

ARKANSAS

COVERED EMPLOYMENT & EARNINGS

FIRST QUARTER 2022



Arkansas Division of
Workforce Services



**COVERED EMPLOYMENT AND EARNINGS
STATE OF ARKANSAS
FIRST QUARTER 2022**

**ASA HUTCHINSON, GOVERNOR
STATE OF ARKANSAS**

**CHARISSE CHILDERS, DIRECTOR
DIVISION OF WORKFORCE SERVICES**

**PUBLISHED BY
LABOR MARKET INFORMATION
BUREAU OF LABOR STATISTICS PROGRAMS
POST OFFICE BOX 2981
LITTLE ROCK, ARKANSAS 72203-2981
SUSAN PRICE, BLS PROGRAMS MANAGER
TELEPHONE (501) 682-3103**

STATE OF ARKANSAS WEBPAGE: <http://www.arkansas.gov>

DIVISION OF WORKFORCE SERVICES WEBPAGE: <http://www.dws.arkansas.gov/>

WEBPAGE FOR LABOR MARKET INFORMATION: <http://www.discover.arkansas.gov>

RELEASED: JULY 2022

TABLE OF CONTENTS

DESCRIPTION OF DATA	PAGE
Description and Classification of Data	1
Definition of Covered Employment and Earnings	2
Significant Developments During First Quarter 2022	3

LIST OF GRAPHS AND TABLES

Graph 1	Total Covered Employment for Selected Years, Arkansas	7
Graph 2	Total Covered Earnings, by Calendar Quarter for Selected Years, Arkansas	8
Table 1	Quarterly Comparison of Covered Employment and Wages, by Industry	5
Table 2	Total Covered Employment in Arkansas, 2015 – 2022	6
Table 3	Total Covered Earnings, 2015 – 2022	9
Table 4	Total Taxable Earnings, 2015 – 2022	10
Table 5	State Summary – Employment and Total Earnings, by Industry, First Quarter 2022	11
Table 6	County Summary – Employment and Total Earnings, by Industry, First Quarter 2022	22
Table 7	Federal Government Employment and Total Earnings in Arkansas, First Quarter 2022	60
Table 8	Local Workforce Development Area – Employment and Total Earnings, by Industry, First Quarter 2022	61

EMPLOYMENT AND EARNINGS
UNDER THE ARKANSAS EMPLOYMENT SECURITY LAW
FIRST QUARTER 2022

DESCRIPTION AND CLASSIFICATION OF DATA

This publication contains covered employment and payroll data by industry and county for the First Quarter 2022 and a record for total covered employment by month, quarterly payroll data, average weekly earnings, and total taxable earnings for 2015 through 2022. These data are compiled from quarterly contributions and wage reports submitted by employers subject to the Arkansas Employment Security Law.

Employment data have been tabulated for each month of the quarter by industry under the **North American Industry Classification System** (NAICS) by state, county, and workforce area. Payroll data represent the total wages paid during the quarter and are classified by industry for the state and by publishable industry groups for each county and workforce area.

Due to industry classification revisions, previously published data will not always be comparable with current data. For this reason, comparisons should not be made between the same industries under different revisions. For more information, visit the NAICS home page at <http://www.census.gov/naics>.

Industry Classification Revisions

- SIC (Standard Industrial Classification) 1987 to NAICS 2002
- NAICS 2002 to NAICS 2007
- NAICS 2007 to NAICS 2012
- NAICS 2012 to NAICS 2018
- NAICS 2018 to NAICS 2022

The tabulation of this data is a joint effort in conjunction with the United States Bureau of Labor Statistics. Data included in this publication are subject to revisions. Revisions are typically reflected in the Annual Covered Employment and Earnings publication.

DEFINITION OF COVERED EMPLOYMENT AND EARNINGS

Covered Employment is the total number of workers employed by establishments subject to the Arkansas Employment Security Law that worked or received pay for the payroll period including the 12th of the month. Earnings include all wages paid to any covered employee by their employer including salaries, bonuses, commissions, fees, fringe benefits, sick pay made directly to employees or dependents, deferred compensation, and reported tips. These wages include both taxable and nontaxable wages. Only the first \$10,000 paid to each worker by an employer in the calendar year is taxable under the Arkansas Employment Security Law.

An Arkansas state unemployment insurance account is required of any entity meeting the definition of an employer. As described by Arkansas Division of Workforce Services Law, the definition of an employer includes, but is not limited to, a sole proprietorship, partnership, corporation, associations, trust, estate, and receiver or trustee in bankruptcy. The entity must employ one or more individuals for ten or more days in a calendar year, whether or not the days are consecutive.

Currently excluded from coverage is employment covered by the Railroad Unemployment Insurance Act, some domestic service workers, employees of small agricultural establishments, self-employed workers, unpaid family workers, insurance and real estate agents paid only on a commission basis, and employees of churches and religious organizations except separately incorporated schools.

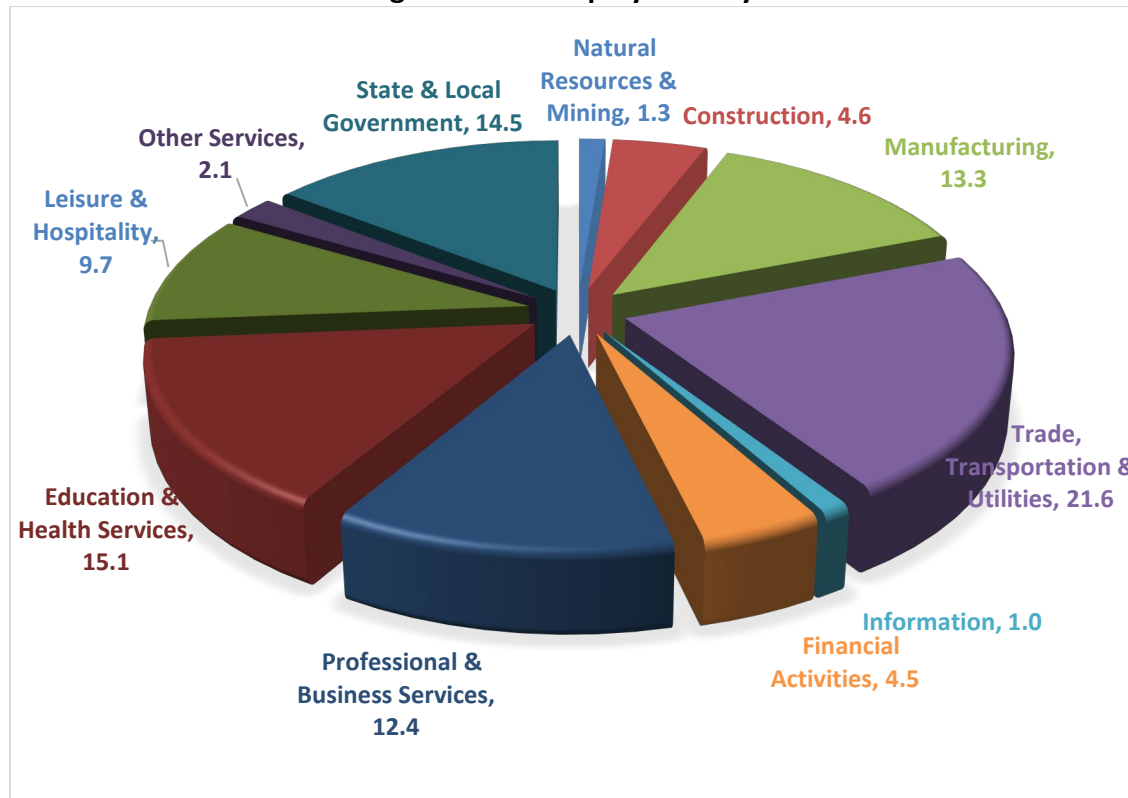
Civilian federal workers are covered by Unemployment Compensation for Federal Employees (UCFE).

SIGNIFICANT DEVELOPMENTS DURING FIRST QUARTER 2022

AVERAGE EMPLOYMENT CHANGES

Covered employment averaged 1,208,336 during the First Quarter 2022 (refer to Table 1), a decrease of 4,634 (-0.4%) from the previous quarter and a gain of 41,783 (3.6%) from the average recorded one year ago. The over-the-year comparison is more significant when used as an economic indicator and allows for seasonal factors that appear when comparing over-the-quarter data to be disregarded.

Average Covered Employment by NAICS



EMPLOYMENT CHANGES FROM FOURTH QUARTER 2021

Gains were recorded in five major industry groups. (refer to Table 1). The only significant increase occurred in Manufacturing (1,203). Education & Health Services also had a fair increase (900). Losses occurred in six major sectors. The decline in Trade, Transportation, & Utilities (-2,903) was due to seasonal losses in Retail Trade (-3869). The only other large loss was in Leisure & Hospitality (-1,525).

EMPLOYMENT CHANGES FROM FIRST QUARTER 2021 (QUARTER YEAR AGO COMPARISON)

Over-the-year gains were recorded in nine major industry groups. (refer to Table 1). Large increases occurred in Trade, Transportation & Utilities (14,860), Leisure & Hospitality (10,613), Professional & Business Services (5,377), Manufacturing (4,444), Construction (2,588) Financial Activities (1,766) and Information (1,213). Small Losses were reported in State & Local Government and Natural Resources & Mining.

COVERED WAGES

Wages paid to covered workers totaled \$16,553,085,492 for the First Quarter 2022 (refer to Table 1), for an average weekly wage of \$1,053.78 (refer to Table 5). Benton County workers recorded the highest average weekly wage (\$1,900.80), and employees in Montgomery reported the lowest (\$549.94) (refer to Table 6). Professional & Business Services recorded the highest average weekly wage for the State of Arkansas (\$1,896.12). The Leisure & Hospitality sector recorded the lowest (\$381.77) (refer to Table 5).

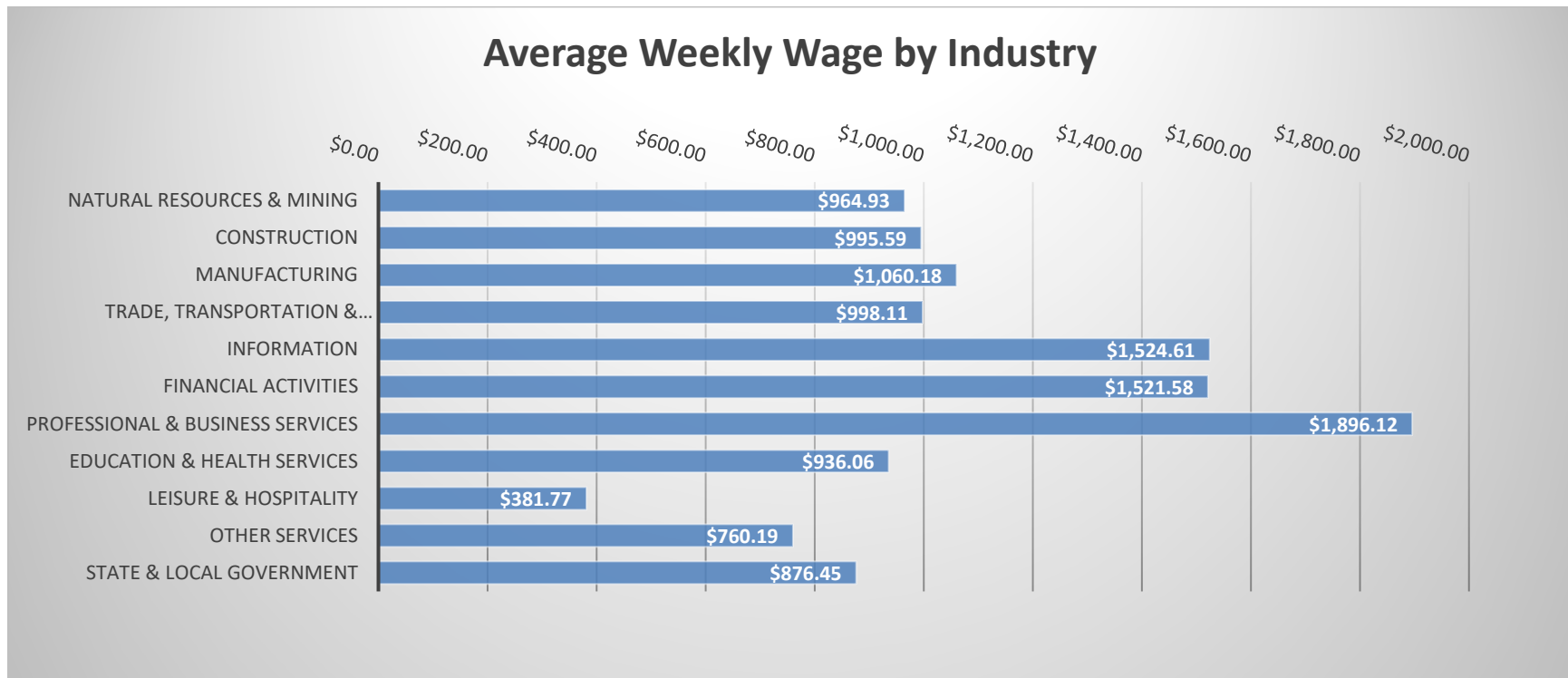


TABLE 1. QUARTERLY COMPARISON OF COVERED EMPLOYMENT AND WAGES, BY INDUSTRY

North American Industry Classification System - Industry Groups	Number of Employing Units	Monthly Employment Average	Percent of Total	Net Change From:		Total Wages Paid Jan - Mar 2022	Percent of Total
				Oct - Dec 2021	Jan - Mar 2021		
TOTAL	97,087	1,208,336	100	-4,634	41,783	\$16,553,085,492	100
Natural Resources & Mining	2,527	15,257	1.3	-519	-21	191,389,746	1.2
Agriculture, Forestry, Fishing & Hunting	2,128	11,947	1.0	-546	-60	132,301,742	0.8
Mining	399	3,310	0.3	27	39	59,088,004	0.4
Construction	7,603	55,567	4.6	-502	2,588	719,179,738	4.3
Manufacturing	3,036	160,428	13.3	1,203	4,444	2,211,063,296	13.4
Trade, Transportation & Utilities	22,397	261,052	21.6	-2,903	14,860	3,387,256,087	20.5
Wholesale Trade	7,741	49,844	4.1	922	3,194	1,064,041,012	6.4
Retail Trade	10,890	140,392	11.6	-3,869	3,507	1,194,180,961	7.2
Transportation & Warehousing	3,316	63,298	5.2	19	8,446	918,246,089	5.5
Utilities	450	7,518	0.6	25	-288	210,788,025	1.3
Information	2,261	12,365	1.0	134	1,213	245,080,808	1.5
Financial Activities	9,751	53,887	4.5	171	1,766	1,065,922,768	6.4
Finance & Insurance	5,746	39,519	3.3	179	1,067	898,847,840	5.4
Real Estate & Rental & Leasing	4,005	14,368	1.2	-8	699	167,074,928	1.0
Professional & Business Services	17,885	149,501	12.4	-787	5,377	3,685,127,237	22.3
Professional & Technical Services	11,489	47,316	3.9	1,316	3,534	836,497,091	5.1
Management of Companies & Enterprises	564	35,456	2.9	778	1,144	2,149,081,799	13.0
Administrative & Waste Services	5,832	66,729	5.5	-2,881	699	699,548,347	4.2
Education & Health Services	15,263	182,680	15.1	900	653	2,222,990,905	13.4
Educational Services	1,131	13,387	1.1	-89	1,024	127,564,479	0.8
Health Care & Social Assistance	14,132	169,293	14.0	988	-372	2,095,426,426	12.7
Leisure & Hospitality	7,647	117,499	9.7	-1,525	10,613	583,155,231	3.5
Arts, Entertainment & Recreation	1,099	11,379	0.9	-180	1,571	78,067,375	0.5
Accommodation & Food Services	6,548	106,120	8.8	-1,345	9,042	505,087,856	3.1
Other Services	5,652	25,136	2.1	6	921	248,407,862	1.5
State & Local Government	3,065	174,964	14.5	-543	-630	1,993,511,814	12.0
Local Government	2,005	110,773	9.2	-715	606	1,122,425,770	6.8
State Government	1,060	64,191	5.3	172	-1,236	871,086,044	5.3
Nonclassifiable Establishments	0	0	0.0	-269	0	0	0.0

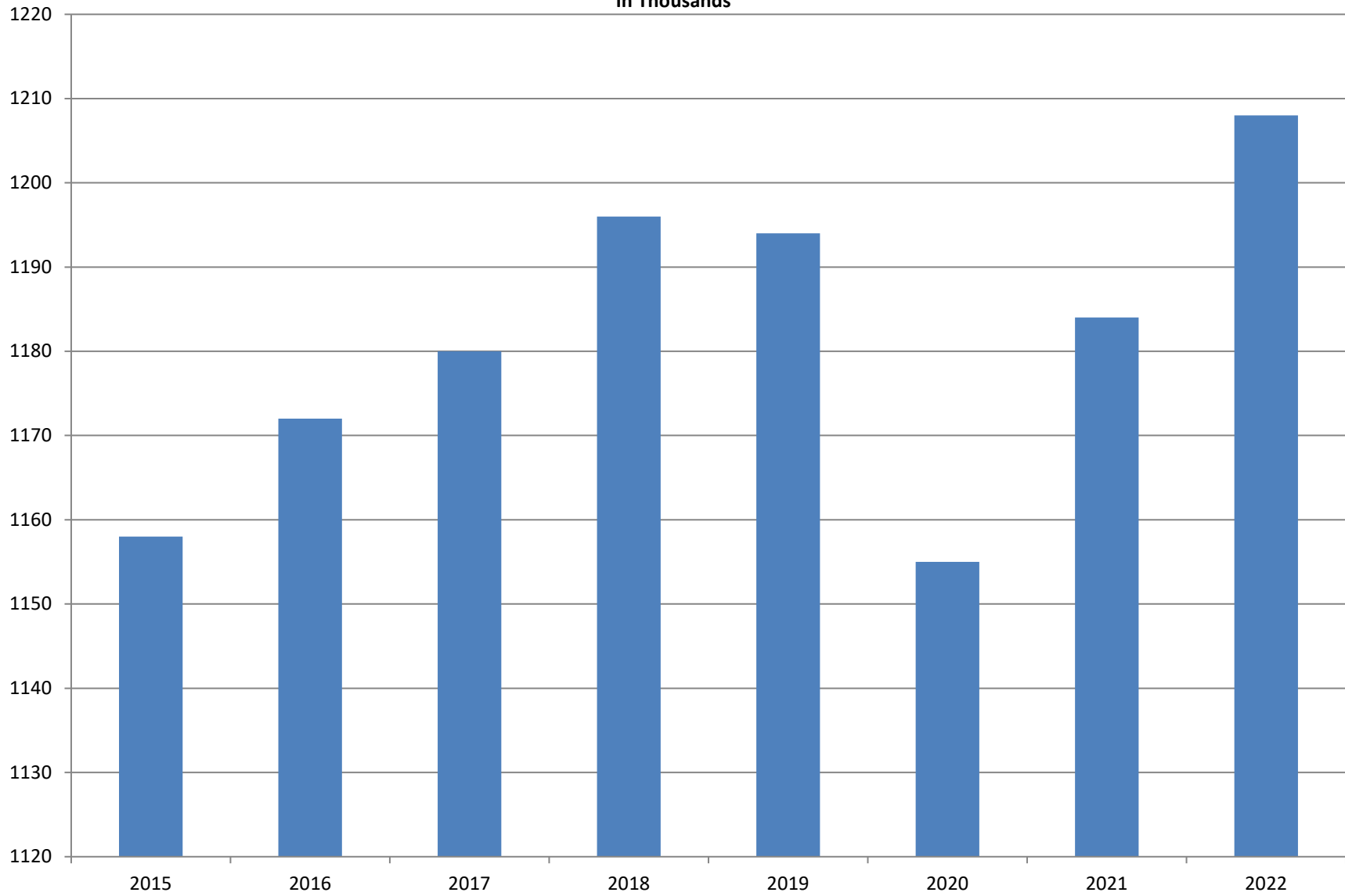
Note: Items do not necessarily add to total because of rounding. Because of industry code changes between years, substantial employment and wage shifts among industries are anticipated.

TABLE 2. TOTAL COVERED EMPLOYMENT IN ARKANSAS

PERIOD	2015	2016	2017	2018	2019	2020	2021	2022
AVERAGE	1,157,634	1,171,503	1,180,337	1,195,781	1,194,322	1,155,490	1,183,930	1,208,336
January	1,135,577	1,152,434	1,161,239	1,173,537	1,186,848	1,195,722	1,162,013	1,200,134
February	1,144,902	1,162,294	1,172,290	1,183,185	1,194,355	1,200,543	1,160,167	1,211,259
March	1,146,413	1,170,837	1,179,686	1,190,199	1,198,481	1,199,702	1,176,533	1,213,614
April	1,158,606	1,178,630	1,185,212	1,194,816	1,204,176	1,090,183	1,183,176	
May	1,167,657	1,181,644	1,189,900	1,201,113	1,206,476	1,120,448	1,186,529	
June	1,164,607	1,177,506	1,186,326	1,195,468	1,202,260	1,137,765	1,186,796	
July	1,119,390	1,132,361	1,137,883	1,168,432	1,155,337	1,099,733	1,145,902	
August	1,148,502	1,160,743	1,168,802	1,200,284	1,185,213	1,137,611	1,175,791	
September	1,173,776	1,185,510	1,193,845	1,222,012	1,202,177	1,157,279	1,189,491	
October	1,173,953	1,185,022	1,194,194	1,205,161	1,209,366	1,170,351	1,209,530	
November	1,177,717	1,186,046	1,197,650	1,208,638	1,194,675	1,177,588	1,213,903	
December	1,180,513	1,185,009	1,197,013	1,206,531	1,192,501	1,178,954	1,217,329	

AVERAGE TOTAL COVERED EMPLOYMENT

In Thousands



TOTAL COVERED EARNINGS BY CALENDAR YEAR

In Millions

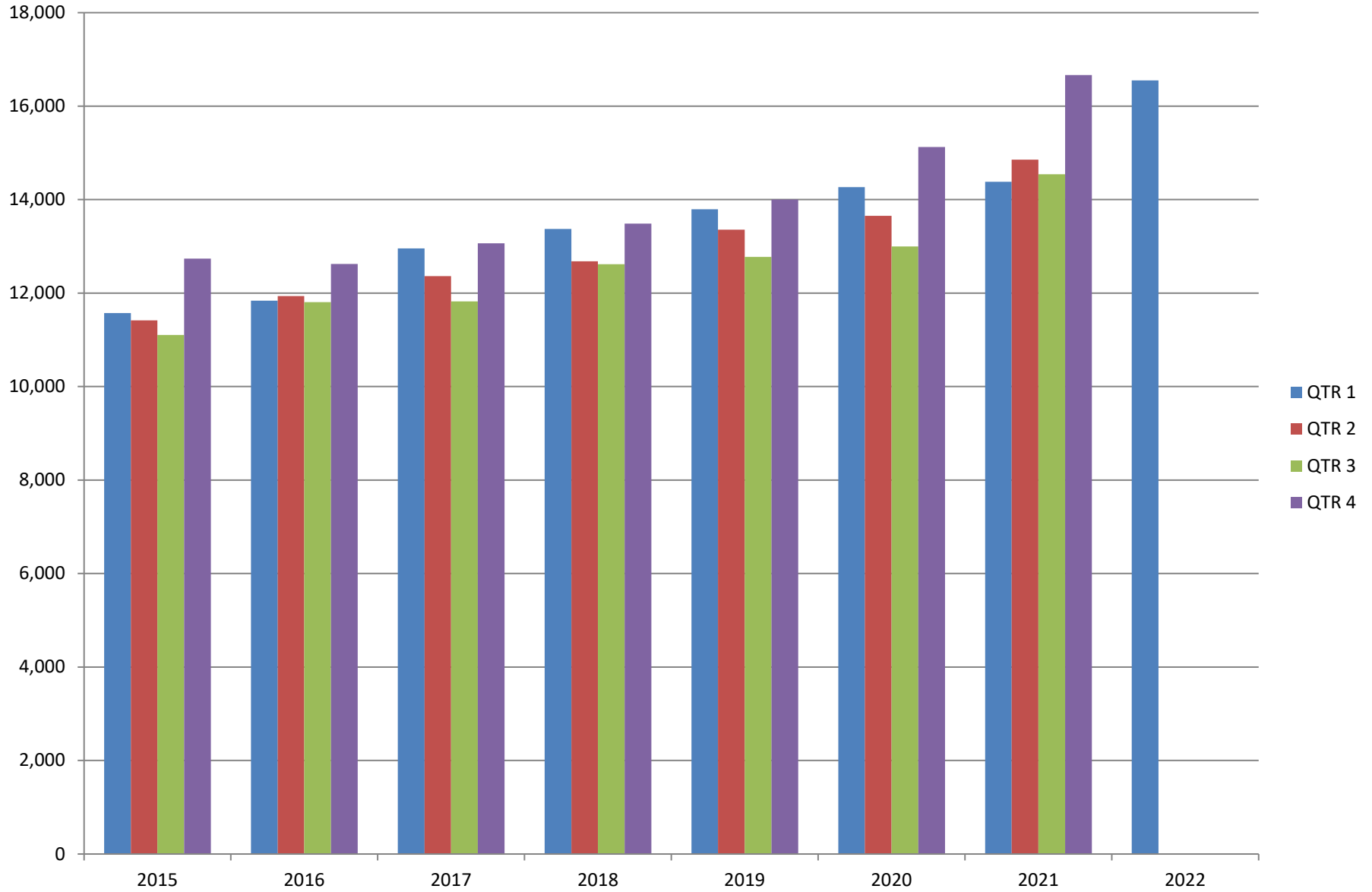


TABLE 3. TOTAL COVERED EARNINGS 2015- 2022

PERIOD	2015	2016	2017	2018
TOTAL	\$46,836,352,793	\$48,207,277,530	\$50,207,202,141	\$52,159,789,393
January - March	11,575,046,688	11,836,255,664	12,955,088,347	13,372,730,974
April - June	11,419,363,330	11,935,722,186	12,363,027,711	12,682,491,819
July - September	11,104,443,452	11,809,460,297	11,823,324,966	12,619,347,460
October - December	12,737,499,323	12,625,839,383	13,065,761,117	13,485,219,140
Average Weekly Earnings	\$778.05	\$791.34	\$818.01	\$838.84

PERIOD	2019	2020	2021	2022
TOTAL	\$53,931,077,907	\$56,042,071,520	\$60,442,740,956	\$16,553,085,492
January - March	13,795,046,820	14,268,302,306	14,379,756,373	16,553,085,492
April - June	13,356,848,831	13,651,304,330	14,854,193,705	
July - September	12,776,218,481	12,998,944,628	14,544,909,536	
October - December	14,002,963,775	15,123,520,256	16,663,881,342	
Average Weekly Earnings	\$868.39	\$932.71	\$981.78	\$1,053.78

TABLE 4. TOTAL TAXABLE EARNINGS, 2015 - 2022

PERIOD	2015	2016	2017	2018
TOTAL	12,258,632,610	12,511,938,047	12,744,039,136	11,335,932,409
January - March	6,378,966,662	6,595,351,454	6,958,706,950	6,577,871,657
April - June	2,915,293,283	3,003,077,908	2,908,226,426	2,278,450,975
July - September	1,640,978,599	1,651,582,584	1,576,968,648	1,328,868,479
October - December	1,323,394,066	1,261,926,101	1,300,137,112	1,150,741,298

PERIOD	2019	2020	2021	2022
TOTAL	11,498,854,755	8,525,235,479	12,092,994,279	7,417,028,137
January - March	6,737,833,125	5,589,526,770	6,791,670,990	7,417,028,137
April - June	2,283,514,220	1,172,837,688	2,364,465,896	
July - September	1,327,818,133	864,579,237	1,501,070,061	
October - December	1,149,689,277	898,291,784	1,435,787,332	

TABLE 5. STATEWIDE SUMMARY

North American Industry Classification System - Industry Groups		Number of Employing Units	Employment			Total Earnings Jan - Mar 2022	Average Weekly Earnings
			Jan	Feb	Mar		
TOTAL, ALL INDUSTRIES		97,087	1,200,134	1,211,259	1,213,614	\$16,553,085,492	\$1,053.78
NATURAL RESOURCES & MINING		2,527	14,969	15,301	15,502	\$191,389,746	\$964.93
11	AGRICULTURE, FORESTRY, FISHING & HUNTING	2,128	11,678	11,979	12,185	\$132,301,742	\$851.83
111	CROP PRODUCTION	949	3,698	3,867	4,034	32,323,251	\$643.09
1111	Oilseed & Grain Farming	699	2,195	2,273	2,361	18,627,671	629.48
1112	Vegetable & Melon Farming	31	100	103	103	1,262,493	952.11
1113	Fruit & Tree Nut Farming	14	54	56	61	418,446	564.70
1114	Greenhouse, Nursery & Floriculture Production	41	741	813	880	7,113,493	674.44
1119	Other Crop Farming	164	608	622	629	4,901,148	608.41
112	ANIMAL PRODUCTION & AQUACULTURE	359	3,039	3,111	3,134	\$43,312,837	\$1,076.61
1121	Cattle Ranching & Farming	134	407	406	419	3,643,226	682.42
1122	Hog & Pig Farming	14	116	113	116	1,641,830	1,098.21
1123	Poultry & Egg Production	145	2,178	2,192	2,190	34,261,557	1,205.26
1125	Aquaculture	36	255	323	336	3,198,865	807.66
	Other	30	83	77	73	567,359	561.93
115	SUPPORT ACTIVITIES FOR AGRICULTURE & FORESTRY	417	2,908	2,960	2,989	\$30,923,911	\$805.72
1151	Support Activities for Crop Production	281	1,346	1,371	1,391	15,054,054	845.67
1152	Support Activities for Animal Production	64	558	557	560	5,304,866	730.87
1153	Support Activities for Forestry	72	1,004	1,032	1,038	10,564,991	793.13
	OTHER	403	2,033	2,041	2,028	\$25,741,743	\$973.52
21	MINING, QUARRYING, & OIL & GAS EXTRACTION	399	3,291	3,322	3,317	\$59,088,004	\$1,373.18
211	OIL & GAS EXTRACTION	65	445	443	445	\$9,182,658	\$1,589.70
212	MINING (EXCEPT OIL & GAS)	104	1,832	1,847	1,824	\$30,923,930	\$1,296.80
213	SUPPORT ACTIVITES FOR MINING	230	1,014	1,032	1,048	\$18,981,416	\$1,415.75

TABLE 5. STATEWIDE SUMMARY

North American Industry Classification System - Industry Groups		Number of Employing Units	Employment			Total Earnings Jan - Mar 2022	Average Weekly Earnings
			Jan	Feb	Mar		
CONSTRUCTION		7,603	55,057	55,434	56,209	\$719,179,738	\$995.59
236	CONSTRUCTION OF BUILDINGS	1,968	11,105	11,245	11,430	\$160,879,120	\$1,099.05
2361	Residential Building Construction	1,352	4,230	4,279	4,375	54,059,303	968.27
2362	Nonresidential Building Construction	616	6,875	6,966	7,055	106,819,817	1,179.69
237	HEAVY & CIVIL ENGINEERING CONSTRUCTION	802	9,135	9,148	9,331	\$128,940,497	\$1,077.55
2371	Utility System Construction	492	5,283	5,288	5,423	75,439,714	1,088.48
2372	Land Subdivision	45	78	79	82	760,107	733.93
2373	Highway, Street & Bridge Construction	169	3,066	3,059	3,125	44,103,140	1,100.29
2379	Other Heavy & Civil Engineering Construction	96	708	722	701	8,637,536	935.37
238	SPECIALTY TRADE CONTRACTORS	4,833	34,817	35,041	35,448	\$429,360,121	\$940.91
2381	Building Foundation & Exterior Contractors	912	5,814	5,812	5,853	70,495,805	930.73
2382	Building Equipment Contractors	2,381	19,964	20,146	20,415	261,499,465	997.04
2383	Building Finishing Contractors	771	3,973	3,964	4,015	42,247,560	815.72
2389	Other Specialty Trade Contractors	769	5,066	5,119	5,165	55,117,291	828.62
MANUFACTURING		3,036	158,975	161,079	161,229	\$2,211,063,296	\$1,060.18
311	FOOD MANUFACTURING	311	49,109	49,932	49,591	\$565,548,927	\$878.08
3111	Animal Food Manufacturing	42	2,018	2,012	1,991	38,255,581	1,466.24
3112	Grain & Oilseed Milling	32	2,864	2,954	2,932	32,104,484	846.71
3114	Fruit & Vegetable Preserving & Specialty Food Manufacturing	15	4,337	4,497	4,447	55,293,926	960.78
3115	Dairy Product Manufacturing	9	511	507	509	6,431,051	971.90
3116	Animal Slaughtering & Processing	93	32,660	33,152	32,848	352,985,499	825.65
3118	Bakeries & Tortilla Manufacturing	84	4,223	4,299	4,322	47,231,548	848.61
3119	Other Food Manufacturing	27	2,452	2,464	2,507	32,965,364	1,024.84
	Other	9	44	47	35	281,474	515.52
312	BEVERAGE & TOBACCO PRODUCT MANUFACTURING	80	1,747	1,753	1,748	\$28,776,681	\$1,265.39
313	TEXTILE MILLS	17	145	149	151	\$2,691,540	\$1,395.79
314	TEXTILE PRODUCT MILLS	43	781	792	790	\$12,494,392	\$1,220.20
3141	Textile Furnishing Mills	7	20	20	20	103,100	396.54
3149	Other Textile Product Mills	36	761	772	770	12,391,292	1,241.65
315	APPAREL MANUFACTURING	23	672	713	743	\$5,332,188	\$578.24
3151	Apparel Knitting Mills	5	372	397	423	2,867,234	555.09
3152	Cut & Sew Apparel Manufacturing	13	167	182	181	1,176,938	512.45
3159	Apparel Accessories & Other Apparel Manufacturing	5	133	134	139	1,288,016	732.10

TABLE 5. STATEWIDE SUMMARY

North American Industry Classification System - Industry Groups		Number of Employing Units	Employment			Total Earnings	Average Weekly Earnings
			Jan	Feb	Mar	Jan - Mar 2022	
316	LEATHER & ALLIED PRODUCT MANUFACTURING	10	809	816	832	\$5,897,934	\$553.95
3162	Footwear Manufacturing	3	623	634	649	3,940,214	\$477.06
	Other	7	186	182	183	1,957,720	\$819.93
321	WOOD PRODUCT MANUFACTURING	297	10,316	10,398	10,427	\$134,591,902	\$997.39
3211	Sawmills & Wood Preservation	128	4,883	4,899	4,928	70,321,669	1,103.20
3212	Veneer, Plywood & Engineered Wood Products	37	2,072	2,128	2,143	29,834,003	1,085.41
3219	Other Wood Product Manufacturing	132	3,361	3,371	3,356	34,436,230	787.75
322	PAPER MANUFACTURING	88	8,733	8,727	8,753	\$157,060,813	\$1,382.70
3221	Pulp, Paper & Paperboard Mills	14	2,527	2,514	2,515	62,559,401	1,910.64
3222	Converted Paper Product Manufacturing	74	6,206	6,213	6,238	94,501,412	1,168.89
323	PRINTING & RELATED SUPPORT ACTIVITIES	246	3,041	3,033	3,042	\$33,900,880	\$858.19
324	PETROLEUM & COAL PRODUCTS MANUFACTURING	22	1,122	1,139	1,140	\$23,650,521	\$1,604.77
325	CHEMICAL MANUFACTURING	134	5,458	5,458	5,458	\$100,734,659	\$1,419.72
3251	Basic Chemical Manufacturing	33	1,859	1,857	1,859	40,387,455	1,671.78
3252	Rubber & Synthetic Fibers & Filament Manufacturing	11	375	373	359	6,548,099	1,365.04
3253	Pesticide, Fertilizer & Other Agricultural Chemical Manufacturing	17	462	466	480	10,498,573	1,720.70
3254	Pharmaceutical & Medicine Manufacturing	32	419	431	449	6,791,155	1,206.46
3259	Other Chemical Product & Preparation Manufacturing	19	622	618	585	10,276,949	1,299.51
	Other	22	1,721	1,713	1,726	26,232,428	1,173.19
326	PLASTICS & RUBBER PRODUCTS MANUFACTURING	129	10,852	11,040	11,097	\$149,343,473	\$1,044.71
3261	Plastics Product Manufacturing	100	6,683	6,820	6,828	82,315,738	934.33
3262	Rubber Product Manufacturing	29	4,169	4,220	4,269	67,027,735	1,221.99
327	NONMETALLIC MINERAL PRODUCT MANUFACTURING	219	3,465	3,454	3,486	\$50,478,333	\$1,119.54
3271	Clay Product & Refractory Manufacturing	10	502	504	506	7,219,503	1,101.88
3272	Glass & Glass Product Manufacturing	7	408	411	413	5,331,759	998.71
3279	Other Nonmetallic Mineral Product Manufacturing	34	274	277	282	2,669,539	739.55
	Other	168	2,281	2,262	2,285	35,257,532	1,191.62
331	PRIMARY METAL MANUFACTURING	72	7,768	7,890	7,982	\$194,758,345	\$1,901.19
3311	Iron & Steel Mills & Ferroalloy Manufacturing	11	3,805	3,832	3,855	136,967,726	2,750.43
3312	Steel Product Manufacturing from Purchased Steel	23	1,441	1,506	1,573	23,769,750	1,213.57
3313	Alumina & Aluminum Production & Processing	14	870	898	906	14,403,545	1,243.04
3314	Nonferrous Metal (except Aluminum) Production & Processing	6	273	270	262	3,601,238	1,032.37
3315	Foundries	18	1,379	1,384	1,386	16,016,086	890.82

TABLE 5. STATEWIDE SUMMARY

North American Industry Classification System - Industry Groups		Number of Employing Units	Employment			Total Earnings	Average Weekly Earnings
			Jan	Feb	Mar	Jan - Mar 2022	
332	FABRICATED METAL PRODUCT MANUFACTURING	514	15,491	15,689	15,705	\$229,437,008	\$1,129.30
3321	Forging & Stamping	12	419	440	442	5,345,531	948.18
3322	Cutlery & Hand Tool Manufacturing	13	631	646	639	9,058,399	1,091.02
3323	Architectural & Structural Metals Manufacturing	153	4,814	4,888	4,906	81,861,014	1,293.20
3324	Boiler, Tank & Shipping Container Manufacturing	14	564	560	588	7,672,062	1,034.16
3325	Hardware Manufacturing	4	258	263	262	3,670,590	1,081.81
3326	Spring & Wire Product Manufacturing	10	297	306	311	3,983,746	1,005.83
3327	Machine Shops; Turned Product; and Screw, Nut & Bolt Mfg	203	2,149	2,189	2,188	25,745,291	910.39
3328	Coating, Engraving Heat Treating & Allied Activities	40	567	560	563	7,488,542	1,022.56
3329	Other Fabricated Metal Product Manufacturing	65	5,792	5,837	5,806	84,611,833	1,119.92
333	MACHINERY MANUFACTURING	222	12,035	12,319	12,430	\$174,599,072	\$1,095.37
3331	Agriculture, Construction & Mining Machinery Manufacturing	37	3,073	3,144	3,177	45,545,592	1,118.85
3332	Industrial Machinery Manufacturing	26	616	627	641	12,868,909	1,576.30
3333	Commercial & Service Industry Machinery Manufacturing	22	818	839	830	11,594,060	1,075.82
3334	HVAC & Commercial Refrigeration Equipment Manufacturing	22	2,708	2,756	2,804	37,185,958	1,037.90
3335	Metalworking Machinery Manufacturing	53	1,169	1,203	1,199	13,288,489	858.74
3336	Engine, Turbine & Power Transmission Equipment Manufacturing	6	258	263	265	3,339,006	980.33
3339	Other General Purpose Machinery Manufacturing	56	3,393	3,487	3,514	50,777,058	1,127.36
336	TRANSPORTATION EQUIPMENT MANUFACTURING	141	14,420	14,630	14,673	\$180,641,846	\$953.42
3362	Motor Vehicle Body & Trailer Manufacturing	32	2,231	2,266	2,267	23,708,151	808.86
3363	Motor Vehicle Parts Manufacturing	46	4,599	4,718	4,731	53,871,726	884.96
3364	Aerospace Product & Parts Manufacturing	29	4,096	4,093	4,097	66,083,584	1,241.25
3366	Ship & Boat Building	22	2,161	2,208	2,240	21,884,715	764.16
	Other	12	1,333	1,345	1,338	15,093,670	867.32
337	FURNITURE & RELATED PRODUCT MANUFACTURING	154	3,291	3,398	3,386	\$34,317,399	\$786.04
339	MISCELLANEOUS MANUFACTURING	204	3,604	3,610	3,607	\$39,993,701	\$852.91
3391	Medical Equipment & Supplies Manufacturing	83	1,817	1,807	1,807	21,295,343	904.86
3399	Other Miscellaneous Manufacturing	121	1,787	1,803	1,800	18,698,358	800.56
	OTHER	110	6,116	6,139	6,188	\$86,813,682	\$1,086.26

TABLE 5. STATEWIDE SUMMARY

North American Industry Classification System - Industry Groups		Number of Employing Units	Employment			Total Earnings	Average Weekly Earnings
			Jan	Feb	Mar	Jan - Mar 2022	
TRADE, TRANSPORTATION & UTILITIES		22,397	260,279	261,657	261,219	\$3,387,256,087	\$998.11
42	WHOLESALE TRADE	7,741	49,478	49,996	50,058	\$1,064,041,012	\$1,642.11
423	MERCHANT WHLS (WHOLESALERS), DURABLE GOODS	3,977	26,306	26,534	26,471	\$533,588,045	\$1,552.57
4231	Motor Vehicle & Motor Vehicle Part & Supplies Merchant Whls	320	3,408	3,424	3,418	61,185,782	1,377.54
4232	Furniture & Home Furnishings Merchant Whls	143	561	565	576	12,288,566	1,666.17
4233	Lumber & Other Construction Materials Merchant Whls	280	1,703	1,730	1,693	29,747,960	1,339.23
4234	Professional & Commercial Equipment & Supplies Merchant Whls	879	3,680	3,711	3,688	92,685,831	1,930.59
4235	Metal & Mineral (except Petroleum) Merchant Whls	135	1,120	1,137	1,120	21,337,304	1,458.10
4236	Household Appliance & Electrical Apparatus Merchant Whls	426	2,984	3,023	3,044	73,796,840	1,881.56
4237	Hardware, Plumbing, Heating Equip & Supplies Merchant Whls	349	2,960	2,993	2,986	62,392,852	1,610.73
4238	Machinery, Equipment & Supplies Merchant Whls	1,085	7,716	7,742	7,760	140,658,567	1,398.04
4239	Miscellaneous Durable Goods Merchant Whls	360	2,174	2,209	2,186	39,494,343	1,387.44
424	MERCHANT WHLS (WHOLESALERS), NONDURABLE GOODS	2,356	19,132	19,379	19,489	\$425,942,192	\$1,694.73
4241	Paper & Paper Product Merchant Whls	127	1,298	1,297	1,298	28,180,485	1,670.48
4242	Drugs & Druggists' Sundries Merchant Whls	363	1,884	1,891	1,928	70,726,667	2,861.92
4243	Apparel, Piece Goods, & Notions Merchant Whls	146	820	829	834	13,103,018	1,217.79
4244	Grocery & Related Product Merchant Whls	645	6,276	6,304	6,231	159,415,794	1,955.68
4245	Farm Product Raw Material Merchant Whls	99	1,072	1,089	1,141	10,471,527	731.83
4246	Chemical & Allied Product Merchant Whls	237	1,231	1,255	1,251	30,512,215	1,884.21
4247	Petroleum & Petroleum Product Merchant Whls	156	940	947	926	16,754,920	1,374.52
4248	Beer, Wine & Distilled Alcoholic Beverage Merchant Whls	85	1,772	1,799	1,805	32,424,574	1,391.85
4249	Miscellaneous Nondurable Goods Merchant Whls	498	3,839	3,968	4,075	64,352,992	1,249.85
425	WHOLESALE TRADE AGENTS & BROKERS	1,408	4,040	4,083	4,098	\$104,510,775	\$1,973.48
44 - 45	RETAIL TRADE	10,890	140,063	140,707	140,406	\$1,194,180,961	\$654.31
441	MOTOR VEHICLE & PARTS DEALERS	1,552	19,339	19,443	19,441	\$272,540,889	\$1,080.23
4411	Automobile Dealers	604	11,564	11,645	11,609	196,805,284	1,304.40
4412	Other Motor Vehicle Dealers	191	1,815	1,854	1,868	23,339,003	972.72
4413	Automotive Parts, Accessories & Tire Stores	757	5,960	5,944	5,964	52,396,602	676.71
444	BUILDING MATERIAL & GARDEN EQUIPMENT & SUPPLIES DEALER	854	12,824	13,152	13,349	\$114,655,986	\$672.83
4441	Building Material & Supplies Dealers	610	10,574	10,891	11,017	98,993,226	703.30
4442	Lawn & Garden Equipment & Supplies Retailers	244	2,250	2,261	2,332	15,662,760	528.20

TABLE 5. STATEWIDE SUMMARY

North American Industry Classification System - Industry Groups		Number of Employing Units	Employment			Total Earnings	Average Weekly Earnings
			Jan	Feb	Mar	Jan - Mar 2022	
445	FOOD & BEVERAGE RETAILERS	1,162	20,515	20,539	20,454	\$139,822,148	\$524.59
4451	Grocery & Convenience Retailers	624	17,726	17,747	17,640	118,959,267	516.86
4452	Specialty Food Retailers	175	888	876	900	9,531,740	825.69
4453	Beer, Wine & Liquor Retailers	363	1,901	1,916	1,914	11,331,141	456.27
449	FURNITURE, FURNISHINGS, ELECTRONICS & APPLIANCE RETAILERS	866	6,716	6,638	6,553	\$68,060,948	\$788.99
4491	Furniture and Home Furnishings Retailers	505	3,619	3,569	3,562	35,576,929	\$763.73
4492	Electronics and Appliance Retailers	361	3,097	3,069	2,991	32,484,019	\$818.64
455	GENERAL MERCHANDISE RETAILERS	998	39,328	39,533	39,119	\$311,340,551	\$608.98
4551	Department Stores	97	6,408	6,234	6,192	40,528,432	496.59
4552	Warehouse clubs, Supercenters, & Other General Merch Retailers	901	32,920	33,299	32,927	270,812,119	630.33
456	HEALTH AND PERSONAL CARE RETAILERS	1,070	8,992	8,973	8,870	\$87,618,217	\$753.48
457	GASOLINE STATIONS & FUEL DEALERS	1,678	13,205	13,212	13,254	\$80,379,252	\$467.57
4571	Gasoline Stations	1,597	12,717	12,732	12,772	73,669,743	444.80
457110	Gasoline Stations with Convenience Stores	1,509	11,697	11,723	11,778	66,506,024	436.03
457120	Other Gasoline Stations	88	1,020	1,009	994	7,163,719	546.86
4572	Fuel Dealers	81	488	480	482	6,709,509	1,067.83
457210	Fuel Dealers	81	488	480	482	6,709,509	1,067.83
458	CLOTHING, CLOTHING ACCESSORIES, SHOE & JEWELRY RETAILERS	983	7,133	7,104	7,155	\$43,648,469	\$470.86
4581	Clothing & Clothing Accessories Retailers	756	5,532	5,512	5,571	30,814,000	427.98
4582	Shoe Retailers	101	922	928	920	4,633,584	386.02
4583	Jewelry, Luggage and Leather Goods Retailers	126	679	664	664	8,200,885	942.96
459	SPORT GOODS, HOBBY, MUSICAL INSTR, BOOK, & MISC RETAIL	1,727	12,011	12,113	12,211	\$76,114,501	\$483.42
4591	Sporting Goods, Hobby, and Musical Instrument Retailers	416	4,025	3,901	3,888	23,506,516	459.17
4592	Book Retailers and News Dealers	72	406	391	390	1,967,419	382.49
4593	Florists	155	633	720	639	3,515,531	407.27
4594	Office Supplies, Stationery, and Gift Retailers	241	1,246	1,250	1,262	7,721,244	474.14
4595	Used Merchandise Retailers	273	2,216	2,387	2,423	11,450,809	376.10
4599	Other Miscellaneous Retailers	570	3,485	3,464	3,609	27,952,982	610.98
48 - 49	TRANSPORTATION & WAREHOUSING	3,316	63,222	63,457	63,215	\$918,246,089	\$1,115.90
481	AIR TRANSPORTATION	50	673	678	674	\$8,016,154	\$913.52
4811	Scheduled Air Transportation	16	596	603	594	6,026,687	775.67
4812	Nonshceduled Air Transportation	34	77	75	80	1,989,467	1,978.91
483	WATER TRANSPORTATION	8	24	26	27	\$514,829	\$1,542.94
484	TRUCK TRANSPORTATION	2,132	32,650	32,597	32,895	\$555,334,798	\$1,305.80
4841	General Freight Trucking	1,321	26,574	26,543	26,845	463,035,287	1,336.31
4842	Specialized Freight Trucking	811	6,076	6,054	6,050	92,299,511	1,171.61

TABLE 5. STATEWIDE SUMMARY

North American Industry Classification System - Industry Groups		Number of Employing Units	Employment			Total Earnings Jan - Mar 2022	Average Weekly Earnings
			Jan	Feb	Mar		
486	PIPELINE TRANSPORTATION	37	509	504	511	\$14,609,679	\$2,212.25
488	SUPPORT ACTIVITIES FOR TRANSPORTATION	536	5,724	5,727	5,686	\$92,503,495	\$1,245.66
4881	Support Activities for Air Transportation	120	1,122	1,132	1,124	13,251,661	905.29
4882	Support Activities for Rail Transportation	41	582	578	591	8,356,625	1,101.34
4884	Support Activities for Road Transportation	166	936	924	918	9,590,035	796.65
4885	Freight Transportation Arrangement Other	181 28	2,539 545	2,554 539	2,574 479	52,680,583 8,624,591	1,585.63 1,273.38
491	POSTAL SERVICE	16	97	95	94	\$883,249	\$712.68
492	COURIERS & MESSENGERS	211	6,521	6,343	6,203	\$68,471,081	\$828.71
493	WAREHOUSING & STORAGE	203	15,657	16,112	15,750	\$167,967,851	\$815.71
	OTHER	123	1,367	1,375	1,375	\$9,944,953	\$557.44
22	UTILITIES	450	7,516	7,497	7,540	\$210,788,025	\$2,156.85
2211	Electric Power Generation, Transmission & Distribution	181	5,587	5,586	5,611	181,240,106	2,491.94
2212	Natural Gas Distribution	87	974	967	976	19,186,619	1,517.89
2213	Water, Sewage & Other Systems	182	955	944	953	10,361,300	838.38
	INFORMATION	2,261	12,302	12,392	12,402	\$245,080,808	\$1,524.61
512	MOTION PICTURE & SOUND RECORDING INDUSTRIES	183	1,006	996	1,026	\$7,199,872	\$548.71
5121	Motion Picture & Video Industries	160	980	967	999	6,737,124	527.74
5122	Sound Recording Industries	23	26	29	27	462,748	1,302.29
513	PUBLISHING INDUSTRIES	326	2,128	2,140	2,099	\$27,295,343	\$989.31
5131	Newspaper, Periodical, Book & Directory Publishers	226	1,597	1,586	1,539	16,450,224	803.94
5132	Software Publishers	100	531	554	560	10,845,119	1,521.41
516	BROADCASTING AND CONTENT PROVIDERS	175	1,421	1,427	1,422	\$19,690,121	\$1,064.14
5161	Radio and Television Broadcasting Stations	93	1,039	1,041	1,033	13,563,898	\$1,005.50
5162	Media Strm Dist Svcs, Scl Ntwks, & Oth Media Netwk & Content Pro	82	382	386	389	6,126,223	\$1,221.90

TABLE 5. STATEWIDE SUMMARY

North American Industry Classification System - Industry Groups		Number of Employing Units	Employment			Total Earnings Jan - Mar 2022	Average Weekly Earnings
			Jan	Feb	Mar		
517	TELECOMMUNICATIONS	368	3,250	3,287	3,302	\$66,378,249	\$1,556.87
5171	Wired & Wireless Telecommunications (except Satellite)	340	3,154	3,190	3,197	64,759,072	1,566.33
5174	Satellite Telecommunications	3	6	6	6	99,074	1,270.18
5178	All Other Telecommunications	25	90	91	99	1,520,103	1,252.83
518	DATA PROCESSING, WEB HOSTING, & RELATED SERVICES	1,183	4,324	4,371	4,379	\$122,307,662	\$2,158.85
519	WEB SEARCH PORTALS, LIBRARIES, ARCHIVES & OTHER INFO SVCS	26	173	171	174	\$2,209,561	\$984.36
FINANCIAL ACTIVITIES		9,751	53,710	54,173	53,779	\$1,065,922,768	\$1,521.58
52	FINANCE & INSURANCE	5,746	39,364	39,719	39,474	\$898,847,840	\$1,749.59
522	CREDIT INTERMEDIATION & RELATED ACTIVITIES	2,147	19,950	20,106	19,963	\$380,027,122	\$1,461.18
5221	Depository Credit Intermediation	1,435	16,309	16,439	16,342	293,223,738	1,378.43
5222	Nondepository Credit Intermediation	468	2,293	2,286	2,259	59,404,598	2,004.79
5223	Activities Related to Credit Intermediation	244	1,348	1,381	1,362	27,398,786	1,545.54
523	FINANCIAL INVESTMENT & RELATED ACTIVITIES	881	3,211	3,181	3,068	\$204,994,068	\$5,000.67
5231	Securities & Commodity Contracts Intermediation & Brokerage	162	1,518	1,487	1,399	143,066,491	7,496.67
5239	Other Financial Investment Activities	719	1,693	1,694	1,669	61,927,577	2,826.54
524	INSURANCE CARRIERS & RELATED ACTIVITIES	2,619	16,119	16,336	16,355	\$311,576,440	\$1,473.11
5241	Insurance Carriers	335	7,243	7,347	7,386	166,133,717	1,744.56
5242	Agencies, Brokerages, & Other Insurance Related Activities	2,284	8,876	8,989	8,969	145,442,723	1,250.79
	OTHER	99	84	96	88	\$2,250,210	\$1,937.61
53	REAL ESTATE & RENTAL & LEASING	4,005	14,346	14,454	14,305	\$167,074,928	\$894.46
531	REAL ESTATE	3,399	10,517	10,618	10,463	118,673,791	\$866.71
5311	Lessors of Real Estate	1,097	3,910	3,908	3,876	41,432,139	817.62
5312	Offices of Real Estate Agents & Brokers	1,178	2,319	2,338	2,315	26,309,142	870.82
5313	Activities Related to Real Estate	1,124	4,288	4,372	4,272	50,932,510	908.88
532	RENTAL & LEASING SERVICES	581	3,764	3,773	3,779	\$47,038,790	\$959.27
5321	Automotive Equipment Rental & Leasing	126	921	936	916	10,127,236	842.79
5322	Consumer Goods Rental	294	1,522	1,522	1,526	14,239,387	719.04
5323	General Rental Centers	26	191	189	190	2,253,524	912.36
5324	Commercial & Industrial Machinery & Equip Rental and Leasing	135	1,130	1,126	1,147	20,418,643	1,384.66
533	LESSORS OF INTANGIBLE ASSETS (EXCEPT COPYRIGHTS)	25	65	63	63	\$1,362,347	\$1,646.01

TABLE 5. STATEWIDE SUMMARY

North American Industry Classification System - Industry Groups		Number of Employing Units	Employment			Total Earnings Jan - Mar 2022	Average Weekly Earnings
			Jan	Feb	Mar		
PROFESSIONAL & BUSINESS SERVICES		17,885	148,238	150,208	150,056	\$3,685,127,237	\$1,896.12
54	PROFESSIONAL, SCIENTIFIC, AND TECHNICAL SERVICES	11,489	46,704	47,738	47,505	\$836,497,091	\$1,359.93
5412	Accounting, Tax Prep, Bookkeeping, and Payroll Services	1,553	6,626	6,939	6,948	86,002,691	967.52
5413	Architectural, Engineering, & Related Services	1,184	6,969	7,092	7,055	121,321,747	1,325.88
5414	Specialized Design Services	219	492	498	483	7,136,585	1,118.06
5415	Computer Systems Design and Related Services	2,715	8,970	9,038	8,724	214,367,951	1,850.57
5416	Management, Scientific and Technical Consulting Services	2,696	7,779	7,964	7,931	177,669,518	1,731.89
5417	Scientific Research & Development Services	218	1,005	997	1,004	20,481,115	1,572.33
5418	Advertising, Public Relations, and Related Services	494	4,007	4,274	4,407	65,835,699	1,197.42
	Other	2,410	10,856	10,936	10,953	143,681,785	1,012.59
55	MANAGEMENT OF COMPANIES & ENTERPRISES	564	35,209	35,426	35,732	\$2,149,081,799	\$4,662.55
56	ADMINISTRATIVE & SUPPORT & WASTE MGT & REMED SERVICES	5,832	66,325	67,044	66,819	\$699,548,347	\$806.41
561	ADMINISTRATIVE & SUPPORT SERVICES	5,476	62,248	62,950	62,715	\$643,190,184	\$789.88
5611	Office Administrative Services	877	4,182	4,193	4,205	76,292,466	1,399.52
5612	Facilities Support Services	69	727	738	732	7,815,241	820.90
5613	Employment Services	1,604	27,574	28,179	27,973	301,694,392	831.54
5614	Business Support Services	495	8,471	8,301	8,122	91,385,190	847.15
5615	Travel Arrangement & Reservation Services	122	270	280	281	3,741,052	1,038.89
5616	Investigation & Security Services	331	4,705	4,788	4,715	40,913,396	664.52
5617	Services to Buildings & Dwellings	1,788	15,109	15,230	15,423	108,607,872	547.69
5619	Other Support Services	190	1,210	1,241	1,264	12,740,575	791.42
562	WASTE MANAGEMENT & REMEDIATION SERVICES	356	4,077	4,094	4,104	\$56,358,163	\$1,059.53
5621	Waste Collection	136	1,319	1,337	1,349	16,351,581	942.18
5622	Waste Treatment & Disposal	47	1,232	1,237	1,228	20,897,078	1,304.41
5629	Remediation & Other Waste Management Services	173	1,526	1,520	1,527	19,109,504	964.33
EDUCATION & HEALTH SERVICES		15,263	181,966	183,120	182,953	\$2,222,990,905	\$936.06
61	EDUCATIONAL SERVICES	1,131	13,132	13,508	13,521	\$127,564,479	\$733.00
6111	Elementary & Secondary Schools	118	5,109	5,112	5,127	47,922,612	720.55
6113	Colleges, Universities, & Professional Schools	164	4,119	4,357	4,402	44,032,367	789.04
6115	Technical & Trade Schools	138	1,103	1,150	1,158	13,839,913	936.33
6116	Other Schools & Instruction	373	1,912	1,965	1,910	10,173,509	405.69
6117	Educational Support Services	229	634	646	626	7,596,469	919.74
	Other	109	255	278	298	3,999,609	1,110.69

TABLE 5. STATEWIDE SUMMARY

North American Industry Classification System - Industry Groups		Number of Employing Units	Employment			Total Earnings	Average Weekly Earnings
			Jan	Feb	Mar	Jan - Mar 2022	
62	HEALTH CARE & SOCIAL ASSISTANCE	14,132	168,834	169,612	169,432	\$2,095,426,426	\$952.12
621	AMBULATORY HEALTH CARE SERVICES	6,568	62,337	62,686	62,342	\$1,019,908,126	\$1,256.18
6211	Offices of Physicians	2,423	27,079	27,248	27,126	590,421,708	1,672.76
6212	Offices of Dentists	980	7,774	7,811	7,709	97,219,077	963.13
6213	Offices of Other Health Practitioners	1,899	10,699	10,713	10,639	111,297,306	801.35
6214	Outpatient Care Centers	450	5,697	5,740	5,676	86,541,433	1,167.01
6215	Medical & Diagnostic Laboratories	216	1,682	1,711	1,675	29,728,630	1,353.68
	Other	600	9,406	9,463	9,517	104,699,972	851.18
622	HOSPITALS	130	43,124	43,189	43,332	\$621,214,267	\$1,105.77
6222	Psychiatric & Substance Abuse Hospitals	12	1,764	1,730	1,746	20,315,324	894.69
	Other Hospitals	118	41,360	41,459	41,586	600,898,943	1,114.66
623	NURSING & RESIDENTIAL CARE FACILITIES	638	26,977	26,887	26,929	\$226,548,283	\$647.09
6231	Nursing Care Facilities	260	17,926	17,810	17,861	155,700,833	670.39
6232	Residential Developmental Disability & Mental Health Facilities	186	3,938	3,938	3,994	33,147,989	644.44
6233	Retirement Communities & Assisted Living Facilities	155	4,199	4,208	4,159	29,037,363	533.26
6239	Other Residential Care Facilities	37	914	931	915	8,662,098	724.26
624	SOCIAL ASSISTANCE	6,796	36,396	36,850	36,829	\$227,755,750	\$477.48
6241	Individual & Family Services	5,728	22,156	22,342	22,304	141,917,399	490.26
6242	Community Food & Housing, & Emergency & Other Relief Services	173	1,449	1,459	1,468	11,296,917	595.75
6243	Vocational Rehabilitation Services	94	2,475	2,530	2,525	15,719,118	481.74
6244	Child Care Services	801	10,316	10,519	10,532	58,822,316	432.76
	LEISURE & HOSPITALITY	7,647	115,475	117,451	119,572	\$583,155,231	\$381.77
71	ARTS, ENTERTAINMENT & RECREATION	1,099	10,889	11,325	11,923	\$78,067,375	\$527.74
711	PERFORMING ARTS, SPECTATOR SPORTS & RELATED INDUSTRIES	271	2,052	2,294	2,488	\$19,679,087	\$664.52
7111	Performing Arts Companies	46	444	385	457	2,680,254	480.96
7112	Spectator Sports	74	1,108	1,153	1,194	11,639,021	777.40
7113	Promoters of Performing Arts, Sports, & Similar Events	66	388	641	711	4,245,945	563.12
7114	Agents for Artists, Athletes, Entertainers & Public Figures	19	32	41	43	429,497	854.44
7115	Independent Artists, Writers, & Performers	66	80	74	83	684,370	666.38
712	MUSEUMS, HISTORICAL SITES & SIMILAR INSTITUTIONS	60	746	776	821	\$7,241,675	\$713.25
713	AMUSEMENT, GAMBLING, & RECREATION INDUSTRIES	768	8,091	8,255	8,614	\$51,146,613	\$472.88
72	ACCOMMODATION & FOOD SERVICES	6,548	104,586	106,126	107,649	\$505,087,856	\$366.12

TABLE 5. STATEWIDE SUMMARY

North American Industry Classification System - Industry Groups		Number of Employing Units	Employment			Total Earnings	Average Weekly Earnings
			Jan	Feb	Mar	Jan - Mar 2022	
721	ACCOMMODATION	973	10,193	10,342	10,696	\$56,611,621	\$418.31
7211	Traveler Accommodation	864	9,692	9,836	10,154	53,214,164	413.73
7212	Recreational Vehicle Parks & Recreational Camps	91	418	408	455	2,708,350	487.90
7213	Rooming & Boarding Houses, Dormitories, & Workers' Camps	18	83	98	87	689,107	593.38
722	FOOD SERVICES & DRINKING PLACES	5,575	94,393	95,784	96,953	\$448,476,235	\$360.44
7223	Special Food Services	385	4,769	5,061	5,137	26,903,357	414.81
7224	Drinking Places	146	939	986	964	4,749,065	379.35
7225	Restaurants & Other Eating Places	5,044	88,685	89,737	90,852	416,823,813	357.22
722511	Full-Service Restaurants	2,091	36,379	37,099	37,517	190,396,828	395.85
722513	Limited-Service Eating Places	2,349	46,707	46,829	47,452	200,429,597	328.06
722514	Cafeterias, Grill Buffets, & Buffets	91	1,279	1,281	1,294	7,472,955	447.46
722515	Snack & Nonalcoholic Beverage Bars	513	4,320	4,528	4,589	18,524,433	318.14
OTHER SERVICES (EXCEPT PUBLIC ADMINISTRATION)		5,652	24,925	25,201	25,283	\$248,407,862	\$760.19
811	REPAIR & MAINTENANCE	2,307	11,682	11,847	11,898	\$125,849,964	\$819.78
8113	Other Commercial & Industrial Machinery & Equipment Repair	479	2,680	2,746	2,738	37,784,033	1,068.03
8114	Personal & Household Goods Repair & Maintenance	182	696	708	740	6,055,139	651.74
	Other Repair & Maintenance	1,646	8,306	8,393	8,420	82,010,792	753.44
812	PERSONAL & LAUNDRY SERVICES	1,453	7,315	7,386	7,405	\$54,817,611	\$572.25
8121	Personal Care Services	730	2,716	2,762	2,842	17,908,252	496.72
8122	Death Care Services	237	1,487	1,514	1,480	12,727,225	655.45
8123	Drycleaning & Laundry Services	177	1,722	1,729	1,728	14,347,530	639.31
8129	Other Personal Services	309	1,390	1,381	1,355	9,834,604	550.05
813	RELIGIOUS, GRANTMAKING, CIVIC, PROFESSIONAL & SIMILAR ORG	1,251	5,208	5,253	5,270	\$61,483,081	\$901.94
8131	Religious Organizations	115	379	379	382	3,013,251	609.97
8132	Grantmaking & Giving Services	152	549	554	554	9,275,062	1,291.73
8133	Social Advocacy Organizations	252	1,216	1,203	1,197	14,829,628	946.41
8134	Civic & Social Organizations	210	1,034	1,066	1,031	5,658,019	417.02
8139	Business, Professional, Labor, Political & Similar Organizations	522	2,030	2,051	2,106	28,707,121	1,070.75
814	PRIVATE HOUSEHOLDS	641	720	715	710	\$6,257,206	\$673.18
	LOCAL GOVERNMENT	2,005	110,852	110,723	110,743	\$1,122,425,770	\$779.44
	STATE GOVERNMENT	1,060	63,386	64,520	64,667	\$871,086,044	\$1,043.86
	NONCLASSIFIABLE ESTABLISHMENTS	0	0	0	0	\$0	#DIV/0!

TABLE 6. COUNTY SUMMARY

North American Industry Classification System - Industry Groups	Number of Employing Units	Employment			Total Earnings	Average Weekly Earnings
		Jan	Feb	Mar	Jan - Mar 2022	
ARKANSAS COUNTY - TOTAL	1,033	9,830	9,909	9,858	\$108,736,746	\$847.83
Natural Resources & Mining	63	153	164	168	1,556,278	740.50
Construction	94	308	312	319	3,057,910	751.51
Manufacturing	44	3,497	3,568	3,587	37,786,648	818.63
Trade, Transportation & Utilities	227	2,057	2,071	2,073	26,833,201	998.59
Wholesale Trade	50	402	427	436	6,109,921	1,114.61
Retail Trade	110	1,069	1,052	1,061	8,279,317	600.44
Transportation, Warehousing & Utilities	67	586	592	576	12,443,963	1,637.22
Information	10	68	72	64	501,544	567.36
Financial Activities	85	361	361	360	5,054,068	1,077.93
Professional & Business Services	123	706	692	670	10,968,554	1,223.99
Education & Health Services	195	1,061	1,074	1,046	11,240,185	815.43
Leisure & Hospitality	83	623	613	593	2,644,129	333.62
Other Services	63	142	140	136	1,205,956	665.78
Local Government	32	703	689	684	6,436,198	715.45
State Government	14	151	153	158	1,452,075	725.31
ASHLEY COUNTY - TOTAL	524	5,725	5,815	5,741	\$63,418,459	\$846.89
Natural Resources & Mining	44	297	326	324	3,327,214	810.79
Construction	36	495	499	457	6,246,450	993.44
Manufacturing	28	1,130	1,164	1,163	19,910,557	1,329.11
Trade, Transportation & Utilities	113	1,184	1,196	1,197	11,800,638	761.32
Wholesale Trade	21	163	166	166	2,808,050	1,309.11
Retail Trade	64	737	742	737	5,238,707	545.55
Transportation, Warehousing & Utilities	28	284	288	294	3,753,881	1,000.32
Information	5	28	26	27	271,668	773.98
Financial Activities	36	187	179	183	1,820,057	765.05
Professional & Business Services	32	165	178	169	1,497,944	675.16
Education & Health Services	121	828	832	822	8,314,275	773.04
Leisure & Hospitality	32	369	365	368	1,489,016	311.81
Other Services	35	140	140	147	1,003,935	542.57
Local Government	32	802	812	783	6,715,413	646.52
State Government	10	100	98	101	1,021,292	788.24

TABLE 6. COUNTY SUMMARY

North American Industry Classification System - Industry Groups	Number of Employing Units	Employment			Total Earnings	Average Weekly Earnings
		Jan	Feb	Mar	Jan - Mar 2022	
BAXTER COUNTY - TOTAL	1,228	15,208	15,295	15,537	\$150,127,705	\$752.49
Construction	108	529	536	561	4,812,495	683.01
Manufacturing	55	2,642	2,625	2,651	27,332,717	796.61
Trade, Transportation & Utilities	249	2,748	2,786	2,878	24,490,588	671.86
Wholesale Trade	33	160	157	162	2,047,980	986.66
Retail Trade	190	2,361	2,398	2,485	20,373,432	649.03
Transportation, Warehousing & Utilities	26	227	231	231	2,069,176	693.04
Information	24	166	167	167	2,113,707	975.56
Financial Activities	129	749	751	758	10,521,660	1,075.32
Professional & Business Services	162	1,095	1,097	1,102	10,671,949	747.65
Education & Health Services	241	3,892	3,887	3,916	45,948,243	906.66
Leisure & Hospitality	121	1,572	1,568	1,609	6,895,030	335.05
Local Government	36	1,185	1,198	1,205	11,581,100	744.86
State Government	11	254	304	314	2,645,620	700.15
Other	92	376	376	376	3,114,596	637.19
BENTON COUNTY - TOTAL	7,596	130,092	131,561	132,025	\$3,242,646,683	\$1,900.80
Natural Resources & Mining	54	750	745	752	14,163,161	1,454.57
Construction	799	6,073	6,080	6,099	76,161,731	962.95
Manufacturing	216	12,819	13,062	13,044	184,133,596	1,091.65
Trade, Transportation & Utilities	1,766	32,718	32,912	33,119	576,851,204	1,348.06
Wholesale Trade	779	7,073	7,125	7,171	213,735,745	2,308.19
Retail Trade	772	12,980	13,038	13,025	116,321,083	687.53
Transportation, Warehousing & Utilities	215	12,665	12,749	12,923	246,794,376	1,485.58
Information	127	950	972	971	18,441,398	1,471.04
Financial Activities	837	4,263	4,305	4,236	87,495,019	1,576.94
Professional & Business Services	1,565	34,291	34,834	34,983	1,927,944,711	4,273.55
Education & Health Services	904	12,720	12,822	12,835	145,723,276	876.27
Leisure & Hospitality	718	13,421	13,674	13,844	75,475,294	425.45
Other Services	500	2,353	2,403	2,404	22,961,903	740.07
Local Government	93	8,762	8,760	8,738	104,369,779	917.19
State Government	17	972	992	1,000	8,925,611	694.92

TABLE 6. COUNTY SUMMARY

North American Industry Classification System - Industry Groups	Number of Employing Units	Employment			Total Earnings	Average Weekly Earnings
		Jan	Feb	Mar	Jan - Mar 2022	
BOONE COUNTY - TOTAL	934	14,157	14,323	14,270	\$150,098,078	\$810.25
Natural Resources & Mining	6	17	18	16	155,516	703.69
Construction	63	468	471	476	5,276,929	860.60
Manufacturing	55	1,847	1,866	1,869	20,186,831	834.56
Trade, Transportation & Utilities	236	3,961	3,931	3,926	45,401,567	886.55
Wholesale Trade	42	397	407	406	5,119,710	976.42
Retail Trade	154	2,194	2,163	2,194	16,956,739	597.33
Transportation, Warehousing & Utilities	40	1,370	1,361	1,326	23,325,118	1,326.77
Information	15	256	255	257	2,989,676	898.34
Financial Activities	93	460	464	447	7,124,300	1,199.18
Professional & Business Services	112	1,274	1,300	1,293	15,726,085	938.48
Education & Health Services	148	1,598	1,578	1,533	14,916,413	730.99
Leisure & Hospitality	84	1,220	1,246	1,271	5,473,214	337.98
Other Services	53	262	266	264	2,496,843	727.52
Local Government	53	2,154	2,173	2,164	23,027,191	818.67
State Government	16	640	755	754	7,323,513	786.43
BRADLEY COUNTY - TOTAL	334	3,551	3,599	3,574	\$35,991,956	\$774.51
Natural Resources & Mining	48	233	237	243	2,574,927	833.40
Construction	15	61	63	71	588,823	696.83
Manufacturing	10	926	958	946	13,344,021	1,088.12
Trade, Transportation & Utilities	75	441	448	449	3,976,863	685.90
Wholesale Trade	12	111	113	112	1,569,314	1,077.83
Retail Trade	38	273	276	278	1,754,164	489.49
Transportation, Warehousing & Utilities	25	57	59	59	653,385	861.61
Information	3	21	23	22	153,507	536.74
Financial Activities	20	128	124	124	1,290,967	792.33
Professional & Business Services	22	92	92	90	772,694	650.78
Education & Health Services	79	544	555	553	5,569,031	777.94
Leisure & Hospitality	14	198	195	192	732,241	288.85
Other Services	24	73	72	71	525,890	561.85
Local Government	14	497	493	474	3,820,815	602.27
State Government	10	337	339	339	2,642,177	600.72

TABLE 6. COUNTY SUMMARY

North American Industry Classification System - Industry Groups	Number of Employing Units	Employment			Total Earnings	Average Weekly Earnings
		Jan	Feb	Mar	Jan - Mar 2022	
CALHOUN COUNTY - TOTAL	102	1,971	1,962	1,963	\$28,847,758	\$1,129.10
Natural Resources & Mining	7	35	33	30	320,421	754.52
Construction	12	58	60	61	696,920	898.48
Manufacturing	5	1,245	1,239	1,239	21,013,137	1,302.49
Trade, Transportation & Utilities	19	170	166	168	1,805,287	826.60
Retail Trade	10	51	49	51	293,273	448.20
Transportation, Warehousing & Utilities	9	119	117	117	1,512,014	988.46
Professional & Business Services	6	15	16	19	151,876	700.97
Education & Health Services	21	74	69	67	820,320	901.45
Leisure & Hospitality	5	9	13	13	47,125	310.71
Local Government	11	191	192	191	1,448,314	582.28
State Government	7	66	66	66	715,649	834.09
Other	9	108	108	109	1,828,709	1,298.49
CARROLL COUNTY - TOTAL	813	10,468	10,563	10,827	\$95,647,414	\$692.84
Natural Resources & Mining	22	271	284	288	2,834,518	775.94
Trade, Transportation & Utilities	183	1,533	1,515	1,541	13,791,271	693.53
Wholesale Trade	26	210	202	206	2,172,175	811.12
Retail Trade	132	1,112	1,104	1,123	7,729,864	534.24
Transportation, Warehousing & Utilities	25	211	209	212	3,889,232	1,420.12
Information	8	57	56	43	759,713	1,123.84
Financial Activities	63	389	388	382	5,440,079	1,083.18
Professional & Business Services	71	462	474	461	4,706,400	777.45
Education & Health Services	101	999	1,025	1,021	9,917,011	751.57
Leisure & Hospitality	182	1,299	1,363	1,592	7,168,672	388.88
Other Services	41	145	147	152	1,008,724	524.28
Local Government	25	1,065	1,070	1,082	9,080,336	651.37
State Government	9	85	85	85	892,437	807.64
Other	108	4,163	4,156	4,180	40,048,253	739.41

TABLE 6. COUNTY SUMMARY

North American Industry Classification System - Industry Groups	Number of Employing Units	Employment			Total Earnings	Average Weekly Earnings
		Jan	Feb	Mar	Jan - Mar 2022	
CHICOT COUNTY - TOTAL	431	2,707	2,720	2,693	\$23,951,058	\$680.69
Natural Resources & Mining	57	221	233	234	2,044,370	685.72
Construction	13	118	110	107	1,428,475	984.02
Trade, Transportation & Utilities	72	768	774	764	5,670,237	567.44
Wholesale Trade	12	50	52	49	507,944	776.28
Retail Trade	46	290	285	281	1,875,604	505.64
Transportation, Warehousing & Utilities	14	428	437	434	3,286,689	583.89
Financial Activities	27	142	144	138	2,169,304	1,180.68
Professional & Business Services	17	39	34	36	362,664	767.81
Education & Health Services	181	511	516	502	4,812,584	726.35
Leisure & Hospitality	14	127	117	111	453,624	294.88
Local Government	17	492	495	497	4,351,813	676.73
State Government	9	223	224	224	2,039,811	701.53
Other	24	66	73	80	618,176	651.40
CLARK COUNTY - TOTAL	655	8,038	8,218	8,196	\$82,377,519	\$777.45
Natural Resources & Mining	50	285	292	284	3,361,481	900.96
Construction	27	87	87	84	942,752	843.25
Manufacturing	32	1,027	1,069	1,043	16,102,465	1,183.80
Trade, Transportation & Utilities	140	1,402	1,387	1,399	13,124,445	723.19
Wholesale Trade	18	55	53	60	957,119	1,314.72
Retail Trade	89	1,177	1,163	1,169	10,053,916	661.20
Transportation, Warehousing & Utilities	33	170	171	170	2,113,410	954.42
Financial Activities	80	292	293	287	3,482,820	921.71
Professional & Business Services	55	600	611	597	6,859,230	875.50
Education & Health Services	123	1,559	1,597	1,586	16,062,858	781.70
Leisure & Hospitality	64	954	1,034	1,061	4,176,527	316.11
Local Government	28	879	880	878	8,313,671	727.55
State Government	12	730	747	753	7,809,150	808.12
Other	44	223	221	224	2,142,120	740.02

TABLE 6. COUNTY SUMMARY

North American Industry Classification System - Industry Groups	Number of Employing Units	Employment			Total Earnings	Average Weekly Earnings
		Jan	Feb	Mar	Jan - Mar 2022	
CLAY COUNTY - TOTAL	342	2,933	2,937	2,999	\$25,398,616	\$660.87
Natural Resources & Mining	50	178	176	191	1,346,016	569.94
Construction	31	84	87	115	583,495	470.81
Manufacturing	14	120	120	122	995,870	634.85
Trade, Transportation & Utilities	81	776	771	781	7,567,591	750.16
Wholesale Trade	19	275	280	289	3,067,572	838.75
Retail Trade	39	351	342	341	2,443,296	545.30
Transportation, Warehousing & Utilities	23	150	149	151	2,056,723	1,054.73
Information	6	24	23	19	172,336	602.57
Financial Activities	19	96	96	97	1,037,630	828.56
Professional & Business Services	21	86	89	93	843,184	726.05
Education & Health Services	49	440	445	447	4,144,644	718.06
Leisure & Hospitality	20	193	191	203	699,706	275.08
Other Services	22	80	82	82	742,235	701.99
Local Government	20	814	815	807	6,835,210	647.52
State Government	9	42	42	42	430,699	788.83
CLEBURNE COUNTY - TOTAL	626	6,076	6,109	6,093	\$56,102,351	\$708.32
Natural Resources & Mining	18	123	121	126	2,084,168	1,299.90
Construction	63	286	280	286	2,686,674	727.70
Manufacturing	35	1,256	1,252	1,260	13,151,019	805.43
Trade, Transportation & Utilities	148	1,327	1,331	1,274	12,856,859	754.57
Wholesale Trade	27	100	93	94	1,212,795	975.18
Retail Trade	98	1,077	1,085	1,027	9,620,417	696.17
Transportation, Warehousing & Utilities	23	150	153	153	2,023,647	1,024.11
Information	13	53	54	53	508,828	733.89
Financial Activities	67	233	235	231	2,816,837	929.96
Professional & Business Services	71	304	311	312	2,901,377	722.27
Education & Health Services	68	778	761	797	7,409,995	732.02
Leisure & Hospitality	82	766	815	827	3,755,287	359.89
Other Services	35	98	94	94	706,077	569.72
Local Government	18	753	756	734	6,311,515	649.36
State Government	8	99	99	99	913,715	709.96

TABLE 6. COUNTY SUMMARY

North American Industry Classification System - Industry Groups	Number of Employing Units	Employment			Total Earnings	Average Weekly Earnings
		Jan	Feb	Mar	Jan - Mar 2022	
CLEVELAND COUNTY - TOTAL	119	998	999	984	\$9,058,090	\$701.22
Natural Resources & Mining	17	134	134	124	1,354,226	797.23
Manufacturing	4	120	119	119	145,855.9	940.20
Trade, Transportation & Utilities	30	134	134	129	1,104,720	642.15
Retail Trade	17	62	65	58	328,443	409.70
Other Trade, Transportation, & Utilities	13	72	69	71	776,277	845.00
Education & Health Services	29	223	219	222	1,888,293	656.26
Other Services	5	6	6	7	55,466	673.68
Local Government	13	293	297	293	2,285,359	597.27
State Government	6	28	28	28	313,598	861.53
Other	15	60	62	62	597,869	749.84
COLUMBIA COUNTY - TOTAL	653	7,779	7,804	7,867	\$86,479,448	\$851.04
Natural Resources & Mining	44	370	366	378	6,167,785	1,277.68
Construction	31	128	124	122	1,287,615	794.50
Manufacturing	25	1,825	1,814	1,837	31,668,173	1,334.56
Trade, Transportation & Utilities	169	1,402	1,393	1,410	12,687,643	696.29
Wholesale Trade	30	208	193	191	2,791,582	1,088.19
Retail Trade	94	1,000	998	997	6,836,924	526.80
Transportation, Warehousing & Utilities	45	194	202	222	3,059,137	1,142.32
Information	6	22	23	22	259,747	894.65
Financial Activities	55	323	350	353	4,896,649	1,101.36
Professional & Business Services	52	330	315	319	2,438,656	583.78
Education & Health Services	145	1,012	1,042	1,028	8,819,712	660.39
Leisure & Hospitality	53	745	751	775	3,036,393	308.55
Other Services	35	115	117	118	770,333	507.91
Local Government	27	838	837	830	7,312,145	673.62
State Government	11	669	672	675	7,134,597	816.69

TABLE 6. COUNTY SUMMARY

North American Industry Classification System - Industry Groups	Number of Employing Units	Employment			Total Earnings	Average Weekly Earnings
		Jan	Feb	Mar	Jan - Mar 2022	
CONWAY COUNTY - TOTAL	507	6,966	6,790	6,783	73,263,541	\$823.16
Natural Resources & Mining	26	178	185	194	2,068,739	857.09
Construction	53	548	547	547	7,889,739	1,108.84
Manufacturing	21	1,091	1,093	1,094	16,245,253	1,143.66
Trade, Transportation & Utilities	104	1,249	1,236	1,227	12,306,528	765.08
Wholesale Trade	12	109	106	105	1,390,101	1,002.48
Retail Trade	71	797	791	782	6,291,755	612.63
Transportation, Warehousing & Utilities	21	343	339	340	4,624,672	1,044.26
Information	5	17	17	18	90,475	401.52
Financial Activities	36	156	159	161	2,243,745	1,087.79
Professional & Business Services	40	806	764	765	6,575,538	649.86
Education & Health Services	118	728	717	718	7,737,567	825.52
Leisure & Hospitality	38	430	445	440	1,866,161	327.49
Other Services	25	89	89	91	914,017	784.12
Local Government	32	1,323	1,187	1,174	12,277,564	769.08
State Government	9	351	351	354	3,048,215	666.13
CRAIGHEAD COUNTY - TOTAL	2,936	51,765	52,149	52,402	\$601,130,893	\$887.45
Natural Resources & Mining	106	303	307	331	3,174,289	778.46
Construction	265	2,418	2,440	2,514	31,097,167	973.45
Manufacturing	101	8,056	8,147	8,169	106,874,484	1,011.95
Trade, Transportation & Utilities	750	10,332	10,403	10,404	115,444,454	855.55
Wholesale Trade	178	1,960	1,972	1,987	34,765,858	1,355.45
Retail Trade	443	6,318	6,378	6,364	55,391,021	670.65
Transportation, Warehousing & Utilities	129	2,054	2,053	2,053	25,287,575	947.34
Information	28	394	390	402	6,303,553	1,226.53
Financial Activities	304	1,818	1,846	1,842	29,558,338	1,238.86
Professional & Business Services	403	4,237	4,219	4,227	41,826,836	761.05
Education & Health Services	438	11,039	11,152	11,199	154,671,588	1,068.99
Leisure & Hospitality	294	5,573	5,598	5,704	27,039,042	369.76
Other Services	191	826	849	847	8,220,729	752.22
Local Government	35	4,163	4,187	4,161	42,574,984	785.31
State Government	21	2,606	2,611	2,602	34,345,429	1,013.67

TABLE 6. COUNTY SUMMARY

North American Industry Classification System - Industry Groups	Number of Employing Units	Employment			Total Earnings	Average Weekly Earnings
		Jan	Feb	Mar	Jan - Mar 2022	
CRAWFORD COUNTY - TOTAL	1,250	18,555	18,639	18,702	\$205,687,335	\$849.19
Natural Resources & Mining	21	176	207	228	2,339,101	883.46
Construction	138	1,017	1,024	1,025	11,196,515	842.73
Manufacturing	61	4,685	4,756	4,720	63,379,537	1,032.84
Trade, Transportation & Utilities	327	5,358	5,327	5,359	65,799,341	946.43
Wholesale Trade	72	851	858	845	13,571,247	1,226.24
Retail Trade	173	2,056	2,060	2,078	17,586,434	655.22
Transportation, Warehousing & Utilities	82	2,451	2,409	2,436	34,641,660	1,095.70
Information	10	29	29	31	424,379	1,100.38
Financial Activities	123	507	504	506	5,700,447	867.16
Professional & Business Services	160	896	911	915	9,813,022	831.94
Education & Health Services	178	1,588	1,582	1,570	14,782,066	719.67
Leisure & Hospitality	95	1,501	1,475	1,519	6,718,191	344.91
Other Services	84	436	438	442	3,873,427	679.23
Local Government	43	2,223	2,248	2,248	20,382,782	700.06
State Government	10	139	138	139	1,278,527	709.24
CRITTENDEN COUNTY - TOTAL	1,135	15,073	15,277	15,397	\$157,563,152	\$794.82
Natural Resources & Mining	54	208	228	219	1,688,698	594.96
Construction	35	343	357	366	6,324,948	1,369.23
Manufacturing	39	1,807	1,827	1,797	23,898,267	1,015.46
Trade, Transportation & Utilities	304	4,470	4,488	4,485	50,558,423	867.91
Wholesale Trade	51	744	751	775	10,403,581	1,057.63
Retail Trade	154	1,763	1,780	1,805	13,045,869	562.94
Transportation, Warehousing & Utilities	99	1,963	1,957	1,905	27,108,973	1,073.98
Information	3	22	21	21	259,962	937.36
Financial Activities	93	448	451	453	6,663,493	1,137.37
Professional & Business Services	104	885	844	867	8,659,119	769.75
Education & Health Services	243	1,846	1,871	1,842	17,661,283	733.17
Leisure & Hospitality	138	2,374	2,448	2,594	14,529,378	452.12
Other Services	70	465	467	459	4,249,498	705.00
Local Government	39	1,882	1,900	1,929	19,793,234	799.80
State Government	13	323	375	365	3,276,849	711.38

TABLE 6. COUNTY SUMMARY

North American Industry Classification System - Industry Groups	Number of Employing Units	Employment			Total Earnings	Average Weekly Earnings
		Jan	Feb	Mar	Jan - Mar 2022	
CROSS COUNTY - TOTAL	450	4,581	4,571	4,609	\$41,396,481	\$694.21
Natural Resources & Mining	47	230	237	238	1,890,670	618.88
Construction	25	84	81	84	779,120	722.08
Manufacturing	10	310	303	311	2,346,301	585.99
Trade, Transportation & Utilities	111	1,074	1,087	1,104	11,168,911	789.42
Wholesale Trade	25	252	257	267	3,529,969	1,049.75
Retail Trade	60	730	741	746	6,353,543	661.35
Transportation, Warehousing & Utilities	26	92	89	91	1,285,399	1,090.55
Information	4	25	25	24	125,903	392.63
Financial Activities	48	226	225	218	2,690,845	928.20
Professional & Business Services	37	138	141	142	1,749,865	959.18
Education & Health Services	78	936	927	925	8,192,310	678.10
Leisure & Hospitality	36	426	424	428	1,697,552	306.53
Other Services	28	98	95	98	850,934	674.81
Local Government	17	703	696	707	6,293,374	689.61
State Government	9	331	330	330	3,610,696	840.80
DALLAS COUNTY - TOTAL	217	2,701	2,681	2,655	\$26,097,929	\$749.36
Natural Resources & Mining	18	95	89	92	911,076	761.77
Construction	17	64	61	61	704,383	873.92
Manufacturing	9	582	586	567	6,975,125	927.75
Trade, Transportation & Utilities	52	486	473	477	4,141,920	665.62
Wholesale Trade	5	19	18	17	305,813	1,306.89
Retail Trade	35	329	320	323	2,380,997	565.29
Transportation, Warehousing & Utilities	12	138	135	137	1,455,110	819.01
Information	3	21	20	21	201,797	751.11
Financial Activities	15	61	61	60	692,399	877.94
Professional & Business Services	13	37	32	33	325,617	736.69
Education & Health Services	46	805	808	802	8,947,943	855.04
Leisure & Hospitality	11	142	146	143	501,333	268.43
Other Services	12	47	49	49	326,804	520.11
Local Government	14	332	327	321	2,067,466	486.84
State Government	7	29	29	29	302,066	801.24

TABLE 6. COUNTY SUMMARY

North American Industry Classification System - Industry Groups	Number of Employing Units	Employment			Total Earnings	Average Weekly Earnings
		Jan	Feb	Mar	Jan - Mar 2022	
DESHA COUNTY - TOTAL	469	4,135	4,178	4,207	\$43,809,788	\$807.50
Natural Resources & Mining	68	227	231	233	1,911,371	638.33
Construction	13	69	70	73	736,047	801.21
Manufacturing	15	974	996	1,028	15,400,780	1,185.47
Trade, Transportation & Utilities	94	812	819	805	8,686,224	822.87
Wholesale Trade	20	191	193	199	2,446,635	968.45
Retail Trade	48	451	481	459	3,020,840	501.16
Transportation, Warehousing & Utilities	26	170	145	147	3,218,749	1,607.77
Financial Activities	28	215	215	215	2,178,275	779.35
Professional & Business Services	33	79	79	78	776,017	758.82
Education & Health Services	122	475	462	459	3,983,999	658.58
Leisure & Hospitality	39	363	373	372	1,367,000	284.71
Local Government	21	725	735	740	7,093,346	744.06
State Government	9	117	118	119	1,021,786	666.09
Other	27	79	80	85	654,943	619.43
DREWA COUNTY - TOTAL	541	6,455	6,488	6,489	\$62,184,872	\$738.49
Natural Resources & Mining	53	466	496	509	4,130,871	648.05
Construction	26	185	208	205	2,654,517	1,024.38
Manufacturing	24	978	979	955	11,875,170	941.08
Trade, Transportation & Utilities	116	1,063	1,047	1,077	9,601,554	695.24
Wholesale Trade	18	133	139	142	1,677,239	934.92
Retail Trade	74	839	835	841	6,887,562	631.98
Transportation, Warehousing & Utilities	24	91	73	94	1,036,753	927.33
Information	5	37	37	37	303,669	631.33
Financial Activities	52	200	200	204	3,234,590	1,235.83
Professional & Business Services	37	282	274	272	2,769,970	772.01
Education & Health Services	124	871	837	839	6,905,860	625.70
Leisure & Hospitality	46	638	625	624	2,693,301	329.38
Other Services	22	49	50	47	449,748	710.88
Local Government	23	1,207	1,224	1,230	11,354,967	715.75
State Government	13	479	511	490	6,210,655	968.40

TABLE 6. COUNTY SUMMARY

North American Industry Classification System - Industry Groups	Number of Employing Units	Employment			Total Earnings	Average Weekly Earnings
		Jan	Feb	Mar	Jan - Mar 2022	
FAULKNER COUNTY - TOTAL	3,101	41,699	42,028	42,309	465,696,689	\$852.68
Natural Resources & Mining	35	176	196	206	2,765,187	1,104.01
Construction	382	3,111	3,125	3,225	37,990,948	926.66
Manufacturing	103	2,886	2,970	2,979	37,755,396	986.17
Trade, Transportation & Utilities	628	8,078	8,062	8,068	77,712,488	740.82
Wholesale Trade	128	918	923	952	14,264,397	1,178.58
Retail Trade	409	6,229	6,220	6,200	51,181,626	633.34
Transportation, Warehousing & Utilities	91	931	919	916	12,266,465	1,023.40
Financial Activities	356	1,514	1,525	1,516	22,192,163	1,124.32
Professional & Business Services	486	3,588	3,621	3,663	46,683,222	990.90
Education & Health Services	498	7,777	7,881	7,879	86,578,920	848.87
Leisure & Hospitality	303	5,606	5,608	5,712	25,573,952	348.68
Local Government	44	3,447	3,457	3,459	39,255,785	874.17
State Government	18	2,991	3,023	3,028	34,708,145	885.82
Other	248	2,525	2,560	2,574	54,480,483	1,641.52
FRANKLIN COUNTY - TOTAL	380	4,634	4,663	4,676	\$43,744,081	\$722.45
Natural Resources & Mining	16	120	113	108	1,487,325	1,006.54
Construction	39	163	168	177	1,367,300	621.12
Manufacturing	17	1,056	1,066	1,072	10,968,080	792.45
Trade, Transportation & Utilities	82	972	970	985	10,537,093	830.76
Wholesale Trade	7	38	39	43	211,454	406.64
Retail Trade	54	625	620	624	4,504,234	556.15
Transportation, Warehousing & Utilities	21	309	311	318	5,821,405	1,432.20
Information	6	30	31	33	458,039	1,124.48
Financial Activities	37	84	87	83	1,013,125	920.46
Professional & Business Services	30	421	413	404	4,029,533	751.12
Education & Health Services	64	522	521	513	4,135,465	613.33
Leisure & Hospitality	30	356	352	357	1,393,548	301.96
Other Services	19	55	61	59	430,311	567.44
Local Government	32	742	757	761	6,603,293	674.26
State Government	8	113	124	124	1,320,969	844.43

TABLE 6. COUNTY SUMMARY

North American Industry Classification System - Industry Groups	Number of Employing Units	Employment			Total Earnings	Average Weekly Earnings
		Jan	Feb	Mar	Jan - Mar 2022	
FULTON COUNTY - TOTAL	200	2,140	2,155	2,174	\$19,210,058	\$685.28
Manufacturing	10	125	121	123	1,032,944	645.99
Trade, Transportation & Utilities	48	310	317	322	3,010,552	732.08
Retail Trade	30	185	186	189	1,224,921	504.78
Other Trade, Transportation, & Utilities	18	125	131	133	1,785,631	1,059.30
Information	4	35	35	31	378,552	864.93
Financial Activities	21	81	84	83	1,096,707	1,020.51
Professional & Business Services	10	21	21	23	152,281	540.64
Education & Health Services	46	469	457	461	3,945,911	656.52
Leisure & Hospitality	17	147	146	153	487,180	252.08
Other Services	8	20	22	21	155,551	569.78
Local Government	12	555	561	562	4,306,004	592.19
State Government	9	58	58	58	535,799	710.61
Other	15	319	333	337	4,108,577	958.68
GARLAND COUNTY - TOTAL	3,187	36,761	37,123	37,155	\$370,658,501	\$770.33
Natural Resources & Mining	29	196	200	207	2,690,949	1,029.83
Construction	354	1,856	1,857	1,869	18,873,806	780.27
Manufacturing	93	2,449	2,473	2,487	29,827,073	929.03
Trade, Transportation & Utilities	660	7,461	7,527	7,530	73,553,755	753.79
Wholesale Trade	132	801	804	802	13,564,444	1,300.48
Retail Trade	461	6,073	6,129	6,135	52,606,673	662.05
Transportation, Warehousing & Utilities	67	587	594	593	7,382,638	960.36
Information	28	411	410	394	4,586,254	871.08
Financial Activities	395	1,477	1,482	1,464	20,711,961	1,080.64
Professional & Business Services	424	3,100	3,078	2,969	34,588,448	872.63
Education & Health Services	504	7,778	7,798	7,797	94,921,659	937.19
Leisure & Hospitality	420	7,403	7,543	7,700	42,876,261	436.92
Other Services	219	924	906	943	6,868,351	571.58
Local Government	40	2,944	3,038	2,987	33,005,657	849.22
State Government	21	762	811	808	8,154,327	790.33

TABLE 6. COUNTY SUMMARY

North American Industry Classification System - Industry Groups	Number of Employing Units	Employment			Total Earnings	Average Weekly Earnings
		Jan	Feb	Mar	Jan - Mar 2022	
GRANT COUNTY - TOTAL	343	4,261	4,320	4,304	\$48,588,325	\$870.21
Natural Resources & Mining	23	162	162	163	2,372,864	1,124.40
Construction	33	261	255	264	3,793,924	1,122.46
Manufacturing	19	1,419	1,459	1,449	18,967,751	1,011.60
Trade, Transportation & Utilities	87	671	682	669	6,575,554	750.46
Wholesale Trade	19	100	102	100	1,979,145	1,512.34
Retail Trade	49	529	539	526	4,170,779	603.82
Transportation, Warehousing & Utilities	19	42	41	43	425,630	779.54
Financial Activities	24	169	169	164	3,125,932	1,436.99
Professional & Business Services	34	133	136	135	1,593,901	910.45
Education & Health Services	63	363	365	367	2,951,751	622.08
Leisure & Hospitality	23	248	260	256	1,114,985	336.79
Local Government	10	732	729	735	7,170,372	753.51
State Government	7	45	45	45	409,374	699.78
Other	20	58	58	57	511,917	682.86
GREENE COUNTY - TOTAL	894	15,128	15,410	15,486	\$155,901,190	\$781.71
Natural Resources & Mining	41	187	197	209	1,644,864	640.11
Construction	73	480	479	512	6,325,172	992.29
Manufacturing	54	4,689	4,872	4,826	56,513,510	906.48
Trade, Transportation & Utilities	228	2,728	2,781	2,763	25,303,484	705.91
Wholesale Trade	46	509	513	511	6,474,115	974.58
Retail Trade	152	2,006	2,041	2,020	16,358,282	622.22
Transportation, Warehousing & Utilities	30	213	227	232	2,471,087	848.59
Information	10	118	122	123	1,708,596	1,086.20
Financial Activities	77	561	568	576	7,113,428	962.79
Professional & Business Services	101	810	835	838	7,133,807	663.01
Education & Health Services	141	2,077	2,087	2,089	22,207,388	819.57
Leisure & Hospitality	82	1,263	1,264	1,334	5,717,037	341.70
Other Services	45	183	185	187	1,280,851	532.58
Local Government	32	1,667	1,657	1,665	16,380,843	757.71
State Government	10	365	363	364	4,572,210	966.23

TABLE 6. COUNTY SUMMARY

North American Industry Classification System - Industry Groups	Number of Employing Units	Employment			Total Earnings	Average Weekly Earnings
		Jan	Feb	Mar	Jan - Mar 2022	
HEMPSTEAD COUNTY - TOTAL	514	7,462	7,522	7,596	\$81,596,700	\$833.92
Natural Resources & Mining	25	223	223	228	3,065,993	1,049.76
Construction	28	130	130	134	1,297,646	760.04
Manufacturing	27	2,076	2,109	2,151	29,993,119	1,092.41
Trade, Transportation & Utilities	126	1,289	1,274	1,273	14,340,555	862.71
Wholesale Trade	26	183	184	160	2,059,539	901.86
Retail Trade	71	827	816	830	6,507,615	607.26
Transportation, Warehousing & Utilities	29	279	274	283	5,773,401	1,593.69
Information	8	15	14	15	199,335	1,045.46
Financial Activities	44	166	175	174	2,374,663	1,064.08
Professional & Business Services	40	574	590	575	4,587,776	608.81
Education & Health Services	96	848	857	873	7,171,046	641.91
Leisure & Hospitality	46	557	542	555	2,526,819	352.55
Other Services	30	102	109	109	930,826	671.27
Local Government	28	830	828	822	8,096,086	753.36
State Government	16	652	671	687	7,012,836	805.15
HOT SPRING COUNTY - TOTAL	602	7,832	7,900	7,887	\$78,837,982	\$770.29
Natural Resources & Mining	21	153	150	151	1,871,036	951.05
Construction	56	194	196	200	1,624,188	635.28
Manufacturing	29	1,561	1,596	1,570	19,513,795	952.65
Trade, Transportation & Utilities	152	1,602	1,590	1,557	17,325,617	841.91
Wholesale Trade	21	92	93	92	1,087,665	906.14
Retail Trade	91	900	925	925	7,262,604	609.45
Transportation, Warehousing & Utilities	40	610	572	540	8,975,348	1,202.81
Financial Activities	55	214	219	221	2,794,398	986.03
Professional & Business Services	58	615	599	597	5,255,368	669.67
Education & Health Services	97	864	873	888	9,635,361	847.06
Leisure & Hospitality	54	605	643	674	2,813,451	337.80
Local Government	27	960	962	964	9,110,085	728.46
State Government	13	883	893	888	7,393,509	640.46
Other	40	181	179	177	1501174	645.11

TABLE 6. COUNTY SUMMARY

North American Industry Classification System - Industry Groups	Number of Employing Units	Employment			Total Earnings	Average Weekly Earnings
		Jan	Feb	Mar	Jan - Mar 2022	
HOWARD COUNTY - TOTAL	356	6,306	6,415	6,419	\$63,072,308	\$760.46
Natural Resources & Mining	19	187	191	196	2,277,273	915.55
Construction	22	80	79	83	797,890	760.86
Manufacturing	19	2,938	3,039	3,036	31,388,415	803.67
Trade, Transportation & Utilities	82	909	900	892	9,139,012	780.82
Wholesale Trade	15	92	92	90	1,261,321	1,062.31
Retail Trade	46	595	593	579	4,596,675	600.32
Transportation, Warehousing & Utilities	21	222	215	223	3,281,016	1,147.21
Financial Activities	34	137	136	128	1,656,951	953.55
Professional & Business Services	24	135	143	143	1,442,716	790.82
Education & Health Services	77	755	760	775	7,468,478	752.62
Leisure & Hospitality	30	304	303	308	1,385,935	349.54
Local Government	17	666	670	662	5,760,989	665.39
State Government	10	100	97	97	872,432	684.80
Other	22	95	97	99	882,217	699.62
INDEPENDENCE COUNTY - TOTAL	909	16,416	16,328	16,324	\$191,186,000	\$899.16
Natural Resources & Mining	23	280	272	270	3,643,707	1,022.94
Construction	58	467	450	482	5,123,453	845.13
Manufacturing	46	3,836	3,733	3,714	52,363,613	1,070.98
Trade, Transportation & Utilities	231	2,879	2,893	2,903	30,378,273	808.11
Wholesale Trade	30	255	259	258	3,416,890	1,021.39
Retail Trade	157	1,911	1,933	1,943	15,265,770	608.76
Transportation, Warehousing & Utilities	44	713	701	702	11,695,613	1,275.51
Information	9	85	86	94	1,065,669	928.01
Financial Activities	90	644	642	630	11,579,288	1,394.65
Professional & Business Services	92	1,222	1,236	1,270	11,685,033	723.32
Education & Health Services	151	3,369	3,390	3,324	49,323,415	1,128.86
Leisure & Hospitality	87	1,237	1,262	1,272	5,318,336	325.46
Other Services	59	310	305	303	2,208,319	555.13
Local Government	48	1,532	1,503	1,499	12,747,532	648.82
State Government	15	555	556	563	5,749,362	792.58

TABLE 6. COUNTY SUMMARY

North American Industry Classification System - Industry Groups	Number of Employing Units	Employment			Total Earnings	Average Weekly Earnings
		Jan	Feb	Mar	Jan - Mar 2022	
IZARD COUNTY - TOTAL	234	2,639	2,672	2,709	\$24,256,646	\$697.97
Natural Resources & Mining	7	84	82	84	1,627,289	1,502.11
Construction	24	70	73	74	583,164	620.17
Manufacturing	8	147	147	153	1,552,316	801.40
Trade, Transportation & Utilities	61	528	532	535	4,279,520	619.17
Wholesale Trade	12	58	57	58	513,172	684.53
Retail Trade	40	368	372	375	2,594,024	536.88
Transportation, Warehousing & Utilities	9	102	103	102	1,172,324	881.23
Financial Activities	21	157	160	168	1,510,163	718.55
Professional & Business Services	18	52	54	51	662,665	974.03
Education & Health Services	35	552	541	553	4,799,720	672.92
Leisure & Hospitality	20	129	142	144	569,799	316.85
Local Government	14	501	506	498	4,454,468	683.03
State Government	9	357	373	392	3,740,988	769.43
Other	17	62	62	57	476,554	607.59
JACKSON COUNTY - TOTAL	407	5,022	5,056	5,086	\$55,132,612	\$839.02
Natural Resources & Mining	52	297	300	318	2,587,955	652.70
Construction	21	128	130	138	1,507,913	878.74
Manufacturing	9	974	1,018	998	15,613,985	1,205.09
Trade, Transportation & Utilities	102	984	989	1,002	10,348,107	802.70
Wholesale Trade	17	197	199	205	3,112,479	1,195.12
Retail Trade	66	698	701	705	5,997,936	657.86
Transportation, Warehousing & Utilities	19	89	89	92	1,237,692	1,057.86
Information	3	8	8	8	69,520	668.46
Financial Activities	30	137	135	135	1,834,785	1,040.32
Professional & Business Services	32	103	105	104	1,300,103	961.61
Education & Health Services	74	736	739	746	7,988,394	830.02
Leisure & Hospitality	23	324	303	295	1,214,496	303.98
Other Services	17	50	50	48	1,205,620	1,879.86
Local Government	32	552	547	562	4,661,371	647.62
State Government	12	729	732	732	6,800,363	715.60

TABLE 6. COUNTY SUMMARY

North American Industry Classification System - Industry Groups	Number of Employing Units	Employment			Total Earnings Jan - Mar 2022	Average Weekly Earnings
		Jan	Feb	Mar		
JEFFERSON COUNTY - TOTAL	1,894	24,260	24,465	24,444	\$280,300,982	\$884.05
Natural Resources & Mining	28	82	88	91	1,446,293	1,278.77
Construction	83	398	413	419	3,910,011	733.59
Manufacturing	58	4,122	4,141	4,101	66,966,962	1,249.91
Trade, Transportation & Utilities	397	4,117	4,149	4,113	42,251,847	787.66
Wholesale Trade	69	623	636	627	8,388,908	1,026.46
Retail Trade	270	2,848	2,887	2,856	22,074,824	592.97
Transportation, Warehousing & Utilities	58	646	626	630	11,788,115	1,430.25
Information	11	56	54	56	686,880	954.88
Financial Activities	142	986	986	981	15,510,687	1,212.12
Professional & Business Services	145	1,912	1,999	2,003	24,102,391	940.50
Education & Health Services	735	4,196	4,174	4,202	46,894,605	860.79
Leisure & Hospitality	128	2,662	2,666	2,657	17,891,351	517.07
Other Services	90	406	410	405	3,893,681	735.91
Local Government	41	2,202	2,224	2,249	22,096,348	763.92
State Government	36	3,121	3,161	3,167	34,649,926	846.24
JOHNSON COUNTY - TOTAL	463	8,331	8,356	8,372	\$83,191,336	\$766.11
Natural Resources & Mining	10	225	226	223	2,569,971	879.93
Construction	41	196	180	189	1,638,502	669.23
Manufacturing	34	2,314	2,353	2,377	23,327,465	764.23
Trade, Transportation & Utilities	102	2,135	2,102	2,133	24,929,425	903.13
Retail Trade	74	972	948	961	7,156,841	573.27
Other Trade, Transportation & Utilities	28	1,163	1,154	1,172	17,772,584	1,175.51
Information	5	27	26	23	185,306	562.67
Financial Activities	40	143	143	146	1,620,380	865.59
Professional & Business Services	45	213	210	208	1,581,001	578.20
Education & Health Services	89	1,226	1,237	1,234	12,835,742	801.22
Leisure & Hospitality	45	612	639	625	2,432,560	299.23
Other Services	29	88	89	96	688,891	582.33
Local Government	14	1,053	1,052	1,019	10,297,218	760.65
State Government	9	99	99	99	1,084,875	842.95

TABLE 6. COUNTY SUMMARY

North American Industry Classification System - Industry Groups	Number of Employing Units	Employment			Total Earnings Jan - Mar 2022	Average Weekly Earnings
		Jan	Feb	Mar		
LAFAYETTE COUNTY - TOTAL	156	1,035	1,063	1,067	\$8,597,750	\$626.89
Natural Resources & Mining	22	59	59	62	416,357	533.79
Construction	9	70	73	68	758,105	829.13
Trade, Transportation & Utilities	31	198	207	205	1,521,169	575.47
Wholesale Trade	3	53	58	59	376,033	510.45
Retail Trade	17	117	122	120	668,267	429.57
Transportation, Warehousing & Utilities	11	28	27	26	476,869	1,358.60
Financial Activities	13	71	71	73	695,627	746.65
Professional & Business Services	8	38	43	44	393,614	726.67
Education & Health Services	31	157	163	166	1,336,642	634.68
Leisure & Hospitality	8	68	71	79	360,036	381.12
Local Government	15	275	274	278	2,168,491	605.10
State Government	7	28	28	28	306,296	841.47
Other	12	71	74	64	641,413	708.22
LAWRENCE COUNTY - TOTAL	384	3,901	3,896	3,906	\$38,553,464	\$760.23
Natural Resources & Mining	54	180	181	184	2,008,763	850.57
Construction	24	176	163	161	5,009,118	2,311.90
Manufacturing	14	261	265	268	2,564,830	745.45
Trade, Transportation & Utilities	113	865	871	871	8,818,671	780.62
Wholesale Trade	20	239	242	241	3,007,977	961.42
Retail Trade	58	491	499	505	3,948,642	609.52
Transportation, Warehousing & Utilities	35	135	130	125	1,862,052	1,101.81
Financial Activities	25	115	115	117	1,296,335	862.12
Professional & Business Services	23	106	108	107	1,036,128	744.88
Education & Health Services	43	582	595	592	5,206,165	679.15
Leisure & Hospitality	35	339	349	371	1,352,073	294.63
Local Government	24	1,035	1,003	984	9,023,650	689.07
State Government	9	70	70	70	639,490	702.74
Other	20	172	176	181	1,598,241	697.21

TABLE 6. COUNTY SUMMARY

North American Industry Classification System - Industry Groups	Number of Employing Units	Employment			Total Earnings	Average Weekly Earnings
		Jan	Feb	Mar	Jan - Mar 2022	
LEE COUNTY - TOTAL	222	1,621	1,622	1,640	\$15,689,092	\$741.46
Natural Resources & Mining	35	140	140	142	1,221,086	667.75
Construction	4	7	8	6	51,836	569.63
Trade, Transportation & Utilities	36	343	339	340	3,742,860	845.14
Wholesale Trade	10	117	114	116	1,913,259	1,272.40
Retail Trade	18	169	168	168	1,001,577	457.69
Transportation, Warehousing & Utilities	8	57	57	56	828,024	1,124.01
Financial Activities	14	81	83	85	753,774	698.59
Professional & Business Services	13	45	44	43	944,673	1,651.53
Education & Health Services	79	340	345	351	3,253,640	724.75
Leisure & Hospitality	10	70	64	71	311,886	351.09
Other Services	6	9	9	9	63,183	540.03
Local Government	15	232	231	233	1,900,976	630.30
State Government	6	346	348	349	3,353,596	742.00
Other	4	8	11	11	91,582	704.48
LINCOLN COUNTY - TOTAL	258	2,582	2,601	2,633	\$25,791,693	\$761.51
Natural Resources & Mining	38	137	144	137	1,331,680	735.19
Construction	18	140	133	131	1,572,054	897.97
Manufacturing	9	309	320	343	2,993,936	710.81
Trade, Transportation & Utilities	41	326	329	337	3,926,603	913.45
Wholesale Trade	7	50	50	55	884,111	1,316.29
Retail Trade	23	153	156	161	941,214	462.13
Transportation, Warehousing & Utilities	11	123	123	121	2,101,278	1,321.28
Financial Activities	18	64	64	65	851,348	1,017.95
Professional & Business Services	9	18	24	21	328,211	1,202.24
Education & Health Services	77	336	336	330	2,823,427	650.26
Leisure & Hospitality	15	113	118	128	399,320	256.69
Local Government	7	304	301	305	2,727,814	691.75
State Government	10	786	791	791	8,250,061	804.00
Other	16	49	41	45	587,239	1,003.83

TABLE 6. COUNTY SUMMARY

North American Industry Classification System - Industry Groups	Number of Employing Units	Employment			Total Earnings	Average Weekly Earnings
		Jan	Feb	Mar	Jan - Mar 2022	
LITTLE RIVER COUNTY - TOTAL	234	3,058	3,078	3,086	\$45,605,481	\$1,141.22
Natural Resources & Mining	14	77	78	79	813,300	802.07
Construction	9	60	58	58	672,034	881.16
Manufacturing	14	962	965	965	28,063,246	2,239.33
Trade, Transportation & Utilities	59	542	548	544	4,633,329	654.36
Wholesale Trade	7	31	29	29	435,462	1,129.11
Retail Trade	37	427	443	440	3,333,378	587.21
Transportation, Warehousing & Utilities	15	84	76	75	864,489	848.93
Financial Activities	12	52	53	52	450,445	662.09
Professional & Business Services	17	129	139	148	1,407,959	781.04
Education & Health Services	45	208	206	198	1,634,380	616.28
Leisure & Hospitality	15	220	220	229	826,038	284.94
Local Government	20	678	684	681	6,058,230	684.31
State Government	10	83	80	81	695,283	657.58
Other	19	47	47	51	351,237	559.00
LOGAN COUNTY - TOTAL	477	5,008	5,073	5,056	\$46,792,134	\$713.36
Natural Resources & Mining	25	128	124	126	1,138,240	694.90
Construction	40	164	160	156	1,774,779	853.26
Manufacturing	22	1,118	1,133	1,141	12,849,931	874.22
Trade, Transportation & Utilities	103	974	1,011	987	8,260,152	641.38
Wholesale Trade	12	55	59	64	416,504	539.98
Retail Trade	72	798	832	807	5,935,574	562.06
Transportation, Warehousing & Utilities	19	121	120	116	1,908,074	1,233.40
Information	5	21	22	22	264,721	939.84
Financial Activities	48	181	185	175	2,774,483	1,183.48
Professional & Business Services	41	121	123	130	1,163,879	718.15
Education & Health Services	96	633	639	643	6,020,031	725.45
Leisure & Hospitality	30	286	298	297	1,075,152	281.63
Other Services	33	137	134	136	1,326,646	752.21
Local Government	22	819	814	813	6,901,005	651.08
State Government	12	426	430	430	3,243,115	581.97

TABLE 6. COUNTY SUMMARY

North American Industry Classification System - Industry Groups	Number of Employing Units	Employment			Total Earnings	Average Weekly Earnings
		Jan	Feb	Mar	Jan - Mar 2022	
LONOKE COUNTY - TOTAL	1,346	14,358	14,511	14,611	\$136,372,362	\$723.79
Natural Resources & Mining	92	446	500	511	5,025,108	795.91
Construction	160	931	946	953	10,871,112	886.47
Manufacturing	36	1,606	1,606	1,610	20,309,514	971.96
Trade, Transportation & Utilities	295	3,101	3,125	3,135	28,778,617	709.46
Wholesale Trade	71	411	421	421	6,339,642	1,167.59
Retail Trade	163	2,358	2,368	2,378	18,070,381	587.01
Transportation, Warehousing & Utilities	61	332	336	336	4,368,594	1,004.12
Information	16	65	89	88	1,196,942	1,141.39
Financial Activities	173	767	765	759	12,243,073	1,233.23
Professional & Business Services	160	641	718	707	5,637,500	629.70
Education & Health Services	199	1,827	1,819	1,837	16,282,885	685.32
Leisure & Hospitality	115	1,989	1,974	2,024	8,973,882	345.90
Other Services	63	194	192	205	1,722,297	672.51
Local Government	23	2,645	2,631	2,635	23,692,063	691.11
State Government	14	146	146	147	1,639,369	861.77
MADISON COUNTY - TOTAL	260	3,507	3,571	3,495	\$34,337,879	\$749.47
Natural Resources & Mining	12	56	61	59	506,963	664.72
Construction	35	171	172	166	1,771,216	803.03
Manufacturing	21	1,302	1,363	1,288	13,359,086	779.88
Trade, Transportation & Utilities	59	708	707	717	6,591,577	713.48
Retail Trade	39	522	525	531	3,996,535	584.46
Other Trade, Transportation, & Utilities	20	186	182	186	2,595,042	1,080.97
Information	4	42	42	42	1,188,368	2,176.50
Financial Activities	19	89	87	87	1,131,958	993.24
Professional & Business Services	24	84	81	80	1,149,944	1,083.15
Education & Health Services	39	248	252	253	2,191,906	671.75
Leisure & Hospitality	12	154	155	157	549,254	272.00
Other Services	19	54	60	63	427,143	556.90
Local Government	9	560	552	544	5,077,319	707.54
State Government	7	39	39	39	393,145	775.43

TABLE 6. COUNTY SUMMARY

North American Industry Classification System - Industry Groups	Number of Employing Units	Employment			Total Earnings	Average Weekly Earnings
		Jan	Feb	Mar	Jan - Mar 2022	
MARION COUNTY - TOTAL	278	3,505	3,475	3,552	\$31,713,345	\$694.88
Manufacturing	24	1,470	1,488	1,517	15,114,039	779.41
Trade, Transportation & Utilities	56	555	555	553	4350496	603.70
Retail Trade	38	465	462	458	3,449,165	574.70
Other Trade, Transportation, & Utilities	18	90	93	95	901,331	748.20
Information	3	55	54	53	754,768	1,075.17
Financial Activities	30	174	169	184	1,892,900	828.89
Professional & Business Services	25	80	87	87	772,974	702.28
Education & Health Services	40	277	268	273	2,626,663	741.02
Leisure & Hospitality	33	174	168	187	692,351	302.03
Other Services	15	33	32	33	180,403	424.81
Local Government	17	513	497	502	3,991,848	609.26
State Government	7	38	38	38	386,120	781.62
Other	28	136	119	125	950,783	577.40
MILLER COUNTY - TOTAL	891	11,744	11,899	11,901	\$131,845,928	\$856.01
Natural Resources & Mining	30	270	265	245	3,574,274	1,057.48
Construction	65	599	621	643	6,912,700	856.27
Manufacturing	21	2,347	2,364	2,396	39,810,441	1,292.67
Trade, Transportation & Utilities	214	2,697	2,644	2,644	28,772,749	831.54
Wholesale Trade	43	521	527	527	7,655,216	1,121.64
Retail Trade	121	1,259	1,271	1,253	9,965,884	607.94
Transportation, Warehousing & Utilities	50	917	846	864	11,151,649	979.62
Information	8	89	89	87	1,525,444	1,328.40
Financial Activities	94	401	418	390	5,491,468	1,048.19
Professional & Business Services	81	707	779	813	7,638,660	766.75
Education & Health Services	185	1,211	1,214	1,201	9,831,116	625.68
Leisure & Hospitality	101	1,419	1,483	1,468	7,112,758	375.61
Other Services	51	221	229	220	1,666,197	573.89
Local Government	26	1,325	1,333	1,335	13,818,613	798.63
State Government	15	458	460	459	5,691,508	953.83

TABLE 6. COUNTY SUMMARY

North American Industry Classification System - Industry Groups	Number of Employing Units	Employment			Total Earnings	Average Weekly Earnings
		Jan	Feb	Mar	Jan - Mar 2022	
MISSISSIPPI COUNTY - TOTAL	1,021	16,614	16,635	16,773	\$277,321,457	\$1,279.38
Natural Resources & Mining	108	474	479	490	4,711,144	753.42
Construction	52	639	640	667	9,887,219	1,172.49
Manufacturing	63	6,248	6,345	6,427	167,583,144	2,033.28
Trade, Transportation & Utilities	255	2,850	2,801	2,758	32,300,099	886.42
Wholesale Trade	55	401	399	419	8,697,038	1,646.44
Retail Trade	133	1,636	1,607	1,570	11,399,505	546.57
Transportation, Warehousing & Utilities	67	813	795	769	12,203,556	1,184.77
Information	9	25	25	19	179,293	599.64
Financial Activities	73	394	392	391	4,664,951	914.64
Professional & Business Services	84	954	919	946	13,086,948	1,071.32
Education & Health Services	171	1,284	1,300	1,308	12,669,485	751.21
Leisure & Hospitality	91	999	990	1,019	4,289,983	329.12
Other Services	46	302	294	286	3,423,806	895.82
Local Government	50	2,005	1,979	1,987	20,159,884	779.15
State Government	19	440	471	475	4,365,501	726.86
MONROE COUNTY - TOTAL	242	1,800	1,820	1,839	\$15,460,675	\$653.57
Natural Resources & Mining	24	72	80	79	713,695	712.98
Manufacturing	6	131	134	138	1,239,288	709.65
Trade, Transportation & Utilities	60	457	469	468	5,091,077	842.80
Wholesale Trade	15	125	123	127	2,433,533	1,497.56
Retail Trade	30	237	250	249	1,468,536	460.45
Transportation, Warehousing & Utilities	15	95	96	92	1,189,008	969.56
Financial Activities	20	79	76	74	965,611	973.07
Professional & Business Services	12	14	15	16	157,696	808.70
Education & Health Services	47	307	315	316	2,650,729	652.14
Leisure & Hospitality	20	269	263	273	1,012,718	290.32
Other Services	16	63	65	64	420,148	504.99
Local Government	21	329	324	332	2,408,395	564.25
State Government	7	62	62	62	683,406	847.90
Other	9	17	17	17	117,912	533.54

TABLE 6. COUNTY SUMMARY

North American Industry Classification System - Industry Groups	Number of Employing Units	Employment			Total Earnings	Average Weekly Earnings
		Jan	Feb	Mar	Jan - Mar 2022	
MONTGOMERY COUNTY - TOTAL	155	1,097	1,125	1,147	\$8,028,556	\$549.94
Natural Resources & Mining	6	19	17	18	120,482	514.88
Construction	24	72	73	75	556,438	583.68
Manufacturing	7	36	35	35	313,179	681.81
Trade, Transportation & Utilities	35	237	239	245	1,680,157	537.76
Wholesale Trade	7	57	57	58	582,646	781.73
Retail Trade	22	163	166	171	969,357	447.40
Transportation, Warehousing & Utilities	6	17	16	16	128,154	603.55
Financial Activities	13	39	37	31	405,911	875.44
Professional & Business Services	11	21	20	20	135,468	512.49
Education & Health Services	16	45	46	46	398,235	670.81
Leisure & Hospitality	14	190	214	234	1,104,211	399.40
Local Government	9	373	373	372	2,796,999	577.34
State Government	7	35	36	36	316,365	682.31
Other	13	30	35	35	201,111	464.10
NEVADA COUNTY - TOTAL	197	2,107	2,112	2,111	\$25,363,696	\$924.67
Natural Resources & Mining	12	41	44	47	742,823	1,298.64
Construction	12	27	26	29	147,462	415.00
Trade, Transportation & Utilities	45	468	467	469	4,485,038	737.19
Retail Trade	25	287	284	288	2,019,340	542.49
Other Trade, Transportation & Utilities	20	181	183	181	2,465,698	1,044.05
Financial Activities	10	67	69	66	518,659	592.53
Professional & Business Services	12	89	88	93	1,228,196	1,049.74
Education & Health Services	34	261	259	260	1,691,792	500.53
Other Services	15	44	47	44	273,562	467.63
Local Government	29	372	368	362	3,022,803	633.00
State Government	9	53	53	53	440,666	639.57
Other	19	685	691	688	12,812,695	1,432.55

TABLE 6. COUNTY SUMMARY

North American Industry Classification System - Industry Groups	Number of Employing Units	Employment			Total Earnings	Average Weekly Earnings
		Jan	Feb	Mar	Jan - Mar 2022	
NEWTON COUNTY - TOTAL	115	922	917	929	7,109,991	\$592.76
Natural Resources & Mining	4	13	13	13	89,696	530.75
Construction	6	20	20	20	195,909	753.50
Manufacturing	9	42	42	39	402,047	754.31
Trade, Transportation & Utilities	27	147	144	137	1,271,030	685.31
Retail Trade	14	95	95	91	631,318	518.47
Other Trade, Transportation & Utilities	13	52	49	46	639,712	1,004.26
Professional & Business Services	4	5	5	5	105,734	1,626.68
Education & Health Services	21	203	194	199	1,344,140	520.45
Local Government	14	326	322	315	2,570,483	615.98
State Government	7	35	35	35	329,059	723.21
Other	23	131	142	166	801,893	421.53
OUACHITA COUNTY - TOTAL	619	8,091	8,166	8,210	\$95,390,649	\$899.71
Natural Resources & Mining	33	174	162	171	1,933,027	879.85
Construction	39	229	248	244	2,981,624	954.32
Manufacturing	30	2,213	2,205	2,199	36,470,995	1,271.93
Trade, Transportation & Utilities	146	1,582	1,602	1,602	13,502,069	651.04
Wholesale Trade	21	214	215	217	2,263,514	808.59
Retail Trade	88	997	1,016	1,014	6,554,548	499.70
Transportation, Warehousing & Utilities	37	371	371	371	4,684,007	971.18
Information	5	27	29	28	343,932	944.87
Financial Activities	50	250	259	252	2,692,798	816.58
Professional & Business Services	45	241	258	265	3,190,270	963.63
Education & Health Services	160	1,253	1,262	1,271	17,839,379	1,087.37
Leisure & Hospitality	46	417	434	448	1,784,960	317.10
Other Services	21	96	92	91	688,609	569.57
Local Government	31	1,064	1,049	1,045	8,162,483	596.47
State Government	13	545	566	594	5,800,503	785.09

TABLE 6. COUNTY SUMMARY

North American Industry Classification System - Industry Groups	Number of Employing Units	Employment			Total Earnings	Average Weekly Earnings
		Jan	Feb	Mar	Jan - Mar 2022	
PERRY COUNTY - TOTAL	144	1,067	1,057	1,058	\$9,475,459	\$687.19
Construction	16	73	69	75	741,825	788.90
Trade, Transportation & Utilities	26	180	176	174	1,650,416	718.61
Retail Trade	18	143	139	137	679,452	374.22
Other Trade, Transportation & Utilities	8	37	37	37	970,964	2,018.64
Financial Activities	9	20	20	20	291,121	1,119.70
Professional & Business Services	22	47	47	48	427,282	694.39
Education & Health Services	27	221	219	215	2,061,575	726.33
Leisure & Hospitality	11	81	79	77	293,746	286.02
Other Services	6	30	29	29	303,296	795.36
Local Government	9	333	334	333	2,687,086	620.10
State Government	7	33	33	33	333,444	777.26
Other	11	49	51	54	685,668	1,027.47
PHILLIPS COUNTY - TOTAL	651	4,786	4,769	4,687	\$44,931,005	\$728.04
Natural Resources & Mining	60	285	283	288	1,973,180	531.95
Construction	24	100	95	92	775,546	623.60
Manufacturing	12	419	422	420	4,951,056	906.07
Trade, Transportation & Utilities	125	1,058	1,062	1,023	10,448,704	767.18
Wholesale Trade	27	256	268	264	3,589,603	1,051.23
Retail Trade	62	603	592	576	4,357,242	567.77
Transportation, Warehousing & Utilities	36	199	202	183	2,501,859	988.62
Information	6	11	11	11	145,304	1,016.11
Financial Activities	38	185	187	188	2,659,279	1,095.86
Professional & Business Services	43	238	223	224	2,315,668	780.12
Education & Health Services	242	1,007	1,007	952	10,342,485	804.70
Leisure & Hospitality	37	363	374	375	1,478,860	306.90
Other Services	23	69	73	72	512,131	552.26
Local Government	27	760	732	727	6,134,285	637.95
State Government	14	291	300	315	3,194,507	813.68

TABLE 6. COUNTY SUMMARY

North American Industry Classification System - Industry Groups	Number of Employing Units	Employment			Total Earnings	Average Weekly Earnings
		Jan	Feb	Mar	Jan - Mar 2022	
PIKE COUNTY - TOTAL	267	2,570	2,531	2,540	\$22,684,652	\$685.11
Natural Resources & Mining	22	127	128	127	1,834,434	1,108.20
Construction	18	46	40	36	327,187	618.89
Manufacturing	16	434	415	428	4,469,970	807.78
Trade, Transportation & Utilities	73	501	486	493	4,293,283	669.43
Wholesale Trade	9	101	101	104	1,139,337	859.23
Retail Trade	39	328	320	329	2,215,412	523.28
Transportation, Warehousing & Utilities	25	72	65	60	938,534	1,099.42
Information	7	35	34	33	380,678	861.26
Financial Activities	23	221	221	213	2,552,657	899.35
Professional & Business Services	17	84	90	78	1,007,376	922.51
Education & Health Services	30	245	243	246	1,726,599	542.84
Leisure & Hospitality	24	208	219	243	885,942	305.15
Other Services	18	74	80	78	568,418	565.40
Local Government	10	507	487	477	3,967,848	622.47
State Government	9	88	88	88	670,260	585.89
POINSETT COUNTY - TOTAL	461	5,155	5,198	5,256	57,755,046	\$853.87
Natural Resources & Mining	68	222	238	245	2,751,006	900.49
Construction	23	92	99	107	836,563	647.83
Manufacturing	14	811	810	818	10,717,769	1,014.08
Trade, Transportation & Utilities	118	1,252	1,262	1,271	16,563,754	1,009.88
Wholesale Trade	24	428	429	435	9,909,411	1,769.96
Retail Trade	65	691	702	695	4,868,002	538.02
Transportation, Warehousing & Utilities	29	133	131	141	1,786,341	1,017.86
Financial Activities	35	178	174	175	2,706,995	1,185.37
Professional & Business Services	29	252	258	260	4,463,815	1,337.81
Education & Health Services	67	683	691	700	6,666,867	741.81
Leisure & Hospitality	45	445	447	483	1,800,901	302.25
Local Government	30	996	998	973	9,017,479	701.37
State Government	10	96	97	97	973,166	774.40
Other	22	128	124	127	1,256,731	765.21

TABLE 6. COUNTY SUMMARY

North American Industry Classification System - Industry Groups	Number of Employing Units	Employment			Total Earnings	Average Weekly Earnings
		Jan	Feb	Mar	Jan - Mar 2022	
POLK COUNTY - TOTAL	470	5,660	5,702	5,725	\$50,816,604	\$686.31
Natural Resources & Mining	25	170	172	174	2,452,176	1,096.68
Construction	34	231	237	232	2,362,368	778.80
Manufacturing	35	1,228	1,260	1,250	12,121,539	748.34
Trade, Transportation & Utilities	114	1,148	1,142	1,125	9,655,291	652.46
Wholesale Trade	15	43	43	43	758,538	1,356.96
Retail Trade	64	892	891	870	6,372,169	554.28
Transportation, Warehousing & Utilities	35	213	208	212	2,524,584	920.37
Information	6	41	40	38	258,158	500.63
Financial Activities	42	198	200	200	2,204,937	850.89
Professional & Business Services	36	152	151	153	1,902,513	962.81
Education & Health Services	74	925	926	980	9,464,423	771.49
Leisure & Hospitality	41	487	473	473	1,817,850	292.75
Other Services	30	113	113	113	981,097	667.87
Local Government	21	673	684	680	5,415,272	613.49
State Government	12	294	304	307	2,180,980	556.14
POPE COUNTY - TOTAL	1,796	24,685	24,984	25,064	\$281,707,026	\$869.89
Natural Resources & Mining	39	864	888	884	8,633,942	755.86
Construction	155	1,158	1,182	1,215	15,772,846	1,023.88
Manufacturing	80	3,563	3,594	3,607	44,397,665	951.84
Trade, Transportation & Utilities	389	6,205	6,171	6,110	87,460,140	1,091.81
Wholesale Trade	67	536	548	545	7,170,446	1,015.79
Retail Trade	251	3,193	3,196	3,143	24,851,173	601.65
Transportation, Warehousing & Utilities	71	2,476	2,427	2,422	55,438,521	1,746.55
Professional & Business Services	256	1,983	2,006	1,983	25,931,274	1,002.03
Education & Health Services	348	3,354	3,411	3,472	33,413,497	753.23
Leisure & Hospitality	147	2,682	2,691	2,757	12,129,153	344.28
Other Services	107	456	467	483	3,850,344	631.96
Local Government	44	2,192	2,200	2,166	21,101,861	742.55
State Government	15	1,283	1,415	1,417	15,913,343	892.42
Other	216	945	959	970	13,102,961	1,052.11

TABLE 6. COUNTY SUMMARY

North American Industry Classification System - Industry Groups	Number of Employing Units	Employment			Total Earnings	Average Weekly Earnings
		Jan	Feb	Mar	Jan - Mar 2022	
PRAIRIE COUNTY - TOTAL	229	1,430	1,414	1,411	\$12,896,487	\$699.44
Natural Resources & Mining	38	139	147	155	1,712,257	896.00
Construction	12	41	35	33	397,141	840.81
Manufacturing	3	56	51	52	369,684	536.55
Trade, Transportation & Utilities	57	348	353	350	3,385,275	743.31
Wholesale Trade	13	84	82	83	1,485,479	1,376.72
Retail Trade	32	215	220	219	1,419,432	500.86
Transportation, Warehousing & Utilities	12	49	51	48	480,364	749.01
Financial Activities	14	53	53	50	529,402	783.14
Professional & Business Services	12	67	68	66	606,261	696.05
Education & Health Services	37	258	253	254	2,210,269	666.75
Leisure & Hospitality	17	92	76	76	357,859	338.45
Local Government	15	311	313	314	2,758,618	678.68
State Government	7	29	29	29	276,512	733.45
Other	17	36	36	32	293,209	650.61
PULASKI COUNTY - TOTAL	14,409	237,777	239,824	239,398	\$3,479,835,195	\$1,120.00
Natural Resources & Mining	49	630	632	637	13,677,591	1,662.12
Construction	935	9,572	9,617	9,685	138,793,109	1,109.27
Manufacturing	319	12,067	12,161	12,242	186,128,612	1,177.76
Trade, Transportation & Utilities	3,041	54,168	54,773	54,234	723,594,491	1,023.34
Wholesale Trade	889	11,945	12,051	11,933	235,842,843	1,514.80
Retail Trade	1,711	23,896	23,907	23,934	222,269,493	715.01
Transportation, Warehousing & Utilities	441	18,327	18,815	18,367	265,482,155	1,103.70
Information	214	2,667	2,668	2,665	45,093,209	1,300.77
Financial Activities	1,742	17,223	17,313	17,168	472,350,451	2,108.23
Professional & Business Services	2,812	33,586	33,829	33,799	541,468,523	1,234.56
Education & Health Services	2,561	41,134	41,287	41,116	577,102,922	1,078.04
Leisure & Hospitality	1,289	20,205	20,685	21,036	110,155,951	410.50
Other Services	1,132	6,426	6,443	6,415	73,062,838	874.33
Local Government	108	14,235	14,231	14,214	173,444,119	937.81
State Government	207	25,864	26,185	26,187	424,963,379	1,253.50

TABLE 6. COUNTY SUMMARY

North American Industry Classification System - Industry Groups	Number of Employing Units	Employment			Total Earnings	Average Weekly Earnings
		Jan	Feb	Mar	Jan - Mar 2022	
RANDOLPH COUNTY - TOTAL	382	5,952	5,968	5,943	\$53,181,538	\$687.04
Natural Resources & Mining	24	218	217	218	2,890,323	1,021.44
Construction	23	73	74	78	522,211	535.60
Manufacturing	27	1,707	1,689	1,663	17,878,714	815.55
Trade, Transportation & Utilities	97	880	860	852	8,159,060	726.41
Wholesale Trade	13	71	76	74	906,678	946.76
Retail Trade	56	632	620	616	4,892,921	604.46
Transportation, Warehousing & Utilities	28	177	164	162	2,359,461	1,082.49
Information	4	12	12	12	188,041	1,205.39
Financial Activities	31	139	142	145	1,449,644	785.29
Professional & Business Services	31	294	307	309	2,086,083	529.02
Education & Health Services	57	952	970	965	8,031,551	641.99
Leisure & Hospitality	31	492	505	496	1,761,206	272.23
Other Services	20	137	136	141	999,633	557.21
Local Government	27	805	797	801	6,604,521	634.26
State Government	10	243	259	263	2,610,551	787.50
SAINT FRANCIS COUNTY - TOTAL	617	6,133	6,185	6,200	\$58,275,422	\$726.22
Natural Resources & Mining	43	159	144	143	1,320,845	683.43
Construction	29	185	180	187	1,940,345	811.18
Trade, Transportation & Utilities	139	1,679	1,682	1,702	17,994,893	820.20
Wholesale Trade	26	458	454	460	6,928,074	1,165.30
Retail Trade	85	933	933	943	6,791,375	557.94
Transportation, Warehousing & Utilities	28	288	295	299	4,275,444	1,118.64
Information	5	43	42	43	416,401	750.72
Financial Activities	53	203	202	207	1,696,319	639.64
Professional & Business Services	49	179	185	189	1,763,065	735.73
Education & Health Services	186	1,384	1,373	1,351	14,020,359	787.60
Leisure & Hospitality	46	601	592	586	2,431,704	315.44
Local Government	28	756	752	747	6,569,335	672.28
State Government	13	319	353	359	3,552,926	795.25
Other	26	625	680	686	6,569,230	761.41

TABLE 6. COUNTY SUMMARY

North American Industry Classification System - Industry Groups	Number of Employing Units	Employment			Total Earnings	Average Weekly Earnings
		Jan	Feb	Mar	Jan - Mar 2022	
SALINE COUNTY - TOTAL	2,267	25,367	25,424	25,570	\$261,218,408	\$789.42
Natural Resources & Mining	16	67	65	65	604,288	707.87
Construction	302	2,223	2,237	2,269	27,147,210	931.01
Manufacturing	81	1,391	1,403	1,418	20,173,473	1,105.27
Trade, Transportation & Utilities	498	5,842	5,858	5,872	57,876,130	760.07
Wholesale Trade	112	522	519	524	8,925,720	1,316.15
Retail Trade	299	4,506	4,517	4,513	39,396,057	671.65
Transportation, Warehousing & Utilities	87	814	822	835	9,554,353	892.29
Information	25	152	147	146	2,133,292	1,106.29
Financial Activities	255	921	934	935	13,182,558	1,090.37
Professional & Business Services	317	1,901	1,911	1,910	24,436,426	985.53
Education & Health Services	346	4,604	4,647	4,649	51,358,664	852.66
Leisure & Hospitality	217	3,583	3,543	3,614	17,005,227	365.39
Other Services	164	828	842	857	7,336,741	670.00
Local Government	32	3,121	3,097	3,095	33,072,518	819.51
State Government	14	734	740	740	6,891,881	718.35
SCOTT COUNTY - TOTAL	178	2,873	2,865	2,857	\$25,077,138	\$673.30
Natural Resources & Mining	16	130	128	125	1,668,749	1,005.47
Construction	8	23	21	22	214,779	750.98
Trade, Transportation & Utilities	38	329	325	327	2,408,680	566.61
Wholesale Trade	7	31	30	30	200,984	509.68
Retail Trade	25	234	231	233	1,277,656	422.41
Transportation, Warehousing & Utilities	6	64	64	64	930,040	1,117.84
Financial Activities	16	61	61	60	641,547	813.46
Professional & Business Services	13	147	133	133	1,145,208	639.90
Education & Health Services	39	208	212	214	2,856,836	1,039.86
Leisure & Hospitality	17	153	153	148	544,433	276.74
Other Services	9	34	32	33	254,098	592.30
Local Government	6	507	510	510	4,250,979	642.43
State Government	6	30	30	30	319,320	818.77
Other	10	1,251	1,260	1,255	10,772,509	660.11

TABLE 6. COUNTY SUMMARY

North American Industry Classification System - Industry Groups	Number of Employing Units	Employment			Total Earnings Jan - Mar 2022	Average Weekly Earnings
		Jan	Feb	Mar		
SEARCY COUNTY - TOTAL	162	1,274	1,292	1,329	\$9,831,669	\$582.50
Construction	11	8	9	16	100,436	702.35
Manufacturing	12	101	100	105	784,205	591.41
Trade, Transportation & Utilities	32	227	224	224	1,506,528	515.05
Retail Trade	21	173	171	171	995,132	445.91
Other Trade, Transportation, & Utilities	11	54	53	53	511,396	737.59
Financial Activities	13	47	44	54	551,395	877.55
Professional & Business Services	19	57	56	58	934,538	1,261.18
Education & Health Services	36	410	424	424	3,037,420	557.19
Leisure & Hospitality	15	134	136	150	463,185	254.50
Local Government	10	229	240	239	1,920,601	626.01
State Government	6	41	41	41	379,725	712.43
Other	8	20	18	18	153,636	633.12
SEBASTIAN COUNTY - TOTAL	3,710	63,291	64,015	63,786	\$807,770,946	\$975.49
Natural Resources & Mining	34	214	229	219	5,199,229	1,812.42
Construction	265	2,378	2,385	2,410	27,872,556	896.71
Manufacturing	193	11,361	11,583	11,628	157,717,803	1,052.77
Trade, Transportation & Utilities	891	13,569	13,564	13,407	161,283,121	918.09
Wholesale Trade	230	2,960	2,973	2,932	46,509,848	1,210.72
Retail Trade	549	7,727	7,702	7,617	63,869,267	639.55
Transportation, Warehousing & Utilities	112	2,882	2,889	2,858	50,904,006	1,361.35
Information	40	801	806	809	22,636,955	2,162.22
Financial Activities	429	2,413	2,437	2,429	38,524,506	1,221.36
Professional & Business Services	553	7,874	8,059	7,960	112,839,655	1,089.86
Education & Health Services	640	11,292	11,370	11,270	172,881,943	1,175.76
Leisure & Hospitality	364	5,998	6,119	6,154	29,848,080	376.99
Other Services	237	1,103	1,121	1,104	9,582,257	664.45
Local Government	43	4,675	4,710	4,758	50,069,521	816.98
State Government	21	1,613	1,632	1,638	19,315,320	912.84

TABLE 6. COUNTY SUMMARY

North American Industry Classification System - Industry Groups	Number of Employing Units	Employment			Total Earnings	Average Weekly Earnings
		Jan	Feb	Mar	Jan - Mar 2022	
SEVIER COUNTY - TOTAL	311	4,619	4,705	4,722	\$45,821,537	\$752.83
Natural Resources & Mining	16	138	141	156	3,174,582	1,684.13
Construction	19	178	186	179	2,619,084	1,113.08
Trade, Transportation & Utilities	81	776	761	766	7,003,532	701.78
Wholesale Trade	11	72	69	73	982,444	1,059.43
Retail Trade	55	615	601	600	4,796,419	609.51
Transportation, Warehousing & Utilities	15	89	91	93	1,224,669	1,035.22
Financial Activities	28	184	184	173	2,198,092	937.62
Professional & Business Services	24	166	175	176	1,343,051	599.49
Education & Health Services	59	449	447	450	3,887,875	666.57
Other Services	27	98	98	99	950,725	743.72
Local Government	13	957	942	931	7,718,329	629.38
State Government	8	148	190	188	1,559,622	684.24
Other	36	1,525	1,581	1,604	15,366,645	752.90
SHARP COUNTY - TOTAL	375	3,549	3,555	3,541	\$30,786,271	\$667.40
Construction	30	110	110	115	1,082,621	745.78
Trade, Transportation & Utilities	86	811	801	805	6,372,203	608.40
Wholesale Trade	16	51	50	46	491,327	771.31
Retail Trade	62	723	715	723	5,373,772	573.86
Transportation, Warehousing & Utilities	8	37	36	36	507,104	1,073.61
Information	8	22	24	24	208,107	686.07
Financial Activities	35	183	174	175	2,674,162	1,159.99
Professional & Business Services	31	121	120	120	1,228,857	785.55
Education & Health Services	72	840	841	815	8,198,903	758.03
Leisure & Hospitality	35	377	374	345	1,436,824	302.53
Other Services	29	70	65	71	431,367	483.23
Local Government	23	746	764	768	6,181,703	626.23
State Government	7	51	51	51	469,365	707.94
Other	19	218	231	252	2,502,159	823.71

TABLE 6. COUNTY SUMMARY

North American Industry Classification System - Industry Groups	Number of Employing Units	Employment			Total Earnings	Average Weekly Earnings
		Jan	Feb	Mar	Jan - Mar 2022	
STONE COUNTY - TOTAL	275	2,471	2,492	2,478	\$21,098,879	\$654.34
Natural Resources & Mining	6	10	10	10	68,057	523.52
Construction	14	35	31	34	213,772	493.32
Manufacturing	20	254	284	278	2,147,134	607.22
Trade, Transportation & Utilities	61	576	539	539	5,302,205	739.77
Wholesale Trade	8	34	18	35	248,206	658.37
Retail Trade	41	498	480	462	4,345,821	696.45
Transportation, Warehousing & Utilities	12	44	41	42	708,178	1,286.82
Financial Activities	39	133	139	143	1,586,665	882.30
Professional & Business Services	19	43	44	41	298,514	538.19
Education & Health Services	51	499	501	481	5,691,199	886.80
Leisure & Hospitality	30	412	433	441	1,549,735	278.10
Local Government	9	381	383	382	3,203,858	645.16
State Government	7	90	91	91	795,944	675.29
Other	19	38	37	38	241,796	493.80
UNION COUNTY - TOTAL	1,187	16,289	16,413	16,413	\$233,303,477	\$1,096.19
Natural Resources & Mining	78	330	335	327	5,062,463	1,177.68
Construction	71	1,409	1,424	1,416	21,203,245	1,151.58
Manufacturing	51	2,899	2,929	2,936	52,524,783	1,383.06
Trade, Transportation & Utilities	295	3,335	3,375	3,392	40,698,374	929.71
Wholesale Trade	64	447	462	459	8,536,348	1,440.00
Retail Trade	175	2,047	2,088	2,120	16,339,913	602.84
Transportation, Warehousing & Utilities	56	841	825	813	15,822,113	1,472.87
Information	7	61	59	62	713,094	904.18
Financial Activities	91	559	538	548	8,276,792	1,161.11
Professional & Business Services	115	1,843	1,877	1,885	56,567,889	2,329.01
Education & Health Services	250	1,904	1,904	1,859	19,173,101	780.76
Leisure & Hospitality	96	1,332	1,376	1,378	5,819,161	328.65
Other Services	85	419	409	411	3,255,371	606.33
Local Government	32	1,730	1,732	1,726	15,104,471	671.87
State Government	16	468	455	473	4,904,733	810.79

TABLE 6. COUNTY SUMMARY

North American Industry Classification System - Industry Groups	Number of Employing Units	Employment			Total Earnings	Average Weekly Earnings
		Jan	Feb	Mar	Jan - Mar 2022	
VAN BUREN COUNTY - TOTAL	324	3,641	3,658	3,702	\$36,046,981	\$756.16
Construction	34	108	119	121	920,099	610.15
Trade, Transportation & Utilities	90	1,092	1,083	1,097	14,202,143	1,001.66
Wholesale Trade	11	42	44	46	532,367	930.71
Retail Trade	52	643	631	634	4,922,970	595.42
Transportation, Warehousing & Utilities	27	407	408	417	8,746,806	1,638.39
Information	6	32	31	31	361,615	887.76
Financial Activities	39	165	165	173	1,882,571	863.70
Professional & Business Services	29	142	139	152	1,174,911	626.17
Education & Health Services	48	680	679	667	7,237,380	824.37
Leisure & Hospitality	22	242	249	260	948,170	291.36
Other Services	20	196	193	183	1,546,445	623.90
Local Government	11	621	620	621	5,015,819	621.64
State Government	6	40	40	40	398,788	766.90
Other	19	323	340	357	2,359,040	533.72
WASHINGTON COUNTY - TOTAL	6,587	110,556	111,969	112,274	\$1,460,031,577	\$1,006.37
Natural Resources & Mining	43	332	339	344	4,697,470	1,068.01
Construction	660	6,730	6,785	6,785	92,782,597	1,054.75
Manufacturing	223	14,014	14,236	14,150	177,921,135	968.37
Trade, Transportation & Utilities	1,365	22,976	23,275	23,096	294,688,298	980.65
Wholesale Trade	387	3,749	3,779	3,763	82,196,207	1,679.95
Retail Trade	774	12,978	13,257	13,009	118,804,947	698.62
Transportation, Warehousing & Utilities	204	6,249	6,239	6,324	93,687,144	1,149.27
Information	95	901	893	886	15,414,980	1,327.35
Financial Activities	782	3,923	3,985	3,890	68,907,614	1,347.83
Professional & Business Services	1,229	14,202	14,520	14,635	292,432,452	1,556.48
Education & Health Services	954	16,302	16,468	16,588	210,716,912	985.19
Leisure & Hospitality	734	12,588	12,927	13,090	64,200,167	383.77
Other Services	419	2,386	2,443	2,455	23,932,103	758.21
Local Government	61	8,937	8,823	9,068	97,555,417	839.15
State Government	22	7,265	7,275	7,287	116,782,432	1,234.70

TABLE 6. COUNTY SUMMARY

North American Industry Classification System - Industry Groups	Number of Employing Units	Employment			Total Earnings	Average Weekly Earnings
		Jan	Feb	Mar	Jan - Mar 2022	
WHITE COUNTY - TOTAL	1,791	24,391	24,648	24,793	\$257,111,270	\$803.63
Natural Resources & Mining	41	429	427	432	7,016,903	1,257.21
Construction	173	1,387	1,373	1,392	16,676,554	926.89
Manufacturing	58	2,348	2,349	2,397	27,667,333	900.02
Trade, Transportation & Utilities	462	6,526	6,547	6,590	72,964,145	856.32
Wholesale Trade	82	585	591	596	8,824,049	1,149.16
Retail Trade	298	3,627	3,653	3,701	30,431,745	639.53
Transportation, Warehousing & Utilities	82	2,314	2,303	2,293	33,708,351	1,125.74
Information	22	98	104	108	917,673	683.13
Financial Activities	186	940	949	951	12,470,954	1,013.35
Professional & Business Services	187	1,155	1,201	1,192	10,405,221	676.78
Education & Health Services	317	5,295	5,357	5,428	63,805,280	915.69
Leisure & Hospitality	169	2,619	2,725	2,694	10,864,501	311.92
Other Services	115	494	494	492	4,825,594	752.43
Local Government	46	2,662	2,681	2,674	24,635,985	709.15
State Government	15	438	441	443	4,861,127	848.56
WOODRUFF COUNTY - TOTAL	181	1,824	1,816	1,842	\$18,906,236	\$795.87
Natural Resources & Mining	31	206	209	223	2,492,694	901.63
Construction	13	31	33	36	265,279	612.18
Trade, Transportation & Utilities	46	342	336	334	3,876,286	883.92
Retail Trade	23	150	148	143	911,677	477.07
Other Trade, Transportation, & Utilities	23	192	188	191	2,964,609	1,198.14
Financial Activities	10	40	38	39	418,725	825.89
Education & Health Services	37	263	263	267	2,763,698	804.26
Leisure & Hospitality	10	89	88	87	403,432	352.65
Local Government	9	371	376	374	2,873,430	591.52
State Government	5	28	28	28	315,444	866.60
Other	20	454	445	454	5,497,248	937.62

TABLE 6. COUNTY SUMMARY

North American Industry Classification System - Industry Groups	Number of Employing Units	Employment			Total Earnings	Average Weekly Earnings
		Jan	Feb	Mar	Jan - Mar 2022	
YELL COUNTY - TOTAL	412	6,234	6,295	6,282	\$58,248,511	\$714.58
Natural Resources & Mining	25	225	225	222	2,942,732	1,010.55
Construction	31	191	205	201	1,836,449	709.88
Manufacturing	20	2,311	2,315	2,296	21,881,934	729.51
Trade, Transportation & Utilities	88	731	739	746	6,479,799	674.79
Wholesale Trade	15	56	56	56	408,733	561.45
Retail Trade	50	528	527	532	3,713,410	539.98
Transportation, Warehousing & Utilities	23	147	156	158	2,357,656	1,180.20
Information	5	51	49	51	800,052	1,222.70
Financial Activities	29	171	172	170	2,384,475	1,072.64
Professional & Business Services	45	383	399	393	3,086,524	606.19
Education & Health Services	94	658	667	666	5,686,191	659.06
Leisure & Hospitality	24	260	272	277	1,052,022	300.09
Other Services	18	69	71	71	572,564	626.21
Local Government	23	1,121	1,118	1,126	10,936,147	749.99
State Government	10	63	63	63	589,622	719.93
STATEWIDE COUNTY - TOTAL	16,667	44,935	45,916	45,974	\$940,910,724	\$1,586.94
Natural Resources & Mining	110	216	240	239	5,236,359	1,738.69
Construction	1,006	3,580	3,689	3,855	61,576,344	1,277.41
Manufacturing	164	341	342	335	11,800,157	2,674.96
Trade, Transportation & Utilities	4,258	9,550	9,742	9,886	286,308,892	2,264.42
Wholesale Trade	3,407	7,000	7,190	7,237	231,863,806	2,497.18
Retail Trade	304	1,131	1,146	1,189	25,366,279	1,688.91
Transportation, Warehousing & Utilities	547	1,419	1,406	1,460	29,078,807	1,566.04
Information	1,297	2,002	2,050	2,094	54,791,499	2,057.30
Financial Activities	1,412	4,059	4,177	4,179	95,082,853	1,767.39
Professional & Business Services	6,740	20,085	20,380	20,104	352,669,011	1,343.68
Education & Health Services	986	3,168	3,289	3,250	43,527,030	1,034.79
Leisure & Hospitality	149	425	442	454	4,273,092	746.48
State Government	21	646	654	654	7,940,888	937.83
Other	524	863	911	924	17,704,599	1,514.34

Note: Statewide classification includes employment and payroll data for employers that have not provided a physical location for each employing unit. This section also includes employers without a physical location in Arkansas.

TABLE 7. FEDERAL GOVERNMENT EMPLOYMENT AND EARNINGS IN ARKANSAS

North American Industry Classification System - Industry Groups	Number of Employing Units	Employment			Total Earnings Jan - Mar 2022	Average Weekly Earnings
		Jan	Feb	Mar		
TOTAL	1,189	20,585	20,460	20,487	\$366,981,367	\$1,376.32
Trade, Transportation & Utilities	586	5,711	5,678	5,655	76,056,220	1,029.77
Information	2	34	34	34	554,849	1,255.31
Financial Activities	14	101	100	99	2,166,414	1,666.47
Professional & Business Services	33	830	834	845	15,280,839	1,405.48
Education & Health Services	20	5,472	5,462	5,492	118,397,102	1,663.36
Leisure & Hospitality	22	235	229	231	2,865,648	951.52
Other Services	1	1	1	1	9,235	710.38
Public Administration	511	8,201	8,122	8,130	151,651,060	1,431.17

TABLE 8. LOCAL WORKFORCE DEVELOPMENT AREA SUMMARY

North American Industry Classification System - Industry Groups	Number of Employing Units	Employment			Total Earnings Jan - Mar 2022	Average Weekly Earnings
		Jan	Feb	Mar		
CENTRAL LOCAL WORKFORCE DEVELOPMENT AREA	7,185	84,654	85,197	85,740	\$891,644,621	\$805.05
Natural Resources & Mining	205	900	988	1,016	10,820,535	859.86
Construction	861	6,319	6,356	6,493	76,494,724	920.94
Manufacturing	229	6,070	6,164	6,197	79,847,355	999.75
Trade, Transportation & Utilities	1,538	17,826	17,867	17,893	172,843,587	744.35
Wholesale Trade	339	2,060	2,068	2,107	33,448,771	1,238.00
Retail Trade	933	13,545	13,575	13,559	111,536,032	632.74
Transportation, Warehousing & Utilities	266	2,221	2,224	2,227	27,858,784	963.57
Information	77	1,837	1,857	1,862	50,087,601	2,080.40
Financial Activities	818	3,334	3,353	3,334	49,112,807	1,131.00
Professional & Business Services	987	6,211	6,333	6,362	77,521,105	946.23
Education & Health Services	1,127	14,773	14,915	14,935	159,081,467	822.69
Leisure & Hospitality	672	11,539	11,464	11,699	52,923,638	351.94
Other Services	476	2,030	2,078	2,108	17,525,110	650.62
Local Government	135	9,853	9,822	9,835	101,187,379	791.29
State Government	60	3,962	4,000	4,006	44,199,313	852.26
Note: Pulaski County is not included in the Central Local Workforce Development Area. Please refer to Page 51 for information on Pulaski County. Central Local Workforce Development Area includes these counties: Faulkner, Lonoke, Monroe, Prairie, and Saline.						
EASTERN LOCAL WORKFORCE DEVELOPMENT AREA	3,075	32,194	32,424	32,533	\$317,855,152	\$755.02
Natural Resources & Mining	239	1,022	1,032	1,030	8,094,479	605.69
Construction	117	719	721	735	9,871,795	1,047.41
Manufacturing	72	3,108	3,178	3,161	37,510,208	916.29
Trade, Transportation & Utilities	715	8,624	8,658	8,654	93,913,791	835.61
Wholesale Trade	139	1,827	1,844	1,882	26,364,486	1,095.64
Retail Trade	379	4,198	4,214	4,238	31,549,606	575.55
Transportation, Warehousing & Utilities	197	2,599	2,600	2,534	35,999,699	1,074.31
Information	20	103	104	104	972,837	721.87
Financial Activities	246	1,143	1,148	1,151	14,463,710	969.72
Professional & Business Services	246	1,485	1,437	1,465	15,432,390	811.79
Education & Health Services	828	5,513	5,523	5,421	53,470,077	749.79
Leisure & Hospitality	267	3,834	3,902	4,054	20,449,380	400.26
Other Services	144	700	704	697	5,996,707	658.67
Local Government	126	4,333	4,311	4,343	40,691,204	723.05
State Government	55	1,610	1,706	1,718	16,988,574	778.79
Eastern Local Workforce Development Area includes these counties: Crittenden, Cross, Lee, Phillips, and Saint Francis.						

TABLE 8. LOCAL WORKFORCE DEVELOPMENT AREA SUMMARY

North American Industry Classification System - Industry Groups	Number of Employing Units	Employment			Total Earnings Jan - Mar 2022	Average Weekly Earnings
		Jan	Feb	Mar		
NORTH CENTRAL LOCAL WORKFORCE DEVELOPMENT AREA	5,322	68,169	68,489	68,743	\$709,837,304	\$797.51
Natural Resources & Mining	195	1,580	1,570	1,613	20,760,439	1,005.85
Construction	442	2,928	2,920	3,003	33,075,982	862.38
Manufacturing	216	9,572	9,557	9,618	119,649,756	960.50
Trade, Transportation & Utilities	1,335	15,375	15,368	15,402	163,590,293	818.11
Wholesale Trade	223	1,502	1,493	1,522	20,697,053	1,057.39
Retail Trade	867	9,880	9,904	9,902	80,689,053	627.25
Transportation, Warehousing & Utilities	245	3,993	3,971	3,977	62,204,187	1,202.14
Information	74	374	384	387	3,887,639	783.53
Financial Activities	538	2,713	2,721	2,728	37,870,857	1,070.75
Professional & Business Services	497	3,374	3,444	3,481	32,779,806	734.50
Education & Health Services	899	13,481	13,529	13,539	161,163,895	917.20
Leisure & Hospitality	495	6,342	6,537	6,518	26,547,760	315.84
Other Services	316	1,311	1,293	1,283	11,538,297	685.02
Local Government	222	8,674	8,697	8,674	74,391,685	659.14
State Government	93	2,445	2,469	2,497	24,580,895	765.42

North Central Local Workforce Development Area includes these counties: Cleburne, Fulton, Independence, Izard, Jackson, Sharp, Stone, Van Buren, White, and Woodruff.

NORTHEAST LOCAL WORKFORCE DEVELOPMENT AREA	6,420	101,448	102,193	102,765	\$1,209,242,204	\$910.74
Natural Resources & Mining	451	1,762	1,795	1,868	18,526,405	788.08
Construction	491	3,962	3,982	4,154	54,260,945	1,035.03
Manufacturing	287	21,892	22,248	22,293	363,128,321	1,261.40
Trade, Transportation & Utilities	1,642	19,683	19,749	19,700	214,157,113	835.77
Wholesale Trade	355	3,883	3,911	3,956	66,828,649	1,312.51
Retail Trade	946	12,125	12,189	12,111	99,301,669	629.12
Transportation, Warehousing & Utilities	341	3,675	3,649	3,633	48,026,795	1,011.51
Information	63	648	647	650	9,311,223	1,104.75
Financial Activities	564	3,301	3,333	3,343	47,827,321	1,106.25
Professional & Business Services	692	6,739	6,735	6,780	70,476,801	803.00
Education & Health Services	966	17,057	17,240	17,300	213,597,688	955.32
Leisure & Hospitality	598	9,304	9,344	9,610	42,659,948	348.38
Other Services	360	1,753	1,771	1,776	16,762,822	729.88
Local Government	218	11,485	11,436	11,378	110,596,571	744.11
State Government	88	3,862	3,913	3,913	47,937,046	946.47

Northeast Local Workforce Development Area includes these counties: Clay, Craighead, Greene, Lawrence, Mississippi, Poinsett, and Randolph.

TABLE 8. LOCAL WORKFORCE DEVELOPMENT AREA SUMMARY

North American Industry Classification System - Industry Groups	Number of Employing Units	Employment			Total Earnings	Average Weekly Earnings
		Jan	Feb	Mar	Jan - Mar 2022	
NORTHWEST LOCAL WORKFORCE DEVELOPMENT AREA	17,973	289,689	292,966	294,238	\$5,181,544,341	\$1,363.61
Natural Resources & Mining	151	1,527	1,547	1,559	23,242,029	1,157.68
Construction	1,785	14,511	14,563	14,625	186,039,890	982.45
Manufacturing	645	38,012	38,555	38,454	475,218,839	953.44
Trade, Transportation & Utilities	3,973	65,573	66,049	66,191	968,942,559	1,130.37
Wholesale Trade	1,288	11,713	11,796	11,836	306,666,682	2,002.24
Retail Trade	2,134	32,880	33,213	33,087	289,258,215	673.04
Transportation, Warehousing & Utilities	551	20,980	21,040	21,268	373,017,662	1,360.15
Information	278	2,432	2,444	2,424	41,736,408	1,319.38
Financial Activities	1,971	10,114	10,218	10,060	183,235,702	1,391.33
Professional & Business Services	3,211	51,550	52,454	52,704	2,254,444,787	3,319.91
Education & Health Services	2,484	36,649	36,918	37,042	436,421,984	910.53
Leisure & Hospitality	1,913	30,671	31,352	32,042	161,535,141	396.29
Other Services	1,142	5,550	5,667	5,687	53,495,266	730.30
Local Government	318	23,731	23,635	23,857	259,174,074	839.75
State Government	102	9,369	9,564	9,593	138,057,662	1,116.86
Northwest Local Workforce Development Area includes these counties: Baxter, Benton, Boone, Carroll, Madison, Marion, Newton, Searcy, and Washington.						
SOUTHEAST LOCAL WORKFORCE DEVELOPMENT AREA	5,946	64,504	65,094	64,927	\$701,831,969	\$832.60
Natural Resources & Mining	439	2,112	2,215	2,226	22,050,094	776.51
Construction	333	2,037	2,065	2,048	23,996,212	900.42
Manufacturing	214	13,482	13,711	13,698	188,771,028	1,065.33
Trade, Transportation & Utilities	1,252	11,573	11,649	11,613	120,427,441	797.79
Wholesale Trade	229	1,835	1,890	1,898	26,541,881	1,089.28
Retail Trade	739	7,251	7,318	7,258	54,571,454	576.96
Transportation, Warehousing & Utilities	284	2,487	2,441	2,457	39,314,106	1,228.50
Information	45	261	263	254	2,561,242	759.71
Financial Activities	436	2,481	2,471	2,461	35,633,329	1,109.28
Professional & Business Services	457	3,441	3,527	3,495	43,277,215	954.51
Education & Health Services	1,726	9,408	9,370	9,342	95,384,010	782.78
Leisure & Hospitality	396	5,349	5,338	5,307	28,807,066	415.64
Other Services	314	1,016	1,018	1,031	8,861,132	667.17
Local Government	210	7,957	7,999	7,990	74,052,445	713.65
State Government	124	5,387	5,468	5,462	58,010,755	820.44
Southeast Local Workforce Development Area includes these counties: Arkansas, Ashley, Bradley, Chicot, Cleveland, Desha, Drew, Grant, Jefferson, and Lincoln.						

TABLE 8. LOCAL WORKFORCE DEVELOPMENT AREA SUMMARY

North American Industry Classification System - Industry Groups	Number of Employing Units	Employment			Total Earnings Jan - Mar 2022	Average Weekly Earnings
		Jan	Feb	Mar		
SOUTHWEST LOCAL WORKFORCE DEVELOPMENT AREA	5,437	73,162	73,820	74,010	\$872,022,661	\$910.60
Natural Resources & Mining	318	1,999	1,986	2,011	28,459,374	1,095.32
Construction	334	3,032	3,090	3,098	40,078,708	1,003.14
Manufacturing	218	18,920	19,135	19,199	304,758,169	1,228.36
Trade, Transportation & Utilities	1,319	13,854	13,810	13,842	142,730,677	793.57
Wholesale Trade	228	1,850	1,858	1,833	26,734,325	1,113.42
Retail Trade	774	8,551	8,601	8,615	64,293,233	575.81
Transportation, Warehousing & Utilities	317	3,453	3,351	3,394	51,703,119	1,169.98
Information	47	313	312	313	4,345,650	1,069.13
Financial Activities	450	2,349	2,391	2,347	31,173,349	1,015.08
Professional & Business Services	437	4,304	4,455	4,513	80,716,280	1,403.47
Education & Health Services	1,149	8,937	8,991	8,950	88,621,784	760.89
Leisure & Hospitality	450	5,600	5,738	5,816	24,775,967	333.31
Other Services	323	1,297	1,309	1,307	10,188,092	600.84
Local Government	263	9,258	9,236	9,184	80,738,420	673.17
State Government	129	3,299	3,367	3,430	35,436,191	809.98
Southwest Local Workforce Development Area includes these counties: Calhoun, Columbia, Dallas, Hempstead, Howard, Lafayette, Little River, Miller, Nevada, Ouachita, Sevier, and Union						
WEST CENTRAL LOCAL WORKFORCE DEVELOPMENT AREA	8,188	103,581	104,379	104,484	\$1,068,473,083	\$789.17
Natural Resources & Mining	233	2,283	2,323	2,323	26,237,621	873.84
Construction	775	4,421	4,436	4,491	50,203,732	867.96
Manufacturing	336	14,815	14,973	14,969	176,488,471	909.98
Trade, Transportation & Utilities	1,769	21,703	21,653	21,614	242,803,565	862.42
Wholesale Trade	301	1,885	1,893	1,897	27,383,941	1,113.55
Retail Trade	1,166	14,274	14,304	14,284	115,800,593	623.47
Transportation, Warehousing & Utilities	302	5,544	5,456	5,433	99,619,031	1,398.95
Information	77	740	732	713	8,204,229	866.49
Financial Activities	879	3,549	3,574	3,555	48,313,344	1,044.13
Professional & Business Services	973	7,852	7,824	7,658	85,447,509	845.06
Education & Health Services	1,446	16,678	16,808	16,868	184,479,284	845.46
Leisure & Hospitality	841	13,425	13,779	14,088	69,630,034	389.14
Other Services	511	2,103	2,110	2,170	16,858,048	609.48
Local Government	236	11,685	11,631	11,496	114,494,136	758.98
State Government	112	4,327	4,536	4,539	45,313,110	780.25
West Central Local Workforce Development Area includes these counties: Clark, Conway, Garland, Hot Spring, Johnson, Montgomery, Perry, Pike, Pope, and Yell						

TABLE 8. LOCAL WORKFORCE DEVELOPMENT AREA SUMMARY

North American Industry Classification System - Industry Groups	Number of Employing Units	Employment			Total Earnings	Average Weekly Earnings
		Jan	Feb	Mar	Jan - Mar 2022	
WESTERN LOCAL WORKFORCE DEVELOPMENT AREA	6,465	100,021	100,957	100,802	\$1,179,888,238	\$902.25
Natural Resources & Mining	137	938	973	980	14,284,820	1,140.26
Construction	524	3,976	3,995	4,022	44,788,297	861.82
Manufacturing	336	20,696	21,055	21,063	267,762,380	983.72
Trade, Transportation & Utilities	1,555	22,350	22,339	22,190	257,943,678	890.05
Wholesale Trade	343	3,978	4,002	3,957	61,668,575	1,192.19
Retail Trade	937	12,332	12,336	12,229	99,545,334	622.60
Transportation, Warehousing & Utilities	275	6,040	6,001	6,004	96,729,769	1,237.03
Information	69	925	931	936	24,089,271	1,991.07
Financial Activities	695	3,444	3,474	3,453	50,859,045	1,131.68
Professional & Business Services	833	9,611	9,790	9,695	130,893,810	1,038.16
Education & Health Services	1,091	15,168	15,250	15,190	210,140,764	1,063.28
Leisure & Hospitality	577	8,781	8,870	8,948	41,397,254	359.16
Other Services	412	1,878	1,899	1,887	16,447,836	670.14
Local Government	167	9,639	9,723	9,770	93,622,852	741.63
State Government	69	2,615	2,658	2,668	27,658,231	803.76

Western Local Workforce Development Area includes these counties: Crawford, Franklin, Logan, Polk, Scott, and Sebastian