



Arkansas Covered Employment & Earnings First Quarter 2020



Arkansas Division of
Workforce Services

**COVERED EMPLOYMENT AND EARNINGS
STATE OF ARKANSAS
FIRST QUARTER 2020**

**ASA HUTCHINSON, GOVERNOR
STATE OF ARKANSAS**

**CHARISSE CHILDERS, DIRECTOR
DIVISION OF WORKFORCE SERVICES**

**PUBLISHED BY
LABOR MARKET INFORMATION
BUREAU OF LABOR STATISTICS PROGRAMS
POST OFFICE BOX 2981
LITTLE ROCK, ARKANSAS 72203-2981
SUSAN PRICE, BLS PROGRAMS MANAGER
TELEPHONE (501) 682-3103**

STATE OF ARKANSAS WEBPAGE: <http://www.arkansas.gov>

DIVISION OF WORKFORCE SERVICES WEBPAGE: <http://www.dws.arkansas.gov/>

WEBPAGE FOR LABOR MARKET INFORMATION: <http://www.discover.arkansas.gov>

RELEASED: AUGUST 2020

TABLE OF CONTENTS

DESCRIPTION OF DATA	PAGE
Description and Classification of Data	1
Definition of Covered Employment and Earnings	2
Significant Developments During First Quarter 2020	3

LIST OF GRAPHS AND TABLES

Graph 1	Total Covered Employment for Selected Years, Arkansas	7
Graph 2	Total Covered Earnings, by Calendar Quarter for Selected Years, Arkansas	8
Table 1	Quarterly Comparison of Covered Employment and Wages, by Industry	5
Table 2	Total Covered Employment in Arkansas, 2013 – 2020	6
Table 3	Total Covered Earnings, 2013 – 2020	9
Table 4	Total Taxable Earnings, 2013 – 2020	10
Table 5	State Summary – Employment and Total Earnings, by Industry, First Quarter 2020	11
Table 6	County Summary – Employment and Total Earnings, by Industry, First Quarter 2020	22
Table 7	Federal Government Employment and Total Earnings in Arkansas, First Quarter 2020	60
Table 8	Local Workforce Development Area – Employment and Total Earnings, by Industry, First Quarter 2020	61

EMPLOYMENT AND EARNINGS
UNDER THE ARKANSAS EMPLOYMENT SECURITY LAW
FIRST QUARTER 2020

DESCRIPTION AND CLASSIFICATION OF DATA

This publication contains covered employment and payroll data by industry and county for the First Quarter 2020 and a record for total covered employment by month, quarterly payroll data, average weekly earnings, and total taxable earnings for 2013 through 2020. These data are compiled from quarterly contributions and wage reports submitted by employers subject to the Arkansas Employment Security Law.

Employment data have been tabulated for each month of the quarter by industry under the **North American Industry Classification System** (NAICS) by state, county, and workforce area. Payroll data represent the total wages paid during the quarter and are classified by industry for the state and by publishable industry groups for each county and workforce area.

Due to industry classification revisions, previously published data will not always be comparable with current data. For this reason, comparisons should not be made between the same industries under different revisions. For more information, visit the NAICS home page at <http://www.census.gov/naics>.

Industry Classification Revisions

- SIC (Standard Industrial Classification) 1987 to NAICS 2002
- NAICS 2002 to NAICS 2007
- NAICS 2007 to NAICS 2012
- NAICS 2012 to NAICS 2018

The tabulation of this data is a joint effort in conjunction with the United States Bureau of Labor Statistics. Data included in this publication are subject to revisions. Revisions are typically reflected in the Annual Covered Employment and Earnings publication.

DEFINITION OF COVERED EMPLOYMENT AND EARNINGS

Covered Employment is the total number of workers employed by establishments subject to the Arkansas Employment Security Law that worked or received pay for the payroll period including the 12th of the month. Earnings include all wages paid to any covered employee by their employer including salaries, bonuses, commissions, fees, fringe benefits, sick pay made directly to employees or dependents, deferred compensation, and reported tips. These wages include both taxable and nontaxable wages. Only the first \$7,000 paid to each worker by an employer in the calendar year is taxable under the Arkansas Employment Security Law.

An Arkansas state unemployment insurance account is required of any entity meeting the definition of an employer. As described by Arkansas Division of Workforce Services Law, the definition of an employer includes, but is not limited to, a sole proprietorship, partnership, corporation, associations, trust, estate, and receiver or trustee in bankruptcy. The entity must employ one or more individuals for ten or more days in a calendar year, whether or not the days are consecutive.

Currently excluded from coverage is employment covered by the Railroad Unemployment Insurance Act, some domestic service workers, employees of small agricultural establishments, self-employed workers, unpaid family workers, insurance and real estate agents paid only on a commission basis, and employees of churches and religious organizations except separately incorporated schools.

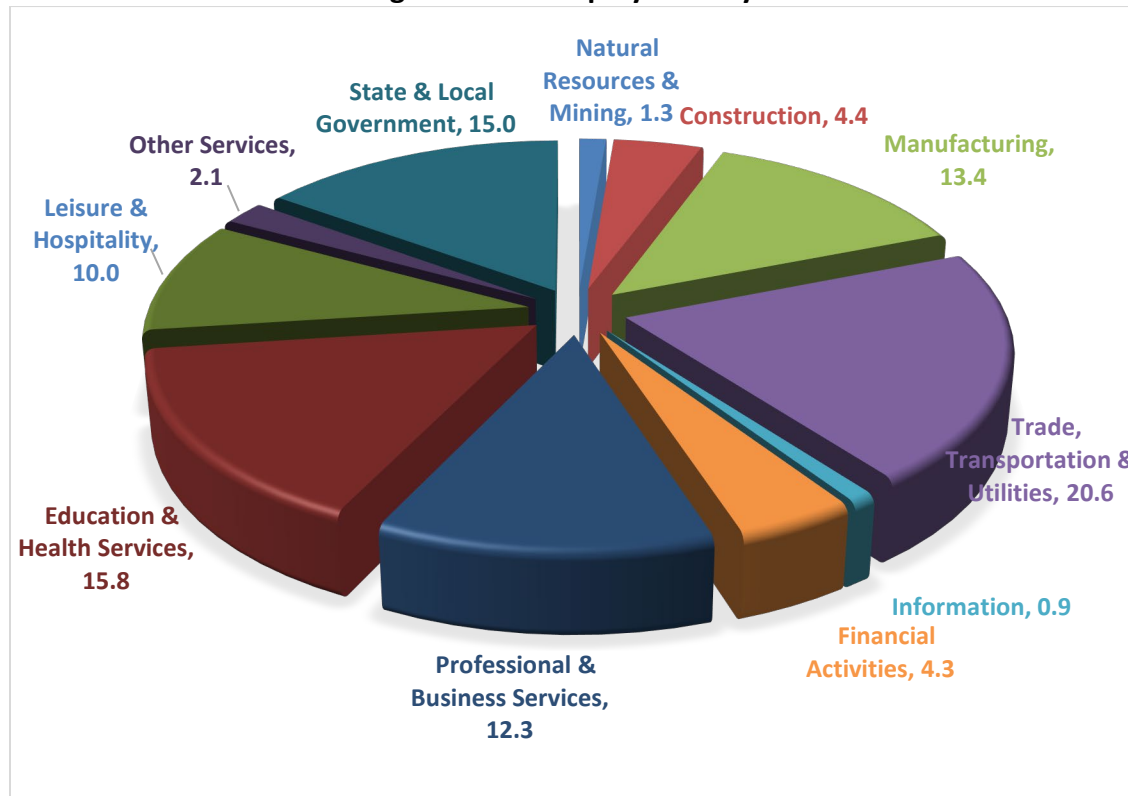
Civilian federal workers are covered by Unemployment Compensation for Federal Employees (UCFE).

SIGNIFICANT DEVELOPMENTS DURING FIRST QUARTER 2020

AVERAGE EMPLOYMENT CHANGES

Covered employment averaged 1,198,656 during the First Quarter 2020 (refer to Table 1), a decrease of 13,742 (-1.1%) from the previous quarter and a gain of 5,428 (0.5%) from the average recorded one year ago. The over-the-year comparison is more significant when used as an economic indicator and allows for seasonal factors that appear when comparing over-the-quarter data to be disregarded.

Average Covered Employment by NAICS



EMPLOYMENT CHANGES FROM FOURTH QUARTER 2019

Losses occurred in ten major industry sectors. Large declines occurred in Trade, Transportation, and Utilities (-5,431) due to seasonal losses in Retail Trade (-4,027) and Transportation & Warehousing (-1,170). Professional & Business Services (-2,091), State & Local Government (-1,973), Manufacturing (-1,285) and Construction (-1,126) also reported significant declines. The only gain occurred in Education & Health Services (648).

EMPLOYMENT CHANGES FROM FIRST QUARTER 2019 (QUARTER YEAR AGO COMPARISON)

Over-the-year gains were recorded in six major industry groups (refer to Table 1). Large increases occurred in Leisure & Hospitality (2,600), Professional & Business Services (1,772), Education & Health Services (1,658), and Construction (1,556). Losses occurred in five major industry groups. Manufacturing (-2,064) reported the only significant loss.

COVERED WAGES

Wages paid to covered workers totaled \$14,268,302,306 for the First Quarter 2020 (refer to Table 1), for an average weekly wage of \$915.66 (refer to Table 5). Benton County workers recorded the highest average weekly wage (\$1,511.21), and employees in Montgomery County reported the lowest (\$520.37) (refer to Table 6). Professional & Business Services recorded the highest average weekly wage for the State of Arkansas (\$1,477.72). The Leisure & Hospitality sector recorded the lowest (\$337.07) (refer to Table 5).

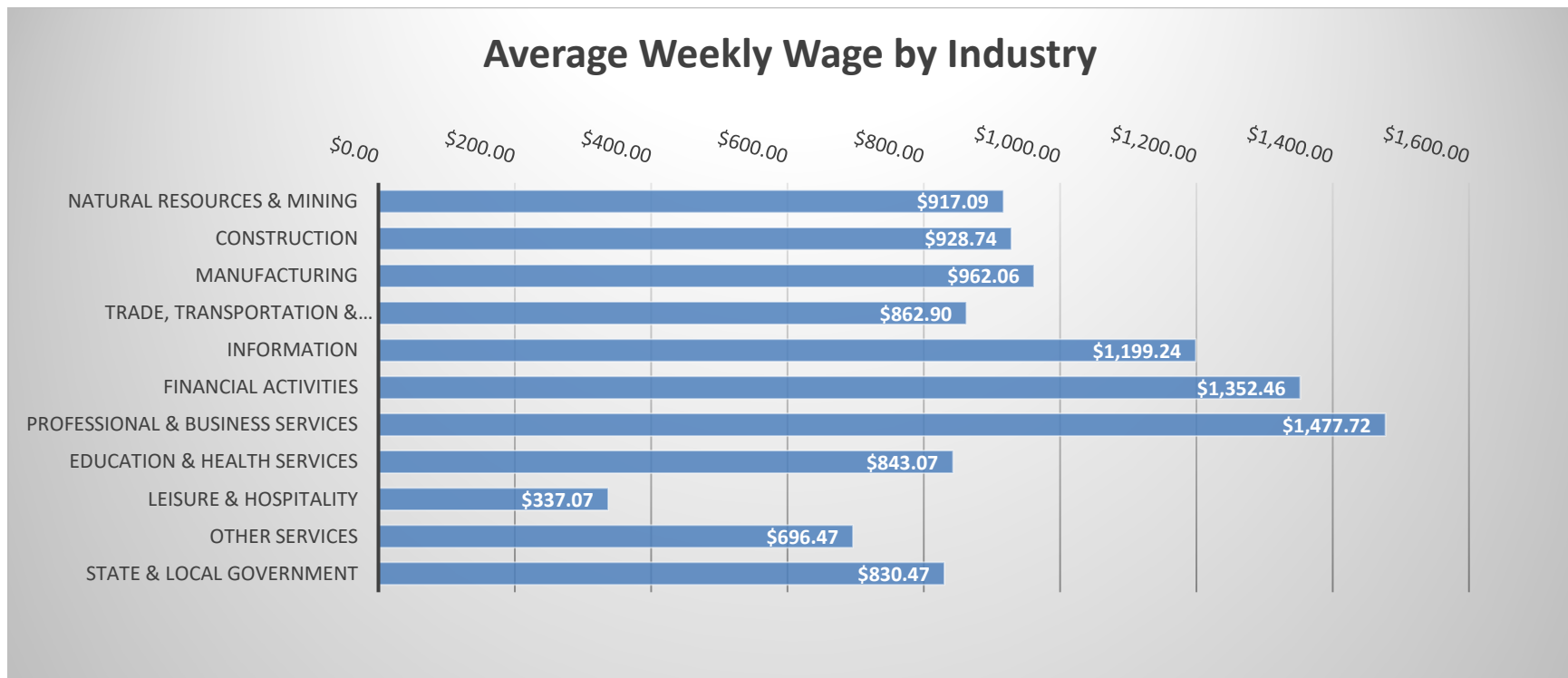


TABLE 1. QUARTERLY COMPARISON OF COVERED EMPLOYMENT AND WAGES, BY INDUSTRY

North American Industry Classification System - Industry Groups	Number of Employing Units	Monthly Employment Average	Percent of Total	Net Change From:		Total Wages Paid Jan - Mar 2020	Percent of Total
				Oct - Dec 2019	Jan - Mar 2019		
TOTAL	92,399	1,198,656	100	-13,742	5,428	\$14,268,302,306	100
Natural Resources & Mining	2,581	15,718	1.3	-899	-89	187,388,579	1.3
Agriculture, Forestry, Fishing & Hunting	2,152	12,131	1.0	-747	42	123,499,866	0.9
Mining	429	3,587	0.3	-152	-131	63,888,713	0.4
Construction	7,289	52,189	4.4	-1,126	1,556	630,113,600	4.4
Manufacturing	2,948	160,641	13.4	-1,285	-2,064	2,009,099,109	14.1
Trade, Transportation & Utilities	21,983	247,063	20.6	-5,431	298	2,771,475,744	19.4
Wholesale Trade	7,410	47,294	3.9	-260	185	910,354,730	6.4
Retail Trade	11,074	135,331	11.3	-4,027	-518	966,047,366	6.8
Transportation & Warehousing	3,090	56,557	4.7	-1,170	447	680,019,003	4.8
Utilities	409	7,881	0.7	26	184	215,054,645	1.5
Information	1,436	10,813	0.9	-14	-227	168,571,304	1.2
Financial Activities	8,829	52,082	4.3	-399	858	915,700,454	6.4
Finance & Insurance	5,158	38,380	3.2	45	750	772,654,331	5.4
Real Estate & Rental & Leasing	3,671	13,702	1.1	-444	108	143,046,123	1.0
Professional & Business Services	15,404	147,023	12.3	-2,091	1,772	2,824,362,296	19.8
Professional & Technical Services	9,718	45,425	3.8	291	-90	742,699,223	5.2
Management of Companies & Enterprises	550	34,485	2.9	316	770	1,553,703,604	10.9
Administrative & Waste Services	5,136	67,113	5.6	-2,698	1,093	527,959,469	3.7
Education & Health Services	15,854	189,082	15.8	648	1,658	2,072,316,601	14.5
Educational Services	964	12,639	1.1	-41	489	116,569,717	0.8
Health Care & Social Assistance	14,890	176,443	14.7	689	1,169	1,955,746,884	13.7
Leisure & Hospitality	7,549	119,392	10.0	-956	2,600	523,172,008	3.7
Arts, Entertainment & Recreation	1,069	11,577	1.0	441	1,300	69,278,028	0.5
Accommodation & Food Services	6,480	107,815	9.0	-1,397	1,301	453,893,980	3.2
Other Services	5,473	24,882	2.1	-217	-81	225,285,728	1.6
State & Local Government	3,053	179,771	15.0	-1,973	-855	1,940,816,883	13.6
Local Government	1,986	114,967	9.6	654	1,602	1,076,378,418	7.5
State Government	1,067	64,804	5.4	-2,626	-2,457	864,438,465	6.1
Nonclassifiable Establishments	0	0	0.0	0	0	0	0.0

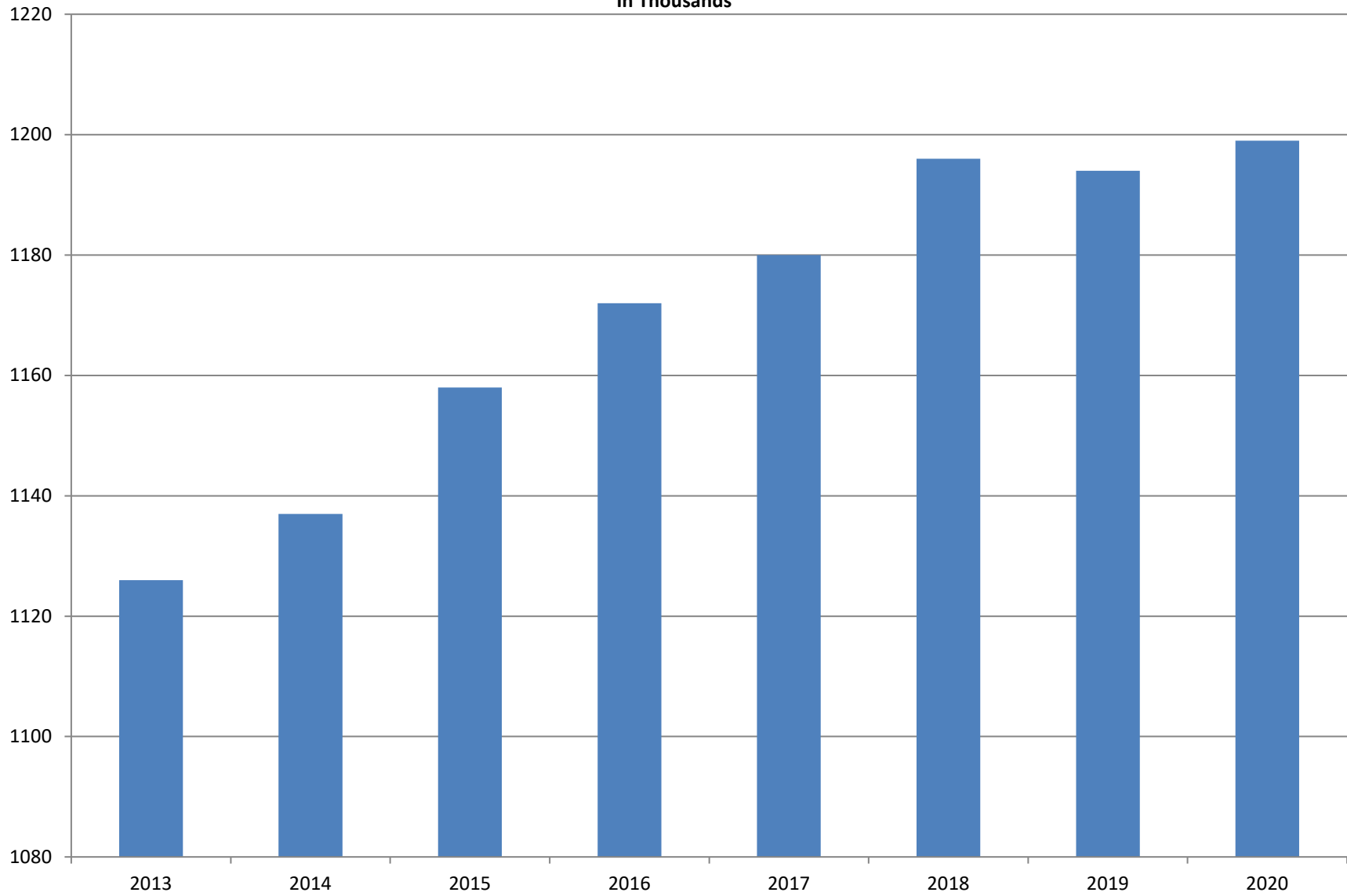
Note: Items do not necessarily add to total because of rounding. Because of industry code changes between years, substantial employment and wage shifts among industries are anticipated.

TABLE 2. TOTAL COVERED EMPLOYMENT IN ARKANSAS

PERIOD	2013	2014	2015	2016	2017	2018	2019	2020
AVERAGE	1,125,890	1,137,486	1,157,634	1,171,503	1,180,337	1,195,781	1,194,322	1,198,656
January	1,112,991	1,114,412	1,135,577	1,152,434	1,161,239	1,173,537	1,186,848	1,195,722
February	1,121,492	1,122,905	1,144,902	1,162,294	1,172,290	1,183,185	1,194,355	1,200,543
March	1,129,100	1,132,106	1,146,413	1,170,837	1,179,686	1,190,199	1,198,481	1,199,702
April	1,134,734	1,140,788	1,158,606	1,178,630	1,185,212	1,194,816	1,204,176	
May	1,138,383	1,149,046	1,167,657	1,181,644	1,189,900	1,201,113	1,206,476	
June	1,130,402	1,144,876	1,164,607	1,177,506	1,186,326	1,195,468	1,202,260	
July	1,083,849	1,096,675	1,119,390	1,132,361	1,137,883	1,168,432	1,155,337	
August	1,109,759	1,125,162	1,148,502	1,160,743	1,168,802	1,200,284	1,185,213	
September	1,135,673	1,150,545	1,173,776	1,185,510	1,193,845	1,222,012	1,202,177	
October	1,138,312	1,153,684	1,173,953	1,185,022	1,194,194	1,205,161	1,209,366	
November	1,141,035	1,158,579	1,177,717	1,186,046	1,197,650	1,208,638	1,194,675	
December	1,134,955	1,161,056	1,180,513	1,185,009	1,197,013	1,206,531	1,192,501	

AVERAGE TOTAL COVERED EMPLOYMENT

In Thousands



TOTAL COVERED EARNINGS BY CALENDAR YEAR

In Thousands

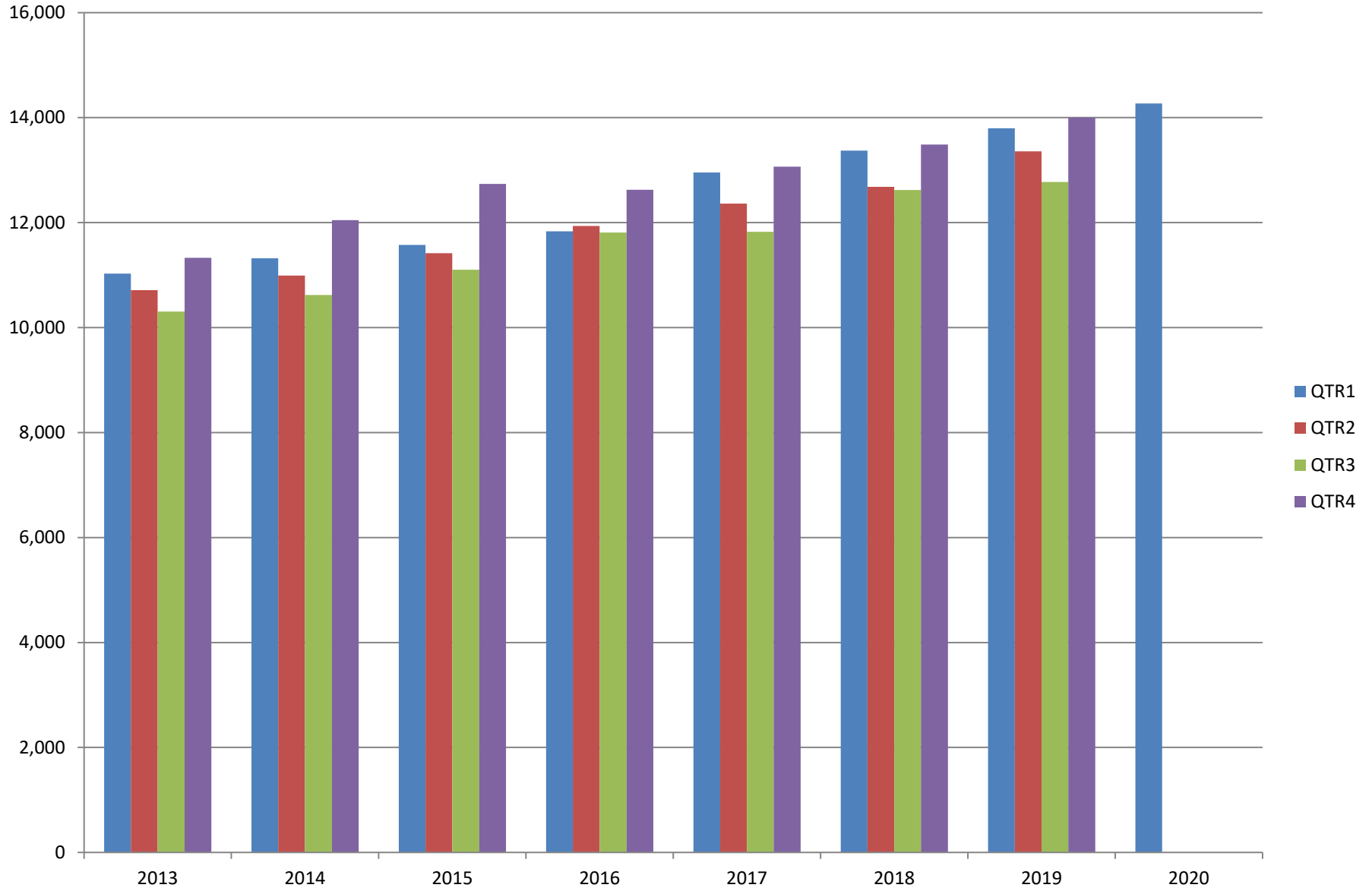


TABLE 3. TOTAL COVERED EARNINGS 2013 - 2020

PERIOD	2013	2014	2015	2016
TOTAL	\$43,371,086,461	\$44,980,520,034	\$46,836,352,793	\$48,207,277,530
January - March	11,027,184,315	11,321,422,241	11,575,046,688	11,836,255,664
April - June	10,711,027,503	10,991,760,061	11,419,363,330	11,935,722,186
July - September	10,304,451,772	10,619,889,280	11,104,443,452	11,809,460,297
October - December	11,328,422,871	12,047,448,452	12,737,499,323	12,625,839,383
Average Weekly Earnings	\$740.80	\$760.46	\$778.05	\$791.34

PERIOD	2017	2018	2019	2020
TOTAL	\$50,207,202,141	\$52,159,789,393	\$53,931,077,907	\$14,268,302,306
January - March	12,955,088,347	13,372,730,974	13,795,046,820	14,268,302,306
April - June	12,363,027,711	12,682,491,819	13,356,848,831	
July - September	11,823,324,966	12,619,347,460	12,776,218,481	
October - December	13,065,761,117	13,485,219,140	14,002,963,775	
Average Weekly Earnings	\$818.01	\$838.84	\$868.39	\$915.66

TABLE 4. TOTAL TAXABLE EARNINGS, 2013 - 2020

PERIOD	2013	2014	2015	2016
TOTAL	11,644,747,978	11,919,662,224	12,258,632,610	12,511,938,047
January - March	6,184,735,653	6,288,682,396	6,378,966,662	6,595,351,454
April - June	2,805,431,293	2,831,013,392	2,915,293,283	3,003,077,908
July - September	1,506,497,129	1,552,243,963	1,640,978,599	1,651,582,584
October - December	1,148,083,903	1,247,722,473	1,323,394,066	1,261,926,101

PERIOD	2017	2018	2019	2020
TOTAL	12,744,039,136	11,335,932,409	11,498,854,755	5,589,526,770
January - March	6,958,706,950	6,577,871,657	6,737,833,125	5,589,526,770
April - June	2,908,226,426	2,278,450,975	2,283,514,220	
July - September	1,576,968,648	1,328,868,479	1,327,818,133	
October - December	1,300,137,112	1,150,741,298	1,149,689,277	

TABLE 5. STATEWIDE SUMMARY

North American Industry Classification System - Industry Groups		Number of Employing Units	Employment			Total Earnings	Average Weekly Earnings
			Jan	Feb	Mar	Jan - Mar 2020	
TOTAL, ALL INDUSTRIES		92,399	1,195,722	1,200,543	1,199,702	\$14,268,302,306	\$915.66
NATURAL RESOURCES & MINING		2,581	15,692	15,547	15,914	\$187,388,579	\$917.09
11	AGRICULTURE, FORESTRY, FISHING & HUNTING	2,152	12,069	11,993	12,330	\$123,499,866	\$783.14
111	CROP PRODUCTION	963	3,592	3,664	3,863	\$28,659,531	\$594.81
1111	Oilseed & Grain Farming	717	2,377	2,428	2,524	19,094,989	601.25
1112	Vegetable & Melon Farming	40	115	118	127	975,245	625.16
1113	Fruit & Tree Nut Farming	13	31	38	55	232,721	433.10
1114	Greenhouse & Nursery Production	41	536	547	587	4,418,030	610.51
1119	Other Crop Farming	152	533	533	570	3,938,546	555.56
112	ANIMAL PRODUCTION & AQUACULTURE	350	3,191	3,189	3,228	\$39,739,698	\$954.49
1121	Cattle Ranching & Farming	132	390	377	389	2,916,854	582.28
1122	Hog & Pig Farming	12	130	132	136	2,880,773	1,670.34
1123	Poultry & Egg Production	135	2,315	2,303	2,291	30,432,621	1,016.49
1125	Animal Aquaculture	41	297	312	347	3,052,118	736.75
	Other	30	59	65	65	457,332	558.40
115	SUPPORT ACTIVITIES FOR AGRICULTURE & FORESTRY	422	3,033	2,963	3,030	\$30,525,983	\$780.46
1151	Support Activities for Crop Production	285	1,357	1,314	1,381	14,875,861	847.21
1152	Support Activities for Animal Production	63	683	665	659	5,649,528	649.60
1153	Support Activities for Forestry	74	993	984	990	10,000,594	777.83
	OTHER	417	2,253	2,177	2,209	\$24,574,654	\$854.21
21	MINING	429	3,623	3,554	3,584	\$63,888,713	\$1,370.09
211	OIL & GAS EXTRACTION	75	645	605	596	\$16,738,671	\$2,092.51
212	MINING (EXCEPT OIL & GAS)	107	1,780	1,763	1,823	\$26,385,682	\$1,134.74
213	SUPPORT ACTIVITIES FOR MINING	247	1,198	1,186	1,165	\$20,764,360	\$1,350.18

TABLE 5. STATEWIDE SUMMARY

North American Industry Classification System - Industry Groups		Number of Employing Units	Employment			Total Earnings Jan - Mar 2020	Average Weekly Earnings
			Jan	Feb	Mar		
CONSTRUCTION		7,289	51,962	51,909	52,697	\$630,113,600	\$928.74
236	CONSTRUCTION OF BUILDINGS	1,922	10,996	11,003	11,062	\$146,868,396	\$1,025.16
2361	Residential Building Construction	1,311	3,646	3,639	3,701	41,335,590	868.29
2362	Nonresidential Building Construction	611	7,350	7,364	7,361	105,532,806	1,103.23
237	HEAVY & CIVIL ENGINEERING CONSTRUCTION	762	8,035	7,969	8,282	\$102,953,360	\$978.28
2371	Utility System Construction	438	4,508	4,578	4,833	60,403,289	1,001.45
2372	Land Subdivision	49	110	114	112	1,182,648	812.26
2373	Highway, Street & Bridge Construction	180	2,595	2,464	2,554	32,207,148	976.28
2379	Other Heavy Construction	95	822	813	783	9,160,275	874.24
238	SPECIALTY TRADE CONTRACTORS	4,605	32,931	32,937	33,353	\$380,291,844	\$884.49
2381	Building Foundation & Exterior Contractors	837	5,847	5,822	5,930	67,255,582	881.90
2382	Building Equipment Contractors	2,277	18,597	18,615	18,753	226,185,343	932.67
2383	Building Finishing Contractors	750	3,650	3,699	3,698	36,800,700	768.76
2389	Other Specialty Trade Contractors	741	4,837	4,801	4,972	50,050,219	790.56
MANUFACTURING		2,948	161,018	160,973	159,931	\$2,009,099,109	\$962.06
311	FOOD MANUFACTURING	301	49,833	50,058	49,776	\$498,093,529	\$768.00
3111	Animal Food Manufacturing	46	1,737	1,761	1,762	27,327,208	1,198.91
3112	Grain & Oilseed Milling	33	2,813	2,829	2,821	32,865,916	896.19
3114	Fruit, Vegetable & Specialty Food	16	4,218	4,273	4,297	52,980,563	956.07
3115	Dairy Product Manufacturing	7	575	572	564	6,755,614	911.16
3116	Animal Slaughtering & Processing	84	34,103	34,190	33,917	307,647,790	694.61
3118	Bakeries & Tortilla Manufacturing	82	3,961	3,986	3,968	41,172,783	797.43
3119	Other Food Manufacturing	22	2,394	2,412	2,414	29,090,572	929.81
	Other	11	32	35	33	253,083	584.04
312	BEVERAGE & TOBACCO PRODUCT MANUFACTURING	63	1,459	1,466	1,461	\$22,286,314	\$1,172.59
313	TEXTILE MILLS	9	127	129	129	\$2,031,121	\$1,217.46
314	TEXTILE PRODUCT MILLS	43	859	857	874	\$10,909,787	\$972.06
3141	Textile Furnishing Mills	9	23	23	23	111,509	372.94
3149	Other Textile Product Mills	34	836	834	851	10,798,278	988.46
315	APPAREL MANUFACTURING	17	767	756	737	\$5,692,373	\$581.25
3151	Apparel Knitting Mills	3	438	442	438	3,241,208	567.50
	Other	14	329	314	299	2,451,165	600.48

TABLE 5. STATEWIDE SUMMARY

North American Industry Classification System - Industry Groups		Number of Employing Units	Employment			Total Earnings	Average Weekly Earnings
			Jan	Feb	Mar	Jan - Mar 2020	
316	LEATHER & ALLIED PRODUCT MANUFACTURING	12	1,091	1,097	1,094	\$7,138,389	\$501.93
3162	Footwear Manufacturing	4	874	893	888	5,461,810	\$474.73
3169	Other Leather & Allied Product Manufacturing	8	217	204	206	1,676,579	\$617.07
321	WOOD PRODUCT MANUFACTURING	305	9,687	9,526	9,495	\$112,361,159	\$903.22
3211	Sawmills & Wood Preservation	137	4,520	4,478	4,452	56,436,412	968.31
3212	Veneer & Engineered Wood Products	43	2,006	1,988	1,984	27,514,704	1,062.15
3219	Other Wood Product Manufacturing	125	3,161	3,060	3,059	28,410,043	706.48
322	PAPER MANUFACTURING	74	9,207	9,159	9,138	\$166,812,760	\$1,399.62
3221	Pulp, Paper & Paperboard Mills	15	3,531	3,488	3,474	89,813,056	1,975.23
3222	Converted Paper Product Manufacturing	59	5,676	5,671	5,664	76,999,704	1,044.57
323	PRINTING & RELATED SUPPORT ACTIVITIES	250	3,710	3,723	3,624	\$39,205,255	\$818.25
324	PETROLEUM & COAL PRODUCTS MANUFACTURING	22	1,134	1,143	1,156	\$23,068,548	\$1,550.69
325	CHEMICAL MANUFACTURING	130	5,644	5,637	5,624	\$96,986,456	\$1,323.96
3251	Basic Chemical Manufacturing	30	1,952	1,952	1,933	40,430,135	1,598.43
3252	Resin, Rubber & Artificial Fibers	13	523	522	516	8,857,192	1,309.40
3253	Agricultural Chemical Manufacturing	17	491	490	496	8,446,954	1,319.77
3254	Pharmaceutical & Medicine Manufacturing	27	508	507	507	7,137,746	1,082.24
3255	Paint, Coating & Adhesive Manufacturing	10	223	225	226	3,568,565	1,221.83
3256	Soap, Cleaning Compound, & Toilet Preparation Manufacturing	13	1,294	1,294	1,308	18,735,044	1,109.72
3259	Other Chemical Preparation Manufacturing	20	653	647	638	9,810,820	1,168.23
326	PLASTICS & RUBBER PRODUCTS MANUFACTURING	125	10,567	10,578	10,577	\$140,056,754	\$1,018.88
3261	Plastics Product Manufacturing	97	6,413	6,413	6,429	74,227,481	889.61
3262	Rubber Product Manufacturing	28	4,154	4,165	4,148	65,829,273	1,218.53
327	NONMETALLIC MINERAL PRODUCT MANUFACTURING	228	3,644	3,636	3,579	\$50,737,789	\$1,078.25
3271	Clay Product & Refractory Manufacturing	11	478	480	474	6,085,002	980.61
3272	Glass & Glass Product Manufacturing	8	378	378	375	4,648,999	948.58
3273	Cement & Concrete Product Manufacturing	170	2,143	2,127	2,081	30,784,497	1,118.58
3274	Lime & Gypsum Product Manufacturing	3	293	294	288	5,098,199	1,344.58
3279	Other Nonmetallic Mineral Products Manufacturing	36	352	357	361	4,121,092	888.80
331	PRIMARY METAL MANUFACTURING	72	8,293	8,311	8,214	\$162,775,496	\$1,513.56
3311	Iron & Steel Mills & Ferroalloys	11	3,532	3,578	3,614	96,296,075	2,072.19
3312	Purchased Steel Product Manufacturing	22	2,301	2,312	2,199	32,120,836	1,088.15
3313	Alumina & Aluminum Production	15	877	878	876	13,998,529	1,227.83
3314	Other Nonferrous Metal Production	6	272	274	270	3,551,771	1,004.46
3315	Foundries	18	1,311	1,269	1,255	16,808,285	1,011.43

TABLE 5. STATEWIDE SUMMARY

North American Industry Classification System - Industry Groups		Number of Employing Units	Employment			Total Earnings	Average Weekly Earnings
			Jan	Feb	Mar	Jan - Mar 2020	
332	FABRICATED METAL PRODUCT MANUFACTURING	517	14,961	14,937	14,602	\$197,748,011	\$1,025.49
3321	Forging & Stamping	12	443	447	447	5,351,193	923.63
3322	Cutlery & Hand Tool Manufacturing	14	541	541	530	6,076,252	869.86
3323	Architectural & Structural Metals	148	4,637	4,646	4,647	67,944,984	1,125.60
3324	Boilers, Tanks & Shipping Containers	13	544	557	558	7,425,637	1,032.92
3325	Hardware Manufacturing	5	266	262	262	3,319,444	969.65
3326	Spring & Wire Product Manufacturing	10	358	356	354	4,232,230	914.48
3327	Machine Shops & Threaded Products	207	2,219	2,224	2,204	24,719,327	858.20
3328	Coating, Engraving & Heat Treating Metals	41	561	560	563	5,590,394	766.09
3329	Other Fabricated Metal Product Manufacturing	67	5,392	5,344	5,037	73,088,550	1,069.33
333	MACHINERY MANUFACTURING	207	11,767	11,687	11,641	\$143,429,082	\$943.13
3331	Agriculture, Construction & Mining Machinery	34	2,764	2,722	2,713	29,097,970	818.99
3332	Industrial Machinery Manufacturing	26	683	669	667	9,941,418	1,136.29
3333	Commercial & Service Industry Machinery	23	873	887	890	12,703,797	1,106.28
3334	HVAC & Commercial Refrigeration Equipment	24	2,889	2,847	2,848	34,419,603	925.32
3335	Metalworking Machinery Manufacturing	51	918	938	926	10,684,727	886.31
3336	Turbine & Power Transmission Equipment Manufacturing	5	729	716	691	8,954,877	967.47
3339	Other General Purpose Machinery Manufacturing	44	2,911	2,908	2,906	37,626,690	995.20
334	COMPUTER & ELECTRONIC PRODUCT MANUFACTURING	53	1,876	1,822	1,775	\$22,187,772	\$935.55
3343	Audio & Video Equipment Manufacturing	4	95	93	96	928,523	754.49
3344	Semiconductors & Electronic Components	26	1,343	1,305	1,284	15,375,973	902.42
3345	Navigational, Measuring, Electromedical, & Control Instr, Mfg Other	19 4	361 77	348 76	319 76	4,732,277 1,150,999	1,062.32 1,159.89
335	ELECTRICAL EQUIPMENT & APPLIANCES	52	4,286	4,273	4,267	\$59,195,395	\$1,065.06
3351	Electric Lighting Equipment Manufacturing	9	314	306	302	3,444,298	\$862.08
3352	Household Appliance Manufacturing	5	26	25	27	443,419	\$1,311.89
3353	Electrical Equipment Manufacturing	19	2,693	2,666	2,654	38,946,496	1,121.63
3359	Other Electrical Equipment & Component Manufacturing	19	1,253	1,276	1,284	16,361,182	990.21
336	TRANSPORTATION EQUIPMENT MANUFACTURING	135	15,344	15,353	15,321	\$180,179,870	\$903.56
3362	Motor Vehicle Body & Trailer Manufacturing	32	2,188	2,176	2,133	21,409,945	760.47
3363	Motor Vehicle Parts Manufacturing	42	5,155	5,120	5,114	52,260,076	783.68
3364	Aerospace Product & Parts Manufacturing	27	4,246	4,274	4,326	67,499,983	1,212.59
3366	Ship & Boat Building Other	22 12	2,370 1,385	2,414 1,369	2,378 1,370	22,136,675 16,873,191	713.27 944.18
337	FURNITURE & RELATED PRODUCT MANUFACTURING	161	3,413	3,444	3,431	\$31,942,990	\$716.51
3371	Household & Institutional Furniture Other	129 32	2,736 677	2,801 643	2,799 632	25,023,059 6,919,931	692.72 818.09
339	MISCELLANEOUS MANUFACTURING	172	3,349	3,381	3,416	\$36,260,259	\$824.73
3391	Medical Equipment & Supplies Manufacturing	67	1,672	1,690	1,720	20,754,075	942.42
3399	Other Miscellaneous Manufacturing	105	1,677	1,691	1,696	15,506,184	706.63

TABLE 5. STATEWIDE SUMMARY

North American Industry Classification System - Industry Groups		Number of Employing Units	Employment			Total Earnings Jan - Mar 2020	Average Weekly Earnings
			Jan	Feb	Mar		
TRADE, TRANSPORTATION & UTILITIES		21,983	247,951	246,490	246,748	\$2,771,475,744	\$862.90
42	WHOLESALE TRADE	7,410	47,122	47,300	47,459	\$910,354,730	\$1,480.69
423	MERCHANT WHOLESALERS, DURABLE GOODS	3,407	24,409	24,506	24,529	\$423,413,701	\$1,330.41
4231	Motor Vehicle & Part Merchant Wholesalers	296	3,174	3,181	3,225	49,721,970	1,197.73
4232	Furniture & Furnishings Merchant Wholesalers	97	456	447	444	8,196,021	1,404.15
4233	Lumber & Supply Merchant Wholesalers	239	1,629	1,608	1,615	22,418,380	1,066.26
4234	Commercial Goods Merchant Wholesalers	690	3,353	3,371	3,379	77,300,964	1,765.68
4235	Metal & Mineral Merchant Wholesalers	137	1,057	1,066	1,065	16,169,879	1,170.49
4236	Appliances & Electronics Goods Merchant Wholesalers	358	2,793	2,817	2,821	56,102,066	1,535.60
4237	Hardware & Plumbing Merchant Wholesalers	313	2,778	2,784	2,784	46,818,120	1,294.53
4238	Machinery & Supply Merchant Wholesalers	959	7,296	7,341	7,328	118,095,748	1,240.74
4239	Miscellaneous Durable Goods Merchant Wholesalers	318	1,873	1,891	1,868	28,590,553	1,171.49
424	MERCHANT WHOLESALERS, NONDURABLE GOODS	2,092	17,670	17,746	17,914	\$369,946,454	\$1,600.83
4241	Paper & Paper Product Merchant Wholesalers	129	1,256	1,262	1,228	26,391,830	1,625.85
4242	Druggist' Goods Merchant Wholesalers	260	1,611	1,610	1,617	59,453,752	2,835.90
4243	Apparel & Piece Goods Merchant Wholesalers	94	804	814	819	12,284,337	1,163.25
4244	Grocery Product Merchant Wholesalers	594	5,919	5,927	5,925	139,385,109	1,810.02
4245	Farm Product & Raw Material Merchant Wholesalers	85	816	783	762	7,793,170	761.72
4246	Chemical Merchant Wholesalers	223	1,055	1,065	1,075	30,095,327	2,173.73
4247	Petroleum Merchant Wholesalers	167	962	958	971	15,021,254	1,199.05
4248	Alcoholic Beverage Merchant Wholesalers	70	1,567	1,578	1,596	26,239,966	1,277.24
4249	Miscellaneous Nondurable Goods Merchant Wholesaler	470	3,680	3,749	3,921	53,281,709	1,083.33
425	ELECTRONIC MARKETS & AGENTS & BROKERS	1,911	5,043	5,048	5,016	\$116,994,575	\$1,787.17
44 - 45	RETAIL TRADE	11,074	135,563	135,096	135,335	\$966,047,366	\$549.11
441	MOTOR VEHICLE & PARTS DEALERS	1,542	18,999	19,127	19,148	\$212,724,923	\$857.11
4411	Automobile Dealers	625	11,640	11,749	11,720	151,326,706	994.66
4412	Other Motor Vehicle Dealers	167	1,630	1,635	1,681	17,747,018	828.04
4413	Automotive Parts, Accessories & Tire Stores	750	5,729	5,743	5,747	43,651,199	585.01
442	FURNITURE & HOME FURNISHINGS STORES	496	3,602	3,580	3,446	\$30,213,598	\$656.04
4421	Furniture Stores	267	1,985	1,985	1,929	19,456,006	761.12
4422	Home Furnishings Stores	229	1,617	1,595	1,517	10,757,592	524.96
443	ELECTRONICS & APPLIANCE STORES	374	3,216	3,141	3,113	\$28,904,491	\$704.36
444	BUILDING MATERIAL & GARDEN SUPPLY STORES	854	11,676	11,957	12,224	\$89,804,487	\$577.97
4441	Building Material & Supplies Dealers	613	9,703	9,981	10,190	77,149,659	595.96
4442	Lawn & Garden Equipment & Supplies Stores	241	1,973	1,976	2,034	12,654,828	488.11

TABLE 5. STATEWIDE SUMMARY

North American Industry Classification System - Industry Groups		Number of Employing Units	Employment			Total Earnings Jan - Mar 2020	Average Weekly Earnings
			Jan	Feb	Mar		
445	FOOD & BEVERAGE STORES	1,065	19,413	19,397	19,325	\$114,132,623	\$453.05
4451	Grocery Stores	563	16,847	16,850	16,802	97,455,053	445.35
4452	Specialty Food Stores	142	776	776	761	6,778,491	676.29
4453	Beer, Wine & Liquor Stores	360	1,790	1,771	1,762	9,899,079	429.16
446	HEALTH & PERSONAL CARE STORES	1,006	8,562	8,542	8,490	\$83,893,895	\$756.43
447	GASOLINE STATIONS	1,617	12,398	12,328	12,211	\$62,569,963	\$390.91
44711	Gasoline Stations with Convenience Stores	1,523	11,233	11,196	11,104	55,685,919	383.22
44719	Other Gasoline Stations	94	1,165	1,132	1,107	6,884,044	466.69
448	CLOTHING & CLOTHING ACCESSORIES STORES	974	7,574	7,343	7,206	\$35,280,566	\$368.02
4481	Clothing Stores	748	5,800	5,598	5,456	23,806,080	325.96
4482	Shoe Stores	108	1,081	1,052	1,071	4,596,361	331.05
4483	Jewelry, Luggage & Leather Goods Stores	118	693	693	679	6,878,125	768.65
451	SPORTING GOODS, HOBBY, BOOK & MUSIC STORES	442	4,273	4,253	4,192	\$22,133,083	\$401.61
4511	Sporting Goods & Musical Instrument Stores	381	3,781	3,738	3,701	20,096,948	413.35
4512	Book, Periodical & Music Stores	61	492	515	491	2,036,135	313.67
452	GENERAL MERCHANDISE STORES	959	36,812	36,352	36,767	\$227,076,043	\$476.68
4522	Department Stores	135	7,457	7,218	7,143	38,619,087	408.47
4523	Gen. Merchandise Stores, Warehouse clubs & Supercenters	824	29,355	29,134	29,624	188,456,956	493.57
453	MISCELLANEOUS STORE RETAILERS	1,187	7,202	7,269	7,408	\$39,293,434	\$414.45
4531	Florists	160	589	638	585	2,861,476	364.43
4532	Office Supplies, Stationery & Gift Stores	236	1,444	1,412	1,347	7,460,390	409.62
4533	Used Merchandise Stores	250	2,171	2,197	2,420	9,758,273	331.75
4539	Other Miscellaneous Store Retailers	541	2,998	3,022	3,056	19,213,295	488.52
454	NONSTORE RETAILERS	558	1,836	1,807	1,805	\$20,020,260	\$848.03
4541	Electronic Shopping & Mail-Order Houses	323	726	707	693	8,245,501	895.02
4542	Vending Machine Operators	56	404	401	407	3,848,757	732.82
4543	Direct Selling Establishments	179	706	699	705	7,926,002	866.86
48 - 49	TRANSPORTATION & WAREHOUSING	3,090	57,341	56,246	56,085	\$680,019,003	\$924.89
481	AIR TRANSPORTATION	45	801	793	810	\$9,315,854	\$894.26
4811	Scheduled Air Transportation	16	704	695	708	7,496,735	821.08
4812	Nonshceduled Air Transportation	29	97	98	102	1,819,119	1,413.46
483	WATER TRANSPORTATION	9	38	35	33	\$604,924	\$1,316.96
484	TRUCK TRANSPORTATION	1,959	32,804	32,604	32,604	\$425,004,650	\$1,000.67
4841	General Freight Trucking	1,177	26,466	26,312	26,295	347,785,113	1,014.99
4842	Specialized Freight Trucking	782	6,338	6,292	6,309	77,219,537	940.91

TABLE 5. STATEWIDE SUMMARY

North American Industry Classification System - Industry Groups		Number of Employing Units	Employment			Total Earnings	Average Weekly Earnings
			Jan	Feb	Mar	Jan - Mar 2020	
485	TRANSIT & GROUND PASSENGER TRANSPORTATION	128	1,811	1,798	1,770	\$11,030,322	\$473.22
4853	Taxi & Limousine Service	34	311	293	283	1,707,244	444.17
4854	School & Employee Bus Transportation	16	437	430	439	2,305,436	407.37
4859	Other Ground Passenger Transportation	65	875	894	866	5,592,436	489.78
	Other	13	188	181	182	1,425,206	596.90
486	PIPELINE TRANSPORTATION	39	416	422	419	\$12,168,870	\$2,234.05
488	SUPPORT ACTIVITIES FOR TRANSPORTATION	534	5,746	5,754	5,702	\$76,407,334	\$1,025.02
4881	Support Activities for Air Transportation	116	1,193	1,215	1,197	13,612,327	871.37
4882	Support Activities for Rail Transportation	36	846	832	838	10,842,516	994.48
4883	Support Activities for Water Transportation	20	451	444	445	6,929,066	1,193.29
4884	Support Activities for Road Transportation	165	896	910	887	8,601,287	737.06
4885	Freight Transportation Arrangement	185	2,259	2,258	2,242	35,414,312	1,209.13
4889	Other Support Activities for Transportation	12	101	95	93	1,007,826	804.76
493	WAREHOUSING & STORAGE	217	9,053	8,984	9,011	\$90,278,509	\$770.24
	OTHER	187	6,662	5,850	5,730	55,170,360	\$697.93
22	UTILITIES	409	7,925	7,848	7,869	\$215,054,645	\$2,099.15
2211	Power Generation & Supply	169	5,947	5,892	5,907	182,089,140	2,367.89
2212	Natural Gas Distribution	63	1,032	1,018	1,019	23,876,032	1,795.33
2213	Water, Sewage & Other Systems	177	946	938	943	9,089,473	741.98
	INFORMATION	1,436	10,867	10,807	10,764	\$168,571,304	\$1,199.24
511	PUBLISHING INDUSTRIES, EXCEPT INTERNET	250	2,425	2,406	2,342	\$26,690,140	\$858.67
5111	Newspaper, Book & Directory Publishers	183	2,072	2,036	1,980	20,291,269	769.15
5112	Software Publishers	67	353	370	362	6,398,871	1,360.98
512	MOTION PICTURE & SOUND RECORDING INDUSTRY	156	1,263	1,213	1,218	\$6,066,871	\$379.01
5121	Motion Picture & Video Industries	139	1,243	1,193	1,199	5,783,124	367.14
5122	Sound Recording Industries	17	20	20	19	283,747	1,109.83
515	BROADCASTING, EXCEPT INTERNET	124	1,502	1,492	1,483	\$19,027,231	\$980.77

TABLE 5. STATEWIDE SUMMARY

North American Industry Classification System - Industry Groups		Number of Employing Units	Employment			Total Earnings	Average Weekly Earnings
			Jan	Feb	Mar	Jan - Mar 2020	
517	TELECOMMUNICATIONS	363	3,438	3,441	3,468	\$67,583,923	\$1,507.32
5173	Telecommunications Resellers	256	3,024	3,032	3,056	59,555,356	1,508.29
5174	Satellite Telecommunications Carriers	4	5	4	5	68,133	1,123.07
5179	Other Telecommunications	103	409	405	407	7,960,434	1,504.52
518	DATA PROCESSING, HOSTING & RELATED SERVICES	444	1,892	1,903	1,903	\$44,409,848	\$1,798.60
519	OTHER INFORMATION SERVICES	99	347	352	350	\$4,793,291	\$1,054.47
FINANCIAL ACTIVITIES		8,829	52,162	52,187	51,896	\$915,700,454	\$1,352.46
52	FINANCE & INSURANCE	5,158	38,354	38,396	38,389	\$772,654,331	\$1,548.61
522	CREDIT INTERMEDIATION & RELATED ACTIVITIES	2,015	19,810	19,864	19,918	\$336,715,299	\$1,303.93
5221	Depository Credit Intermediation	1,433	16,734	16,789	16,855	274,174,214	1,255.92
5222	Nondepository Credit Intermediation	428	1,969	1,950	1,947	42,711,127	1,680.26
5223	Activities Related to Credit Intermediation	154	1,107	1,125	1,116	19,829,958	1,366.83
523	FINANCIAL INVESTMENT & RELATED ACTIVITIES	755	3,159	3,143	3,095	\$155,458,655	\$3,817.72
5231	Insurance Carriers	328	2,156	2,150	2,093	123,669,429	4,459.93
5239	Insurance Agencies, Brokerages & Support	427	1,003	993	1,002	31,789,226	2,446.96
524	INSURANCE CARRIERS & RELATED ACTIVITIES	2,295	15,300	15,306	15,301	\$278,849,758	\$1,401.75
5231	Security & Commodity Contracts Intermediation & Brokerage	302	6,702	6,693	6,690	151,433,240	1,739.91
5239	Other Financial Investment Activities	1,993	8,598	8,613	8,611	127,416,518	1,138.71
	OTHER	93	85	83	75	\$1,630,619	\$1,548.55
53	REAL ESTATE & RENTAL & LEASING	3,671	13,808	13,791	13,507	\$143,046,123	\$803.06
531	REAL ESTATE	3,055	9,788	9,809	9,618	\$99,199,469	\$783.58
5311	Lessors of Real Estate	1,110	4,148	4,142	3,980	40,041,783	753.09
5312	Offices of Real Estate Agents & Brokers	1,019	2,015	2,016	2,014	20,103,268	767.45
5313	Activities Related to Real Estate	926	3,625	3,651	3,624	39,054,418	826.84
532	RENTAL & LEASING SERVICES	598	3,965	3,926	3,830	\$42,773,709	\$842.15
5321	Automotive Equipment Rental & Leasing	126	1,155	1,170	1,144	10,243,687	681.44
5322	Consumer Goods Rental	308	1,656	1,607	1,617	14,526,103	686.92
5323	General Rental Centers	32	205	203	118	2,160,001	947.65
5324	Machinery & Equipment Rental & Leasing	132	949	946	951	15,843,918	1,284.71
533	LESSORS OF NONFINANCIAL INTANGIBLE ASSETS	18	55	56	59	\$1,072,945	\$1,456.49

TABLE 5. STATEWIDE SUMMARY

North American Industry Classification System - Industry Groups		Number of Employing Units	Employment			Total Earnings Jan - Mar 2020	Average Weekly Earnings
			Jan	Feb	Mar		
PROFESSIONAL & BUSINESS SERVICES		15,404	145,519	147,527	148,024	\$2,824,362,296	\$1,477.72
54	PROFESSIONAL & TECHNICAL SERVICES	9,718	45,399	45,581	45,295	\$742,699,223	\$1,257.69
5411	Legal Services	1,696	5,950	5,960	5,986	80,950,057	1,043.85
5412	Accounting & Bookkeeping Services	1,343	6,888	7,076	6,869	79,306,572	878.49
5413	Architectural & Engineering Services	1,073	6,413	6,421	6,428	103,203,083	1,236.43
5414	Specialized Design Services	182	379	379	384	5,010,365	1,012.47
5415	Computer Systems Design & Related Services	2,131	10,422	10,374	10,167	234,768,013	1,749.74
5416	Management & Technical Consulting Services	2,110	6,082	6,142	6,161	118,352,441	1,485.56
5417	Scientific Research & Development Services	162	886	887	887	16,122,667	1,398.73
5418	Advertising & Related Services	412	3,846	3,886	3,929	57,444,889	1,136.82
5419	Other Professional & Technical Services	609	4,533	4,456	4,484	47,541,136	814.30
55	MANAGEMENT OF COMPANIES & ENTERPRISES	550	34,479	34,369	34,608	\$1,553,703,604	\$3,465.70
56	ADMINISTRATIVE & WASTE SERVICES	5,136	65,641	67,577	68,121	\$527,959,469	\$605.13
561	ADMINISTRATIVE & SUPPORT SERVICES	4,800	61,954	63,869	64,381	\$477,696,278	\$579.58
5611	Office Administrative Services	743	3,466	3,461	3,509	60,004,086	1,326.86
5612	Facilities Support Services	69	1,488	1,503	1,496	12,988,027	667.98
5613	Employment Services	1,276	26,329	27,920	28,394	165,563,498	462.31
5614	Business Support Services	400	9,339	9,500	9,192	91,830,921	756.01
5615	Travel Arrangement & Reservation Services	120	361	359	341	4,226,746	919.32
5616	Investigation & Security Services	318	5,193	5,166	5,056	37,793,892	565.79
5617	Services to Buildings & Dwellings	1,675	14,520	14,719	15,092	93,725,416	487.90
5619	Other Support Services	199	1,258	1,241	1,301	11,563,692	702.25
562	WASTE MANAGEMENT & REMEDIATION SERVICES	336	3,687	3,708	3,740	\$50,263,191	\$1,041.69
5621	Waste Collection Services	134	1,293	1,286	1,299	15,548,648	925.26
5622	Waste Treatment & Disposal Services	41	1,076	1,092	1,082	17,291,777	1,227.82
5629	Remediation & Other Waste Services	161	1,318	1,330	1,359	17,422,766	1,003.40
EDUCATION & HEALTH SERVICES		15,854	188,715	189,765	188,766	2,072,316,601	\$843.07
61	EDUCATIONAL SERVICES	964	12,363	12,804	12,750	116,569,717	\$709.46
6111	Elementary & Secondary Schools	106	4,655	4,728	4,724	40,153,851	656.86
6113	Colleges & Universities	129	4,138	4,401	4,383	43,296,998	773.23
6115	Technical & Trade Schools	121	852	860	857	13,826,014	1,241.97
6116	Other Schools & Instruction	330	1,844	1,923	1,870	9,245,538	378.50
6117	Educational Support Services	199	610	608	621	6,825,146	856.46
	Other	79	264	284	295	3,222,170	882.06

TABLE 5. STATEWIDE SUMMARY

North American Industry Classification System - Industry Groups		Number of Employing Units	Employment			Total Earnings Jan - Mar 2020	Average Weekly Earnings
			Jan	Feb	Mar		
62	HEALTH CARE & SOCIAL ASSISTANCE	14,890	176,352	176,961	176,016	\$1,955,746,884	\$852.64
621	AMBULATORY HEALTH CARE SERVICES	6,156	60,134	60,403	59,753	\$934,742,582	\$1,196.46
6211	Offices of Physicians	2,360	26,325	26,396	26,207	544,625,944	1,592.37
6212	Offices of Dentists	970	7,513	7,472	7,294	90,523,527	937.66
6213	Offices of Other Health Practitioners	1,735	9,906	10,041	9,870	102,910,521	796.48
6214	Outpatient Care Centers	402	5,329	5,361	5,282	78,636,752	1,136.17
6215	Medical & Diagnostic Laboratories	203	1,320	1,305	1,312	21,054,969	1,234.15
6216	Home Health Care Services	274	6,932	6,986	6,947	63,761,069	705.20
6219	Other Ambulatory Health Care Services	212	2,809	2,842	2,841	33,229,800	903.02
622	HOSPITALS	123	43,889	44,078	44,065	\$573,102,844	\$1,001.69
6221	General Medical & Surgical Hospitals	92	39,140	39,305	39,304	518,808,758	1,016.78
6222	Psychiatric & Substance Abuse Hospitals	11	1,951	1,963	1,965	20,606,881	808.88
6223	Speciality Hospitals	20	2,798	2,810	2,796	33,687,205	925.03
623	Residential & Mental Health Facilities	663	32,423	32,260	32,238	\$228,854,979	\$544.90
6231	Nursing Care Facilities (Skilled Nursing Facilities)	281	22,603	22,520	22,529	160,814,977	548.56
6232	Residential Mental Health Facilities	188	4,323	4,267	4,270	31,394,075	563.36
6233	Continuing Care & Assisted Living Facilities	156	4,477	4,464	4,459	28,560,470	491.86
6239	Other Residential Care Facilities	38	1,020	1,009	980	8,085,457	620.10
624	SOCIAL ASSISTANCE	7,948	39,906	40,220	39,960	\$219,046,479	\$420.94
6241	Individual & Family Services	6,858	24,514	24,690	24,550	135,673,531	424.51
6242	Emergency & Other Relief Services	167	1,458	1,436	1,428	10,028,871	535.48
6243	Vocational Rehabilitation Services	91	3,291	3,328	3,310	18,637,713	433.18
6244	Child Day Care Services	832	10,643	10,766	10,672	54,706,364	393.52
LEISURE & HOSPITALITY		7,549	118,279	120,251	119,647	\$523,172,008	\$337.07
71	ARTS, ENTERTAINMENT & RECREATION	1,069	10,972	11,858	11,902	69,278,028	\$460.30
711	PERFORMING ARTS & SPECTATOR SPORTS	252	3,085	3,606	3,525	26,918,111	\$608.05
7111	Performing Arts Companies	44	382	473	388	2,422,824	449.81
7112	Spectator Sports	72	1,909	2,174	2,394	18,915,486	673.94
7113	Performing Arts & Sports Promoters	59	689	761	638	4,423,081	488.85
7114	Agents & Managers for Public Figures	20	22	119	27	247,249	339.63
7115	Independent Artists, Writers, & Performers	57	83	79	78	909,471	874.49
712	MUSEUMS, PARKS, & HISTORICAL SITES	56	729	741	784	6,327,890	\$647.86
713	GAMBLING, RECREATIONAL & AMUSEMENT INDUSTRY	761	7,158	7,511	7,593	36,032,027	373.51
72	ACCOMMODATION & FOOD SERVICES	6,480	107,307	108,393	107,745	453,893,980	\$323.84

TABLE 5. STATEWIDE SUMMARY

North American Industry Classification System - Industry Groups		Number of Employing Units	Employment			Total Earnings	Average Weekly Earnings
			Jan	Feb	Mar	Jan - Mar 2020	
721	ACCOMMODATION	936	11,211	11,492	11,555	\$56,482,000	\$380.47
7211	Travel Accommodation	840	10,681	10,910	10,962	53,207,528	377.19
7212	RV Parks & Recreational Camps	78	420	441	454	2,533,814	444.66
7213	Rooming & Boarding Houses	18	110	141	139	740,658	438.26
722	FOOD SERVICES & DRINKING PLACES	5,544	96,096	96,901	96,190	\$397,411,980	\$317.13
7223	Special Food Services	306	4,927	5,147	5,003	22,726,931	347.86
7224	Drinking Places, Alcoholic Beverages	148	970	1,008	913	3,889,119	310.44
7225	Restaurants & Other Eating Places	5,090	90,199	90,746	90,274	370,795,930	315.50
722511	Full-Service Restaurants	2,168	37,969	38,712	37,920	172,425,834	347.21
722513	Limited-Service Eating Places	2,387	47,239	46,968	47,327	177,321,028	289.12
722514	Cafeterias, Grill Buffets, & Buffets	95	1,772	1,747	1,668	8,480,512	377.30
722515	Snack & Nonalcoholic Beverage Bars	440	3,219	3,319	3,359	12,568,556	293.06
OTHER SERVICES		5,473	24,819	24,963	24,864	\$225,285,728	\$696.47
811	REPAIR & MAINTENANCE	2,247	10,989	11,135	11,175	\$112,104,469	\$776.91
8111	Automotive Repair & Maintenance	1,430	6,938	7,018	6,997	63,151,090	695.52
8112	Electronic Equipment Repair & Maintenance	159	996	981	982	10,451,607	815.11
8113	Commercial Machinery Repair & Maintenance	489	2,449	2,531	2,583	33,693,834	1,028.10
8114	Household Goods Repair & Maintenance	169	606	605	613	4,807,938	608.29
812	PERSONAL & LAUNDRY SERVICES	1,407	7,708	7,655	7,562	\$51,387,910	\$517.28
8121	Personal Care Services	693	2,903	2,854	2,833	16,905,111	454.15
8122	Death Care Services	251	1,531	1,513	1,488	11,387,107	579.83
8123	Drycleaning & Laundry Service	209	2,125	2,132	2,141	16,039,769	578.54
8129	Other Personal Services	254	1,149	1,156	1,100	7,055,923	478.21
813	MEMBERSHIP ASSOCIATIONS & ORGANIZATIONS	1,139	5,234	5,292	5,253	\$55,748,530	\$815.33
8131	Religious Organizations	100	312	308	304	2,429,343	606.73
8132	Grantmaking & Giving Organizations	125	455	455	449	6,943,052	1,178.99
8133	Social Advocacy Organizations	230	1,254	1,243	1,228	14,911,261	923.77
8134	Civic & Social Organizations	193	1,125	1,163	1,113	5,496,199	372.94
8139	Professional & Similar Organizations	491	2,088	2,123	2,159	25,968,675	940.78
814	PRIVATE HOUSEHOLDS	680	888	881	874	\$6,044,819	\$527.79
LOCAL GOVERNMENT		1,986	114,591	114,980	115,330	\$1,076,378,418	\$720.19
STATE GOVERNMENT		1,067	64,147	65,144	65,121	\$864,438,465	\$1,026.10
NONCLASSIFIABLE ESTABLISHMENTS		0	0	0	0	\$0	\$0.00

TABLE 6. COUNTY SUMMARY

North American Industry Classification System - Industry Groups	Number of Employing Units	Employment			Total Earnings	Average Weekly Earnings
		Jan	Feb	Mar	Jan - Mar 2020	
ARKANSAS COUNTY - TOTAL	986	10,094	10,120	10,165	\$98,915,739	\$751.40
Natural Resources & Mining	62	157	165	170	1,523,873	714.76
Construction	78	285	287	293	2,809,314	749.48
Manufacturing	37	3,982	3,957	3,956	40,507,794	785.87
Trade, Transportation & Utilities	220	2,048	2,067	2,073	22,456,447	837.47
Wholesale Trade	49	416	423	456	5,470,178	974.79
Retail Trade	108	1,060	1,072	1,051	7,394,335	536.09
Transportation, Warehousing & Utilities	63	572	572	566	9,591,934	1,294.46
Information	11	43	46	41	480,643	853.21
Financial Activities	71	322	326	330	4,034,667	952.02
Professional & Business Services	94	498	529	520	6,947,075	1,036.31
Education & Health Services	219	1,120	1,114	1,133	9,412,547	645.12
Leisure & Hospitality	90	663	656	666	2,506,271	291.37
Other Services	58	102	101	98	828,612	635.28
Local Government	32	714	713	719	5,991,114	644.25
State Government	14	160	159	166	1,417,382	674.41
ASHLEY COUNTY - TOTAL	567	5,922	5,879	5,860	\$65,920,653	\$861.36
Natural Resources & Mining	47	329	319	316	3,379,376	808.98
Construction	36	479	501	495	5,447,243	852.24
Manufacturing	25	1,200	1,163	1,159	24,103,962	1,579.34
Trade, Transportation & Utilities	114	1,152	1,134	1,148	9,806,561	659.01
Wholesale Trade	24	181	183	184	2,608,570	1,098.50
Retail Trade	62	699	692	695	4,124,373	456.27
Transportation, Warehousing & Utilities	28	272	259	269	3,073,618	886.62
Information	5	36	35	33	295,428	655.54
Financial Activities	37	182	179	180	1,863,888	795.06
Professional & Business Services	40	198	198	198	1,777,128	690.41
Education & Health Services	148	890	891	882	9,031,833	782.68
Leisure & Hospitality	40	376	380	377	1,416,245	288.46
Other Services	33	136	125	137	1,008,129	584.54
Local Government	32	848	851	832	6,744,818	614.97
State Government	10	96	103	103	1,046,042	799.32

TABLE 6. COUNTY SUMMARY

North American Industry Classification System - Industry Groups	Number of Employing Units	Employment			Total Earnings	Average Weekly Earnings
		Jan	Feb	Mar	Jan - Mar 2020	
BAXTER COUNTY - TOTAL	1,217	14,797	14,921	14,980	\$132,718,940	\$685.21
Natural Resources & Mining	9	53	53	54	502,790	725.18
Construction	100	520	506	515	4,283,188	641.42
Manufacturing	54	2,469	2,493	2,486	26,108,444	808.95
Trade, Transportation & Utilities	254	2,614	2,616	2,654	18,397,720	538.51
Wholesale Trade	33	162	162	158	1,780,297	852.36
Retail Trade	197	2,260	2,271	2,335	14,676,514	493.28
Transportation, Warehousing & Utilities	24	192	183	161	1,940,909	835.64
Information	22	159	160	161	1,891,113	909.19
Financial Activities	119	720	704	717	9,556,729	1,030.08
Professional & Business Services	146	896	902	926	7,479,072	633.60
Education & Health Services	257	4,004	4,072	4,046	43,697,740	831.88
Leisure & Hospitality	117	1,558	1,557	1,561	5,920,555	292.19
Other Services	92	325	329	324	2,188,468	516.39
Local Government	36	1,211	1,223	1,230	9,915,413	624.50
State Government	11	268	306	306	2,777,708	728.42
BENTON COUNTY - TOTAL	6,970	125,167	125,570	125,897	\$2,466,416,243	\$1,511.21
Natural Resources & Mining	51	828	828	834	13,182,422	1,221.73
Construction	686	5,304	5,362	5,410	64,438,646	925.01
Manufacturing	201	12,675	12,800	12,846	156,938,559	945.08
Trade, Transportation & Utilities	1,738	29,617	29,579	29,753	437,538,646	1,135.15
Wholesale Trade	774	6,413	6,458	6,493	193,873,201	2,310.47
Retail Trade	760	12,167	12,106	12,161	94,038,195	595.63
Transportation, Warehousing & Utilities	204	11,037	11,015	11,099	149,627,250	1,041.58
Information	92	1,037	1,066	1,086	18,680,515	1,351.80
Financial Activities	734	4,114	4,132	4,122	75,181,586	1,402.78
Professional & Business Services	1,384	34,048	33,838	33,880	1,376,876,910	3,122.27
Education & Health Services	870	12,151	12,290	12,178	128,835,226	811.91
Leisure & Hospitality	688	12,966	13,332	13,422	65,884,707	382.78
Other Services	424	2,349	2,326	2,345	20,836,659	684.97
Local Government	85	8,994	8,941	8,940	97,700,309	838.93
State Government	17	1,084	1,076	1,081	10,322,058	734.96

TABLE 6. COUNTY SUMMARY

North American Industry Classification System - Industry Groups	Number of Employing Units	Employment			Total Earnings Jan - Mar 2020	Average Weekly Earnings
		Jan	Feb	Mar		
BOONE COUNTY - TOTAL	948	13,971	14,138	14,050	\$133,759,181	\$732.17
Construction	64	393	423	426	4,518,014	839.47
Manufacturing	55	1,769	1,776	1,752	19,508,308	849.90
Trade, Transportation & Utilities	241	3,627	3,647	3,631	36,873,028	780.30
Wholesale Trade	40	333	337	330	3,116,170	719.12
Retail Trade	159	2,010	2,039	2,044	14,193,686	537.58
Transportation, Warehousing & Utilities	42	1,284	1,271	1,257	19,563,172	1,184.31
Information	14	284	279	276	3,919,514	1,078.07
Financial Activities	94	445	447	437	5,979,654	1,038.31
Professional & Business Services	96	1,369	1,345	1,343	14,227,462	809.28
Education & Health Services	164	1,704	1,707	1,660	14,080,065	640.75
Leisure & Hospitality	86	1,183	1,202	1,198	4,657,642	299.98
Local Government	53	2,270	2,257	2,250	20,252,517	689.64
State Government	17	659	768	790	7,108,977	739.98
Other	64	268	287	287	2,634,000	721.91
BRADLEY COUNTY - TOTAL	347	3,823	3,796	3,750	\$33,796,443	\$686.00
Natural Resources & Mining	42	233	226	224	2,238,689	756.40
Construction	16	76	73	77	601,901	614.60
Manufacturing	11	988	990	1,007	10,930,951	845.07
Trade, Transportation & Utilities	66	491	495	479	3,871,342	609.82
Wholesale Trade	11	102	102	100	1,350,986	1,025.55
Retail Trade	36	307	304	295	1,608,104	409.60
Transportation, Warehousing & Utilities	19	82	89	84	912,252	825.57
Information	3	29	28	29	183,683	492.89
Financial Activities	24	128	124	121	1,273,475	787.88
Professional & Business Services	27	118	116	112	934,796	623.47
Education & Health Services	95	659	650	614	6,061,865	727.45
Leisure & Hospitality	14	188	183	178	625,534	262.94
Other Services	25	83	84	85	568,603	520.70
Local Government	14	484	488	485	3,612,864	572.23
State Government	10	346	339	339	2,892,740	651.91

TABLE 6. COUNTY SUMMARY

North American Industry Classification System - Industry Groups	Number of Employing Units	Employment			Total Earnings	Average Weekly Earnings
		Jan	Feb	Mar	Jan - Mar 2020	
CALHOUN COUNTY - TOTAL	102	3,285	3,268	3,309	\$51,780,145	\$1,211.65
Natural Resources & Mining	6	31	31	30	306,426	768.63
Construction	9	120	121	127	1,527,119	957.64
Manufacturing	9	2,506	2,491	2,523	43,678,217	1,340.37
Trade, Transportation & Utilities	17	176	178	174	1,655,017	723.35
Retail Trade	8	41	42	39	227,053	429.48
Transportation, Warehousing & Utilities	9	135	136	135	1,427,964	811.65
Professional & Business Services	7	10	10	14	123,256	836.58
Education & Health Services	23	59	58	60	627,944	818.70
Leisure & Hospitality	4	14	14	14	48,534	266.67
Other Services	3	3	3	3	22,462	575.95
Local Government	11	187	187	189	1,354,174	555.07
State Government	7	73	72	70	783,410	840.87
Other	6	106	103	105	1,653,586	1,215.28
CARROLL COUNTY - TOTAL	788	10,555	10,586	10,743	\$83,930,586	\$607.47
Natural Resources & Mining	22	265	258	252	2,282,509	679.66
Trade, Transportation & Utilities	183	1,488	1,471	1,488	12,011,606	623.32
Wholesale Trade	23	190	183	178	1,682,317	704.59
Retail Trade	138	1,100	1,092	1,113	6,419,619	448.25
Transportation, Warehousing & Utilities	22	198	196	197	3,909,670	1,526.62
Information	10	61	61	64	646,735	802.40
Financial Activities	55	385	388	379	4,904,440	982.46
Professional & Business Services	70	478	479	485	4,327,154	692.49
Education & Health Services	103	1,088	1,100	1,097	9,913,148	696.39
Leisure & Hospitality	167	1,329	1,356	1,510	5,667,730	311.78
Other Services	43	149	152	152	961,573	489.85
Local Government	25	1,083	1,075	1,081	8,422,588	600.08
State Government	9	94	91	89	999,871	842.11
Other	101	4,135	4,155	4,146	33,793,232	627.09

TABLE 6. COUNTY SUMMARY

North American Industry Classification System - Industry Groups	Number of Employing Units	Employment			Total Earnings	Average Weekly Earnings
		Jan	Feb	Mar	Jan - Mar 2020	
CHICOT COUNTY - TOTAL	493	2,808	2,812	2,806	\$23,123,927	\$633.31
Natural Resources & Mining	54	214	213	229	1,809,427	636.52
Construction	14	116	104	107	1,232,158	869.55
Manufacturing	6	12	12	12	184,937	1,185.49
Trade, Transportation & Utilities	64	598	587	583	4,534,009	591.80
Wholesale Trade	10	44	45	45	443,933	764.52
Retail Trade	41	256	257	256	1,787,284	536.35
Transportation, Warehousing & Utilities	13	298	285	282	2,302,792	614.35
Financial Activities	29	182	182	172	2,358,189	1,015.29
Professional & Business Services	16	42	39	42	391,428	734.39
Education & Health Services	248	647	659	653	4,882,717	575.18
Leisure & Hospitality	16	100	107	108	345,234	252.92
Local Government	17	608	603	595	4,662,630	595.79
State Government	9	234	226	226	2,221,372	747.27
Other	20	55	80	79	501,826	541.15
CLARK COUNTY - TOTAL	661	8,915	8,977	9,001	\$82,296,044	\$706.18
Natural Resources & Mining	48	294	284	291	3,096,929	822.41
Construction	26	83	86	90	898,383	800.46
Manufacturing	35	1,255	1,248	1,245	17,696,614	1,089.60
Trade, Transportation & Utilities	136	1,431	1,408	1,431	11,170,349	603.69
Wholesale Trade	15	47	48	48	601,453	970.61
Retail Trade	92	1,202	1,185	1,201	8,593,294	552.69
Transportation, Warehousing & Utilities	29	182	175	182	1,975,602	845.84
Information	4	7	7	7	93,139	1,023.51
Financial Activities	73	349	349	343	3,548,381	786.61
Professional & Business Services	55	585	589	590	7,892,276	1,032.48
Education & Health Services	128	1,644	1,674	1,677	13,861,246	640.39
Leisure & Hospitality	68	1,100	1,154	1,158	4,093,674	276.87
Other Services	45	204	202	206	2,037,119	768.14
Local Government	29	936	928	938	7,954,210	655.10
State Government	14	1,027	1,048	1,025	9,953,724	740.97

TABLE 6. COUNTY SUMMARY

North American Industry Classification System - Industry Groups	Number of Employing Units	Employment			Total Earnings	Average Weekly Earnings
		Jan	Feb	Mar	Jan - Mar 2020	
CLAY COUNTY - TOTAL	349	2,944	2,945	2,979	\$22,597,158	\$588.04
Natural Resources & Mining	50	190	198	209	1,248,190	482.49
Construction	29	80	78	97	508,643	460.31
Manufacturing	12	102	104	102	779,486	584.03
Trade, Transportation & Utilities	82	738	739	740	6,157,081	640.90
Wholesale Trade	19	238	231	238	2,032,893	663.55
Retail Trade	40	365	373	369	2,480,512	517.10
Transportation, Warehousing & Utilities	23	135	135	133	1,643,676	941.22
Information	6	22	21	23	181,859	635.87
Financial Activities	21	101	102	98	1,003,323	769.22
Professional & Business Services	24	70	70	75	676,220	725.82
Education & Health Services	51	518	510	514	3,977,989	595.33
Leisure & Hospitality	23	236	229	225	707,422	236.60
Other Services	22	69	71	74	653,950	705.19
Local Government	20	775	781	780	6,237,881	616.23
State Government	9	43	42	42	465,114	845.15
CLEBURNE COUNTY - TOTAL	644	6,164	6,193	6,172	\$51,623,243	\$642.94
Natural Resources & Mining	19	174	171	171	2,665,943	1,192.28
Construction	65	310	270	276	2,612,238	704.23
Manufacturing	32	1,210	1,217	1,223	11,790,898	745.47
Trade, Transportation & Utilities	153	1,209	1,178	1,196	9,745,489	627.67
Wholesale Trade	32	107	110	111	1,229,580	865.09
Retail Trade	100	962	931	946	6,847,044	556.56
Transportation, Warehousing & Utilities	21	140	137	139	1,668,865	925.78
Information	13	54	58	60	622,055	834.60
Financial Activities	72	251	250	243	2,923,602	906.82
Professional & Business Services	67	310	322	304	2,839,298	700.02
Education & Health Services	76	894	902	898	7,050,103	603.91
Leisure & Hospitality	82	742	804	790	3,144,947	310.68
Other Services	39	114	117	116	774,876	515.32
Local Government	18	802	794	784	6,245,050	605.53
State Government	8	94	110	111	1,208,744	885.53

TABLE 6. COUNTY SUMMARY

North American Industry Classification System - Industry Groups	Number of Employing Units	Employment			Total Earnings	Average Weekly Earnings
		Jan	Feb	Mar	Jan - Mar 2020	
CLEVELAND COUNTY - TOTAL	129	1,067	1,043	1,022	\$8,729,556	\$643.20
Natural Resources & Mining	15	162	154	141	1,432,141	723.18
Construction	6	20	18	18	191,979	791.12
Manufacturing	4	113	113	118	1,386,960	930.43
Trade, Transportation & Utilities	30	150	148	144	1,101,921	575.32
Retail Trade	17	65	66	65	283,352	333.62
Other Trade, Transportation, & Utilities	13	85	82	79	818,569	767.89
Financial Activities	5	21	22	22	281,072	997.89
Education & Health Services	34	217	220	216	1,544,759	545.92
Other Services	6	11	11	11	100,163	700.44
Local Government	13	314	309	305	2,231,363	554.88
State Government	6	30	30	28	333,544	874.68
Other	10	29	18	19	125,654	439.35
COLUMBIA COUNTY - TOTAL	695	8,011	8,019	7,937	\$82,493,135	\$794.30
Natural Resources & Mining	44	395	381	372	5,753,176	1,156.49
Construction	36	151	156	153	1,442,262	723.54
Manufacturing	29	1,956	1,933	1,940	31,657,262	1,253.31
Trade, Transportation & Utilities	164	1,436	1,402	1,401	11,181,270	608.70
Wholesale Trade	29	237	210	214	2,666,778	931.03
Retail Trade	93	980	971	965	5,832,605	461.59
Transportation, Warehousing & Utilities	42	219	221	222	2,681,887	934.89
Information	6	30	30	30	315,615	809.27
Financial Activities	61	301	332	324	4,296,093	1,035.95
Professional & Business Services	52	295	293	298	2,253,793	587.03
Education & Health Services	166	846	871	853	5,520,999	495.75
Leisure & Hospitality	61	770	794	785	2,884,934	283.42
Other Services	37	132	134	117	752,809	453.59
Local Government	27	1,053	1,044	1,039	9,569,512	704.19
State Government	12	646	649	625	6,865,410	825.17

TABLE 6. COUNTY SUMMARY

North American Industry Classification System - Industry Groups	Number of Employing Units	Employment			Total Earnings	Average Weekly Earnings
		Jan	Feb	Mar	Jan - Mar 2020	
CONWAY COUNTY - TOTAL	516	6,546	6,536	6,541	\$65,231,042	\$767.13
Natural Resources & Mining	28	208	207	213	2,132,356	783.57
Construction	47	486	478	493	6,719,154	1,064.22
Manufacturing	19	1,001	999	992	14,737,022	1,136.65
Trade, Transportation & Utilities	113	1,302	1,285	1,287	10,595,926	631.19
Wholesale Trade	15	103	105	100	1,023,235	766.66
Retail Trade	74	770	747	749	5,102,727	519.66
Transportation, Warehousing & Utilities	24	429	433	438	4,469,964	793.48
Information	3	12	14	13	48,449	286.68
Financial Activities	38	150	147	144	1,747,017	914.19
Professional & Business Services	37	600	641	621	4,485,390	555.90
Education & Health Services	128	766	777	772	8,552,539	852.55
Leisure & Hospitality	37	433	425	427	1,730,148	310.71
Other Services	26	103	106	103	893,030	660.53
Local Government	31	1,120	1,114	1,122	10,542,875	724.96
State Government	9	365	343	354	3,047,136	662.13
CRAIGHEAD COUNTY - TOTAL	2,874	52,299	52,193	52,302	\$540,330,569	\$795.26
Natural Resources & Mining	105	326	308	331	3,144,589	751.99
Construction	249	2,090	2,057	2,119	21,228,690	781.83
Manufacturing	102	7,061	7,099	7,116	88,369,578	958.50
Trade, Transportation & Utilities	771	10,582	10,493	10,480	98,997,140	723.99
Wholesale Trade	180	2,016	2,014	2,060	29,862,733	1,131.59
Retail Trade	466	6,638	6,632	6,577	46,119,192	536.25
Transportation, Warehousing & Utilities	125	1,928	1,847	1,843	23,015,215	945.39
Information	21	410	404	410	5,727,396	1,079.83
Financial Activities	284	1,783	1,786	1,782	27,602,436	1,190.39
Professional & Business Services	373	4,604	4,613	4,704	40,305,830	668.15
Education & Health Services	462	11,511	11,529	11,487	148,903,547	995.23
Leisure & Hospitality	275	6,031	6,022	5,954	25,041,919	320.93
Other Services	175	782	784	801	6,202,743	604.73
Local Government	35	4,229	4,237	4,272	39,905,665	722.95
State Government	22	2,890	2,861	2,846	34,901,036	936.85

TABLE 6. COUNTY SUMMARY

North American Industry Classification System - Industry Groups	Number of Employing Units	Employment			Total Earnings	Average Weekly Earnings
		Jan	Feb	Mar	Jan - Mar 2020	
CRAWFORD COUNTY - TOTAL	1,272	19,743	19,780	19,783	\$181,656,683	\$706.86
Natural Resources & Mining	23	218	229	264	2,265,706	735.38
Construction	146	984	990	990	10,819,914	842.41
Manufacturing	63	4,782	4,767	4,700	51,464,650	833.49
Trade, Transportation & Utilities	325	5,764	5,734	5,768	53,384,192	713.51
Wholesale Trade	76	776	785	795	10,539,497	1,032.34
Retail Trade	168	1,970	1,948	1,937	13,564,119	534.62
Transportation, Warehousing & Utilities	81	3,018	3,001	3,036	29,280,576	746.22
Information	11	45	44	43	491,472	859.22
Financial Activities	123	535	543	539	5,710,845	815.02
Professional & Business Services	163	1,445	1,496	1,518	14,322,824	741.26
Education & Health Services	187	1,649	1,661	1,638	13,059,459	609.08
Leisure & Hospitality	97	1,635	1,586	1,608	6,117,345	292.34
Other Services	82	405	425	419	3,432,680	634.23
Local Government	42	2,141	2,168	2,158	19,187,967	684.71
State Government	10	140	137	138	1,399,629	778.29
CRITTENDEN COUNTY - TOTAL	1,182	16,258	16,203	16,091	\$151,657,235	\$720.83
Natural Resources & Mining	57	195	206	211	1,516,820	571.95
Construction	41	384	396	389	5,255,586	1,037.49
Manufacturing	41	2,048	2,045	2,051	25,708,175	965.60
Trade, Transportation & Utilities	300	4,175	4,156	4,131	43,352,280	802.79
Wholesale Trade	54	697	693	699	8,660,726	956.74
Retail Trade	157	1,830	1,841	1,816	12,135,923	510.41
Transportation, Warehousing & Utilities	89	1,648	1,622	1,616	22,555,631	1,065.32
Information	5	63	42	28	423,464	734.76
Financial Activities	99	443	443	438	6,008,678	1,047.29
Professional & Business Services	105	1,068	1,067	1,062	9,425,705	680.38
Education & Health Services	278	2,139	2,122	2,046	18,264,356	668.28
Leisure & Hospitality	138	2,662	2,668	2,696	14,100,322	405.42
Other Services	65	467	460	458	3,846,024	640.83
Local Government	40	2,216	2,197	2,183	20,050,188	701.48
State Government	13	398	401	398	3,705,637	714.41

TABLE 6. COUNTY SUMMARY

North American Industry Classification System - Industry Groups	Number of Employing Units	Employment			Total Earnings	Average Weekly Earnings
		Jan	Feb	Mar	Jan - Mar 2020	
CROSS COUNTY - TOTAL	488	4,749	4,767	4,778	\$39,437,360	\$636.70
Natural Resources & Mining	45	267	271	271	2,183,269	622.78
Construction	23	67	64	68	557,964	647.04
Manufacturing	10	283	299	302	2,397,566	625.89
Trade, Transportation & Utilities	129	1,064	1,073	1,086	9,957,927	713.00
Wholesale Trade	26	283	282	294	3,712,999	997.49
Retail Trade	69	682	692	695	5,067,546	565.22
Transportation, Warehousing & Utilities	34	99	99	97	1,177,382	921.03
Information	6	44	38	35	280,202	552.67
Financial Activities	49	291	259	249	2,476,308	715.21
Professional & Business Services	43	163	171	169	1,540,771	706.88
Education & Health Services	89	990	1,025	1,015	8,511,008	648.21
Leisure & Hospitality	37	450	439	435	1,536,227	267.76
Other Services	31	100	100	100	819,254	630.20
Local Government	17	690	692	707	6,068,786	670.41
State Government	9	340	336	341	3,108,078	705.26
DALLAS COUNTY - TOTAL	228	2,591	2,598	2,586	\$22,429,001	\$665.71
Natural Resources & Mining	23	110	104	110	1,023,358	728.89
Construction	15	77	72	68	565,155	601.02
Manufacturing	9	530	532	516	6,036,355	882.77
Trade, Transportation & Utilities	52	473	468	466	3,671,836	602.24
Wholesale Trade	5	17	16	17	221,804	1,023.71
Retail Trade	33	303	299	295	1,982,978	510.16
Transportation, Warehousing & Utilities	14	153	153	154	1,467,054	735.98
Information	3	16	16	16	158,019	759.71
Financial Activities	17	67	68	69	799,337	904.23
Professional & Business Services	12	33	36	37	256,201	557.77
Education & Health Services	50	720	736	744	6,705,695	703.39
Leisure & Hospitality	13	146	148	142	481,393	254.80
Other Services	13	51	53	52	323,978	479.26
Local Government	14	338	334	335	2,087,702	478.43
State Government	7	30	31	31	319,972	802.61

TABLE 6. COUNTY SUMMARY

North American Industry Classification System - Industry Groups	Number of Employing Units	Employment			Total Earnings	Average Weekly Earnings
		Jan	Feb	Mar	Jan - Mar 2020	
DESHA COUNTY - TOTAL	511	4,571	4,611	4,659	\$43,356,679	\$722.88
Natural Resources & Mining	65	248	251	273	1,941,577	580.38
Construction	14	91	89	93	907,043	766.73
Manufacturing	14	1,060	1,085	1,091	15,899,756	1,133.86
Trade, Transportation & Utilities	102	818	819	826	7,026,847	658.38
Wholesale Trade	19	178	183	196	2,725,735	1,129.29
Retail Trade	55	446	440	439	2,546,911	443.58
Transportation, Warehousing & Utilities	28	194	196	191	1,754,201	696.76
Information	4	23	22	24	291,109	973.61
Financial Activities	28	206	203	203	1,928,578	727.22
Professional & Business Services	35	88	90	97	833,395	699.35
Education & Health Services	156	673	680	667	5,333,697	609.33
Leisure & Hospitality	39	361	353	359	1,220,013	262.39
Other Services	24	55	56	51	296,446	422.29
Local Government	21	834	850	862	6,722,007	609.28
State Government	9	114	113	113	956,211	649.01
DREW COUNTY - TOTAL	548	6,451	6,397	6,315	\$56,917,359	\$685.42
Natural Resources & Mining	59	452	428	409	4,197,868	751.54
Construction	23	157	146	147	1,561,328	800.68
Manufacturing	21	904	902	904	9,837,700	837.73
Trade, Transportation & Utilities	110	1,051	1,063	1,038	8,316,421	608.88
Wholesale Trade	17	114	120	117	1,417,509	931.96
Retail Trade	73	826	826	823	5,524,836	515.14
Transportation, Warehousing & Utilities	20	111	117	98	1,374,076	972.68
Information	5	37	37	34	321,703	687.40
Financial Activities	54	212	218	204	3,292,623	1,198.48
Professional & Business Services	38	309	287	277	2,660,027	703.15
Education & Health Services	142	877	870	888	6,757,303	591.79
Leisure & Hospitality	42	652	665	631	2,315,943	274.36
Other Services	18	50	48	51	429,874	665.78
Local Government	23	1,218	1,178	1,186	10,919,700	703.50
State Government	13	532	555	546	6,306,869	891.26

TABLE 6. COUNTY SUMMARY

North American Industry Classification System - Industry Groups	Number of Employing Units	Employment			Total Earnings	Average Weekly Earnings
		Jan	Feb	Mar	Jan - Mar 2020	
FAULKNER COUNTY - TOTAL	2,940	41,049	41,346	41,393	\$427,177,086	\$796.36
Natural Resources & Mining	41	248	255	257	4,994,180	1,516.45
Construction	356	2,875	2,876	2,878	31,142,097	832.85
Manufacturing	98	3,378	3,350	3,328	45,317,081	1,039.96
Trade, Transportation & Utilities	632	7,463	7,511	7,567	62,014,970	634.89
Wholesale Trade	136	727	732	734	10,050,441	1,057.61
Retail Trade	408	5,889	5,953	5,999	41,062,091	531.13
Transportation, Warehousing & Utilities	88	847	826	834	10,902,438	1,003.57
Information	25	275	270	275	5,310,616	1,494.54
Financial Activities	316	1,460	1,466	1,464	20,631,682	1,084.55
Professional & Business Services	459	4,929	4,914	4,982	83,643,009	1,302.01
Education & Health Services	482	7,675	7,765	7,767	74,040,151	736.25
Leisure & Hospitality	276	5,217	5,426	5,320	21,464,052	310.30
Other Services	195	909	904	936	7,223,702	606.41
Local Government	42	3,484	3,471	3,484	35,553,073	785.95
State Government	18	3,136	3,138	3,135	35,842,473	879.09
FRANKLIN COUNTY - TOTAL	372	4,605	4,587	4,561	\$42,937,572	\$720.47
Natural Resources & Mining	19	201	155	150	4,686,718	2,137.45
Construction	33	144	141	138	1,215,371	663.05
Manufacturing	16	972	982	967	9,360,655	739.52
Trade, Transportation & Utilities	83	959	952	956	8,870,115	713.97
Wholesale Trade	10	53	49	51	278,234	419.66
Retail Trade	49	609	604	602	3,477,989	442.21
Transportation, Warehousing & Utilities	24	297	299	303	5,113,892	1,312.71
Information	6	26	24	26	339,814	1,031.82
Financial Activities	29	69	68	63	818,671	944.62
Professional & Business Services	33	382	394	379	4,249,960	849.14
Education & Health Services	66	566	568	569	4,017,043	544.34
Leisure & Hospitality	31	341	338	346	1,189,840	267.88
Other Services	16	58	61	55	407,545	540.51
Local Government	32	759	761	770	6,347,677	639.67
State Government	8	128	143	142	1,434,163	801.36

TABLE 6. COUNTY SUMMARY

North American Industry Classification System - Industry Groups	Number of Employing Units	Employment			Total Earnings	Average Weekly Earnings
		Jan	Feb	Mar	Jan - Mar 2020	
FULTON COUNTY - TOTAL	205	2,109	2,102	2,144	\$16,162,313	\$586.90
Manufacturing	11	119	119	121	704,417	452.81
Trade, Transportation & Utilities	51	303	296	300	2,872,607	737.39
Retail Trade	30	182	181	183	1,094,834	462.74
Other Trade, Transportation, & Utilities	21	121	115	117	1,777,773	1,162.20
Information	5	31	33	31	330,844	803.67
Financial Activities	19	76	76	84	834,063	815.58
Professional & Business Services	16	30	32	30	223,705	561.13
Education & Health Services	44	514	510	506	3,493,737	526.96
Leisure & Hospitality	15	131	133	133	455,054	264.52
Other Services	11	19	18	17	132,238	565.12
Local Government	12	580	580	626	3,895,538	503.34
State Government	9	58	56	58	593,178	795.86
Other	12	248	249	238	2,626,932	824.78
GARLAND COUNTY - TOTAL	3,070	37,051	37,523	37,706	\$353,591,728	\$726.74
Natural Resources & Mining	27	182	177	191	2,195,818	921.32
Construction	332	1,921	1,895	1,905	17,675,035	712.96
Manufacturing	93	2,594	2,599	2,599	30,192,807	894.20
Trade, Transportation & Utilities	677	7,371	7,298	7,282	62,933,262	661.61
Wholesale Trade	139	785	780	775	11,691,507	1,153.01
Retail Trade	473	5,995	5,960	5,953	44,303,360	570.91
Transportation, Warehousing & Utilities	65	591	558	554	6,938,395	940.20
Information	30	408	424	425	4,340,355	796.83
Financial Activities	341	1,503	1,505	1,487	20,538,394	1,054.42
Professional & Business Services	386	3,013	2,955	2,985	30,598,958	788.71
Education & Health Services	505	8,051	8,036	7,981	98,644,484	945.82
Leisure & Hospitality	403	7,266	7,606	7,799	39,117,426	398.18
Other Services	217	988	1,002	1,020	6,673,074	511.61
Local Government	37	2,985	3,197	3,196	32,061,294	788.95
State Government	22	769	829	836	8,620,821	817.35

TABLE 6. COUNTY SUMMARY

North American Industry Classification System - Industry Groups	Number of Employing Units	Employment			Total Earnings	Average Weekly Earnings
		Jan	Feb	Mar	Jan - Mar 2020	
GRANT COUNTY - TOTAL	346	4,161	4,115	4,187	\$42,741,322	\$791.41
Natural Resources & Mining	27	200	198	202	2,500,583	961.76
Construction	36	242	231	244	3,788,103	1,219.22
Manufacturing	17	1,282	1,282	1,278	16,328,336	980.76
Trade, Transportation & Utilities	82	641	627	638	4,892,907	592.41
Wholesale Trade	17	75	72	75	1,199,124	1,246.49
Retail Trade	45	513	506	515	3,262,637	490.82
Transportation, Warehousing & Utilities	20	53	49	48	431,146	663.30
Financial Activities	20	121	121	122	1,802,254	1,142.60
Professional & Business Services	31	109	115	124	1,468,446	973.77
Education & Health Services	75	396	373	366	2,810,268	571.39
Leisure & Hospitality	23	288	280	270	917,427	252.64
Local Government	10	782	790	844	7,321,542	699.33
State Government	7	46	44	43	435,422	755.50
Other	18	54	54	56	476,034	669.84
GREENE COUNTY - TOTAL	880	15,128	15,182	15,111	\$143,395,578	\$728.55
Natural Resources & Mining	38	176	183	213	1,444,266	582.68
Construction	71	325	353	373	3,876,768	851.23
Manufacturing	64	5,146	5,079	5,013	57,714,500	874.05
Trade, Transportation & Utilities	223	2,522	2,555	2,599	20,651,307	620.86
Wholesale Trade	41	442	450	456	5,299,006	907.16
Retail Trade	152	1,848	1,863	1,901	12,880,175	529.64
Transportation, Warehousing & Utilities	30	232	242	242	2,472,126	796.77
Information	11	170	166	163	1,651,293	763.66
Financial Activities	75	560	555	550	6,251,812	866.50
Professional & Business Services	89	752	854	736	6,081,228	599.21
Education & Health Services	154	2,067	2,021	2,046	20,513,698	771.75
Leisure & Hospitality	78	1,232	1,237	1,236	4,882,571	304.12
Other Services	36	153	149	155	1,118,960	565.04
Local Government	31	1,645	1,646	1,649	15,224,290	711.19
State Government	10	380	384	378	3,984,885	805.24

TABLE 6. COUNTY SUMMARY

North American Industry Classification System - Industry Groups	Number of Employing Units	Employment			Total Earnings	Average Weekly Earnings
		Jan	Feb	Mar	Jan - Mar 2020	
HEMPSTEAD COUNTY - TOTAL	522	7,522	7,513	7,549	\$72,912,041	\$745.03
Natural Resources & Mining	23	259	252	256	3,129,270	941.51
Construction	26	126	121	119	1,284,264	809.75
Manufacturing	28	2,172	2,169	2,176	25,337,946	897.23
Trade, Transportation & Utilities	128	1,310	1,291	1,293	13,673,184	810.31
Wholesale Trade	26	185	182	190	1,701,854	705.09
Retail Trade	75	837	834	839	5,395,024	496.02
Transportation, Warehousing & Utilities	27	288	275	264	6,576,306	1,835.08
Information	8	18	18	17	229,205	997.99
Financial Activities	47	188	198	195	2,257,950	896.84
Professional & Business Services	35	231	225	227	2,185,068	738.28
Education & Health Services	105	986	971	979	7,311,646	574.69
Leisure & Hospitality	49	595	584	589	2,449,507	319.72
Other Services	29	117	113	120	921,827	607.80
Local Government	28	868	870	878	7,547,054	665.76
State Government	16	652	701	700	6,585,120	740.21
HOT SPRING COUNTY - TOTAL	614	8,446	8,424	8,362	\$78,788,653	\$720.59
Natural Resources & Mining	26	187	182	181	1,689,575	708.91
Construction	51	167	172	181	1,377,414	611.28
Manufacturing	30	1,417	1,406	1,406	18,670,739	1,018.83
Trade, Transportation & Utilities	151	1,687	1,651	1,646	18,216,234	843.45
Wholesale Trade	20	86	85	83	944,400	858.03
Retail Trade	94	864	850	859	5,624,096	504.42
Transportation, Warehousing & Utilities	37	737	716	704	11,647,738	1,246.15
Information	5	40	40	39	427,826	829.66
Financial Activities	50	211	213	207	2,714,506	992.75
Professional & Business Services	56	940	978	927	6,529,872	529.66
Education & Health Services	111	1,010	1,015	1,021	9,042,484	685.07
Leisure & Hospitality	54	795	779	781	2,903,983	284.56
Other Services	40	164	163	163	1,009,816	475.58
Local Government	27	991	994	987	8,862,574	688.16
State Government	13	837	831	823	7,343,630	680.32

TABLE 6. COUNTY SUMMARY

North American Industry Classification System - Industry Groups	Number of Employing Units	Employment			Total Earnings	Average Weekly Earnings
		Jan	Feb	Mar	Jan - Mar 2020	
HOWARD COUNTY - TOTAL	357	6,424	6,447	6,399	\$56,274,152	\$673.92
Natural Resources & Mining	16	202	205	200	2,078,200	790.09
Construction	22	87	89	84	653,636	580.15
Manufacturing	18	2,964	2,942	2,904	26,815,851	702.41
Trade, Transportation & Utilities	79	825	830	849	7,804,270	719.24
Wholesale Trade	16	78	79	81	836,410	811.00
Retail Trade	45	546	545	550	3,647,741	512.97
Transportation, Warehousing & Utilities	18	201	206	218	3,320,119	1,225.89
Financial Activities	34	145	142	141	1,524,918	822.21
Professional & Business Services	22	160	171	157	1,380,781	652.95
Education & Health Services	88	866	875	847	7,445,269	663.89
Leisure & Hospitality	27	318	328	328	1,271,091	301.16
Local Government	17	663	663	669	5,573,315	644.69
State Government	10	91	96	98	880,966	713.33
Other	24	103	106	122	845,855	589.72
INDEPENDENCE COUNTY - TOTAL	918	16,267	16,417	16,293	\$160,411,316	\$755.82
Natural Resources & Mining	20	257	261	262	3,586,249	1,061.02
Construction	61	512	534	551	6,593,087	952.71
Manufacturing	41	3,416	3,439	3,441	37,734,476	845.76
Trade, Transportation & Utilities	244	2,886	2,861	2,819	26,886,774	724.33
Wholesale Trade	28	204	205	192	2,423,628	930.61
Retail Trade	170	1,904	1,912	1,879	12,762,393	517.15
Transportation, Warehousing & Utilities	46	778	744	748	11,700,753	1,189.50
Information	10	92	90	91	789,613	667.47
Financial Activities	88	561	567	568	8,482,427	1,154.18
Professional & Business Services	89	1,198	1,233	1,198	9,262,602	589.01
Education & Health Services	159	3,793	3,798	3,786	43,082,465	873.88
Leisure & Hospitality	85	1,221	1,246	1,194	4,549,230	286.76
Other Services	60	293	298	305	1,985,769	511.44
Local Government	46	1,473	1,500	1,497	11,967,534	617.84
State Government	15	565	590	581	5,491,090	729.94

TABLE 6. COUNTY SUMMARY

North American Industry Classification System - Industry Groups	Number of Employing Units	Employment			Total Earnings	Average Weekly Earnings
		Jan	Feb	Mar	Jan - Mar 2020	
IZARD COUNTY - TOTAL	244	2,912	2,845	2,876	\$23,600,453	\$630.87
Natural Resources & Mining	8	92	86	92	1,221,198	1,043.76
Construction	20	65	54	58	505,456	659.00
Manufacturing	9	245	172	180	1,934,551	747.80
Trade, Transportation & Utilities	63	550	549	551	4,422,311	618.51
Wholesale Trade	11	49	44	52	367,550	584.96
Retail Trade	43	364	372	372	2,301,354	479.32
Transportation, Warehousing & Utilities	9	137	133	127	1,753,407	1,019.23
Information	4	6	6	6	106,289	1,362.68
Financial Activities	23	157	153	162	1,349,705	659.89
Professional & Business Services	16	36	37	40	238,379	486.82
Education & Health Services	44	632	622	628	4,843,810	593.94
Leisure & Hospitality	22	188	182	181	684,250	286.58
Other Services	12	27	28	27	179,209	504.34
Local Government	14	532	528	526	3,994,018	581.15
State Government	9	382	428	425	4,121,277	770.09
JACKSON COUNTY - TOTAL	431	5,061	5,093	5,113	\$49,121,154	\$742.49
Natural Resources & Mining	59	228	239	265	2,035,587	641.74
Construction	21	104	104	108	967,860	706.81
Manufacturing	13	1,073	1,062	1,032	13,821,050	1,007.10
Trade, Transportation & Utilities	105	903	931	947	8,275,142	686.68
Wholesale Trade	17	204	210	216	2,557,184	936.70
Retail Trade	69	618	635	642	4,644,061	565.54
Transportation, Warehousing & Utilities	19	81	86	89	1,073,897	968.06
Information	3	8	8	8	83,500	802.88
Financial Activities	31	125	124	125	1,758,017	1,084.75
Professional & Business Services	32	107	105	105	1,101,635	801.97
Education & Health Services	78	827	835	832	7,653,456	708.17
Leisure & Hospitality	26	304	305	320	1,081,770	268.72
Other Services	19	64	62	63	810,978	990.21
Local Government	32	559	567	564	4,323,685	590.40
State Government	12	759	751	744	7,208,474	738.02

TABLE 6. COUNTY SUMMARY

North American Industry Classification System - Industry Groups	Number of Employing Units	Employment			Total Earnings Jan - Mar 2020	Average Weekly Earnings
		Jan	Feb	Mar		
JEFFERSON COUNTY - TOTAL	2,025	25,473	25,627	25,672	\$266,618,225	\$801.43
Natural Resources & Mining	41	115	111	122	1,833,796	1,216.05
Construction	87	464	447	415	4,607,451	801.85
Manufacturing	60	4,660	4,624	4,594	70,843,350	1,178.01
Trade, Transportation & Utilities	395	4,208	4,173	4,169	37,078,492	681.80
Wholesale Trade	69	639	614	626	7,123,660	874.89
Retail Trade	274	2,865	2,889	2,869	19,332,758	517.38
Transportation, Warehousing & Utilities	52	704	670	674	10,622,074	1,196.90
Information	9	71	71	70	833,721	907.53
Financial Activities	151	1,025	1,010	1,012	14,185,823	1,074.39
Professional & Business Services	144	1,905	1,830	1,916	19,709,904	804.89
Education & Health Services	814	4,812	4,816	4,792	47,054,508	753.03
Leisure & Hospitality	141	2,158	2,194	2,190	8,769,849	309.36
Other Services	106	441	461	452	3,864,758	658.69
Local Government	40	2,500	2,504	2,504	22,052,625	677.82
State Government	37	3,114	3,386	3,436	35,783,948	831.10
JOHNSON COUNTY - TOTAL	483	8,450	8,501	8,464	\$67,952,498	\$617.01
Natural Resources & Mining	13	196	200	197	1,951,219	759.33
Construction	39	194	185	183	1,550,586	636.70
Manufacturing	33	2,443	2,479	2,437	21,422,437	671.78
Trade, Transportation & Utilities	98	1,899	1,896	1,925	15,458,550	623.66
Retail Trade	69	848	842	846	5,213,149	474.38
Other Trade, Transportation & Utilities	29	1,051	1,054	1,079	10,245,401	742.56
Information	4	16	14	14	191,813	1,006.01
Financial Activities	48	180	181	176	1,778,173	764.15
Professional & Business Services	47	413	413	416	2,003,096	372.18
Education & Health Services	108	1,259	1,261	1,256	11,004,594	672.54
Leisure & Hospitality	42	585	595	587	2,093,721	273.44
Other Services	29	79	78	78	574,766	564.42
Local Government	14	1,088	1,102	1,100	8,784,996	616.20
State Government	8	98	97	95	1,138,547	906.01

TABLE 6. COUNTY SUMMARY

North American Industry Classification System - Industry Groups	Number of Employing Units	Employment			Total Earnings	Average Weekly Earnings
		Jan	Feb	Mar	Jan - Mar 2020	
LAFAYETTE COUNTY - TOTAL	161	1,092	1,097	1,079	\$8,345,277	\$589.30
Natural Resources & Mining	23	78	73	73	485,033	499.69
Construction	11	84	78	76	834,012	808.67
Manufacturing	6	37	36	36	356,465	754.69
Trade, Transportation & Utilities	30	185	182	183	1,433,370	601.41
Retail Trade	16	94	96	95	532,176	430.91
Other Trade, Transportation & Utilities	14	91	86	88	901,194	784.78
Financial Activities	13	70	70	70	621,498	682.96
Professional & Business Services	9	38	40	41	282,656	548.14
Education & Health Services	34	217	223	218	1,573,096	551.71
Leisure & Hospitality	6	37	34	36	128,026	276.12
Local Government	15	276	292	277	2,030,027	554.40
State Government	8	31	31	31	336,077	833.94
Other	6	39	38	38	265,017	531.81
LAWRENCE COUNTY - TOTAL	400	3,853	3,875	3,901	\$31,733,787	\$629.73
Natural Resources & Mining	53	184	186	187	1,768,002	732.50
Construction	27	134	143	146	1,492,533	814.26
Manufacturing	17	360	350	363	3,165,572	680.82
Trade, Transportation & Utilities	117	772	781	785	6,770,833	668.31
Wholesale Trade	17	172	175	180	1,819,707	796.84
Retail Trade	62	470	472	473	3,297,568	537.79
Transportation, Warehousing & Utilities	38	130	134	132	1,653,558	963.61
Financial Activities	29	124	121	122	1,255,796	789.64
Professional & Business Services	24	88	85	81	903,857	821.19
Education & Health Services	48	556	573	575	4,633,048	627.44
Leisure & Hospitality	29	314	312	312	1,130,614	278.16
Local Government	24	1,075	1,081	1,085	8,303,175	591.21
State Government	9	68	66	68	689,103	787.25
Other	23	178	177	177	1,621,254	703.26

TABLE 6. COUNTY SUMMARY

North American Industry Classification System - Industry Groups	Number of Employing Units	Employment			Total Earnings Jan - Mar 2020	Average Weekly Earnings
		Jan	Feb	Mar		
LEE COUNTY - TOTAL	263	1,715	1,693	1,698	\$14,467,887	\$653.89
Natural Resources & Mining	40	175	155	170	1,191,233	549.80
Construction	4	5	2	3	24,535	566.19
Trade, Transportation & Utilities	41	311	313	323	3,037,260	740.13
Wholesale Trade	10	104	105	114	1,498,847	1,070.86
Retail Trade	21	151	152	149	888,956	453.86
Transportation, Warehousing & Utilities	10	56	56	60	649,457	871.36
Financial Activities	16	59	59	60	494,538	641.15
Professional & Business Services	13	50	49	49	866,299	1,350.78
Education & Health Services	108	417	420	422	3,130,855	573.87
Leisure & Hospitality	8	60	63	62	257,500	321.21
Local Government	15	261	263	244	1,695,338	509.42
State Government	6	360	352	349	3,662,552	796.61
Other	12	17	17	16	107,777	497.43
LINCOLN COUNTY - TOTAL	282	2,693	2,668	2,672	\$24,590,535	\$706.43
Natural Resources & Mining	34	145	140	142	1,248,888	674.95
Construction	21	131	125	124	1,291,512	784.32
Manufacturing	9	326	319	327	2,817,576	668.94
Trade, Transportation & Utilities	40	306	310	312	3,116,107	774.89
Wholesale Trade	7	48	52	53	575,385	867.85
Retail Trade	21	144	145	145	775,196	412.19
Transportation, Warehousing & Utilities	12	114	113	114	1,765,526	1,194.81
Financial Activities	18	68	69	68	780,472	878.58
Professional & Business Services	11	26	26	27	300,190	876.89
Education & Health Services	105	407	402	402	2,560,265	487.89
Leisure & Hospitality	13	117	113	114	362,013	242.85
Local Government	7	315	316	316	2,477,407	603.71
State Government	10	807	800	792	9,083,515	873.78
Other	14	45	48	48	552,590	904.40

TABLE 6. COUNTY SUMMARY

North American Industry Classification System - Industry Groups	Number of Employing Units	Employment			Total Earnings Jan - Mar 2020	Average Weekly Earnings
		Jan	Feb	Mar		
LITTLE RIVER COUNTY - TOTAL	253	3,328	3,256	3,281	\$50,595,464	\$1,183.57
Natural Resources & Mining	15	86	67	59	584,319	636.05
Construction	13	86	87	86	913,785	814.18
Manufacturing	16	1,135	1,107	1,097	33,550,586	2,318.79
Trade, Transportation & Utilities	62	554	539	545	4,181,673	589.13
Wholesale Trade	7	31	32	31	506,409	1,243.23
Retail Trade	39	400	397	396	2,483,369	480.37
Transportation, Warehousing & Utilities	16	123	110	118	1,191,895	783.63
Financial Activities	14	60	56	53	464,861	634.77
Professional & Business Services	14	119	133	143	1,572,206	918.52
Education & Health Services	53	234	231	222	1,740,084	584.51
Leisure & Hospitality	18	229	223	228	762,463	258.75
Local Government	20	692	686	711	5,745,734	634.72
State Government	10	72	73	86	705,119	704.41
Other	18	61	54	51	374,634	520.81
LOGAN COUNTY - TOTAL	481	5,190	5,165	5,166	\$42,704,255	\$634.94
Natural Resources & Mining	21	112	110	112	956,495	660.87
Construction	41	195	166	172	1,683,414	728.86
Manufacturing	20	1,182	1,198	1,189	11,915,415	770.44
Trade, Transportation & Utilities	101	955	964	962	6,689,925	535.87
Wholesale Trade	9	59	58	56	363,222	484.51
Retail Trade	72	771	782	782	4,675,910	462.12
Transportation, Warehousing & Utilities	20	125	124	124	1,650,793	1,021.32
Information	5	26	26	26	279,205	826.05
Financial Activities	50	182	181	182	2,364,278	1,001.11
Professional & Business Services	41	112	111	111	981,524	678.16
Education & Health Services	105	718	723	710	5,891,826	632.10
Leisure & Hospitality	32	307	300	316	1,061,455	265.39
Other Services	31	132	130	130	1,173,197	690.66
Local Government	22	823	827	821	6,148,587	574.22
State Government	12	446	429	435	3,558,934	626.94

TABLE 6. COUNTY SUMMARY

North American Industry Classification System - Industry Groups	Number of Employing Units	Employment			Total Earnings	Average Weekly Earnings
		Jan	Feb	Mar	Jan - Mar 2020	
LONOKE COUNTY - TOTAL	1,326	13,709	13,754	13,488	\$119,778,725	\$674.98
Natural Resources & Mining	92	441	464	490	4,178,663	691.26
Construction	146	905	916	919	10,866,317	915.19
Manufacturing	35	1,420	1,366	1,084	14,975,079	892.97
Trade, Transportation & Utilities	293	2,848	2,853	2,846	24,018,561	648.50
Wholesale Trade	70	420	416	432	5,542,839	1,008.77
Retail Trade	167	2,112	2,122	2,091	14,240,137	519.56
Transportation, Warehousing & Utilities	56	316	315	323	4,235,585	1,024.57
Information	14	97	97	94	1,181,716	946.89
Financial Activities	164	713	715	722	11,270,732	1,209.74
Professional & Business Services	159	543	560	557	4,938,335	686.52
Education & Health Services	200	1,835	1,855	1,870	14,804,276	614.46
Leisure & Hospitality	120	1,927	1,918	1,905	7,787,316	312.53
Other Services	65	180	187	191	1,298,764	537.12
Local Government	24	2,647	2,673	2,658	22,786,137	659.10
State Government	14	153	150	152	1,672,829	848.43
MADISON COUNTY - TOTAL	253	3,405	3,401	3,416	\$30,445,321	\$687.33
Natural Resources & Mining	12	49	49	51	422,720	654.70
Construction	34	127	126	141	1,314,466	769.89
Manufacturing	23	1,251	1,249	1,230	11,363,480	703.04
Trade, Transportation & Utilities	50	660	659	682	5,625,316	648.75
Wholesale Trade	8	34	33	37	650,044	1,442.41
Retail Trade	32	463	462	470	3,223,444	533.24
Transportation, Warehousing & Utilities	10	163	164	175	1,751,828	805.31
Information	5	53	50	51	1,507,406	2,258.85
Financial Activities	20	89	87	90	1,028,223	892.04
Professional & Business Services	25	80	78	73	1,029,605	1,028.58
Education & Health Services	32	265	258	259	2,085,034	615.30
Leisure & Hospitality	17	166	168	171	528,077	241.31
Other Services	19	43	53	51	330,701	519.15
Local Government	9	581	583	578	4,790,231	634.58
State Government	7	41	41	39	420,062	801.14

TABLE 6. COUNTY SUMMARY

North American Industry Classification System - Industry Groups	Number of Employing Units	Employment			Total Earnings	Average Weekly Earnings
		Jan	Feb	Mar	Jan - Mar 2020	
MARION COUNTY - TOTAL	285	3,684	3,634	3,609	\$30,211,243	\$638.04
Manufacturing	21	1,722	1,682	1,643	15,473,973	707.53
Trade, Transportation & Utilities	60	490	491	494	3,445,519	539.06
Wholesale Trade	6	32	35	34	303,100	692.54
Retail Trade	44	424	421	427	2,671,083	484.59
Transportation, Warehousing & Utilities	10	34	35	33	471,336	1,066.37
Information	3	56	55	56	834,804	1,153.58
Financial Activities	30	162	163	169	1,583,560	739.75
Professional & Business Services	26	92	86	90	644,787	555.21
Education & Health Services	44	313	313	316	2,689,774	658.94
Leisure & Hospitality	39	176	177	176	598,754	261.20
Other Services	15	31	32	32	137,682	334.45
Local Government	18	520	511	510	3,686,496	552.06
State Government	7	38	38	37	414,427	846.35
Other	22	84	86	86	701,467	632.33
MILLER COUNTY - TOTAL	888	13,309	13,142	13,075	\$132,543,543	\$773.84
Natural Resources & Mining	31	347	322	345	3,784,648	861.32
Construction	65	552	562	628	6,141,037	813.53
Manufacturing	27	2,358	2,355	2,349	38,499,698	1,258.08
Trade, Transportation & Utilities	220	3,543	3,334	3,200	34,571,284	791.70
Wholesale Trade	47	499	506	495	6,848,518	1,053.62
Retail Trade	123	1,249	1,238	1,278	8,360,566	512.45
Transportation, Warehousing & Utilities	50	1,795	1,590	1,427	19,362,200	928.55
Information	5	98	98	99	1,585,161	1,240.02
Financial Activities	82	388	397	398	4,949,084	965.42
Professional & Business Services	77	1,222	1,232	1,242	6,147,708	383.85
Education & Health Services	191	1,277	1,285	1,288	9,350,873	560.49
Leisure & Hospitality	93	1,360	1,398	1,363	5,931,845	332.17
Other Services	56	284	282	279	1,970,843	538.24
Local Government	26	1,417	1,421	1,429	13,765,489	744.47
State Government	15	463	456	455	5,845,873	981.84

TABLE 6. COUNTY SUMMARY

North American Industry Classification System - Industry Groups	Number of Employing Units	Employment			Total Earnings	Average Weekly Earnings
		Jan	Feb	Mar	Jan - Mar 2020	
MISSISSIPPI COUNTY - TOTAL	1,080	17,609	17,689	17,602	\$230,038,054	\$1,003.51
Natural Resources & Mining	106	461	442	448	4,372,728	746.92
Construction	54	730	741	767	10,950,216	1,129.12
Manufacturing	61	6,719	6,778	6,622	129,476,928	1,485.13
Trade, Transportation & Utilities	263	2,775	2,725	2,709	26,887,034	755.84
Wholesale Trade	54	363	364	368	5,420,636	1,142.39
Retail Trade	142	1,547	1,523	1,523	9,493,189	476.97
Transportation, Warehousing & Utilities	67	865	838	818	11,973,209	1,096.01
Information	5	26	26	26	162,229	479.97
Financial Activities	85	430	434	419	4,396,674	790.82
Professional & Business Services	83	1,196	1,169	1,249	11,234,252	717.35
Education & Health Services	212	1,332	1,370	1,385	11,557,389	652.58
Leisure & Hospitality	96	1,078	1,120	1,085	3,867,743	271.87
Other Services	46	274	263	273	2,788,123	794.34
Local Government	50	2,104	2,115	2,113	19,667,445	716.78
State Government	19	484	506	506	4,677,293	721.51
MONROE COUNTY - TOTAL	267	1,931	1,936	1,946	\$15,334,495	\$608.76
Natural Resources & Mining	26	80	90	102	770,185	653.44
Manufacturing	6	140	138	147	1,271,809	690.58
Trade, Transportation & Utilities	66	534	532	543	5,241,079	751.70
Wholesale Trade	16	177	180	185	2,668,675	1,136.25
Retail Trade	31	251	244	249	1,509,011	468.06
Transportation, Warehousing & Utilities	19	106	108	109	1,063,393	759.75
Financial Activities	21	88	83	82	960,791	876.37
Professional & Business Services	14	37	38	34	189,925	402.10
Education & Health Services	55	366	365	360	2,582,939	546.35
Leisure & Hospitality	23	215	212	207	716,933	260.96
Local Government	21	316	314	310	2,131,798	523.35
State Government	7	63	62	61	748,460	928.61
Other	28	92	102	100	720,576	565.60

TABLE 6. COUNTY SUMMARY

North American Industry Classification System - Industry Groups	Number of Employing Units	Employment			Total Earnings	Average Weekly Earnings
		Jan	Feb	Mar	Jan - Mar 2020	
MONTGOMERY COUNTY - TOTAL	161	1,136	1,148	1,175	\$7,799,891	\$520.37
Natural Resources & Mining	8	29	30	34	203,145	504.08
Construction	24	72	63	65	457,989	528.45
Manufacturing	8	31	35	37	367,305	822.94
Trade, Transportation & Utilities	32	205	204	216	1,389,714	513.13
Wholesale Trade	7	54	57	59	493,385	669.75
Retail Trade	21	135	130	141	796,199	452.56
Transportation, Warehousing & Utilities	4	16	17	16	100,130	471.57
Financial Activities	10	38	38	46	402,239	760.86
Professional & Business Services	14	20	20	20	113,078	434.92
Education & Health Services	22	60	58	56	457,629	606.94
Leisure & Hospitality	14	203	229	235	1,093,067	378.18
Local Government	9	410	402	396	2,810,462	536.89
State Government	7	34	34	35	325,873	730.11
Other	13	34	35	35	179,390	398.05
NEVADA COUNTY - TOTAL	201	2,485	2,451	2,475	\$27,232,340	\$847.98
Natural Resources & Mining	13	53	51	52	687,032	1,016.32
Trade, Transportation & Utilities	38	580	563	557	5,501,731	746.84
Retail Trade	22	311	306	301	1,877,521	471.98
Other Trade, Transportation & Utilities	16	269	257	256	3,624,210	1,069.51
Financial Activities	12	63	70	55	454,417	557.80
Professional & Business Services	11	62	60	61	878,281	1,107.54
Education & Health Services	46	433	433	430	2,466,278	439.15
Leisure & Hospitality	9	90	82	90	309,360	272.48
Other Services	15	47	44	41	265,654	464.43
Local Government	29	395	389	431	2,770,545	526.22
State Government	9	50	50	51	472,321	721.84
Other	19	712	709	707	13,426,721	1,456.05

TABLE 6. COUNTY SUMMARY

North American Industry Classification System - Industry Groups	Number of Employing Units	Employment			Total Earnings	Average Weekly Earnings
		Jan	Feb	Mar	Jan - Mar 2020	
NEWTON COUNTY - TOTAL	115	995	996	1,028	\$7,831,753	\$598.65
Construction	7	23	22	20	189,092	671.33
Manufacturing	7	31	27	33	283,327	718.50
Trade, Transportation & Utilities	25	158	155	157	1,282,908	629.91
Retail Trade	12	104	103	106	627,830	462.89
Other Trade, Transportation & Utilities	13	54	52	51	655,078	962.88
Education & Health Services	24	251	251	249	1,321,583	406.10
Leisure & Hospitality	16	115	122	148	488,837	293.01
Other Services	3	3	3	3	13,381	343.10
Local Government	14	356	356	356	2,346,754	507.08
State Government	7	35	36	35	353,563	769.73
Other	12	23	24	27	1,552,308	4,840.88
OUACHITA COUNTY - TOTAL	659	6,616	6,620	6,608	\$57,254,696	\$665.82
Natural Resources & Mining	35	162	149	156	1,645,966	813.36
Construction	42	210	187	184	1,987,071	789.25
Manufacturing	26	414	415	404	4,463,843	835.46
Trade, Transportation & Utilities	157	1,481	1,494	1,500	11,808,976	608.97
Wholesale Trade	25	212	214	209	2,421,692	880.08
Retail Trade	95	911	932	944	5,258,454	435.41
Transportation, Warehousing & Utilities	37	358	348	347	4,128,830	904.85
Information	6	33	32	34	407,365	949.57
Financial Activities	52	251	264	254	2,644,016	793.44
Professional & Business Services	45	539	533	529	4,585,070	660.90
Education & Health Services	182	1,287	1,283	1,289	13,649,198	816.23
Leisure & Hospitality	40	449	447	440	1,655,730	286.00
Other Services	30	114	116	117	803,994	534.69
Local Government	31	1,080	1,087	1,083	8,299,119	589.29
State Government	13	596	613	618	5,304,348	669.99

TABLE 6. COUNTY SUMMARY

North American Industry Classification System - Industry Groups	Number of Employing Units	Employment			Total Earnings	Average Weekly Earnings
		Jan	Feb	Mar	Jan - Mar 2020	
PERRY COUNTY - TOTAL	150	1,103	1,110	1,134	\$9,391,616	\$647.53
Construction	14	87	85	82	739,861	672.19
Manufacturing	5	33	31	33	449,709	1,069.89
Trade, Transportation & Utilities	28	171	169	168	1,178,040	535.15
Retail Trade	17	135	133	132	560,183	323.18
Other Trade, Transportation & Utilities	11	36	36	36	617,857	1,320.21
Financial Activities	10	24	28	28	307,177	886.09
Professional & Business Services	19	43	41	47	332,647	585.99
Education & Health Services	32	225	225	228	1,688,663	574.77
Leisure & Hospitality	9	56	58	74	262,733	322.50
Local Government	9	331	332	329	2,626,269	610.95
State Government	7	36	36	34	356,959	777.12
Other	17	97	105	111	1,449,558	1,068.73
PHILLIPS COUNTY - TOTAL	726	5,172	5,213	5,264	\$43,443,019	\$640.64
Natural Resources & Mining	63	255	250	271	1,862,978	554.02
Construction	29	89	85	103	751,096	625.74
Manufacturing	11	402	398	395	4,432,483	855.97
Trade, Transportation & Utilities	139	1,171	1,207	1,198	9,850,999	635.71
Wholesale Trade	28	261	265	267	3,026,306	880.68
Retail Trade	72	685	713	699	4,255,515	468.31
Transportation, Warehousing & Utilities	39	225	229	232	2,569,178	864.27
Information	8	12	12	12	178,361	1,143.34
Financial Activities	41	202	200	195	2,307,557	891.98
Professional & Business Services	40	251	255	262	2,520,227	757.28
Education & Health Services	289	1,280	1,281	1,279	10,224,499	614.45
Leisure & Hospitality	41	352	354	360	1,306,137	282.75
Other Services	24	63	63	62	352,079	432.18
Local Government	27	781	791	790	6,525,917	637.59
State Government	14	314	317	337	3,130,686	746.35

TABLE 6. COUNTY SUMMARY

North American Industry Classification System - Industry Groups	Number of Employing Units	Employment			Total Earnings	Average Weekly Earnings
		Jan	Feb	Mar	Jan - Mar 2020	
PIKE COUNTY - TOTAL	265	2,561	2,549	2,560	\$20,826,473	\$626.61
Natural Resources & Mining	23	112	106	110	1,404,256	987.98
Construction	15	51	58	60	386,366	527.58
Manufacturing	17	409	408	410	4,145,578	779.68
Trade, Transportation & Utilities	72	520	521	521	4,150,578	613.20
Wholesale Trade	10	103	108	109	1,094,323	789.18
Retail Trade	42	339	336	337	2,201,022	501.91
Transportation, Warehousing & Utilities	20	78	77	75	855,233	858.09
Information	7	27	28	28	307,531	855.04
Financial Activities	24	218	220	225	2,401,132	835.76
Professional & Business Services	14	59	61	58	647,551	839.52
Education & Health Services	32	300	296	280	1,859,743	489.92
Leisure & Hospitality	28	214	214	230	741,128	259.92
Other Services	14	60	63	60	454,331	572.93
Local Government	10	497	485	490	3,601,478	564.61
State Government	9	94	89	88	726,801	618.91
POINSETT COUNTY - TOTAL	479	4,910	4,993	4,987	\$50,946,468	\$789.58
Natural Resources & Mining	67	251	255	253	2,722,218	827.67
Construction	25	77	80	81	600,268	582.03
Manufacturing	18	684	706	689	8,644,766	959.57
Trade, Transportation & Utilities	118	1,120	1,149	1,168	14,830,549	995.76
Wholesale Trade	22	374	384	403	9,667,788	1,921.64
Retail Trade	68	609	624	629	3,514,650	435.59
Transportation, Warehousing & Utilities	28	137	141	136	1,648,111	918.68
Professional & Business Services	27	198	212	202	3,807,405	1,435.67
Education & Health Services	83	789	781	780	6,495,105	637.82
Leisure & Hospitality	41	424	433	436	1,587,917	283.40
Other Services	19	58	56	58	472,056	633.35
Local Government	30	985	1,000	997	8,283,809	641.06
State Government	10	98	93	96	1,007,464	810.08
Other	41	226	228	227	2,494,911	845.45

TABLE 6. COUNTY SUMMARY

North American Industry Classification System - Industry Groups	Number of Employing Units	Employment			Total Earnings	Average Weekly Earnings
		Jan	Feb	Mar	Jan - Mar 2020	
POLK COUNTY - TOTAL	481	5,726	5,717	5,706	\$47,284,780	\$636.30
Natural Resources & Mining	23	168	169	172	2,136,541	968.66
Construction	31	218	216	205	2,036,729	735.55
Manufacturing	36	1,307	1,303	1,288	11,129,188	658.87
Trade, Transportation & Utilities	121	1,053	1,042	1,054	8,158,924	597.91
Wholesale Trade	19	61	62	62	744,885	929.17
Retail Trade	66	746	736	745	4,492,960	465.58
Transportation, Warehousing & Utilities	36	246	244	247	2,921,079	914.65
Information	6	51	53	48	264,133	401.01
Financial Activities	41	217	220	217	2,069,997	730.42
Professional & Business Services	39	135	147	143	1,560,347	847.25
Education & Health Services	83	1,004	996	988	9,697,947	748.99
Leisure & Hospitality	43	446	437	457	1,541,927	265.54
Other Services	25	152	151	140	1,185,672	617.64
Local Government	21	689	697	705	5,311,023	586.14
State Government	12	286	286	289	2,192,352	587.60
POPE COUNTY - TOTAL	1,844	24,659	24,876	24,902	\$258,874,192	\$802.56
Natural Resources & Mining	37	792	802	793	7,592,367	734.01
Construction	163	1,064	1,091	1,170	14,284,830	991.43
Manufacturing	73	3,492	3,482	3,453	35,917,680	794.93
Trade, Transportation & Utilities	416	6,178	6,147	6,069	80,368,390	1,008.29
Wholesale Trade	76	546	554	552	6,224,665	869.53
Retail Trade	264	3,123	3,155	3,114	21,240,949	521.91
Transportation, Warehousing & Utilities	76	2,509	2,438	2,403	52,902,776	1,661.00
Information	18	128	124	123	1,323,376	814.39
Financial Activities	196	886	871	868	11,807,048	1,037.98
Professional & Business Services	255	1,971	1,938	1,932	24,242,506	957.79
Education & Health Services	377	3,245	3,287	3,288	31,586,029	742.27
Leisure & Hospitality	148	2,813	2,829	2,858	11,542,936	313.38
Other Services	103	417	435	422	3,388,954	613.87
Local Government	43	2,232	2,243	2,311	20,270,220	689.32
State Government	15	1,441	1,627	1,615	16,549,856	815.55

TABLE 6. COUNTY SUMMARY

North American Industry Classification System - Industry Groups	Number of Employing Units	Employment			Total Earnings	Average Weekly Earnings
		Jan	Feb	Mar	Jan - Mar 2020	
PRAIRIE COUNTY - TOTAL	253	1,448	1,477	1,471	\$11,921,011	\$625.80
Natural Resources & Mining	36	157	175	167	1,708,409	790.08
Construction	13	44	46	44	490,184	844.17
Trade, Transportation & Utilities	59	334	344	355	2,759,801	616.53
Wholesale Trade	12	76	78	82	1,144,957	1,119.58
Retail Trade	33	206	213	220	1,141,114	412.10
Transportation, Warehousing & Utilities	14	52	53	53	473,730	691.91
Financial Activities	16	52	52	50	590,952	885.54
Professional & Business Services	16	65	68	63	697,569	821.31
Education & Health Services	46	272	274	273	1,978,185	557.39
Leisure & Hospitality	21	102	100	100	385,716	294.74
Local Government	15	308	305	306	2,383,684	598.56
State Government	7	28	28	28	288,777	793.34
Other	24	86	85	85	637,734	574.88
PULASKI COUNTY - TOTAL	14,588	240,373	240,183	238,621	\$3,166,594,580	\$1,016.10
Natural Resources & Mining	53	591	593	622	11,561,540	1,477.32
Construction	950	9,281	9,269	9,205	125,083,672	1,040.01
Manufacturing	330	13,304	13,220	13,102	188,113,260	1,095.51
Trade, Transportation & Utilities	3,125	49,382	48,887	48,668	592,298,281	930.22
Wholesale Trade	921	11,759	11,786	11,762	207,675,123	1,357.38
Retail Trade	1,796	24,452	24,157	24,022	188,148,454	597.80
Transportation, Warehousing & Utilities	408	13,171	12,944	12,884	196,474,704	1,162.60
Information	207	3,148	3,082	3,053	45,961,259	1,142.57
Financial Activities	1,719	17,798	17,743	17,656	422,182,014	1,831.43
Professional & Business Services	2,819	34,545	34,467	34,360	477,080,097	1,065.04
Education & Health Services	2,594	41,926	42,123	41,947	539,456,712	988.05
Leisure & Hospitality	1,313	22,797	23,016	22,378	107,618,426	364.20
Other Services	1,160	6,541	6,541	6,414	66,912,506	792.03
Local Government	108	15,283	15,269	15,300	170,407,773	857.65
State Government	210	25,777	25,973	25,916	419,919,040	1,247.71

TABLE 6. COUNTY SUMMARY

North American Industry Classification System - Industry Groups	Number of Employing Units	Employment			Total Earnings	Average Weekly Earnings
		Jan	Feb	Mar	Jan - Mar 2020	
RANDOLPH COUNTY - TOTAL	394	5,856	5,884	5,885	\$47,999,695	\$628.47
Natural Resources & Mining	26	221	229	233	2,920,405	986.73
Construction	26	76	72	73	493,992	515.83
Manufacturing	28	1,742	1,739	1,724	16,718,881	741.25
Trade, Transportation & Utilities	98	900	889	901	7,207,058	618.28
Wholesale Trade	14	110	111	113	1,034,633	714.85
Retail Trade	57	603	604	612	4,026,624	510.84
Transportation, Warehousing & Utilities	27	187	174	176	2,145,801	922.13
Information	5	24	24	23	262,316	852.60
Financial Activities	32	145	145	143	1,411,025	752.01
Professional & Business Services	32	235	236	233	1,667,152	546.49
Education & Health Services	67	974	983	1,000	7,768,673	606.28
Leisure & Hospitality	30	396	420	415	1,387,358	260.08
Other Services	16	46	45	48	302,316	501.91
Local Government	24	853	845	826	5,498,316	502.71
State Government	10	244	257	266	2,362,203	710.72
SAINT FRANCIS COUNTY - TOTAL	670	6,555	6,521	6,459	\$55,486,118	\$655.46
Natural Resources & Mining	44	152	152	164	1,306,506	644.23
Construction	36	179	178	179	1,768,808	761.54
Trade, Transportation & Utilities	147	1,827	1,763	1,761	15,407,390	664.46
Wholesale Trade	29	559	544	548	6,366,701	889.91
Retail Trade	97	931	896	890	5,691,851	483.44
Transportation, Warehousing & Utilities	21	337	323	323	3,348,838	786.17
Information	5	52	53	51	490,988	726.31
Financial Activities	52	256	251	238	2,230,217	690.83
Professional & Business Services	48	198	197	182	1,766,978	706.70
Education & Health Services	215	1,407	1,447	1,428	13,177,079	710.15
Leisure & Hospitality	47	658	673	664	2,490,880	288.13
Local Government	28	806	806	795	6,835,242	655.32
State Government	14	404	395	395	3,887,194	751.29
Other	34	616	606	602	6124836	774.90

TABLE 6. COUNTY SUMMARY

North American Industry Classification System - Industry Groups	Number of Employing Units	Employment			Total Earnings	Average Weekly Earnings
		Jan	Feb	Mar	Jan - Mar 2020	
SALINE COUNTY - TOTAL	2,149	25,088	25,241	25,212	\$232,030,864	\$708.83
Natural Resources & Mining	13	55	55	55	490,517	686.04
Construction	289	2,206	2,207	2,207	24,207,442	843.86
Manufacturing	78	1,340	1,343	1,326	17,895,320	1,030.10
Trade, Transportation & Utilities	479	5,547	5,579	5,575	48,350,231	668.09
Wholesale Trade	113	591	588	588	8,865,747	1,157.86
Retail Trade	293	4,351	4,374	4,376	32,881,459	579.19
Transportation, Warehousing & Utilities	73	605	617	611	6,603,025	831.30
Information	20	160	147	144	1,886,462	965.27
Financial Activities	220	816	825	817	10,918,686	1,025.10
Professional & Business Services	301	1,921	1,957	1,998	22,140,995	869.55
Education & Health Services	343	4,749	4,781	4,735	45,107,759	729.72
Leisure & Hospitality	201	3,551	3,606	3,600	14,520,185	311.50
Other Services	158	790	791	791	6,894,645	670.77
Local Government	33	3,186	3,198	3,218	32,043,686	770.12
State Government	14	767	752	746	7,574,936	771.77
SCOTT COUNTY - TOTAL	191	3,037	3,007	3,020	\$22,849,441	\$581.75
Natural Resources & Mining	18	172	167	172	1,703,449	769.28
Trade, Transportation & Utilities	38	330	329	329	2,359,785	551.18
Wholesale Trade	8	36	39	38	283,220	578.39
Retail Trade	24	222	220	220	1,260,691	439.47
Transportation, Warehousing & Utilities	6	72	70	71	815,874	883.94
Financial Activities	16	62	60	60	523,914	664.30
Professional & Business Services	14	114	114	120	753,782	499.86
Education & Health Services	43	316	318	314	3,440,086	837.41
Leisure & Hospitality	19	152	129	136	482,589	267.07
Other Services	9	34	33	34	237,952	543.68
Local Government	6	525	523	524	3,896,415	571.99
State Government	6	30	30	30	335,962	861.44
Other	22	1,302	1,304	1,301	9,115,507	538.41

TABLE 6. COUNTY SUMMARY

North American Industry Classification System - Industry Groups	Number of Employing Units	Employment			Total Earnings Jan - Mar 2020	Average Weekly Earnings
		Jan	Feb	Mar		
SEARCY COUNTY - TOTAL	167	1,407	1,420	1,477	\$9,897,156	\$530.66
Construction	13	5	6	12	39,231	393.62
Manufacturing	14	154	146	150	1,117,199	572.92
Trade, Transportation & Utilities	35	232	234	243	1,549,429	504.32
Wholesale Trade	5	31	30	32	246,376	611.35
Retail Trade	24	183	186	193	1,086,634	446.20
Transportation, Warehousing & Utilities	6	18	18	18	216,419	924.87
Financial Activities	12	41	48	54	528,365	852.66
Education & Health Services	38	350	355	344	2,316,280	509.56
Leisure & Hospitality	14	136	129	151	418,354	232.08
Local Government	10	311	328	329	2,198,272	524.06
State Government	6	41	40	41	408,622	772.93
Other	25	137	134	153	1,321,404	719.20
SEBASTIAN COUNTY - TOTAL	3,683	62,689	62,500	62,527	\$703,596,309	\$864.97
Natural Resources & Mining	39	293	291	292	7,192,747	1,894.82
Construction	264	2,421	2,398	2,414	26,642,267	850.02
Manufacturing	188	11,001	11,092	11,095	137,606,363	956.83
Trade, Transportation & Utilities	884	12,875	12,721	12,729	136,748,631	823.41
Wholesale Trade	223	2,631	2,631	2,631	37,408,857	1,093.73
Retail Trade	546	7,617	7,542	7,556	52,644,470	534.83
Transportation, Warehousing & Utilities	115	2,627	2,548	2,542	46,695,304	1,396.38
Information	39	851	844	839	17,695,822	1,611.54
Financial Activities	409	2,418	2,413	2,403	34,373,942	1,096.55
Professional & Business Services	563	7,688	7,553	7,639	81,867,275	825.72
Education & Health Services	622	11,671	11,631	11,624	157,379,939	1,039.87
Leisure & Hospitality	353	5,930	5,982	5,947	26,141,006	337.79
Other Services	256	1,173	1,169	1,142	9,546,284	632.32
Local Government	43	4,716	4,760	4,772	49,047,431	794.40
State Government	23	1,652	1,646	1,631	19,354,602	906.16

TABLE 6. COUNTY SUMMARY

North American Industry Classification System - Industry Groups	Number of Employing Units	Employment			Total Earnings Jan - Mar 2020	Average Weekly Earnings
		Jan	Feb	Mar		
SEVIER COUNTY - TOTAL	315	4,699	4,747	4,739	\$40,746,504	\$662.89
Natural Resources & Mining	18	159	164	163	2,189,436	1,039.62
Construction	20	160	158	163	2,079,542	997.70
Trade, Transportation & Utilities	84	794	785	785	6,273,774	612.43
Wholesale Trade	12	83	84	83	1,040,829	960.77
Retail Trade	59	616	612	616	4,029,342	504.26
Transportation, Warehousing & Utilities	13	95	89	86	1,203,603	1,028.72
Financial Activities	27	197	197	195	2,137,811	837.59
Professional & Business Services	25	180	187	184	1,332,151	557.93
Education & Health Services	63	417	424	425	3,379,149	615.96
Leisure & Hospitality	25	276	282	297	884,953	238.85
Local Government	13	944	949	954	7,886,205	639.23
State Government	8	156	153	165	1,336,950	650.90
Other	32	1,416	1,448	1,408	13,246,533	715.56
SHARP COUNTY - TOTAL	379	3,424	3,386	3,429	\$26,590,404	\$599.30
Construction	27	102	99	102	1,942,565	1,479.49
Manufacturing	16	152	145	157	1,287,653	654.52
Trade, Transportation & Utilities	81	716	711	708	4,560,974	492.99
Wholesale Trade	12	34	39	40	279,015	569.81
Retail Trade	60	640	632	630	3,745,717	454.47
Transportation, Warehousing & Utilities	9	42	40	38	536,242	1,031.23
Information	7	31	24	20	188,497	579.99
Financial Activities	31	154	161	162	2,240,128	1,083.76
Professional & Business Services	38	127	130	134	1,030,588	608.26
Education & Health Services	83	872	858	862	7,546,716	671.89
Leisure & Hospitality	33	359	349	368	1,284,838	275.56
Local Government	24	767	761	764	5,195,455	523.10
State Government	7	52	51	51	517,575	775.59
Other	32	92	97	101	795,415	632.96

TABLE 6. COUNTY SUMMARY

North American Industry Classification System - Industry Groups	Number of Employing Units	Employment			Total Earnings	Average Weekly Earnings
		Jan	Feb	Mar	Jan - Mar 2020	
STONE COUNTY - TOTAL	277	2,447	2,451	2,429	\$18,192,307	\$572.98
Natural Resources & Mining	4	8	8	9	48,529	447.96
Construction	15	32	28	34	203,887	500.54
Manufacturing	17	219	224	232	1,529,621	522.95
Trade, Transportation & Utilities	69	543	550	539	3,995,237	564.94
Wholesale Trade	5	37	40	26	290,741	651.40
Retail Trade	51	462	467	470	3,149,687	519.55
Transportation, Warehousing & Utilities	13	44	43	43	554,809	984.87
Financial Activities	36	118	111	115	1,284,823	861.91
Professional & Business Services	14	32	32	33	202,657	482.13
Education & Health Services	51	550	557	536	5,182,069	727.85
Leisure & Hospitality	32	394	407	397	1,371,955	264.28
Local Government	10	404	398	399	3,201,601	615.18
State Government	7	97	87	90	830,361	699.35
Other	22	50	49	45	341,567	547.38
UNION COUNTY - TOTAL	1,253	16,840	16,830	16,818	\$241,103,646	\$1,102.03
Natural Resources & Mining	81	380	372	367	4,541,058	936.49
Construction	80	1,451	1,459	1,432	21,122,243	1,122.61
Manufacturing	52	2,773	2,779	2,758	48,417,851	1,344.57
Trade, Transportation & Utilities	299	3,409	3,402	3,435	36,297,924	817.53
Wholesale Trade	65	440	435	436	6,474,042	1,139.60
Retail Trade	175	1,994	1,979	2,032	13,280,874	510.38
Transportation, Warehousing & Utilities	59	975	988	967	16,543,008	1,302.94
Information	8	82	84	80	874,670	820.52
Financial Activities	93	573	580	584	7,349,106	976.37
Professional & Business Services	122	1,814	1,837	1,834	73,838,843	3,106.61
Education & Health Services	284	2,189	2,200	2,205	19,944,221	697.98
Leisure & Hospitality	95	1,436	1,402	1,408	5,923,690	321.95
Other Services	91	391	388	385	2,876,430	570.27
Local Government	32	1,848	1,835	1,846	14,811,215	618.19
State Government	16	494	492	484	5,106,395	801.63

TABLE 6. COUNTY SUMMARY

North American Industry Classification System - Industry Groups	Number of Employing Units	Employment			Total Earnings	Average Weekly Earnings
		Jan	Feb	Mar	Jan - Mar 2020	
VAN BUREN COUNTY - TOTAL	331	3,341	3,320	3,340	\$29,690,753	\$685.10
Natural Resources & Mining	9	87	87	85	2,444,933	2,178.44
Construction	37	123	111	114	962,520	638.28
Manufacturing	8	189	179	182	1,072,927	450.18
Trade, Transportation & Utilities	91	821	826	823	8,516,641	795.70
Wholesale Trade	11	42	42	48	498,651	871.77
Retail Trade	51	562	562	553	3,745,591	515.42
Transportation, Warehousing & Utilities	29	217	222	222	4,272,399	1,491.59
Information	7	37	37	36	356,577	748.06
Financial Activities	36	156	153	155	1,880,310	935.17
Professional & Business Services	28	115	113	124	1,066,425	699.14
Education & Health Services	56	725	731	716	6,262,728	665.40
Leisure & Hospitality	23	257	252	264	986,838	294.61
Other Services	19	137	140	144	966,567	529.82
Local Government	11	653	650	656	4,739,604	558.32
State Government	6	41	41	41	434,683	815.54
WASHINGTON COUNTY - TOTAL	6,418	108,743	109,401	109,162	\$1,259,600,008	\$888.09
Natural Resources & Mining	38	316	308	312	4,074,667	1,004.60
Construction	611	5,983	6,006	6,067	80,524,981	1,029.17
Manufacturing	231	14,213	14,297	14,232	163,901,237	884.92
Trade, Transportation & Utilities	1,386	22,771	22,557	22,716	243,729,993	826.60
Wholesale Trade	386	3,610	3,629	3,616	68,750,065	1,461.58
Retail Trade	795	12,160	12,085	12,207	92,031,917	582.63
Transportation, Warehousing & Utilities	205	7,001	6,843	6,893	82,948,011	923.08
Information	89	881	909	911	13,248,366	1,131.92
Financial Activities	738	3,837	3,864	3,832	59,233,332	1,185.23
Professional & Business Services	1,190	13,500	13,484	13,478	215,153,508	1,227.10
Education & Health Services	933	16,622	16,851	16,671	200,244,547	921.55
Leisure & Hospitality	717	12,886	13,295	13,090	58,309,694	342.65
Other Services	403	2,294	2,278	2,246	21,583,817	730.55
Local Government	60	8,992	9,070	9,113	95,825,958	813.75
State Government	22	6,448	6,482	6,494	103,769,908	1,232.85

TABLE 6. COUNTY SUMMARY

North American Industry Classification System - Industry Groups	Number of Employing Units	Employment			Total Earnings	Average Weekly Earnings
		Jan	Feb	Mar	Jan - Mar 2020	
WHITE COUNTY - TOTAL	1,815	23,836	23,964	24,003	\$224,837,294	\$722.61
Natural Resources & Mining	49	331	348	361	5,226,963	1,159.83
Construction	165	1,040	977	1,011	11,034,433	840.95
Manufacturing	61	2,233	2,248	2,245	26,006,158	892.27
Trade, Transportation & Utilities	480	6,142	6,111	6,182	58,669,061	734.42
Wholesale Trade	83	597	591	577	8,582,931	1,122.20
Retail Trade	310	3,421	3,450	3,516	24,069,543	534.76
Transportation, Warehousing & Utilities	87	2,124	2,070	2,089	26,016,587	955.57
Information	21	104	107	108	968,579	700.68
Financial Activities	181	925	931	929	11,256,774	932.75
Professional & Business Services	178	1,127	1,142	1,137	9,204,072	623.61
Education & Health Services	331	5,588	5,663	5,620	59,053,679	807.76
Leisure & Hospitality	170	2,676	2,716	2,665	10,270,266	294.16
Other Services	118	511	503	506	4,503,812	683.78
Local Government	46	2,707	2,719	2,717	23,813,359	674.86
State Government	15	452	499	522	4,830,138	756.72
WOODRUFF COUNTY - TOTAL	192	1,709	1,718	1,749	\$15,602,690	\$695.64
Natural Resources & Mining	32	156	157	164	1,317,691	637.49
Construction	10	33	29	30	231,455	580.57
Manufacturing	5	196	190	185	1,942,477	785.05
Trade, Transportation & Utilities	47	361	359	363	3,549,083	756.25
Wholesale Trade	13	131	133	142	1,698,126	965.21
Retail Trade	25	158	153	151	856,454	427.80
Transportation, Warehousing & Utilities	9	72	73	70	994,503	1,067.45
Financial Activities	11	44	44	43	388,158	683.78
Education & Health Services	46	246	246	248	2,233,733	696.59
Leisure & Hospitality	12	81	83	94	340,143	304.24
Local Government	9	391	406	417	3,091,155	587.60
State Government	5	32	32	31	332,878	808.61
Other	15	169	172	174	2,175,917	975.02

TABLE 6. COUNTY SUMMARY

North American Industry Classification System - Industry Groups	Number of Employing Units	Employment			Total Earnings	Average Weekly Earnings
		Jan	Feb	Mar	Jan - Mar 2020	
YELL COUNTY - TOTAL	418	6,512	6,509	6,512	\$51,811,378	\$612.12
Natural Resources & Mining	26	250	248	251	2,697,523	831.12
Construction	34	246	229	229	2,258,119	740.21
Manufacturing	22	2,452	2,430	2,433	19,512,950	615.58
Trade, Transportation & Utilities	86	744	759	763	5,572,891	567.54
Wholesale Trade	14	51	56	58	316,431	442.56
Retail Trade	49	514	516	511	2,954,853	442.50
Transportation, Warehousing & Utilities	23	179	187	194	2,301,607	948.46
Financial Activities	32	131	130	132	1,327,659	779.60
Professional & Business Services	37	307	314	318	2,461,717	604.99
Education & Health Services	105	792	793	784	5,635,600	548.98
Leisure & Hospitality	25	265	268	251	945,178	278.21
Local Government	23	1,140	1,157	1,168	9,541,039	635.43
State Government	10	65	64	66	637,797	754.79
Other	18	120	117	117	1,220,905	795.90
STATEWIDE COUNTY - TOTAL	11,996	35,448	37,927	38,521	\$607,277,322	\$1,252.42
Natural Resources & Mining	113	292	285	288	5,431,270	1,448.98
Construction	924	3,478	3,548	3,882	52,844,842	1,117.98
Manufacturing	68	187	178	186	5,238,294	2,193.90
Trade, Transportation & Utilities	3,663	8,122	8,189	8,163	214,237,610	2,020.08
Wholesale Trade	3,027	6,378	6,460	6,438	188,325,921	2,254.61
Retail Trade	238	476	454	459	8,774,339	1,457.77
Transportation, Warehousing & Utilities	398	1,268	1,275	1,266	17,137,350	1,038.27
Information	532	1,028	1,026	1,025	25,298,347	1,896.10
Financial Activities	837	2,278	2,291	2,271	48,370,640	1,631.94
Professional & Business Services	4,649	15,028	17,237	17,536	194,299,295	900.35
Education & Health Services	670	3,018	3,037	3,026	34,619,915	879.77
Leisure & Hospitality	127	537	584	594	3,446,925	463.82
State Government	15	679	667	653	8,671,319	1,001.04
Other	398	801	885	897	14,818,865	1,028.79

Note: Statewide classification includes employment and payroll data for employers that have not provided a physical location for each employing unit. This section also includes employers without a physical location in Arkansas.

TABLE 7. FEDERAL GOVERNMENT EMPLOYMENT AND EARNINGS IN ARKANSAS

North American Industry Classification System - Industry Groups	Number of Employing Units	Employment			Total Earnings Jan - Mar 2020	Average Weekly Earnings
		Jan	Feb	Mar		
TOTAL	1,199	20,586	20,470	20,745	\$341,568,632	\$1,275.44
Trade, Transportation & Utilities	589	5,587	5,491	5,520	68,711,995	955.33
Information	2	39	37	36	606,421	1,249.49
Financial Activities	14	101	98	98	2,035,056	1,581.24
Professional & Business Services	32	809	805	821	14,691,048	1,392.30
Education & Health Services	18	5,410	5,432	5,392	106,231,256	1,510.10
Leisure & Hospitality	23	258	259	257	2,962,742	883.35
Other Services	1	1	1	1	9,576	736.62
Public Administration	520	8,381	8,347	8,620	146,320,538	1,332.11

TABLE 8. LOCAL WORKFORCE DEVELOPMENT AREA SUMMARY

North American Industry Classification System - Industry Groups	Number of Employing Units	Employment			Total Earnings Jan - Mar 2020	Average Weekly Earnings
		Jan	Feb	Mar		
CENTRAL LOCAL WORKFORCE DEVELOPMENT AREA	6,935	83,225	83,754	83,510	\$806,242,181	\$742.77
Natural Resources & Mining	208	981	1,039	1,071	12,141,954	1,132.46
Construction	814	6,052	6,068	6,069	66,943,894	849.34
Manufacturing	222	6,317	6,233	5,922	79,734,087	996.11
Trade, Transportation & Utilities	1,529	16,726	16,819	16,886	142,384,642	651.54
Wholesale Trade	347	1,991	1,994	2,021	28,272,659	1,086.32
Retail Trade	932	12,809	12,906	12,935	90,833,812	542.35
Transportation, Warehousing & Utilities	250	1,926	1,919	1,930	23,278,171	930.20
Information	66	552	542	542	8,535,047	1,203.93
Financial Activities	737	3,129	3,141	3,135	44,372,843	1,088.77
Professional & Business Services	949	7,495	7,537	7,634	111,609,833	1,136.33
Education & Health Services	1,126	14,897	15,040	15,005	138,513,310	711.24
Leisure & Hospitality	641	11,012	11,262	11,132	44,874,202	309.99
Other Services	448	1,976	1,982	2,016	16,106,516	622.18
Local Government	135	9,941	9,961	9,976	94,898,378	732.97
State Government	60	4,147	4,130	4,122	46,127,475	858.52
Note: Pulaski County is not included in the Central Local Workforce Development Area. Please refer to Page 51 for information on Pulaski County. Central Local Workforce Development Area includes these counties: Faulkner, Lonoke, Monroe, Prairie, and Saline.						
EASTERN LOCAL WORKFORCE DEVELOPMENT AREA	3,329	34,449	34,397	34,290	\$304,491,619	\$681.31
Natural Resources & Mining	249	1,044	1,034	1,087	8,060,806	587.74
Construction	133	724	725	742	8,357,989	880.31
Manufacturing	74	3,299	3,303	3,305	38,386,459	894.16
Trade, Transportation & Utilities	756	8,548	8,512	8,499	81,605,856	736.81
Wholesale Trade	147	1,904	1,889	1,922	23,265,579	939.45
Retail Trade	416	4,279	4,294	4,249	28,039,791	504.66
Transportation, Warehousing & Utilities	193	2,365	2,329	2,328	30,300,486	995.79
Information	25	173	147	128	1,380,867	711.30
Financial Activities	257	1,251	1,212	1,180	13,517,298	856.27
Professional & Business Services	249	1,730	1,739	1,724	16,119,980	716.35
Education & Health Services	979	6,233	6,295	6,190	53,307,797	657.22
Leisure & Hospitality	271	4,182	4,197	4,217	19,691,066	360.76
Other Services	153	695	683	679	5,393,883	605.13
Local Government	127	4,754	4,749	4,719	41,175,471	668.12
State Government	56	1,816	1,801	1,820	17,494,147	742.53
Eastern Local Workforce Development Area includes these counties: Crittenden, Cross, Lee, Phillips, and Saint Francis.						

TABLE 8. LOCAL WORKFORCE DEVELOPMENT AREA SUMMARY

North American Industry Classification System - Industry Groups	Number of Employing Units	Employment			Total Earnings Jan - Mar 2020	Average Weekly Earnings
		Jan	Feb	Mar		
NORTH CENTRAL LOCAL WORKFORCE DEVELOPMENT AREA	5,436	67,270	67,489	67,548	\$615,831,927	\$702.47
Natural Resources & Mining	207	1,365	1,391	1,439	18,998,808	1,045.13
Construction	431	2,563	2,449	2,516	27,632,147	847.06
Manufacturing	213	9,052	8,995	8,998	97,824,228	834.71
Trade, Transportation & Utilities	1,384	14,434	14,372	14,428	131,493,319	701.87
Wholesale Trade	220	1,440	1,449	1,437	18,238,220	972.91
Retail Trade	909	9,273	9,295	9,342	63,216,678	522.70
Transportation, Warehousing & Utilities	255	3,721	3,628	3,649	50,038,421	1,049.95
Information	76	389	389	385	3,588,523	712.06
Financial Activities	528	2,567	2,570	2,586	32,398,007	968.08
Professional & Business Services	486	3,232	3,297	3,259	27,217,388	641.70
Education & Health Services	968	14,641	14,722	14,632	146,402,496	767.93
Leisure & Hospitality	500	6,353	6,477	6,406	24,169,291	289.95
Other Services	328	1,274	1,279	1,295	10,072,323	604.05
Local Government	222	8,868	8,903	8,950	70,466,999	608.57
State Government	93	2,532	2,645	2,654	25,568,398	753.47

North Central Local Workforce Development Area includes these counties: Cleburne, Fulton, Independence, Izard, Jackson, Sharp, Stone, Van Buren, White, and Woodruff.

NORTHEAST LOCAL WORKFORCE DEVELOPMENT AREA	6,456	102,599	102,761	102,767	\$1,067,041,309	\$799.15
Natural Resources & Mining	445	1,809	1,801	1,874	17,620,398	914.43
Construction	481	3,512	3,524	3,656	39,151,110	845.01
Manufacturing	302	21,814	21,855	21,629	304,869,711	1,077.44
Trade, Transportation & Utilities	1,672	19,409	19,331	19,382	181,501,002	720.64
Wholesale Trade	347	3,715	3,729	3,818	55,137,396	1,129.82
Retail Trade	987	12,080	12,091	12,084	81,811,910	520.75
Transportation, Warehousing & Utilities	338	3,614	3,511	3,480	44,551,696	969.46
Information	55	724	715	720	8,860,179	947.04
Financial Activities	563	3,312	3,312	3,281	43,746,613	1,019.22
Professional & Business Services	652	7,143	7,239	7,280	64,675,944	689.00
Education & Health Services	1,077	17,747	17,767	17,787	203,849,449	882.58
Leisure & Hospitality	572	9,711	9,773	9,663	38,605,544	305.66
Other Services	334	1,545	1,530	1,571	12,953,680	643.42
Local Government	214	11,666	11,705	11,722	103,120,581	678.11
State Government	89	4,207	4,209	4,202	48,087,098	879.46

Northeast Local Workforce Development Area includes these counties: Clay, Craighead, Greene, Lawrence, Mississippi, Poinsett, and Randolph.

TABLE 8. LOCAL WORKFORCE DEVELOPMENT AREA SUMMARY

North American Industry Classification System - Industry Groups	Number of Employing Units	Employment			Total Earnings Jan - Mar 2020	Average Weekly Earnings
		Jan	Feb	Mar		
NORTHWEST LOCAL WORKFORCE DEVELOPMENT AREA	17,161	282,724	284,067	284,362	\$4,154,810,431	\$1,126.47
Natural Resources & Mining	145	1,622	1,607	1,629	22,421,583	1,065.09
Construction	1,605	12,803	12,910	13,061	160,026,482	952.42
Manufacturing	637	38,043	38,240	38,122	424,399,581	856.07
Trade, Transportation & Utilities	3,972	61,657	61,409	61,818	760,454,165	949.19
Wholesale Trade	1,275	10,805	10,867	10,878	270,401,570	1,917.06
Retail Trade	2,161	30,871	30,765	31,056	228,968,922	570.05
Transportation, Warehousing & Utilities	536	19,981	19,777	19,884	261,083,673	1,010.20
Information	238	2,535	2,584	2,609	40,789,080	1,218.02
Financial Activities	1,805	9,804	9,846	9,816	158,280,427	1,239.61
Professional & Business Services	2,954	50,503	50,250	50,316	1,620,364,257	2,475.23
Education & Health Services	2,465	36,748	37,197	36,820	405,183,397	844.16
Leisure & Hospitality	1,861	30,515	31,338	31,427	142,474,350	352.47
Other Services	1,066	5,468	5,464	5,445	48,703,375	686.28
Local Government	310	24,318	24,344	24,387	245,138,538	774.42
State Government	103	8,708	8,878	8,912	126,575,196	1,102.33
Northwest Local Workforce Development Area includes these counties: Baxter, Benton, Boone, Carroll, Madison, Marion, Newton, Searcy, and Washington.						
SOUTHEAST LOCAL WORKFORCE DEVELOPMENT AREA	6,234	67,063	67,068	67,108	\$664,710,438	\$762.25
Natural Resources & Mining	446	2,255	2,205	2,228	22,106,218	762.77
Construction	331	2,061	2,021	2,013	22,438,032	849.55
Manufacturing	204	14,527	14,447	14,446	192,841,322	1,024.92
Trade, Transportation & Utilities	1,223	11,463	11,423	11,410	102,201,054	687.69
Wholesale Trade	224	1,818	1,815	1,872	23,123,153	969.32
Retail Trade	732	7,181	7,197	7,153	46,639,786	499.89
Transportation, Warehousing & Utilities	267	2,464	2,411	2,385	32,438,115	1,031.09
Information	44	260	258	250	2,692,557	809.06
Financial Activities	437	2,467	2,454	2,434	31,801,041	997.78
Professional & Business Services	442	3,313	3,239	3,324	35,116,685	820.56
Education & Health Services	2,036	10,698	10,675	10,613	95,449,762	688.64
Leisure & Hospitality	421	4,911	4,939	4,900	18,502,522	289.48
Other Services	316	1,012	1,050	1,050	8,348,130	619.05
Local Government	209	8,617	8,602	8,648	72,736,070	648.91
State Government	125	5,479	5,755	5,792	60,477,045	819.70
Southeast Local Workforce Development Area includes these counties: Arkansas, Ashley, Bradley, Chicot, Cleveland, Desha, Drew, Grant, Jefferson, and Lincoln.						

TABLE 8. LOCAL WORKFORCE DEVELOPMENT AREA SUMMARY

North American Industry Classification System - Industry Groups	Number of Employing Units	Employment			Total Earnings Jan - Mar 2020	Average Weekly Earnings
		Jan	Feb	Mar		
SOUTHWEST LOCAL WORKFORCE DEVELOPMENT AREA	5,634	76,202	75,988	75,855	\$843,709,944	\$853.79
Natural Resources & Mining	328	2,262	2,171	2,183	26,207,922	914.14
Construction	349	3,119	3,105	3,137	38,660,826	953.07
Manufacturing	231	18,842	18,780	18,679	284,284,353	1,165.24
Trade, Transportation & Utilities	1,330	14,766	14,468	14,388	138,054,309	730.34
Wholesale Trade	238	1,849	1,822	1,819	23,131,189	972.31
Retail Trade	783	8,282	8,251	8,350	52,907,703	490.68
Transportation, Warehousing & Utilities	309	4,635	4,395	4,219	62,015,417	1,080.18
Information	46	346	352	351	4,636,269	1,019.93
Financial Activities	456	2,383	2,451	2,417	28,598,198	910.16
Professional & Business Services	431	4,703	4,757	4,767	94,836,014	1,538.29
Education & Health Services	1,285	9,531	9,590	9,560	79,714,452	641.39
Leisure & Hospitality	440	5,720	5,736	5,720	22,731,526	305.41
Other Services	344	1,415	1,404	1,398	10,004,023	547.46
Local Government	263	9,761	9,757	9,841	81,440,091	640.14
State Government	131	3,354	3,417	3,414	34,541,961	782.64

Southwest Local Workforce Development Area includes these counties: Calhoun, Columbia, Dallas, Hempstead, Howard, Lafayette, Little River, Miller, Nevada, Ouachita, Sevier, and Union

WEST CENTRAL LOCAL WORKFORCE DEVELOPMENT AREA	8,182	105,379	106,153	106,357	\$996,563,515	\$723.45
Natural Resources & Mining	244	2,307	2,300	2,331	23,896,424	1,023.77
Construction	745	4,371	4,342	4,458	46,347,737	812.06
Manufacturing	335	15,127	15,117	15,045	163,112,841	831.14
Trade, Transportation & Utilities	1,809	21,508	21,338	21,308	211,033,934	759.11
Wholesale Trade	319	1,847	1,865	1,859	23,166,005	959.61
Retail Trade	1,195	13,925	13,854	13,843	96,589,832	535.53
Transportation, Warehousing & Utilities	295	5,736	5,619	5,606	91,278,097	1,241.92
Information	78	709	717	715	7,691,099	828.99
Financial Activities	822	3,690	3,682	3,656	46,571,726	974.55
Professional & Business Services	920	7,951	7,950	7,914	79,307,091	768.49
Education & Health Services	1,548	17,352	17,422	17,343	182,333,011	807.35
Leisure & Hospitality	828	13,730	14,157	14,400	64,523,994	352.12
Other Services	507	2,138	2,176	2,179	15,989,097	568.27
Local Government	232	11,730	11,954	12,037	107,055,417	691.61
State Government	114	4,766	4,998	4,971	48,701,144	762.72

West Central Local Workforce Development Area includes these counties: Clark, Conway, Garland, Hot Spring, Johnson, Montgomery, Perry, Pike, Pope, and Yell

TABLE 8. LOCAL WORKFORCE DEVELOPMENT AREA SUMMARY

North American Industry Classification System - Industry Groups	Number of Employing Units	Employment			Total Earnings Jan - Mar 2020	Average Weekly Earnings
		Jan	Feb	Mar		
WESTERN LOCAL WORKFORCE DEVELOPMENT AREA	6,480	100,990	100,756	100,763	\$1,041,029,040	\$794.15
Natural Resources & Mining	143	1,164	1,121	1,162	18,941,656	1,268.10
Construction	526	3,998	3,948	3,958	42,626,869	826.36
Manufacturing	332	20,506	20,605	20,497	230,294,973	862.63
Trade, Transportation & Utilities	1,552	21,936	21,742	21,798	216,211,572	762.03
Wholesale Trade	345	3,616	3,624	3,633	49,617,915	1,053.09
Retail Trade	925	11,935	11,832	11,842	80,116,139	519.20
Transportation, Warehousing & Utilities	282	6,385	6,286	6,323	86,477,518	1,050.67
Information	69	1,003	995	986	19,138,077	1,480.05
Financial Activities	668	3,483	3,485	3,464	45,861,647	1,014.52
Professional & Business Services	853	9,876	9,815	9,910	103,735,712	808.72
Education & Health Services	1,106	15,924	15,897	15,843	193,486,300	936.78
Leisure & Hospitality	575	8,811	8,772	8,810	36,534,162	319.44
Other Services	419	1,954	1,969	1,920	15,983,330	631.26
Local Government	166	9,653	9,736	9,750	89,939,100	712.28
State Government	71	2,682	2,671	2,665	28,275,642	813.81

Western Local Workforce Development Area includes these counties: Crawford, Franklin, Logan, Polk, Scott, and Sebastian