

Arkansas Covered
Employment & Earnings
Fourth Quarter
2018

**COVERED EMPLOYMENT AND EARNINGS
STATE OF ARKANSAS
FOURTH QUARTER 2018**

**ASA HUTCHINSON, GOVERNOR
STATE OF ARKANSAS**

**DARYL BASSETT, DIRECTOR
DEPARTMENT OF WORKFORCE SERVICES**

**PUBLISHED BY
LABOR MARKET INFORMATION
BUREAU OF LABOR STATISTICS PROGRAMS
POST OFFICE BOX 2981
LITTLE ROCK, ARKANSAS 72203-2981
SUSAN PRICE, BLS PROGRAMS MANAGER
TELEPHONE (501) 682-3103**

STATE OF ARKANSAS WEBPAGE: <http://www.arkansas.gov>

DEPARTMENT OF WORKFORCE SERVICES WEBPAGE: <http://www.dws.arkansas.gov/>

WEBPAGE FOR LABOR MARKET INFORMATION: <http://www.discover.arkansas.gov>

RELEASED: APRIL 2019

TABLE OF CONTENTS

DESCRIPTION OF DATA	PAGE
Description and Classification of Data	1
Definition of Covered Employment and Earnings	2
Significant Developments During Fourth Quarter 2018	3

LIST OF GRAPHS AND TABLES

Graph 1	Total Covered Employment for Selected Years, Arkansas	7
Graph 2	Total Covered Earnings, by Calendar Quarter for Selected Years, Arkansas	8
Table 1	Quarterly Comparison of Covered Employment and Wages, by Industry	5
Table 2	Total Covered Employment in Arkansas, 2011 – 2018	6
Table 3	Total Covered Earnings, 2011 – 2018	9
Table 4	Total Taxable Earnings, 2011 – 2018	10
Table 5	State Summary – Employment and Total Earnings, by Industry, Fourth Quarter 2018	11
Table 6	County Summary – Employment and Total Earnings, by Industry, Fourth Quarter 2018	22
Table 7	Federal Government Employment and Total Earnings in Arkansas, Fourth Quarter 2018	60
Table 8	Local Workforce Development Area – Employment and Total Earnings, by Industry, Fourth Quarter 2018	61

EMPLOYMENT AND EARNINGS
UNDER THE ARKANSAS EMPLOYMENT SECURITY LAW
FOURTH QUARTER 2018

DESCRIPTION AND CLASSIFICATION OF DATA

This publication contains covered employment and payroll data by industry and county for the Fourth Quarter 2018 and a record for total covered employment by month, quarterly payroll data, average weekly earnings, and total taxable earnings for 2011 through 2018. These data are compiled from quarterly contributions and wage reports submitted by employers subject to the Arkansas Employment Security Law.

Employment data have been tabulated for each month of the quarter by industry under the **North American Industry Classification System** (NAICS) by state, county, and workforce area. Payroll data represent the total wages paid during the quarter and are classified by industry for the state and by publishable industry groups for each county and workforce area.

Due to industry classification revisions, previously published data will not always be comparable with current data. For this reason, comparisons should not be made between the same industries under different revisions. For more information, visit the NAICS home page at <http://www.census.gov/naics>.

Industry Classification Revisions

- SIC (Standard Industrial Classification) 1987 to NAICS 2002
- NAICS 2002 to NAICS 2007
- NAICS 2007 to NAICS 2012
- NAICS 2012 to NAICS 2018

The tabulation of this data is a joint effort in conjunction with the United States Bureau of Labor Statistics. Data included in this publication are subject to revisions. Revisions are typically reflected in the Annual Covered Employment and Earnings publication.

DEFINITION OF COVERED EMPLOYMENT AND EARNINGS

Covered Employment is the total number of workers employed by establishments subject to the Arkansas Employment Security Law that worked or received pay for the payroll period including the 12th of the month. Earnings include all wages paid to any covered employee by their employer including salaries, bonuses, commissions, fees, fringe benefits, sick pay made directly to employees or dependents, deferred compensation, and reported tips. These wages include both taxable and nontaxable wages. Only the first \$10,000 paid to each worker by an employer in the calendar year is taxable under the Arkansas Employment Security Law.

An Arkansas state unemployment insurance account is required of any entity meeting the definition of an employer. As described by Arkansas Department of Workforce Services Law, the definition of an employer includes, but is not limited to, a sole proprietorship, partnership, corporation, associations, trust, estate, and receiver or trustee in bankruptcy. The entity must employ one or more individuals for ten or more days in a calendar year, whether or not the days are consecutive.

Currently excluded from coverage is employment covered by the Railroad Unemployment Insurance Act, some domestic service workers, employees of small agricultural establishments, self-employed workers, unpaid family workers, insurance and real estate agents paid only on a commission basis, and employees of churches and religious organizations except separately incorporated schools.

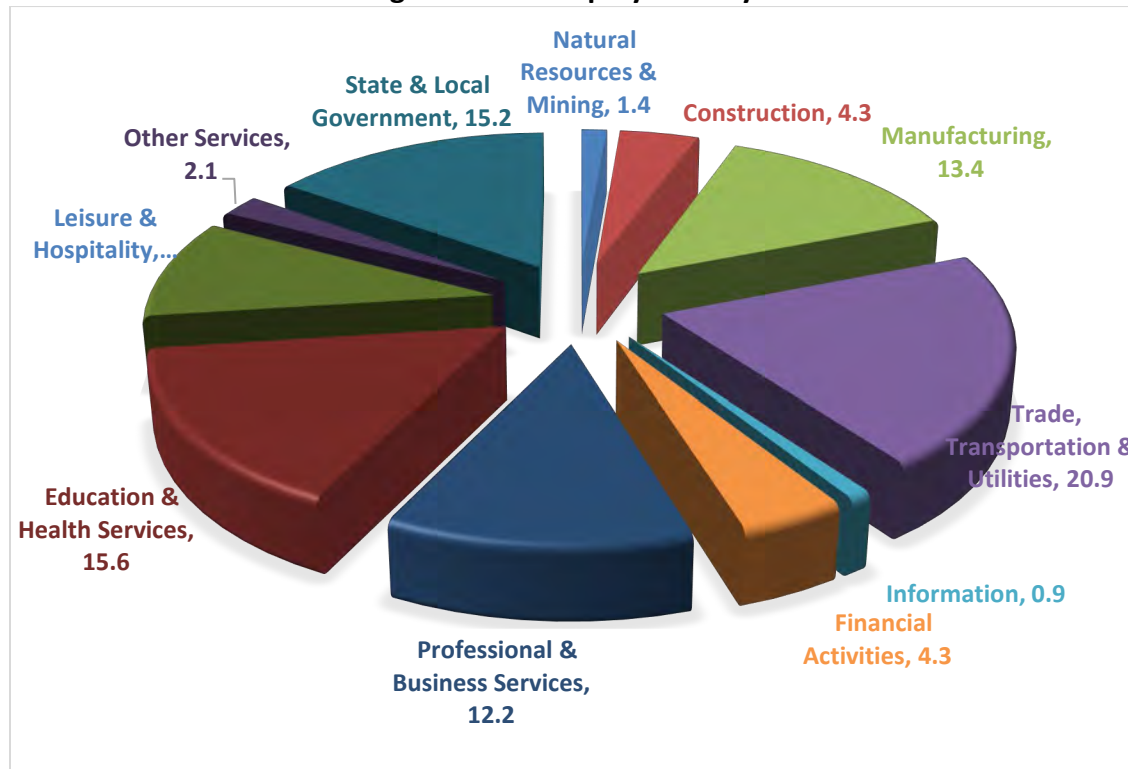
Civilian federal workers are covered by Unemployment Compensation for Federal Employees (UCFE).

SIGNIFICANT DEVELOPMENTS DURING FOURTH QUARTER 2018

AVERAGE EMPLOYMENT CHANGES

Covered employment averaged 1,206,777 during the Fourth Quarter 2018 (refer to Table 1), an increase of 29,992 (2.5%) from the previous quarter and an increase of 10,519 (0.9%) from the average recorded one year ago. The over-the-year comparison is more significant when used as an economic indicator and allows for seasonal factors that appear when comparing over-the-quarter data to be disregarded.

Average Covered Employment by NAICS



EMPLOYMENT CHANGES FROM THIRD QUARTER 2018

Over the quarter gains were recorded in nine of the eleven industry groups. Manufacturing reported the largest increase (3,141). Other large increases were reported in Education & Health Services (2,365), Leisure & Hospitality (1,540) and Professional & Business Services (1,485). Over-the-quarter losses occurred in two industry groups. Declines occurred in Information (-1,690) and Natural Resources & Mining (-184).

EMPLOYMENT CHANGES FROM FOURTH QUARTER 2017 (QUARTER YEAR AGO COMPARISON)

Over-the-year gains were recorded in nine industry groups (refer to Table 1). The largest expansions occurred in Education & Health Services (6,944), mostly due to growth in Health Care & Social Assistance (6,157). Trade, Transportation & Utilities (6,711), and Manufacturing (5,982) also saw large over-the-year gains. The only loss occurred in Information (-2,006).

COVERED WAGES

Wages paid to covered workers totaled \$13,485,219,140 for the Fourth Quarter 2018 (refer to Table 1), for an average weekly wage of \$859.58 (refer to Table 5). Mississippi County workers recorded the highest average weekly wage (\$1,070.80), and employees in Newton County reported the lowest (\$494.81) (refer to Table 6). Professional and Business Services recorded the highest average weekly wage for the State of Arkansas (\$1,171.78). The Leisure & Hospitality sector recorded the lowest (\$326.23) (refer to Table 5).

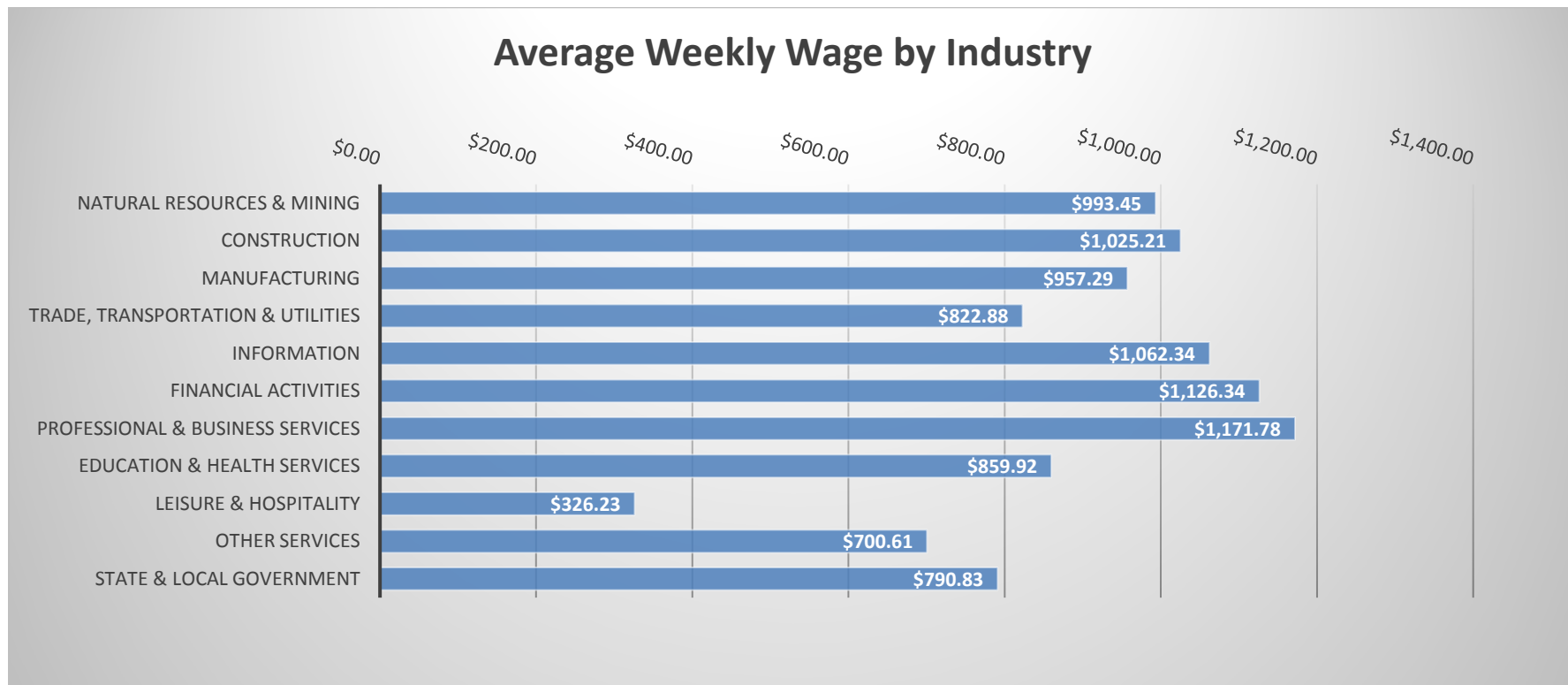


TABLE 1. QUARTERLY COMPARISON OF COVERED EMPLOYMENT AND WAGES, BY INDUSTRY

North American Industry Classification System - Industry Groups	Number of Employing Units	Monthly Employment Average	Percent of Total	Net Change From:		Total Wages Paid Oct - Dec 2018	Percent of Total
				Jul - Sep 2018	Oct - Dec 2017		
TOTAL	90,435	1,206,777	100	29,992	10,519	\$13,485,219,140	100
Natural Resources & Mining	2,552	16,475	1.4	-184	484	212,775,512	1.6
Agriculture, Forestry, Fishing & Hunting	2,111	12,720	1.1	-163	445	147,979,618	1.1
Mining	441	3,755	0.3	-20	40	64,795,894	0.5
Construction	7,060	51,488	4.3	439	1,810	686,218,370	5.1
Manufacturing	2,947	162,106	13.4	3,141	5,982	2,017,371,791	15.0
Trade, Transportation & Utilities	21,841	252,424	20.9	1,375	6,711	2,700,301,364	20.0
Wholesale Trade	7,293	47,782	4.0	524	1,214	847,471,976	6.3
Retail Trade	11,076	140,916	11.7	-1,294	1,017	988,352,807	7.3
Transportation & Warehousing	2,995	55,937	4.6	2,118	4,339	690,469,652	5.1
Utilities	477	7,788	0.6	27	141	174,006,929	1.3
Information	1,247	10,934	0.9	-1,690	-2,006	150,998,550	1.1
Financial Activities	8,512	51,401	4.3	1,470	2,187	752,626,868	5.6
Finance & Insurance	5,026	37,688	3.1	1,286	1,508	608,480,881	4.5
Real Estate & Rental & Leasing	3,486	13,713	1.1	184	679	144,145,987	1.1
Professional & Business Services	14,648	147,569	12.2	1,485	4,761	2,247,943,382	16.7
Professional & Technical Services	9,248	44,310	3.7	1,313	1,011	787,706,011	5.8
Management of Companies & Enterprises	568	34,509	2.9	201	-1,480	917,982,652	6.8
Administrative & Waste Services	4,832	68,750	5.7	-29	5,230	542,254,719	4.0
Education & Health Services	15,908	188,007	15.6	2,365	6,944	2,101,720,426	15.6
Educational Services	897	12,377	1.0	348	787	114,380,063	0.8
Health Care & Social Assistance	15,011	175,630	14.6	2,017	6,157	1,987,340,363	14.7
Leisure & Hospitality	7,296	117,663	9.8	1,540	4,775	499,002,379	3.7
Arts, Entertainment & Recreation	999	10,457	0.9	34	482	61,310,828	0.5
Accommodation & Food Services	6,297	107,206	8.9	1,506	4,293	437,691,551	3.2
Other Services	5,391	25,098	2.1	506	602	228,594,647	1.7
State & Local Government	3,033	183,612	15.2	72	2,861	1,887,665,851	14.0
Local Government	1,975	114,949	9.5	708	2,026	1,088,534,438	8.1
State Government	1,058	68,663	5.7	-636	835	799,131,413	5.9
Nonclassifiable Establishments	0	0	0.0	0	0	0	0.0

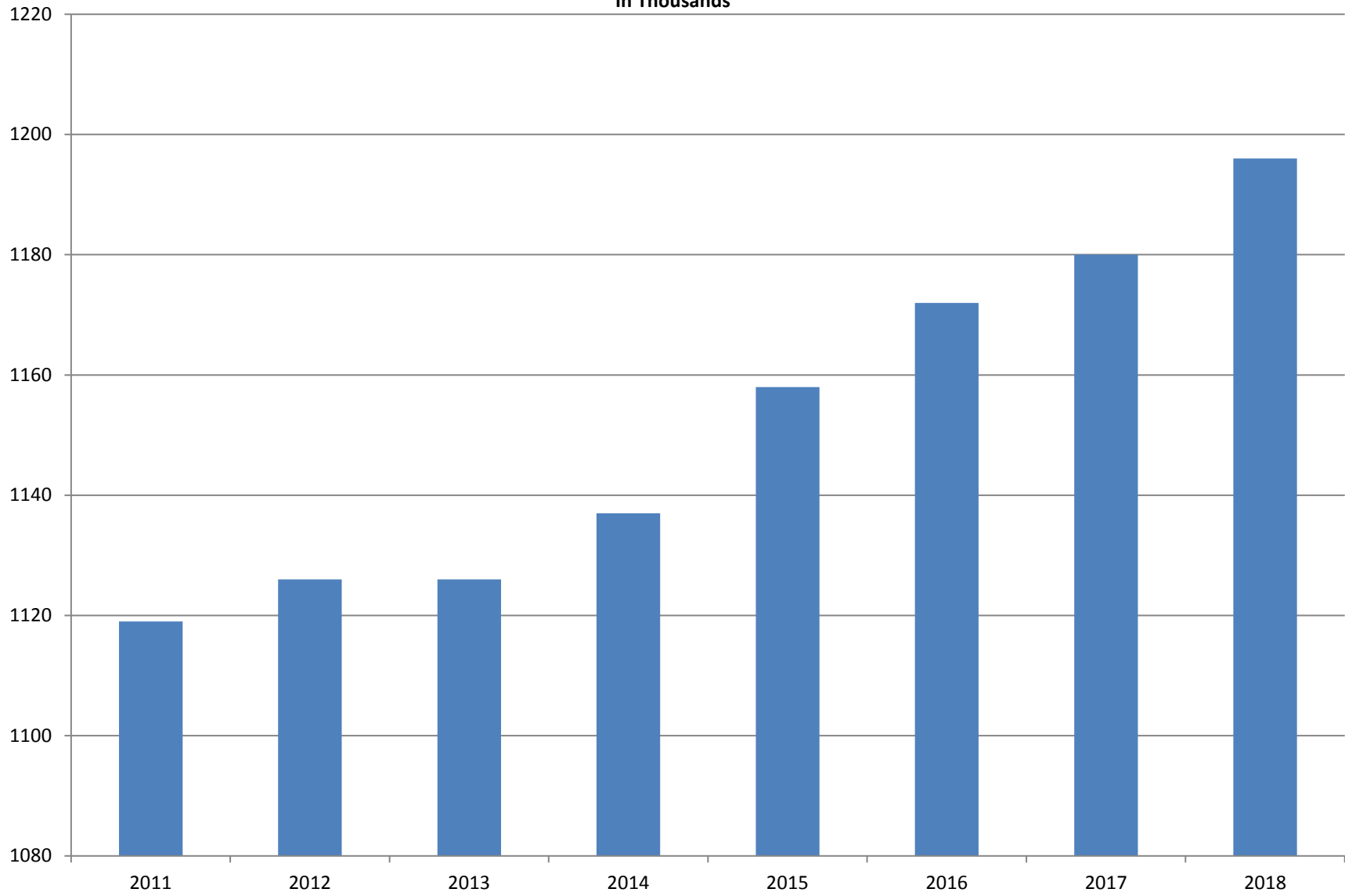
Note: Items do not necessarily add to total because of rounding. Because of industry code changes between years, substantial employment and wage shifts among industries are anticipated.

TABLE 2. TOTAL COVERED EMPLOYMENT IN ARKANSAS

PERIOD	2011	2012	2013	2014	2015	2016	2017	2018
AVERAGE	1,118,639	1,126,171	1,125,890	1,137,486	1,157,634	1,171,503	1,180,337	1,195,781
January	1,098,349	1,113,274	1,112,991	1,114,412	1,135,577	1,152,434	1,161,239	1,173,537
February	1,098,445	1,119,319	1,121,492	1,122,905	1,144,902	1,162,294	1,172,290	1,183,185
March	1,113,061	1,131,123	1,129,100	1,132,106	1,146,413	1,170,837	1,179,686	1,190,199
April	1,129,635	1,136,608	1,134,734	1,140,788	1,158,606	1,178,630	1,185,212	1,194,816
May	1,126,371	1,142,985	1,138,383	1,149,046	1,167,657	1,181,644	1,189,900	1,201,113
June	1,123,412	1,136,699	1,130,402	1,144,876	1,164,607	1,177,506	1,186,326	1,195,468
July	1,080,937	1,078,836	1,083,849	1,096,675	1,119,390	1,132,361	1,137,883	1,168,432
August	1,106,262	1,108,552	1,109,759	1,125,162	1,148,502	1,160,743	1,168,802	1,200,284
September	1,132,779	1,134,829	1,135,673	1,150,545	1,173,776	1,185,510	1,193,845	1,222,012
October	1,138,395	1,135,677	1,138,312	1,153,684	1,173,953	1,185,022	1,194,194	1,205,161
November	1,138,543	1,137,411	1,141,035	1,158,579	1,177,717	1,186,046	1,197,650	1,208,638
December	1,137,474	1,138,742	1,134,955	1,161,056	1,180,513	1,185,009	1,197,013	1,206,531

AVERAGE TOTAL COVERED EMPLOYMENT

In Thousands



TOTAL COVERED EARNINGS BY CALENDAR YEAR

In Thousands

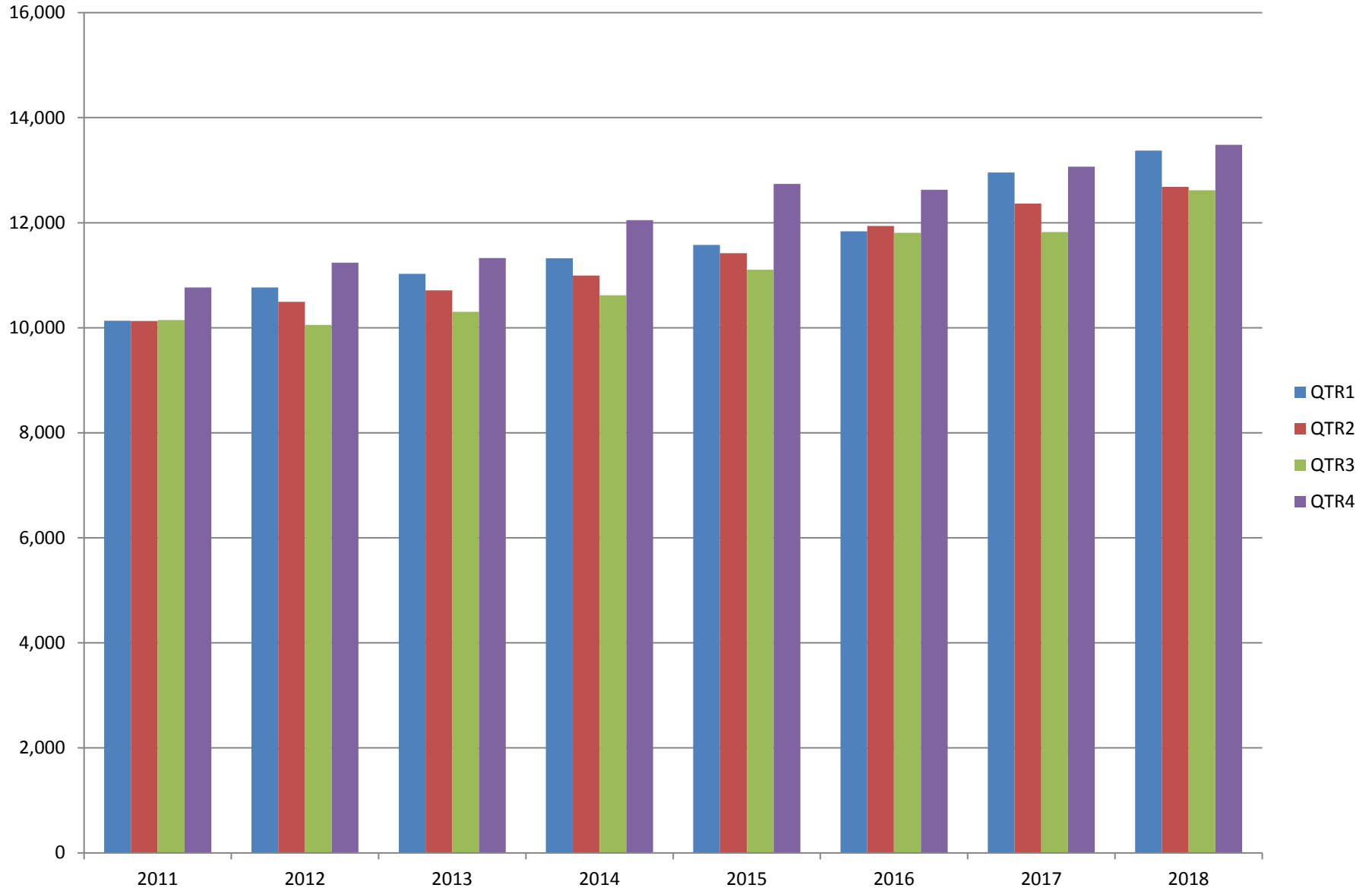


TABLE 3. TOTAL COVERED EARNINGS 2011 - 2018

PERIOD	2011	2012	2013	2014
TOTAL	\$41,177,659,236	\$42,551,238,929	\$43,371,086,461	\$44,980,520,034
January - March	10,134,035,254	10,766,175,449	11,027,184,315	11,321,422,241
April - June	10,128,274,611	10,494,369,042	10,711,027,503	10,991,760,061
July - September	10,147,287,431	10,053,294,410	10,304,451,772	10,619,889,280
October - December	10,768,061,940	11,237,400,028	11,328,422,871	12,047,448,452
Average Weekly Earnings	\$707.89	\$726.62	\$740.80	\$760.46

PERIOD	2015	2016	2017	2018
TOTAL	\$46,836,352,793	\$48,207,277,530	\$50,207,202,141	\$52,159,789,393
January - March	11,575,046,688	11,836,255,664	12,955,088,347	13,372,730,974
April - June	11,419,363,330	11,935,722,186	12,363,027,711	12,682,491,819
July - September	11,104,443,452	11,809,460,297	11,823,324,966	12,619,347,460
October - December	12,737,499,323	12,625,839,383	13,065,761,117	13,485,219,140
Average Weekly Earnings	\$778.05	\$791.34	\$818.01	\$838.84

TABLE 4. TOTAL TAXABLE EARNINGS, 2011 - 2018

PERIOD	2011	2012	2013	2014
TOTAL	11,479,396,226	11,624,348,048	11,644,747,978	11,919,662,224
January - March	5,828,877,821	6,167,036,199	6,184,735,653	6,288,682,396
April - June	2,910,604,359	2,838,154,846	2,805,431,293	2,831,013,392
July - September	1,601,382,146	1,494,712,584	1,506,497,129	1,552,243,963
October - December	1,138,531,900	1,124,444,419	1,148,083,903	1,247,722,473

PERIOD	2015	2016	2017	2018
TOTAL	12,258,632,610	12,511,938,047	12,744,039,136	11,343,357,036
January - March	6,378,966,662	6,595,351,454	6,958,706,950	6,577,871,657
April - June	2,915,293,283	3,003,077,908	2,908,226,426	2,278,450,975
July - September	1,640,978,599	1,651,582,584	1,576,968,648	1,328,689,516
October - December	1,323,394,066	1,261,926,101	1,300,137,112	1,158,344,888

TABLE 5. STATEWIDE SUMMARY

North American Industry Classification System - Industry Groups		Number of Employing Units	Employment			Total Earnings Oct - Dec 2018	Average Weekly Earnings
			Oct	Nov	Dec		
TOTAL, ALL INDUSTRIES		90,435	1,205,161	1,208,638	1,206,531	\$13,485,219,140	\$859.58
NATURAL RESOURCES & MINING		2,552	16,731	16,373	16,322	\$212,775,512	\$993.45
11	AGRICULTURE, FORESTRY, FISHING & HUNTING	2,111	12,943	12,635	12,582	\$147,979,618	\$894.89
111	CROP PRODUCTION	953	4,381	4,103	3,983	\$39,609,165	\$733.18
1111	Oilseed & Grain Farming	707	3,034	2,917	2,759	28,372,424	751.72
1112	Vegetable & Melon Farming	38	355	227	218	1,972,746	569.06
1113	Fruit & Tree Nut Farming	12	34	32	52	250,443	489.78
1114	Greenhouse & Nursery Production	38	298	292	362	2,857,216	692.60
1119	Other Crop Farming	158	660	635	592	6,156,336	752.88
112	ANIMAL PRODUCTION & AQUACULTURE	337	3,195	3,197	3,156	\$45,262,240	\$1,093.96
1121	Cattle Ranching & Farming	130	396	390	392	3,369,406	660.06
1122	Hog & Pig Farming	12	141	142	141	2,008,195	1,092.99
1123	Poultry & Egg Production	129	2,243	2,253	2,271	35,340,407	1,205.18
1125	Animal Aquaculture	44	347	343	294	4,104,652	962.63
	Other	22	68	69	58	439,580	520.21
115	SUPPORT ACTIVITIES FOR AGRICULTURE & FORESTRY	414	3,064	3,070	3,209	\$37,674,057	\$930.54
1151	Support Activities for Crop Production	276	1,951	1,856	1,666	25,343,377	1,068.60
1152	Support Activities for Animal Production	66	705	699	701	6,123,993	671.37
1153	Support Activities for Forestry	72	408	515	842	6,206,687	811.51
	OTHER	407	2,303	2,265	2,234	\$25,434,156	\$862.90
21	MINING	441	3,788	3,738	3,740	\$64,795,894	\$1,327.26
211	OIL & GAS EXTRACTION	80	633	624	621	\$15,466,254	\$1,900.50
212	MINING (EXCEPT OIL & GAS)	111	1,791	1,763	1,748	\$24,818,950	\$1,080.24
213	SUPPORT ACTIVITIES FOR MINING	250	1,364	1,351	1,371	\$24,510,690	\$1,384.32

TABLE 5. STATEWIDE SUMMARY

North American Industry Classification System - Industry Groups		Number of Employing Units	Employment			Total Earnings Oct - Dec 2018	Average Weekly Earnings
			Oct	Nov	Dec		
CONSTRUCTION		7,060	51,947	51,248	51,269	\$686,218,370	\$1,025.21
236	CONSTRUCTION OF BUILDINGS	1,874	11,097	10,957	11,009	\$173,027,620	\$1,207.68
2361	Residential Building Construction	1,275	3,728	3,743	3,807	48,698,134	996.46
2362	Nonresidential Building Construction	599	7,369	7,214	7,202	124,329,486	1,317.03
237	HEAVY & CIVIL ENGINEERING CONSTRUCTION	722	8,118	7,915	7,930	\$109,929,371	\$1,058.65
2371	Utility System Construction	408	4,501	4,461	4,441	62,608,110	1,077.97
2372	Land Subdivision	44	81	81	80	875,379	834.75
2373	Highway, Street & Bridge Construction	180	2,816	2,717	2,706	37,126,500	1,039.89
2379	Other Heavy Construction	90	720	656	703	9,319,382	1,034.45
238	SPECIALTY TRADE CONTRACTORS	4,464	32,732	32,376	32,330	\$403,261,379	\$955.07
2381	Building Foundation & Exterior Contractors	832	5,981	5,895	5,893	73,128,574	949.73
2382	Building Equipment Contractors	2,173	18,042	18,026	18,119	238,526,714	1,015.83
2383	Building Finishing Contractors	728	3,863	3,768	3,708	40,314,466	820.47
2389	Other Specialty Trade Contractors	731	4,846	4,687	4,610	51,291,625	836.92
MANUFACTURING		2,947	161,353	162,118	162,847	\$2,017,371,791	\$957.29
311	FOOD MANUFACTURING	300	48,638	48,797	49,015	\$477,838,384	\$752.96
3111	Animal Food Manufacturing	49	1,952	1,943	1,940	25,746,985	1,018.27
3112	Grain & Oilseed Milling	35	2,700	2,689	2,657	35,175,998	1,008.89
3114	Fruit, Vegetable & Specialty Food	18	4,188	4,115	4,172	48,813,686	902.98
3115	Dairy Product Manufacturing	7	567	566	565	6,346,480	862.53
3116	Animal Slaughtering & Processing	79	32,979	33,176	33,339	294,400,468	682.84
3118	Bakeries & Tortilla Manufacturing	77	3,990	4,008	4,009	41,040,777	788.79
3119	Other Food Manufacturing	23	2,221	2,262	2,288	26,077,855	888.79
	Other	12	41	38	45	236,135	439.46
312	BEVERAGE & TOBACCO PRODUCT MANUFACTURING	64	1,477	1,446	1,442	\$18,817,824	\$994.86
313	TEXTILE MILLS	8	119	114	116	\$1,785,111	\$1,180.37
314	TEXTILE PRODUCT MILLS	47	962	951	944	\$12,455,632	\$1,006.08
3141	Textile Furnishing Mills	10	38	40	43	505,595	964.26
3149	Other Textile Product Mills	37	924	911	901	11,950,037	1,007.93
315	APPAREL MANUFACTURING	15	898	910	884	\$6,440,518	\$552.11
3151	Apparel Knitting Mills	3	560	559	536	4,421,119	616.47
	Other	12	338	351	348	2,019,399	449.39

TABLE 5. STATEWIDE SUMMARY

North American Industry Classification System - Industry Groups		Number of	Employment			Total Earnings	Average
		Employing Units	Oct	Nov	Dec	Oct - Dec 2018	Weekly Earnings
316	LEATHER & ALLIED PRODUCT MANUFACTURING	12	1,127	1,163	1,131	\$7,886,776	\$532.02
3162	Footwear Manufacturing	3	933	965	930	5,983,877	\$488.29
3169	Other Leather & Allied Product Manufacturing	9	194	198	201	1,902,899	\$740.52
321	WOOD PRODUCT MANUFACTURING	304	10,070	10,056	10,054	\$113,996,079	\$871.66
3211	Sawmills & Wood Preservation	144	4,926	4,913	4,923	60,704,980	948.98
3212	Veneer & Engineered Wood Products	38	1,806	1,831	1,812	22,856,294	967.98
3219	Other Wood Product Manufacturing	122	3,338	3,312	3,319	30,434,805	704.53
322	PAPER MANUFACTURING	72	9,647	9,755	9,783	\$162,689,240	\$1,286.40
3221	Pulp, Paper & Paperboard Mills	15	3,900	3,892	3,919	81,499,499	1,605.98
3222	Converted Paper Product Manufacturing	57	5,747	5,863	5,864	81,189,741	1,072.23
323	PRINTING & RELATED SUPPORT ACTIVITIES	251	3,893	3,865	3,846	\$43,989,439	\$874.82
324	PETROLEUM & COAL PRODUCTS MANUFACTURING	22	1,242	1,247	1,258	\$20,333,938	\$1,252.32
325	CHEMICAL MANUFACTURING	122	5,565	5,615	5,625	\$93,327,293	\$1,281.59
3251	Basic Chemical Manufacturing	30	1,884	1,908	1,913	39,507,001	1,598.07
3252	Resin, Rubber & Artificial Fibers	11	475	476	469	7,910,772	1,285.61
3253	Agricultural Chemical Manufacturing	15	444	440	449	8,432,959	1,459.92
3254	Pharmaceutical & Medicine Manufacturing	23	522	527	527	6,743,585	987.44
3255	Paint, Coating & Adhesive Manufacturing	8	210	209	208	2,948,952	1,085.37
3256	Soap, Cleaning Compound, & Toilet Preparation Manufacturing	14	1,250	1,256	1,266	16,781,174	1,026.66
3259	Other Chemical Preparation Manufacturing	21	780	799	793	11,002,850	1,070.45
326	PLASTICS & RUBBER PRODUCTS MANUFACTURING	127	10,937	10,937	11,027	\$141,604,340	\$993.22
3261	Plastics Product Manufacturing	99	6,723	6,721	6,777	79,997,550	912.96
3262	Rubber Product Manufacturing	28	4,214	4,216	4,250	61,606,790	1,121.21
327	NONMETALLIC MINERAL PRODUCT MANUFACTURING	229	3,641	3,684	3,660	\$46,441,788	\$975.63
3271	Clay Product & Refractory Manufacturing	12	514	519	517	6,154,816	916.35
3272	Glass & Glass Product Manufacturing	9	350	363	366	4,933,930	1,055.24
3273	Cement & Concrete Product Manufacturing	172	2,075	2,100	2,103	26,410,112	970.79
3274	Lime & Gypsum Product Manufacturing	3	298	300	298	4,610,690	1,187.51
3279	Other Nonmetallic Mineral Products Manufacturing	33	404	402	376	4,332,240	845.81
331	PRIMARY METAL MANUFACTURING	72	8,278	8,359	8,418	\$174,569,141	\$1,607.87
3311	Iron & Steel Mills & Ferroalloys	10	3,254	3,275	3,302	99,810,385	2,342.91
3312	Purchased Steel Product Manufacturing	23	2,303	2,324	2,329	38,474,855	1,276.43
3313	Alumina & Aluminum Production	15	860	867	872	11,905,836	1,057.14
3314	Other Nonferrous Metal Production	6	313	319	325	3,650,661	880.31
3315	Foundries	18	1,548	1,574	1,590	20,727,404	1,015.12

TABLE 5. STATEWIDE SUMMARY

North American Industry Classification System - Industry Groups		Number of	Employment			Total Earnings	Average
		Employing Units	Oct	Nov	Dec	Oct - Dec 2018	Weekly Earnings
332	FABRICATED METAL PRODUCT MANUFACTURING	528	15,920	16,008	16,098	\$217,185,401	\$1,043.60
3321	Forging & Stamping	15	454	454	460	5,746,332	969.35
3322	Cutlery & Hand Tool Manufacturing	14	512	520	518	6,209,348	924.47
3323	Architectural & Structural Metals	155	4,570	4,599	4,652	69,530,954	1,160.96
3324	Boilers, Tanks & Shipping Containers	15	642	646	643	8,635,534	1,032.01
3325	Hardware Manufacturing	5	269	275	277	3,665,905	1,030.42
3326	Spring & Wire Product Manufacturing	10	356	350	351	4,010,846	875.67
3327	Machine Shops & Threaded Products	206	2,199	2,180	2,202	26,836,213	941.04
3328	Coating, Engraving & Heat Treating Metals	41	695	714	708	7,950,599	866.68
3329	Other Fabricated Metal Product Manufacturing	67	6,223	6,270	6,287	84,599,670	1,039.56
333	MACHINERY MANUFACTURING	204	11,385	11,505	11,635	\$146,931,306	\$982.11
3331	Agriculture, Construction & Mining Machinery	37	2,724	2,705	2,789	29,717,116	834.48
3332	Industrial Machinery Manufacturing	25	675	680	673	10,940,711	1,244.96
3333	Commercial & Service Industry Machinery	20	754	749	755	11,338,136	1,158.77
3334	HVAC & Commercial Refrigeration Equipment	23	2,777	2,908	2,912	35,599,494	955.60
3335	Metalworking Machinery Manufacturing	51	955	946	944	11,883,818	963.94
3336	Turbine & Power Transmission Equipment Manufacturing	5	787	770	795	10,577,510	1,037.82
3339	Other General Purpose Machinery Manufacturing	43	2,713	2,747	2,767	36,874,521	1,034.34
334	COMPUTER & ELECTRONIC PRODUCT MANUFACTURING	53	2,035	2,023	2,032	\$27,224,415	\$1,031.62
3343	Audio & Video Equipment Manufacturing	5	118	114	118	1,140,959	752.28
3344	Semiconductors & Electronic Components	24	1,432	1,428	1,443	19,137,428	1,026.34
3345	Navigational, Measuring, Electromedical, & Control Instr, Mtg Other	18 6	399 86	397 84	386 85	5,411,684 1,534,344	1,056.56 1,388.55
335	ELECTRICAL EQUIPMENT & APPLIANCES	52	4,583	4,626	4,642	\$66,492,264	\$1,107.82
3351	Electric Lighting Equipment Manufacturing	9	333	357	372	3,940,836	\$856.33
3352	Household Appliance Manufacturing	4	28	27	30	401,650	\$1,090.45
3353	Electrical Equipment Manufacturing	20	2,907	2,920	2,907	43,288,271	1,143.76
3359	Other Electrical Equipment & Component Manufacturing	19	1,315	1,322	1,333	18,861,507	1,096.39
336	TRANSPORTATION EQUIPMENT MANUFACTURING	126	13,960	14,051	14,183	\$167,316,480	\$915.09
3362	Motor Vehicle Body & Trailer Manufacturing	31	2,143	2,149	2,196	22,174,277	788.71
3363	Motor Vehicle Parts Manufacturing	39	5,274	5,321	5,329	57,789,707	837.48
3364	Aerospace Product & Parts Manufacturing	24	3,032	3,034	3,046	49,210,765	1,246.30
3366	Ship & Boat Building Other	20 12	2,213 1,298	2,209 1,338	2,229 1,383	19,943,920 18,197,811	691.99 1,044.91
337	FURNITURE & RELATED PRODUCT MANUFACTURING	165	3,631	3,681	3,713	\$35,723,142	\$747.74
3371	Household & Institutional Furniture Other	138 27	2,884 747	2,920 761	2,945 768	27,625,987 8,097,155	728.68 820.99
339	MISCELLANEOUS MANUFACTURING	174	3,345	3,325	3,341	\$34,323,280	\$791.21
3391	Medical Equipment & Supplies Manufacturing	66	1,630	1,611	1,620	17,352,862	823.80
3399	Other Miscellaneous Manufacturing	108	1,715	1,714	1,721	16,970,418	760.44

TABLE 5. STATEWIDE SUMMARY

North American Industry Classification System - Industry Groups		Number of	Employment			Total Earnings	Average
		Employing Units	Oct	Nov	Dec	Oct - Dec 2018	Weekly Earnings
TRADE, TRANSPORTATION & UTILITIES		21,841	249,044	254,192	254,035	\$2,700,301,364	\$822.88
42	WHOLESALE TRADE	7,293	47,572	47,832	47,943	\$847,471,976	\$1,364.31
423	MERCHANT WHOLESALERS, DURABLE GOODS	3,117	23,812	23,838	23,896	\$396,757,093	\$1,279.73
4231	Motor Vehicle & Part Merchant Wholesalers	293	3,200	3,175	3,171	45,835,392	1,108.05
4232	Furniture & Furnishings Merchant Wholesalers	78	435	429	430	7,670,125	1,367.87
4233	Lumber & Supply Merchant Wholesalers	229	1,566	1,561	1,564	21,840,496	1,074.42
4234	Commercial Goods Merchant Wholesalers	565	3,088	3,095	3,073	67,518,753	1,683.37
4235	Metal & Mineral Merchant Wholesalers	147	1,082	1,081	1,092	15,988,995	1,133.57
4236	Appliances & Electronics Goods Merchant Wholesalers	302	2,580	2,582	2,592	47,750,206	1,421.11
4237	Hardware & Plumbing Merchant Wholesalers	303	2,762	2,780	2,791	43,789,263	1,212.67
4238	Machinery & Supply Merchant Wholesalers	906	7,127	7,163	7,196	117,130,097	1,258.03
4239	Miscellaneous Durable Goods Merchant Wholesalers	294	1,972	1,972	1,987	29,233,766	1,137.46
424	MERCHANT WHOLESALERS, NONDURABLE GOODS	1,932	17,897	17,820	17,857	\$320,855,826	\$1,382.08
4241	Paper & Paper Product Merchant Wholesalers	125	1,254	1,239	1,237	25,413,262	1,572.28
4242	Druggist' Goods Merchant Wholesalers	232	1,657	1,656	1,655	43,151,144	2,004.42
4243	Apparel & Piece Goods Merchant Wholesalers	65	712	710	730	11,111,980	1,191.59
4244	Grocery Product Merchant Wholesalers	535	5,691	5,684	5,706	110,863,435	1,497.80
4245	Farm Product & Raw Material Merchant Wholesalers	82	899	860	877	9,755,930	854.09
4246	Chemical Merchant Wholesalers	225	1,109	1,107	1,111	27,565,028	1,911.98
4247	Petroleum Merchant Wholesalers	166	1,228	1,252	1,222	17,409,560	1,085.25
4248	Alcoholic Beverage Merchant Wholesalers	68	1,686	1,678	1,694	24,865,569	1,134.48
4249	Miscellaneous Nondurable Goods Merchant Wholesaler	434	3,661	3,634	3,625	50,719,918	1,071.85
425	ELECTRONIC MARKETS & AGENTS & BROKERS	2,244	5,863	6,174	6,190	\$129,859,057	\$1,644.13
44 - 45	RETAIL TRADE	11,076	138,760	142,412	141,575	\$988,352,807	\$539.52
441	MOTOR VEHICLE & PARTS DEALERS	1,523	19,097	18,917	18,992	\$215,620,615	\$872.87
4411	Automobile Dealers	633	11,712	11,608	11,641	151,516,519	1,000.12
4412	Other Motor Vehicle Dealers	172	1,771	1,707	1,705	19,492,377	867.88
4413	Automotive Parts, Accessories & Tire Stores	718	5,614	5,602	5,646	44,611,719	610.55
442	FURNITURE & HOME FURNISHINGS STORES	490	3,694	3,786	3,754	\$30,912,812	\$635.01
4421	Furniture Stores	262	2,046	2,043	2,021	19,174,572	724.21
4422	Home Furnishings Stores	228	1,648	1,743	1,733	11,738,240	528.65
443	ELECTRONICS & APPLIANCE STORES	389	3,412	3,448	3,448	\$30,863,477	\$690.95
444	BUILDING MATERIAL & GARDEN SUPPLY STORES	836	11,591	11,565	11,452	\$85,195,016	\$568.09
4441	Building Material & Supplies Dealers	597	9,588	9,579	9,520	72,846,374	586.00
4442	Lawn & Garden Equipment & Supplies Stores	239	2,003	1,986	1,932	12,348,642	481.28

TABLE 5. STATEWIDE SUMMARY

North American Industry Classification System - Industry Groups		Number of Employing Units	Employment			Total Earnings Oct - Dec 2018	Average Weekly Earnings
			Oct	Nov	Dec		
445	FOOD & BEVERAGE STORES	1,062	19,289	19,553	19,259	\$116,206,609	\$461.56
4451	Grocery Stores	559	16,651	16,867	16,644	95,949,788	441.41
4452	Specialty Food Stores	148	853	855	828	9,388,849	854.36
4453	Beer, Wine & Liquor Stores	355	1,785	1,831	1,787	10,867,972	464.19
446	HEALTH & PERSONAL CARE STORES	989	8,755	8,961	9,170	\$85,366,026	\$732.72
447	GASOLINE STATIONS	1,613	12,327	12,279	12,246	\$59,956,341	\$375.45
44711	Gasoline Stations with Convenience Stores	1,514	11,127	11,082	11,051	52,388,048	363.49
44719	Other Gasoline Stations	99	1,200	1,197	1,195	7,568,293	486.23
448	CLOTHING & CLOTHING ACCESSORIES STORES	1,024	7,933	8,793	8,851	\$37,856,319	\$341.56
4481	Clothing Stores	764	6,028	6,705	6,777	25,563,815	302.38
4482	Shoe Stores	130	1,189	1,348	1,316	5,064,539	303.33
4483	Jewelry, Luggage & Leather Goods Stores	130	716	740	758	7,227,965	753.38
451	SPORTING GOODS, HOBBY, BOOK & MUSIC STORES	445	4,524	4,925	4,919	\$25,896,247	\$415.93
4511	Sporting Goods & Musical Instrument Stores	384	4,053	4,431	4,393	23,929,320	428.84
4512	Book, Periodical & Music Stores	61	471	494	526	1,966,927	304.43
452	GENERAL MERCHANDISE STORES	1,022	39,085	41,201	40,379	\$238,621,513	\$456.36
4522	Department Stores	136	7,987	9,124	8,849	41,133,816	365.66
4523	Gen. Merchandise Stores, Warehouse clubs & Supercenters	886	31,098	32,077	31,530	197,487,697	481.22
453	MISCELLANEOUS STORE RETAILERS	1,175	7,139	7,074	7,175	\$41,292,616	\$445.53
4531	Florists	165	592	603	597	3,168,469	408.03
4532	Office Supplies, Stationery & Gift Stores	228	1,610	1,565	1,598	9,296,368	449.47
4533	Used Merchandise Stores	253	2,084	2,075	2,138	11,505,257	421.64
4539	Other Miscellaneous Store Retailers	529	2,853	2,831	2,842	17,322,522	468.86
454	NONSTORE RETAILERS	508	1,914	1,910	1,930	\$20,565,216	\$824.79
4541	Electronic Shopping & Mail-Order Houses	264	738	749	767	8,771,228	898.02
4542	Vending Machine Operators	64	460	452	455	4,073,037	687.59
4543	Direct Selling Establishments	180	716	709	708	7,720,951	835.33
48 - 49	TRANSPORTATION & WAREHOUSING	2,995	54,925	56,156	56,731	\$690,469,652	\$949.51
481	AIR TRANSPORTATION	48	750	745	749	\$7,429,583	\$764.05
4811	Scheduled Air Transportation	17	660	655	655	5,348,738	626.56
4812	Nonshceduled Air Transportation	31	90	90	94	2,080,845	1,752.54
483	WATER TRANSPORTATION	6	36	38	39	\$588,844	\$1,202.54
484	TRUCK TRANSPORTATION	1,864	32,656	32,895	32,859	\$442,013,883	\$1,036.51
4841	General Freight Trucking	1,086	26,539	26,848	26,804	369,391,584	1,063.01
4842	Specialized Freight Trucking	778	6,117	6,047	6,055	72,622,299	919.86

TABLE 5. STATEWIDE SUMMARY

North American Industry Classification System - Industry Groups		Number of Employing Units	Employment			Total Earnings Oct - Dec 2018	Average Weekly Earnings
			Oct	Nov	Dec		
485	TRANSIT & GROUND PASSENGER TRANSPORTATION	117	1,860	1,854	1,838	\$10,861,202	\$451.45
4853	Taxi & Limousine Service	28	423	410	409	1,999,280	371.48
4854	School & Employee Bus Transportation	14	395	394	409	2,378,634	458.19
4855	Charter Bus Industry Service	8	93	94	97	669,249	543.81
4859	Other Ground Passenger Transportation	62	846	850	823	4,951,865	453.65
	Other	5	103	106	100	862,174	643.89
486	PIPELINE TRANSPORTATION	42	423	421	412	\$10,305,417	\$1,893.45
487	SCENIC & SIGHTSEEING TRANSPORTATION	4	36	25	14	\$99,255	\$305.40
488	SUPPORT ACTIVITIES FOR TRANSPORTATION	509	5,507	5,588	5,573	\$71,255,784	\$986.54
4881	Support Activities for Air Transportation	108	1,032	1,055	1,057	11,453,999	840.72
4882	Support Activities for Rail Transportation	35	859	887	894	11,997,473	1,048.73
4883	Support Activities for Water Transportation	21	435	421	406	5,740,850	1,049.77
4884	Support Activities for Road Transportation	163	784	800	777	7,723,811	754.94
4885	Freight Transportation Arrangement	168	2,287	2,311	2,334	33,284,780	1,108.06
4889	Other Support Activities for Transportation	14	110	114	105	1,054,871	739.91
493	WAREHOUSING & STORAGE	224	8,438	8,534	8,515	\$93,011,768	\$842.16
	OTHER	181	5,219	6,056	6,732	\$54,903,916	\$703.62
22	UTILITIES	477	7,787	7,792	7,786	\$174,006,929	\$1,718.62
2211	Power Generation & Supply	225	5,814	5,819	5,831	143,791,637	1,900.06
2212	Natural Gas Distribution	71	1,034	1,033	1,031	20,428,970	1,521.75
2213	Water, Sewage & Other Systems	181	939	940	924	9,786,322	805.70
	INFORMATION	1,247	10,876	10,959	10,966	\$150,998,550	\$1,062.34
511	PUBLISHING INDUSTRIES, EXCEPT INTERNET	226	2,690	2,728	2,742	\$30,631,793	\$866.28
5111	Newspaper, Book & Directory Publishers	172	2,308	2,337	2,347	22,446,566	740.84
5112	Software Publishers	54	382	391	395	8,185,227	1,617.21
512	MOTION PICTURE & SOUND RECORDING INDUSTRY	149	1,312	1,340	1,389	\$6,634,137	\$378.86
5121	Motion Picture & Video Industries	136	1,298	1,326	1,374	6,465,973	373.22
5122	Sound Recording Industries	13	14	14	15	168,164	902.49
515	BROADCASTING, EXCEPT INTERNET	118	1,598	1,578	1,576	\$17,764,748	\$862.70

TABLE 5. STATEWIDE SUMMARY

North American Industry Classification System - Industry Groups		Number of Employing Units	Employment			Total Earnings Oct - Dec 2018	Average Weekly Earnings
			Oct	Nov	Dec		
517	TELECOMMUNICATIONS	342	3,446	3,422	3,398	\$56,966,525	\$1,280.55
5173	Telecommunications Resellers	241	3,075	3,054	3,025	50,693,425	1,277.96
5174	Satellite Telecommunications Carriers	4	7	6	7	74,623	861.03
5179	Other Telecommunications	97	364	362	366	6,198,477	1,309.91
518	DATA PROCESSING, HOSTING & RELATED SERVICES	316	1,484	1,536	1,504	\$34,479,017	\$1,758.77
519	OTHER INFORMATION SERVICES	96	346	355	357	\$4,522,330	\$986.40
FINANCIAL ACTIVITIES		8,512	51,464	51,454	51,284	\$752,626,868	\$1,126.34
52	FINANCE & INSURANCE	5,026	37,661	37,725	37,678	\$608,480,881	\$1,241.94
522	CREDIT INTERMEDIATION & RELATED ACTIVITIES	1,947	19,405	19,441	19,457	\$281,383,441	\$1,113.74
5221	Depository Credit Intermediation	1,399	16,377	16,423	16,478	232,492,526	1,088.76
5222	Nondepository Credit Intermediation	410	1,913	1,910	1,875	32,364,166	1,310.75
5223	Activities Related to Credit Intermediation	138	1,115	1,108	1,104	16,526,749	1,146.34
523	FINANCIAL INVESTMENT & RELATED ACTIVITIES	722	3,164	3,122	3,120	\$94,697,323	\$2,323.33
5231	Insurance Carriers	296	2,194	2,160	2,165	68,059,489	2,409.27
5239	Insurance Agencies, Brokerages & Support	426	970	962	955	26,637,834	2,129.27
524	INSURANCE CARRIERS & RELATED ACTIVITIES	2,282	15,011	15,074	14,999	\$230,315,845	\$1,178.91
5231	Security & Commodity Contracts Intermediation & Brokerage	303	6,527	6,578	6,609	106,426,668	1,245.82
5239	Other Financial Investment Activities	1,979	8,484	8,496	8,390	123,889,177	1,126.91
	OTHER	75	81	88	102	\$2,084,272	\$1,774.86
53	REAL ESTATE & RENTAL & LEASING	3,486	13,803	13,729	13,606	\$144,145,987	\$808.61
531	REAL ESTATE	2,883	9,705	9,669	9,566	\$98,926,993	\$788.85
5311	Lessors of Real Estate	1,111	4,405	4,355	4,276	37,670,945	666.87
5312	Offices of Real Estate Agents & Brokers	945	2,044	2,034	2,058	27,736,393	1,043.14
5313	Activities Related to Real Estate	827	3,256	3,280	3,232	33,519,655	791.90
532	RENTAL & LEASING SERVICES	589	4,039	3,999	3,978	\$44,278,964	\$850.38
5321	Automotive Equipment Rental & Leasing	120	1,088	1,091	1,098	8,547,083	601.89
5322	Consumer Goods Rental	303	1,794	1,752	1,719	15,715,013	688.80
5323	General Rental Centers	36	221	223	227	2,812,988	967.44
5324	Machinery & Equipment Rental & Leasing	130	936	933	934	17,203,880	1,416.38
533	LESSORS OF NONFINANCIAL INTANGIBLE ASSETS	14	59	61	62	\$940,030	\$1,191.92

TABLE 5. STATEWIDE SUMMARY

North American Industry Classification System - Industry Groups		Number of Employing Units	Employment			Total Earnings Oct - Dec 2018	Average Weekly Earnings
			Oct	Nov	Dec		
PROFESSIONAL & BUSINESS SERVICES		14,648	148,082	147,612	147,013	\$2,247,943,382	\$1,171.78
54	PROFESSIONAL & TECHNICAL SERVICES	9,248	43,935	44,086	44,908	\$787,706,011	\$1,367.48
5411	Legal Services	1,692	6,004	5,979	6,017	110,515,193	1,416.86
5412	Accounting & Bookkeeping Services	1,284	5,455	5,563	6,478	82,489,479	1,088.02
5413	Architectural & Engineering Services	1,033	6,371	6,319	6,351	125,502,114	1,521.03
5414	Specialized Design Services	175	331	338	358	5,012,153	1,126.24
5415	Computer Systems Design & Related Services	1,900	9,750	9,814	9,628	232,349,422	1,836.77
5416	Management & Technical Consulting Services	2,039	7,069	7,082	7,105	119,926,219	1,302.00
5417	Scientific Research & Development Services	132	766	781	776	13,825,178	1,373.41
5418	Advertising & Related Services	401	3,902	3,921	3,873	51,637,105	1,018.83
5419	Other Professional & Technical Services	592	4,287	4,289	4,322	46,449,148	831.06
55	MANAGEMENT OF COMPANIES & ENTERPRISES	568	34,571	34,592	34,364	\$917,982,652	\$2,046.25
56	ADMINISTRATIVE & WASTE SERVICES	4,832	69,576	68,934	67,741	\$542,254,719	\$606.72
561	ADMINISTRATIVE & SUPPORT SERVICES	4,509	66,055	65,431	64,205	\$495,648,302	\$584.49
5611	Office Administrative Services	712	3,840	3,862	3,905	58,973,098	1,172.50
5612	Facilities Support Services	59	1,544	1,476	1,443	13,674,983	707.10
5613	Employment Services	1,166	30,581	30,522	29,642	185,819,504	472.55
5614	Business Support Services	375	8,112	8,193	8,075	88,225,467	835.10
5615	Travel Arrangement & Reservation Services	117	377	374	367	4,531,382	935.33
5616	Investigation & Security Services	295	5,148	5,073	4,957	36,191,741	550.27
5617	Services to Buildings & Dwellings	1,590	15,228	14,718	14,598	95,811,412	496.37
5619	Other Support Services	195	1,225	1,213	1,218	12,420,715	784.00
562	WASTE MANAGEMENT & REMEDIATION SERVICES	323	3,521	3,503	3,536	\$46,606,417	\$1,018.50
5621	Waste Collection Services	136	1,282	1,273	1,262	15,543,478	939.73
5622	Waste Treatment & Disposal Services	39	1,008	1,001	1,032	16,154,768	1,225.92
5629	Remediation & Other Waste Services	148	1,231	1,229	1,242	14,908,171	929.32
EDUCATION & HEALTH SERVICES		15,908	187,969	187,802	188,251	\$2,101,720,426	\$859.92
61	EDUCATIONAL SERVICES	897	12,387	12,447	12,297	\$114,380,063	\$710.87
6111	Elementary & Secondary Schools	103	4,364	4,367	4,371	38,759,054	682.67
6112	Junior Colleges	7	120	121	121	862,084	549.56
6113	Colleges & Universities	115	4,329	4,418	4,328	42,794,302	755.30
6114	Business, Computer, & Management Training	59	171	175	173	2,697,895	1,199.60
6115	Technical & Trade Schools	117	878	871	874	13,315,690	1,171.50
6116	Other Schools & Instruction	319	1,974	1,935	1,852	9,768,270	391.29
6117	Educational Support Services	177	551	560	578	6,182,768	844.76

TABLE 5. STATEWIDE SUMMARY

North American Industry Classification System - Industry Groups		Number of Employing Units	Employment			Total Earnings Oct - Dec 2018	Average Weekly Earnings
			Oct	Nov	Dec		
62	HEALTH CARE & SOCIAL ASSISTANCE	15,011	175,582	175,355	175,954	\$1,987,340,363	\$870.42
621	AMBULATORY HEALTH CARE SERVICES	6,008	59,128	59,220	59,609	\$1,004,008,668	\$1,301.97
6211	Offices of Physicians	2,351	25,693	25,806	25,925	595,375,158	1,774.57
6212	Offices of Dentists	985	7,441	7,462	7,448	100,026,451	1,032.75
6213	Offices of Other Health Practitioners	1,654	9,727	9,701	9,858	109,171,985	860.26
6214	Outpatient Care Centers	380	5,198	5,186	5,200	78,327,002	1,159.87
6215	Medical & Diagnostic Laboratories	186	1,316	1,323	1,286	25,592,866	1,504.73
6216	Home Health Care Services	268	7,067	7,087	7,165	63,839,720	691.04
6219	Other Ambulatory Health Care Services	184	2,686	2,655	2,727	31,675,486	906.01
622	HOSPITALS	112	43,915	43,836	43,968	\$551,141,254	\$965.59
6221	General Medical & Surgical Hospitals	83	39,154	39,120	39,244	493,627,650	969.33
6222	Psychiatric & Substance Abuse Hospitals	10	1,952	1,934	1,918	21,454,748	853.05
6223	Specialty Hospitals	19	2,809	2,782	2,806	36,058,856	990.98
623	Residential & Mental Health Facilities	648	32,394	32,357	32,380	\$215,770,463	\$512.64
6231	Nursing Care Facilities (Skilled Nursing Facilities)	281	22,930	22,991	22,991	153,151,936	512.87
6232	Residential Mental Health Facilities	176	4,375	4,305	4,344	29,509,630	522.87
6233	Continuing Care & Assisted Living Facilities	153	4,272	4,273	4,245	26,529,582	478.67
6239	Other Residential Care Facilities	38	817	788	800	6,579,315	631.31
624	SOCIAL ASSISTANCE	8,243	40,145	39,942	39,997	\$216,419,978	\$415.90
6241	Individual & Family Services	7,174	24,978	24,629	24,672	137,152,963	426.11
6242	Emergency & Other Relief Services	144	1,375	1,388	1,406	9,472,390	524.33
6243	Vocational Rehabilitation Services	91	3,373	3,398	3,441	18,633,903	421.09
6244	Child Day Care Services	834	10,419	10,527	10,478	51,160,722	375.71
LEISURE & HOSPITALITY		7,296	119,256	117,444	116,288	\$499,002,379	\$326.23
71	ARTS, ENTERTAINMENT & RECREATION	999	11,246	10,162	9,962	61,310,828	\$451.02
711	PERFORMING ARTS & SPECTATOR SPORTS	231	3,000	2,400	2,474	21,192,372	\$621.10
7111	Performing Arts Companies	46	614	449	299	2,121,089	359.38
7112	Spectator Sports	71	1,160	1,147	1,266	12,909,017	833.75
7113	Performing Arts & Sports Promoters	49	1,131	707	824	4,694,809	406.99
7114	Agents & Managers for Public Figures	17	19	33	13	459,883	1,632.72
7115	Independent Artists, Writers, & Performers	48	76	64	72	1,007,574	1,096.78
712	MUSEUMS, PARKS, & HISTORICAL SITES	56	730	736	713	5,825,858	\$616.99
713	GAMBLING, RECREATIONAL & AMUSEMENT INDUSTRY	712	7,516	7,026	6,775	34,292,598	\$371.24
7131	Amusement Parks & Arcades	30	419	135	112	1,088,471	377.16
7139	Other Amusement & Recreation Industries	682	7,097	6,891	6,663	33,204,127	371.05
72	ACCOMMODATION & FOOD SERVICES	6,297	108,010	107,282	106,326	437,691,551	\$314.06

TABLE 5. STATEWIDE SUMMARY

North American Industry Classification System - Industry Groups		Number of Employing Units	Employment			Total Earnings Oct - Dec 2018	Average Weekly Earnings
			Oct	Nov	Dec		
721	ACCOMMODATION	919	11,346	11,082	10,835	\$54,939,004	\$381.15
7211	Travel Accommodation	826	10,807	10,548	10,324	51,836,815	377.61
7212	RV Parks & Recreational Camps	76	423	412	417	2,463,456	454.07
7213	Rooming & Boarding Houses	17	116	122	94	638,733	443.98
722	FOOD SERVICES & DRINKING PLACES	5,378	96,664	96,200	95,491	\$382,752,547	\$306.32
7223	Special Food Services	296	5,236	5,212	5,124	25,600,964	379.39
7224	Drinking Places, Alcoholic Beverages	147	1,074	1,035	974	4,084,922	305.77
7225	Restaurants & Other Eating Places	4,935	90,354	89,953	89,393	353,066,661	302.10
722511	Full-Service Restaurants	2,102	38,522	38,426	38,237	169,439,968	339.47
722513	Limited-Service Eating Places	2,339	47,033	46,790	46,386	163,478,776	269.07
722514	Caterias, Grill Buffets, & Buffets	90	1,684	1,669	1,643	8,183,225	377.99
722515	Snack & Nonalcoholic Beverage Bars	404	3,115	3,068	3,127	11,964,692	296.57
	OTHER SERVICES	5,391	25,209	25,089	24,997	\$228,594,647	\$700.61
811	REPAIR & MAINTENANCE	2,213	11,164	11,088	11,111	\$116,073,959	\$802.87
8111	Automotive Repair & Maintenance	1,397	6,778	6,775	6,806	62,004,172	702.82
8112	Electronic Equipment Repair & Maintenance	164	1,032	997	1,027	13,830,996	1,044.43
8113	Commercial Machinery Repair & Maintenance	486	2,739	2,703	2,664	35,008,091	996.64
8114	Household Goods Repair & Maintenance	166	615	613	614	5,230,700	655.31
812	PERSONAL & LAUNDRY SERVICES	1,356	7,750	7,772	7,732	\$52,638,367	\$522.38
8121	Personal Care Services	635	2,862	2,865	2,862	16,777,248	450.77
8122	Death Care Services	251	1,573	1,581	1,575	13,074,818	638.03
8123	Drycleaning & Laundry Service	222	2,259	2,256	2,218	16,070,518	550.81
8129	Other Personal Services	248	1,056	1,070	1,077	6,715,783	483.86
813	MEMBERSHIP ASSOCIATIONS & ORGANIZATIONS	1,112	5,365	5,330	5,260	\$54,024,139	\$781.39
8131	Religious Organizations	91	325	324	330	2,532,115	596.87
8132	Grantmaking & Giving Organizations	124	450	436	428	6,441,142	1,131.22
8133	Social Advocacy Organizations	219	1,353	1,370	1,378	14,224,134	800.41
8134	Civic & Social Organizations	195	1,215	1,182	1,176	5,891,969	380.54
8139	Professional & Similar Organizations	483	2,022	2,018	1,948	24,934,779	960.95
814	PRIVATE HOUSEHOLDS	710	930	899	894	\$5,858,182	\$496.47
	LOCAL GOVERNMENT	1,975	114,657	115,470	114,720	\$1,088,534,438	\$728.44
	STATE GOVERNMENT	1,058	68,573	68,877	68,539	\$799,131,413	\$895.27
	NONCLASSIFIABLE ESTABLISHMENTS	0	0	0	0	\$0	\$0.00

TABLE 6. COUNTY SUMMARY

North American Industry Classification System - Industry Groups	Number of Employing Units	Employment			Total Earnings Oct - Dec 2018	Average Weekly Earnings
		Oct	Nov	Dec		
ARKANSAS COUNTY - TOTAL	814	9,708	9,869	9,890	\$106,315,764	\$832.61
Natural Resources & Mining	56	175	179	177	1,959,799	851.72
Construction	48	245	240	240	3,623,285	1,153.30
Manufacturing	33	3,713	3,860	3,856	43,513,648	878.61
Trade, Transportation & Utilities	189	2,069	2,082	2,066	23,328,287	865.92
Wholesale Trade	48	430	407	407	6,331,126	1,174.46
Retail Trade	87	964	986	976	7,099,779	559.95
Transportation, Warehousing & Utilities	54	675	689	683	9,897,382	1,115.78
Information	9	57	56	55	484,671	665.76
Financial Activities	53	306	306	288	5,131,421	1,315.75
Professional & Business Services	61	504	488	490	7,929,276	1,234.71
Education & Health Services	208	1,061	1,081	1,093	9,568,751	682.59
Leisure & Hospitality	70	560	574	611	2,158,043	285.39
Other Services	41	106	100	97	793,361	604.24
Local Government	32	730	722	737	6,444,489	679.39
State Government	14	182	181	180	1,380,733	586.80
ASHLEY COUNTY - TOTAL	565	6,770	6,630	6,573	\$73,158,295	\$845.28
Natural Resources & Mining	45	407	378	365	4,134,635	829.69
Construction	33	586	537	516	6,981,225	982.95
Manufacturing	26	1,673	1,660	1,665	28,829,909	1,331.14
Trade, Transportation & Utilities	112	1,238	1,232	1,194	10,422,501	656.44
Wholesale Trade	23	201	191	175	2,572,291	1,046.92
Retail Trade	63	717	728	724	4,476,119	476.23
Transportation, Warehousing & Utilities	26	320	313	295	3,374,091	839.05
Information	5	40	39	36	285,277	572.46
Financial Activities	40	180	176	180	1,646,574	708.92
Professional & Business Services	40	224	199	213	2,016,387	731.64
Education & Health Services	150	969	943	945	8,514,939	687.78
Leisure & Hospitality	34	355	354	341	1,218,225	267.74
Other Services	38	145	158	166	1,351,648	665.07
Local Government	32	846	846	844	6,815,680	620.21
State Government	10	107	108	108	941,295	672.51

TABLE 6. COUNTY SUMMARY

North American Industry Classification System - Industry Groups	Number of Employing Units	Employment			Total Earnings Oct - Dec 2018	Average Weekly Earnings
		Oct	Nov	Dec		
BAXTER COUNTY - TOTAL	1,233	15,027	14,963	14,939	\$136,653,409	\$701.89
Natural Resources & Mining	6	62	60	59	652,465	831.87
Construction	112	503	503	507	4,635,781	707.07
Manufacturing	54	2,422	2,431	2,469	24,232,032	763.73
Trade, Transportation & Utilities	258	2,802	2,854	2,798	19,648,507	536.35
Wholesale Trade	35	245	234	229	2,608,887	850.35
Retail Trade	199	2,347	2,389	2,353	14,971,346	487.36
Transportation, Warehousing & Utilities	24	210	231	216	2,068,274	726.47
Information	20	167	173	173	1,970,219	886.29
Financial Activities	117	705	678	688	12,304,561	1,371.08
Professional & Business Services	141	842	833	825	7,383,225	681.53
Education & Health Services	269	3,906	3,870	3,904	43,560,560	860.65
Leisure & Hospitality	122	1,671	1,606	1,578	6,287,902	298.88
Other Services	87	399	400	397	3,072,187	592.78
Local Government	36	1,209	1,220	1,211	10,280,481	651.76
State Government	11	339	335	330	2,625,489	603.47
BENTON COUNTY - TOTAL	6,674	120,342	120,832	121,030	\$1,673,893,716	\$1,066.48
Natural Resources & Mining	45	758	767	773	16,741,823	1,681.24
Construction	657	4,983	4,954	4,979	65,370,957	1,011.37
Manufacturing	195	12,249	12,266	12,369	143,108,844	895.38
Trade, Transportation & Utilities	1,694	28,929	29,644	29,573	385,569,108	1,009.43
Wholesale Trade	765	6,083	6,108	6,169	151,407,724	1,903.06
Retail Trade	742	12,476	12,980	12,819	92,690,308	558.85
Transportation, Warehousing & Utilities	187	10,370	10,556	10,585	141,471,076	1,036.06
Information	82	918	957	960	13,826,134	1,125.45
Financial Activities	686	4,026	4,020	4,001	61,348,900	1,175.18
Professional & Business Services	1,310	31,719	31,839	31,847	674,408,176	1,631.28
Education & Health Services	835	11,894	11,816	11,896	127,260,124	824.80
Leisure & Hospitality	647	12,798	12,498	12,461	60,726,755	371.16
Other Services	422	2,330	2,313	2,368	23,147,985	761.92
Local Government	84	8,621	8,637	8,677	93,138,691	828.75
State Government	17	1,117	1,121	1,126	9,246,219	634.29

TABLE 6. COUNTY SUMMARY

North American Industry Classification System - Industry Groups	Number of Employing Units	Employment			Total Earnings Oct - Dec 2018	Average Weekly Earnings
		Oct	Nov	Dec		
BOONE COUNTY - TOTAL	966	14,193	14,217	14,220	\$142,284,130	\$770.23
Construction	67	381	381	387	4,190,830	841.70
Manufacturing	59	1,880	1,894	1,905	20,208,424	821.18
Trade, Transportation & Utilities	254	3,565	3,594	3,611	39,665,952	849.92
Wholesale Trade	39	330	330	335	3,315,171	768.88
Retail Trade	169	2,004	2,039	2,038	14,649,729	555.95
Transportation, Warehousing & Utilities	46	1,231	1,225	1,238	21,701,052	1,355.69
Information	13	249	247	247	2,942,977	914.06
Financial Activities	96	485	480	470	6,134,649	986.54
Professional & Business Services	96	1,534	1,488	1,441	17,743,872	917.49
Education & Health Services	169	1,602	1,630	1,637	13,903,089	658.95
Leisure & Hospitality	83	1,178	1,198	1,211	4,692,041	301.86
Local Government	53	2,297	2,289	2,295	23,043,870	772.83
State Government	17	757	757	754	7,303,588	743.14
Other	59	265	259	262	2,454,838	720.74
BRADLEY COUNTY - TOTAL	368	3,768	3,821	3,853	\$35,036,077	\$706.63
Natural Resources & Mining	44	203	256	258	2,390,310	769.33
Construction	19	89	72	85	650,065	609.82
Manufacturing	12	956	951	953	10,936,951	882.49
Trade, Transportation & Utilities	72	474	476	471	3,634,668	590.27
Wholesale Trade	11	79	80	77	1,091,987	1,067.78
Retail Trade	38	306	311	310	1,664,162	414.28
Transportation, Warehousing & Utilities	23	89	85	84	878,519	785.80
Information	3	25	21	21	177,458	611.22
Financial Activities	25	131	133	131	1,807,506	1,055.99
Professional & Business Services	27	88	98	132	1,064,086	772.20
Education & Health Services	101	684	701	695	6,954,692	771.60
Leisure & Hospitality	16	196	189	176	566,654	233.10
Other Services	25	92	86	95	826,016	698.24
Local Government	14	477	481	479	3,669,750	589.33
State Government	10	353	357	357	2,357,921	509.97

TABLE 6. COUNTY SUMMARY

North American Industry Classification System - Industry Groups	Number of Employing Units	Employment			Total Earnings Oct - Dec 2018	Average Weekly Earnings
		Oct	Nov	Dec		
CALHOUN COUNTY - TOTAL	102	3,104	3,120	3,111	\$42,463,112	\$1,049.72
Natural Resources & Mining	6	37	37	36	311,294	653.06
Construction	11	134	131	130	1,462,823	854.62
Manufacturing	7	2,243	2,277	2,268	33,620,831	1,143.00
Trade, Transportation & Utilities	19	217	202	202	1,928,981	716.83
Retail Trade	9	57	52	51	272,029	392.35
Transportation, Warehousing & Utilities	10	160	150	151	1,656,952	829.44
Professional & Business Services	6	9	10	10	89,259	710.28
Education & Health Services	21	60	60	60	655,282	840.11
Leisure & Hospitality	4	11	11	11	40,767	285.08
Other Services	3	4	4	3	21,014	440.85
Local Government	11	200	201	202	1,522,335	582.60
State Government	7	81	81	82	755,530	714.56
Other	7	108	106	107	2,054,996	1,477.35
CARROLL COUNTY - TOTAL	807	10,869	10,605	10,416	\$84,342,479	\$610.34
Natural Resources & Mining	21	197	199	201	1,954,479	755.50
Trade, Transportation & Utilities	197	1,659	1,630	1,641	13,453,912	629.77
Wholesale Trade	23	207	198	209	1,745,824	656.16
Retail Trade	144	1,108	1,101	1,113	6,710,130	466.13
Transportation, Warehousing & Utilities	30	344	331	319	4,997,958	1,160.34
Information	11	77	70	69	1,074,038	1,147.48
Financial Activities	60	392	395	396	5,282,073	1,030.38
Professional & Business Services	62	248	247	251	2,395,603	741.06
Education & Health Services	100	1,125	1,119	1,120	9,648,995	661.92
Leisure & Hospitality	174	1,807	1,526	1,317	6,275,405	311.43
Other Services	46	145	147	149	1,055,192	552.17
Local Government	25	1,090	1,101	1,084	8,844,745	623.24
State Government	9	92	93	93	838,110	695.72
Other	102	4,037	4,078	4,095	33,519,927	633.53

TABLE 6. COUNTY SUMMARY

North American Industry Classification System - Industry Groups	Number of Employing Units	Employment			Total Earnings Oct - Dec 2018	Average Weekly Earnings
		Oct	Nov	Dec		
CHICOT COUNTY - TOTAL	495	3,096	3,104	3,065	\$26,388,670	\$657.28
Natural Resources & Mining	52	249	241	246	2,460,936	771.61
Construction	15	129	133	123	1,696,201	1,016.70
Manufacturing	6	17	19	19	254,084	1,066.09
Trade, Transportation & Utilities	68	654	651	662	5,472,510	642.04
Wholesale Trade	14	52	54	51	1,064,602	1,564.82
Retail Trade	40	310	304	310	2,331,294	582.24
Transportation, Warehousing & Utilities	14	292	293	301	2,076,614	540.88
Financial Activities	28	183	173	174	2,026,153	882.21
Professional & Business Services	17	44	45	44	421,234	730.89
Education & Health Services	246	659	669	664	4,676,814	541.80
Leisure & Hospitality	15	138	136	138	421,531	236.11
Local Government	17	627	631	600	5,892,288	731.84
State Government	10	314	313	310	2,347,759	578.22
Other	21	82	93	85	719,160	
CLARK COUNTY - TOTAL	662	9,538	9,658	9,628	\$82,826,319	\$663.12
Natural Resources & Mining	49	292	299	297	3,176,404	825.47
Construction	24	64	71	69	711,492	804.86
Manufacturing	33	1,418	1,412	1,409	18,614,051	1,013.34
Trade, Transportation & Utilities	140	1,525	1,530	1,530	11,786,828	593.25
Wholesale Trade	15	49	48	44	591,460	968.02
Retail Trade	92	1,261	1,272	1,276	8,761,891	530.84
Transportation, Warehousing & Utilities	33	215	210	210	2,433,477	884.36
Information	3	10	9	9	76,967	634.34
Financial Activities	72	302	301	295	2,931,017	753.22
Professional & Business Services	54	578	655	665	6,906,575	839.74
Education & Health Services	126	1,708	1,718	1,728	14,002,524	626.96
Leisure & Hospitality	70	1,196	1,209	1,160	4,375,311	283.22
Other Services	47	207	203	216	1,934,334	713.07
Local Government	30	977	981	979	8,002,612	628.79
State Government	14	1,261	1,270	1,271	10,308,204	625.67

TABLE 6. COUNTY SUMMARY

North American Industry Classification System - Industry Groups	Number of Employing Units	Employment			Total Earnings Oct - Dec 2018	Average Weekly Earnings
		Oct	Nov	Dec		
CLAY COUNTY - TOTAL	370	3,317	3,182	3,159	\$25,682,476	\$613.66
Natural Resources & Mining	57	399	274	248	2,220,729	556.43
Construction	30	138	125	115	973,023	594.03
Manufacturing	12	108	107	103	919,511	667.28
Trade, Transportation & Utilities	86	718	712	710	6,648,892	716.99
Wholesale Trade	20	229	231	227	2,242,516	753.28
Retail Trade	41	352	346	350	2,596,556	571.76
Transportation, Warehousing & Utilities	25	137	135	133	1,809,820	1,031.24
Information	6	29	28	28	207,863	564.33
Financial Activities	22	91	94	95	1,078,597	888.95
Professional & Business Services	26	132	129	125	1,123,746	671.83
Education & Health Services	53	517	528	531	3,690,725	540.42
Leisure & Hospitality	24	249	260	260	777,967	233.46
Other Services	24	79	76	75	692,367	694.68
Local Government	21	808	800	821	6,943,775	659.70
State Government	9	49	49	48	405,281	640.59
CLEBURNE COUNTY - TOTAL	643	6,210	6,211	6,173	\$53,844,100	\$668.26
Natural Resources & Mining	24	185	183	187	2,780,798	1,156.26
Construction	64	329	310	312	3,588,877	870.88
Manufacturing	31	1,250	1,264	1,270	12,949,946	789.76
Trade, Transportation & Utilities	147	1,112	1,131	1,107	9,557,844	658.40
Wholesale Trade	33	122	121	123	1,448,126	913.07
Retail Trade	94	893	914	885	6,702,833	574.59
Transportation, Warehousing & Utilities	20	97	96	99	1,406,885	1,111.87
Information	8	45	45	46	398,545	676.26
Financial Activities	76	262	261	257	2,855,562	844.84
Professional & Business Services	66	233	228	222	2,673,291	903.24
Education & Health Services	82	902	903	914	7,299,267	619.51
Leisure & Hospitality	82	858	838	825	3,368,535	308.35
Other Services	37	117	121	111	827,448	547.13
Local Government	18	806	818	807	6,675,818	633.72
State Government	8	111	109	115	868,169	598.05

TABLE 6. COUNTY SUMMARY

North American Industry Classification System - Industry Groups	Number of Employing Units	Employment			Total Earnings Oct - Dec 2018	Average Weekly Earnings
		Oct	Nov	Dec		
CLEVELAND COUNTY - TOTAL	129	1,083	1,072	1,083	\$8,842,739	\$630.21
Natural Resources & Mining	16	167	169	165	1,669,314	768.91
Construction	8	10	9	11	88,843	683.41
Manufacturing	4	110	112	111	1,233,964	855.14
Trade, Transportation & Utilities	32	172	169	177	1,469,861	654.82
Retail Trade	17	69	72	74	273,500	293.56
Other Trade, Transportation, & Utilities	15	103	97	103	1,196,361	911.17
Financial Activities	4	25	25	26	285,051	865.54
Education & Health Services	32	199	197	197	774,760	301.50
Other Services	5	12	12	11	109,557	722.35
Local Government	14	331	325	333	2,821,420	658.34
State Government	6	28	28	28	252,264	693.03
Other	8	29	26	24	137,705	402.25
COLUMBIA COUNTY - TOTAL	701	8,044	8,098	8,119	\$83,459,148	\$793.86
Natural Resources & Mining	38	377	365	353	7,024,522	1,480.41
Construction	35	168	161	165	1,664,764	777.68
Manufacturing	33	1,885	1,908	1,929	27,365,369	1,103.65
Trade, Transportation & Utilities	168	1,328	1,353	1,367	12,050,053	686.95
Wholesale Trade	32	199	201	207	3,175,332	1,207.20
Retail Trade	96	911	944	934	5,958,765	493.04
Transportation, Warehousing & Utilities	40	218	208	226	2,915,956	1,032.08
Information	6	33	32	34	335,788	782.72
Financial Activities	63	347	350	348	4,995,072	1,103.07
Professional & Business Services	52	301	289	275	2,631,789	702.12
Education & Health Services	168	975	987	974	6,391,696	502.39
Leisure & Hospitality	58	774	769	753	2,746,822	276.08
Other Services	41	125	123	125	815,867	504.76
Local Government	27	1,117	1,125	1,138	9,888,440	675.13
State Government	12	614	636	658	7,548,966	913.03

TABLE 6. COUNTY SUMMARY

North American Industry Classification System - Industry Groups	Number of Employing Units	Employment			Total Earnings Oct - Dec 2018	Average Weekly Earnings
		Oct	Nov	Dec		
CONWAY COUNTY - TOTAL	527	6,287	6,283	6,320	\$64,243,893	\$784.83
Natural Resources & Mining	29	215	214	224	2,473,346	874.08
Construction	49	472	463	465	6,771,322	1,116.15
Manufacturing	19	927	941	950	15,198,667	1,244.64
Trade, Transportation & Utilities	118	1,322	1,318	1,318	11,608,719	676.84
Wholesale Trade	14	132	131	135	1,631,641	946.06
Retail Trade	78	756	757	749	5,325,652	543.32
Transportation, Warehousing & Utilities	26	434	430	434	4,651,426	826.97
Information	3	13	14	14	52,174	293.66
Financial Activities	38	153	154	155	1,903,386	950.74
Professional & Business Services	39	427	443	448	3,875,940	678.64
Education & Health Services	130	784	774	778	7,268,671	718.06
Leisure & Hospitality	36	418	400	410	1,567,657	294.60
Other Services	26	85	84	84	687,807	627.37
Local Government	31	1,062	1,064	1,061	9,883,692	715.67
State Government	9	409	414	413	2,952,512	551.25
CRAIGHEAD COUNTY - TOTAL	2,840	51,536	51,931	51,760	\$525,902,852	\$781.84
Natural Resources & Mining	98	539	516	371	5,718,084	925.36
Construction	240	2,164	2,145	2,110	26,765,306	962.24
Manufacturing	100	6,881	6,883	6,964	86,374,698	961.63
Trade, Transportation & Utilities	783	10,392	10,768	10,847	97,246,911	701.15
Wholesale Trade	189	1,929	1,937	1,955	26,868,949	1,065.20
Retail Trade	462	6,693	6,964	6,985	46,086,451	515.23
Transportation, Warehousing & Utilities	132	1,770	1,867	1,907	24,291,511	1,011.14
Information	21	391	393	383	4,385,950	867.30
Financial Activities	279	1,583	1,591	1,588	21,954,696	1,063.94
Professional & Business Services	379	4,911	4,895	4,878	42,228,202	663.65
Education & Health Services	462	11,185	11,223	11,201	138,705,359	952.39
Leisure & Hospitality	262	5,626	5,672	5,546	22,763,898	311.87
Other Services	159	730	720	721	5,856,174	622.49
Local Government	35	4,229	4,208	4,238	41,329,680	752.47
State Government	22	2,905	2,917	2,913	32,573,894	860.57

TABLE 6. COUNTY SUMMARY

North American Industry Classification System - Industry Groups	Number of Employing Units	Employment			Total Earnings	Average Weekly Earnings
		Oct	Nov	Dec	Oct - Dec 2018	
CRAWFORD COUNTY - TOTAL	1,248	19,481	19,447	19,404	\$183,518,774	\$726.02
Natural Resources & Mining	21	229	205	224	2,794,991	980.24
Construction	144	1,059	1,046	1,054	14,064,095	1,027.40
Manufacturing	63	4,515	4,560	4,539	48,664,762	824.91
Trade, Transportation & Utilities	310	5,535	5,574	5,558	53,207,118	736.70
Wholesale Trade	76	735	741	751	9,762,198	1,011.59
Retail Trade	168	1,986	1,961	1,948	13,877,820	543.27
Transportation, Warehousing & Utilities	66	2,814	2,872	2,859	29,567,100	798.50
Information	9	44	46	46	449,363	762.49
Financial Activities	126	500	500	500	5,705,976	877.84
Professional & Business Services	165	1,680	1,672	1,656	14,662,274	675.64
Education & Health Services	183	1,685	1,661	1,656	13,660,392	630.23
Leisure & Hospitality	92	1,563	1,524	1,506	5,847,360	293.79
Other Services	83	429	428	424	4,269,012	769.05
Local Government	42	2,087	2,076	2,086	19,070,360	704.25
State Government	10	155	155	155	1,123,071	557.36
CRITTENDEN COUNTY - TOTAL	1,191	16,215	16,202	16,258	\$153,828,475	\$729.30
Natural Resources & Mining	55	292	278	275	3,364,815	918.93
Construction	43	406	394	415	5,066,814	962.36
Manufacturing	42	2,059	2,046	2,104	28,483,753	1,058.65
Trade, Transportation & Utilities	304	4,278	4,335	4,381	43,281,542	768.67
Wholesale Trade	56	751	758	762	9,532,068	968.61
Retail Trade	159	1,901	1,919	1,921	12,236,365	491.86
Transportation, Warehousing & Utilities	89	1,626	1,658	1,698	21,513,109	996.50
Information	5	48	48	49	456,797	727.00
Financial Activities	100	455	458	456	5,674,145	956.48
Professional & Business Services	106	1,026	1,071	1,042	9,062,490	666.25
Education & Health Services	284	2,035	1,979	1,986	17,721,483	681.60
Leisure & Hospitality	128	2,497	2,467	2,493	11,821,483	365.84
Other Services	70	518	524	518	4,513,042	667.61
Local Government	41	2,157	2,155	2,164	21,130,436	752.97
State Government	13	444	447	375	3,251,675	592.72

TABLE 6. COUNTY SUMMARY

North American Industry Classification System - Industry Groups	Number of Employing Units	Employment			Total Earnings Oct - Dec 2018	Average Weekly Earnings
		Oct	Nov	Dec		
CROSS COUNTY - TOTAL	472	4,810	4,814	4,777	\$41,788,570	\$669.64
Natural Resources & Mining	44	317	307	291	2,846,914	718.01
Construction	22	61	63	60	649,218	814.24
Manufacturing	11	343	348	343	2,731,357	609.59
Trade, Transportation & Utilities	127	1,159	1,149	1,136	10,450,867	700.27
Wholesale Trade	27	276	276	270	3,862,466	1,084.35
Retail Trade	68	760	747	736	5,298,067	545.09
Transportation, Warehousing & Utilities	32	123	126	130	1,290,334	785.67
Information	6	44	45	40	316,262	565.76
Financial Activities	45	285	284	273	3,026,360	829.44
Professional & Business Services	40	136	153	158	1,900,920	981.37
Education & Health Services	87	986	982	990	8,499,924	663.12
Leisure & Hospitality	31	310	302	309	1,065,741	267.04
Other Services	33	110	114	113	956,544	655.02
Local Government	17	703	707	703	5,966,006	651.57
State Government	9	356	360	361	3,378,457	723.90
DALLAS COUNTY - TOTAL	227	2,699	2,691	2,726	\$22,393,197	\$636.73
Natural Resources & Mining	24	125	118	117	1,191,614	763.86
Construction	13	63	61	60	529,098	663.58
Manufacturing	9	568	572	572	5,648,232	761.35
Trade, Transportation & Utilities	55	476	481	472	3,578,609	577.91
Wholesale Trade	6	11	10	13	126,091	855.82
Retail Trade	35	322	325	319	2,115,950	505.48
Transportation, Warehousing & Utilities	14	143	146	140	1,336,568	718.97
Information	4	17	17	18	143,289	635.90
Financial Activities	14	73	74	78	1,216,252	1,247.44
Professional & Business Services	10	33	32	32	153,332	364.79
Education & Health Services	52	767	774	761	6,723,909	674.05
Leisure & Hospitality	13	155	141	148	494,062	256.79
Other Services	12	49	48	49	337,699	533.77
Local Government	14	345	345	391	2,129,553	454.61
State Government	7	28	28	28	247,548	680.08

TABLE 6. COUNTY SUMMARY

North American Industry Classification System - Industry Groups	Number of Employing Units	Employment			Total Earnings	Average Weekly Earnings
		Oct	Nov	Dec	Oct - Dec 2018	
DESHA COUNTY - TOTAL	547	4,761	4,797	4,729	\$42,605,894	\$688.19
Natural Resources & Mining	63	306	269	252	2,910,868	812.26
Construction	17	97	96	96	951,799	760.02
Manufacturing	15	1,066	1,068	1,083	13,652,126	979.33
Trade, Transportation & Utilities	108	899	877	837	7,503,330	662.66
Wholesale Trade	19	182	176	174	2,726,658	1,182.76
Retail Trade	60	481	482	470	2,708,232	436.13
Transportation, Warehousing & Utilities	29	236	219	193	2,068,440	736.62
Information	4	17	17	18	176,175	781.84
Financial Activities	28	198	197	192	1,933,792	760.24
Professional & Business Services	35	95	89	97	1,016,784	835.03
Education & Health Services	182	767	772	787	5,140,147	509.97
Leisure & Hospitality	39	349	344	357	1,180,305	259.41
Other Services	26	55	58	65	319,879	414.71
Local Government	21	794	892	825	6,872,171	631.58
State Government	9	118	118	120	948,518	614.86
DREW COUNTY - TOTAL	534	6,406	6,418	6,488	\$57,091,629	\$682.22
Natural Resources & Mining	53	320	317	377	3,939,879	896.65
Construction	24	157	141	144	1,670,573	872.21
Manufacturing	21	899	898	902	9,674,058	827.15
Trade, Transportation & Utilities	117	1,052	1,076	1,073	7,998,274	576.62
Wholesale Trade	16	102	99	106	1,014,793	762.81
Retail Trade	79	831	861	855	5,635,798	510.63
Transportation, Warehousing & Utilities	22	119	116	112	1,347,683	896.26
Information	6	46	45	43	450,766	776.29
Financial Activities	48	213	216	212	2,928,102	1,054.16
Professional & Business Services	34	287	294	291	3,462,131	916.23
Education & Health Services	139	905	896	925	7,765,672	657.40
Leisure & Hospitality	41	685	679	662	2,261,971	257.65
Other Services	15	52	49	45	437,780	691.96
Local Government	23	1,210	1,216	1,226	10,397,194	657.00
State Government	13	580	591	588	6,105,229	800.97

TABLE 6. COUNTY SUMMARY

North American Industry Classification System - Industry Groups	Number of Employing Units	Employment			Total Earnings Oct - Dec 2018	Average Weekly Earnings
		Oct	Nov	Dec		
FAULKNER COUNTY - TOTAL	2,891	40,912	41,116	41,068	\$450,874,187	\$845.26
Natural Resources & Mining	42	263	248	254	5,647,626	1,703.66
Construction	334	2,827	2,849	2,882	39,612,415	1,068.16
Manufacturing	102	3,298	3,323	3,332	44,610,493	1,034.33
Trade, Transportation & Utilities	649	7,727	7,908	7,875	63,001,886	618.41
Wholesale Trade	138	698	698	700	10,147,353	1,117.22
Retail Trade	421	6,237	6,399	6,344	41,859,841	508.95
Transportation, Warehousing & Utilities	90	792	811	831	10,994,692	1,042.41
Information	21	289	290	284	6,917,190	1,849.68
Financial Activities	314	1,444	1,444	1,437	16,868,623	900.06
Professional & Business Services	443	4,710	4,709	4,688	98,096,336	1,604.71
Education & Health Services	459	7,311	7,369	7,371	77,983,552	816.12
Leisure & Hospitality	271	5,265	5,229	5,230	19,720,569	289.42
Other Services	196	946	921	902	6,981,837	581.87
Local Government	42	3,511	3,507	3,502	36,785,595	806.94
State Government	18	3,321	3,319	3,311	34,648,065	803.51
FRANKLIN COUNTY - TOTAL	364	4,608	4,563	4,546	\$42,646,287	\$717.46
Natural Resources & Mining	20	235	234	233	4,266,921	1,402.67
Construction	33	117	124	126	1,448,742	910.97
Manufacturing	16	999	971	965	10,376,497	815.87
Trade, Transportation & Utilities	85	958	955	956	9,173,330	737.86
Wholesale Trade	11	57	57	60	411,678	545.99
Retail Trade	52	616	615	607	4,026,521	505.55
Transportation, Warehousing & Utilities	22	285	283	289	4,735,131	1,275.06
Information	6	18	18	23	195,841	766.00
Financial Activities	31	79	80	79	726,476	704.40
Professional & Business Services	37	325	326	328	2,767,867	652.44
Education & Health Services	63	569	572	575	4,180,636	562.22
Leisure & Hospitality	32	352	335	326	1,116,445	254.33
Other Services	14	56	58	56	402,266	546.06
Local Government	19	767	757	746	6,562,717	667.17
State Government	8	133	133	133	1,428,549	826.23

TABLE 6. COUNTY SUMMARY

North American Industry Classification System - Industry Groups	Number of Employing Units	Employment			Total Earnings Oct - Dec 2018	Average Weekly Earnings
		Oct	Nov	Dec		
FULTON COUNTY - TOTAL	202	2,019	2,019	2,034	\$15,690,032	\$596.31
Manufacturing	12	127	130	133	855,342	506.12
Trade, Transportation & Utilities	48	277	284	288	2,633,989	715.95
Retail Trade	27	159	157	169	1,031,018	490.57
Other Trade, Transportation, & Utilities	21	118	127	119	1,602,971	1,016.25
Information	5	26	26	28	145,117	418.61
Financial Activities	18	79	77	79	1,017,807	999.48
Professional & Business Services	20	49	46	53	536,366	836.33
Education & Health Services	44	544	542	539	3,668,452	520.96
Leisure & Hospitality	15	124	132	112	393,646	246.85
Other Services	8	16	17	17	129,207	596.34
Local Government	12	565	555	571	4,035,535	550.73
State Government	9	62	62	62	456,681	566.60
Other	11	150	148	152	1,817,890	932.25
GARLAND COUNTY - TOTAL	3,073	36,861	37,013	36,854	\$345,653,943	\$720.38
Natural Resources & Mining	27	243	252	247	3,013,656	937.28
Construction	326	1,816	1,838	1,852	18,865,312	790.69
Manufacturing	90	2,554	2,580	2,596	32,405,769	967.43
Trade, Transportation & Utilities	681	7,234	7,507	7,468	63,559,480	660.43
Wholesale Trade	143	817	824	806	14,251,024	1,343.97
Retail Trade	475	5,949	6,176	6,131	43,217,243	546.30
Transportation, Warehousing & Utilities	63	468	507	531	6,091,213	933.38
Information	31	372	395	400	3,533,430	698.72
Financial Activities	337	1,486	1,480	1,474	18,253,141	948.71
Professional & Business Services	377	3,068	3,020	2,982	29,979,738	762.78
Education & Health Services	540	8,216	8,180	8,201	95,860,801	899.37
Leisure & Hospitality	383	6,890	6,587	6,645	34,188,411	392.09
Other Services	225	1,020	1,012	1,005	6,900,351	524.33
Local Government	34	2,951	3,146	2,973	30,281,101	770.45
State Government	22	1,011	1,016	1,011	8,812,753	669.42

TABLE 6. COUNTY SUMMARY

North American Industry Classification System - Industry Groups	Number of Employing Units	Employment			Total Earnings Oct - Dec 2018	Average Weekly Earnings
		Oct	Nov	Dec		
GRANT COUNTY - TOTAL	342	4,235	4,277	4,286	\$43,746,278	\$788.82
Natural Resources & Mining	26	185	185	183	2,630,248	1,097.61
Construction	33	224	233	230	3,471,293	1,166.04
Manufacturing	17	1,402	1,422	1,435	17,836,096	966.43
Trade, Transportation & Utilities	84	639	647	645	5,016,793	599.55
Wholesale Trade	16	77	70	71	1,115,308	1,180.64
Retail Trade	46	504	517	516	3,352,605	503.37
Transportation, Warehousing & Utilities	22	58	60	58	548,880	719.69
Financial Activities	18	106	103	107	1,556,378	1,136.60
Professional & Business Services	31	117	117	114	1,477,428	979.73
Education & Health Services	76	426	419	408	2,762,662	508.81
Leisure & Hospitality	23	296	307	309	950,800	240.59
Local Government	10	743	747	756	7,229,331	742.79
State Government	7	43	43	43	373,730	668.57
Other	17	54	54	56	441,519	621.27
GREENE COUNTY - TOTAL	907	15,611	15,609	15,613	\$151,633,143	\$747.17
Natural Resources & Mining	38	234	212	188	2,394,662	871.63
Construction	75	402	397	386	4,117,793	801.91
Manufacturing	67	5,153	5,206	5,278	61,856,304	912.87
Trade, Transportation & Utilities	233	2,692	2,684	2,675	21,360,572	612.27
Wholesale Trade	43	446	442	448	5,069,118	875.60
Retail Trade	156	1,926	1,923	1,902	13,177,917	528.79
Transportation, Warehousing & Utilities	34	320	319	325	3,113,537	745.34
Information	11	182	183	187	1,770,353	740.11
Financial Activities	77	535	541	543	7,498,211	1,068.78
Professional & Business Services	94	890	870	877	7,702,836	674.09
Education & Health Services	153	2,034	2,011	1,987	18,990,918	726.55
Leisure & Hospitality	78	1,301	1,307	1,282	5,101,853	302.66
Other Services	39	145	147	154	1,076,558	557.03
Local Government	31	1,646	1,654	1,657	15,399,856	716.93
State Government	11	397	397	399	4,363,227	844.01

TABLE 6. COUNTY SUMMARY

North American Industry Classification System - Industry Groups	Number of Employing Units	Employment			Total Earnings Oct - Dec 2018	Average Weekly Earnings
		Oct	Nov	Dec		
HEMPSTEAD COUNTY - TOTAL	514	7,888	7,898	7,928	\$72,716,345	\$707.63
Natural Resources & Mining	23	256	252	268	2,988,744	888.80
Construction	27	155	150	156	1,786,924	894.51
Manufacturing	30	2,341	2,316	2,324	26,780,965	885.29
Trade, Transportation & Utilities	122	1,253	1,265	1,300	11,356,068	686.39
Wholesale Trade	20	151	150	159	1,343,288	673.89
Retail Trade	76	836	849	856	5,519,307	501.25
Transportation, Warehousing & Utilities	26	266	266	285	4,493,473	1,269.22
Information	8	24	24	21	283,821	949.23
Financial Activities	43	205	208	206	2,407,960	897.71
Professional & Business Services	31	234	223	222	2,145,709	729.25
Education & Health Services	108	1,043	1,061	1,062	7,018,392	511.57
Leisure & Hospitality	49	653	650	647	2,416,855	286.02
Other Services	29	116	112	114	1,069,559	721.70
Local Government	28	885	887	878	7,943,888	691.78
State Government	16	723	750	730	6,517,460	682.72
HOT SPRING COUNTY - TOTAL	617	8,167	8,250	8,132	\$76,439,765	\$718.56
Natural Resources & Mining	22	116	121	116	1,011,426	661.21
Construction	49	230	227	234	2,023,515	675.78
Manufacturing	28	1,438	1,441	1,421	18,522,177	994.03
Trade, Transportation & Utilities	155	1,554	1,574	1,566	17,472,307	858.98
Wholesale Trade	17	85	86	87	1,638,238	1,465.33
Retail Trade	100	847	856	842	5,710,517	517.80
Transportation, Warehousing & Utilities	38	622	632	637	10,123,552	1,235.43
Information	6	41	45	42	540,225	973.96
Financial Activities	49	209	212	203	2,451,382	906.58
Professional & Business Services	54	787	854	773	5,541,554	529.75
Education & Health Services	128	1,126	1,113	1,111	10,068,773	693.60
Leisure & Hospitality	51	686	687	704	2,275,726	252.85
Other Services	35	137	142	143	919,714	502.94
Local Government	27	976	971	965	8,993,521	712.72
State Government	13	867	863	854	6,619,445	591.16

TABLE 6. COUNTY SUMMARY

North American Industry Classification System - Industry Groups	Number of Employing Units	Employment			Total Earnings Oct - Dec 2018	Average Weekly Earnings
		Oct	Nov	Dec		
HOWARD COUNTY - TOTAL	361	6,781	6,776	6,810	\$56,534,651	\$640.57
Natural Resources & Mining	16	205	204	204	2,057,760	774.66
Construction	22	126	125	121	1,232,262	764.43
Manufacturing	18	3,223	3,182	3,206	27,003,448	648.38
Trade, Transportation & Utilities	84	845	862	861	7,629,274	685.59
Wholesale Trade	17	78	79	77	943,898	930.87
Retail Trade	49	573	581	580	4,075,658	542.41
Transportation, Warehousing & Utilities	18	194	202	204	2,609,718	1,003.74
Financial Activities	35	138	139	139	1,564,398	867.82
Professional & Business Services	24	144	151	146	1,237,694	647.67
Education & Health Services	88	847	860	876	6,857,293	612.64
Leisure & Hospitality	23	345	344	351	1,272,635	282.39
Local Government	17	696	692	689	6,009,691	667.72
State Government	10	108	109	108	779,439	553.45
Other	24	104	108	109	890,757	640.37
INDEPENDENCE COUNTY - TOTAL	908	16,248	16,336	16,350	\$166,075,379	\$783.20
Natural Resources & Mining	18	254	232	227	3,190,482	1,032.63
Construction	60	523	593	547	8,939,209	1,240.47
Manufacturing	40	3,340	3,375	3,403	40,710,149	928.51
Trade, Transportation & Utilities	237	2,885	2,975	2,960	26,215,436	685.91
Wholesale Trade	28	308	307	303	2,970,577	746.75
Retail Trade	159	1,871	1,939	1,924	12,410,685	499.48
Transportation, Warehousing & Utilities	50	706	729	733	10,834,174	1,153.23
Information	11	105	99	103	869,845	653.85
Financial Activities	86	543	546	551	7,793,675	1,096.67
Professional & Business Services	91	1,218	1,152	1,147	9,980,781	654.89
Education & Health Services	163	3,611	3,592	3,670	43,916,600	932.09
Leisure & Hospitality	80	1,314	1,303	1,284	4,524,642	267.66
Other Services	62	318	320	331	2,025,528	482.38
Local Government	45	1,525	1,538	1,517	12,251,489	617.31
State Government	15	612	611	610	5,657,543	712.27

TABLE 6. COUNTY SUMMARY

North American Industry Classification System - Industry Groups	Number of Employing Units	Employment			Total Earnings Oct - Dec 2018	Average Weekly Earnings
		Oct	Nov	Dec		
IZARD COUNTY - TOTAL	259	3,136	3,163	3,172	\$26,128,823	\$636.65
Natural Resources & Mining	8	136	137	134	1,814,696	1,028.93
Construction	24	81	80	74	723,425	710.40
Manufacturing	9	353	376	392	3,384,102	696.65
Trade, Transportation & Utilities	66	500	498	506	4,011,721	615.55
Wholesale Trade	13	41	44	45	309,780	549.91
Retail Trade	42	330	322	329	2,041,084	480.14
Transportation, Warehousing & Utilities	11	129	132	132	1,660,857	975.25
Information	4	5	5	5	57,494	884.52
Financial Activities	26	162	163	162	1,958,646	928.12
Professional & Business Services	16	45	40	42	367,174	667.18
Education & Health Services	49	722	727	727	5,592,512	593.10
Leisure & Hospitality	21	175	166	165	622,294	283.81
Other Services	13	31	31	33	190,327	462.33
Local Government	14	500	509	509	3,982,268	605.39
State Government	9	426	431	423	3,424,164	617.34
JACKSON COUNTY - TOTAL	435	5,263	5,284	5,195	\$48,968,287	\$717.85
Natural Resources & Mining	58	311	296	258	2,753,574	734.61
Construction	20	102	95	84	1,089,016	894.35
Manufacturing	13	905	923	940	11,832,388	986.47
Trade, Transportation & Utilities	108	1,004	1,026	999	8,892,455	677.49
Wholesale Trade	21	207	204	204	2,742,573	1,029.11
Retail Trade	69	698	724	698	4,907,005	534.14
Transportation, Warehousing & Utilities	18	99	98	97	1,242,877	975.57
Information	3	10	10	9	79,141	629.77
Financial Activities	30	137	133	133	1,489,293	852.81
Professional & Business Services	31	112	112	110	1,226,833	847.65
Education & Health Services	82	881	870	887	8,800,737	769.88
Leisure & Hospitality	27	356	361	333	1,173,158	257.84
Other Services	19	57	55	56	516,919	710.05
Local Government	32	589	597	574	4,520,146	592.68
State Government	12	799	806	812	6,594,627	629.64

TABLE 6. COUNTY SUMMARY

North American Industry Classification System - Industry Groups	Number of Employing Units	Employment			Total Earnings Oct - Dec 2018	Average Weekly Earnings
		Oct	Nov	Dec		
JEFFERSON COUNTY - TOTAL	2,050	26,519	26,531	26,425	\$263,641,921	\$765.53
Natural Resources & Mining	42	154	143	125	2,309,647	1,263.02
Construction	86	505	463	485	4,936,468	784.02
Manufacturing	58	4,768	4,782	4,783	66,805,167	1,075.60
Trade, Transportation & Utilities	394	4,401	4,497	4,542	39,407,698	676.64
Wholesale Trade	76	684	678	721	8,162,660	904.32
Retail Trade	269	3,055	3,136	3,115	20,859,650	517.28
Transportation, Warehousing & Utilities	49	662	683	706	10,385,388	1,168.52
Information	8	69	68	70	895,348	998.16
Financial Activities	149	984	983	981	11,540,907	903.42
Professional & Business Services	140	2,250	2,211	2,158	18,495,041	644.82
Education & Health Services	852	4,853	4,838	4,859	52,254,504	828.78
Leisure & Hospitality	138	1,868	1,828	1,827	6,798,365	284.06
Other Services	106	497	499	487	4,396,240	684.10
Local Government	42	2,625	2,623	2,657	23,034,195	672.43
State Government	35	3,545	3,596	3,451	32,768,341	713.93
JOHNSON COUNTY - TOTAL	495	8,531	8,609	8,573	\$72,886,826	\$654.15
Natural Resources & Mining	14	201	199	201	2,128,161	817.16
Construction	34	207	212	211	1,850,926	677.99
Manufacturing	35	2,606	2,644	2,647	24,332,839	711.06
Trade, Transportation & Utilities	106	1,859	1,895	1,860	16,019,464	658.50
Retail Trade	74	866	896	881	5,527,446	482.62
Other Trade, Transportation & Utilities	32	993	999	979	10,492,018	814.96
Information	4	19	19	19	194,038	785.58
Financial Activities	49	180	181	181	1,824,055	776.63
Professional & Business Services	50	401	402	407	2,700,624	515.06
Education & Health Services	109	1,217	1,222	1,233	11,451,639	719.69
Leisure & Hospitality	44	625	606	591	1,955,938	247.73
Other Services	28	78	75	77	538,498	540.30
Local Government	14	1,036	1,050	1,043	8,925,433	658.27
State Government	8	102	104	103	965,211	720.84

TABLE 6. COUNTY SUMMARY

North American Industry Classification System - Industry Groups	Number of Employing Units	Employment			Total Earnings Oct - Dec 2018	Average Weekly Earnings
		Oct	Nov	Dec		
LAFAYETTE COUNTY - TOTAL	162	1,175	1,188	1,154	\$9,520,813	\$624.71
Natural Resources & Mining	26	84	87	78	570,917	529.12
Construction	9	76	75	72	1,146,172	1,186.10
Manufacturing	6	32	39	41	724,411	1,492.61
Trade, Transportation & Utilities	30	196	196	197	1,416,087	554.82
Retail Trade	18	116	123	120	634,014	407.55
Other Trade, Transportation & Utilities	12	80	73	77	782,073	784.69
Financial Activities	14	67	67	62	661,817	779.22
Professional & Business Services	10	36	37	35	305,402	652.57
Education & Health Services	34	175	176	173	1,184,236	521.54
Leisure & Hospitality	5	39	36	35	166,399	349.09
Local Government	14	303	310	295	2,253,384	572.70
State Government	9	127	127	128	806,948	487.48
Other	5	40	38	38	285,040	567.06
LAWRENCE COUNTY - TOTAL	407	3,967	3,953	3,918	\$33,800,557	\$658.91
Natural Resources & Mining	54	275	263	266	3,068,357	880.70
Construction	25	98	95	90	965,729	787.49
Manufacturing	18	414	409	398	3,548,451	670.66
Trade, Transportation & Utilities	119	807	815	789	7,550,245	722.67
Wholesale Trade	18	191	193	184	2,070,475	841.20
Retail Trade	62	477	488	476	3,695,018	591.74
Transportation, Warehousing & Utilities	39	139	134	129	1,784,752	1,024.54
Financial Activities	28	123	124	127	1,492,049	920.64
Professional & Business Services	25	104	103	103	1,009,571	751.54
Education & Health Services	52	565	566	566	4,484,417	609.82
Leisure & Hospitality	30	346	346	347	1,138,896	252.96
Local Government	24	1,072	1,070	1,065	9,024,538	649.39
State Government	9	79	79	81	635,617	613.73
Other	23	84	83	86	882,687	805.13

TABLE 6. COUNTY SUMMARY

North American Industry Classification System - Industry Groups	Number of Employing Units	Employment			Total Earnings Oct - Dec 2018	Average Weekly Earnings
		Oct	Nov	Dec		
LEE COUNTY - TOTAL	271	1,953	1,968	1,937	\$18,966,113	\$747.15
Natural Resources & Mining	43	281	284	253	4,278,212	1,206.94
Construction	6	28	29	28	259,028	703.24
Trade, Transportation & Utilities	42	327	335	330	3,482,376	810.11
Wholesale Trade	11	104	105	101	1,598,291	1,189.79
Retail Trade	21	169	175	172	1,046,923	468.21
Transportation, Warehousing & Utilities	10	54	55	57	837,162	1,163.80
Financial Activities	17	63	59	61	460,814	581.10
Professional & Business Services	13	48	47	51	1,073,121	1,696.19
Education & Health Services	109	424	430	434	3,387,461	606.93
Leisure & Hospitality	7	61	62	60	239,362	301.84
Local Government	15	297	299	297	2,118,304	547.41
State Government	6	404	405	405	3,535,107	671.99
Other	13	20	18	18	132,328	545.31
LINCOLN COUNTY - TOTAL	290	2,796	2,813	2,804	\$24,733,067	\$678.43
Natural Resources & Mining	32	157	151	162	1,482,158	727.74
Construction	20	121	136	127	1,251,446	752.07
Manufacturing	8	272	276	257	2,636,662	755.85
Trade, Transportation & Utilities	45	344	342	342	3,702,427	831.13
Wholesale Trade	9	54	53	55	537,389	765.51
Retail Trade	24	158	158	156	896,957	438.54
Transportation, Warehousing & Utilities	12	132	131	131	2,268,081	1,328.43
Financial Activities	19	73	74	73	644,657	676.21
Professional & Business Services	9	20	20	20	204,830	787.81
Education & Health Services	112	422	424	423	3,144,002	571.74
Leisure & Hospitality	15	154	159	161	409,267	199.25
Local Government	7	336	333	333	2,935,409	676.05
State Government	10	854	854	859	7,758,847	697.51
Other	13	43	44	47	563,362	970.20

TABLE 6. COUNTY SUMMARY

North American Industry Classification System - Industry Groups	Number of Employing Units	Employment			Total Earnings Oct - Dec 2018	Average Weekly Earnings
		Oct	Nov	Dec		
LITTLE RIVER COUNTY - TOTAL	245	3,448	3,424	3,398	\$41,602,064	\$934.81
Natural Resources & Mining	14	77	85	81	717,311	681.21
Construction	14	246	211	184	2,207,207	794.63
Manufacturing	17	1,163	1,163	1,167	24,261,013	1,602.83
Trade, Transportation & Utilities	60	574	573	569	4,461,279	599.96
Wholesale Trade	7	31	32	32	735,491	1,786.62
Retail Trade	40	418	426	419	2,609,920	476.87
Transportation, Warehousing & Utilities	13	125	115	118	1,115,868	719.30
Financial Activities	15	58	58	59	564,302	744.13
Professional & Business Services	15	71	64	63	562,798	655.94
Education & Health Services	44	211	212	212	1,604,224	583.00
Leisure & Hospitality	14	198	199	198	601,765	233.39
Local Government	20	708	710	719	5,669,024	612.18
State Government	10	84	85	86	632,822	572.69
Other	22	58	64	60	320,319	406.15
LOGAN COUNTY - TOTAL	499	5,256	5,284	5,248	\$42,960,615	\$627.94
Natural Resources & Mining	24	122	120	117	1,230,163	790.76
Construction	45	237	237	227	2,401,327	790.52
Manufacturing	21	1,066	1,070	1,052	11,195,673	810.42
Trade, Transportation & Utilities	100	988	995	984	7,335,492	570.54
Wholesale Trade	7	28	28	29	233,779	634.69
Retail Trade	71	807	814	801	5,234,021	498.70
Transportation, Warehousing & Utilities	22	153	153	154	1,867,692	936.97
Information	5	29	28	28	275,853	748.92
Financial Activities	51	185	189	192	2,420,880	987.04
Professional & Business Services	47	124	119	125	1,361,497	853.78
Education & Health Services	108	726	738	734	5,895,215	618.94
Leisure & Hospitality	33	316	308	297	1,043,030	261.35
Other Services	31	146	141	149	1,225,500	648.64
Local Government	22	814	822	818	5,433,830	510.99
State Government	12	503	517	525	3,142,155	469.33

TABLE 6. COUNTY SUMMARY

North American Industry Classification System - Industry Groups	Number of Employing Units	Employment			Total Earnings Oct - Dec 2018	Average Weekly Earnings
		Oct	Nov	Dec		
LONOKE COUNTY - TOTAL	1,307	14,056	14,001	13,993	\$126,871,165	\$696.27
Natural Resources & Mining	85	497	489	457	5,790,778	926.08
Construction	136	930	915	926	10,911,668	908.73
Manufacturing	34	1,662	1,655	1,641	20,568,322	957.35
Trade, Transportation & Utilities	309	2,754	2,790	2,762	23,110,269	642.08
Wholesale Trade	74	391	397	386	5,402,903	1,062.03
Retail Trade	175	2,029	2,058	2,037	13,522,958	509.58
Transportation, Warehousing & Utilities	60	334	335	339	4,184,408	957.97
Information	13	83	78	80	849,996	813.91
Financial Activities	151	663	659	660	10,781,406	1,255.31
Professional & Business Services	154	612	624	654	6,150,079	750.93
Education & Health Services	204	1,784	1,771	1,790	14,305,716	617.65
Leisure & Hospitality	117	2,061	2,052	2,028	7,614,670	286.15
Other Services	65	204	205	208	1,424,574	532.82
Local Government	25	2,637	2,592	2,614	23,888,902	702.90
State Government	14	169	171	173	1,474,785	663.42
MADISON COUNTY - TOTAL	259	3,364	3,326	3,344	\$31,154,650	\$716.52
Natural Resources & Mining	12	34	32	38	315,239	699.49
Construction	31	135	133	137	1,467,327	836.08
Manufacturing	21	1,203	1,175	1,169	11,946,366	777.24
Trade, Transportation & Utilities	54	687	684	676	5,559,874	626.79
Wholesale Trade	7	24	26	26	221,084	671.31
Retail Trade	35	497	493	489	3,383,019	527.85
Transportation, Warehousing & Utilities	12	166	165	161	1,955,771	917.34
Information	6	54	53	55	1,659,131	2,363.43
Financial Activities	19	74	82	82	873,849	847.30
Professional & Business Services	25	80	78	82	888,863	854.68
Education & Health Services	38	263	255	256	1,977,839	589.70
Leisure & Hospitality	17	189	198	193	564,180	224.47
Other Services	20	46	46	45	359,150	604.97
Local Government	9	559	550	570	5,212,573	716.44
State Government	7	40	40	41	330,259	629.86

TABLE 6. COUNTY SUMMARY

North American Industry Classification System - Industry Groups	Number of Employing Units	Employment			Total Earnings Oct - Dec 2018	Average Weekly Earnings
		Oct	Nov	Dec		
MARION COUNTY - TOTAL	287	3,736	3,697	3,706	\$30,527,325	\$632.44
Manufacturing	22	1,683	1,668	1,695	14,762,133	675.12
Trade, Transportation & Utilities	56	521	518	514	3,683,651	547.37
Wholesale Trade	6	36	36	38	298,499	626.22
Retail Trade	40	444	442	436	2,826,419	493.38
Transportation, Warehousing & Utilities	10	41	40	40	558,733	1,065.61
Information	3	53	55	55	1,185,118	1,677.85
Financial Activities	36	200	186	182	1,793,772	728.78
Professional & Business Services	24	73	72	74	625,754	659.38
Education & Health Services	48	335	333	335	2,588,535	595.57
Leisure & Hospitality	36	193	190	178	659,406	271.25
Other Services	14	31	32	29	129,957	325.98
Local Government	17	507	507	503	3,940,803	599.48
State Government	7	38	38	38	335,803	679.76
Other	24	102	98	103	822,393	626.35
MILLER COUNTY - TOTAL	884	13,006	13,087	13,129	\$136,843,086	\$805.14
Natural Resources & Mining	32	231	227	233	2,710,955	905.36
Construction	70	624	615	587	7,940,598	1,003.53
Manufacturing	26	2,276	2,303	2,314	39,800,436	1,332.47
Trade, Transportation & Utilities	221	3,528	3,642	3,718	36,224,271	767.77
Wholesale Trade	50	504	498	503	7,490,230	1,148.51
Retail Trade	124	1,264	1,277	1,268	8,226,009	498.37
Transportation, Warehousing & Utilities	47	1,760	1,867	1,947	20,508,032	849.05
Information	7	120	117	118	2,338,299	1,520.02
Financial Activities	82	388	389	395	5,183,667	1,020.67
Professional & Business Services	81	1,150	1,108	1,086	6,600,152	455.48
Education & Health Services	189	1,176	1,176	1,165	9,357,466	613.99
Leisure & Hospitality	83	1,354	1,349	1,339	5,723,460	326.77
Other Services	52	222	223	229	1,689,693	578.53
Local Government	26	1,476	1,473	1,479	14,271,212	743.76
State Government	15	461	465	466	5,002,877	829.39

TABLE 6. COUNTY SUMMARY

North American Industry Classification System - Industry Groups	Number of Employing Units	Employment			Total Earnings Oct - Dec 2018	Average Weekly Earnings
		Oct	Nov	Dec		
MISSISSIPPI COUNTY - TOTAL	1,118	17,931	17,938	17,877	\$249,387,927	\$1,070.80
Natural Resources & Mining	113	680	665	624	7,546,375	884.44
Construction	51	780	762	745	11,977,983	1,208.64
Manufacturing	59	6,706	6,755	6,773	143,666,212	1,638.52
Trade, Transportation & Utilities	276	2,774	2,810	2,821	27,657,248	759.36
Wholesale Trade	55	373	378	379	5,364,968	1,095.64
Retail Trade	150	1,549	1,592	1,594	10,219,011	498.04
Transportation, Warehousing & Utilities	71	852	840	848	12,073,269	1,096.91
Information	5	35	32	32	149,180	347.74
Financial Activities	82	461	454	454	4,943,514	833.32
Professional & Business Services	82	1,067	1,038	983	10,962,752	819.26
Education & Health Services	241	1,634	1,625	1,643	14,674,964	690.85
Leisure & Hospitality	89	1,150	1,153	1,149	4,100,165	274.10
Other Services	48	224	223	225	2,000,983	687.15
Local Government	49	1,895	1,896	1,915	17,469,016	706.50
State Government	23	525	525	513	4,239,535	625.95
MONROE COUNTY - TOTAL	286	2,008	1,994	2,023	\$15,773,949	\$604.17
Natural Resources & Mining	27	121	104	117	1,133,616	764.92
Manufacturing	6	142	150	145	1,264,441	667.72
Trade, Transportation & Utilities	72	511	510	516	5,029,992	755.22
Wholesale Trade	16	181	178	181	2,233,345	954.42
Retail Trade	33	242	238	237	1,704,917	548.73
Transportation, Warehousing & Utilities	23	88	94	98	1,091,730	899.78
Financial Activities	22	88	89	89	947,448	821.96
Professional & Business Services	15	21	18	33	163,207	523.10
Education & Health Services	66	378	388	389	2,597,965	519.07
Leisure & Hospitality	23	233	229	228	759,784	254.11
Local Government	21	356	346	345	2,591,231	571.13
State Government	7	69	70	70	655,059	723.29
Other	27	89	90	91	631,206	539.49

TABLE 6. COUNTY SUMMARY

North American Industry Classification System - Industry Groups	Number of Employing Units	Employment			Total Earnings Oct - Dec 2018	Average Weekly Earnings
		Oct	Nov	Dec		
MONTGOMERY COUNTY - TOTAL	166	1,267	1,269	1,241	\$8,768,711	\$535.76
Natural Resources & Mining	8	34	37	36	272,094	586.83
Construction	25	82	79	77	565,661	548.48
Manufacturing	9	35	36	35	275,338	599.43
Trade, Transportation & Utilities	34	228	225	243	1,509,108	500.37
Wholesale Trade	6	55	55	56	481,141	668.87
Retail Trade	22	145	142	158	842,338	436.82
Transportation, Warehousing & Utilities	6	28	28	29	185,629	503.97
Financial Activities	10	37	35	36	353,242	754.79
Professional & Business Services	15	21	21	24	198,506	694.08
Education & Health Services	20	54	52	53	423,697	614.94
Leisure & Hospitality	14	257	260	215	1,267,682	399.65
Local Government	9	454	459	458	3,451,092	580.89
State Government	7	34	34	34	291,373	659.21
Other	15	31	31	30	160,918	403.64
NEVADA COUNTY - TOTAL	199	2,531	2,584	2,481	\$23,547,354	\$715.38
Natural Resources & Mining	13	60	57	50	826,037	1,141.46
Trade, Transportation & Utilities	37	582	572	564	5,125,316	688.45
Retail Trade	22	314	308	304	1,791,995	446.58
Other Trade, Transportation & Utilities	15	268	264	260	3,333,321	971.25
Financial Activities	11	62	69	58	790,749	965.51
Professional & Business Services	12	47	49	45	627,529	1,027.05
Education & Health Services	47	448	448	447	2,672,392	459.20
Leisure & Hospitality	9	86	89	89	301,735	263.75
Other Services	13	42	46	34	205,935	389.54
Local Government	29	401	468	392	2,952,281	540.28
State Government	9	55	56	58	413,787	565.03
Other	19	748	730	744	9,631,593	1,000.30

TABLE 6. COUNTY SUMMARY

North American Industry Classification System - Industry Groups	Number of Employing Units	Employment			Total Earnings Oct - Dec 2018	Average Weekly Earnings
		Oct	Nov	Dec		
NEWTON COUNTY - TOTAL	117	1,026	1,043	1,014	\$6,610,513	\$494.81
Construction	5	17	18	17	142,938	634.34
Manufacturing	9	35	36	38	370,625	784.67
Trade, Transportation & Utilities	27	159	158	157	1,246,019	606.63
Retail Trade	13	106	105	108	638,746	462.08
Other Trade, Transportation & Utilities	14	53	53	49	607,273	904.13
Education & Health Services	23	245	265	252	1,204,140	364.67
Leisure & Hospitality	19	158	150	131	638,772	335.78
Other Services	4	3	3	3	17,023	436.49
Local Government	14	343	345	348	2,414,275	537.78
State Government	7	37	37	37	325,457	676.63
Other	9	29	31	31	251,264	637.19
OUACHITA COUNTY - TOTAL	652	6,878	6,840	6,837	\$63,276,145	\$710.40
Natural Resources & Mining	33	169	165	167	1,755,038	808.40
Construction	39	204	204	207	2,246,656	843.02
Manufacturing	25	583	567	574	7,207,359	964.75
Trade, Transportation & Utilities	160	1,481	1,490	1,518	12,128,124	623.48
Wholesale Trade	26	235	237	242	2,376,562	768.12
Retail Trade	103	944	950	955	5,634,448	456.39
Transportation, Warehousing & Utilities	31	302	303	321	4,117,114	1,026.03
Information	6	38	38	39	381,216	764.98
Financial Activities	48	251	251	239	2,984,530	929.47
Professional & Business Services	44	595	559	566	5,286,272	709.25
Education & Health Services	190	1,250	1,254	1,243	13,917,065	857.12
Leisure & Hospitality	37	464	447	436	1,573,084	269.50
Other Services	26	104	104	106	821,959	604.09
Local Government	31	1,105	1,113	1,108	9,266,149	642.92
State Government	13	634	648	634	5,708,693	687.57

TABLE 6. COUNTY SUMMARY

North American Industry Classification System - Industry Groups	Number of Employing Units	Employment			Total Earnings Oct - Dec 2018	Average Weekly Earnings
		Oct	Nov	Dec		
PERRY COUNTY - TOTAL	137	1,147	1,141	1,135	\$9,684,253	\$652.89
Construction	15	99	92	91	825,207	675.29
Manufacturing	5	24	23	28	359,983	1,107.64
Trade, Transportation & Utilities	27	171	167	166	1,246,410	570.70
Retail Trade	18	141	136	139	590,268	327.44
Other Trade, Transportation & Utilities	9	30	31	27	656,142	1,720.65
Financial Activities	8	25	25	25	314,219	966.83
Professional & Business Services	14	30	29	30	415,425	1,077.16
Education & Health Services	31	230	227	220	1,564,598	533.33
Leisure & Hospitality	7	64	70	70	253,097	286.31
Local Government	9	331	336	334	2,702,277	622.98
State Government	7	34	34	34	304,797	689.59
Other	14	139	138	137	1,698,240	946.62
PHILLIPS COUNTY - TOTAL	737	5,509	5,517	5,469	\$47,423,695	\$663.47
Natural Resources & Mining	59	293	292	268	2,831,774	766.10
Construction	29	86	91	101	812,423	674.40
Manufacturing	13	396	380	384	4,503,640	895.95
Trade, Transportation & Utilities	141	1,261	1,278	1,269	11,297,352	684.63
Wholesale Trade	27	262	264	264	3,686,487	1,076.87
Retail Trade	73	740	763	752	4,457,914	456.21
Transportation, Warehousing & Utilities	41	259	251	253	3,152,951	953.61
Information	6	18	17	17	179,591	797.00
Financial Activities	40	207	204	205	2,163,694	810.57
Professional & Business Services	41	263	257	254	2,821,413	841.21
Education & Health Services	297	1,477	1,480	1,471	11,581,971	603.60
Leisure & Hospitality	40	361	355	343	1,194,776	260.36
Other Services	31	75	74	76	412,596	423.18
Local Government	26	730	744	737	6,625,589	691.53
State Government	14	342	345	344	2,998,876	671.24

TABLE 6. COUNTY SUMMARY

North American Industry Classification System - Industry Groups	Number of Employing Units	Employment			Total Earnings	Average Weekly Earnings
		Oct	Nov	Dec	Oct - Dec 2018	
PIKE COUNTY - TOTAL	255	2,617	2,611	2,619	\$22,632,664	\$665.59
Natural Resources & Mining	24	117	112	113	1,148,556	775.00
Construction	15	47	46	55	411,355	641.41
Manufacturing	17	453	447	443	4,258,358	731.72
Trade, Transportation & Utilities	67	542	548	565	5,078,643	708.15
Wholesale Trade	10	128	134	145	1,031,813	585.04
Retail Trade	36	338	333	338	2,238,368	511.94
Transportation, Warehousing & Utilities	21	76	81	82	1,808,462	1,746.18
Information	7	26	28	29	287,133	798.33
Financial Activities	24	209	206	208	2,972,161	1,100.94
Professional & Business Services	12	53	57	50	1,235,785	1,782.38
Education & Health Services	33	322	324	315	1,762,289	423.19
Leisure & Hospitality	25	214	209	207	737,478	270.14
Other Services	12	60	61	61	447,559	567.49
Local Government	10	460	461	463	3,684,611	614.37
State Government	9	114	112	110	608,736	418.09
POINSETT COUNTY - TOTAL	500	5,360	5,357	5,309	\$50,420,220	\$726.03
Natural Resources & Mining	69	335	324	306	3,830,035	915.91
Construction	24	87	87	90	1,222,483	1,068.60
Manufacturing	19	745	756	746	8,932,665	917.39
Trade, Transportation & Utilities	132	1,229	1,232	1,222	12,122,936	759.60
Wholesale Trade	28	380	379	377	6,228,541	1,265.28
Retail Trade	70	685	693	688	4,056,492	453.10
Transportation, Warehousing & Utilities	34	164	160	157	1,837,903	881.77
Professional & Business Services	27	191	195	189	3,109,319	1,247.89
Education & Health Services	87	765	772	768	6,829,115	683.71
Leisure & Hospitality	42	513	493	477	1,613,090	251.01
Other Services	19	64	61	64	503,080	614.26
Local Government	30	1,041	1,053	1,065	8,521,293	622.49
State Government	11	148	149	149	1,193,154	617.36
Other	40	242	235	233	2,543,050	826.56

TABLE 6. COUNTY SUMMARY

North American Industry Classification System - Industry Groups	Number of Employing Units	Employment			Total Earnings Oct - Dec 2018	Average Weekly Earnings
		Oct	Nov	Dec		
POLK COUNTY - TOTAL	499	5,844	5,906	5,878	\$47,196,904	\$617.86
Natural Resources & Mining	24	165	169	172	2,216,727	1,010.97
Construction	33	203	194	195	1,737,189	677.18
Manufacturing	34	1,306	1,294	1,298	11,522,289	682.14
Trade, Transportation & Utilities	128	1,069	1,081	1,103	8,310,425	589.55
Wholesale Trade	20	73	68	77	830,319	878.95
Retail Trade	70	766	777	782	4,629,277	459.48
Transportation, Warehousing & Utilities	38	230	236	244	2,850,829	926.60
Information	6	55	57	58	328,291	445.64
Financial Activities	40	217	213	212	2,138,962	768.86
Professional & Business Services	43	141	137	144	1,582,554	865.41
Education & Health Services	91	1,043	1,048	1,054	9,158,687	672.03
Leisure & Hospitality	42	466	467	459	1,611,402	267.14
Other Services	25	159	157	155	1,205,720	590.75
Local Government	21	698	763	694	5,401,182	578.39
State Government	12	322	326	334	1,983,476	466.12
POPE COUNTY - TOTAL	1,873	26,034	26,028	26,382	\$285,541,445	\$840.02
Natural Resources & Mining	37	358	362	690	4,941,223	808.71
Construction	164	1,207	1,218	1,217	20,622,750	1,306.73
Manufacturing	75	4,554	4,561	4,580	53,780,275	906.23
Trade, Transportation & Utilities	419	6,170	6,271	6,304	82,406,098	1,014.50
Wholesale Trade	74	549	553	542	6,944,743	974.84
Retail Trade	263	3,123	3,191	3,218	20,797,740	503.51
Transportation, Warehousing & Utilities	82	2,498	2,527	2,544	54,663,615	1,666.62
Information	14	126	130	130	1,069,769	639.56
Financial Activities	193	947	958	949	10,623,164	858.97
Professional & Business Services	278	2,130	1,969	1,937	27,816,429	1,063.48
Education & Health Services	375	3,270	3,263	3,294	30,946,398	726.72
Leisure & Hospitality	146	2,806	2,824	2,790	11,410,104	312.72
Other Services	114	569	561	573	4,631,973	627.67
Local Government	43	2,189	2,195	2,199	19,828,555	695.10
State Government	15	1,708	1,716	1,719	17,464,707	783.65

TABLE 6. COUNTY SUMMARY

North American Industry Classification System - Industry Groups	Number of Employing Units	Employment			Total Earnings Oct - Dec 2018	Average Weekly Earnings
		Oct	Nov	Dec		
PRAIRIE COUNTY - TOTAL	251	1,453	1,475	1,437	\$12,031,819	\$636.10
Natural Resources & Mining	34	164	162	153	2,097,289	1,010.42
Construction	10	50	50	48	343,190	535.12
Trade, Transportation & Utilities	59	335	337	336	2,856,691	654.00
Wholesale Trade	12	82	82	80	1,110,125	1,049.93
Retail Trade	34	201	205	205	1,135,779	428.97
Transportation, Warehousing & Utilities	13	52	50	51	610,787	921.25
Financial Activities	15	48	48	48	617,857	990.16
Professional & Business Services	16	69	61	60	642,843	780.78
Education & Health Services	52	231	236	236	1,541,548	506.03
Leisure & Hospitality	18	95	98	111	405,377	307.73
Local Government	16	327	331	326	2,565,029	601.55
State Government	7	33	33	33	265,578	619.06
Other	24	101	119	86	696,417	525.20
PULASKI COUNTY - TOTAL	14,483	244,664	245,315	245,479	\$3,061,577,159	\$960.65
Natural Resources & Mining	54	616	625	610	9,692,987	1,208.45
Construction	934	9,141	8,963	8,912	137,824,350	1,177.29
Manufacturing	336	13,361	13,379	13,522	195,433,282	1,120.16
Trade, Transportation & Utilities	3,158	49,666	50,852	50,948	563,001,431	857.77
Wholesale Trade	929	12,032	12,073	12,083	206,400,604	1,316.21
Retail Trade	1,821	25,297	26,118	26,012	196,460,259	585.54
Transportation, Warehousing & Utilities	408	12,337	12,661	12,853	160,140,568	976.34
Information	208	3,527	3,541	3,538	47,260,952	1,028.32
Financial Activities	1,713	17,597	17,616	17,618	303,913,950	1,327.52
Professional & Business Services	2,800	36,707	36,670	36,900	533,341,022	1,116.09
Education & Health Services	2,558	41,628	41,639	41,659	547,913,517	1,012.13
Leisure & Hospitality	1,274	23,288	22,935	22,868	106,473,633	355.63
Other Services	1,146	6,571	6,563	6,482	68,064,942	800.74
Local Government	108	15,547	15,471	15,360	173,527,709	863.45
State Government	194	27,015	27,061	27,062	375,129,384	1,066.93

TABLE 6. COUNTY SUMMARY

North American Industry Classification System - Industry Groups	Number of Employing Units	Employment			Total Earnings Oct - Dec 2018	Average Weekly Earnings
		Oct	Nov	Dec		
RANDOLPH COUNTY - TOTAL	398	5,787	5,764	5,723	\$46,187,217	\$617.03
Natural Resources & Mining	28	256	245	235	2,960,174	928.15
Construction	26	111	104	102	949,315	691.08
Manufacturing	28	1,548	1,539	1,544	14,114,321	703.34
Trade, Transportation & Utilities	90	878	888	893	6,895,795	598.47
Wholesale Trade	15	109	114	112	1,075,534	740.90
Retail Trade	54	610	610	608	3,870,263	488.59
Transportation, Warehousing & Utilities	21	159	164	173	1,949,998	907.26
Information	5	24	25	24	222,212	702.46
Financial Activities	33	151	157	158	1,557,437	771.26
Professional & Business Services	36	279	272	253	2,013,962	578.06
Education & Health Services	70	954	970	972	7,817,825	622.97
Leisure & Hospitality	31	433	415	402	1,391,298	256.86
Other Services	17	48	46	48	299,920	487.41
Local Government	24	814	811	804	5,658,560	537.60
State Government	10	291	292	288	2,306,398	611.07
SAINT FRANCIS COUNTY - TOTAL	693	6,835	6,779	6,735	\$58,813,711	\$666.98
Natural Resources & Mining	41	227	218	201	2,296,765	820.47
Construction	38	190	198	182	2,405,776	974.00
Trade, Transportation & Utilities	148	1,871	1,868	1,852	16,551,037	683.15
Wholesale Trade	29	557	555	549	6,708,891	932.09
Retail Trade	96	1,020	1,007	993	6,399,309	488.99
Transportation, Warehousing & Utilities	23	294	306	310	3,442,837	873.08
Information	5	47	48	48	422,234	681.39
Financial Activities	60	247	248	240	2,241,161	703.66
Professional & Business Services	47	164	163	167	1,705,333	796.64
Education & Health Services	231	1,444	1,409	1,433	13,577,907	731.07
Leisure & Hospitality	46	684	673	662	2,414,989	276.03
Local Government	28	860	856	866	7,201,879	643.68
State Government	15	451	451	451	3,908,196	666.59
Other	34	650	647	633	6,088,434	727.99

TABLE 6. COUNTY SUMMARY

North American Industry Classification System - Industry Groups	Number of Employing Units	Employment			Total Earnings Oct - Dec 2018	Average Weekly Earnings
		Oct	Nov	Dec		
SALINE COUNTY - TOTAL	2,063	24,787	25,074	24,934	\$234,202,481	\$722.60
Natural Resources & Mining	13	54	55	54	683,098	967.10
Construction	273	2,114	2,142	2,154	27,156,823	977.68
Manufacturing	79	1,358	1,369	1,379	18,170,515	1,021.24
Trade, Transportation & Utilities	472	5,686	5,787	5,746	48,606,518	651.43
Wholesale Trade	115	624	616	617	9,008,057	1,119.43
Retail Trade	282	4,491	4,595	4,538	32,553,443	551.40
Transportation, Warehousing & Utilities	75	571	576	591	7,045,018	935.43
Information	17	170	165	170	1,821,885	832.54
Financial Activities	204	827	820	816	10,494,930	983.32
Professional & Business Services	278	1,668	1,653	1,666	18,901,087	874.63
Education & Health Services	338	4,740	4,750	4,771	48,161,712	779.35
Leisure & Hospitality	189	3,398	3,366	3,401	13,689,421	310.78
Other Services	154	879	868	868	7,538,785	665.28
Local Government	32	3,079	3,280	3,092	32,793,190	800.73
State Government	14	814	819	817	6,184,517	582.53
SCOTT COUNTY - TOTAL	180	2,989	2,986	2,995	\$23,241,221	\$597.92
Natural Resources & Mining	18	157	161	159	1,748,141	845.74
Trade, Transportation & Utilities	34	314	308	314	2,495,844	615.35
Wholesale Trade	8	43	36	43	340,483	644.04
Retail Trade	20	205	205	205	1,289,322	483.80
Transportation, Warehousing & Utilities	6	66	67	66	866,039	1,004.30
Financial Activities	17	63	64	66	507,958	607.36
Professional & Business Services	13	91	92	91	649,907	547.37
Education & Health Services	42	326	320	314	3,146,278	756.32
Leisure & Hospitality	18	151	151	147	539,862	277.47
Other Services	9	25	25	27	223,878	670.96
Local Government	6	545	544	550	4,201,267	591.53
State Government	6	33	33	33	318,013	741.29
Other	17	1,284	1,288	1,294	9,410,073	561.71

TABLE 6. COUNTY SUMMARY

North American Industry Classification System - Industry Groups	Number of Employing Units	Employment			Total Earnings Oct - Dec 2018	Average Weekly Earnings
		Oct	Nov	Dec		
SEARCY COUNTY - TOTAL	172	1,410	1,456	1,438	\$9,772,540	\$523.98
Construction	14	10	10	12	50,859	366.77
Manufacturing	16	176	174	166	1,161,083	519.27
Trade, Transportation & Utilities	35	251	241	249	1,620,671	504.72
Wholesale Trade	6	38	36	37	251,057	521.95
Retail Trade	24	198	190	197	1,163,692	459.05
Transportation, Warehousing & Utilities	5	15	15	15	205,922	1,056.01
Financial Activities	12	54	48	46	427,212	666.13
Education & Health Services	40	345	344	352	2,386,118	528.96
Leisure & Hospitality	15	153	159	149	528,072	264.34
Other Services	5	10	10	10	62,617	481.67
Local Government	10	308	301	301	2,239,475	567.91
State Government	6	40	41	41	346,912	656.20
Other	19	63	128	112	949,521	723.17
SEBASTIAN COUNTY - TOTAL	3,708	64,674	65,024	64,637	\$701,684,953	\$833.24
Natural Resources & Mining	41	357	355	346	6,627,114	1,445.50
Construction	270	2,356	2,321	2,321	26,693,017	880.24
Manufacturing	195	11,481	11,501	11,522	141,513,472	946.47
Trade, Transportation & Utilities	888	13,060	13,554	13,502	133,795,776	769.67
Wholesale Trade	228	2,643	2,646	2,650	36,771,275	1,068.86
Retail Trade	546	7,665	8,073	7,992	52,895,375	514.40
Transportation, Warehousing & Utilities	114	2,752	2,835	2,860	44,129,126	1,205.59
Information	39	865	861	861	14,752,891	1,316.01
Financial Activities	408	2,598	2,632	2,614	33,140,985	975.00
Professional & Business Services	563	8,259	8,151	7,856	84,293,320	801.63
Education & Health Services	622	11,662	11,638	11,665	158,629,748	1,046.96
Leisure & Hospitality	352	6,213	6,176	6,151	25,849,945	321.76
Other Services	264	1,321	1,296	1,288	10,791,554	637.74
Local Government	43	4,738	4,764	4,742	46,611,197	755.16
State Government	23	1,764	1,775	1,769	18,985,934	825.43

TABLE 6. COUNTY SUMMARY

North American Industry Classification System - Industry Groups	Number of Employing Units	Employment			Total Earnings Oct - Dec 2018	Average Weekly Earnings
		Oct	Nov	Dec		
SEVIER COUNTY - TOTAL	314	4,813	4,845	4,871	\$40,021,524	\$635.68
Natural Resources & Mining	18	162	166	165	1,999,945	936.16
Construction	18	182	180	188	2,366,271	992.84
Trade, Transportation & Utilities	87	809	829	817	6,562,055	616.83
Wholesale Trade	12	77	76	74	1,264,789	1,285.79
Retail Trade	62	647	669	659	4,262,669	498.07
Transportation, Warehousing & Utilities	13	85	84	84	1,034,597	943.69
Financial Activities	26	186	188	185	2,203,526	909.67
Professional & Business Services	25	97	93	95	695,112	562.84
Education & Health Services	60	554	556	561	4,893,113	675.75
Leisure & Hospitality	26	303	296	292	942,185	244.03
Local Government	13	964	953	973	7,240,948	578.20
State Government	7	179	181	177	1,399,478	601.41
Other	34	1,377	1,403	1,418	11,718,891	644.20
SHARP COUNTY - TOTAL	385	3,609	3,575	3,545	\$25,580,998	\$550.22
Construction	32	141	144	140	1,462,707	794.23
Manufacturing	17	158	152	156	1,354,303	670.67
Trade, Transportation & Utilities	79	776	763	775	4,708,362	469.55
Wholesale Trade	11	34	22	30	244,075	654.94
Retail Trade	58	683	681	685	3,843,044	432.82
Transportation, Warehousing & Utilities	10	59	60	60	621,243	800.91
Information	7	31	35	28	184,678	453.38
Financial Activities	32	167	165	167	1,851,065	856.05
Professional & Business Services	35	121	122	120	1,134,891	721.48
Education & Health Services	89	893	884	890	7,147,355	618.44
Leisure & Hospitality	30	390	381	379	1,415,391	284.02
Local Government	24	779	783	746	5,382,661	538.19
State Government	7	54	54	54	436,091	621.21
Other	33	99	92	90	503,494	413.49

TABLE 6. COUNTY SUMMARY

North American Industry Classification System - Industry Groups	Number of Employing Units	Employment			Total Earnings	Average Weekly Earnings
		Oct	Nov	Dec	Oct - Dec 2018	
STONE COUNTY - TOTAL	279	2,701	2,676	2,652	\$20,087,226	\$577.35
Natural Resources & Mining	5	12	12	13	66,238	413.13
Construction	17	34	32	37	271,881	609.14
Manufacturing	17	260	251	244	1,734,000	530.01
Trade, Transportation & Utilities	71	604	595	592	4,473,797	576.45
Wholesale Trade	5	42	45	30	355,475	701.13
Retail Trade	52	520	511	520	3,548,939	528.04
Transportation, Warehousing & Utilities	14	42	39	42	569,383	1,068.26
Financial Activities	32	152	151	154	1,958,493	988.97
Professional & Business Services	14	25	29	25	152,624	445.83
Education & Health Services	54	553	558	572	5,351,169	733.74
Leisure & Hospitality	30	455	432	389	1,417,877	256.43
Local Government	11	420	422	418	3,382,778	619.56
State Government	7	138	147	160	854,859	443.31
Other	21	48	47	48	423,510	683.45
UNION COUNTY - TOTAL	1,300	17,457	17,422	17,464	\$211,151,865	\$930.92
Natural Resources & Mining	80	401	379	412	5,767,150	1,116.51
Construction	89	1,541	1,551	1,550	21,460,744	1,066.88
Manufacturing	49	2,877	2,876	2,884	49,224,624	1,315.22
Trade, Transportation & Utilities	315	3,428	3,490	3,500	35,665,695	790.03
Wholesale Trade	70	479	465	469	6,797,773	1,110.20
Retail Trade	180	2,057	2,099	2,090	14,268,009	527.16
Transportation, Warehousing & Utilities	65	892	926	941	14,599,913	1,221.17
Information	8	87	86	88	800,394	707.69
Financial Activities	96	590	598	601	7,260,247	936.52
Professional & Business Services	129	1,999	1,986	2,000	39,892,890	1,538.19
Education & Health Services	297	2,270	2,237	2,221	22,094,596	757.84
Leisure & Hospitality	98	1,460	1,417	1,415	6,018,472	323.60
Other Services	91	414	421	417	3,235,352	596.34
Local Government	32	1,864	1,855	1,849	14,846,843	615.34
State Government	16	526	526	527	4,884,858	713.92

TABLE 6. COUNTY SUMMARY

North American Industry Classification System - Industry Groups	Number of Employing Units	Employment			Total Earnings Oct - Dec 2018	Average Weekly Earnings
		Oct	Nov	Dec		
VAN BUREN COUNTY - TOTAL	342	3,475	3,447	3,385	\$31,963,570	\$715.65
Natural Resources & Mining	12	116	114	112	3,354,713	2,263.64
Construction	38	129	119	116	1,103,567	699.64
Manufacturing	8	165	160	147	1,240,773	606.64
Trade, Transportation & Utilities	95	911	913	896	9,551,286	810.35
Wholesale Trade	11	51	50	45	425,880	673.15
Retail Trade	54	596	601	593	3,902,948	503.17
Transportation, Warehousing & Utilities	30	264	262	258	5,222,458	1,537.22
Information	5	33	35	38	88,980	193.72
Financial Activities	30	134	132	135	1,533,350	882.42
Professional & Business Services	34	155	150	145	1,577,252	808.85
Education & Health Services	61	743	736	732	6,246,697	651.99
Leisure & Hospitality	25	334	327	310	1,541,867	366.44
Other Services	17	63	65	66	505,361	601.14
Local Government	11	653	657	649	4,858,550	572.33
State Government	6	39	39	39	361,174	712.37
WASHINGTON COUNTY - TOTAL	6,222	107,370	107,864	107,086	\$1,357,637,064	\$972.02
Natural Resources & Mining	44	305	309	308	5,044,445	1,262.58
Construction	590	5,728	5,743	5,777	83,209,190	1,113.30
Manufacturing	223	13,060	13,227	13,232	148,656,995	868.08
Trade, Transportation & Utilities	1,381	22,867	23,363	23,297	263,976,858	876.17
Wholesale Trade	392	3,838	3,841	3,858	72,125,072	1,442.68
Retail Trade	790	12,385	12,712	12,639	96,189,184	588.23
Transportation, Warehousing & Utilities	199	6,644	6,810	6,800	95,662,602	1,089.96
Information	78	936	945	949	11,686,410	952.96
Financial Activities	686	3,832	3,795	3,755	52,318,452	1,060.75
Professional & Business Services	1,130	13,507	13,340	13,186	310,089,060	1,787.50
Education & Health Services	909	16,256	16,219	16,150	214,846,775	1,019.64
Leisure & Hospitality	705	13,264	13,138	12,938	56,982,117	334.26
Other Services	393	2,132	2,117	2,074	18,619,341	679.55
Local Government	61	8,980	9,156	9,020	92,869,236	789.19
State Government	22	6,503	6,512	6,400	99,338,185	1,180.75

TABLE 6. COUNTY SUMMARY

North American Industry Classification System - Industry Groups	Number of Employing Units	Employment			Total Earnings Oct - Dec 2018	Average Weekly Earnings
		Oct	Nov	Dec		
WHITE COUNTY - TOTAL	1,807	23,932	24,034	24,161	\$230,766,731	\$738.33
Natural Resources & Mining	53	310	314	315	3,628,854	891.83
Construction	156	981	976	969	11,699,814	922.75
Manufacturing	60	2,112	2,124	2,176	24,164,321	869.68
Trade, Transportation & Utilities	487	6,256	6,433	6,431	60,622,143	731.68
Wholesale Trade	85	600	601	592	7,375,264	949.24
Retail Trade	313	3,524	3,653	3,655	24,589,818	523.87
Transportation, Warehousing & Utilities	89	2,132	2,179	2,184	28,657,061	1,018.19
Information	17	116	124	123	993,294	631.46
Financial Activities	175	888	896	887	11,768,896	1,016.81
Professional & Business Services	189	1,157	1,075	1,104	10,405,394	719.80
Education & Health Services	329	5,673	5,640	5,697	63,600,552	862.85
Leisure & Hospitality	166	2,685	2,667	2,671	9,631,694	277.04
Other Services	114	483	481	489	4,284,720	680.51
Local Government	46	2,741	2,770	2,751	24,940,294	696.62
State Government	15	530	534	548	5,026,755	719.62
WOODRUFF COUNTY - TOTAL	205	1,689	1,665	1,667	\$15,762,263	\$724.45
Natural Resources & Mining	31	143	127	122	1,120,732	659.77
Construction	10	37	35	34	317,256	690.69
Manufacturing	5	179	177	174	2,250,189	979.76
Trade, Transportation & Utilities	48	377	382	381	4,258,134	861.97
Wholesale Trade	12	146	142	132	2,185,217	1,200.67
Retail Trade	26	162	176	172	873,206	395.12
Transportation, Warehousing & Utilities	10	69	64	77	1,199,711	1,318.36
Financial Activities	12	46	45	46	471,309	793.90
Education & Health Services	56	238	234	240	1,865,382	604.60
Leisure & Hospitality	12	80	78	78	278,136	271.97
Local Government	9	413	410	411	3,205,809	599.52
State Government	5	28	28	28	256,118	703.62
Other	17	148	149	153	1,739,198	891.90

TABLE 6. COUNTY SUMMARY

North American Industry Classification System - Industry Groups	Number of Employing Units	Employment			Total Earnings Oct - Dec 2018	Average Weekly Earnings
		Oct	Nov	Dec		
YELL COUNTY - TOTAL	412	6,484	6,530	6,506	\$52,258,364	\$617.81
Natural Resources & Mining	23	251	240	243	2,792,089	877.83
Construction	33	244	245	242	2,335,861	737.41
Manufacturing	21	2,429	2,452	2,458	19,532,420	614.18
Trade, Transportation & Utilities	81	674	693	683	4,775,822	537.62
Wholesale Trade	14	57	60	65	370,732	470.07
Retail Trade	49	524	540	520	3,105,081	452.37
Transportation, Warehousing & Utilities	18	93	93	98	1,300,009	1,056.35
Financial Activities	29	122	120	121	1,197,103	761.03
Professional & Business Services	38	300	297	298	2,618,543	675.17
Education & Health Services	110	804	801	810	5,349,883	511.22
Leisure & Hospitality	25	306	314	298	976,863	245.57
Local Government	25	1,175	1,188	1,173	10,635,231	694.08
State Government	10	67	68	68	502,124	570.81
Other	17	112	112	112	1,542,425	1,059.36
STATEWIDE COUNTY - TOTAL	10,538	36,080	36,329	36,213	\$525,035,614	\$1,115.45
Natural Resources & Mining	102	305	307	301	5,523,013	1,395.99
Construction	832	3,474	3,162	3,253	48,876,419	1,140.58
Manufacturing	59	135	137	143	4,107,812	2,284.23
Trade, Transportation & Utilities	3,347	7,975	8,249	8,262	184,936,060	1,742.94
Wholesale Trade	2,845	6,349	6,599	6,581	162,760,650	1,923.30
Retail Trade	177	531	541	555	8,166,422	1,158.30
Transportation, Warehousing & Utilities	325	1,095	1,109	1,126	14,008,988	970.82
Information	389	677	683	678	15,908,133	1,801.33
Financial Activities	696	1,899	1,910	1,909	34,027,166	1,373.28
Professional & Business Services	4,081	17,021	17,229	17,123	179,053,479	804.31
Education & Health Services	558	2,683	2,745	2,791	30,092,613	844.93
Leisure & Hospitality	107	226	228	111	1,688,509	689.66
State Government	16	738	742	743	7,614,302	790.44
Other	351	947	937	899	13,208,108	1,028.79

Note: Statewide classification includes employment and payroll data for employers that have not provided a physical location for each employing unit. This section also includes employers without a physical location in Arkansas.

TABLE 7. FEDERAL GOVERNMENT EMPLOYMENT AND EARNINGS IN ARKANSAS

North American Industry Classification System - Industry Groups	Number of Employing Units	Employment			Total Earnings Oct -Dec 2018	Average Weekly Earnings
		Oct	Nov	Dec		
TOTAL	1,145	20,170	20,335	20,434	\$379,984,120	\$1,438.96
Trade, Transportation & Utilities	588	5,573	5,667	5,751	82,441,833	1,119.71
Information	2	38	37	37	751,476	1,548.37
Financial Activities	15	103	103	100	2,312,362	1,743.86
Professional & Business Services	32	823	828	830	15,194,320	1,413.29
Education & Health Services	18	5,450	5,472	5,497	120,019,046	1,686.87
Leisure & Hospitality	23	291	271	273	3,285,224	907.94
Other Services	1	1	1	1	8,125	625.00
Public Administration	466	7,891	7,956	7,945	155,971,734	1,512.84

TABLE 8. LOCAL WORKFORCE DEVELOPMENT AREA SUMMARY

North American Industry Classification System - Industry Groups	Number of Employing Units	Employment			Total Earnings Oct - Dec 2018	Average Weekly Earnings
		Oct	Nov	Dec		
CENTRAL LOCAL WORKFORCE DEVELOPMENT AREA	6,798	83,216	83,660	83,455	\$839,753,601	\$774.13
Natural Resources & Mining	201	1,099	1,058	1,035	15,352,407	1,109.92
Construction	762	5,937	5,971	6,025	78,107,030	1,005.11
Manufacturing	226	6,518	6,572	6,537	84,924,245	998.52
Trade, Transportation & Utilities	1,561	17,013	17,332	17,235	142,605,356	638.02
Wholesale Trade	355	1,976	1,971	1,964	27,901,783	1,089.30
Retail Trade	945	13,200	13,495	13,361	90,776,938	522.98
Transportation, Warehousing & Utilities	261	1,837	1,866	1,910	23,926,635	983.70
Information	58	567	558	559	9,740,552	1,334.81
Financial Activities	706	3,070	3,060	3,050	39,710,264	998.25
Professional & Business Services	906	7,080	7,065	7,101	123,953,552	1,346.36
Education & Health Services	1,119	14,444	14,514	14,557	144,590,493	766.79
Leisure & Hospitality	618	11,052	10,974	10,998	42,189,821	294.82
Other Services	445	2,120	2,088	2,075	16,727,930	614.40
Local Government	136	9,910	10,056	9,879	98,623,947	762.59
State Government	60	4,406	4,412	4,404	43,228,004	754.48
Note: Pulaski County is not included in the Central Local Workforce Development Area. Please refer to Page 51 for information on Pulaski County. Central Local Workforce Development Area includes these counties: Faulkner, Lonoke, Monroe, Prairie, and Saline.						
EASTERN LOCAL WORKFORCE DEVELOPMENT AREA	3,364	35,322	35,280	35,176	\$320,820,564	\$699.91
Natural Resources & Mining	242	1,410	1,379	1,288	15,618,480	884.05
Construction	138	771	775	786	9,193,259	909.74
Manufacturing	78	3,401	3,375	3,418	41,542,791	940.44
Trade, Transportation & Utilities	762	8,896	8,965	8,968	85,063,174	731.67
Wholesale Trade	150	1,950	1,958	1,946	25,388,203	1,000.82
Retail Trade	417	4,590	4,611	4,574	29,438,578	493.18
Transportation, Warehousing & Utilities	195	2,356	2,396	2,448	30,236,393	969.12
Information	23	159	160	156	1,382,822	671.82
Financial Activities	262	1,257	1,253	1,235	13,566,174	835.96
Professional & Business Services	247	1,637	1,691	1,672	16,563,277	764.46
Education & Health Services	1,008	6,366	6,280	6,314	54,768,746	666.61
Leisure & Hospitality	252	3,913	3,859	3,867	16,736,351	331.84
Other Services	168	768	774	769	6,270,965	626.20
Local Government	127	4,747	4,761	4,767	43,042,214	695.82
State Government	57	1,997	2,008	1,936	17,072,311	663.15
Eastern Local Workforce Development Area includes these counties: Crittenden, Cross, Lee, Phillips, and Saint Francis.						

TABLE 8. LOCAL WORKFORCE DEVELOPMENT AREA SUMMARY

North American Industry Classification System - Industry Groups	Number of Employing Units	Employment			Total Earnings	Average Weekly Earnings
		Oct	Nov	Dec	Oct - Dec 2018	
NORTH CENTRAL LOCAL WORKFORCE DEVELOPMENT AREA	5,465	68,282	68,410	68,334	\$634,867,409	\$714.58
Natural Resources & Mining	216	1,480	1,427	1,380	18,792,330	1,011.59
Construction	429	2,503	2,528	2,461	30,988,289	954.50
Manufacturing	212	8,849	8,932	9,035	100,475,513	864.66
Trade, Transportation & Utilities	1,386	14,702	15,000	14,935	134,925,167	697.55
Wholesale Trade	227	1,584	1,579	1,540	18,383,879	902.07
Retail Trade	894	9,436	9,678	9,630	63,850,580	512.62
Transportation, Warehousing & Utilities	265	3,682	3,743	3,765	52,690,708	1,086.63
Information	66	397	405	406	3,005,734	574.20
Financial Activities	517	2,570	2,569	2,571	32,698,096	978.69
Professional & Business Services	505	3,243	3,083	3,101	29,668,363	726.27
Education & Health Services	1,009	14,760	14,686	14,868	153,488,723	799.31
Leisure & Hospitality	488	6,771	6,685	6,546	24,367,240	281.13
Other Services	322	1,217	1,215	1,227	9,286,425	585.68
Local Government	222	8,991	9,059	8,953	73,235,348	625.87
State Government	93	2,799	2,821	2,851	23,936,181	652.08

North Central Local Workforce Development Area includes these counties: Cleburne, Fulton, Independence, Izard, Jackson, Sharp, Stone, Van Buren, White, and Woodruff.

NORTHEAST LOCAL WORKFORCE DEVELOPMENT AREA	6,540	103,509	103,734	103,359	\$1,083,014,392	\$804.65
Natural Resources & Mining	457	2,718	2,499	2,238	27,738,416	858.64
Construction	471	3,780	3,715	3,638	46,971,632	973.65
Manufacturing	303	21,555	21,655	21,806	319,412,162	1,133.73
Trade, Transportation & Utilities	1,719	19,490	19,909	19,957	179,482,599	697.81
Wholesale Trade	368	3,657	3,674	3,682	48,920,101	1,025.08
Retail Trade	995	12,292	12,616	12,603	83,701,708	514.94
Transportation, Warehousing & Utilities	356	3,541	3,619	3,672	46,860,790	998.34
Information	55	738	737	733	7,557,878	789.91
Financial Activities	557	3,133	3,143	3,145	40,502,664	992.12
Professional & Business Services	669	7,574	7,502	7,408	68,150,388	699.48
Education & Health Services	1,118	17,654	17,695	17,668	195,193,323	849.63
Leisure & Hospitality	556	9,618	9,646	9,463	36,887,167	296.32
Other Services	326	1,350	1,333	1,347	11,054,339	633.00
Local Government	214	11,505	11,492	11,565	104,346,718	696.72
State Government	95	4,394	4,408	4,391	45,717,106	799.67

Northeast Local Workforce Development Area includes these counties: Clay, Craighead, Greene, Lawrence, Mississippi, Poinsett, and Randolph.

TABLE 8. LOCAL WORKFORCE DEVELOPMENT AREA SUMMARY

North American Industry Classification System - Industry Groups	Number of Employing Units	Employment			Total Earnings Oct - Dec 2018	Average Weekly Earnings
		Oct	Nov	Dec		
NORTHWEST LOCAL WORKFORCE DEVELOPMENT AREA	16,737	277,337	278,003	277,193	\$3,472,875,826	\$962.64
Natural Resources & Mining	140	1,407	1,473	1,484	25,175,116	1,331.27
Construction	1,568	12,171	12,163	12,236	163,117,226	1,029.33
Manufacturing	631	36,420	36,613	36,808	394,664,113	829.17
Trade, Transportation & Utilities	3,956	61,440	62,686	62,516	734,424,552	908.06
Wholesale Trade	1,275	10,803	10,811	10,903	231,979,588	1,646.33
Retail Trade	2,156	31,565	32,451	32,192	233,222,573	559.42
Transportation, Warehousing & Utilities	525	19,072	19,424	19,421	269,222,391	1,072.71
Information	215	2,458	2,504	2,512	34,396,112	1,062.02
Financial Activities	1,715	9,779	9,695	9,631	140,634,678	1,115.07
Professional & Business Services	2,804	48,043	47,950	47,744	1,014,186,566	1,628.27
Education & Health Services	2,431	35,971	35,851	35,902	417,376,175	894.11
Leisure & Hospitality	1,818	31,411	30,663	30,156	137,354,650	343.68
Other Services	1,047	5,360	5,325	5,335	48,872,467	704.01
Local Government	309	23,914	24,106	24,009	241,984,149	775.28
State Government	103	8,963	8,974	8,860	120,690,022	1,039.35

Northwest Local Workforce Development Area includes these counties: Baxter, Benton, Boone, Carroll, Madison, Marion, Newton, Searcy, and Washington.

SOUTHEAST LOCAL WORKFORCE DEVELOPMENT AREA	6,134	69,142	69,332	69,196	\$681,560,334	\$757.37
Natural Resources & Mining	429	2,323	2,288	2,310	25,887,794	863.19
Construction	303	2,163	2,060	2,057	25,321,198	930.47
Manufacturing	200	14,876	15,048	15,064	195,372,665	1,002.18
Trade, Transportation & Utilities	1,221	11,942	12,049	12,009	107,956,349	692.03
Wholesale Trade	233	1,884	1,833	1,863	24,901,261	1,029.83
Retail Trade	723	7,395	7,555	7,506	49,298,096	506.61
Transportation, Warehousing & Utilities	265	2,663	2,661	2,640	33,756,992	978.16
Information	42	275	266	264	2,711,541	777.32
Financial Activities	412	2,399	2,386	2,364	29,500,541	952.28
Professional & Business Services	398	3,646	3,577	3,575	36,192,259	773.48
Education & Health Services	2,098	10,945	10,940	10,996	101,556,943	712.76
Leisure & Hospitality	394	4,612	4,579	4,589	15,990,456	267.79
Other Services	301	1,118	1,134	1,134	9,724,024	662.73
Local Government	212	8,719	8,816	8,790	76,111,927	667.21
State Government	124	6,124	6,189	6,044	55,234,637	694.36

Southeast Local Workforce Development Area includes these counties: Arkansas, Ashley, Bradley, Chicot, Cleveland, Desha, Drew, Grant, Jefferson, and Lincoln.

TABLE 8. LOCAL WORKFORCE DEVELOPMENT AREA SUMMARY

North American Industry Classification System - Industry Groups	Number of Employing Units	Employment			Total Earnings	Average Weekly Earnings
		Oct	Nov	Dec	Oct - Dec 2018	
SOUTHWEST LOCAL WORKFORCE DEVELOPMENT AREA	5,661	77,824	77,973	78,028	\$803,529,304	\$793.03
Natural Resources & Mining	323	2,184	2,142	2,164	27,921,287	992.82
Construction	357	3,538	3,476	3,440	44,198,013	975.66
Manufacturing	232	19,181	19,211	19,305	261,824,844	1,047.21
Trade, Transportation & Utilities	1,358	14,717	14,955	15,085	138,125,812	712.18
Wholesale Trade	244	1,815	1,796	1,825	24,670,628	1,047.32
Retail Trade	814	8,459	8,603	8,555	55,368,773	498.79
Transportation, Warehousing & Utilities	300	4,443	4,556	4,705	58,086,411	978.15
Information	49	394	388	396	6,070,050	1,189.12
Financial Activities	452	2,448	2,472	2,451	30,609,228	958.31
Professional & Business Services	439	4,716	4,601	4,575	60,227,938	1,000.49
Education & Health Services	1,298	9,776	9,801	9,755	83,369,664	655.91
Leisure & Hospitality	419	5,842	5,748	5,714	22,298,241	297.37
Other Services	341	1,344	1,355	1,348	10,192,073	581.18
Local Government	262	10,064	10,132	10,113	83,993,748	639.52
State Government	131	3,620	3,692	3,682	34,698,406	728.34

Southwest Local Workforce Development Area includes these counties: Calhoun, Columbia, Dallas, Hempstead, Howard, Lafayette, Little River, Miller, Nevada, Ouachita, Sevier, and Union

WEST CENTRAL LOCAL WORKFORCE DEVELOPMENT AREA	8,217	106,933	107,392	107,390	\$1,020,936,183	\$732.33
Natural Resources & Mining	240	1,924	1,931	2,261	\$22,189,625	837.26
Construction	734	4,468	4,491	4,513	54,983,401	941.84
Manufacturing	332	16,438	16,537	16,567	187,279,877	872.36
Trade, Transportation & Utilities	1,828	21,279	21,728	21,703	215,462,879	768.39
Wholesale Trade	317	1,943	1,962	1,946	27,815,547	1,097.07
Retail Trade	1,207	13,950	14,299	14,252	96,116,544	521.89
Transportation, Warehousing & Utilities	304	5,386	5,467	5,505	91,530,788	1,291.26
Information	76	670	704	705	6,907,441	766.73
Financial Activities	809	3,670	3,672	3,647	42,822,870	899.28
Professional & Business Services	931	7,795	7,747	7,614	81,289,119	810.12
Education & Health Services	1,602	17,731	17,674	17,743	178,699,273	775.91
Leisure & Hospitality	801	13,462	13,166	13,090	59,008,267	342.85
Other Services	518	2,278	2,260	2,282	17,075,444	577.78
Local Government	232	11,611	11,851	11,648	106,388,125	699.26
State Government	114	5,607	5,631	5,617	48,829,862	668.55

West Central Local Workforce Development Area includes these counties: Clark, Conway, Garland, Hot Spring, Johnson, Montgomery, Perry, Pike, Pope, and Yell

TABLE 8. LOCAL WORKFORCE DEVELOPMENT AREA SUMMARY

North American Industry Classification System - Industry Groups	Number of Employing Units	Employment			Total Earnings	Average Weekly Earnings
		Oct	Nov	Dec	Oct - Dec 2018	
WESTERN LOCAL WORKFORCE DEVELOPMENT AREA	6,498	102,852	103,210	102,708	\$1,041,248,754	\$778.21
Natural Resources & Mining	148	1,265	1,244	1,251	18,884,057	1,159.01
Construction	532	4,001	3,944	3,948	46,637,553	904.95
Manufacturing	338	20,619	20,659	20,642	232,334,487	865.89
Trade, Transportation & Utilities	1,545	21,924	22,467	22,417	214,317,985	740.30
Wholesale Trade	350	3,579	3,576	3,610	48,349,732	1,036.47
Retail Trade	927	12,045	12,445	12,335	81,952,336	513.57
Transportation, Warehousing & Utilities	268	6,300	6,446	6,472	84,015,917	1,008.86
Information	66	1,014	1,013	1,019	16,057,335	1,216.53
Financial Activities	673	3,642	3,678	3,663	44,641,237	937.98
Professional & Business Services	868	10,620	10,497	10,200	105,317,419	776.06
Education & Health Services	1,109	16,011	15,977	15,998	194,670,956	936.19
Leisure & Hospitality	569	9,061	8,961	8,886	36,008,044	308.81
Other Services	426	2,136	2,105	2,099	18,117,930	659.47
Local Government	153	9,649	9,726	9,636	87,280,553	694.28
State Government	71	2,910	2,939	2,949	26,981,198	707.71

Western Local Workforce Development Area includes these counties: Crawford, Franklin, Logan, Polk, Scott, and Sebastian