



Arkansas Covered
Employment & Earnings
First Quarter
2018

**COVERED EMPLOYMENT AND EARNINGS
STATE OF ARKANSAS
FIRST QUARTER 2018**

**ASA HUTCHINSON, GOVERNOR
STATE OF ARKANSAS**

**DARYL BASSETT, DIRECTOR
DEPARTMENT OF WORKFORCE SERVICES**

**PUBLISHED BY
LABOR MARKET INFORMATION
BUREAU OF LABOR STATISTICS PROGRAMS
POST OFFICE BOX 2981
LITTLE ROCK, ARKANSAS 72203-2981
SUSAN PRICE, BLS PROGRAMS MANAGER
TELEPHONE (501) 682-3103**

STATE OF ARKANSAS WEBPAGE: <http://www.arkansas.gov>

DEPARTMENT OF WORKFORCE SERVICES WEBPAGE: <http://www.dws.arkansas.gov/>

WEBPAGE FOR LABOR MARKET INFORMATION: <http://www.discover.arkansas.gov>

RELEASED: December 2018

TABLE OF CONTENTS

DESCRIPTION OF DATA	PAGE
Description and Classification of Data	1
Definition of Covered Employment and Earnings	2
Significant Developments During First Quarter 2018	3

LIST OF GRAPHS AND TABLES

Graph 1	Total Covered Employment for Selected Years, Arkansas	7
Graph 2	Total Covered Earnings, by Calendar Quarter for Selected Years, Arkansas	8
Table 1	Quarterly Comparison of Covered Employment and Wages, by Industry	5
Table 2	Total Covered Employment in Arkansas, 2011 – 2018	6
Table 3	Total Covered Earnings, 2011 – 2018	9
Table 4	Total Taxable Earnings, 2011 – 2018	10
Table 5	State Summary – Employment and Total Earnings, by Industry, First Quarter 2018	11
Table 6	County Summary – Employment and Total Earnings, by Industry, First Quarter 2018	22
Table 7	Federal Government Employment and Total Earnings in Arkansas, First Quarter 2018	60
Table 8	Local Workforce Development Area – Employment and Total Earnings, by Industry, First Quarter 2018	61

EMPLOYMENT AND EARNINGS
UNDER THE ARKANSAS EMPLOYMENT SECURITY LAW
FIRST QUARTER 2018

DESCRIPTION AND CLASSIFICATION OF DATA

This publication contains covered employment and payroll data by industry and county for the First Quarter 2018 and a record for total covered employment by month, quarterly payroll data, average weekly earnings, and total taxable earnings for 2011 through 2018. These data are compiled from quarterly contributions and wage reports submitted by employers subject to the Arkansas Employment Security Law.

Employment data have been tabulated for each month of the quarter by industry under the **North American Industry Classification System** (NAICS) by state, county, and workforce area. Payroll data represent the total wages paid during the quarter and are classified by industry for the state and by publishable industry groups for each county and workforce area.

Due to industry classification revisions, previously published data will not always be comparable with current data. For this reason, comparisons should not be made between the same industries under different revisions. For more information, visit the NAICS home page at <http://www.census.gov/naics>.

Industry Classification Revisions

- SIC (Standard Industrial Classification) 1987 to NAICS 2002
- NAICS 2002 to NAICS 2007
- NAICS 2007 to NAICS 2012
- NAICS 2012 to NAICS 2018

The tabulation of this data is a joint effort in conjunction with the United States Bureau of Labor Statistics. Data included in this publication are subject to revisions. Revisions are typically reflected in the Annual Covered Employment and Earnings publication.

DEFINITION OF COVERED EMPLOYMENT AND EARNINGS

Covered Employment is the total number of workers employed by establishments subject to the Arkansas Employment Security Law that worked or received pay for the payroll period including the 12th of the month. Earnings include all wages paid to any covered employee by their employer including salaries, bonuses, commissions, fees, fringe benefits, sick pay made directly to employees or dependents, deferred compensation, and reported tips. These wages include both taxable and nontaxable wages. Only the first \$10,000 paid to each worker by an employer in the calendar year is taxable under the Arkansas Employment Security Law.

An Arkansas state unemployment insurance account is required of any entity meeting the definition of an employer. As described by Arkansas Department of Workforce Services Law, the definition of an employer includes, but is not limited to, a sole proprietorship, partnership, corporation, associations, trust, estate, and receiver or trustee in bankruptcy. The entity must employ one or more individuals for ten or more days in a calendar year, whether or not the days are consecutive.

Currently excluded from coverage is employment covered by the Railroad Unemployment Insurance Act, some domestic service workers, employees of small agricultural establishments, self-employed workers, unpaid family workers, insurance and real estate agents paid only on a commission basis, and employees of churches and religious organizations except separately incorporated schools.

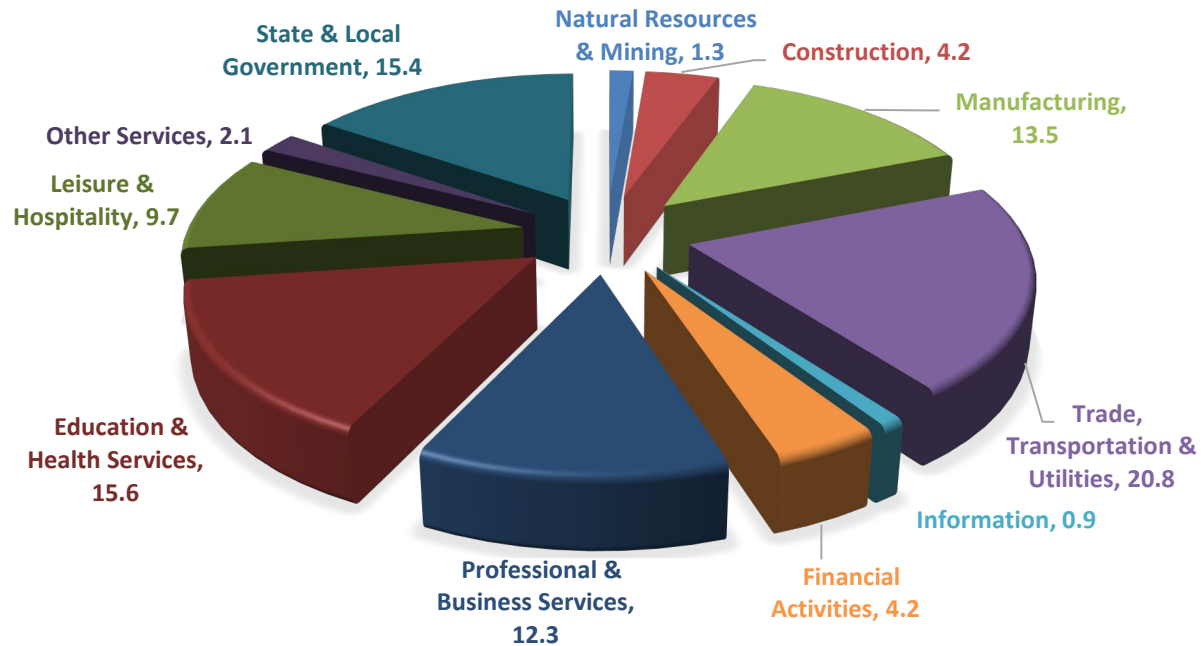
Civilian federal workers are covered by Unemployment Compensation for Federal Employees (UCFE).

SIGNIFICANT DEVELOPMENTS DURING FIRST QUARTER 2018

AVERAGE EMPLOYMENT CHANGES

Covered employment averaged 1,182,307 during the First Quarter 2018 (refer to Table 1), a decrease of 13,950 (-1.2%) from the previous quarter and an increase of 10,643 (0.9%) from the average recorded one year ago. The over-the-year comparison is more significant when used as an economic indicator and allows for seasonal factors that appear when comparing over-the-quarter data to be disregarded.

Average Covered Employment by NAICS



EMPLOYMENT CHANGES FROM FOURTH QUARTER 2017

Over the quarter losses were recorded in ten of the eleven industry groups. Trade, Transportation, and Utilities reported the largest decline (-5,135), the majority of the decrease was in the trade industries due to the end of the holiday season. Construction dropped 1,970 jobs due to weather related delays. Leisure and Hospitality experienced a typical decline. Manufacturing increased 638 jobs.

EMPLOYMENT CHANGES FROM FIRST QUARTER 2016 (QUARTER YEAR AGO COMPARISON)

Over-the-year gains were recorded in seven industry groups (refer to Table 1). The largest gains occurred in Education & Health Services (3,597), Manufacturing (3,479) and Professional and Business Services (2,775). Losses occurred four industry groups the largest was in Information (-1,989).

COVERED WAGES

Wages paid to covered workers totaled \$13,372,730,974 for the First Quarter 2018 (refer to Table 1), for an average weekly wage of \$870.05 (refer to Table 5). Benton County workers recorded the highest average weekly wage (\$1,501.81), and employees in Montgomery County reported the lowest (\$476.03) (refer to Table 6).

Professional & Business Services industry recorded the highest average weekly wage for the State of Arkansas (\$1,431.65). The Leisure & Hospitality sector recorded the lowest (\$311.52) (refer to Table 5).

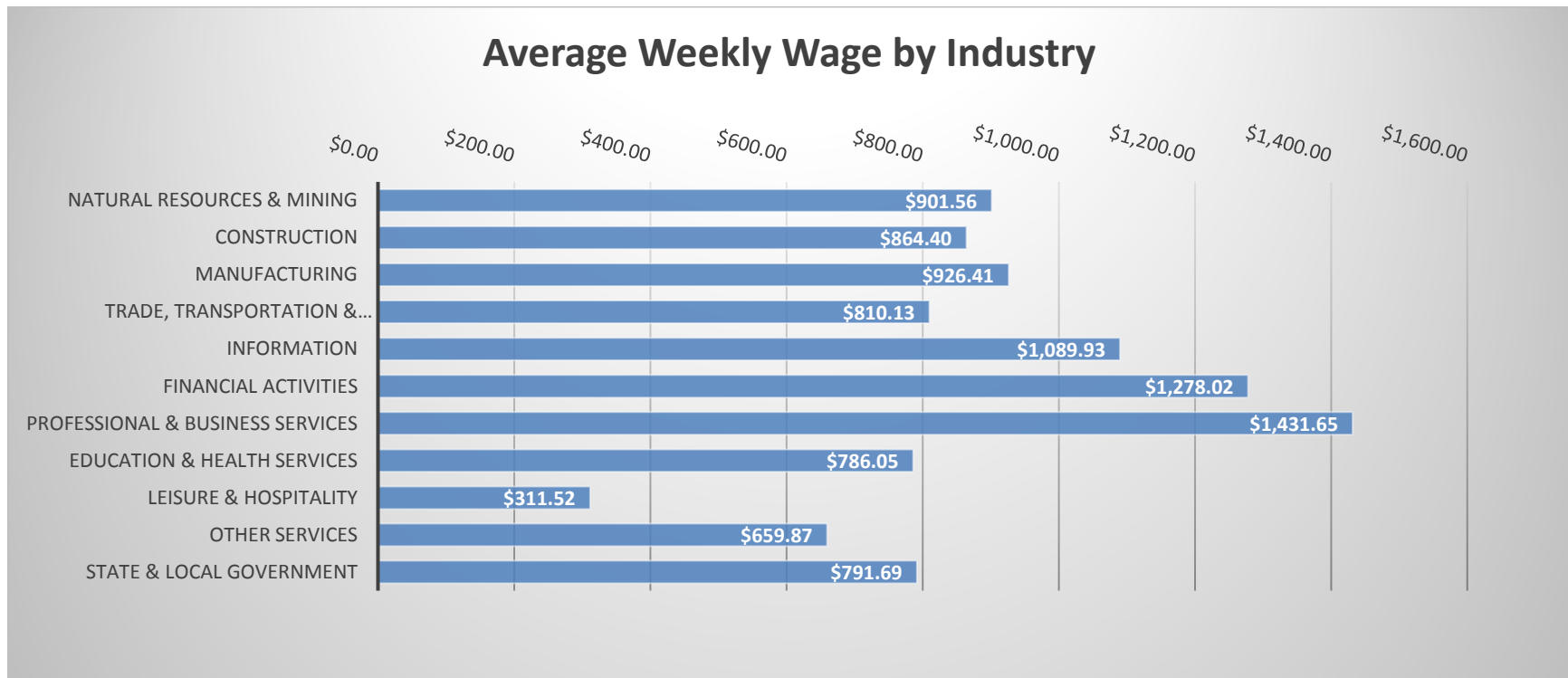


TABLE 1. QUARTERLY COMPARISON OF COVERED EMPLOYMENT AND WAGES, BY INDUSTRY

North American Industry Classification System - Industry Groups	Number of Employing Units	Monthly Employment Average	Percent of Total	Net Change From:		Total Wages Paid Jan - Mar 2018	Percent of Total
				Oct - Dec 2017	Jan - Mar 2017		
TOTAL	88,736	1,182,307	100	-13,950	10,643	\$13,372,730,974	100
Natural Resources & Mining	2,530	15,901	1.3	-758	-90	186,360,091	1.4
Agriculture, Forestry, Fishing & Hunting	2,104	12,089	1.0	-794	-186	120,169,381	0.9
Mining	426	3,811	0.3	36	96	66,190,710	0.5
Construction	6,891	49,079	4.2	-1,970	-599	551,509,894	4.1
Manufacturing	2,909	159,603	13.5	638	3,479	1,922,155,032	14.4
Trade, Transportation & Utilities	21,534	245,914	20.8	-5,135	201	2,589,877,098	19.4
Wholesale Trade	7,229	46,956	4.0	-302	388	839,454,232	6.3
Retail Trade	10,980	138,136	11.7	-4,074	-1,763	940,084,685	7.0
Transportation & Warehousing	2,912	53,068	4.5	-751	1,470	616,215,181	4.6
Utilities	413	7,754	0.7	-8	106	194,123,000	1.5
Information	1,174	10,951	0.9	-1,673	-1,989	155,165,912	1.2
Financial Activities	8,367	49,743	4.2	-188	530	826,448,088	6.2
Finance & Insurance	4,959	36,416	3.1	13	236	696,445,842	5.2
Real Estate & Rental & Leasing	3,408	13,328	1.1	-201	294	130,002,246	1.0
Professional & Business Services	14,095	145,583	12.3	-501	2,775	2,709,523,361	20.3
Professional & Technical Services	8,873	43,966	3.7	969	668	667,353,764	5.0
Management of Companies & Enterprises	559	35,117	3.0	809	-872	1,549,395,078	11.6
Administrative & Waste Services	4,663	66,500	5.6	-2,279	2,979	492,774,519	3.7
Education & Health Services	15,806	184,660	15.6	-983	3,597	1,886,979,085	14.1
Educational Services	856	11,885	1.0	-144	295	104,881,685	0.8
Health Care & Social Assistance	14,950	172,775	14.6	-839	3,302	1,782,097,400	13.3
Leisure & Hospitality	7,081	114,725	9.7	-1,398	1,837	464,602,009	3.5
Arts, Entertainment & Recreation	984	10,293	0.9	-130	318	55,762,924	0.4
Accommodation & Food Services	6,097	104,432	8.8	-1,268	1,519	408,839,085	3.1
Other Services	5,322	24,258	2.1	-334	-238	208,091,882	1.6
State & Local Government	3,027	181,891	15.4	-1,649	1,141	1,872,018,522	14.0
Local Government	1,967	113,707	9.6	-535	784	1,031,447,629	7.7
State Government	1,060	68,185	5.8	-1,114	357	840,570,893	6.3
Nonclassifiable Establishments	0	0	0.0	0	0	0	0.0

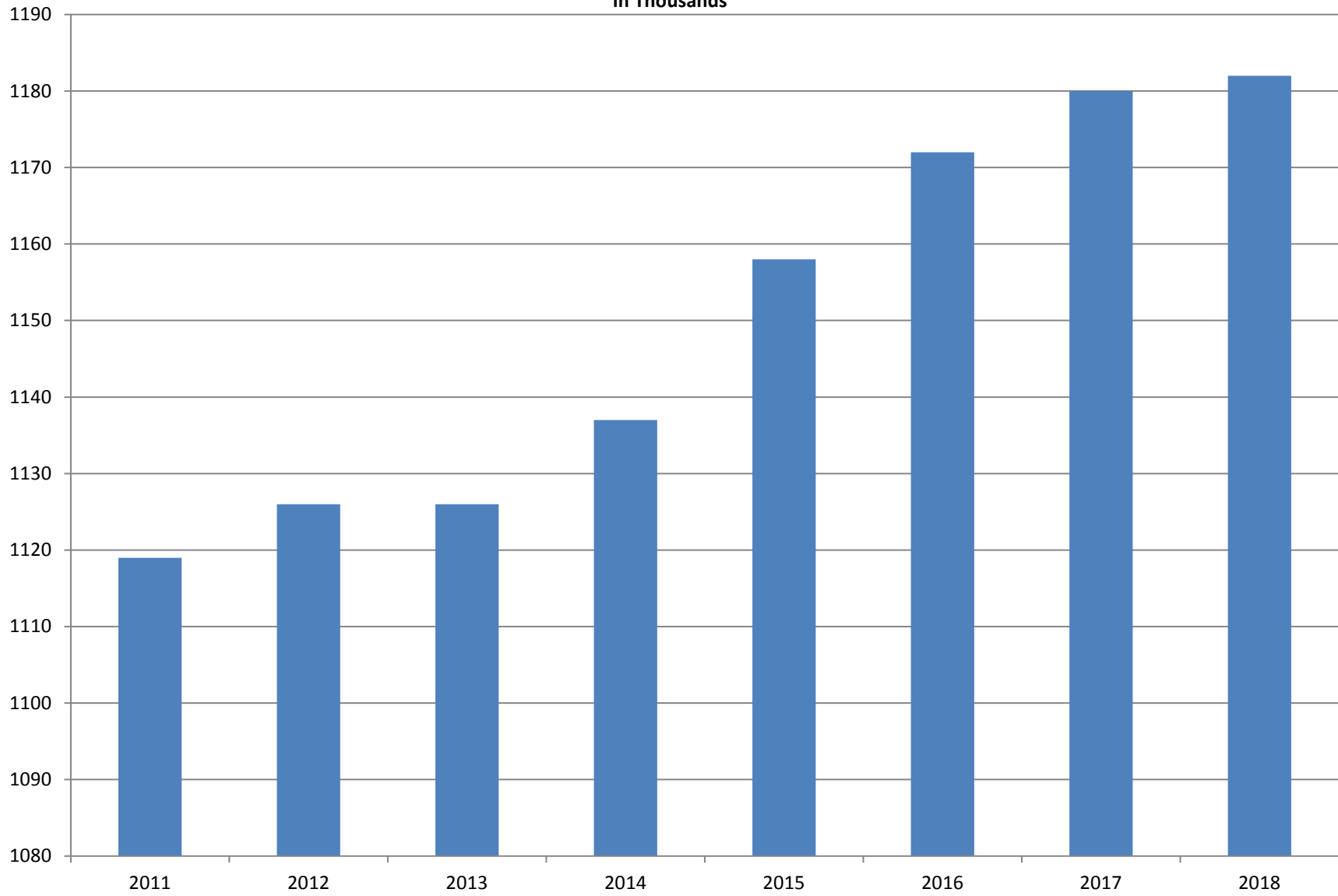
Note: Items do not necessarily add to total because of rounding. Because of industry code changes between years, substantial employment and wage shifts among industries are anticipated.

TABLE 2. TOTAL COVERED EMPLOYMENT IN ARKANSAS

PERIOD	2011	2012	2013	2014	2015	2016	2017	2018
AVERAGE	1,118,639	1,126,171	1,125,890	1,137,486	1,157,634	1,171,503	1,180,337	1,182,307
January	1,098,349	1,113,274	1,112,991	1,114,412	1,135,577	1,152,434	1,161,239	1,173,537
February	1,098,445	1,119,319	1,121,492	1,122,905	1,144,902	1,162,294	1,172,290	1,183,185
March	1,113,061	1,131,123	1,129,100	1,132,106	1,146,413	1,170,837	1,179,686	1,190,199
April	1,129,635	1,136,608	1,134,734	1,140,788	1,158,606	1,178,630	1,185,212	N/A
May	1,126,371	1,142,985	1,138,383	1,149,046	1,167,657	1,181,644	1,189,900	N/A
June	1,123,412	1,136,699	1,130,402	1,144,876	1,164,607	1,177,506	1,186,326	N/A
July	1,080,937	1,078,836	1,083,849	1,096,675	1,119,390	1,132,361	1,137,883	N/A
August	1,106,262	1,108,552	1,109,759	1,125,162	1,148,502	1,160,743	1,168,802	N/A
September	1,132,779	1,134,829	1,135,673	1,150,545	1,173,776	1,185,510	1,193,845	N/A
October	1,138,395	1,135,677	1,138,312	1,153,684	1,173,953	1,185,022	1,194,194	N/A
November	1,138,543	1,137,411	1,141,035	1,158,579	1,177,717	1,186,046	1,197,650	N/A
December	1,137,474	1,138,742	1,134,955	1,161,056	1,180,513	1,185,009	1,197,013	N/A

AVERAGE TOTAL COVERED EMPLOYMENT

In Thousands



TOTAL COVERED EARNINGS BY CALENDAR YEAR

In Thousands

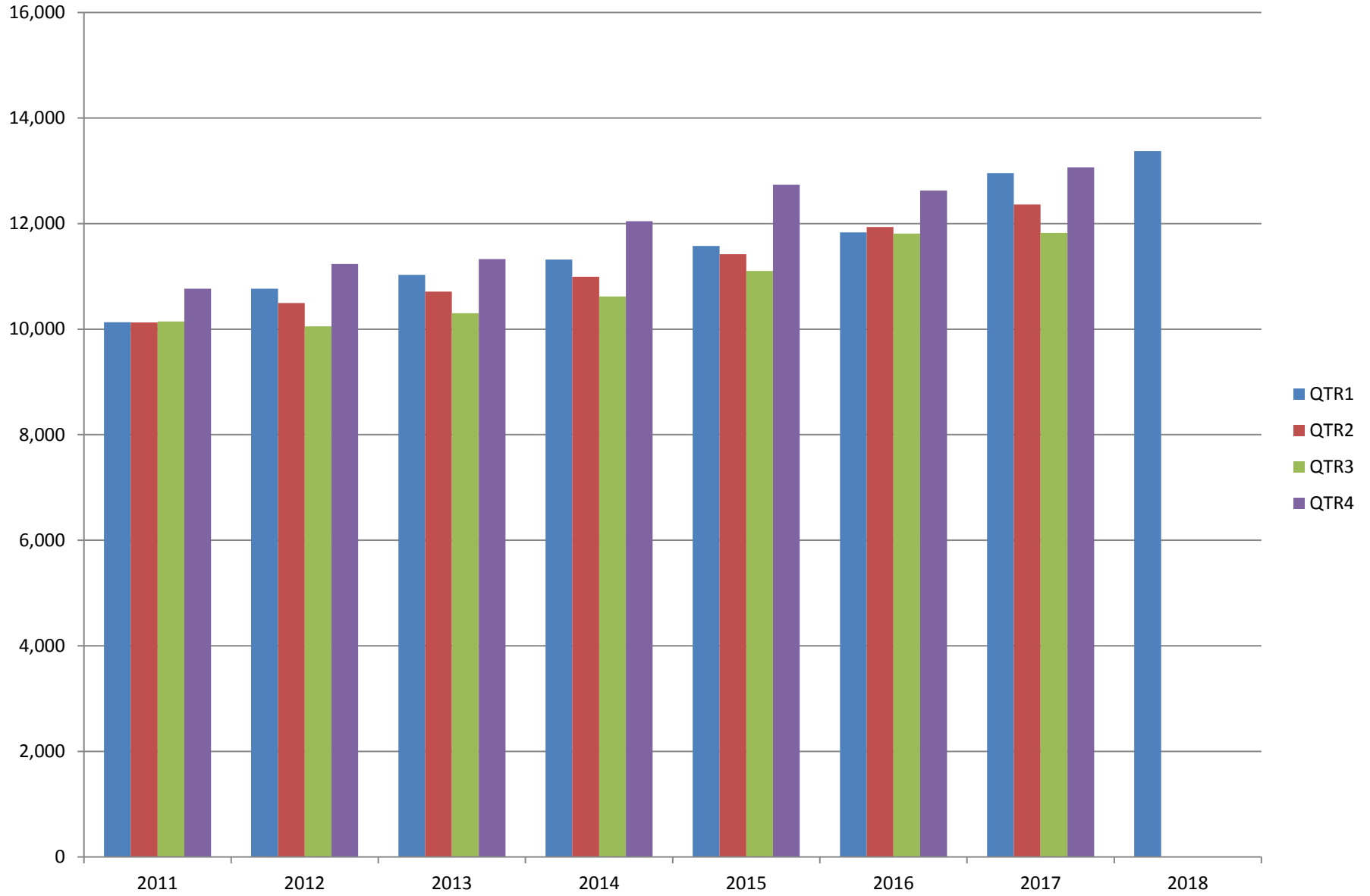


TABLE 3. TOTAL COVERED EARNINGS 2011 - 2018

PERIOD	2011	2012	2013	2014
TOTAL	\$41,177,659,236	\$42,551,238,929	\$43,371,086,461	\$44,980,520,034
January - March	10,134,035,254	10,766,175,449	11,027,184,315	11,321,422,241
April - June	10,128,274,611	10,494,369,042	10,711,027,503	10,991,760,061
July - September	10,147,287,431	10,053,294,410	10,304,451,772	10,619,889,280
October - December	10,768,061,940	11,237,400,028	11,328,422,871	12,047,448,452
Average Weekly Earnings	\$707.89	\$726.62	\$740.80	\$760.46

PERIOD	2015	2016	2017	2017
TOTAL	\$46,836,352,793	\$48,207,277,530	\$50,207,202,141	\$13,372,730,974
January - March	11,575,046,688	11,836,255,664	12,955,088,347	13,372,730,974
April - June	11,419,363,330	11,935,722,186	12,363,027,711	N/A
July - September	11,104,443,452	11,809,460,297	11,823,324,966	N/A
October - December	12,737,499,323	12,625,839,383	13,065,761,117	N/a
Average Weekly Earnings	\$778.05	\$791.34	\$818.01	\$870.05

TABLE 4. TOTAL TAXABLE EARNINGS, 2011 - 2018

PERIOD	2011	2012	2013	2014
TOTAL	11,479,396,226	11,624,348,048	11,644,747,978	11,919,662,224
January - March	5,828,877,821	6,167,036,199	6,184,735,653	6,288,682,396
April - June	2,910,604,359	2,838,154,846	2,805,431,293	2,831,013,392
July - September	1,601,382,146	1,494,712,584	1,506,497,129	1,552,243,963
October - December	1,138,531,900	1,124,444,419	1,148,083,903	1,247,722,473

PERIOD	2015	2016	2017	2018
TOTAL	12,258,632,610	12,511,938,047	12,744,039,136	6,577,871,657
January - March	6,378,966,662	6,595,351,454	6,958,706,950	6,577,871,657
April - June	2,915,293,283	3,003,077,908	2,908,226,426	N/A
July - September	1,640,978,599	1,651,582,584	1,576,968,648	N/A
October - December	1,323,394,066	1,261,926,101	1,300,137,112	N/A

TABLE 5. STATEWIDE SUMMARY

North American Industry Classification System - Industry Groups		Number of Employing Units	Employment			Total Earnings Jan - Mar 2018	Average Weekly Earnings
			Jan	Feb	Mar		
TOTAL, ALL INDUSTRIES		88,736	1,173,537	1,183,185	1,190,199	\$13,372,730,974	\$870.05
NATURAL RESOURCES & MINING		2,530	15,593	15,811	16,298	\$186,360,091	\$901.56
11	AGRICULTURE, FORESTRY, FISHING & HUNTING	2,104	11,817	12,005	12,446	\$120,169,381	\$764.62
111	CROP PRODUCTION	937	3,534	3,684	3,976	\$27,045,104	\$557.55
1111	Oilseed & Grain Farming	694	2,417	2,502	2,702	18,776,167	568.56
1112	Vegetable & Melon Farming	32	172	173	197	1,100,038	468.37
1113	Fruit & Tree Nut Farming	13	29	30	37	193,490	465.12
1114	Greenhouse & Nursery Production	38	373	420	434	2,918,175	548.84
1119	Other Crop Farming	160	543	559	606	4,057,234	548.18
112	ANIMAL PRODUCTION & AQUACULTURE	334	3,113	3,137	3,201	\$41,153,755	\$1,004.87
1121	Cattle Ranching & Farming	126	401	386	405	2,941,836	569.53
1122	Hog & Pig Farming	12	141	144	146	1,847,664	989.29
1123	Poultry & Egg Production	130	2,218	2,245	2,230	33,072,734	1,140.32
1125	Animal Aquaculture	44	295	305	358	2,896,816	697.80
	Other	22	58	57	62	394,705	514.61
115	SUPPORT ACTIVITIES FOR AGRICULTURE & FORESTRY	421	2,868	2,899	2,976	\$27,923,115	\$737.02
1151	Support Activities for Crop Production	287	1,123	1,133	1,235	12,972,578	857.54
1152	Support Activities for Animal Production	63	735	746	748	6,080,805	629.55
1153	Support Activities for Forestry	71	1,010	1,020	993	8,869,732	677.10
	OTHER	412	2,302	2,285	2,293	\$24,047,407	\$806.60
21	MINING	426	3,776	3,806	3,852	\$66,190,710	\$1,335.91
211	OIL & GAS EXTRACTION	74	720	709	705	\$14,648,942	\$1,584.13
212	MINING (EXCEPT OIL & GAS)	105	1,736	1,737	1,743	\$25,681,421	\$1,136.21
213	SUPPORT ACTIVITIES FOR MINING	247	1,320	1,360	1,404	\$25,860,347	\$1,461.26

TABLE 5. STATEWIDE SUMMARY

North American Industry Classification System - Industry Groups		Number of Employing Units	Employment			Total Earnings	Average Weekly Earnings
			Jan	Feb	Mar	Jan - Mar 2018	
CONSTRUCTION		6,891	48,522	49,177	49,537	\$551,509,894	\$864.40
236	CONSTRUCTION OF BUILDINGS	1,823	10,294	10,476	10,426	\$128,204,969	\$948.38
2361	Residential Building Construction	1,233	3,354	3,417	3,494	36,331,253	816.77
2362	Nonresidential Building Construction	590	6,940	7,059	6,932	91,873,716	1,012.93
237	HEAVY & CIVIL ENGINEERING CONSTRUCTION	713	7,846	7,944	8,022	\$94,403,194	\$914.89
2371	Utility System Construction	401	4,362	4,494	4,457	51,595,043	894.36
2372	Land Subdivision	46	76	76	77	766,979	772.90
2373	Highway, Street & Bridge Construction	179	2,804	2,768	2,834	34,840,202	956.47
2379	Other Heavy Construction	87	604	606	654	7,200,970	891.50
238	SPECIALTY TRADE CONTRACTORS	4,355	30,382	30,757	31,089	\$328,901,731	\$822.96
2381	Building Foundation & Exterior Contractors	813	5,559	5,709	5,815	58,840,121	794.85
2382	Building Equipment Contractors	2,113	16,822	16,918	16,963	192,086,666	874.26
2383	Building Finishing Contractors	721	3,710	3,772	3,826	34,850,727	711.22
2389	Other Specialty Trade Contractors	708	4,291	4,358	4,485	43,124,217	757.71
MANUFACTURING		2,909	158,885	159,793	160,130	\$1,922,155,032	\$926.41
311	FOOD MANUFACTURING	292	48,271	48,521	48,553	\$466,892,247	\$741.30
3111	Animal Food Manufacturing	48	2,008	2,009	2,000	28,362,505	1,087.78
3112	Grain & Oilseed Milling	33	2,703	2,712	2,704	29,955,273	851.43
3114	Fruit, Vegetable & Specialty Food	17	4,052	4,079	4,005	48,654,069	925.17
3115	Dairy Product Manufacturing	7	570	572	581	6,488,180	868.99
3116	Animal Slaughtering & Processing	79	32,760	32,944	33,005	286,858,698	670.64
3118	Bakeries & Tortilla Manufacturing	75	3,891	3,889	3,901	40,311,424	796.39
3119	Other Food Manufacturing	23	2,257	2,287	2,328	26,016,464	873.66
	Other	10	30	29	29	245,634	644.15
312	BEVERAGE & TOBACCO PRODUCT MANUFACTURING	62	1,490	1,444	1,465	\$21,413,166	\$1,123.32
313	TEXTILE MILLS	8	116	113	113	\$1,708,570	\$1,152.88
314	TEXTILE PRODUCT MILLS	47	976	986	992	\$12,380,439	\$967.17
3141	Textile Furnishing Mills	10	39	38	38	462,934	928.96
3149	Other Textile Product Mills	37	937	948	954	11,917,505	968.72
315	APPAREL MANUFACTURING	14	832	822	827	\$5,149,634	\$478.99
3151	Apparel Knitting Mills	3	588	577	582	3,473,399	458.82
	Other	11	244	245	245	1,676,235	527.01

TABLE 5. STATEWIDE SUMMARY

North American Industry Classification System - Industry Groups		Number of Employing Units	Employment			Total Earnings	Average Weekly Earnings
			Jan	Feb	Mar	Jan - Mar 2018	
316	LEATHER & ALLIED PRODUCT MANUFACTURING	12	1,004	1,019	1,025	\$6,000,040	\$454.27
3162	Footwear Manufacturing	3	813	832	839	4,652,295	\$432.21
3169	Other Leather & Allied Product Manufacturing	9	191	187	186	1,347,745	\$551.45
321	WOOD PRODUCT MANUFACTURING	311	9,651	9,731	9,764	\$110,149,688	\$872.13
3211	Sawmills & Wood Preservation	147	4,681	4,718	4,740	56,218,993	917.58
3212	Veneer & Engineered Wood Products	40	1,780	1,797	1,787	25,148,850	1,081.95
3219	Other Wood Product Manufacturing	124	3,190	3,216	3,237	28,781,845	688.79
322	PAPER MANUFACTURING	74	9,519	9,575	9,600	\$167,104,948	\$1,343.93
3221	Pulp, Paper & Paperboard Mills	14	3,803	3,858	3,863	90,728,574	1,816.85
3222	Converted Paper Product Manufacturing	60	5,716	5,717	5,737	76,376,374	1,026.52
323	PRINTING & RELATED SUPPORT ACTIVITIES	243	3,906	3,953	3,918	\$39,432,601	\$772.68
324	PETROLEUM & COAL PRODUCTS MANUFACTURING	21	1,223	1,200	1,205	\$24,298,653	\$1,545.58
325	CHEMICAL MANUFACTURING	117	5,343	5,403	5,473	\$88,779,817	\$1,263.19
3251	Basic Chemical Manufacturing	30	1,812	1,820	1,833	36,617,897	1,546.26
3252	Resin, Rubber & Artificial Fibers	10	468	471	499	7,694,069	1,234.74
3253	Agricultural Chemical Manufacturing	14	451	454	459	8,151,523	1,379.12
3254	Pharmaceutical & Medicine Manufacturing	19	514	507	507	6,501,206	981.86
3255	Paint, Coating & Adhesive Manufacturing	10	226	230	231	3,679,894	1,236.11
3256	Soap, Cleaning Compound, & Toilet Preparation Manufacturing	14	1,159	1,214	1,237	16,584,405	1,060.16
3259	Other Chemical Preparation Manufacturing	20	713	707	707	9,550,823	1,036.22
326	PLASTICS & RUBBER PRODUCTS MANUFACTURING	124	10,906	10,941	10,875	\$134,095,671	\$945.70
3261	Plastics Product Manufacturing	96	6,645	6,707	6,653	74,888,390	863.88
3262	Rubber Product Manufacturing	28	4,261	4,234	4,222	59,207,281	1,074.41
327	NONMETALLIC MINERAL PRODUCT MANUFACTURING	224	3,592	3,586	3,634	\$46,519,605	\$992.91
3271	Clay Product & Refractory Manufacturing	12	503	507	509	6,354,311	965.36
3272	Glass & Glass Product Manufacturing	8	349	352	349	3,943,361	866.67
3273	Cement & Concrete Product Manufacturing	168	2,048	2,038	2,087	26,756,730	1,000.26
3274	Lime & Gypsum Product Manufacturing	3	303	300	296	4,991,120	1,281.20
3279	Other Nonmetallic Mineral Products Manufacturing	33	389	389	393	4,474,083	881.71
331	PRIMARY METAL MANUFACTURING	72	7,880	7,928	8,002	\$150,620,828	\$1,459.83
3311	Iron & Steel Mills & Ferroalloys	10	3,161	3,165	3,179	83,961,873	2,038.49
3312	Purchased Steel Product Manufacturing	21	1,989	1,982	2,047	29,365,147	1,126.05
3313	Alumina & Aluminum Production	15	775	797	794	11,655,614	1,136.84
3314	Other Nonferrous Metal Production	7	334	354	357	4,973,230	1,098.25
3315	Foundries	19	1,621	1,630	1,625	20,664,964	978.02

TABLE 5. STATEWIDE SUMMARY

North American Industry Classification System - Industry Groups		Number of Employing Units	Employment			Total Earnings	Average Weekly Earnings
			Jan	Feb	Mar	Jan - Mar 2018	
332	FABRICATED METAL PRODUCT MANUFACTURING	514	15,357	15,470	15,393	\$201,451,452	\$1,005.82
3321	Forging & Stamping	14	425	435	431	5,212,145	931.68
3322	Cutlery & Hand Tool Manufacturing	13	544	548	537	6,044,617	856.30
3323	Architectural & Structural Metals	144	4,374	4,424	4,452	60,242,817	1,049.22
3324	Boilers, Tanks & Shipping Containers	15	631	636	639	8,699,671	1,053.31
3325	Hardware Manufacturing	5	264	267	267	3,170,266	916.79
3326	Spring & Wire Product Manufacturing	11	347	349	355	4,154,200	912.14
3327	Machine Shops & Threaded Products	205	1,988	2,011	2,023	21,500,744	823.93
3328	Coating, Engraving & Heat Treating Metals	40	622	624	628	6,342,769	781.07
3329	Other Fabricated Metal Product Manufacturing	67	6,162	6,176	6,061	86,084,223	1,079.71
333	MACHINERY MANUFACTURING	213	11,294	11,361	11,391	\$135,217,252	\$916.52
3331	Agriculture, Construction & Mining Machinery	40	2,705	2,719	2,705	28,767,024	816.65
3332	Industrial Machinery Manufacturing	24	707	709	708	10,429,906	1,133.19
3333	Commercial & Service Industry Machinery	21	771	779	772	9,968,598	990.72
3334	HVAC & Commercial Refrigeration Equipment	24	2,770	2,774	2,821	34,159,589	942.38
3335	Metalworking Machinery Manufacturing	56	986	992	1,005	11,054,084	855.16
3336	Turbine & Power Transmission Equipment Manufacturing	5	685	706	714	8,639,168	947.10
3339	Other General Purpose Machinery Manufacturing	43	2,670	2,682	2,666	32,198,883	926.73
334	COMPUTER & ELECTRONIC PRODUCT MANUFACTURING	50	2,134	2,151	2,152	\$27,557,930	\$987.96
3343	Audio & Video Equipment Manufacturing	5	121	121	121	1,302,149	827.81
3344	Semiconductors & Electronic Components	24	1,512	1,535	1,545	18,761,904	942.87
3345	Navigational, Measuring, Electromedical, & Control Instr, Mfg Other	16 5	414 87	406 89	395 91	5,967,837 1,526,040	1,133.49 1,318.96
335	ELECTRICAL EQUIPMENT & APPLIANCES	53	4,722	4,693	4,677	\$62,179,831	\$1,018.25
3351	Electric Lighting Equipment Manufacturing	9	334	333	336	3,650,462	\$839.89
3352	Household Appliance Manufacturing	4	38	40	35	831,607	\$1,698.31
3353	Electrical Equipment Manufacturing	21	3,130	3,107	3,091	40,266,421	996.17
3359	Other Electrical Equipment & Component Manufacturing	19	1,220	1,213	1,215	17,431,341	1,102.69
336	TRANSPORTATION EQUIPMENT MANUFACTURING	127	13,730	13,913	14,024	\$155,654,248	\$862.08
3362	Motor Vehicle Body & Trailer Manufacturing	31	2,049	2,112	2,184	20,105,772	731.25
3363	Motor Vehicle Parts Manufacturing	40	5,302	5,365	5,432	58,427,124	837.52
3364	Aerospace Product & Parts Manufacturing	25	2,979	2,999	2,991	43,220,421	1,112.05
3366	Ship & Boat Building Other	19 12	2,116 1,284	2,170 1,267	2,160 1,257	18,353,459 15,547,472	657.06 942.19
337	FURNITURE & RELATED PRODUCT MANUFACTURING	164	3,645	3,646	3,680	\$32,060,042	\$674.37
3371	Household & Institutional Furniture	137	2,938	2,940	2,969	24,584,537	641.27
3372	Office Furniture & Fixtures Manufacturing	21	618	626	634	6,879,056	845.30
3379	Other Furniture Related Product Manufacturing	6	89	80	77	596,449	559.52
339	MISCELLANEOUS MANUFACTURING	167	3,294	3,337	3,367	\$33,488,370	\$772.96
3391	Medical Equipment & Supplies Manufacturing	63	1,606	1,625	1,641	18,992,356	899.60
3399	Other Miscellaneous Manufacturing	104	1,688	1,712	1,726	14,496,014	652.60

TABLE 5. STATEWIDE SUMMARY

North American Industry Classification System - Industry Groups		Number of Employing Units	Employment			Total Earnings Jan - Mar 2018	Average Weekly Earnings
			Jan	Feb	Mar		
TRADE, TRANSPORTATION & UTILITIES		21,534	246,003	245,265	246,473	\$2,589,877,098	\$810.13
42	WHOLESALE TRADE	7,229	46,722	47,004	47,141	\$839,454,232	\$1,375.20
423	MERCHANT WHOLESALERS, DURABLE GOODS	2,980	23,281	23,378	23,406	\$379,609,067	\$1,250.30
4231	Motor Vehicle & Part Merchant Wholesalers	285	3,058	3,104	3,096	44,546,732	1,110.39
4232	Furniture & Furnishings Merchant Wholesalers	70	468	463	473	8,387,163	1,378.56
4233	Lumber & Supply Merchant Wholesalers	216	1,550	1,524	1,559	21,156,985	1,053.83
4234	Commercial Goods Merchant Wholesalers	546	3,077	3,073	3,036	65,559,608	1,646.98
4235	Metal & Mineral Merchant Wholesalers	141	1,014	1,015	1,022	15,409,062	1,165.50
4236	Appliances & Electronics Goods Merchant Wholesalers	281	2,486	2,495	2,495	50,180,889	1,548.98
4237	Hardware & Plumbing Merchant Wholesalers	300	2,682	2,695	2,693	43,491,555	1,243.68
4238	Machinery & Supply Merchant Wholesalers	859	6,964	7,016	7,042	103,895,747	1,140.52
4239	Miscellaneous Durable Goods Merchant Wholesalers	282	1,982	1,993	1,990	26,981,326	1,043.83
424	MERCHANT WHOLESALERS, NONDURABLE GOODS	1,876	17,852	18,000	18,167	\$337,234,140	\$1,440.66
4241	Paper & Paper Product Merchant Wholesalers	124	1,266	1,289	1,264	24,128,594	1,458.01
4242	Druggist' Goods Merchant Wholesalers	215	1,590	1,599	1,578	47,968,935	2,322.16
4243	Apparel & Piece Goods Merchant Wholesalers	57	728	745	750	9,717,915	1,008.82
4244	Grocery Product Merchant Wholesalers	514	5,661	5,675	5,668	124,507,614	1,689.75
4245	Farm Product & Raw Material Merchant Wholesalers	79	858	837	857	7,798,953	705.23
4246	Chemical Merchant Wholesalers	222	1,119	1,116	1,110	29,504,769	2,035.51
4247	Petroleum Merchant Wholesalers	168	1,229	1,238	1,254	15,871,794	984.34
4248	Alcoholic Beverage Merchant Wholesalers	68	1,690	1,705	1,726	26,515,605	1,194.88
4249	Miscellaneous Nondurable Goods Merchant Wholesaler	429	3,711	3,796	3,960	51,219,961	1,030.78
425	ELECTRONIC MARKETS & AGENTS & BROKERS	2,373	5,589	5,626	5,568	\$122,611,025	\$1,685.92
44 - 45	RETAIL TRADE	10,980	138,644	137,563	138,201	\$940,084,685	\$523.50
441	MOTOR VEHICLE & PARTS DEALERS	1,542	19,047	19,154	19,226	\$202,823,346	\$815.04
4411	Automobile Dealers	638	11,870	11,900	11,890	145,384,426	940.84
4412	Other Motor Vehicle Dealers	170	1,660	1,691	1,699	16,888,683	771.76
4413	Automotive Parts, Accessories & Tire Stores	734	5,517	5,563	5,637	40,550,237	559.77
442	FURNITURE & HOME FURNISHINGS STORES	493	3,689	3,691	3,661	\$28,069,411	\$586.68
4421	Furniture Stores	265	2,004	2,024	2,038	17,813,470	677.68
4422	Home Furnishings Stores	228	1,685	1,667	1,623	10,255,941	475.73
443	ELECTRONICS & APPLIANCE STORES	400	3,647	3,537	3,484	\$31,689,864	\$685.51
444	BUILDING MATERIAL & GARDEN SUPPLY STORES	833	11,442	11,751	12,221	\$89,974,047	\$586.30
4441	Building Material & Supplies Dealers	591	9,589	9,899	10,282	78,508,099	608.57
4442	Lawn & Garden Equipment & Supplies Stores	242	1,853	1,852	1,939	11,465,948	468.81

TABLE 5. STATEWIDE SUMMARY

North American Industry Classification System - Industry Groups		Number of Employing Units	Employment			Total Earnings	Average Weekly Earnings
			Jan	Feb	Mar	Jan - Mar 2018	
445	FOOD & BEVERAGE STORES	1,057	19,542	19,413	19,415	\$108,513,372	\$429.01
4451	Grocery Stores	558	16,969	16,862	16,822	92,040,611	419.33
4452	Specialty Food Stores	151	818	807	830	6,970,696	655.24
4453	Beer, Wine & Liquor Stores	348	1,755	1,744	1,763	9,502,065	416.72
446	HEALTH & PERSONAL CARE STORES	979	8,754	8,705	8,732	\$82,535,211	\$727.22
447	GASOLINE STATIONS	1,572	11,973	11,978	12,022	\$56,928,445	\$365.20
44711	Gasoline Stations with Convenience Stores	1,472	10,739	10,748	10,808	49,641,494	354.72
44719	Other Gasoline Stations	100	1,234	1,230	1,214	7,286,951	457.21
448	CLOTHING & CLOTHING ACCESSORIES STORES	1,030	8,236	8,000	8,047	\$35,459,633	\$336.98
4481	Clothing Stores	767	6,330	6,125	6,186	23,469,432	290.54
4482	Shoe Stores	130	1,187	1,156	1,160	4,810,059	316.88
4483	Jewelry, Luggage & Leather Goods Stores	133	719	719	701	7,180,142	774.64
451	SPORTING GOODS, HOBBY, BOOK & MUSIC STORES	465	4,600	4,352	4,338	\$21,018,315	\$364.96
4511	Sporting Goods & Musical Instrument Stores	405	4,060	3,872	3,868	19,013,660	371.84
4512	Book, Periodical & Music Stores	60	540	480	470	2,004,655	310.48
452	GENERAL MERCHANDISE STORES	966	39,054	38,274	38,440	\$228,882,344	\$456.25
4522	Department Stores	132	7,960	7,584	7,627	38,597,210	384.41
4523	Gen. Merchandise Stores, Warehouse clubs & Supercenters	834	31,094	30,690	30,813	190,285,134	474.23
453	MISCELLANEOUS STORE RETAILERS	1,168	6,849	6,887	6,814	\$36,409,388	\$408.86
4531	Florists	169	629	679	627	2,985,240	356.02
4532	Office Supplies, Stationery & Gift Stores	237	1,508	1,504	1,505	8,225,715	420.24
4533	Used Merchandise Stores	250	2,034	2,004	1,955	10,001,553	385.12
4539	Other Miscellaneous Store Retailers	512	2,678	2,700	2,727	15,196,880	432.69
454	NONSTORE RETAILERS	475	1,811	1,821	1,801	\$17,781,309	\$755.27
4541	Electronic Shopping & Mail-Order Houses	235	674	683	675	6,822,196	774.78
4542	Vending Machine Operators	65	485	479	473	4,113,089	660.52
4543	Direct Selling Establishments	175	652	659	653	6,846,024	804.41
48 - 49	TRANSPORTATION & WAREHOUSING	2,912	52,860	52,971	53,374	\$616,215,181	\$893.21
481	AIR TRANSPORTATION	50	759	758	761	\$7,988,683	\$809.28
4811	Scheduled Air Transportation	18	652	654	663	6,209,081	727.71
4812	Nonshceduled Air Transportation	32	107	104	98	1,779,602	1,329.05
483	WATER TRANSPORTATION	5	21	23	23	\$406,029	\$1,398.49
484	TRUCK TRANSPORTATION	1,823	31,184	31,641	31,986	\$391,017,790	\$951.73
4841	General Freight Trucking	1,051	25,051	25,484	25,755	315,874,351	955.49
4842	Specialized Freight Trucking	772	6,133	6,157	6,231	75,143,439	936.28

TABLE 5. STATEWIDE SUMMARY

North American Industry Classification System - Industry Groups		Number of Employing Units	Employment			Total Earnings	Average Weekly Earnings
			Jan	Feb	Mar	Jan - Mar 2018	
485	TRANSIT & GROUND PASSENGER TRANSPORTATION	114	1,788	1,794	1,804	\$9,079,586	\$389.03
4853	Taxi & Limousine Service	30	386	383	373	1,651,575	333.74
4854	School & Employee Bus Transportation	11	391	391	388	2,004,267	395.32
4855	Charter Bus Industry Service	8	89	90	98	588,870	490.59
4859	Other Ground Passenger Transportation	60	815	823	839	4,086,813	380.75
	Other	5	107	107	106	748,061	539.47
486	PIPELINE TRANSPORTATION	39	415	411	411	\$11,257,371	\$2,100.13
487	SCENIC & SIGHTSEEING TRANSPORTATION	4	13	19	23	\$56,803	\$238.33
488	SUPPORT ACTIVITIES FOR TRANSPORTATION	477	5,055	5,055	5,115	\$62,394,266	\$945.73
4881	Support Activities for Air Transportation	99	1,005	999	1,013	10,165,961	777.59
4882	Support Activities for Rail Transportation	37	744	746	731	8,882,331	922.90
4883	Support Activities for Water Transportation	20	444	436	434	6,292,722	1,105.15
4884	Support Activities for Road Transportation	161	729	726	765	6,709,840	697.49
4885	Freight Transportation Arrangement	146	2,035	2,054	2,076	29,390,834	1,100.16
4889	Other Support Activities for Transportation	14	98	94	96	952,578	763.28
493	WAREHOUSING & STORAGE	226	8,528	8,579	8,524	\$86,580,398	\$779.53
	OTHER	174	5,097	4,691	4,727	\$47,434,255	\$754.14
22	UTILITIES	413	7,777	7,727	7,757	\$194,123,000	\$1,925.87
2211	Power Generation & Supply	163	5,781	5,745	5,765	159,749,493	2,132.05
2212	Natural Gas Distribution	68	1,049	1,045	1,046	25,268,289	1,857.05
2213	Water, Sewage & Other Systems	182	947	937	946	9,105,218	742.47
	INFORMATION	1,174	10,997	10,938	10,918	\$155,165,912	\$1,089.93
511	PUBLISHING INDUSTRIES, EXCEPT INTERNET	221	2,854	2,843	2,833	\$31,073,634	\$840.66
5111	Newspaper, Book & Directory Publishers	176	2,462	2,453	2,446	23,207,111	727.55
5112	Software Publishers	45	392	390	387	7,866,523	1,552.91
512	MOTION PICTURE & SOUND RECORDING INDUSTRY	145	1,295	1,241	1,263	\$5,888,353	\$357.69
5121	Motion Picture & Video Industries	133	1,285	1,229	1,251	5,712,663	350.15
5122	Sound Recording Industries	12	10	12	12	175,690	1,192.47
515	BROADCASTING, EXCEPT INTERNET	116	1,595	1,586	1,583	\$18,639,307	\$902.89

TABLE 5. STATEWIDE SUMMARY

North American Industry Classification System - Industry Groups		Number of Employing Units	Employment			Total Earnings	Average Weekly Earnings
			Jan	Feb	Mar	Jan - Mar 2018	
517	TELECOMMUNICATIONS	344	3,559	3,549	3,540	\$66,186,356	\$1,434.43
5173	Telecommunications Resellers	245	3,171	3,170	3,167	58,908,200	1,429.76
5174	Satellite Telecommunications Carriers	5	7	7	7	97,367	1,069.97
5179	Other Telecommunications	94	381	372	366	7,180,789	1,480.88
518	DATA PROCESSING, HOSTING & RELATED SERVICES	257	1,359	1,380	1,359	\$28,659,192	\$1,613.87
519	OTHER INFORMATION SERVICES	91	335	339	340	\$4,719,070	\$1,073.98
FINANCIAL ACTIVITIES		8,367	49,710	49,795	49,725	\$826,448,088	\$1,278.02
52	FINANCE & INSURANCE	4,959	36,363	36,438	36,446	\$696,445,842	\$1,471.15
522	CREDIT INTERMEDIATION & RELATED ACTIVITIES	1,944	19,100	19,099	19,108	\$292,856,687	\$1,179.30
5221	Depository Credit Intermediation	1,405	16,148	16,144	16,171	240,555,202	1,145.47
5222	Nondepository Credit Intermediation	402	1,849	1,857	1,830	36,190,506	1,508.61
5223	Activities Related to Credit Intermediation	137	1,103	1,098	1,107	16,110,979	1,123.92
523	FINANCIAL INVESTMENT & RELATED ACTIVITIES	700	3,067	3,089	3,087	\$159,796,761	\$3,989.63
5231	Insurance Carriers	299	2,175	2,186	2,190	131,904,918	4,646.56
5239	Insurance Agencies, Brokerages & Support	401	892	903	897	27,891,843	2,391.00
524	INSURANCE CARRIERS & RELATED ACTIVITIES	2,241	14,138	14,187	14,185	\$242,455,197	\$1,316.19
5231	Security & Commodity Contracts Intermediation & Brokerage	303	6,249	6,241	6,269	133,591,252	1,643.41
5239	Other Financial Investment Activities	1,938	7,889	7,946	7,916	108,863,945	1,057.74
	OTHER	74	58	63	66	\$1,337,197	\$1,650.18
53	REAL ESTATE & RENTAL & LEASING	3,408	13,347	13,357	13,279	\$130,002,246	\$750.33
531	REAL ESTATE	2,790	9,353	9,380	9,260	\$88,614,249	\$730.52
5311	Lessors of Real Estate	1,118	4,338	4,299	4,205	39,833,956	715.81
5312	Offices of Real Estate Agents & Brokers	889	1,846	1,865	1,865	18,426,497	762.60
5313	Activities Related to Real Estate	783	3,169	3,216	3,190	30,353,796	731.56
532	RENTAL & LEASING SERVICES	604	3,964	3,948	3,988	\$40,294,826	\$781.41
5321	Automotive Equipment Rental & Leasing	117	1,067	1,073	1,072	8,933,741	641.85
5322	Consumer Goods Rental	312	1,731	1,735	1,777	14,192,637	624.69
5323	General Rental Centers	38	253	223	220	2,530,764	839.11
5324	Machinery & Equipment Rental & Leasing	137	913	917	919	14,637,684	1,228.78
533	LESSORS OF NONFINANCIAL INTANGIBLE ASSETS	14	30	29	31	\$1,093,171	\$2,803.00

TABLE 5. STATEWIDE SUMMARY

North American Industry Classification System - Industry Groups		Number of Employing Units	Employment			Total Earnings Jan - Mar 2018	Average Weekly Earnings
			Jan	Feb	Mar		
PROFESSIONAL & BUSINESS SERVICES		14,095	142,914	146,417	147,419	\$2,709,523,361	\$1,431.65
54	PROFESSIONAL & TECHNICAL SERVICES	8,873	43,509	44,147	44,242	\$667,353,764	\$1,167.60
5411	Legal Services	1,664	5,923	5,966	5,961	78,275,007	1,011.96
5412	Accounting & Bookkeeping Services	1,251	6,623	7,031	6,926	88,299,845	990.13
5413	Architectural & Engineering Services	999	6,355	6,269	6,269	95,846,740	1,170.72
5414	Specialized Design Services	172	316	322	324	3,982,983	955.46
5415	Computer Systems Design & Related Services	1,775	9,397	9,439	9,442	192,999,809	1,575.02
5416	Management & Technical Consulting Services	1,925	6,446	6,444	6,470	105,280,478	1,254.93
5417	Scientific Research & Development Services	119	756	777	778	12,929,894	1,291.14
5418	Advertising & Related Services	388	3,757	3,915	4,012	50,472,562	996.88
5419	Other Professional & Technical Services	580	3,936	3,984	4,060	39,266,446	756.38
55	MANAGEMENT OF COMPANIES & ENTERPRISES	559	35,014	35,201	35,137	\$1,549,395,078	\$3,393.89
56	ADMINISTRATIVE & WASTE SERVICES	4,663	64,391	67,069	68,040	\$492,774,519	\$570.01
561	ADMINISTRATIVE & SUPPORT SERVICES	4,345	61,084	63,742	64,692	\$451,758,741	\$550.09
5611	Office Administrative Services	679	3,987	4,035	4,103	54,565,971	1,038.53
5612	Facilities Support Services	53	1,326	1,331	1,346	9,654,484	556.57
5613	Employment Services	1,118	26,363	28,827	29,449	162,838,751	443.98
5614	Business Support Services	360	8,524	8,490	8,381	91,284,547	829.52
5615	Travel Arrangement & Reservation Services	104	342	359	359	4,391,218	956.00
5616	Investigation & Security Services	287	4,961	5,008	4,978	34,256,073	528.89
5617	Services to Buildings & Dwellings	1,559	14,282	14,442	14,808	83,887,114	444.70
5619	Other Support Services	185	1,299	1,250	1,268	10,880,583	657.82
562	WASTE MANAGEMENT & REMEDIATION SERVICES	318	3,307	3,327	3,348	\$41,015,778	\$948.22
5621	Waste Collection Services	136	1,289	1,277	1,262	14,154,693	853.31
5622	Waste Treatment & Disposal Services	40	978	994	996	14,353,108	1,115.99
5629	Remediation & Other Waste Services	142	1,040	1,056	1,090	12,507,977	905.98
EDUCATION & HEALTH SERVICES		15,806	183,797	184,889	185,293	\$1,886,979,085	\$786.05
61	EDUCATIONAL SERVICES	856	11,591	12,043	12,020	\$104,881,685	\$678.84
6111	Elementary & Secondary Schools	101	4,037	4,143	4,130	33,413,873	626.39
6112	Junior Colleges	7	118	120	118	805,553	522.18
6113	Colleges & Universities	106	4,044	4,355	4,353	40,139,388	726.39
6114	Business, Computer, & Management Training	56	160	163	160	2,304,962	1,101.27
6115	Technical & Trade Schools	109	927	930	916	14,109,953	1,174.23
6116	Other Schools & Instruction	311	1,764	1,796	1,792	8,256,684	356.01
6117	Educational Support Services	166	541	536	551	5,851,272	829.42

TABLE 5. STATEWIDE SUMMARY

North American Industry Classification System - Industry Groups		Number of Employing Units	Employment			Total Earnings	Average Weekly Earnings
			Jan	Feb	Mar	Jan - Mar 2018	
62	HEALTH CARE & SOCIAL ASSISTANCE	14,950	172,206	172,846	173,273	\$1,782,097,400	\$793.43
621	AMBULATORY HEALTH CARE SERVICES	5,816	57,200	57,480	57,456	\$843,268,349	\$1,130.50
6211	Offices of Physicians	2,300	24,937	24,927	24,851	480,514,178	1,484.14
6212	Offices of Dentists	971	7,199	7,296	7,254	85,831,449	910.72
6213	Offices of Other Health Practitioners	1,579	9,094	9,208	9,294	94,076,598	786.71
6214	Outpatient Care Centers	345	5,209	5,266	5,208	73,342,473	1,079.21
6215	Medical & Diagnostic Laboratories	184	1,312	1,293	1,319	19,610,869	1,153.31
6216	Home Health Care Services	260	6,757	6,762	6,814	59,945,285	680.35
6219	Other Ambulatory Health Care Services	177	2,692	2,728	2,716	29,947,497	849.43
622	HOSPITALS	112	43,280	43,331	43,560	\$524,524,164	\$929.88
6221	General Medical & Surgical Hospitals	83	38,625	38,720	38,877	473,578,643	940.33
6222	Psychiatric & Substance Abuse Hospitals	10	1,939	1,889	1,937	19,308,358	772.90
6223	Speciality Hospitals	19	2,716	2,722	2,746	31,637,163	892.09
623	Residential & Mental Health Facilities	641	32,156	32,093	32,107	\$207,225,030	\$496.30
6231	Nursing Care Facilities (Skilled Nursing Facilities)	284	22,696	22,582	22,554	146,026,168	496.79
6232	Residential Mental Health Facilities	168	4,442	4,445	4,471	29,307,043	506.30
6233	Continuing Care & Assisted Living Facilities	155	4,232	4,265	4,277	26,040,098	470.43
6239	Other Residential Care Facilities	34	786	801	805	5,851,721	564.55
624	SOCIAL ASSISTANCE	8,381	39,570	39,942	40,150	\$207,079,857	\$399.36
6241	Individual & Family Services	7,324	24,956	25,144	25,347	132,017,019	403.80
6242	Emergency & Other Relief Services	141	1,351	1,372	1,358	9,112,437	515.28
6243	Vocational Rehabilitation Services	90	3,184	3,181	3,232	18,456,709	443.81
6244	Child Day Care Services	826	10,079	10,245	10,213	47,493,692	358.91
LEISURE & HOSPITALITY		7,081	112,652	114,356	117,166	\$464,602,009	\$311.52
71	ARTS, ENTERTAINMENT & RECREATION	984	9,808	10,265	10,805	55,762,924	\$416.75
711	PERFORMING ARTS & SPECTATOR SPORTS	222	2,736	2,856	3,039	19,719,605	\$527.25
7111	Performing Arts Companies	46	316	374	389	2,194,492	469.34
7112	Spectator Sports	68	1,687	1,722	1,699	12,428,453	561.49
7113	Performing Arts & Sports Promoters	50	646	596	853	4,179,874	460.42
7114	Agents & Managers for Public Figures	16	31	104	29	257,497	362.33
7115	Independent Artists, Writers, & Performers	42	56	60	69	659,289	822.40
712	MUSEUMS, PARKS, & HISTORICAL SITES	55	643	653	699	4,633,057	\$535.92
713	GAMBLING, RECREATIONAL & AMUSEMENT INDUSTRY	707	6,429	6,756	7,067	31,410,262	\$357.92
7131	Amusement Parks & Arcades	30	113	191	283	807,506	317.46
7139	Other Amusement & Recreation Industries	677	6,316	6,565	6,784	30,602,756	359.12
72	ACCOMMODATION & FOOD SERVICES	6,097	102,844	104,091	106,361	408,839,085	\$301.14

TABLE 5. STATEWIDE SUMMARY

North American Industry Classification System - Industry Groups		Number of Employing Units	Employment			Total Earnings	Average Weekly Earnings
			Jan	Feb	Mar	Jan - Mar 2018	
721	ACCOMMODATION	887	10,407	10,678	11,044	\$48,976,092	\$351.77
7211	Travel Accommodation	801	9,954	10,194	10,538	46,440,798	349.25
7212	RV Parks & Recreational Camps	70	356	377	404	1,924,826	390.67
7213	Rooming & Boarding Houses	16	97	107	102	610,468	460.38
722	FOOD SERVICES & DRINKING PLACES	5,210	92,437	93,413	95,317	\$359,862,993	\$295.36
7223	Special Food Services	268	4,549	4,744	4,840	19,887,741	324.73
7224	Drinking Places, Alcoholic Beverages	141	984	1,009	1,023	3,810,090	291.53
7225	Restaurants & Other Eating Places	4,801	86,904	87,660	89,454	336,165,162	293.83
722511	Full-Service Restaurants	2,070	37,459	38,108	38,702	162,214,901	327.60
722513	Limited-Service Eating Places	2,253	44,957	44,938	46,159	155,305,124	263.42
722514	Cafeterias, Grill Buffets, & Buffets	91	1,664	1,690	1,690	7,963,986	364.36
722515	Snack & Nonalcoholic Beverage Bars	387	2,824	2,924	2,903	10,681,151	284.92
	OTHER SERVICES	5,322	24,144	24,204	24,426	\$208,091,882	\$659.87
811	REPAIR & MAINTENANCE	2,205	10,366	10,474	10,633	\$102,353,086	\$750.48
8111	Automotive Repair & Maintenance	1,397	6,475	6,531	6,587	57,084,339	672.35
8112	Electronic Equipment Repair & Maintenance	174	965	961	948	10,481,851	841.65
8113	Commercial Machinery Repair & Maintenance	471	2,410	2,456	2,551	30,638,936	953.29
8114	Household Goods Repair & Maintenance	163	516	526	547	4,147,960	602.40
812	PERSONAL & LAUNDRY SERVICES	1,330	7,617	7,562	7,643	\$48,167,718	\$487.06
8121	Personal Care Services	624	2,804	2,783	2,806	14,892,601	409.48
8122	Death Care Services	246	1,552	1,530	1,558	11,263,203	560.17
8123	Drycleaning & Laundry Service	229	2,301	2,272	2,262	16,233,943	548.10
8129	Other Personal Services	231	960	977	1,017	5,777,971	451.38
813	MEMBERSHIP ASSOCIATIONS & ORGANIZATIONS	1,094	5,240	5,245	5,229	\$51,655,328	\$758.59
8131	Religious Organizations	89	288	296	300	2,215,465	578.35
8132	Grantmaking & Giving Organizations	124	463	466	445	6,379,215	1,071.42
8133	Social Advocacy Organizations	202	1,332	1,321	1,304	14,269,730	832.20
8134	Civic & Social Organizations	194	1,195	1,238	1,200	5,523,697	350.87
8139	Professional & Similar Organizations	485	1,962	1,924	1,980	23,267,221	915.34
814	PRIVATE HOUSEHOLDS	693	921	923	921	\$5,915,750	\$493.73
	LOCAL GOVERNMENT	1,967	113,245	113,701	114,174	\$1,031,447,629	\$697.78
	STATE GOVERNMENT	1,060	67,075	68,839	68,640	\$840,570,893	\$948.30
	NONCLASSIFIABLE ESTABLISHMENTS	0	0	0	0	\$0	\$0.00

TABLE 6. COUNTY SUMMARY

North American Industry Classification System - Industry Groups	Number of Employing Units	Employment			Total Earnings	Average Weekly Earnings
		Jan	Feb	Mar	Jan - Mar 2018	
ARKANSAS COUNTY - TOTAL	759	9,297	9,386	9,449	\$90,104,041	\$739.13
Natural Resources & Mining	52	175	161	171	1,600,964	728.70
Construction	43	221	217	218	2,187,503	769.52
Manufacturing	30	3,542	3,588	3,613	35,693,182	766.72
Trade, Transportation & Utilities	187	2,002	1,997	2,025	21,366,252	818.50
Wholesale Trade	46	443	446	485	6,390,485	1,073.31
Retail Trade	85	985	962	947	6,516,745	519.65
Transportation, Warehousing & Utilities	56	574	589	593	8,459,022	1,111.66
Information	9	62	60	62	606,058	760.11
Financial Activities	48	286	287	281	3,308,876	894.13
Professional & Business Services	49	471	484	480	6,514,069	1,047.56
Education & Health Services	196	1,047	1,069	1,089	9,117,223	656.47
Leisure & Hospitality	62	510	527	517	1,672,726	248.40
Other Services	37	89	96	95	683,712	563.50
Local Government	32	717	724	723	5,899,977	629.17
State Government	14	175	176	175	1,453,499	637.69
ASHLEY COUNTY - TOTAL	551	6,569	6,595	6,564	\$72,439,466	\$847.36
Natural Resources & Mining	42	329	320	321	3,201,478	761.65
Construction	33	564	561	503	6,044,129	856.76
Manufacturing	22	1,633	1,672	1,700	30,233,509	1,394.00
Trade, Transportation & Utilities	109	1,232	1,219	1,218	10,290,891	647.27
Wholesale Trade	22	197	193	197	2,817,529	1,107.66
Retail Trade	62	721	713	715	4,312,576	463.10
Transportation, Warehousing & Utilities	25	314	313	306	3,160,786	781.79
Information	6	36	37	33	245,237	533.90
Financial Activities	36	181	180	178	2,039,589	873.24
Professional & Business Services	38	179	176	187	1,589,339	676.70
Education & Health Services	155	963	972	977	8,995,043	712.84
Leisure & Hospitality	33	338	334	334	1,104,529	253.37
Other Services	35	135	125	140	1,030,498	594.52
Local Government	32	885	893	866	6,672,124	582.35
State Government	10	94	106	107	993,100	746.50

TABLE 6. COUNTY SUMMARY

North American Industry Classification System - Industry Groups	Number of Employing Units	Employment			Total Earnings Jan - Mar 2018	Average Weekly Earnings
		Jan	Feb	Mar		
BAXTER COUNTY - TOTAL	1,211	14,533	14,647	14,836	\$125,477,474	\$657.86
Natural Resources & Mining	6	54	57	58	510,599	697.22
Construction	111	452	458	497	3,878,365	636.11
Manufacturing	54	2,479	2,490	2,501	24,271,142	749.80
Trade, Transportation & Utilities	253	2,740	2,728	2,755	18,760,487	526.49
Wholesale Trade	34	224	232	230	2,393,863	805.29
Retail Trade	194	2,324	2,303	2,341	14,472,107	479.29
Transportation, Warehousing & Utilities	25	192	193	184	1,894,517	768.36
Information	19	184	179	180	2,022,527	859.55
Financial Activities	117	716	712	719	9,552,532	1,026.75
Professional & Business Services	135	770	786	806	6,391,392	624.44
Education & Health Services	270	3,836	3,854	3,863	40,092,964	800.85
Leisure & Hospitality	117	1,523	1,557	1,614	5,697,825	280.12
Other Services	82	333	341	345	2,370,100	536.75
Local Government	36	1,177	1,179	1,189	9,347,287	608.48
State Government	11	269	306	309	2,582,254	674.10
BENTON COUNTY - TOTAL	6,527	117,443	118,731	119,252	\$2,313,062,093	\$1,501.81
Natural Resources & Mining	45	758	769	764	15,201,545	1,531.23
Construction	641	4,877	4,891	4,929	55,426,447	870.29
Manufacturing	195	12,058	12,233	12,238	140,722,283	889.00
Trade, Transportation & Utilities	1,692	28,221	28,186	28,172	377,752,271	1,030.68
Wholesale Trade	761	5,982	5,974	5,944	162,092,078	2,089.71
Retail Trade	744	12,457	12,288	12,270	89,857,467	560.21
Transportation, Warehousing & Utilities	187	9,782	9,924	9,958	125,802,726	978.67
Information	78	938	930	928	13,880,432	1,145.63
Financial Activities	655	3,861	3,880	3,861	60,734,614	1,208.04
Professional & Business Services	1,270	31,544	31,995	32,117	1,357,304,256	3,274.48
Education & Health Services	819	11,572	11,708	11,787	115,738,379	761.65
Leisure & Hospitality	629	12,006	12,282	12,486	55,905,273	350.82
Other Services	402	2,121	2,123	2,120	19,333,837	701.08
Local Government	84	8,624	8,646	8,733	90,978,086	807.40
State Government	17	863	1,088	1,117	10,084,670	758.55

TABLE 6. COUNTY SUMMARY

North American Industry Classification System - Industry Groups	Number of Employing Units	Employment			Total Earnings	Average Weekly Earnings
		Jan	Feb	Mar	Jan - Mar 2018	
BOONE COUNTY - TOTAL	959	13,701	13,785	13,941	\$127,403,501	\$709.70
Construction	64	368	382	385	3,726,293	757.63
Manufacturing	63	1,870	1,883	1,896	19,986,863	816.49
Trade, Transportation & Utilities	245	3,533	3,510	3,548	34,244,697	746.16
Wholesale Trade	38	347	348	347	2,981,479	660.30
Retail Trade	162	2,000	1,982	1,989	13,355,380	516.16
Transportation, Warehousing & Utilities	45	1,186	1,180	1,212	17,907,838	1,155.00
Information	14	273	274	275	3,510,695	985.60
Financial Activities	90	416	409	399	5,637,971	1,062.97
Professional & Business Services	103	1,371	1,398	1,408	15,005,410	829.01
Education & Health Services	170	1,542	1,554	1,588	11,886,090	585.60
Leisure & Hospitality	81	1,125	1,122	1,153	4,193,824	284.65
Local Government	53	2,252	2,256	2,278	20,125,791	684.41
State Government	17	702	744	752	6,918,723	726.40
Other	59	249	253	259	2,167,144	657.17
BRADLEY COUNTY - TOTAL	360	3,811	3,840	3,820	\$31,796,801	\$639.68
Natural Resources & Mining	44	324	343	325	2,748,746	639.44
Construction	18	64	64	74	503,061	574.71
Manufacturing	12	919	928	921	9,737,911	811.85
Trade, Transportation & Utilities	71	440	441	454	3,481,549	601.82
Wholesale Trade	11	75	77	79	1,149,248	1,148.10
Retail Trade	38	300	294	303	1,594,652	410.25
Transportation, Warehousing & Utilities	22	65	70	72	737,649	822.35
Information	3	21	27	28	169,231	513.86
Financial Activities	24	136	138	131	1,309,819	746.34
Professional & Business Services	26	116	119	117	781,039	512.04
Education & Health Services	98	696	694	693	5,743,689	636.33
Leisure & Hospitality	15	175	170	168	534,989	240.66
Other Services	25	99	102	96	604,176	469.45
Local Government	14	484	478	476	3,564,465	572.02
State Government	10	337	336	337	2,618,126	598.20

TABLE 6. COUNTY SUMMARY

North American Industry Classification System - Industry Groups	Number of Employing Units	Employment			Total Earnings	Average Weekly Earnings
		Jan	Feb	Mar	Jan - Mar 2018	
CALHOUN COUNTY - TOTAL	99	2,934	2,930	2,956	\$43,045,166	\$1,126.25
Natural Resources & Mining	6	35	34	35	298,963	663.38
Construction	10	92	98	97	1,187,617	954.93
Manufacturing	7	2,136	2,128	2,152	35,095,751	1,262.32
Trade, Transportation & Utilities	20	215	209	208	1,899,471	693.58
Retail Trade	9	54	53	52	259,759	377.01
Transportation, Warehousing & Utilities	11	161	156	156	1,639,712	799.99
Professional & Business Services	5	10	10	9	99,238	789.69
Education & Health Services	19	62	60	58	575,774	738.17
Leisure & Hospitality	4	12	15	15	48,236	265.03
Other Services	3	3	3	3	15,715	402.95
Local Government	11	186	191	196	1,429,313	575.64
State Government	7	79	77	77	870,798	862.46
Other	7	104	105	106	1,524,290	1,116.70
CARROLL COUNTY - TOTAL	799	10,067	10,112	10,368	\$76,548,084	\$578.25
Natural Resources & Mining	19	208	210	201	1,862,793	694.47
Trade, Transportation & Utilities	195	1,595	1,588	1,604	12,280,500	592.01
Wholesale Trade	23	186	196	194	1,643,259	658.36
Retail Trade	144	1,071	1,050	1,065	5,982,809	433.35
Transportation, Warehousing & Utilities	28	338	342	345	4,654,432	1,047.90
Information	10	67	67	68	723,330	826.35
Financial Activities	61	365	371	367	4,325,087	904.89
Professional & Business Services	62	234	243	245	2,109,411	674.22
Education & Health Services	98	1,112	1,100	1,122	8,528,373	590.31
Leisure & Hospitality	172	1,183	1,211	1,426	4,764,110	287.80
Other Services	48	133	138	132	815,128	466.77
Local Government	26	1,037	1,033	1,043	7,761,674	575.38
State Government	9	90	90	90	934,246	798.50
Other	99	4,043	4,061	4,070	32,443,432	614.99

TABLE 6. COUNTY SUMMARY

North American Industry Classification System - Industry Groups	Number of Employing Units	Employment			Total Earnings Jan - Mar 2018	Average Weekly Earnings
		Jan	Feb	Mar		
CHICOT COUNTY - TOTAL	497	2,960	2,949	2,993	\$22,940,663	\$594.70
Natural Resources & Mining	51	183	177	214	1,584,512	637.03
Construction	15	133	125	134	1,481,122	871.93
Manufacturing	6	14	16	16	280,364	1,406.51
Trade, Transportation & Utilities	66	660	642	628	4,372,840	522.86
Wholesale Trade	15	75	74	64	677,316	733.82
Retail Trade	38	298	302	300	1,806,526	463.21
Transportation, Warehousing & Utilities	13	287	266	264	1,888,998	533.57
Financial Activities	28	168	165	164	2,091,077	970.94
Professional & Business Services	17	42	47	46	390,692	667.85
Education & Health Services	253	680	682	682	4,286,231	483.92
Leisure & Hospitality	15	129	134	140	427,202	244.63
Local Government	17	579	577	584	4,691,991	622.28
State Government	10	303	310	311	2,778,958	694.05
Other	19	69	74	74	555,674	
CLARK COUNTY - TOTAL	649	9,055	9,209	9,325	\$80,129,273	\$670.24
Natural Resources & Mining	48	273	276	273	2,815,561	790.44
Construction	26	53	49	56	382,573	558.77
Manufacturing	32	1,393	1,402	1,376	19,121,412	1,057.93
Trade, Transportation & Utilities	134	1,474	1,442	1,473	10,855,799	570.79
Wholesale Trade	14	36	36	40	413,420	851.83
Retail Trade	91	1,234	1,211	1,226	8,172,632	513.75
Transportation, Warehousing & Utilities	29	204	195	207	2,269,747	864.34
Information	3	14	13	13	136,362	786.70
Financial Activities	71	292	287	291	3,280,132	870.06
Professional & Business Services	50	604	596	592	6,895,669	888.01
Education & Health Services	131	1,594	1,651	1,682	13,063,360	611.86
Leisure & Hospitality	66	1,080	1,128	1,174	3,648,982	248.99
Other Services	44	216	211	215	1,900,000	682.96
Local Government	30	983	971	993	7,568,686	592.68
State Government	14	1,079	1,183	1,187	10,460,737	699.92

TABLE 6. COUNTY SUMMARY

North American Industry Classification System - Industry Groups	Number of Employing Units	Employment			Total Earnings	Average Weekly Earnings
		Jan	Feb	Mar	Jan - Mar 2018	
CLAY COUNTY - TOTAL	373	3,174	3,207	3,255	\$22,546,014	\$539.95
Natural Resources & Mining	58	195	212	236	1,355,642	486.53
Construction	28	82	89	107	601,984	499.71
Manufacturing	13	126	124	124	843,186	520.27
Trade, Transportation & Utilities	89	779	788	807	6,046,916	587.80
Wholesale Trade	21	234	238	248	1,963,360	629.28
Retail Trade	43	421	419	421	2,602,911	476.35
Transportation, Warehousing & Utilities	25	124	131	138	1,480,645	869.43
Information	5	35	35	34	243,393	540.07
Financial Activities	23	104	105	105	961,847	706.89
Professional & Business Services	28	125	125	129	1,085,839	661.16
Education & Health Services	51	523	515	518	3,824,541	567.21
Leisure & Hospitality	23	268	273	276	723,335	204.31
Other Services	25	74	75	74	542,609	561.51
Local Government	21	820	823	801	5,884,113	555.59
State Government	9	43	43	44	432,609	767.94
CLEBURNE COUNTY - TOTAL	647	6,063	6,204	6,290	\$49,167,376	\$611.43
Natural Resources & Mining	29	196	210	215	2,920,287	1,085.21
Construction	64	274	297	288	2,648,169	711.43
Manufacturing	31	1,167	1,215	1,239	11,548,828	736.02
Trade, Transportation & Utilities	146	1,154	1,139	1,142	9,131,879	613.50
Wholesale Trade	32	117	113	121	1,315,312	864.77
Retail Trade	94	906	896	889	6,383,320	547.41
Transportation, Warehousing & Utilities	20	131	130	132	1,433,247	841.60
Information	8	50	50	49	451,270	698.92
Financial Activities	80	265	266	266	2,689,314	778.68
Professional & Business Services	63	236	239	240	2,337,331	754.38
Education & Health Services	84	931	934	936	6,596,466	543.47
Leisure & Hospitality	80	766	817	853	2,971,891	281.54
Other Services	36	109	114	122	772,842	516.95
Local Government	18	820	811	825	6,170,356	579.78
State Government	8	95	112	115	928,743	665.61

TABLE 6. COUNTY SUMMARY

North American Industry Classification System - Industry Groups	Number of Employing Units	Employment			Total Earnings Jan - Mar 2018	Average Weekly Earnings
		Jan	Feb	Mar		
CLEVELAND COUNTY - TOTAL	132	1,035	1,044	1,043	\$8,141,866	\$601.82
Natural Resources & Mining	17	164	169	166	1,568,764	725.50
Construction	9	15	17	17	200,895	946.13
Manufacturing	4	110	110	111	1,057,963	737.60
Trade, Transportation & Utilities	35	171	170	171	1,291,625	582.16
Retail Trade	19	71	74	70	261,980	281.19
Other Trade, Transportation, & Utilities	16	100	96	101	1,029,645	800.03
Financial Activities	4	27	28	27	287,320	808.59
Education & Health Services	32	170	171	165	876,019	399.52
Other Services	5	12	11	12	118,647	782.29
Local Government	11	319	320	323	2,311,832	554.57
State Government	6	28	28	28	305,113	838.22
Other	9	19	20	23	123,688	460.38
COLUMBIA COUNTY - TOTAL	694	7,860	7,843	7,878	\$79,577,135	\$778.76
Natural Resources & Mining	38	314	316	321	4,598,802	1,115.94
Construction	36	152	160	156	1,431,119	705.68
Manufacturing	32	1,861	1,845	1,857	29,843,159	1,237.98
Trade, Transportation & Utilities	165	1,351	1,328	1,317	11,508,492	664.62
Wholesale Trade	30	199	197	203	2,743,801	1,057.07
Retail Trade	96	943	924	917	5,853,311	485.19
Transportation, Warehousing & Utilities	39	209	207	197	2,911,380	1,096.01
Information	6	48	46	47	470,194	769.55
Financial Activities	64	333	336	331	3,925,768	905.95
Professional & Business Services	49	258	255	268	1,841,654	544.17
Education & Health Services	175	1,006	1,014	1,011	6,399,258	487.22
Leisure & Hospitality	49	669	679	689	2,458,245	278.49
Other Services	42	138	135	149	738,033	403.59
Local Government	26	1,106	1,115	1,125	9,471,518	653.24
State Government	12	624	614	607	6,890,893	861.90

TABLE 6. COUNTY SUMMARY

North American Industry Classification System - Industry Groups	Number of Employing Units	Employment			Total Earnings	Average Weekly Earnings
		Jan	Feb	Mar	Jan - Mar 2018	
CONWAY COUNTY - TOTAL	519	6,290	6,306	6,313	\$61,533,375	\$750.97
Natural Resources & Mining	29	240	246	257	2,403,518	746.51
Construction	45	466	463	467	7,771,166	1,284.63
Manufacturing	18	883	865	879	13,339,497	1,171.81
Trade, Transportation & Utilities	114	1,308	1,303	1,321	10,590,014	621.53
Wholesale Trade	17	119	125	127	1,090,383	678.24
Retail Trade	73	757	745	752	5,074,751	519.56
Transportation, Warehousing & Utilities	24	432	433	442	4,424,880	781.27
Information	3	13	13	14	50,389	290.71
Financial Activities	38	151	154	149	1,738,966	883.92
Professional & Business Services	38	539	569	544	3,827,659	534.69
Education & Health Services	131	803	795	780	7,645,873	741.98
Leisure & Hospitality	38	432	421	443	1,516,317	270.00
Other Services	26	81	83	78	740,032	705.69
Local Government	30	1,011	1,025	1,022	8,967,860	676.75
State Government	9	363	369	359	2,942,084	622.31
CRAIGHEAD COUNTY - TOTAL	2,818	49,899	50,091	50,524	\$486,908,659	\$746.53
Natural Resources & Mining	98	295	309	345	2,878,506	699.97
Construction	238	1,988	2,030	2,071	21,801,586	826.27
Manufacturing	99	6,741	6,814	6,867	80,269,711	907.05
Trade, Transportation & Utilities	790	10,241	10,247	10,386	90,040,728	673.01
Wholesale Trade	185	1,862	1,892	1,912	26,146,442	1,064.91
Retail Trade	471	6,704	6,660	6,756	43,770,144	502.03
Transportation, Warehousing & Utilities	134	1,675	1,695	1,718	20,124,142	912.74
Information	20	415	407	406	5,178,601	973.18
Financial Activities	274	1,605	1,614	1,597	22,332,453	1,070.11
Professional & Business Services	370	4,441	4,467	4,525	34,910,752	599.74
Education & Health Services	454	10,687	10,650	10,680	130,684,681	941.94
Leisure & Hospitality	261	5,526	5,601	5,666	21,527,261	295.83
Other Services	157	729	728	738	5,645,766	593.56
Local Government	35	4,148	4,139	4,170	36,896,596	683.52
State Government	22	3,083	3,085	3,073	34,742,018	867.59

TABLE 6. COUNTY SUMMARY

North American Industry Classification System - Industry Groups	Number of Employing Units	Employment			Total Earnings	Average Weekly Earnings
		Jan	Feb	Mar	Jan - Mar 2018	
CRAWFORD COUNTY - TOTAL	1,241	19,328	19,451	19,550	\$171,284,690	\$677.66
Natural Resources & Mining	22	224	259	290	2,418,322	721.96
Construction	147	952	982	1,013	9,624,323	753.65
Manufacturing	65	4,543	4,573	4,585	48,370,529	814.72
Trade, Transportation & Utilities	307	5,554	5,548	5,572	49,292,513	682.21
Wholesale Trade	77	748	743	712	9,126,909	956.06
Retail Trade	166	1,923	1,930	1,965	13,526,430	536.52
Transportation, Warehousing & Utilities	64	2,883	2,875	2,895	26,639,174	710.45
Information	9	47	48	49	478,144	766.26
Financial Activities	124	498	506	510	5,262,154	802.08
Professional & Business Services	163	1,682	1,714	1,684	14,464,915	657.10
Education & Health Services	184	1,666	1,661	1,645	13,117,381	608.83
Leisure & Hospitality	90	1,533	1,508	1,539	5,237,733	263.91
Other Services	78	400	399	402	3,559,396	683.93
Local Government	42	2,083	2,106	2,113	18,187,914	666.01
State Government	10	146	147	148	1,271,366	665.29
CRITTENDEN COUNTY - TOTAL	1,197	15,986	16,065	16,250	\$148,114,549	\$707.65
Natural Resources & Mining	56	220	225	247	1,574,157	524.95
Construction	43	434	447	439	4,872,182	851.78
Manufacturing	43	2,169	2,175	2,105	31,077,425	1,112.07
Trade, Transportation & Utilities	298	4,309	4,353	4,355	42,250,177	749.02
Wholesale Trade	59	755	762	776	10,118,332	1,018.32
Retail Trade	152	1,942	1,931	1,915	11,528,946	459.66
Transportation, Warehousing & Utilities	87	1,612	1,660	1,664	20,602,899	963.23
Information	5	55	56	54	533,421	746.04
Financial Activities	98	445	445	457	5,414,321	927.59
Professional & Business Services	106	901	867	1,034	8,251,671	679.60
Education & Health Services	296	2,010	2,019	2,003	15,846,739	606.26
Leisure & Hospitality	127	2,358	2,398	2,449	10,839,586	347.18
Other Services	71	470	472	484	3,950,554	639.32
Local Government	41	2,164	2,146	2,157	19,546,081	697.48
State Government	13	451	462	466	3,958,235	662.39

TABLE 6. COUNTY SUMMARY

North American Industry Classification System - Industry Groups	Number of Employing Units	Employment			Total Earnings	Average Weekly Earnings
		Jan	Feb	Mar	Jan - Mar 2018	
CROSS COUNTY - TOTAL	473	4,739	4,765	4,828	\$38,454,658	\$619.18
Natural Resources & Mining	44	248	246	263	1,755,860	535.27
Construction	23	58	60	64	460,957	584.48
Manufacturing	10	376	353	347	2,968,928	636.74
Trade, Transportation & Utilities	124	1,150	1,197	1,208	9,890,282	642.02
Wholesale Trade	28	285	287	289	3,634,580	974.16
Retail Trade	67	761	806	811	5,045,783	489.66
Transportation, Warehousing & Utilities	29	104	104	108	1,209,919	883.58
Information	6	45	43	44	341,275	596.63
Financial Activities	45	277	278	266	2,502,658	703.45
Professional & Business Services	39	162	166	164	1,668,918	782.79
Education & Health Services	91	964	946	984	8,003,087	638.17
Leisure & Hospitality	31	305	304	312	999,298	250.39
Other Services	34	103	112	112	865,335	610.68
Local Government	17	706	715	718	6,013,063	648.73
State Government	9	345	345	346	2,984,997	664.91
DALLAS COUNTY - TOTAL	237	2,740	2,764	2,779	\$22,254,019	\$620.01
Natural Resources & Mining	26	123	124	124	1,084,795	674.76
Construction	13	52	47	62	474,666	680.36
Manufacturing	9	549	560	556	6,328,316	877.11
Trade, Transportation & Utilities	55	435	438	438	3,335,686	587.17
Wholesale Trade	6	17	17	18	186,133	826.03
Retail Trade	36	315	315	310	2,153,278	528.63
Transportation, Warehousing & Utilities	13	103	106	110	996,275	720.72
Information	4	20	20	20	152,334	585.90
Financial Activities	15	73	72	74	767,015	808.23
Professional & Business Services	10	22	31	28	425,646	1,212.67
Education & Health Services	58	909	915	903	6,618,520	560.08
Leisure & Hospitality	14	137	135	147	409,453	225.51
Other Services	12	46	48	51	300,801	478.73
Local Government	14	346	345	347	2,063,611	458.78
State Government	7	28	29	29	293,176	786.70

TABLE 6. COUNTY SUMMARY

North American Industry Classification System - Industry Groups	Number of Employing Units	Employment			Total Earnings	Average Weekly Earnings
		Jan	Feb	Mar	Jan - Mar 2018	
DESHA COUNTY - TOTAL	547	4,497	4,511	4,566	\$41,422,071	\$704.21
Natural Resources & Mining	63	212	208	229	1,579,314	561.57
Construction	16	96	97	96	866,695	692.06
Manufacturing	15	1,008	1,036	1,058	15,246,239	1,134.22
Trade, Transportation & Utilities	109	839	819	828	7,396,000	686.55
Wholesale Trade	19	180	187	189	2,897,865	1,202.77
Retail Trade	63	464	455	463	2,561,502	427.72
Transportation, Warehousing & Utilities	27	195	177	176	1,936,633	815.54
Information	3	12	11	12	110,250	726.92
Financial Activities	30	195	203	201	1,747,090	673.08
Professional & Business Services	34	95	93	94	769,753	629.91
Education & Health Services	188	726	746	745	4,761,064	495.58
Leisure & Hospitality	35	338	342	334	1,162,894	264.65
Other Services	24	61	52	62	303,691	400.47
Local Government	21	803	783	786	6,469,620	629.42
State Government	9	112	121	121	1,009,461	658.06
DREW COUNTY - TOTAL	541	6,358	6,417	6,423	\$55,405,543	\$666.00
Natural Resources & Mining	53	368	370	333	3,191,968	687.78
Construction	28	142	149	135	1,682,157	911.24
Manufacturing	21	847	855	874	9,457,380	847.23
Trade, Transportation & Utilities	116	1,062	1,073	1,090	8,520,694	609.71
Wholesale Trade	18	100	98	98	1,307,542	1,019.39
Retail Trade	76	843	851	865	5,727,936	516.54
Transportation, Warehousing & Utilities	22	119	124	127	1,485,216	926.33
Information	5	44	45	43	443,789	775.85
Financial Activities	50	246	245	241	3,078,098	970.40
Professional & Business Services	35	268	272	287	2,195,643	612.68
Education & Health Services	142	931	917	913	7,952,223	664.66
Leisure & Hospitality	41	656	652	668	2,132,885	249.09
Other Services	14	63	63	61	412,073	508.52
Local Government	23	1,203	1,186	1,196	10,049,436	646.89
State Government	13	528	590	582	6,289,197	853.74

TABLE 6. COUNTY SUMMARY

North American Industry Classification System - Industry Groups	Number of Employing Units	Employment			Total Earnings	Average Weekly Earnings
		Jan	Feb	Mar	Jan - Mar 2018	
FAULKNER COUNTY - TOTAL	2,824	39,460	39,971	40,264	\$385,008,030	\$742.29
Natural Resources & Mining	44	308	315	311	5,907,630	1,459.64
Construction	321	2,625	2,691	2,677	27,475,227	793.25
Manufacturing	101	3,159	3,215	3,221	43,601,954	1,048.67
Trade, Transportation & Utilities	639	7,480	7,520	7,575	59,482,803	608.05
Wholesale Trade	139	669	670	674	8,827,047	1,011.93
Retail Trade	412	6,056	6,082	6,121	39,994,677	505.48
Transportation, Warehousing & Utilities	88	755	768	780	10,661,079	1,068.28
Information	20	194	197	200	2,248,200	877.86
Financial Activities	311	1,420	1,406	1,427	17,296,855	938.53
Professional & Business Services	426	4,816	4,856	4,914	69,405,788	1,098.09
Education & Health Services	452	6,958	7,134	7,103	63,744,877	694.05
Leisure & Hospitality	254	4,926	4,974	5,124	19,048,116	292.58
Other Services	196	814	839	854	6,221,098	572.65
Local Government	42	3,462	3,476	3,485	34,629,240	766.70
State Government	18	3,298	3,348	3,373	35,946,242	827.96
FRANKLIN COUNTY - TOTAL	365	4,491	4,538	4,560	\$40,567,012	\$688.91
Natural Resources & Mining	20	243	243	251	3,719,432	1,164.63
Construction	32	104	111	114	912,706	640.20
Manufacturing	15	930	929	943	8,998,675	741.12
Trade, Transportation & Utilities	88	963	965	957	8,404,203	672.25
Wholesale Trade	11	51	49	55	249,910	372.07
Retail Trade	56	630	639	625	3,644,408	444.04
Transportation, Warehousing & Utilities	21	282	277	277	4,509,885	1,244.91
Information	4	21	21	21	158,959	582.27
Financial Activities	30	82	82	82	906,500	850.38
Professional & Business Services	36	362	362	357	4,604,205	982.89
Education & Health Services	70	587	586	586	4,021,007	527.53
Leisure & Hospitality	29	309	326	338	1,027,835	243.77
Other Services	14	53	54	52	356,635	517.61
Local Government	19	720	727	728	6,026,127	639.38
State Government	8	117	132	131	1,430,728	868.86

TABLE 6. COUNTY SUMMARY

North American Industry Classification System - Industry Groups	Number of Employing Units	Employment			Total Earnings	Average Weekly Earnings
		Jan	Feb	Mar	Jan - Mar 2018	
FULTON COUNTY - TOTAL	191	1,884	1,893	1,901	\$13,732,177	\$558.11
Natural Resources & Mining	3	5	5	5	27,232	418.95
Construction	9	93	100	104	1,242,560	965.47
Manufacturing	11	103	111	108	648,316	464.63
Trade, Transportation & Utilities	44	284	286	284	2,657,416	718.09
Retail Trade	25	166	168	166	1,030,194	475.47
Other Trade, Transportation, & Utilities	19	118	118	118	1,627,222	1,060.77
Information	4	29	29	28	166,428	446.59
Financial Activities	19	76	76	78	781,099	783.71
Professional & Business Services	15	30	31	35	316,655	761.19
Education & Health Services	43	510	510	505	3,064,752	463.77
Leisure & Hospitality	15	114	120	116	371,340	244.84
Other Services	7	14	13	13	114,022	657.82
Local Government	12	566	552	564	3,792,306	520.30
State Government	9	60	60	61	550,051	701.30
GARLAND COUNTY - TOTAL	3,045	36,164	36,470	36,987	\$323,502,876	\$681.02
Natural Resources & Mining	26	234	227	241	3,165,163	1,040.49
Construction	321	1,640	1,693	1,677	14,909,682	686.77
Manufacturing	90	2,459	2,491	2,491	28,577,818	886.29
Trade, Transportation & Utilities	670	7,241	7,233	7,301	58,192,810	616.72
Wholesale Trade	143	818	825	816	10,758,214	1,009.62
Retail Trade	467	5,936	5,936	6,008	41,531,197	536.02
Transportation, Warehousing & Utilities	60	487	472	477	5,903,399	948.69
Information	27	377	390	373	3,804,768	770.20
Financial Activities	336	1,422	1,414	1,412	18,147,254	985.84
Professional & Business Services	376	2,950	2,977	3,027	30,732,672	792.07
Education & Health Services	532	7,937	7,916	7,984	86,736,725	839.71
Leisure & Hospitality	385	7,019	7,185	7,474	33,000,725	351.30
Other Services	226	967	967	953	6,161,429	492.51
Local Government	34	2,987	3,005	3,068	30,626,699	780.10
State Government	22	931	972	986	9,447,131	754.62

TABLE 6. COUNTY SUMMARY

North American Industry Classification System - Industry Groups	Number of Employing Units	Employment			Total Earnings Jan - Mar 2018	Average Weekly Earnings
		Jan	Feb	Mar		
GRANT COUNTY - TOTAL	343	4,070	4,072	4,085	\$39,803,760	\$751.25
Natural Resources & Mining	25	166	174	172	2,100,306	946.65
Construction	32	219	220	211	2,684,176	952.96
Manufacturing	16	1,275	1,284	1,286	15,759,093	945.83
Trade, Transportation & Utilities	84	619	611	606	4,915,691	617.86
Wholesale Trade	16	65	66	66	1,180,348	1,382.68
Retail Trade	44	479	470	467	3,076,261	501.35
Transportation, Warehousing & Utilities	24	75	75	73	659,082	682.04
Financial Activities	19	98	96	98	1,758,099	1,389.44
Professional & Business Services	30	118	113	115	1,264,424	843.32
Education & Health Services	78	432	434	432	2,854,170	507.44
Leisure & Hospitality	24	293	294	312	892,342	229.06
Local Government	10	756	752	757	6,749,562	687.68
State Government	7	41	41	43	398,061	734.88
Other	18	53	53	53	427,836	620.95
GREENE COUNTY - TOTAL	898	15,105	15,191	15,379	\$139,927,465	\$706.97
Natural Resources & Mining	39	184	198	229	1,522,224	574.93
Construction	72	305	323	339	3,118,351	744.18
Manufacturing	64	5,014	5,050	5,105	57,134,376	869.20
Trade, Transportation & Utilities	242	2,647	2,612	2,657	20,188,540	588.54
Wholesale Trade	44	429	431	433	4,799,405	856.58
Retail Trade	162	1,912	1,871	1,911	12,464,785	505.18
Transportation, Warehousing & Utilities	36	306	310	313	2,924,350	726.43
Information	11	174	176	178	1,793,583	783.91
Financial Activities	76	541	539	545	6,308,795	895.92
Professional & Business Services	90	733	762	805	5,876,647	589.63
Education & Health Services	149	2,030	2,044	2,037	19,901,951	751.56
Leisure & Hospitality	72	1,279	1,285	1,304	4,504,928	268.77
Other Services	40	165	165	145	1,096,930	532.92
Local Government	32	1,645	1,651	1,650	14,505,286	676.78
State Government	11	388	386	385	3,975,854	791.63

TABLE 6. COUNTY SUMMARY

North American Industry Classification System - Industry Groups	Number of Employing Units	Employment			Total Earnings	Average Weekly Earnings
		Jan	Feb	Mar	Jan - Mar 2018	
HEMPSTEAD COUNTY - TOTAL	503	7,825	7,828	7,878	\$71,287,544	\$699.12
Natural Resources & Mining	23	259	259	262	2,917,801	863.25
Construction	28	163	166	167	1,798,292	836.67
Manufacturing	29	2,327	2,327	2,334	25,407,530	839.05
Trade, Transportation & Utilities	122	1,247	1,232	1,279	11,931,924	732.71
Wholesale Trade	21	157	139	168	1,433,255	712.83
Retail Trade	75	824	821	837	5,261,394	489.19
Transportation, Warehousing & Utilities	26	266	272	274	5,237,275	1,488.43
Information	7	27	28	27	305,946	861.01
Financial Activities	44	211	210	203	2,341,009	865.76
Professional & Business Services	29	215	220	217	2,338,492	827.69
Education & Health Services	108	1,067	1,066	1,070	7,354,510	529.88
Leisure & Hospitality	45	587	589	577	2,215,649	291.67
Other Services	24	104	109	110	848,804	606.43
Local Government	28	895	899	906	7,551,306	645.41
State Government	16	723	723	726	6,276,281	666.84
HOT SPRING COUNTY - TOTAL	630	8,212	8,275	8,302	\$72,134,672	\$671.53
Natural Resources & Mining	23	140	135	138	1,077,599	602.12
Construction	50	194	186	190	1,449,270	586.75
Manufacturing	28	1,376	1,384	1,409	17,091,352	946.07
Trade, Transportation & Utilities	151	1,609	1,598	1,601	15,861,440	761.30
Wholesale Trade	15	91	92	89	1,009,680	856.63
Retail Trade	98	895	889	890	5,342,021	461.02
Transportation, Warehousing & Utilities	38	623	617	622	9,509,739	1,178.60
Information	6	42	48	43	475,475	825.00
Financial Activities	54	217	220	211	2,553,839	909.49
Professional & Business Services	51	947	951	920	5,520,436	452.07
Education & Health Services	135	1,076	1,088	1,090	8,798,104	623.95
Leisure & Hospitality	55	657	654	688	2,108,398	243.40
Other Services	38	146	145	142	853,713	454.99
Local Government	27	990	991	987	8,576,748	666.86
State Government	12	818	875	883	7,768,298	695.92

TABLE 6. COUNTY SUMMARY

North American Industry Classification System - Industry Groups	Number of Employing Units	Employment			Total Earnings	Average Weekly Earnings
		Jan	Feb	Mar	Jan - Mar 2018	
HOWARD COUNTY - TOTAL	357	7,003	7,021	7,019	\$58,373,896	\$640.16
Natural Resources & Mining	19	214	215	217	2,022,933	722.65
Construction	22	211	208	205	1,417,725	524.31
Manufacturing	18	3,329	3,346	3,347	29,810,452	686.42
Trade, Transportation & Utilities	85	894	870	867	7,495,641	657.45
Wholesale Trade	17	82	81	80	874,170	830.17
Retail Trade	50	609	591	590	4,023,408	518.70
Transportation, Warehousing & Utilities	18	203	198	197	2,598,063	1,002.60
Financial Activities	34	131	129	131	1,422,282	839.43
Professional & Business Services	22	161	168	154	1,233,608	589.40
Education & Health Services	85	853	840	849	6,831,763	620.20
Leisure & Hospitality	21	314	324	327	1,072,168	256.40
Local Government	17	676	696	697	5,286,476	589.64
State Government	10	96	102	102	842,572	648.13
Other	24	124	123	123	938,276	585.20
INDEPENDENCE COUNTY - TOTAL	890	15,519	15,621	15,744	\$144,192,089	\$709.73
Natural Resources & Mining	17	236	240	246	3,148,913	1,006.47
Construction	62	400	432	458	4,793,260	857.47
Manufacturing	37	3,152	3,162	3,197	33,527,863	813.50
Trade, Transportation & Utilities	223	2,865	2,842	2,889	25,452,383	683.30
Wholesale Trade	28	313	311	310	2,945,696	727.81
Retail Trade	151	1,816	1,807	1,850	11,913,696	502.34
Transportation, Warehousing & Utilities	44	736	724	729	10,592,991	1,116.74
Information	11	117	114	113	982,383	659.02
Financial Activities	87	537	544	550	7,609,400	1,076.65
Professional & Business Services	91	1,188	1,198	1,176	8,905,442	576.95
Education & Health Services	159	3,427	3,447	3,472	37,193,008	829.60
Leisure & Hospitality	79	1,214	1,207	1,191	4,114,013	262.84
Other Services	64	344	336	346	1,926,042	433.21
Local Government	45	1,497	1,504	1,503	11,250,714	576.45
State Government	15	542	595	603	5,288,668	701.41

TABLE 6. COUNTY SUMMARY

North American Industry Classification System - Industry Groups	Number of Employing Units	Employment			Total Earnings Jan - Mar 2018	Average Weekly Earnings
		Jan	Feb	Mar		
IZARD COUNTY - TOTAL	252	2,909	2,941	3,033	\$24,102,119	\$626.14
Natural Resources & Mining	8	142	141	140	2,008,280	1,095.62
Construction	23	86	79	89	733,114	666.06
Manufacturing	10	240	262	268	2,480,704	743.47
Trade, Transportation & Utilities	66	513	481	502	3,762,063	580.33
Wholesale Trade	13	35	38	38	271,169	563.76
Retail Trade	42	340	316	329	1,987,505	465.64
Transportation, Warehousing & Utilities	11	138	127	135	1,503,389	867.34
Information	4	5	5	5	80,791	1,242.94
Financial Activities	25	153	149	156	1,277,616	643.74
Professional & Business Services	14	31	29	40	300,927	694.45
Education & Health Services	49	710	707	723	4,923,124	530.89
Leisure & Hospitality	19	136	143	163	485,966	253.72
Other Services	11	27	28	27	176,663	497.18
Local Government	14	500	505	510	3,769,387	574.16
State Government	9	366	412	410	4,103,484	797.10
JACKSON COUNTY - TOTAL	425	4,990	5,056	5,109	\$48,574,237	\$739.65
Natural Resources & Mining	57	244	246	275	1,921,917	579.76
Construction	19	69	81	83	670,030	663.62
Manufacturing	13	888	890	888	13,110,129	1,134.81
Trade, Transportation & Utilities	106	1,011	1,017	1,044	8,649,051	649.72
Wholesale Trade	21	209	214	220	2,830,102	1,015.71
Retail Trade	69	705	705	727	4,706,593	508.25
Transportation, Warehousing & Utilities	16	97	98	97	1,112,356	879.10
Information	3	13	12	12	101,700	634.30
Financial Activities	29	128	128	131	1,777,034	1,059.65
Professional & Business Services	29	104	106	112	961,420	689.03
Education & Health Services	80	897	883	860	7,731,777	675.85
Leisure & Hospitality	25	281	280	280	992,778	272.42
Other Services	20	58	58	58	790,576	1,048.51
Local Government	32	572	574	578	4,451,402	595.85
State Government	12	725	781	788	7,416,423	746.07

TABLE 6. COUNTY SUMMARY

North American Industry Classification System - Industry Groups	Number of Employing Units	Employment			Total Earnings Jan - Mar 2018	Average Weekly Earnings
		Jan	Feb	Mar		
JEFFERSON COUNTY - TOTAL	2,092	26,024	26,324	26,315	\$260,786,359	\$765.05
Natural Resources & Mining	41	143	149	162	1,983,135	1,008.03
Construction	89	505	463	494	4,289,737	677.11
Manufacturing	58	4,851	4,855	4,853	70,771,871	1,121.78
Trade, Transportation & Utilities	401	4,405	4,378	4,386	38,078,602	667.28
Wholesale Trade	73	668	669	672	7,454,345	856.26
Retail Trade	278	3,007	2,999	3,019	19,360,147	495.04
Transportation, Warehousing & Utilities	50	730	710	695	11,264,110	1,217.52
Information	8	69	67	68	919,356	1,040.00
Financial Activities	153	964	966	969	12,284,523	977.89
Professional & Business Services	145	2,054	2,110	2,108	19,236,780	707.79
Education & Health Services	872	4,870	4,889	4,883	44,469,602	700.88
Leisure & Hospitality	135	1,725	1,745	1,776	6,200,593	272.76
Other Services	113	532	525	508	4,275,410	630.44
Local Government	41	2,634	2,630	2,628	22,998,851	672.51
State Government	36	3,272	3,547	3,480	35,277,899	790.47
JOHNSON COUNTY - TOTAL	489	8,576	8,573	8,563	\$68,456,215	\$614.41
Natural Resources & Mining	15	218	222	227	2,190,258	757.79
Construction	33	191	203	196	1,699,159	664.60
Manufacturing	34	2,692	2,680	2,668	22,082,323	633.82
Trade, Transportation & Utilities	110	1,855	1,859	1,853	15,381,616	637.62
Retail Trade	78	859	857	865	5,241,134	468.61
Other Trade, Transportation & Utilities	32	996	1,002	988	10,140,482	783.69
Information	4	22	21	19	186,494	694.15
Financial Activities	47	172	173	172	1,825,820	814.98
Professional & Business Services	49	409	406	414	2,219,801	416.81
Education & Health Services	104	1,229	1,216	1,221	10,773,241	678.16
Leisure & Hospitality	42	591	594	598	1,944,174	251.63
Other Services	29	89	91	91	569,180	484.68
Local Government	14	1,011	1,015	1,010	8,427,959	640.62
State Government	8	97	93	94	1,156,190	939.48

TABLE 6. COUNTY SUMMARY

North American Industry Classification System - Industry Groups	Number of Employing Units	Employment			Total Earnings Jan - Mar 2018	Average Weekly Earnings
		Jan	Feb	Mar		
LAFAYETTE COUNTY - TOTAL	162	1,189	1,159	1,175	\$8,372,395	\$548.42
Natural Resources & Mining	25	97	90	85	546,064	463.29
Construction	8	68	67	67	730,865	834.96
Manufacturing	6	36	36	43	415,095	832.97
Trade, Transportation & Utilities	29	194	182	190	1,291,583	526.60
Retail Trade	18	117	107	107	576,903	402.21
Other Trade, Transportation & Utilities	11	77	75	83	714,680	701.81
Financial Activities	15	63	65	61	514,111	627.73
Professional & Business Services	10	40	43	43	322,044	589.82
Education & Health Services	36	190	180	183	1,076,641	449.29
Leisure & Hospitality	5	36	36	38	138,056	289.63
Local Government	14	288	289	295	2,064,867	546.45
State Government	9	134	145	145	979,777	533.26
Other	5	43	26	25	293,292	720.03
LAWRENCE COUNTY - TOTAL	402	3,912	3,921	3,959	\$32,008,703	\$626.41
Natural Resources & Mining	52	258	253	264	2,495,428	743.06
Construction	23	88	93	95	881,081	736.69
Manufacturing	19	444	440	431	3,975,683	697.69
Trade, Transportation & Utilities	114	790	784	813	7,096,004	686.02
Wholesale Trade	18	189	196	199	2,152,475	850.56
Retail Trade	60	478	470	485	3,337,779	537.51
Transportation, Warehousing & Utilities	36	123	118	129	1,605,750	1,001.51
Financial Activities	28	124	122	122	1,304,792	818.22
Professional & Business Services	26	98	97	97	912,498	721.15
Education & Health Services	55	546	560	563	4,470,146	618.08
Leisure & Hospitality	30	319	318	330	1,092,952	260.83
Local Government	24	1,081	1,092	1,084	8,379,675	593.73
State Government	9	76	76	76	705,353	713.92
Other	22	88	86	84	695,091	621.73

TABLE 6. COUNTY SUMMARY

North American Industry Classification System - Industry Groups	Number of Employing Units	Employment			Total Earnings Jan - Mar 2018	Average Weekly Earnings
		Jan	Feb	Mar		
LEE COUNTY - TOTAL	274	1,818	1,835	1,862	\$14,555,476	\$609.06
Natural Resources & Mining	43	170	187	193	1,691,292	709.63
Construction	8	27	25	27	308,439	900.99
Trade, Transportation & Utilities	41	316	316	331	2,845,090	681.79
Wholesale Trade	9	102	104	108	1,306,561	960.24
Retail Trade	22	162	159	169	927,767	436.94
Transportation, Warehousing & Utilities	10	52	53	54	610,762	886.45
Financial Activities	17	62	60	58	447,493	573.71
Professional & Business Services	13	46	46	46	626,357	1,047.42
Education & Health Services	114	432	432	438	2,906,720	515.19
Leisure & Hospitality	7	59	62	64	213,588	266.43
Local Government	15	300	300	300	1,438,305	368.80
State Government	6	390	391	388	3,976,198	784.93
Other	10	16	16	17	101,994	480.35
LINCOLN COUNTY - TOTAL	290	2,705	2,748	2,789	\$24,402,896	\$683.26
Natural Resources & Mining	35	143	149	154	1,279,403	661.99
Construction	19	99	119	117	1,112,270	766.20
Manufacturing	9	260	266	267	2,228,085	648.39
Trade, Transportation & Utilities	46	346	339	344	3,327,159	746.17
Wholesale Trade	9	52	55	59	837,472	1,164.23
Retail Trade	24	168	159	162	821,558	387.71
Transportation, Warehousing & Utilities	13	126	125	123	1,668,129	1,029.29
Financial Activities	20	72	73	70	705,763	757.53
Professional & Business Services	10	21	19	19	171,188	669.57
Education & Health Services	106	423	420	419	2,938,366	537.31
Leisure & Hospitality	15	150	155	157	418,244	208.91
Local Government	7	331	333	343	2,494,059	571.55
State Government	10	814	829	852	9,290,560	859.31
Other	13	46	46	47	437,799	726.84

TABLE 6. COUNTY SUMMARY

North American Industry Classification System - Industry Groups	Number of Employing Units	Employment			Total Earnings Jan - Mar 2018	Average Weekly Earnings
		Jan	Feb	Mar		
LITTLE RIVER COUNTY - TOTAL	247	3,239	3,257	3,326	\$47,581,877	\$1,117.94
Natural Resources & Mining	15	87	83	84	572,115	519.79
Construction	13	151	148	159	2,745,551	1,383.38
Manufacturing	18	1,148	1,142	1,162	30,705,519	2,052.69
Trade, Transportation & Utilities	59	541	555	573	4,084,694	564.78
Wholesale Trade	7	26	26	26	425,753	1,259.62
Retail Trade	37	403	411	420	2,591,214	484.58
Transportation, Warehousing & Utilities	15	112	118	127	1,067,727	690.19
Financial Activities	15	68	69	68	569,133	640.68
Professional & Business Services	14	62	63	67	649,632	780.81
Education & Health Services	47	207	208	213	1,367,824	502.63
Leisure & Hospitality	13	168	180	185	563,102	243.80
Local Government	20	684	692	686	5,380,198	602.13
State Government	10	72	73	77	653,288	679.09
Other	23	51	44	52	290,821	456.55
LOGAN COUNTY - TOTAL	501	5,213	5,209	5,252	\$43,354,952	\$638.32
Natural Resources & Mining	26	111	117	116	1,034,752	694.15
Construction	44	219	235	241	2,165,070	718.89
Manufacturing	20	1,115	1,111	1,116	12,505,747	863.54
Trade, Transportation & Utilities	98	970	932	954	6,796,169	549.14
Wholesale Trade	7	30	30	31	244,385	619.74
Retail Trade	68	766	743	765	4,617,711	468.61
Transportation, Warehousing & Utilities	23	174	159	158	1,934,073	909.01
Information	5	30	30	30	291,938	748.56
Financial Activities	50	187	185	184	2,266,681	940.79
Professional & Business Services	41	119	121	121	983,033	628.40
Education & Health Services	118	723	730	729	5,550,761	587.05
Leisure & Hospitality	34	306	300	315	984,015	246.56
Other Services	31	136	140	143	1,143,783	629.95
Local Government	22	786	801	797	5,949,783	575.93
State Government	12	511	507	506	3,683,220	557.73

TABLE 6. COUNTY SUMMARY

North American Industry Classification System - Industry Groups	Number of Employing Units	Employment			Total Earnings	Average Weekly Earnings
		Jan	Feb	Mar	Jan - Mar 2018	
LONOKE COUNTY - TOTAL	1,287	13,395	13,482	13,637	\$113,069,689	\$644.05
Natural Resources & Mining	86	419	435	486	3,980,090	685.43
Construction	132	870	867	868	9,653,792	855.20
Manufacturing	34	1,636	1,655	1,658	17,992,464	838.98
Trade, Transportation & Utilities	305	2,732	2,765	2,759	21,982,030	614.44
Wholesale Trade	76	424	418	426	5,259,906	957.27
Retail Trade	173	2,021	2,041	2,031	13,018,329	493.06
Transportation, Warehousing & Utilities	56	287	306	302	3,703,795	955.00
Information	11	88	88	83	1,095,333	975.94
Financial Activities	152	642	644	641	9,090,481	1,088.64
Professional & Business Services	149	512	527	533	5,122,056	751.92
Education & Health Services	209	1,699	1,713	1,714	12,655,605	569.75
Leisure & Hospitality	110	1,805	1,788	1,903	6,653,283	279.36
Other Services	60	207	211	199	1,277,786	477.92
Local Government	25	2,626	2,627	2,633	21,956,349	642.51
State Government	14	159	162	160	1,610,420	772.63
MADISON COUNTY - TOTAL	255	3,248	3,258	3,300	\$27,424,892	\$645.40
Natural Resources & Mining	11	36	39	40	350,850	704.05
Construction	27	112	115	112	1,041,381	708.90
Manufacturing	20	1,143	1,140	1,145	10,360,263	697.44
Trade, Transportation & Utilities	53	686	682	684	5,566,963	626.06
Wholesale Trade	7	34	32	34	408,921	943.66
Retail Trade	36	486	481	484	3,296,025	524.20
Transportation, Warehousing & Utilities	10	166	169	166	1,862,017	857.68
Information	6	50	52	52	1,008,691	1,511.52
Financial Activities	19	85	86	86	802,050	720.19
Professional & Business Services	22	77	74	81	846,810	842.32
Education & Health Services	45	267	267	271	1,848,882	530.02
Leisure & Hospitality	16	169	176	209	536,923	223.66
Other Services	20	35	33	43	309,009	642.43
Local Government	9	550	556	539	4,397,328	616.88
State Government	7	38	38	38	355,742	720.13

TABLE 6. COUNTY SUMMARY

North American Industry Classification System - Industry Groups	Number of Employing Units	Employment			Total Earnings	Average Weekly Earnings
		Jan	Feb	Mar	Jan - Mar 2018	
MARION COUNTY - TOTAL	277	3,675	3,722	3,788	\$28,470,751	\$587.41
Manufacturing	21	1,709	1,751	1,761	14,258,495	630.23
Trade, Transportation & Utilities	55	516	512	514	3,544,908	530.52
Wholesale Trade	6	39	37	39	332,552	667.33
Retail Trade	41	441	438	438	2,691,949	471.69
Transportation, Warehousing & Utilities	8	36	37	37	520,407	1,091.76
Information	3	56	55	55	757,495	1,053.05
Financial Activities	35	174	174	185	1,739,248	753.03
Professional & Business Services	25	82	87	87	654,410	589.91
Education & Health Services	47	331	337	339	2,465,883	565.09
Leisure & Hospitality	31	173	172	188	561,654	243.18
Other Services	13	29	30	31	121,419	311.33
Local Government	17	481	486	506	3,405,595	533.54
State Government	7	41	41	42	405,381	754.43
Other	23	83	77	80	556,263	534.87
MILLER COUNTY - TOTAL	880	12,717	12,654	12,670	\$120,288,981	\$729.71
Natural Resources & Mining	32	222	215	214	2,198,361	779.28
Construction	67	604	606	618	6,171,324	779.08
Manufacturing	26	2,347	2,326	2,317	34,175,258	1,128.27
Trade, Transportation & Utilities	217	3,363	3,309	3,295	31,172,029	721.74
Wholesale Trade	47	469	474	475	6,071,441	988.08
Retail Trade	123	1,227	1,210	1,212	7,632,902	482.72
Transportation, Warehousing & Utilities	47	1,667	1,625	1,608	17,467,686	822.65
Information	7	120	121	123	1,657,313	1,050.71
Financial Activities	80	392	393	401	4,362,401	848.83
Professional & Business Services	80	1,119	1,054	1,033	5,731,951	412.59
Education & Health Services	192	1,084	1,105	1,063	8,360,024	593.25
Leisure & Hospitality	89	1,340	1,402	1,463	5,481,046	300.80
Other Services	51	207	209	228	1,441,223	516.44
Local Government	24	1,454	1,450	1,450	13,964,618	740.15
State Government	15	465	464	465	5,573,433	922.65

TABLE 6. COUNTY SUMMARY

North American Industry Classification System - Industry Groups	Number of Employing Units	Employment			Total Earnings	Average Weekly Earnings
		Jan	Feb	Mar	Jan - Mar 2018	
MISSISSIPPI COUNTY - TOTAL	1,111	17,327	17,411	17,534	\$214,830,919	\$948.43
Natural Resources & Mining	111	442	450	486	4,068,244	681.30
Construction	51	695	701	739	9,240,981	998.85
Manufacturing	57	6,484	6,545	6,568	116,132,728	1,367.55
Trade, Transportation & Utilities	276	2,880	2,789	2,774	28,067,659	767.16
Wholesale Trade	57	366	369	371	4,931,528	1,028.97
Retail Trade	148	1,633	1,563	1,566	9,701,712	470.15
Transportation, Warehousing & Utilities	71	881	857	837	13,434,419	1,203.98
Information	6	38	36	36	277,773	582.74
Financial Activities	80	472	466	467	4,907,489	806.05
Professional & Business Services	84	856	894	936	9,911,189	851.53
Education & Health Services	231	1,671	1,704	1,712	14,697,665	666.75
Leisure & Hospitality	92	1,080	1,087	1,107	3,700,869	260.86
Other Services	51	277	272	227	2,594,458	771.55
Local Government	49	1,935	1,938	1,951	16,591,242	657.41
State Government	23	497	529	531	4,640,622	687.81
MONROE COUNTY - TOTAL	296	2,014	2,036	2,020	\$15,342,052	\$583.27
Natural Resources & Mining	31	83	81	96	773,798	686.80
Construction	9	20	20	25	126,616	449.52
Manufacturing	6	145	150	148	1,208,428	629.50
Trade, Transportation & Utilities	75	533	531	533	4,701,740	679.41
Wholesale Trade	16	175	179	183	2,266,176	973.86
Retail Trade	34	252	244	244	1,432,724	446.80
Transportation, Warehousing & Utilities	25	106	108	106	1,002,840	723.20
Financial Activities	22	89	92	86	867,555	749.83
Professional & Business Services	15	36	39	40	176,566	354.31
Education & Health Services	68	387	389	375	2,958,731	593.21
Leisure & Hospitality	23	218	222	214	808,941	285.44
Local Government	21	348	346	346	2,403,920	533.41
State Government	7	66	65	66	757,352	887.18
Other	19	89	101	91	558,405	458.59

TABLE 6. COUNTY SUMMARY

North American Industry Classification System - Industry Groups	Number of Employing Units	Employment			Total Earnings Jan - Mar 2018	Average Weekly Earnings
		Jan	Feb	Mar		
MONTGOMERY COUNTY - TOTAL	169	1,236	1,263	1,326	\$7,890,149	\$476.03
Natural Resources & Mining	8	26	30	31	227,143	602.50
Construction	25	77	75	75	479,866	487.83
Manufacturing	9	36	36	38	297,993	625.16
Trade, Transportation & Utilities	35	247	253	260	1,381,327	419.43
Wholesale Trade	7	51	51	51	420,464	634.18
Retail Trade	23	170	176	183	839,600	366.26
Transportation, Warehousing & Utilities	5	26	26	26	121,263	358.77
Financial Activities	10	28	27	36	265,649	673.67
Professional & Business Services	15	18	18	18	111,073	474.67
Education & Health Services	20	61	60	59	450,173	577.14
Leisure & Hospitality	15	203	234	268	953,366	312.07
Local Government	9	437	430	437	2,966,403	524.97
State Government	7	33	34	35	360,955	816.64
Other	16	70	66	69	396,201	446.00
NEVADA COUNTY - TOTAL	193	2,354	2,396	2,413	\$24,454,255	\$787.84
Natural Resources & Mining	12	75	75	71	822,581	858.94
Trade, Transportation & Utilities	35	565	574	575	4,871,809	655.93
Retail Trade	21	307	316	316	1,605,523	394.57
Other Trade, Transportation & Utilities	14	258	258	259	3,266,286	972.59
Financial Activities	11	65	73	59	595,980	698.14
Professional & Business Services	12	40	52	48	615,591	1,014.71
Education & Health Services	48	419	416	420	2,526,695	464.61
Leisure & Hospitality	9	75	76	88	263,877	254.79
Other Services	13	32	31	33	230,124	553.18
Local Government	28	372	371	385	2,676,015	547.47
State Government	9	54	54	54	496,476	707.23
Other	16	657	674	680	11,355,107	1,303.04

TABLE 6. COUNTY SUMMARY

North American Industry Classification System - Industry Groups	Number of Employing Units	Employment			Total Earnings Jan - Mar 2018	Average Weekly Earnings
		Jan	Feb	Mar		
NEWTON COUNTY - TOTAL	119	970	990	1,037	\$6,240,007	\$480.48
Construction	6	16	17	19	130,397	578.68
Manufacturing	8	36	36	36	324,912	694.26
Trade, Transportation & Utilities	30	147	157	161	1,136,779	564.16
Retail Trade	14	95	104	109	567,246	425.01
Other Trade, Transportation & Utilities	16	52	53	52	569,533	837.14
Education & Health Services	24	247	257	250	1,046,435	320.27
Leisure & Hospitality	17	110	112	138	438,911	281.35
Other Services	4	2	2	4	10,172	293.42
Local Government	14	348	343	351	2,327,979	515.57
State Government	7	37	38	38	366,414	748.29
Other	9	27	28	40	458,008	1,112.57
OUACHITA COUNTY - TOTAL	667	6,720	6,817	6,854	\$56,391,751	\$638.20
Natural Resources & Mining	34	161	158	161	1,504,797	723.46
Construction	39	199	199	211	1,970,883	746.83
Manufacturing	25	565	576	575	6,244,367	839.75
Trade, Transportation & Utilities	159	1,501	1,539	1,557	11,691,145	586.90
Wholesale Trade	26	241	233	243	2,485,239	799.88
Retail Trade	105	985	1,020	1,025	5,604,107	426.82
Transportation, Warehousing & Utilities	28	275	286	289	3,601,799	977.86
Information	6	42	42	44	461,707	832.40
Financial Activities	52	247	246	242	2,445,963	767.96
Professional & Business Services	45	573	573	564	4,709,850	635.61
Education & Health Services	200	1,235	1,238	1,229	12,054,728	751.45
Leisure & Hospitality	37	403	427	438	1,486,272	270.49
Other Services	26	106	104	108	728,281	528.51
Local Government	31	1,087	1,079	1,082	7,818,252	555.48
State Government	13	601	636	643	5,275,506	647.57

TABLE 6. COUNTY SUMMARY

North American Industry Classification System - Industry Groups	Number of Employing Units	Employment			Total Earnings Jan - Mar 2018	Average Weekly Earnings
		Jan	Feb	Mar		
PERRY COUNTY - TOTAL	135	1,109	1,107	1,159	\$8,613,106	\$588.93
Construction	16	64	64	75	571,969	650.21
Manufacturing	5	25	23	23	293,402	953.64
Trade, Transportation & Utilities	26	176	171	171	1,136,836	506.46
Retail Trade	18	142	138	137	559,579	309.67
Other Trade, Transportation & Utilities	8	34	33	34	577,257	1,318.94
Financial Activities	8	26	25	25	264,785	804.00
Professional & Business Services	14	24	27	31	213,763	601.58
Education & Health Services	28	236	236	231	1,480,787	486.09
Leisure & Hospitality	7	68	66	64	239,139	278.72
Local Government	9	354	345	347	2,486,385	548.55
State Government	7	33	33	33	328,223	765.09
Other	15	103	117	159	1,597,817	972.89
PHILLIPS COUNTY - TOTAL	745	5,393	5,390	5,450	\$41,961,832	\$596.53
Natural Resources & Mining	58	192	204	223	1,387,165	517.15
Construction	29	105	106	120	765,051	533.38
Manufacturing	14	386	379	380	3,870,617	780.10
Trade, Transportation & Utilities	141	1,230	1,224	1,223	9,964,195	625.35
Wholesale Trade	27	246	245	258	2,961,161	912.34
Retail Trade	76	743	737	724	4,283,790	448.53
Transportation, Warehousing & Utilities	38	241	242	241	2,719,244	866.74
Information	7	26	24	25	376,965	1,159.89
Financial Activities	39	213	203	204	2,201,854	819.55
Professional & Business Services	40	272	287	300	2,391,403	642.45
Education & Health Services	308	1,424	1,439	1,447	10,268,938	549.83
Leisure & Hospitality	39	321	316	339	1,086,750	256.96
Other Services	30	79	71	73	363,046	375.69
Local Government	26	795	785	768	6,249,502	614.22
State Government	14	350	352	348	3,036,346	667.33

TABLE 6. COUNTY SUMMARY

North American Industry Classification System - Industry Groups	Number of Employing Units	Employment			Total Earnings	Average Weekly Earnings
		Jan	Feb	Mar	Jan - Mar 2018	
PIKE COUNTY - TOTAL	253	2,491	2,518	2,555	\$18,955,667	\$578.32
Natural Resources & Mining	25	126	130	132	1,556,808	925.94
Construction	14	52	49	50	418,023	638.85
Manufacturing	17	385	406	406	3,120,083	601.52
Trade, Transportation & Utilities	64	522	533	536	3,863,037	560.32
Wholesale Trade	10	109	114	114	942,512	645.41
Retail Trade	35	338	344	346	2,075,957	466.02
Transportation, Warehousing & Utilities	19	75	75	76	844,568	862.39
Information	7	32	30	28	328,806	843.09
Financial Activities	23	211	211	214	2,215,075	803.73
Professional & Business Services	13	69	65	62	713,550	840.13
Education & Health Services	34	301	295	300	1,711,361	440.77
Leisure & Hospitality	25	179	190	223	612,009	238.57
Other Services	12	63	60	60	438,692	553.21
Local Government	10	459	457	451	3,309,215	558.64
State Government	9	92	92	93	669,008	557.35
POINSETT COUNTY - TOTAL	502	5,088	5,141	5,160	\$46,345,471	\$694.98
Natural Resources & Mining	67	250	265	272	2,818,833	826.56
Construction	23	81	87	95	654,220	574.05
Manufacturing	20	690	705	706	7,864,925	863.87
Trade, Transportation & Utilities	131	1,233	1,244	1,264	11,155,153	688.12
Wholesale Trade	29	372	381	391	5,505,126	1,110.50
Retail Trade	69	695	698	705	3,869,121	425.58
Transportation, Warehousing & Utilities	33	166	165	168	1,780,906	823.60
Information	5	56	56	56	657,288	902.87
Financial Activities	38	187	170	164	2,072,175	917.84
Professional & Business Services	27	182	195	189	3,505,138	1,429.11
Education & Health Services	90	842	816	814	6,516,381	608.33
Leisure & Hospitality	40	330	346	348	1,027,982	231.67
Other Services	20	67	67	70	542,527	613.72
Local Government	30	1,010	1,025	1,017	8,113,660	613.49
State Government	11	160	165	165	1,417,189	667.44

TABLE 6. COUNTY SUMMARY

North American Industry Classification System - Industry Groups	Number of Employing Units	Employment			Total Earnings	Average Weekly Earnings
		Jan	Feb	Mar	Jan - Mar 2018	
POLK COUNTY - TOTAL	503	5,753	5,777	5,821	\$45,161,028	\$600.64
Natural Resources & Mining	23	178	172	181	2,049,276	890.60
Construction	33	194	188	191	1,544,086	621.86
Manufacturing	32	1,276	1,286	1,291	11,033,678	660.84
Trade, Transportation & Utilities	126	1,034	1,044	1,041	7,477,690	553.26
Wholesale Trade	23	72	79	74	645,049	661.59
Retail Trade	68	745	745	740	4,474,021	462.99
Transportation, Warehousing & Utilities	35	217	220	227	2,358,620	819.72
Information	8	71	71	70	514,360	559.90
Financial Activities	47	244	240	243	2,174,830	690.35
Professional & Business Services	44	153	158	158	1,496,376	736.28
Education & Health Services	89	1,013	1,027	1,018	8,982,498	677.86
Leisure & Hospitality	41	455	462	487	1,499,009	246.39
Other Services	26	166	152	158	1,210,875	587.04
Local Government	21	691	689	692	5,210,965	580.37
State Government	13	278	288	291	1,967,385	529.77
POPE COUNTY - TOTAL	1,831	25,343	25,690	25,978	\$260,914,675	\$781.85
Natural Resources & Mining	33	771	769	765	6,721,564	672.94
Construction	160	1,213	1,182	1,212	14,173,155	906.77
Manufacturing	73	4,391	4,410	4,432	49,962,323	871.29
Trade, Transportation & Utilities	414	6,057	6,033	6,064	73,014,893	928.15
Wholesale Trade	74	546	528	532	5,686,421	817.09
Retail Trade	261	3,083	3,058	3,072	19,720,673	493.97
Transportation, Warehousing & Utilities	79	2,428	2,447	2,460	47,607,799	1,497.81
Information	17	138	137	137	1,331,445	745.77
Financial Activities	188	914	919	918	11,339,034	951.18
Professional & Business Services	270	1,731	1,834	1,941	24,725,814	1,036.32
Education & Health Services	361	3,278	3,281	3,326	29,682,387	692.95
Leisure & Hospitality	140	2,653	2,695	2,753	10,444,151	297.52
Other Services	117	549	560	579	4,209,221	575.45
Local Government	43	2,155	2,182	2,172	19,087,170	676.71
State Government	15	1,493	1,688	1,679	16,223,518	770.35

TABLE 6. COUNTY SUMMARY

North American Industry Classification System - Industry Groups	Number of Employing Units	Employment			Total Earnings	Average Weekly Earnings
		Jan	Feb	Mar	Jan - Mar 2018	
PRAIRIE COUNTY - TOTAL	248	1,425	1,401	1,431	\$10,824,054	\$586.77
Natural Resources & Mining	35	155	156	169	1,470,508	706.98
Construction	9	53	52	50	317,940	473.36
Trade, Transportation & Utilities	59	330	327	336	2,638,228	613.11
Wholesale Trade	12	75	75	78	1,075,352	1,088.41
Retail Trade	34	205	204	207	1,095,666	410.46
Transportation, Warehousing & Utilities	13	50	48	51	467,210	723.61
Financial Activities	15	47	47	45	486,847	808.27
Professional & Business Services	16	79	78	75	745,708	741.75
Education & Health Services	50	248	242	245	1,761,818	553.16
Leisure & Hospitality	17	109	98	101	369,144	276.58
Local Government	16	303	303	310	2,233,923	562.80
State Government	7	26	26	26	260,566	770.91
Other	24	75	72	74	539,372	563.21
PULASKI COUNTY - TOTAL	14,289	239,219	239,483	240,060	\$2,992,703,177	\$960.85
Natural Resources & Mining	52	589	595	584	11,349,304	1,481.37
Construction	930	8,648	8,758	8,734	108,303,902	956.13
Manufacturing	333	12,792	12,767	12,850	178,545,162	1,072.74
Trade, Transportation & Utilities	3,122	48,919	48,621	48,796	560,470,441	883.85
Wholesale Trade	929	11,770	11,795	11,808	200,568,712	1,308.49
Retail Trade	1,810	25,449	25,159	25,198	188,124,493	572.69
Transportation, Warehousing & Utilities	383	11,700	11,667	11,790	171,777,236	1,127.54
Information	208	3,617	3,556	3,558	52,721,533	1,133.77
Financial Activities	1,695	16,898	16,853	16,873	398,768,292	1,817.78
Professional & Business Services	2,735	35,557	35,516	35,668	465,210,723	1,005.76
Education & Health Services	2,545	40,577	40,909	40,929	484,036,837	912.48
Leisure & Hospitality	1,233	22,737	22,766	23,081	101,893,065	342.85
Other Services	1,134	6,296	6,253	6,306	62,950,785	770.46
Local Government	108	15,322	15,399	15,455	167,853,779	838.87
State Government	194	27,267	27,490	27,226	400,599,354	1,127.62

TABLE 6. COUNTY SUMMARY

North American Industry Classification System - Industry Groups	Number of Employing Units	Employment			Total Earnings	Average Weekly Earnings
		Jan	Feb	Mar	Jan - Mar 2018	
RANDOLPH COUNTY - TOTAL	400	5,435	5,521	5,567	\$43,261,453	\$604.21
Natural Resources & Mining	27	226	234	237	2,743,430	908.32
Construction	29	103	110	96	909,849	679.50
Manufacturing	28	1,430	1,456	1,457	12,813,439	680.85
Trade, Transportation & Utilities	90	864	860	873	6,846,651	608.39
Wholesale Trade	16	132	130	136	1,131,589	656.12
Retail Trade	58	583	577	579	3,726,365	494.50
Transportation, Warehousing & Utilities	16	149	153	158	1,988,697	997.67
Information	5	26	28	27	313,841	894.13
Financial Activities	32	147	152	147	1,453,442	752.04
Professional & Business Services	37	270	264	270	1,852,976	531.85
Education & Health Services	69	927	935	939	7,040,607	580.06
Leisure & Hospitality	33	352	358	395	1,210,700	252.84
Other Services	16	42	43	49	259,164	446.32
Local Government	24	804	807	793	5,517,180	529.62
State Government	10	244	274	284	2,300,174	661.86
SAINT FRANCIS COUNTY - TOTAL	702	6,630	6,678	6,760	\$53,558,852	\$615.89
Natural Resources & Mining	42	156	152	166	1,271,947	619.25
Construction	39	194	193	190	1,745,986	698.30
Trade, Transportation & Utilities	147	1,849	1,852	1,873	15,229,251	630.51
Wholesale Trade	29	532	542	562	6,156,295	868.39
Retail Trade	96	1,030	1,023	1,022	5,919,277	444.22
Transportation, Warehousing & Utilities	22	287	287	289	3,153,679	843.30
Information	5	45	45	45	398,755	681.63
Financial Activities	64	244	245	231	1,909,071	611.88
Professional & Business Services	48	180	186	188	1,492,004	621.50
Education & Health Services	234	1,439	1,424	1,445	12,440,972	666.43
Leisure & Hospitality	44	628	637	664	2,157,849	258.15
Local Government	28	844	853	853	6,986,468	632.26
State Government	16	425	446	444	4,170,496	731.88
Other	35	626	645	661	5,756,053	687.54

TABLE 6. COUNTY SUMMARY

North American Industry Classification System - Industry Groups	Number of Employing Units	Employment			Total Earnings	Average Weekly Earnings
		Jan	Feb	Mar	Jan - Mar 2018	
SALINE COUNTY - TOTAL	2,035	24,338	24,455	24,661	\$211,201,029	\$663.53
Natural Resources & Mining	13	49	49	49	472,615	741.94
Construction	271	2,028	2,023	2,037	20,418,949	773.99
Manufacturing	78	1,385	1,380	1,382	17,430,294	969.95
Trade, Transportation & Utilities	456	5,620	5,616	5,655	46,678,558	637.73
Wholesale Trade	112	633	644	630	8,871,377	1,073.54
Retail Trade	277	4,459	4,432	4,482	32,234,033	556.24
Transportation, Warehousing & Utilities	67	528	540	543	5,573,148	798.33
Information	16	166	164	171	1,951,975	899.11
Financial Activities	207	781	780	785	10,137,523	997.20
Professional & Business Services	276	1,777	1,800	1,798	17,121,312	735.08
Education & Health Services	331	4,533	4,575	4,626	40,823,662	685.95
Leisure & Hospitality	190	3,366	3,398	3,484	12,814,294	288.56
Other Services	151	831	870	870	6,346,186	569.62
Local Government	32	2,944	2,943	2,947	29,345,240	766.58
State Government	14	858	857	857	7,660,421	687.32
SCOTT COUNTY - TOTAL	178	2,987	3,002	3,034	\$22,207,117	\$567.96
Natural Resources & Mining	18	174	172	168	1,760,922	790.60
Trade, Transportation & Utilities	33	298	302	333	2,008,640	496.82
Wholesale Trade	7	35	35	49	221,982	430.48
Retail Trade	20	194	198	214	1,022,587	389.41
Transportation, Warehousing & Utilities	6	69	69	70	764,071	847.71
Financial Activities	18	60	58	57	500,540	660.05
Professional & Business Services	13	104	103	89	775,349	604.48
Education & Health Services	42	329	338	343	3,022,341	690.56
Leisure & Hospitality	15	124	119	126	461,635	288.70
Other Services	9	27	25	28	203,511	587.05
Local Government	6	548	550	552	3,791,378	530.26
State Government	6	31	31	31	319,678	793.25
Other	18	1,292	1,304	1,307	9,363,123	553.61

TABLE 6. COUNTY SUMMARY

North American Industry Classification System - Industry Groups	Number of Employing Units	Employment			Total Earnings	Average Weekly Earnings
		Jan	Feb	Mar	Jan - Mar 2018	
SEARCY COUNTY - TOTAL	167	1,413	1,438	1,486	\$9,596,540	\$510.63
Construction	13	13	12	10	60,690	400.15
Manufacturing	16	169	180	178	1,211,252	530.40
Trade, Transportation & Utilities	35	216	232	246	1,416,896	471.15
Wholesale Trade	6	35	36	35	232,750	506.71
Retail Trade	24	166	181	196	1,011,028	429.68
Transportation, Warehousing & Utilities	5	15	15	15	173,118	887.78
Financial Activities	12	45	50	57	523,716	795.12
Education & Health Services	40	354	354	358	2,279,945	493.57
Leisure & Hospitality	13	132	132	147	406,634	228.32
Other Services	4	6	6	7	51,412	624.44
Local Government	10	312	311	322	2,178,112	531.90
State Government	6	42	41	42	379,941	701.43
Other	18	124	120	119	1,087,942	691.64
SEBASTIAN COUNTY - TOTAL	3,694	64,413	64,336	64,455	\$688,237,757	\$822.05
Natural Resources & Mining	40	358	353	354	10,051,734	2,178.06
Construction	261	2,355	2,315	2,340	24,510,274	806.88
Manufacturing	195	11,749	11,701	11,772	140,112,811	918.00
Trade, Transportation & Utilities	885	13,304	13,094	13,088	133,222,539	778.60
Wholesale Trade	230	2,611	2,598	2,604	34,628,761	1,022.81
Retail Trade	543	7,894	7,732	7,716	51,579,771	509.94
Transportation, Warehousing & Utilities	112	2,799	2,764	2,768	47,014,007	1,302.29
Information	39	879	883	883	16,608,575	1,449.05
Financial Activities	404	2,497	2,529	2,516	31,575,968	966.16
Professional & Business Services	561	8,102	8,101	8,085	83,120,251	789.76
Education & Health Services	628	11,450	11,500	11,509	147,839,359	990.07
Leisure & Hospitality	350	5,966	6,063	6,121	24,237,080	308.16
Other Services	265	1,283	1,274	1,268	9,643,799	581.83
Local Government	43	4,684	4,750	4,743	47,539,037	773.83
State Government	23	1,786	1,773	1,776	19,776,330	855.44

TABLE 6. COUNTY SUMMARY

North American Industry Classification System - Industry Groups	Number of Employing Units	Employment			Total Earnings Jan - Mar 2018	Average Weekly Earnings
		Jan	Feb	Mar		
SEVIER COUNTY - TOTAL	305	4,737	4,768	4,836	\$38,760,971	\$623.72
Natural Resources & Mining	18	193	200	200	2,632,019	1,024.26
Construction	17	172	172	167	2,192,420	990.10
Trade, Transportation & Utilities	86	797	802	791	6,292,317	607.56
Wholesale Trade	12	73	76	69	1,139,558	1,206.31
Retail Trade	60	643	646	645	4,157,380	496.07
Transportation, Warehousing & Utilities	14	81	80	77	995,379	965.14
Financial Activities	23	180	181	180	2,048,893	873.98
Professional & Business Services	25	103	117	125	692,282	463.06
Education & Health Services	58	533	526	537	4,466,249	645.78
Leisure & Hospitality	25	283	284	294	853,580	228.78
Local Government	12	942	923	941	6,572,026	540.49
State Government	7	141	149	172	1,362,757	680.70
Other	34	1,393	1,414	1,429	11,648,428	634.58
SHARP COUNTY - TOTAL	384	3,473	3,516	3,599	\$24,245,081	\$528.43
Construction	32	151	150	154	1,380,735	700.29
Manufacturing	19	185	179	184	1,170,234	492.80
Trade, Transportation & Utilities	78	763	767	778	4,645,872	464.53
Wholesale Trade	11	34	33	33	204,896	472.84
Retail Trade	57	642	648	659	3,754,405	444.54
Transportation, Warehousing & Utilities	10	87	86	86	686,571	611.74
Information	7	31	31	27	304,235	788.85
Financial Activities	33	160	167	167	2,031,412	948.96
Professional & Business Services	33	99	106	116	928,784	667.71
Education & Health Services	88	852	862	866	6,553,879	586.21
Leisure & Hospitality	31	341	347	378	1,222,416	264.63
Local Government	24	752	766	784	5,019,916	503.23
State Government	7	51	51	52	511,705	766.79
Other	32	88	90	93	475,893	405.25

TABLE 6. COUNTY SUMMARY

North American Industry Classification System - Industry Groups	Number of Employing Units	Employment			Total Earnings Jan - Mar 2018	Average Weekly Earnings
		Jan	Feb	Mar		
STONE COUNTY - TOTAL	271	2,479	2,495	2,541	\$18,209,625	\$559.18
Natural Resources & Mining	5	7	7	8	45,597	478.29
Construction	15	33	32	32	179,496	427.03
Manufacturing	18	197	212	219	1,266,399	465.36
Trade, Transportation & Utilities	72	592	595	596	4,143,799	536.32
Wholesale Trade	7	41	44	43	313,039	564.37
Retail Trade	54	511	511	513	3,296,810	495.64
Transportation, Warehousing & Utilities	11	40	40	40	533,950	1,026.83
Financial Activities	31	154	145	136	2,157,800	1,144.72
Professional & Business Services	12	32	27	33	232,970	584.37
Education & Health Services	51	539	533	531	4,748,622	683.62
Leisure & Hospitality	28	358	382	426	1,172,727	232.10
Local Government	11	405	401	404	3,083,133	588.01
State Government	7	114	114	110	838,156	572.25
Other	21	48	47	46	340,926	557.98
UNION COUNTY - TOTAL	1,293	17,245	17,260	17,234	\$217,335,137	\$969.37
Natural Resources & Mining	79	377	378	368	4,304,000	884.44
Construction	91	1,386	1,375	1,391	18,937,163	1,052.53
Manufacturing	49	2,984	2,979	2,840	49,287,524	1,292.06
Trade, Transportation & Utilities	304	3,330	3,349	3,358	33,942,247	780.40
Wholesale Trade	67	450	461	464	6,544,100	1,098.31
Retail Trade	174	2,015	2,039	2,052	12,999,288	491.29
Transportation, Warehousing & Utilities	63	865	849	842	14,398,859	1,300.01
Information	8	110	111	110	1,095,231	763.58
Financial Activities	99	610	611	610	7,658,610	965.25
Professional & Business Services	129	1,961	1,979	2,048	52,960,612	2,041.03
Education & Health Services	300	2,376	2,348	2,342	21,342,558	697.03
Leisure & Hospitality	92	1,348	1,362	1,397	5,516,744	309.98
Other Services	94	419	415	407	3,060,568	569.13
Local Government	32	1,821	1,839	1,852	13,996,104	585.97
State Government	16	523	514	511	5,233,776	780.23

TABLE 6. COUNTY SUMMARY

North American Industry Classification System - Industry Groups	Number of Employing Units	Employment			Total Earnings	Average Weekly Earnings
		Jan	Feb	Mar	Jan - Mar 2018	
VAN BUREN COUNTY - TOTAL	340	3,543	3,545	3,560	\$30,522,975	\$661.51
Natural Resources & Mining	10	148	144	142	3,145,589	1,672.59
Construction	37	140	144	148	1,115,101	595.67
Manufacturing	8	133	108	99	698,061	473.80
Trade, Transportation & Utilities	93	995	986	979	9,779,850	762.46
Wholesale Trade	10	88	88	81	1,011,393	908.16
Retail Trade	56	609	602	609	3,734,479	473.52
Transportation, Warehousing & Utilities	27	298	296	289	5,033,978	1,315.61
Information	5	36	35	33	248,071	550.45
Financial Activities	30	132	134	133	1,710,869	989.51
Professional & Business Services	35	127	139	137	1,306,469	748.12
Education & Health Services	60	751	751	753	5,582,396	571.28
Leisure & Hospitality	27	322	338	358	1,314,476	297.98
Other Services	18	46	48	49	343,636	554.55
Local Government	11	673	679	689	4,826,873	545.76
State Government	6	40	39	40	451,584	875.73
WASHINGTON COUNTY - TOTAL	6,031	104,357	105,254	105,683	\$1,148,152,373	\$840.35
Natural Resources & Mining	40	294	289	300	4,525,027	1,182.60
Construction	570	5,417	5,493	5,570	66,456,699	930.59
Manufacturing	216	12,953	13,011	12,948	141,456,986	838.92
Trade, Transportation & Utilities	1,361	22,692	22,630	22,757	231,467,605	784.61
Wholesale Trade	386	3,783	3,805	3,815	64,909,826	1,313.62
Retail Trade	775	12,502	12,407	12,364	88,998,409	551.02
Transportation, Warehousing & Utilities	200	6,407	6,418	6,578	77,559,370	922.45
Information	75	883	884	896	12,555,998	1,088.07
Financial Activities	662	3,610	3,671	3,673	48,805,993	1,028.20
Professional & Business Services	1,096	13,284	13,288	13,338	206,170,259	1,192.13
Education & Health Services	874	15,650	15,826	15,870	178,877,338	871.87
Leisure & Hospitality	661	12,335	12,725	12,902	53,404,049	324.64
Other Services	393	2,084	2,108	2,100	17,471,928	640.81
Local Government	61	8,608	8,768	8,783	89,257,289	787.41
State Government	22	6,547	6,561	6,546	97,703,202	1,147.19

TABLE 6. COUNTY SUMMARY

North American Industry Classification System - Industry Groups	Number of Employing Units	Employment			Total Earnings	Average Weekly Earnings
		Jan	Feb	Mar	Jan - Mar 2018	
WHITE COUNTY - TOTAL	1,780	23,506	23,696	23,890	\$213,529,694	\$693.13
Natural Resources & Mining	50	305	315	339	4,644,264	1,117.57
Construction	154	952	957	991	9,793,568	779.33
Manufacturing	58	2,099	2,115	2,118	25,015,894	911.70
Trade, Transportation & Utilities	477	6,076	6,042	6,061	56,190,487	713.30
Wholesale Trade	82	572	577	576	6,330,516	846.89
Retail Trade	308	3,400	3,372	3,387	22,787,579	517.64
Transportation, Warehousing & Utilities	87	2,104	2,093	2,098	27,072,392	992.45
Information	17	128	126	123	1,028,715	629.70
Financial Activities	174	887	881	874	10,022,941	875.47
Professional & Business Services	186	1,164	1,213	1,239	9,652,232	616.00
Education & Health Services	319	5,617	5,646	5,636	55,219,816	754.07
Leisure & Hospitality	171	2,597	2,657	2,728	9,357,229	270.53
Other Services	113	497	490	500	4,090,590	634.82
Local Government	46	2,739	2,736	2,758	23,484,848	658.28
State Government	15	445	518	523	5,029,110	781.00
WOODRUFF COUNTY - TOTAL	198	1,679	1,666	1,678	\$14,203,035	\$652.52
Natural Resources & Mining	28	111	114	121	804,993	536.90
Construction	10	31	32	36	239,204	557.59
Manufacturing	5	196	189	186	2,131,675	861.51
Trade, Transportation & Utilities	50	378	372	379	3,406,292	696.25
Wholesale Trade	12	130	131	139	1,721,041	992.91
Retail Trade	28	183	175	174	857,036	371.76
Transportation, Warehousing & Utilities	10	65	66	66	828,215	970.19
Financial Activities	12	53	53	51	482,614	709.38
Education & Health Services	53	235	238	238	2,020,570	655.82
Leisure & Hospitality	10	67	67	70	236,503	267.54
Local Government	9	449	439	432	3,026,860	529.17
State Government	5	28	28	28	283,579	779.06
Other	16	131	134	137	1,570,745	901.69

TABLE 6. COUNTY SUMMARY

North American Industry Classification System - Industry Groups	Number of Employing Units	Employment			Total Earnings	Average Weekly Earnings
		Jan	Feb	Mar	Jan - Mar 2018	
YELL COUNTY - TOTAL	408	6,459	6,530	6,494	\$49,894,030	\$590.98
Natural Resources & Mining	22	212	213	212	2,297,738	832.41
Construction	32	214	222	216	1,888,271	668.34
Manufacturing	21	2,457	2,483	2,464	19,123,972	596.06
Trade, Transportation & Utilities	83	766	771	766	5,775,362	578.71
Wholesale Trade	15	64	63	62	323,969	395.57
Retail Trade	51	519	523	523	2,847,515	419.88
Transportation, Warehousing & Utilities	17	183	185	181	2,603,878	1,094.53
Financial Activities	27	116	115	114	1,028,307	687.83
Professional & Business Services	37	277	281	285	2,421,116	662.77
Education & Health Services	108	809	806	780	5,281,479	508.89
Leisure & Hospitality	25	277	288	297	940,968	251.91
Local Government	25	1,159	1,179	1,189	9,350,521	611.80
State Government	10	56	56	56	517,481	710.83
Other	18	116	116	115	1,268,815	843.81
STATEWIDE COUNTY - TOTAL	9,780	32,719	35,734	35,823	\$521,451,582	\$1,154.00
Natural Resources & Mining	95	338	340	331	5,872,321	1,343.06
Construction	771	2,959	3,157	3,062	40,369,718	1,015.05
Manufacturing	48	120	125	121	3,870,661	2,440.52
Trade, Transportation & Utilities	3,223	7,537	7,710	7,671	194,499,225	1,958.48
Wholesale Trade	2,795	6,182	6,321	6,271	175,870,768	2,161.80
Retail Trade	151	455	457	474	7,294,009	1,214.45
Transportation, Warehousing & Utilities	277	900	932	926	11,334,448	948.38
Information	330	605	603	603	15,295,366	1,949.03
Financial Activities	633	1,643	1,677	1,660	33,365,017	1,546.11
Professional & Business Services	3,766	15,315	17,832	17,940	176,468,219	797.14
Education & Health Services	475	2,549	2,579	2,594	28,871,417	862.81
Leisure & Hospitality	96	170	178	198	1,852,166	782.83
State Government	16	746	743	746	8,779,332	906.49
Other	327	737	790	897	12,208,140	1,028.79

Note: Statewide classification includes employment and payroll data for employers that have not provided a physical location for each employing unit. This section also includes employers without a physical location in Arkansas.

TABLE 7. FEDERAL GOVERNMENT EMPLOYMENT AND EARNINGS IN ARKANSAS

North American Industry Classification System - Industry Groups	Number of Employing Units	Employment			Total Earnings Jan - Mar 2018	Average Weekly Earnings
		Jan	Feb	Mar		
TOTAL	1,147	20,007	19,861	19,924	\$338,225,580	\$1,305.39
Trade, Transportation & Utilities	592	5,575	5,512	5,554	68,337,547	947.67
Information	2	40	38	38	710,375	1,413.21
Financial Activities	14	109	109	110	2,487,631	1,750.21
Professional & Business Services	32	770	768	774	14,664,636	1,463.73
Education & Health Services	18	5,292	5,326	5,344	101,451,113	1,466.72
Leisure & Hospitality	22	272	272	271	3,212,541	909.64
Other Services	1	1	1	1	9,265	712.69
Public Administration	466	7,948	7,835	7,832	147,352,472	1,439.95

TABLE 8. LOCAL WORKFORCE DEVELOPMENT AREA SUMMARY

North American Industry Classification System - Industry Groups	Number of Employing Units	Employment			Total Earnings Jan - Mar 2018	Average Weekly Earnings
		Jan	Feb	Mar		
CENTRAL LOCAL WORKFORCE DEVELOPMENT AREA	6,690	80,632	81,345	82,013	\$735,444,854	\$695.59
Natural Resources & Mining	209	1,014	1,036	1,111	12,604,641	920.20
Construction	742	5,596	5,653	5,657	57,992,524	791.61
Manufacturing	224	6,359	6,432	6,442	80,474,872	965.59
Trade, Transportation & Utilities	1,534	16,695	16,759	16,858	135,483,359	621.43
Wholesale Trade	355	1,976	1,986	1,991	26,299,858	1,019.52
Retail Trade	930	12,993	13,003	13,085	87,775,429	518.30
Transportation, Warehousing & Utilities	249	1,726	1,770	1,782	21,408,072	936.02
Information	55	481	493	496	5,505,267	864.25
Financial Activities	707	2,979	2,969	2,984	37,879,261	978.66
Professional & Business Services	882	7,220	7,300	7,360	92,571,430	976.35
Education & Health Services	1,110	13,825	14,053	14,063	121,944,693	670.97
Leisure & Hospitality	594	10,424	10,480	10,826	39,693,778	288.69
Other Services	437	1,949	2,017	2,013	14,491,356	559.32
Local Government	136	9,683	9,695	9,721	90,568,672	718.25
State Government	60	4,407	4,458	4,482	46,235,001	799.40
Note: Pulaski County is not included in the Central Local Workforce Development Area. Please refer to Page 51 for information on Pulaski County. Central Local Workforce Development Area includes these counties: Faulkner, Lonoke, Monroe, Prairie, and Saline.						
EASTERN LOCAL WORKFORCE DEVELOPMENT AREA	3,391	34,566	34,733	35,150	\$296,645,367	\$655.41
Natural Resources & Mining	243	986	1,014	1,092	7,680,421	573.22
Construction	142	818	831	840	8,152,615	755.87
Manufacturing	79	3,505	3,496	3,434	43,387,641	959.51
Trade, Transportation & Utilities	751	8,854	8,942	8,990	80,178,995	690.77
Wholesale Trade	152	1,920	1,940	1,993	24,176,929	953.24
Retail Trade	413	4,638	4,656	4,641	27,705,563	458.82
Transportation, Warehousing & Utilities	186	2,296	2,346	2,356	28,296,503	933.12
Information	24	173	170	170	1,657,049	745.41
Financial Activities	263	1,241	1,231	1,216	12,475,397	780.62
Professional & Business Services	246	1,561	1,552	1,732	14,430,353	687.32
Education & Health Services	1,043	6,269	6,260	6,317	49,466,456	605.72
Leisure & Hospitality	248	3,671	3,717	3,828	15,297,071	314.74
Other Services	167	718	725	743	5,559,678	586.92
Local Government	127	4,809	4,799	4,796	40,233,419	644.59
State Government	58	1,961	1,996	1,992	18,126,272	703.14
Eastern Local Workforce Development Area includes these counties: Crittenden, Cross, Lee, Phillips, and Saint Francis.						

TABLE 8. LOCAL WORKFORCE DEVELOPMENT AREA SUMMARY

North American Industry Classification System - Industry Groups	Number of Employing Units	Employment			Total Earnings Jan - Mar 2018	Average Weekly Earnings
		Jan	Feb	Mar		
NORTH CENTRAL LOCAL WORKFORCE DEVELOPMENT AREA	5,378	66,045	66,633	67,345	\$580,478,408	\$669.71
Natural Resources & Mining	211	1,401	1,429	1,498	18,718,266	998.06
Construction	425	2,229	2,304	2,383	22,795,237	760.62
Manufacturing	210	8,360	8,443	8,506	91,598,103	835.20
Trade, Transportation & Utilities	1,355	14,631	14,527	14,654	127,819,092	673.26
Wholesale Trade	224	1,575	1,587	1,600	17,233,803	835.16
Retail Trade	884	9,278	9,200	9,303	60,451,617	502.16
Transportation, Warehousing & Utilities	247	3,778	3,740	3,751	50,133,672	1,026.65
Information	64	434	427	415	3,511,444	635.06
Financial Activities	520	2,545	2,543	2,542	30,540,099	923.68
Professional & Business Services	486	3,122	3,202	3,244	26,385,756	636.39
Education & Health Services	986	14,469	14,511	14,520	133,634,410	708.94
Leisure & Hospitality	485	6,196	6,358	6,563	22,239,339	268.46
Other Services	321	1,219	1,212	1,243	8,959,364	562.75
Local Government	222	8,973	8,967	9,047	68,875,795	588.97
State Government	93	2,466	2,710	2,730	25,401,503	741.45

North Central Local Workforce Development Area includes these counties: Cleburne, Fulton, Independence, Izard, Jackson, Sharp, Stone, Van Buren, White, and Woodruff.

NORTHEAST LOCAL WORKFORCE DEVELOPMENT AREA	6,504	99,940	100,483	101,378	\$985,828,684	\$753.80
Natural Resources & Mining	452	1,850	1,921	2,069	17,882,307	706.62
Construction	464	3,342	3,433	3,542	37,208,052	832.26
Manufacturing	300	20,929	21,134	21,258	279,034,048	1,016.92
Trade, Transportation & Utilities	1,732	19,434	19,324	19,574	169,441,651	670.33
Wholesale Trade	370	3,584	3,637	3,690	46,629,925	986.23
Retail Trade	1,011	12,426	12,258	12,423	79,472,817	494.24
Transportation, Warehousing & Utilities	351	3,424	3,429	3,461	43,338,909	969.68
Information	55	771	765	762	8,706,981	874.37
Financial Activities	551	3,180	3,168	3,147	39,340,993	956.15
Professional & Business Services	662	6,705	6,804	6,951	58,055,039	654.81
Education & Health Services	1,099	17,226	17,224	17,263	187,135,972	835.09
Leisure & Hospitality	551	9,154	9,268	9,426	33,788,027	279.99
Other Services	328	1,415	1,409	1,362	11,134,043	613.81
Local Government	215	11,443	11,475	11,466	95,887,752	643.55
State Government	95	4,491	4,558	4,558	48,213,819	817.69

Northeast Local Workforce Development Area includes these counties: Clay, Craighead, Greene, Lawrence, Mississippi, Poinsett, and Randolph.

TABLE 8. LOCAL WORKFORCE DEVELOPMENT AREA SUMMARY

North American Industry Classification System - Industry Groups	Number of Employing Units	Employment			Total Earnings Jan - Mar 2018	Average Weekly Earnings
		Jan	Feb	Mar		
NORTHWEST LOCAL WORKFORCE DEVELOPMENT AREA	16,345	269,407	271,937	273,691	\$3,862,375,715	\$1,093.59
Natural Resources & Mining	133	1,459	1,467	1,467	23,253,425	1,221.53
Construction	1,519	11,595	11,703	11,865	133,801,754	878.12
Manufacturing	626	36,191	36,515	36,498	382,443,888	808.18
Trade, Transportation & Utilities	3,919	60,346	60,225	60,441	686,171,106	874.79
Wholesale Trade	1,264	10,634	10,664	10,642	235,012,501	1,697.99
Retail Trade	2,134	31,542	31,234	31,256	220,232,420	540.48
Transportation, Warehousing & Utilities	521	18,170	18,327	18,543	230,926,185	968.22
Information	207	2,455	2,445	2,458	34,515,629	1,082.51
Financial Activities	1,654	9,283	9,364	9,369	132,445,422	1,090.96
Professional & Business Services	2,728	47,404	47,916	48,126	1,588,946,761	2,556.22
Education & Health Services	2,387	34,911	35,257	35,448	362,764,289	792.63
Leisure & Hospitality	1,737	28,756	29,489	30,263	125,909,203	328.29
Other Services	1,022	4,989	5,031	5,038	42,614,524	653.08
Local Government	310	23,389	23,578	23,744	229,779,141	749.90
State Government	103	8,629	8,947	8,974	119,730,573	1,040.68
Northwest Local Workforce Development Area includes these counties: Baxter, Benton, Boone, Carroll, Madison, Marion, Newton, Searcy, and Washington.						
SOUTHEAST LOCAL WORKFORCE DEVELOPMENT AREA	6,112	67,326	67,886	68,047	\$647,243,466	\$734.85
Natural Resources & Mining	423	2,207	2,220	2,247	20,838,590	720.54
Construction	302	2,058	2,032	1,999	21,051,745	797.85
Manufacturing	193	14,459	14,610	14,699	190,465,597	1,004.24
Trade, Transportation & Utilities	1,224	11,776	11,689	11,750	103,041,303	675.25
Wholesale Trade	230	1,871	1,884	1,929	24,914,187	1,011.51
Retail Trade	727	7,336	7,279	7,311	46,039,883	484.57
Transportation, Warehousing & Utilities	267	2,569	2,526	2,510	32,087,233	973.67
Information	42	264	267	265	2,727,000	790.59
Financial Activities	412	2,373	2,381	2,360	28,610,254	928.08
Professional & Business Services	389	3,376	3,447	3,466	33,008,798	740.35
Education & Health Services	2,120	10,938	10,994	10,998	91,993,630	644.68
Leisure & Hospitality	377	4,320	4,358	4,415	14,567,396	256.76
Other Services	297	1,140	1,128	1,130	8,623,262	585.63
Local Government	208	8,711	8,676	8,682	71,901,917	636.49
State Government	125	5,704	6,084	6,036	60,413,974	782.19
Southeast Local Workforce Development Area includes these counties: Arkansas, Ashley, Bradley, Chicot, Cleveland, Desha, Drew, Grant, Jefferson, and Lincoln.						

TABLE 8. LOCAL WORKFORCE DEVELOPMENT AREA SUMMARY

North American Industry Classification System - Industry Groups	Number of Employing Units	Employment			Total Earnings Jan - Mar 2018	Average Weekly Earnings
		Jan	Feb	Mar		
SOUTHWEST LOCAL WORKFORCE DEVELOPMENT AREA	5,637	76,563	76,697	77,018	\$787,723,127	\$789.40
Natural Resources & Mining	327	2,157	2,147	2,142	23,503,231	841.42
Construction	351	3,264	3,262	3,315	39,158,740	918.26
Manufacturing	231	19,196	19,217	19,152	269,168,499	1,079.06
Trade, Transportation & Utilities	1,336	14,433	14,387	14,448	129,517,038	690.78
Wholesale Trade	237	1,760	1,749	1,793	22,230,022	967.56
Retail Trade	804	8,442	8,453	8,483	52,718,467	479.38
Transportation, Warehousing & Utilities	295	4,231	4,185	4,172	54,568,549	1,000.38
Information	48	444	440	446	5,172,087	897.41
Financial Activities	457	2,451	2,464	2,440	27,677,819	868.41
Professional & Business Services	430	4,564	4,565	4,604	71,620,600	1,203.51
Education & Health Services	1,326	9,941	9,916	9,878	78,974,544	612.91
Leisure & Hospitality	403	5,372	5,509	5,658	20,506,428	286.13
Other Services	340	1,344	1,321	1,365	9,401,104	538.33
Local Government	257	9,857	9,889	9,962	78,274,304	608.03
State Government	131	3,540	3,580	3,608	34,748,733	747.48

Southwest Local Workforce Development Area includes these counties: Calhoun, Columbia, Dallas, Hempstead, Howard, Lafayette, Little River, Miller, Nevada, Ouachita, Sevier, and Union

WEST CENTRAL LOCAL WORKFORCE DEVELOPMENT AREA	8,128	104,935	105,941	107,002	\$952,024,038	\$691.14
Natural Resources & Mining	236	2,304	2,326	2,397	\$23,623,147	775.79
Construction	722	4,164	4,186	4,214	43,743,134	803.45
Manufacturing	327	16,097	16,180	16,186	173,010,175	823.83
Trade, Transportation & Utilities	1,801	21,255	21,196	21,346	196,053,134	709.17
Wholesale Trade	318	1,903	1,907	1,899	21,400,531	865.05
Retail Trade	1,195	13,933	13,877	14,002	91,405,059	504.48
Transportation, Warehousing & Utilities	288	5,419	5,412	5,445	83,247,544	1,180.33
Information	75	702	716	689	7,249,417	793.99
Financial Activities	802	3,549	3,545	3,542	42,658,861	925.57
Professional & Business Services	913	7,568	7,724	7,834	77,381,553	772.17
Education & Health Services	1,584	17,324	17,344	17,453	165,623,490	733.31
Leisure & Hospitality	798	13,159	13,455	13,982	55,408,229	314.97
Other Services	526	2,272	2,274	2,278	16,031,627	542.15
Local Government	231	11,546	11,600	11,676	101,367,646	671.77
State Government	113	4,995	5,395	5,405	49,873,625	728.67

West Central Local Workforce Development Area includes these counties: Clark, Conway, Garland, Hot Spring, Johnson, Montgomery, Perry, Pike, Pope, and Yell

TABLE 8. LOCAL WORKFORCE DEVELOPMENT AREA SUMMARY

North American Industry Classification System - Industry Groups	Number of Employing Units	Employment			Total Earnings	Average Weekly Earnings
		Jan	Feb	Mar	Jan - Mar 2018	
WESTERN LOCAL WORKFORCE DEVELOPMENT AREA	6,482	102,185	102,313	102,672	\$1,010,812,556	\$759.40
Natural Resources & Mining	149	1,288	1,316	1,360	21,034,438	1,224.55
Construction	523	3,849	3,858	3,926	38,932,473	772.32
Manufacturing	338	20,877	20,874	20,984	230,156,386	846.62
Trade, Transportation & Utilities	1,537	22,123	21,885	21,945	207,201,754	725.00
Wholesale Trade	355	3,547	3,534	3,525	45,116,996	981.67
Retail Trade	921	12,152	11,987	12,025	78,864,928	503.25
Transportation, Warehousing & Utilities	261	6,424	6,364	6,395	83,219,830	1,001.12
Information	66	1,051	1,056	1,056	18,104,139	1,320.86
Financial Activities	673	3,568	3,600	3,592	42,686,673	915.50
Professional & Business Services	858	10,522	10,559	10,494	105,444,129	770.65
Education & Health Services	1,131	15,768	15,842	15,830	182,533,347	887.92
Leisure & Hospitality	559	8,693	8,778	8,926	33,447,307	292.40
Other Services	423	2,065	2,044	2,051	16,117,999	603.82
Local Government	153	9,512	9,623	9,625	86,705,204	695.72
State Government	72	2,869	2,878	2,883	28,448,707	760.73

Western Local Workforce Development Area includes these counties: Crawford, Franklin, Logan, Polk, Scott, and Sebastian