

# Arkansas Covered Employment & Earnings



Third Quarter  
2017



**COVERED EMPLOYMENT AND EARNINGS  
STATE OF ARKANSAS  
THIRD QUARTER 2017**

**ASA HUTCHINSON, GOVERNOR  
STATE OF ARKANSAS**

**DARYL BASSETT, DIRECTOR  
DEPARTMENT OF WORKFORCE SERVICES**

**PUBLISHED BY  
LABOR MARKET INFORMATION  
BUREAU OF LABOR STATISTICS PROGRAMS  
POST OFFICE BOX 2981  
LITTLE ROCK, ARKANSAS 72203-2981  
SUSAN PRICE, BLS PROGRAMS MANAGER  
TELEPHONE (501) 682-3103**

**STATE OF ARKANSAS WEBPAGE: <http://www.arkansas.gov>**

**DEPARTMENT OF WORKFORCE SERVICES WEBPAGE: <http://www.dws.arkansas.gov/>**

**WEBPAGE FOR LABOR MARKET INFORMATION: <http://www.discover.arkansas.gov>**

**RELEASED: March 2018**



## TABLE OF CONTENTS

DESCRIPTION OF DATA	PAGE
Description and Classification of Data	1
Definition of Covered Employment and Earnings	2
Significant Developments During Third Quarter 2017	3

### LIST OF GRAPHS AND TABLES

Graph 1	Total Covered Employment for Selected Years, Arkansas	7
Graph 2	Total Covered Earnings, by Calendar Quarter for Selected Years, Arkansas	8
Table 1	Quarterly Comparison of Covered Employment and Wages, by Industry	5
Table 2	Total Covered Employment in Arkansas, 2010 – 2017	6
Table 3	Total Covered Earnings, 2010 – 2017	9
Table 4	Total Taxable Earnings, 2010 – 2017	10
Table 5	State Summary – Employment and Total Earnings, by Industry, Third Quarter 2017	11
Table 6	County Summary – Employment and Total Earnings, by Industry, Third Quarter 2017	22
Table 7	Federal Government Employment and Total Earnings in Arkansas, Third Quarter 2017	60
Table 8	Local Workforce Development Area – Employment and Total Earnings, by Industry, Third Quarter 2017	61



EMPLOYMENT AND EARNINGS  
UNDER THE ARKANSAS EMPLOYMENT SECURITY LAW  
THIRD QUARTER 2017

**DESCRIPTION AND CLASSIFICATION OF DATA**

This publication contains covered employment and payroll data by industry and county for the Third Quarter 2017 and a record for total covered employment by month, quarterly payroll data, average weekly earnings, and total taxable earnings for 2010 through 2017. These data are compiled from quarterly contributions and wage reports submitted by employers subject to the Arkansas Employment Security Law.

Employment data have been tabulated for each month of the quarter by industry under the **North American Industry Classification System** (NAICS) by state, county, and workforce area. Payroll data represent the total wages paid during the quarter and are classified by industry for the state and by publishable industry groups for each county and workforce area.

Due to industry classification revisions, previously published data will not always be comparable with current data. For this reason, comparisons should not be made between the same industries under different revisions. For more information, visit the NAICS home page at <http://www.census.gov/naics>.

Industry Classification Revisions

- SIC (Standard Industrial Classification) 1987 to NAICS 2002
- NAICS 2002 to NAICS 2007
- NAICS 2007 to NAICS 2012
- NAICS 2012 to NAICS 2017

The tabulation of this data is a joint effort in conjunction with the United States Bureau of Labor Statistics. Data included in this publication are subject to revisions. Revisions are typically reflected in the Annual Covered Employment and Earnings publication.

## **DEFINITION OF COVERED EMPLOYMENT AND EARNINGS**

Covered Employment is the total number of workers employed by establishments subject to the Arkansas Employment Security Law that worked or received pay for the payroll period including the 12<sup>th</sup> of the month. Earnings include all wages paid to any covered employee by their employer including salaries, bonuses, commissions, fees, fringe benefits, sick pay made directly to employees or dependents, deferred compensation, and reported tips. These wages include both taxable and nontaxable wages. Only the first \$12,000 paid to each worker by an employer in the calendar year is taxable under the Arkansas Employment Security Law.

An Arkansas state unemployment insurance account is required of any entity meeting the definition of an employer. As described by Arkansas Department of Workforce Services Law, the definition of an employer includes, but is not limited to, a sole proprietorship, partnership, corporation, associations, trust, estate, and receiver or trustee in bankruptcy. The entity must employ one or more individuals for ten or more days in a calendar year, whether or not the days are consecutive.

Currently excluded from coverage is employment covered by the Railroad Unemployment Insurance Act, some domestic service workers, employees of small agricultural establishments, self-employed workers, unpaid family workers, insurance and real estate agents paid only on a commission basis, and employees of churches and religious organizations except separately incorporated schools.

Civilian federal workers are covered by Unemployment Compensation for Federal Employees (UCFE).

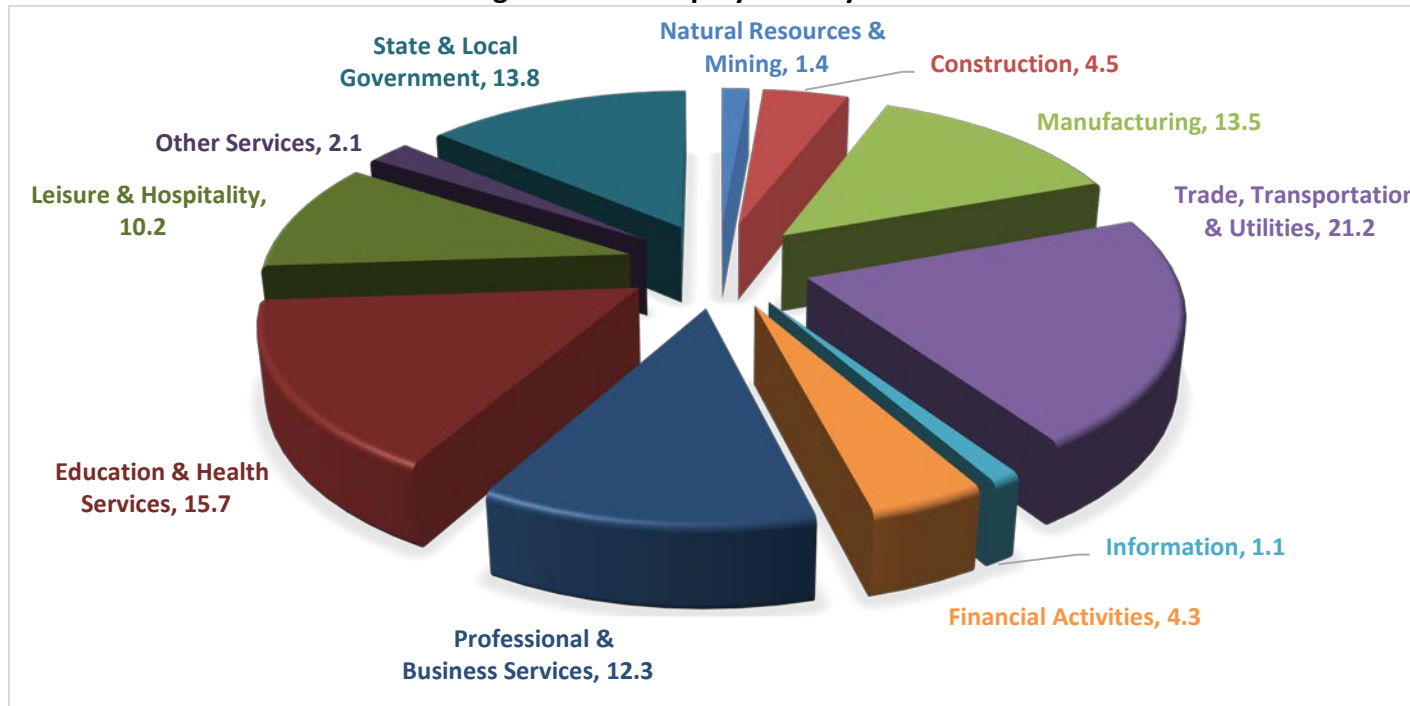


## SIGNIFICANT DEVELOPMENTS DURING THIRD QUARTER 2017

### AVERAGE EMPLOYMENT CHANGES

Covered employment averaged 1,666,609 during the Third Quarter 2017 (refer to Table 1), a decrease of 20,458 (-1.7%) from the previous quarter and an increase of 8,193 (0.7%) from the average recorded one year ago. The over-the-year comparison is more significant when used as an economic indicator and allows for seasonal factors that appear when comparing over-the-quarter data to be disregarded.

**Average Covered Employment by NAICS**



### EMPLOYMENT CHANGES FROM FIRST QUARTER 2017

Compared to Second Quarter 2010, covered employment decreased in six major industry sectors, State and Local Government reported the largest drop (-20,648), caused mostly by fluctuations in public school employment. Professional and Business Services reduced employment to total 142,931, a loss of 1,575 jobs. Declines in employment also occurred in Leisure and Hospitality (-593), Natural Resources and Mining (-275), Information (-214), and Other Services (-43). Over the Quarter gains were seen in five industry sectors, Manufacturing reported the largest employment increase (1,329). Trade, Transportation, and Utilities rose 1,215 jobs, mainly focused in Transportation and Warehousing sector. Increases in employment also occurred in Construction (285), Financial Activities (46), and Education & Health Services (14).

## EMPLOYMENT CHANGES FROM THIRD QUARTER 2016 (QUARTER YEAR AGO COMPARISON)

Over-the-year gains were recorded in seven industry groups (refer to Table 1). The largest gains occurred in Education & Health Services (4,575), Manufacturing (2,455) and Leisure & Hospitality (1,372). The largest losses occurred in Trade, Transportation & Utilities (-1,290), Natural Resources & Mining (-638), and Information (-511).

## COVERED WAGES

Wages paid to covered workers totaled \$11,823,484,551 for the Third Quarter 2017 (refer to Table 1), for an average weekly wage of \$779.61 (refer to Table 5). Calhoun County workers recorded the highest average weekly wage (\$1,008.16), and employees in Newton County reported the lowest (\$442.05) (refer to Table 6).

Information industry recorded the highest average weekly wage for the State of Arkansas (\$1,029.53). The Leisure & Hospitality sector recorded the lowest (\$312.22) (refer to Table 5).

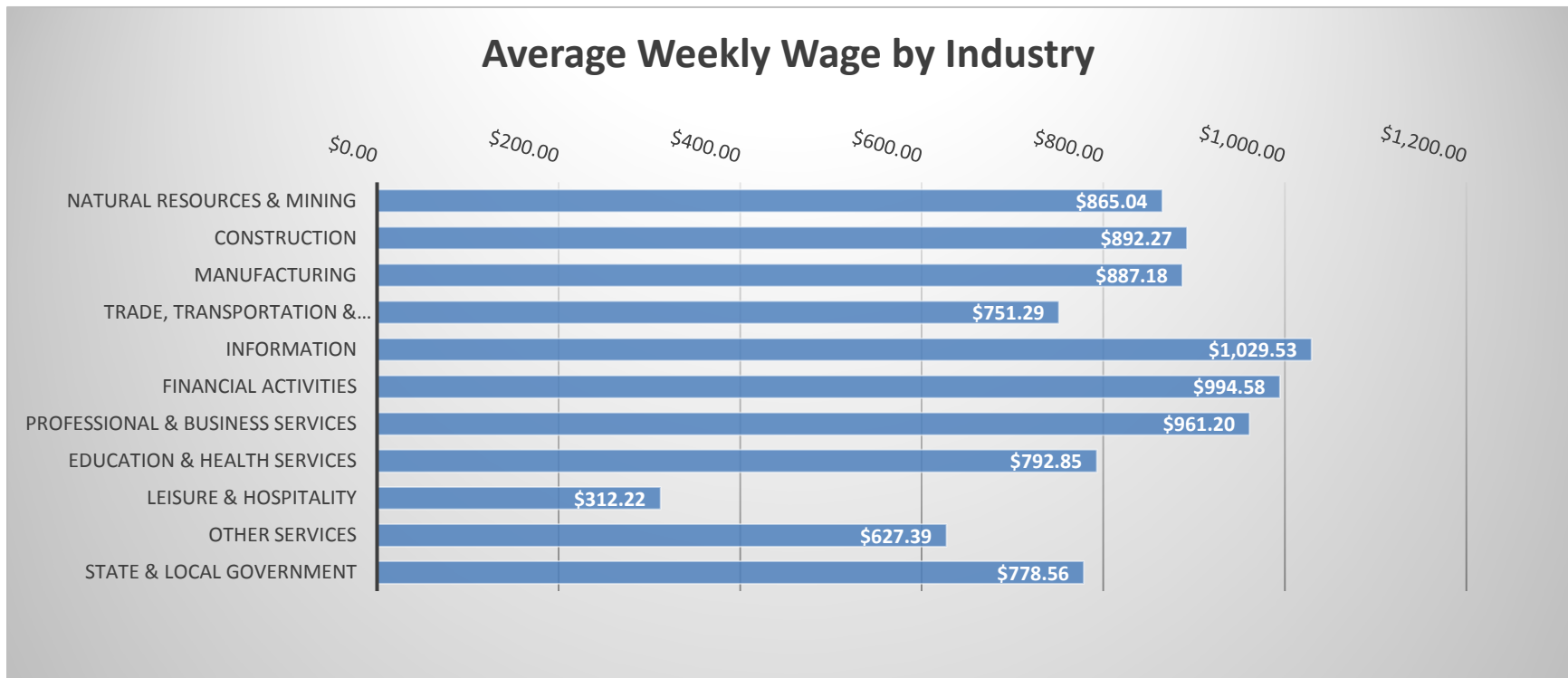


TABLE 1. QUARTERLY COMPARISON OF COVERED EMPLOYMENT AND WAGES, BY INDUSTRY

North American Industry Classification System - Industry Groups	Number of Employing Units	Monthly Employment Average	Percent of Total	Net Change From:		Total Wages Paid Jul - Sep 2017	Percent of Total
				Apr - Jun 2017	Jul - Sep 2016		
<b>TOTAL</b>	<b>88,552</b>	<b>1,166,609</b>	<b>100</b>	<b>-20,458</b>	<b>8,193</b>	<b>\$11,823,484,551</b>	<b>100</b>
<b>Natural Resources &amp; Mining</b>	2,541	16,408	1.4	-275	-638	184,520,862	1.6
Agriculture, Forestry, Fishing & Hunting	2,100	12,567	1.1	-270	-554	126,298,325	1.1
Mining	441	3,841	0.3	-5	-83	58,222,537	0.5
<b>Construction</b>	6,856	51,967	4.5	285	761	602,786,575	5.1
<b>Manufacturing</b>	2,930	157,729	13.5	1,329	2,455	1,819,141,497	15.4
<b>Trade, Transportation &amp; Utilities</b>	21,614	247,606	21.2	1,215	-1,290	2,418,307,293	20.5
Wholesale Trade	7,231	47,068	4.0	212	686	765,407,317	6.5
Retail Trade	11,065	140,026	12.0	-272	-2,148	921,063,684	7.8
Transportation & Warehousing	2,906	52,773	4.5	1,212	120	581,091,698	4.9
Utilities	412	7,739	0.7	62	52	150,744,594	1.3
<b>Information</b>	1,126	12,642	1.1	-214	-511	169,199,564	1.4
<b>Financial Activities</b>	8,289	49,757	4.3	46	185	643,328,783	5.4
Finance & Insurance	4,909	36,200	3.1	30	55	520,186,662	4.4
Real Estate & Rental & Leasing	3,380	13,557	1.2	16	130	123,142,121	1.0
<b>Professional &amp; Business Services</b>	13,925	142,931	12.3	-1,575	1,092	1,785,998,830	15.1
Professional & Technical Services	8,771	42,155	3.6	-638	-5	616,701,748	5.2
Management of Companies & Enterprises	551	34,739	3.0	-721	-691	699,032,398	5.9
Administrative & Waste Services	4,603	66,037	5.7	-216	1,788	470,264,684	4.0
<b>Education &amp; Health Services</b>	15,827	183,238	15.7	14	4,575	1,888,629,892	16.0
Educational Services	839	10,773	0.9	-764	21	99,294,286	0.8
Health Care & Social Assistance	14,988	172,465	14.8	779	4,555	1,789,335,606	15.1
<b>Leisure &amp; Hospitality</b>	7,081	118,667	10.2	-593	1,372	481,650,419	4.1
Arts, Entertainment & Recreation	971	12,145	1.0	28	698	60,205,216	0.5
Accommodation & Food Services	6,110	106,522	9.1	-620	674	421,445,203	3.6
<b>Other Services</b>	5,333	25,063	2.1	-43	-47	204,417,119	1.7
<b>State &amp; Local Government</b>	3,030	160,602	13.8	-20,648	240	1,625,503,717	13.7
Local Government	1,964	92,369	7.9	-21,021	759	807,013,085	6.8
State Government	1,066	68,233	5.8	373	-520	818,490,632	6.9
<b>Nonclassifiable Establishments</b>	0	0	0.0	0	0	0	0.0

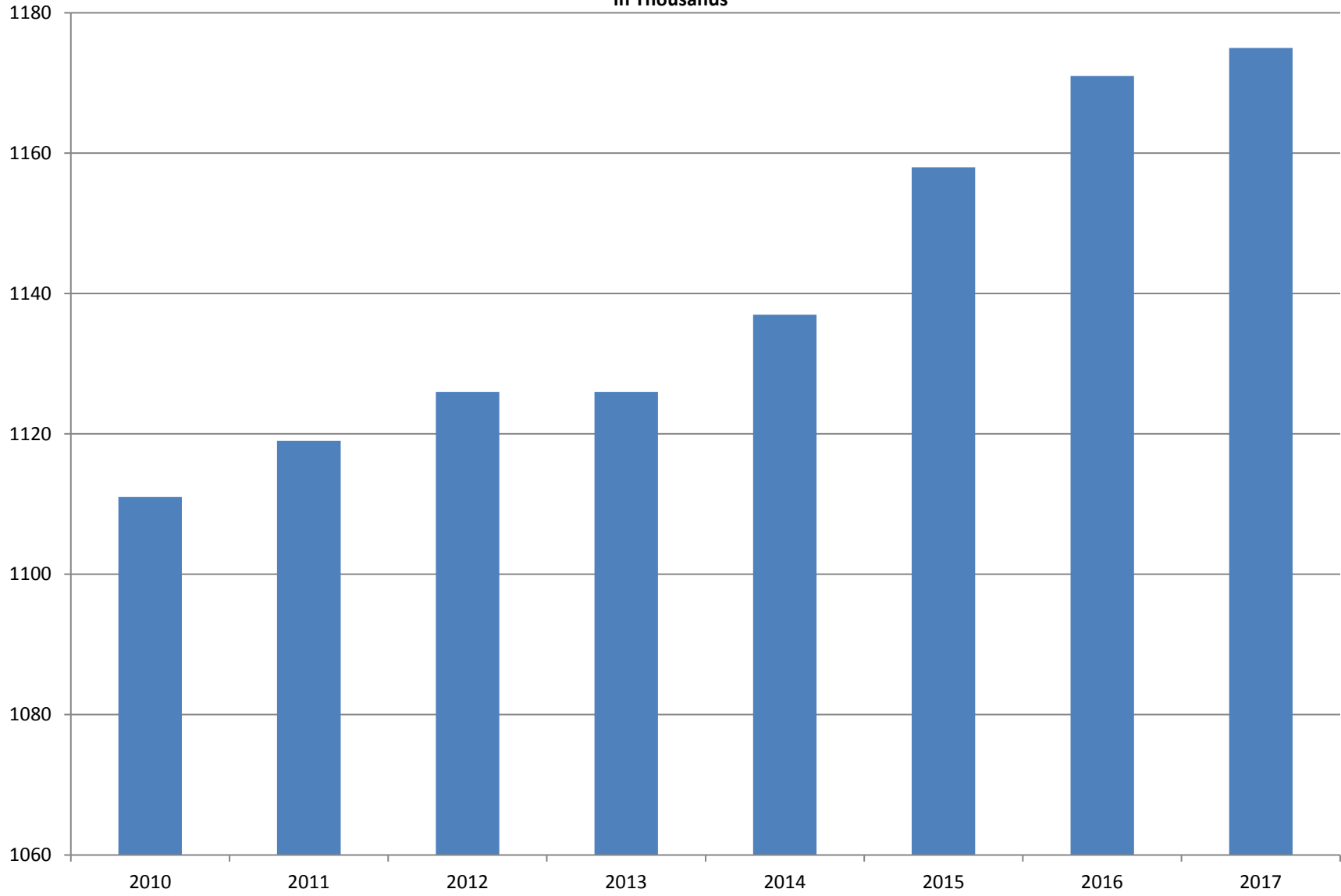
Note: Items do not necessarily add to total because of rounding. Because of industry code changes between years, substantial employment and wage shifts among industries are anticipated.

**TABLE 2. TOTAL COVERED EMPLOYMENT IN ARKANSAS**

<b>PERIOD</b>	<b>2010</b>	<b>2011</b>	<b>2012</b>	<b>2013</b>	<b>2014</b>	<b>2015</b>	<b>2016</b>	<b>2017</b>
<b>AVERAGE</b>	<b>1,110,947</b>	<b>1,118,639</b>	<b>1,126,171</b>	<b>1,125,890</b>	<b>1,137,486</b>	<b>1,157,634</b>	<b>1,171,490</b>	<b>1,175,113</b>
January	1,089,984	1,098,349	1,113,274	1,112,991	1,114,412	1,135,577	1,152,434	1,162,153
February	1,091,282	1,098,445	1,119,319	1,121,492	1,122,905	1,144,902	1,162,294	1,172,930
March	1,106,198	1,113,061	1,131,123	1,129,100	1,132,106	1,146,413	1,170,837	1,179,908
April	1,115,341	1,129,635	1,136,608	1,134,734	1,140,788	1,158,606	1,178,630	1,185,282
May	1,123,250	1,126,371	1,142,985	1,138,383	1,149,046	1,167,657	1,181,644	1,189,981
June	1,130,164	1,123,412	1,136,699	1,130,402	1,144,876	1,164,607	1,177,506	1,185,938
July	1,073,743	1,080,937	1,078,836	1,083,849	1,096,675	1,119,390	1,132,361	1,138,087
August	1,099,795	1,106,262	1,108,552	1,109,759	1,125,162	1,148,502	1,160,743	1,168,694
September	1,124,281	1,132,779	1,134,829	1,135,673	1,150,545	1,173,776	1,185,352	1,193,046
October	1,125,073	1,138,395	1,135,677	1,138,312	1,153,684	1,173,953	1,185,022	N/A
November	1,126,781	1,138,543	1,137,411	1,141,035	1,158,579	1,177,717	1,186,046	N/A
December	1,125,466	1,137,474	1,138,742	1,134,955	1,161,056	1,180,513	1,185,009	N/A

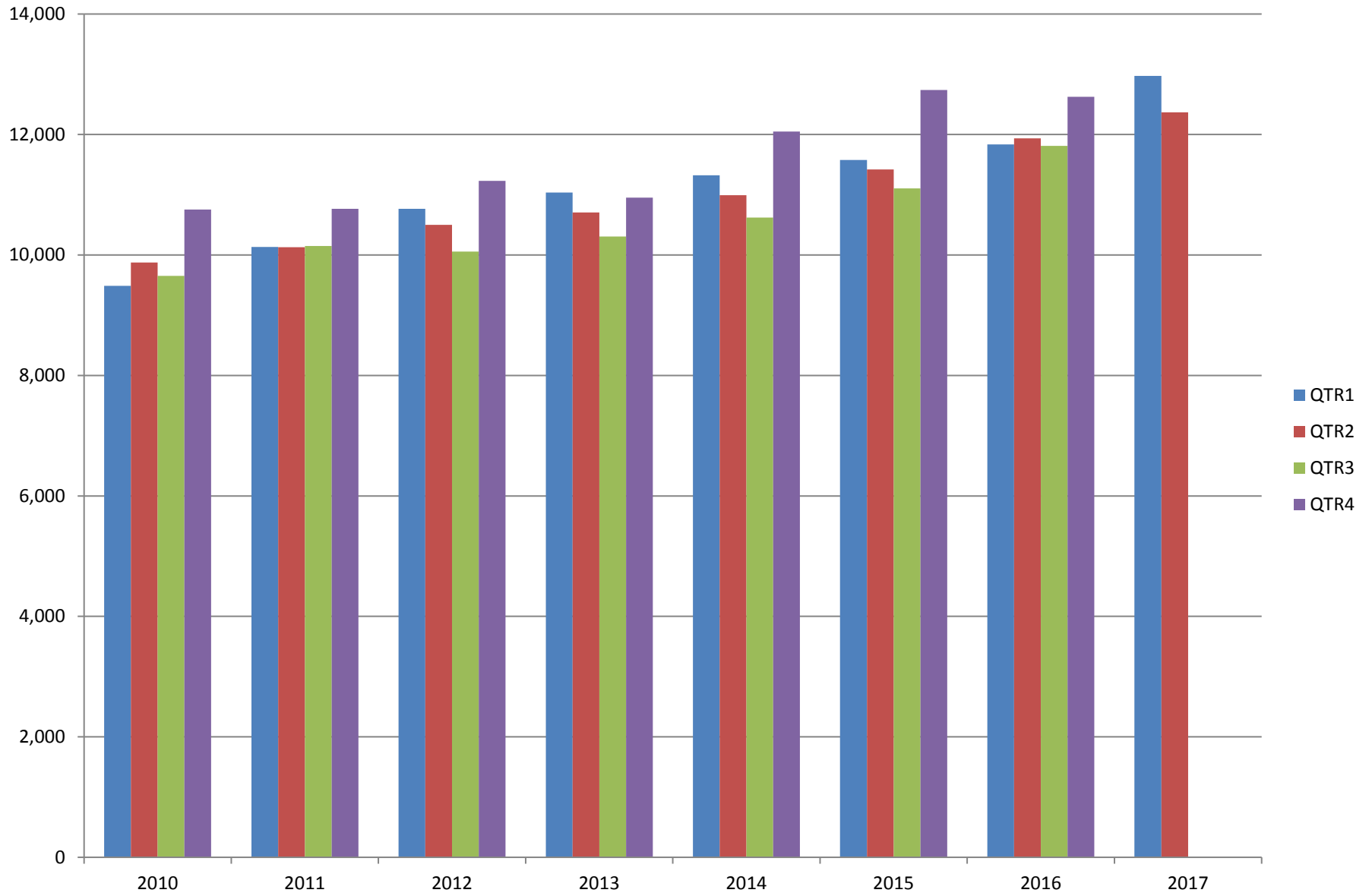
# AVERAGE TOTAL COVERED EMPLOYMENT

In Thousands



# TOTAL COVERED EARNINGS BY CALENDAR YEAR

In Thousands



**TABLE 3. TOTAL COVERED EARNINGS 2010 - 2017**

<b>PERIOD</b>	<b>2010</b>	<b>2011</b>	<b>2012</b>	<b>2013</b>
<b>TOTAL</b>	<b>\$39,769,504,992</b>	<b>\$41,177,659,236</b>	<b>\$42,551,238,929</b>	<b>\$43,371,086,461</b>
January - March	9,486,245,580	10,134,035,254	10,766,175,449	11,050,678,946
April - June	9,873,489,653	10,128,274,611	10,494,369,042	10,692,826,528
July - September	9,653,588,807	10,147,287,431	10,053,294,410	10,322,652,747
October - December	10,756,180,952	10,768,061,940	11,237,400,028	11,304,928,240
<b>Average Weekly Earnings</b>	<b>\$688.42</b>	<b>\$707.89</b>	<b>\$726.62</b>	<b>\$740.80</b>

<b>PERIOD</b>	<b>2014</b>	<b>2015</b>	<b>2016</b>	<b>2017</b>
<b>TOTAL</b>	<b>\$44,980,520,034</b>	<b>\$46,836,352,793</b>	<b>\$48,207,277,530</b>	<b>\$37,161,690,557</b>
January - March	11,321,422,241	11,575,046,688	11,836,255,664	12,970,946,939
April - June	10,991,760,061	11,419,363,330	11,935,722,186	12,367,259,067
July - September	10,619,889,280	11,104,443,452	11,809,460,297	11,823,484,551
October - December	12,047,448,452	12,737,499,323	12,625,839,383	N/A
<b>Average Weekly Earnings</b>	<b>\$760.46</b>	<b>\$778.05</b>	<b>\$791.35</b>	<b>\$810.87</b>

**TABLE 4. TOTAL TAXABLE EARNINGS, 2010 - 2017**

<b>PERIOD</b>	<b>2010</b>	<b>2011</b>	<b>2012</b>	<b>2013</b>
<b>TOTAL</b>	<b>11,332,118,456</b>	<b>11,479,396,226</b>	<b>11,624,348,048</b>	<b>11,644,747,978</b>
January - March	5,607,134,758	5,828,877,821	6,167,036,199	6,184,735,653
April - June	2,977,100,591	2,910,604,359	2,838,154,846	2,805,431,293
July - September	1,577,067,770	1,601,382,146	1,494,712,584	1,506,497,129
October - December	1,170,815,337	1,138,531,900	1,124,444,419	1,148,083,903

<b>PERIOD</b>	<b>2014</b>	<b>2015</b>	<b>2016</b>	<b>2017</b>
<b>TOTAL</b>	<b>11,919,662,224</b>	<b>12,258,632,610</b>	<b>12,511,938,047</b>	<b>11,470,614,279</b>
January - March	6,288,682,396	6,378,966,662	6,595,351,454	6,971,816,280
April - June	2,831,013,392	2,915,293,283	3,003,077,908	2,918,611,828
July - September	1,552,243,963	1,640,978,599	1,651,582,584	1,580,186,171
October - December	1,247,722,473	1,323,394,066	1,261,926,101	N/A



TABLE 5. STATEWIDE SUMMARY

North American Industry Classification System - Industry Groups		Number of Employing Units	Employment			Total Earnings	Average Weekly Earnings
			Jul	Aug	Sep	Jul - Sep 2017	
<b>TOTAL, ALL INDUSTRIES</b>		<b>88,552</b>	<b>1,138,087</b>	<b>1,168,694</b>	<b>1,193,046</b>	<b>\$11,823,484,551</b>	<b>\$779.61</b>
<b>NATURAL RESOURCES &amp; MINING</b>		<b>2,541</b>	<b>16,756</b>	<b>16,301</b>	<b>16,168</b>	<b>\$184,520,862</b>	<b>\$865.04</b>
<b>11</b>	<b>AGRICULTURE, FORESTRY, FISHING &amp; HUNTING</b>	<b>2,100</b>	<b>12,835</b>	<b>12,463</b>	<b>12,404</b>	<b>\$126,298,325</b>	<b>\$773.06</b>
<b>111</b>	<b>CROP PRODUCTION</b>	<b>935</b>	<b>4,226</b>	<b>4,169</b>	<b>4,305</b>	<b>\$31,922,801</b>	<b>\$580.06</b>
1111	Oilseed & Grain Farming	683	2,883	2,870	3,007	22,554,769	594.17
1112	Vegetable & Melon Farming	35	229	215	224	1,517,486	524.24
1113	Fruit & Tree Nut Farming	15	50	35	33	260,905	510.24
1114	Greenhouse & Nursery Production	40	331	327	315	2,388,364	566.46
1119	Other Crop Farming	162	733	722	726	5,201,277	550.34
<b>112</b>	<b>ANIMAL PRODUCTION &amp; AQUACULTURE</b>	<b>329</b>	<b>3,321</b>	<b>3,266</b>	<b>3,244</b>	<b>\$37,953,833</b>	<b>\$890.91</b>
1121	Cattle Ranching & Farming	123	423	431	428	3,168,329	570.32
1122	Hog & Pig Farming	14	146	143	147	1,645,369	870.87
1123	Poultry & Egg Production	128	2,324	2,290	2,272	29,420,932	985.98
1125	Animal Aquaculture	42	369	344	340	3,314,356	726.35
	Other	22	59	58	57	404,847	536.93
<b>115</b>	<b>SUPPORT ACTIVITIES FOR AGRICULTURE &amp; FORESTRY</b>	<b>428</b>	<b>3,033</b>	<b>2,771</b>	<b>2,557</b>	<b>\$33,116,081</b>	<b>\$914.03</b>
1151	Support Activities for Crop Production	293	1,454	1,413	1,498	20,216,160	1,068.79
1152	Support Activities for Animal Production	63	698	730	736	5,960,807	635.66
1153	Support Activities for Forestry	72	881	628	323	6,939,114	874.09
	<b>OTHER</b>	<b>408</b>	<b>2,255</b>	<b>2,257</b>	<b>2,298</b>	<b>\$23,305,610</b>	<b>\$789.75</b>
<b>21</b>	<b>MINING</b>	<b>441</b>	<b>3,921</b>	<b>3,838</b>	<b>3,764</b>	<b>\$58,222,537</b>	<b>\$1,166.01</b>
<b>211</b>	<b>OIL &amp; GAS EXTRACTION</b>	<b>76</b>	<b>765</b>	<b>759</b>	<b>746</b>	<b>\$13,297,562</b>	<b>\$1,351.84</b>
<b>212</b>	<b>MINING (EXCEPT OIL &amp; GAS)</b>	<b>102</b>	<b>1,761</b>	<b>1,720</b>	<b>1,691</b>	<b>\$23,129,937</b>	<b>\$1,032.03</b>
<b>213</b>	<b>SUPPORT ACTIVITIES FOR MINING</b>	<b>263</b>	<b>1,395</b>	<b>1,359</b>	<b>1,327</b>	<b>\$21,795,038</b>	<b>\$1,232.45</b>

TABLE 5. STATEWIDE SUMMARY

North American Industry Classification System - Industry Groups		Number of Employing Units	Employment			Total Earnings	Average Weekly Earnings
			Jul	Aug	Sep	Jul - Sep 2017	
<b>CONSTRUCTION</b>		<b>6,856</b>	<b>51,887</b>	<b>51,842</b>	<b>52,171</b>	<b>\$602,786,575</b>	<b>\$892.27</b>
<b>236</b>	<b>CONSTRUCTION OF BUILDINGS</b>	<b>1,791</b>	<b>10,434</b>	<b>10,533</b>	<b>10,851</b>	<b>\$126,697,103</b>	<b>\$918.91</b>
2361	Residential Building Construction	1,204	3,433	3,424	3,433	35,134,481	787.95
2362	Nonresidential Building Construction	587	7,001	7,109	7,418	91,562,622	981.50
<b>237</b>	<b>HEAVY &amp; CIVIL ENGINEERING CONSTRUCTION</b>	<b>706</b>	<b>9,287</b>	<b>9,273</b>	<b>9,103</b>	<b>\$120,959,459</b>	<b>\$1,009.06</b>
2371	Utility System Construction	393	5,083	5,069	4,966	69,725,619	1,064.33
2372	Land Subdivision	48	99	96	84	919,657	760.68
2373	Highway, Street & Bridge Construction	179	3,406	3,424	3,347	41,667,316	944.83
2379	Other Heavy Construction	86	699	684	706	8,646,867	955.21
<b>238</b>	<b>SPECIALTY TRADE CONTRACTORS</b>	<b>4,359</b>	<b>32,166</b>	<b>32,036</b>	<b>32,217</b>	<b>\$355,130,013</b>	<b>\$849.97</b>
2381	Building Foundation & Exterior Contractors	798	5,900	5,816	5,854	63,133,085	829.21
2382	Building Equipment Contractors	2,114	17,456	17,424	17,541	207,534,621	913.61
2383	Building Finishing Contractors	725	4,058	4,006	4,058	38,176,640	726.78
2389	Other Specialty Trade Contractors	722	4,752	4,790	4,764	46,285,667	746.63
<b>MANUFACTURING</b>		<b>2,930</b>	<b>157,462</b>	<b>157,757</b>	<b>157,968</b>	<b>\$1,819,141,497</b>	<b>\$887.18</b>
<b>311</b>	<b>FOOD MANUFACTURING</b>	<b>286</b>	<b>47,217</b>	<b>47,532</b>	<b>47,883</b>	<b>\$437,281,089</b>	<b>\$707.49</b>
3111	Animal Food Manufacturing	46	1,890	1,873	1,898	22,253,075	907.14
3112	Grain & Oilseed Milling	34	2,615	2,631	2,832	32,174,146	919.14
3114	Fruit, Vegetable & Specialty Food	20	4,210	4,201	4,265	47,333,333	861.71
3115	Dairy Product Manufacturing	8	578	582	582	6,700,569	887.65
3116	Animal Slaughtering & Processing	77	31,926	32,192	32,209	262,228,371	628.22
3118	Bakeries & Tortilla Manufacturing	70	3,851	3,878	3,924	43,657,805	864.57
3119	Other Food Manufacturing	21	2,120	2,145	2,138	22,745,859	819.78
	Other	10	27	30	35	187,931	471.40
<b>312</b>	<b>BEVERAGE &amp; TOBACCO PRODUCT MANUFACTURING</b>	<b>54</b>	<b>1,530</b>	<b>1,523</b>	<b>1,498</b>	<b>\$18,752,943</b>	<b>\$950.91</b>
<b>313</b>	<b>TEXTILE MILLS</b>	<b>8</b>	<b>116</b>	<b>118</b>	<b>116</b>	<b>\$1,637,647</b>	<b>\$1,079.77</b>
<b>314</b>	<b>TEXTILE PRODUCT MILLS</b>	<b>43</b>	<b>976</b>	<b>984</b>	<b>999</b>	<b>\$11,537,237</b>	<b>\$899.78</b>
3141	Textile Furnishing Mills	9	36	35	34	413,836	909.53
3149	Other Textile Product Mills	34	940	949	965	11,123,401	899.42
<b>315</b>	<b>APPAREL MANUFACTURING</b>	<b>16</b>	<b>864</b>	<b>894</b>	<b>873</b>	<b>\$5,792,384</b>	<b>\$508.06</b>
3151	Apparel Knitting Mills	3	610	617	602	4,117,657	519.53
	Other	13	254	277	271	1,674,727	481.89

TABLE 5. STATEWIDE SUMMARY

North American Industry Classification System - Industry Groups		Number of Employing Units	Employment			Total Earnings	Average Weekly Earnings
			Jul	Aug	Sep	Jul - Sep 2017	
<b>316</b>	<b>LEATHER &amp; ALLIED PRODUCT MANUFACTURING</b>	<b>15</b>	<b>1,053</b>	<b>1,074</b>	<b>1,071</b>	<b>\$6,451,101</b>	<b>\$465.51</b>
3162	Footwear Manufacturing	5	868	889	885	5,236,985	\$457.43
3169	Other Leather & Allied Product Manufacturing	10	185	185	186	1,214,116	\$503.92
<b>321</b>	<b>WOOD PRODUCT MANUFACTURING</b>	<b>320</b>	<b>9,566</b>	<b>9,553</b>	<b>9,582</b>	<b>\$102,513,482</b>	<b>\$824.26</b>
3211	Sawmills & Wood Preservation	153	4,620	4,635	4,643	52,639,518	874.05
3212	Veneer & Engineered Wood Products	40	1,798	1,813	1,799	23,038,276	982.72
3219	Other Wood Product Manufacturing	127	3,148	3,105	3,140	26,835,688	659.30
<b>322</b>	<b>PAPER MANUFACTURING</b>	<b>71</b>	<b>9,358</b>	<b>9,329</b>	<b>9,300</b>	<b>\$150,234,281</b>	<b>\$1,238.77</b>
3221	Pulp, Paper & Paperboard Mills	13	3,742	3,715	3,696	77,064,160	1,594.55
3222	Converted Paper Product Manufacturing	58	5,616	5,614	5,604	73,170,121	1,003.05
<b>323</b>	<b>PRINTING &amp; RELATED SUPPORT ACTIVITIES</b>	<b>241</b>	<b>3,925</b>	<b>3,991</b>	<b>3,970</b>	<b>\$38,353,930</b>	<b>\$744.65</b>
<b>324</b>	<b>PETROLEUM &amp; COAL PRODUCTS MANUFACTURING</b>	<b>20</b>	<b>1,254</b>	<b>1,243</b>	<b>1,195</b>	<b>\$20,888,674</b>	<b>\$1,305.65</b>
<b>325</b>	<b>CHEMICAL MANUFACTURING</b>	<b>123</b>	<b>5,363</b>	<b>5,363</b>	<b>5,318</b>	<b>\$81,469,535</b>	<b>\$1,171.82</b>
3251	Basic Chemical Manufacturing	33	1,802	1,802	1,789	31,800,636	1,360.77
3252	Resin, Rubber & Artificial Fibers	9	469	469	470	7,112,536	1,165.73
3253	Agricultural Chemical Manufacturing	14	448	441	434	6,668,751	1,163.22
3254	Pharmaceutical & Medicine Manufacturing	19	502	514	513	6,521,749	984.32
3255	Paint, Coating & Adhesive Manufacturing	10	247	246	242	3,475,404	1,091.18
3256	Soap, Cleaning Compound, & Toilet Preparation Manufacturing	14	1,177	1,170	1,149	14,191,882	936.80
3259	Other Chemical Preparation Manufacturing	24	718	721	721	11,698,577	1,249.85
<b>326</b>	<b>PLASTICS &amp; RUBBER PRODUCTS MANUFACTURING</b>	<b>123</b>	<b>10,909</b>	<b>10,837</b>	<b>10,826</b>	<b>\$129,252,595</b>	<b>\$915.74</b>
3261	Plastics Product Manufacturing	95	6,665	6,626	6,605	73,105,926	847.94
3262	Rubber Product Manufacturing	28	4,244	4,211	4,221	56,146,669	1,022.16
<b>327</b>	<b>NONMETALLIC MINERAL PRODUCT MANUFACTURING</b>	<b>231</b>	<b>3,646</b>	<b>3,627</b>	<b>3,604</b>	<b>\$44,228,411</b>	<b>\$938.36</b>
3271	Clay Product & Refractory Manufacturing	13	484	492	495	5,378,252	843.74
3272	Glass & Glass Product Manufacturing	9	340	338	349	4,070,966	914.76
3273	Cement & Concrete Product Manufacturing	173	2,108	2,081	2,046	24,871,557	920.54
3274	Lime & Gypsum Product Manufacturing	3	299	302	295	4,447,797	1,145.55
3279	Other Nonmetallic Mineral Products Manufacturing	33	415	414	419	5,459,839	1,009.59
<b>331</b>	<b>PRIMARY METAL MANUFACTURING</b>	<b>76</b>	<b>7,920</b>	<b>7,933</b>	<b>7,961</b>	<b>\$137,216,809</b>	<b>\$1,329.70</b>
3311	Iron & Steel Mills & Ferroalloys	11	3,034	3,106	3,122	70,680,998	1,761.07
3312	Purchased Steel Product Manufacturing	21	1,925	1,934	1,941	27,912,986	1,110.60
3313	Alumina & Aluminum Production	17	933	912	912	13,170,893	1,102.44
3314	Other Nonferrous Metal Production	8	350	311	311	4,390,879	1,042.47
3315	Foundries	19	1,678	1,670	1,675	21,061,053	967.60

TABLE 5. STATEWIDE SUMMARY

North American Industry Classification System - Industry Groups		Number of Employing Units	Employment			Total Earnings	Average Weekly Earnings
			Jul	Aug	Sep	Jul - Sep 2017	
<b>332</b>	<b>FABRICATED METAL PRODUCT MANUFACTURING</b>	<b>517</b>	<b>15,276</b>	<b>15,261</b>	<b>15,232</b>	<b>\$190,632,524</b>	<b>\$961.18</b>
3321	Forging & Stamping	13	420	416	415	4,605,699	849.60
3322	Cutlery & Hand Tool Manufacturing	13	603	596	559	6,401,519	840.31
3323	Architectural & Structural Metals	151	4,491	4,444	4,487	57,237,788	984.11
3324	Boilers, Tanks & Shipping Containers	15	636	665	663	8,577,801	1,007.89
3325	Hardware Manufacturing	4	136	139	142	1,499,324	829.73
3326	Spring & Wire Product Manufacturing	11	364	363	357	4,101,034	873.06
3327	Machine Shops & Threaded Products	202	1,844	1,850	1,856	19,826,450	824.38
3328	Coating, Engraving & Heat Treating Metals	39	622	608	611	5,962,415	747.39
3329	Other Fabricated Metal Product Manufacturing	69	6,160	6,180	6,142	82,420,494	1,029.12
<b>333</b>	<b>MACHINERY MANUFACTURING</b>	<b>210</b>	<b>11,184</b>	<b>11,206</b>	<b>11,104</b>	<b>\$136,946,681</b>	<b>\$943.54</b>
3331	Agriculture, Construction & Mining Machinery	40	2,535	2,519	2,482	23,293,655	713.30
3332	Industrial Machinery Manufacturing	21	709	719	723	9,181,805	985.07
3333	Commercial & Service Industry Machinery	20	715	710	724	9,305,468	999.26
3334	HVAC & Commercial Refrigeration Equipment	24	2,935	2,960	2,840	37,105,536	980.29
3335	Metalworking Machinery Manufacturing	57	1,040	1,034	1,025	11,675,376	869.42
3336	Turbine & Power Transmission Equipment Manufacturing	5	662	649	660	8,407,813	984.41
3339	Other General Purpose Machinery Manufacturing	43	2,588	2,615	2,650	37,977,028	1,116.00
<b>334</b>	<b>COMPUTER &amp; ELECTRONIC PRODUCT MANUFACTURING</b>	<b>53</b>	<b>2,130</b>	<b>2,122</b>	<b>2,121</b>	<b>\$26,736,155</b>	<b>\$968.13</b>
3343	Audio & Video Equipment Manufacturing	5	128	127	130	1,329,392	796.84
3344	Semiconductors & Electronic Components	26	1,503	1,494	1,492	18,211,314	936.20
3345	Navigational, Measuring, Electromedical, & Control Instr, Mfg Other	17 5	413 86	414 87	410 89	5,806,799 1,388,650	1,083.29 1,223.12
<b>335</b>	<b>ELECTRICAL EQUIPMENT &amp; APPLIANCES</b>	<b>56</b>	<b>4,885</b>	<b>4,885</b>	<b>4,905</b>	<b>\$63,502,884</b>	<b>\$998.60</b>
3351	Electric Lighting Equipment Manufacturing	9	344	346	348	3,503,406	\$778.88
3352	Household Appliance Manufacturing	6	165	163	162	2,041,613	\$961.51
3353	Electrical Equipment Manufacturing	21	3,152	3,177	3,189	42,346,858	1,026.72
3359	Other Electrical Equipment & Component Manufacturing	20	1,224	1,199	1,206	15,611,007	992.71
<b>336</b>	<b>TRANSPORTATION EQUIPMENT MANUFACTURING</b>	<b>136</b>	<b>13,412</b>	<b>13,427</b>	<b>13,536</b>	<b>\$149,105,083</b>	<b>\$852.23</b>
3362	Motor Vehicle Body & Trailer Manufacturing	33	1,968	1,958	1,979	18,901,474	738.68
3363	Motor Vehicle Parts Manufacturing	42	5,187	5,211	5,304	56,486,463	830.17
3364	Aerospace Product & Parts Manufacturing	26	2,935	2,904	2,931	40,986,021	1,078.48
3366	Ship & Boat Building Other	22 13	2,032 1,290	2,071 1,283	2,068 1,254	17,397,808 15,333,317	650.60 924.60
<b>337</b>	<b>FURNITURE &amp; RELATED PRODUCT MANUFACTURING</b>	<b>160</b>	<b>3,581</b>	<b>3,594</b>	<b>3,604</b>	<b>\$32,335,542</b>	<b>\$692.28</b>
3371	Household & Institutional Furniture	135	2,903	2,895	2,903	25,091,949	665.49
3372	Office Furniture & Fixtures Manufacturing	19	592	608	614	6,626,539	843.00
3379	Other Furniture Related Product Manufacturing	6	86	91	87	617,054	539.38
<b>339</b>	<b>MISCELLANEOUS MANUFACTURING</b>	<b>171</b>	<b>3,297</b>	<b>3,261</b>	<b>3,270</b>	<b>\$34,272,510</b>	<b>\$804.75</b>
3391	Medical Equipment & Supplies Manufacturing	66	1,587	1,589	1,586	17,027,254	825.15
3399	Other Miscellaneous Manufacturing	105	1,710	1,672	1,684	17,245,256	785.57

TABLE 5. STATEWIDE SUMMARY

North American Industry Classification System - Industry Groups		Number of Employing Units	Employment			Total Earnings	Average Weekly Earnings
			Jul	Aug	Sep	Jul - Sep 2017	
<b>TRADE, TRANSPORTATION &amp; UTILITIES</b>		<b>21,614</b>	<b>247,183</b>	<b>248,228</b>	<b>247,406</b>	<b>\$2,418,307,293</b>	<b>\$751.29</b>
<b>42</b>	<b>WHOLESALE TRADE</b>	<b>7,231</b>	<b>47,100</b>	<b>47,141</b>	<b>46,963</b>	<b>\$765,407,317</b>	<b>\$1,250.90</b>
<b>423</b>	<b>MERCHANT WHOLESALERS, DURABLE GOODS</b>	<b>2,106</b>	<b>20,686</b>	<b>20,675</b>	<b>20,572</b>	<b>\$281,422,679</b>	<b>\$1,048.61</b>
4231	Motor Vehicle & Part Merchant Wholesalers	233	2,668	2,662	2,647	29,071,508	841.02
4232	Furniture & Furnishings Merchant Wholesalers	53	501	500	501	7,732,368	1,188.01
4233	Lumber & Supply Merchant Wholesalers	165	1,477	1,477	1,451	17,385,790	910.81
4234	Commercial Goods Merchant Wholesalers	296	2,406	2,416	2,405	43,335,617	1,383.77
4235	Metal & Mineral Merchant Wholesalers	53	847	833	839	10,538,005	965.40
4236	Appliances & Electronics Goods Merchant Wholesalers	195	2,073	2,098	2,087	31,135,903	1,148.16
4237	Hardware & Plumbing Merchant Wholesalers	233	2,387	2,392	2,373	31,323,144	1,010.68
4238	Machinery & Supply Merchant Wholesalers	676	6,590	6,580	6,571	91,661,343	1,071.51
4239	Miscellaneous Durable Goods Merchant Wholesalers	202	1,737	1,717	1,698	19,239,001	861.76
<b>424</b>	<b>MERCHANT WHOLESALERS, NONDURABLE GOODS</b>	<b>1,110</b>	<b>14,465</b>	<b>14,468</b>	<b>14,392</b>	<b>\$197,740,162</b>	<b>\$1,053.26</b>
4241	Paper & Paper Product Merchant Wholesalers	69	1,106	1,127	1,115	19,846,332	1,367.96
4242	Druggist' Goods Merchant Wholesalers	50	744	755	747	11,724,846	1,204.69
4243	Apparel & Piece Goods Merchant Wholesalers	35	617	600	611	7,497,506	946.50
4244	Grocery Product Merchant Wholesalers	279	4,309	4,373	4,404	68,503,153	1,208.04
4245	Farm Product & Raw Material Merchant Wholesalers	69	752	787	795	7,336,765	725.41
4246	Chemical Merchant Wholesalers	87	648	661	653	11,009,078	1,294.88
4247	Petroleum Merchant Wholesalers	134	1,180	1,196	1,176	13,926,992	904.82
4248	Alcoholic Beverage Merchant Wholesalers	43	1,611	1,603	1,599	19,963,766	957.20
4249	Miscellaneous Nondurable Goods Merchant Wholesaler	344	3,498	3,366	3,292	37,931,724	861.90
<b>425</b>	<b>ELECTRONIC MARKETS &amp; AGENTS &amp; BROKERS</b>	<b>4,015</b>	<b>11,949</b>	<b>11,998</b>	<b>11,999</b>	<b>\$286,244,476</b>	<b>\$1,837.66</b>
<b>44 - 45</b>	<b>RETAIL TRADE</b>	<b>11,065</b>	<b>139,901</b>	<b>140,437</b>	<b>139,739</b>	<b>\$921,063,684</b>	<b>\$505.99</b>
<b>441</b>	<b>MOTOR VEHICLE &amp; PARTS DEALERS</b>	<b>1,538</b>	<b>19,589</b>	<b>19,504</b>	<b>19,448</b>	<b>\$212,173,512</b>	<b>\$836.39</b>
4411	Automobile Dealers	633	12,113	12,084	12,050	151,658,335	965.54
4412	Other Motor Vehicle Dealers	171	1,766	1,733	1,718	19,479,308	861.65
4413	Automotive Parts, Accessories & Tire Stores	734	5,710	5,687	5,680	41,035,869	554.54
<b>442</b>	<b>FURNITURE &amp; HOME FURNISHINGS STORES</b>	<b>505</b>	<b>3,625</b>	<b>3,636</b>	<b>3,598</b>	<b>\$27,787,767</b>	<b>\$590.53</b>
4421	Furniture Stores	272	2,050	2,011	2,002	18,018,336	685.81
4422	Home Furnishings Stores	233	1,575	1,625	1,596	9,769,431	470.08
<b>443</b>	<b>ELECTRONICS &amp; APPLIANCE STORES</b>	<b>414</b>	<b>3,542</b>	<b>3,533</b>	<b>3,550</b>	<b>\$30,486,643</b>	<b>\$662.15</b>
<b>444</b>	<b>BUILDING MATERIAL &amp; GARDEN SUPPLY STORES</b>	<b>843</b>	<b>11,656</b>	<b>11,440</b>	<b>11,439</b>	<b>\$84,758,130</b>	<b>\$566.37</b>
4441	Building Material & Supplies Dealers	595	9,653	9,458	9,487	72,198,039	582.60
4442	Lawn & Garden Equipment & Supplies Stores	248	2,003	1,982	1,952	12,560,091	488.21

TABLE 5. STATEWIDE SUMMARY

North American Industry Classification System - Industry Groups		Number of Employing Units	Employment			Total Earnings	Average Weekly Earnings
			Jul	Aug	Sep	Jul - Sep 2017	
<b>445</b>	<b>FOOD &amp; BEVERAGE STORES</b>	<b>1,069</b>	<b>19,843</b>	<b>19,814</b>	<b>19,729</b>	<b>\$106,805,957</b>	<b>\$415.04</b>
4451	Grocery Stores	568	17,013	16,965	16,878	88,373,782	401.01
4452	Specialty Food Stores	155	1,060	1,066	1,057	8,666,003	628.29
4453	Beer, Wine & Liquor Stores	346	1,770	1,783	1,794	9,766,172	421.49
<b>446</b>	<b>HEALTH &amp; PERSONAL CARE STORES</b>	<b>990</b>	<b>8,665</b>	<b>8,594</b>	<b>8,646</b>	<b>\$83,321,914</b>	<b>\$742.26</b>
<b>447</b>	<b>GASOLINE STATIONS</b>	<b>1,584</b>	<b>12,288</b>	<b>12,333</b>	<b>12,289</b>	<b>\$56,174,066</b>	<b>\$351.21</b>
44711	Gasoline Stations with Convenience Stores	1,484	11,052	11,102	11,055	49,484,126	343.87
44719	Other Gasoline Stations	100	1,236	1,231	1,234	6,689,940	417.14
<b>448</b>	<b>CLOTHING &amp; CLOTHING ACCESSORIES STORES</b>	<b>1,055</b>	<b>8,107</b>	<b>8,421</b>	<b>8,175</b>	<b>\$34,786,016</b>	<b>\$324.96</b>
4481	Clothing Stores	773	6,155	6,404	6,237	23,544,789	289.07
4482	Shoe Stores	143	1,254	1,325	1,213	5,387,421	327.86
4483	Jewelry, Luggage & Leather Goods Stores	139	698	692	725	5,853,806	638.71
<b>451</b>	<b>SPORTING GOODS, HOBBY, BOOK &amp; MUSIC STORES</b>	<b>466</b>	<b>4,373</b>	<b>4,513</b>	<b>4,480</b>	<b>\$21,549,899</b>	<b>\$372.07</b>
4511	Sporting Goods & Musical Instrument Stores	401	3,917	3,994	3,975	19,468,581	377.99
4512	Book, Periodical & Music Stores	65	456	519	505	2,081,318	324.53
<b>452</b>	<b>GENERAL MERCHANDISE STORES</b>	<b>959</b>	<b>39,120</b>	<b>39,459</b>	<b>39,214</b>	<b>\$205,124,332</b>	<b>\$401.86</b>
4522	Department Stores	134	7,554	7,711	7,533	37,053,992	375.07
4523	Gen. Merchandise Stores, Warehouse clubs & Supercenters	825	31,566	31,748	31,681	168,070,340	408.29
<b>453</b>	<b>MISCELLANEOUS STORE RETAILERS</b>	<b>1,192</b>	<b>7,261</b>	<b>7,321</b>	<b>7,251</b>	<b>\$40,048,298</b>	<b>\$423.30</b>
4531	Florists	175	585	593	601	2,676,583	347.20
4532	Office Supplies, Stationery & Gift Stores	242	1,591	1,661	1,664	8,958,383	420.53
4533	Used Merchandise Stores	264	2,112	2,322	2,236	12,377,861	428.25
4539	Other Miscellaneous Store Retailers	511	2,973	2,745	2,750	16,035,471	437.00
<b>454</b>	<b>NONSTORE RETAILERS</b>	<b>450</b>	<b>1,832</b>	<b>1,869</b>	<b>1,920</b>	<b>\$18,047,150</b>	<b>\$740.92</b>
4541	Electronic Shopping & Mail-Order Houses	216	721	740	778	8,295,728	855.02
4542	Vending Machine Operators	66	474	465	475	3,795,986	619.52
4543	Direct Selling Establishments	168	637	664	667	5,955,436	698.34
<b>48 - 49</b>	<b>TRANSPORTATION &amp; WAREHOUSING</b>	<b>2,906</b>	<b>52,415</b>	<b>52,922</b>	<b>52,981</b>	<b>\$581,091,698</b>	<b>\$847.02</b>
<b>481</b>	<b>AIR TRANSPORTATION</b>	<b>53</b>	<b>696</b>	<b>702</b>	<b>735</b>	<b>\$6,682,068</b>	<b>\$722.93</b>
4811	Scheduled Air Transportation	19	609	617	642	5,246,840	648.18
4812	Nonshceduled Air Transportation	34	87	85	93	1,435,228	1,249.84
<b>483</b>	<b>WATER TRANSPORTATION</b>	<b>5</b>	<b>21</b>	<b>25</b>	<b>26</b>	<b>\$401,791</b>	<b>\$1,287.79</b>
<b>484</b>	<b>TRUCK TRANSPORTATION</b>	<b>1,813</b>	<b>31,497</b>	<b>31,918</b>	<b>31,589</b>	<b>\$372,579,145</b>	<b>\$905.01</b>
4841	General Freight Trucking	1,045	24,938	25,342	25,047	301,570,432	923.88
4842	Specialized Freight Trucking	768	6,559	6,576	6,542	71,008,713	832.78

TABLE 5. STATEWIDE SUMMARY

North American Industry Classification System - Industry Groups		Number of Employing Units	Employment			Total Earnings	Average Weekly Earnings
			Jul	Aug	Sep	Jul - Sep 2017	
<b>485</b>	<b>TRANSIT &amp; GROUND PASSENGER TRANSPORTATION</b>	<b>115</b>	<b>1,645</b>	<b>1,659</b>	<b>1,783</b>	<b>\$9,481,604</b>	<b>\$430.13</b>
4853	Taxi & Limousine Service	31	413	404	382	1,776,535	341.93
4854	School & Employee Bus Transportation	12	249	272	399	1,798,502	451.13
4855	Charter Bus Industry Service	8	103	98	106	728,787	547.82
4859	Other Ground Passenger Transportation	60	772	773	782	4,244,701	420.95
	Other	4	108	112	114	933,079	644.69
<b>486</b>	<b>PIPELINE TRANSPORTATION</b>	<b>38</b>	<b>431</b>	<b>431</b>	<b>415</b>	<b>\$9,031,889</b>	<b>\$1,632.17</b>
<b>487</b>	<b>SCENIC &amp; SIGHTSEEING TRANSPORTATION</b>	<b>4</b>	<b>48</b>	<b>45</b>	<b>39</b>	<b>\$156,863</b>	<b>\$274.24</b>
<b>488</b>	<b>SUPPORT ACTIVITIES FOR TRANSPORTATION</b>	<b>482</b>	<b>5,329</b>	<b>5,334</b>	<b>5,443</b>	<b>\$61,701,313</b>	<b>\$884.07</b>
4881	Support Activities for Air Transportation	104	988	968	985	10,060,348	789.40
4882	Support Activities for Rail Transportation	42	655	660	699	7,909,433	906.28
4883	Support Activities for Water Transportation	21	773	757	760	10,678,051	1,076.05
4884	Support Activities for Road Transportation	161	874	880	896	7,452,192	648.96
4885	Freight Transportation Arrangement	139	1,894	1,925	1,955	24,472,039	978.07
4889	Other Support Activities for Transportation	15	145	144	148	1,129,250	596.33
<b>493</b>	<b>WAREHOUSING &amp; STORAGE</b>	<b>222</b>	<b>8,575</b>	<b>8,552</b>	<b>8,622</b>	<b>\$77,994,787</b>	<b>\$699.01</b>
	<b>OTHER</b>	<b>174</b>	<b>4,173</b>	<b>4,256</b>	<b>4,329</b>	<b>\$43,062,238</b>	<b>\$778.92</b>
<b>22</b>	<b>UTILITIES</b>	<b>412</b>	<b>7,767</b>	<b>7,728</b>	<b>7,723</b>	<b>\$150,744,594</b>	<b>\$1,498.29</b>
2211	Power Generation & Supply	164	5,748	5,731	5,731	124,046,225	1,663.34
2212	Natural Gas Distribution	66	1,072	1,055	1,051	17,885,749	1,298.77
2213	Water, Sewage & Other Systems	182	947	942	941	8,812,620	718.62
	<b>INFORMATION</b>	<b>1,126</b>	<b>12,755</b>	<b>12,653</b>	<b>12,518</b>	<b>\$169,199,564</b>	<b>\$1,029.53</b>
<b>511</b>	<b>PUBLISHING INDUSTRIES, EXCEPT INTERNET</b>	<b>212</b>	<b>3,010</b>	<b>3,009</b>	<b>2,988</b>	<b>\$30,529,818</b>	<b>\$782.21</b>
5111	Newspaper, Book & Directory Publishers	177	2,644	2,644	2,630	23,829,275	694.50
5112	Software Publishers	35	366	365	358	6,700,543	1,419.91
<b>512</b>	<b>MOTION PICTURE &amp; SOUND RECORDING INDUSTRY</b>	<b>146</b>	<b>1,115</b>	<b>1,102</b>	<b>1,026</b>	<b>\$5,404,020</b>	<b>\$384.55</b>
5121	Motion Picture & Video Industries	133	1,094	1,082	1,007	5,145,929	373.08
5122	Sound Recording Industries	13	21	20	19	258,091	992.66
<b>515</b>	<b>BROADCASTING, EXCEPT INTERNET</b>	<b>117</b>	<b>1,568</b>	<b>1,571</b>	<b>1,586</b>	<b>\$16,811,254</b>	<b>\$821.06</b>
5151	Radio & Television Broadcasting	114	1,545	1,548	1,563	16,596,726	822.60
5152	Cable & Other Subscription Programming	3	23	23	23	214,528	717.48

TABLE 5. STATEWIDE SUMMARY

North American Industry Classification System - Industry Groups		Number of Employing Units	Employment			Total Earnings	Average Weekly Earnings
			Jul	Aug	Sep	Jul - Sep 2017	
<b>517</b>	<b>TELECOMMUNICATIONS</b>	<b>345</b>	<b>5,386</b>	<b>5,307</b>	<b>5,275</b>	<b>\$88,183,673</b>	<b>\$1,274.43</b>
5173	Telecommunications Resellers	253	5,043	4,954	4,915	82,542,066	1,277.37
5174	Satellite Telecommunications Carriers	5	6	6	6	58,798	753.82
5179	Other Telecommunications	87	337	347	354	5,582,809	1,241.18
<b>518</b>	<b>DATA PROCESSING, HOSTING &amp; RELATED SERVICES</b>	<b>226</b>	<b>1,403</b>	<b>1,390</b>	<b>1,374</b>	<b>\$25,061,898</b>	<b>\$1,387.93</b>
<b>519</b>	<b>OTHER INFORMATION SERVICES</b>	<b>80</b>	<b>273</b>	<b>274</b>	<b>269</b>	<b>\$3,208,901</b>	<b>\$907.49</b>
<b>FINANCIAL ACTIVITIES</b>		<b>8,289</b>	<b>49,956</b>	<b>49,944</b>	<b>49,370</b>	<b>\$643,328,783</b>	<b>\$994.58</b>
<b>52</b>	<b>FINANCE &amp; INSURANCE</b>	<b>4,909</b>	<b>36,286</b>	<b>36,291</b>	<b>36,022</b>	<b>\$520,186,662</b>	<b>\$1,105.38</b>
<b>522</b>	<b>CREDIT INTERMEDIATION &amp; RELATED ACTIVITIES</b>	<b>1,908</b>	<b>19,101</b>	<b>19,093</b>	<b>18,939</b>	<b>\$236,800,561</b>	<b>\$956.47</b>
5221	Depository Credit Intermediation	1,387	16,227	16,207	16,083	195,772,812	931.19
5222	Nondepository Credit Intermediation	387	1,769	1,774	1,756	27,096,087	1,180.02
5223	Activities Related to Credit Intermediation	134	1,105	1,112	1,100	13,931,662	969.25
<b>523</b>	<b>FINANCIAL INVESTMENT &amp; RELATED ACTIVITIES</b>	<b>690</b>	<b>3,056</b>	<b>3,053</b>	<b>3,007</b>	<b>\$81,735,805</b>	<b>\$2,069.12</b>
5231	Insurance Carriers	296	2,167	2,164	2,129	64,428,654	2,301.57
5239	Insurance Agencies, Brokerages & Support	394	889	889	878	17,307,151	1,503.75
<b>524</b>	<b>INSURANCE CARRIERS &amp; RELATED ACTIVITIES</b>	<b>2,228</b>	<b>14,036</b>	<b>14,055</b>	<b>14,005</b>	<b>\$199,947,835</b>	<b>\$1,096.11</b>
5231	Security & Commodity Contracts Intermediation & Brokerage	298	6,236	6,229	6,205	99,885,134	1,234.62
5239	Other Financial Investment Activities	1,930	7,800	7,826	7,800	100,062,701	985.72
	<b>OTHER</b>	<b>83</b>	<b>93</b>	<b>90</b>	<b>71</b>	<b>\$1,702,461</b>	<b>\$1,546.75</b>
<b>53</b>	<b>REAL ESTATE &amp; RENTAL &amp; LEASING</b>	<b>3,380</b>	<b>13,670</b>	<b>13,653</b>	<b>13,348</b>	<b>\$123,142,121</b>	<b>\$698.71</b>
<b>531</b>	<b>REAL ESTATE</b>	<b>2,753</b>	<b>9,435</b>	<b>9,518</b>	<b>9,254</b>	<b>\$83,227,528</b>	<b>\$680.91</b>
5311	Lessors of Real Estate	1,117	4,263	4,287	4,212	34,290,309	620.06
5312	Offices of Real Estate Agents & Brokers	851	1,812	1,833	1,773	18,835,207	802.25
5313	Activities Related to Real Estate	785	3,360	3,398	3,269	30,102,012	692.79
<b>532</b>	<b>RENTAL &amp; LEASING SERVICES</b>	<b>611</b>	<b>4,194</b>	<b>4,103</b>	<b>4,062</b>	<b>\$39,134,698</b>	<b>\$730.73</b>
5321	Automotive Equipment Rental & Leasing	114	998	989	977	7,476,133	582.07
5322	Consumer Goods Rental	316	2,033	1,960	1,929	14,735,922	574.23
5323	General Rental Centers	38	237	238	245	2,635,983	844.87
5324	Machinery & Equipment Rental & Leasing	143	926	916	911	14,286,660	1,197.57
<b>533</b>	<b>LESSORS OF NONFINANCIAL INTANGIBLE ASSETS</b>	<b>16</b>	<b>41</b>	<b>32</b>	<b>32</b>	<b>\$779,895</b>	<b>\$1,714.05</b>



TABLE 5. STATEWIDE SUMMARY

North American Industry Classification System - Industry Groups		Number of Employing Units	Employment			Total Earnings	Average Weekly Earnings
			Jul	Aug	Sep	Jul - Sep 2017	
<b>PROFESSIONAL &amp; BUSINESS SERVICES</b>		<b>13,925</b>	<b>141,334</b>	<b>142,243</b>	<b>145,215</b>	<b>\$1,785,998,830</b>	<b>\$961.20</b>
<b>54</b>	<b>PROFESSIONAL &amp; TECHNICAL SERVICES</b>	<b>8,771</b>	<b>42,273</b>	<b>42,165</b>	<b>42,026</b>	<b>\$616,701,748</b>	<b>\$1,125.35</b>
5411	Legal Services	1,653	5,993	5,997	5,996	74,078,937	950.47
5412	Accounting & Bookkeeping Services	1,261	5,323	5,373	5,323	68,259,358	983.34
5413	Architectural & Engineering Services	976	6,651	6,617	6,542	104,244,437	1,214.36
5414	Specialized Design Services	174	383	383	375	4,902,697	991.58
5415	Computer Systems Design & Related Services	1,743	9,380	9,266	9,099	183,019,074	1,522.26
5416	Management & Technical Consulting Services	1,896	5,968	6,047	6,256	89,126,025	1,125.69
5417	Scientific Research & Development Services	118	807	784	796	12,278,947	1,187.10
5418	Advertising & Related Services	378	3,804	3,735	3,690	43,449,804	892.94
5419	Other Professional & Technical Services	572	3,964	3,963	3,949	37,342,469	725.62
<b>55</b>	<b>MANAGEMENT OF COMPANIES &amp; ENTERPRISES</b>	<b>551</b>	<b>34,947</b>	<b>34,742</b>	<b>34,528</b>	<b>\$699,032,398</b>	<b>\$1,547.88</b>
<b>56</b>	<b>ADMINISTRATIVE &amp; WASTE SERVICES</b>	<b>4,603</b>	<b>64,114</b>	<b>65,336</b>	<b>68,661</b>	<b>\$470,264,684</b>	<b>\$547.79</b>
<b>561</b>	<b>ADMINISTRATIVE &amp; SUPPORT SERVICES</b>	<b>4,294</b>	<b>60,853</b>	<b>62,025</b>	<b>65,320</b>	<b>\$431,982,797</b>	<b>\$529.70</b>
5611	Office Administrative Services	674	3,985	4,043	4,000	50,137,492	961.94
5612	Facilities Support Services	50	1,244	1,258	1,260	8,322,544	510.52
5613	Employment Services	1,080	26,610	27,176	30,315	164,196,983	450.55
5614	Business Support Services	361	7,388	7,349	7,406	66,708,782	695.22
5615	Travel Arrangement & Reservation Services	106	385	375	371	4,422,529	902.37
5616	Investigation & Security Services	292	4,762	4,885	5,011	32,582,447	512.96
5617	Services to Buildings & Dwellings	1,541	15,175	15,629	15,700	94,092,050	466.92
5619	Other Support Services	190	1,304	1,310	1,257	11,519,970	686.76
<b>562</b>	<b>WASTE MANAGEMENT &amp; REMEDIATION SERVICES</b>	<b>309</b>	<b>3,261</b>	<b>3,311</b>	<b>3,341</b>	<b>\$38,281,887</b>	<b>\$891.18</b>
5621	Waste Collection Services	137	1,327	1,331	1,358	14,748,098	847.46
5622	Waste Treatment & Disposal Services	35	902	922	907	12,886,732	1,088.93
5629	Remediation & Other Waste Services	137	1,032	1,058	1,076	10,647,057	776.06
<b>EDUCATION &amp; HEALTH SERVICES</b>		<b>15,827</b>	<b>181,662</b>	<b>183,248</b>	<b>184,803</b>	<b>\$1,888,629,892</b>	<b>\$792.85</b>
<b>61</b>	<b>EDUCATIONAL SERVICES</b>	<b>839</b>	<b>10,108</b>	<b>10,520</b>	<b>11,690</b>	<b>\$99,294,286</b>	<b>\$709.02</b>
6111	Elementary & Secondary Schools	99	3,133	3,735	4,021	30,150,127	638.97
6112	Junior Colleges	6	79	80	91	681,988	629.53
6113	Colleges & Universities	104	3,815	3,670	4,230	39,395,164	776.03
6114	Business, Computer, & Management Training	49	130	134	124	1,880,683	1,118.57
6115	Technical & Trade Schools	105	772	807	877	12,978,822	1,219.51
6116	Other Schools & Instruction	312	1,679	1,601	1,844	8,381,113	377.46
6117	Educational Support Services	164	500	493	503	5,826,389	898.76

TABLE 5. STATEWIDE SUMMARY

North American Industry Classification System - Industry Groups		Number of Employing Units	Employment			Total Earnings	Average Weekly Earnings
			Jul	Aug	Sep	Jul - Sep 2017	
<b>62</b>	<b>HEALTH CARE &amp; SOCIAL ASSISTANCE</b>	<b>14,988</b>	<b>171,554</b>	<b>172,728</b>	<b>173,113</b>	<b>\$1,789,335,606</b>	<b>\$798.08</b>
<b>621</b>	<b>AMBULATORY HEALTH CARE SERVICES</b>	<b>5,700</b>	<b>56,844</b>	<b>57,166</b>	<b>57,315</b>	<b>\$856,202,223</b>	<b>\$1,153.28</b>
6211	Offices of Physicians	2,264	24,916	24,999	25,080	503,909,416	1,550.59
6212	Offices of Dentists	987	7,364	7,331	7,291	87,167,738	914.93
6213	Offices of Other Health Practitioners	1,509	8,873	9,043	8,997	91,055,532	780.77
6214	Outpatient Care Centers	328	5,075	5,075	5,103	68,344,469	1,034.01
6215	Medical & Diagnostic Laboratories	179	1,238	1,255	1,264	17,133,584	1,052.41
6216	Home Health Care Services	260	6,664	6,723	6,810	58,740,020	671.16
6219	Other Ambulatory Health Care Services	173	2,714	2,740	2,770	29,851,464	837.65
<b>622</b>	<b>HOSPITALS</b>	<b>109</b>	<b>43,381</b>	<b>43,378</b>	<b>43,581</b>	<b>\$519,168,934</b>	<b>\$919.20</b>
6221	General Medical & Surgical Hospitals	84	38,622	38,585	38,781	468,632,601	932.39
6222	Psychiatric & Substance Abuse Hospitals	10	2,189	2,187	2,212	21,588,676	756.22
6223	Specialty Hospitals	15	2,570	2,606	2,588	28,947,657	860.41
<b>623</b>	<b>Residential &amp; Mental Health Facilities</b>	<b>620</b>	<b>32,468</b>	<b>32,584</b>	<b>32,627</b>	<b>\$209,321,483</b>	<b>\$494.53</b>
6231	Nursing Care Facilities (Skilled Nursing Facilities)	267	23,065	23,136	23,128	149,604,429	497.97
6232	Residential Mental Health Facilities	170	4,628	4,627	4,628	29,867,579	496.47
6233	Continuing Care & Assisted Living Facilities	149	4,017	4,060	4,120	24,461,408	462.81
6239	Other Residential Care Facilities	34	758	761	751	5,388,067	547.75
<b>624</b>	<b>SOCIAL ASSISTANCE</b>	<b>8,559</b>	<b>38,861</b>	<b>39,600</b>	<b>39,590</b>	<b>\$204,642,966</b>	<b>\$400.04</b>
6241	Individual & Family Services	7,439	24,867	25,067	24,906	131,433,273	405.27
6242	Emergency & Other Relief Services	136	1,334	1,302	1,311	8,826,098	516.04
6243	Vocational Rehabilitation Services	91	3,251	3,208	3,213	18,492,350	441.22
6244	Child Day Care Services	893	9,409	10,023	10,160	45,891,245	357.88
<b>LEISURE &amp; HOSPITALITY</b>		<b>7,081</b>	<b>118,135</b>	<b>119,421</b>	<b>118,446</b>	<b>\$481,650,419</b>	<b>\$312.22</b>
<b>71</b>	<b>ARTS, ENTERTAINMENT &amp; RECREATION</b>	<b>971</b>	<b>12,788</b>	<b>12,386</b>	<b>11,262</b>	<b>60,205,216</b>	<b>\$381.31</b>
<b>711</b>	<b>PERFORMING ARTS &amp; SPECTATOR SPORTS</b>	<b>218</b>	<b>2,597</b>	<b>2,658</b>	<b>2,745</b>	<b>16,928,913</b>	<b>\$488.33</b>
7111	Performing Arts Companies	49	499	509	528	2,217,958	333.23
7112	Spectator Sports	66	1,384	1,380	1,187	9,809,495	572.95
7113	Performing Arts & Sports Promoters	47	637	667	937	4,046,971	416.74
7114	Agents & Managers for Public Figures	18	30	54	30	283,034	572.94
7115	Independent Artists, Writers, & Performers	38	47	48	63	571,455	834.65
<b>712</b>	<b>MUSEUMS, PARKS, &amp; HISTORICAL SITES</b>	<b>53</b>	<b>737</b>	<b>718</b>	<b>683</b>	<b>4,778,015</b>	<b>\$515.72</b>
<b>713</b>	<b>GAMBLING, RECREATIONAL &amp; AMUSEMENT INDUSTRY</b>	<b>700</b>	<b>9,454</b>	<b>9,010</b>	<b>7,834</b>	<b>38,498,288</b>	<b>\$337.83</b>
7131	Amusement Parks & Arcades	29	1,193	916	417	2,513,203	229.60
7139	Other Amusement & Recreation Industries	671	8,261	8,094	7,417	35,985,085	349.33
<b>72</b>	<b>ACCOMMODATION &amp; FOOD SERVICES</b>	<b>6,110</b>	<b>105,347</b>	<b>107,035</b>	<b>107,184</b>	<b>421,445,203</b>	<b>\$304.34</b>

TABLE 5. STATEWIDE SUMMARY

North American Industry Classification System - Industry Groups		Number of Employing Units	Employment			Total Earnings	Average Weekly Earnings
			Jul	Aug	Sep	Jul - Sep 2017	
<b>721</b>	<b>ACCOMMODATION</b>	<b>899</b>	<b>11,882</b>	<b>11,696</b>	<b>11,525</b>	<b>\$54,490,259</b>	<b>\$358.22</b>
7211	Travel Accommodation	814	11,151	11,109	11,001	51,246,753	355.56
7212	RV Parks & Recreational Camps	68	649	479	412	2,669,051	399.96
7213	Rooming & Boarding Houses	17	82	108	112	574,455	438.96
<b>722</b>	<b>FOOD SERVICES &amp; DRINKING PLACES</b>	<b>5,211</b>	<b>93,465</b>	<b>95,339</b>	<b>95,659</b>	<b>\$366,954,944</b>	<b>\$297.69</b>
7223	Special Food Services	270	2,854	4,144	4,687	17,718,798	349.93
7224	Drinking Places, Alcoholic Beverages	145	1,012	1,025	1,054	3,882,546	289.86
7225	Restaurants & Other Eating Places	4,796	89,599	90,170	89,918	345,353,600	295.52
722511	Full-Service Restaurants	2,095	38,985	39,181	39,220	164,683,842	323.75
722513	Limited-Service Eating Places	2,225	45,877	46,239	46,058	161,765,248	270.17
722514	Cafeterias, Grill Buffets, & Buffets	90	1,597	1,626	1,620	7,514,413	358.06
722515	Snack & Nonalcoholic Beverage Bars	386	3,140	3,124	3,020	11,390,097	283.12
	<b>OTHER SERVICES</b>	<b>5,333</b>	<b>25,294</b>	<b>24,985</b>	<b>24,911</b>	<b>\$204,417,119</b>	<b>\$627.39</b>
<b>811</b>	<b>REPAIR &amp; MAINTENANCE</b>	<b>2,203</b>	<b>10,519</b>	<b>10,549</b>	<b>10,629</b>	<b>\$100,232,490</b>	<b>\$729.74</b>
8111	Automotive Repair & Maintenance	1,407	6,629	6,616	6,628	57,384,752	666.36
8112	Electronic Equipment Repair & Maintenance	169	904	899	894	10,100,194	864.22
8113	Commercial Machinery Repair & Maintenance	457	2,400	2,457	2,536	28,259,725	882.11
8114	Household Goods Repair & Maintenance	170	586	577	571	4,487,819	597.26
<b>812</b>	<b>PERSONAL &amp; LAUNDRY SERVICES</b>	<b>1,341</b>	<b>7,912</b>	<b>7,914</b>	<b>7,928</b>	<b>\$49,026,763</b>	<b>\$476.29</b>
8121	Personal Care Services	641	3,020	3,079	3,096	15,883,008	398.62
8122	Death Care Services	246	1,592	1,584	1,584	11,439,280	554.59
8123	Drycleaning & Laundry Service	224	2,310	2,280	2,288	16,626,819	557.86
8129	Other Personal Services	230	990	971	960	5,077,656	401.15
<b>813</b>	<b>MEMBERSHIP ASSOCIATIONS &amp; ORGANIZATIONS</b>	<b>1,075</b>	<b>5,964</b>	<b>5,606</b>	<b>5,424</b>	<b>\$50,047,101</b>	<b>\$679.61</b>
8131	Religious Organizations	86	292	285	294	2,020,801	535.41
8132	Grantmaking & Giving Organizations	121	454	456	461	6,259,077	1,053.54
8133	Social Advocacy Organizations	201	1,513	1,384	1,375	14,216,791	767.98
8134	Civic & Social Organizations	190	1,516	1,304	1,251	5,647,223	320.12
8139	Professional & Similar Organizations	477	2,189	2,177	2,043	21,903,209	788.67
<b>814</b>	<b>PRIVATE HOUSEHOLDS</b>	<b>714</b>	<b>899</b>	<b>916</b>	<b>930</b>	<b>\$5,110,765</b>	<b>\$429.66</b>
	<b>LOCAL GOVERNMENT</b>	<b>1,964</b>	<b>69,642</b>	<b>94,127</b>	<b>113,337</b>	<b>\$807,013,085</b>	<b>\$672.07</b>
	<b>STATE GOVERNMENT</b>	<b>1,066</b>	<b>66,021</b>	<b>67,945</b>	<b>70,733</b>	<b>\$818,490,632</b>	<b>\$922.73</b>
	<b>NONCLASSIFIABLE ESTABLISHMENTS</b>	<b>0</b>	<b>0</b>	<b>0</b>	<b>0</b>	<b>\$0</b>	<b>\$0.00</b>

TABLE 6. COUNTY SUMMARY

North American Industry Classification System - Industry Groups	Number of Employing Units	Employment			Total Earnings	Average Weekly Earnings
		Jul	Aug	Sep	Jul - Sep 2017	
<b>ARKANSAS COUNTY - TOTAL</b>	<b>759</b>	<b>9,185</b>	<b>9,360</b>	<b>9,516</b>	<b>\$91,131,795</b>	<b>\$749.45</b>
Natural Resources & Mining	53	205	206	203	1,940,190	729.21
Construction	43	244	242	238	3,409,779	1,086.84
Manufacturing	32	3,633	3,647	3,785	38,399,643	800.85
Trade, Transportation & Utilities	191	2,063	2,025	2,005	19,472,513	737.51
Wholesale Trade	47	478	450	438	5,230,589	883.64
Retail Trade	88	953	955	917	6,192,763	505.88
Transportation, Warehousing & Utilities	56	632	620	650	8,049,161	976.60
Information	9	69	67	65	679,741	780.41
Financial Activities	43	300	290	275	3,095,013	825.70
Professional & Business Services	48	408	413	471	6,065,853	1,083.45
Education & Health Services	197	1,061	1,082	1,083	9,216,938	659.33
Leisure & Hospitality	57	429	441	436	1,453,253	256.79
Other Services	40	94	98	99	692,864	549.46
Local Government	32	513	688	710	5,336,142	644.38
State Government	14	166	161	146	1,369,866	668.34
<b>ASHLEY COUNTY - TOTAL</b>	<b>561</b>	<b>6,181</b>	<b>6,378</b>	<b>6,599</b>	<b>\$66,570,287</b>	<b>\$801.88</b>
Natural Resources & Mining	40	354	332	346	3,297,907	737.46
Construction	37	492	509	536	5,535,488	831.11
Manufacturing	22	1,583	1,585	1,572	28,057,658	1,366.00
Trade, Transportation & Utilities	115	1,224	1,249	1,230	9,588,906	597.58
Wholesale Trade	25	207	227	222	2,839,450	998.87
Retail Trade	66	741	743	731	4,041,458	421.06
Transportation, Warehousing & Utilities	24	276	279	277	2,707,998	751.11
Information	5	33	37	36	229,716	500.11
Financial Activities	34	179	182	175	1,543,113	664.37
Professional & Business Services	39	203	211	217	1,678,950	614.03
Education & Health Services	156	963	1,004	996	9,046,112	704.54
Leisure & Hospitality	33	348	353	365	1,201,645	260.13
Other Services	38	132	135	148	1,034,046	575.00
Local Government	32	591	698	877	4,501,594	479.61
State Government	10	79	83	101	855,152	750.35

TABLE 6. COUNTY SUMMARY

North American Industry Classification System - Industry Groups	Number of Employing Units	Employment			Total Earnings	Average Weekly Earnings
		Jul	Aug	Sep	Jul - Sep 2017	
<b>BAXTER COUNTY - TOTAL</b>	<b>1,219</b>	<b>14,229</b>	<b>14,553</b>	<b>15,010</b>	<b>\$122,892,524</b>	<b>\$647.60</b>
Natural Resources & Mining	6	54	55	55	565,754	796.09
Construction	120	530	526	542	4,357,902	629.33
Manufacturing	55	2,281	2,319	2,362	22,090,228	732.22
Trade, Transportation & Utilities	254	2,903	2,909	2,913	20,308,786	537.15
Wholesale Trade	34	408	414	415	4,304,096	802.95
Retail Trade	195	2,300	2,284	2,292	13,914,223	466.98
Transportation, Warehousing & Utilities	25	195	211	206	2,090,467	788.26
Information	18	183	187	180	2,010,566	843.59
Financial Activities	113	751	749	734	9,017,140	931.46
Professional & Business Services	138	801	790	799	6,340,143	612.18
Education & Health Services	267	3,775	3,827	3,874	39,795,505	800.24
Leisure & Hospitality	117	1,769	1,752	1,683	6,569,695	291.33
Other Services	84	331	335	343	2,128,392	486.79
Local Government	36	597	829	1,204	7,224,509	633.91
State Government	11	254	275	321	2,483,904	674.36
<b>BENTON COUNTY - TOTAL</b>	<b>6,435</b>	<b>114,363</b>	<b>115,663</b>	<b>117,596</b>	<b>\$1,418,894,141</b>	<b>\$941.93</b>
Natural Resources & Mining	47	770	759	764	10,784,502	1,085.36
Construction	623	4,993	4,910	4,973	57,042,038	884.88
Manufacturing	193	11,785	11,766	11,787	130,219,553	850.38
Trade, Transportation & Utilities	1,685	27,860	27,900	27,872	330,623,274	912.30
Wholesale Trade	748	5,609	5,643	5,635	132,819,225	1,815.04
Retail Trade	750	12,527	12,489	12,422	87,694,192	540.55
Transportation, Warehousing & Utilities	187	9,724	9,768	9,815	110,109,857	867.03
Information	80	891	887	868	12,049,429	1,050.88
Financial Activities	639	3,762	3,793	3,740	48,872,317	998.52
Professional & Business Services	1,230	32,226	32,236	32,070	564,260,855	1,348.92
Education & Health Services	821	10,984	11,148	11,362	113,084,310	779.14
Leisure & Hospitality	625	12,389	12,514	12,431	56,811,965	351.17
Other Services	393	2,155	2,132	2,123	18,212,351	655.67
Local Government	82	5,666	6,724	8,504	67,883,771	749.76
State Government	17	882	894	1,102	9,049,776	725.65

TABLE 6. COUNTY SUMMARY

North American Industry Classification System - Industry Groups	Number of Employing Units	Employment			Total Earnings	Average Weekly Earnings
		Jul	Aug	Sep	Jul - Sep 2017	
<b>BOONE COUNTY - TOTAL</b>	<b>956</b>	<b>12,960</b>	<b>13,183</b>	<b>13,733</b>	<b>\$124,716,243</b>	<b>\$721.75</b>
Construction	69	398	397	395	3,888,032	753.98
Manufacturing	63	1,809	1,804	1,771	18,624,615	798.29
Trade, Transportation & Utilities	234	3,393	3,409	3,415	34,611,886	781.77
Wholesale Trade	37	305	301	304	2,474,360	627.48
Retail Trade	153	1,923	1,937	1,933	12,687,156	505.40
Transportation, Warehousing & Utilities	44	1,165	1,171	1,178	19,450,370	1,277.33
Information	14	285	282	284	2,951,660	800.41
Financial Activities	93	419	424	411	4,767,139	877.28
Professional & Business Services	102	1,444	1,448	1,430	18,025,872	962.47
Education & Health Services	168	1,507	1,517	1,526	11,275,970	571.90
Leisure & Hospitality	83	1,298	1,290	1,263	4,926,503	295.22
Local Government	53	1,447	1,650	2,219	16,109,391	699.31
State Government	17	682	696	744	7,140,458	776.53
Other	60	278	266	275	2,394,717	674.76
<b>BRADLEY COUNTY - TOTAL</b>	<b>367</b>	<b>3,455</b>	<b>3,522</b>	<b>3,748</b>	<b>\$28,687,683</b>	<b>\$617.27</b>
Natural Resources & Mining	45	194	192	212	2,014,315	777.33
Construction	17	86	88	86	710,507	630.63
Manufacturing	11	906	910	908	8,636,963	731.70
Trade, Transportation & Utilities	67	503	508	506	3,206,059	487.71
Wholesale Trade	10	72	72	75	932,975	983.11
Retail Trade	37	324	333	326	1,599,656	375.54
Transportation, Warehousing & Utilities	20	107	103	105	673,428	493.35
Information	4	24	24	24	209,913	672.80
Financial Activities	25	136	136	129	1,288,187	741.33
Professional & Business Services	26	78	79	80	649,585	632.51
Education & Health Services	103	665	673	686	5,623,824	641.21
Leisure & Hospitality	18	207	193	194	597,049	231.95
Other Services	27	110	109	103	624,674	447.69
Local Government	14	202	261	465	2,353,865	585.34
State Government	10	344	349	355	2,772,742	610.56

TABLE 6. COUNTY SUMMARY

North American Industry Classification System - Industry Groups	Number of Employing Units	Employment			Total Earnings Jul - Sep 2017	Average Weekly Earnings
		Jul	Aug	Sep		
<b>CALHOUN COUNTY - TOTAL</b>	<b>101</b>	<b>2,805</b>	<b>2,894</b>	<b>2,925</b>	<b>\$37,675,681</b>	<b>\$1,008.16</b>
Natural Resources & Mining	6	42	42	44	350,317	631.58
Construction	9	86	85	85	715,532	645.01
Manufacturing	9	2,063	2,101	2,101	30,574,421	1,126.20
Trade, Transportation & Utilities	20	220	231	227	2,131,217	725.40
Retail Trade	9	51	50	52	258,672	390.15
Transportation, Warehousing & Utilities	11	169	181	175	1,872,545	823.10
Professional & Business Services	5	12	13	11	145,954	935.60
Education & Health Services	19	58	63	65	582,273	722.42
Leisure & Hospitality	4	14	14	13	51,138	287.83
Other Services	4	2	2	2	11,690	449.62
Local Government	11	117	150	187	1,040,071	528.67
State Government	7	82	83	84	835,450	774.28
Other	7	109	110	106	1,237,618	878.78
<b>CARROLL COUNTY - TOTAL</b>	<b>806</b>	<b>10,818</b>	<b>11,180</b>	<b>11,241</b>	<b>\$78,316,773</b>	<b>\$543.73</b>
Natural Resources & Mining	19	204	202	202	1,942,234	737.18
Trade, Transportation & Utilities	196	1,674	1,671	1,639	12,438,997	575.95
Wholesale Trade	22	152	159	155	1,283,410	635.56
Retail Trade	146	1,167	1,162	1,136	6,336,361	422.00
Transportation, Warehousing & Utilities	28	355	350	348	4,819,226	1,056.15
Information	10	71	70	70	658,511	720.21
Financial Activities	62	380	369	366	3,880,980	803.24
Professional & Business Services	64	552	555	560	4,760,194	658.97
Education & Health Services	101	1,087	1,104	1,135	8,667,303	601.37
Leisure & Hospitality	177	1,914	1,880	1,880	7,119,711	289.57
Other Services	46	134	134	132	802,222	462.82
Local Government	25	591	971	1,076	6,506,812	569.21
State Government	9	92	97	97	945,170	762.64
Other	97	4,119	4,127	4,084	30,594,639	572.61

TABLE 6. COUNTY SUMMARY

North American Industry Classification System - Industry Groups	Number of Employing Units	Employment			Total Earnings	Average Weekly Earnings
		Jul	Aug	Sep	Jul - Sep 2017	
<b>CHICOT COUNTY - TOTAL</b>	<b>520</b>	<b>3,022</b>	<b>3,128</b>	<b>3,147</b>	<b>\$24,081,638</b>	<b>\$597.75</b>
Natural Resources & Mining	55	247	243	257	2,377,232	734.39
Construction	17	175	166	167	1,932,475	877.87
Manufacturing	6	20	21	21	308,055	1,146.61
Trade, Transportation & Utilities	67	672	672	686	4,807,027	546.46
Wholesale Trade	15	71	70	66	790,714	881.51
Retail Trade	39	309	302	318	1,846,367	458.65
Transportation, Warehousing & Utilities	13	292	300	302	2,169,946	560.13
Information	3	3	3	3	11,763	301.62
Financial Activities	27	159	161	157	1,747,688	845.52
Professional & Business Services	18	44	39	41	368,397	685.60
Education & Health Services	266	733	730	733	4,651,588	488.82
Leisure & Hospitality	18	142	146	138	487,743	264.22
Other Services	16	78	76	62	548,372	585.87
Local Government	17	444	560	570	4,358,320	638.99
State Government	10	305	311	312	2,482,978	617.45
<b>CLARK COUNTY - TOTAL</b>	<b>626</b>	<b>8,643</b>	<b>8,871</b>	<b>9,175</b>	<b>\$75,176,520</b>	<b>\$650.02</b>
Natural Resources & Mining	46	264	256	269	2,795,722	817.70
Construction	19	59	58	52	394,816	539.12
Manufacturing	33	1,427	1,438	1,446	18,843,948	1,008.72
Trade, Transportation & Utilities	126	1,370	1,374	1,378	10,249,693	573.83
Wholesale Trade	12	32	29	29	351,337	900.86
Retail Trade	89	1,179	1,182	1,195	8,069,128	523.65
Transportation, Warehousing & Utilities	25	159	163	154	1,829,228	886.83
Information	3	14	13	12	118,855	703.28
Financial Activities	74	315	310	312	2,980,667	734.09
Professional & Business Services	49	559	556	549	5,161,858	715.86
Education & Health Services	130	1,549	1,535	1,620	12,367,731	606.74
Leisure & Hospitality	60	1,063	1,028	1,061	3,744,160	274.12
Other Services	42	216	228	233	1,932,396	658.70
Local Government	30	808	963	989	6,631,549	554.48
State Government	14	999	1,112	1,254	9,955,125	682.72



TABLE 6. COUNTY SUMMARY

North American Industry Classification System - Industry Groups	Number of Employing Units	Employment			Total Earnings	Average Weekly Earnings
		Jul	Aug	Sep	Jul - Sep 2017	
<b>CLAY COUNTY - TOTAL</b>	<b>378</b>	<b>3,127</b>	<b>3,328</b>	<b>3,310</b>	<b>\$23,431,316</b>	<b>\$553.74</b>
Natural Resources & Mining	56	267	261	257	2,189,617	643.69
Construction	30	136	139	135	1,222,132	687.88
Manufacturing	13	127	121	125	881,844	545.58
Trade, Transportation & Utilities	89	802	822	820	6,350,173	599.60
Wholesale Trade	20	225	236	229	2,021,739	676.17
Retail Trade	43	410	417	413	2,461,897	458.17
Transportation, Warehousing & Utilities	26	167	169	178	1,866,537	838.01
Information	5	37	37	35	278,509	589.65
Financial Activities	26	109	107	104	844,126	608.74
Professional & Business Services	26	112	109	99	899,435	648.63
Education & Health Services	53	510	546	558	3,827,574	547.27
Leisure & Hospitality	25	253	252	247	737,023	226.17
Other Services	25	73	74	77	561,555	578.53
Local Government	21	656	814	806	5,218,424	529.11
State Government	9	45	46	47	420,904	703.85
<b>CLEBURNE COUNTY - TOTAL</b>	<b>652</b>	<b>6,168</b>	<b>6,381</b>	<b>6,479</b>	<b>\$48,715,441</b>	<b>\$590.81</b>
Natural Resources & Mining	26	308	288	214	3,573,362	1,018.05
Construction	65	314	315	327	3,011,922	727.05
Manufacturing	32	1,125	1,162	1,170	10,671,198	712.35
Trade, Transportation & Utilities	143	1,231	1,247	1,245	9,313,963	577.32
Wholesale Trade	31	116	119	124	1,272,325	817.86
Retail Trade	91	958	954	968	6,093,756	488.28
Transportation, Warehousing & Utilities	21	157	174	153	1,947,882	928.74
Information	9	61	59	61	482,570	615.26
Financial Activities	81	264	270	264	2,659,571	769.11
Professional & Business Services	66	276	270	262	2,347,681	670.51
Education & Health Services	86	947	998	995	6,753,047	530.07
Leisure & Hospitality	79	977	962	879	3,800,525	311.23
Other Services	39	128	125	133	814,914	487.19
Local Government	18	450	592	818	4,450,498	552.17
State Government	8	87	93	111	836,190	663.12

TABLE 6. COUNTY SUMMARY

North American Industry Classification System - Industry Groups	Number of Employing Units	Employment			Total Earnings	Average Weekly Earnings
		Jul	Aug	Sep	Jul - Sep 2017	
<b>CLEVELAND COUNTY - TOTAL</b>	<b>128</b>	<b>829</b>	<b>1,007</b>	<b>1,018</b>	<b>\$7,653,602</b>	<b>\$618.86</b>
Natural Resources & Mining	15	146	149	142	1,465,066	773.67
Construction	9	16	19	19	199,911	854.32
Manufacturing	5	111	105	103	967,361	699.80
Trade, Transportation & Utilities	35	177	172	171	1,241,436	550.93
Retail Trade	18	78	76	76	259,723	260.59
Other Trade, Transportation, & Utilities	17	99	96	95	981,713	781.20
Financial Activities	3	26	26	26	268,581	794.62
Education & Health Services	32	165	163	165	948,315	443.90
Other Services	4	11	12	12	96,410	635.67
Local Government	11	129	313	331	2,070,099	618.00
State Government	6	31	31	31	317,070	786.77
Other	8	17	17	18	79,353	352.16
<b>COLUMBIA COUNTY - TOTAL</b>	<b>710</b>	<b>7,451</b>	<b>7,779</b>	<b>8,004</b>	<b>\$74,582,008</b>	<b>\$740.78</b>
Natural Resources & Mining	39	356	346	340	5,093,615	1,128.07
Construction	39	164	171	173	1,582,214	718.75
Manufacturing	31	1,828	1,812	1,801	26,513,430	1,124.51
Trade, Transportation & Utilities	163	1,315	1,319	1,303	9,809,710	575.00
Wholesale Trade	29	194	199	195	2,465,279	967.53
Retail Trade	96	943	948	939	5,550,326	452.60
Transportation, Warehousing & Utilities	38	178	172	169	1,794,105	797.73
Information	7	52	51	50	396,752	598.42
Financial Activities	67	333	328	332	3,802,024	883.58
Professional & Business Services	52	309	315	311	2,435,214	601.04
Education & Health Services	182	1,065	1,063	1,033	6,231,591	454.94
Leisure & Hospitality	48	649	669	724	2,544,209	287.52
Other Services	44	129	135	130	775,649	454.30
Local Government	26	605	889	1,091	8,072,037	720.61
State Government	12	646	681	716	7,325,563	827.47

TABLE 6. COUNTY SUMMARY

North American Industry Classification System - Industry Groups	Number of Employing Units	Employment			Total Earnings	Average Weekly Earnings
		Jul	Aug	Sep	Jul - Sep 2017	
<b>CONWAY COUNTY - TOTAL</b>	<b>522</b>	<b>6,036</b>	<b>6,299</b>	<b>6,367</b>	<b>\$55,945,213</b>	<b>\$690.32</b>
Natural Resources & Mining	31	239	235	234	2,301,837	750.27
Construction	44	484	485	471	6,578,719	1,054.28
Manufacturing	18	909	909	910	12,719,397	1,075.97
Trade, Transportation & Utilities	116	1,310	1,309	1,310	10,219,573	600.25
Wholesale Trade	16	112	117	109	963,334	657.72
Retail Trade	76	778	772	773	4,891,196	485.90
Transportation, Warehousing & Utilities	24	420	420	428	4,365,043	794.41
Information	3	12	12	13	47,558	296.62
Financial Activities	38	154	151	152	1,475,664	745.16
Professional & Business Services	36	476	495	504	2,945,386	460.82
Education & Health Services	132	798	797	783	7,442,721	722.27
Leisure & Hospitality	40	490	468	459	1,662,116	270.69
Other Services	25	96	96	99	814,770	646.13
Local Government	30	702	941	1,032	6,664,631	574.95
State Government	9	366	401	400	3,072,841	607.64
<b>CRAIGHEAD COUNTY - TOTAL</b>	<b>2,828</b>	<b>47,525</b>	<b>49,389</b>	<b>50,684</b>	<b>\$465,871,542</b>	<b>\$728.39</b>
Natural Resources & Mining	89	352	312	342	2,780,962	637.93
Construction	236	2,167	2,146	2,117	24,794,846	889.87
Manufacturing	99	6,586	6,615	6,705	81,140,534	940.66
Trade, Transportation & Utilities	790	9,991	10,061	10,113	81,802,427	625.81
Wholesale Trade	182	1,640	1,642	1,669	20,698,230	964.76
Retail Trade	470	6,715	6,777	6,780	42,463,051	483.38
Transportation, Warehousing & Utilities	138	1,636	1,642	1,664	18,641,146	870.46
Information	20	406	414	410	4,518,026	847.66
Financial Activities	269	1,652	1,635	1,625	19,186,761	901.41
Professional & Business Services	373	4,782	4,892	4,889	36,224,875	574.03
Education & Health Services	478	10,569	10,643	10,705	128,567,930	929.58
Leisure & Hospitality	262	5,409	5,624	5,714	21,377,859	294.58
Other Services	155	773	781	787	5,466,419	538.86
Local Government	35	2,085	3,357	4,151	28,584,768	687.64
State Government	22	2,753	2,909	3,126	31,426,135	825.24

TABLE 6. COUNTY SUMMARY

North American Industry Classification System - Industry Groups	Number of Employing Units	Employment			Total Earnings	Average Weekly Earnings
		Jul	Aug	Sep	Jul - Sep 2017	
<b>CRAWFORD COUNTY - TOTAL</b>	<b>1,239</b>	<b>17,888</b>	<b>19,068</b>	<b>19,077</b>	<b>\$161,846,840</b>	<b>\$666.56</b>
Natural Resources & Mining	22	219	220	217	2,173,457	764.58
Construction	148	989	984	983	9,729,326	759.55
Manufacturing	69	4,423	4,449	4,520	44,901,412	773.74
Trade, Transportation & Utilities	308	5,476	5,613	5,495	49,136,937	683.75
Wholesale Trade	76	778	784	770	9,748,697	964.71
Retail Trade	165	1,971	1,951	1,935	12,923,667	509.20
Transportation, Warehousing & Utilities	67	2,727	2,878	2,790	26,464,573	727.48
Information	10	51	49	48	459,676	716.75
Financial Activities	123	501	515	512	4,691,053	708.48
Professional & Business Services	154	1,316	1,311	1,318	12,234,004	715.65
Education & Health Services	181	1,612	1,642	1,662	12,980,967	609.36
Leisure & Hospitality	95	1,665	1,661	1,656	6,129,257	283.91
Other Services	76	400	394	377	3,297,441	649.83
Local Government	43	1,069	2,059	2,117	14,747,533	648.86
State Government	10	167	171	172	1,365,777	618.00
<b>CRITTENDEN COUNTY - TOTAL</b>	<b>1,235</b>	<b>15,541</b>	<b>15,992</b>	<b>16,601</b>	<b>\$138,243,484</b>	<b>\$662.78</b>
Natural Resources & Mining	53	261	249	279	1,948,991	570.05
Construction	45	512	556	498	6,314,034	930.45
Manufacturing	42	2,085	2,082	2,100	25,610,536	943.05
Trade, Transportation & Utilities	306	4,600	4,424	4,444	40,810,541	699.27
Wholesale Trade	62	798	797	793	9,371,878	905.67
Retail Trade	157	2,156	1,969	1,982	11,540,828	436.10
Transportation, Warehousing & Utilities	87	1,646	1,658	1,669	19,897,835	923.35
Information	5	55	53	53	538,128	771.33
Financial Activities	98	444	438	433	4,516,871	792.67
Professional & Business Services	106	1,248	1,221	1,194	9,456,095	595.73
Education & Health Services	325	1,964	2,010	2,028	15,456,867	594.30
Leisure & Hospitality	126	2,408	2,442	2,447	11,313,009	357.78
Other Services	74	498	502	492	4,141,580	640.58
Local Government	42	1,087	1,552	2,160	14,274,631	686.42
State Government	13	379	463	473	3,862,201	677.78

TABLE 6. COUNTY SUMMARY

North American Industry Classification System - Industry Groups	Number of Employing Units	Employment			Total Earnings	Average Weekly Earnings
		Jul	Aug	Sep	Jul - Sep 2017	
<b>CROSS COUNTY - TOTAL</b>	<b>481</b>	<b>4,551</b>	<b>4,843</b>	<b>4,857</b>	<b>\$38,942,906</b>	<b>\$630.61</b>
Natural Resources & Mining	41	247	256	258	1,983,846	601.59
Construction	21	63	62	59	485,935	609.45
Manufacturing	10	391	391	392	3,289,263	646.56
Trade, Transportation & Utilities	124	1,221	1,204	1,188	10,698,564	683.34
Wholesale Trade	28	299	290	278	4,237,277	1,127.84
Retail Trade	71	800	798	791	5,178,597	500.23
Transportation, Warehousing & Utilities	25	122	116	119	1,282,690	829.15
Information	6	41	40	45	327,863	600.48
Financial Activities	44	298	301	287	2,552,724	664.89
Professional & Business Services	39	122	120	121	1,228,554	781.03
Education & Health Services	103	990	1,002	993	8,419,168	650.88
Leisure & Hospitality	33	353	319	326	1,108,202	256.25
Other Services	34	105	107	108	796,251	574.22
Local Government	17	351	676	723	4,963,220	654.49
State Government	9	369	365	357	3,089,316	653.45
<b>DALLAS COUNTY - TOTAL</b>	<b>246</b>	<b>2,655</b>	<b>2,693</b>	<b>2,719</b>	<b>\$20,723,049</b>	<b>\$592.82</b>
Natural Resources & Mining	27	145	149	145	1,282,443	674.14
Construction	14	50	55	61	447,064	621.50
Manufacturing	11	566	578	578	6,001,511	804.28
Trade, Transportation & Utilities	60	453	439	446	3,198,912	551.73
Wholesale Trade	6	15	14	13	148,493	815.90
Retail Trade	40	338	327	334	2,095,869	484.15
Transportation, Warehousing & Utilities	14	100	98	99	954,550	741.69
Information	4	17	17	17	107,342	485.71
Financial Activities	15	74	74	75	726,897	752.22
Professional & Business Services	10	28	27	25	180,008	519.25
Education & Health Services	59	823	810	817	5,974,946	562.79
Leisure & Hospitality	13	148	143	140	554,330	296.80
Other Services	12	46	48	47	291,188	476.58
Local Government	14	274	321	338	1,655,603	409.50
State Government	7	31	32	30	302,805	751.38

TABLE 6. COUNTY SUMMARY

North American Industry Classification System - Industry Groups	Number of Employing Units	Employment			Total Earnings	Average Weekly Earnings
		Jul	Aug	Sep	Jul - Sep 2017	
<b>DESHA COUNTY - TOTAL</b>	<b>561</b>	<b>4,347</b>	<b>4,590</b>	<b>4,699</b>	<b>\$38,995,805</b>	<b>\$659.95</b>
Natural Resources & Mining	69	266	265	299	2,263,072	629.21
Construction	16	93	90	85	935,330	805.39
Manufacturing	15	993	998	1,019	13,932,240	1,068.15
Trade, Transportation & Utilities	109	846	848	853	6,516,291	590.40
Wholesale Trade	19	190	186	187	2,404,580	985.62
Retail Trade	64	486	486	470	2,385,298	381.73
Transportation, Warehousing & Utilities	26	170	176	196	1,726,413	735.06
Information	3	12	12	12	115,734	741.88
Financial Activities	29	205	209	202	1,729,184	647.80
Professional & Business Services	33	83	89	89	772,549	683.07
Education & Health Services	196	761	772	783	4,914,137	489.65
Leisure & Hospitality	37	372	381	369	1,343,250	276.28
Other Services	24	54	50	56	267,001	385.10
Local Government	21	560	781	815	5,295,897	566.85
State Government	9	102	95	117	911,120	669.61
<b>DREW COUNTY - TOTAL</b>	<b>545</b>	<b>6,012</b>	<b>6,114</b>	<b>6,446</b>	<b>\$52,255,973</b>	<b>\$649.31</b>
Natural Resources & Mining	55	315	325	321	3,260,852	783.04
Construction	26	205	193	211	2,708,215	1,026.23
Manufacturing	21	806	844	858	8,402,794	773.17
Trade, Transportation & Utilities	125	1,158	1,166	1,145	8,585,657	571.15
Wholesale Trade	20	153	153	157	1,734,546	864.54
Retail Trade	80	869	884	855	5,363,278	474.57
Transportation, Warehousing & Utilities	25	136	129	133	1,487,833	862.68
Information	5	47	46	45	449,062	750.94
Financial Activities	48	247	244	245	2,598,547	814.76
Professional & Business Services	34	257	254	255	2,325,329	700.54
Education & Health Services	141	924	936	937	7,853,580	647.97
Leisure & Hospitality	38	567	576	600	2,114,057	279.90
Other Services	15	51	53	50	364,845	546.72
Local Government	23	933	981	1,196	7,751,535	575.18
State Government	14	502	496	583	5,841,500	852.65

TABLE 6. COUNTY SUMMARY

North American Industry Classification System - Industry Groups	Number of Employing Units	Employment			Total Earnings	Average Weekly Earnings
		Jul	Aug	Sep	Jul - Sep 2017	
<b>FAULKNER COUNTY - TOTAL</b>	<b>2,816</b>	<b>38,361</b>	<b>38,708</b>	<b>40,479</b>	<b>\$374,359,962</b>	<b>\$734.94</b>
Natural Resources & Mining	52	376	366	361	5,643,876	1,180.81
Construction	313	2,703	2,705	2,708	30,681,157	872.38
Manufacturing	99	3,170	3,138	3,138	41,511,984	1,014.15
Trade, Transportation & Utilities	638	7,307	7,370	7,408	56,496,683	590.34
Wholesale Trade	136	546	535	539	7,218,711	1,028.31
Retail Trade	417	5,985	6,079	6,113	39,726,291	504.35
Transportation, Warehousing & Utilities	85	776	756	756	9,551,681	963.39
Information	19	268	267	267	3,555,906	1,023.18
Financial Activities	309	1,467	1,475	1,463	15,664,960	820.66
Professional & Business Services	429	5,298	5,225	5,213	73,880,741	1,083.46
Education & Health Services	440	6,952	6,919	6,948	63,595,112	704.92
Leisure & Hospitality	262	5,147	5,125	5,233	19,165,074	285.24
Other Services	197	841	862	869	6,065,701	544.24
Local Government	41	1,762	2,204	3,494	23,773,314	735.41
State Government	17	3,070	3,052	3,377	34,325,454	833.90
<b>FRANKLIN COUNTY - TOTAL</b>	<b>359</b>	<b>4,182</b>	<b>4,460</b>	<b>4,513</b>	<b>\$37,927,729</b>	<b>\$665.34</b>
Natural Resources & Mining	20	229	258	247	4,578,158	1,439.37
Construction	30	111	118	110	976,529	664.76
Manufacturing	14	932	949	965	9,036,755	732.75
Trade, Transportation & Utilities	89	959	961	961	7,776,716	622.92
Wholesale Trade	14	52	55	51	275,962	403.06
Retail Trade	53	634	633	633	3,543,629	430.40
Transportation, Warehousing & Utilities	22	273	273	277	3,957,125	1,109.58
Information	4	20	21	20	182,759	691.40
Financial Activities	29	81	80	80	683,746	654.72
Professional & Business Services	33	337	339	331	2,881,224	660.28
Education & Health Services	69	542	547	546	3,674,572	518.64
Leisure & Hospitality	29	360	359	351	1,132,077	244.16
Other Services	15	47	49	49	366,564	583.39
Local Government	19	450	658	719	5,225,053	659.98
State Government	8	114	121	134	1,413,576	884.04

TABLE 6. COUNTY SUMMARY

North American Industry Classification System - Industry Groups	Number of Employing Units	Employment			Total Earnings	Average Weekly Earnings
		Jul	Aug	Sep	Jul - Sep 2017	
<b>FULTON COUNTY - TOTAL</b>	<b>191</b>	<b>1,717</b>	<b>1,751</b>	<b>1,903</b>	<b>\$12,517,668</b>	<b>\$537.83</b>
Natural Resources & Mining	3	6	6	6	35,580	456.15
Construction	9	54	61	68	803,874	1,013.71
Manufacturing	11	95	97	95	561,090	451.16
Trade, Transportation & Utilities	43	284	290	284	2,664,738	716.71
Retail Trade	26	171	170	171	1,020,536	459.98
Other Trade, Transportation, & Utilities	17	113	120	113	1,644,202	1,096.62
Information	4	26	26	27	175,790	513.51
Financial Activities	20	106	96	93	831,273	650.28
Professional & Business Services	16	37	36	38	329,989	686.05
Education & Health Services	42	481	504	507	2,946,609	455.76
Leisure & Hospitality	16	153	152	148	557,392	283.95
Other Services	6	14	15	14	106,655	572.39
Local Government	12	383	390	545	2,734,756	478.83
State Government	9	78	78	78	769,922	759.29
<b>GARLAND COUNTY - TOTAL</b>	<b>3,116</b>	<b>35,207</b>	<b>35,707</b>	<b>36,132</b>	<b>\$311,496,318</b>	<b>\$671.52</b>
Natural Resources & Mining	28	233	231	237	2,836,366	933.73
Construction	326	1,773	1,780	1,776	15,883,626	687.83
Manufacturing	92	2,597	2,588	2,587	27,941,192	829.64
Trade, Transportation & Utilities	683	7,229	7,245	7,192	58,585,348	624.01
Wholesale Trade	146	859	849	853	14,005,474	1,262.02
Retail Trade	479	5,899	5,940	5,868	39,428,718	513.86
Transportation, Warehousing & Utilities	58	471	456	471	5,151,156	850.31
Information	28	415	405	405	3,985,087	750.72
Financial Activities	339	1,497	1,500	1,486	17,285,642	889.80
Professional & Business Services	386	2,876	2,838	2,832	27,346,788	738.45
Education & Health Services	549	7,843	7,875	7,920	86,163,208	841.18
Leisure & Hospitality	392	7,307	7,032	6,676	32,019,072	351.61
Other Services	235	979	980	975	6,354,552	499.81
Local Government	35	1,570	2,276	3,058	24,168,617	807.85
State Government	23	888	957	988	8,926,820	727.16



TABLE 6. COUNTY SUMMARY

North American Industry Classification System - Industry Groups	Number of Employing Units	Employment			Total Earnings	Average Weekly Earnings
		Jul	Aug	Sep	Jul - Sep 2017	
<b>GRANT COUNTY - TOTAL</b>	<b>350</b>	<b>3,833</b>	<b>3,906</b>	<b>4,115</b>	<b>\$37,090,979</b>	<b>\$722.07</b>
Natural Resources & Mining	23	172	168	165	2,127,814	972.34
Construction	30	205	217	221	2,654,427	952.66
Manufacturing	17	1,284	1,263	1,259	14,797,866	897.24
Trade, Transportation & Utilities	94	620	616	627	4,633,619	573.96
Wholesale Trade	22	72	69	71	1,108,610	1,206.76
Retail Trade	45	475	467	485	2,870,466	464.20
Transportation, Warehousing & Utilities	27	73	80	71	654,543	674.32
Financial Activities	22	99	100	100	883,883	682.18
Professional & Business Services	28	108	109	106	1,837,866	1,313.07
Education & Health Services	78	445	446	454	2,713,372	465.55
Leisure & Hospitality	23	310	314	321	946,623	231.17
Local Government	10	494	580	768	5,756,549	721.19
State Government	7	43	43	43	381,812	683.03
Other	18	53	50	51	357,148	535.19
<b>GREENE COUNTY - TOTAL</b>	<b>899</b>	<b>14,850</b>	<b>14,955</b>	<b>15,238</b>	<b>\$136,087,741</b>	<b>\$697.22</b>
Natural Resources & Mining	38	279	263	264	2,439,892	698.58
Construction	73	348	332	346	3,507,784	788.98
Manufacturing	66	4,985	4,961	4,945	56,379,054	873.72
Trade, Transportation & Utilities	242	2,698	2,691	2,672	19,687,965	563.62
Wholesale Trade	45	452	434	427	4,772,351	838.78
Retail Trade	161	1,911	1,931	1,913	11,846,570	475.03
Transportation, Warehousing & Utilities	36	335	326	332	3,069,044	713.23
Information	9	98	98	94	600,997	478.25
Financial Activities	75	538	546	536	5,373,336	765.43
Professional & Business Services	91	802	809	805	6,528,352	623.57
Education & Health Services	153	1,991	2,036	2,057	20,018,001	759.29
Leisure & Hospitality	71	1,261	1,341	1,307	4,438,783	262.05
Other Services	40	155	153	159	1,043,059	515.43
Local Government	30	1,279	1,314	1,645	12,139,804	661.04
State Government	11	416	411	408	3,930,714	734.48

TABLE 6. COUNTY SUMMARY

North American Industry Classification System - Industry Groups	Number of Employing Units	Employment			Total Earnings	Average Weekly Earnings
		Jul	Aug	Sep	Jul - Sep 2017	
<b>HEMPSTEAD COUNTY - TOTAL</b>	<b>500</b>	<b>7,290</b>	<b>7,525</b>	<b>7,844</b>	<b>\$65,662,150</b>	<b>\$668.73</b>
Natural Resources & Mining	25	261	259	259	2,737,979	811.09
Construction	29	188	206	195	2,352,164	921.57
Manufacturing	29	2,309	2,316	2,325	23,525,018	781.13
Trade, Transportation & Utilities	124	1,237	1,257	1,255	10,780,839	663.61
Wholesale Trade	20	176	178	177	1,616,757	702.63
Retail Trade	77	813	829	838	4,965,131	462.02
Transportation, Warehousing & Utilities	27	248	250	240	4,198,951	1,312.99
Information	8	29	28	28	315,650	856.97
Financial Activities	44	210	212	207	1,928,335	707.47
Professional & Business Services	30	205	205	210	1,763,422	656.36
Education & Health Services	96	986	1,002	1,013	6,984,144	537.06
Leisure & Hospitality	43	615	627	624	2,292,197	283.48
Other Services	29	118	118	121	878,869	568.11
Local Government	27	440	593	889	5,835,504	700.65
State Government	16	692	702	718	6,268,029	684.88
<b>HOT SPRING COUNTY - TOTAL</b>	<b>639</b>	<b>8,096</b>	<b>8,103</b>	<b>8,366</b>	<b>\$70,454,552</b>	<b>\$661.87</b>
Natural Resources & Mining	22	142	143	146	1,160,680	621.46
Construction	55	337	332	358	3,066,855	689.13
Manufacturing	27	1,419	1,400	1,401	17,708,963	968.41
Trade, Transportation & Utilities	153	1,603	1,599	1,628	15,007,779	717.05
Wholesale Trade	17	98	99	103	1,049,243	807.11
Retail Trade	97	880	876	906	5,147,726	446.26
Transportation, Warehousing & Utilities	39	625	624	619	8,810,810	1,088.47
Information	6	47	46	42	440,297	752.64
Financial Activities	53	221	210	203	2,306,930	839.70
Professional & Business Services	53	931	902	916	5,440,025	456.67
Education & Health Services	138	1,051	1,080	1,076	8,832,757	635.59
Leisure & Hospitality	55	706	668	610	2,109,792	245.40
Other Services	38	130	136	132	849,226	492.40
Local Government	27	707	772	991	6,329,311	591.34
State Government	12	802	815	863	7,201,937	670.16

TABLE 6. COUNTY SUMMARY

North American Industry Classification System - Industry Groups	Number of Employing Units	Employment			Total Earnings	Average Weekly Earnings
		Jul	Aug	Sep	Jul - Sep 2017	
<b>HOWARD COUNTY - TOTAL</b>	<b>353</b>	<b>6,609</b>	<b>6,831</b>	<b>6,967</b>	<b>\$54,471,969</b>	<b>\$615.99</b>
Natural Resources & Mining	20	212	214	216	1,925,513	692.13
Construction	22	92	107	116	1,224,378	896.98
Manufacturing	19	3,415	3,395	3,352	28,063,477	637.29
Trade, Transportation & Utilities	86	916	902	897	7,279,945	618.78
Wholesale Trade	17	84	81	77	831,455	792.87
Retail Trade	51	644	629	624	3,963,815	482.20
Transportation, Warehousing & Utilities	18	188	192	196	2,484,675	995.46
Financial Activities	32	131	129	129	1,232,274	731.03
Professional & Business Services	22	134	130	132	1,064,744	620.48
Education & Health Services	81	832	854	864	6,943,399	628.36
Leisure & Hospitality	21	316	329	322	1,125,582	268.61
Local Government	17	325	541	691	3,599,402	533.48
State Government	10	95	92	103	889,872	708.12
Other	23	141	138	145	1,123,383	611.42
<b>INDEPENDENCE COUNTY - TOTAL</b>	<b>888</b>	<b>14,925</b>	<b>15,055</b>	<b>15,685</b>	<b>\$136,085,428</b>	<b>\$687.71</b>
Natural Resources & Mining	16	258	257	255	3,308,686	991.61
Construction	61	450	468	482	5,367,541	884.76
Manufacturing	37	2,907	2,907	2,876	30,138,903	800.36
Trade, Transportation & Utilities	229	2,950	2,953	2,946	24,326,085	634.39
Wholesale Trade	28	322	324	320	2,880,621	688.16
Retail Trade	156	1,833	1,850	1,849	11,472,546	478.58
Transportation, Warehousing & Utilities	45	795	779	777	9,972,918	978.92
Information	11	129	127	128	983,364	590.96
Financial Activities	81	521	527	527	6,265,908	918.08
Professional & Business Services	87	1,342	1,262	1,279	9,483,710	563.62
Education & Health Services	163	3,463	3,452	3,474	37,138,045	824.94
Leisure & Hospitality	79	1,227	1,254	1,253	4,202,369	259.72
Other Services	64	373	349	356	1,959,225	419.41
Local Government	46	754	970	1,506	7,929,667	566.54
State Government	14	551	529	603	4,981,925	683.11

TABLE 6. COUNTY SUMMARY

North American Industry Classification System - Industry Groups	Number of Employing Units	Employment			Total Earnings Jul - Sep 2017	Average Weekly Earnings
		Jul	Aug	Sep		
<b>IZARD COUNTY - TOTAL</b>	<b>255</b>	<b>2,767</b>	<b>2,994</b>	<b>3,082</b>	<b>\$23,356,873</b>	<b>\$609.53</b>
Natural Resources & Mining	7	146	147	148	1,953,446	1,022.21
Construction	24	105	101	85	941,135	746.34
Manufacturing	10	290	263	258	2,221,772	632.20
Trade, Transportation & Utilities	65	528	539	528	4,227,309	611.62
Wholesale Trade	13	22	24	24	182,760	602.51
Retail Trade	41	358	361	360	2,191,125	468.62
Transportation, Warehousing & Utilities	11	148	154	144	1,853,424	959.00
Information	4	6	6	7	90,024	1,093.41
Financial Activities	25	165	170	171	1,296,313	591.20
Professional & Business Services	15	52	53	47	405,430	615.53
Education & Health Services	49	658	675	674	4,814,267	553.55
Leisure & Hospitality	20	185	186	196	639,944	260.46
Other Services	10	26	26	24	176,871	537.06
Local Government	17	267	453	507	2,939,400	552.83
State Government	9	339	375	437	3,650,962	732.00
<b>JACKSON COUNTY - TOTAL</b>	<b>438</b>	<b>4,907</b>	<b>5,168</b>	<b>5,211</b>	<b>\$45,298,517</b>	<b>\$683.86</b>
Natural Resources & Mining	57	306	300	317	2,818,175	704.60
Construction	20	99	94	93	882,226	711.86
Manufacturing	14	925	918	885	10,840,772	917.05
Trade, Transportation & Utilities	106	1,000	1,031	1,031	8,548,945	644.30
Wholesale Trade	20	199	202	202	2,601,149	995.46
Retail Trade	71	712	740	738	4,924,354	518.90
Transportation, Warehousing & Utilities	15	89	89	91	1,023,442	877.99
Information	3	13	12	12	116,458	726.35
Financial Activities	29	140	138	135	1,405,642	785.42
Professional & Business Services	31	115	114	115	1,057,489	709.41
Education & Health Services	89	886	888	900	7,697,754	664.32
Leisure & Hospitality	24	302	326	298	1,027,366	256.03
Other Services	21	68	65	62	503,222	595.53
Local Government	32	334	521	584	3,509,824	562.86
State Government	12	719	761	779	6,890,644	703.92

TABLE 6. COUNTY SUMMARY

North American Industry Classification System - Industry Groups	Number of Employing Units	Employment			Total Earnings	Average Weekly Earnings
		Jul	Aug	Sep	Jul - Sep 2017	
<b>JEFFERSON COUNTY - TOTAL</b>	<b>2,087</b>	<b>25,156</b>	<b>26,100</b>	<b>26,702</b>	<b>\$245,959,491</b>	<b>\$728.08</b>
Natural Resources & Mining	40	164	171	168	2,143,248	983.29
Construction	89	580	522	549	5,835,058	815.60
Manufacturing	58	4,846	4,849	4,882	66,899,158	1,059.08
Trade, Transportation & Utilities	402	4,420	4,416	4,415	35,160,605	612.33
Wholesale Trade	71	678	684	676	6,680,042	756.40
Retail Trade	279	3,050	3,044	3,046	19,203,939	484.87
Transportation, Warehousing & Utilities	52	692	688	693	9,276,624	1,032.69
Information	8	79	69	69	873,359	928.78
Financial Activities	154	951	958	931	9,979,053	810.87
Professional & Business Services	145	2,130	2,186	2,206	16,818,331	595.09
Education & Health Services	873	4,804	4,846	4,859	45,308,423	720.64
Leisure & Hospitality	131	1,810	1,862	1,874	6,763,420	281.43
Other Services	111	566	531	557	4,286,101	598.00
Local Government	40	1,609	2,396	2,765	18,033,810	614.72
State Government	36	3,197	3,294	3,427	33,858,925	787.82
<b>JOHNSON COUNTY - TOTAL</b>	<b>482</b>	<b>8,118</b>	<b>8,272</b>	<b>8,632</b>	<b>\$65,484,921</b>	<b>\$603.94</b>
Natural Resources & Mining	14	224	223	217	2,207,142	767.08
Construction	33	202	196	195	1,752,891	682.15
Manufacturing	34	2,670	2,688	2,690	21,885,002	627.53
Trade, Transportation & Utilities	109	1,896	1,915	1,902	13,813,067	557.96
Retail Trade	76	871	905	886	4,989,884	432.57
Other Trade, Transportation & Utilities	33	1,025	1,010	1,016	8,823,183	667.36
Information	5	20	22	22	200,696	723.66
Financial Activities	48	181	181	174	1,479,952	637.18
Professional & Business Services	52	394	388	381	2,199,343	436.41
Education & Health Services	94	1,247	1,246	1,267	11,049,191	678.14
Leisure & Hospitality	42	606	598	584	1,881,736	242.87
Other Services	29	84	86	84	516,403	469.17
Local Government	14	494	627	1,012	7,396,814	800.26
State Government	8	100	102	104	1,102,684	831.59

TABLE 6. COUNTY SUMMARY

North American Industry Classification System - Industry Groups	Number of Employing Units	Employment			Total Earnings	Average Weekly Earnings
		Jul	Aug	Sep	Jul - Sep 2017	
<b>LAFAYETTE COUNTY - TOTAL</b>	<b>169</b>	<b>1,071</b>	<b>1,151</b>	<b>1,188</b>	<b>\$7,950,080</b>	<b>\$538.02</b>
Natural Resources & Mining	28	110	104	106	805,829	581.13
Construction	9	67	66	66	811,141	940.64
Manufacturing	6	36	36	36	327,766	700.35
Trade, Transportation & Utilities	29	199	197	200	1,224,834	474.25
Retail Trade	18	119	117	117	558,656	365.21
Other Trade, Transportation & Utilities	11	80	80	83	666,178	632.65
Financial Activities	15	58	59	52	455,713	622.28
Professional & Business Services	9	31	30	30	260,018	659.39
Education & Health Services	39	185	189	191	1,195,996	488.49
Leisure & Hospitality	6	34	41	47	140,751	266.24
Local Government	14	198	269	292	1,472,395	447.67
State Government	9	111	119	127	948,337	613.02
Other	5	42	41	41	307,300	571.90
<b>LAWRENCE COUNTY - TOTAL</b>	<b>409</b>	<b>3,592</b>	<b>3,884</b>	<b>4,012</b>	<b>\$29,669,241</b>	<b>\$595.99</b>
Natural Resources & Mining	52	208	202	199	2,009,701	761.54
Construction	22	83	95	92	853,142	729.18
Manufacturing	20	462	472	445	3,888,021	650.64
Trade, Transportation & Utilities	121	849	840	838	6,801,965	621.17
Wholesale Trade	19	198	199	198	2,034,990	789.27
Retail Trade	63	511	503	502	3,213,111	489.11
Transportation, Warehousing & Utilities	39	140	138	138	1,553,864	861.98
Financial Activities	28	128	124	128	1,221,588	741.86
Professional & Business Services	26	98	96	96	943,810	751.04
Education & Health Services	56	505	520	557	4,342,507	633.45
Leisure & Hospitality	30	314	351	354	1,201,241	272.04
Local Government	24	769	1,007	1,124	6,942,384	552.44
State Government	9	82	84	84	720,910	665.46
Other	21	94	93	95	743,972	608.82

TABLE 6. COUNTY SUMMARY

North American Industry Classification System - Industry Groups	Number of Employing Units	Employment			Total Earnings	Average Weekly Earnings
		Jul	Aug	Sep	Jul - Sep 2017	
<b>LEE COUNTY - TOTAL</b>	<b>282</b>	<b>1,902</b>	<b>1,918</b>	<b>1,934</b>	<b>\$14,252,823</b>	<b>\$571.62</b>
Natural Resources & Mining	42	221	230	231	1,774,196	600.34
Construction	7	26	25	23	211,863	660.70
Trade, Transportation & Utilities	39	310	307	313	2,584,282	641.26
Wholesale Trade	10	106	106	109	1,092,416	785.35
Retail Trade	20	165	162	162	944,087	445.53
Transportation, Warehousing & Utilities	9	39	39	42	547,779	1,053.42
Financial Activities	17	63	62	66	474,984	573.88
Professional & Business Services	13	42	42	46	533,502	947.04
Education & Health Services	126	476	478	465	3,053,063	496.51
Leisure & Hospitality	7	63	65	62	224,938	273.20
Local Government	15	301	304	320	1,499,553	374.11
State Government	6	383	389	393	3,792,316	751.20
Other	10	17	16	15	104,126	500.61
<b>LINCOLN COUNTY - TOTAL</b>	<b>290</b>	<b>2,646</b>	<b>2,844</b>	<b>2,898</b>	<b>\$22,706,841</b>	<b>\$624.71</b>
Natural Resources & Mining	35	170	172	181	1,417,091	625.28
Construction	19	113	108	111	1,044,506	726.02
Manufacturing	8	265	265	263	2,107,128	613.19
Trade, Transportation & Utilities	46	344	345	341	3,017,714	676.11
Wholesale Trade	9	57	55	54	478,137	664.69
Retail Trade	24	166	167	162	872,105	406.58
Transportation, Warehousing & Utilities	13	121	123	125	1,667,472	1,042.82
Financial Activities	20	70	74	74	606,743	642.28
Professional & Business Services	10	23	23	25	170,854	555.32
Education & Health Services	105	414	418	429	2,987,557	546.74
Leisure & Hospitality	15	171	165	174	461,146	208.66
Local Government	7	185	333	333	2,040,351	553.29
State Government	11	845	894	919	8,423,480	731.33
Other	14	46	47	48	430,271	704.21

TABLE 6. COUNTY SUMMARY

North American Industry Classification System - Industry Groups	Number of Employing Units	Employment			Total Earnings	Average Weekly Earnings
		Jul	Aug	Sep	Jul - Sep 2017	
<b>LITTLE RIVER COUNTY - TOTAL</b>	<b>248</b>	<b>3,096</b>	<b>3,148</b>	<b>3,316</b>	<b>\$35,618,479</b>	<b>\$859.80</b>
Natural Resources & Mining	16	94	93	95	984,036	805.27
Construction	13	156	166	191	1,615,761	726.84
Manufacturing	17	1,081	1,084	1,075	20,520,197	1,461.55
Trade, Transportation & Utilities	60	575	574	583	3,909,664	520.92
Wholesale Trade	8	27	26	27	490,249	1,414.18
Retail Trade	37	454	454	459	2,636,891	445.15
Transportation, Warehousing & Utilities	15	94	94	97	782,524	633.62
Financial Activities	15	67	65	66	537,828	626.84
Professional & Business Services	15	68	68	76	595,631	648.36
Education & Health Services	50	204	210	221	1,397,190	507.76
Leisure & Hospitality	13	200	192	179	583,843	235.96
Local Government	20	536	585	711	4,633,621	583.68
State Government	10	69	68	75	630,877	686.73
Other	19	46	43	44	209,831	364.08
<b>LOGAN COUNTY - TOTAL</b>	<b>499</b>	<b>5,213</b>	<b>5,328</b>	<b>5,360</b>	<b>\$40,948,821</b>	<b>\$594.29</b>
Natural Resources & Mining	27	108	112	117	986,289	675.39
Construction	44	254	245	236	2,466,063	774.27
Manufacturing	21	1,156	1,151	1,128	11,278,581	757.71
Trade, Transportation & Utilities	100	989	998	992	6,657,370	515.72
Wholesale Trade	9	33	42	38	304,209	621.26
Retail Trade	68	785	788	780	4,465,458	437.95
Transportation, Warehousing & Utilities	23	171	168	174	1,887,703	849.17
Information	5	29	29	29	323,846	859.01
Financial Activities	48	203	201	199	1,991,055	761.98
Professional & Business Services	41	124	125	121	1,012,181	631.30
Education & Health Services	116	709	702	708	5,414,010	589.61
Leisure & Hospitality	33	366	355	348	1,161,845	250.81
Other Services	30	165	139	137	1,121,398	586.81
Local Government	22	590	743	815	4,798,948	515.57
State Government	12	520	528	530	3,737,235	546.54



TABLE 6. COUNTY SUMMARY

North American Industry Classification System - Industry Groups	Number of Employing Units	Employment			Total Earnings	Average Weekly Earnings
		Jul	Aug	Sep	Jul - Sep 2017	
<b>LONOKE COUNTY - TOTAL</b>	<b>1,277</b>	<b>13,655</b>	<b>14,000</b>	<b>13,889</b>	<b>\$116,124,797</b>	<b>\$645.05</b>
Natural Resources & Mining	82	489	489	478	4,874,655	772.61
Construction	132	948	952	976	12,204,425	979.28
Manufacturing	38	1,695	1,699	1,686	20,849,276	947.12
Trade, Transportation & Utilities	304	2,818	2,829	2,807	21,508,224	587.11
Wholesale Trade	75	436	439	427	5,342,828	946.97
Retail Trade	171	2,096	2,089	2,082	12,376,766	455.75
Transportation, Warehousing & Utilities	58	286	301	298	3,788,630	987.91
Information	11	84	84	80	1,149,179	1,069.34
Financial Activities	152	656	656	652	8,911,721	1,047.12
Professional & Business Services	151	796	792	757	7,025,478	691.37
Education & Health Services	200	1,714	1,736	1,721	12,563,361	560.67
Leisure & Hospitality	107	1,814	1,805	1,735	6,595,630	284.29
Other Services	61	200	198	200	1,305,806	503.91
Local Government	25	2,266	2,585	2,624	17,441,105	538.44
State Government	14	175	175	173	1,695,937	748.32
<b>MADISON COUNTY - TOTAL</b>	<b>250</b>	<b>2,910</b>	<b>3,239</b>	<b>3,315</b>	<b>\$25,774,111</b>	<b>\$628.47</b>
Natural Resources & Mining	10	44	45	46	383,622	655.76
Construction	25	98	105	112	1,000,152	732.71
Manufacturing	20	1,134	1,155	1,193	9,867,857	653.99
Trade, Transportation & Utilities	52	667	668	676	5,009,277	574.83
Wholesale Trade	7	20	20	22	262,822	978.25
Retail Trade	36	500	498	500	3,124,799	481.38
Transportation, Warehousing & Utilities	9	147	150	154	1,621,656	829.77
Information	6	49	51	52	1,089,153	1,653.57
Financial Activities	19	91	92	88	759,973	647.15
Professional & Business Services	24	76	75	71	867,131	901.38
Education & Health Services	45	259	260	265	1,912,183	562.85
Leisure & Hospitality	15	162	167	177	569,025	259.51
Other Services	18	46	42	44	352,049	615.47
Local Government	9	238	528	540	3,556,134	628.37
State Government	7	46	51	51	407,555	635.48

TABLE 6. COUNTY SUMMARY

North American Industry Classification System - Industry Groups	Number of Employing Units	Employment			Total Earnings	Average Weekly Earnings
		Jul	Aug	Sep	Jul - Sep 2017	
<b>MARION COUNTY - TOTAL</b>	<b>279</b>	<b>3,598</b>	<b>3,668</b>	<b>3,755</b>	<b>\$26,181,792</b>	<b>\$548.22</b>
Manufacturing	21	1,655	1,669	1,680	13,380,540	617.07
Trade, Transportation & Utilities	54	554	548	546	3,315,636	464.29
Wholesale Trade	6	46	45	44	366,481	626.46
Retail Trade	40	475	466	465	2,506,770	411.44
Transportation, Warehousing & Utilities	8	33	37	37	442,385	954.10
Information	3	54	53	56	732,313	1,036.78
Financial Activities	35	223	219	208	1,651,311	586.26
Professional & Business Services	26	77	76	78	525,379	524.85
Education & Health Services	49	339	341	346	2,422,481	544.87
Leisure & Hospitality	31	243	240	224	746,385	243.62
Other Services	13	27	27	28	115,105	323.94
Local Government	17	344	408	503	2,682,376	493.23
State Government	7	43	43	43	373,828	668.74
Other	23	39	44	43	236,438	433.04
<b>MILLER COUNTY - TOTAL</b>	<b>885</b>	<b>12,983</b>	<b>12,957</b>	<b>13,128</b>	<b>\$119,311,904</b>	<b>\$704.76</b>
Natural Resources & Mining	31	209	197	204	2,284,808	864.37
Construction	68	635	665	666	6,864,920	805.80
Manufacturing	28	2,375	2,347	2,350	33,931,302	1,107.23
Trade, Transportation & Utilities	220	3,360	3,337	3,339	29,888,779	687.27
Wholesale Trade	49	463	465	462	5,815,700	965.53
Retail Trade	125	1,236	1,231	1,221	7,212,091	451.28
Transportation, Warehousing & Utilities	46	1,661	1,641	1,656	16,860,988	784.79
Information	7	129	129	125	1,739,510	1,048.11
Financial Activities	84	413	426	420	4,014,294	735.80
Professional & Business Services	85	1,180	1,230	1,263	6,768,277	425.24
Education & Health Services	183	1,085	1,085	1,091	8,614,659	609.63
Leisure & Hospitality	90	1,566	1,533	1,532	6,014,432	299.71
Other Services	50	352	217	218	1,626,945	477.06
Local Government	24	1,199	1,308	1,438	12,015,624	702.87
State Government	15	480	483	482	5,548,354	886.08

TABLE 6. COUNTY SUMMARY

North American Industry Classification System - Industry Groups	Number of Employing Units	Employment			Total Earnings	Average Weekly Earnings
		Jul	Aug	Sep	Jul - Sep 2017	
<b>MISSISSIPPI COUNTY - TOTAL</b>	<b>1,138</b>	<b>17,218</b>	<b>17,753</b>	<b>18,341</b>	<b>\$198,448,231</b>	<b>\$859.01</b>
Natural Resources & Mining	109	504	490	517	4,428,021	676.27
Construction	51	748	795	1,015	11,520,900	1,039.35
Manufacturing	61	6,282	6,432	6,512	103,540,228	1,242.79
Trade, Transportation & Utilities	283	2,915	2,932	2,894	26,406,376	697.15
Wholesale Trade	60	353	333	325	4,293,326	979.99
Retail Trade	153	1,717	1,724	1,682	9,730,060	438.30
Transportation, Warehousing & Utilities	70	845	875	887	12,382,990	1,096.13
Information	6	39	39	39	295,340	582.52
Financial Activities	83	452	458	446	3,960,477	674.01
Professional & Business Services	87	1,343	1,326	1,407	9,927,575	562.07
Education & Health Services	240	1,476	1,550	1,638	14,718,133	728.24
Leisure & Hospitality	94	1,180	1,193	1,165	4,174,296	272.27
Other Services	52	270	261	273	2,779,715	797.85
Local Government	49	1,543	1,802	1,945	12,405,028	541.15
State Government	23	466	475	490	4,292,142	692.17
<b>MONROE COUNTY - TOTAL</b>	<b>303</b>	<b>1,949</b>	<b>2,038</b>	<b>2,063</b>	<b>\$15,874,916</b>	<b>\$605.53</b>
Natural Resources & Mining	34	138	138	141	2,435,226	1,347.66
Construction	9	26	23	21	183,677	605.53
Manufacturing	6	129	125	123	913,785	559.35
Trade, Transportation & Utilities	75	535	534	542	4,297,590	615.61
Wholesale Trade	16	181	179	173	1,816,453	786.46
Retail Trade	36	252	252	262	1,477,792	445.21
Transportation, Warehousing & Utilities	23	102	103	107	1,003,345	742.12
Financial Activities	22	92	94	90	835,577	698.64
Professional & Business Services	14	21	20	19	130,583	502.24
Education & Health Services	72	373	379	384	2,787,620	566.28
Leisure & Hospitality	23	232	232	228	882,752	294.38
Local Government	21	237	320	343	2,077,354	532.65
State Government	7	65	68	68	778,008	893.24
Other	20	101	105	104	552,744	411.47

TABLE 6. COUNTY SUMMARY

North American Industry Classification System - Industry Groups	Number of Employing Units	Employment			Total Earnings Jul - Sep 2017	Average Weekly Earnings
		Jul	Aug	Sep		
<b>MONTGOMERY COUNTY - TOTAL</b>	<b>164</b>	<b>1,238</b>	<b>1,339</b>	<b>1,368</b>	<b>\$8,218,723</b>	<b>\$480.77</b>
Natural Resources & Mining	7	26	25	29	242,986	700.92
Construction	24	75	77	73	503,012	515.91
Manufacturing	8	38	37	34	310,379	657.12
Trade, Transportation & Utilities	35	223	223	226	1,362,919	468.04
Wholesale Trade	9	48	46	47	411,706	673.82
Retail Trade	21	158	161	163	878,682	420.69
Transportation, Warehousing & Utilities	5	17	16	16	72,531	341.59
Financial Activities	9	62	68	68	489,785	570.84
Professional & Business Services	14	21	21	22	137,898	497.23
Education & Health Services	20	55	61	58	434,945	576.85
Leisure & Hospitality	15	351	368	306	1,727,371	388.90
Local Government	9	277	347	440	2,234,302	484.59
State Government	7	37	37	37	355,054	738.16
Other	16	73	75	75	420,072	434.71
<b>NEVADA COUNTY - TOTAL</b>	<b>198</b>	<b>2,290</b>	<b>2,303</b>	<b>2,432</b>	<b>\$19,995,753</b>	<b>\$656.85</b>
Natural Resources & Mining	12	76	74	75	801,810	822.37
Trade, Transportation & Utilities	39	588	579	602	4,836,634	630.95
Retail Trade	22	318	320	331	1,633,527	389.03
Other Trade, Transportation & Utilities	17	270	259	271	3,203,107	923.97
Financial Activities	11	68	71	56	574,850	680.30
Professional & Business Services	11	41	39	39	344,399	667.87
Education & Health Services	47	427	425	436	2,512,772	450.21
Leisure & Hospitality	10	78	90	95	284,720	249.83
Other Services	14	35	35	37	149,102	321.57
Local Government	28	254	271	383	1,732,123	440.22
State Government	9	57	57	58	510,450	684.86
Other	17	666	662	651	8,248,893	961.90

TABLE 6. COUNTY SUMMARY

North American Industry Classification System - Industry Groups	Number of Employing Units	Employment			Total Earnings Jul - Sep 2017	Average Weekly Earnings
		Jul	Aug	Sep		
<b>NEWTON COUNTY - TOTAL</b>	<b>117</b>	<b>939</b>	<b>1,062</b>	<b>1,050</b>	<b>\$5,844,380</b>	<b>\$442.05</b>
Construction	5	18	18	18	129,540	553.59
Manufacturing	9	36	35	34	282,844	621.64
Trade, Transportation & Utilities	32	153	149	140	1,148,321	599.54
Retail Trade	16	97	95	89	551,753	453.12
Other Trade, Transportation & Utilities	16	56	54	51	596,568	855.09
Education & Health Services	23	254	257	253	1,069,730	323.12
Leisure & Hospitality	16	172	169	164	601,726	274.97
Other Services	3	4	4	4	19,867	382.06
Local Government	13	227	362	365	1,948,767	471.40
State Government	7	38	38	38	357,470	723.62
Other	9	37	30	34	286,115	653.73
<b>OUACHITA COUNTY - TOTAL</b>	<b>657</b>	<b>6,662</b>	<b>6,676</b>	<b>6,934</b>	<b>\$53,619,120</b>	<b>\$610.38</b>
Natural Resources & Mining	35	157	165	157	1,628,969	784.79
Construction	38	216	203	202	2,032,045	755.13
Manufacturing	25	562	548	559	5,914,731	817.82
Trade, Transportation & Utilities	160	1,482	1,487	1,490	11,194,316	579.35
Wholesale Trade	25	223	225	227	2,247,500	768.38
Retail Trade	107	967	957	961	5,340,991	427.22
Transportation, Warehousing & Utilities	28	292	305	302	3,605,825	925.60
Information	6	43	44	43	458,250	813.46
Financial Activities	52	255	253	250	2,406,064	732.51
Professional & Business Services	44	595	618	633	5,250,262	656.34
Education & Health Services	189	1,237	1,246	1,256	11,705,745	722.47
Leisure & Hospitality	40	506	508	517	1,481,118	223.25
Other Services	26	107	111	110	715,171	503.17
Local Government	29	883	906	1,091	5,512,249	441.69
State Government	13	619	587	626	5,320,200	670.16

TABLE 6. COUNTY SUMMARY

North American Industry Classification System - Industry Groups	Number of Employing Units	Employment			Total Earnings Jul - Sep 2017	Average Weekly Earnings
		Jul	Aug	Sep		
<b>PERRY COUNTY - TOTAL</b>	<b>144</b>	<b>1,063</b>	<b>1,157</b>	<b>1,173</b>	<b>\$8,423,317</b>	<b>\$572.90</b>
Construction	17	109	99	98	879,064	662.94
Manufacturing	5	31	30	31	327,957	822.63
Trade, Transportation & Utilities	27	180	178	172	1,127,448	490.91
Retail Trade	19	142	140	136	549,842	303.56
Other Trade, Transportation & Utilities	8	38	38	36	577,606	1,190.12
Financial Activities	7	28	26	25	262,588	767.05
Professional & Business Services	14	47	44	45	531,404	901.70
Education & Health Services	33	228	215	228	1,423,795	489.67
Leisure & Hospitality	8	82	83	73	278,793	270.32
Local Government	10	220	350	367	2,056,418	506.47
State Government	7	35	35	36	332,953	724.86
Other	16	103	97	98	1,202,897	931.52
<b>PHILLIPS COUNTY - TOTAL</b>	<b>767</b>	<b>5,044</b>	<b>5,224</b>	<b>5,322</b>	<b>\$39,854,634</b>	<b>\$589.94</b>
Natural Resources & Mining	60	245	252	258	1,788,708	546.73
Construction	30	126	127	129	896,245	541.43
Manufacturing	14	383	362	373	3,800,361	784.44
Trade, Transportation & Utilities	146	1,260	1,236	1,241	9,634,137	594.93
Wholesale Trade	27	260	253	251	2,954,432	892.40
Retail Trade	82	750	736	743	3,982,335	412.29
Transportation, Warehousing & Utilities	37	250	247	247	2,697,370	836.65
Information	7	24	25	25	304,023	948.10
Financial Activities	41	203	202	205	1,924,801	728.17
Professional & Business Services	41	239	229	220	2,310,141	774.87
Education & Health Services	321	1,369	1,395	1,392	10,169,383	564.67
Leisure & Hospitality	36	305	300	293	1,017,475	261.47
Other Services	30	72	71	70	473,486	512.99
Local Government	27	466	685	780	4,418,306	528.02
State Government	14	352	340	336	3,117,568	699.84

TABLE 6. COUNTY SUMMARY

North American Industry Classification System - Industry Groups	Number of Employing Units	Employment			Total Earnings	Average Weekly Earnings
		Jul	Aug	Sep	Jul - Sep 2017	
<b>PIKE COUNTY - TOTAL</b>	<b>255</b>	<b>2,405</b>	<b>2,596</b>	<b>2,577</b>	<b>\$17,759,388</b>	<b>\$540.82</b>
Natural Resources & Mining	27	121	121	118	1,205,225	772.58
Construction	12	40	48	46	426,243	734.06
Manufacturing	18	364	375	367	3,167,703	660.95
Trade, Transportation & Utilities	63	533	548	532	3,792,079	542.53
Wholesale Trade	8	112	113	113	900,625	614.90
Retail Trade	36	355	360	351	2,064,963	447.03
Transportation, Warehousing & Utilities	19	66	75	68	826,491	912.58
Information	7	29	29	35	292,868	726.72
Financial Activities	24	227	222	218	2,097,882	725.83
Professional & Business Services	13	50	55	52	634,542	932.69
Education & Health Services	34	302	322	333	1,763,671	425.29
Leisure & Hospitality	26	290	273	249	883,467	251.08
Other Services	12	56	54	59	406,910	555.63
Local Government	10	272	428	448	2,340,376	470.46
State Government	9	121	121	120	748,422	477.11
<b>POINSETT COUNTY - TOTAL</b>	<b>514</b>	<b>4,839</b>	<b>5,160</b>	<b>5,216</b>	<b>\$43,877,676</b>	<b>\$665.50</b>
Natural Resources & Mining	70	395	384	402	4,522,069	883.62
Construction	23	96	90	92	1,042,978	865.78
Manufacturing	19	685	683	690	7,742,608	868.20
Trade, Transportation & Utilities	132	1,194	1,177	1,179	9,669,785	628.59
Wholesale Trade	29	346	322	314	4,371,759	1,027.36
Retail Trade	73	678	680	689	3,598,917	405.73
Transportation, Warehousing & Utilities	30	170	175	176	1,699,109	752.60
Information	5	55	55	55	543,290	759.85
Financial Activities	39	170	172	167	1,792,181	812.53
Professional & Business Services	26	176	178	180	2,827,030	1,221.71
Education & Health Services	100	827	823	816	6,789,249	635.34
Leisure & Hospitality	40	332	364	361	1,117,873	244.06
Other Services	19	49	52	48	337,301	522.41
Local Government	30	691	1,006	1,044	6,054,420	509.73
State Government	11	169	176	182	1,438,892	630.08

TABLE 6. COUNTY SUMMARY

North American Industry Classification System - Industry Groups	Number of Employing Units	Employment			Total Earnings	Average Weekly Earnings
		Jul	Aug	Sep	Jul - Sep 2017	
<b>POLK COUNTY - TOTAL</b>	<b>496</b>	<b>5,372</b>	<b>5,722</b>	<b>5,785</b>	<b>\$43,129,027</b>	<b>\$589.66</b>
Natural Resources & Mining	22	137	133	144	1,678,803	935.79
Construction	34	196	195	195	1,613,037	635.22
Manufacturing	32	1,267	1,284	1,269	10,691,509	645.88
Trade, Transportation & Utilities	122	1,026	1,014	1,027	6,967,699	524.27
Wholesale Trade	21	57	54	57	466,008	640.12
Retail Trade	69	754	752	759	4,254,346	433.45
Transportation, Warehousing & Utilities	32	215	208	211	2,247,345	818.01
Information	8	70	67	69	504,963	565.68
Financial Activities	47	244	243	243	2,089,943	660.68
Professional & Business Services	41	140	138	139	1,298,279	718.47
Education & Health Services	89	1,024	1,050	1,055	9,200,922	678.58
Leisure & Hospitality	40	421	452	475	1,544,790	264.46
Other Services	27	180	179	176	1,265,331	545.79
Local Government	21	389	707	703	4,247,516	544.86
State Government	13	278	260	290	2,026,235	564.73
<b>POPE COUNTY - TOTAL</b>	<b>1,829</b>	<b>24,400</b>	<b>24,668</b>	<b>25,244</b>	<b>\$237,595,222</b>	<b>\$737.83</b>
Natural Resources & Mining	33	771	575	313	6,492,329	903.09
Construction	155	1,323	1,298	1,312	16,514,881	969.01
Manufacturing	73	4,349	4,315	4,325	47,134,190	837.41
Trade, Transportation & Utilities	428	6,024	6,039	6,025	62,480,687	797.14
Wholesale Trade	80	582	567	553	6,067,362	822.66
Retail Trade	265	3,110	3,120	3,076	19,624,378	486.64
Transportation, Warehousing & Utilities	83	2,332	2,352	2,396	36,788,947	1,199.12
Information	19	147	143	140	1,467,766	787.71
Financial Activities	189	984	987	965	9,648,278	758.35
Professional & Business Services	273	1,728	1,691	1,646	19,363,020	882.21
Education & Health Services	346	3,228	3,237	3,254	29,643,413	703.86
Leisure & Hospitality	143	2,614	2,795	2,866	10,176,064	283.79
Other Services	112	540	549	544	3,901,129	551.29
Local Government	43	1,241	1,508	2,147	14,639,345	690.01
State Government	15	1,451	1,531	1,707	16,134,120	794.04



TABLE 6. COUNTY SUMMARY

North American Industry Classification System - Industry Groups	Number of Employing Units	Employment			Total Earnings	Average Weekly Earnings
		Jul	Aug	Sep	Jul - Sep 2017	
<b>PRAIRIE COUNTY - TOTAL</b>	<b>257</b>	<b>1,385</b>	<b>1,500</b>	<b>1,494</b>	<b>\$12,130,628</b>	<b>\$639.27</b>
Natural Resources & Mining	35	167	163	169	1,898,920	878.18
Construction	10	49	48	44	396,468	648.88
Trade, Transportation & Utilities	61	355	350	343	2,951,211	649.86
Wholesale Trade	12	87	77	76	1,311,687	1,261.24
Retail Trade	34	204	208	201	1,043,884	392.98
Transportation, Warehousing & Utilities	15	64	65	66	595,640	704.90
Financial Activities	15	48	52	49	471,245	729.86
Professional & Business Services	16	130	125	114	1,475,100	922.51
Education & Health Services	54	269	271	275	2,013,169	570.03
Leisure & Hospitality	18	103	101	102	359,157	270.86
Local Government	16	166	290	299	1,811,931	553.83
State Government	7	27	27	27	250,183	712.77
Other	25	71	73	72	503,244	537.65
<b>PULASKI COUNTY - TOTAL</b>	<b>14,257</b>	<b>235,819</b>	<b>239,583</b>	<b>242,372</b>	<b>\$2,758,968,365</b>	<b>\$887.03</b>
Natural Resources & Mining	53	645	634	636	9,483,003	1,142.76
Construction	933	9,102	9,046	8,999	110,812,148	941.98
Manufacturing	338	12,740	12,700	12,702	168,624,448	1,020.22
Trade, Transportation & Utilities	3,138	48,406	48,710	48,524	517,604,552	820.15
Wholesale Trade	941	11,628	11,664	11,585	184,661,434	1,221.84
Retail Trade	1,807	25,493	25,728	25,510	188,163,967	565.90
Transportation, Warehousing & Utilities	390	11,285	11,318	11,429	144,779,151	981.74
Information	202	5,275	5,198	5,135	76,587,730	1,132.37
Financial Activities	1,675	16,802	16,753	16,667	272,468,026	1,251.99
Professional & Business Services	2,716	34,101	34,544	34,599	391,703,689	875.53
Education & Health Services	2,517	40,626	40,939	41,310	502,879,188	944.45
Leisure & Hospitality	1,228	23,945	23,978	23,454	105,915,128	342.43
Other Services	1,148	6,961	6,853	6,650	64,113,060	722.99
Local Government	110	9,828	12,411	15,472	139,498,767	853.65
State Government	199	27,388	27,817	28,224	399,278,626	1,104.43

TABLE 6. COUNTY SUMMARY

North American Industry Classification System - Industry Groups	Number of Employing Units	Employment			Total Earnings	Average Weekly Earnings
		Jul	Aug	Sep	Jul - Sep 2017	
<b>RANDOLPH COUNTY - TOTAL</b>	<b>394</b>	<b>5,184</b>	<b>5,338</b>	<b>5,426</b>	<b>\$40,414,393</b>	<b>\$584.80</b>
Natural Resources & Mining	28	221	222	226	2,571,167	886.92
Construction	29	119	113	112	931,260	624.73
Manufacturing	26	1,240	1,284	1,308	10,742,692	646.94
Trade, Transportation & Utilities	89	878	878	875	6,458,731	566.51
Wholesale Trade	16	139	134	134	1,181,484	669.90
Retail Trade	55	601	600	595	3,473,559	446.32
Transportation, Warehousing & Utilities	18	138	144	146	1,803,688	972.51
Information	5	27	29	27	312,260	868.19
Financial Activities	34	161	159	157	1,346,567	651.46
Professional & Business Services	35	272	279	266	1,841,941	520.27
Education & Health Services	65	906	933	933	7,193,414	598.85
Leisure & Hospitality	32	397	386	379	1,375,599	273.19
Other Services	17	60	63	60	427,733	539.39
Local Government	24	645	732	798	4,424,162	469.41
State Government	10	258	260	285	2,788,867	801.48
<b>SAINT FRANCIS COUNTY - TOTAL</b>	<b>726</b>	<b>6,483</b>	<b>6,760</b>	<b>6,796</b>	<b>\$51,908,490</b>	<b>\$597.78</b>
Natural Resources & Mining	43	215	218	236	2,212,030	763.03
Construction	39	197	208	196	2,024,666	777.42
Trade, Transportation & Utilities	151	1,893	1,911	1,862	14,393,253	586.22
Wholesale Trade	29	566	555	534	5,348,526	745.79
Retail Trade	100	1,042	1,070	1,037	5,900,671	432.42
Transportation, Warehousing & Utilities	22	285	286	291	3,144,056	841.71
Information	5	50	51	50	479,967	733.52
Financial Activities	63	242	246	241	1,906,419	603.49
Professional & Business Services	47	137	141	137	1,286,752	715.52
Education & Health Services	253	1,504	1,502	1,481	12,454,618	640.55
Leisure & Hospitality	46	647	677	667	2,223,862	257.76
Local Government	28	528	749	862	5,681,836	612.99
State Government	16	446	451	467	4,091,943	692.30
Other	35	624	606	597	5,153,144	650.90

TABLE 6. COUNTY SUMMARY

North American Industry Classification System - Industry Groups	Number of Employing Units	Employment			Total Earnings	Average Weekly Earnings
		Jul	Aug	Sep	Jul - Sep 2017	
<b>SALINE COUNTY - TOTAL</b>	<b>2,037</b>	<b>22,736</b>	<b>24,135</b>	<b>24,444</b>	<b>\$202,006,529</b>	<b>\$653.68</b>
Natural Resources & Mining	13	55	55	51	524,856	752.30
Construction	277	2,134	2,093	2,103	22,174,357	808.40
Manufacturing	83	1,428	1,421	1,403	16,853,049	914.67
Trade, Transportation & Utilities	457	5,483	5,573	5,543	44,433,027	617.73
Wholesale Trade	115	666	660	656	8,150,920	949.03
Retail Trade	280	4,325	4,417	4,382	31,026,227	545.56
Transportation, Warehousing & Utilities	62	492	496	505	5,255,880	812.39
Information	17	169	172	170	1,996,190	901.49
Financial Activities	201	756	751	746	8,431,199	863.59
Professional & Business Services	268	1,583	1,629	1,569	16,231,619	783.47
Education & Health Services	324	4,544	4,525	4,604	40,404,737	681.94
Leisure & Hospitality	193	3,475	3,608	3,574	13,527,277	292.92
Other Services	158	837	809	804	6,514,963	613.65
Local Government	31	1,386	2,596	2,971	23,073,168	765.80
State Government	15	886	903	906	7,842,087	671.51
<b>SCOTT COUNTY - TOTAL</b>	<b>178</b>	<b>2,779</b>	<b>2,852</b>	<b>2,976</b>	<b>\$20,334,770</b>	<b>\$545.21</b>
Natural Resources & Mining	17	156	159	158	1,629,058	794.79
Trade, Transportation & Utilities	33	366	353	334	2,320,943	508.64
Wholesale Trade	6	31	35	39	189,663	416.84
Retail Trade	21	266	246	229	1,344,195	418.62
Transportation, Warehousing & Utilities	6	69	72	66	787,085	877.46
Financial Activities	19	63	64	62	452,772	552.84
Professional & Business Services	12	100	100	95	699,679	547.34
Education & Health Services	44	321	320	321	3,088,809	740.96
Leisure & Hospitality	14	127	124	136	505,436	301.39
Other Services	9	27	28	27	202,913	571.05
Local Government	6	291	373	517	2,506,708	489.81
State Government	6	29	29	29	292,491	775.84
Other	18	1,299	1,302	1,297	8,635,961	511.27

TABLE 6. COUNTY SUMMARY

North American Industry Classification System - Industry Groups	Number of Employing Units	Employment			Total Earnings Jul - Sep 2017	Average Weekly Earnings
		Jul	Aug	Sep		
<b>SEARCY COUNTY - TOTAL</b>	<b>162</b>	<b>1,400</b>	<b>1,565</b>	<b>1,527</b>	<b>\$9,390,669</b>	<b>\$482.43</b>
Construction	10	12	9	11	61,592	444.17
Manufacturing	17	200	191	190	1,272,475	505.42
Trade, Transportation & Utilities	36	228	227	222	1,389,340	473.58
Wholesale Trade	7	40	39	38	234,630	462.78
Retail Trade	24	174	173	169	983,687	439.93
Transportation, Warehousing & Utilities	5	14	15	15	171,023	896.97
Financial Activities	11	87	82	67	509,387	498.10
Education & Health Services	40	357	357	349	2,331,571	506.17
Leisure & Hospitality	12	167	167	156	544,035	256.22
Other Services	3	8	8	8	49,296	474.00
Local Government	10	160	310	306	1,801,864	535.84
State Government	6	43	43	43	403,782	722.33
Other	17	138	171	175	1,027,327	489.83
<b>SEBASTIAN COUNTY - TOTAL</b>	<b>3,660</b>	<b>63,491</b>	<b>65,096</b>	<b>64,795</b>	<b>\$655,038,288</b>	<b>\$781.68</b>
Natural Resources & Mining	42	528	505	458	8,122,216	1,257.11
Construction	258	2,376	2,384	2,346	24,746,500	803.65
Manufacturing	187	11,904	11,917	11,809	144,436,650	935.49
Trade, Transportation & Utilities	897	13,241	13,278	13,136	124,136,149	722.40
Wholesale Trade	233	2,576	2,595	2,562	32,643,811	974.16
Retail Trade	555	7,953	7,969	7,864	50,461,535	489.57
Transportation, Warehousing & Utilities	109	2,712	2,714	2,710	41,030,803	1,163.80
Information	41	930	936	909	15,049,007	1,251.48
Financial Activities	403	2,423	2,405	2,401	27,979,891	893.19
Professional & Business Services	559	8,409	8,441	8,411	78,700,108	718.96
Education & Health Services	593	11,440	11,462	11,383	141,968,493	955.58
Leisure & Hospitality	347	6,211	6,252	6,061	24,664,282	307.26
Other Services	267	1,369	1,328	1,344	9,855,968	562.84
Local Government	43	2,980	4,486	4,725	36,244,184	686.08
State Government	23	1,680	1,702	1,812	19,134,840	850.16

TABLE 6. COUNTY SUMMARY

North American Industry Classification System - Industry Groups	Number of Employing Units	Employment			Total Earnings	Average Weekly Earnings
		Jul	Aug	Sep	Jul - Sep 2017	
<b>SEVIER COUNTY - TOTAL</b>	<b>302</b>	<b>4,592</b>	<b>4,732</b>	<b>4,874</b>	<b>\$36,116,832</b>	<b>\$587.03</b>
Natural Resources & Mining	15	166	168	176	1,537,544	695.72
Construction	18	198	200	205	2,294,391	878.07
Trade, Transportation & Utilities	89	837	845	846	6,673,699	609.21
Wholesale Trade	13	101	101	100	1,787,562	1,365.94
Retail Trade	62	660	671	672	3,946,774	454.71
Transportation, Warehousing & Utilities	14	76	73	74	939,363	972.09
Financial Activities	24	203	192	184	1,842,055	734.18
Professional & Business Services	24	100	96	90	568,665	458.85
Education & Health Services	55	539	539	549	4,226,336	599.45
Leisure & Hospitality	24	309	320	337	967,721	231.18
Local Government	12	720	853	928	6,034,016	556.76
State Government	7	128	121	148	1,183,485	687.94
Other	34	1,392	1,398	1,411	10,788,920	592.66
<b>SHARP COUNTY - TOTAL</b>	<b>395</b>	<b>3,630</b>	<b>3,689</b>	<b>3,909</b>	<b>\$26,517,825</b>	<b>\$545.02</b>
Construction	30	141	142	143	1,425,596	772.26
Manufacturing	21	194	192	192	1,224,734	488.98
Trade, Transportation & Utilities	82	1,099	1,073	1,072	8,828,394	628.03
Wholesale Trade	12	37	30	37	201,250	446.56
Retail Trade	58	663	665	672	3,610,676	416.62
Transportation, Warehousing & Utilities	12	399	378	363	5,016,468	1,015.48
Information	7	28	29	34	294,273	746.25
Financial Activities	35	177	178	177	1,821,616	790.17
Professional & Business Services	34	128	127	121	942,192	578.27
Education & Health Services	88	800	830	829	5,864,687	550.38
Leisure & Hospitality	36	420	411	388	1,441,446	272.88
Local Government	24	437	504	757	3,702,499	503.19
State Government	7	53	55	55	495,647	701.72
Other	31	153	148	141	476,741	248.91

TABLE 6. COUNTY SUMMARY

North American Industry Classification System - Industry Groups	Number of Employing Units	Employment			Total Earnings	Average Weekly Earnings
		Jul	Aug	Sep	Jul - Sep 2017	
<b>STONE COUNTY - TOTAL</b>	<b>267</b>	<b>2,419</b>	<b>2,570</b>	<b>2,595</b>	<b>\$17,118,339</b>	<b>\$520.88</b>
Natural Resources & Mining	5	11	8	8	48,520	414.70
Construction	14	36	36	38	208,009	436.38
Manufacturing	19	198	206	202	1,236,777	470.97
Trade, Transportation & Utilities	70	599	595	595	3,879,446	500.42
Wholesale Trade	7	39	35	29	277,970	622.79
Retail Trade	52	522	521	526	3,179,688	467.67
Transportation, Warehousing & Utilities	11	38	39	40	421,788	831.93
Financial Activities	27	143	145	147	1,688,245	895.62
Professional & Business Services	11	28	27	26	146,315	416.85
Education & Health Services	54	533	559	554	4,673,131	655.17
Leisure & Hospitality	29	478	461	458	1,529,619	252.68
Local Government	10	221	356	390	2,423,037	578.24
State Government	7	127	130	129	959,548	573.66
Other	21	45	47	48	325,692	536.85
<b>UNION COUNTY - TOTAL</b>	<b>1,286</b>	<b>16,461</b>	<b>17,146</b>	<b>17,412</b>	<b>\$188,608,194</b>	<b>\$853.11</b>
Natural Resources & Mining	81	385	381	383	4,451,940	894.14
Construction	82	1,427	1,426	1,443	19,382,426	1,041.17
Manufacturing	50	3,023	3,030	2,994	46,592,578	1,188.48
Trade, Transportation & Utilities	304	3,398	3,414	3,367	31,781,606	720.52
Wholesale Trade	65	514	521	510	6,390,813	954.57
Retail Trade	177	2,020	2,029	2,009	12,536,849	477.57
Transportation, Warehousing & Utilities	62	864	864	848	12,853,944	1,151.51
Information	8	122	123	121	1,125,935	709.92
Financial Activities	102	607	604	603	6,795,303	864.47
Professional & Business Services	131	1,921	1,988	2,020	32,505,579	1,265.19
Education & Health Services	295	2,333	2,387	2,354	20,905,282	681.98
Leisure & Hospitality	91	1,379	1,343	1,331	5,621,055	320.05
Other Services	94	432	429	428	3,061,143	548.04
Local Government	32	939	1,527	1,830	11,347,678	609.57
State Government	16	495	494	538	5,037,669	761.32

TABLE 6. COUNTY SUMMARY

North American Industry Classification System - Industry Groups	Number of Employing Units	Employment			Total Earnings	Average Weekly Earnings
		Jul	Aug	Sep	Jul - Sep 2017	
<b>VAN BUREN COUNTY - TOTAL</b>	<b>350</b>	<b>3,334</b>	<b>3,484</b>	<b>3,653</b>	<b>\$27,953,936</b>	<b>\$616.07</b>
Natural Resources & Mining	10	136	136	135	2,522,875	1,430.47
Construction	39	170	163	161	1,230,759	574.94
Manufacturing	7	123	126	133	968,093	584.83
Trade, Transportation & Utilities	97	1,024	1,009	1,010	9,234,948	700.34
Wholesale Trade	11	92	97	88	1,121,577	934.39
Retail Trade	57	616	602	616	3,352,483	421.84
Transportation, Warehousing & Utilities	29	316	310	306	4,760,888	1,178.83
Information	4	28	28	31	58,373	154.84
Financial Activities	30	111	108	108	1,057,211	746.09
Professional & Business Services	35	157	168	162	1,161,101	550.20
Education & Health Services	64	748	753	767	5,689,304	578.89
Leisure & Hospitality	27	387	381	374	1,537,859	310.76
Other Services	20	52	52	51	355,517	529.31
Local Government	11	355	516	677	3,701,958	551.87
State Government	6	43	44	44	435,938	767.95
<b>WASHINGTON COUNTY - TOTAL</b>	<b>5,925</b>	<b>99,130</b>	<b>103,239</b>	<b>105,142</b>	<b>\$1,082,557,710</b>	<b>\$812.40</b>
Natural Resources & Mining	39	307	308	312	3,849,376	958.27
Construction	555	5,398	5,375	5,290	64,212,380	922.51
Manufacturing	210	12,634	12,722	12,777	136,751,281	827.58
Trade, Transportation & Utilities	1,361	22,840	23,166	22,941	222,106,020	743.40
Wholesale Trade	377	3,866	3,905	3,899	65,168,712	1,288.68
Retail Trade	785	12,673	12,842	12,762	87,286,323	526.24
Transportation, Warehousing & Utilities	199	6,301	6,419	6,280	69,650,985	845.96
Information	74	899	905	886	10,426,318	894.45
Financial Activities	653	3,609	3,621	3,579	42,472,566	906.78
Professional & Business Services	1,067	13,132	13,286	13,274	202,014,822	1,174.51
Education & Health Services	845	15,379	15,427	15,663	177,476,321	881.36
Leisure & Hospitality	649	12,219	12,894	13,125	52,974,151	319.70
Other Services	389	2,035	2,031	2,076	16,687,058	626.97
Local Government	60	4,441	6,682	8,187	64,229,617	767.59
State Government	23	6,237	6,822	7,032	89,357,800	1,026.38

TABLE 6. COUNTY SUMMARY

North American Industry Classification System - Industry Groups	Number of Employing Units	Employment			Total Earnings	Average Weekly Earnings
		Jul	Aug	Sep	Jul - Sep 2017	
<b>WHITE COUNTY - TOTAL</b>	<b>1,784</b>	<b>22,240</b>	<b>23,494</b>	<b>23,966</b>	<b>\$204,878,909</b>	<b>\$678.33</b>
Natural Resources & Mining	52	289	281	285	3,422,282	923.69
Construction	156	1,050	1,051	1,029	11,031,499	813.33
Manufacturing	59	2,154	2,121	2,106	25,223,452	912.21
Trade, Transportation & Utilities	478	6,145	6,135	6,169	52,137,695	652.16
Wholesale Trade	88	588	596	596	6,085,188	788.92
Retail Trade	301	3,470	3,455	3,492	22,852,147	506.25
Transportation, Warehousing & Utilities	89	2,087	2,084	2,081	23,200,360	856.35
Information	17	135	130	127	1,097,093	645.86
Financial Activities	169	859	868	854	9,130,036	816.32
Professional & Business Services	188	1,236	1,230	1,223	10,343,216	647.03
Education & Health Services	321	5,435	5,503	5,645	54,995,778	765.32
Leisure & Hospitality	167	2,606	2,693	2,807	9,734,567	277.13
Other Services	116	509	502	492	4,313,280	662.26
Local Government	46	1,398	2,529	2,703	18,976,824	660.52
State Government	15	424	451	526	4,473,187	736.81
<b>WOODRUFF COUNTY - TOTAL</b>	<b>200</b>	<b>1,624</b>	<b>1,746</b>	<b>1,766</b>	<b>\$14,581,037</b>	<b>\$655.15</b>
Natural Resources & Mining	27	130	126	131	984,043	586.79
Construction	9	43	41	41	338,706	625.30
Manufacturing	6	194	195	196	2,339,094	922.72
Trade, Transportation & Utilities	47	400	397	408	3,570,593	683.80
Wholesale Trade	11	137	138	147	1,799,244	983.91
Retail Trade	27	193	189	190	879,490	354.82
Transportation, Warehousing & Utilities	9	70	70	71	891,859	975.42
Financial Activities	11	68	66	64	624,010	727.28
Education & Health Services	61	248	252	251	1,992,691	612.32
Leisure & Hospitality	9	72	78	74	261,481	269.38
Local Government	9	319	440	448	2,743,574	524.55
State Government	5	27	29	29	290,854	789.65
Other	16	123	122	124	1,435,991	898.06



TABLE 6. COUNTY SUMMARY

North American Industry Classification System - Industry Groups	Number of Employing Units	Employment			Total Earnings	Average Weekly Earnings
		Jul	Aug	Sep	Jul - Sep 2017	
<b>YELL COUNTY - TOTAL</b>	<b>409</b>	<b>6,154</b>	<b>6,341</b>	<b>6,544</b>	<b>\$46,351,879</b>	<b>\$561.83</b>
Natural Resources & Mining	23	213	213	213	2,150,167	776.51
Construction	30	264	250	249	2,416,790	730.96
Manufacturing	20	2,429	2,436	2,426	18,134,412	573.98
Trade, Transportation & Utilities	80	762	763	760	5,143,704	519.48
Wholesale Trade	15	66	65	64	288,060	340.90
Retail Trade	49	518	522	522	2,595,740	383.49
Transportation, Warehousing & Utilities	16	178	176	174	2,259,904	987.72
Financial Activities	29	118	123	123	1,046,074	663.19
Professional & Business Services	40	290	289	287	2,502,445	666.84
Education & Health Services	107	792	803	813	5,166,438	495.12
Leisure & Hospitality	27	337	328	328	997,694	231.86
Local Government	25	757	946	1,158	6,995,842	564.29
State Government	10	69	69	69	525,671	586.03
Other	18	123	121	118	1,272,642	811.29
<b>STATEWIDE COUNTY - TOTAL</b>	<b>9,545</b>	<b>31,332</b>	<b>31,839</b>	<b>35,235</b>	<b>\$485,823,720</b>	<b>\$1,139.29</b>
Natural Resources & Mining	95	290	269	269	4,882,082	1,360.67
Construction	772	3,942	4,052	4,202	61,214,208	1,158.28
Manufacturing	45	128	125	119	3,311,923	2,054.54
Trade, Transportation & Utilities	3,191	8,342	8,455	8,544	180,316,061	1,642.06
Wholesale Trade	2,778	6,788	6,793	6,871	158,014,402	1,782.95
Retail Trade	148	491	508	531	7,685,277	1,159.17
Transportation, Warehousing & Utilities	265	1,063	1,154	1,142	14,616,382	1,004.17
Information	280	555	551	562	11,860,653	1,640.93
Financial Activities	612	1,602	1,621	1,565	26,772,886	1,290.38
Professional & Business Services	3,672	12,391	12,539	15,665	150,609,194	856.16
Education & Health Services	454	2,507	2,552	2,527	27,622,289	840.28
Leisure & Hospitality	96	182	188	239	1,626,154	616.20
State Government	14	752	763	764	8,702,352	881.19
Other	314	641	724	779	8,905,918	1,028.79

Note: Statewide classification includes employment and payroll data for employers that have not provided a physical location for each employing unit. This section also includes employers without a physical location in Arkansas.

**TABLE 7. FEDERAL GOVERNMENT EMPLOYMENT AND EARNINGS IN ARKANSAS**

North American Industry Classification System - Industry Groups	Number of Employing Units	Employment			Total Earnings Jul - Sep 2017	Average Weekly Earnings
		Jul	Aug	Sep		
<b>TOTAL</b>	<b>1,162</b>	<b>20,044</b>	<b>19,988</b>	<b>19,995</b>	<b>\$333,143,262</b>	<b>\$1,280.74</b>
Trade, Transportation & Utilities	593	5,616	5,561	5,595	64,638,721	889.38
Information	2	44	44	44	739,106	1,292.14
Financial Activities	14	110	109	107	2,339,530	1,656.11
Professional & Business Services	34	824	820	799	16,126,471	1,523.33
Education & Health Services	18	5,074	5,157	5,151	95,111,614	1,426.92
Leisure & Hospitality	23	333	322	317	3,664,410	869.99
Other Services	1	1	1	1	8,917	685.92
Public Administration	477	8,042	7,974	7,981	150,514,493	1,447.44

TABLE 8. LOCAL WORKFORCE DEVELOPMENT AREA SUMMARY

North American Industry Classification System - Industry Groups	Number of Employing Units	Employment			Total Earnings	Average Weekly Earnings
		Jul	Aug	Sep	Jul - Sep 2017	
<b>CENTRAL LOCAL WORKFORCE DEVELOPMENT AREA</b>	<b>6,690</b>	<b>78,086</b>	<b>80,381</b>	<b>82,369</b>	<b>720,496,832</b>	<b>\$690.38</b>
Natural Resources & Mining	216	1,225	1,211	1,200	15,377,533	975.98
Construction	741	5,860	5,821	5,852	65,640,084	863.95
Trade, Transportation & Utilities	1,535	16,498	16,656	16,643	129,686,735	600.99
Wholesale Trade	354	1,916	1,890	1,871	23,840,599	969.12
Retail Trade	938	12,862	13,045	13,040	85,650,960	507.50
Transportation, Warehousing & Utilities	243	1,720	1,721	1,732	20,195,176	900.91
Information	55	565	569	564	6,902,205	938.05
Financial Activities	699	3,019	3,028	3,000	34,314,702	875.29
Professional & Business Services	878	7,828	7,791	7,672	98,743,521	978.36
Education & Health Services	1,090	13,852	13,830	13,932	121,363,999	673.02
Leisure & Hospitality	603	10,771	10,871	10,872	40,529,890	287.66
Local Government	134	5,817	7,995	9,731	68,176,872	668.27
State Government	60	4,223	4,225	4,551	44,891,669	796.95
Other	679	8,428	8,384	8,352	94,869,622	870.01

Note: Pulaski County is not included in the Central Local Workforce Development Area. Please refer to Page 51 for information on Pulaski County.  
Central Local Workforce Development Area includes these counties: Faulkner, Lonoke, Monroe, Prairie, and Saline.

<b>EASTERN LOCAL WORKFORCE DEVELOPMENT AREA</b>	<b>3,491</b>	<b>33,521</b>	<b>34,737</b>	<b>35,510</b>	<b>\$283,202,337</b>	<b>\$629.81</b>
Natural Resources & Mining	239	1,189	1,205	1,262	9,707,771	612.76
Construction	142	924	978	905	9,932,743	816.59
Trade, Transportation & Utilities	766	9,284	9,082	9,048	78,120,777	657.62
Wholesale Trade	156	2,029	2,001	1,965	23,004,529	885.53
Retail Trade	430	4,913	4,735	4,715	27,546,518	442.59
Transportation, Warehousing & Utilities	180	2,342	2,346	2,368	27,569,730	901.68
Financial Activities	263	1,250	1,249	1,232	11,375,799	703.61
Professional & Business Services	246	1,788	1,753	1,718	14,815,044	650.10
Education & Health Services	1,128	6,303	6,387	6,359	49,553,099	600.31
Leisure & Hospitality	248	3,776	3,803	3,795	15,887,486	322.34
Local Government	129	2,733	3,966	4,845	30,837,546	616.46
State Government	58	1,929	2,008	2,026	17,953,344	694.80
Other	272	4,345	4,306	4,320	45,018,728	800.94

Eastern Local Workforce Development Area includes these counties: Crittenden, Cross, Lee, Phillips, and Saint Francis.

TABLE 8. LOCAL WORKFORCE DEVELOPMENT AREA SUMMARY

North American Industry Classification System - Industry Groups	Number of Employing Units	Employment			Total Earnings	Average Weekly Earnings
		Jul	Aug	Sep	Jul - Sep 2017	
<b>NORTH CENTRAL LOCAL WORKFORCE DEVELOPMENT AREA</b>	<b>5,420</b>	<b>63,731</b>	<b>66,332</b>	<b>68,249</b>	<b>\$557,023,973</b>	<b>\$648.19</b>
Construction	427	2,462	2,472	2,467	25,241,267	787.04
Manufacturing	216	8,205	8,187	8,113	85,425,885	804.48
Trade, Transportation & Utilities	1,360	15,260	15,269	15,288	126,732,116	638.32
Retail Trade	880	9,496	9,507	9,582	59,576,801	480.97
Other Trade, Transportation & Utilities	480	5,764	5,762	5,706	67,155,315	899.34
Financial Activities	508	2,554	2,566	2,540	26,779,825	806.78
Education & Health Services	1,017	14,199	14,414	14,596	132,565,313	708.00
Leisure & Hospitality	486	6,807	6,904	6,875	24,732,568	277.25
Local Government	225	4,918	7,271	8,935	53,112,037	580.22
State Government	92	2,448	2,545	2,791	23,784,817	705.14
Other	1,089	6,878	6,704	6,644	58,650,145	669.17

North Central Local Workforce Development Area includes these counties: Cleburne, Fulton, Independence, IZard, Jackson, Sharp, Stone, Van Buren, White, and Woodruff.

North American Industry Classification System - Industry Groups	Number of Employing Units	Employment			Total Earnings	Average Weekly Earnings
		Jul	Aug	Sep	Jul - Sep 2017	
<b>NORTHEAST LOCAL WORKFORCE DEVELOPMENT AREA</b>	<b>6,560</b>	<b>96,335</b>	<b>99,807</b>	<b>102,227</b>	<b>\$937,800,140</b>	<b>\$725.33</b>
Natural Resources & Mining	442	2,226	2,134	2,207	20,941,429	735.90
Construction	464	3,697	3,710	3,909	43,873,042	894.71
Manufacturing	304	20,367	20,568	20,730	264,314,981	989.15
Trade, Transportation & Utilities	1,746	19,327	19,401	19,391	157,177,422	624.09
Wholesale Trade	371	3,353	3,300	3,296	39,373,879	913.29
Retail Trade	1,018	12,543	12,632	12,574	76,787,165	469.42
Transportation, Warehousing & Utilities	357	3,431	3,469	3,521	41,016,378	908.29
Financial Activities	554	3,210	3,201	3,163	33,725,036	812.90
Professional & Business Services	664	7,585	7,689	7,742	59,193,018	593.50
Education & Health Services	1,145	16,784	17,051	17,264	185,456,808	837.55
Leisure & Hospitality	554	9,146	9,511	9,527	34,422,674	281.85
Local Government	213	7,668	10,032	11,513	75,768,990	598.54
State Government	95	4,189	4,361	4,622	45,018,564	788.71
Other	379	2,136	2,149	2,159	17,908,176	641.32

Northeast Local Workforce Development Area includes these counties: Clay, Craighead, Greene, Lawrence, Mississippi, Poinsett, and Randolph.

TABLE 8. LOCAL WORKFORCE DEVELOPMENT AREA SUMMARY

North American Industry Classification System - Industry Groups	Number of Employing Units	Employment			Total Earnings	Average Weekly Earnings
		Jul	Aug	Sep	Jul - Sep 2017	
<b>NORTHWEST LOCAL WORKFORCE DEVELOPMENT AREA</b>	<b>16,149</b>	<b>260,347</b>	<b>267,352</b>	<b>272,369</b>	<b>\$2,894,568,343</b>	<b>\$834.90</b>
Natural Resources & Mining	135	1,458	1,406	1,415	17,829,760	961.57
Trade, Transportation & Utilities	3,904	60,272	60,647	60,364	630,951,537	803.19
Retail Trade	2,145	31,836	31,946	31,768	215,085,264	519.47
Other Trade, Transportation & Utilities	1,759	28,436	28,701	28,596	415,866,273	1,119.40
Information	207	2,436	2,439	2,400	29,964,135	950.49
Professional & Business Services	2,665	48,402	48,634	48,455	797,701,511	1,265.27
Education & Health Services	2,359	33,941	34,238	34,773	358,035,374	802.54
Leisure & Hospitality	1,725	30,333	31,073	31,103	130,863,196	326.45
Other Services	1,005	5,009	4,971	5,025	40,692,992	625.84
Local Government	305	13,711	18,464	22,904	171,943,241	720.41
State Government	104	8,317	8,959	9,471	110,519,743	953.55
Other	3,740	56,468	56,521	56,459	606,066,854	825.40

Northwest Local Workforce Development Area includes these counties: Baxter, Benton, Boone, Carroll, Madison, Marion, Newton, Searcy, and Washington.

<b>SOUTHEAST LOCAL WORKFORCE DEVELOPMENT AREA</b>	<b>6,168</b>	<b>64,666</b>	<b>66,949</b>	<b>68,888</b>	<b>\$615,134,094</b>	<b>\$707.99</b>
Natural Resources & Mining	430	2,233	2,223	2,294	22,306,787	762.63
Construction	303	2,209	2,154	2,223	24,965,696	874.78
Manufacturing	195	14,447	14,487	14,670	182,508,866	965.91
Trade, Transportation & Utilities	1,251	12,027	12,017	11,979	96,229,827	616.46
Retail Trade	740	7,451	7,457	7,386	44,635,053	462.03
Other Trade, Transportation & Utilities	511	4,576	4,560	4,593	51,594,774	867.25
Financial Activities	405	2,372	2,380	2,314	23,739,992	775.33
Education & Health Services	2,147	10,935	11,070	11,125	93,263,846	649.64
Other Services	303	1,178	1,145	1,169	8,502,373	561.88
Local Government	207	5,660	7,591	8,830	57,498,162	600.92
State Government	127	5,614	5,757	6,034	57,214,645	758.60
Other	800	7,991	8,125	8,250	48,903,900	463.17

Southeast Local Workforce Development Area includes these counties: Arkansas, Ashley, Bradley, Chicot, Cleveland, Desha, Drew, Grant, Jefferson, and Lincoln.

TABLE 8. LOCAL WORKFORCE DEVELOPMENT AREA SUMMARY

North American Industry Classification System - Industry Groups	Number of Employing Units	Employment			Total Earnings	Average Weekly Earnings
		Jul	Aug	Sep	Jul - Sep 2017	
<b>SOUTHWEST LOCAL WORKFORCE DEVELOPMENT AREA</b>	<b>5,655</b>	<b>73,965</b>	<b>75,835</b>	<b>77,743</b>	<b>\$714,335,219</b>	<b>\$724.46</b>
Natural Resources & Mining	335	2,213	2,192	2,200	23,884,803	834.50
Manufacturing	238	19,158	19,153	19,080	239,726,296	963.94
Trade, Transportation & Utilities	1,354	14,580	14,581	14,555	122,710,155	647.77
Wholesale Trade	237	1,842	1,854	1,832	22,064,004	921.07
Retail Trade	821	8,563	8,562	8,557	50,699,592	455.57
Transportation, Warehousing & Utilities	296	4,175	4,165	4,166	49,946,559	921.65
Information	51	475	471	462	5,161,217	845.92
Professional & Business Services	438	4,624	4,759	4,840	51,882,173	841.79
Education & Health Services	1,295	9,774	9,873	9,890	77,274,333	603.74
Leisure & Hospitality	403	5,814	5,809	5,861	21,661,096	285.90
Other Services	341	1,530	1,396	1,402	9,775,576	521.23
Local Government	254	6,490	8,213	9,869	62,950,323	591.20
State Government	131	3,505	3,519	3,705	34,801,091	748.53
Other	815	5,802	5,869	5,879	64,508,156	848.23

Southwest Local Workforce Development Area includes these counties: Calhoun, Columbia, Dallas, Hempstead, Howard, Lafayette, Little River, Miller, Nevada, Ouachita, Sevier, and Union

<b>WEST CENTRAL LOCAL WORKFORCE DEVELOPMENT AREA</b>	<b>8,186</b>	<b>101,360</b>	<b>103,353</b>	<b>105,578</b>	<b>\$896,906,053</b>	<b>\$667.05</b>
Construction	715	4,666	4,623	4,630	\$48,416,897	802.73
Manufacturing	328	16,233	16,216	16,217	168,173,143	797.46
Trade, Transportation & Utilities	1,820	21,130	21,193	21,125	181,782,297	661.17
Wholesale Trade	326	1,989	1,964	1,947	24,776,424	969.09
Retail Trade	1,207	13,890	13,978	13,876	88,240,257	487.81
Transportation, Warehousing & Utilities	287	5,251	5,251	5,302	68,765,616	1,004.11
Financial Activities	810	3,787	3,778	3,726	39,073,462	798.60
Professional & Business Services	930	7,372	7,279	7,234	66,262,709	698.72
Education & Health Services	1,583	17,093	17,171	17,352	164,287,870	734.51
Leisure & Hospitality	808	13,846	13,641	13,212	55,480,265	314.58
Local Government	233	7,048	9,158	11,642	79,457,205	658.44
State Government	114	4,868	5,180	5,578	48,355,627	714.13
Other	845	5,317	5,114	4,862	45,616,578	688.35

West Central Local Workforce Development Area includes these counties: Clark, Conway, Garland, Hot Spring, Johnson, Montgomery, Perry, Pike, Pope, and Yell

TABLE 8. LOCAL WORKFORCE DEVELOPMENT AREA SUMMARY

North American Industry Classification System - Industry Groups	Number of Employing Units	Employment			Total Earnings	Average Weekly Earnings
		Jul	Aug	Sep	Jul - Sep 2017	
<b>WESTERN LOCAL WORKFORCE DEVELOPMENT AREA</b>	<b>6,431</b>	<b>98,925</b>	<b>102,526</b>	<b>102,506</b>	<b>\$959,225,475</b>	<b>\$728.26</b>
Natural Resources & Mining	150	1,377	1,387	1,341	19,167,981	1,077.56
Trade, Transportation & Utilities	1,549	22,057	22,217	21,945	196,995,814	686.52
Wholesale Trade	359	3,527	3,565	3,517	43,628,350	949.01
Retail Trade	931	12,363	12,339	12,200	76,992,830	481.48
Transportation, Warehousing & Utilities	259	6,167	6,313	6,228	76,374,634	942.11
Financial Activities	669	3,515	3,508	3,497	37,888,460	831.13
Professional & Business Services	840	10,426	10,454	10,415	96,825,475	713.99
Education & Health Services	1,092	15,648	15,723	15,675	176,327,773	864.92
Leisure & Hospitality	558	9,150	9,203	9,027	35,137,687	296.15
Other Services	424	2,188	2,117	2,110	16,109,615	579.52
Local Government	154	5,769	9,026	9,596	67,769,942	641.19
State Government	72	2,788	2,811	2,967	27,970,154	753.52
Other	923	26,007	26,080	25,933	285,032,574	843.08

Western Local Workforce Development Area includes these counties: Crawford, Franklin, Logan, Polk, Scott, and Sebastian