

Arkansas Covered  
Employment  
& Earnings



Annual  
2016



**COVERED EMPLOYMENT AND EARNINGS  
STATE OF ARKANSAS  
ANNUAL 2016**

**ASA HUTCHINSON, GOVERNOR  
STATE OF ARKANSAS**

**DARYL E. BASSETT, DIRECTOR  
DEPARTMENT OF WORKFORCE SERVICES**

**PUBLISHED BY  
LABOR MARKET INFORMATION & ANALYSIS  
BUREAU OF LABOR STATISTICS PROGRAMS  
POST OFFICE BOX 2981  
LITTLE ROCK, ARKANSAS 72203-2981  
SUSAN PRICE, BLS PROGRAMS MANAGER  
TELEPHONE (501) 682-3103**

**STATE OF ARKANSAS WEBPAGE: <http://www.arkansas.gov>**

**DEPARTMENT OF WORKFORCE SERVICES WEBPAGE: <http://www.dws.arkansas.gov>**

**WEBPAGE FOR LABOR MARKET INFORMATION: <http://www.discover.arkansas.gov>**

**RELEASED: JULY 2017**



## TABLE OF CONTENTS

	Page
Description of Data	1
Industry Classification	1
Definition of Covered Employment and Earnings	2
Federal Government	2
County Classification	2
Significant Developments During Calendar Year 2016	3

## GRAPHS AND TABLES

Graph 1	Average Total Covered Employment for Selected Years, Arkansas	7
Graph 2	Total Covered Earnings, by Calendar Quarter for Selected Years, Arkansas	8
Table 1	Annual Comparison of Covered Employment and Wages, by Industry	5
Table 2	Total Covered Employment in Arkansas, 2009 – 2016	6
Table 3	Total Covered Earnings, 2009 – 2016	9
Table 4	Total Taxable Earnings, 2009 – 2016	10
Table 5	State Summary – Employment and Total Earnings, by Industry, Calendar Year 2016	11
Table 6	County Summary – Employment and Total Earnings, by Industry, Calendar Year 2016	22
Table 7	Federal Government Employment and Total Earnings in Arkansas, Calendar Year 2016	60
Table 8	Workforce Investment Area – Employment and Total Earnings, by Industry, Calendar Year 2016	61



EMPLOYMENT AND EARNINGS  
UNDER THE ARKANSAS EMPLOYMENT SECURITY LAW  
ANNUAL 2016

**DESCRIPTION AND CLASSIFICATION OF DATA**

This publication contains covered employment and payroll data by industry and county for the Calendar Year 2016 and a record for total covered employment by month, quarterly payroll data, average weekly earnings, and total taxable earnings for 2009 through 2016. These data are compiled from quarterly contributions and wage reports submitted by employers subject to the Arkansas Employment Security Law.

Employment data have been tabulated for each month of the quarter by industry under the **North American Industry Classification System** (NAICS) by state, county, and workforce area. Payroll data represent the total wages paid during the quarter and are classified by industry for the state and by publishable industry groups for each county and workforce area.

Due to industry classification revisions, previously published data will not always be comparable with current data. For this reason, comparisons should not be made between the same industries under different revisions. For more information, visit the NAICS home page at <http://www.census.gov/naics>.

Industry Classification Revisions

- SIC (Standard Industrial Classification) 1987 to NAICS 2002
- NAICS 2002 to NAICS 2007
- NAICS 2007 to NAICS 2012

The tabulation of this data is a joint effort in conjunction with the United States Bureau of Labor Statistics. Data included in this publication are subject to revisions. Revisions are typically reflected in the Annual Covered Employment and Earnings publication.

## DEFINITION OF COVERED EMPLOYMENT AND EARNINGS

Covered Employment is the total number of workers employed by establishments subject to the Arkansas Employment Security Law that worked or received pay for the payroll period including the 12<sup>th</sup> of the month. Earnings include all wages paid to any covered employee by their employer including salaries, bonuses, commissions, fees, fringe benefits, sick pay made directly to employees or dependents, deferred compensation, and reported tips. These wages include both taxable and nontaxable wages. Only the first \$12,000 paid to each worker by an employer in the calendar year is taxable under the Arkansas Employment Security Law.

An Arkansas state unemployment account is required of any entity meeting the definition of an employer. As described by Arkansas Department of Workforce Services Law, the definition of an employer includes, but is not limited to, a sole proprietorship, partnership, corporation, associations, trust, estate, and receiver or trustee in bankruptcy. The entity must employ one or more individuals for ten or more days in a calendar year, whether or not the days are consecutive.

Currently excluded from coverage is employment covered by the Railroad Unemployment Insurance Act, some domestic service workers, employees of small agricultural establishments, self-employed workers, unpaid family workers, insurance and real estate agents paid only on a commission basis, and employees of churches and religious organizations except separately incorporated schools.

Civilian federal workers are covered by Unemployment Compensation for Federal Employees (UCFE).

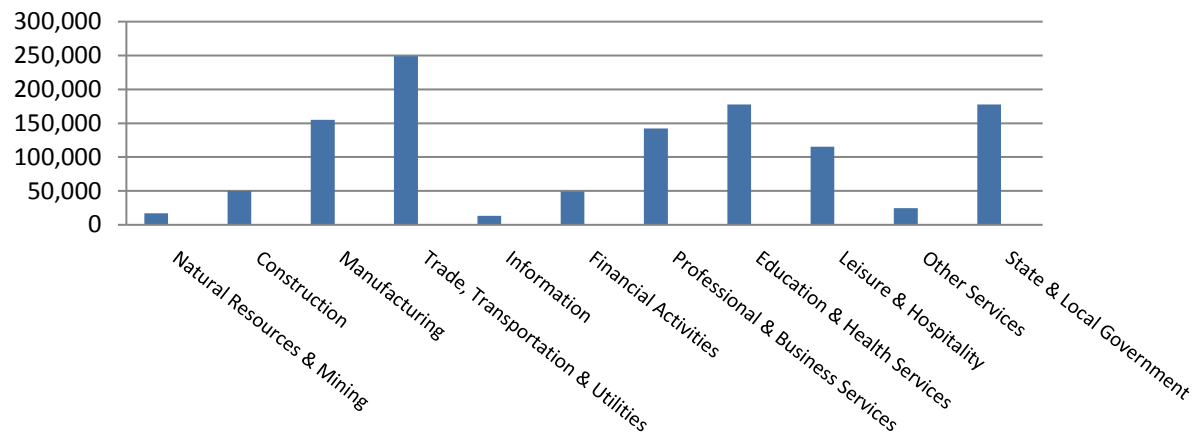


## SIGNIFICANT DEVELOPMENTS DURING CALENDAR YEAR 2016

### AVERAGE EMPLOYMENT CHANGES

Covered employment averaged 1,171,545 during the Calendar Year 2016 (see Table 1, page 5), an increase of 13,851 from the previous year. The greatest employment gain occurred in Education and Health Services (+5,859). The largest annual loss occurred in Natural Resources and Mining (-1,762).

### Average Covered Employment by NAICS



### EMPLOYMENT CHANGES FOR CALENDAR YEAR 2016

Seven of the eleven major industry sectors recorded over-the-year employment gains (see Table 1). The increase in Educational & Health Services brought the sector's employment average to 142,367; this growth was mainly due to the expansion in Health Care & Social Assistance. The Professional & Business Services subsector had an average of 142,367 jobs, an increase of 3,645 from 2015. Jobs in Leisure & Hospitality grew to 115,343. This increase can be attributed mainly to Accommodation & Food Services which expanded by 3,222 jobs.

Four major industry sectors experienced over-the-year losses. Natural Resources & Mining had the most significant decline in average employment (-1,762), almost all of the decline was centered in the Mining subsector. State & Local Government (-1,295), Trade, Transportation & Utilities (-80), and Financial Activities (-75) experiences job losses over the year.

## EMPLOYMENT CHANGES FOR CALENDAR YEAR 2016

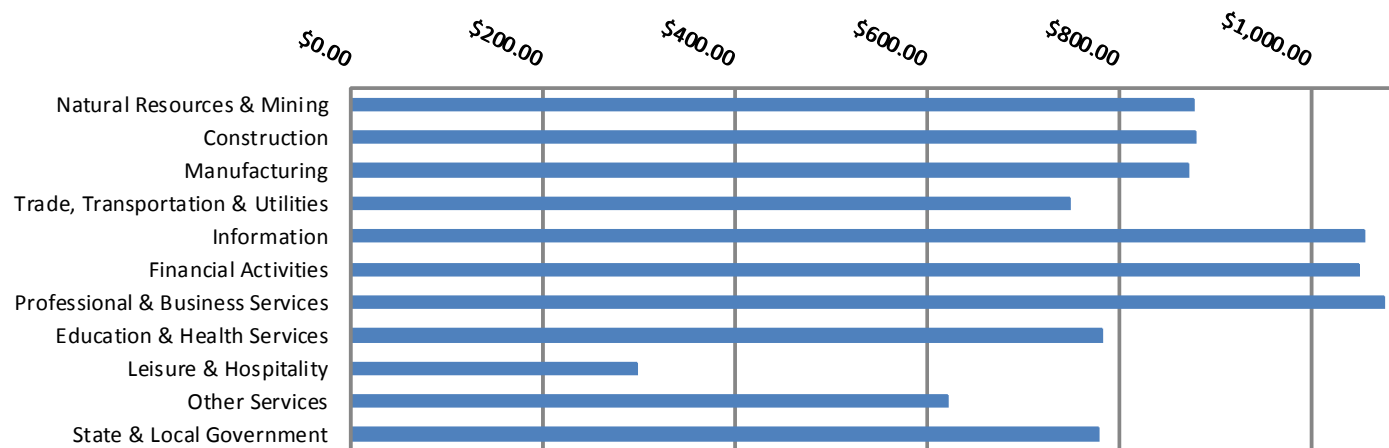
Pulaski County posted the highest average covered employment for Arkansas counties in 2016 at 238,363. Benton County averaged 114,159 in covered employment, slightly higher than Washington County with 101,141. Sebastian County had the fourth highest average covered employment with 65,438, followed by Craighead County with 48,328. All of the five leading counties experienced over the year growth in employment ranging from a low of 949 added jobs to 5,141.

## COVERED WAGES

Wages paid to covered workers totaled \$48,207,782,764 for the Calendar Year 2016 (see Table 1), for an average weekly wage of \$791.32 (see Table 5). Employees in Benton County recorded the highest average weekly wage (\$1,050.64), and workers in Newton County the lowest (\$461.08) (see Table 6).

The Professional & Business Services sector recorded the highest average weekly wage for the State of Arkansas at \$1,075.74. The Leisure and Hospitality sector reported the lowest average weekly wage at \$299.12 (see Table 5).

### Average Weekly Wage by Industry



**TABLE 1. YEARLY COMPARISON OF COVERED EMPLOYMENT AND WAGES, BY INDUSTRY**

North American Industry Classification System - Industry Groups	Number of Employing Units	Average Covered Employment	Percent of Total	Net Change From: 2015	Total Calendar Earnings 2016	Percent of Total	Average Weekly Earnings
<b>Total</b>	<b>87,400</b>	<b>1,171,545</b>	<b>100</b>	<b>13,851</b>	<b>\$48,207,782,764</b>	<b>100</b>	<b>\$791.32</b>
<b>Natural Resources &amp; Mining</b>	2,592	16,919	1.4	-1,762	772,847,274	1.6	878.45
Agriculture, Forestry, Fishing & Hunting	2,116	12,766	1.1	-12	501,564,094	1.0	755.56
Mining	476	4,153	0.4	-1,750	271,283,180	0.6	1,256.20
<b>Construction</b>	6,710	50,302	4.3	1,069	2,302,324,500	4.8	880.19
<b>Manufacturing</b>	2,943	154,791	13.2	-80	7,022,193,305	14.6	872.42
<b>Trade, Transportation &amp; Utilities</b>	21,460	249,050	21.3	983	9,710,031,742	20.1	749.77
Wholesale Trade	7,037	46,247	3.9	-994	3,047,160,100	6.3	1,267.09
Retail Trade	11,111	142,306	12.1	1,763	3,714,613,538	7.7	501.98
Transportation & Warehousing	2,888	52,783	4.5	450	2,310,838,968	4.8	841.92
Utilities	424	7,714	0.7	-236	637,419,136	1.3	1,589.07
<b>Information</b>	1,098	13,235	1.1	-75	725,892,822	1.5	1,054.74
<b>Financial Activities</b>	8,214	49,414	4.2	1,170	2,697,506,583	5.6	1,049.81
Finance & Insurance	4,900	36,117	3.1	988	2,212,983,694	4.6	1,178.32
Real Estate & Rental & Leasing	3,314	13,297	1.1	182	484,522,889	1.0	700.74
<b>Professional &amp; Business Services</b>	13,777	142,367	12.2	3,645	7,963,777,453	16.5	1,075.74
Professional & Technical Services	8,695	42,541	3.6	1,181	2,516,184,816	5.2	1,137.45
Management of Companies & Enterprises	531	35,040	3.0	1,633	3,642,500,180	7.6	1,999.09
Administrative & Waste Services	4,551	64,786	5.5	831	1,805,092,457	3.7	535.82
<b>Education &amp; Health Services</b>	15,287	177,885	15.2	5,859	7,235,281,788	15.0	782.19
Educational Services	802	11,178	1.0	279	392,405,915	0.8	675.10
Health Care & Social Assistance	14,485	166,707	14.2	5,580	6,842,875,873	14.2	789.37
<b>Leisure &amp; Hospitality</b>	6,903	115,343	9.8	3,634	1,794,088,504	3.7	299.12
Arts, Entertainment & Recreation	958	11,047	0.9	412	221,068,917	0.5	384.84
Accommodation & Food Services	5,945	104,296	8.9	3,222	1,573,019,587	3.3	290.04
<b>Other Services</b>	5,348	24,694	2.1	703	797,962,564	1.7	621.42
<b>State &amp; Local Government</b>	3,068	177,545	15.2	-1,295	7,185,876,229	14.9	778.34
Local Government	1,948	108,154	9.2	-515	4,078,260,026	8.5	725.15
State Government	1,120	69,391	5.9	-780	3,107,616,203	6.4	861.23
<b>Nonclassifiable Establishments</b>	0	0	0.0	0	0	0.0	0.00

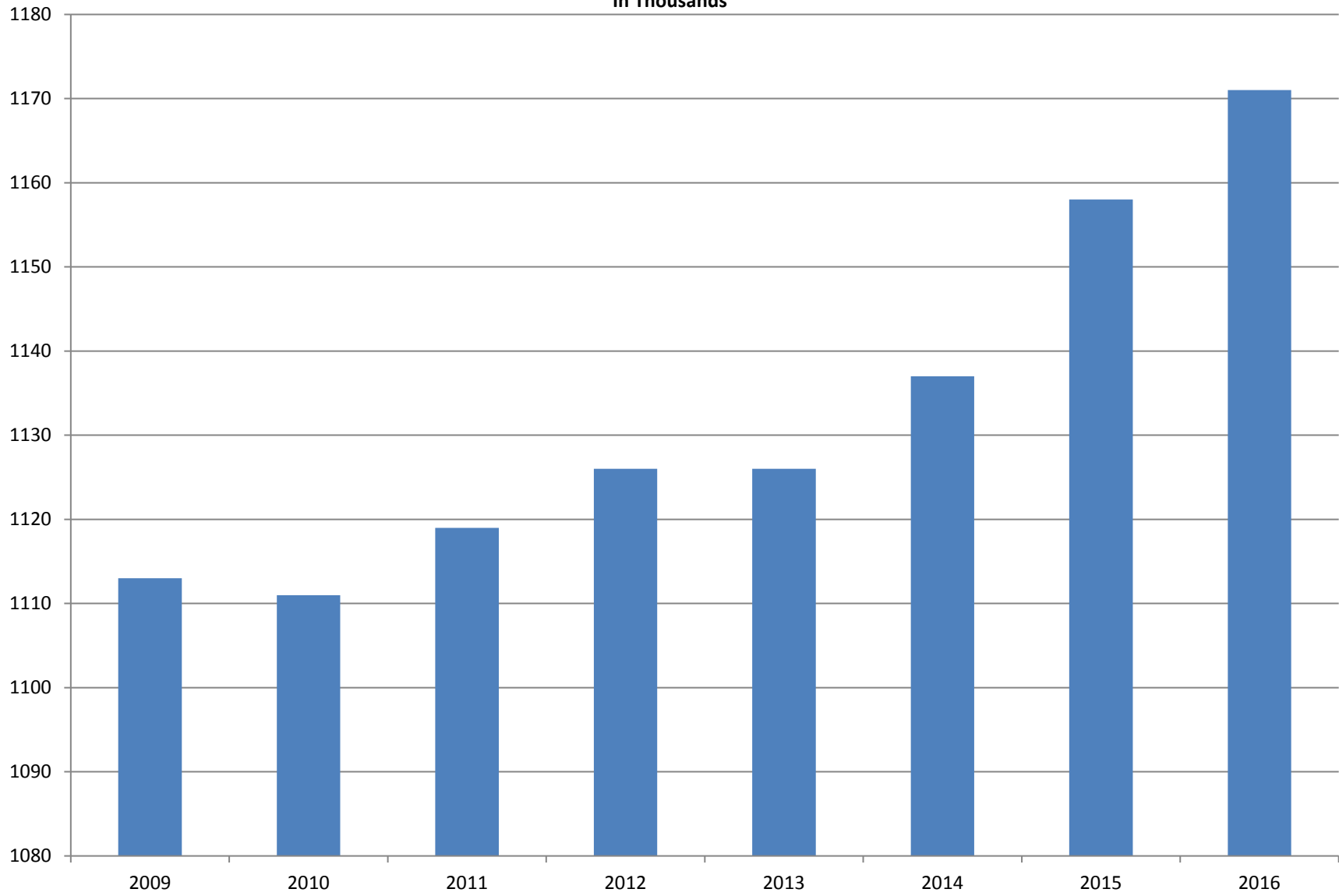
Note: Items do not necessarily add to total because of rounding. Because of industry code changes between years, substantial employment and wage shifts among industries are anticipated.

**TABLE 2. TOTAL COVERED EMPLOYMENT IN ARKANSAS**

<b>PERIOD</b>	<b>2009</b>	<b>2010</b>	<b>2011</b>	<b>2012</b>	<b>2013</b>	<b>2014</b>	<b>2015</b>	<b>2016</b>
<b>AVERAGE</b>	<b>1,112,591</b>	<b>1,110,947</b>	<b>1,118,639</b>	<b>1,126,171</b>	<b>1,125,890</b>	<b>1,137,486</b>	<b>1,157,634</b>	<b>1,171,286</b>
January	1,119,299	1,089,984	1,098,349	1,113,274	1,112,991	1,114,412	1,135,577	1,153,115
February	1,119,476	1,091,282	1,098,445	1,119,319	1,121,492	1,122,905	1,144,902	1,162,987
March	1,124,386	1,106,198	1,113,061	1,131,123	1,129,100	1,132,106	1,146,413	1,170,873
April	1,123,383	1,115,341	1,129,635	1,136,608	1,134,734	1,140,788	1,158,606	1,178,480
May	1,122,322	1,123,250	1,126,371	1,142,985	1,138,383	1,149,046	1,167,657	1,181,258
June	1,117,884	1,130,164	1,123,412	1,136,699	1,130,402	1,144,876	1,164,607	1,177,108
July	1,071,048	1,073,743	1,080,937	1,078,836	1,083,849	1,096,675	1,119,390	1,130,652
August	1,093,192	1,099,795	1,106,262	1,108,552	1,109,759	1,125,162	1,148,502	1,159,416
September	1,116,580	1,124,281	1,132,779	1,134,829	1,135,673	1,150,545	1,173,776	1,185,181
October	1,113,157	1,125,073	1,138,395	1,135,677	1,138,312	1,153,684	1,173,953	1,185,035
November	1,115,443	1,126,781	1,138,543	1,137,411	1,141,035	1,158,579	1,177,717	1,186,308
December	1,114,919	1,125,466	1,137,474	1,138,742	1,134,955	1,161,056	1,180,513	1,185,015

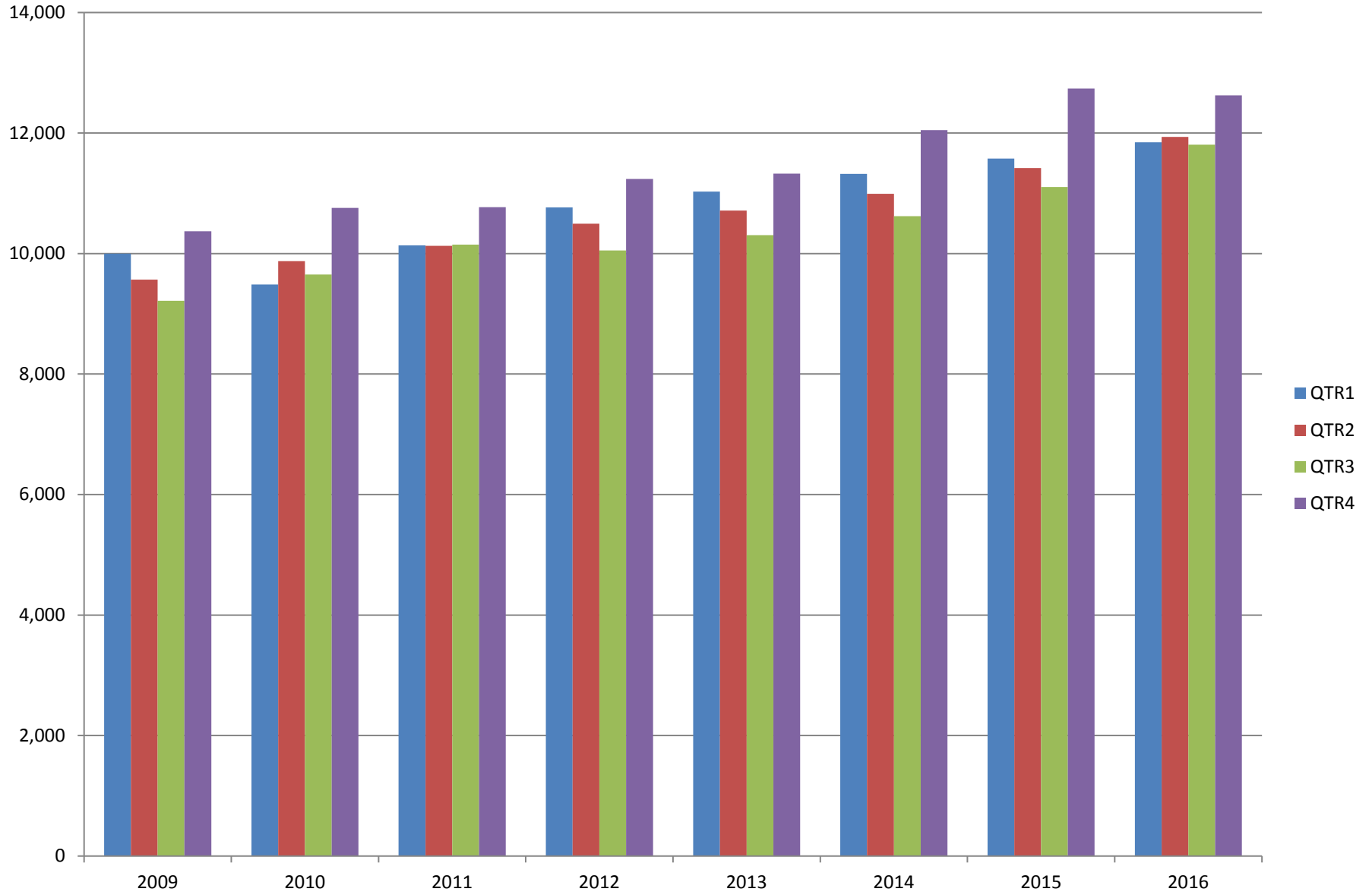
# AVERAGE TOTAL COVERED EMPLOYMENT

In Thousands



# TOTAL COVERED EARNINGS BY CALENDAR YEAR

In Thousands



**TABLE 3. TOTAL COVERED EARNINGS 2009 - 2016**

<b>PERIOD</b>	<b>2009</b>	<b>2010</b>	<b>2011</b>	<b>2012</b>
<b>TOTAL</b>	<b>\$39,149,476,305</b>	<b>\$39,769,504,992</b>	<b>\$41,177,659,236</b>	<b>\$42,551,238,929</b>
January - March	9,998,452,028	9,486,245,580	10,134,035,254	10,766,175,449
April - June	9,566,968,853	9,873,489,653	10,128,274,611	10,494,369,042
July - September	9,213,797,140	9,653,588,807	10,147,287,431	10,053,294,410
October - December	10,370,258,284	10,756,180,952	10,768,061,940	11,237,400,028
<b>Average Weekly Earnings</b>	<b>\$676.69</b>	<b>\$688.42</b>	<b>\$707.89</b>	<b>\$726.62</b>

<b>PERIOD</b>	<b>2013</b>	<b>2014</b>	<b>2015</b>	<b>2016</b>
<b>TOTAL</b>	<b>\$43,371,086,461</b>	<b>\$44,980,520,034</b>	<b>\$46,836,352,793</b>	<b>\$48,216,814,491</b>
January - March	11,027,184,315	11,321,422,241	11,575,046,688	11,847,506,815
April - June	10,711,027,503	10,991,760,061	11,419,363,330	11,935,742,777
July - September	10,304,451,772	10,619,889,280	11,104,443,452	11,807,220,282
October - December	11,328,422,871	12,047,448,452	12,737,499,323	12,626,344,617
<b>Average Weekly Earnings</b>	<b>\$740.80</b>	<b>\$760.46</b>	<b>\$778.05</b>	<b>\$791.65</b>

**TABLE 4. TOTAL TAXABLE EARNINGS, 2009 - 2016**

<b>PERIOD</b>	<b>2009</b>	<b>2010</b>	<b>2011</b>	<b>2012</b>
<b>TOTAL</b>	<b>9,787,660,886</b>	<b>11,332,118,456</b>	<b>11,479,396,226</b>	<b>11,624,348,048</b>
January - March	5,423,705,265	5,607,134,758	5,828,877,821	6,167,036,199
April - June	2,293,670,854	2,977,100,591	2,910,604,359	2,838,154,846
July - September	1,165,280,065	1,577,067,770	1,601,382,146	1,494,712,584
October - December	905,004,702	1,170,815,337	1,138,531,900	1,124,444,419

<b>PERIOD</b>	<b>2013</b>	<b>2014</b>	<b>2015</b>	<b>2016</b>
<b>TOTAL</b>	<b>11,644,747,978</b>	<b>11,919,662,224</b>	<b>12,258,632,610</b>	<b>12,538,167,625</b>
January - March	6,184,735,653	6,288,682,396	6,378,966,662	6,607,245,841
April - June	2,805,431,293	2,831,013,392	2,915,293,283	3,010,214,324
July - September	1,506,497,129	1,552,243,963	1,640,978,599	1,656,043,561
October - December	1,148,083,903	1,247,722,473	1,323,394,066	1,264,663,899



TABLE 5. STATEWIDE SUMMARY CALENDAR YEAR 2016

North American Industry Classification System - Industry Groups		Average Employing Units	Average Covered Employment	Total Calendar Earnings	Average Weekly Earnings
<b>TOTAL, ALL INDUSTRIES</b>		<b>87,400</b>	<b>1,171,545</b>	<b>\$48,207,782,764</b>	<b>\$791.32</b>
<b>NATURAL RESOURCES &amp; MINING</b>		<b>2,592</b>	<b>16,919</b>	<b>\$772,847,274</b>	<b>\$878.45</b>
<b>11</b>	<b>AGRICULTURE, FORESTRY, FISHING &amp; HUNTING</b>	<b>2,116</b>	<b>12,766</b>	<b>\$501,564,094</b>	<b>\$755.56</b>
<b>111</b>	<b>CROP PRODUCTION</b>	<b>950</b>	<b>4,266</b>	<b>\$129,891,380</b>	<b>\$585.54</b>
1111	Oilseed & Grain Farming	686	2,891	90,916,714	604.77
1112	Vegetable & Melon Farming	29	199	5,002,628	483.44
1113	Fruit & Tree Nut Farming	14	62	1,185,503	367.71
1114	Greenhouse & Nursery Production	42	368	10,589,484	553.38
1119	Other Crop Farming	179	746	22,197,051	572.21
<b>112</b>	<b>ANIMAL PRODUCTION &amp; AQUACULTURE</b>	<b>323</b>	<b>3,177</b>	<b>\$148,239,093</b>	<b>\$897.31</b>
1121	Cattle Ranching & Farming	125	419	12,065,652	553.78
1122	Hog & Pig Farming	14	139	7,005,909	969.27
1123	Poultry & Egg Production	114	2,175	113,701,023	1,005.31
1125	Animal Aquaculture	48	383	13,951,579	700.52
1129	Other Animal Production	22	61	1,514,930	477.59
<b>113</b>	<b>FORESTRY &amp; LOGGING</b>	<b>413</b>	<b>2,368</b>	<b>\$96,012,014</b>	<b>\$779.72</b>
1131	Timber Tract Operations	35	168	8,899,558	1,018.72
1132	Forest Nurseries & Gathering of Forest Products	6	24	1,168,521	936.31
1133	Logging	372	2,176	85,943,935	759.54
<b>114</b>	<b>FISHING, HUNTING &amp; TRAPPING</b>	<b>4</b>	<b>29</b>	<b>\$672,559</b>	<b>\$445.99</b>
<b>115</b>	<b>SUPPORT ACTIVITIES FOR AGRICULTURE &amp; FORESTRY</b>	<b>426</b>	<b>2,926</b>	<b>\$126,749,048</b>	<b>\$833.04</b>
1151	Support Activities for Crop Production	295	1,524	74,285,545	937.38
1152	Support Activities for Animal Production	63	682	21,595,093	608.93
1153	Support Activities for Forestry	68	720	30,868,410	824.48
<b>21</b>	<b>MINING</b>	<b>476</b>	<b>4,153</b>	<b>\$271,283,180</b>	<b>\$1,256.20</b>
<b>211</b>	<b>OIL &amp; GAS EXTRACTION</b>	<b>81</b>	<b>981</b>	<b>\$85,453,753</b>	<b>\$1,675.17</b>
<b>212</b>	<b>MINING (EXCEPT OIL &amp; GAS)</b>	<b>101</b>	<b>1,613</b>	<b>\$86,475,733</b>	<b>\$1,030.99</b>
<b>213</b>	<b>SUPPORT ACTIVITIES FOR MINING</b>	<b>294</b>	<b>1,559</b>	<b>\$99,353,694</b>	<b>\$1,225.56</b>

Note: Data may not add due to rounding.

TABLE 5. STATEWIDE SUMMARY CALENDAR YEAR 2016

North American Industry Classification System - Industry Groups		Average Employing Units	Average Covered Employment	Total Calendar Earnings	Average Weekly Earnings
<b>CONSTRUCTION</b>		<b>6,710</b>	<b>50,302</b>	<b>\$2,302,324,500</b>	<b>\$880.19</b>
<b>236</b>	<b>CONSTRUCTION OF BUILDINGS</b>	<b>1,695</b>	<b>10,370</b>	<b>\$529,042,899</b>	<b>\$981.09</b>
2361	Residential Building Construction	1,123	3,209	131,226,977	786.41
2362	Nonresidential Building Construction	572	7,161	397,815,922	1,068.33
<b>237</b>	<b>HEAVY &amp; CIVIL ENGINEERING CONSTRUCTION</b>	<b>710</b>	<b>7,863</b>	<b>\$379,085,386</b>	<b>\$927.14</b>
2371	Utility System Construction	390	4,230	205,598,934	934.71
2372	Land Subdivision	52	91	3,562,196	752.79
2373	Highway, Street & Bridge Construction	179	2,938	140,798,804	921.60
2379	Other Heavy Construction	89	604	29,125,452	927.33
<b>238</b>	<b>SPECIALTY TRADE CONTRACTORS</b>	<b>4,305</b>	<b>32,069</b>	<b>\$1,394,196,215</b>	<b>\$836.06</b>
2381	Building Foundation & Exterior Contractors	800	6,030	249,640,248	796.15
2382	Building Equipment Contractors	2,054	17,142	804,230,606	902.23
2383	Building Finishing Contractors	713	4,179	161,620,102	743.74
2389	Other Specialty Trade Contractors	738	4,718	178,705,259	728.41
<b>MANUFACTURING</b>		<b>2,943</b>	<b>154,791</b>	<b>\$7,022,193,305</b>	<b>\$872.42</b>
<b>311</b>	<b>FOOD MANUFACTURING</b>	<b>278</b>	<b>45,157</b>	<b>\$1,609,787,486</b>	<b>\$685.55</b>
3111	Animal Food Manufacturing	45	1,602	84,208,218	1,010.85
3112	Grain & Oilseed Milling	34	2,600	125,385,650	927.41
3114	Fruit, Vegetable & Specialty Food	19	4,221	190,290,428	866.96
3115	Dairy Product Manufacturing	8	539	23,947,173	854.40
3116	Animal Slaughtering & Processing	76	30,351	941,627,625	596.63
3118	Bakeries & Tortilla Manufacturing	64	3,660	150,535,107	790.96
3119	Other Food Manufacturing	23	2,136	92,744,599	835.00
	Other	9	48	1,048,686	420.15
<b>312</b>	<b>BEVERAGE &amp; TOBACCO PRODUCT MANUFACTURING</b>	<b>53</b>	<b>1,370</b>	<b>\$64,660,115</b>	<b>\$907.64</b>
<b>313</b>	<b>TEXTILE MILLS</b>	<b>8</b>	<b>105</b>	<b>\$5,952,577</b>	<b>\$1,090.22</b>
3132	Fiber, Yarn, & Thread Mills	4	85	5,099,304	1,153.69
3133	Textile, Fabric Finishing/Coating Mills	4	20	853,273	820.45
<b>314</b>	<b>TEXTILE PRODUCT MILLS</b>	<b>47</b>	<b>947</b>	<b>\$46,441,441</b>	<b>\$943.09</b>
3141	Textile Furnishing Mills	9	36	1,683,038	899.06
3149	Other Textile Product Mills	38	911	44,758,403	944.83
<b>315</b>	<b>APPAREL MANUFACTURING</b>	<b>17</b>	<b>893</b>	<b>24,288,997</b>	<b>\$523.06</b>
3151	Apparel Knitting Mills	3	672	18,817,667	538.51
3152	Other	14	221	5,471,330	476.10
<b>316</b>	<b>LEATHER &amp; ALLIED PRODUCT MANUFACTURING</b>	<b>15</b>	<b>1,167</b>	<b>\$30,693,388</b>	<b>\$505.79</b>
3162	Footwear Manufacturing	6	974	24,957,852	492.77
3169	Other Leather & Allied Product Manufacturing	9	193	5,735,536	571.50

Note: Data may not add due to rounding.

TABLE 5. STATEWIDE SUMMARY CALENDAR YEAR 2016

North American Industry Classification System - Industry Groups		Average Employing Units	Average Covered Employment	Total Calendar Earnings	Average Weekly Earnings
<b>321</b>	<b>WOOD PRODUCT MANUFACTURING</b>	<b>320</b>	<b>9,431</b>	<b>\$384,165,602</b>	<b>\$783.35</b>
3211	Sawmills & Wood Preservation	150	4,511	193,181,945	823.55
3212	Veneer & Engineered Wood Products	44	1,877	89,924,585	921.32
3219	Other Wood Product Manufacturing	126	3,043	101,059,072	638.66
<b>322</b>	<b>PAPER MANUFACTURING</b>	<b>73</b>	<b>9,556</b>	<b>\$617,027,581</b>	<b>\$1,241.72</b>
3221	Pulp, Paper & Paperboard Mills	12	3,879	325,005,074	1,611.27
3222	Converted Paper Product Manufacturing	61	5,677	292,022,507	989.22
<b>323</b>	<b>PRINTING &amp; RELATED SUPPORT ACTIVITIES</b>	<b>239</b>	<b>3,961</b>	<b>\$171,573,474</b>	<b>\$832.99</b>
<b>324</b>	<b>PETROLEUM &amp; COAL PRODUCTS MANUFACTURING</b>	<b>19</b>	<b>1,160</b>	<b>\$75,223,873</b>	<b>\$1,247.08</b>
<b>325</b>	<b>CHEMICAL MANUFACTURING</b>	<b>120</b>	<b>5,016</b>	<b>\$316,240,512</b>	<b>\$1,212.43</b>
3251	Basic Chemical Manufacturing	31	1,815	134,350,549	1,423.51
3252	Resin, Rubber & Artificial Fibers	7	293	17,746,432	1,164.77
3253	Agricultural Chemical Manufacturing	16	447	32,042,443	1,378.53
3254	Pharmaceutical & Medicine Manufacturing	17	323	17,489,787	1,041.31
3255	Paint, Coating & Adhesive Manufacturing	9	266	14,899,581	1,077.18
3256	Soap, Cleaning Compound, & Toilet Preparation Manufacturing	16	1,171	57,998,809	952.49
3259	Other Chemical Preparation Manufacturing	24	701	41,712,911	1,144.32
<b>326</b>	<b>PLASTICS &amp; RUBBER PRODUCTS MANUFACTURING</b>	<b>128</b>	<b>11,014</b>	<b>\$539,770,508</b>	<b>\$942.46</b>
3261	Plastics Product Manufacturing	99	6,798	300,940,346	851.33
3262	Rubber Product Manufacturing	29	4,216	238,830,162	1,089.39
<b>327</b>	<b>NONMETALLIC MINERAL PRODUCT MANUFACTURING</b>	<b>231</b>	<b>3,589</b>	<b>\$165,904,282</b>	<b>\$888.96</b>
3271	Clay Product & Refractory Manufacturing	12	410	17,620,781	826.49
3272	Glass & Glass Product Manufacturing	10	351	16,462,899	901.98
3273	Cement & Concrete Product Manufacturing	171	2,121	96,702,486	876.79
3274	Lime & Gypsum Product Manufacturing	3	284	17,261,562	1,168.85
3279	Other Nonmetallic Mineral Products Manufacturing	35	423	17,856,554	811.81
<b>331</b>	<b>PRIMARY METAL MANUFACTURING</b>	<b>76</b>	<b>7,995</b>	<b>\$510,835,841</b>	<b>\$1,228.74</b>
3311	Iron & Steel Mills & Ferroalloys	10	2,623	240,899,369	1,766.18
3312	Purchased Steel Product Manufacturing	22	1,943	102,306,469	1,012.57
3313	Alumina & Aluminum Production	18	1,239	65,478,290	1,016.30
3314	Other Nonferrous Metal Production	8	419	19,093,788	876.34
3315	Foundries	18	1,771	83,057,925	901.90

Note: Data may not add due to rounding.

TABLE 5. STATEWIDE SUMMARY CALENDAR YEAR 2016

North American Industry Classification System - Industry Groups		Average Employing Units	Average Covered Employment	Total Calendar Earnings	Average Weekly Earnings
<b>332</b>	<b>FABRICATED METAL PRODUCT MANUFACTURING</b>	<b>519</b>	<b>14,987</b>	<b>\$750,323,298</b>	<b>\$962.79</b>
3321	Forging & Stamping	11	363	14,946,967	791.85
3322	Cutlery & Hand Tool Manufacturing	11	582	26,195,081	865.55
3323	Architectural & Structural Metals	149	4,285	229,118,336	1,028.27
3324	Boilers, Tanks & Shipping Containers	16	675	34,451,177	981.52
3325	Hardware Manufacturing	5	246	11,770,013	920.11
3326	Spring & Wire Product Manufacturing	13	379	16,514,260	837.95
3327	Machine Shops & Threaded Products	209	1,844	76,289,382	795.61
3328	Coating, Engraving & Heat Treating Metals	38	649	24,648,034	730.36
3329	Other Fabricated Metal Product Manufacturing	67	5,964	316,390,048	1,020.19
<b>333</b>	<b>MACHINERY MANUFACTURING</b>	<b>210</b>	<b>10,901</b>	<b>\$492,367,142</b>	<b>\$868.60</b>
3331	Agriculture, Construction & Mining Machinery	40	2,592	97,818,305	725.74
3332	Industrial Machinery Manufacturing	21	630	34,144,438	1,042.26
3333	Commercial & Service Industry Machinery	22	740	39,176,778	1,018.11
3334	HVAC & Commercial Refrigeration Equipment	22	2,960	134,485,676	873.74
3335	Metalworking Machinery Manufacturing	59	1,039	43,595,763	806.91
3336	Turbine & Power Transmission Equipment Manufacturing	5	636	31,768,147	960.58
3339	Other General Purpose Machinery Manufacturing	41	2,304	111,378,035	929.64
<b>334</b>	<b>COMPUTER &amp; ELECTRONIC PRODUCT MANUFACTURING</b>	<b>57</b>	<b>2,310</b>	<b>\$116,318,773</b>	<b>\$968.35</b>
3343	Audio & Video Equipment Manufacturing	6	141	5,717,636	779.82
3344	Semiconductors & Electronic Components	26	1,646	81,668,599	954.16
3345	Electronic Instrument Manufacturing	18	413	22,111,779	1,029.60
	Other	7	110	6,820,759	1,192.44
<b>335</b>	<b>ELECTRICAL EQUIPMENT &amp; APPLIANCES</b>	<b>58</b>	<b>4,884</b>	<b>\$248,634,996</b>	<b>\$979.00</b>
3353	Electrical Equipment Manufacturing	23	3,155	162,612,636	991.18
3359	Other Electrical Equipment & Component Manufacturing	19	1,305	66,534,752	980.47
	Other	16	424	19,487,608	883.87
<b>336</b>	<b>TRANSPORTATION EQUIPMENT MANUFACTURING</b>	<b>143</b>	<b>13,512</b>	<b>\$600,746,865</b>	<b>\$855.00</b>
3362	Motor Vehicle Body & Trailer Manufacturing	34	1,832	68,238,930	716.31
3363	Motor Vehicle Parts Manufacturing	44	5,099	211,953,934	799.38
3364	Aerospace Product & Parts Manufacturing	29	3,301	192,263,613	1,120.08
3366	Ship & Boat Building	21	1,882	61,590,878	629.35
	Other	15	1,398	66,699,510	917.51
<b>337</b>	<b>FURNITURE &amp; RELATED PRODUCT MANUFACTURING</b>	<b>159</b>	<b>3,445</b>	<b>\$120,559,091</b>	<b>\$672.99</b>
3371	Household & Institutional Furniture	134	2,689	89,332,527	638.87
3372	Office Furniture & Fixtures Manufacturing	19	659	28,415,213	829.21
3379	Other Furniture Related Product Manufacturing	6	97	2,811,351	557.37
<b>339</b>	<b>MISCELLANEOUS MANUFACTURING</b>	<b>173</b>	<b>3,391</b>	<b>\$130,677,463</b>	<b>\$741.09</b>
3391	Medical Equipment & Supplies Manufacturing	69	1,675	73,054,556	838.74
3399	Other Miscellaneous Manufacturing	104	1,716	57,622,907	645.77

Note: Data may not add due to rounding.

TABLE 5. STATEWIDE SUMMARY CALENDAR YEAR 2016

North American Industry Classification System - Industry Groups		Average Employing Units	Average Covered Employment	Total Calendar Earnings	Average Weekly Earnings
<b>TRADE, TRANSPORTATION &amp; UTILITIES</b>		<b>21,460</b>	<b>249,050</b>	<b>\$9,710,031,742</b>	<b>\$749.77</b>
<b>42</b>	<b>WHOLESALE TRADE</b>	<b>7,037</b>	<b>46,247</b>	<b>\$3,047,160,100</b>	<b>\$1,267.09</b>
<b>423</b>	<b>MERCHANT WHOLESALERS, DURABLE GOODS</b>	<b>2,106</b>	<b>20,353</b>	<b>\$1,126,909,172</b>	<b>\$1,064.77</b>
4231	Motor Vehicle & Part Merchant Wholesalers	229	2,626	113,730,407	832.87
4232	Furniture & Furnishings Merchant Wholesalers	52	464	27,751,548	1,150.18
4233	Lumber & Supply Merchant Wholesalers	166	1,413	68,545,628	932.90
4234	Commercial Goods Merchant Wholesalers	290	2,423	176,635,191	1,401.91
4235	Metal & Mineral Merchant Wholesalers	51	854	44,046,640	991.86
4236	Appliances & Electronics Goods Merchant Wholesalers	199	1,915	124,570,112	1,250.96
4237	Hardware & Plumbing Merchant Wholesalers	225	2,293	126,756,097	1,063.07
4238	Machinery & Supply Merchant Wholesalers	684	6,571	362,446,400	1,060.74
4239	Miscellaneous Durable Goods Merchant Wholesalers	210	1,794	82,427,149	883.58
<b>424</b>	<b>MERCHANT WHOLESALERS, NONDURABLE GOODS</b>	<b>1,141</b>	<b>14,601</b>	<b>\$799,911,818</b>	<b>\$1,053.55</b>
4241	Paper & Paper Product Merchant Wholesalers	70	1,153	72,831,200	1,214.74
4242	Druggist' Goods Merchant Wholesalers	52	618	33,764,498	1,050.68
4243	Apparel & Piece Goods Merchant Wholesalers	39	602	30,213,187	965.15
4244	Grocery Product Merchant Wholesalers	284	4,380	284,831,519	1,250.58
4245	Farm Product Merchant Wholesalers	71	812	28,767,253	681.30
4246	Chemical merchant Wholesalers	92	636	43,986,966	1,330.04
4247	Petroleum Merchant Wholesalers	138	1,277	59,804,500	900.62
4248	Alcoholic Beverage Merchant Wholesalers	43	1,612	81,934,111	977.45
4249	Miscellaneous Nondurable Goods Merchant Wholesaler	352	3,511	163,778,584	897.06
<b>425</b>	<b>ELECTRONIC MARKETS &amp; AGENTS &amp; BROKERS</b>	<b>3,790</b>	<b>11,293</b>	<b>\$1,120,339,110</b>	<b>\$1,907.82</b>
<b>44 - 45</b>	<b>RETAIL TRADE</b>	<b>11,111</b>	<b>142,306</b>	<b>\$3,714,613,538</b>	<b>\$501.98</b>
<b>441</b>	<b>MOTOR VEHICLE &amp; PARTS DEALERS</b>	<b>1,549</b>	<b>19,567</b>	<b>\$850,717,927</b>	<b>\$836.10</b>
4411	Automobile Dealers	627	12,034	609,281,871	973.65
4412	Other Motor Vehicle Dealers	168	1,649	69,414,585	809.52
4413	Automotive Parts, Accessories & Tire Stores	754	5,884	172,021,471	562.22
<b>442</b>	<b>FURNITURE &amp; HOME FURNISHINGS STORES</b>	<b>503</b>	<b>3,600</b>	<b>\$108,508,003</b>	<b>\$579.64</b>
4421	Furniture Stores	272	2,035	69,963,408	661.15
4422	Home Furnishings Stores	231	1,565	38,544,595	473.64
<b>443</b>	<b>ELECTRONICS &amp; APPLIANCE STORES</b>	<b>443</b>	<b>3,756</b>	<b>\$125,170,875</b>	<b>\$640.88</b>
<b>444</b>	<b>BUILDING MATERIAL &amp; GARDEN SUPPLY STORES</b>	<b>837</b>	<b>11,395</b>	<b>\$316,327,571</b>	<b>\$533.85</b>
4441	Building Material & Supplies Dealers	596	9,378	267,933,042	549.43
4442	Lawn & Garden Equipment & Supplies Stores	241	2,017	48,394,529	461.41

Note: Data may not add due to rounding.

TABLE 5. STATEWIDE SUMMARY CALENDAR YEAR 2016

North American Industry Classification System - Industry Groups		Average Employing Units	Average Covered Employment	Total Calendar Earnings	Average Weekly Earnings
<b>445</b>	<b>FOOD &amp; BEVERAGE STORES</b>	<b>1,071</b>	<b>19,843</b>	<b>\$429,966,166</b>	<b>\$416.70</b>
4451	Grocery Stores	570	17,049	357,847,143	403.64
4452	Specialty Food Stores	149	1,005	34,283,619	656.02
4453	Beer, Wine & Liquor Stores	352	1,789	37,835,404	406.71
<b>446</b>	<b>HEALTH &amp; PERSONAL CARE STORES</b>	<b>991</b>	<b>8,510</b>	<b>\$316,862,664</b>	<b>\$716.04</b>
<b>447</b>	<b>GASOLINE STATIONS</b>	<b>1,591</b>	<b>12,386</b>	<b>\$220,220,218</b>	<b>\$341.92</b>
44711	Gasoline Stations with Convenience Stores	1,488	11,109	192,301,923	332.89
44719	Other Gasoline Stations	103	1,277	27,918,295	420.43
<b>448</b>	<b>CLOTHING &amp; CLOTHING ACCESSORIES STORES</b>	<b>1,085</b>	<b>8,916</b>	<b>\$147,416,010</b>	<b>\$317.96</b>
4481	Clothing Stores	804	6,906	100,841,483	280.81
4482	Shoe Stores	142	1,269	20,603,864	312.24
4483	Jewelry, Luggage & Leather Goods Stores	139	741	25,970,663	674.00
<b>451</b>	<b>SPORTING GOODS, HOBBY, BOOK &amp; MUSIC STORES</b>	<b>474</b>	<b>4,672</b>	<b>\$88,405,811</b>	<b>\$363.89</b>
4511	Sporting Goods & Musical Instrument Stores	411	4,170	80,347,999	370.54
4512	Book, Periodical & Music Stores	63	502	8,057,812	308.68
<b>452</b>	<b>GENERAL MERCH&amp;ISE STORES</b>	<b>928</b>	<b>40,497</b>	<b>\$887,165,485</b>	<b>\$421.29</b>
<b>453</b>	<b>MISCELLANEOUS STORE RETAILERS</b>	<b>1,208</b>	<b>7,259</b>	<b>\$152,896,114</b>	<b>\$405.06</b>
4531	Florists	181	651	12,001,214	354.52
4532	Office Supplies, Stationery & Gift Stores	257	1,862	39,820,765	411.27
4533	Used Merchandise Stores	259	2,010	38,304,725	366.48
4539	Other Miscellaneous Store Retailers	511	2,736	62,769,410	441.19
<b>454</b>	<b>NONSTORE RETAILERS</b>	<b>431</b>	<b>1,905</b>	<b>\$70,956,694</b>	<b>\$716.30</b>
4541	Electronic Shopping & Mail-Order Houses	207	747	30,187,044	777.14
4542	Vending Machine Operators	68	455	14,104,620	596.14
4543	Direct Selling Establishments	156	703	26,665,030	729.43
<b>48 - 49</b>	<b>TRANSPORTATION &amp; WAREHOUSING</b>	<b>2,888</b>	<b>52,783</b>	<b>\$2,310,838,968</b>	<b>\$841.92</b>
<b>481</b>	<b>AIR TRANSPORTATION</b>	<b>52</b>	<b>650</b>	<b>\$24,490,718</b>	<b>\$724.58</b>
4811	Scheduled Air Transportation	21	571	18,348,046	617.95
4812	Nonsheduled Air Transportation	31	79	6,142,672	1,495.30
<b>483</b>	<b>WATER TRANSPORTATION</b>	<b>4</b>	<b>19</b>	<b>\$1,286,325</b>	<b>\$1,301.95</b>
<b>484</b>	<b>TRUCK TRANSPORTATION</b>	<b>1,820</b>	<b>32,397</b>	<b>\$1,477,892,223</b>	<b>\$877.27</b>
4841	General Freight Trucking	1,062	26,094	1,209,923,377	891.69
4842	Specialized Freight Trucking	758	6,303	267,968,846	817.59

Note: Data may not add due to rounding.

TABLE 5. STATEWIDE SUMMARY CALENDAR YEAR 2016

North American Industry Classification System - Industry Groups		Average Employing Units	Average Covered Employment	Total Calendar Earnings	Average Weekly Earnings
<b>485</b>	<b>TRANSIT &amp; GROUND PASSENGER TRANSPORTATION</b>	<b>113</b>	<b>1,778</b>	<b>\$36,415,222</b>	<b>\$393.87</b>
4853	Taxi & Limousine Service	34	420	6,946,413	318.06
4854	School & Employee Bus Transportation	13	427	8,505,631	383.07
4855	Charter Bus Industry Service	8	106	2,837,514	514.79
4859	Other Ground Passenger Transportation	54	710	14,269,994	386.51
	Other	4	115	3,855,670	644.76
<b>486</b>	<b>PIPELINE TRANSPORTATION</b>	<b>33</b>	<b>424</b>	<b>\$41,449,930</b>	<b>\$1,879.99</b>
<b>487</b>	<b>SCENIC AND SIGHTSEEING TRANSPORTATION</b>	<b>5</b>	<b>27</b>	<b>\$439,719</b>	<b>\$313.19</b>
<b>488</b>	<b>SUPPORT ACTIVITIES FOR TRANSPORTATION</b>	<b>465</b>	<b>5,080</b>	<b>\$241,455,904</b>	<b>\$914.05</b>
4881	Support Activities for Air Transportation	101	975	40,716,294	803.08
4882	Support Activities for Rail Transportation	42	616	28,776,029	898.35
4883	Support Activities for Water Transportation	20	684	39,993,741	1,124.43
4884	Support Activities for Road Transportation	154	853	27,149,956	612.09
4885	Freight Transportation Arrangement	132	1,843	101,078,960	1,054.71
4889	Other Support Activities for Transportation	16	109	3,740,924	660.01
<b>491</b>	<b>POSTAL SERVICE</b>	<b>11</b>	<b>287</b>	<b>\$12,983,548</b>	<b>\$869.98</b>
<b>492</b>	<b>COURIERS &amp; MESSENGERS</b>	<b>162</b>	<b>3,785</b>	<b>\$152,878,240</b>	<b>\$776.74</b>
<b>493</b>	<b>OTHER WAREHOUSING &amp; STORAGE</b>	<b>234</b>	<b>8,623</b>	<b>334,530,687</b>	<b>\$746.06</b>
<b>22</b>	<b>UTILITIES</b>	<b>424</b>	<b>7,714</b>	<b>\$637,419,136</b>	<b>\$1,589.07</b>
2211	Power Generation & Supply	165	5,658	522,923,741	1,777.35
2212	Natural Gas Distribution	73	1,110	79,909,153	1,384.43
2213	Water, Sewage & Other Systems	186	946	34,586,242	703.09
<b>INFORMATION</b>		<b>1,098</b>	<b>13,235</b>	<b>\$725,892,822</b>	<b>\$1,054.74</b>
<b>511</b>	<b>PUBLISHING INDUSTRIES, EXCEPT INTERNET</b>	<b>226</b>	<b>3,228</b>	<b>\$129,302,395</b>	<b>\$770.32</b>
5111	Newspaper, Book & Directory Publishers	192	2,854	101,272,804	682.39
5112	Software Publishers	34	374	28,029,591	1,441.26
<b>512</b>	<b>MOTION PICTURE &amp; SOUND RECORDING INDUSTRY</b>	<b>138</b>	<b>1,085</b>	<b>\$21,408,624</b>	<b>\$379.45</b>
5121	Motion Picture & Video Industries	122	1,059	20,159,376	366.08
5122	Sound Recording Industries	16	26	1,249,248	924.00
<b>515</b>	<b>BROADCASTING, EXCEPT INTERNET</b>	<b>123</b>	<b>1,613</b>	<b>\$68,481,107</b>	<b>\$816.46</b>
5151	Radio & Television Broadcasting	119	1,588	67,543,633	817.96
5152	Cable & Other Subscription Programming	4	25	937,474	721.13

Note: Data may not add due to rounding.

TABLE 5. STATEWIDE SUMMARY CALENDAR YEAR 2016

North American Industry Classification System - Industry Groups		Average Employing Units	Average Covered Employment	Total Calendar Earnings	Average Weekly Earnings
<b>517</b>	<b>TELECOMMUNICATIONS</b>	<b>340</b>	<b>5,644</b>	<b>\$394,916,745</b>	<b>\$1,345.60</b>
5171	Wired Telecommunications Carriers	212	3,732	261,918,821	1,349.65
5172	Wireless Telecommunications Carriers (except Satellite)	44	1,617	114,416,113	1,360.74
5174	Satellite Telecommunications Carriers	6	6	309,381	991.61
5179	Other Telecommunications	78	289	18,272,430	1,215.89
<b>518</b>	<b>DATA PROCESSING, HOSTING &amp; RELATED SERVICES</b>	<b>190</b>	<b>1,337</b>	<b>\$96,216,799</b>	<b>\$1,383.94</b>
<b>519</b>	<b>OTHER INFORMATION SERVICES</b>	<b>81</b>	<b>328</b>	<b>\$15,567,152</b>	<b>\$912.71</b>
<b>FINANCIAL ACTIVITIES</b>		<b>8,214</b>	<b>49,414</b>	<b>\$2,697,506,583</b>	<b>\$1,049.81</b>
<b>52</b>	<b>FINANCE &amp; INSURANCE</b>	<b>4,900</b>	<b>36,117</b>	<b>\$2,212,983,694</b>	<b>\$1,178.32</b>
<b>522</b>	<b>CREDIT INTERMEDIATION &amp; RELATED ACTIVITIES</b>	<b>1,937</b>	<b>19,093</b>	<b>\$1,001,282,962</b>	<b>\$1,008.51</b>
5221	Depository Credit Intermediation	1,404	16,156	823,888,778	980.69
5222	Nondepository Credit Intermediation	392	1,814	119,262,908	1,264.34
5223	Activities Related to Credit Intermediation	141	1,123	58,131,276	995.47
<b>523</b>	<b>FINANCIAL INVESTMENT &amp; RELATED ACTIVITIES</b>	<b>674</b>	<b>3,075</b>	<b>\$396,747,146</b>	<b>\$2,481.22</b>
5231	Securities & Commodity Contracts Intermediation & Brokerage	304	2,185	315,609,994	2,777.77
5239	Other Financial Investment Activities	370	890	81,137,152	1,753.18
<b>524</b>	<b>INSURANCE CARRIERS &amp; RELATED ACTIVITIES</b>	<b>2,211</b>	<b>13,849</b>	<b>\$807,672,805</b>	<b>\$1,121.54</b>
5241	Insurance Carriers	313	6,004	403,743,948	1,293.19
5242	Insurance Agencies, Brokerages & Support	1,898	7,845	403,928,857	990.17
	<b>OTHER</b>	<b>78</b>	<b>100</b>	<b>\$7,280,781</b>	<b>\$1,400.15</b>
<b>53</b>	<b>REAL ESTATE &amp; RENTAL &amp; LEASING</b>	<b>3,314</b>	<b>13,297</b>	<b>\$484,522,889</b>	<b>\$700.74</b>
<b>531</b>	<b>REAL ESTATE</b>	<b>2,670</b>	<b>9,123</b>	<b>\$327,631,910</b>	<b>\$690.63</b>
5311	Lessors of Real Estate	1,103	4,126	134,482,616	626.81
5312	Offices of Real Estate Agents & Brokers	796	1,763	77,356,128	843.80
5313	Activities Related to Real Estate	771	3,234	115,793,166	688.56
<b>532</b>	<b>RENTAL &amp; LEASING SERVICES</b>	<b>626</b>	<b>4,119</b>	<b>\$152,813,024</b>	<b>\$713.45</b>
5321	Automotive Equipment Rental & Leasing	111	966	29,217,979	581.66
5322	Consumer Goods Rental	329	2,042	62,479,610	588.41
5323	General Rental Centers	39	224	9,184,884	788.54
5324	Machinery & Equipment Rental & Leasing	147	887	51,930,551	1,125.89
<b>533</b>	<b>LESSORS OF NONFINANCIAL INTANGIBLE ASSETS</b>	<b>18</b>	<b>55</b>	<b>\$4,077,955</b>	<b>\$1,425.86</b>

Note: Data may not add due to rounding.



TABLE 5. STATEWIDE SUMMARY CALENDAR YEAR 2016

North American Industry Classification System - Industry Groups		Average Employing Units	Average Covered Employment	Total Calendar Earnings	Average Weekly Earnings
<b>PROFESSIONAL &amp; BUSINESS SERVICES</b>		<b>13,777</b>	<b>142,367</b>	<b>\$7,963,777,453</b>	<b>\$1,075.74</b>
<b>54</b>	<b>PROFESSIONAL &amp; TECHNICAL SERVICES</b>	<b>8,695</b>	<b>42,541</b>	<b>\$2,516,184,816</b>	<b>\$1,137.45</b>
5411	Legal Services	1,677	5,997	330,277,518	1,059.11
5412	Accounting & Bookkeeping Services	1,253	5,317	234,468,792	848.04
5413	Architectural & Engineering Services	955	6,211	394,549,116	1,221.62
5414	Specialized Design Services	179	401	19,517,297	935.99
5415	Computer Systems Design & Related Services	1,674	10,297	800,570,298	1,495.15
5416	Management & Technical Consulting Services	1,872	6,041	358,354,413	1,140.78
5417	Scientific Research & Development Services	142	870	51,161,380	1,130.89
5418	Advertising & Related Services	381	3,636	183,885,780	972.57
5419	Other Professional & Technical Services	562	3,771	143,400,222	731.29
<b>55</b>	<b>MANAGEMENT OF COMPANIES &amp; ENTERPRISES</b>	<b>531</b>	<b>35,040</b>	<b>\$3,642,500,180</b>	<b>\$1,999.09</b>
<b>56</b>	<b>ADMINISTRATIVE &amp; SUPPORT SERVICES</b>	<b>4,551</b>	<b>64,786</b>	<b>\$1,805,092,457</b>	<b>\$535.82</b>
<b>561</b>	<b>ADMINISTRATIVE &amp; SUPPORT SERVICES</b>	<b>4,253</b>	<b>61,772</b>	<b>\$1,669,479,965</b>	<b>\$519.74</b>
5611	Office Administrative Services	649	4,002	197,336,333	948.26
5612	Facilities Support Services	42	1,023	24,062,339	452.33
5613	Employment Services	1,056	27,594	639,792,399	445.88
5614	Business Support Services	356	8,218	285,035,312	667.01
5615	Travel Arrangement & Reservation Services	105	389	16,113,859	796.61
5616	Investigation & Security Services	294	4,688	119,882,413	491.77
5617	Services to Buildings & Dwellings	1,562	14,557	341,062,194	450.57
5619	Other Support Services	189	1,301	46,195,116	682.83
<b>562</b>	<b>WASTE MANAGEMENT &amp; REMEDIATION SERVICES</b>	<b>298</b>	<b>3,014</b>	<b>\$135,612,492</b>	<b>\$865.27</b>
5621	Waste Collection Services	129	1,162	49,820,018	824.51
5622	Waste Treatment & disposal Services	34	847	45,267,106	1,027.77
5629	Remediation & Other Waste Services	135	1,005	40,525,368	775.46
<b>EDUCATION &amp; HEALTH SERVICES</b>		<b>15,287</b>	<b>177,885</b>	<b>\$7,235,281,788</b>	<b>\$782.19</b>
<b>61</b>	<b>EDUCATIONAL SERVICES</b>	<b>802</b>	<b>11,178</b>	<b>\$392,405,915</b>	<b>\$675.10</b>
6111	Elementary & Secondary Schools	95	3,593	118,127,371	632.25
6112	Junior Colleges	7	133	4,176,670	603.91
6113	Colleges & Universities	84	4,106	152,467,894	714.10
6114	Business, Computer, & Management Training	47	132	7,791,471	1,135.12
6115	Technical & Trade Schools	111	867	51,542,666	1,143.26
6116	Other Schools & Instruction	288	1,698	29,953,774	339.24
6117	Educational Support Services	170	649	28,346,069	839.93

Note: Data may not add due to rounding.

TABLE 5. STATEWIDE SUMMARY CALENDAR YEAR 2016

North American Industry Classification System - Industry Groups		Average Employing Units	Average Covered Employment	Total Calendar Earnings	Average Weekly Earnings
<b>62</b>	<b>HEALTH CARE &amp; SOCIAL ASSISTANCE</b>	<b>14,485</b>	<b>166,707</b>	<b>\$6,842,875,873</b>	<b>\$789.37</b>
<b>621</b>	<b>AMBULATORY HEALTH CARE SERVICES</b>	<b>5,567</b>	<b>53,947</b>	<b>\$3,307,386,335</b>	<b>\$1,179.00</b>
6211	Offices of Physicians	2,225	24,290	1,974,074,180	1,562.91
6212	Offices of Dentists	987	7,161	345,504,873	927.85
6213	Offices of Other Health Practitioners	1,444	8,194	342,518,946	803.87
6214	Outpatient Care Centers	329	4,910	264,838,792	1,037.28
6215	Medical & Diagnostic Laboratories	186	1,115	65,849,981	1,135.74
6216	Home Health Care Services	220	5,548	203,330,517	704.79
6219	Other Ambulatory Health Care Services	176	2,729	111,269,046	784.09
<b>622</b>	<b>HOSPITALS</b>	<b>106</b>	<b>41,316</b>	<b>\$1,928,064,852</b>	<b>\$897.43</b>
6221	General Medical & Surgical Hospitals	80	36,733	1,729,026,794	905.19
6222	Psychiatric & Substance Abuse Hospitals	11	2,200	87,184,041	762.10
6223	Other Hospitals	15	2,383	111,854,017	902.66
<b>623</b>	<b>Residential &amp; Mental Health Facilities</b>	<b>650</b>	<b>31,807</b>	<b>\$799,656,370</b>	<b>\$483.48</b>
6231	Nursing Care Facilities (Skilled Nursing Facilities)	283	22,310	563,985,658	486.14
6232	Residential Mental Health Facilities	177	4,488	114,532,476	490.76
6233	Continuing Care & Assisted Living Facilities	150	3,962	91,549,402	444.36
6239	Other Residential Care Facilities	40	1,047	29,588,834	543.47
<b>624</b>	<b>SOCIAL ASSISTANCE</b>	<b>8,162</b>	<b>39,637</b>	<b>\$807,768,316</b>	<b>\$391.91</b>
6241	Individual & Family Services	7,037	24,999	516,400,133	397.25
6242	Emergency & Other Relief Services	137	1,324	34,441,234	500.25
6243	Vocational Rehabilitation Services	91	3,305	73,082,625	425.25
6244	Child Day Care Services	897	10,009	183,844,324	353.23
<b>LEISURE &amp; HOSPITALITY</b>		<b>6,903</b>	<b>115,343</b>	<b>\$1,794,088,504</b>	<b>\$299.12</b>
<b>71</b>	<b>ARTS, ENTERTAINMENT &amp; RECREATION</b>	<b>958</b>	<b>11,047</b>	<b>\$221,068,917</b>	<b>\$384.84</b>
<b>711</b>	<b>PERFORMING ARTS &amp; SPECTATOR SPORTS</b>	<b>211</b>	<b>2,788</b>	<b>\$68,913,056</b>	<b>\$475.34</b>
7111	Performing Arts Companies	47	454	8,423,786	356.82
7112	Spectator Sports	67	1,493	42,115,996	542.48
7113	Performing Arts & Sports Promoters	45	752	15,303,087	391.34
7114	Agents & Managers for Public Figures	15	35	1,355,889	744.99
7115	Independent Artists, Writers, & Performers	37	54	1,714,298	610.50
<b>712</b>	<b>MUSEUMS, PARKS, &amp; HISTORICAL SITES</b>	<b>56</b>	<b>655</b>	<b>\$18,300,557</b>	<b>\$537.30</b>
<b>713</b>	<b>GAMBLING, RECREATIONAL &amp; AMUSEMENT INDUSTRY</b>	<b>691</b>	<b>7,604</b>	<b>\$133,855,304</b>	<b>\$338.52</b>
7131	Amusement Parks & Arcades	33	667	7,840,691	226.06
7139	Other Amusement & Recreation Industries	658	6,937	126,014,613	349.34
<b>72</b>	<b>ACCOMMODATION &amp; FOOD SERVICES</b>	<b>5,945</b>	<b>104,296</b>	<b>\$1,573,019,587</b>	<b>\$290.04</b>

Note: Data may not add due to rounding.

TABLE 5. STATEWIDE SUMMARY CALENDAR YEAR 2016

North American Industry Classification System - Industry Groups		Average Employing Units	Average Covered Employment	Total Calendar Earnings	Average Weekly Earnings
<b>721</b>	<b>ACCOMMODATION</b>	<b>890</b>	<b>11,201</b>	<b>\$202,610,689</b>	<b>\$347.86</b>
7211	Travel Accommodation	805	10,627	190,884,458	345.43
7212	RV Parks & Recreational Camps	66	453	8,993,357	381.79
7213	Rooming & Boarding Houses	19	121	2,732,874	434.34
<b>722</b>	<b>FOOD SERVICES &amp; DRINKING PLACES</b>	<b>5,055</b>	<b>93,095</b>	<b>\$1,370,408,898</b>	<b>\$283.09</b>
7223	Special Food Services	226	3,874	69,617,335	345.58
7224	Drinking Places, Alcoholic Beverages	150	1,100	15,243,882	266.50
7225	Restaurants & Other Eating Places	4,679	88,121	1,285,547,681	280.55
722511	Full-Service Restaurants	2,099	39,105	625,399,967	307.55
722513	Limited-Service Eating Places	2,135	44,586	592,326,542	255.48
722514	Cafeterias, Grill Buffets, & Buffets	89	1,646	28,880,420	337.42
722515	Snack & Nonalcoholic Beverage Bars	356	2,784	38,940,752	268.99
	<b>OTHER SERVICES</b>	<b>5,348</b>	<b>24,694</b>	<b>\$797,962,564</b>	<b>\$621.42</b>
<b>811</b>	<b>REPAIR &amp; MAINTENANCE</b>	<b>2,192</b>	<b>10,245</b>	<b>\$383,161,096</b>	<b>\$719.23</b>
8111	Automotive Repair & Maintenance	1,399	6,479	220,587,161	654.74
8112	Electronic Equipment Repair & Maintenance	172	861	38,168,821	852.52
8113	Commercial Machinery Repair & Maintenance	452	2,304	106,534,909	889.21
8114	Household Goods Repair & Maintenance	169	601	17,870,205	571.81
<b>812</b>	<b>PERSONAL &amp; LAUNDRY SERVICES</b>	<b>1,308</b>	<b>7,916</b>	<b>\$191,818,992</b>	<b>\$466.00</b>
8121	Personal Care Services	610	2,999	61,252,006	392.77
8122	Death Care Services	247	1,625	48,189,970	570.30
8123	Drycleaning & Laundry Service	237	2,405	63,954,211	511.39
8129	Other Personal Services	214	887	18,422,805	399.42
<b>813</b>	<b>MEMBERSHIP ASSOCIATIONS &amp; ORGANIZATIONS</b>	<b>1,085</b>	<b>5,555</b>	<b>\$201,317,494</b>	<b>\$696.94</b>
8131	Religious Organizations	76	261	7,573,208	558.00
8132	Grantmaking & Giving Organizations	113	441	22,419,546	977.65
8133	Social Advocacy Organizations	215	1,544	54,100,650	673.83
8134	Civic & Social Organizations	195	1,232	21,245,315	331.63
8139	Professional & Similar Organizations	486	2,077	95,978,775	888.66
<b>814</b>	<b>PRIVATE HOUSEHOLDS</b>	<b>763</b>	<b>978</b>	<b>\$21,664,982</b>	<b>\$426.01</b>
	<b>LOCAL GOVERNMENT</b>	<b>1,948</b>	<b>108,154</b>	<b>\$4,078,260,026</b>	<b>\$725.15</b>
	<b>STATE GOVERNMENT</b>	<b>1,120</b>	<b>69,391</b>	<b>\$3,107,616,203</b>	<b>\$861.23</b>
	<b>NONCLASSIFIABLE ESTABLISHMENTS</b>	<b>0</b>	<b>0</b>	<b>0</b>	<b>\$0.00</b>

Note: Data may not add due to rounding.

TABLE 6. COUNTY SUMMARY CALENDAR YEAR 2016

North American Industry Classification System - Industry Groups	Average Employing Units	Average Covered Employment	Total Calendar Earnings	Average Weekly Earnings
<b>ARKANSAS COUNTY - TOTAL</b>	<b>768</b>	<b>9,713</b>	<b>\$380,583,205</b>	<b>\$753.52</b>
Natural Resources & Mining	54	230	9,561,934	799.49
Construction	45	255	11,001,026	829.64
Manufacturing	33	3,798	164,174,432	831.28
Trade, Transportation & Utilities	198	2,127	82,522,063	746.10
Wholesale Trade	45	493	24,354,029	949.99
Retail Trade	90	1,008	25,998,327	496.00
Transportation, Warehousing & Utilities	63	626	32,169,707	988.26
Information	11	86	3,186,760	712.60
Financial Activities	46	294	13,706,088	896.53
Professional & Business Services	51	423	25,186,358	1,145.04
Education & Health Services	186	1,084	34,143,543	605.73
Leisure & Hospitality	52	432	5,815,650	258.89
Other Services	44	98	2,694,987	528.84
Local Government	32	712	23,660,676	639.06
State Government	16	174	4,929,688	544.84
<b>ASHLEY COUNTY - TOTAL</b>	<b>556</b>	<b>6,565</b>	<b>\$271,601,997</b>	<b>\$795.60</b>
Natural Resources & Mining	40	332	13,788,311	798.67
Construction	40	567	24,813,806	841.60
Manufacturing	24	1,643	112,421,340	1,315.85
Trade, Transportation & Utilities	111	1,194	37,074,839	597.13
Wholesale Trade	22	205	10,778,347	1,011.10
Retail Trade	67	745	16,429,431	424.09
Transportation, Warehousing & Utilities	22	244	9,867,061	777.67
Information	5	30	945,448	606.06
Financial Activities	36	185	6,273,077	652.09
Professional & Business Services	43	237	7,214,678	585.42
Education & Health Services	148	871	29,477,166	650.83
Leisure & Hospitality	29	394	4,949,249	241.57
Other Services	37	130	3,826,605	566.07
Local Government	32	845	26,817,948	610.33
State Government	11	137	3,999,530	561.42

Note: Data may not add due to rounding.

TABLE 6. COUNTY SUMMARY CALENDAR YEAR 2016

North American Industry Classification System - Industry Groups	Average Employing Units	Average Covered Employment	Total Calendar Earnings	Average Weekly Earnings
<b>BAXTER COUNTY - TOTAL</b>	<b>1,196</b>	<b>14,474</b>	<b>\$479,147,918</b>	<b>\$636.62</b>
Natural Resources & Mining	7	65	2,464,561	729.16
Construction	107	511	16,551,686	622.90
Manufacturing	54	2,315	88,961,293	739.00
Trade, Transportation & Utilities	260	2,749	71,208,613	498.14
Wholesale Trade	32	208	7,891,645	729.63
Retail Trade	203	2,344	55,588,205	456.06
Transportation, Warehousing & Utilities	25	197	7,728,763	754.47
Information	18	185	8,129,400	845.05
Financial Activities	114	752	41,495,755	1,061.16
Professional & Business Services	130	755	23,890,858	608.53
Education & Health Services	259	3,787	146,323,703	743.05
Leisure & Hospitality	118	1,628	23,390,019	276.29
Other Services	84	352	7,774,954	424.77
Local Government	33	1,074	38,938,185	697.22
State Government	12	301	10,018,891	640.10
<b>BENTON COUNTY - TOTAL</b>	<b>6,080</b>	<b>114,159</b>	<b>\$6,236,867,221</b>	<b>\$1,050.64</b>
Natural Resources & Mining	44	715	49,538,542	1,332.40
Construction	581	4,585	212,896,267	892.95
Manufacturing	189	11,262	476,545,768	813.74
Trade, Transportation & Utilities	1,611	27,199	1,318,553,451	932.27
Wholesale Trade	719	5,285	544,325,995	1,980.66
Retail Trade	715	12,297	334,382,567	522.93
Transportation, Warehousing & Utilities	177	9,617	439,844,889	879.54
Information	70	918	47,047,125	985.57
Financial Activities	604	3,622	198,849,508	1,055.78
Professional & Business Services	1,180	32,375	2,868,177,538	1,703.70
Education & Health Services	744	10,727	419,951,220	752.87
Leisure & Hospitality	573	11,738	206,579,422	338.45
Other Services	385	2,026	68,043,660	645.87
Local Government	82	7,962	334,116,709	807.00
State Government	17	1,030	36,568,011	682.75

Note: Data may not add due to rounding.

TABLE 6. COUNTY SUMMARY CALENDAR YEAR 2016

North American Industry Classification System - Industry Groups	Average Employing Units	Average Covered Employment	Total Calendar Earnings	Average Weekly Earnings
<b>BOONE COUNTY - TOTAL</b>	<b>973</b>	<b>13,757</b>	<b>\$491,497,694</b>	<b>\$687.06</b>
Natural Resources & Mining	3	1	86,000	\$1,653.85
Construction	70	464	15,913,694	659.55
Manufacturing	61	1,798	72,263,795	772.91
Trade, Transportation & Utilities	243	3,590	134,593,488	720.99
Wholesale Trade	40	312	10,928,570	673.61
Retail Trade	160	2,090	53,542,345	492.66
Transportation, Warehousing & Utilities	43	1,188	70,122,573	1,135.11
Information	15	294	12,078,581	790.07
Financial Activities	97	456	20,974,161	884.54
Professional & Business Services	110	1,339	59,205,323	850.31
Education & Health Services	164	1,533	43,507,906	545.79
Leisure & Hospitality	82	1,188	16,934,104	274.12
Other Services	54	254	8,673,590	656.69
Local Government	56	2,105	80,280,434	733.42
State Government	18	735	26,986,618	706.09
<b>BRADLEY COUNTY - TOTAL</b>	<b>358</b>	<b>3,657</b>	<b>\$117,587,268</b>	<b>\$618.35</b>
Natural Resources & Mining	46	264	9,970,546	726.29
Construction	18	66	2,091,272	609.34
Manufacturing	11	814	31,153,958	736.01
Trade, Transportation & Utilities	71	507	13,155,801	499.01
Wholesale Trade	12	90	4,332,317	925.71
Retail Trade	40	352	6,828,449	373.06
Transportation, Warehousing & Utilities	19	65	1,995,035	590.25
Information	4	30	1,004,632	643.99
Financial Activities	24	131	5,330,942	782.58
Professional & Business Services	25	97	3,020,900	598.91
Education & Health Services	94	636	22,427,308	678.14
Leisure & Hospitality	14	202	2,407,644	229.21
Other Services	26	100	2,543,781	489.19
Local Government	14	437	14,370,290	632.38
State Government	11	373	10,110,194	521.25

Note: Data may not add due to rounding.

TABLE 6. COUNTY SUMMARY CALENDAR YEAR 2016

North American Industry Classification System - Industry Groups	Average Employing Units	Average Covered Employment	Total Calendar Earnings	Average Weekly Earnings
<b>CALHOUN COUNTY - TOTAL</b>	<b>100</b>	<b>2,747</b>	<b>\$140,469,363</b>	<b>\$983.38</b>
Natural Resources & Mining	7	43	1,415,558	633.08
Construction	10	106	4,052,827	735.27
Manufacturing	9	1,920	110,289,136	1,104.66
Trade, Transportation & Utilities	21	224	8,070,375	692.85
Retail Trade	11	57	1,079,588	364.23
Transportation, Warehousing & Utilities	10	167	6,990,787	805.02
Financial Activities	5	83	3,056,361	708.15
Professional & Business Services	4	9	342,202	731.20
Education & Health Services	15	58	2,205,042	731.11
Leisure & Hospitality	4	14	190,203	261.27
Local Government	11	183	5,067,038	532.48
State Government	8	78	2,873,830	708.54
Other	6	29	2,906,791	1,927.58
<b>CARROLL COUNTY - TOTAL</b>	<b>785</b>	<b>10,731</b>	<b>\$304,479,192</b>	<b>\$545.65</b>
Natural Resources & Mining	17	202	6,964,867	663.07
Trade, Transportation & Utilities	193	1,606	46,455,653	556.28
Wholesale Trade	21	124	3,905,439	605.68
Retail Trade	149	1,178	26,214,057	427.94
Transportation, Warehousing & Utilities	23	304	16,336,157	1,033.41
Information	10	61	2,499,753	788.07
Financial Activities	66	364	16,786,360	886.85
Professional & Business Services	66	532	16,984,844	613.97
Education & Health Services	93	1,033	33,109,160	616.37
Leisure & Hospitality	166	1,643	23,856,783	279.24
Other Services	42	132	3,030,865	441.56
Local Government	25	975	32,000,309	631.17
State Government	10	102	3,338,077	629.35
Other	97	4,081	119,452,521	562.89

Note: Data may not add due to rounding.

TABLE 6. COUNTY SUMMARY CALENDAR YEAR 2016

North American Industry Classification System - Industry Groups	Average Employing Units	Average Covered Employment	Total Calendar Earnings	Average Weekly Earnings
<b>CHICOT COUNTY - TOTAL</b>	<b>511</b>	<b>3,191</b>	<b>\$97,254,884</b>	<b>\$586.11</b>
Natural Resources & Mining	58	257	9,401,219	703.47
Construction	16	144	6,472,288	864.35
Manufacturing	7	28	1,473,336	1,011.91
Trade, Transportation & Utilities	65	674	18,705,921	533.72
Wholesale Trade	13	68	2,925,842	827.44
Retail Trade	39	324	7,591,035	450.56
Transportation, Warehousing & Utilities	13	282	8,189,044	558.45
Information	4	5	86,722	333.55
Financial Activities	28	149	6,951,891	897.25
Professional & Business Services	17	41	1,695,076	795.06
Education & Health Services	252	799	20,194,034	486.04
Leisure & Hospitality	20	145	1,739,877	230.75
Other Services	16	65	2,137,782	632.48
Local Government	18	609	19,858,662	627.09
State Government	10	275	8,538,076	597.07
<b>CLARK COUNTY - TOTAL</b>	<b>618</b>	<b>9,015</b>	<b>\$300,312,627</b>	<b>\$640.63</b>
Natural Resources & Mining	45	260	10,030,426	741.90
Construction	20	59	1,632,735	532.18
Manufacturing	32	1,443	73,315,949	977.08
Trade, Transportation & Utilities	124	1,389	41,129,093	569.43
Wholesale Trade	11	31	1,659,582	1,029.52
Retail Trade	92	1,206	32,092,751	511.75
Transportation, Warehousing & Utilities	21	152	7,376,760	933.29
Information	4	18	569,017	607.92
Financial Activities	72	290	11,179,344	741.34
Professional & Business Services	52	622	22,498,952	695.61
Education & Health Services	124	1,608	49,805,705	595.65
Leisure & Hospitality	59	1,029	14,856,498	277.65
Other Services	43	234	7,366,134	605.37
Local Government	28	941	29,738,994	607.76
State Government	15	1,122	38,189,780	654.56

Note: Data may not add due to rounding.



TABLE 6. COUNTY SUMMARY CALENDAR YEAR 2016

North American Industry Classification System - Industry Groups	Average Employing Units	Average Covered Employment	Total Calendar Earnings	Average Weekly Earnings
<b>CLAY COUNTY - TOTAL</b>	<b>384</b>	<b>3,284</b>	<b>\$93,867,465</b>	<b>\$549.68</b>
Natural Resources & Mining	59	240	6,699,261	536.80
Construction	28	141	4,214,616	574.82
Manufacturing	13	136	3,922,240	554.62
Trade, Transportation & Utilities	95	855	27,419,751	616.73
Wholesale Trade	22	241	8,621,751	687.98
Retail Trade	45	423	10,669,072	485.05
Transportation, Warehousing & Utilities	28	191	8,128,928	818.46
Information	5	41	1,180,843	553.87
Financial Activities	27	120	4,170,096	668.28
Professional & Business Services	26	114	3,422,275	577.31
Education & Health Services	49	492	13,385,161	523.18
Leisure & Hospitality	23	251	2,962,590	226.98
Other Services	26	77	2,451,807	612.34
Local Government	22	772	22,720,654	565.98
State Government	11	45	1,318,171	563.32
<b>CLEBURNE COUNTY - TOTAL</b>	<b>660</b>	<b>6,454</b>	<b>\$200,892,545</b>	<b>\$598.59</b>
Natural Resources & Mining	26	257	13,166,962	985.26
Construction	64	309	12,118,832	754.22
Manufacturing	36	1,121	41,735,393	715.97
Trade, Transportation & Utilities	151	1,246	38,507,504	594.32
Wholesale Trade	33	129	5,705,309	850.52
Retail Trade	96	951	24,681,272	499.10
Transportation, Warehousing & Utilities	22	166	8,120,923	940.79
Information	9	62	2,011,693	623.97
Financial Activities	72	259	10,695,606	794.15
Professional & Business Services	68	311	10,632,041	657.44
Education & Health Services	91	944	27,251,948	555.17
Leisure & Hospitality	80	925	13,498,615	280.64
Other Services	36	129	3,073,522	458.19
Local Government	18	770	24,763,671	618.47
State Government	9	121	3,436,758	546.21

Note: Data may not add due to rounding.

TABLE 6. COUNTY SUMMARY CALENDAR YEAR 2016

North American Industry Classification System - Industry Groups	Average Employing Units	Average Covered Employment	Total Calendar Earnings	Average Weekly Earnings
<b>CLEVELAND COUNTY - TOTAL</b>	<b>123</b>	<b>951</b>	<b>\$28,997,310</b>	<b>\$586.37</b>
Natural Resources & Mining	15	130	5,501,608	813.85
Construction	9	25	609,601	468.92
Manufacturing	4	74	2,456,142	638.29
Trade, Transportation & Utilities	37	188	5,442,522	556.72
Retail Trade	19	59	925,545	301.68
Other Trade, Transportation & Utilities	18	129	4,516,977	673.37
Financial Activities	3	26	1,235,999	914.20
Education & Health Services	27	143	3,060,802	411.62
Other Services	4	12	410,872	658.45
Local Government	11	295	8,697,900	567.01
State Government	7	45	1,343,948	574.34
Other	6	13	237,916	351.95
<b>COLUMBIA COUNTY - TOTAL</b>	<b>724</b>	<b>8,023</b>	<b>\$305,697,602</b>	<b>\$732.74</b>
Natural Resources & Mining	41	360	22,430,203	1,198.19
Construction	41	171	6,404,386	720.24
Manufacturing	32	1,847	100,484,177	1,046.23
Trade, Transportation & Utilities	163	1,369	41,701,617	585.80
Wholesale Trade	31	190	10,468,366	1,059.55
Retail Trade	95	975	22,113,319	436.16
Transportation, Warehousing & Utilities	37	204	9,119,932	859.72
Information	8	55	1,891,356	661.31
Financial Activities	67	357	18,039,834	971.76
Professional & Business Services	55	300	11,532,184	739.24
Education & Health Services	182	1,019	25,175,914	475.12
Leisure & Hospitality	50	684	9,540,302	268.23
Other Services	46	157	3,390,628	415.31
Local Government	26	1,079	37,696,075	671.85
State Government	13	625	27,410,926	843.41

Note: Data may not add due to rounding.

TABLE 6. COUNTY SUMMARY CALENDAR YEAR 2016

North American Industry Classification System - Industry Groups	Average Employing Units	Average Covered Employment	Total Calendar Earnings	Average Weekly Earnings
<b>CONWAY COUNTY - TOTAL</b>	<b>547</b>	<b>6,576</b>	<b>\$235,914,281</b>	<b>\$689.90</b>
Natural Resources & Mining	34	250	9,693,275	745.64
Construction	50	500	26,395,021	1,015.19
Manufacturing	20	851	49,346,722	1,115.13
Trade, Transportation & Utilities	121	1,547	50,099,762	622.79
Wholesale Trade	16	129	4,894,033	729.58
Retail Trade	78	832	20,794,057	480.63
Transportation, Warehousing & Utilities	27	586	24,411,672	801.12
Information	3	16	189,329	227.56
Financial Activities	38	152	6,235,050	788.85
Professional & Business Services	39	538	12,169,996	435.02
Education & Health Services	134	812	27,805,279	658.52
Leisure & Hospitality	42	462	6,114,247	254.51
Other Services	27	91	2,971,288	627.91
Local Government	29	979	33,415,742	656.39
State Government	10	378	11,478,570	583.97
<b>CRAIGHEAD COUNTY - TOTAL</b>	<b>2,780</b>	<b>48,328</b>	<b>\$1,792,429,332</b>	<b>\$713.25</b>
Natural Resources & Mining	90	354	12,446,302	676.14
Construction	227	2,096	89,896,035	824.79
Manufacturing	100	6,043	276,997,472	881.50
Trade, Transportation & Utilities	782	10,155	326,146,763	617.63
Wholesale Trade	181	1,644	83,357,510	975.08
Retail Trade	473	6,948	173,021,084	478.89
Transportation, Warehousing & Utilities	128	1,563	69,768,169	858.41
Information	20	429	18,837,152	844.41
Financial Activities	267	1,631	80,833,619	953.09
Professional & Business Services	363	4,398	133,078,999	581.90
Education & Health Services	466	10,207	480,007,874	904.37
Leisure & Hospitality	252	5,430	81,566,816	288.88
Other Services	155	852	24,626,524	555.85
Local Government	35	3,801	146,491,260	741.16
State Government	23	2,932	121,500,516	796.91

Note: Data may not add due to rounding.

TABLE 6. COUNTY SUMMARY CALENDAR YEAR 2016

North American Industry Classification System - Industry Groups	Average Employing Units	Average Covered Employment	Total Calendar Earnings	Average Weekly Earnings
<b>CRAWFORD COUNTY - TOTAL</b>	<b>1,234</b>	<b>19,367</b>	<b>\$662,889,498</b>	<b>\$658.23</b>
Natural Resources & Mining	28	234	9,482,309	779.28
Construction	145	876	35,138,159	771.39
Manufacturing	69	4,450	174,681,418	754.89
Trade, Transportation & Utilities	306	5,887	206,539,874	674.69
Wholesale Trade	79	780	39,989,903	985.94
Retail Trade	161	2,009	54,987,009	526.35
Transportation, Warehousing & Utilities	66	3,098	111,562,962	692.52
Information	10	84	3,047,969	697.80
Financial Activities	119	499	18,435,406	710.48
Professional & Business Services	157	1,525	50,458,367	636.30
Education & Health Services	172	1,632	52,307,983	616.37
Leisure & Hospitality	95	1,652	23,077,156	268.64
Other Services	80	378	12,588,964	640.46
Local Government	43	1,993	72,406,797	698.66
State Government	10	157	4,725,096	578.77
<b>CRITTENDEN COUNTY - TOTAL</b>	<b>1,275</b>	<b>16,416</b>	<b>\$576,109,192</b>	<b>\$674.89</b>
Natural Resources & Mining	56	268	9,015,135	646.90
Construction	48	528	26,498,440	965.12
Manufacturing	41	1,955	99,739,020	981.10
Trade, Transportation & Utilities	307	4,430	159,575,264	692.72
Wholesale Trade	64	776	36,368,901	901.29
Retail Trade	163	2,047	46,899,628	440.60
Transportation, Warehousing & Utilities	80	1,607	76,306,735	913.15
Information	5	55	1,932,035	675.54
Financial Activities	97	456	18,378,459	775.07
Professional & Business Services	115	1,309	40,728,993	598.36
Education & Health Services	348	2,120	64,688,005	586.79
Leisure & Hospitality	124	2,333	42,512,652	350.43
Other Services	78	481	16,157,296	645.98
Local Government	42	2,018	82,220,266	783.53
State Government	14	463	14,663,627	609.06

Note: Data may not add due to rounding.

TABLE 6. COUNTY SUMMARY CALENDAR YEAR 2016

North American Industry Classification System - Industry Groups	Average Employing Units	Average Covered Employment	Total Calendar Earnings	Average Weekly Earnings
<b>CROSS COUNTY - TOTAL</b>	<b>475</b>	<b>4,935</b>	<b>\$159,491,777</b>	<b>\$621.51</b>
Natural Resources & Mining	38	245	7,612,650	597.54
Construction	21	62	2,044,241	634.07
Manufacturing	11	469	15,639,751	641.29
Trade, Transportation & Utilities	128	1,225	43,615,478	684.70
Wholesale Trade	30	302	16,161,546	1,029.14
Retail Trade	71	809	22,906,072	544.50
Transportation, Warehousing & Utilities	27	114	4,547,860	767.18
Information	5	42	1,220,988	559.06
Financial Activities	44	305	10,912,449	688.05
Professional & Business Services	38	121	4,770,644	758.21
Education & Health Services	100	985	30,196,220	589.54
Leisure & Hospitality	30	339	4,329,248	245.59
Other Services	34	92	2,738,646	572.46
Local Government	16	681	23,656,397	668.03
State Government	10	369	12,755,065	664.74
<b>DALLAS COUNTY - TOTAL</b>	<b>251</b>	<b>2,815</b>	<b>\$84,884,575</b>	<b>\$579.89</b>
Natural Resources & Mining	30	158	5,567,202	677.60
Construction	16	80	2,880,823	692.51
Manufacturing	9	547	20,288,930	713.29
Trade, Transportation & Utilities	58	470	13,301,374	544.25
Wholesale Trade	6	13	688,519	1,018.52
Retail Trade	39	358	8,992,928	483.08
Transportation, Warehousing & Utilities	13	99	3,619,927	703.17
Information	4	17	567,499	641.97
Financial Activities	16	78	3,496,468	862.05
Professional & Business Services	11	31	1,080,273	670.14
Education & Health Services	59	850	25,297,170	572.33
Leisure & Hospitality	13	151	1,755,233	223.54
Other Services	13	59	1,293,163	421.50
Local Government	14	335	8,152,427	467.99
State Government	8	39	1,204,013	593.69

Note: Data may not add due to rounding.

TABLE 6. COUNTY SUMMARY CALENDAR YEAR 2016

North American Industry Classification System - Industry Groups	Average Employing Units	Average Covered Employment	Total Calendar Earnings	Average Weekly Earnings
<b>DESHA COUNTY - TOTAL</b>	<b>546</b>	<b>4,517</b>	<b>\$149,105,117</b>	<b>\$634.80</b>
Natural Resources & Mining	68	302	8,957,365	570.39
Construction	19	96	3,928,107	786.88
Manufacturing	15	817	45,002,480	1,059.28
Trade, Transportation & Utilities	108	860	26,693,600	596.91
Wholesale Trade	20	203	10,392,437	984.51
Retail Trade	64	487	10,061,716	397.32
Transportation, Warehousing & Utilities	24	170	6,239,447	705.82
Information	3	10	387,793	745.76
Financial Activities	28	202	6,682,920	636.23
Professional & Business Services	39	87	2,795,397	617.90
Education & Health Services	178	749	18,401,968	472.48
Leisure & Hospitality	37	399	5,632,953	271.49
Other Services	20	53	1,175,642	426.58
Local Government	21	802	25,448,512	610.22
State Government	10	140	3,998,380	549.23
<b>DREW COUNTY - TOTAL</b>	<b>530</b>	<b>6,359</b>	<b>\$213,891,997</b>	<b>\$646.85</b>
Natural Resources & Mining	52	346	13,674,135	760.01
Construction	21	104	3,597,384	665.20
Manufacturing	21	776	30,044,481	744.56
Trade, Transportation & Utilities	123	1,209	34,007,480	540.93
Wholesale Trade	19	127	5,975,078	904.77
Retail Trade	81	941	22,242,312	454.56
Transportation, Warehousing & Utilities	23	141	5,790,090	789.70
Information	6	49	1,679,754	659.24
Financial Activities	50	250	10,718,244	824.48
Professional & Business Services	33	227	10,270,535	870.09
Education & Health Services	131	917	32,333,740	678.08
Leisure & Hospitality	39	638	8,423,159	253.89
Other Services	17	66	1,510,259	440.05
Local Government	22	1,199	43,722,133	701.26
State Government	15	578	23,910,693	795.54

Note: Data may not add due to rounding.

TABLE 6. COUNTY SUMMARY CALENDAR YEAR 2016

North American Industry Classification System - Industry Groups	Average Employing Units	Average Covered Employment	Total Calendar Earnings	Average Weekly Earnings
<b>FAULKNER COUNTY - TOTAL</b>	<b>2,809</b>	<b>40,069</b>	<b>\$1,547,733,145</b>	<b>\$742.82</b>
Natural Resources & Mining	60	441	30,594,422	1,334.14
Construction	304	2,734	122,776,070	863.60
Manufacturing	102	3,165	161,585,703	981.81
Trade, Transportation & Utilities	647	7,340	219,708,925	575.64
Wholesale Trade	143	498	26,984,544	1,042.04
Retail Trade	415	6,111	155,847,408	490.44
Transportation, Warehousing & Utilities	89	731	36,876,973	970.14
Information	20	254	12,548,811	950.09
Financial Activities	312	1,447	63,107,425	838.70
Professional & Business Services	426	5,609	325,834,269	1,117.14
Education & Health Services	432	6,563	243,896,072	714.66
Leisure & Hospitality	256	5,125	72,736,333	272.93
Other Services	191	787	23,798,280	581.52
Local Government	41	3,298	137,916,658	804.20
State Government	18	3,306	133,230,177	774.99
<b>FRANKLIN COUNTY - TOTAL</b>	<b>362</b>	<b>4,320</b>	<b>\$149,225,550</b>	<b>\$664.29</b>
Natural Resources & Mining	19	204	14,848,945	1,399.79
Construction	34	116	3,794,863	629.12
Manufacturing	14	898	35,629,726	763.01
Trade, Transportation & Utilities	88	929	31,127,050	644.35
Wholesale Trade	12	40	889,335	427.56
Retail Trade	55	636	14,515,253	438.90
Transportation, Warehousing & Utilities	21	253	15,722,462	1,195.08
Information	5	20	643,203	618.46
Financial Activities	29	80	2,785,636	669.62
Professional & Business Services	37	303	11,001,629	698.25
Education & Health Services	66	561	14,919,775	511.44
Leisure & Hospitality	27	331	4,127,802	239.82
Other Services	15	59	1,438,379	468.83
Local Government	19	695	23,536,961	651.27
State Government	9	124	5,371,581	833.06

Note: Data may not add due to rounding.

TABLE 6. COUNTY SUMMARY CALENDAR YEAR 2016

North American Industry Classification System - Industry Groups	Average Employing Units	Average Covered Employment	Total Calendar Earnings	Average Weekly Earnings
<b>FULTON COUNTY - TOTAL</b>	<b>190</b>	<b>1,796</b>	<b>\$50,089,333</b>	<b>\$536.33</b>
Natural Resources & Mining	3	6	154,175	494.15
Construction	8	37	1,431,553	744.05
Manufacturing	13	95	2,172,828	439.84
Trade, Transportation & Utilities	45	286	9,691,100	651.63
Retail Trade	30	175	3,667,867	403.06
Other Trade, Transportation & Utilities	15	111	6,023,233	1,043.53
Information	4	31	711,268	441.23
Financial Activities	18	97	3,487,483	691.41
Professional & Business Services	13	36	1,213,152	648.05
Education & Health Services	42	436	11,059,507	487.80
Leisure & Hospitality	16	160	1,971,664	236.98
Other Services	6	12	300,677	481.85
Local Government	12	506	14,865,214	564.96
State Government	10	94	3,030,712	620.03
<b>GARLAND COUNTY - TOTAL</b>	<b>3,090</b>	<b>35,834</b>	<b>\$1,228,110,454</b>	<b>\$659.08</b>
Natural Resources & Mining	28	235	12,238,408	1,001.51
Construction	330	1,666	59,876,800	691.16
Manufacturing	96	2,542	108,261,512	819.02
Trade, Transportation & Utilities	688	7,276	223,209,197	589.95
Wholesale Trade	138	823	43,489,514	1,016.21
Retail Trade	489	5,980	159,012,596	511.36
Transportation, Warehousing & Utilities	61	473	20,707,087	841.89
Information	31	420	15,818,676	724.30
Financial Activities	335	1,463	71,542,285	940.41
Professional & Business Services	382	2,825	103,445,806	704.19
Education & Health Services	527	7,581	331,602,913	841.18
Leisure & Hospitality	381	7,050	122,591,422	334.40
Other Services	235	976	25,701,640	506.42
Local Government	33	2,805	119,703,198	820.67
State Government	24	995	34,118,597	659.42

Note: Data may not add due to rounding.



TABLE 6. COUNTY SUMMARY CALENDAR YEAR 2016

North American Industry Classification System - Industry Groups	Average Employing Units	Average Covered Employment	Total Calendar Earnings	Average Weekly Earnings
<b>GRANT COUNTY - TOTAL</b>	<b>343</b>	<b>3,931</b>	<b>\$146,741,964</b>	<b>\$717.87</b>
Natural Resources & Mining	27	179	9,029,428	970.07
Construction	29	183	8,976,819	943.34
Manufacturing	18	1,201	57,069,579	913.82
Trade, Transportation & Utilities	90	648	19,104,116	566.96
Wholesale Trade	22	99	4,786,979	929.87
Retail Trade	44	474	11,697,137	474.57
Transportation, Warehousing & Utilities	24	75	2,620,000	671.79
Financial Activities	24	96	3,865,134	774.27
Professional & Business Services	27	95	6,360,112	1,287.47
Education & Health Services	68	395	9,572,183	466.03
Leisure & Hospitality	22	310	3,570,153	221.47
Local Government	10	720	26,414,624	705.52
State Government	8	52	1,464,669	541.67
Other	20	52	1,315,147	486.37
<b>GREENE COUNTY - TOTAL</b>	<b>883</b>	<b>15,266</b>	<b>\$543,190,933</b>	<b>\$684.26</b>
Natural Resources & Mining	40	273	8,889,256	626.18
Construction	70	302	11,674,748	743.43
Manufacturing	63	5,134	227,334,991	851.54
Trade, Transportation & Utilities	240	2,665	78,041,835	563.15
Wholesale Trade	45	411	18,342,261	858.24
Retail Trade	159	1,900	47,200,520	477.74
Transportation, Warehousing & Utilities	36	354	12,499,054	679.00
Information	10	94	2,422,361	495.57
Financial Activities	75	547	23,193,584	815.41
Professional & Business Services	88	888	27,689,944	599.66
Education & Health Services	146	1,956	69,644,949	684.73
Leisure & Hospitality	65	1,223	15,724,156	247.25
Other Services	44	181	5,105,729	542.47
Local Government	30	1,585	57,157,409	693.49
State Government	12	418	16,311,971	750.46

Note: Data may not add due to rounding.

TABLE 6. COUNTY SUMMARY CALENDAR YEAR 2016

North American Industry Classification System - Industry Groups	Average Employing Units	Average Covered Employment	Total Calendar Earnings	Average Weekly Earnings
<b>HEMPSTEAD COUNTY - TOTAL</b>	<b>505</b>	<b>7,734</b>	<b>\$260,433,493</b>	<b>\$647.57</b>
Natural Resources & Mining	23	245	9,312,954	731.00
Construction	29	197	8,047,054	785.54
Manufacturing	28	2,264	89,681,799	761.77
Trade, Transportation & Utilities	125	1,277	44,125,913	664.51
Wholesale Trade	20	183	6,408,607	673.46
Retail Trade	78	841	20,483,964	468.40
Transportation, Warehousing & Utilities	27	253	17,233,342	1,309.92
Information	8	36	1,352,497	722.49
Financial Activities	46	215	8,216,798	734.96
Professional & Business Services	34	212	6,447,537	584.86
Education & Health Services	93	971	25,640,178	507.81
Leisure & Hospitality	44	601	8,523,078	272.72
Other Services	31	143	4,042,407	543.63
Local Government	27	835	30,227,024	696.15
State Government	17	738	24,816,254	646.66
<b>HOT SPRING COUNTY - TOTAL</b>	<b>619</b>	<b>8,411</b>	<b>\$288,858,107</b>	<b>\$660.44</b>
Natural Resources & Mining	22	151	4,710,522	599.91
Construction	55	336	12,489,658	714.84
Manufacturing	28	1,378	67,191,152	937.69
Trade, Transportation & Utilities	150	1,626	61,825,928	731.22
Wholesale Trade	17	111	4,924,018	853.09
Retail Trade	95	878	20,968,244	459.27
Transportation, Warehousing & Utilities	38	637	35,933,666	1,084.82
Information	7	77	2,746,822	686.02
Financial Activities	53	210	8,707,112	797.35
Professional & Business Services	50	1,027	25,291,521	473.59
Education & Health Services	124	1,024	34,328,823	644.70
Leisure & Hospitality	53	642	7,611,630	228.00
Other Services	37	126	3,234,450	493.66
Local Government	27	953	33,717,349	680.39
State Government	13	861	27,003,140	603.13

Note: Data may not add due to rounding.

TABLE 6. COUNTY SUMMARY CALENDAR YEAR 2016

North American Industry Classification System - Industry Groups	Average Employing Units	Average Covered Employment	Total Calendar Earnings	Average Weekly Earnings
<b>HOWARD COUNTY - TOTAL</b>	<b>352</b>	<b>6,916</b>	<b>\$217,453,724</b>	<b>\$604.66</b>
Natural Resources & Mining	21	246	8,693,537	679.61
Construction	19	127	6,431,651	973.90
Manufacturing	20	3,342	104,886,254	603.54
Trade, Transportation & Utilities	87	915	28,135,798	591.34
Wholesale Trade	15	77	2,936,365	733.36
Retail Trade	54	639	15,555,930	468.16
Transportation, Warehousing & Utilities	18	199	9,643,503	931.92
Information	3	21	490,646	449.31
Financial Activities	35	137	5,284,703	741.82
Professional & Business Services	23	136	4,168,411	589.42
Education & Health Services	72	742	25,026,472	648.62
Leisure & Hospitality	21	323	4,301,741	256.12
Other Services	23	149	4,637,904	598.59
Local Government	17	671	21,885,551	627.24
State Government	11	107	3,511,056	631.03
<b>INDEPENDENCE COUNTY - TOTAL</b>	<b>911</b>	<b>15,296</b>	<b>\$543,574,941</b>	<b>\$683.41</b>
Natural Resources & Mining	13	203	10,474,861	992.31
Construction	62	424	16,895,521	766.31
Manufacturing	38	2,800	118,530,335	814.08
Trade, Transportation & Utilities	239	3,105	105,655,078	654.37
Wholesale Trade	30	431	18,087,688	807.05
Retail Trade	156	1,805	45,383,870	483.53
Transportation, Warehousing & Utilities	53	869	42,183,520	933.51
Information	10	116	3,653,632	605.71
Financial Activities	84	504	24,535,709	936.19
Professional & Business Services	96	1,227	30,218,522	473.61
Education & Health Services	164	3,354	144,168,310	826.62
Leisure & Hospitality	78	1,194	15,457,400	248.96
Other Services	65	365	7,738,286	407.71
Local Government	46	1,409	45,655,006	623.12
State Government	16	595	20,592,281	665.56

Note: Data may not add due to rounding.

TABLE 6. COUNTY SUMMARY CALENDAR YEAR 2016

North American Industry Classification System - Industry Groups	Average Employing Units	Average Covered Employment	Total Calendar Earnings	Average Weekly Earnings
<b>IZARD COUNTY - TOTAL</b>	<b>257</b>	<b>3,114</b>	<b>\$98,676,692</b>	<b>\$609.39</b>
Natural Resources & Mining	7	137	6,958,565	976.78
Construction	22	111	3,974,713	688.62
Manufacturing	10	306	10,654,711	669.60
Trade, Transportation & Utilities	67	559	16,354,959	562.64
Wholesale Trade	12	28	727,746	499.83
Retail Trade	44	393	9,768,545	478.01
Transportation, Warehousing & Utilities	11	138	5,858,668	816.43
Information	4	7	336,981	925.77
Financial Activities	25	173	6,097,404	677.79
Professional & Business Services	15	51	1,594,450	601.23
Education & Health Services	49	691	19,467,483	541.79
Leisure & Hospitality	20	156	1,786,473	220.23
Other Services	11	26	668,487	494.44
Local Government	17	468	15,813,872	649.81
State Government	10	429	14,968,594	671.00
<b>JACKSON COUNTY - TOTAL</b>	<b>450</b>	<b>5,260</b>	<b>\$184,209,137</b>	<b>\$673.48</b>
Natural Resources & Mining	55	279	9,928,359	684.34
Construction	21	106	4,002,885	726.21
Manufacturing	15	1,024	46,981,080	882.31
Trade, Transportation & Utilities	108	1,012	33,126,227	629.49
Wholesale Trade	20	207	10,360,246	962.49
Retail Trade	70	712	18,444,921	498.19
Transportation, Warehousing & Utilities	18	93	4,321,060	893.52
Information	4	25	672,138	517.03
Financial Activities	33	142	5,729,254	775.90
Professional & Business Services	33	121	4,354,000	691.99
Education & Health Services	87	831	28,726,893	664.79
Leisure & Hospitality	28	302	3,909,706	248.96
Other Services	21	60	2,050,611	657.25
Local Government	32	574	17,871,063	598.74
State Government	13	784	26,856,921	658.77

Note: Data may not add due to rounding.

TABLE 6. COUNTY SUMMARY CALENDAR YEAR 2016

North American Industry Classification System - Industry Groups	Average Employing Units	Average Covered Employment	Total Calendar Earnings	Average Weekly Earnings
<b>JEFFERSON COUNTY - TOTAL</b>	<b>2,095</b>	<b>26,764</b>	<b>\$994,467,037</b>	<b>\$714.56</b>
Natural Resources & Mining	38	174	8,227,213	909.29
Construction	88	549	23,128,351	810.16
Manufacturing	61	4,882	249,334,567	982.16
Trade, Transportation & Utilities	406	4,549	150,926,372	638.04
Wholesale Trade	72	674	27,669,545	789.48
Retail Trade	278	3,150	81,541,740	497.81
Transportation, Warehousing & Utilities	56	725	41,715,087	1,106.50
Information	10	77	3,433,127	857.42
Financial Activities	153	999	50,289,660	968.08
Professional & Business Services	153	2,131	62,098,076	560.39
Education & Health Services	854	4,794	178,797,767	717.23
Leisure & Hospitality	139	1,941	26,658,052	264.12
Other Services	117	574	17,883,509	599.15
Local Government	39	2,695	94,246,296	672.52
State Government	37	3,399	129,444,047	732.36
<b>JOHNSON COUNTY - TOTAL</b>	<b>502</b>	<b>8,543</b>	<b>\$266,590,247</b>	<b>\$600.11</b>
Natural Resources & Mining	15	190	6,487,125	656.59
Construction	35	160	5,605,689	673.76
Manufacturing	36	2,697	85,886,156	612.41
Trade, Transportation & Utilities	116	1,936	58,774,227	583.82
Retail Trade	78	947	21,150,893	429.51
Other Trade, Transportation & Utilities	38	989	37,623,334	731.57
Information	6	33	1,010,915	589.11
Financial Activities	50	180	6,623,581	707.65
Professional & Business Services	54	376	8,455,537	432.46
Education & Health Services	95	1,263	45,618,918	694.61
Leisure & Hospitality	39	538	6,577,139	235.10
Other Services	33	90	2,276,153	486.36
Local Government	14	963	35,074,726	700.43
State Government	9	117	4,200,081	690.35

Note: Data may not add due to rounding.

TABLE 6. COUNTY SUMMARY CALENDAR YEAR 2016

North American Industry Classification System - Industry Groups	Average Employing Units	Average Covered Employment	Total Calendar Earnings	Average Weekly Earnings
<b>LAFAYETTE COUNTY - TOTAL</b>	<b>174</b>	<b>1,184</b>	<b>\$38,776,621</b>	<b>\$629.82</b>
Natural Resources & Mining	29	140	6,541,058	898.50
Construction	9	61	3,904,648	1,230.97
Manufacturing	5	30	2,587,806	1,658.85
Trade, Transportation & Utilities	31	198	5,010,005	486.60
Retail Trade	18	119	2,284,070	369.11
Other Trade, Transportation & Utilities	13	79	2,725,935	663.57
Financial Activities	14	47	1,500,703	614.04
Professional & Business Services	10	42	1,401,905	641.90
Education & Health Services	42	207	5,553,005	515.89
Leisure & Hospitality	5	44	628,113	274.52
Local Government	13	288	8,663,588	578.50
State Government	8	42	1,138,849	521.45
Other	8	85	1,846,941	417.86
<b>LAWRENCE COUNTY - TOTAL</b>	<b>416</b>	<b>3,989</b>	<b>\$124,893,464</b>	<b>\$602.11</b>
Natural Resources & Mining	51	207	7,733,083	718.42
Construction	25	115	4,031,814	674.22
Manufacturing	20	490	16,641,357	653.11
Trade, Transportation & Utilities	116	833	27,382,162	632.15
Wholesale Trade	19	197	8,415,446	821.50
Retail Trade	61	496	12,820,555	497.07
Transportation, Warehousing & Utilities	36	140	6,146,161	844.25
Financial Activities	34	144	5,266,684	703.35
Professional & Business Services	27	107	4,260,453	765.72
Education & Health Services	56	534	17,073,351	614.86
Leisure & Hospitality	30	346	4,446,248	247.12
Local Government	25	1,055	33,554,244	611.63
State Government	10	90	2,488,893	531.81
Other	22	68	2,015,175	569.90

Note: Data may not add due to rounding.

TABLE 6. COUNTY SUMMARY CALENDAR YEAR 2016

North American Industry Classification System - Industry Groups	Average Employing Units	Average Covered Employment	Total Calendar Earnings	Average Weekly Earnings
<b>LEE COUNTY - TOTAL</b>	<b>294</b>	<b>1,940</b>	<b>\$61,631,249</b>	<b>\$610.94</b>
Natural Resources & Mining	40	209	8,926,558	821.36
Construction	11	29	927,838	615.28
Trade, Transportation & Utilities	43	338	12,340,243	702.11
Wholesale Trade	10	116	5,594,500	927.47
Retail Trade	22	168	3,842,974	439.90
Transportation, Warehousing & Utilities	11	54	2,902,769	1,033.75
Financial Activities	18	63	1,841,910	562.24
Professional & Business Services	14	64	3,618,140	1,087.18
Education & Health Services	128	452	12,244,584	520.96
Leisure & Hospitality	9	79	1,104,252	268.81
Local Government	15	259	5,660,577	420.30
State Government	7	432	14,552,399	647.81
Other	9	15	414,748	531.73
<b>LINCOLN COUNTY - TOTAL</b>	<b>285</b>	<b>2,842</b>	<b>\$91,376,581</b>	<b>\$618.31</b>
Natural Resources & Mining	34	173	5,643,080	627.29
Construction	17	86	3,189,818	713.29
Manufacturing	8	258	8,319,578	620.12
Trade, Transportation & Utilities	47	376	13,308,981	680.70
Wholesale Trade	6	53	1,798,329	652.51
Retail Trade	25	183	3,659,856	384.60
Transportation, Warehousing & Utilities	16	140	7,850,796	1,078.41
Financial Activities	20	75	2,837,717	727.62
Professional & Business Services	11	32	872,317	524.23
Education & Health Services	96	404	10,913,426	519.49
Leisure & Hospitality	16	187	1,854,477	190.71
Local Government	7	348	10,589,881	585.21
State Government	12	855	31,923,725	718.03
Other	17	48	1,923,581	770.67

Note: Data may not add due to rounding.

TABLE 6. COUNTY SUMMARY CALENDAR YEAR 2016

North American Industry Classification System - Industry Groups	Average Employing Units	Average Covered Employment	Total Calendar Earnings	Average Weekly Earnings
<b>LITTLE RIVER COUNTY - TOTAL</b>	<b>241</b>	<b>3,432</b>	<b>\$174,253,624</b>	<b>\$976.41</b>
Natural Resources & Mining	15	91	3,570,433	754.53
Construction	15	224	8,776,702	753.49
Manufacturing	15	1,173	107,970,631	1,770.13
Trade, Transportation & Utilities	56	570	16,110,978	543.56
Wholesale Trade	7	24	1,521,988	1,219.54
Retail Trade	35	421	10,203,047	466.06
Transportation, Warehousing & Utilities	14	125	4,385,943	674.76
Financial Activities	17	75	2,524,452	647.30
Professional & Business Services	16	79	2,736,369	666.11
Education & Health Services	44	175	4,531,568	497.97
Leisure & Hospitality	14	191	2,355,412	237.15
Local Government	20	695	21,787,047	602.85
State Government	11	83	2,338,199	541.75
Other	18	76	1,551,833	392.67
<b>LOGAN COUNTY - TOTAL</b>	<b>501</b>	<b>5,443</b>	<b>\$165,258,883</b>	<b>\$583.88</b>
Natural Resources & Mining	28	120	4,820,565	772.53
Construction	43	215	7,995,664	715.18
Manufacturing	20	1,186	44,522,390	721.92
Trade, Transportation & Utilities	104	1,047	26,679,256	490.03
Wholesale Trade	9	71	1,421,830	385.11
Retail Trade	69	798	17,970,454	433.06
Transportation, Warehousing & Utilities	26	178	7,286,972	787.27
Information	5	30	1,236,016	792.32
Financial Activities	49	202	8,208,342	781.45
Professional & Business Services	49	134	5,060,714	726.28
Education & Health Services	109	716	21,507,113	577.65
Leisure & Hospitality	31	356	4,283,991	231.42
Other Services	27	128	4,117,955	618.68
Local Government	22	770	23,750,629	593.17
State Government	14	539	13,076,248	466.54

Note: Data may not add due to rounding.



TABLE 6. COUNTY SUMMARY CALENDAR YEAR 2016

North American Industry Classification System - Industry Groups	Average Employing Units	Average Covered Employment	Total Calendar Earnings	Average Weekly Earnings
<b>LONOKE COUNTY - TOTAL</b>	<b>1,307</b>	<b>13,921</b>	<b>\$462,893,633</b>	<b>\$639.45</b>
Natural Resources & Mining	86	464	19,431,776	805.36
Construction	123	875	34,896,310	766.95
Manufacturing	36	1,771	86,337,694	937.52
Trade, Transportation & Utilities	318	2,882	84,738,157	565.43
Wholesale Trade	76	403	18,848,206	899.42
Retail Trade	180	2,175	52,904,964	467.77
Transportation, Warehousing & Utilities	62	304	12,984,987	821.42
Information	15	92	3,691,243	771.58
Financial Activities	149	678	37,823,927	1,072.84
Professional & Business Services	159	827	26,700,042	620.87
Education & Health Services	200	1,668	47,804,211	551.15
Leisure & Hospitality	115	1,810	24,973,142	265.33
Other Services	65	181	4,693,522	498.67
Local Government	25	2,526	87,114,378	663.21
State Government	16	147	4,689,231	613.45
<b>MADISON COUNTY - TOTAL</b>	<b>250</b>	<b>3,133</b>	<b>\$103,267,512</b>	<b>\$633.87</b>
Natural Resources & Mining	10	46	1,501,904	627.89
Construction	24	82	2,897,683	679.57
Manufacturing	22	1,073	39,278,308	703.96
Trade, Transportation & Utilities	53	677	20,533,750	583.28
Wholesale Trade	8	26	1,021,800	755.77
Retail Trade	35	507	12,823,390	486.40
Transportation, Warehousing & Utilities	10	144	6,688,560	893.24
Information	6	51	3,687,418	1,390.43
Financial Activities	18	75	2,699,598	692.20
Professional & Business Services	24	100	4,108,554	790.11
Education & Health Services	44	249	6,170,559	476.56
Leisure & Hospitality	16	185	2,098,952	218.19
Other Services	17	45	1,350,695	577.22
Local Government	9	510	17,721,730	668.24
State Government	7	40	1,218,361	585.75

Note: Data may not add due to rounding.

TABLE 6. COUNTY SUMMARY CALENDAR YEAR 2016

North American Industry Classification System - Industry Groups	Average Employing Units	Average Covered Employment	Total Calendar Earnings	Average Weekly Earnings
<b>MARION COUNTY - TOTAL</b>	<b>277</b>	<b>3,786</b>	<b>\$107,921,047</b>	<b>\$548.18</b>
Natural Resources & Mining	3	17	379,696	429.52
Construction	18	50	1,263,588	486.00
Manufacturing	19	1,734	51,038,319	566.04
Trade, Transportation & Utilities	55	555	13,879,478	480.92
Wholesale Trade	7	41	1,433,739	672.49
Retail Trade	39	480	10,636,839	426.16
Transportation, Warehousing & Utilities	9	34	1,808,900	1,023.13
Information	4	53	4,191,817	1,520.98
Financial Activities	32	197	7,166,233	699.55
Professional & Business Services	28	86	2,258,155	504.95
Education & Health Services	47	339	9,549,755	541.74
Leisure & Hospitality	32	208	2,453,682	226.86
Other Services	14	26	480,758	355.59
Local Government	17	472	13,844,596	564.07
State Government	8	49	1,414,970	555.33
<b>MILLER COUNTY - TOTAL</b>	<b>881</b>	<b>12,900</b>	<b>\$489,149,054</b>	<b>\$729.20</b>
Natural Resources & Mining	30	171	6,436,080	723.81
Construction	69	612	25,590,132	804.11
Manufacturing	29	2,389	150,821,491	1,214.07
Trade, Transportation & Utilities	225	3,459	120,604,602	670.52
Wholesale Trade	50	469	22,389,383	918.05
Retail Trade	129	1,310	30,725,979	451.06
Transportation, Warehousing & Utilities	46	1,680	67,489,240	772.54
Information	6	78	5,441,955	1,341.70
Financial Activities	85	403	16,016,232	764.28
Professional & Business Services	90	1,012	25,364,574	482.00
Education & Health Services	162	1,094	34,247,695	602.02
Leisure & Hospitality	91	1,510	22,878,101	291.37
Other Services	53	268	6,471,949	464.41
Local Government	24	1,402	55,688,039	763.85
State Government	17	502	19,588,204	750.39

Note: Data may not add due to rounding.

TABLE 6. COUNTY SUMMARY CALENDAR YEAR 2016

North American Industry Classification System - Industry Groups	Average Employing Units	Average Covered Employment	Total Calendar Earnings	Average Weekly Earnings
<b>MISSISSIPPI COUNTY - TOTAL</b>	<b>1,176</b>	<b>17,900</b>	<b>\$769,373,821</b>	<b>\$826.57</b>
Natural Resources & Mining	118	541	18,504,355	657.77
Construction	54	977	59,051,333	1,162.34
Manufacturing	57	5,940	368,907,808	1,194.34
Trade, Transportation & Utilities	288	2,929	103,760,404	681.25
Wholesale Trade	63	377	18,675,634	952.64
Retail Trade	158	1,747	39,952,685	439.79
Transportation, Warehousing & Utilities	67	805	45,132,085	1,078.17
Information	6	45	1,208,992	516.66
Financial Activities	86	474	16,780,365	680.80
Professional & Business Services	99	1,252	36,952,894	567.60
Education & Health Services	243	1,762	57,605,935	628.72
Leisure & Hospitality	96	1,243	16,347,661	252.92
Other Services	56	223	7,148,720	616.48
Local Government	49	1,989	65,682,716	635.06
State Government	24	525	17,422,638	638.19
<b>MONROE COUNTY - TOTAL</b>	<b>306</b>	<b>2,106</b>	<b>\$61,249,370</b>	<b>\$559.29</b>
Natural Resources & Mining	33	149	6,239,422	805.29
Construction	11	23	626,871	524.14
Manufacturing	7	132	4,650,444	677.51
Trade, Transportation & Utilities	78	568	18,258,209	618.17
Wholesale Trade	17	200	8,394,602	807.17
Retail Trade	38	265	6,078,600	441.12
Transportation, Warehousing & Utilities	23	103	3,785,007	706.69
Financial Activities	21	89	3,408,403	736.47
Professional & Business Services	14	32	711,886	427.82
Education & Health Services	71	363	9,644,633	510.95
Leisure & Hospitality	22	223	2,953,404	254.69
Local Government	21	335	9,793,358	562.19
State Government	8	78	2,566,501	632.77
Other	20	114	2,396,239	404.22

Note: Data may not add due to rounding.

TABLE 6. COUNTY SUMMARY CALENDAR YEAR 2016

North American Industry Classification System - Industry Groups	Average Employing Units	Average Covered Employment	Total Calendar Earnings	Average Weekly Earnings
<b>MONTGOMERY COUNTY - TOTAL</b>	<b>166</b>	<b>1,341</b>	<b>\$34,708,754</b>	<b>\$497.74</b>
Natural Resources & Mining	8	47	1,554,251	635.95
Construction	24	75	1,927,193	494.15
Trade, Transportation & Utilities	35	219	5,170,969	454.07
Wholesale Trade	9	47	1,453,399	594.68
Retail Trade	20	155	3,274,209	406.23
Transportation, Warehousing & Utilities	6	17	443,361	501.54
Financial Activities	10	59	2,268,080	739.27
Professional & Business Services	16	20	542,628	521.76
Education & Health Services	19	59	1,730,760	564.13
Leisure & Hospitality	15	277	5,259,551	365.15
Other Services	11	69	1,335,639	372.25
Local Government	9	433	12,360,749	548.98
State Government	8	40	1,331,117	639.96
Other	11	43	1,227,817	549.11
<b>NEVADA COUNTY - TOTAL</b>	<b>196</b>	<b>2,439</b>	<b>\$86,814,900</b>	<b>\$684.51</b>
Natural Resources & Mining	10	74	3,264,939	848.48
Trade, Transportation & Utilities	39	573	18,493,395	620.67
Retail Trade	23	306	6,257,657	393.27
Other Trade, Transportation & Utilities	16	267	12,235,738	881.28
Financial Activities	11	62	2,175,580	674.81
Professional & Business Services	11	44	1,452,509	634.84
Education & Health Services	44	413	9,924,623	462.13
Leisure & Hospitality	10	100	1,205,947	231.91
Local Government	28	364	10,132,067	535.30
State Government	10	69	1,929,429	537.74
Other	33	740	38,236,411	993.67

Note: Data may not add due to rounding.

TABLE 6. COUNTY SUMMARY CALENDAR YEAR 2016

North American Industry Classification System - Industry Groups	Average Employing Units	Average Covered Employment	Total Calendar Earnings	Average Weekly Earnings
<b>NEWTON COUNTY - TOTAL</b>	<b>119</b>	<b>1,066</b>	<b>\$25,558,715</b>	<b>\$461.08</b>
Construction	6	17	462,662	523.37
Manufacturing	8	27	888,884	633.11
Trade, Transportation & Utilities	30	163	4,326,830	510.48
Retail Trade	16	107	2,100,575	377.53
Other Trade, Transportation & Utilities	14	56	2,226,255	764.51
Professional & Business Services	4	5	88,745	341.33
Education & Health Services	25	237	4,478,079	363.36
Leisure & Hospitality	16	154	2,415,799	301.67
Other Services	3	5	89,404	343.86
Local Government	13	369	10,330,975	538.41
State Government	8	58	1,427,035	473.15
Other	6	31	1,050,302	651.55
<b>OUACHITA COUNTY - TOTAL</b>	<b>651</b>	<b>6,981</b>	<b>\$226,155,536</b>	<b>\$623.00</b>
Natural Resources & Mining	36	163	6,387,235	753.57
Construction	34	198	7,225,812	701.81
Manufacturing	24	524	22,648,447	831.20
Trade, Transportation & Utilities	158	1,608	48,474,012	579.72
Wholesale Trade	28	308	12,239,275	764.19
Retail Trade	103	985	21,652,082	422.73
Transportation, Warehousing & Utilities	27	315	14,582,655	890.27
Information	6	44	1,832,105	800.75
Financial Activities	56	276	10,522,134	733.15
Professional & Business Services	48	557	19,082,760	658.84
Education & Health Services	176	1,280	46,094,484	692.53
Leisure & Hospitality	40	507	6,357,957	241.16
Other Services	30	128	3,570,012	536.36
Local Government	29	1,044	32,197,956	593.10
State Government	14	652	21,762,622	641.89

Note: Data may not add due to rounding.

TABLE 6. COUNTY SUMMARY CALENDAR YEAR 2016

North American Industry Classification System - Industry Groups	Average Employing Units	Average Covered Employment	Total Calendar Earnings	Average Weekly Earnings
<b>PERRY COUNTY - TOTAL</b>	<b>143</b>	<b>1,203</b>	<b>\$38,475,507</b>	<b>\$615.06</b>
Construction	17	102	3,502,700	660.39
Manufacturing	5	40	1,221,841	587.42
Trade, Transportation & Utilities	25	182	5,064,186	535.10
Retail Trade	15	150	2,758,285	353.63
Other Trade, Transportation & Utilities	10	32	2,305,901	1,385.76
Financial Activities	6	27	1,161,002	826.92
Professional & Business Services	14	36	1,598,268	853.78
Education & Health Services	35	217	5,532,256	490.27
Leisure & Hospitality	8	77	919,847	229.73
Local Government	10	342	10,063,804	565.89
State Government	8	47	1,378,460	564.02
Other	15	133	8,033,143	1,161.53
<b>PHILLIPS COUNTY - TOTAL</b>	<b>782</b>	<b>5,404</b>	<b>\$167,781,689</b>	<b>\$597.07</b>
Natural Resources & Mining	61	252	7,008,849	534.86
Construction	30	111	3,419,256	592.39
Manufacturing	12	359	14,568,284	780.39
Trade, Transportation & Utilities	152	1,308	41,110,447	604.42
Wholesale Trade	27	285	13,661,422	921.82
Retail Trade	86	782	17,018,439	418.51
Transportation, Warehousing & Utilities	39	241	10,430,586	832.32
Information	8	33	1,372,469	799.81
Financial Activities	40	202	7,316,101	696.51
Professional & Business Services	43	225	9,233,346	789.17
Education & Health Services	326	1,375	41,052,831	574.17
Leisure & Hospitality	37	311	3,822,281	236.35
Other Services	31	74	1,856,975	482.58
Local Government	27	740	25,369,484	659.29
State Government	15	414	11,651,366	541.22

Note: Data may not add due to rounding.

TABLE 6. COUNTY SUMMARY CALENDAR YEAR 2016

North American Industry Classification System - Industry Groups	Average Employing Units	Average Covered Employment	Total Calendar Earnings	Average Weekly Earnings
<b>PIKE COUNTY - TOTAL</b>	<b>253</b>	<b>2,425</b>	<b>\$69,667,864</b>	<b>\$552.48</b>
Natural Resources & Mining	25	122	4,912,502	774.35
Construction	13	53	1,586,593	575.69
Manufacturing	17	273	7,302,960	514.44
Trade, Transportation & Utilities	62	514	14,286,492	534.51
Wholesale Trade	9	112	3,380,954	580.52
Retail Trade	36	340	7,964,310	450.47
Transportation, Warehousing & Utilities	17	62	2,941,228	912.29
Information	7	25	1,034,859	796.05
Financial Activities	24	223	9,024,785	778.27
Professional & Business Services	18	82	4,720,492	1,107.06
Education & Health Services	28	306	6,796,082	427.10
Leisure & Hospitality	25	207	2,790,862	259.28
Other Services	14	56	1,565,237	537.51
Local Government	10	431	12,899,744	575.57
State Government	10	133	2,747,256	397.23
<b>POINSETT COUNTY - TOTAL</b>	<b>525</b>	<b>5,167</b>	<b>\$179,405,101</b>	<b>\$667.72</b>
Natural Resources & Mining	72	412	16,737,402	781.25
Construction	22	88	3,455,660	755.17
Manufacturing	19	691	30,243,214	841.68
Trade, Transportation & Utilities	133	1,225	42,062,559	660.32
Wholesale Trade	30	355	20,058,340	1,086.58
Retail Trade	72	710	15,469,430	419.00
Transportation, Warehousing & Utilities	31	160	6,534,789	785.43
Information	5	54	2,105,540	749.84
Financial Activities	39	178	7,417,899	801.42
Professional & Business Services	28	177	10,522,739	1,143.28
Education & Health Services	104	829	24,813,099	575.60
Leisure & Hospitality	42	332	4,145,103	240.10
Other Services	20	53	1,474,487	535.01
Local Government	30	1,008	32,569,725	621.37
State Government	11	120	3,857,674	618.22

Note: Data may not add due to rounding.

TABLE 6. COUNTY SUMMARY CALENDAR YEAR 2016

North American Industry Classification System - Industry Groups	Average Employing Units	Average Covered Employment	Total Calendar Earnings	Average Weekly Earnings
<b>POLK COUNTY - TOTAL</b>	<b>491</b>	<b>5,756</b>	<b>\$169,723,034</b>	<b>\$567.04</b>
Natural Resources & Mining	20	128	6,023,564	904.98
Construction	31	197	5,692,401	555.68
Manufacturing	33	1,231	38,799,212	606.12
Trade, Transportation & Utilities	129	1,075	28,869,033	516.44
Wholesale Trade	22	58	1,848,182	612.79
Retail Trade	74	801	17,798,660	427.32
Transportation, Warehousing & Utilities	33	216	9,222,191	821.06
Information	8	74	2,092,687	543.84
Financial Activities	47	236	8,060,237	656.80
Professional & Business Services	43	149	5,735,619	740.27
Education & Health Services	80	1,004	34,960,117	669.63
Leisure & Hospitality	37	466	5,978,112	246.70
Other Services	28	179	4,777,609	513.28
Local Government	21	702	20,972,426	574.52
State Government	14	315	7,762,017	473.87
<b>POPE COUNTY - TOTAL</b>	<b>1,807</b>	<b>25,903</b>	<b>\$1,000,052,925</b>	<b>\$742.45</b>
Natural Resources & Mining	35	631	28,354,597	864.15
Construction	158	1,413	76,796,178	1,045.19
Manufacturing	73	4,390	177,113,591	775.86
Trade, Transportation & Utilities	424	6,145	271,221,492	848.79
Wholesale Trade	76	576	24,461,650	816.70
Retail Trade	264	3,260	79,648,762	469.85
Transportation, Warehousing & Utilities	84	2,309	167,111,080	1,391.80
Information	20	173	6,071,213	674.88
Financial Activities	190	1,162	41,948,085	694.23
Professional & Business Services	276	1,825	90,667,310	955.40
Education & Health Services	328	3,161	113,042,360	687.72
Leisure & Hospitality	137	2,792	39,620,059	272.90
Other Services	108	529	15,118,806	549.61
Local Government	42	2,015	75,036,226	716.13
State Government	16	1,667	65,063,008	750.58

Note: Data may not add due to rounding.



TABLE 6. COUNTY SUMMARY CALENDAR YEAR 2016

North American Industry Classification System - Industry Groups	Average Employing Units	Average Covered Employment	Total Calendar Earnings	Average Weekly Earnings
<b>PRAIRIE COUNTY - TOTAL</b>	<b>256</b>	<b>1,443</b>	<b>\$45,825,694</b>	<b>\$610.72</b>
Natural Resources & Mining	37	159	7,060,434	853.95
Construction	10	46	1,633,645	682.96
Manufacturing	6	38	865,333	437.92
Trade, Transportation & Utilities	65	367	12,198,651	639.21
Wholesale Trade	12	83	5,770,843	1,337.08
Retail Trade	35	216	4,067,210	362.11
Transportation, Warehousing & Utilities	18	68	2,360,598	667.59
Financial Activities	16	58	2,122,290	703.68
Professional & Business Services	15	78	2,854,291	703.72
Education & Health Services	52	248	6,587,590	510.82
Leisure & Hospitality	16	93	1,262,230	261.01
Local Government	15	287	8,851,271	593.09
State Government	9	33	1,036,835	604.22
Other	15	36	1,353,124	722.82
<b>PULASKI COUNTY - TOTAL</b>	<b>14,242</b>	<b>238,363</b>	<b>\$11,131,270,274</b>	<b>\$898.05</b>
Natural Resources & Mining	55	607	37,565,310	1,190.13
Construction	925	8,988	454,985,732	973.49
Manufacturing	333	12,625	686,195,100	1,045.23
Trade, Transportation & Utilities	3,179	48,839	2,051,843,655	807.93
Wholesale Trade	962	11,721	731,600,285	1,200.34
Retail Trade	1,824	26,025	749,081,126	553.52
Transportation, Warehousing & Utilities	393	11,093	571,162,244	990.16
Information	198	5,606	359,660,294	1,233.78
Financial Activities	1,668	16,471	1,165,029,132	1,360.23
Professional & Business Services	2,762	33,289	1,617,804,658	934.59
Education & Health Services	2,458	39,829	1,941,189,565	937.27
Leisure & Hospitality	1,205	23,154	400,862,357	332.94
Other Services	1,150	6,561	247,637,379	725.84
Local Government	109	14,417	667,280,128	890.08
State Government	200	27,977	1,501,216,964	1,031.90

Note: Data may not add due to rounding.

TABLE 6. COUNTY SUMMARY CALENDAR YEAR 2016

North American Industry Classification System - Industry Groups	Average Employing Units	Average Covered Employment	Total Calendar Earnings	Average Weekly Earnings
<b>RANDOLPH COUNTY - TOTAL</b>	<b>401</b>	<b>4,829</b>	<b>\$143,386,840</b>	<b>\$571.02</b>
Natural Resources & Mining	28	164	6,798,913	797.25
Construction	26	89	2,534,717	547.69
Manufacturing	31	965	31,144,689	620.66
Trade, Transportation & Utilities	88	836	24,641,855	566.84
Wholesale Trade	17	150	5,327,481	683.01
Retail Trade	55	555	13,504,561	467.93
Transportation, Warehousing & Utilities	16	131	5,809,813	852.88
Information	5	32	1,351,217	812.03
Financial Activities	36	142	4,926,407	667.17
Professional & Business Services	36	164	4,572,002	536.12
Education & Health Services	65	896	27,110,240	581.86
Leisure & Hospitality	31	387	5,121,673	254.51
Other Services	20	66	1,705,734	497.01
Local Government	24	787	22,882,775	559.15
State Government	11	301	10,596,618	677.01
<b>SAINT FRANCIS COUNTY - TOTAL</b>	<b>744</b>	<b>7,262</b>	<b>\$224,370,580</b>	<b>\$594.16</b>
Natural Resources & Mining	45	207	7,433,719	690.61
Trade, Transportation & Utilities	157	2,027	62,563,364	593.56
Wholesale Trade	31	619	24,779,845	769.85
Retail Trade	102	1,109	25,390,230	440.28
Transportation, Warehousing & Utilities	24	299	12,393,289	797.10
Information	5	59	2,161,752	704.61
Financial Activities	61	247	7,827,210	609.41
Professional & Business Services	45	527	13,114,865	478.57
Education & Health Services	266	1,427	47,962,468	646.36
Leisure & Hospitality	45	640	8,180,474	245.81
Other Services	26	63	1,289,413	393.59
Local Government	27	803	27,747,969	664.53
State Government	16	459	15,611,151	654.06
Other	51	803	30,478,195	729.91

Note: Data may not add due to rounding.

TABLE 6. COUNTY SUMMARY CALENDAR YEAR 2016

North American Industry Classification System - Industry Groups	Average Employing Units	Average Covered Employment	Total Calendar Earnings	Average Weekly Earnings
<b>SALINE COUNTY - TOTAL</b>	<b>1,972</b>	<b>23,421</b>	<b>\$800,483,579</b>	<b>\$657.27</b>
Natural Resources & Mining	14	58	2,428,662	805.26
Construction	263	2,063	87,698,495	817.50
Manufacturing	83	1,368	63,364,868	890.76
Trade, Transportation & Utilities	450	5,450	178,622,728	630.28
Wholesale Trade	114	564	30,276,999	1,032.36
Retail Trade	272	4,405	128,063,485	559.08
Transportation, Warehousing & Utilities	64	481	20,282,244	810.90
Information	14	159	6,987,688	845.15
Financial Activities	200	726	32,256,030	854.42
Professional & Business Services	265	1,626	62,789,533	742.61
Education & Health Services	305	3,848	134,971,950	674.54
Leisure & Hospitality	180	3,199	47,023,065	282.68
Other Services	153	815	24,282,214	572.96
Local Government	30	3,205	131,766,892	790.63
State Government	15	904	28,291,454	601.84
<b>SCOTT COUNTY - TOTAL</b>	<b>182</b>	<b>2,992</b>	<b>\$83,477,405</b>	<b>\$536.54</b>
Natural Resources & Mining	17	165	6,267,103	730.43
Trade, Transportation & Utilities	34	427	12,940,362	582.79
Wholesale Trade	6	77	3,312,860	827.39
Retail Trade	21	287	6,614,318	443.20
Transportation, Warehousing & Utilities	7	63	3,013,184	919.78
Financial Activities	20	70	1,927,528	529.54
Professional & Business Services	12	77	2,157,656	538.88
Education & Health Services	41	314	11,002,775	673.86
Leisure & Hospitality	15	128	1,876,142	281.87
Local Government	6	513	15,572,700	583.77
State Government	7	42	1,196,623	547.90
Other	30	1,256	30,536,516	467.55

Note: Data may not add due to rounding.

TABLE 6. COUNTY SUMMARY CALENDAR YEAR 2016

North American Industry Classification System - Industry Groups	Average Employing Units	Average Covered Employment	Total Calendar Earnings	Average Weekly Earnings
<b>SEARCY COUNTY - TOTAL</b>	<b>170</b>	<b>1,519</b>	<b>\$39,108,761</b>	<b>\$495.12</b>
Construction	9	11	347,993	608.38
Manufacturing	18	212	4,875,011	442.22
Trade, Transportation & Utilities	40	238	6,010,590	485.66
Wholesale Trade	8	48	1,238,752	496.29
Retail Trade	26	173	3,890,882	432.51
Transportation, Warehousing & Utilities	6	17	880,956	996.56
Financial Activities	12	62	1,676,620	520.04
Professional & Business Services	12	70	2,874,449	789.68
Education & Health Services	40	329	8,828,375	516.04
Leisure & Hospitality	12	137	1,802,366	253.00
Local Government	10	313	8,693,210	534.11
State Government	7	81	2,055,106	487.92
Other	10	66	1,945,041	566.74
<b>SEBASTIAN COUNTY - TOTAL</b>	<b>3,656</b>	<b>65,438</b>	<b>\$2,631,182,757</b>	<b>\$773.25</b>
Natural Resources & Mining	49	604	42,222,092	1,344.31
Construction	253	2,491	102,359,132	790.22
Manufacturing	186	11,920	567,401,696	915.40
Trade, Transportation & Utilities	900	13,400	485,835,853	697.24
Wholesale Trade	244	2,593	130,680,191	969.18
Retail Trade	538	8,082	206,601,096	491.60
Transportation, Warehousing & Utilities	118	2,725	148,554,566	1,048.37
Information	40	934	58,489,639	1,204.28
Financial Activities	397	2,370	109,089,134	885.18
Professional & Business Services	580	8,620	332,675,070	742.18
Education & Health Services	577	11,370	548,658,211	927.98
Leisure & Hospitality	344	6,306	98,778,864	301.24
Other Services	269	1,305	37,725,957	555.94
Local Government	39	4,435	180,534,348	782.82
State Government	22	1,683	67,412,761	770.29

Note: Data may not add due to rounding.

TABLE 6. COUNTY SUMMARY CALENDAR YEAR 2016

North American Industry Classification System - Industry Groups	Average Employing Units	Average Covered Employment	Total Calendar Earnings	Average Weekly Earnings
<b>SEVIER COUNTY - TOTAL</b>	<b>316</b>	<b>4,828</b>	<b>\$150,800,799</b>	<b>\$600.67</b>
Natural Resources & Mining	16	204	6,745,683	635.91
Construction	16	164	7,911,497	927.71
Trade, Transportation & Utilities	96	871	28,501,659	629.29
Wholesale Trade	14	108	8,201,346	1,460.35
Retail Trade	67	675	16,191,266	461.29
Transportation, Warehousing & Utilities	15	88	4,109,047	897.96
Financial Activities	26	209	10,124,369	931.58
Professional & Business Services	27	111	2,762,724	478.64
Education & Health Services	54	523	16,358,697	601.51
Leisure & Hospitality	25	303	3,550,000	225.31
Local Government	12	897	28,573,118	612.58
State Government	8	166	4,995,838	578.76
Other	36	1,380	41,277,214	575.21
<b>SHARP COUNTY - TOTAL</b>	<b>388</b>	<b>3,797</b>	<b>\$109,384,384</b>	<b>\$554.00</b>
Construction	27	133	4,922,885	711.81
Manufacturing	19	167	4,250,459	489.46
Trade, Transportation & Utilities	80	1,055	36,147,260	658.90
Wholesale Trade	12	38	1,052,822	532.80
Retail Trade	57	663	14,452,577	419.21
Transportation, Warehousing & Utilities	11	354	20,641,861	1,121.35
Information	6	36	1,491,322	796.65
Financial Activities	34	180	7,251,836	774.77
Professional & Business Services	37	136	4,609,641	651.82
Education & Health Services	88	798	22,005,285	530.30
Leisure & Hospitality	38	420	5,273,518	241.46
Local Government	24	713	19,867,632	535.86
State Government	8	58	1,790,835	593.78
Other	27	101	1,773,711	337.72

Note: Data may not add due to rounding.

TABLE 6. COUNTY SUMMARY CALENDAR YEAR 2016

North American Industry Classification System - Industry Groups	Average Employing Units	Average Covered Employment	Total Calendar Earnings	Average Weekly Earnings
<b>STONE COUNTY - TOTAL</b>	<b>270</b>	<b>2,486</b>	<b>\$67,414,586</b>	<b>\$521.49</b>
Natural Resources & Mining	6	25	302,852	232.96
Construction	16	38	916,267	463.70
Manufacturing	20	223	5,356,217	461.90
Trade, Transportation & Utilities	70	590	16,347,037	532.82
Wholesale Trade	6	36	1,111,737	593.88
Retail Trade	53	516	13,419,389	500.13
Transportation, Warehousing & Utilities	11	38	1,815,911	918.98
Financial Activities	27	130	5,713,057	845.13
Professional & Business Services	12	29	718,230	476.28
Education & Health Services	53	523	17,835,937	655.83
Leisure & Hospitality	30	360	4,253,155	227.20
Local Government	10	381	11,818,894	596.55
State Government	8	140	2,937,436	403.49
Other	18	47	1,215,504	497.34
<b>UNION COUNTY - TOTAL</b>	<b>1,295</b>	<b>17,638</b>	<b>\$810,065,466</b>	<b>\$883.22</b>
Natural Resources & Mining	90	396	19,150,635	930.00
Construction	82	1,612	85,427,578	1,019.13
Manufacturing	51	3,142	194,456,021	1,190.18
Trade, Transportation & Utilities	315	3,514	129,818,622	710.45
Wholesale Trade	66	503	26,383,577	1,008.70
Retail Trade	188	2,174	53,074,465	469.49
Transportation, Warehousing & Utilities	61	837	50,360,580	1,157.08
Information	9	122	3,953,888	623.25
Financial Activities	102	607	26,787,511	848.67
Professional & Business Services	130	1,857	155,337,799	1,608.65
Education & Health Services	279	2,390	87,573,443	704.65
Leisure & Hospitality	87	1,289	19,266,022	287.43
Other Services	101	467	12,513,652	515.30
Local Government	32	1,701	56,946,342	643.81
State Government	17	541	18,833,953	669.49

Note: Data may not add due to rounding.

TABLE 6. COUNTY SUMMARY CALENDAR YEAR 2016

North American Industry Classification System - Industry Groups	Average Employing Units	Average Covered Employment	Total Calendar Earnings	Average Weekly Earnings
<b>VAN BUREN COUNTY - TOTAL</b>	<b>358</b>	<b>3,545</b>	<b>\$124,297,359</b>	<b>\$674.28</b>
Natural Resources & Mining	10	181	17,061,678	1,812.76
Construction	40	145	4,505,777	597.58
Manufacturing	7	108	3,220,837	573.51
Trade, Transportation & Utilities	99	917	38,072,210	798.43
Wholesale Trade	13	86	4,121,377	921.60
Retail Trade	59	606	13,880,503	440.48
Transportation, Warehousing & Utilities	27	225	20,070,330	1,715.41
Information	5	32	1,283,031	771.05
Financial Activities	33	118	4,517,286	736.19
Professional & Business Services	33	136	4,467,681	631.74
Education & Health Services	63	757	22,498,305	571.55
Leisure & Hospitality	27	363	5,294,860	280.51
Other Services	23	60	1,550,203	496.86
Local Government	11	675	20,158,058	574.30
State Government	7	53	1,667,433	605.02
<b>WASHINGTON COUNTY - TOTAL</b>	<b>5,844</b>	<b>101,141</b>	<b>\$4,435,590,111</b>	<b>\$843.38</b>
Natural Resources & Mining	42	312	16,727,709	1,031.05
Construction	519	4,793	230,536,462	924.97
Manufacturing	218	12,297	517,931,645	809.97
Trade, Transportation & Utilities	1,361	23,230	920,966,373	762.41
Wholesale Trade	372	3,706	249,424,822	1,294.29
Retail Trade	787	12,823	358,932,214	538.29
Transportation, Warehousing & Utilities	202	6,701	312,609,337	897.14
Information	79	886	43,784,762	950.36
Financial Activities	651	3,578	177,855,136	955.92
Professional & Business Services	1,049	12,404	907,550,012	1,407.04
Education & Health Services	810	14,889	688,549,272	889.34
Leisure & Hospitality	644	12,307	193,796,982	302.82
Other Services	389	1,998	60,773,379	584.94
Local Government	60	8,068	331,581,386	790.35
State Government	22	6,379	345,536,993	1,041.69

Note: Data may not add due to rounding.

TABLE 6. COUNTY SUMMARY CALENDAR YEAR 2016

North American Industry Classification System - Industry Groups	Average Employing Units	Average Covered Employment	Total Calendar Earnings	Average Weekly Earnings
<b>WHITE COUNTY - TOTAL</b>	<b>1,799</b>	<b>23,831</b>	<b>\$844,447,629</b>	<b>\$681.44</b>
Natural Resources & Mining	57	411	24,444,945	1,143.78
Construction	156	1,021	40,449,197	761.87
Manufacturing	60	2,028	92,430,932	876.49
Trade, Transportation & Utilities	481	6,291	215,260,825	658.02
Wholesale Trade	88	579	25,072,586	832.75
Retail Trade	304	3,611	92,062,121	490.29
Transportation, Warehousing & Utilities	89	2,101	98,126,118	898.16
Information	17	147	4,655,485	609.04
Financial Activities	175	861	38,264,721	854.66
Professional & Business Services	196	1,296	46,333,287	687.52
Education & Health Services	323	5,509	220,452,396	769.55
Leisure & Hospitality	155	2,592	34,338,524	254.77
Other Services	116	502	16,115,592	617.36
Local Government	47	2,595	91,995,957	681.75
State Government	16	578	19,705,768	655.64
<b>WOODRUFF COUNTY - TOTAL</b>	<b>207</b>	<b>1,742</b>	<b>\$57,405,882</b>	<b>\$633.73</b>
Natural Resources & Mining	28	134	4,402,299	631.79
Construction	8	42	1,427,984	653.84
Manufacturing	7	220	8,761,076	765.83
Trade, Transportation & Utilities	47	394	13,884,751	677.70
Wholesale Trade	11	138	7,185,679	1,001.35
Retail Trade	27	187	3,196,197	328.69
Transportation, Warehousing & Utilities	9	69	3,502,875	976.28
Financial Activities	12	70	2,459,251	675.62
Education & Health Services	64	233	7,217,341	595.69
Leisure & Hospitality	10	78	946,375	233.33
Local Government	9	416	12,072,203	558.07
State Government	6	38	1,132,773	573.27
Other	16	117	5,101,829	838.56

Note: Data may not add due to rounding.



TABLE 6. COUNTY SUMMARY CALENDAR YEAR 2016

North American Industry Classification System - Industry Groups	Average Employing Units	Average Covered Employment	Total Calendar Earnings	Average Weekly Earnings
<b>YELL COUNTY - TOTAL</b>	<b>407</b>	<b>6,315</b>	<b>\$187,244,994</b>	<b>\$570.21</b>
Natural Resources & Mining	27	211	8,238,468	750.86
Construction	35	203	7,189,592	681.09
Manufacturing	21	2,364	67,105,874	545.90
Trade, Transportation & Utilities	73	720	20,251,871	540.92
Wholesale Trade	13	49	1,020,897	400.67
Retail Trade	45	499	10,600,188	408.52
Transportation, Warehousing & Utilities	15	172	8,630,786	964.98
Financial Activities	30	160	6,747,803	811.03
Professional & Business Services	37	271	9,139,266	648.54
Education & Health Services	102	770	20,283,823	506.59
Leisure & Hospitality	25	299	3,441,556	221.35
Local Government	25	1,112	37,807,174	653.83
State Government	12	76	2,027,978	513.15
Other	20	129	5,011,589	747.11
<b>STATEWIDE COUNTY - TOTAL</b>	<b>8,900</b>	<b>31,427</b>	<b>\$1,830,309,963</b>	<b>\$1,120.00</b>
Natural Resources & Mining	93	286	15,348,170	1,032.02
Construction	758	3,438	189,328,987	1,059.03
Manufacturing	41	140	15,096,122	2,073.64
Trade, Transportation & Utilities	2,965	7,617	690,111,425	1,742.34
Wholesale Trade	2,571	6,310	617,890,931	1,883.12
Retail Trade	141	353	20,466,231	1,114.96
Transportation, Warehousing & Utilities	253	954	51,754,263	1,043.26
Information	242	524	42,265,947	1,551.16
Financial Activities	565	1,442	98,329,865	1,311.34
Professional & Business Services	3,429	14,260	604,314,464	814.97
Education & Health Services	414	2,220	97,398,495	843.72
Leisure & Hospitality	82	99	4,364,358	847.78
Other Services	297	653	41,729,187	1,228.92
Local Government	0	0	0	0.00
State Government	14	748	32,022,943	823.30

Note: Statewide classification includes employment and payroll data for employers that have not provided a physical location for each employing unit. This section also includes employers without a physical location in Arkansas.

**TABLE 7. FEDERAL GOVERNMENT EMPLOYMENT AND EARNINGS IN ARKANSAS**

<b>North American Industry Classification System - Industry Groups</b>	<b>Average Employing Units</b>	<b>Average Covered Employment</b>	<b>Total Calendar Earnings</b>	<b>Average Weekly Earnings</b>
<b>TOTAL</b>	<b>1,166</b>	<b>20,265</b>	<b>\$1,350,804,538</b>	<b>\$1,281.87</b>
Trade, Transportation & Utilities	597	5,545	278,781,764	966.85
Information	2	41	2,544,940	1,193.69
Financial Activities	14	106	8,745,874	1,586.70
Professional & Business Services	34	772	57,468,338	1,431.55
Education & Health Services	18	5,272	414,670,838	1,512.60
Leisure & Hospitality	23	302	12,659,297	806.12
Other Services	1	1	31,416	604.15
Public Administration	477	8,226	575,902,071	1,346.35

Note: Data may not add due to rounding.

TABLE 8. LOCAL WORKFORCE DEVELOPMENT AREASUMMARY CALENDAR YEAR 2016

North American Industry Classification System - Industry Groups	Average Employing Units	Average Covered Employment	Total Calendar Earnings	Average Weekly Earnings
<b>CENTRAL WORKFORCE DEVELOPMENT AREA</b>	<b>6,650</b>	<b>80,960</b>	<b>\$2,918,185,421</b>	<b>\$693.17</b>
Natural Resources & Mining	230	1,271	65,754,716	994.90
Construction	711	5,741	247,631,391	829.50
Trade, Transportation & Utilities	1,558	16,607	513,526,670	594.66
Wholesale Trade	362	1,748	90,275,194	993.17
Retail Trade	940	13,172	346,961,667	506.55
Transportation, Warehousing & Utilities	256	1,687	76,289,809	869.66
Information	57	564	24,748,220	843.84
Financial Activities	698	2,998	138,718,075	889.81
Professional & Business Services	879	8,172	418,890,021	985.75
Education & Health Services	1,060	12,690	442,904,456	671.19
Leisure & Hospitality	589	10,450	148,948,174	274.10
Local Government	132	9,651	375,442,557	748.11
State Government	66	4,468	169,814,198	730.90
Other	670	8,348	371,806,943	856.51

\*Note: Pulaski County is not included in the Central Workforce Investment Area. Please refer to Page 51 for information on Pulaski County.  
Central Workforce Investment Area includes these counties: Faulkner, Lonoke, Monroe, Prairie, and Saline.

<b>EASTERN WORKFORCE DEVELOPMENT AREA</b>	<b>3,570</b>	<b>35,957</b>	<b>\$1,189,384,487</b>	<b>\$636.11</b>
Natural Resources & Mining	240	1,181	39,996,911	651.29
Manufacturing	74	3,396	153,032,154	866.59
Trade, Transportation & Utilities	787	9,328	319,204,796	658.08
Wholesale Trade	162	2,098	96,566,214	885.15
Retail Trade	444	4,915	116,057,343	454.09
Transportation, Warehousing & Utilities	181	2,315	106,581,239	885.37
Financial Activities	260	1,273	46,276,129	699.08
Professional & Business Services	255	2,246	71,465,988	611.91
Education & Health Services	1,168	6,359	196,144,108	593.18
Leisure & Hospitality	245	3,702	59,948,907	311.42
Local Government	127	4,501	164,654,693	703.50
State Government	62	2,137	69,233,608	623.03
Other	352	1,834	69,427,193	727.99

Eastern Workforce Investment Area includes these counties: Crittenden, Cross, Lee, Phillips, and Saint Francis.

TABLE 8. LOCAL WORKFORCE DEVELOPMENT AREASUMMARY CALENDAR YEAR 2016

North American Industry Classification System - Industry Groups	Average Employing Units	Average Covered Employment	Total Calendar Earnings	Average Weekly Earnings
<b>NORTH CENTRAL WORKFORCE DEVELOPMENT AREA</b>	<b>5,490</b>	<b>67,321</b>	<b>\$2,280,392,488</b>	<b>\$651.41</b>
Construction	424	2,366	90,645,614	736.76
Manufacturing	225	8,092	334,093,868	793.98
Trade, Transportation & Utilities	1,387	15,455	523,046,951	650.83
Retail Trade	896	9,619	238,957,262	477.73
Other Trade, Transportation & Utilities	491	5,836	284,089,689	936.13
Financial Activities	513	2,534	108,751,607	825.33
Education & Health Services	1,024	14,076	520,683,405	711.36
Leisure & Hospitality	482	6,550	86,730,290	254.64
Local Government	226	8,507	274,881,570	621.39
State Government	103	2,890	96,119,511	639.60
Other	1,106	6,851	245,439,672	688.95

North Central Workforce Investment Area includes these counties: Cleburne, Fulton, Independence, IZard, Jackson, Sharp, Stone, Van Buren, White, and Woodruff.

<b>NORTHEAST WORKFORCE DEVELOPMENT AREA</b>	<b>6,565</b>	<b>98,763</b>	<b>\$3,646,546,956</b>	<b>\$710.04</b>
Natural Resources & Mining	458	2,191	77,808,572	682.94
Construction	452	3,808	174,858,923	883.05
Manufacturing	303	19,399	955,191,771	946.91
Trade, Transportation & Utilities	1,742	19,498	629,455,329	620.83
Wholesale Trade	377	3,375	162,798,423	927.63
Retail Trade	1,023	12,779	312,637,907	470.48
Transportation, Warehousing & Utilities	342	3,344	154,018,999	885.74
Financial Activities	564	3,236	142,588,654	847.37
Professional & Business Services	667	7,100	220,499,306	597.24
Education & Health Services	1,129	16,676	689,640,609	795.29
Leisure & Hospitality	539	9,212	130,314,247	272.04
Local Government	215	10,997	381,058,783	666.37
State Government	102	4,431	173,496,481	752.98
Other	394	2,215	71,634,281	621.93

Northeast Workforce Investment Area includes these counties: Clay, Craighead, Greene, Lawrence, Mississippi, Poinsett, and Randolph.

TABLE 8. LOCAL WORKFORCE DEVELOPMENT AREASUMMARY CALENDAR YEAR 2016

North American Industry Classification System - Industry Groups	Average Employing Units	Average Covered Employment	Total Calendar Earnings	Average Weekly Earnings
<b>NORTHWEST WORKFORCE DEVELOPMENT AREA</b>	<b>15,694</b>	<b>263,766</b>	<b>\$12,223,438,171</b>	<b>\$891.19</b>
Natural Resources & Mining	132	1,422	79,531,783	1,075.57
Trade, Transportation & Utilities	3,846	60,007	2,536,528,226	812.89
Retail Trade	2,130	31,999	858,111,074	515.71
Other Trade, Transportation & Utilities	1,716	28,008	1,678,417,152	1,152.43
Information	204	2,450	121,564,822	954.20
Professional & Business Services	2,603	47,666	3,885,138,478	1,567.45
Education & Health Services	2,226	33,123	1,360,468,029	789.87
Leisure & Hospitality	1,659	29,188	473,328,109	311.86
Other Services	993	4,850	150,468,655	596.62
Local Government	305	21,848	867,507,534	763.59
State Government	109	8,775	428,564,062	939.22
Other	3,617	54,437	2,320,338,473	819.70

Northwest Workforce Investment Area includes these counties: Baxter, Benton, Boone, Carroll, Madison, Marion, Newton, Searcy, and Washington.

<b>SOUTHEAST WORKFORCE DEVELOPMENT AREA</b>	<b>6,115</b>	<b>68,490</b>	<b>\$2,491,607,360</b>	<b>\$699.60</b>
Natural Resources & Mining	432	2,387	93,754,839	755.33
Construction	302	2,075	87,808,472	813.79
Manufacturing	202	14,291	701,449,893	943.91
Trade, Transportation & Utilities	1,256	12,332	400,941,695	625.24
Retail Trade	747	7,723	186,975,548	465.58
Other Trade, Transportation & Utilities	509	4,609	213,966,147	892.76
Financial Activities	412	2,407	107,891,672	862.00
Education & Health Services	2,034	10,792	359,321,937	640.29
Other Services	312	1,184	34,763,864	564.64
Local Government	206	8,662	293,826,922	652.33
State Government	137	6,028	219,662,950	700.78
Other	822	8,332	192,185,116	443.58

Southeast Workforce Investment Area includes these counties: Arkansas, Ashley, Bradley, Chicot, Cleveland, Desha, Drew, Grant, Jefferson, and Lincoln.

TABLE 8. LOCAL WORKFORCE DEVELOPMENT AREASUMMARY CALENDAR YEAR 2016

North American Industry Classification System - Industry Groups	Average Employing Units	Average Covered Employment	Total Calendar Earnings	Average Weekly Earnings
<b>SOUTHWEST WORKFORCE DEVELOPMENT AREA</b>	<b>5,686</b>	<b>77,637</b>	<b>\$2,984,954,757</b>	<b>\$739.38</b>
Natural Resources & Mining	348	2,291	99,515,517	835.34
Trade, Transportation & Utilities	1,374	15,048	502,348,350	641.98
Wholesale Trade	241	1,918	92,331,303	925.76
Retail Trade	840	8,860	208,614,295	452.80
Transportation, Warehousing & Utilities	293	4,270	201,402,752	907.06
Information	53	438	20,061,507	880.82
Financial Activities	480	2,549	107,745,145	812.88
Professional & Business Services	459	4,390	231,709,247	1,015.02
Education & Health Services	1,222	9,722	307,628,291	608.51
Leisure & Hospitality	404	5,717	80,552,109	270.96
Other Services	366	1,698	43,162,742	488.84
Local Government	253	9,494	317,016,272	642.14
State Government	142	3,642	130,403,173	688.56
Other	585	22,648	1,144,812,404	972.08

Southwest Workforce Investment Area includes these counties: Calhoun, Columbia, Dallas, Hempstead, Howard, Lafayette, Little River, Miller, Nevada, Ouachita, Sevier, and Union

<b>WEST CENTRAL WORKFORCE DEVELOPMENT AREA</b>	<b>8,152</b>	<b>105,566</b>	<b>\$3,649,935,760</b>	<b>\$664.90</b>
Construction	737	4,567	197,002,159	829.54
Trade, Transportation & Utilities	1,818	21,554	751,033,217	670.08
Wholesale Trade	316	1,944	88,312,807	873.62
Retail Trade	1,212	14,247	358,264,295	483.59
Transportation, Warehousing & Utilities	290	5,363	304,456,115	1,091.73
Financial Activities	808	3,926	165,437,127	810.36
Professional & Business Services	938	7,622	278,529,776	702.75
Education & Health Services	1,516	16,801	636,546,919	728.60
Leisure & Hospitality	784	13,373	209,782,811	301.67
Local Government	227	10,974	399,817,706	700.64
State Government	125	5,436	187,537,987	663.45
Other	1,199	21,313	824,248,058	743.72

West Central Workforce Investment Area includes these counties: Clark, Conway, Garland, Hot Spring, Johnson, Montgomery, Perry, Pike, Pope, and Yell

TABLE 8. LOCAL WORKFORCE DEVELOPMENT AREASUMMARY CALENDAR YEAR 2016

North American Industry Classification System - Industry Groups	Average Employing Units	Average Covered Employment	Total Calendar Earnings	Average Weekly Earnings
<b>WESTERN WORKFORCE DEVELOPMENT AREA</b>	<b>6,426</b>	<b>103,316</b>	<b>\$3,861,757,127</b>	<b>\$718.81</b>
Natural Resources & Mining	161	1,455	83,664,578	1,105.80
Trade, Transportation & Utilities	1,561	22,765	791,991,428	669.04
Wholesale Trade	372	3,619	178,142,301	946.62
Retail Trade	918	12,613	318,486,790	485.59
Transportation, Warehousing & Utilities	271	6,533	295,362,337	869.44
Financial Activities	661	3,457	148,506,283	826.12
Professional & Business Services	878	10,808	407,089,055	724.34
Education & Health Services	1,045	15,597	683,355,974	842.56
Leisure & Hospitality	549	9,239	138,122,067	287.50
Local Government	150	9,108	336,773,861	711.07
State Government	76	2,860	99,544,326	669.34
Other	1,345	28,027	1,172,709,555	804.66

Western Workforce Investment Area includes these counties: Crawford, Franklin, Logan, Polk, Scott, and Sebastian