

Arkansas Covered Employment & Earnings



Fourth Quarter
2016

**COVERED EMPLOYMENT AND EARNINGS
STATE OF ARKANSAS
FOURTH QUARTER 2016**

**ASA HUTCHINSON, GOVERNOR
STATE OF ARKANSAS**

**DARYL BASSETT, DIRECTOR
DEPARTMENT OF WORKFORCE SERVICES**

**PUBLISHED BY
LABOR MARKET INFORMATION
BUREAU OF LABOR STATISTICS PROGRAMS
POST OFFICE BOX 2981
LITTLE ROCK, ARKANSAS 72203-2981
SUSAN PRICE, BLS PROGRAMS MANAGER
TELEPHONE (501) 682-3103**

STATE OF ARKANSAS WEBPAGE: <http://www.arkansas.gov>

DEPARTMENT OF WORKFORCE SERVICES WEBPAGE: <http://www.arkansas.gov/esd/>

WEBPAGE FOR LABOR MARKET INFORMATION: <http://www.discover.arkansas.gov>

RELEASED: JUNE 2017

TABLE OF CONTENTS

DESCRIPTION OF DATA	PAGE
Description and Classification of Data	1
Definition of Covered Employment and Earnings	2
Significant Developments During Fourth Quarter 2016	3

LIST OF GRAPHS AND TABLES

Graph 1	Total Covered Employment for Selected Years, Arkansas	7
Graph 2	Total Covered Earnings, by Calendar Quarter for Selected Years, Arkansas	8
Table 1	Quarterly Comparison of Covered Employment and Wages, by Industry	5
Table 2	Total Covered Employment in Arkansas, 2009 – 2016	6
Table 3	Total Covered Earnings, 2009 – 2016	9
Table 4	Total Taxable Earnings, 2009 – 2016	10
Table 5	State Summary – Employment and Total Earnings, by Industry, Fourth Quarter 2016	11
Table 6	County Summary – Employment and Total Earnings, by Industry, Fourth Quarter 2016	22
Table 7	Federal Government Employment and Total Earnings in Arkansas, Fourth Quarter 2016	60
Table 8	Local Workforce Development Area – Employment and Total Earnings, by Industry, Fourth Quarter 2016	61

EMPLOYMENT AND EARNINGS
UNDER THE ARKANSAS EMPLOYMENT SECURITY LAW
FOURTH QUARTER 2016

DESCRIPTION AND CLASSIFICATION OF DATA

This publication contains covered employment and payroll data by industry and county for the Fourth Quarter 2016 and a record for total covered employment by month, quarterly payroll data, average weekly earnings, and total taxable earnings for 2009 through 2016. These data are compiled from quarterly contributions and wage reports submitted by employers subject to the Arkansas Employment Security Law.

Employment data have been tabulated for each month of the quarter by industry under the **North American Industry Classification System** (NAICS) by state, county, and workforce area. Payroll data represent the total wages paid during the quarter and are classified by industry for the state and by publishable industry groups for each county and workforce area.

Due to industry classification revisions, previously published data will not always be comparable with current data. For this reason, comparisons should not be made between the same industries under different revisions. For more information, visit the NAICS home page at <http://www.census.gov/naics>.

Industry Classification Revisions

- SIC (Standard Industrial Classification) 1987 to NAICS 2002
- NAICS 2002 to NAICS 2007
- NAICS 2007 to NAICS 2012

The tabulation of this data is a joint effort in conjunction with the United States Bureau of Labor Statistics. Data included in this publication are subject to revisions. Revisions are typically reflected in the Annual Covered Employment and Earnings publication.

DEFINITION OF COVERED EMPLOYMENT AND EARNINGS

Covered Employment is the total number of workers employed by establishments subject to the Arkansas Employment Security Law that worked or received pay for the payroll period including the 12th of the month. Earnings include all wages paid to any covered employee by their employer including salaries, bonuses, commissions, fees, fringe benefits, sick pay made directly to employees or dependents, deferred compensation, and reported tips. These wages include both taxable and nontaxable wages. Only the first \$12,000 paid to each worker by an employer in the calendar year is taxable under the Arkansas Employment Security Law.

An Arkansas state unemployment insurance account is required of any entity meeting the definition of an employer. As described by Arkansas Department of Workforce Services Law, the definition of an employer includes, but is not limited to, a sole proprietorship, partnership, corporation, associations, trust, estate, and receiver or trustee in bankruptcy. The entity must employ one or more individuals for ten or more days in a calendar year, whether or not the days are consecutive.

Currently excluded from coverage is employment covered by the Railroad Unemployment Insurance Act, some domestic service workers, employees of small agricultural establishments, self-employed workers, unpaid family workers, insurance and real estate agents paid only on a commission basis, and employees of churches and religious organizations except separately incorporated schools.

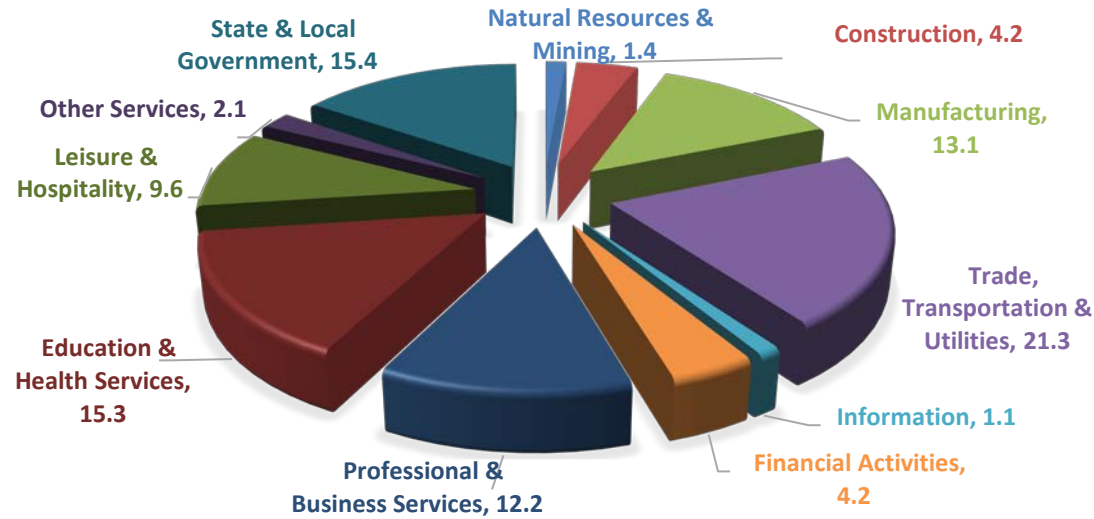
Civilian federal workers are covered by Unemployment Compensation for Federal Employees (UCFE).

SIGNIFICANT DEVELOPMENTS DURING FOURTH QUARTER 2016

AVERAGE EMPLOYMENT CHANGES

Covered employment averaged 1,185,453 during the Fourth Quarter 2016 (refer to Table 1), an increase of 27,036 (2.3%) from the previous quarter and an increase of 7,851 (0.7%) from the average recorded one year ago. The over-the-year comparison is more significant when used as an economic indicator and allows for seasonal factors that appear when comparing over-the-quarter data to be disregarded.

Average Covered Employment by NAICS



EMPLOYMENT CHANGES FROM THIRD QUARTER 2016

Over the quarter gains occurred in seven industry groups while four reported losses. The largest increase was in Government (21,821), seasonal growth was noted particularly with Local Government (21,474), as schools resumed classes from the summer break. Trade, Transportation & Utilities advanced 3,550 jobs mainly due to retail trade as shops hired for the holiday season. Professional & Business Services gained 3,138 jobs, a little over 65 percent of the increase was focused in Administrative & Waste Services. Growth has also seen in Education & Health Services (3,023), Manufacturing (306), Financial Activities (39), and Information (31). The biggest loss occurred in Leisure & Hospitality, with a decline of 3,070 jobs. Drops also occurred in Construction (-874), Other Services (-537), and Natural Resources & Mining (-391).

EMPLOYMENT CHANGES FROM FOURTH QUARTER 2015 (QUARTER YEAR AGO COMPARISON)

Over-the-year gains were recorded in six industry groups (refer to Table 1). The largest gains occurred in Education & Health Services (6,616), Professional & Business Services (2,248), and Leisure & Hospitality (1,984). The largest losses occurred in State & Local Government (-2,766), Natural Resources & Mining (-1,375), and Trade, Transportation & Utilities (-712).

COVERED WAGES

Wages paid to covered workers totaled \$12,626,344,617 for the Fourth Quarter 2016 (refer to Table 1), for an average weekly wage of \$819.31 (refer to Table 5). Benton County workers recorded the highest average weekly wage (\$1,087.40), and employees in Newton County reported the lowest (\$458.68) (refer to Table 6).

The Professional & Business Services industry recorded the highest average weekly wage for the State of Arkansas (\$1,120.92). The Leisure & Hospitality sector recorded the lowest (\$308.08) (refer to Table 5).

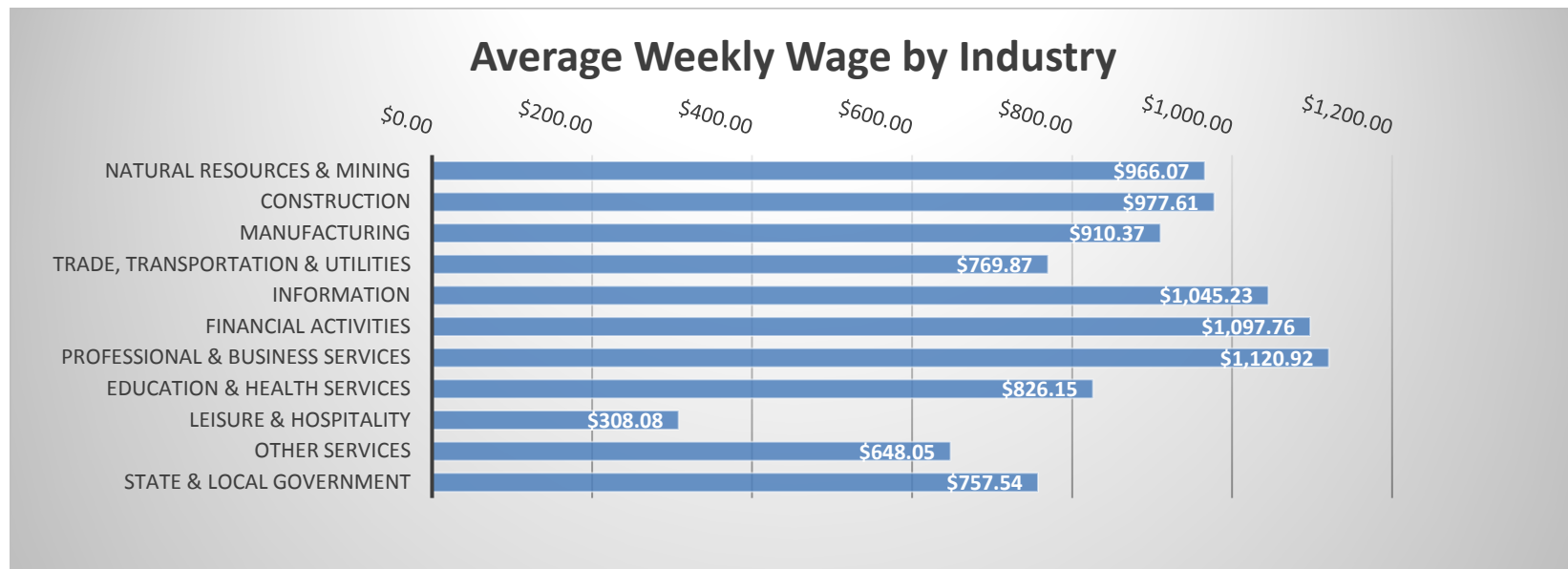


TABLE 1. QUARTERLY COMPARISON OF COVERED EMPLOYMENT AND WAGES, BY INDUSTRY

North American Industry Classification System - Industry Groups	Number of Employing Units	Monthly Employment Average	Percent of Total	Net Change From:		Total Wages Paid Oct - Dec 2016	Percent of Total
				Jul - Sep 2016	Oct - Dec 2015		
TOTAL	88,189	1,185,453	100	27,036	7,851	\$12,626,344,617	100
Natural Resources & Mining	2,601	16,655	1.4	-391	-1,375	209,169,110	1.7
Agriculture, Forestry, Fishing & Hunting	2,131	12,781	1.1	-341	129	144,982,202	1.1
Mining	470	3,874	0.3	-50	-1,504	64,186,908	0.5
Construction	6,791	50,332	4.2	-874	-682	639,664,638	5.1
Manufacturing	2,939	155,580	13.1	306	1,221	1,841,251,398	14.6
Trade, Transportation & Utilities	21,561	252,447	21.3	3,550	-712	2,526,575,878	20.0
Wholesale Trade	7,071	46,283	3.9	-99	-1,281	788,117,351	6.2
Retail Trade	11,159	144,777	12.2	2,603	227	974,477,666	7.7
Transportation & Warehousing	2,913	53,737	4.5	1,084	627	604,811,813	4.8
Utilities	418	7,650	0.6	-37	-286	159,169,048	1.3
Information	1,116	13,184	1.1	31	-123	179,149,364	1.4
Financial Activities	8,266	49,611	4.2	39	824	707,997,077	5.6
Finance & Insurance	4,919	36,228	3.1	83	686	573,773,868	4.5
Real Estate & Rental & Leasing	3,347	13,383	1.1	-44	138	134,223,209	1.1
Professional & Business Services	13,902	144,977	12.2	3,138	2,248	2,112,592,335	16.7
Professional & Technical Services	8,771	42,693	3.6	533	994	712,476,903	5.6
Management of Companies & Enterprises	532	35,826	3.0	395	1,514	915,919,743	7.3
Administrative & Waste Services	4,599	66,458	5.6	2,209	-259	484,195,689	3.8
Education & Health Services	15,640	181,686	15.3	3,023	6,616	1,951,296,437	15.5
Educational Services	816	11,689	1.0	937	231	100,469,800	0.8
Health Care & Social Assistance	14,824	169,996	14.3	2,086	6,384	1,850,826,637	14.7
Leisure & Hospitality	6,990	114,225	9.6	-3,070	1,984	457,477,271	3.6
Arts, Entertainment & Recreation	966	9,939	0.8	-1,508	379	55,915,127	0.4
Accommodation & Food Services	6,024	104,286	8.8	-1,562	1,605	401,562,144	3.2
Other Services	5,368	24,573	2.1	-537	616	207,023,183	1.6
State & Local Government	3,015	182,183	15.4	21,821	-2,766	1,794,147,926	14.2
Local Government	1,948	113,084	9.5	21,474	-1,287	1,033,879,494	8.2
State Government	1,067	69,099	5.8	347	-1,478	760,268,432	6.0
Nonclassifiable Establishments	0	0	0.0	0	0	0	0.0

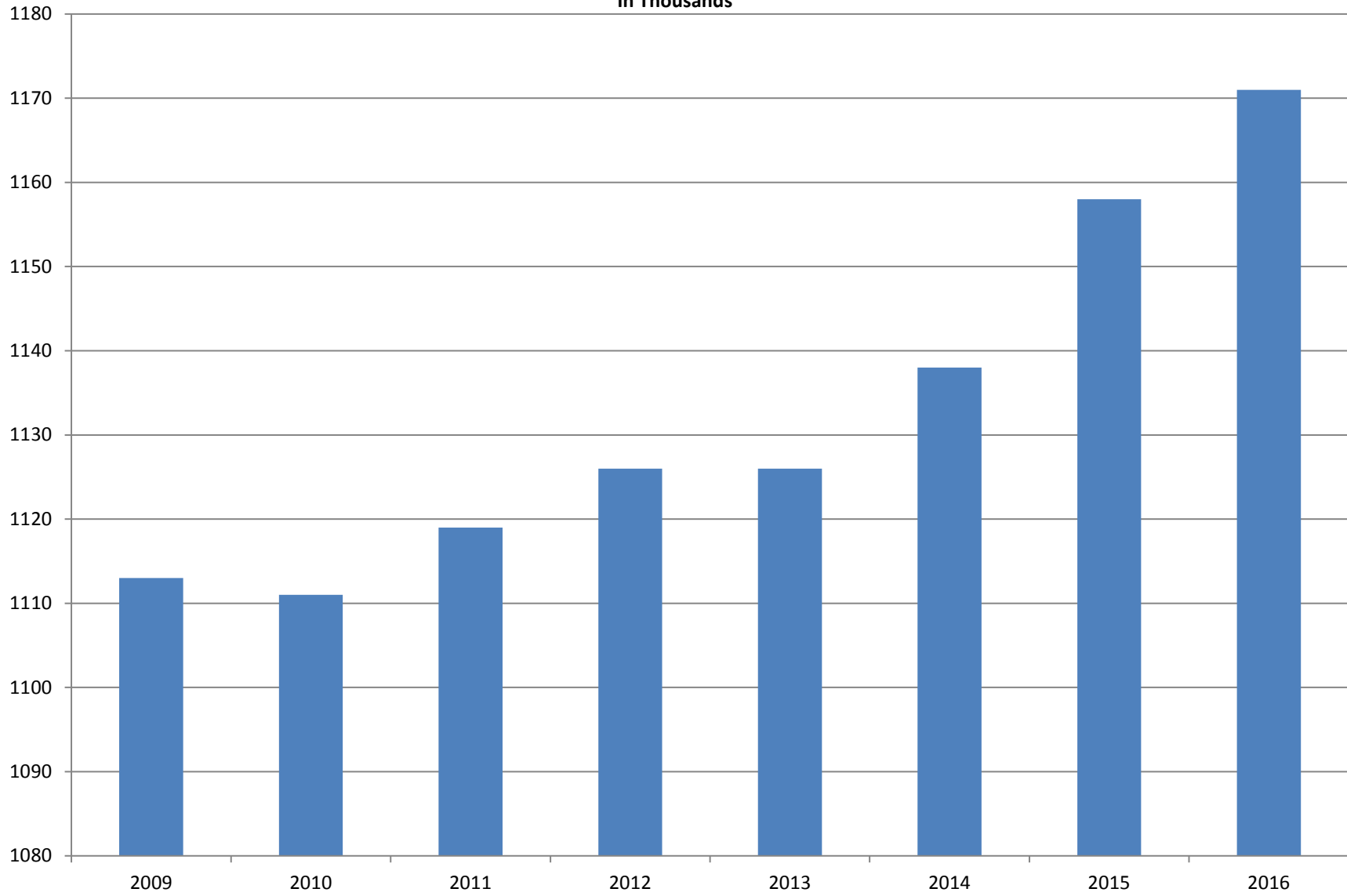
Note: Items do not necessarily add to total because of rounding. Because of industry code changes between years, substantial employment and wage shifts among industries are anticipated.

TABLE 2. TOTAL COVERED EMPLOYMENT IN ARKANSAS

PERIOD	2009	2010	2011	2012	2013	2014	2015	2016
AVERAGE	1,112,591	1,110,947	1,118,639	1,126,171	1,125,890	1,137,486	1,157,724	1,171,286
January	1,119,299	1,089,984	1,098,349	1,113,274	1,112,991	1,114,412	1,135,999	1,153,115
February	1,119,476	1,091,282	1,098,445	1,119,319	1,121,492	1,122,905	1,145,107	1,162,987
March	1,124,386	1,106,198	1,113,061	1,131,123	1,129,100	1,132,106	1,146,804	1,170,873
April	1,123,383	1,115,341	1,129,635	1,136,608	1,134,734	1,140,788	1,158,513	1,178,480
May	1,122,322	1,123,250	1,126,371	1,142,985	1,138,383	1,149,046	1,167,423	1,181,258
June	1,117,884	1,130,164	1,123,412	1,136,699	1,130,402	1,144,876	1,164,266	1,177,108
July	1,071,048	1,073,743	1,080,937	1,078,836	1,083,849	1,096,675	1,119,869	1,130,652
August	1,093,192	1,099,795	1,106,262	1,108,552	1,109,759	1,125,162	1,148,725	1,159,416
September	1,116,580	1,124,281	1,132,779	1,134,829	1,135,673	1,150,545	1,173,175	1,185,181
October	1,113,157	1,125,073	1,138,395	1,135,677	1,138,312	1,153,684	1,174,144	1,185,035
November	1,115,443	1,126,781	1,138,543	1,137,411	1,141,035	1,158,579	1,177,834	1,186,308
December	1,114,919	1,125,466	1,137,474	1,138,742	1,134,955	1,161,056	1,180,826	1,185,015

AVERAGE TOTAL COVERED EMPLOYMENT

In Thousands



TOTAL COVERED EARNINGS BY CALENDAR YEAR

In Thousands

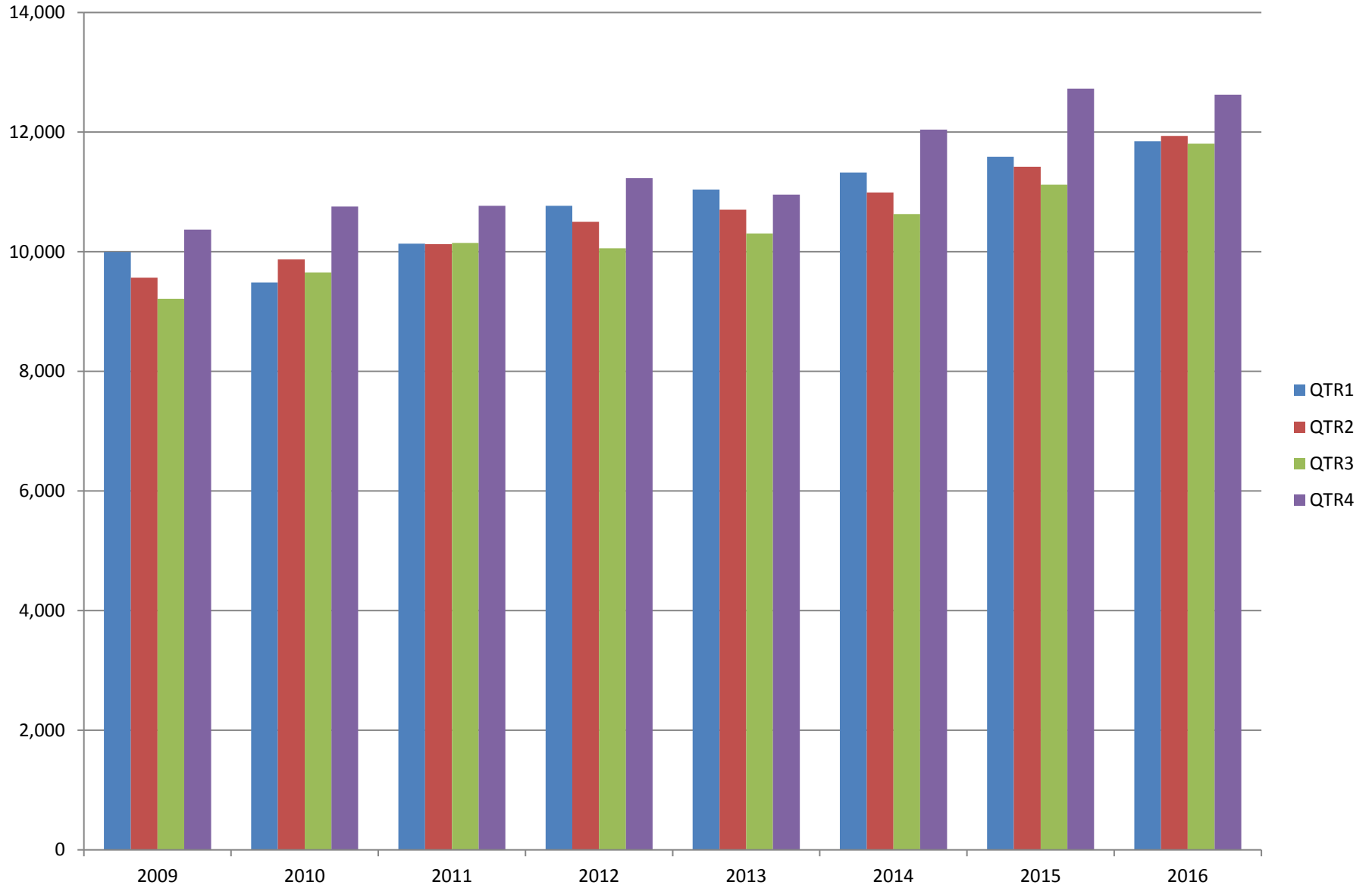


TABLE 3. TOTAL COVERED EARNINGS 2009 - 2016

PERIOD	2009	2010	2011	2012
TOTAL	\$39,149,476,305	\$39,769,504,992	\$41,177,659,236	\$42,551,238,929
January - March	9,998,452,028	9,486,245,580	10,134,035,254	10,766,175,449
April - June	9,566,968,853	9,873,489,653	10,128,274,611	10,494,369,042
July - September	9,213,797,140	9,653,588,807	10,147,287,431	10,053,294,410
October - December	10,370,258,284	10,756,180,952	10,768,061,940	11,237,400,028
Average Weekly Earnings	\$676.69	\$688.42	\$707.89	\$726.62

PERIOD	2013	2014	2015	2016
TOTAL	\$43,371,086,461	\$44,980,520,034	\$46,858,013,612	\$48,216,814,491
January - March	11,050,678,946	11,321,422,241	11,588,392,768	11,847,506,815
April - June	10,692,826,528	10,991,760,061	11,421,560,368	11,935,742,777
July - September	10,322,652,747	10,619,889,280	11,121,401,679	11,807,220,282
October - December	11,304,928,240	12,047,448,452	12,726,658,797	12,626,344,617
Average Weekly Earnings	\$740.80	\$760.46	\$778.35	\$791.65

TABLE 4. TOTAL TAXABLE EARNINGS, 2009 - 2016

PERIOD	2009	2010	2011	2012
TOTAL	9,787,660,886	11,332,118,456	11,479,396,226	11,624,348,048
January - March	5,423,705,265	5,607,134,758	5,828,877,821	6,167,036,199
April - June	2,293,670,854	2,977,100,591	2,910,604,359	2,838,154,846
July - September	1,165,280,065	1,577,067,770	1,601,382,146	1,494,712,584
October - December	905,004,702	1,170,815,337	1,138,531,900	1,124,444,419

PERIOD	2013	2014	2015	2016
TOTAL	11,644,747,978	11,919,662,224	12,280,544,995	12,538,167,625
January - March	6,184,735,653	6,288,682,396	6,387,946,312	6,607,245,841
April - June	2,805,431,293	2,831,013,392	2,919,500,476	3,010,214,324
July - September	1,506,497,129	1,552,243,963	1,645,440,596	1,656,043,561
October - December	1,148,083,903	1,247,722,473	1,327,657,611	1,264,663,899

TABLE 5. STATEWIDE SUMMARY

North American Industry Classification System - Industry Groups		Number of Employing Units	Employment			Total Earnings Oct - Dec 2016	Average Weekly Earnings
			Oct	Nov	Dec		
TOTAL, ALL INDUSTRIES		88,189	1,185,035	1,186,308	1,185,015	\$12,626,344,617	\$819.31
NATURAL RESOURCES & MINING		2,601	17,131	16,458	16,376	\$209,169,110	\$966.07
11	AGRICULTURE, FORESTRY, FISHING & HUNTING	2,131	13,271	12,581	12,490	\$144,982,202	\$872.61
111	CROP PRODUCTION	957	4,486	4,116	3,963	\$38,843,008	\$713.39
1111	Oilseed & Grain Farming	693	3,088	2,833	2,729	27,488,988	733.37
1112	Vegetable & Melon Farming	29	234	213	192	1,449,890	523.62
1113	Fruit & Tree Nut Farming	15	43	43	37	269,500	505.63
1114	Greenhouse & Nursery Production	43	338	323	324	2,759,971	646.62
1119	Other Crop Farming	177	783	704	681	6,874,659	731.76
112	ANIMAL PRODUCTION & AQUACULTURE	327	3,201	3,148	3,146	\$46,129,111	\$1,121.14
1121	Cattle Ranching & Farming	124	404	402	397	3,186,078	611.18
1122	Hog & Pig Farming	14	140	138	143	2,625,054	1,438.91
1123	Poultry & Egg Production	119	2,211	2,202	2,224	36,075,891	1,254.36
1125	Animal Aquaculture	47	381	345	323	3,844,871	845.83
	Other	23	65	61	59	397,217	495.49
115	SUPPORT ACTIVITIES FOR AGRICULTURE & FORESTRY	428	3,143	2,921	2,940	\$33,892,618	\$868.66
1151	Support Activities for Crop Production	295	1,944	1,812	1,502	22,687,688	995.74
1152	Support Activities for Animal Production	65	664	650	662	5,463,726	638.09
1153	Support Activities for Forestry	68	535	459	776	5,741,204	748.53
	OTHER	419	2,441	2,396	2,441	\$26,117,465	\$828.13
21	MINING	470	3,860	3,877	3,886	\$64,186,908	\$1,274.40
211	OIL & GAS EXTRACTION	81	899	894	899	\$19,980,766	\$1,712.83
212	MINING (EXCEPT OIL & GAS)	100	1,622	1,623	1,628	\$21,770,902	\$1,031.00
213	SUPPORT ACTIVITIES FOR MINING	289	1,339	1,360	1,359	\$22,435,240	\$1,275.84

TABLE 5. STATEWIDE SUMMARY

North American Industry Classification System - Industry Groups		Number of Employing Units	Employment			Total Earnings Oct - Dec 2016	Average Weekly Earnings
			Oct	Nov	Dec		
CONSTRUCTION		6,791	51,183	50,220	49,592	\$639,664,638	\$977.61
236	CONSTRUCTION OF BUILDINGS	1,744	10,276	9,991	9,897	\$145,540,235	\$1,113.45
2361	Residential Building Construction	1,166	3,405	3,422	3,422	39,963,682	899.83
2362	Nonresidential Building Construction	578	6,871	6,569	6,475	105,576,553	1,223.39
237	HEAVY & CIVIL ENGINEERING CONSTRUCTION	710	8,395	8,261	8,081	\$114,875,684	\$1,071.66
2371	Utility System Construction	391	4,458	4,417	4,347	64,224,319	1,120.93
2372	Land Subdivision	51	96	92	88	1,068,492	893.39
2373	Highway, Street & Bridge Construction	178	3,194	3,126	3,024	41,555,298	1,026.29
2379	Other Heavy Construction	90	647	626	622	8,027,575	977.58
238	SPECIALTY TRADE CONTRACTORS	4,337	32,512	31,968	31,614	\$379,248,719	\$910.76
2381	Building Foundation & Exterior Contractors	804	6,041	5,938	5,952	66,901,871	861.02
2382	Building Equipment Contractors	2,071	17,591	17,146	16,998	221,341,938	987.32
2383	Building Finishing Contractors	719	4,057	4,056	3,976	40,725,214	777.41
2389	Other Specialty Trade Contractors	743	4,823	4,828	4,688	50,279,696	809.19
MANUFACTURING		2,939	155,309	155,343	156,087	\$1,841,251,398	\$910.37
311	FOOD MANUFACTURING	279	46,477	46,479	46,696	\$432,938,864	\$715.41
3111	Animal Food Manufacturing	45	1,696	1,707	1,742	21,420,898	960.79
3112	Grain & Oilseed Milling	34	2,732	2,601	2,603	37,665,920	1,095.28
3114	Fruit, Vegetable & Specialty Food	20	4,313	4,380	4,437	52,078,866	915.32
3115	Dairy Product Manufacturing	8	545	540	550	6,003,663	847.38
3116	Animal Slaughtering & Processing	75	31,146	31,189	31,335	254,986,998	628.20
3118	Bakeries & Tortilla Manufacturing	66	3,832	3,851	3,827	37,390,566	749.66
3119	Other Food Manufacturing	22	2,163	2,161	2,153	23,097,088	822.93
	Other	9	50	50	49	294,865	456.68
312	BEVERAGE & TOBACCO PRODUCT MANUFACTURING	53	1,375	1,369	1,372	\$15,514,907	\$869.86
313	TEXTILE MILLS	8	106	110	111	\$1,545,622	\$1,090.77
314	TEXTILE PRODUCT MILLS	48	940	936	946	\$12,484,527	\$1,020.92
3141	Textile Furnishing Mills	9	35	36	38	399,839	846.52
3149	Other Textile Product Mills	39	905	900	908	12,084,688	1,027.93
315	APPAREL MANUFACTURING	17	901	874	865	\$6,694,437	\$585.18
3151	Apparel Knitting Mills	3	676	665	651	5,339,631	618.59
	Other	14	225	209	214	1,354,806	482.48

TABLE 5. STATEWIDE SUMMARY

North American Industry Classification System - Industry Groups		Number of Employing Units	Employment			Total Earnings	Average Weekly Earnings
			Oct	Nov	Dec	Oct - Dec 2016	
316	LEATHER & ALLIED PRODUCT MANUFACTURING	15	1,130	1,119	1,134	\$7,273,059	\$496.13
3162	Footwear Manufacturing	6	942	930	945	5,536,608	\$453.56
3169	Other Leather & Allied Product Manufacturing	9	188	189	189	1,736,451	\$707.98
321	WOOD PRODUCT MANUFACTURING	319	9,389	9,409	9,381	\$99,429,359	\$814.27
3211	Sawmills & Wood Preservation	151	4,483	4,503	4,455	50,408,105	865.46
3212	Veneer & Engineered Wood Products	44	1,866	1,856	1,875	22,422,735	924.51
3219	Other Wood Product Manufacturing	124	3,040	3,050	3,051	26,598,519	671.49
322	PAPER MANUFACTURING	73	9,505	9,501	9,455	\$152,892,606	\$1,239.69
3221	Pulp, Paper & Paperboard Mills	12	3,813	3,800	3,774	77,049,907	1,561.50
3222	Converted Paper Product Manufacturing	61	5,692	5,701	5,681	75,842,699	1,025.08
323	PRINTING & RELATED SUPPORT ACTIVITIES	239	3,980	3,983	3,959	\$55,643,221	\$1,077.06
324	PETROLEUM & COAL PRODUCTS MANUFACTURING	20	1,175	1,181	1,196	\$19,458,971	\$1,264.23
325	CHEMICAL MANUFACTURING	120	4,942	4,949	5,046	\$82,862,819	\$1,280.19
3251	Basic Chemical Manufacturing	30	1,779	1,776	1,803	35,910,332	1,546.66
3252	Resin, Rubber & Artificial Fibers	7	294	294	288	4,411,240	1,162.08
3253	Agricultural Chemical Manufacturing	15	438	437	453	8,552,110	1,486.12
3254	Pharmaceutical & Medicine Manufacturing	19	335	339	368	4,942,021	1,094.50
3255	Paint, Coating & Adhesive Manufacturing	9	255	256	252	3,571,738	1,080.27
3256	Soap, Cleaning Compound, & Toilet Preparation Manufacturing	15	1,156	1,152	1,172	15,054,875	998.33
3259	Other Chemical Preparation Manufacturing	25	685	695	710	10,420,503	1,150.59
326	PLASTICS & RUBBER PRODUCTS MANUFACTURING	127	10,971	11,003	11,029	\$143,137,863	\$1,000.87
3261	Plastics Product Manufacturing	98	6,818	6,845	6,896	83,709,810	939.62
3262	Rubber Product Manufacturing	29	4,153	4,158	4,133	59,428,053	1,102.07
327	NONMETALLIC MINERAL PRODUCT MANUFACTURING	232	3,573	3,603	3,575	\$43,181,045	\$926.88
3271	Clay Product & Refractory Manufacturing	12	414	433	446	4,770,009	851.33
3272	Glass & Glass Product Manufacturing	10	349	351	347	4,586,233	1,010.85
3273	Cement & Concrete Product Manufacturing	172	2,085	2,105	2,100	24,942,299	915.09
3274	Lime & Gypsum Product Manufacturing	3	288	290	290	4,516,177	1,200.69
3279	Other Nonmetallic Mineral Products Manufacturing	35	437	424	392	4,366,327	804.16
331	PRIMARY METAL MANUFACTURING	76	7,743	7,798	7,858	\$131,664,542	\$1,298.52
3311	Iron & Steel Mills & Ferroalloys	10	2,702	2,808	2,867	64,439,304	1,775.17
3312	Purchased Steel Product Manufacturing	22	1,725	1,697	1,714	25,376,334	1,140.20
3313	Alumina & Aluminum Production	18	1,224	1,206	1,197	16,189,727	1,030.08
3314	Other Nonferrous Metal Production	8	396	382	377	4,296,881	858.52
3315	Foundries	18	1,696	1,705	1,703	21,362,296	965.86

TABLE 5. STATEWIDE SUMMARY

North American Industry Classification System - Industry Groups		Number of	Employment			Total Earnings	Average
		Employing Units	Oct	Nov	Dec	Oct - Dec 2016	Weekly Earnings
332	FABRICATED METAL PRODUCT MANUFACTURING	518	15,000	14,945	15,012	\$192,104,394	\$986.09
3321	Forging & Stamping	11	345	347	341	3,657,426	817.06
3322	Cutlery & Hand Tool Manufacturing	11	561	575	571	6,509,275	879.99
3323	Architectural & Structural Metals	149	4,316	4,255	4,277	58,544,127	1,051.54
3324	Boilers, Tanks & Shipping Containers	15	649	655	646	8,186,600	968.83
3325	Hardware Manufacturing	5	246	243	243	3,000,619	945.97
3326	Spring & Wire Product Manufacturing	13	371	368	371	4,102,682	852.95
3327	Machine Shops & Threaded Products	209	1,808	1,803	1,814	20,382,527	867.03
3328	Coating, Engraving & Heat Treating Metals	39	647	628	630	6,082,652	736.84
3329	Other Fabricated Metal Product Manufacturing	66	6,057	6,071	6,119	81,638,486	1,032.48
333	MACHINERY MANUFACTURING	210	10,715	10,708	10,955	\$128,048,438	\$912.65
3331	Agriculture, Construction & Mining Machinery	39	2,425	2,393	2,590	25,582,210	796.92
3332	Industrial Machinery Manufacturing	22	649	637	656	9,009,332	1,070.59
3333	Commercial & Service Industry Machinery	22	739	745	759	10,357,518	1,065.62
3334	HVAC & Commercial Refrigeration Equipment	22	2,919	2,930	2,934	33,824,366	888.72
3335	Metalworking Machinery Manufacturing	59	1,039	1,041	1,025	11,498,151	854.56
3336	Turbine & Power Transmission Equipment Manufacturing	5	591	586	588	7,399,493	967.46
3339	Other General Purpose Machinery Manufacturing	41	2,353	2,376	2,403	30,377,368	982.92
334	COMPUTER & ELECTRONIC PRODUCT MANUFACTURING	57	2,308	2,289	2,302	\$32,875,376	\$1,099.67
3343	Audio & Video Equipment Manufacturing	6	133	137	136	1,370,667	779.08
3344	Semiconductors & Electronic Components	26	1,655	1,633	1,654	24,305,977	1,134.98
3345	Navigational, Measuring, Electromedical, & Control Instr, Mfg Other	18 7	413 107	413 106	408 104	5,464,152 1,734,580	1,021.85 1,262.74
335	ELECTRICAL EQUIPMENT & APPLIANCES	57	4,820	4,824	4,852	\$63,759,268	\$1,015.02
3351	Electric Lighting Equipment Manufacturing	10	394	420	449	5,168,380	\$944.34
3352	Household Appliance Manufacturing	5	41	44	41	622,228	\$1,139.61
3353	Electrical Equipment Manufacturing	23	3,118	3,103	3,097	41,749,444	1,033.97
3359	Other Electrical Equipment & Component Manufacturing	19	1,267	1,257	1,265	16,219,216	987.83
336	TRANSPORTATION EQUIPMENT MANUFACTURING	141	13,476	13,487	13,599	\$155,360,175	\$883.89
3362	Motor Vehicle Body & Trailer Manufacturing	34	1,805	1,784	1,817	17,050,993	727.87
3363	Motor Vehicle Parts Manufacturing	43	5,163	5,154	5,263	54,225,983	803.19
3364	Aerospace Product & Parts Manufacturing	28	3,197	3,186	3,162	50,545,517	1,222.04
3366	Ship & Boat Building Other	21 15	1,901 1,410	1,937 1,426	1,948 1,409	15,876,897 17,660,785	633.24 960.09
337	FURNITURE & RELATED PRODUCT MANUFACTURING	158	3,409	3,425	3,382	\$31,619,581	\$714.25
3371	Household & Institutional Furniture	132	2,741	2,749	2,737	24,613,965	690.43
3372	Office Furniture & Fixtures Manufacturing	20	574	579	547	6,270,395	851.18
3379	Other Furniture Related Product Manufacturing	6	94	97	98	735,221	587.08
339	MISCELLANEOUS MANUFACTURING	172	3,374	3,351	3,362	\$32,762,324	\$749.53
3391	Medical Equipment & Supplies Manufacturing	69	1,647	1,621	1,650	17,117,012	803.19
3399	Other Miscellaneous Manufacturing	103	1,727	1,730	1,712	15,645,312	698.48

TABLE 5. STATEWIDE SUMMARY

North American Industry Classification System - Industry Groups		Number of Employing Units	Employment			Total Earnings Oct - Dec 2016	Average Weekly Earnings
			Oct	Nov	Dec		
TRADE, TRANSPORTATION & UTILITIES		21,561	249,776	253,568	253,996	\$2,526,575,878	\$769.87
42	WHOLESALE TRADE	7,071	46,240	46,212	46,398	\$788,117,351	\$1,309.85
423	MERCHANT WHOLESALERS, DURABLE GOODS	2,085	20,213	20,212	20,338	\$300,155,931	\$1,139.95
4231	Motor Vehicle & Part Merchant Wholesalers	227	2,585	2,582	2,605	29,360,795	871.79
4232	Furniture & Furnishings Merchant Wholesalers	52	476	471	470	7,855,958	1,279.40
4233	Lumber & Supply Merchant Wholesalers	165	1,417	1,431	1,439	18,635,520	1,003.15
4234	Commercial Goods Merchant Wholesalers	282	2,426	2,456	2,478	46,411,268	1,455.20
4235	Metal & Mineral Merchant Wholesalers	51	852	837	841	11,612,957	1,059.25
4236	Appliances & Electronics Goods Merchant Wholesalers	197	1,949	1,944	1,965	33,290,501	1,311.44
4237	Hardware & Plumbing Merchant Wholesalers	221	2,267	2,263	2,266	33,819,193	1,148.39
4238	Machinery & Supply Merchant Wholesalers	683	6,483	6,472	6,513	97,733,747	1,158.51
4239	Miscellaneous Durable Goods Merchant Wholesalers	207	1,758	1,756	1,761	21,435,992	937.78
424	MERCHANT WHOLESALERS, NONDURABLE GOODS	1,129	14,605	14,545	14,500	\$199,404,332	\$1,054.21
4241	Paper & Paper Product Merchant Wholesalers	71	1,175	1,185	1,148	17,543,745	1,154.09
4242	Druggist' Goods Merchant Wholesalers	47	632	624	615	8,480,742	1,046.02
4243	Apparel & Piece Goods Merchant Wholesalers	38	622	635	643	8,930,905	1,084.73
4244	Grocery Product Merchant Wholesalers	284	4,440	4,447	4,434	65,565,968	1,135.85
4245	Farm Product & Raw Material Merchant Wholesalers	69	850	789	785	7,849,946	747.33
4246	Chemical Merchant Wholesalers	90	632	638	643	11,607,214	1,400.20
4247	Petroleum Merchant Wholesalers	138	1,252	1,245	1,267	16,132,434	989.07
4248	Alcoholic Beverage Merchant Wholesalers	43	1,624	1,618	1,632	21,761,294	1,030.33
4249	Miscellaneous Nondurable Goods Merchant Wholesaler	349	3,378	3,364	3,333	41,532,084	951.30
425	ELECTRONIC MARKETS & AGENTS & BROKERS	3,857	11,422	11,455	11,560	\$288,557,088	\$1,933.68
44 - 45	RETAIL TRADE	11,159	142,604	146,072	145,654	\$974,477,666	\$517.76
441	MOTOR VEHICLE & PARTS DEALERS	1,553	19,626	19,561	19,493	\$219,454,492	\$863.04
4411	Automobile Dealers	634	12,109	12,047	12,053	158,278,773	1,008.75
4412	Other Motor Vehicle Dealers	167	1,624	1,601	1,594	17,331,893	829.98
4413	Automotive Parts, Accessories & Tire Stores	752	5,893	5,913	5,846	43,843,826	573.18
442	FURNITURE & HOME FURNISHINGS STORES	510	3,596	3,670	3,718	\$28,068,174	\$589.70
4421	Furniture Stores	277	1,984	1,991	2,040	17,610,221	675.63
4422	Home Furnishings Stores	233	1,612	1,679	1,678	10,457,953	485.69
443	ELECTRONICS & APPLIANCE STORES	431	3,712	3,765	3,804	\$31,367,659	\$641.67
444	BUILDING MATERIAL & GARDEN SUPPLY STORES	837	11,132	11,097	11,065	\$77,262,894	\$535.53
4441	Building Material & Supplies Dealers	595	9,150	9,127	9,119	65,170,008	548.96
4442	Lawn & Garden Equipment & Supplies Stores	242	1,982	1,970	1,946	12,092,886	473.15

TABLE 5. STATEWIDE SUMMARY

North American Industry Classification System - Industry Groups		Number of Employing Units	Employment			Total Earnings Oct - Dec 2016	Average Weekly Earnings
			Oct	Nov	Dec		
445	FOOD & BEVERAGE STORES	1,079	19,922	20,008	19,953	\$113,658,545	\$438.00
4451	Grocery Stores	575	17,072	17,175	17,122	93,214,136	418.75
4452	Specialty Food Stores	150	1,013	1,032	1,014	10,219,792	770.98
4453	Beer, Wine & Liquor Stores	354	1,837	1,801	1,817	10,224,617	432.54
446	HEALTH & PERSONAL CARE STORES	997	8,572	8,735	8,824	\$83,970,037	\$741.56
447	GASOLINE STATIONS	1,625	12,388	12,328	12,376	\$57,149,443	\$355.56
44711	Gasoline Stations with Convenience Stores	1,523	11,090	11,037	11,090	49,825,347	346.15
44719	Other Gasoline Stations	102	1,298	1,291	1,286	7,324,096	436.17
448	CLOTHING & CLOTHING ACCESSORIES STORES	1,081	8,845	9,563	9,961	\$39,496,477	\$321.29
4481	Clothing Stores	800	6,885	7,447	7,780	27,052,531	282.33
4482	Shoe Stores	142	1,220	1,353	1,382	5,322,342	310.55
4483	Jewelry, Luggage & Leather Goods Stores	139	740	763	799	7,121,604	713.92
451	SPORTING GOODS, HOBBY, BOOK & MUSIC STORES	468	4,722	5,022	5,121	\$25,226,548	\$391.63
4511	Sporting Goods & Musical Instrument Stores	404	4,221	4,501	4,591	23,116,971	400.71
4512	Book, Periodical & Music Stores	64	501	521	530	2,109,577	313.68
452	GENERAL MERCHANDISE STORES	935	40,939	43,041	42,035	\$239,363,059	\$438.34
453	MISCELLANEOUS STORE RETAILERS	1,209	7,237	7,360	7,347	\$40,466,067	\$425.55
4531	Florists	180	596	622	627	3,265,653	408.46
4532	Office Supplies, Stationery & Gift Stores	260	1,961	1,977	1,941	10,580,950	415.34
4533	Used Merchandise Stores	262	2,020	2,043	2,067	10,398,517	391.46
4539	Other Miscellaneous Store Retailers	507	2,660	2,718	2,712	16,220,947	462.71
454	NONSTORE RETAILERS	434	1,913	1,922	1,957	\$18,994,271	\$756.78
4541	Electronic Shopping & Mail-Order Houses	207	756	759	791	8,217,890	822.39
4542	Vending Machine Operators	69	455	458	460	3,687,536	619.79
4543	Direct Selling Establishments	158	702	705	706	7,088,845	774.20
48 - 49	TRANSPORTATION & WAREHOUSING	2,913	53,318	53,638	54,255	\$604,811,813	\$865.77
481	AIR TRANSPORTATION	52	644	648	668	\$6,057,538	\$713.21
4811	Scheduled Air Transportation	21	577	585	602	4,402,592	575.95
4812	Nonshceduled Air Transportation	31	67	63	66	1,654,946	1,948.52
483	WATER TRANSPORTATION	4	18	19	19	\$345,263	\$1,422.79
484	TRUCK TRANSPORTATION	1,830	32,559	32,451	32,520	\$383,470,180	\$907.34
4841	General Freight Trucking	1,072	26,236	26,152	26,292	311,092,679	912.44
4842	Specialized Freight Trucking	758	6,323	6,299	6,228	72,377,501	886.07

TABLE 5. STATEWIDE SUMMARY

North American Industry Classification System - Industry Groups		Number of Employing Units	Employment			Total Earnings Oct - Dec 2016	Average Weekly Earnings
			Oct	Nov	Dec		
485	TRANSIT & GROUND PASSENGER TRANSPORTATION	116	1,830	1,796	1,767	\$9,595,583	\$410.60
4853	Taxi & Limousine Service	35	454	435	437	1,884,241	327.92
4854	School & Employee Bus Transportation	12	440	427	414	2,187,472	394.07
4855	Charter Bus Industry Service	8	110	105	98	691,506	509.83
4859	Other Ground Passenger Transportation	57	711	715	703	3,818,260	413.87
	Other	4	115	114	115	1,014,104	680.30
486	PIPELINE TRANSPORTATION	33	406	408	404	\$9,204,969	\$1,744.03
487	SCENIC & SIGHTSEEING TRANSPORTATION	4	39	24	14	\$91,783	\$275.07
488	SUPPORT ACTIVITIES FOR TRANSPORTATION	473	5,081	5,094	5,163	\$61,922,748	\$931.66
4881	Support Activities for Air Transportation	99	982	1,006	998	10,804,996	835.05
4882	Support Activities for Rail Transportation	43	603	599	612	7,406,696	942.25
4883	Support Activities for Water Transportation	20	675	668	673	9,939,682	1,137.78
4884	Support Activities for Road Transportation	158	855	864	879	7,008,417	622.53
4885	Freight Transportation Arrangement	138	1,866	1,858	1,891	25,793,849	1,060.09
4889	Other Support Activities for Transportation	15	100	99	110	969,108	723.76
493	WAREHOUSING & STORAGE	224	8,688	8,643	8,551	\$89,182,709	\$795.17
	OTHER	177	4,053	4,555	5,149	\$44,941,040	\$753.87
22	UTILITIES	418	7,614	7,646	7,689	\$159,169,048	\$1,600.56
2211	Power Generation & Supply	164	5,624	5,637	5,642	132,154,174	1,804.24
2212	Natural Gas Distribution	68	1,066	1,071	1,075	18,186,359	1,306.62
2213	Water, Sewage & Other Systems	186	924	938	972	8,828,515	718.90
	INFORMATION	1,116	13,146	13,181	13,226	\$179,149,364	\$1,045.23
511	PUBLISHING INDUSTRIES, EXCEPT INTERNET	227	3,248	3,272	3,287	\$32,994,862	\$776.40
5111	Newspaper, Book & Directory Publishers	193	2,867	2,897	2,905	26,084,828	694.38
5112	Software Publishers	34	381	375	382	6,910,034	1,401.25
512	MOTION PICTURE & SOUND RECORDING INDUSTRY	138	1,034	1,078	1,141	\$5,680,691	\$402.99
5121	Motion Picture & Video Industries	123	1,009	1,055	1,114	5,373,566	390.20
5122	Sound Recording Industries	15	25	23	27	307,125	945.00
515	BROADCASTING, EXCEPT INTERNET	120	1,658	1,638	1,608	\$17,303,278	\$814.25
5151	Radio & Television Broadcasting	117	1,633	1,612	1,583	17,071,654	815.99
5152	Cable & Other Subscription Programming	3	25	26	25	231,624	703.31

TABLE 5. STATEWIDE SUMMARY

North American Industry Classification System - Industry Groups		Number of Employing Units	Employment			Total Earnings Oct - Dec 2016	Average Weekly Earnings
			Oct	Nov	Dec		
517	TELECOMMUNICATIONS	343	5,545	5,517	5,503	\$94,553,212	\$1,317.23
5171	Wired Telecommunications Carriers	211	3,688	3,672	3,639	63,537,685	1,333.08
5172	Wireless Telecommunications Carriers (except Satellite)	42	1,543	1,540	1,558	26,296,851	1,307.59
5174	Satellite Telecommunications Carriers	6	6	5	7	71,924	922.10
5179	Other Telecommunications	84	308	300	299	4,646,752	1,182.28
518	DATA PROCESSING, HOSTING & RELATED SERVICES	204	1,340	1,349	1,370	\$24,430,534	\$1,388.97
519	OTHER INFORMATION SERVICES	84	321	327	317	\$4,186,787	\$1,001.22
FINANCIAL ACTIVITIES		8,266	49,679	49,674	49,481	\$707,997,077	\$1,097.76
52	FINANCE & INSURANCE	4,919	36,217	36,255	36,212	\$573,773,868	\$1,218.30
522	CREDIT INTERMEDIATION & RELATED ACTIVITIES	1,946	19,121	19,125	19,134	\$272,427,909	\$1,095.64
5221	Depository Credit Intermediation	1,410	16,159	16,156	16,150	225,964,533	1,075.94
5222	Nondepository Credit Intermediation	394	1,814	1,827	1,843	30,925,359	1,301.35
5223	Activities Related to Credit Intermediation	142	1,148	1,142	1,141	15,538,017	1,045.09
523	FINANCIAL INVESTMENT & RELATED ACTIVITIES	681	3,120	3,128	3,065	\$96,440,801	\$2,389.73
5231	Insurance Carriers	299	2,209	2,220	2,147	68,589,839	2,407.00
5239	Insurance Agencies, Brokerages & Support	382	911	908	918	27,850,962	2,348.24
524	INSURANCE CARRIERS & RELATED ACTIVITIES	2,200	13,877	13,899	13,900	\$203,095,507	\$1,124.58
5231	Security & Commodity Contracts Intermediation & Brokerage	306	6,028	6,069	6,141	98,478,708	1,246.07
5239	Other Financial Investment Activities	1,894	7,849	7,830	7,759	104,616,799	1,030.05
	OTHER	92	99	103	113	\$1,809,651	\$1,325.75
53	REAL ESTATE & RENTAL & LEASING	3,347	13,462	13,419	13,269	\$134,223,209	\$771.47
531	REAL ESTATE	2,708	9,347	9,325	9,245	\$94,140,801	\$778.19
5311	Lessors of Real Estate	1,114	4,165	4,161	4,111	35,189,045	652.93
5312	Offices of Real Estate Agents & Brokers	819	1,872	1,843	1,856	27,224,376	1,127.72
5313	Activities Related to Real Estate	775	3,310	3,321	3,278	31,727,380	738.89
532	RENTAL & LEASING SERVICES	621	4,052	4,031	3,962	\$39,012,551	\$747.44
5321	Automotive Equipment Rental & Leasing	113	985	993	977	7,408,552	578.57
5322	Consumer Goods Rental	327	1,975	1,933	1,880	15,835,159	631.35
5323	General Rental Centers	39	226	226	231	2,518,983	851.10
5324	Machinery & Equipment Rental & Leasing	142	866	879	874	13,249,857	1,167.49
533	LESSORS OF NONFINANCIAL INTANGIBLE ASSETS	18	63	63	62	\$1,069,857	\$1,313.25

TABLE 5. STATEWIDE SUMMARY

North American Industry Classification System - Industry Groups		Number of Employing Units	Employment			Total Earnings Oct - Dec 2016	Average Weekly Earnings
			Oct	Nov	Dec		
PROFESSIONAL & BUSINESS SERVICES		13,902	145,371	145,044	144,515	\$2,112,592,335	\$1,120.92
54	PROFESSIONAL & TECHNICAL SERVICES	8,771	42,564	42,561	42,955	\$712,476,903	\$1,283.71
5411	Legal Services	1,676	6,021	5,972	6,050	110,603,414	1,414.61
5412	Accounting & Bookkeeping Services	1,256	4,731	4,832	5,281	64,011,530	995.14
5413	Architectural & Engineering Services	968	6,289	6,300	6,361	120,519,070	1,467.66
5414	Specialized Design Services	182	413	422	435	5,500,735	999.53
5415	Computer Systems Design & Related Services	1,699	10,355	10,261	10,161	201,294,383	1,509.33
5416	Management & Technical Consulting Services	1,900	6,458	6,467	6,397	104,348,291	1,246.27
5417	Scientific Research & Development Services	142	866	869	874	13,553,500	1,198.82
5418	Advertising & Related Services	384	3,649	3,626	3,602	53,947,766	1,144.57
5419	Other Professional & Technical Services	564	3,782	3,812	3,794	38,698,214	784.19
55	MANAGEMENT OF COMPANIES & ENTERPRISES	532	35,646	35,869	35,962	\$915,919,743	\$1,966.62
56	ADMINISTRATIVE & WASTE SERVICES	4,599	67,161	66,614	65,598	\$484,195,689	\$560.44
561	ADMINISTRATIVE & SUPPORT SERVICES	4,302	64,089	63,520	62,484	\$446,665,081	\$542.24
5611	Office Administrative Services	670	4,076	4,080	4,118	55,938,778	1,051.73
5612	Facilities Support Services	42	938	1,014	998	6,235,744	487.80
5613	Employment Services	1,075	29,498	29,485	28,728	171,613,842	451.52
5614	Business Support Services	353	7,985	7,867	8,067	74,284,402	716.69
5615	Travel Arrangement & Reservation Services	108	390	405	392	4,370,929	849.77
5616	Investigation & Security Services	289	4,880	4,829	4,637	30,663,791	493.26
5617	Services to Buildings & Dwellings	1,575	15,029	14,601	14,322	91,815,499	482.08
5619	Other Support Services	190	1,293	1,239	1,222	11,742,096	721.82
562	WASTE MANAGEMENT & REMEDIATION SERVICES	297	3,072	3,094	3,114	\$37,530,608	\$933.29
5621	Waste Collection Services	132	1,178	1,193	1,201	13,506,446	872.58
5622	Waste Treatment & Disposal Services	32	875	888	877	12,713,003	1,111.28
5629	Remediation & Other Waste Services	133	1,019	1,013	1,036	11,311,159	850.80
EDUCATION & HEALTH SERVICES		15,640	181,539	181,615	181,903	\$1,951,296,437	\$826.15
61	EDUCATIONAL SERVICES	816	11,687	11,747	11,634	\$100,469,800	\$661.15
6111	Elementary & Secondary Schools	96	3,825	3,852	3,827	30,917,704	620.21
6112	Junior Colleges	6	72	66	66	593,918	671.85
6113	Colleges & Universities	90	4,320	4,367	4,340	39,274,376	695.73
6114	Business, Computer, & Management Training	47	139	144	141	2,232,976	1,215.34
6115	Technical & Trade Schools	112	868	878	868	12,470,879	1,100.95
6116	Other Schools & Instruction	296	1,801	1,808	1,748	7,874,784	339.23
6117	Educational Support Services	169	662	632	644	7,105,163	846.05

TABLE 5. STATEWIDE SUMMARY

North American Industry Classification System - Industry Groups		Number of Employing Units	Employment			Total Earnings Oct - Dec 2016	Average Weekly Earnings
			Oct	Nov	Dec		
62	HEALTH CARE & SOCIAL ASSISTANCE	14,824	169,852	169,868	170,269	\$1,850,826,637	\$837.50
621	AMBULATORY HEALTH CARE SERVICES	5,658	55,569	55,684	55,973	\$934,547,385	\$1,289.66
6211	Offices of Physicians	2,246	24,741	24,756	24,883	572,438,080	1,776.03
6212	Offices of Dentists	986	7,120	7,182	7,177	95,120,706	1,021.97
6213	Offices of Other Health Practitioners	1,473	8,343	8,365	8,498	93,426,801	855.35
6214	Outpatient Care Centers	331	4,976	4,964	4,994	70,602,069	1,090.99
6215	Medical & Diagnostic Laboratories	185	1,121	1,119	1,123	18,195,884	1,248.60
6216	Home Health Care Services	257	6,500	6,504	6,482	55,184,273	653.54
6219	Other Ambulatory Health Care Services	180	2,768	2,794	2,816	29,579,572	814.76
622	HOSPITALS	109	42,140	42,188	42,229	\$504,348,412	\$919.65
6221	General Medical & Surgical Hospitals	83	37,417	37,539	37,593	450,436,172	923.57
6222	Psychiatric & Substance Abuse Hospitals	11	2,251	2,227	2,187	22,831,249	790.51
6223	Speciality Hospitals	15	2,472	2,422	2,449	31,080,991	976.79
623	Residential & Mental Health Facilities	662	32,235	32,013	32,078	\$204,443,814	\$489.79
6231	Nursing Care Facilities (Skilled Nursing Facilities)	289	22,606	22,395	22,429	143,535,702	491.23
6232	Residential Mental Health Facilities	182	4,554	4,527	4,544	29,321,025	496.62
6233	Continuing Care & Assisted Living Facilities	150	4,058	4,069	4,088	23,697,913	447.71
6239	Other Residential Care Facilities	41	1,017	1,022	1,017	7,889,174	595.74
624	SOCIAL ASSISTANCE	8,395	39,908	39,983	39,989	\$207,487,026	\$399.41
6241	Individual & Family Services	7,271	25,220	25,325	25,335	132,453,690	402.82
6242	Emergency & Other Relief Services	137	1,336	1,322	1,348	8,941,210	515.07
6243	Vocational Rehabilitation Services	92	3,310	3,307	3,322	18,471,697	428.89
6244	Child Day Care Services	895	10,042	10,029	9,984	47,620,429	365.64
LEISURE & HOSPITALITY		6,990	115,590	114,174	112,911	\$457,477,271	\$308.08
71	ARTS, ENTERTAINMENT & RECREATION	966	10,491	9,632	9,693	\$55,915,127	\$432.77
711	PERFORMING ARTS & SPECTATOR SPORTS	214	2,566	2,146	2,401	\$18,821,479	\$610.63
7111	Performing Arts Companies	47	567	416	381	2,414,177	408.44
7112	Spectator Sports	69	1,071	1,157	1,244	10,958,811	728.39
7113	Performing Arts & Sports Promoters	46	833	474	679	4,270,699	496.25
7114	Agents & Managers for Public Figures	15	38	43	35	625,636	1,244.63
7115	Independent Artists, Writers, & Performers	37	57	56	62	552,156	728.12
712	MUSEUMS, PARKS, & HISTORICAL SITES	56	658	658	629	\$4,851,788	\$575.65
713	GAMBLING, RECREATIONAL & AMUSEMENT INDUSTRY	696	7,267	6,828	6,663	\$32,241,860	\$358.44
7131	Amusement Parks & Arcades	30	492	262	264	1,364,595	309.34
7139	Other Amusement & Recreation Industries	666	6,775	6,566	6,399	30,877,265	360.97
72	ACCOMMODATION & FOOD SERVICES	6,024	105,099	104,542	103,218	\$401,562,144	\$296.20

TABLE 5. STATEWIDE SUMMARY

North American Industry Classification System - Industry Groups		Number of Employing Units	Employment			Total Earnings Oct - Dec 2016	Average Weekly Earnings
			Oct	Nov	Dec		
721	ACCOMMODATION	898	11,339	11,155	10,820	\$51,875,427	\$359.35
7211	Travel Accommodation	812	10,798	10,625	10,317	48,966,720	356.02
7212	RV Parks & Recreational Camps	67	425	411	389	2,163,524	407.57
7213	Rooming & Boarding Houses	19	116	119	114	745,183	492.74
722	FOOD SERVICES & DRINKING PLACES	5,126	93,760	93,387	92,398	\$349,686,717	\$288.67
7223	Special Food Services	237	4,493	4,453	4,222	20,646,524	361.83
7224	Drinking Places, Alcoholic Beverages	147	1,085	1,078	1,025	3,813,196	276.03
7225	Restaurants & Other Eating Places	4,742	88,182	87,856	87,151	325,226,997	285.17
722511	Full-Service Restaurants	2,125	38,964	39,114	38,585	157,460,427	311.47
722513	Limited-Service Eating Places	2,166	44,884	44,391	44,202	150,289,762	259.84
722514	Cafeterias, Grill Buffets, & Buffets	88	1,575	1,579	1,630	7,405,281	357.21
722515	Snack & Nonalcoholic Beverage Bars	363	2,759	2,772	2,734	10,071,527	281.21
	OTHER SERVICES	5,368	24,675	24,518	24,527	\$207,023,183	\$648.05
811	REPAIR & MAINTENANCE	2,193	10,337	10,234	10,164	\$101,820,662	\$764.51
8111	Automotive Repair & Maintenance	1,398	6,529	6,498	6,463	57,798,549	684.36
8112	Electronic Equipment Repair & Maintenance	172	851	837	842	10,292,625	938.82
8113	Commercial Machinery Repair & Maintenance	452	2,364	2,329	2,290	29,262,236	967.04
8114	Household Goods Repair & Maintenance	171	593	570	569	4,467,252	595.21
812	PERSONAL & LAUNDRY SERVICES	1,325	7,941	7,936	7,983	\$49,936,896	\$482.98
8121	Personal Care Services	623	3,043	3,063	3,055	15,680,907	395.01
8122	Death Care Services	246	1,600	1,583	1,637	12,880,789	616.70
8123	Drycleaning & Laundry Service	237	2,370	2,374	2,374	16,447,277	533.23
8129	Other Personal Services	219	928	916	917	4,927,923	411.88
813	MEMBERSHIP ASSOCIATIONS & ORGANIZATIONS	1,088	5,427	5,391	5,407	\$49,624,113	\$705.81
8131	Religious Organizations	80	274	274	277	2,015,617	563.81
8132	Grantmaking & Giving Organizations	117	429	445	429	5,579,760	988.21
8133	Social Advocacy Organizations	217	1,521	1,545	1,540	13,029,402	652.80
8134	Civic & Social Organizations	191	1,133	1,142	1,152	5,254,651	353.84
8139	Professional & Similar Organizations	483	2,070	1,985	2,009	23,744,683	903.62
814	PRIVATE HOUSEHOLDS	762	970	957	973	\$5,641,512	\$448.93
	LOCAL GOVERNMENT	1,948	112,518	113,326	113,408	\$1,033,879,494	\$703.28
	STATE GOVERNMENT	1,067	69,118	69,187	68,993	\$760,268,432	\$846.35
	NONCLASSIFIABLE ESTABLISHMENTS	0	0	0	0	\$0	\$0.00

TABLE 6. COUNTY SUMMARY

North American Industry Classification System - Industry Groups	Number of Employing Units	Employment			Total Earnings	Average Weekly Earnings
		Oct	Nov	Dec	Oct - Dec 2016	
ARKANSAS COUNTY - TOTAL	779	9,871	9,694	9,799	\$105,974,280	\$832.84
Natural Resources & Mining	53	223	221	231	3,221,261	1,101.29
Construction	46	260	264	262	3,164,177	929.00
Manufacturing	33	3,941	3,826	3,876	45,646,426	904.73
Trade, Transportation & Utilities	199	2,142	2,092	2,123	21,784,679	790.82
Wholesale Trade	46	474	453	464	5,862,791	972.65
Retail Trade	89	979	988	999	7,078,000	550.70
Transportation, Warehousing & Utilities	64	689	651	660	8,843,888	1,020.45
Information	11	84	83	81	780,364	726.15
Financial Activities	46	292	299	292	4,553,216	1,189.97
Professional & Business Services	50	439	418	416	8,079,877	1,464.72
Education & Health Services	196	1,083	1,094	1,101	9,122,939	642.25
Leisure & Hospitality	52	425	424	422	1,510,173	274.19
Other Services	45	100	98	96	694,370	545.03
Local Government	32	730	725	750	6,318,937	661.32
State Government	16	152	150	149	1,097,861	561.76
ASHLEY COUNTY - TOTAL	560	6,604	6,578	6,464	\$67,404,845	\$791.76
Natural Resources & Mining	40	380	371	342	3,840,501	810.86
Construction	38	520	518	513	5,512,969	820.26
Manufacturing	24	1,608	1,610	1,568	26,541,994	1,279.79
Trade, Transportation & Utilities	112	1,224	1,194	1,192	9,655,371	617.22
Wholesale Trade	23	238	204	203	2,855,262	1,021.56
Retail Trade	67	738	746	744	4,318,497	447.30
Transportation, Warehousing & Utilities	22	248	244	245	2,481,612	777.04
Information	5	32	31	29	273,710	686.56
Financial Activities	35	182	191	183	1,565,589	649.80
Professional & Business Services	43	250	258	255	1,894,600	573.02
Education & Health Services	154	902	911	897	7,684,863	654.40
Leisure & Hospitality	30	399	394	359	1,208,033	241.99
Other Services	37	132	127	138	1,035,021	601.64
Local Government	32	877	874	888	7,345,952	642.37
State Government	10	98	99	100	846,242	657.53

TABLE 6. COUNTY SUMMARY

North American Industry Classification System - Industry Groups	Number of Employing Units	Employment			Total Earnings Oct - Dec 2016	Average Weekly Earnings
		Oct	Nov	Dec		
BAXTER COUNTY - TOTAL	1,204	14,630	14,635	14,630	\$128,471,277	\$675.41
Natural Resources & Mining	7	66	64	62	663,110	797.01
Construction	108	512	505	515	4,454,285	670.96
Manufacturing	55	2,242	2,223	2,276	21,811,009	746.67
Trade, Transportation & Utilities	257	2,745	2,805	2,807	18,216,761	503.04
Wholesale Trade	32	206	213	217	2,146,417	778.82
Retail Trade	201	2,341	2,379	2,375	14,171,841	460.95
Transportation, Warehousing & Utilities	24	198	213	215	1,898,503	699.87
Information	19	179	179	184	2,017,734	859.10
Financial Activities	113	766	763	756	14,126,849	1,426.71
Professional & Business Services	132	794	775	766	6,701,983	662.36
Education & Health Services	262	3,815	3,819	3,787	40,069,978	809.64
Leisure & Hospitality	121	1,669	1,659	1,630	5,865,561	273.01
Other Services	86	346	351	354	2,027,329	445.14
Local Government	33	1,183	1,182	1,191	10,143,631	658.28
State Government	11	313	310	302	2,373,047	592.03
BENTON COUNTY - TOTAL	6,209	116,194	116,900	117,050	\$1,542,825,764	\$1,016.83
Natural Resources & Mining	45	725	724	727	18,279,323	1,938.56
Construction	598	4,564	4,583	4,613	57,562,984	965.39
Manufacturing	190	11,476	11,503	11,516	125,237,506	837.83
Trade, Transportation & Utilities	1,634	27,669	28,240	28,218	334,951,888	918.81
Wholesale Trade	721	5,378	5,366	5,408	133,860,366	1,912.51
Retail Trade	726	12,358	12,891	12,815	88,463,740	536.33
Transportation, Warehousing & Utilities	187	9,933	9,983	9,995	112,627,782	868.95
Information	71	934	925	950	12,112,128	995.05
Financial Activities	619	3,709	3,688	3,696	54,372,508	1,131.12
Professional & Business Services	1,204	33,113	33,270	33,258	666,687,794	1,544.05
Education & Health Services	771	10,845	10,908	10,912	110,192,247	778.48
Leisure & Hospitality	593	11,726	11,647	11,630	52,634,388	347.01
Other Services	385	2,036	2,038	2,033	17,695,230	668.66
Local Government	82	8,306	8,278	8,404	84,759,055	782.77
State Government	17	1,091	1,096	1,093	8,340,713	586.82

TABLE 6. COUNTY SUMMARY

North American Industry Classification System - Industry Groups	Number of Employing Units	Employment			Total Earnings Oct - Dec 2016	Average Weekly Earnings
		Oct	Nov	Dec		
BOONE COUNTY - TOTAL	980	13,846	13,841	13,726	\$127,706,520	\$711.63
Construction	69	477	476	457	4,608,938	754.33
Manufacturing	62	1,803	1,798	1,784	18,428,032	789.72
Trade, Transportation & Utilities	250	3,486	3,533	3,557	33,613,015	733.44
Wholesale Trade	39	315	311	314	2,818,995	692.06
Retail Trade	167	2,053	2,080	2,078	14,091,109	523.55
Transportation, Warehousing & Utilities	44	1,118	1,142	1,165	16,702,911	1,125.41
Information	15	291	287	294	3,090,350	817.84
Financial Activities	101	469	459	412	6,449,313	1,110.67
Professional & Business Services	109	1,369	1,369	1,339	15,821,413	895.53
Education & Health Services	166	1,557	1,548	1,581	12,053,556	593.60
Leisure & Hospitality	82	1,163	1,146	1,128	4,280,853	287.43
Local Government	55	2,228	2,238	2,237	20,476,493	704.96
State Government	17	741	735	676	6,588,494	706.52
Other	54	262	252	261	2,296,063	683.69
BRADLEY COUNTY - TOTAL	366	3,690	3,687	3,750	\$31,194,248	\$646.96
Natural Resources & Mining	46	257	276	303	2,734,253	754.76
Construction	18	59	57	62	516,185	669.21
Manufacturing	11	846	849	866	8,495,141	765.49
Trade, Transportation & Utilities	72	481	483	493	3,365,971	533.12
Wholesale Trade	12	82	80	80	1,101,022	1,049.93
Retail Trade	40	350	351	360	1,726,879	375.60
Transportation, Warehousing & Utilities	20	49	52	53	538,070	806.30
Information	4	31	29	24	231,354	635.59
Financial Activities	24	134	135	129	1,538,582	892.10
Professional & Business Services	26	90	96	117	898,742	684.50
Education & Health Services	102	668	655	654	6,157,082	718.70
Leisure & Hospitality	14	200	197	188	567,559	223.89
Other Services	25	101	86	91	777,802	645.66
Local Government	14	481	482	482	3,757,480	600.08
State Government	10	342	342	341	2,154,097	484.97

TABLE 6. COUNTY SUMMARY

North American Industry Classification System - Industry Groups	Number of Employing Units	Employment			Total Earnings Oct - Dec 2016	Average Weekly Earnings
		Oct	Nov	Dec		
CALHOUN COUNTY - TOTAL	101	2,778	2,805	2,826	\$36,041,475	\$989.09
Natural Resources & Mining	7	43	43	38	387,201	720.60
Construction	10	113	107	107	1,056,965	745.92
Manufacturing	9	1,927	1,953	1,998	27,993,790	1,099.03
Trade, Transportation & Utilities	21	225	229	229	2,025,865	684.49
Retail Trade	11	57	55	56	254,234	349.22
Transportation, Warehousing & Utilities	10	168	174	173	1,771,631	793.86
Professional & Business Services	4	7	7	7	55,516	610.07
Education & Health Services	17	64	62	62	588,239	722.06
Leisure & Hospitality	4	16	15	13	47,732	250.34
Other Services	4	5	5	4	14,688	242.11
Local Government	11	198	206	191	1,347,488	522.62
State Government	7	71	71	71	641,482	695.00
Other	7	109	107	106	1,882,509	1,349.15
CARROLL COUNTY - TOTAL	794	11,111	10,776	10,661	\$82,862,516	\$587.51
Natural Resources & Mining	18	202	198	195	1,894,251	734.68
Trade, Transportation & Utilities	196	1,683	1,673	1,668	12,596,048	578.58
Wholesale Trade	23	144	159	167	1,317,532	646.91
Retail Trade	150	1,195	1,190	1,164	6,970,869	453.27
Transportation, Warehousing & Utilities	23	344	324	337	4,307,647	989.13
Information	10	62	61	60	748,751	944.20
Financial Activities	66	364	364	364	4,909,594	1,037.53
Professional & Business Services	64	573	555	555	4,755,168	652.02
Education & Health Services	95	1,028	1,037	1,048	8,591,552	636.90
Leisure & Hospitality	169	1,827	1,523	1,405	5,958,258	289.17
Other Services	43	136	138	137	799,481	448.89
Local Government	25	1,043	1,045	1,025	8,773,447	650.38
State Government	9	89	87	87	712,865	625.50
Other	99	4,104	4,095	4,117	33,123,101	620.64

TABLE 6. COUNTY SUMMARY

North American Industry Classification System - Industry Groups	Number of Employing Units	Employment			Total Earnings Oct - Dec 2016	Average Weekly Earnings
		Oct	Nov	Dec		
CHICOT COUNTY - TOTAL	522	3,217	3,165	3,175	\$25,323,770	\$611.48
Natural Resources & Mining	57	257	248	238	2,588,599	804.00
Construction	16	150	157	143	1,966,482	1,008.45
Manufacturing	7	21	23	31	426,024	1,310.84
Trade, Transportation & Utilities	65	679	664	685	4,949,473	563.21
Wholesale Trade	13	68	69	70	881,652	982.89
Retail Trade	39	323	316	323	1,951,152	468.05
Transportation, Warehousing & Utilities	13	288	279	292	2,116,669	568.64
Information	4	6	5	4	20,974	322.68
Financial Activities	28	157	155	152	1,710,202	850.56
Professional & Business Services	18	36	39	42	405,100	799.01
Education & Health Services	265	817	813	827	5,224,309	490.68
Leisure & Hospitality	19	148	144	142	428,508	227.85
Other Services	16	65	54	51	595,421	808.26
Local Government	18	627	615	611	5,160,774	642.71
State Government	9	254	248	249	1,847,904	567.83
CLARK COUNTY - TOTAL	624	9,109	9,143	9,216	\$76,739,441	\$644.72
Natural Resources & Mining	45	258	257	256	2,630,368	787.30
Construction	21	57	63	56	446,106	584.93
Manufacturing	32	1,418	1,415	1,413	17,697,052	961.83
Trade, Transportation & Utilities	126	1,394	1,429	1,433	10,627,729	576.26
Wholesale Trade	11	30	30	30	384,452	985.77
Retail Trade	91	1,209	1,245	1,250	8,364,551	521.13
Transportation, Warehousing & Utilities	24	155	154	153	1,878,726	938.42
Information	3	17	18	18	125,140	544.88
Financial Activities	72	299	296	299	3,185,779	822.35
Professional & Business Services	52	588	581	617	5,854,424	756.45
Education & Health Services	127	1,638	1,667	1,679	13,209,903	611.65
Leisure & Hospitality	60	1,057	1,035	1,035	3,725,481	274.94
Other Services	44	233	233	241	1,902,812	621.09
Local Government	28	964	961	991	7,803,153	617.53
State Government	14	1,186	1,188	1,178	9,531,494	619.25

TABLE 6. COUNTY SUMMARY

North American Industry Classification System - Industry Groups	Number of Employing Units	Employment			Total Earnings Oct - Dec 2016	Average Weekly Earnings
		Oct	Nov	Dec		
CLAY COUNTY - TOTAL	383	3,334	3,317	3,207	\$24,914,495	\$583.23
Natural Resources & Mining	59	277	259	232	1,821,728	547.39
Construction	30	149	151	127	1,276,443	689.84
Manufacturing	13	146	135	133	1,108,972	618.16
Trade, Transportation & Utilities	92	843	840	842	7,135,943	652.18
Wholesale Trade	22	249	246	249	2,284,140	708.48
Retail Trade	42	416	421	416	2,797,130	515.16
Transportation, Warehousing & Utilities	28	178	173	177	2,054,673	898.02
Information	5	41	41	37	271,290	526.10
Financial Activities	27	119	119	117	1,161,965	755.34
Professional & Business Services	26	125	117	115	945,258	611.03
Education & Health Services	51	508	505	498	3,442,356	525.74
Leisure & Hospitality	23	253	251	243	744,978	230.14
Other Services	25	74	73	70	665,320	707.54
Local Government	22	762	790	757	6,069,215	606.58
State Government	10	37	36	36	271,027	573.80
CLEBURNE COUNTY - TOTAL	665	6,545	6,425	6,327	\$53,689,466	\$642.06
Natural Resources & Mining	25	301	253	254	3,380,849	965.59
Construction	65	335	331	316	3,831,631	900.43
Manufacturing	36	1,120	1,100	1,103	10,871,432	754.98
Trade, Transportation & Utilities	147	1,223	1,220	1,208	10,035,320	634.30
Wholesale Trade	32	127	127	125	1,584,246	964.63
Retail Trade	94	941	942	932	6,552,598	537.17
Transportation, Warehousing & Utilities	21	155	151	151	1,898,476	958.66
Information	9	57	55	48	428,958	618.69
Financial Activities	76	267	264	269	2,886,301	832.59
Professional & Business Services	70	299	289	272	2,993,740	803.33
Education & Health Services	95	994	966	971	7,733,103	608.86
Leisure & Hospitality	79	864	857	821	3,288,921	298.58
Other Services	37	135	136	128	804,340	465.21
Local Government	18	825	834	816	6,539,015	609.70
State Government	8	125	120	121	895,856	564.85

TABLE 6. COUNTY SUMMARY

North American Industry Classification System - Industry Groups	Number of Employing Units	Employment			Total Earnings Oct - Dec 2016	Average Weekly Earnings
		Oct	Nov	Dec		
CLEVELAND COUNTY - TOTAL	124	970	955	969	\$7,778,888	\$620.29
Natural Resources & Mining	14	129	121	136	1,410,272	843.13
Construction	9	24	24	26	201,158	627.31
Manufacturing	4	72	73	74	609,158	641.89
Trade, Transportation & Utilities	38	187	182	184	1,428,909	596.29
Retail Trade	20	60	56	56	222,121	298.02
Other Trade, Transportation, & Utilities	18	127	126	128	1,206,788	730.94
Financial Activities	3	27	29	28	535,166	1,470.24
Education & Health Services	29	155	155	154	785,035	390.44
Other Services	4	13	12	12	101,057	630.29
Local Government	11	312	311	308	2,396,832	594.11
State Government	6	30	27	27	241,939	664.67
Other	6	21	21	20	69,362	258.17
COLUMBIA COUNTY - TOTAL	725	8,022	8,121	8,000	\$79,690,867	\$761.72
Natural Resources & Mining	41	373	366	375	6,718,442	1,391.75
Construction	41	173	169	171	1,732,975	779.57
Manufacturing	32	1,757	1,742	1,724	23,705,310	1,047.38
Trade, Transportation & Utilities	163	1,354	1,382	1,369	11,058,822	621.69
Wholesale Trade	31	181	185	180	2,826,303	1,194.55
Retail Trade	95	977	1,008	994	5,959,417	461.65
Transportation, Warehousing & Utilities	37	196	189	195	2,273,102	904.42
Information	8	52	53	53	388,383	567.26
Financial Activities	67	358	353	359	5,956,673	1,284.69
Professional & Business Services	56	303	294	292	3,566,351	925.76
Education & Health Services	184	1,043	1,083	1,078	6,595,452	475.04
Leisure & Hospitality	51	717	726	671	2,557,391	279.17
Other Services	44	153	149	155	866,180	437.39
Local Government	26	1,113	1,172	1,130	9,616,994	649.87
State Government	12	626	632	623	6,927,894	849.94

TABLE 6. COUNTY SUMMARY

North American Industry Classification System - Industry Groups	Number of Employing Units	Employment			Total Earnings Oct - Dec 2016	Average Weekly Earnings
		Oct	Nov	Dec		
CONWAY COUNTY - TOTAL	551	6,556	6,625	6,601	\$61,906,648	\$722.18
Natural Resources & Mining	34	240	240	247	2,869,588	910.88
Construction	50	522	504	497	6,984,856	1,058.36
Manufacturing	20	844	835	850	12,780,794	1,166.24
Trade, Transportation & Utilities	121	1,542	1,545	1,531	13,693,925	684.31
Wholesale Trade	17	124	125	129	1,732,492	1,057.69
Retail Trade	77	836	836	817	5,550,691	514.64
Transportation, Warehousing & Utilities	27	582	584	585	6,410,742	844.89
Information	3	17	16	17	51,365	237.07
Financial Activities	38	151	149	148	1,627,704	838.45
Professional & Business Services	40	490	476	530	3,276,890	505.48
Education & Health Services	137	817	815	816	6,857,222	646.42
Leisure & Hospitality	41	453	452	451	1,558,425	265.22
Other Services	28	97	93	93	720,662	587.66
Local Government	30	1,005	1,116	1,033	8,676,788	634.86
State Government	9	378	384	388	2,808,429	563.56
CRAIGHEAD COUNTY - TOTAL	2,803	49,436	49,690	49,583	\$475,328,148	\$737.62
Natural Resources & Mining	90	514	408	307	4,752,982	892.47
Construction	233	2,173	2,139	2,105	25,669,015	923.11
Manufacturing	99	6,091	6,080	6,195	74,358,231	934.31
Trade, Transportation & Utilities	790	10,152	10,473	10,508	85,631,266	634.73
Wholesale Trade	181	1,617	1,617	1,620	21,210,611	1,008.40
Retail Trade	480	6,926	7,217	7,221	45,842,448	495.18
Transportation, Warehousing & Utilities	129	1,609	1,639	1,667	18,578,207	872.28
Information	20	421	430	429	4,554,659	821.15
Financial Activities	271	1,632	1,636	1,612	22,067,203	1,043.53
Professional & Business Services	364	4,656	4,627	4,596	36,899,725	613.54
Education & Health Services	467	10,378	10,386	10,469	124,615,782	920.74
Leisure & Hospitality	257	5,570	5,594	5,476	20,699,411	287.07
Other Services	155	836	840	836	6,347,707	583.14
Local Government	35	3,976	4,037	4,015	38,182,408	732.57
State Government	22	3,037	3,040	3,035	31,549,759	799.02

TABLE 6. COUNTY SUMMARY

North American Industry Classification System - Industry Groups	Number of Employing Units	Employment			Total Earnings Oct - Dec 2016	Average Weekly Earnings
		Oct	Nov	Dec		
CRAWFORD COUNTY - TOTAL	1,245	19,459	19,532	19,534	\$171,488,866	\$676.20
Natural Resources & Mining	28	224	203	216	2,245,879	806.03
Construction	147	873	875	880	10,526,846	924.38
Manufacturing	70	4,421	4,459	4,480	47,363,497	818.12
Trade, Transportation & Utilities	311	5,834	5,829	5,821	49,725,213	656.32
Wholesale Trade	78	774	769	768	9,978,100	996.38
Retail Trade	166	2,049	2,056	2,040	14,376,396	539.89
Transportation, Warehousing & Utilities	67	3,011	3,004	3,013	25,370,717	648.51
Information	11	71	75	74	719,032	754.23
Financial Activities	119	501	498	503	5,171,635	794.58
Professional & Business Services	156	1,579	1,609	1,630	13,348,902	639.38
Education & Health Services	176	1,678	1,650	1,660	13,555,597	627.15
Leisure & Hospitality	95	1,635	1,640	1,625	5,936,812	279.60
Other Services	79	380	387	377	3,424,817	690.86
Local Government	43	2,104	2,152	2,115	18,378,296	665.70
State Government	10	159	155	153	1,092,340	539.78
CRITTENDEN COUNTY - TOTAL	1,272	16,709	16,525	16,544	\$150,449,883	\$697.48
Natural Resources & Mining	56	300	283	280	3,255,579	870.55
Construction	48	484	455	413	6,328,969	1,080.27
Manufacturing	40	2,087	2,092	2,199	27,623,647	999.48
Trade, Transportation & Utilities	308	4,413	4,429	4,424	40,584,693	705.99
Wholesale Trade	63	779	770	767	9,083,591	905.10
Retail Trade	164	1,987	2,027	2,028	12,295,665	469.62
Transportation, Warehousing & Utilities	81	1,647	1,632	1,629	19,205,437	903.02
Information	5	50	54	53	462,165	679.32
Financial Activities	95	450	452	451	4,804,628	819.48
Professional & Business Services	112	1,321	1,243	1,161	10,190,274	631.30
Education & Health Services	347	2,133	2,099	2,082	16,696,980	610.25
Leisure & Hospitality	127	2,313	2,270	2,269	10,606,460	357.22
Other Services	79	475	480	477	4,109,221	662.21
Local Government	42	2,203	2,194	2,251	22,382,018	776.94
State Government	13	480	474	484	3,405,249	546.47

TABLE 6. COUNTY SUMMARY

North American Industry Classification System - Industry Groups	Number of Employing Units	Employment			Total Earnings Oct - Dec 2016	Average Weekly Earnings
		Oct	Nov	Dec		
CROSS COUNTY - TOTAL	474	4,979	4,935	4,900	\$41,501,504	\$646.50
Natural Resources & Mining	39	256	243	229	2,287,079	724.98
Construction	22	60	60	66	596,006	739.46
Manufacturing	11	458	447	442	3,796,073	650.35
Trade, Transportation & Utilities	126	1,239	1,229	1,214	11,475,063	719.20
Wholesale Trade	30	291	287	288	4,104,125	1,093.66
Retail Trade	71	815	828	814	6,197,698	582.11
Transportation, Warehousing & Utilities	25	133	114	112	1,173,240	754.17
Information	5	40	41	45	300,705	550.74
Financial Activities	44	305	303	294	2,991,900	765.45
Professional & Business Services	38	119	122	122	1,361,010	865.23
Education & Health Services	99	992	988	993	7,864,587	610.46
Leisure & Hospitality	31	341	331	322	1,109,941	257.69
Other Services	34	92	89	86	689,775	596.18
Local Government	16	720	725	729	5,785,186	614.10
State Government	9	357	357	358	3,244,179	698.37
DALLAS COUNTY - TOTAL	248	2,783	2,787	2,802	\$22,064,457	\$608.19
Natural Resources & Mining	29	151	149	149	1,411,472	725.44
Construction	16	80	75	72	686,063	697.45
Manufacturing	10	545	554	545	5,095,568	715.27
Trade, Transportation & Utilities	57	462	471	464	3,375,360	557.57
Wholesale Trade	6	16	17	13	178,774	896.86
Retail Trade	38	346	354	353	2,302,651	504.64
Transportation, Warehousing & Utilities	13	100	100	98	893,935	692.26
Information	4	19	18	18	176,774	741.71
Financial Activities	16	77	77	74	1,265,412	1,280.78
Professional & Business Services	11	34	34	33	194,750	444.97
Education & Health Services	59	846	839	829	6,673,243	612.56
Leisure & Hospitality	13	139	144	141	417,558	227.26
Other Services	12	59	60	61	347,560	445.59
Local Government	14	344	337	387	2,182,892	471.67
State Government	7	27	29	29	237,805	645.62

TABLE 6. COUNTY SUMMARY

North American Industry Classification System - Industry Groups	Number of Employing Units	Employment			Total Earnings Oct - Dec 2016	Average Weekly Earnings
		Oct	Nov	Dec		
DESHA COUNTY - TOTAL	555	4,618	4,494	4,487	\$38,710,803	\$656.91
Natural Resources & Mining	69	351	300	289	2,828,982	694.51
Construction	19	95	95	92	1,109,548	907.98
Manufacturing	15	838	844	848	10,590,888	966.03
Trade, Transportation & Utilities	108	887	846	848	7,376,532	659.54
Wholesale Trade	19	192	193	197	2,741,859	1,087.18
Retail Trade	65	481	470	468	2,724,384	443.06
Transportation, Warehousing & Utilities	24	214	183	183	1,910,289	760.06
Information	3	10	10	10	95,188	732.22
Financial Activities	27	202	205	200	1,803,559	685.68
Professional & Business Services	38	83	79	85	791,990	739.95
Education & Health Services	190	776	759	763	4,907,219	492.79
Leisure & Hospitality	36	379	368	352	1,295,787	272.09
Other Services	20	54	52	54	289,514	417.57
Local Government	21	818	813	827	6,656,302	624.93
State Government	9	125	123	119	965,294	606.98
DREW COUNTY - TOTAL	534	6,438	6,426	6,388	\$55,964,159	\$670.83
Natural Resources & Mining	51	341	335	330	3,867,716	887.23
Construction	22	109	117	123	1,021,187	675.24
Manufacturing	21	816	810	799	7,841,205	746.19
Trade, Transportation & Utilities	124	1,191	1,200	1,189	8,649,854	557.58
Wholesale Trade	19	133	135	136	1,577,725	901.21
Retail Trade	81	913	922	909	5,632,708	473.71
Transportation, Warehousing & Utilities	24	145	143	144	1,439,421	768.92
Information	6	49	50	49	480,770	749.64
Financial Activities	49	255	250	246	2,909,296	893.98
Professional & Business Services	33	223	225	209	2,623,565	921.52
Education & Health Services	136	931	913	950	8,443,016	697.35
Leisure & Hospitality	39	628	631	630	2,164,057	264.37
Other Services	17	65	68	69	410,015	468.41
Local Government	22	1,237	1,244	1,225	11,449,949	712.98
State Government	14	593	583	569	6,103,529	807.17

TABLE 6. COUNTY SUMMARY

North American Industry Classification System - Industry Groups	Number of Employing Units	Employment			Total Earnings Oct - Dec 2016	Average Weekly Earnings
		Oct	Nov	Dec		
FAULKNER COUNTY - TOTAL	2,825	40,469	40,426	40,397	\$403,756,002	\$768.18
Natural Resources & Mining	59	327	318	336	5,915,423	1,391.54
Construction	305	2,744	2,718	2,704	36,147,716	1,021.53
Manufacturing	102	3,161	3,177	3,190	40,360,243	977.53
Trade, Transportation & Utilities	656	7,507	7,754	7,768	58,349,552	584.71
Wholesale Trade	141	497	495	501	7,711,984	1,192.02
Retail Trade	425	6,285	6,507	6,487	41,347,697	494.93
Transportation, Warehousing & Utilities	90	725	752	780	9,289,871	949.85
Information	20	271	274	281	3,843,914	1,073.92
Financial Activities	314	1,450	1,437	1,436	16,921,463	903.30
Professional & Business Services	427	5,359	5,273	5,356	79,701,744	1,150.41
Education & Health Services	432	6,864	6,839	6,790	69,371,516	781.18
Leisure & Hospitality	259	5,184	5,044	4,960	18,842,047	286.29
Other Services	193	799	810	816	5,960,261	567.19
Local Government	41	3,494	3,490	3,481	35,582,541	784.65
State Government	17	3,309	3,292	3,279	32,759,582	765.17
FRANKLIN COUNTY - TOTAL	357	4,418	4,414	4,386	\$39,827,333	\$695.33
Natural Resources & Mining	20	197	196	183	3,694,543	1,480.19
Construction	33	115	120	115	1,000,182	659.46
Manufacturing	14	953	933	927	9,381,026	769.59
Trade, Transportation & Utilities	85	946	954	949	8,546,043	692.23
Wholesale Trade	12	39	46	42	226,048	410.75
Retail Trade	53	641	638	630	4,110,741	496.93
Transportation, Warehousing & Utilities	20	266	270	277	4,209,254	1,194.79
Information	5	19	19	20	153,502	610.75
Financial Activities	29	79	79	77	724,789	711.74
Professional & Business Services	36	311	321	319	3,615,852	877.42
Education & Health Services	66	564	565	564	3,877,439	528.53
Leisure & Hospitality	26	319	317	312	1,035,660	252.11
Other Services	15	58	56	55	366,734	500.77
Local Government	19	728	726	737	6,112,626	643.82
State Government	9	129	128	128	1,318,937	790.57

TABLE 6. COUNTY SUMMARY

North American Industry Classification System - Industry Groups	Number of Employing Units	Employment			Total Earnings Oct - Dec 2016	Average Weekly Earnings
		Oct	Nov	Dec		
FULTON COUNTY - TOTAL	193	1,788	1,801	1,824	\$12,973,177	\$553.08
Natural Resources & Mining	3	6	6	6	38,050	487.82
Construction	9	38	43	45	490,970	899.21
Manufacturing	13	96	99	97	637,288	503.65
Trade, Transportation & Utilities	46	267	269	278	2,492,505	706.63
Retail Trade	30	163	163	164	1,003,978	472.83
Other Trade, Transportation, & Utilities	16	104	106	114	1,488,527	1,060.20
Information	5	31	31	34	162,083	389.62
Financial Activities	18	93	83	86	1,007,108	887.06
Professional & Business Services	13	37	34	35	314,937	685.64
Education & Health Services	43	453	457	459	3,068,884	517.31
Leisure & Hospitality	17	152	147	145	448,169	232.94
Other Services	5	12	12	11	79,979	527.33
Local Government	12	528	547	555	3,627,551	513.57
State Government	9	75	73	73	605,653	632.43
GARLAND COUNTY - TOTAL	3,106	35,662	35,782	35,602	\$320,770,106	\$691.51
Natural Resources & Mining	30	238	231	232	2,587,930	851.95
Construction	334	1,750	1,758	1,745	17,208,303	755.98
Manufacturing	95	2,507	2,535	2,581	27,861,553	843.45
Trade, Transportation & Utilities	690	7,333	7,448	7,395	59,434,952	618.50
Wholesale Trade	138	840	840	835	13,184,968	1,209.82
Retail Trade	492	6,012	6,098	6,052	40,955,880	520.39
Transportation, Warehousing & Utilities	60	481	510	508	5,294,104	815.02
Information	31	415	408	414	3,878,866	723.62
Financial Activities	335	1,484	1,492	1,490	20,969,047	1,083.52
Professional & Business Services	385	2,816	2,870	2,853	27,686,680	748.24
Education & Health Services	535	7,614	7,564	7,624	87,266,222	883.18
Leisure & Hospitality	384	6,587	6,354	6,384	30,568,222	365.03
Other Services	232	970	956	948	6,559,798	526.72
Local Government	33	2,946	3,164	2,947	28,703,646	731.36
State Government	22	1,002	1,002	989	8,044,887	620.28

TABLE 6. COUNTY SUMMARY

North American Industry Classification System - Industry Groups	Number of Employing Units	Employment			Total Earnings Oct - Dec 2016	Average Weekly Earnings
		Oct	Nov	Dec		
GRANT COUNTY - TOTAL	352	4,012	4,035	4,036	\$39,198,231	\$748.63
Natural Resources & Mining	28	178	174	175	2,748,768	1,203.66
Construction	30	196	211	206	2,651,445	998.16
Manufacturing	17	1,234	1,261	1,254	15,108,379	929.99
Trade, Transportation & Utilities	92	659	664	661	5,323,233	619.17
Wholesale Trade	22	99	106	106	1,520,537	1,128.27
Retail Trade	44	478	474	473	3,075,494	498.06
Transportation, Warehousing & Utilities	26	82	84	82	727,202	676.68
Financial Activities	24	101	99	99	1,175,007	906.87
Professional & Business Services	29	88	88	93	1,248,282	1,070.87
Education & Health Services	75	416	417	407	2,425,938	451.48
Leisure & Hospitality	22	301	299	305	922,634	235.27
Local Government	10	747	730	744	6,959,235	723.09
State Government	7	42	42	41	308,461	569.47
Other	18	50	50	51	326,849	499.51
GREENE COUNTY - TOTAL	882	15,099	15,184	15,096	\$139,491,728	\$709.37
Natural Resources & Mining	40	245	259	246	2,318,436	713.36
Construction	70	312	302	287	3,075,798	787.79
Manufacturing	64	5,041	5,044	5,053	57,254,013	872.80
Trade, Transportation & Utilities	241	2,646	2,698	2,688	20,150,599	578.95
Wholesale Trade	44	403	404	405	4,556,557	867.59
Retail Trade	160	1,908	1,955	1,947	12,513,693	497.04
Transportation, Warehousing & Utilities	37	335	339	336	3,080,349	703.81
Information	10	92	92	95	564,296	466.75
Financial Activities	74	550	548	551	7,133,081	998.24
Professional & Business Services	87	758	759	739	7,176,005	734.04
Education & Health Services	148	1,999	1,995	1,983	17,524,299	676.61
Leisure & Hospitality	65	1,248	1,259	1,241	4,054,009	249.61
Other Services	42	177	180	182	1,472,071	630.26
Local Government	30	1,625	1,641	1,630	14,629,090	689.53
State Government	11	406	407	401	4,140,031	786.98

TABLE 6. COUNTY SUMMARY

North American Industry Classification System - Industry Groups	Number of Employing Units	Employment			Total Earnings Oct - Dec 2016	Average Weekly Earnings
		Oct	Nov	Dec		
HEMPSTEAD COUNTY - TOTAL	502	7,819	7,836	7,817	\$68,453,207	\$673.01
Natural Resources & Mining	23	245	244	250	2,525,591	788.67
Construction	28	187	190	193	2,124,781	860.24
Manufacturing	28	2,273	2,288	2,272	24,792,057	837.30
Trade, Transportation & Utilities	125	1,264	1,285	1,258	11,036,384	668.99
Wholesale Trade	20	179	182	175	1,589,701	684.43
Retail Trade	79	846	864	850	5,686,012	512.56
Transportation, Warehousing & Utilities	26	239	239	233	3,760,671	1,220.60
Information	8	38	40	38	327,331	651.19
Financial Activities	46	216	215	210	2,245,334	808.35
Professional & Business Services	33	223	220	219	1,685,449	587.54
Education & Health Services	94	1,026	1,022	1,023	6,558,698	492.85
Leisure & Hospitality	43	589	577	586	2,233,472	294.19
Other Services	31	142	145	144	1,015,341	543.64
Local Government	27	902	900	913	7,886,957	670.37
State Government	16	714	710	711	6,021,812	650.89
HOT SPRING COUNTY - TOTAL	616	8,440	8,396	8,463	\$75,870,117	\$692.06
Natural Resources & Mining	22	164	154	154	1,292,445	631.90
Construction	55	303	305	310	3,207,819	806.39
Manufacturing	27	1,392	1,391	1,410	18,094,669	995.87
Trade, Transportation & Utilities	147	1,629	1,645	1,639	16,834,190	790.72
Wholesale Trade	17	108	106	106	1,576,865	1,137.16
Retail Trade	93	871	894	889	5,648,403	491.14
Transportation, Warehousing & Utilities	37	650	645	644	9,608,922	1,143.60
Information	7	75	74	65	694,473	748.89
Financial Activities	53	213	212	204	2,331,624	855.43
Professional & Business Services	49	1,008	963	1,047	6,864,578	524.90
Education & Health Services	127	1,050	1,049	1,041	9,202,344	676.31
Leisure & Hospitality	53	617	618	617	1,945,061	242.37
Other Services	37	131	130	129	926,060	547.96
Local Government	27	992	988	986	8,854,153	688.90
State Government	12	866	867	861	5,622,701	500.21

TABLE 6. COUNTY SUMMARY

North American Industry Classification System - Industry Groups	Number of Employing Units	Employment			Total Earnings Oct - Dec 2016	Average Weekly Earnings
		Oct	Nov	Dec		
HOWARD COUNTY - TOTAL	352	6,925	6,924	6,919	\$56,154,693	\$623.98
Natural Resources & Mining	21	234	232	232	2,126,785	703.15
Construction	19	154	159	157	2,506,415	1,230.65
Manufacturing	20	3,324	3,316	3,304	26,635,133	618.12
Trade, Transportation & Utilities	86	900	902	913	7,151,407	607.85
Wholesale Trade	15	77	77	86	819,815	788.28
Retail Trade	53	628	636	633	4,014,697	488.39
Transportation, Warehousing & Utilities	18	195	189	194	2,316,895	925.03
Information	3	18	17	17	102,510	454.93
Financial Activities	33	130	132	128	1,361,248	805.47
Professional & Business Services	21	128	128	127	995,318	599.71
Education & Health Services	77	794	792	806	6,449,733	622.24
Leisure & Hospitality	22	329	334	317	1,142,274	268.98
Other Services	23	148	142	148	1,174,850	618.99
Local Government	17	666	674	671	5,694,499	653.46
State Government	10	100	96	99	814,521	637.17
INDEPENDENCE COUNTY - TOTAL	911	15,444	15,550	15,776	\$149,119,375	\$735.77
Natural Resources & Mining	13	197	199	198	2,652,864	1,030.64
Construction	59	422	441	412	4,739,835	857.89
Manufacturing	37	2,802	2,793	3,001	35,144,367	943.49
Trade, Transportation & Utilities	241	3,110	3,125	3,156	28,386,397	697.55
Wholesale Trade	31	417	419	425	5,556,523	1,016.87
Retail Trade	158	1,850	1,870	1,893	12,076,541	496.51
Transportation, Warehousing & Utilities	52	843	836	838	10,753,333	985.91
Information	11	116	120	126	932,226	594.28
Financial Activities	83	512	512	518	6,464,420	967.44
Professional & Business Services	96	1,179	1,189	1,219	7,721,155	496.74
Education & Health Services	167	3,435	3,452	3,459	39,961,292	891.34
Leisure & Hospitality	78	1,208	1,226	1,209	4,012,526	254.18
Other Services	65	353	362	371	2,010,976	427.32
Local Government	46	1,520	1,549	1,535	11,953,823	599.17
State Government	15	590	582	572	5,139,494	680.07

TABLE 6. COUNTY SUMMARY

North American Industry Classification System - Industry Groups	Number of Employing Units	Employment			Total Earnings Oct - Dec 2016	Average Weekly Earnings
		Oct	Nov	Dec		
IZARD COUNTY - TOTAL	258	3,181	3,156	3,174	\$25,758,297	\$624.98
Natural Resources & Mining	7	137	137	135	2,112,325	1,191.83
Construction	23	117	105	106	1,079,774	759.69
Manufacturing	10	310	297	286	2,559,549	661.44
Trade, Transportation & Utilities	68	559	568	573	4,447,760	603.77
Wholesale Trade	12	28	30	30	197,947	519.09
Retail Trade	45	391	393	396	2,836,237	554.67
Transportation, Warehousing & Utilities	11	140	145	147	1,413,576	755.12
Information	4	6	5	6	75,435	1,024.00
Financial Activities	25	164	167	176	2,065,277	940.04
Professional & Business Services	15	54	52	50	423,446	626.40
Education & Health Services	49	706	710	726	5,238,200	564.34
Leisure & Hospitality	20	175	155	165	462,039	215.40
Other Services	11	30	27	26	176,079	489.56
Local Government	17	502	509	506	3,818,094	580.82
State Government	9	421	424	419	3,300,319	602.54
JACKSON COUNTY - TOTAL	451	5,268	5,222	5,193	\$46,220,345	\$680.11
Natural Resources & Mining	54	299	260	235	2,591,895	753.31
Construction	20	108	114	108	1,196,235	836.53
Manufacturing	15	1,012	982	980	10,740,104	833.38
Trade, Transportation & Utilities	108	1,007	1,014	1,020	8,902,078	675.54
Wholesale Trade	20	197	192	200	2,753,891	1,078.97
Retail Trade	70	717	730	725	4,868,490	517.26
Transportation, Warehousing & Utilities	18	93	92	95	1,279,697	1,054.70
Information	4	14	14	14	103,340	567.80
Financial Activities	33	143	138	139	1,324,783	727.90
Professional & Business Services	34	131	123	119	1,162,346	719.13
Education & Health Services	89	853	859	861	8,097,665	726.27
Leisure & Hospitality	27	296	292	303	973,282	252.08
Other Services	23	57	60	59	531,028	696.28
Local Government	32	582	598	590	4,392,039	572.63
State Government	12	766	768	765	6,205,550	622.90

TABLE 6. COUNTY SUMMARY

North American Industry Classification System - Industry Groups	Number of Employing Units	Employment			Total Earnings Oct - Dec 2016	Average Weekly Earnings
		Oct	Nov	Dec		
JEFFERSON COUNTY - TOTAL	2,105	27,061	27,033	26,897	\$259,402,818	\$739.12
Natural Resources & Mining	40	186	170	158	2,270,028	1,019.17
Construction	90	597	582	544	6,961,846	932.43
Manufacturing	61	4,828	4,842	4,860	63,681,235	1,011.40
Trade, Transportation & Utilities	400	4,477	4,560	4,558	39,243,488	666.14
Wholesale Trade	71	665	660	650	7,072,319	826.37
Retail Trade	275	3,106	3,180	3,176	21,997,182	536.49
Transportation, Warehousing & Utilities	54	706	720	732	10,173,987	1,087.97
Information	10	74	70	75	923,094	972.70
Financial Activities	155	971	974	971	11,317,692	895.67
Professional & Business Services	153	2,371	2,202	2,220	17,017,116	578.10
Education & Health Services	865	4,886	4,876	4,876	50,872,688	802.01
Leisure & Hospitality	140	1,950	1,953	1,856	6,780,946	271.72
Other Services	116	557	569	558	4,750,830	651.04
Local Government	39	2,760	2,768	2,785	24,281,178	674.05
State Government	36	3,404	3,467	3,436	31,302,677	700.85
JOHNSON COUNTY - TOTAL	504	8,719	8,909	8,857	\$70,771,438	\$616.65
Natural Resources & Mining	15	228	224	222	1,997,895	684.05
Construction	34	165	164	176	1,546,830	706.85
Manufacturing	36	2,727	2,757	2,799	23,515,566	655.16
Trade, Transportation & Utilities	117	1,938	2,004	1,977	15,566,916	606.92
Retail Trade	79	949	985	968	5,587,679	444.34
Other Trade, Transportation & Utilities	38	989	1,019	1,009	9,979,237	763.31
Information	6	34	33	32	319,223	744.11
Financial Activities	49	177	178	183	1,924,611	825.54
Professional & Business Services	53	392	400	415	2,343,826	448.12
Education & Health Services	99	1,276	1,275	1,287	12,223,147	734.95
Leisure & Hospitality	40	567	557	556	1,698,580	233.32
Other Services	33	96	94	90	610,844	503.44
Local Government	14	1,021	1,124	1,021	8,145,843	593.75
State Government	8	98	99	99	878,157	684.63

TABLE 6. COUNTY SUMMARY

North American Industry Classification System - Industry Groups	Number of Employing Units	Employment			Total Earnings Oct - Dec 2016	Average Weekly Earnings
		Oct	Nov	Dec		
LAFAYETTE COUNTY - TOTAL	176	1,216	1,201	1,198	\$10,501,087	\$670.35
Natural Resources & Mining	29	143	139	137	1,744,869	961.01
Construction	9	62	63	59	1,810,288	2,270.43
Manufacturing	5	29	29	29	313,043	830.35
Trade, Transportation & Utilities	31	207	205	210	1,332,292	494.30
Retail Trade	18	124	124	126	608,681	375.57
Other Trade, Transportation & Utilities	13	83	81	84	723,611	673.34
Financial Activities	14	49	47	47	396,821	640.38
Professional & Business Services	10	39	42	40	334,192	637.37
Education & Health Services	44	215	213	212	1,502,092	541.62
Leisure & Hospitality	6	48	48	46	152,043	247.09
Local Government	13	309	300	304	2,209,258	558.41
State Government	7	33	32	31	234,245	563.09
Other	8	82	83	83	471,944	439.15
LAWRENCE COUNTY - TOTAL	416	4,099	4,079	4,023	\$32,933,237	\$622.90
Natural Resources & Mining	51	211	200	208	2,230,149	831.42
Construction	25	115	120	107	1,034,882	698.30
Manufacturing	20	474	480	472	4,214,692	682.06
Trade, Transportation & Utilities	118	867	855	835	7,301,489	658.96
Wholesale Trade	19	191	190	191	2,154,437	869.19
Retail Trade	62	511	510	498	3,461,698	525.91
Transportation, Warehousing & Utilities	37	165	155	146	1,685,354	834.61
Financial Activities	32	139	138	136	1,290,471	721.07
Professional & Business Services	27	103	104	109	1,073,548	783.99
Education & Health Services	57	585	588	569	4,594,143	608.60
Leisure & Hospitality	30	378	372	363	1,218,420	252.63
Local Government	25	1,075	1,071	1,072	8,869,540	636.05
State Government	9	78	77	76	548,204	547.66
Other	22	74	74	76	557,699	574.55

TABLE 6. COUNTY SUMMARY

North American Industry Classification System - Industry Groups	Number of Employing Units	Employment			Total Earnings Oct - Dec 2016	Average Weekly Earnings
		Oct	Nov	Dec		
LEE COUNTY - TOTAL	297	1,981	1,977	1,926	\$15,724,907	\$616.73
Natural Resources & Mining	42	260	245	202	3,023,167	986.78
Construction	10	24	31	26	233,794	666.08
Trade, Transportation & Utilities	42	336	338	341	3,319,119	754.63
Wholesale Trade	10	108	106	105	1,413,157	1,022.30
Retail Trade	21	167	169	176	1,046,266	471.57
Transportation, Warehousing & Utilities	11	61	63	60	859,696	1,078.21
Financial Activities	18	65	64	64	489,389	585.16
Professional & Business Services	14	56	55	56	872,661	1,205.89
Education & Health Services	131	491	503	493	3,408,221	528.93
Leisure & Hospitality	9	68	62	75	256,707	288.98
Local Government	15	277	280	268	908,644	254.17
State Government	6	388	385	385	3,086,789	615.14
Other	10	16	14	16	126,416	634.19
LINCOLN COUNTY - TOTAL	290	2,874	2,856	2,844	\$22,634,192	\$609.20
Natural Resources & Mining	34	184	179	166	1,623,791	708.36
Construction	17	84	87	87	934,672	836.02
Manufacturing	8	261	259	261	2,150,297	635.37
Trade, Transportation & Utilities	47	368	369	370	3,353,044	698.99
Wholesale Trade	7	52	51	52	387,378	576.74
Retail Trade	25	176	179	182	914,313	392.91
Transportation, Warehousing & Utilities	15	140	139	136	2,051,353	1,140.70
Financial Activities	20	72	72	75	705,657	743.58
Professional & Business Services	11	40	40	35	248,323	498.31
Education & Health Services	104	426	412	423	2,929,917	536.19
Leisure & Hospitality	16	202	199	192	473,839	184.40
Local Government	7	364	364	365	2,700,578	570.18
State Government	11	830	827	824	6,942,095	645.72
Other	15	43	48	46	571,979	963.47

TABLE 6. COUNTY SUMMARY

North American Industry Classification System - Industry Groups	Number of Employing Units	Employment			Total Earnings Oct - Dec 2016	Average Weekly Earnings
		Oct	Nov	Dec		
LITTLE RIVER COUNTY - TOTAL	245	3,384	3,394	3,413	\$42,877,760	\$970.94
Natural Resources & Mining	15	93	111	107	1,027,540	762.46
Construction	14	225	214	201	2,136,937	770.53
Manufacturing	16	1,124	1,141	1,139	26,037,221	1,765.16
Trade, Transportation & Utilities	57	558	571	586	4,181,489	562.66
Wholesale Trade	8	24	26	27	380,291	1,139.73
Retail Trade	35	409	421	432	2,664,815	487.29
Transportation, Warehousing & Utilities	14	125	124	127	1,136,383	697.45
Financial Activities	16	74	70	69	627,894	680.28
Professional & Business Services	16	77	71	73	665,243	694.65
Education & Health Services	48	191	186	189	1,261,883	514.49
Leisure & Hospitality	14	186	181	176	606,694	257.84
Local Government	20	705	698	722	5,407,193	587.21
State Government	10	76	79	79	544,410	536.89
Other	19	75	72	72	381,256	401.74
LOGAN COUNTY - TOTAL	500	5,413	5,429	5,467	\$43,001,472	\$608.46
Natural Resources & Mining	28	109	104	103	1,202,820	878.40
Construction	45	203	212	240	2,267,099	798.74
Manufacturing	20	1,170	1,154	1,146	11,108,990	738.79
Trade, Transportation & Utilities	102	1,051	1,032	1,046	7,182,964	529.76
Wholesale Trade	9	79	72	75	385,073	393.20
Retail Trade	68	799	791	795	4,881,335	472.31
Transportation, Warehousing & Utilities	25	173	169	176	1,916,556	853.83
Information	5	29	29	29	316,579	839.73
Financial Activities	48	187	193	194	2,254,900	906.55
Professional & Business Services	47	138	143	149	1,543,456	828.33
Education & Health Services	112	729	747	738	5,761,540	600.54
Leisure & Hospitality	31	348	361	357	1,050,107	227.33
Other Services	27	126	125	127	1,108,352	676.65
Local Government	22	797	797	797	6,314,393	609.44
State Government	13	526	532	541	2,890,272	417.13

TABLE 6. COUNTY SUMMARY

North American Industry Classification System - Industry Groups	Number of Employing Units	Employment			Total Earnings Oct - Dec 2016	Average Weekly Earnings
		Oct	Nov	Dec		
LONOKE COUNTY - TOTAL	1,308	13,987	13,872	13,905	\$122,377,431	\$676.20
Natural Resources & Mining	88	481	448	440	5,519,794	930.46
Construction	125	866	847	875	9,433,129	841.14
Manufacturing	37	1,797	1,782	1,779	21,787,038	938.37
Trade, Transportation & Utilities	312	2,841	2,886	2,878	22,101,244	592.71
Wholesale Trade	76	396	392	393	4,888,075	955.14
Retail Trade	174	2,134	2,177	2,182	13,915,262	494.57
Transportation, Warehousing & Utilities	62	311	317	303	3,297,907	817.46
Information	14	88	89	87	873,043	763.15
Financial Activities	151	694	695	697	11,135,864	1,231.93
Professional & Business Services	157	813	803	844	7,332,794	687.88
Education & Health Services	202	1,686	1,673	1,676	12,705,243	582.32
Leisure & Hospitality	117	1,791	1,766	1,749	6,394,868	278.13
Other Services	65	181	178	173	1,248,915	541.75
Local Government	25	2,615	2,569	2,574	22,845,208	679.55
State Government	15	134	136	133	1,000,291	572.79
MADISON COUNTY - TOTAL	251	3,269	3,268	3,207	\$27,830,135	\$659.11
Natural Resources & Mining	10	41	42	44	351,090	637.96
Construction	24	83	91	85	803,462	715.89
Manufacturing	21	1,152	1,142	1,110	10,870,106	736.92
Trade, Transportation & Utilities	51	681	686	675	5,140,348	580.92
Wholesale Trade	7	25	27	27	183,487	535.99
Retail Trade	35	509	509	505	3,315,963	502.44
Transportation, Warehousing & Utilities	9	147	150	143	1,640,898	860.61
Information	6	50	51	54	1,045,707	1,556.88
Financial Activities	19	88	86	86	880,659	781.65
Professional & Business Services	24	98	95	103	1,052,396	820.48
Education & Health Services	45	267	267	269	1,786,162	513.31
Leisure & Hospitality	18	182	176	164	536,810	237.32
Other Services	17	61	60	60	384,763	490.56
Local Government	9	528	534	521	4,717,445	687.71
State Government	7	38	38	36	261,187	538.16

TABLE 6. COUNTY SUMMARY

North American Industry Classification System - Industry Groups	Number of Employing Units	Employment			Total Earnings Oct - Dec 2016	Average Weekly Earnings
		Oct	Nov	Dec		
MARION COUNTY - TOTAL	277	3,748	3,736	3,741	\$27,317,874	\$561.61
Natural Resources & Mining	3	13	13	13	85,185	504.05
Construction	19	50	43	48	336,478	550.70
Manufacturing	19	1,703	1,703	1,704	12,410,666	560.47
Trade, Transportation & Utilities	54	565	567	562	3,677,051	500.92
Wholesale Trade	6	42	47	48	365,006	614.83
Retail Trade	40	488	485	479	2,836,124	450.75
Transportation, Warehousing & Utilities	8	35	35	35	475,921	1,045.98
Information	4	54	54	55	1,229,709	1,740.98
Financial Activities	33	188	183	184	1,966,648	817.73
Professional & Business Services	28	78	81	86	685,508	645.69
Education & Health Services	47	343	350	347	2,473,184	548.78
Leisure & Hospitality	32	204	181	186	590,185	238.52
Other Services	14	26	26	30	134,142	377.51
Local Government	17	485	497	488	3,452,782	542.04
State Government	7	39	38	38	276,336	554.52
MILLER COUNTY - TOTAL	895	12,891	12,833	12,900	\$128,003,162	\$764.79
Natural Resources & Mining	31	187	186	180	1,907,467	795.99
Construction	69	634	611	620	7,365,881	911.43
Manufacturing	30	2,389	2,409	2,421	40,749,163	1,302.63
Trade, Transportation & Utilities	225	3,428	3,475	3,569	31,088,590	685.09
Wholesale Trade	50	458	470	469	5,954,375	983.60
Retail Trade	130	1,320	1,341	1,322	7,778,612	450.68
Transportation, Warehousing & Utilities	45	1,650	1,664	1,778	17,355,603	786.56
Information	7	134	134	135	1,974,159	1,130.46
Financial Activities	86	404	403	392	4,385,377	844.05
Professional & Business Services	92	941	943	927	6,562,191	538.72
Education & Health Services	172	1,105	1,079	1,088	8,634,114	608.95
Leisure & Hospitality	93	1,493	1,441	1,405	5,740,505	305.31
Other Services	50	264	244	248	1,667,220	508.92
Local Government	24	1,434	1,430	1,436	13,364,744	717.25
State Government	16	478	478	479	4,563,751	733.92

TABLE 6. COUNTY SUMMARY

North American Industry Classification System - Industry Groups	Number of Employing Units	Employment			Total Earnings Oct - Dec 2016	Average Weekly Earnings
		Oct	Nov	Dec		
MISSISSIPPI COUNTY - TOTAL	1,170	18,678	18,102	17,935	\$209,004,161	\$881.51
Natural Resources & Mining	117	629	583	539	6,176,688	814.04
Construction	53	1,419	1,099	999	18,970,957	1,244.79
Manufacturing	59	5,996	6,001	6,057	100,586,768	1,285.72
Trade, Transportation & Utilities	285	3,043	3,018	3,027	26,458,942	671.87
Wholesale Trade	61	369	365	360	4,650,324	980.94
Retail Trade	156	1,820	1,818	1,813	10,646,169	450.71
Transportation, Warehousing & Utilities	68	854	835	854	11,162,449	1,012.96
Information	6	46	46	40	284,426	497.25
Financial Activities	85	462	465	459	4,383,404	729.84
Professional & Business Services	96	1,311	1,165	1,136	9,993,550	638.48
Education & Health Services	245	1,759	1,771	1,747	14,845,240	649.20
Leisure & Hospitality	96	1,247	1,210	1,178	4,092,332	259.80
Other Services	56	222	221	226	1,992,292	687.23
Local Government	49	2,039	2,020	2,025	17,175,986	651.49
State Government	23	505	503	502	4,043,576	617.97
MONROE COUNTY - TOTAL	306	2,093	2,050	2,047	\$15,457,664	\$576.28
Natural Resources & Mining	33	142	136	124	1,421,013	815.74
Construction	10	24	21	22	102,716	353.79
Manufacturing	7	126	123	124	1,071,416	662.87
Trade, Transportation & Utilities	76	550	543	546	4,619,031	650.35
Wholesale Trade	15	187	177	180	2,027,655	860.15
Retail Trade	38	257	261	265	1,573,480	463.74
Transportation, Warehousing & Utilities	23	106	105	101	1,017,896	752.88
Financial Activities	21	85	90	90	920,203	801.34
Professional & Business Services	14	22	20	20	175,917	654.78
Education & Health Services	74	396	387	385	2,622,124	518.07
Leisure & Hospitality	23	214	223	219	740,120	260.36
Local Government	21	368	343	351	2,594,344	563.74
State Government	7	63	62	61	563,795	699.50
Other	20	103	102	105	626,985	466.74

TABLE 6. COUNTY SUMMARY

North American Industry Classification System - Industry Groups	Number of Employing Units	Employment			Total Earnings Oct - Dec 2016	Average Weekly Earnings
		Oct	Nov	Dec		
MONTGOMERY COUNTY - TOTAL	166	1,361	1,327	1,303	\$8,879,289	\$513.42
Natural Resources & Mining	8	48	40	42	329,178	584.34
Construction	26	97	93	87	653,790	544.67
Manufacturing	8	39	39	39	283,876	559.91
Trade, Transportation & Utilities	36	219	222	231	1,329,801	456.66
Wholesale Trade	10	46	47	47	367,845	606.34
Retail Trade	20	153	159	165	848,628	410.56
Transportation, Warehousing & Utilities	6	20	16	19	113,328	475.50
Financial Activities	9	56	50	52	544,951	795.94
Professional & Business Services	15	19	19	22	134,251	516.35
Education & Health Services	20	64	56	57	403,298	525.81
Leisure & Hospitality	15	259	256	217	1,242,772	391.79
Local Government	9	455	447	452	3,303,405	563.02
State Government	7	35	34	35	301,550	669.12
Other	13	70	71	69	352,417	387.27
NEVADA COUNTY - TOTAL	197	2,498	2,495	2,495	\$21,452,473	\$661.13
Natural Resources & Mining	10	76	77	80	861,889	853.64
Trade, Transportation & Utilities	37	572	576	589	4,738,657	629.55
Retail Trade	22	315	320	327	1,725,412	413.90
Other Trade, Transportation & Utilities	15	257	256	262	3,013,245	897.24
Financial Activities	11	63	66	54	591,524	745.93
Professional & Business Services	11	43	44	46	358,641	622.28
Education & Health Services	47	446	448	450	2,570,034	441.28
Leisure & Hospitality	11	98	95	95	297,350	238.26
Other Services	14	44	44	40	188,750	340.29
Local Government	28	374	373	379	2,700,442	553.44
State Government	9	53	52	51	390,861	578.20
Other	19	729	720	711	8,754,325	935.29

TABLE 6. COUNTY SUMMARY

North American Industry Classification System - Industry Groups	Number of Employing Units	Employment			Total Earnings Oct - Dec 2016	Average Weekly Earnings
		Oct	Nov	Dec		
NEWTON COUNTY - TOTAL	117	1,054	1,048	1,014	\$6,193,338	\$458.68
Construction	6	15	13	13	90,301	508.26
Manufacturing	8	26	26	26	211,096	624.54
Trade, Transportation & Utilities	32	165	164	169	1,102,414	510.85
Retail Trade	16	110	113	112	537,108	369.99
Other Trade, Transportation & Utilities	16	55	51	57	565,306	800.34
Education & Health Services	23	248	256	249	1,222,424	374.63
Leisure & Hospitality	16	157	152	129	627,772	330.75
Other Services	3	4	4	4	16,524	317.77
Local Government	13	374	366	363	2,356,829	493.09
State Government	7	36	36	35	260,531	561.89
Other	9	29	31	26	305,447	819.63
OUACHITA COUNTY - TOTAL	652	6,979	7,009	6,975	\$60,309,052	\$663.91
Natural Resources & Mining	36	166	173	170	1,784,557	809.08
Construction	34	188	187	177	1,736,502	725.96
Manufacturing	24	516	510	521	6,069,797	905.44
Trade, Transportation & Utilities	157	1,552	1,585	1,604	12,670,940	616.76
Wholesale Trade	28	302	301	302	3,178,170	810.41
Retail Trade	102	963	992	993	5,711,188	447.07
Transportation, Warehousing & Utilities	27	287	292	309	3,781,582	982.74
Information	6	44	45	46	433,427	740.90
Financial Activities	55	280	276	273	3,043,621	847.25
Professional & Business Services	48	559	567	545	5,147,540	710.89
Education & Health Services	179	1,306	1,313	1,307	12,525,560	736.25
Leisure & Hospitality	41	503	501	491	1,542,821	238.15
Other Services	30	128	123	124	882,579	543.13
Local Government	29	1,079	1,078	1,078	8,946,319	638.19
State Government	13	658	651	639	5,525,389	654.56

TABLE 6. COUNTY SUMMARY

North American Industry Classification System - Industry Groups	Number of Employing Units	Employment			Total Earnings Oct - Dec 2016	Average Weekly Earnings
		Oct	Nov	Dec		
PERRY COUNTY - TOTAL	142	1,158	1,173	1,193	\$9,548,449	\$625.28
Construction	17	93	93	102	806,696	646.39
Manufacturing	5	39	40	43	299,579	566.67
Trade, Transportation & Utilities	25	183	185	198	1,407,583	573.90
Retail Trade	16	152	153	167	765,863	374.44
Other Trade, Transportation & Utilities	9	31	32	31	641,720	1,575.42
Financial Activities	6	27	27	26	341,595	985.37
Professional & Business Services	14	35	33	38	553,317	1,204.61
Education & Health Services	36	228	227	226	1,594,498	540.32
Leisure & Hospitality	7	77	82	70	227,915	229.68
Local Government	10	353	352	352	2,648,785	578.30
State Government	7	33	31	31	257,364	625.18
Other	15	90	103	107	1,411,117	1,085.47
PHILLIPS COUNTY - TOTAL	780	5,424	5,387	5,368	\$44,093,950	\$628.93
Natural Resources & Mining	61	283	256	246	2,261,002	664.67
Construction	31	106	105	106	936,883	682.03
Manufacturing	12	359	358	374	4,169,761	881.99
Trade, Transportation & Utilities	151	1,286	1,296	1,268	10,932,687	655.31
Wholesale Trade	26	271	269	266	3,646,348	1,044.00
Retail Trade	87	771	778	763	4,521,773	451.33
Transportation, Warehousing & Utilities	38	244	249	239	2,764,566	871.55
Information	8	33	34	27	287,738	706.39
Financial Activities	39	204	201	204	1,806,543	684.56
Professional & Business Services	42	234	234	236	2,473,774	810.90
Education & Health Services	325	1,406	1,419	1,415	10,800,486	587.83
Leisure & Hospitality	38	319	302	311	965,621	239.09
Other Services	32	78	81	79	498,617	483.47
Local Government	27	765	755	761	6,323,516	639.75
State Government	14	351	346	341	2,637,322	586.33

TABLE 6. COUNTY SUMMARY

North American Industry Classification System - Industry Groups	Number of Employing Units	Employment			Total Earnings Oct - Dec 2016	Average Weekly Earnings
		Oct	Nov	Dec		
PIKE COUNTY - TOTAL	254	2,415	2,431	2,459	\$18,649,086	\$589.14
Natural Resources & Mining	25	129	125	131	1,274,786	764.11
Construction	13	57	49	55	450,652	645.94
Manufacturing	17	271	281	285	2,046,816	564.33
Trade, Transportation & Utilities	62	524	529	546	3,673,746	530.20
Wholesale Trade	9	107	109	112	811,571	570.99
Retail Trade	35	349	357	364	2,066,847	445.76
Transportation, Warehousing & Utilities	18	68	63	70	795,328	913.12
Information	6	24	24	24	259,063	830.33
Financial Activities	24	223	218	218	2,651,167	928.39
Professional & Business Services	18	78	83	82	1,461,260	1,387.71
Education & Health Services	31	334	333	339	1,957,793	449.10
Leisure & Hospitality	25	178	183	175	584,842	251.80
Other Services	14	60	63	61	457,680	574.01
Local Government	10	442	449	450	3,304,449	568.65
State Government	9	95	94	93	526,832	431.12
POINSETT COUNTY - TOTAL	526	5,325	5,254	5,218	\$46,996,908	\$686.55
Natural Resources & Mining	72	470	431	388	4,305,934	770.89
Construction	23	85	85	87	1,175,526	1,055.55
Manufacturing	19	716	704	704	7,983,764	867.42
Trade, Transportation & Utilities	132	1,214	1,218	1,203	11,073,972	703.03
Wholesale Trade	31	348	344	337	5,299,430	1,188.48
Retail Trade	70	700	708	698	3,966,947	434.69
Transportation, Warehousing & Utilities	31	166	166	168	1,807,595	834.27
Information	5	55	55	57	564,235	779.69
Financial Activities	40	172	177	170	1,991,056	885.31
Professional & Business Services	29	179	180	187	2,484,435	1,050.06
Education & Health Services	106	854	854	881	6,724,200	599.36
Leisure & Hospitality	41	338	337	322	1,014,025	234.71
Other Services	19	57	54	60	429,374	579.45
Local Government	30	1,074	1,048	1,045	8,337,488	607.53
State Government	10	111	111	114	912,899	626.99

TABLE 6. COUNTY SUMMARY

North American Industry Classification System - Industry Groups	Number of Employing Units	Employment			Total Earnings Oct - Dec 2016	Average Weekly Earnings
		Oct	Nov	Dec		
POLK COUNTY - TOTAL	496	5,714	5,841	5,789	\$43,542,628	\$579.35
Natural Resources & Mining	20	126	124	132	1,617,690	977.26
Construction	31	193	198	201	1,462,645	570.16
Manufacturing	33	1,224	1,227	1,223	10,043,107	630.82
Trade, Transportation & Utilities	126	1,042	1,079	1,076	7,713,087	556.75
Wholesale Trade	21	63	63	66	522,871	628.45
Retail Trade	73	776	799	794	4,654,725	453.43
Transportation, Warehousing & Utilities	32	203	217	216	2,535,491	919.99
Information	8	76	75	76	517,961	526.56
Financial Activities	47	233	229	232	2,219,562	738.05
Professional & Business Services	44	142	143	143	1,537,877	829.19
Education & Health Services	85	1,007	1,032	1,042	8,483,842	635.45
Leisure & Hospitality	40	471	471	461	1,547,386	254.52
Other Services	28	170	169	168	1,157,742	526.96
Local Government	21	717	774	713	5,400,936	565.50
State Government	13	313	320	322	1,840,793	444.82
POPE COUNTY - TOTAL	1,826	26,370	26,375	26,168	\$275,424,030	\$805.44
Natural Resources & Mining	36	425	423	643	5,006,801	774.93
Construction	158	1,641	1,429	1,340	26,934,055	1,409.42
Manufacturing	73	4,301	4,323	4,306	46,454,058	829.09
Trade, Transportation & Utilities	427	6,125	6,200	6,191	75,358,822	939.21
Wholesale Trade	76	577	577	579	6,558,877	873.39
Retail Trade	267	3,227	3,297	3,302	20,392,572	478.93
Transportation, Warehousing & Utilities	84	2,321	2,326	2,310	48,407,373	1,605.71
Information	19	164	164	166	1,388,014	648.40
Financial Activities	194	1,109	1,099	1,101	10,614,881	740.28
Professional & Business Services	276	2,099	2,126	1,902	30,050,475	1,131.83
Education & Health Services	337	3,217	3,234	3,242	28,888,557	687.77
Leisure & Hospitality	139	2,861	2,881	2,872	10,578,585	283.40
Other Services	110	549	544	547	4,597,705	646.96
Local Government	42	2,164	2,240	2,155	19,189,357	675.15
State Government	15	1,715	1,712	1,703	16,362,720	736.06

TABLE 6. COUNTY SUMMARY

North American Industry Classification System - Industry Groups	Number of Employing Units	Employment			Total Earnings	Average Weekly Earnings
		Oct	Nov	Dec	Oct - Dec 2016	
PRAIRIE COUNTY - TOTAL	256	1,474	1,473	1,488	\$12,730,019	\$662.39
Natural Resources & Mining	36	152	144	147	2,033,233	1,059.16
Construction	10	54	54	50	479,215	699.92
Manufacturing	6	60	53	46	239,027	346.92
Trade, Transportation & Utilities	63	356	355	357	3,136,339	677.69
Wholesale Trade	12	78	78	76	1,363,308	1,356.08
Retail Trade	35	213	211	214	1,063,121	384.54
Transportation, Warehousing & Utilities	16	65	66	67	709,910	827.40
Financial Activities	16	56	51	55	625,619	891.20
Professional & Business Services	16	84	95	110	1,072,374	856.30
Education & Health Services	55	252	249	246	1,716,605	530.31
Leisure & Hospitality	16	89	92	106	348,532	280.25
Local Government	15	305	314	304	2,363,514	590.93
State Government	7	28	27	27	209,974	590.92
Other	16	38	39	40	505,587	997.21
PULASKI COUNTY - TOTAL	14,358	240,423	241,127	241,560	\$2,920,229,011	\$931.95
Natural Resources & Mining	54	603	613	626	9,352,394	1,171.69
Construction	932	9,171	9,081	9,029	130,403,686	1,103.08
Manufacturing	332	12,453	12,415	12,408	186,380,820	1,153.85
Trade, Transportation & Utilities	3,194	49,066	50,041	50,128	531,180,597	821.39
Wholesale Trade	960	11,719	11,759	11,763	193,701,587	1,268.42
Retail Trade	1,840	26,199	26,982	26,957	193,357,412	556.80
Transportation, Warehousing & Utilities	394	11,148	11,300	11,408	144,121,598	982.36
Information	203	5,543	5,565	5,577	86,046,319	1,190.10
Financial Activities	1,676	16,560	16,638	16,646	287,885,553	1,332.86
Professional & Business Services	2,775	33,647	33,536	33,953	463,599,847	1,057.83
Education & Health Services	2,508	40,243	40,283	40,247	529,027,065	1,010.85
Leisure & Hospitality	1,227	23,397	23,150	23,175	103,090,797	341.21
Other Services	1,148	6,524	6,468	6,476	63,691,224	754.98
Local Government	109	14,903	14,950	14,902	162,573,803	838.28
State Government	200	28,313	28,387	28,393	366,996,906	995.28

TABLE 6. COUNTY SUMMARY

North American Industry Classification System - Industry Groups	Number of Employing Units	Employment			Total Earnings Oct - Dec 2016	Average Weekly Earnings
		Oct	Nov	Dec		
RANDOLPH COUNTY - TOTAL	405	5,211	5,188	5,216	\$40,697,420	\$601.45
Natural Resources & Mining	28	195	186	191	2,172,553	876.50
Construction	26	104	108	110	832,709	596.78
Manufacturing	32	1,305	1,306	1,354	10,900,105	634.40
Trade, Transportation & Utilities	89	819	825	815	6,396,632	600.30
Wholesale Trade	18	138	136	138	1,237,858	693.35
Retail Trade	54	539	548	532	3,486,091	496.90
Transportation, Warehousing & Utilities	17	142	141	145	1,672,683	901.88
Information	5	32	32	33	388,459	924.17
Financial Activities	37	144	140	137	1,210,405	663.48
Professional & Business Services	36	159	158	160	1,357,384	656.69
Education & Health Services	67	906	878	876	7,407,832	642.67
Leisure & Hospitality	32	362	379	369	1,242,411	258.30
Other Services	19	62	65	66	442,625	529.24
Local Government	24	819	807	805	5,746,779	545.53
State Government	10	304	304	300	2,599,526	660.67
SAINT FRANCIS COUNTY - TOTAL	743	7,345	7,242	7,153	\$57,207,851	\$607.26
Natural Resources & Mining	44	279	252	188	2,228,416	715.23
Construction	42	201	195	199	2,137,327	828.96
Trade, Transportation & Utilities	155	1,991	1,995	1,999	16,199,965	624.64
Wholesale Trade	30	631	623	611	6,405,673	792.62
Retail Trade	102	1,072	1,088	1,093	6,607,290	468.72
Transportation, Warehousing & Utilities	23	288	284	295	3,187,002	848.28
Information	6	58	58	52	549,731	755.13
Financial Activities	61	246	251	247	2,075,905	643.89
Professional & Business Services	46	565	568	553	3,650,494	499.66
Education & Health Services	264	1,413	1,401	1,405	12,180,335	666.24
Leisure & Hospitality	47	622	610	623	1,993,770	248.03
Local Government	27	845	818	800	6,847,858	641.61
State Government	15	448	440	442	3,665,923	636.08
Other	36	677	654	645	5,678,127	663.13

TABLE 6. COUNTY SUMMARY

North American Industry Classification System - Industry Groups	Number of Employing Units	Employment			Total Earnings Oct - Dec 2016	Average Weekly Earnings
		Oct	Nov	Dec		
SALINE COUNTY - TOTAL	1,985	23,449	23,498	23,824	\$212,687,133	\$693.53
Natural Resources & Mining	14	57	59	63	776,172	1,000.65
Construction	268	2,108	2,072	2,035	24,463,943	908.37
Manufacturing	81	1,346	1,370	1,389	17,413,465	978.93
Trade, Transportation & Utilities	447	5,418	5,532	5,513	47,094,370	660.14
Wholesale Trade	113	547	558	565	8,545,796	1,180.90
Retail Trade	272	4,400	4,501	4,464	33,163,732	572.63
Transportation, Warehousing & Utilities	62	471	473	484	5,384,842	870.21
Information	15	159	162	167	1,803,123	852.67
Financial Activities	201	730	730	717	8,775,310	930.21
Professional & Business Services	264	1,492	1,497	1,498	17,343,579	891.99
Education & Health Services	314	4,384	4,370	4,379	41,386,488	727.23
Leisure & Hospitality	186	3,239	3,204	3,218	12,339,748	294.76
Other Services	152	779	774	790	6,281,138	618.65
Local Government	29	2,845	2,841	3,175	28,681,880	746.97
State Government	14	892	887	880	6,327,917	549.19
SCOTT COUNTY - TOTAL	179	3,023	3,016	3,046	\$22,554,764	\$572.92
Natural Resources & Mining	17	167	160	168	1,641,284	765.17
Trade, Transportation & Utilities	33	427	417	421	3,561,918	649.79
Wholesale Trade	6	74	62	60	776,048	913.71
Retail Trade	20	292	293	297	1,946,318	509.24
Transportation, Warehousing & Utilities	7	61	62	64	839,552	1,036.06
Financial Activities	19	76	75	76	562,323	571.66
Professional & Business Services	11	80	83	85	588,277	547.40
Education & Health Services	43	320	320	317	2,806,606	676.78
Leisure & Hospitality	15	129	127	131	478,902	285.57
Other Services	10	33	34	33	370,654	855.36
Local Government	6	539	542	542	4,104,593	583.62
State Government	6	28	28	28	235,509	647.00
Other	19	1,224	1,230	1,245	8,204,698	511.87

TABLE 6. COUNTY SUMMARY

North American Industry Classification System - Industry Groups	Number of Employing Units	Employment			Total Earnings Oct - Dec 2016	Average Weekly Earnings
		Oct	Nov	Dec		
SEARCY COUNTY - TOTAL	167	1,464	1,434	1,471	\$9,879,497	\$521.83
Construction	9	12	12	10	96,217	653.06
Manufacturing	18	229	211	206	1,248,117	445.86
Trade, Transportation & Utilities	39	242	240	234	1,529,754	493.04
Wholesale Trade	8	47	49	48	290,308	465.24
Retail Trade	25	179	176	173	1,045,745	457.06
Transportation, Warehousing & Utilities	6	16	15	13	193,701	1,015.91
Financial Activities	12	52	48	35	419,212	716.60
Education & Health Services	40	358	355	358	2,347,386	505.79
Leisure & Hospitality	12	143	139	138	484,922	266.44
Other Services	4	8	8	6	60,556	635.20
Local Government	10	314	319	321	2,189,656	529.67
State Government	6	44	43	44	311,736	549.15
Other	17	62	59	119	1,191,941	1,146.10
SEBASTIAN COUNTY - TOTAL	3,672	66,070	66,365	66,066	\$672,798,360	\$782.17
Natural Resources & Mining	49	568	558	559	9,298,088	1,273.42
Construction	254	2,465	2,485	2,463	27,430,224	853.91
Manufacturing	185	12,027	12,101	12,048	146,094,895	931.95
Trade, Transportation & Utilities	903	13,478	13,821	13,875	124,152,333	695.84
Wholesale Trade	245	2,639	2,630	2,626	34,010,677	994.13
Retail Trade	542	8,125	8,444	8,450	53,954,823	497.67
Transportation, Warehousing & Utilities	116	2,714	2,747	2,799	36,186,833	1,010.99
Information	39	916	918	924	13,336,950	1,115.94
Financial Activities	396	2,400	2,427	2,414	29,266,157	932.71
Professional & Business Services	580	8,689	8,597	8,373	83,572,070	751.62
Education & Health Services	585	11,543	11,496	11,478	142,697,706	954.03
Leisure & Hospitality	347	6,302	6,300	6,222	25,003,674	306.53
Other Services	273	1,286	1,262	1,283	9,929,265	598.11
Local Government	39	4,671	4,665	4,692	45,028,468	740.75
State Government	22	1,725	1,735	1,735	16,988,530	754.65

TABLE 6. COUNTY SUMMARY

North American Industry Classification System - Industry Groups	Number of Employing Units	Employment			Total Earnings Oct - Dec 2016	Average Weekly Earnings
		Oct	Nov	Dec		
SEVIER COUNTY - TOTAL	314	4,853	4,856	4,857	\$38,346,890	\$607.53
Natural Resources & Mining	15	201	175	175	1,708,269	715.46
Construction	16	181	168	169	2,111,835	940.82
Trade, Transportation & Utilities	95	868	901	892	7,434,981	644.78
Wholesale Trade	13	109	112	107	2,110,414	1,484.81
Retail Trade	67	676	698	693	4,344,292	485.02
Transportation, Warehousing & Utilities	15	83	91	92	980,275	850.44
Financial Activities	25	206	208	204	2,272,073	848.42
Professional & Business Services	26	104	106	104	688,332	505.88
Education & Health Services	56	519	535	543	4,098,070	592.18
Leisure & Hospitality	25	304	289	285	882,753	232.02
Local Government	12	931	929	942	7,807,870	643.05
State Government	7	172	170	172	1,195,186	536.60
Other	37	1,367	1,375	1,371	10,147,521	569.35
SHARP COUNTY - TOTAL	390	3,867	3,835	3,828	\$28,868,823	\$577.80
Construction	26	142	133	131	1,323,236	752.12
Manufacturing	19	164	157	165	1,146,855	544.57
Trade, Transportation & Utilities	81	1,057	1,046	1,052	9,460,881	692.01
Wholesale Trade	11	44	35	37	336,822	670.07
Retail Trade	58	671	670	673	3,821,523	437.88
Transportation, Warehousing & Utilities	12	342	341	342	5,302,536	1,193.82
Information	6	42	41	40	310,115	581.83
Financial Activities	35	187	186	185	1,975,891	817.16
Professional & Business Services	36	137	139	128	1,279,828	731.05
Education & Health Services	91	800	815	829	5,915,922	558.60
Leisure & Hospitality	37	423	402	389	1,324,284	251.73
Local Government	24	777	777	775	5,310,648	526.21
State Government	7	48	49	48	364,063	579.41
Other	28	90	90	86	457,100	396.56

TABLE 6. COUNTY SUMMARY

North American Industry Classification System - Industry Groups	Number of Employing Units	Employment			Total Earnings Oct - Dec 2016	Average Weekly Earnings
		Oct	Nov	Dec		
STONE COUNTY - TOTAL	266	2,504	2,515	2,479	\$18,065,428	\$556.01
Natural Resources & Mining	5	9	9	9	59,783	510.97
Construction	16	41	38	37	265,253	527.69
Manufacturing	20	224	221	217	1,514,302	527.88
Trade, Transportation & Utilities	69	596	598	588	4,442,263	575.27
Wholesale Trade	6	33	34	33	277,773	641.01
Retail Trade	52	525	526	518	3,664,768	539.02
Transportation, Warehousing & Utilities	11	38	38	37	499,722	1,020.54
Financial Activities	26	134	132	130	1,562,877	910.77
Professional & Business Services	10	25	28	24	145,860	437.14
Education & Health Services	57	541	546	549	4,906,858	692.15
Leisure & Hospitality	29	366	367	333	1,063,855	230.30
Local Government	10	396	395	395	3,118,837	606.86
State Government	7	130	136	153	667,108	367.42
Other	17	42	45	44	318,432	560.95
UNION COUNTY - TOTAL	1,300	17,503	17,519	17,479	\$205,232,837	\$902.11
Natural Resources & Mining	89	397	394	402	5,530,333	1,069.77
Construction	83	1,411	1,391	1,381	18,636,427	1,028.14
Manufacturing	51	3,100	3,110	3,120	50,808,222	1,256.70
Trade, Transportation & Utilities	314	3,461	3,506	3,558	32,917,790	721.75
Wholesale Trade	65	486	487	491	6,516,251	1,027.15
Retail Trade	187	2,143	2,172	2,201	13,736,111	486.48
Transportation, Warehousing & Utilities	62	832	847	866	12,665,428	1,148.44
Information	9	120	124	124	938,620	588.60
Financial Activities	100	609	607	597	6,846,455	871.46
Professional & Business Services	130	1,859	1,864	1,883	39,206,281	1,613.91
Education & Health Services	285	2,454	2,447	2,429	22,833,090	718.85
Leisure & Hospitality	89	1,296	1,306	1,245	4,804,182	288.19
Other Services	102	480	460	450	3,249,017	539.41
Local Government	32	1,805	1,801	1,778	14,980,312	642.09
State Government	16	511	509	512	4,482,108	675.15

TABLE 6. COUNTY SUMMARY

North American Industry Classification System - Industry Groups	Number of Employing Units	Employment			Total Earnings Oct - Dec 2016	Average Weekly Earnings
		Oct	Nov	Dec		
VAN BUREN COUNTY - TOTAL	356	3,507	3,520	3,497	\$30,987,180	\$679.48
Natural Resources & Mining	10	145	145	144	3,541,074	1,882.88
Construction	39	153	150	141	1,185,148	615.98
Manufacturing	7	128	156	146	1,097,578	589.04
Trade, Transportation & Utilities	96	892	890	881	8,896,919	770.99
Wholesale Trade	12	89	89	85	982,869	862.42
Retail Trade	59	603	604	604	3,607,933	459.75
Transportation, Warehousing & Utilities	25	200	197	192	4,306,117	1,687.13
Information	5	30	32	32	347,007	851.90
Financial Activities	32	116	116	112	1,210,180	811.84
Professional & Business Services	36	141	139	131	1,352,824	759.59
Education & Health Services	65	765	759	790	6,248,193	623.12
Leisure & Hospitality	27	343	342	334	1,367,551	309.70
Other Services	22	61	59	61	419,583	534.95
Local Government	11	688	688	683	4,981,847	558.36
State Government	6	45	44	42	339,276	597.67
WASHINGTON COUNTY - TOTAL	5,880	102,277	102,882	102,807	\$1,253,600,112	\$939.36
Natural Resources & Mining	44	298	304	302	5,293,683	1,351.35
Construction	528	4,980	5,007	4,999	66,958,116	1,031.09
Manufacturing	218	12,296	12,283	12,338	135,573,107	847.47
Trade, Transportation & Utilities	1,361	23,285	23,561	23,683	252,580,353	826.44
Wholesale Trade	368	3,704	3,702	3,768	68,259,558	1,409.72
Retail Trade	790	12,933	13,201	13,099	94,993,895	558.76
Transportation, Warehousing & Utilities	203	6,648	6,658	6,816	89,326,900	1,024.45
Information	77	854	862	878	10,814,102	962.05
Financial Activities	651	3,607	3,603	3,586	48,143,102	1,029.08
Professional & Business Services	1,061	12,560	12,756	12,491	299,823,894	1,830.09
Education & Health Services	827	15,205	15,333	15,352	193,392,732	972.52
Leisure & Hospitality	636	12,430	12,300	12,120	49,651,374	310.94
Other Services	396	2,033	2,021	2,027	15,726,494	596.81
Local Government	59	8,521	8,630	8,820	84,960,664	754.93
State Government	22	6,208	6,222	6,211	90,682,491	1,122.62

TABLE 6. COUNTY SUMMARY

North American Industry Classification System - Industry Groups	Number of Employing Units	Employment			Total Earnings Oct - Dec 2016	Average Weekly Earnings
		Oct	Nov	Dec		
WHITE COUNTY - TOTAL	1,814	24,105	24,166	24,220	\$228,807,131	\$728.39
Natural Resources & Mining	56	375	366	356	5,206,184	1,095.19
Construction	156	1,084	1,048	1,051	11,619,526	842.42
Manufacturing	62	2,008	2,022	2,025	22,987,117	876.09
Trade, Transportation & Utilities	482	6,259	6,433	6,414	57,215,566	691.07
Wholesale Trade	88	554	557	559	6,928,095	957.36
Retail Trade	304	3,567	3,672	3,659	24,414,609	516.99
Transportation, Warehousing & Utilities	90	2,138	2,204	2,196	25,872,862	913.22
Information	17	145	150	151	1,173,428	607.15
Financial Activities	176	865	860	872	10,923,996	970.71
Professional & Business Services	197	1,334	1,214	1,195	15,930,805	982.19
Education & Health Services	330	5,655	5,657	5,740	61,370,367	830.54
Leisure & Hospitality	157	2,601	2,624	2,595	9,001,880	265.65
Other Services	119	497	508	511	4,394,207	668.90
Local Government	47	2,723	2,723	2,742	23,980,429	675.86
State Government	15	559	561	568	5,003,626	684.05
WOODRUFF COUNTY - TOTAL	205	1,759	1,726	1,743	\$15,565,822	\$687.09
Natural Resources & Mining	28	138	127	119	1,173,559	705.26
Construction	9	40	37	42	378,014	733.06
Manufacturing	6	214	213	208	2,323,862	844.53
Trade, Transportation & Utilities	48	398	387	404	3,927,120	762.20
Wholesale Trade	11	145	135	129	2,020,613	1,140.09
Retail Trade	29	186	186	199	847,102	342.36
Transportation, Warehousing & Utilities	8	67	66	76	1,059,405	1,169.75
Financial Activities	11	71	67	70	713,085	791.14
Education & Health Services	63	251	244	252	1,945,111	600.90
Leisure & Hospitality	10	84	82	75	236,674	226.63
Local Government	9	413	421	423	3,160,909	580.30
State Government	5	25	24	25	205,857	641.97
Other	16	125	124	125	1,501,631	926.55

TABLE 6. COUNTY SUMMARY

North American Industry Classification System - Industry Groups	Number of Employing Units	Employment			Total Earnings Oct - Dec 2016	Average Weekly Earnings
		Oct	Nov	Dec		
YELL COUNTY - TOTAL	407	6,368	6,404	6,392	\$49,620,385	\$597.52
Natural Resources & Mining	26	218	208	214	2,313,489	834.19
Construction	33	218	208	206	1,982,081	723.74
Manufacturing	21	2,365	2,388	2,396	17,902,132	577.88
Trade, Transportation & Utilities	73	720	738	727	5,311,023	560.92
Wholesale Trade	13	58	59	60	317,633	414.12
Retail Trade	45	497	508	505	2,857,033	436.63
Transportation, Warehousing & Utilities	15	165	171	162	2,136,357	989.97
Financial Activities	30	157	154	147	1,707,538	860.37
Professional & Business Services	39	280	268	279	2,368,223	660.84
Education & Health Services	104	767	764	764	5,174,603	520.32
Leisure & Hospitality	25	290	302	294	853,833	222.39
Local Government	25	1,161	1,182	1,174	10,126,206	664.43
State Government	11	68	68	67	407,303	463.02
Other	20	124	124	124	1,473,954	914.36
STATEWIDE COUNTY - TOTAL	9,073	32,698	32,681	32,225	\$459,914,482	\$1,087.40
Natural Resources & Mining	91	277	256	257	3,639,832	1,063.24
Construction	768	3,088	2,952	2,821	41,796,542	1,088.52
Manufacturing	39	119	118	118	3,300,229	2,145.33
Trade, Transportation & Utilities	3,015	7,769	7,805	7,895	173,556,558	1,706.57
Wholesale Trade	2,618	6,357	6,383	6,436	153,808,617	1,850.97
Retail Trade	138	359	366	368	5,164,584	1,090.42
Transportation, Warehousing & Utilities	259	1,053	1,056	1,091	14,583,357	1,051.68
Information	255	546	539	518	11,216,629	1,614.76
Financial Activities	579	1,492	1,483	1,483	25,056,227	1,297.04
Professional & Business Services	3,504	15,605	15,744	15,384	158,307,585	781.73
Education & Health Services	425	2,256	2,271	2,288	24,944,588	844.67
Leisure & Hospitality	81	89	84	83	1,071,898	966.25
State Government	14	749	736	736	7,273,900	755.78
Other	302	708	693	642	9,750,494	1,028.79

Note: Statewide classification includes employment and payroll data for employers that have not provided a physical location for each employing unit. This section also includes employers without a physical location in Arkansas.

TABLE 7. FEDERAL GOVERNMENT EMPLOYMENT AND EARNINGS IN ARKANSAS

North American Industry Classification System - Industry Groups	Number of Employing Units	Employment			Total Earnings Oct - Dec 2016	Average Weekly Earnings
		Oct	Nov	Dec		
TOTAL	1,164	20,167	20,229	20,376	\$342,540,547	\$1,300.73
Trade, Transportation & Utilities	598	5,543	5,581	5,696	77,753,569	1,066.77
Information	2	45	45	44	650,796	1,120.77
Financial Activities	14	106	103	103	2,043,132	1,511.19
Professional & Business Services	34	763	758	758	13,132,305	1,329.76
Education & Health Services	18	5,167	5,172	5,150	105,038,945	1,564.97
Leisure & Hospitality	23	309	312	312	2,940,534	727.31
Other Services	1	1	1	1	7,233	556.38
Public Administration	474	8,233	8,257	8,312	140,974,033	1,311.69

TABLE 8. LOCAL WORKFORCE DEVELOPMENT AREA SUMMARY

North American Industry Classification System - Industry Groups	Number of Employing Units	Employment			Total Earnings	Average Weekly Earnings
		Oct	Nov	Dec	Oct - Dec 2016	
CENTRAL LOCAL WORKFORCE DEVELOPMENT AREA	6,680	81,472	81,319	81,661	\$767,008,249	\$724.08
Natural Resources & Mining	230	1,159	1,105	1,110	15,665,635	1,071.47
Construction	718	5,796	5,712	5,686	70,626,719	947.92
Manufacturing	233	6,490	6,505	6,528	80,871,189	955.93
Trade, Transportation & Utilities	1,554	16,672	17,070	17,062	135,300,536	614.58
Wholesale Trade	357	1,705	1,700	1,715	24,536,818	1,105.93
Retail Trade	944	13,289	13,657	13,612	91,063,292	518.14
Transportation, Warehousing & Utilities	253	1,678	1,713	1,735	19,700,426	886.90
Information	57	568	572	582	7,014,203	939.99
Financial Activities	703	3,015	3,003	2,995	38,378,459	982.64
Professional & Business Services	878	7,770	7,688	7,828	105,626,408	1,046.78
Education & Health Services	1,077	13,582	13,518	13,476	127,801,976	726.85
Leisure & Hospitality	601	10,517	10,329	10,252	38,665,315	286.92
Other Services	438	1,850	1,856	1,877	14,128,763	584.00
Local Government	131	9,627	9,557	9,885	92,067,487	730.89
State Government	60	4,426	4,404	4,380	40,861,559	713.82

Note: Pulaski County is not included in the Central Local Workforce Development Area. Please refer to Page 51 for information on Pulaski County.
Central Local Workforce Development Area includes these counties: Faulkner, Lonoke, Monroe, Prairie, and Saline.

EASTERN LOCAL WORKFORCE DEVELOPMENT AREA	3,566	36,438	36,066	35,891	\$308,978,095	\$657.80
Natural Resources & Mining	242	1,378	1,279	1,145	13,055,243	792.41
Construction	153	875	846	810	10,232,979	933.01
Trade, Transportation & Utilities	782	9,265	9,287	9,246	82,511,527	684.98
Wholesale Trade	159	2,080	2,055	2,037	24,652,894	921.76
Retail Trade	445	4,812	4,890	4,874	30,668,692	485.55
Transportation, Warehousing & Utilities	178	2,373	2,342	2,335	27,189,941	890.01
Financial Activities	257	1,270	1,271	1,260	12,168,365	738.78
Professional & Business Services	252	2,295	2,222	2,128	18,548,213	644.15
Education & Health Services	1,166	6,435	6,410	6,388	50,950,609	611.34
Leisure & Hospitality	252	3,663	3,575	3,600	14,932,499	317.95
Local Government	127	4,810	4,772	4,809	42,247,222	677.46
State Government	57	2,024	2,002	2,010	16,039,462	613.22
Other	278	4,423	4,402	4,495	48,291,976	836.66

Eastern Local Workforce Development Area includes these counties: Crittenden, Cross, Lee, Phillips, and Saint Francis.

TABLE 8. LOCAL WORKFORCE DEVELOPMENT AREA SUMMARY

North American Industry Classification System - Industry Groups	Number of Employing Units	Employment			Total Earnings	Average Weekly Earnings
		Oct	Nov	Dec	Oct - Dec 2016	
NORTH CENTRAL LOCAL WORKFORCE DEVELOPMENT AREA	5,509	67,968	67,916	68,061	\$610,055,044	\$690.29
Construction	422	2,480	2,440	2,389	26,109,622	824.37
Manufacturing	225	8,078	8,040	8,228	89,022,454	843.82
Trade, Transportation & Utilities	1,386	15,368	15,550	15,574	138,206,809	686.01
Retail Trade	899	9,614	9,756	9,763	63,693,779	504.53
Other Trade, Transportation & Utilities	487	5,754	5,794	5,811	74,513,030	990.57
Financial Activities	515	2,552	2,525	2,557	30,133,918	910.92
Education & Health Services	1,049	14,453	14,465	14,636	144,485,595	765.55
Leisure & Hospitality	481	6,512	6,494	6,369	22,179,181	264.17
Local Government	226	8,954	9,041	9,020	70,883,192	605.50
State Government	93	2,784	2,781	2,786	22,726,802	628.03
Other	1,112	6,787	6,580	6,502	66,307,471	770.13

North Central Local Workforce Development Area includes these counties: Cleburne, Fulton, Independence, Izard, Jackson, Sharp, Stone, Van Buren, White, and Woodruff.

NORTHEAST LOCAL WORKFORCE DEVELOPMENT AREA	6,585	101,182	100,814	100,278	\$969,366,097	\$740.06
Natural Resources & Mining	457	2,541	2,326	2,111	23,778,470	786.38
Construction	460	4,357	4,004	3,822	52,035,330	985.65
Manufacturing	306	19,769	19,750	19,968	256,406,545	994.68
Trade, Transportation & Utilities	1,747	19,584	19,927	19,918	164,148,843	637.41
Wholesale Trade	376	3,315	3,302	3,300	41,393,357	963.23
Retail Trade	1,024	12,820	13,177	13,125	82,714,176	487.91
Transportation, Warehousing & Utilities	347	3,449	3,448	3,493	40,041,310	889.35
Financial Activities	566	3,218	3,223	3,182	39,237,585	940.96
Professional & Business Services	665	7,291	7,110	7,042	59,929,905	644.96
Education & Health Services	1,141	16,989	16,977	17,023	179,153,852	810.83
Leisure & Hospitality	544	9,396	9,402	9,192	33,065,586	272.62
Local Government	215	11,370	11,414	11,349	99,010,506	669.40
State Government	95	4,478	4,478	4,464	44,065,022	757.74
Other	389	2,189	2,203	2,207	18,534,453	648.16

Northeast Local Workforce Development Area includes these counties: Clay, Craighead, Greene, Lawrence, Mississippi, Poinsett, and Randolph.

TABLE 8. LOCAL WORKFORCE DEVELOPMENT AREA SUMMARY

North American Industry Classification System - Industry Groups	Number of Employing Units	Employment			Total Earnings	Average Weekly Earnings
		Oct	Nov	Dec	Oct - Dec 2016	
NORTHWEST LOCAL WORKFORCE DEVELOPMENT AREA	15,879	267,593	268,520	268,307	\$3,206,687,033	\$919.92
Natural Resources & Mining	136	1,372	1,372	1,430	26,956,742	1,490.37
Trade, Transportation & Utilities	3,874	60,521	61,469	61,573	663,407,632	834.01
Retail Trade	2,150	32,166	33,024	32,800	226,426,394	533.24
Other Trade, Transportation & Utilities	1,724	28,355	28,445	28,773	436,981,238	1,178.43
Information	204	2,427	2,422	2,477	31,097,973	979.59
Professional & Business Services	2,637	48,635	48,948	48,645	996,394,464	1,572.46
Education & Health Services	2,276	33,666	33,873	33,903	372,129,221	846.55
Leisure & Hospitality	1,679	29,501	28,923	28,530	120,630,123	320.14
Other Services	999	4,910	4,896	4,910	39,113,082	613.35
Local Government	303	22,982	23,089	23,370	221,830,002	737.19
State Government	103	8,599	8,605	8,522	109,807,400	985.00
Other	3,668	54,980	54,923	54,947	625,320,394	875.37

Northwest Local Workforce Development Area includes these counties: Baxter, Benton, Boone, Carroll, Madison, Marion, Newton, Searcy, and Washington.

SOUTHEAST LOCAL WORKFORCE DEVELOPMENT AREA	6,187	69,355	68,923	68,809	\$653,586,234	\$728.33
Natural Resources & Mining	432	2,486	2,395	2,368	27,134,171	863.81
Construction	305	2,094	2,112	2,058	24,039,669	885.63
Manufacturing	201	14,465	14,397	14,437	181,090,747	965.15
Trade, Transportation & Utilities	1,257	12,295	12,254	12,303	105,130,554	658.33
Retail Trade	745	7,604	7,682	7,690	49,640,730	498.59
Other Trade, Transportation & Utilities	512	4,691	4,572	4,613	55,489,824	922.84
Financial Activities	411	2,393	2,409	2,375	27,813,966	894.33
Education & Health Services	2,116	11,060	11,005	11,052	98,553,006	686.75
Other Services	309	1,165	1,149	1,151	9,371,516	624.14
Local Government	206	8,953	8,926	8,985	77,027,217	661.69
State Government	128	5,870	5,908	5,855	51,810,099	678.06
Other	822	8,574	8,368	8,225	51,615,289	473.29

Southeast Local Workforce Development Area includes these counties: Arkansas, Ashley, Bradley, Chicot, Cleveland, Desha, Drew, Grant, Jefferson, and Lincoln.

TABLE 8. LOCAL WORKFORCE DEVELOPMENT AREA SUMMARY

North American Industry Classification System - Industry Groups	Number of Employing Units	Employment			Total Earnings	Average Weekly Earnings
		Oct	Nov	Dec	Oct - Dec 2016	
SOUTHWEST LOCAL WORKFORCE DEVELOPMENT AREA	5,707	77,651	77,780	77,681	\$769,127,960	\$761.40
Natural Resources & Mining	346	2,309	2,289	2,295	27,734,415	928.51
Manufacturing	238	18,875	18,940	18,947	249,442,915	1,014.12
Trade, Transportation & Utilities	1,368	14,851	15,088	15,241	129,012,577	658.97
Wholesale Trade	240	1,875	1,900	1,894	23,872,636	971.79
Retail Trade	837	8,804	8,985	8,980	54,786,122	472.30
Transportation, Warehousing & Utilities	291	4,172	4,203	4,367	50,353,819	911.95
Information	54	490	498	499	5,900,361	915.68
Professional & Business Services	458	4,317	4,320	4,296	59,459,804	1,060.97
Education & Health Services	1,262	10,009	10,019	10,016	80,290,208	616.71
Leisure & Hospitality	412	5,718	5,657	5,471	20,424,775	279.79
Other Services	363	1,689	1,640	1,642	11,033,385	512.20
Local Government	253	9,860	9,898	9,931	82,144,968	638.50
State Government	130	3,519	3,509	3,496	31,579,464	692.47
Other	823	6,014	5,922	5,847	72,105,088	935.70

Southwest Local Workforce Development Area includes these counties: Calhoun, Columbia, Dallas, Hempstead, Howard, Lafayette, Little River, Miller, Nevada, Ouachita, Sevier, and Union

WEST CENTRAL LOCAL WORKFORCE DEVELOPMENT AREA	8,196	106,158	106,565	106,254	\$968,178,989	\$700.45
Construction	741	4,903	4,666	4,574	\$60,221,188	982.62
Manufacturing	334	15,903	16,004	16,122	166,936,095	802.09
Trade, Transportation & Utilities	1,824	21,607	21,945	21,868	203,238,687	716.93
Wholesale Trade	317	1,953	1,956	1,960	25,682,944	1,009.85
Retail Trade	1,215	14,255	14,532	14,479	93,038,147	496.24
Transportation, Warehousing & Utilities	292	5,399	5,457	5,429	84,517,596	1,197.67
Financial Activities	810	3,896	3,875	3,868	45,898,897	910.05
Professional & Business Services	941	7,805	7,819	7,785	80,593,924	794.51
Education & Health Services	1,553	17,005	16,984	17,075	166,777,587	753.70
Leisure & Hospitality	789	12,946	12,720	12,671	52,983,716	318.94
Local Government	228	11,503	12,023	11,561	100,755,785	662.68
State Government	114	5,476	5,479	5,444	44,741,437	629.61
Other	862	5,114	5,050	5,286	46,031,673	687.55

West Central Local Workforce Development Area includes these counties: Clark, Conway, Garland, Hot Spring, Johnson, Montgomery, Perry, Pike, Pope, and Yell

TABLE 8. LOCAL WORKFORCE DEVELOPMENT AREA SUMMARY

North American Industry Classification System - Industry Groups	Number of Employing Units	Employment			Total Earnings	Average Weekly Earnings
		Oct	Nov	Dec	Oct - Dec 2016	
WESTERN LOCAL WORKFORCE DEVELOPMENT AREA	6,449	104,097	104,597	104,288	\$993,213,423	\$732.32
Natural Resources & Mining	162	1,391	1,345	1,361	19,700,304	1,109.65
Trade, Transportation & Utilities	1,560	22,778	23,132	23,188	200,881,558	670.89
Wholesale Trade	371	3,668	3,642	3,637	45,898,817	967.57
Retail Trade	922	12,682	13,021	13,006	83,924,338	500.33
Transportation, Warehousing & Utilities	267	6,428	6,469	6,545	71,058,403	843.44
Financial Activities	658	3,476	3,501	3,496	40,199,366	885.78
Professional & Business Services	874	10,939	10,896	10,699	104,206,434	739.15
Education & Health Services	1,067	15,841	15,810	15,799	177,182,730	861.71
Leisure & Hospitality	554	9,204	9,216	9,108	35,052,541	293.85
Other Services	432	2,053	2,033	2,043	16,357,564	615.90
Local Government	150	9,556	9,656	9,596	85,339,312	683.62
State Government	73	2,880	2,898	2,907	24,366,381	647.44
Other	919	25,979	26,110	26,091	289,927,233	855.80

Western Local Workforce Development Area includes these counties: Crawford, Franklin, Logan, Polk, Scott, and Sebastian