

Arkansas Covered Employment & Earnings

Jobs for People. People for Jobs.
DWS
Department of
WORKFORCE**Services**

First Quarter
2014

**COVERED EMPLOYMENT AND EARNINGS
STATE OF ARKANSAS
FIRST QUARTER 2014**

**MIKE BEEBE, GOVERNOR
STATE OF ARKANSAS**

**ARTEE WILLIAMS, DIRECTOR
DEPARTMENT OF WORKFORCE SERVICES**

**PUBLISHED BY
LABOR MARKET INFORMATION
BUREAU OF LABOR STATISTICS PROGRAMS
POST OFFICE BOX 2981
LITTLE ROCK, ARKANSAS 72203-2981
SUSAN PRICE, QCEW LEAD ANALYST
TELEPHONE (501) 682-3103**

STATE OF ARKANSAS WEBPAGE: <http://www.arkansas.gov>

DEPARTMENT OF WORKFORCE SERVICES WEBPAGE: <http://www.arkansas.gov/esd/>

WEBPAGE FOR LABOR MARKET INFORMATION: <http://www.discover.arkansas.gov>

RELEASED: DECEMBER 2014

TABLE OF CONTENTS

DESCRIPTION OF DATA	PAGE
Description and Classification of Data	1
Definition of Covered Employment and Earnings	2
Significant Developments During First Quarter 2014	3

LIST OF GRAPHS AND TABLES

Graph 1	Total Covered Employment for Selected Years, Arkansas	7
Graph 2	Total Covered Earnings, by Calendar Quarter for Selected Years, Arkansas	8
Table 1	Quarterly Comparison of Covered Employment and Wages, by Industry	5
Table 2	Total Covered Employment in Arkansas, 2007 – 2014	6
Table 3	Total Covered Earnings, 2007 – 2014	9
Table 4	Total Taxable Earnings, 2007 – 2014	10
Table 5	State Summary – Employment and Total Earnings, by Industry, First Quarter 2014	11
Table 6	County Summary – Employment and Total Earnings, by Industry, First Quarter 2014	22
Table 7	Federal Government Employment and Total Earnings in Arkansas, First Quarter 2014	60
Table 8	Workforce Information Area – Employment and Total Earnings, by Industry, First Quarter 2014	61

EMPLOYMENT AND EARNINGS
UNDER THE ARKANSAS EMPLOYMENT SECURITY LAW
FIRST QUARTER 2014

DESCRIPTION AND CLASSIFICATION OF DATA

This publication contains covered employment and payroll data by industry and county for the First Quarter 2014 and a record for total covered employment by month, quarterly payroll data, average weekly earnings, and total taxable earnings for 2007 through 2014. These data are compiled from quarterly contributions and wage reports submitted by employers subject to the Arkansas Employment Security Law.

Employment data have been tabulated for each month of the quarter by industry under the **North American Industry Classification System** (NAICS) by state, county, and workforce area. Payroll data represent the total wages paid during the quarter and are classified by industry for the state and by publishable industry groups for each county and workforce area.

Due to industry classification revisions, previously published data will not always be comparable with current data. For this reason, comparisons should not be made between the same industries under different revisions. For more information, visit the NAICS home page at <http://www.census.gov/naics>.

Industry Classification Revisions

- SIC (Standard Industrial Classification) 1987 to NAICS 2002
- NAICS 2002 to NAICS 2007
- NAICS 2007 to NAICS 2012

The tabulation of this data is a joint effort in conjunction with the United States Bureau of Labor Statistics. Data included in this publication are subject to revisions. Revisions are typically reflected in the Annual Covered Employment and Earnings publication.

DEFINITION OF COVERED EMPLOYMENT AND EARNINGS

Covered Employment is the total number of workers employed by establishments subject to the Arkansas Employment Security Law that worked or received pay for the payroll period including the 12th of the month. Earnings include all wages paid to any covered employee by their employer including salaries, bonuses, commissions, fees, fringe benefits, sick pay made directly to employees or dependents, deferred compensation, and reported tips. These wages include both taxable and nontaxable wages. Only the first \$12,000 paid to each worker by an employer in the calendar year is taxable under the Arkansas Employment Security Law.

An Arkansas state unemployment insurance account is required of any entity meeting the definition of an employer. As described by Arkansas Department of Workforce Services Law, the definition of an employer includes, but is not limited to, a sole proprietorship, partnership, corporation, associations, trust, estate, and receiver or trustee in bankruptcy. The entity must employ one or more individuals for ten or more days in a calendar year, whether or not the days are consecutive.

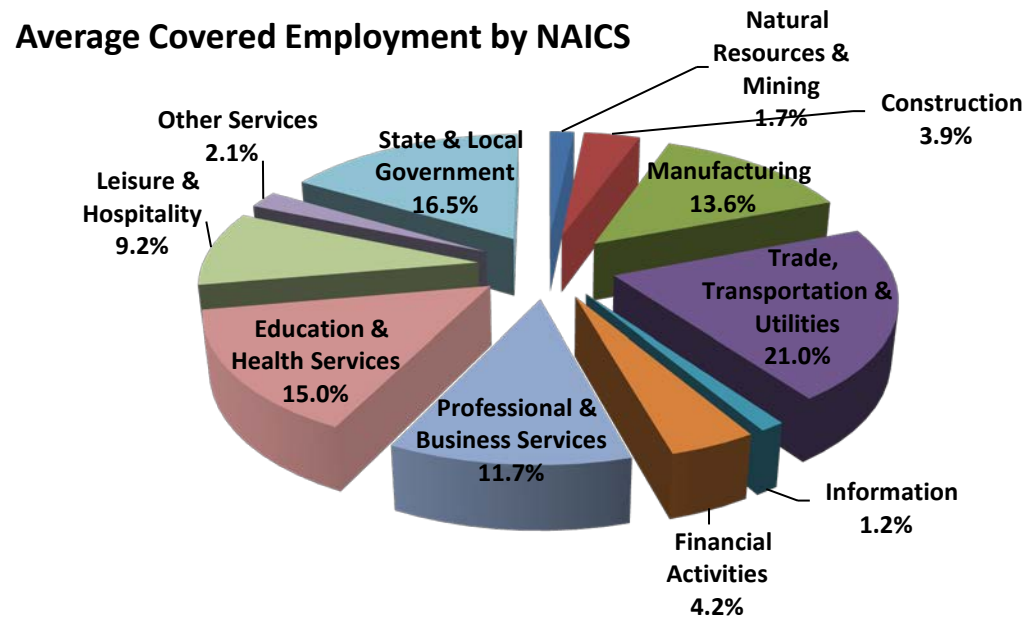
Currently excluded from coverage is employment covered by the Railroad Unemployment Insurance Act, some domestic service workers, employees of small agricultural establishments, self-employed workers, unpaid family workers, insurance and real estate agents paid only on a commission basis, and employees of churches and religious organizations except separately incorporated schools.

Civilian federal workers are covered by Unemployment Compensation for Federal Employees (UCFE).

SIGNIFICANT DEVELOPMENTS DURING FIRST QUARTER 2014

AVERAGE EMPLOYMENT CHANGES

Covered employment averaged 1,123,612 during the First Quarter 2014 (refer to Table 1), a decrease of 13,722 (-1.2%) from the previous quarter and an increase of 905 (+.1%) from the average recorded one year ago. The over-the-year comparison is more significant when used as an economic indicator and allows for seasonal factors that appear when comparing over-the-quarter data to be disregarded.



EMPLOYMENT CHANGES FROM FOURTH QUARTER 2013

Compared to Fourth Quarter 2013, covered employment decreased in ten major industry sectors. Trade, Transportation & Utilities decreased by 5,750 jobs, a typical seasonal decline. State & Local Government experienced a loss of 2,284 positions. Natural Resources & Mining lost 1,560 positions. Due to a seasonal contraction, Construction declined by 1,337 jobs. Education & Health Services lost 1,293 positions. Other industries that experienced losses include Leisure & Hospitality (-742), Financial Activities (-654), Professional & Business Services (-490), Information (-247), and Other Services (-136). Manufacturing increased by 771 positions.

EMPLOYMENT CHANGES FROM FIRST QUARTER 2013 (QUARTER YEAR AGO COMPARISON)

Over-the-year gains were recorded in three industry groups (refer to Table 1). The gains occurred in Professional & Business Services (4,277), Leisure & Hospitality (1,899), and Trade, Transportation & Utilities (718). The most significant losses occurred in State & Local Government (-2,814), Construction (-1,328), and Natural Resources & Mining (-622).

COVERED WAGES

Wages paid to covered workers totaled \$11,325,261,964 for the First Quarter 2014 (refer to Table 1), for an average weekly wage of \$775.33 (refer to Table 5). Benton County workers recorded the highest average weekly wage (\$1,298.99), and employees in Newton County reported the lowest (\$419.85) (refer to Table 6).

The Professional & Business Services industry recorded the highest average weekly wage for the State of Arkansas (\$1,227.20). The Leisure & Hospitality sector recorded the lowest (\$266.55) (refer to Table 5).

Average Weekly Wage by Industry

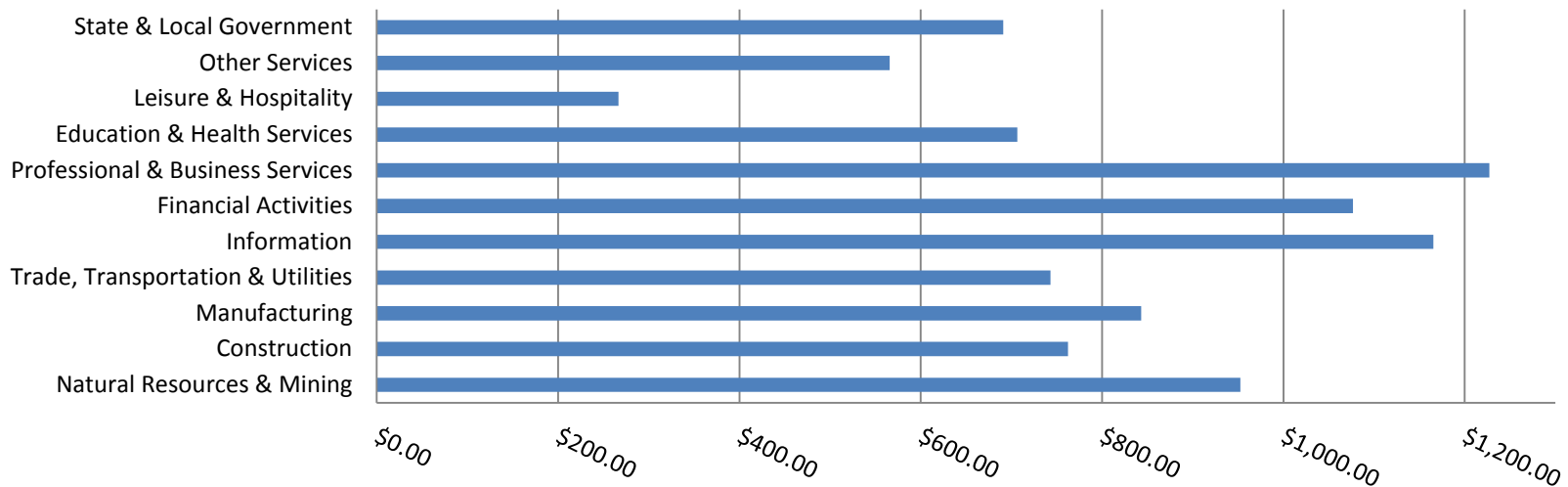


TABLE 1. QUARTERLY COMPARISON OF COVERED EMPLOYMENT AND WAGES, BY INDUSTRY

North American Industry Classification System - Industry Groups	Number of Employing Units	Monthly Employment Average	Percent of Total	Net Change From:		Total Wages Paid Jan - Mar 2014	Percent of Total
				Oct - Dec 2013	Jan - Mar 2013		
TOTAL	86,030	1,123,612	100	-13,722	905	\$11,325,261,964	100
Natural Resources & Mining	2,566	18,744	1.7	-1,560	-622	232,084,279	2.0
Agriculture, Forestry, Fishing & Hunting	2,033	11,905	1.1	-1,007	204	100,799,968	0.9
Mining	533	6,839	0.6	-553	-826	131,284,311	1.2
Construction	6,695	43,641	3.9	-1,337	-1,328	432,518,828	3.8
Manufacturing	3,030	152,880	13.6	771	-294	1,675,602,486	14.8
Trade, Transportation & Utilities	21,337	235,924	21.0	-5,750	718	2,279,319,151	20.1
Wholesale Trade	6,881	45,746	4.1	-476	-1,083	749,083,155	6.6
Retail Trade	11,179	133,050	11.8	-4,011	2,375	812,432,224	7.2
Transportation & Warehousing	2,869	49,137	4.4	-1,199	-785	529,304,030	4.7
Utilities	408	7,991	0.7	-64	211	188,499,742	1.7
Information	1,125	13,779	1.2	-247	-389	208,735,707	1.8
Financial Activities	8,126	47,427	4.2	-654	-307	663,772,351	5.9
Finance & Insurance	4,814	34,702	3.1	-255	-126	556,052,982	4.9
Real Estate & Rental & Leasing	3,312	12,725	1.1	-399	-182	107,719,369	1.0
Professional & Business Services	13,009	131,122	11.7	-490	4,277	2,091,860,429	18.5
Professional & Technical Services	8,225	41,309	3.7	200	1,300	539,777,948	4.8
Management of Companies & Enterprises	497	31,623	2.8	-37	164	1,187,902,606	10.5
Administrative & Waste Services	4,287	58,189	5.2	-653	2,813	364,179,875	3.2
Education & Health Services	14,989	168,275	15.0	-1,293	-115	1,545,701,613	13.6
Educational Services	744	10,726	1.0	-837	-469	86,691,165	0.8
Health Care & Social Assistance	14,245	157,549	14.0	-456	354	1,459,010,448	12.9
Leisure & Hospitality	6,697	102,857	9.2	-742	1,899	356,408,721	3.1
Arts, Entertainment & Recreation	935	9,114	0.8	82	226	43,151,494	0.4
Accommodation & Food Services	5,762	93,743	8.3	-824	1,673	313,257,227	2.8
Other Services	5,354	23,464	2.1	-136	-120	172,579,296	1.5
State & Local Government	3,102	185,499	16.5	-2,284	-2,814	1,666,679,103	14.7
Local Government	1,969	115,135	10.2	-935	-2,574	956,901,693	8.4
State Government	1,133	70,364	6.3	-1,349	-240	709,777,410	6.3
Nonclassifiable Establishments	0	0	0.0	0	0	0	0.0

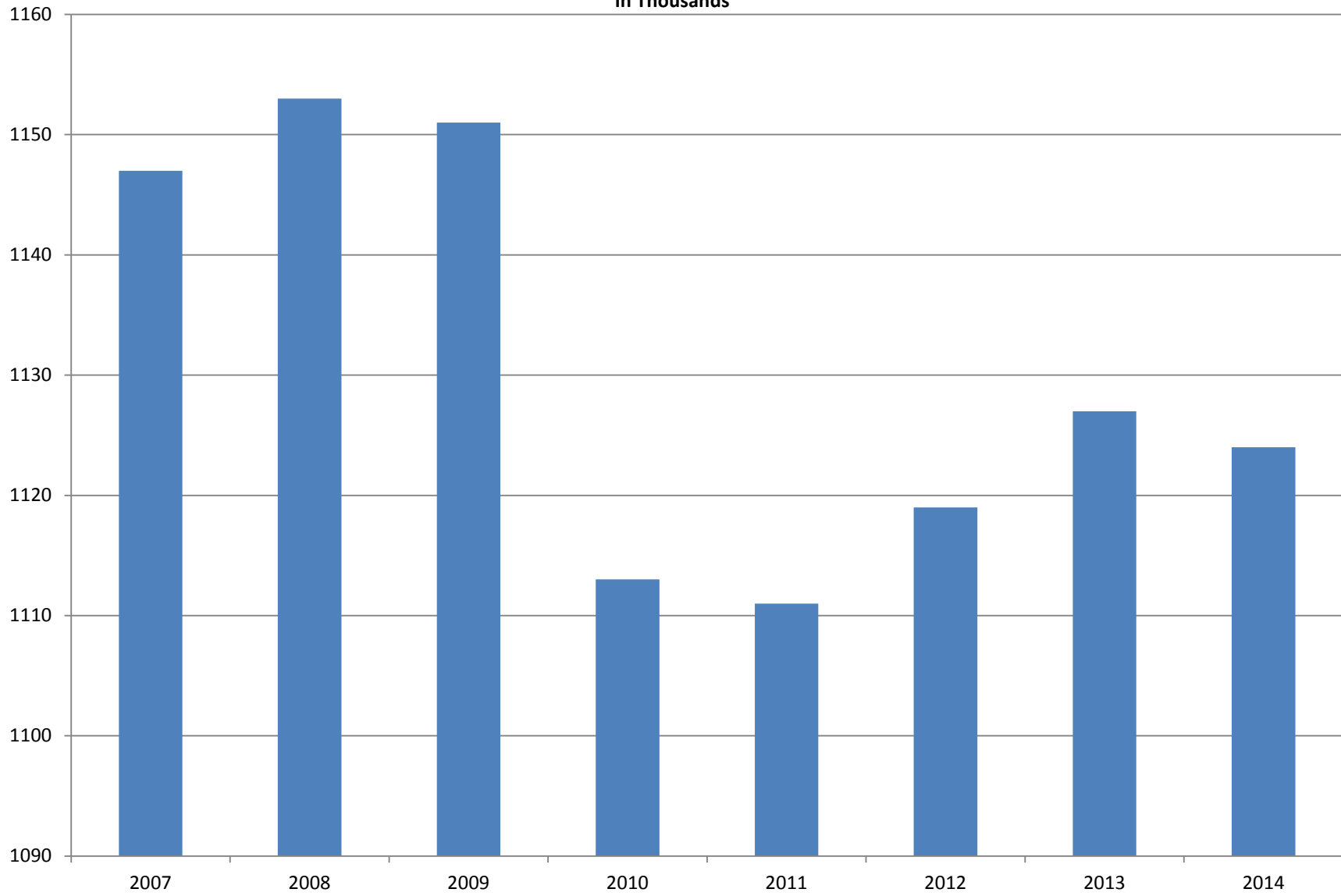
Note: Items do not necessarily add to total because of rounding. Because of industry code changes between years, substantial employment and wage shifts among industries are anticipated.

TABLE 2. TOTAL COVERED EMPLOYMENT IN ARKANSAS

PERIOD	2007	2008	2009	2010	2011	2012	2013	2014
AVERAGE	1,146,948	1,152,994	1,150,965	1,112,591	1,110,947	1,118,639	1,126,588	1,123,612
January	1,130,595	1,137,437	1,141,856	1,119,299	1,089,984	1,098,349	1,113,274	1,114,986
February	1,136,810	1,143,397	1,149,443	1,119,476	1,091,282	1,098,445	1,119,319	1,123,443
March	1,150,439	1,158,895	1,157,690	1,124,386	1,106,198	1,113,061	1,131,123	1,132,406
April	1,155,498	1,159,623	1,159,841	1,123,383	1,115,341	1,129,635	1,136,973	N/A
May	1,159,886	1,165,224	1,166,111	1,122,322	1,123,250	1,126,371	1,143,142	N/A
June	1,162,026	1,164,207	1,164,167	1,117,884	1,130,164	1,123,412	1,136,739	N/A
July	1,106,142	1,110,571	1,114,279	1,071,048	1,073,743	1,080,937	1,079,329	N/A
August	1,130,839	1,139,109	1,138,583	1,093,192	1,099,795	1,106,262	1,109,425	N/A
September	1,159,814	1,165,135	1,162,333	1,116,580	1,124,281	1,132,779	1,136,019	N/A
October	1,156,804	1,162,768	1,157,196	1,113,157	1,125,073	1,138,395	1,136,045	N/A
November	1,156,011	1,164,246	1,152,159	1,115,443	1,126,781	1,138,543	1,138,302	N/A
December	1,158,509	1,165,314	1,147,927	1,114,919	1,125,466	1,137,474	1,139,361	N/A

AVERAGE TOTAL COVERED EMPLOYMENT

In Thousands



TOTAL COVERED EARNINGS BY CALENDAR YEAR

In Thousands

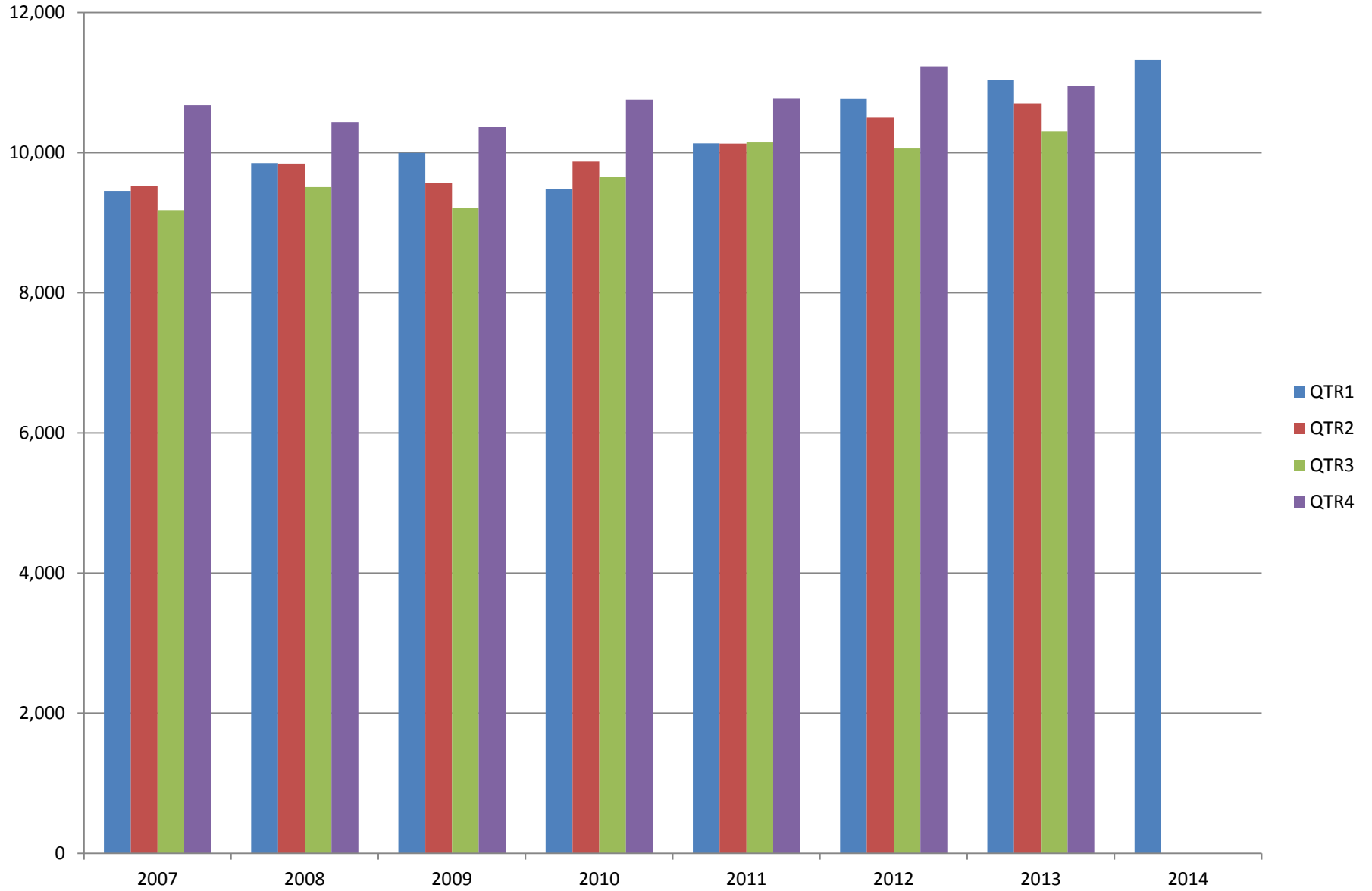


TABLE 3. TOTAL COVERED EARNINGS 2007 - 2014

PERIOD	2007	2008	2009	2010
TOTAL	\$38,833,265,464	\$39,643,039,342	\$39,149,476,305	\$39,769,504,992
January - March	9,452,711,662	9,851,866,058	9,998,452,028	9,486,245,580
April - June	9,525,837,049	9,843,711,293	9,566,968,853	9,873,489,653
July - September	9,178,902,477	9,509,150,631	9,213,797,140	9,653,588,807
October - December	10,675,814,276	10,438,311,360	10,370,258,284	10,756,180,952
Average Weekly Earnings	\$651.11	\$661.21	\$654.12	\$687.40

PERIOD	2011	2012	2013	2014
TOTAL	\$41,177,659,236	\$42,555,976,081	\$43,003,433,021	\$11,325,261,964
January - March	10,134,035,254	10,766,175,449	11,038,435,964	11,325,261,964
April - June	10,128,274,611	10,499,018,872	10,705,006,820	N/A
July - September	10,147,287,431	10,058,388,682	10,306,649,458	N/A
October - December	10,768,061,940	11,232,393,078	10,953,340,779	N/A
Average Weekly Earnings	\$712.80	\$731.59	\$734.07	\$775.33

TABLE 4. TOTAL TAXABLE EARNINGS, 2007 - 2014

PERIOD	2007	2008	2009	2010
TOTAL	10,459,105,059	10,360,487,108	9,787,660,886	11,332,118,456
January - March	5,617,417,571	5,635,750,082	5,423,705,265	5,607,134,758
April - June	2,466,606,627	2,419,313,519	2,293,670,854	2,977,100,591
July - September	1,307,060,412	1,297,473,555	1,165,280,065	1,577,067,770
October - December	1,068,020,449	1,007,949,952	905,004,702	1,170,815,337
PERIOD	2011	2012	2013	2014
TOTAL	11,479,396,226	11,642,854,241	11,669,483,946	6,294,681,175
January - March	5,828,877,821	6,167,036,199	6,194,767,117	6,294,681,175
April - June	2,910,604,359	2,845,540,593	2,807,334,202	N/A
July - September	1,601,382,146	1,505,833,030	1,509,412,524	N/A
October - December	1,138,531,900	1,124,444,419	1,157,970,103	N/A

TABLE 5. STATEWIDE SUMMARY

North American Industry Classification System - Industry Groups		Number of Employing Units	Employment			Total Earnings Jan - Mar 2014	Average Weekly Earnings
			Jan	Feb	Mar		
TOTAL, ALL INDUSTRIES		86,030	1,114,986	1,123,443	1,132,406	\$11,325,261,964	\$775.33
NATURAL RESOURCES & MINING		2,566	18,451	18,662	19,120	\$232,084,279	\$952.43
11	AGRICULTURE, FORESTRY, FISHING & HUNTING	2,033	11,644	11,827	12,244	\$100,799,968	\$651.31
111	CROP PRODUCTION	905	3,751	3,864	4,148	\$24,700,989	\$484.59
1111	Oilseed & Grain Farming	629	2,472	2,542	2,685	16,467,831	493.61
1112	Vegetable & Melon Farming	16	123	124	121	670,801	420.65
1113	Fruit & Tree Nut Farming	13	48	40	43	285,696	503.28
1114	Greenhouse & Nursery Production	44	307	350	435	2,363,733	499.52
1119	Other Crop Farming	203	801	808	864	4,912,928	458.45
112	ANIMAL PRODUCTION & AQUACULTURE	292	2,903	2,909	2,967	\$30,589,172	\$804.08
1121	Cattle Ranching & Farming	101	370	363	367	2,290,569	480.54
1122	Hog & Pig Farming	11	134	138	135	1,672,806	948.48
1123	Poultry & Egg Production	105	1,988	1,990	1,993	23,612,660	912.59
1125	Animal Aquaculture	54	364	372	422	2,749,939	548.01
	Other	21	47	46	50	263,198	424.74
113	FORESTRY & LOGGING	404	2,153	2,145	2,170	\$19,875,402	\$709.13
1131	Timber Tract Operations	37	175	173	172	2,487,638	1,103.98
1132	Forest Nurseries & Gathering of Forest Products	5	25	25	25	346,309	1,065.57
1133	Logging	362	1,953	1,947	1,973	17,041,455	669.61
114	FISHING, HUNTING & TRAPPING	3	21	20	12	\$118,807	\$517.30
115	SUPPORT ACTIVITIES FOR AGRICULTURE & FORESTRY	429	2,816	2,889	2,947	\$25,515,598	\$680.56
1151	Support Activities for Crop Production	296	1,171	1,203	1,292	12,737,001	801.78
1152	Support Activities for Animal Production	60	662	659	670	4,533,488	525.46
1153	Support Activities for Forestry	73	983	1,027	985	8,245,109	635.30
21	MINING	533	6,807	6,835	6,876	\$131,284,311	\$1,476.58
211	OIL & GAS EXTRACTION	88	1,537	1,539	1,544	\$43,730,954	\$2,184.36
212	MINING (EXCEPT OIL & GAS)	116	1,638	1,649	1,724	\$21,838,293	\$1,005.71
213	SUPPORT ACTIVITIES FOR MINING	329	3,632	3,647	3,608	\$65,715,064	\$1,392.95

TABLE 5. STATEWIDE SUMMARY

North American Industry Classification System - Industry Groups		Number of Employing Units	Employment			Total Earnings	Average Weekly Earnings
			Jan	Feb	Mar	Jan - Mar 2014	
CONSTRUCTION		6,695	43,993	43,252	43,678	\$432,518,828	\$762.37
236	CONSTRUCTION OF BUILDINGS	1,604	9,845	9,193	8,716	\$107,764,984	\$896.05
2361	Residential Building Construction	1,063	2,653	2,679	2,776	22,706,121	646.26
2362	Nonresidential Building Construction	541	7,192	6,514	5,940	85,058,863	999.13
237	HEAVY & CIVIL ENGINEERING CONSTRUCTION	734	7,040	6,872	7,205	\$72,289,208	\$789.99
2371	Utility System Construction	403	3,836	3,720	3,751	38,770,039	791.27
2372	Land Subdivision	62	131	133	132	1,291,558	752.66
2373	Highway, Street & Bridge Construction	184	2,547	2,516	2,758	25,562,806	754.27
2379	Other Heavy Construction	85	526	503	564	6,664,805	965.49
238	SPECIALTY TRADE CONTRACTORS	4,357	27,108	27,187	27,757	\$252,464,636	\$710.05
2381	Building Foundation & Exterior Contractors	836	5,291	5,225	5,451	44,931,210	649.39
2382	Building Equipment Contractors	2,039	14,588	14,676	14,776	148,764,043	779.52
2383	Building Finishing Contractors	741	3,342	3,384	3,461	27,568,852	624.53
2389	Other Specialty Trade Contractors	741	3,887	3,902	4,069	31,200,531	607.20
MANUFACTURING		3,030	152,738	152,750	153,151	\$1,675,602,486	\$843.10
311	FOOD MANUFACTURING	270	42,740	42,734	42,801	\$349,795,793	\$629.29
3111	Animal Food Manufacturing	44	1,472	1,499	1,493	16,989,140	878.26
3112	Grain & Oilseed Milling	29	2,389	2,405	2,422	25,203,523	806.01
3113	Sugar & Confectionery Product Manufacturing	5	22	25	24	154,991	503.76
3114	Fruit, Vegetable & Specialty Food	20	4,428	4,437	4,435	45,506,703	789.59
3115	Dairy Product Manufacturing	8	518	520	523	5,359,170	792.27
3116	Animal Slaughtering & Processing	79	28,850	28,760	28,788	207,630,930	554.58
3117	Seafood Product Preparation & Packaging	4	60	62	62	247,529	310.45
3118	Bakeries & Tortilla Manufacturing	58	3,240	3,230	3,246	29,599,764	703.04
3119	Other Food Manufacturing	23	1,761	1,796	1,808	19,104,043	821.74
312	BEVERAGE & TOBACCO PRODUCT MANUFACTURING	43	1,076	1,083	1,071	\$11,345,822	\$810.61
313	TEXTILE MILLS	10	73	70	71	\$647,113	\$697.82
314	TEXTILE PRODUCT MILLS	58	883	878	875	\$10,292,631	\$901.07
3141	Textile Furnishing Mills	10	33	34	28	393,733	956.44
3149	Other Textile Product Mills	48	850	844	847	9,898,898	899.00
315	APPAREL MANUFACTURING	21	864	869	870	\$5,255,251	\$465.90
316	LEATHER & ALLIED PRODUCT MANUFACTURING	15	966	928	941	\$5,861,618	\$477.14

TABLE 5. STATEWIDE SUMMARY

North American Industry Classification System - Industry Groups		Number of Employing Units	Employment			Total Earnings	Average Weekly Earnings
			Jan	Feb	Mar	Jan - Mar 2014	
321	WOOD PRODUCT MANUFACTURING	323	8,961	8,964	9,041	\$87,194,925	\$746.20
3211	Sawmills & Wood Preservation	137	4,280	4,268	4,299	44,170,510	793.43
3212	Veneer & Engineered Wood Products	52	1,865	1,902	1,922	22,264,845	903.15
3219	Other Wood Product Manufacturing	134	2,816	2,794	2,820	20,759,570	568.29
322	PAPER MANUFACTURING	74	9,982	9,962	9,958	\$162,042,371	\$1,250.56
3221	Pulp, Paper & Paperboard Mills	12	4,191	4,179	4,174	88,636,120	1,630.62
3222	Converted Paper Product Manufacturing	62	5,791	5,783	5,784	73,406,251	975.91
323	PRINTING & RELATED SUPPORT ACTIVITIES	242	3,949	3,952	3,957	\$38,562,609	\$750.47
324	PETROLEUM & COAL PRODUCTS MANUFACTURING	18	1,098	1,076	1,063	\$19,697,163	\$1,404.23
325	CHEMICAL MANUFACTURING	115	5,048	5,030	5,047	\$77,597,390	\$1,183.94
3251	Basic Chemical Manufacturing	29	1,778	1,770	1,769	31,963,934	1,387.30
3252	Resin, Rubber & Artificial Fibers	7	293	297	293	4,476,952	1,170.04
3253	Agricultural Chemical Manufacturing	13	347	345	342	6,078,858	1,356.69
3254	Pharmaceutical & Medicine Manufacturing	13	221	220	236	2,873,357	979.44
3255	Paint, Coating & Adhesive Manufacturing	8	266	275	277	4,228,937	1,193.04
3256	Soap, Cleaning Compound, & Toilet Preparation Manufacturing	17	1,228	1,217	1,220	14,343,529	903.15
3259	Other Chemical Preparation Manufacturing	28	915	906	910	13,631,823	1,151.89
326	PLASTICS & RUBBER PRODUCTS MANUFACTURING	140	10,509	10,502	10,547	\$131,446,741	\$961.21
3261	Plastics Product Manufacturing	98	6,349	6,357	6,402	70,695,287	853.79
3262	Rubber Product Manufacturing	42	4,160	4,145	4,145	60,751,454	1,126.07
327	NONMETALLIC MINERAL PRODUCT MANUFACTURING	249	3,567	3,567	3,670	\$40,081,208	\$856.12
3271	Clay Product & Refractory Manufacturing	14	396	386	396	4,385,289	859.07
3272	Glass & Glass Product Manufacturing	11	345	373	389	3,935,580	820.43
3273	Cement & Concrete Product Manufacturing	183	1,932	1,905	1,976	19,407,634	770.46
3274	Lime & Gypsum Product Manufacturing	4	227	235	238	3,466,906	1,142.94
3279	Other Nonmetallic Mineral Products Manufacturing	37	667	668	671	8,885,799	1,022.22
331	PRIMARY METAL MANUFACTURING	75	9,969	9,985	9,963	\$151,885,781	\$1,171.59
3311	Iron & Steel Mills & Ferroalloys	8	2,345	2,363	2,368	58,154,298	1,896.58
3312	Purchased Steel Product Manufacturing	21	3,044	3,038	3,043	42,292,601	1,069.57
3313	Alumina & Aluminum Production	19	1,233	1,235	1,241	17,854,611	1,110.89
3314	Other Nonferrous Metal Production	7	591	598	605	6,396,297	822.78
3315	Foundries	20	2,756	2,751	2,706	27,187,974	763.93

TABLE 5. STATEWIDE SUMMARY

North American Industry Classification System - Industry Groups		Number of Employing Units	Employment			Total Earnings	Average Weekly Earnings
			Jan	Feb	Mar	Jan - Mar 2014	
332	FABRICATED METAL PRODUCT MANUFACTURING	527	14,606	14,630	14,636	\$169,737,085	\$892.83
3321	Forging & Stamping	11	301	301	300	2,949,299	754.55
3322	Cutlery & Hand Tool Manufacturing	12	707	698	695	7,147,518	785.44
3323	Architectural & Structural Metals	153	3,830	3,840	3,818	46,585,804	935.81
3324	Boilers, Tanks & Shipping Containers	18	765	755	765	9,481,561	957.57
3325	Hardware Manufacturing	6	260	263	265	3,193,685	935.28
3326	Spring & Wire Product Manufacturing	13	390	391	398	4,261,794	834.17
3327	Machine Shops & Threaded Products	214	1,888	1,903	1,920	18,094,710	731.17
3328	Coating, Engraving & Heat Treating Metals	35	703	698	691	5,529,506	609.96
3329	Other Fabricated Metal Product Manufacturing	65	5,762	5,781	5,784	72,493,208	965.50
333	MACHINERY MANUFACTURING	214	11,151	11,054	11,193	\$121,766,641	\$841.37
3331	Agriculture, Construction & Mining Machinery	40	2,919	2,942	2,969	26,492,258	692.37
3332	Industrial Machinery Manufacturing	26	729	727	729	9,388,773	991.60
3333	Commercial & Service Industry Machinery	21	754	757	775	10,574,301	1,067.46
3334	HVAC & Commercial Refrigeration Equipment	20	3,046	3,012	2,997	35,934,962	915.81
3335	Metalworking Machinery Manufacturing	60	1,135	1,048	1,143	11,612,857	805.74
3336	Turbine & Power Transmission Equipment Manufacturing	6	594	597	596	7,002,137	904.24
3339	Other General Purpose Machinery Manufacturing	41	1,974	1,971	1,984	20,761,353	808.08
334	COMPUTER & ELECTRONIC PRODUCT MANUFACTURING	61	2,509	2,506	2,479	\$27,970,769	\$861.33
3343	Audio & Video Equipment Manufacturing	5	208	203	200	2,423,530	915.35
3344	Semiconductors & Electronic Components	25	1,636	1,636	1,618	17,245,248	813.84
3345	Electronic Instrument Manufacturing	21	514	518	509	6,105,158	914.27
	Other	10	151	149	152	2,196,833	1,121.60
335	ELECTRICAL EQUIPMENT & APPLIANCES	55	5,487	5,473	5,443	\$65,602,849	\$922.95
3351	Electric Lighting Equipment Manufacturing	12	394	396	396	3,897,326	\$758.33
3352	Household Appliance Manufacturing	5	67	63	62	799,648	\$961.12
3353	Electrical Equipment Manufacturing	21	3,417	3,411	3,403	41,130,187	927.73
3359	Other Electrical Equipment & Component Manufacturing	17	1,609	1,603	1,582	19,775,688	951.94
336	TRANSPORTATION EQUIPMENT MANUFACTURING	141	12,643	12,726	12,770	\$139,207,599	\$842.31
3362	Motor Vehicle Body & Trailer Manufacturing	28	1,683	1,744	1,745	15,011,404	669.79
3363	Motor Vehicle Parts Manufacturing	46	4,441	4,475	4,494	43,204,429	743.49
3364	Aerospace Product & Parts Manufacturing	28	3,251	3,311	3,280	49,494,358	1,160.51
3366	Ship & Boat Building	23	1,589	1,612	1,626	11,172,573	534.14
	Other	16	1,679	1,584	1,625	20,324,835	959.56
337	FURNITURE & RELATED PRODUCT MANUFACTURING	189	3,334	3,419	3,425	\$28,687,928	\$650.45
3371	Household & Institutional Furniture	155	2,352	2,391	2,398	16,878,114	545.43
3372	Office Furniture & Fixtures Manufacturing	25	893	930	932	11,178,226	936.33
3379	Other Furniture Related Product Manufacturing	9	89	98	95	631,588	516.85
339	MISCELLANEOUS MANUFACTURING	190	3,323	3,342	3,330	\$30,923,199	\$713.97
3391	Medical Equipment & Supplies Manufacturing	77	1,584	1,608	1,599	18,167,330	875.07
3399	Other Miscellaneous Manufacturing	113	1,739	1,734	1,731	12,755,869	565.65

TABLE 5. STATEWIDE SUMMARY

North American Industry Classification System - Industry Groups		Number of Employing Units	Employment			Total Earnings Jan - Mar 2014	Average Weekly Earnings
			Jan	Feb	Mar		
TRADE, TRANSPORTATION & UTILITIES		21,337	235,667	235,017	237,088	\$2,279,319,151	\$743.17
42	WHOLESALE TRADE	6,881	45,405	45,730	46,104	\$749,083,155	\$1,259.59
423	MERCHANT WHOLESALERS, DURABLE GOODS	2,170	20,534	20,557	20,623	\$275,704,818	\$1,030.95
4231	Motor Vehicle & Part Merchant Wholesalers	233	2,613	2,637	2,648	27,789,418	811.97
4232	Furniture & Furnishings Merchant Wholesalers	54	431	432	432	5,624,512	1,002.29
4233	Lumber & Supply Merchant Wholesalers	167	1,330	1,325	1,342	14,474,387	835.69
4234	Commercial Goods Merchant Wholesalers	299	2,632	2,640	2,636	42,580,526	1,242.57
4235	Metal & Mineral Merchant Wholesalers	54	919	895	907	12,127,863	1,028.57
4236	Appliances & Electronics Goods Merchant Wholesalers	190	1,815	1,829	1,853	32,304,059	1,356.15
4237	Hardware & Plumbing Merchant Wholesalers	230	2,178	2,184	2,168	28,697,935	1,014.18
4238	Machinery & Supply Merchant Wholesalers	703	6,593	6,595	6,600	88,612,640	1,033.41
4239	Miscellaneous Durable Goods Merchant Wholesalers	240	2,023	2,020	2,037	23,493,478	891.71
424	MERCHANT WHOLESALERS, NONDURABLE GOODS	1,186	15,072	15,228	15,464	\$220,689,603	\$1,112.85
4241	Paper & Paper Product Merchant Wholesalers	65	1,131	1,140	1,157	16,664,846	1,121.86
4242	Druggist' Goods Merchant Wholesalers	56	543	546	536	7,847,505	1,114.44
4243	Apparel & Piece Goods Merchant Wholesalers	38	618	638	643	6,874,903	835.45
4244	Grocery Product Merchant Wholesalers	302	4,590	4,574	4,579	74,623,635	1,253.06
4245	Farm Product Merchant Wholesalers	71	850	863	869	6,984,331	624.23
4246	Chemical Merchant Wholesalers	98	641	643	631	10,058,958	1,212.17
4247	Petroleum Merchant Wholesalers	139	1,765	1,797	1,798	32,310,590	1,391.10
4248	Alcoholic Beverage Merchant Wholesalers	42	1,446	1,444	1,449	18,643,338	991.54
4249	Miscellaneous Nondurable Goods Merchant Wholesaler	375	3,488	3,583	3,802	46,681,497	990.77
425	ELECTRONIC MARKETS & AGENTS & BROKERS	3,525	9,799	9,945	10,017	\$252,688,734	\$1,959.37
44 - 45	RETAIL TRADE	11,179	133,300	132,328	133,523	\$812,432,224	\$469.71
441	MOTOR VEHICLE & PARTS DEALERS	1,578	17,923	17,969	17,931	\$179,287,491	\$768.71
4411	Automobile Dealers	635	10,923	10,909	10,807	126,597,603	895.09
4412	Other Motor Vehicle Dealers	164	1,399	1,410	1,431	12,048,386	655.75
4413	Automotive Parts, Accessories & Tire Stores	779	5,601	5,650	5,693	40,641,502	553.52
442	FURNITURE & HOME FURNISHINGS STORES	513	3,423	3,394	3,375	\$23,693,843	\$536.48
4421	Furniture Stores	275	1,909	1,937	1,934	15,301,444	610.92
4422	Home Furnishings Stores	238	1,514	1,457	1,441	8,392,399	438.96
443	ELECTRONICS & APPLIANCE STORES	482	3,725	3,598	3,610	\$27,667,254	\$583.99
444	BUILDING MATERIAL & GARDEN SUPPLY STORES	841	10,212	10,435	10,798	\$64,466,142	\$473.11
4441	Building Material & Supplies Dealers	617	8,987	9,183	9,474	57,261,063	478.01
4442	Lawn & Garden Equipment & Supplies Stores	224	1,225	1,252	1,324	7,205,079	437.44

TABLE 5. STATEWIDE SUMMARY

North American Industry Classification System - Industry Groups		Number of Employing Units	Employment			Total Earnings	Average Weekly Earnings
			Jan	Feb	Mar	Jan - Mar 2014	
445	FOOD & BEVERAGE STORES	1,014	18,037	18,083	18,163	\$92,548,092	\$393.44
4451	Grocery Stores	543	15,693	15,728	15,780	79,377,061	388.08
4452	Specialty Food Stores	127	717	731	744	5,240,965	551.76
4453	Beer, Wine & Liquor Stores	344	1,627	1,624	1,639	7,930,066	374.24
446	HEALTH & PERSONAL CARE STORES	1,033	7,825	7,814	7,922	\$65,847,649	\$644.95
447	GASOLINE STATIONS	1,666	11,933	11,912	11,948	\$48,866,047	\$315.06
44711	Gasoline Stations with Convenience Stores	1,560	10,654	10,649	10,672	42,380,911	305.87
44719	Other Gasoline Stations	106	1,279	1,263	1,276	6,485,136	391.98
448	CLOTHING & CLOTHING ACCESSORIES STORES	1,051	8,352	8,120	8,179	\$31,689,253	\$296.66
4481	Clothing Stores	770	6,424	6,216	6,283	21,177,377	258.26
4482	Shoe Stores	142	1,126	1,118	1,135	4,465,663	304.98
4483	Jewelry, Luggage & Leather Goods Stores	139	802	786	761	6,046,213	593.99
451	SPORTING GOODS, HOBBY, BOOK & MUSIC STORES	484	4,822	4,530	4,513	\$20,844,383	\$346.93
4511	Sporting Goods & Musical Instrument Stores	411	4,245	4,010	4,013	18,953,700	356.53
4512	Book, Periodical & Music Stores	73	577	520	500	1,890,683	273.21
452	GENERAL MERCHANDISE STORES	888	38,161	37,679	38,305	\$206,458,487	\$417.40
453	MISCELLANEOUS STORE RETAILERS	1,266	7,101	6,997	7,000	\$34,880,133	\$381.52
4531	Florists	197	696	781	731	2,892,822	302.34
4532	Office Supplies, Stationery & Gift Stores	301	2,066	2,034	2,031	10,957,718	412.45
4533	Used Merchandise Stores	259	1,794	1,704	1,691	8,108,717	360.62
4539	Other Miscellaneous Store Retailers	509	2,545	2,478	2,547	12,920,876	393.89
454	NONSTORE RETAILERS	363	1,786	1,797	1,779	\$16,183,450	\$696.50
4541	Electronic Shopping & Mail-Order Houses	154	683	691	679	6,149,148	691.20
4542	Vending Machine Operators	68	423	423	420	3,205,481	584.30
4543	Direct Selling Establishments	141	680	683	680	6,828,821	771.36
48 - 49	TRANSPORTATION & WAREHOUSING	2,869	49,013	49,067	49,330	\$29,304,030	\$828.62
481	AIR TRANSPORTATION	49	621	618	607	\$5,612,998	\$701.68
484	TRUCK TRANSPORTATION	1,878	31,328	31,591	31,766	\$343,505,835	\$837.20
4841	General Freight Trucking	1,115	25,136	25,372	25,538	282,830,844	858.28
4842	Specialized Freight Trucking	763	6,192	6,219	6,228	60,674,991	751.22

TABLE 5. STATEWIDE SUMMARY

North American Industry Classification System - Industry Groups		Number of Employing Units	Employment			Total Earnings	Average Weekly Earnings
			Jan	Feb	Mar	Jan - Mar 2014	
485	TRANSIT & GROUND PASSENGER TRANSPORTATION	82	1,524	1,556	1,566	\$6,729,700	\$334.27
4853	Taxi & Limousine Service	26	402	406	415	1,660,570	313.33
4854	School & Employee Bus Transportation	12	466	457	450	1,974,131	331.81
4855	Charter Bus Industry Service	6	85	92	102	581,771	481.20
4859	Other Ground Passenger Transportation	34	509	532	522	1,977,777	292.01
	Other	4	62	69	77	535,451	594.07
486	PIPELINE TRANSPORTATION	32	477	484	477	\$15,183,574	\$2,436.65
488	SUPPORT ACTIVITIES FOR TRANSPORTATION	418	4,549	4,591	4,635	\$56,059,673	\$939.15
4881	Support Activities for Air Transportation	99	1,180	1,209	1,177	11,797,224	763.44
4882	Support Activities for Rail Transportation	40	352	352	361	3,677,159	796.78
4883	Support Activities for Water Transportation	21	670	670	685	8,673,897	988.48
4884	Support Activities for Road Transportation	128	638	632	672	4,566,819	542.68
4885	Freight Transportation Arrangement	115	1,629	1,644	1,658	26,688,954	1,249.03
4889	Other Support Activities for Transportation	15	80	84	82	655,620	615.03
	OTHER	9	37	44	43	\$408,440	\$760.12
493	WAREHOUSING & STORAGE	224	7,001	7,001	7,018	66,220,452	\$727.00
	OTHER	177	3,476	3,182	3,218	35,583,358	\$831.46
22	UTILITIES	408	7,949	7,892	8,131	\$188,499,742	\$1,814.61
2211	Power Generation & Supply	161	5,699	5,626	5,857	155,100,265	2,083.13
2212	Natural Gas Distribution	63	1,343	1,355	1,356	25,561,198	1,455.04
2213	Water, Sewage & Other Systems	184	907	911	918	7,838,279	661.12
	INFORMATION	1,125	13,785	13,792	13,760	\$208,735,707	\$1,165.29
511	PUBLISHING INDUSTRIES, EXCEPT INTERNET	227	3,515	3,520	3,530	\$32,554,792	\$711.09
5111	Newspaper, Book & Directory Publishers	201	3,178	3,184	3,195	26,385,017	637.11
5112	Software Publishers	26	337	336	335	6,169,775	1,412.49
512	MOTION PICTURE & SOUND RECORDING INDUSTRY	136	1,045	1,035	1,054	\$5,088,748	\$374.71
5121	Motion Picture & Video Industries	118	1,014	1,006	1,024	4,765,106	361.25
5122	Sound Recording Industries	18	31	29	30	323,642	829.85
515	BROADCASTING, EXCEPT INTERNET	128	1,662	1,666	1,671	\$18,150,047	\$837.86
5151	Radio & Television Broadcasting	122	1,629	1,634	1,638	17,874,750	841.65
5152	Cable & Other Subscription Programming	6	33	32	33	275,297	648.27

TABLE 5. STATEWIDE SUMMARY

North American Industry Classification System - Industry Groups		Number of Employing Units	Employment			Total Earnings	Average Weekly Earnings
			Jan	Feb	Mar	Jan - Mar 2014	
517	TELECOMMUNICATIONS	383	5,760	5,795	5,741	\$127,660,384	\$1,703.29
5171	Wired Telecommunications Carriers	264	3,622	3,640	3,595	76,670,507	1,629.66
5172	Wireless Telecommunications Carriers (except Satellite)	44	1,792	1,812	1,804	44,900,531	1,915.99
5174	Satellite Telecommunications Carriers	4	3	3	5	54,009	1,133.06
5179	Other Telecommunications	71	343	340	337	6,035,337	1,365.46
518	DATA PROCESSING, HOSTING & RELATED SERVICES	181	1,422	1,393	1,378	\$21,257,145	\$1,169.92
519	OTHER INFORMATION SERVICES	70	381	383	386	\$4,024,591	\$807.61
FINANCIAL ACTIVITIES		8,126	47,313	47,461	47,508	\$663,772,351	\$1,076.58
52	FINANCE & INSURANCE	4,814	34,602	34,762	34,742	\$556,052,982	\$1,232.59
522	CREDIT INTERMEDIATION & RELATED ACTIVITIES	1,949	19,204	19,229	19,215	\$233,623,160	\$935.21
5221	Depository Credit Intermediation	1,416	16,419	16,434	16,408	190,786,931	893.76
5222	Nondepository Credit Intermediation	379	2,310	2,319	2,324	36,512,587	1,211.85
5223	Activities Related to Credit Intermediation	154	475	476	483	6,323,642	1,017.64
523	FINANCIAL INVESTMENT & RELATED ACTIVITIES	651	3,004	3,043	3,015	\$129,464,506	\$3,296.89
524	INSURANCE CARRIERS & RELATED ACTIVITIES	2,157	12,320	12,410	12,437	\$191,723,940	\$1,190.41
5241	Insurance Carriers	352	5,259	5,305	5,317	105,829,269	1,537.82
5242	Insurance Agencies, Brokerages & Support	1,805	7,061	7,105	7,120	85,894,671	931.22
	OTHER	57	74	80	75	\$1,241,376	\$1,250.97
53	REAL ESTATE & RENTAL & LEASING	3,312	12,711	12,699	12,766	\$107,719,369	\$651.15
531	REAL ESTATE	2,621	8,425	8,418	8,434	\$66,695,233	\$608.90
5311	Lessors of Real Estate	1,126	4,017	4,008	4,002	29,088,886	558.15
5312	Offices of Real Estate Agents & Brokers	750	1,549	1,551	1,570	13,733,978	678.67
5313	Activities Related to Real Estate	745	2,859	2,859	2,862	23,872,369	642.08
532	RENTAL & LEASING SERVICES	667	4,225	4,221	4,275	\$40,113,538	\$727.69
5321	Automotive Equipment Rental & Leasing	103	901	887	889	6,341,850	546.70
5322	Consumer Goods Rental	356	1,951	1,943	1,981	14,980,468	588.43
5323	General Rental Centers	43	226	232	231	2,217,413	742.69
5324	Machinery & Equipment Rental & Leasing	165	1,147	1,159	1,174	16,573,807	1,099.06
533	LESSORS OF NONFINANCIAL INTANGIBLE ASSETS	24	61	60	57	\$910,598	\$1,180.55

TABLE 5. STATEWIDE SUMMARY

North American Industry Classification System - Industry Groups		Number of Employing Units	Employment			Total Earnings Jan - Mar 2014	Average Weekly Earnings
			Jan	Feb	Mar		
PROFESSIONAL & BUSINESS SERVICES		13,009	127,754	132,139	133,472	\$2,091,860,429	\$1,227.20
54	PROFESSIONAL & TECHNICAL SERVICES	8,225	41,058	41,595	41,275	\$539,777,948	\$1,005.13
5411	Legal Services	1,703	6,103	6,103	6,086	69,984,363	882.91
5412	Accounting & Bookkeeping Services	1,250	5,947	6,519	6,260	56,123,111	691.63
5413	Architectural & Engineering Services	945	5,708	5,712	5,749	77,496,620	1,041.64
5414	Specialized Design Services	172	420	415	420	4,764,897	876.17
5415	Computer Systems Design & Related Services	1,401	9,426	9,410	9,186	169,434,559	1,395.34
5416	Management & Technical Consulting Services	1,675	5,586	5,547	5,620	77,515,745	1,067.76
5417	Scientific Research & Development Services	136	1,041	1,034	1,029	16,075,554	1,195.15
5418	Advertising & Related Services	381	3,334	3,365	3,419	37,293,435	850.58
5419	Other Professional & Technical Services	562	3,493	3,490	3,506	31,089,664	684.01
55	MANAGEMENT OF COMPANIES & ENTERPRISES	497	31,644	31,588	31,638	\$1,187,902,606	\$2,889.55
56	ADMINISTRATIVE & SUPPORT SERVICES	4,287	55,052	58,956	60,559	\$364,179,875	\$481.43
561	ADMINISTRATIVE & SUPPORT SERVICES	3,987	52,085	55,978	57,552	\$334,628,378	\$466.27
5611	Office Administrative Services	591	3,818	3,876	3,859	40,914,794	817.27
5612	Facilities Support Services	26	204	209	212	2,042,922	754.31
5613	Employment Services	921	20,505	24,505	25,594	121,871,862	398.34
5614	Business Support Services	390	7,995	7,965	7,909	60,495,676	584.88
5615	Travel Arrangement & Reservation Services	93	334	351	373	3,021,889	659.13
5616	Investigation & Security Services	255	4,485	4,465	4,446	28,202,888	485.84
5617	Services to Buildings & Dwellings	1,498	13,269	13,138	13,715	66,566,054	382.87
5619	Other Support Services	213	1,475	1,469	1,444	11,512,293	605.44
562	WASTE MANAGEMENT & REMEDIATION SERVICES	300	2,967	2,978	3,007	\$29,551,497	\$761.79
5621	Waste Collection Services	122	1,060	1,048	1,058	9,861,580	718.81
5622	Waste Treatment & disposal Services	37	847	855	864	10,524,819	946.53
5629	Remediation & Other Waste Services	141	1,060	1,075	1,085	9,165,098	656.84
EDUCATION & HEALTH SERVICES		14,989	167,687	168,307	168,830	\$1,545,701,613	\$706.58
61	EDUCATIONAL SERVICES	744	10,432	10,884	10,862	\$86,691,165	\$621.72
6111	Elementary & Secondary Schools	82	3,205	3,255	3,226	23,697,317	564.59
6112	Junior Colleges	5	179	193	188	1,456,432	600.18
6113	Colleges & Universities	53	3,856	4,162	4,176	34,196,812	647.17
6114	Business, Computer, & Management Training	46	97	99	103	1,542,424	1,190.45
6115	Technical & Trade Schools	102	936	924	933	12,856,822	1,062.28
6116	Other Schools & Instruction	265	1,558	1,620	1,593	6,640,327	321.19
6117	Educational Support Services	191	601	631	643	6,301,031	775.51

TABLE 5. STATEWIDE SUMMARY

North American Industry Classification System - Industry Groups		Number of Employing Units	Employment			Total Earnings Jan - Mar 2014	Average Weekly Earnings
			Jan	Feb	Mar		
62	HEALTH CARE & SOCIAL ASSISTANCE	14,245	157,255	157,423	157,968	\$1,459,010,448	\$712.36
621	AMBULATORY HEALTH CARE SERVICES	5,318	48,581	48,862	48,957	\$655,372,003	\$1,033.06
6211	Offices of Physicians	2,278	22,227	22,354	22,402	397,115,206	1,368.14
6212	Offices of Dentists	997	6,938	6,951	6,962	71,608,461	792.53
6213	Offices of Other Health Practitioners	1,326	7,396	7,460	7,426	69,721,569	722.09
6214	Outpatient Care Centers	290	4,120	4,154	4,176	42,610,431	789.81
6215	Medical & Diagnostic Laboratories	121	1,045	1,044	1,036	13,019,209	961.42
6216	Home Health Care Services	149	4,415	4,452	4,478	37,598,257	650.17
6219	Other Ambulatory Health Care Services	157	2,440	2,447	2,477	23,698,870	742.66
622	HOSPITALS	112	41,087	41,040	41,129	\$447,695,559	\$838.21
6221	General Medical & Surgical Hospitals	81	36,408	36,367	36,374	398,858,014	843.29
6222	Psychiatric & Substance Abuse Hospitals	12	2,349	2,340	2,421	22,775,902	739.24
6223	Other Hospitals	19	2,330	2,333	2,334	26,061,643	859.54
623	Residential & Mental Health Facilities	621	30,961	30,869	30,979	\$181,439,765	\$451.15
6231	Nursing Care Facilities (Skilled Nursing Facilities)	277	22,344	22,265	22,331	130,538,935	450.02
6232	Residential Mental Health Facilities	172	4,332	4,313	4,313	26,606,559	473.84
6233	Continuing Care & Assisted Living Facilities	135	3,229	3,234	3,262	17,264,674	409.68
6239	Other Residential Care Facilities	37	1,056	1,057	1,073	7,029,597	509.17
624	SOCIAL ASSISTANCE	8,194	36,626	36,652	36,903	\$174,503,121	\$365.49
6241	Individual & Family Services	6,961	22,303	22,294	22,405	109,243,895	376.26
6242	Emergency & Other Relief Services	141	1,297	1,275	1,292	7,836,493	468.02
6243	Vocational Rehabilitation Services	131	3,382	3,396	3,401	17,332,820	392.95
6244	Child Day Care Services	961	9,644	9,687	9,805	40,089,913	317.53
	LEISURE & HOSPITALITY	6,697	101,232	102,266	105,073	\$356,408,721	\$266.55
71	ARTS, ENTERTAINMENT & RECREATION	935	8,804	9,009	9,528	\$43,151,494	\$364.22
711	PERFORMING ARTS & SPECTATOR SPORTS	206	2,254	2,448	2,589	\$13,413,806	\$424.56
7111	Performing Arts Companies	45	298	392	344	1,775,021	396.15
7112	Spectator Sports	58	1,554	1,572	1,597	8,525,260	416.55
7113	Performing Arts & Sports Promoters	37	315	395	535	2,299,053	426.15
7114	Agents & Managers for Public Figures	21	24	23	42	390,496	1,012.52
7115	Independent Artists, Writers, & Performers	45	63	66	71	423,976	489.20
712	MUSEUMS, PARKS, & HISTORICAL SITES	56	490	494	530	\$3,785,408	\$576.99
713	GAMBLING, RECREATIONAL & AMUSEMENT INDUSTRY	673	6,060	6,067	6,409	\$25,952,280	\$323.10
72	ACCOMMODATION & FOOD SERVICES	5,762	92,428	93,257	95,545	\$313,257,227	\$257.05

TABLE 5. STATEWIDE SUMMARY

North American Industry Classification System - Industry Groups		Number of Employing Units	Employment			Total Earnings	Average Weekly Earnings
			Jan	Feb	Mar	Jan - Mar 2014	
721	ACCOMMODATION	884	9,970	10,232	10,395	\$42,154,005	\$317.93
7211	Travel Accommodation	802	9,547	9,811	9,945	40,146,476	316.16
7212	RV Parks & Recreational Camps	64	334	324	351	1,520,584	347.77
7213	Rooming & Boarding Houses	18	89	97	99	486,945	394.29
722	FOOD SERVICES & DRINKING PLACES	4,878	82,458	83,025	85,150	\$271,103,222	\$249.62
7223	Special Food Services	183	2,806	2,953	2,971	11,427,171	302.07
7224	Drinking Places, Alcoholic Beverages	171	1,161	1,172	1,174	3,740,533	246.14
7225	Restaurants & Other Eating Places	4,524	78,491	78,900	81,005	255,935,518	247.75
722511	Full-Service Restaurants	2,061	35,567	35,557	36,495	126,297,321	270.82
722513	Limited-Service Eating Places	2,049	38,990	39,278	40,418	115,355,570	224.29
722514	Cafeterias, Grill Buffets, & Buffets	102	1,851	1,957	1,957	7,229,281	289.38
722515	Snack & Nonalcoholic Beverage Bars	312	2,083	2,108	2,135	7,053,346	257.30
	OTHER SERVICES	5,354	23,324	23,400	23,669	\$172,579,296	\$565.77
811	REPAIR & MAINTENANCE	2,238	9,396	9,359	9,517	\$80,735,980	\$659.00
8111	Automotive Repair & Maintenance	1,433	5,979	5,955	6,050	47,522,736	609.81
8112	Electronic Equipment Repair & Maintenance	181	709	737	751	7,788,133	818.05
8113	Commercial Machinery Repair & Maintenance	438	2,123	2,105	2,132	21,503,075	780.23
8114	Household Goods Repair & Maintenance	186	585	562	584	3,922,036	522.87
812	PERSONAL & LAUNDRY SERVICES	1,319	7,771	7,828	7,904	\$42,601,096	\$418.29
8121	Personal Care Services	609	2,685	2,763	2,816	12,086,168	337.50
8122	Death Care Services	245	1,552	1,545	1,555	11,124,891	551.87
8123	Drycleaning & Laundry Service	257	2,829	2,823	2,820	15,828,207	431.15
8129	Other Personal Services	208	705	697	713	3,561,830	388.63
813	MEMBERSHIP ASSOCIATIONS & ORGANIZATIONS	1,055	5,187	5,230	5,282	\$43,988,451	\$646.61
8131	Religious Organizations	54	219	221	230	1,628,876	561.04
8132	Grantmaking & Giving Organizations	109	441	449	449	4,833,866	833.09
8133	Social Advocacy Organizations	206	1,528	1,544	1,556	12,461,811	621.39
8134	Civic & Social Organizations	194	1,108	1,132	1,138	4,709,572	321.74
8139	Professional & Similar Organizations	492	1,891	1,884	1,909	20,354,326	826.38
814	PRIVATE HOUSEHOLDS	742	970	983	966	\$5,253,769	\$415.35
	LOCAL GOVERNMENT	1,969	114,441	115,363	115,600	\$956,901,693	\$639.32
	STATE GOVERNMENT	1,133	68,601	71,034	71,457	\$709,777,410	\$775.94
	NONCLASSIFIABLE ESTABLISHMENTS	0	0	0	0	\$0	\$0.00

TABLE 6. COUNTY SUMMARY

North American Industry Classification System - Industry Groups	Number of Employing Units	Employment			Total Earnings	Average Weekly Earnings
		Jan	Feb	Mar	Jan - Mar 2014	
ARKANSAS COUNTY - TOTAL	744	9,422	9,391	9,504	\$87,739,984	\$715.04
Natural Resources & Mining	48	163	171	166	1,772,864	818.24
Construction	50	279	251	256	2,219,041	651.51
Manufacturing	30	3,382	3,335	3,398	36,180,824	825.45
Trade, Transportation & Utilities	207	2,347	2,366	2,385	23,522,656	764.77
Wholesale Trade	42	474	485	512	7,065,985	1,108.51
Retail Trade	97	1,032	1,026	1,023	6,025,062	451.28
Transportation, Warehousing & Utilities	68	841	855	850	10,431,609	945.52
Information	11	81	81	82	727,933	688.46
Financial Activities	46	313	315	319	3,105,172	756.68
Professional & Business Services	46	322	326	323	3,852,239	915.53
Education & Health Services	158	1,082	1,065	1,070	7,223,986	518.21
Leisure & Hospitality	56	425	443	453	1,380,773	241.21
Other Services	44	100	100	98	710,781	550.42
Local Government	32	728	731	732	5,811,919	612.15
State Government	16	200	207	222	1,231,796	451.92
ASHLEY COUNTY - TOTAL	576	7,085	6,990	7,060	\$67,507,934	\$737.11
Natural Resources & Mining	41	275	278	285	2,785,288	767.02
Construction	44	535	503	552	4,836,107	701.90
Manufacturing	26	1,977	1,970	1,968	30,783,209	1,200.98
Trade, Transportation & Utilities	118	1,228	1,223	1,239	9,089,390	568.44
Wholesale Trade	25	229	228	234	2,719,098	908.08
Retail Trade	72	746	743	749	3,917,799	403.98
Transportation, Warehousing & Utilities	21	253	252	256	2,452,493	743.71
Information	7	42	43	40	291,447	538.06
Financial Activities	35	219	223	220	1,935,821	674.82
Professional & Business Services	45	274	227	228	1,820,588	576.32
Education & Health Services	146	945	929	940	6,422,696	526.71
Leisure & Hospitality	31	370	369	381	1,076,644	221.84
Other Services	40	130	115	125	895,837	558.73
Local Government	32	906	919	891	6,466,616	549.45
State Government	11	184	191	191	1,104,291	450.24

TABLE 6. COUNTY SUMMARY

North American Industry Classification System - Industry Groups	Number of Employing Units	Employment			Total Earnings	Average Weekly Earnings
		Jan	Feb	Mar	Jan - Mar 2014	
BAXTER COUNTY - TOTAL	1,230	13,764	13,789	13,939	\$104,784,108	\$582.79
Natural Resources & Mining	6	60	50	66	386,187	506.36
Construction	113	499	481	500	3,635,850	566.92
Manufacturing	57	2,281	2,280	2,272	22,642,661	764.71
Trade, Transportation & Utilities	263	2,633	2,588	2,615	16,117,050	474.65
Wholesale Trade	34	227	230	228	1,958,057	659.65
Retail Trade	205	2,230	2,192	2,218	12,506,805	434.67
Transportation, Warehousing & Utilities	24	176	166	169	1,652,188	746.13
Information	18	172	173	177	1,898,331	839.23
Financial Activities	110	702	699	712	8,011,740	874.99
Professional & Business Services	133	704	730	713	5,208,839	559.87
Education & Health Services	261	3,571	3,581	3,600	29,106,657	624.71
Leisure & Hospitality	120	1,325	1,350	1,401	4,196,576	237.60
Other Services	96	340	340	349	1,785,724	400.48
Local Government	41	1,159	1,167	1,180	9,208,500	606.11
State Government	12	318	350	354	2,585,993	583.92
BENTON COUNTY - TOTAL	5,689	100,456	101,680	102,696	\$1,715,888,654	\$1,298.99
Natural Resources & Mining	46	599	600	601	10,263,199	1,315.79
Construction	530	3,473	3,473	3,582	36,075,447	790.76
Manufacturing	193	10,579	10,577	10,675	108,165,036	784.18
Trade, Transportation & Utilities	1,540	22,936	23,302	23,465	287,832,417	952.94
Wholesale Trade	704	4,376	4,435	4,439	116,477,923	2,028.64
Retail Trade	675	10,654	10,644	10,781	68,701,162	494.22
Transportation, Warehousing & Utilities	161	7,906	8,223	8,245	102,653,332	971.91
Information	74	821	812	801	10,674,980	1,012.10
Financial Activities	579	2,892	2,886	2,892	39,772,012	1,058.61
Professional & Business Services	1,094	29,705	29,904	30,086	1,004,506,718	2,584.42
Education & Health Services	677	9,529	9,598	9,658	84,542,920	677.78
Leisure & Hospitality	497	9,713	9,767	10,067	37,880,149	295.85
Other Services	360	1,626	1,628	1,668	12,455,954	584.00
Local Government	82	7,749	7,963	8,028	75,325,222	732.21
State Government	17	834	1,170	1,173	8,394,600	609.76

TABLE 6. COUNTY SUMMARY

North American Industry Classification System - Industry Groups	Number of Employing Units	Employment			Total Earnings	Average Weekly Earnings
		Jan	Feb	Mar	Jan - Mar 2014	
BOONE COUNTY - TOTAL	997	13,237	13,397	13,475	\$111,354,515	\$640.68
Construction	78	405	402	409	3,206,191	608.46
Manufacturing	63	1,726	1,735	1,738	16,327,035	724.71
Trade, Transportation & Utilities	246	3,517	3,528	3,565	32,601,003	709.08
Wholesale Trade	47	298	306	312	2,616,060	659.07
Retail Trade	145	1,785	1,799	1,835	11,333,237	482.63
Transportation, Warehousing & Utilities	54	1,434	1,423	1,418	18,651,706	1,006.84
Information	15	296	291	282	3,182,543	845.15
Financial Activities	91	467	463	469	5,173,784	853.43
Professional & Business Services	106	1,073	1,070	1,068	10,143,624	729.01
Education & Health Services	171	1,404	1,436	1,427	10,630,770	574.94
Leisure & Hospitality	81	1,062	1,070	1,104	3,430,510	244.64
Local Government	57	2,287	2,304	2,304	18,333,879	613.62
State Government	19	734	822	823	6,268,609	608.07
Other	70	266	276	286	2,056,567	573.18
BRADLEY COUNTY - TOTAL	367	3,382	3,356	3,357	\$24,307,791	\$555.67
Natural Resources & Mining	43	304	321	286	2,379,801	602.84
Construction	17	74	73	79	653,814	667.61
Manufacturing	10	537	536	541	5,781,154	826.59
Trade, Transportation & Utilities	74	466	438	447	2,715,947	463.92
Wholesale Trade	14	89	79	80	841,188	782.74
Retail Trade	44	340	328	330	1,533,165	354.52
Transportation, Warehousing & Utilities	16	37	31	37	341,594	750.76
Information	4	11	11	11	88,007	615.43
Financial Activities	24	133	130	136	1,042,175	602.76
Professional & Business Services	27	131	133	130	855,386	501.01
Education & Health Services	97	580	579	575	4,017,081	534.61
Leisure & Hospitality	13	155	159	166	448,977	215.85
Other Services	33	97	103	102	507,631	387.90
Local Government	14	492	477	478	3,430,746	547.14
State Government	11	402	396	406	2,387,072	457.53

TABLE 6. COUNTY SUMMARY

North American Industry Classification System - Industry Groups	Number of Employing Units	Employment			Total Earnings	Average Weekly Earnings
		Jan	Feb	Mar	Jan - Mar 2014	
CALHOUN COUNTY - TOTAL	114	2,637	2,600	2,610	\$31,823,109	\$935.87
Natural Resources & Mining	11	35	36	36	300,766	648.67
Construction	11	84	83	88	702,815	636.03
Manufacturing	10	1,856	1,818	1,818	25,531,136	1,072.80
Trade, Transportation & Utilities	21	226	223	224	1,928,492	661.27
Retail Trade	12	61	60	63	254,002	318.56
Transportation, Warehousing & Utilities	9	165	163	161	1,674,490	790.23
Financial Activities	6	77	79	78	839,285	827.70
Education & Health Services	16	57	58	58	487,586	650.40
Leisure & Hospitality	10	15	16	19	54,641	252.19
Other Services	3	6	6	6	26,764	343.13
Local Government	11	186	185	187	1,185,195	490.16
State Government	8	86	86	86	640,159	572.59
Other	7	9	10	10	126,270	1,004.80
CARROLL COUNTY - TOTAL	772	9,564	9,642	9,920	\$65,426,241	\$518.38
Natural Resources & Mining	17	199	201	204	1,533,290	585.82
Trade, Transportation & Utilities	191	1,465	1,467	1,492	9,851,323	513.87
Wholesale Trade	22	165	166	168	1,090,253	504.20
Retail Trade	149	1,055	1,051	1,073	5,644,827	409.77
Transportation, Warehousing & Utilities	20	245	250	251	3,116,243	963.99
Information	10	70	70	68	638,728	708.65
Financial Activities	60	349	350	354	3,711,455	813.38
Professional & Business Services	62	302	307	317	2,253,464	561.59
Education & Health Services	86	939	942	949	7,942,184	647.64
Leisure & Hospitality	176	1,082	1,152	1,326	3,788,222	245.56
Other Services	41	122	119	125	657,228	414.39
Local Government	24	1,041	1,043	1,065	7,383,403	541.08
State Government	10	111	111	112	815,691	563.58
Other	95	3,884	3,880	3,908	26,851,253	530.88

TABLE 6. COUNTY SUMMARY

North American Industry Classification System - Industry Groups	Number of Employing Units	Employment			Total Earnings	Average Weekly Earnings
		Jan	Feb	Mar	Jan - Mar 2014	
CHICOT COUNTY - TOTAL	467	3,347	3,305	3,279	\$22,602,001	\$525.21
Natural Resources & Mining	55	248	242	247	1,657,232	518.91
Construction	17	140	150	132	1,271,591	695.37
Trade, Transportation & Utilities	69	675	669	659	4,451,852	512.91
Wholesale Trade	12	76	79	72	878,622	893.21
Retail Trade	44	328	329	330	1,876,037	438.63
Transportation, Warehousing & Utilities	13	271	261	257	1,697,193	496.40
Information	5	6	6	6	56,550	725.00
Financial Activities	28	146	142	140	1,681,520	906.64
Professional & Business Services	19	49	51	49	400,631	620.49
Education & Health Services	197	814	784	789	4,885,735	472.34
Leisure & Hospitality	24	192	192	194	554,516	221.39
Local Government	17	657	657	647	4,901,027	576.75
State Government	10	294	291	296	1,898,509	497.30
Other	26	126	121	120	842,838	529.98
CLARK COUNTY - TOTAL	613	8,886	9,013	9,114	\$68,880,660	\$588.44
Natural Resources & Mining	39	232	230	239	2,097,288	690.43
Construction	24	64	63	65	413,994	497.59
Manufacturing	30	1,394	1,396	1,392	17,956,691	990.88
Trade, Transportation & Utilities	131	1,370	1,350	1,366	8,839,087	499.21
Wholesale Trade	11	30	32	32	332,402	816.04
Retail Trade	98	1,156	1,138	1,155	6,642,286	444.43
Transportation, Warehousing & Utilities	22	184	180	179	1,864,399	792.35
Information	5	20	21	18	208,188	814.29
Financial Activities	75	309	314	312	3,039,535	750.19
Professional & Business Services	49	650	661	652	5,334,440	627.11
Education & Health Services	115	1,426	1,438	1,484	9,870,168	523.86
Leisure & Hospitality	60	1,036	1,093	1,115	3,191,047	227.00
Other Services	44	230	232	227	1,649,252	552.39
Local Government	27	959	938	953	6,920,875	560.39
State Government	14	1,196	1,277	1,291	9,360,095	573.86

TABLE 6. COUNTY SUMMARY

North American Industry Classification System - Industry Groups	Number of Employing Units	Employment			Total Earnings Jan - Mar 2014	Average Weekly Earnings
		Jan	Feb	Mar		
CLAY COUNTY - TOTAL	411	3,429	3,361	3,457	\$24,285,048	\$546.92
Natural Resources & Mining	59	227	225	248	1,297,703	427.81
Construction	30	124	115	137	722,695	443.55
Manufacturing	17	330	331	332	3,164,540	735.43
Trade, Transportation & Utilities	105	863	845	868	7,336,457	657.23
Wholesale Trade	23	263	247	262	2,751,319	822.43
Retail Trade	51	397	397	405	2,574,839	495.57
Transportation, Warehousing & Utilities	31	203	201	201	2,010,299	766.80
Information	5	46	46	48	345,116	568.87
Financial Activities	27	124	125	124	1,193,952	738.68
Professional & Business Services	26	94	89	93	652,688	545.73
Education & Health Services	54	439	434	438	2,645,116	465.61
Leisure & Hospitality	22	266	245	259	643,227	192.78
Other Services	33	81	77	83	539,697	516.79
Local Government	22	780	775	771	5,399,147	535.67
State Government	11	55	54	56	344,710	482.11
CLEBURNE COUNTY - TOTAL	669	6,346	6,436	6,497	\$47,157,752	\$564.48
Natural Resources & Mining	26	264	253	246	3,348,144	1,012.65
Construction	63	329	335	344	2,956,144	676.77
Manufacturing	33	951	966	977	8,503,384	678.06
Trade, Transportation & Utilities	165	1,534	1,523	1,504	12,148,408	614.66
Wholesale Trade	36	160	163	168	1,810,003	850.70
Retail Trade	101	948	935	947	5,748,431	468.75
Transportation, Warehousing & Utilities	28	426	425	389	4,589,974	854.21
Information	7	51	51	54	339,302	501.93
Financial Activities	70	226	227	231	2,120,837	715.53
Professional & Business Services	74	370	367	376	2,840,901	589.03
Education & Health Services	88	791	810	804	5,410,991	519.21
Leisure & Hospitality	73	794	854	917	2,580,833	232.19
Other Services	43	132	129	129	712,119	421.37
Local Government	18	802	819	810	5,590,895	530.73
State Government	9	102	102	105	605,794	452.42

TABLE 6. COUNTY SUMMARY

North American Industry Classification System - Industry Groups	Number of Employing Units	Employment			Total Earnings Jan - Mar 2014	Average Weekly Earnings
		Jan	Feb	Mar		
CLEVELAND COUNTY - TOTAL	129	1,019	1,020	1,013	\$6,953,635	\$525.78
Natural Resources & Mining	16	153	151	147	1,210,163	619.22
Construction	5	27	27	27	128,695	366.65
Manufacturing	6	84	86	86	700,682	631.62
Trade, Transportation & Utilities	38	203	201	192	1,436,388	556.16
Wholesale Trade	4	52	53	44	433,228	670.98
Retail Trade	18	68	64	66	306,530	357.26
Transportation, Warehousing & Utilities	16	83	84	82	696,630	645.63
Financial Activities	3	18	18	19	128,754	540.23
Education & Health Services	27	134	135	134	616,810	353.20
Other Services	6	14	12	12	106,550	647.06
Local Government	11	311	316	319	2,026,193	494.27
State Government	7	47	46	47	255,514	421.18
Other	10	28	28	30	343,886	922.77
COLUMBIA COUNTY - TOTAL	748	8,013	8,143	8,246	\$73,475,459	\$694.86
Natural Resources & Mining	44	387	386	395	6,356,823	1,255.96
Construction	42	298	294	303	2,842,185	732.84
Manufacturing	35	1,757	1,758	1,778	25,230,964	1,100.04
Trade, Transportation & Utilities	163	1,407	1,411	1,418	9,768,229	532.15
Wholesale Trade	29	183	191	195	1,859,016	753.96
Retail Trade	99	977	970	971	5,253,880	415.50
Transportation, Warehousing & Utilities	35	247	250	252	2,655,333	818.12
Information	9	53	54	58	493,319	689.96
Financial Activities	73	368	370	368	3,551,674	741.06
Professional & Business Services	60	292	302	301	2,478,563	639.08
Education & Health Services	181	1,010	1,010	1,005	5,933,683	452.66
Leisure & Hospitality	49	611	638	685	1,985,060	236.86
Other Services	53	191	194	193	836,697	334.06
Local Government	26	1,089	1,104	1,109	8,583,505	599.88
State Government	13	550	622	633	5,414,757	692.28

TABLE 6. COUNTY SUMMARY

North American Industry Classification System - Industry Groups	Number of Employing Units	Employment			Total Earnings	Average Weekly Earnings
		Jan	Feb	Mar	Jan - Mar 2014	
CONWAY COUNTY - TOTAL	579	6,720	6,790	6,805	\$57,137,965	\$649.06
Natural Resources & Mining	33	339	329	334	3,354,501	772.57
Construction	51	468	472	477	5,392,142	878.15
Manufacturing	17	813	812	814	11,518,823	1,089.87
Trade, Transportation & Utilities	134	1,605	1,633	1,589	13,992,794	668.97
Wholesale Trade	23	202	203	197	2,226,573	853.53
Retail Trade	81	797	819	777	4,671,910	450.54
Transportation, Warehousing & Utilities	30	606	611	615	7,094,311	893.64
Information	4	14	15	16	97,340	499.18
Financial Activities	33	158	176	177	1,581,560	714.24
Professional & Business Services	44	514	551	573	3,366,530	474.29
Education & Health Services	156	856	854	868	5,821,108	521.08
Leisure & Hospitality	40	444	452	455	1,324,263	226.20
Other Services	28	106	109	104	868,950	628.61
Local Government	29	970	954	966	7,124,670	568.91
State Government	10	433	433	432	2,695,284	479.19
CRAIGHEAD COUNTY - TOTAL	2,717	44,677	44,876	45,113	\$384,343,662	\$658.63
Natural Resources & Mining	76	248	268	281	1,922,920	556.78
Construction	211	1,744	1,717	1,768	14,805,302	653.40
Manufacturing	110	5,768	5,820	5,792	60,306,834	800.75
Trade, Transportation & Utilities	752	9,430	9,346	9,389	74,732,595	612.32
Wholesale Trade	187	1,733	1,727	1,757	23,374,392	1,033.94
Retail Trade	447	6,305	6,239	6,246	36,971,980	454.07
Transportation, Warehousing & Utilities	118	1,392	1,380	1,386	14,386,223	798.44
Information	27	476	479	476	5,184,839	836.13
Financial Activities	269	1,568	1,572	1,600	18,916,160	920.94
Professional & Business Services	348	3,722	3,868	3,840	27,630,842	557.86
Education & Health Services	462	9,549	9,547	9,544	96,399,011	776.74
Leisure & Hospitality	246	4,633	4,670	4,815	15,771,198	257.79
Other Services	158	855	835	843	5,512,065	502.18
Local Government	35	3,939	3,988	3,992	33,093,929	640.75
State Government	23	2,745	2,766	2,773	30,067,967	837.61

TABLE 6. COUNTY SUMMARY

North American Industry Classification System - Industry Groups	Number of Employing Units	Employment			Total Earnings	Average Weekly Earnings
		Jan	Feb	Mar	Jan - Mar 2014	
CRAWFORD COUNTY - TOTAL	1,297	18,705	18,860	18,970	\$153,449,114	\$626.36
Natural Resources & Mining	32	280	350	355	3,513,399	823.13
Construction	156	769	793	802	6,695,251	653.58
Manufacturing	69	4,337	4,361	4,385	40,546,937	715.20
Trade, Transportation & Utilities	326	5,795	5,802	5,815	49,707,730	658.80
Wholesale Trade	90	778	779	785	8,598,090	847.21
Retail Trade	162	1,862	1,863	1,878	11,924,185	491.12
Transportation, Warehousing & Utilities	74	3,155	3,160	3,152	29,185,455	711.43
Information	12	111	111	115	1,058,989	725.17
Financial Activities	130	525	525	519	4,755,533	699.45
Professional & Business Services	160	1,373	1,363	1,356	10,033,763	565.86
Education & Health Services	182	1,522	1,522	1,551	11,614,164	583.28
Leisure & Hospitality	99	1,465	1,481	1,531	4,683,696	241.42
Other Services	78	358	363	365	2,567,568	545.59
Local Government	43	2,017	2,036	2,021	17,274,772	656.32
State Government	10	153	153	155	997,312	499.24
CRITTENDEN COUNTY - TOTAL	1,318	16,896	16,884	16,504	\$137,411,140	\$630.62
Natural Resources & Mining	54	242	253	272	1,772,955	533.43
Construction	52	1,064	1,005	325	11,458,559	1,104.55
Manufacturing	42	1,624	1,613	1,609	17,878,060	851.36
Trade, Transportation & Utilities	310	4,290	4,222	4,328	38,097,969	684.72
Wholesale Trade	65	681	696	713	8,636,088	953.56
Retail Trade	161	1,903	1,841	1,885	10,431,571	427.66
Transportation, Warehousing & Utilities	84	1,706	1,685	1,730	19,030,310	857.57
Information	6	67	66	68	552,291	634.09
Financial Activities	97	433	442	435	4,494,670	791.78
Professional & Business Services	119	1,329	1,366	1,502	9,111,329	500.98
Education & Health Services	388	2,603	2,623	2,608	20,390,769	600.66
Leisure & Hospitality	118	2,066	2,126	2,173	8,210,800	297.69
Other Services	74	412	413	422	2,950,351	545.99
Local Government	44	2,247	2,237	2,249	19,238,008	659.37
State Government	14	519	518	513	3,255,379	484.67

TABLE 6. COUNTY SUMMARY

North American Industry Classification System - Industry Groups	Number of Employing Units	Employment			Total Earnings Jan - Mar 2014	Average Weekly Earnings
		Jan	Feb	Mar		
CROSS COUNTY - TOTAL	510	4,820	4,897	4,982	\$37,219,798	\$584.34
Natural Resources & Mining	35	186	191	193	1,142,667	462.62
Construction	22	66	71	74	552,027	603.75
Manufacturing	12	628	631	639	5,151,628	626.36
Trade, Transportation & Utilities	130	1,207	1,230	1,263	10,950,840	683.00
Wholesale Trade	29	298	312	331	4,785,078	1,173.48
Retail Trade	74	774	777	788	4,769,225	470.54
Transportation, Warehousing & Utilities	27	135	141	144	1,396,537	767.33
Information	5	37	39	38	280,472	567.76
Financial Activities	46	311	317	316	2,810,795	687.12
Professional & Business Services	44	118	123	127	1,094,126	686.12
Education & Health Services	122	802	809	823	5,481,213	519.68
Leisure & Hospitality	33	300	311	310	849,122	212.76
Other Services	35	75	74	77	453,759	463.33
Local Government	16	700	710	732	5,537,315	596.56
State Government	10	390	391	390	2,915,834	574.62
DALLAS COUNTY - TOTAL	256	2,696	2,719	2,701	\$19,965,618	\$567.70
Natural Resources & Mining	34	169	170	174	1,418,100	637.92
Construction	18	63	81	70	535,307	577.25
Manufacturing	10	529	532	535	5,279,163	763.33
Trade, Transportation & Utilities	57	465	465	466	2,993,479	494.84
Retail Trade	40	340	340	337	1,944,617	441.26
Other Trade, Transportation, & Utilities	17	125	125	129	1,048,862	638.64
Information	3	16	16	16	127,906	614.93
Financial Activities	16	76	74	73	665,875	689.07
Professional & Business Services	12	40	40	39	560,761	1,087.45
Education & Health Services	59	755	747	743	5,504,257	565.80
Leisure & Hospitality	13	124	140	155	378,175	208.28
Other Services	13	65	65	62	312,804	375.97
Local Government	14	344	341	321	1,888,229	433.15
State Government	7	50	48	47	301,562	479.94

TABLE 6. COUNTY SUMMARY

North American Industry Classification System - Industry Groups	Number of Employing Units	Employment			Total Earnings Jan - Mar 2014	Average Weekly Earnings
		Jan	Feb	Mar		
DESHA COUNTY - TOTAL	527	4,403	4,392	4,426	\$34,370,630	\$599.93
Natural Resources & Mining	71	278	279	297	1,943,633	525.21
Construction	20	105	104	104	818,098	603.17
Manufacturing	14	818	810	810	10,089,032	954.98
Trade, Transportation & Utilities	114	886	875	877	7,042,901	616.10
Wholesale Trade	23	237	226	228	3,052,111	1,019.30
Retail Trade	65	482	485	486	2,557,549	406.20
Transportation, Warehousing & Utilities	26	167	164	163	1,433,241	669.53
Information	4	14	14	14	140,834	773.81
Financial Activities	30	201	205	204	1,533,270	580.05
Professional & Business Services	41	99	100	95	629,590	494.18
Education & Health Services	142	742	738	748	4,478,571	463.88
Leisure & Hospitality	39	288	298	306	909,452	235.28
Other Services	23	46	45	49	198,082	326.51
Local Government	19	799	793	787	5,683,104	551.28
State Government	10	127	131	135	904,063	530.86
DREW COUNTY - TOTAL	534	6,216	6,266	6,373	\$47,194,016	\$577.61
Natural Resources & Mining	45	260	297	324	2,356,130	617.16
Construction	19	78	77	81	648,465	634.09
Manufacturing	23	777	768	782	6,242,736	619.09
Trade, Transportation & Utilities	130	1,220	1,231	1,271	8,357,313	518.17
Wholesale Trade	20	170	170	167	1,919,595	873.73
Retail Trade	90	945	960	999	5,392,974	428.56
Transportation, Warehousing & Utilities	20	105	101	105	1,044,744	775.22
Information	8	56	54	54	439,122	617.90
Financial Activities	47	236	231	228	2,322,871	771.29
Professional & Business Services	36	245	245	242	1,962,784	618.78
Education & Health Services	122	892	884	884	6,745,474	585.21
Leisure & Hospitality	46	594	586	606	1,823,230	235.58
Other Services	20	52	51	53	338,746	501.10
Local Government	22	1,212	1,219	1,216	9,977,455	631.34
State Government	16	594	623	632	5,979,690	746.31

TABLE 6. COUNTY SUMMARY

North American Industry Classification System - Industry Groups	Number of Employing Units	Employment			Total Earnings	Average Weekly Earnings
		Jan	Feb	Mar	Jan - Mar 2014	
FAULKNER COUNTY - TOTAL	2,791	39,479	39,639	39,957	\$379,049,187	\$734.60
Natural Resources & Mining	59	1,256	1,271	1,275	31,432,149	1,907.83
Construction	308	2,522	2,504	2,558	24,203,280	736.47
Manufacturing	99	3,082	3,119	3,151	38,622,517	953.05
Trade, Transportation & Utilities	657	7,006	6,965	7,005	52,304,736	575.43
Wholesale Trade	161	600	611	628	8,240,952	1,034.13
Retail Trade	402	5,548	5,512	5,527	32,310,260	449.52
Transportation, Warehousing & Utilities	94	858	842	850	11,753,524	1,063.67
Information	19	237	238	240	3,251,950	1,049.58
Financial Activities	325	1,562	1,561	1,571	19,327,673	950.20
Professional & Business Services	404	5,787	5,756	5,691	77,313,029	1,035.25
Education & Health Services	443	5,889	5,997	6,044	50,993,578	656.32
Leisure & Hospitality	241	4,499	4,538	4,637	14,239,614	240.31
Other Services	180	693	685	713	4,634,080	511.43
Local Government	38	3,597	3,638	3,692	32,386,558	683.98
State Government	18	3,349	3,367	3,380	30,340,023	693.50
FRANKLIN COUNTY - TOTAL	334	4,157	4,140	4,152	\$33,919,662	\$628.77
Natural Resources & Mining	19	281	273	277	4,515,655	1,254.00
Construction	30	86	92	97	685,332	575.10
Manufacturing	13	835	835	828	7,532,523	695.87
Trade, Transportation & Utilities	86	895	890	894	7,405,707	637.93
Wholesale Trade	13	39	38	38	196,379	394.07
Retail Trade	52	583	582	585	3,080,722	406.25
Transportation, Warehousing & Utilities	21	273	270	271	4,128,606	1,170.46
Information	6	23	23	23	183,896	615.04
Financial Activities	30	191	191	191	1,966,822	792.12
Professional & Business Services	27	125	125	122	676,130	419.44
Education & Health Services	54	558	534	542	3,080,920	435.12
Leisure & Hospitality	25	285	282	287	804,880	217.50
Other Services	16	52	49	49	308,233	474.20
Local Government	19	716	725	719	5,615,009	599.89
State Government	9	110	121	123	1,144,555	746.12

TABLE 6. COUNTY SUMMARY

North American Industry Classification System - Industry Groups	Number of Employing Units	Employment			Total Earnings	Average Weekly Earnings
		Jan	Feb	Mar	Jan - Mar 2014	
FULTON COUNTY - TOTAL	208	1,865	1,882	1,872	\$12,161,530	\$499.47
Natural Resources & Mining	3	2	2	2	11,103	427.04
Construction	8	30	25	25	261,623	754.68
Manufacturing	13	119	126	117	600,139	382.58
Trade, Transportation & Utilities	50	304	317	299	2,207,405	553.70
Retail Trade	31	182	186	186	871,982	363.22
Other Trade, Transportation, & Utilities	19	122	131	113	1,335,423	842.01
Information	4	32	33	34	193,801	451.75
Financial Activities	17	87	87	94	1,144,552	985.55
Professional & Business Services	17	48	50	50	373,649	582.61
Education & Health Services	49	454	451	454	2,613,278	443.76
Leisure & Hospitality	17	134	134	131	301,492	174.37
Other Services	8	14	15	14	61,810	331.72
Local Government	12	534	535	545	3,630,728	519.12
State Government	10	107	107	107	761,950	547.77
GARLAND COUNTY - TOTAL	3,102	35,380	35,283	35,757	\$277,740,690	\$602.27
Natural Resources & Mining	31	267	270	265	3,743,326	1,077.11
Construction	339	1,589	1,586	1,613	12,004,148	578.57
Manufacturing	99	2,422	2,427	2,388	23,369,159	745.18
Trade, Transportation & Utilities	712	7,164	7,122	7,183	52,180,401	560.88
Wholesale Trade	140	847	839	865	9,292,278	840.60
Retail Trade	517	5,750	5,716	5,745	35,404,175	474.71
Transportation, Warehousing & Utilities	55	567	567	573	7,483,948	1,011.75
Information	33	528	522	503	4,032,897	599.27
Financial Activities	348	1,389	1,384	1,384	14,770,993	819.99
Professional & Business Services	375	3,192	3,087	3,161	25,273,535	617.83
Education & Health Services	520	7,510	7,503	7,598	75,735,286	772.96
Leisure & Hospitality	352	6,373	6,327	6,525	24,265,541	291.27
Other Services	234	911	930	938	5,461,540	453.53
Local Government	34	2,989	3,001	3,034	28,092,743	718.41
State Government	25	1,046	1,124	1,165	8,811,121	609.70

TABLE 6. COUNTY SUMMARY

North American Industry Classification System - Industry Groups	Number of Employing Units	Employment			Total Earnings	Average Weekly Earnings
		Jan	Feb	Mar	Jan - Mar 2014	
GRANT COUNTY - TOTAL	334	3,774	3,830	3,897	\$30,896,149	\$619.94
Natural Resources & Mining	27	172	174	177	2,121,022	935.88
Construction	29	148	152	157	1,576,831	796.25
Manufacturing	17	1,120	1,158	1,170	11,150,814	746.31
Trade, Transportation & Utilities	86	596	605	611	3,987,007	507.77
Wholesale Trade	18	101	101	98	909,992	699.99
Retail Trade	47	434	440	450	2,527,501	440.54
Transportation, Warehousing & Utilities	21	61	64	63	549,514	674.53
Information	3	34	34	34	559,908	1,266.76
Financial Activities	25	83	84	83	693,172	639.85
Professional & Business Services	25	116	122	125	1,105,777	702.97
Education & Health Services	58	367	359	358	2,151,933	458.12
Leisure & Hospitality	24	253	263	258	659,583	196.66
Other Services	22	50	50	49	223,695	346.46
Local Government	10	783	776	820	6,246,219	605.90
State Government	8	52	53	55	420,188	606.04
GREENE COUNTY - TOTAL	888	14,767	14,733	14,826	\$122,169,809	\$636.04
Natural Resources & Mining	38	236	254	261	1,529,660	470.04
Construction	64	218	246	264	1,966,932	623.50
Manufacturing	63	5,160	5,088	5,138	55,790,566	836.78
Trade, Transportation & Utilities	236	2,451	2,436	2,470	17,225,335	540.31
Wholesale Trade	51	526	520	532	5,266,686	770.21
Retail Trade	155	1,710	1,696	1,712	10,144,822	457.43
Transportation, Warehousing & Utilities	30	215	220	226	1,813,827	633.25
Information	9	86	86	86	483,411	432.39
Financial Activities	78	455	461	468	4,179,405	696.88
Professional & Business Services	92	1,051	1,050	1,032	6,445,855	474.79
Education & Health Services	147	1,801	1,804	1,788	13,544,813	579.59
Leisure & Hospitality	68	1,079	1,065	1,073	3,232,530	231.88
Other Services	52	208	209	212	1,213,896	445.36
Local Government	30	1,619	1,635	1,631	13,077,087	617.77
State Government	11	403	399	403	3,480,319	666.51

TABLE 6. COUNTY SUMMARY

North American Industry Classification System - Industry Groups	Number of Employing Units	Employment			Total Earnings	Average Weekly Earnings
		Jan	Feb	Mar	Jan - Mar 2014	
HEMPSTEAD COUNTY - TOTAL	502	7,684	7,741	7,767	\$63,559,009	\$632.44
Natural Resources & Mining	21	205	208	216	1,934,046	709.57
Construction	31	183	185	192	1,563,881	644.46
Manufacturing	28	2,006	2,004	1,995	18,655,249	716.91
Trade, Transportation & Utilities	135	1,495	1,504	1,506	13,012,767	666.58
Wholesale Trade	21	278	270	274	2,486,960	698.19
Retail Trade	86	891	899	893	5,075,928	436.59
Transportation, Warehousing & Utilities	28	326	335	339	5,449,879	1,257.66
Information	8	46	47	47	316,825	522.24
Financial Activities	39	242	228	230	2,462,732	811.89
Professional & Business Services	32	140	168	169	4,498,385	2,176.29
Education & Health Services	85	997	991	982	5,858,642	455.22
Leisure & Hospitality	44	585	579	600	1,724,917	225.66
Other Services	35	156	152	154	926,425	462.75
Local Government	27	906	911	910	7,089,721	599.96
State Government	17	723	764	766	5,515,419	564.93
HOT SPRING COUNTY - TOTAL	605	8,353	8,329	8,394	\$67,531,405	\$621.48
Natural Resources & Mining	25	143	147	146	1,096,341	580.28
Construction	55	391	381	320	3,122,160	659.80
Manufacturing	30	1,394	1,386	1,414	16,073,328	884.41
Trade, Transportation & Utilities	150	1,409	1,406	1,449	12,947,538	700.73
Wholesale Trade	17	86	88	89	978,143	858.27
Retail Trade	96	806	804	823	4,699,757	445.77
Transportation, Warehousing & Utilities	37	517	514	537	7,269,638	1,069.90
Information	7	52	54	51	438,405	644.40
Financial Activities	54	264	265	264	2,545,175	740.67
Professional & Business Services	54	916	930	951	5,984,580	493.76
Education & Health Services	111	1,235	1,215	1,224	8,908,143	559.53
Leisure & Hospitality	46	537	528	539	1,412,995	203.29
Other Services	33	127	131	135	748,975	439.80
Local Government	27	1,029	1,023	1,023	7,973,004	598.35
State Government	13	856	863	878	6,280,761	558.11

TABLE 6. COUNTY SUMMARY

North American Industry Classification System - Industry Groups	Number of Employing Units	Employment			Total Earnings	Average Weekly Earnings
		Jan	Feb	Mar	Jan - Mar 2014	
HOWARD COUNTY - TOTAL	352	7,091	7,018	7,181	\$50,781,973	\$550.44
Natural Resources & Mining	14	179	183	185	1,528,112	644.68
Construction	17	96	97	99	925,477	731.41
Manufacturing	23	3,734	3,641	3,760	27,039,706	560.39
Trade, Transportation & Utilities	95	891	874	889	6,570,483	571.31
Wholesale Trade	17	72	76	79	723,609	735.62
Retail Trade	56	602	593	598	3,516,170	452.55
Transportation, Warehousing & Utilities	22	217	205	212	2,330,704	848.35
Information	5	27	27	27	163,619	466.15
Financial Activities	33	145	145	144	1,155,177	614.24
Professional & Business Services	25	150	150	146	1,078,788	558.19
Education & Health Services	66	599	603	611	4,466,720	568.55
Leisure & Hospitality	22	289	305	318	886,467	224.31
Other Services	24	130	135	142	1,071,723	607.67
Local Government	17	732	736	735	5,005,062	524.29
State Government	11	119	122	125	890,639	561.56
INDEPENDENCE COUNTY - TOTAL	915	14,363	14,394	14,672	\$118,591,453	\$630.16
Natural Resources & Mining	16	253	250	264	2,840,294	854.57
Construction	66	337	327	372	2,958,587	659.03
Manufacturing	45	2,802	2,826	2,928	28,149,970	759.25
Trade, Transportation & Utilities	242	2,886	2,844	2,876	22,575,502	605.36
Wholesale Trade	33	458	457	464	4,145,285	693.69
Retail Trade	161	1,691	1,667	1,673	9,408,114	431.55
Transportation, Warehousing & Utilities	48	737	720	739	9,022,103	948.10
Information	10	109	112	111	835,969	581.07
Financial Activities	81	500	504	496	5,668,003	872.00
Professional & Business Services	94	967	937	985	5,455,399	435.77
Education & Health Services	164	2,993	2,987	2,981	30,249,480	779.00
Leisure & Hospitality	73	1,035	1,061	1,089	3,008,421	217.98
Other Services	61	316	322	334	1,650,494	391.86
Local Government	47	1,583	1,593	1,594	10,264,811	496.60
State Government	16	582	631	642	4,934,523	613.87

TABLE 6. COUNTY SUMMARY

North American Industry Classification System - Industry Groups	Number of Employing Units	Employment			Total Earnings	Average Weekly Earnings
		Jan	Feb	Mar	Jan - Mar 2014	
IZARD COUNTY - TOTAL	251	2,996	3,054	3,078	\$22,043,265	\$557.29
Natural Resources & Mining	5	131	159	172	1,685,074	841.70
Construction	21	84	85	90	721,739	643.07
Manufacturing	9	296	301	296	2,460,741	635.91
Trade, Transportation & Utilities	63	561	550	556	3,442,899	476.61
Wholesale Trade	9	18	19	17	120,684	515.74
Retail Trade	44	399	385	390	1,999,545	393.04
Transportation, Warehousing & Utilities	10	144	146	149	1,322,670	695.29
Information	4	7	7	7	155,139	1,704.82
Financial Activities	25	139	137	135	1,178,973	661.97
Professional & Business Services	17	82	82	89	467,213	426.16
Education & Health Services	46	621	619	627	4,630,465	572.35
Leisure & Hospitality	22	103	102	110	283,034	207.35
Other Services	11	24	22	20	126,946	443.87
Local Government	18	512	510	499	3,505,263	531.83
State Government	10	436	480	477	3,385,779	560.90
JACKSON COUNTY - TOTAL	448	5,053	5,079	5,229	\$44,946,916	\$675.24
Natural Resources & Mining	52	210	222	258	1,758,118	588.00
Construction	25	122	121	126	1,155,849	722.86
Manufacturing	16	900	907	933	12,300,491	1,035.98
Trade, Transportation & Utilities	109	1,025	1,005	1,029	8,540,616	644.30
Wholesale Trade	23	231	212	216	3,331,500	1,166.63
Retail Trade	69	699	699	718	4,181,928	456.08
Transportation, Warehousing & Utilities	17	95	94	95	1,027,188	834.66
Information	4	39	35	39	208,204	425.20
Financial Activities	33	151	151	155	1,557,323	786.39
Professional & Business Services	32	120	114	130	972,308	616.43
Education & Health Services	84	806	808	807	7,265,404	692.54
Leisure & Hospitality	27	284	279	292	787,677	212.60
Other Services	21	62	62	63	560,593	691.81
Local Government	32	621	632	642	4,162,245	506.87
State Government	13	713	743	755	5,678,088	592.64

TABLE 6. COUNTY SUMMARY

North American Industry Classification System - Industry Groups	Number of Employing Units	Employment			Total Earnings	Average Weekly Earnings
		Jan	Feb	Mar	Jan - Mar 2014	
JEFFERSON COUNTY - TOTAL	2,177	26,504	26,599	26,816	\$241,737,798	\$698.03
Natural Resources & Mining	35	177	180	185	2,044,398	870.45
Construction	97	526	506	593	4,747,341	674.18
Manufacturing	63	5,126	5,059	4,942	61,896,496	944.26
Trade, Transportation & Utilities	440	4,691	4,660	4,715	41,475,366	680.45
Wholesale Trade	77	601	598	598	6,361,161	816.89
Retail Trade	299	3,135	3,127	3,169	19,239,141	470.77
Transportation, Warehousing & Utilities	64	955	935	948	15,875,064	1,290.87
Information	14	98	97	97	992,238	784.17
Financial Activities	156	1,088	1,109	1,087	14,037,191	986.40
Professional & Business Services	154	1,565	1,489	1,608	11,142,259	551.54
Education & Health Services	874	4,851	4,847	4,850	43,463,110	689.44
Leisure & Hospitality	140	1,759	1,813	1,878	5,472,863	231.74
Other Services	129	580	586	599	4,277,722	559.30
Local Government	39	3,002	3,036	3,046	23,515,566	597.39
State Government	36	3,041	3,217	3,216	28,673,248	698.43
JOHNSON COUNTY - TOTAL	495	8,198	8,217	8,255	\$60,931,409	\$569.97
Natural Resources & Mining	17	134	136	138	1,143,871	646.99
Construction	35	167	178	185	1,357,456	591.05
Manufacturing	35	2,682	2,661	2,657	20,030,195	577.79
Trade, Transportation & Utilities	124	1,827	1,834	1,837	14,422,365	605.35
Retail Trade	79	889	887	893	4,945,111	427.57
Other Trade, Transportation & Utilities	45	938	947	944	9,477,254	773.09
Information	5	49	49	52	290,700	447.23
Financial Activities	49	192	189	195	1,591,586	637.65
Professional & Business Services	51	223	227	236	1,630,180	548.39
Education & Health Services	89	1,267	1,241	1,238	10,064,963	620.04
Leisure & Hospitality	37	458	477	492	1,354,969	219.12
Other Services	30	61	66	68	358,255	423.97
Local Government	14	1,000	1,023	1,020	7,666,572	581.40
State Government	9	138	136	137	1,020,297	572.88

TABLE 6. COUNTY SUMMARY

North American Industry Classification System - Industry Groups	Number of Employing Units	Employment			Total Earnings Jan - Mar 2014	Average Weekly Earnings
		Jan	Feb	Mar		
LAFAYETTE COUNTY - TOTAL	171	1,226	1,231	1,227	\$9,513,829	\$595.96
Natural Resources & Mining	30	163	169	164	2,200,121	1,023.63
Construction	10	66	66	65	766,768	898.21
Manufacturing	7	37	36	37	312,481	655.55
Trade, Transportation & Utilities	32	200	199	204	1,320,367	505.31
Retail Trade	19	113	114	111	513,327	350.47
Other Trade, Transportation & Utilities	13	87	85	93	807,040	702.79
Financial Activities	12	48	48	48	339,374	543.87
Professional & Business Services	11	54	53	47	376,489	564.17
Education & Health Services	37	231	226	222	1,351,073	459.18
Leisure & Hospitality	5	39	39	39	132,889	262.11
Local Government	13	277	283	287	2,076,025	565.62
State Government	7	45	46	47	276,409	462.22
Other	7	66	66	67	361,833	419.60
LAWRENCE COUNTY - TOTAL	412	3,987	3,992	4,052	\$28,554,263	\$547.71
Natural Resources & Mining	54	193	197	204	1,474,319	572.77
Construction	22	104	106	119	856,919	601.07
Manufacturing	22	459	460	464	3,457,153	576.87
Trade, Transportation & Utilities	110	830	833	863	6,932,676	633.35
Wholesale Trade	20	233	239	248	2,678,545	858.51
Retail Trade	59	482	476	495	2,902,220	460.94
Transportation, Warehousing & Utilities	31	115	118	120	1,351,911	883.79
Financial Activities	34	147	146	151	1,164,799	605.40
Professional & Business Services	28	104	105	108	914,976	666.08
Education & Health Services	59	519	519	504	3,634,705	543.95
Leisure & Hospitality	26	318	307	316	861,214	211.20
Local Government	27	1,140	1,144	1,146	8,211,203	552.45
State Government	10	101	103	104	624,757	468.10
Other	20	72	72	73	421,542	448.29

TABLE 6. COUNTY SUMMARY

North American Industry Classification System - Industry Groups	Number of Employing Units	Employment			Total Earnings	Average Weekly Earnings
		Jan	Feb	Mar	Jan - Mar 2014	
LEE COUNTY - TOTAL	302	1,874	1,898	1,952	\$14,701,542	\$592.71
Natural Resources & Mining	37	166	185	213	1,451,776	594.02
Construction	10	23	26	36	205,217	557.15
Trade, Transportation & Utilities	45	330	343	345	3,267,529	740.71
Wholesale Trade	8	97	100	106	1,544,557	1,176.36
Retail Trade	25	184	192	190	1,024,165	417.57
Transportation, Warehousing & Utilities	12	49	51	49	698,807	1,082.30
Financial Activities	18	69	69	70	569,221	631.53
Professional & Business Services	15	72	72	70	692,072	746.30
Education & Health Services	132	337	338	344	2,515,655	569.71
Leisure & Hospitality	9	86	83	86	260,897	236.11
Local Government	15	294	291	292	1,910,435	502.70
State Government	7	477	472	479	3,723,946	601.80
Other	14	20	19	17	104,794	431.84
LINCOLN COUNTY - TOTAL	284	2,884	2,908	2,931	\$22,672,936	\$599.82
Natural Resources & Mining	35	166	161	164	1,438,466	676.08
Construction	16	104	96	96	747,753	582.97
Manufacturing	9	315	317	320	2,512,469	609.03
Trade, Transportation & Utilities	43	356	356	356	3,577,591	773.03
Wholesale Trade	8	56	58	61	965,936	1,273.76
Retail Trade	22	174	175	169	829,959	369.75
Transportation, Warehousing & Utilities	13	126	123	126	1,781,696	1,096.43
Financial Activities	20	74	72	73	698,870	736.43
Professional & Business Services	12	19	19	19	158,372	641.18
Education & Health Services	101	389	386	405	2,747,269	537.28
Leisure & Hospitality	14	151	155	158	384,518	191.24
Local Government	7	340	366	355	2,428,136	528.12
State Government	12	940	947	953	7,705,132	626.09
Other	15	30	33	32	274,360	666.46

TABLE 6. COUNTY SUMMARY

North American Industry Classification System - Industry Groups	Number of Employing Units	Employment			Total Earnings	Average Weekly Earnings
		Jan	Feb	Mar	Jan - Mar 2014	
LITTLE RIVER COUNTY - TOTAL	243	3,487	3,480	3,496	\$47,314,587	\$1,043.56
Natural Resources & Mining	13	94	90	90	800,069	673.84
Construction	18	183	190	185	1,820,386	752.85
Manufacturing	16	1,294	1,274	1,285	32,371,121	1,938.82
Trade, Transportation & Utilities	58	510	518	509	3,398,218	510.22
Wholesale Trade	9	31	30	31	407,534	1,022.24
Retail Trade	36	350	357	359	2,131,928	461.52
Transportation, Warehousing & Utilities	13	129	131	119	858,756	522.89
Information	3	10	10	10	121,764	936.65
Financial Activities	19	78	77	76	671,068	670.40
Professional & Business Services	19	76	79	90	580,130	546.43
Education & Health Services	35	158	164	163	927,625	441.38
Leisure & Hospitality	14	196	192	194	625,073	247.85
Other Services	17	75	65	62	260,443	297.54
Local Government	20	724	731	732	5,173,748	545.93
State Government	11	89	90	100	564,942	467.28
LOGAN COUNTY - TOTAL	477	5,351	5,339	5,395	\$38,243,613	\$548.68
Natural Resources & Mining	24	129	129	135	1,574,952	924.81
Construction	40	206	214	227	1,810,121	645.63
Manufacturing	21	1,175	1,184	1,179	9,989,495	651.57
Trade, Transportation & Utilities	107	926	917	927	6,172,584	514.24
Wholesale Trade	11	70	71	72	298,746	323.67
Retail Trade	68	689	681	689	3,876,164	434.43
Transportation, Warehousing & Utilities	28	167	165	166	1,997,674	925.71
Information	5	32	31	31	360,157	884.18
Financial Activities	43	185	178	177	1,892,966	808.96
Professional & Business Services	47	139	131	138	1,191,311	673.82
Education & Health Services	98	749	746	746	4,758,957	490.06
Leisure & Hospitality	30	311	310	323	831,476	203.26
Other Services	26	126	126	127	942,817	574.07
Local Government	22	798	798	798	5,574,188	537.32
State Government	14	575	575	587	3,144,589	417.77

TABLE 6. COUNTY SUMMARY

North American Industry Classification System - Industry Groups	Number of Employing Units	Employment			Total Earnings	Average Weekly Earnings
		Jan	Feb	Mar	Jan - Mar 2014	
LONOKE COUNTY - TOTAL	1,318	13,046	13,138	13,226	\$98,783,086	\$578.43
Natural Resources & Mining	88	428	428	465	3,387,113	591.70
Construction	133	670	669	690	5,898,687	670.89
Manufacturing	38	1,625	1,648	1,662	19,245,435	899.95
Trade, Transportation & Utilities	325	2,832	2,823	2,884	19,510,953	527.29
Wholesale Trade	80	424	431	454	4,938,960	870.71
Retail Trade	183	2,158	2,120	2,153	12,049,644	432.39
Transportation, Warehousing & Utilities	62	250	272	277	2,522,349	728.51
Information	15	96	98	95	901,123	719.56
Financial Activities	138	502	511	503	5,963,712	907.81
Professional & Business Services	154	860	849	828	5,711,719	519.55
Education & Health Services	206	1,608	1,650	1,645	11,487,601	540.69
Leisure & Hospitality	107	1,518	1,540	1,551	4,630,727	231.86
Other Services	73	192	194	196	1,075,145	426.31
Local Government	26	2,551	2,562	2,538	19,816,689	597.71
State Government	15	164	166	169	1,154,182	533.77
MADISON COUNTY - TOTAL	246	3,151	3,126	3,176	\$22,206,238	\$542.10
Natural Resources & Mining	13	58	48	50	338,395	500.58
Construction	22	65	64	83	479,835	522.32
Manufacturing	23	1,102	1,096	1,096	8,172,168	572.52
Trade, Transportation & Utilities	49	559	565	571	3,956,661	538.69
Retail Trade	33	436	429	432	2,479,153	441.10
Other Trade, Transportation & Utilities	16	123	136	139	1,477,508	856.69
Information	6	42	41	40	551,515	1,034.74
Financial Activities	18	74	68	75	553,915	589.06
Professional & Business Services	22	154	152	156	1,135,988	567.43
Education & Health Services	47	271	266	270	1,712,067	489.58
Leisure & Hospitality	17	187	193	196	436,855	175.02
Other Services	13	27	28	27	247,538	696.64
Local Government	9	571	564	571	4,332,679	586.08
State Government	7	41	41	41	288,622	541.50

TABLE 6. COUNTY SUMMARY

North American Industry Classification System - Industry Groups	Number of Employing Units	Employment			Total Earnings	Average Weekly Earnings
		Jan	Feb	Mar	Jan - Mar 2014	
MARION COUNTY - TOTAL	291	3,635	3,648	3,687	\$23,543,782	\$495.28
Natural Resources & Mining	5	23	24	22	113,601	379.94
Construction	20	49	47	47	273,360	441.14
Manufacturing	20	1,663	1,671	1,690	10,640,453	488.75
Trade, Transportation & Utilities	52	482	480	491	3,442,139	546.69
Retail Trade	36	408	408	412	2,301,185	432.45
Other Trade, Transportation & Utilities	16	74	72	79	1,140,954	1,170.21
Information	4	52	52	51	617,691	919.64
Financial Activities	31	176	177	182	1,611,399	695.07
Professional & Business Services	24	61	65	64	344,212	418.07
Education & Health Services	58	345	345	340	2,016,779	451.85
Leisure & Hospitality	34	179	179	193	509,877	213.55
Other Services	16	31	33	31	136,550	331.70
Local Government	18	501	503	504	3,414,912	522.58
State Government	9	73	72	72	422,809	449.64
MILLER COUNTY - TOTAL	865	12,565	12,560	12,698	\$109,159,574	\$666.01
Natural Resources & Mining	31	169	172	166	1,423,290	647.83
Construction	77	653	670	683	5,790,910	666.18
Manufacturing	27	2,241	2,244	2,247	32,149,857	1,102.08
Trade, Transportation & Utilities	229	3,489	3,416	3,462	28,918,232	643.72
Wholesale Trade	53	507	507	506	5,574,705	846.36
Retail Trade	129	1,353	1,350	1,361	7,803,765	443.13
Transportation, Warehousing & Utilities	47	1,629	1,559	1,595	15,539,762	749.76
Information	7	70	70	69	1,127,444	1,244.88
Financial Activities	83	374	371	384	3,555,138	726.68
Professional & Business Services	85	883	909	928	5,374,628	455.99
Education & Health Services	134	917	948	970	7,048,589	573.76
Leisure & Hospitality	94	1,375	1,375	1,404	5,038,065	279.88
Other Services	57	283	277	281	1,477,441	405.41
Local Government	25	1,596	1,594	1,584	12,746,106	616.13
State Government	16	515	514	520	4,509,874	671.88

TABLE 6. COUNTY SUMMARY

North American Industry Classification System - Industry Groups	Number of Employing Units	Employment			Total Earnings	Average Weekly Earnings
		Jan	Feb	Mar	Jan - Mar 2014	
MISSISSIPPI COUNTY - TOTAL	1,190	18,494	18,381	18,516	\$189,056,889	\$787.65
Natural Resources & Mining	118	526	522	562	3,738,160	535.81
Construction	54	764	751	798	8,769,931	874.98
Manufacturing	55	6,607	6,616	6,633	100,371,518	1,166.53
Trade, Transportation & Utilities	283	2,865	2,826	2,851	25,221,792	681.39
Wholesale Trade	64	462	464	476	6,088,798	1,002.22
Retail Trade	160	1,622	1,606	1,617	8,763,952	417.43
Transportation, Warehousing & Utilities	59	781	756	758	10,369,042	1,042.64
Information	9	70	67	66	435,250	494.79
Financial Activities	88	409	414	411	3,653,118	683.17
Professional & Business Services	85	1,370	1,319	1,282	10,024,900	582.58
Education & Health Services	280	1,838	1,827	1,834	12,490,202	524.16
Leisure & Hospitality	87	1,122	1,103	1,137	3,156,324	216.65
Other Services	57	186	184	182	1,034,431	432.45
Local Government	52	2,176	2,172	2,177	15,972,575	564.90
State Government	22	561	580	583	4,188,688	560.68
MONROE COUNTY - TOTAL	310	2,232	2,253	2,278	\$15,149,099	\$516.92
Natural Resources & Mining	33	126	121	135	1,036,132	625.94
Construction	11	56	55	55	507,403	705.38
Manufacturing	7	136	140	136	1,097,598	614.79
Trade, Transportation & Utilities	84	661	668	685	5,766,941	660.79
Wholesale Trade	20	255	262	280	3,322,871	962.13
Retail Trade	41	287	286	286	1,439,993	386.85
Transportation, Warehousing & Utilities	23	119	120	119	1,004,077	647.23
Financial Activities	22	93	91	92	826,553	691.10
Professional & Business Services	14	64	78	73	200,834	215.56
Education & Health Services	70	306	314	315	1,691,095	417.38
Leisure & Hospitality	22	231	227	231	659,320	220.83
Local Government	21	333	332	330	2,095,878	486.09
State Government	8	110	111	112	783,820	543.19
Other	18	116	116	114	483,525	322.49

TABLE 6. COUNTY SUMMARY

North American Industry Classification System - Industry Groups	Number of Employing Units	Employment			Total Earnings Jan - Mar 2014	Average Weekly Earnings
		Jan	Feb	Mar		
MONTGOMERY COUNTY - TOTAL	176	1,261	1,306	1,353	\$7,850,387	\$462.15
Natural Resources & Mining	8	33	30	31	270,833	664.89
Construction	23	66	72	81	425,420	448.28
Manufacturing	7	20	18	22	91,873	353.36
Trade, Transportation & Utilities	41	228	239	240	1,462,834	477.48
Wholesale Trade	11	59	60	61	496,324	636.31
Retail Trade	22	146	155	160	795,016	397.97
Transportation, Warehousing & Utilities	8	23	24	19	171,494	599.63
Information	3	5	5	5	36,409	560.14
Financial Activities	13	56	53	56	477,708	668.12
Professional & Business Services	15	39	38	37	332,820	673.72
Education & Health Services	17	65	64	65	373,402	444.17
Leisure & Hospitality	19	168	199	234	802,603	308.18
Other Services	13	57	61	55	249,549	332.88
Local Government	9	477	480	478	3,007,861	483.71
State Government	8	47	47	49	319,075	514.91
NEVADA COUNTY - TOTAL	197	2,337	2,359	2,383	\$24,020,668	\$783.05
Natural Resources & Mining	10	55	53	53	588,153	843.03
Trade, Transportation & Utilities	42	504	513	526	3,788,850	566.66
Wholesale Trade	3	14	14	14	55,970	307.53
Retail Trade	26	272	282	293	1,265,447	344.78
Transportation, Warehousing & Utilities	13	218	217	219	2,467,433	870.65
Financial Activities	11	54	60	56	447,785	607.85
Professional & Business Services	12	44	44	43	329,185	579.89
Education & Health Services	41	398	409	409	2,288,151	434.24
Leisure & Hospitality	9	81	83	83	227,127	212.20
Other Services	16	55	50	51	163,865	242.40
Local Government	27	407	410	407	2,391,977	450.98
State Government	10	81	85	87	485,344	442.70
Other	19	658	652	668	13,310,231	1,552.88

TABLE 6. COUNTY SUMMARY

North American Industry Classification System - Industry Groups	Number of Employing Units	Employment			Total Earnings Jan - Mar 2014	Average Weekly Earnings
		Jan	Feb	Mar		
NEWTON COUNTY - TOTAL	121	1,001	1,004	1,028	\$5,518,081	\$419.85
Construction	5	18	15	14	67,344	330.66
Manufacturing	9	29	32	35	281,768	677.33
Trade, Transportation & Utilities	31	140	145	144	936,972	504.02
Retail Trade	16	92	91	92	446,804	374.94
Other Trade, Transportation & Utilities	15	48	54	52	490,168	734.52
Education & Health Services	27	226	220	214	930,756	325.44
Leisure & Hospitality	14	60	62	88	270,386	297.13
Other Services	3	5	4	4	20,962	372.11
Local Government	13	385	391	394	2,212,653	436.42
State Government	8	96	93	92	461,726	379.19
Other	11	42	42	43	335,514	609.66
OUACHITA COUNTY - TOTAL	658	7,045	7,039	7,053	\$52,143,216	\$569.29
Natural Resources & Mining	36	178	173	163	1,480,573	664.73
Construction	35	220	205	208	1,799,334	655.97
Manufacturing	25	494	494	489	4,852,843	758.22
Trade, Transportation & Utilities	173	1,588	1,588	1,584	11,046,335	535.54
Wholesale Trade	29	242	250	247	2,731,079	852.84
Retail Trade	116	1,047	1,049	1,049	5,164,689	378.97
Transportation, Warehousing & Utilities	28	299	289	288	3,150,567	829.97
Information	7	46	45	45	395,080	670.38
Financial Activities	59	286	276	276	2,508,702	690.85
Professional & Business Services	52	560	573	584	4,525,286	608.21
Education & Health Services	155	1,237	1,244	1,243	10,216,273	633.08
Leisure & Hospitality	40	486	475	485	1,337,393	213.44
Other Services	32	125	123	122	701,782	437.70
Local Government	30	1,151	1,142	1,143	7,899,209	530.53
State Government	14	674	701	711	5,380,406	595.22

TABLE 6. COUNTY SUMMARY

North American Industry Classification System - Industry Groups	Number of Employing Units	Employment			Total Earnings Jan - Mar 2014	Average Weekly Earnings
		Jan	Feb	Mar		
PERRY COUNTY - TOTAL	152	1,143	1,128	1,145	\$7,695,577	\$519.88
Natural Resources & Mining	8	41	36	34	398,529	828.54
Construction	16	120	108	114	971,391	655.46
Manufacturing	5	41	43	46	298,711	530.26
Trade, Transportation & Utilities	25	142	136	136	1,106,582	616.82
Retail Trade	15	106	99	100	541,917	410.03
Other Trade, Transportation & Utilities	10	36	37	36	564,665	1,195.48
Financial Activities	10	27	26	26	228,609	667.80
Professional & Business Services	18	32	33	32	396,437	943.15
Education & Health Services	35	221	222	228	1,203,284	413.83
Leisure & Hospitality	8	64	68	70	195,007	222.78
Local Government	10	355	356	360	2,237,792	482.18
State Government	8	58	57	56	319,176	430.74
Other	9	42	43	43	340,059	613.09
PHILLIPS COUNTY - TOTAL	851	5,728	5,706	5,856	\$41,845,564	\$558.51
Natural Resources & Mining	62	232	242	271	1,384,856	428.97
Construction	25	95	97	105	679,843	528.24
Manufacturing	12	369	372	377	3,249,624	670.76
Trade, Transportation & Utilities	162	1,344	1,313	1,372	11,034,578	632.03
Wholesale Trade	30	304	309	318	4,095,662	1,015.20
Retail Trade	90	772	750	780	4,296,644	430.73
Transportation, Warehousing & Utilities	42	268	254	274	2,642,272	766.02
Information	9	42	41	42	346,728	640.11
Financial Activities	39	200	196	199	1,863,985	722.94
Professional & Business Services	49	307	309	317	2,406,985	595.35
Education & Health Services	390	1,423	1,413	1,414	9,463,091	513.83
Leisure & Hospitality	30	277	276	278	794,071	220.51
Other Services	32	77	75	80	469,112	466.62
Local Government	27	858	848	849	6,656,153	601.19
State Government	14	504	524	552	3,496,538	510.69

TABLE 6. COUNTY SUMMARY

North American Industry Classification System - Industry Groups	Number of Employing Units	Employment			Total Earnings Jan - Mar 2014	Average Weekly Earnings
		Jan	Feb	Mar		
PIKE COUNTY - TOTAL	239	2,171	2,180	2,215	\$14,332,776	\$503.74
Natural Resources & Mining	21	110	106	107	1,035,455	739.79
Construction	12	43	42	41	299,726	548.95
Manufacturing	19	212	214	217	1,190,653	427.32
Trade, Transportation & Utilities	68	509	513	527	3,152,107	469.60
Wholesale Trade	9	113	113	114	855,064	580.36
Retail Trade	40	331	338	351	1,695,626	383.63
Transportation, Warehousing & Utilities	19	65	62	62	601,417	734.33
Information	5	25	25	25	278,839	857.97
Financial Activities	22	181	181	187	1,731,325	727.75
Professional & Business Services	14	36	38	40	523,953	1,060.63
Education & Health Services	24	274	278	278	1,633,237	454.10
Leisure & Hospitality	20	147	147	170	480,140	238.80
Other Services	14	35	35	36	238,948	520.21
Local Government	10	447	448	434	3,131,610	543.78
State Government	10	152	153	153	636,783	320.85
POINSETT COUNTY - TOTAL	530	4,915	4,909	4,946	\$40,737,104	\$636.48
Natural Resources & Mining	63	310	310	322	2,593,642	635.39
Construction	23	84	89	99	547,217	464.27
Manufacturing	22	648	651	653	6,439,563	761.30
Trade, Transportation & Utilities	130	1,253	1,249	1,262	12,206,160	748.35
Wholesale Trade	33	413	417	441	7,134,398	1,295.36
Retail Trade	69	695	691	677	3,696,522	413.50
Transportation, Warehousing & Utilities	28	145	141	144	1,375,240	738.05
Information	5	53	54	54	478,011	685.16
Financial Activities	36	236	234	232	2,135,413	701.98
Professional & Business Services	31	169	178	174	2,296,457	1,017.18
Education & Health Services	110	633	617	611	4,192,660	519.90
Leisure & Hospitality	45	328	328	343	964,416	222.78
Other Services	24	51	52	49	318,940	484.22
Local Government	30	1,011	1,006	1,002	7,552,079	577.27
State Government	11	139	141	145	1,012,546	549.80

TABLE 6. COUNTY SUMMARY

North American Industry Classification System - Industry Groups	Number of Employing Units	Employment			Total Earnings	Average Weekly Earnings
		Jan	Feb	Mar	Jan - Mar 2014	
POLK COUNTY - TOTAL	525	5,894	5,925	6,026	\$40,701,226	\$526.34
Natural Resources & Mining	23	138	132	133	1,393,118	797.74
Construction	35	159	167	176	1,198,970	551.17
Manufacturing	40	1,397	1,393	1,386	10,664,966	589.35
Trade, Transportation & Utilities	137	1,113	1,118	1,137	6,724,215	460.73
Wholesale Trade	22	55	54	54	402,448	569.77
Retail Trade	79	829	842	848	4,204,996	385.23
Transportation, Warehousing & Utilities	36	229	222	235	2,116,771	712.08
Information	8	45	46	45	299,821	508.75
Financial Activities	47	232	233	236	1,843,967	607.03
Professional & Business Services	46	174	178	180	1,506,231	653.37
Education & Health Services	83	1,027	1,012	1,011	7,992,955	604.76
Leisure & Hospitality	42	436	436	443	1,180,951	207.24
Other Services	29	166	173	171	1,097,417	496.57
Local Government	21	738	746	820	5,046,455	505.45
State Government	14	269	291	288	1,752,160	476.82
POPE COUNTY - TOTAL	1,786	25,803	25,976	26,370	\$231,940,197	\$684.91
Natural Resources & Mining	31	831	831	819	7,067,290	657.36
Construction	154	1,174	1,087	1,172	13,158,300	884.51
Manufacturing	73	4,457	4,498	4,474	43,356,637	745.06
Trade, Transportation & Utilities	434	5,881	5,891	6,066	70,291,704	909.36
Wholesale Trade	88	587	596	588	6,291,445	819.80
Retail Trade	270	3,209	3,208	3,291	17,389,090	413.36
Transportation, Warehousing & Utilities	76	2,085	2,087	2,187	46,611,169	1,691.53
Information	24	206	202	207	1,912,108	717.49
Financial Activities	189	1,339	1,341	1,328	10,141,652	583.93
Professional & Business Services	261	2,372	2,367	2,520	20,194,513	642.00
Education & Health Services	317	3,070	3,076	3,064	23,906,256	599.00
Leisure & Hospitality	139	2,298	2,316	2,367	7,110,916	235.06
Other Services	106	403	409	417	2,772,764	520.64
Local Government	42	2,219	2,246	2,226	17,494,921	603.39
State Government	16	1,553	1,712	1,710	14,533,136	674.13

TABLE 6. COUNTY SUMMARY

North American Industry Classification System - Industry Groups	Number of Employing Units	Employment			Total Earnings Jan - Mar 2014	Average Weekly Earnings
		Jan	Feb	Mar		
PRAIRIE COUNTY - TOTAL	254	1,467	1,470	1,506	\$11,459,377	\$595.20
Natural Resources & Mining	34	126	130	132	973,523	579.02
Trade, Transportation & Utilities	64	330	322	322	3,378,493	800.46
Wholesale Trade	10	76	80	84	1,928,923	1,854.73
Retail Trade	37	194	183	180	884,702	366.54
Transportation, Warehousing & Utilities	17	60	59	58	564,868	736.46
Financial Activities	17	56	55	56	427,365	590.56
Professional & Business Services	14	57	55	55	407,536	563.15
Education & Health Services	52	252	266	256	1,515,517	451.85
Leisure & Hospitality	16	100	87	76	268,604	235.69
Other Services	14	26	25	27	140,447	415.52
Local Government	15	322	323	307	2,149,650	521.09
State Government	9	41	41	43	292,315	539.66
Other	19	157	166	232	1,905,927	792.49
PULASKI COUNTY - TOTAL	14,263	230,473	231,755	232,861	\$2,594,755,692	\$861.46
Natural Resources & Mining	56	598	597	625	10,185,320	1,291.46
Construction	961	7,672	7,699	7,789	86,155,353	858.46
Manufacturing	341	12,445	12,521	12,499	169,429,261	1,043.62
Trade, Transportation & Utilities	3,195	46,561	46,133	46,397	479,807,639	796.06
Wholesale Trade	1,001	11,455	11,463	11,483	174,263,994	1,169.00
Retail Trade	1,799	25,074	24,656	24,867	166,442,813	514.90
Transportation, Warehousing & Utilities	395	10,032	10,014	10,047	139,100,832	1,066.70
Information	210	6,031	6,054	6,052	123,084,560	1,566.09
Financial Activities	1,696	15,478	15,529	15,495	308,448,256	1,530.69
Professional & Business Services	2,784	32,548	32,859	33,089	365,688,889	856.78
Education & Health Services	2,389	37,949	38,161	38,184	414,295,074	836.50
Leisure & Hospitality	1,178	21,225	21,438	21,821	85,392,501	305.59
Other Services	1,149	6,605	6,657	6,707	57,906,683	669.19
Local Government	105	16,159	16,229	16,236	160,867,108	763.47
State Government	199	27,202	27,878	27,967	333,495,048	926.71

TABLE 6. COUNTY SUMMARY

North American Industry Classification System - Industry Groups	Number of Employing Units	Employment			Total Earnings	Average Weekly Earnings
		Jan	Feb	Mar	Jan - Mar 2014	
RANDOLPH COUNTY - TOTAL	420	4,474	4,567	4,541	\$29,789,018	\$506.14
Natural Resources & Mining	31	93	97	106	349,229	272.27
Construction	28	70	67	72	405,007	447.19
Manufacturing	28	541	547	522	4,383,653	628.33
Trade, Transportation & Utilities	98	843	850	844	5,739,696	522.09
Wholesale Trade	21	162	162	162	1,230,240	584.16
Retail Trade	56	539	546	535	3,159,250	450.04
Transportation, Warehousing & Utilities	21	142	142	147	1,350,206	722.94
Information	5	39	37	37	321,939	657.47
Financial Activities	35	127	125	127	975,204	593.79
Professional & Business Services	38	162	159	159	925,698	445.05
Education & Health Services	69	1,175	1,199	1,196	8,227,337	531.83
Leisure & Hospitality	28	349	358	355	994,493	216.10
Other Services	25	74	76	77	363,325	369.36
Local Government	24	727	729	724	4,622,925	489.37
State Government	11	274	323	322	2,480,512	622.88
SAINT FRANCIS COUNTY - TOTAL	796	6,976	6,964	7,047	\$50,645,580	\$556.89
Natural Resources & Mining	45	148	154	182	1,370,308	653.36
Construction	46	161	164	181	1,411,908	643.92
Trade, Transportation & Utilities	162	1,926	1,927	1,948	14,530,289	578.03
Wholesale Trade	33	535	537	549	5,917,333	842.40
Retail Trade	107	1,087	1,094	1,099	5,583,104	392.81
Transportation, Warehousing & Utilities	22	304	296	300	3,029,852	776.89
Information	7	62	63	65	481,292	584.57
Financial Activities	63	246	246	245	2,002,975	627.17
Professional & Business Services	50	441	392	400	2,406,223	450.35
Education & Health Services	296	1,351	1,369	1,372	9,794,546	552.37
Leisure & Hospitality	45	530	542	552	1,567,805	222.78
Local Government	28	958	950	950	7,066,344	570.57
State Government	16	461	464	462	4,049,549	673.76
Other	38	692	693	690	5,964,341	663.32

TABLE 6. COUNTY SUMMARY

North American Industry Classification System - Industry Groups	Number of Employing Units	Employment			Total Earnings	Average Weekly Earnings
		Jan	Feb	Mar	Jan - Mar 2014	
SALINE COUNTY - TOTAL	1,900	21,383	21,439	21,624	\$166,301,747	\$595.50
Natural Resources & Mining	14	73	73	70	714,985	763.87
Construction	272	1,669	1,636	1,639	14,222,315	663.85
Manufacturing	86	1,322	1,320	1,320	15,428,246	898.63
Trade, Transportation & Utilities	447	4,836	4,856	4,886	36,569,545	578.89
Wholesale Trade	113	522	532	540	6,082,683	880.61
Retail Trade	266	3,870	3,878	3,902	26,129,481	517.59
Transportation, Warehousing & Utilities	68	444	446	444	4,357,381	753.79
Information	15	134	133	138	1,588,920	905.37
Financial Activities	193	722	726	719	7,192,994	766.00
Professional & Business Services	252	1,371	1,403	1,467	11,487,449	625.08
Education & Health Services	268	3,196	3,179	3,215	25,080,201	603.52
Leisure & Hospitality	161	2,826	2,813	2,857	9,502,380	258.10
Other Services	146	673	670	704	4,460,626	502.87
Local Government	31	3,622	3,691	3,669	33,539,411	704.78
State Government	15	939	939	940	6,514,675	533.49
SCOTT COUNTY - TOTAL	187	3,023	3,016	3,042	\$21,954,847	\$557.92
Natural Resources & Mining	18	154	157	165	1,431,333	693.92
Trade, Transportation & Utilities	34	401	398	407	2,780,129	531.98
Wholesale Trade	6	46	48	52	530,594	838.66
Retail Trade	22	291	290	292	1,593,297	421.17
Transportation, Warehousing & Utilities	6	64	60	63	656,238	809.84
Financial Activities	23	72	65	66	471,024	535.46
Professional & Business Services	11	58	58	60	430,484	564.45
Education & Health Services	37	284	283	287	2,476,319	669.15
Leisure & Hospitality	16	116	119	122	416,097	268.97
Other Services	11	44	45	45	333,448	574.25
Local Government	6	565	561	565	3,673,464	501.31
State Government	7	60	61	61	347,364	440.44
Other	24	1,269	1,269	1,264	9,595,185	582.40

TABLE 6. COUNTY SUMMARY

North American Industry Classification System - Industry Groups	Number of Employing Units	Employment			Total Earnings Jan - Mar 2014	Average Weekly Earnings
		Jan	Feb	Mar		
SEARCY COUNTY - TOTAL	185	1,536	1,564	1,591	\$8,903,536	\$438.00
Natural Resources & Mining	7	87	93	87	537,456	464.53
Construction	12	18	18	14	58,764	271.22
Manufacturing	17	233	241	244	1,276,020	410.12
Trade, Transportation & Utilities	38	233	230	236	1,401,871	462.82
Wholesale Trade	6	30	29	26	152,670	414.49
Retail Trade	26	183	181	190	981,276	408.75
Transportation, Warehousing & Utilities	6	20	20	20	267,925	1,030.48
Financial Activities	15	48	51	62	479,564	687.38
Professional & Business Services	12	27	30	34	179,047	454.05
Education & Health Services	47	315	315	310	1,936,179	475.33
Leisure & Hospitality	14	112	109	119	268,653	182.34
Local Government	10	342	359	361	2,144,316	465.95
State Government	7	109	106	112	530,060	374.07
Other	6	12	12	12	91,606	587.22
SEBASTIAN COUNTY - TOTAL	3,749	62,541	62,839	63,337	\$608,393,709	\$743.96
Natural Resources & Mining	53	1,036	1,022	1,046	22,950,878	1,706.30
Construction	275	2,108	2,095	2,158	19,085,541	692.40
Manufacturing	199	11,809	11,781	11,794	138,428,279	902.81
Trade, Transportation & Utilities	937	12,657	12,603	12,730	113,205,374	687.66
Wholesale Trade	250	2,773	2,818	2,808	35,916,232	986.83
Retail Trade	561	7,500	7,410	7,515	45,441,378	467.62
Transportation, Warehousing & Utilities	126	2,384	2,375	2,407	31,847,764	1,025.60
Information	47	965	961	948	13,675,821	1,098.11
Financial Activities	423	2,465	2,475	2,479	28,671,765	891.84
Professional & Business Services	589	7,714	7,805	7,898	76,032,856	749.29
Education & Health Services	573	10,800	10,811	10,854	109,802,166	780.50
Leisure & Hospitality	337	5,783	5,753	5,862	20,283,950	269.05
Other Services	255	1,171	1,171	1,184	8,059,912	527.50
Local Government	40	4,463	4,548	4,551	41,817,436	711.56
State Government	21	1,570	1,814	1,833	16,379,731	724.54

TABLE 6. COUNTY SUMMARY

North American Industry Classification System - Industry Groups	Number of Employing Units	Employment			Total Earnings	Average Weekly Earnings
		Jan	Feb	Mar	Jan - Mar 2014	
SEVIER COUNTY - TOTAL	321	4,751	4,807	4,884	\$34,457,773	\$550.60
Natural Resources & Mining	14	177	179	181	1,598,269	686.84
Construction	18	135	135	132	1,405,866	807.04
Trade, Transportation & Utilities	99	862	864	884	6,482,005	573.12
Wholesale Trade	17	106	105	111	1,960,099	1,404.75
Retail Trade	67	671	678	687	3,594,809	407.45
Transportation, Warehousing & Utilities	15	85	81	86	927,097	848.99
Information	3	21	21	20	183,208	681.92
Financial Activities	29	226	230	227	2,081,397	703.25
Professional & Business Services	28	103	104	104	580,387	430.66
Education & Health Services	48	550	548	551	3,844,719	538.05
Leisure & Hospitality	24	250	258	277	749,316	220.28
Local Government	12	913	915	925	6,270,470	525.62
State Government	8	147	155	175	1,154,799	558.68
Other	38	1,367	1,398	1,408	10,107,337	558.94
SHARP COUNTY - TOTAL	391	3,572	3,568	3,654	\$23,099,922	\$493.86
Natural Resources & Mining	3	5	7	7	45,927	557.82
Construction	21	93	93	95	776,188	637.44
Manufacturing	19	151	154	155	880,221	441.58
Trade, Transportation & Utilities	83	1,026	1,015	1,055	7,614,094	567.54
Wholesale Trade	12	31	30	37	250,232	589.24
Retail Trade	59	630	624	643	3,266,391	397.36
Transportation, Warehousing & Utilities	12	365	361	375	4,097,471	858.83
Information	5	41	37	42	450,478	866.30
Financial Activities	34	182	176	181	1,748,239	748.50
Professional & Business Services	38	140	149	146	1,196,160	634.57
Education & Health Services	91	706	710	699	4,147,225	452.51
Leisure & Hospitality	38	359	348	386	933,464	197.09
Other Services	26	71	72	68	293,233	320.71
Local Government	25	718	726	741	4,532,708	478.72
State Government	8	80	81	79	481,985	463.45

TABLE 6. COUNTY SUMMARY

North American Industry Classification System - Industry Groups	Number of Employing Units	Employment			Total Earnings Jan - Mar 2014	Average Weekly Earnings
		Jan	Feb	Mar		
STONE COUNTY - TOTAL	284	2,300	2,282	2,360	\$14,110,869	\$469.08
Natural Resources & Mining	6	7	7	7	39,414	433.12
Construction	20	40	35	43	163,721	320.18
Manufacturing	19	170	156	183	808,246	366.44
Trade, Transportation & Utilities	72	594	584	590	3,951,304	515.75
Wholesale Trade	8	51	45	51	392,047	615.46
Retail Trade	54	506	502	501	3,051,569	466.67
Transportation, Warehousing & Utilities	10	37	37	38	507,688	1,046.06
Information	3	17	18	18	85,331	371.54
Financial Activities	26	76	85	86	596,618	557.41
Professional & Business Services	17	37	39	41	228,044	449.79
Education & Health Services	51	491	483	479	3,900,163	619.43
Leisure & Hospitality	35	252	274	298	663,137	185.72
Other Services	17	42	42	45	281,983	504.44
Local Government	10	399	385	392	2,736,603	537.01
State Government	8	175	174	178	656,305	287.39
UNION COUNTY - TOTAL	1,343	17,868	17,630	17,684	\$222,620,063	\$966.00
Natural Resources & Mining	96	539	536	538	6,650,702	951.50
Construction	78	1,751	1,464	1,390	20,220,548	1,013.31
Manufacturing	52	3,034	3,050	3,022	46,545,363	1,179.58
Trade, Transportation & Utilities	331	4,053	4,050	4,110	50,954,819	962.81
Wholesale Trade	67	982	985	973	24,597,788	1,930.75
Retail Trade	209	2,206	2,193	2,257	12,725,174	441.19
Transportation, Warehousing & Utilities	55	865	872	880	13,631,857	1,202.07
Information	10	136	140	139	985,544	548.03
Financial Activities	116	676	669	666	6,898,311	791.61
Professional & Business Services	140	1,316	1,346	1,361	44,609,012	2,558.88
Education & Health Services	277	2,337	2,311	2,340	20,367,638	672.61
Leisure & Hospitality	88	1,137	1,132	1,179	3,799,872	254.32
Other Services	104	535	534	547	3,607,492	515.16
Local Government	34	1,819	1,818	1,814	13,242,289	560.62
State Government	17	535	580	578	4,738,473	645.89

TABLE 6. COUNTY SUMMARY

North American Industry Classification System - Industry Groups	Number of Employing Units	Employment			Total Earnings	Average Weekly Earnings
		Jan	Feb	Mar	Jan - Mar 2014	
VAN BUREN COUNTY - TOTAL	365	3,794	3,827	3,844	\$40,473,067	\$814.65
Natural Resources & Mining	15	334	331	332	10,570,970	2,446.80
Construction	37	122	132	142	1,221,775	711.99
Manufacturing	8	60	57	52	404,482	552.32
Trade, Transportation & Utilities	99	1,132	1,122	1,131	13,898,588	947.52
Wholesale Trade	10	92	91	93	931,226	778.62
Retail Trade	57	573	564	572	3,186,994	430.35
Transportation, Warehousing & Utilities	32	467	467	466	9,780,368	1,612.15
Information	9	40	47	44	361,051	636.03
Financial Activities	33	131	128	127	1,217,121	727.65
Professional & Business Services	31	122	135	136	1,057,171	620.77
Education & Health Services	63	724	725	716	5,121,510	545.91
Leisure & Hospitality	31	324	329	349	1,180,787	271.95
Other Services	21	58	59	58	362,971	478.64
Local Government	11	682	698	692	4,644,835	517.32
State Government	7	65	64	65	431,806	513.65
WASHINGTON COUNTY - TOTAL	5,641	91,736	92,312	93,094	\$922,240,129	\$767.93
Natural Resources & Mining	43	395	398	393	4,656,919	906.13
Construction	478	3,813	3,799	3,909	38,328,124	767.72
Manufacturing	222	12,271	12,251	12,212	117,668,450	739.21
Trade, Transportation & Utilities	1,359	21,034	20,933	20,976	198,147,381	726.47
Wholesale Trade	407	3,504	3,548	3,540	57,697,913	1,257.07
Retail Trade	769	11,239	11,203	11,205	72,991,780	500.62
Transportation, Warehousing & Utilities	183	6,291	6,182	6,231	67,457,688	832.29
Information	87	901	907	912	10,322,845	875.81
Financial Activities	631	3,323	3,363	3,372	39,156,895	898.41
Professional & Business Services	971	10,094	10,211	10,440	167,887,076	1,260.15
Education & Health Services	793	13,255	13,371	13,474	141,909,447	816.67
Leisure & Hospitality	601	10,496	10,701	11,025	36,971,467	264.78
Other Services	372	1,732	1,759	1,768	11,874,447	521.06
Local Government	62	8,067	8,219	8,215	75,646,166	712.49
State Government	22	6,355	6,400	6,398	79,670,912	959.93

TABLE 6. COUNTY SUMMARY

North American Industry Classification System - Industry Groups	Number of Employing Units	Employment			Total Earnings	Average Weekly Earnings
		Jan	Feb	Mar	Jan - Mar 2014	
WHITE COUNTY - TOTAL	1,836	24,028	24,134	24,277	\$220,280,605	\$701.75
Natural Resources & Mining	55	1,044	1,020	1,016	16,604,669	1,244.11
Construction	165	1,043	1,056	1,098	10,560,683	762.30
Manufacturing	63	2,346	2,380	2,382	25,192,830	817.91
Trade, Transportation & Utilities	500	6,107	6,084	6,144	53,761,717	676.66
Wholesale Trade	94	620	620	627	6,246,670	772.12
Retail Trade	314	3,551	3,529	3,549	20,780,439	451.17
Transportation, Warehousing & Utilities	92	1,936	1,935	1,968	26,734,608	1,056.61
Information	21	163	172	167	1,272,637	585.03
Financial Activities	173	891	893	897	9,422,890	811.08
Professional & Business Services	204	1,390	1,384	1,427	9,243,913	507.79
Education & Health Services	315	4,951	5,033	5,045	55,549,660	852.96
Leisure & Hospitality	155	2,224	2,251	2,229	6,713,472	231.10
Other Services	120	542	549	550	4,605,738	647.69
Local Government	47	2,664	2,661	2,660	21,647,609	625.62
State Government	18	663	651	662	5,704,787	666.24
WOODRUFF COUNTY - TOTAL	208	1,799	1,814	1,868	\$13,367,288	\$562.81
Natural Resources & Mining	25	124	140	157	1,028,757	563.91
Construction	5	32	34	39	225,324	495.22
Manufacturing	7	224	222	222	1,984,497	685.57
Trade, Transportation & Utilities	43	398	403	412	3,675,345	699.22
Wholesale Trade	11	167	171	177	2,270,543	1,017.42
Retail Trade	23	173	171	174	709,163	315.93
Transportation, Warehousing & Utilities	9	58	61	61	695,639	891.84
Financial Activities	15	68	67	65	526,269	607.23
Education & Health Services	71	257	256	256	1,463,246	439.11
Leisure & Hospitality	10	78	80	84	231,008	220.29
Local Government	10	478	474	491	3,073,860	491.58
State Government	6	47	45	48	290,742	479.25
Other	16	93	93	94	868,240	715.58

TABLE 6. COUNTY SUMMARY

North American Industry Classification System - Industry Groups	Number of Employing Units	Employment			Total Earnings	Average Weekly Earnings
		Jan	Feb	Mar	Jan - Mar 2014	
YELL COUNTY - TOTAL	412	6,449	6,450	6,411	\$43,284,648	\$517.28
Natural Resources & Mining	23	194	195	199	1,609,758	631.77
Construction	34	287	255	200	1,980,624	615.99
Manufacturing	20	2,447	2,441	2,428	16,019,659	505.31
Trade, Transportation & Utilities	82	667	654	660	4,238,556	493.75
Wholesale Trade	15	38	34	33	190,477	418.63
Retail Trade	51	505	495	504	2,818,119	432.40
Transportation, Warehousing & Utilities	16	124	125	123	1,229,960	763.00
Information	3	56	56	60	723,550	970.77
Financial Activities	29	166	160	160	1,410,179	669.60
Professional & Business Services	38	284	290	301	2,136,355	563.43
Education & Health Services	101	743	751	754	4,391,824	450.84
Leisure & Hospitality	29	255	284	287	732,337	204.60
Other Services	16	50	50	51	275,806	421.51
Local Government	25	1,197	1,214	1,212	9,228,023	587.78
State Government	12	103	100	99	537,977	411.09
STATEWIDE COUNTY - TOTAL	7,465	22,202	25,774	25,878	\$364,100,771	\$1,137.69
Natural Resources & Mining	87	340	343	343	5,320,857	1,196.77
Construction	697	2,384	2,172	2,258	26,580,295	900.19
Manufacturing	46	186	186	186	2,921,805	1,208.36
Trade, Transportation & Utilities	2,565	6,296	6,390	6,458	154,133,839	1,857.99
Wholesale Trade	2,219	5,307	5,389	5,459	141,142,943	2,016.18
Retail Trade	124	249	239	232	5,093,050	1,632.39
Transportation, Warehousing & Utilities	222	740	762	767	7,897,846	803.25
Information	191	418	404	400	7,417,757	1,400.81
Financial Activities	432	1,165	1,201	1,201	24,319,162	1,573.34
Professional & Business Services	2,809	8,305	11,912	11,907	109,774,211	788.59
Education & Health Services	295	1,719	1,770	1,743	18,099,475	798.32
Leisure & Hospitality	80	119	126	132	1,229,684	752.71
State Government	17	712	722	724	6,474,119	692.32
Other	246	558	548	526	7,829,567	1,028.79

Note: Statewide classification includes employment and payroll data for employers that have not provided a physical location for each employing unit. This section also includes employers without a physical location in Arkansas.

TABLE 7. FEDERAL GOVERNMENT EMPLOYMENT AND EARNINGS IN ARKANSAS

North American Industry Classification System - Industry Groups	Number of Employing Units	Employment			Total Earnings	Average Weekly Earnings
		Jan	Feb	Mar	Jan - Mar 2014	
TOTAL	1,152	20,118	20,006	20,035	\$334,342,993	\$1,282.54
Trade, Transportation & Utilities	585	5,446	5,393	5,389	73,387,651	1,043.60
Information	2	43	44	44	579,016	1,019.99
Financial Activities	14	115	115	113	2,471,833	1,663.04
Professional & Business Services	32	748	746	748	12,574,309	1,294.27
Education & Health Services	16	5,264	5,255	5,288	101,107,340	1,476.08
Leisure & Hospitality	20	272	278	286	2,651,604	731.95
Other Services	2	1	1	1	6,916	532.00
Public Administration	481	8,229	8,174	8,166	141,564,324	1,329.67

TABLE 8. WORKFORCE INVESTMENT AREA SUMMARY

North American Industry Classification System - Industry Groups	Number of Employing Units	Employment			Total Earnings	Average Weekly Earnings
		Jan	Feb	Mar	Jan - Mar 2014	
CENTRAL WORKFORCE INVESTMENT AREA	6,573	77,607	77,939	78,591	\$670,742,496	\$661.09
Natural Resources & Mining	228	2,009	2,023	2,077	37,543,902	1,418.23
Trade, Transportation & Utilities	1,577	15,665	15,634	15,782	117,530,668	576.08
Wholesale Trade	384	1,877	1,916	1,986	24,514,389	978.92
Retail Trade	929	12,057	11,979	12,048	72,814,080	465.67
Transportation, Warehousing & Utilities	264	1,731	1,739	1,748	20,202,199	893.45
Information	56	535	536	540	6,008,945	860.76
Financial Activities	695	2,935	2,944	2,941	33,738,297	882.74
Professional & Business Services	838	8,139	8,141	8,114	95,120,567	899.85
Education & Health Services	1,039	11,251	11,406	11,475	90,767,992	613.69
Leisure & Hospitality	547	9,174	9,205	9,352	29,300,645	243.83
Local Government	131	10,425	10,546	10,536	89,988,186	659.11
State Government	65	4,603	4,624	4,644	39,085,015	650.25
Other	1,397	12,871	12,880	13,130	131,658,279	781.43

Note: Pulaski County is not included in the Central Workforce Investment Area. Please refer to Page 51 for information on Pulaski County.
Central Workforce Investment Area includes these counties: Faulkner, Lonoke, Monroe, Prairie, and Saline.

EASTERN WORKFORCE INVESTMENT AREA	3,777	36,294	36,349	36,341	\$281,823,624	\$596.75
Natural Resources & Mining	233	974	1,025	1,131	7,122,562	525.13
Construction	155	1,409	1,363	721	14,307,554	945.25
Trade, Transportation & Utilities	809	9,097	9,035	9,256	77,881,205	656.22
Wholesale Trade	165	1,915	1,954	2,017	24,978,718	979.33
Retail Trade	457	4,720	4,654	4,742	26,104,709	426.76
Transportation, Warehousing & Utilities	187	2,462	2,427	2,497	26,797,778	837.27
Financial Activities	263	1,259	1,270	1,265	11,741,646	714.18
Professional & Business Services	277	2,267	2,262	2,416	15,710,735	522.04
Education & Health Services	1,328	6,516	6,552	6,561	47,645,274	560.14
Leisure & Hospitality	235	3,259	3,338	3,399	11,682,695	269.71
Local Government	130	5,057	5,036	5,072	40,408,255	614.90
State Government	61	2,351	2,369	2,396	17,441,246	565.61
Other	286	4,105	4,099	4,124	37,882,452	709.13

Eastern Workforce Investment Area includes these counties: Crittenden, Cross, Lee, Phillips, and Saint Francis.

TABLE 8. WORKFORCE INVESTMENT AREA SUMMARY

North American Industry Classification System - Industry Groups	Number of Employing Units	Employment			Total Earnings Jan - Mar 2014	Average Weekly Earnings
		Jan	Feb	Mar		
NORTH CENTRAL WORKFORCE INVESTMENT AREA	5,575	66,116	66,470	67,351	\$556,232,667	\$642.01
Natural Resources & Mining	206	2,374	2,391	2,461	37,932,470	1,211.41
Construction	431	2,232	2,243	2,374	21,001,633	707.63
Manufacturing	232	8,019	8,095	8,245	81,285,001	770.07
Trade, Transportation & Utilities	1,426	15,567	15,447	15,596	131,815,878	652.63
Retail Trade	913	9,352	9,262	9,353	53,204,556	439.02
Other Trade, Transportation & Utilities	513	6,215	6,185	6,243	78,611,322	973.08
Financial Activities	507	2,451	2,455	2,467	25,180,825	788.14
Education & Health Services	1,022	12,794	12,882	12,868	120,351,422	720.56
Leisure & Hospitality	481	5,587	5,712	5,885	16,683,325	224.05
Local Government	230	8,993	9,033	9,066	63,789,557	543.36
State Government	105	2,970	3,078	3,118	22,931,759	577.35
Other	935	5,129	5,134	5,271	35,260,797	523.83

North Central Workforce Investment Area includes these counties: Cleburne, Fulton, Independence, Izard, Jackson, Sharp, Stone, Van Buren, White, and Woodruff.

NORTHEAST WORKFORCE INVESTMENT AREA	6,568	94,743	94,819	95,451	\$818,935,793	\$663.08
Natural Resources & Mining	439	1,833	1,873	1,984	12,905,633	523.41
Construction	432	3,108	3,091	3,257	28,074,003	685.13
Manufacturing	317	19,513	19,513	19,534	233,913,827	921.79
Trade, Transportation & Utilities	1,714	18,535	18,385	18,547	149,394,711	621.55
Wholesale Trade	399	3,792	3,776	3,878	48,524,378	978.33
Retail Trade	997	11,750	11,651	11,687	68,213,585	448.63
Transportation, Warehousing & Utilities	318	2,993	2,958	2,982	32,656,748	843.63
Financial Activities	567	3,066	3,077	3,113	32,218,051	803.26
Professional & Business Services	648	6,672	6,768	6,688	48,891,416	560.54
Education & Health Services	1,181	15,954	15,947	15,915	141,133,844	681.14
Leisure & Hospitality	522	8,095	8,076	8,298	25,623,402	241.66
Local Government	220	11,392	11,449	11,443	87,928,945	591.86
State Government	99	4,278	4,366	4,386	42,199,499	747.38
Other	429	2,297	2,274	2,286	16,652,462	560.43

Northeast Workforce Investment Area includes these counties: Clay, Craighead, Greene, Lawrence, Mississippi, Poinsett, and Randolph.

TABLE 8. WORKFORCE INVESTMENT AREA SUMMARY

North American Industry Classification System - Industry Groups	Number of Employing Units	Employment			Total Earnings	Average Weekly Earnings
		Jan	Feb	Mar	Jan - Mar 2014	
NORTHWEST WORKFORCE INVESTMENT AREA	15,172	238,080	240,162	242,606	\$2,979,865,284	\$953.96
Natural Resources & Mining	142	1,435	1,428	1,437	17,888,987	960.05
Trade, Transportation & Utilities	3,769	52,999	53,238	53,555	554,286,817	800.49
Wholesale Trade	1,238	8,683	8,800	8,802	181,198,088	1,590.83
Retail Trade	2,054	28,082	27,998	28,238	177,386,229	485.49
Transportation, Warehousing & Utilities	477	16,234	16,440	16,515	195,702,500	918.13
Information	217	2,358	2,350	2,335	27,932,124	915.22
Education & Health Services	2,167	29,855	30,074	30,242	280,727,759	718.45
Leisure & Hospitality	1,554	24,216	24,583	25,519	87,752,695	272.49
Other Services	972	4,157	4,195	4,266	29,281,923	535.53
Local Government	316	22,102	22,513	22,622	198,001,730	679.58
State Government	111	8,671	9,165	9,177	99,439,022	849.50
Other	5,924	92,287	92,616	93,453	1,684,554,227	1,396.57

Northwest Workforce Investment Area includes these counties: Baxter, Benton, Boone, Carroll, Madison, Marion, Newton, Searcy, and Washington.

SOUTHEAST WORKFORCE INVESTMENT AREA	6,139	68,036	68,057	68,656	\$585,982,874	\$660.45
Natural Resources & Mining	416	2,196	2,254	2,278	19,708,997	676.02
Construction	314	2,016	1,939	2,077	17,647,736	675.16
Trade, Transportation & Utilities	1,319	12,668	12,624	12,752	105,656,411	640.90
Wholesale Trade	243	2,085	2,077	2,094	25,146,916	927.61
Retail Trade	798	7,684	7,677	7,771	44,205,717	441.00
Transportation, Warehousing & Utilities	278	2,899	2,870	2,887	36,303,778	967.86
Financial Activities	414	2,511	2,529	2,509	27,178,816	830.84
Education & Health Services	1,922	10,796	10,706	10,753	82,752,665	592.06
Local Government	203	9,230	9,290	9,291	70,486,981	584.88
State Government	137	5,881	6,102	6,153	50,559,503	643.34
Other	1,414	22,738	22,613	22,843	211,991,765	717.38

Southeast Workforce Investment Area includes these counties: Arkansas, Ashley, Bradley, Chicot, Cleveland, Desha, Drew, Grant, Jefferson, and Lincoln.

TABLE 8. WORKFORCE INVESTMENT AREA SUMMARY

North American Industry Classification System - Industry Groups	Number of Employing Units	Employment			Total Earnings	Average
		Jan	Feb	Mar	Jan - Mar 2014	Weekly Earnings
SOUTHWEST WORKFORCE INVESTMENT AREA	5,770	77,400	77,327	77,930	\$738,834,878	\$732.84
Natural Resources & Mining	354	2,350	2,355	2,361	26,279,024	858.25
Trade, Transportation & Utilities	1,435	15,690	15,625	15,782	140,182,276	686.88
Wholesale Trade	252	2,485	2,498	2,498	40,799,040	1,258.54
Retail Trade	895	8,883	8,885	8,979	49,243,736	424.87
Transportation, Warehousing & Utilities	288	4,322	4,242	4,305	50,139,500	899.11
Information	59	441	446	447	4,130,660	714.56
Financial Activities	496	2,650	2,627	2,626	25,176,518	735.16
Education & Health Services	1,134	9,246	9,259	9,297	68,294,956	566.88
Leisure & Hospitality	412	5,188	5,232	5,438	16,938,995	246.50
Other Services	392	1,833	1,803	1,827	10,565,926	446.33
Local Government	256	10,144	10,170	10,154	73,551,536	557.09
State Government	139	3,614	3,813	3,875	29,872,783	609.96
Other	1,093	26,244	25,997	26,123	343,842,204	1,012.56

Southwest Workforce Investment Area includes these counties: Calhoun, Columbia, Dallas, Hempstead, Howard, Lafayette, Little River, Miller, Nevada, Ouachita, Sevier, and Union

WEST CENTRAL WORKFORCE INVESTMENT AREA	8,159	104,364	104,672	105,819	\$837,325,714	\$613.71
Natural Resources & Mining	236	2,324	2,310	2,312	\$21,817,192	724.84
Construction	743	4,369	4,244	4,268	\$39,125,361	700.95
Manufacturing	335	15,882	15,896	15,852	149,905,729	726.30
Trade, Transportation & Utilities	1,901	20,802	20,778	21,053	182,633,968	672.91
Wholesale Trade	342	2,178	2,189	2,192	22,757,603	800.69
Retail Trade	1,269	13,695	13,659	13,799	79,603,007	446.38
Transportation, Warehousing & Utilities	290	4,929	4,930	5,062	80,273,358	1,241.51
Financial Activities	822	4,081	4,089	4,089	37,518,322	706.26
Professional & Business Services	919	8,258	8,222	8,503	65,173,343	602.01
Education & Health Services	1,485	16,667	16,642	16,801	141,907,671	653.52
Leisure & Hospitality	750	11,780	11,891	12,254	40,869,818	262.53
Local Government	227	11,642	11,683	11,706	92,878,071	611.84
State Government	125	5,582	5,902	5,970	44,513,705	588.54
Other	616	2,977	3,015	3,011	20,982,534	537.83

West Central Workforce Investment Area includes these counties: Clark, Conway, Garland, Hot Spring, Johnson, Montgomery, Perry, Pike, Pope, and Yell

TABLE 8. WORKFORCE INVESTMENT AREA SUMMARY

North American Industry Classification System - Industry Groups	Number of Employing Units	Employment			Total Earnings	Average
		Jan	Feb	Mar	Jan - Mar 2014	Weekly Earnings
WESTERN WORKFORCE INVESTMENT AREA	6,569	99,671	100,119	100,922	\$896,662,171	\$688.11
Natural Resources & Mining	169	2,018	2,063	2,111	35,379,335	1,318.55
Trade, Transportation & Utilities	1,627	21,787	21,728	21,910	185,995,739	656.05
Wholesale Trade	392	3,761	3,808	3,809	45,942,489	931.81
Retail Trade	944	11,754	11,668	11,807	70,120,742	459.33
Transportation, Warehousing & Utilities	291	6,272	6,252	6,294	69,932,508	857.60
Financial Activities	696	3,670	3,667	3,668	39,602,077	830.44
Professional & Business Services	880	9,583	9,660	9,754	89,870,775	715.23
Education & Health Services	1,027	14,940	14,908	14,991	139,725,481	719.11
Leisure & Hospitality	549	8,396	8,381	8,568	28,201,050	256.77
Other Services	415	1,917	1,927	1,941	13,309,395	530.92
Local Government	151	9,297	9,414	9,474	79,001,324	646.84
State Government	75	2,737	3,015	3,047	23,765,711	623.30
Other	980	25,326	25,356	25,458	261,811,284	793.51

Western Workforce Investment Area includes these counties: Crawford, Franklin, Logan, Polk, Scott, and Sebastian

