

Arkansas Covered Employment & Earnings

Third Quarter
2013

Jobs for People. People for Jobs.

DWS
Department of
WORKFORCE**Services**

**COVERED EMPLOYMENT AND EARNINGS
STATE OF ARKANSAS
THIRD QUARTER 2013**

**MIKE BEEBE, GOVERNOR
STATE OF ARKANSAS**

**ARTEE WILLIAMS, DIRECTOR
DEPARTMENT OF WORKFORCE SERVICES**

**PUBLISHED BY
LABOR MARKET INFORMATION & ANALYSIS
BUREAU OF LABOR STATISTICS PROGRAMS
POST OFFICE BOX 2981
LITTLE ROCK, ARKANSAS 72203-2981
BERNADETTE COLEMAN, BLS PROGRAMS MANAGER
TELEPHONE (501) 682-3159
SUSAN PRICE, QCEW LEAD ANALYST
TELEPHONE (501) 682-3103**

STATE OF ARKANSAS WEBPAGE: <http://www.arkansas.gov>

DEPARTMENT OF WORKFORCE SERVICES WEBPAGE: <http://www.arkansas.gov/esd/>

WEBPAGE FOR LABOR MARKET INFORMATION: <http://www.discover.arkansas.gov>

RELEASED: FEBRUARY 2014

TABLE OF CONTENTS

DESCRIPTION OF DATA	PAGE
Description and Classification of Data	1
Definition of Covered Employment and Earnings	2
Significant Developments During Third Quarter 2013	3

LIST OF GRAPHS AND TABLES

Graph 1	Total Covered Employment for Selected Years, Arkansas	7
Graph 2	Total Covered Earnings, by Calendar Quarter for Selected Years, Arkansas	8
Table 1	Quarterly Comparison of Covered Employment and Wages, by Industry	5
Table 2	Total Covered Employment in Arkansas, 2006 – 2013	6
Table 3	Total Covered Earnings, 2006 – 2013	9
Table 4	Total Taxable Earnings, 2006 – 2013	10
Table 5	State Summary – Employment and Total Earnings, by Industry, Third Quarter 2013	11
Table 6	County Summary – Employment and Total Earnings, by Industry, Third Quarter 2013	22
Table 7	Federal Government Employment and Total Earnings in Arkansas, Third Quarter 2013	60
Table 8	Workforce Information Area – Employment and Total Earnings, by Industry, Third Quarter 2013	61

EMPLOYMENT AND EARNINGS
UNDER THE ARKANSAS EMPLOYMENT SECURITY LAW
THIRD QUARTER 2013

DESCRIPTION AND CLASSIFICATION OF DATA

This publication contains covered employment and payroll data by industry and county for the Third Quarter 2013 and a record for total covered employment by month, quarterly payroll data, average weekly earnings, and total taxable earnings for 2006 through 2013. These data are compiled from quarterly contributions and wage reports submitted by employers subject to the Arkansas Employment Security Law.

Employment data have been tabulated for each month of the quarter by industry under the **North American Industry Classification System** (NAICS) by state, county, and workforce area. Payroll data represent the total wages paid during the quarter and are classified by industry for the state and by publishable industry groups for each county and workforce area.

Due to industry classification revisions, previously published data will not always be comparable with current data. For this reason, comparisons should not be made between the same industries under different revisions. For more information, visit the NAICS home page at <http://www.census.gov/naics>.

Industry Classification Revisions

- SIC (Standard Industrial Classification) 1987 to NAICS 2002
- NAICS 2002 to NAICS 2007
- NAICS 2007 to NAICS 2012

The tabulation of this data is a joint effort in conjunction with the United States Bureau of Labor Statistics. Data included in this publication are subject to revisions. Revisions are typically reflected in the Annual Covered Employment and Earnings publication.

DEFINITION OF COVERED EMPLOYMENT AND EARNINGS

Covered Employment is the total number of workers employed by establishments subject to the Arkansas Employment Security Law that worked or received pay for the payroll period including the 12th of the month. Earnings include all wages paid to any covered employee by their employer including salaries, bonuses, commissions, fees, fringe benefits, sick pay made directly to employees or dependents, deferred compensation, and reported tips. These wages include both taxable and nontaxable wages. Only the first \$12,000 paid to each worker by an employer in the calendar year is taxable under the Arkansas Employment Security Law.

An Arkansas state unemployment account is required of any entity meeting the definition of an employer. As described by Arkansas Department of Workforce Services Law, the definition of an employer includes, but is not limited to, a sole proprietorship, partnership, corporation, associations, trust, estate, and receiver or trustee in bankruptcy. The entity must employ one or more individuals for ten or more days in a calendar year, whether or not the days are consecutive.

Currently excluded from coverage is employment covered by the Railroad Unemployment Insurance Act, some domestic service workers, employees of small agricultural establishments, self-employed workers, unpaid family workers, insurance and real estate agents paid only on a commission basis, and employees of churches and religious organizations except separately incorporated schools.

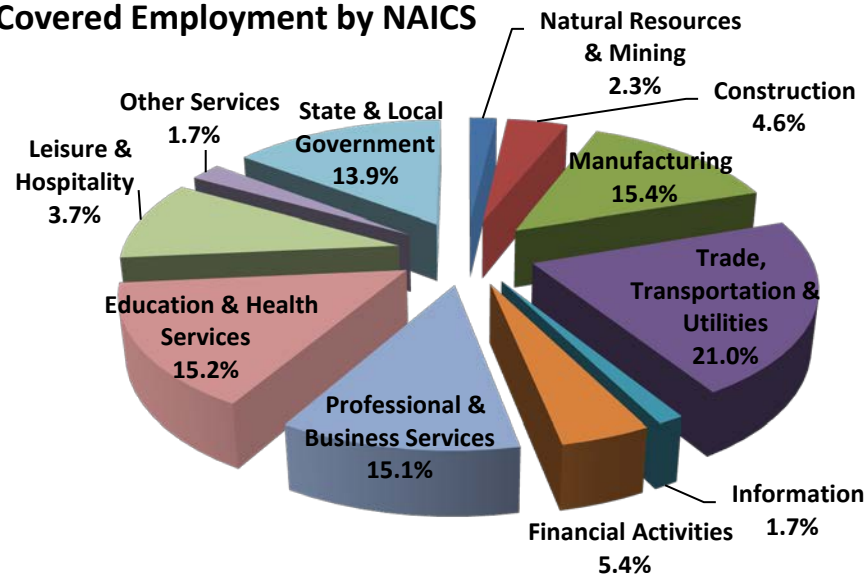
Civilian federal workers are covered by Unemployment Compensation for Federal Employees (UCFE).

SIGNIFICANT DEVELOPMENTS DURING THIRD QUARTER 2013

AVERAGE EMPLOYMENT CHANGES

Covered employment averaged 1,110,507 during the Third Quarter 2013 (refer to Table 1), a decline of 23,775 (-2.1%) from the previous quarter and an increase of 2,250 from the average recorded one year ago. The over-the-year increase is more significant when used as an economic indicator. The over-the-year comparison allows for seasonal factors that appear when comparing over-the-quarter data to be disregarded.

Average Covered Employment by NAICS



EMPLOYMENT CHANGES FROM SECOND QUARTER 2013

Compared to Second Quarter 2013, covered employment decreased in five major industry sectors. State & Local Government declined by 25,221, primarily due to summer break for education. Professional & Business Services experienced a loss of 724, while Education and Health Services decreased by 306. Other Services lost 267 positions, and Information declined by 10. Six major industries reported gains. Trade, Transportation, & Utilities increased by 1,658. Leisure & Hospitality expanded by 491 positions. Natural Resources & Mining gained 259, and Construction added 193. Manufacturing (+86) and Financial Activities (+64) experienced marginal gains as well.

EMPLOYMENT CHANGES FROM THIRD QUARTER 2012 (QUARTER YEAR AGO COMPARISON)

Over-the-year gains were recorded in five industry groups (refer to Table 1). Professional & Business Services increased by 4,232, while Leisure & Hospitality grew by 2,948. Other industries that reported significant gains include State & Local Government (+2,011) and Financial Activities (+457). The most significant over-the-year losses occurred in Manufacturing (-3,524), Construction (-2,221), and Natural Resources & Mining (-839).

COVERED WAGES

Wages paid to covered workers totaled \$10,306,649,458 for the Third Quarter 2013 (refer to Table 1), for an average weekly wage of \$713.93 (refer to Table 5). Benton County workers recorded the highest average weekly wage (\$915.84), and employees in Newton County reported the lowest (\$420.25) (refer to Table 6).

The Information sector recorded the highest average weekly wage for the State of Arkansas (\$940.61). The Leisure & Hospitality industry recorded the lowest (\$272.48) (refer to Table 5).

Average Weekly Wage by Industry

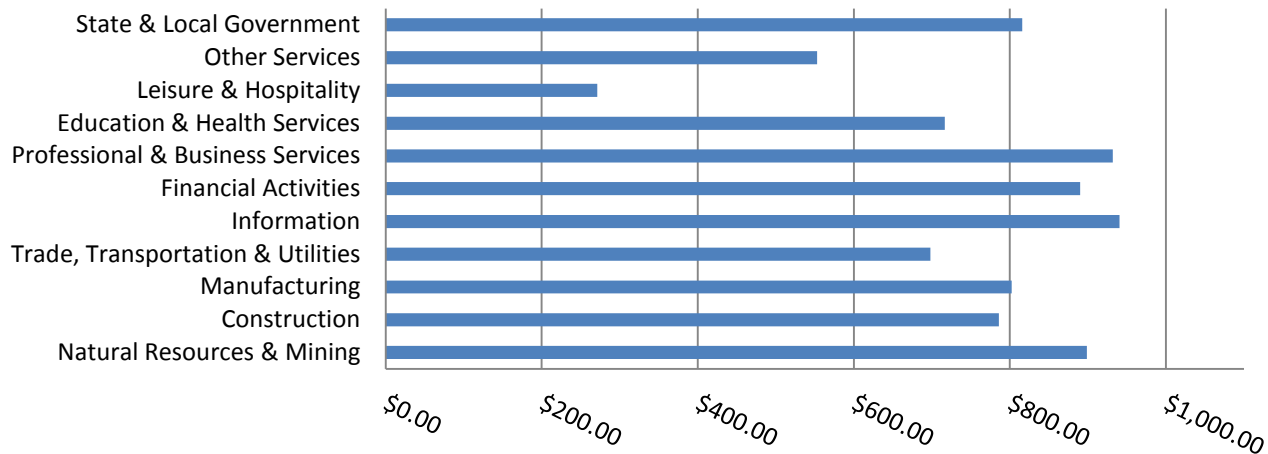


TABLE 1. QUARTERLY COMPARISON OF COVERED EMPLOYMENT AND WAGES, BY INDUSTRY

North American Industry Classification System	Number of Employing Units	Monthly Employment Average	Percent of Total	Net Change From:		Total Wages Paid Jul - Sept 2013	Percent of Total
				Apr - Jun 2013	Jul - Sept 2012		
Total	86,060	1,110,507	100	-23,775	2,250	\$10,306,649,458	100
Natural Resources & Mining	2,509	20,491	1.8	259	-839	239,433,280	2.3
Agriculture, Forestry, Fishing & Hunting	1,991	12,782	1.2	185	-104	112,600,393	1.1
Mining	518	7,709	0.7	74	-735	126,832,887	1.2
Construction	6,755	46,187	4.2	193	-2,221	471,804,826	4.6
Manufacturing	3,032	152,545	13.7	86	-3,524	1,591,125,333	15.4
Trade, Transportation & Utilities	21,311	238,272	21.5	1,658	86	2,162,702,024	21.0
Wholesale Trade	6,849	47,048	4.2	-195	-400	679,336,960	6.6
Retail Trade	11,178	133,380	12.0	1,650	786	810,844,099	7.9
Transportation & Warehousing	2,874	49,727	4.5	172	-700	529,724,652	5.1
Utilities	410	8,117	0.7	30	400	142,796,313	1.4
Information	1,156	14,165	1.3	-10	-147	173,205,022	1.7
Financial Activities	8,130	48,288	4.3	64	457	558,731,232	5.4
Finance & Insurance	4,826	34,953	3.1	-12	478	451,148,361	4.4
Real Estate & Rental & Leasing	3,304	13,335	1.2	77	-21	107,582,871	1.0
Professional & Business Services	12,982	128,053	11.5	-724	4,232	1,551,308,061	15.1
Professional & Technical Services	8,205	39,535	3.6	-318	1,566	524,260,185	5.1
Management of Companies & Enterprises	501	31,172	2.8	-360	61	656,300,190	6.4
Administrative & Waste Services	4,276	57,346	5.2	-46	2,605	370,747,686	3.6
Education & Health Services	15,005	168,458	15.2	-306	-314	1,568,812,501	15.2
Educational Services	730	10,634	1.0	-385	-468	87,755,186	0.9
Health Care & Social Assistance	14,275	157,824	14.2	78	154	1,481,057,315	14.4
Leisure & Hospitality	6,735	108,050	9.7	491	2,948	382,741,711	3.7
Arts, Entertainment & Recreation	924	11,118	1.0	250	451	48,356,684	0.5
Accommodation & Food Services	5,811	96,932	8.7	241	2,497	334,385,027	3.2
Other Services	5,358	23,931	2.2	-267	-439	172,077,058	1.7
State & Local Government	3,087	162,067	14.6	-25,221	2,011	1,434,708,410	13.9
Local Government	1,961	93,099	8.4	-23,690	1,698	735,782,029	7.1
State Government	1,126	68,968	6.2	-1,531	314	698,926,381	6.8
Nonclassifiable Establishments	0	0	0.0	0	0	0	0.0

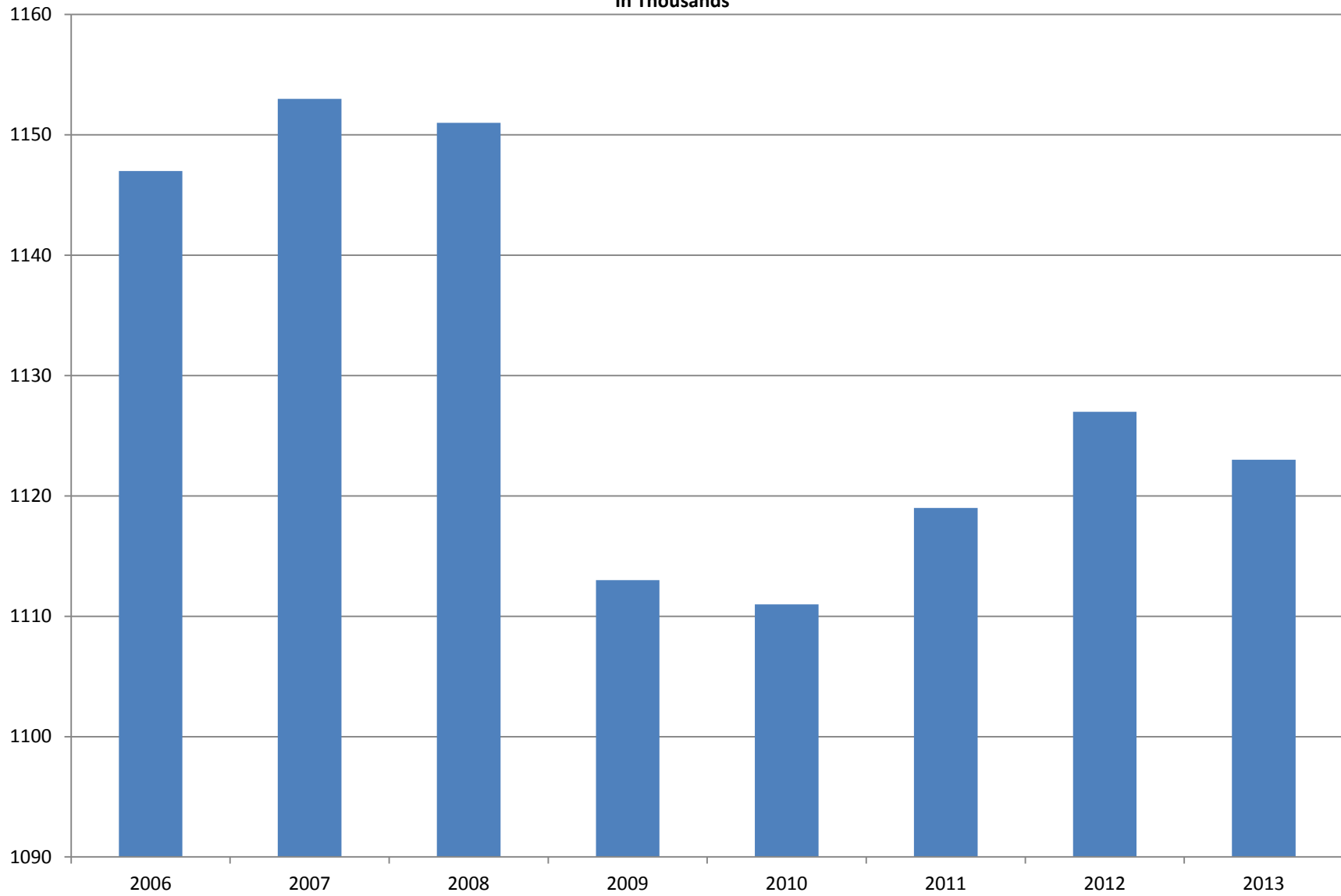
Note: Items do not necessarily add to total because of rounding. Because of industry code changes between years, substantial employment and wage shifts among industries are anticipated.

TABLE 2. TOTAL COVERED EMPLOYMENT IN ARKANSAS

Period	2006	2007	2008	2009	2010	2011	2012	2013
Average	1,146,948	1,152,994	1,150,965	1,112,591	1,110,947	1,118,639	1,126,588	1,122,707
January	1,130,595	1,137,437	1,141,856	1,119,299	1,089,984	1,098,349	1,113,274	1,114,507
February	1,136,810	1,143,397	1,149,443	1,119,476	1,091,282	1,098,445	1,119,319	1,123,049
March	1,150,439	1,158,895	1,157,690	1,124,386	1,106,198	1,113,061	1,131,123	1,130,565
April	1,155,498	1,159,623	1,159,841	1,123,383	1,115,341	1,129,635	1,136,973	1,134,706
May	1,159,886	1,165,224	1,166,111	1,122,322	1,123,250	1,126,371	1,143,142	1,138,211
June	1,162,026	1,164,207	1,164,167	1,117,884	1,130,164	1,123,412	1,136,739	1,129,931
July	1,106,142	1,110,571	1,114,279	1,071,048	1,073,743	1,080,937	1,079,329	1,084,864
August	1,130,839	1,139,109	1,138,583	1,093,192	1,099,795	1,106,262	1,109,425	1,110,517
September	1,159,814	1,165,135	1,162,333	1,116,580	1,124,281	1,132,779	1,136,019	1,136,141
October	1,156,804	1,162,768	1,157,196	1,113,157	1,125,073	1,138,395	1,136,045	N/A
November	1,156,011	1,164,246	1,152,159	1,115,443	1,126,781	1,138,543	1,138,302	N/A
December	1,158,509	1,165,314	1,147,927	1,114,919	1,125,466	1,137,474	1,139,361	N/A

AVERAGE TOTAL COVERED EMPLOYMENT

In Thousands



TOTAL COVERED EARNINGS BY CALENDAR YEAR

In Thousands

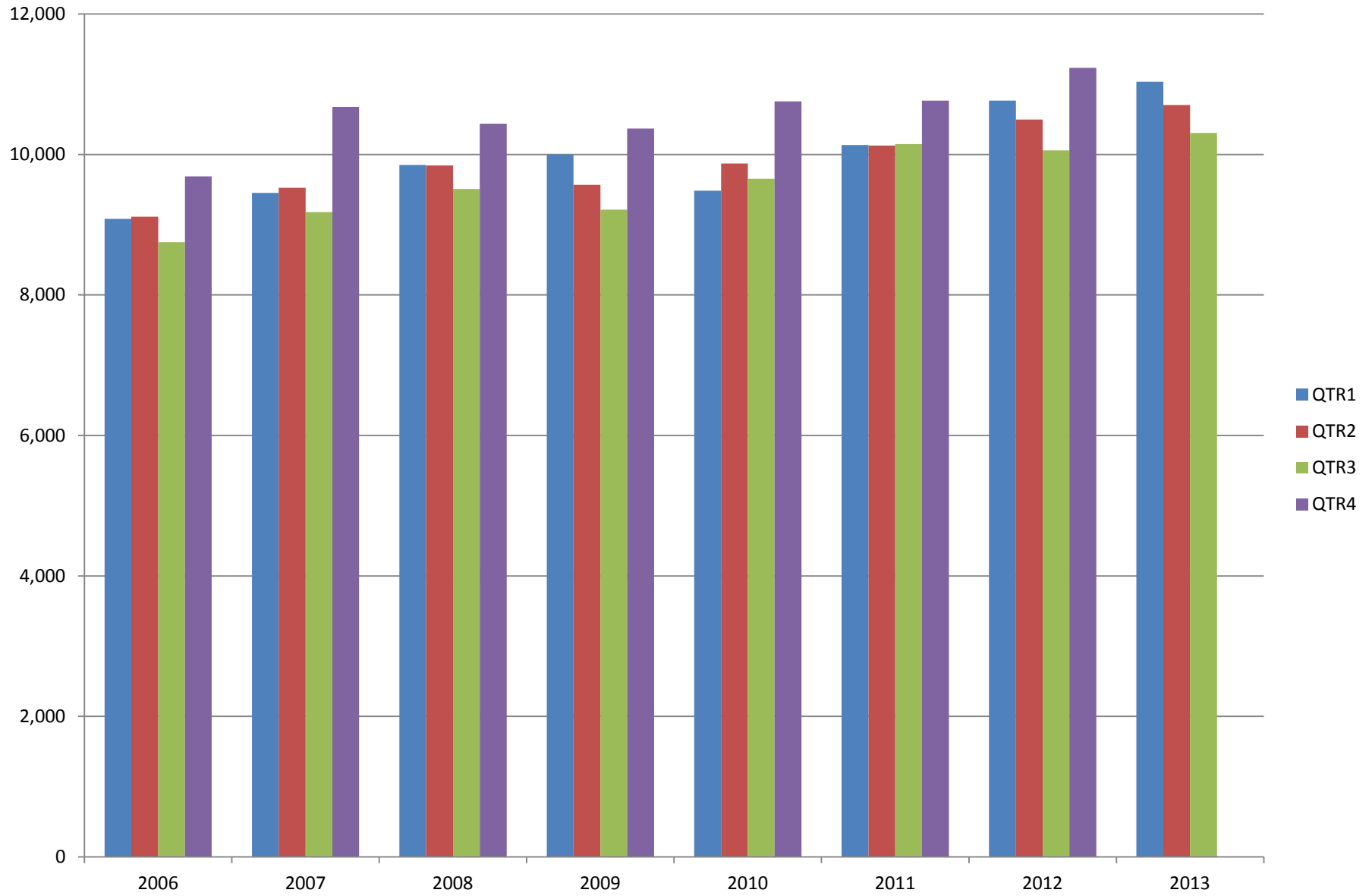


TABLE 3. TOTAL COVERED EARNINGS 2006 - 2013

Period	2006	2007	2008	2009
Total	\$36,636,090,775	\$38,833,265,464	\$39,643,039,342	\$39,149,476,305
January - March	9,085,021,816	9,452,711,662	9,851,866,058	9,998,452,028
April - June	9,112,624,590	9,525,837,049	9,843,711,293	9,566,968,853
July - September	8,750,878,205	9,178,902,477	9,509,150,631	9,213,797,140
October - December	9,687,566,164	10,675,814,276	10,438,311,360	10,370,258,284
Average Weekly Earnings	\$614.27	\$647.70	\$662.37	\$676.69

Period	2010	2011	2012	2013
Total	\$39,769,504,992	\$41,177,659,236	\$42,555,976,081	\$32,050,092,242
January - March	9,486,245,580	10,134,035,254	10,766,175,449	11,038,435,964
April - June	9,873,489,653	10,128,274,611	10,499,018,872	10,705,006,820
July - September	9,653,588,807	10,147,287,431	10,058,388,682	10,306,649,458
October - December	10,756,180,952	10,768,061,940	11,232,393,078	N/A
Average Weekly Earnings	\$688.42	\$707.89	\$726.43	\$731.98

TABLE 4. TOTAL TAXABLE EARNINGS, 2006 - 2013

Period	2006	2007	2008	2009
Total	10,197,511,360	10,459,105,059	10,360,487,108	9,787,660,886
January - March	5,421,204,601	5,617,417,571	5,635,750,082	5,423,705,265
April - June	2,385,110,992	2,466,606,627	2,419,313,519	2,293,670,854
July - September	1,314,939,803	1,307,060,412	1,297,473,555	1,165,280,065
October - December	1,076,255,964	1,068,020,449	1,007,949,952	905,004,702
<hr/>				
Period	2010	2011	2012	2013
Total	11,332,118,456	11,479,396,226	11,642,854,241	10,511,513,843
January - March	5,607,134,758	5,828,877,821	6,167,036,199	6,194,767,117
April - June	2,977,100,591	2,910,604,359	2,845,540,593	2,807,334,202
July - September	1,577,067,770	1,601,382,146	1,505,833,030	1,509,412,524
October - December	1,170,815,337	1,138,531,900	1,124,444,419	N/A

TABLE 5. STATEWIDE SUMMARY

NORTH AMERICAN INDUSTRY CLASSIFICATION SYSTEM - INDUSTRY GROUPS		NUMBER OF EMPLOYING UNITS	EMPLOYMENT			TOTAL EARNINGS	AVERAGE WEEKLY EARNINGS
			JUL	AUG	SEPT	JUL - SEPT 2013	
TOTAL, ALL INDUSTRIES		86,060	1,084,864	1,110,517	1,136,141	\$10,306,649,458	\$713.93
NATURAL RESOURCES & MINING		2,509	20,842	20,353	20,278	\$239,433,280	\$898.83
11	AGRICULTURE, FORESTRY, FISHING & HUNTING	1,991	13,056	12,636	12,655	\$112,600,393	\$677.62
111	CROP PRODUCTION	866	4,653	4,480	4,660	\$29,772,857	\$498.13
1111	Oilseed & Grain Farming	576	2,873	2,818	2,944	19,168,387	512.27
1112	Vegetable & Melon Farming	14	228	174	152	943,462	393.00
1113	Fruit & Tree Nut Farming	12	104	70	66	447,672	430.45
1114	Greenhouse & Nursery Production	43	356	367	361	2,238,784	476.61
1119	Other Crop Farming	221	1,092	1,051	1,137	6,974,552	490.70
112	ANIMAL PRODUCTION & AQUACULTURE	289	3,026	2,994	2,981	\$30,717,580	\$787.54
1121	Cattle Ranching & Farming	100	369	367	367	2,389,175	499.86
1122	Hog & Pig Farming	11	127	127	128	1,402,259	847.12
1123	Poultry & Egg Production	101	2,039	2,016	2,012	23,428,424	891.14
1125	Animal Aquaculture	57	441	430	414	3,198,846	574.47
1129	Other Animal Production	20	50	54	60	298,876	420.56
113	FORESTRY & LOGGING	403	2,259	2,272	2,311	\$21,323,389	\$719.20
1131	Timber Tract Operations	36	184	186	187	1,902,191	788.09
1132	Forest Nurseries & Gathering of Forest Products	5	24	24	24	257,326	824.76
1133	Logging	362	2,051	2,062	2,100	19,163,872	711.80
114	FISHING, HUNTING & TRAPPING	3	19	20	18	\$90,019	\$364.45
115	SUPPORT ACTIVITIES FOR AGRICULTURE & FORESTRY	430	3,099	2,870	2,685	\$30,696,548	\$818.56
1151	Support Activities for Crop Production	293	1,541	1,485	1,477	18,985,281	972.96
1152	Support Activities for Animal Production	63	713	717	694	4,937,367	536.44
1153	Support Activities for Forestry	74	845	668	514	6,773,900	771.19
21	MINING	518	7,786	7,717	7,623	\$126,832,887	\$1,265.64
211	OIL & GAS EXTRACTION	87	1,585	1,568	1,564	\$32,403,368	\$1,585.27
212	MINING (EXCEPT OIL & GAS)	112	1,925	1,909	1,918	\$23,228,475	\$931.92
213	SUPPORT ACTIVITIES FOR MINING	319	4,276	4,240	4,141	\$71,201,044	\$1,298.18

TABLE 5. STATEWIDE SUMMARY

NORTH AMERICAN INDUSTRY CLASSIFICATION SYSTEM - INDUSTRY GROUPS		NUMBER OF	EMPLOYMENT			TOTAL EARNINGS	AVERAGE
		EMPLOYING	JUL	AUG	SEPT	JUL - SEPT 2013	WEEKLY
		UNITS					EARNINGS
CONSTRUCTION		6,755	46,311	46,283	45,968	\$471,804,826	\$785.77
236	CONSTRUCTION OF BUILDINGS	1,607	9,311	9,203	9,278	\$100,221,271	\$832.18
2361	Residential Building Construction	1,066	2,778	2,831	2,856	24,125,605	657.70
2362	Nonresidential Building Construction	541	6,533	6,372	6,422	76,095,666	908.60
237	HEAVY & CIVIL ENGINEERING CONSTRUCTION	728	7,870	7,871	7,726	\$91,070,433	\$895.57
2371	Utility System Construction	399	3,944	3,945	3,701	42,918,696	854.56
2372	Land Subdivision	66	159	152	148	1,473,473	740.81
2373	Highway, Street & Bridge Construction	180	2,994	3,134	3,149	36,871,446	917.19
2379	Other Heavy Construction	83	773	640	728	9,806,818	1,057.03
238	SPECIALTY TRADE CONTRACTORS	4,420	29,130	29,209	28,964	\$280,513,122	\$741.48
2381	Building Foundation & Exterior Contractors	855	5,511	5,460	5,328	48,608,503	688.22
2382	Building Equipment Contractors	2,044	15,282	15,320	15,106	160,362,018	809.63
2383	Building Finishing Contractors	757	3,737	3,771	3,815	30,340,267	618.35
2389	Other Specialty Trade Contractors	764	4,600	4,658	4,715	41,202,334	680.47
MANUFACTURING		3,032	152,559	152,533	152,544	\$1,591,125,333	\$802.35
311	FOOD MANUFACTURING	268	42,741	42,763	42,819	\$349,701,206	\$628.88
3111	Animal Food Manufacturing	43	1,402	1,403	1,429	14,844,582	809.09
3112	Grain & Oilseed Milling	29	2,382	2,408	2,388	28,249,548	908.21
3113	Sugar & Confectionery Product Manufacturing	7	39	36	37	170,181	350.65
3114	Fruit, Vegetable & Specialty Food	20	4,300	4,301	4,354	44,293,626	789.01
3115	Dairy Product Manufacturing	10	577	571	579	5,824,611	778.31
3116	Animal Slaughtering & Processing	79	29,089	29,055	29,021	205,127,488	543.07
3117	Seafood Product Preparation & Packaging	5	76	79	79	427,182	421.28
3118	Bakeries & Tortilla Manufacturing	54	3,171	3,196	3,225	33,399,328	803.54
3119	Other Food Manufacturing	21	1,705	1,714	1,707	17,364,660	781.75
312	BEVERAGE & TOBACCO PRODUCT MANUFACTURING	44	1,158	1,168	1,116	\$13,572,609	\$909.98
313	TEXTILE MILLS	12	71	72	81	\$771,258	\$794.57
314	TEXTILE PRODUCT MILLS	56	893	892	885	\$9,442,912	\$816.15
3141	Textile Furnishing Mills	10	29	29	28	366,933	984.61
3149	Other Textile Product Mills	46	864	863	857	9,075,979	810.55
315	APPAREL MANUFACTURING	21	1,011	1,021	1,028	\$6,001,249	\$452.58
316	LEATHER & ALLIED PRODUCT MANUFACTURING	16	1,119	1,122	1,083	\$7,028,855	\$487.98

TABLE 5. STATEWIDE SUMMARY

NORTH AMERICAN INDUSTRY CLASSIFICATION SYSTEM - INDUSTRY GROUPS		NUMBER OF EMPLOYING UNITS	EMPLOYMENT			TOTAL EARNINGS	AVERAGE WEEKLY EARNINGS
			JUL	AUG	SEPT	JUL - SEPT 2013	
321	WOOD PRODUCT MANUFACTURING	313	9,038	9,069	9,087	\$83,542,732	\$708.95
3211	Sawmills & Wood Preservation	127	4,261	4,286	4,290	41,811,780	751.65
3212	Veneer & Engineered Wood Products	52	1,992	1,971	1,953	20,776,022	810.42
3219	Other Wood Product Manufacturing	134	2,785	2,812	2,844	20,954,930	572.89
322	PAPER MANUFACTURING	74	10,173	10,023	9,985	\$147,385,929	\$1,126.94
3221	Pulp, Paper & Paperboard Mills	11	4,299	4,262	4,245	77,390,724	1,394.61
3222	Converted Paper Product Manufacturing	63	5,874	5,761	5,740	69,995,205	929.65
323	PRINTING & RELATED SUPPORT ACTIVITIES	246	3,451	3,594	3,550	\$34,308,529	\$747.27
324	PETROLEUM & COAL PRODUCTS MANUFACTURING	17	982	987	1,001	\$13,903,214	\$1,080.28
325	CHEMICAL MANUFACTURING	118	4,738	4,752	4,773	\$68,936,896	\$1,115.37
3251	Basic Chemical Manufacturing	30	1,734	1,738	1,743	28,347,001	1,254.38
3252	Resin, Rubber & Artificial Fibers	6	261	266	264	3,709,735	1,082.29
3253	Agricultural Chemical Manufacturing	16	397	398	391	5,783,202	1,125.28
3254	Pharmaceutical & Medicine Manufacturing	13	208	214	213	2,853,287	1,036.93
3255	Paint, Coating & Adhesive Manufacturing	9	236	248	254	3,558,774	1,112.81
3256	Soap, Cleaning Compound, & Toilet Preparation Manufacturing	16	1,119	1,107	1,125	13,346,986	919.15
3259	Other Chemical Preparation Manufacturing	28	783	781	783	11,337,911	1,114.80
326	PLASTICS & RUBBER PRODUCTS MANUFACTURING	140	10,648	10,639	10,530	\$114,143,275	\$827.88
3261	Plastics Product Manufacturing	99	6,475	6,482	6,427	65,324,986	777.70
3262	Rubber Product Manufacturing	41	4,173	4,157	4,103	48,818,289	906.12
327	NONMETALLIC MINERAL PRODUCT MANUFACTURING	249	3,529	3,545	3,548	\$38,230,171	\$830.57
3271	Clay Product & Refractory Manufacturing	14	367	372	383	4,204,932	864.86
3272	Glass & Glass Product Manufacturing	12	372	382	375	4,038,416	825.46
3273	Cement & Concrete Product Manufacturing	181	1,971	1,962	1,967	19,672,148	769.45
3274	Lime & Gypsum Product Manufacturing	5	206	219	225	3,061,278	1,086.84
3279	Other Nonmetallic Mineral Products Manufacturing	37	613	610	598	7,253,397	919.20
331	PRIMARY METAL MANUFACTURING	75	10,185	10,062	9,986	\$147,067,901	\$1,122.57
3311	Iron & Steel Mills & Ferroalloys	8	2,410	2,406	2,357	54,472,074	1,752.47
3312	Purchased Steel Product Manufacturing	20	3,058	3,005	3,015	42,978,131	1,092.53
3313	Alumina & Aluminum Production	19	1,250	1,255	1,245	15,505,811	954.20
3314	Other Nonferrous Metal Production	7	613	609	607	6,022,089	759.82
3315	Foundries	21	2,854	2,787	2,762	28,089,796	771.42

TABLE 5. STATEWIDE SUMMARY

NORTH AMERICAN INDUSTRY CLASSIFICATION SYSTEM - INDUSTRY GROUPS		NUMBER OF EMPLOYING UNITS	EMPLOYMENT			TOTAL EARNINGS	AVERAGE WEEKLY EARNINGS
			JUL	AUG	SEPT	JUL - SEPT 2013	
332	FABRICATED METAL PRODUCT MANUFACTURING	522	14,184	14,180	14,233	\$160,623,338	\$870.18
3321	Forging & Stamping	12	319	320	316	3,317,924	801.75
3322	Cutlery & Hand Tool Manufacturing	12	731	710	711	7,210,373	773.20
3323	Architectural & Structural Metals	152	3,580	3,567	3,597	41,433,324	889.94
3324	Boilers, Tanks & Shipping Containers	17	688	688	696	8,195,361	912.76
3325	Hardware Manufacturing	7	272	262	262	2,969,922	861.01
3326	Spring & Wire Product Manufacturing	13	382	391	386	4,097,063	815.77
3327	Machine Shops & Threaded Products	210	1,886	1,873	1,871	19,242,172	788.72
3328	Coating, Engraving & Heat Treating Metals	39	720	731	742	6,272,927	660.10
3329	Other Fabricated Metal Product Manufacturing	60	5,606	5,638	5,652	67,884,272	927.18
333	MACHINERY MANUFACTURING	213	11,035	11,020	11,039	\$111,629,936	\$778.41
3331	Agriculture, Construction & Mining Machinery	38	2,830	2,824	2,807	23,668,035	645.53
3332	Industrial Machinery Manufacturing	26	746	742	734	8,384,744	870.81
3333	Commercial & Service Industry Machinery	23	766	752	756	9,490,419	963.10
3334	HVAC & Commercial Refrigeration Equipment	19	3,023	3,007	3,027	31,151,676	793.73
3335	Metalworking Machinery Manufacturing	59	1,155	1,157	1,159	12,068,368	802.36
3336	Turbine & Power Transmission Equipment Manufacturing	7	534	534	555	5,632,621	800.88
3339	Other General Purpose Machinery Manufacturing	41	1,981	2,004	2,001	21,234,073	818.61
334	COMPUTER & ELECTRONIC PRODUCT MANUFACTURING	61	2,918	2,947	2,941	\$31,440,799	\$823.93
3343	Audio & Video Equipment Manufacturing	5	223	221	213	2,273,889	798.70
3344	Semiconductors & Electronic Components	27	2,032	2,066	2,065	21,470,465	803.95
3345	Electronic Instrument Manufacturing	20	513	511	513	5,602,530	841.18
	Other	9	150	149	150	2,093,915	1,076.19
335	ELECTRICAL EQUIPMENT & APPLIANCES	55	5,662	5,636	5,764	\$64,836,336	\$876.93
3353	Electrical Equipment Manufacturing	20	3,476	3,461	3,605	39,966,141	874.88
3359	Other Electrical Equipment & Component Manufacturing	18	1,639	1,625	1,628	18,723,857	883.26
	Other	17	547	550	531	6,146,338	871.24
336	TRANSPORTATION EQUIPMENT MANUFACTURING	143	12,376	12,307	12,395	\$129,205,051	\$804.16
3362	Motor Vehicle Body & Trailer Manufacturing	30	1,666	1,635	1,614	13,932,686	654.17
3363	Motor Vehicle Parts Manufacturing	47	4,767	4,724	4,692	42,835,615	696.97
3364	Aerospace Product & Parts Manufacturing	26	2,917	2,905	2,888	42,862,158	1,135.62
3366	Ship & Boat Building	23	1,531	1,539	1,538	10,864,789	544.11
	Other	17	1,495	1,504	1,663	18,709,803	926.14
337	FURNITURE & RELATED PRODUCT MANUFACTURING	192	3,299	3,376	3,347	\$28,985,885	\$667.44
3371	Household & Institutional Furniture	158	2,295	2,333	2,310	17,950,742	597.07
3372	Office Furniture & Fixtures Manufacturing	25	914	952	942	10,435,072	857.58
3379	Other Furniture Related Product Manufacturing	9	90	91	95	600,071	501.73
339	MISCELLANEOUS MANUFACTURING	197	3,348	3,358	3,353	\$30,367,252	\$696.67
3391	Medical Equipment & Supplies Manufacturing	79	1,601	1,598	1,583	16,840,577	812.69
3399	Other Miscellaneous Manufacturing	118	1,747	1,760	1,770	13,526,675	591.54

TABLE 5. STATEWIDE SUMMARY

NORTH AMERICAN INDUSTRY CLASSIFICATION SYSTEM - INDUSTRY GROUPS		NUMBER OF	EMPLOYMENT			TOTAL EARNINGS	AVERAGE
		EMPLOYING	JUL	AUG	SEPT	JUL - SEPT 2013	WEEKLY
		UNITS					EARNINGS
TRADE, TRANSPORTATION & UTILITIES		21,311	238,025	238,678	238,113	\$2,162,702,024	\$698.20
42	WHOLESALE TRADE	6,849	47,198	47,068	46,878	\$679,336,960	\$1,110.71
423	MERCHANT WHOLESALERS, DURABLE GOODS	2,155	21,022	21,061	20,982	\$260,749,466	\$954.14
4231	Motor Vehicle & Part Merchant Wholesalers	229	2,626	2,646	2,649	26,554,714	773.64
4232	Furniture & Furnishings Merchant Wholesalers	49	392	397	404	4,656,000	900.64
4233	Lumber & Supply Merchant Wholesalers	175	1,376	1,397	1,406	14,993,031	827.93
4234	Commercial Goods Merchant Wholesalers	309	2,808	2,812	2,810	44,223,730	1,210.61
4235	Metal & Mineral Merchant Wholesalers	52	896	910	904	11,301,703	962.39
4236	Appliances & Electronics Goods Merchant Wholesalers	185	1,841	1,832	1,824	26,549,596	1,114.58
4237	Hardware & Plumbing Merchant Wholesalers	226	2,219	2,202	2,187	27,685,679	966.86
4238	Machinery & Supply Merchant Wholesalers	704	6,835	6,818	6,788	84,876,487	958.22
4239	Miscellaneous Durable Goods Merchant Wholesalers	226	2,029	2,047	2,010	19,908,526	754.89
424	MERCHANT WHOLESALERS, NONDURABLE GOODS	1,197	16,015	15,883	15,751	\$197,005,736	\$954.12
4241	Paper & Paper Product Merchant Wholesalers	68	1,546	1,538	1,526	19,729,490	987.63
4242	Druggist' Goods Merchant Wholesalers	65	629	613	607	9,787,503	1,221.55
4243	Apparel & Piece Goods Merchant Wholesalers	40	621	621	618	6,142,529	762.10
4244	Grocery Product Merchant Wholesalers	297	4,868	4,843	4,807	66,966,459	1,064.46
4245	Farm Product Merchant Wholesalers	74	870	863	898	7,727,293	677.77
4246	Chemical Merchant Wholesalers	96	693	683	688	10,249,085	1,145.92
4247	Petroleum Merchant Wholesalers	138	1,605	1,690	1,674	23,014,718	1,068.84
4248	Alcoholic Beverage Merchant Wholesalers	40	1,420	1,418	1,406	16,407,228	892.15
4249	Miscellaneous Nondurable Goods Merchant Wholesaler	379	3,763	3,614	3,527	36,981,431	782.66
425	ELECTRONIC MARKETS & AGENTS & BROKERS	3,497	10,161	10,124	10,145	\$221,581,758	\$1,680.39
44 - 45	RETAIL TRADE	11,178	133,259	133,648	133,234	\$810,844,099	\$467.63
441	MOTOR VEHICLE & PARTS DEALERS	1,601	18,068	18,140	18,244	\$184,577,987	\$782.25
4411	Automobile Dealers	645	10,739	10,825	10,818	129,274,882	921.27
4412	Other Motor Vehicle Dealers	162	1,452	1,451	1,565	14,272,632	737.17
4413	Automotive Parts, Accessories & Tire Stores	794	5,877	5,864	5,861	41,030,473	537.93
442	FURNITURE & HOME FURNISHINGS STORES	520	3,335	3,324	3,359	\$23,834,314	\$549.03
4421	Furniture Stores	280	1,858	1,856	1,871	14,821,290	612.41
4422	Home Furnishings Stores	240	1,477	1,468	1,488	9,013,024	469.19
443	ELECTRONICS & APPLIANCE STORES	510	3,671	3,682	3,724	\$28,457,946	\$592.87
444	BUILDING MATERIAL & GARDEN SUPPLY STORES	831	10,644	10,486	10,369	\$66,227,129	\$485.20
4441	Building Material & Supplies Dealers	616	9,295	9,182	9,098	58,029,214	485.63
4442	Lawn & Garden Equipment & Supplies Stores	215	1,349	1,304	1,271	8,197,915	482.12

TABLE 5. STATEWIDE SUMMARY

NORTH AMERICAN INDUSTRY CLASSIFICATION SYSTEM - INDUSTRY GROUPS		NUMBER OF EMPLOYING UNITS	EMPLOYMENT			TOTAL EARNINGS	AVERAGE WEEKLY EARNINGS
			JUL	AUG	SEPT	JUL - SEPT 2013	
445	FOOD & BEVERAGE STORES	1,008	17,942	17,761	17,830	\$85,536,363	\$368.73
4451	Grocery Stores	555	15,585	15,436	15,481	72,414,408	359.36
4452	Specialty Food Stores	124	743	732	745	5,122,594	532.49
4453	Beer, Wine & Liquor Stores	329	1,614	1,593	1,604	7,999,361	383.71
446	HEALTH & PERSONAL CARE STORES	1,011	7,960	7,921	7,923	\$68,585,003	\$664.90
447	GASOLINE STATIONS	1,665	12,251	12,411	12,383	\$52,577,233	\$327.53
44711	Gasoline Stations with Convenience Stores	1,562	10,949	11,048	11,045	45,278,966	316.23
44719	Other Gasoline Stations	103	1,302	1,363	1,338	7,298,267	420.74
448	CLOTHING & CLOTHING ACCESSORIES STORES	1,052	8,360	8,677	8,387	\$32,221,294	\$292.47
4481	Clothing Stores	770	6,432	6,665	6,481	21,953,012	258.76
4482	Shoe Stores	142	1,180	1,256	1,149	4,830,148	310.92
4483	Jewelry, Luggage & Leather Goods Stores	140	748	756	757	5,438,134	555.04
451	SPORTING GOODS, HOBBY, BOOK & MUSIC STORES	488	4,353	4,564	4,477	\$19,623,591	\$338.10
4511	Sporting Goods & Musical Instrument Stores	411	3,874	3,981	3,974	17,625,289	343.85
4512	Book, Periodical & Music Stores	77	479	583	503	1,998,302	294.66
452	GENERAL MERCHANDISE STORES	860	38,123	38,113	37,839	\$198,629,242	\$401.82
453	MISCELLANEOUS STORE RETAILERS	1,264	6,814	6,809	6,958	\$35,542,221	\$398.53
4531	Florists	203	682	680	689	2,702,928	304.12
4532	Office Supplies, Stationery & Gift Stores	306	2,032	2,055	2,140	11,083,991	410.77
4533	Used Merchandise Stores	256	1,516	1,621	1,654	7,502,899	361.39
4539	Other Miscellaneous Store Retailers	499	2,584	2,453	2,475	14,252,403	437.83
454	NONSTORE RETAILERS	368	1,738	1,760	1,741	\$15,031,776	\$662.12
4541	Electronic Shopping & Mail-Order Houses	146	611	599	621	5,592,129	704.80
4542	Vending Machine Operators	71	447	485	446	3,397,965	569.05
4543	Direct Selling Establishments	151	680	676	674	6,041,682	686.81
48 - 49	TRANSPORTATION & WAREHOUSING	2,874	49,425	49,836	49,920	529,724,652	\$819.44
481	AIR TRANSPORTATION	50	784	785	778	\$10,378,626	\$1,020.48
484	TRUCK TRANSPORTATION	1,876	31,849	32,286	32,012	\$354,741,621	\$851.44
4841	General Freight Trucking	1,134	25,320	25,788	25,503	286,667,074	863.50
4842	Specialized Freight Trucking	742	6,529	6,498	6,509	68,074,547	804.13

TABLE 5. STATEWIDE SUMMARY

NORTH AMERICAN INDUSTRY CLASSIFICATION SYSTEM - INDUSTRY GROUPS		NUMBER OF EMPLOYING UNITS	EMPLOYMENT			TOTAL EARNINGS	AVERAGE WEEKLY EARNINGS
			JUL	AUG	SEPT	JUL - SEPT 2013	
485	TRANSIT & GROUND PASSENGER TRANSPORTATION	84	1,346	1,354	1,547	\$6,471,325	\$351.63
4853	Taxi & Limousine Service	27	363	371	378	1,622,832	336.78
4854	School & Employee Bus Transportation	13	309	314	485	1,694,512	352.93
4855	Charter Bus Industry Service	6	102	94	98	641,322	503.39
4859	Other Ground Passenger Transportation	32	505	507	508	2,025,428	307.50
	Other	6	67	68	78	487,231	527.88
486	PIPELINE TRANSPORTATION	32	463	458	460	\$10,382,203	\$1,734.90
488	SUPPORT ACTIVITIES FOR TRANSPORTATION	419	4,518	4,501	4,548	\$50,026,858	\$850.94
4881	Support Activities for Air Transportation	98	1,232	1,225	1,215	12,564,434	789.62
4882	Support Activities for Rail Transportation	43	358	365	361	3,744,263	797.10
4883	Support Activities for Water Transportation	22	629	621	619	7,365,886	909.48
4884	Support Activities for Road Transportation	128	622	617	639	4,629,210	568.84
4885	Freight Transportation Arrangement	112	1,566	1,558	1,578	20,934,777	1,027.46
4889	Other Support Activities for Transportation	16	111	115	136	788,288	502.52
	OTHER	9	85	82	78	\$447,278	\$421.30
491	POSTAL SERVICE	13	243	226	218	\$2,501,867	\$840.40
492	COURIERS & MESSENGERS	171	3,025	3,051	3,087	\$31,735,365	\$799.25
493	WAREHOUSING & STORAGE	220	7,112	7,093	7,192	63,039,509	\$679.89
22	UTILITIES	410	8,143	8,126	8,081	\$142,796,313	\$1,353.31
2211	Power Generation & Supply	158	5,882	5,856	5,798	115,027,470	1,513.73
2212	Natural Gas Distribution	65	1,331	1,336	1,344	19,983,341	1,149.72
2213	Water, Sewage & Other Systems	187	930	934	939	7,785,502	640.98
	INFORMATION	1,156	14,261	14,194	14,039	\$173,205,022	\$940.61
511	PUBLISHING INDUSTRIES, EXCEPT INTERNET	236	3,604	3,591	3,608	\$32,026,228	\$684.13
5111	Newspaper, Book & Directory Publishers	208	3,283	3,267	3,288	26,268,440	616.18
5112	Software Publishers	28	321	324	320	5,757,788	1,376.91
512	MOTION PICTURE & SOUND RECORDING INDUSTRY	137	1,209	1,169	1,058	\$5,916,053	\$397.33
5121	Motion Picture & Video Industries	119	1,175	1,135	1,023	5,603,409	387.97
5122	Sound Recording Industries	18	34	34	35	312,644	700.47
515	BROADCASTING, EXCEPT INTERNET	125	1,664	1,659	1,674	\$16,346,034	\$754.89
5151	Radio & Television Broadcasting	120	1,635	1,629	1,645	16,108,819	757.27
5152	Cable & Other Subscription Programming	5	29	30	29	237,215	622.07

TABLE 5. STATEWIDE SUMMARY

NORTH AMERICAN INDUSTRY CLASSIFICATION SYSTEM - INDUSTRY GROUPS		NUMBER OF EMPLOYING UNITS	EMPLOYMENT			TOTAL EARNINGS	AVERAGE WEEKLY EARNINGS
			JUL	AUG	SEPT	JUL - SEPT 2013	
517	TELECOMMUNICATIONS	391	5,930	5,932	5,864	\$96,269,374	\$1,253.30
5171	Wired Telecommunications Carriers	268	3,692	3,686	3,660	57,268,911	1,197.31
5172	Wireless Telecommunications Carriers (except Satellite)	54	1,900	1,913	1,875	33,939,745	1,376.98
5174	Satellite Telecommunications Carriers	5	4	4	4	36,375	699.52
5179	Other Telecommunications	64	334	329	325	5,024,343	1,173.55
518	DATA PROCESSING, HOSTING & RELATED SERVICES	185	1,540	1,515	1,515	\$19,412,265	\$980.25
519	OTHER INFORMATION SERVICES	82	314	328	320	\$3,235,068	\$776.04
FINANCIAL ACTIVITIES		8,130	48,299	48,430	48,135	\$558,731,232	\$890.06
52	FINANCE & INSURANCE	4,826	34,956	35,045	34,858	\$451,148,361	\$992.87
522	CREDIT INTERMEDIATION & RELATED ACTIVITIES	1,937	19,324	19,323	19,209	\$214,563,153	\$855.82
5221	Depository Credit Intermediation	1,417	16,659	16,645	16,541	178,157,204	824.82
5222	Nondepository Credit Intermediation	376	2,273	2,283	2,285	31,024,797	1,046.57
5223	Activities Related to Credit Intermediation	144	392	395	383	5,381,152	1,061.37
523	FINANCIAL INVESTMENT & RELATED ACTIVITIES	655	3,055	3,053	3,034	\$80,993,189	\$2,044.49
524	INSURANCE CARRIERS & RELATED ACTIVITIES	2,163	12,487	12,551	12,517	\$154,410,744	\$948.83
5241	Insurance Carriers	357	5,317	5,327	5,347	74,572,508	1,076.17
5242	Insurance Agencies, Brokerages & Support	1,806	7,170	7,224	7,170	79,838,236	854.40
	OTHER	71	90	118	98	\$1,181,275	\$890.86
53	REAL ESTATE & RENTAL & LEASING	3,304	13,343	13,385	13,277	\$107,582,871	\$620.59
531	REAL ESTATE	2,604	8,802	8,868	8,786	\$66,657,735	\$581.44
5311	Lessors of Real Estate	1,123	4,297	4,332	4,276	29,374,836	525.29
5312	Offices of Real Estate Agents & Brokers	745	1,534	1,553	1,549	13,098,954	652.04
5313	Activities Related to Real Estate	736	2,971	2,983	2,961	24,183,945	626.01
532	RENTAL & LEASING SERVICES	678	4,481	4,459	4,434	\$40,102,365	\$691.97
5321	Automotive Equipment Rental & Leasing	112	958	956	972	6,226,528	497.88
5322	Consumer Goods Rental	359	2,025	2,030	1,974	14,980,461	573.40
5323	General Rental Centers	45	268	270	274	2,419,401	687.59
5324	Machinery & Equipment Rental & Leasing	162	1,230	1,203	1,214	16,475,975	1,042.54
533	LESSORS OF NONFINANCIAL INTANGIBLE ASSETS	22	60	58	57	\$822,771	\$1,084.97

TABLE 5. STATEWIDE SUMMARY

NORTH AMERICAN INDUSTRY CLASSIFICATION SYSTEM - INDUSTRY GROUPS		NUMBER OF EMPLOYING	EMPLOYMENT			TOTAL EARNINGS	AVERAGE WEEKLY
		UNITS	JUL	AUG	SEPT	JUL - SEPT 2013	EARNINGS
PROFESSIONAL & BUSINESS SERVICES		12,982	126,941	127,174	130,044	\$1,551,308,061	\$931.89
54	PROFESSIONAL & TECHNICAL SERVICES	8,205	39,673	39,583	39,350	\$524,260,185	\$1,020.04
5411	Legal Services	1,723	6,102	6,077	6,048	71,460,657	904.75
5412	Accounting & Bookkeeping Services	1,246	4,280	4,299	4,332	46,478,229	830.74
5413	Architectural & Engineering Services	936	5,960	5,876	5,827	79,385,404	1,037.18
5414	Specialized Design Services	177	441	437	444	5,430,436	947.94
5415	Computer Systems Design & Related Services	1,371	9,201	9,252	9,169	167,618,987	1,400.38
5416	Management & Technical Consulting Services	1,666	5,760	5,656	5,581	74,440,142	1,010.68
5417	Scientific Research & Development Services	130	1,062	1,058	1,048	14,563,820	1,060.88
5418	Advertising & Related Services	394	3,375	3,381	3,391	33,945,453	772.01
5419	Other Professional & Technical Services	562	3,492	3,547	3,510	30,937,057	676.78
55	MANAGEMENT OF COMPANIES & ENTERPRISES	501	31,260	31,187	31,069	\$656,300,190	\$1,619.55
56	ADMINISTRATIVE & SUPPORT SERVICES	4,276	56,008	56,404	59,625	\$370,747,686	\$497.32
561	ADMINISTRATIVE & SUPPORT SERVICES	3,977	53,007	53,406	56,635	\$341,084,708	\$482.75
5611	Office Administrative Services	561	2,119	2,178	2,218	29,618,165	1,049.11
5612	Facilities Support Services	28	218	228	222	2,205,409	761.89
5613	Employment Services	913	21,435	21,767	24,961	126,399,186	427.93
5614	Business Support Services	388	8,855	8,572	8,678	64,856,287	573.33
5615	Travel Arrangement & Reservation Services	94	336	339	334	2,822,780	645.60
5616	Investigation & Security Services	242	4,417	4,408	4,383	27,107,767	473.62
5617	Services to Buildings & Dwellings	1,528	14,108	14,387	14,280	75,589,697	407.80
5619	Other Support Services	223	1,519	1,527	1,559	12,485,417	625.68
562	WASTE MANAGEMENT & REMEDIATION SERVICES	299	3,001	2,998	2,990	\$29,662,978	\$761.52
5621	Waste Collection Services	120	1,055	1,042	1,037	9,733,853	716.74
5622	Waste Treatment & disposal Services	36	826	824	832	10,314,913	959.05
5629	Remediation & Other Waste Services	143	1,120	1,132	1,121	9,614,212	657.77
EDUCATION & HEALTH SERVICES		15,005	166,733	168,851	169,790	\$1,568,812,501	\$716.37
61	EDUCATIONAL SERVICES	730	9,992	10,529	11,382	\$87,755,186	\$634.77
6111	Elementary & Secondary Schools	87	3,144	3,563	3,747	25,107,545	554.24
6112	Junior Colleges	4	116	130	135	978,545	592.70
6113	Colleges & Universities	39	3,700	3,708	4,106	34,513,803	691.74
6114	Business, Computer, & Management Training	40	92	92	94	1,478,582	1,227.38
6115	Technical & Trade Schools	101	864	900	917	12,664,820	1,090.13
6116	Other Schools & Instruction	267	1,498	1,513	1,759	6,940,916	335.80
6117	Educational Support Services	192	578	623	624	6,070,975	767.67

TABLE 5. STATEWIDE SUMMARY

NORTH AMERICAN INDUSTRY CLASSIFICATION SYSTEM - INDUSTRY GROUPS		NUMBER OF	EMPLOYMENT			TOTAL EARNINGS	AVERAGE
		EMPLOYING	JUL	AUG	SEPT	JUL - SEPT 2013	WEEKLY
		UNITS					EARNINGS
62	HEALTH CARE & SOCIAL ASSISTANCE	14,275	156,741	158,322	158,408	\$1,481,057,315	\$721.87
621	AMBULATORY HEALTH CARE SERVICES	5,277	48,667	48,784	48,903	\$671,578,970	\$1,058.94
6211	Offices of Physicians	2,284	22,466	22,510	22,563	413,081,751	1,411.43
6212	Offices of Dentists	1,001	7,015	7,059	7,008	77,310,708	846.26
6213	Offices of Other Health Practitioners	1,295	7,216	7,252	7,360	69,053,432	730.04
6214	Outpatient Care Centers	277	3,967	3,990	3,993	40,172,647	775.78
6215	Medical & Diagnostic Laboratories	114	1,025	1,027	1,023	12,062,551	905.26
6216	Home Health Care Services	148	4,372	4,347	4,341	36,948,427	652.88
6219	Other Ambulatory Health Care Services	158	2,606	2,599	2,615	22,949,454	677.24
622	HOSPITALS	108	41,899	41,880	41,698	\$450,457,386	\$828.45
6221	General Medical & Surgical Hospitals	76	37,035	36,994	36,833	400,799,428	834.30
6222	Psychiatric & Substance Abuse Hospitals	12	2,461	2,466	2,445	23,068,065	722.11
6223	Other Hospitals	20	2,403	2,420	2,420	26,589,893	847.18
623	Residential & Mental Health Facilities	607	31,179	31,420	31,451	\$185,513,688	\$455.19
6231	Nursing Care Facilities (Skilled Nursing Facilities)	275	22,778	22,997	23,000	136,502,041	458.02
6232	Residential Mental Health Facilities	170	4,326	4,345	4,343	26,216,897	464.89
6233	Continuing Care & Assisted Living Facilities	122	3,024	3,029	3,046	15,891,664	403.05
6239	Other Residential Care Facilities	40	1,051	1,049	1,062	6,903,086	503.80
624	SOCIAL ASSISTANCE	8,283	34,996	36,238	36,356	\$173,507,271	\$372.15
6241	Individual & Family Services	7,033	21,869	22,147	22,080	110,045,224	384.21
6242	Emergency & Other Relief Services	139	1,303	1,322	1,312	8,100,914	474.84
6243	Vocational Rehabilitation Services	148	3,450	3,439	3,440	18,492,663	413.16
6244	Child Day Care Services	963	8,374	9,330	9,524	36,868,470	312.48
LEISURE & HOSPITALITY		6,735	108,552	108,536	107,062	\$382,741,711	\$272.48
71	ARTS, ENTERTAINMENT & RECREATION	924	11,554	11,381	10,420	\$48,356,684	\$334.56
711	PERFORMING ARTS & SPECTATOR SPORTS	194	2,216	2,265	2,283	\$11,980,280	\$408.73
7111	Performing Arts Companies	47	459	535	612	1,736,411	249.51
7112	Spectator Sports	48	1,154	1,148	1,106	7,276,054	492.69
7113	Performing Arts & Sports Promoters	37	502	477	461	2,349,596	376.54
7114	Agents & Managers for Public Figures	21	20	18	22	202,240	777.85
7115	Independent Artists, Writers, & Performers	41	81	87	82	415,979	383.98
712	MUSEUMS, PARKS, & HISTORICAL SITES	54	542	525	528	\$3,827,533	\$553.78
713	GAMBLING, RECREATIONAL & AMUSEMENT INDUSTRY	676	8,796	8,591	7,609	\$32,548,871	\$300.50
72	ACCOMODATION & FOOD SERVICES	5,811	96,998	97,155	96,642	\$334,385,027	\$265.36

TABLE 5. STATEWIDE SUMMARY

NORTH AMERICAN INDUSTRY CLASSIFICATION SYSTEM - INDUSTRY GROUPS		NUMBER OF	EMPLOYMENT			TOTAL EARNINGS	AVERAGE
		EMPLOYING	JUL	AUG	SEPT	JUL - SEPT 2013	WEEKLY
		UNITS					EARNINGS
721	ACCOMODATION	914	12,230	11,711	11,283	\$48,911,529	\$320.44
7211	Travel Accommodation	832	10,967	10,936	10,757	45,381,786	320.66
7212	RV Parks & Recreational Camps	64	1,197	690	428	3,119,612	310.98
7213	Rooming & Boarding Houses	18	66	85	98	410,131	380.10
722	FOOD SERVICES & DRINKING PLACES	4,897	84,768	85,444	85,359	\$285,473,498	\$257.77
7223	Special Food Services	185	1,846	2,313	2,951	10,121,373	328.51
7224	Drinking Places, Alcoholic Beverages	165	1,309	1,306	1,305	4,271,380	251.45
7225	Restaurants & Other Eating Places	4,547	81,613	81,825	81,103	271,080,745	255.81
722511	Full-Service Restaurants	2,087	36,408	36,833	36,332	130,820,043	275.52
722513	Limited-Service Eating Places	2,055	41,287	41,060	40,770	126,110,598	236.38
722514	Cafeterias, Grill Buffets, & Buffets	98	1,820	1,827	1,931	7,514,168	310.87
722515	Snack & Nonalcoholic Beverage Bars	307	2,098	2,105	2,070	6,635,936	244.12
OTHER SERVICES		5,358	24,191	23,836	23,765	\$172,077,058	\$553.13
811	REPAIR & MAINTENANCE	2,239	9,406	9,390	9,403	\$79,816,379	\$653.19
8111	Automotive Repair & Maintenance	1,446	6,191	6,188	6,186	48,082,816	597.69
8112	Electronic Equipment Repair & Maintenance	172	631	650	632	6,805,470	820.96
8113	Commercial Machinery Repair & Maintenance	431	1,959	1,925	1,968	20,545,422	810.19
8114	Household Goods Repair & Maintenance	190	625	627	617	4,382,671	541.14
812	PERSONAL & LAUNDRY SERVICES	1,325	7,982	7,952	7,907	\$43,855,030	\$424.50
8121	Personal Care Services	612	2,720	2,703	2,676	12,027,642	342.71
8122	Death Care Services	249	1,615	1,611	1,614	11,520,147	549.28
8123	Drycleaning & Laundry Service	263	2,914	2,898	2,899	16,678,794	441.85
8129	Other Personal Services	201	733	740	718	3,628,447	382.17
813	MEMBERSHIP ASSOCIATIONS & ORGANIZATIONS	1,076	5,868	5,566	5,526	\$43,850,118	\$596.65
8131	Religious Organizations	54	278	289	282	1,675,855	455.52
8132	Grantmaking & Giving Organizations	108	442	431	442	5,173,764	907.94
8133	Social Advocacy Organizations	222	1,539	1,598	1,606	12,559,465	611.08
8134	Civic & Social Organizations	197	1,505	1,159	1,157	5,248,645	316.99
8139	Professional & Similar Organizations	495	2,104	2,089	2,039	19,192,389	710.69
814	PRIVATE HOUSEHOLDS	718	935	928	929	\$4,555,531	\$376.53
LOCAL GOVERNMENT		1,961	71,150	93,034	115,114	\$735,782,029	\$607.94
STATE GOVERNMENT		1,126	67,000	68,615	71,289	\$698,926,381	\$779.54
NONCLASSIFIABLE ESTABLISHMENTS		0	0	0	0	\$0	\$0.00

TABLE 6. COUNTY SUMMARY

NORTH AMERICAN INDUSTRY CLASSIFICATION SYSTEM - INDUSTRY GROUPS	NUMBER OF EMPLOYING UNITS	EMPLOYMENT			TOTAL EARNINGS	AVERAGE WEEKLY EARNINGS
		JUL	AUG	SEPT	JUL - SEPT 2013	
ARKANSAS COUNTY - TOTAL	745	9,589	9,673	9,711	\$85,595,347	\$681.76
Natural Resources & Mining	47	176	184	177	1,910,063	820.83
Construction	49	306	291	298	2,805,500	723.38
Manufacturing	30	3,315	3,412	3,412	34,628,899	788.17
Trade, Transportation & Utilities	212	2,488	2,500	2,510	22,913,883	705.23
Wholesale Trade	42	477	453	446	6,053,335	1,015.21
Retail Trade	97	1,055	1,088	1,080	6,122,647	438.39
Transportation, Warehousing & Utilities	73	956	959	984	10,737,901	854.77
Information	10	83	82	81	690,436	647.69
Financial Activities	45	317	318	317	3,175,102	769.66
Professional & Business Services	48	330	333	331	4,027,656	935.07
Education & Health Services	160	1,063	1,072	1,078	7,073,997	508.08
Leisure & Hospitality	54	476	483	456	1,399,743	228.28
Other Services	43	131	116	108	742,650	482.76
Local Government	32	713	693	755	4,969,444	530.68
State Government	15	191	189	188	1,257,974	511.09
ASHLEY COUNTY - TOTAL	581	7,019	7,140	7,376	\$66,013,498	\$707.40
Natural Resources & Mining	43	362	353	366	2,668,313	569.62
Construction	44	609	599	585	5,830,858	750.46
Manufacturing	25	2,017	2,011	2,006	29,466,484	1,126.94
Trade, Transportation & Utilities	123	1,300	1,275	1,291	9,909,408	591.51
Wholesale Trade	26	227	227	232	3,066,746	1,031.65
Retail Trade	75	794	771	771	4,079,794	403.04
Transportation, Warehousing & Utilities	22	279	277	288	2,762,868	755.43
Information	6	37	37	37	272,481	566.49
Financial Activities	36	216	219	225	1,872,550	654.74
Professional & Business Services	46	297	297	291	1,876,913	489.42
Education & Health Services	144	935	959	949	6,539,927	530.85
Leisure & Hospitality	30	381	394	372	1,151,049	231.58
Other Services	41	130	141	144	882,456	490.71
Local Government	32	571	695	927	4,574,139	481.34
State Government	11	164	160	183	968,920	441.02

TABLE 6. COUNTY SUMMARY

NORTH AMERICAN INDUSTRY CLASSIFICATION SYSTEM - INDUSTRY GROUPS	NUMBER OF EMPLOYING UNITS	EMPLOYMENT			TOTAL EARNINGS	AVERAGE WEEKLY EARNINGS
		JUL	AUG	SEPT	JUL - SEPT 2013	
BAXTER COUNTY - TOTAL	1,240	13,520	13,821	14,140	\$113,393,799	\$630.84
Natural Resources & Mining	6	73	70	73	528,068	564.18
Construction	117	543	569	569	4,245,184	582.78
Manufacturing	57	2,275	2,306	2,258	20,811,723	702.25
Trade, Transportation & Utilities	264	2,590	2,561	2,562	16,085,904	481.28
Wholesale Trade	34	240	239	236	2,120,478	684.39
Retail Trade	206	2,168	2,145	2,153	12,309,209	439.31
Transportation, Warehousing & Utilities	24	182	177	173	1,656,217	718.43
Information	18	196	191	188	1,884,010	756.12
Financial Activities	106	716	721	704	14,937,344	1,610.03
Professional & Business Services	140	767	778	768	5,724,801	571.17
Education & Health Services	264	3,606	3,649	3,650	32,976,660	697.84
Leisure & Hospitality	121	1,528	1,505	1,468	4,984,315	255.55
Other Services	96	348	355	359	1,752,840	380.89
Local Government	39	586	807	1,189	7,146,769	638.75
State Government	12	292	309	352	2,316,181	560.86
BENTON COUNTY - TOTAL	5,653	95,896	97,000	98,598	\$1,156,840,308	\$915.84
Natural Resources & Mining	45	625	609	614	9,930,714	1,240.10
Construction	516	3,464	3,489	3,478	35,529,830	786.04
Manufacturing	196	10,237	10,242	10,207	105,521,239	793.56
Trade, Transportation & Utilities	1,519	22,441	22,642	22,416	249,296,827	852.31
Wholesale Trade	704	4,382	4,418	4,381	95,845,994	1,678.04
Retail Trade	654	10,449	10,502	10,445	66,702,709	490.28
Transportation, Warehousing & Utilities	161	7,610	7,722	7,590	86,748,124	873.34
Information	77	800	793	787	9,159,106	888.08
Financial Activities	577	2,893	2,891	2,903	36,324,939	964.97
Professional & Business Services	1,101	27,902	28,009	27,919	507,305,340	1,396.52
Education & Health Services	662	9,243	9,477	9,636	86,474,806	703.76
Leisure & Hospitality	503	10,387	10,231	10,085	40,985,981	308.06
Other Services	360	1,623	1,590	1,606	12,426,552	595.07
Local Government	80	5,331	6,091	7,767	55,857,942	671.75
State Government	17	950	936	1,180	8,027,032	604.17

TABLE 6. COUNTY SUMMARY

NORTH AMERICAN INDUSTRY CLASSIFICATION SYSTEM - INDUSTRY GROUPS	NUMBER OF EMPLOYING UNITS	EMPLOYMENT			TOTAL EARNINGS	AVERAGE WEEKLY EARNINGS
		JUL	AUG	SEPT	JUL - SEPT 2013	
BOONE COUNTY - TOTAL	989	12,782	13,040	13,608	\$115,685,857	\$677.07
Natural Resources & Mining	4	4	4	4	23,300	\$448.08
Construction	78	456	444	453	3,647,878	622.19
Manufacturing	61	1,732	1,730	1,721	16,414,863	730.86
Trade, Transportation & Utilities	245	3,610	3,626	3,583	40,159,862	856.61
Wholesale Trade	46	317	309	311	2,602,808	641.03
Retail Trade	145	1,792	1,773	1,807	10,874,589	467.15
Transportation, Warehousing & Utilities	54	1,501	1,544	1,465	26,682,465	1,365.30
Information	20	309	306	301	3,155,292	794.92
Financial Activities	92	471	468	473	4,844,495	791.76
Professional & Business Services	107	1,110	1,083	1,099	10,232,649	717.31
Education & Health Services	166	1,464	1,491	1,497	10,988,635	569.60
Leisure & Hospitality	79	1,173	1,154	1,129	3,790,280	253.09
Other Services	61	262	260	251	2,123,565	633.96
Local Government	57	1,500	1,745	2,268	14,293,296	598.30
State Government	19	691	729	829	6,011,742	616.86
BRADLEY COUNTY - TOTAL	368	3,175	3,189	3,402	\$23,406,505	\$553.09
Natural Resources & Mining	44	304	246	237	2,154,812	631.85
Construction	15	107	105	99	932,387	691.85
Manufacturing	10	527	544	549	5,908,369	841.65
Trade, Transportation & Utilities	73	507	501	518	2,935,108	443.86
Wholesale Trade	15	94	90	96	860,701	709.37
Retail Trade	43	340	337	347	1,617,628	364.55
Transportation, Warehousing & Utilities	15	73	74	75	456,779	474.82
Information	4	13	13	13	101,266	599.21
Financial Activities	24	134	134	131	1,018,178	588.88
Professional & Business Services	29	97	99	96	691,645	546.61
Education & Health Services	101	586	583	579	3,983,053	525.84
Leisure & Hospitality	13	162	168	168	460,914	213.58
Other Services	30	112	111	116	567,718	386.47
Local Government	14	227	284	498	2,320,080	530.63
State Government	11	399	401	398	2,332,975	449.40

TABLE 6. COUNTY SUMMARY

NORTH AMERICAN INDUSTRY CLASSIFICATION SYSTEM - INDUSTRY GROUPS	NUMBER OF EMPLOYING UNITS	EMPLOYMENT			TOTAL EARNINGS	AVERAGE WEEKLY EARNINGS
		JUL	AUG	SEPT	JUL - SEPT 2013	
CALHOUN COUNTY - TOTAL	113	2,573	2,628	2,685	\$29,836,234	\$873.10
Natural Resources & Mining	12	51	51	53	472,615	703.65
Construction	11	105	107	107	821,138	594.02
Manufacturing	10	1,835	1,835	1,857	23,822,186	994.65
Trade, Transportation & Utilities	23	237	242	227	1,932,306	631.61
Retail Trade	14	82	83	70	349,580	343.29
Transportation, Warehousing & Utilities	9	155	159	157	1,582,726	775.47
Financial Activities	6	79	79	83	631,624	604.81
Education & Health Services	14	45	51	54	445,850	685.92
Leisure & Hospitality	8	16	19	17	57,567	255.47
Other Services	3	5	6	6	25,980	352.67
Local Government	11	107	145	190	886,260	462.72
State Government	8	85	84	84	646,598	589.78
Other	7	8	9	7	94,110	904.90
CARROLL COUNTY - TOTAL	789	9,915	10,443	10,555	\$67,048,489	\$500.52
Natural Resources & Mining	16	259	254	237	2,015,747	620.23
Trade, Transportation & Utilities	194	1,617	1,634	1,679	10,373,478	485.57
Wholesale Trade	24	167	169	167	1,102,894	505.99
Retail Trade	150	1,178	1,167	1,224	6,164,878	398.62
Transportation, Warehousing & Utilities	20	272	298	288	3,105,706	835.32
Information	10	73	70	74	641,050	681.73
Financial Activities	62	370	365	361	3,584,388	754.71
Professional & Business Services	62	215	220	221	1,722,083	605.80
Education & Health Services	86	931	929	936	7,757,869	640.30
Leisure & Hospitality	186	1,831	1,851	1,887	6,204,788	257.12
Other Services	44	131	128	131	737,787	436.56
Local Government	24	540	1,013	1,070	6,235,554	548.60
State Government	10	115	118	113	783,986	522.89
Other	95	3,833	3,861	3,846	26,991,759	539.76

TABLE 6. COUNTY SUMMARY

NORTH AMERICAN INDUSTRY CLASSIFICATION SYSTEM - INDUSTRY GROUPS	NUMBER OF EMPLOYING UNITS	EMPLOYMENT			TOTAL EARNINGS	AVERAGE WEEKLY EARNINGS
		JUL	AUG	SEPT	JUL - SEPT 2013	
CHICOT COUNTY - TOTAL	455	3,194	3,317	3,358	\$23,846,773	\$557.61
Natural Resources & Mining	57	257	249	259	2,552,005	769.84
Construction	16	145	135	145	1,763,005	957.29
Trade, Transportation & Utilities	68	489	514	513	3,705,812	564.11
Wholesale Trade	12	62	64	66	679,630	816.86
Retail Trade	44	358	369	360	2,064,241	438.24
Transportation, Warehousing & Utilities	12	69	81	87	961,941	936.65
Information	5	8	8	8	66,132	635.88
Financial Activities	27	142	144	140	1,365,540	739.73
Professional & Business Services	18	41	40	41	375,058	709.44
Education & Health Services	191	783	772	776	4,843,904	479.55
Leisure & Hospitality	21	201	216	208	583,447	215.43
Local Government	17	515	639	673	4,751,662	600.18
State Government	10	306	306	306	2,053,194	516.14
Other	25	307	294	289	1,787,014	463.36
CLARK COUNTY - TOTAL	608	8,665	9,091	9,311	\$67,423,085	\$574.84
Natural Resources & Mining	37	232	237	247	2,325,361	749.47
Construction	25	80	70	78	441,398	446.76
Manufacturing	30	1,375	1,398	1,396	16,373,417	906.33
Trade, Transportation & Utilities	134	1,565	1,622	1,608	11,217,225	539.85
Wholesale Trade	14	110	117	114	1,218,275	824.46
Retail Trade	97	1,267	1,319	1,312	8,039,005	475.92
Transportation, Warehousing & Utilities	23	188	186	182	1,959,945	813.48
Information	5	21	21	21	217,351	796.16
Financial Activities	76	318	325	315	2,785,737	671.05
Professional & Business Services	47	561	566	560	4,769,879	652.48
Education & Health Services	109	1,327	1,355	1,419	9,802,054	551.58
Leisure & Hospitality	60	1,121	1,170	1,163	3,644,979	243.53
Other Services	44	167	178	182	1,040,001	455.41
Local Government	27	879	996	1,020	6,098,644	486.14
State Government	14	1,019	1,153	1,302	8,707,039	578.39

TABLE 6. COUNTY SUMMARY

NORTH AMERICAN INDUSTRY CLASSIFICATION SYSTEM - INDUSTRY GROUPS	NUMBER OF EMPLOYING UNITS	EMPLOYMENT			TOTAL EARNINGS	AVERAGE WEEKLY EARNINGS
		JUL	AUG	SEPT	JUL - SEPT 2013	
CLAY COUNTY - TOTAL	411	3,462	3,646	3,646	\$24,564,368	\$527.12
Natural Resources & Mining	60	302	302	321	2,103,592	524.80
Construction	28	144	148	149	1,251,994	655.15
Manufacturing	16	350	345	344	2,947,038	654.56
Trade, Transportation & Utilities	108	902	908	929	7,145,174	602.00
Wholesale Trade	23	261	264	258	2,585,649	762.05
Retail Trade	51	422	425	438	2,399,348	430.89
Transportation, Warehousing & Utilities	34	219	219	233	2,160,177	742.92
Information	5	46	45	44	326,029	557.31
Financial Activities	25	113	116	111	858,200	582.49
Professional & Business Services	27	105	105	95	590,057	446.45
Education & Health Services	56	445	459	462	2,740,380	462.95
Leisure & Hospitality	21	275	267	251	701,261	204.07
Other Services	31	78	80	77	577,529	567.13
Local Government	23	647	814	803	4,978,213	507.43
State Government	11	55	57	60	344,901	462.75
CLEBURNE COUNTY - TOTAL	667	6,681	6,862	7,082	\$49,461,692	\$553.42
Natural Resources & Mining	25	357	380	398	4,257,639	865.67
Construction	64	385	404	383	3,496,730	688.51
Manufacturing	33	1,196	1,176	1,197	9,845,430	636.60
Trade, Transportation & Utilities	165	1,552	1,583	1,577	12,808,430	627.29
Wholesale Trade	37	243	247	252	3,003,940	934.25
Retail Trade	101	973	999	998	5,980,210	464.66
Transportation, Warehousing & Utilities	27	336	337	327	3,824,280	882.53
Information	7	53	51	52	348,684	515.80
Financial Activities	66	217	218	221	1,902,962	669.43
Professional & Business Services	70	312	307	306	1,970,332	491.56
Education & Health Services	85	780	832	828	5,665,302	535.81
Leisure & Hospitality	78	1,124	1,111	1,047	3,455,287	242.95
Other Services	47	168	170	162	953,291	439.98
Local Government	18	440	528	810	4,145,273	538.02
State Government	9	97	102	101	612,332	471.02

TABLE 6. COUNTY SUMMARY

NORTH AMERICAN INDUSTRY CLASSIFICATION SYSTEM - INDUSTRY GROUPS	NUMBER OF EMPLOYING UNITS	EMPLOYMENT			TOTAL EARNINGS	AVERAGE WEEKLY EARNINGS
		JUL	AUG	SEPT	JUL - SEPT 2013	
CLEVELAND COUNTY - TOTAL	128	918	1,040	1,068	\$6,991,724	\$533.20
Natural Resources & Mining	15	176	169	170	1,377,656	617.32
Construction	6	20	20	20	64,313	247.36
Manufacturing	6	98	97	93	786,961	630.58
Trade, Transportation & Utilities	38	211	208	213	1,671,689	610.40
Retail Trade	18	69	69	68	322,299	361.05
Other Trade, Transportation & Utilities	20	142	139	145	1,349,390	730.98
Financial Activities	3	18	18	17	129,297	562.98
Education & Health Services	28	138	139	135	636,107	356.30
Other Services	5	13	12	12	106,043	661.39
Local Government	11	160	290	320	1,573,381	471.54
State Government	7	55	57	57	383,862	524.16
Other	9	29	30	31	262,415	672.86
COLUMBIA COUNTY - TOTAL	747	7,740	7,959	8,180	\$71,012,958	\$686.28
Natural Resources & Mining	47	381	396	400	5,588,329	1,095.68
Construction	43	323	324	332	3,054,854	720.09
Manufacturing	33	1,831	1,795	1,786	24,057,447	1,025.82
Trade, Transportation & Utilities	162	1,385	1,394	1,377	9,516,049	528.40
Wholesale Trade	27	184	187	189	1,888,074	778.05
Retail Trade	101	964	969	960	5,138,711	409.91
Transportation, Warehousing & Utilities	34	237	238	228	2,489,264	817.13
Information	9	55	56	57	451,943	620.80
Financial Activities	74	375	374	375	3,581,329	735.29
Professional & Business Services	58	306	314	287	2,670,514	679.46
Education & Health Services	184	996	1,023	1,009	5,871,931	447.51
Leisure & Hospitality	49	636	636	693	2,104,589	247.16
Other Services	49	179	185	181	864,236	365.94
Local Government	26	694	891	1,074	7,270,632	631.00
State Government	13	579	571	609	5,981,105	784.68

TABLE 6. COUNTY SUMMARY

NORTH AMERICAN INDUSTRY CLASSIFICATION SYSTEM - INDUSTRY GROUPS	NUMBER OF EMPLOYING UNITS	EMPLOYMENT			TOTAL EARNINGS	AVERAGE WEEKLY EARNINGS
		JUL	AUG	SEPT	JUL - SEPT 2013	
CONWAY COUNTY - TOTAL	578	6,422	6,562	6,738	\$55,944,827	\$654.62
Natural Resources & Mining	32	293	312	325	3,343,797	829.73
Construction	51	503	496	482	6,416,632	999.84
Manufacturing	17	852	853	845	11,742,191	1,062.64
Trade, Transportation & Utilities	135	1,613	1,595	1,597	13,524,517	649.54
Wholesale Trade	22	199	196	197	2,199,238	857.29
Retail Trade	83	826	813	822	4,724,000	442.97
Transportation, Warehousing & Utilities	30	588	586	578	6,601,279	869.50
Information	3	11	11	11	75,162	525.61
Financial Activities	32	155	153	152	1,426,883	715.83
Professional & Business Services	44	419	435	432	3,265,547	585.99
Education & Health Services	157	860	877	866	5,836,644	517.45
Leisure & Hospitality	40	508	491	487	1,435,525	222.93
Other Services	30	143	141	144	1,035,834	558.50
Local Government	27	681	757	963	5,162,391	496.18
State Government	10	384	441	434	2,679,704	491.18
CRAIGHEAD COUNTY - TOTAL	2,708	42,996	44,101	45,392	\$369,667,137	\$643.89
Natural Resources & Mining	75	344	344	349	2,354,199	523.89
Construction	209	1,884	1,834	1,837	18,795,179	780.80
Manufacturing	112	5,788	5,816	5,827	59,475,822	787.40
Trade, Transportation & Utilities	747	9,179	9,294	9,245	70,298,790	585.28
Wholesale Trade	186	1,763	1,764	1,754	20,377,094	890.44
Retail Trade	445	6,087	6,205	6,147	36,129,462	452.17
Transportation, Warehousing & Utilities	116	1,329	1,325	1,344	13,792,234	796.10
Information	27	487	478	477	4,708,627	753.54
Financial Activities	263	1,569	1,595	1,597	17,590,138	852.61
Professional & Business Services	352	3,942	4,083	4,278	28,626,760	536.96
Education & Health Services	459	9,143	9,333	9,325	93,729,434	778.02
Leisure & Hospitality	247	4,705	4,784	4,892	16,479,976	264.45
Other Services	159	803	810	813	5,274,812	501.76
Local Government	35	2,367	2,943	3,947	24,992,445	623.04
State Government	23	2,785	2,787	2,805	27,340,955	753.19

TABLE 6. COUNTY SUMMARY

NORTH AMERICAN INDUSTRY CLASSIFICATION SYSTEM - INDUSTRY GROUPS	NUMBER OF EMPLOYING UNITS	EMPLOYMENT			TOTAL EARNINGS	AVERAGE WEEKLY EARNINGS
		JUL	AUG	SEPT	JUL - SEPT 2013	
CRAWFORD COUNTY - TOTAL	1,301	17,738	18,907	19,032	\$150,258,129	\$622.79
Natural Resources & Mining	31	296	297	301	4,256,666	1,098.78
Construction	160	790	843	832	7,051,254	660.13
Manufacturing	71	4,223	4,237	4,224	38,801,548	705.94
Trade, Transportation & Utilities	322	5,913	5,952	5,940	49,825,237	645.78
Retail Trade	161	1,892	1,870	1,880	11,252,892	460.27
Other Trade, Transportation & Utilities	161	4,021	4,082	4,060	38,572,345	731.84
Information	11	116	113	111	980,258	665.33
Financial Activities	126	529	529	523	4,623,542	674.87
Professional & Business Services	159	1,341	1,370	1,367	10,153,861	574.60
Education & Health Services	185	1,505	1,525	1,567	12,029,992	603.91
Leisure & Hospitality	100	1,604	1,612	1,548	5,065,954	245.40
Other Services	83	383	386	389	2,835,467	565.06
Local Government	43	885	1,890	2,077	13,547,415	644.34
State Government	10	153	153	153	1,086,935	546.47
CRITTENDEN COUNTY - TOTAL	1,334	15,292	15,705	16,524	\$122,358,534	\$594.19
Natural Resources & Mining	52	288	271	295	1,904,342	514.59
Construction	50	335	329	348	3,265,965	744.75
Manufacturing	41	1,522	1,515	1,489	16,454,557	838.98
Trade, Transportation & Utilities	313	4,423	4,333	4,315	36,410,704	642.83
Wholesale Trade	65	686	705	711	7,581,706	832.36
Retail Trade	163	2,024	1,944	1,912	11,222,476	440.44
Transportation, Warehousing & Utilities	85	1,713	1,684	1,692	17,606,522	798.40
Information	6	71	68	70	583,428	644.20
Financial Activities	99	485	490	502	4,401,030	687.63
Professional & Business Services	121	1,519	1,524	1,553	10,268,448	515.59
Education & Health Services	401	2,501	2,568	2,592	19,963,924	601.37
Leisure & Hospitality	121	2,186	2,189	2,167	8,646,046	304.99
Other Services	73	410	410	415	2,986,696	558.09
Local Government	43	1,142	1,491	2,249	14,220,709	672.20
State Government	14	410	517	529	3,252,685	515.54

TABLE 6. COUNTY SUMMARY

NORTH AMERICAN INDUSTRY CLASSIFICATION SYSTEM - INDUSTRY GROUPS	NUMBER OF EMPLOYING UNITS	EMPLOYMENT			TOTAL EARNINGS	AVERAGE WEEKLY EARNINGS
		JUL	AUG	SEPT	JUL - SEPT 2013	
CROSS COUNTY - TOTAL	512	4,719	4,966	5,030	\$36,230,861	\$568.19
Natural Resources & Mining	33	202	196	210	1,550,458	588.48
Construction	23	87	83	85	636,930	576.41
Manufacturing	12	697	662	629	5,061,001	587.49
Trade, Transportation & Utilities	129	1,292	1,287	1,274	10,535,572	631.01
Wholesale Trade	28	322	322	310	3,612,509	873.85
Retail Trade	73	799	796	789	5,385,046	521.27
Transportation, Warehousing & Utilities	28	171	169	175	1,538,017	689.18
Information	5	32	31	33	228,288	548.77
Financial Activities	45	312	311	307	2,621,752	650.56
Professional & Business Services	43	126	121	127	1,051,131	648.58
Education & Health Services	128	843	854	877	5,875,584	526.77
Leisure & Hospitality	33	329	307	308	913,090	223.21
Other Services	35	77	75	73	479,019	491.30
Local Government	16	335	654	730	4,409,452	591.95
State Government	10	387	385	377	2,868,584	576.14
DALLAS COUNTY - TOTAL	257	2,587	2,630	2,675	\$18,264,268	\$534.06
Natural Resources & Mining	34	180	180	180	1,484,579	634.44
Construction	18	59	62	61	479,064	607.44
Manufacturing	11	533	531	517	4,925,136	718.89
Trade, Transportation & Utilities	57	460	447	463	2,938,390	494.96
Retail Trade	39	340	324	340	1,859,503	427.41
Other Trade, Transportation, & Utilities	18	120	123	123	1,078,887	680.26
Information	3	17	17	17	127,908	578.77
Financial Activities	14	69	68	68	607,336	683.68
Professional & Business Services	12	31	32	30	195,684	485.57
Education & Health Services	60	776	775	775	5,202,788	516.18
Leisure & Hospitality	12	122	123	132	351,977	215.45
Other Services	14	62	62	60	306,960	384.98
Local Government	15	227	282	323	1,352,984	375.27
State Government	7	51	51	49	291,462	445.43

TABLE 6. COUNTY SUMMARY

NORTH AMERICAN INDUSTRY CLASSIFICATION SYSTEM - INDUSTRY GROUPS	NUMBER OF EMPLOYING UNITS	EMPLOYMENT			TOTAL EARNINGS	AVERAGE WEEKLY EARNINGS
		JUL	AUG	SEPT	JUL - SEPT 2013	
DESHA COUNTY - TOTAL	518	4,303	4,590	4,628	\$34,095,472	\$581.92
Natural Resources & Mining	68	373	367	391	2,529,403	516.10
Construction	21	118	120	116	1,117,415	728.43
Manufacturing	14	868	873	859	10,131,235	899.22
Trade, Transportation & Utilities	112	888	887	906	6,837,109	588.51
Wholesale Trade	21	228	219	220	2,601,034	899.91
Retail Trade	66	495	496	499	2,552,005	395.25
Transportation, Warehousing & Utilities	25	165	172	187	1,684,070	741.66
Information	5	28	28	28	231,306	635.46
Financial Activities	30	225	224	220	1,598,476	551.39
Professional & Business Services	40	97	98	99	660,724	518.62
Education & Health Services	137	727	727	722	4,275,856	453.46
Leisure & Hospitality	38	333	317	311	871,642	209.31
Other Services	24	55	52	55	226,600	322.79
Local Government	19	483	790	794	4,814,706	537.54
State Government	10	108	107	127	801,000	540.49
DREW COUNTY - TOTAL	529	5,866	5,918	6,506	\$45,490,597	\$573.97
Natural Resources & Mining	44	265	268	291	2,398,857	671.82
Construction	19	101	105	103	802,477	599.31
Manufacturing	23	765	755	763	6,725,331	679.81
Trade, Transportation & Utilities	130	1,227	1,216	1,221	8,157,838	513.80
Wholesale Trade	21	182	177	172	1,688,660	733.88
Retail Trade	89	933	929	940	5,350,594	440.67
Transportation, Warehousing & Utilities	20	112	110	109	1,118,584	779.86
Information	8	55	54	54	429,506	608.08
Financial Activities	47	224	233	237	2,153,001	715.92
Professional & Business Services	35	337	324	317	2,615,266	617.10
Education & Health Services	120	896	901	894	6,806,345	583.68
Leisure & Hospitality	46	623	633	671	2,009,050	240.60
Other Services	19	67	67	69	381,323	433.49
Local Government	22	744	815	1,252	7,574,444	621.82
State Government	16	562	547	634	5,437,159	719.87

TABLE 6. COUNTY SUMMARY

NORTH AMERICAN INDUSTRY CLASSIFICATION SYSTEM - INDUSTRY GROUPS	NUMBER OF EMPLOYING UNITS	EMPLOYMENT			TOTAL EARNINGS	AVERAGE WEEKLY EARNINGS
		JUL	AUG	SEPT	JUL - SEPT 2013	
FAULKNER COUNTY - TOTAL	2,797	38,826	38,619	40,437	\$358,953,738	\$702.70
Natural Resources & Mining	57	1,410	1,370	1,334	25,589,228	1,435.39
Construction	311	2,775	2,762	2,767	26,848,276	746.12
Manufacturing	100	3,176	3,156	3,132	37,586,460	916.50
Trade, Transportation & Utilities	664	6,952	6,831	6,910	50,912,188	567.77
Wholesale Trade	168	798	786	777	9,547,486	933.19
Retail Trade	402	5,320	5,227	5,314	31,265,980	454.90
Transportation, Warehousing & Utilities	94	834	818	819	10,098,722	943.13
Information	23	330	328	314	3,086,092	732.69
Financial Activities	325	1,596	1,592	1,597	15,845,392	764.19
Professional & Business Services	401	6,172	5,804	5,916	75,159,194	969.40
Education & Health Services	438	5,958	6,037	6,029	52,561,045	672.96
Leisure & Hospitality	244	4,737	4,750	4,832	15,200,171	244.97
Other Services	178	752	739	803	5,574,314	560.76
Local Government	38	2,007	2,374	3,455	22,138,740	651.98
State Government	18	2,961	2,876	3,348	28,452,638	714.86
FRANKLIN COUNTY - TOTAL	341	4,022	4,205	4,272	\$33,234,210	\$613.60
Natural Resources & Mining	18	279	270	262	4,124,543	1,173.63
Construction	34	107	117	118	857,206	578.41
Manufacturing	15	877	874	876	7,781,381	683.56
Trade, Transportation & Utilities	87	913	913	927	7,095,551	594.78
Wholesale Trade	14	45	37	40	228,643	432.49
Retail Trade	52	594	599	611	3,083,212	394.41
Transportation, Warehousing & Utilities	21	274	277	276	3,783,696	1,055.82
Information	5	21	22	23	162,744	569.03
Financial Activities	30	198	197	195	1,613,456	631.08
Professional & Business Services	27	106	108	103	586,968	427.30
Education & Health Services	56	582	582	575	3,620,033	480.39
Leisure & Hospitality	26	307	314	309	908,335	225.39
Other Services	15	42	43	43	279,001	503.01
Local Government	19	484	655	722	5,028,770	623.58
State Government	9	106	110	119	1,176,222	810.26

TABLE 6. COUNTY SUMMARY

NORTH AMERICAN INDUSTRY CLASSIFICATION SYSTEM - INDUSTRY GROUPS	NUMBER OF EMPLOYING UNITS	EMPLOYMENT			TOTAL EARNINGS	AVERAGE WEEKLY EARNINGS
		JUL	AUG	SEPT	JUL - SEPT 2013	
FULTON COUNTY - TOTAL	208	1,766	1,850	1,948	\$11,272,589	\$467.54
Construction	9	32	36	36	337,983	749.96
Manufacturing	12	114	113	118	597,532	399.69
Trade, Transportation & Utilities	52	356	352	338	2,272,978	501.47
Retail Trade	33	208	207	204	898,451	334.95
Other Trade, Transportation & Utilities	19	148	145	134	1,374,527	742.85
Information	4	32	30	30	166,162	416.79
Financial Activities	17	114	115	104	812,246	562.89
Professional & Business Services	16	55	51	48	414,495	621.12
Education & Health Services	50	456	467	465	2,772,573	460.97
Leisure & Hospitality	16	176	176	159	478,035	215.88
Local Government	12	304	387	525	2,549,237	483.79
State Government	10	110	109	111	789,786	552.30
Other	10	17	14	14	81,562	418.27
GARLAND COUNTY - TOTAL	3,137	34,607	35,466	35,207	\$274,645,905	\$602.01
Natural Resources & Mining	31	316	310	315	3,216,274	788.75
Construction	348	1,807	1,801	1,813	14,385,060	612.36
Manufacturing	97	2,521	2,529	2,496	24,049,891	735.49
Trade, Transportation & Utilities	712	7,129	7,130	7,088	51,156,351	553.02
Wholesale Trade	145	911	916	904	10,165,104	858.95
Retail Trade	511	5,654	5,644	5,618	34,311,122	468.07
Transportation, Warehousing & Utilities	56	564	570	566	6,680,125	906.80
Information	33	280	273	266	2,775,337	782.01
Financial Activities	354	1,445	1,438	1,435	14,678,896	784.49
Professional & Business Services	391	3,287	3,228	3,104	25,745,342	617.66
Education & Health Services	515	7,458	7,476	7,493	77,652,847	799.03
Leisure & Hospitality	357	6,680	6,565	6,056	25,516,912	305.09
Other Services	240	991	1,005	986	5,792,826	448.29
Local Government	34	1,717	2,662	3,042	21,270,717	661.45
State Government	25	976	1,049	1,113	8,405,452	618.14

TABLE 6. COUNTY SUMMARY

NORTH AMERICAN INDUSTRY CLASSIFICATION SYSTEM - INDUSTRY GROUPS	NUMBER OF EMPLOYING UNITS	EMPLOYMENT			TOTAL EARNINGS	AVERAGE WEEKLY EARNINGS
		JUL	AUG	SEPT	JUL - SEPT 2013	
GRANT COUNTY - TOTAL	334	3,544	3,615	3,825	\$29,990,469	\$630.09
Natural Resources & Mining	27	184	194	181	2,398,566	990.19
Construction	27	144	165	165	1,618,275	787.87
Manufacturing	16	1,101	1,105	1,091	10,742,526	751.91
Trade, Transportation & Utilities	86	610	609	627	4,088,536	511.11
Wholesale Trade	18	112	111	117	1,033,209	701.27
Retail Trade	45	434	437	442	2,458,728	432.14
Transportation, Warehousing & Utilities	23	64	61	68	596,599	713.35
Information	3	35	35	35	584,630	1,284.90
Financial Activities	26	93	93	89	759,772	637.57
Professional & Business Services	24	72	74	76	782,421	813.33
Education & Health Services	63	379	382	374	2,316,417	470.98
Leisure & Hospitality	23	271	266	259	689,224	199.81
Other Services	21	45	46	51	228,752	371.75
Local Government	10	557	591	824	5,410,849	633.19
State Government	8	53	55	53	370,501	531.06
GREENE COUNTY - TOTAL	896	14,293	14,356	14,736	\$119,158,483	\$633.82
Natural Resources & Mining	38	260	244	244	1,967,758	607.08
Construction	68	276	272	257	2,516,454	721.39
Manufacturing	60	5,106	5,108	5,194	53,997,711	808.74
Trade, Transportation & Utilities	234	2,516	2,547	2,546	17,773,140	539.03
Wholesale Trade	51	543	540	539	5,564,036	791.62
Retail Trade	153	1,713	1,745	1,755	9,982,708	441.91
Transportation, Warehousing & Utilities	30	260	262	252	2,226,396	663.80
Information	10	93	92	89	578,367	487.11
Financial Activities	79	448	448	453	4,108,049	702.75
Professional & Business Services	93	904	891	895	6,208,925	532.65
Education & Health Services	154	1,745	1,776	1,797	13,207,843	573.14
Leisure & Hospitality	68	1,046	1,034	1,049	3,289,414	242.60
Other Services	51	195	198	198	1,174,164	458.48
Local Government	30	1,297	1,344	1,617	10,886,961	590.04
State Government	11	407	402	397	3,449,697	660.10

TABLE 6. COUNTY SUMMARY

NORTH AMERICAN INDUSTRY CLASSIFICATION SYSTEM - INDUSTRY GROUPS	NUMBER OF EMPLOYING UNITS	EMPLOYMENT			TOTAL EARNINGS	AVERAGE WEEKLY EARNINGS
		JUL	AUG	SEPT	JUL - SEPT 2013	
HEMPSTEAD COUNTY - TOTAL	503	7,244	7,428	7,830	\$56,909,845	\$583.64
Natural Resources & Mining	20	205	210	203	1,996,268	745.43
Construction	35	217	216	215	1,863,494	663.64
Manufacturing	28	1,809	1,798	1,822	15,435,623	656.12
Trade, Transportation & Utilities	131	1,652	1,653	1,677	13,989,704	648.01
Wholesale Trade	23	479	487	494	5,309,006	839.15
Retail Trade	85	865	858	868	4,801,507	427.65
Transportation, Warehousing & Utilities	23	308	308	315	3,879,191	961.54
Information	8	50	49	49	319,732	498.54
Financial Activities	42	231	232	243	2,280,226	745.33
Professional & Business Services	32	142	150	146	1,151,584	606.74
Education & Health Services	85	987	970	1,001	6,066,796	473.30
Leisure & Hospitality	44	624	638	640	1,971,875	239.25
Other Services	35	162	163	163	1,280,047	605.32
Local Government	27	473	631	918	5,174,156	590.52
State Government	16	692	718	753	5,380,340	574.03
HOT SPRING COUNTY - TOTAL	598	7,658	7,858	8,141	\$60,816,075	\$593.25
Natural Resources & Mining	23	141	143	148	1,142,279	610.19
Construction	55	309	322	342	2,660,471	630.99
Manufacturing	30	1,304	1,321	1,326	14,746,701	861.32
Trade, Transportation & Utilities	150	1,357	1,375	1,359	11,467,535	646.87
Wholesale Trade	17	81	81	79	918,345	879.36
Retail Trade	97	860	875	857	4,912,429	437.36
Transportation, Warehousing & Utilities	36	416	419	423	5,636,761	1,034.02
Information	7	48	53	51	444,285	674.52
Financial Activities	53	266	261	262	2,407,984	704.29
Professional & Business Services	54	892	889	881	5,286,228	458.26
Education & Health Services	105	1,168	1,151	1,163	8,597,074	569.77
Leisure & Hospitality	48	599	590	593	1,565,684	202.76
Other Services	33	129	142	144	787,698	438.02
Local Government	27	626	783	998	5,439,436	521.50
State Government	13	819	828	874	6,270,700	574.01

TABLE 6. COUNTY SUMMARY

NORTH AMERICAN INDUSTRY CLASSIFICATION SYSTEM - INDUSTRY GROUPS	NUMBER OF EMPLOYING UNITS	EMPLOYMENT			TOTAL EARNINGS	AVERAGE WEEKLY EARNINGS
		JUL	AUG	SEPT	JUL - SEPT 2013	
HOWARD COUNTY - TOTAL	362	6,789	6,895	7,104	\$48,120,766	\$534.19
Natural Resources & Mining	15	205	202	203	1,636,605	619.14
Construction	18	105	101	105	1,040,909	772.38
Manufacturing	22	3,660	3,717	3,729	26,593,746	552.59
Trade, Transportation & Utilities	100	911	894	905	6,442,802	548.63
Wholesale Trade	18	67	67	64	568,648	662.76
Retail Trade	58	628	602	623	3,641,964	453.56
Transportation, Warehousing & Utilities	24	216	225	218	2,232,190	781.67
Information	5	29	29	29	179,757	476.81
Financial Activities	36	151	151	148	1,039,634	533.15
Professional & Business Services	24	125	130	127	865,457	522.83
Education & Health Services	67	605	614	602	4,289,044	543.54
Leisure & Hospitality	22	312	303	324	988,997	243.06
Other Services	25	115	115	113	822,183	553.16
Local Government	17	459	535	706	3,405,094	462.23
State Government	11	112	104	113	816,538	572.74
INDEPENDENCE COUNTY - TOTAL	905	13,833	14,024	14,743	\$116,625,430	\$631.77
Natural Resources & Mining	14	278	266	263	3,136,985	897.05
Construction	65	428	450	469	4,321,134	740.30
Manufacturing	43	3,005	2,929	2,909	28,389,207	740.85
Trade, Transportation & Utilities	235	2,919	2,898	2,896	22,530,552	596.74
Wholesale Trade	32	440	443	444	4,034,524	701.62
Retail Trade	155	1,695	1,677	1,684	9,521,580	434.59
Transportation, Warehousing & Utilities	48	784	778	768	8,974,448	888.85
Information	10	112	112	114	860,040	587.19
Financial Activities	78	475	474	473	4,780,161	775.75
Professional & Business Services	91	791	894	874	5,412,725	488.12
Education & Health Services	170	3,095	3,050	3,096	30,136,828	752.59
Leisure & Hospitality	74	1,074	1,101	1,108	3,217,907	226.19
Other Services	62	326	322	319	1,676,235	400.02
Local Government	47	774	959	1,586	7,511,586	522.28
State Government	16	556	569	636	4,652,070	609.63

TABLE 6. COUNTY SUMMARY

NORTH AMERICAN INDUSTRY CLASSIFICATION SYSTEM - INDUSTRY GROUPS	NUMBER OF EMPLOYING UNITS	EMPLOYMENT			TOTAL EARNINGS	AVERAGE WEEKLY EARNINGS
		JUL	AUG	SEPT	JUL - SEPT 2013	
IZARD COUNTY - TOTAL	253	2,815	3,029	3,182	\$22,189,087	\$567.31
Natural Resources & Mining	5	145	140	140	1,460,079	792.80
Construction	22	133	130	115	1,850,672	1,129.84
Trade, Transportation & Utilities	66	573	576	587	3,615,260	480.58
Wholesale Trade	8	10	10	12	77,318	557.58
Retail Trade	48	416	419	430	2,186,991	398.96
Transportation, Warehousing & Utilities	10	147	147	145	1,350,951	710.15
Financial Activities	26	144	139	140	1,069,921	583.70
Professional & Business Services	15	83	85	86	487,318	442.75
Education & Health Services	46	604	620	640	4,252,485	526.47
Leisure & Hospitality	22	157	150	141	403,534	207.86
Local Government	18	269	453	526	3,185,586	589.05
State Government	10	397	426	490	3,228,701	567.47
Other	23	310	310	317	2,635,531	649.09
JACKSON COUNTY - TOTAL	453	5,081	5,097	5,297	\$42,851,923	\$639.02
Natural Resources & Mining	52	306	288	316	2,423,183	614.50
Construction	24	133	130	132	1,293,164	755.50
Manufacturing	17	926	915	868	10,017,071	853.32
Trade, Transportation & Utilities	106	1,032	1,071	1,074	8,309,240	603.56
Wholesale Trade	23	246	241	241	2,719,660	862.11
Retail Trade	68	699	743	739	4,626,369	489.51
Transportation, Warehousing & Utilities	15	87	87	94	963,211	829.40
Information	4	37	44	44	222,107	410.04
Financial Activities	36	169	169	172	1,927,448	872.15
Professional & Business Services	33	129	132	128	1,039,227	616.51
Education & Health Services	89	791	813	792	7,021,138	676.24
Leisure & Hospitality	26	318	312	297	847,671	211.02
Other Services	21	79	68	67	446,435	481.42
Local Government	32	431	442	653	3,406,765	515.19
State Government	13	730	713	754	5,898,474	619.57

TABLE 6. COUNTY SUMMARY

NORTH AMERICAN INDUSTRY CLASSIFICATION SYSTEM - INDUSTRY GROUPS	NUMBER OF EMPLOYING UNITS	EMPLOYMENT			TOTAL EARNINGS	AVERAGE WEEKLY EARNINGS
		JUL	AUG	SEPT	JUL - SEPT 2013	
JEFFERSON COUNTY - TOTAL	2,171	26,002	27,060	27,994	\$232,967,883	\$663.27
Natural Resources & Mining	37	323	335	342	3,922,253	905.14
Construction	99	677	682	828	7,058,011	744.75
Manufacturing	57	5,222	5,238	5,363	56,666,010	826.44
Trade, Transportation & Utilities	445	4,757	4,737	4,741	39,049,528	633.05
Wholesale Trade	79	655	633	628	7,380,461	888.93
Retail Trade	297	3,151	3,161	3,156	19,043,717	464.16
Transportation, Warehousing & Utilities	69	951	943	957	12,625,350	1,021.94
Information	14	116	105	103	936,925	667.33
Financial Activities	149	1,090	1,103	1,091	11,541,309	811.02
Professional & Business Services	156	1,602	1,620	1,697	11,632,337	545.72
Education & Health Services	868	5,075	5,162	5,097	45,249,003	680.98
Leisure & Hospitality	142	1,795	1,884	1,872	5,751,798	239.12
Other Services	129	628	611	607	4,394,658	549.38
Local Government	39	1,690	2,514	3,054	18,746,084	596.03
State Government	36	3,027	3,069	3,199	28,019,967	695.66
JOHNSON COUNTY - TOTAL	497	7,810	7,960	8,433	\$57,746,091	\$550.59
Natural Resources & Mining	17	134	132	137	1,158,175	663.20
Construction	33	145	141	137	1,036,364	565.39
Manufacturing	34	2,976	3,020	3,030	20,479,096	523.59
Trade, Transportation & Utilities	125	1,877	1,873	1,873	14,536,680	596.59
Retail Trade	81	882	885	876	4,912,201	428.90
Other Trade, Transportation & Utilities	44	995	988	997	9,624,479	745.31
Information	5	41	42	46	250,853	448.75
Financial Activities	48	204	202	198	1,704,270	651.15
Professional & Business Services	49	154	144	147	1,162,615	602.91
Education & Health Services	92	1,152	1,198	1,201	9,646,167	626.88
Leisure & Hospitality	39	486	501	489	1,450,885	226.84
Other Services	32	77	74	75	392,976	401.27
Local Government	14	432	500	967	4,865,230	591.23
State Government	9	132	133	133	1,062,780	616.22

TABLE 6. COUNTY SUMMARY

NORTH AMERICAN INDUSTRY CLASSIFICATION SYSTEM - INDUSTRY GROUPS	NUMBER OF EMPLOYING UNITS	EMPLOYMENT			TOTAL EARNINGS	AVERAGE WEEKLY EARNINGS
		JUL	AUG	SEPT	JUL - SEPT 2013	
LAFAYETTE COUNTY - TOTAL	177	1,122	1,163	1,225	\$8,442,150	\$555.04
Natural Resources & Mining	31	174	176	173	1,685,347	743.64
Construction	10	77	79	75	954,962	954.01
Manufacturing	8	31	32	31	242,782	596.03
Trade, Transportation & Utilities	32	201	198	202	1,286,680	494.05
Retail Trade	20	121	119	121	532,015	340.09
Other Trade, Transportation & Utilities	12	80	79	81	754,665	725.64
Financial Activities	14	45	48	48	330,451	540.84
Professional & Business Services	12	46	47	46	335,938	557.73
Education & Health Services	37	213	199	214	1,352,414	498.56
Leisure & Hospitality	5	40	43	41	150,001	279.16
Local Government	14	181	228	280	1,468,128	491.73
State Government	7	47	47	49	275,853	445.16
Other	7	67	66	66	359,594	417.00
LAWRENCE COUNTY - TOTAL	407	3,683	3,981	4,164	\$27,718,778	\$540.80
Natural Resources & Mining	48	236	225	228	1,992,838	667.47
Construction	21	111	124	132	1,081,868	680.28
Manufacturing	23	462	469	484	3,589,229	585.36
Trade, Transportation & Utilities	109	866	858	849	6,289,723	564.12
Wholesale Trade	19	234	226	223	2,084,087	704.16
Retail Trade	60	520	518	510	2,929,285	436.69
Transportation, Warehousing & Utilities	30	112	114	116	1,276,351	861.24
Financial Activities	31	153	154	155	1,150,266	574.56
Professional & Business Services	29	109	125	127	1,253,485	801.29
Education & Health Services	60	488	505	517	3,677,996	562.10
Leisure & Hospitality	28	306	327	344	827,200	195.39
Local Government	27	779	1,020	1,158	6,782,746	529.34
State Government	10	104	105	104	609,589	449.44
Other	21	69	69	66	463,838	524.70

TABLE 6. COUNTY SUMMARY

NORTH AMERICAN INDUSTRY CLASSIFICATION SYSTEM - INDUSTRY GROUPS	NUMBER OF EMPLOYING UNITS	EMPLOYMENT			TOTAL EARNINGS	AVERAGE WEEKLY EARNINGS
		JUL	AUG	SEPT	JUL - SEPT 2013	
LEE COUNTY - TOTAL	310	1,844	1,968	1,974	\$14,308,828	\$570.69
Natural Resources & Mining	35	231	221	220	2,069,361	710.63
Construction	9	38	40	40	292,813	572.65
Trade, Transportation & Utilities	47	337	335	327	2,704,368	624.71
Wholesale Trade	8	92	87	83	863,047	760.17
Retail Trade	26	187	191	188	1,106,699	451.22
Transportation, Warehousing & Utilities	13	58	57	56	734,622	991.39
Financial Activities	18	67	70	70	614,037	684.55
Professional & Business Services	14	54	52	51	597,437	878.15
Education & Health Services	140	365	368	371	2,355,120	492.29
Leisure & Hospitality	10	93	87	80	270,963	240.50
Local Government	15	164	296	319	1,479,960	438.42
State Government	7	473	476	474	3,790,851	614.77
Other	15	22	23	22	133,918	461.26
LINCOLN COUNTY - TOTAL	276	2,778	2,958	2,947	\$21,343,807	\$567.26
Natural Resources & Mining	33	170	175	174	1,297,038	576.72
Construction	14	95	104	102	744,353	570.68
Manufacturing	9	301	302	305	2,209,148	561.46
Trade, Transportation & Utilities	43	381	383	360	3,364,489	690.77
Wholesale Trade	8	64	64	60	647,880	795.27
Retail Trade	22	177	179	172	801,898	350.48
Transportation, Warehousing & Utilities	13	140	140	128	1,914,711	1,082.98
Financial Activities	20	69	68	66	566,654	644.17
Professional & Business Services	13	18	18	18	153,490	655.94
Education & Health Services	96	388	402	392	2,434,797	475.36
Leisure & Hospitality	14	178	179	174	403,518	175.37
Local Government	7	159	310	343	1,964,923	558.43
State Government	12	980	977	973	7,929,706	624.55
Other	15	39	40	40	275,691	534.63

TABLE 6. COUNTY SUMMARY

NORTH AMERICAN INDUSTRY CLASSIFICATION SYSTEM - INDUSTRY GROUPS	NUMBER OF EMPLOYING UNITS	EMPLOYMENT			TOTAL EARNINGS	AVERAGE WEEKLY EARNINGS
		JUL	AUG	SEPT	JUL - SEPT 2013	
LITTLE RIVER COUNTY - TOTAL	240	3,425	3,393	3,564	\$38,799,098	\$862.42
Natural Resources & Mining	13	86	86	84	814,607	734.32
Construction	18	185	212	230	1,945,085	715.89
Manufacturing	16	1,272	1,260	1,275	23,906,665	1,449.15
Trade, Transportation & Utilities	56	550	539	536	3,677,411	522.24
Wholesale Trade	9	30	28	28	347,369	932.12
Retail Trade	35	380	372	367	2,128,096	438.87
Transportation, Warehousing & Utilities	12	140	139	141	1,201,946	660.41
Financial Activities	19	83	85	80	662,471	616.44
Professional & Business Services	18	82	78	74	523,998	516.76
Education & Health Services	36	161	163	161	1,060,739	504.71
Leisure & Hospitality	14	227	231	213	727,493	250.20
Local Government	20	614	581	742	4,602,168	548.29
State Government	11	81	79	89	504,961	467.99
Other	19	84	79	80	373,500	354.70
LOGAN COUNTY - TOTAL	484	5,127	5,316	5,365	\$37,654,633	\$549.69
Natural Resources & Mining	23	168	170	159	2,164,597	1,005.08
Construction	41	183	209	210	1,600,386	613.49
Manufacturing	22	1,216	1,205	1,188	9,726,946	621.97
Trade, Transportation & Utilities	112	915	913	916	5,946,463	500.10
Wholesale Trade	11	70	67	70	301,900	336.57
Retail Trade	72	701	705	698	3,881,492	425.73
Transportation, Warehousing & Utilities	29	144	141	148	1,763,071	939.64
Information	5	32	32	32	321,486	772.80
Financial Activities	45	215	216	213	2,330,459	835.09
Professional & Business Services	48	105	105	103	771,265	568.64
Education & Health Services	98	765	776	776	5,404,441	538.27
Leisure & Hospitality	28	306	293	292	847,519	219.51
Other Services	26	120	123	124	933,727	587.13
Local Government	22	554	722	798	4,441,420	494.19
State Government	14	548	552	554	3,165,924	441.72

TABLE 6. COUNTY SUMMARY

NORTH AMERICAN INDUSTRY CLASSIFICATION SYSTEM - INDUSTRY GROUPS	NUMBER OF EMPLOYING UNITS	EMPLOYMENT			TOTAL EARNINGS	AVERAGE WEEKLY EARNINGS
		JUL	AUG	SEPT	JUL - SEPT 2013	
LONOKE COUNTY - TOTAL	1,327	12,929	13,272	13,283	\$98,090,089	\$573.30
Natural Resources & Mining	81	526	526	513	5,121,941	755.26
Construction	140	752	755	732	6,923,018	713.54
Manufacturing	38	1,615	1,639	1,629	19,140,399	904.57
Trade, Transportation & Utilities	330	2,962	2,911	2,896	19,807,160	521.25
Wholesale Trade	80	446	437	429	4,808,890	845.84
Retail Trade	188	2,247	2,204	2,193	12,283,728	426.66
Transportation, Warehousing & Utilities	62	269	270	274	2,714,542	770.52
Information	15	106	104	97	976,454	733.99
Financial Activities	141	521	524	522	6,047,358	890.58
Professional & Business Services	153	789	784	812	6,188,452	598.79
Education & Health Services	213	1,593	1,632	1,615	11,077,167	528.15
Leisure & Hospitality	105	1,546	1,561	1,517	4,727,754	235.95
Other Services	71	186	195	194	1,086,295	435.97
Local Government	25	2,162	2,473	2,591	15,857,265	506.42
State Government	15	171	168	165	1,136,826	520.52
MADISON COUNTY - TOTAL	247	2,888	3,218	3,264	\$22,140,533	\$545.29
Natural Resources & Mining	11	51	50	50	337,814	516.27
Construction	22	72	74	68	675,648	728.59
Manufacturing	23	1,127	1,138	1,156	8,599,636	580.10
Trade, Transportation & Utilities	48	566	560	553	3,752,477	515.76
Retail Trade	33	435	430	422	2,390,428	428.62
Other Trade, Transportation & Utilities	15	131	130	131	1,362,049	801.83
Information	6	43	43	43	711,077	1,272.05
Financial Activities	18	73	78	74	586,194	601.22
Professional & Business Services	26	160	160	162	1,159,908	555.33
Education & Health Services	48	284	289	285	1,751,832	471.18
Leisure & Hospitality	15	181	205	211	491,824	190.11
Other Services	14	24	25	27	216,179	656.41
Local Government	9	262	551	590	3,555,476	584.81
State Government	7	45	45	45	302,468	517.04

TABLE 6. COUNTY SUMMARY

NORTH AMERICAN INDUSTRY CLASSIFICATION SYSTEM - INDUSTRY GROUPS	NUMBER OF EMPLOYING UNITS	EMPLOYMENT			TOTAL EARNINGS	AVERAGE WEEKLY EARNINGS
		JUL	AUG	SEPT	JUL - SEPT 2013	
MARION COUNTY - TOTAL	298	3,496	3,631	3,711	\$22,841,281	\$486.35
Natural Resources & Mining	4	25	25	25	130,871	402.68
Construction	21	57	51	57	296,494	414.68
Manufacturing	18	1,621	1,663	1,664	10,458,647	487.78
Trade, Transportation & Utilities	56	525	516	516	3,267,980	484.36
Wholesale Trade	10	73	65	65	690,044	784.44
Retail Trade	39	423	423	424	2,222,556	403.86
Transportation, Warehousing & Utilities	7	29	28	27	355,380	976.32
Information	4	53	54	54	633,056	907.39
Financial Activities	33	219	217	205	1,805,640	650.06
Professional & Business Services	28	52	60	60	330,849	443.89
Education & Health Services	58	332	339	342	2,182,541	497.20
Leisure & Hospitality	34	211	200	189	601,701	231.42
Other Services	17	24	31	27	150,149	422.56
Local Government	18	304	402	504	2,594,630	494.84
State Government	7	73	73	68	388,723	419.18
MILLER COUNTY - TOTAL	866	11,870	12,193	12,763	\$102,093,561	\$639.77
Natural Resources & Mining	29	143	150	159	1,259,858	643.22
Construction	78	763	741	740	6,629,172	681.73
Manufacturing	26	2,283	2,279	2,247	28,049,602	950.65
Trade, Transportation & Utilities	224	3,420	3,465	3,525	29,414,548	652.06
Wholesale Trade	52	526	523	528	5,567,406	814.70
Retail Trade	126	1,358	1,336	1,357	7,681,920	437.61
Transportation, Warehousing & Utilities	46	1,536	1,606	1,640	16,165,222	780.10
Information	8	67	69	70	1,073,174	1,202.21
Financial Activities	83	398	394	377	3,263,877	644.31
Professional & Business Services	87	882	909	900	5,425,747	465.29
Education & Health Services	135	947	944	951	6,732,510	546.68
Leisure & Hospitality	95	1,413	1,457	1,398	5,419,360	293.02
Other Services	60	279	278	283	1,487,021	408.52
Local Government	25	766	996	1,601	8,769,785	601.78
State Government	16	509	511	512	4,568,907	688.23

TABLE 6. COUNTY SUMMARY

NORTH AMERICAN INDUSTRY CLASSIFICATION SYSTEM - INDUSTRY GROUPS	NUMBER OF EMPLOYING UNITS	EMPLOYMENT			TOTAL EARNINGS	AVERAGE WEEKLY EARNINGS
		JUL	AUG	SEPT	JUL - SEPT 2013	
MISSISSIPPI COUNTY - TOTAL	1,203	17,442	17,686	18,338	\$176,226,150	\$760.62
Natural Resources & Mining	115	705	699	702	4,611,032	505.26
Construction	53	756	762	766	9,436,148	953.40
Manufacturing	53	6,070	6,147	6,156	92,388,521	1,160.42
Trade, Transportation & Utilities	299	3,011	2,969	2,967	25,113,621	647.75
Wholesale Trade	66	502	480	476	6,057,261	958.73
Retail Trade	174	1,734	1,715	1,687	9,203,412	413.52
Transportation, Warehousing & Utilities	59	775	774	804	9,852,948	966.32
Information	9	71	70	70	487,584	533.27
Financial Activities	92	402	401	402	3,337,033	639.07
Professional & Business Services	83	1,103	1,133	1,318	8,018,558	520.66
Education & Health Services	279	1,679	1,735	1,793	12,098,111	536.18
Leisure & Hospitality	88	1,142	1,131	1,140	3,333,128	225.37
Other Services	58	203	204	196	1,128,299	431.80
Local Government	52	1,774	1,896	2,251	12,241,913	477.12
State Government	22	526	539	577	4,032,202	566.69
MONROE COUNTY - TOTAL	308	2,139	2,243	2,255	\$15,021,268	\$522.29
Natural Resources & Mining	32	156	155	160	1,920,356	940.89
Construction	13	91	84	81	718,408	647.60
Manufacturing	7	117	119	119	915,799	595.32
Trade, Transportation & Utilities	80	667	649	666	4,866,640	566.64
Wholesale Trade	20	281	267	269	2,361,984	667.16
Retail Trade	39	268	265	276	1,456,910	415.59
Transportation, Warehousing & Utilities	21	118	117	121	1,047,746	679.18
Financial Activities	22	94	96	93	803,242	654.99
Professional & Business Services	14	31	31	33	213,687	519.08
Education & Health Services	68	299	307	307	1,735,900	438.76
Leisure & Hospitality	25	266	271	248	760,729	223.63
Local Government	21	202	314	338	1,818,323	491.35
State Government	8	116	117	116	801,383	529.90
Other	18	100	100	94	466,801	366.41

TABLE 6. COUNTY SUMMARY

NORTH AMERICAN INDUSTRY CLASSIFICATION SYSTEM - INDUSTRY GROUPS	NUMBER OF EMPLOYING UNITS	EMPLOYMENT			TOTAL EARNINGS	AVERAGE WEEKLY EARNINGS
		JUL	AUG	SEPT	JUL - SEPT 2013	
MONTGOMERY COUNTY - TOTAL	173	1,757	1,544	1,429	\$9,191,510	\$448.44
Natural Resources & Mining	7	32	32	31	262,593	637.88
Construction	22	86	82	76	590,922	558.88
Trade, Transportation & Utilities	41	253	250	256	1,794,640	545.65
Wholesale Trade	12	74	70	71	617,585	662.88
Retail Trade	21	151	152	155	916,289	461.68
Transportation, Warehousing & Utilities	8	28	28	30	260,766	699.73
Financial Activities	12	71	75	64	542,245	595.87
Professional & Business Services	15	41	39	39	370,552	718.59
Education & Health Services	20	98	98	97	500,043	393.84
Leisure & Hospitality	20	658	446	250	1,840,587	313.70
Local Government	9	304	389	490	2,432,668	474.54
State Government	7	42	44	45	319,339	562.55
Other	20	172	89	81	537,921	362.97
NEVADA COUNTY - TOTAL	193	2,257	2,289	2,459	\$17,446,249	\$574.74
Natural Resources & Mining	9	34	34	34	274,122	620.19
Trade, Transportation & Utilities	41	552	548	558	4,076,713	567.42
Wholesale Trade	4	18	18	19	77,269	324.21
Retail Trade	25	304	307	305	1,471,947	370.83
Transportation, Warehousing & Utilities	12	230	223	234	2,527,497	849.01
Financial Activities	11	58	59	56	445,132	593.77
Professional & Business Services	10	41	42	41	272,971	508.01
Education & Health Services	42	401	415	425	2,394,701	445.30
Leisure & Hospitality	8	92	97	98	244,641	196.71
Other Services	15	43	40	43	164,255	300.83
Local Government	27	276	283	430	1,516,104	353.76
State Government	10	80	80	82	486,580	464.00
Other	20	680	691	692	7,571,030	846.90

TABLE 6. COUNTY SUMMARY

NORTH AMERICAN INDUSTRY CLASSIFICATION SYSTEM - INDUSTRY GROUPS	NUMBER OF EMPLOYING UNITS	EMPLOYMENT			TOTAL EARNINGS	AVERAGE WEEKLY EARNINGS
		JUL	AUG	SEPT	JUL - SEPT 2013	
NEWTON COUNTY - TOTAL	120	841	1,036	1,053	\$5,335,822	\$420.25
Construction	5	18	20	20	106,433	423.47
Manufacturing	10	44	39	43	357,387	654.55
Trade, Transportation & Utilities	31	168	161	162	923,568	434.08
Retail Trade	15	114	111	109	463,606	320.32
Other Trade, Transportation & Utilities	16	54	50	53	459,962	676.08
Education & Health Services	29	230	233	228	1,038,478	346.81
Leisure & Hospitality	14	94	93	89	371,602	310.70
Local Government	13	161	361	380	1,827,291	467.50
State Government	6	89	90	92	426,662	363.32
Other	12	37	39	39	284,401	570.70
OUACHITA COUNTY - TOTAL	660	6,990	7,078	7,183	\$51,055,901	\$554.43
Natural Resources & Mining	38	211	207	202	1,797,749	669.14
Construction	37	206	206	215	1,977,953	727.99
Manufacturing	24	507	499	492	4,785,357	737.19
Trade, Transportation & Utilities	174	1,666	1,687	1,644	11,487,607	530.52
Wholesale Trade	29	240	241	234	2,547,335	822.16
Retail Trade	117	1,101	1,123	1,082	5,424,123	378.62
Transportation, Warehousing & Utilities	28	325	323	328	3,516,149	831.37
Information	7	43	44	42	377,922	676.07
Financial Activities	60	297	299	288	2,412,924	629.90
Professional & Business Services	52	627	614	617	5,133,939	637.65
Education & Health Services	152	1,209	1,240	1,235	10,026,380	628.06
Leisure & Hospitality	39	522	507	509	1,402,254	210.40
Other Services	33	131	131	128	691,920	409.42
Local Government	30	873	952	1,090	5,461,455	432.36
State Government	14	698	692	721	5,500,441	601.29

TABLE 6. COUNTY SUMMARY

NORTH AMERICAN INDUSTRY CLASSIFICATION SYSTEM - INDUSTRY GROUPS	NUMBER OF EMPLOYING UNITS	EMPLOYMENT			TOTAL EARNINGS	AVERAGE WEEKLY EARNINGS
		JUL	AUG	SEPT	JUL - SEPT 2013	
PERRY COUNTY - TOTAL	146	1,187	1,325	1,281	\$8,982,075	\$546.48
Construction	16	106	175	167	1,097,389	565.28
Manufacturing	5	44	43	41	312,326	563.09
Trade, Transportation & Utilities	25	137	137	139	1,017,949	568.79
Retail Trade	15	104	103	106	516,864	381.07
Other Trade, Transportation & Utilities	10	33	34	33	501,085	1,156.35
Financial Activities	9	30	33	34	265,791	632.33
Professional & Business Services	15	42	40	38	477,028	917.36
Education & Health Services	33	259	259	252	1,422,774	426.41
Leisure & Hospitality	8	68	71	69	204,603	227.00
Local Government	10	261	352	359	1,794,525	426.05
State Government	8	54	59	58	329,499	444.67
Other	17	186	156	124	2,060,191	1,020.23
PHILLIPS COUNTY - TOTAL	875	5,558	5,798	5,891	\$41,023,952	\$548.91
Natural Resources & Mining	66	282	271	299	1,977,428	535.60
Construction	28	127	124	115	854,943	539.06
Manufacturing	10	357	301	325	2,691,311	631.81
Trade, Transportation & Utilities	159	1,408	1,410	1,425	11,382,753	619.09
Wholesale Trade	33	371	368	389	4,153,922	849.82
Retail Trade	85	769	767	763	4,426,469	444.32
Transportation, Warehousing & Utilities	41	268	275	273	2,802,362	792.52
Information	10	50	49	48	394,821	619.81
Financial Activities	39	215	206	204	1,806,788	667.12
Professional & Business Services	51	322	308	316	2,362,160	576.23
Education & Health Services	406	1,404	1,477	1,447	9,865,968	526.05
Leisure & Hospitality	31	288	285	268	847,173	232.46
Other Services	34	70	70	72	433,551	471.94
Local Government	27	551	812	892	4,926,922	504.20
State Government	14	484	485	480	3,480,134	554.25

TABLE 6. COUNTY SUMMARY

NORTH AMERICAN INDUSTRY CLASSIFICATION SYSTEM - INDUSTRY GROUPS	NUMBER OF EMPLOYING UNITS	EMPLOYMENT			TOTAL EARNINGS	AVERAGE WEEKLY EARNINGS
		JUL	AUG	SEPT	JUL - SEPT 2013	
PIKE COUNTY - TOTAL	242	2,089	2,250	2,238	\$13,736,083	\$481.96
Natural Resources & Mining	21	103	105	111	910,498	658.67
Construction	14	51	49	45	341,386	543.32
Manufacturing	17	216	212	210	1,287,198	465.59
Trade, Transportation & Utilities	70	523	518	518	3,216,926	476.18
Wholesale Trade	10	108	106	107	746,440	536.62
Retail Trade	41	352	351	345	1,848,659	407.07
Transportation, Warehousing & Utilities	19	63	61	66	621,827	755.26
Information	5	26	26	27	302,745	884.36
Financial Activities	22	192	190	191	1,751,309	705.32
Professional & Business Services	12	38	42	31	548,031	1,139.36
Education & Health Services	21	262	256	253	1,587,312	475.10
Leisure & Hospitality	20	235	227	217	646,645	219.77
Other Services	20	48	54	53	328,382	488.91
Local Government	10	238	418	431	2,117,019	449.44
State Government	10	157	153	151	698,632	349.72
POINSETT COUNTY - TOTAL	528	4,816	5,049	5,096	\$38,069,516	\$587.21
Natural Resources & Mining	56	350	332	338	3,195,323	722.92
Construction	23	126	120	116	1,056,463	673.48
Manufacturing	25	678	679	674	6,846,604	777.93
Trade, Transportation & Utilities	132	1,305	1,279	1,276	10,364,943	619.67
Wholesale Trade	33	439	419	413	5,214,268	946.73
Retail Trade	70	727	715	715	3,787,530	405.21
Transportation, Warehousing & Utilities	29	139	145	148	1,363,145	728.18
Information	5	53	53	55	414,245	593.76
Financial Activities	36	248	245	244	2,096,284	656.39
Professional & Business Services	32	168	168	161	2,022,662	939.17
Education & Health Services	110	629	642	645	4,190,917	504.77
Leisure & Hospitality	44	372	373	374	1,022,859	210.94
Other Services	24	48	47	51	302,158	477.59
Local Government	30	707	981	1,017	5,584,704	476.44
State Government	11	132	130	145	972,354	551.33

TABLE 6. COUNTY SUMMARY

NORTH AMERICAN INDUSTRY CLASSIFICATION SYSTEM - INDUSTRY GROUPS	NUMBER OF EMPLOYING UNITS	EMPLOYMENT			TOTAL EARNINGS	AVERAGE WEEKLY EARNINGS
		JUL	AUG	SEPT	JUL - SEPT 2013	
POLK COUNTY - TOTAL	526	5,598	5,880	5,944	\$39,791,666	\$527.07
Natural Resources & Mining	23	151	152	150	1,540,395	784.71
Construction	35	172	175	174	1,157,747	512.81
Manufacturing	38	1,308	1,306	1,310	10,530,366	619.29
Trade, Transportation & Utilities	138	1,149	1,135	1,143	6,865,161	462.29
Wholesale Trade	21	51	51	51	392,009	591.27
Retail Trade	81	829	831	831	4,206,470	389.69
Transportation, Warehousing & Utilities	36	269	253	261	2,266,682	668.05
Information	8	49	47	47	308,708	498.18
Financial Activities	48	254	262	263	2,081,217	616.54
Professional & Business Services	47	165	172	182	1,060,335	471.47
Education & Health Services	81	1,019	1,030	1,032	8,220,916	615.75
Leisure & Hospitality	44	475	473	455	1,325,233	217.98
Other Services	30	223	172	170	1,061,799	433.68
Local Government	21	387	689	737	3,945,982	502.27
State Government	13	246	267	281	1,693,807	492.29
POPE COUNTY - TOTAL	1,775	24,871	24,972	25,552	\$216,985,563	\$664.15
Natural Resources & Mining	31	742	580	424	5,852,336	773.50
Construction	157	1,488	1,418	1,212	17,471,331	979.08
Manufacturing	71	4,411	4,381	4,368	40,500,509	710.20
Trade, Transportation & Utilities	431	5,797	5,828	5,841	59,837,213	790.60
Wholesale Trade	88	600	603	597	6,044,082	774.88
Retail Trade	267	3,091	3,107	3,134	17,239,527	426.31
Transportation, Warehousing & Utilities	76	2,106	2,118	2,110	36,553,604	1,331.77
Information	25	234	228	232	1,820,124	605.23
Financial Activities	180	1,268	1,260	1,252	9,372,965	572.22
Professional & Business Services	264	2,516	2,496	2,446	20,820,202	644.23
Education & Health Services	314	2,923	2,989	3,022	23,768,293	613.95
Leisure & Hospitality	144	2,379	2,358	2,444	7,508,585	241.30
Other Services	100	419	438	432	2,664,105	476.95
Local Government	42	1,195	1,446	2,214	12,795,932	608.22
State Government	16	1,499	1,550	1,665	14,573,968	713.45

TABLE 6. COUNTY SUMMARY

NORTH AMERICAN INDUSTRY CLASSIFICATION SYSTEM - INDUSTRY GROUPS	NUMBER OF EMPLOYING UNITS	EMPLOYMENT			TOTAL EARNINGS	AVERAGE WEEKLY EARNINGS
		JUL	AUG	SEPT	JUL - SEPT 2013	
PRAIRIE COUNTY - TOTAL	263	1,332	1,466	1,531	\$10,574,087	\$563.68
Natural Resources & Mining	34	159	152	142	1,777,549	905.53
Construction	11	63	87	106	1,064,593	959.67
Trade, Transportation & Utilities	64	336	336	343	2,231,224	507.29
Wholesale Trade	10	85	81	74	837,165	804.97
Retail Trade	37	185	188	188	835,232	343.58
Transportation, Warehousing & Utilities	17	66	67	81	558,827	602.62
Financial Activities	18	66	60	63	452,435	552.42
Professional & Business Services	16	79	80	81	537,942	517.25
Education & Health Services	55	271	262	264	1,696,468	491.21
Leisure & Hospitality	18	99	102	97	270,509	209.48
Other Services	14	32	33	33	189,094	445.28
Local Government	15	164	276	316	1,792,766	547.24
State Government	9	38	40	41	287,924	558.35
Other	9	25	38	45	273,583	584.58
PULASKI COUNTY - TOTAL	14,403	227,962	231,668	235,112	\$2,443,915,399	\$811.78
Natural Resources & Mining	55	702	717	705	9,349,810	1,015.84
Construction	986	8,029	8,006	7,978	94,989,221	912.86
Manufacturing	356	12,403	12,397	12,415	159,129,529	986.76
Trade, Transportation & Utilities	3,225	47,121	47,213	47,105	474,577,145	774.31
Wholesale Trade	1,032	11,858	11,806	11,735	173,266,385	1,129.54
Retail Trade	1,797	24,812	24,960	24,737	168,932,228	523.22
Transportation, Warehousing & Utilities	396	10,451	10,447	10,633	132,378,532	968.85
Information	219	6,522	6,529	6,441	94,272,717	1,116.11
Financial Activities	1,718	15,743	15,852	15,707	220,493,464	1,075.71
Professional & Business Services	2,826	32,878	33,291	33,402	360,421,283	835.32
Education & Health Services	2,381	38,039	38,327	38,577	424,796,326	852.86
Leisure & Hospitality	1,186	22,568	22,633	22,063	89,635,503	307.52
Other Services	1,147	6,930	6,800	6,682	55,997,049	633.08
Local Government	104	10,024	12,521	16,122	124,514,387	743.12
State Government	200	27,003	27,382	27,915	335,738,965	941.41

TABLE 6. COUNTY SUMMARY

NORTH AMERICAN INDUSTRY CLASSIFICATION SYSTEM - INDUSTRY GROUPS	NUMBER OF EMPLOYING UNITS	EMPLOYMENT			TOTAL EARNINGS	AVERAGE WEEKLY EARNINGS
		JUL	AUG	SEPT	JUL - SEPT 2013	
RANDOLPH COUNTY - TOTAL	415	4,492	4,603	4,717	\$29,634,535	\$495.13
Natural Resources & Mining	29	131	126	133	731,771	433.00
Construction	28	76	75	75	428,917	437.97
Manufacturing	29	527	548	550	4,360,500	619.24
Trade, Transportation & Utilities	97	871	856	859	5,796,794	517.29
Wholesale Trade	20	182	180	180	1,320,133	562.08
Retail Trade	58	552	539	540	3,159,039	446.97
Transportation, Warehousing & Utilities	19	137	137	139	1,317,622	736.24
Information	5	38	38	38	309,148	625.81
Financial Activities	34	120	120	121	927,825	593.11
Professional & Business Services	40	245	245	248	1,200,564	375.41
Education & Health Services	69	1,213	1,224	1,176	8,528,657	544.74
Leisure & Hospitality	25	366	370	367	1,091,289	228.32
Other Services	25	63	61	66	344,449	418.36
Local Government	23	591	673	760	3,578,428	408.00
State Government	11	251	267	324	2,336,193	640.29
SAINT FRANCIS COUNTY - TOTAL	815	6,836	7,248	7,291	\$50,531,795	\$545.55
Natural Resources & Mining	43	196	180	192	1,549,826	629.67
Construction	46	192	176	184	1,633,252	682.80
Manufacturing	9	602	618	634	5,587,805	695.52
Trade, Transportation & Utilities	169	2,001	2,006	2,000	14,804,076	568.72
Wholesale Trade	35	583	578	566	5,574,757	744.92
Retail Trade	110	1,126	1,132	1,132	6,305,660	429.25
Transportation, Warehousing & Utilities	24	292	296	302	2,923,659	758.08
Information	7	63	65	66	524,208	623.56
Financial Activities	65	270	266	264	2,213,546	638.52
Professional & Business Services	49	382	387	402	2,474,795	487.71
Education & Health Services	307	1,380	1,392	1,371	9,762,308	543.77
Leisure & Hospitality	48	638	642	630	1,862,399	225.02
Other Services	28	67	65	64	280,602	330.38
Local Government	28	529	941	973	5,966,883	563.64
State Government	16	516	510	511	3,872,095	581.37

TABLE 6. COUNTY SUMMARY

NORTH AMERICAN INDUSTRY CLASSIFICATION SYSTEM - INDUSTRY GROUPS	NUMBER OF EMPLOYING UNITS	EMPLOYMENT			TOTAL EARNINGS	AVERAGE WEEKLY EARNINGS
		JUL	AUG	SEPT	JUL - SEPT 2013	
SALINE COUNTY - TOTAL	1,897	20,764	21,480	21,578	\$163,800,516	\$592.27
Natural Resources & Mining	12	49	49	48	565,052	893.13
Construction	273	1,805	1,752	1,745	16,507,387	718.48
Manufacturing	85	1,358	1,350	1,348	15,098,561	859.04
Trade, Transportation & Utilities	440	4,810	4,820	4,757	36,081,956	578.76
Wholesale Trade	115	538	534	536	5,772,121	828.38
Retail Trade	259	3,815	3,836	3,771	25,686,382	518.97
Transportation, Warehousing & Utilities	66	457	450	450	4,623,453	786.26
Information	13	82	77	80	868,946	839.02
Financial Activities	188	716	728	713	6,690,560	715.80
Professional & Business Services	246	1,338	1,301	1,265	11,521,171	681.03
Education & Health Services	278	3,442	3,469	3,434	27,338,902	609.86
Leisure & Hospitality	162	2,959	2,956	2,863	10,050,882	264.23
Other Services	154	710	706	713	4,410,883	478.11
Local Government	31	2,557	3,328	3,675	28,271,039	682.44
State Government	15	938	944	937	6,395,177	523.52
SCOTT COUNTY - TOTAL	190	2,880	2,895	3,088	\$19,086,029	\$496.95
Natural Resources & Mining	18	155	150	154	1,455,928	731.99
Trade, Transportation & Utilities	38	439	432	418	3,238,519	579.79
Wholesale Trade	9	80	76	77	974,729	965.40
Retail Trade	23	294	291	278	1,549,158	414.25
Transportation, Warehousing & Utilities	6	65	65	63	714,632	854.48
Financial Activities	23	75	76	87	463,922	449.83
Professional & Business Services	11	10	10	12	90,206	650.52
Education & Health Services	38	299	318	308	2,456,499	612.85
Leisure & Hospitality	17	146	139	133	484,888	267.70
Other Services	11	45	45	44	343,616	591.76
Local Government	6	391	399	590	2,338,410	391.04
State Government	7	58	58	61	345,605	450.59
Other	21	1,262	1,268	1,281	7,868,436	476.46

TABLE 6. COUNTY SUMMARY

NORTH AMERICAN INDUSTRY CLASSIFICATION SYSTEM - INDUSTRY GROUPS	NUMBER OF EMPLOYING UNITS	EMPLOYMENT			TOTAL EARNINGS	AVERAGE WEEKLY EARNINGS
		JUL	AUG	SEPT	JUL - SEPT 2013	
SEARCY COUNTY - TOTAL	194	1,472	1,612	1,628	\$8,942,142	\$437.94
Construction	13	15	15	44	129,019	402.35
Manufacturing	18	222	224	228	1,237,348	423.65
Trade, Transportation & Utilities	39	233	240	243	1,269,648	409.21
Wholesale Trade	6	29	29	27	156,882	425.92
Retail Trade	26	184	191	196	862,767	348.69
Transportation, Warehousing & Utilities	7	20	20	20	249,999	961.53
Financial Activities	15	91	88	80	575,119	512.43
Professional & Business Services	12	16	19	20	110,844	465.08
Education & Health Services	50	333	330	327	2,016,534	470.05
Leisure & Hospitality	17	150	151	131	424,028	226.51
Local Government	10	159	328	349	1,709,489	471.89
State Government	7	111	111	109	559,256	389.91
Other	13	142	106	97	910,857	609.27
SEBASTIAN COUNTY - TOTAL	3,779	61,943	63,226	63,585	\$581,068,298	\$710.41
Natural Resources & Mining	59	1,270	1,252	1,238	22,654,021	1,390.39
Construction	280	2,280	2,216	2,199	21,042,768	725.32
Manufacturing	198	11,688	11,640	11,643	133,343,168	879.91
Trade, Transportation & Utilities	932	12,432	12,494	12,408	101,849,084	629.55
Wholesale Trade	243	2,626	2,637	2,635	30,415,121	888.69
Retail Trade	566	7,605	7,645	7,550	45,005,800	455.52
Transportation, Warehousing & Utilities	123	2,201	2,212	2,223	26,428,163	919.05
Information	50	991	988	983	12,492,441	973.29
Financial Activities	430	2,569	2,548	2,519	28,108,690	849.48
Professional & Business Services	587	8,213	8,227	8,236	74,784,605	699.38
Education & Health Services	576	10,738	10,802	10,795	109,759,736	783.34
Leisure & Hospitality	341	5,908	5,948	5,913	21,089,305	273.89
Other Services	265	1,346	1,274	1,269	8,475,111	502.90
Local Government	40	2,869	4,197	4,546	31,546,178	626.93
State Government	21	1,639	1,640	1,836	15,923,191	718.39

TABLE 6. COUNTY SUMMARY

NORTH AMERICAN INDUSTRY CLASSIFICATION SYSTEM - INDUSTRY GROUPS	NUMBER OF EMPLOYING UNITS	EMPLOYMENT			TOTAL EARNINGS	AVERAGE WEEKLY EARNINGS
		JUL	AUG	SEPT	JUL - SEPT 2013	
SEVIER COUNTY - TOTAL	329	4,657	4,732	4,817	\$32,661,773	\$530.57
Natural Resources & Mining	14	163	167	171	1,580,497	728.00
Construction	20	143	145	142	1,425,722	765.15
Trade, Transportation & Utilities	100	851	848	839	5,681,064	516.55
Wholesale Trade	17	105	107	105	1,291,951	940.51
Retail Trade	67	659	655	648	3,471,679	408.34
Transportation, Warehousing & Utilities	16	87	86	86	917,434	817.43
Information	3	21	21	19	182,984	692.25
Financial Activities	28	231	231	231	1,736,935	578.40
Professional & Business Services	31	144	144	128	683,905	379.39
Education & Health Services	50	521	530	528	3,734,424	545.78
Leisure & Hospitality	26	252	267	255	804,119	239.75
Local Government	12	676	784	878	5,660,840	558.75
State Government	8	148	128	158	1,070,963	569.46
Other	37	1,507	1,467	1,468	10,100,320	524.73
SHARP COUNTY - TOTAL	391	3,487	3,432	3,627	\$21,784,482	\$476.69
Construction	22	116	112	111	933,354	635.37
Manufacturing	17	139	139	141	822,283	452.88
Trade, Transportation & Utilities	83	1,050	1,044	1,044	6,999,742	514.76
Wholesale Trade	12	35	32	35	193,866	438.61
Retail Trade	58	670	664	666	3,446,011	397.62
Transportation, Warehousing & Utilities	13	345	348	343	3,359,865	748.41
Information	6	41	44	40	370,524	684.04
Financial Activities	35	188	184	178	1,664,689	698.47
Professional & Business Services	36	148	146	145	1,189,689	625.38
Education & Health Services	95	660	664	654	4,037,317	471.03
Leisure & Hospitality	36	442	429	415	1,291,093	231.68
Local Government	25	476	515	748	3,591,937	476.66
State Government	8	80	79	77	502,518	491.38
Other	28	147	76	74	381,336	296.30

TABLE 6. COUNTY SUMMARY

NORTH AMERICAN INDUSTRY CLASSIFICATION SYSTEM - INDUSTRY GROUPS	NUMBER OF EMPLOYING UNITS	EMPLOYMENT			TOTAL EARNINGS	AVERAGE WEEKLY EARNINGS
		JUL	AUG	SEPT	JUL - SEPT 2013	
STONE COUNTY - TOTAL	291	2,328	2,428	2,476	\$14,024,968	\$447.53
Natural Resources & Mining	5	27	15	12	100,173	428.09
Construction	21	48	46	50	277,987	445.49
Manufacturing	19	174	184	178	987,990	425.37
Trade, Transportation & Utilities	78	656	654	659	3,892,983	456.26
Wholesale Trade	9	46	47	53	329,419	520.68
Retail Trade	56	570	567	564	3,104,363	421.16
Transportation, Warehousing & Utilities	13	40	40	42	459,201	868.60
Financial Activities	26	101	99	98	562,523	435.61
Professional & Business Services	19	32	33	37	191,738	433.80
Education & Health Services	51	461	458	474	3,613,959	598.70
Leisure & Hospitality	34	384	360	352	1,042,696	219.55
Local Government	10	234	369	407	2,205,628	503.95
State Government	8	149	149	147	788,101	408.70
Other	20	62	61	62	361,190	450.55
UNION COUNTY - TOTAL	1,347	17,088	17,387	17,602	\$173,738,755	\$769.89
Natural Resources & Mining	94	584	590	587	7,113,575	932.19
Construction	77	1,266	1,301	1,327	15,940,762	944.69
Manufacturing	55	2,952	2,929	2,945	38,679,573	1,011.34
Trade, Transportation & Utilities	331	3,761	3,915	3,858	39,078,343	781.87
Wholesale Trade	70	744	834	821	14,983,446	1,441.32
Retail Trade	205	2,144	2,227	2,182	12,174,035	428.72
Transportation, Warehousing & Utilities	56	873	854	855	11,920,862	1,065.44
Information	10	145	148	141	1,008,092	536.03
Financial Activities	123	746	715	706	6,960,930	741.29
Professional & Business Services	139	1,601	1,596	1,577	20,761,779	1,003.60
Education & Health Services	268	2,328	2,385	2,347	21,148,595	691.28
Leisure & Hospitality	90	1,204	1,177	1,189	3,993,821	258.17
Other Services	109	513	530	529	3,752,617	550.88
Local Government	34	1,441	1,547	1,811	10,603,257	509.88
State Government	17	547	554	585	4,697,411	642.95

TABLE 6. COUNTY SUMMARY

NORTH AMERICAN INDUSTRY CLASSIFICATION SYSTEM - INDUSTRY GROUPS	NUMBER OF EMPLOYING UNITS	EMPLOYMENT			TOTAL EARNINGS	AVERAGE WEEKLY EARNINGS
		JUL	AUG	SEPT	JUL - SEPT 2013	
VAN BUREN COUNTY - TOTAL	360	3,604	3,774	3,972	\$33,090,343	\$672.80
Natural Resources & Mining	15	286	285	283	6,315,610	1,706.61
Construction	36	171	179	195	1,450,403	614.14
Manufacturing	8	54	61	59	563,931	747.92
Trade, Transportation & Utilities	100	1,215	1,216	1,223	12,489,217	788.76
Wholesale Trade	8	52	52	51	517,915	771.09
Retail Trade	58	586	571	570	3,252,927	434.67
Transportation, Warehousing & Utilities	34	577	593	602	8,718,375	1,135.40
Information	9	42	40	42	361,791	673.31
Financial Activities	34	134	134	134	1,029,882	591.21
Professional & Business Services	29	118	126	115	740,053	475.71
Education & Health Services	62	673	687	705	5,061,523	565.64
Leisure & Hospitality	28	426	398	375	1,474,849	283.86
Other Services	21	70	69	63	405,225	462.94
Local Government	11	343	509	710	2,735,848	404.19
State Government	7	72	70	68	462,011	507.70
WASHINGTON COUNTY - TOTAL	5,672	88,264	91,352	93,656	\$901,057,899	\$760.91
Natural Resources & Mining	47	376	373	367	4,234,199	875.56
Construction	477	4,126	4,093	4,039	43,108,070	811.55
Manufacturing	227	12,332	12,289	12,272	115,965,320	725.37
Trade, Transportation & Utilities	1,367	21,104	21,269	21,189	192,813,371	700.03
Wholesale Trade	409	3,609	3,607	3,575	54,450,256	1,164.44
Retail Trade	775	10,968	11,035	11,081	71,560,965	499.16
Transportation, Warehousing & Utilities	183	6,527	6,627	6,533	66,802,150	783.05
Information	90	974	958	946	9,737,761	780.81
Financial Activities	625	3,372	3,374	3,405	37,817,506	859.73
Professional & Business Services	990	10,355	10,174	10,334	169,435,667	1,266.91
Education & Health Services	798	13,171	13,313	13,551	146,125,664	842.30
Leisure & Hospitality	600	10,791	11,003	11,209	38,528,861	269.41
Other Services	368	1,758	1,752	1,761	12,386,285	542.28
Local Government	61	3,989	6,118	8,064	55,569,948	705.73
State Government	22	5,916	6,636	6,519	75,335,247	911.60

TABLE 6. COUNTY SUMMARY

NORTH AMERICAN INDUSTRY CLASSIFICATION SYSTEM - INDUSTRY GROUPS	NUMBER OF EMPLOYING UNITS	EMPLOYMENT			TOTAL EARNINGS	AVERAGE WEEKLY EARNINGS
		JUL	AUG	SEPT	JUL - SEPT 2013	
WHITE COUNTY - TOTAL	1,816	23,358	24,561	24,917	\$215,791,266	\$683.70
Natural Resources & Mining	54	1,199	1,184	1,159	19,930,960	1,298.55
Construction	167	1,189	1,176	1,108	11,675,074	775.77
Manufacturing	65	2,356	2,334	2,335	24,559,663	806.78
Trade, Transportation & Utilities	495	6,326	6,415	6,395	51,607,985	622.36
Wholesale Trade	93	610	617	589	5,922,485	752.60
Retail Trade	309	3,598	3,676	3,666	20,834,771	439.49
Transportation, Warehousing & Utilities	93	2,118	2,122	2,140	24,850,729	898.87
Information	21	170	169	173	1,305,517	588.42
Financial Activities	162	851	856	857	8,250,126	742.54
Professional & Business Services	209	1,605	1,564	1,574	11,025,778	536.46
Education & Health Services	311	4,803	4,876	5,031	52,698,685	826.73
Leisure & Hospitality	148	2,299	2,299	2,350	7,164,875	237.97
Other Services	119	543	542	530	4,652,881	664.86
Local Government	47	1,405	2,504	2,664	17,884,763	627.91
State Government	18	612	642	741	5,034,959	582.41
WOODRUFF COUNTY - TOTAL	211	1,749	1,856	1,876	\$13,242,838	\$557.57
Natural Resources & Mining	24	165	154	154	1,246,256	608.03
Construction	5	45	46	42	342,500	594.27
Manufacturing	7	254	234	230	2,009,838	645.97
Trade, Transportation & Utilities	46	433	422	418	3,495,539	633.67
Wholesale Trade	12	182	179	173	1,994,591	861.97
Retail Trade	26	189	180	184	785,597	327.83
Transportation, Warehousing & Utilities	8	62	63	61	715,351	887.53
Financial Activities	14	66	66	67	526,689	610.77
Education & Health Services	73	254	260	257	1,525,936	456.73
Leisure & Hospitality	10	96	88	89	253,508	214.29
Local Government	10	300	450	482	2,735,010	512.30
State Government	6	46	43	44	280,053	485.92
Other	16	90	93	93	827,509	691.90

TABLE 6. COUNTY SUMMARY

NORTH AMERICAN INDUSTRY CLASSIFICATION SYSTEM - INDUSTRY GROUPS	NUMBER OF EMPLOYING UNITS	EMPLOYMENT			TOTAL EARNINGS	AVERAGE WEEKLY EARNINGS
		JUL	AUG	SEPT	JUL - SEPT 2013	
YELL COUNTY - TOTAL	424	6,063	6,329	6,478	\$42,067,786	\$514.46
Natural Resources & Mining	22	198	198	202	1,655,215	638.75
Construction	35	275	291	266	2,461,446	682.72
Manufacturing	20	2,420	2,432	2,431	16,063,323	508.98
Trade, Transportation & Utilities	88	705	720	712	4,730,320	510.82
Wholesale Trade	15	37	38	38	305,467	623.83
Retail Trade	53	525	534	532	2,647,701	384.04
Transportation, Warehousing & Utilities	20	143	148	142	1,777,152	947.14
Financial Activities	29	165	163	164	1,809,769	848.86
Professional & Business Services	38	244	245	240	1,730,712	547.87
Education & Health Services	107	694	749	770	4,274,659	445.76
Leisure & Hospitality	29	323	307	316	880,546	214.80
Local Government	25	834	1,020	1,172	6,902,833	526.42
State Government	12	99	99	98	584,447	455.65
Other	19	106	105	107	974,516	707.20
STATEWIDE COUNTY - TOTAL	7,196	22,536	22,535	24,817	\$326,425,078	\$1,077.85
Natural Resources & Mining	75	335	326	327	5,434,960	1,269.45
Construction	692	2,664	2,656	2,515	28,849,025	849.71
Manufacturing	48	208	208	207	2,992,929	1,108.63
Trade, Transportation & Utilities	2,475	6,879	6,849	6,856	130,166,624	1,459.31
Wholesale Trade	2,134	5,799	5,759	5,806	117,720,916	1,564.52
Retail Trade	124	258	261	250	4,022,076	1,206.98
Transportation, Warehousing & Utilities	217	822	829	800	8,423,632	793.11
Information	196	395	391	381	6,795,664	1,343.81
Financial Activities	433	1,232	1,263	1,238	19,364,432	1,197.08
Professional & Business Services	2,693	7,670	7,717	10,102	100,509,394	909.98
Education & Health Services	265	1,857	1,858	1,910	18,446,624	756.78
Leisure & Hospitality	74	99	100	100	823,397	635.50
State Government	17	707	703	709	6,563,265	714.77
Other	228	490	464	472	6,478,764	1,028.79

Note: Statewide classification includes employment and payroll data for employers that have not provided a physical location for each employing unit. This section also includes employers without a physical location in Arkansas.

TABLE 7. FEDERAL GOVERNMENT EMPLOYMENT AND EARNINGS IN ARKANSAS

CLASSIFICATION SYSTEM - INDUSTRY GROUPS	NUMBER OF EMPLOYING UNITS	EMPLOYMENT			TOTAL EARNINGS	AVERAGE
		JUL	AUG	SEPT	JUL - SEPT 2013	WEEKLY EARNINGS
TOTAL	1,177	20,422	20,382	20,332	\$328,425,041	\$1,239.70
Trade, Transportation & Utilities	586	5,489	5,472	5,452	71,234,007	1,001.56
Information	2	46	45	47	576,477	964.01
Financial Activities	14	116	117	117	2,452,845	1,617.26
Professional & Business Services	30	828	812	774	12,858,305	1,229.21
Education & Health Services	16	5,217	5,257	5,264	98,210,189	1,440.07
Leisure & Hospitality	19	333	327	319	2,988,983	704.56
Other Services	2	1	1	1	6,727	517.46
Public Administration	508	8,392	8,351	8,358	140,097,508	1,288.00

TABLE 8. WORKFORCE INVESTMENT AREA SUMMARY

NORTH AMERICAN INDUSTRY CLASSIFICATION SYSTEM - INDUSTRY GROUPS	NUMBER OF EMPLOYING UNITS	EMPLOYMENT			TOTAL EARNINGS	AVERAGE WEEKLY EARNINGS
		JUL	AUG	SEPT	JUL - SEPT 2013	
CENTRAL WORKFORCE INVESTMENT AREA	6,592	75,990	77,080	79,084	\$646,439,698	\$642.58
Natural Resources & Mining	216	2,300	2,252	2,197	34,974,126	1,195.87
Construction	748	5,486	5,440	5,431	52,061,682	734.50
Trade, Transportation & Utilities	1,578	15,727	15,547	15,572	113,899,168	561.08
Wholesale Trade	393	2,148	2,105	2,085	23,327,646	849.37
Retail Trade	925	11,835	11,720	11,742	71,528,232	467.65
Transportation, Warehousing & Utilities	260	1,744	1,722	1,745	19,043,290	843.33
Information	59	572	566	546	5,191,213	711.38
Financial Activities	694	2,993	3,000	2,988	29,838,987	766.72
Professional & Business Services	830	8,409	8,000	8,107	93,620,446	881.25
Education & Health Services	1,052	11,563	11,707	11,649	94,409,482	623.92
Leisure & Hospitality	554	9,607	9,640	9,557	31,010,045	248.44
Local Government	130	7,092	8,765	10,375	69,878,133	614.73
State Government	65	4,224	4,145	4,607	37,073,948	659.33
Other	666	8,017	8,018	8,055	84,482,468	809.30
EASTERN WORKFORCE INVESTMENT AREA	3,846	34,249	35,685	36,710	\$264,453,970	\$572.26
Natural Resources & Mining	229	1,199	1,139	1,216	9,051,415	587.73
Construction	156	779	752	772	6,683,903	669.75
Trade, Transportation & Utilities	817	9,461	9,371	9,341	75,837,473	621.20
Wholesale Trade	169	2,054	2,060	2,059	21,785,941	814.44
Retail Trade	457	4,905	4,830	4,784	28,446,350	452.13
Transportation, Warehousing & Utilities	191	2,502	2,481	2,498	25,605,182	789.85
Financial Activities	266	1,349	1,343	1,347	11,657,153	666.03
Professional & Business Services	278	2,403	2,392	2,449	16,753,971	533.72
Education & Health Services	1,382	6,493	6,659	6,658	47,822,904	557.10
Leisure & Hospitality	243	3,534	3,510	3,453	12,539,671	275.68
Local Government	129	2,721	4,194	5,163	31,003,926	592.38
State Government	61	2,270	2,373	2,371	17,264,349	568.02
Other	285	4,040	3,952	3,940	35,839,205	693.14

Note: Pulaski County is not included in the Central Workforce Investment. Please refer to Page 51 for information on Pulaski County.
Central Workforce Includes these counties: Faulkner, Lonoke, Monroe, Prairie, and Saline.

Eastern Workforce Includes these counties: Crittenden, Cross, Lee, Phillips, and Saint Francis.

TABLE 8. WORKFORCE INVESTMENT AREA SUMMARY

NORTH AMERICAN INDUSTRY CLASSIFICATION SYSTEM - INDUSTRY GROUPS	NUMBER OF EMPLOYING UNITS	EMPLOYMENT			TOTAL EARNINGS	AVERAGE WEEKLY EARNINGS
		JUL	AUG	SEPT	JUL - SEPT 2013	
NORTH CENTRAL WORKFORCE INVESTMENT AREA	5,555	64,702	66,913	69,120	\$540,334,618	\$621.18
Construction	435	2,680	2,709	2,641	25,979,001	746.59
Trade, Transportation & Utilities	1,426	16,112	16,231	16,211	128,021,926	608.47
Retail Trade	912	9,604	9,703	9,705	54,637,270	434.60
Other Trade, Transportation & Utilities	514	6,508	6,528	6,506	73,384,656	866.59
Financial Activities	494	2,459	2,454	2,444	22,526,647	706.60
Education & Health Services	1,032	12,577	12,727	12,942	116,785,746	704.66
Leisure & Hospitality	472	6,496	6,424	6,333	19,629,455	235.28
Local Government	230	4,976	7,116	9,111	49,951,633	543.66
State Government	105	2,849	2,902	3,169	22,249,005	575.60
Other	1,361	16,553	16,350	16,269	155,191,205	728.33

North Central Workforce Includes these counties: Cleburne, Fulton, Independence, Izard, Jackson, Sharp, Stone, Van Buren, White, and Woodruff.

NORTHEAST WORKFORCE INVESTMENT AREA	6,568	91,184	93,422	96,089	\$785,038,967	\$645.41
Natural Resources & Mining	421	2,328	2,272	2,315	16,956,513	565.88
Construction	430	3,373	3,335	3,332	34,567,023	794.52
Manufacturing	318	18,981	19,112	19,229	223,605,425	900.20
Trade, Transportation & Utilities	1,726	18,650	18,711	18,671	142,782,185	588.05
Wholesale Trade	398	3,924	3,873	3,843	43,202,528	856.51
Retail Trade	1,011	11,755	11,862	11,792	67,590,784	440.51
Transportation, Warehousing & Utilities	317	2,971	2,976	3,036	31,988,873	821.78
Financial Activities	560	3,053	3,079	3,083	30,067,795	752.98
Professional & Business Services	656	6,576	6,750	7,122	47,921,011	540.82
Education & Health Services	1,187	15,342	15,674	15,715	138,173,338	682.33
Leisure & Hospitality	521	8,212	8,286	8,417	26,745,127	247.72
Local Government	220	8,162	9,671	11,553	69,045,410	542.22
State Government	99	4,260	4,287	4,412	39,085,891	696.03
Other	430	2,247	2,245	2,240	16,089,249	551.53

Northeast Workforce Includes these counties: Clay, Craighead, Greene, Lawrence, Mississippi, Poinsett, and Randolph.

TABLE 8. WORKFORCE INVESTMENT AREA SUMMARY

NORTH AMERICAN INDUSTRY CLASSIFICATION SYSTEM - INDUSTRY GROUPS	NUMBER OF EMPLOYING UNITS	EMPLOYMENT			TOTAL EARNINGS	AVERAGE WEEKLY EARNINGS
		JUL	AUG	SEPT	JUL - SEPT 2013	
NORTHWEST WORKFORCE INVESTMENT AREA	15,202	229,074	235,153	240,213	\$2,413,286,130	\$790.57
Natural Resources & Mining	142	1,544	1,482	1,459	18,041,310	928.29
Trade, Transportation & Utilities	3,763	52,854	53,209	52,903	517,943,115	751.89
Retail Trade	2,043	27,711	27,777	27,861	173,551,707	480.51
Other Trade, Transportation & Utilities	1,720	25,143	25,432	25,042	344,391,408	1,051.02
Education & Health Services	2,161	29,594	30,050	30,452	291,313,019	746.16
Leisure & Hospitality	1,569	26,346	26,393	26,398	96,383,380	281.06
Local Government	311	12,832	17,416	22,181	148,790,395	654.91
State Government	107	8,282	9,047	9,307	94,151,297	815.71
Other	7,149	97,622	97,556	97,513	1,246,663,614	982.92
SOUTHEAST WORKFORCE INVESTMENT AREA	6,105	66,388	68,500	70,815	\$569,742,075	\$639.17
Natural Resources & Mining	415	2,590	2,540	2,588	23,208,966	693.95
Construction	310	2,322	2,326	2,461	22,736,594	738.07
Manufacturing	190	14,214	14,337	14,441	157,264,963	844.16
Trade, Transportation & Utilities	1,330	12,858	12,830	12,900	102,633,400	613.78
Retail Trade	796	7,806	7,836	7,835	44,413,551	436.57
Other Trade, Transportation & Utilities	534	5,052	4,994	5,065	58,219,849	889.11
Financial Activities	407	2,528	2,554	2,533	24,179,879	732.76
Education & Health Services	1,908	10,970	11,099	10,996	84,159,406	587.37
Local Government	203	5,819	7,621	9,440	56,699,712	571.88
State Government	136	5,845	5,868	6,118	49,555,258	641.35
Other	1,206	9,242	9,325	9,338	49,303,897	407.73

Northwest Workforce Includes these counties: Baxter, Benton, Boone, Carroll, Madison, Marion, Newton, Searcy, and Washington.

Southeast Workforce Includes these counties: Arkansas, Ashley, Bradley, Chicot, Cleveland, Desha, Drew, Grant, Jefferson, and Lincoln.

TABLE 8. WORKFORCE INVESTMENT AREA SUMMARY

NORTH AMERICAN INDUSTRY CLASSIFICATION SYSTEM - INDUSTRY GROUPS	NUMBER OF EMPLOYING UNITS	EMPLOYMENT			TOTAL EARNINGS	AVERAGE WEEKLY EARNINGS
		JUL	AUG	SEPT	JUL - SEPT 2013	
SOUTHWEST WORKFORCE INVESTMENT AREA	5,794	74,342	75,775	78,087	\$648,381,558	\$655.67
Natural Resources & Mining	356	2,417	2,449	2,449	25,704,151	810.90
Trade, Transportation & Utilities	1431	15646	15830	15811	129521617	632.09
Retail Trade	892	8,946	8,975	8,923	48,675,080	418.44
Other Trade, Transportation & Utilities	539	6,700	6,855	6,888	80,846,537	912.63
Information	60	452	459	449	4,004,849	679.56
Financial Activities	510	2,763	2,735	2,703	23,952,869	674.01
Education & Health Services	1,130	9,189	9,309	9,302	68,326,172	567.18
Leisure & Hospitality	412	5,460	5,498	5,509	18,216,694	255.29
Other Services	397	1,769	1,780	1,784	10,825,060	468.42
Local Government	258	6,787	7,855	10,043	56,170,863	525.12
State Government	138	3,629	3,619	3,804	30,221,159	631.03
Other	1,102	26,230	26,241	26,233	281,438,124	825.21

Southwest Workforce Includes these counties: Calhoun, Columbia, Dallas, Hempstead, Howard, Lafayette, Little River, Miller, Nevada, Ouachita, Sevier, and Union

WEST CENTRAL WORKFORCE INVESTMENT AREA	8,178	101,129	103,357	104,808	\$807,539,000	\$602.52
Construction	756	4,850	4,845	4,618	46,902,399	756.21
Trade, Transportation & Utilities	1,911	20,956	21,048	20,991	172,499,356	631.92
Retail Trade	1,266	13,712	13,783	13,757	80,067,797	447.91
Other Trade, Transportation & Utilities	645	7,244	7,265	7,234	92,431,559	981.02
Financial Activities	815	4,114	4,100	4,067	36,745,849	690.48
Professional & Business Services	929	8,194	8,124	7,918	64,176,136	611.07
Education & Health Services	1,473	16,201	16,408	16,536	143,087,867	671.89
Leisure & Hospitality	765	13,057	12,726	12,084	44,694,951	272.38
Local Government	225	7,167	9,323	11,656	68,879,395	564.74
State Government	124	5,181	5,509	5,873	43,631,560	607.91
Other	1,180	21,409	21,274	21,065	186,921,487	676.66

West Central Workforce Includes these counties: Clark, Conway, Garland, Hot Spring, Johnson, Montgomery, Perry, Pike, Pope, and Yell

TABLE 8. WORKFORCE INVESTMENT AREA SUMMARY

NORTH AMERICAN INDUSTRY CLASSIFICATION SYSTEM - INDUSTRY GROUPS	NUMBER OF EMPLOYING UNITS	EMPLOYMENT			TOTAL EARNINGS	AVERAGE WEEKLY EARNINGS
		JUL	AUG	SEPT	JUL - SEPT 2013	
WESTERN WORKFORCE INVESTMENT AREA	6,621	97,308	100,429	101,286	\$861,092,965	\$664.54
Natural Resources & Mining	172	2,319	2,291	2,264	36,196,150	1,215.15
Trade, Transportation & Utilities	1,629	21,761	21,839	21,752	174,820,015	617.32
Retail Trade	955	11,915	11,941	11,848	68,979,024	445.84
Other Trade, Transportation & Utilities	674	9,846	9,898	9,904	105,840,991	823.83
Financial Activities	702	3,840	3,828	3,800	39,221,286	789.25
Professional & Business Services	879	9,940	9,992	10,003	87,447,240	674.13
Education & Health Services	1,034	14,908	15,033	15,053	141,491,617	725.69
Leisure & Hospitality	556	8,746	8,779	8,650	29,721,234	262.03
Other Services	430	2,159	2,043	2,039	13,928,721	515.03
Local Government	151	5,570	8,552	9,470	60,848,175	595.20
State Government	74	2,750	2,780	3,004	23,391,684	632.54
Other	994	25,315	25,292	25,251	254,026,843	772.78

Western Workforce Includes these counties: Crawford, Franklin, Logan, Polk, Scott, and Sebastian