

Arkansas Covered Employment & Earnings

Annual
2010

Jobs for People. People for Jobs.

DWS

Department of
WORKFORCE**Services**

**COVERED EMPLOYMENT AND EARNINGS
STATE OF ARKANSAS
ANNUAL 2010**

**MIKE BEEBE, GOVERNOR
STATE OF ARKANSAS**

**ARTEE WILLIAMS, DIRECTOR
DEPARTMENT OF WORKFORCE SERVICES**

**PUBLISHED BY
LABOR MARKET INFORMATION & ANALYSIS
BUREAU OF LABOR STATISTICS PROGRAMS
POST OFFICE BOX 2981
LITTLE ROCK, ARKANSAS 72203-2981
BERNADETTE COLEMAN, BLS PROGRAMS MANAGER
TELEPHONE (501) 682-3159
SUSAN PRICE, QCEW LEAD ANALYST
TELEPHONE (501) 682-3103**

STATE OF ARKANSAS WEBPAGE: <http://www.arkansas.gov>

DEPARTMENT OF WORKFORCE SERVICES WEBPAGE: <http://www.arkansas.gov/esd/>

WEBPAGE FOR LABOR MARKET INFORMATION: <http://www.discover.arkansas.gov>

RELEASED: FEBRUARY 2012

TABLE OF CONTENTS

	Page
Description of Data	1
Industry Classification	1
Definition of Covered Employment and Earnings	2
Federal Government	2
County Classification	2
Significant Developments During Calendar Year 2010	3

GRAPHS AND TABLES

Graph 1	Average Total Covered Employment for Selected Years, Arkansas	7
Graph 2	Total Covered Earnings, by Calendar Quarter for Selected Years, Arkansas	8
Table 1	Annual Comparison of Covered Employment and Wages, by Industry	5
Table 2	Total Covered Employment in Arkansas, 2003 – 2010	6
Table 3	Total Covered Earnings, 2003 – 2010	9
Table 4	Total Taxable Earnings, 2003 – 2010	10
Table 5	State Summary – Employment and Total Earnings, by Industry, Calendar Year 2010	11
Table 6	County Summary – Employment and Total Earnings, by Industry, Calendar Year 2010	25
Table 7	Federal Government Employment and Total Earnings in Arkansas, Calendar Year 2010	63
Table 8	Workforce Investment Area – Employment and Total Earnings, by Industry, Calendar Year 2010	64

EMPLOYMENT AND EARNINGS
UNDER THE ARKANSAS EMPLOYMENT SECURITY LAW
ANNUAL 2010

DESCRIPTION OF DATA

This publication contains covered employment and payroll data by industry and county for the Calendar Year 2010. These data are compiled from quarterly contributions and wage reports submitted by employers subject to the Arkansas Employment Security Law. An employing unit is a single physical location where business is conducted, production takes place, or services are provided. Employment and wage data have been tabulated annually for the calendar year by industry under the **North American Industry Classification System** (NAICS) (see "Industry Classification" below) on a statewide, county and workforce area basis. Payroll data represent the total wages paid during the calendar year, and are also shown by

industry for the State and by publishable industry groups for each county and workforce area. The tabulation of this data is a joint effort in conjunction with the U.S. Bureau of Labor Statistics. In addition, there are tables included which set out total covered employment by months, quarterly payrolls, and average weekly earnings for the years 2003 through 2010. Data contained in this publication are subject to revision. Because of industry code changes between years, substantial employment and wage shifts among industries are anticipated.

INDUSTRY CLASSIFICATION

Previously published industry data will not be comparable in all instances with currently published data since industry codes have been revised. The last two revisions were based on the North American Industry Classification System (NAICS) a six digit industry code instead of the Standard Industrial Classification (SIC) system, a four digit industry code, which had been used previously. The following are the NAICS Manuals used to revise the data: (a) between January 1, 2001 and December 31, 2006 industry codes were assigned under the 2002 North American Industry Classification System (NAICS) Manual; (b) since January 1, 2007 industry codes have been assigned under the 2007 North American Industry Classification System Manual. The NAICS Manual represents a significant change in coding methodology as compared to the SIC Manual. One of the most significant changes involves how NAICS treats auxiliary units.

Auxiliary units are establishments primarily engaged in performing management of support services for other establishments of the same enterprise. The SIC code for these units was based on the activity of the enterprise served. The NAICS code is based on the actual activities that the establishment performs. Comparisons of many industries should not be made between this publication and previous Covered Employment and Earnings publications that were based on SIC. Even though some titles are the same or similar in nature, NAICS and SIC could differ in classification of employers. The implementation of NAICS represents a profound change for statistical programs and will create significant benefits along with transition obstacles for both data collectors and data users. A summary is available on the NAICS home page at <http://www.census.gov/naics>.

DEFINITION OF COVERED EMPLOYMENT AND EARNINGS

Covered Employment is the number of workers employed by businesses subject to the Arkansas Employment Security Law who worked or received pay for the payroll period including the 12th of the month. An employer is subject to the law when they employ one or more employees in each of ten days during the current or preceding calendar year.

Currently excluded from coverage is employment covered by the Railroad Unemployment Insurance Act, some domestic service workers, employees of small agricultural establishments, self-

employed and unpaid family workers, insurance and real estate agents who are on commission only, and employees of churches and religious organizations except separately incorporated schools. The payroll information in this publication includes all wages and salaries paid to any covered employees by their employers including bonuses, commissions, and cash values of remuneration received in any medium other than cash. These wages include both taxable and nontaxable wages. Only the first \$12,000 paid to each worker by an employer in the calendar year is taxable under the Arkansas Employment Security Law.

FEDERAL GOVERNMENT EMPLOYMENT

Table 7 on page 63 lists the average number of civilians employed by the Federal Government in Arkansas during the Calendar Year 2010. Employment and wage data are set out by industry divisions.

These data are obtained from required reports submitted by various government agencies having employment in the State. Civilian Federal workers are covered by the Unemployment Compensation for Federal Employees (UCFE) program.

COUNTY CLASSIFICATION

Employment and payroll data by county are classified according to the county where the workers are employed. Employers with operations in more than one county are requested to furnish this agency with a breakdown of employment and wages for at least one quarter of each year by the counties in which they operate. Many such employers submit county data with each regular contribution report. Note: This information is invaluable in the preparation of monthly employment and payroll data by county.

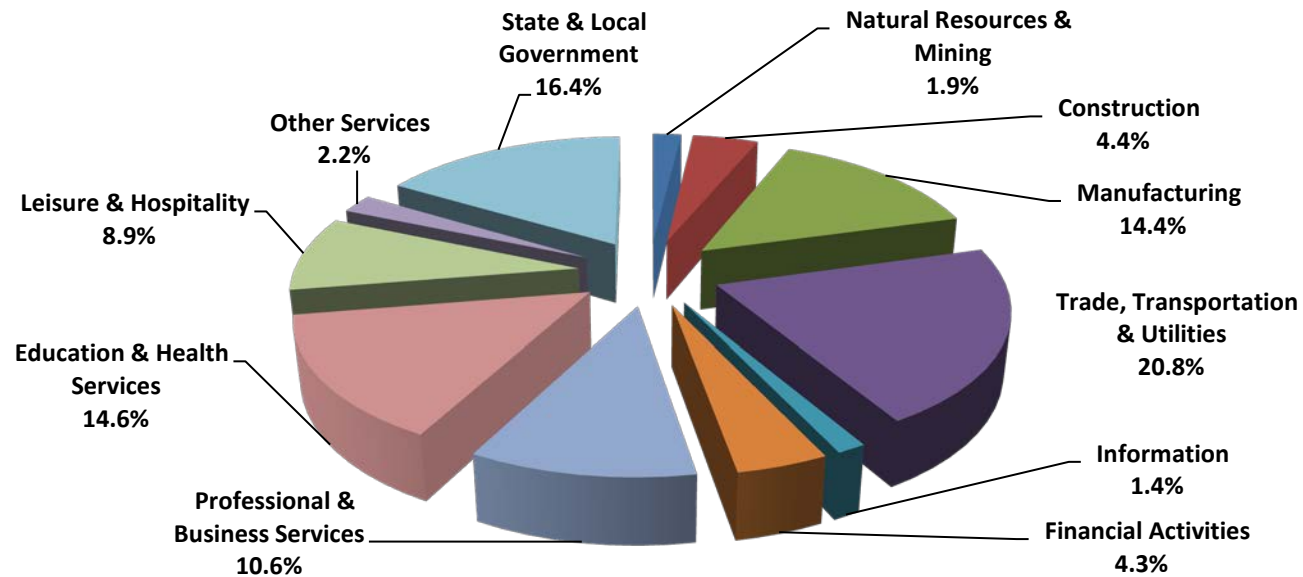
Employment and payroll data for multi-area employers, who do not furnish county data each quarter of the year, are prorated by county on the basis of one quarter's information. The "Statewide County" table that appears on page 62 of this publication includes data on firms that did not provide a county breakdown of employment and payrolls. It also includes sales, and all other types of personnel with no permanent place of work, as well as employment of employers with no established place of business in Arkansas.

SIGNIFICANT DEVELOPMENTS DURING CALENDAR YEAR 2010

AVERAGE EMPLOYMENT CHANGES

Covered employment averaged 1,110,965 during the Calendar Year 2010 (see Table 1, page 5), a decline of 3,541 from the previous year. The largest employment drops occurred in Manufacturing (-4,277) and Construction (-3,080). The greatest annual growth occurred in Professional and Business Services (+3,616) and Education and Health Services (+3,391).

Average Covered Employment by NAICS



EMPLOYMENT CHANGES FOR CALENDAR YEAR 2010

Seven of the eleven major industry sectors recorded job losses over the year. The decline in Manufacturing brought the sector's employment average down to 159,822. Jobs in Construction averaged 48,726 in 2010. Financial Activities posted a decline of 1,199. A majority of the loss occurred in finance and insurance. Employment in Leisure and Hospitality fell 933. Most of the decrease was in accommodation and food services (-857).

Four industries experienced gains over the year. The expansion in Professional and Business Services was mostly attributed to gains in the administrative and waste services subsector (+4,216). Increases in Education and Health Services were linked to growth in health care and social assistance (+3,337). State and Local Government added jobs (+1,181), which were split between the state (+602) and local (+579) levels.

EMPLOYMENT CHANGES FOR CALENDAR YEAR 2010

Pulaski County posted the highest average covered employment in 2010 at 233,249. Benton County came in second with 90,950 in covered employment, slightly higher than Washington County with 87,425. Sebastian County had the fourth highest number of covered employment with 66,334, followed by Craighead County with 41,949.

COVERED WAGES

Wages paid to covered workers totaled \$39,769,504,992 for the Calendar Year 2010 (see Table 1), for an average weekly wage of \$688.41 (see Table 5). Employees in Benton County recorded the highest average weekly wage (\$888.55), and workers in Newton County the lowest (\$411.99) (see Table 6).

The Information sector recorded the highest average weekly wage for the State of Arkansas at \$927.23; while the Leisure and Hospitality sector recorded the lowest at \$257.02 for the State of Arkansas (see Table 5).

Average Weekly Wage by Industry

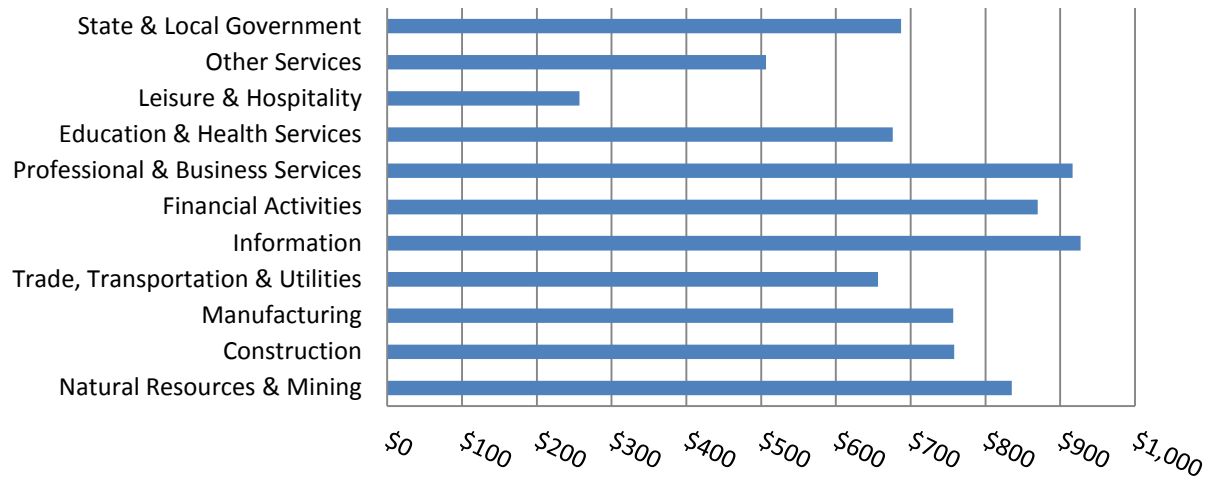


TABLE 1. YEARLY COMPARISON OF COVERED EMPLOYMENT AND WAGES, BY INDUSTRY

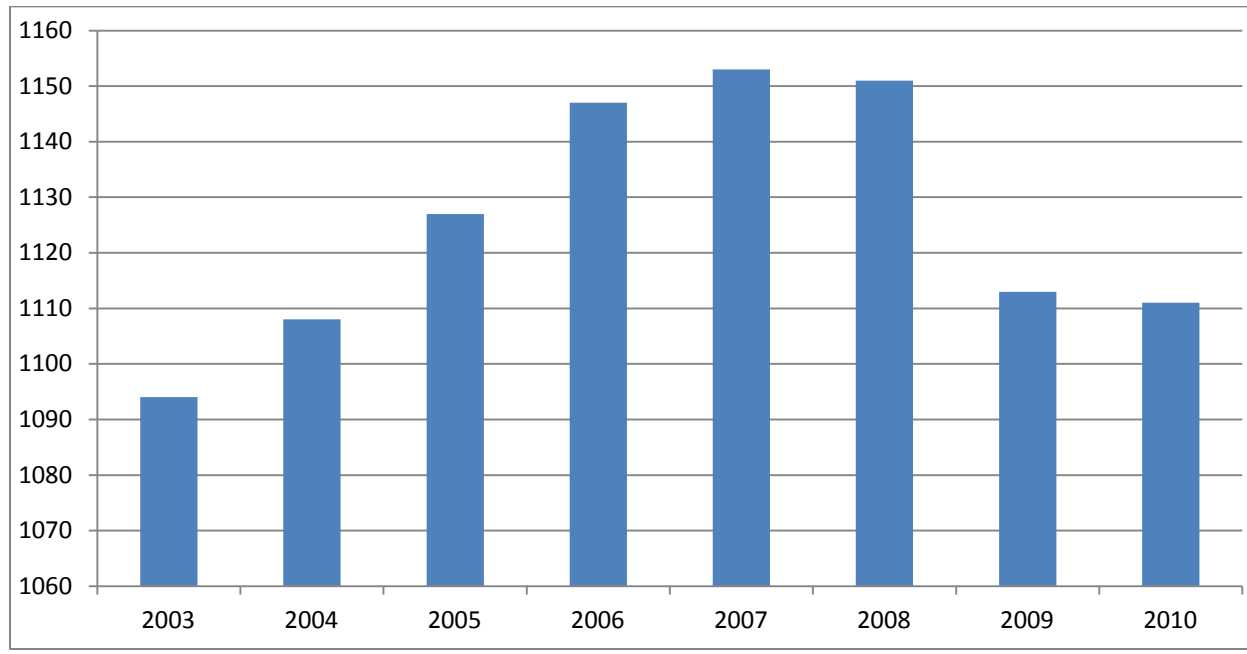
North American Industry Classification System	Number of Employing Units	Average Covered Employment	Percent of Total	Net Change From: 2009	Total Earnings 2010	Percent of Total	Average Weekly Earnings
Total	84,248	1,110,965	100.0	-3,541	\$39,769,504,992	100.0	688.4
Natural Resources & Mining	2,512	21,096	1.9	315	\$916,160,844	2.3	835.2
Agriculture, Forestry, Fishing & Hunting	1,973	12,738	1.1	142	\$402,819,344	1.0	608.1
Mining	539	8,358	0.8	173	\$513,341,500	1.3	1181.1
Construction	7,100	48,726	4.4	-3,080	\$1,920,844,760	4.8	758.1
Manufacturing	3,270	159,822	14.4	-4,277	\$6,289,906,001	15.8	756.8
Trade, Transportation & Utilities	20,659	231,444	20.8	-743	\$7,901,670,133	19.9	656.6
Wholesale Trade	6,426	46,444	4.2	-568	\$2,558,138,383	6.4	1059.2
Retail Trade	10,981	129,514	11.7	-103	\$2,986,046,985	7.5	443.4
Transportation & Warehousing	2,846	48,169	4.3	-634	\$1,853,597,701	4.7	740.0
Utilities	406	7,317	0.7	562	\$503,887,064	1.3	1324.3
Information	1,117	15,375	1.4	-887	\$741,317,173	1.9	927.2
Financial Activities	7,999	47,970	4.3	-1,199	\$2,170,060,902	5.5	870.0
Finance & Insurance	4,667	34,437	3.1	-933	\$1,758,508,048	4.4	982.0
Real Estate & Rental & Leasing	3,332	13,533	1.2	-266	\$411,552,854	1.0	584.8
Professional & Business Services	12,181	117,715	10.6	4,716	\$5,610,559,924	14.1	916.6
Professional & Technical Services	7,586	38,422	3.5	772	\$1,992,541,633	5.0	997.3
Management of Companies & Enterprises	521	26,207	2.4	-272	\$2,309,856,260	5.8	1695.0
Administrative & Waste Services	4,074	53,086	4.8	4,216	\$1,308,162,031	3.3	473.9
Education & Health Services	14,612	162,740	14.6	3,391	\$5,721,283,622	14.4	676.1
Educational Services	685	10,378	0.9	54	\$321,705,447	0.8	596.1
Health Care & Social Assistance	13,927	152,362	13.7	3,337	\$5,399,578,175	13.6	681.5
Leisure & Hospitality	6,319	98,781	8.9	-933	\$1,320,215,769	3.3	257.0
Arts, Entertainment & Recreation	909	9,675	0.9	-76	\$163,495,135	0.4	325.0
Accommodation & Food Services	5,410	89,106	8.0	-857	\$1,156,720,634	2.9	249.6
Other Services	5,359	24,608	2.2	-111	\$648,193,539	1.6	506.6
State & Local Government	3,120	182,688	16.4	1,181	\$6,529,292,325	16.4	687.3
Local Government	1,970	113,639	10.2	579	\$3,752,557,726	9.4	635.0
State Government	1,150	69,049	6.2	602	\$2,776,734,599	7.0	773.3
Nonclassifiable Establishments	0	0	0.0	0	\$0	0.0	0.0

Note: Items do not necessarily add to totals because of rounding. Because of industry code changes between years, substantial employment and wage shifts among industries are anticipated.

TABLE 2. TOTAL COVERED EMPLOYMENT IN ARKANSAS

Period	2003	2004	2005	2006	2007	2008	2009	2010
Average	1,094,087	1,108,264	1,126,778	1,146,948	1,152,994	1,150,965	1,112,591	1,110,947
January	1,082,740	1,089,510	1,102,768	1,130,595	1,137,437	1,141,856	1,119,299	1,089,984
February	1,084,880	1,094,626	1,110,577	1,136,810	1,143,397	1,149,443	1,119,476	1,091,282
March	1,092,172	1,105,266	1,122,619	1,150,439	1,158,895	1,157,690	1,124,386	1,106,198
April	1,095,341	1,111,020	1,129,785	1,155,498	1,159,623	1,159,841	1,123,383	1,115,341
May	1,103,099	1,117,144	1,135,567	1,159,886	1,165,224	1,166,111	1,122,322	1,123,250
June	1,099,688	1,117,010	1,136,118	1,162,026	1,164,207	1,164,167	1,117,884	1,130,164
July	1,053,220	1,071,463	1,090,071	1,106,142	1,110,571	1,114,279	1,071,048	1,073,743
August	1,077,775	1,094,871	1,114,098	1,130,839	1,139,109	1,138,583	1,093,192	1,099,795
September	1,105,980	1,122,704	1,144,815	1,159,814	1,165,135	1,162,333	1,116,580	1,124,281
October	1,112,550	1,123,246	1,142,300	1,156,804	1,162,768	1,157,196	1,113,157	1,125,073
November	1,109,712	1,125,061	1,145,667	1,156,011	1,164,246	1,152,159	1,115,443	1,126,781
December	1,111,892	1,127,250	1,146,954	1,158,509	1,165,314	1,147,927	1,114,919	1,125,466

Graph 1
AVERAGE TOTAL COVERED EMPLOYMENT
In Thousands



Graph 2
TOTAL COVERED EARNINGS BY CALENDAR YEAR
In Thousands

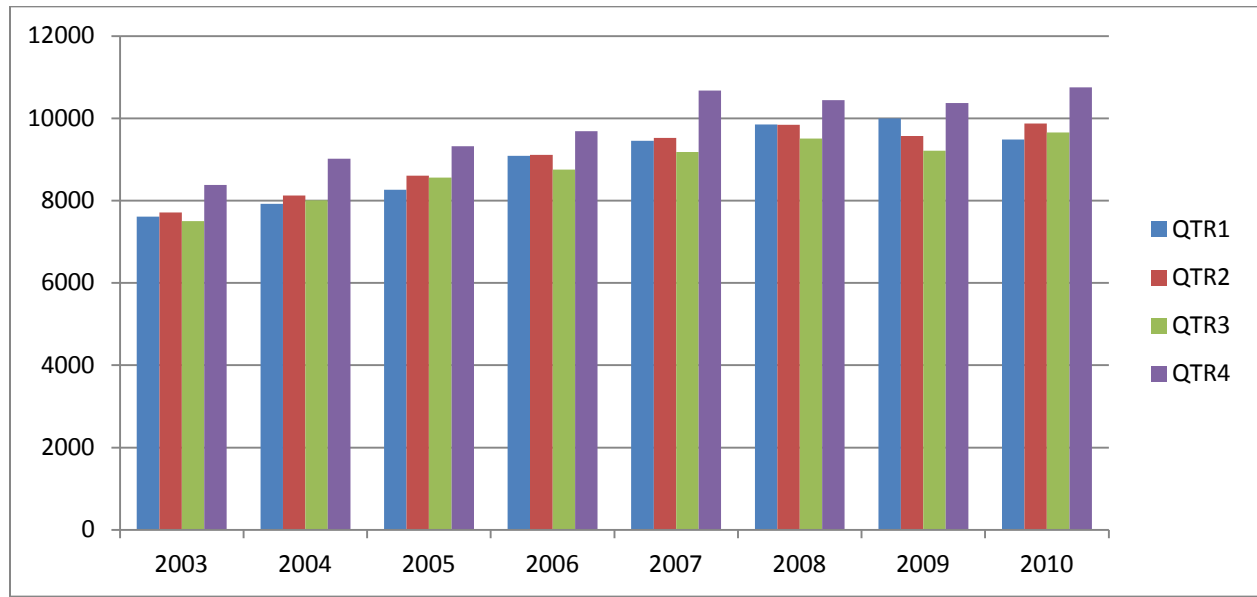


TABLE 3. TOTAL COVERED EARNINGS 2003 - 2010

Period	2003	2004	2005	2006
Total	\$31,202,576,767	\$33,068,189,304	\$34,753,107,631	\$36,636,090,775
January - March	\$7,608,130,008	\$7,918,843,610	\$8,261,153,981	\$9,085,021,816
April - June	\$7,714,813,038	\$8,122,370,361	\$8,607,722,353	\$9,112,624,590
July - September	\$7,500,204,764	\$8,010,300,454	\$8,562,555,369	\$8,750,878,205
October - December	\$8,379,428,957	\$9,016,674,879	\$9,321,675,928	\$9,687,566,164
Average Weekly Earnings	\$548.45	\$573.80	\$593.13	\$614.27
Period	2007	2008	2009	2010
Total	\$38,833,265,464	\$39,643,043,342	\$39,149,476,305	\$39,769,504,992
January - March	\$9,452,711,662	\$9,851,866,058	\$9,998,452,028	\$9,486,245,580
April - June	\$9,525,837,049	\$9,843,711,293	\$9,566,968,853	\$9,873,489,653
July - September	\$9,178,902,477	\$9,509,150,631	\$9,213,797,140	\$9,653,588,807
October - December	\$10,675,814,276	\$10,438,311,360	\$10,370,258,284	\$10,756,180,952
Average Weekly Earnings	\$647.70	\$662.37	\$676.69	\$688.42

TABLE 4. TOTAL TAXABLE EARNINGS, 2003 - 2010

Period	2003	2004	2005	2006
Total	\$9,154,938,743	\$9,731,247,501	\$9,991,605,239	\$10,197,511,360
January - March	\$4,737,918,796	\$4,931,559,230	\$5,062,670,306	\$5,421,204,601
April - June	\$2,270,519,362	\$2,451,454,749	\$2,506,505,721	\$2,385,110,992
July - September	\$1,188,681,170	\$1,318,017,835	\$1,353,660,445	\$1,314,939,803
October - December	\$957,819,415	\$1,030,215,687	\$1,068,768,767	\$1,076,255,964
Period	2007	2008	2009	2010
Total	\$10,459,105,059	\$10,360,487,108	\$9,787,660,886	\$11,332,118,456
January - March	\$5,617,417,571	\$5,635,750,082	\$5,423,705,265	\$5,607,134,758
April - June	\$2,466,606,627	\$2,419,313,519	\$2,293,670,854	\$2,977,100,591
July - September	\$1,307,060,412	\$1,297,473,555	\$1,165,280,065	\$1,577,067,770
October - December	\$1,068,020,449	\$1,007,949,952	\$905,004,702	\$1,170,815,337

TABLE 5. STATEWIDE SUMMARY
CALENDAR YEAR 2010

NORTH AMERICAN INDUSTRY CLASSIFICATION SYSTEM - INDUSTRY GROUPS	AVERAGE EMPLOYING UNITS	AVERAGE COVERED EMPLOYMENT	TOTAL CALENDAR EARNINGS	AVERAGE WEEKLY EARNINGS
TOTAL, ALL INDUSTRIES	84,248	1,110,965	\$39,769,504,992	\$688.41
NATURAL RESOURCES & MINING	2,512	21,096	\$916,160,844	\$835.16
AGRICULTURE, FORESTRY, FISHING & HUNTING	1,973	12,738	\$402,819,344	\$608.14
CROP PRODUCTION	819	3,881	\$93,730,014	\$464.44
Oilseed & Grain Farming	483	2,210	\$54,140,339	\$471.11
Vegetable & Melon Farming	11	75	\$1,238,955	\$317.68
Fruit & Tree Nut Farming	8	80	\$1,622,529	\$390.03
Greenhouse & Nursery Production	48	343	\$8,588,298	\$481.51
Other Crop Farming	269	1,173	\$28,139,893	\$461.34
ANIMAL PRODUCTION	280	3,382	\$122,453,985	\$696.30
Cattle Ranching & Farming	90	338	\$8,444,948	\$480.48
Hog & Pig Farming	8	75	\$4,710,476	\$1,207.81
Poultry & Egg Production	99	2,484	\$94,767,331	\$733.67
Animal Aquaculture	58	421	\$12,811,660	\$585.22
Other Animal Production	25	64	\$1,719,570	\$516.70
FORESTRY & LOGGING	439	2,344	\$80,214,147	\$658.10
Timber Tract Operations	38	212	\$8,852,731	\$803.04
Forest Nurseries & Gathering of Forest Products	7	37	\$1,659,591	\$862.57
Logging	394	2,095	\$69,701,825	\$639.82
OTHER	4	21	\$460,506	\$421.71
MINING	539	8,358	\$513,341,500	\$1,181.14
OIL & GAS EXTRACTION	96	968	\$72,150,687	\$1,433.38
MINING (EXCEPT OIL & GAS)	108	2,080	\$100,300,140	\$927.33
SUPPORT ACTIVITIES FOR MINING	335	5,310	\$340,890,673	\$1,234.57
CONSTRUCTION	7,100	48,726	\$1,920,844,760	\$758.10
CONSTRUCTION OF BUILDINGS	1,763	9,754	\$403,845,061	\$796.21
Residential Building Construction	1,182	2,933	\$92,267,275	\$604.97
Nonresidential Building Construction	581	6,821	\$311,577,786	\$878.45
HEAVY & CIVIL ENGINEERING CONSTRUCTION	848	10,447	\$501,763,654	\$923.64
Utility System Construction	454	6,132	\$309,976,735	\$972.13
Land Subdivision	95	267	\$9,320,347	\$671.30
Highway, Street & Bridge Construction	201	2,738	\$107,814,004	\$757.25
Other Heavy Construction	98	1,310	\$74,652,568	\$1,095.90

TABLE 5. STATEWIDE SUMMARY
CALENDAR YEAR 2010

NORTH AMERICAN INDUSTRY CLASSIFICATION SYSTEM - INDUSTRY GROUPS	AVERAGE EMPLOYING UNITS	AVERAGE COVERED EMPLOYMENT	TOTAL CALENDAR EARNINGS	AVERAGE WEEKLY EARNINGS
SPECIALTY TRADE CONTRACTORS	4,489	28,525	\$1,015,236,045	\$684.44
Building Foundation & Exterior Contractors	851	5,591	\$179,547,706	\$617.57
Building Equipment Contractors	2,039	14,286	\$558,688,488	\$752.07
Building Finishing Contractors	815	3,819	\$117,975,000	\$594.07
Other Specialty Trade Contractors	784	4,829	\$159,024,851	\$633.29
MANUFACTURING	3,270	159,822	\$6,289,906,001	\$756.84
FOOD MANUFACTURING	300	46,216	\$1,421,094,944	\$591.33
Animal Food Manufacturing	52	1,629	\$73,644,791	\$869.40
Grain & Oilseed Milling	32	2,388	\$98,405,394	\$792.47
Sugar & Confectionery Product Manufacturing	7	69	\$1,236,699	\$344.68
Fruit, Vegetable & Specialty Food	22	5,597	\$206,720,075	\$710.27
Dairy Product Manufacturing	11	701	\$28,601,174	\$784.63
Animal Slaughtering & Processing	90	30,949	\$834,211,035	\$518.35
Seafood Product Preparation & Packaging	5	113	\$2,381,781	\$405.34
Bakeries and Tortilla Manufacturing	55	3,110	\$111,733,297	\$690.91
Other Food Manufacturing	26	1,660	\$64,160,698	\$743.29
BEVERAGE & TOBACCO PRODUCT MANUFACTURING	40	1,051	\$45,428,396	\$831.23
TEXTILE MILLS	14	111	\$4,964,625	\$860.12
TEXTILE PRODUCT MILLS	58	944	\$36,831,527	\$750.32
Textile Furnishing Mills	12	23	\$555,030	\$464.07
Other Textile Product Mills	46	921	\$36,276,497	\$757.46
APPAREL MANUFACTURING	29	1,296	\$28,496,293	\$422.84
LEATHER & ALLIED PRODUCT MANUFACTURING	20	1,284	\$30,874,271	\$462.41
WOOD PRODUCT MANUFACTURING	342	9,258	\$321,585,956	\$668.00
Sawmills & Wood Preservation	139	4,119	\$144,010,576	\$672.36
Veneer & Engineered Wood Products	56	2,522	\$106,185,450	\$809.69
Other Wood Product Manufacturing	147	2,617	\$71,389,930	\$524.60
PAPER MANUFACTURING	81	10,504	\$594,836,909	\$1,089.03
Pulp, Paper & Paperboard Mills	14	4,266	\$311,892,529	\$1,405.99
Converted Paper Product Manufacturing	67	6,238	\$282,944,380	\$872.27
PRINTING & RELATED SUPPORT ACTIVITIES	261	5,146	\$190,907,782	\$713.43
PETROLEUM & COAL PRODUCTS MANUFACTURING	19	1,003	\$49,125,145	\$941.89
CHEMICAL MANUFACTURING	122	4,627	\$258,286,888	\$1,073.49

TABLE 5. STATEWIDE SUMMARY
CALENDAR YEAR 2010

NORTH AMERICAN INDUSTRY CLASSIFICATION SYSTEM - INDUSTRY GROUPS	AVERAGE EMPLOYING UNITS	AVERAGE COVERED EMPLOYMENT	TOTAL CALENDAR EARNINGS	AVERAGE WEEKLY EARNINGS
Basic Chemical Manufacturing	32	1,764	\$111,529,191	\$1,215.87
Resin, Rubber & Artificial Fibers	9	277	\$15,831,411	\$1,099.10
Agricultural Chemical Manufacturing	15	296	\$17,531,253	\$1,138.98
Pharmaceutical & Medicine Manufacturing	13	173	\$7,465,635	\$829.88
Paint, Coating & Adhesive Manufacturing	9	169	\$10,219,426	\$1,162.88
Soap, Cleaning Compound, & Toilet Preparation Manufacturing	15	952	\$48,070,797	\$971.05
Other Chemical Preparation Manufacturing	29	996	\$47,639,175	\$919.82
PLASTICS & RUBBER PRODUCTS MANUFACTURING	149	10,153	\$444,152,963	\$841.27
Plastics Product Manufacturing	106	6,483	\$249,219,154	\$739.27
Rubber Product Manufacturing	43	3,670	\$194,933,809	\$1,021.45
NONMETALLIC MINERAL PRODUCT MANUFACTURING	255	3,423	\$137,998,475	\$775.29
Clay Product & Refractory Manufacturing	16	344	\$14,624,849	\$817.58
Glass & Glass Product Manufacturing	16	347	\$13,384,898	\$741.79
Cement & Concrete Product Manufacturing	185	2,048	\$77,508,128	\$727.80
Lime & Gypsum Product Manufacturing	5	223	\$11,318,154	\$976.04
Other Nonmetallic Mineral Products Manufacturing	33	461	\$21,162,446	\$882.80
PRIMARY METAL MANUFACTURING	71	7,206	\$405,236,942	\$1,081.46
Iron & Steel Mills & Ferroalloys	9	2,218	\$180,494,268	\$1,564.94
Purchased Steel Product Manufacturing	15	1,731	\$86,081,147	\$956.33
Alumina & Aluminum Production	20	1,470	\$71,798,185	\$939.28
Other Nonferrous Metal Production	12	699	\$27,248,753	\$749.66
Foundries	15	1,088	\$39,614,589	\$700.20
FABRICATED METAL PRODUCT MANUFACTURING	541	14,484	\$619,652,383	\$822.73
Forging & Stamping	12	471	\$20,503,714	\$837.16
Cutlery & Hand Tool Manufacturing	16	989	\$37,595,143	\$731.02
Architectural & Structural Metals	169	3,629	\$158,447,127	\$839.64
Boilers, Tanks & Shipping Containers	19	572	\$26,989,146	\$907.38
Hardware Manufacturing	7	255	\$9,247,887	\$697.43
Spring & Wire Product Manufacturing	12	480	\$15,749,194	\$630.98
Machine Shops & Threaded Products	209	1,757	\$64,469,542	\$705.63
Coating, Engraving & Heat Treating Metals	36	549	\$17,676,422	\$619.18
Other Fabricated Metal Product Manufacturing	61	5,782	\$268,974,208	\$894.60
MACHINERY MANUFACTURING	230	11,273	\$434,450,723	\$741.14

TABLE 5. STATEWIDE SUMMARY
CALENDAR YEAR 2010

NORTH AMERICAN INDUSTRY CLASSIFICATION SYSTEM - INDUSTRY GROUPS	AVERAGE EMPLOYING UNITS	AVERAGE COVERED EMPLOYMENT	TOTAL CALENDAR EARNINGS	AVERAGE WEEKLY EARNINGS
Agriculture, Construction & Mining Machinery	38	2,725	\$77,820,033	\$549.19
Industrial Machinery Manufacturing	33	677	\$31,409,334	\$892.21
Commercial & Service Industry Machinery	20	813	\$35,176,136	\$832.06
HVAC & Commercial Refrigeration Equipment	18	3,691	\$148,675,375	\$774.63
Metalworking Machinery Manufacturing	67	953	\$39,934,110	\$805.84
Turbine & Power Transmission Equipment Manufacturing	8	595	\$26,690,044	\$862.64
Other General Purpose Machinery Manufacturing	46	1,819	\$74,745,691	\$790.22
COMPUTER & ELECTRONIC PRODUCT MANUFACTURING	71	3,158	\$126,112,717	\$767.97
Communications Equipment Manufacturing	7	116	\$6,756,676	\$1,120.14
Audio & Video Equipment Manufacturing	8	566	\$20,896,168	\$709.98
Semiconductors & Electronic Components	27	1,941	\$75,207,097	\$745.13
Electronic Instrument Manufacturing	25	525	\$22,964,929	\$841.21
Other	4	10	\$287,847	\$553.55
ELECTRICAL EQUIPMENT & APPLIANCES	56	8,117	\$343,004,374	\$812.64
Electrical Equipment Manufacturing	20	3,914	\$174,428,830	\$857.03
Other Electrical Equipment & Component Manufacturing	21	1,617	\$69,571,721	\$827.41
Other	15	2,586	\$99,003,823	\$736.24
TRANSPORTATION EQUIPMENT MANUFACTURING	165	12,126	\$508,529,397	\$806.48
Motor Vehicle Body & Trailer Manufacturing	38	1,481	\$51,496,613	\$668.68
Motor Vehicle Parts Manufacturing	55	5,347	\$208,023,573	\$748.17
Aerospace Product & Parts Manufacturing	29	3,439	\$184,082,244	\$1,029.38
Ship & Boat Building	25	1,161	\$35,069,543	\$580.89
Other	18	698	\$29,857,424	\$822.61
FURNITURE & RELATED PRODUCT MANUFACTURING	222	4,166	\$141,948,277	\$655.25
Household & Institutional Furniture	182	2,827	\$87,051,658	\$592.17
Office Furniture & Fixtures Manufacturing	32	1,244	\$52,331,437	\$808.98
Other Furniture Related Product Manufacturing	8	95	\$2,565,182	\$519.27
MISCELLANEOUS MANUFACTURING	224	4,276	\$146,387,014	\$658.36
Medical Equipment & Supplies Manufacturing	90	2,288	\$87,585,461	\$736.16
Other Miscellaneous Manufacturing	134	1,988	\$58,801,553	\$568.81
TRADE, TRANSPORTATION & UTILITIES	20,659	231,444	\$7,901,670,133	\$656.55
WHOLESALE TRADE	6,426	46,444	\$2,558,138,383	\$1,059.23
MERCHANT WHOLESALERS, DURABLE GOODS	2,230	20,438	\$983,603,815	\$925.50

TABLE 5. STATEWIDE SUMMARY
CALENDAR YEAR 2010

NORTH AMERICAN INDUSTRY CLASSIFICATION SYSTEM - INDUSTRY GROUPS	AVERAGE EMPLOYING UNITS	AVERAGE COVERED EMPLOYMENT	TOTAL CALENDAR EARNINGS	AVERAGE WEEKLY EARNINGS
Motor Vehicle & Part Merchant Wholesalers	253	2,463	\$96,868,410	\$756.34
Furniture & Furnishings Merchant Wholesalers	61	349	\$16,851,724	\$928.57
Lumber & Supply Merchant Wholesalers	188	1,422	\$56,710,027	\$766.93
Commercial Goods Merchant Wholesalers	316	2,800	\$165,823,776	\$1,138.90
Metal & Mineral Merchant Wholesalers	58	833	\$41,046,606	\$947.61
Electric Goods Merchant Wholesalers	185	1,971	\$104,330,429	\$1,017.94
Hardware & Plumbing Merchant Wholesalers	220	2,151	\$103,852,205	\$928.48
Machinery & Supply Merchant Wholesalers	717	6,622	\$320,449,592	\$930.61
Miscellaneous Durable Goods Merchant Wholesalers	232	1,827	\$77,671,046	\$817.56
MERCHANT WHOLESALERS, NONDURABLE GOODS	1,251	16,156	\$756,341,585	\$900.29
Paper & Paper Product Merchant Wholesalers	75	1,084	\$54,316,410	\$963.60
Druggist' Goods Merchant Wholesalers	65	993	\$48,234,524	\$934.13
Apparel & Piece Goods Merchant Wholesalers	44	557	\$21,066,371	\$727.33
Grocery Product Merchant Wholesalers	334	5,649	\$291,517,081	\$992.41
Farm Product Merchant Wholesalers	73	863	\$26,980,812	\$601.23
Chemical merchant Wholesalers	97	563	\$31,989,929	\$1,092.70
Petroleum Merchant Wholesalers	141	1,572	\$80,472,034	\$984.44
Alcoholic Beverage Merchant Wholesalers	38	1,186	\$57,088,821	\$925.68
Miscellaneous Nondurable Goods Merchant Wholesaler	384	3,689	\$144,675,603	\$754.19
ELECTRONIC MARKETS & AGENTS & BROKERS	2,945	9,850	\$818,192,983	\$1,597.41
RETAIL TRADE	10,981	129,514	\$2,986,046,985	\$443.38
MOTOR VEHICLE & PARTS DEALERS	1,637	16,470	\$600,397,030	\$701.04
Automobile Dealers	678	9,603	\$404,680,017	\$810.40
Other Motor Vehicle Dealers	174	1,316	\$43,864,341	\$640.99
Automotive Parts, Accessories & Tire Stores	785	5,551	\$151,852,672	\$526.08
FURNITURE & HOME FURNISHINGS STORES	550	3,383	\$92,702,478	\$526.97
Furniture Stores	299	2,032	\$60,304,017	\$570.71
Home Furnishings Stores	251	1,351	\$32,398,461	\$461.17
ELECTRONICS & APPLIANCE STORES	540	3,972	\$123,584,062	\$598.34
BUILDING MATERIAL & GARDEN SUPPLY STORES	843	10,265	\$264,475,057	\$495.48
Building Material & Supplies Dealers	636	9,074	\$235,306,451	\$498.69
Lawn & Garden Equipment & Supplies Stores	207	1,191	\$29,168,606	\$470.98
FOOD & BEVERAGE STORES	1,019	17,875	\$339,440,904	\$365.19

TABLE 5. STATEWIDE SUMMARY
CALENDAR YEAR 2010

NORTH AMERICAN INDUSTRY CLASSIFICATION SYSTEM - INDUSTRY GROUPS	AVERAGE EMPLOYING UNITS	AVERAGE COVERED EMPLOYMENT	TOTAL CALENDAR EARNINGS	AVERAGE WEEKLY EARNINGS
Grocery Stores	564	15,448	\$286,564,579	\$356.74
Specialty Food Stores	151	916	\$24,118,416	\$506.35
Beer, Wine & Liquor Stores	304	1,511	\$28,757,909	\$366.01
HEALTH & PERSONAL CARE STORES	976	7,795	\$266,046,496	\$656.35
GASOLINE STATIONS	1,530	11,517	\$187,332,583	\$312.80
Gasoline Stations with Convenience Stores	1,420	10,599	\$167,625,085	\$304.14
Other Gasoline Stations	110	918	\$19,707,498	\$412.84
CLOTHING & CLOTHING ACCESSORIES STORES	986	8,559	\$124,370,841	\$279.44
Clothing Stores	699	6,688	\$85,936,265	\$247.10
Shoe Stores	149	1,129	\$17,753,858	\$302.41
Jewelry, Luggage & Leather Goods Stores	138	742	\$20,680,718	\$535.99
SPORTING GOODS, HOBBY, BOOK & MUSIC STORES	529	4,320	\$70,017,463	\$311.69
Sporting Goods & Musical Instrument Stores	405	3,146	\$54,145,060	\$330.98
Book, Periodical & Music Stores	124	1,174	\$15,872,403	\$260.00
GENERAL MERCHANDISE STORES	761	37,469	\$735,709,718	\$377.60
MISCELLANEOUS STORE RETAILERS	1,252	6,174	\$124,642,752	\$388.24
Florists	219	744	\$11,807,633	\$305.20
Office Supplies, Stationery & Gift Stores	323	2,050	\$43,423,648	\$407.35
Used Merchandise Stores	229	1,098	\$21,643,681	\$379.08
Other Miscellaneous Store Retailers	481	2,282	\$47,767,790	\$402.55
NONSTORE RETAILERS	358	1,715	\$57,327,601	\$642.83
Electronic Shopping & Mail-Order Houses	137	462	\$17,880,126	\$744.26
Vending Machine Operators	65	490	\$13,795,330	\$541.42
Direct Selling Establishments	156	763	\$25,652,145	\$646.54
TRANSPORTATION & WAREHOUSING	2,846	48,169	\$1,853,597,701	\$740.02
AIR TRANSPORTATION	48	800	\$41,629,943	\$1,000.72
SUPPORT ACTIVITIES FOR TRANSPORTATION	4	92	\$5,241,012	\$1,095.53
TRUCK TRANSPORTATION	1,899	31,524	\$1,225,766,350	\$747.76
General Freight Trucking	1,172	25,233	\$983,823,635	\$749.80
Specialized Freight Trucking	727	6,291	\$241,942,715	\$739.59
TRANSIT & GROUND PASSENGER TRANSPORTATION	77	1,178	\$19,424,111	\$317.10
Taxi & Limousine Service	26	312	\$4,870,439	\$300.20
School & Employee Bus Transportation	8	331	\$5,879,195	\$341.58

TABLE 5. STATEWIDE SUMMARY
CALENDAR YEAR 2010

NORTH AMERICAN INDUSTRY CLASSIFICATION SYSTEM - INDUSTRY GROUPS	AVERAGE EMPLOYING UNITS	AVERAGE COVERED EMPLOYMENT	TOTAL CALENDAR EARNINGS	AVERAGE WEEKLY EARNINGS
Charter Bus Industry Service	9	71	\$1,400,877	\$379.44
Other Ground Passenger Transportation	28	348	\$5,343,868	\$295.31
Other	6	116	\$1,929,732	\$319.92
PIPELINE TRANSPORTATION	31	344	\$25,480,981	\$1,424.47
SCENIC AND SIGHTSEEING TRANSPORTATION	7	53	\$746,355	\$270.81
SUPPORT ACTIVITIES FOR TRANSPORTATION	399	4,054	\$175,303,029	\$831.58
Support Activities for Air Transportation	97	1,346	\$50,325,154	\$719.01
Support Activities for Rail Transportation	32	306	\$11,510,398	\$723.38
Support Activities for Water Transportation	26	539	\$30,716,884	\$1,095.94
Support Activities for Road Transportation	113	467	\$12,936,221	\$532.71
Freight Transportation Arrangement	115	1,327	\$67,709,898	\$981.25
Other Support Activities for Transportation	16	69	\$2,104,474	\$586.53
POSTAL SERVICE	12	16	\$312,350	\$375.42
COURIERS & MESSENGERS	148	3,041	\$121,184,248	\$766.35
WARHOUSING & STORAGE	221	7,067	\$238,509,322	\$649.03
UTILITIES	406	7,317	\$503,887,064	\$1,324.33
Power Generation & Supply	159	5,073	\$388,668,506	\$1,473.37
Natural Gas Distribution	70	1,389	\$87,117,218	\$1,206.14
Water, Sewage and Other Systems	177	855	\$28,101,340	\$632.06
INFORMATION	1,117	15,375	\$741,317,173	\$927.23
PUBLISHING INDUSTRIES, EXCEPT INTERNET	237	4,001	\$138,172,034	\$664.12
Newspaper, Book & Directory Publishers	209	3,758	\$122,656,701	\$627.67
Software Publishers	28	243	\$15,515,333	\$1,227.87
MOTION PICTURE & SOUND RECORDING INDUSTRY	145	1,253	\$22,709,740	\$348.54
Motion Picture & Video Industries	124	1,216	\$21,292,675	\$336.74
Sound Recording Industries	21	37	\$1,417,065	\$736.52
BROADCASTING, EXCEPT INTERNET	129	1,743	\$64,266,189	\$709.06
Radio & Television Broadcasting	124	1,705	\$63,314,070	\$714.12
Cable & Other Subscription Programming	5	38	\$952,119	\$481.84
TELECOMMUNICATIONS	388	6,687	\$435,774,299	\$1,253.22
Wired Telecommunications Carriers	280	4,047	\$249,587,240	\$1,186.00
Satellite Telecommunications	5	5	\$146,241	\$562.47
Other	103	2,635	\$186,040,818	\$1,357.76

TABLE 5. STATEWIDE SUMMARY
CALENDAR YEAR 2010

NORTH AMERICAN INDUSTRY CLASSIFICATION SYSTEM - INDUSTRY GROUPS	AVERAGE EMPLOYING UNITS	AVERAGE COVERED EMPLOYMENT	TOTAL CALENDAR EARNINGS	AVERAGE WEEKLY EARNINGS
DATA PROCESSING, HOSTING & RELATED SERVICES	152	1,397	\$68,674,062	\$945.35
OTHER INFORMATION SERVICES	66	294	\$11,720,849	\$766.67
FINANCIAL ACTIVITIES	7,999	47,970	\$2,170,060,902	\$869.96
FINANCE & INSURANCE	4,667	34,437	\$1,758,508,048	\$982.01
CREDIT INTERMEDIATION & RELATED ACTIVITIES	1,864	19,245	\$804,833,272	\$804.24
Depository Credit Intermediation	1,400	17,221	\$684,857,058	\$764.78
Nondepository Credit Intermediation	336	1,632	\$100,408,106	\$1,183.16
Activities Related to Credit Intermediation	128	392	\$19,568,108	\$959.97
FINANCIAL INVESTMENT & RELATED ACTIVITIES	662	3,070	\$329,363,633	\$2,063.16
INSURANCE CARRIERS & RELATED ACTIVITIES	2,063	11,647	\$601,273,353	\$992.78
Insurance Carriers	419	5,473	\$320,219,705	\$1,125.17
Insurance Agencies, Brokerages & Support	1,644	6,174	\$281,053,648	\$875.43
OTHER	78	475	\$23,037,790	\$932.70
REAL ESTATE & RENTAL & LEASING	3,332	13,533	\$411,552,854	\$584.83
REAL ESTATE	2,542	8,774	\$254,907,505	\$558.70
Lessors of Real Estate	1,080	4,474	\$118,510,692	\$509.40
Offices of Real Estate Agents & Brokers	802	1,659	\$52,782,029	\$611.84
Activities Related to Real Estate	660	2,641	\$83,614,784	\$608.85
RENTAL & LEASING SERVICES	771	4,698	\$154,016,856	\$630.45
Automotive Equipment Rental & Leasing	124	884	\$25,086,013	\$545.73
Consumer Goods Rental	433	2,406	\$63,309,899	\$506.03
General Rental Centers	29	233	\$8,089,437	\$667.67
Machinery & Equipment Rental & Leasing	185	1,175	\$57,531,507	\$941.60
LESSORS OF NONFINANCIAL INTANGIBLE ASSETS	19	61	\$2,628,493	\$828.65
PROFESSIONAL & BUSINESS SERVICES	12,181	117,715	\$5,610,559,924	\$916.58
PROFESSIONAL & TECHNICAL SERVICES	7,586	38,422	\$1,992,541,633	\$997.30
Legal Services	1,690	6,171	\$315,214,466	\$982.31
Accounting & Bookkeeping Services	1,280	5,504	\$219,740,580	\$767.77
Architectural & Engineering Services	972	6,281	\$353,220,546	\$1,081.47
Specialized Design Services	172	425	\$19,110,144	\$864.71
Computer Systems Design & Related Services	1,051	7,967	\$544,665,740	\$1,314.72
Management & Technical Consulting Services	1,325	5,144	\$283,490,954	\$1,059.83
Scientific Research & Development Services	115	1,140	\$66,163,530	\$1,116.12

TABLE 5. STATEWIDE SUMMARY
CALENDAR YEAR 2010

NORTH AMERICAN INDUSTRY CLASSIFICATION SYSTEM - INDUSTRY GROUPS	AVERAGE EMPLOYING UNITS	AVERAGE COVERED EMPLOYMENT	TOTAL CALENDAR EARNINGS	AVERAGE WEEKLY EARNINGS
Advertising & Related Services	363	1,960	\$88,681,662	\$870.11
Other Professional & Technical Services	618	3,830	\$102,254,011	\$513.43
MANAGEMENT OF COMPANIES & ENTERPRISES	521	26,207	\$2,309,856,260	\$1,694.98
ADMINISTRATIVE & WASTE SERVICES	4,074	53,086	\$1,308,162,031	\$473.89
ADMINISTRATIVE & SUPPORT SERVICES	3,832	50,037	\$1,192,340,218	\$458.25
Office Administrative Services	561	1,721	\$91,861,194	\$1,026.47
Facilities Support Services	19	129	\$5,076,943	\$756.85
Employment Services	789	20,278	\$422,693,874	\$400.86
Business Support Services	434	9,635	\$256,293,958	\$511.54
Travel Arrangement & Reservation Services	84	328	\$10,505,774	\$615.96
Investigation & Security Services	246	4,484	\$110,386,585	\$473.42
Services to Buildings & Dwellings	1,420	11,690	\$235,561,455	\$387.51
Other Support Services	279	1,772	\$59,960,435	\$650.73
WASTE MANAGEMENT & REMEDIATION SERVICES	242	3,049	\$115,821,813	\$730.52
Waste Collection Services	107	1,204	\$44,507,761	\$710.90
Waste Treatment & Disposal Services	35	888	\$42,957,905	\$930.31
Remediation & Other Waste Services	100	957	\$28,356,147	\$569.81
EDUCATION & HEALTH SERVICES	14,612	162,740	\$5,721,283,622	\$676.08
EDUCATIONAL SERVICES	685	10,378	\$321,705,447	\$596.13
Elementary & Secondary Schools	88	3,252	\$84,745,428	\$501.14
Junior Colleges	7	207	\$6,224,190	\$578.24
Colleges & Universities	32	3,800	\$125,762,730	\$636.45
Business, Computer, & Management Training	48	255	\$19,082,083	\$1,439.07
Technical & Trade Schools	105	861	\$44,336,883	\$990.28
Other Schools & Instruction	264	1,582	\$23,590,590	\$286.77
Educational Support Services	141	421	\$17,963,543	\$820.55
HEALTH CARE & SOCIAL ASSISTANCE	13,927	152,362	\$5,399,578,175	\$681.52
AMBULATORY HEALTH CARE SERVICES	5,062	45,821	\$2,420,705,321	\$1,015.95
Offices of Physicians	2,236	21,431	\$1,490,752,029	\$1,337.70
Offices of Dentists	975	6,545	\$283,705,265	\$833.59
Offices of Other Health Practitioners	1,188	6,383	\$222,413,192	\$670.09
Outpatient Care Centers	267	3,791	\$153,931,409	\$780.85
Medical & Diagnostic Laboratories	108	890	\$48,070,353	\$1,038.69

TABLE 5. STATEWIDE SUMMARY
CALENDAR YEAR 2010

NORTH AMERICAN INDUSTRY CLASSIFICATION SYSTEM - INDUSTRY GROUPS	AVERAGE EMPLOYING UNITS	AVERAGE COVERED EMPLOYMENT	TOTAL CALENDAR EARNINGS	AVERAGE WEEKLY EARNINGS
Home Health Care Services	157	4,315	\$138,200,576	\$615.92
Other Ambulatory Health Care Services	131	2,466	\$83,632,497	\$652.20
HOSPITALS	121	41,992	\$1,683,130,332	\$770.81
General Medical & Surgical Hospitals	87	37,767	\$1,518,769,106	\$773.35
Psychiatric & Substance Abuse Hospitals	10	1,898	\$69,013,410	\$699.25
Other Hospitals	24	2,327	\$95,347,816	\$787.97
NURSING & RESIDENTIAL CARE FACILITIES	543	30,693	\$678,636,306	\$425.20
Nursing Care Facilities	257	22,538	\$501,436,436	\$427.86
Residential Mental Health Facilities	137	4,147	\$93,638,399	\$434.23
Community Care Facilities for the Elderly	106	2,792	\$52,962,635	\$364.80
Other Residential Care Facilities	43	1,216	\$30,598,836	\$483.91
SOCIAL ASSISTANCE	8,201	33,856	\$617,106,216	\$350.53
Individual & Family Services	7,012	18,855	\$341,658,134	\$348.47
Emergency & Other Relief Services	123	1,070	\$24,051,683	\$432.27
Vocational Rehabilitation Services	129	3,816	\$82,770,036	\$417.12
Child Day Care Services	937	10,115	\$168,626,363	\$320.59
LEISURE & HOSPITALITY	6,319	98,781	\$1,320,215,769	\$257.02
ARTS, ENTERTAINMENT & RECREATION	909	9,675	\$163,495,135	\$324.98
PERFORMING ARTS & SPECTATOR SPORTS	213	2,274	\$45,568,461	\$385.36
Performing Arts Companies	43	479	\$7,562,072	\$303.60
Spectator Sports	52	1,151	\$24,511,218	\$409.53
Performing Arts & Sports Promoters	37	551	\$9,783,309	\$341.45
Agents & Managers for Public Figures	24	22	\$1,095,680	\$957.76
Independent Artists, Writers, & Performers	57	71	\$2,616,182	\$708.61
MUSEUMS, PARKS, & HISTORICAL SITES	53	323	\$7,763,185	\$462.20
GAMBLING, RECREATION & AMUSEMENT INDUSTRY	643	7,078	\$110,163,489	\$299.31
ACCOMODATION & FOOD SERVICES	5,410	89,106	\$1,156,720,634	\$249.64
ACCOMODATION	877	11,155	\$174,208,954	\$300.33
Traveler Accommodation	794	10,575	\$164,903,536	\$299.88
RV Parks & Recreational Camps	62	495	\$7,903,031	\$307.03
Rooming & Boarding Houses	21	85	\$1,402,387	\$317.28
FOOD SERVICES & DRINKING PLACES	4,533	77,951	\$982,511,680	\$242.39
Full -Service Restaurants	1,923	33,279	\$446,181,370	\$257.83

TABLE 5. STATEWIDE SUMMARY
CALENDAR YEAR 2010

NORTH AMERICAN INDUSTRY CLASSIFICATION SYSTEM - INDUSTRY GROUPS	AVERAGE EMPLOYING UNITS	AVERAGE COVERED EMPLOYMENT	TOTAL CALENDAR EARNINGS	AVERAGE WEEKLY EARNINGS
Limited -Service Eating Places	2,297	41,145	\$485,608,379	\$226.97
Special Food Services	162	2,443	\$37,943,331	\$298.68
Drinking Places, Alcoholic Beverages	151	1,084	\$12,778,600	\$226.70
OTHER SERVICES	5,359	24,608	\$648,193,539	\$506.55
REPAIR & MAINTENANCE	2,176	8,877	\$278,823,444	\$604.03
Automotive Repair & Maintenance	1,458	6,049	\$173,553,502	\$551.76
Electronic Equipment Repair & Maintenance	164	712	\$28,169,224	\$760.84
Commercial Machinery Repair & Maintenance	372	1,581	\$62,577,433	\$761.17
Household Goods Repair & Maintenance	182	535	\$14,523,285	\$522.04
PERSONAL & LAUNDRY SERVICES	1,300	8,207	\$167,406,553	\$392.27
Personal Care Services	575	2,735	\$44,635,135	\$313.85
Death Care Services	244	1,642	\$44,433,735	\$520.40
Drycleaning & Laundry Services	284	3,139	\$65,321,888	\$400.19
Other Personal Services	197	691	\$13,015,795	\$362.23
MEMBERSHIP ASSOCIATIONS & ORGANIZATIONS	1,087	6,435	\$182,697,463	\$545.98
Religious Organizations	48	212	\$5,417,945	\$491.47
Grantmaking & Giving Services	108	526	\$21,763,113	\$795.67
Social Advocacy Organizations	210	2,159	\$61,071,787	\$543.98
Civic & Social Organizations	198	1,387	\$20,481,844	\$283.98
Professional & Similar Organizations	523	2,151	\$73,962,774	\$661.26
PRIVATE HOUSEHOLDS	796	1,089	\$19,266,079	\$340.22
LOCAL GOVERNMENT	1,970	113,639	\$3,752,557,726	\$635.03
STATE GOVERNMENT	1,150	69,049	\$2,776,734,599	\$773.35
NONCLASSIFIABLE ESTABLISHMENTS	0	0	\$0	\$0.00

TABLE 6. COUNTY SUMMARY
CALENDAR YEAR 2010

NORTH AMERICAN INDUSTRY CLASSIFICATION SYSTEM - INDUSTRY GROUPS	AVERAGE EMPLOYING UNITS	AVERAGE COVERED EMPLOYMENT	TOTAL CALENDAR EARNINGS	AVERAGE WEEKLY EARNINGS
ARKANSAS COUNTY - TOTAL	755	9,509	\$312,621,759	\$632.24
Natural Resources & Mining	41	190	\$8,635,678	\$874.06
Construction	48	276	\$9,314,179	\$648.98
Manufacturing	33	3,369	\$123,612,921	\$705.60
Trade, Transportation & Utilities	209	2,068	\$70,666,009	\$657.14
Wholesale Trade	47	427	\$22,833,798	\$1,028.36
Retail Trade	97	1,045	\$23,273,385	\$428.29
Transportation, Warehousing & Utilities	65	596	\$24,558,826	\$792.42
Information	10	105	\$3,704,375	\$678.46
Financial Activities	46	322	\$13,843,871	\$826.80
Professional & Business Services	48	379	\$16,442,509	\$834.31
Education & Health Services	163	1,176	\$28,776,807	\$470.58
Leisure & Hospitality	53	451	\$5,318,767	\$226.79
Other Services	57	156	\$3,613,749	\$445.48
Local Government	32	821	\$23,346,095	\$546.85
State Government	15	196	\$5,346,799	\$524.61
ASHLEY COUNTY - TOTAL	586	7,808	\$291,919,472	\$718.99
Natural Resources & Mining	48	308	\$9,514,498	\$594.06
Construction	44	628	\$23,148,862	\$708.87
Manufacturing	29	2,538	\$145,597,337	\$1,103.21
Trade, Transportation & Utilities	136	1,200	\$31,532,210	\$505.32
Wholesale Trade	24	196	\$8,190,290	\$803.60
Retail Trade	84	773	\$14,744,909	\$366.83
Transportation, Warehousing & Utilities	28	231	\$8,597,011	\$715.70
Information	7	44	\$1,294,218	\$565.65
Financial Activities	37	230	\$7,589,021	\$634.53
Professional & Business Services	51	405	\$9,767,806	\$463.81
Education & Health Services	122	752	\$23,510,967	\$601.24
Leisure & Hospitality	28	372	\$4,218,195	\$218.06
Other Services	41	158	\$3,394,080	\$413.11
Local Government	32	941	\$27,290,902	\$557.73
State Government	11	232	\$5,061,376	\$419.54

TABLE 6. COUNTY SUMMARY
CALENDAR YEAR 2010

NORTH AMERICAN INDUSTRY CLASSIFICATION SYSTEM - INDUSTRY GROUPS	AVERAGE EMPLOYING UNITS	AVERAGE COVERED EMPLOYMENT	TOTAL CALENDAR EARNINGS	AVERAGE WEEKLY EARNINGS
BAXTER COUNTY - TOTAL	1,306	13,882	\$414,571,046	\$574.31
Natural Resources & Mining	6	112	\$3,322,315	\$570.45
Construction	135	647	\$18,524,982	\$550.62
Manufacturing	63	2,047	\$75,376,026	\$708.13
Trade, Transportation & Utilities	273	2,469	\$60,155,738	\$468.55
Wholesale Trade	40	186	\$6,071,623	\$627.75
Retail Trade	207	2,123	\$47,962,537	\$434.46
Transportation, Warehousing & Utilities	26	160	\$6,121,578	\$735.77
Information	21	219	\$8,214,015	\$721.29
Financial Activities	115	710	\$29,401,576	\$796.36
Professional & Business Services	140	802	\$22,387,253	\$536.81
Education & Health Services	276	3,392	\$123,373,857	\$699.46
Leisure & Hospitality	125	1,509	\$19,481,611	\$248.27
Other Services	101	366	\$7,010,746	\$368.37
Local Government	39	1,256	\$37,065,802	\$567.52
State Government	12	353	\$10,257,125	\$558.79
BENTON COUNTY - TOTAL	5,377	90,950	\$4,202,294,875	\$888.55
Natural Resources & Mining	37	759	\$38,554,091	\$976.84
Construction	534	3,326	\$125,944,067	\$728.20
Manufacturing	219	11,797	\$446,098,025	\$727.20
Trade, Transportation & Utilities	1,430	20,643	\$868,898,383	\$809.46
Wholesale Trade	654	3,819	\$325,032,221	\$1,636.72
Retail Trade	613	8,836	\$216,297,390	\$470.75
Transportation, Warehousing & Utilities	163	7,988	\$327,568,772	\$788.61
Information	71	765	\$33,608,987	\$844.87
Financial Activities	541	3,509	\$170,097,563	\$932.20
Professional & Business Services	1,050	23,801	\$1,745,738,630	\$1,410.52
Education & Health Services	598	8,235	\$304,977,939	\$712.20
Leisure & Hospitality	452	8,346	\$122,368,071	\$281.96
Other Services	350	1,746	\$47,723,828	\$525.64
Local Government	78	6,975	\$264,725,073	\$729.87
State Government	17	1,048	\$33,560,218	\$615.83

TABLE 6. COUNTY SUMMARY
CALENDAR YEAR 2010

NORTH AMERICAN INDUSTRY CLASSIFICATION SYSTEM - INDUSTRY GROUPS	AVERAGE EMPLOYING UNITS	AVERAGE COVERED EMPLOYMENT	TOTAL CALENDAR EARNINGS	AVERAGE WEEKLY EARNINGS
BOONE COUNTY - TOTAL	1,046	13,531	\$433,207,002	\$615.69
Construction	87	428	\$12,970,377	\$582.78
Manufacturing	68	1,689	\$59,671,058	\$679.41
Trade, Transportation & Utilities	246	3,817	\$135,310,433	\$681.72
Wholesale Trade	51	550	\$17,615,101	\$615.91
Retail Trade	143	1,791	\$41,454,560	\$445.12
Transportation, Warehousing & Utilities	52	1,476	\$76,240,772	\$993.34
Information	22	374	\$14,146,381	\$727.40
Financial Activities	92	562	\$20,102,995	\$687.89
Professional & Business Services	116	961	\$31,362,216	\$627.60
Education & Health Services	197	1,363	\$40,506,238	\$571.51
Leisure & Hospitality	81	1,120	\$14,132,338	\$242.66
Local Government	57	2,180	\$68,401,566	\$603.40
State Government	19	755	\$28,598,320	\$728.43
Other	61	282	\$8,005,080	\$545.90
BRADLEY COUNTY - TOTAL	392	3,855	\$121,981,945	\$608.51
Natural Resources & Mining	43	309	\$8,435,776	\$525.00
Construction	20	171	\$4,725,927	\$531.48
Manufacturing	11	937	\$47,113,576	\$966.95
Trade, Transportation & Utilities	81	498	\$12,409,515	\$479.21
Wholesale Trade	14	84	\$3,798,466	\$869.61
Retail Trade	42	354	\$6,423,410	\$348.95
Transportation, Warehousing & Utilities	25	60	\$2,187,639	\$701.17
Information	4	14	\$430,136	\$590.85
Financial Activities	26	148	\$4,554,145	\$591.75
Professional & Business Services	26	95	\$2,007,917	\$406.46
Education & Health Services	115	616	\$15,969,124	\$498.54
Leisure & Hospitality	12	179	\$1,912,600	\$205.48
Other Services	29	98	\$1,948,631	\$382.38
Local Government	14	514	\$14,553,565	\$544.51
State Government	11	276	\$7,921,033	\$551.91

TABLE 6. COUNTY SUMMARY
CALENDAR YEAR 2010

NORTH AMERICAN INDUSTRY CLASSIFICATION SYSTEM - INDUSTRY GROUPS	AVERAGE EMPLOYING UNITS	AVERAGE COVERED EMPLOYMENT	TOTAL CALENDAR EARNINGS	AVERAGE WEEKLY EARNINGS
CALHOUN COUNTY - TOTAL	121	3,018	\$129,178,228	\$823.13
Natural Resources & Mining	15	89	\$3,012,936	\$651.02
Construction	14	98	\$2,748,345	\$539.31
Manufacturing	8	2,018	\$96,957,374	\$923.97
Trade, Transportation & Utilities	30	238	\$7,177,160	\$579.93
Retail Trade	17	82	\$1,686,306	\$395.48
Transportation, Warehousing & Utilities	13	156	\$5,490,854	\$676.88
Financial Activities	7	89	\$2,805,582	\$606.22
Education & Health Services	13	48	\$1,730,417	\$693.28
Leisure & Hospitality	6	20	\$182,916	\$175.88
Other Services	3	4	\$115,258	\$554.13
Local Government	11	209	\$4,834,324	\$444.82
State Government	8	83	\$2,764,189	\$640.45
Other	6	122	\$6,849,727	\$1,079.72
CARROLL COUNTY - TOTAL	796	9,729	\$248,720,424	\$491.63
Natural Resources & Mining	16	282	\$9,229,277	\$629.38
Trade, Transportation & Utilities	197	1,532	\$37,110,010	\$465.83
Wholesale Trade	25	180	\$4,139,286	\$442.23
Retail Trade	154	1,114	\$22,381,092	\$386.36
Transportation, Warehousing & Utilities	18	238	\$10,589,632	\$855.66
Information	8	75	\$2,256,902	\$578.69
Financial Activities	73	360	\$12,852,954	\$686.59
Professional & Business Services	61	209	\$5,326,817	\$490.14
Education & Health Services	94	934	\$29,131,680	\$599.81
Leisure & Hospitality	163	1,505	\$18,553,496	\$237.08
Other Services	41	128	\$2,797,389	\$420.28
Local Government	26	963	\$28,584,480	\$570.82
State Government	10	106	\$3,027,820	\$549.31
Other	107	3,635	\$99,849,599	\$528.25

TABLE 6. COUNTY SUMMARY
CALENDAR YEAR 2010

NORTH AMERICAN INDUSTRY CLASSIFICATION SYSTEM - INDUSTRY GROUPS	AVERAGE EMPLOYING UNITS	AVERAGE COVERED EMPLOYMENT	TOTAL CALENDAR EARNINGS	AVERAGE WEEKLY EARNINGS
CHICOT COUNTY - TOTAL	409	3,338	\$88,120,814	\$507.68
Natural Resources & Mining	50	252	\$6,809,263	\$519.63
Construction	13	157	\$6,479,850	\$793.71
Manufacturing	9	288	\$6,119,839	\$408.64
Trade, Transportation & Utilities	71	484	\$12,029,224	\$477.96
Wholesale Trade	13	69	\$2,172,913	\$605.61
Retail Trade	47	358	\$7,421,105	\$398.64
Transportation, Warehousing & Utilities	11	57	\$2,435,206	\$821.59
Information	5	10	\$251,353	\$483.37
Financial Activities	28	164	\$5,897,733	\$691.57
Professional & Business Services	23	60	\$1,999,393	\$640.83
Education & Health Services	149	692	\$17,425,033	\$484.24
Leisure & Hospitality	18	156	\$1,514,190	\$186.66
Other Services	15	60	\$1,647,755	\$528.13
Local Government	18	710	\$19,551,679	\$529.57
State Government	10	305	\$8,395,502	\$529.35
CLARK COUNTY - TOTAL	624	9,162	\$270,719,864	\$568.23
Natural Resources & Mining	32	218	\$7,450,575	\$657.25
Construction	33	112	\$2,762,256	\$474.29
Manufacturing	35	1,926	\$72,633,684	\$725.23
Trade, Transportation & Utilities	139	1,429	\$38,762,020	\$521.64
Wholesale Trade	20	53	\$2,353,333	\$853.89
Retail Trade	98	1,165	\$28,520,918	\$470.80
Transportation, Warehousing & Utilities	21	211	\$7,887,769	\$718.90
Information	9	32	\$1,056,044	\$634.64
Financial Activities	79	305	\$10,688,746	\$673.94
Professional & Business Services	53	373	\$17,746,970	\$914.98
Education & Health Services	95	1,359	\$37,475,384	\$530.30
Leisure & Hospitality	62	1,011	\$12,291,528	\$233.80
Other Services	46	237	\$6,015,312	\$488.10
Local Government	27	971	\$28,390,422	\$562.28
State Government	14	1,189	\$35,446,923	\$573.32

TABLE 6. COUNTY SUMMARY
CALENDAR YEAR 2010

NORTH AMERICAN INDUSTRY CLASSIFICATION SYSTEM - INDUSTRY GROUPS	AVERAGE EMPLOYING UNITS	AVERAGE COVERED EMPLOYMENT	TOTAL CALENDAR EARNINGS	AVERAGE WEEKLY EARNINGS
CLAY COUNTY - TOTAL	408	3,925	\$105,792,597	\$518.34
Natural Resources & Mining	60	255	\$6,341,737	\$478.26
Construction	29	147	\$3,696,342	\$483.56
Manufacturing	15	697	\$23,596,151	\$651.04
Trade, Transportation & Utilities	99	901	\$25,955,361	\$553.99
Wholesale Trade	23	301	\$10,178,234	\$650.28
Retail Trade	47	413	\$8,925,965	\$415.63
Transportation, Warehousing & Utilities	29	187	\$6,851,162	\$704.56
Information	4	61	\$1,358,938	\$428.42
Financial Activities	29	114	\$3,484,807	\$587.86
Professional & Business Services	25	67	\$1,732,903	\$497.39
Education & Health Services	62	471	\$11,588,992	\$473.17
Leisure & Hospitality	24	208	\$2,004,261	\$185.31
Other Services	28	72	\$1,932,183	\$516.07
Local Government	22	877	\$22,502,288	\$493.43
State Government	11	55	\$1,598,634	\$558.96
CLEBURNE COUNTY - TOTAL	696	6,776	\$190,641,668	\$541.05
Natural Resources & Mining	30	351	\$15,826,202	\$867.09
Construction	73	395	\$12,962,384	\$631.08
Manufacturing	38	1,177	\$36,819,465	\$601.59
Trade, Transportation & Utilities	175	1,526	\$46,182,404	\$581.99
Wholesale Trade	45	276	\$12,502,884	\$871.16
Retail Trade	103	952	\$21,042,526	\$425.07
Transportation, Warehousing & Utilities	27	298	\$12,636,994	\$815.50
Information	8	57	\$1,514,912	\$511.10
Financial Activities	73	264	\$9,050,937	\$659.30
Professional & Business Services	60	271	\$7,169,554	\$508.77
Education & Health Services	84	861	\$21,069,160	\$470.59
Leisure & Hospitality	78	837	\$10,432,837	\$239.70
Other Services	50	162	\$3,406,653	\$404.40
Local Government	18	767	\$23,252,939	\$583.01
State Government	9	108	\$2,954,221	\$526.04

TABLE 6. COUNTY SUMMARY
CALENDAR YEAR 2010

NORTH AMERICAN INDUSTRY CLASSIFICATION SYSTEM - INDUSTRY GROUPS	AVERAGE EMPLOYING UNITS	AVERAGE COVERED EMPLOYMENT	TOTAL CALENDAR EARNINGS	AVERAGE WEEKLY EARNINGS
CLEVELAND COUNTY - TOTAL	123	1,115	\$24,203,301	\$417.44
Natural Resources & Mining	14	168	\$5,270,641	\$603.32
Construction	7	24	\$449,854	\$360.46
Manufacturing	6	93	\$2,503,384	\$517.66
Trade, Transportation & Utilities	31	167	\$3,279,551	\$377.65
Retail Trade	16	83	\$965,812	\$223.77
Other Trade, Transportation & Utilities	15	84	\$2,313,739	\$529.70
Education & Health Services	31	137	\$2,545,158	\$357.27
Other Services	5	13	\$462,671	\$684.42
Local Government	11	336	\$6,698,955	\$383.41
State Government	7	58	\$1,306,555	\$433.21
Other	11	119	\$1,686,532	\$272.55
COLUMBIA COUNTY - TOTAL	755	8,577	\$280,636,963	\$629.23
Natural Resources & Mining	47	468	\$26,105,169	\$1,072.70
Construction	41	282	\$9,423,325	\$642.62
Manufacturing	39	1,980	\$90,427,766	\$878.28
Trade, Transportation & Utilities	165	1,532	\$40,316,254	\$506.08
Wholesale Trade	28	239	\$9,053,106	\$728.44
Retail Trade	103	1,040	\$20,752,855	\$383.74
Transportation, Warehousing & Utilities	34	253	\$10,510,293	\$798.90
Information	9	71	\$1,898,629	\$514.25
Financial Activities	74	390	\$14,357,342	\$707.96
Professional & Business Services	61	297	\$9,215,321	\$596.69
Education & Health Services	181	1,061	\$23,236,863	\$421.17
Leisure & Hospitality	48	601	\$7,501,547	\$240.03
Other Services	51	244	\$3,942,481	\$310.73
Local Government	26	1,077	\$33,728,138	\$602.25
State Government	13	574	\$20,484,128	\$686.28

TABLE 6. COUNTY SUMMARY
CALENDAR YEAR 2010

NORTH AMERICAN INDUSTRY CLASSIFICATION SYSTEM - INDUSTRY GROUPS	AVERAGE EMPLOYING UNITS	AVERAGE COVERED EMPLOYMENT	TOTAL CALENDAR EARNINGS	AVERAGE WEEKLY EARNINGS
CONWAY COUNTY - TOTAL	583	6,828	\$217,591,037	\$612.84
Natural Resources & Mining	32	231	\$10,953,387	\$911.87
Construction	52	540	\$24,693,660	\$879.40
Manufacturing	22	927	\$47,080,753	\$976.70
Trade, Transportation & Utilities	130	1,561	\$48,111,171	\$592.71
Wholesale Trade	22	230	\$9,949,194	\$831.87
Retail Trade	83	840	\$18,493,203	\$423.38
Transportation, Warehousing & Utilities	25	491	\$19,668,774	\$770.36
Information	4	11	\$533,883	\$933.36
Financial Activities	33	168	\$5,345,241	\$611.86
Professional & Business Services	41	541	\$10,172,406	\$361.60
Education & Health Services	168	981	\$26,174,465	\$513.10
Leisure & Hospitality	41	455	\$4,925,564	\$208.18
Other Services	24	94	\$2,523,962	\$516.36
Local Government	26	919	\$26,235,824	\$549.00
State Government	10	400	\$10,840,721	\$521.19
CRAIGHEAD COUNTY - TOTAL	2,689	41,949	\$1,379,860,329	\$632.57
Natural Resources & Mining	70	339	\$9,865,685	\$559.66
Construction	217	1,618	\$57,738,153	\$686.25
Manufacturing	129	5,956	\$233,305,142	\$753.30
Trade, Transportation & Utilities	729	8,603	\$253,943,900	\$567.66
Wholesale Trade	186	1,633	\$75,572,211	\$889.96
Retail Trade	431	5,791	\$130,591,984	\$433.67
Transportation, Warehousing & Utilities	112	1,179	\$47,779,705	\$779.34
Information	29	504	\$17,503,466	\$667.87
Financial Activities	263	1,511	\$64,728,684	\$823.81
Professional & Business Services	355	3,941	\$109,827,888	\$535.92
Education & Health Services	457	8,096	\$333,126,650	\$791.29
Leisure & Hospitality	214	4,231	\$53,543,585	\$243.37
Other Services	164	848	\$18,177,739	\$412.23
Local Government	39	3,578	\$121,822,926	\$654.76
State Government	23	2,724	\$106,276,511	\$750.29

TABLE 6. COUNTY SUMMARY
CALENDAR YEAR 2010

NORTH AMERICAN INDUSTRY CLASSIFICATION SYSTEM - INDUSTRY GROUPS	AVERAGE EMPLOYING UNITS	AVERAGE COVERED EMPLOYMENT	TOTAL CALENDAR EARNINGS	AVERAGE WEEKLY EARNINGS
CRAWFORD COUNTY - TOTAL	1,308	19,375	\$571,517,634	\$567.26
Natural Resources & Mining	30	353	\$16,995,933	\$925.91
Construction	184	1,177	\$39,931,040	\$652.43
Manufacturing	83	4,008	\$120,984,215	\$580.49
Trade, Transportation & Utilities	310	6,221	\$186,830,359	\$577.54
Wholesale Trade	81	725	\$29,797,588	\$790.39
Retail Trade	163	1,937	\$42,480,682	\$421.75
Transportation, Warehousing & Utilities	66	3,559	\$114,552,089	\$618.97
Information	13	130	\$3,983,896	\$589.33
Financial Activities	129	539	\$17,429,473	\$621.86
Professional & Business Services	162	1,206	\$34,490,675	\$549.99
Education & Health Services	167	1,694	\$49,666,974	\$563.83
Leisure & Hospitality	94	1,490	\$18,589,973	\$239.93
Other Services	84	371	\$10,131,809	\$525.18
Local Government	42	2,053	\$68,298,444	\$639.76
State Government	10	133	\$4,184,843	\$605.10
CRITTENDEN COUNTY - TOTAL	1,350	15,758	\$495,792,337	\$605.06
Natural Resources & Mining	49	287	\$7,636,263	\$511.68
Construction	56	423	\$16,844,036	\$765.78
Manufacturing	44	1,654	\$70,045,676	\$814.41
Trade, Transportation & Utilities	323	4,573	\$154,098,897	\$648.03
Wholesale Trade	78	773	\$34,282,741	\$852.89
Retail Trade	164	1,969	\$42,875,683	\$418.76
Transportation, Warehousing & Utilities	81	1,831	\$76,940,473	\$808.10
Information	6	60	\$2,065,947	\$662.16
Financial Activities	100	572	\$21,157,521	\$711.32
Professional & Business Services	123	1,020	\$27,193,190	\$512.69
Education & Health Services	384	2,156	\$63,598,485	\$567.28
Leisure & Hospitality	112	1,817	\$26,385,651	\$279.26
Other Services	95	496	\$12,028,411	\$466.36
Local Government	44	2,207	\$80,130,066	\$698.22
State Government	14	493	\$14,608,194	\$569.83

TABLE 6. COUNTY SUMMARY
CALENDAR YEAR 2010

NORTH AMERICAN INDUSTRY CLASSIFICATION SYSTEM - INDUSTRY GROUPS	AVERAGE EMPLOYING UNITS	AVERAGE COVERED EMPLOYMENT	TOTAL CALENDAR EARNINGS	AVERAGE WEEKLY EARNINGS
CROSS COUNTY - TOTAL	537	4,844	\$143,710,298	\$570.53
Natural Resources & Mining	35	193	\$4,959,461	\$494.17
Construction	23	98	\$2,859,306	\$561.09
Manufacturing	13	644	\$21,245,356	\$634.42
Trade, Transportation & Utilities	140	1,241	\$39,147,098	\$606.63
Wholesale Trade	31	304	\$12,152,254	\$768.74
Retail Trade	76	708	\$17,152,978	\$465.91
Transportation, Warehousing & Utilities	33	229	\$9,841,866	\$826.49
Information	4	34	\$1,024,096	\$579.24
Financial Activities	43	303	\$10,129,753	\$642.91
Professional & Business Services	47	112	\$3,629,171	\$623.14
Education & Health Services	136	761	\$20,877,917	\$527.59
Leisure & Hospitality	33	323	\$3,391,542	\$201.93
Other Services	37	70	\$1,401,787	\$385.11
Local Government	16	695	\$22,508,965	\$622.83
State Government	10	370	\$12,535,846	\$651.55
DALLAS COUNTY - TOTAL	264	3,103	\$85,219,710	\$528.15
Natural Resources & Mining	37	199	\$6,056,944	\$585.33
Construction	12	105	\$4,744,493	\$868.95
Manufacturing	15	645	\$22,260,276	\$663.69
Trade, Transportation & Utilities	63	495	\$14,487,210	\$562.83
Wholesale Trade	6	43	\$3,577,278	\$1,599.86
Retail Trade	42	361	\$7,836,003	\$417.43
Transportation, Warehousing & Utilities	15	91	\$3,073,929	\$649.60
Information	3	17	\$502,845	\$568.83
Financial Activities	17	84	\$2,660,323	\$609.05
Professional & Business Services	17	51	\$1,199,697	\$452.37
Education & Health Services	52	905	\$20,772,616	\$441.41
Leisure & Hospitality	11	99	\$1,136,889	\$220.84
Other Services	14	66	\$1,417,106	\$412.91
Local Government	15	383	\$8,679,175	\$435.79
State Government	8	54	\$1,302,136	\$463.72

TABLE 6. COUNTY SUMMARY
CALENDAR YEAR 2010

NORTH AMERICAN INDUSTRY CLASSIFICATION SYSTEM - INDUSTRY GROUPS	AVERAGE EMPLOYING UNITS	AVERAGE COVERED EMPLOYMENT	TOTAL CALENDAR EARNINGS	AVERAGE WEEKLY EARNINGS
DESHA COUNTY - TOTAL	497	4,155	\$111,465,940	\$515.90
Natural Resources & Mining	56	261	\$8,145,629	\$600.18
Construction	18	114	\$3,798,906	\$640.84
Manufacturing	18	478	\$14,247,681	\$573.21
Trade, Transportation & Utilities	108	892	\$24,503,694	\$528.28
Wholesale Trade	17	160	\$7,641,416	\$918.44
Retail Trade	64	544	\$10,828,753	\$382.80
Transportation, Warehousing & Utilities	27	188	\$6,033,525	\$617.18
Information	6	34	\$1,074,750	\$607.89
Financial Activities	44	221	\$6,551,312	\$570.08
Professional & Business Services	34	88	\$2,094,847	\$457.79
Education & Health Services	127	715	\$18,251,528	\$490.90
Leisure & Hospitality	35	301	\$2,950,767	\$188.52
Other Services	22	80	\$1,705,795	\$410.05
Local Government	19	811	\$23,972,415	\$568.44
State Government	10	160	\$4,168,616	\$501.04
DREW COUNTY - TOTAL	526	6,299	\$175,512,915	\$535.84
Natural Resources & Mining	49	349	\$11,120,019	\$612.74
Construction	21	93	\$2,614,500	\$540.63
Manufacturing	20	827	\$24,479,675	\$569.24
Trade, Transportation & Utilities	119	1,138	\$30,276,261	\$511.63
Wholesale Trade	17	169	\$6,743,709	\$767.38
Retail Trade	82	877	\$19,607,451	\$429.95
Transportation, Warehousing & Utilities	20	92	\$3,925,101	\$820.46
Information	7	63	\$1,855,447	\$566.38
Financial Activities	46	234	\$8,410,894	\$691.23
Professional & Business Services	45	287	\$9,717,990	\$651.17
Education & Health Services	119	785	\$19,841,732	\$486.08
Leisure & Hospitality	42	596	\$6,097,692	\$196.75
Other Services	19	59	\$1,446,792	\$471.57
Local Government	23	1,220	\$36,137,740	\$569.64
State Government	16	648	\$23,514,173	\$697.83

TABLE 6. COUNTY SUMMARY
CALENDAR YEAR 2010

NORTH AMERICAN INDUSTRY CLASSIFICATION SYSTEM - INDUSTRY GROUPS	AVERAGE EMPLOYING UNITS	AVERAGE COVERED EMPLOYMENT	TOTAL CALENDAR EARNINGS	AVERAGE WEEKLY EARNINGS
FAULKNER COUNTY - TOTAL	2,715	39,217	\$1,381,330,376	\$677.36
Natural Resources & Mining	49	863	\$68,846,941	\$1,534.16
Construction	323	2,549	\$95,292,932	\$718.93
Manufacturing	110	3,508	\$161,101,264	\$883.15
Trade, Transportation & Utilities	633	7,175	\$211,206,966	\$566.09
Wholesale Trade	173	1,175	\$56,559,367	\$925.69
Retail Trade	381	5,138	\$116,053,205	\$434.37
Transportation, Warehousing & Utilities	79	862	\$38,594,394	\$861.02
Information	29	334	\$14,228,339	\$819.23
Financial Activities	324	1,455	\$53,572,922	\$708.07
Professional & Business Services	381	5,824	\$279,043,429	\$921.40
Education & Health Services	433	5,991	\$190,776,381	\$612.38
Leisure & Hospitality	215	4,404	\$52,874,168	\$230.88
Other Services	160	680	\$17,254,120	\$487.96
Local Government	39	3,204	\$119,831,717	\$719.24
State Government	19	3,230	\$117,301,197	\$698.39
FRANKLIN COUNTY - TOTAL	327	4,182	\$135,256,365	\$621.97
Natural Resources & Mining	12	263	\$12,784,998	\$934.85
Construction	28	90	\$3,285,086	\$701.94
Manufacturing	16	864	\$32,609,133	\$725.81
Trade, Transportation & Utilities	90	865	\$29,243,241	\$650.14
Wholesale Trade	18	60	\$2,198,708	\$704.71
Retail Trade	51	475	\$10,134,919	\$410.32
Transportation, Warehousing & Utilities	21	330	\$16,909,614	\$985.41
Information	5	27	\$790,697	\$563.17
Financial Activities	29	227	\$6,532,467	\$553.41
Professional & Business Services	23	107	\$2,647,386	\$475.81
Education & Health Services	53	567	\$14,842,418	\$503.41
Leisure & Hospitality	23	273	\$3,140,037	\$221.19
Other Services	20	60	\$1,754,432	\$562.32
Local Government	19	741	\$23,674,301	\$614.41
State Government	9	98	\$3,952,169	\$775.54

TABLE 6. COUNTY SUMMARY
CALENDAR YEAR 2010

NORTH AMERICAN INDUSTRY CLASSIFICATION SYSTEM - INDUSTRY GROUPS	AVERAGE EMPLOYING UNITS	AVERAGE COVERED EMPLOYMENT	TOTAL CALENDAR EARNINGS	AVERAGE WEEKLY EARNINGS
FULTON COUNTY - TOTAL	224	1,929	\$46,012,215	\$458.71
Construction	11	20	\$632,027	\$607.72
Manufacturing	12	125	\$2,236,654	\$344.10
Trade, Transportation & Utilities	53	324	\$9,023,418	\$535.58
Retail Trade	34	170	\$3,118,850	\$352.81
Other Trade, Transportation & Utilities	19	154	\$5,904,568	\$737.33
Information	4	38	\$594,121	\$300.67
Financial Activities	16	94	\$2,797,657	\$572.35
Professional & Business Services	15	60	\$1,798,887	\$576.57
Education & Health Services	64	445	\$9,514,021	\$411.15
Leisure & Hospitality	16	145	\$1,535,146	\$203.60
Local Government	13	544	\$14,479,576	\$511.86
State Government	10	110	\$3,031,464	\$529.98
Other	10	24	\$369,244	\$295.87
GARLAND COUNTY - TOTAL	3,172	35,028	\$1,031,911,232	\$566.53
Natural Resources & Mining	37	324	\$14,291,401	\$848.26
Construction	372	1,727	\$51,345,398	\$571.75
Manufacturing	106	2,007	\$74,941,496	\$718.08
Trade, Transportation & Utilities	710	7,245	\$193,714,685	\$514.19
Wholesale Trade	146	1,087	\$40,609,513	\$718.45
Retail Trade	501	5,642	\$130,574,524	\$445.06
Transportation, Warehousing & Utilities	63	516	\$22,530,648	\$839.69
Information	36	333	\$11,566,301	\$667.95
Financial Activities	340	1,375	\$48,799,757	\$682.51
Professional & Business Services	411	3,189	\$97,215,931	\$586.25
Education & Health Services	512	7,403	\$279,638,704	\$726.42
Leisure & Hospitality	352	6,276	\$92,565,773	\$283.64
Other Services	236	963	\$21,665,956	\$432.66
Local Government	34	3,058	\$109,693,347	\$689.83
State Government	26	1,128	\$36,472,483	\$621.80

TABLE 6. COUNTY SUMMARY
CALENDAR YEAR 2010

NORTH AMERICAN INDUSTRY CLASSIFICATION SYSTEM - INDUSTRY GROUPS	AVERAGE EMPLOYING UNITS	AVERAGE COVERED EMPLOYMENT	TOTAL CALENDAR EARNINGS	AVERAGE WEEKLY EARNINGS
GRANT COUNTY - TOTAL	323	3,652	\$103,350,523	\$544.23
Natural Resources & Mining	22	164	\$7,980,890	\$935.85
Construction	31	154	\$5,059,035	\$631.75
Manufacturing	14	856	\$26,015,908	\$584.47
Trade, Transportation & Utilities	88	631	\$17,403,668	\$530.41
Wholesale Trade	17	130	\$5,945,480	\$879.51
Retail Trade	47	445	\$9,663,776	\$417.62
Transportation, Warehousing & Utilities	24	56	\$1,794,412	\$616.21
Information	3	13	\$546,847	\$808.95
Financial Activities	26	94	\$2,820,220	\$576.97
Professional & Business Services	21	70	\$3,020,740	\$829.87
Education & Health Services	57	465	\$10,015,372	\$414.20
Leisure & Hospitality	24	269	\$2,916,077	\$208.47
Other Services	19	48	\$925,376	\$370.74
Local Government	10	832	\$25,029,325	\$578.53
State Government	8	56	\$1,617,065	\$555.31
GREENE COUNTY - TOTAL	925	13,920	\$433,464,233	\$598.84
Natural Resources & Mining	34	208	\$6,288,120	\$581.37
Construction	83	343	\$10,291,756	\$577.02
Manufacturing	62	4,380	\$176,121,426	\$773.28
Trade, Transportation & Utilities	234	2,286	\$58,218,334	\$489.76
Wholesale Trade	61	497	\$17,559,173	\$679.43
Retail Trade	145	1,582	\$33,769,532	\$410.50
Transportation, Warehousing & Utilities	28	207	\$6,889,629	\$640.06
Information	12	119	\$2,339,577	\$378.08
Financial Activities	82	467	\$16,212,306	\$667.61
Professional & Business Services	105	1,109	\$30,372,641	\$526.68
Education & Health Services	150	1,799	\$51,961,003	\$555.45
Leisure & Hospitality	72	1,065	\$12,534,122	\$226.33
Other Services	50	177	\$3,954,247	\$429.62
Local Government	30	1,558	\$49,920,924	\$616.19
State Government	11	409	\$15,249,777	\$717.03

TABLE 6. COUNTY SUMMARY
CALENDAR YEAR 2010

NORTH AMERICAN INDUSTRY CLASSIFICATION SYSTEM - INDUSTRY GROUPS	AVERAGE EMPLOYING UNITS	AVERAGE COVERED EMPLOYMENT	TOTAL CALENDAR EARNINGS	AVERAGE WEEKLY EARNINGS
HEMPSTEAD COUNTY - TOTAL	498	7,875	\$255,684,610	\$624.38
Natural Resources & Mining	16	173	\$5,809,090	\$645.74
Construction	33	966	\$53,394,610	\$1,062.96
Manufacturing	27	1,624	\$53,770,231	\$636.73
Trade, Transportation & Utilities	133	1,272	\$35,404,592	\$535.27
Wholesale Trade	27	235	\$8,532,604	\$698.25
Retail Trade	83	860	\$17,937,482	\$401.11
Transportation, Warehousing & Utilities	23	177	\$8,934,506	\$970.72
Information	8	56	\$1,534,780	\$527.05
Financial Activities	37	216	\$7,752,620	\$690.23
Professional & Business Services	43	157	\$5,313,563	\$650.85
Education & Health Services	82	1,055	\$27,997,294	\$510.34
Leisure & Hospitality	41	567	\$6,863,734	\$232.80
Other Services	34	163	\$4,305,512	\$507.97
Local Government	28	918	\$29,688,647	\$621.93
State Government	16	708	\$23,849,937	\$647.81
HOT SPRING COUNTY - TOTAL	595	7,719	\$234,831,393	\$585.05
Natural Resources & Mining	26	183	\$5,375,228	\$564.86
Construction	64	324	\$11,027,249	\$654.51
Manufacturing	30	1,307	\$57,647,721	\$848.21
Trade, Transportation & Utilities	151	1,334	\$41,189,873	\$593.79
Wholesale Trade	19	79	\$5,053,217	\$1,230.09
Retail Trade	96	904	\$19,190,384	\$408.24
Transportation, Warehousing & Utilities	36	351	\$16,946,272	\$928.46
Information	8	52	\$1,664,275	\$615.49
Financial Activities	57	269	\$9,394,350	\$671.60
Professional & Business Services	48	588	\$14,876,194	\$486.53
Education & Health Services	92	1,176	\$31,999,041	\$523.27
Leisure & Hospitality	43	523	\$5,456,944	\$200.65
Other Services	36	176	\$3,720,071	\$406.48
Local Government	27	1,108	\$32,454,545	\$563.29
State Government	13	679	\$20,025,902	\$567.18

TABLE 6. COUNTY SUMMARY
CALENDAR YEAR 2010

NORTH AMERICAN INDUSTRY CLASSIFICATION SYSTEM - INDUSTRY GROUPS	AVERAGE EMPLOYING UNITS	AVERAGE COVERED EMPLOYMENT	TOTAL CALENDAR EARNINGS	AVERAGE WEEKLY EARNINGS
HOWARD COUNTY - TOTAL	356	6,944	\$196,537,390	\$544.29
Natural Resources & Mining	20	208	\$6,476,974	\$598.83
Construction	17	120	\$3,881,715	\$622.07
Manufacturing	23	3,571	\$108,436,821	\$583.96
Trade, Transportation & Utilities	99	920	\$24,356,140	\$509.12
Wholesale Trade	19	68	\$2,464,278	\$696.91
Retail Trade	59	621	\$12,599,407	\$390.17
Transportation, Warehousing & Utilities	21	231	\$9,292,455	\$773.60
Information	5	35	\$838,015	\$460.45
Financial Activities	39	156	\$4,130,906	\$509.23
Professional & Business Services	23	103	\$3,057,006	\$570.76
Education & Health Services	59	642	\$16,349,589	\$489.74
Leisure & Hospitality	19	303	\$3,294,677	\$209.11
Other Services	24	117	\$2,628,727	\$432.07
Local Government	17	650	\$19,736,611	\$583.92
State Government	11	119	\$3,350,209	\$541.40
INDEPENDENCE COUNTY - TOTAL	936	15,277	\$469,985,601	\$591.62
Natural Resources & Mining	13	238	\$10,402,067	\$840.50
Construction	72	439	\$13,643,176	\$597.65
Manufacturing	52	3,763	\$129,380,927	\$661.20
Trade, Transportation & Utilities	240	3,005	\$88,107,635	\$563.85
Wholesale Trade	38	450	\$16,178,312	\$691.38
Retail Trade	155	1,719	\$36,422,362	\$407.46
Transportation, Warehousing & Utilities	47	836	\$35,506,961	\$816.78
Information	10	131	\$3,829,608	\$562.19
Financial Activities	86	513	\$18,305,354	\$686.21
Professional & Business Services	89	525	\$13,798,539	\$505.44
Education & Health Services	171	3,050	\$111,049,098	\$700.18
Leisure & Hospitality	69	1,037	\$12,664,451	\$234.86
Other Services	70	375	\$7,510,964	\$385.18
Local Government	47	1,559	\$40,451,135	\$498.98
State Government	17	642	\$20,842,647	\$624.33

TABLE 6. COUNTY SUMMARY
CALENDAR YEAR 2010

NORTH AMERICAN INDUSTRY CLASSIFICATION SYSTEM - INDUSTRY GROUPS	AVERAGE EMPLOYING UNITS	AVERAGE COVERED EMPLOYMENT	TOTAL CALENDAR EARNINGS	AVERAGE WEEKLY EARNINGS
IZARD COUNTY - TOTAL	275	2,887	\$75,744,525	\$504.55
Natural Resources & Mining	5	108	\$4,166,648	\$741.92
Construction	28	75	\$1,881,599	\$482.46
Manufacturing	11	193	\$6,569,594	\$654.60
Trade, Transportation & Utilities	68	551	\$13,281,872	\$463.56
Wholesale Trade	10	36	\$959,541	\$512.58
Retail Trade	47	387	\$8,150,470	\$405.01
Transportation, Warehousing & Utilities	11	128	\$4,171,861	\$626.78
Financial Activities	29	143	\$4,502,770	\$605.54
Professional & Business Services	21	76	\$1,948,595	\$493.07
Education & Health Services	58	628	\$13,627,483	\$417.30
Leisure & Hospitality	16	110	\$1,170,349	\$204.61
Local Government	18	514	\$14,296,750	\$534.90
State Government	10	463	\$13,716,778	\$569.73
Other	11	26	\$582,087	\$430.54
JACKSON COUNTY - TOTAL	481	5,158	\$158,232,294	\$589.94
Natural Resources & Mining	52	257	\$7,017,134	\$525.08
Construction	22	124	\$5,226,352	\$810.54
Manufacturing	19	865	\$34,769,545	\$773.00
Trade, Transportation & Utilities	111	988	\$29,169,988	\$567.77
Wholesale Trade	26	199	\$9,086,017	\$878.05
Retail Trade	68	679	\$15,680,616	\$444.11
Transportation, Warehousing & Utilities	17	110	\$4,403,355	\$769.82
Information	4	29	\$655,879	\$434.93
Financial Activities	37	156	\$5,402,961	\$666.05
Professional & Business Services	37	142	\$4,609,633	\$624.27
Education & Health Services	104	822	\$25,686,809	\$600.95
Leisure & Hospitality	28	283	\$3,006,591	\$204.31
Other Services	22	75	\$1,824,495	\$467.82
Local Government	32	686	\$17,673,329	\$495.44
State Government	13	731	\$23,189,578	\$610.06

TABLE 6. COUNTY SUMMARY
CALENDAR YEAR 2010

NORTH AMERICAN INDUSTRY CLASSIFICATION SYSTEM - INDUSTRY GROUPS	AVERAGE EMPLOYING UNITS	AVERAGE COVERED EMPLOYMENT	TOTAL CALENDAR EARNINGS	AVERAGE WEEKLY EARNINGS
JEFFERSON COUNTY - TOTAL	2,105	29,906	\$1,024,870,780	\$659.03
Natural Resources & Mining	41	408	\$17,797,629	\$838.88
Construction	107	1,375	\$71,780,371	\$1,003.92
Manufacturing	69	5,263	\$221,442,988	\$809.14
Trade, Transportation & Utilities	435	5,219	\$165,283,022	\$609.03
Wholesale Trade	82	992	\$41,836,402	\$811.03
Retail Trade	292	3,329	\$77,098,076	\$445.38
Transportation, Warehousing & Utilities	61	898	\$46,348,544	\$992.56
Information	13	135	\$4,396,380	\$626.26
Financial Activities	149	1,152	\$46,052,052	\$768.76
Professional & Business Services	179	1,706	\$58,624,715	\$660.84
Education & Health Services	750	5,272	\$176,434,217	\$643.58
Leisure & Hospitality	141	2,053	\$23,815,619	\$223.08
Other Services	140	651	\$15,908,451	\$469.94
Local Government	43	3,164	\$101,809,396	\$618.80
State Government	38	3,508	\$121,525,940	\$666.20
JOHNSON COUNTY - TOTAL	475	8,466	\$233,738,259	\$530.94
Natural Resources & Mining	21	260	\$8,655,175	\$640.18
Construction	23	93	\$2,619,618	\$541.69
Manufacturing	39	2,920	\$77,381,901	\$509.63
Trade, Transportation & Utilities	109	1,980	\$55,905,756	\$542.99
Retail Trade	72	919	\$18,389,537	\$384.81
Other Trade, Transportation & Utilities	37	1,061	\$37,516,219	\$679.99
Information	5	32	\$753,415	\$452.77
Financial Activities	47	210	\$6,967,248	\$638.03
Professional & Business Services	45	155	\$4,505,626	\$559.01
Education & Health Services	98	1,163	\$35,965,868	\$594.71
Leisure & Hospitality	38	484	\$5,478,755	\$217.69
Other Services	27	63	\$1,416,268	\$432.32
Local Government	14	967	\$29,670,506	\$590.06
State Government	9	139	\$4,418,123	\$611.25

TABLE 6. COUNTY SUMMARY
CALENDAR YEAR 2010

NORTH AMERICAN INDUSTRY CLASSIFICATION SYSTEM - INDUSTRY GROUPS	AVERAGE EMPLOYING UNITS	AVERAGE COVERED EMPLOYMENT	TOTAL CALENDAR EARNINGS	AVERAGE WEEKLY EARNINGS
LAFAYETTE COUNTY - TOTAL	180	1,323	\$35,274,817	\$512.75
Natural Resources & Mining	33	165	\$5,571,468	\$649.36
Construction	10	61	\$2,844,017	\$896.60
Manufacturing	5	29	\$1,031,872	\$684.27
Trade, Transportation & Utilities	36	200	\$4,794,195	\$460.98
Retail Trade	22	143	\$2,465,880	\$331.61
Other Trade, Transportation & Utilities	14	57	\$2,328,315	\$785.53
Financial Activities	17	60	\$1,532,559	\$491.20
Professional & Business Services	12	52	\$2,046,855	\$756.97
Education & Health Services	35	248	\$5,130,346	\$397.82
Leisure & Hospitality	6	51	\$579,834	\$218.64
Local Government	13	317	\$8,465,246	\$513.54
State Government	7	45	\$1,225,903	\$523.89
Other	6	95	\$2,052,522	\$415.49
LAWRENCE COUNTY - TOTAL	421	3,967	\$105,232,042	\$510.13
Natural Resources & Mining	38	186	\$5,683,621	\$587.64
Construction	25	66	\$1,972,049	\$574.61
Manufacturing	23	448	\$12,417,280	\$533.02
Trade, Transportation & Utilities	115	855	\$23,656,776	\$532.09
Wholesale Trade	23	184	\$6,914,658	\$722.69
Retail Trade	61	529	\$11,230,230	\$408.25
Transportation, Warehousing & Utilities	31	142	\$5,511,888	\$746.46
Financial Activities	33	147	\$4,401,025	\$575.75
Professional & Business Services	26	101	\$3,279,998	\$624.52
Education & Health Services	77	527	\$14,377,608	\$524.65
Leisure & Hospitality	25	280	\$2,839,116	\$194.99
Local Government	27	1,175	\$32,009,554	\$523.89
State Government	10	106	\$2,750,557	\$499.01
Other	22	76	\$1,844,458	\$466.72

TABLE 6. COUNTY SUMMARY
CALENDAR YEAR 2010

NORTH AMERICAN INDUSTRY CLASSIFICATION SYSTEM - INDUSTRY GROUPS	AVERAGE EMPLOYING UNITS	AVERAGE COVERED EMPLOYMENT	TOTAL CALENDAR EARNINGS	AVERAGE WEEKLY EARNINGS
LEE COUNTY - TOTAL	309	2,068	\$59,452,171	\$552.86
Natural Resources & Mining	34	225	\$6,146,426	\$525.34
Construction	8	23	\$569,749	\$476.38
Trade, Transportation & Utilities	51	349	\$9,854,645	\$543.02
Wholesale Trade	8	78	\$3,065,092	\$755.69
Retail Trade	26	193	\$3,835,367	\$382.16
Transportation, Warehousing & Utilities	17	78	\$2,954,186	\$728.35
Financial Activities	16	76	\$2,722,629	\$688.92
Professional & Business Services	17	58	\$3,252,789	\$1,078.51
Education & Health Services	135	425	\$10,705,604	\$484.42
Leisure & Hospitality	9	92	\$893,217	\$186.71
Local Government	15	335	\$9,548,094	\$548.11
State Government	7	454	\$15,073,793	\$638.50
Other	17	31	\$685,225	\$425.08
LINCOLN COUNTY - TOTAL	269	2,813	\$82,909,348	\$566.80
Natural Resources & Mining	34	170	\$5,375,071	\$608.04
Construction	14	76	\$1,951,235	\$493.73
Manufacturing	9	336	\$10,726,964	\$613.95
Trade, Transportation & Utilities	46	325	\$10,768,828	\$637.21
Wholesale Trade	9	42	\$1,569,729	\$718.74
Retail Trade	23	161	\$2,840,438	\$339.28
Transportation, Warehousing & Utilities	14	122	\$6,358,661	\$1,002.31
Financial Activities	21	70	\$2,432,883	\$668.37
Professional & Business Services	13	28	\$850,912	\$584.42
Education & Health Services	87	393	\$8,829,063	\$432.03
Leisure & Hospitality	12	135	\$1,187,177	\$169.11
Local Government	7	349	\$10,353,977	\$570.53
State Government	12	896	\$29,618,343	\$635.70
Other	14	35	\$814,895	\$447.74

TABLE 6. COUNTY SUMMARY
CALENDAR YEAR 2010

NORTH AMERICAN INDUSTRY CLASSIFICATION SYSTEM - INDUSTRY GROUPS	AVERAGE EMPLOYING UNITS	AVERAGE COVERED EMPLOYMENT	TOTAL CALENDAR EARNINGS	AVERAGE WEEKLY EARNINGS
LITTLE RIVER COUNTY - TOTAL	250	3,937	\$175,739,072	\$858.42
Natural Resources & Mining	10	74	\$2,161,213	\$561.65
Construction	22	338	\$13,998,222	\$796.44
Manufacturing	18	1,367	\$103,650,874	\$1,458.15
Trade, Transportation & Utilities	58	623	\$16,071,881	\$496.11
Wholesale Trade	10	41	\$1,826,159	\$856.55
Retail Trade	36	379	\$7,958,885	\$403.84
Transportation, Warehousing & Utilities	12	203	\$6,286,837	\$595.57
Financial Activities	23	100	\$2,635,520	\$506.83
Professional & Business Services	16	103	\$3,041,244	\$567.82
Education & Health Services	39	159	\$3,864,885	\$467.45
Leisure & Hospitality	16	176	\$2,133,122	\$233.08
Local Government	20	816	\$24,184,440	\$569.96
State Government	11	84	\$2,175,193	\$497.98
Other	17	97	\$1,822,478	\$361.32
LOGAN COUNTY - TOTAL	509	5,423	\$150,924,079	\$535.20
Natural Resources & Mining	25	171	\$8,521,236	\$958.30
Construction	47	196	\$5,650,379	\$554.39
Manufacturing	25	1,227	\$38,865,573	\$609.14
Trade, Transportation & Utilities	126	883	\$20,883,715	\$454.82
Wholesale Trade	16	83	\$1,320,837	\$306.03
Retail Trade	77	693	\$14,908,453	\$413.71
Transportation, Warehousing & Utilities	33	107	\$4,654,425	\$836.52
Information	7	43	\$1,670,448	\$747.07
Financial Activities	45	252	\$9,369,791	\$715.03
Professional & Business Services	43	105	\$2,460,132	\$450.57
Education & Health Services	98	799	\$22,057,122	\$530.88
Leisure & Hospitality	31	314	\$3,364,605	\$206.06
Other Services	26	80	\$1,985,440	\$477.27
Local Government	22	812	\$23,116,341	\$547.47
State Government	14	541	\$12,979,297	\$461.37

TABLE 6. COUNTY SUMMARY
CALENDAR YEAR 2010

NORTH AMERICAN INDUSTRY CLASSIFICATION SYSTEM - INDUSTRY GROUPS	AVERAGE EMPLOYING UNITS	AVERAGE COVERED EMPLOYMENT	TOTAL CALENDAR EARNINGS	AVERAGE WEEKLY EARNINGS
LONOKE COUNTY - TOTAL	1,300	12,957	\$371,510,053	\$551.39
Natural Resources & Mining	78	481	\$16,225,380	\$648.70
Construction	146	759	\$25,954,476	\$657.61
Manufacturing	38	1,361	\$62,126,894	\$877.85
Trade, Transportation & Utilities	328	2,857	\$73,943,378	\$497.72
Wholesale Trade	81	470	\$19,518,371	\$798.62
Retail Trade	179	2,144	\$45,199,637	\$405.42
Transportation, Warehousing & Utilities	68	243	\$9,225,370	\$730.09
Information	17	96	\$4,091,638	\$819.64
Financial Activities	127	493	\$20,194,053	\$787.72
Professional & Business Services	149	687	\$20,967,987	\$586.94
Education & Health Services	200	1,653	\$43,317,932	\$503.95
Leisure & Hospitality	104	1,502	\$17,019,765	\$217.91
Other Services	72	209	\$5,075,062	\$466.97
Local Government	26	2,706	\$77,967,859	\$554.10
State Government	15	153	\$4,625,629	\$581.40
MADISON COUNTY - TOTAL	240	3,037	\$80,930,294	\$512.46
Natural Resources & Mining	10	35	\$1,042,242	\$572.66
Construction	31	67	\$2,131,479	\$611.79
Manufacturing	20	1,081	\$29,468,956	\$524.25
Trade, Transportation & Utilities	47	533	\$13,534,690	\$488.33
Wholesale Trade	6	19	\$937,611	\$949.00
Retail Trade	33	416	\$8,929,191	\$412.78
Transportation, Warehousing & Utilities	8	98	\$3,667,888	\$719.76
Information	5	37	\$1,785,799	\$928.17
Financial Activities	15	76	\$2,470,313	\$625.08
Professional & Business Services	25	149	\$3,707,172	\$478.47
Education & Health Services	42	241	\$5,283,615	\$421.61
Leisure & Hospitality	14	165	\$1,915,958	\$223.31
Other Services	15	31	\$892,934	\$553.93
Local Government	9	580	\$17,434,355	\$578.06
State Government	7	42	\$1,262,781	\$578.20

TABLE 6. COUNTY SUMMARY
CALENDAR YEAR 2010

NORTH AMERICAN INDUSTRY CLASSIFICATION SYSTEM - INDUSTRY GROUPS	AVERAGE EMPLOYING UNITS	AVERAGE COVERED EMPLOYMENT	TOTAL CALENDAR EARNINGS	AVERAGE WEEKLY EARNINGS
MARION COUNTY - TOTAL	317	3,478	\$87,762,108	\$485.26
Natural Resources & Mining	6	24	\$553,405	\$443.43
Construction	23	68	\$1,269,832	\$359.12
Manufacturing	20	1,264	\$33,609,563	\$511.34
Trade, Transportation & Utilities	55	544	\$12,765,274	\$451.26
Wholesale Trade	7	34	\$1,339,549	\$757.66
Retail Trade	39	474	\$9,957,199	\$403.98
Transportation, Warehousing & Utilities	9	36	\$1,468,526	\$784.47
Information	4	58	\$2,940,891	\$975.10
Financial Activities	36	188	\$5,897,841	\$603.30
Professional & Business Services	30	113	\$3,068,013	\$522.13
Education & Health Services	65	356	\$8,403,425	\$453.94
Leisure & Hospitality	38	223	\$2,348,175	\$202.50
Other Services	13	27	\$510,739	\$363.77
Local Government	20	533	\$14,635,565	\$528.05
State Government	7	80	\$1,759,385	\$422.93
MILLER COUNTY - TOTAL	853	12,960	\$435,040,392	\$645.54
Natural Resources & Mining	27	132	\$4,212,322	\$613.68
Construction	83	790	\$24,594,968	\$598.71
Manufacturing	32	2,347	\$135,743,408	\$1,112.25
Trade, Transportation & Utilities	228	3,311	\$105,586,180	\$613.26
Wholesale Trade	57	556	\$25,041,962	\$866.14
Retail Trade	128	1,344	\$29,328,663	\$419.65
Transportation, Warehousing & Utilities	43	1,411	\$51,215,555	\$698.03
Information	9	78	\$5,446,470	\$1,342.82
Financial Activities	78	376	\$13,642,121	\$697.74
Professional & Business Services	89	1,261	\$28,258,482	\$430.95
Education & Health Services	128	870	\$22,912,537	\$506.47
Leisure & Hospitality	82	1,319	\$17,837,870	\$260.07
Other Services	56	344	\$6,478,334	\$362.16
Local Government	25	1,644	\$52,617,864	\$615.50
State Government	16	488	\$17,709,836	\$697.90

TABLE 6. COUNTY SUMMARY
CALENDAR YEAR 2010

NORTH AMERICAN INDUSTRY CLASSIFICATION SYSTEM - INDUSTRY GROUPS	AVERAGE EMPLOYING UNITS	AVERAGE COVERED EMPLOYMENT	TOTAL CALENDAR EARNINGS	AVERAGE WEEKLY EARNINGS
MISSISSIPPI COUNTY - TOTAL	1,249	18,218	\$669,606,575	\$706.83
Natural Resources & Mining	107	665	\$18,037,245	\$521.61
Construction	68	578	\$26,146,666	\$869.93
Manufacturing	55	6,132	\$326,690,801	\$1,024.55
Trade, Transportation & Utilities	302	3,137	\$100,736,197	\$617.54
Wholesale Trade	63	501	\$22,430,686	\$861.00
Retail Trade	178	1,833	\$37,927,047	\$397.91
Transportation, Warehousing & Utilities	61	803	\$40,378,464	\$967.01
Information	11	96	\$2,335,639	\$467.88
Financial Activities	102	560	\$16,531,619	\$567.71
Professional & Business Services	98	1,035	\$31,323,139	\$582.00
Education & Health Services	286	1,707	\$43,044,792	\$484.94
Leisure & Hospitality	87	1,136	\$13,043,920	\$220.81
Other Services	66	239	\$4,884,935	\$393.06
Local Government	45	2,286	\$67,756,958	\$570.00
State Government	22	647	\$19,074,664	\$566.96
MONROE COUNTY - TOTAL	327	2,240	\$56,427,365	\$484.44
Natural Resources & Mining	37	142	\$4,055,283	\$549.20
Construction	15	48	\$1,509,551	\$604.79
Manufacturing	6	100	\$3,531,146	\$679.07
Trade, Transportation & Utilities	80	637	\$18,563,506	\$560.42
Wholesale Trade	18	206	\$7,793,283	\$727.53
Retail Trade	38	277	\$6,015,099	\$417.60
Transportation, Warehousing & Utilities	24	154	\$4,755,124	\$593.80
Financial Activities	18	88	\$2,819,303	\$616.11
Professional & Business Services	16	38	\$742,294	\$375.65
Education & Health Services	78	332	\$6,982,027	\$404.43
Leisure & Hospitality	25	229	\$2,410,106	\$202.39
Local Government	22	402	\$10,585,930	\$506.41
State Government	8	119	\$3,179,095	\$513.75
Other	22	105	\$2,049,124	\$375.30

TABLE 6. COUNTY SUMMARY
CALENDAR YEAR 2010

NORTH AMERICAN INDUSTRY CLASSIFICATION SYSTEM - INDUSTRY GROUPS	AVERAGE EMPLOYING UNITS	AVERAGE COVERED EMPLOYMENT	TOTAL CALENDAR EARNINGS	AVERAGE WEEKLY EARNINGS
MONTGOMERY COUNTY - TOTAL	182	1,586	\$36,444,906	\$441.91
Natural Resources & Mining	12	40	\$1,234,769	\$593.64
Construction	24	81	\$2,355,082	\$559.14
Trade, Transportation & Utilities	45	253	\$5,820,508	\$442.42
Wholesale Trade	14	72	\$1,984,288	\$529.99
Retail Trade	23	173	\$3,687,586	\$409.91
Transportation, Warehousing & Utilities	8	8	\$148,634	\$357.29
Financial Activities	10	77	\$2,152,328	\$537.54
Professional & Business Services	13	25	\$784,247	\$603.27
Education & Health Services	18	91	\$2,230,255	\$471.31
Leisure & Hospitality	21	307	\$4,516,578	\$282.92
Local Government	9	479	\$12,248,585	\$491.75
State Government	7	42	\$1,201,545	\$550.16
Other	23	191	\$3,901,009	\$392.77
NEVADA COUNTY - TOTAL	191	2,121	\$62,759,130	\$569.03
Natural Resources & Mining	11	39	\$1,024,575	\$505.21
Trade, Transportation & Utilities	42	492	\$13,828,316	\$540.51
Wholesale Trade	3	13	\$204,869	\$303.06
Retail Trade	28	272	\$5,254,180	\$371.48
Transportation, Warehousing & Utilities	11	207	\$8,369,267	\$777.52
Financial Activities	13	61	\$1,784,858	\$562.69
Professional & Business Services	9	49	\$1,428,843	\$560.77
Education & Health Services	30	391	\$8,800,542	\$432.84
Leisure & Hospitality	13	90	\$936,020	\$200.00
Other Services	15	57	\$911,592	\$307.55
Local Government	28	425	\$10,725,781	\$485.33
State Government	10	70	\$2,075,925	\$570.31
Other	20	447	\$21,242,678	\$913.90

TABLE 6. COUNTY SUMMARY
CALENDAR YEAR 2010

NORTH AMERICAN INDUSTRY CLASSIFICATION SYSTEM - INDUSTRY GROUPS	AVERAGE EMPLOYING UNITS	AVERAGE COVERED EMPLOYMENT	TOTAL CALENDAR EARNINGS	AVERAGE WEEKLY EARNINGS
NEWTON COUNTY - TOTAL	129	1,003	\$21,487,670	\$411.99
Construction	7	21	\$359,801	\$329.49
Manufacturing	11	40	\$1,047,477	\$503.59
Trade, Transportation & Utilities	29	163	\$3,568,583	\$421.02
Wholesale Trade	3	8	\$204,443	\$491.45
Retail Trade	13	105	\$1,847,249	\$338.32
Transportation, Warehousing & Utilities	13	50	\$1,516,891	\$583.42
Education & Health Services	30	224	\$3,815,551	\$327.57
Leisure & Hospitality	18	69	\$956,388	\$266.55
Other Services	3	5	\$85,301	\$328.08
Local Government	13	359	\$9,054,830	\$485.05
State Government	6	84	\$1,527,233	\$349.64
Other	12	38	\$1,072,506	\$542.77
OUACHITA COUNTY - TOTAL	667	7,688	\$221,856,336	\$554.95
Natural Resources & Mining	41	229	\$8,196,243	\$688.30
Construction	47	213	\$6,634,848	\$599.03
Manufacturing	28	874	\$32,272,275	\$710.09
Trade, Transportation & Utilities	173	1,807	\$50,685,488	\$539.41
Wholesale Trade	28	249	\$10,556,843	\$815.33
Retail Trade	113	1,086	\$21,459,025	\$379.99
Transportation, Warehousing & Utilities	32	472	\$18,669,620	\$760.66
Information	8	53	\$1,627,306	\$590.46
Financial Activities	64	321	\$10,058,002	\$602.56
Professional & Business Services	49	461	\$12,496,903	\$521.31
Education & Health Services	123	1,198	\$35,397,065	\$568.21
Leisure & Hospitality	42	487	\$4,942,281	\$195.16
Other Services	47	164	\$3,720,975	\$436.32
Local Government	30	1,147	\$32,895,224	\$551.53
State Government	15	734	\$22,929,726	\$600.76

TABLE 6. COUNTY SUMMARY
CALENDAR YEAR 2010

NORTH AMERICAN INDUSTRY CLASSIFICATION SYSTEM - INDUSTRY GROUPS	AVERAGE EMPLOYING UNITS	AVERAGE COVERED EMPLOYMENT	TOTAL CALENDAR EARNINGS	AVERAGE WEEKLY EARNINGS
PERRY COUNTY - TOTAL	160	1,292	\$36,644,987	\$545.44
Construction	20	81	\$3,172,083	\$753.11
Manufacturing	6	47	\$1,312,897	\$537.19
Trade, Transportation & Utilities	28	203	\$4,679,092	\$443.26
Wholesale Trade	6	9	\$475,289	\$1,015.57
Retail Trade	16	164	\$2,593,054	\$304.06
Transportation, Warehousing & Utilities	6	30	\$1,610,749	\$1,032.53
Financial Activities	14	33	\$1,710,691	\$996.91
Professional & Business Services	15	43	\$1,259,273	\$563.18
Education & Health Services	35	216	\$4,942,658	\$440.05
Leisure & Hospitality	8	48	\$510,287	\$204.44
Local Government	12	401	\$10,025,497	\$480.79
State Government	8	43	\$1,134,490	\$507.37
Other	14	177	\$7,898,019	\$858.11
PHILLIPS COUNTY - TOTAL	960	6,433	\$181,740,712	\$543.29
Natural Resources & Mining	88	340	\$7,456,706	\$421.76
Construction	27	130	\$3,848,841	\$569.36
Manufacturing	12	329	\$10,587,392	\$618.86
Trade, Transportation & Utilities	169	1,523	\$51,172,098	\$646.14
Wholesale Trade	34	366	\$14,859,312	\$780.75
Retail Trade	88	842	\$19,026,935	\$434.56
Transportation, Warehousing & Utilities	47	315	\$17,285,851	\$1,055.30
Information	10	51	\$1,462,379	\$551.42
Financial Activities	45	233	\$7,771,921	\$641.46
Professional & Business Services	53	268	\$7,991,470	\$573.44
Education & Health Services	440	1,505	\$36,937,187	\$471.98
Leisure & Hospitality	37	348	\$4,227,841	\$233.63
Other Services	36	77	\$1,554,370	\$388.20
Local Government	29	1,073	\$33,829,566	\$606.31
State Government	14	556	\$14,900,941	\$515.39

TABLE 6. COUNTY SUMMARY
CALENDAR YEAR 2010

NORTH AMERICAN INDUSTRY CLASSIFICATION SYSTEM - INDUSTRY GROUPS	AVERAGE EMPLOYING UNITS	AVERAGE COVERED EMPLOYMENT	TOTAL CALENDAR EARNINGS	AVERAGE WEEKLY EARNINGS
PIKE COUNTY - TOTAL	259	2,551	\$65,247,648	\$491.87
Natural Resources & Mining	24	130	\$4,529,255	\$670.01
Construction	13	35	\$793,802	\$436.15
Manufacturing	16	300	\$7,434,750	\$476.59
Trade, Transportation & Utilities	85	598	\$14,506,022	\$466.49
Wholesale Trade	17	160	\$4,876,411	\$586.11
Retail Trade	45	373	\$7,113,617	\$366.76
Transportation, Warehousing & Utilities	23	65	\$2,515,994	\$744.38
Information	4	23	\$1,066,170	\$891.45
Financial Activities	22	191	\$6,715,120	\$676.11
Professional & Business Services	10	31	\$2,793,445	\$1,732.91
Education & Health Services	24	280	\$5,795,817	\$398.06
Leisure & Hospitality	19	229	\$2,522,672	\$211.85
Other Services	20	103	\$2,337,753	\$436.47
Local Government	12	511	\$14,169,807	\$533.26
State Government	10	120	\$2,583,035	\$413.95
POINSETT COUNTY - TOTAL	515	4,999	\$145,248,696	\$558.76
Natural Resources & Mining	56	303	\$11,172,594	\$709.10
Construction	24	91	\$2,974,910	\$628.68
Manufacturing	21	639	\$21,014,556	\$632.44
Trade, Transportation & Utilities	126	1,239	\$36,543,102	\$567.19
Wholesale Trade	30	389	\$18,386,602	\$908.97
Retail Trade	69	698	\$13,578,577	\$374.11
Transportation, Warehousing & Utilities	27	152	\$4,577,923	\$579.19
Information	6	56	\$2,907,491	\$998.45
Financial Activities	45	288	\$9,799,266	\$654.33
Professional & Business Services	33	131	\$5,453,009	\$800.50
Education & Health Services	96	610	\$14,962,368	\$471.70
Leisure & Hospitality	43	353	\$3,475,748	\$189.35
Other Services	24	57	\$1,273,975	\$429.82
Local Government	30	1,083	\$31,236,300	\$554.66
State Government	11	149	\$4,435,377	\$572.45

TABLE 6. COUNTY SUMMARY
CALENDAR YEAR 2010

NORTH AMERICAN INDUSTRY CLASSIFICATION SYSTEM - INDUSTRY GROUPS	AVERAGE EMPLOYING UNITS	AVERAGE COVERED EMPLOYMENT	TOTAL CALENDAR EARNINGS	AVERAGE WEEKLY EARNINGS
POLK COUNTY - TOTAL	550	5,980	\$153,139,193	\$492.47
Natural Resources & Mining	25	220	\$7,814,827	\$683.11
Construction	44	198	\$5,081,538	\$493.54
Manufacturing	37	1,167	\$32,508,049	\$535.69
Trade, Transportation & Utilities	145	1,214	\$28,995,396	\$459.31
Wholesale Trade	22	72	\$2,736,433	\$730.88
Retail Trade	81	828	\$16,705,282	\$387.99
Transportation, Warehousing & Utilities	42	314	\$9,553,681	\$585.11
Information	9	58	\$1,545,548	\$512.45
Financial Activities	44	234	\$7,263,308	\$596.92
Professional & Business Services	54	191	\$4,680,040	\$471.21
Education & Health Services	87	1,058	\$28,234,506	\$513.21
Leisure & Hospitality	40	436	\$4,584,122	\$202.19
Other Services	31	136	\$3,261,341	\$461.16
Local Government	21	761	\$21,473,030	\$542.63
State Government	13	307	\$7,697,488	\$482.18
POPE COUNTY - TOTAL	1,783	25,915	\$843,238,831	\$625.74
Natural Resources & Mining	32	733	\$23,516,921	\$616.98
Construction	174	1,374	\$54,157,284	\$758.00
Manufacturing	80	4,448	\$164,066,818	\$709.34
Trade, Transportation & Utilities	449	6,049	\$230,266,215	\$732.05
Wholesale Trade	94	595	\$25,119,563	\$811.88
Retail Trade	277	3,257	\$69,871,529	\$412.55
Transportation, Warehousing & Utilities	78	2,197	\$135,275,123	\$1,184.09
Information	21	208	\$8,395,652	\$776.23
Financial Activities	182	753	\$25,610,405	\$654.06
Professional & Business Services	252	2,496	\$78,736,619	\$606.64
Education & Health Services	303	3,345	\$96,902,024	\$557.10
Leisure & Hospitality	137	2,384	\$28,900,342	\$233.13
Other Services	97	435	\$9,932,236	\$439.09
Local Government	40	2,153	\$69,222,292	\$618.30
State Government	16	1,537	\$53,532,023	\$669.79

TABLE 6. COUNTY SUMMARY
CALENDAR YEAR 2010

NORTH AMERICAN INDUSTRY CLASSIFICATION SYSTEM - INDUSTRY GROUPS	AVERAGE EMPLOYING UNITS	AVERAGE COVERED EMPLOYMENT	TOTAL CALENDAR EARNINGS	AVERAGE WEEKLY EARNINGS
PRAIRIE COUNTY - TOTAL	255	1,314	\$35,156,652	\$514.53
Natural Resources & Mining	29	151	\$5,572,496	\$709.69
Construction	13	53	\$1,675,270	\$607.86
Trade, Transportation & Utilities	65	299	\$7,844,178	\$504.51
Wholesale Trade	10	63	\$2,809,089	\$857.48
Retail Trade	34	166	\$2,628,134	\$304.46
Transportation, Warehousing & Utilities	21	70	\$2,406,955	\$661.25
Financial Activities	19	58	\$1,860,295	\$616.81
Professional & Business Services	15	43	\$1,132,909	\$506.67
Education & Health Services	52	216	\$4,763,239	\$424.08
Leisure & Hospitality	17	87	\$932,078	\$206.03
Other Services	14	43	\$876,979	\$392.21
Local Government	15	309	\$8,786,387	\$546.83
State Government	9	37	\$1,066,545	\$554.34
Other	7	18	\$646,276	\$690.47
PULASKI COUNTY - TOTAL	14,982	233,249	\$9,576,482,735	\$789.56
Natural Resources & Mining	66	801	\$41,696,896	\$1,001.08
Construction	1,104	8,602	\$370,097,263	\$827.40
Manufacturing	387	13,122	\$622,256,930	\$911.94
Trade, Transportation & Utilities	3,388	45,718	\$1,728,237,566	\$726.96
Wholesale Trade	1,247	12,638	\$703,507,118	\$1,070.50
Retail Trade	1,736	24,051	\$611,945,289	\$489.30
Transportation, Warehousing & Utilities	405	9,029	\$412,785,159	\$879.19
Information	235	7,092	\$414,820,226	\$1,124.83
Financial Activities	1,742	15,336	\$902,396,350	\$1,131.57
Professional & Business Services	3,056	33,594	\$1,413,226,019	\$809.00
Education & Health Services	2,436	37,442	\$1,585,664,136	\$814.42
Leisure & Hospitality	1,077	20,689	\$317,498,990	\$295.12
Other Services	1,166	7,045	\$217,774,141	\$594.46
Local Government	100	16,316	\$634,231,666	\$747.53
State Government	225	27,492	\$1,328,582,552	\$929.35

TABLE 6. COUNTY SUMMARY
CALENDAR YEAR 2010

NORTH AMERICAN INDUSTRY CLASSIFICATION SYSTEM - INDUSTRY GROUPS	AVERAGE EMPLOYING UNITS	AVERAGE COVERED EMPLOYMENT	TOTAL CALENDAR EARNINGS	AVERAGE WEEKLY EARNINGS
RANDOLPH COUNTY - TOTAL	423	4,847	\$118,897,654	\$471.73
Natural Resources & Mining	25	101	\$2,210,454	\$420.88
Construction	32	94	\$2,011,648	\$411.55
Manufacturing	32	776	\$18,392,625	\$455.80
Trade, Transportation & Utilities	100	899	\$21,721,260	\$464.65
Wholesale Trade	20	200	\$4,964,950	\$477.40
Retail Trade	61	570	\$11,949,078	\$403.14
Transportation, Warehousing & Utilities	19	129	\$4,807,232	\$716.64
Information	4	41	\$1,523,338	\$714.51
Financial Activities	27	120	\$3,632,687	\$582.16
Professional & Business Services	43	268	\$5,567,754	\$399.52
Education & Health Services	73	1,016	\$27,904,258	\$528.17
Leisure & Hospitality	33	396	\$4,128,090	\$200.47
Other Services	20	57	\$1,109,365	\$374.28
Local Government	23	800	\$21,555,139	\$518.15
State Government	11	279	\$9,141,036	\$630.07
SAINT FRANCIS COUNTY - TOTAL	805	7,554	\$212,379,901	\$540.67
Natural Resources & Mining	32	176	\$5,320,291	\$581.33
Construction	43	171	\$5,718,971	\$643.16
Manufacturing	13	685	\$21,969,858	\$616.78
Trade, Transportation & Utilities	171	2,008	\$58,242,252	\$557.79
Wholesale Trade	35	634	\$24,747,297	\$750.65
Retail Trade	114	1,152	\$23,653,462	\$394.86
Transportation, Warehousing & Utilities	22	222	\$9,841,493	\$852.52
Information	8	75	\$2,248,945	\$576.65
Financial Activities	61	325	\$9,636,594	\$570.21
Professional & Business Services	48	306	\$8,970,406	\$563.75
Education & Health Services	298	1,465	\$37,985,230	\$498.62
Leisure & Hospitality	53	682	\$7,884,113	\$222.31
Other Services	33	84	\$1,484,630	\$339.89
Local Government	28	1,043	\$35,264,545	\$650.21
State Government	17	534	\$17,654,066	\$635.77

TABLE 6. COUNTY SUMMARY
CALENDAR YEAR 2010

NORTH AMERICAN INDUSTRY CLASSIFICATION SYSTEM - INDUSTRY GROUPS	AVERAGE EMPLOYING UNITS	AVERAGE COVERED EMPLOYMENT	TOTAL CALENDAR EARNINGS	AVERAGE WEEKLY EARNINGS
SALINE COUNTY - TOTAL	1,828	20,701	\$619,562,742	\$575.56
Natural Resources & Mining	11	37	\$2,182,165	\$1,134.18
Construction	300	1,874	\$63,728,113	\$653.97
Manufacturing	79	1,207	\$53,344,248	\$849.92
Trade, Transportation & Utilities	414	4,425	\$128,461,450	\$558.29
Wholesale Trade	116	542	\$23,859,292	\$846.55
Retail Trade	247	3,628	\$94,717,458	\$502.06
Transportation, Warehousing & Utilities	51	255	\$9,884,700	\$745.45
Information	11	102	\$3,788,944	\$714.36
Financial Activities	185	679	\$23,707,581	\$671.45
Professional & Business Services	248	1,395	\$45,777,006	\$631.06
Education & Health Services	260	3,084	\$90,154,854	\$562.17
Leisure & Hospitality	139	2,657	\$34,875,022	\$252.42
Other Services	135	637	\$16,320,045	\$492.70
Local Government	30	3,468	\$124,732,394	\$691.67
State Government	16	1,136	\$32,490,920	\$550.02
SCOTT COUNTY - TOTAL	191	2,854	\$72,776,830	\$490.38
Natural Resources & Mining	18	202	\$6,467,447	\$615.71
Trade, Transportation & Utilities	39	428	\$10,843,105	\$487.20
Wholesale Trade	8	63	\$2,434,088	\$743.01
Retail Trade	25	317	\$6,091,946	\$369.57
Transportation, Warehousing & Utilities	6	48	\$2,317,071	\$928.31
Financial Activities	22	68	\$1,851,172	\$523.52
Professional & Business Services	10	9	\$279,793	\$597.85
Education & Health Services	34	303	\$9,022,953	\$572.67
Leisure & Hospitality	17	143	\$1,747,423	\$235.00
Other Services	10	40	\$1,180,529	\$567.56
Local Government	5	398	\$11,079,156	\$535.33
State Government	7	69	\$1,572,350	\$438.22
Other	29	1,194	\$28,732,902	\$462.78

TABLE 6. COUNTY SUMMARY
CALENDAR YEAR 2010

NORTH AMERICAN INDUSTRY CLASSIFICATION SYSTEM - INDUSTRY GROUPS	AVERAGE EMPLOYING UNITS	AVERAGE COVERED EMPLOYMENT	TOTAL CALENDAR EARNINGS	AVERAGE WEEKLY EARNINGS
SEARCY COUNTY - TOTAL	191	1,630	\$35,182,386	\$415.08
Construction	8	20	\$612,546	\$588.99
Manufacturing	16	206	\$3,665,845	\$342.22
Trade, Transportation & Utilities	40	279	\$5,247,762	\$361.72
Wholesale Trade	8	47	\$802,769	\$328.47
Retail Trade	25	203	\$3,483,923	\$330.04
Transportation, Warehousing & Utilities	7	29	\$961,070	\$637.31
Information	5	13	\$313,289	\$463.45
Financial Activities	15	90	\$2,295,669	\$490.53
Professional & Business Services	13	24	\$683,384	\$547.58
Education & Health Services	54	375	\$7,826,781	\$401.37
Leisure & Hospitality	12	96	\$1,048,757	\$210.09
Local Government	10	351	\$9,080,145	\$497.49
State Government	7	110	\$2,355,102	\$411.73
Other	11	66	\$2,053,106	\$598.22
SEBASTIAN COUNTY - TOTAL	3,810	66,334	\$2,374,369,506	\$688.35
Natural Resources & Mining	73	1,483	\$100,329,392	\$1,301.02
Construction	297	2,454	\$93,579,714	\$733.34
Manufacturing	207	14,505	\$599,913,057	\$795.37
Trade, Transportation & Utilities	970	12,841	\$399,700,639	\$598.59
Wholesale Trade	249	2,658	\$116,382,185	\$842.03
Retail Trade	576	7,820	\$177,164,128	\$435.68
Transportation, Warehousing & Utilities	145	2,363	\$106,154,326	\$863.91
Information	52	864	\$42,983,568	\$956.72
Financial Activities	408	2,447	\$100,647,844	\$790.98
Professional & Business Services	587	8,075	\$280,117,912	\$667.11
Education & Health Services	551	10,621	\$418,997,112	\$758.65
Leisure & Hospitality	322	5,443	\$74,094,535	\$261.78
Other Services	280	1,306	\$33,870,764	\$498.74
Local Government	43	4,440	\$165,624,825	\$717.36
State Government	20	1,855	\$64,510,144	\$668.78

TABLE 6. COUNTY SUMMARY
CALENDAR YEAR 2010

NORTH AMERICAN INDUSTRY CLASSIFICATION SYSTEM - INDUSTRY GROUPS	AVERAGE EMPLOYING UNITS	AVERAGE COVERED EMPLOYMENT	TOTAL CALENDAR EARNINGS	AVERAGE WEEKLY EARNINGS
SEVIER COUNTY - TOTAL	324	5,755	\$143,931,345	\$480.96
Natural Resources & Mining	14	209	\$5,966,914	\$549.04
Construction	17	137	\$4,744,651	\$666.01
Manufacturing	10	2,199	\$53,918,357	\$471.53
Trade, Transportation & Utilities	98	850	\$20,728,471	\$468.97
Wholesale Trade	18	129	\$4,537,167	\$676.38
Retail Trade	61	617	\$12,260,195	\$382.13
Transportation, Warehousing & Utilities	19	104	\$3,931,109	\$726.91
Information	3	22	\$692,040	\$604.93
Financial Activities	30	191	\$5,691,266	\$573.02
Professional & Business Services	28	91	\$2,207,631	\$466.53
Education & Health Services	48	554	\$13,761,293	\$477.69
Leisure & Hospitality	25	286	\$2,971,865	\$199.83
Other Services	31	152	\$3,125,868	\$395.48
Local Government	12	870	\$24,967,053	\$551.88
State Government	8	194	\$5,155,936	\$511.10
SHARP COUNTY - TOTAL	432	3,618	\$85,346,448	\$453.64
Natural Resources & Mining	3	7	\$132,173	\$363.11
Construction	28	132	\$4,336,070	\$631.71
Manufacturing	19	162	\$3,538,397	\$420.04
Trade, Transportation & Utilities	94	929	\$22,434,770	\$464.41
Wholesale Trade	13	45	\$1,032,437	\$441.21
Retail Trade	65	619	\$11,389,627	\$353.85
Transportation, Warehousing & Utilities	16	265	\$10,012,706	\$726.61
Information	7	54	\$2,429,547	\$865.22
Financial Activities	37	222	\$6,955,162	\$602.49
Professional & Business Services	46	133	\$3,839,818	\$555.21
Education & Health Services	100	662	\$15,362,337	\$446.27
Leisure & Hospitality	34	374	\$3,711,219	\$190.83
Other Services	31	90	\$1,599,780	\$341.83
Local Government	25	755	\$18,611,519	\$474.06
State Government	8	98	\$2,395,656	\$470.11

TABLE 6. COUNTY SUMMARY
CALENDAR YEAR 2010

NORTH AMERICAN INDUSTRY CLASSIFICATION SYSTEM - INDUSTRY GROUPS	AVERAGE EMPLOYING UNITS	AVERAGE COVERED EMPLOYMENT	TOTAL CALENDAR EARNINGS	AVERAGE WEEKLY EARNINGS
STONE COUNTY - TOTAL	299	2,732	\$61,682,350	\$434.19
Natural Resources & Mining	7	13	\$144,249	\$213.39
Construction	22	73	\$1,675,951	\$441.50
Manufacturing	26	293	\$6,898,774	\$452.79
Trade, Transportation & Utilities	75	674	\$15,386,806	\$439.02
Wholesale Trade	11	44	\$1,102,724	\$481.96
Retail Trade	51	584	\$12,587,223	\$414.49
Transportation, Warehousing & Utilities	13	46	\$1,696,859	\$709.39
Financial Activities	29	105	\$2,080,504	\$381.04
Professional & Business Services	13	35	\$865,103	\$475.33
Education & Health Services	57	515	\$13,925,175	\$519.98
Leisure & Hospitality	35	353	\$3,655,376	\$199.14
Local Government	10	436	\$11,685,758	\$515.43
State Government	8	156	\$3,113,336	\$383.79
Other	17	79	\$2,251,318	\$548.03
UNION COUNTY - TOTAL	1,360	17,021	\$691,054,644	\$780.77
Natural Resources & Mining	110	543	\$25,333,103	\$897.19
Construction	84	1,076	\$48,450,982	\$865.94
Manufacturing	55	2,732	\$136,934,211	\$963.89
Trade, Transportation & Utilities	342	3,657	\$133,063,915	\$699.73
Wholesale Trade	70	709	\$46,544,901	\$1,262.47
Retail Trade	213	2,138	\$45,326,964	\$407.70
Transportation, Warehousing & Utilities	59	810	\$41,192,050	\$977.97
Information	13	152	\$4,520,802	\$571.96
Financial Activities	116	736	\$25,905,159	\$676.87
Professional & Business Services	134	1,522	\$130,344,952	\$1,646.93
Education & Health Services	248	2,403	\$80,095,255	\$640.99
Leisure & Hospitality	89	1,185	\$14,518,101	\$235.61
Other Services	117	561	\$17,151,266	\$587.94
Local Government	35	1,861	\$55,872,078	\$577.36
State Government	17	593	\$18,864,820	\$611.78

TABLE 6. COUNTY SUMMARY
CALENDAR YEAR 2010

NORTH AMERICAN INDUSTRY CLASSIFICATION SYSTEM - INDUSTRY GROUPS	AVERAGE EMPLOYING UNITS	AVERAGE COVERED EMPLOYMENT	TOTAL CALENDAR EARNINGS	AVERAGE WEEKLY EARNINGS
VAN BUREN COUNTY - TOTAL	372	3,528	\$94,980,783	\$517.73
Natural Resources & Mining	7	34	\$1,852,551	\$1,047.82
Construction	42	218	\$7,428,823	\$655.33
Manufacturing	12	54	\$1,745,012	\$621.44
Trade, Transportation & Utilities	101	943	\$28,657,944	\$584.43
Wholesale Trade	12	33	\$1,237,253	\$721.01
Retail Trade	58	592	\$12,590,637	\$409.00
Transportation, Warehousing & Utilities	31	318	\$14,830,054	\$896.83
Information	8	47	\$1,666,039	\$681.69
Financial Activities	31	164	\$5,398,715	\$633.06
Professional & Business Services	32	129	\$2,797,085	\$416.98
Education & Health Services	64	662	\$17,504,794	\$508.51
Leisure & Hospitality	29	469	\$6,424,446	\$263.43
Other Services	28	81	\$1,895,665	\$450.06
Local Government	11	652	\$17,516,617	\$516.65
State Government	7	75	\$2,093,092	\$536.69
WASHINGTON COUNTY - TOTAL	5,505	87,425	\$3,394,995,694	\$746.79
Natural Resources & Mining	41	413	\$22,317,626	\$1,039.19
Construction	507	3,798	\$153,379,614	\$776.62
Manufacturing	230	13,166	\$478,192,812	\$698.47
Trade, Transportation & Utilities	1,353	20,153	\$713,091,882	\$680.46
Wholesale Trade	409	3,505	\$222,055,809	\$1,218.35
Retail Trade	756	10,377	\$249,595,271	\$462.55
Transportation, Warehousing & Utilities	188	6,271	\$241,440,802	\$740.41
Information	90	1,208	\$53,759,975	\$855.83
Financial Activities	582	3,343	\$145,434,247	\$836.62
Professional & Business Services	955	9,114	\$618,813,771	\$1,305.71
Education & Health Services	735	12,481	\$502,124,201	\$773.67
Leisure & Hospitality	551	9,232	\$125,940,889	\$262.34
Other Services	378	1,798	\$46,744,335	\$499.96
Local Government	60	7,335	\$271,704,316	\$712.35
State Government	23	5,384	\$263,492,026	\$941.15

TABLE 6. COUNTY SUMMARY
CALENDAR YEAR 2010

NORTH AMERICAN INDUSTRY CLASSIFICATION SYSTEM - INDUSTRY GROUPS	AVERAGE EMPLOYING UNITS	AVERAGE COVERED EMPLOYMENT	TOTAL CALENDAR EARNINGS	AVERAGE WEEKLY EARNINGS
WHITE COUNTY - TOTAL	1,828	25,075	\$834,887,132	\$640.30
Natural Resources & Mining	57	1,676	\$97,102,005	\$1,114.17
Construction	196	1,291	\$46,939,412	\$699.21
Manufacturing	74	2,402	\$99,218,026	\$794.35
Trade, Transportation & Utilities	478	5,983	\$188,401,612	\$605.57
Wholesale Trade	97	609	\$23,623,892	\$745.99
Retail Trade	285	3,137	\$69,604,347	\$426.70
Transportation, Warehousing & Utilities	96	2,237	\$95,173,373	\$818.17
Information	21	147	\$5,079,131	\$664.46
Financial Activities	180	953	\$36,102,788	\$728.53
Professional & Business Services	189	1,500	\$44,979,433	\$576.66
Education & Health Services	315	4,718	\$169,477,963	\$690.80
Leisure & Hospitality	141	2,419	\$27,675,385	\$220.02
Other Services	113	572	\$15,971,208	\$536.96
Local Government	46	2,680	\$82,470,254	\$591.78
State Government	18	734	\$21,469,915	\$562.51
WOODRUFF COUNTY - TOTAL	221	1,897	\$51,414,271	\$521.21
Natural Resources & Mining	26	139	\$4,166,524	\$576.44
Construction	7	44	\$1,174,599	\$513.37
Manufacturing	7	328	\$8,909,354	\$522.36
Trade, Transportation & Utilities	47	418	\$12,821,635	\$589.88
Wholesale Trade	11	150	\$6,636,026	\$850.77
Retail Trade	23	184	\$3,100,475	\$324.05
Transportation, Warehousing & Utilities	13	84	\$3,085,134	\$706.30
Financial Activities	14	64	\$2,109,036	\$633.72
Professional & Business Services	6	8	\$384,157	\$923.45
Education & Health Services	81	270	\$6,982,498	\$497.33
Leisure & Hospitality	7	72	\$834,344	\$222.85
Local Government	10	488	\$12,221,047	\$481.60
State Government	6	44	\$1,334,717	\$583.36
Other	10	22	\$476,360	\$416.40

TABLE 6. COUNTY SUMMARY
CALENDAR YEAR 2010

NORTH AMERICAN INDUSTRY CLASSIFICATION SYSTEM - INDUSTRY GROUPS	AVERAGE EMPLOYING UNITS	AVERAGE COVERED EMPLOYMENT	TOTAL CALENDAR EARNINGS	AVERAGE WEEKLY EARNINGS
YELL COUNTY - TOTAL	447	6,086	\$158,995,846	\$502.40
Natural Resources & Mining	28	231	\$6,849,217	\$570.20
Construction	40	263	\$7,218,940	\$527.85
Manufacturing	20	2,241	\$59,579,732	\$511.27
Trade, Transportation & Utilities	82	632	\$13,529,823	\$411.69
Wholesale Trade	17	33	\$876,776	\$510.94
Retail Trade	46	509	\$9,240,476	\$349.12
Transportation, Warehousing & Utilities	19	90	\$3,412,571	\$729.18
Information	2	65	\$2,721,094	\$805.06
Financial Activities	36	160	\$5,060,256	\$608.20
Professional & Business Services	42	200	\$5,819,409	\$559.56
Education & Health Services	109	698	\$17,150,805	\$472.53
Leisure & Hospitality	34	322	\$3,415,293	\$203.97
Other Services	15	35	\$626,893	\$344.45
Local Government	27	1,131	\$34,475,840	\$586.20
State Government	12	108	\$2,548,544	\$453.80
STATEWIDE COUNTY - TOTAL	4,882	17,747	\$1,052,561,694	\$1,140.56
Natural Resources & Mining	79	540	\$36,815,051	\$1,311.08
Construction	542	3,551	\$194,126,489	\$1,051.31
Manufacturing	39	191	\$8,651,393	\$871.06
Trade, Transportation & Utilities	1,698	5,498	\$429,338,926	\$1,501.73
Wholesale Trade	1,435	4,429	\$377,915,470	\$1,640.91
Retail Trade	111	441	\$26,482,582	\$1,154.83
Transportation, Warehousing & Utilities	152	628	\$24,940,874	\$763.75
Information	120	406	\$19,050,045	\$902.33
Financial Activities	301	873	\$56,313,589	\$1,240.50
Professional & Business Services	1,704	4,864	\$230,616,410	\$911.79
Education & Health Services	177	961	\$40,168,525	\$803.82
Leisure & Hospitality	57	85	\$3,410,922	\$771.70
Other	165	778	\$34,070,344	\$842.16

TABLE 7. FEDERAL GOVERNMENT EMPLOYMENT AND EARNINGS IN ARKANSAS

NORTH AMERICAN INDUSTRY CLASSIFICATION SYSTEM - INDUSTRY GROUPS	AVERAGE EMPLOYING UNITS	AVERAGE COVERED EMPLOYMENT	TOTAL CALENDAR EARNINGS	AVERAGE WEEKLY EARNINGS
TOTAL	1,257	22,861	\$1,331,589,635	\$1,120.14
Trade, Transportation & Utilities	618	6,113	\$289,143,332	\$909.61
Information	2	56	\$2,608,285	\$895.70
Financial Activities	19	181	\$12,327,588	\$1,309.77
Professional & Business Services	29	871	\$60,676,584	\$1,339.68
Education & Health Services	18	4,965	\$352,401,775	\$1,364.95
Leisure & Hospitality	22	392	\$13,458,736	\$660.26
Other Services	3	7	\$168,143	\$461.93
Public Administration	546	10,276	\$600,805,192	\$1,124.36

TABLE 8. WORKFORCE INVESTMENT AREA SUMMARY
CALENDAR YEAR 2010

NORTH AMERICAN INDUSTRY CLASSIFICATION SYSTEM - INDUSTRY GROUPS	AVERAGE EMPLOYING UNITS	AVERAGE COVERED EMPLOYMENT	TOTAL CALENDAR EARNINGS	AVERAGE WEEKLY EARNINGS
CENTRAL WORKFORCE INVESTMENT AREA*	6,425	76,429	\$2,463,987,188	\$619.98
Natural Resources & Mining	204	1,674	\$96,882,265	\$1,112.98
Construction	797	5,283	\$188,160,342	\$684.93
Trade, Transportation & Utilities	1,520	15,393	\$440,019,478	\$549.72
Wholesale Trade	398	2,456	\$110,539,402	\$865.54
Retail Trade	879	11,353	\$264,613,533	\$448.23
Transportation, Warehousing & Utilities	243	1,584	\$64,866,543	\$787.52
Information	66	591	\$23,445,699	\$762.91
Financial Activities	673	2,773	\$102,154,154	\$708.44
Professional & Business Services	809	7,987	\$347,663,625	\$837.09
Education & Health Services	1,023	11,276	\$335,994,433	\$573.03
Leisure & Hospitality	500	8,879	\$108,111,139	\$234.15
Local Government	132	10,089	\$341,904,287	\$651.71
State Government	67	4,675	\$158,663,386	\$652.67
Other	634	7,809	\$320,988,380	\$790.48
*Note: Pulaski County is not included in the Central Workforce Investment Please refer to Page 53 for information on Pulaski County.				
Central Workforce Includes these counties: Faulkner, Lonoke, Monroe, Prairie, and Saline.				
EASTERN WORKFORCE INVESTMENT AREA	3,961	36,657	\$1,093,075,419	\$573.44
Natural Resources & Mining	238	1,221	\$31,519,147	\$496.43
Construction	157	845	\$29,840,903	\$679.13
Trade, Transportation & Utilities	854	9,694	\$312,514,990	\$619.96
Wholesale Trade	186	2,155	\$89,106,696	\$795.17
Retail Trade	468	4,864	\$106,544,425	\$421.24
Transportation, Warehousing & Utilities	200	2,675	\$116,863,869	\$840.14
Financial Activities	265	1,509	\$51,418,418	\$655.28
Professional & Business Services	288	1,764	\$51,037,026	\$556.40
Education & Health Services	1,393	6,312	\$170,104,423	\$518.26
Leisure & Hospitality	244	3,262	\$42,782,364	\$252.22
Local Government	132	5,353	\$181,281,236	\$651.26
State Government	62	2,407	\$74,772,840	\$597.40
Other	328	4,290	\$147,804,072	\$662.56
Eastern Workforce Includes these counties: Crittenden, Cross, Lee, Phillips, and Saint Francis.				

TABLE 8. WORKFORCE INVESTMENT AREA SUMMARY
CALENDAR YEAR 2010

NORTH CENTRAL WORKFORCE INVESTMENT AREA	5,764	68,877	\$2,068,927,287	\$577.65
Construction	501	2,811	\$95,900,393	\$656.08
Manufacturing	270	9,362	\$330,085,748	\$678.04
Trade, Transportation & Utilities	1,442	15,341	\$453,468,084	\$568.45
Retail Trade	889	9,023	\$193,687,133	\$412.81
Other Trade, Transportation & Utilities	553	6,318	\$259,780,951	\$790.72
Information	69	553	\$17,175,949	\$597.30
Financial Activities	532	2,678	\$92,705,884	\$665.72
Professional & Business Services	508	2,879	\$82,190,804	\$549.01
Education & Health Services	1,098	12,633	\$404,199,338	\$615.30
Leisure & Hospitality	453	6,099	\$71,110,144	\$224.22
Local Government	230	9,081	\$252,658,924	\$535.05
State Government	106	3,161	\$94,141,404	\$572.73
Other	555	4,279	\$175,290,615	\$787.79
North Central Workforce Includes these counties: Cleburne, Fulton, Independence, Izard, Jackson, Sharp, Stone, Van Buren, White, and Woodruff.				
NORTHEAST WORKFORCE INVESTMENT AREA	6,630	91,825	\$2,958,102,126	\$619.51
Natural Resources & Mining	390	2,057	\$59,599,456	\$557.19
Construction	478	2,937	\$104,831,524	\$686.41
Manufacturing	337	19,028	\$811,537,981	\$820.19
Trade, Transportation & Utilities	1,705	17,920	\$520,774,930	\$558.87
Wholesale Trade	406	3,705	\$156,006,514	\$809.75
Retail Trade	992	11,416	\$247,972,413	\$417.72
Transportation, Warehousing & Utilities	307	2,799	\$116,796,003	\$802.46
Financial Activities	581	3,207	\$118,790,394	\$712.33
Professional & Business Services	685	6,652	\$187,557,332	\$542.22
Education & Health Services	1,201	14,226	\$496,965,671	\$671.80
Leisure & Hospitality	498	7,669	\$91,568,842	\$229.62
Local Government	216	11,357	\$346,804,089	\$587.24
State Government	99	4,369	\$158,526,556	\$697.78
Other	440	2,403	\$61,145,351	\$489.34
Northeast Workforce Includes these counties: Clay, Craighead, Greene, Lawrence, Mississippi, Poinsett, and Randolph.				
NORTHWEST WORKFORCE INVESTMENT AREA	14,907	224,665	\$8,919,151,499	\$763.46
Natural Resources & Mining	128	1,691	\$77,463,276	\$880.95
Trade, Transportation & Utilities	3,670	50,133	\$1,849,682,755	\$709.53
Wholesale Trade	1,203	8,348	\$578,198,412	\$1,331.96

TABLE 8. WORKFORCE INVESTMENT AREA SUMMARY
CALENDAR YEAR 2010

Retail Trade	1,983	25,439	\$601,908,412	\$455.02
Transportation, Warehousing & Utilities	484	16,346	\$669,575,931	\$787.74
Education & Health Services	2,091	27,601	\$1,025,443,287	\$714.47
Leisure & Hospitality	1,454	22,265	\$306,745,683	\$264.94
Other Services	963	4,384	\$113,385,888	\$497.38
Local Government	312	20,532	\$720,686,132	\$675.01
State Government	108	7,962	\$345,840,010	\$835.31
Other	6,181	90,097	\$4,479,904,468	\$956.21
Northwest Workforce Includes these counties: Baxter, Benton, Boone, Carroll, Madison, Marion, Newton, Searcy, and Washington.				
SOUTHEAST WORKFORCE INVESTMENT	5,985	72,450	\$2,336,956,797	\$620.31
Natural Resources & Mining	398	2,579	\$89,085,094	\$664.28
Construction	323	3,068	\$129,322,719	\$810.62
Manufacturing	218	14,985	\$621,860,273	\$798.05
Trade, Transportation & Utilities	1,324	12,622	\$378,151,982	\$576.15
Retail Trade	794	7,969	\$172,867,115	\$417.16
Other Trade, Transportation & Utilities	530	4,653	\$205,284,867	\$848.44
Education & Health Services	1,720	11,003	\$321,599,001	\$562.08
Local Government	209	9,698	\$288,744,049	\$572.57
State Government	138	6,335	\$208,475,402	\$632.86
Other	1,655	12,160	\$299,718,277	\$474.00
Southeast Workforce Includes these counties: Arkansas, Ashley, Bradley, Chicot, Cleveland, Desha, Drew, Grant, Jefferson, and Lincoln.				
SOUTHWEST WORKFORCE INVESTMENT	5,819	80,322	\$2,712,912,637	\$649.53
Natural Resources & Mining	381	2,528	\$99,926,951	\$760.16
Trade, Transportation & Utilities	1,467	15,397	\$466,499,802	\$582.66
Retail Trade	905	8,943	\$184,865,845	\$397.53
Other Trade, Transportation & Utilities	562	6,454	\$281,633,957	\$839.18
Information	65	548	\$21,345,573	\$749.07
Financial Activities	515	2,780	\$92,956,258	\$643.03
Education & Health Services	1,038	9,534	\$260,048,702	\$524.54
Leisure & Hospitality	398	5,184	\$62,898,856	\$233.33
Other Services	412	2,034	\$46,589,335	\$440.49
Local Government	260	10,317	\$306,394,581	\$571.12
State Government	140	3,746	\$121,887,938	\$625.73
Other	1,143	28,254	\$1,234,364,641	\$840.16
Southwest Workforce Includes these counties: Calhoun, Columbia, Dallas, Hempstead, Howard, Lafayette, Little River, Miller, Nevada, Ouachita, Sevier, and Union				

TABLE 8. WORKFORCE INVESTMENT AREA SUMMARY
CALENDAR YEAR 2010

WEST CENTRAL WORKFORCE INVESTMENT	8,280	104,633	\$3,129,364,003	\$575.15
Construction	815	4,630	\$160,145,372	\$665.17
Trade, Transportation & Utilities	1,928	21,284	\$646,485,165	\$584.12
Retail Trade	1,257	13,946	\$307,674,828	\$424.27
Other Trade, Transportation & Utilities	671	7,338	\$338,810,337	\$887.92
Financial Activities	820	3,541	\$122,444,142	\$664.98
Professional & Business Services	930	7,641	\$233,910,120	\$588.70
Education & Health Services	1,454	16,712	\$538,275,021	\$619.40
Leisure & Hospitality	755	12,039	\$160,583,736	\$256.51
Local Government	228	11,698	\$366,586,665	\$602.65
State Government	125	5,385	\$168,203,789	\$600.68
Other	1,225	21,703	\$732,729,993	\$649.26
West Central Workforce Includes these counties: Clark, Conway, Garland, Hot Spring, Johnson, Montgomery, Perry, Pike, Pope, and Yell				
WESTERN WORKFORCE INVESTMENT	6,695	104,148	\$3,457,983,607	\$638.51
Natural Resources & Mining	183	2,692	\$152,913,833	\$1,092.37
Trade, Transportation & Utilities	1,680	22,452	\$676,496,455	\$579.44
Wholesale Trade	394	3,661	\$154,869,839	\$813.51
Retail Trade	973	12,070	\$267,485,410	\$426.18
Transportation, Warehousing & Utilities	313	6,721	\$254,141,206	\$727.17
Financial Activities	677	3,767	\$143,094,055	\$730.50
Professional & Business Services	879	9,693	\$324,675,938	\$644.15
Education & Health Services	990	15,042	\$542,821,085	\$693.98
Leisure & Hospitality	527	8,099	\$105,520,695	\$250.55
Other Services	451	1,993	\$52,184,315	\$503.53
Local Government	152	9,205	\$313,266,097	\$654.46
State Government	73	3,003	\$94,896,291	\$607.70
Other	1,083	28,202	\$1,052,114,843	\$717.43
Western Workforce Includes these counties: Crawford, Franklin, Logan, Polk, Scott, and Sebastian				

