

Arkansas Covered Employment & Earnings

Jobs for People. People for Jobs.

DWS
Department of
WORKFORCE**Services**

Second Quarter
2008

**COVERED EMPLOYMENT AND EARNINGS
STATE OF ARKANSAS
SECOND QUARTER 2008**

**MIKE BEEBE, GOVERNOR
STATE OF ARKANSAS**

**ARTEE WILLIAMS, DIRECTOR
DEPARTMENT OF WORKFORCE SERVICES**

**PUBLISHED BY
LABOR MARKET INFORMATION & ANALYSIS
BUREAU OF LABOR STATISTICS PROGRAMS
POST OFFICE BOX 2981
LITTLE ROCK, ARKANSAS 72203-2981
BERNADETTE COLEMAN, BLS PROGRAMS MANAGER
TELEPHONE: (501) 682-3159**

STATE OF ARKANSAS HOME PAGE: <http://www.arkansas.gov>

DEPARTMENT OF WORKFORCE SERVICES HOME PAGE: <http://www.arkansas.gov/esd/>

**INTERNET SITE FOR LABOR MARKET INFORMATION:
<http://www.discover.arkansas.gov>**

RELEASED: FEBRUARY 2009

TABLE OF CONTENTS

Description of Data	Page 1
Industry Classification	Page 1
Definition of Covered Employment and Earnings	Page 2
Federal Government Employment	Page 2
County Classification	Page 2
Significant Developments During Second Quarter 2008	Page 3

LIST OF GRAPHS AND TABLES

Graph 1	Total Covered Employment for Selected Years, Arkansas	Page 7
Graph 2	Total Covered Earnings, by Calendar Quarter for Selected Years, Arkansas	Page 8
Table 1	Quarterly Comparison of Covered Employment and Wages, by Industry	Page 5
Table 2	Total Covered Employment in Arkansas, 2001-2008	Page 6
Table 3	Total Covered Earnings, 2001-2008	Page 9
Table 4	Total Taxable Earnings, 2001-2008	Page 10
Table 5	State Summary - Employment and Total Earnings, by Industry, Second Quarter 2008	Page 11
Table 6	County Summary - Employment and Total Earnings, by Industry, Second Quarter 2008	Page 23
Table 7	Federal Government Employment and Total Earnings in Arkansas, Second Quarter 2008	Page 61
Table 8	Workforce Information Area – Employment and Total Earnings, by Industry, Second Quarter 2008	Page 62

EMPLOYMENT AND EARNINGS UNDER THE ARKANSAS EMPLOYMENT SECURITY LAW SECOND QUARTER 2008

DESCRIPTION OF DATA

This publication contains covered employment and payroll data by industry and county for the Second Quarter 2008. These data are compiled from quarterly contribution and wage reports submitted by employers subject to the Arkansas Employment Security Law. An employing unit is a single physical location where business is conducted, production takes place, or services are provided. Employment data have been tabulated for each month of the quarter by industry under the **North American Industry Classification System** (NAICS) (see "Industry Classification" below) on a statewide, county and workforce area basis. Payroll data represent the total wages paid during the quarter, and are also shown by

industry for the State and by publishable industry groups for each county and workforce area. The tabulation of this data is a joint effort in conjunction with the U.S. Bureau of Labor Statistics. In addition, there are tables included which set out total covered employment by months, quarterly payrolls, and average weekly earnings for the years 2001 through 2008. Data contained in this publication are subject to revision. These revisions will be reflected in the 2008 Annual Covered Employment and Earnings publication. Because of industry code changes between years, substantial employment and wage shifts among industries are anticipated.

INDUSTRY CLASSIFICATION

Previously published industry data **will not** be comparable in all instances with currently published data since industry codes have been revised according to the following Manuals: (a) between January 1, 1958 and December 31, 1967, industry codes were assigned under the 1957 Standard Industrial Classification (SIC) Manual; (b) between January 1, 1968 and December 31, 1974, industry codes were assigned under the 1967 Standard Industrial Classification (SIC) Manual; (c) between January 1, 1975 and December 31, 1987, industry codes were assigned under the 1972 Standard Industrial Classification (SIC) Manual; (d) between January 1, 1988 and December 31, 2000, industry codes were assigned under the 1987 Standard Industrial Classification (SIC) Manual; (e) between January 1, 2001 and December 31, 2006, industry codes were assigned under the 2002 North American Industry Classification System (NAICS) Manual; and (f) since January 1, 2007, industry codes have been assigned under the 2007 North American Industry Classification System (NAICS) Manual.

The NAICS Manual represents a significant change in coding methodology as compared to the SIC Manual. One of the most significant changes involves how NAICS treats auxiliary units. Auxiliary units are establishments primarily engaged in performing management or support services for other establishments of the same enterprise. The SIC code for these units was based on the activity of the enterprise served. The NAICS code is based on the actual activities that the establishment performs. Comparisons of many industries **should not be made** between this publication and previous Covered Employment and Earnings publications that were based on SIC. Even though some titles are the same or similar, in nature, NAICS and SIC could differ in the classification of employers. The implementation of NAICS represents a profound change for statistical programs, and will create significant benefits along with transition obstacles for both data collectors and data users. A summary is available on the NAICS home page at <http://www.census.gov/naics>.

DEFINITION OF COVERED EMPLOYMENT AND EARNINGS

Covered Employment is the number of workers employed by employers subject to the Arkansas Employment Security Law who worked or received pay for the payroll period including the 12th of the month. An employer is subject to the law when they employ one or more employees in each of ten days during the current or preceding calendar year.

Currently excluded from coverage is employment covered by the Railroad Unemployment Insurance Act, some domestic service workers, employees of small agricultural establishments, self-employed and unpaid family workers, insurance and real estate

agents who are on commission only, and employees of churches and religious organizations except separately incorporated schools. The payroll information in this publication includes all wages and salaries paid to any covered employees by their employers including bonuses, commissions, and cash values of remuneration received in any medium other than cash. These wages include both taxable and nontaxable wages. Only the first \$10,000 paid to each worker by an employer in the calendar year is taxable under the Arkansas Employment Security Law.

FEDERAL GOVERNMENT EMPLOYMENT

Table 7 on page 61 lists the total number of civilians employed by the Federal Government in Arkansas during the Second Quarter 2008. Employment and wage data are set out by industry divisions. These data are obtained from required reports submitted by various

government agencies having employment in the State. Civilian Federal workers are covered by the Unemployment Compensation for Federal Employees (UCFE) program.

COUNTY CLASSIFICATION

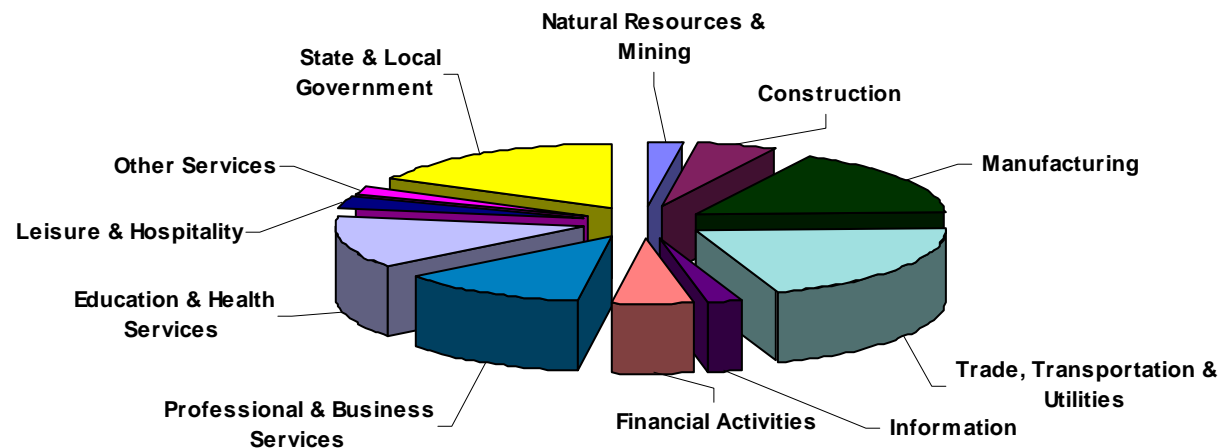
Employment and payroll data by county are classified according to the county where the workers are employed. Employers with operations in more than one county are requested to furnish this agency with a breakdown of employment and wages for at least one quarter of each year by the counties in which they operate. Many such employers submit county data with each regular contribution report. **Note:** This information is invaluable in the preparation of monthly employment and payroll data by county.

Employment and payroll data for multi - area employers, who do not furnish county data each quarter of the year, are prorated by county on the basis of one quarter's information. The "rest-of-state" table that appears on page 60 of this publication includes data on firms that **did not** provide a county breakdown of employment and payrolls. It also includes sales, and all other type of personnel with no permanent place of work, as well as employment of employers with no established place of business in Arkansas.

SIGNIFICANT DEVELOPMENTS DURING SECOND QUARTER 2008

AVERAGE EMPLOYMENT CHANGES

Covered employment averaged 1,161,727 during the Second Quarter 2008 (see table 1), an increase of 12,313 (1.1%) from the previous quarter and 2,340 (-0.2%) below the average recorded one-year ago. This *over-the-year* decrease is more significant when used as an economic indicator. This *over-the-year* comparison allows for the disregarding of many seasonal factors that are evident when making an *over-the-quarter* comparison.

Average Covered Employment by NAICS Group**EMPLOYMENT CHANGES FROM FIRST QUARTER 2008**

Nine industry groups posted over the quarter increases while two experienced losses. Leisure & Hospitality (+5,431) enjoyed the largest gain, as warming weather and the summer travel season both began. Natural Resources & Mining (+10.3%) and Construction (+3.8%) both expanded due to seasonal factors. Education & Health Services added 1,377 jobs, all in Health Care & Social Assistance. Professional & Business Services (+1,009); Trade, Transportation &

Utilities (+764); and Other Services (+515) also posted moderate gains.

Manufacturing (-0.5%) continues to lose jobs as the result of layoffs and closures. Information (-0.2) was the only other industry to lose jobs.

EMPLOYMENT CHANGES FROM SECOND QUARTER 2007

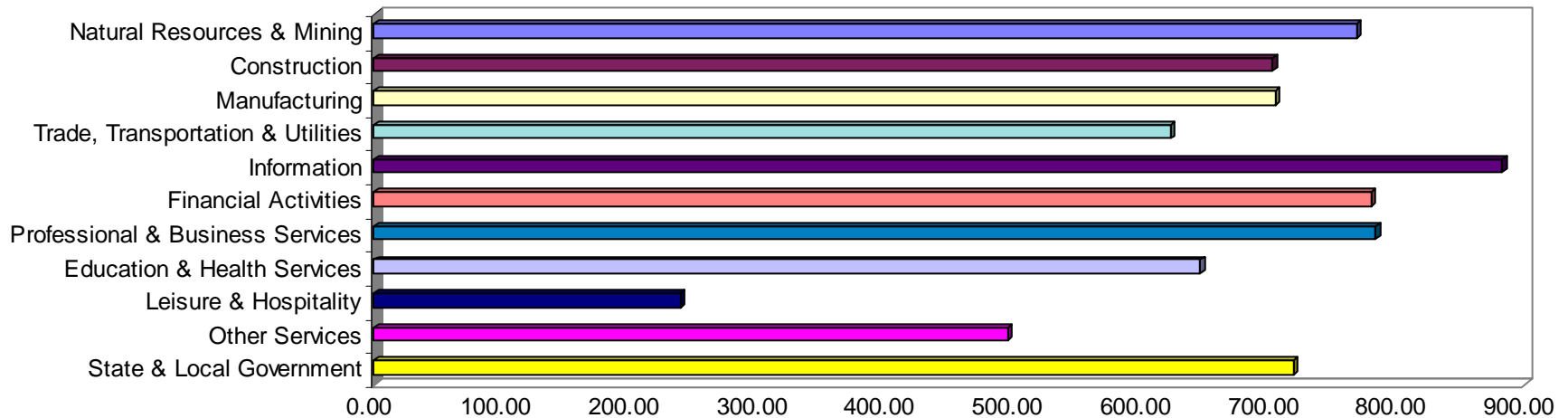
Over-the-year gains were recorded in five industry groups while six recorded losses (see table 1). Significant gains were posted in Education & Health Services (+4,621), Natural Resources & Mining (+1,453), and Leisure & Hospitality (+1,084). Significant losses occurred in Manufacturing (-6,236), Trade, Transportation & Utilities (-1,282) and Construction (-1,211).

COVERED WAGES

Wages paid to covered workers totaled \$9,830,766,145 for the Second Quarter 2008 (see table 1), for an average weekly wage of \$650.94 (see table 5). Employees in Little River County recorded the highest average weekly wage (\$793.43), and workers in Searcy County the lowest (\$405.92) (see table 6).

The Information sector recorded the highest average weekly wage for the State of Arkansas at \$882.09, while the Leisure & Hospitality sector recorded the lowest at \$239.49 for the State of Arkansas (see table 5).

Average Weekly Wages by Industry Group



Note: Because of industry code changes between years, substantial employment and wage shifts among industries are anticipated.

TABLE 1. QUARTERLY COMPARISON OF COVERED EMPLOYMENT AND WAGES, BY INDUSTRY

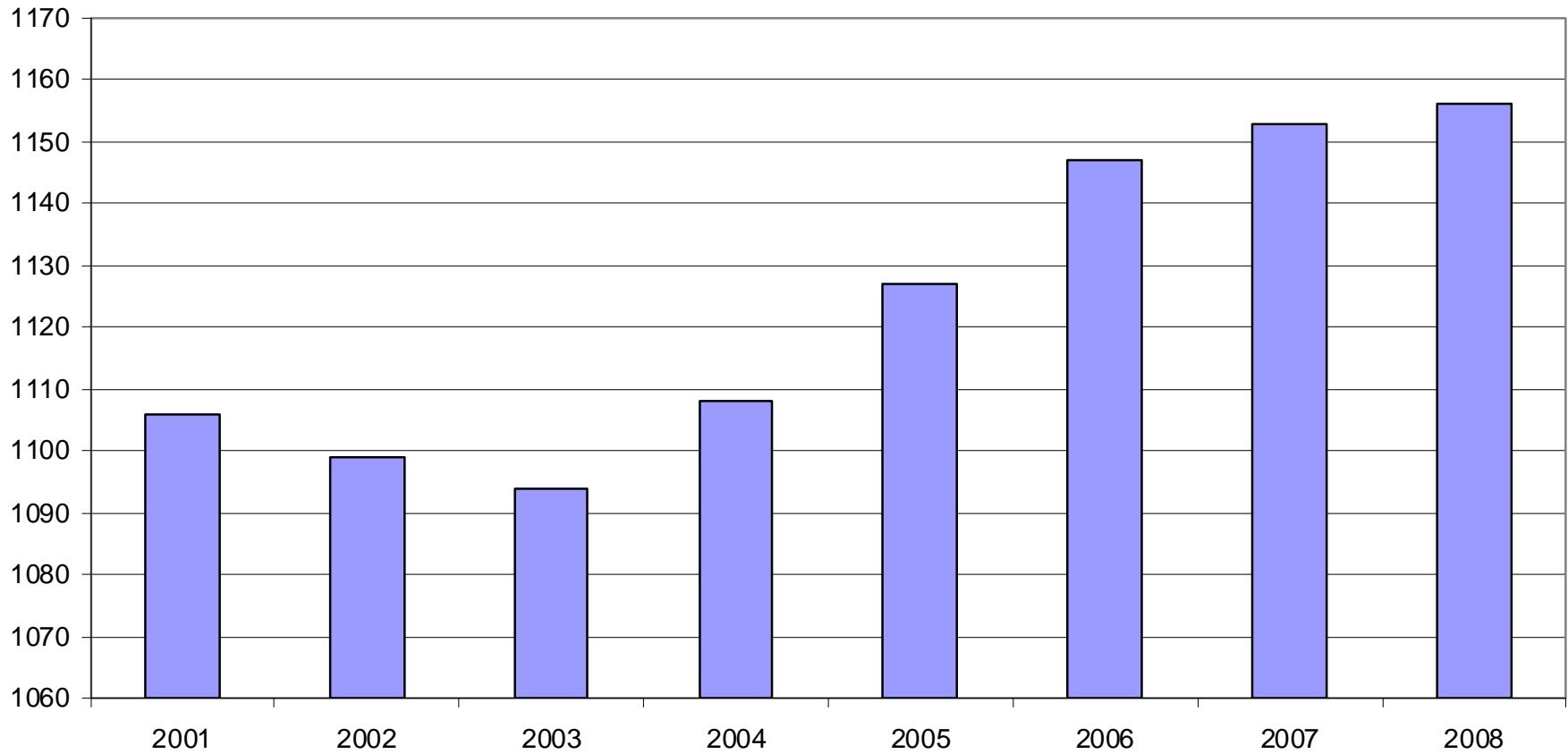
North American Industry Classification System Industry	Number of Employing Units	Average Monthly Employment	% of Employment Total	Net Change From Jan. - Mar. 2008	Net Change From Apr. - June 2007	Total Wages Paid April - June 2008	% of Total Wages Paid
Total	84,464	1,161,727	100.0%	12,313	-2,340	\$9,830,766,145	100.0%
Natural Resources & Mining	2,440	21,346	1.8%	1,999	1,453	\$213,064,253	2.2%
Agriculture, Forestry, Fishing & Hunting	1,946	13,295	1.1%	1,080	166	\$95,871,825	1.0%
Mining	494	8,051	0.7%	919	1,287	\$117,192,428	1.2%
Construction	7,951	56,442	4.9%	2,047	-1,211	\$515,289,771	5.2%
Manufacturing	3,580	183,961	15.8%	-913	-6,236	\$1,685,225,200	17.1%
Trade, Transportation & Utilities	21,156	244,887	21.1%	764	-1,282	\$1,981,320,261	20.2%
Wholesale Trade	6,459	48,895	4.2%	567	520	\$609,143,528	6.2%
Retail Trade	11,325	133,813	11.5%	230	59	\$740,611,174	7.5%
Transportation & Warehousing	3,008	55,307	4.8%	-153	-1,928	\$514,619,019	5.2%
Utilities	364	6,872	0.6%	120	66	\$116,946,540	1.2%
Information	1,115	18,850	1.6%	-34	-954	\$216,152,246	2.2%
Financial Activities	8,450	51,074	4.4%	87	-1,063	\$517,418,153	5.3%
Finance & Insurance	4,940	36,598	3.2%	-330	-949	\$417,994,044	4.3%
Real Estate & Rental & Leasing	3,510	14,475	1.2%	417	-113	\$99,424,109	1.0%
Professional & Business Services	11,718	117,663	10.1%	1,009	499	\$1,198,136,248	12.2%
Professional & Technical Services	7,337	38,675	3.3%	-887	8	\$452,598,166	4.6%
Management of Companies & Enterprises	552	25,485	2.2%	65	810	\$442,211,321	4.5%
Administrative & Waste Services	3,829	53,504	4.6%	1,831	-319	\$303,326,761	3.1%
Education & Health Services	13,222	154,423	13.3%	1,377	4,621	\$1,295,830,160	13.2%
Educational Services	601	9,659	0.8%	-119	151	\$68,075,328	0.7%
Health Care & Social Assistance	12,621	144,764	12.5%	1,495	4,471	\$1,227,754,832	12.5%
Leisure & Hospitality	6,230	102,995	8.9%	5,431	1,084	\$320,654,846	3.3%
Arts, Entertainment & Recreation	915	10,947	0.9%	2,064	414	\$41,195,355	0.4%
Accommodation & Food Services	5,315	92,048	7.9%	3,367	670	\$279,459,491	2.8%
Other Services	5,406	25,555	2.2%	515	-188	\$164,454,612	1.7%
State & Local Government	3,196	184,532	15.9%	32	935	\$1,723,220,395	17.5%
Local Government	1,988	119,302	10.3%	84	-20	\$1,119,845,525	11.4%
State Government	1,208	65,230	5.6%	-52	956	\$603,374,870	6.1%
Nonclassifiable Establishments	0	0	0.0%	0	0	\$0	0.0%

Note: Items do not necessarily add to totals because of rounding. Because of industry code changes between years, substantial employment and wage shifts among industries are anticipated.

TABLE 2. TOTAL COVERED EMPLOYMENT IN ARKANSAS

Period	2001	2002	2003	2004	2005	2006	2007	2008
Average	1,106,066	1,098,558	1,094,087	1,108,264	1,126,778	1,146,948	1,152,994	1,155,571
January	1,096,009	1,081,635	1,082,740	1,089,510	1,102,768	1,130,595	1,137,437	1,141,697
February	1,101,616	1,086,793	1,084,880	1,094,626	1,110,577	1,136,810	1,143,397	1,149,049
March	1,112,143	1,098,500	1,092,172	1,105,266	1,122,619	1,150,439	1,158,895	1,157,496
April	1,115,526	1,103,399	1,095,341	1,111,020	1,129,785	1,155,498	1,159,623	1,158,601
May	1,119,815	1,111,998	1,103,099	1,117,144	1,135,567	1,159,886	1,165,224	1,164,266
June	1,119,734	1,112,028	1,099,688	1,117,010	1,136,118	1,162,026	1,164,207	1,162,315
July	1,071,921	1,065,697	1,053,220	1,071,463	1,090,071	1,106,142	1,110,571	N/A
August	1,094,160	1,086,011	1,077,775	1,094,871	1,114,098	1,130,839	1,139,109	N/A
September	1,115,976	1,113,148	1,105,980	1,122,704	1,144,815	1,159,814	1,165,135	N/A
October	1,110,994	1,108,447	1,112,550	1,123,246	1,142,300	1,156,804	1,162,768	N/A
November	1,109,012	1,107,611	1,109,712	1,125,061	1,145,667	1,156,011	1,164,246	N/A
December	1,105,887	1,107,425	1,111,892	1,127,250	1,146,954	1,158,509	1,165,314	N/A

AVERAGE TOTAL COVERED EMPLOYMENT GRAPH 1
In Thousands



TOTAL COVERED EARNINGS BY CALENDAR QUARTER, GRAPH 2

In Thousands

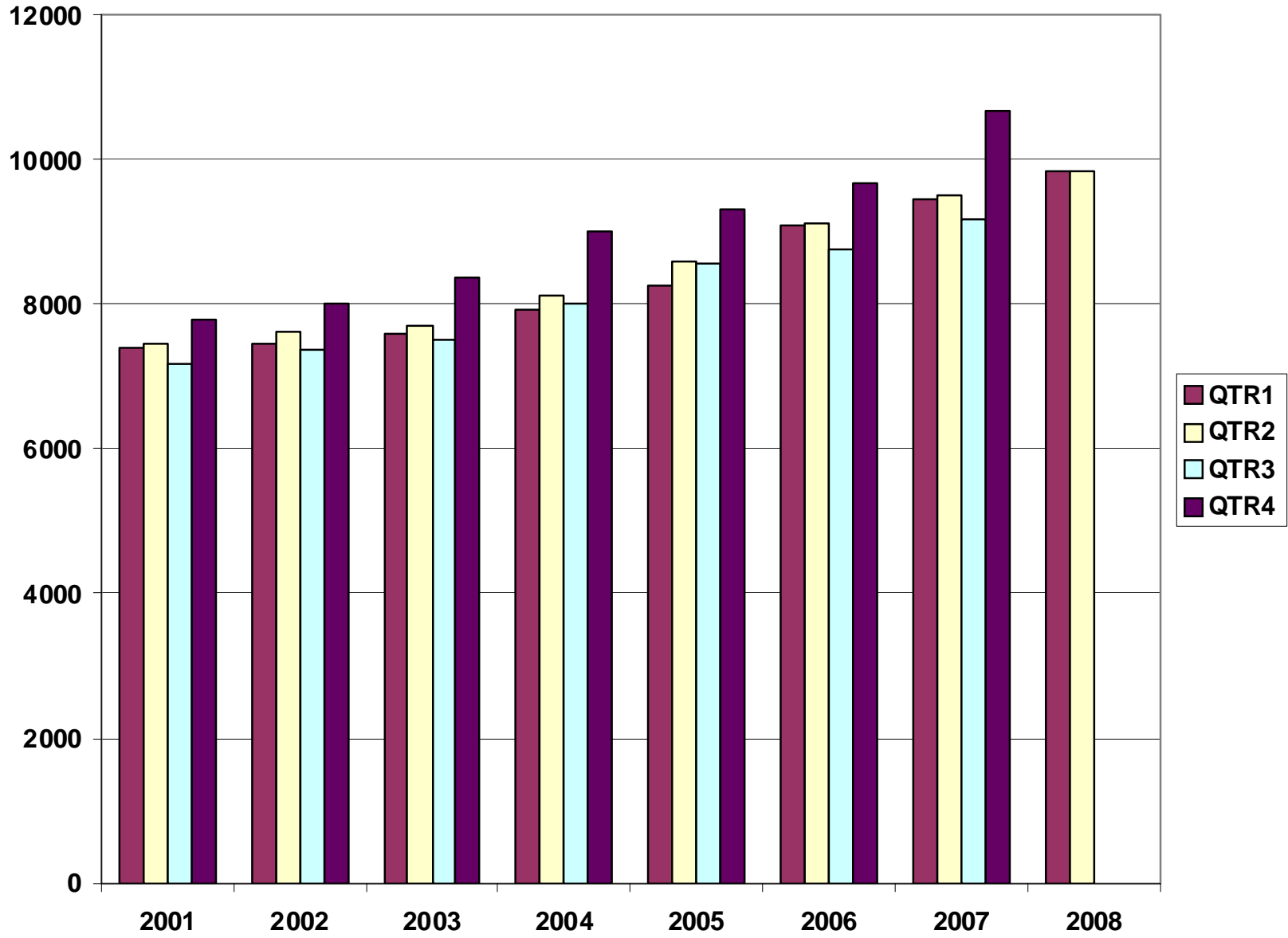


TABLE 3. TOTAL COVERED EARNINGS, 2001 - 2008

Period	2001	2002	2003	2004
Total	\$29,807,669,666	\$30,472,854,103	\$31,202,576,767	\$33,068,189,304
January - March	\$7,398,887,532	\$7,465,250,305	\$7,608,130,008	\$7,918,843,610
April - June	\$7,448,023,298	\$7,621,878,775	\$7,714,813,038	\$8,122,370,361
July - September	\$7,177,293,061	\$7,361,666,511	\$7,500,204,764	\$8,010,300,454
October - December	\$7,783,465,775	\$8,024,058,512	\$8,379,428,957	\$9,016,674,879
Average Weekly Earnings	\$518.26	\$533.44	\$548.45	\$573.80

Period	2005	2006	2007	2008
Total	\$34,753,107,631	\$36,636,090,775	\$38,833,265,464	\$19,680,478,979
January - March	\$8,261,153,981	\$9,085,021,816	\$9,452,711,662	\$9,849,712,834
April - June	\$8,607,722,353	\$9,112,624,590	\$9,525,837,049	\$9,830,766,145
July - September	\$8,562,555,369	\$8,750,878,205	\$9,178,902,477	N/A
October - December	\$9,321,675,928	\$9,687,566,164	\$10,675,814,276	N/A
Average Weekly Earnings	\$593.13	\$614.27	\$647.70	\$655.04

TABLE 4. TOTAL TAXABLE EARNINGS, 2001 - 2008

Period	2001	2002	2003	2004
Total	\$9,003,189,480	\$8,887,270,978	\$9,154,938,743	\$9,731,247,501
January - March	\$4,670,296,360	\$4,668,534,587	\$4,737,918,796	\$4,931,559,230
April - June	\$2,219,485,263	\$2,162,971,435	\$2,270,519,362	\$2,451,454,749
July - September	\$1,190,098,737	\$1,158,197,858	\$1,188,681,170	\$1,318,017,835
October - December	\$923,309,120	\$897,567,098	\$957,819,415	\$1,030,215,687

Period	2005	2006	2007	2008
Total	\$9,991,605,239	\$10,197,511,360	\$10,459,105,059	\$8,075,745,486
January - March	\$5,062,670,306	\$5,421,204,601	\$5,617,417,571	\$5,633,961,758
April - June	\$2,506,505,721	\$2,385,110,992	\$2,466,606,627	\$2,441,783,728
July - September	\$1,353,660,445	\$1,314,939,803	\$1,307,060,412	N/A
October - December	\$1,068,768,767	\$1,076,255,964	\$1,068,020,449	N/A

**TABLE 5. STATEWIDE SUMMARY
EMPLOYMENT AND TOTAL EARNINGS, BY INDUSTRY
SECOND QUARTER 2008**

NORTH AMERICAN INDUSTRY CLASSIFICATION SYSTEM INDUSTRY GROUPS	NUMBER OF EMPLOYING UNITS	EMPLOYMENT APRIL	EMPLOYMENT MAY	EMPLOYMENT JUNE	TOTAL EARNINGS APRIL - JUNE	AVERAGE WEEKLY EARNINGS
TOTAL, ALL INDUSTRIES	84,464	1,158,601	1,164,266	1,162,315	\$9,830,766,145	\$650.94
NATURAL RESOURCES AND MINING	2,440	20,828	21,347	21,864	\$213,064,253	\$767.79
AGRICULTURE, FORESTRY, FISHING AND HUNTING	1,946	13,008	13,281	13,597	\$95,871,825	\$554.69
CROP PRODUCTION	717	3,547	3,753	3,957	\$20,914,715	\$428.75
Oilseed and Grain Farming	446	1,964	2,119	2,202	\$11,971,339	\$439.56
Vegetable and Melon Farming	9	61	68	74	\$213,674	\$242.90
Fruit and Tree Nut Farming	9	130	140	197	\$826,558	\$408.45
Greenhouse and Nursery Production	53	461	433	420	\$2,551,319	\$448.07
Other Crop Farming	200	931	993	1,064	\$5,351,825	\$413.33
ANIMAL PRODUCTION	266	3,713	3,722	3,743	\$29,455,399	\$608.11
Cattle Ranching and Farming	76	323	327	335	\$1,997,971	\$468.09
Hog and Pig Farming	9	152	152	149	\$1,379,583	\$702.79
Poultry and Egg Production	90	2,615	2,624	2,648	\$21,878,733	\$640.16
Animal Aquaculture	63	548	547	545	\$3,762,691	\$529.46
Other	28	75	72	66	\$436,421	\$472.83
FORESTRY AND LOGGING	515	2,611	2,673	2,708	\$20,288,866	\$585.84
Timber Tract Operations	40	243	240	240	\$2,101,797	\$670.86
Forest Nurseries & Gathering of Forest Products	6	33	32	32	\$325,481	\$774.34
Logging	469	2,335	2,401	2,436	\$17,861,588	\$574.72
OTHER	448	3,137	3,133	3,189	\$25,212,845	\$615.11
MINING	494	7,820	8,066	8,267	\$117,192,428	\$1,119.71
OIL AND GAS EXTRACTION	101	928	1,011	1,046	\$15,383,501	\$1,189.29
MINING (EXCEPT OIL AND GAS)	111	2,237	2,263	2,249	\$25,977,718	\$888.26
SUPPORT ACTIVITIES FOR MINING	282	4,655	4,792	4,972	\$75,831,209	\$1,213.64
CONSTRUCTION	7,951	55,288	56,701	57,336	\$515,289,771	\$702.28
CONSTRUCTION OF BUILDINGS	2,204	13,111	13,302	13,453	\$132,237,392	\$765.47
Residential Building Construction	1,557	3,573	3,708	3,722	\$27,290,187	\$572.37
Nonresidential Building Construction	647	9,538	9,594	9,731	\$104,947,205	\$839.09
HEAVY AND CIVIL ENGINEERING CONSTRUCTION	862	9,333	9,928	10,186	\$98,821,015	\$774.44

**TABLE 5. STATEWIDE SUMMARY
EMPLOYMENT AND TOTAL EARNINGS, BY INDUSTRY
SECOND QUARTER 2008**

NORTH AMERICAN INDUSTRY CLASSIFICATION SYSTEM INDUSTRY GROUPS	NUMBER OF EMPLOYING UNITS	EMPLOYMENT	EMPLOYMENT	EMPLOYMENT	TOTAL EARNINGS	AVERAGE WEEKLY EARNINGS
		APRIL	MAY	JUNE	APRIL - JUNE	
Utility System Construction	414	4,647	4,982	5,359	\$50,844,544	\$782.85
Land Subdivision	125	370	371	352	\$3,144,755	\$663.96
Highway, Street and Bridge Construction	213	2,865	2,967	2,989	\$26,648,407	\$697.16
Other Heavy Construction	110	1,451	1,608	1,486	\$18,183,309	\$923.24
SPECIALTY TRADE CONTRACTORS	4,885	32,844	33,471	33,697	\$284,231,364	\$655.84
Building Foundation and Exterior Contractors	971	6,814	6,911	7,025	\$55,947,566	\$622.22
Building Equipment Contractors	2,162	15,797	15,967	16,063	\$143,507,936	\$692.44
Building Finishing Contractors	914	4,802	4,894	4,913	\$40,090,511	\$633.28
Other Specialty Trade Contractors	838	5,431	5,699	5,696	\$44,685,351	\$612.86
MANUFACTURING	3,580	183,959	183,886	184,039	\$1,685,225,200	\$704.67
FOOD MANUFACTURING	313	49,266	49,007	48,894	\$353,790,682	\$554.77
Animal Food Manufacturing	61	1,597	1,560	1,548	\$17,298,299	\$848.44
Grain and Oilseed Milling	30	2,375	2,413	2,426	\$21,247,669	\$679.69
Sugar and Confectionery Product Manufacturing	7	54	54	53	\$279,212	\$400.21
Fruit, Vegetable and Specialty Food	24	5,716	5,775	5,756	\$48,698,640	\$651.60
Dairy Product Manufacturing	11	688	700	698	\$6,742,450	\$745.90
Animal Slaughtering and Processing	93	33,594	33,264	33,177	\$216,610,054	\$499.69
Seafood Product Preparation and Packaging	5	175	180	170	\$942,448	\$414.26
Bakeries and Tortilla Manufacturing	53	3,379	3,384	3,377	\$27,631,409	\$628.84
Other Food Manufacturing	29	1,688	1,677	1,689	\$14,340,501	\$654.80
BEVERAGE AND TOBACCO PRODUCT MFG.	43	1,231	1,238	1,253	\$12,357,568	\$766.19
TEXTILE MILLS	16	263	267	272	\$2,938,704	\$845.59
TEXTILE PRODUCT MILLS	62	1,019	1,028	976	\$9,350,895	\$713.83
Textile Furnishing Mills	15	33	32	35	\$164,925	\$380.60
Other Textile Product Mills	47	986	996	941	\$9,185,970	\$725.23
APPAREL MANUFACTURING	36	1,521	1,519	1,523	\$8,384,273	\$424.03
Apparel Knitting Mills	3	712	717	707	\$4,648,438	\$502.21
Cut and Sew Apparel Manufacturing	27	565	581	600	\$2,628,980	\$347.47
Accessories and Other Apparel Manufacturing	6	244	221	216	\$1,106,855	\$375.08
LEATHER AND ALLIED PRODUCT MANUFACTURING	22	1,924	1,926	1,921	\$12,576,320	\$502.90
WOOD PRODUCT MANUFACTURING	379	11,347	11,252	11,229	\$91,226,984	\$622.34

**TABLE 5. STATEWIDE SUMMARY
EMPLOYMENT AND TOTAL EARNINGS, BY INDUSTRY
SECOND QUARTER 2008**

NORTH AMERICAN INDUSTRY CLASSIFICATION SYSTEM INDUSTRY GROUPS	NUMBER OF EMPLOYING UNITS	EMPLOYMENT	EMPLOYMENT	EMPLOYMENT	TOTAL EARNINGS	AVERAGE WEEKLY EARNINGS
		APRIL	MAY	JUNE	APRIL - JUNE	
Sawmills and Wood Preservation	157	4,589	4,719	4,680	\$40,673,800	\$671.02
Veneer and Engineered Wood Products	54	3,044	2,803	2,826	\$26,973,080	\$717.69
Other Wood Product Manufacturing	168	3,714	3,730	3,723	\$23,580,104	\$487.29
PAPER MANUFACTURING	86	10,945	10,920	10,977	\$139,104,961	\$977.44
Pulp, Paper and Paperboard Mills	13	4,272	4,282	4,309	\$69,789,228	\$1,252.06
Converted Paper Product Manufacturing	73	6,673	6,638	6,668	\$69,315,733	\$800.64
PRINTING AND RELATED SUPPORT ACTIVITIES	283	4,541	4,581	4,554	\$40,799,802	\$688.46
PETROLEUM AND COAL PRODUCTS MANUFACTURING	23	998	1,013	1,052	\$13,126,646	\$988.97
CHEMICAL MANUFACTURING	129	4,737	4,809	4,910	\$61,411,768	\$980.35
Basic Chemical Manufacturing	31	1,992	2,028	2,092	\$29,003,571	\$1,095.08
Resin, Rubber and Artificial Fibers	10	291	285	295	\$3,660,455	\$969.83
Agricultural Chemical Manufacturing	16	344	348	350	\$4,469,305	\$989.81
Paint, Coating and Adhesive Manufacturing	10	192	188	192	\$2,333,176	\$941.30
Other Chemical Preparation Manufacturing	31	921	904	908	\$10,522,567	\$888.51
Other	31	997	1,056	1,073	\$11,422,694	\$843.25
PLASTICS AND RUBBER PRODUCTS MANUFACTURING	157	11,398	11,378	11,418	\$115,978,706	\$782.72
Plastics Product Manufacturing	110	7,331	7,288	7,314	\$64,287,144	\$676.40
Rubber Product Manufacturing	47	4,067	4,090	4,104	\$51,691,562	\$972.91
NONMETALLIC MINERAL PRODUCT MANUFACTURING	264	4,471	4,436	4,442	\$41,941,548	\$725.06
Clay Product and Refractory Manufacturing	22	572	531	519	\$4,783,586	\$680.58
Glass and Glass Product Manufacturing	14	429	435	443	\$3,990,767	\$704.63
Cement and Concrete Product Manufacturing	185	2,526	2,525	2,546	\$23,258,731	\$706.52
Lime and Gypsum Product Manufacturing	5	347	343	347	\$4,376,097	\$973.84
Other Nonmetallic Mineral Products Manufacturing	38	597	602	587	\$5,532,367	\$714.84
PRIMARY METAL MANUFACTURING	83	8,377	8,400	8,469	\$111,706,198	\$1,021.09
Iron and Steel Mills and Ferroalloys	14	2,231	2,231	2,270	\$45,334,834	\$1,554.05
Purchased Steel Product Manufacturing	16	2,330	2,361	2,388	\$26,170,912	\$853.15
Alumina and Aluminum Production	22	1,985	1,986	1,935	\$22,579,994	\$882.28
Other Nonferrous Metal Production	16	672	664	698	\$6,214,524	\$705.07
Foundries	15	1,159	1,158	1,178	\$11,405,934	\$753.12
FABRICATED METAL PRODUCT MANUFACTURING	574	16,901	16,970	17,019	\$166,144,029	\$753.41

**TABLE 5. STATEWIDE SUMMARY
EMPLOYMENT AND TOTAL EARNINGS, BY INDUSTRY
SECOND QUARTER 2008**

NORTH AMERICAN INDUSTRY CLASSIFICATION SYSTEM INDUSTRY GROUPS	NUMBER OF EMPLOYING UNITS	EMPLOYMENT	EMPLOYMENT	EMPLOYMENT	TOTAL EARNINGS	AVERAGE WEEKLY EARNINGS
		APRIL	MAY	JUNE	APRIL - JUNE	
Forging and Stamping	11	755	777	766	\$7,678,366	\$771.08
Cutlery and Hand Tool Manufacturing	20	1,216	1,215	1,209	\$10,954,421	\$694.49
Architectural and Structural Metals	193	5,098	5,107	5,136	\$53,802,620	\$809.33
Boilers, Tanks and Shipping Containers	18	717	717	714	\$7,740,229	\$831.57
Hardware Manufacturing	8	268	263	256	\$1,938,817	\$568.51
Spring and Wire Product Manufacturing	12	498	477	471	\$3,573,045	\$570.23
Machine Shops and Threaded Products	204	1,995	2,053	2,058	\$16,772,591	\$633.90
Coating, Engraving and Heat Treating Metals	39	627	650	657	\$4,872,131	\$581.35
Other Fabricated Metal Product Manufacturing	69	5,727	5,711	5,752	\$58,811,809	\$789.53
MACHINERY MANUFACTURING	265	14,190	14,197	14,155	\$125,914,114	\$683.02
Agricultural, Construction and Mining Machinery	41	3,171	3,109	2,996	\$18,659,520	\$464.21
Industrial Machinery Manufacturing	35	813	795	788	\$8,920,159	\$859.14
Commercial and Service Industry Machinery	28	954	963	957	\$10,114,096	\$812.12
HVAC and Commercial Refrigeration Equipment	22	4,500	4,486	4,555	\$41,607,645	\$709.09
Metalworking Machinery Manufacturing	78	1,373	1,374	1,378	\$14,114,923	\$789.65
Turbine and Power Transmission Equipment Manufacturing	7	485	565	584	\$5,622,504	\$794.06
Other General Purpose Machinery Manufacturing	54	2,894	2,905	2,897	\$26,875,267	\$713.20
COMPUTER AND ELECTRONIC PRODUCT MANUFACTURING	82	4,081	4,145	4,149	\$37,190,269	\$693.52
Communications Equipment Manufacturing	9	152	159	160	\$2,140,600	\$1,048.80
Audio and Video Equipment Manufacturing	10	882	884	874	\$7,752,835	\$677.70
Semiconductors and Electronic Components	29	2,189	2,243	2,229	\$19,119,873	\$662.40
Electronic Instrument Manufacturing	27	827	828	856	\$8,065,362	\$741.23
Other	7	31	31	30	\$111,599	\$279.93
ELECTRICAL EQUIPMENT AND APPLIANCES	65	9,643	9,685	9,586	\$97,475,427	\$777.97
Electrical Equipment Manufacturing	23	4,753	4,749	4,628	\$46,773,195	\$763.89
Other Electrical Equipment and Component Manufacturing	23	1,990	2,016	2,015	\$19,847,865	\$760.72
Other	19	2,900	2,920	2,943	\$30,854,367	\$812.53
TRANSPORTATION EQUIPMENT MANUFACTURING	178	16,144	16,208	16,260	\$158,018,242	\$750.14
Motor Vehicle Body and Trailer Manufacturing	40	2,428	2,438	2,376	\$19,430,428	\$619.16
Motor Vehicle Parts Manufacturing	59	6,462	6,398	6,411	\$55,627,214	\$666.13
Aerospace Product and Parts Manufacturing	31	4,245	4,348	4,417	\$57,155,433	\$1,013.81

**TABLE 5. STATEWIDE SUMMARY
EMPLOYMENT AND TOTAL EARNINGS, BY INDUSTRY
SECOND QUARTER 2008**

NORTH AMERICAN INDUSTRY CLASSIFICATION SYSTEM INDUSTRY GROUPS	NUMBER OF EMPLOYING UNITS	EMPLOYMENT	EMPLOYMENT	EMPLOYMENT	TOTAL EARNINGS	AVERAGE WEEKLY EARNINGS
		APRIL	MAY	JUNE	APRIL - JUNE	
Ship and Boat Building	29	1,659	1,674	1,672	\$11,701,522	\$539.53
Other	19	1,350	1,350	1,384	\$14,103,645	\$796.94
FURNITURE & RELATED PRODUCT MFG.	264	5,930	5,918	5,983	\$45,927,418	\$594.39
Household & Institutional Furniture	217	4,059	4,066	4,109	\$30,017,563	\$566.22
Office Furniture & Fixtures Manufacturing	40	1,731	1,717	1,753	\$15,145,449	\$672.01
Other Furniture Related Product Manufacturing	7	140	135	121	\$764,406	\$445.46
MISCELLANEOUS MANUFACTURING	256	5,032	4,989	4,997	\$39,860,646	\$612.51
Medical Equipment & Supplies Manufacturing	95	2,488	2,467	2,460	\$21,702,159	\$675.41
Other Miscellaneous Manufacturing	161	2,544	2,522	2,537	\$18,158,487	\$551.15
TRADE, TRANSPORTATION AND UTILITIES	21,156	244,038	245,075	245,547	\$1,981,320,261	\$622.37
WHOLESALE TRADE	6,459	48,646	48,949	49,089	\$609,143,528	\$958.33
MERCHANT WHOLESALERS, DURABLE GOODS	2,214	22,062	22,283	22,386	\$245,954,998	\$850.56
Motor Vehicle & Part Merchant Wholesalers	250	2,644	2,684	2,671	\$24,540,949	\$708.00
Furniture & Furnishing Merchant Wholesalers	70	455	461	451	\$5,208,502	\$879.27
Lumber & Supply Merchant Wholesalers	186	1,696	1,712	1,723	\$17,357,402	\$780.66
Commercial Goods Merchant Wholesalers	288	2,693	2,722	2,797	\$41,617,274	\$1,169.51
Metal & Mineral Merchant Wholesalers	59	908	915	923	\$11,004,873	\$924.83
Electric Goods Merchant Wholesalers	179	2,227	2,215	2,197	\$25,138,810	\$873.82
Hardware & Plumbing Merchant Wholesalers	231	2,353	2,370	2,386	\$25,631,414	\$832.04
Machinery & Supply Merchant Wholesalers	713	7,271	7,345	7,387	\$78,896,417	\$827.47
Misc. Durable Goods Merchant Wholesalers	238	1,815	1,859	1,851	\$16,559,357	\$691.65
MERCHANT WHOLESALERS, NONDURABLE GOODS	1,267	16,651	16,684	16,719	\$175,885,324	\$810.90
Paper & Paper Product Merchant Wholesalers	74	1,111	1,110	1,079	\$11,583,233	\$810.02
Druggists' Goods Merchant Wholesalers	61	1,127	1,113	1,120	\$11,524,996	\$791.55
Apparel & Piece Goods Merchant Wholesalers	44	520	530	529	\$4,398,327	\$642.81
Grocery Product Merchant Wholesalers	333	5,656	5,604	5,625	\$63,994,488	\$874.62
Farm Product Merchant Wholesalers	76	877	870	896	\$5,693,220	\$497.09
Chemical Merchant Wholesalers	89	553	563	546	\$6,295,100	\$874.08
Petroleum Merchant Wholesalers	150	1,448	1,444	1,441	\$22,021,348	\$1,172.82
Alcoholic Beverage Merchant Wholesalers	36	1,163	1,166	1,173	\$12,237,354	\$806.40
Misc. Nondurable Goods Merchant Wholesalers	404	4,196	4,284	4,310	\$38,137,258	\$688.11

**TABLE 5. STATEWIDE SUMMARY
EMPLOYMENT AND TOTAL EARNINGS, BY INDUSTRY
SECOND QUARTER 2008**

NORTH AMERICAN INDUSTRY CLASSIFICATION SYSTEM INDUSTRY GROUPS	NUMBER OF EMPLOYING UNITS	EMPLOYMENT	EMPLOYMENT	EMPLOYMENT	TOTAL EARNINGS	AVERAGE WEEKLY EARNINGS
		APRIL	MAY	JUNE	APRIL - JUNE	
ELECTRONIC MARKETS & AGENTS & BROKERS	2,978	9,933	9,982	9,984	\$187,303,206	\$1,445.66
RETAIL TRADE	11,325	133,093	133,848	134,499	\$740,611,174	\$425.74
MOTOR VEHICLE & PARTS DEALERS	1,721	17,998	18,108	18,100	\$159,741,580	\$680.06
Automobile Dealers	723	10,773	10,767	10,756	\$109,605,809	\$783.18
Other Motor Vehicle Dealers	200	1,628	1,660	1,667	\$13,948,367	\$649.62
Automotive Parts, Accessories & Tire Stores	798	5,597	5,681	5,677	\$36,187,404	\$492.54
FURNITURE & HOME FURNISHINGS STORES	593	3,796	3,844	3,817	\$25,102,785	\$505.63
Furniture Stores	316	2,292	2,294	2,259	\$15,679,172	\$528.60
Home Furnishings Stores	277	1,504	1,550	1,558	\$9,423,613	\$471.53
ELECTRONICS & APPLIANCE STORES	533	4,037	4,026	4,054	\$29,681,825	\$565.29
BUILDING MATERIAL & GARDEN SUPPLY STORES	853	11,134	11,381	11,496	\$68,977,704	\$468.02
Building Material & Supplies Dealers	667	10,069	10,255	10,374	\$61,752,209	\$464.22
Lawn & Garden Equipment & Supplies Stores	186	1,065	1,126	1,122	\$7,225,495	\$503.30
FOOD & BEVERAGE STORES	1,081	18,442	18,447	18,391	\$77,899,477	\$325.20
Grocery Stores	617	16,117	16,080	16,010	\$66,087,528	\$316.36
Specialty Food Stores	159	819	868	850	\$5,640,819	\$513.10
Beer, Wine & Liquor Stores	305	1,506	1,499	1,531	\$6,171,130	\$313.96
HEALTH & PERSONAL CARE STORES	939	7,426	7,542	7,628	\$59,270,539	\$605.32
GASOLINE STATIONS	1,571	11,941	12,080	12,097	\$43,124,977	\$275.54
Gasoline Stations with Convenience Stores	1,417	10,720	10,821	10,872	\$37,170,960	\$264.64
Other Gasoline Stations	154	1,221	1,259	1,225	\$5,954,017	\$370.85
CLOTHING & CLOTHING ACCESSORIES STORES	1,071	8,734	8,681	8,631	\$30,258,744	\$268.09
Clothing Stores	726	6,712	6,724	6,695	\$21,025,029	\$241.02
Shoe Stores	177	1,162	1,119	1,105	\$4,106,162	\$279.85
Jewelry, Luggage & Leather Goods Stores	168	860	838	831	\$5,127,553	\$467.89
SPORTING GOODS, HOBBY, BOOK & MUSIC STORES	575	4,487	4,490	4,463	\$17,389,701	\$298.59
Sporting Goods & Musical Instrument Stores	429	3,162	3,171	3,156	\$13,102,074	\$318.64
Book, Periodical & Music Stores	146	1,325	1,319	1,307	\$4,287,627	\$250.43
GENERAL MERCHANDISE STORES	735	37,086	37,217	37,807	\$184,192,188	\$379.14
MISCELLANEOUS STORE RETAILERS	1,323	6,278	6,321	6,293	\$31,930,241	\$390.03
Florists	248	957	991	934	\$3,738,091	\$299.32

**TABLE 5. STATEWIDE SUMMARY
EMPLOYMENT AND TOTAL EARNINGS, BY INDUSTRY
SECOND QUARTER 2008**

NORTH AMERICAN INDUSTRY CLASSIFICATION SYSTEM INDUSTRY GROUPS	NUMBER OF EMPLOYING UNITS	EMPLOYMENT	EMPLOYMENT	EMPLOYMENT	TOTAL EARNINGS	AVERAGE WEEKLY EARNINGS
		APRIL	MAY	JUNE	APRIL - JUNE	
Office Supplies, Stationery & Gift Stores	351	2,173	2,155	2,125	\$10,895,736	\$389.65
Used Merchandise Stores	210	832	839	833	\$4,785,039	\$440.99
Other Miscellaneous Store Retailers	514	2,316	2,336	2,401	\$12,511,375	\$409.36
NONSTORE RETAILERS	330	1,734	1,711	1,722	\$13,041,413	\$582.46
Electronic Shopping & Mail -Order Houses	85	327	323	320	\$3,143,595	\$747.88
Vending Machine Operators	72	621	619	625	\$4,130,740	\$511.12
Direct Selling Establishments	173	786	769	777	\$5,767,078	\$570.70
TRANSPORTATION & WAREHOUSING	3,008	55,502	55,446	54,972	\$514,619,019	\$715.76
AIR TRANSPORTATION	50	1,003	1,025	1,034	\$12,493,679	\$941.59
TRUCK TRANSPORTATION	2,023	35,198	35,063	34,878	\$333,360,981	\$731.69
General Freight Trucking	1,282	29,573	29,388	29,064	\$282,481,589	\$740.56
Specialized Freight Trucking	741	5,625	5,675	5,814	\$50,879,392	\$686.07
TRANSIT & GROUND PASSENGER TRANSPORTATION	63	1,131	1,132	908	\$4,721,908	\$343.64
Urban Transit Systems	4	60	63	64	\$345,762	\$426.69
Interurban and Rural Bus Transportation	3	61	60	62	\$335,615	\$423.22
Taxi & Limousine Service	22	330	332	323	\$1,229,027	\$287.94
School & Employee Bus Transportation	7	348	335	130	\$1,310,112	\$371.87
Charter Bus Industry	7	62	62	61	\$416,617	\$519.69
Other Ground Passenger Transportation	20	270	280	268	\$1,084,775	\$306.03
PIPELINE TRANSPORTATION	67	858	859	868	\$12,090,423	\$1,079.34
SUPPORT ACTIVITIES FOR TRANSPORTATION	412	4,564	4,580	4,525	\$46,333,169	\$782.23
Support Activities for Air Transportation	99	1,457	1,453	1,420	\$12,937,798	\$689.53
Support Activities for Rail Transportation	33	374	380	366	\$3,164,849	\$652.10
Support Activities for Water Transportation	23	637	644	626	\$6,779,938	\$820.45
Support Activities for Road Transportation	109	520	532	535	\$3,306,030	\$480.74
Freight Transportation Arrangement	126	1,417	1,408	1,411	\$18,926,261	\$1,031.07
Other Support Activities for Transportation	22	159	163	167	\$1,218,293	\$574.94
POSTAL SERVICE	8	14	14	14	\$95,204	\$523.10
COURIERS & MESSENGERS	143	3,294	3,317	3,338	\$31,145,652	\$722.43
Couriers	86	2,968	2,995	3,023	\$29,028,980	\$745.49
Local Messengers & Local Delivery	57	326	322	315	\$2,116,672	\$507.23

**TABLE 5. STATEWIDE SUMMARY
EMPLOYMENT AND TOTAL EARNINGS, BY INDUSTRY
SECOND QUARTER 2008**

NORTH AMERICAN INDUSTRY CLASSIFICATION SYSTEM INDUSTRY GROUPS	NUMBER OF EMPLOYING UNITS	EMPLOYMENT	EMPLOYMENT	EMPLOYMENT	TOTAL EARNINGS	AVERAGE WEEKLY EARNINGS
		APRIL	MAY	JUNE	APRIL - JUNE	
WAREHOUSING & STORAGE	229	9,249	9,243	9,196	\$72,626,046	\$605.31
OTHER	13	191	213	211	\$1,751,957	\$657.39
UTILITIES	364	6,797	6,832	6,987	\$116,946,540	\$1,309.06
Power Generation & Supply	161	5,048	5,060	5,187	\$95,838,731	\$1,446.00
Natural Gas Distribution	34	907	917	936	\$14,652,879	\$1,225.16
Water, Sewage and Other Systems	169	842	855	864	\$6,454,930	\$581.65
INFORMATION	1,115	19,132	18,754	18,663	\$216,152,246	\$882.09
PUBLISHING INDUSTRIES, EXCEPT INTERNET	252	6,122	6,063	5,897	\$48,235,006	\$615.59
Newspaper, Book & Directory Publishers	225	5,888	5,831	5,675	\$44,498,961	\$590.38
Software Publishers	27	234	232	222	\$3,736,045	\$1,253.15
MOTION PICTURE & SOUND RECORDING INDUSTRY	145	1,180	1,214	1,319	\$5,472,217	\$340.11
Motion Picture & Video Industries	124	1,133	1,168	1,272	\$5,094,499	\$329.04
Sound Recording Industries	21	47	46	47	\$377,718	\$622.61
BROADCASTING, EXCEPT INTERNET	145	2,137	2,127	2,109	\$19,247,956	\$696.98
Radio & Television Broadcasting	139	2,093	2,090	2,076	\$18,999,479	\$700.51
Cable & Other Subscription Programming	6	44	37	33	\$248,477	\$502.99
TELECOMMUNICATIONS	420	8,406	8,048	8,032	\$125,850,216	\$1,186.08
Wired Telecommunications Carriers	300	4,467	4,498	4,441	\$63,135,453	\$1,086.81
Other Telecommunications	88	559	552	560	\$6,202,753	\$856.62
Other	32	3,380	2,998	3,031	\$56,512,010	\$1,386.04
DATA PROCESSING, HOSTING & RELATED SERVICES	97	986	986	985	\$14,413,690	\$1,124.87
OTHER	56	301	316	321	\$2,933,161	\$721.62
FINANCIAL ACTIVITIES	8,450	50,917	51,198	51,106	\$517,418,153	\$779.29
FINANCE & INSURANCE	4,940	36,585	36,670	36,540	\$417,994,044	\$878.55
CREDIT INTERMEDIATION & RELATED ACTIVITIES	2,123	21,470	21,436	21,390	\$200,741,715	\$720.50
Depository Credit Intermediation	1,440	18,414	18,403	18,434	\$165,106,065	\$689.61
Nondepository Credit Intermediation	400	2,070	2,081	2,014	\$27,578,258	\$1,032.31
Activities Related to Credit Intermediation	283	986	952	942	\$8,057,392	\$645.62
FINANCIAL INVESTMENT & RELATED ACTIVITIES	635	3,189	3,228	3,215	\$74,039,043	\$1,773.87
INSURANCE CARRIERS & RELATED ACTIVITIES	2,140	11,483	11,555	11,488	\$138,500,163	\$925.72
Insurance Carriers	389	4,853	4,868	4,884	\$65,575,734	\$1,036.14

**TABLE 5. STATEWIDE SUMMARY
EMPLOYMENT AND TOTAL EARNINGS, BY INDUSTRY
SECOND QUARTER 2008**

NORTH AMERICAN INDUSTRY CLASSIFICATION SYSTEM INDUSTRY GROUPS	NUMBER OF EMPLOYING UNITS	EMPLOYMENT	EMPLOYMENT	EMPLOYMENT	TOTAL EARNINGS	AVERAGE WEEKLY EARNINGS
		APRIL	MAY	JUNE	APRIL - JUNE	
Insurance Agencies, Brokerages & Support	1,751	6,630	6,687	6,604	\$72,924,429	\$844.77
OTHER	42	443	451	447	\$4,713,123	\$811.07
REAL ESTATE & RENTAL & LEASING	3,510	14,332	14,528	14,566	\$99,424,109	\$528.35
REAL ESTATE	2,651	8,868	8,997	9,047	\$60,139,896	\$515.70
Lessors of Real Estate	1,072	4,405	4,501	4,553	\$28,548,201	\$489.49
Offices of Real Estate Agents & Brokers	966	2,001	2,025	2,002	\$14,350,778	\$549.39
Activities Related to Real Estate	613	2,462	2,471	2,492	\$17,240,917	\$535.85
RENTAL & LEASING SERVICES	840	5,394	5,461	5,454	\$38,333,122	\$542.41
Automotive Equipment Rental & Leasing	125	1,061	1,081	1,062	\$7,189,246	\$517.81
Consumer Goods Rental	513	3,037	3,075	3,084	\$16,793,860	\$421.43
General Rental Centers	32	252	250	262	\$1,959,064	\$591.74
Machinery & Equipment Rental & Leasing	170	1,044	1,055	1,046	\$12,390,952	\$909.21
LESSORS OF NONFINANCIAL INTANGIBLE ASSETS	19	70	70	65	\$951,091	\$1,070.65
PROFESSIONAL AND BUSINESS SERVICES	11,718	117,243	118,025	117,722	\$1,198,136,248	\$783.29
PROFESSIONAL & TECHNICAL SERVICES	7,337	39,341	38,409	38,274	\$452,598,166	\$900.21
Legal Services	1,663	6,532	6,511	6,588	\$68,372,426	\$803.74
Accounting & Bookkeeping Services	1,249	6,598	5,502	5,116	\$54,874,263	\$735.55
Architectural & Engineering Services	980	6,575	6,667	6,763	\$80,508,772	\$928.72
Specialized Design Services	176	468	469	464	\$3,995,534	\$658.13
Computer Systems Design & Related Services	981	7,781	7,745	7,734	\$131,977,098	\$1,309.38
Management & Technical Consulting Services	1,231	4,439	4,491	4,557	\$53,750,891	\$919.70
Scientific Research & Development Services	105	1,078	1,083	1,090	\$13,537,346	\$960.94
Advertising & Related Services	334	1,960	1,989	2,011	\$22,712,944	\$879.44
Other Professional & Technical Services	618	3,910	3,952	3,951	\$22,868,892	\$446.75
MANAGEMENT OF COMPANIES & ENTERPRISES	552	25,434	25,452	25,568	\$442,211,321	\$1,334.77
ADMINISTRATIVE & WASTE SERVICES	3,829	52,468	54,164	53,880	\$303,326,761	\$436.10
ADMINISTRATIVE & SUPPORT SERVICES	3,609	50,085	51,745	51,418	\$279,355,867	\$420.67
Office Administrative Services	393	1,317	1,332	1,333	\$16,278,021	\$943.36
Facilities Support Services	17	113	123	371	\$1,295,949	\$492.69
Employment Services	710	23,253	24,213	23,642	\$117,747,133	\$382.13
Business Support Services	435	6,634	6,996	6,753	\$40,497,104	\$458.49

**TABLE 5. STATEWIDE SUMMARY
EMPLOYMENT AND TOTAL EARNINGS, BY INDUSTRY
SECOND QUARTER 2008**

NORTH AMERICAN INDUSTRY CLASSIFICATION SYSTEM INDUSTRY GROUPS	NUMBER OF EMPLOYING UNITS	EMPLOYMENT	EMPLOYMENT	EMPLOYMENT	TOTAL EARNINGS	AVERAGE WEEKLY EARNINGS
		APRIL	MAY	JUNE	APRIL - JUNE	
Travel Arrangement & Reservation Services	102	402	406	423	\$3,031,120	\$568.23
Investigation & Security Services	246	4,602	4,607	4,507	\$27,623,146	\$464.75
Services to Buildings & Dwellings	1,397	12,150	12,476	12,729	\$59,851,552	\$369.75
Other Support Services	309	1,614	1,592	1,660	\$13,031,842	\$618.03
WASTE MANAGEMENT & REMEDIATION SERVICES	220	2,383	2,419	2,462	\$23,970,894	\$761.53
Waste Collection	106	1,234	1,250	1,269	\$11,948,923	\$734.73
Waste Treatment & Disposal	42	709	717	719	\$8,270,363	\$889.76
Remediation & Other Waste Services	72	440	452	474	\$3,751,608	\$633.79
EDUCATION AND HEALTH SERVICES	13,222	154,084	154,711	154,473	\$1,295,830,160	\$645.50
EDUCATIONAL SERVICES	601	9,902	9,789	9,285	\$68,075,328	\$542.16
Elementary & Secondary Schools	72	3,206	3,220	3,001	\$18,529,412	\$453.59
Junior Colleges	7	290	289	282	\$2,028,483	\$543.68
Colleges & Universities	29	3,592	3,498	3,277	\$26,898,745	\$598.77
Business, Computer & Management Training	42	205	212	218	\$4,431,586	\$1,610.51
Technical & Trade Schools	106	757	759	738	\$8,345,536	\$854.43
Other Schools & Instruction	237	1,487	1,465	1,401	\$4,626,833	\$245.29
Educational Support Services	108	365	346	368	\$3,214,733	\$687.55
HEALTH CARE & SOCIAL ASSISTANCE	12,621	144,182	144,922	145,188	\$1,227,754,832	\$652.39
AMBULATORY HEALTH CARE SERVICES	5,033	44,521	44,878	45,077	\$542,661,772	\$931.24
Offices of Physicians	2,215	20,997	21,176	21,257	\$335,864,317	\$1,221.93
Offices of Dentists	947	6,249	6,329	6,327	\$61,485,360	\$750.54
Offices of Other Health Practitioners	1,190	6,100	6,156	6,191	\$49,813,604	\$623.16
Outpatient Care Centers	253	3,961	3,952	3,963	\$37,249,105	\$723.81
Medical & Diagnostic Laboratories	111	829	846	851	\$10,997,099	\$1,004.67
Home Health Care Services	181	4,126	4,130	4,185	\$29,556,730	\$548.25
Other Ambulatory Health Care Services	136	2,259	2,289	2,303	\$17,695,557	\$596.06
HOSPITALS	124	42,196	42,302	42,674	\$413,799,490	\$750.89
General Medical & Surgical Hospitals	91	38,516	38,609	38,953	\$376,930,468	\$749.36
Psychiatric & Substance Abuse Hospitals	11	1,723	1,713	1,710	\$15,529,060	\$696.39
Other Hospitals	22	1,957	1,980	2,011	\$21,339,962	\$827.94
NURSING & RESIDENTIAL CARE FACILITIES	519	28,253	28,630	28,667	\$148,296,853	\$400.03

**TABLE 5. STATEWIDE SUMMARY
EMPLOYMENT AND TOTAL EARNINGS, BY INDUSTRY
SECOND QUARTER 2008**

NORTH AMERICAN INDUSTRY CLASSIFICATION SYSTEM INDUSTRY GROUPS	NUMBER OF EMPLOYING UNITS	EMPLOYMENT	EMPLOYMENT	EMPLOYMENT	TOTAL EARNINGS	AVERAGE WEEKLY EARNINGS
		APRIL	MAY	JUNE	APRIL - JUNE	
Nursing Care Facilities	249	20,903	21,255	21,255	\$109,728,136	\$399.32
Residential Mental Health Facilities	128	3,397	3,393	3,397	\$18,165,991	\$411.52
Community Care Facilities for the Elderly	96	2,375	2,386	2,414	\$11,179,586	\$359.57
Other Residential Care Facilities	46	1,578	1,596	1,601	\$9,223,140	\$445.74
SOCIAL ASSISTANCE	6,945	29,212	29,112	28,770	\$122,996,717	\$325.90
Individual & Family Services	5,746	15,353	15,410	15,495	\$66,402,012	\$331.26
Emergency & Other Relief Services	127	921	931	937	\$4,935,063	\$408.34
Vocational Rehabilitation Services	128	3,720	3,687	3,746	\$17,630,481	\$364.80
Child Day Care Services	944	9,218	9,084	8,592	\$34,029,161	\$291.99
LEISURE AND HOSPITALITY	6,230	101,876	102,872	104,236	\$320,654,846	\$239.49
ARTS, ENTERTAINMENT & RECREATION	915	10,376	10,889	11,575	\$41,195,355	\$289.48
PERFORMING ARTS & SPECTATOR SPORTS	230	3,030	2,712	2,535	\$11,946,365	\$333.07
Performing Arts Companies	38	319	580	605	\$1,727,275	\$265.03
Spectator Sports	60	1,755	1,182	1,175	\$6,858,580	\$384.91
Performing Arts & Sports Promoters	49	817	811	606	\$2,316,447	\$239.29
Agents & Managers for Public Figures	20	29	26	21	\$198,689	\$603.31
Independent Artists, Writers & Performers	63	110	113	128	\$845,374	\$555.80
MUSEUMS, PARKS & HISTORICAL SITES	51	255	286	314	\$1,350,742	\$364.57
GAMBLING, RECREATION & AMUSEMENT INDUSTRY	634	7,091	7,891	8,726	\$27,898,248	\$271.56
ACCOMMODATION & FOOD SERVICES	5,315	91,500	91,983	92,661	\$279,459,491	\$233.54
ACCOMMODATION	841	11,713	12,049	12,861	\$45,792,873	\$288.55
Traveler Accommodation	763	11,299	11,530	11,805	\$43,291,385	\$288.45
RV Parks & Recreational Camps	59	335	444	1,008	\$2,233,201	\$288.39
Rooming & Boarding Houses	19	79	75	48	\$268,287	\$306.50
FOOD SERVICES & DRINKING PLACES	4,474	79,787	79,934	79,800	\$233,666,618	\$225.13
Full -Service Restaurants	1,959	35,041	35,060	34,752	\$110,139,151	\$242.40
Limited-Service Eating Places	2,222	41,175	41,740	41,958	\$112,605,006	\$208.10
Special Food Services	147	2,541	2,118	2,042	\$7,919,419	\$272.73
Drinking Places, Alcoholic Beverages	146	1,030	1,016	1,048	\$3,003,042	\$223.99
OTHER SERVICES	5,406	25,298	25,474	25,894	\$164,454,612	\$495.02
REPAIR & MAINTENANCE	2,172	9,646	9,620	9,633	\$75,301,882	\$601.31

**TABLE 5. STATEWIDE SUMMARY
EMPLOYMENT AND TOTAL EARNINGS, BY INDUSTRY
SECOND QUARTER 2008**

NORTH AMERICAN INDUSTRY CLASSIFICATION SYSTEM INDUSTRY GROUPS	NUMBER OF EMPLOYING UNITS	EMPLOYMENT	EMPLOYMENT	EMPLOYMENT	TOTAL EARNINGS	AVERAGE WEEKLY EARNINGS
		APRIL	MAY	JUNE	APRIL - JUNE	
Automotive Repair & Maintenance	1,487	6,572	6,550	6,597	\$45,484,187	\$532.30
Electronic Equipment Repair & Maintenance	160	706	703	692	\$6,801,679	\$747.08
Commercial Machinery Repair & Maintenance	344	1,699	1,703	1,683	\$18,407,895	\$835.39
Household Goods Repair & Maintenance	181	669	664	661	\$4,608,121	\$533.31
PERSONAL & LAUNDRY SERVICES	1,316	8,288	8,311	8,246	\$41,938,782	\$389.54
Personal Care Services	573	2,795	2,849	2,758	\$11,707,049	\$321.55
Death Care Services	237	1,625	1,619	1,644	\$11,181,300	\$527.88
Drycleaning & Laundry Services	329	3,165	3,145	3,131	\$15,683,985	\$383.37
Other Personal Services	177	703	698	713	\$3,366,448	\$367.49
MEMBERSHIP ASSOCIATIONS & ORGANIZATIONS	1,036	6,151	6,305	6,791	\$41,900,061	\$502.38
Religious Organizations	45	239	250	269	\$1,496,987	\$455.75
Grantmaking & Giving Services	102	470	483	493	\$4,744,498	\$757.18
Social Advocacy Organizations	180	1,992	2,004	1,909	\$12,809,251	\$500.59
Civic & Social Organizations	204	1,398	1,456	1,880	\$5,645,793	\$275.22
Professional & Similar Organizations	505	2,052	2,112	2,240	\$17,203,532	\$619.93
PRIVATE HOUSEHOLDS	882	1,213	1,238	1,224	\$5,313,887	\$333.68
LOCAL GOVERNMENT	1,988	120,003	120,607	117,297	\$1,119,845,525	\$722.05
STATE GOVERNMENT	1,208	65,935	65,616	64,138	\$603,374,870	\$711.54
NONCLASSIFIABLE ESTABLISHMENTS	0	0	0	0	\$0	

**TABLE 6. COUNTY SUMMARY
EMPLOYMENT AND TOTAL EARNINGS, BY INDUSTRY
SECOND QUARTER 2008**

NORTH AMERICAN INDUSTRY CLASSIFICATION SYSTEM INDUSTRY GROUP	NUMBER OF EMPLOYING UNITS	EMPLOYMENT	EMPLOYMENT	EMPLOYMENT	TOTAL EARNINGS	AVERAGE WEEKLY EARNINGS
		APRIL	MAY	JUNE	APRIL - JUNE	
ARKANSAS COUNTY - TOTAL	752	10,235	10,312	10,318	\$78,909,085	\$589.98
Natural Resources & Mining	44	214	228	225	\$2,056,871	\$711.64
Construction	45	318	341	341	\$2,853,864	\$658.58
Manufacturing	33	3,734	3,743	3,802	\$32,809,080	\$671.28
Trade, Transportation & Utilities	205	1,964	1,973	1,978	\$16,712,681	\$652.03
Wholesale Trade	43	425	427	423	\$5,160,053	\$933.95
Retail Trade	101	1,062	1,070	1,089	\$5,849,253	\$419.07
Transportation, Warehousing & Utilities	61	477	476	466	\$5,703,375	\$927.53
Information	11	111	111	100	\$874,388	\$626.65
Financial Activities	54	337	344	334	\$2,790,333	\$634.41
Professional & Business Services	60	410	399	401	\$3,909,684	\$745.65
Education & Health Services	135	1,339	1,322	1,294	\$6,895,970	\$402.37
Leisure & Hospitality	59	516	556	566	\$1,276,219	\$179.80
Other Services	58	146	146	147	\$837,145	\$440.06
Local Government	32	900	905	901	\$6,407,022	\$546.39
State Government	16	246	244	229	\$1,485,828	\$476.89
ASHLEY COUNTY - TOTAL	590	7,928	7,798	7,879	\$67,815,547	\$662.98
Natural Resources & Mining	64	382	403	424	\$2,922,088	\$557.76
Construction	49	497	536	529	\$3,894,672	\$575.40
Manufacturing	26	2,638	2,447	2,487	\$31,599,019	\$963.03
Trade, Transportation & Utilities	139	1,262	1,255	1,235	\$7,740,120	\$476.06
Wholesale Trade	24	187	186	170	\$1,718,301	\$730.26
Retail Trade	87	840	844	841	\$3,916,763	\$357.97
Transportation, Warehousing & Utilities	28	235	225	224	\$2,105,056	\$710.21
Information	8	51	51	52	\$340,476	\$510.20
Financial Activities	40	246	244	248	\$1,750,035	\$547.23
Professional & Business Services	52	351	345	363	\$2,126,898	\$463.48
Education & Health Services	98	703	714	701	\$5,153,604	\$561.52
Leisure & Hospitality	28	400	413	411	\$1,111,121	\$209.49
Other Services	42	198	198	200	\$1,125,997	\$435.98
Local Government	32	960	952	1,004	\$8,823,197	\$698.26
State Government	12	240	240	225	\$1,228,320	\$402.07

**TABLE 6. COUNTY SUMMARY
EMPLOYMENT AND TOTAL EARNINGS, BY INDUSTRY
SECOND QUARTER 2008**

NORTH AMERICAN INDUSTRY CLASSIFICATION SYSTEM INDUSTRY GROUP	NUMBER OF EMPLOYING UNITS	EMPLOYMENT	EMPLOYMENT	EMPLOYMENT	TOTAL EARNINGS	AVERAGE WEEKLY EARNINGS
		APRIL	MAY	JUNE	APRIL - JUNE	
BAXTER COUNTY - TOTAL	1,340	14,918	15,116	14,821	\$109,228,124	\$561.95
Natural Resources & Mining	5	127	136	137	\$1,053,012	\$607.51
Construction	153	723	750	765	\$4,878,728	\$503.07
Manufacturing	64	2,511	2,533	2,547	\$24,346,399	\$740.14
Trade, Transportation & Utilities	293	2,722	2,766	2,760	\$16,587,031	\$464.09
Wholesale Trade	39	214	215	215	\$1,533,173	\$549.39
Retail Trade	220	2,300	2,334	2,317	\$13,297,732	\$441.48
Transportation, Warehousing & Utilities	34	208	217	228	\$1,756,126	\$620.61
Information	24	234	245	239	\$1,900,892	\$610.96
Financial Activities	127	723	733	725	\$6,324,865	\$669.23
Professional & Business Services	142	891	888	881	\$6,040,665	\$524.06
Education & Health Services	258	3,439	3,465	3,445	\$28,528,924	\$636.16
Leisure & Hospitality	120	1,498	1,562	1,561	\$4,357,127	\$217.59
Other Services	103	395	387	405	\$2,032,173	\$395.08
Local Government	38	1,314	1,319	1,061	\$10,991,679	\$686.67
State Government	13	341	332	295	\$2,186,629	\$521.29
BENTON COUNTY - TOTAL	5,583	95,381	95,757	95,827	\$976,409,000	\$785.20
Natural Resources & Mining	29	754	772	792	\$8,455,853	\$841.83
Construction	712	4,268	4,224	4,304	\$41,642,422	\$751.00
Manufacturing	244	13,162	13,091	12,957	\$114,248,115	\$672.40
Trade, Transportation & Utilities	1,512	23,465	23,431	23,341	\$230,008,884	\$755.71
Wholesale Trade	691	3,871	3,907	3,901	\$70,716,168	\$1,397.30
Retail Trade	632	9,083	9,204	9,272	\$54,793,476	\$458.82
Transportation, Warehousing & Utilities	189	10,511	10,320	10,168	\$104,499,240	\$777.94
Information	73	891	870	867	\$8,775,841	\$770.62
Financial Activities	599	3,908	3,939	3,943	\$42,201,815	\$826.03
Professional & Business Services	1,010	22,457	22,588	22,867	\$339,507,539	\$1,153.67
Education & Health Services	532	7,487	7,544	7,507	\$62,762,033	\$642.63
Leisure & Hospitality	440	8,525	8,723	8,893	\$30,102,585	\$265.74
Other Services	335	1,661	1,677	1,713	\$11,633,407	\$531.51
Local Government	78	7,719	7,819	7,757	\$79,570,676	\$788.26
State Government	19	1,084	1,079	886	\$7,499,830	\$567.64

**TABLE 6. COUNTY SUMMARY
EMPLOYMENT AND TOTAL EARNINGS, BY INDUSTRY
SECOND QUARTER 2008**

NORTH AMERICAN INDUSTRY CLASSIFICATION SYSTEM INDUSTRY GROUP	NUMBER OF EMPLOYING UNITS	EMPLOYMENT	EMPLOYMENT	EMPLOYMENT	TOTAL EARNINGS	AVERAGE WEEKLY EARNINGS
		APRIL	MAY	JUNE	APRIL - JUNE	
BOONE COUNTY - TOTAL	1,087	13,847	14,028	14,065	\$110,065,657	\$605.62
Construction	96	470	480	483	\$3,471,998	\$559.13
Manufacturing	73	1,870	1,873	1,881	\$16,622,754	\$682.08
Trade, Transportation & Utilities	267	4,401	4,453	4,535	\$37,766,135	\$650.93
Wholesale Trade	62	666	671	689	\$5,037,058	\$573.74
Retail Trade	153	1,861	1,890	1,913	\$10,593,793	\$431.62
Transportation, Warehousing & Utilities	52	1,874	1,892	1,933	\$22,135,284	\$896.32
Information	19	434	444	439	\$4,523,885	\$792.69
Financial Activities	99	649	650	645	\$5,333,624	\$633.15
Professional & Business Services	114	525	508	498	\$3,378,454	\$509.24
Education & Health Services	198	1,190	1,199	1,190	\$8,783,974	\$566.38
Leisure & Hospitality	78	1,118	1,158	1,143	\$3,226,222	\$217.76
Local Government	62	2,269	2,312	2,315	\$19,773,355	\$661.70
State Government	21	633	662	648	\$5,197,643	\$617.32
Other	60	288	289	288	\$1,987,613	\$530.27
BRADLEY COUNTY - TOTAL	401	4,096	4,038	4,006	\$27,005,732	\$513.35
Natural Resources & Mining	48	450	352	365	\$2,427,580	\$480.04
Construction	20	182	174	170	\$1,148,294	\$503.79
Manufacturing	9	972	974	944	\$7,452,211	\$595.07
Trade, Transportation & Utilities	84	460	475	489	\$2,522,968	\$408.86
Wholesale Trade	17	74	74	75	\$622,845	\$644.54
Retail Trade	44	338	341	348	\$1,453,154	\$326.53
Transportation, Warehousing & Utilities	23	48	60	66	\$446,969	\$592.80
Information	4	13	14	14	\$125,056	\$703.88
Financial Activities	26	162	161	159	\$1,151,908	\$551.50
Professional & Business Services	27	97	95	94	\$423,917	\$342.05
Education & Health Services	108	621	628	638	\$4,304,828	\$526.46
Leisure & Hospitality	17	164	168	159	\$402,252	\$189.06
Other Services	32	118	131	137	\$702,680	\$420.10
Local & State Government	26	857	866	837	\$6,344,038	\$571.88

**TABLE 6. COUNTY SUMMARY
EMPLOYMENT AND TOTAL EARNINGS, BY INDUSTRY
SECOND QUARTER 2008**

NORTH AMERICAN INDUSTRY CLASSIFICATION SYSTEM INDUSTRY GROUP	NUMBER OF EMPLOYING UNITS	EMPLOYMENT	EMPLOYMENT	EMPLOYMENT	TOTAL EARNINGS	AVERAGE WEEKLY EARNINGS
		APRIL	MAY	JUNE	APRIL - JUNE	
CALHOUN COUNTY - TOTAL	120	2,991	2,942	2,953	\$28,950,150	\$751.83
Natural Resources & Mining	17	184	186	182	\$1,544,642	\$645.75
Construction	11	55	51	50	\$310,848	\$459.83
Manufacturing	11	2,006	1,968	1,980	\$21,825,373	\$845.92
Trade, Transportation & Utilities	31	212	207	206	\$1,317,927	\$486.62
Retail Trade	19	82	82	81	\$278,839	\$262.64
Other Trade, Transportation & Utilities	12	130	125	125	\$1,039,088	\$631.03
Financial Activities	6	81	80	86	\$544,295	\$508.53
Education & Health Services	9	51	51	50	\$355,236	\$539.33
Leisure & Hospitality	6	23	22	20	\$38,379	\$136.26
Local & State Government	20	282	280	281	\$1,932,056	\$528.90
Other	9	97	97	98	\$1,081,394	\$854.63
CARROLL COUNTY - TOTAL	847	10,056	10,516	10,331	\$62,640,749	\$467.77
Natural Resources & Mining	17	279	284	284	\$1,907,632	\$519.74
Construction	84	335	414	358	\$2,643,223	\$551.02
Trade, Transportation & Utilities	209	1,704	1,734	1,764	\$10,309,652	\$457.35
Wholesale Trade	30	153	160	160	\$832,666	\$406.24
Retail Trade	160	1,261	1,281	1,297	\$6,588,934	\$396.07
Transportation, Warehousing & Utilities	19	290	293	307	\$2,888,052	\$748.85
Information	15	99	101	103	\$727,231	\$553.87
Financial Activities	77	365	366	381	\$2,965,924	\$615.51
Professional & Business Services	66	235	223	228	\$1,605,178	\$539.98
Education & Health Services	94	855	861	820	\$6,155,006	\$560.09
Leisure & Hospitality	168	1,526	1,825	1,858	\$5,061,695	\$224.24
Local Government	25	1,136	1,154	955	\$8,673,896	\$616.85
State Government	11	104	107	103	\$748,050	\$549.77
Other	81	3,418	3,447	3,477	\$21,843,262	\$487.41

**TABLE 6. COUNTY SUMMARY
EMPLOYMENT AND TOTAL EARNINGS, BY INDUSTRY
SECOND QUARTER 2008**

NORTH AMERICAN INDUSTRY CLASSIFICATION SYSTEM INDUSTRY GROUP	NUMBER OF EMPLOYING UNITS	EMPLOYMENT	EMPLOYMENT	EMPLOYMENT	TOTAL EARNINGS	AVERAGE WEEKLY EARNINGS
		APRIL	MAY	JUNE	APRIL - JUNE	
CHICOT COUNTY - TOTAL	403	3,563	3,571	3,599	\$22,142,477	\$476.08
Natural Resources & Mining	49	245	259	264	\$1,871,888	\$562.47
Construction	14	137	139	144	\$1,128,305	\$619.95
Manufacturing	10	464	441	438	\$2,109,763	\$362.52
Trade, Transportation & Utilities	69	545	554	592	\$3,131,951	\$427.41
Wholesale Trade	14	98	100	99	\$879,981	\$683.75
Retail Trade	46	394	397	432	\$1,606,656	\$303.16
Transportation, Warehousing & Utilities	9	53	57	61	\$645,314	\$870.87
Information	7	9	11	11	\$49,310	\$367.07
Financial Activities	31	168	168	171	\$1,310,043	\$596.29
Professional & Business Services	29	83	81	88	\$820,521	\$751.39
Education & Health Services	129	656	655	656	\$3,819,568	\$448.11
Leisure & Hospitality	19	152	155	166	\$349,466	\$170.50
Other Services	18	48	47	48	\$231,629	\$373.80
Local Government	17	719	722	682	\$5,244,565	\$570.08
State Government	11	337	339	339	\$2,075,468	\$471.88
CLARK COUNTY - TOTAL	631	9,858	9,814	9,551	\$68,469,767	\$540.69
Natural Resources & Mining	34	215	217	217	\$1,694,146	\$602.40
Construction	32	94	103	107	\$576,262	\$437.45
Manufacturing	35	2,378	2,359	2,370	\$20,461,024	\$664.38
Trade, Transportation & Utilities	152	1,604	1,611	1,623	\$10,552,048	\$503.33
Wholesale Trade	22	97	98	98	\$913,510	\$719.49
Retail Trade	105	1,206	1,221	1,222	\$7,027,650	\$444.44
Transportation, Warehousing & Utilities	25	301	292	303	\$2,610,888	\$672.45
Information	9	49	49	47	\$358,488	\$570.54
Financial Activities	89	375	383	393	\$2,726,076	\$546.56
Professional & Business Services	49	295	296	302	\$3,205,468	\$828.36
Education & Health Services	88	1,327	1,330	1,298	\$9,320,601	\$543.85
Leisure & Hospitality	57	1,052	1,026	1,044	\$2,950,694	\$218.11
Other Services	44	203	207	183	\$1,057,117	\$411.38
Local Government	27	1,029	1,035	928	\$7,835,096	\$604.31
State Government	15	1,237	1,198	1,039	\$7,732,747	\$513.67

**TABLE 6. COUNTY SUMMARY
EMPLOYMENT AND TOTAL EARNINGS, BY INDUSTRY
SECOND QUARTER 2008**

NORTH AMERICAN INDUSTRY CLASSIFICATION SYSTEM INDUSTRY GROUP	NUMBER OF EMPLOYING UNITS	EMPLOYMENT	EMPLOYMENT	EMPLOYMENT	TOTAL EARNINGS	AVERAGE WEEKLY EARNINGS
		APRIL	MAY	JUNE	APRIL - JUNE	
CLAY COUNTY - TOTAL	420	4,080	4,119	4,181	\$25,921,251	\$483.18
Natural Resources & Mining	63	203	222	249	\$1,434,186	\$491.05
Construction	33	143	167	171	\$1,029,168	\$493.76
Manufacturing	17	720	699	732	\$4,604,590	\$494.00
Trade, Transportation & Utilities	98	941	954	956	\$6,615,997	\$535.52
Wholesale Trade	23	357	356	352	\$2,990,349	\$647.96
Retail Trade	50	427	436	442	\$2,129,877	\$376.64
Transportation, Warehousing & Utilities	25	157	162	162	\$1,495,771	\$717.63
Information	4	73	74	71	\$357,371	\$378.30
Financial Activities	34	129	128	130	\$845,449	\$504.14
Professional & Business Services	27	52	54	54	\$356,884	\$514.74
Education & Health Services	64	529	514	516	\$2,793,408	\$413.49
Leisure & Hospitality	20	216	208	209	\$472,981	\$172.43
Other Services	26	74	80	78	\$467,105	\$464.63
Local Government	22	924	945	939	\$6,460,395	\$530.93
State Government	12	76	74	76	\$483,717	\$493.92
CLEBURNE COUNTY - TOTAL	713	7,003	7,254	7,405	\$48,255,584	\$514.08
Natural Resources & Mining	20	152	156	147	\$1,711,848	\$868.22
Construction	82	529	647	737	\$4,611,891	\$556.34
Manufacturing	42	1,355	1,380	1,374	\$10,833,553	\$608.43
Trade, Transportation & Utilities	188	1,564	1,597	1,617	\$10,426,194	\$503.57
Wholesale Trade	45	198	197	198	\$1,816,628	\$706.95
Retail Trade	115	1,003	1,031	1,033	\$5,261,322	\$395.88
Transportation, Warehousing & Utilities	28	363	369	386	\$3,348,244	\$691.12
Information	7	59	57	57	\$344,783	\$459.92
Financial Activities	77	310	320	314	\$2,463,477	\$602.22
Professional & Business Services	57	232	228	224	\$1,393,967	\$470.30
Education & Health Services	90	835	839	833	\$5,380,155	\$495.24
Leisure & Hospitality	72	869	927	1,014	\$2,691,848	\$221.07
Other Services	49	165	163	163	\$778,757	\$366.01
Local Government	19	809	819	802	\$6,826,689	\$648.31
State Government	10	124	121	123	\$792,422	\$496.92

**TABLE 6. COUNTY SUMMARY
EMPLOYMENT AND TOTAL EARNINGS, BY INDUSTRY
SECOND QUARTER 2008**

NORTH AMERICAN INDUSTRY CLASSIFICATION SYSTEM INDUSTRY GROUP	NUMBER OF EMPLOYING UNITS	EMPLOYMENT	EMPLOYMENT	EMPLOYMENT	TOTAL EARNINGS	AVERAGE WEEKLY EARNINGS
		APRIL	MAY	JUNE	APRIL - JUNE	
CLEVELAND COUNTY - TOTAL	121	1,018	1,068	967	\$6,511,529	\$492.19
Natural Resources & Mining	16	149	149	153	\$1,056,519	\$540.60
Construction	8	27	34	35	\$159,975	\$384.56
Manufacturing	6	85	89	94	\$551,097	\$474.54
Trade, Transportation & Utilities	28	154	162	167	\$820,519	\$392.03
Retail Trade	14	61	63	72	\$214,871	\$252.99
Other Trade, Transportation & Utilities	14	93	99	95	\$605,648	\$486.99
Education & Health Services	29	117	116	113	\$486,060	\$324.18
Other Services	6	26	25	25	\$193,534	\$587.65
Local Government	11	350	358	233	\$2,522,022	\$618.50
State Government	8	65	65	63	\$378,354	\$452.40
Other	9	45	70	84	\$343,449	\$398.28
COLUMBIA COUNTY - TOTAL	742	9,273	9,316	9,315	\$74,908,356	\$619.50
Natural Resources & Mining	49	638	637	655	\$8,482,969	\$1,014.30
Construction	45	312	337	334	\$2,945,430	\$691.47
Manufacturing	38	2,472	2,486	2,450	\$25,514,809	\$794.82
Trade, Transportation & Utilities	175	1,509	1,529	1,519	\$9,160,830	\$463.91
Wholesale Trade	27	247	250	251	\$1,919,550	\$592.21
Retail Trade	114	1,001	1,012	1,001	\$4,757,527	\$364.26
Transportation, Warehousing & Utilities	34	261	267	267	\$2,483,753	\$720.97
Information	9	72	73	71	\$475,783	\$508.32
Financial Activities	78	414	410	413	\$3,400,542	\$634.39
Professional & Business Services	64	349	340	338	\$2,623,667	\$589.54
Education & Health Services	145	948	947	942	\$5,056,782	\$411.33
Leisure & Hospitality	50	649	661	665	\$1,766,903	\$206.45
Other Services	49	229	222	236	\$1,020,877	\$342.92
Local Government	26	1,138	1,158	1,175	\$9,233,982	\$613.92
State Government	14	543	516	517	\$5,225,782	\$765.20

**TABLE 6. COUNTY SUMMARY
EMPLOYMENT AND TOTAL EARNINGS, BY INDUSTRY
SECOND QUARTER 2008**

NORTH AMERICAN INDUSTRY CLASSIFICATION SYSTEM INDUSTRY GROUP	NUMBER OF EMPLOYING UNITS	EMPLOYMENT	EMPLOYMENT	EMPLOYMENT	TOTAL EARNINGS	AVERAGE WEEKLY EARNINGS
		APRIL	MAY	JUNE	APRIL - JUNE	
CONWAY COUNTY - TOTAL	594	6,917	6,933	6,980	\$51,563,383	\$571.26
Natural Resources & Mining	22	242	240	233	\$2,295,149	\$740.77
Construction	55	514	511	525	\$5,272,694	\$785.02
Manufacturing	24	1,064	1,062	1,062	\$11,669,498	\$844.72
Trade, Transportation & Utilities	141	1,477	1,481	1,488	\$9,810,597	\$509.22
Wholesale Trade	26	217	215	220	\$1,924,924	\$681.31
Retail Trade	83	894	895	897	\$4,753,943	\$408.44
Transportation, Warehousing & Utilities	32	366	371	371	\$3,131,730	\$652.26
Information	6	14	14	15	\$146,376	\$785.56
Financial Activities	37	187	180	181	\$1,325,629	\$558.24
Professional & Business Services	43	505	501	515	\$2,338,583	\$354.81
Education & Health Services	154	915	918	906	\$5,570,064	\$469.30
Leisure & Hospitality	45	481	506	553	\$1,254,784	\$188.03
Other Services	28	152	157	184	\$1,647,369	\$771.12
Local Government	28	946	944	947	\$7,933,470	\$645.33
State Government	11	420	419	371	\$2,299,170	\$438.49
CRAIGHEAD COUNTY - TOTAL	2,654	41,893	42,341	42,255	\$326,828,059	\$596.27
Natural Resources & Mining	62	255	279	297	\$1,613,984	\$448.20
Construction	232	1,705	1,793	1,823	\$14,197,426	\$615.74
Manufacturing	134	6,976	7,071	7,079	\$60,454,854	\$660.38
Trade, Transportation & Utilities	729	8,622	8,566	8,622	\$59,649,176	\$533.33
Wholesale Trade	187	1,730	1,732	1,751	\$17,898,613	\$792.34
Retail Trade	423	5,712	5,652	5,675	\$30,522,227	\$413.38
Transportation, Warehousing & Utilities	119	1,180	1,182	1,196	\$11,228,336	\$728.26
Information	32	565	561	573	\$4,491,203	\$610.02
Financial Activities	262	1,630	1,640	1,629	\$16,557,980	\$779.97
Professional & Business Services	351	3,487	3,660	3,680	\$23,852,051	\$508.39
Education & Health Services	414	7,266	7,328	7,319	\$68,714,953	\$723.65
Leisure & Hospitality	207	4,141	4,145	4,176	\$12,264,599	\$227.11
Other Services	168	907	915	909	\$4,753,206	\$401.65
Local Government	38	3,764	3,797	3,562	\$35,335,895	\$733.11
State Government	25	2,575	2,586	2,586	\$24,942,732	\$743.00

**TABLE 6. COUNTY SUMMARY
EMPLOYMENT AND TOTAL EARNINGS, BY INDUSTRY
SECOND QUARTER 2008**

NORTH AMERICAN INDUSTRY CLASSIFICATION SYSTEM INDUSTRY GROUP	NUMBER OF EMPLOYING UNITS	EMPLOYMENT	EMPLOYMENT	EMPLOYMENT	TOTAL EARNINGS	AVERAGE WEEKLY EARNINGS
		APRIL	MAY	JUNE	APRIL - JUNE	
CRAWFORD COUNTY - TOTAL	1,293	20,161	20,092	19,941	\$149,466,682	\$573.02
Natural Resources & Mining	27	539	477	433	\$4,923,498	\$784.12
Construction	191	1,354	1,384	1,382	\$11,769,028	\$659.21
Manufacturing	78	3,628	3,684	3,713	\$27,781,898	\$581.52
Trade, Transportation & Utilities	314	6,805	6,770	6,769	\$51,264,074	\$581.51
Wholesale Trade	82	741	745	744	\$7,163,677	\$741.33
Retail Trade	158	1,963	1,983	1,989	\$10,283,720	\$399.86
Transportation, Warehousing & Utilities	74	4,101	4,042	4,036	\$33,816,677	\$640.76
Information	12	179	181	184	\$1,630,567	\$691.70
Financial Activities	138	564	567	553	\$4,004,498	\$548.76
Professional & Business Services	162	1,393	1,314	1,281	\$8,365,478	\$484.08
Education & Health Services	153	1,467	1,435	1,441	\$11,033,725	\$586.29
Leisure & Hospitality	86	1,513	1,530	1,533	\$4,512,348	\$227.56
Other Services	80	370	376	383	\$2,492,903	\$509.55
Local Government	41	2,179	2,203	2,099	\$20,258,623	\$721.35
State Government	11	170	171	170	\$1,430,042	\$645.81
CRITTENDEN COUNTY - TOTAL	1,281	16,873	16,872	17,145	\$133,650,319	\$606.06
Natural Resources & Mining	40	249	249	260	\$1,692,921	\$515.40
Construction	71	508	497	518	\$4,439,642	\$672.71
Manufacturing	46	2,213	2,194	2,193	\$21,769,126	\$761.16
Trade, Transportation & Utilities	339	4,781	4,787	4,800	\$38,156,021	\$612.84
Wholesale Trade	80	784	796	782	\$8,919,537	\$871.45
Retail Trade	173	2,064	2,043	2,082	\$10,509,699	\$391.88
Transportation, Warehousing & Utilities	86	1,933	1,948	1,936	\$18,726,785	\$742.92
Information	7	70	69	67	\$599,017	\$671.04
Financial Activities	110	590	619	619	\$5,024,893	\$634.35
Professional & Business Services	131	857	831	853	\$5,800,828	\$526.82
Education & Health Services	277	2,152	2,193	2,216	\$17,067,710	\$600.32
Leisure & Hospitality	104	1,924	1,945	2,022	\$6,824,454	\$267.34
Other Services	95	611	616	611	\$3,575,778	\$448.96
Local Government	46	2,411	2,438	2,512	\$25,136,760	\$788.04
State Government	15	507	434	474	\$3,563,169	\$581.11

**TABLE 6. COUNTY SUMMARY
EMPLOYMENT AND TOTAL EARNINGS, BY INDUSTRY
SECOND QUARTER 2008**

NORTH AMERICAN INDUSTRY CLASSIFICATION SYSTEM INDUSTRY GROUP	NUMBER OF EMPLOYING UNITS	EMPLOYMENT	EMPLOYMENT	EMPLOYMENT	TOTAL EARNINGS	AVERAGE WEEKLY EARNINGS
		APRIL	MAY	JUNE	APRIL - JUNE	
CROSS COUNTY - TOTAL	549	4,898	4,998	5,009	\$34,305,272	\$531.14
Natural Resources & Mining	37	202	227	234	\$1,150,652	\$400.51
Construction	33	152	182	181	\$1,163,446	\$521.34
Manufacturing	16	663	671	675	\$5,532,997	\$635.56
Trade, Transportation & Utilities	143	1,230	1,249	1,219	\$8,867,816	\$553.39
Wholesale Trade	30	299	299	294	\$2,579,474	\$667.34
Retail Trade	76	714	730	705	\$4,004,579	\$430.03
Transportation, Warehousing & Utilities	37	217	220	220	\$2,283,763	\$802.16
Information	4	42	41	42	\$252,280	\$465.75
Financial Activities	46	341	339	339	\$2,449,787	\$554.79
Professional & Business Services	44	157	153	138	\$1,102,149	\$567.73
Education & Health Services	123	711	719	721	\$4,241,914	\$455.09
Leisure & Hospitality	34	358	368	399	\$956,419	\$196.19
Other Services	41	73	80	82	\$378,336	\$371.52
Local Government	17	750	745	755	\$6,396,773	\$656.08
State Government	11	219	224	224	\$1,812,703	\$627.16
DALLAS COUNTY - TOTAL	278	3,328	3,384	3,235	\$22,645,102	\$525.36
Natural Resources & Mining	41	207	223	223	\$1,401,254	\$495.20
Construction	15	61	62	63	\$700,261	\$868.81
Manufacturing	17	911	921	929	\$7,769,322	\$649.37
Trade, Transportation & Utilities	63	466	451	456	\$2,738,357	\$460.25
Wholesale Trade	7	26	27	26	\$184,707	\$539.55
Retail Trade	41	350	339	340	\$1,808,732	\$405.64
Transportation, Warehousing & Utilities	15	90	85	90	\$744,918	\$648.69
Information	3	23	23	23	\$170,544	\$570.38
Financial Activities	20	107	106	107	\$729,511	\$526.09
Professional & Business Services	16	36	38	42	\$320,181	\$636.96
Education & Health Services	49	793	812	807	\$4,794,335	\$458.70
Leisure & Hospitality	15	125	136	109	\$282,677	\$176.31
Other Services	14	59	58	58	\$258,117	\$340.37
Local Government	16	469	481	348	\$3,027,135	\$538.19
State Government	9	71	73	70	\$453,408	\$488.94

**TABLE 6. COUNTY SUMMARY
EMPLOYMENT AND TOTAL EARNINGS, BY INDUSTRY
SECOND QUARTER 2008**

NORTH AMERICAN INDUSTRY CLASSIFICATION SYSTEM INDUSTRY GROUP	NUMBER OF EMPLOYING UNITS	EMPLOYMENT	EMPLOYMENT	EMPLOYMENT	TOTAL EARNINGS	AVERAGE WEEKLY EARNINGS
		APRIL	MAY	JUNE	APRIL - JUNE	
DESHA COUNTY - TOTAL	496	4,714	4,739	4,840	\$35,072,871	\$566.27
Natural Resources & Mining	49	231	245	258	\$1,622,153	\$510.00
Construction	20	123	123	136	\$973,733	\$588.24
Manufacturing	19	1,071	1,061	1,061	\$11,271,900	\$814.66
Trade, Transportation & Utilities	128	939	922	913	\$5,780,949	\$480.92
Wholesale Trade	19	175	170	172	\$1,746,683	\$779.65
Retail Trade	79	605	594	572	\$2,648,850	\$345.16
Transportation, Warehousing & Utilities	30	159	158	169	\$1,385,416	\$657.84
Information	6	24	26	26	\$204,878	\$622.10
Financial Activities	45	206	206	203	\$1,457,604	\$546.94
Professional & Business Services	35	120	115	126	\$987,297	\$631.13
Education & Health Services	104	629	623	648	\$3,417,798	\$415.12
Leisure & Hospitality	35	269	275	309	\$646,647	\$174.94
Other Services	25	68	72	71	\$320,439	\$350.46
Local Government	19	849	883	915	\$7,177,596	\$625.75
State Government	11	185	188	174	\$1,211,877	\$511.27
DREW COUNTY - TOTAL	538	6,912	6,929	6,860	\$44,472,942	\$495.77
Natural Resources & Mining	45	320	316	319	\$2,407,502	\$581.76
Construction	24	107	114	120	\$586,958	\$397.22
Manufacturing	22	838	834	822	\$5,145,799	\$476.14
Trade, Transportation & Utilities	129	1,182	1,220	1,240	\$7,736,204	\$490.19
Wholesale Trade	19	197	198	195	\$1,915,157	\$749.08
Retail Trade	90	883	921	947	\$4,824,834	\$404.73
Transportation, Warehousing & Utilities	20	102	101	98	\$996,213	\$763.77
Information	6	68	68	72	\$458,666	\$508.88
Financial Activities	49	250	249	249	\$2,180,060	\$672.58
Professional & Business Services	49	317	316	307	\$2,121,309	\$520.78
Education & Health Services	110	906	902	900	\$5,405,651	\$460.66
Leisure & Hospitality	42	655	644	658	\$1,360,203	\$160.39
Other Services	22	74	73	77	\$358,575	\$369.41
Local Government	23	1,281	1,278	1,317	\$11,038,620	\$657.22
State Government	17	914	915	779	\$5,673,395	\$502.01

**TABLE 6. COUNTY SUMMARY
EMPLOYMENT AND TOTAL EARNINGS, BY INDUSTRY
SECOND QUARTER 2008**

NORTH AMERICAN INDUSTRY CLASSIFICATION SYSTEM INDUSTRY GROUP	NUMBER OF EMPLOYING UNITS	EMPLOYMENT	EMPLOYMENT	EMPLOYMENT	TOTAL EARNINGS	AVERAGE WEEKLY EARNINGS
		APRIL	MAY	JUNE	APRIL - JUNE	
FAULKNER COUNTY - TOTAL	2,677	39,045	39,362	39,176	\$333,775,884	\$655.07
Natural Resources & Mining	36	758	761	776	\$14,143,373	\$1,422.16
Construction	378	2,843	2,936	3,043	\$25,826,471	\$675.58
Manufacturing	122	4,587	4,648	4,654	\$45,756,313	\$760.25
Trade, Transportation & Utilities	625	6,843	6,866	6,907	\$46,203,389	\$517.19
Wholesale Trade	164	826	840	852	\$8,462,017	\$775.53
Retail Trade	377	5,038	5,037	5,064	\$27,140,280	\$413.71
Transportation, Warehousing & Utilities	84	979	989	991	\$10,601,092	\$826.77
Information	32	364	358	353	\$3,364,272	\$722.21
Financial Activities	317	1,523	1,535	1,529	\$12,870,773	\$647.52
Professional & Business Services	366	4,985	4,968	4,959	\$62,492,336	\$967.09
Education & Health Services	397	5,472	5,582	5,619	\$43,446,183	\$601.33
Leisure & Hospitality	201	4,220	4,203	4,161	\$11,573,097	\$212.23
Other Services	145	642	656	654	\$3,729,022	\$440.85
Local Government	39	3,399	3,427	3,440	\$37,463,282	\$842.14
State Government	19	3,409	3,422	3,081	\$26,907,373	\$626.45
FRANKLIN COUNTY - TOTAL	326	4,318	4,369	4,312	\$32,297,046	\$573.36
Natural Resources & Mining	11	188	180	193	\$2,218,006	\$912.38
Construction	31	243	253	252	\$2,219,588	\$684.78
Manufacturing	22	927	934	948	\$8,118,650	\$666.98
Trade, Transportation & Utilities	86	855	853	854	\$6,160,504	\$554.90
Wholesale Trade	17	46	48	48	\$282,824	\$459.63
Retail Trade	49	502	500	493	\$2,312,562	\$356.97
Transportation, Warehousing & Utilities	20	307	305	313	\$3,565,118	\$889.43
Information	6	52	49	54	\$253,635	\$377.62
Financial Activities	29	238	239	238	\$1,536,137	\$495.79
Professional & Business Services	23	83	78	75	\$498,425	\$487.38
Education & Health Services	46	472	490	455	\$2,700,051	\$439.72
Leisure & Hospitality	25	296	304	306	\$789,512	\$201.10
Other Services	18	45	47	52	\$300,160	\$481.03
Local Government	19	791	813	764	\$6,341,537	\$618.00
State Government	10	128	129	121	\$1,160,841	\$708.69

**TABLE 6. COUNTY SUMMARY
EMPLOYMENT AND TOTAL EARNINGS, BY INDUSTRY
SECOND QUARTER 2008**

NORTH AMERICAN INDUSTRY CLASSIFICATION SYSTEM INDUSTRY GROUP	NUMBER OF EMPLOYING UNITS	EMPLOYMENT	EMPLOYMENT	EMPLOYMENT	TOTAL EARNINGS	AVERAGE WEEKLY EARNINGS
		APRIL	MAY	JUNE	APRIL - JUNE	
FULTON COUNTY - TOTAL	239	1,987	2,063	2,107	\$12,150,353	\$455.40
Construction	16	35	35	36	\$223,320	\$486.18
Manufacturing	12	113	122	126	\$515,261	\$329.38
Trade, Transportation & Utilities	64	365	391	419	\$2,529,207	\$496.73
Wholesale Trade	15	70	70	75	\$450,095	\$483.11
Retail Trade	41	179	195	199	\$700,683	\$282.19
Transportation, Warehousing & Utilities	8	116	126	145	\$1,378,429	\$821.96
Financial Activities	14	96	110	114	\$740,077	\$533.71
Professional & Business Services	14	67	68	67	\$387,274	\$442.43
Education & Health Services	64	405	418	413	\$2,037,846	\$380.48
Leisure & Hospitality	18	192	198	207	\$487,065	\$188.27
Local Government	13	528	536	542	\$4,284,437	\$615.64
State Government	11	114	114	112	\$648,635	\$440.25
Other	13	72	71	71	\$297,231	\$320.52
GARLAND COUNTY - TOTAL	3,331	37,625	36,921	36,963	\$263,038,749	\$544.36
Natural Resources & Mining	46	365	377	369	\$3,903,190	\$810.74
Construction	448	2,217	2,254	2,247	\$15,603,432	\$535.99
Manufacturing	120	2,604	2,561	2,544	\$23,167,850	\$693.53
Trade, Transportation & Utilities	737	7,344	7,372	7,393	\$46,218,198	\$482.42
Wholesale Trade	165	1,011	1,033	1,060	\$8,870,324	\$659.47
Retail Trade	507	5,714	5,734	5,753	\$31,380,027	\$421.00
Transportation, Warehousing & Utilities	65	619	605	580	\$5,967,847	\$763.41
Information	40	396	385	388	\$3,130,715	\$618.03
Financial Activities	375	1,515	1,506	1,532	\$12,490,354	\$633.07
Professional & Business Services	419	3,567	3,524	3,626	\$24,686,104	\$531.57
Education & Health Services	470	6,965	6,979	7,081	\$63,244,569	\$694.17
Leisure & Hospitality	381	7,271	6,611	6,864	\$23,775,394	\$264.47
Other Services	234	966	982	1,003	\$5,376,392	\$420.44
Local Government	34	3,252	3,204	2,898	\$32,957,188	\$813.08
State Government	27	1,163	1,166	1,018	\$8,485,363	\$585.05

**TABLE 6. COUNTY SUMMARY
EMPLOYMENT AND TOTAL EARNINGS, BY INDUSTRY
SECOND QUARTER 2008**

NORTH AMERICAN INDUSTRY CLASSIFICATION SYSTEM INDUSTRY GROUP	NUMBER OF EMPLOYING UNITS	EMPLOYMENT	EMPLOYMENT	EMPLOYMENT	TOTAL EARNINGS	AVERAGE WEEKLY EARNINGS
		APRIL	MAY	JUNE	APRIL - JUNE	
GRANT COUNTY - TOTAL	314	3,834	3,860	3,939	\$25,264,698	\$501.19
Natural Resources & Mining	23	156	159	161	\$1,557,865	\$755.27
Construction	31	209	210	217	\$1,646,064	\$597.27
Manufacturing	16	861	853	923	\$5,957,145	\$521.32
Trade, Transportation & Utilities	87	625	639	637	\$3,810,041	\$462.51
Wholesale Trade	19	134	138	143	\$1,099,280	\$611.28
Retail Trade	42	433	444	434	\$2,275,651	\$400.57
Transportation, Warehousing & Utilities	26	58	57	60	\$435,110	\$573.77
Information	4	30	29	28	\$267,078	\$708.43
Financial Activities	26	105	109	109	\$803,016	\$573.72
Professional & Business Services	26	111	111	92	\$820,774	\$603.21
Education & Health Services	45	452	451	450	\$2,267,228	\$386.70
Leisure & Hospitality	20	257	255	269	\$740,330	\$218.75
Other Services	17	50	51	51	\$216,828	\$329.19
Local Government	10	918	933	943	\$6,766,317	\$558.86
State Government	9	60	60	59	\$412,012	\$531.17
GREENE COUNTY - TOTAL	928	14,752	14,840	14,884	\$108,349,210	\$562.18
Natural Resources & Mining	38	199	213	224	\$1,381,383	\$501.23
Construction	85	349	376	393	\$2,653,670	\$547.75
Manufacturing	60	5,253	5,218	5,300	\$47,491,358	\$694.92
Trade, Transportation & Utilities	244	2,350	2,320	2,347	\$14,136,771	\$464.92
Wholesale Trade	56	430	442	427	\$3,817,630	\$678.21
Retail Trade	157	1,708	1,665	1,706	\$8,445,881	\$383.75
Transportation, Warehousing & Utilities	31	212	213	214	\$1,873,260	\$676.51
Information	11	89	90	119	\$592,599	\$458.90
Financial Activities	92	507	516	508	\$3,830,997	\$577.45
Professional & Business Services	93	1,040	1,117	1,048	\$6,849,968	\$493.22
Education & Health Services	144	1,767	1,786	1,756	\$11,529,980	\$501.18
Leisure & Hospitality	68	1,160	1,164	1,158	\$2,993,452	\$198.39
Other Services	51	184	183	186	\$985,479	\$411.24
Local Government	31	1,587	1,585	1,574	\$13,773,798	\$669.74
State Government	11	267	272	271	\$2,129,755	\$606.77

**TABLE 6. COUNTY SUMMARY
EMPLOYMENT AND TOTAL EARNINGS, BY INDUSTRY
SECOND QUARTER 2008**

NORTH AMERICAN INDUSTRY CLASSIFICATION SYSTEM INDUSTRY GROUP	NUMBER OF EMPLOYING UNITS	EMPLOYMENT	EMPLOYMENT	EMPLOYMENT	TOTAL EARNINGS	AVERAGE WEEKLY EARNINGS
		APRIL	MAY	JUNE	APRIL - JUNE	
HEMPSTEAD COUNTY - TOTAL	501	8,215	8,116	8,018	\$58,199,251	\$551.59
Natural Resources & Mining	17	230	235	235	\$1,785,304	\$588.56
Construction	32	284	321	329	\$3,396,554	\$839.21
Manufacturing	28	2,231	2,177	2,152	\$17,347,517	\$610.26
Trade, Transportation & Utilities	135	1,443	1,441	1,416	\$8,875,529	\$476.33
Wholesale Trade	28	287	277	276	\$1,878,532	\$516.08
Retail Trade	87	944	957	933	\$4,566,665	\$371.86
Transportation, Warehousing & Utilities	20	212	207	207	\$2,430,332	\$895.92
Information	9	58	59	58	\$489,273	\$645.20
Financial Activities	43	249	241	243	\$2,044,871	\$643.78
Professional & Business Services	39	289	265	237	\$1,400,408	\$408.56
Education & Health Services	72	954	950	939	\$5,838,305	\$473.90
Leisure & Hospitality	43	681	652	664	\$1,744,399	\$201.58
Other Services	37	202	198	200	\$1,377,512	\$529.81
Local Government	29	1,052	1,038	1,004	\$9,519,731	\$710.04
State Government	17	542	539	541	\$4,379,848	\$623.14
HOT SPRING COUNTY - TOTAL	604	7,556	7,574	7,473	\$57,214,173	\$584.14
Natural Resources & Mining	29	200	205	206	\$1,425,727	\$538.48
Construction	70	333	336	353	\$2,400,945	\$542.14
Manufacturing	34	1,375	1,363	1,354	\$14,495,991	\$817.50
Trade, Transportation & Utilities	157	1,437	1,435	1,433	\$10,424,188	\$558.79
Wholesale Trade	21	91	93	95	\$902,341	\$746.35
Retail Trade	96	954	946	936	\$5,108,863	\$415.72
Transportation, Warehousing & Utilities	40	392	396	402	\$4,412,984	\$855.78
Information	8	59	63	58	\$470,283	\$602.93
Financial Activities	61	319	320	318	\$2,527,574	\$609.49
Professional & Business Services	49	221	225	215	\$1,384,645	\$483.41
Education & Health Services	79	1,140	1,140	1,131	\$7,693,366	\$520.49
Leisure & Hospitality	40	533	547	551	\$1,443,464	\$204.23
Other Services	37	179	182	156	\$713,818	\$318.62
Local Government	26	1,103	1,102	1,081	\$9,997,535	\$702.11
State Government	14	657	656	617	\$4,236,637	\$506.57

**TABLE 6. COUNTY SUMMARY
EMPLOYMENT AND TOTAL EARNINGS, BY INDUSTRY
SECOND QUARTER 2008**

NORTH AMERICAN INDUSTRY CLASSIFICATION SYSTEM INDUSTRY GROUP	NUMBER OF EMPLOYING UNITS	EMPLOYMENT	EMPLOYMENT	EMPLOYMENT	TOTAL EARNINGS	AVERAGE WEEKLY EARNINGS
		APRIL	MAY	JUNE	APRIL - JUNE	
HOWARD COUNTY - TOTAL	366	7,534	7,534	7,509	\$51,751,152	\$528.97
Natural Resources & Mining	24	257	249	249	\$1,891,288	\$578.08
Construction	22	140	133	143	\$1,075,606	\$596.67
Manufacturing	23	4,011	3,992	3,942	\$28,297,476	\$546.69
Trade, Transportation & Utilities	104	964	972	987	\$6,341,351	\$500.65
Wholesale Trade	18	90	89	90	\$899,312	\$771.50
Retail Trade	61	605	617	625	\$3,023,889	\$377.81
Transportation, Warehousing & Utilities	25	269	266	272	\$2,418,150	\$691.49
Information	5	37	37	36	\$235,581	\$494.23
Financial Activities	40	166	171	170	\$1,039,224	\$473.02
Professional & Business Services	28	132	123	129	\$878,898	\$528.18
Education & Health Services	50	553	556	566	\$3,261,359	\$449.33
Leisure & Hospitality	20	306	323	334	\$820,352	\$196.59
Other Services	20	120	121	119	\$638,078	\$409.02
Local Government	18	697	708	692	\$6,268,821	\$689.87
State Government	12	151	149	142	\$1,003,118	\$523.73
INDEPENDENCE COUNTY - TOTAL	956	15,505	15,620	15,744	\$118,394,555	\$582.94
Natural Resources & Mining	15	120	131	141	\$1,122,561	\$660.85
Construction	72	509	542	568	\$3,925,856	\$559.58
Manufacturing	56	4,023	3,986	4,037	\$34,308,802	\$657.27
Trade, Transportation & Utilities	258	2,984	3,031	3,026	\$22,120,290	\$564.61
Wholesale Trade	49	563	560	556	\$4,565,242	\$627.47
Retail Trade	158	1,636	1,672	1,682	\$8,237,573	\$380.96
Transportation, Warehousing & Utilities	51	785	799	788	\$9,317,475	\$906.49
Information	9	140	140	137	\$1,046,872	\$579.34
Financial Activities	87	489	496	500	\$3,905,588	\$606.93
Professional & Business Services	96	793	809	829	\$4,288,259	\$407.07
Education & Health Services	163	2,890	2,930	2,984	\$26,402,571	\$692.06
Leisure & Hospitality	68	1,008	1,017	1,066	\$2,739,425	\$204.52
Other Services	68	407	407	391	\$1,848,755	\$354.05
Local Government	47	1,640	1,630	1,617	\$12,891,876	\$608.77
State Government	17	502	501	448	\$3,793,700	\$603.36

**TABLE 6. COUNTY SUMMARY
EMPLOYMENT AND TOTAL EARNINGS, BY INDUSTRY
SECOND QUARTER 2008**

NORTH AMERICAN INDUSTRY CLASSIFICATION SYSTEM INDUSTRY GROUP	NUMBER OF EMPLOYING UNITS	EMPLOYMENT	EMPLOYMENT	EMPLOYMENT	TOTAL EARNINGS	AVERAGE WEEKLY EARNINGS
		APRIL	MAY	JUNE	APRIL - JUNE	
IZARD COUNTY - TOTAL	288	3,158	3,165	3,105	\$19,254,148	\$471.28
Natural Resources & Mining	4	88	89	87	\$728,035	\$636.39
Construction	27	70	82	94	\$538,590	\$505.24
Trade, Transportation & Utilities	69	532	531	542	\$2,787,752	\$400.83
Retail Trade	49	423	418	422	\$1,916,880	\$350.24
Other Trade, Transportation & Utilities	20	109	113	120	\$870,872	\$587.63
Financial Activities	31	151	146	153	\$1,032,305	\$529.39
Professional & Business Services	20	96	96	90	\$405,379	\$331.73
Education & Health Services	64	577	612	624	\$3,212,549	\$408.91
Leisure & Hospitality	18	190	204	201	\$414,695	\$160.84
Local Government	18	562	553	484	\$4,143,249	\$597.96
State Government	11	485	463	448	\$3,180,716	\$525.80
Other	26	407	389	382	\$2,810,878	\$550.65
JACKSON COUNTY - TOTAL	521	5,719	5,751	5,681	\$40,462,041	\$544.42
Natural Resources & Mining	49	228	240	239	\$1,465,292	\$478.28
Construction	24	125	124	119	\$906,097	\$568.20
Manufacturing	26	1,215	1,219	1,257	\$10,197,531	\$637.57
Trade, Transportation & Utilities	118	1,142	1,145	1,149	\$7,693,502	\$516.71
Wholesale Trade	27	226	226	225	\$2,220,527	\$756.91
Retail Trade	74	682	686	689	\$3,560,348	\$399.43
Transportation, Warehousing & Utilities	17	234	233	235	\$1,912,627	\$628.74
Information	5	39	39	39	\$273,876	\$540.19
Financial Activities	41	170	173	174	\$1,312,544	\$585.87
Professional & Business Services	38	138	129	132	\$1,032,935	\$597.42
Education & Health Services	113	856	861	861	\$6,326,262	\$566.29
Leisure & Hospitality	32	315	305	313	\$875,135	\$216.46
Other Services	29	91	92	96	\$460,548	\$380.93
Local Government	32	712	729	627	\$4,904,096	\$547.25
State Government	14	688	695	675	\$5,014,223	\$562.26

**TABLE 6. COUNTY SUMMARY
EMPLOYMENT AND TOTAL EARNINGS, BY INDUSTRY
SECOND QUARTER 2008**

NORTH AMERICAN INDUSTRY CLASSIFICATION SYSTEM INDUSTRY GROUP	NUMBER OF EMPLOYING UNITS	EMPLOYMENT	EMPLOYMENT	EMPLOYMENT	TOTAL EARNINGS	AVERAGE WEEKLY EARNINGS
		APRIL	MAY	JUNE	APRIL - JUNE	
JEFFERSON COUNTY - TOTAL	2,022	30,928	31,142	30,889	\$251,112,895	\$623.38
Natural Resources & Mining	44	431	437	442	\$3,651,726	\$643.29
Construction	125	1,469	1,602	1,531	\$17,256,228	\$865.32
Manufacturing	72	5,787	5,788	5,812	\$55,163,162	\$732.15
Trade, Transportation & Utilities	444	5,560	5,562	5,539	\$40,281,112	\$557.93
Wholesale Trade	82	1,093	1,089	1,094	\$9,339,823	\$657.92
Retail Trade	297	3,635	3,622	3,609	\$19,681,719	\$418.00
Transportation, Warehousing & Utilities	65	832	851	836	\$11,259,570	\$1,031.51
Information	13	164	165	169	\$1,338,574	\$620.28
Financial Activities	162	1,194	1,188	1,169	\$10,994,056	\$714.47
Professional & Business Services	180	1,734	1,715	1,766	\$14,295,490	\$632.59
Education & Health Services	616	5,155	5,140	5,160	\$39,738,095	\$593.36
Leisure & Hospitality	145	2,116	2,159	2,178	\$5,871,749	\$209.98
Other Services	137	653	655	673	\$3,955,032	\$460.73
Local Government	44	3,383	3,387	3,312	\$32,262,772	\$738.47
State Government	40	3,282	3,344	3,138	\$26,304,899	\$621.71
JOHNSON COUNTY - TOTAL	481	8,903	8,933	8,882	\$62,496,282	\$539.79
Natural Resources & Mining	18	257	261	269	\$2,135,412	\$626.16
Construction	25	145	148	151	\$1,133,839	\$589.31
Manufacturing	46	3,056	3,072	3,060	\$20,343,641	\$510.96
Trade, Transportation & Utilities	117	2,095	2,104	2,089	\$15,026,670	\$551.48
Retail Trade	78	899	912	904	\$4,657,092	\$395.84
Other Trade, Transportation & Utilities	39	1,196	1,192	1,185	\$10,369,578	\$669.74
Information	5	33	34	35	\$193,772	\$438.40
Financial Activities	47	226	225	223	\$1,617,141	\$553.69
Professional & Business Services	48	171	174	159	\$1,198,872	\$548.93
Education & Health Services	85	1,166	1,165	1,114	\$8,488,181	\$568.60
Leisure & Hospitality	38	503	509	515	\$1,347,003	\$203.57
Other Services	28	73	67	71	\$392,583	\$429.37
Local Government	14	1,009	1,006	1,028	\$9,402,960	\$713.08
State Government	10	169	168	168	\$1,216,208	\$555.77

**TABLE 6. COUNTY SUMMARY
EMPLOYMENT AND TOTAL EARNINGS, BY INDUSTRY
SECOND QUARTER 2008**

NORTH AMERICAN INDUSTRY CLASSIFICATION SYSTEM INDUSTRY GROUP	NUMBER OF EMPLOYING UNITS	EMPLOYMENT	EMPLOYMENT	EMPLOYMENT	TOTAL EARNINGS	AVERAGE WEEKLY EARNINGS
		APRIL	MAY	JUNE	APRIL - JUNE	
LAFAYETTE COUNTY - TOTAL	181	1,427	1,400	1,402	\$10,184,922	\$555.77
Natural Resources & Mining	38	177	167	169	\$1,293,051	\$581.67
Construction	9	56	59	59	\$552,277	\$732.46
Manufacturing	6	46	47	47	\$1,305,228	\$2,151.47
Trade, Transportation & Utilities	32	197	196	203	\$1,219,042	\$472.01
Wholesale Trade	5	47	48	47	\$353,179	\$573.96
Retail Trade	20	127	125	129	\$557,383	\$337.60
Transportation, Warehousing & Utilities	7	23	23	27	\$308,480	\$975.17
Financial Activities	18	61	58	58	\$408,876	\$533.08
Professional & Business Services	10	96	86	88	\$633,996	\$541.88
Education & Health Services	31	248	245	249	\$1,135,840	\$353.26
Leisure & Hospitality	8	57	58	57	\$161,422	\$216.58
Local Government	13	337	334	318	\$2,613,556	\$609.84
State Government	8	57	57	56	\$371,056	\$503.70
Other	8	95	93	98	\$490,578	\$395.84
LAWRENCE COUNTY - TOTAL	440	4,069	4,031	4,000	\$27,151,229	\$517.82
Natural Resources & Mining	38	182	185	196	\$1,339,207	\$548.93
Construction	25	66	73	79	\$462,297	\$489.38
Manufacturing	23	519	519	540	\$3,553,306	\$519.64
Trade, Transportation & Utilities	129	858	867	884	\$5,632,678	\$498.22
Wholesale Trade	21	165	177	198	\$1,453,159	\$621.01
Retail Trade	70	538	538	533	\$2,652,574	\$380.44
Transportation, Warehousing & Utilities	38	155	152	153	\$1,526,945	\$766.03
Financial Activities	36	160	158	161	\$1,072,612	\$516.76
Professional & Business Services	25	107	102	108	\$849,466	\$618.39
Education & Health Services	77	467	442	442	\$3,051,733	\$521.28
Leisure & Hospitality	24	346	349	330	\$696,117	\$156.72
Local Government	28	1,184	1,156	1,075	\$9,378,243	\$633.74
State Government	11	119	117	118	\$741,182	\$483.17
Other	24	61	63	67	\$374,388	\$452.34

**TABLE 6. COUNTY SUMMARY
EMPLOYMENT AND TOTAL EARNINGS, BY INDUSTRY
SECOND QUARTER 2008**

NORTH AMERICAN INDUSTRY CLASSIFICATION SYSTEM INDUSTRY GROUP	NUMBER OF EMPLOYING UNITS	EMPLOYMENT	EMPLOYMENT	EMPLOYMENT	TOTAL EARNINGS	AVERAGE WEEKLY EARNINGS
		APRIL	MAY	JUNE	APRIL - JUNE	
LEE COUNTY - TOTAL	286	2,092	2,134	2,144	\$13,905,121	\$503.75
Natural Resources & Mining	33	192	201	209	\$1,153,266	\$442.09
Construction	10	30	33	32	\$253,451	\$615.67
Trade, Transportation & Utilities	52	360	363	375	\$2,381,879	\$500.61
Wholesale Trade	8	68	66	73	\$729,529	\$813.30
Retail Trade	27	191	199	199	\$881,752	\$345.47
Transportation, Warehousing & Utilities	17	101	98	103	\$770,598	\$588.84
Financial Activities	17	78	78	77	\$649,404	\$643.19
Professional & Business Services	16	68	67	69	\$729,607	\$825.35
Education & Health Services	105	380	395	386	\$2,056,054	\$408.68
Leisure & Hospitality	8	87	95	92	\$202,408	\$170.47
Local Government	14	351	354	353	\$2,716,129	\$592.44
State Government	8	498	499	503	\$3,529,715	\$543.03
Other	23	48	49	48	\$233,208	\$371.15
LINCOLN COUNTY - TOTAL	262	2,941	2,998	2,775	\$19,611,342	\$519.36
Natural Resources & Mining	35	150	161	167	\$1,188,568	\$573.82
Construction	13	76	84	86	\$552,545	\$518.33
Manufacturing	10	368	378	375	\$2,832,671	\$583.13
Trade, Transportation & Utilities	51	356	375	379	\$2,713,179	\$564.07
Wholesale Trade	7	28	28	29	\$271,614	\$737.41
Retail Trade	26	187	193	192	\$746,160	\$301.03
Transportation, Warehousing & Utilities	18	141	154	158	\$1,695,405	\$863.68
Financial Activities	22	81	78	76	\$591,669	\$581.02
Professional & Business Services	12	22	25	25	\$170,626	\$546.88
Education & Health Services	69	360	364	349	\$1,809,207	\$389.10
Leisure & Hospitality	17	164	161	160	\$375,563	\$178.70
Local & State Government	21	1,329	1,338	1,126	\$9,196,243	\$559.51
Other	12	35	34	32	\$181,071	\$413.72

**TABLE 6. COUNTY SUMMARY
EMPLOYMENT AND TOTAL EARNINGS, BY INDUSTRY
SECOND QUARTER 2008**

NORTH AMERICAN INDUSTRY CLASSIFICATION SYSTEM INDUSTRY GROUP	NUMBER OF EMPLOYING UNITS	EMPLOYMENT	EMPLOYMENT	EMPLOYMENT	TOTAL EARNINGS	AVERAGE WEEKLY EARNINGS
		APRIL	MAY	JUNE	APRIL - JUNE	
LITTLE RIVER COUNTY - TOTAL	263	4,581	4,480	4,560	\$46,831,500	\$793.43
Natural Resources & Mining	11	72	71	69	\$502,035	\$546.48
Construction	25	816	674	778	\$8,376,911	\$852.35
Manufacturing	17	1,380	1,385	1,386	\$22,976,282	\$1,277.34
Trade, Transportation & Utilities	61	641	645	653	\$3,830,228	\$455.85
Retail Trade	38	391	392	401	\$1,899,485	\$370.22
Other Trade, Transportation & Utilities	23	250	253	252	\$1,930,743	\$590.14
Financial Activities	23	99	100	93	\$584,838	\$462.20
Professional & Business Services	24	158	156	149	\$953,568	\$475.28
Education & Health Services	33	171	170	166	\$963,173	\$438.40
Leisure & Hospitality	20	207	215	220	\$622,419	\$223.73
Local Government	20	841	861	853	\$6,953,667	\$628.06
State Government	12	99	99	93	\$631,078	\$500.46
Other	17	97	104	100	\$437,301	\$335.27
LOGAN COUNTY - TOTAL	506	5,954	5,725	5,669	\$38,191,420	\$508.04
Natural Resources & Mining	21	146	156	157	\$1,700,231	\$854.82
Construction	55	184	189	201	\$1,323,527	\$532.11
Manufacturing	31	1,681	1,374	1,294	\$11,163,677	\$592.37
Trade, Transportation & Utilities	117	879	883	878	\$4,809,532	\$420.41
Wholesale Trade	16	37	37	35	\$212,578	\$450.06
Retail Trade	76	746	756	754	\$3,689,924	\$377.45
Transportation, Warehousing & Utilities	25	96	90	89	\$907,030	\$761.14
Information	6	40	41	45	\$316,773	\$580.17
Financial Activities	46	277	277	271	\$2,401,585	\$671.77
Professional & Business Services	41	129	132	135	\$707,476	\$412.28
Education & Health Services	94	781	788	780	\$4,943,146	\$485.62
Leisure & Hospitality	30	339	347	330	\$774,838	\$175.99
Other Services	28	86	85	85	\$486,679	\$438.71
Local & State Government	37	1,412	1,453	1,493	\$9,563,956	\$506.44

**TABLE 6. COUNTY SUMMARY
EMPLOYMENT AND TOTAL EARNINGS, BY INDUSTRY
SECOND QUARTER 2008**

NORTH AMERICAN INDUSTRY CLASSIFICATION SYSTEM INDUSTRY GROUP	NUMBER OF EMPLOYING UNITS	EMPLOYMENT	EMPLOYMENT	EMPLOYMENT	TOTAL EARNINGS	AVERAGE WEEKLY EARNINGS
		APRIL	MAY	JUNE	APRIL - JUNE	
LONOKE COUNTY - TOTAL	1,332	12,643	12,782	12,606	\$88,800,820	\$538.84
Natural Resources & Mining	74	471	474	500	\$3,878,769	\$619.45
Construction	173	937	950	979	\$8,025,305	\$646.19
Manufacturing	40	1,354	1,342	1,313	\$12,718,516	\$732.11
Trade, Transportation & Utilities	356	2,787	2,801	2,809	\$18,030,744	\$495.53
Wholesale Trade	84	512	500	502	\$4,756,427	\$724.99
Retail Trade	194	1,993	2,013	2,012	\$10,648,486	\$408.33
Transportation, Warehousing & Utilities	78	282	288	295	\$2,625,831	\$700.53
Information	16	86	94	87	\$776,795	\$671.39
Financial Activities	140	550	548	556	\$4,607,593	\$642.86
Professional & Business Services	143	604	565	552	\$4,106,944	\$550.70
Education & Health Services	166	1,449	1,479	1,461	\$8,980,120	\$472.17
Leisure & Hospitality	107	1,452	1,509	1,524	\$4,068,098	\$209.32
Other Services	73	232	230	233	\$1,233,159	\$409.46
Local Government	28	2,564	2,632	2,433	\$21,372,728	\$646.50
State Government	16	157	158	159	\$1,002,049	\$487.85
MADISON COUNTY - TOTAL	265	3,207	3,172	3,151	\$21,169,187	\$512.61
Natural Resources & Mining	12	54	45	44	\$322,290	\$520.10
Construction	43	88	84	80	\$562,615	\$515.22
Manufacturing	21	1,139	1,137	1,160	\$7,916,287	\$531.68
Trade, Transportation & Utilities	61	605	611	602	\$3,504,795	\$444.88
Wholesale Trade	11	35	29	29	\$228,254	\$566.39
Retail Trade	37	413	431	429	\$1,972,135	\$357.51
Transportation, Warehousing & Utilities	13	157	151	144	\$1,304,406	\$665.97
Financial Activities	17	75	73	74	\$554,383	\$576.28
Professional & Business Services	21	117	115	131	\$646,524	\$411.01
Education & Health Services	42	259	262	240	\$1,325,785	\$402.04
Leisure & Hospitality	13	123	126	123	\$268,079	\$166.30
Local Government	9	620	591	567	\$5,050,951	\$655.57
State Government	8	57	57	58	\$396,720	\$532.27
Other	18	70	71	72	\$620,758	\$672.54

**TABLE 6. COUNTY SUMMARY
EMPLOYMENT AND TOTAL EARNINGS, BY INDUSTRY
SECOND QUARTER 2008**

NORTH AMERICAN INDUSTRY CLASSIFICATION SYSTEM INDUSTRY GROUP	NUMBER OF EMPLOYING UNITS	EMPLOYMENT	EMPLOYMENT	EMPLOYMENT	TOTAL EARNINGS	AVERAGE WEEKLY EARNINGS
		APRIL	MAY	JUNE	APRIL - JUNE	
MARION COUNTY - TOTAL	318	4,134	4,226	4,205	\$25,551,885	\$469.29
Natural Resources & Mining	7	45	48	45	\$263,654	\$440.89
Construction	27	88	89	89	\$459,185	\$398.37
Manufacturing	22	1,680	1,719	1,686	\$10,555,117	\$479.02
Trade, Transportation & Utilities	57	651	661	675	\$3,516,802	\$408.44
Wholesale Trade	9	36	36	37	\$410,798	\$869.72
Retail Trade	37	480	493	500	\$2,189,883	\$343.08
Transportation, Warehousing & Utilities	11	135	132	138	\$916,121	\$522.01
Financial Activities	36	175	209	211	\$1,370,228	\$531.44
Professional & Business Services	29	53	53	56	\$360,996	\$514.24
Education & Health Services	57	365	360	358	\$1,985,870	\$423.16
Leisure & Hospitality	38	230	263	266	\$674,098	\$204.96
Local Government	20	589	575	581	\$4,641,670	\$613.84
State Government	8	106	109	107	\$693,102	\$496.73
Other	17	152	140	131	\$1,031,163	\$562.55
MILLER COUNTY - TOTAL	857	13,095	13,197	13,306	\$108,518,815	\$632.43
Natural Resources & Mining	25	118	124	127	\$863,931	\$540.29
Construction	92	761	803	786	\$5,869,762	\$576.41
Manufacturing	32	2,354	2,360	2,356	\$33,610,970	\$1,097.08
Trade, Transportation & Utilities	230	3,448	3,437	3,543	\$25,368,778	\$561.41
Wholesale Trade	55	536	542	539	\$5,351,803	\$763.78
Retail Trade	135	1,338	1,362	1,442	\$6,937,710	\$386.53
Transportation, Warehousing & Utilities	40	1,574	1,533	1,562	\$13,079,265	\$646.45
Information	10	92	95	93	\$1,117,916	\$921.36
Financial Activities	83	349	352	354	\$2,714,643	\$593.80
Professional & Business Services	86	962	996	956	\$5,282,056	\$418.30
Education & Health Services	117	1,099	1,107	1,093	\$7,210,026	\$504.35
Leisure & Hospitality	82	1,323	1,328	1,348	\$4,293,181	\$247.75
Other Services	57	338	339	425	\$1,664,232	\$348.51
Local Government	26	1,756	1,758	1,721	\$16,305,752	\$718.79
State Government	17	495	498	504	\$4,217,568	\$650.16

**TABLE 6. COUNTY SUMMARY
EMPLOYMENT AND TOTAL EARNINGS, BY INDUSTRY
SECOND QUARTER 2008**

NORTH AMERICAN INDUSTRY CLASSIFICATION SYSTEM INDUSTRY GROUP	NUMBER OF EMPLOYING UNITS	EMPLOYMENT	EMPLOYMENT	EMPLOYMENT	TOTAL EARNINGS	AVERAGE WEEKLY EARNINGS
		APRIL	MAY	JUNE	APRIL - JUNE	
MISSISSIPPI COUNTY - TOTAL	1,237	19,783	19,921	19,610	\$179,646,857	\$698.94
Natural Resources & Mining	95	544	571	612	\$3,585,083	\$479.05
Construction	69	770	783	777	\$8,454,218	\$837.33
Manufacturing	58	6,103	6,107	6,121	\$81,079,640	\$1,020.71
Trade, Transportation & Utilities	300	2,961	2,934	2,985	\$21,172,873	\$550.23
Wholesale Trade	66	515	516	513	\$5,839,569	\$872.79
Retail Trade	181	1,855	1,833	1,868	\$9,184,135	\$381.46
Transportation, Warehousing & Utilities	53	591	585	604	\$6,149,169	\$797.21
Financial Activities	107	591	598	606	\$4,415,598	\$567.68
Professional & Business Services	106	1,435	1,465	1,549	\$10,752,231	\$557.72
Education & Health Services	264	1,691	1,717	1,646	\$10,691,131	\$488.16
Leisure & Hospitality	86	1,129	1,175	1,165	\$3,004,737	\$199.88
Local Government	46	2,349	2,377	2,233	\$21,473,741	\$712.10
State Government	24	663	666	595	\$4,810,509	\$576.98
Other	82	1,547	1,528	1,321	\$10,207,096	\$535.82
MONROE COUNTY - TOTAL	326	2,505	2,530	2,529	\$14,309,526	\$436.57
Natural Resources & Mining	35	145	161	158	\$926,421	\$460.75
Construction	13	42	46	49	\$257,418	\$433.61
Manufacturing	7	115	113	117	\$799,294	\$534.64
Trade, Transportation & Utilities	88	742	746	746	\$4,610,165	\$476.22
Wholesale Trade	22	232	242	237	\$1,865,824	\$605.59
Retail Trade	41	351	344	344	\$1,516,908	\$336.92
Transportation, Warehousing & Utilities	25	159	160	165	\$1,227,433	\$585.24
Financial Activities	16	87	89	93	\$728,470	\$624.94
Professional & Business Services	16	58	55	40	\$290,992	\$438.90
Education & Health Services	68	358	360	360	\$1,576,919	\$337.57
Leisure & Hospitality	25	280	277	288	\$653,094	\$178.36
Local Government	22	428	436	429	\$3,143,455	\$561.03
State Government	9	137	138	138	\$827,017	\$462.11
Other	27	113	109	111	\$496,281	\$343.92

**TABLE 6. COUNTY SUMMARY
EMPLOYMENT AND TOTAL EARNINGS, BY INDUSTRY
SECOND QUARTER 2008**

NORTH AMERICAN INDUSTRY CLASSIFICATION SYSTEM INDUSTRY GROUP	NUMBER OF EMPLOYING UNITS	EMPLOYMENT	EMPLOYMENT	EMPLOYMENT	TOTAL EARNINGS	AVERAGE WEEKLY EARNINGS
		APRIL	MAY	JUNE	APRIL - JUNE	
MONTGOMERY COUNTY - TOTAL	184	1,561	1,613	1,891	\$10,029,032	\$456.94
Natural Resources & Mining	13	56	54	54	\$545,668	\$767.83
Construction	21	88	85	94	\$640,576	\$553.65
Manufacturing	10	154	153	151	\$836,793	\$421.63
Trade, Transportation & Utilities	45	219	218	225	\$1,275,882	\$444.76
Wholesale Trade	11	74	76	74	\$566,784	\$583.91
Retail Trade	24	127	125	131	\$623,044	\$375.40
Transportation, Warehousing & Utilities	10	18	17	20	\$86,054	\$361.07
Financial Activities	11	72	74	74	\$531,791	\$557.82
Professional & Business Services	13	26	25	26	\$115,780	\$346.99
Education & Health Services	17	65	65	67	\$360,079	\$421.80
Leisure & Hospitality	22	260	313	572	\$1,398,983	\$281.96
Local Government	9	502	506	512	\$3,669,217	\$557.07
State Government	8	53	53	55	\$389,133	\$557.76
Other	15	66	67	61	\$265,130	\$315.38
NEVADA COUNTY - TOTAL	194	2,485	2,522	2,400	\$19,989,845	\$622.79
Natural Resources & Mining	13	48	47	48	\$341,201	\$550.62
Trade, Transportation & Utilities	42	474	486	501	\$3,063,041	\$483.82
Retail Trade	29	285	295	297	\$1,310,205	\$344.76
Other Trade, Transportation & Utilities	13	189	191	204	\$1,752,836	\$692.64
Financial Activities	15	64	64	68	\$471,039	\$554.60
Professional & Business Services	9	39	40	44	\$325,147	\$610.03
Education & Health Services	23	392	401	408	\$2,229,160	\$428.33
Leisure & Hospitality	14	101	98	110	\$288,255	\$215.28
Other Services	17	59	62	60	\$206,234	\$262.94
Local Government	28	493	502	498	\$3,888,179	\$600.99
State Government	11	86	86	88	\$568,001	\$504.14
Other	22	729	736	575	\$8,609,588	\$973.94

**TABLE 6. COUNTY SUMMARY
EMPLOYMENT AND TOTAL EARNINGS, BY INDUSTRY
SECOND QUARTER 2008**

NORTH AMERICAN INDUSTRY CLASSIFICATION SYSTEM INDUSTRY GROUP	NUMBER OF EMPLOYING UNITS	EMPLOYMENT	EMPLOYMENT	EMPLOYMENT	TOTAL EARNINGS	AVERAGE WEEKLY EARNINGS
		APRIL	MAY	JUNE	APRIL - JUNE	
NEWTON COUNTY - TOTAL	136	1,084	1,076	1,053	\$5,940,232	\$426.65
Construction	8	27	25	24	\$129,170	\$392.22
Manufacturing	16	73	67	68	\$463,001	\$513.68
Trade, Transportation & Utilities	27	145	146	150	\$775,149	\$405.62
Retail Trade	13	92	91	96	\$362,624	\$299.94
Other Trade, Transportation & Utilities	14	53	55	54	\$412,525	\$587.64
Professional & Business Services	7	21	22	20	\$154,862	\$567.26
Education & Health Services	27	207	211	208	\$863,086	\$318.17
Leisure & Hospitality	19	88	82	85	\$271,064	\$245.31
Other Services	4	12	11	12	\$38,527	\$254.02
Local Government	13	392	393	369	\$2,615,866	\$523.10
State Government	7	94	94	92	\$481,777	\$397.07
Other	8	25	25	25	\$147,730	\$454.55
OUACHITA COUNTY - TOTAL	658	7,689	7,739	7,750	\$55,052,622	\$548.13
Natural Resources & Mining	47	254	260	262	\$2,016,568	\$599.69
Construction	47	279	284	269	\$1,904,538	\$528.26
Manufacturing	32	892	907	924	\$7,354,361	\$623.27
Trade, Transportation & Utilities	172	1,716	1,725	1,744	\$11,581,611	\$515.46
Wholesale Trade	27	244	241	243	\$2,332,511	\$739.38
Retail Trade	118	1,053	1,058	1,068	\$4,972,338	\$360.95
Transportation, Warehousing & Utilities	27	419	426	433	\$4,276,762	\$772.26
Information	7	59	62	59	\$510,650	\$654.68
Financial Activities	64	351	348	344	\$2,635,457	\$583.11
Professional & Business Services	51	340	347	360	\$2,234,190	\$492.44
Education & Health Services	118	1,264	1,260	1,263	\$8,688,222	\$529.44
Leisure & Hospitality	35	524	534	532	\$1,203,726	\$174.71
Other Services	41	148	148	153	\$1,084,434	\$557.36
Local Government	30	1,265	1,250	1,262	\$11,520,594	\$703.89
State Government	14	597	614	578	\$4,318,271	\$557.03

**TABLE 6. COUNTY SUMMARY
EMPLOYMENT AND TOTAL EARNINGS, BY INDUSTRY
SECOND QUARTER 2008**

NORTH AMERICAN INDUSTRY CLASSIFICATION SYSTEM INDUSTRY GROUP	NUMBER OF EMPLOYING UNITS	EMPLOYMENT	EMPLOYMENT	EMPLOYMENT	TOTAL EARNINGS	AVERAGE WEEKLY EARNINGS
		APRIL	MAY	JUNE	APRIL - JUNE	
PERRY COUNTY - TOTAL	160	1,334	1,399	1,411	\$9,901,673	\$551.40
Construction	21	63	67	66	\$753,325	\$886.96
Manufacturing	7	74	74	73	\$469,041	\$489.77
Trade, Transportation & Utilities	29	229	235	236	\$1,396,111	\$460.26
Retail Trade	19	158	160	160	\$565,586	\$273.05
Other Trade, Transportation & Utilities	10	71	75	76	\$830,525	\$863.33
Financial Activities	16	65	67	68	\$613,421	\$707.79
Professional & Business Services	15	35	39	36	\$290,573	\$609.59
Education & Health Services	29	182	189	194	\$1,134,818	\$463.51
Local Government	12	435	449	449	\$3,016,488	\$522.22
State Government	9	52	50	51	\$360,608	\$543.90
Other	22	199	229	238	\$1,867,288	\$647.02
PHILLIPS COUNTY - TOTAL	872	6,687	6,746	6,578	\$46,413,045	\$535.24
Natural Resources & Mining	67	353	392	400	\$2,022,544	\$407.63
Construction	31	158	162	186	\$1,486,653	\$678.01
Manufacturing	13	366	369	355	\$3,039,990	\$643.61
Trade, Transportation & Utilities	172	1,679	1,673	1,647	\$10,955,828	\$505.75
Wholesale Trade	34	474	471	472	\$4,038,984	\$657.78
Retail Trade	95	931	922	901	\$4,544,787	\$380.83
Transportation, Warehousing & Utilities	43	274	280	274	\$2,372,057	\$661.11
Information	9	47	46	49	\$344,273	\$559.49
Financial Activities	56	276	275	267	\$1,994,777	\$562.75
Professional & Business Services	60	181	173	192	\$1,579,426	\$667.55
Education & Health Services	339	1,373	1,402	1,392	\$8,261,374	\$457.52
Leisure & Hospitality	38	426	420	425	\$1,017,482	\$184.74
Other Services	40	81	86	85	\$398,641	\$365.06
Local Government	30	1,132	1,140	1,021	\$11,691,449	\$819.32
State Government	17	615	608	559	\$3,620,608	\$468.87

**TABLE 6. COUNTY SUMMARY
EMPLOYMENT AND TOTAL EARNINGS, BY INDUSTRY
SECOND QUARTER 2008**

NORTH AMERICAN INDUSTRY CLASSIFICATION SYSTEM INDUSTRY GROUP	NUMBER OF EMPLOYING UNITS	EMPLOYMENT	EMPLOYMENT	EMPLOYMENT	TOTAL EARNINGS	AVERAGE WEEKLY EARNINGS
		APRIL	MAY	JUNE	APRIL - JUNE	
PIKE COUNTY - TOTAL	277	2,616	2,736	2,634	\$17,055,458	\$492.85
Natural Resources & Mining	27	148	143	147	\$1,167,819	\$615.29
Construction	13	35	32	17	\$227,638	\$625.38
Manufacturing	16	210	334	346	\$1,748,946	\$453.49
Trade, Transportation & Utilities	94	661	664	665	\$4,092,385	\$474.57
Wholesale Trade	20	166	169	166	\$1,308,595	\$602.76
Retail Trade	47	376	372	378	\$1,754,089	\$359.49
Transportation, Warehousing & Utilities	27	119	123	121	\$1,029,701	\$654.61
Information	4	28	26	26	\$307,363	\$886.62
Financial Activities	25	184	185	184	\$1,477,775	\$616.68
Professional & Business Services	15	38	36	35	\$376,981	\$798.12
Education & Health Services	21	240	234	241	\$1,196,834	\$386.28
Leisure & Hospitality	19	234	247	257	\$644,700	\$201.59
Other Services	19	124	125	105	\$557,764	\$363.60
Local Government	13	566	560	461	\$4,602,341	\$669.24
State Government	11	148	150	150	\$654,912	\$337.35
POINSETT COUNTY - TOTAL	496	5,499	5,603	5,652	\$39,396,867	\$542.65
Natural Resources & Mining	49	331	356	365	\$2,631,974	\$577.36
Construction	22	85	95	93	\$593,047	\$501.31
Manufacturing	22	801	814	825	\$6,458,204	\$610.80
Trade, Transportation & Utilities	127	1,344	1,367	1,414	\$10,178,482	\$569.43
Wholesale Trade	32	489	499	516	\$5,833,995	\$895.15
Retail Trade	67	692	705	730	\$3,106,925	\$337.09
Transportation, Warehousing & Utilities	28	163	163	168	\$1,237,562	\$578.12
Information	6	53	53	54	\$558,330	\$805.28
Financial Activities	51	287	287	290	\$2,014,636	\$538.10
Professional & Business Services	30	178	173	171	\$1,251,780	\$553.40
Education & Health Services	80	581	592	574	\$3,240,432	\$428.04
Leisure & Hospitality	44	407	418	428	\$887,232	\$163.40
Other Services	23	59	57	57	\$335,363	\$447.35
Local Government	30	1,161	1,179	1,173	\$9,853,238	\$647.26
State Government	12	212	212	208	\$1,394,149	\$509.06

**TABLE 6. COUNTY SUMMARY
EMPLOYMENT AND TOTAL EARNINGS, BY INDUSTRY
SECOND QUARTER 2008**

NORTH AMERICAN INDUSTRY CLASSIFICATION SYSTEM INDUSTRY GROUP	NUMBER OF EMPLOYING UNITS	EMPLOYMENT	EMPLOYMENT	EMPLOYMENT	TOTAL EARNINGS	AVERAGE WEEKLY EARNINGS
		APRIL	MAY	JUNE	APRIL - JUNE	
POLK COUNTY - TOTAL	555	6,344	6,464	6,446	\$40,208,077	\$481.91
Natural Resources & Mining	26	219	218	219	\$1,822,560	\$641.14
Construction	44	171	185	191	\$1,075,415	\$453.70
Manufacturing	42	1,306	1,313	1,320	\$9,455,805	\$553.98
Trade, Transportation & Utilities	147	1,343	1,414	1,414	\$7,794,661	\$431.26
Wholesale Trade	22	109	117	112	\$822,659	\$561.67
Retail Trade	82	900	939	934	\$4,367,537	\$363.47
Transportation, Warehousing & Utilities	43	334	358	368	\$2,604,465	\$567.01
Information	9	46	50	50	\$384,458	\$607.68
Financial Activities	40	255	259	262	\$1,749,872	\$520.38
Professional & Business Services	54	246	256	261	\$1,294,402	\$391.49
Education & Health Services	85	999	1,004	1,013	\$6,169,795	\$472.08
Leisure & Hospitality	38	431	427	438	\$1,009,982	\$179.84
Other Services	36	150	150	152	\$867,004	\$442.65
Local Government	20	836	846	829	\$6,728,546	\$618.38
State Government	14	342	342	297	\$1,855,577	\$436.50
POPE COUNTY - TOTAL	1,793	26,791	26,951	26,544	\$213,635,590	\$614.06
Natural Resources & Mining	28	784	771	771	\$7,660,987	\$760.07
Construction	189	1,179	1,216	1,194	\$11,465,251	\$737.20
Manufacturing	88	4,946	4,992	4,975	\$41,765,889	\$646.30
Trade, Transportation & Utilities	469	6,551	6,559	6,581	\$62,465,706	\$732.07
Wholesale Trade	103	650	648	666	\$6,224,030	\$731.32
Retail Trade	274	3,420	3,420	3,397	\$17,724,008	\$399.55
Transportation, Warehousing & Utilities	92	2,481	2,491	2,518	\$38,517,668	\$1,186.74
Information	16	224	227	222	\$2,048,486	\$702.42
Financial Activities	194	838	840	848	\$6,828,419	\$623.83
Professional & Business Services	247	2,539	2,638	2,438	\$18,942,691	\$574.05
Education & Health Services	271	3,066	3,065	3,045	\$21,541,382	\$541.75
Leisure & Hospitality	129	2,474	2,445	2,389	\$6,742,673	\$212.92
Other Services	106	499	503	491	\$2,948,543	\$455.75
Local Government	40	2,331	2,333	2,335	\$20,278,356	\$668.61
State Government	16	1,360	1,362	1,255	\$10,947,207	\$635.22

**TABLE 6. COUNTY SUMMARY
EMPLOYMENT AND TOTAL EARNINGS, BY INDUSTRY
SECOND QUARTER 2008**

NORTH AMERICAN INDUSTRY CLASSIFICATION SYSTEM INDUSTRY GROUP	NUMBER OF EMPLOYING UNITS	EMPLOYMENT	EMPLOYMENT	EMPLOYMENT	TOTAL EARNINGS	AVERAGE WEEKLY EARNINGS
		APRIL	MAY	JUNE	APRIL - JUNE	
PRAIRIE COUNTY - TOTAL	249	1,493	1,495	1,519	\$10,159,466	\$520.19
Natural Resources & Mining	28	146	158	163	\$1,229,217	\$607.42
Construction	14	78	74	84	\$478,570	\$467.96
Trade, Transportation & Utilities	63	312	319	322	\$2,042,866	\$494.68
Wholesale Trade	9	58	60	61	\$659,776	\$850.59
Retail Trade	35	180	185	183	\$678,103	\$285.56
Transportation, Warehousing & Utilities	19	74	74	78	\$704,987	\$719.86
Financial Activities	19	69	69	69	\$521,365	\$581.23
Professional & Business Services	17	63	61	61	\$396,681	\$494.82
Education & Health Services	42	181	187	189	\$1,019,598	\$422.43
Leisure & Hospitality	17	78	75	80	\$196,727	\$194.84
Other Services	15	41	43	43	\$201,325	\$365.82
Local Government	15	329	318	309	\$2,506,659	\$605.08
State Government	10	55	55	56	\$402,784	\$559.94
Other	9	141	136	143	\$1,163,674	\$639.38
PULASKI COUNTY - TOTAL	14,849	242,019	243,183	242,719	\$2,348,859,573	\$744.65
Natural Resources & Mining	58	760	760	770	\$10,221,779	\$1,030.08
Construction	1,168	10,228	10,396	10,475	\$105,933,969	\$786.08
Manufacturing	441	15,330	15,610	15,728	\$170,220,626	\$841.73
Trade, Transportation & Utilities	3,364	50,425	50,627	50,501	\$444,596,346	\$676.99
Wholesale Trade	1,186	13,685	13,723	13,698	\$170,773,839	\$958.72
Retail Trade	1,772	24,480	24,612	24,805	\$150,720,608	\$470.68
Transportation, Warehousing & Utilities	406	12,260	12,292	11,998	\$123,101,899	\$777.24
Information	221	8,719	8,337	8,416	\$122,318,993	\$1,108.18
Financial Activities	1,797	15,727	15,767	15,716	\$206,976,609	\$1,011.73
Professional & Business Services	2,859	34,766	34,950	34,627	\$325,954,875	\$720.90
Education & Health Services	2,359	35,988	35,968	35,893	\$365,424,030	\$781.91
Leisure & Hospitality	1,056	21,010	21,520	21,496	\$76,932,099	\$277.29
Other Services	1,217	6,876	6,970	7,200	\$52,278,869	\$573.24
Local Government	103	17,123	17,089	17,133	\$188,248,692	\$846.08
State Government	206	25,067	25,189	24,764	\$279,752,686	\$860.55

**TABLE 6. COUNTY SUMMARY
EMPLOYMENT AND TOTAL EARNINGS, BY INDUSTRY
SECOND QUARTER 2008**

NORTH AMERICAN INDUSTRY CLASSIFICATION SYSTEM INDUSTRY GROUP	NUMBER OF EMPLOYING UNITS	EMPLOYMENT	EMPLOYMENT	EMPLOYMENT	TOTAL EARNINGS	AVERAGE WEEKLY EARNINGS
		APRIL	MAY	JUNE	APRIL - JUNE	
RANDOLPH COUNTY - TOTAL	426	4,742	4,797	4,751	\$29,948,301	\$483.64
Natural Resources & Mining	24	94	105	105	\$587,610	\$446.06
Construction	24	74	78	85	\$358,469	\$349.04
Manufacturing	37	633	627	636	\$4,075,281	\$496.02
Trade, Transportation & Utilities	107	915	934	920	\$5,402,102	\$450.21
Wholesale Trade	22	213	219	204	\$1,280,301	\$464.55
Retail Trade	66	575	587	591	\$3,000,261	\$394.96
Transportation, Warehousing & Utilities	19	127	128	125	\$1,121,540	\$681.10
Information	5	39	40	40	\$356,959	\$692.23
Financial Activities	32	146	151	149	\$970,911	\$502.37
Professional & Business Services	35	267	269	275	\$1,217,956	\$346.57
Education & Health Services	78	950	916	922	\$6,256,522	\$517.87
Leisure & Hospitality	26	389	394	396	\$933,803	\$182.78
Other Services	24	62	71	71	\$316,879	\$358.46
Local Government	22	886	928	877	\$7,347,810	\$630.12
State Government	12	287	284	275	\$2,123,999	\$579.38
SAINT FRANCIS COUNTY - TOTAL	769	7,773	7,853	7,943	\$53,018,041	\$519.11
Natural Resources & Mining	30	188	200	200	\$1,226,407	\$481.32
Construction	44	227	240	260	\$1,841,661	\$584.59
Manufacturing	16	768	771	785	\$6,373,220	\$632.85
Trade, Transportation & Utilities	179	2,058	2,064	2,100	\$13,701,894	\$508.19
Wholesale Trade	32	601	589	587	\$4,803,141	\$623.76
Retail Trade	122	1,203	1,222	1,255	\$6,114,736	\$383.45
Transportation, Warehousing & Utilities	25	254	253	258	\$2,784,017	\$839.82
Information	7	86	83	79	\$617,008	\$574.14
Financial Activities	62	313	327	333	\$1,945,875	\$461.51
Professional & Business Services	54	286	285	274	\$2,183,858	\$596.41
Education & Health Services	238	1,394	1,403	1,415	\$8,486,533	\$464.96
Leisure & Hospitality	56	674	686	707	\$1,969,218	\$219.85
Other Services	37	99	104	95	\$391,002	\$302.79
Local Government	29	1,142	1,150	1,168	\$10,203,119	\$680.51
State Government	17	538	540	527	\$4,078,246	\$586.38

**TABLE 6. COUNTY SUMMARY
EMPLOYMENT AND TOTAL EARNINGS, BY INDUSTRY
SECOND QUARTER 2008**

NORTH AMERICAN INDUSTRY CLASSIFICATION SYSTEM INDUSTRY GROUP	NUMBER OF EMPLOYING UNITS	EMPLOYMENT	EMPLOYMENT	EMPLOYMENT	TOTAL EARNINGS	AVERAGE WEEKLY EARNINGS
		APRIL	MAY	JUNE	APRIL - JUNE	
SALINE COUNTY - TOTAL	1,857	21,309	21,446	21,386	\$159,019,285	\$572.13
Natural Resources & Mining	14	36	40	44	\$579,494	\$1,114.41
Construction	319	1,990	2,027	2,012	\$17,281,879	\$661.49
Manufacturing	85	1,862	1,824	1,838	\$20,189,037	\$843.41
Trade, Transportation & Utilities	437	4,598	4,657	4,638	\$33,277,926	\$552.76
Wholesale Trade	120	600	589	584	\$6,479,589	\$843.37
Retail Trade	259	3,703	3,771	3,769	\$23,977,735	\$492.16
Transportation, Warehousing & Utilities	58	295	297	285	\$2,820,602	\$742.20
Information	13	120	126	124	\$925,888	\$577.48
Financial Activities	193	798	810	790	\$6,318,816	\$608.09
Professional & Business Services	235	1,278	1,274	1,291	\$8,509,188	\$510.97
Education & Health Services	235	2,925	2,933	2,955	\$19,660,598	\$514.81
Leisure & Hospitality	140	2,537	2,583	2,580	\$7,808,081	\$234.01
Other Services	137	616	626	583	\$3,394,959	\$429.29
Local & State Government	49	4,549	4,546	4,531	\$41,073,419	\$695.62
SCOTT COUNTY - TOTAL	194	2,885	2,926	2,910	\$17,952,325	\$475.04
Natural Resources & Mining	15	172	174	174	\$1,370,636	\$608.27
Construction	10	47	50	48	\$254,460	\$404.98
Manufacturing	17	1,134	1,151	1,152	\$6,446,586	\$432.84
Trade, Transportation & Utilities	41	459	470	459	\$2,529,064	\$420.48
Wholesale Trade	10	64	66	71	\$508,454	\$583.76
Retail Trade	25	333	339	326	\$1,376,944	\$318.39
Transportation, Warehousing & Utilities	6	62	65	62	\$643,666	\$785.92
Financial Activities	22	81	78	83	\$479,497	\$457.24
Professional & Business Services	12	9	9	9	\$62,258	\$532.12
Education & Health Services	36	307	298	304	\$1,833,118	\$465.38
Leisure & Hospitality	17	177	192	167	\$401,231	\$172.75
Local Government	5	382	384	394	\$3,793,760	\$754.73
State Government	8	73	76	76	\$434,898	\$446.05
Other	11	44	44	44	\$346,817	\$606.32

**TABLE 6. COUNTY SUMMARY
EMPLOYMENT AND TOTAL EARNINGS, BY INDUSTRY
SECOND QUARTER 2008**

NORTH AMERICAN INDUSTRY CLASSIFICATION SYSTEM INDUSTRY GROUP	NUMBER OF EMPLOYING UNITS	EMPLOYMENT	EMPLOYMENT	EMPLOYMENT	TOTAL EARNINGS	AVERAGE WEEKLY EARNINGS
		APRIL	MAY	JUNE	APRIL - JUNE	
SEARCY COUNTY - TOTAL	196	1,772	1,805	1,838	\$9,525,000	\$405.92
Construction	7	21	21	23	\$123,256	\$437.60
Manufacturing	17	236	246	264	\$987,240	\$305.39
Trade, Transportation & Utilities	41	327	323	331	\$1,380,290	\$324.70
Wholesale Trade	6	64	61	64	\$249,246	\$304.33
Retail Trade	26	214	217	220	\$828,519	\$293.70
Transportation, Warehousing & Utilities	9	49	45	47	\$302,525	\$495.13
Information	6	14	12	14	\$106,800	\$616.15
Financial Activities	13	101	109	118	\$692,830	\$487.45
Professional & Business Services	16	46	33	29	\$199,097	\$425.42
Education & Health Services	53	331	334	329	\$1,600,028	\$371.47
Leisure & Hospitality	16	132	140	156	\$397,411	\$214.28
Local Government	10	375	379	373	\$2,719,722	\$556.90
State Government	8	147	150	147	\$963,452	\$500.75
Other	9	42	58	54	\$354,874	\$531.78
SEBASTIAN COUNTY - TOTAL	3,789	71,753	72,352	72,166	\$614,031,610	\$655.19
Natural Resources & Mining	74	1,929	1,937	1,959	\$31,006,940	\$1,228.40
Construction	316	2,648	2,775	2,775	\$24,187,375	\$680.86
Manufacturing	232	17,628	17,693	17,649	\$171,485,991	\$747.10
Trade, Transportation & Utilities	967	13,107	13,124	13,162	\$96,737,527	\$566.70
Wholesale Trade	251	2,681	2,690	2,736	\$27,600,545	\$785.66
Retail Trade	577	8,041	8,041	8,033	\$45,811,324	\$438.39
Transportation, Warehousing & Utilities	139	2,385	2,393	2,393	\$23,325,658	\$750.64
Information	51	990	994	995	\$11,588,383	\$897.70
Financial Activities	432	2,519	2,528	2,548	\$24,711,348	\$750.84
Professional & Business Services	554	9,301	9,453	9,643	\$65,978,961	\$536.18
Education & Health Services	525	10,499	10,570	10,638	\$101,243,278	\$736.87
Leisure & Hospitality	304	5,647	5,704	5,807	\$18,165,238	\$244.32
Other Services	269	1,344	1,376	1,419	\$8,906,424	\$496.58
Local Government	43	4,607	4,669	4,297	\$48,088,850	\$817.61
State Government	22	1,534	1,529	1,274	\$11,931,295	\$634.86

**TABLE 6. COUNTY SUMMARY
EMPLOYMENT AND TOTAL EARNINGS, BY INDUSTRY
SECOND QUARTER 2008**

NORTH AMERICAN INDUSTRY CLASSIFICATION SYSTEM INDUSTRY GROUP	NUMBER OF EMPLOYING UNITS	EMPLOYMENT	EMPLOYMENT	EMPLOYMENT	TOTAL EARNINGS	AVERAGE WEEKLY EARNINGS
		APRIL	MAY	JUNE	APRIL - JUNE	
SEVIER COUNTY - TOTAL	328	5,857	5,872	5,738	\$36,128,670	\$477.32
Natural Resources & Mining	18	258	262	260	\$1,782,819	\$527.46
Construction	19	160	172	152	\$1,349,911	\$643.63
Manufacturing	11	2,251	2,215	2,203	\$13,360,004	\$462.30
Trade, Transportation & Utilities	96	837	859	852	\$5,481,617	\$496.46
Wholesale Trade	14	133	133	131	\$1,492,056	\$867.31
Retail Trade	63	584	606	607	\$2,872,530	\$368.89
Transportation, Warehousing & Utilities	19	120	120	114	\$1,117,031	\$728.18
Information	4	49	47	47	\$349,570	\$564.13
Financial Activities	30	184	187	190	\$1,285,333	\$528.73
Professional & Business Services	28	72	75	76	\$451,310	\$467.03
Education & Health Services	50	515	524	532	\$3,278,792	\$481.63
Leisure & Hospitality	23	259	245	246	\$611,308	\$188.09
Other Services	29	140	133	130	\$589,425	\$337.52
Local Government	11	914	938	858	\$6,211,059	\$528.90
State Government	9	218	215	192	\$1,377,522	\$508.62
SHARP COUNTY - TOTAL	447	3,755	3,795	3,860	\$22,912,827	\$463.42
Construction	30	172	178	188	\$1,370,705	\$587.95
Manufacturing	23	178	171	173	\$937,431	\$414.43
Trade, Transportation & Utilities	95	985	1,006	997	\$6,427,197	\$496.39
Wholesale Trade	11	44	41	40	\$265,995	\$491.07
Retail Trade	69	640	651	652	\$2,924,437	\$347.33
Transportation, Warehousing & Utilities	15	301	314	305	\$3,236,765	\$811.90
Information	7	54	57	59	\$673,525	\$914.29
Financial Activities	38	244	240	244	\$1,804,966	\$572.16
Professional & Business Services	46	176	175	177	\$1,355,269	\$592.34
Education & Health Services	107	586	586	565	\$3,094,643	\$411.14
Leisure & Hospitality	38	396	392	393	\$924,196	\$180.59
Local Government	24	779	796	801	\$5,250,884	\$509.99
State Government	9	113	113	109	\$671,250	\$462.40
Other	30	72	81	154	\$402,761	\$302.75

**TABLE 6. COUNTY SUMMARY
EMPLOYMENT AND TOTAL EARNINGS, BY INDUSTRY
SECOND QUARTER 2008**

NORTH AMERICAN INDUSTRY CLASSIFICATION SYSTEM INDUSTRY GROUP	NUMBER OF EMPLOYING UNITS	EMPLOYMENT	EMPLOYMENT	EMPLOYMENT	TOTAL EARNINGS	AVERAGE WEEKLY EARNINGS
		APRIL	MAY	JUNE	APRIL - JUNE	
STONE COUNTY - TOTAL	303	3,027	3,028	3,094	\$17,314,258	\$436.73
Natural Resources & Mining	5	27	31	70	\$141,547	\$255.19
Construction	27	112	113	109	\$639,877	\$442.11
Manufacturing	27	408	411	411	\$2,335,444	\$438.17
Trade, Transportation & Utilities	75	718	716	717	\$4,444,384	\$476.81
Wholesale Trade	8	57	61	58	\$340,900	\$446.98
Retail Trade	56	621	616	619	\$3,670,192	\$456.34
Transportation, Warehousing & Utilities	11	40	39	40	\$433,292	\$840.26
Financial Activities	31	130	131	134	\$795,041	\$464.48
Professional & Business Services	14	35	23	33	\$196,111	\$497.32
Education & Health Services	59	514	500	496	\$3,272,810	\$500.17
Leisure & Hospitality	32	382	405	418	\$973,258	\$186.39
Local Government	10	456	453	458	\$3,272,384	\$552.43
State Government	9	176	177	178	\$799,784	\$347.58
Other	14	69	68	70	\$443,618	\$494.56
UNION COUNTY - TOTAL	1,403	19,478	19,595	19,583	\$191,883,335	\$754.92
Natural Resources & Mining	111	490	513	523	\$5,137,590	\$776.93
Construction	89	1,233	1,291	1,222	\$13,203,467	\$813.39
Manufacturing	62	4,600	4,543	4,639	\$45,470,555	\$761.37
Trade, Transportation & Utilities	363	3,689	3,749	3,719	\$36,626,275	\$757.57
Wholesale Trade	78	666	680	680	\$15,268,045	\$1,739.09
Retail Trade	222	2,221	2,261	2,229	\$11,214,961	\$385.65
Transportation, Warehousing & Utilities	63	802	808	810	\$10,143,269	\$967.25
Information	15	172	171	171	\$1,208,193	\$542.44
Financial Activities	123	728	744	740	\$5,908,086	\$616.37
Professional & Business Services	141	1,732	1,696	1,686	\$30,969,742	\$1,397.51
Education & Health Services	220	2,439	2,476	2,469	\$20,834,980	\$651.15
Leisure & Hospitality	89	1,178	1,184	1,225	\$3,570,745	\$229.72
Other Services	136	657	662	665	\$6,961,755	\$809.76
Local Government	36	1,979	1,990	1,950	\$17,684,695	\$689.49
State Government	18	581	576	574	\$4,307,252	\$574.22

**TABLE 6. COUNTY SUMMARY
EMPLOYMENT AND TOTAL EARNINGS, BY INDUSTRY
SECOND QUARTER 2008**

NORTH AMERICAN INDUSTRY CLASSIFICATION SYSTEM INDUSTRY GROUP	NUMBER OF EMPLOYING UNITS	EMPLOYMENT	EMPLOYMENT	EMPLOYMENT	TOTAL EARNINGS	AVERAGE WEEKLY EARNINGS
		APRIL	MAY	JUNE	APRIL - JUNE	
VAN BUREN COUNTY - TOTAL	364	3,771	3,822	3,828	\$24,107,424	\$487.11
Natural Resources & Mining	11	56	65	66	\$615,396	\$759.44
Construction	45	231	239	232	\$1,515,473	\$498.18
Trade, Transportation & Utilities	98	904	911	905	\$5,780,026	\$490.39
Wholesale Trade	16	58	58	57	\$560,280	\$747.37
Retail Trade	57	666	676	667	\$3,317,252	\$381.05
Transportation, Warehousing & Utilities	25	180	177	181	\$1,902,494	\$816.05
Information	10	49	47	46	\$426,682	\$693.42
Financial Activities	27	148	152	151	\$1,061,739	\$543.27
Professional & Business Services	26	94	99	108	\$509,578	\$390.68
Education & Health Services	62	632	632	633	\$3,942,016	\$479.54
Leisure & Hospitality	25	414	434	453	\$1,491,140	\$264.50
Local Government	11	634	651	634	\$4,973,850	\$598.13
State Government	8	89	88	88	\$594,885	\$518.04
Other	41	520	504	512	\$3,196,639	\$480.26
WASHINGTON COUNTY - TOTAL	5,734	90,130	89,994	91,403	\$801,986,846	\$681.60
Natural Resources & Mining	39	500	506	506	\$4,371,865	\$667.26
Construction	653	5,107	5,037	5,023	\$46,459,543	\$706.89
Manufacturing	238	14,669	14,724	14,743	\$124,056,819	\$648.64
Trade, Transportation & Utilities	1,370	20,042	20,156	20,203	\$167,526,135	\$640.05
Wholesale Trade	416	3,633	3,715	3,746	\$46,796,280	\$973.42
Retail Trade	762	11,045	11,037	11,134	\$65,157,554	\$452.68
Transportation, Warehousing & Utilities	192	5,364	5,404	5,323	\$55,572,301	\$796.99
Information	91	1,540	1,540	1,557	\$16,059,049	\$799.21
Financial Activities	673	3,951	3,945	3,969	\$38,454,500	\$747.92
Professional & Business Services	975	8,501	8,613	8,719	\$107,197,445	\$957.61
Education & Health Services	694	11,223	11,339	11,317	\$110,806,049	\$754.76
Leisure & Hospitality	525	9,792	9,726	9,904	\$31,704,855	\$248.67
Other Services	394	1,969	1,940	1,935	\$12,189,846	\$481.36
Local & State Government	82	12,836	12,468	13,527	\$143,160,740	\$850.79

**TABLE 6. COUNTY SUMMARY
EMPLOYMENT AND TOTAL EARNINGS, BY INDUSTRY
SECOND QUARTER 2008**

NORTH AMERICAN INDUSTRY CLASSIFICATION SYSTEM INDUSTRY GROUP	NUMBER OF EMPLOYING UNITS	EMPLOYMENT	EMPLOYMENT	EMPLOYMENT	TOTAL EARNINGS	AVERAGE WEEKLY EARNINGS
		APRIL	MAY	JUNE	APRIL - JUNE	
WHITE COUNTY - TOTAL	1,806	24,102	24,229	24,280	\$190,906,255	\$606.73
Natural Resources & Mining	44	1,026	1,190	1,267	\$17,577,758	\$1,164.63
Construction	199	1,245	1,348	1,471	\$12,359,925	\$701.84
Manufacturing	82	2,700	2,671	2,667	\$25,098,700	\$720.58
Trade, Transportation & Utilities	500	5,949	5,970	5,999	\$44,403,892	\$571.89
Wholesale Trade	100	601	608	599	\$5,216,883	\$665.87
Retail Trade	304	3,266	3,257	3,278	\$17,484,989	\$411.69
Transportation, Warehousing & Utilities	96	2,082	2,105	2,122	\$21,702,020	\$793.81
Information	22	177	169	167	\$1,286,162	\$578.57
Financial Activities	193	994	1,006	987	\$7,666,716	\$592.31
Professional & Business Services	184	1,271	1,325	1,376	\$8,777,326	\$509.95
Education & Health Services	284	4,275	4,224	4,212	\$37,103,522	\$673.62
Leisure & Hospitality	132	2,378	2,364	2,287	\$6,041,766	\$198.36
Other Services	102	604	590	597	\$4,031,335	\$519.43
Local Government	45	2,650	2,668	2,600	\$21,626,004	\$630.29
State Government	19	833	704	650	\$4,933,149	\$520.54
WOODRUFF COUNTY - TOTAL	233	1,955	1,970	1,925	\$12,849,489	\$506.88
Natural Resources & Mining	24	154	155	168	\$960,980	\$464.92
Construction	9	42	49	66	\$390,648	\$574.20
Manufacturing	8	339	325	279	\$2,245,773	\$549.58
Trade, Transportation & Utilities	59	452	461	451	\$3,373,799	\$570.80
Wholesale Trade	13	149	152	153	\$1,650,304	\$838.85
Retail Trade	29	201	207	205	\$733,084	\$275.98
Transportation, Warehousing & Utilities	17	102	102	93	\$990,411	\$769.55
Financial Activities	16	60	58	61	\$410,481	\$529.20
Professional & Business Services	5	9	8	9	\$85,254	\$756.69
Education & Health Services	77	233	237	233	\$1,326,986	\$435.60
Leisure & Hospitality	10	65	72	71	\$157,941	\$175.23
Local Government	10	524	524	508	\$3,387,328	\$502.37
State Government	7	57	61	59	\$402,750	\$525.10
Other	8	20	20	20	\$107,549	\$413.65

**TABLE 6. COUNTY SUMMARY
EMPLOYMENT AND TOTAL EARNINGS, BY INDUSTRY
SECOND QUARTER 2008**

NORTH AMERICAN INDUSTRY CLASSIFICATION SYSTEM INDUSTRY GROUP	NUMBER OF EMPLOYING UNITS	EMPLOYMENT	EMPLOYMENT	EMPLOYMENT	TOTAL EARNINGS	AVERAGE WEEKLY EARNINGS
		APRIL	MAY	JUNE	APRIL - JUNE	
YELL COUNTY - TOTAL	425	6,998	6,948	6,847	\$46,208,217	\$512.84
Natural Resources & Mining	24	224	227	234	\$1,534,044	\$516.80
Construction	45	420	357	326	\$2,823,836	\$590.80
Manufacturing	19	2,750	2,739	2,719	\$17,673,053	\$496.88
Trade, Transportation & Utilities	85	665	680	672	\$3,434,930	\$393.00
Wholesale Trade	16	28	27	24	\$149,929	\$437.96
Retail Trade	52	550	562	558	\$2,389,287	\$330.16
Transportation, Warehousing & Utilities	17	87	91	90	\$895,714	\$771.28
Information	3	72	69	71	\$671,822	\$731.30
Financial Activities	38	193	188	185	\$1,234,713	\$503.42
Professional & Business Services	37	301	295	302	\$3,101,980	\$797.15
Education & Health Services	89	622	635	637	\$3,402,837	\$414.61
Leisure & Hospitality	29	332	338	341	\$833,065	\$190.15
Other Services	16	72	73	77	\$298,710	\$310.51
Local Government	27	1,225	1,231	1,163	\$10,512,996	\$670.37
State Government	13	122	116	120	\$686,231	\$442.35
REST-OF-STATE-TOTAL	4,507	18,239	18,524	18,044	\$253,462,083	\$1,067.22
Natural Resources & Mining	72	420	434	492	\$6,454,913	\$1,106.68
Construction	562	3,648	3,796	3,877	\$41,953,520	\$855.19
Manufacturing	68	246	246	249	\$2,884,349	\$898.27
Trade, Transportation & Utilities	1,677	6,202	6,234	6,263	\$113,499,805	\$1,400.73
Wholesale Trade	1,397	4,944	4,986	5,016	\$100,373,264	\$1,549.78
Retail Trade	123	470	467	457	\$5,996,436	\$992.68
Transportation, Warehousing & Utilities	157	788	781	790	\$7,130,105	\$697.50
Information	97	165	184	193	\$2,585,485	\$1,100.83
Financial Activities	263	832	850	768	\$13,259,365	\$1,248.92
Professional & Business Services	1,475	5,219	5,326	4,756	\$57,288,086	\$864.02
Education & Health Services	112	713	662	685	\$7,600,790	\$851.47
Leisure & Hospitality	53	69	65	57	\$617,468	\$746.03
Other	128	725	727	704	\$7,318,302	\$783.32

TABLE 7. FEDERAL GOVERNMENT EMPLOYMENT AND EARNINGS IN ARKANSAS

NORTH AMERICAN INDUSTRY CLASSIFICATION SYSTEM INDUSTRY GROUP	NUMBER OF EMPLOYING UNITS	EMPLOYMENT	EMPLOYMENT	EMPLOYMENT	TOTAL EARNINGS
		APRIL	MAY	JUNE	APR. - JUNE 2008
Trade, Transportation & Utilities	614	6,645	6,635	6,607	\$81,519,751
Information	1	35	34	35	\$456,575
Financial Activities	23	162	161	163	\$3,043,899
Professional & Business Services	30	759	846	853	\$12,199,497
Education & Health Services	5	4,373	4,380	4,419	\$94,664,728
Leisure & Hospitality	15	214	251	269	\$2,379,219
Other Services	2	246	263	272	\$946,705
Public Administration	490	8,483	8,605	8,583	\$137,340,615
TOTAL	1,180	20,917	21,175	21,201	\$332,550,989

**TABLE 8. WORKFORCE INFORMATION AREA, SUMMARY
EMPLOYMENT AND TOTAL EARNINGS, BY INDUSTRY
SECOND QUARTER 2008**

NORTH AMERICAN INDUSTRY CLASSIFICATION SYSTEM INDUSTRY GROUP	NUMBER OF EMPLOYING UNITS	EMPLOYMENT			TOTAL EARNINGS APRIL - JUNE	AVERAGE WEEKLY EARNINGS
		APRIL	MAY	JUNE		
CENTRAL WORKFORCE INFORMATION*	6,441	76,995	77,615	77,216	\$606,064,981	\$603.30
Natural Resources & Mining	187	1,556	1,594	1,641	\$20,757,274	\$999.82
Construction	897	5,890	6,033	6,167	\$51,869,643	\$661.69
Trade, Transportation & Utilities	1,569	15,282	15,389	15,422	\$104,165,090	\$521.51
Wholesale Trade	399	2,228	2,231	2,236	\$22,223,633	\$766.02
Retail Trade	906	11,265	11,350	11,372	\$63,961,512	\$434.29
Transportation, Warehousing & Utilities	264	1,789	1,808	1,814	\$17,979,945	\$766.81
Financial Activities	685	3,027	3,051	3,037	\$25,047,017	\$634.13
Professional & Business Services	777	6,988	6,923	6,903	\$75,796,141	\$840.37
Education & Health Services	908	10,385	10,541	10,584	\$74,683,418	\$546.96
Leisure & Hospitality	490	8,567	8,647	8,633	\$24,299,097	\$216.95
Local & State Government	207	15,027	15,132	14,576	\$134,698,766	\$694.85
Other	721	10,273	10,305	10,253	\$94,748,535	\$709.19
*Note: Pulaski County is not included in the Central Workforce Information. Please refer to Page 55 for information on Pulaski County.						
Central Workforce Includes these counties: Faulkner, Lonoke, Monroe, Prairie, and Saline.						
EASTERN WORKFORCE INFORMATION	3,757	38,323	38,603	38,819	\$281,291,798	\$560.83
Natural Resources & Mining	207	1,184	1,269	1,303	\$7,245,790	\$445.18
Construction	189	1,075	1,114	1,177	\$9,184,853	\$629.70
Trade, Transportation & Utilities	885	10,108	10,136	10,141	\$74,063,438	\$562.50
Wholesale Trade	184	2,226	2,221	2,208	\$21,070,665	\$730.65
Retail Trade	493	5,103	5,116	5,142	\$26,055,553	\$391.43
Transportation, Warehousing & Utilities	208	2,779	2,799	2,791	\$26,937,220	\$742.77
Financial Activities	291	1,598	1,638	1,635	\$12,064,736	\$571.58
Professional & Business Services	305	1,549	1,509	1,526	\$11,395,868	\$573.69
Education & Health Services	1,082	6,010	6,112	6,130	\$40,113,585	\$507.18
Leisure & Hospitality	240	3,469	3,514	3,645	\$10,969,981	\$238.19
Local Government	136	5,786	5,827	5,809	\$56,144,230	\$743.68
State Government	68	2,377	2,305	2,287	\$16,604,441	\$549.83
Other	354	5,167	5,179	5,166	\$43,504,876	\$647.21
Eastern Workforce Includes these counties: Crittenden, Cross, Lee, Phillips, and Saint Francis.						

**TABLE 8. WORKFORCE INFORMATION AREA, SUMMARY
EMPLOYMENT AND TOTAL EARNINGS, BY INDUSTRY
SECOND QUARTER 2008**

NORTH AMERICAN INDUSTRY CLASSIFICATION SYSTEM INDUSTRY GROUP	NUMBER OF EMPLOYING UNITS	EMPLOYMENT			TOTAL EARNINGS APRIL - JUNE	AVERAGE WEEKLY EARNINGS
		APRIL	MAY	JUNE		
NORTH CENTRAL WORKFORCE INFORMATION	5,870	69,982	70,697	71,029	\$506,606,934	\$552.22
Construction	531	3,070	3,357	3,620	\$26,482,382	\$608.27
Trade, Transportation & Utilities	1,524	15,595	15,759	15,822	\$109,986,243	\$538.02
Retail Trade	952	9,317	9,409	9,446	\$47,806,760	\$391.61
Other Trade, Transportation & Utilities	572	6,278	6,350	6,376	\$62,179,483	\$755.06
Financial Activities	555	2,792	2,832	2,832	\$21,192,934	\$578.37
Professional & Business Services	500	2,911	2,960	3,045	\$18,431,352	\$477.05
Education & Health Services	1,083	11,803	11,839	11,854	\$92,099,360	\$598.76
Leisure & Hospitality	445	6,209	6,318	6,423	\$16,796,469	\$204.54
Local Government	229	9,294	9,359	9,073	\$71,560,797	\$595.62
State Government	115	3,181	3,037	2,890	\$20,831,514	\$527.81
Other	888	15,127	15,236	15,470	\$129,225,883	\$650.65
North Central Workforce Includes these counties: Cleburne, Fulton, Independence, IZard, Jackson, Sharp, Stone, Van Buren, White, and Woodruff						
NORTHEAST WORKFORCE INFORMATION	6,601	94,818	95,652	95,333	\$737,241,774	\$595.28
Natural Resources & Mining	369	1,808	1,931	2,048	\$12,573,427	\$501.39
Construction	490	3,192	3,365	3,421	\$27,748,295	\$641.76
Manufacturing	351	21,005	21,055	21,233	\$207,717,233	\$757.35
Trade, Transportation & Utilities	1,734	17,991	17,942	18,128	\$122,788,079	\$524.14
Wholesale Trade	407	3,899	3,941	3,961	\$39,113,616	\$764.87
Retail Trade	1,014	11,507	11,416	11,545	\$59,041,880	\$395.30
Transportation, Warehousing & Utilities	313	2,585	2,585	2,622	\$24,632,583	\$729.52
Financial Activities	614	3,450	3,478	3,473	\$29,708,183	\$659.14
Professional & Business Services	667	6,566	6,840	6,885	\$45,130,336	\$513.27
Education & Health Services	1,121	13,251	13,295	13,175	\$106,278,159	\$617.45
Leisure & Hospitality	475	7,788	7,853	7,862	\$21,252,921	\$208.68
Local Government	217	11,855	11,967	11,433	\$103,623,120	\$678.29
State Government	107	4,199	4,211	4,129	\$36,626,043	\$674.07
Other	456	3,713	3,715	3,546	\$23,795,978	\$500.40
Northeast Workforce Includes these counties: Clay, Craighead, Greene, Lawrence, Mississippi, Poinsett, and Randolph.						

**TABLE 8. WORKFORCE INFORMATION AREA, SUMMARY
EMPLOYMENT AND TOTAL EARNINGS, BY INDUSTRY
SECOND QUARTER 2008**

NORTH AMERICAN INDUSTRY CLASSIFICATION SYSTEM INDUSTRY GROUP	NUMBER OF EMPLOYING UNITS	EMPLOYMENT APRIL	EMPLOYMENT MAY	EMPLOYMENT JUNE	TOTAL EARNINGS APRIL - JUNE	AVERAGE WEEKLY EARNINGS
NORTHWEST WORKFORCE INFORMATION	15,506	234,529	235,690	236,694	\$2,122,516,680	\$692.89
Construction	1,783	11,127	11,124	11,149	\$100,370,140	\$693.48
Trade, Transportation & Utilities	3,837	54,062	54,281	54,361	\$471,374,873	\$668.57
Retail Trade	2,040	26,749	26,978	27,178	\$155,784,650	\$444.35
Other Trade, Transportation & Utilities	1,797	27,313	27,303	27,183	\$315,590,223	\$890.34
Professional & Business Services	2,380	32,846	33,043	33,429	\$459,090,760	\$1,066.72
Education & Health Services	1,955	25,356	25,575	25,414	\$222,810,755	\$673.49
Leisure & Hospitality	1,417	23,032	23,605	23,989	\$76,063,136	\$248.53
Local & State Government	432	29,816	29,600	29,841	\$295,365,758	\$763.65
Other	3,702	58,290	58,462	58,511	\$497,441,258	\$654.98
Northwest Workforce Includes these counties: Baxter, Benton, Boone, Carroll, Madison, Marion, Newton, Searcy, and Washington.						
SOUTHEAST WORKFORCE INFORMATION	5,899	76,169	76,455	76,072	\$577,919,118	\$583.16
Natural Resources & Mining	417	2,728	2,709	2,778	\$20,762,760	\$583.25
Construction	349	3,145	3,357	3,309	\$30,200,638	\$710.36
Manufacturing	223	16,818	16,608	16,758	\$154,891,847	\$712.26
Trade, Transportation & Utilities	1,364	13,047	13,137	13,169	\$91,249,724	\$535.10
Retail Trade	826	8,438	8,489	8,536	\$43,217,911	\$391.68
Other Trade, Transportation & Utilities	538	4,609	4,648	4,633	\$48,031,813	\$798.00
Education & Health Services	1,443	10,938	10,915	10,909	\$73,298,009	\$516.30
Local & State Government	359	16,875	17,017	16,276	\$134,552,545	\$618.93
Other	1,744	12,618	12,712	12,873	\$72,963,595	\$440.74
Southeast Workforce Includes these counties: Arkansas, Ashley, Bradley, Chicot, Cleveland, Desha, Drew, Grant, Jefferson, and Lincoln.						

**TABLE 8. WORKFORCE INFORMATION AREA, SUMMARY
EMPLOYMENT AND TOTAL EARNINGS, BY INDUSTRY
SECOND QUARTER 2008**

NORTH AMERICAN INDUSTRY CLASSIFICATION SYSTEM INDUSTRY GROUP	NUMBER OF EMPLOYING UNITS	EMPLOYMENT APRIL	EMPLOYMENT MAY	EMPLOYMENT JUNE	TOTAL EARNINGS APRIL - JUNE	AVERAGE WEEKLY EARNINGS
SOUTHWEST WORKFORCE INFORMATION	5,891	85,953	86,097	85,769	\$705,043,720	\$631.07
Natural Resources & Mining	411	2,933	2,974	3,002	\$27,042,652	\$700.48
Trade, Transportation & Utilities	1,504	15,596	15,697	15,799	\$115,604,586	\$566.51
Retail Trade	947	8,981	9,106	9,153	\$44,200,264	\$374.45
Other Trade, Transportation & Utilities	557	6,615	6,591	6,646	\$71,404,322	\$830.04
Financial Activities	543	2,853	2,861	2,866	\$21,766,715	\$585.44
Education & Health Services	917	9,427	9,499	9,484	\$63,646,210	\$516.99
Leisure & Hospitality	405	5,433	5,456	5,530	\$15,403,766	\$216.50
Local & State Government	414	14,663	14,720	14,315	\$122,012,131	\$644.35
Other	1,697	35,048	34,890	34,773	\$339,567,660	\$748.36
Southwest Workforce Includes these counties: Calhoun, Columbia, Dallas, Hempstead, Howard, Lafayette, Little River, Miller, Nevada, Ouachita, Sevier, and Union						
WEST CENTRAL WORKFORCE INFORMATION	8,480	110,159	109,822	109,176	\$799,612,324	\$560.60
Construction	919	5,088	5,109	5,080	\$40,897,798	\$617.79
Manufacturing	399	18,611	18,709	18,654	\$152,631,726	\$629.27
Trade, Transportation & Utilities	2,026	22,282	22,359	22,405	\$164,696,715	\$566.88
Retail Trade	1,285	14,298	14,347	14,336	\$75,983,589	\$407.96
Other Trade, Transportation & Utilities	741	7,984	8,012	8,069	\$88,713,126	\$850.71
Financial Activities	893	3,974	3,968	4,006	\$31,372,893	\$605.95
Professional & Business Services	935	7,698	7,753	7,654	\$55,641,677	\$555.74
Education & Health Services	1,303	15,688	15,720	15,714	\$121,952,731	\$597.24
Local Government	230	12,398	12,370	11,802	\$110,205,647	\$695.44
State Government	134	5,381	5,338	4,844	\$37,008,216	\$548.76
Other	1,641	19,039	18,496	19,017	\$85,204,921	\$347.69
West Central Workforce Includes these counties: Clark, Conway, Garland, Hot Spring, Johnson, Montgomery, Perry, Pike, Pope, and Yell						

**TABLE 8. WORKFORCE INFORMATION AREA, SUMMARY
EMPLOYMENT AND TOTAL EARNINGS, BY INDUSTRY
SECOND QUARTER 2008**

NORTH AMERICAN INDUSTRY CLASSIFICATION SYSTEM INDUSTRY GROUP	NUMBER OF EMPLOYING UNITS	EMPLOYMENT APRIL	EMPLOYMENT MAY	EMPLOYMENT JUNE	TOTAL EARNINGS APRIL - JUNE	AVERAGE WEEKLY EARNINGS
WESTERN WORKFORCE INFORMATION	6,663	111,415	111,928	111,444	\$892,147,160	\$614.96
Natural Resources & Mining	174	3,193	3,142	3,135	\$43,041,871	\$1,048.86
Construction	647	4,647	4,836	4,849	\$40,829,393	\$657.42
Manufacturing	422	26,304	26,149	26,076	\$234,452,607	\$688.97
Trade, Transportation & Utilities	1,672	23,448	23,514	23,536	\$169,295,362	\$554.17
Wholesale Trade	398	3,678	3,703	3,746	\$36,590,737	\$758.88
Retail Trade	967	12,485	12,558	12,529	\$67,842,011	\$416.69
Transportation, Warehousing & Utilities	307	7,285	7,253	7,261	\$64,862,614	\$686.65
Financial Activities	707	3,934	3,948	3,955	\$34,882,937	\$680.06
Professional & Business Services	846	11,161	11,242	11,404	\$76,907,000	\$524.97
Education & Health Services	939	14,525	14,585	14,631	\$127,923,113	\$674.90
Leisure & Hospitality	500	8,403	8,504	8,581	\$25,653,149	\$232.26
Local & State Government	230	12,454	12,615	11,814	\$111,587,925	\$698.18
Other	526	3,346	3,393	3,463	\$27,573,803	\$623.72
Western Workforce Includes these counties: Crawford, Franklin, Logan, Polk, Scott, and Sebastian						