

Arkansas Covered Employment & Earnings

Jobs for People. People for Jobs.

DWS
Department of
WORKFORCE**Services**

2007 Annual

**COVERED EMPLOYMENT AND EARNINGS
STATE OF ARKANSAS
CALENDAR YEAR 2007**

**MIKE BEEBE, GOVERNOR
STATE OF ARKANSAS**

**ARTEE WILLIAMS, DIRECTOR
ARKANSAS DEPARTMENT OF WORKFORCE SERVICES**

**PUBLISHED BY
BUREAU OF LABOR STATISTICS PROGRAMS
ARKANSAS DEPARTMENT OF WORKFORCE SERVICES
POST OFFICE BOX 2981
LITTLE ROCK, ARKANSAS 72203-2981
BERNADETTE COLEMAN, BLS PROGRAMS MANAGER
TELEPHONE: (501) 682-3159**

STATE OF ARKANSAS HOME PAGE: <http://www.arkansas.gov>

**ARKANSAS DEPARTMENT OF WORKFORCE SERVICES
HOME PAGE: <http://www.arkansas.gov/esd/>**

**INTERNET SITE FOR LABOR MARKET INFORMATION:
<http://www.discover.arkansas.gov>**

RELEASED: DECEMBER 2008

TABLE OF CONTENTS

Description of Data	Page 1
Industry Classification	Page 1
Definition of Covered Employment and Earnings	Page 2
Federal Government Employment	Page 2
County Classification	Page 2
Significant Developments During Calendar Year 2007	Page 3

LIST OF GRAPHS AND TABLES

Graph 1	Total Covered Employment for Selected Years, Arkansas	Page 7
Graph 2	Total Covered Earnings, by Calendar Quarter for Selected Years, Arkansas	Page 8
Table 1	Quarterly Comparison of Covered Employment and Wages, by Industry	Page 5
Table 2	Total Covered Employment in Arkansas, 2000-2007	Page 6
Table 3	Total Covered Earnings, 2000-2007	Page 9
Table 4	Total Taxable Earnings, 2000-2007	Page 10
Table 5	State Summary - Employment and Total Earnings, by Industry, Calendar Year 2007	Page 11
Table 6	County Summary - Employment and Total Earnings, by Industry, Calendar Year 2007	Page 21
Table 7	Federal Government Employment and Total Earnings in Arkansas, Calendar Year 2007	Page 60
Table 8	Workforce Information Area – Employment and Total Earnings, by Industry, Calendar Year 2007	Page 61

EMPLOYMENT AND EARNINGS UNDER THE ARKANSAS EMPLOYMENT SECURITY LAW CALENDAR YEAR 2007

DESCRIPTION OF DATA

This publication contains covered employment and payroll data by industry and county for the Calendar Year 2007. These data are compiled from quarterly contribution and wage reports submitted by employers subject to the Arkansas Employment Security Law. An employing unit is a single physical location where business is conducted, production takes place, or services are provided. Employment data have been tabulated for each month of the quarter by industry under the **North American Industry Classification System** (NAICS) (see "Industry Classification" below) on a statewide, county and workforce area basis. Payroll data represent the total wages paid during the quarter, and are also shown by

industry for the State and by publishable industry groups for each county and workforce area. The tabulation of this data is a joint effort in conjunction with the U.S. Bureau of Labor Statistics. In addition, there are tables included which set out total covered employment by months, quarterly payrolls, and average weekly earnings for the years 2000 through 2007. Data contained in this publication are subject to revision. These revisions will be reflected in the 2008 First Quarter Covered Employment and Earnings publication. Because of industry code changes between years, substantial employment and wage shifts among industries are anticipated.

INDUSTRY CLASSIFICATION

Previously published industry data **will not** be comparable in all instances with currently published data since industry codes have been revised according to the following Manuals: (a) between January 1, 1958 and December 31, 1967, industry codes were assigned under the 1957 Standard Industrial Classification (SIC) Manual; (b) between January 1, 1968 and December 31, 1974, industry codes were assigned under the 1967 Standard Industrial Classification (SIC) Manual; (c) between January 1, 1975 and December 31, 1987, industry codes were assigned under the 1972 Standard Industrial Classification (SIC) Manual; (d) between January 1, 1988 and December 31, 2000, industry codes were assigned under the 1987 Standard Industrial Classification (SIC) Manual; (e) January 1, 2001, industry codes have been assigned under the 2002 North American Industry Classification System (NAICS) Manual; and (f) since January 1, 2007, industry codes have been assigned under the 2007 North American Industry Classification System (NAICS) Manual. **The NAICS Manual**

represents a significant change in coding methodology as compared to the SIC Manual. One of the most significant changes involves how NAICS treats auxiliary units. Auxiliary units are establishments primarily engaged in performing management or support services for other establishments of the same enterprise. The SIC code for these units was based on the activity of the enterprise served. The NAICS code is based on the actual activities that the establishment performs. Comparisons of many industries **should not be made** between this publication and previous Covered Employment and Earnings publications that were based on SIC. Even though some titles are the same or similar, in nature, NAICS and SIC could differ in the classification of employers. The implementation of NAICS represents a profound change for statistical programs, and will create significant benefits along with transition obstacles for both data collectors and data users. A summary is available on the NAICS home page at <http://www.census.gov/naics>.

DEFINITION OF COVERED EMPLOYMENT AND EARNINGS

Covered Employment is the number of workers employed by employers subject to the Arkansas Employment Security Law who worked or received pay for the payroll period including the 12th of the month. An employer is subject to the law when they employ one or more employees in each of ten days during the current or preceding calendar year.

Currently excluded from coverage is employment covered by the Railroad Unemployment Insurance Act, some domestic service workers, employees of small agricultural establishments, self-employed and unpaid family workers, insurance and real estate

agents who are on commission only, and employees of churches and religious organizations except separately incorporated schools. The payroll information in this publication includes all wages and salaries paid to any covered employees by their employers including bonuses, commissions, and cash values of remuneration received in any medium other than cash. These wages include both taxable and nontaxable wages. Only the first \$10,000 paid to each worker by an employer in the calendar year is taxable under the Arkansas Employment Security Law.

FEDERAL GOVERNMENT EMPLOYMENT

Table 7 on page 60 lists the total number of civilians employed by the Federal Government in Arkansas during the Calendar Year 2007. Employment and wage data are set out by industry divisions. These data are obtained from required reports submitted by various

government agencies having employment in the State. Civilian Federal workers are covered by the Unemployment Compensation for Federal Employees (UCFE) program.

COUNTY CLASSIFICATION

Employment and payroll data by county are classified according to the county where the workers are employed. Employers with operations in more than one county are requested to furnish this agency with a breakdown of employment and wages for at least one quarter of each year by the counties in which they operate. Many such employers submit county data with each regular contribution report. **Note:** This information is invaluable in the preparation of monthly employment and payroll data by county.

Employment and payroll data for multi - area employers who do not furnish county data each quarter of the year, are prorated by county on the basis of one quarter of information. The "rest-of-state" table that appears on page 59 of this publication includes data on firms that **did not** provide a county breakdown of employment and payrolls. It also includes sales, and all other type of personnel with no permanent place of work, as well as employment of employers with no established place of business in Arkansas.

SIGNIFICANT DEVELOPMENTS DURING CALENDAR YEAR 2007

AVERAGE EMPLOYMENT CHANGES

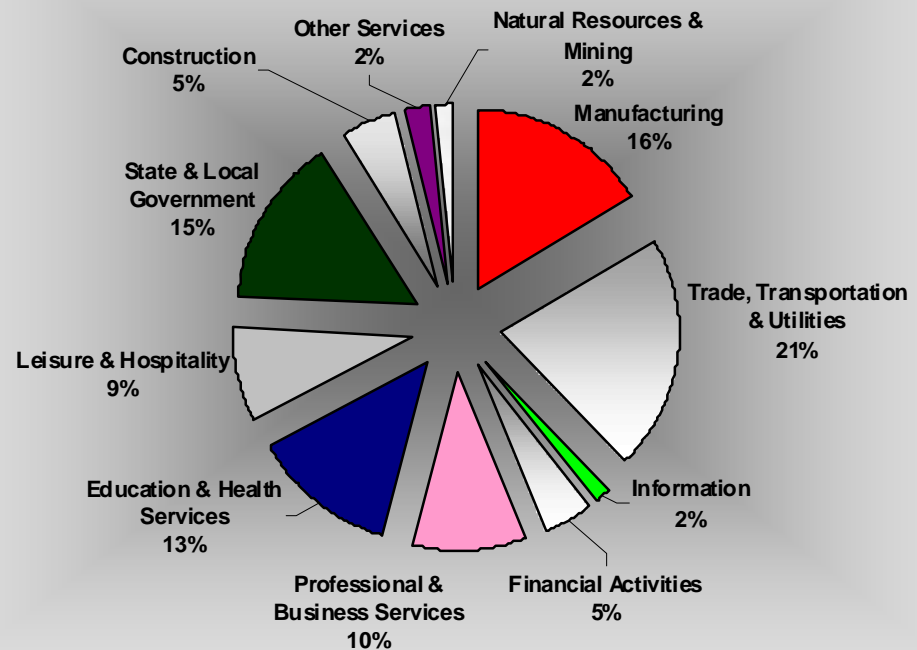
Covered employment averaged 1,153,436 during the Calendar Year 2007 (see table 1), an increase of 6,364 (+0.55%) from the previous year and 44,782 (+4.04%) from 2004 above the average recorded previously. The sectors driving the three year increase are Education & Health Services (+13,441), State & Local Government (+10,781), Professional & Business Services (+8,828) and Trade, Transportation & Utilities (+8,700).

Seven of the eleven major industries recorded gains over the year. The largest increase occurred in Education & Health Services (+4,313). 90% of the growth can be attributed to new jobs in the Health Care & Social Assistance sector which saw major growth in both Ambulatory Health Care Services (+1,522) and Social Assistance (+1,554). The Fayetteville Shale Play contributed to Natural Resources and Mining seeing an 8.4% gain in jobs, the largest growth rate in any of the major industries. The expansion of the natural gas industry also helped to create job expansion in Professional & Business Services (+2,702), with 1,423 new jobs in Professional & Technical Services. Job growth also occurred in Leisure & Hospitality (+2.2%), State & Local Government (+2.0%), Financial Activities (+1.6%), and Trade, Transportation & Utilities (+0.6%).

Four industries suffered losses over the year. The biggest job decrease occurred in Manufacturing (-9,441) due to plant closures and layoffs. Construction (-398), Other Services (-383), and Information (-81) also declined slightly.

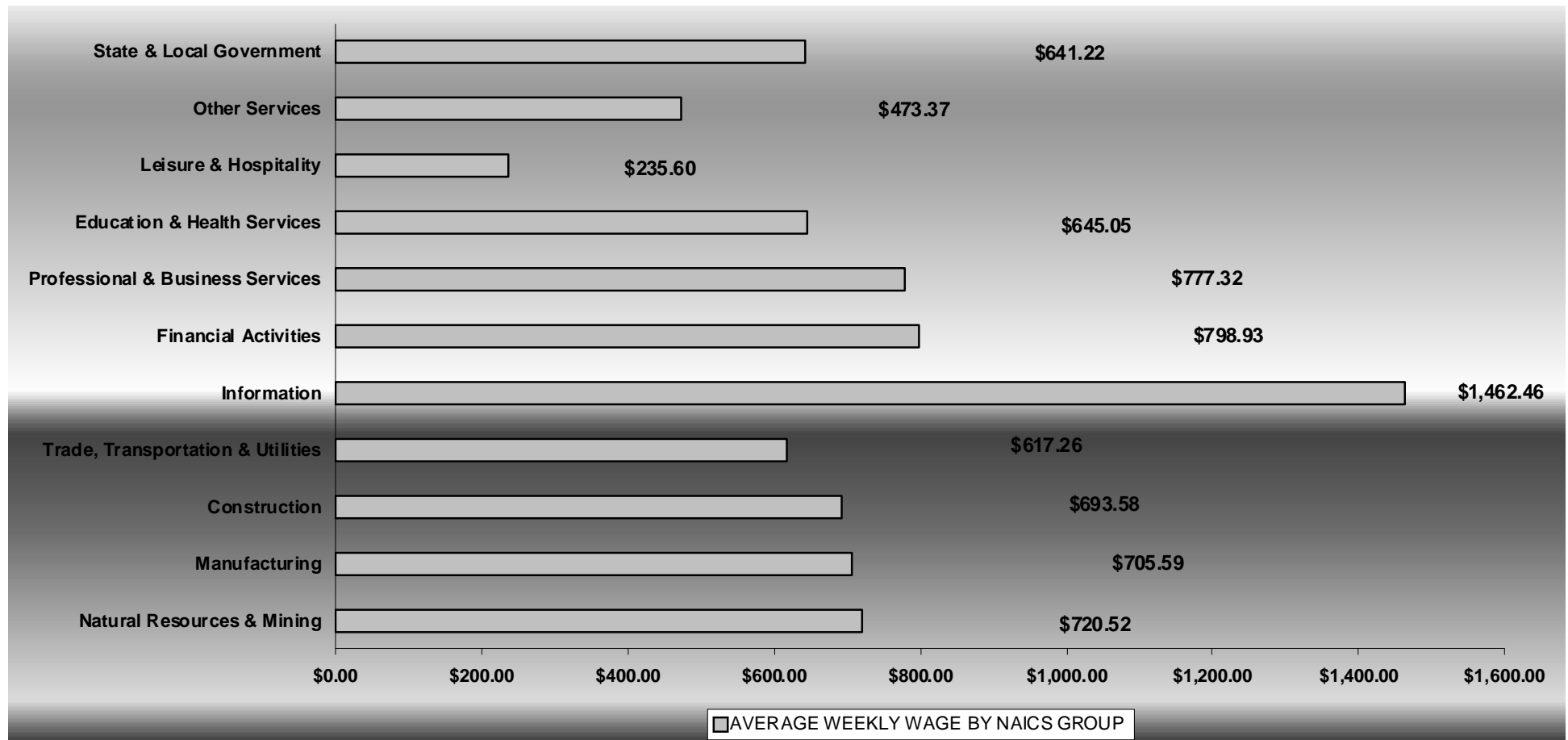
Pulaski County ranked first among counties in covered employment, averaging 241,051 during 2007. The rest of the top five in average covered employment are Benton County (95,081), Washington County (90,775), Sebastian County (72,986), and Craighead County (41,332).

AVERAGE COVERED EMPLOYMENT BY NAICS GROUP



AVERAGE WEEKLY EARNINGS

Wages paid to covered workers totaled \$38,830,050,835 for the Calendar Year 2007 (see table 1), for an average weekly wage of \$647.40 (see table 5). This represented an increase of \$33.13 from the level of \$614.27 recorded in 2006. Employees in Information recorded the highest weekly wage with \$1,462.46 while Leisure & Hospitality recorded the lowest yearly average weekly wage at \$235.60.



Note: Because of industry code changes between years, substantial employment and wage shifts among industries are anticipated.

TABLE 1. YEARLY COMPARISON OF COVERED EMPLOYMENT AND WAGES, BY INDUSTRY

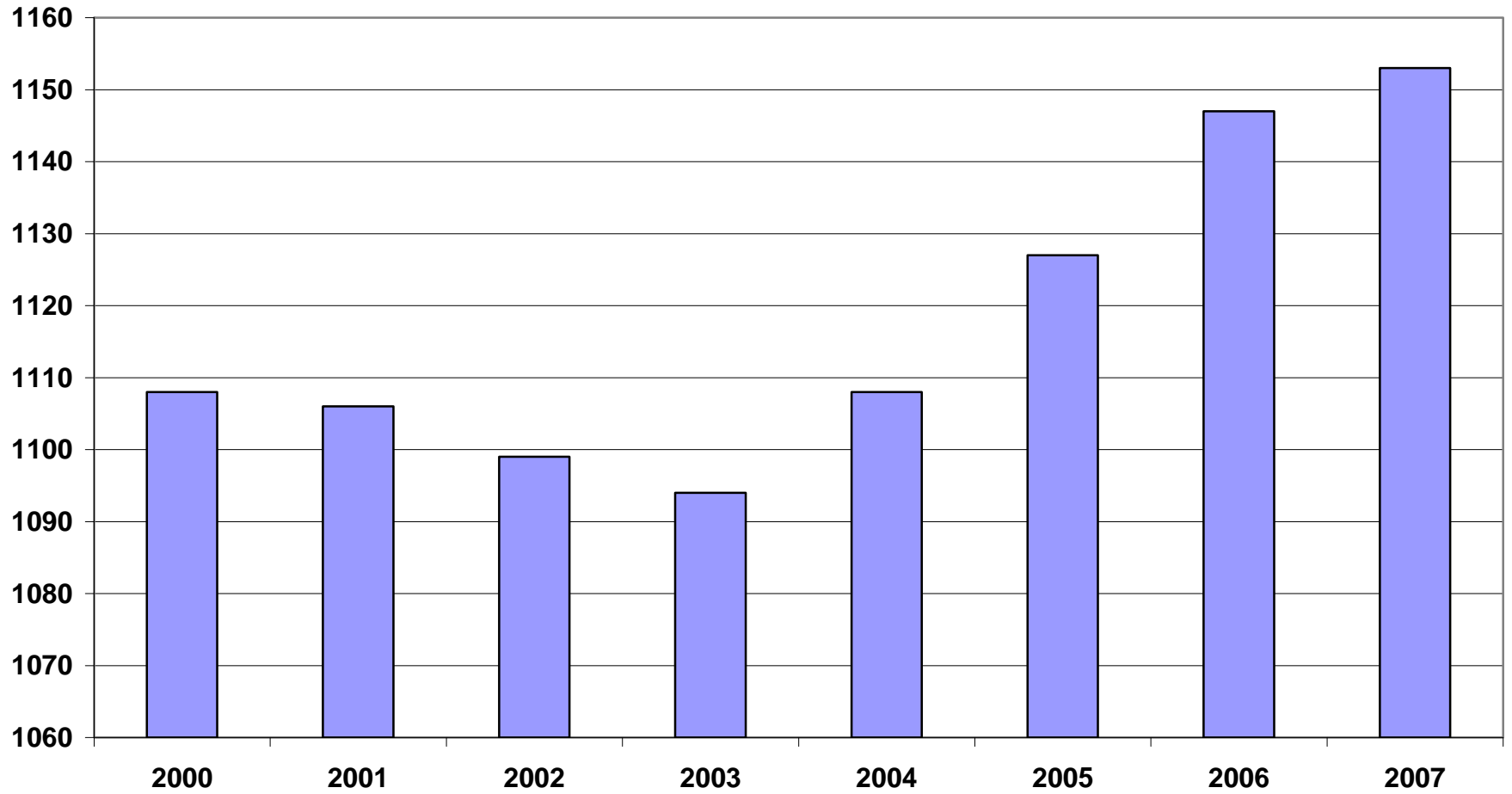
North American Industry Classification System Industry Group	Number of Employing Units	Average Covered Employment	% of Total Employment	Net Change From 2006	Total Earnings Calendar Year 2007	% of Total Wages	Average Weekly Earnings
Total	81,891	1,153,436	100.0%	6,364	\$38,830,050,835	100.0%	\$647.40
Natural Resources & Mining	2,397	20,106	1.7%	1,556	\$753,314,079	1.9%	\$720.52
Agriculture, Forestry, Fishing & Hunting	1,954	13,268	1.2%	-361	\$380,926,888	1.0%	\$552.12
Mining	443	6,838	0.6%	1,917	\$372,387,191	1.0%	\$1,047.28
Construction	8,009	56,558	4.9%	-398	\$2,039,827,788	5.3%	\$693.58
Manufacturing	3,627	189,381	16.4%	-9,441	\$6,948,471,820	17.9%	\$705.59
Trade, Transportation & Utilities	20,842	246,507	21.4%	1,590	\$7,912,201,056	20.4%	\$617.26
Wholesale Trade	6,332	48,175	4.2%	230	\$2,458,441,762	6.3%	\$981.37
Retail Trade	11,194	134,252	11.6%	1,024	\$2,886,334,974	7.4%	\$413.45
Transportation & Warehousing	2,954	57,269	5.0%	350	\$2,120,067,663	5.5%	\$711.91
Utilities	362	6,811	0.6%	-14	\$447,356,657	1.2%	\$1,263.11
Information	1,197	19,830	1.7%	-81	\$1,508,032,452	3.9%	\$1,462.46
Financial Activities	8,287	51,965	4.5%	794	\$2,158,849,842	5.6%	\$798.93
Finance & Insurance	4,843	37,511	3.3%	562	\$1,750,080,354	4.5%	\$897.21
Real Estate & Rental & Leasing	3,444	14,454	1.3%	232	\$408,769,488	1.1%	\$543.86
Professional & Business Services	11,200	116,919	10.1%	2,702	\$4,725,959,956	12.2%	\$777.32
Professional & Technical Services	7,043	38,605	3.3%	1,423	\$1,850,664,910	4.8%	\$921.89
Management of Companies & Enterprises	526	24,774	2.1%	673	\$1,749,416,388	4.5%	\$1,357.98
Administrative & Waste Services	3,631	53,540	4.6%	606	\$1,125,878,658	2.9%	\$404.40
Education & Health Services	11,586	150,091	13.0%	4,313	\$5,034,475,911	13.0%	\$645.05
Educational Services	583	9,501	0.8%	443	\$261,740,967	0.7%	\$529.78
Health Care & Social Assistance	11,003	140,590	12.2%	3,870	\$4,772,734,944	12.3%	\$652.84
Leisure & Hospitality	6,140	99,621	8.6%	2,172	\$1,220,459,682	3.1%	\$235.60
Arts, Entertainment & Recreation	914	9,744	0.8%	324	\$157,601,919	0.4%	\$311.04
Accommodation & Food Services	5,226	89,877	7.8%	1,848	\$1,062,857,763	2.7%	\$227.42
Other Services	5,415	25,462	2.2%	-383	\$626,758,645	1.6%	\$473.37
State & Local Government	3,193	176,996	15.3%	3,540	\$5,901,699,604	15.2%	\$641.22
Local Government	1,992	112,747	9.8%	1,461	\$3,519,212,518	9.1%	\$600.26
State Government	1,201	64,249	5.6%	2,079	\$2,382,487,086	6.1%	\$713.12
Nonclassifiable Establishments	0	0	0.0%	0	\$0	0.0%	\$0.00

Note: Items do not necessarily add to totals because of rounding. Because of industry code changes between years, substantial employment and wage shifts among industries are anticipated.

TABLE 2. TOTAL COVERED EMPLOYMENT IN ARKANSAS

Period	2000	2001	2002	2003	2004	2005	2006	2007
Average	1,108,490	1,106,053	1,098,558	1,094,087	1,108,273	1,126,778	1,146,948	1,153,436
January	1,089,956	1,096,009	1,081,635	1,082,740	1,089,510	1,102,768	1,130,595	1,137,437
February	1,096,126	1,101,616	1,086,793	1,084,880	1,094,626	1,110,577	1,136,810	1,143,397
March	1,109,157	1,112,143	1,098,500	1,092,172	1,105,266	1,122,619	1,150,439	1,158,895
April	1,111,543	1,115,526	1,103,399	1,095,341	1,111,020	1,129,785	1,155,498	1,159,623
May	1,116,779	1,119,815	1,111,998	1,103,099	1,117,144	1,135,567	1,159,886	1,165,224
June	1,121,245	1,119,734	1,112,028	1,099,688	1,117,010	1,136,118	1,162,026	1,164,207
July	1,075,096	1,071,830	1,065,697	1,053,220	1,071,473	1,090,071	1,106,142	1,110,571
August	1,096,841	1,094,068	1,086,011	1,077,775	1,094,886	1,114,098	1,130,839	1,139,109
September	1,123,735	1,115,996	1,113,148	1,105,980	1,122,724	1,144,815	1,159,814	1,165,135
October	1,122,884	1,110,994	1,108,447	1,112,550	1,123,260	1,142,300	1,156,804	1,164,709
November	1,120,620	1,109,012	1,107,611	1,109,712	1,125,081	1,145,667	1,156,011	1,166,114
December	1,117,892	1,105,887	1,107,425	1,111,892	1,127,271	1,146,954	1,158,509	1,166,810

AVERAGE TOTAL COVERED EMPLOYMENT GRAPH 1
In Thousands



TOTAL COVERED EARNINGS BY CALENDAR QUARTER, GRAPH 2
In Thousands

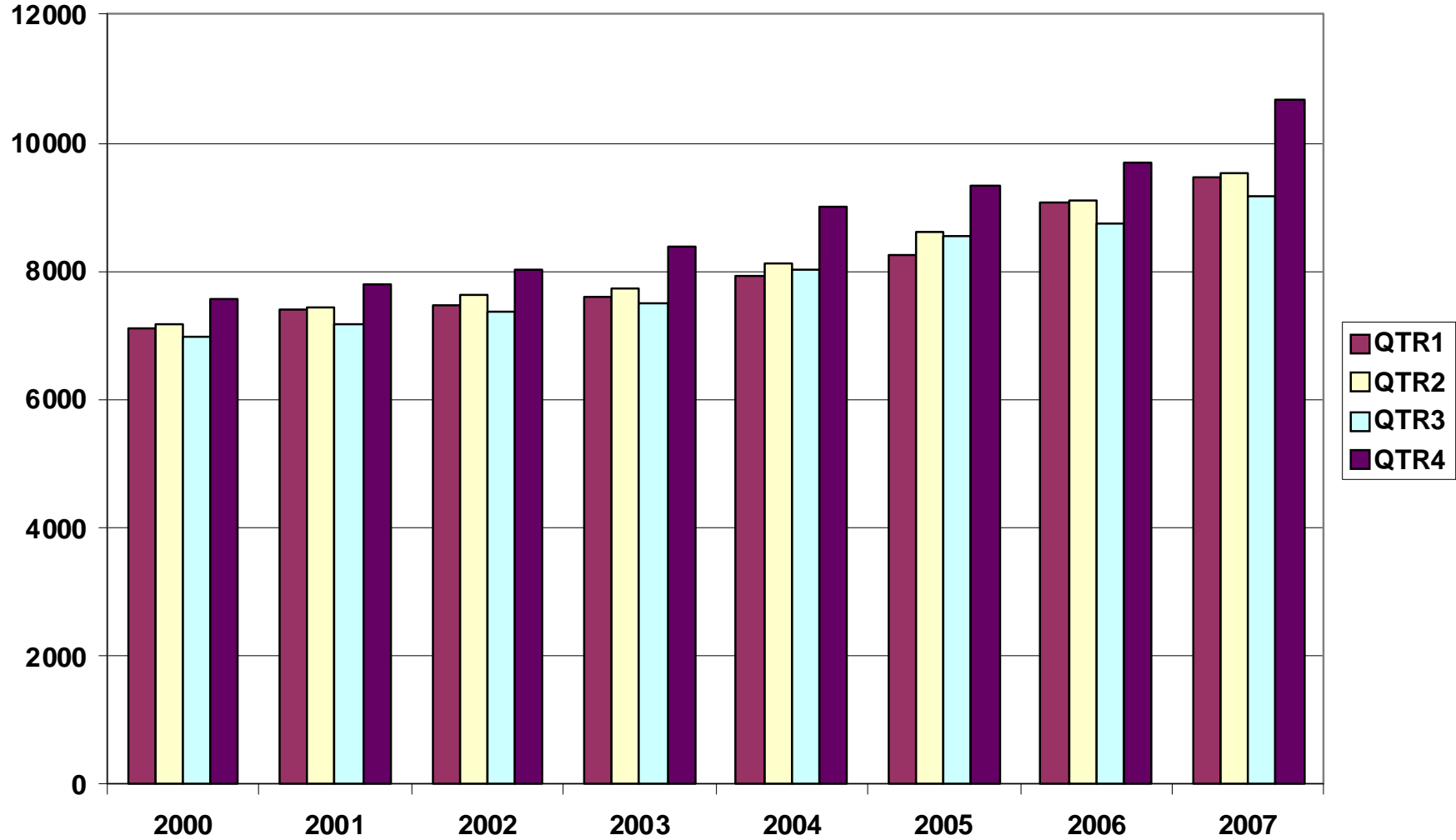


TABLE 3. TOTAL COVERED EARNINGS, 2000 - 2007

Period	2000	2001	2002	2003
Total	\$28,853,825,155	\$29,807,669,666	\$30,472,854,103	\$31,202,576,767
January - March	\$7,122,666,917	\$7,398,887,532	\$7,465,250,305	\$7,608,130,008
April - June	\$7,166,110,114	\$7,448,023,298	\$7,621,878,775	\$7,714,813,038
July - September	\$6,986,103,157	\$7,177,293,061	\$7,361,666,511	\$7,500,204,764
October - December	\$7,578,944,967	\$7,783,465,775	\$8,024,058,512	\$8,379,428,957
Average Weekly Earnings	\$500.57	\$518.26	\$533.44	\$548.45

Period	2004	2005	2006	2007
Total	\$33,068,302,933	\$34,753,107,631	\$36,636,090,775	\$38,830,050,835
January - March	\$7,918,843,610	\$8,261,153,981	\$9,085,021,816	\$9,452,711,662
April - June	\$8,122,370,361	\$8,607,722,353	\$9,112,624,590	\$9,525,837,049
July - September	\$8,010,367,094	\$8,562,555,369	\$8,750,878,205	\$9,178,902,477
October - December	\$9,016,721,868	\$9,321,675,928	\$9,687,566,164	\$10,672,599,647
Average Weekly Earnings	\$573.80	\$593.13	\$614.27	\$647.40

TABLE 4. TOTAL TAXABLE EARNINGS, 2000 - 2007

Period	2000	2001	2002	2003
Total	\$9,048,033,534	\$9,003,189,480	\$8,887,270,978	\$9,154,938,743
January - March	\$4,560,814,012	\$4,670,296,360	\$4,668,534,587	\$4,737,918,796
April - June	\$2,260,741,187	\$2,219,485,263	\$2,162,971,435	\$2,270,519,362
July - September	\$1,250,850,348	\$1,190,098,737	\$1,158,197,858	\$1,188,681,170
October - December	\$975,627,987	\$923,309,120	\$897,567,098	\$957,819,415

Period	2004	2005	2006	2007
Total	\$9,731,263,681	\$9,991,605,239	\$10,197,511,360	\$10,463,390,568
January - March	\$4,931,559,230	\$5,062,670,306	\$5,421,204,601	\$5,617,417,571
April - June	\$2,451,454,749	\$2,506,505,721	\$2,385,110,992	\$2,466,606,627
July - September	\$1,318,017,835	\$1,353,660,445	\$1,314,939,803	\$1,307,060,412
October - December	\$1,030,231,867	\$1,068,768,767	\$1,076,255,964	\$1,072,305,958

**TABLE 5. STATEWIDE SUMMARY
EMPLOYMENT AND TOTAL EARNINGS, BY INDUSTRY
CALENDAR YEAR 2007**

NORTH AMERICAN INDUSTRY CLASSIFICATION SYSTEM INDUSTRY GROUPS	AVERAGE EMPLOYING UNITS	AVERAGE COVERED EMPLOYMENT	TOTAL EARNINGS	AVERAGE WEEKLY EARNINGS
TOTAL, ALL INDUSTRIES	81,891	1,153,436	\$38,830,050,835	\$647.40
NATURAL RESOURCES & MINING	2,397	20,106	\$753,314,079	\$720.52
AGRICULTURE, FORESTRY, FISHING & HUNTING	1,954	13,268	\$380,926,888	\$552.12
CROP PRODUCTION	702	3,653	\$79,961,717	\$420.95
Oilseed and Grain Farming	447	2,029	\$45,179,195	\$428.21
Vegetable and Melon Farming	11	181	\$2,095,121	\$222.60
Fruit and Tree Nut Farming	8	77	\$1,789,615	\$446.96
Greenhouse & Nursery Production	53	389	\$9,475,876	\$468.45
Other Crop Farming	184	977	\$21,421,910	\$421.66
ANIMAL PRODUCTION	269	3,631	\$116,540,194	\$617.23
Cattle Ranching and Farming	80	323	\$8,756,970	\$521.37
Hog and Pig Farming	9	149	\$5,667,420	\$731.47
Poultry and Egg Production	88	2,530	\$84,667,191	\$643.56
Animal Aquaculture	63	546	\$15,694,977	\$552.80
Other	30	81	\$1,753,636	\$416.34
FORESTRY AND LOGGING	534	2,812	\$87,322,536	\$597.18
Timber Tract Operations	46	255	\$10,395,209	\$783.95
Forest Nurseries & Gathering of Forest Products	6	34	\$1,377,335	\$779.04
Logging	482	2,523	\$75,549,992	\$575.86
OTHER	450	3,173	\$97,102,441	\$588.51
MINING	443	6,838	\$372,387,191	\$1,047.28
OIL AND GAS EXTRACTION	93	733	\$44,021,938	\$1,154.95
MINING (EXCEPT OIL AND GAS)	112	2,124	\$94,216,624	\$853.04
SUPPORT ACTIVITIES FOR MINING	237	3,980	\$234,148,629	\$1,131.37
CONSTRUCTION	8,009	56,558	\$2,039,827,788	\$693.58
CONSTRUCTION OF BUILDINGS	2,271	13,098	\$519,263,706	\$762.39
Residential Building Construction	1,642	4,239	\$130,228,370	\$590.80
Nonresidential Building Construction	629	8,859	\$389,035,336	\$844.50
HEAVY & CIVIL ENGINEERING CONSTRUCTION	878	9,810	\$389,672,985	\$763.88
Utility System Construction	418	4,756	\$181,164,805	\$732.54
Land Subdivision	135	390	\$16,300,049	\$803.75
Highway, Street & Bridge Construction	210	3,249	\$117,922,269	\$697.98
Other Heavy Construction	115	1,415	\$74,285,862	\$1,009.59

**TABLE 5. STATEWIDE SUMMARY
EMPLOYMENT AND TOTAL EARNINGS, BY INDUSTRY
CALENDAR YEAR 2007**

NORTH AMERICAN INDUSTRY CLASSIFICATION SYSTEM INDUSTRY GROUPS	AVERAGE EMPLOYING UNITS	AVERAGE COVERED EMPLOYMENT	TOTAL EARNINGS	AVERAGE WEEKLY EARNINGS
SPECIALTY TRADE CONTRACTORS	4,861	33,650	\$1,130,891,097	\$646.30
Building Foundation & Exterior Contractors	970	6,720	\$208,445,824	\$596.51
Building Equipment Contractors	2,143	16,170	\$590,603,905	\$702.40
Building Finishing Contractors	908	5,232	\$158,386,966	\$582.17
Other Specialty Trade Contractors	841	5,527	\$173,454,402	\$603.52
MANUFACTURING	3,627	189,381	\$6,948,471,820	\$705.59
FOOD MANUFACTURING	328	49,522	\$1,425,654,027	\$553.62
Animal Food Manufacturing	59	1,455	\$61,609,339	\$814.29
Grain and Oilseed Milling	31	2,361	\$85,590,196	\$697.15
Fruit, Vegetable & Specialty Food	35	6,835	\$229,296,196	\$645.14
Dairy Product Manufacturing	14	725	\$27,233,771	\$722.38
Animal Slaughtering & Processing	92	32,899	\$844,483,040	\$493.63
Bakeries and Tortilla Manufacturing	55	3,287	\$109,332,827	\$639.66
Other Food Manufacturing	30	1,729	\$63,822,878	\$709.87
Other	13	232	\$4,285,780	\$355.25
BEVERAGE & TOBACCO PRODUCT MFG.	39	1,268	\$49,561,689	\$751.66
TEXTILE MILLS	23	366	\$15,463,670	\$812.51
TEXTILE PRODUCT MILLS	62	1,323	\$49,116,364	\$713.94
Textile Furnishing Mills	14	33	\$549,914	\$320.46
Other Textile Product Mills	47	1,290	\$48,566,450	\$724.01
APPAREL MANUFACTURING	35	1,612	\$35,610,081	\$424.82
LEATHER & ALLIED PRODUCT MANUFACTURING	21	1,785	\$44,250,568	\$476.74
WOOD PRODUCT MANUFACTURING	386	12,276	\$396,606,625	\$621.30
Sawmills and Wood Preservation	164	5,147	\$175,070,385	\$654.12
Veneer & Engineered Wood Products	55	3,110	\$118,556,903	\$733.10
Other Wood Product Manufacturing	167	4,020	\$102,979,337	\$492.63
PAPER MANUFACTURING	87	11,193	\$599,175,890	\$1,029.45
Pulp, Paper & Paperboard Mills	12	4,277	\$296,638,208	\$1,333.78
Converted Paper Product Manufacturing	75	6,915	\$302,537,682	\$841.36
PRINTING & RELATED SUPPORT ACTIVITIES	295	4,605	\$175,329,616	\$732.19
PETROLEUM AND COAL PRODUCTS MFG.	23	981	\$49,154,894	\$963.59
CHEMICAL MANUFACTURING	123	4,691	\$241,104,363	\$988.41
Basic Chemical Manufacturing	31	2,008	\$115,555,268	\$1,106.68
Resin, Rubber & Artificial Fibers	8	303	\$15,888,943	\$1,008.44

**TABLE 5. STATEWIDE SUMMARY
EMPLOYMENT AND TOTAL EARNINGS, BY INDUSTRY
CALENDAR YEAR 2007**

NORTH AMERICAN INDUSTRY CLASSIFICATION SYSTEM INDUSTRY GROUPS	AVERAGE EMPLOYING UNITS	AVERAGE COVERED EMPLOYMENT	TOTAL EARNINGS	AVERAGE WEEKLY EARNINGS
Agricultural Chemical Manufacturing	17	340	\$16,480,428	\$932.15
Paint, Coating & Adhesive Manufacturing	9	167	\$9,127,227	\$1,051.04
Other Chemical Preparation Manufacturing	29	958	\$42,311,643	\$849.36
Other	30	916	\$41,740,854	\$876.32
PLASTICS & RUBBER PRODUCTS MFG.	162	12,084	\$480,308,379	\$764.37
Plastics Product Manufacturing	113	7,502	\$260,071,169	\$666.67
Rubber Product Manufacturing	50	4,582	\$220,237,210	\$924.34
NONMETALLIC MINERAL PRODUCT MFG.	259	4,522	\$170,208,588	\$723.85
Cement & Concrete Product Manufacturing	182	2,674	\$98,288,871	\$706.87
Lime & Gypsum Product Manufacturing	4	420	\$20,443,762	\$936.07
Other Nonmetallic Mineral Products	40	591	\$22,941,919	\$746.52
Other	33	837	\$28,534,036	\$655.59
PRIMARY METAL MANUFACTURING	72	8,283	\$441,205,678	\$1,024.35
Iron & Steel Mills and Ferroalloys	12	2,165	\$185,656,074	\$1,649.10
Purchased Steel Product Manufacturing	17	2,380	\$103,980,560	\$840.18
Alumina & Aluminum Production	19	1,753	\$78,693,529	\$863.28
Other Nonferrous Metal Production	10	604	\$21,593,455	\$687.51
Foundries	14	1,382	\$51,282,060	\$713.60
FABRICATED METAL PRODUCT MANUFACTURING	580	17,223	\$687,462,795	\$767.60
Forging & Stamping	12	760	\$29,197,442	\$738.80
Cutlery & Hand Tool Manufacturing	17	1,313	\$46,200,747	\$676.68
Architectural & Structural Metals	203	5,216	\$223,066,203	\$822.42
Boilers, Tanks & Shipping Containers	19	814	\$40,770,883	\$963.21
Hardware Manufacturing	9	276	\$8,603,495	\$599.46
Spring & Wire Product Manufacturing	14	638	\$17,777,666	\$535.86
Machine Shops & Threaded Products	198	1,886	\$64,280,075	\$655.44
Coating, Engraving & Heat Treating Metals	40	604	\$18,253,633	\$581.18
Other Fabricated Metal Product Manufacturing	68	5,716	\$239,312,651	\$805.14
MACHINERY MANUFACTURING	264	14,368	\$492,960,643	\$659.80
Agri., Construction & Mining Machinery	38	3,204	\$76,893,243	\$461.52
Commercial & Service Industry Machinery	26	935	\$39,575,242	\$813.97
HVAC & Commercial Refrigeration Equipment	23	4,793	\$167,698,189	\$672.85
Metalworking Machinery Manufacturing	81	1,416	\$56,376,819	\$765.66
Other General Purpose Machinery Manufacturing	58	3,010	\$112,229,541	\$717.03

**TABLE 5. STATEWIDE SUMMARY
EMPLOYMENT AND TOTAL EARNINGS, BY INDUSTRY
CALENDAR YEAR 2007**

NORTH AMERICAN INDUSTRY CLASSIFICATION SYSTEM INDUSTRY GROUPS	AVERAGE EMPLOYING UNITS	AVERAGE COVERED EMPLOYMENT	TOTAL EARNINGS	AVERAGE WEEKLY EARNINGS
Other	39	1,010	\$40,187,609	\$765.19
COMPUTER & ELECTRONIC PRODUCT MFG.	84	4,765	\$171,512,360	\$692.20
Audio & Video Equipment Manufacturing	12	1,099	\$38,241,721	\$669.17
Semiconductors & Electronic Components	29	2,334	\$77,686,822	\$640.09
Electronic Instrument Manufacturing	29	964	\$35,290,823	\$704.01
Other	15	368	\$20,292,994	\$1,060.46
ELECTRICAL EQUIPMENT & APPLIANCES	71	10,487	\$428,784,422	\$786.29
TRANSPORTATION EQUIPMENT MANUFACTURING	179	16,582	\$633,143,970	\$734.28
Motor Vehicle Body & Trailer Manufacturing	45	3,718	\$126,088,325	\$652.17
Motor Vehicle Parts Manufacturing	63	6,120	\$209,292,998	\$657.66
Aerospace Product & Parts Manufacturing	27	3,722	\$197,570,418	\$1,020.80
Ship & Boat Building	27	1,695	\$48,444,284	\$549.63
Other	18	1,327	\$51,747,945	\$749.93
FURNITURE & RELATED PRODUCT MFG.	273	6,112	\$192,465,602	\$605.57
Household & Institutional Furniture	223	4,194	\$124,896,909	\$572.69
Office Furniture & Fixtures Manufacturing	43	1,774	\$64,028,892	\$694.10
Other Furniture Related Product Manufacturing	7	143	\$3,539,801	\$476.04
MISCELLANEOUS MANUFACTURING	264	5,336	\$169,391,596	\$610.48
Medical Equipment & Supplies Manufacturing	96	2,438	\$83,509,544	\$658.72
Other Miscellaneous Manufacturing	168	2,898	\$85,882,052	\$569.90
TRADE, TRANSPORTATION & UTILITIES	20,842	246,507	\$7,912,201,056	\$617.26
WHOLESALE TRADE	6,332	48,175	\$2,458,441,762	\$981.37
MERCHANT WHOLESALERS, DURABLE GOODS	2,125	22,052	\$995,917,416	\$868.50
Motor Vehicle & Part Merchant Wholesalers	246	2,674	\$101,299,949	\$728.53
Furniture & Furnishing Merchant Wholesalers	72	440	\$20,268,227	\$885.85
Lumber & Supply Merchant Wholesalers	181	1,843	\$76,753,742	\$800.89
Commercial Goods Merchant Wholesalers	250	2,627	\$159,706,447	\$1,169.12
Metal & Mineral Merchant Wholesalers	51	830	\$38,193,685	\$884.93
Electric Goods Merchant Wholesalers	177	2,161	\$107,084,470	\$952.95
Hardware & Plumbing Merchant Wholesalers	223	2,449	\$108,810,178	\$854.43
Machinery & Supply Merchant Wholesalers	689	7,213	\$312,684,396	\$833.66
Misc. Durable Goods Merchant Wholesalers	237	1,815	\$71,116,322	\$753.51
MERCHANT WHOLESALERS, NONDURABLE GOODS	1,264	16,664	\$705,587,884	\$814.27
Paper & Paper Product Merchant Wholesalers	73	1,175	\$51,836,402	\$848.39

**TABLE 5. STATEWIDE SUMMARY
EMPLOYMENT AND TOTAL EARNINGS, BY INDUSTRY
CALENDAR YEAR 2007**

NORTH AMERICAN INDUSTRY CLASSIFICATION SYSTEM INDUSTRY GROUPS	AVERAGE EMPLOYING UNITS	AVERAGE COVERED EMPLOYMENT	TOTAL EARNINGS	AVERAGE WEEKLY EARNINGS
Druggists' Goods Merchant Wholesalers	58	1,173	\$54,447,697	\$892.64
Apparel & Piece Goods Merchant Wholesalers	38	462	\$15,564,165	\$647.86
Grocery Product Merchant Wholesalers	328	5,198	\$247,270,145	\$914.81
Farm Product Merchant Wholesalers	75	930	\$23,403,619	\$483.95
Chemical Merchant Wholesalers	82	537	\$25,631,586	\$917.91
Petroleum Merchant Wholesalers	153	1,577	\$82,576,632	\$1,006.98
Alcoholic Beverage Merchant Wholesalers	37	1,150	\$51,030,739	\$853.36
Misc. Nondurable Goods Merchant Wholesalers	421	4,462	\$153,826,899	\$662.98
ELECTRONIC MARKETS & AGENTS & BROKERS	2,943	9,460	\$756,936,462	\$1,538.74
RETAIL TRADE	11,194	134,252	\$2,886,334,974	\$413.45
MOTOR VEHICLE & PARTS DEALERS	1,741	18,290	\$629,718,979	\$662.11
Automobile Dealers	743	10,948	\$431,320,649	\$757.64
Other Motor Vehicle Dealers	197	1,631	\$54,326,741	\$640.55
Automotive Parts, Accessories & Tire Stores	801	5,711	\$144,071,589	\$485.14
FURNITURE & HOME FURNISHINGS STORES	589	4,097	\$108,526,633	\$509.41
Furniture Stores	310	2,470	\$67,192,384	\$523.14
Home Furnishings Stores	279	1,627	\$41,334,249	\$488.56
ELECTRONICS & APPLIANCE STORES	444	3,105	\$78,724,839	\$487.58
BUILDING MATERIAL & GARDEN SUPPLY STORES	861	11,135	\$283,934,274	\$490.37
Building Material & Supplies Dealers	680	10,243	\$262,731,850	\$493.27
Lawn & Garden Equipment & Supplies Stores	181	892	\$21,202,424	\$457.11
FOOD & BEVERAGE STORES	1,089	18,624	\$309,179,775	\$319.25
Grocery Stores	615	16,178	\$260,917,525	\$310.15
Specialty Food Stores	161	923	\$23,101,633	\$481.32
Beer, Wine & Liquor Stores	313	1,523	\$25,160,617	\$317.70
HEALTH & PERSONAL CARE STORES	818	7,159	\$208,260,587	\$559.44
GASOLINE STATIONS	1,586	12,411	\$177,857,850	\$275.59
Gasoline Stations with Convenience Stores	1,427	11,133	\$154,459,677	\$266.81
Other Gasoline Stations	159	1,278	\$23,398,173	\$352.09
CLOTHING & CLOTHING ACCESSORIES STORES	1,086	9,226	\$127,433,268	\$265.62
Clothing Stores	735	7,075	\$87,005,168	\$236.49
Shoe Stores	184	1,230	\$17,374,697	\$271.65
Jewelry, Luggage & Leather Goods Stores	167	922	\$23,053,403	\$480.84
SPORTING GOODS, HOBBY, BOOK & MUSIC STORES	584	4,712	\$70,229,818	\$286.62

**TABLE 5. STATEWIDE SUMMARY
EMPLOYMENT AND TOTAL EARNINGS, BY INDUSTRY
CALENDAR YEAR 2007**

NORTH AMERICAN INDUSTRY CLASSIFICATION SYSTEM INDUSTRY GROUPS	AVERAGE EMPLOYING UNITS	AVERAGE COVERED EMPLOYMENT	TOTAL EARNINGS	AVERAGE WEEKLY EARNINGS
Sporting Goods & Musical Instrument Stores	433	3,299	\$52,732,792	\$307.39
Book, Periodical & Music Stores	150	1,413	\$17,497,026	\$238.13
GENERAL MERCHANDISE STORES	713	37,059	\$709,864,339	\$368.36
MISCELLANEOUS STORE RETAILERS	1,364	6,566	\$127,439,024	\$373.25
Florists	256	976	\$14,817,809	\$291.97
Office Supplies, Stationery & Gift Stores	363	2,324	\$45,522,231	\$376.69
Used Merchandise Stores	215	822	\$16,040,728	\$375.27
Other Miscellaneous Store Retailers	530	2,445	\$51,058,256	\$401.59
NONSTORE RETAILERS	320	1,868	\$55,165,588	\$567.92
Electronic Shopping & Mail -Order Houses	75	420	\$15,110,535	\$691.87
Vending Machine Operators	78	651	\$15,982,701	\$472.13
Direct Selling Establishments	168	797	\$24,072,352	\$580.84
TRANSPORTATION & WAREHOUSING	2,954	57,269	\$2,120,067,663	\$711.91
AIR TRANSPORTATION	49	913	\$46,719,139	\$984.06
TRUCK TRANSPORTATION	1,994	36,583	\$1,377,647,783	\$724.20
General Freight Trucking	1,257	31,190	\$1,187,142,022	\$731.95
Specialized Freight Trucking	737	5,394	\$190,505,761	\$679.19
TRANSIT & GROUND PASSENGER TRANS.	63	1,129	\$20,050,193	\$341.52
Taxi & Limousine Service	22	277	\$4,098,341	\$284.53
School & Employee Bus Transportation	8	433	\$8,669,744	\$385.05
Charter Bus Industry Service	8	80	\$1,640,622	\$394.38
Other Ground Passenger Transportation	18	233	\$3,653,576	\$301.55
Other	7	106	\$1,987,910	\$360.65
PIPELINE TRANSPORTATION	66	900	\$50,580,112	\$1,080.77
SUPPORT ACTIVITIES FOR TRANSPORTATION	411	4,813	\$207,438,322	\$828.84
Support Activities for Air Transportation	103	1,601	\$57,869,231	\$695.11
Support Activities for Rail Transportation	30	375	\$13,296,780	\$681.89
Support Activities for Water Transportation	25	642	\$41,402,990	\$1,240.20
Support Activities for Road Transportation	103	504	\$12,134,435	\$463.00
Freight Transportation Arrangement	127	1,511	\$77,872,017	\$991.09
Other Support Activities for Transportation	23	180	\$4,862,869	\$519.54
COURIERS & MESSENGERS	140	3,299	\$121,018,401	\$705.45
Couriers	86	3,024	\$114,661,886	\$729.18
Local Messengers & Local Delivery	55	275	\$6,356,515	\$444.51

**TABLE 5. STATEWIDE SUMMARY
EMPLOYMENT AND TOTAL EARNINGS, BY INDUSTRY
CALENDAR YEAR 2007**

NORTH AMERICAN INDUSTRY CLASSIFICATION SYSTEM INDUSTRY GROUPS	AVERAGE EMPLOYING UNITS	AVERAGE COVERED EMPLOYMENT	TOTAL EARNINGS	AVERAGE WEEKLY EARNINGS
WAREHOUSING & STORAGE	210	9,422	\$289,534,891	\$590.96
OTHER	22	211	\$7,078,822	\$645.17
UTILITIES	362	6,811	\$447,356,657	\$1,263.11
Power Generation & Supply	161	5,106	\$365,560,493	\$1,376.81
Natural Gas Distribution	34	859	\$56,199,182	\$1,258.15
Water, Sewage and Other Systems	168	846	\$25,596,982	\$581.86
INFORMATION	1,197	19,830	\$1,508,032,452	\$1,462.46
PUBLISHING INDUSTRIES, EXCEPT INTERNET	251	6,239	\$200,454,215	\$617.87
Newspaper, Book & Directory Publishers	225	5,959	\$184,813,445	\$596.43
Software Publishers	26	279	\$15,640,770	\$1,078.08
MOTION PICTURE & SOUND RECORDING INDUSTRY	135	1,239	\$21,149,664	\$328.27
Motion Picture & Video Industries	118	1,200	\$19,880,358	\$318.60
Sound Recording Industries	17	39	\$1,269,306	\$625.89
BROADCASTING, EXCEPT INTERNET	145	2,247	\$78,546,597	\$672.23
Radio & Television Broadcasting	138	2,207	\$77,579,456	\$675.99
Cable & Other Subscription Programming	7	40	\$967,141	\$464.97
TELECOMMUNICATIONS	527	8,848	\$1,142,855,503	\$2,483.95
Wired Telecommunications Carriers	314	4,605	\$628,357,245	\$2,624.06
Wireless Telecommunications Carriers	119	3,685	\$490,047,397	\$2,557.39
Other	95	559	\$24,450,861	\$841.16
DATA PROCESSING, HOSTING & RELATED SERVICES	90	966	\$55,271,419	\$1,100.32
OTHER	49	292	\$9,755,054	\$642.46
FINANCIAL ACTIVITIES	8,287	51,965	\$2,158,849,842	\$798.93
FINANCE & INSURANCE	4,843	37,511	\$1,750,080,354	\$897.21
CREDIT INTERMEDIATION & RELATED ACTIVITIES	2,062	22,284	\$866,101,536	\$747.43
Depository Credit Intermediation	1,364	18,515	\$696,697,458	\$723.63
Nondepository Credit Intermediation	400	2,653	\$132,287,399	\$958.91
Activities Related to Credit Intermediation	299	1,115	\$37,116,679	\$640.16
FINANCIAL INVESTMENT & RELATED ACTIVITIES	591	3,111	\$307,019,261	\$1,897.85
INSURANCE CARRIERS & RELATED ACTIVITIES	2,155	11,675	\$558,705,659	\$920.29
Insurance Carriers	420	4,885	\$263,537,244	\$1,037.47
Insurance Agencies, Brokerages & Support	1,734	6,791	\$295,168,415	\$835.86
OTHER	35	442	\$18,253,898	\$794.20
REAL ESTATE & RENTAL & LEASING	3,444	14,454	\$408,769,488	\$543.86

**TABLE 5. STATEWIDE SUMMARY
EMPLOYMENT AND TOTAL EARNINGS, BY INDUSTRY
CALENDAR YEAR 2007**

NORTH AMERICAN INDUSTRY CLASSIFICATION SYSTEM INDUSTRY GROUPS	AVERAGE EMPLOYING UNITS	AVERAGE COVERED EMPLOYMENT	TOTAL EARNINGS	AVERAGE WEEKLY EARNINGS
REAL ESTATE	2,611	8,967	\$256,368,880	\$549.81
Lessors of Real Estate	1,048	4,292	\$113,054,849	\$506.55
Offices of Real Estate Agents & Brokers	949	2,135	\$68,100,089	\$613.40
Activities Related to Real Estate	614	2,540	\$75,213,942	\$569.46
RENTAL & LEASING SERVICES	811	5,416	\$147,650,862	\$524.27
Automotive Equipment Rental & Leasing	125	1,010	\$28,059,747	\$534.27
Consumer Goods Rental	496	3,216	\$68,198,329	\$407.81
General Rental Centers	35	260	\$8,352,166	\$617.76
Machinery & Equipment Rental & Leasing	157	931	\$43,040,620	\$889.05
LESSORS OF NONFINANCIAL INTANGIBLE ASSETS	22	71	\$4,749,746	\$1,286.50
PROFESSIONAL & BUSINESS SERVICES	11,200	116,919	\$4,725,959,956	\$777.32
PROFESSIONAL & TECHNICAL SERVICES	7,043	38,605	\$1,850,664,910	\$921.89
Legal Services	1,668	6,631	\$307,695,461	\$892.36
Accounting & Bookkeeping Services	1,235	5,583	\$203,804,680	\$702.01
Architectural & Engineering Services	955	6,910	\$345,008,174	\$960.17
Specialized Design Services	166	503	\$17,626,301	\$673.89
Computer Systems Design & Related Services	878	7,869	\$537,434,349	\$1,313.42
Management & Technical Consulting Services	1,131	4,195	\$206,967,113	\$948.78
Scientific Research & Development Services	96	1,057	\$53,282,316	\$969.40
Advertising & Related Services	316	2,034	\$90,813,747	\$858.61
Other Professional & Technical Services	599	3,822	\$88,032,769	\$442.95
MANAGEMENT OF COMPANIES & ENTERPRISES	526	24,774	\$1,749,416,388	\$1,357.98
ADMINISTRATIVE & WASTE SERVICES	3,631	53,540	\$1,125,878,658	\$404.40
ADMINISTRATIVE & SUPPORT SERVICES	3,424	51,210	\$1,034,940,931	\$388.65
Office Administrative Services	351	1,187	\$62,744,936	\$1,016.54
Facilities Support Services	17	124	\$4,483,662	\$695.36
Employment Services	673	25,024	\$443,627,984	\$340.93
Business Support Services	382	6,274	\$132,162,109	\$405.10
Travel Arrangement & Reservation Services	99	419	\$12,803,534	\$587.64
Investigation & Security Services	252	4,560	\$107,082,893	\$451.60
Services to Buildings & Dwellings	1,351	12,040	\$222,687,214	\$355.68
Other Support Services	300	1,581	\$49,348,599	\$600.26
WASTE MANAGEMENT & REMEDIATION SERVICES	207	2,330	\$90,937,727	\$750.56
Waste Collection Services	99	1,170	\$44,250,349	\$727.32

**TABLE 5. STATEWIDE SUMMARY
EMPLOYMENT AND TOTAL EARNINGS, BY INDUSTRY
CALENDAR YEAR 2007**

NORTH AMERICAN INDUSTRY CLASSIFICATION SYSTEM INDUSTRY GROUPS	AVERAGE EMPLOYING UNITS	AVERAGE COVERED EMPLOYMENT	TOTAL EARNINGS	AVERAGE WEEKLY EARNINGS
Waste Treatment & Disposal Services	38	646	\$29,966,092	\$892.06
Remediation & Other Waste Services	71	514	\$16,721,286	\$625.61
EDUCATION & HEALTH SERVICES	11,586	150,091	\$5,034,475,911	\$645.05
EDUCATIONAL SERVICES	583	9,501	\$261,740,967	\$529.78
Elementary & Secondary Schools	77	3,226	\$70,299,568	\$419.07
Junior Colleges	7	270	\$7,793,831	\$555.12
Colleges & Universities	29	3,298	\$103,720,727	\$604.80
Business, Computer, & Management Training	45	187	\$14,522,907	\$1,493.51
Technical & Trade Schools	102	731	\$31,716,501	\$834.38
Other Schools & Instruction	229	1,466	\$21,096,889	\$276.75
Educational Support Services	96	323	\$12,590,544	\$749.62
HEALTH CARE & SOCIAL ASSISTANCE	11,003	140,590	\$4,772,734,944	\$652.84
AMBULATORY HEALTH CARE SERVICES	4,926	43,869	\$2,176,296,001	\$954.02
Offices of Physicians	2,199	20,936	\$1,377,831,728	\$1,265.61
Offices of Dentists	924	6,145	\$248,135,938	\$776.54
Offices of Other Health Practitioners	1,157	5,974	\$189,294,806	\$609.35
Outpatient Care Centers	231	3,655	\$137,373,501	\$722.79
Medical & Diagnostic Laboratories	103	852	\$43,579,889	\$983.66
Home Health Care Services	170	4,081	\$112,484,874	\$530.06
Other Ambulatory Health Care Services	142	2,227	\$67,595,265	\$583.70
HOSPITALS	108	41,605	\$1,569,281,115	\$725.36
General Medical & Surgical Hospitals	77	38,122	\$1,443,437,352	\$728.15
Psychiatric & Substance Abuse Hospitals	11	1,608	\$53,233,634	\$636.64
Other Hospitals	21	1,874	\$72,610,129	\$745.12
NURSING & RESIDENTIAL CARE FACILITIES	514	27,666	\$563,898,372	\$391.97
Nursing Care Facilities	248	20,631	\$420,066,232	\$391.56
Residential Mental Health Facilities	128	3,232	\$68,489,807	\$407.52
Community Care Facilities for the Elderly	94	2,301	\$41,657,957	\$348.16
Other Residential Care Facilities	45	1,502	\$33,684,376	\$431.28
SOCIAL ASSISTANCE	5,455	27,451	\$463,259,456	\$324.54
Individual & Family Services	4,286	14,050	\$249,871,275	\$342.01
Emergency & Other Relief Services	124	910	\$19,006,741	\$401.66
Vocational Rehabilitation Services	128	3,675	\$70,042,367	\$366.52
Child Day Care Services	917	8,816	\$124,339,073	\$271.23

**TABLE 5. STATEWIDE SUMMARY
EMPLOYMENT AND TOTAL EARNINGS, BY INDUSTRY
CALENDAR YEAR 2007**

NORTH AMERICAN INDUSTRY CLASSIFICATION SYSTEM INDUSTRY GROUPS	AVERAGE EMPLOYING UNITS	AVERAGE COVERED EMPLOYMENT	TOTAL EARNINGS	AVERAGE WEEKLY EARNINGS
LEISURE & HOSPITALITY	6,140	99,621	\$1,220,459,682	\$235.60
ARTS, ENTERTAINMENT & RECREATION	914	9,744	\$157,601,919	\$311.04
PERFORMING ARTS & SPECTATOR SPORTS	213	2,386	\$47,858,532	\$385.73
Performing Arts Companies	34	477	\$6,807,581	\$274.45
Spectator Sports	59	1,174	\$22,987,691	\$376.55
Performing Arts & Sports Promoters	49	578	\$12,489,108	\$415.53
Agents & Managers for Public Figures	15	19	\$709,246	\$717.86
Independent Artists, Writers & Performers	56	138	\$4,864,906	\$677.94
MUSEUMS, PARKS & HISTORICAL SITES	47	230	\$4,380,237	\$366.24
GAMBLING, RECREATION & AMUSEMENT INDUSTRY	655	7,128	\$105,363,150	\$284.26
ACCOMMODATION & FOOD SERVICES	5,226	89,877	\$1,062,857,763	\$227.42
ACCOMMODATION	825	11,285	\$165,724,549	\$282.41
Traveler Accommodation	750	10,839	\$157,996,077	\$280.32
RV Parks & Recreational Camps	56	376	\$6,497,398	\$332.31
Rooming & Boarding Houses	19	71	\$1,231,074	\$333.44
FOOD SERVICES & DRINKING PLACES	4,400	78,592	\$897,133,214	\$219.52
Full -Service Restaurants	1,950	34,795	\$425,409,121	\$235.12
Limited-Service Eating Places	2,159	40,654	\$429,362,175	\$203.10
Special Food Services	148	2,227	\$31,673,064	\$273.51
Drinking Places, Alcoholic Beverages	144	916	\$10,688,854	\$224.40
OTHER SERVICES	5,415	25,462	\$626,758,645	\$473.37
REPAIR & MAINTENANCE	2,203	9,623	\$279,891,791	\$559.34
Automotive Repair & Maintenance	1,511	6,769	\$181,472,074	\$515.56
Electronic Equipment Repair & Maintenance	161	701	\$26,676,567	\$731.83
Commercial Machinery Repair & Maintenance	344	1,563	\$56,647,249	\$696.97
Household Goods Repair & Maintenance	187	590	\$15,095,901	\$492.04
PERSONAL & LAUNDRY SERVICES	1,315	8,218	\$163,323,495	\$382.19
Personal Care Services	567	2,664	\$41,923,796	\$302.64
Death Care Services	242	1,660	\$43,576,096	\$504.82
Drycleaning & Laundry Services	331	3,203	\$62,789,093	\$376.98
Other Personal Services	175	691	\$15,034,510	\$418.42
MEMBERSHIP ASSOCIATIONS & ORGANIZATIONS	997	6,344	\$162,118,045	\$491.43
Religious Organizations	43	226	\$5,563,063	\$473.37
Grantmaking & Giving Services	100	464	\$17,750,232	\$735.67

**TABLE 5. STATEWIDE SUMMARY
EMPLOYMENT AND TOTAL EARNINGS, BY INDUSTRY
CALENDAR YEAR 2007**

NORTH AMERICAN INDUSTRY CLASSIFICATION SYSTEM INDUSTRY GROUPS	AVERAGE EMPLOYING UNITS	AVERAGE COVERED EMPLOYMENT	TOTAL EARNINGS	AVERAGE WEEKLY EARNINGS
Social Advocacy Organizations	141	1,946	\$48,569,947	\$479.98
Civic & Social Organizations	209	1,536	\$21,462,875	\$268.72
Professional & Similar Organizations	504	2,173	\$68,771,928	\$608.62
PRIVATE HOUSEHOLDS	901	1,277	\$21,425,314	\$322.65
LOCAL GOVERNMENT	1,992	112,747	\$3,519,212,518	\$600.26
STATE GOVERNMENT	1,201	64,249	\$2,382,487,086	\$713.12
NONCLASSIFIABLE ESTABLISHMENTS	0	0	\$0	

**TABLE 6. COUNTY SUMMARY
EMPLOYMENT AND TOTAL EARNINGS, BY INDUSTRY
CALENDAR YEAR 2007**

NORTH AMERICAN INDUSTRY CLASSIFICATION SYSTEM INDUSTRY GROUP	AVERAGE EMPLOYING UNITS	AVERAGE COVERED EMPLOYMENT	TOTAL EARNINGS	AVERAGE WEEKLY EARNINGS
ARKANSAS COUNTY - TOTAL	714	10,045	\$301,196,807	\$576.63
Natural Resources & Mining	44	233	\$7,350,268	\$606.66
Construction	50	323	\$11,372,891	\$677.12
Manufacturing	33	3,617	\$123,250,324	\$655.29
Trade, Transportation & Utilities	203	2,051	\$63,904,212	\$599.18
Wholesale Trade	44	428	\$19,046,975	\$855.81
Retail Trade	99	1,087	\$22,168,136	\$392.19
Transportation, Warehousing & Utilities	60	536	\$22,689,101	\$814.05
Information	10	102	\$3,568,047	\$672.71
Financial Activities	50	331	\$11,788,461	\$684.90
Professional & Business Services	57	390	\$15,565,169	\$767.51
Education & Health Services	107	1,217	\$27,433,208	\$433.49
Leisure & Hospitality	60	532	\$5,293,120	\$191.34
Other Services	54	141	\$3,169,156	\$432.24
Local Government	32	885	\$22,725,288	\$493.81
State Government	16	224	\$5,776,663	\$495.94
ASHLEY COUNTY - TOTAL	549	7,808	\$281,037,005	\$692.18
Natural Resources & Mining	58	436	\$12,438,999	\$548.65
Construction	50	533	\$15,660,937	\$565.05
Manufacturing	30	2,634	\$146,704,959	\$1,071.09
Trade, Transportation & Utilities	131	1,185	\$29,740,630	\$482.65
Wholesale Trade	25	164	\$6,454,337	\$756.84
Retail Trade	81	788	\$14,565,426	\$355.46
Transportation, Warehousing & Utilities	25	232	\$8,720,867	\$722.88
Information	9	51	\$1,387,452	\$523.17
Financial Activities	33	222	\$6,437,744	\$557.67
Professional & Business Services	52	379	\$9,507,286	\$482.41
Education & Health Services	72	604	\$19,515,214	\$621.35
Leisure & Hospitality	28	404	\$4,052,324	\$192.89
Other Services	43	190	\$4,428,321	\$448.21
Local Government	32	942	\$26,243,909	\$535.76
State Government	12	229	\$4,919,230	\$413.10

**TABLE 6. COUNTY SUMMARY
EMPLOYMENT AND TOTAL EARNINGS, BY INDUSTRY
CALENDAR YEAR 2007**

NORTH AMERICAN INDUSTRY CLASSIFICATION SYSTEM INDUSTRY GROUP	AVERAGE EMPLOYING UNITS	AVERAGE COVERED EMPLOYMENT	TOTAL EARNINGS	AVERAGE WEEKLY EARNINGS
BAXTER COUNTY - TOTAL	1,309	14,967	\$427,577,703	\$549.39
Natural Resources & Mining	5	114	\$3,396,990	\$573.04
Construction	145	768	\$20,983,054	\$525.42
Manufacturing	63	2,511	\$88,880,585	\$680.70
Trade, Transportation & Utilities	289	2,736	\$64,224,357	\$451.42
Wholesale Trade	36	237	\$6,721,462	\$545.40
Retail Trade	221	2,280	\$50,610,484	\$426.88
Transportation, Warehousing & Utilities	32	219	\$6,892,411	\$605.23
Information	24	260	\$8,523,229	\$630.42
Financial Activities	123	746	\$26,256,329	\$676.85
Professional & Business Services	138	860	\$24,333,215	\$544.12
Education & Health Services	245	3,488	\$122,344,695	\$674.54
Leisure & Hospitality	124	1,580	\$18,347,939	\$223.32
Other Services	104	400	\$7,154,237	\$343.95
Local Government	37	1,178	\$34,447,481	\$562.35
State Government	13	326	\$8,685,592	\$512.36
BENTON COUNTY - TOTAL	5,479	95,081	\$3,811,458,109	\$770.89
Natural Resources & Mining	31	697	\$30,954,040	\$854.05
Construction	780	4,833	\$175,809,135	\$699.55
Manufacturing	254	13,609	\$475,479,109	\$671.90
Trade, Transportation & Utilities	1,467	23,835	\$905,545,878	\$730.62
Wholesale Trade	675	3,727	\$279,775,238	\$1,443.60
Retail Trade	618	8,844	\$208,175,707	\$452.67
Transportation, Warehousing & Utilities	173	11,263	\$417,594,933	\$713.01
Information	71	945	\$34,012,224	\$692.15
Financial Activities	593	3,982	\$176,250,641	\$851.19
Professional & Business Services	963	22,834	\$1,347,646,006	\$1,134.99
Education & Health Services	486	6,950	\$236,411,629	\$654.16
Leisure & Hospitality	418	7,884	\$103,916,970	\$253.48
Other Services	323	1,733	\$46,090,053	\$511.45
Local Government	76	6,961	\$251,532,821	\$694.90
State Government	19	821	\$27,809,603	\$651.40

**TABLE 6. COUNTY SUMMARY
EMPLOYMENT AND TOTAL EARNINGS, BY INDUSTRY
CALENDAR YEAR 2007**

NORTH AMERICAN INDUSTRY CLASSIFICATION SYSTEM INDUSTRY GROUP	AVERAGE EMPLOYING UNITS	AVERAGE COVERED EMPLOYMENT	TOTAL EARNINGS	AVERAGE WEEKLY EARNINGS
BOONE COUNTY - TOTAL	1,069	13,884	\$427,242,057	\$591.77
Construction	95	481	\$14,310,931	\$572.16
Manufacturing	74	1,946	\$67,672,234	\$668.75
Trade, Transportation & Utilities	257	4,552	\$156,023,012	\$659.15
Wholesale Trade	57	675	\$20,211,423	\$575.82
Retail Trade	148	1,965	\$42,756,036	\$418.44
Transportation, Warehousing & Utilities	53	1,913	\$93,055,553	\$935.46
Information	20	426	\$15,725,306	\$709.88
Financial Activities	99	648	\$21,411,846	\$635.44
Professional & Business Services	113	541	\$13,564,549	\$482.18
Education & Health Services	181	1,157	\$33,885,115	\$563.21
Leisure & Hospitality	81	1,132	\$12,884,005	\$218.88
Local Government	61	2,127	\$64,028,170	\$578.90
State Government	21	595	\$20,637,345	\$667.01
Other	68	281	\$7,099,544	\$485.87
BRADLEY COUNTY - TOTAL	392	4,225	\$108,820,016	\$495.31
Natural Resources & Mining	49	446	\$9,953,311	\$429.17
Construction	24	226	\$6,126,345	\$521.30
Manufacturing	9	1,053	\$33,404,663	\$610.06
Trade, Transportation & Utilities	86	516	\$10,448,673	\$389.41
Wholesale Trade	17	79	\$2,421,834	\$589.54
Retail Trade	45	357	\$6,031,004	\$324.88
Transportation, Warehousing & Utilities	24	80	\$1,995,835	\$479.77
Information	4	13	\$363,351	\$537.50
Financial Activities	24	170	\$4,792,592	\$542.15
Professional & Business Services	27	79	\$1,418,612	\$345.33
Education & Health Services	94	609	\$15,944,747	\$503.50
Leisure & Hospitality	18	189	\$1,735,634	\$176.60
Other Services	33	121	\$3,148,381	\$500.38
Local & State Government	26	804	\$21,483,707	\$513.87

**TABLE 6. COUNTY SUMMARY
EMPLOYMENT AND TOTAL EARNINGS, BY INDUSTRY
CALENDAR YEAR 2007**

NORTH AMERICAN INDUSTRY CLASSIFICATION SYSTEM INDUSTRY GROUP	AVERAGE EMPLOYING UNITS	AVERAGE COVERED EMPLOYMENT	TOTAL EARNINGS	AVERAGE WEEKLY EARNINGS
CALHOUN COUNTY - TOTAL	113	3,032	\$118,460,063	\$751.35
Natural Resources & Mining	18	205	\$6,157,893	\$577.66
Construction	11	63	\$1,649,586	\$503.54
Manufacturing	11	2,027	\$88,737,058	\$841.88
Trade, Transportation & Utilities	27	221	\$5,947,567	\$517.54
Wholesale Trade & Retail Trade	19	72	\$1,031,307	\$275.46
Transportation, Warehousing & Utilities	8	149	\$4,916,260	\$634.52
Financial Activities	6	79	\$2,150,004	\$523.37
Education & Health Services	6	46	\$1,422,940	\$594.87
Local & State Government	20	272	\$6,883,761	\$486.69
Other	14	119	\$5,511,254	\$890.64
CARROLL COUNTY - TOTAL	841	9,908	\$238,508,892	\$462.93
Natural Resources & Mining	17	272	\$7,543,509	\$533.34
Trade, Transportation & Utilities	206	1,686	\$40,483,958	\$461.77
Wholesale Trade	28	147	\$3,417,947	\$447.14
Retail Trade	159	1,274	\$26,388,675	\$398.33
Transportation, Warehousing & Utilities	20	266	\$10,677,336	\$771.93
Professional & Business Services	76	231	\$6,760,986	\$562.85
Education & Health Services	81	816	\$24,565,725	\$578.94
Leisure & Hospitality	171	1,622	\$18,999,359	\$225.26
Local Government	25	1,063	\$28,823,048	\$521.44
State Government	11	105	\$2,899,891	\$531.12
Other	255	4,113	\$108,432,416	\$506.99

**TABLE 6. COUNTY SUMMARY
EMPLOYMENT AND TOTAL EARNINGS, BY INDUSTRY
CALENDAR YEAR 2007**

NORTH AMERICAN INDUSTRY CLASSIFICATION SYSTEM INDUSTRY GROUP	AVERAGE EMPLOYING UNITS	AVERAGE COVERED EMPLOYMENT	TOTAL EARNINGS	AVERAGE WEEKLY EARNINGS
CHICOT COUNTY - TOTAL	363	3,534	\$85,388,577	\$464.65
Natural Resources & Mining	48	278	\$7,398,159	\$511.77
Construction	16	122	\$3,867,967	\$609.70
Manufacturing	10	492	\$8,830,555	\$345.16
Trade, Transportation & Utilities	72	572	\$13,660,027	\$459.25
Wholesale Trade	14	105	\$4,244,131	\$777.31
Retail Trade	48	403	\$6,921,458	\$330.29
Transportation, Warehousing & Utilities	10	64	\$2,494,438	\$749.53
Information	6	11	\$237,412	\$415.06
Financial Activities	28	165	\$5,355,100	\$624.14
Professional & Business Services	28	84	\$2,708,289	\$620.03
Education & Health Services	91	554	\$13,318,822	\$462.33
Leisure & Hospitality	19	177	\$1,661,539	\$180.52
Other Services	18	46	\$892,067	\$372.94
Local Government	17	703	\$18,965,412	\$518.80
State Government	11	330	\$8,493,228	\$494.94
CLARK COUNTY - TOTAL	612	9,817	\$267,787,192	\$524.58
Natural Resources & Mining	40	256	\$7,561,034	\$567.99
Construction	28	93	\$2,332,246	\$482.27
Manufacturing	37	2,432	\$76,615,135	\$605.83
Trade, Transportation & Utilities	146	1,507	\$38,783,609	\$494.92
Wholesale Trade	19	59	\$2,307,865	\$752.24
Retail Trade	105	1,158	\$25,902,593	\$430.16
Transportation, Warehousing & Utilities	23	290	\$10,573,151	\$701.14
Information	10	42	\$1,207,100	\$552.70
Financial Activities	87	389	\$11,581,883	\$572.57
Professional & Business Services	45	395	\$16,904,554	\$823.01
Education & Health Services	78	1,425	\$38,645,226	\$521.53
Leisure & Hospitality	57	1,027	\$11,240,705	\$210.48
Other Services	44	208	\$4,544,726	\$420.19
Local Government	26	927	\$25,369,416	\$526.29
State Government	15	1,117	\$33,001,558	\$568.17

**TABLE 6. COUNTY SUMMARY
EMPLOYMENT AND TOTAL EARNINGS, BY INDUSTRY
CALENDAR YEAR 2007**

NORTH AMERICAN INDUSTRY CLASSIFICATION SYSTEM INDUSTRY GROUP	AVERAGE EMPLOYING UNITS	AVERAGE COVERED EMPLOYMENT	TOTAL EARNINGS	AVERAGE WEEKLY EARNINGS
CLAY COUNTY - TOTAL	410	4,054	\$98,003,129	\$464.89
Natural Resources & Mining	59	213	\$4,593,414	\$414.72
Construction	33	161	\$3,773,787	\$450.76
Manufacturing	18	734	\$20,277,886	\$531.28
Trade, Transportation & Utilities	97	899	\$22,999,398	\$491.99
Wholesale Trade	23	312	\$8,997,740	\$554.59
Retail Trade	50	427	\$7,985,137	\$359.63
Transportation, Warehousing & Utilities	24	161	\$6,016,521	\$718.65
Information	4	72	\$1,887,574	\$504.16
Financial Activities	35	149	\$3,904,229	\$503.90
Professional & Business Services	27	52	\$1,376,289	\$508.98
Education & Health Services	56	507	\$11,339,989	\$430.13
Leisure & Hospitality	22	215	\$1,865,912	\$166.90
Other Services	26	71	\$1,776,036	\$481.05
Local Government	22	904	\$22,227,620	\$472.85
State Government	12	76	\$1,980,995	\$501.26
CLEBURNE COUNTY - TOTAL	700	6,805	\$172,723,561	\$488.11
Natural Resources & Mining	18	133	\$4,703,251	\$680.05
Construction	79	440	\$12,068,668	\$527.48
Manufacturing	41	1,378	\$43,742,195	\$610.45
Trade, Transportation & Utilities	187	1,569	\$39,130,522	\$479.61
Wholesale Trade	43	206	\$7,090,189	\$661.89
Retail Trade	111	1,023	\$20,301,027	\$381.63
Transportation, Warehousing & Utilities	33	340	\$11,739,306	\$663.99
Information	7	55	\$1,492,234	\$521.76
Financial Activities	76	264	\$7,947,909	\$578.96
Professional & Business Services	57	234	\$5,865,557	\$482.05
Education & Health Services	82	792	\$20,564,220	\$499.33
Leisure & Hospitality	70	910	\$10,386,275	\$219.49
Other Services	54	160	\$3,207,069	\$385.47
Local Government	19	746	\$20,375,531	\$525.25
State Government	10	123	\$3,240,130	\$506.59

**TABLE 6. COUNTY SUMMARY
EMPLOYMENT AND TOTAL EARNINGS, BY INDUSTRY
CALENDAR YEAR 2007**

NORTH AMERICAN INDUSTRY CLASSIFICATION SYSTEM INDUSTRY GROUP	AVERAGE EMPLOYING UNITS	AVERAGE COVERED EMPLOYMENT	TOTAL EARNINGS	AVERAGE WEEKLY EARNINGS
CLEVELAND COUNTY - TOTAL	113	1,071	\$27,428,391	\$492.50
Natural Resources & Mining	16	146	\$4,155,452	\$547.35
Construction	7	32	\$548,142	\$329.41
Manufacturing	5	90	\$2,250,384	\$480.85
Trade, Transportation & Utilities	28	174	\$3,477,615	\$384.35
Retail Trade	14	76	\$822,233	\$208.05
Other Trade, Transportation & Utilities	15	98	\$2,655,382	\$521.07
Local Government	11	313	\$8,021,867	\$492.86
State Government	8	64	\$1,524,315	\$458.03
Other	36	253	\$7,450,616	\$566.33
COLUMBIA COUNTY - TOTAL	715	9,451	\$302,769,961	\$616.07
Natural Resources & Mining	49	565	\$32,396,829	\$1,102.68
Construction	48	334	\$11,230,309	\$646.61
Manufacturing	43	2,681	\$111,463,765	\$799.53
Trade, Transportation & Utilities	176	1,564	\$36,294,410	\$446.27
Wholesale Trade	29	268	\$7,811,478	\$560.53
Retail Trade	113	1,036	\$18,813,817	\$349.23
Transportation, Warehousing & Utilities	34	260	\$9,669,115	\$715.17
Information	9	73	\$1,875,189	\$493.99
Financial Activities	74	533	\$21,829,803	\$787.62
Professional & Business Services	59	323	\$8,808,077	\$524.42
Education & Health Services	119	903	\$19,258,586	\$410.14
Leisure & Hospitality	50	631	\$6,997,295	\$213.25
Other Services	48	207	\$3,413,554	\$317.13
Local Government	27	1,081	\$31,227,132	\$555.52
State Government	14	557	\$17,975,012	\$620.60

**TABLE 6. COUNTY SUMMARY
EMPLOYMENT AND TOTAL EARNINGS, BY INDUSTRY
CALENDAR YEAR 2007**

NORTH AMERICAN INDUSTRY CLASSIFICATION SYSTEM INDUSTRY GROUP	AVERAGE EMPLOYING UNITS	AVERAGE COVERED EMPLOYMENT	TOTAL EARNINGS	AVERAGE WEEKLY EARNINGS
CONWAY COUNTY - TOTAL	570	6,862	\$193,382,730	\$541.96
Natural Resources & Mining	22	183	\$7,216,745	\$758.38
Construction	59	515	\$20,908,381	\$780.75
Manufacturing	29	1,135	\$46,850,471	\$793.81
Trade, Transportation & Utilities	138	1,502	\$39,685,413	\$508.11
Wholesale Trade	25	226	\$7,928,049	\$674.61
Retail Trade	82	922	\$19,122,192	\$398.84
Transportation, Warehousing & Utilities	31	354	\$12,635,172	\$686.40
Information	5	13	\$578,549	\$855.84
Financial Activities	34	196	\$5,483,113	\$537.98
Professional & Business Services	44	553	\$8,805,743	\$306.22
Education & Health Services	134	891	\$23,035,522	\$497.18
Leisure & Hospitality	39	493	\$4,748,236	\$185.22
Other Services	28	93	\$2,613,356	\$540.40
Local Government	28	896	\$24,088,632	\$517.01
State Government	11	393	\$9,368,569	\$458.43
CRAIGHEAD COUNTY - TOTAL	2,684	41,332	\$1,264,033,549	\$588.12
Natural Resources & Mining	60	294	\$7,366,433	\$481.84
Construction	242	1,636	\$54,019,376	\$634.98
Manufacturing	139	6,636	\$241,747,570	\$700.57
Trade, Transportation & Utilities	741	8,591	\$227,628,040	\$509.54
Wholesale Trade	188	1,607	\$66,207,805	\$792.30
Retail Trade	438	5,818	\$118,504,046	\$391.70
Transportation, Warehousing & Utilities	116	1,166	\$42,916,189	\$707.81
Information	36	610	\$20,735,284	\$653.70
Financial Activities	268	1,630	\$68,473,367	\$807.85
Professional & Business Services	358	3,543	\$96,972,276	\$526.35
Education & Health Services	401	7,283	\$274,907,842	\$725.89
Leisure & Hospitality	201	4,127	\$47,082,532	\$219.39
Other Services	177	962	\$19,510,737	\$390.03
Local Government	38	3,534	\$110,345,905	\$600.46
State Government	25	2,485	\$95,244,187	\$737.07

**TABLE 6. COUNTY SUMMARY
EMPLOYMENT AND TOTAL EARNINGS, BY INDUSTRY
CALENDAR YEAR 2007**

NORTH AMERICAN INDUSTRY CLASSIFICATION SYSTEM INDUSTRY GROUP	AVERAGE EMPLOYING UNITS	AVERAGE COVERED EMPLOYMENT	TOTAL EARNINGS	AVERAGE WEEKLY EARNINGS
CRAWFORD COUNTY - TOTAL	1,264	19,881	\$574,683,186	\$555.89
Natural Resources & Mining	26	653	\$29,134,939	\$858.02
Construction	187	1,421	\$48,290,725	\$653.53
Manufacturing	78	3,678	\$105,274,283	\$550.44
Trade, Transportation & Utilities	309	6,810	\$202,489,783	\$571.81
Retail Trade	160	1,958	\$39,876,979	\$391.66
Other Trade, Transportation & Utilities	149	4,852	\$162,612,804	\$644.51
Information	11	192	\$6,238,384	\$624.84
Financial Activities	141	544	\$15,524,106	\$548.79
Professional & Business Services	154	1,081	\$31,580,814	\$561.82
Education & Health Services	141	1,362	\$39,533,257	\$558.19
Leisure & Hospitality	89	1,577	\$17,426,419	\$212.51
Other Services	78	367	\$9,834,447	\$515.32
Local Government	41	2,023	\$63,617,576	\$604.75
State Government	11	173	\$5,738,453	\$637.89
CRITTENDEN COUNTY - TOTAL	1,234	17,083	\$513,424,911	\$577.98
Natural Resources & Mining	43	275	\$7,544,614	\$527.60
Construction	74	496	\$16,849,830	\$653.30
Manufacturing	46	2,050	\$86,390,563	\$810.42
Trade, Transportation & Utilities	337	4,943	\$154,779,007	\$602.17
Wholesale Trade	77	809	\$36,084,750	\$857.77
Retail Trade	171	2,107	\$41,647,632	\$380.12
Transportation, Warehousing & Utilities	89	2,027	\$77,046,625	\$730.96
Information	10	86	\$3,040,690	\$679.94
Financial Activities	108	584	\$20,065,556	\$660.75
Professional & Business Services	133	1,049	\$25,868,541	\$474.23
Education & Health Services	224	2,056	\$65,243,079	\$610.25
Leisure & Hospitality	102	2,130	\$28,287,984	\$255.40
Other Services	98	599	\$13,517,398	\$433.97
Local Government	46	2,340	\$78,798,837	\$647.59
State Government	15	476	\$13,038,812	\$526.78

**TABLE 6. COUNTY SUMMARY
EMPLOYMENT AND TOTAL EARNINGS, BY INDUSTRY
CALENDAR YEAR 2007**

NORTH AMERICAN INDUSTRY CLASSIFICATION SYSTEM INDUSTRY GROUP	AVERAGE EMPLOYING UNITS	AVERAGE COVERED EMPLOYMENT	TOTAL EARNINGS	AVERAGE WEEKLY EARNINGS
CROSS COUNTY - TOTAL	523	4,817	\$127,473,909	\$508.91
Natural Resources & Mining	39	194	\$3,987,148	\$395.24
Construction	34	166	\$4,243,287	\$491.58
Manufacturing	16	614	\$19,009,518	\$595.39
Trade, Transportation & Utilities	133	1,161	\$33,308,190	\$551.72
Wholesale Trade	30	271	\$9,988,530	\$708.81
Retail Trade	68	647	\$14,149,469	\$420.56
Transportation, Warehousing & Utilities	36	243	\$9,170,191	\$725.72
Information	6	68	\$1,809,225	\$511.66
Financial Activities	49	347	\$10,212,598	\$565.98
Professional & Business Services	44	170	\$5,103,519	\$577.32
Education & Health Services	103	674	\$16,649,697	\$475.05
Leisure & Hospitality	33	390	\$3,617,147	\$178.36
Other Services	39	73	\$1,335,896	\$351.92
Local Government	17	738	\$21,306,158	\$555.19
State Government	11	223	\$6,891,526	\$594.30
DALLAS COUNTY - TOTAL	275	3,253	\$87,709,669	\$518.51
Natural Resources & Mining	40	192	\$5,561,779	\$557.07
Construction	14	66	\$2,138,680	\$623.16
Manufacturing	17	904	\$32,095,291	\$682.76
Trade, Transportation & Utilities	71	437	\$9,933,151	\$437.12
Wholesale Trade	9	29	\$903,079	\$598.86
Retail Trade	44	355	\$7,431,550	\$402.58
Transportation, Warehousing & Utilities	18	53	\$1,598,522	\$580.02
Information	3	22	\$631,492	\$552.00
Financial Activities	21	105	\$3,069,804	\$562.24
Professional & Business Services	16	48	\$2,377,598	\$952.56
Education & Health Services	40	795	\$17,546,887	\$424.45
Leisure & Hospitality	15	120	\$1,105,105	\$177.10
Other Services	14	58	\$1,025,981	\$340.18
Local Government	16	438	\$10,348,752	\$454.37
State Government	9	69	\$1,875,149	\$522.62

**TABLE 6. COUNTY SUMMARY
EMPLOYMENT AND TOTAL EARNINGS, BY INDUSTRY
CALENDAR YEAR 2007**

NORTH AMERICAN INDUSTRY CLASSIFICATION SYSTEM INDUSTRY GROUP	AVERAGE EMPLOYING UNITS	AVERAGE COVERED EMPLOYMENT	TOTAL EARNINGS	AVERAGE WEEKLY EARNINGS
DESHA COUNTY - TOTAL	476	4,646	\$133,724,082	\$553.51
Natural Resources & Mining	51	275	\$7,383,642	\$516.34
Construction	26	137	\$4,392,276	\$616.55
Manufacturing	17	1,117	\$45,163,454	\$777.55
Trade, Transportation & Utilities	129	917	\$23,168,353	\$485.87
Wholesale Trade	21	179	\$7,310,653	\$785.42
Retail Trade	78	550	\$9,999,484	\$349.63
Transportation, Warehousing & Utilities	31	188	\$5,858,216	\$599.24
Information	5	21	\$782,871	\$716.91
Financial Activities	43	209	\$5,847,997	\$538.09
Professional & Business Services	37	117	\$2,782,414	\$457.33
Education & Health Services	80	579	\$13,156,749	\$436.99
Leisure & Hospitality	33	271	\$2,518,577	\$178.72
Other Services	26	60	\$1,127,863	\$361.49
Local Government	19	767	\$22,346,258	\$560.28
State Government	11	177	\$5,053,628	\$549.07
DREW COUNTY - TOTAL	516	6,666	\$164,910,186	\$475.75
Natural Resources & Mining	40	278	\$8,891,525	\$615.08
Construction	24	113	\$2,695,527	\$458.74
Manufacturing	22	788	\$20,623,500	\$503.31
Trade, Transportation & Utilities	130	1,204	\$29,199,829	\$466.39
Wholesale Trade	22	226	\$7,447,390	\$633.71
Retail Trade	86	882	\$17,913,125	\$390.57
Transportation, Warehousing & Utilities	22	96	\$3,839,314	\$769.09
Information	8	79	\$2,412,626	\$587.30
Financial Activities	44	257	\$9,225,766	\$690.34
Professional & Business Services	46	335	\$10,168,778	\$583.74
Education & Health Services	92	834	\$18,384,361	\$423.92
Leisure & Hospitality	43	660	\$5,646,362	\$164.52
Other Services	27	92	\$1,738,641	\$363.43
Local Government	23	1,202	\$32,593,096	\$521.46
State Government	17	823	\$23,330,175	\$545.15

**TABLE 6. COUNTY SUMMARY
EMPLOYMENT AND TOTAL EARNINGS, BY INDUSTRY
CALENDAR YEAR 2007**

NORTH AMERICAN INDUSTRY CLASSIFICATION SYSTEM INDUSTRY GROUP	AVERAGE EMPLOYING UNITS	AVERAGE COVERED EMPLOYMENT	TOTAL EARNINGS	AVERAGE WEEKLY EARNINGS
FAULKNER COUNTY - TOTAL	2,600	39,208	\$1,295,619,394	\$635.48
Natural Resources & Mining	28	646	\$42,144,369	\$1,254.60
Construction	370	3,008	\$99,113,566	\$633.65
Manufacturing	128	5,128	\$202,631,605	\$759.90
Trade, Transportation & Utilities	624	6,785	\$175,876,144	\$498.49
Wholesale Trade	163	832	\$35,028,450	\$809.64
Retail Trade	380	5,083	\$103,718,964	\$392.41
Transportation, Warehousing & Utilities	82	870	\$37,128,730	\$820.71
Information	43	389	\$14,024,909	\$693.34
Financial Activities	319	1,473	\$49,710,834	\$649.00
Professional & Business Services	348	5,279	\$268,954,183	\$979.77
Education & Health Services	343	5,536	\$170,156,779	\$591.08
Leisure & Hospitality	195	3,936	\$42,301,416	\$206.68
Other Services	144	594	\$13,012,462	\$421.28
Local Government	41	3,160	\$111,073,858	\$675.96
State Government	19	3,275	\$106,619,269	\$626.07
FRANKLIN COUNTY - TOTAL	333	4,189	\$119,008,722	\$546.34
Natural Resources & Mining	11	128	\$5,772,384	\$867.25
Construction	35	250	\$8,109,223	\$623.79
Manufacturing	23	939	\$30,461,567	\$623.85
Trade, Transportation & Utilities	89	842	\$23,590,282	\$538.79
Wholesale Trade	15	51	\$1,093,589	\$412.36
Retail Trade	51	483	\$8,977,649	\$357.45
Transportation, Warehousing & Utilities	22	308	\$13,519,044	\$844.10
Information	6	46	\$1,011,166	\$422.73
Financial Activities	29	225	\$6,080,289	\$519.68
Professional & Business Services	22	67	\$1,989,365	\$571.00
Education & Health Services	45	472	\$10,866,275	\$442.73
Leisure & Hospitality	26	303	\$3,028,474	\$192.21
Other Services	20	56	\$1,135,619	\$389.98
Local Government	19	722	\$22,565,538	\$601.04
State Government	10	139	\$4,398,540	\$608.54

**TABLE 6. COUNTY SUMMARY
EMPLOYMENT AND TOTAL EARNINGS, BY INDUSTRY
CALENDAR YEAR 2007**

NORTH AMERICAN INDUSTRY CLASSIFICATION SYSTEM INDUSTRY GROUP	AVERAGE EMPLOYING UNITS	AVERAGE COVERED EMPLOYMENT	TOTAL EARNINGS	AVERAGE WEEKLY EARNINGS
FULTON COUNTY - TOTAL	237	1,906	\$40,988,980	\$413.56
Construction	17	28	\$773,193	\$531.04
Manufacturing	13	120	\$1,953,938	\$313.13
Trade, Transportation & Utilities	66	395	\$9,381,607	\$456.75
Retail Trade	41	201	\$2,825,463	\$270.33
Other Trade, Transportation & Utilities	26	194	\$6,556,144	\$649.90
Financial Activities	15	105	\$2,911,106	\$533.17
Professional & Business Services	17	64	\$1,646,948	\$494.88
Education & Health Services	57	387	\$7,063,173	\$350.98
Leisure & Hospitality	15	139	\$1,453,750	\$201.13
Local Government	13	489	\$12,006,448	\$472.17
State Government	11	108	\$2,659,295	\$473.52
Other	13	72	\$1,139,522	\$304.36
GARLAND COUNTY - TOTAL	3,297	36,807	\$1,032,278,346	\$539.34
Natural Resources & Mining	47	370	\$15,588,785	\$810.23
Construction	459	2,413	\$67,329,565	\$536.59
Manufacturing	129	2,714	\$92,338,593	\$654.29
Trade, Transportation & Utilities	716	7,469	\$188,499,437	\$485.34
Wholesale Trade	155	1,047	\$39,454,775	\$724.69
Retail Trade	492	5,771	\$123,980,986	\$413.14
Transportation, Warehousing & Utilities	69	651	\$25,063,676	\$740.39
Information	42	419	\$13,981,331	\$641.70
Financial Activities	384	1,535	\$51,895,714	\$650.16
Professional & Business Services	423	3,373	\$95,297,102	\$543.33
Education & Health Services	446	7,123	\$263,596,981	\$711.66
Leisure & Hospitality	367	6,383	\$88,433,170	\$266.43
Other Services	225	969	\$20,445,290	\$405.76
Local Government	34	2,950	\$100,169,659	\$653.00
State Government	27	1,090	\$34,702,719	\$612.26

**TABLE 6. COUNTY SUMMARY
EMPLOYMENT AND TOTAL EARNINGS, BY INDUSTRY
CALENDAR YEAR 2007**

NORTH AMERICAN INDUSTRY CLASSIFICATION SYSTEM INDUSTRY GROUP	AVERAGE EMPLOYING UNITS	AVERAGE COVERED EMPLOYMENT	TOTAL EARNINGS	AVERAGE WEEKLY EARNINGS
GRANT COUNTY - TOTAL	301	3,858	\$102,356,372	\$510.21
Natural Resources & Mining	24	182	\$7,719,193	\$815.64
Construction	32	232	\$7,687,687	\$637.24
Manufacturing	17	935	\$26,851,089	\$552.26
Trade, Transportation & Utilities	84	611	\$14,230,338	\$447.89
Wholesale Trade	17	131	\$4,509,061	\$661.93
Retail Trade	41	419	\$7,898,019	\$362.49
Transportation, Warehousing & Utilities	27	62	\$1,823,258	\$565.53
Information	4	32	\$1,100,839	\$661.56
Financial Activities	25	106	\$3,423,438	\$621.09
Professional & Business Services	23	100	\$3,556,129	\$683.87
Education & Health Services	36	418	\$8,580,103	\$394.74
Leisure & Hospitality	21	274	\$2,972,726	\$208.64
Other Services	16	53	\$891,889	\$323.62
Local Government	10	858	\$23,714,295	\$531.52
State Government	9	58	\$1,628,646	\$540.00
GREENE COUNTY - TOTAL	921	14,967	\$420,538,564	\$540.34
Natural Resources & Mining	38	205	\$5,685,138	\$533.32
Construction	85	371	\$10,653,317	\$552.21
Manufacturing	58	5,288	\$188,744,515	\$686.40
Trade, Transportation & Utilities	246	2,271	\$53,856,177	\$456.05
Wholesale Trade	58	437	\$14,537,479	\$639.74
Retail Trade	159	1,614	\$31,570,061	\$376.16
Transportation, Warehousing & Utilities	30	220	\$7,748,637	\$677.33
Information	13	127	\$2,618,712	\$396.53
Financial Activities	91	496	\$15,239,328	\$590.85
Professional & Business Services	93	1,515	\$29,589,224	\$375.59
Education & Health Services	138	1,727	\$45,138,017	\$502.63
Leisure & Hospitality	70	1,067	\$11,122,039	\$200.45
Other Services	48	167	\$3,696,580	\$425.68
Local Government	31	1,468	\$45,899,365	\$601.28
State Government	11	265	\$8,296,152	\$602.04

**TABLE 6. COUNTY SUMMARY
EMPLOYMENT AND TOTAL EARNINGS, BY INDUSTRY
CALENDAR YEAR 2007**

NORTH AMERICAN INDUSTRY CLASSIFICATION SYSTEM INDUSTRY GROUP	AVERAGE EMPLOYING UNITS	AVERAGE COVERED EMPLOYMENT	TOTAL EARNINGS	AVERAGE WEEKLY EARNINGS
HEMPSTEAD COUNTY - TOTAL	500	8,172	\$221,725,893	\$521.78
Natural Resources & Mining	18	210	\$6,627,717	\$606.93
Construction	31	137	\$3,882,886	\$545.04
Manufacturing	29	2,484	\$78,425,746	\$607.16
Trade, Transportation & Utilities	131	1,334	\$33,064,451	\$476.65
Wholesale Trade	25	246	\$6,750,826	\$527.74
Retail Trade	83	890	\$17,256,677	\$372.88
Transportation, Warehousing & Utilities	23	198	\$9,056,948	\$879.66
Information	11	76	\$2,489,240	\$629.87
Financial Activities	45	262	\$8,768,607	\$643.61
Professional & Business Services	35	283	\$5,373,612	\$365.15
Education & Health Services	74	980	\$24,264,617	\$476.15
Leisure & Hospitality	44	672	\$6,955,256	\$199.04
Other Services	37	206	\$5,616,306	\$524.30
Local Government	29	983	\$29,255,076	\$572.33
State Government	17	545	\$17,002,379	\$599.94
HOT SPRING COUNTY - TOTAL	583	7,962	\$237,092,209	\$572.65
Natural Resources & Mining	31	208	\$5,723,752	\$529.19
Construction	67	463	\$18,919,745	\$785.83
Manufacturing	36	1,693	\$68,317,055	\$776.01
Trade, Transportation & Utilities	153	1,415	\$41,425,675	\$563.00
Wholesale Trade	19	84	\$4,684,152	\$1,072.38
Retail Trade	94	941	\$19,538,326	\$399.30
Transportation, Warehousing & Utilities	40	390	\$17,203,197	\$848.28
Information	9	73	\$2,632,618	\$693.52
Financial Activities	60	339	\$10,791,137	\$612.16
Professional & Business Services	53	216	\$5,384,264	\$479.37
Education & Health Services	63	1,027	\$26,154,801	\$489.75
Leisure & Hospitality	41	533	\$5,409,813	\$195.19
Other Services	34	276	\$4,794,332	\$334.05
Local Government	26	1,079	\$30,058,654	\$535.73
State Government	14	640	\$17,480,363	\$525.25

**TABLE 6. COUNTY SUMMARY
EMPLOYMENT AND TOTAL EARNINGS, BY INDUSTRY
CALENDAR YEAR 2007**

NORTH AMERICAN INDUSTRY CLASSIFICATION SYSTEM INDUSTRY GROUP	AVERAGE EMPLOYING UNITS	AVERAGE COVERED EMPLOYMENT	TOTAL EARNINGS	AVERAGE WEEKLY EARNINGS
HOWARD COUNTY - TOTAL	353	7,614	\$203,696,808	\$514.48
Natural Resources & Mining	23	242	\$7,872,727	\$625.61
Construction	24	89	\$2,294,082	\$495.70
Manufacturing	25	4,222	\$120,341,754	\$548.14
Trade, Transportation & Utilities	96	935	\$23,803,273	\$489.58
Wholesale Trade	17	92	\$3,680,404	\$769.32
Retail Trade	59	638	\$12,143,653	\$366.04
Transportation, Warehousing & Utilities	21	205	\$7,979,216	\$748.52
Information	6	38	\$949,032	\$480.28
Financial Activities	38	160	\$4,257,936	\$511.77
Professional & Business Services	27	123	\$3,076,689	\$481.03
Education & Health Services	45	588	\$13,084,373	\$427.93
Leisure & Hospitality	19	298	\$2,909,833	\$187.78
Other Services	20	136	\$2,536,347	\$358.65
Local Government	18	639	\$18,479,596	\$556.15
State Government	12	144	\$4,091,166	\$546.36
INDEPENDENCE COUNTY - TOTAL	939	15,922	\$460,561,702	\$556.27
Natural Resources & Mining	13	147	\$4,238,716	\$554.52
Construction	73	475	\$12,748,503	\$516.13
Manufacturing	53	4,433	\$149,637,912	\$649.14
Trade, Transportation & Utilities	268	3,058	\$87,628,109	\$551.06
Wholesale Trade	54	564	\$18,733,790	\$638.77
Retail Trade	158	1,693	\$33,971,533	\$385.88
Transportation, Warehousing & Utilities	56	802	\$34,922,786	\$837.40
Information	12	162	\$4,765,561	\$565.71
Financial Activities	85	483	\$17,164,228	\$683.40
Professional & Business Services	94	855	\$17,766,247	\$399.60
Education & Health Services	145	2,906	\$96,119,237	\$636.08
Leisure & Hospitality	66	1,051	\$10,838,409	\$198.32
Other Services	67	385	\$6,847,771	\$342.05
Local Government	48	1,498	\$38,355,245	\$492.39
State Government	17	470	\$14,451,764	\$591.32

**TABLE 6. COUNTY SUMMARY
EMPLOYMENT AND TOTAL EARNINGS, BY INDUSTRY
CALENDAR YEAR 2007**

NORTH AMERICAN INDUSTRY CLASSIFICATION SYSTEM INDUSTRY GROUP	AVERAGE EMPLOYING UNITS	AVERAGE COVERED EMPLOYMENT	TOTAL EARNINGS	AVERAGE WEEKLY EARNINGS
IZARD COUNTY - TOTAL	280	3,082	\$71,665,765	\$447.17
Natural Resources & Mining	5	93	\$3,145,788	\$650.49
Construction	25	75	\$2,052,175	\$526.20
Trade, Transportation & Utilities	69	538	\$11,003,990	\$393.34
Retail Trade	50	418	\$7,633,906	\$351.21
Other Trade, Transportation & Utilities	19	120	\$3,370,084	\$540.08
Financial Activities	32	156	\$4,372,000	\$538.95
Professional & Business Services	19	81	\$1,663,277	\$394.89
Education & Health Services	56	557	\$11,703,132	\$404.06
Leisure & Hospitality	20	211	\$1,814,325	\$165.36
Other Services	13	36	\$842,047	\$449.81
Local Government	18	513	\$13,168,925	\$493.66
State Government	11	461	\$12,508,320	\$521.79
Other	14	362	\$9,391,786	\$498.93
JACKSON COUNTY - TOTAL	519	5,629	\$158,874,347	\$542.77
Natural Resources & Mining	47	228	\$5,514,968	\$465.16
Construction	26	139	\$4,931,867	\$682.33
Manufacturing	26	1,212	\$42,179,907	\$669.27
Trade, Transportation & Utilities	123	1,114	\$28,823,982	\$497.58
Wholesale Trade	33	214	\$8,048,934	\$723.30
Retail Trade	71	665	\$13,292,197	\$384.39
Transportation, Warehousing & Utilities	19	235	\$7,482,851	\$612.34
Information	6	39	\$1,133,964	\$559.15
Financial Activities	42	172	\$5,642,181	\$630.83
Professional & Business Services	37	149	\$4,383,928	\$565.81
Education & Health Services	99	824	\$24,141,227	\$563.42
Leisure & Hospitality	38	313	\$3,597,196	\$221.01
Other Services	30	87	\$1,572,658	\$347.63
Local Government	32	675	\$16,572,689	\$472.16
State Government	14	680	\$20,379,780	\$576.35

**TABLE 6. COUNTY SUMMARY
EMPLOYMENT AND TOTAL EARNINGS, BY INDUSTRY
CALENDAR YEAR 2007**

NORTH AMERICAN INDUSTRY CLASSIFICATION SYSTEM INDUSTRY GROUP	AVERAGE EMPLOYING UNITS	AVERAGE COVERED EMPLOYMENT	TOTAL EARNINGS	AVERAGE WEEKLY EARNINGS
JEFFERSON COUNTY - TOTAL	1,942	31,340	\$1,000,955,734	\$614.20
Natural Resources & Mining	40	428	\$16,702,463	\$750.47
Construction	128	1,417	\$68,492,143	\$929.54
Manufacturing	71	5,876	\$234,990,261	\$769.07
Trade, Transportation & Utilities	458	5,773	\$165,728,219	\$552.07
Wholesale Trade	83	1,051	\$37,366,967	\$683.73
Retail Trade	308	3,853	\$80,061,671	\$399.60
Transportation, Warehousing & Utilities	67	869	\$48,299,581	\$1,068.86
Information	18	200	\$6,452,577	\$620.44
Financial Activities	158	1,175	\$43,091,121	\$705.26
Professional & Business Services	180	1,751	\$55,923,868	\$614.20
Education & Health Services	516	5,488	\$163,975,470	\$574.59
Leisure & Hospitality	149	2,156	\$23,640,946	\$210.87
Other Services	145	711	\$17,525,076	\$474.01
Local Government	41	3,145	\$99,086,799	\$605.89
State Government	40	3,220	\$105,346,791	\$629.16
JOHNSON COUNTY - TOTAL	474	8,629	\$233,188,763	\$519.69
Natural Resources & Mining	17	210	\$7,101,170	\$650.29
Construction	26	155	\$4,508,877	\$559.41
Manufacturing	45	2,963	\$83,643,652	\$542.87
Trade, Transportation & Utilities	118	2,042	\$53,629,469	\$505.06
Information	6	35	\$986,109	\$541.82
Financial Activities	44	229	\$6,970,462	\$585.36
Professional & Business Services	51	178	\$4,963,410	\$536.24
Education & Health Services	78	1,148	\$31,905,140	\$534.46
Leisure & Hospitality	37	527	\$5,516,253	\$201.29
Other Services	28	79	\$1,653,170	\$402.43
Local Government	14	897	\$27,225,602	\$583.69
State Government	10	167	\$5,085,449	\$585.61

**TABLE 6. COUNTY SUMMARY
EMPLOYMENT AND TOTAL EARNINGS, BY INDUSTRY
CALENDAR YEAR 2007**

NORTH AMERICAN INDUSTRY CLASSIFICATION SYSTEM INDUSTRY GROUP	AVERAGE EMPLOYING UNITS	AVERAGE COVERED EMPLOYMENT	TOTAL EARNINGS	AVERAGE WEEKLY EARNINGS
LAFAYETTE COUNTY - TOTAL	172	1,403	\$34,746,068	\$476.26
Natural Resources & Mining	38	185	\$5,935,613	\$617.01
Trade, Transportation & Utilities	34	238	\$5,467,198	\$441.76
Retail Trade	22	165	\$2,776,704	\$323.63
Other Trade, Transportation & Utilities	13	73	\$2,690,494	\$708.77
Financial Activities	16	65	\$1,594,263	\$471.68
Professional & Business Services	9	57	\$2,018,895	\$681.14
Education & Health Services	23	228	\$4,204,809	\$354.66
Leisure & Hospitality	7	55	\$670,569	\$234.46
Other Services	7	72	\$1,242,061	\$331.75
Local Government	13	330	\$7,911,943	\$461.07
State Government	8	50	\$1,399,683	\$538.34
Other	16	123	\$4,301,034	\$672.46
LAWRENCE COUNTY - TOTAL	437	4,081	\$99,793,513	\$470.25
Natural Resources & Mining	35	166	\$5,091,327	\$589.82
Construction	26	69	\$1,727,484	\$481.46
Manufacturing	22	541	\$13,923,546	\$494.94
Trade, Transportation & Utilities	135	913	\$22,181,736	\$467.22
Wholesale Trade	22	178	\$5,448,960	\$588.69
Retail Trade	73	586	\$11,362,929	\$372.90
Transportation, Warehousing & Utilities	40	148	\$5,369,847	\$697.75
Financial Activities	35	136	\$3,621,654	\$512.11
Professional & Business Services	24	123	\$4,028,207	\$629.80
Education & Health Services	71	448	\$11,668,083	\$500.86
Leisure & Hospitality	25	338	\$2,674,983	\$152.20
Local Government	28	1,152	\$30,297,068	\$505.76
State Government	11	119	\$3,108,928	\$502.41
Other	28	75	\$1,470,497	\$377.05

**TABLE 6. COUNTY SUMMARY
EMPLOYMENT AND TOTAL EARNINGS, BY INDUSTRY
CALENDAR YEAR 2007**

NORTH AMERICAN INDUSTRY CLASSIFICATION SYSTEM INDUSTRY GROUP	AVERAGE EMPLOYING UNITS	AVERAGE COVERED EMPLOYMENT	TOTAL EARNINGS	AVERAGE WEEKLY EARNINGS
LEE COUNTY - TOTAL	260	2,073	\$54,306,009	\$503.79
Natural Resources & Mining	29	199	\$4,683,358	\$452.59
Construction	10	30	\$812,777	\$521.01
Trade, Transportation & Utilities	52	359	\$8,415,921	\$450.82
Wholesale Trade	9	69	\$2,282,113	\$636.04
Retail Trade	26	197	\$3,204,678	\$312.83
Transportation, Warehousing & Utilities	17	93	\$2,929,130	\$605.69
Financial Activities	16	75	\$2,472,096	\$633.87
Professional & Business Services	19	67	\$2,609,970	\$749.13
Education & Health Services	77	339	\$8,045,358	\$456.40
Leisure & Hospitality	9	92	\$772,218	\$161.42
Local Government	15	340	\$9,859,359	\$557.66
State Government	8	488	\$15,013,580	\$591.64
Other	27	85	\$1,621,372	\$366.83
LINCOLN COUNTY - TOTAL	242	2,970	\$81,763,296	\$529.42
Natural Resources & Mining	33	170	\$5,075,148	\$574.11
Construction	16	80	\$2,090,432	\$502.51
Manufacturing	10	440	\$13,441,740	\$587.49
Trade, Transportation & Utilities	49	357	\$9,993,161	\$538.31
Wholesale Trade	7	29	\$1,201,754	\$796.92
Retail Trade	24	188	\$2,664,012	\$272.51
Transportation, Warehousing & Utilities	18	140	\$6,127,395	\$841.68
Financial Activities	23	78	\$2,400,214	\$591.77
Professional & Business Services	13	22	\$579,623	\$506.66
Education & Health Services	47	314	\$6,695,606	\$410.07
Leisure & Hospitality	16	154	\$1,390,956	\$173.70
Local & State Government	22	1,320	\$39,327,374	\$572.95
Other	14	36	\$769,042	\$410.81

**TABLE 6. COUNTY SUMMARY
EMPLOYMENT AND TOTAL EARNINGS, BY INDUSTRY
CALENDAR YEAR 2007**

NORTH AMERICAN INDUSTRY CLASSIFICATION SYSTEM INDUSTRY GROUP	AVERAGE EMPLOYING UNITS	AVERAGE COVERED EMPLOYMENT	TOTAL EARNINGS	AVERAGE WEEKLY EARNINGS
LITTLE RIVER COUNTY - TOTAL	266	4,740	\$195,662,214	\$793.83
Natural Resources & Mining	10	58	\$1,695,574	\$562.19
Construction	25	257	\$7,109,125	\$531.96
Manufacturing	18	1,381	\$97,208,194	\$1,353.65
Trade, Transportation & Utilities	68	1,452	\$52,246,023	\$691.96
Wholesale Trade	10	43	\$1,657,623	\$741.33
Other Trade, Transportation & Utilities	59	1,410	\$50,588,400	\$689.97
Financial Activities	25	101	\$2,549,490	\$485.43
Professional & Business Services	23	149	\$3,501,140	\$451.88
Education & Health Services	29	164	\$3,683,850	\$431.97
Leisure & Hospitality	19	220	\$2,248,043	\$196.51
Local Government	20	769	\$21,387,183	\$534.84
State Government	12	84	\$2,256,494	\$516.60
Other	17	107	\$1,777,098	\$319.39
LOGAN COUNTY - TOTAL	476	6,084	\$156,526,945	\$494.76
Natural Resources & Mining	22	154	\$6,469,296	\$807.85
Construction	50	170	\$4,445,142	\$502.84
Manufacturing	28	1,859	\$55,815,729	\$577.40
Trade, Transportation & Utilities	111	894	\$18,758,164	\$403.51
Wholesale Trade	16	44	\$1,101,201	\$481.29
Retail Trade	71	764	\$14,242,368	\$358.50
Transportation, Warehousing & Utilities	23	86	\$3,414,595	\$763.55
Information	6	41	\$1,323,789	\$620.91
Financial Activities	45	255	\$9,468,173	\$714.04
Professional & Business Services	42	136	\$3,231,871	\$457.00
Education & Health Services	82	748	\$17,792,482	\$457.44
Leisure & Hospitality	28	331	\$3,008,289	\$174.78
Other Services	28	84	\$1,872,415	\$428.67
Local & State Government	37	1,412	\$34,341,595	\$467.72

**TABLE 6. COUNTY SUMMARY
EMPLOYMENT AND TOTAL EARNINGS, BY INDUSTRY
CALENDAR YEAR 2007**

NORTH AMERICAN INDUSTRY CLASSIFICATION SYSTEM INDUSTRY GROUP	AVERAGE EMPLOYING UNITS	AVERAGE COVERED EMPLOYMENT	TOTAL EARNINGS	AVERAGE WEEKLY EARNINGS
LONOKE COUNTY - TOTAL	1,283	12,618	\$341,218,124	\$520.04
Natural Resources & Mining	74	419	\$14,250,679	\$654.06
Construction	176	1,016	\$33,227,699	\$628.93
Manufacturing	37	1,351	\$53,137,851	\$756.39
Trade, Transportation & Utilities	349	2,830	\$69,743,209	\$473.93
Wholesale Trade	89	502	\$19,815,024	\$759.08
Retail Trade	185	2,028	\$40,151,911	\$380.75
Transportation, Warehousing & Utilities	76	300	\$9,776,274	\$626.68
Information	15	120	\$4,363,077	\$699.21
Financial Activities	129	607	\$22,273,585	\$705.66
Professional & Business Services	144	618	\$17,578,662	\$547.01
Education & Health Services	152	1,415	\$34,960,747	\$475.14
Leisure & Hospitality	94	1,383	\$14,277,418	\$198.53
Other Services	69	189	\$4,452,230	\$453.01
Local Government	28	2,506	\$68,775,564	\$527.78
State Government	16	165	\$4,177,403	\$486.88
MADISON COUNTY - TOTAL	257	3,217	\$80,677,413	\$482.28
Natural Resources & Mining	10	56	\$1,547,452	\$531.41
Construction	46	136	\$3,587,397	\$507.27
Manufacturing	20	1,120	\$30,005,776	\$515.21
Trade, Transportation & Utilities	60	594	\$14,594,583	\$472.50
Wholesale Trade	12	37	\$1,497,447	\$778.30
Retail Trade	34	404	\$7,828,627	\$372.65
Transportation, Warehousing & Utilities	14	153	\$5,268,509	\$662.21
Financial Activities	16	72	\$2,186,671	\$584.05
Professional & Business Services	20	101	\$2,309,325	\$439.70
Education & Health Services	39	261	\$5,214,471	\$384.21
Leisure & Hospitality	14	141	\$1,132,949	\$154.52
Local Government	9	623	\$16,363,109	\$505.10
State Government	8	55	\$1,458,677	\$510.03
Other	17	59	\$2,277,003	\$742.18

**TABLE 6. COUNTY SUMMARY
EMPLOYMENT AND TOTAL EARNINGS, BY INDUSTRY
CALENDAR YEAR 2007**

NORTH AMERICAN INDUSTRY CLASSIFICATION SYSTEM INDUSTRY GROUP	AVERAGE EMPLOYING UNITS	AVERAGE COVERED EMPLOYMENT	TOTAL EARNINGS	AVERAGE WEEKLY EARNINGS
MARION COUNTY - TOTAL	321	4,182	\$100,131,293	\$460.45
Natural Resources & Mining	7	47	\$976,610	\$399.59
Construction	30	91	\$1,939,420	\$409.85
Manufacturing	25	1,739	\$45,482,875	\$502.97
Trade, Transportation & Utilities	57	654	\$13,802,893	\$405.87
Wholesale Trade	9	39	\$1,454,543	\$717.23
Retail Trade	36	472	\$8,679,526	\$353.63
Transportation, Warehousing & Utilities	13	143	\$3,668,824	\$493.39
Financial Activities	37	201	\$5,430,732	\$519.59
Professional & Business Services	29	63	\$1,661,882	\$507.29
Education & Health Services	53	363	\$7,912,050	\$419.16
Leisure & Hospitality	38	255	\$2,600,790	\$196.14
Local Government	20	529	\$13,546,712	\$492.46
State Government	8	113	\$2,789,258	\$474.69
Other	18	129	\$3,988,071	\$594.52
MILLER COUNTY - TOTAL	847	12,156	\$389,624,283	\$616.38
Natural Resources & Mining	27	130	\$3,920,912	\$580.02
Construction	95	787	\$23,100,030	\$564.46
Manufacturing	33	2,434	\$132,902,221	\$1,050.05
Trade, Transportation & Utilities	227	2,523	\$73,687,306	\$561.66
Wholesale Trade	61	606	\$24,551,191	\$779.11
Retail Trade	129	1,359	\$27,651,571	\$391.29
Transportation, Warehousing & Utilities	38	558	\$21,484,544	\$740.44
Information	12	101	\$6,607,573	\$1,258.11
Financial Activities	85	380	\$12,431,911	\$629.15
Professional & Business Services	84	964	\$21,862,473	\$436.13
Education & Health Services	96	1,081	\$27,556,264	\$490.22
Leisure & Hospitality	85	1,320	\$16,463,443	\$239.85
Other Services	62	356	\$6,220,195	\$336.01
Local Government	26	1,587	\$48,374,199	\$586.18
State Government	17	494	\$16,497,756	\$642.24

**TABLE 6. COUNTY SUMMARY
EMPLOYMENT AND TOTAL EARNINGS, BY INDUSTRY
CALENDAR YEAR 2007**

NORTH AMERICAN INDUSTRY CLASSIFICATION SYSTEM INDUSTRY GROUP	AVERAGE EMPLOYING UNITS	AVERAGE COVERED EMPLOYMENT	TOTAL EARNINGS	AVERAGE WEEKLY EARNINGS
MISSISSIPPI COUNTY - TOTAL	1,187	19,318	\$688,683,442	\$685.57
Natural Resources & Mining	100	736	\$19,477,662	\$508.93
Construction	74	652	\$24,967,721	\$736.42
Manufacturing	58	5,766	\$316,848,223	\$1,056.75
Trade, Transportation & Utilities	302	2,993	\$94,638,010	\$608.07
Wholesale Trade	67	472	\$18,134,081	\$738.84
Retail Trade	184	1,891	\$36,366,098	\$369.83
Transportation, Warehousing & Utilities	51	630	\$40,137,831	\$1,225.21
Financial Activities	105	597	\$17,673,108	\$569.29
Professional & Business Services	98	1,215	\$34,940,171	\$553.03
Education & Health Services	214	1,692	\$44,246,752	\$502.90
Leisure & Hospitality	84	1,157	\$11,972,263	\$198.99
Local Government	46	2,354	\$64,635,663	\$528.03
State Government	24	639	\$17,784,504	\$535.23
Other	85	1,518	\$41,499,365	\$525.73
MONROE COUNTY - TOTAL	311	2,396	\$52,833,650	\$424.05
Natural Resources & Mining	38	147	\$3,498,970	\$457.74
Construction	12	34	\$763,842	\$432.04
Manufacturing	8	123	\$3,386,386	\$529.45
Trade, Transportation & Utilities	89	694	\$16,963,942	\$470.07
Wholesale Trade	23	206	\$6,570,943	\$613.42
Retail Trade	40	345	\$6,134,686	\$341.96
Transportation, Warehousing & Utilities	27	144	\$4,258,313	\$568.68
Financial Activities	17	96	\$2,859,257	\$572.77
Professional & Business Services	17	48	\$1,152,378	\$461.69
Education & Health Services	51	340	\$5,871,643	\$332.11
Leisure & Hospitality	24	252	\$2,554,589	\$194.95
Local Government	22	418	\$10,559,167	\$485.79
State Government	9	130	\$3,221,068	\$476.49
Other	25	115	\$2,002,408	\$334.85

**TABLE 6. COUNTY SUMMARY
EMPLOYMENT AND TOTAL EARNINGS, BY INDUSTRY
CALENDAR YEAR 2007**

NORTH AMERICAN INDUSTRY CLASSIFICATION SYSTEM INDUSTRY GROUP	AVERAGE EMPLOYING UNITS	AVERAGE COVERED EMPLOYMENT	TOTAL EARNINGS	AVERAGE WEEKLY EARNINGS
MONTGOMERY COUNTY - TOTAL	182	1,612	\$36,134,877	\$431.08
Natural Resources & Mining	13	61	\$2,189,922	\$690.39
Construction	24	98	\$2,912,403	\$571.51
Trade, Transportation & Utilities	45	230	\$4,641,039	\$388.05
Wholesale Trade	10	71	\$1,857,115	\$503.01
Retail Trade	25	138	\$2,350,647	\$327.57
Transportation, Warehousing & Utilities	10	22	\$433,277	\$378.74
Financial Activities	10	76	\$2,169,373	\$548.93
Education & Health Services	15	56	\$1,207,597	\$414.70
Leisure & Hospitality	23	283	\$4,566,071	\$310.28
Other Services	11	76	\$1,268,059	\$320.87
Local Government	9	468	\$11,217,336	\$460.94
State Government	8	55	\$1,623,218	\$567.56
Other	24	208	\$4,339,859	\$401.24
NEVADA COUNTY - TOTAL	189	2,594	\$74,144,766	\$549.68
Natural Resources & Mining	15	65	\$2,146,021	\$634.92
Manufacturing	9	743	\$31,246,870	\$808.75
Trade, Transportation & Utilities	44	539	\$13,578,659	\$484.47
Retail Trade	29	306	\$5,370,631	\$337.52
Other Trade, Transportation & Utilities	15	232	\$8,208,028	\$680.37
Financial Activities	13	57	\$1,798,148	\$606.66
Professional & Business Services	7	32	\$901,971	\$542.05
Education & Health Services	18	397	\$8,014,221	\$388.21
Leisure & Hospitality	14	103	\$1,133,492	\$211.63
Other Services	17	69	\$909,149	\$253.39
Local Government	28	451	\$10,824,912	\$461.58
State Government	11	87	\$2,450,664	\$541.70
Other	13	52	\$1,140,659	\$421.84

**TABLE 6. COUNTY SUMMARY
EMPLOYMENT AND TOTAL EARNINGS, BY INDUSTRY
CALENDAR YEAR 2007**

NORTH AMERICAN INDUSTRY CLASSIFICATION SYSTEM INDUSTRY GROUP	AVERAGE EMPLOYING UNITS	AVERAGE COVERED EMPLOYMENT	TOTAL EARNINGS	AVERAGE WEEKLY EARNINGS
NEWTON COUNTY - TOTAL	139	1,056	\$21,526,557	\$392.02
Natural Resources & Mining	4	2	\$28,000	\$269.23
Construction	10	21	\$408,841	\$374.40
Manufacturing	16	81	\$1,962,653	\$465.97
Trade, Transportation & Utilities	31	145	\$2,890,140	\$383.31
Retail Trade	15	94	\$1,451,810	\$297.02
Other Trade, Transportation & Utilities	17	51	\$1,438,330	\$542.36
Education & Health Services	23	221	\$3,531,060	\$307.26
Leisure & Hospitality	18	68	\$839,150	\$237.32
Other Services	4	11	\$129,571	\$226.52
Local Government	13	367	\$8,653,222	\$453.43
State Government	7	92	\$1,769,970	\$369.98
Other	14	48	\$1,313,950	\$526.42
OUACHITA COUNTY - TOTAL	644	7,651	\$204,657,558	\$514.41
Natural Resources & Mining	46	263	\$8,715,975	\$637.32
Construction	49	262	\$7,834,591	\$575.06
Manufacturing	29	850	\$28,217,031	\$638.39
Trade, Transportation & Utilities	173	1,739	\$46,765,596	\$517.16
Wholesale Trade	28	236	\$10,192,091	\$830.52
Retail Trade	117	1,053	\$18,882,128	\$344.84
Transportation, Warehousing & Utilities	28	450	\$17,691,377	\$756.04
Information	8	95	\$2,845,279	\$575.97
Financial Activities	62	361	\$10,961,352	\$583.92
Professional & Business Services	54	351	\$8,227,374	\$450.77
Education & Health Services	103	1,263	\$33,087,040	\$503.79
Leisure & Hospitality	34	485	\$4,684,884	\$185.76
Other Services	42	159	\$3,346,415	\$404.74
Local Government	30	1,253	\$33,391,072	\$512.48
State Government	14	570	\$16,580,949	\$559.41

**TABLE 6. COUNTY SUMMARY
EMPLOYMENT AND TOTAL EARNINGS, BY INDUSTRY
CALENDAR YEAR 2007**

NORTH AMERICAN INDUSTRY CLASSIFICATION SYSTEM INDUSTRY GROUP	AVERAGE EMPLOYING UNITS	AVERAGE COVERED EMPLOYMENT	TOTAL EARNINGS	AVERAGE WEEKLY EARNINGS
PERRY COUNTY - TOTAL	164	1,278	\$31,335,371	\$471.52
Natural Resources & Mining	8	55	\$1,962,925	\$686.34
Construction	26	70	\$1,867,518	\$513.05
Manufacturing	7	82	\$1,878,298	\$440.50
Trade, Transportation & Utilities	29	207	\$4,481,517	\$416.34
Retail Trade	18	163	\$2,316,140	\$273.26
Other Trade, Transportation & Utilities	11	44	\$2,165,377	\$946.41
Financial Activities	15	70	\$2,599,405	\$714.12
Professional & Business Services	15	37	\$1,063,565	\$552.79
Education & Health Services	27	201	\$4,472,074	\$427.87
Local Government	12	406	\$9,688,586	\$458.91
State Government	9	53	\$1,449,747	\$526.03
Other	16	97	\$1,871,736	\$371.08
PHILLIPS COUNTY - TOTAL	790	6,511	\$163,545,608	\$483.05
Natural Resources & Mining	66	400	\$8,612,770	\$414.08
Construction	30	133	\$3,613,078	\$522.42
Manufacturing	13	373	\$11,565,612	\$596.29
Trade, Transportation & Utilities	178	1,638	\$41,710,141	\$489.69
Wholesale Trade	35	447	\$15,295,608	\$658.05
Retail Trade	102	880	\$16,876,981	\$368.82
Transportation, Warehousing & Utilities	42	311	\$9,537,552	\$589.76
Information	9	48	\$1,361,889	\$545.63
Financial Activities	55	271	\$7,921,617	\$562.14
Professional & Business Services	59	179	\$5,316,474	\$571.17
Education & Health Services	257	1,317	\$30,959,967	\$452.08
Leisure & Hospitality	37	442	\$4,233,671	\$184.20
Other Services	41	89	\$1,546,827	\$334.23
Local Government	30	1,066	\$32,720,632	\$590.28
State Government	17	557	\$13,982,930	\$482.77

**TABLE 6. COUNTY SUMMARY
EMPLOYMENT AND TOTAL EARNINGS, BY INDUSTRY
CALENDAR YEAR 2007**

NORTH AMERICAN INDUSTRY CLASSIFICATION SYSTEM INDUSTRY GROUP	AVERAGE EMPLOYING UNITS	AVERAGE COVERED EMPLOYMENT	TOTAL EARNINGS	AVERAGE WEEKLY EARNINGS
PIKE COUNTY - TOTAL	270	2,809	\$66,453,227	\$454.95
Natural Resources & Mining	26	136	\$4,117,483	\$582.22
Construction	13	96	\$3,006,429	\$602.25
Manufacturing	16	406	\$9,596,679	\$454.56
Trade, Transportation & Utilities	93	603	\$13,981,201	\$445.89
Wholesale Trade	19	127	\$3,958,960	\$599.48
Retail Trade	46	366	\$6,578,894	\$345.68
Transportation, Warehousing & Utilities	28	111	\$3,443,347	\$596.56
Information	6	30	\$1,276,064	\$817.99
Financial Activities	26	184	\$5,806,965	\$606.92
Professional & Business Services	14	34	\$1,830,620	\$1,035.42
Education & Health Services	20	249	\$4,783,675	\$369.45
Leisure & Hospitality	18	231	\$2,334,913	\$194.38
Other Services	14	129	\$2,635,970	\$392.96
Local Government	13	577	\$14,477,946	\$482.53
State Government	11	134	\$2,605,282	\$373.89
POINSETT COUNTY - TOTAL	495	5,634	\$151,809,491	\$518.18
Natural Resources & Mining	53	339	\$10,141,392	\$575.30
Construction	23	73	\$2,121,041	\$558.76
Manufacturing	22	976	\$31,400,887	\$618.71
Trade, Transportation & Utilities	130	1,345	\$38,136,089	\$545.27
Wholesale Trade	32	489	\$21,224,388	\$834.69
Retail Trade	70	703	\$12,401,702	\$339.25
Transportation, Warehousing & Utilities	28	153	\$4,509,999	\$566.87
Information	6	48	\$2,253,835	\$902.98
Financial Activities	45	272	\$8,727,269	\$617.03
Professional & Business Services	32	173	\$4,758,541	\$528.96
Education & Health Services	69	584	\$12,784,379	\$420.98
Leisure & Hospitality	45	399	\$3,502,404	\$168.81
Other Services	28	65	\$1,458,291	\$431.45
Local Government	31	1,149	\$31,109,653	\$520.68
State Government	12	210	\$5,415,710	\$495.94

**TABLE 6. COUNTY SUMMARY
EMPLOYMENT AND TOTAL EARNINGS, BY INDUSTRY
CALENDAR YEAR 2007**

NORTH AMERICAN INDUSTRY CLASSIFICATION SYSTEM INDUSTRY GROUP	AVERAGE EMPLOYING UNITS	AVERAGE COVERED EMPLOYMENT	TOTAL EARNINGS	AVERAGE WEEKLY EARNINGS
POLK COUNTY - TOTAL	554	6,283	\$146,941,100	\$449.75
Natural Resources & Mining	29	230	\$7,484,171	\$625.77
Construction	41	193	\$4,117,528	\$410.28
Manufacturing	44	1,349	\$35,046,773	\$499.61
Trade, Transportation & Utilities	150	1,291	\$27,863,809	\$415.06
Wholesale Trade	25	118	\$2,148,813	\$350.20
Retail Trade	81	805	\$15,143,483	\$361.77
Transportation, Warehousing & Utilities	45	369	\$10,571,513	\$550.94
Information	10	57	\$1,722,560	\$581.16
Financial Activities	39	238	\$6,615,290	\$534.53
Professional & Business Services	48	233	\$4,850,514	\$400.34
Education & Health Services	83	988	\$23,650,508	\$460.34
Leisure & Hospitality	40	453	\$4,142,720	\$175.87
Other Services	36	143	\$2,946,171	\$396.20
Local Government	21	779	\$21,152,103	\$522.17
State Government	14	329	\$7,348,953	\$429.56
POPE COUNTY - TOTAL	1,759	27,204	\$808,440,906	\$571.49
Natural Resources & Mining	25	609	\$17,126,777	\$540.82
Construction	186	1,345	\$46,801,740	\$669.17
Manufacturing	90	5,070	\$178,783,589	\$678.14
Trade, Transportation & Utilities	469	6,744	\$242,289,940	\$690.90
Wholesale Trade	106	720	\$25,392,417	\$678.22
Retail Trade	272	3,435	\$69,897,510	\$391.32
Transportation, Warehousing & Utilities	91	2,588	\$147,000,013	\$1,092.32
Information	20	249	\$9,545,427	\$737.21
Financial Activities	190	859	\$28,472,371	\$637.42
Professional & Business Services	233	2,654	\$58,172,947	\$421.52
Education & Health Services	248	3,026	\$84,500,681	\$537.02
Leisure & Hospitality	135	2,469	\$26,296,576	\$204.82
Other Services	107	477	\$10,990,175	\$443.08
Local Government	40	2,134	\$62,227,928	\$560.77
State Government	16	1,570	\$43,232,755	\$529.55

**TABLE 6. COUNTY SUMMARY
EMPLOYMENT AND TOTAL EARNINGS, BY INDUSTRY
CALENDAR YEAR 2007**

NORTH AMERICAN INDUSTRY CLASSIFICATION SYSTEM INDUSTRY GROUP	AVERAGE EMPLOYING UNITS	AVERAGE COVERED EMPLOYMENT	TOTAL EARNINGS	AVERAGE WEEKLY EARNINGS
PRAIRIE COUNTY - TOTAL	242	1,404	\$36,908,581	\$505.54
Natural Resources & Mining	29	139	\$4,043,979	\$559.49
Construction	14	58	\$1,695,592	\$562.20
Trade, Transportation & Utilities	68	323	\$8,128,548	\$483.96
Wholesale Trade	10	57	\$2,087,906	\$704.42
Retail Trade	38	185	\$3,052,245	\$317.28
Transportation, Warehousing & Utilities	20	80	\$2,988,397	\$718.36
Financial Activities	18	66	\$2,076,995	\$605.19
Professional & Business Services	16	46	\$1,142,630	\$477.69
Education & Health Services	32	157	\$3,735,074	\$457.51
Leisure & Hospitality	18	88	\$873,102	\$190.80
Other Services	14	38	\$695,474	\$351.96
Local Government	15	300	\$8,223,494	\$527.15
State Government	10	50	\$1,439,426	\$553.63
Other	8	140	\$4,854,267	\$666.79
PULASKI COUNTY - TOTAL	14,553	241,051	\$9,948,809,190	\$793.70
Natural Resources & Mining	55	695	\$36,076,032	\$998.23
Construction	1,173	10,744	\$458,842,350	\$821.29
Manufacturing	449	15,417	\$692,823,725	\$864.21
Trade, Transportation & Utilities	3,339	51,715	\$1,851,831,786	\$688.62
Wholesale Trade	1,189	13,540	\$705,576,581	\$1,002.13
Retail Trade	1,753	24,952	\$595,932,129	\$459.29
Transportation, Warehousing & Utilities	396	13,223	\$550,323,076	\$800.36
Information	243	8,661	\$1,103,730,978	\$2,450.71
Financial Activities	1,798	16,449	\$887,602,393	\$1,037.71
Professional & Business Services	2,817	34,241	\$1,283,484,096	\$720.84
Education & Health Services	2,120	34,617	\$1,425,355,639	\$791.83
Leisure & Hospitality	1,042	20,584	\$298,525,284	\$278.90
Other Services	1,211	6,952	\$204,343,168	\$565.26
Local Government	104	16,241	\$601,193,835	\$711.87
State Government	204	24,735	\$1,104,999,904	\$859.11

**TABLE 6. COUNTY SUMMARY
EMPLOYMENT AND TOTAL EARNINGS, BY INDUSTRY
CALENDAR YEAR 2007**

NORTH AMERICAN INDUSTRY CLASSIFICATION SYSTEM INDUSTRY GROUP	AVERAGE EMPLOYING UNITS	AVERAGE COVERED EMPLOYMENT	TOTAL EARNINGS	AVERAGE WEEKLY EARNINGS
RANDOLPH COUNTY - TOTAL	417	4,819	\$118,823,070	\$474.18
Natural Resources & Mining	23	75	\$1,588,802	\$407.39
Construction	22	85	\$1,579,473	\$357.35
Manufacturing	40	805	\$26,259,210	\$627.31
Trade, Transportation & Utilities	101	940	\$20,502,195	\$419.44
Wholesale Trade	22	208	\$4,377,624	\$404.74
Retail Trade	60	605	\$11,436,136	\$363.51
Transportation, Warehousing & Utilities	19	126	\$4,688,435	\$715.57
Information	5	41	\$1,559,507	\$731.48
Financial Activities	31	157	\$4,791,381	\$586.89
Professional & Business Services	37	244	\$4,268,935	\$336.45
Education & Health Services	71	886	\$24,010,007	\$521.14
Leisure & Hospitality	29	397	\$3,517,475	\$170.39
Other Services	25	63	\$1,202,079	\$366.93
Local Government	23	853	\$21,246,321	\$479.00
State Government	12	272	\$8,297,685	\$586.66
SAINT FRANCIS COUNTY - TOTAL	691	7,800	\$203,041,185	\$500.59
Natural Resources & Mining	26	174	\$4,678,268	\$517.05
Construction	45	239	\$6,700,139	\$539.12
Manufacturing	17	996	\$30,462,958	\$588.18
Trade, Transportation & Utilities	182	2,037	\$52,209,262	\$492.89
Wholesale Trade	33	518	\$17,491,793	\$649.38
Retail Trade	121	1,237	\$23,727,705	\$368.88
Transportation, Warehousing & Utilities	28	281	\$10,989,764	\$752.11
Information	9	94	\$2,766,904	\$566.06
Financial Activities	58	312	\$8,147,517	\$502.19
Professional & Business Services	56	196	\$6,889,864	\$676.01
Education & Health Services	160	1,334	\$31,279,535	\$450.92
Leisure & Hospitality	52	678	\$7,813,867	\$221.63
Other Services	42	117	\$2,004,192	\$329.42
Local Government	29	1,101	\$33,221,033	\$580.26
State Government	17	523	\$16,867,646	\$620.23

**TABLE 6. COUNTY SUMMARY
EMPLOYMENT AND TOTAL EARNINGS, BY INDUSTRY
CALENDAR YEAR 2007**

NORTH AMERICAN INDUSTRY CLASSIFICATION SYSTEM INDUSTRY GROUP	AVERAGE EMPLOYING UNITS	AVERAGE COVERED EMPLOYMENT	TOTAL EARNINGS	AVERAGE WEEKLY EARNINGS
SALINE COUNTY - TOTAL	1,812	20,975	\$602,463,062	\$552.36
Natural Resources & Mining	16	35	\$1,281,640	\$704.20
Construction	316	1,949	\$67,052,342	\$661.60
Manufacturing	89	1,910	\$79,919,938	\$804.67
Trade, Transportation & Utilities	440	4,614	\$126,635,929	\$527.81
Wholesale Trade	129	523	\$24,809,708	\$912.26
Retail Trade	252	3,788	\$90,768,096	\$460.81
Transportation, Warehousing & Utilities	60	304	\$11,058,125	\$699.53
Information	18	150	\$4,609,510	\$590.96
Financial Activities	177	776	\$25,150,608	\$623.28
Professional & Business Services	228	1,263	\$34,742,162	\$528.99
Education & Health Services	209	2,897	\$78,618,764	\$521.88
Leisure & Hospitality	137	2,542	\$30,442,984	\$230.31
Other Services	133	578	\$15,134,593	\$503.55
Local & State Government	50	4,262	\$138,874,592	\$626.62
SCOTT COUNTY - TOTAL	192	2,841	\$66,571,890	\$450.63
Natural Resources & Mining	18	183	\$6,007,761	\$631.33
Trade, Transportation & Utilities	41	463	\$9,965,293	\$413.91
Wholesale Trade	9	68	\$2,020,687	\$571.46
Retail Trade	25	326	\$5,443,491	\$321.11
Transportation, Warehousing & Utilities	7	69	\$2,501,115	\$697.08
Financial Activities	20	76	\$1,803,318	\$456.31
Professional & Business Services	12	19	\$466,695	\$472.36
Education & Health Services	32	306	\$7,185,733	\$451.59
Leisure & Hospitality	18	163	\$1,528,072	\$180.28
Other Services	10	39	\$1,240,389	\$611.63
Local Government	5	362	\$9,566,910	\$508.23
State Government	8	75	\$1,797,093	\$460.79
Other	30	1,156	\$27,010,626	\$449.34

**TABLE 6. COUNTY SUMMARY
EMPLOYMENT AND TOTAL EARNINGS, BY INDUSTRY
CALENDAR YEAR 2007**

NORTH AMERICAN INDUSTRY CLASSIFICATION SYSTEM INDUSTRY GROUP	AVERAGE EMPLOYING UNITS	AVERAGE COVERED EMPLOYMENT	TOTAL EARNINGS	AVERAGE WEEKLY EARNINGS
SEARCY COUNTY - TOTAL	186	1,740	\$35,115,227	\$388.10
Construction	7	14	\$348,509	\$478.72
Manufacturing	17	272	\$4,811,689	\$340.19
Trade, Transportation & Utilities	39	320	\$5,255,442	\$315.83
Retail Trade	26	220	\$3,344,560	\$292.36
Other Trade, Transportation & Utilities	13	100	\$1,910,882	\$367.48
Financial Activities	14	94	\$2,482,215	\$507.82
Professional & Business Services	16	34	\$731,701	\$413.86
Education & Health Services	47	320	\$5,931,822	\$356.48
Leisure & Hospitality	13	117	\$1,157,794	\$190.30
Local Government	10	360	\$8,701,369	\$464.82
State Government	8	144	\$3,692,791	\$493.16
Other	15	65	\$2,001,895	\$592.28
SEBASTIAN COUNTY - TOTAL	3,709	72,986	\$2,439,452,459	\$642.76
Natural Resources & Mining	74	1,749	\$109,953,522	\$1,208.97
Construction	310	2,836	\$107,348,430	\$727.92
Manufacturing	237	18,991	\$702,509,637	\$711.38
Trade, Transportation & Utilities	944	12,978	\$378,577,719	\$560.98
Wholesale Trade	248	2,610	\$113,654,263	\$837.42
Retail Trade	564	8,065	\$175,252,606	\$417.88
Transportation, Warehousing & Utilities	133	2,304	\$89,670,850	\$748.45
Information	60	1,089	\$49,795,921	\$879.35
Financial Activities	415	2,586	\$100,590,807	\$748.04
Professional & Business Services	536	9,770	\$285,743,446	\$562.44
Education & Health Services	491	10,243	\$399,010,119	\$749.12
Leisure & Hospitality	305	5,541	\$67,688,638	\$234.92
Other Services	271	1,450	\$35,698,769	\$473.46
Local Government	43	4,341	\$155,485,262	\$688.80
State Government	22	1,412	\$47,050,189	\$640.80

**TABLE 6. COUNTY SUMMARY
EMPLOYMENT AND TOTAL EARNINGS, BY INDUSTRY
CALENDAR YEAR 2007**

NORTH AMERICAN INDUSTRY CLASSIFICATION SYSTEM INDUSTRY GROUP	AVERAGE EMPLOYING UNITS	AVERAGE COVERED EMPLOYMENT	TOTAL EARNINGS	AVERAGE WEEKLY EARNINGS
SEVIER COUNTY - TOTAL	336	5,923	\$156,849,114	\$509.26
Natural Resources & Mining	18	254	\$6,635,227	\$502.36
Construction	21	149	\$4,978,998	\$642.62
Manufacturing	11	2,329	\$57,480,113	\$474.62
Trade, Transportation & Utilities	98	883	\$22,363,291	\$487.05
Wholesale Trade	16	145	\$6,839,601	\$907.11
Retail Trade	62	607	\$10,917,317	\$345.88
Transportation, Warehousing & Utilities	20	131	\$4,606,373	\$676.21
Information	6	38	\$1,203,511	\$609.06
Financial Activities	30	203	\$6,051,735	\$573.30
Professional & Business Services	30	99	\$13,392,314	\$2,601.46
Education & Health Services	51	518	\$12,424,868	\$461.27
Leisure & Hospitality	22	262	\$2,447,169	\$179.62
Other Services	31	139	\$2,438,488	\$337.37
Local Government	11	852	\$22,394,540	\$505.47
State Government	9	198	\$5,038,860	\$489.40
SHARP COUNTY - TOTAL	446	3,874	\$86,100,621	\$427.41
Construction	31	201	\$6,141,547	\$587.60
Manufacturing	21	183	\$3,550,914	\$373.15
Trade, Transportation & Utilities	103	1,003	\$24,813,859	\$475.76
Retail Trade	73	666	\$11,665,220	\$336.83
Other Trade, Transportation & Utilities	30	337	\$13,148,639	\$750.32
Information	7	60	\$2,765,336	\$886.33
Financial Activities	38	260	\$7,380,041	\$545.86
Professional & Business Services	44	163	\$4,315,588	\$509.15
Education & Health Services	97	592	\$11,941,265	\$387.90
Leisure & Hospitality	44	455	\$4,077,792	\$172.35
Local Government	24	759	\$16,961,493	\$429.75
State Government	9	112	\$2,707,085	\$464.82
Other	29	88	\$1,445,701	\$315.93

**TABLE 6. COUNTY SUMMARY
EMPLOYMENT AND TOTAL EARNINGS, BY INDUSTRY
CALENDAR YEAR 2007**

NORTH AMERICAN INDUSTRY CLASSIFICATION SYSTEM INDUSTRY GROUP	AVERAGE EMPLOYING UNITS	AVERAGE COVERED EMPLOYMENT	TOTAL EARNINGS	AVERAGE WEEKLY EARNINGS
STONE COUNTY - TOTAL	290	2,983	\$64,458,318	\$415.55
Construction	24	109	\$2,510,231	\$442.88
Manufacturing	25	455	\$9,963,854	\$421.13
Trade, Transportation & Utilities	78	726	\$15,864,560	\$420.23
Wholesale Trade	9	57	\$1,317,743	\$444.58
Retail Trade	56	619	\$12,877,185	\$400.06
Transportation, Warehousing & Utilities	13	50	\$1,669,632	\$642.17
Financial Activities	27	127	\$3,235,999	\$490.01
Professional & Business Services	11	27	\$783,622	\$558.14
Education & Health Services	51	483	\$12,464,173	\$496.26
Leisure & Hospitality	34	395	\$3,771,293	\$183.61
Other Services	14	27	\$602,775	\$429.33
Local Government	10	398	\$10,671,831	\$515.65
State Government	9	178	\$3,204,457	\$346.20
Other	7	58	\$1,385,523	\$459.39
UNION COUNTY - TOTAL	1,398	19,498	\$693,054,972	\$683.56
Natural Resources & Mining	112	530	\$20,221,430	\$733.72
Construction	92	1,332	\$59,279,732	\$855.85
Manufacturing	65	4,769	\$198,300,875	\$799.64
Trade, Transportation & Utilities	355	3,630	\$123,588,581	\$654.74
Wholesale Trade	82	634	\$42,801,924	\$1,298.29
Retail Trade	215	2,207	\$43,413,718	\$378.29
Transportation, Warehousing & Utilities	58	789	\$37,372,939	\$910.91
Information	20	201	\$5,926,483	\$567.02
Financial Activities	120	714	\$23,076,238	\$621.53
Professional & Business Services	143	1,625	\$87,492,229	\$1,035.41
Education & Health Services	207	2,445	\$78,188,645	\$614.98
Leisure & Hospitality	89	1,209	\$13,703,366	\$217.97
Other Services	142	559	\$13,418,394	\$461.62
Local Government	37	1,927	\$53,290,981	\$531.82
State Government	18	557	\$16,568,018	\$572.02

**TABLE 6. COUNTY SUMMARY
EMPLOYMENT AND TOTAL EARNINGS, BY INDUSTRY
CALENDAR YEAR 2007**

NORTH AMERICAN INDUSTRY CLASSIFICATION SYSTEM INDUSTRY GROUP	AVERAGE EMPLOYING UNITS	AVERAGE COVERED EMPLOYMENT	TOTAL EARNINGS	AVERAGE WEEKLY EARNINGS
VAN BUREN COUNTY - TOTAL	357	3,697	\$85,992,971	\$447.31
Natural Resources & Mining	13	49	\$2,004,610	\$786.74
Construction	42	205	\$5,374,941	\$504.22
Manufacturing	15	475	\$12,259,160	\$496.32
Trade, Transportation & Utilities	96	800	\$18,085,276	\$434.74
Wholesale Trade	15	48	\$1,753,244	\$702.42
Retail Trade	58	603	\$11,740,359	\$374.42
Transportation, Warehousing & Utilities	23	148	\$4,591,673	\$596.63
Information	10	50	\$1,738,801	\$668.77
Financial Activities	27	152	\$4,355,145	\$551.01
Professional & Business Services	26	105	\$2,194,246	\$401.88
Education & Health Services	54	619	\$14,648,322	\$455.09
Leisure & Hospitality	31	460	\$5,706,607	\$238.57
Other Services	25	78	\$1,734,716	\$427.69
Local Government	11	611	\$15,379,573	\$484.06
State Government	8	94	\$2,511,574	\$513.82
WASHINGTON COUNTY - TOTAL	5,649	90,725	\$3,180,107,713	\$674.08
Natural Resources & Mining	39	502	\$17,451,289	\$668.53
Construction	685	5,565	\$201,208,982	\$695.31
Manufacturing	240	15,043	\$513,711,386	\$656.72
Trade, Transportation & Utilities	1,355	20,692	\$706,409,524	\$656.52
Wholesale Trade	409	3,863	\$219,325,591	\$1,091.85
Retail Trade	754	11,441	\$264,917,268	\$445.29
Transportation, Warehousing & Utilities	192	5,388	\$222,166,665	\$792.95
Information	94	1,607	\$69,017,675	\$825.93
Financial Activities	663	4,054	\$158,020,155	\$749.59
Professional & Business Services	949	8,936	\$448,714,740	\$965.66
Education & Health Services	638	10,751	\$411,738,018	\$736.49
Leisure & Hospitality	513	9,331	\$119,883,740	\$247.07
Other Services	390	1,959	\$47,026,870	\$461.65
Local & State Government	84	12,286	\$486,925,334	\$762.16

**TABLE 6. COUNTY SUMMARY
EMPLOYMENT AND TOTAL EARNINGS, BY INDUSTRY
CALENDAR YEAR 2007**

NORTH AMERICAN INDUSTRY CLASSIFICATION SYSTEM INDUSTRY GROUP	AVERAGE EMPLOYING UNITS	AVERAGE COVERED EMPLOYMENT	TOTAL EARNINGS	AVERAGE WEEKLY EARNINGS
WHITE COUNTY - TOTAL	1,703	23,298	\$688,919,509	\$568.65
Natural Resources & Mining	43	504	\$22,184,400	\$846.47
Construction	188	1,233	\$40,444,742	\$630.81
Manufacturing	85	2,744	\$111,505,590	\$781.46
Trade, Transportation & Utilities	480	5,922	\$168,649,703	\$547.66
Wholesale Trade	98	624	\$20,578,426	\$634.20
Retail Trade	296	3,194	\$65,096,308	\$391.94
Transportation, Warehousing & Utilities	87	2,103	\$82,974,969	\$758.76
Information	23	223	\$6,468,378	\$557.81
Financial Activities	180	948	\$29,823,830	\$604.99
Professional & Business Services	173	1,337	\$36,878,371	\$530.44
Education & Health Services	241	4,191	\$140,913,264	\$646.59
Leisure & Hospitality	121	2,282	\$23,067,284	\$194.39
Other Services	105	620	\$16,101,703	\$499.43
Local Government	46	2,550	\$72,126,126	\$543.94
State Government	19	744	\$20,756,118	\$536.50
WOODRUFF COUNTY - TOTAL	201	1,940	\$50,503,114	\$500.63
Natural Resources & Mining	20	130	\$3,620,176	\$535.53
Construction	7	62	\$1,618,302	\$501.95
Manufacturing	8	326	\$9,101,408	\$536.89
Trade, Transportation & Utilities	59	503	\$14,919,599	\$570.41
Wholesale Trade	13	190	\$7,791,792	\$788.64
Retail Trade	27	197	\$2,823,201	\$275.60
Transportation, Warehousing & Utilities	19	115	\$4,304,606	\$719.83
Financial Activities	16	62	\$1,807,021	\$560.49
Professional & Business Services	4	7	\$260,431	\$715.47
Education & Health Services	55	232	\$5,574,877	\$462.11
Leisure & Hospitality	7	55	\$421,162	\$147.26
Local Government	10	482	\$11,170,408	\$445.68
State Government	7	60	\$1,532,107	\$491.06
Other	8	22	\$477,623	\$417.50

**TABLE 6. COUNTY SUMMARY
EMPLOYMENT AND TOTAL EARNINGS, BY INDUSTRY
CALENDAR YEAR 2007**

NORTH AMERICAN INDUSTRY CLASSIFICATION SYSTEM INDUSTRY GROUP	AVERAGE EMPLOYING UNITS	AVERAGE COVERED EMPLOYMENT	TOTAL EARNINGS	AVERAGE WEEKLY EARNINGS
YELL COUNTY - TOTAL	406	6,711	\$167,917,303	\$481.18
Natural Resources & Mining	22	225	\$6,056,688	\$517.67
Construction	44	325	\$9,548,661	\$565.01
Manufacturing	20	2,723	\$68,339,110	\$482.63
Trade, Transportation & Utilities	84	679	\$13,279,511	\$376.10
Wholesale Trade	12	22	\$550,661	\$481.35
Retail Trade	53	567	\$9,565,005	\$324.41
Transportation, Warehousing & Utilities	19	90	\$3,163,845	\$676.04
Information	3	73	\$2,701,171	\$711.58
Financial Activities	38	200	\$5,350,011	\$514.42
Professional & Business Services	36	263	\$11,173,179	\$816.99
Education & Health Services	73	479	\$10,154,989	\$407.70
Leisure & Hospitality	29	336	\$3,433,707	\$196.53
Other Services	17	73	\$1,148,384	\$302.52
Local Government	28	1,217	\$33,966,556	\$536.73
State Government	13	118	\$2,765,336	\$450.67
REST-OF-STATE-TOTAL	3,871	15,796	\$897,711,541	\$1,092.91
Natural Resources & Mining	57	524	\$24,626,345	\$903.79
Construction	500	3,119	\$129,861,969	\$800.69
Manufacturing	53	151	\$5,887,294	\$749.78
Trade, Transportation & Utilities	1,513	6,091	\$452,893,914	\$1,429.90
Wholesale Trade	1,281	4,924	\$404,609,917	\$1,580.21
Retail Trade	101	489	\$23,729,923	\$933.22
Transportation, Warehousing & Utilities	131	678	\$24,554,074	\$696.45
Information	88	215	\$11,753,420	\$1,051.29
Financial Activities	239	731	\$41,503,566	\$1,091.85
Professional & Business Services	1,165	3,811	\$180,308,339	\$909.86
Education & Health Services	94	510	\$24,815,774	\$935.74
Other	163	644	\$26,060,920	\$778.22

TABLE 7. FEDERAL GOVERNMENT EMPLOYMENT AND EARNINGS IN ARKANSAS

NORTH AMERICAN INDUSTRY CLASSIFICATION SYSTEM INDUSTRY GROUP	AVERAGE EMPLOYING UNITS	AVERAGE COVERED EMPLOYMENT	TOTAL EARNINGS	AVERAGE WEEKLY EARNINGS
Trade, Transportation & Utilities	614	6,750	\$301,664,208	\$859.44
Information	1	33	\$1,644,814	\$958.52
Financial Activities	23	170	\$11,189,434	\$1,265.77
Professional & Business Services	31	788	\$50,502,802	\$1,232.50
Education & Health Services	6	4,138	\$318,681,936	\$1,481.03
Leisure & Hospitality	15	223	\$9,902,437	\$853.95
Other Services	2	260	\$3,861,302	\$285.60
Public Administration	489	8,497	\$518,491,317	\$1,173.47
TOTAL	1,182	20,858	\$1,215,938,250	\$1,121.08

**TABLE 8. WORKFORCE INFORMATION AREA, SUMMARY
EMPLOYMENT AND TOTAL EARNINGS, BY INDUSTRY
CALENDAR YEAR 2007**

NORTH AMERICAN INDUSTRY CLASSIFICATION SYSTEM INDUSTRY GROUP	AVERAGE EMPLOYING UNITS	AVERAGE COVERED EMPLOYMENT	TOTAL EARNINGS	AVERAGE WEEKLY EARNINGS
CENTRAL WORKFORCE INFORMATION*	6,248	76,601	\$2,329,042,811	\$584.71
Natural Resources & Mining	185	1,386	\$65,219,637	\$904.92
Trade, Transportation & Utilities	1,574	15,247	\$397,347,772	\$501.17
Wholesale Trade	414	2,120	\$88,312,031	\$801.09
Retail Trade	895	11,429	\$243,825,902	\$410.27
Transportation, Warehousing & Utilities	265	1,698	\$65,209,839	\$738.54
Financial Activities	660	3,018	\$102,071,279	\$650.40
Professional & Business Services	753	7,254	\$323,570,015	\$857.80
Education & Health Services	787	10,345	\$293,343,007	\$545.31
Leisure & Hospitality	468	8,201	\$90,449,509	\$212.10
Local & State Government	210	14,266	\$452,963,841	\$610.60
Other	1,619	16,890	\$604,077,751	\$687.80
*Note: Pulaski County is not included in the Central Workforce Information. Please refer to Page 55 for information on Pulaski County.				
Central Workforce Includes these counties: Faulkner, Lonoke Monroe, Prairie, and Saline.				
EASTERN WORKFORCE INFORMATION	3,498	38,284	\$1,061,791,622	\$533.36
Natural Resources & Mining	203	1,242	\$29,506,158	\$456.86
Construction	193	1,064	\$32,219,111	\$582.33
Trade, Transportation & Utilities	884	10,137	\$290,422,521	\$550.96
Wholesale Trade	184	2,114	\$81,142,794	\$738.14
Retail Trade	488	5,068	\$99,606,465	\$377.96
Transportation, Warehousing & Utilities	212	2,955	\$109,673,262	\$713.74
Financial Activities	286	1,589	\$48,819,384	\$590.83
Professional & Business Services	311	1,661	\$45,788,368	\$530.13
Education & Health Services	821	5,720	\$152,177,636	\$511.62
Leisure & Hospitality	233	3,732	\$44,724,887	\$230.46
Local Government	137	5,585	\$175,906,019	\$605.70
State Government	68	2,267	\$65,794,494	\$558.13
Other	373	5,292	\$176,433,044	\$641.15
Eastern Workforce Includes these counties: Crittenden, Cross, Lee, Phillips, and Saint Francis.				

**TABLE 8. WORKFORCE INFORMATION AREA, SUMMARY
EMPLOYMENT AND TOTAL EARNINGS, BY INDUSTRY
CALENDAR YEAR 2007**

NORTH AMERICAN INDUSTRY CLASSIFICATION SYSTEM INDUSTRY GROUP	AVERAGE EMPLOYING UNITS	AVERAGE COVERED EMPLOYMENT	TOTAL EARNINGS	AVERAGE WEEKLY EARNINGS
NORTH CENTRAL WORKFORCE INFORMATION	5,672	69,136	\$1,880,788,888	\$523.16
Construction	512	2,967	\$88,664,169	\$574.68
Trade, Transportation & Utilities	1,531	15,626	\$418,301,207	\$514.80
Retail Trade	941	9,279	\$182,226,399	\$377.67
Other Trade, Transportation & Utilities	590	6,347	\$236,074,808	\$715.28
Financial Activities	538	2,729	\$84,639,460	\$596.44
Professional & Business Services	482	3,022	\$75,758,215	\$482.09
Education & Health Services	937	11,583	\$345,132,890	\$573.01
Leisure & Hospitality	446	6,271	\$65,134,093	\$199.74
Local Government	231	8,721	\$226,788,269	\$500.09
State Government	115	3,030	\$83,950,630	\$532.82
Other	890	15,194	\$492,419,955	\$623.25
North Central Workforce Includes these counties: Cleburne, Fulton, Independence, IZard, Jackson, Sharp, Stone, Van Buren, White, and Woodruff				
NORTHEAST WORKFORCE INFORMATION	6,551	94,205	\$2,841,684,758	\$580.09
Natural Resources & Mining	368	2,028	\$53,944,168	\$511.53
Construction	505	3,047	\$98,842,199	\$623.83
Manufacturing	357	20,746	\$839,201,837	\$777.91
Trade, Transportation & Utilities	1,754	17,951	\$479,941,645	\$514.16
Wholesale Trade	412	3,703	\$138,928,077	\$721.49
Retail Trade	1,034	11,644	\$229,626,109	\$379.24
Transportation, Warehousing & Utilities	308	2,604	\$111,387,459	\$822.61
Financial Activities	610	3,437	\$122,430,336	\$685.02
Professional & Business Services	669	6,865	\$175,933,643	\$492.84
Education & Health Services	1,020	13,127	\$424,095,069	\$621.29
Leisure & Hospitality	476	7,700	\$81,737,608	\$204.14
Local Government	219	11,414	\$325,761,595	\$548.86
State Government	107	4,066	\$140,128,161	\$662.76
Other	481	3,819	\$99,668,497	\$501.89
Northeast Workforce Includes these counties: Clay, Craighead, Greene, Lawrence, Mississippi, Poinsett, and Randolph.				

**TABLE 8. WORKFORCE INFORMATION AREA, SUMMARY
EMPLOYMENT AND TOTAL EARNINGS, BY INDUSTRY
CALENDAR YEAR 2007**

NORTH AMERICAN INDUSTRY CLASSIFICATION SYSTEM INDUSTRY GROUP	AVERAGE EMPLOYING UNITS	AVERAGE COVERED EMPLOYMENT	TOTAL EARNINGS	AVERAGE WEEKLY EARNINGS
NORTHWEST WORKFORCE INFORMATION	15,250	234,760	\$8,322,344,964	\$681.74
Trade, Transportation & Utilities	3,764	55,215	\$1,909,229,787	\$664.96
Retail Trade	2,011	26,994	\$614,152,693	\$437.53
Other Trade, Transportation & Utilities	1,753	28,221	\$1,295,077,094	\$882.51
Education & Health Services	1,793	24,327	\$851,534,585	\$673.15
Leisure & Hospitality	1,390	22,130	\$279,762,696	\$243.11
Local & State Government	430	27,745	\$982,764,393	\$681.18
Other	7,886	105,353	\$4,299,053,503	\$784.73
Northwest Workforce Includes these counties: Baxter, Benton, Boone, Carroll, Madison, Marion, Newton, Searcy, and Washington.				
SOUTHEAST WORKFORCE INFORMATION	5,608	76,163	\$2,287,580,466	\$577.60
Natural Resources & Mining	403	2,872	\$87,068,160	\$583.00
Construction	373	3,215	\$122,934,347	\$735.34
Manufacturing	224	17,042	\$655,510,929	\$739.70
Trade, Transportation & Utilities	1,373	13,360	\$363,551,057	\$523.31
Retail Trade	824	8,603	\$169,044,568	\$377.87
Other Trade, Transportation & Utilities	549	4,757	\$194,506,489	\$786.32
Local & State Government	357	16,064	\$470,580,681	\$563.35
Other	2,889	23,616	\$587,935,292	\$478.76
Southeast Workforce Includes these counties: Arkansas, Ashley, Bradley, Chicot, Cleveland, Desha, Drew, Grant, Jefferson, and Lincoln				
SOUTHWEST WORKFORCE INFORMATION	5,808	85,487	\$2,683,101,369	\$603.58
Natural Resources & Mining	414	2,899	\$107,887,697	\$715.68
Trade, Transportation & Utilities	1,500	15,495	\$446,739,506	\$554.45
Education & Health Services	811	9,408	\$242,737,100	\$496.18
Local & State Government	416	13,937	\$395,505,277	\$545.73
Other	2,675	43,755	\$1,490,231,789	\$654.97
Southwest Workforce Includes these counties: Calhoun, Columbia, Dallas, Hempstead, Howard, Lafayette, Little River, Miller, Nevada, Ouachita, Sevier, and Union				

**TABLE 8. WORKFORCE INFORMATION AREA, SUMMARY
EMPLOYMENT AND TOTAL EARNINGS, BY INDUSTRY
CALENDAR YEAR 2007**

NORTH AMERICAN INDUSTRY CLASSIFICATION SYSTEM INDUSTRY GROUP	AVERAGE EMPLOYING UNITS	AVERAGE COVERED EMPLOYMENT	TOTAL EARNINGS	AVERAGE WEEKLY EARNINGS
WEST CENTRAL WORKFORCE INFORMATION	8,317	109,691	\$3,074,010,924	\$538.93
Natural Resources & Mining	251	2,313	\$74,645,281	\$620.62
Construction	932	5,573	\$178,135,565	\$614.69
Trade, Transportation & Utilities	1,991	22,398	\$640,696,811	\$550.10
Financial Activities	888	4,077	\$131,120,434	\$618.48
Education & Health Services	1,182	15,625	\$488,456,686	\$601.18
Local Government	230	11,551	\$338,490,315	\$563.54
State Government	134	5,337	\$151,314,996	\$545.23
Other	2,718	42,822	\$1,071,150,836	\$481.04
West Central Workforce Includes these counties: Clark, Conway, Garland, Hot Spring, Johnson, Montgomery, Perry, Pike, Pope, and Yell				
WESTERN WORKFORCE INFORMATION	6,528	112,264	\$3,503,184,302	\$600.09
Natural Resources & Mining	180	3,097	\$164,822,073	\$1,023.46
Trade, Transportation & Utilities	1,644	23,280	\$661,245,050	\$546.23
Retail Trade	952	12,401	\$258,936,576	\$401.54
Other Trade, Transportation & Utilities	692	10,879	\$402,308,474	\$711.16
Financial Activities	689	3,924	\$140,081,983	\$686.51
Professional & Business Services	814	11,306	\$327,862,705	\$557.67
Education & Health Services	874	14,119	\$498,038,374	\$678.35
Leisure & Hospitality	506	8,368	\$96,822,612	\$222.51
Local & State Government	231	11,767	\$373,062,212	\$609.69
Other	1,599	36,406	\$1,241,249,293	\$655.67
Western Workforce Includes these counties: Crawford, Franklin, Logan, Polk, Scott, and Sebastian				