

Arkansas Covered Employment & Earnings

Jobs for People. People for Jobs.

DWS
Department of
WORKFORCE**Services**

Fourth Quarter
2007

**COVERED EMPLOYMENT AND EARNINGS
STATE OF ARKANSAS
FOURTH QUARTER 2007**

**MIKE BEEBE, GOVERNOR
STATE OF ARKANSAS**

**ARTEE WILLIAMS, DIRECTOR
DEPARTMENT OF WORKFORCE SERVICES**

**PUBLISHED BY
LABOR MARKET INFORMATION & ANALYSIS
BUREAU OF LABOR STATISTICS PROGRAMS
POST OFFICE BOX 2981
LITTLE ROCK, ARKANSAS 72203-2981
BERNADETTE COLEMAN, BLS PROGRAMS MANAGER
TELEPHONE: (501) 682-3159**

STATE OF ARKANSAS HOME PAGE: <http://www.arkansas.gov>

DEPARTMENT OF WORKFORCE SERVICES HOME PAGE: <http://www.arkansas.gov/esd/>

**INTERNET SITE FOR LABOR MARKET INFORMATION:
<http://www.discover.arkansas.gov>**

RELEASED: NOVEMBER 2008

TABLE OF CONTENTS

Description of Data	Page 1
Industry Classification	Page 1
Definition of Covered Employment and Earnings	Page 2
Federal Government Employment	Page 2
County Classification	Page 2
Significant Developments During Fourth Quarter 2007	Page 3

LIST OF GRAPHS AND TABLES

Graph 1	Total Covered Employment for Selected Years, Arkansas	Page 7
Graph 2	Total Covered Earnings, by Calendar Quarter for Selected Years, Arkansas	Page 8
Table 1	Quarterly Comparison of Covered Employment and Wages, by Industry	Page 5
Table 2	Total Covered Employment in Arkansas, 2000-2007	Page 6
Table 3	Total Covered Earnings, 2000-2007	Page 9
Table 4	Total Taxable Earnings, 2000-2007	Page 10
Table 5	State Summary - Employment and Total Earnings, by Industry, Fourth Quarter 2007	Page 11
Table 6	County Summary - Employment and Total Earnings, by Industry, Fourth Quarter 2007	Page 22
Table 7	Federal Government Employment and Total Earnings in Arkansas, Fourth Quarter 2007	Page 60
Table 8	Workforce Information Area – Employment and Total Earnings, by Industry, Fourth Quarter 2007	Page 61

EMPLOYMENT AND EARNINGS UNDER THE ARKANSAS EMPLOYMENT SECURITY LAW FOURTH QUARTER 2007

DESCRIPTION OF DATA

This publication contains covered employment and payroll data by industry and county for the Fourth Quarter 2007. These data are compiled from quarterly contribution and wage reports submitted by employers subject to the Arkansas Employment Security Law. An employing unit is a single physical location where business is conducted, production takes place, or services are provided. Employment data have been tabulated for each month of the quarter by industry under the **North American Industry Classification System** (NAICS) (see "Industry Classification" below) on a statewide, county and workforce area basis. Payroll data represent the total wages paid during the quarter, and are also shown by

industry for the State and by publishable industry groups for each county and workforce area. The tabulation of this data is a joint effort in conjunction with the U.S. Bureau of Labor Statistics. In addition, there are tables included which set out total covered employment by months, quarterly payrolls, and average weekly earnings for the years 2000 through 2007. Data contained in this publication are subject to revision. These revisions will be reflected in the 2007 Annual Covered Employment and Earnings publication. Because of industry code changes between years, substantial employment and wage shifts among industries are anticipated.

INDUSTRY CLASSIFICATION

Previously published industry data **will not** be comparable in all instances with currently published data since industry codes have been revised according to the following Manuals: (a) between January 1, 1958 and December 31, 1967, industry codes were assigned under the 1957 Standard Industrial Classification (SIC) Manual; (b) between January 1, 1968 and December 31, 1974, industry codes were assigned under the 1967 Standard Industrial Classification (SIC) Manual; (c) between January 1, 1975 and December 31, 1987, industry codes were assigned under the 1972 Standard Industrial Classification (SIC) Manual; (d) between January 1, 1988 and December 31, 2000, industry codes were assigned under the 1987 Standard Industrial Classification (SIC) Manual; (e) between January 1, 2001 and December 31, 2006, industry codes were assigned under the 2002 North American Industry Classification System (NAICS) Manual; and (f) since January 1, 2007, industry codes have been assigned under the 2007 North American Industry Classification System (NAICS) Manual.

The NAICS Manual represents a significant change in coding methodology as compared to the SIC Manual. One of the most significant changes involves how NAICS treats auxiliary units. Auxiliary units are establishments primarily engaged in performing management or support services for other establishments of the same enterprise. The SIC code for these units was based on the activity of the enterprise served. The NAICS code is based on the actual activities that the establishment performs. Comparisons of many industries **should not be made** between this publication and previous Covered Employment and Earnings publications that were based on SIC. Even though some titles are the same or similar, in nature, NAICS and SIC could differ in the classification of employers. The implementation of NAICS represents a profound change for statistical programs, and will create significant benefits along with transition obstacles for both data collectors and data users. A summary is available on the NAICS home page at <http://www.census.gov/naics>.

DEFINITION OF COVERED EMPLOYMENT AND EARNINGS

Covered Employment is the number of workers employed by employers subject to the Arkansas Employment Security Law who worked or received pay for the payroll period including the 12th of the month. An employer is subject to the law when they employ one or more employees in each of ten days during the current or preceding calendar year.

Currently excluded from coverage is employment covered by the Railroad Unemployment Insurance Act, some domestic service workers, employees of small agricultural establishments, self-employed and unpaid family workers, insurance and real estate

agents who are on commission only, and employees of churches and religious organizations except separately incorporated schools. The payroll information in this publication includes all wages and salaries paid to any covered employees by their employers including bonuses, commissions, and cash values of remuneration received in any medium other than cash. These wages include both taxable and nontaxable wages. Only the first \$10,000 paid to each worker by an employer in the calendar year is taxable under the Arkansas Employment Security Law.

FEDERAL GOVERNMENT EMPLOYMENT

Table 7 on page 60 lists the total number of civilians employed by the Federal Government in Arkansas during the Fourth Quarter 2007. Employment and wage data are set out by industry divisions. These data are obtained from required reports submitted by various

government agencies having employment in the State. Civilian Federal workers are covered by the Unemployment Compensation for Federal Employees (UCFE) program.

COUNTY CLASSIFICATION

Employment and payroll data by county are classified according to the county where the workers are employed. Employers with operations in more than one county are requested to furnish this agency with a breakdown of employment and wages for at least one quarter of each year by the counties in which they operate. Many such employers submit county data with each regular contribution report. **Note:** This information is invaluable in the preparation of monthly employment and payroll data by county.

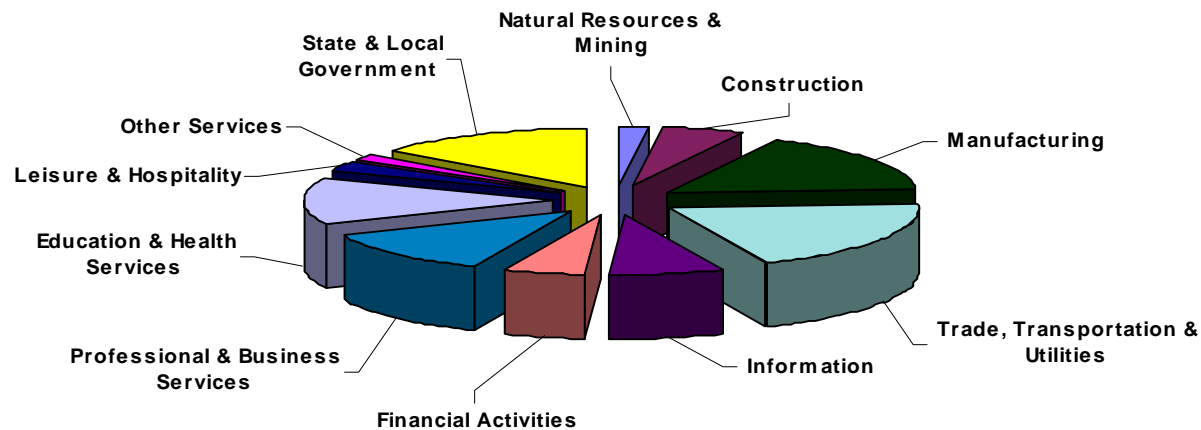
Employment and payroll data for multi - area employers, who do not furnish county data each quarter of the year, are prorated by county on the basis of one quarter's information. The "rest-of-state" table that appears on page 59 of this publication includes data on firms that **did not** provide a county breakdown of employment and payrolls. It also includes sales, and all other type of personnel with no permanent place of work, as well as employment of employers with no established place of business in Arkansas.

SIGNIFICANT DEVELOPMENTS DURING FOURTH QUARTER 2007

AVERAGE EMPLOYMENT CHANGES

Covered employment averaged 1,165,878 during the Fourth Quarter 2007 (see table 1), an increase of 29,049 (2.6%) from the previous quarter and 8,832 (0.8%) above the average recorded one-year ago. This *over-the-year* increase is more significant when used as an economic indicator. This *over-the-year* comparison allows for the disregarding of many seasonal factors that are evident when making an *over-the-quarter* comparison.

Average Covered Employment by NAICS Group

**EMPLOYMENT CHANGES FROM THIRD QUARTER 2007**

Over the quarter gains were recorded in six industries while five suffered losses (see Table 1). The largest increase occurred in State & Local Government, which gained 30,007 jobs due to the start of classes in public schools and universities. The holiday season caused a job increase in Trade, Transportation, & Utilities (+1.2%), led by an increase of 3,142 jobs in Retail Trade. Educational and Health Services also had a significant increase of 1,797 jobs with contributions from both Educational Services (+790) and Health Care & Social Assistance. (+1006). Other gains were recorded in Natural Resources & Mining (+348), Information (+131), and Professional & Business Services (+113).

The biggest decline in jobs occurred in Leisure and Hospitality (-2,452). The reason for this decline is the end of the summer travel season. The cooling weather, along with the decline in the real estate market, led to a loss of jobs in Construction (-1,311). Continuing layoffs and closures across the state contributed to a drop in jobs in Manufacturing (-1,737). Other losses were recorded in Other Services (-562) and Financial Activities (-313).

EMPLOYMENT CHANGES FROM FOURTH QUARTER 2006

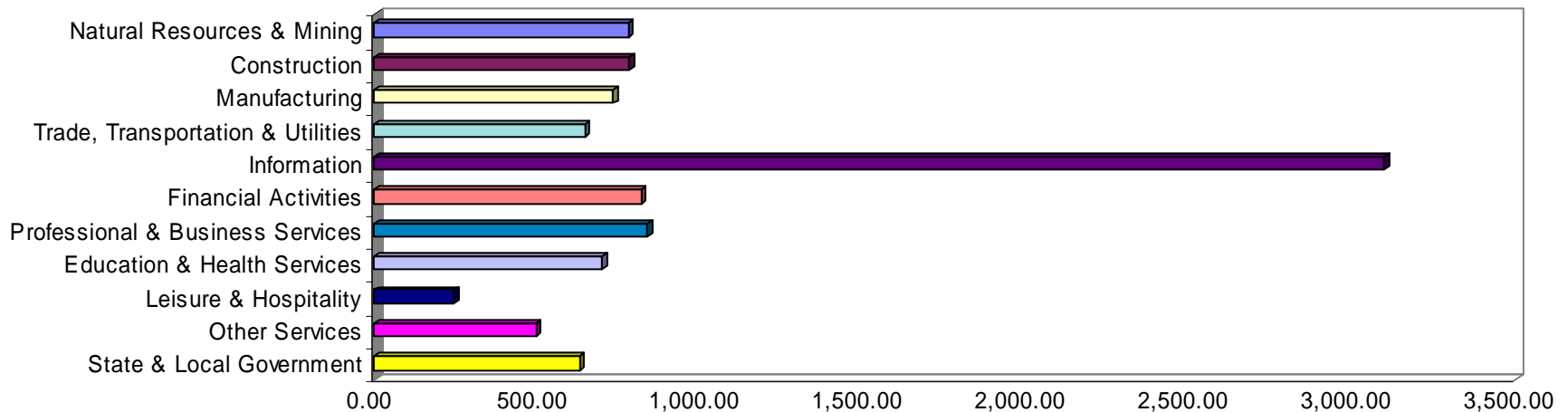
Over-the-year gains were recorded in seven industry groups while four recorded losses (see table 1). Significant gains were posted in Educational & Health Services (+4,779), State & Local Government (+4,160), and Professional & Business Services (+3,465). Significant losses occurred in Manufacturing (-7,858), Other Services (-589), and Construction (-445).

COVERED WAGES

Wages paid to covered workers totaled \$10,672,599,647 for the Fourth Quarter 2007 (see table 1), for an average weekly wage of \$704.16 (see table 5). Employees in Pulaski County recorded the highest average weekly wage (\$977.58), and workers in Newton County recorded the lowest (\$392.89) (see table 6).

The Information sector recorded the highest average weekly wage for the State of Arkansas at \$3,096.56, while the Leisure & Hospitality sector recorded the lowest at \$242.79 for the State of Arkansas (see table 5).

Average Weekly Wages by Industry Group



Note: Because of industry code changes between years, substantial employment and wage shifts among industries are anticipated.

TABLE 1. QUARTERLY COMPARISON OF COVERED EMPLOYMENT AND WAGES, BY INDUSTRY

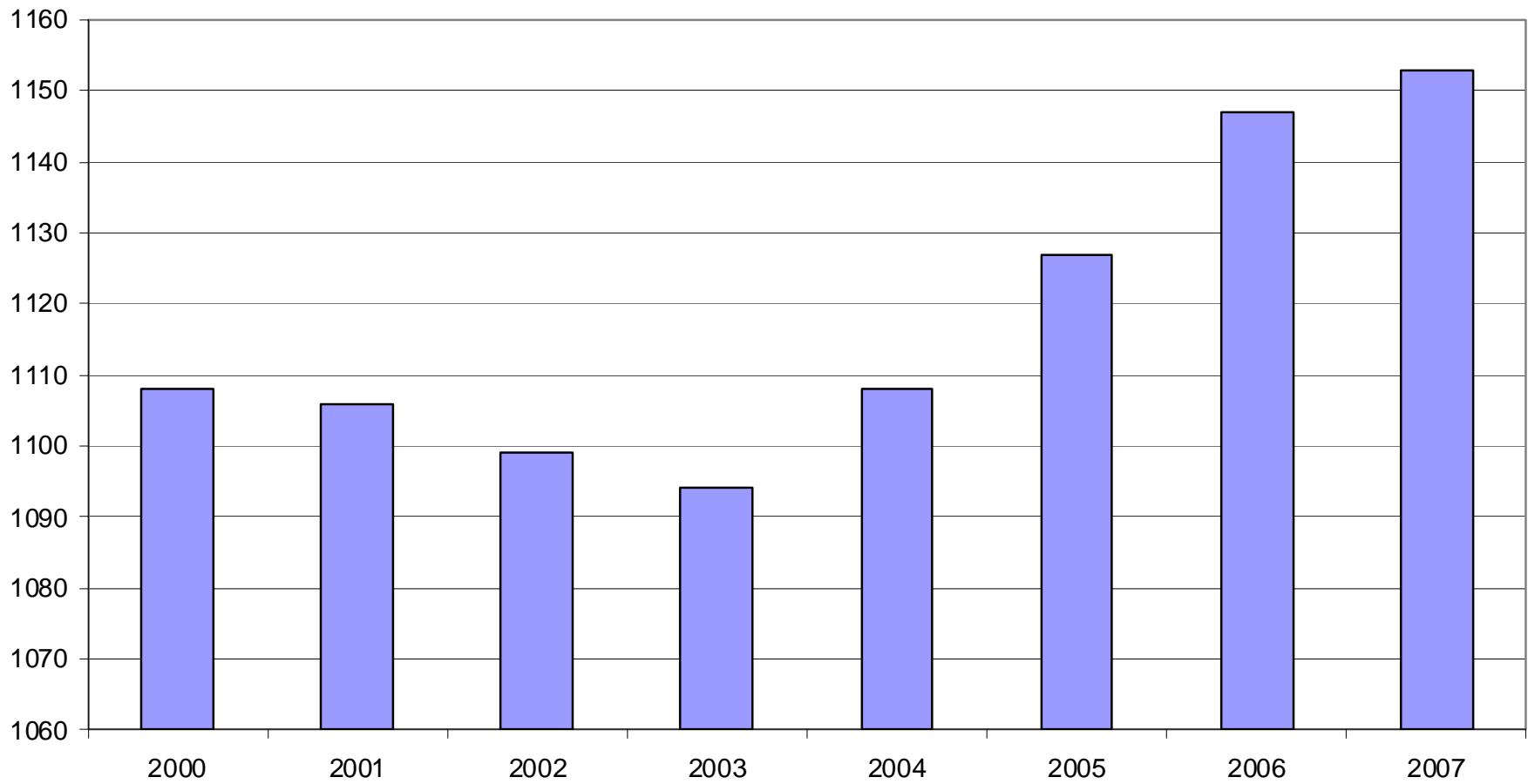
North American Industry Classification System Industry	Number of Employing Units	Average Monthly Employment	% of Employment Total	Net Change From July - Sept. 2007	Net Change From Oct. - Dec. 2006	Total Wages Paid Oct. - Dec 2007	% of Total Wages Paid
Total	82,871	1,165,878	100.0%	29,049	8,832	\$10,672,599,647	100.0%
Natural Resources & Mining	2,403	21,039	1.8%	348	1,571	\$212,699,493	2.0%
Agriculture, Forestry, Fishing & Hunting	1,946	13,822	1.2%	263	-349	\$108,458,928	1.0%
Mining	457	7,217	0.6%	85	1,920	\$104,240,565	1.0%
Construction	8,067	56,312	4.8%	-1,311	-445	\$572,387,549	5.4%
Manufacturing	3,647	186,879	16.0%	-1,737	-7,858	\$1,776,146,413	16.6%
Trade, Transportation & Utilities	20,902	249,245	21.4%	3,028	348	\$2,092,716,978	19.6%
Wholesale Trade	6,369	48,365	4.1%	69	207	\$665,061,251	6.2%
Retail Trade	11,202	136,737	11.7%	3,142	1,112	\$754,953,007	7.1%
Transportation & Warehousing	2,967	57,266	4.9%	-164	-957	\$559,701,599	5.2%
Utilities	364	6,877	0.6%	-18	-14	\$113,001,121	1.1%
Information	1,200	20,033	1.7%	131	-15	\$806,420,529	7.6%
Financial Activities	8,386	52,145	4.5%	-313	562	\$554,629,037	5.2%
Finance & Insurance	4,890	37,741	3.2%	-23	591	\$442,890,136	4.1%
Real Estate & Rental & Leasing	3,496	14,403	1.2%	-291	-30	\$111,738,901	1.0%
Professional & Business Services	11,411	117,574	10.1%	113	3,465	\$1,280,856,134	12.0%
Professional & Technical Services	7,166	38,613	3.3%	549	1,068	\$535,507,196	5.0%
Management of Companies & Enterprises	539	24,921	2.1%	42	654	\$444,778,250	4.2%
Administrative & Waste Services	3,706	54,040	4.6%	-478	1,743	\$300,570,688	2.8%
Education & Health Services	12,057	152,186	13.1%	1,797	4,779	\$1,383,116,844	13.0%
Educational Services	598	9,960	0.9%	790	553	\$70,425,019	0.7%
Health Care & Social Assistance	11,459	142,225	12.2%	1,006	4,225	\$1,312,691,825	12.3%
Leisure & Hospitality	6,186	99,498	8.5%	-2,452	2,855	\$314,036,881	2.9%
Arts, Entertainment & Recreation	918	8,937	0.8%	-1,796	280	\$40,882,096	0.4%
Accommodation & Food Services	5,268	90,560	7.8%	-656	2,574	\$273,154,785	2.6%
Other Services	5,418	25,041	2.1%	-562	-589	\$161,880,165	1.5%
State & Local Government	3,194	185,927	15.9%	30,007	4,160	\$1,517,709,624	14.2%
Local Government	1,992	120,289	10.3%	27,524	2,196	\$914,089,239	8.6%
State Government	1,202	65,638	5.6%	2,482	1,964	\$603,620,385	5.7%
Nonclassifiable Establishments	0	0	0.0%	0	0	\$0	0.0%

Note: Items do not necessarily add to totals because of rounding. Because of industry code changes between years, substantial employment and wage shifts among industries are anticipated.

TABLE 2. TOTAL COVERED EMPLOYMENT IN ARKANSAS

Period	2000	2001	2002	2003	2004	2005	2006	2007
Average	1,108,479	1,106,066	1,098,558	1,094,087	1,108,264	1,126,778	1,146,948	1,153,412
January	1,089,943	1,096,009	1,081,635	1,082,740	1,089,510	1,102,768	1,130,595	1,137,460
February	1,096,113	1,101,616	1,086,793	1,084,880	1,094,626	1,110,577	1,136,810	1,143,824
March	1,109,144	1,112,143	1,098,500	1,092,172	1,105,266	1,122,619	1,150,439	1,159,342
April	1,111,525	1,115,526	1,103,399	1,095,341	1,111,020	1,129,785	1,155,498	1,160,427
May	1,116,760	1,119,815	1,111,998	1,103,099	1,117,144	1,135,567	1,159,886	1,166,301
June	1,121,225	1,119,734	1,112,028	1,099,688	1,117,010	1,136,118	1,162,026	1,165,475
July	1,075,066	1,071,921	1,065,697	1,053,220	1,071,463	1,090,071	1,106,142	1,110,094
August	1,096,848	1,094,160	1,086,011	1,077,775	1,094,871	1,114,098	1,130,839	1,136,839
September	1,123,725	1,115,976	1,113,148	1,105,980	1,122,704	1,144,815	1,159,814	1,163,554
October	1,122,884	1,110,994	1,108,447	1,112,550	1,123,246	1,142,300	1,156,804	1,164,709
November	1,120,620	1,109,012	1,107,611	1,109,712	1,125,061	1,145,667	1,156,011	1,166,114
December	1,117,892	1,105,887	1,107,425	1,111,892	1,127,250	1,146,954	1,158,509	1,166,810

AVERAGE TOTAL COVERED EMPLOYMENT GRAPH 1
In Thousands



TOTAL COVERED EARNINGS BY CALENDAR QUARTER, GRAPH 2
In Thousands

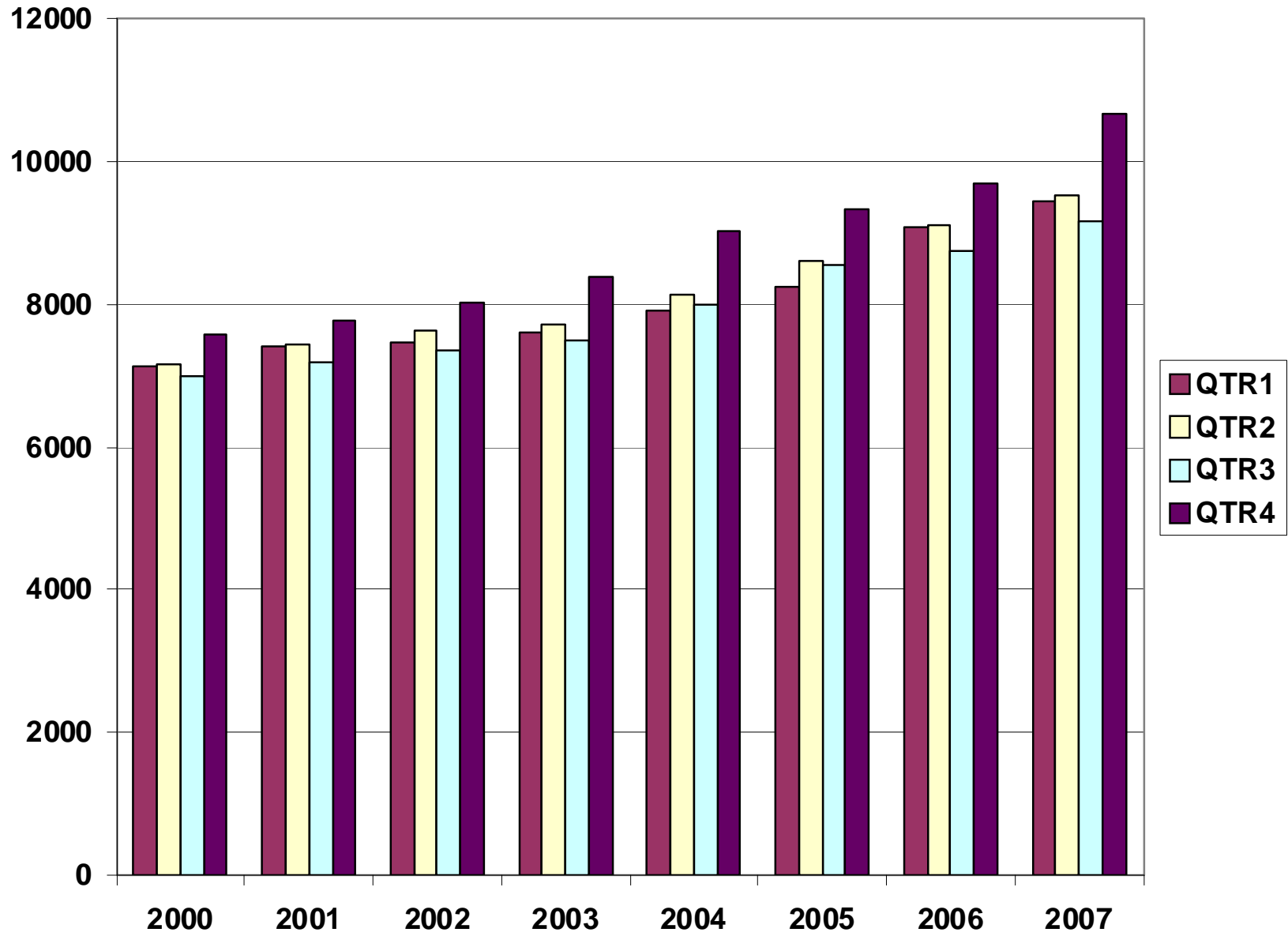


TABLE 3. TOTAL COVERED EARNINGS, 2000- 2007

Period	2000	2001	2002	2003
Total	\$28,853,716,151	\$29,807,669,666	\$30,472,854,103	\$31,202,576,767
January - March	\$7,122,636,896	\$7,398,887,532	\$7,465,250,305	\$7,608,130,008
April - June	\$7,166,049,182	\$7,448,023,298	\$7,621,878,775	\$7,714,813,038
July - September	\$6,986,085,106	\$7,177,293,061	\$7,361,666,511	\$7,500,204,764
October - December	\$7,578,944,967	\$7,783,465,775	\$8,024,058,512	\$8,379,428,957
Average Weekly Earnings	\$500.58	\$518.26	\$533.44	\$548.45

Period	2004	2005	2006	2007
Total	\$33,068,189,304	\$34,753,107,631	\$36,636,090,775	\$38,820,889,615
January - March	\$7,918,843,610	\$8,261,153,981	\$9,085,021,816	\$9,457,035,252
April - June	\$8,122,370,361	\$8,607,722,353	\$9,112,624,590	\$9,523,821,876
July - September	\$8,010,300,454	\$8,562,555,369	\$8,750,878,205	\$9,167,432,840
October - December	\$9,016,674,879	\$9,321,675,928	\$9,687,566,164	\$10,672,599,647
Average Weekly Earnings	\$573.80	\$593.13	\$614.27	\$647.26

TABLE 4. TOTAL TAXABLE EARNINGS, 2000 - 2007

Period	2000	2001	2002	2003
Total	\$9,047,924,530	\$9,003,189,480	\$8,887,270,978	\$9,154,938,743
January - March	\$4,560,783,991	\$4,670,296,360	\$4,668,534,587	\$4,737,918,796
April - June	\$2,260,680,255	\$2,219,485,263	\$2,162,971,435	\$2,270,519,362
July - September	\$1,250,832,297	\$1,190,098,737	\$1,158,197,858	\$1,188,681,170
October - December	\$975,627,987	\$923,309,120	\$897,567,098	\$957,819,415

Period	2004	2005	2006	2007
Total	\$9,731,247,501	\$9,991,605,239	\$10,197,511,360	\$10,465,981,309
January - March	\$4,931,559,230	\$5,062,670,306	\$5,421,204,601	\$5,622,850,182
April - June	\$2,451,454,749	\$2,506,505,721	\$2,385,110,992	\$2,468,016,877
July - September	\$1,318,017,835	\$1,353,660,445	\$1,314,939,803	\$1,302,808,292
October - December	\$1,030,215,687	\$1,068,768,767	\$1,076,255,964	\$1,072,305,958

**TABLE 5. STATEWIDE SUMMARY
EMPLOYMENT AND TOTAL EARNINGS, BY INDUSTRY
FOURTH QUARTER 2007**

NORTH AMERICAN INDUSTRY CLASSIFICATION SYSTEM INDUSTRY GROUPS	NUMBER OF EMPLOYING UNITS	EMPLOYMENT OCTOBER	EMPLOYMENT NOVEMBER	EMPLOYMENT DECEMBER	TOTAL EARNINGS OCTOBER - DECEMBER	AVERAGE WEEKLY EARNINGS
TOTAL, ALL INDUSTRIES	82,871	1,164,709	1,166,114	1,166,810	\$10,672,599,647	\$704.16
NATURAL RESOURCES AND MINING	2,403	21,555	21,198	20,363	\$212,699,493	\$777.69
AGRICULTURE, FORESTRY, FISHING AND HUNTING	1,946	14,424	13,965	13,076	\$108,458,928	\$603.62
CROP PRODUCTION	705	4,145	3,819	3,502	\$24,271,608	\$488.50
Oilseed and Grain Farming	445	2,249	2,142	1,977	\$13,428,524	\$486.63
Vegetable and Melon Farming	10	249	193	173	\$597,922	\$224.36
Fruit and Tree Nut Farming	8	64	64	56	\$439,519	\$551.24
Greenhouse and Nursery Production	53	340	325	327	\$2,469,710	\$574.53
Other Crop Farming	189	1,243	1,095	969	\$7,335,933	\$511.92
ANIMAL PRODUCTION	270	3,647	3,629	3,637	\$32,016,840	\$677.04
Cattle Ranching and Farming	81	326	340	349	\$2,963,167	\$673.70
Hog and Pig Farming	9	150	147	149	\$1,437,737	\$743.91
Poultry and Egg Production	88	2,556	2,577	2,612	\$22,965,801	\$684.29
Animal Aquaculture	63	528	482	451	\$4,246,058	\$670.68
Other	29	87	83	76	\$404,077	\$379.06
FORESTRY AND LOGGING	525	2,805	2,762	2,761	\$22,866,408	\$633.63
Timber Tract Operations	43	255	255	253	\$2,556,325	\$773.16
Forest Nurseries & Gathering of Forest Products	6	30	31	30	\$345,418	\$875.95
Logging	476	2,520	2,476	2,478	\$19,964,665	\$616.43
OTHER	446	3,827	3,755	3,176	\$29,304,072	\$628.60
MINING	457	7,131	7,233	7,287	\$104,240,565	\$1,111.06
OIL AND GAS EXTRACTION	96	690	694	705	\$11,715,817	\$1,294.23
MINING (EXCEPT OIL AND GAS)	111	2,167	2,142	2,113	\$24,471,034	\$879.35
SUPPORT ACTIVITIES FOR MINING	250	4,274	4,397	4,469	\$68,053,714	\$1,195.18
CONSTRUCTION	8,067	56,645	56,398	55,893	\$572,387,549	\$781.89
CONSTRUCTION OF BUILDINGS	2,301	13,043	13,045	13,215	\$161,029,310	\$945.49
Residential Building Construction	1,658	4,146	4,136	4,172	\$35,984,691	\$666.79
Nonresidential Building Construction	643	8,897	8,909	9,043	\$125,044,619	\$1,074.77
HEAVY AND CIVIL ENGINEERING CONSTRUCTION	871	9,947	9,682	9,197	\$104,061,994	\$833.08
Utility System Construction	415	4,702	4,731	4,600	\$48,903,439	\$804.21
Land Subdivision	135	418	419	408	\$5,244,535	\$972.11

**TABLE 5. STATEWIDE SUMMARY
EMPLOYMENT AND TOTAL EARNINGS, BY INDUSTRY
FOURTH QUARTER 2007**

NORTH AMERICAN INDUSTRY CLASSIFICATION SYSTEM INDUSTRY GROUPS	NUMBER OF EMPLOYING UNITS	EMPLOYMENT	EMPLOYMENT	EMPLOYMENT	TOTAL EARNINGS OCTOBER - DECEMBER	AVERAGE WEEKLY EARNINGS
		OCTOBER	NOVEMBER	DECEMBER		
Highway, Street and Bridge Construction	208	3,367	3,188	2,952	\$30,268,869	\$734.73
Other Heavy Construction	113	1,460	1,344	1,237	\$19,645,151	\$1,121.87
SPECIALTY TRADE CONTRACTORS	4,895	33,655	33,671	33,481	\$307,296,245	\$703.47
Building Foundation and Exterior Contractors	974	6,621	6,629	6,527	\$55,653,717	\$649.40
Building Equipment Contractors	2,163	16,133	16,201	16,330	\$161,554,179	\$766.10
Building Finishing Contractors	911	5,204	5,113	5,083	\$42,744,829	\$640.53
Other Specialty Trade Contractors	847	5,697	5,728	5,541	\$47,343,520	\$643.96
MANUFACTURING	3,647	187,403	186,244	186,990	\$1,776,146,413	\$731.10
FOOD MANUFACTURING	331	49,593	49,591	49,860	\$376,424,173	\$582.83
Animal Food Manufacturing	59	1,548	1,590	1,603	\$21,785,113	\$1,060.40
Grain and Oilseed Milling	30	2,434	2,382	2,385	\$23,389,384	\$749.56
Fruit, Vegetable and Specialty Food	35	6,917	6,736	6,836	\$59,364,301	\$668.62
Dairy Product Manufacturing	13	712	703	700	\$6,638,626	\$724.35
Animal Slaughtering and Processing	92	32,745	32,953	33,107	\$220,924,406	\$515.99
Bakeries and Tortilla Manufacturing	57	3,278	3,276	3,294	\$27,045,517	\$633.76
Other Food Manufacturing	32	1,712	1,710	1,709	\$16,126,806	\$725.31
Other	13	247	241	226	\$1,150,020	\$371.69
BEVERAGE AND TOBACCO PRODUCT MFG.	41	1,269	1,260	1,252	\$12,134,204	\$740.60
TEXTILE MILLS	24	333	304	301	\$3,541,721	\$871.34
TEXTILE PRODUCT MILLS	63	1,329	1,330	1,343	\$13,090,643	\$754.85
APPAREL MANUFACTURING	36	1,601	1,634	1,630	\$9,838,789	\$466.70
Cut and Sew Apparel Manufacturing	26	622	628	623	\$3,003,396	\$370.04
Other	10	979	1,006	1,007	\$6,835,393	\$527.21
LEATHER AND ALLIED PRODUCT MANUFACTURING	21	1,738	1,754	1,867	\$11,826,539	\$509.27
WOOD PRODUCT MANUFACTURING	381	12,010	11,656	11,684	\$93,518,530	\$610.50
Sawmills and Wood Preservation	160	4,787	4,801	4,873	\$41,623,307	\$664.23
Veneer and Engineered Wood Products	54	3,190	2,863	2,874	\$25,084,297	\$648.45
Other Wood Product Manufacturing	167	4,033	3,992	3,937	\$26,810,926	\$517.23
PAPER MANUFACTURING	85	11,120	11,091	11,128	\$147,311,319	\$1,019.67
Pulp, Paper and Paperboard Mills	12	4,250	4,246	4,227	\$70,437,884	\$1,277.60
Converted Paper Product Manufacturing	73	6,870	6,845	6,901	\$76,873,435	\$860.50
PRINTING AND RELATED SUPPORT ACTIVITIES	292	4,657	4,636	4,637	\$46,315,732	\$767.28

**TABLE 5. STATEWIDE SUMMARY
EMPLOYMENT AND TOTAL EARNINGS, BY INDUSTRY
FOURTH QUARTER 2007**

NORTH AMERICAN INDUSTRY CLASSIFICATION SYSTEM INDUSTRY GROUPS	NUMBER OF EMPLOYING UNITS	EMPLOYMENT	EMPLOYMENT	EMPLOYMENT	TOTAL EARNINGS OCTOBER - DECEMBER	AVERAGE WEEKLY EARNINGS
		OCTOBER	NOVEMBER	DECEMBER		
PETROLEUM AND COAL PRODUCTS MANUFACTURING	23	997	991	1,011	\$14,281,223	\$1,098.92
CHEMICAL MANUFACTURING	131	4,729	4,695	4,715	\$63,364,079	\$1,034.19
Basic Chemical Manufacturing	31	2,048	2,034	2,052	\$29,065,671	\$1,093.49
Resin, Rubber and Artificial Fibers	9	301	294	297	\$3,908,177	\$1,011.08
Agricultural Chemical Manufacturing	19	325	326	332	\$4,672,422	\$1,096.90
Paint, Coating and Adhesive Manufacturing	10	176	177	181	\$2,454,609	\$1,060.76
Other Chemical Preparation Manufacturing	32	954	940	937	\$11,418,543	\$930.78
Other	30	925	924	916	\$11,844,657	\$988.57
PLASTICS AND RUBBER PRODUCTS MANUFACTURING	160	11,876	11,871	11,714	\$123,372,895	\$802.87
Plastics Product Manufacturing	111	7,448	7,510	7,544	\$67,504,169	\$692.29
Rubber Product Manufacturing	49	4,428	4,361	4,170	\$55,868,726	\$994.89
NONMETALLIC MINERAL PRODUCT MANUFACTURING	264	4,503	4,420	4,432	\$44,353,777	\$766.42
Glass and Glass Product Manufacturing	12	421	429	436	\$3,991,096	\$716.19
Cement and Concrete Product Manufacturing	185	2,692	2,606	2,606	\$26,100,416	\$762.04
Other	67	1,390	1,385	1,390	\$14,262,265	\$790.23
PRIMARY METAL MANUFACTURING	76	8,234	8,215	8,306	\$112,727,337	\$1,050.86
Iron and Steel Mills and Ferroalloys	13	2,203	2,229	2,242	\$47,055,753	\$1,627.06
Purchased Steel Product Manufacturing	17	2,352	2,321	2,351	\$28,046,392	\$921.45
Alumina and Aluminum Production	19	1,705	1,700	1,722	\$19,069,801	\$858.34
Other Nonferrous Metal Production	12	625	623	641	\$5,422,849	\$662.48
Foundries	15	1,349	1,342	1,350	\$13,132,542	\$749.96
FABRICATED METAL PRODUCT MANUFACTURING	582	17,117	17,052	17,035	\$177,974,081	\$802.10
Forging and Stamping	12	772	779	778	\$7,638,392	\$756.85
Cutlery and Hand Tool Manufacturing	17	1,277	1,277	1,274	\$12,653,138	\$762.79
Architectural and Structural Metals	202	5,138	5,145	5,118	\$58,554,650	\$877.39
Boilers, Tanks and Shipping Containers	19	741	738	706	\$8,823,912	\$931.94
Hardware Manufacturing	9	253	261	258	\$2,112,578	\$631.50
Spring and Wire Product Manufacturing	13	613	583	602	\$4,558,008	\$585.01
Machine Shops and Threaded Products	201	1,886	1,856	1,891	\$17,730,225	\$726.36
Coating, Engraving and Heat Treating Metals	40	627	622	619	\$5,062,623	\$625.43
Other Fabricated Metal Product Manufacturing	69	5,810	5,791	5,789	\$60,840,555	\$807.37
MACHINERY MANUFACTURING	269	13,833	13,922	13,970	\$126,209,223	\$698.03

**TABLE 5. STATEWIDE SUMMARY
EMPLOYMENT AND TOTAL EARNINGS, BY INDUSTRY
FOURTH QUARTER 2007**

NORTH AMERICAN INDUSTRY CLASSIFICATION SYSTEM INDUSTRY GROUPS	NUMBER OF EMPLOYING UNITS	EMPLOYMENT	EMPLOYMENT	EMPLOYMENT	TOTAL EARNINGS	AVERAGE
		OCTOBER	NOVEMBER	DECEMBER	OCTOBER - DECEMBER	WEEKLY EARNINGS
Agricultural, Construction and Mining Machinery	39	2,943	2,998	3,080	\$18,644,177	\$476.94
Commercial and Service Industry Machinery	25	925	920	906	\$10,300,331	\$864.05
HVAC and Commercial Refrigeration Equipment	23	4,677	4,656	4,540	\$41,359,005	\$687.98
Metalworking Machinery Manufacturing	81	1,378	1,393	1,387	\$14,745,396	\$818.37
Other General Purpose Machinery Manufacturing	61	2,885	2,911	2,991	\$29,737,137	\$780.97
Other	40	1,025	1,044	1,066	\$11,423,177	\$840.87
COMPUTER AND ELECTRONIC PRODUCT MANUFACTURING	85	4,501	4,366	4,376	\$41,882,521	\$729.83
Audio and Video Equipment Manufacturing	12	1,056	965	959	\$9,192,981	\$711.90
Semiconductors and Electronic Components	29	2,293	2,245	2,275	\$20,265,807	\$686.44
Electronic Instrument Manufacturing	29	899	896	886	\$8,610,150	\$741.13
Other	15	253	260	256	\$3,813,583	\$1,144.42
ELECTRICAL EQUIPMENT AND APPLIANCES	71	10,474	10,033	9,929	\$99,961,542	\$757.92
Electrical Equipment Manufacturing	23	4,944	4,828	4,805	\$49,471,151	\$783.18
Other	48	5,530	5,205	5,124	\$50,490,391	\$734.70
TRANSPORTATION EQUIPMENT MANUFACTURING	180	16,281	16,240	16,443	\$164,305,154	\$774.38
Motor Vehicle Body and Trailer Manufacturing	44	3,715	3,578	3,696	\$33,534,828	\$704.23
Motor Vehicle Parts Manufacturing	62	5,814	5,858	5,858	\$50,466,306	\$664.35
Aerospace Product and Parts Manufacturing	28	3,838	3,928	3,986	\$56,196,799	\$1,103.51
Ship and Boat Building	26	1,687	1,695	1,691	\$12,678,975	\$576.76
Other	20	1,227	1,181	1,212	\$11,428,246	\$728.53
FURNITURE & RELATED PRODUCT MFG.	272	5,970	5,939	5,996	\$49,638,741	\$639.77
Household & Institutional Furniture	222	4,081	4,130	4,161	\$34,537,148	\$644.21
Office Furniture & Fixtures Manufacturing	43	1,748	1,669	1,701	\$14,247,180	\$642.40
Other Furniture Related Product Manufacturing	7	141	140	134	\$854,413	\$475.11
MISCELLANEOUS MANUFACTURING	260	5,238	5,244	5,361	\$44,074,190	\$641.98
Medical Equipment & Supplies Manufacturing	94	2,384	2,403	2,500	\$20,945,962	\$663.33
Other Miscellaneous Manufacturing	166	2,854	2,841	2,861	\$23,128,228	\$623.81
TRADE, TRANSPORTATION AND UTILITIES	20,902	246,368	249,946	251,422	\$2,092,716,978	\$645.86
WHOLESALE TRADE	6,369	48,292	48,265	48,537	\$665,061,251	\$1,057.77
MERCHANT WHOLESALERS, DURABLE GOODS	2,140	21,893	21,934	22,048	\$268,601,638	\$940.95
Motor Vehicle & Part Merchant Wholesalers	245	2,649	2,648	2,663	\$26,179,258	\$758.97

**TABLE 5. STATEWIDE SUMMARY
EMPLOYMENT AND TOTAL EARNINGS, BY INDUSTRY
FOURTH QUARTER 2007**

NORTH AMERICAN INDUSTRY CLASSIFICATION SYSTEM INDUSTRY GROUPS	NUMBER OF EMPLOYING UNITS	EMPLOYMENT	EMPLOYMENT	EMPLOYMENT	TOTAL EARNINGS OCTOBER - DECEMBER	AVERAGE WEEKLY EARNINGS
		OCTOBER	NOVEMBER	DECEMBER		
Furniture & Furnishing Merchant Wholesalers	71	440	439	451	\$4,936,986	\$856.62
Lumber & Supply Merchant Wholesalers	182	1,765	1,755	1,757	\$20,193,316	\$883.08
Commercial Goods Merchant Wholesalers	255	2,619	2,625	2,650	\$40,265,049	\$1,177.09
Metal & Mineral Merchant Wholesalers	51	817	832	833	\$10,021,873	\$931.80
Electric Goods Merchant Wholesalers	183	2,155	2,166	2,178	\$29,654,525	\$1,052.99
Hardware & Plumbing Merchant Wholesalers	224	2,442	2,415	2,429	\$28,821,102	\$912.85
Machinery & Supply Merchant Wholesalers	692	7,209	7,259	7,265	\$87,632,908	\$930.52
Misc. Durable Goods Merchant Wholesalers	237	1,797	1,795	1,822	\$20,896,621	\$890.71
MERCHANT WHOLESALERS, NONDURABLE GOODS	1,252	16,757	16,600	16,649	\$190,131,718	\$877.43
Paper & Paper Product Merchant Wholesalers	72	1,154	1,109	1,172	\$13,442,502	\$903.09
Druggists' Goods Merchant Wholesalers	59	1,163	1,161	1,190	\$14,958,042	\$982.32
Apparel & Piece Goods Merchant Wholesalers	37	450	453	448	\$4,818,166	\$823.01
Grocery Product Merchant Wholesalers	321	5,244	5,230	5,214	\$62,619,787	\$921.13
Farm Product Merchant Wholesalers	75	982	955	954	\$7,767,732	\$620.05
Chemical Merchant Wholesalers	82	560	547	547	\$6,736,022	\$939.82
Petroleum Merchant Wholesalers	154	1,611	1,630	1,635	\$23,560,170	\$1,115.05
Alcoholic Beverage Merchant Wholesalers	37	1,167	1,158	1,163	\$14,545,002	\$962.31
Misc. Nondurable Goods Merchant Wholesalers	415	4,426	4,357	4,326	\$41,684,295	\$733.81
ELECTRONIC MARKETS & AGENTS & BROKERS	2,977	9,642	9,731	9,840	\$206,327,895	\$1,629.90
RETAIL TRADE	11,202	133,728	137,450	139,033	\$754,953,007	\$424.71
MOTOR VEHICLE & PARTS DEALERS	1,739	18,392	18,390	18,403	\$161,534,953	\$675.50
Automobile Dealers	737	11,037	11,052	11,116	\$109,973,176	\$764.30
Other Motor Vehicle Dealers	202	1,653	1,670	1,653	\$14,711,784	\$682.28
Automotive Parts, Accessories & Tire Stores	800	5,702	5,668	5,634	\$36,849,993	\$500.11
FURNITURE & HOME FURNISHINGS STORES	583	4,142	4,193	4,199	\$28,700,982	\$528.43
Furniture Stores	306	2,471	2,445	2,453	\$17,708,936	\$554.58
Home Furnishings Stores	277	1,671	1,748	1,746	\$10,992,046	\$491.12
ELECTRONICS & APPLIANCE STORES	450	3,117	3,301	3,322	\$21,193,505	\$502.14
BUILDING MATERIAL & GARDEN SUPPLY STORES	862	10,926	10,833	10,774	\$68,939,211	\$489.01
Building Material & Supplies Dealers	682	10,069	9,986	9,972	\$63,508,778	\$488.09
Lawn & Garden Equipment & Supplies Stores	180	857	847	802	\$5,430,433	\$500.07
FOOD & BEVERAGE STORES	1,089	18,620	18,990	19,063	\$80,644,532	\$328.38

**TABLE 5. STATEWIDE SUMMARY
EMPLOYMENT AND TOTAL EARNINGS, BY INDUSTRY
FOURTH QUARTER 2007**

NORTH AMERICAN INDUSTRY CLASSIFICATION SYSTEM INDUSTRY GROUPS	NUMBER OF EMPLOYING UNITS	EMPLOYMENT	EMPLOYMENT	EMPLOYMENT	TOTAL EARNINGS	AVERAGE
		OCTOBER	NOVEMBER	DECEMBER	OCTOBER - DECEMBER	WEEKLY EARNINGS
Grocery Stores	613	16,245	16,485	16,578	\$67,776,931	\$317.21
Specialty Food Stores	160	875	987	958	\$6,259,973	\$512.27
Beer, Wine & Liquor Stores	316	1,500	1,518	1,527	\$6,607,628	\$335.50
HEALTH & PERSONAL CARE STORES	823	7,190	7,310	7,536	\$57,308,870	\$600.16
GASOLINE STATIONS	1,592	12,465	12,443	12,305	\$45,602,759	\$282.80
Gasoline Stations with Convenience Stores	1,434	11,110	11,099	10,958	\$39,377,470	\$273.98
Other Gasoline Stations	158	1,355	1,344	1,347	\$6,225,289	\$355.07
CLOTHING & CLOTHING ACCESSORIES STORES	1,083	9,084	9,917	10,182	\$34,315,803	\$271.36
Clothing Stores	731	6,959	7,676	7,871	\$23,034,253	\$236.19
Shoe Stores	185	1,228	1,286	1,298	\$4,581,779	\$277.37
Jewelry, Luggage & Leather Goods Stores	167	897	955	1,013	\$6,699,771	\$539.65
SPORTING GOODS, HOBBY, BOOK & MUSIC STORES	585	4,756	5,080	5,322	\$19,420,031	\$295.66
Sporting Goods & Musical Instrument Stores	435	3,370	3,632	3,767	\$15,008,439	\$321.62
Book, Periodical & Music Stores	150	1,386	1,448	1,555	\$4,411,592	\$231.96
GENERAL MERCHANDISE STORES	714	36,642	38,520	39,249	\$187,661,730	\$378.52
MISCELLANEOUS STORE RETAILERS	1,357	6,501	6,546	6,717	\$34,396,607	\$401.62
Florists	254	936	951	974	\$3,905,798	\$315.04
Office Supplies, Stationery & Gift Stores	362	2,337	2,387	2,465	\$12,465,823	\$400.16
Used Merchandise Stores	215	841	835	867	\$4,299,496	\$390.17
Other Miscellaneous Store Retailers	526	2,387	2,373	2,411	\$13,725,490	\$441.70
NONSTORE RETAILERS	325	1,893	1,927	1,961	\$15,234,024	\$608.12
Electronic Shopping & Mail -Order Houses	77	418	461	484	\$4,699,080	\$795.60
Vending Machine Operators	77	671	652	643	\$3,988,033	\$468.12
Direct Selling Establishments	171	804	814	834	\$6,546,911	\$616.16
TRANSPORTATION & WAREHOUSING	2,967	57,470	57,332	56,997	\$559,701,599	\$751.82
AIR TRANSPORTATION	50	925	919	924	\$12,628,436	\$1,052.84
TRUCK TRANSPORTATION	2,002	36,406	36,400	35,962	\$351,161,389	\$745.05
General Freight Trucking	1,271	30,793	30,809	30,405	\$297,298,788	\$745.68
Specialized Freight Trucking	731	5,613	5,591	5,557	\$53,862,601	\$741.59
TRANSIT & GROUND PASSENGER TRANSPORTATION	64	1,195	1,229	1,205	\$5,554,217	\$353.19
Taxi & Limousine Service	24	268	278	268	\$1,098,039	\$311.29
School & Employee Bus Transportation	8	498	512	506	\$2,459,158	\$374.34

**TABLE 5. STATEWIDE SUMMARY
EMPLOYMENT AND TOTAL EARNINGS, BY INDUSTRY
FOURTH QUARTER 2007**

NORTH AMERICAN INDUSTRY CLASSIFICATION SYSTEM INDUSTRY GROUPS	NUMBER OF EMPLOYING UNITS	EMPLOYMENT OCTOBER	EMPLOYMENT NOVEMBER	EMPLOYMENT DECEMBER	TOTAL EARNINGS OCTOBER - DECEMBER	AVERAGE WEEKLY EARNINGS
Charter Bus Industry	8	81	79	74	\$424,610	\$418.75
Other Ground Passenger Transportation	17	236	250	255	\$989,073	\$308.03
Other	7	112	110	102	\$583,337	\$415.48
PIPELINE TRANSPORTATION	67	893	892	891	\$13,221,662	\$1,140.19
SUPPORT ACTIVITIES FOR TRANSPORTATION	416	4,811	4,789	4,748	\$62,572,419	\$1,006.40
Support Activities for Air Transportation	103	1,580	1,543	1,556	\$15,103,516	\$744.91
Support Activities for Rail Transportation	31	355	383	361	\$3,725,531	\$782.29
Support Activities for Water Transportation	25	669	636	619	\$20,244,596	\$2,428.19
Support Activities for Road Transportation	106	517	516	518	\$3,158,196	\$469.90
Freight Transportation Arrangement	128	1,500	1,522	1,510	\$19,084,977	\$971.81
Other Support Activities for Transportation	23	190	189	184	\$1,255,603	\$514.66
COURIERS & MESSENGERS	137	3,271	3,371	3,753	\$33,559,431	\$745.02
Couriers	84	2,978	3,121	3,509	\$32,021,798	\$769.11
Local Messengers & Local Delivery	53	293	250	244	\$1,537,633	\$450.87
WAREHOUSING & STORAGE	210	9,753	9,519	9,322	\$79,110,448	\$638.46
OTHER	21	216	213	192	\$1,893,597	\$703.68
UTILITIES	364	6,878	6,899	6,855	\$113,001,121	\$1,263.92
Power Generation & Supply	161	5,152	5,164	5,109	\$90,390,207	\$1,352.30
Natural Gas Distribution	34	874	875	881	\$15,614,548	\$1,370.10
Water, Sewage and Other Systems	169	852	860	865	\$6,996,366	\$626.52
INFORMATION	1,200	19,939	20,029	20,130	\$806,420,529	\$3,096.56
PUBLISHING INDUSTRIES, EXCEPT INTERNET	253	6,294	6,324	6,344	\$53,836,080	\$655.19
Newspaper, Book & Directory Publishers	227	6,002	6,033	6,050	\$49,232,893	\$628.22
Software Publishers	26	292	291	294	\$4,603,187	\$1,211.26
MOTION PICTURE & SOUND RECORDING INDUSTRY	138	1,160	1,207	1,233	\$5,301,452	\$339.84
Motion Picture & Video Industries	120	1,116	1,164	1,187	\$4,940,776	\$328.87
Sound Recording Industries	18	44	43	46	\$360,676	\$625.81
BROADCASTING, EXCEPT INTERNET	146	2,276	2,255	2,265	\$20,252,975	\$687.72
Radio & Television Broadcasting	139	2,238	2,216	2,227	\$20,000,773	\$690.85
Cable & Other Subscription Programming	7	38	39	38	\$252,202	\$506.09
TELECOMMUNICATIONS	519	8,979	9,006	9,047	\$710,400,204	\$6,064.61
Wired Telecommunications Carriers	311	4,614	4,634	4,631	\$382,498,083	\$6,359.88

**TABLE 5. STATEWIDE SUMMARY
EMPLOYMENT AND TOTAL EARNINGS, BY INDUSTRY
FOURTH QUARTER 2007**

NORTH AMERICAN INDUSTRY CLASSIFICATION SYSTEM INDUSTRY GROUPS	NUMBER OF EMPLOYING UNITS	EMPLOYMENT	EMPLOYMENT	EMPLOYMENT	TOTAL EARNINGS OCTOBER - DECEMBER	AVERAGE WEEKLY EARNINGS
		OCTOBER	NOVEMBER	DECEMBER		
Wireless Telecommunications Carriers	113	3,809	3,822	3,858	\$321,761,384	\$6,462.93
Other	95	556	550	558	\$6,140,737	\$851.62
DATA PROCESSING, HOSTING & RELATED SERVICES	93	946	945	943	\$14,002,685	\$1,140.22
OTHER	51	284	292	298	\$2,627,133	\$693.66
FINANCIAL ACTIVITIES	8,386	52,061	52,044	52,329	\$554,629,037	\$818.18
FINANCE & INSURANCE	4,890	37,659	37,720	37,845	\$442,890,136	\$902.68
CREDIT INTERMEDIATION & RELATED ACTIVITIES	2,080	22,310	22,422	22,464	\$218,743,762	\$751.23
Depository Credit Intermediation	1,383	18,611	18,744	18,747	\$177,126,059	\$728.59
Nondepository Credit Intermediation	395	2,627	2,596	2,640	\$32,337,808	\$949.07
Activities Related to Credit Intermediation	302	1,072	1,082	1,077	\$9,279,895	\$662.80
FINANCIAL INVESTMENT & RELATED ACTIVITIES	591	3,162	3,148	3,152	\$70,735,607	\$1,725.17
INSURANCE CARRIERS & RELATED ACTIVITIES	2,180	11,742	11,706	11,784	\$148,671,215	\$973.79
Insurance Carriers	425	4,875	4,862	4,904	\$70,628,310	\$1,113.23
Insurance Agencies, Brokerages & Support	1,755	6,867	6,844	6,880	\$78,042,905	\$874.65
OTHER	39	445	444	445	\$4,739,552	\$819.90
REAL ESTATE & RENTAL & LEASING	3,496	14,402	14,324	14,484	\$111,738,901	\$596.76
REAL ESTATE	2,647	8,941	8,886	9,072	\$71,437,329	\$612.87
Lessors of Real Estate	1,052	4,221	4,280	4,355	\$31,419,872	\$564.00
Offices of Real Estate Agents & Brokers	974	2,152	2,140	2,234	\$20,453,492	\$723.27
Activities Related to Real Estate	621	2,568	2,466	2,483	\$19,563,965	\$600.61
RENTAL & LEASING SERVICES	828	5,389	5,366	5,340	\$38,623,717	\$553.78
Automotive Equipment Rental & Leasing	125	1,011	1,016	1,020	\$6,951,026	\$526.45
Consumer Goods Rental	502	3,141	3,110	3,087	\$17,487,710	\$432.17
General Rental Centers	34	269	268	263	\$2,199,953	\$634.60
Machinery & Equipment Rental & Leasing	167	968	972	970	\$11,985,028	\$950.44
LESSORS OF NONFINANCIAL INTANGIBLE ASSETS	21	72	72	72	\$1,677,855	\$1,792.58
PROFESSIONAL AND BUSINESS SERVICES	11,411	118,180	117,329	117,213	\$1,280,856,134	\$838.00
PROFESSIONAL & TECHNICAL SERVICES	7,166	38,274	38,410	39,155	\$535,507,196	\$1,066.81
Legal Services	1,672	6,630	6,640	6,659	\$105,363,058	\$1,220.06
Accounting & Bookkeeping Services	1,241	4,952	5,012	5,628	\$56,794,391	\$840.58
Architectural & Engineering Services	975	6,921	6,937	6,918	\$105,481,333	\$1,171.63
Specialized Design Services	173	512	545	575	\$5,554,242	\$785.38

**TABLE 5. STATEWIDE SUMMARY
EMPLOYMENT AND TOTAL EARNINGS, BY INDUSTRY
FOURTH QUARTER 2007**

NORTH AMERICAN INDUSTRY CLASSIFICATION SYSTEM INDUSTRY GROUPS	NUMBER OF EMPLOYING UNITS	EMPLOYMENT	EMPLOYMENT	EMPLOYMENT	TOTAL EARNINGS	AVERAGE
		OCTOBER	NOVEMBER	DECEMBER	OCTOBER - DECEMBER	WEEKLY EARNINGS
Computer Systems Design & Related Services	916	7,865	7,850	7,857	\$134,125,603	\$1,313.09
Management & Technical Consulting Services	1,176	4,498	4,450	4,494	\$62,145,907	\$1,066.91
Scientific Research & Development Services	96	1,082	1,066	1,078	\$14,571,632	\$1,042.37
Advertising & Related Services	323	2,006	1,994	2,035	\$26,177,527	\$1,000.99
Other Professional & Technical Services	594	3,808	3,916	3,911	\$25,293,503	\$501.67
MANAGEMENT OF COMPANIES & ENTERPRISES	539	24,829	24,952	24,981	\$444,778,250	\$1,372.91
ADMINISTRATIVE & WASTE SERVICES	3,706	55,077	53,967	53,077	\$300,570,688	\$427.84
ADMINISTRATIVE & SUPPORT SERVICES	3,496	52,714	51,628	50,752	\$277,355,212	\$412.69
Office Administrative Services	364	1,213	1,242	1,285	\$19,959,058	\$1,231.53
Facilities Support Services	17	131	112	113	\$1,034,259	\$670.44
Employment Services	679	26,142	25,329	24,544	\$118,483,926	\$359.70
Business Support Services	395	6,484	6,310	6,284	\$34,293,903	\$414.82
Travel Arrangement & Reservation Services	102	429	415	407	\$3,077,385	\$567.68
Investigation & Security Services	254	4,702	4,706	4,714	\$28,902,445	\$472.30
Services to Buildings & Dwellings	1,370	12,019	11,969	11,835	\$58,362,318	\$375.97
Other Support Services	315	1,594	1,545	1,570	\$13,241,918	\$648.93
WASTE MANAGEMENT & REMEDIATION SERVICES	210	2,363	2,339	2,325	\$23,215,476	\$762.40
Waste Collection	98	1,203	1,210	1,197	\$11,487,742	\$734.35
Waste Treatment & Disposal	41	632	636	636	\$7,510,899	\$910.34
Remediation & Other Waste Services	71	528	493	492	\$4,216,835	\$643.17
EDUCATION AND HEALTH SERVICES	12,057	151,881	152,236	152,440	\$1,383,116,844	\$699.10
EDUCATIONAL SERVICES	598	10,007	10,025	9,849	\$70,425,019	\$543.89
Elementary & Secondary Schools	76	3,355	3,398	3,395	\$19,414,774	\$441.50
Junior Colleges	7	263	269	266	\$1,980,554	\$572.75
Colleges & Universities	28	3,556	3,558	3,359	\$27,321,131	\$602.01
Business, Computer & Management Training	44	186	182	190	\$3,685,226	\$1,524.08
Technical & Trade Schools	103	786	773	773	\$8,580,722	\$849.13
Other Schools & Instruction	238	1,499	1,505	1,524	\$6,112,212	\$311.51
Educational Support Services	102	362	340	342	\$3,330,400	\$736.16
HEALTH CARE & SOCIAL ASSISTANCE	11,459	141,874	142,211	142,591	\$1,312,691,825	\$709.97
AMBULATORY HEALTH CARE SERVICES	4,979	44,204	44,176	44,630	\$636,671,486	\$1,104.61
Offices of Physicians	2,209	21,102	21,093	21,373	\$415,181,998	\$1,507.22

**TABLE 5. STATEWIDE SUMMARY
EMPLOYMENT AND TOTAL EARNINGS, BY INDUSTRY
FOURTH QUARTER 2007**

NORTH AMERICAN INDUSTRY CLASSIFICATION SYSTEM INDUSTRY GROUPS	NUMBER OF EMPLOYING UNITS	EMPLOYMENT	EMPLOYMENT	EMPLOYMENT	TOTAL EARNINGS	AVERAGE
		OCTOBER	NOVEMBER	DECEMBER	OCTOBER - DECEMBER	WEEKLY EARNINGS
Offices of Dentists	934	6,177	6,161	6,197	\$73,445,576	\$914.43
Offices of Other Health Practitioners	1,172	5,967	5,994	6,110	\$52,614,316	\$671.89
Outpatient Care Centers	240	3,679	3,672	3,713	\$35,843,163	\$747.60
Medical & Diagnostic Laboratories	105	855	862	863	\$12,131,375	\$1,085.10
Home Health Care Services	178	4,163	4,128	4,076	\$30,154,392	\$562.68
Other Ambulatory Health Care Services	141	2,261	2,266	2,298	\$17,300,666	\$584.98
HOSPITALS	110	41,770	41,764	41,733	\$407,745,281	\$751.16
General Medical & Surgical Hospitals	78	38,263	38,228	38,211	\$373,098,155	\$750.64
Psychiatric & Substance Abuse Hospitals	11	1,616	1,623	1,633	\$14,377,975	\$681.03
Other Hospitals	21	1,891	1,913	1,889	\$20,269,151	\$821.62
NURSING & RESIDENTIAL CARE FACILITIES	521	27,902	28,131	28,192	\$146,354,135	\$401.00
Nursing Care Facilities	253	20,681	20,840	20,875	\$108,018,652	\$399.50
Residential Mental Health Facilities	129	3,327	3,333	3,357	\$17,624,497	\$406.03
Community Care Facilities for the Elderly	94	2,398	2,439	2,457	\$11,508,162	\$364.10
Other Residential Care Facilities	45	1,496	1,519	1,503	\$9,202,824	\$470.06
SOCIAL ASSISTANCE	5,849	27,998	28,140	28,036	\$121,920,923	\$334.26
Individual & Family Services	4,667	14,204	14,282	14,282	\$65,573,916	\$353.83
Emergency & Other Relief Services	124	916	911	923	\$4,978,799	\$417.80
Vocational Rehabilitation Services	128	3,772	3,824	3,829	\$18,067,942	\$364.95
Child Day Care Services	930	9,106	9,123	9,002	\$33,300,266	\$282.20
LEISURE AND HOSPITALITY	6,186	100,325	99,431	98,737	\$314,036,881	\$242.79
ARTS, ENTERTAINMENT & RECREATION	918	9,493	8,683	8,636	\$40,882,096	\$351.87
PERFORMING ARTS & SPECTATOR SPORTS	218	2,353	2,047	2,192	\$13,674,558	\$478.71
Performing Arts Companies	33	611	402	362	\$1,756,184	\$294.74
Spectator Sports	59	867	886	1,030	\$5,387,951	\$446.77
Performing Arts & Sports Promoters	51	734	618	653	\$4,536,717	\$522.16
Agents & Managers for Public Figures	18	18	19	20	\$206,496	\$836.02
Independent Artists, Writers & Performers	57	123	122	127	\$1,787,210	\$1,108.69
MUSEUMS, PARKS & HISTORICAL SITES	47	241	226	215	\$1,194,401	\$404.15
GAMBLING, RECREATION & AMUSEMENT INDUSTRY	653	6,899	6,410	6,229	\$26,013,137	\$307.25
ACCOMMODATION & FOOD SERVICES	5,268	90,832	90,748	90,101	\$273,154,785	\$232.02
ACCOMMODATION	829	11,475	11,410	11,198	\$43,595,932	\$295.18

**TABLE 5. STATEWIDE SUMMARY
EMPLOYMENT AND TOTAL EARNINGS, BY INDUSTRY
FOURTH QUARTER 2007**

NORTH AMERICAN INDUSTRY CLASSIFICATION SYSTEM INDUSTRY GROUPS	NUMBER OF EMPLOYING UNITS	EMPLOYMENT	EMPLOYMENT	EMPLOYMENT	TOTAL EARNINGS	AVERAGE
		OCTOBER	NOVEMBER	DECEMBER	OCTOBER - DECEMBER	WEEKLY EARNINGS
Traveler Accommodation	754	11,119	11,062	10,853	\$42,008,280	\$293.46
RV Parks & Recreational Camps	56	276	270	265	\$1,238,228	\$352.34
Rooming & Boarding Houses	19	80	78	80	\$349,424	\$338.81
FOOD SERVICES & DRINKING PLACES	4,439	79,357	79,338	78,903	\$229,558,853	\$222.96
Full -Service Restaurants	1,958	35,181	35,015	35,166	\$109,057,043	\$238.86
Limited-Service Eating Places	2,187	40,808	41,018	40,448	\$108,620,997	\$205.00
Special Food Services	149	2,412	2,364	2,359	\$9,015,669	\$291.60
Drinking Places, Alcoholic Beverages	145	956	941	930	\$2,865,144	\$233.88
OTHER SERVICES	5,418	25,054	25,018	25,051	\$161,880,165	\$497.28
REPAIR & MAINTENANCE	2,205	9,589	9,516	9,498	\$72,320,086	\$583.48
Automotive Repair & Maintenance	1,511	6,662	6,664	6,648	\$46,181,983	\$533.56
Electronic Equipment Repair & Maintenance	160	720	679	678	\$7,151,998	\$794.64
Commercial Machinery Repair & Maintenance	345	1,589	1,558	1,553	\$14,804,612	\$726.90
Household Goods Repair & Maintenance	189	618	615	619	\$4,181,493	\$521.04
PERSONAL & LAUNDRY SERVICES	1,317	7,991	8,013	8,046	\$42,127,044	\$404.23
Personal Care Services	569	2,523	2,522	2,513	\$10,364,784	\$316.47
Death Care Services	241	1,643	1,641	1,665	\$12,221,154	\$569.87
Drycleaning & Laundry Services	327	3,176	3,196	3,182	\$16,109,843	\$389.12
Other Personal Services	180	649	654	686	\$3,431,263	\$398.10
MEMBERSHIP ASSOCIATIONS & ORGANIZATIONS	1,004	6,209	6,240	6,262	\$41,965,422	\$517.57
Religious Organizations	43	238	241	246	\$1,569,085	\$499.44
Grantmaking & Giving Services	101	470	488	503	\$4,679,727	\$739.18
Social Advocacy Organizations	144	1,947	1,979	1,994	\$12,279,962	\$478.69
Civic & Social Organizations	210	1,464	1,453	1,431	\$5,308,417	\$281.74
Professional & Similar Organizations	506	2,090	2,079	2,088	\$18,128,231	\$668.60
PRIVATE HOUSEHOLDS	892	1,265	1,249	1,245	\$5,467,613	\$335.66
LOCAL GOVERNMENT	1,992	119,825	120,443	120,599	\$914,089,239	\$584.55
STATE GOVERNMENT	1,202	65,473	65,798	65,643	\$603,620,385	\$707.40
NONCLASSIFIABLE ESTABLISHMENTS	0	0	0	0	\$0	

**TABLE 6. COUNTY SUMMARY
EMPLOYMENT AND TOTAL EARNINGS, BY INDUSTRY
FOURTH QUARTER 2007**

NORTH AMERICAN INDUSTRY CLASSIFICATION SYSTEM INDUSTRY GROUP	NUMBER OF EMPLOYING UNITS	EMPLOYMENT OCTOBER	EMPLOYMENT NOVEMBER	EMPLOYMENT DECEMBER	TOTAL EARNINGS OCTOBER-DECEMBER	AVERAGE WEEKLY EARNINGS
ARKANSAS COUNTY - TOTAL	730	10,247	10,170	10,252	\$80,245,467	\$603.81
Natural Resources & Mining	43	249	229	203	\$1,944,781	\$659.02
Construction	47	318	312	309	\$3,137,666	\$771.11
Manufacturing	33	3,671	3,623	3,638	\$30,393,980	\$641.60
Trade, Transportation & Utilities	203	2,106	2,128	2,162	\$17,627,261	\$636.00
Wholesale Trade	44	432	421	417	\$5,371,817	\$976.10
Retail Trade	99	1,079	1,138	1,171	\$6,023,636	\$410.29
Transportation, Warehousing & Utilities	60	595	569	574	\$6,231,808	\$827.45
Information	11	103	109	110	\$857,756	\$614.73
Financial Activities	52	347	343	344	\$4,057,052	\$905.46
Professional & Business Services	60	394	374	386	\$5,120,624	\$1,023.99
Education & Health Services	114	1,247	1,226	1,243	\$7,342,085	\$455.95
Leisure & Hospitality	63	515	537	546	\$1,352,099	\$195.26
Other Services	56	140	139	142	\$826,449	\$453.01
Local Government	32	931	922	940	\$6,128,407	\$506.35
State Government	16	226	228	229	\$1,457,307	\$492.39
ASHLEY COUNTY - TOTAL	552	8,019	7,766	7,677	\$69,077,045	\$679.43
Natural Resources & Mining	59	520	494	412	\$3,681,811	\$595.83
Construction	50	536	502	510	\$4,049,733	\$603.72
Manufacturing	30	2,706	2,444	2,436	\$32,930,269	\$1,001.75
Trade, Transportation & Utilities	129	1,194	1,248	1,250	\$8,034,993	\$502.23
Wholesale Trade	22	173	184	180	\$1,888,339	\$811.49
Retail Trade	82	780	822	850	\$3,918,985	\$368.83
Transportation, Warehousing & Utilities	25	241	242	220	\$2,227,669	\$731.26
Information	9	53	52	50	\$361,209	\$537.78
Financial Activities	33	213	217	218	\$1,840,402	\$655.41
Professional & Business Services	52	361	350	361	\$2,503,156	\$538.85
Education & Health Services	76	642	634	619	\$5,004,227	\$609.40
Leisure & Hospitality	27	409	406	408	\$1,064,708	\$200.90
Other Services	43	192	209	196	\$1,109,073	\$428.71
Local Government	32	959	969	982	\$7,231,760	\$573.49
State Government	12	234	241	235	\$1,265,704	\$411.39

**TABLE 6. COUNTY SUMMARY
EMPLOYMENT AND TOTAL EARNINGS, BY INDUSTRY
FOURTH QUARTER 2007**

NORTH AMERICAN INDUSTRY CLASSIFICATION SYSTEM INDUSTRY GROUP	NUMBER OF EMPLOYING UNITS	EMPLOYMENT OCTOBER	EMPLOYMENT NOVEMBER	EMPLOYMENT DECEMBER	TOTAL EARNINGS OCTOBER-DECEMBER	AVERAGE WEEKLY EARNINGS
BAXTER COUNTY - TOTAL	1,319	15,019	15,008	15,010	\$114,930,193	\$588.90
Natural Resources & Mining	5	123	123	112	\$938,892	\$605.22
Construction	141	771	794	761	\$5,916,731	\$587.02
Manufacturing	61	2,531	2,513	2,570	\$22,350,828	\$677.42
Trade, Transportation & Utilities	292	2,718	2,717	2,704	\$16,280,185	\$461.60
Wholesale Trade	38	237	239	241	\$1,659,024	\$533.96
Retail Trade	222	2,266	2,255	2,234	\$12,872,525	\$439.76
Transportation, Warehousing & Utilities	32	215	223	229	\$1,748,636	\$604.99
Information	24	256	257	256	\$2,124,977	\$637.68
Financial Activities	128	731	745	770	\$7,987,991	\$820.74
Professional & Business Services	138	868	865	850	\$7,263,256	\$648.91
Education & Health Services	253	3,479	3,476	3,487	\$34,420,389	\$760.69
Leisure & Hospitality	121	1,489	1,443	1,449	\$4,403,794	\$231.97
Other Services	105	384	387	395	\$1,811,321	\$358.49
Local Government	38	1,327	1,349	1,313	\$9,255,365	\$535.44
State Government	13	342	339	343	\$2,176,464	\$490.49
BENTON COUNTY - TOTAL	5,562	95,468	95,859	95,894	\$983,430,380	\$790.14
Natural Resources & Mining	31	735	742	741	\$9,706,544	\$1,009.91
Construction	779	4,687	4,635	4,573	\$45,014,178	\$747.60
Manufacturing	255	13,554	13,596	13,599	\$123,775,072	\$700.96
Trade, Transportation & Utilities	1,490	23,442	23,729	23,432	\$230,382,521	\$753.02
Wholesale Trade	687	3,750	3,788	3,830	\$72,197,642	\$1,465.60
Retail Trade	622	8,782	9,080	9,192	\$54,649,687	\$466.16
Transportation, Warehousing & Utilities	181	10,910	10,861	10,410	\$103,535,192	\$742.45
Information	73	962	964	954	\$9,294,967	\$744.79
Financial Activities	594	3,940	3,962	3,992	\$43,520,642	\$844.39
Professional & Business Services	993	22,823	22,775	22,977	\$347,553,651	\$1,169.59
Education & Health Services	498	7,225	7,268	7,318	\$63,321,714	\$669.97
Leisure & Hospitality	425	8,280	8,384	8,380	\$27,919,336	\$257.26
Other Services	329	1,711	1,655	1,639	\$11,271,112	\$519.69
Local Government	76	7,293	7,327	7,465	\$64,287,299	\$671.75
State Government	19	816	822	824	\$7,383,344	\$692.06

**TABLE 6. COUNTY SUMMARY
EMPLOYMENT AND TOTAL EARNINGS, BY INDUSTRY
FOURTH QUARTER 2007**

NORTH AMERICAN INDUSTRY CLASSIFICATION SYSTEM INDUSTRY GROUP	NUMBER OF EMPLOYING UNITS	EMPLOYMENT OCTOBER	EMPLOYMENT NOVEMBER	EMPLOYMENT DECEMBER	TOTAL EARNINGS OCTOBER-DECEMBER	AVERAGE WEEKLY EARNINGS
BOONE COUNTY - TOTAL	1,086	13,946	13,948	14,057	\$109,733,334	\$603.63
Construction	96	504	492	477	\$3,884,283	\$608.54
Manufacturing	75	1,876	1,888	1,944	\$18,237,226	\$737.31
Trade, Transportation & Utilities	258	4,547	4,522	4,612	\$38,691,640	\$652.65
Wholesale Trade	57	665	670	686	\$5,335,795	\$609.27
Retail Trade	148	1,978	1,949	1,992	\$11,093,050	\$432.49
Transportation, Warehousing & Utilities	53	1,904	1,903	1,934	\$22,262,795	\$894.89
Information	20	415	424	427	\$4,058,292	\$739.75
Financial Activities	101	653	660	669	\$5,585,842	\$650.37
Professional & Business Services	115	498	490	467	\$3,479,307	\$551.83
Education & Health Services	193	1,171	1,174	1,189	\$9,270,069	\$605.33
Leisure & Hospitality	81	1,132	1,133	1,100	\$3,274,642	\$224.57
Local Government	62	2,292	2,311	2,309	\$16,179,612	\$540.18
State Government	21	582	583	586	\$5,248,913	\$691.77
Other	64	276	271	277	\$1,823,508	\$510.69
BRADLEY COUNTY - TOTAL	395	4,196	4,141	4,128	\$27,835,016	\$515.32
Natural Resources & Mining	48	377	372	354	\$2,166,326	\$453.24
Construction	22	226	214	207	\$1,524,751	\$543.84
Manufacturing	9	1,063	1,039	1,053	\$8,561,940	\$626.25
Trade, Transportation & Utilities	85	496	503	501	\$2,717,638	\$418.10
Wholesale Trade	16	72	72	74	\$597,465	\$632.46
Retail Trade	44	348	354	350	\$1,597,110	\$350.35
Transportation, Warehousing & Utilities	25	76	77	77	\$523,063	\$524.81
Information	4	15	14	14	\$81,749	\$438.72
Financial Activities	25	172	170	168	\$1,311,979	\$593.66
Professional & Business Services	27	79	77	76	\$389,892	\$387.82
Education & Health Services	99	606	610	605	\$4,325,610	\$548.17
Leisure & Hospitality	17	190	185	183	\$442,467	\$182.99
Other Services	33	121	116	117	\$1,036,792	\$675.87
Local & State Government	26	851	841	850	\$5,275,872	\$478.96

**TABLE 6. COUNTY SUMMARY
EMPLOYMENT AND TOTAL EARNINGS, BY INDUSTRY
FOURTH QUARTER 2007**

NORTH AMERICAN INDUSTRY CLASSIFICATION SYSTEM INDUSTRY GROUP	NUMBER OF EMPLOYING UNITS	EMPLOYMENT OCTOBER	EMPLOYMENT NOVEMBER	EMPLOYMENT DECEMBER	TOTAL EARNINGS OCTOBER-DECEMBER	AVERAGE WEEKLY EARNINGS
CALHOUN COUNTY - TOTAL	114	3,005	3,046	3,079	\$31,156,991	\$787.52
Natural Resources & Mining	17	197	201	199	\$1,489,887	\$575.91
Construction	11	50	53	61	\$386,475	\$543.82
Manufacturing	11	2,005	2,036	2,034	\$23,036,783	\$875.09
Trade, Transportation & Utilities	28	229	236	257	\$1,679,125	\$536.69
Wholesale Trade & Retail Trade	20	72	73	91	\$308,262	\$301.43
Transportation, Warehousing & Utilities	8	157	163	166	\$1,370,863	\$650.93
Financial Activities	6	77	79	81	\$539,902	\$525.71
Education & Health Services	7	47	47	46	\$370,303	\$610.39
Local & State Government	20	275	279	285	\$1,688,706	\$464.48
Other	14	125	115	116	\$1,965,810	\$1,274.29
CARROLL COUNTY - TOTAL	846	10,309	10,034	9,858	\$62,868,516	\$480.39
Natural Resources & Mining	17	268	270	273	\$2,054,914	\$584.72
Trade, Transportation & Utilities	206	1,707	1,699	1,686	\$11,009,948	\$498.97
Wholesale Trade	29	151	150	151	\$916,630	\$467.99
Retail Trade	159	1,289	1,288	1,285	\$7,349,257	\$439.15
Transportation, Warehousing & Utilities	18	267	261	250	\$2,744,061	\$813.94
Professional & Business Services	72	241	240	242	\$1,610,293	\$513.98
Education & Health Services	83	831	828	833	\$6,079,804	\$563.01
Leisure & Hospitality	175	1,844	1,546	1,356	\$4,804,348	\$233.61
Local Government	25	1,137	1,143	1,135	\$7,574,574	\$511.85
State Government	11	103	103	107	\$728,136	\$536.84
Other	257	4,178	4,205	4,226	\$29,006,499	\$530.88

**TABLE 6. COUNTY SUMMARY
EMPLOYMENT AND TOTAL EARNINGS, BY INDUSTRY
FOURTH QUARTER 2007**

NORTH AMERICAN INDUSTRY CLASSIFICATION SYSTEM INDUSTRY GROUP	NUMBER OF EMPLOYING UNITS	EMPLOYMENT OCTOBER	EMPLOYMENT NOVEMBER	EMPLOYMENT DECEMBER	TOTAL EARNINGS OCTOBER-DECEMBER	AVERAGE WEEKLY EARNINGS
CHICOT COUNTY - TOTAL	371	3,638	3,560	3,546	\$22,731,220	\$488.24
Natural Resources & Mining	48	341	315	278	\$2,027,528	\$500.95
Construction	15	122	116	117	\$1,199,707	\$779.87
Manufacturing	10	479	484	479	\$2,368,093	\$378.98
Trade, Transportation & Utilities	69	588	591	591	\$3,800,484	\$495.50
Wholesale Trade	14	107	106	104	\$1,304,237	\$949.46
Retail Trade	46	415	420	416	\$1,842,646	\$339.91
Transportation, Warehousing & Utilities	9	66	65	71	\$653,601	\$746.69
Information	6	10	9	9	\$43,179	\$355.87
Financial Activities	28	165	163	164	\$1,374,264	\$644.59
Professional & Business Services	28	85	82	79	\$680,282	\$638.16
Education & Health Services	103	561	552	557	\$3,386,903	\$468.02
Leisure & Hospitality	18	167	155	150	\$375,943	\$183.81
Other Services	18	49	48	42	\$257,735	\$427.89
Local Government	17	738	713	745	\$5,211,835	\$547.69
State Government	11	333	332	335	\$2,005,267	\$462.75
CLARK COUNTY - TOTAL	615	10,082	10,032	10,123	\$68,607,677	\$523.61
Natural Resources & Mining	38	258	255	251	\$1,926,498	\$581.91
Construction	29	91	91	93	\$588,102	\$493.51
Manufacturing	37	2,413	2,325	2,373	\$18,188,735	\$590.27
Trade, Transportation & Utilities	146	1,591	1,620	1,655	\$10,138,727	\$480.83
Wholesale Trade	19	61	61	60	\$632,519	\$802.01
Retail Trade	105	1,243	1,274	1,312	\$6,872,275	\$414.18
Transportation, Warehousing & Utilities	22	287	285	283	\$2,633,933	\$710.91
Information	9	49	50	50	\$358,066	\$554.57
Financial Activities	88	389	390	383	\$2,856,997	\$567.39
Professional & Business Services	46	396	408	414	\$4,782,834	\$906.18
Education & Health Services	82	1,442	1,433	1,456	\$10,495,023	\$559.21
Leisure & Hospitality	57	1,026	1,015	994	\$2,913,887	\$221.56
Other Services	42	206	211	210	\$1,162,876	\$428.00
Local Government	26	1,027	1,037	1,042	\$6,737,710	\$500.60
State Government	15	1,194	1,197	1,202	\$8,458,222	\$543.25

**TABLE 6. COUNTY SUMMARY
EMPLOYMENT AND TOTAL EARNINGS, BY INDUSTRY
FOURTH QUARTER 2007**

NORTH AMERICAN INDUSTRY CLASSIFICATION SYSTEM INDUSTRY GROUP	NUMBER OF EMPLOYING UNITS	EMPLOYMENT OCTOBER	EMPLOYMENT NOVEMBER	EMPLOYMENT DECEMBER	TOTAL EARNINGS OCTOBER-DECEMBER	AVERAGE WEEKLY EARNINGS
CLAY COUNTY - TOTAL	419	4,142	4,041	4,028	\$25,252,882	\$477.24
Natural Resources & Mining	60	270	211	202	\$1,171,807	\$395.93
Construction	33	169	165	145	\$947,635	\$456.54
Manufacturing	17	708	667	692	\$4,532,156	\$505.99
Trade, Transportation & Utilities	98	905	905	911	\$6,215,874	\$527.17
Wholesale Trade	23	311	324	330	\$2,442,549	\$584.11
Retail Trade	50	414	415	418	\$2,091,270	\$387.01
Transportation, Warehousing & Utilities	25	180	166	163	\$1,682,055	\$762.61
Information	4	74	74	72	\$407,423	\$427.37
Financial Activities	35	148	148	149	\$1,114,124	\$577.77
Professional & Business Services	28	53	51	54	\$401,416	\$586.29
Education & Health Services	61	533	526	518	\$3,029,892	\$443.38
Leisure & Hospitality	23	209	210	212	\$484,248	\$177.10
Other Services	26	69	68	66	\$448,265	\$509.59
Local Government	22	928	936	930	\$5,986,024	\$494.41
State Government	12	76	80	77	\$514,018	\$509.10
CLEBURNE COUNTY - TOTAL	710	6,941	6,960	6,942	\$45,344,327	\$502.04
Natural Resources & Mining	17	132	121	122	\$1,206,708	\$742.59
Construction	86	530	562	547	\$3,978,466	\$560.16
Manufacturing	41	1,322	1,311	1,323	\$10,831,300	\$631.83
Trade, Transportation & Utilities	185	1,551	1,553	1,530	\$9,887,280	\$492.38
Wholesale Trade	43	207	203	207	\$1,805,706	\$675.37
Retail Trade	110	1,002	1,008	1,011	\$5,162,546	\$394.36
Transportation, Warehousing & Utilities	32	342	342	312	\$2,919,028	\$676.33
Information	7	55	55	54	\$361,538	\$508.73
Financial Activities	78	269	276	278	\$2,288,556	\$641.71
Professional & Business Services	57	239	233	244	\$1,640,212	\$528.65
Education & Health Services	85	811	812	804	\$5,949,861	\$565.74
Leisure & Hospitality	72	924	925	919	\$2,578,391	\$214.96
Other Services	53	152	154	157	\$829,556	\$413.47
Local Government	19	828	837	843	\$5,007,814	\$460.79
State Government	10	128	121	121	\$784,645	\$489.38

**TABLE 6. COUNTY SUMMARY
EMPLOYMENT AND TOTAL EARNINGS, BY INDUSTRY
FOURTH QUARTER 2007**

NORTH AMERICAN INDUSTRY CLASSIFICATION SYSTEM INDUSTRY GROUP	NUMBER OF EMPLOYING UNITS	EMPLOYMENT OCTOBER	EMPLOYMENT NOVEMBER	EMPLOYMENT DECEMBER	TOTAL EARNINGS OCTOBER-DECEMBER	AVERAGE WEEKLY EARNINGS
CLEVELAND COUNTY - TOTAL	114	1,094	1,104	1,108	\$7,325,902	\$511.37
Natural Resources & Mining	16	153	156	162	\$1,178,842	\$577.58
Construction	7	33	34	34	\$146,658	\$335.09
Manufacturing	6	90	94	93	\$598,482	\$498.60
Trade, Transportation & Utilities	27	159	167	168	\$926,473	\$432.80
Retail Trade	14	64	69	68	\$192,916	\$221.49
Other Trade, Transportation & Utilities	13	95	98	100	\$733,557	\$577.76
Local Government	11	336	341	349	\$2,076,123	\$466.96
State Government	8	64	64	62	\$389,286	\$472.82
Other	39	259	248	240	\$2,010,038	\$620.96
COLUMBIA COUNTY - TOTAL	717	9,353	9,531	9,583	\$81,601,489	\$661.51
Natural Resources & Mining	49	566	573	587	\$9,914,472	\$1,325.58
Construction	50	347	342	341	\$3,636,182	\$814.68
Manufacturing	43	2,504	2,636	2,645	\$28,177,840	\$835.27
Trade, Transportation & Utilities	172	1,539	1,551	1,578	\$9,665,873	\$477.85
Wholesale Trade	28	245	238	242	\$2,083,717	\$663.25
Retail Trade	111	1,038	1,052	1,073	\$5,059,407	\$369.13
Transportation, Warehousing & Utilities	33	256	261	263	\$2,522,749	\$746.38
Information	9	72	75	77	\$469,509	\$483.70
Financial Activities	73	545	547	542	\$6,210,834	\$877.15
Professional & Business Services	59	343	329	328	\$2,227,528	\$514.04
Education & Health Services	123	908	918	922	\$5,349,952	\$449.27
Leisure & Hospitality	50	628	631	634	\$2,028,978	\$247.35
Other Services	48	207	213	225	\$898,196	\$321.36
Local Government	27	1,142	1,153	1,151	\$8,134,176	\$544.72
State Government	14	552	563	553	\$4,887,949	\$676.25

**TABLE 6. COUNTY SUMMARY
EMPLOYMENT AND TOTAL EARNINGS, BY INDUSTRY
FOURTH QUARTER 2007**

NORTH AMERICAN INDUSTRY CLASSIFICATION SYSTEM INDUSTRY GROUP	NUMBER OF EMPLOYING UNITS	EMPLOYMENT OCTOBER	EMPLOYMENT NOVEMBER	EMPLOYMENT DECEMBER	TOTAL EARNINGS OCTOBER-DECEMBER	AVERAGE WEEKLY EARNINGS
CONWAY COUNTY - TOTAL	584	6,810	6,847	6,890	\$51,082,274	\$573.72
Natural Resources & Mining	22	200	200	212	\$2,130,874	\$803.50
Construction	60	519	500	532	\$6,170,413	\$918.08
Manufacturing	29	1,103	1,118	1,123	\$12,114,761	\$836.04
Trade, Transportation & Utilities	139	1,466	1,494	1,513	\$10,730,655	\$553.61
Wholesale Trade	24	223	220	217	\$2,295,341	\$802.57
Retail Trade	84	869	902	916	\$4,999,196	\$429.35
Transportation, Warehousing & Utilities	31	374	372	380	\$3,436,118	\$704.22
Information	6	14	14	14	\$156,633	\$860.62
Financial Activities	34	194	192	192	\$1,364,934	\$544.96
Professional & Business Services	44	471	440	430	\$2,017,624	\$347.21
Education & Health Services	143	911	912	904	\$5,807,377	\$491.44
Leisure & Hospitality	41	489	515	506	\$1,259,018	\$192.41
Other Services	27	86	95	98	\$715,600	\$591.89
Local Government	28	931	938	941	\$6,206,989	\$509.74
State Government	11	426	429	425	\$2,407,396	\$434.03
CRAIGHEAD COUNTY - TOTAL	2,692	42,038	42,087	42,187	\$340,351,672	\$621.81
Natural Resources & Mining	58	390	385	319	\$2,872,304	\$605.89
Construction	243	1,710	1,701	1,639	\$15,846,781	\$724.15
Manufacturing	138	6,715	6,727	6,777	\$62,964,870	\$718.65
Trade, Transportation & Utilities	740	8,580	8,860	9,063	\$61,058,706	\$531.66
Wholesale Trade	189	1,616	1,617	1,644	\$19,052,547	\$901.53
Retail Trade	434	5,773	6,050	6,213	\$30,653,417	\$392.21
Transportation, Warehousing & Utilities	117	1,191	1,193	1,206	\$11,352,742	\$729.77
Information	36	611	610	610	\$5,112,230	\$644.32
Financial Activities	270	1,645	1,663	1,662	\$17,151,604	\$796.39
Professional & Business Services	359	3,658	3,480	3,501	\$30,239,142	\$655.91
Education & Health Services	402	7,339	7,297	7,346	\$74,771,017	\$784.95
Leisure & Hospitality	205	4,154	4,110	4,036	\$11,811,001	\$221.59
Other Services	178	917	933	911	\$4,879,176	\$407.81
Local Government	38	3,772	3,764	3,767	\$28,832,357	\$588.66
State Government	25	2,547	2,557	2,556	\$24,812,484	\$747.51

**TABLE 6. COUNTY SUMMARY
EMPLOYMENT AND TOTAL EARNINGS, BY INDUSTRY
FOURTH QUARTER 2007**

NORTH AMERICAN INDUSTRY CLASSIFICATION SYSTEM INDUSTRY GROUP	NUMBER OF EMPLOYING UNITS	EMPLOYMENT OCTOBER	EMPLOYMENT NOVEMBER	EMPLOYMENT DECEMBER	TOTAL EARNINGS OCTOBER-DECEMBER	AVERAGE WEEKLY EARNINGS
CRAWFORD COUNTY - TOTAL	1,279	20,091	20,055	20,171	\$150,471,859	\$575.70
Natural Resources & Mining	26	605	602	641	\$7,901,877	\$986.75
Construction	189	1,393	1,393	1,394	\$12,898,467	\$712.10
Manufacturing	79	3,609	3,544	3,578	\$26,978,053	\$580.16
Trade, Transportation & Utilities	304	6,821	6,787	6,802	\$51,011,954	\$576.78
Wholesale Trade	78	731	720	715	\$7,077,369	\$754.03
Other Trade, Transportation & Utilities	226	6,090	6,067	6,087	\$43,934,585	\$555.73
Financial Activities	146	563	557	562	\$4,262,922	\$584.87
Professional & Business Services	154	1,188	1,215	1,260	\$9,815,321	\$618.37
Education & Health Services	149	1,396	1,400	1,403	\$11,057,581	\$607.70
Leisure & Hospitality	90	1,608	1,648	1,614	\$4,542,486	\$215.25
Local Government	41	2,186	2,183	2,188	\$16,360,912	\$575.81
State Government	11	171	170	170	\$1,420,389	\$641.45
Other	90	551	556	559	\$4,221,897	\$584.80
CRITTENDEN COUNTY - TOTAL	1,253	17,296	17,310	17,167	\$135,344,032	\$603.27
Natural Resources & Mining	42	333	316	266	\$3,058,096	\$771.27
Construction	74	488	494	504	\$4,866,163	\$755.69
Manufacturing	48	2,187	2,171	2,235	\$24,408,411	\$854.35
Trade, Transportation & Utilities	341	4,894	4,917	4,890	\$39,609,307	\$621.77
Wholesale Trade	78	795	806	817	\$9,440,441	\$900.98
Retail Trade	173	2,071	2,094	2,096	\$10,655,512	\$392.74
Transportation, Warehousing & Utilities	90	2,028	2,017	1,977	\$19,513,354	\$747.77
Information	10	82	80	78	\$692,436	\$665.80
Financial Activities	107	580	573	576	\$4,950,101	\$660.69
Professional & Business Services	133	990	968	950	\$6,344,183	\$503.45
Education & Health Services	237	2,088	2,083	2,084	\$17,860,542	\$658.94
Leisure & Hospitality	103	2,078	2,077	2,046	\$7,112,254	\$264.68
Other Services	97	574	583	582	\$3,430,428	\$455.23
Local Government	46	2,481	2,533	2,538	\$19,722,633	\$602.67
State Government	15	521	515	418	\$3,289,478	\$522.08

**TABLE 6. COUNTY SUMMARY
EMPLOYMENT AND TOTAL EARNINGS, BY INDUSTRY
FOURTH QUARTER 2007**

NORTH AMERICAN INDUSTRY CLASSIFICATION SYSTEM INDUSTRY GROUP	NUMBER OF EMPLOYING UNITS	EMPLOYMENT OCTOBER	EMPLOYMENT NOVEMBER	EMPLOYMENT DECEMBER	TOTAL EARNINGS OCTOBER-DECEMBER	AVERAGE WEEKLY EARNINGS
CROSS COUNTY - TOTAL	527	4,898	4,909	4,948	\$33,969,999	\$531.29
Natural Resources & Mining	36	220	217	188	\$1,012,128	\$373.71
Construction	33	174	161	163	\$1,138,186	\$527.43
Manufacturing	15	601	604	630	\$4,707,708	\$592.04
Trade, Transportation & Utilities	135	1,199	1,204	1,201	\$9,722,534	\$622.55
Wholesale Trade	29	263	261	260	\$3,226,554	\$949.73
Retail Trade	68	652	665	674	\$3,802,152	\$440.69
Transportation, Warehousing & Utilities	38	284	278	267	\$2,693,828	\$749.88
Information	6	72	69	71	\$464,474	\$505.60
Financial Activities	49	351	351	355	\$2,730,687	\$596.18
Professional & Business Services	45	182	171	178	\$1,470,466	\$639.06
Education & Health Services	108	680	675	694	\$4,234,493	\$476.91
Leisure & Hospitality	35	371	403	408	\$963,646	\$188.14
Other Services	37	68	68	72	\$348,240	\$386.36
Local Government	17	760	766	768	\$5,363,594	\$539.56
State Government	11	220	220	220	\$1,813,843	\$634.21
DALLAS COUNTY - TOTAL	277	3,276	3,294	3,302	\$22,307,775	\$521.47
Natural Resources & Mining	39	200	195	199	\$1,492,878	\$579.98
Construction	14	65	61	63	\$430,763	\$525.96
Manufacturing	17	915	895	904	\$7,294,956	\$620.28
Trade, Transportation & Utilities	69	424	441	434	\$2,774,823	\$492.95
Wholesale Trade	8	26	27	27	\$222,635	\$642.22
Retail Trade	44	344	361	354	\$2,134,861	\$465.21
Transportation, Warehousing & Utilities	17	54	53	53	\$417,327	\$601.91
Information	3	20	20	20	\$173,415	\$666.98
Financial Activities	22	106	107	108	\$879,341	\$632.16
Professional & Business Services	17	46	44	50	\$472,834	\$779.40
Education & Health Services	43	773	803	784	\$4,891,603	\$478.32
Leisure & Hospitality	15	132	133	131	\$297,447	\$173.34
Other Services	13	57	57	56	\$284,644	\$386.39
Local Government	16	469	469	484	\$2,841,151	\$461.08
State Government	9	69	69	69	\$473,920	\$528.34

**TABLE 6. COUNTY SUMMARY
EMPLOYMENT AND TOTAL EARNINGS, BY INDUSTRY
FOURTH QUARTER 2007**

NORTH AMERICAN INDUSTRY CLASSIFICATION SYSTEM INDUSTRY GROUP	NUMBER OF EMPLOYING UNITS	EMPLOYMENT OCTOBER	EMPLOYMENT NOVEMBER	EMPLOYMENT DECEMBER	TOTAL EARNINGS OCTOBER-DECEMBER	AVERAGE WEEKLY EARNINGS
DESHA COUNTY - TOTAL	482	4,817	4,780	4,727	\$36,490,869	\$587.89
Natural Resources & Mining	51	413	379	307	\$2,678,061	\$562.34
Construction	24	139	138	152	\$1,110,430	\$597.33
Manufacturing	18	1,091	1,079	1,080	\$11,550,627	\$820.16
Trade, Transportation & Utilities	128	968	963	909	\$6,529,186	\$530.54
Wholesale Trade	20	166	169	170	\$2,035,652	\$930.23
Retail Trade	78	546	560	554	\$2,684,074	\$373.13
Transportation, Warehousing & Utilities	30	256	234	185	\$1,809,460	\$618.62
Information	5	23	22	21	\$181,122	\$633.29
Financial Activities	43	201	209	208	\$1,699,177	\$634.49
Professional & Business Services	37	120	129	141	\$1,005,402	\$594.91
Education & Health Services	90	577	586	589	\$3,602,611	\$474.53
Leisure & Hospitality	33	250	252	254	\$612,099	\$186.84
Other Services	23	56	58	64	\$338,360	\$438.67
Local Government	19	793	784	817	\$5,874,854	\$566.31
State Government	11	186	181	185	\$1,308,940	\$547.22
DREW COUNTY - TOTAL	522	6,807	6,897	6,922	\$44,076,492	\$493.14
Natural Resources & Mining	41	318	327	311	\$2,940,980	\$709.92
Construction	24	124	117	112	\$674,585	\$441.00
Manufacturing	22	740	774	784	\$5,375,105	\$539.78
Trade, Transportation & Utilities	130	1,186	1,200	1,202	\$7,570,878	\$486.94
Wholesale Trade	22	218	218	213	\$1,890,560	\$672.24
Retail Trade	87	872	888	895	\$4,613,578	\$401.01
Transportation, Warehousing & Utilities	21	96	94	94	\$1,066,740	\$866.80
Information	8	76	80	79	\$566,227	\$556.03
Financial Activities	44	253	254	255	\$2,418,703	\$732.50
Professional & Business Services	46	345	332	331	\$2,395,571	\$548.44
Education & Health Services	99	843	867	889	\$5,065,787	\$449.80
Leisure & Hospitality	41	640	629	639	\$1,482,036	\$179.25
Other Services	27	87	86	86	\$473,369	\$421.77
Local Government	23	1,289	1,319	1,322	\$8,942,141	\$525.08
State Government	17	906	912	912	\$6,171,110	\$521.65

**TABLE 6. COUNTY SUMMARY
EMPLOYMENT AND TOTAL EARNINGS, BY INDUSTRY
FOURTH QUARTER 2007**

NORTH AMERICAN INDUSTRY CLASSIFICATION SYSTEM INDUSTRY GROUP	NUMBER OF EMPLOYING UNITS	EMPLOYMENT OCTOBER	EMPLOYMENT NOVEMBER	EMPLOYMENT DECEMBER	TOTAL EARNINGS OCTOBER-DECEMBER	AVERAGE WEEKLY EARNINGS
FAULKNER COUNTY - TOTAL	2,650	39,528	39,558	39,710	\$334,524,239	\$649.84
Natural Resources & Mining	30	677	712	764	\$12,524,961	\$1,342.49
Construction	373	3,006	2,999	3,015	\$28,206,652	\$721.64
Manufacturing	130	5,029	4,968	5,058	\$49,711,015	\$761.99
Trade, Transportation & Utilities	628	6,831	6,976	7,025	\$45,700,370	\$506.25
Wholesale Trade	164	860	863	869	\$9,274,648	\$825.73
Retail Trade	381	5,055	5,185	5,220	\$26,189,555	\$390.93
Transportation, Warehousing & Utilities	83	916	928	936	\$10,236,167	\$849.71
Information	43	396	395	395	\$3,569,938	\$694.63
Financial Activities	332	1,497	1,501	1,511	\$13,052,570	\$668.03
Professional & Business Services	356	5,107	4,961	4,936	\$63,393,158	\$975.02
Education & Health Services	353	5,527	5,572	5,597	\$47,931,714	\$662.50
Leisure & Hospitality	198	4,065	4,090	4,025	\$10,992,012	\$208.26
Other Services	147	602	593	589	\$3,452,970	\$446.66
Local Government	41	3,419	3,418	3,413	\$28,417,835	\$639.80
State Government	19	3,372	3,373	3,382	\$27,571,044	\$628.28
FRANKLIN COUNTY - TOTAL	334	4,321	4,338	4,333	\$31,431,294	\$558.30
Natural Resources & Mining	10	127	126	127	\$1,907,078	\$1,158.14
Construction	35	264	260	260	\$2,167,338	\$637.95
Manufacturing	22	937	938	940	\$7,609,323	\$623.80
Trade, Transportation & Utilities	87	859	874	881	\$6,367,073	\$562.10
Wholesale Trade	16	52	52	54	\$289,348	\$422.61
Retail Trade	50	496	500	505	\$2,467,688	\$379.39
Transportation, Warehousing & Utilities	21	311	322	322	\$3,610,037	\$872.34
Information	6	49	49	48	\$249,041	\$393.64
Financial Activities	29	230	230	230	\$1,543,163	\$516.11
Professional & Business Services	23	73	78	80	\$653,840	\$653.19
Education & Health Services	47	495	493	486	\$2,848,286	\$445.93
Leisure & Hospitality	26	287	298	290	\$806,889	\$212.81
Other Services	20	59	52	54	\$293,772	\$410.87
Local Government	19	795	793	790	\$5,839,291	\$566.66
State Government	10	146	147	147	\$1,146,200	\$601.15

**TABLE 6. COUNTY SUMMARY
EMPLOYMENT AND TOTAL EARNINGS, BY INDUSTRY
FOURTH QUARTER 2007**

NORTH AMERICAN INDUSTRY CLASSIFICATION SYSTEM INDUSTRY GROUP	NUMBER OF EMPLOYING UNITS	EMPLOYMENT OCTOBER	EMPLOYMENT NOVEMBER	EMPLOYMENT DECEMBER	TOTAL EARNINGS OCTOBER-DECEMBER	AVERAGE WEEKLY EARNINGS
FULTON COUNTY - TOTAL	237	1,944	1,935	1,944	\$10,767,718	\$426.73
Construction	17	29	35	33	\$255,829	\$608.63
Manufacturing	12	125	128	135	\$468,866	\$278.87
Trade, Transportation & Utilities	66	396	390	407	\$2,517,618	\$487.00
Retail Trade	41	186	183	190	\$685,314	\$282.91
Other Trade, Transportation & Utilities	25	210	207	217	\$1,832,304	\$666.94
Financial Activities	15	102	98	96	\$690,931	\$538.67
Professional & Business Services	16	69	69	66	\$502,198	\$568.10
Education & Health Services	60	391	387	391	\$1,943,617	\$383.68
Leisure & Hospitality	14	145	139	134	\$345,049	\$190.49
Local Government	13	507	509	501	\$3,104,520	\$472.27
State Government	11	109	108	109	\$654,861	\$463.56
Other	13	71	72	72	\$284,229	\$305.08
GARLAND COUNTY - TOTAL	3,315	36,782	36,623	36,693	\$268,952,534	\$563.73
Natural Resources & Mining	45	388	366	375	\$4,168,308	\$852.01
Construction	464	2,334	2,312	2,320	\$17,326,738	\$574.00
Manufacturing	127	2,639	2,703	2,713	\$23,111,345	\$662.12
Trade, Transportation & Utilities	716	7,515	7,674	7,673	\$49,272,735	\$497.36
Wholesale Trade	157	1,047	1,039	1,046	\$10,134,259	\$746.70
Retail Trade	492	5,799	5,999	5,968	\$32,574,615	\$423.12
Transportation, Warehousing & Utilities	67	669	636	659	\$6,563,861	\$771.25
Information	41	405	418	432	\$3,527,636	\$648.66
Financial Activities	386	1,527	1,532	1,542	\$13,253,252	\$664.73
Professional & Business Services	427	3,488	3,449	3,471	\$25,988,298	\$576.22
Education & Health Services	455	7,194	7,163	7,159	\$72,487,539	\$777.46
Leisure & Hospitality	369	6,010	5,701	5,682	\$20,782,880	\$275.75
Other Services	224	970	963	960	\$5,216,378	\$416.10
Local Government	34	3,153	3,167	3,209	\$25,049,577	\$606.64
State Government	27	1,159	1,175	1,157	\$8,767,848	\$579.59

**TABLE 6. COUNTY SUMMARY
EMPLOYMENT AND TOTAL EARNINGS, BY INDUSTRY
FOURTH QUARTER 2007**

NORTH AMERICAN INDUSTRY CLASSIFICATION SYSTEM INDUSTRY GROUP	NUMBER OF EMPLOYING UNITS	EMPLOYMENT OCTOBER	EMPLOYMENT NOVEMBER	EMPLOYMENT DECEMBER	TOTAL EARNINGS OCTOBER-DECEMBER	AVERAGE WEEKLY EARNINGS
GRANT COUNTY - TOTAL	299	3,929	3,931	3,918	\$26,570,573	\$520.60
Natural Resources & Mining	24	170	168	176	\$1,996,684	\$896.45
Construction	30	245	238	242	\$1,948,576	\$620.24
Manufacturing	16	940	928	934	\$6,655,851	\$548.17
Trade, Transportation & Utilities	84	617	630	622	\$4,264,249	\$526.52
Wholesale Trade	17	139	138	129	\$1,627,412	\$925.02
Retail Trade	41	403	414	419	\$2,144,001	\$400.30
Transportation, Warehousing & Utilities	26	75	78	74	\$492,836	\$501.02
Information	4	31	32	31	\$280,244	\$688.00
Financial Activities	25	104	110	108	\$939,619	\$673.40
Professional & Business Services	24	98	94	101	\$919,125	\$723.91
Education & Health Services	38	432	423	418	\$2,176,346	\$394.53
Leisure & Hospitality	19	260	260	253	\$732,771	\$218.76
Other Services	16	47	47	48	\$209,474	\$340.42
Local Government	10	927	944	928	\$6,028,412	\$497.02
State Government	9	58	57	57	\$419,222	\$562.46
GREENE COUNTY - TOTAL	929	15,138	15,173	15,455	\$106,067,252	\$534.83
Natural Resources & Mining	37	225	215	187	\$1,917,923	\$705.90
Construction	88	378	357	366	\$2,585,846	\$541.99
Manufacturing	59	5,207	5,083	5,140	\$45,542,551	\$681.13
Trade, Transportation & Utilities	249	2,237	2,249	2,369	\$13,769,725	\$463.55
Wholesale Trade	58	439	443	448	\$3,704,891	\$642.84
Retail Trade	161	1,585	1,599	1,711	\$8,127,411	\$383.16
Transportation, Warehousing & Utilities	30	213	207	210	\$1,937,423	\$709.68
Information	13	118	118	119	\$682,353	\$443.57
Financial Activities	91	492	489	497	\$4,247,281	\$663.15
Professional & Business Services	92	1,713	1,829	1,932	\$8,305,076	\$350.12
Education & Health Services	141	1,720	1,743	1,750	\$11,446,706	\$506.72
Leisure & Hospitality	68	1,031	1,063	1,069	\$2,732,156	\$199.34
Other Services	49	167	173	167	\$979,816	\$445.98
Local Government	31	1,584	1,588	1,592	\$11,717,961	\$567.62
State Government	11	266	266	267	\$2,139,858	\$618.04

**TABLE 6. COUNTY SUMMARY
EMPLOYMENT AND TOTAL EARNINGS, BY INDUSTRY
FOURTH QUARTER 2007**

NORTH AMERICAN INDUSTRY CLASSIFICATION SYSTEM INDUSTRY GROUP	NUMBER OF EMPLOYING UNITS	EMPLOYMENT OCTOBER	EMPLOYMENT NOVEMBER	EMPLOYMENT DECEMBER	TOTAL EARNINGS OCTOBER-DECEMBER	AVERAGE WEEKLY EARNINGS
HEMPSTEAD COUNTY - TOTAL	503	8,204	8,238	8,264	\$57,787,836	\$539.77
Natural Resources & Mining	18	212	211	219	\$1,758,176	\$631.98
Construction	30	133	150	149	\$1,095,781	\$585.35
Manufacturing	30	2,329	2,342	2,388	\$20,522,275	\$670.90
Trade, Transportation & Utilities	129	1,329	1,326	1,342	\$8,660,489	\$500.02
Wholesale Trade	25	252	247	244	\$1,890,312	\$587.11
Retail Trade	83	874	872	892	\$4,354,803	\$380.95
Transportation, Warehousing & Utilities	21	203	207	206	\$2,415,374	\$904.86
Information	11	76	77	77	\$634,653	\$636.78
Financial Activities	44	257	261	263	\$2,288,628	\$676.24
Professional & Business Services	37	401	379	319	\$1,920,437	\$403.26
Education & Health Services	76	974	973	982	\$6,054,490	\$477.02
Leisure & Hospitality	44	670	671	686	\$1,754,647	\$199.76
Other Services	38	201	207	203	\$1,369,377	\$517.20
Local Government	29	1,070	1,080	1,077	\$7,384,141	\$528.05
State Government	17	552	561	559	\$4,344,742	\$599.66
HOT SPRING COUNTY - TOTAL	577	7,897	7,803	7,866	\$58,965,376	\$577.42
Natural Resources & Mining	29	211	204	204	\$1,401,453	\$522.48
Construction	69	338	335	335	\$2,484,056	\$568.69
Manufacturing	34	1,674	1,646	1,651	\$16,938,313	\$786.33
Trade, Transportation & Utilities	150	1,436	1,427	1,434	\$11,626,308	\$624.39
Wholesale Trade	19	83	83	81	\$2,146,509	\$2,005.46
Retail Trade	92	956	950	959	\$4,999,564	\$402.70
Transportation, Warehousing & Utilities	39	397	394	394	\$4,480,235	\$872.49
Information	8	68	71	73	\$686,201	\$746.95
Financial Activities	58	350	344	343	\$2,974,135	\$661.85
Professional & Business Services	51	194	173	179	\$1,273,054	\$538.06
Education & Health Services	65	1,078	1,066	1,070	\$7,226,067	\$518.84
Leisure & Hospitality	40	504	510	499	\$1,347,907	\$205.59
Other Services	33	287	280	283	\$1,186,716	\$322.19
Local Government	26	1,127	1,131	1,132	\$7,624,994	\$519.06
State Government	14	630	616	663	\$4,196,172	\$507.25

**TABLE 6. COUNTY SUMMARY
EMPLOYMENT AND TOTAL EARNINGS, BY INDUSTRY
FOURTH QUARTER 2007**

NORTH AMERICAN INDUSTRY CLASSIFICATION SYSTEM INDUSTRY GROUP	NUMBER OF EMPLOYING UNITS	EMPLOYMENT OCTOBER	EMPLOYMENT NOVEMBER	EMPLOYMENT DECEMBER	TOTAL EARNINGS OCTOBER-DECEMBER	AVERAGE WEEKLY EARNINGS
HOWARD COUNTY - TOTAL	355	7,536	7,547	7,585	\$51,039,921	\$519.61
Natural Resources & Mining	23	251	254	249	\$2,079,468	\$636.44
Construction	22	97	93	98	\$597,551	\$478.81
Manufacturing	26	4,071	4,065	4,098	\$29,240,751	\$551.57
Trade, Transportation & Utilities	96	947	943	946	\$6,433,463	\$523.50
Wholesale Trade	17	88	85	88	\$931,097	\$823.25
Retail Trade	58	645	656	647	\$3,362,899	\$398.38
Transportation, Warehousing & Utilities	21	214	202	211	\$2,139,467	\$787.44
Information	6	35	35	36	\$227,154	\$494.53
Financial Activities	38	167	168	167	\$1,124,810	\$517.07
Professional & Business Services	27	113	112	120	\$749,607	\$501.41
Education & Health Services	47	585	592	583	\$3,282,345	\$430.38
Leisure & Hospitality	20	287	299	296	\$709,503	\$185.64
Other Services	20	131	128	131	\$680,546	\$402.69
Local Government	18	705	709	712	\$4,882,021	\$529.92
State Government	12	147	149	149	\$1,032,702	\$535.54
INDEPENDENCE COUNTY - TOTAL	947	16,045	15,926	15,858	\$121,668,318	\$587.04
Natural Resources & Mining	14	137	137	145	\$1,121,604	\$617.74
Construction	74	467	465	473	\$3,339,114	\$548.44
Manufacturing	53	4,309	4,198	3,997	\$37,935,404	\$700.12
Trade, Transportation & Utilities	266	3,137	3,183	3,233	\$24,492,005	\$591.65
Wholesale Trade	53	586	582	585	\$4,767,792	\$627.64
Retail Trade	158	1,700	1,764	1,812	\$9,783,519	\$427.93
Transportation, Warehousing & Utilities	55	851	837	836	\$9,940,694	\$908.88
Information	11	151	153	156	\$1,108,910	\$556.31
Financial Activities	85	484	478	537	\$4,038,509	\$621.72
Professional & Business Services	98	879	851	865	\$4,583,232	\$407.58
Education & Health Services	151	2,930	2,910	2,925	\$26,830,752	\$706.41
Leisure & Hospitality	65	1,042	1,038	1,024	\$2,727,804	\$202.80
Other Services	66	376	363	366	\$1,842,696	\$384.83
Local Government	47	1,644	1,652	1,644	\$9,831,576	\$459.28
State Government	17	489	498	493	\$3,816,712	\$595.12

**TABLE 6. COUNTY SUMMARY
EMPLOYMENT AND TOTAL EARNINGS, BY INDUSTRY
FOURTH QUARTER 2007**

NORTH AMERICAN INDUSTRY CLASSIFICATION SYSTEM INDUSTRY GROUP	NUMBER OF EMPLOYING UNITS	EMPLOYMENT OCTOBER	EMPLOYMENT NOVEMBER	EMPLOYMENT DECEMBER	TOTAL EARNINGS OCTOBER-DECEMBER	AVERAGE WEEKLY EARNINGS
IZARD COUNTY - TOTAL	284	3,254	3,276	3,297	\$19,507,154	\$458.09
Natural Resources & Mining	4	92	91	90	\$769,360	\$650.35
Construction	25	78	80	79	\$545,158	\$530.83
Trade, Transportation & Utilities	70	563	553	561	\$3,178,530	\$437.39
Retail Trade	50	434	434	436	\$2,127,957	\$376.59
Other Trade, Transportation & Utilities	20	129	119	125	\$1,050,573	\$649.97
Financial Activities	31	160	158	158	\$1,405,913	\$681.60
Professional & Business Services	20	77	78	79	\$437,016	\$430.98
Education & Health Services	59	587	576	573	\$3,134,776	\$416.71
Leisure & Hospitality	20	224	259	277	\$476,553	\$144.70
Local Government	18	550	552	548	\$3,425,547	\$479.10
State Government	11	473	472	480	\$3,053,857	\$494.55
Other	26	450	457	452	\$3,080,444	\$523.08
JACKSON COUNTY - TOTAL	513	5,745	5,727	5,702	\$41,122,132	\$552.56
Natural Resources & Mining	47	247	228	190	\$1,460,976	\$506.99
Construction	26	132	140	121	\$1,392,978	\$817.96
Manufacturing	26	1,246	1,244	1,279	\$10,540,675	\$645.39
Trade, Transportation & Utilities	118	1,138	1,127	1,124	\$7,893,423	\$537.49
Wholesale Trade	29	219	215	217	\$2,354,805	\$834.74
Retail Trade	70	667	670	679	\$3,553,665	\$406.78
Transportation, Warehousing & Utilities	19	252	242	228	\$1,984,953	\$634.44
Information	6	40	40	40	\$273,317	\$525.61
Financial Activities	41	172	170	167	\$1,347,113	\$610.75
Professional & Business Services	38	146	147	154	\$1,178,829	\$608.58
Education & Health Services	102	813	818	846	\$6,416,264	\$597.77
Leisure & Hospitality	35	299	299	286	\$870,594	\$227.27
Other Services	28	89	85	84	\$395,978	\$354.18
Local Government	32	742	740	726	\$4,416,366	\$461.58
State Government	14	681	689	685	\$4,935,619	\$554.25

**TABLE 6. COUNTY SUMMARY
EMPLOYMENT AND TOTAL EARNINGS, BY INDUSTRY
FOURTH QUARTER 2007**

NORTH AMERICAN INDUSTRY CLASSIFICATION SYSTEM INDUSTRY GROUP	NUMBER OF EMPLOYING UNITS	EMPLOYMENT OCTOBER	EMPLOYMENT NOVEMBER	EMPLOYMENT DECEMBER	TOTAL EARNINGS OCTOBER-DECEMBER	AVERAGE WEEKLY EARNINGS
JEFFERSON COUNTY - TOTAL	1,972	31,543	31,554	31,491	\$261,008,119	\$636.79
Natural Resources & Mining	40	456	448	435	\$4,196,924	\$723.32
Construction	126	1,348	1,346	1,314	\$16,556,981	\$953.30
Manufacturing	70	5,867	5,755	5,762	\$62,067,736	\$823.94
Trade, Transportation & Utilities	449	5,754	5,811	5,837	\$44,841,598	\$594.65
Wholesale Trade	83	1,049	1,043	1,058	\$11,584,084	\$848.65
Retail Trade	299	3,813	3,878	3,895	\$21,022,299	\$418.72
Transportation, Warehousing & Utilities	67	892	890	884	\$12,235,215	\$1,059.08
Information	17	187	194	191	\$1,581,475	\$638.03
Financial Activities	157	1,145	1,170	1,168	\$10,622,601	\$703.81
Professional & Business Services	179	1,749	1,753	1,756	\$14,654,962	\$643.19
Education & Health Services	560	5,521	5,581	5,552	\$44,989,414	\$623.40
Leisure & Hospitality	152	2,169	2,088	2,040	\$5,948,848	\$218.01
Other Services	141	684	681	694	\$4,567,404	\$511.91
Local Government	41	3,375	3,403	3,406	\$24,904,858	\$564.34
State Government	40	3,288	3,324	3,336	\$26,075,318	\$604.88
JOHNSON COUNTY - TOTAL	474	8,782	8,859	8,869	\$61,779,523	\$537.79
Natural Resources & Mining	17	216	218	220	\$1,856,437	\$655.06
Construction	24	172	171	140	\$1,317,972	\$629.70
Manufacturing	45	2,994	2,994	3,044	\$21,949,532	\$560.81
Trade, Transportation & Utilities	114	2,022	2,054	2,075	\$14,461,663	\$542.56
Wholesale Trade	20	212	217	220	\$1,997,616	\$710.31
Other Trade, Transportation & Utilities	94	1,810	1,837	1,855	\$12,464,047	\$522.78
Information	7	38	38	38	\$291,073	\$589.22
Financial Activities	45	218	226	223	\$1,690,636	\$584.93
Professional & Business Services	51	177	177	172	\$1,344,338	\$589.79
Education & Health Services	81	1,160	1,161	1,148	\$8,749,466	\$582.04
Leisure & Hospitality	37	544	549	546	\$1,425,883	\$200.76
Other Services	29	70	75	69	\$425,095	\$458.41
Local Government	14	1,003	1,027	1,027	\$7,027,004	\$530.46
State Government	10	168	169	167	\$1,240,424	\$567.96

**TABLE 6. COUNTY SUMMARY
EMPLOYMENT AND TOTAL EARNINGS, BY INDUSTRY
FOURTH QUARTER 2007**

NORTH AMERICAN INDUSTRY CLASSIFICATION SYSTEM INDUSTRY GROUP	NUMBER OF EMPLOYING UNITS	EMPLOYMENT OCTOBER	EMPLOYMENT NOVEMBER	EMPLOYMENT DECEMBER	TOTAL EARNINGS OCTOBER-DECEMBER	AVERAGE WEEKLY EARNINGS
LAFAYETTE COUNTY - TOTAL	172	1,395	1,429	1,425	\$9,648,170	\$524.01
Natural Resources & Mining	39	186	202	204	\$1,867,074	\$727.81
Manufacturing	5	21	21	21	\$363,609	\$1,331.90
Trade, Transportation & Utilities	33	226	225	230	\$1,299,617	\$440.40
Retail Trade	21	158	155	158	\$647,226	\$317.11
Other Trade, Transportation & Utilities	12	68	70	72	\$652,391	\$716.91
Financial Activities	16	57	66	61	\$431,466	\$541.14
Professional & Business Services	9	55	54	64	\$528,046	\$704.37
Education & Health Services	24	235	232	225	\$1,119,442	\$373.31
Leisure & Hospitality	7	53	65	58	\$253,957	\$332.99
Other Services	7	73	70	70	\$308,745	\$334.50
Local Government	13	344	349	349	\$2,026,483	\$448.80
State Government	8	52	52	51	\$355,374	\$529.09
Other	11	93	93	92	\$1,094,357	\$908.43
LAWRENCE COUNTY - TOTAL	439	4,130	4,170	4,112	\$25,721,947	\$478.23
Natural Resources & Mining	34	165	157	150	\$1,379,592	\$674.51
Construction	25	69	70	70	\$440,585	\$486.48
Manufacturing	22	539	543	522	\$3,261,741	\$469.27
Trade, Transportation & Utilities	135	897	919	913	\$5,962,008	\$504.16
Wholesale Trade	22	172	174	174	\$1,400,412	\$621.48
Retail Trade	74	572	593	587	\$2,990,316	\$393.88
Transportation, Warehousing & Utilities	39	153	152	152	\$1,571,280	\$793.44
Financial Activities	36	143	144	146	\$959,823	\$511.54
Professional & Business Services	24	114	114	110	\$991,261	\$676.78
Education & Health Services	74	464	459	450	\$3,009,943	\$505.90
Leisure & Hospitality	24	347	352	344	\$665,102	\$147.16
Local Government	28	1,203	1,216	1,217	\$7,929,725	\$503.28
State Government	11	120	121	121	\$750,462	\$478.41
Other	26	69	75	69	\$371,705	\$402.71

**TABLE 6. COUNTY SUMMARY
EMPLOYMENT AND TOTAL EARNINGS, BY INDUSTRY
FOURTH QUARTER 2007**

NORTH AMERICAN INDUSTRY CLASSIFICATION SYSTEM INDUSTRY GROUP	NUMBER OF EMPLOYING UNITS	EMPLOYMENT OCTOBER	EMPLOYMENT NOVEMBER	EMPLOYMENT DECEMBER	TOTAL EARNINGS OCTOBER-DECEMBER	AVERAGE WEEKLY EARNINGS
LEE COUNTY - TOTAL	265	2,148	2,135	2,026	\$14,192,660	\$519.14
Natural Resources & Mining	30	287	267	164	\$1,716,563	\$551.71
Construction	10	27	31	28	\$209,877	\$563.18
Trade, Transportation & Utilities	51	366	370	364	\$2,293,107	\$481.07
Wholesale Trade	9	65	66	59	\$625,555	\$759.78
Retail Trade	25	195	198	205	\$876,836	\$338.37
Transportation, Warehousing & Utilities	17	106	106	100	\$790,716	\$584.85
Financial Activities	17	76	74	76	\$616,804	\$629.82
Professional & Business Services	18	69	69	68	\$636,432	\$712.96
Education & Health Services	82	335	334	339	\$2,128,102	\$487.20
Leisure & Hospitality	8	103	104	104	\$195,411	\$145.00
Local Government	14	345	347	344	\$2,687,868	\$598.72
State Government	8	492	493	493	\$3,479,396	\$543.26
Other	27	48	46	46	\$229,100	\$377.64
LINCOLN COUNTY - TOTAL	253	3,044	3,072	3,035	\$20,844,818	\$525.66
Natural Resources & Mining	33	211	203	173	\$1,634,517	\$642.58
Construction	15	73	70	69	\$442,812	\$482.02
Manufacturing	10	436	429	438	\$3,363,064	\$595.62
Trade, Transportation & Utilities	50	344	366	353	\$2,781,784	\$603.90
Wholesale Trade	7	28	28	30	\$377,614	\$1,013.28
Retail Trade	24	178	199	186	\$730,677	\$299.50
Transportation, Warehousing & Utilities	19	138	139	137	\$1,673,493	\$932.83
Financial Activities	23	72	79	78	\$607,624	\$612.32
Professional & Business Services	13	23	23	21	\$171,794	\$591.71
Education & Health Services	56	312	316	311	\$1,684,165	\$413.90
Leisure & Hospitality	17	164	172	177	\$364,313	\$163.88
Local & State Government	22	1,376	1,377	1,380	\$9,588,389	\$535.38
Other	14	33	37	35	\$206,356	\$453.53

**TABLE 6. COUNTY SUMMARY
EMPLOYMENT AND TOTAL EARNINGS, BY INDUSTRY
FOURTH QUARTER 2007**

NORTH AMERICAN INDUSTRY CLASSIFICATION SYSTEM INDUSTRY GROUP	NUMBER OF EMPLOYING UNITS	EMPLOYMENT OCTOBER	EMPLOYMENT NOVEMBER	EMPLOYMENT DECEMBER	TOTAL EARNINGS OCTOBER-DECEMBER	AVERAGE WEEKLY EARNINGS
LITTLE RIVER COUNTY - TOTAL	264	4,870	4,909	4,890	\$48,253,133	\$759.11
Natural Resources & Mining	10	55	64	61	\$479,418	\$614.64
Manufacturing	17	1,359	1,359	1,367	\$22,887,156	\$1,292.94
Trade, Transportation & Utilities	67	1,570	1,599	1,588	\$13,111,838	\$636.07
Wholesale Trade	9	43	42	42	\$453,994	\$824.94
Retail Trade	41	432	420	409	\$2,089,475	\$382.38
Transportation, Warehousing & Utilities	17	1,095	1,137	1,137	\$10,568,369	\$723.91
Financial Activities	24	103	102	102	\$664,813	\$499.73
Professional & Business Services	23	150	152	148	\$945,283	\$484.76
Education & Health Services	30	164	161	165	\$1,004,717	\$473.18
Leisure & Hospitality	19	209	203	195	\$547,472	\$208.14
Local Government	20	799	814	815	\$5,701,180	\$541.87
State Government	12	84	86	85	\$570,824	\$516.58
Other	42	377	369	364	\$2,340,432	\$486.58
LOGAN COUNTY - TOTAL	483	6,246	6,303	6,312	\$41,677,936	\$509.94
Natural Resources & Mining	21	166	185	180	\$2,090,197	\$908.39
Construction	51	176	178	187	\$1,253,395	\$534.65
Manufacturing	28	1,916	1,930	1,939	\$14,664,327	\$584.97
Trade, Transportation & Utilities	114	913	926	925	\$5,139,937	\$429.14
Wholesale Trade	16	39	40	40	\$323,206	\$626.77
Retail Trade	74	785	800	800	\$3,915,262	\$378.84
Transportation, Warehousing & Utilities	24	89	86	85	\$901,469	\$800.12
Information	6	39	39	39	\$328,831	\$648.58
Financial Activities	45	259	256	258	\$2,775,270	\$828.52
Professional & Business Services	40	112	113	113	\$752,781	\$513.96
Education & Health Services	86	764	766	770	\$4,794,708	\$481.07
Leisure & Hospitality	26	344	342	336	\$756,822	\$170.89
Other Services	29	82	84	84	\$496,203	\$458.03
Local & State Government	37	1,475	1,484	1,481	\$8,625,465	\$448.31

**TABLE 6. COUNTY SUMMARY
EMPLOYMENT AND TOTAL EARNINGS, BY INDUSTRY
FOURTH QUARTER 2007**

NORTH AMERICAN INDUSTRY CLASSIFICATION SYSTEM INDUSTRY GROUP	NUMBER OF EMPLOYING UNITS	EMPLOYMENT OCTOBER	EMPLOYMENT NOVEMBER	EMPLOYMENT DECEMBER	TOTAL EARNINGS OCTOBER-DECEMBER	AVERAGE WEEKLY EARNINGS
LONOKE COUNTY - TOTAL	1,305	12,781	12,794	12,702	\$93,047,071	\$560.97
Natural Resources & Mining	74	455	425	398	\$4,242,965	\$766.15
Construction	177	986	976	971	\$10,006,082	\$787.28
Manufacturing	38	1,367	1,336	1,331	\$14,288,253	\$817.37
Trade, Transportation & Utilities	350	2,824	2,860	2,903	\$18,872,667	\$507.19
Wholesale Trade	89	477	480	479	\$5,287,249	\$849.68
Retail Trade	184	2,035	2,073	2,121	\$11,010,624	\$407.92
Transportation, Warehousing & Utilities	77	312	307	303	\$2,574,794	\$644.45
Information	15	123	126	127	\$1,439,864	\$883.71
Financial Activities	130	592	597	613	\$5,923,809	\$758.62
Professional & Business Services	147	648	650	659	\$5,064,247	\$597.18
Education & Health Services	161	1,402	1,402	1,411	\$9,581,558	\$524.59
Leisure & Hospitality	98	1,377	1,468	1,453	\$3,662,993	\$196.67
Other Services	71	193	183	187	\$1,138,302	\$466.58
Local Government	28	2,657	2,616	2,489	\$17,787,892	\$528.85
State Government	16	157	155	160	\$1,038,439	\$507.71
MADISON COUNTY - TOTAL	258	3,325	3,308	3,285	\$21,386,296	\$497.61
Natural Resources & Mining	11	57	55	53	\$389,189	\$544.32
Construction	46	134	128	121	\$873,159	\$526.11
Manufacturing	20	1,158	1,156	1,148	\$8,097,735	\$539.78
Trade, Transportation & Utilities	59	610	609	601	\$3,747,655	\$475.19
Wholesale Trade	11	36	34	35	\$318,620	\$700.26
Retail Trade	35	408	417	404	\$2,039,364	\$382.93
Transportation, Warehousing & Utilities	13	166	158	162	\$1,389,671	\$659.86
Financial Activities	16	73	75	74	\$591,932	\$615.31
Professional & Business Services	20	107	112	109	\$655,475	\$461.17
Education & Health Services	40	263	267	263	\$1,386,593	\$403.51
Leisure & Hospitality	13	144	146	131	\$289,787	\$158.85
Local Government	9	658	639	663	\$4,292,574	\$505.41
State Government	8	57	57	57	\$365,941	\$493.85
Other	16	64	64	65	\$696,256	\$832.51

**TABLE 6. COUNTY SUMMARY
EMPLOYMENT AND TOTAL EARNINGS, BY INDUSTRY
FOURTH QUARTER 2007**

NORTH AMERICAN INDUSTRY CLASSIFICATION SYSTEM INDUSTRY GROUP	NUMBER OF EMPLOYING UNITS	EMPLOYMENT OCTOBER	EMPLOYMENT NOVEMBER	EMPLOYMENT DECEMBER	TOTAL EARNINGS OCTOBER-DECEMBER	AVERAGE WEEKLY EARNINGS
MARION COUNTY - TOTAL	323	4,265	4,276	4,268	\$26,111,141	\$470.42
Natural Resources & Mining	7	48	49	52	\$277,063	\$429.11
Construction	31	91	92	90	\$544,583	\$460.34
Manufacturing	23	1,750	1,750	1,728	\$11,398,753	\$503.15
Trade, Transportation & Utilities	57	655	649	669	\$3,599,373	\$421.00
Retail Trade	36	458	465	484	\$2,139,679	\$350.94
Other Trade, Transportation & Utilities	21	197	184	185	\$1,459,694	\$595.15
Financial Activities	38	187	187	178	\$1,376,521	\$575.47
Professional & Business Services	29	60	55	48	\$386,659	\$547.42
Education & Health Services	53	352	365	361	\$2,062,128	\$441.44
Leisure & Hospitality	38	253	253	253	\$641,366	\$195.00
Local Government	20	579	579	580	\$3,640,993	\$483.45
State Government	8	109	114	111	\$725,517	\$501.28
Other	19	181	183	198	\$1,458,185	\$598.76
MILLER COUNTY - TOTAL	853	12,249	12,276	12,243	\$104,033,190	\$652.95
Natural Resources & Mining	26	134	138	145	\$1,061,948	\$587.69
Construction	94	841	854	804	\$6,163,142	\$569.13
Manufacturing	34	2,359	2,386	2,366	\$35,296,247	\$1,145.45
Trade, Transportation & Utilities	227	2,489	2,507	2,557	\$20,179,228	\$616.54
Wholesale Trade	58	586	587	598	\$6,962,067	\$907.19
Retail Trade	131	1,336	1,357	1,356	\$7,389,278	\$421.15
Transportation, Warehousing & Utilities	38	567	563	603	\$5,827,883	\$776.05
Information	12	107	106	106	\$1,891,775	\$1,368.54
Financial Activities	83	375	369	376	\$3,660,530	\$754.23
Professional & Business Services	85	948	932	943	\$6,555,704	\$535.90
Education & Health Services	102	1,079	1,063	1,067	\$7,363,376	\$529.52
Leisure & Hospitality	86	1,324	1,318	1,268	\$4,153,393	\$245.13
Other Services	61	338	347	342	\$1,594,479	\$358.28
Local Government	26	1,756	1,760	1,771	\$12,050,459	\$525.98
State Government	17	499	496	498	\$4,062,909	\$627.99

**TABLE 6. COUNTY SUMMARY
EMPLOYMENT AND TOTAL EARNINGS, BY INDUSTRY
FOURTH QUARTER 2007**

NORTH AMERICAN INDUSTRY CLASSIFICATION SYSTEM INDUSTRY GROUP	NUMBER OF EMPLOYING UNITS	EMPLOYMENT OCTOBER	EMPLOYMENT NOVEMBER	EMPLOYMENT DECEMBER	TOTAL EARNINGS OCTOBER-DECEMBER	AVERAGE WEEKLY EARNINGS
MISSISSIPPI COUNTY - TOTAL	1,201	19,991	19,777	19,758	\$193,745,073	\$751.11
Natural Resources & Mining	100	1,102	882	653	\$7,080,742	\$619.65
Construction	72	621	623	626	\$6,186,453	\$763.45
Manufacturing	58	5,843	5,949	6,032	\$84,699,306	\$1,096.61
Trade, Transportation & Utilities	307	3,039	3,014	3,045	\$35,086,695	\$889.97
Wholesale Trade	67	480	489	481	\$5,159,745	\$821.18
Retail Trade	187	1,897	1,919	1,965	\$9,548,082	\$381.15
Transportation, Warehousing & Utilities	53	662	606	599	\$20,378,868	\$2,518.92
Financial Activities	107	614	611	611	\$4,988,964	\$627.07
Professional & Business Services	97	1,314	1,257	1,350	\$9,023,163	\$531.06
Education & Health Services	221	1,703	1,699	1,672	\$11,083,586	\$504.09
Leisure & Hospitality	84	1,174	1,131	1,133	\$3,111,409	\$208.85
Local Government	46	2,364	2,362	2,374	\$16,448,952	\$534.64
State Government	24	660	661	660	\$4,386,563	\$511.00
Other	85	1,557	1,588	1,602	\$11,649,240	\$566.31
MONROE COUNTY - TOTAL	313	2,449	2,451	2,422	\$14,319,802	\$451.32
Natural Resources & Mining	37	172	158	144	\$906,016	\$441.10
Construction	11	33	31	28	\$135,506	\$339.90
Manufacturing	8	108	114	117	\$910,366	\$619.72
Trade, Transportation & Utilities	90	725	726	711	\$5,385,096	\$574.80
Wholesale Trade	23	215	218	202	\$2,194,414	\$797.49
Retail Trade	40	344	351	353	\$1,822,361	\$401.28
Transportation, Warehousing & Utilities	27	166	157	156	\$1,368,321	\$659.22
Financial Activities	16	96	96	96	\$770,940	\$617.74
Professional & Business Services	17	43	42	41	\$277,448	\$508.15
Education & Health Services	54	335	350	350	\$1,405,471	\$313.37
Leisure & Hospitality	24	253	258	243	\$661,951	\$202.60
Local Government	22	448	439	455	\$2,585,681	\$444.63
State Government	9	136	138	135	\$798,130	\$450.33
Other	25	100	99	102	\$483,197	\$370.46

**TABLE 6. COUNTY SUMMARY
EMPLOYMENT AND TOTAL EARNINGS, BY INDUSTRY
FOURTH QUARTER 2007**

NORTH AMERICAN INDUSTRY CLASSIFICATION SYSTEM INDUSTRY GROUP	NUMBER OF EMPLOYING UNITS	EMPLOYMENT OCTOBER	EMPLOYMENT NOVEMBER	EMPLOYMENT DECEMBER	TOTAL EARNINGS OCTOBER-DECEMBER	AVERAGE WEEKLY EARNINGS
MONTGOMERY COUNTY - TOTAL	183	1,616	1,580	1,555	\$9,430,370	\$458.06
Natural Resources & Mining	13	62	60	61	\$591,539	\$745.95
Construction	24	92	90	89	\$853,458	\$726.76
Trade, Transportation & Utilities	45	234	237	241	\$1,322,968	\$428.79
Wholesale Trade	11	78	78	80	\$573,764	\$561.05
Retail Trade	24	137	139	141	\$648,794	\$359.04
Transportation, Warehousing & Utilities	10	19	20	20	\$100,410	\$392.74
Financial Activities	10	76	75	74	\$534,851	\$548.57
Education & Health Services	15	68	63	73	\$357,782	\$404.73
Leisure & Hospitality	23	237	212	175	\$918,677	\$339.75
Other Services	12	79	75	75	\$303,759	\$306.11
Local Government	9	509	504	510	\$2,996,097	\$453.98
State Government	8	56	57	56	\$403,435	\$550.89
Other	24	203	207	201	\$1,147,804	\$433.52
NEVADA COUNTY - TOTAL	186	2,604	2,583	2,578	\$18,445,779	\$548.19
Natural Resources & Mining	15	70	69	67	\$614,763	\$688.68
Manufacturing	9	729	724	714	\$7,351,305	\$782.86
Trade, Transportation & Utilities	42	541	529	529	\$3,433,221	\$495.49
Retail Trade	28	304	296	303	\$1,336,147	\$341.46
Other Trade, Transportation & Utilities	14	237	233	226	\$2,097,074	\$695.32
Financial Activities	12	58	57	57	\$530,911	\$712.31
Education & Health Services	18	398	393	393	\$2,111,505	\$411.55
Leisure & Hospitality	14	100	101	104	\$291,675	\$220.69
Other Services	17	70	73	70	\$245,621	\$266.11
Local Government	28	495	497	499	\$2,852,927	\$441.56
State Government	11	87	85	85	\$591,850	\$531.44
Other	20	56	55	60	\$422,001	\$569.50

**TABLE 6. COUNTY SUMMARY
EMPLOYMENT AND TOTAL EARNINGS, BY INDUSTRY
FOURTH QUARTER 2007**

NORTH AMERICAN INDUSTRY CLASSIFICATION SYSTEM INDUSTRY GROUP	NUMBER OF EMPLOYING UNITS	EMPLOYMENT OCTOBER	EMPLOYMENT NOVEMBER	EMPLOYMENT DECEMBER	TOTAL EARNINGS OCTOBER-DECEMBER	AVERAGE WEEKLY EARNINGS
NEWTON COUNTY - TOTAL	136	1,105	1,088	1,076	\$5,565,531	\$392.89
Construction	10	25	23	25	\$141,116	\$446.10
Manufacturing	16	78	79	83	\$518,619	\$498.67
Trade, Transportation & Utilities	29	151	147	146	\$787,537	\$409.32
Retail Trade	14	100	94	93	\$419,962	\$337.68
Other Trade, Transportation & Utilities	15	51	53	53	\$367,575	\$540.29
Education & Health Services	23	218	215	216	\$919,184	\$326.84
Leisure & Hospitality	18	70	64	50	\$191,826	\$240.58
Other Services	4	13	12	13	\$36,624	\$222.41
Local Government	13	409	406	401	\$2,178,676	\$413.46
State Government	7	93	94	93	\$447,749	\$369.02
Other	16	48	48	49	\$344,200	\$547.80
OUACHITA COUNTY - TOTAL	648	7,693	7,696	7,740	\$54,561,297	\$544.38
Natural Resources & Mining	46	261	261	253	\$2,102,207	\$625.97
Construction	48	266	266	246	\$2,082,023	\$617.57
Manufacturing	29	857	788	814	\$7,406,761	\$695.10
Trade, Transportation & Utilities	173	1,744	1,774	1,794	\$12,903,062	\$560.55
Wholesale Trade	28	228	228	233	\$2,950,387	\$988.18
Retail Trade	116	1,042	1,070	1,078	\$5,050,468	\$365.36
Transportation, Warehousing & Utilities	29	474	476	483	\$4,902,207	\$789.45
Information	8	96	91	94	\$704,782	\$578.80
Financial Activities	61	348	346	354	\$3,058,281	\$673.43
Professional & Business Services	53	373	379	386	\$2,369,876	\$480.58
Education & Health Services	111	1,267	1,271	1,277	\$8,880,222	\$537.16
Leisure & Hospitality	33	467	473	492	\$1,177,867	\$189.82
Other Services	42	160	161	160	\$819,640	\$393.24
Local Government	30	1,268	1,288	1,282	\$8,704,631	\$523.39
State Government	14	586	598	588	\$4,351,945	\$566.76

**TABLE 6. COUNTY SUMMARY
EMPLOYMENT AND TOTAL EARNINGS, BY INDUSTRY
FOURTH QUARTER 2007**

NORTH AMERICAN INDUSTRY CLASSIFICATION SYSTEM INDUSTRY GROUP	NUMBER OF EMPLOYING UNITS	EMPLOYMENT OCTOBER	EMPLOYMENT NOVEMBER	EMPLOYMENT DECEMBER	TOTAL EARNINGS OCTOBER-DECEMBER	AVERAGE WEEKLY EARNINGS
PERRY COUNTY - TOTAL	163	1,346	1,324	1,311	\$8,741,158	\$506.70
Natural Resources & Mining	8	67	67	66	\$573,552	\$661.79
Construction	25	76	75	72	\$526,868	\$545.22
Manufacturing	7	83	79	74	\$496,762	\$485.75
Trade, Transportation & Utilities	29	225	220	219	\$1,486,605	\$516.66
Retail Trade	18	171	166	165	\$587,968	\$270.29
Other Trade, Transportation & Utilities	11	54	54	54	\$898,637	\$1,280.11
Financial Activities	15	66	67	66	\$662,637	\$768.42
Professional & Business Services	16	34	34	33	\$301,342	\$688.52
Education & Health Services	27	207	195	200	\$1,347,894	\$516.70
Local Government	12	432	434	431	\$2,495,591	\$444.03
State Government	9	50	50	51	\$357,055	\$545.68
Other	15	106	103	99	\$492,852	\$369.27
PHILLIPS COUNTY - TOTAL	806	6,735	6,708	6,715	\$43,737,957	\$500.71
Natural Resources & Mining	64	551	517	453	\$2,990,169	\$453.67
Construction	30	129	134	133	\$872,096	\$508.21
Manufacturing	13	359	353	371	\$2,844,163	\$606.04
Trade, Transportation & Utilities	180	1,643	1,652	1,656	\$11,155,068	\$519.94
Wholesale Trade	34	437	426	444	\$3,920,627	\$692.24
Retail Trade	102	869	886	892	\$4,497,986	\$392.14
Transportation, Warehousing & Utilities	44	337	340	320	\$2,736,455	\$633.39
Information	9	48	47	48	\$320,629	\$517.42
Financial Activities	55	271	275	277	\$2,001,644	\$561.26
Professional & Business Services	58	171	172	169	\$1,556,392	\$701.50
Education & Health Services	272	1,331	1,331	1,363	\$8,486,679	\$486.58
Leisure & Hospitality	37	419	412	419	\$989,648	\$182.70
Other Services	41	91	89	89	\$404,572	\$347.07
Local Government	30	1,161	1,165	1,168	\$8,526,934	\$563.18
State Government	17	561	561	569	\$3,589,963	\$489.92

**TABLE 6. COUNTY SUMMARY
EMPLOYMENT AND TOTAL EARNINGS, BY INDUSTRY
FOURTH QUARTER 2007**

NORTH AMERICAN INDUSTRY CLASSIFICATION SYSTEM INDUSTRY GROUP	NUMBER OF EMPLOYING UNITS	EMPLOYMENT OCTOBER	EMPLOYMENT NOVEMBER	EMPLOYMENT DECEMBER	TOTAL EARNINGS OCTOBER-DECEMBER	AVERAGE WEEKLY EARNINGS
PIKE COUNTY - TOTAL	271	2,678	2,671	2,729	\$16,440,190	\$469.66
Natural Resources & Mining	25	131	131	133	\$994,032	\$580.74
Construction	12	95	104	98	\$779,876	\$605.96
Manufacturing	17	254	244	257	\$1,471,977	\$449.92
Trade, Transportation & Utilities	95	612	593	606	\$3,444,294	\$438.89
Wholesale Trade	20	128	131	135	\$986,694	\$577.92
Retail Trade	47	368	357	369	\$1,561,723	\$329.43
Transportation, Warehousing & Utilities	28	116	105	102	\$895,877	\$640.06
Information	6	29	27	28	\$322,786	\$886.77
Financial Activities	26	183	185	187	\$1,724,075	\$716.87
Professional & Business Services	14	33	32	32	\$893,161	\$2,124.89
Education & Health Services	20	248	253	249	\$1,267,641	\$390.04
Leisure & Hospitality	18	233	228	210	\$520,627	\$179.05
Other Services	14	121	125	131	\$663,045	\$405.86
Local Government	13	592	602	653	\$3,736,309	\$466.82
State Government	11	147	147	145	\$622,367	\$327.16
POINSETT COUNTY - TOTAL	492	5,639	5,632	5,574	\$38,803,910	\$531.60
Natural Resources & Mining	53	413	384	314	\$2,846,817	\$591.32
Construction	22	80	82	77	\$708,259	\$683.87
Manufacturing	21	851	855	869	\$6,932,695	\$621.30
Trade, Transportation & Utilities	129	1,395	1,383	1,392	\$10,225,201	\$565.87
Wholesale Trade	31	504	499	495	\$5,654,735	\$871.12
Retail Trade	68	719	724	738	\$3,324,922	\$351.81
Transportation, Warehousing & Utilities	30	172	160	159	\$1,245,544	\$585.40
Information	6	48	50	49	\$569,355	\$893.81
Financial Activities	45	268	280	280	\$2,455,004	\$684.23
Professional & Business Services	32	169	167	181	\$1,184,166	\$528.57
Education & Health Services	71	592	601	595	\$3,365,475	\$434.37
Leisure & Hospitality	43	378	382	368	\$805,445	\$164.78
Other Services	27	65	63	63	\$406,025	\$490.57
Local Government	31	1,169	1,174	1,175	\$7,918,976	\$519.46
State Government	12	211	211	211	\$1,386,492	\$505.47

**TABLE 6. COUNTY SUMMARY
EMPLOYMENT AND TOTAL EARNINGS, BY INDUSTRY
FOURTH QUARTER 2007**

NORTH AMERICAN INDUSTRY CLASSIFICATION SYSTEM INDUSTRY GROUP	NUMBER OF EMPLOYING UNITS	EMPLOYMENT OCTOBER	EMPLOYMENT NOVEMBER	EMPLOYMENT DECEMBER	TOTAL EARNINGS OCTOBER-DECEMBER	AVERAGE WEEKLY EARNINGS
POLK COUNTY - TOTAL	560	6,272	6,281	6,319	\$37,569,850	\$459.41
Natural Resources & Mining	29	216	215	217	\$1,863,429	\$663.61
Construction	43	177	171	173	\$1,009,105	\$446.97
Manufacturing	44	1,341	1,330	1,333	\$8,606,272	\$496.02
Trade, Transportation & Utilities	153	1,252	1,259	1,277	\$7,232,584	\$440.62
Wholesale Trade	24	113	108	107	\$507,771	\$357.25
Retail Trade	83	783	790	790	\$4,028,711	\$393.44
Transportation, Warehousing & Utilities	46	356	361	380	\$2,696,102	\$567.16
Information	10	58	56	56	\$441,152	\$598.85
Financial Activities	38	233	237	241	\$1,844,044	\$598.52
Professional & Business Services	48	212	214	217	\$1,181,072	\$423.88
Education & Health Services	85	1,019	1,024	1,011	\$6,272,518	\$473.97
Leisure & Hospitality	38	432	439	469	\$1,046,570	\$180.24
Other Services	37	150	152	152	\$812,997	\$413.25
Local Government	21	839	836	832	\$5,396,770	\$496.77
State Government	14	343	348	341	\$1,863,337	\$416.67
POPE COUNTY - TOTAL	1,772	27,432	27,674	28,067	\$209,093,078	\$580.14
Natural Resources & Mining	27	366	593	724	\$3,572,850	\$489.90
Construction	190	1,273	1,282	1,304	\$11,838,157	\$707.92
Manufacturing	88	5,170	5,171	5,245	\$49,024,570	\$725.87
Trade, Transportation & Utilities	469	6,767	6,847	6,887	\$60,084,763	\$676.34
Wholesale Trade	109	709	699	704	\$6,867,602	\$750.39
Retail Trade	269	3,461	3,537	3,557	\$17,734,375	\$387.74
Transportation, Warehousing & Utilities	91	2,597	2,611	2,626	\$35,482,786	\$1,045.23
Information	18	241	251	248	\$2,255,479	\$703.37
Financial Activities	191	859	857	874	\$7,581,894	\$675.55
Professional & Business Services	234	2,675	2,601	2,601	\$15,757,825	\$461.65
Education & Health Services	254	3,083	3,098	3,110	\$22,070,150	\$548.18
Leisure & Hospitality	137	2,494	2,461	2,558	\$6,773,336	\$208.05
Other Services	108	483	490	481	\$3,200,789	\$508.01
Local Government	40	2,355	2,338	2,350	\$15,851,633	\$519.39
State Government	16	1,666	1,685	1,685	\$11,081,632	\$507.80

**TABLE 6. COUNTY SUMMARY
EMPLOYMENT AND TOTAL EARNINGS, BY INDUSTRY
FOURTH QUARTER 2007**

NORTH AMERICAN INDUSTRY CLASSIFICATION SYSTEM INDUSTRY GROUP	NUMBER OF EMPLOYING UNITS	EMPLOYMENT OCTOBER	EMPLOYMENT NOVEMBER	EMPLOYMENT DECEMBER	TOTAL EARNINGS OCTOBER-DECEMBER	AVERAGE WEEKLY EARNINGS
PRAIRIE COUNTY - TOTAL	242	1,440	1,407	1,395	\$9,629,091	\$523.83
Natural Resources & Mining	29	137	115	107	\$841,257	\$540.77
Trade, Transportation & Utilities	67	333	315	311	\$2,163,606	\$520.64
Wholesale Trade	9	54	54	52	\$576,332	\$831.25
Retail Trade	38	185	184	184	\$701,072	\$292.56
Transportation, Warehousing & Utilities	20	94	77	75	\$886,202	\$831.33
Financial Activities	18	69	68	71	\$695,271	\$771.38
Professional & Business Services	16	42	41	42	\$252,996	\$467.07
Education & Health Services	34	160	158	161	\$895,502	\$431.43
Leisure & Hospitality	18	81	79	83	\$253,192	\$240.45
Other Services	14	40	38	41	\$185,962	\$360.62
Local Government	15	315	326	314	\$2,154,663	\$520.66
State Government	10	50	51	51	\$374,965	\$569.28
Other	21	213	216	214	\$1,811,677	\$650.20
PULASKI COUNTY - TOTAL	14,732	242,724	243,996	244,887	\$3,099,220,810	\$977.58
Natural Resources & Mining	56	738	712	695	\$9,345,546	\$1,005.44
Construction	1,192	10,765	10,726	10,662	\$142,304,111	\$1,021.35
Manufacturing	453	15,280	15,429	15,442	\$190,521,250	\$952.66
Trade, Transportation & Utilities	3,361	51,523	52,634	53,206	\$493,855,927	\$724.23
Wholesale Trade	1,212	13,651	13,628	13,666	\$195,286,606	\$1,100.65
Retail Trade	1,757	24,766	25,872	26,354	\$156,229,173	\$468.27
Transportation, Warehousing & Utilities	392	13,106	13,134	13,186	\$142,340,148	\$833.15
Information	244	8,784	8,812	8,852	\$701,576,465	\$6,121.53
Financial Activities	1,820	16,526	16,547	16,678	\$222,014,136	\$1,029.81
Professional & Business Services	2,871	34,273	34,328	34,453	\$371,949,959	\$832.91
Education & Health Services	2,168	35,248	35,225	35,229	\$401,839,510	\$877.30
Leisure & Hospitality	1,050	20,859	20,728	20,875	\$78,821,235	\$291.21
Other Services	1,210	6,746	6,795	6,793	\$53,069,105	\$602.28
Local Government	103	16,972	16,991	16,923	\$156,820,990	\$711.19
State Government	204	25,010	25,069	25,079	\$277,102,576	\$850.83

**TABLE 6. COUNTY SUMMARY
EMPLOYMENT AND TOTAL EARNINGS, BY INDUSTRY
FOURTH QUARTER 2007**

NORTH AMERICAN INDUSTRY CLASSIFICATION SYSTEM INDUSTRY GROUP	NUMBER OF EMPLOYING UNITS	EMPLOYMENT OCTOBER	EMPLOYMENT NOVEMBER	EMPLOYMENT DECEMBER	TOTAL EARNINGS OCTOBER-DECEMBER	AVERAGE WEEKLY EARNINGS
RANDOLPH COUNTY - TOTAL	422	4,777	4,787	4,777	\$28,806,568	\$463.54
Natural Resources & Mining	23	85	75	70	\$427,159	\$428.59
Construction	22	84	78	76	\$425,526	\$412.60
Manufacturing	39	723	757	753	\$5,115,262	\$528.64
Trade, Transportation & Utilities	104	921	944	926	\$5,388,874	\$445.57
Wholesale Trade	23	232	234	231	\$1,249,423	\$413.67
Retail Trade	62	567	576	576	\$2,950,890	\$396.15
Transportation, Warehousing & Utilities	19	122	134	119	\$1,188,561	\$731.42
Information	5	41	41	41	\$361,068	\$677.43
Financial Activities	32	159	155	166	\$1,069,755	\$514.31
Professional & Business Services	37	260	258	254	\$1,154,038	\$344.97
Education & Health Services	73	886	888	896	\$6,158,435	\$532.28
Leisure & Hospitality	28	402	361	368	\$894,815	\$182.58
Other Services	24	63	63	74	\$329,661	\$380.38
Local Government	23	863	873	858	\$5,325,180	\$473.74
State Government	12	290	294	295	\$2,156,795	\$566.24
SAINT FRANCIS COUNTY - TOTAL	701	7,796	7,617	7,574	\$52,298,851	\$525.03
Natural Resources & Mining	28	206	200	201	\$1,426,658	\$542.39
Construction	45	243	238	218	\$1,672,926	\$552.30
Manufacturing	17	950	829	821	\$7,087,308	\$629.05
Trade, Transportation & Utilities	179	2,056	2,029	2,014	\$13,688,468	\$517.93
Wholesale Trade	32	518	513	499	\$4,694,669	\$708.09
Retail Trade	119	1,235	1,239	1,229	\$6,024,015	\$375.41
Transportation, Warehousing & Utilities	28	303	277	286	\$2,969,784	\$791.38
Information	9	91	91	93	\$661,520	\$555.12
Financial Activities	59	312	312	304	\$2,152,777	\$535.34
Professional & Business Services	57	188	184	196	\$2,048,142	\$832.13
Education & Health Services	167	1,291	1,291	1,304	\$8,385,973	\$498.00
Leisure & Hospitality	52	663	657	634	\$2,079,613	\$245.60
Other Services	42	114	106	108	\$510,656	\$359.28
Local Government	29	1,158	1,157	1,157	\$8,330,133	\$553.67
State Government	17	524	523	524	\$4,254,677	\$624.98

**TABLE 6. COUNTY SUMMARY
EMPLOYMENT AND TOTAL EARNINGS, BY INDUSTRY
FOURTH QUARTER 2007**

NORTH AMERICAN INDUSTRY CLASSIFICATION SYSTEM INDUSTRY GROUP	NUMBER OF EMPLOYING UNITS	EMPLOYMENT OCTOBER	EMPLOYMENT NOVEMBER	EMPLOYMENT DECEMBER	TOTAL EARNINGS OCTOBER-DECEMBER	AVERAGE WEEKLY EARNINGS
SALINE COUNTY - TOTAL	1,838	21,227	21,353	21,462	\$162,215,885	\$584.53
Natural Resources & Mining	16	33	33	38	\$365,462	\$810.94
Construction	319	1,963	2,002	1,976	\$18,021,944	\$700.04
Manufacturing	89	1,919	1,915	1,940	\$21,621,532	\$864.15
Trade, Transportation & Utilities	442	4,520	4,630	4,674	\$33,817,277	\$564.52
Wholesale Trade	127	498	502	505	\$7,520,927	\$1,153.22
Retail Trade	255	3,703	3,812	3,852	\$23,124,649	\$469.47
Transportation, Warehousing & Utilities	60	319	316	317	\$3,171,701	\$768.84
Information	17	147	149	159	\$1,243,251	\$630.56
Financial Activities	183	794	791	804	\$6,794,968	\$656.37
Professional & Business Services	232	1,250	1,172	1,215	\$9,720,694	\$616.78
Education & Health Services	217	2,949	2,989	3,028	\$21,878,263	\$563.11
Leisure & Hospitality	139	2,585	2,552	2,524	\$7,859,799	\$236.76
Other Services	135	566	585	564	\$3,686,370	\$496.04
Local & State Government	49	4,501	4,535	4,540	\$37,206,325	\$632.45
SCOTT COUNTY - TOTAL	192	2,847	2,865	2,887	\$17,671,984	\$474.26
Natural Resources & Mining	18	180	181	186	\$1,560,183	\$658.21
Trade, Transportation & Utilities	41	465	460	470	\$2,804,412	\$463.92
Wholesale Trade	9	65	66	71	\$595,554	\$680.37
Retail Trade	25	332	330	334	\$1,563,380	\$362.23
Transportation, Warehousing & Utilities	7	68	64	65	\$645,478	\$756.12
Financial Activities	19	79	77	79	\$475,880	\$467.31
Professional & Business Services	12	18	17	22	\$167,635	\$678.68
Education & Health Services	35	297	305	316	\$1,927,091	\$484.44
Leisure & Hospitality	16	163	150	145	\$378,529	\$190.73
Other Services	9	38	37	37	\$329,522	\$678.96
Local Government	5	386	399	389	\$2,507,230	\$492.84
State Government	8	75	76	73	\$438,727	\$451.99
Other	29	1,146	1,163	1,170	\$7,082,775	\$469.82

**TABLE 6. COUNTY SUMMARY
EMPLOYMENT AND TOTAL EARNINGS, BY INDUSTRY
FOURTH QUARTER 2007**

NORTH AMERICAN INDUSTRY CLASSIFICATION SYSTEM INDUSTRY GROUP	NUMBER OF EMPLOYING UNITS	EMPLOYMENT OCTOBER	EMPLOYMENT NOVEMBER	EMPLOYMENT DECEMBER	TOTAL EARNINGS OCTOBER-DECEMBER	AVERAGE WEEKLY EARNINGS
SEARCY COUNTY - TOTAL	190	1,767	1,740	1,733	\$9,194,458	\$404.92
Construction	7	17	17	15	\$119,071	\$560.77
Manufacturing	17	268	263	256	\$1,120,501	\$328.56
Trade, Transportation & Utilities	39	323	333	336	\$1,435,804	\$334.01
Retail Trade	25	216	224	227	\$893,728	\$309.21
Other Trade, Transportation & Utilities	14	107	109	109	\$542,076	\$384.91
Financial Activities	14	91	88	90	\$634,977	\$544.73
Professional & Business Services	16	30	28	30	\$180,625	\$473.67
Education & Health Services	50	327	326	329	\$1,696,867	\$398.76
Leisure & Hospitality	13	122	115	111	\$275,113	\$182.44
Local Government	10	362	361	359	\$2,210,740	\$471.51
State Government	8	148	146	144	\$957,469	\$504.46
Other	16	79	63	63	\$563,291	\$634.10
SEBASTIAN COUNTY - TOTAL	3,745	73,595	73,905	73,133	\$627,948,690	\$656.80
Natural Resources & Mining	73	1,776	1,803	1,794	\$28,851,946	\$1,239.19
Construction	313	2,912	2,885	2,871	\$31,246,569	\$831.88
Manufacturing	238	18,646	18,306	18,098	\$174,886,112	\$733.12
Trade, Transportation & Utilities	947	13,001	13,373	13,586	\$99,260,750	\$573.23
Wholesale Trade	248	2,609	2,626	2,634	\$29,946,891	\$878.23
Retail Trade	567	8,072	8,424	8,622	\$45,584,545	\$418.80
Transportation, Warehousing & Utilities	132	2,320	2,323	2,330	\$23,729,314	\$785.31
Information	62	1,083	1,086	1,082	\$12,320,683	\$874.57
Financial Activities	423	2,604	2,616	2,603	\$26,558,594	\$783.45
Professional & Business Services	543	10,252	10,317	9,562	\$73,308,064	\$561.46
Education & Health Services	505	10,232	10,402	10,430	\$103,679,007	\$770.21
Leisure & Hospitality	307	5,583	5,552	5,601	\$17,661,739	\$243.53
Other Services	269	1,440	1,406	1,412	\$9,313,967	\$504.79
Local Government	43	4,609	4,643	4,621	\$38,628,976	\$642.57
State Government	22	1,457	1,516	1,473	\$12,232,283	\$634.92

**TABLE 6. COUNTY SUMMARY
EMPLOYMENT AND TOTAL EARNINGS, BY INDUSTRY
FOURTH QUARTER 2007**

NORTH AMERICAN INDUSTRY CLASSIFICATION SYSTEM INDUSTRY GROUP	NUMBER OF EMPLOYING UNITS	EMPLOYMENT OCTOBER	EMPLOYMENT NOVEMBER	EMPLOYMENT DECEMBER	TOTAL EARNINGS OCTOBER-DECEMBER	AVERAGE WEEKLY EARNINGS
SEVIER COUNTY - TOTAL	334	5,901	5,880	5,897	\$37,986,554	\$495.88
Natural Resources & Mining	18	266	260	264	\$1,818,001	\$531.06
Construction	20	162	174	167	\$1,460,634	\$670.12
Manufacturing	11	2,222	2,226	2,260	\$13,993,189	\$481.39
Trade, Transportation & Utilities	95	854	866	869	\$5,643,703	\$503.05
Wholesale Trade	16	140	145	140	\$1,743,468	\$946.68
Retail Trade	61	590	595	602	\$2,785,668	\$359.74
Transportation, Warehousing & Utilities	18	124	126	127	\$1,114,567	\$682.25
Information	5	38	36	38	\$300,292	\$618.73
Financial Activities	30	195	191	192	\$1,587,309	\$633.74
Professional & Business Services	31	115	92	92	\$1,357,277	\$1,047.55
Education & Health Services	51	519	506	505	\$3,306,453	\$498.71
Leisure & Hospitality	22	263	271	269	\$628,139	\$180.52
Other Services	31	134	133	139	\$618,529	\$351.57
Local Government	11	914	906	881	\$5,937,907	\$507.33
State Government	9	219	219	221	\$1,335,121	\$467.53
SHARP COUNTY - TOTAL	450	3,884	3,869	3,813	\$21,998,209	\$438.92
Construction	31	204	200	178	\$1,615,087	\$640.40
Manufacturing	20	177	179	179	\$965,260	\$416.36
Trade, Transportation & Utilities	103	990	987	962	\$6,396,350	\$502.24
Retail Trade	74	652	644	636	\$3,004,511	\$358.88
Other Trade, Transportation & Utilities	29	338	343	326	\$3,391,839	\$777.29
Information	7	68	68	63	\$660,002	\$765.37
Financial Activities	38	264	265	258	\$1,874,249	\$549.58
Professional & Business Services	46	148	158	157	\$1,046,802	\$521.75
Education & Health Services	100	581	568	572	\$3,088,186	\$414.10
Leisure & Hospitality	42	429	427	419	\$1,007,743	\$182.40
Local Government	24	832	826	831	\$4,323,241	\$400.83
State Government	9	116	115	119	\$679,002	\$447.69
Other	30	75	76	75	\$342,287	\$349.51

**TABLE 6. COUNTY SUMMARY
EMPLOYMENT AND TOTAL EARNINGS, BY INDUSTRY
FOURTH QUARTER 2007**

NORTH AMERICAN INDUSTRY CLASSIFICATION SYSTEM INDUSTRY GROUP	NUMBER OF EMPLOYING UNITS	EMPLOYMENT OCTOBER	EMPLOYMENT NOVEMBER	EMPLOYMENT DECEMBER	TOTAL EARNINGS OCTOBER-DECEMBER	AVERAGE WEEKLY EARNINGS
STONE COUNTY - TOTAL	296	3,064	3,072	3,050	\$17,380,573	\$436.63
Natural Resources & Mining	5	10	16	14	\$70,531	\$406.91
Construction	23	111	104	104	\$622,592	\$450.39
Manufacturing	26	473	474	477	\$2,498,883	\$404.96
Trade, Transportation & Utilities	78	739	737	726	\$4,673,319	\$489.76
Wholesale Trade	9	55	55	57	\$347,626	\$480.37
Retail Trade	57	635	632	620	\$3,899,728	\$476.91
Transportation, Warehousing & Utilities	12	49	50	49	\$425,965	\$664.19
Financial Activities	29	125	132	130	\$867,541	\$517.32
Professional & Business Services	12	27	24	27	\$216,655	\$640.99
Education & Health Services	54	506	519	530	\$3,463,458	\$513.99
Leisure & Hospitality	33	401	393	362	\$980,130	\$195.66
Local Government	10	428	428	435	\$2,674,683	\$478.11
State Government	9	176	177	176	\$778,482	\$339.60
Other	17	68	68	69	\$534,299	\$601.46
UNION COUNTY - TOTAL	1,407	19,490	19,468	19,627	\$174,446,434	\$687.15
Natural Resources & Mining	115	513	496	507	\$5,775,090	\$879.10
Construction	92	1,339	1,365	1,367	\$15,713,378	\$890.73
Manufacturing	68	4,678	4,627	4,670	\$47,053,152	\$776.99
Trade, Transportation & Utilities	358	3,627	3,724	3,718	\$33,450,850	\$697.39
Wholesale Trade	82	655	678	666	\$11,951,482	\$1,379.71
Retail Trade	217	2,180	2,239	2,241	\$11,357,955	\$393.55
Transportation, Warehousing & Utilities	59	792	807	811	\$10,141,413	\$971.09
Information	19	206	209	214	\$1,492,965	\$547.74
Financial Activities	121	709	696	690	\$5,744,625	\$632.78
Professional & Business Services	140	1,644	1,572	1,615	\$17,699,442	\$845.47
Education & Health Services	212	2,412	2,440	2,475	\$22,143,576	\$697.43
Leisure & Hospitality	89	1,183	1,152	1,166	\$3,487,479	\$229.88
Other Services	139	535	533	551	\$3,384,826	\$482.47
Local Government	36	2,075	2,088	2,073	\$14,280,468	\$528.46
State Government	18	569	566	581	\$4,220,583	\$567.59

**TABLE 6. COUNTY SUMMARY
EMPLOYMENT AND TOTAL EARNINGS, BY INDUSTRY
FOURTH QUARTER 2007**

NORTH AMERICAN INDUSTRY CLASSIFICATION SYSTEM INDUSTRY GROUP	NUMBER OF EMPLOYING UNITS	EMPLOYMENT OCTOBER	EMPLOYMENT NOVEMBER	EMPLOYMENT DECEMBER	TOTAL EARNINGS OCTOBER-DECEMBER	AVERAGE WEEKLY EARNINGS
VAN BUREN COUNTY - TOTAL	361	3,703	3,685	3,657	\$22,673,619	\$473.73
Natural Resources & Mining	12	66	56	58	\$639,491	\$819.86
Construction	42	202	195	198	\$1,390,369	\$539.25
Manufacturing	15	448	437	443	\$3,041,216	\$528.48
Trade, Transportation & Utilities	98	805	815	816	\$5,008,927	\$474.51
Wholesale Trade	15	55	53	55	\$606,190	\$858.22
Retail Trade	59	591	598	602	\$3,101,532	\$399.63
Transportation, Warehousing & Utilities	24	159	164	159	\$1,301,205	\$622.98
Information	10	49	46	47	\$480,807	\$781.38
Financial Activities	27	149	149	148	\$1,060,882	\$548.92
Professional & Business Services	26	93	96	93	\$563,811	\$461.38
Education & Health Services	57	629	632	627	\$4,119,865	\$503.57
Leisure & Hospitality	30	449	437	418	\$1,406,076	\$248.83
Other Services	25	81	80	76	\$453,019	\$441.11
Local Government	11	640	654	645	\$3,896,245	\$463.71
State Government	8	92	88	88	\$612,911	\$527.76
WASHINGTON COUNTY - TOTAL	5,696	91,475	91,556	91,440	\$856,663,468	\$720.26
Natural Resources & Mining	39	517	523	520	\$4,736,209	\$700.62
Construction	684	5,378	5,340	5,517	\$53,070,833	\$754.36
Manufacturing	243	14,900	14,706	14,800	\$131,432,058	\$683.03
Trade, Transportation & Utilities	1,348	20,710	21,126	21,167	\$186,661,920	\$683.71
Wholesale Trade	411	3,874	3,870	3,863	\$60,209,076	\$1,197.07
Retail Trade	746	11,449	11,832	11,843	\$68,263,419	\$448.50
Transportation, Warehousing & Utilities	191	5,387	5,424	5,461	\$58,189,425	\$825.24
Information	96	1,639	1,611	1,621	\$17,830,044	\$844.72
Financial Activities	664	4,080	4,040	4,029	\$40,830,573	\$775.57
Professional & Business Services	967	9,057	8,808	8,657	\$130,822,634	\$1,138.29
Education & Health Services	654	10,888	10,966	10,949	\$118,424,299	\$833.12
Leisure & Hospitality	522	9,575	9,481	9,245	\$30,998,753	\$252.77
Other Services	395	1,961	1,938	1,950	\$11,831,641	\$466.81
Local & State Government	84	12,770	13,017	12,985	\$130,024,504	\$773.90

**TABLE 6. COUNTY SUMMARY
EMPLOYMENT AND TOTAL EARNINGS, BY INDUSTRY
FOURTH QUARTER 2007**

NORTH AMERICAN INDUSTRY CLASSIFICATION SYSTEM INDUSTRY GROUP	NUMBER OF EMPLOYING UNITS	EMPLOYMENT OCTOBER	EMPLOYMENT NOVEMBER	EMPLOYMENT DECEMBER	TOTAL EARNINGS OCTOBER-DECEMBER	AVERAGE WEEKLY EARNINGS
WHITE COUNTY - TOTAL	1,742	23,606	23,759	23,470	\$184,824,721	\$602.13
Natural Resources & Mining	45	480	501	449	\$5,187,669	\$837.17
Construction	194	1,304	1,343	1,250	\$12,980,403	\$768.66
Manufacturing	84	2,674	2,699	2,681	\$26,625,093	\$762.88
Trade, Transportation & Utilities	488	5,908	6,043	6,070	\$46,218,977	\$591.86
Wholesale Trade	99	609	606	612	\$5,335,403	\$673.92
Retail Trade	298	3,210	3,301	3,333	\$17,196,700	\$403.14
Transportation, Warehousing & Utilities	91	2,089	2,136	2,125	\$23,686,874	\$860.82
Information	24	219	222	226	\$1,620,857	\$560.79
Financial Activities	180	966	963	946	\$8,662,651	\$695.33
Professional & Business Services	176	1,373	1,307	1,307	\$10,534,487	\$609.74
Education & Health Services	259	4,269	4,265	4,111	\$37,791,253	\$689.68
Leisure & Hospitality	123	2,326	2,306	2,310	\$5,945,553	\$197.64
Other Services	105	621	614	614	\$4,237,185	\$528.83
Local Government	45	2,617	2,649	2,666	\$19,337,315	\$562.59
State Government	19	849	847	840	\$5,683,278	\$517.16
WOODRUFF COUNTY - TOTAL	211	2,031	1,980	1,928	\$13,779,800	\$535.44
Natural Resources & Mining	21	149	147	127	\$1,137,616	\$620.63
Construction	8	57	54	53	\$409,978	\$576.89
Manufacturing	8	336	324	330	\$2,250,729	\$524.65
Trade, Transportation & Utilities	59	542	515	480	\$4,365,593	\$655.46
Wholesale Trade	13	208	187	162	\$2,446,706	\$1,013.69
Retail Trade	27	204	200	197	\$781,520	\$300.08
Transportation, Warehousing & Utilities	19	130	128	121	\$1,137,367	\$692.53
Financial Activities	16	60	57	61	\$577,501	\$748.70
Professional & Business Services	4	6	7	6	\$68,683	\$834.21
Education & Health Services	63	235	235	233	\$1,488,967	\$488.77
Leisure & Hospitality	7	48	48	45	\$92,806	\$151.89
Local Government	10	516	509	510	\$2,865,968	\$430.86
State Government	7	61	62	62	\$397,288	\$495.58
Other	8	21	22	21	\$124,671	\$449.53

**TABLE 6. COUNTY SUMMARY
EMPLOYMENT AND TOTAL EARNINGS, BY INDUSTRY
FOURTH QUARTER 2007**

NORTH AMERICAN INDUSTRY CLASSIFICATION SYSTEM INDUSTRY GROUP	NUMBER OF EMPLOYING UNITS	EMPLOYMENT OCTOBER	EMPLOYMENT NOVEMBER	EMPLOYMENT DECEMBER	TOTAL EARNINGS OCTOBER-DECEMBER	AVERAGE WEEKLY EARNINGS
YELL COUNTY - TOTAL	412	6,785	6,826	6,872	\$45,100,711	\$508.12
Natural Resources & Mining	22	221	220	222	\$1,603,985	\$558.30
Construction	45	332	344	344	\$2,634,078	\$595.95
Manufacturing	20	2,696	2,697	2,711	\$17,800,519	\$506.89
Trade, Transportation & Utilities	83	675	688	685	\$3,513,435	\$395.89
Wholesale Trade	12	22	21	21	\$171,581	\$618.68
Retail Trade	52	566	581	574	\$2,504,000	\$335.76
Transportation, Warehousing & Utilities	19	87	86	90	\$837,854	\$735.17
Information	3	74	74	74	\$837,402	\$870.48
Financial Activities	39	199	199	200	\$1,394,639	\$538.19
Professional & Business Services	36	267	267	268	\$3,018,354	\$868.51
Education & Health Services	78	470	480	487	\$2,833,775	\$455.08
Leisure & Hospitality	29	332	325	321	\$828,944	\$195.60
Other Services	16	78	78	78	\$304,573	\$300.37
Local Government	28	1,322	1,333	1,362	\$9,647,917	\$554.26
State Government	13	119	121	120	\$683,090	\$437.88
REST-OF-STATE-TOTAL	3,999	16,444	16,345	16,482	\$239,961,464	\$1,123.90
Natural Resources & Mining	63	658	665	677	\$8,412,560	\$970.68
Construction	509	3,467	3,366	3,191	\$39,997,876	\$920.82
Manufacturing	61	154	151	157	\$1,541,483	\$769.97
Trade, Transportation & Utilities	1,532	6,063	6,064	6,220	\$115,289,164	\$1,450.11
Wholesale Trade	1,285	4,887	4,863	4,984	\$103,116,550	\$1,615.05
Retail Trade	112	502	513	511	\$5,816,486	\$879.60
Transportation, Warehousing & Utilities	135	674	688	725	\$6,356,128	\$702.83
Information	84	179	183	190	\$2,559,297	\$1,069.94
Financial Activities	255	739	644	630	\$9,717,953	\$1,114.06
Professional & Business Services	1,230	3,967	4,094	4,194	\$48,661,536	\$916.33
Education & Health Services	95	527	503	518	\$6,639,943	\$989.85
Other	170	690	675	705	\$7,141,652	\$796.17

TABLE 7. FEDERAL GOVERNMENT EMPLOYMENT AND EARNINGS IN ARKANSAS

NORTH AMERICAN INDUSTRY CLASSIFICATION SYSTEM INDUSTRY GROUP	NUMBER OF EMPLOYING UNITS	EMPLOYMENT OCTOBER	EMPLOYMENT NOVEMBER	EMPLOYMENT DECEMBER	TOTAL EARNINGS OCT. - DEC 2007
Trade, Transportation & Utilities	614	6,733	6,726	6,603	\$81,654,288
Information	1	34	35	35	\$462,221
Financial Activities	23	168	168	168	\$2,966,603
Professional & Business Services	30	750	749	751	\$10,853,896
Education & Health Services	5	4,303	4,308	4,305	\$82,245,684
Leisure & Hospitality	15	201	188	196	\$2,292,644
Other Services	2	264	262	263	\$883,986
Public Administration	491	8,678	8,657	8,459	\$134,501,464
TOTAL	1,181	21,131	21,093	20,780	\$315,860,786

**TABLE 8. WORKFORCE INFORMATION AREA, SUMMARY
EMPLOYMENT AND TOTAL EARNINGS, BY INDUSTRY
FOURTH QUARTER 2007**

NORTH AMERICAN INDUSTRY CLASSIFICATION SYSTEM INDUSTRY GROUP	NUMBER OF EMPLOYING UNITS	EMPLOYMENT OCTOBER	EMPLOYMENT NOVEMBER	EMPLOYMENT DECEMBER	TOTAL EARNINGS OCTOBER -DECEMBER	AVERAGE WEEKLY EARNINGS
CENTRAL WORKFORCE INFORMATION*	6,348	77,425	77,563	77,691	\$613,736,088	\$545.57
Natural Resources & Mining	186	1,474	1,443	1,451	\$18,880,661	\$535.11
Trade, Transportation & Utilities	1,577	15,233	15,507	15,624	\$105,939,016	\$446.24
Wholesale Trade	412	2,104	2,117	2,107	\$24,853,570	\$651.37
Retail Trade	898	11,322	11,605	11,730	\$62,848,261	\$385.26
Transportation, Warehousing & Utilities	267	1,807	1,785	1,787	\$18,237,185	\$629.97
Financial Activities	679	3,048	3,053	3,095	\$27,237,558	\$561.33
Professional & Business Services	768	7,090	6,866	6,893	\$78,708,543	\$778.00
Education & Health Services	819	10,373	10,471	10,547	\$81,692,508	\$501.93
Leisure & Hospitality	477	8,361	8,447	8,328	\$23,429,947	\$196.08
Local & State Government	209	15,055	15,051	14,939	\$117,934,974	\$651.01
Other	1,633	16,791	16,725	16,814	\$159,912,881	\$624.35
*Note: Pulaski County is not included in the Central Workforce Information. Please refer to Page 55 for information on Pulaski County.						
Central Workforce Includes these counties: Faulkner, Lonoke, Monroe, Prairie, and Saline.						
EASTERN WORKFORCE INFORMATION	3,552	38,873	38,679	38,430	\$279,543,499	\$505.44
Natural Resources & Mining	200	1,597	1,517	1,272	\$10,203,614	\$397.18
Construction	192	1,061	1,058	1,046	\$8,759,248	\$534.05
Trade, Transportation & Utilities	886	10,158	10,172	10,125	\$76,468,484	\$499.92
Wholesale Trade	182	2,078	2,072	2,079	\$21,907,846	\$614.93
Retail Trade	487	5,022	5,082	5,096	\$25,856,501	\$344.10
Transportation, Warehousing & Utilities	217	3,058	3,018	2,950	\$28,704,137	\$691.30
Financial Activities	287	1,590	1,585	1,588	\$12,452,013	\$531.70
Professional & Business Services	311	1,600	1,564	1,561	\$12,055,615	\$510.73
Education & Health Services	866	5,725	5,714	5,784	\$41,095,789	\$474.97
Leisure & Hospitality	235	3,634	3,653	3,611	\$11,340,572	\$195.99
Local Government	136	5,905	5,968	5,975	\$44,631,162	\$661.01
State Government	68	2,318	2,312	2,224	\$16,427,357	\$539.22
Other	371	5,285	5,136	5,244	\$46,109,645	\$574.57
Eastern Workforce Includes these counties: Crittenden, Cross, Lee, Phillips, and Saint Francis.						

**TABLE 8. WORKFORCE INFORMATION AREA, SUMMARY
EMPLOYMENT AND TOTAL EARNINGS, BY INDUSTRY
FOURTH QUARTER 2007**

NORTH AMERICAN INDUSTRY CLASSIFICATION SYSTEM INDUSTRY GROUP	NUMBER OF EMPLOYING UNITS	EMPLOYMENT OCTOBER	EMPLOYMENT NOVEMBER	EMPLOYMENT DECEMBER	TOTAL EARNINGS OCTOBER -DECEMBER	AVERAGE WEEKLY EARNINGS
NORTH CENTRAL WORKFORCE INFORMATION	5,751	70,217	70,189	69,661	\$499,066,571	\$491.40
Construction	526	3,114	3,178	3,036	\$26,529,974	\$507.98
Trade, Transportation & Utilities	1,531	15,769	15,903	15,909	\$114,632,022	\$468.08
Retail Trade	944	9,281	9,434	9,516	\$49,296,992	\$338.92
Other Trade, Transportation & Utilities	587	6,488	6,469	6,393	\$65,335,030	\$656.61
Financial Activities	540	2,751	2,746	2,779	\$22,813,846	\$494.10
Professional & Business Services	493	3,057	2,970	2,998	\$20,771,925	\$421.20
Education & Health Services	990	11,752	11,722	11,612	\$94,226,999	\$537.74
Leisure & Hospitality	441	6,287	6,271	6,194	\$16,430,699	\$181.33
Local Government	229	9,304	9,356	9,349	\$58,883,275	\$540.89
State Government	115	3,174	3,177	3,173	\$21,396,655	\$505.96
Other	886	15,009	14,866	14,611	\$123,381,176	\$440.52
North Central Workforce Includes these counties: Cleburne, Fulton, Independence, Izard, Jackson, Sharp, Stone, Van Buren, White, and Woodruff						
NORTHEAST WORKFORCE INFORMATION	6,594	95,855	95,667	95,891	\$758,749,304	\$527.74
Natural Resources & Mining	365	2,650	2,309	1,895	\$17,696,344	\$454.85
Construction	505	3,111	3,076	2,999	\$27,141,085	\$530.31
Manufacturing	354	20,586	20,581	20,785	\$213,048,581	\$655.01
Trade, Transportation & Utilities	1,762	17,974	18,274	18,619	\$137,707,083	\$456.00
Wholesale Trade	413	3,754	3,780	3,803	\$38,664,302	\$625.83
Retail Trade	1,036	11,527	11,876	12,208	\$59,686,308	\$358.49
Transportation, Warehousing & Utilities	313	2,693	2,618	2,608	\$39,356,473	\$643.34
Financial Activities	616	3,469	3,490	3,511	\$31,986,555	\$602.55
Professional & Business Services	669	7,281	7,156	7,382	\$51,298,262	\$428.94
Education & Health Services	1,043	13,237	13,213	13,227	\$112,865,054	\$571.77
Leisure & Hospitality	475	7,695	7,609	7,530	\$20,504,176	\$185.54
Local Government	219	11,883	11,913	11,913	\$84,159,175	\$604.85
State Government	107	4,170	4,190	4,187	\$36,146,672	\$607.05
Other	479	3,799	3,856	3,843	\$26,196,317	\$459.89
Northeast Workforce Includes these counties: Clay, Craighead, Greene, Lawrence, Mississippi, Poinsett, and Randolph.						

**TABLE 8. WORKFORCE INFORMATION AREA, SUMMARY
EMPLOYMENT AND TOTAL EARNINGS, BY INDUSTRY
FOURTH QUARTER 2007**

NORTH AMERICAN INDUSTRY CLASSIFICATION SYSTEM INDUSTRY GROUP	NUMBER OF EMPLOYING UNITS	EMPLOYMENT	EMPLOYMENT	EMPLOYMENT	TOTAL EARNINGS	AVERAGE
		OCTOBER	NOVEMBER	DECEMBER	OCTOBER -DECEMBER	WEEKLY EARNINGS
NORTHWEST WORKFORCE INFORMATION	15,416	236,679	236,817	236,621	\$2,189,883,317	\$615.92
Trade, Transportation & Utilities	3,778	54,863	55,531	55,353	\$492,596,583	\$591.49
Retail Trade	2,007	26,946	27,604	27,754	\$159,720,671	\$405.53
Other Trade, Transportation & Utilities	1,771	27,917	27,927	27,599	\$332,875,912	\$762.65
Education & Health Services	1,847	24,754	24,885	24,945	\$237,581,047	\$610.56
Leisure & Hospitality	1,406	22,909	22,565	22,075	\$72,798,965	\$220.04
Local & State Government	432	29,077	29,390	29,475	\$257,677,870	\$698.08
Other	7,953	105,076	104,446	104,773	\$1,129,228,852	\$688.39
Northwest Workforce Includes these counties: Baxter, Benton, Boone, Carroll, Madison, Marion, Newton, Searcy, and Washington.						
SOUTHEAST WORKFORCE INFORMATION	5,690	77,334	76,975	76,804	\$596,205,521	\$546.39
Natural Resources & Mining	403	3,208	3,091	2,811	\$24,446,454	\$511.24
Construction	360	3,164	3,087	3,066	\$30,791,899	\$654.09
Manufacturing	224	17,083	16,649	16,697	\$163,865,147	\$704.13
Trade, Transportation & Utilities	1,354	13,412	13,607	13,595	\$99,094,544	\$457.78
Retail Trade	814	8,498	8,742	8,804	\$44,769,922	\$623.81
Other Trade, Transportation & Utilities	540	4,914	4,865	4,791	\$54,324,622	\$735.22
Local & State Government	357	16,870	16,952	17,070	\$120,354,805	\$590.20
Other	2,992	23,597	23,589	23,565	\$157,652,672	\$415.77
Southeast Workforce Includes these counties: Arkansas, Ashley, Bradley, Chicot, Cleveland, Desha, Drew, Grant, Jefferson, and Lincoln						
SOUTHWEST WORKFORCE INFORMATION	5,830	85,576	85,897	86,213	\$691,268,569	\$560.83
Natural Resources & Mining	415	2,911	2,924	2,954	\$30,453,382	\$598.57
Manufacturing	300	24,049	24,105	24,281	\$242,624,024	\$598.57
Trade, Transportation & Utilities	1,489	15,519	15,721	15,842	\$119,235,292	\$462.94
Education & Health Services	844	9,361	9,399	9,424	\$65,877,984	\$452.03
Local & State Government	415	14,728	14,836	14,818	\$102,712,169	\$592.25
Other	2,367	19,008	18,912	18,894	\$130,365,718	\$602.73
Southwest Workforce Includes these counties: Calhoun, Columbia, Dallas, Hempstead, Howard, Lafayette, Little River, Miller, Nevada, Ouachita, Sevier, and Union						

**TABLE 8. WORKFORCE INFORMATION AREA, SUMMARY
EMPLOYMENT AND TOTAL EARNINGS, BY INDUSTRY
FOURTH QUARTER 2007**

NORTH AMERICAN INDUSTRY CLASSIFICATION SYSTEM INDUSTRY GROUP	NUMBER OF EMPLOYING UNITS	EMPLOYMENT	EMPLOYMENT	EMPLOYMENT	TOTAL EARNINGS	AVERAGE
		OCTOBER	NOVEMBER	DECEMBER	OCTOBER -DECEMBER	WEEKLY EARNINGS
WEST CENTRAL WORKFORCE INFORMATION	8,366	110,210	110,239	110,975	\$798,192,891	\$505.24
Natural Resources & Mining	246	2,120	2,314	2,468	\$18,819,528	\$586.39
Construction	942	5,322	5,304	5,327	\$44,519,718	\$545.63
Trade, Transportation & Utilities	1,986	22,543	22,854	22,988	\$166,082,153	\$492.05
Financial Activities	892	4,061	4,067	4,084	\$34,038,050	\$551.22
Education & Health Services	1,220	15,861	15,824	15,856	\$132,642,714	\$556.12
Local Government	230	12,451	12,511	12,657	\$87,373,821	\$643.77
State Government	134	5,615	5,646	5,671	\$38,217,641	\$574.27
Other	2,716	42,237	41,719	41,924	\$276,499,266	\$434.92
West Central Workforce Includes these counties: Clark, Conway, Garland, Hot Spring, Johnson, Montgomery, Perry, Pike, Pope, and Yell						
WESTERN WORKFORCE INFORMATION	6,593	113,372	113,747	113,155	\$906,771,613	\$555.86
Natural Resources & Mining	177	3,070	3,112	3,145	\$44,174,710	\$736.78
Trade, Transportation & Utilities	1,646	23,311	23,679	23,941	\$171,816,710	\$499.68
Wholesale Trade	391	3,609	3,612	3,621	\$38,740,139	\$383.80
Other Trade, Transportation & Utilities	1,255	19,702	20,067	20,320	\$133,076,571	\$628.75
Financial Activities	700	3,968	3,973	3,973	\$37,459,873	\$623.05
Professional & Business Services	820	11,855	11,954	11,254	\$85,878,713	\$476.62
Education & Health Services	907	14,203	14,390	14,416	\$130,579,191	\$630.20
Leisure & Hospitality	503	8,417	8,429	8,455	\$25,193,035	\$203.44
Local & State Government	231	12,482	12,595	12,505	\$94,459,580	\$666.17
Other	1,609	36,066	35,615	35,466	\$317,209,801	\$606.70
Western Workforce Includes these counties: Crawford, Franklin, Logan, Polk, Scott, and Sebastian						