

Arkansas Covered Employment & Earnings

Jobs for People. People for Jobs.

DWS
Department of
WORKFORCE**Services**

Second Quarter
2007

**COVERED EMPLOYMENT AND EARNINGS
STATE OF ARKANSAS
SECOND QUARTER 2007**

**MIKE BEEBE, GOVERNOR
STATE OF ARKANSAS**

**ARTEE WILLIAMS, DIRECTOR
DEPARTMENT OF WORKFORCE SERVICES**

**PUBLISHED BY
LABOR MARKET INFORMATION & ANALYSIS
BUREAU OF LABOR STATISTICS PROGRAMS
POST OFFICE BOX 2981
LITTLE ROCK, ARKANSAS 72203-2981
BERNADETTE COLEMAN, BLS PROGRAMS MANAGER
TELEPHONE: (501) 682-3159**

STATE OF ARKANSAS HOME PAGE: <http://www.arkansas.gov>

DEPARTMENT OF WORKFORCE SERVICES HOME PAGE: <http://www.arkansas.gov/esd/>

**INTERNET SITE FOR LABOR MARKET INFORMATION:
<http://www.discover.arkansas.gov>**

RELEASED: NOVEMBER 2008

TABLE OF CONTENTS

Description of Data	Page 1
Industry Classification	Page 1
Definition of Covered Employment and Earnings	Page 2
Federal Government Employment	Page 2
County Classification	Page 2
Significant Developments During Second Quarter 2007	Page 3

LIST OF GRAPHS AND TABLES

Graph 1	Total Covered Employment for Selected Years, Arkansas	Page 7
Graph 2	Total Covered Earnings, by Calendar Quarter for Selected Years, Arkansas	Page 8
Table 1	Quarterly Comparison of Covered Employment and Wages, by Industry	Page 5
Table 2	Total Covered Employment in Arkansas, 2000-2007	Page 6
Table 3	Total Covered Earnings, 2000-2007	Page 9
Table 4	Total Taxable Earnings, 2000-2007	Page 10
Table 5	State Summary - Employment and Total Earnings, by Industry, Second Quarter 2007	Page 11
Table 6	County Summary - Employment and Total Earnings, by Industry, Second Quarter 2007	Page 23
Table 7	Federal Government Employment and Total Earnings in Arkansas, Second Quarter 2007	Page 61
Table 8	Workforce Information Area – Employment and Total Earnings, by Industry, Second Quarter 2007	Page 62

EMPLOYMENT AND EARNINGS UNDER THE ARKANSAS EMPLOYMENT SECURITY LAW SECOND QUARTER 2007

DESCRIPTION OF DATA

This publication contains covered employment and payroll data by industry and county for the Second Quarter 2007. These data are compiled from quarterly contribution and wage reports submitted by employers subject to the Arkansas Employment Security Law. An employing unit is a single physical location where business is conducted, production takes place, or services are provided. Employment data have been tabulated for each month of the quarter by industry under the **North American Industry Classification System** (NAICS) (see "Industry Classification" below) on a statewide, county and workforce area basis. Payroll data represent the total wages paid during the quarter, and are also shown by

industry for the State and by publishable industry groups for each county and workforce area. The tabulation of this data is a joint effort in conjunction with the U.S. Bureau of Labor Statistics. In addition, there are tables included which set out total covered employment by months, quarterly payrolls, and average weekly earnings for the years 2000 through 2007. Data contained in this publication are subject to revision. These revisions will be reflected in the 2007 Annual Covered Employment and Earnings publication. Because of industry code changes between years, substantial employment and wage shifts among industries are anticipated.

INDUSTRY CLASSIFICATION

Previously published industry data **will not** be comparable in all instances with currently published data since industry codes have been revised according to the following Manuals: (a) between January 1, 1958 and December 31, 1967, industry codes were assigned under the 1957 Standard Industrial Classification (SIC) Manual; (b) between January 1, 1968 and December 31, 1974, industry codes were assigned under the 1967 Standard Industrial Classification (SIC) Manual; (c) between January 1, 1975 and December 31, 1987, industry codes were assigned under the 1972 Standard Industrial Classification (SIC) Manual; (d) between January 1, 1988 and December 31, 2000, industry codes were assigned under the 1987 Standard Industrial Classification (SIC) Manual; (e) between January 1, 2001 and December 31, 2006, industry codes were assigned under the 2002 North American Industry Classification System (NAICS) Manual; and (f) since January 1, 2007, industry codes have been assigned under the 2007 North American Industry Classification System (NAICS) Manual. **The**

NAICS Manual represents a significant change in coding methodology as compared to the SIC Manual. One of the most significant changes involves how NAICS treats auxiliary units. Auxiliary units are establishments primarily engaged in performing management or support services for other establishments of the same enterprise. The SIC code for these units was based on the activity of the enterprise served. The NAICS code is based on the actual activities that the establishment performs. Comparisons of many industries **should not be made** between this publication and previous Covered Employment and Earnings publications that were based on SIC. Even though some titles are the same or similar, in nature, NAICS and SIC could differ in the classification of employers. The implementation of NAICS represents a profound change for statistical programs, and will create significant benefits along with transition obstacles for both data collectors and data users. A summary is available on the NAICS home page at <http://www.census.gov/naics>.

DEFINITION OF COVERED EMPLOYMENT AND EARNINGS

Covered Employment is the number of workers employed by employers subject to the Arkansas Employment Security Law who worked or received pay for the payroll period including the 12th of the month. An employer is subject to the law when they employ one or more employees in each of ten days during the current or preceding calendar year.

Currently excluded from coverage is employment covered by the Railroad Unemployment Insurance Act, some domestic service workers, employees of small agricultural establishments, self-employed and unpaid family workers, insurance and real estate

agents who are on commission only, and employees of churches and religious organizations except separately incorporated schools. The payroll information in this publication includes all wages and salaries paid to any covered employees by their employers including bonuses, commissions, and cash values of remuneration received in any medium other than cash. These wages include both taxable and nontaxable wages. Only the first \$10,000 paid to each worker by an employer in the calendar year is taxable under the Arkansas Employment Security Law.

FEDERAL GOVERNMENT EMPLOYMENT

Table 7 on page 62 lists the total number of civilians employed by the Federal Government in Arkansas during the Second Quarter 2007. Employment and wage data are set out by industry divisions. These data are obtained from required reports submitted by various

government agencies having employment in the State. Civilian Federal workers are covered by the Unemployment Compensation for Federal Employees (UCFE) program.

COUNTY CLASSIFICATION

Employment and payroll data by county are classified according to the county where the workers are employed. Employers with operations in more than one county are requested to furnish this agency with a breakdown of employment and wages for at least one quarter of each year by the counties in which they operate. Many such employers submit county data with each regular contribution report. **Note:** This information is invaluable in the preparation of monthly employment and payroll data by county.

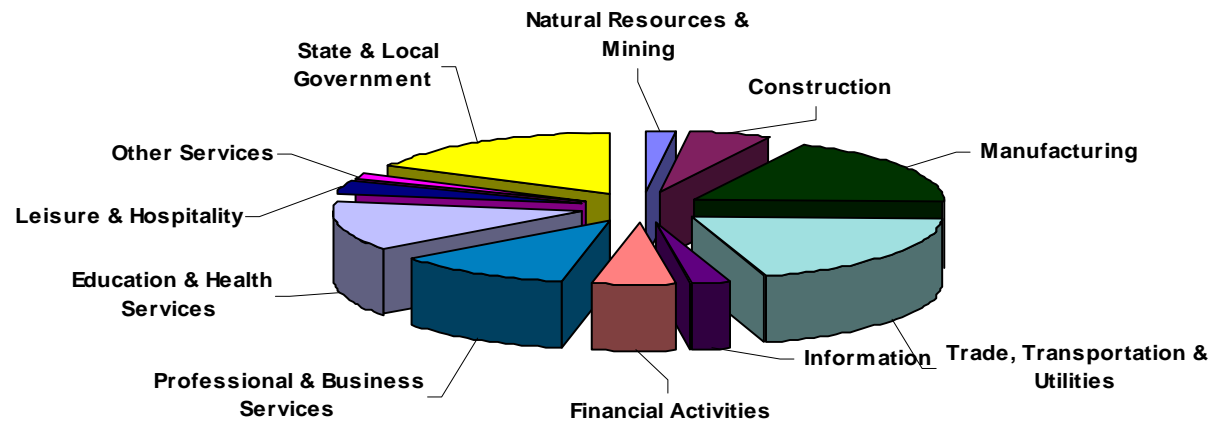
Employment and payroll data for multi - area employers, who do not furnish county data each quarter of the year, are prorated by county on the basis of one quarter's information. The "rest-of-state" table that appears on page 61 of this publication includes data on firms that **did not** provide a county breakdown of employment and payrolls. It also includes sales, and all other type of personnel with no permanent place of work, as well as employment of employers with no established place of business in Arkansas.

SIGNIFICANT DEVELOPMENTS DURING SECOND QUARTER 2007

AVERAGE EMPLOYMENT CHANGES

Covered employment averaged 1,164,068 during the Second Quarter 2007 (see table 1), an increase of 17,193 (1.5%) from the previous quarter and 4,905 (0.4%) above the average recorded one-year ago. This *over-the-year* increase is more significant when used as an economic indicator. This *over-the-year* comparison allows for the disregarding of many seasonal factors that are evident when making an *over-the-quarter* comparison.

Average Covered Employment by NAICS Group



EMPLOYMENT CHANGES FROM FIRST QUARTER 2007

Over the quarter gains were recorded in ten industries while only one suffered a loss. The largest gain was the addition of 6,334 jobs in the Leisure and Hospitality sector. This is because of the seasonal increase in employees during the summer travel and recreation season. Another significant gain occurred in Construction, which added 2,753 jobs, due to the increase in new projects that occur during the summer. Also showing seasonal gains are Natural Resources and Mining (7.2%) and Trade, Transportation, and Utilities (0.7%). Other industries that gained jobs are Financial

Activities (1.9%), Professional and Business Services (1.8%), Other Services (1.6%), Educational and Health Services (1.4%), Information (1.1%), and State and Local Government (0.8%).

The only sector that recorded a decline in jobs was Manufacturing, which lost 2,032 jobs.

EMPLOYMENT CHANGES FROM SECOND QUARTER 2006

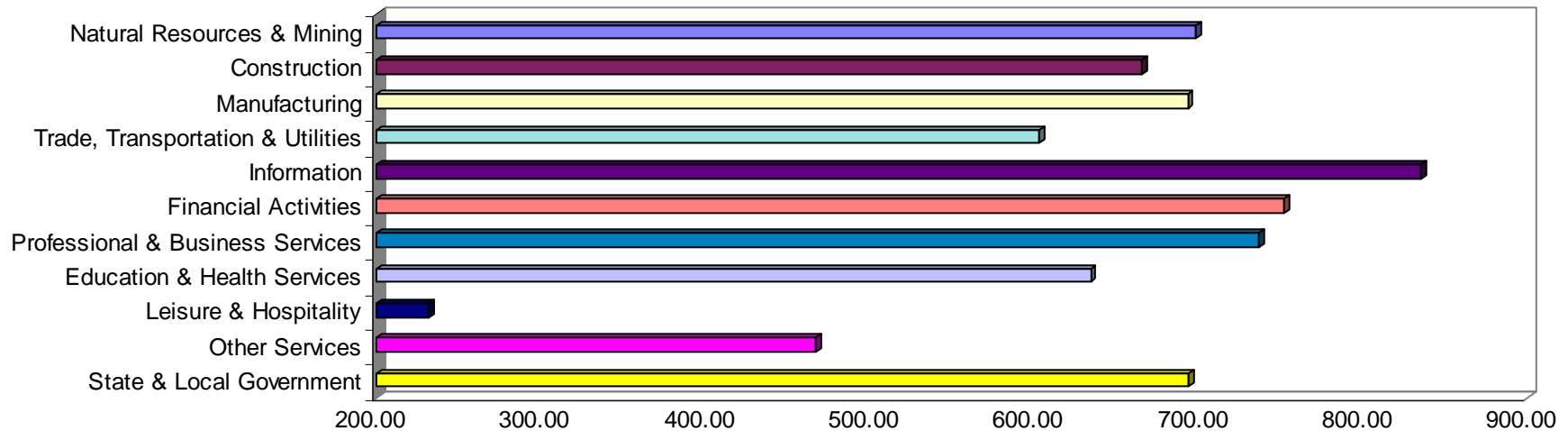
Over-the-year gains were recorded in seven industry groups while four recorded losses (see table 1). Significant gains were posted in State & Local Government (+4,128) Educational & Health Services (+3,967), and Professional and Business Services (+2,225). Significant losses were posted in Manufacturing (-10,270), Other Services (-513) and Construction (-295).

COVERED WAGES

Wages paid to covered workers totaled \$9,523,821,876 for the Second Quarter 2007 (see table 1), for an average weekly wage of \$629.35 (see table 5). Employees in Little River County recorded the highest average weekly wage (\$774.14), and workers in Searcy County the lowest (\$400.30) (see table 6).

The Information sector recorded the highest average weekly wage for the State of Arkansas at \$835.51, while the Leisure & Hospitality sector recorded the lowest at \$231.81 for the State of Arkansas (see table 5).

Average Weekly Wages by Industry Group



Note: Because of industry code changes between years, substantial employment and wage shifts among industries are anticipated.

TABLE 1. QUARTERLY COMPARISON OF COVERED EMPLOYMENT AND WAGES, BY INDUSTRY

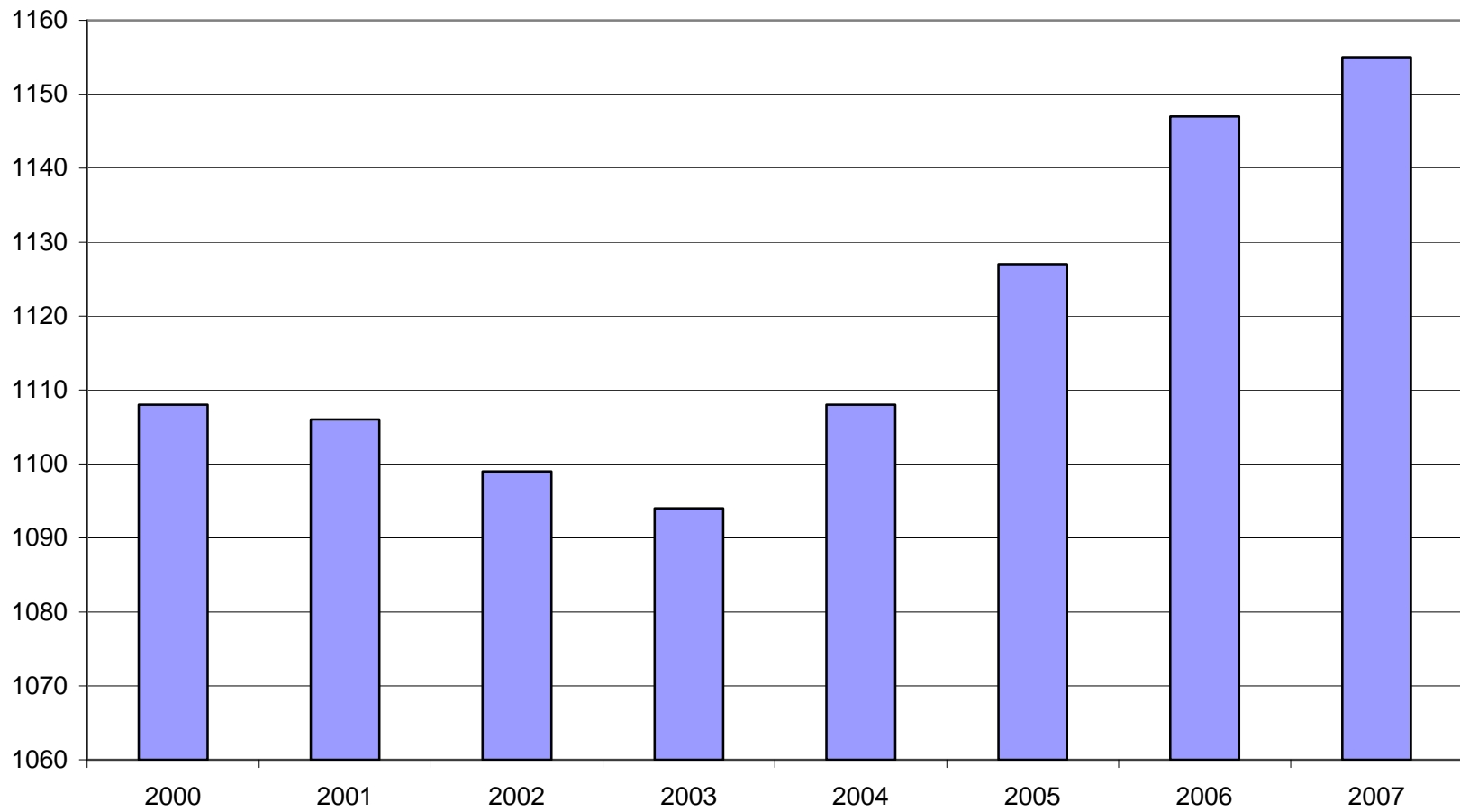
North American Industry Classification System Industry	Number of Employing Units	Average Monthly Employment	% of Employment Total	Net Change From Jan. - Mar. 2007	Net Change From Apr. - June 2006	Total Wages Paid Apr. - June 2007	% of Total Wages Paid
Total	81,495	1,164,068	100.0%	17,193	4,905	\$9,523,821,876	100.0%
Natural Resources & Mining	2,399	19,893	1.7%	1,334	1,391	\$180,603,256	1.9%
Agriculture, Forestry, Fishing & Hunting	1,958	13,129	1.1%	623	-595	\$93,342,814	1.0%
Mining	441	6,764	0.6%	711	1,986	\$87,260,442	0.9%
Construction	8,022	57,652	5.0%	2,753	-295	\$498,747,730	5.2%
Manufacturing	3,633	190,198	16.3%	-2,032	-10,270	\$1,714,942,257	18.0%
Trade, Transportation & Utilities	20,893	246,168	21.1%	1,701	1,586	\$1,929,428,090	20.3%
Wholesale Trade	6,340	48,374	4.2%	811	107	\$580,426,704	6.1%
Retail Trade	11,220	133,754	11.5%	807	685	\$719,485,130	7.6%
Transportation & Warehousing	2,972	57,234	4.9%	210	799	\$522,575,221	5.5%
Utilities	361	6,806	0.6%	-127	-6	\$106,941,035	1.1%
Information	1,196	19,804	1.7%	208	-32	\$215,102,629	2.3%
Financial Activities	8,286	52,136	4.5%	984	1,015	\$509,764,287	5.4%
Finance & Insurance	4,848	37,548	3.2%	515	675	\$410,831,252	4.3%
Real Estate & Rental & Leasing	3,438	14,589	1.3%	470	341	\$98,933,035	1.0%
Professional & Business Services	11,127	117,164	10.1%	2,038	2,225	\$1,121,501,509	11.8%
Professional & Technical Services	7,003	38,667	3.3%	-231	1,699	\$446,896,342	4.7%
Management of Companies & Enterprises	523	24,675	2.1%	91	600	\$396,125,535	4.2%
Administrative & Waste Services	3,601	53,823	4.6%	2,179	-73	\$278,479,632	2.9%
Education & Health Services	11,157	149,801	12.9%	2,059	3,967	\$1,234,839,943	13.0%
Educational Services	574	9,508	0.8%	154	433	\$63,967,838	0.7%
Health Care & Social Assistance	10,583	140,293	12.1%	1,905	3,534	\$1,170,872,105	12.3%
Leisure & Hospitality	6,153	101,911	8.8%	6,334	1,701	\$307,118,406	3.2%
Arts, Entertainment & Recreation	915	10,533	0.9%	1,663	325	\$40,478,232	0.4%
Accommodation & Food Services	5,238	91,378	7.8%	4,671	1,377	\$266,640,174	2.8%
Other Services	5,438	25,743	2.2%	416	-513	\$156,298,452	1.6%
State & Local Government	3,191	183,597	15.8%	1,397	4,128	\$1,655,475,317	17.4%
Local Government	1,991	119,323	10.3%	985	2,194	\$1,084,934,410	11.4%
State Government	1,200	64,274	5.5%	462	1,934	\$570,540,907	6.0%
Nonclassifiable Establishments	0	0	0.0%	0	0	\$0	0.0%

Note: Items do not necessarily add to totals because of rounding. Because of industry code changes between years, substantial employment and wage shifts among industries are anticipated.

TABLE 2. TOTAL COVERED EMPLOYMENT IN ARKANSAS

Period	2000	2001	2002	2003	2004	2005	2006	2007
Average	1,108,479	1,106,066	1,098,558	1,094,087	1,108,264	1,126,778	1,146,948	1,155,472
January	1,089,943	1,096,009	1,081,635	1,082,740	1,089,510	1,102,768	1,130,595	1,137,460
February	1,096,113	1,101,616	1,086,793	1,084,880	1,094,626	1,110,577	1,136,810	1,143,824
March	1,109,144	1,112,143	1,098,500	1,092,172	1,105,266	1,122,619	1,150,439	1,159,342
April	1,111,525	1,115,526	1,103,399	1,095,341	1,111,020	1,129,785	1,155,498	1,160,427
May	1,116,760	1,119,815	1,111,998	1,103,099	1,117,144	1,135,567	1,159,886	1,166,301
June	1,121,225	1,119,734	1,112,028	1,099,688	1,117,010	1,136,118	1,162,026	1,165,475
July	1,075,066	1,071,921	1,065,697	1,053,220	1,071,463	1,090,071	1,106,142	N/A
August	1,096,848	1,094,160	1,086,011	1,077,775	1,094,871	1,114,098	1,130,839	N/A
September	1,123,725	1,115,976	1,113,148	1,105,980	1,122,704	1,144,815	1,159,814	N/A
October	1,122,884	1,110,994	1,108,447	1,112,550	1,123,246	1,142,300	1,156,804	N/A
November	1,120,620	1,109,012	1,107,611	1,109,712	1,125,061	1,145,667	1,156,011	N/A
December	1,117,892	1,105,887	1,107,425	1,111,892	1,127,250	1,146,954	1,158,509	N/A

AVERAGE TOTAL COVERED EMPLOYMENT GRAPH 1
In Thousands



TOTAL COVERED EARNINGS BY CALENDAR QUARTER, GRAPH 2

In Thousands

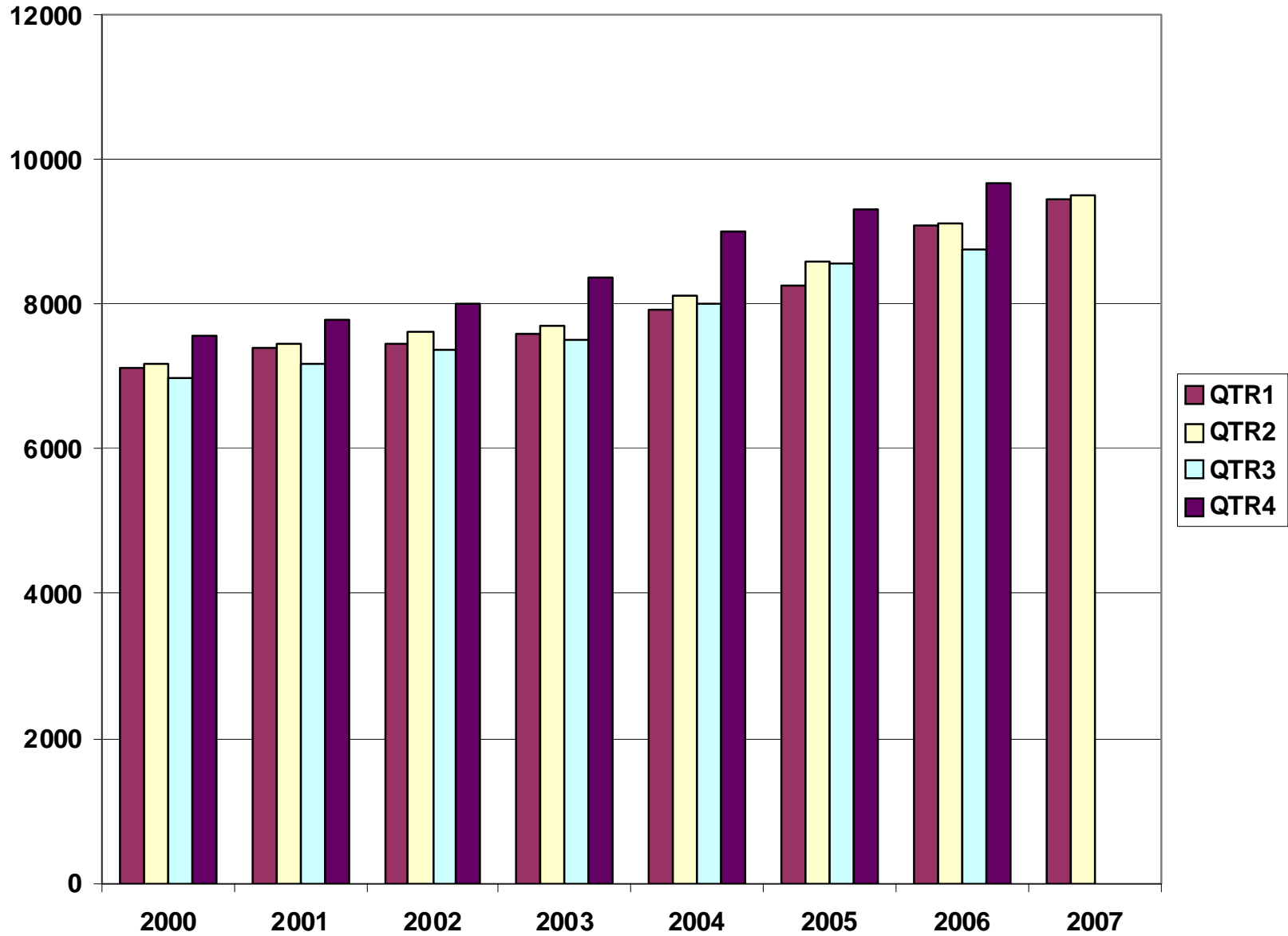


TABLE 3. TOTAL COVERED EARNINGS, 2000- 2007

Period	2000	2001	2002	2003
Total	\$28,853,716,151	\$29,807,669,666	\$30,472,854,103	\$31,202,576,767
January - March	\$7,122,636,896	\$7,398,887,532	\$7,465,250,305	\$7,608,130,008
April - June	\$7,166,049,182	\$7,448,023,298	\$7,621,878,775	\$7,714,813,038
July - September	\$6,986,085,106	\$7,177,293,061	\$7,361,666,511	\$7,500,204,764
October - December	\$7,578,944,967	\$7,783,465,775	\$8,024,058,512	\$8,379,428,957
Average Weekly Earnings	\$500.58	\$518.26	\$533.44	\$548.45

Period	2004	2005	2006	2007
Total	\$33,068,189,304	\$34,753,107,631	\$36,636,090,775	\$18,980,857,128
January - March	\$7,918,843,610	\$8,261,153,981	\$9,085,021,816	\$9,457,035,252
April - June	\$8,122,370,361	\$8,607,722,353	\$9,112,624,590	\$9,523,821,876
July - September	\$8,010,300,454	\$8,562,555,369	\$8,750,878,205	N/A
October - December	\$9,016,674,879	\$9,321,675,928	\$9,687,566,164	N/A
Average Weekly Earnings	\$573.80	\$593.13	\$614.27	\$631.81

TABLE 4. TOTAL TAXABLE EARNINGS, 2000 - 2007

Period	2000	2001	2002	2003
Total	\$9,047,924,530	\$9,003,189,480	\$8,887,270,978	\$9,154,938,743
January - March	\$4,560,783,991	\$4,670,296,360	\$4,668,534,587	\$4,737,918,796
April - June	\$2,260,680,255	\$2,219,485,263	\$2,162,971,435	\$2,270,519,362
July - September	\$1,250,832,297	\$1,190,098,737	\$1,158,197,858	\$1,188,681,170
October - December	\$975,627,987	\$923,309,120	\$897,567,098	\$957,819,415

Period	2004	2005	2006	2007
Total	\$9,731,247,501	\$9,991,605,239	\$10,197,511,360	\$8,090,867,059
January - March	\$4,931,559,230	\$5,062,670,306	\$5,421,204,601	\$5,622,850,182
April - June	\$2,451,454,749	\$2,506,505,721	\$2,385,110,992	\$2,468,016,877
July - September	\$1,318,017,835	\$1,353,660,445	\$1,314,939,803	N/A
October - December	\$1,030,215,687	\$1,068,768,767	\$1,076,255,964	N/A

**TABLE 5. STATEWIDE SUMMARY
EMPLOYMENT AND TOTAL EARNINGS, BY INDUSTRY
SECOND QUARTER 2007**

NORTH AMERICAN INDUSTRY CLASSIFICATION SYSTEM INDUSTRY GROUPS	NUMBER OF EMPLOYING UNITS	EMPLOYMENT APRIL	EMPLOYMENT MAY	EMPLOYMENT JUNE	TOTAL EARNINGS APRIL - JUNE	AVERAGE WEEKLY EARNINGS
TOTAL, ALL INDUSTRIES	81,495	1,160,427	1,166,301	1,165,475	\$9,523,821,876	\$629.35
NATURAL RESOURCES AND MINING	2,399	19,450	19,833	20,396	\$180,603,256	\$698.36
AGRICULTURE, FORESTRY, FISHING AND HUNTING	1,958	12,910	13,085	13,392	\$93,342,814	\$546.90
CROP PRODUCTION	698	3,648	3,728	3,898	\$19,547,822	\$400.13
Oilseed and Grain Farming	446	1,992	2,052	2,118	\$10,880,149	\$407.47
Vegetable and Melon Farming	10	174	203	231	\$640,462	\$243.09
Fruit and Tree Nut Farming	8	88	87	127	\$509,102	\$389.02
Greenhouse and Nursery Production	53	491	443	429	\$2,639,784	\$446.94
Other Crop Farming	181	903	943	993	\$4,878,325	\$396.54
ANIMAL PRODUCTION	270	3,599	3,697	3,682	\$29,134,966	\$612.45
Cattle Ranching and Farming	80	310	329	330	\$1,929,645	\$459.55
Hog and Pig Farming	9	152	154	151	\$1,446,313	\$730.34
Poultry and Egg Production	89	2,475	2,520	2,508	\$20,987,700	\$645.52
Animal Aquaculture	62	579	608	614	\$4,286,616	\$549.26
Other	30	83	86	79	\$484,692	\$451.02
FORESTRY AND LOGGING	537	2,804	2,777	2,816	\$21,634,040	\$594.55
Timber Tract Operations	45	274	250	251	\$2,710,388	\$807.06
Forest Nurseries & Gathering of Forest Products	6	39	37	30	\$328,548	\$715.27
Logging	486	2,491	2,490	2,535	\$18,595,104	\$570.94
OTHER	453	2,859	2,883	2,996	\$23,025,986	\$608.11
MINING	441	6,540	6,748	7,004	\$87,260,442	\$992.36
OIL AND GAS EXTRACTION	94	753	771	783	\$10,412,784	\$1,041.59
MINING (EXCEPT OIL AND GAS)	112	2,104	2,124	2,167	\$22,904,516	\$826.53
SUPPORT ACTIVITIES FOR MINING	235	3,683	3,853	4,054	\$53,943,142	\$1,074.07
CONSTRUCTION	8,022	56,945	57,674	58,338	\$498,747,730	\$665.46
CONSTRUCTION OF BUILDINGS	2,266	12,964	13,281	13,500	\$121,561,973	\$705.82
Residential Building Construction	1,644	4,285	4,342	4,364	\$32,274,550	\$573.32
Nonresidential Building Construction	622	8,679	8,939	9,136	\$89,287,423	\$770.16
HEAVY AND CIVIL ENGINEERING CONSTRUCTION	886	10,301	10,356	10,204	\$98,223,911	\$734.49
Utility System Construction	424	5,111	5,136	5,059	\$47,992,384	\$723.58
Land Subdivision	136	373	378	401	\$3,412,643	\$683.62

**TABLE 5. STATEWIDE SUMMARY
EMPLOYMENT AND TOTAL EARNINGS, BY INDUSTRY
SECOND QUARTER 2007**

NORTH AMERICAN INDUSTRY CLASSIFICATION SYSTEM INDUSTRY GROUPS	NUMBER OF EMPLOYING UNITS	EMPLOYMENT	EMPLOYMENT	EMPLOYMENT	TOTAL EARNINGS	AVERAGE WEEKLY EARNINGS
		APRIL	MAY	JUNE	APRIL - JUNE	
Highway, Street and Bridge Construction	210	3,223	3,309	3,403	\$28,799,629	\$668.96
Other Heavy Construction	116	1,594	1,533	1,341	\$18,019,255	\$930.68
SPECIALTY TRADE CONTRACTORS	4,870	33,680	34,037	34,634	\$278,961,846	\$628.97
Building Foundation and Exterior Contractors	975	6,855	6,913	6,947	\$52,577,607	\$585.73
Building Equipment Contractors	2,145	15,961	16,220	16,608	\$141,588,473	\$669.71
Building Finishing Contractors	909	5,246	5,280	5,360	\$42,134,320	\$612.07
Other Specialty Trade Contractors	841	5,618	5,624	5,719	\$42,661,446	\$580.45
MANUFACTURING	3,633	190,546	190,390	189,657	\$1,714,942,257	\$693.59
FOOD MANUFACTURING	328	49,372	49,307	49,391	\$349,285,083	\$544.37
Animal Food Manufacturing	58	1,390	1,411	1,431	\$14,397,036	\$785.06
Grain and Oilseed Milling	33	2,329	2,345	2,377	\$19,931,371	\$652.33
Fruit, Vegetable and Specialty Food	35	6,754	6,867	6,820	\$57,733,952	\$651.79
Dairy Product Manufacturing	14	717	715	728	\$6,662,573	\$711.81
Animal Slaughtering and Processing	92	32,971	32,681	32,704	\$207,441,316	\$486.71
Bakeries and Tortilla Manufacturing	54	3,245	3,312	3,335	\$26,793,062	\$625.05
Other Food Manufacturing	29	1,733	1,755	1,781	\$15,377,634	\$673.50
Other	13	233	221	215	\$948,139	\$327.06
BEVERAGE AND TOBACCO PRODUCT MFG.	38	1,260	1,284	1,300	\$12,437,513	\$746.67
TEXTILE MILLS	22	392	389	384	\$4,040,270	\$800.32
Fabric Mills	8	302	295	289	\$3,515,651	\$915.69
Textile and Fabric Finishing Mills	14	90	94	95	\$524,619	\$433.93
TEXTILE PRODUCT MILLS	60	1,338	1,331	1,326	\$11,675,068	\$674.40
APPAREL MANUFACTURING	35	1,591	1,599	1,592	\$8,926,236	\$430.76
Cut and Sew Apparel Manufacturing	25	653	649	642	\$2,864,209	\$340.01
Other	10	938	950	950	\$6,062,027	\$492.93
LEATHER AND ALLIED PRODUCT MANUFACTURING	21	1,824	1,809	1,734	\$11,775,676	\$506.33
Footwear Manufacturing	10	1,605	1,592	1,516	\$10,217,044	\$500.27
Other Leather Product Manufacturing	11	219	217	218	\$1,558,632	\$549.98
WOOD PRODUCT MANUFACTURING	389	12,416	12,496	12,645	\$96,694,970	\$594.14
Sawmills and Wood Preservation	167	5,239	5,255	5,314	\$42,817,387	\$625.06
Veneer and Engineered Wood Products	55	3,177	3,204	3,212	\$28,411,862	\$683.48
Other Wood Product Manufacturing	167	4,000	4,037	4,119	\$25,465,721	\$483.44

**TABLE 5. STATEWIDE SUMMARY
EMPLOYMENT AND TOTAL EARNINGS, BY INDUSTRY
SECOND QUARTER 2007**

NORTH AMERICAN INDUSTRY CLASSIFICATION SYSTEM INDUSTRY GROUPS	NUMBER OF EMPLOYING UNITS	EMPLOYMENT	EMPLOYMENT	EMPLOYMENT	TOTAL EARNINGS	AVERAGE
		APRIL	MAY	JUNE	APRIL - JUNE	WEEKLY EARNINGS
PAPER MANUFACTURING	87	11,244	11,186	11,208	\$142,725,489	\$979.15
Pulp, Paper and Paperboard Mills	12	4,302	4,283	4,294	\$69,207,516	\$1,240.08
Converted Paper Product Manufacturing	75	6,942	6,903	6,914	\$73,517,973	\$817.27
PRINTING AND RELATED SUPPORT ACTIVITIES	300	4,606	4,603	4,636	\$46,958,852	\$782.71
PETROLEUM AND COAL PRODUCTS MANUFACTURING	23	950	950	984	\$12,426,007	\$994.29
CHEMICAL MANUFACTURING	119	4,657	4,673	4,714	\$59,068,201	\$970.60
Basic Chemical Manufacturing	30	1,981	1,997	2,009	\$28,003,480	\$1,079.40
Resin, Rubber and Artificial Fibers	7	305	299	303	\$3,811,287	\$969.71
Agricultural Chemical Manufacturing	16	345	353	357	\$4,331,082	\$947.37
Paint, Coating and Adhesive Manufacturing	9	159	156	162	\$2,162,890	\$1,046.39
Other Chemical Preparation Manufacturing	28	962	972	961	\$10,587,999	\$844.00
Other	29	905	896	922	\$10,171,463	\$862.01
PLASTICS AND RUBBER PRODUCTS MANUFACTURING	163	12,165	12,181	12,114	\$122,231,736	\$773.65
Plastics Product Manufacturing	113	7,526	7,541	7,566	\$64,575,954	\$658.43
Rubber Product Manufacturing	50	4,639	4,640	4,548	\$57,655,782	\$962.26
NONMETALLIC MINERAL PRODUCT MANUFACTURING	256	4,542	4,578	4,620	\$42,400,517	\$712.13
Clay Product and Refractory Manufacturing	22	432	425	419	\$3,551,094	\$642.23
Glass and Glass Product Manufacturing	12	410	414	408	\$3,494,825	\$654.63
Cement and Concrete Product Manufacturing	179	2,707	2,729	2,764	\$24,561,894	\$691.24
Lime and Gypsum Product Manufacturing	4	419	420	425	\$5,111,313	\$933.18
Other Nonmetallic Mineral Products	39	574	590	604	\$5,681,391	\$741.57
PRIMARY METAL MANUFACTURING	70	8,295	8,291	8,325	\$103,849,831	\$962.04
Iron and Steel Mills and Ferroalloys	12	2,133	2,146	2,179	\$42,278,184	\$1,510.76
Purchased Steel Product Manufacturing	16	2,377	2,356	2,345	\$23,586,299	\$769.00
Alumina and Aluminum Production	19	1,774	1,796	1,807	\$19,977,515	\$857.39
Other Nonferrous Metal Production	9	590	586	605	\$5,361,563	\$694.71
Foundries	14	1,421	1,407	1,389	\$12,646,270	\$692.05
FABRICATED METAL PRODUCT MANUFACTURING	583	17,198	17,226	17,182	\$167,861,557	\$750.64
Forging and Stamping	12	779	782	773	\$7,247,674	\$716.60
Cutlery and Hand Tool Manufacturing	16	1,342	1,323	1,290	\$11,041,374	\$644.25
Architectural and Structural Metals	208	5,210	5,288	5,311	\$53,620,048	\$782.71
Boilers, Tanks and Shipping Containers	19	804	778	731	\$12,034,182	\$1,200.66

**TABLE 5. STATEWIDE SUMMARY
EMPLOYMENT AND TOTAL EARNINGS, BY INDUSTRY
SECOND QUARTER 2007**

NORTH AMERICAN INDUSTRY CLASSIFICATION SYSTEM INDUSTRY GROUPS	NUMBER OF EMPLOYING UNITS	EMPLOYMENT	EMPLOYMENT	EMPLOYMENT	TOTAL EARNINGS	AVERAGE WEEKLY EARNINGS
		APRIL	MAY	JUNE	APRIL - JUNE	
Hardware Manufacturing	9	282	289	283	\$2,074,850	\$560.67
Spring and Wire Product Manufacturing	14	655	665	643	\$4,556,254	\$535.63
Machine Shops and Threaded Products	197	1,893	1,873	1,906	\$15,231,424	\$619.70
Coating, Engraving and Heat Treating Metals	40	563	556	593	\$4,424,852	\$596.45
Other Fabricated Metal Product Manufacturing	68	5,670	5,672	5,652	\$57,630,899	\$782.60
MACHINERY MANUFACTURING	265	14,819	14,727	14,462	\$122,461,057	\$642.16
Agricultural, Construction and Mining Machinery	40	3,547	3,389	3,202	\$19,921,036	\$453.46
Commercial and Service Industry Machinery	26	949	959	948	\$9,457,860	\$764.21
HVAC and Commercial Refrigeration Equipment	23	4,809	4,849	4,897	\$42,462,731	\$673.25
Metalworking Machinery Manufacturing	82	1,420	1,438	1,418	\$14,254,137	\$769.27
Other General Purpose Machinery Manufacturing	57	3,093	3,067	3,001	\$26,967,676	\$679.33
Other	37	1,001	1,025	996	\$9,397,617	\$717.63
COMPUTER AND ELECTRONIC PRODUCT MANUFACTURING	84	4,939	4,797	4,602	\$42,502,885	\$684.08
Audio and Video Equipment Manufacturing	12	1,178	1,150	1,066	\$9,386,248	\$638.20
Semiconductors and Electronic Components	28	2,337	2,326	2,330	\$19,400,291	\$640.21
Electronic Instrument Manufacturing	29	980	952	906	\$8,732,745	\$710.09
Other	15	444	369	300	\$4,983,601	\$1,033.30
ELECTRICAL EQUIPMENT AND APPLIANCES	71	10,621	10,616	10,398	\$112,449,042	\$820.29
Electrical Equipment Manufacturing	22	4,900	4,951	4,698	\$48,115,993	\$763.19
Other	49	5,721	5,665	5,700	\$64,333,049	\$868.90
TRANSPORTATION EQUIPMENT MANUFACTURING	179	16,835	16,840	16,521	\$156,011,649	\$717.24
Motor Vehicle Body and Trailer Manufacturing	46	3,664	3,716	3,758	\$30,590,600	\$633.81
Motor Vehicle Parts Manufacturing	63	6,423	6,328	6,139	\$54,947,770	\$671.27
Aerospace Product and Parts Manufacturing	26	3,623	3,629	3,650	\$45,570,249	\$964.61
Ship and Boat Building	27	1,703	1,710	1,704	\$11,098,254	\$500.52
Other	17	1,422	1,457	1,270	\$13,804,776	\$767.83
FURNITURE & RELATED PRODUCT MFG.	275	6,087	6,104	6,147	\$46,518,130	\$585.39
Household & Institutional Furniture	225	4,179	4,191	4,216	\$30,612,729	\$561.30
Office Furniture & Fixtures Manufacturing	43	1,763	1,772	1,790	\$15,104,024	\$654.56
Other Furniture Related Product Manufacturing	7	145	141	141	\$801,377	\$433.10
MISCELLANEOUS MANUFACTURING	265	5,395	5,403	5,372	\$42,642,488	\$608.57

**TABLE 5. STATEWIDE SUMMARY
EMPLOYMENT AND TOTAL EARNINGS, BY INDUSTRY
SECOND QUARTER 2007**

NORTH AMERICAN INDUSTRY CLASSIFICATION SYSTEM INDUSTRY GROUPS	NUMBER OF EMPLOYING UNITS	EMPLOYMENT	EMPLOYMENT	EMPLOYMENT	TOTAL EARNINGS	AVERAGE WEEKLY EARNINGS
		APRIL	MAY	JUNE	APRIL - JUNE	
Medical Equipment & Supplies Manufacturing	96	2,457	2,445	2,428	\$21,735,252	\$684.29
Other Miscellaneous Manufacturing	169	2,938	2,958	2,944	\$20,907,236	\$545.79
TRADE, TRANSPORTATION AND UTILITIES	20,893	244,830	246,706	246,969	\$1,929,428,090	\$602.91
WHOLESALE TRADE	6,340	48,162	48,332	48,629	\$580,426,704	\$922.97
MERCHANT WHOLESALERS, DURABLE GOODS	2,125	22,092	22,167	22,363	\$236,689,969	\$819.86
Motor Vehicle & Part Merchant Wholesalers	246	2,684	2,696	2,701	\$24,525,550	\$700.38
Furniture & Furnishing Merchant Wholesalers	73	439	431	433	\$5,295,651	\$937.89
Lumber & Supply Merchant Wholesalers	179	1,877	1,889	1,909	\$19,006,511	\$772.88
Commercial Goods Merchant Wholesalers	250	2,601	2,623	2,654	\$38,578,225	\$1,130.07
Metal & Mineral Merchant Wholesalers	53	818	838	845	\$9,203,548	\$849.22
Electric Goods Merchant Wholesalers	175	2,170	2,155	2,175	\$24,034,223	\$853.29
Hardware & Plumbing Merchant Wholesalers	223	2,465	2,490	2,511	\$24,878,536	\$768.98
Machinery & Supply Merchant Wholesalers	689	7,236	7,223	7,294	\$75,375,904	\$799.63
Misc. Durable Goods Merchant Wholesalers	237	1,802	1,822	1,841	\$15,791,821	\$666.84
MERCHANT WHOLESALERS, NONDURABLE GOODS	1,276	16,691	16,847	16,907	\$169,307,419	\$774.53
Paper & Paper Product Merchant Wholesalers	74	1,187	1,210	1,202	\$13,183,905	\$845.36
Druggists' Goods Merchant Wholesalers	59	1,184	1,175	1,173	\$12,457,148	\$813.91
Apparel & Piece Goods Merchant Wholesalers	38	479	475	481	\$3,537,630	\$568.90
Grocery Product Merchant Wholesalers	335	5,133	5,203	5,235	\$58,841,552	\$872.06
Farm Product Merchant Wholesalers	74	931	917	929	\$5,036,561	\$418.54
Chemical Merchant Wholesalers	82	537	552	556	\$6,350,356	\$890.86
Petroleum Merchant Wholesalers	153	1,448	1,472	1,465	\$17,276,047	\$909.19
Alcoholic Beverage Merchant Wholesalers	37	1,150	1,153	1,159	\$11,993,266	\$799.44
Misc. Nondurable Goods Merchant Wholesalers	424	4,642	4,690	4,707	\$40,630,954	\$667.88
ELECTRONIC MARKETS & AGENTS & BROKERS	2,939	9,379	9,318	9,359	\$174,429,316	\$1,434.73
RETAIL TRADE	11,220	132,915	134,142	134,205	\$719,485,130	\$413.78
MOTOR VEHICLE & PARTS DEALERS	1,749	18,178	18,257	18,492	\$158,547,690	\$666.12
Automobile Dealers	751	10,786	10,883	10,998	\$108,535,654	\$766.73
Other Motor Vehicle Dealers	195	1,644	1,659	1,704	\$13,972,497	\$643.98
Automotive Parts, Accessories & Tire Stores	803	5,748	5,715	5,790	\$36,039,539	\$482.05
FURNITURE & HOME FURNISHINGS STORES	593	4,020	4,068	4,008	\$25,817,052	\$492.54
Furniture Stores	310	2,475	2,476	2,436	\$16,059,430	\$501.70

**TABLE 5. STATEWIDE SUMMARY
EMPLOYMENT AND TOTAL EARNINGS, BY INDUSTRY
SECOND QUARTER 2007**

NORTH AMERICAN INDUSTRY CLASSIFICATION SYSTEM INDUSTRY GROUPS	NUMBER OF EMPLOYING UNITS	EMPLOYMENT	EMPLOYMENT	EMPLOYMENT	TOTAL EARNINGS	AVERAGE WEEKLY EARNINGS
		APRIL	MAY	JUNE	APRIL - JUNE	
Home Furnishings Stores	283	1,545	1,592	1,572	\$9,757,622	\$478.18
ELECTRONICS & APPLIANCE STORES	440	3,010	3,043	3,030	\$18,627,067	\$473.25
BUILDING MATERIAL & GARDEN SUPPLY STORES	861	11,430	11,403	11,399	\$71,103,153	\$479.33
Building Material & Supplies Dealers	679	10,400	10,367	10,407	\$64,735,499	\$479.21
Lawn & Garden Equipment & Supplies Stores	182	1,030	1,036	992	\$6,367,654	\$480.53
FOOD & BEVERAGE STORES	1,096	18,388	18,611	18,781	\$74,766,470	\$309.32
Grocery Stores	619	15,944	16,155	16,264	\$62,745,064	\$299.39
Specialty Food Stores	165	913	917	920	\$5,952,877	\$499.54
Beer, Wine & Liquor Stores	312	1,531	1,539	1,597	\$6,068,529	\$300.07
HEALTH & PERSONAL CARE STORES	819	7,013	7,060	7,211	\$49,635,560	\$538.17
GASOLINE STATIONS	1,588	12,294	12,537	12,704	\$43,713,517	\$268.76
Gasoline Stations with Convenience Stores	1,427	11,075	11,276	11,408	\$37,832,839	\$258.62
Other Gasoline Stations	161	1,219	1,261	1,296	\$5,880,678	\$359.40
CLOTHING & CLOTHING ACCESSORIES STORES	1,085	8,864	8,937	8,944	\$30,476,625	\$262.97
Clothing Stores	737	6,739	6,813	6,835	\$21,011,075	\$237.83
Shoe Stores	184	1,222	1,220	1,201	\$4,162,772	\$263.69
Jewelry, Luggage & Leather Goods Stores	164	903	904	908	\$5,302,778	\$450.72
SPORTING GOODS, HOBBY, BOOK & MUSIC STORES	586	4,522	4,557	4,512	\$16,791,177	\$285.11
Sporting Goods & Musical Instrument Stores	434	3,183	3,155	3,173	\$12,638,122	\$306.64
Book, Periodical & Music Stores	152	1,339	1,402	1,339	\$4,153,055	\$234.90
GENERAL MERCHANDISE STORES	712	36,861	37,245	36,698	\$185,131,252	\$385.57
MISCELLANEOUS STORE RETAILERS	1,372	6,463	6,594	6,577	\$31,759,866	\$373.29
Florists	258	993	1,019	968	\$3,736,927	\$289.39
Office Supplies, Stationery & Gift Stores	363	2,265	2,297	2,280	\$11,107,738	\$374.65
Used Merchandise Stores	216	783	817	813	\$4,545,057	\$434.67
Other Miscellaneous Store Retailers	535	2,422	2,461	2,516	\$12,370,144	\$385.82
NONSTORE RETAILERS	319	1,872	1,830	1,849	\$13,115,701	\$545.25
Electronic Shopping & Mail -Order Houses	74	406	397	404	\$3,614,673	\$691.10
Vending Machine Operators	79	686	664	670	\$3,923,866	\$448.27
Direct Selling Establishments	166	780	769	775	\$5,577,162	\$553.80
TRANSPORTATION & WAREHOUSING	2,972	57,018	57,426	57,259	\$522,575,221	\$702.34
AIR TRANSPORTATION	51	899	892	902	\$10,715,196	\$918.21

**TABLE 5. STATEWIDE SUMMARY
EMPLOYMENT AND TOTAL EARNINGS, BY INDUSTRY
SECOND QUARTER 2007**

NORTH AMERICAN INDUSTRY CLASSIFICATION SYSTEM INDUSTRY GROUPS	NUMBER OF EMPLOYING UNITS	EMPLOYMENT	EMPLOYMENT	EMPLOYMENT	TOTAL EARNINGS	AVERAGE WEEKLY EARNINGS
		APRIL	MAY	JUNE	APRIL - JUNE	
TRUCK TRANSPORTATION	1,999	36,592	36,878	36,758	\$343,492,394	\$719.12
General Freight Trucking	1,248	31,340	31,536	31,305	\$298,104,461	\$730.44
Specialized Freight Trucking	751	5,252	5,342	5,453	\$45,387,933	\$652.72
TRANSIT & GROUND PASSENGER TRANSPORTATION	63	1,157	1,178	995	\$5,039,093	\$349.21
Taxi & Limousine Service	22	292	278	278	\$997,870	\$271.55
School & Employee Bus Transportation	8	457	473	278	\$2,106,983	\$402.51
Charter Bus Industry	8	85	86	84	\$459,721	\$416.04
Other Ground Passenger Transportation	18	220	230	246	\$969,159	\$321.34
Other	7	103	111	109	\$505,360	\$361.06
PIPELINE TRANSPORTATION	66	902	901	901	\$12,799,828	\$1,092.38
SUPPORT ACTIVITIES FOR TRANSPORTATION	413	4,766	4,781	4,877	\$47,780,579	\$764.44
Support Activities for Air Transportation	104	1,553	1,578	1,623	\$14,244,331	\$691.45
Support Activities for Rail Transportation	30	365	361	380	\$3,066,331	\$639.80
Support Activities for Water Transportation	25	653	651	650	\$6,996,210	\$826.26
Support Activities for Road Transportation	102	505	503	522	\$3,035,680	\$457.87
Freight Transportation Arrangement	127	1,524	1,524	1,527	\$19,195,535	\$968.25
Other Support Activities for Transportation	25	166	164	175	\$1,242,492	\$567.78
COURIERS & MESSENGERS	144	3,264	3,278	3,253	\$29,227,224	\$688.59
Couriers	88	2,988	2,996	2,978	\$27,653,431	\$712.07
Local Messengers & Local Delivery	56	276	282	275	\$1,573,793	\$435.99
WAREHOUSING & STORAGE	213	9,236	9,300	9,329	\$71,770,314	\$594.38
OTHER	23	202	218	244	\$1,750,593	\$608.41
UTILITIES	361	6,735	6,806	6,876	\$106,941,035	\$1,208.73
Power Generation & Supply	161	5,041	5,094	5,144	\$87,929,894	\$1,328.07
Natural Gas Distribution	34	850	859	861	\$12,927,621	\$1,160.82
Water, Sewage and Other Systems	166	844	853	871	\$6,083,520	\$546.69
INFORMATION	1,196	19,751	19,838	19,823	\$215,102,629	\$835.51
PUBLISHING INDUSTRIES, EXCEPT INTERNET	252	6,270	6,225	6,080	\$47,786,176	\$593.68
Newspaper, Book & Directory Publishers	225	5,994	5,949	5,802	\$43,896,175	\$570.86
Software Publishers	27	276	276	278	\$3,890,001	\$1,081.56
MOTION PICTURE & SOUND RECORDING INDUSTRY	131	1,225	1,323	1,349	\$5,539,219	\$328.02
Motion Picture & Video Industries	115	1,188	1,284	1,312	\$5,257,910	\$320.66

**TABLE 5. STATEWIDE SUMMARY
EMPLOYMENT AND TOTAL EARNINGS, BY INDUSTRY
SECOND QUARTER 2007**

NORTH AMERICAN INDUSTRY CLASSIFICATION SYSTEM INDUSTRY GROUPS	NUMBER OF EMPLOYING UNITS	EMPLOYMENT APRIL	EMPLOYMENT MAY	EMPLOYMENT JUNE	TOTAL EARNINGS APRIL - JUNE	AVERAGE WEEKLY EARNINGS
Sound Recording Industries	16	37	39	37	\$281,309	\$574.49
BROADCASTING, EXCEPT INTERNET	146	2,238	2,245	2,248	\$19,721,745	\$676.15
Radio & Television Broadcasting	139	2,193	2,208	2,212	\$19,469,169	\$679.40
Cable & Other Subscription Programming	7	45	37	36	\$252,576	\$493.96
TELECOMMUNICATIONS	533	8,749	8,764	8,864	\$126,045,850	\$1,102.76
Wired Telecommunications Carriers	315	4,606	4,599	4,638	\$63,136,133	\$1,052.51
Wireless Telecommunications Carriers	122	3,601	3,601	3,670	\$56,616,998	\$1,201.75
Other	96	542	564	556	\$6,292,719	\$873.75
DATA PROCESSING, HOSTING & RELATED SERVICES	85	980	980	983	\$13,516,791	\$1,059.89
OTHER	49	289	301	299	\$2,492,848	\$647.10
FINANCIAL ACTIVITIES	8,286	51,788	52,094	52,527	\$509,764,287	\$752.12
FINANCE & INSURANCE	4,848	37,422	37,479	37,742	\$410,831,252	\$841.66
CREDIT INTERMEDIATION & RELATED ACTIVITIES	2,080	22,287	22,238	22,433	\$214,078,919	\$737.82
Depository Credit Intermediation	1,357	18,456	18,457	18,613	\$172,812,185	\$718.22
Nondepository Credit Intermediation	423	2,684	2,669	2,683	\$32,264,256	\$926.53
Activities Related to Credit Intermediation	300	1,147	1,112	1,137	\$9,002,478	\$611.75
FINANCIAL INVESTMENT & RELATED ACTIVITIES	595	3,052	3,088	3,082	\$64,965,543	\$1,625.68
INSURANCE CARRIERS & RELATED ACTIVITIES	2,140	11,640	11,697	11,786	\$127,438,361	\$837.31
Insurance Carriers	421	4,896	4,900	4,941	\$58,541,717	\$916.71
Insurance Agencies, Brokerages & Support	1,719	6,744	6,797	6,845	\$68,896,644	\$779.91
OTHER	33	443	456	441	\$4,348,429	\$748.87
REAL ESTATE & RENTAL & LEASING	3,438	14,366	14,615	14,785	\$98,933,035	\$521.65
REAL ESTATE	2,609	8,870	9,029	9,137	\$62,294,902	\$531.73
Lessors of Real Estate	1,046	4,265	4,344	4,350	\$27,670,017	\$492.74
Offices of Real Estate Agents & Brokers	950	2,071	2,098	2,168	\$16,235,012	\$591.22
Activities Related to Real Estate	613	2,534	2,587	2,619	\$18,389,873	\$548.30
RENTAL & LEASING SERVICES	806	5,422	5,516	5,578	\$35,713,454	\$499.00
Automotive Equipment Rental & Leasing	124	1,010	1,023	1,022	\$6,664,069	\$503.39
Consumer Goods Rental	498	3,263	3,335	3,352	\$17,141,887	\$397.57
General Rental Centers	34	255	261	276	\$2,109,199	\$614.57
Machinery & Equipment Rental & Leasing	150	894	897	928	\$9,798,299	\$831.61
LESSORS OF NONFINANCIAL INTANGIBLE ASSETS	23	74	70	70	\$924,679	\$997.14

**TABLE 5. STATEWIDE SUMMARY
EMPLOYMENT AND TOTAL EARNINGS, BY INDUSTRY
SECOND QUARTER 2007**

NORTH AMERICAN INDUSTRY CLASSIFICATION SYSTEM INDUSTRY GROUPS	NUMBER OF EMPLOYING UNITS	EMPLOYMENT	EMPLOYMENT	EMPLOYMENT	TOTAL EARNINGS	AVERAGE
		APRIL	MAY	JUNE	APRIL - JUNE	WEEKLY EARNINGS
PROFESSIONAL AND BUSINESS SERVICES	11,127	116,798	117,050	117,644	\$1,121,501,509	\$736.31
PROFESSIONAL & TECHNICAL SERVICES	7,003	39,178	38,287	38,535	\$446,896,342	\$889.05
Legal Services	1,676	6,572	6,614	6,755	\$68,947,136	\$797.90
Accounting & Bookkeeping Services	1,239	6,560	5,465	5,059	\$52,724,858	\$712.20
Architectural & Engineering Services	944	6,784	6,891	6,975	\$79,807,677	\$891.87
Specialized Design Services	165	482	499	495	\$3,844,563	\$601.09
Computer Systems Design & Related Services	866	7,802	7,846	7,888	\$138,988,492	\$1,362.77
Management & Technical Consulting Services	1,117	4,043	4,057	4,275	\$46,927,724	\$875.11
Scientific Research & Development Services	97	1,045	1,061	1,074	\$12,998,578	\$943.29
Advertising & Related Services	313	2,025	2,043	2,094	\$21,609,825	\$809.30
Other Professional & Technical Services	586	3,865	3,811	3,920	\$21,047,489	\$418.86
MANAGEMENT OF COMPANIES & ENTERPRISES	523	24,472	24,712	24,840	\$396,125,535	\$1,234.92
ADMINISTRATIVE & WASTE SERVICES	3,601	53,148	54,051	54,269	\$278,479,632	\$398.00
ADMINISTRATIVE & SUPPORT SERVICES	3,392	50,866	51,725	51,907	\$255,691,086	\$381.92
Office Administrative Services	348	1,148	1,164	1,167	\$13,493,668	\$895.06
Facilities Support Services	17	160	110	127	\$1,222,873	\$710.83
Employment Services	664	24,804	25,373	24,980	\$110,778,861	\$340.15
Business Support Services	372	6,165	6,164	6,510	\$32,570,259	\$398.97
Travel Arrangement & Reservation Services	98	403	413	439	\$2,942,324	\$541.03
Investigation & Security Services	250	4,460	4,509	4,482	\$26,113,937	\$448.02
Services to Buildings & Dwellings	1,351	12,132	12,382	12,562	\$56,852,026	\$353.86
Other Support Services	292	1,594	1,610	1,640	\$11,717,138	\$558.21
WASTE MANAGEMENT & REMEDIATION SERVICES	209	2,282	2,326	2,362	\$22,788,546	\$754.50
Waste Collection	100	1,155	1,173	1,189	\$11,106,561	\$728.76
Waste Treatment & Disposal	36	640	634	632	\$7,484,390	\$906.17
Remediation & Other Waste Services	73	487	519	541	\$4,197,595	\$626.16
EDUCATION AND HEALTH SERVICES	11,157	149,091	150,089	150,224	\$1,234,839,943	\$634.09
EDUCATIONAL SERVICES	574	9,701	9,571	9,252	\$63,967,838	\$517.52
Elementary & Secondary Schools	77	3,263	3,310	3,116	\$17,459,663	\$415.85
Junior Colleges	7	284	293	269	\$1,965,059	\$536.02
Colleges & Universities	31	3,403	3,265	3,196	\$25,727,708	\$601.90
Business, Computer & Management Training	46	195	199	202	\$3,746,742	\$1,450.73

**TABLE 5. STATEWIDE SUMMARY
EMPLOYMENT AND TOTAL EARNINGS, BY INDUSTRY
SECOND QUARTER 2007**

NORTH AMERICAN INDUSTRY CLASSIFICATION SYSTEM INDUSTRY GROUPS	NUMBER OF EMPLOYING UNITS	EMPLOYMENT	EMPLOYMENT	EMPLOYMENT	TOTAL EARNINGS	AVERAGE WEEKLY EARNINGS
		APRIL	MAY	JUNE	APRIL - JUNE	
Technical & Trade Schools	102	714	707	693	\$7,444,203	\$812.63
Other Schools & Instruction	222	1,520	1,511	1,436	\$4,846,261	\$250.36
Educational Support Services	89	322	286	340	\$2,778,202	\$676.29
HEALTH CARE & SOCIAL ASSISTANCE	10,583	139,390	140,518	140,972	\$1,170,872,105	\$641.99
AMBULATORY HEALTH CARE SERVICES	4,892	43,544	43,935	44,237	\$525,862,474	\$921.32
Offices of Physicians	2,200	20,794	20,905	21,024	\$332,291,510	\$1,222.56
Offices of Dentists	921	6,072	6,172	6,237	\$58,577,799	\$731.45
Offices of Other Health Practitioners	1,147	5,946	5,981	6,038	\$46,268,728	\$594.34
Outpatient Care Centers	225	3,617	3,640	3,690	\$33,485,542	\$705.90
Medical & Diagnostic Laboratories	102	847	846	847	\$10,450,265	\$949.45
Home Health Care Services	152	4,060	4,127	4,158	\$28,574,398	\$534.15
Other Ambulatory Health Care Services	145	2,208	2,264	2,243	\$16,214,232	\$557.22
HOSPITALS	109	41,469	41,698	42,014	\$392,537,864	\$723.64
General Medical & Surgical Hospitals	78	37,965	37,972	38,230	\$358,122,346	\$723.88
Psychiatric & Substance Abuse Hospitals	10	1,641	1,854	1,873	\$15,282,847	\$657.01
Other Hospitals	21	1,863	1,872	1,911	\$19,132,671	\$782.01
NURSING & RESIDENTIAL CARE FACILITIES	510	27,241	27,503	27,774	\$138,903,628	\$388.46
Nursing Care Facilities	247	20,336	20,545	20,768	\$103,834,896	\$388.68
Residential Mental Health Facilities	127	3,211	3,218	3,246	\$16,390,951	\$390.96
Community Care Facilities for the Elderly	92	2,176	2,246	2,253	\$10,364,514	\$358.32
Other Residential Care Facilities	44	1,518	1,494	1,507	\$8,313,267	\$424.53
SOCIAL ASSISTANCE	5,072	27,136	27,382	26,947	\$113,568,139	\$321.71
Individual & Family Services	3,911	13,646	13,702	13,836	\$60,706,921	\$340.16
Emergency & Other Relief Services	124	909	920	878	\$4,613,377	\$393.29
Vocational Rehabilitation Services	128	3,630	3,684	3,737	\$17,175,282	\$358.66
Child Day Care Services	909	8,951	9,076	8,496	\$31,072,559	\$270.35
LEISURE AND HOSPITALITY	6,153	100,486	101,881	103,366	\$307,118,406	\$231.81
ARTS, ENTERTAINMENT & RECREATION	915	9,880	10,361	11,358	\$40,478,232	\$295.61
PERFORMING ARTS & SPECTATOR SPORTS	211	2,665	2,397	2,335	\$12,039,237	\$375.60
Performing Arts Companies	36	367	662	658	\$1,792,581	\$245.21
Spectator Sports	59	1,555	992	980	\$5,633,858	\$368.62
Performing Arts & Sports Promoters	48	584	564	506	\$3,337,146	\$465.60

**TABLE 5. STATEWIDE SUMMARY
EMPLOYMENT AND TOTAL EARNINGS, BY INDUSTRY
SECOND QUARTER 2007**

NORTH AMERICAN INDUSTRY CLASSIFICATION SYSTEM INDUSTRY GROUPS	NUMBER OF EMPLOYING UNITS	EMPLOYMENT	EMPLOYMENT	EMPLOYMENT	TOTAL EARNINGS	AVERAGE
		APRIL	MAY	JUNE	APRIL - JUNE	WEEKLY EARNINGS
Agents & Managers for Public Figures	12	19	20	18	\$174,561	\$706.72
Independent Artists, Writers & Performers	56	140	159	173	\$1,101,091	\$538.34
MUSEUMS, PARKS & HISTORICAL SITES	45	226	236	282	\$1,140,254	\$353.68
GAMBLING, RECREATION & AMUSEMENT INDUSTRY	659	6,989	7,728	8,741	\$27,298,741	\$268.55
ACCOMMODATION & FOOD SERVICES	5,238	90,606	91,520	92,008	\$266,640,174	\$224.46
ACCOMMODATION	827	11,149	11,445	12,128	\$42,024,748	\$279.30
Traveler Accommodation	751	10,765	11,067	11,361	\$39,771,242	\$276.50
RV Parks & Recreational Camps	57	306	312	712	\$1,965,580	\$341.05
Rooming & Boarding Houses	19	78	66	55	\$287,926	\$333.89
FOOD SERVICES & DRINKING PLACES	4,411	79,457	80,075	79,880	\$224,615,426	\$216.51
Full -Service Restaurants	1,973	35,009	35,326	35,252	\$107,283,416	\$234.48
Limited-Service Eating Places	2,147	41,126	41,803	41,720	\$107,448,842	\$198.93
Special Food Services	147	2,411	2,047	2,010	\$7,226,187	\$257.82
Drinking Places, Alcoholic Beverages	144	911	899	898	\$2,656,981	\$226.42
OTHER SERVICES	5,438	25,429	25,595	26,205	\$156,298,452	\$467.04
REPAIR & MAINTENANCE	2,212	9,666	9,670	9,848	\$70,456,959	\$557.13
Automotive Repair & Maintenance	1,515	6,802	6,778	6,847	\$44,894,802	\$507.19
Electronic Equipment Repair & Maintenance	166	688	711	717	\$6,440,450	\$702.39
Commercial Machinery Repair & Maintenance	344	1,614	1,600	1,665	\$15,280,200	\$722.73
Household Goods Repair & Maintenance	187	562	581	619	\$3,841,507	\$503.12
PERSONAL & LAUNDRY SERVICES	1,323	8,247	8,356	8,309	\$40,875,897	\$378.65
Personal Care Services	571	2,766	2,808	2,778	\$10,908,935	\$301.42
Death Care Services	245	1,675	1,681	1,695	\$11,109,297	\$507.56
Drycleaning & Laundry Services	335	3,154	3,206	3,161	\$15,622,643	\$378.66
Other Personal Services	172	652	661	675	\$3,235,022	\$375.52
MEMBERSHIP ASSOCIATIONS & ORGANIZATIONS	996	6,215	6,295	6,770	\$39,586,959	\$473.83
Religious Organizations	44	198	232	245	\$1,280,941	\$437.93
Grantmaking & Giving Services	100	449	443	447	\$4,249,293	\$732.34
Social Advocacy Organizations	140	1,961	1,934	1,857	\$11,643,476	\$467.13
Civic & Social Organizations	208	1,459	1,488	1,860	\$5,475,175	\$262.85
Professional & Similar Organizations	504	2,148	2,198	2,361	\$16,938,074	\$582.79
PRIVATE HOUSEHOLDS	907	1,301	1,274	1,278	\$5,378,637	\$322.14

**TABLE 5. STATEWIDE SUMMARY
EMPLOYMENT AND TOTAL EARNINGS, BY INDUSTRY
SECOND QUARTER 2007**

NORTH AMERICAN INDUSTRY CLASSIFICATION SYSTEM INDUSTRY GROUPS	NUMBER OF EMPLOYING UNITS	EMPLOYMENT	EMPLOYMENT	EMPLOYMENT	TOTAL EARNINGS	AVERAGE WEEKLY EARNINGS
		APRIL	MAY	JUNE	APRIL - JUNE	
LOCAL GOVERNMENT	1,991	119,981	120,406	117,581	\$1,084,934,410	\$699.42
STATE GOVERNMENT	1,200	65,332	64,745	62,745	\$570,540,907	\$682.82
NONCLASSIFIABLE ESTABLISHMENTS	0	0	0	0	\$0	

**TABLE 6. COUNTY SUMMARY
EMPLOYMENT AND TOTAL EARNINGS, BY INDUSTRY
SECOND QUARTER 2007**

NORTH AMERICAN INDUSTRY CLASSIFICATION SYSTEM INDUSTRY GROUP	NUMBER OF EMPLOYING UNITS	EMPLOYMENT	EMPLOYMENT	EMPLOYMENT	TOTAL EARNINGS	AVERAGE WEEKLY EARNINGS
		APRIL	MAY	JUNE	APRIL - JUNE 2007	
ARKANSAS COUNTY - TOTAL	709	9,999	10,072	10,063	\$74,845,513	\$573.17
Natural Resources & Mining	44	232	233	241	\$1,799,270	\$588.12
Construction	51	311	320	318	\$2,768,504	\$673.22
Manufacturing	32	3,636	3,679	3,671	\$31,271,032	\$656.87
Trade, Transportation & Utilities	202	2,003	1,998	1,996	\$15,504,272	\$596.62
Wholesale Trade	45	463	458	458	\$4,668,310	\$781.22
Retail Trade	100	1,062	1,045	1,049	\$5,342,640	\$390.66
Transportation, Warehousing & Utilities	57	478	495	489	\$5,493,322	\$867.09
Information	10	99	98	98	\$858,822	\$671.83
Financial Activities	51	321	327	323	\$2,617,713	\$622.13
Professional & Business Services	56	371	381	392	\$3,419,713	\$689.83
Education & Health Services	102	1,200	1,186	1,179	\$6,909,846	\$447.29
Leisure & Hospitality	60	514	532	558	\$1,348,720	\$194.04
Other Services	53	145	144	142	\$796,437	\$426.43
Local Government	32	919	925	926	\$6,068,986	\$505.61
State Government	16	248	249	219	\$1,482,198	\$477.72
ASHLEY COUNTY - TOTAL	546	7,974	8,025	8,085	\$69,692,704	\$667.78
Natural Resources & Mining	58	412	428	442	\$2,986,397	\$537.57
Construction	50	606	565	537	\$4,183,511	\$565.24
Manufacturing	29	2,679	2,702	2,714	\$34,638,948	\$987.47
Trade, Transportation & Utilities	131	1,174	1,161	1,166	\$7,176,320	\$473.03
Wholesale Trade	25	158	151	153	\$1,420,704	\$709.64
Retail Trade	81	794	784	784	\$3,596,929	\$351.42
Transportation, Warehousing & Utilities	25	222	226	229	\$2,158,687	\$735.83
Information	9	51	52	53	\$324,497	\$480.03
Financial Activities	33	222	226	225	\$1,385,203	\$474.98
Professional & Business Services	52	390	393	411	\$2,412,305	\$466.24
Education & Health Services	68	563	595	618	\$4,664,696	\$606.12
Leisure & Hospitality	29	410	415	401	\$995,726	\$187.42
Other Services	43	187	188	192	\$1,070,227	\$435.58
Local Government	32	1,041	1,066	1,092	\$8,584,968	\$619.30
State Government	12	239	234	234	\$1,269,906	\$414.51

**TABLE 6. COUNTY SUMMARY
EMPLOYMENT AND TOTAL EARNINGS, BY INDUSTRY
SECOND QUARTER 2007**

NORTH AMERICAN INDUSTRY CLASSIFICATION SYSTEM INDUSTRY GROUP	NUMBER OF EMPLOYING UNITS	EMPLOYMENT	EMPLOYMENT	EMPLOYMENT	TOTAL EARNINGS	AVERAGE WEEKLY EARNINGS
		APRIL	MAY	JUNE	APRIL - JUNE 2007	
BAXTER COUNTY - TOTAL	1,304	15,103	15,304	15,054	\$107,685,195	\$546.63
Natural Resources & Mining	5	116	111	120	\$835,353	\$555.54
Construction	144	741	765	795	\$4,886,806	\$490.10
Manufacturing	64	2,489	2,484	2,501	\$24,038,638	\$742.22
Trade, Transportation & Utilities	288	2,747	2,779	2,792	\$15,662,600	\$434.53
Wholesale Trade	35	235	237	236	\$1,642,337	\$535.31
Retail Trade	221	2,291	2,319	2,332	\$12,320,783	\$409.57
Transportation, Warehousing & Utilities	32	221	223	224	\$1,699,480	\$587.11
Information	24	262	267	264	\$2,007,407	\$584.17
Financial Activities	121	738	744	752	\$6,124,446	\$632.65
Professional & Business Services	139	854	889	893	\$5,829,199	\$510.32
Education & Health Services	237	3,501	3,512	3,524	\$28,904,633	\$633.04
Leisure & Hospitality	125	1,633	1,696	1,671	\$4,659,007	\$215.03
Other Services	107	410	424	413	\$1,951,136	\$361.08
Local Government	37	1,278	1,304	1,022	\$10,600,210	\$678.75
State Government	13	334	329	307	\$2,185,760	\$520.01
BENTON COUNTY - TOTAL	5,459	95,163	95,927	95,698	\$924,467,077	\$743.89
Natural Resources & Mining	31	647	694	703	\$7,303,628	\$824.59
Construction	781	4,922	4,881	4,917	\$46,703,992	\$732.19
Manufacturing	254	13,611	13,546	13,247	\$115,069,822	\$657.23
Trade, Transportation & Utilities	1,460	23,866	24,086	23,972	\$224,833,054	\$721.38
Wholesale Trade	674	3,746	3,710	3,715	\$66,416,306	\$1,372.02
Retail Trade	615	8,702	8,829	8,828	\$51,567,680	\$451.47
Transportation, Warehousing & Utilities	171	11,418	11,547	11,429	\$106,849,068	\$716.91
Information	69	924	920	931	\$8,156,318	\$678.28
Financial Activities	597	4,016	4,049	4,084	\$42,936,016	\$815.57
Professional & Business Services	954	22,739	22,976	22,951	\$305,293,866	\$1,026.02
Education & Health Services	483	6,812	6,881	6,903	\$57,186,293	\$640.75
Leisure & Hospitality	415	7,642	7,839	7,966	\$25,099,661	\$247.03
Other Services	321	1,728	1,782	1,785	\$10,931,112	\$476.40
Local Government	75	7,427	7,437	7,502	\$74,128,680	\$764.85
State Government	19	829	836	737	\$6,824,635	\$655.67

**TABLE 6. COUNTY SUMMARY
EMPLOYMENT AND TOTAL EARNINGS, BY INDUSTRY
SECOND QUARTER 2007**

NORTH AMERICAN INDUSTRY CLASSIFICATION SYSTEM INDUSTRY GROUP	NUMBER OF EMPLOYING UNITS	EMPLOYMENT	EMPLOYMENT	EMPLOYMENT	TOTAL EARNINGS	AVERAGE WEEKLY EARNINGS
		APRIL	MAY	JUNE	APRIL - JUNE 2007	
BOONE COUNTY - TOTAL	1,057	14,103	14,091	14,025	\$107,720,034	\$588.80
Construction	94	466	475	520	\$3,318,297	\$524.13
Manufacturing	75	1,992	2,010	1,999	\$16,768,953	\$644.85
Trade, Transportation & Utilities	260	4,535	4,559	4,459	\$37,823,181	\$644.02
Wholesale Trade	58	695	688	704	\$5,306,995	\$586.82
Retail Trade	149	1,949	1,971	1,940	\$10,530,227	\$414.68
Transportation, Warehousing & Utilities	53	1,891	1,900	1,815	\$21,985,959	\$905.05
Information	19	424	420	425	\$4,046,456	\$735.85
Financial Activities	98	641	639	629	\$5,146,854	\$622.18
Professional & Business Services	111	551	544	539	\$3,387,128	\$478.36
Education & Health Services	172	1,151	1,167	1,147	\$8,173,235	\$544.34
Leisure & Hospitality	79	1,158	1,155	1,140	\$3,122,283	\$208.67
Local Government	60	2,250	2,255	2,291	\$19,053,036	\$646.98
State Government	21	659	584	600	\$5,106,671	\$639.43
Other	68	276	283	276	\$1,773,940	\$490.26
BRADLEY COUNTY - TOTAL	391	4,292	4,246	4,260	\$28,627,865	\$516.21
Natural Resources & Mining	49	451	404	463	\$2,516,605	\$440.63
Construction	24	208	237	220	\$1,616,454	\$560.94
Manufacturing	9	1,052	1,033	1,053	\$8,544,068	\$628.33
Trade, Transportation & Utilities	87	507	511	530	\$2,649,382	\$394.96
Wholesale Trade	17	84	84	86	\$642,000	\$583.28
Retail Trade	47	355	358	357	\$1,504,044	\$324.38
Transportation, Warehousing & Utilities	23	68	69	87	\$503,338	\$518.55
Information	4	12	12	12	\$84,973	\$544.70
Financial Activities	23	173	169	170	\$1,151,256	\$518.90
Professional & Business Services	28	81	80	80	\$342,364	\$327.83
Education & Health Services	89	611	595	609	\$4,106,446	\$522.12
Leisure & Hospitality	19	209	217	210	\$430,418	\$156.17
Other Services	33	120	125	136	\$752,980	\$456.08
Local & State Government	26	868	863	777	\$6,432,919	\$591.91

**TABLE 6. COUNTY SUMMARY
EMPLOYMENT AND TOTAL EARNINGS, BY INDUSTRY
SECOND QUARTER 2007**

NORTH AMERICAN INDUSTRY CLASSIFICATION SYSTEM INDUSTRY GROUP	NUMBER OF EMPLOYING UNITS	EMPLOYMENT	EMPLOYMENT	EMPLOYMENT	TOTAL EARNINGS	AVERAGE WEEKLY EARNINGS
		APRIL	MAY	JUNE	APRIL - JUNE 2007	
CALHOUN COUNTY - TOTAL	112	3,055	3,067	3,060	\$29,079,443	\$730.85
Natural Resources & Mining	18	209	203	199	\$1,465,055	\$553.34
Construction	11	71	66	70	\$419,229	\$467.37
Manufacturing	10	2,044	2,051	2,040	\$21,528,195	\$809.79
Trade, Transportation & Utilities	27	202	213	209	\$1,538,958	\$569.14
Wholesale Trade & Retail Trade	19	67	69	65	\$248,045	\$284.78
Transportation, Warehousing & Utilities	8	135	144	144	\$1,290,913	\$704.26
Financial Activities	6	82	80	81	\$489,397	\$464.76
Education & Health Services	6	46	46	46	\$344,549	\$576.17
Local Government	11	206	214	213	\$1,476,583	\$538.31
State Government	9	80	76	74	\$533,476	\$535.26
Other	14	115	118	128	\$1,284,001	\$820.80
CARROLL COUNTY - TOTAL	839	9,830	10,236	10,228	\$60,556,986	\$461.30
Natural Resources & Mining	18	267	265	266	\$1,832,799	\$530.02
Trade, Transportation & Utilities	206	1,697	1,715	1,741	\$9,803,250	\$439.02
Wholesale Trade	27	146	149	152	\$797,988	\$411.97
Retail Trade	159	1,284	1,296	1,312	\$6,478,196	\$384.11
Transportation, Warehousing & Utilities	20	267	270	277	\$2,527,066	\$716.42
Professional & Business Services	78	227	222	230	\$1,574,832	\$535.23
Education & Health Services	80	828	818	806	\$6,049,542	\$569.35
Leisure & Hospitality	169	1,513	1,910	1,984	\$5,154,259	\$219.98
Local Government	24	1,139	1,148	953	\$8,498,888	\$605.33
State Government	11	107	106	105	\$683,708	\$496.16
Other	253	4,052	4,052	4,143	\$26,959,708	\$508.00

**TABLE 6. COUNTY SUMMARY
EMPLOYMENT AND TOTAL EARNINGS, BY INDUSTRY
SECOND QUARTER 2007**

NORTH AMERICAN INDUSTRY CLASSIFICATION SYSTEM INDUSTRY GROUP	NUMBER OF EMPLOYING UNITS	EMPLOYMENT	EMPLOYMENT	EMPLOYMENT	TOTAL EARNINGS	AVERAGE WEEKLY EARNINGS
		APRIL	MAY	JUNE	APRIL - JUNE 2007	
CHICOT COUNTY - TOTAL	358	3,523	3,544	3,563	\$21,155,247	\$459.26
Natural Resources & Mining	47	249	259	271	\$1,818,580	\$538.73
Construction	16	112	124	142	\$901,606	\$550.43
Manufacturing	10	499	482	465	\$2,064,951	\$329.55
Trade, Transportation & Utilities	75	545	557	576	\$3,242,377	\$445.91
Wholesale Trade	14	103	103	105	\$950,294	\$705.14
Retail Trade	50	385	397	410	\$1,709,546	\$330.97
Transportation, Warehousing & Utilities	11	57	57	61	\$582,537	\$768.18
Information	6	13	12	12	\$57,866	\$360.91
Financial Activities	29	164	165	164	\$1,231,198	\$576.31
Professional & Business Services	27	86	85	85	\$738,006	\$665.27
Education & Health Services	82	564	556	552	\$3,379,243	\$466.40
Leisure & Hospitality	20	190	193	199	\$459,790	\$182.31
Other Services	18	45	45	45	\$214,522	\$366.70
Local Government	17	732	735	724	\$5,075,480	\$534.58
State Government	11	324	331	328	\$1,971,628	\$462.86
CLARK COUNTY - TOTAL	609	9,956	9,969	9,685	\$66,802,721	\$520.64
Natural Resources & Mining	41	253	241	260	\$1,818,170	\$556.47
Construction	27	91	87	94	\$500,340	\$424.50
Manufacturing	36	2,511	2,477	2,477	\$18,491,494	\$571.64
Trade, Transportation & Utilities	146	1,426	1,456	1,473	\$10,022,154	\$531.07
Wholesale Trade	18	58	57	60	\$542,380	\$715.23
Retail Trade	105	1,083	1,104	1,112	\$6,796,357	\$475.41
Transportation, Warehousing & Utilities	23	285	295	301	\$2,683,417	\$702.89
Information	10	40	42	45	\$252,281	\$458.41
Financial Activities	86	376	396	392	\$2,765,272	\$548.23
Professional & Business Services	44	398	415	386	\$4,004,366	\$770.71
Education & Health Services	76	1,468	1,426	1,396	\$10,000,964	\$537.98
Leisure & Hospitality	57	1,034	1,063	1,058	\$2,858,228	\$209.06
Other Services	45	218	212	195	\$1,100,673	\$406.40
Local Government	26	978	1,046	925	\$7,221,025	\$565.07
State Government	15	1,163	1,108	984	\$7,767,754	\$550.71

**TABLE 6. COUNTY SUMMARY
EMPLOYMENT AND TOTAL EARNINGS, BY INDUSTRY
SECOND QUARTER 2007**

NORTH AMERICAN INDUSTRY CLASSIFICATION SYSTEM INDUSTRY GROUP	NUMBER OF EMPLOYING UNITS	EMPLOYMENT	EMPLOYMENT	EMPLOYMENT	TOTAL EARNINGS	AVERAGE WEEKLY EARNINGS
		APRIL	MAY	JUNE	APRIL - JUNE 2007	
CLAY COUNTY - TOTAL	403	4,064	4,105	4,091	\$25,464,257	\$479.31
Natural Resources & Mining	58	202	220	232	\$1,254,609	\$442.70
Construction	34	172	175	173	\$1,058,356	\$469.68
Manufacturing	18	729	729	755	\$4,751,181	\$495.45
Trade, Transportation & Utilities	96	908	907	899	\$6,149,968	\$522.93
Wholesale Trade	22	331	323	314	\$2,697,594	\$643.10
Retail Trade	50	423	430	429	\$2,069,217	\$372.47
Transportation, Warehousing & Utilities	24	154	154	156	\$1,383,157	\$687.91
Information	4	68	68	69	\$435,870	\$490.66
Financial Activities	34	149	148	148	\$923,338	\$478.83
Professional & Business Services	27	54	58	56	\$333,834	\$458.56
Education & Health Services	51	500	497	477	\$2,878,449	\$450.65
Leisure & Hospitality	22	237	230	228	\$498,634	\$165.57
Other Services	25	75	70	73	\$423,449	\$448.25
Local Government	22	892	924	906	\$6,280,991	\$532.50
State Government	12	78	79	75	\$475,578	\$473.06
CLEBURNE COUNTY - TOTAL	691	6,906	6,979	6,824	\$44,652,721	\$497.58
Natural Resources & Mining	18	163	161	135	\$1,325,021	\$666.17
Construction	75	382	413	405	\$2,610,899	\$502.10
Manufacturing	42	1,438	1,422	1,294	\$10,877,603	\$604.29
Trade, Transportation & Utilities	189	1,600	1,624	1,648	\$10,115,468	\$479.13
Wholesale Trade	43	206	215	221	\$1,815,990	\$652.76
Retail Trade	113	1,031	1,045	1,059	\$5,127,467	\$377.44
Transportation, Warehousing & Utilities	33	363	364	368	\$3,172,011	\$668.50
Information	6	52	50	51	\$325,288	\$490.63
Financial Activities	75	260	255	266	\$1,823,487	\$538.80
Professional & Business Services	57	241	237	237	\$1,406,886	\$454.08
Education & Health Services	79	772	774	793	\$5,159,304	\$509.02
Leisure & Hospitality	68	875	909	957	\$2,706,720	\$227.88
Other Services	53	174	171	166	\$790,656	\$357.06
Local Government	19	822	834	747	\$6,693,552	\$642.81
State Government	10	127	129	125	\$817,837	\$495.36

**TABLE 6. COUNTY SUMMARY
EMPLOYMENT AND TOTAL EARNINGS, BY INDUSTRY
SECOND QUARTER 2007**

NORTH AMERICAN INDUSTRY CLASSIFICATION SYSTEM INDUSTRY GROUP	NUMBER OF EMPLOYING UNITS	EMPLOYMENT	EMPLOYMENT	EMPLOYMENT	TOTAL EARNINGS	AVERAGE WEEKLY EARNINGS
		APRIL	MAY	JUNE	APRIL - JUNE 2007	
CLEVELAND COUNTY - TOTAL	111	1,072	1,095	1,018	\$7,150,728	\$518.11
Natural Resources & Mining	17	138	139	140	\$1,025,922	\$567.75
Construction	7	32	33	33	\$132,262	\$311.45
Manufacturing	5	87	89	91	\$529,778	\$457.89
Trade, Transportation & Utilities	29	179	177	186	\$870,740	\$370.74
Retail Trade	14	84	81	84	\$222,148	\$205.88
Other Trade, Transportation & Utilities	15	95	96	102	\$648,592	\$510.84
Local Government	11	337	342	239	\$2,388,393	\$600.40
State Government	8	65	65	66	\$369,058	\$434.53
Other	34	234	250	263	\$1,834,575	\$566.75
COLUMBIA COUNTY - TOTAL	727	9,501	9,548	9,558	\$74,330,828	\$599.62
Natural Resources & Mining	49	553	565	582	\$7,493,715	\$1,017.25
Construction	47	325	339	339	\$3,133,913	\$721.05
Manufacturing	43	2,678	2,698	2,697	\$26,605,308	\$760.52
Trade, Transportation & Utilities	185	1,615	1,621	1,578	\$9,247,391	\$443.29
Wholesale Trade	30	301	292	278	\$2,099,302	\$556.20
Retail Trade	120	1,041	1,056	1,036	\$4,700,008	\$346.19
Transportation, Warehousing & Utilities	35	273	273	264	\$2,448,081	\$697.46
Information	9	75	72	73	\$446,815	\$468.69
Financial Activities	77	517	525	517	\$5,185,071	\$767.51
Professional & Business Services	59	309	310	314	\$2,571,376	\$636.01
Education & Health Services	116	892	902	891	\$4,942,942	\$424.83
Leisure & Hospitality	53	637	620	617	\$1,635,683	\$201.42
Other Services	48	208	207	205	\$844,072	\$314.17
Local Government	27	1,116	1,120	1,148	\$8,674,831	\$591.57
State Government	14	576	569	597	\$3,549,711	\$470.24

**TABLE 6. COUNTY SUMMARY
EMPLOYMENT AND TOTAL EARNINGS, BY INDUSTRY
SECOND QUARTER 2007**

NORTH AMERICAN INDUSTRY CLASSIFICATION SYSTEM INDUSTRY GROUP	NUMBER OF EMPLOYING UNITS	EMPLOYMENT	EMPLOYMENT	EMPLOYMENT	TOTAL EARNINGS	AVERAGE WEEKLY EARNINGS
		APRIL	MAY	JUNE	APRIL - JUNE 2007	
CONWAY COUNTY - TOTAL	558	6,926	6,936	6,963	\$49,396,539	\$547.38
Natural Resources & Mining	22	169	170	171	\$1,634,391	\$739.54
Construction	58	505	516	525	\$5,503,834	\$821.55
Manufacturing	29	1,158	1,156	1,169	\$11,527,145	\$763.74
Trade, Transportation & Utilities	137	1,502	1,510	1,541	\$9,756,633	\$494.52
Wholesale Trade	25	226	229	230	\$1,906,704	\$642.35
Retail Trade	82	939	938	964	\$4,806,382	\$390.41
Transportation, Warehousing & Utilities	30	337	343	347	\$3,043,547	\$683.89
Information	4	14	13	12	\$126,319	\$747.45
Financial Activities	34	197	198	201	\$1,433,900	\$555.20
Professional & Business Services	44	604	583	599	\$2,267,315	\$292.96
Education & Health Services	125	876	879	885	\$5,388,151	\$470.99
Leisure & Hospitality	38	504	500	525	\$1,189,672	\$179.56
Other Services	28	89	92	106	\$612,070	\$492.15
Local Government	28	914	917	871	\$7,770,894	\$663.69
State Government	11	394	402	358	\$2,186,215	\$437.18
CRAIGHEAD COUNTY - TOTAL	2,693	41,324	41,774	41,206	\$310,936,807	\$577.25
Natural Resources & Mining	62	241	258	281	\$1,462,216	\$432.61
Construction	241	1,581	1,628	1,708	\$12,817,859	\$601.58
Manufacturing	139	6,556	6,560	6,558	\$57,603,785	\$675.67
Trade, Transportation & Utilities	743	8,494	8,519	8,487	\$56,170,623	\$508.33
Wholesale Trade	187	1,634	1,655	1,640	\$15,636,198	\$732.07
Retail Trade	439	5,731	5,720	5,695	\$30,179,144	\$406.18
Transportation, Warehousing & Utilities	117	1,129	1,144	1,152	\$10,355,281	\$697.72
Information	36	605	606	600	\$5,025,283	\$640.35
Financial Activities	271	1,623	1,632	1,649	\$16,513,065	\$777.06
Professional & Business Services	364	3,522	3,618	3,592	\$22,734,165	\$488.85
Education & Health Services	394	7,258	7,306	7,222	\$65,142,759	\$690.03
Leisure & Hospitality	200	4,222	4,302	4,283	\$11,656,649	\$210.04
Other Services	180	984	987	986	\$4,928,844	\$384.66
Local Government	38	3,717	3,811	3,486	\$33,978,407	\$711.93
State Government	25	2,521	2,547	2,354	\$22,903,152	\$712.12

**TABLE 6. COUNTY SUMMARY
EMPLOYMENT AND TOTAL EARNINGS, BY INDUSTRY
SECOND QUARTER 2007**

NORTH AMERICAN INDUSTRY CLASSIFICATION SYSTEM INDUSTRY GROUP	NUMBER OF EMPLOYING UNITS	EMPLOYMENT	EMPLOYMENT	EMPLOYMENT	TOTAL EARNINGS	AVERAGE WEEKLY EARNINGS
		APRIL	MAY	JUNE	APRIL - JUNE 2007	
CRAWFORD COUNTY - TOTAL	1,261	19,978	20,013	19,950	\$145,415,500	\$559.84
Natural Resources & Mining	25	732	693	648	\$7,718,872	\$859.28
Construction	185	1,470	1,424	1,457	\$11,205,809	\$594.34
Manufacturing	78	3,706	3,705	3,675	\$26,540,392	\$552.47
Trade, Transportation & Utilities	313	6,766	6,783	6,819	\$50,126,460	\$567.93
Wholesale Trade	83	669	700	716	\$6,367,302	\$704.74
Other Trade, Transportation & Utilities	230	6,097	6,083	6,103	\$43,759,158	\$552.33
Financial Activities	137	531	542	543	\$3,618,447	\$516.72
Professional & Business Services	155	997	997	1,055	\$7,168,610	\$542.57
Education & Health Services	137	1,333	1,349	1,341	\$9,416,074	\$540.13
Leisure & Hospitality	88	1,552	1,587	1,647	\$4,355,968	\$210.03
Local Government	41	2,148	2,183	2,021	\$19,723,268	\$716.55
State Government	11	178	179	175	\$1,448,145	\$628.17
Other	91	565	571	569	\$4,093,455	\$554.04
CRITTENDEN COUNTY - TOTAL	1,223	17,243	17,249	17,449	\$131,245,639	\$583.11
Natural Resources & Mining	43	254	272	274	\$1,534,294	\$442.58
Construction	75	473	494	492	\$4,056,027	\$641.54
Manufacturing	46	1,948	2,013	2,087	\$20,451,045	\$780.34
Trade, Transportation & Utilities	335	4,933	4,943	4,893	\$37,641,988	\$588.17
Wholesale Trade	77	798	801	797	\$8,720,987	\$839.96
Retail Trade	170	2,091	2,100	2,058	\$10,186,074	\$376.16
Transportation, Warehousing & Utilities	88	2,044	2,042	2,038	\$18,734,927	\$705.98
Information	10	96	92	87	\$687,919	\$577.27
Financial Activities	109	580	576	588	\$5,049,552	\$668.17
Professional & Business Services	133	1,178	1,163	1,172	\$7,020,569	\$461.18
Education & Health Services	211	2,021	2,033	2,050	\$16,267,198	\$615.00
Leisure & Hospitality	102	2,171	2,132	2,160	\$7,020,343	\$250.67
Other Services	98	621	618	627	\$3,391,823	\$419.47
Local Government	46	2,458	2,470	2,555	\$24,721,320	\$762.38
State Government	15	510	443	464	\$3,403,561	\$554.30

**TABLE 6. COUNTY SUMMARY
EMPLOYMENT AND TOTAL EARNINGS, BY INDUSTRY
SECOND QUARTER 2007**

NORTH AMERICAN INDUSTRY CLASSIFICATION SYSTEM INDUSTRY GROUP	NUMBER OF EMPLOYING UNITS	EMPLOYMENT	EMPLOYMENT	EMPLOYMENT	TOTAL EARNINGS	AVERAGE WEEKLY EARNINGS
		APRIL	MAY	JUNE	APRIL - JUNE 2007	
CROSS COUNTY - TOTAL	521	4,813	4,853	4,916	\$32,258,338	\$510.51
Natural Resources & Mining	39	186	209	226	\$1,101,542	\$409.34
Construction	37	165	165	174	\$995,778	\$455.94
Manufacturing	16	595	591	624	\$4,883,355	\$622.61
Trade, Transportation & Utilities	132	1,132	1,134	1,145	\$7,778,670	\$526.26
Wholesale Trade	30	280	273	276	\$2,254,917	\$627.70
Retail Trade	68	645	642	642	\$3,470,774	\$415.21
Transportation, Warehousing & Utilities	34	207	219	227	\$2,052,979	\$725.52
Information	6	65	67	67	\$443,939	\$514.81
Financial Activities	49	339	339	352	\$2,460,594	\$551.29
Professional & Business Services	44	160	156	150	\$1,222,697	\$605.50
Education & Health Services	100	678	672	659	\$4,059,178	\$466.27
Leisure & Hospitality	31	398	410	422	\$899,141	\$168.69
Other Services	39	74	72	73	\$328,865	\$346.54
Local Government	17	794	812	795	\$6,338,673	\$609.23
State Government	11	227	226	229	\$1,745,906	\$590.76
DALLAS COUNTY - TOTAL	271	3,276	3,285	3,158	\$22,534,729	\$535.07
Natural Resources & Mining	40	175	180	205	\$1,357,475	\$559.40
Construction	13	66	69	64	\$812,685	\$942.43
Manufacturing	17	896	916	899	\$7,860,881	\$669.14
Trade, Transportation & Utilities	71	447	440	434	\$2,429,563	\$424.43
Wholesale Trade	9	29	32	33	\$236,097	\$579.62
Retail Trade	44	362	358	353	\$1,799,590	\$387.04
Transportation, Warehousing & Utilities	18	56	50	48	\$393,876	\$590.22
Information	3	22	22	22	\$163,164	\$570.50
Financial Activities	19	103	102	104	\$735,049	\$548.95
Professional & Business Services	16	47	44	46	\$432,003	\$727.69
Education & Health Services	38	797	790	801	\$4,501,061	\$434.97
Leisure & Hospitality	15	125	123	113	\$273,976	\$175.14
Other Services	14	62	58	61	\$242,761	\$309.51
Local Government	16	468	471	339	\$3,259,224	\$588.52
State Government	9	68	70	70	\$466,887	\$518.00

**TABLE 6. COUNTY SUMMARY
EMPLOYMENT AND TOTAL EARNINGS, BY INDUSTRY
SECOND QUARTER 2007**

NORTH AMERICAN INDUSTRY CLASSIFICATION SYSTEM INDUSTRY GROUP	NUMBER OF EMPLOYING UNITS	EMPLOYMENT	EMPLOYMENT	EMPLOYMENT	TOTAL EARNINGS	AVERAGE WEEKLY EARNINGS
		APRIL	MAY	JUNE	APRIL - JUNE 2007	
DESHA COUNTY - TOTAL	472	4,584	4,642	4,708	\$33,371,357	\$552.68
Natural Resources & Mining	52	235	245	257	\$1,575,007	\$493.17
Construction	27	144	147	153	\$1,212,052	\$629.96
Manufacturing	16	1,116	1,100	1,110	\$11,121,844	\$771.67
Trade, Transportation & Utilities	130	909	906	909	\$5,550,642	\$470.23
Wholesale Trade	21	186	187	190	\$1,791,561	\$734.35
Retail Trade	77	557	553	557	\$2,437,647	\$337.45
Transportation, Warehousing & Utilities	32	166	166	162	\$1,321,434	\$617.30
Information	5	22	22	22	\$182,179	\$636.99
Financial Activities	43	211	212	210	\$1,408,369	\$513.44
Professional & Business Services	37	104	107	109	\$586,373	\$422.87
Education & Health Services	72	574	580	583	\$3,093,359	\$410.97
Leisure & Hospitality	33	243	253	272	\$634,098	\$190.53
Other Services	27	59	59	59	\$247,863	\$323.16
Local Government	19	787	828	845	\$6,467,574	\$606.71
State Government	11	180	183	179	\$1,291,997	\$550.10
DREW COUNTY - TOTAL	512	6,910	6,927	6,768	\$42,370,425	\$474.53
Natural Resources & Mining	38	257	257	258	\$2,010,347	\$600.94
Construction	24	111	119	120	\$673,621	\$444.15
Manufacturing	24	813	821	839	\$4,982,192	\$464.92
Trade, Transportation & Utilities	131	1,233	1,218	1,198	\$7,260,897	\$459.19
Wholesale Trade	22	231	230	227	\$1,914,431	\$642.14
Retail Trade	86	903	892	878	\$4,442,307	\$383.52
Transportation, Warehousing & Utilities	23	99	96	93	\$904,159	\$724.49
Information	8	81	80	79	\$565,551	\$543.80
Financial Activities	45	261	259	260	\$2,233,703	\$660.86
Professional & Business Services	46	331	343	345	\$2,283,519	\$517.14
Education & Health Services	85	817	815	837	\$4,588,784	\$428.90
Leisure & Hospitality	44	689	688	651	\$1,379,751	\$157.00
Other Services	27	99	101	96	\$431,540	\$336.44
Local Government	23	1,356	1,369	1,336	\$10,376,206	\$589.64
State Government	17	862	857	749	\$5,584,314	\$522.16

**TABLE 6. COUNTY SUMMARY
EMPLOYMENT AND TOTAL EARNINGS, BY INDUSTRY
SECOND QUARTER 2007**

NORTH AMERICAN INDUSTRY CLASSIFICATION SYSTEM INDUSTRY GROUP	NUMBER OF EMPLOYING UNITS	EMPLOYMENT	EMPLOYMENT	EMPLOYMENT	TOTAL EARNINGS	AVERAGE WEEKLY EARNINGS
		APRIL	MAY	JUNE	APRIL - JUNE 2007	
FAULKNER COUNTY - TOTAL	2,567	39,387	39,521	39,656	\$337,694,470	\$657.28
Natural Resources & Mining	26	570	583	656	\$9,448,928	\$1,205.37
Construction	369	2,981	3,023	3,159	\$24,364,759	\$613.62
Manufacturing	126	5,169	5,139	5,175	\$51,081,242	\$761.35
Trade, Transportation & Utilities	621	6,703	6,786	6,812	\$42,614,057	\$484.41
Wholesale Trade	162	821	836	869	\$8,088,533	\$738.95
Retail Trade	377	5,054	5,111	5,085	\$25,852,871	\$391.22
Transportation, Warehousing & Utilities	82	828	839	858	\$8,672,653	\$792.63
Information	43	390	398	404	\$3,260,725	\$631.27
Financial Activities	314	1,461	1,465	1,480	\$12,194,653	\$638.71
Professional & Business Services	340	5,418	5,335	5,417	\$75,104,091	\$1,071.84
Education & Health Services	331	5,498	5,558	5,653	\$42,954,513	\$593.25
Leisure & Hospitality	194	3,899	3,915	3,896	\$10,585,337	\$208.61
Other Services	143	597	613	581	\$3,222,970	\$415.28
Local Government	41	3,402	3,419	3,440	\$37,172,914	\$836.02
State Government	19	3,299	3,287	2,983	\$25,690,281	\$619.56
FRANKLIN COUNTY - TOTAL	331	4,201	4,273	4,300	\$29,537,895	\$533.62
Natural Resources & Mining	11	131	133	140	\$1,328,314	\$758.75
Construction	34	253	248	251	\$1,935,402	\$593.92
Manufacturing	23	911	953	959	\$7,314,765	\$597.95
Trade, Transportation & Utilities	89	829	838	844	\$5,741,875	\$527.70
Wholesale Trade	15	49	53	50	\$276,365	\$419.58
Retail Trade	52	478	478	483	\$2,208,113	\$354.11
Transportation, Warehousing & Utilities	22	302	307	311	\$3,257,397	\$817.07
Information	6	42	46	45	\$247,475	\$429.40
Financial Activities	30	224	226	226	\$1,371,567	\$468.22
Professional & Business Services	22	63	63	62	\$452,029	\$554.86
Education & Health Services	42	466	463	466	\$2,695,222	\$445.86
Leisure & Hospitality	26	297	316	327	\$741,508	\$182.04
Other Services	19	55	54	57	\$273,767	\$380.58
Local Government	19	784	790	791	\$6,290,926	\$613.85
State Government	10	146	143	132	\$1,145,045	\$627.65

**TABLE 6. COUNTY SUMMARY
EMPLOYMENT AND TOTAL EARNINGS, BY INDUSTRY
SECOND QUARTER 2007**

NORTH AMERICAN INDUSTRY CLASSIFICATION SYSTEM INDUSTRY GROUP	NUMBER OF EMPLOYING UNITS	EMPLOYMENT	EMPLOYMENT	EMPLOYMENT	TOTAL EARNINGS	AVERAGE
		APRIL	MAY	JUNE	APRIL - JUNE 2007	WEEKLY EARNINGS
FULTON COUNTY - TOTAL	236	1,976	2,022	2,019	\$11,076,968	\$424.83
Construction	17	28	28	28	\$187,358	\$514.72
Manufacturing	15	139	120	119	\$509,198	\$310.87
Trade, Transportation & Utilities	65	390	407	405	\$2,162,413	\$415.16
Retail Trade	40	200	207	206	\$692,872	\$260.84
Other Trade, Transportation & Utilities	25	190	200	199	\$1,469,541	\$575.76
Financial Activities	15	99	124	125	\$763,171	\$506.08
Professional & Business Services	17	69	72	71	\$432,147	\$470.41
Education & Health Services	54	389	395	395	\$1,700,438	\$332.83
Leisure & Hospitality	16	151	159	164	\$406,160	\$197.74
Local Government	13	528	532	531	\$3,996,267	\$579.65
State Government	11	109	110	107	\$634,110	\$448.87
Other	13	74	75	74	\$285,706	\$295.66
GARLAND COUNTY - TOTAL	3,277	37,375	36,885	37,132	\$259,796,306	\$538.22
Natural Resources & Mining	46	347	346	363	\$3,608,672	\$788.61
Construction	457	2,410	2,478	2,516	\$16,628,368	\$518.28
Manufacturing	130	2,712	2,693	2,718	\$22,371,863	\$635.57
Trade, Transportation & Utilities	714	7,336	7,370	7,413	\$46,114,561	\$481.12
Wholesale Trade	154	1,065	1,060	1,043	\$9,262,414	\$674.71
Retail Trade	490	5,656	5,676	5,713	\$30,699,834	\$415.64
Transportation, Warehousing & Utilities	70	615	634	657	\$6,152,313	\$744.89
Information	42	428	426	427	\$3,360,942	\$605.47
Financial Activities	385	1,556	1,551	1,580	\$12,816,464	\$631.03
Professional & Business Services	418	3,388	3,303	3,413	\$22,841,616	\$521.69
Education & Health Services	436	7,064	7,097	7,177	\$62,947,534	\$680.77
Leisure & Hospitality	361	6,864	6,327	6,717	\$22,927,034	\$265.77
Other Services	227	965	971	1,002	\$5,130,885	\$403.01
Local Government	34	3,159	3,164	2,789	\$32,599,410	\$825.61
State Government	27	1,146	1,159	1,017	\$8,448,957	\$586.92

**TABLE 6. COUNTY SUMMARY
EMPLOYMENT AND TOTAL EARNINGS, BY INDUSTRY
SECOND QUARTER 2007**

NORTH AMERICAN INDUSTRY CLASSIFICATION SYSTEM INDUSTRY GROUP	NUMBER OF EMPLOYING UNITS	EMPLOYMENT	EMPLOYMENT	EMPLOYMENT	TOTAL EARNINGS	AVERAGE WEEKLY EARNINGS
		APRIL	MAY	JUNE	APRIL - JUNE 2007	
GRANT COUNTY - TOTAL	302	3,981	4,015	4,046	\$26,239,157	\$502.84
Natural Resources & Mining	24	190	187	186	\$1,895,044	\$776.76
Construction	34	230	235	247	\$1,865,854	\$604.75
Manufacturing	17	941	943	938	\$6,706,688	\$548.44
Trade, Transportation & Utilities	83	604	617	610	\$3,371,847	\$424.97
Wholesale Trade	16	120	126	130	\$847,790	\$520.33
Retail Trade	41	424	434	423	\$2,064,915	\$371.99
Transportation, Warehousing & Utilities	26	60	57	57	\$459,142	\$608.94
Information	4	31	32	31	\$273,702	\$671.94
Financial Activities	25	107	104	106	\$847,886	\$617.24
Professional & Business Services	23	104	109	102	\$858,899	\$629.23
Education & Health Services	35	436	461	472	\$2,138,700	\$360.52
Leisure & Hospitality	22	310	311	320	\$829,623	\$203.46
Other Services	16	56	57	56	\$238,994	\$326.35
Local Government	10	912	901	921	\$6,829,250	\$576.44
State Government	9	60	58	57	\$382,670	\$504.62
GREENE COUNTY - TOTAL	920	15,250	15,521	14,626	\$107,328,870	\$545.59
Natural Resources & Mining	38	203	232	228	\$1,366,635	\$475.68
Construction	85	369	379	407	\$2,782,505	\$555.95
Manufacturing	57	5,319	5,393	5,279	\$47,744,688	\$689.01
Trade, Transportation & Utilities	247	2,338	2,318	2,285	\$13,511,543	\$449.22
Wholesale Trade	58	441	440	438	\$3,685,501	\$644.81
Retail Trade	159	1,667	1,650	1,621	\$7,860,837	\$367.36
Transportation, Warehousing & Utilities	30	230	228	226	\$1,965,205	\$663.02
Information	13	132	132	138	\$669,373	\$384.26
Financial Activities	90	498	496	506	\$3,665,983	\$564.00
Professional & Business Services	93	1,549	1,635	1,073	\$7,270,044	\$394.10
Education & Health Services	133	1,734	1,733	1,722	\$10,681,613	\$475.04
Leisure & Hospitality	73	1,109	1,174	1,182	\$3,022,690	\$201.31
Other Services	49	167	165	165	\$926,973	\$430.42
Local Government	31	1,566	1,592	1,372	\$13,593,585	\$692.49
State Government	11	266	272	269	\$2,093,238	\$598.58

**TABLE 6. COUNTY SUMMARY
EMPLOYMENT AND TOTAL EARNINGS, BY INDUSTRY
SECOND QUARTER 2007**

NORTH AMERICAN INDUSTRY CLASSIFICATION SYSTEM INDUSTRY GROUP	NUMBER OF EMPLOYING UNITS	EMPLOYMENT	EMPLOYMENT	EMPLOYMENT	TOTAL EARNINGS	AVERAGE WEEKLY EARNINGS
		APRIL	MAY	JUNE	APRIL - JUNE 2007	
HEMPSTEAD COUNTY - TOTAL	502	8,261	8,298	8,354	\$55,963,762	\$518.39
Natural Resources & Mining	18	201	198	204	\$1,657,690	\$634.40
Construction	32	132	134	135	\$898,685	\$517.18
Manufacturing	29	2,570	2,572	2,621	\$18,480,138	\$549.36
Trade, Transportation & Utilities	134	1,354	1,382	1,376	\$8,451,944	\$474.33
Wholesale Trade	26	248	259	260	\$1,694,222	\$509.74
Retail Trade	84	908	925	915	\$4,527,088	\$380.17
Transportation, Warehousing & Utilities	24	198	198	201	\$2,230,634	\$862.25
Information	11	76	76	74	\$566,654	\$578.61
Financial Activities	45	263	261	272	\$2,173,091	\$630.00
Professional & Business Services	34	242	226	239	\$1,001,464	\$326.88
Education & Health Services	72	953	971	941	\$5,842,578	\$470.61
Leisure & Hospitality	44	634	661	723	\$1,787,637	\$204.43
Other Services	37	202	201	210	\$1,390,570	\$523.49
Local Government	29	1,069	1,072	1,017	\$9,456,754	\$691.05
State Government	17	565	544	542	\$4,256,557	\$594.96
HOT SPRING COUNTY - TOTAL	587	8,229	8,260	7,979	\$61,719,044	\$582.10
Natural Resources & Mining	31	210	205	209	\$1,541,810	\$570.20
Construction	66	542	544	539	\$5,173,390	\$734.68
Manufacturing	36	1,741	1,744	1,700	\$16,854,980	\$750.17
Trade, Transportation & Utilities	154	1,427	1,433	1,437	\$10,248,712	\$550.40
Wholesale Trade	19	84	83	83	\$868,703	\$801.88
Retail Trade	94	939	948	942	\$4,946,608	\$403.51
Transportation, Warehousing & Utilities	41	404	402	412	\$4,433,401	\$839.98
Information	9	75	78	76	\$634,336	\$639.24
Financial Activities	60	333	338	339	\$2,592,431	\$592.33
Professional & Business Services	54	220	226	223	\$1,413,062	\$487.43
Education & Health Services	60	1,035	1,064	1,056	\$6,767,889	\$495.03
Leisure & Hospitality	42	561	567	538	\$1,348,485	\$186.79
Other Services	35	285	278	224	\$1,090,768	\$319.84
Local Government	26	1,142	1,154	1,028	\$9,875,713	\$685.62
State Government	14	658	629	610	\$4,177,468	\$508.19

**TABLE 6. COUNTY SUMMARY
EMPLOYMENT AND TOTAL EARNINGS, BY INDUSTRY
SECOND QUARTER 2007**

NORTH AMERICAN INDUSTRY CLASSIFICATION SYSTEM INDUSTRY GROUP	NUMBER OF EMPLOYING UNITS	EMPLOYMENT	EMPLOYMENT	EMPLOYMENT	TOTAL EARNINGS	AVERAGE WEEKLY EARNINGS
		APRIL	MAY	JUNE	APRIL - JUNE 2007	
HOWARD COUNTY - TOTAL	351	7,972	7,845	7,678	\$53,147,294	\$522.02
Natural Resources & Mining	22	244	241	243	\$1,907,363	\$604.62
Construction	25	82	81	89	\$532,152	\$487.32
Manufacturing	25	4,455	4,356	4,232	\$31,104,241	\$550.33
Trade, Transportation & Utilities	97	937	933	933	\$5,729,429	\$471.70
Wholesale Trade	17	96	92	99	\$869,168	\$698.88
Retail Trade	60	634	636	637	\$3,028,275	\$366.46
Transportation, Warehousing & Utilities	20	207	205	197	\$1,831,986	\$694.20
Information	6	39	39	38	\$225,330	\$448.27
Financial Activities	37	160	158	168	\$1,113,033	\$528.51
Professional & Business Services	27	134	122	129	\$767,543	\$460.07
Education & Health Services	43	603	593	605	\$3,116,863	\$399.38
Leisure & Hospitality	19	307	320	317	\$769,939	\$188.22
Other Services	20	153	142	140	\$640,872	\$339.99
Local Government	18	708	712	642	\$6,202,581	\$694.16
State Government	12	150	148	142	\$1,037,948	\$544.38
INDEPENDENCE COUNTY - TOTAL	934	16,191	16,296	16,364	\$119,852,432	\$566.18
Natural Resources & Mining	13	149	145	147	\$1,070,621	\$560.24
Construction	73	475	492	496	\$3,275,810	\$516.72
Manufacturing	53	4,523	4,516	4,471	\$37,940,868	\$648.08
Trade, Transportation & Utilities	268	2,947	3,014	3,068	\$21,214,330	\$542.21
Wholesale Trade	54	545	544	561	\$4,471,477	\$625.38
Retail Trade	158	1,626	1,682	1,716	\$8,099,406	\$372.03
Transportation, Warehousing & Utilities	56	776	788	791	\$8,643,447	\$846.98
Information	12	164	170	168	\$1,182,758	\$543.71
Financial Activities	85	485	481	479	\$5,368,475	\$857.36
Professional & Business Services	94	877	839	898	\$4,457,545	\$393.52
Education & Health Services	140	2,949	2,992	3,050	\$24,614,000	\$631.76
Leisure & Hospitality	65	1,071	1,096	1,097	\$2,715,017	\$191.96
Other Services	66	392	398	401	\$1,733,732	\$335.93
Local Government	48	1,656	1,651	1,640	\$12,727,151	\$593.70
State Government	17	503	502	449	\$3,552,125	\$563.77

**TABLE 6. COUNTY SUMMARY
EMPLOYMENT AND TOTAL EARNINGS, BY INDUSTRY
SECOND QUARTER 2007**

NORTH AMERICAN INDUSTRY CLASSIFICATION SYSTEM INDUSTRY GROUP	NUMBER OF EMPLOYING UNITS	EMPLOYMENT	EMPLOYMENT	EMPLOYMENT	TOTAL EARNINGS	AVERAGE WEEKLY EARNINGS
		APRIL	MAY	JUNE	APRIL - JUNE 2007	
IZARD COUNTY - TOTAL	279	3,066	3,112	3,063	\$18,330,069	\$457.74
Natural Resources & Mining	5	97	99	95	\$730,431	\$579.25
Construction	26	73	78	83	\$566,026	\$558.21
Trade, Transportation & Utilities	69	543	539	537	\$2,685,871	\$382.84
Retail Trade	50	428	418	420	\$1,886,884	\$343.95
Other Trade, Transportation & Utilities	19	115	121	117	\$798,987	\$522.33
Information	3	7	7	7	\$28,844	\$316.97
Financial Activities	31	154	151	156	\$995,528	\$498.35
Professional & Business Services	18	77	79	84	\$401,162	\$385.73
Education & Health Services	54	547	556	555	\$3,003,868	\$418.09
Leisure & Hospitality	20	188	195	214	\$481,253	\$186.03
Local Government	18	547	560	546	\$4,090,600	\$571.07
State Government	11	480	490	427	\$2,897,228	\$478.59
Other	24	353	358	359	\$2,449,258	\$528.24
JACKSON COUNTY - TOTAL	518	5,747	5,776	5,677	\$40,371,033	\$541.65
Natural Resources & Mining	47	237	252	253	\$1,458,294	\$453.54
Construction	26	191	168	149	\$1,543,000	\$700.94
Manufacturing	26	1,190	1,203	1,250	\$10,496,983	\$664.94
Trade, Transportation & Utilities	124	1,095	1,118	1,126	\$7,163,935	\$495.12
Wholesale Trade	34	212	213	216	\$2,011,358	\$724.12
Retail Trade	71	656	673	677	\$3,298,135	\$379.42
Transportation, Warehousing & Utilities	19	227	232	233	\$1,854,442	\$618.42
Information	6	39	40	40	\$262,808	\$509.65
Financial Activities	42	168	167	176	\$1,379,612	\$623.04
Professional & Business Services	37	162	149	144	\$1,148,810	\$582.66
Education & Health Services	95	846	845	828	\$6,282,568	\$575.56
Leisure & Hospitality	39	319	321	333	\$927,149	\$219.89
Other Services	30	88	85	88	\$381,040	\$336.91
Local Government	32	722	735	619	\$4,626,270	\$514.26
State Government	14	690	693	671	\$4,700,564	\$528.11

**TABLE 6. COUNTY SUMMARY
EMPLOYMENT AND TOTAL EARNINGS, BY INDUSTRY
SECOND QUARTER 2007**

NORTH AMERICAN INDUSTRY CLASSIFICATION SYSTEM INDUSTRY GROUP	NUMBER OF EMPLOYING UNITS	EMPLOYMENT	EMPLOYMENT	EMPLOYMENT	TOTAL EARNINGS	AVERAGE WEEKLY EARNINGS
		APRIL	MAY	JUNE	APRIL - JUNE 2007	
JEFFERSON COUNTY - TOTAL	1,921	31,952	31,886	31,715	\$253,137,272	\$611.35
Natural Resources & Mining	40	421	440	425	\$3,966,338	\$711.75
Construction	131	1,599	1,455	1,418	\$17,013,859	\$877.97
Manufacturing	72	5,919	5,910	5,911	\$56,697,339	\$737.54
Trade, Transportation & Utilities	475	5,811	5,861	5,868	\$39,832,206	\$524.06
Wholesale Trade	84	1,060	1,057	1,087	\$8,695,939	\$626.33
Retail Trade	322	3,886	3,951	3,913	\$19,944,468	\$391.71
Transportation, Warehousing & Utilities	69	865	853	868	\$11,191,799	\$998.73
Information	18	206	203	205	\$1,610,239	\$605.20
Financial Activities	159	1,182	1,187	1,193	\$10,684,125	\$692.19
Professional & Business Services	183	1,789	1,777	1,816	\$14,105,889	\$604.83
Education & Health Services	464	5,397	5,415	5,473	\$40,715,266	\$576.96
Leisure & Hospitality	150	2,284	2,249	2,199	\$5,956,865	\$204.20
Other Services	148	724	716	755	\$4,306,086	\$452.72
Local Government	41	3,332	3,386	3,347	\$33,031,054	\$757.33
State Government	40	3,288	3,287	3,105	\$25,218,006	\$601.19
JOHNSON COUNTY - TOTAL	476	8,673	8,691	8,805	\$61,355,928	\$541.06
Natural Resources & Mining	17	207	204	205	\$1,719,246	\$644.07
Construction	27	136	148	168	\$1,064,743	\$543.61
Manufacturing	44	2,913	2,926	2,968	\$20,848,357	\$546.29
Trade, Transportation & Utilities	122	2,029	2,045	2,056	\$13,729,724	\$516.87
Wholesale Trade	20	184	185	190	\$1,671,252	\$689.93
Other Trade, Transportation & Utilities	102	1,845	1,860	1,866	\$12,058,472	\$499.50
Information	6	35	35	35	\$237,265	\$521.46
Financial Activities	45	236	234	236	\$1,826,484	\$597.02
Professional & Business Services	51	185	188	177	\$1,180,687	\$495.39
Education & Health Services	77	1,183	1,152	1,144	\$8,184,099	\$542.87
Leisure & Hospitality	36	529	535	576	\$1,382,304	\$194.51
Other Services	27	82	83	76	\$416,586	\$398.90
Local Government	14	973	973	996	\$9,553,972	\$749.41
State Government	10	165	168	168	\$1,212,461	\$558.48

**TABLE 6. COUNTY SUMMARY
EMPLOYMENT AND TOTAL EARNINGS, BY INDUSTRY
SECOND QUARTER 2007**

NORTH AMERICAN INDUSTRY CLASSIFICATION SYSTEM INDUSTRY GROUP	NUMBER OF EMPLOYING UNITS	EMPLOYMENT	EMPLOYMENT	EMPLOYMENT	TOTAL EARNINGS	AVERAGE WEEKLY EARNINGS
		APRIL	MAY	JUNE	APRIL - JUNE 2007	
LAFAYETTE COUNTY - TOTAL	172	1,402	1,419	1,459	\$8,939,883	\$482.02
Natural Resources & Mining	38	169	188	181	\$1,338,146	\$573.98
Manufacturing	5	24	23	24	\$174,239	\$566.32
Trade, Transportation & Utilities	35	244	239	243	\$1,390,606	\$442.02
Retail Trade	23	170	168	168	\$702,171	\$320.24
Other Trade, Transportation & Utilities	12	74	71	75	\$688,435	\$722.13
Financial Activities	16	66	64	65	\$420,632	\$497.79
Professional & Business Services	9	63	53	56	\$508,332	\$682.02
Education & Health Services	23	222	221	235	\$1,057,173	\$359.83
Leisure & Hospitality	7	54	58	55	\$133,020	\$183.81
Other Services	7	72	75	71	\$316,019	\$334.53
Local Government	13	337	340	368	\$2,464,154	\$544.16
State Government	8	50	50	49	\$341,217	\$528.47
Other	11	101	108	112	\$796,345	\$572.50
LAWRENCE COUNTY - TOTAL	436	4,205	4,167	4,171	\$26,587,152	\$489.16
Natural Resources & Mining	35	169	166	179	\$1,290,573	\$579.43
Construction	26	67	75	70	\$451,431	\$491.40
Manufacturing	21	542	538	558	\$3,635,748	\$512.22
Trade, Transportation & Utilities	135	934	940	947	\$5,459,641	\$446.62
Wholesale Trade	22	182	180	185	\$1,362,134	\$574.66
Retail Trade	72	601	611	611	\$2,845,912	\$360.26
Transportation, Warehousing & Utilities	41	151	149	151	\$1,251,595	\$640.42
Information	4	19	15	15	\$122,385	\$576.38
Financial Activities	34	131	133	139	\$874,381	\$500.70
Professional & Business Services	24	124	116	124	\$1,097,713	\$695.93
Education & Health Services	68	452	437	418	\$2,837,004	\$500.91
Leisure & Hospitality	26	343	339	336	\$654,617	\$148.39
Other Services	24	57	59	58	\$215,759	\$286.15
Local Government	28	1,245	1,229	1,210	\$9,196,874	\$576.10
State Government	11	122	120	117	\$751,026	\$482.77

**TABLE 6. COUNTY SUMMARY
EMPLOYMENT AND TOTAL EARNINGS, BY INDUSTRY
SECOND QUARTER 2007**

NORTH AMERICAN INDUSTRY CLASSIFICATION SYSTEM INDUSTRY GROUP	NUMBER OF EMPLOYING UNITS	EMPLOYMENT	EMPLOYMENT	EMPLOYMENT	TOTAL EARNINGS	AVERAGE WEEKLY EARNINGS
		APRIL	MAY	JUNE	APRIL - JUNE 2007	
LEE COUNTY - TOTAL	255	2,104	2,132	2,127	\$13,606,040	\$493.46
Natural Resources & Mining	29	186	200	191	\$998,006	\$399.15
Construction	10	35	30	26	\$190,377	\$482.78
Trade, Transportation & Utilities	53	345	359	361	\$2,036,371	\$441.25
Wholesale Trade	9	70	76	75	\$568,173	\$593.29
Retail Trade	27	189	200	202	\$799,055	\$312.01
Transportation, Warehousing & Utilities	17	86	83	84	\$669,143	\$610.35
Financial Activities	15	75	75	77	\$624,640	\$635.01
Professional & Business Services	19	69	66	67	\$694,202	\$793.07
Education & Health Services	70	337	336	327	\$1,958,243	\$451.90
Leisure & Hospitality	9	79	83	94	\$187,470	\$168.99
Local Government	14	371	370	375	\$2,958,464	\$611.76
State Government	8	487	488	488	\$3,488,311	\$550.24
Other	28	120	125	121	\$469,956	\$296.32
LINCOLN COUNTY - TOTAL	232	2,988	3,021	2,819	\$20,474,906	\$535.23
Natural Resources & Mining	33	155	157	157	\$1,144,309	\$563.05
Construction	17	88	96	85	\$607,747	\$521.37
Manufacturing	9	439	451	450	\$3,391,360	\$584.05
Trade, Transportation & Utilities	49	342	345	364	\$2,350,996	\$516.21
Wholesale Trade	7	29	29	29	\$272,496	\$722.80
Retail Trade	24	174	175	184	\$654,144	\$283.22
Transportation, Warehousing & Utilities	18	139	141	151	\$1,424,356	\$762.64
Financial Activities	23	77	78	75	\$592,015	\$593.99
Professional & Business Services	13	21	21	22	\$153,561	\$553.71
Education & Health Services	35	293	300	288	\$1,598,626	\$418.74
Leisure & Hospitality	17	144	149	145	\$360,793	\$190.09
Local & State Government	22	1,392	1,387	1,197	\$10,087,105	\$585.46
Other	14	37	37	36	\$188,394	\$395.23

**TABLE 6. COUNTY SUMMARY
EMPLOYMENT AND TOTAL EARNINGS, BY INDUSTRY
SECOND QUARTER 2007**

NORTH AMERICAN INDUSTRY CLASSIFICATION SYSTEM INDUSTRY GROUP	NUMBER OF EMPLOYING UNITS	EMPLOYMENT	EMPLOYMENT	EMPLOYMENT	TOTAL EARNINGS	AVERAGE WEEKLY EARNINGS
		APRIL	MAY	JUNE	APRIL - JUNE 2007	
LITTLE RIVER COUNTY - TOTAL	267	4,773	4,774	4,779	\$48,058,361	\$774.14
Natural Resources & Mining	10	56	56	59	\$396,786	\$535.47
Manufacturing	19	1,415	1,389	1,383	22,219,527	\$1,224.64
Trade, Transportation & Utilities	69	1,416	1,427	1,415	\$13,394,561	\$725.94
Retail Trade	43	320	323	325	\$1,496,469	\$356.76
Other Trade, Transportation & Utilities	26	1,096	1,104	1,090	\$11,898,092	\$834.56
Financial Activities	24	104	101	102	\$663,067	\$498.42
Professional & Business Services	23	144	147	150	\$815,430	\$426.70
Education & Health Services	28	163	163	156	\$820,748	\$392.95
Leisure & Hospitality	20	226	233	239	\$596,568	\$197.23
Other Services	15	105	97	102	\$348,782	\$264.76
Local Government	20	809	819	815	\$6,522,815	\$616.15
State Government	12	87	85	86	\$557,667	\$498.81
Other	27	248	257	272	\$1,722,410	\$511.56
LOGAN COUNTY - TOTAL	469	6,080	6,086	6,122	\$39,289,721	\$495.78
Natural Resources & Mining	22	151	139	148	\$1,447,530	\$762.66
Construction	50	165	166	168	\$1,076,314	\$497.76
Manufacturing	28	1,817	1,805	1,811	\$13,598,897	\$577.62
Trade, Transportation & Utilities	107	915	919	907	\$4,756,328	\$400.44
Wholesale Trade	16	60	58	56	\$360,733	\$478.43
Retail Trade	68	769	771	763	\$3,559,434	\$356.67
Transportation, Warehousing & Utilities	23	86	90	88	\$836,161	\$730.91
Information	6	40	40	39	\$311,827	\$604.71
Financial Activities	45	253	253	263	\$2,266,519	\$680.16
Professional & Business Services	42	144	143	136	\$844,929	\$460.95
Education & Health Services	77	728	741	744	\$4,374,338	\$456.15
Leisure & Hospitality	28	345	352	359	\$776,203	\$169.62
Other Services	27	83	84	85	\$471,596	\$431.86
Local & State Government	37	1,439	1,444	1,462	\$9,365,240	\$497.40

**TABLE 6. COUNTY SUMMARY
EMPLOYMENT AND TOTAL EARNINGS, BY INDUSTRY
SECOND QUARTER 2007**

NORTH AMERICAN INDUSTRY CLASSIFICATION SYSTEM INDUSTRY GROUP	NUMBER OF EMPLOYING UNITS	EMPLOYMENT	EMPLOYMENT	EMPLOYMENT	TOTAL EARNINGS	AVERAGE WEEKLY EARNINGS
		APRIL	MAY	JUNE	APRIL - JUNE 2007	
LONOKE COUNTY - TOTAL	1,275	12,787	12,897	12,816	\$86,918,239	\$520.99
Natural Resources & Mining	74	432	434	445	\$3,577,704	\$629.77
Construction	178	1,065	1,058	1,068	\$7,515,644	\$543.52
Manufacturing	37	1,357	1,346	1,338	\$12,886,789	\$735.93
Trade, Transportation & Utilities	349	2,851	2,910	2,851	\$17,197,329	\$460.82
Wholesale Trade	88	532	533	523	\$4,907,717	\$713.19
Retail Trade	185	2,032	2,087	2,025	\$9,858,422	\$370.28
Transportation, Warehousing & Utilities	76	287	290	303	\$2,431,190	\$637.55
Information	15	119	128	126	\$970,284	\$600.30
Financial Activities	129	612	604	612	\$5,319,990	\$671.60
Professional & Business Services	143	635	602	601	\$4,225,519	\$530.53
Education & Health Services	144	1,405	1,433	1,418	\$8,488,053	\$460.24
Leisure & Hospitality	94	1,372	1,435	1,441	\$3,703,118	\$201.17
Other Services	68	184	183	202	\$1,123,937	\$455.83
Local Government	28	2,583	2,593	2,549	\$20,905,284	\$624.50
State Government	16	172	171	165	\$1,004,588	\$456.35
MADISON COUNTY - TOTAL	255	3,192	3,223	3,209	\$20,531,486	\$492.31
Natural Resources & Mining	10	57	55	57	\$381,622	\$521.10
Construction	45	134	137	138	\$956,409	\$539.63
Manufacturing	20	1,100	1,106	1,093	\$7,345,058	\$513.80
Trade, Transportation & Utilities	61	584	594	590	\$3,558,365	\$464.46
Wholesale Trade	12	38	39	38	\$399,734	\$802.14
Retail Trade	34	402	410	406	\$1,918,021	\$363.40
Transportation, Warehousing & Utilities	15	144	145	146	\$1,240,610	\$658.15
Financial Activities	16	69	71	70	\$513,543	\$564.33
Professional & Business Services	19	93	91	91	\$531,346	\$445.88
Education & Health Services	38	262	266	260	\$1,282,576	\$375.61
Leisure & Hospitality	14	139	142	148	\$286,962	\$154.36
Local Government	8	641	643	650	\$4,766,673	\$568.77
State Government	8	58	57	56	\$353,010	\$476.40
Other	16	55	61	56	\$555,922	\$745.87

**TABLE 6. COUNTY SUMMARY
EMPLOYMENT AND TOTAL EARNINGS, BY INDUSTRY
SECOND QUARTER 2007**

NORTH AMERICAN INDUSTRY CLASSIFICATION SYSTEM INDUSTRY GROUP	NUMBER OF EMPLOYING UNITS	EMPLOYMENT	EMPLOYMENT	EMPLOYMENT	TOTAL EARNINGS	AVERAGE WEEKLY EARNINGS
		APRIL	MAY	JUNE	APRIL - JUNE 2007	
MARION COUNTY - TOTAL	319	4,163	4,240	4,258	\$24,832,952	\$452.62
Natural Resources & Mining	7	49	51	50	\$244,950	\$376.85
Construction	30	83	92	96	\$467,505	\$398.10
Manufacturing	26	1,734	1,729	1,730	\$10,774,368	\$478.80
Trade, Transportation & Utilities	56	641	660	657	\$3,387,749	\$399.28
Retail Trade	36	466	481	475	\$2,108,718	\$342.21
Other Trade, Transportation & Utilities	20	175	179	182	\$1,279,031	\$550.67
Financial Activities	36	208	219	230	\$1,372,830	\$482.20
Professional & Business Services	29	69	69	69	\$407,828	\$454.66
Education & Health Services	53	369	372	366	\$1,949,833	\$406.47
Leisure & Hospitality	37	256	283	292	\$679,726	\$188.76
Local Government	20	552	563	570	\$4,114,041	\$563.44
State Government	8	112	114	112	\$678,418	\$463.19
Other	17	90	88	86	\$755,704	\$660.58
MILLER COUNTY - TOTAL	851	12,330	12,687	12,553	\$104,101,075	\$639.43
Natural Resources & Mining	26	132	131	124	\$960,142	\$572.54
Construction	98	744	798	764	\$5,544,995	\$554.91
Manufacturing	33	2,505	2,492	2,336	\$36,341,515	\$1,143.67
Trade, Transportation & Utilities	230	2,505	2,543	2,551	\$17,703,039	\$537.61
Wholesale Trade	62	611	628	628	\$5,643,015	\$697.50
Retail Trade	129	1,346	1,358	1,382	\$6,897,127	\$389.54
Transportation, Warehousing & Utilities	39	548	557	541	\$5,162,897	\$723.84
Information	12	101	98	100	\$1,374,166	\$1,060.59
Financial Activities	86	377	379	387	\$2,944,851	\$594.56
Professional & Business Services	85	951	941	996	\$5,214,407	\$416.66
Education & Health Services	89	1,102	1,340	1,327	\$8,667,576	\$530.70
Leisure & Hospitality	87	1,314	1,356	1,328	\$4,226,773	\$243.97
Other Services	62	338	341	430	\$1,577,811	\$328.32
Local Government	26	1,755	1,759	1,706	\$15,630,315	\$691.00
State Government	17	506	509	504	\$3,915,485	\$594.85

**TABLE 6. COUNTY SUMMARY
EMPLOYMENT AND TOTAL EARNINGS, BY INDUSTRY
SECOND QUARTER 2007**

NORTH AMERICAN INDUSTRY CLASSIFICATION SYSTEM INDUSTRY GROUP	NUMBER OF EMPLOYING UNITS	EMPLOYMENT	EMPLOYMENT	EMPLOYMENT	TOTAL EARNINGS	AVERAGE WEEKLY EARNINGS
		APRIL	MAY	JUNE	APRIL - JUNE 2007	
MISSISSIPPI COUNTY - TOTAL	1,185	19,209	19,276	18,892	\$162,623,931	\$654.07
Natural Resources & Mining	99	582	607	649	\$3,551,042	\$445.85
Construction	74	636	678	660	\$5,948,970	\$695.46
Manufacturing	59	5,656	5,641	5,679	\$71,550,541	\$972.65
Trade, Transportation & Utilities	302	3,020	3,057	3,026	\$20,763,789	\$526.38
Wholesale Trade	68	487	495	497	\$5,048,499	\$787.72
Retail Trade	184	1,901	1,924	1,877	\$9,323,288	\$377.33
Transportation, Warehousing & Utilities	50	632	638	652	\$6,392,002	\$767.47
Financial Activities	105	596	591	598	\$4,359,136	\$563.56
Professional & Business Services	98	1,118	1,092	1,140	\$7,443,782	\$512.77
Education & Health Services	207	1,746	1,738	1,706	\$11,315,128	\$503.12
Leisure & Hospitality	85	1,205	1,238	1,239	\$3,011,842	\$188.77
Local Government	46	2,459	2,460	2,298	\$20,890,021	\$667.97
State Government	24	675	675	582	\$4,607,241	\$550.32
Other	86	1,516	1,499	1,315	\$9,182,439	\$489.38
MONROE COUNTY - TOTAL	313	2,460	2,468	2,407	\$13,432,328	\$422.60
Natural Resources & Mining	38	142	144	152	\$854,888	\$450.42
Construction	14	38	36	37	\$232,393	\$483.15
Manufacturing	8	140	144	134	\$869,901	\$480.25
Trade, Transportation & Utilities	89	691	691	700	\$4,031,051	\$446.80
Wholesale Trade	23	210	214	207	\$1,620,201	\$592.54
Retail Trade	40	348	345	353	\$1,448,907	\$319.66
Transportation, Warehousing & Utilities	26	133	132	140	\$961,943	\$548.12
Financial Activities	18	94	96	101	\$648,120	\$513.97
Professional & Business Services	17	54	53	49	\$305,807	\$452.38
Education & Health Services	48	345	345	346	\$1,400,130	\$311.88
Leisure & Hospitality	24	240	250	270	\$619,640	\$188.15
Local Government	22	462	455	361	\$3,191,273	\$576.25
State Government	9	128	130	128	\$772,800	\$462.02
Other	26	126	124	129	\$506,325	\$308.30

**TABLE 6. COUNTY SUMMARY
EMPLOYMENT AND TOTAL EARNINGS, BY INDUSTRY
SECOND QUARTER 2007**

NORTH AMERICAN INDUSTRY CLASSIFICATION SYSTEM INDUSTRY GROUP	NUMBER OF EMPLOYING UNITS	EMPLOYMENT	EMPLOYMENT	EMPLOYMENT	TOTAL EARNINGS	AVERAGE WEEKLY EARNINGS
		APRIL	MAY	JUNE	APRIL - JUNE 2007	
MONTGOMERY COUNTY - TOTAL	183	1,635	1,664	1,896	\$9,895,843	\$439.59
Natural Resources & Mining	14	57	57	52	\$543,414	\$755.44
Construction	23	98	105	99	\$704,084	\$538.02
Trade, Transportation & Utilities	46	233	240	241	\$1,115,068	\$360.40
Wholesale Trade	10	68	75	78	\$416,314	\$434.72
Retail Trade	25	139	140	142	\$578,803	\$317.27
Transportation, Warehousing & Utilities	11	26	25	21	\$119,951	\$384.46
Financial Activities	10	78	79	79	\$536,946	\$525.04
Education & Health Services	15	49	49	49	\$260,760	\$409.36
Leisure & Hospitality	23	258	273	549	\$1,424,098	\$304.29
Other Services	11	78	79	66	\$300,903	\$311.39
Local Government	9	520	515	496	\$3,498,951	\$527.40
State Government	8	56	58	56	\$399,493	\$542.30
Other	24	208	209	209	\$1,112,126	\$409.98
NEVADA COUNTY - TOTAL	191	2,628	2,639	2,654	\$18,828,073	\$548.53
Natural Resources & Mining	15	64	62	65	\$468,188	\$565.67
Manufacturing	9	710	721	755	\$7,160,910	\$755.96
Trade, Transportation & Utilities	45	542	546	560	\$3,432,104	\$480.60
Retail Trade	30	318	325	330	\$1,480,052	\$351.03
Other Trade, Transportation & Utilities	15	224	221	230	\$1,952,052	\$667.37
Financial Activities	13	57	58	60	\$425,376	\$560.94
Education & Health Services	18	396	398	413	\$2,096,083	\$400.76
Leisure & Hospitality	14	106	108	114	\$286,036	\$201.24
Other Services	17	65	66	66	\$207,430	\$242.99
Local Government	28	486	487	477	\$3,668,252	\$583.81
State Government	11	91	88	88	\$605,622	\$523.44
Other	21	111	105	56	\$478,072	\$405.60

**TABLE 6. COUNTY SUMMARY
EMPLOYMENT AND TOTAL EARNINGS, BY INDUSTRY
SECOND QUARTER 2007**

NORTH AMERICAN INDUSTRY CLASSIFICATION SYSTEM INDUSTRY GROUP	NUMBER OF EMPLOYING UNITS	EMPLOYMENT	EMPLOYMENT	EMPLOYMENT	TOTAL EARNINGS	AVERAGE WEEKLY EARNINGS
		APRIL	MAY	JUNE	APRIL - JUNE 2007	
NEWTON COUNTY - TOTAL	144	1,076	1,095	1,079	\$5,753,002	\$408.50
Construction	10	18	18	19	\$78,529	\$329.49
Manufacturing	17	79	77	80	\$473,852	\$463.35
Trade, Transportation & Utilities	33	143	144	140	\$664,854	\$359.32
Retail Trade	15	92	94	91	\$346,387	\$288.58
Other Trade, Transportation & Utilities	18	51	50	49	\$318,467	\$489.95
Education & Health Services	23	224	228	228	\$907,148	\$307.86
Leisure & Hospitality	19	72	87	91	\$257,693	\$237.87
Other Services	4	10	10	10	\$30,925	\$237.88
Local Government	13	389	387	369	\$2,608,118	\$525.65
State Government	7	89	91	90	\$421,235	\$360.03
Other	18	52	53	52	\$310,648	\$456.61
OUACHITA COUNTY - TOTAL	647	7,775	7,789	7,838	\$54,078,165	\$533.27
Natural Resources & Mining	47	253	261	270	\$2,155,305	\$634.41
Construction	49	260	270	273	\$1,874,397	\$538.67
Manufacturing	29	864	854	858	\$6,853,281	\$613.95
Trade, Transportation & Utilities	176	1,738	1,744	1,745	\$11,501,462	\$507.78
Wholesale Trade	30	242	238	245	\$2,488,071	\$791.96
Retail Trade	118	1,049	1,064	1,050	\$4,714,666	\$343.98
Transportation, Warehousing & Utilities	28	447	442	450	\$4,298,725	\$740.86
Information	8	95	90	97	\$682,914	\$558.85
Financial Activities	63	360	363	360	\$2,653,714	\$565.46
Professional & Business Services	54	352	354	361	\$2,046,918	\$442.70
Education & Health Services	98	1,262	1,251	1,258	\$8,507,838	\$520.64
Leisure & Hospitality	36	500	506	519	\$1,199,691	\$181.54
Other Services	43	162	162	172	\$1,052,351	\$489.62
Local Government	30	1,334	1,331	1,342	\$11,446,282	\$659.21
State Government	14	595	603	583	\$4,104,012	\$531.77

**TABLE 6. COUNTY SUMMARY
EMPLOYMENT AND TOTAL EARNINGS, BY INDUSTRY
SECOND QUARTER 2007**

NORTH AMERICAN INDUSTRY CLASSIFICATION SYSTEM INDUSTRY GROUP	NUMBER OF EMPLOYING UNITS	EMPLOYMENT	EMPLOYMENT	EMPLOYMENT	TOTAL EARNINGS	AVERAGE WEEKLY EARNINGS
		APRIL	MAY	JUNE	APRIL - JUNE 2007	
PERRY COUNTY - TOTAL	163	1,273	1,276	1,312	\$8,231,042	\$491.96
Natural Resources & Mining	8	42	45	64	\$480,549	\$734.41
Construction	28	67	68	71	\$494,949	\$554.46
Manufacturing	7	85	88	89	\$467,428	\$411.71
Trade, Transportation & Utilities	28	211	194	205	\$993,859	\$375.99
Retail Trade	18	172	151	163	\$559,936	\$265.88
Other Trade, Transportation & Utilities	10	39	43	42	\$433,923	\$807.55
Financial Activities	15	69	70	71	\$628,158	\$690.28
Professional & Business Services	14	37	38	39	\$253,380	\$512.91
Education & Health Services	27	205	204	202	\$1,094,842	\$413.51
Local Government	12	416	416	422	\$3,003,306	\$552.69
State Government	9	57	54	54	\$368,276	\$515.07
Other	15	84	99	95	\$446,295	\$370.47
PHILLIPS COUNTY - TOTAL	775	6,615	6,666	6,444	\$43,791,826	\$512.33
Natural Resources & Mining	66	342	357	373	\$1,927,581	\$414.95
Construction	29	142	142	138	\$1,112,569	\$608.40
Manufacturing	12	388	383	377	\$3,026,583	\$608.40
Trade, Transportation & Utilities	177	1,663	1,671	1,644	\$10,631,786	\$492.87
Wholesale Trade	35	462	470	456	\$3,896,895	\$647.90
Retail Trade	101	900	897	889	\$4,397,662	\$377.83
Transportation, Warehousing & Utilities	41	301	304	299	\$2,337,229	\$596.64
Information	9	47	47	46	\$319,484	\$526.62
Financial Activities	56	267	267	280	\$1,854,447	\$525.74
Professional & Business Services	61	172	171	177	\$1,281,224	\$568.59
Education & Health Services	239	1,297	1,321	1,288	\$7,691,667	\$454.43
Leisure & Hospitality	37	458	447	470	\$1,068,348	\$179.30
Other Services	42	88	89	90	\$386,748	\$334.27
Local Government	30	1,137	1,146	1,018	\$10,938,144	\$764.67
State Government	17	614	625	543	\$3,553,245	\$460.15

**TABLE 6. COUNTY SUMMARY
EMPLOYMENT AND TOTAL EARNINGS, BY INDUSTRY
SECOND QUARTER 2007**

NORTH AMERICAN INDUSTRY CLASSIFICATION SYSTEM INDUSTRY GROUP	NUMBER OF EMPLOYING UNITS	EMPLOYMENT	EMPLOYMENT	EMPLOYMENT	TOTAL EARNINGS	AVERAGE WEEKLY EARNINGS
		APRIL	MAY	JUNE	APRIL - JUNE 2007	
PIKE COUNTY - TOTAL	270	2,942	2,963	2,964	\$17,982,395	\$467.90
Natural Resources & Mining	26	139	135	130	\$985,172	\$562.74
Construction	14	92	102	102	\$789,914	\$615.84
Manufacturing	15	495	506	516	\$2,997,100	\$455.93
Trade, Transportation & Utilities	92	601	611	601	\$3,483,561	\$443.41
Wholesale Trade	19	125	127	124	\$961,468	\$590.10
Retail Trade	45	370	373	362	\$1,634,779	\$341.41
Transportation, Warehousing & Utilities	28	106	111	115	\$887,314	\$616.76
Information	6	31	31	31	\$350,424	\$869.54
Financial Activities	25	183	187	187	\$1,423,025	\$589.57
Professional & Business Services	14	36	33	32	\$296,494	\$677.44
Education & Health Services	19	250	250	249	\$1,204,804	\$371.20
Leisure & Hospitality	20	251	236	260	\$624,054	\$192.79
Other Services	15	128	137	128	\$645,621	\$379.11
Local Government	13	595	595	588	\$4,535,806	\$588.71
State Government	11	141	140	140	\$646,420	\$354.33
POINSETT COUNTY - TOTAL	498	5,859	5,852	5,688	\$41,741,128	\$553.63
Natural Resources & Mining	53	337	358	372	\$2,663,317	\$576.02
Construction	24	70	78	81	\$482,484	\$486.21
Manufacturing	22	1,119	1,055	949	\$8,967,509	\$662.64
Trade, Transportation & Utilities	131	1,360	1,378	1,374	\$9,544,100	\$535.62
Wholesale Trade	32	528	531	512	\$5,316,590	\$780.97
Retail Trade	72	688	704	715	\$3,158,390	\$345.92
Transportation, Warehousing & Utilities	27	144	143	147	\$1,069,120	\$568.48
Information	6	45	48	46	\$492,816	\$818.18
Financial Activities	44	268	264	269	\$2,093,705	\$603.20
Professional & Business Services	32	177	170	168	\$1,126,412	\$504.74
Education & Health Services	67	570	573	569	\$3,326,486	\$448.39
Leisure & Hospitality	46	417	430	427	\$858,505	\$155.51
Other Services	30	67	64	71	\$354,060	\$404.49
Local Government	31	1,214	1,220	1,164	\$10,545,015	\$676.34
State Government	12	215	214	198	\$1,286,719	\$473.58

**TABLE 6. COUNTY SUMMARY
EMPLOYMENT AND TOTAL EARNINGS, BY INDUSTRY
SECOND QUARTER 2007**

NORTH AMERICAN INDUSTRY CLASSIFICATION SYSTEM INDUSTRY GROUP	NUMBER OF EMPLOYING UNITS	EMPLOYMENT	EMPLOYMENT	EMPLOYMENT	TOTAL EARNINGS	AVERAGE WEEKLY EARNINGS
		APRIL	MAY	JUNE	APRIL - JUNE 2007	
POLK COUNTY - TOTAL	547	6,389	6,427	6,454	\$38,369,086	\$459.49
Natural Resources & Mining	28	236	236	239	\$1,848,923	\$600.10
Construction	39	198	194	203	\$997,034	\$386.70
Manufacturing	45	1,395	1,395	1,411	\$9,966,382	\$547.47
Trade, Transportation & Utilities	148	1,283	1,296	1,307	\$6,894,774	\$409.44
Wholesale Trade	24	123	126	128	\$575,800	\$352.46
Retail Trade	81	818	823	816	\$3,809,308	\$357.78
Transportation, Warehousing & Utilities	43	342	347	363	\$2,509,666	\$550.53
Information	10	56	60	66	\$414,856	\$526.02
Financial Activities	39	243	241	243	\$1,562,455	\$495.96
Professional & Business Services	47	223	233	240	\$1,246,000	\$413.13
Education & Health Services	78	973	982	979	\$5,365,265	\$422.00
Leisure & Hospitality	43	453	456	462	\$1,061,673	\$178.70
Other Services	35	130	137	146	\$699,628	\$390.93
Local Government	21	864	858	865	\$6,486,155	\$578.59
State Government	14	335	339	293	\$1,825,941	\$435.75
POPE COUNTY - TOTAL	1,753	27,795	27,988	27,110	\$209,248,592	\$582.54
Natural Resources & Mining	25	611	606	639	\$5,270,377	\$655.30
Construction	186	1,696	1,697	1,295	\$15,827,686	\$779.13
Manufacturing	92	4,982	5,008	4,967	\$43,098,301	\$664.96
Trade, Transportation & Utilities	468	6,727	6,735	6,800	\$59,926,401	\$682.52
Wholesale Trade	105	737	743	751	\$6,199,258	\$641.24
Retail Trade	272	3,419	3,411	3,463	\$16,819,308	\$377.09
Transportation, Warehousing & Utilities	91	2,571	2,581	2,586	\$36,907,835	\$1,100.70
Information	22	251	257	264	\$2,273,717	\$679.67
Financial Activities	190	860	865	878	\$7,135,390	\$632.59
Professional & Business Services	231	2,653	2,770	2,585	\$14,957,981	\$431.05
Education & Health Services	242	2,998	3,025	3,024	\$20,380,804	\$519.87
Leisure & Hospitality	134	2,452	2,472	2,463	\$6,555,167	\$204.78
Other Services	107	473	461	458	\$2,702,576	\$448.04
Local Government	40	2,384	2,387	2,299	\$19,527,356	\$637.39
State Government	16	1,708	1,705	1,438	\$11,592,836	\$551.49

**TABLE 6. COUNTY SUMMARY
EMPLOYMENT AND TOTAL EARNINGS, BY INDUSTRY
SECOND QUARTER 2007**

NORTH AMERICAN INDUSTRY CLASSIFICATION SYSTEM INDUSTRY GROUP	NUMBER OF EMPLOYING UNITS	EMPLOYMENT	EMPLOYMENT	EMPLOYMENT	TOTAL EARNINGS	AVERAGE WEEKLY EARNINGS
		APRIL	MAY	JUNE	APRIL - JUNE 2007	
PRAIRIE COUNTY - TOTAL	244	1,442	1,463	1,424	\$9,701,740	\$517.18
Natural Resources & Mining	31	157	174	166	\$1,312,363	\$609.36
Trade, Transportation & Utilities	69	319	319	323	\$1,964,017	\$471.63
Wholesale Trade	11	59	63	67	\$584,906	\$714.17
Retail Trade	37	186	183	179	\$650,556	\$273.96
Transportation, Warehousing & Utilities	21	74	73	77	\$728,555	\$750.57
Information	4	8	8	8	\$93,768	\$901.62
Financial Activities	17	62	63	62	\$430,250	\$530.95
Professional & Business Services	17	48	53	51	\$296,101	\$449.55
Education & Health Services	29	155	154	159	\$903,494	\$445.51
Leisure & Hospitality	18	93	96	94	\$208,193	\$169.77
Other Services	14	28	27	42	\$169,144	\$402.40
Local Government	15	334	335	273	\$2,412,528	\$591.02
State Government	10	50	48	51	\$346,669	\$536.92
Other	20	188	186	195	\$1,565,213	\$634.80
PULASKI COUNTY - TOTAL	14,467	240,679	241,956	243,119	\$2,268,707,181	\$721.38
Natural Resources & Mining	54	677	681	702	\$8,712,662	\$976.03
Construction	1,166	10,729	10,847	11,051	\$103,958,582	\$735.29
Manufacturing	446	15,415	15,402	15,406	\$167,023,578	\$833.87
Trade, Transportation & Utilities	3,330	51,035	51,416	51,454	\$448,241,783	\$672.11
Wholesale Trade	1,170	13,390	13,423	13,527	\$166,398,568	\$951.90
Retail Trade	1,752	24,399	24,674	24,814	\$148,559,085	\$463.99
Transportation, Warehousing & Utilities	408	13,246	13,319	13,113	\$133,284,130	\$775.19
Information	241	8,579	8,628	8,751	\$118,958,987	\$1,057.56
Financial Activities	1,799	16,226	16,355	16,432	\$199,325,403	\$938.49
Professional & Business Services	2,780	34,311	34,460	34,445	\$304,643,723	\$681.12
Education & Health Services	2,078	34,196	34,366	34,528	\$348,740,146	\$780.66
Leisure & Hospitality	1,046	20,487	20,918	21,291	\$74,979,820	\$275.98
Other Services	1,219	6,909	6,928	7,230	\$50,430,682	\$552.42
Local Government	104	17,157	17,039	17,458	\$181,526,034	\$810.99
State Government	204	24,958	24,916	24,371	\$262,165,781	\$814.87

**TABLE 6. COUNTY SUMMARY
EMPLOYMENT AND TOTAL EARNINGS, BY INDUSTRY
SECOND QUARTER 2007**

NORTH AMERICAN INDUSTRY CLASSIFICATION SYSTEM INDUSTRY GROUP	NUMBER OF EMPLOYING UNITS	EMPLOYMENT	EMPLOYMENT	EMPLOYMENT	TOTAL EARNINGS	AVERAGE WEEKLY EARNINGS
		APRIL	MAY	JUNE	APRIL - JUNE 2007	
RANDOLPH COUNTY - TOTAL	414	4,848	4,806	4,787	\$32,926,631	\$526.17
Natural Resources & Mining	23	80	78	81	\$422,591	\$408.04
Construction	23	79	84	90	\$383,503	\$349.81
Manufacturing	40	810	785	734	\$8,581,718	\$850.32
Trade, Transportation & Utilities	100	901	909	930	\$5,114,625	\$430.77
Wholesale Trade	21	186	185	188	\$1,058,244	\$436.87
Retail Trade	60	600	604	604	\$2,887,572	\$368.56
Transportation, Warehousing & Utilities	19	115	120	138	\$1,168,809	\$723.12
Information	5	43	40	42	\$382,626	\$706.39
Financial Activities	31	159	156	160	\$1,191,168	\$578.71
Professional & Business Services	38	238	232	237	\$1,044,548	\$340.95
Education & Health Services	65	900	891	862	\$5,872,714	\$510.83
Leisure & Hospitality	29	428	439	421	\$898,872	\$161.05
Other Services	25	54	52	69	\$282,582	\$372.64
Local Government	23	871	875	894	\$6,728,485	\$588.15
State Government	12	285	265	267	\$2,023,199	\$571.47
SAINT FRANCIS COUNTY - TOTAL	681	8,011	8,039	7,988	\$51,828,957	\$497.57
Natural Resources & Mining	25	162	166	178	\$1,119,689	\$510.65
Construction	44	235	242	260	\$1,771,187	\$554.59
Manufacturing	16	1,063	1,041	988	\$7,871,747	\$587.50
Trade, Transportation & Utilities	183	2,038	2,041	2,039	\$12,834,456	\$484.11
Wholesale Trade	33	524	527	529	\$4,416,129	\$645.00
Retail Trade	122	1,252	1,252	1,238	\$5,897,210	\$363.68
Transportation, Warehousing & Utilities	28	262	262	272	\$2,521,117	\$730.90
Information	9	98	98	97	\$698,518	\$550.16
Financial Activities	58	302	319	319	\$2,054,401	\$504.35
Professional & Business Services	55	209	199	188	\$1,554,505	\$601.90
Education & Health Services	152	1,376	1,390	1,360	\$7,759,532	\$433.99
Leisure & Hospitality	52	687	690	711	\$1,935,045	\$213.86
Other Services	41	114	114	113	\$492,876	\$333.55
Local Government	29	1,188	1,199	1,222	\$9,791,477	\$626.09
State Government	17	539	540	513	\$3,945,524	\$571.93

**TABLE 6. COUNTY SUMMARY
EMPLOYMENT AND TOTAL EARNINGS, BY INDUSTRY
SECOND QUARTER 2007**

NORTH AMERICAN INDUSTRY CLASSIFICATION SYSTEM INDUSTRY GROUP	NUMBER OF EMPLOYING UNITS	EMPLOYMENT	EMPLOYMENT	EMPLOYMENT	TOTAL EARNINGS	AVERAGE WEEKLY EARNINGS
		APRIL	MAY	JUNE	APRIL - JUNE 2007	
SALINE COUNTY - TOTAL	1,806	20,991	21,076	21,406	\$152,806,169	\$555.56
Natural Resources & Mining	15	36	35	38	\$350,910	\$742.93
Construction	319	1,920	1,918	1,966	\$16,221,512	\$644.97
Manufacturing	90	1,883	1,895	1,915	\$19,304,074	\$782.50
Trade, Transportation & Utilities	442	4,732	4,775	4,772	\$31,633,540	\$511.24
Wholesale Trade	131	645	642	638	\$6,587,555	\$789.72
Retail Trade	250	3,790	3,832	3,831	\$22,308,584	\$449.50
Transportation, Warehousing & Utilities	61	297	301	303	\$2,737,401	\$701.12
Information	18	153	160	156	\$1,084,483	\$533.61
Financial Activities	175	778	769	790	\$6,234,731	\$615.65
Professional & Business Services	230	1,300	1,307	1,297	\$8,755,326	\$517.54
Education & Health Services	199	2,814	2,838	2,926	\$18,679,167	\$502.52
Leisure & Hospitality	137	2,504	2,540	2,602	\$7,474,588	\$225.60
Other Services	131	625	577	628	\$4,618,178	\$582.37
Local & State Government	50	4,246	4,262	4,316	\$38,449,660	\$691.91
SCOTT COUNTY - TOTAL	191	2,864	2,881	2,894	\$17,539,240	\$468.52
Natural Resources & Mining	17	183	187	181	\$1,527,166	\$639.61
Trade, Transportation & Utilities	41	450	451	457	\$2,400,868	\$407.99
Wholesale Trade	9	66	68	69	\$442,952	\$503.55
Retail Trade	25	313	312	320	\$1,326,618	\$323.96
Transportation, Warehousing & Utilities	7	71	71	68	\$631,298	\$693.73
Financial Activities	19	75	77	78	\$446,212	\$447.70
Professional & Business Services	12	20	18	18	\$99,779	\$411.18
Education & Health Services	30	305	310	308	\$1,735,701	\$433.96
Leisure & Hospitality	18	180	179	181	\$413,337	\$176.64
Other Services	10	39	42	40	\$370,516	\$706.64
Local Government	5	384	380	380	\$3,394,433	\$684.73
State Government	8	78	74	75	\$438,602	\$445.88
Other	29	1,143	1,156	1,169	\$6,646,035	\$442.24

**TABLE 6. COUNTY SUMMARY
EMPLOYMENT AND TOTAL EARNINGS, BY INDUSTRY
SECOND QUARTER 2007**

NORTH AMERICAN INDUSTRY CLASSIFICATION SYSTEM INDUSTRY GROUP	NUMBER OF EMPLOYING UNITS	EMPLOYMENT	EMPLOYMENT	EMPLOYMENT	TOTAL EARNINGS	AVERAGE WEEKLY EARNINGS
		APRIL	MAY	JUNE	APRIL - JUNE 2007	
SEARCY COUNTY - TOTAL	182	1,703	1,765	1,798	\$9,134,642	\$400.30
Construction	7	13	11	15	\$80,860	\$478.46
Manufacturing	17	262	281	291	\$1,199,649	\$331.94
Trade, Transportation & Utilities	37	315	337	333	\$1,299,056	\$304.35
Retail Trade	25	214	233	227	\$809,721	\$277.24
Other Trade, Transportation & Utilities	12	101	104	106	\$489,335	\$363.10
Financial Activities	14	95	103	102	\$634,209	\$487.85
Professional & Business Services	16	39	38	38	\$162,679	\$326.45
Education & Health Services	46	311	319	318	\$1,420,632	\$345.82
Leisure & Hospitality	12	111	126	150	\$316,392	\$188.67
Local Government	10	347	349	350	\$2,623,257	\$578.74
State Government	8	141	148	144	\$915,294	\$487.81
Other	15	69	53	57	\$482,614	\$622.19
SEBASTIAN COUNTY - TOTAL	3,700	72,590	73,276	73,821	\$609,034,328	\$639.76
Natural Resources & Mining	77	1,703	1,731	1,774	\$25,734,366	\$1,140.30
Construction	313	2,766	2,850	2,867	\$25,975,919	\$706.64
Manufacturing	235	19,193	19,216	19,123	\$184,371,833	\$739.54
Trade, Transportation & Utilities	942	12,784	12,845	12,955	\$91,931,747	\$549.84
Wholesale Trade	249	2,610	2,624	2,640	\$26,073,756	\$764.16
Retail Trade	559	7,906	7,953	8,012	\$44,218,024	\$427.47
Transportation, Warehousing & Utilities	134	2,268	2,268	2,303	\$21,639,967	\$730.20
Information	59	1,072	1,071	1,079	\$12,132,479	\$868.96
Financial Activities	412	2,617	2,644	2,671	\$24,413,423	\$710.27
Professional & Business Services	534	9,402	9,555	10,149	\$63,575,605	\$504.06
Education & Health Services	484	10,143	10,194	10,225	\$96,053,839	\$725.29
Leisure & Hospitality	307	5,483	5,650	5,726	\$16,859,748	\$230.78
Other Services	272	1,421	1,463	1,499	\$8,792,527	\$462.94
Local Government	43	4,502	4,555	4,525	\$47,788,888	\$811.97
State Government	22	1,504	1,502	1,228	\$11,403,954	\$621.56

**TABLE 6. COUNTY SUMMARY
EMPLOYMENT AND TOTAL EARNINGS, BY INDUSTRY
SECOND QUARTER 2007**

NORTH AMERICAN INDUSTRY CLASSIFICATION SYSTEM INDUSTRY GROUP	NUMBER OF EMPLOYING UNITS	EMPLOYMENT	EMPLOYMENT	EMPLOYMENT	TOTAL EARNINGS	AVERAGE WEEKLY EARNINGS
		APRIL	MAY	JUNE	APRIL - JUNE 2007	
SEVIER COUNTY - TOTAL	336	6,076	6,008	5,909	\$37,842,583	\$485.35
Natural Resources & Mining	17	234	236	234	\$1,589,732	\$521.11
Construction	21	151	148	138	1,207,875	\$637.85
Manufacturing	11	2,446	2,399	2,338	14,755,499	\$474.05
Trade, Transportation & Utilities	100	888	885	905	\$5,411,084	\$466.29
Wholesale Trade	16	149	142	146	\$1,522,917	\$804.22
Retail Trade	63	610	618	623	\$2,806,015	\$349.83
Transportation, Warehousing & Utilities	21	129	125	136	\$1,082,152	\$640.33
Information	6	38	38	39	\$286,131	\$574.18
Financial Activities	30	205	201	208	\$1,430,978	\$537.83
Professional & Business Services	29	102	93	100	\$1,673,065	\$1,308.79
Education & Health Services	50	531	529	525	\$3,066,388	\$446.45
Leisure & Hospitality	21	262	273	266	\$642,577	\$185.13
Other Services	31	132	142	137	\$582,305	\$326.95
Local Government	11	883	862	828	\$5,876,158	\$527.03
State Government	9	204	202	191	\$1,320,791	\$510.55
SHARP COUNTY - TOTAL	442	4,039	4,051	4,091	\$22,609,918	\$428.35
Construction	29	212	214	210	\$1,562,780	\$567.05
Manufacturing	21	185	185	186	\$861,197	\$357.44
Trade, Transportation & Utilities	103	1,072	1,069	1,038	\$6,458,853	\$468.86
Retail Trade	73	725	736	708	\$3,081,291	\$327.83
Other Trade, Transportation & Utilities	30	347	333	330	\$3,377,562	\$771.72
Information	7	57	59	57	\$608,792	\$812.08
Financial Activities	38	258	261	262	\$1,906,457	\$563.32
Professional & Business Services	44	175	164	174	\$1,111,603	\$500.05
Education & Health Services	93	596	597	598	\$2,809,734	\$362.03
Leisure & Hospitality	46	482	499	504	\$1,088,449	\$169.15
Local Government	24	809	809	797	\$5,129,593	\$490.17
State Government	9	113	112	111	\$660,947	\$453.95
Other	28	80	82	154	\$411,513	\$300.52

**TABLE 6. COUNTY SUMMARY
EMPLOYMENT AND TOTAL EARNINGS, BY INDUSTRY
SECOND QUARTER 2007**

NORTH AMERICAN INDUSTRY CLASSIFICATION SYSTEM INDUSTRY GROUP	NUMBER OF EMPLOYING UNITS	EMPLOYMENT	EMPLOYMENT	EMPLOYMENT	TOTAL EARNINGS	AVERAGE WEEKLY EARNINGS
		APRIL	MAY	JUNE	APRIL - JUNE 2007	
STONE COUNTY - TOTAL	286	2,993	3,066	3,157	\$16,970,282	\$424.94
Natural Resources & Mining	5	22	19	76	113,851	\$224.56
Construction	24	119	124	127	\$665,833	\$415.28
Manufacturing	24	422	435	452	\$2,468,180	\$435.13
Trade, Transportation & Utilities	77	706	729	736	\$4,123,076	\$438.27
Wholesale Trade	9	57	58	61	\$345,705	\$453.28
Retail Trade	55	601	622	623	\$3,357,663	\$419.74
Transportation, Warehousing & Utilities	13	48	49	52	\$419,708	\$650.04
Financial Activities	27	121	126	133	\$715,642	\$434.60
Professional & Business Services	11	32	22	24	\$170,708	\$505.05
Education & Health Services	49	492	498	468	\$3,153,012	\$499.05
Leisure & Hospitality	35	395	428	443	\$1,002,457	\$182.73
Local Government	10	450	453	463	\$3,424,616	\$578.55
State Government	9	179	179	180	\$798,603	\$342.55
Other	15	55	53	55	\$334,304	\$473.29
UNION COUNTY - TOTAL	1,402	19,764	19,853	19,894	\$166,140,207	\$644.25
Natural Resources & Mining	111	530	526	540	\$4,751,677	\$687.06
Construction	92	1,338	1,369	1,337	\$14,023,535	\$800.25
Manufacturing	65	4,775	4,756	4,803	\$45,677,369	\$735.38
Trade, Transportation & Utilities	359	3,641	3,682	3,658	\$29,805,130	\$626.36
Wholesale Trade	84	618	619	620	\$9,610,449	\$1,194.29
Retail Trade	218	2,244	2,272	2,237	\$10,727,633	\$366.59
Transportation, Warehousing & Utilities	57	779	791	801	\$9,467,048	\$921.43
Information	20	188	191	188	\$1,331,845	\$542.06
Financial Activities	120	724	712	708	\$5,784,098	\$622.57
Professional & Business Services	144	1,652	1,612	1,614	\$17,316,583	\$819.22
Education & Health Services	206	2,441	2,467	2,494	\$19,233,294	\$599.63
Leisure & Hospitality	89	1,298	1,308	1,304	\$3,579,992	\$211.29
Other Services	141	534	570	585	\$3,294,096	\$450.07
Local Government	37	2,074	2,095	2,090	\$17,303,282	\$637.97
State Government	18	569	565	573	\$4,039,306	\$546.07

**TABLE 6. COUNTY SUMMARY
EMPLOYMENT AND TOTAL EARNINGS, BY INDUSTRY
SECOND QUARTER 2007**

NORTH AMERICAN INDUSTRY CLASSIFICATION SYSTEM INDUSTRY GROUP	NUMBER OF EMPLOYING UNITS	EMPLOYMENT	EMPLOYMENT	EMPLOYMENT	TOTAL EARNINGS	AVERAGE WEEKLY EARNINGS
		APRIL	MAY	JUNE	APRIL - JUNE 2007	
VAN BUREN COUNTY - TOTAL	356	3,744	3,830	3,817	\$22,881,510	\$463.55
Natural Resources & Mining	13	45	59	53	\$573,172	\$842.49
Construction	42	207	214	229	\$1,396,098	\$495.66
Manufacturing	15	473	484	490	\$3,038,262	\$484.55
Trade, Transportation & Utilities	97	792	804	793	\$4,563,481	\$440.82
Wholesale Trade	16	46	47	46	\$367,585	\$610.27
Retail Trade	58	602	618	607	\$3,012,710	\$380.54
Transportation, Warehousing & Utilities	23	144	139	140	\$1,183,186	\$645.49
Information	10	50	50	49	\$426,730	\$660.91
Financial Activities	27	154	154	153	\$1,058,995	\$530.12
Professional & Business Services	26	112	119	111	\$535,190	\$361.13
Education & Health Services	52	605	617	617	\$3,724,242	\$467.34
Leisure & Hospitality	30	469	488	491	\$1,495,943	\$238.41
Other Services	25	82	80	76	\$413,743	\$401.17
Local Government	11	659	665	661	\$5,046,981	\$586.74
State Government	8	96	96	94	\$608,673	\$491.13
WASHINGTON COUNTY - TOTAL	5,637	91,290	91,068	92,283	\$801,082,273	\$673.12
Natural Resources & Mining	38	489	490	500	\$4,337,640	\$676.80
Construction	692	5,616	5,682	5,770	\$50,510,737	\$682.93
Manufacturing	241	15,186	15,171	15,114	\$128,109,848	\$650.17
Trade, Transportation & Utilities	1,361	20,355	20,554	20,718	\$169,269,513	\$633.85
Wholesale Trade	408	3,717	3,756	3,830	\$48,161,464	\$983.30
Retail Trade	758	11,239	11,350	11,393	\$66,551,344	\$451.95
Transportation, Warehousing & Utilities	195	5,399	5,448	5,495	\$54,556,705	\$770.41
Information	91	1,606	1,626	1,638	\$16,676,942	\$790.25
Financial Activities	668	4,092	4,120	4,141	\$38,452,734	\$718.34
Professional & Business Services	941	8,910	8,901	8,974	\$113,992,882	\$982.12
Education & Health Services	625	10,678	10,762	10,692	\$102,428,869	\$735.64
Leisure & Hospitality	510	9,564	9,500	9,356	\$29,881,074	\$242.63
Other Services	386	1,939	1,947	1,935	\$12,001,960	\$475.81
Local & State Government	84	12,855	12,315	13,445	\$135,420,074	\$809.29

**TABLE 6. COUNTY SUMMARY
EMPLOYMENT AND TOTAL EARNINGS, BY INDUSTRY
SECOND QUARTER 2007**

NORTH AMERICAN INDUSTRY CLASSIFICATION SYSTEM INDUSTRY GROUP	NUMBER OF EMPLOYING UNITS	EMPLOYMENT	EMPLOYMENT	EMPLOYMENT	TOTAL EARNINGS	AVERAGE WEEKLY EARNINGS
		APRIL	MAY	JUNE	APRIL - JUNE 2007	
WHITE COUNTY - TOTAL	1,677	23,386	23,643	23,518	\$171,971,927	\$562.54
Natural Resources & Mining	41	491	563	597	\$5,707,267	\$797.74
Construction	185	1,154	1,187	1,223	\$8,563,423	\$554.48
Manufacturing	84	2,763	2,779	2,777	\$25,933,702	\$719.40
Trade, Transportation & Utilities	476	5,880	5,988	6,003	\$42,580,830	\$549.85
Wholesale Trade	96	645	634	656	\$5,186,830	\$618.58
Retail Trade	295	3,144	3,181	3,191	\$16,019,002	\$388.47
Transportation, Warehousing & Utilities	85	2,091	2,173	2,156	\$21,374,998	\$768.33
Information	22	241	233	227	\$1,588,048	\$522.79
Financial Activities	181	939	946	960	\$7,287,889	\$591.15
Professional & Business Services	169	1,309	1,295	1,395	\$8,888,433	\$512.92
Education & Health Services	228	4,232	4,218	4,127	\$35,802,822	\$656.93
Leisure & Hospitality	120	2,302	2,308	2,291	\$5,769,093	\$192.92
Other Services	106	618	621	637	\$4,020,693	\$494.59
Local Government	46	2,677	2,717	2,664	\$21,034,613	\$602.40
State Government	19	780	788	617	\$4,795,114	\$506.44
WOODRUFF COUNTY - TOTAL	196	1,988	1,999	1,858	\$12,782,395	\$504.67
Natural Resources & Mining	21	132	141	137	\$889,216	\$500.50
Construction	7	71	68	64	\$441,760	\$502.19
Manufacturing	8	344	339	334	\$2,378,292	\$539.66
Trade, Transportation & Utilities	59	490	487	502	\$3,511,539	\$547.91
Wholesale Trade	13	184	189	192	\$1,711,982	\$699.24
Retail Trade	28	190	188	197	\$681,852	\$273.65
Transportation, Warehousing & Utilities	18	116	110	113	\$1,117,705	\$760.86
Financial Activities	16	62	63	62	\$393,638	\$485.77
Professional & Business Services	4	6	8	7	\$69,238	\$760.86
Education & Health Services	48	225	233	228	\$1,357,195	\$456.56
Leisure & Hospitality	7	58	58	58	\$108,770	\$144.26
Local Government	10	519	523	384	\$3,134,399	\$507.24
State Government	7	59	57	60	\$385,586	\$505.58
Other	9	22	22	22	\$112,762	\$394.27

**TABLE 6. COUNTY SUMMARY
EMPLOYMENT AND TOTAL EARNINGS, BY INDUSTRY
SECOND QUARTER 2007**

NORTH AMERICAN INDUSTRY CLASSIFICATION SYSTEM INDUSTRY GROUP	NUMBER OF EMPLOYING UNITS	EMPLOYMENT	EMPLOYMENT	EMPLOYMENT	TOTAL EARNINGS	AVERAGE WEEKLY EARNINGS
		APRIL	MAY	JUNE	APRIL - JUNE 2007	
YELL COUNTY - TOTAL	399	6,792	6,807	6,798	\$43,458,730	\$491.69
Natural Resources & Mining	22	218	236	227	\$1,490,346	\$505.03
Construction	43	322	313	331	\$2,358,257	\$563.37
Manufacturing	20	2,708	2,692	2,743	\$16,975,355	\$481.07
Trade, Transportation & Utilities	84	690	697	695	\$3,320,454	\$368.04
Wholesale Trade	14	21	24	25	\$128,371	\$423.20
Retail Trade	52	574	579	572	\$2,386,301	\$319.24
Transportation, Warehousing & Utilities	18	95	94	98	\$805,782	\$647.91
Information	3	73	73	74	\$562,010	\$589.52
Financial Activities	37	202	205	202	\$1,262,438	\$478.38
Professional & Business Services	36	264	265	276	\$3,010,351	\$862.98
Education & Health Services	67	473	472	464	\$2,385,046	\$390.63
Leisure & Hospitality	29	369	362	363	\$912,755	\$192.54
Other Services	17	69	70	68	\$275,662	\$307.32
Local Government	28	1,281	1,299	1,235	\$10,213,373	\$617.81
State Government	13	123	123	120	\$692,683	\$436.75
REST-OF-STATE-TOTAL	3,851	15,691	15,677	16,118	\$213,776,784	\$1,038.90
Natural Resources & Mining	57	521	549	539	\$5,433,381	\$779.28
Construction	495	3,040	3,183	3,483	\$31,465,035	\$748.11
Manufacturing	54	146	148	148	\$1,372,629	\$716.65
Trade, Transportation & Utilities	1,519	5,990	5,997	6,008	\$106,819,206	\$1,369.86
Wholesale Trade	1,295	4,836	4,858	4,857	\$95,060,153	\$1,507.59
Retail Trade	96	466	463	472	\$5,797,437	\$954.94
Transportation, Warehousing & Utilities	128	688	676	679	\$5,961,616	\$673.40
Information	91	212	223	247	\$2,799,941	\$947.42
Financial Activities	233	747	749	738	\$10,329,958	\$1,067.07
Professional & Business Services	1,151	3,855	3,650	3,761	\$43,327,085	\$887.50
Education & Health Services	94	514	490	523	\$5,951,015	\$899.35
Other	157	666	688	671	\$6,278,534	\$715.50

TABLE 7. FEDERAL GOVERNMENT EMPLOYMENT AND EARNINGS IN ARKANSAS

NORTH AMERICAN INDUSTRY CLASSIFICATION SYSTEM INDUSTRY GROUP	NUMBER OF EMPLOYING UNITS	EMPLOYMENT	EMPLOYMENT	EMPLOYMENT	TOTAL
		APRIL	MAY	JUNE	EARNINGS APRIL – JUNE 2007
Trade, Transportation & Utilities	614	6,772	6,792	6,800	\$81,179,774
Information	1	33	32	31	\$408,312
Financial Activities	23	168	167	171	\$3,003,256
Professional & Business Services	31	776	782	860	\$11,357,810
Education & Health Services	6	4,058	4,063	4,193	\$85,411,398
Leisure & Hospitality	15	223	238	245	\$2,385,653
Other Services	2	248	265	274	\$938,219
Public Administration	489	8,391	8,384	8,529	\$127,917,998
TOTAL	1,181	20,669	20,723	21,103	\$312,602,420

Note: Industries with Employing Units that have no employment or wages are not included in this table.

**TABLE 8. WORKFORCE INFORMATION AREA, SUMMARY
EMPLOYMENT AND TOTAL EARNINGS, BY INDUSTRY
SECOND QUARTER 2007**

NORTH AMERICAN INDUSTRY CLASSIFICATION SYSTEM INDUSTRY GROUP	NUMBER OF EMPLOYING UNITS	EMPLOYMENT	EMPLOYMENT	EMPLOYMENT	TOTAL EARNINGS APRIL - JUNE 2007	AVERAGE WEEKLY EARNINGS
		APRIL	MAY	JUNE		
CENTRAL WORKFORCE INFORMATION*	6,205	77,067	77,425	77,709	\$600,552,946	\$596.85
Natural Resources & Mining	184	1,337	1,370	1,457	\$15,544,793	\$861.49
Trade, Transportation & Utilities	1,570	15,296	15,481	15,458	\$97,439,994	\$486.34
Wholesale Trade	415	2,267	2,288	2,304	\$21,788,912	\$733.08
Retail Trade	889	11,410	11,558	11,473	\$60,119,340	\$402.82
Transportation, Warehousing & Utilities	266	1,619	1,635	1,681	\$15,531,742	\$726.29
Financial Activities	653	3,007	2,997	3,045	\$24,827,744	\$633.16
Professional & Business Services	747	7,455	7,350	7,415	\$88,686,844	\$921.07
Education & Health Services	751	10,217	10,328	10,502	\$72,425,357	\$538.33
Leisure & Hospitality	467	8,108	8,236	8,303	\$22,590,876	\$211.52
Local & State Government	210	14,676	14,700	14,266	\$129,945,997	\$687.13
Other	1,623	16,971	16,963	17,263	\$149,091,341	\$672.03
*Note: Pulaski County is not included in the Central Workforce Information. Please refer to Page 55 for information on Pulaski County.						
Central Workforce Includes these counties: Faulkner, Lonoke, Monroe, Prairie, and Saline.						
EASTERN WORKFORCE INFORMATION	3,455	38,786	38,939	38,924	\$272,730,800	\$539.55
Natural Resources & Mining	202	1,130	1,204	1,242	\$6,681,112	\$431.15
Construction	195	1,050	1,073	1,090	\$8,125,938	\$583.63
Trade, Transportation & Utilities	880	10,111	10,148	10,082	\$70,923,271	\$539.43
Wholesale Trade	184	2,134	2,147	2,133	\$19,857,101	\$714.44
Retail Trade	488	5,077	5,091	5,029	\$24,750,775	\$375.85
Transportation, Warehousing & Utilities	208	2,900	2,910	2,920	\$26,315,395	\$695.62
Financial Activities	287	1,563	1,576	1,616	\$12,043,634	\$584.50
Professional & Business Services	312	1,788	1,755	1,754	\$11,773,197	\$512.91
Education & Health Services	772	5,709	5,752	5,684	\$37,735,818	\$507.92
Leisure & Hospitality	231	3,793	3,762	3,857	\$11,110,347	\$224.67
Local Government	136	5,948	5,997	5,965	\$54,748,078	\$705.43
State Government	68	2,377	2,322	2,237	\$16,136,547	\$536.88
Other	372	5,317	5,350	5,397	\$43,452,858	\$624.23
Eastern Workforce Includes these counties: Crittenden, Cross, Lee, Phillips, and Saint Francis.						

**TABLE 8. WORKFORCE INFORMATION AREA, SUMMARY
EMPLOYMENT AND TOTAL EARNINGS, BY INDUSTRY
SECOND QUARTER 2007**

NORTH AMERICAN INDUSTRY CLASSIFICATION SYSTEM INDUSTRY GROUP	NUMBER OF EMPLOYING UNITS	EMPLOYMENT	EMPLOYMENT	EMPLOYMENT	TOTAL EARNINGS	AVERAGE
		APRIL	MAY	JUNE	APRIL - JUNE 2007	WEEKLY EARNINGS
NORTH CENTRAL WORKFORCE INFORMATION	5,615	70,036	70,774	70,388	\$481,499,255	\$526.12
Construction	504	2,912	2,986	3,014	\$20,812,987	\$538.94
Trade, Transportation & Utilities	1,527	15,515	15,779	15,856	\$104,579,796	\$511.85
Retail Trade	941	9,203	9,370	9,404	\$45,257,282	\$373.31
Other Trade, Transportation & Utilities	586	6,312	6,409	6,452	\$59,322,514	\$714.02
Financial Activities	537	2,700	2,728	2,772	\$21,692,894	\$610.49
Professional & Business Services	477	3,060	2,984	3,145	\$18,621,722	\$467.66
Education & Health Services	892	11,653	11,725	11,659	\$87,607,183	\$577.02
Leisure & Hospitality	446	6,310	6,461	6,552	\$16,701,011	\$199.46
Local Government	231	9,389	9,479	9,052	\$69,904,042	\$577.78
State Government	115	3,136	3,156	2,841	\$19,850,787	\$501.58
Other	886	15,361	15,476	15,497	\$121,728,833	\$606.28
North Central Workforce Includes these counties: Cleburne, Fulton, Independence, IZard, Jackson, Sharp, Stone, Van Buren, White, and Woodruff						
NORTHEAST WORKFORCE INFORMATION	6,549	94,759	95,501	93,461	\$707,608,776	\$575.55
Natural Resources & Mining	368	1,814	1,919	2,022	\$12,010,983	\$481.63
Construction	507	2,974	3,097	3,189	\$23,925,108	\$596.24
Manufacturing	356	20,731	20,701	20,512	\$202,835,170	\$755.65
Trade, Transportation & Utilities	1,754	17,955	18,028	17,948	\$116,714,289	\$499.42
Wholesale Trade	410	3,789	3,809	3,774	\$34,804,760	\$706.28
Retail Trade	1,036	11,611	11,643	11,552	\$58,324,360	\$386.70
Transportation, Warehousing & Utilities	308	2,555	2,576	2,622	\$23,585,169	\$702.02
Financial Activities	609	3,424	3,420	3,469	\$29,620,776	\$662.81
Professional & Business Services	676	6,782	6,921	6,390	\$41,050,498	\$471.47
Education & Health Services	985	13,160	13,175	12,976	\$102,054,153	\$599.09
Leisure & Hospitality	481	7,961	8,152	8,116	\$20,601,809	\$196.22
Local Government	219	11,964	12,111	11,330	\$101,213,378	\$659.71
State Government	107	4,162	4,172	3,862	\$34,140,153	\$645.99
Other	487	3,832	3,805	3,647	\$23,442,459	\$479.42
Northeast Workforce Includes these counties: Clay, Craighead, Greene, Lawrence, Mississippi, Poinsett, and Randolph.						

**TABLE 8. WORKFORCE INFORMATION AREA, SUMMARY
EMPLOYMENT AND TOTAL EARNINGS, BY INDUSTRY
SECOND QUARTER 2007**

NORTH AMERICAN INDUSTRY CLASSIFICATION SYSTEM INDUSTRY GROUP	NUMBER OF EMPLOYING UNITS	EMPLOYMENT	EMPLOYMENT	EMPLOYMENT	TOTAL EARNINGS	AVERAGE
		APRIL	MAY	JUNE	APRIL - JUNE 2007	WEEKLY EARNINGS
NORTHWEST WORKFORCE INFORMATION	15,196	235,623	236,949	237,632	\$2,061,763,647	\$669.94
Trade, Transportation & Utilities	3,762	54,883	55,428	55,402	\$466,301,622	\$649.36
Retail Trade	2,012	26,639	26,983	27,004	\$152,631,077	\$436.86
Other Trade, Transportation & Utilities	1,750	28,244	28,445	28,398	\$313,670,545	\$850.72
Education & Health Services	1,757	24,136	24,325	24,244	\$208,302,761	\$661.16
Leisure & Hospitality	1,380	22,088	22,738	22,798	\$69,457,057	\$237.02
Local & State Government	426	29,207	28,666	29,303	\$278,981,708	\$738.51
Other	7,871	105,309	105,792	105,885	\$1,038,720,499	\$756.20
Northwest Workforce Includes these counties: Baxter, Benton, Boone, Carroll, Madison, Marion, Newton, Searcy, and Washington.						
SOUTHEAST WORKFORCE INFORMATION	5,554	77,275	77,473	77,045	\$577,065,174	\$574.52
Natural Resources & Mining	402	2,740	2,749	2,840	\$20,737,819	\$574.58
Construction	381	3,441	3,331	3,273	\$30,975,470	\$711.62
Manufacturing	223	17,181	17,210	17,242	\$159,948,200	\$714.87
Trade, Transportation & Utilities	1,392	13,307	13,351	13,403	\$87,809,679	\$505.82
Retail Trade	842	8,624	8,670	8,639	\$41,918,788	\$373.02
Other Trade, Transportation & Utilities	550	4,683	4,681	4,764	\$45,890,891	\$749.59
Local & State Government	357	16,942	17,066	16,341	\$132,911,712	\$609.19
Other	2,799	23,664	23,766	23,946	\$144,682,294	\$467.78
Southeast Workforce Includes these counties: Arkansas, Ashley, Bradley, Chicot, Cleveland, Desha, Drew, Grant, Jefferson, and Lincoln						
SOUTHWEST WORKFORCE INFORMATION	5,829	86,813	87,212	86,894	\$673,044,403	\$595.27
Natural Resources & Mining	411	2,820	2,847	2,906	\$25,541,274	\$687.52
Manufacturing	295	25,382	25,227	24,986	238,761,103	\$728.87
Trade, Transportation & Utilities	1,528	15,529	15,655	15,607	\$110,035,271	\$542.68
Education & Health Services	787	9,408	9,671	9,692	\$62,197,093	\$498.88
Local Government	266	11,245	11,282	10,985	\$91,981,231	\$633.40
State Government	150	3,541	3,509	3,499	\$24,728,679	\$540.96
Other	2,392	18,888	19,021	19,219	\$119,799,752	\$483.93
Southwest Workforce Includes these counties: Calhoun, Columbia, Dallas, Hempstead, Howard, Lafayette, Little River, Miller, Nevada, Ouachita, Sevier, and Union						

**TABLE 8. WORKFORCE INFORMATION AREA, SUMMARY
EMPLOYMENT AND TOTAL EARNINGS, BY INDUSTRY
SECOND QUARTER 2007**

NORTH AMERICAN INDUSTRY CLASSIFICATION SYSTEM INDUSTRY GROUP	NUMBER OF EMPLOYING UNITS	EMPLOYMENT	EMPLOYMENT	EMPLOYMENT	TOTAL EARNINGS APRIL - JUNE 2007	AVERAGE WEEKLY EARNINGS
		APRIL	MAY	JUNE		
WEST CENTRAL WORKFORCE INFORMATION	8,275	111,596	111,439	110,644	\$787,887,140	\$544.90
Natural Resources & Mining	252	2,253	2,245	2,320	\$19,092,147	\$646.21
Construction	929	5,959	6,058	5,740	\$49,045,565	\$637.39
Trade, Transportation & Utilities	1,991	22,182	22,291	22,462	\$158,711,127	\$547.18
Financial Activities	887	4,090	4,123	4,165	\$32,420,508	\$604.43
Education & Health Services	1,144	15,601	15,618	15,646	\$118,614,893	\$584.07
Local Government	230	12,362	12,466	11,649	\$107,799,806	\$681.99
State Government	134	5,611	5,546	4,945	\$37,492,563	\$537.33
Other	2,708	43,538	43,092	43,717	\$264,710,531	\$468.65
West Central Workforce Includes these counties: Clark, Conway, Garland, Hot Spring, Johnson, Montgomery, Perry, Pike, Pope, and Yell						
WESTERN WORKFORCE INFORMATION	6,499	112,102	112,956	113,541	\$879,185,770	\$599.20
Natural Resources & Mining	180	3,136	3,119	3,130	\$39,605,171	\$973.86
Trade, Transportation & Utilities	1,640	23,027	23,132	23,289	\$161,852,052	\$537.82
Wholesale Trade	396	3,577	3,629	3,659	\$34,096,908	\$724.21
Other Trade, Transportation & Utilities	1,244	19,450	19,503	19,630	\$127,755,144	\$503.25
Financial Activities	682	3,943	3,983	4,024	\$33,678,623	\$650.38
Professional & Business Services	812	10,849	11,009	11,660	\$73,386,952	\$505.26
Education & Health Services	848	13,948	14,039	14,063	\$119,640,439	\$656.58
Leisure & Hospitality	510	8,310	8,540	8,702	\$24,208,437	\$218.64
Local & State Government	231	12,362	12,447	11,947	\$109,310,597	\$686.30
Other	1,596	36,527	36,687	36,726	\$317,503,499	\$666.45
Western Workforce Includes these counties: Crawford, Franklin, Logan, Polk, Scott, and Sebastian						