

Arkansas Covered Employment & Earnings

Jobs for People. People for Jobs.

DWS
Department of
WORKFORCE**Services**

2006 Annual

**COVERED EMPLOYMENT AND EARNINGS
STATE OF ARKANSAS
CALENDAR YEAR 2006**

**MIKE BEEBE, GOVERNOR
STATE OF ARKANSAS**

**ARTEE WILLIAMS, DIRECTOR
ARKANSAS DEPARTMENT OF WORKFORCE SERVICES**

**PUBLISHED BY
BUREAU OF LABOR STATISTICS PROGRAMS
ARKANSAS DEPARTMENT OF WORKFORCE SERVICES
POST OFFICE BOX 2981
LITTLE ROCK, ARKANSAS 72203-2981
BERNADETTE COLEMAN, BLS PROGRAMS MANAGER
TELEPHONE: (501) 682-3159**

STATE OF ARKANSAS HOME PAGE: <http://www.arkansas.gov>

**ARKANSAS DEPARTMENT OF WORKFORCE SERVICES
HOME PAGE: <http://www.arkansas.gov/esd/>**

**INTERNET SITE FOR LABOR MARKET INFORMATION:
<http://www.discover.arkansas.gov>**

RELEASED: JUNE 2008

TABLE OF CONTENTS

Description of Data	Page 1
Industry Classification	Page 1
Definition of Covered Employment and Earnings	Page 2
Federal Government Employment	Page 2
County Classification	Page 2
Significant Developments During Calendar Year 2005	Page 3

LIST OF GRAPHS AND TABLES

Graph 1	Total Covered Employment for Selected Years, Arkansas	Page 7
Graph 2	Total Covered Earnings, by Calendar Quarter for Selected Years, Arkansas	Page 8
Table 1	Quarterly Comparison of Covered Employment and Wages, by Industry	Page 5
Table 2	Total Covered Employment in Arkansas, 1998-2005	Page 6
Table 3	Total Covered Earnings, 1998-2005	Page 9
Table 4	Total Taxable Earnings, 1998-2005	Page 10
Table 5	State Summary - Employment and Total Earnings, by Industry, Calendar Year 2005	Page 11
Table 6	County Summary - Employment and Total Earnings, by Industry, Calendar Year 2005	Page 21
Table 7	Federal Government Employment and Total Earnings in Arkansas, Calendar Year 2005	Page 60
Table 8	Workforce Information Area – Employment and Total Earnings, by Industry, Calendar Year 2005	Page 61

EMPLOYMENT AND EARNINGS UNDER THE ARKANSAS EMPLOYMENT SECURITY LAW CALENDAR YEAR 2006

DESCRIPTION OF DATA

This publication contains covered employment and payroll data by industry and county for the Calendar Year 2006. These data are compiled from quarterly contribution and wage reports submitted by employers subject to the Arkansas Employment Security Law. An employing unit is a single physical location where business is conducted, production takes place, or services are provided. Employment data have been tabulated for each month of the quarter by industry under the **North American Industry Classification System** (NAICS) (see "Industry Classification" below) on a statewide, county and workforce area basis. Payroll data represent the total wages paid during the quarter, and are also shown by

industry for the State and by publishable industry groups for each county and workforce area. The tabulation of this data is a joint effort in conjunction with the U.S. Bureau of Labor Statistics. In addition, there are tables included which set out total covered employment by months, quarterly payrolls, and average weekly earnings for the years 1999 through 2006. Data contained in this publication are subject to revision. These revisions will be reflected in the 2007 First Quarter Covered Employment and Earnings publication. Because of industry code changes between years, substantial employment and wage shifts among industries are anticipated.

INDUSTRY CLASSIFICATION

Previously published industry data **will not** be comparable in all instances with currently published data since industry codes have been revised according to the following Manuals: (a) between January 1, 1958 and December 31, 1967, industry codes were assigned under the 1957 Standard Industrial Classification (SIC) Manual; (b) between January 1, 1968 and December 31, 1974, industry codes were assigned under the 1967 Standard Industrial Classification (SIC) Manual; (c) between January 1, 1975 and December 31, 1987, industry codes were assigned under the 1972 Standard Industrial Classification (SIC) Manual; (d) between January 1, 1988 and December 31, 2000, industry codes were assigned under the 1987 Standard Industrial Classification (SIC) Manual; and (e) since January 1, 2001, industry codes have been assigned under the 2002 North American Industry Classification System (NAICS) Manual. **The NAICS Manual represents a significant change in coding methodology as compared to the**

SIC Manual. One of the most significant changes involves how NAICS treats auxiliary units. Auxiliary units are establishments primarily engaged in performing management or support services for other establishments of the same enterprise. The SIC code for these units was based on the activity of the enterprise served. The NAICS code is based on the actual activities that the establishment performs. Comparisons of many industries **should not be made** between this publication and previous Covered Employment and Earnings publications that were based on SIC. Even though some titles are the same or similar, in nature, NAICS and SIC could differ in the classification of employers. The implementation of NAICS represents a profound change for statistical programs, and will create significant benefits along with transition obstacles for both data collectors and data users. A summary is available on the NAICS home page at <http://www.census.gov/naics>.

DEFINITION OF COVERED EMPLOYMENT AND EARNINGS

Covered Employment is the number of workers employed by employers subject to the Arkansas Employment Security Law who worked or received pay for the payroll period including the 12th of the month. An employer is subject to the law when they employ one or more employees in each of ten days during the current or preceding calendar year.

Currently excluded from coverage is employment covered by the Railroad Unemployment Insurance Act, some domestic service workers, employees of small agricultural establishments, self-employed and unpaid family workers, insurance and real estate

agents who are on commission only, and employees of churches and religious organizations except separately incorporated schools. The payroll information in this publication includes all wages and salaries paid to any covered employees by their employers including bonuses, commissions, and cash values of remuneration received in any medium other than cash. These wages include both taxable and nontaxable wages. Only the first \$10,000 paid to each worker by an employer in the calendar year is taxable under the Arkansas Employment Security Law.

FEDERAL GOVERNMENT EMPLOYMENT

Table 7 on page 60 lists the total number of civilians employed by the Federal Government in Arkansas during the Calendar Year 2006. Employment and wage data are set out by industry divisions. These data are obtained from required reports submitted by various

government agencies having employment in the State. Civilian Federal workers are covered by the Unemployment Compensation for Federal Employees (UCFE) program.

COUNTY CLASSIFICATION

Employment and payroll data by county are classified according to the county where the workers are employed. Employers with operations in more than one county are requested to furnish this agency with a breakdown of employment and wages for at least one quarter of each year by the counties in which they operate. Many such employers submit county data with each regular contribution report. **Note:** This information is invaluable in the preparation of monthly employment and payroll data by county.

Employment and payroll data for multi - area employers who do not furnish county data each quarter of the year, are prorated by county on the basis of one quarter of information. The "rest-of-state" table that appears on page 59 of this publication includes data on firms that **did not** provide a county breakdown of employment and payrolls. It also includes sales, and all other type of personnel with no permanent place of work, as well as employment of employers with no established place of business in Arkansas.

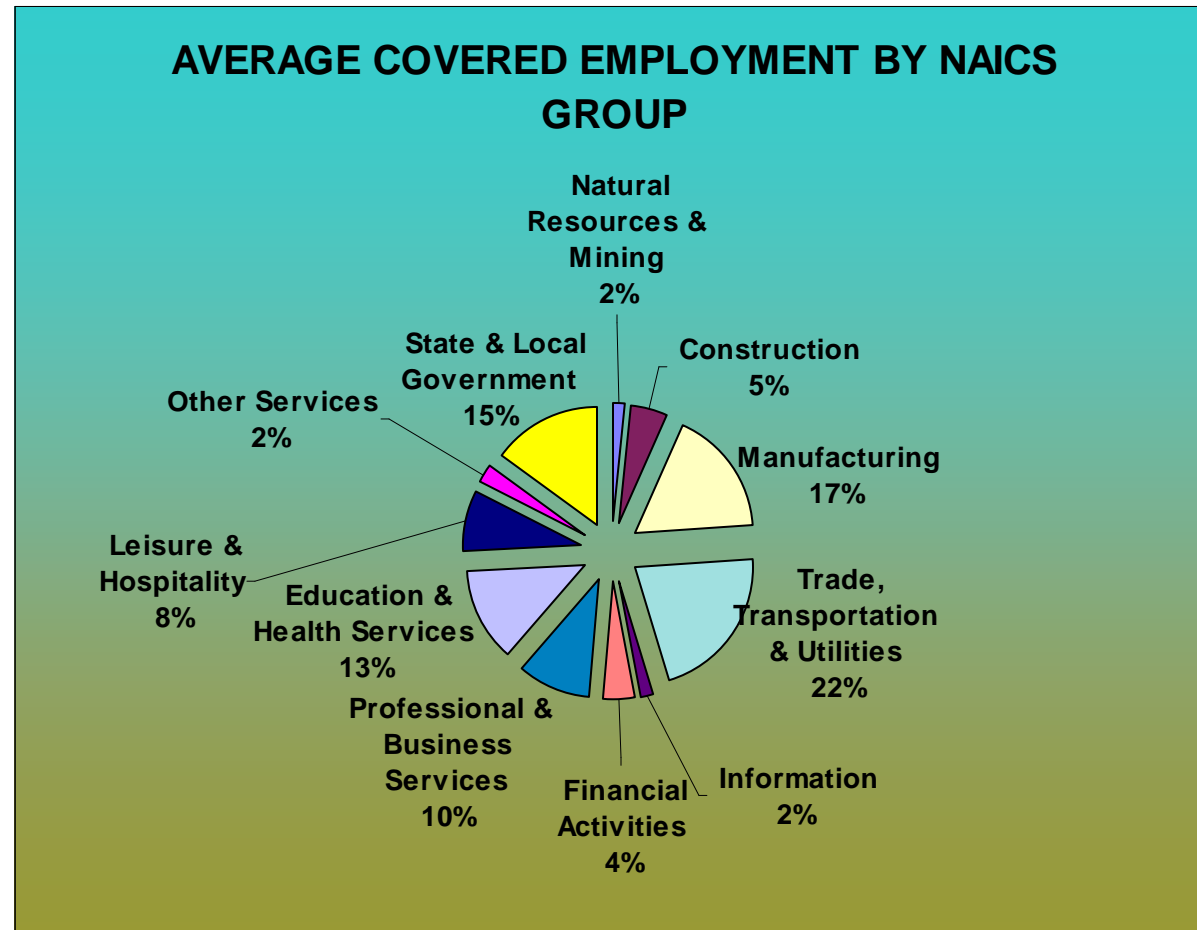
SIGNIFICANT DEVELOPMENTS DURING CALENDAR YEAR 2006

AVERAGE EMPLOYMENT CHANGES

Covered employment averaged 1,147,072 during the Calendar Year 2006 (see table 1), an increase of 20,201 (+1.79%) from the previous year and 38,418 from 2004. The sectors driving the three year increase are Education & Health Services (+4,818), State & Local Government (+10,527), Leisure & Hospitality (+3,360), and Trade, Transportation, & Utilities (+3,112).

Nine of the eleven major industries recorded gains over the year. Education & Health Services posted a gain in employment to 145,778, an increase of 4,818 jobs. Individual & Family Services (+2,903), Offices of Physicians (+501), and Nursing Care Facilities (+475) all contributed to the gain in employment. State & Local Government added 3,924 positions. Leisure & Hospitality gained 3,360, with most of the increase in Accommodations & Food Services (+3,209). Trade, Transportation, and Utilities rose by 3,112 jobs to 244,917. This increase can be contributed to gains in retail trade (+1,325), and transportation & warehousing (+1,227).

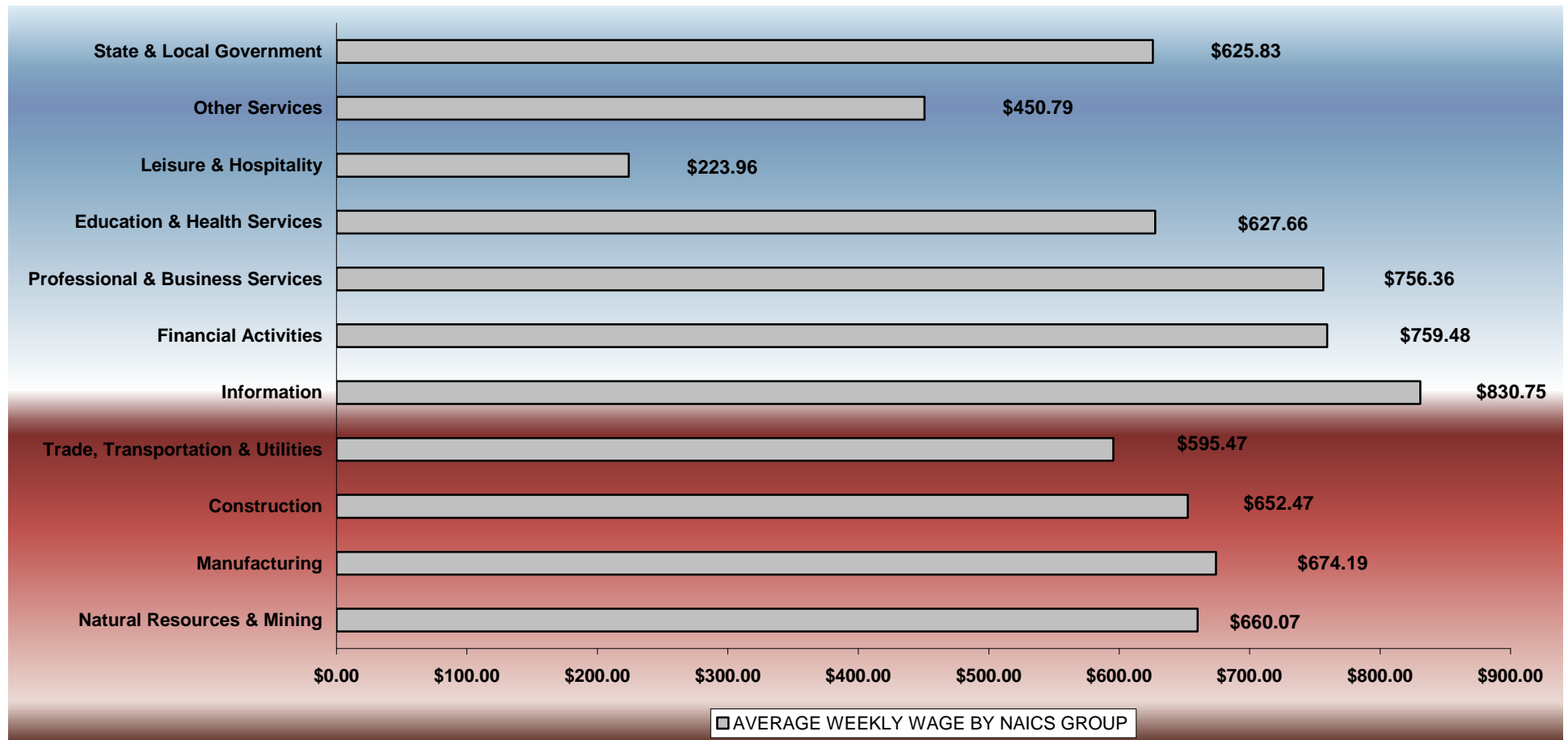
Two industries experienced losses this year. The most significant loss occurred in the Manufacturing industry (-2,175). This is a result of layoffs and the closing of factories. A slight decline occurred in Information (-132).



Pulaski ranked first among the counties in covered employment, averaging 238,413 during 2006. Benton County ranked second, averaging 92,686, followed by Washington County with 90,854. Sebastian and Craighead Counties averaged 73,184 and 41,331, respectively, to also rank among the top five counties.

AVERAGE WEEKLY EARNINGS

Wages paid to covered workers totaled \$36,639,836,671 for the Calendar Year 2006 (see table 1), for an average weekly wage of \$614.27 (see table 5). This represented an increase of \$21.26 from the level of \$593.01 recorded in 2005. Employees in Information recorded the highest yearly average weekly wage with \$830.75 while Leisure & Hospitality recorded the lowest at \$223.96.



Note: Because of industry code changes between years, substantial employment and wage shifts among industries are anticipated.

TABLE 1. YEARLY COMPARISON OF COVERED EMPLOYMENT AND WAGES, BY INDUSTRY

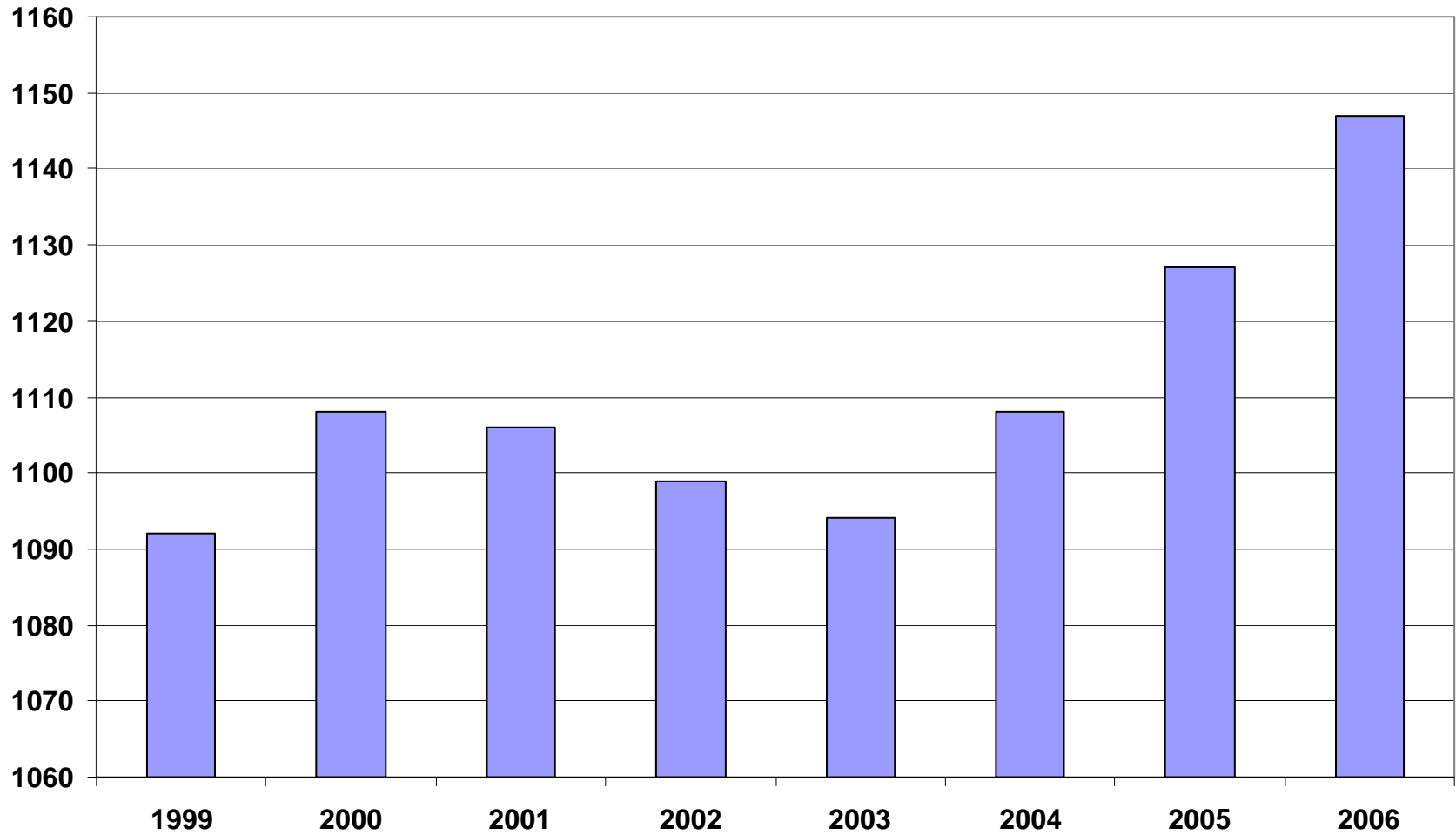
North American Industry Classification System Industry Group	Number of Employing Units	Average Covered Employment	% of Total Employment	Net Change From 2005	Total Earnings Calendar Year 2006	% of Total Wages	Average Weekly Earnings
Total	80,210	1,147,072	100.0%	20,201	\$36,639,836,671	100.0%	\$573.65
Natural Resources & Mining	2,360	18,550	1.6%	262	\$636,706,628	1.7%	\$560.26
Agriculture, Forestry, Fishing & Hunting	1,993	13,629	1.2%	-522	\$379,593,335	1.0%	\$494.40
Mining	367	4,921	0.4%	784	\$257,113,293	0.7%	\$806.72
Construction	7,922	56,956	5.0%	2,349	\$1,932,416,061	5.3%	\$589.15
Manufacturing	3,586	198,822	17.3%	-2,175	\$6,970,231,559	19.0%	\$639.55
Trade, Transportation & Utilities	20,862	244,917	21.4%	3,112	\$7,583,712,518	20.7%	\$550.75
Wholesale Trade	6,283	47,945	4.2%	343	\$2,322,852,004	6.3%	\$838.28
Retail Trade	11,259	133,228	11.6%	1,325	\$2,763,480,375	7.5%	\$375.20
Transportation & Warehousing	2,960	56,919	5.0%	1,227	\$2,073,855,795	5.7%	\$654.75
Utilities	360	6,825	0.6%	217	\$423,524,344	1.2%	\$1,172.56
Information	1,203	19,911	1.7%	-132	\$860,130,874	2.3%	\$745.30
Financial Activities	8,045	51,171	4.5%	1,404	\$2,020,895,233	5.5%	\$711.26
Finance & Insurance	4,731	36,949	3.2%	864	\$1,635,161,159	4.5%	\$799.03
Real Estate & Rental & Leasing	3,314	14,222	1.2%	540	\$385,734,074	1.1%	\$473.05
Professional & Business Services	10,837	114,217	10.0%	2,698	\$4,492,246,455	12.3%	\$700.79
Professional & Technical Services	6,839	37,182	3.2%	1,592	\$1,710,324,436	4.7%	\$846.39
Management of Companies & Enterprises	507	24,101	2.1%	551	\$1,708,859,416	4.7%	\$1,251.17
Administrative & Waste Services	3,491	52,934	4.6%	555	\$1,073,062,603	2.9%	\$339.71
Education & Health Services	10,651	145,778	12.7%	4,818	\$4,757,943,714	13.0%	\$599.11
Educational Services	553	9,058	0.8%	387	\$236,767,083	0.6%	\$484.27
Health Care & Social Assistance	10,098	136,720	11.9%	4,431	\$4,521,176,631	12.3%	\$606.25
Leisure & Hospitality	6,070	97,449	8.5%	3,360	\$1,134,905,363	3.1%	\$211.39
Arts, Entertainment & Recreation	920	9,420	0.8%	151	\$145,526,243	0.4%	\$266.28
Accommodation & Food Services	5,150	88,029	7.7%	3,209	\$989,379,120	2.7%	\$205.26
Other Services	5,475	25,845	2.3%	580	\$605,839,820	1.7%	\$428.54
State & Local Government	3,199	173,456	15.1%	3,924	\$5,644,808,446	15.4%	\$1,192.55
Local Government	2,002	111,286	9.7%	2,043	\$3,382,482,377	9.2%	\$533.46
State Government	1,197	62,170	5.4%	1,881	\$2,262,326,069	6.2%	\$659.10
Nonclassifiable Establishments	0	0	0.0%	0	\$0	0.0%	\$0.00

Note: Items do not necessarily add to totals because of rounding. Because of industry code changes between years, substantial employment and wage shifts among industries are anticipated.

TABLE 2. TOTAL COVERED EMPLOYMENT IN ARKANSAS

Period	1999	2000	2001	2002	2003	2004	2005	2006
Average	1,092,351	1,108,490	1,106,053	1,098,558	1,094,087	1,108,273	1,126,870	1,147,072
January	1,065,920	1,089,956	1,096,009	1,081,635	1,082,740	1,089,510	1,102,770	1,130,707
February	1,074,315	1,096,126	1,101,616	1,086,793	1,084,880	1,094,626	1,110,579	1,136,924
March	1,084,653	1,109,157	1,112,143	1,098,500	1,092,172	1,105,266	1,122,621	1,150,551
April	1,093,574	1,111,543	1,115,526	1,103,399	1,095,341	1,111,020	1,129,797	1,155,521
May	1,098,539	1,116,779	1,119,815	1,111,998	1,103,099	1,117,144	1,135,580	1,159,912
June	1,101,748	1,121,245	1,119,734	1,112,028	1,099,688	1,117,010	1,136,132	1,162,056
July	1,062,563	1,075,096	1,071,830	1,065,697	1,053,220	1,071,473	1,090,092	1,106,461
August	1,081,260	1,096,841	1,094,068	1,086,011	1,077,775	1,094,886	1,114,123	1,131,153
September	1,108,212	1,123,735	1,115,996	1,113,148	1,105,980	1,122,724	1,144,840	1,160,131
October	1,110,604	1,122,884	1,110,994	1,108,447	1,112,550	1,123,260	1,142,394	1,156,842
November	1,112,003	1,120,620	1,109,012	1,107,611	1,109,712	1,125,081	1,145,899	1,156,051
December	1,114,823	1,117,892	1,105,887	1,107,425	1,111,892	1,127,271	1,147,617	1,158,549

AVERAGE TOTAL COVERED EMPLOYMENT GRAPH 1
In Thousands



TOTAL COVERED EARNINGS BY CALENDAR QUARTER, GRAPH 2
In Thousands

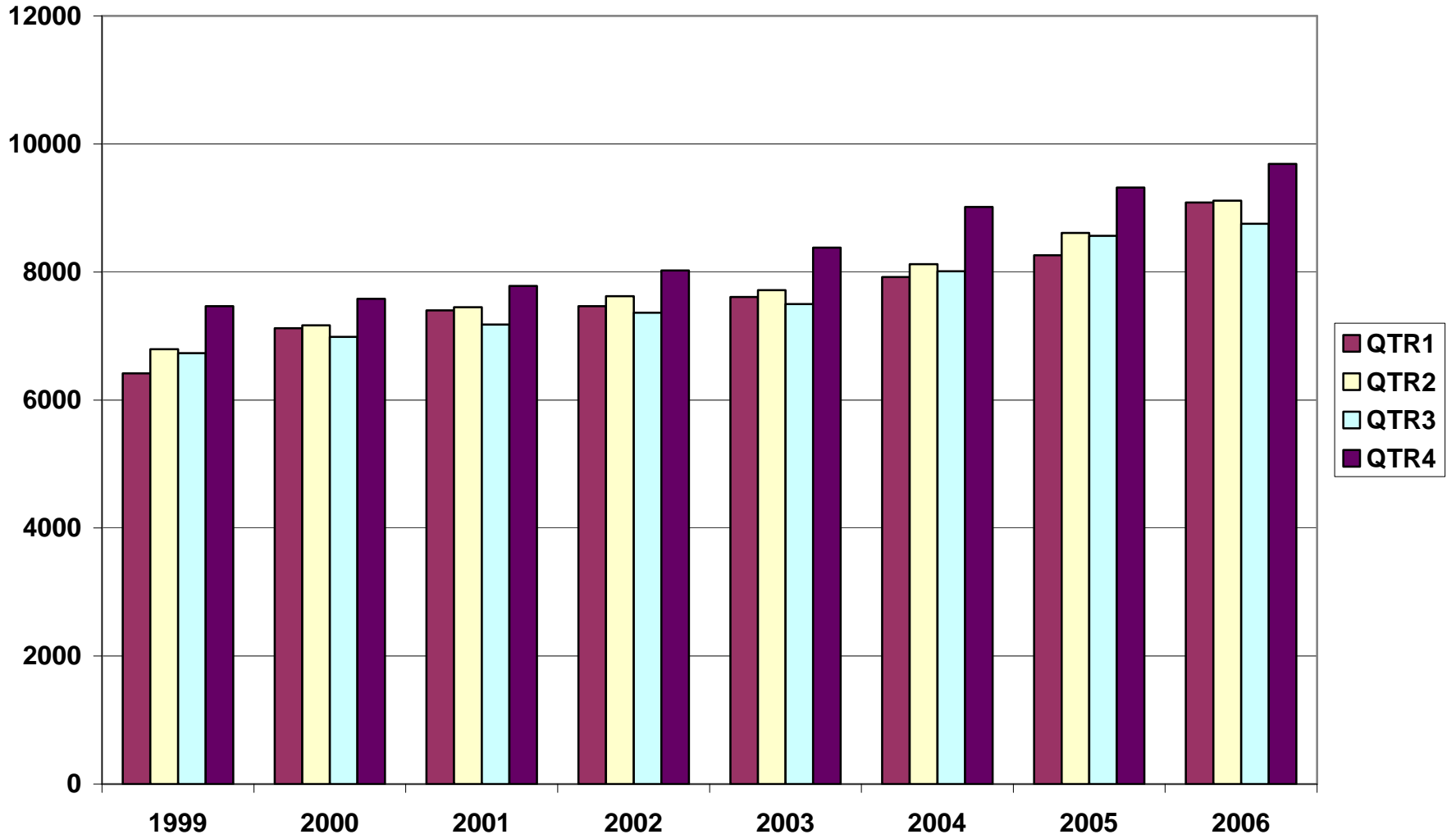


TABLE 3. TOTAL COVERED EARNINGS, 1999 - 2006

Period	1999	2000	2001	2002
Total	27,407,925,462	28,853,825,155	29,807,669,666	30,472,854,103
January - March	6,418,456,638	7,122,666,917	7,398,887,532	7,465,250,305
April - June	6,791,960,679	7,166,110,114	7,448,023,298	7,621,878,775
July - September	6,733,480,079	6,986,103,157	7,177,293,061	7,361,666,511
October - December	7,464,028,066	7,578,944,967	7,783,465,775	8,024,058,512
Average Weekly Earnings	482.51	500.57	518.26	535.62

Period	2003	2004	2005	2006
Total	31,202,576,767	33,068,302,933	34,748,658,215	36,639,836,671
January - March	7,608,130,008	7,918,843,610	8,261,160,581	9,085,903,803
April - June	7,714,813,038	8,122,370,361	8,607,765,828	9,112,836,787
July - September	7,500,204,764	8,010,367,094	8,562,914,149	8,753,099,690
October - December	8,379,428,957	9,016,721,868	9,316,817,657	9,687,996,391
Average Weekly Earnings	548.45	573.80	593.01	614.27

TABLE 4. TOTAL TAXABLE EARNINGS, 1999 - 2006

Period	1999	2000	2001	2002
Total	8,807,445,422	9,048,033,534	9,003,189,480	8,887,270,978
January - March	4,203,067,856	4,560,814,012	4,670,296,360	4,668,534,587
April - June	2,325,649,764	2,260,741,187	2,219,485,263	2,162,971,435
July - September	1,267,562,743	1,250,850,348	1,190,098,737	1,158,197,858
October - December	1,011,165,059	975,627,987	923,309,120	897,567,098

Period	2003	2004	2005	2006
Total	9,154,938,743	9,731,263,681	9,987,286,576	10,198,120,473
January - March	4,737,918,796	4,931,559,230	5,061,418,525	5,421,204,601
April - June	2,270,519,362	2,451,454,749	2,506,471,437	2,385,187,226
July - September	1,188,681,170	1,318,017,835	1,353,696,885	1,315,626,582
October - December	957,819,415	1,030,231,867	1,065,699,729	1,076,102,064

**TABLE 5. STATEWIDE SUMMARY
EMPLOYMENT AND TOTAL EARNINGS, BY INDUSTRY
CALENDAR YEAR 2006**

NORTH AMERICAN INDUSTRY CLASSIFICATION SYSTEM INDUSTRY GROUPS	AVERAGE EMPLOYING UNITS	AVERAGE COVERED EMPLOYMENT	TOTAL EARNINGS	AVERAGE WEEKLY EARNINGS
TOTAL, ALL INDUSTRIES	80,193	1,139,831	\$35,987,697,874	\$607.17
NATURAL RESOURCES & MINING	2,360	18,550	\$636,698,898	\$660.07
AGRICULTURE, FORESTRY, FISHING & HUNTING	1,993	13,629	\$379,585,605	\$535.60
CROP PRODUCTION	721	3,721	\$79,706,136	\$411.94
Oilseed and Grain Farming	424	1,870	\$39,573,539	\$406.97
Vegetable and Melon Farming	12	183	\$2,391,421	\$251.31
Fruit and Tree Nut Farming	9	87	\$1,475,140	\$326.07
Greenhouse & Nursery Production	50	342	\$8,501,835	\$478.06
Other Crop Farming	227	1,239	\$27,764,201	\$430.93
ANIMAL PRODUCTION	255	3,656	\$115,586,201	\$607.99
Cattle Ranching and Farming	74	314	\$9,099,720	\$557.31
Hog and Pig Farming	8	145	\$5,536,731	\$734.31
Poultry and Egg Production	84	2,561	\$84,182,416	\$632.13
Animal Aquaculture	60	555	\$14,982,927	\$519.16
Other Animal Production	29	81	\$1,784,407	\$423.65
FORESTRY AND LOGGING	559	3,022	\$87,774,470	\$558.56
Timber Tract Operations	45	256	\$9,137,204	\$686.39
Forest Nurseries & Gathering of Forest Products	6	32	\$1,104,668	\$663.86
Logging	508	2,734	\$77,532,598	\$545.36
OTHER	457	3,231	\$96,518,798	\$574.48
MINING	367	4,921	\$257,113,293	\$1,004.77
OIL AND GAS EXTRACTION	85	433	\$25,029,559	\$1,111.63
MINING (EXCEPT OIL AND GAS)	103	2,053	\$90,337,644	\$846.21
SUPPORT ACTIVITIES FOR MINING	179	2,435	\$141,746,090	\$1,119.46
CONSTRUCTION	7,922	56,956	\$1,932,416,061	\$652.47
CONSTRUCTION OF BUILDINGS	2,239	13,211	\$486,550,973	\$708.25
Residential Building Construction	1,630	4,691	\$142,383,441	\$583.70
Nonresidential Building Construction	609	8,520	\$344,167,532	\$776.83
HEAVY & CIVIL ENGINEERING CONSTRUCTION	893	10,559	\$391,908,417	\$713.77
Utility System Construction	422	4,875	\$173,203,196	\$683.25
Land Subdivision	138	499	\$20,493,099	\$789.78
Highway, Street & Bridge Construction	221	3,658	\$127,772,573	\$671.72
Other Heavy Construction	113	1,527	\$70,439,549	\$887.10
SPECIALTY TRADE CONTRACTORS	4,790	33,186	\$1,053,956,671	\$610.75

**TABLE 5. STATEWIDE SUMMARY
EMPLOYMENT AND TOTAL EARNINGS, BY INDUSTRY
CALENDAR YEAR 2006**

NORTH AMERICAN INDUSTRY CLASSIFICATION SYSTEM INDUSTRY GROUPS	AVERAGE EMPLOYING UNITS	AVERAGE COVERED EMPLOYMENT	TOTAL EARNINGS	AVERAGE WEEKLY EARNINGS
Building Foundation & Exterior Contractors	953	6,601	\$194,780,400	\$567.46
Building Equipment Contractors	2,097	15,942	\$554,514,580	\$668.91
Building Finishing Contractors	897	5,264	\$148,015,559	\$540.74
Other Specialty Trade Contractors	843	5,379	\$156,646,132	\$560.03
MANUFACTURING	3,586	198,822	\$6,970,227,207	\$674.19
FOOD MANUFACTURING	320	50,999	\$1,401,506,180	\$528.48
Animal Food Manufacturing	58	1,414	\$53,680,869	\$730.07
Grain and Oilseed Milling	30	2,397	\$82,433,587	\$661.35
Fruit, Vegetable & Specialty Food	35	6,949	\$225,325,395	\$623.57
Dairy Product Manufacturing	13	716	\$26,048,109	\$699.62
Animal Slaughtering & Processing	92	34,169	\$842,468,621	\$474.15
Bakeries and Tortilla Manufacturing	53	3,393	\$107,470,002	\$609.12
Other Food Manufacturing	25	1,725	\$59,882,007	\$667.58
Other	14	235	\$4,197,590	\$343.50
BEVERAGE & TOBACCO PRODUCT MFG.	36	1,244	\$48,274,831	\$746.27
TEXTILE MILLS	20	408	\$17,262,742	\$813.67
Fabric Mills	6	324	\$15,247,613	\$905.01
Textile & Fabric Finishing Mills	13	84	\$2,015,129	\$461.34
TEXTILE PRODUCT MILLS	57	1,297	\$47,097,138	\$698.31
APPAREL MANUFACTURING	45	1,837	\$37,677,767	\$394.43
Cut & Sew Apparel Manufacturing	36	855	\$16,765,607	\$377.09
Other	9	981	\$20,912,160	\$409.95
LEATHER & ALLIED PRODUCT MANUFACTURING	20	2,062	\$46,473,838	\$433.43
Footwear Manufacturing	10	1,850	\$39,880,399	\$414.56
Other Leather Product Manufacturing	10	212	\$6,593,439	\$598.10
WOOD PRODUCT MANUFACTURING	391	13,675	\$434,262,513	\$610.69
Sawmills and Wood Preservation	178	6,166	\$209,745,321	\$654.16
Veneer & Engineered Wood Products	47	3,229	\$117,167,026	\$697.80
Other Wood Product Manufacturing	166	4,280	\$107,350,166	\$482.34
PAPER MANUFACTURING	86	11,723	\$609,402,108	\$999.68
Pulp, Paper & Paperboard Mills	12	4,600	\$313,699,456	\$1,311.45
Converted Paper Product Manufacturing	74	7,123	\$295,702,652	\$798.34
PRINTING & RELATED SUPPORT ACTIVITIES	299	4,623	\$162,629,017	\$676.50
PETROLEUM AND COAL PRODUCTS MFG.	20	901	\$48,599,598	\$1,037.30
CHEMICAL MANUFACTURING	108	4,652	\$232,459,159	\$960.96

**TABLE 5. STATEWIDE SUMMARY
EMPLOYMENT AND TOTAL EARNINGS, BY INDUSTRY
CALENDAR YEAR 2006**

NORTH AMERICAN INDUSTRY CLASSIFICATION SYSTEM INDUSTRY GROUPS	AVERAGE EMPLOYING UNITS	AVERAGE COVERED EMPLOYMENT	TOTAL EARNINGS	AVERAGE WEEKLY EARNINGS
Basic Chemical Manufacturing	27	1,945	\$111,404,771	\$1,101.49
Resin, Rubber & Artificial Fibers	5	302	\$16,240,101	\$1,034.14
Agricultural Chemical Manufacturing	16	347	\$16,600,488	\$920.00
Pharmaceutical & Medicine Manufacturing	13	127	\$4,446,684	\$673.33
Paint, Coating & Adhesive Manufacturing	8	180	\$9,948,572	\$1,062.88
Cleaning Compound & Toiletry Manufacturing	15	811	\$33,945,926	\$804.94
Other Chemical Preparation Manufacturing	26	940	\$39,872,617	\$815.72
PLASTICS & RUBBER PRODUCTS MFG.	171	13,035	\$490,558,846	\$723.73
Plastics Product Manufacturing	128	7,860	\$262,205,195	\$641.53
Rubber Product Manufacturing	44	5,174	\$228,353,651	\$848.75
NONMETALLIC MINERAL PRODUCT MFG.	250	4,630	\$170,083,356	\$706.44
Clay Product & Refractory Manufacturing	16	451	\$16,435,371	\$700.81
Glass & Glass Product Manufacturing	14	410	\$14,147,864	\$663.60
Cement & Concrete Product Manufacturing	179	2,807	\$99,059,876	\$678.66
Lime & Gypsum Product Manufacturing	4	426	\$19,769,426	\$892.44
Other Nonmetallic Mineral Products	37	536	\$20,670,819	\$741.63
PRIMARY METAL MANUFACTURING	66	8,319	\$423,454,407	\$978.89
Iron & Steel Mills and Ferroalloys	9	2,129	\$174,764,727	\$1,578.61
Purchased Steel Product Manufacturing	13	2,423	\$98,367,922	\$780.72
Alumina & Aluminum Production	19	1,827	\$81,071,426	\$853.35
Other Nonferrous Metal Production	10	589	\$20,717,077	\$676.41
Foundries	15	1,352	\$48,533,255	\$690.33
FABRICATED METAL PRODUCT MANUFACTURING	575	17,904	\$672,295,137	\$722.12
Forging & Stamping	14	927	\$31,337,064	\$650.09
Cutlery & Hand Tool Manufacturing	17	1,388	\$48,751,925	\$675.46
Architectural & Structural Metals	202	5,161	\$199,961,650	\$745.09
Boilers, Tanks & Shipping Containers	20	1,106	\$42,002,281	\$730.32
Hardware Manufacturing	9	286	\$8,457,001	\$568.65
Spring & Wire Product Manufacturing	16	719	\$20,610,435	\$551.26
Machine Shops & Threaded Products	196	1,833	\$62,004,280	\$650.51
Coating, Engraving & Heat Treating Metals	37	867	\$26,882,900	\$596.28
Other Fabricated Metal Product Manufacturing	65	5,617	\$232,287,601	\$795.28
MACHINERY MANUFACTURING	254	14,613	\$509,089,251	\$669.96
Agri., Construction & Mining Machinery	37	3,004	\$72,037,035	\$461.16
Commercial & Service Industry Machinery	27	984	\$40,430,707	\$790.16

**TABLE 5. STATEWIDE SUMMARY
EMPLOYMENT AND TOTAL EARNINGS, BY INDUSTRY
CALENDAR YEAR 2006**

NORTH AMERICAN INDUSTRY CLASSIFICATION SYSTEM INDUSTRY GROUPS	AVERAGE EMPLOYING UNITS	AVERAGE COVERED EMPLOYMENT	TOTAL EARNINGS	AVERAGE WEEKLY EARNINGS
HVAC & Commercial Refrigeration Equipment	24	5,151	\$194,024,973	\$724.37
Metalworking Machinery Manufacturing	75	1,297	\$52,794,943	\$782.80
Other General Purpose Machinery Manufacturing	56	3,204	\$112,265,714	\$673.83
Other	35	972	\$37,535,879	\$742.64
COMPUTER & ELECTRONIC PRODUCT MFG.	82	5,717	\$196,969,535	\$662.56
Audio & Video Equipment Manufacturing	11	1,375	\$43,553,881	\$609.15
Semiconductors & Electronic Components	25	2,236	\$77,276,403	\$664.62
Electronic Instrument Manufacturing	31	1,215	\$37,112,464	\$587.41
Other	16	891	\$39,026,787	\$842.33
ELECTRICAL EQUIPMENT & APPLIANCES	72	12,083	\$455,429,821	\$724.84
Electrical Equipment Manufacturing	24	4,915	\$188,372,536	\$737.04
Other	48	7,167	\$267,057,285	\$716.58
TRANSPORTATION EQUIPMENT MANUFACTURING	172	16,861	\$601,079,896	\$685.56
Motor Vehicle Body & Trailer Manufacturing	43	3,852	\$129,715,057	\$647.59
Motor Vehicle Parts Manufacturing	57	6,479	\$203,568,437	\$604.23
Aerospace Product & Parts Manufacturing	28	3,430	\$169,785,315	\$951.92
Ship & Boat Building	26	1,695	\$47,084,562	\$534.20
Other	18	1,405	\$50,926,525	\$697.05
FURNITURE & RELATED PRODUCT MFG.	274	6,471	\$193,931,799	\$576.33
Household & Institutional Furniture	225	4,301	\$124,008,461	\$554.47
Office Furniture & Fixtures Manufacturing	40	2,029	\$66,421,115	\$629.54
Other Furniture Related Product Manufacturing	8	142	\$3,502,223	\$474.30
MISCELLANEOUS MANUFACTURING	272	5,769	\$171,690,268	\$572.32
Medical Equipment & Supplies Manufacturing	98	2,641	\$82,672,823	\$601.99
Other Miscellaneous Manufacturing	174	3,128	\$89,017,445	\$547.27
TRADE, TRANSPORTATION & UTILITIES	20,862	244,917	\$7,580,473,276	\$595.22
WHOLESALE TRADE	6,283	47,945	\$2,322,852,004	\$931.70
MERCHANT WHOLESALERS, DURABLE GOODS	2,101	22,246	\$960,273,150	\$830.12
Motor Vehicle & Part Merchant Wholesalers	236	2,749	\$100,672,067	\$704.26
Furniture & Furnishing Merchant Wholesalers	66	439	\$20,016,400	\$876.84
Lumber & Supply Merchant Wholesalers	175	1,854	\$75,026,651	\$778.22
Commercial Goods Merchant Wholesalers	245	2,551	\$147,276,696	\$1,110.25
Metal & Mineral Merchant Wholesalers	50	794	\$35,194,345	\$852.41
Electric Goods Merchant Wholesalers	176	2,176	\$101,189,375	\$894.28
Hardware & Plumbing Merchant Wholesalers	224	2,492	\$108,857,590	\$840.05

**TABLE 5. STATEWIDE SUMMARY
EMPLOYMENT AND TOTAL EARNINGS, BY INDUSTRY
CALENDAR YEAR 2006**

NORTH AMERICAN INDUSTRY CLASSIFICATION SYSTEM INDUSTRY GROUPS	AVERAGE EMPLOYING UNITS	AVERAGE COVERED EMPLOYMENT	TOTAL EARNINGS	AVERAGE WEEKLY EARNINGS
Machinery & Supply Merchant Wholesalers	691	7,301	\$302,132,112	\$795.81
Misc. Durable Goods Merchant Wholesalers	239	1,892	\$69,907,914	\$710.56
MERCHANT WHOLESALERS, NONDURABLE GOODS	1,294	16,524	\$659,471,260	\$767.50
Paper & Paper Product Merchant Wholesalers	73	1,164	\$46,142,068	\$762.33
Druggists' Goods Merchant Wholesalers	56	1,211	\$52,316,649	\$830.79
Apparel & Piece Goods Merchant Wholesalers	40	461	\$15,071,814	\$628.73
Grocery Product Merchant Wholesalers	348	5,233	\$235,819,642	\$866.61
Farm Product Merchant Wholesalers	78	861	\$21,673,932	\$484.10
Chemical Merchant Wholesalers	82	478	\$22,953,593	\$923.46
Petroleum Merchant Wholesalers	154	1,479	\$68,635,236	\$892.43
Alcoholic Beverage Merchant Wholesalers	38	1,130	\$49,313,943	\$839.24
Misc. Nondurable Goods Merchant Wholesalers	426	4,508	\$147,544,383	\$629.41
ELECTRONIC MARKETS & AGENTS & BROKERS	2,888	9,174	\$703,107,594	\$1,473.87
RETAIL TRADE	11,259	133,228	\$2,760,241,133	\$398.43
MOTOR VEHICLE & PARTS DEALERS	1,731	17,933	\$601,308,019	\$644.82
Automobile Dealers	744	10,695	\$412,203,167	\$741.19
Other Motor Vehicle Dealers	195	1,548	\$50,481,823	\$627.13
Automotive Parts, Accessories & Tire Stores	792	5,690	\$138,623,029	\$468.51
FURNITURE & HOME FURNISHINGS STORES	602	4,137	\$107,564,293	\$500.01
Furniture Stores	319	2,564	\$66,402,051	\$498.04
Home Furnishings Stores	284	1,572	\$41,162,242	\$503.55
ELECTRONICS & APPLIANCE STORES	453	3,002	\$73,407,376	\$470.25
BUILDING MATERIAL & GARDEN SUPPLY STORES	838	11,344	\$288,906,815	\$489.77
Building Material & Supplies Dealers	664	10,459	\$269,374,707	\$495.29
Lawn & Garden Equipment & Supplies Stores	174	885	\$19,532,108	\$424.43
FOOD & BEVERAGE STORES	1,104	18,560	\$294,927,932	\$305.59
Grocery Stores	630	16,137	\$248,919,157	\$296.64
Specialty Food Stores	163	918	\$21,687,725	\$454.33
Beer, Wine & Liquor Stores	311	1,505	\$24,321,050	\$310.77
HEALTH & PERSONAL CARE STORES	810	6,919	\$191,935,853	\$533.47
GASOLINE STATIONS	1,618	12,586	\$171,550,916	\$262.12
Gasoline Stations with Convenience Stores	1,494	11,748	\$148,866,121	\$243.68
Other Gasoline Stations	184	1,357	\$22,684,795	\$321.48
CLOTHING & CLOTHING ACCESSORIES STORES	1,072	8,816	\$120,232,559	\$262.27
Clothing Stores	720	6,669	\$80,746,990	\$232.84

**TABLE 5. STATEWIDE SUMMARY
EMPLOYMENT AND TOTAL EARNINGS, BY INDUSTRY
CALENDAR YEAR 2006**

NORTH AMERICAN INDUSTRY CLASSIFICATION SYSTEM INDUSTRY GROUPS	AVERAGE EMPLOYING UNITS	AVERAGE COVERED EMPLOYMENT	TOTAL EARNINGS	AVERAGE WEEKLY EARNINGS
Shoe Stores	182	1,199	\$17,021,100	\$273.00
Jewelry, Luggage & Leather Goods Stores	171	948	\$22,464,469	\$455.71
SPORTING GOODS, HOBBY, BOOK & MUSIC STORES	581	4,550	\$65,709,659	\$277.72
Sporting Goods & Musical Instrument Stores	422	3,088	\$48,377,266	\$301.27
Book, Periodical & Music Stores	160	1,462	\$17,332,393	\$227.99
GENERAL MERCHANDISE STORES	705	36,772	\$666,984,505	\$348.81
MISCELLANEOUS STORE RETAILERS	1,422	6,683	\$124,693,476	\$358.81
Florists	269	1,010	\$14,893,269	\$283.57
Office Supplies, Stationery & Gift Stores	389	2,461	\$47,135,242	\$368.32
Used Merchandise Stores	217	773	\$14,627,110	\$363.89
Other Miscellaneous Store Retailers	548	2,439	\$48,037,855	\$378.76
NONSTORE RETAILERS	324	1,925	\$53,019,730	\$529.67
Electronic Shopping & Mail -Order Houses	65	370	\$12,752,908	\$662.83
Vending Machine Operators	83	705	\$16,406,108	\$447.52
Direct Selling Establishments	176	849	\$23,860,714	\$540.47
TRANSPORTATION & WAREHOUSING	2,960	56,919	\$2,073,855,795	\$700.68
AIR TRANSPORTATION	48	951	\$50,727,108	\$1,025.78
TRUCK TRANSPORTATION	1,980	35,912	\$1,347,575,150	\$721.62
General Freight Trucking	1,246	30,840	\$1,176,586,721	\$733.68
Specialized Freight Trucking	734	5,072	\$170,988,429	\$648.31
TRANSIT & GROUND PASSENGER TRANS.	57	1,001	\$16,672,219	\$320.30
Taxi & Limousine Service	18	229	\$2,955,846	\$248.22
School & Employee Bus Transportation	8	390	\$7,422,978	\$366.02
Charter Bus Industry Service	8	93	\$1,808,694	\$374.01
Other Ground Passenger Transportation	17	193	\$2,998,481	\$298.77
Other	8	96	\$1,486,220	\$297.72
PIPELINE TRANSPORTATION	65	922	\$48,510,126	\$1,011.81
SUPPORT ACTIVITIES FOR TRANSPORTATION	431	4,933	\$196,952,129	\$767.80
Support Activities for Air Transportation	107	1,652	\$57,892,509	\$673.92
Support Activities for Rail Transportation	31	408	\$13,361,202	\$629.77
Support Activities for Water Transportation	29	665	\$28,695,684	\$829.83
Support Activities for Road Transportation	105	505	\$12,104,214	\$460.94
Freight Transportation Arrangement	136	1,542	\$80,371,692	\$1,002.34
Other Support Activities for Transportation	25	162	\$4,526,828	\$537.37
COURIERS & MESSENGERS	142	3,287	\$117,906,292	\$689.82

**TABLE 5. STATEWIDE SUMMARY
EMPLOYMENT AND TOTAL EARNINGS, BY INDUSTRY
CALENDAR YEAR 2006**

NORTH AMERICAN INDUSTRY CLASSIFICATION SYSTEM INDUSTRY GROUPS	AVERAGE EMPLOYING UNITS	AVERAGE COVERED EMPLOYMENT	TOTAL EARNINGS	AVERAGE WEEKLY EARNINGS
Couriers	88	3,043	\$111,945,904	\$707.46
Local Messengers & Local Delivery	55	244	\$5,960,388	\$469.77
WAREHOUSING & STORAGE	213	9,675	\$287,952,473	\$572.36
OTHER	24	238	\$7,560,298	\$610.88
UTILITIES	360	6,825	\$423,524,344	\$1,193.36
Power Generation & Supply	162	5,045	\$341,435,281	\$1,301.50
Natural Gas Distribution	34	957	\$58,863,826	\$1,182.86
Water, Sewage and Other Systems	164	822	\$23,225,237	\$543.36
INFORMATION	1,203	19,911	\$860,130,874	\$830.75
PUBLISHING INDUSTRIES, EXCEPT INTERNET	248	6,342	\$196,019,860	\$594.39
Newspaper, Book & Directory Publishers	219	6,078	\$181,221,479	\$573.38
Software Publishers	29	265	\$14,798,381	\$1,073.90
MOTION PICTURE & SOUND RECORDING INDUSTRY	138	1,193	\$21,186,242	\$341.52
Motion Picture & Video Industries	123	1,157	\$19,900,840	\$330.78
Sound Recording Industries	16	36	\$1,285,402	\$686.65
BROADCASTING, EXCEPT INTERNET	141	2,072	\$69,599,441	\$645.97
Radio & Television Broadcasting	133	2,036	\$68,766,110	\$649.52
Cable & Other Subscription Programming	8	36	\$833,331	\$445.16
TELECOMMUNICATIONS	489	8,868	\$501,885,529	\$1,088.37
Wired Telecommunications Carriers	215	3,150	\$218,331,014	\$1,332.91
Wireless Telecommunications Carriers	119	3,956	\$214,381,299	\$1,042.14
Cable & Other Program Distribution	88	1,263	\$47,571,442	\$724.34
Other	67	499	\$21,601,774	\$832.50
ISPS, SEARCH PORTALS, & DATA PROCESSING	150	1,137	\$61,928,567	\$1,047.44
ISPs, & Web Search Portals	65	166	\$6,649,046	\$770.28
Data Processing & Related Services	85	971	\$55,279,521	\$1,094.82
OTHER	37	300	\$9,511,235	\$609.69
FINANCIAL ACTIVITIES	8,045	51,171	\$2,020,895,233	\$759.48
FINANCE & INSURANCE	4,731	36,949	\$1,635,161,159	\$851.05
CREDIT INTERMEDIATION & RELATED ACTIVITIES	2,036	21,919	\$807,847,126	\$708.77
Depository Credit Intermediation	1,324	18,278	\$650,778,600	\$684.70
Nondepository Credit Intermediation	396	2,606	\$123,535,708	\$911.62
Activities Related to Credit Intermediation	316	1,035	\$33,532,818	\$623.05
FINANCIAL INVESTMENT & RELATED ACTIVITIES	573	3,059	\$277,872,886	\$1,746.88
Security & Commodity Investment Activities	321	2,308	\$234,002,203	\$1,949.76

**TABLE 5. STATEWIDE SUMMARY
EMPLOYMENT AND TOTAL EARNINGS, BY INDUSTRY
CALENDAR YEAR 2006**

NORTH AMERICAN INDUSTRY CLASSIFICATION SYSTEM INDUSTRY GROUPS	AVERAGE EMPLOYING UNITS	AVERAGE COVERED EMPLOYMENT	TOTAL EARNINGS	AVERAGE WEEKLY EARNINGS
Other Financial Investment Activities	252	751	\$43,870,683	\$1,123.39
INSURANCE CARRIERS & RELATED ACTIVITIES	2,083	11,515	\$531,829,473	\$888.19
Insurance Carriers	403	4,744	\$245,787,771	\$996.35
Insurance Agencies, Brokerages & Support	1,681	6,771	\$286,041,702	\$812.41
OTHER	39	456	\$17,611,674	\$742.73
REAL ESTATE & RENTAL & LEASING	3,314	14,222	\$385,734,074	\$521.58
REAL ESTATE	2,497	8,936	\$247,648,944	\$532.95
Lessors of Real Estate	1,048	4,365	\$109,320,141	\$481.63
Offices of Real Estate Agents & Brokers	851	2,180	\$69,157,317	\$610.07
Activities Related to Real Estate	599	2,391	\$69,171,486	\$556.34
RENTAL & LEASING SERVICES	791	5,209	\$133,308,893	\$492.15
Automotive Equipment Rental & Leasing	127	1,000	\$28,233,709	\$542.96
Consumer Goods Rental	484	3,176	\$63,976,176	\$387.38
General Rental Centers	35	245	\$7,518,762	\$590.17
Machinery & Equipment Rental & Leasing	145	788	\$33,580,246	\$819.51
LESSORS OF NONFINANCIAL INTANGIBLE ASSETS	26	78	\$4,776,237	\$1,177.57
PROFESSIONAL & BUSINESS SERVICES	10,837	114,217	\$4,492,246,455	\$756.36
PROFESSIONAL & TECHNICAL SERVICES	6,839	37,182	\$1,710,324,436	\$884.59
Legal Services	1,650	6,687	\$299,906,047	\$862.48
Accounting & Bookkeeping Services	1,205	5,316	\$184,322,608	\$666.79
Architectural & Engineering Services	923	6,621	\$311,114,012	\$903.63
Specialized Design Services	155	460	\$14,589,254	\$609.92
Computer Systems Design & Related Services	818	7,632	\$523,938,188	\$1,320.20
Management & Technical Consulting Services	1,078	3,360	\$158,226,399	\$905.60
Scientific Research & Development Services	114	1,127	\$53,650,304	\$915.47
Advertising & Related Services	318	2,076	\$84,843,990	\$785.94
Other Professional & Technical Services	580	3,903	\$79,733,634	\$392.86
MANAGEMENT OF COMPANIES & ENTERPRISES	507	24,101	\$1,708,859,416	\$1,363.54
ADMINISTRATIVE & WASTE SERVICES	3,491	52,934	\$1,073,062,603	\$389.84
ADMINISTRATIVE & SUPPORT SERVICES	3,288	50,636	\$984,196,369	\$373.78
Office Administrative Services	352	1,337	\$66,009,156	\$949.44
Facilities Support Services	16	127	\$4,029,302	\$610.13
Employment Services	642	25,880	\$445,015,834	\$330.68
Business Support Services	362	5,177	\$100,862,113	\$374.67
Travel Arrangement & Reservation Services	101	441	\$12,079,730	\$526.76

**TABLE 5. STATEWIDE SUMMARY
EMPLOYMENT AND TOTAL EARNINGS, BY INDUSTRY
CALENDAR YEAR 2006**

NORTH AMERICAN INDUSTRY CLASSIFICATION SYSTEM INDUSTRY GROUPS	AVERAGE EMPLOYING UNITS	AVERAGE COVERED EMPLOYMENT	TOTAL EARNINGS	AVERAGE WEEKLY EARNINGS
Investigation & Security Services	236	4,419	\$101,604,253	\$442.17
Services to Buildings & Dwellings	1,301	11,705	\$207,260,176	\$340.52
Other Support Services	278	1,550	\$47,335,805	\$587.29
WASTE MANAGEMENT & REMEDIATION SERVICES	203	2,298	\$88,866,234	\$743.68
Waste Collection Services	95	1,066	\$39,765,962	\$717.38
Waste Treatment & Disposal Services	38	722	\$33,576,447	\$894.32
Remediation & Other Waste Services	70	510	\$15,523,825	\$585.36
EDUCATION & HEALTH SERVICES	10,651	145,778	\$4,757,943,714	\$627.66
EDUCATIONAL SERVICES	553	9,058	\$236,767,083	\$502.67
Elementary & Secondary Schools	81	3,164	\$66,312,016	\$403.04
Junior Colleges	7	255	\$7,249,881	\$546.75
Colleges & Universities	26	3,166	\$96,080,773	\$583.61
Business, Computer, & Management Training	44	141	\$10,896,321	\$1,486.13
Technical & Trade Schools	100	716	\$28,703,076	\$770.92
Other Schools & Instruction	210	1,391	\$19,064,288	\$263.57
Educational Support Services	85	225	\$8,460,728	\$723.14
HEALTH CARE & SOCIAL ASSISTANCE	10,098	136,720	\$4,521,176,631	\$635.94
AMBULATORY HEALTH CARE SERVICES	4,776	42,347	\$2,053,906,772	\$932.73
Offices of Physicians	2,144	20,586	\$1,320,465,297	\$1,233.54
Offices of Dentists	914	6,018	\$233,911,699	\$747.47
Offices of Other Health Practitioners	1,128	5,559	\$167,501,842	\$579.45
Outpatient Care Centers	211	3,465	\$127,896,719	\$709.83
Medical & Diagnostic Laboratories	98	788	\$41,547,735	\$1,013.95
Home Health Care Services	136	3,763	\$100,438,177	\$513.29
Other Ambulatory Health Care Services	147	2,168	\$62,145,303	\$551.25
HOSPITALS	108	41,501	\$1,511,847,916	\$700.56
General Medical & Surgical Hospitals	78	38,222	\$1,396,543,211	\$702.65
Psychiatric & Substance Abuse Hospitals	9	1,500	\$49,146,418	\$630.08
Other Hospitals	20	1,779	\$66,158,287	\$715.16
NURSING & RESIDENTIAL CARE FACILITIES	505	26,975	\$528,818,851	\$377.00
Nursing Care Facilities	243	20,279	\$395,041,414	\$374.62
Residential Mental Health Facilities	125	3,026	\$63,362,032	\$402.68
Community Care Facilities for the Elderly	90	2,218	\$39,160,698	\$339.54
Other Residential Care Facilities	47	1,452	\$31,254,707	\$413.95
SOCIAL ASSISTANCE	4,710	25,897	\$426,603,092	\$316.79

**TABLE 5. STATEWIDE SUMMARY
EMPLOYMENT AND TOTAL EARNINGS, BY INDUSTRY
CALENDAR YEAR 2006**

NORTH AMERICAN INDUSTRY CLASSIFICATION SYSTEM INDUSTRY GROUPS	AVERAGE EMPLOYING UNITS	AVERAGE COVERED EMPLOYMENT	TOTAL EARNINGS	AVERAGE WEEKLY EARNINGS
Individual & Family Services	3,570	13,206	\$228,443,158	\$332.66
Emergency & Other Relief Services	119	864	\$17,231,336	\$383.53
Vocational Rehabilitation Services	130	3,407	\$64,512,338	\$364.14
Child Day Care Services	891	8,420	\$116,416,260	\$265.89
LEISURE & HOSPITALITY	6,070	97,449	\$1,134,905,363	\$223.96
ARTS, ENTERTAINMENT & RECREATION	920	9,420	\$145,526,243	\$297.09
PERFORMING ARTS & SPECTATOR SPORTS	202	2,166	\$40,343,488	\$358.19
Performing Arts Companies	35	486	\$7,216,567	\$285.56
Spectator Sports	54	990	\$16,426,088	\$319.08
Performing Arts & Sports Promoters	42	550	\$12,973,813	\$453.63
Agents & Managers for Public Figures	12	19	\$614,240	\$621.70
Independent Artists, Writers & Performers	59	121	\$3,112,780	\$494.72
MUSEUMS, PARKS & HISTORICAL SITES	47	225	\$4,030,912	\$344.52
GAMBLING, RECREATION & AMUSEMENT INDUSTRY	672	7,030	\$101,151,843	\$276.70
Other Amusement & Recreation Industries	632	6,528	\$96,091,073	\$283.07
Other	41	502	\$5,060,770	\$193.87
ACCOMMODATION & FOOD SERVICES	5,150	88,029	\$989,379,120	\$216.14
ACCOMMODATION	817	11,086	\$156,728,885	\$271.88
Traveler Accommodation	742	10,699	\$149,710,955	\$269.10
RV Parks & Recreational Camps	55	318	\$5,825,356	\$352.28
Rooming & Boarding Houses	19	69	\$1,192,574	\$332.38
FOOD SERVICES & DRINKING PLACES	4,334	76,943	\$832,650,235	\$208.11
Full -Service Restaurants	1,912	34,080	\$393,789,437	\$222.21
Limited-Service Eating Places	2,116	39,863	\$401,434,651	\$193.66
Special Food Services	155	2,104	\$27,717,011	\$253.34
Drinking Places, Alcoholic Beverages	150	897	\$9,709,136	\$208.15
OTHER SERVICES	5,475	25,845	\$605,839,820	\$450.79
REPAIR & MAINTENANCE	2,214	9,574	\$263,428,923	\$529.14
Automotive Repair & Maintenance	1,534	6,799	\$174,689,999	\$494.11
Electronic Equipment Repair & Maintenance	162	681	\$23,641,266	\$667.61
Commercial Machinery Repair & Maintenance	336	1,540	\$51,488,266	\$642.96
Household Goods Repair & Maintenance	182	554	\$13,609,392	\$472.42
PERSONAL & LAUNDRY SERVICES	1,313	8,320	\$162,309,542	\$375.16
Personal Care Services	561	2,649	\$40,506,443	\$294.06
Death Care Services	246	1,680	\$42,411,618	\$485.48

**TABLE 5. STATEWIDE SUMMARY
EMPLOYMENT AND TOTAL EARNINGS, BY INDUSTRY
CALENDAR YEAR 2006**

NORTH AMERICAN INDUSTRY CLASSIFICATION SYSTEM INDUSTRY GROUPS	AVERAGE EMPLOYING UNITS	AVERAGE COVERED EMPLOYMENT	TOTAL EARNINGS	AVERAGE WEEKLY EARNINGS
Drycleaning & Laundry Services	339	3,248	\$62,590,649	\$370.59
Other Personal Services	168	743	\$16,800,832	\$434.85
MEMBERSHIP ASSOCIATIONS & ORGANIZATIONS	1,021	6,505	\$157,485,164	\$465.57
Religious Organizations	40	222	\$4,965,677	\$430.15
Grantmaking & Giving Services	96	449	\$16,890,402	\$723.42
Social Advocacy Organizations	148	1,979	\$46,405,027	\$450.94
Civic & Social Organizations	220	1,590	\$21,219,873	\$256.65
Professional & Similar Organizations	517	2,265	\$68,004,185	\$577.38
PRIVATE HOUSEHOLDS	928	1,447	\$22,616,191	\$300.57
LOCAL GOVERNMENT	1,980	107,261	\$2,975,389,154	\$533.46
STATE GOVERNMENT	1,202	58,954	\$2,020,531,819	\$659.10
NONCLASSIFIABLE ESTABLISHMENTS	0	0	\$0	

**TABLE 6. COUNTY SUMMARY
EMPLOYMENT AND TOTAL EARNINGS, BY INDUSTRY
CALENDAR YEAR 2006**

NORTH AMERICAN INDUSTRY CLASSIFICATION SYSTEM INDUSTRY GROUP	AVERAGE EMPLOYING UNITS	AVERAGE COVERED EMPLOYMENT	TOTAL EARNINGS	AVERAGE WEEKLY EARNINGS
ARKANSAS COUNTY - TOTAL	682	9,902	\$287,807,822	\$558.95
Natural Resources & Mining	43	225	\$7,125,065	\$608.98
Construction	53	282	\$9,027,190	\$615.60
Manufacturing	32	3,555	\$117,747,501	\$636.95
Trade, Transportation & Utilities	200	2,037	\$61,853,520	\$583.94
Wholesale Trade	46	433	\$18,492,101	\$821.29
Retail Trade	101	1,052	\$20,944,882	\$382.88
Transportation, Warehousing & Utilities	53	552	\$22,416,537	\$780.96
Information	10	92	\$3,171,383	\$662.91
Financial Activities	42	325	\$10,798,562	\$638.97
Professional & Business Services	53	404	\$15,135,561	\$720.47
Education & Health Services	89	1,232	\$26,779,486	\$418.01
Leisure & Hospitality	60	534	\$5,259,112	\$189.39
Other Services	53	147	\$3,092,193	\$404.53
Local Government	32	864	\$22,075,275	\$491.35
State Government	16	206	\$5,742,974	\$536.13
ASHLEY COUNTY - TOTAL	539	8,220	\$291,742,010	\$682.53
Natural Resources & Mining	61	484	\$13,625,771	\$541.39
Construction	48	590	\$15,694,923	\$511.57
Manufacturing	30	2,915	\$158,789,022	\$1,047.56
Trade, Transportation & Utilities	133	1,229	\$29,238,127	\$457.50
Wholesale Trade	24	167	\$6,177,853	\$711.41
Retail Trade	86	839	\$14,818,431	\$339.65
Transportation, Warehousing & Utilities	23	223	\$8,241,843	\$710.75
Information	8	49	\$1,336,767	\$524.63
Financial Activities	32	221	\$6,403,849	\$557.24
Professional & Business Services	49	365	\$9,697,723	\$510.94
Education & Health Services	64	594	\$18,249,578	\$590.83
Leisure & Hospitality	28	390	\$3,680,286	\$181.47
Other Services	43	193	\$3,830,319	\$381.66
Local Government	32	972	\$26,589,976	\$526.08
State Government	12	217	\$4,605,669	\$408.16

**TABLE 6. COUNTY SUMMARY
EMPLOYMENT AND TOTAL EARNINGS, BY INDUSTRY
CALENDAR YEAR 2006**

NORTH AMERICAN INDUSTRY CLASSIFICATION SYSTEM INDUSTRY GROUP	AVERAGE EMPLOYING UNITS	AVERAGE COVERED EMPLOYMENT	TOTAL EARNINGS	AVERAGE WEEKLY EARNINGS
BAXTER COUNTY - TOTAL	1,248	14,709	\$400,767,831	\$523.97
Natural Resources & Mining	6	121	\$3,337,433	\$530.42
Construction	136	714	\$17,911,947	\$482.44
Manufacturing	60	2,563	\$84,333,346	\$632.77
Trade, Transportation & Utilities	279	2,727	\$61,804,683	\$435.85
Wholesale Trade	34	208	\$6,424,244	\$593.96
Retail Trade	212	2,260	\$47,819,432	\$406.90
Transportation, Warehousing & Utilities	33	260	\$7,561,007	\$559.25
Information	25	267	\$8,453,575	\$608.87
Financial Activities	115	722	\$23,822,303	\$634.52
Professional & Business Services	138	763	\$21,064,285	\$530.91
Education & Health Services	215	3,347	\$114,611,424	\$658.52
Leisure & Hospitality	125	1,571	\$16,788,543	\$205.51
Other Services	103	439	\$7,438,976	\$325.87
Local Government	36	1,176	\$33,009,306	\$539.79
State Government	13	299	\$8,192,010	\$526.89
BENTON COUNTY - TOTAL	5,182	92,686	\$3,557,681,310	\$738.16
Natural Resources & Mining	26	659	\$30,643,300	\$894.22
Construction	787	5,300	\$182,926,299	\$663.74
Manufacturing	244	14,197	\$478,140,276	\$647.67
Trade, Transportation & Utilities	1,373	23,071	\$856,298,156	\$713.76
Wholesale Trade	619	3,453	\$232,254,117	\$1,293.49
Retail Trade	586	7,993	\$184,389,930	\$443.63
Transportation, Warehousing & Utilities	169	11,626	\$439,654,109	\$727.24
Information	65	933	\$32,833,695	\$676.76
Financial Activities	577	3,748	\$151,347,335	\$776.55
Professional & Business Services	860	21,889	\$1,216,259,873	\$1,068.56
Education & Health Services	446	6,457	\$215,202,828	\$640.93
Leisure & Hospitality	403	7,262	\$92,219,072	\$244.21
Other Services	308	1,766	\$45,199,562	\$492.20
Local Government	75	6,650	\$231,972,433	\$670.83
State Government	19	754	\$24,638,481	\$628.40

**TABLE 6. COUNTY SUMMARY
EMPLOYMENT AND TOTAL EARNINGS, BY INDUSTRY
CALENDAR YEAR 2006**

NORTH AMERICAN INDUSTRY CLASSIFICATION SYSTEM INDUSTRY GROUP	AVERAGE EMPLOYING UNITS	AVERAGE COVERED EMPLOYMENT	TOTAL EARNINGS	AVERAGE WEEKLY EARNINGS
BOONE COUNTY - TOTAL	1,062	13,962	\$420,523,005	\$579.21
Construction	91	480	\$14,304,622	\$573.10
Manufacturing	72	2,100	\$69,271,066	\$634.35
Trade, Transportation & Utilities	265	4,455	\$153,036,615	\$660.61
Wholesale Trade	59	652	\$19,836,254	\$585.07
Retail Trade	153	1,959	\$41,532,789	\$407.71
Transportation, Warehousing & Utilities	53	1,843	\$91,667,572	\$956.50
Information	20	422	\$15,299,824	\$697.22
Financial Activities	96	638	\$20,523,331	\$618.62
Professional & Business Services	110	610	\$13,880,559	\$437.60
Education & Health Services	169	1,139	\$31,970,561	\$539.79
Leisure & Hospitality	85	1,167	\$12,539,184	\$206.63
Local Government	60	2,114	\$63,039,507	\$573.46
State Government	21	573	\$20,245,506	\$679.47
Other	76	267	\$6,412,230	\$461.84
BRADLEY COUNTY - TOTAL	387	4,083	\$102,543,959	\$482.98
Natural Resources & Mining	49	393	\$8,479,964	\$414.95
Construction	23	175	\$4,329,329	\$475.75
Manufacturing	9	1,076	\$33,197,458	\$593.32
Trade, Transportation & Utilities	88	511	\$10,410,118	\$391.77
Wholesale Trade	15	116	\$2,135,599	\$354.04
Retail Trade	49	319	\$5,946,326	\$358.47
Transportation, Warehousing & Utilities	24	75	\$2,328,193	\$596.97
Information	3	12	\$345,460	\$553.62
Financial Activities	24	177	\$4,536,498	\$492.88
Professional & Business Services	28	88	\$1,603,443	\$350.40
Education & Health Services	86	570	\$14,687,013	\$495.51
Leisure & Hospitality	17	171	\$1,585,016	\$178.25
Other Services	33	120	\$2,549,200	\$408.53
Local Government	16	516	\$13,780,227	\$513.57
State Government	12	275	\$7,040,233	\$492.32

**TABLE 6. COUNTY SUMMARY
EMPLOYMENT AND TOTAL EARNINGS, BY INDUSTRY
CALENDAR YEAR 2006**

NORTH AMERICAN INDUSTRY CLASSIFICATION SYSTEM INDUSTRY GROUP	AVERAGE EMPLOYING UNITS	AVERAGE COVERED EMPLOYMENT	TOTAL EARNINGS	AVERAGE WEEKLY EARNINGS
CALHOUN COUNTY - TOTAL	113	3,127	\$114,876,791	\$706.48
Natural Resources & Mining	19	178	\$5,102,361	\$551.25
Construction	10	72	\$1,799,066	\$480.52
Manufacturing	11	2,145	\$87,510,790	\$784.57
Trade, Transportation & Utilities	26	207	\$5,210,474	\$484.06
Wholesale Trade & Retail Trade	18	69	\$913,687	\$254.65
Transportation, Warehousing & Utilities	8	138	\$4,296,787	\$598.77
Financial Activities	7	83	\$2,145,493	\$497.10
Education & Health Services	4	45	\$1,358,733	\$580.66
Local Government	11	203	\$4,700,558	\$445.30
State Government	9	79	\$2,311,133	\$562.59
Other	16	116	\$4,738,183	\$785.51
CARROLL COUNTY - TOTAL	840	9,863	\$226,130,694	\$440.91
Natural Resources & Mining	17	253	\$6,920,292	\$526.02
Trade, Transportation & Utilities	207	1,631	\$37,362,786	\$440.54
Wholesale Trade	23	130	\$2,925,459	\$432.76
Retail Trade	163	1,233	\$24,422,510	\$380.91
Transportation, Warehousing & Utilities	21	269	\$10,014,817	\$715.96
Professional & Business Services	81	258	\$6,589,553	\$491.17
Education & Health Services	81	788	\$22,436,119	\$547.54
Leisure & Hospitality	172	1,668	\$18,380,192	\$211.91
Local Government	25	1,035	\$27,458,585	\$510.19
State Government	11	106	\$2,956,385	\$536.35
Other	248	4,124	\$104,026,782	\$485.09

**TABLE 6. COUNTY SUMMARY
EMPLOYMENT AND TOTAL EARNINGS, BY INDUSTRY
CALENDAR YEAR 2006**

NORTH AMERICAN INDUSTRY CLASSIFICATION SYSTEM INDUSTRY GROUP	AVERAGE EMPLOYING UNITS	AVERAGE COVERED EMPLOYMENT	TOTAL EARNINGS	AVERAGE WEEKLY EARNINGS
CHICOT COUNTY - TOTAL	344	3,578	\$83,794,577	\$450.37
Natural Resources & Mining	45	263	\$6,936,350	\$507.19
Construction	19	173	\$5,259,986	\$584.70
Manufacturing	12	498	\$8,727,007	\$337.00
Trade, Transportation & Utilities	79	569	\$12,469,578	\$421.44
Wholesale Trade	15	103	\$3,591,230	\$670.51
Retail Trade	52	402	\$6,377,086	\$305.07
Transportation, Warehousing & Utilities	12	65	\$2,501,262	\$740.02
Information	6	14	\$353,362	\$485.39
Financial Activities	30	168	\$5,196,583	\$594.85
Professional & Business Services	25	89	\$2,874,470	\$621.10
Education & Health Services	66	503	\$11,973,944	\$457.79
Leisure & Hospitality	21	222	\$1,847,135	\$160.01
Other Services	15	50	\$1,067,777	\$410.68
Local Government	16	714	\$18,903,259	\$509.14
State Government	11	316	\$8,185,126	\$498.12
CLARK COUNTY - TOTAL	607	9,641	\$251,653,316	\$501.97
Natural Resources & Mining	42	243	\$7,155,433	\$566.27
Construction	29	140	\$3,459,576	\$475.22
Manufacturing	34	2,323	\$69,394,604	\$574.48
Trade, Transportation & Utilities	142	1,464	\$36,681,993	\$481.85
Wholesale Trade	20	85	\$2,897,669	\$655.58
Retail Trade	100	1,094	\$23,538,131	\$413.76
Transportation, Warehousing & Utilities	22	285	\$10,246,193	\$691.38
Information	10	30	\$954,567	\$611.90
Financial Activities	86	389	\$11,689,466	\$577.89
Professional & Business Services	46	379	\$15,100,264	\$766.20
Education & Health Services	74	1,427	\$37,773,185	\$509.05
Leisure & Hospitality	57	1,020	\$10,406,101	\$196.19
Other Services	48	214	\$4,525,745	\$406.70
Local Government	26	896	\$22,643,932	\$486.00
State Government	15	1,117	\$31,868,450	\$548.66

**TABLE 6. COUNTY SUMMARY
EMPLOYMENT AND TOTAL EARNINGS, BY INDUSTRY
CALENDAR YEAR 2006**

NORTH AMERICAN INDUSTRY CLASSIFICATION SYSTEM INDUSTRY GROUP	AVERAGE EMPLOYING UNITS	AVERAGE COVERED EMPLOYMENT	TOTAL EARNINGS	AVERAGE WEEKLY EARNINGS
CLAY COUNTY - TOTAL	409	4,455	\$101,060,893	\$436.25
Natural Resources & Mining	58	207	\$4,408,810	\$409.59
Construction	35	166	\$3,414,282	\$395.54
Manufacturing	19	1,105	\$26,229,677	\$456.49
Trade, Transportation & Utilities	98	937	\$22,493,991	\$461.66
Wholesale Trade	22	331	\$8,881,005	\$515.98
Retail Trade	54	450	\$7,875,677	\$336.57
Transportation, Warehousing & Utilities	22	156	\$5,737,309	\$707.26
Information	7	80	\$2,257,426	\$542.65
Financial Activities	36	154	\$4,084,265	\$510.02
Professional & Business Services	25	53	\$1,251,021	\$453.93
Education & Health Services	51	496	\$10,470,492	\$405.96
Leisure & Hospitality	23	219	\$1,756,908	\$154.28
Other Services	25	55	\$1,177,066	\$411.56
Local Government	22	906	\$21,535,808	\$457.12
State Government	12	78	\$1,981,147	\$488.45
CLEBURNE COUNTY - TOTAL	682	6,815	\$164,128,950	\$463.14
Natural Resources & Mining	15	84	\$2,315,809	\$530.18
Construction	74	334	\$7,539,173	\$434.08
Manufacturing	44	1,713	\$50,137,673	\$562.86
Trade, Transportation & Utilities	183	1,550	\$36,298,731	\$450.36
Wholesale Trade	39	197	\$5,518,440	\$538.70
Retail Trade	113	1,056	\$20,240,002	\$368.59
Transportation, Warehousing & Utilities	31	298	\$10,540,289	\$680.19
Information	9	60	\$1,496,255	\$479.57
Financial Activities	72	251	\$6,906,989	\$529.19
Professional & Business Services	54	195	\$5,145,421	\$507.44
Education & Health Services	74	779	\$19,166,077	\$473.14
Leisure & Hospitality	70	809	\$8,768,066	\$208.43
Other Services	58	163	\$3,104,824	\$366.31
Local Government	20	761	\$20,079,194	\$507.41
State Government	10	117	\$3,170,738	\$521.16

**TABLE 6. COUNTY SUMMARY
EMPLOYMENT AND TOTAL EARNINGS, BY INDUSTRY
CALENDAR YEAR 2006**

NORTH AMERICAN INDUSTRY CLASSIFICATION SYSTEM INDUSTRY GROUP	AVERAGE EMPLOYING UNITS	AVERAGE COVERED EMPLOYMENT	TOTAL EARNINGS	AVERAGE WEEKLY EARNINGS
CLEVELAND COUNTY - TOTAL	112	1,083	\$26,309,067	\$467.17
Natural Resources & Mining	17	169	\$4,634,607	\$527.38
Construction	7	39	\$598,478	\$295.11
Manufacturing	5	97	\$2,160,226	\$428.28
Trade, Transportation & Utilities	29	188	\$3,481,158	\$356.09
Wholesale Trade	4	15	\$300,008	\$384.63
Retail Trade	14	84	\$774,548	\$177.32
Transportation, Warehousing & Utilities	12	90	\$2,406,602	\$514.23
Local Government	12	321	\$8,105,923	\$485.62
State Government	8	66	\$1,520,508	\$443.04
Other	34	205	\$5,808,167	\$544.86
COLUMBIA COUNTY - TOTAL	698	9,408	\$288,447,756	\$589.61
Natural Resources & Mining	50	510	\$27,158,497	\$1,024.08
Construction	44	302	\$9,744,673	\$620.52
Manufacturing	41	2,797	\$111,598,876	\$767.30
Trade, Transportation & Utilities	176	1,556	\$34,760,132	\$429.60
Wholesale Trade	29	275	\$7,681,493	\$537.17
Retail Trade	108	1,013	\$17,604,146	\$334.20
Transportation, Warehousing & Utilities	39	269	\$9,474,493	\$677.33
Information	10	74	\$1,963,234	\$510.20
Financial Activities	74	521	\$20,266,857	\$748.08
Professional & Business Services	59	328	\$7,232,486	\$424.04
Education & Health Services	109	860	\$17,518,491	\$391.74
Leisure & Hospitality	47	654	\$6,431,085	\$189.11
Other Services	49	207	\$3,323,471	\$308.76
Local Government	28	1,067	\$30,211,402	\$544.51
State Government	14	534	\$18,238,552	\$656.82

**TABLE 6. COUNTY SUMMARY
EMPLOYMENT AND TOTAL EARNINGS, BY INDUSTRY
CALENDAR YEAR 2006**

NORTH AMERICAN INDUSTRY CLASSIFICATION SYSTEM INDUSTRY GROUP	AVERAGE EMPLOYING UNITS	AVERAGE COVERED EMPLOYMENT	TOTAL EARNINGS	AVERAGE WEEKLY EARNINGS
CONWAY COUNTY - TOTAL	533	6,737	\$181,439,074	\$517.92
Natural Resources & Mining	19	136	\$4,680,168	\$661.79
Construction	55	516	\$18,619,002	\$693.91
Manufacturing	29	1,148	\$46,152,399	\$773.12
Trade, Transportation & Utilities	131	1,378	\$33,982,900	\$474.25
Wholesale Trade	25	218	\$7,271,273	\$641.43
Retail Trade	80	877	\$17,384,905	\$381.21
Transportation, Warehousing & Utilities	27	284	\$9,326,722	\$631.55
Information	6	28	\$640,172	\$439.68
Financial Activities	34	193	\$5,288,797	\$526.98
Professional & Business Services	46	673	\$11,862,089	\$338.96
Education & Health Services	114	879	\$21,941,449	\$480.04
Leisure & Hospitality	37	451	\$4,089,691	\$174.39
Other Services	26	91	\$2,356,922	\$498.08
Local Government	27	874	\$23,231,254	\$511.16
State Government	11	369	\$8,594,231	\$447.90
CRAIGHEAD COUNTY - TOTAL	2,631	41,331	\$1,206,486,551	\$561.36
Natural Resources & Mining	67	328	\$8,209,693	\$481.34
Construction	236	1,718	\$52,492,816	\$587.59
Manufacturing	135	6,824	\$233,995,010	\$659.42
Trade, Transportation & Utilities	736	8,439	\$208,819,586	\$475.86
Wholesale Trade	179	1,507	\$54,790,265	\$699.18
Retail Trade	442	5,803	\$113,593,641	\$376.44
Transportation, Warehousing & Utilities	115	1,130	\$40,435,680	\$688.15
Information	31	601	\$20,410,212	\$653.08
Financial Activities	258	1,569	\$59,921,409	\$734.44
Professional & Business Services	346	3,595	\$92,731,083	\$496.05
Education & Health Services	385	7,387	\$276,580,284	\$720.03
Leisure & Hospitality	194	3,992	\$43,168,213	\$207.96
Other Services	180	1,040	\$20,528,927	\$379.60
Local Government	38	3,469	\$102,932,121	\$570.62
State Government	25	2,368	\$86,697,197	\$704.08

**TABLE 6. COUNTY SUMMARY
EMPLOYMENT AND TOTAL EARNINGS, BY INDUSTRY
CALENDAR YEAR 2006**

NORTH AMERICAN INDUSTRY CLASSIFICATION SYSTEM INDUSTRY GROUP	AVERAGE EMPLOYING UNITS	AVERAGE COVERED EMPLOYMENT	TOTAL EARNINGS	AVERAGE WEEKLY EARNINGS
CRAWFORD COUNTY - TOTAL	1,207	18,943	\$528,945,727	\$536.98
Natural Resources & Mining	26	426	\$13,753,377	\$620.86
Construction	179	1,468	\$47,565,572	\$623.11
Manufacturing	76	3,686	\$104,521,387	\$545.31
Trade, Transportation & Utilities	312	6,614	\$189,808,540	\$551.88
Wholesale Trade	82	680	\$24,191,010	\$684.13
Retail Trade	161	1,982	\$38,720,065	\$375.69
Transportation, Warehousing & Utilities	70	3,953	\$126,897,465	\$617.34
Information	14	193	\$6,189,534	\$616.73
Financial Activities	126	503	\$14,504,456	\$554.54
Professional & Business Services	146	771	\$23,701,065	\$591.17
Education & Health Services	119	1,359	\$38,210,558	\$540.71
Leisure & Hospitality	82	1,430	\$14,911,599	\$200.53
Other Services	76	343	\$8,921,783	\$500.21
Local Government	41	1,993	\$61,397,432	\$592.43
State Government	11	159	\$5,460,424	\$660.43
CRITTENDEN COUNTY - TOTAL	1,194	16,269	\$470,794,904	\$556.50
Natural Resources & Mining	45	297	\$7,403,542	\$479.38
Construction	78	571	\$18,148,518	\$611.23
Manufacturing	47	1,685	\$69,424,992	\$792.34
Trade, Transportation & Utilities	329	4,933	\$148,739,826	\$579.85
Wholesale Trade	74	791	\$31,799,325	\$773.10
Retail Trade	170	2,092	\$39,722,476	\$365.15
Transportation, Warehousing & Utilities	86	2,051	\$77,218,025	\$724.02
Information	9	91	\$3,050,336	\$644.62
Financial Activities	108	575	\$18,563,771	\$620.86
Professional & Business Services	119	797	\$19,997,786	\$482.53
Education & Health Services	193	1,955	\$59,820,500	\$588.44
Leisure & Hospitality	102	1,933	\$23,178,320	\$230.59
Other Services	103	616	\$13,951,541	\$435.55
Local Government	47	2,363	\$76,743,746	\$624.56
State Government	15	452	\$11,772,026	\$500.85

**TABLE 6. COUNTY SUMMARY
EMPLOYMENT AND TOTAL EARNINGS, BY INDUSTRY
CALENDAR YEAR 2006**

NORTH AMERICAN INDUSTRY CLASSIFICATION SYSTEM INDUSTRY GROUP	AVERAGE EMPLOYING UNITS	AVERAGE COVERED EMPLOYMENT	TOTAL EARNINGS	AVERAGE WEEKLY EARNINGS
CROSS COUNTY - TOTAL	526	5,015	\$129,899,556	\$498.12
Natural Resources & Mining	44	200	\$3,974,734	\$382.19
Construction	38	183	\$4,720,865	\$496.10
Manufacturing	17	705	\$22,092,288	\$602.63
Trade, Transportation & Utilities	131	1,183	\$31,854,775	\$517.83
Wholesale Trade	31	268	\$9,048,683	\$649.30
Retail Trade	67	658	\$13,283,641	\$388.23
Transportation, Warehousing & Utilities	32	257	\$9,522,451	\$712.54
Information	6	60	\$1,602,174	\$513.52
Financial Activities	48	398	\$11,710,700	\$565.84
Professional & Business Services	43	167	\$4,908,707	\$565.26
Education & Health Services	99	676	\$15,988,835	\$454.85
Leisure & Hospitality	31	392	\$3,263,115	\$160.08
Other Services	40	73	\$1,324,199	\$348.84
Local Government	17	764	\$21,655,380	\$545.09
State Government	11	214	\$6,803,784	\$611.41
DALLAS COUNTY - TOTAL	277	3,365	\$84,986,014	\$485.69
Natural Resources & Mining	40	213	\$6,031,871	\$544.59
Construction	13	78	\$2,339,657	\$576.84
Manufacturing	15	929	\$30,078,071	\$622.63
Trade, Transportation & Utilities	73	471	\$9,975,715	\$407.31
Wholesale Trade	9	42	\$1,315,804	\$602.47
Retail Trade	45	369	\$7,076,827	\$368.82
Transportation, Warehousing & Utilities	19	59	\$1,583,084	\$516.00
Information	3	26	\$619,231	\$458.01
Financial Activities	19	103	\$2,878,149	\$537.37
Professional & Business Services	18	52	\$2,393,935	\$885.33
Education & Health Services	37	794	\$16,566,522	\$401.24
Leisure & Hospitality	19	135	\$1,182,208	\$168.41
Other Services	15	63	\$1,058,531	\$323.12
Local Government	16	437	\$9,968,085	\$438.66
State Government	9	64	\$1,894,039	\$569.12

**TABLE 6. COUNTY SUMMARY
EMPLOYMENT AND TOTAL EARNINGS, BY INDUSTRY
CALENDAR YEAR 2006**

NORTH AMERICAN INDUSTRY CLASSIFICATION SYSTEM INDUSTRY GROUP	AVERAGE EMPLOYING UNITS	AVERAGE COVERED EMPLOYMENT	TOTAL EARNINGS	AVERAGE WEEKLY EARNINGS
DESHA COUNTY - TOTAL	465	4,890	\$135,757,659	\$533.89
Natural Resources & Mining	51	280	\$7,384,521	\$507.18
Construction	26	130	\$3,833,222	\$567.04
Manufacturing	15	1,285	\$49,897,599	\$746.75
Trade, Transportation & Utilities	131	952	\$22,404,420	\$452.58
Wholesale Trade	21	188	\$7,096,380	\$725.90
Retail Trade	79	570	\$9,823,061	\$331.41
Transportation, Warehousing & Utilities	31	194	\$5,484,979	\$543.71
Information	5	23	\$752,472	\$629.16
Financial Activities	43	227	\$5,675,303	\$480.79
Professional & Business Services	35	118	\$2,666,495	\$434.57
Education & Health Services	67	542	\$12,685,969	\$450.11
Leisure & Hospitality	35	302	\$2,634,223	\$167.74
Other Services	28	68	\$929,387	\$262.84
Local Government	19	794	\$22,141,636	\$536.27
State Government	11	169	\$4,752,412	\$540.78
DREW COUNTY - TOTAL	513	6,624	\$159,744,255	\$463.77
Natural Resources & Mining	38	304	\$9,396,002	\$594.38
Construction	26	122	\$3,433,422	\$541.21
Manufacturing	21	753	\$19,153,571	\$489.16
Trade, Transportation & Utilities	135	1,222	\$29,209,649	\$459.68
Wholesale Trade	24	236	\$8,542,718	\$696.11
Retail Trade	88	883	\$16,790,999	\$365.69
Transportation, Warehousing & Utilities	23	103	\$3,875,932	\$723.66
Information	9	79	\$2,339,159	\$569.42
Financial Activities	43	268	\$8,869,444	\$636.44
Professional & Business Services	45	329	\$9,335,275	\$545.67
Education & Health Services	85	832	\$17,213,326	\$397.87
Leisure & Hospitality	44	636	\$5,383,861	\$162.79
Other Services	28	94	\$1,524,217	\$311.83
Local Government	23	1,187	\$31,181,031	\$505.17
State Government	17	799	\$22,705,298	\$546.48

**TABLE 6. COUNTY SUMMARY
EMPLOYMENT AND TOTAL EARNINGS, BY INDUSTRY
CALENDAR YEAR 2006**

NORTH AMERICAN INDUSTRY CLASSIFICATION SYSTEM INDUSTRY GROUP	AVERAGE EMPLOYING UNITS	AVERAGE COVERED EMPLOYMENT	TOTAL EARNINGS	AVERAGE WEEKLY EARNINGS
FAULKNER COUNTY - TOTAL	2,443	37,668	\$1,193,147,101	\$609.14
Natural Resources & Mining	18	191	\$10,358,287	\$1,042.92
Construction	351	2,987	\$94,239,609	\$606.73
Manufacturing	121	5,238	\$202,157,458	\$742.20
Trade, Transportation & Utilities	601	6,483	\$155,823,470	\$462.23
Wholesale Trade	151	797	\$29,458,887	\$710.81
Retail Trade	375	4,994	\$98,695,946	\$380.06
Transportation, Warehousing & Utilities	76	693	\$27,668,637	\$767.81
Information	40	356	\$11,864,891	\$640.93
Financial Activities	293	1,401	\$44,992,693	\$617.59
Professional & Business Services	325	5,254	\$260,948,309	\$955.13
Education & Health Services	311	5,211	\$158,186,765	\$583.78
Leisure & Hospitality	189	3,815	\$39,031,579	\$196.75
Other Services	135	572	\$12,195,486	\$410.01
Local Government	41	2,991	\$103,276,290	\$664.02
State Government	19	3,169	\$100,072,264	\$607.28
FRANKLIN COUNTY - TOTAL	329	4,186	\$112,862,420	\$518.50
Natural Resources & Mining	10	91	\$4,298,359	\$908.36
Construction	30	221	\$7,364,990	\$640.88
Manufacturing	23	968	\$29,545,254	\$586.96
Trade, Transportation & Utilities	89	856	\$22,293,504	\$500.84
Wholesale Trade	14	50	\$919,403	\$353.62
Retail Trade	53	477	\$8,398,929	\$338.61
Transportation, Warehousing & Utilities	22	329	\$12,975,172	\$758.43
Information	7	51	\$1,061,168	\$400.14
Financial Activities	28	219	\$5,324,372	\$467.54
Professional & Business Services	22	57	\$1,343,945	\$453.42
Education & Health Services	45	479	\$10,877,891	\$436.72
Leisure & Hospitality	26	329	\$2,923,032	\$170.86
Other Services	20	61	\$1,230,813	\$388.02
Local Government	19	727	\$22,647,907	\$599.09
State Government	10	127	\$3,951,185	\$598.30

**TABLE 6. COUNTY SUMMARY
EMPLOYMENT AND TOTAL EARNINGS, BY INDUSTRY
CALENDAR YEAR 2006**

NORTH AMERICAN INDUSTRY CLASSIFICATION SYSTEM INDUSTRY GROUP	AVERAGE EMPLOYING UNITS	AVERAGE COVERED EMPLOYMENT	TOTAL EARNINGS	AVERAGE WEEKLY EARNINGS
FULTON COUNTY - TOTAL	228	1,864	\$39,690,505	\$409.48
Construction	15	28	\$651,016	\$447.13
Manufacturing	14	130	\$2,307,451	\$341.34
Trade, Transportation & Utilities	65	392	\$9,194,366	\$451.06
Retail Trade	43	211	\$2,887,040	\$263.13
Other Trade, Transportation & Utilities	23	181	\$6,307,326	\$670.14
Financial Activities	17	108	\$2,764,813	\$492.31
Professional & Business Services	16	46	\$2,280,358	\$953.33
Education & Health Services	48	362	\$6,091,697	\$323.61
Leisure & Hospitality	15	142	\$1,412,954	\$191.35
Local Government	13	490	\$11,427,068	\$448.47
State Government	11	98	\$2,475,789	\$485.83
Other	14	67	\$1,084,993	\$311.42
GARLAND COUNTY - TOTAL	3,223	36,570	\$997,735,985	\$524.67
Natural Resources & Mining	49	348	\$15,316,457	\$846.40
Construction	434	2,377	\$63,683,582	\$515.22
Manufacturing	129	3,418	\$108,934,277	\$612.90
Trade, Transportation & Utilities	711	7,416	\$180,216,837	\$467.33
Wholesale Trade	148	1,116	\$40,416,585	\$696.45
Retail Trade	493	5,627	\$116,437,660	\$397.94
Transportation, Warehousing & Utilities	71	673	\$23,362,592	\$667.58
Information	41	434	\$13,755,147	\$609.50
Financial Activities	369	1,560	\$51,468,271	\$634.47
Professional & Business Services	413	2,725	\$76,411,317	\$539.25
Education & Health Services	423	6,968	\$253,560,864	\$699.79
Leisure & Hospitality	369	6,444	\$85,339,587	\$254.68
Other Services	225	950	\$19,587,969	\$396.52
Local Government	34	2,910	\$96,634,731	\$638.61
State Government	27	1,020	\$32,826,946	\$618.91

**TABLE 6. COUNTY SUMMARY
EMPLOYMENT AND TOTAL EARNINGS, BY INDUSTRY
CALENDAR YEAR 2006**

NORTH AMERICAN INDUSTRY CLASSIFICATION SYSTEM INDUSTRY GROUP	AVERAGE EMPLOYING UNITS	AVERAGE COVERED EMPLOYMENT	TOTAL EARNINGS	AVERAGE WEEKLY EARNINGS
GRANT COUNTY - TOTAL	298	3,647	\$96,557,233	\$509.15
Natural Resources & Mining	23	188	\$7,925,637	\$810.72
Construction	34	243	\$6,657,616	\$526.88
Manufacturing	19	863	\$26,773,430	\$596.61
Trade, Transportation & Utilities	84	627	\$13,658,995	\$418.94
Wholesale Trade	16	131	\$4,371,143	\$641.68
Retail Trade	38	436	\$7,550,994	\$333.05
Transportation, Warehousing & Utilities	30	60	\$1,736,858	\$556.69
Information	4	32	\$1,029,190	\$618.50
Financial Activities	22	101	\$3,148,210	\$599.43
Professional & Business Services	22	91	\$3,169,166	\$669.73
Education & Health Services	35	240	\$5,659,802	\$453.51
Leisure & Hospitality	22	286	\$2,952,963	\$198.56
Other Services	16	57	\$936,098	\$315.82
Local Government	10	860	\$23,081,878	\$516.14
State Government	9	60	\$1,564,248	\$501.36
GREENE COUNTY - TOTAL	898	15,101	\$415,564,112	\$529.21
Natural Resources & Mining	37	206	\$5,438,615	\$507.71
Construction	83	388	\$10,362,543	\$513.61
Manufacturing	56	5,538	\$193,411,481	\$671.62
Trade, Transportation & Utilities	240	2,140	\$49,202,173	\$442.15
Wholesale Trade	53	399	\$13,294,702	\$640.77
Retail Trade	158	1,534	\$28,934,875	\$362.74
Transportation, Warehousing & Utilities	30	206	\$6,972,596	\$650.91
Information	13	125	\$2,415,909	\$371.68
Financial Activities	87	484	\$14,045,751	\$558.08
Professional & Business Services	92	1,483	\$30,537,159	\$395.99
Education & Health Services	135	1,737	\$43,502,579	\$481.63
Leisure & Hospitality	66	1,089	\$10,292,901	\$181.76
Other Services	48	171	\$3,572,703	\$401.79
Local Government	31	1,487	\$44,638,792	\$577.30
State Government	11	253	\$8,143,506	\$619.00

**TABLE 6. COUNTY SUMMARY
EMPLOYMENT AND TOTAL EARNINGS, BY INDUSTRY
CALENDAR YEAR 2006**

NORTH AMERICAN INDUSTRY CLASSIFICATION SYSTEM INDUSTRY GROUP	AVERAGE EMPLOYING UNITS	AVERAGE COVERED EMPLOYMENT	TOTAL EARNINGS	AVERAGE WEEKLY EARNINGS
HEMPSTEAD COUNTY - TOTAL	502	8,268	\$218,732,065	\$508.75
Natural Resources & Mining	18	209	\$6,509,429	\$598.95
Construction	35	160	\$3,986,577	\$479.16
Manufacturing	29	2,707	\$83,415,949	\$592.59
Trade, Transportation & Utilities	135	1,260	\$29,437,716	\$449.29
Wholesale Trade	25	184	\$4,519,157	\$472.32
Retail Trade	86	892	\$16,516,294	\$356.08
Transportation, Warehousing & Utilities	24	185	\$8,402,265	\$873.42
Information	10	75	\$2,177,064	\$558.22
Financial Activities	44	252	\$8,347,490	\$637.02
Professional & Business Services	35	241	\$3,864,824	\$308.40
Education & Health Services	70	1,012	\$24,182,717	\$459.54
Leisure & Hospitality	44	635	\$6,433,959	\$194.85
Other Services	38	220	\$5,408,806	\$472.80
Local Government	29	975	\$28,577,455	\$563.66
State Government	17	522	\$16,390,079	\$603.82
HOT SPRING COUNTY - TOTAL	615	8,097	\$235,259,147	\$558.75
Natural Resources & Mining	38	207	\$5,949,133	\$552.69
Construction	68	560	\$22,079,834	\$758.24
Manufacturing	42	1,657	\$67,880,235	\$787.80
Trade, Transportation & Utilities	163	1,493	\$41,126,542	\$529.74
Wholesale Trade	21	101	\$5,183,667	\$986.99
Retail Trade	97	961	\$18,798,449	\$376.18
Transportation, Warehousing & Utilities	44	432	\$17,144,426	\$763.20
Information	9	71	\$2,530,472	\$685.39
Financial Activities	62	333	\$9,967,252	\$575.61
Professional & Business Services	55	254	\$5,624,245	\$425.82
Education & Health Services	60	1,020	\$25,405,684	\$478.99
Leisure & Hospitality	41	581	\$5,300,829	\$175.45
Other Services	38	298	\$4,757,126	\$306.99
Local Government	26	1,074	\$30,012,492	\$537.40
State Government	14	549	\$14,625,303	\$512.31

**TABLE 6. COUNTY SUMMARY
EMPLOYMENT AND TOTAL EARNINGS, BY INDUSTRY
CALENDAR YEAR 2006**

NORTH AMERICAN INDUSTRY CLASSIFICATION SYSTEM INDUSTRY GROUP	AVERAGE EMPLOYING UNITS	AVERAGE COVERED EMPLOYMENT	TOTAL EARNINGS	AVERAGE WEEKLY EARNINGS
HOWARD COUNTY - TOTAL	361	7,670	\$199,339,680	\$499.80
Natural Resources & Mining	21	239	\$7,399,044	\$595.35
Construction	26	106	\$2,711,585	\$491.94
Manufacturing	26	4,297	\$120,749,151	\$540.40
Trade, Transportation & Utilities	107	944	\$21,901,306	\$446.16
Wholesale Trade	21	106	\$3,699,733	\$671.21
Retail Trade	64	642	\$11,525,416	\$345.24
Transportation, Warehousing & Utilities	22	196	\$6,676,157	\$655.04
Information	7	38	\$905,966	\$458.48
Financial Activities	36	137	\$3,956,444	\$555.37
Professional & Business Services	27	126	\$3,042,324	\$464.34
Education & Health Services	43	599	\$12,533,301	\$402.38
Leisure & Hospitality	19	302	\$2,685,415	\$171.00
Other Services	20	114	\$2,213,567	\$373.41
Local Government	18	637	\$17,530,815	\$529.25
State Government	12	132	\$3,710,762	\$540.61
INDEPENDENCE COUNTY - TOTAL	933	16,172	\$445,468,459	\$529.72
Natural Resources & Mining	14	144	\$4,264,901	\$569.56
Construction	67	447	\$11,867,372	\$510.56
Manufacturing	57	4,812	\$153,562,387	\$613.70
Trade, Transportation & Utilities	277	2,983	\$80,733,509	\$520.47
Wholesale Trade	53	550	\$17,931,615	\$626.98
Retail Trade	168	1,686	\$31,759,898	\$362.26
Transportation, Warehousing & Utilities	57	746	\$31,041,996	\$800.22
Information	12	163	\$4,599,789	\$542.68
Financial Activities	85	461	\$14,260,143	\$594.87
Professional & Business Services	88	935	\$18,886,553	\$388.45
Education & Health Services	138	2,820	\$89,330,748	\$609.18
Leisure & Hospitality	66	1,123	\$10,262,319	\$175.74
Other Services	67	373	\$6,639,573	\$342.32
Local Government	46	1,457	\$37,213,234	\$491.17
State Government	17	455	\$13,847,931	\$585.29

**TABLE 6. COUNTY SUMMARY
EMPLOYMENT AND TOTAL EARNINGS, BY INDUSTRY
CALENDAR YEAR 2006**

NORTH AMERICAN INDUSTRY CLASSIFICATION SYSTEM INDUSTRY GROUP	AVERAGE EMPLOYING UNITS	AVERAGE COVERED EMPLOYMENT	TOTAL EARNINGS	AVERAGE WEEKLY EARNINGS
IZARD COUNTY - TOTAL	275	3,008	\$70,107,723	\$448.21
Natural Resources & Mining	4	88	\$2,962,915	\$647.49
Construction	22	47	\$989,393	\$404.83
Manufacturing	12	402	\$12,088,318	\$578.28
Trade, Transportation & Utilities	67	531	\$10,423,843	\$377.51
Retail Trade	51	422	\$7,192,350	\$327.76
Other Trade, Transportation & Utilities	17	109	\$3,231,493	\$570.13
Information	3	8	\$140,467	\$337.66
Financial Activities	30	152	\$4,242,453	\$536.75
Professional & Business Services	21	79	\$1,490,227	\$362.76
Education & Health Services	51	544	\$11,170,608	\$394.89
Leisure & Hospitality	23	185	\$1,609,865	\$167.35
Other Services	14	36	\$674,156	\$360.13
Local Government	18	503	\$12,406,110	\$474.31
State Government	11	435	\$11,909,368	\$526.50
JACKSON COUNTY - TOTAL	527	5,638	\$154,547,300	\$527.15
Natural Resources & Mining	45	202	\$4,801,042	\$457.07
Construction	29	179	\$5,532,801	\$594.41
Manufacturing	25	1,074	\$37,704,452	\$675.13
Trade, Transportation & Utilities	126	1,123	\$28,166,145	\$482.33
Wholesale Trade	34	219	\$7,969,782	\$699.84
Retail Trade	73	671	\$12,949,197	\$371.12
Transportation, Warehousing & Utilities	19	234	\$7,247,166	\$595.59
Information	6	37	\$1,215,085	\$631.54
Financial Activities	44	185	\$5,468,584	\$568.46
Professional & Business Services	38	215	\$5,930,945	\$530.50
Education & Health Services	92	830	\$25,000,452	\$579.25
Leisure & Hospitality	38	329	\$3,481,322	\$203.49
Other Services	36	98	\$1,736,836	\$340.82
Local Government	35	699	\$16,399,392	\$451.18
State Government	14	665	\$19,110,244	\$552.64

**TABLE 6. COUNTY SUMMARY
EMPLOYMENT AND TOTAL EARNINGS, BY INDUSTRY
CALENDAR YEAR 2006**

NORTH AMERICAN INDUSTRY CLASSIFICATION SYSTEM INDUSTRY GROUP	AVERAGE EMPLOYING UNITS	AVERAGE COVERED EMPLOYMENT	TOTAL EARNINGS	AVERAGE WEEKLY EARNINGS
JEFFERSON COUNTY - TOTAL	1,905	31,965	\$990,800,257	\$596.08
Natural Resources & Mining	41	462	\$16,394,250	\$682.41
Construction	134	1,519	\$65,899,854	\$834.30
Manufacturing	72	6,167	\$245,046,387	\$764.14
Trade, Transportation & Utilities	485	5,881	\$159,463,056	\$521.44
Wholesale Trade	85	1,029	\$34,357,106	\$642.09
Retail Trade	334	3,962	\$78,939,577	\$383.16
Transportation, Warehousing & Utilities	67	890	\$46,166,373	\$997.54
Information	19	210	\$6,295,305	\$576.49
Financial Activities	155	1,219	\$44,682,255	\$704.90
Professional & Business Services	177	1,741	\$55,197,578	\$609.70
Education & Health Services	437	5,452	\$157,874,782	\$556.87
Leisure & Hospitality	149	2,250	\$23,061,972	\$197.11
Other Services	157	768	\$18,397,403	\$460.67
Local Government	41	3,080	\$96,340,756	\$601.53
State Government	40	3,218	\$102,146,659	\$610.43
JOHNSON COUNTY - TOTAL	477	8,479	\$212,303,578	\$481.51
Natural Resources & Mining	15	201	\$6,317,849	\$604.46
Construction	30	127	\$3,168,221	\$479.74
Manufacturing	45	3,082	\$79,390,283	\$495.37
Trade, Transportation & Utilities	124	1,838	\$43,597,145	\$456.15
Information	6	33	\$952,959	\$555.34
Financial Activities	43	235	\$6,512,195	\$532.91
Professional & Business Services	50	187	\$4,749,867	\$488.47
Education & Health Services	73	1,140	\$30,233,266	\$510.01
Leisure & Hospitality	38	520	\$5,173,797	\$191.34
Other Services	30	88	\$1,711,279	\$373.97
Local Government	14	873	\$25,619,553	\$564.36
State Government	10	155	\$4,877,164	\$605.11

**TABLE 6. COUNTY SUMMARY
EMPLOYMENT AND TOTAL EARNINGS, BY INDUSTRY
CALENDAR YEAR 2006**

NORTH AMERICAN INDUSTRY CLASSIFICATION SYSTEM INDUSTRY GROUP	AVERAGE EMPLOYING UNITS	AVERAGE COVERED EMPLOYMENT	TOTAL EARNINGS	AVERAGE WEEKLY EARNINGS
LAFAYETTE COUNTY - TOTAL	172	1,426	\$36,100,261	\$486.84
Natural Resources & Mining	33	184	\$5,518,427	\$576.76
Trade, Transportation & Utilities	38	229	\$5,084,804	\$427.01
Retail Trade	22	153	\$2,432,099	\$305.69
Other Trade, Transportation & Utilities	15	76	\$2,652,705	\$671.23
Financial Activities	17	85	\$2,091,383	\$473.16
Professional & Business Services	9	59	\$1,848,531	\$602.52
Education & Health Services	23	226	\$4,283,435	\$364.49
Leisure & Hospitality	6	41	\$597,628	\$280.31
Other Services	8	80	\$1,296,684	\$311.70
Local Government	13	326	\$8,182,422	\$482.68
State Government	8	50	\$1,446,717	\$556.43
Other	19	146	\$5,750,230	\$757.41
LAWRENCE COUNTY - TOTAL	424	4,099	\$97,318,204	\$456.58
Natural Resources & Mining	35	177	\$5,465,500	\$593.82
Construction	25	65	\$1,504,236	\$445.04
Manufacturing	22	561	\$14,161,751	\$485.46
Trade, Transportation & Utilities	130	922	\$21,252,129	\$443.27
Wholesale Trade	24	207	\$6,300,813	\$585.36
Retail Trade	71	586	\$10,403,812	\$341.42
Transportation, Warehousing & Utilities	35	129	\$4,547,504	\$677.92
Information	6	20	\$645,143	\$620.33
Financial Activities	29	133	\$3,405,142	\$492.36
Professional & Business Services	24	126	\$3,979,189	\$607.32
Education & Health Services	65	447	\$11,181,939	\$481.07
Leisure & Hospitality	25	325	\$2,468,344	\$146.06
Other Services	26	80	\$1,167,733	\$280.71
Local Government	28	1,130	\$28,998,436	\$493.51
State Government	11	113	\$3,088,662	\$525.64

**TABLE 6. COUNTY SUMMARY
EMPLOYMENT AND TOTAL EARNINGS, BY INDUSTRY
CALENDAR YEAR 2006**

NORTH AMERICAN INDUSTRY CLASSIFICATION SYSTEM INDUSTRY GROUP	AVERAGE EMPLOYING UNITS	AVERAGE COVERED EMPLOYMENT	TOTAL EARNINGS	AVERAGE WEEKLY EARNINGS
LEE COUNTY - TOTAL	251	2,075	\$52,661,949	\$488.06
Natural Resources & Mining	29	206	\$4,987,032	\$465.56
Construction	8	18	\$351,128	\$375.14
Trade, Transportation & Utilities	53	349	\$7,935,952	\$437.29
Wholesale Trade	9	71	\$2,119,196	\$574.00
Retail Trade	27	190	\$2,933,679	\$296.93
Transportation, Warehousing & Utilities	18	88	\$2,883,077	\$630.04
Financial Activities	15	81	\$2,444,563	\$580.38
Professional & Business Services	19	66	\$2,280,541	\$664.49
Education & Health Services	66	302	\$7,441,092	\$473.83
Leisure & Hospitality	10	91	\$695,978	\$147.08
Local Government	16	372	\$9,825,322	\$507.93
State Government	8	456	\$13,420,222	\$565.97
Other	27	134	\$3,280,119	\$470.74
LINCOLN COUNTY - TOTAL	223	2,938	\$78,551,536	\$514.16
Natural Resources & Mining	32	184	\$5,247,799	\$548.47
Construction	13	66	\$1,702,661	\$496.11
Manufacturing	9	434	\$12,672,148	\$561.51
Trade, Transportation & Utilities	47	376	\$10,206,570	\$522.02
Wholesale Trade	7	31	\$1,332,150	\$826.40
Retail Trade	25	208	\$2,926,744	\$270.59
Transportation, Warehousing & Utilities	15	137	\$5,947,676	\$834.88
Financial Activities	22	76	\$2,243,200	\$567.61
Professional & Business Services	13	21	\$608,636	\$557.36
Education & Health Services	35	301	\$6,231,594	\$398.13
Leisure & Hospitality	15	139	\$1,215,732	\$168.20
Local & State Government	22	1,297	\$37,641,608	\$558.12
Other	16	44	\$781,588	\$341.60

**TABLE 6. COUNTY SUMMARY
EMPLOYMENT AND TOTAL EARNINGS, BY INDUSTRY
CALENDAR YEAR 2006**

NORTH AMERICAN INDUSTRY CLASSIFICATION SYSTEM INDUSTRY GROUP	AVERAGE EMPLOYING UNITS	AVERAGE COVERED EMPLOYMENT	TOTAL EARNINGS	AVERAGE WEEKLY EARNINGS
LITTLE RIVER COUNTY - TOTAL	257	4,449	\$179,042,890	\$773.91
Natural Resources & Mining	12	69	\$2,272,337	\$633.32
Construction	26	214	\$6,124,467	\$550.37
Manufacturing	14	1,441	\$93,103,514	\$1,242.51
Trade, Transportation & Utilities	68	1,163	\$42,498,258	\$702.73
Wholesale Trade	10	41	\$1,394,229	\$653.95
Retail Trade	41	321	\$5,881,537	\$352.36
Transportation, Warehousing & Utilities	17	801	\$35,222,492	\$845.64
Information	3	11	\$345,221	\$603.53
Financial Activities	24	101	\$2,642,671	\$503.17
Professional & Business Services	20	134	\$2,964,299	\$425.42
Education & Health Services	25	161	\$3,342,165	\$399.21
Leisure & Hospitality	19	231	\$2,131,341	\$177.43
Other Services	14	99	\$1,367,678	\$265.67
Local Government	20	748	\$20,031,064	\$514.99
State Government	12	79	\$2,219,875	\$540.38
LOGAN COUNTY - TOTAL	481	5,811	\$140,376,489	\$464.56
Natural Resources & Mining	19	93	\$3,044,100	\$629.47
Construction	51	158	\$4,016,215	\$488.83
Manufacturing	27	1,790	\$49,010,178	\$526.54
Trade, Transportation & Utilities	117	838	\$16,256,691	\$373.07
Wholesale Trade	18	43	\$936,830	\$418.98
Retail Trade	73	723	\$12,760,463	\$339.41
Transportation, Warehousing & Utilities	26	72	\$2,559,398	\$683.60
Information	6	45	\$1,508,328	\$644.58
Financial Activities	44	246	\$8,645,091	\$675.82
Professional & Business Services	43	178	\$3,476,537	\$375.60
Education & Health Services	77	753	\$16,995,269	\$434.04
Leisure & Hospitality	31	327	\$3,022,254	\$177.74
Other Services	29	78	\$1,704,923	\$420.35
Local Government	23	794	\$20,979,956	\$508.14
State Government	15	512	\$11,716,947	\$440.09

**TABLE 6. COUNTY SUMMARY
EMPLOYMENT AND TOTAL EARNINGS, BY INDUSTRY
CALENDAR YEAR 2006**

NORTH AMERICAN INDUSTRY CLASSIFICATION SYSTEM INDUSTRY GROUP	AVERAGE EMPLOYING UNITS	AVERAGE COVERED EMPLOYMENT	TOTAL EARNINGS	AVERAGE WEEKLY EARNINGS
LONOKE COUNTY - TOTAL	1,214	12,144	\$318,640,641	\$504.59
Natural Resources & Mining	70	447	\$14,554,948	\$626.18
Construction	166	935	\$30,912,311	\$635.79
Manufacturing	37	1,390	\$49,970,187	\$691.34
Trade, Transportation & Utilities	333	2,676	\$62,359,019	\$448.14
Wholesale Trade	79	441	\$16,452,135	\$717.43
Retail Trade	178	1,942	\$36,843,216	\$364.84
Transportation, Warehousing & Utilities	76	292	\$9,063,668	\$596.92
Information	17	119	\$4,036,508	\$652.31
Financial Activities	122	588	\$21,274,136	\$695.78
Professional & Business Services	141	555	\$15,652,515	\$542.36
Education & Health Services	134	1,371	\$32,103,055	\$450.30
Leisure & Hospitality	85	1,298	\$12,978,046	\$192.28
Other Services	67	197	\$4,409,948	\$430.49
Local Government	28	2,423	\$66,460,604	\$527.48
State Government	16	145	\$3,929,364	\$521.14
MADISON COUNTY - TOTAL	257	3,173	\$78,229,563	\$474.13
Natural Resources & Mining	12	57	\$1,538,641	\$519.11
Construction	45	154	\$4,012,007	\$501.00
Manufacturing	20	1,101	\$28,667,945	\$500.73
Trade, Transportation & Utilities	64	584	\$13,410,871	\$441.61
Wholesale Trade	15	41	\$2,055,426	\$964.08
Retail Trade	34	427	\$7,773,684	\$350.10
Transportation, Warehousing & Utilities	15	116	\$3,581,761	\$593.79
Information	4	35	\$1,562,922	\$858.75
Financial Activities	15	92	\$2,732,816	\$571.24
Professional & Business Services	20	85	\$1,770,519	\$400.57
Education & Health Services	36	258	\$4,892,357	\$364.67
Leisure & Hospitality	13	126	\$887,653	\$135.48
Other Services	13	25	\$664,078	\$510.83
Local Government	8	611	\$16,620,650	\$523.12
State Government	8	47	\$1,469,104	\$601.11

**TABLE 6. COUNTY SUMMARY
EMPLOYMENT AND TOTAL EARNINGS, BY INDUSTRY
CALENDAR YEAR 2006**

NORTH AMERICAN INDUSTRY CLASSIFICATION SYSTEM INDUSTRY GROUP	AVERAGE EMPLOYING UNITS	AVERAGE COVERED EMPLOYMENT	TOTAL EARNINGS	AVERAGE WEEKLY EARNINGS
MARION COUNTY - TOTAL	309	4,121	\$95,479,000	\$445.56
Natural Resources & Mining	5	59	\$957,710	\$312.16
Construction	23	68	\$1,329,724	\$376.05
Manufacturing	27	1,747	\$45,479,923	\$500.64
Trade, Transportation & Utilities	57	661	\$12,245,468	\$356.26
Wholesale Trade	7	43	\$1,243,828	\$556.27
Retail Trade	38	497	\$7,909,624	\$306.05
Transportation, Warehousing & Utilities	12	121	\$3,092,016	\$491.42
Financial Activities	35	180	\$4,598,553	\$491.30
Professional & Business Services	27	53	\$1,587,874	\$576.15
Education & Health Services	48	373	\$7,602,448	\$391.96
Leisure & Hospitality	41	254	\$2,541,377	\$192.41
Local Government	20	531	\$13,234,879	\$479.32
State Government	8	108	\$2,723,084	\$484.88
Other	20	89	\$3,177,960	\$686.68
MILLER COUNTY - TOTAL	837	12,537	\$385,780,423	\$591.76
Natural Resources & Mining	28	141	\$4,172,303	\$569.05
Construction	90	799	\$23,712,612	\$570.73
Manufacturing	34	2,714	\$134,782,963	\$955.04
Trade, Transportation & Utilities	231	2,699	\$74,210,542	\$528.76
Wholesale Trade	65	643	\$25,534,259	\$763.68
Retail Trade	127	1,469	\$27,395,608	\$358.64
Transportation, Warehousing & Utilities	39	588	\$21,280,675	\$695.99
Information	9	100	\$7,195,251	\$1,383.70
Financial Activities	86	381	\$12,107,968	\$611.14
Professional & Business Services	83	931	\$19,802,693	\$409.05
Education & Health Services	89	1,074	\$26,920,531	\$482.03
Leisure & Hospitality	83	1,292	\$15,036,310	\$223.81
Other Services	63	350	\$5,143,548	\$282.61
Local Government	25	1,595	\$47,380,288	\$571.26
State Government	17	462	\$15,315,414	\$637.50

**TABLE 6. COUNTY SUMMARY
EMPLOYMENT AND TOTAL EARNINGS, BY INDUSTRY
CALENDAR YEAR 2006**

NORTH AMERICAN INDUSTRY CLASSIFICATION SYSTEM INDUSTRY GROUP	AVERAGE EMPLOYING UNITS	AVERAGE COVERED EMPLOYMENT	TOTAL EARNINGS	AVERAGE WEEKLY EARNINGS
MISSISSIPPI COUNTY - TOTAL	1,167	18,931	\$631,615,185	\$641.62
Natural Resources & Mining	101	735	\$19,712,595	\$515.77
Construction	64	562	\$19,890,254	\$680.61
Manufacturing	54	5,408	\$284,441,301	\$1,011.47
Trade, Transportation & Utilities	301	3,125	\$83,193,639	\$511.96
Wholesale Trade	63	580	\$22,403,623	\$742.83
Retail Trade	185	1,926	\$36,068,991	\$360.14
Transportation, Warehousing & Utilities	53	618	\$24,721,025	\$769.26
Financial Activities	103	580	\$15,926,991	\$528.08
Professional & Business Services	97	1,151	\$32,150,958	\$537.17
Education & Health Services	207	1,712	\$44,872,537	\$504.05
Leisure & Hospitality	81	1,120	\$11,316,348	\$194.31
Local Government	46	2,358	\$62,481,876	\$509.57
State Government	24	632	\$17,219,990	\$523.98
Other	89	1,548	\$40,408,696	\$502.00
MONROE COUNTY - TOTAL	307	2,365	\$51,650,583	\$419.99
Natural Resources & Mining	35	145	\$3,393,266	\$450.04
Construction	14	36	\$699,375	\$373.60
Manufacturing	8	103	\$2,882,301	\$538.14
Trade, Transportation & Utilities	91	686	\$16,032,416	\$449.44
Wholesale Trade	23	193	\$5,941,253	\$591.99
Retail Trade	41	344	\$5,843,403	\$326.67
Transportation, Warehousing & Utilities	27	150	\$4,247,760	\$544.58
Information	7	47	\$881,797	\$360.80
Financial Activities	16	98	\$2,953,719	\$579.62
Professional & Business Services	17	43	\$1,033,976	\$462.42
Education & Health Services	44	313	\$5,577,877	\$342.71
Leisure & Hospitality	27	272	\$2,641,779	\$186.78
Other Services	19	72	\$1,210,913	\$323.43
Local Government	22	435	\$11,126,984	\$491.91
State Government	9	116	\$3,216,180	\$533.19

**TABLE 6. COUNTY SUMMARY
EMPLOYMENT AND TOTAL EARNINGS, BY INDUSTRY
CALENDAR YEAR 2006**

NORTH AMERICAN INDUSTRY CLASSIFICATION SYSTEM INDUSTRY GROUP	AVERAGE EMPLOYING UNITS	AVERAGE COVERED EMPLOYMENT	TOTAL EARNINGS	AVERAGE WEEKLY EARNINGS
MONTGOMERY COUNTY - TOTAL	187	1,666	\$35,041,268	\$404.48
Natural Resources & Mining	15	58	\$1,897,283	\$629.07
Construction	24	133	\$3,617,708	\$523.09
Trade, Transportation & Utilities	45	201	\$3,934,626	\$376.45
Wholesale Trade	9	60	\$1,375,462	\$440.85
Retail Trade	26	124	\$2,161,018	\$335.15
Transportation, Warehousing & Utilities	11	18	\$398,146	\$425.37
Financial Activities	10	74	\$2,053,528	\$533.66
Education & Health Services	16	53	\$1,050,361	\$381.12
Leisure & Hospitality	22	278	\$4,136,458	\$286.14
Other Services	12	73	\$1,184,965	\$312.16
Local Government	9	461	\$10,749,682	\$448.43
State Government	8	57	\$1,611,769	\$543.78
Other	26	279	\$4,804,888	\$331.19
NEVADA COUNTY - TOTAL	189	2,629	\$73,988,536	\$541.22
Natural Resources & Mining	15	63	\$1,941,857	\$592.75
Construction	11	18	\$377,362	\$403.16
Manufacturing	9	834	\$32,076,145	\$739.63
Trade, Transportation & Utilities	47	523	\$13,420,596	\$493.48
Wholesale Trade	5	13	\$192,762	\$285.15
Retail Trade	31	293	\$5,200,612	\$341.34
Transportation, Warehousing & Utilities	11	217	\$8,027,222	\$711.38
Financial Activities	14	64	\$2,124,271	\$638.30
Education & Health Services	16	380	\$7,818,245	\$395.66
Leisure & Hospitality	14	106	\$1,019,581	\$184.97
Other Services	15	70	\$898,228	\$246.77
Local Government	27	450	\$10,609,970	\$453.42
State Government	11	79	\$2,313,211	\$563.10
Other	12	43	\$1,389,070	\$621.23

**TABLE 6. COUNTY SUMMARY
EMPLOYMENT AND TOTAL EARNINGS, BY INDUSTRY
CALENDAR YEAR 2006**

NORTH AMERICAN INDUSTRY CLASSIFICATION SYSTEM INDUSTRY GROUP	AVERAGE EMPLOYING UNITS	AVERAGE COVERED EMPLOYMENT	TOTAL EARNINGS	AVERAGE WEEKLY EARNINGS
NEWTON COUNTY - TOTAL	135	1,075	\$20,759,175	\$371.36
Natural Resources & Mining	5	7	\$66,685	\$183.20
Construction	8	14	\$223,058	\$306.40
Manufacturing	16	95	\$2,073,909	\$419.82
Trade, Transportation & Utilities	31	161	\$2,677,974	\$319.87
Retail Trade	16	107	\$1,387,759	\$249.42
Other Trade, Transportation & Utilities	16	54	\$1,290,215	\$459.48
Education & Health Services	20	224	\$3,490,660	\$299.68
Leisure & Hospitality	17	66	\$747,375	\$217.77
Other Services	5	10	\$142,487	\$274.01
Local Government	13	360	\$8,293,263	\$443.02
State Government	7	88	\$1,757,145	\$383.99
Other	13	49	\$1,286,619	\$504.95
OUACHITA COUNTY - TOTAL	647	7,846	\$203,657,489	\$499.17
Natural Resources & Mining	45	278	\$8,340,499	\$576.96
Construction	51	285	\$7,371,478	\$497.40
Manufacturing	31	927	\$32,549,257	\$675.24
Trade, Transportation & Utilities	179	1,790	\$45,227,495	\$485.90
Wholesale Trade	31	252	\$10,597,998	\$808.76
Retail Trade	120	1,117	\$18,872,211	\$324.91
Transportation, Warehousing & Utilities	28	421	\$15,757,286	\$719.77
Information	9	92	\$2,660,717	\$556.17
Financial Activities	64	366	\$10,821,888	\$568.62
Professional & Business Services	51	351	\$7,899,152	\$432.78
Education & Health Services	93	1,257	\$32,377,066	\$495.33
Leisure & Hospitality	39	528	\$4,822,003	\$175.63
Other Services	43	164	\$3,203,511	\$375.65
Local Government	30	1,265	\$32,277,091	\$490.68
State Government	14	544	\$16,107,332	\$569.41

**TABLE 6. COUNTY SUMMARY
EMPLOYMENT AND TOTAL EARNINGS, BY INDUSTRY
CALENDAR YEAR 2006**

NORTH AMERICAN INDUSTRY CLASSIFICATION SYSTEM INDUSTRY GROUP	AVERAGE EMPLOYING UNITS	AVERAGE COVERED EMPLOYMENT	TOTAL EARNINGS	AVERAGE WEEKLY EARNINGS
PERRY COUNTY - TOTAL	158	1,205	\$27,975,287	\$446.46
Natural Resources & Mining	9	37	\$1,213,929	\$630.94
Construction	26	78	\$2,061,619	\$508.29
Manufacturing	7	81	\$1,920,060	\$455.85
Trade, Transportation & Utilities	27	188	\$3,544,163	\$362.54
Retail Trade	18	159	\$2,185,650	\$264.35
Other Trade, Transportation & Utilities	9	29	\$1,358,513	\$900.87
Financial Activities	14	51	\$2,034,330	\$767.09
Education & Health Services	24	177	\$3,728,552	\$405.10
Local Government	12	395	\$9,319,240	\$453.71
State Government	9	53	\$1,429,650	\$518.74
Other	32	144	\$2,723,744	\$363.75
PHILLIPS COUNTY - TOTAL	766	6,480	\$162,443,832	\$482.09
Natural Resources & Mining	71	477	\$10,541,664	\$425.00
Construction	30	113	\$2,702,099	\$459.85
Manufacturing	12	402	\$12,417,564	\$594.03
Trade, Transportation & Utilities	176	1,560	\$38,977,658	\$480.49
Wholesale Trade	36	391	\$12,843,310	\$631.68
Retail Trade	104	887	\$16,366,580	\$354.84
Transportation, Warehousing & Utilities	36	283	\$9,767,768	\$663.75
Information	11	52	\$1,528,934	\$565.43
Financial Activities	55	272	\$7,815,288	\$552.55
Professional & Business Services	60	229	\$6,159,783	\$517.28
Education & Health Services	224	1,276	\$29,353,732	\$442.39
Leisure & Hospitality	39	438	\$3,952,428	\$173.53
Other Services	42	84	\$1,617,051	\$370.20
Local Government	31	1,072	\$33,213,447	\$595.82
State Government	17	506	\$14,164,184	\$538.32

**TABLE 6. COUNTY SUMMARY
EMPLOYMENT AND TOTAL EARNINGS, BY INDUSTRY
CALENDAR YEAR 2006**

NORTH AMERICAN INDUSTRY CLASSIFICATION SYSTEM INDUSTRY GROUP	AVERAGE EMPLOYING UNITS	AVERAGE COVERED EMPLOYMENT	TOTAL EARNINGS	AVERAGE WEEKLY EARNINGS
PIKE COUNTY - TOTAL	266	2,891	\$67,417,217	\$448.46
Natural Resources & Mining	31	148	\$4,502,053	\$584.99
Construction	14	112	\$3,342,072	\$573.84
Manufacturing	14	531	\$13,076,499	\$473.58
Trade, Transportation & Utilities	90	582	\$13,558,437	\$448.01
Wholesale Trade	18	122	\$3,872,531	\$610.42
Retail Trade	44	335	\$5,998,436	\$344.34
Transportation, Warehousing & Utilities	29	125	\$3,687,470	\$567.30
Information	5	30	\$1,252,884	\$803.13
Financial Activities	25	177	\$5,428,580	\$589.81
Professional & Business Services	10	31	\$558,339	\$346.36
Education & Health Services	19	247	\$4,349,366	\$338.63
Leisure & Hospitality	19	213	\$2,089,472	\$188.65
Other Services	14	125	\$2,484,062	\$382.16
Local Government	13	574	\$14,196,185	\$475.62
State Government	11	121	\$2,579,268	\$409.93
POINSETT COUNTY - TOTAL	500	5,912	\$152,362,843	\$495.61
Natural Resources & Mining	50	344	\$9,341,092	\$522.20
Construction	27	72	\$1,962,268	\$524.11
Manufacturing	25	1,206	\$36,133,634	\$576.18
Trade, Transportation & Utilities	135	1,371	\$36,576,858	\$513.06
Wholesale Trade	34	510	\$20,947,921	\$789.89
Retail Trade	75	722	\$11,701,833	\$311.68
Transportation, Warehousing & Utilities	26	139	\$3,927,104	\$543.32
Information	6	55	\$2,440,486	\$853.32
Financial Activities	46	336	\$10,761,724	\$615.94
Professional & Business Services	31	147	\$3,829,994	\$501.05
Education & Health Services	63	562	\$12,180,664	\$416.80
Leisure & Hospitality	44	404	\$3,254,663	\$154.92
Other Services	30	62	\$1,406,901	\$436.38
Local Government	31	1,148	\$29,431,859	\$493.03
State Government	12	205	\$5,042,700	\$473.05

**TABLE 6. COUNTY SUMMARY
EMPLOYMENT AND TOTAL EARNINGS, BY INDUSTRY
CALENDAR YEAR 2006**

NORTH AMERICAN INDUSTRY CLASSIFICATION SYSTEM INDUSTRY GROUP	AVERAGE EMPLOYING UNITS	AVERAGE COVERED EMPLOYMENT	TOTAL EARNINGS	AVERAGE WEEKLY EARNINGS
POLK COUNTY - TOTAL	540	6,256	\$143,818,819	\$442.10
Natural Resources & Mining	27	254	\$7,875,270	\$596.25
Construction	36	204	\$4,150,789	\$391.29
Manufacturing	45	1,363	\$35,904,823	\$506.59
Trade, Transportation & Utilities	153	1,361	\$27,696,527	\$391.35
Wholesale Trade	27	118	\$2,235,120	\$364.26
Retail Trade	83	835	\$14,619,932	\$336.71
Transportation, Warehousing & Utilities	43	408	\$10,841,475	\$511.00
Information	9	55	\$1,540,225	\$538.54
Financial Activities	40	228	\$6,168,217	\$520.26
Professional & Business Services	49	160	\$4,258,171	\$511.80
Education & Health Services	76	947	\$22,310,511	\$453.06
Leisure & Hospitality	41	458	\$3,794,960	\$159.34
Other Services	31	139	\$2,465,664	\$341.13
Local Government	21	766	\$20,634,270	\$518.03
State Government	14	322	\$7,019,392	\$419.22
POPE COUNTY - TOTAL	1,726	26,897	\$771,239,909	\$551.42
Natural Resources & Mining	23	622	\$17,152,737	\$530.32
Construction	176	1,289	\$43,431,707	\$647.96
Manufacturing	91	5,155	\$169,616,913	\$632.76
Trade, Transportation & Utilities	471	6,609	\$230,641,519	\$671.12
Wholesale Trade	101	720	\$23,880,230	\$637.83
Retail Trade	280	3,389	\$67,579,788	\$383.48
Transportation, Warehousing & Utilities	90	2,500	\$139,181,501	\$1,070.63
Information	24	265	\$9,828,843	\$713.27
Financial Activities	179	857	\$26,875,685	\$603.08
Professional & Business Services	226	2,661	\$54,651,343	\$394.96
Education & Health Services	238	2,940	\$81,699,918	\$534.41
Leisure & Hospitality	133	2,397	\$24,557,168	\$197.02
Other Services	110	466	\$9,947,837	\$410.52
Local Government	40	2,132	\$61,868,976	\$558.06
State Government	16	1,505	\$40,967,263	\$523.48

**TABLE 6. COUNTY SUMMARY
EMPLOYMENT AND TOTAL EARNINGS, BY INDUSTRY
CALENDAR YEAR 2006**

NORTH AMERICAN INDUSTRY CLASSIFICATION SYSTEM INDUSTRY GROUP	AVERAGE EMPLOYING UNITS	AVERAGE COVERED EMPLOYMENT	TOTAL EARNINGS	AVERAGE WEEKLY EARNINGS
PRAIRIE COUNTY - TOTAL	241	1,495	\$36,840,191	\$473.89
Natural Resources & Mining	31	134	\$3,929,375	\$563.92
Trade, Transportation & Utilities	69	370	\$8,414,640	\$437.35
Wholesale Trade	11	65	\$2,094,273	\$619.61
Retail Trade	39	217	\$3,313,448	\$293.64
Transportation, Warehousing & Utilities	20	88	\$3,006,919	\$657.11
Information	4	9	\$383,634	\$819.73
Financial Activities	16	62	\$1,934,185	\$599.93
Professional & Business Services	16	52	\$1,239,003	\$458.21
Education & Health Services	30	167	\$3,961,329	\$456.16
Leisure & Hospitality	20	106	\$1,050,800	\$190.64
Other Services	13	38	\$665,576	\$336.83
Local Government	15	320	\$8,205,505	\$493.12
State Government	10	48	\$1,365,677	\$547.15
Other	19	189	\$5,690,467	\$579.01
PULASKI COUNTY - TOTAL	14,050	238,413	\$8,899,736,206	\$717.87
Natural Resources & Mining	48	704	\$33,828,347	\$924.07
Construction	1,138	10,519	\$419,269,414	\$766.51
Manufacturing	444	15,765	\$656,985,460	\$801.42
Trade, Transportation & Utilities	3,248	51,902	\$1,808,986,923	\$670.27
Wholesale Trade	1,095	13,355	\$665,222,794	\$957.90
Retail Trade	1,751	24,931	\$579,084,236	\$446.68
Transportation, Warehousing & Utilities	403	13,616	\$564,679,893	\$797.53
Information	237	8,762	\$467,960,033	\$1,027.08
Financial Activities	1,717	16,182	\$825,863,840	\$981.46
Professional & Business Services	2,698	34,044	\$1,241,555,051	\$701.33
Education & Health Services	1,969	33,280	\$1,343,688,308	\$776.45
Leisure & Hospitality	1,022	19,935	\$277,612,823	\$267.81
Other Services	1,223	6,868	\$189,957,635	\$531.89
Local Government	104	16,122	\$580,789,924	\$692.78
State Government	202	24,330	\$1,053,238,448	\$832.49

**TABLE 6. COUNTY SUMMARY
EMPLOYMENT AND TOTAL EARNINGS, BY INDUSTRY
CALENDAR YEAR 2006**

NORTH AMERICAN INDUSTRY CLASSIFICATION SYSTEM INDUSTRY GROUP	AVERAGE EMPLOYING UNITS	AVERAGE COVERED EMPLOYMENT	TOTAL EARNINGS	AVERAGE WEEKLY EARNINGS
RANDOLPH COUNTY - TOTAL	413	5,031	\$114,099,223	\$436.14
Natural Resources & Mining	22	76	\$1,563,061	\$395.51
Construction	26	105	\$1,912,151	\$350.21
Manufacturing	40	1,070	\$28,252,061	\$507.77
Trade, Transportation & Utilities	102	945	\$19,867,279	\$404.30
Wholesale Trade	22	203	\$4,033,459	\$382.10
Retail Trade	62	606	\$10,722,876	\$340.28
Transportation, Warehousing & Utilities	18	136	\$5,110,944	\$722.70
Information	5	44	\$1,615,929	\$706.26
Financial Activities	27	151	\$3,401,220	\$433.17
Professional & Business Services	38	226	\$4,015,958	\$341.73
Education & Health Services	66	820	\$20,606,817	\$483.27
Leisure & Hospitality	29	424	\$3,289,706	\$149.21
Other Services	24	67	\$1,237,502	\$355.20
Local Government	23	847	\$20,555,467	\$466.70
State Government	12	257	\$7,782,072	\$582.32
SAINT FRANCIS COUNTY - TOTAL	670	8,135	\$201,828,121	\$477.11
Natural Resources & Mining	22	172	\$4,183,644	\$467.76
Construction	44	233	\$6,734,229	\$555.81
Manufacturing	21	1,294	\$36,396,402	\$540.90
Trade, Transportation & Utilities	189	2,106	\$51,325,944	\$468.68
Wholesale Trade	32	516	\$16,216,049	\$604.35
Retail Trade	126	1,261	\$23,449,706	\$357.62
Transportation, Warehousing & Utilities	31	329	\$11,660,189	\$681.56
Information	9	98	\$2,680,475	\$526.00
Financial Activities	50	286	\$7,321,914	\$492.33
Professional & Business Services	49	174	\$5,656,362	\$625.15
Education & Health Services	152	1,310	\$29,154,756	\$427.99
Leisure & Hospitality	49	729	\$7,380,704	\$194.70
Other Services	40	121	\$1,867,562	\$296.82
Local Government	30	1,108	\$33,298,898	\$577.95
State Government	17	505	\$15,827,231	\$602.71

**TABLE 6. COUNTY SUMMARY
EMPLOYMENT AND TOTAL EARNINGS, BY INDUSTRY
CALENDAR YEAR 2006**

NORTH AMERICAN INDUSTRY CLASSIFICATION SYSTEM INDUSTRY GROUP	AVERAGE EMPLOYING UNITS	AVERAGE COVERED EMPLOYMENT	TOTAL EARNINGS	AVERAGE WEEKLY EARNINGS
SALINE COUNTY - TOTAL	1,706	20,069	\$558,491,569	\$535.16
Natural Resources & Mining	11	32	\$1,296,297	\$779.02
Construction	302	1,945	\$63,338,331	\$626.24
Manufacturing	86	1,860	\$74,872,163	\$774.11
Trade, Transportation & Utilities	423	4,431	\$116,530,064	\$505.75
Wholesale Trade	123	552	\$23,704,829	\$825.84
Retail Trade	247	3,630	\$84,321,831	\$446.71
Transportation, Warehousing & Utilities	53	250	\$8,503,404	\$654.11
Information	17	139	\$3,783,364	\$523.43
Financial Activities	164	756	\$23,768,036	\$604.60
Professional & Business Services	212	1,193	\$31,864,561	\$513.65
Education & Health Services	185	2,665	\$70,157,246	\$506.26
Leisure & Hospitality	131	2,357	\$27,799,861	\$226.82
Other Services	127	580	\$13,647,531	\$452.50
Local & State Government	50	4,111	\$131,434,115	\$614.83
SCOTT COUNTY - TOTAL	187	2,902	\$65,756,628	\$435.75
Natural Resources & Mining	18	178	\$5,623,028	\$607.50
Construction	10	67	\$1,542,741	\$442.81
Manufacturing	18	1,132	\$25,305,487	\$429.90
Trade, Transportation & Utilities	40	458	\$9,453,800	\$396.95
Wholesale Trade	7	65	\$1,798,246	\$532.03
Retail Trade	26	326	\$5,319,588	\$313.80
Transportation, Warehousing & Utilities	7	66	\$2,335,966	\$680.64
Information	3	7	\$285,845	\$785.29
Financial Activities	18	71	\$1,751,544	\$474.42
Professional & Business Services	9	12	\$275,622	\$441.70
Education & Health Services	30	310	\$6,831,365	\$423.78
Leisure & Hospitality	19	189	\$1,475,337	\$150.12
Other Services	11	60	\$2,655,227	\$851.03
Local Government	5	345	\$8,861,527	\$493.95
State Government	8	71	\$1,695,105	\$459.13

**TABLE 6. COUNTY SUMMARY
EMPLOYMENT AND TOTAL EARNINGS, BY INDUSTRY
CALENDAR YEAR 2006**

NORTH AMERICAN INDUSTRY CLASSIFICATION SYSTEM INDUSTRY GROUP	AVERAGE EMPLOYING UNITS	AVERAGE COVERED EMPLOYMENT	TOTAL EARNINGS	AVERAGE WEEKLY EARNINGS
SEARCY COUNTY - TOTAL	176	1,687	\$33,801,647	\$385.32
Construction	6	15	\$297,133	\$380.94
Manufacturing	16	268	\$4,996,519	\$358.53
Trade, Transportation & Utilities	38	289	\$4,641,086	\$308.83
Retail Trade	27	208	\$3,136,705	\$290.01
Other Trade, Transportation & Utilities	11	81	\$1,504,381	\$357.17
Financial Activities	14	92	\$2,327,849	\$486.59
Professional & Business Services	16	33	\$640,838	\$373.45
Education & Health Services	43	311	\$5,694,021	\$352.09
Leisure & Hospitality	11	112	\$1,017,563	\$174.72
Local Government	10	356	\$8,654,674	\$467.52
State Government	8	147	\$3,713,873	\$485.85
Other	15	66	\$1,818,091	\$529.75
SEBASTIAN COUNTY - TOTAL	3,631	73,184	\$2,448,250,651	\$643.33
Natural Resources & Mining	67	1,361	\$86,871,441	\$1,227.48
Construction	307	2,900	\$99,483,409	\$659.70
Manufacturing	230	20,864	\$756,985,997	\$697.73
Trade, Transportation & Utilities	930	12,837	\$361,747,432	\$541.92
Wholesale Trade	240	2,558	\$106,952,772	\$804.06
Retail Trade	564	8,055	\$169,092,336	\$403.70
Transportation, Warehousing & Utilities	127	2,225	\$85,702,324	\$740.73
Information	58	1,161	\$51,211,859	\$848.27
Financial Activities	409	2,508	\$92,740,629	\$711.11
Professional & Business Services	517	9,379	\$348,315,409	\$714.19
Education & Health Services	459	9,642	\$362,008,537	\$722.02
Leisure & Hospitality	314	5,409	\$63,174,099	\$224.60
Other Services	277	1,484	\$35,694,147	\$462.55
Local Government	43	4,254	\$146,206,481	\$660.95
State Government	22	1,385	\$43,811,211	\$608.32

**TABLE 6. COUNTY SUMMARY
EMPLOYMENT AND TOTAL EARNINGS, BY INDUSTRY
CALENDAR YEAR 2006**

NORTH AMERICAN INDUSTRY CLASSIFICATION SYSTEM INDUSTRY GROUP	AVERAGE EMPLOYING UNITS	AVERAGE COVERED EMPLOYMENT	TOTAL EARNINGS	AVERAGE WEEKLY EARNINGS
SEVIER COUNTY - TOTAL	335	5,865	\$148,054,502	\$485.46
Natural Resources & Mining	19	211	\$6,072,151	\$553.42
Construction	21	164	\$5,453,323	\$639.46
Manufacturing	11	2,327	\$56,451,964	\$466.53
Trade, Transportation & Utilities	92	850	\$20,857,917	\$471.90
Wholesale Trade	15	144	\$6,507,144	\$869.01
Retail Trade	58	595	\$10,254,427	\$331.43
Transportation, Warehousing & Utilities	19	111	\$4,096,346	\$709.69
Information	6	40	\$1,262,372	\$606.91
Financial Activities	28	216	\$5,949,266	\$529.67
Professional & Business Services	30	101	\$6,971,836	\$1,327.46
Education & Health Services	55	550	\$12,195,376	\$426.41
Leisure & Hospitality	21	247	\$2,155,171	\$167.80
Other Services	32	146	\$2,537,969	\$334.30
Local Government	12	827	\$23,289,274	\$541.56
State Government	9	186	\$4,857,883	\$502.26
SHARP COUNTY - TOTAL	434	3,920	\$85,000,017	\$416.99
Construction	35	223	\$5,965,309	\$514.43
Manufacturing	21	189	\$3,529,352	\$359.11
Trade, Transportation & Utilities	100	1,029	\$25,760,401	\$481.43
Retail Trade	70	645	\$10,914,101	\$325.41
Other Trade, Transportation & Utilities	30	384	\$14,846,300	\$743.50
Information	7	56	\$2,960,837	\$1,016.77
Financial Activities	39	268	\$7,314,396	\$524.86
Professional & Business Services	39	171	\$4,036,267	\$453.92
Education & Health Services	85	587	\$11,365,717	\$372.35
Leisure & Hospitality	40	469	\$3,806,030	\$156.06
Local Government	29	743	\$16,398,334	\$424.43
State Government	9	97	\$2,511,297	\$497.88
Other	31	87	\$1,352,077	\$298.87

**TABLE 6. COUNTY SUMMARY
EMPLOYMENT AND TOTAL EARNINGS, BY INDUSTRY
CALENDAR YEAR 2006**

NORTH AMERICAN INDUSTRY CLASSIFICATION SYSTEM INDUSTRY GROUP	AVERAGE EMPLOYING UNITS	AVERAGE COVERED EMPLOYMENT	TOTAL EARNINGS	AVERAGE WEEKLY EARNINGS
STONE COUNTY - TOTAL	273	2,945	\$60,498,694	\$395.05
Construction	23	105	\$2,279,931	\$417.57
Manufacturing	25	479	\$9,869,668	\$396.24
Trade, Transportation & Utilities	75	711	\$14,963,681	\$404.73
Wholesale Trade	10	51	\$1,038,943	\$391.76
Retail Trade	52	609	\$12,417,350	\$392.11
Transportation, Warehousing & Utilities	13	51	\$1,507,388	\$568.40
Financial Activities	23	98	\$2,777,687	\$545.07
Professional & Business Services	10	23	\$613,006	\$512.55
Education & Health Services	44	473	\$11,641,130	\$473.29
Leisure & Hospitality	35	415	\$3,488,299	\$161.64
Other Services	14	27	\$566,167	\$403.25
Local Government	10	383	\$9,993,292	\$501.77
State Government	9	169	\$3,175,036	\$361.29
Other	7	61	\$1,130,797	\$356.49
UNION COUNTY - TOTAL	1,377	19,775	\$667,693,198	\$649.32
Natural Resources & Mining	107	526	\$18,209,324	\$665.74
Construction	91	1,304	\$52,334,441	\$771.80
Manufacturing	65	5,151	\$208,199,540	\$777.29
Trade, Transportation & Utilities	355	3,632	\$113,634,714	\$601.67
Wholesale Trade	80	575	\$34,678,585	\$1,159.82
Retail Trade	218	2,274	\$43,427,439	\$367.26
Transportation, Warehousing & Utilities	58	783	\$35,528,690	\$872.60
Information	20	194	\$5,343,893	\$529.73
Financial Activities	121	734	\$23,161,455	\$606.83
Professional & Business Services	135	1,722	\$82,950,586	\$926.37
Education & Health Services	196	2,376	\$72,895,166	\$590.00
Leisure & Hospitality	86	1,051	\$11,676,138	\$213.65
Other Services	146	639	\$12,900,883	\$388.25
Local Government	37	1,914	\$50,899,546	\$511.41
State Government	18	533	\$15,487,512	\$558.79

**TABLE 6. COUNTY SUMMARY
EMPLOYMENT AND TOTAL EARNINGS, BY INDUSTRY
CALENDAR YEAR 2006**

NORTH AMERICAN INDUSTRY CLASSIFICATION SYSTEM INDUSTRY GROUP	AVERAGE EMPLOYING UNITS	AVERAGE COVERED EMPLOYMENT	TOTAL EARNINGS	AVERAGE WEEKLY EARNINGS
VAN BUREN COUNTY - TOTAL	358	3,741	\$81,758,024	\$420.28
Natural Resources & Mining	10	22	\$347,928	\$304.13
Construction	45	185	\$4,617,351	\$479.97
Manufacturing	14	554	\$13,418,542	\$465.79
Trade, Transportation & Utilities	97	793	\$16,762,944	\$406.51
Wholesale Trade	17	51	\$1,724,738	\$650.35
Retail Trade	60	607	\$10,950,781	\$346.94
Transportation, Warehousing & Utilities	21	135	\$4,087,425	\$582.25
Information	10	54	\$1,767,007	\$629.28
Financial Activities	27	147	\$3,839,707	\$502.32
Professional & Business Services	29	98	\$2,012,995	\$395.01
Education & Health Services	48	595	\$13,609,953	\$439.88
Leisure & Hospitality	32	487	\$5,554,967	\$219.36
Other Services	27	76	\$1,589,894	\$402.30
Local Government	13	643	\$15,814,319	\$472.97
State Government	8	87	\$2,422,417	\$535.46
WASHINGTON COUNTY - TOTAL	5,544	90,854	\$3,053,001,249	\$646.22
Natural Resources & Mining	40	464	\$14,310,870	\$593.12
Construction	677	5,862	\$210,400,207	\$690.24
Manufacturing	235	15,505	\$501,531,766	\$622.05
Trade, Transportation & Utilities	1,349	20,664	\$666,618,225	\$620.38
Wholesale Trade	374	3,675	\$189,903,990	\$993.74
Retail Trade	772	11,644	\$267,925,183	\$442.49
Transportation, Warehousing & Utilities	203	5,345	\$208,789,052	\$751.20
Information	95	1,477	\$60,530,804	\$788.12
Financial Activities	671	3,987	\$152,379,479	\$734.98
Professional & Business Services	915	9,145	\$431,804,743	\$908.03
Education & Health Services	615	10,571	\$390,331,681	\$710.09
Leisure & Hospitality	496	9,319	\$115,876,575	\$239.12
Other Services	369	1,977	\$48,336,044	\$470.18
Local & State Government	83	11,882	\$460,880,855	\$745.93

**TABLE 6. COUNTY SUMMARY
EMPLOYMENT AND TOTAL EARNINGS, BY INDUSTRY
CALENDAR YEAR 2006**

NORTH AMERICAN INDUSTRY CLASSIFICATION SYSTEM INDUSTRY GROUP	AVERAGE EMPLOYING UNITS	AVERAGE COVERED EMPLOYMENT	TOTAL EARNINGS	AVERAGE WEEKLY EARNINGS
WHITE COUNTY - TOTAL	1,631	23,776	\$665,031,948	\$537.90
Natural Resources & Mining	36	252	\$7,554,014	\$576.47
Construction	178	1,206	\$36,478,892	\$581.69
Manufacturing	84	3,563	\$130,380,413	\$703.71
Trade, Transportation & Utilities	473	5,905	\$159,405,279	\$519.13
Wholesale Trade	97	605	\$18,301,983	\$581.75
Retail Trade	294	3,113	\$60,888,269	\$376.14
Transportation, Warehousing & Utilities	82	2,187	\$80,215,027	\$705.35
Information	22	225	\$6,422,580	\$548.94
Financial Activities	174	916	\$26,695,509	\$560.45
Professional & Business Services	159	1,387	\$35,293,521	\$489.35
Education & Health Services	213	4,242	\$137,023,782	\$621.19
Leisure & Hospitality	121	2,253	\$21,130,884	\$180.37
Other Services	106	629	\$16,025,998	\$489.97
Local Government	46	2,492	\$68,932,358	\$531.95
State Government	19	705	\$19,688,718	\$537.06
WOODRUFF COUNTY - TOTAL	188	1,970	\$50,976,016	\$497.62
Natural Resources & Mining	20	102	\$2,775,438	\$523.27
Construction	6	65	\$1,581,397	\$467.87
Manufacturing	9	365	\$10,862,716	\$572.32
Trade, Transportation & Utilities	56	515	\$14,706,837	\$549.17
Wholesale Trade	13	210	\$7,921,000	\$725.37
Retail Trade	26	201	\$2,846,399	\$272.33
Transportation, Warehousing & Utilities	16	104	\$3,939,438	\$728.45
Financial Activities	15	60	\$1,703,107	\$545.87
Professional & Business Services	4	7	\$242,892	\$667.29
Education & Health Services	46	230	\$5,588,585	\$467.27
Leisure & Hospitality	7	56	\$448,836	\$154.13
Local Government	10	484	\$11,034,887	\$438.45
State Government	7	58	\$1,447,364	\$479.90
Other	10	28	\$583,957	\$401.07

**TABLE 6. COUNTY SUMMARY
EMPLOYMENT AND TOTAL EARNINGS, BY INDUSTRY
CALENDAR YEAR 2006**

NORTH AMERICAN INDUSTRY CLASSIFICATION SYSTEM INDUSTRY GROUP	AVERAGE EMPLOYING UNITS	AVERAGE COVERED EMPLOYMENT	TOTAL EARNINGS	AVERAGE WEEKLY EARNINGS
YELL COUNTY - TOTAL	408	6,919	\$165,625,455	\$460.34
Natural Resources & Mining	23	258	\$6,335,179	\$472.21
Construction	45	354	\$9,632,550	\$523.28
Manufacturing	22	2,893	\$69,623,280	\$462.81
Trade, Transportation & Utilities	86	699	\$12,787,651	\$351.81
Wholesale Trade	11	22	\$510,896	\$446.59
Retail Trade	56	583	\$9,128,815	\$301.12
Transportation, Warehousing & Utilities	19	94	\$3,147,940	\$644.01
Information	4	61	\$2,372,492	\$747.95
Financial Activities	37	200	\$5,153,881	\$495.57
Professional & Business Services	35	239	\$9,663,827	\$777.59
Education & Health Services	67	482	\$10,215,592	\$407.58
Leisure & Hospitality	29	344	\$3,549,889	\$198.45
Other Services	19	74	\$1,259,613	\$327.34
Local Government	28	1,202	\$32,287,918	\$516.57
State Government	13	112	\$2,743,583	\$471.08
REST-OF-STATE-TOTAL	4,308	16,424	901,604,947	\$1,055.68
Natural Resources & Mining	61	447	21,652,318	\$931.52
Construction	575	2,866	107,162,550	\$719.06
Manufacturing	48	178	7,043,475	\$760.96
Trade, Transportation & Utilities	1,734	6,837	494,871,409	\$1,391.95
Wholesale Trade	1,478	5,681	448,921,882	\$1,519.65
Retail Trade	98	457	19,671,665	\$827.79
Transportation, Warehousing & Utilities	157	700	26,277,862	\$721.92
Information	100	242	14,720,418	\$1,169.77
Financial Activities	263	810	47,200,876	\$1,120.63
Professional & Business Services	1,239	3,700	158,442,139	\$823.50
Education & Health Services	113	649	24,830,485	\$735.76
Leisure & Hospitality	41	68	2,307,012	\$652.44
Other	143	632	23,374,265	\$711.24

TABLE 7. FEDERAL GOVERNMENT EMPLOYMENT AND EARNINGS IN ARKANSAS
CALENDAR YEAR 2006

NORTH AMERICAN INDUSTRY CLASSIFICATION SYSTEM INDUSTRY GROUP	AVERAGE EMPLOYING UNITS	AVERAGE COVERED EMPLOYMENT	TOTAL EARNINGS	AVERAGE WEEKLY EARNINGS
Manufacturing	2	3	\$245,032	\$710.91
Trade, Transportation & Utilities	445	6,756	\$298,841,872	\$830.42
Information	1	34	\$1,680,647	\$1,044.61
Financial Activities	23	178	\$11,341,977	\$1,141.51
Professional & Business Services	32	792	\$49,052,035	\$1,084.68
Education & Health Services	6	4,023	\$305,947,987	\$1,276.67
Leisure & Hospitality	15	224	\$9,740,465	\$715.29
Other Services	2	253	\$3,710,909	\$263.76
Public Administration	482	8,591	\$507,772,096	\$1,028.42
TOTAL	1,009	20,832	\$1,188,333,020	\$997.65

**TABLE 8. WORKFORCE INFORMATION AREA, SUMMARY
EMPLOYMENT AND TOTAL EARNINGS, BY INDUSTRY
CALENDAR YEAR 2006**

NORTH AMERICAN INDUSTRY CLASSIFICATION SYSTEM INDUSTRY GROUP	AVERAGE EMPLOYING UNITS	AVERAGE COVERED EMPLOYMENT	TOTAL EARNINGS	AVERAGE WEEKLY EARNINGS
CENTRAL WORKFORCE INFORMATION*	5,911	73,741	\$2,158,770,085	\$562.98
Natural Resources & Mining	165	949	\$33,532,173	\$679.50
Trade, Transportation & Utilities	1,519	14,648	\$359,159,609	\$471.53
Wholesale Trade	387	2,048	\$77,651,377	\$729.15
Retail Trade	880	11,127	\$229,017,844	\$395.81
Transportation, Warehousing & Utilities	252	1,473	\$52,490,388	\$685.29
Financial Activities	611	2,905	\$94,922,769	\$628.38
Professional & Business Services	711	7,097	\$310,738,364	\$842.01
Education & Health Services	704	9,727	\$269,986,272	\$533.78
Leisure & Hospitality	452	7,848	\$83,502,065	\$204.61
Local & State Government	210	13,758	\$429,086,983	\$599.77
Other	1,550	16,812	\$577,841,850	\$660.98
*Note: Pulaski County is not included in the Central Workforce Information. Please refer to Page 55 for information on Pulaski County.				
Central Workforce Includes these counties: Faulkner, Lonoke Monroe, Prairie, and Saline.				
EASTERN WORKFORCE INFORMATION	3,407	37,974	\$1,017,628,362	\$515.35
Natural Resources & Mining	211	1,352	\$31,090,616	\$442.23
Construction	198	1,118	\$32,656,839	\$561.73
Trade, Transportation & Utilities	879	10,133	\$278,834,155	\$529.18
Wholesale Trade	182	2,037	\$72,026,563	\$679.98
Retail Trade	494	5,088	\$95,756,082	\$361.92
Transportation, Warehousing & Utilities	203	3,008	\$111,051,510	\$709.98
Financial Activities	276	1,612	\$47,856,236	\$570.91
Professional & Business Services	290	1,433	\$39,003,179	\$523.42
Education & Health Services	734	5,519	\$141,758,915	\$493.95
Leisure & Hospitality	231	3,583	\$38,470,545	\$206.48
Local Government	141	5,679	\$174,736,793	\$591.71
State Government	68	2,133	\$61,987,447	\$558.87
Other	384	5,415	\$171,233,637	\$608.12
Eastern Workforce Includes these counties: Crittenden, Cross, Lee, Phillips, and Saint Francis.				

**TABLE 8. WORKFORCE INFORMATION AREA, SUMMARY
EMPLOYMENT AND TOTAL EARNINGS, BY INDUSTRY
CALENDAR YEAR 2006**

NORTH AMERICAN INDUSTRY CLASSIFICATION SYSTEM INDUSTRY GROUP	AVERAGE EMPLOYING UNITS	AVERAGE COVERED EMPLOYMENT	TOTAL EARNINGS	AVERAGE WEEKLY EARNINGS
NORTH CENTRAL WORKFORCE INFORMATION	5,529	69,849	\$1,817,207,636	\$500.31
Construction	494	2,819	\$77,502,635	\$528.71
Manufacturing	305	13,281	\$423,860,972	\$613.75
Trade, Transportation & Utilities	1,522	15,533	\$396,415,736	\$490.79
Retail Trade	950	9,221	\$173,045,387	\$360.89
Other Trade, Transportation & Utilities	572	6,312	\$223,370,349	\$680.54
Financial Activities	526	2,646	\$75,973,388	\$552.16
Professional & Business Services	458	3,156	\$75,932,185	\$462.69
Education & Health Services	839	11,462	\$329,988,749	\$553.65
Leisure & Hospitality	447	6,268	\$59,963,542	\$183.97
Local Government	240	8,655	\$219,698,188	\$488.15
State Government	115	2,886	\$79,758,902	\$531.47
Other	597	3,142	\$78,113,339	\$478.10
North Central Workforce Includes these counties: Cleburne, Fulton, Independence, IZard, Jackson, Sharp, Stone, Van Buren, White, and Woodruff				
NORTHEAST WORKFORCE INFORMATION	6,442	94,860	\$2,718,507,011	\$551.12
Natural Resources & Mining	370	2,073	\$54,139,366	\$502.24
Construction	496	3,076	\$91,538,550	\$572.29
Manufacturing	351	21,712	\$816,624,915	\$723.30
Trade, Transportation & Utilities	1,743	17,878	\$441,405,655	\$474.81
Wholesale Trade	397	3,737	\$130,651,788	\$672.34
Retail Trade	1,047	11,627	\$219,301,705	\$362.72
Transportation, Warehousing & Utilities	299	2,514	\$91,452,162	\$699.56
Financial Activities	586	3,407	\$111,546,502	\$629.62
Professional & Business Services	653	6,781	\$168,495,362	\$477.85
Education & Health Services	972	13,161	\$419,395,312	\$612.82
Leisure & Hospitality	462	7,573	\$75,547,083	\$191.84
Local Government	219	11,345	\$310,574,359	\$526.45
State Government	107	3,906	\$129,955,274	\$639.82
Other	490	3,948	\$99,284,633	\$483.62
Northeast Workforce Includes these counties: Clay, Craighead, Greene, Lawrence, Mississippi, Poinsett, and Randolph.				

**TABLE 8. WORKFORCE INFORMATION AREA, SUMMARY
EMPLOYMENT AND TOTAL EARNINGS, BY INDUSTRY
CALENDAR YEAR 2006**

NORTH AMERICAN INDUSTRY CLASSIFICATION SYSTEM INDUSTRY GROUP	AVERAGE EMPLOYING UNITS	AVERAGE COVERED EMPLOYMENT	TOTAL EARNINGS	AVERAGE WEEKLY EARNINGS
NORTHWEST WORKFORCE INFORMATION	14,753	232,130	\$7,886,373,474	\$653.35
Trade, Transportation & Utilities	3,665	54,245	\$1,808,095,864	\$641.00
Retail Trade	2,001	26,328	\$586,297,616	\$428.25
Other Trade, Transportation & Utilities	1,664	27,917	\$1,221,798,248	\$841.64
Education & Health Services	1,673	23,468	\$796,232,099	\$652.47
Leisure & Hospitality	1,363	21,545	\$260,997,534	\$232.96
Local & State Government	425	26,837	\$928,859,740	\$665.60
Other	7,643	106,044	\$4,092,188,237	\$742.11
Northwest Workforce Includes these counties: Baxter, Benton, Boone, Carroll, Madison, Marion, Newton, Searcy, and Washington.				
SOUTHEAST WORKFORCE INFORMATION	5,468	76,930	\$2,253,608,375	\$563.35
Natural Resources & Mining	400	2,952	\$87,149,966	\$567.74
Construction	383	3,339	\$116,436,681	\$670.61
Manufacturing	224	17,643	\$674,164,349	\$734.84
Trade, Transportation & Utilities	1,413	13,593	\$352,395,191	\$498.55
Wholesale Trade	257	2,449	\$86,396,288	\$678.43
Retail Trade	866	8,755	\$164,892,648	\$362.19
Transportation, Warehousing & Utilities	290	2,389	\$101,106,255	\$813.88
Local & State Government	359	15,931	\$458,104,696	\$552.99
Other	2,702	23,481	\$565,357,492	\$463.02
Southeast Workforce Includes these counties: Arkansas, Ashley, Bradley, Chicot, Cleveland, Desha, Drew, Grant, Jefferson, and Lincoln				
SOUTHWEST WORKFORCE INFORMATION	5,765	86,365	\$2,600,699,605	\$579.09
Natural Resources & Mining	407	2,821	\$98,728,100	\$673.03
Trade, Transportation & Utilities	1,527	15,324	\$416,219,669	\$522.33
Education & Health Services	760	9,334	\$231,991,748	\$477.97
Local Government	266	10,444	\$283,657,970	\$522.31
State Government	150	3,264	\$100,292,509	\$590.90
Other	2,669	45,188	\$1,469,809,609	\$625.51
Southwest Workforce Includes these counties: Calhoun, Columbia, Dallas, Hempstead, Howard, Lafayette, Little River, Miller, Nevada, Ouachita, Sevier, and Union				

**TABLE 8. WORKFORCE INFORMATION AREA, SUMMARY
EMPLOYMENT AND TOTAL EARNINGS, BY INDUSTRY
CALENDAR YEAR 2006**

NORTH AMERICAN INDUSTRY CLASSIFICATION SYSTEM INDUSTRY GROUP	AVERAGE EMPLOYING UNITS	AVERAGE COVERED EMPLOYMENT	TOTAL EARNINGS	AVERAGE WEEKLY EARNINGS
WEST CENTRAL WORKFORCE INFORMATION	8,200	109,102	\$2,945,690,236	\$519.22
Natural Resources & Mining	264	2,258	\$70,520,221	\$600.60
Construction	901	5,686	\$173,095,871	\$585.43
Trade, Transportation & Utilities	1,990	21,868	\$600,071,813	\$527.70
Financial Activities	859	4,069	\$126,471,985	\$597.73
Education & Health Services	1,108	15,333	\$469,958,237	\$589.43
Local Government	229	11,391	\$326,563,963	\$551.32
State Government	134	5,058	\$142,123,627	\$540.36
Other	2,724	43,439	\$1,036,884,519	\$459.04
West Central Workforce Includes these counties: Clark, Conway, Garland, Hot Spring, Johnson, Montgomery, Perry, Pike, Pope, and Yell				
WESTERN WORKFORCE INFORMATION	6,375	111,282	\$3,438,470,509	\$594.21
Natural Resources & Mining	167	2,403	\$121,465,575	\$972.07
Trade, Transportation & Utilities	1,643	22,965	\$627,256,494	\$525.26
Wholesale Trade	388	3,514	\$137,033,381	\$749.93
Retail Trade	960	12,398	\$248,911,313	\$386.09
Transportation, Warehousing & Utilities	295	7,053	\$241,311,800	\$657.96
Financial Activities	665	3,775	\$129,134,309	\$657.84
Professional & Business Services	786	10,557	\$381,370,749	\$694.71
Education & Health Services	806	13,490	\$457,234,131	\$651.81
Leisure & Hospitality	513	8,142	\$89,301,281	\$210.92
Local & State Government	232	11,455	\$354,381,837	\$594.94
Other	1,564	38,443	\$1,278,326,133	\$639.47
Western Workforce Includes these counties: Crawford, Franklin, Logan, Polk, Scott, and Sebastian				