

Arkansas Covered Employment & Earnings

Jobs for People. People for Jobs.

DWS
Department of
WORKFORCE**Services**

Third Quarter
2006

**COVERED EMPLOYMENT AND EARNINGS
STATE OF ARKANSAS
THIRD QUARTER 2006**

**MIKE BEEBE, GOVERNOR
STATE OF ARKANSAS**

**ARTEE WILLIAMS, DIRECTOR
DEPARTMENT OF WORKFORCE SERVICES**

**PUBLISHED BY
LABOR MARKET INFORMATION & ANALYSIS
BUREAU OF LABOR STATISTICS PROGRAMS
POST OFFICE BOX 2981
LITTLE ROCK, ARKANSAS 72203-2981
BERNADETTE COLEMAN, BLS PROGRAMS MANAGER
TELEPHONE: (501) 682-3159**

STATE OF ARKANSAS HOME PAGE: <http://www.arkansas.gov>

DEPARTMENT OF WORKFORCE SERVICES HOME PAGE: <http://www.arkansas.gov/esd/>

**INTERNET SITE FOR LABOR MARKET INFORMATION:
<http://www.discoverarkansas.net>**

RELEASED: JULY 2007

TABLE OF CONTENTS

Description of Data	Page 1
Industry Classification	Page 1
Definition of Covered Employment and Earnings	Page 2
Federal Government Employment	Page 2
County Classification	Page 2
Significant Developments During Third Quarter 2006	Page 3

LIST OF GRAPHS AND TABLES

Graph 1	Total Covered Employment for Selected Years, Arkansas	Page 7
Graph 2	Total Covered Earnings, by Calendar Quarter for Selected Years, Arkansas	Page 8
Table 1	Quarterly Comparison of Covered Employment and Wages, by Industry	Page 5
Table 2	Total Covered Employment in Arkansas, 1999-2006	Page 6
Table 3	Total Covered Earnings, 1999-2006	Page 9
Table 4	Total Taxable Earnings, 1999-2006	Page 10
Table 5	State Summary - Employment and Total Earnings, by Industry, Third Quarter 2006	Page 11
Table 6	County Summary - Employment and Total Earnings, by Industry, Third Quarter 2006	Page 23
Table 7	Federal Government Employment and Total Earnings in Arkansas, Third Quarter 2006	Page 61
Table 8	Workforce Information Area – Employment and Total Earnings, by Industry, Third Quarter 2006	Page 62

EMPLOYMENT AND EARNINGS
UNDER THE ARKANSAS EMPLOYMENT SECURITY LAW
THIRD QUARTER 2006

DESCRIPTION OF DATA

This publication contains covered employment and payroll data by industry and county for the Third Quarter 2006. These data are compiled from quarterly contribution and wage reports submitted by employers subject to the Arkansas Employment Security Law. An employing unit is a single physical location where business is conducted, production takes place, or services are provided. Employment data have been tabulated for each month of the quarter by industry under the **North American Industry Classification System** (NAICS) (see "Industry Classification" below) on a statewide, county and workforce area basis. Payroll data represent the total wages paid during the quarter, and are also shown by

industry for the State and by publishable industry groups for each county and workforce area. The tabulation of this data is a joint effort in conjunction with the U.S. Bureau of Labor Statistics. In addition, there are tables included which set out total covered employment by months, quarterly payrolls, and average weekly earnings for the years 1999 through 2006. Data contained in this publication are subject to revision. These revisions will be reflected in the 2006 Annual Covered Employment and Earnings publication. Because of industry code changes between years, substantial employment and wage shifts among industries are anticipated.

INDUSTRY CLASSIFICATION

Previously published industry data **will not** be comparable in all instances with currently published data since industry codes have been revised according to the following Manuals: (a) between January 1, 1958 and December 31, 1967, industry codes were assigned under the 1957 Standard Industrial Classification (SIC) Manual; (b) between January 1, 1968 and December 31, 1974, industry codes were assigned under the 1967 Standard Industrial Classification (SIC) Manual; (c) between January 1, 1975 and December 31, 1987, industry codes were assigned under the 1972 Standard Industrial Classification (SIC) Manual; (d) between January 1, 1988 and December 31, 2000, industry codes were assigned under the 1987 Standard Industrial Classification (SIC) Manual; and (e) since January 1, 2001, industry codes have been assigned under the 2002 North American Industry Classification System (NAICS) Manual. **The NAICS Manual represents a significant change in coding methodology as compared to the**

SIC Manual. One of the most significant changes involves how NAICS treats auxiliary units. Auxiliary units are establishments primarily engaged in performing management or support services for other establishments of the same enterprise. The SIC code for these units was based on the activity of the enterprise served. The NAICS code is based on the actual activities that the establishment performs. Comparisons of many industries **should not be made** between this publication and previous Covered Employment and Earnings publications that were based on SIC. Even though some titles are the same or similar, in nature, NAICS and SIC could differ in the classification of employers. The implementation of NAICS represents a profound change for statistical programs, and will create significant benefits along with transition obstacles for both data collectors and data users. A summary is available on the NAICS home page at <http://www.census.gov/naics>.

DEFINITION OF COVERED EMPLOYMENT AND EARNINGS

Covered Employment is the number of workers employed by employers subject to the Arkansas Employment Security Law who worked or received pay for the payroll period including the 12th of the month. An employer is subject to the law when they employ one or more employees in each of ten days during the current or preceding calendar year.

Currently excluded from coverage is employment covered by the Railroad Unemployment Insurance Act, some domestic service workers, employees of small agricultural establishments, self-employed and unpaid family workers, insurance and real estate

agents who are on commission only, and employees of churches and religious organizations except separately incorporated schools. The payroll information in this publication includes all wages and salaries paid to any covered employees by their employers including bonuses, commissions, and cash values of remuneration received in any medium other than cash. These wages include both taxable and nontaxable wages. Only the first \$10,000 paid to each worker by an employer in the calendar year is taxable under the Arkansas Employment Security Law.

FEDERAL GOVERNMENT EMPLOYMENT

Table 7 on page 62 lists the total number of civilians employed by the Federal Government in Arkansas during the Third Quarter 2006. Employment and wage data are set out by industry divisions. These data are obtained from required reports submitted by various

government agencies having employment in the State. Civilian Federal workers are covered by the Unemployment Compensation for Federal Employees (UCFE) program.

COUNTY CLASSIFICATION

Employment and payroll data by county are classified according to the county where the workers are employed. Employers with operations in more than one county are requested to furnish this agency with a breakdown of employment and wages for at least one quarter of each year by the counties in which they operate. Many such employers submit county data with each regular contribution report. **Note:** This information is invaluable in the preparation of monthly employment and payroll data by county.

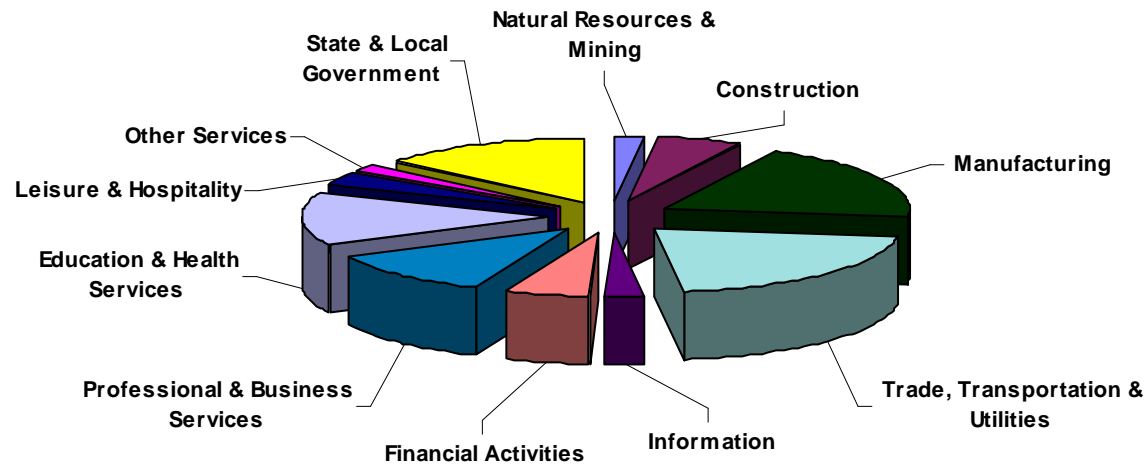
Employment and payroll data for multi - area employers, who do not furnish county data each quarter of the year, are prorated by county on the basis of one quarter's information. The "rest-of-state" table that appears on page 61 of this publication includes data on firms that **did not** provide a county breakdown of employment and payrolls. It also includes sales, and all other type of personnel with no permanent place of work, as well as employment of employers with no established place of business in Arkansas.

SIGNIFICANT DEVELOPMENTS DURING THIRD QUARTER 2006

AVERAGE EMPLOYMENT CHANGES

Covered employment averaged 1,135,252 during the Third Quarter 2006 (see table 1), a decrease of 23,911 (-2.1%) from the previous quarter and 18,863 (1.7%) above the average recorded one-year ago. This *over-the-year* increase is more significant when used as an economic indicator. This *over-the-year* comparison allows for the disregarding of many seasonal factors that are evident when making an *over-the-quarter* comparison.

Average Covered Employment by NAICS Group



EMPLOYMENT CHANGES FROM FIRST QUARTER 2006

Over the quarter gains were recorded in seven industry groups while four suffered losses (see table 1). Employment in Natural Resources & Mining rose 3.3% over the preceding quarter adding 619 workers. This increase was associated with the continuation of the growing season and interest in natural gas in the state. New projects and the expansion of existing projects resulted in an increase of 593 employees in Construction. Trade, Transportation, & Utilities gained 584 workers. The increase occurred in Transportation and Warehousing (1.1%). Other industries posting over the quarter

increases were: Education & Health Services (0.3%); Financial Activities (0.8%); and Information (1.0%).

State & Local Government declined 24,915 or 13.9%. This drop was due to the summer vacation period in local school districts. The downturn in Manufacturing (-1,396) is attributed plants closing and layoffs. Leisure & Hospitality and Professional & Business services reported a loss of 344 and 135, respectively.

EMPLOYMENT CHANGES FROM THIRD QUARTER 2005

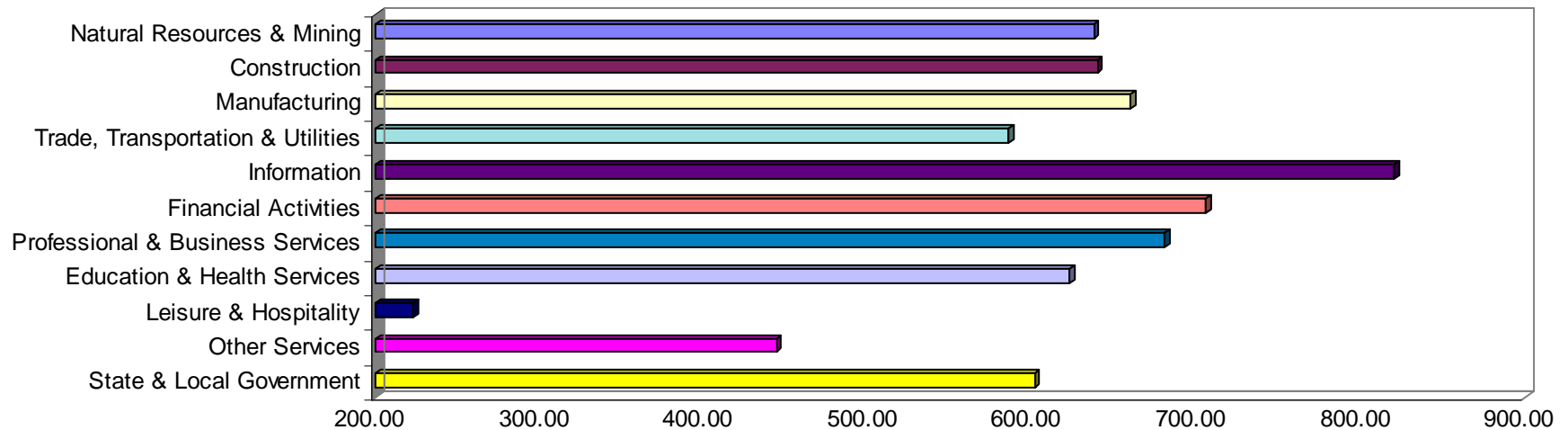
Over-the-year gains were recorded in Ten industry groups while one recorded a loss (see table 1). Significant gains were posted in Educational & Health Services (+4,844), State & Local Government (+3,893), and Leisure & Hospitality (+3,027). The only Loss occurred in Manufacturing (-1,411).

COVERED WAGES

Wages paid to covered workers totaled \$8,752,570,201 for the Third Quarter 2006 (see table 1), for an average weekly wage of \$593.06 (see table 5). Employees in Calhoun County recorded the highest average weekly wage (\$716.55), and workers in Newton County the lowest (\$369.12) (see table 6).

The Information sector recorded the highest average weekly wage for the State of Arkansas at \$819.88, while the Leisure & Hospitality sector recorded the lowest at \$223.32 for the State of Arkansas (see table 5).

Average Weekly Wages by Industry Group



Note: Because of industry code changes between years, substantial employment and wage shifts among industries are anticipated.

TABLE 1. QUARTERLY COMPARISON OF COVERED EMPLOYMENT AND WAGES, BY INDUSTRY

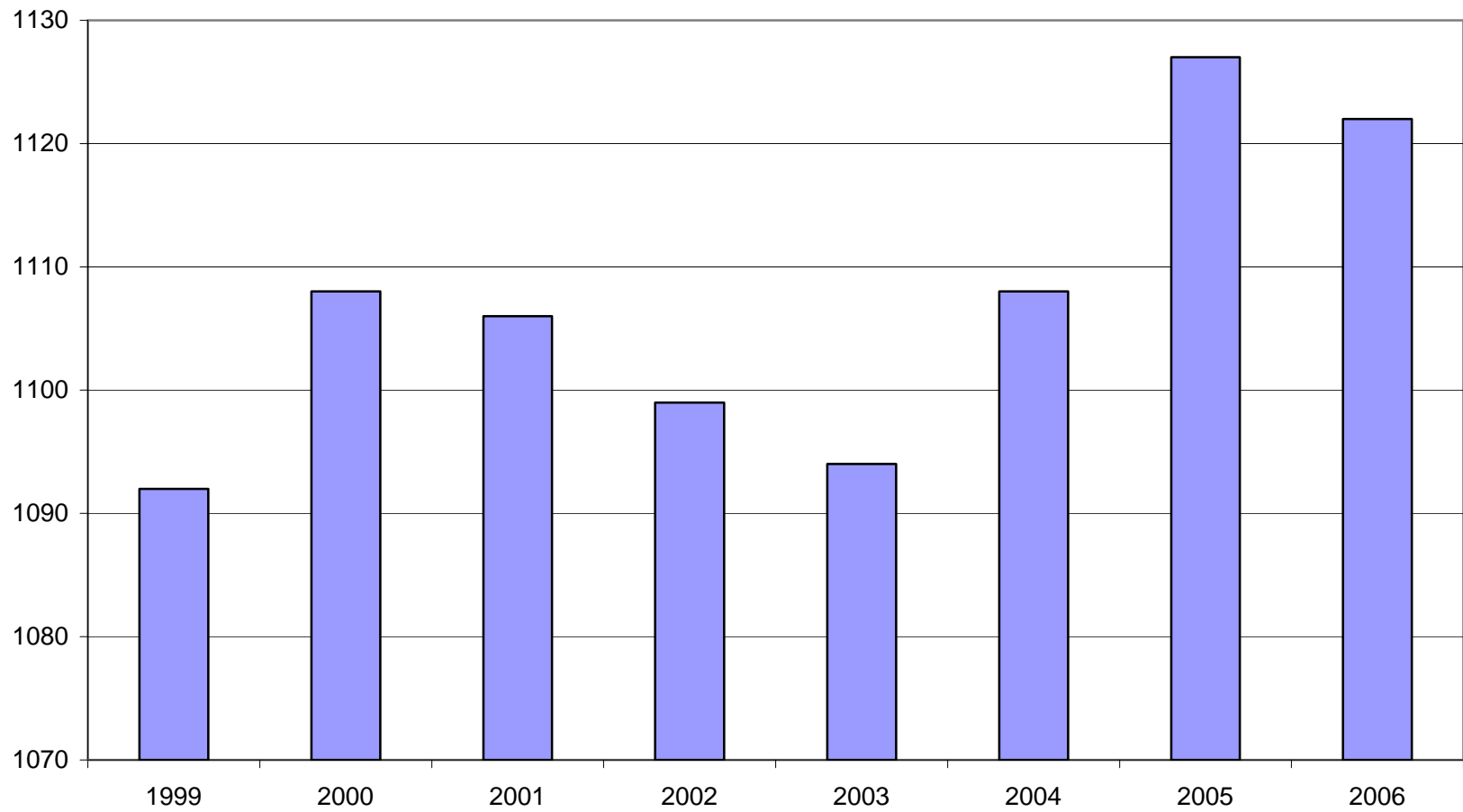
North American Industry Classification System Industry	Number of Employing Units	Average Monthly Employment	% of Employment Total	Net Change From Apr. – Jun., 2006	Net Change From Jul. - Sep. 2005	Total Wages Paid Jul. - Sep. 2006	% of Total Wages Paid
Total	80,885	1,135,252	100.0%	-23,911	18,863	\$8,752,570,201	100.0%
Natural Resources & Mining	2,362	19,121	1.7%	619	204	\$158,401,380	1.8%
Agriculture, Forestry, Fishing & Hunting	1,992	14,066	1.2%	342	-646	\$93,351,660	1.1%
Mining	370	5,056	0.4%	277	851	\$65,049,720	0.7%
Construction	8,037	58,540	5.2%	593	1,995	\$486,509,004	5.6%
Manufacturing	3,598	199,072	17.5%	-1,396	-1,411	\$1,706,404,043	19.5%
Trade, Transportation & Utilities	21,011	245,166	21.6%	584	2,385	\$1,865,385,394	21.3%
Wholesale Trade	6,313	48,230	4.2%	-37	244	\$563,620,220	6.4%
Retail Trade	11,336	132,999	11.7%	-69	1,166	\$683,115,004	7.8%
Transportation & Warehousing	2,999	57,046	5.0%	612	719	\$519,909,880	5.9%
Utilities	363	6,890	0.6%	78	256	\$98,740,290	1.1%
Information	1,208	20,036	1.8%	200	9	\$213,551,924	2.4%
Financial Activities	8,131	51,551	4.5%	430	1,287	\$472,968,660	5.4%
Finance & Insurance	4,779	37,126	3.3%	253	826	\$379,018,533	4.3%
Real Estate & Rental & Leasing	3,352	14,425	1.3%	177	461	\$93,950,127	1.1%
Professional & Business Services	10,934	114,803	10.1%	-135	1,929	\$1,015,067,376	11.6%
Professional & Technical Services	6,875	36,531	3.2%	-437	1,294	\$397,387,344	4.5%
Management of Companies & Enterprises	515	24,181	2.1%	106	505	\$346,875,232	4.0%
Administrative & Waste Services	3,544	54,092	4.8%	196	130	\$270,804,800	3.1%
Education & Health Services	10,766	146,276	12.9%	442	4,844	\$1,184,475,801	13.5%
Educational Services	558	8,781	0.8%	-294	514	\$59,710,037	0.7%
Health Care & Social Assistance	10,208	137,495	12.1%	735	4,330	\$1,124,765,764	12.9%
Leisure & Hospitality	6,138	99,866	8.8%	-344	3,027	\$289,920,542	3.3%
Arts, Entertainment & Recreation	935	10,379	0.9%	171	-9	\$37,158,289	0.4%
Accommodation & Food Services	5,203	89,487	7.9%	-515	3,036	\$252,762,253	2.9%
Other Services	5,495	26,267	2.3%	11	701	\$151,690,588	1.7%
State & Local Government	3,205	154,554	13.6%	-24,915	3,893	\$1,208,195,489	13.8%
Local Government	2,006	92,630	8.2%	-24,498	1,781	\$634,330,288	7.2%
State Government	1,199	61,923	5.5%	-417	2,112	\$573,865,201	6.6%
Nonclassifiable Establishments	0	0	0.0%	0	0	\$0	0.0%

Note: Items do not necessarily add to totals because of rounding. Because of industry code changes between years, substantial employment and wage shifts among industries are anticipated.

TABLE 2. TOTAL COVERED EMPLOYMENT IN ARKANSAS

Period	1999	2000	2001	2002	2003	2004	2005	2006
Average	1,092,351	1,108,479	1,106,066	1,098,558	1,094,087	1,108,264	1,126,778	1,121,595
January	1,065,920	1,089,943	1,096,009	1,081,635	1,082,740	1,089,510	1,102,768	1,104,692
February	1,074,315	1,096,113	1,101,616	1,086,793	1,084,880	1,094,626	1,110,577	1,112,453
March	1,084,653	1,109,144	1,112,143	1,098,500	1,092,172	1,105,266	1,122,619	1,124,250
April	1,093,574	1,111,525	1,115,526	1,103,399	1,095,341	1,111,020	1,129,785	1,130,599
May	1,098,539	1,116,760	1,119,815	1,111,998	1,103,099	1,117,144	1,135,567	1,136,212
June	1,101,748	1,121,225	1,119,734	1,112,028	1,099,688	1,117,010	1,136,118	1,136,984
July	1,062,563	1,075,066	1,071,921	1,065,697	1,053,220	1,071,463	1,090,071	1,090,058
August	1,081,260	1,096,848	1,094,160	1,086,011	1,077,775	1,094,871	1,114,098	1,114,403
September	1,108,212	1,123,725	1,115,976	1,113,148	1,105,980	1,122,704	1,144,815	1,144,705
October	1,110,604	1,122,884	1,110,994	1,108,447	1,112,550	1,123,246	1,142,300	N/A
November	1,112,003	1,120,620	1,109,012	1,107,611	1,109,712	1,125,061	1,145,667	N/A
December	1,114,823	1,117,892	1,105,887	1,107,425	1,111,892	1,127,250	1,146,954	N/A

AVERAGE TOTAL COVERED EMPLOYMENT GRAPH 1
In Thousands



TOTAL COVERED EARNINGS BY CALENDAR QUARTER, GRAPH 2
In Thousands

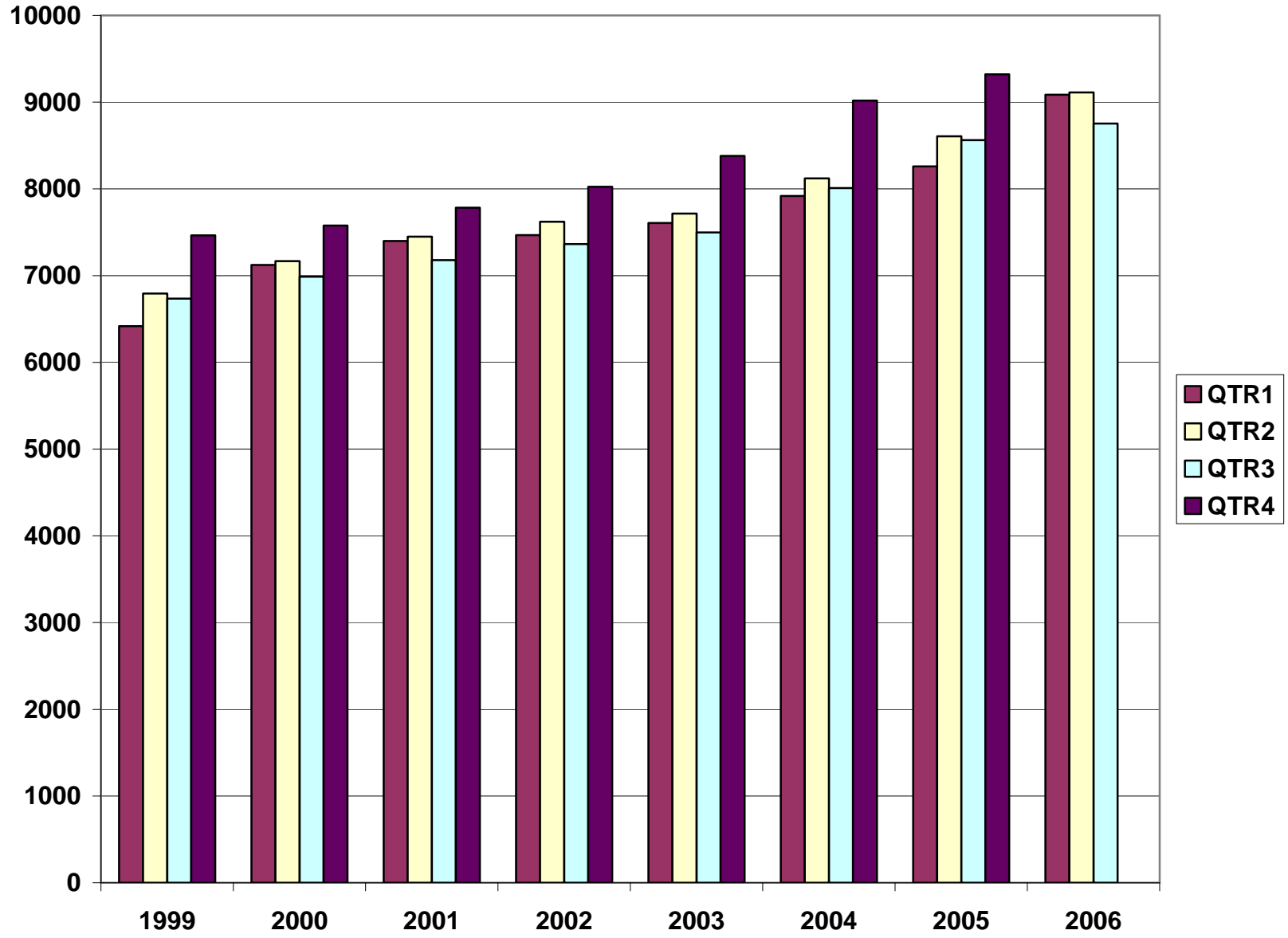


TABLE 3. TOTAL COVERED EARNINGS, 1999- 2006

Period	1999	2000	2001	2002
Total	\$27,407,925,462	\$28,853,716,151	\$29,807,669,666	\$30,472,854,103
January - March	\$6,418,456,638	\$7,122,636,896	\$7,398,887,532	\$7,465,250,305
April - June	\$6,791,960,679	\$7,166,049,182	\$7,448,023,298	\$7,621,878,775
July - September	\$6,733,480,079	\$6,986,085,106	\$7,177,293,061	\$7,361,666,511
October - December	\$7,464,028,066	\$7,578,944,967	\$7,783,465,775	\$8,024,058,512
Average Weekly Earnings	\$482.51	\$500.58	\$518.26	\$533.44

Period	2003	2004	2005	2006
Total	\$31,202,576,767	\$33,068,189,304	\$34,753,437,458	\$26,951,779,807
January - March	\$7,608,130,008	\$7,918,843,610	\$8,261,153,981	\$9,086,373,822
April - June	\$7,714,813,038	\$8,122,370,361	\$8,607,722,353	\$9,112,835,784
July - September	\$7,500,204,764	\$8,010,300,454	\$8,562,885,196	\$8,752,570,201
October - December	\$8,379,428,957	\$9,016,674,879	\$9,321,675,928	N/A
Average Weekly Earnings	\$548.45	\$573.80	\$593.14	\$616.15

TABLE 4. TOTAL TAXABLE EARNINGS, 1999 - 2006

Period	1999	2000	2001	2002
Total	\$8,807,445,422	\$9,047,924,530	\$9,003,189,480	\$8,887,270,978
January - March	\$4,203,067,856	\$4,560,783,991	\$4,670,296,360	\$4,668,534,587
April - June	\$2,325,649,764	\$2,260,680,255	\$2,219,485,263	\$2,162,971,435
July - September	\$1,267,562,743	\$1,250,832,297	\$1,190,098,737	\$1,158,197,858
October - December	\$1,011,165,059	\$975,627,987	\$923,309,120	\$897,567,098

Period	2003	2004	2005	2006
Total	\$9,154,938,743	\$9,731,247,501	\$9,991,605,239	\$9,163,275,091
January - March	\$4,737,918,796	\$4,931,559,230	\$5,062,670,306	\$5,422,414,259
April - June	\$2,270,519,362	\$2,451,454,749	\$2,506,505,721	\$2,385,187,226
July - September	\$1,188,681,170	\$1,318,017,835	\$1,353,660,445	\$1,355,673,606
October - December	\$957,819,415	\$1,030,215,687	\$1,068,768,767	N/A

**TABLE 5. STATEWIDE SUMMARY
EMPLOYMENT AND TOTAL EARNINGS, BY INDUSTRY
THIRD QUARTER 2006**

NORTH AMERICAN INDUSTRY CLASSIFICATION SYSTEM INDUSTRY GROUPS	NUMBER OF EMPLOYING UNITS	EMPLOYMENT JULY	EMPLOYMENT AUGUST	EMPLOYMENT SEPTEMBER	TOTAL EARNINGS JULY-SEPTEMBER	AVERAGE WEEKLY EARNINGS
TOTAL, ALL INDUSTRIES	80,878	1,108,939	1,133,616	1,162,775	\$8,751,370,064	\$593.06
NATURAL RESOURCES AND MINING	2,355	18,607	18,536	19,795	\$157,201,243	\$637.14
AGRICULTURE, FORESTRY, FISHING AND HUNTING	1,985	13,656	13,550	14,565	\$92,151,523	\$509.10
CROP PRODUCTION	718	3,843	3,822	4,175	\$19,374,604	\$377.62
Oilseed and Grain Farming	418	1,908	1,913	2,072	\$9,875,850	\$386.74
Vegetable and Melon Farming	12	243	225	252	\$541,406	\$173.53
Fruit and Tree Nut Farming	9	119	93	74	\$387,334	\$312.53
Greenhouse and Nursery Production	50	282	288	305	\$1,791,375	\$472.45
Other Crop Farming	229	1,291	1,303	1,472	\$6,778,639	\$384.73
ANIMAL PRODUCTION	247	3,610	3,574	3,562	\$26,332,146	\$565.48
Cattle Ranching and Farming	72	313	305	299	\$2,009,046	\$505.59
Poultry and Egg Production	84	2,594	2,590	2,588	\$20,114,418	\$597.25
Animal Aquaculture	59	626	604	590	\$3,779,184	\$479.19
Other	32	77	75	85	\$429,498	\$418.21
FORESTRY AND LOGGING	566	3,019	3,036	3,049	\$22,642,617	\$573.95
Timber Tract Operations	45	260	258	257	\$2,109,554	\$628.16
Forest Nurseries & Gathering of Forest Products	6	30	30	30	\$261,970	\$671.72
Logging	515	2,729	2,748	2,762	\$20,271,093	\$567.78
OTHER	454	3,184	3,118	3,779	\$23,802,156	\$544.87
MINING	370	4,951	4,986	5,230	\$65,049,720	\$989.75
OIL AND GAS EXTRACTION	85	424	422	435	\$6,064,489	\$1,092.50
MINING (EXCEPT OIL AND GAS)	105	2,069	2,083	2,126	\$23,215,923	\$853.38
SUPPORT ACTIVITIES FOR MINING	180	2,458	2,481	2,669	\$35,769,308	\$1,084.97
CONSTRUCTION	8,037	57,947	58,558	59,115	\$486,509,004	\$639.29
CONSTRUCTION OF BUILDINGS	2,280	13,562	13,664	13,646	\$119,049,800	\$672.17
Residential Building Construction	1,670	4,738	4,855	4,839	\$35,258,804	\$563.79
Nonresidential Building Construction	610	8,824	8,809	8,807	\$83,790,996	\$731.33
HEAVY AND CIVIL ENGINEERING CONSTRUCTION	905	10,545	10,842	11,296	\$101,727,216	\$718.28
Utility System Construction	426	4,932	5,068	5,448	\$45,965,260	\$686.65

**TABLE 5. STATEWIDE SUMMARY
EMPLOYMENT AND TOTAL EARNINGS, BY INDUSTRY
THIRD QUARTER 2006**

NORTH AMERICAN INDUSTRY CLASSIFICATION SYSTEM INDUSTRY GROUPS	NUMBER OF EMPLOYING UNITS	EMPLOYMENT	EMPLOYMENT	EMPLOYMENT	TOTAL EARNINGS	AVERAGE
		JULY	AUGUST	SEPTEMBER	JULY-SEPTEMBER	WEEKLY EARNINGS
Land Subdivision	143	510	508	502	\$4,370,047	\$663.47
Highway, Street and Bridge Construction	224	3,831	3,922	3,974	\$34,542,208	\$679.74
Other Heavy Construction	112	1,272	1,344	1,372	\$16,849,701	\$975.02
SPECIALTY TRADE CONTRACTORS	4,852	33,840	34,052	34,173	\$265,731,988	\$600.82
Building Foundation and Exterior Contractors	967	6,834	6,769	6,768	\$48,563,740	\$550.15
Building Equipment Contractors	2,124	16,072	16,238	16,423	\$139,759,713	\$661.82
Building Finishing Contractors	907	5,255	5,360	5,345	\$36,109,419	\$522.11
Other Specialty Trade Contractors	854	5,679	5,685	5,637	\$41,299,116	\$560.59
MANUFACTURING	3,598	199,729	199,624	197,862	\$1,706,404,043	\$659.37
FOOD MANUFACTURING	319	51,087	51,025	50,804	\$350,387,374	\$528.78
Animal Food Manufacturing	59	1,409	1,431	1,455	\$12,321,246	\$662.02
Grain and Oilseed Milling	29	2,307	2,280	2,317	\$20,402,047	\$681.95
Fruit, Vegetable and Specialty Food	35	6,976	6,943	6,950	\$55,928,813	\$618.46
Dairy Product Manufacturing	13	707	705	704	\$6,569,986	\$716.52
Animal Slaughtering and Processing	92	34,307	34,336	34,115	\$210,901,717	\$473.63
Bakeries and Tortilla Manufacturing	52	3,388	3,354	3,285	\$28,683,203	\$660.14
Other Food Manufacturing	26	1,768	1,750	1,738	\$14,485,077	\$635.98
Other	13	225	226	240	\$1,095,285	\$365.79
BEVERAGE AND TOBACCO PRODUCT MFG.	37	1,277	1,283	1,261	\$12,764,848	\$770.93
TEXTILE MILLS	20	400	398	403	\$4,021,654	\$772.75
Fabric Mills	6	316	313	315	\$3,532,814	\$863.63
Textile and Fabric Finishing Mills	14	84	85	88	\$488,840	\$438.95
TEXTILE PRODUCT MILLS	56	1,270	1,283	1,271	\$11,473,420	\$692.39
APPAREL MANUFACTURING	45	1,823	1,825	1,819	\$8,897,518	\$375.58
Cut and Sew Apparel Manufacturing	36	873	885	861	\$4,129,580	\$363.87
Other	9	950	940	958	\$4,767,938	\$386.34
LEATHER AND ALLIED PRODUCT MANUFACTURING	20	1,939	1,956	1,937	\$10,315,030	\$408.16
Footwear Manufacturing	10	1,737	1,744	1,722	\$8,977,255	\$398.17
Other Leather Product Manufacturing	10	202	212	215	\$1,337,775	\$490.81
WOOD PRODUCT MANUFACTURING	390	14,045	13,767	13,675	\$107,313,318	\$596.92
Sawmills and Wood Preservation	178	6,377	6,273	6,272	\$50,939,654	\$621.25

**TABLE 5. STATEWIDE SUMMARY
EMPLOYMENT AND TOTAL EARNINGS, BY INDUSTRY
THIRD QUARTER 2006**

NORTH AMERICAN INDUSTRY CLASSIFICATION SYSTEM INDUSTRY GROUPS	NUMBER OF EMPLOYING UNITS	EMPLOYMENT	EMPLOYMENT	EMPLOYMENT	TOTAL EARNINGS	AVERAGE
		JULY	AUGUST	SEPTEMBER	JULY-SEPTEMBER	WEEKLY EARNINGS
Veneer and Engineered Wood Products	47	3,251	3,118	3,080	\$30,162,844	\$736.66
Other Wood Product Manufacturing	165	4,417	4,376	4,323	\$26,210,820	\$461.17
PAPER MANUFACTURING	86	11,684	11,629	11,678	\$146,646,534	\$967.15
Pulp, Paper and Paperboard Mills	12	4,624	4,587	4,648	\$73,866,885	\$1,229.97
Converted Paper Product Manufacturing	74	7,060	7,042	7,030	\$72,779,649	\$794.78
PRINTING AND RELATED SUPPORT ACTIVITIES	297	4,637	4,660	4,656	\$39,615,187	\$655.20
PETROLEUM AND COAL PRODUCTS MANUFACTURING	21	925	944	946	\$11,258,655	\$922.97
CHEMICAL MANUFACTURING	110	4,695	4,659	4,615	\$55,928,939	\$923.95
Basic Chemical Manufacturing	28	1,955	1,938	1,929	\$27,449,020	\$1,088.01
Resin, Rubber and Artificial Fibers	5	311	311	306	\$3,854,202	\$958.44
Agricultural Chemical Manufacturing	16	354	347	340	\$3,604,956	\$799.15
Paint, Coating and Adhesive Manufacturing	8	192	189	182	\$2,716,083	\$1,113.30
Other Chemical Preparation Manufacturing	26	941	943	935	\$9,098,398	\$744.81
Other	27	942	931	923	\$9,206,280	\$759.84
PLASTICS AND RUBBER PRODUCTS MANUFACTURING	172	13,000	13,075	12,980	\$114,948,200	\$679.21
Plastics Product Manufacturing	129	7,879	7,917	7,959	\$64,846,096	\$629.95
Rubber Product Manufacturing	43	5,121	5,158	5,021	\$50,102,104	\$755.69
NONMETALLIC MINERAL PRODUCT MANUFACTURING	252	4,689	4,677	4,593	\$42,624,222	\$704.66
Clay Product and Refractory Manufacturing	16	451	454	439	\$4,129,670	\$709.08
Glass and Glass Product Manufacturing	14	404	397	388	\$3,433,751	\$666.45
Cement and Concrete Product Manufacturing	179	2,860	2,849	2,784	\$25,196,690	\$684.64
Lime and Gypsum Product Manufacturing	4	423	428	430	\$4,777,939	\$860.73
Other Nonmetallic Mineral Products	39	551	549	552	\$5,086,172	\$710.49
PRIMARY METAL MANUFACTURING	66	8,357	8,353	8,373	\$103,059,939	\$948.17
Iron and Steel Mills and Ferroalloys	10	2,130	2,135	2,093	\$41,089,027	\$1,491.36
Purchased Steel Product Manufacturing	13	2,428	2,428	2,459	\$24,269,883	\$765.65
Alumina and Aluminum Production	19	1,839	1,847	1,871	\$21,009,180	\$872.46
Other Nonferrous Metal Production	10	573	573	596	\$4,975,426	\$659.11
Foundries	14	1,387	1,370	1,354	\$11,716,423	\$657.70
FABRICATED METAL PRODUCT MANUFACTURING	576	17,859	18,000	17,931	\$166,575,644	\$714.64
Forging and Stamping	14	952	958	943	\$7,923,676	\$640.92

**TABLE 5. STATEWIDE SUMMARY
EMPLOYMENT AND TOTAL EARNINGS, BY INDUSTRY
THIRD QUARTER 2006**

NORTH AMERICAN INDUSTRY CLASSIFICATION SYSTEM INDUSTRY GROUPS	NUMBER OF EMPLOYING UNITS	EMPLOYMENT	EMPLOYMENT	EMPLOYMENT	TOTAL EARNINGS	AVERAGE
		JULY	AUGUST	SEPTEMBER	JULY-SEPTEMBER	WEEKLY EARNINGS
Cutlery and Hand Tool Manufacturing	16	1,400	1,392	1,422	\$11,844,687	\$648.64
Architectural and Structural Metals	203	5,185	5,227	5,291	\$50,514,213	\$742.35
Boilers, Tanks and Shipping Containers	20	1,119	1,121	1,116	\$10,266,756	\$705.97
Hardware Manufacturing	9	280	280	285	\$2,026,092	\$553.33
Spring and Wire Product Manufacturing	16	576	730	709	\$4,863,972	\$557.05
Machine Shops and Threaded Products	196	1,839	1,836	1,838	\$15,376,085	\$643.63
Coating, Engraving and Heat Treating Metals	37	913	909	793	\$6,614,957	\$583.76
Other Fabricated Metal Product Manufacturing	65	5,595	5,547	5,534	\$57,145,206	\$790.80
MACHINERY MANUFACTURING	254	14,695	14,687	14,269	\$124,485,218	\$658.11
Agricultural, Construction and Mining Machinery	37	2,953	2,907	2,834	\$16,611,766	\$440.93
Commercial and Service Industry Machinery	27	1,004	976	975	\$9,605,085	\$750.10
HVAC and Commercial Refrigeration Equipment	24	5,284	5,313	5,427	\$48,907,103	\$704.33
Metalworking Machinery Manufacturing	76	1,320	1,321	858	\$13,362,932	\$881.32
Other General Purpose Machinery Manufacturing	56	3,186	3,182	3,168	\$27,323,683	\$661.23
Other	34	948	988	1,007	\$8,674,649	\$680.20
COMPUTER AND ELECTRONIC PRODUCT MANUFACTURING	85	5,815	5,842	5,964	\$50,916,694	\$666.82
Audio and Video Equipment Manufacturing	11	1,482	1,487	1,510	\$11,038,172	\$568.71
Semiconductors and Electronic Components	26	2,295	2,361	2,371	\$20,600,928	\$676.54
Electronic Instrument Manufacturing	32	1,208	1,204	1,207	\$9,470,208	\$603.88
Other	16	830	790	876	\$9,807,386	\$906.75
ELECTRICAL EQUIPMENT AND APPLIANCES	73	12,466	12,420	11,714	\$106,773,982	\$673.23
Electrical Equipment Manufacturing	24	4,918	4,918	4,946	\$46,732,717	\$729.57
Other	49	7,548	7,502	6,768	\$60,041,265	\$635.06
TRANSPORTATION EQUIPMENT MANUFACTURING	169	16,715	16,784	16,707	\$147,161,365	\$676.42
Motor Vehicle Body and Trailer Manufacturing	43	3,877	3,957	3,909	\$31,640,172	\$621.78
Motor Vehicle Parts Manufacturing	56	6,341	6,298	6,262	\$48,804,657	\$595.87
Aerospace Product and Parts Manufacturing	26	3,406	3,411	3,469	\$41,835,599	\$938.59
Ship and Boat Building	26	1,722	1,688	1,683	\$12,597,131	\$570.79
Other	18	1,369	1,430	1,384	\$12,283,806	\$677.68
FURNITURE & RELATED PRODUCT MFG.	277	6,505	6,514	6,467	\$47,432,488	\$561.73
Household & Institutional Furniture	229	4,282	4,300	4,272	\$30,477,712	\$547.17

**TABLE 5. STATEWIDE SUMMARY
EMPLOYMENT AND TOTAL EARNINGS, BY INDUSTRY
THIRD QUARTER 2006**

NORTH AMERICAN INDUSTRY CLASSIFICATION SYSTEM INDUSTRY GROUPS	NUMBER OF EMPLOYING UNITS	EMPLOYMENT	EMPLOYMENT	EMPLOYMENT	TOTAL EARNINGS	AVERAGE
		JULY	AUGUST	SEPTEMBER	JULY-SEPTEMBER	WEEKLY EARNINGS
Office Furniture & Fixtures Manufacturing	40	2,084	2,073	2,058	\$16,205,548	\$601.73
Other Furniture Related Product Manufacturing	8	139	141	137	\$749,228	\$414.63
MISCELLANEOUS MANUFACTURING	273	5,846	5,843	5,799	\$43,803,814	\$578.03
Medical Equipment & Supplies Manufacturing	99	2,606	2,654	2,647	\$20,478,135	\$597.66
Other Miscellaneous Manufacturing	174	3,240	3,189	3,152	\$23,325,679	\$561.83
TRADE, TRANSPORTATION AND UTILITIES	21,011	244,312	245,077	246,108	\$1,865,385,394	\$585.28
WHOLESALE TRADE	6,313	48,195	48,167	48,328	\$563,620,220	\$898.93
MERCHANT WHOLESALERS, DURABLE GOODS	2,110	22,402	22,471	22,537	\$234,394,003	\$802.42
Motor Vehicle & Part Merchant Wholesalers	239	2,776	2,796	2,793	\$25,325,534	\$698.67
Furniture & Furnishing Merchant Wholesalers	68	445	448	448	\$4,920,245	\$846.71
Lumber & Supply Merchant Wholesalers	176	1,856	1,854	1,879	\$18,308,876	\$755.97
Commercial Goods Merchant Wholesalers	247	2,564	2,582	2,612	\$35,603,533	\$1,059.06
Metal & Mineral Merchant Wholesalers	50	765	771	794	\$8,585,531	\$850.33
Electric Goods Merchant Wholesalers	177	2,206	2,161	2,155	\$23,028,945	\$814.84
Hardware & Plumbing Merchant Wholesalers	223	2,503	2,542	2,523	\$26,867,891	\$819.28
Machinery & Supply Merchant Wholesalers	690	7,355	7,355	7,380	\$75,484,053	\$788.56
Misc. Durable Goods Merchant Wholesalers	240	1,932	1,962	1,953	\$16,269,395	\$642.12
MERCHANT WHOLESALERS, NONDURABLE GOODS	1,304	16,615	16,513	16,518	\$159,251,644	\$740.25
Paper & Paper Product Merchant Wholesalers	76	1,139	1,118	1,138	\$10,644,924	\$723.57
Druggists' Goods Merchant Wholesalers	56	1,212	1,226	1,218	\$12,611,046	\$796.02
Apparel & Piece Goods Merchant Wholesalers	40	465	471	472	\$3,266,908	\$535.44
Grocery Product Merchant Wholesalers	351	5,331	5,327	5,317	\$59,614,145	\$861.16
Farm Product Merchant Wholesalers	77	821	867	931	\$5,192,954	\$457.57
Chemical Merchant Wholesalers	83	491	488	483	\$5,782,762	\$912.78
Petroleum Merchant Wholesalers	155	1,475	1,491	1,507	\$16,485,556	\$850.52
Alcoholic Beverage Merchant Wholesalers	38	1,134	1,143	1,140	\$11,807,585	\$797.43
Misc. Nondurable Goods Merchant Wholesalers	428	4,547	4,382	4,312	\$33,845,764	\$589.88
ELECTRONIC MARKETS & AGENTS & BROKERS	2,899	9,178	9,183	9,273	\$169,974,573	\$1,419.44
RETAIL TRADE	11,336	132,587	133,175	133,236	\$683,115,004	\$395.09
MOTOR VEHICLE & PARTS DEALERS	1,741	18,397	18,540	18,485	\$156,724,667	\$652.58
Automobile Dealers	750	11,044	11,157	11,133	\$108,628,906	\$752.03

**TABLE 5. STATEWIDE SUMMARY
EMPLOYMENT AND TOTAL EARNINGS, BY INDUSTRY
THIRD QUARTER 2006**

NORTH AMERICAN INDUSTRY CLASSIFICATION SYSTEM INDUSTRY GROUPS	NUMBER OF EMPLOYING UNITS	EMPLOYMENT	EMPLOYMENT	EMPLOYMENT	TOTAL EARNINGS	AVERAGE
		JULY	AUGUST	SEPTEMBER	JULY-SEPTEMBER	WEEKLY EARNINGS
Other Motor Vehicle Dealers	196	1,626	1,634	1,634	\$13,760,010	\$648.83
Automotive Parts, Accessories & Tire Stores	795	5,727	5,749	5,718	\$34,335,751	\$460.84
FURNITURE & HOME FURNISHINGS STORES	608	4,043	4,083	4,122	\$27,494,777	\$518.04
Furniture Stores	320	2,508	2,553	2,571	\$16,317,282	\$493.39
Home Furnishings Stores	288	1,535	1,530	1,551	\$11,177,495	\$558.80
ELECTRONICS & APPLIANCE STORES	452	2,867	2,962	2,953	\$18,449,132	\$484.80
BUILDING MATERIAL & GARDEN SUPPLY STORES	835	11,618	11,371	11,227	\$73,448,753	\$495.37
Building Material & Supplies Dealers	663	10,668	10,470	10,329	\$68,368,928	\$501.40
Lawn & Garden Equipment & Supplies Stores	172	950	901	898	\$5,079,825	\$426.43
FOOD & BEVERAGE STORES	1,110	18,627	18,675	18,688	\$74,546,807	\$307.25
Grocery Stores	630	16,202	16,237	16,204	\$63,057,006	\$299.15
Specialty Food Stores	166	902	920	957	\$5,408,852	\$449.15
Beer, Wine & Liquor Stores	314	1,523	1,518	1,527	\$6,080,949	\$307.20
HEALTH & PERSONAL CARE STORES	817	6,957	6,979	7,018	\$48,478,864	\$533.90
GASOLINE STATIONS	1,635	12,688	12,872	12,821	\$44,401,081	\$266.97
Gasoline Stations with Convenience Stores	1,473	11,379	11,588	11,559	\$38,575,204	\$257.83
Other Gasoline Stations	162	1,309	1,284	1,262	\$5,825,877	\$348.75
CLOTHING & CLOTHING ACCESSORIES STORES	1,077	8,416	8,618	8,569	\$28,771,797	\$259.33
Clothing Stores	725	6,348	6,516	6,492	\$19,535,752	\$232.91
Shoe Stores	184	1,170	1,218	1,178	\$4,189,253	\$271.10
Jewelry, Luggage & Leather Goods Stores	168	898	884	899	\$5,046,792	\$434.41
SPORTING GOODS, HOBBY, BOOK & MUSIC STORES	590	4,336	4,607	4,601	\$16,248,239	\$276.85
Sporting Goods & Musical Instrument Stores	425	2,938	3,121	3,167	\$11,956,029	\$299.06
Book, Periodical & Music Stores	165	1,398	1,486	1,434	\$4,292,210	\$229.39
GENERAL MERCHANDISE STORES	719	35,899	35,944	36,276	\$151,050,501	\$322.40
MISCELLANEOUS STORE RETAILERS	1,422	6,841	6,612	6,581	\$30,618,065	\$352.69
Florists	270	962	947	969	\$3,391,146	\$271.92
Office Supplies, Stationery & Gift Stores	386	2,422	2,445	2,423	\$11,499,357	\$364.02
Used Merchandise Stores	216	727	768	750	\$3,338,184	\$343.14
Other Miscellaneous Store Retailers	550	2,730	2,452	2,439	\$12,389,378	\$375.16
NONSTORE RETAILERS	330	1,898	1,912	1,895	\$12,882,321	\$521.09

**TABLE 5. STATEWIDE SUMMARY
EMPLOYMENT AND TOTAL EARNINGS, BY INDUSTRY
THIRD QUARTER 2006**

NORTH AMERICAN INDUSTRY CLASSIFICATION SYSTEM INDUSTRY GROUPS	NUMBER OF EMPLOYING UNITS	EMPLOYMENT JULY	EMPLOYMENT AUGUST	EMPLOYMENT SEPTEMBER	TOTAL EARNINGS JULY-SEPTEMBER	AVERAGE WEEKLY EARNINGS
Electronic Shopping & Mail -Order Houses	68	374	364	363	\$3,083,474	\$646.30
Vending Machine Operators	83	730	745	727	\$4,191,021	\$439.22
Direct Selling Establishments	179	794	803	805	\$5,607,826	\$538.77
TRANSPORTATION & WAREHOUSING	2,999	56,632	56,849	57,658	\$519,909,880	\$701.06
AIR TRANSPORTATION	48	929	927	919	\$12,212,265	\$1,015.57
TRUCK TRANSPORTATION	2,015	35,879	35,928	36,200	\$343,382,473	\$733.68
General Freight Trucking	1,272	30,696	30,686	30,984	\$298,696,570	\$746.27
Specialized Freight Trucking	743	5,183	5,242	5,216	\$44,685,903	\$659.30
TRANSIT & GROUND PASSENGER TRANSPORTATION	59	834	917	1,059	\$4,024,824	\$330.54
Taxi & Limousine Service	17	202	204	198	\$691,357	\$264.15
School & Employee Bus Transportation	7	250	321	437	\$1,716,654	\$393.01
Charter Bus Industry	8	99	94	93	\$479,780	\$387.13
Other Ground Passenger Transportation	17	175	192	217	\$734,880	\$290.39
Other	10	108	106	114	\$402,153	\$282.94
PIPELINE TRANSPORTATION	65	926	923	914	\$11,452,373	\$956.52
SUPPORT ACTIVITIES FOR TRANSPORTATION	431	4,893	4,925	4,954	\$46,666,158	\$729.02
Support Activities for Air Transportation	106	1,611	1,632	1,669	\$14,127,307	\$663.71
Support Activities for Rail Transportation	31	408	412	418	\$3,421,681	\$637.82
Support Activities for Water Transportation	28	696	663	646	\$7,383,093	\$849.77
Support Activities for Road Transportation	106	496	526	533	\$3,020,455	\$448.25
Freight Transportation Arrangement	135	1,528	1,542	1,530	\$17,639,616	\$884.93
Other Support Activities for Transportation	25	154	150	158	\$1,074,006	\$536.47
COURIERS & MESSENGERS	141	3,195	3,246	3,302	\$29,051,340	\$688.10
Couriers	87	2,963	3,011	3,057	\$27,599,241	\$705.24
Local Messengers & Local Delivery	54	232	235	245	\$1,452,099	\$470.65
WAREHOUSING & STORAGE	216	9,716	9,719	10,042	\$71,112,764	\$556.73
OTHER	24	260	264	268	\$2,007,683	\$584.99
UTILITIES	363	6,898	6,886	6,886	\$98,740,290	\$1,102.38
Power Generation & Supply	165	5,099	5,083	5,048	\$78,077,890	\$1,183.06
Natural Gas Distribution	33	965	979	1,000	\$14,862,691	\$1,165.03
Water, Sewage and Other Systems	165	834	824	838	\$5,799,709	\$536.22

**TABLE 5. STATEWIDE SUMMARY
EMPLOYMENT AND TOTAL EARNINGS, BY INDUSTRY
THIRD QUARTER 2006**

NORTH AMERICAN INDUSTRY CLASSIFICATION SYSTEM INDUSTRY GROUPS	NUMBER OF EMPLOYING UNITS	EMPLOYMENT JULY	EMPLOYMENT AUGUST	EMPLOYMENT SEPTEMBER	TOTAL EARNINGS JULY-SEPTEMBER	AVERAGE WEEKLY EARNINGS
INFORMATION	1,208	19,882	20,089	20,137	\$213,551,924	\$819.88
PUBLISHING INDUSTRIES, EXCEPT INTERNET	248	6,197	6,338	6,439	\$47,982,662	\$583.58
Newspaper, Book & Directory Publishers	219	5,944	6,082	6,183	\$44,318,034	\$561.66
Software Publishers	29	253	256	256	\$3,664,628	\$1,105.47
MOTION PICTURE & SOUND RECORDING INDUSTRY	138	1,276	1,261	1,189	\$6,048,165	\$374.59
Motion Picture & Video Industries	122	1,245	1,224	1,152	\$5,762,036	\$367.22
Sound Recording Industries	16	31	37	37	\$286,129	\$628.85
BROADCASTING, EXCEPT INTERNET	142	2,058	2,080	2,074	\$17,295,850	\$642.52
Radio & Television Broadcasting	133	2,024	2,046	2,038	\$17,098,366	\$646.00
Cable & Other Subscription Programming	9	34	34	36	\$197,484	\$438.20
TELECOMMUNICATIONS	492	8,907	8,976	9,001	\$125,424,357	\$1,076.63
Wired Telecommunications Carriers	218	3,129	3,188	3,223	\$55,691,997	\$1,347.17
Wireless Telecommunications Carriers	118	4,032	4,046	4,026	\$52,258,253	\$996.33
Cable & Other Program Distribution	89	1,240	1,232	1,256	\$12,234,002	\$757.30
Other	67	506	510	496	\$5,240,105	\$799.77
ISPS, SEARCH PORTALS, & DATA PROCESSING	150	1,140	1,134	1,137	\$14,586,385	\$986.83
ISPs, & Web Search Portals	64	162	164	164	\$1,583,050	\$745.55
Data Processing & Related Services	86	978	970	973	\$13,003,335	\$1,027.31
OTHER	38	304	300	297	\$2,214,505	\$567.19
FINANCIAL ACTIVITIES	8,131	51,547	51,613	51,493	\$472,968,660	\$705.75
FINANCE & INSURANCE	4,779	37,113	37,158	37,107	\$379,018,533	\$785.31
CREDIT INTERMEDIATION & RELATED ACTIVITIES	2,062	22,116	22,119	22,054	\$190,623,863	\$663.61
Depository Credit Intermediation	1,343	18,499	18,421	18,295	\$152,259,235	\$636.36
Nondepository Credit Intermediation	395	2,570	2,580	2,607	\$29,577,970	\$879.94
Activities Related to Credit Intermediation	324	1,047	1,118	1,152	\$8,786,658	\$611.30
FINANCIAL INVESTMENT & RELATED ACTIVITIES	571	3,081	3,089	3,092	\$58,087,376	\$1,447.29
Security & Commodity Investment Activities	322	2,327	2,346	2,294	\$48,074,707	\$1,592.39
Other Financial Investment Activities	249	754	743	798	\$10,012,669	\$1,006.80
INSURANCE CARRIERS & RELATED ACTIVITIES	2,108	11,469	11,501	11,520	\$126,780,757	\$848.28
Insurance Carriers	416	4,724	4,731	4,762	\$59,426,229	\$964.60
Insurance Agencies, Brokerages & Support	1,692	6,745	6,770	6,758	\$67,354,528	\$766.70

**TABLE 5. STATEWIDE SUMMARY
EMPLOYMENT AND TOTAL EARNINGS, BY INDUSTRY
THIRD QUARTER 2006**

NORTH AMERICAN INDUSTRY CLASSIFICATION SYSTEM INDUSTRY GROUPS	NUMBER OF EMPLOYING UNITS	EMPLOYMENT	EMPLOYMENT	EMPLOYMENT	TOTAL EARNINGS	AVERAGE
		JULY	AUGUST	SEPTEMBER	JULY-SEPTEMBER	WEEKLY EARNINGS
OTHER	38	447	449	441	\$3,526,537	\$608.69
REAL ESTATE & RENTAL & LEASING	3,352	14,434	14,455	14,386	\$93,950,127	\$501.00
REAL ESTATE	2,538	9,054	9,081	9,088	\$59,689,224	\$505.99
Lessors of Real Estate	1,071	4,407	4,387	4,439	\$26,511,367	\$462.33
Offices of Real Estate Agents & Brokers	854	2,171	2,201	2,218	\$16,105,944	\$564.00
Activities Related to Real Estate	613	2,476	2,493	2,431	\$17,071,913	\$532.39
RENTAL & LEASING SERVICES	789	5,306	5,301	5,241	\$33,293,629	\$484.80
Automotive Equipment Rental & Leasing	127	1,019	1,027	1,011	\$7,025,278	\$530.33
Consumer Goods Rental	482	3,245	3,249	3,167	\$15,651,011	\$373.85
General Rental Centers	35	256	255	252	\$1,908,251	\$577.15
Machinery & Equipment Rental & Leasing	145	786	770	811	\$8,709,089	\$849.09
LESSORS OF NONFINANCIAL INTANGIBLE ASSETS	25	74	73	57	\$967,274	\$1,094.20
PROFESSIONAL AND BUSINESS SERVICES	10,934	114,041	114,619	115,750	\$1,015,067,376	\$680.14
PROFESSIONAL & TECHNICAL SERVICES	6,875	36,390	36,521	36,681	\$397,387,344	\$836.78
Legal Services	1,657	6,692	6,710	6,682	\$65,948,311	\$757.76
Accounting & Bookkeeping Services	1,205	4,560	4,542	4,600	\$40,086,143	\$675.13
Architectural & Engineering Services	931	6,663	6,715	6,655	\$75,215,226	\$866.44
Specialized Design Services	157	444	453	466	\$3,558,371	\$602.47
Computer Systems Design & Related Services	826	7,662	7,651	7,726	\$122,833,761	\$1,230.36
Management & Technical Consulting Services	1,082	3,290	3,380	3,462	\$37,538,250	\$854.98
Scientific Research & Development Services	114	1,111	1,134	1,124	\$12,450,550	\$852.84
Advertising & Related Services	320	2,043	2,028	2,102	\$20,471,877	\$765.31
Other Professional & Technical Services	583	3,925	3,908	3,864	\$19,284,855	\$380.47
MANAGEMENT OF COMPANIES & ENTERPRISES	515	24,147	24,152	24,244	\$346,875,232	\$1,103.46
ADMINISTRATIVE & WASTE SERVICES	3,544	53,504	53,946	54,825	\$270,804,800	\$385.11
ADMINISTRATIVE & SUPPORT SERVICES	3,343	51,116	51,578	52,486	\$247,886,636	\$368.63
Office Administrative Services	357	1,316	1,326	1,338	\$15,554,316	\$901.87
Facilities Support Services	16	131	143	150	\$990,824	\$539.27
Employment Services	652	25,775	26,849	27,417	\$114,220,847	\$329.31
Business Support Services	367	5,249	4,848	5,016	\$24,297,904	\$371.02
Travel Arrangement & Reservation Services	102	466	450	439	\$3,123,956	\$532.04

**TABLE 5. STATEWIDE SUMMARY
EMPLOYMENT AND TOTAL EARNINGS, BY INDUSTRY
THIRD QUARTER 2006**

NORTH AMERICAN INDUSTRY CLASSIFICATION SYSTEM INDUSTRY GROUPS	NUMBER OF EMPLOYING UNITS	EMPLOYMENT JULY	EMPLOYMENT AUGUST	EMPLOYMENT SEPTEMBER	TOTAL EARNINGS JULY-SEPTEMBER	AVERAGE WEEKLY EARNINGS
Investigation & Security Services	236	4,426	4,438	4,441	\$24,754,365	\$429.35
Services to Buildings & Dwellings	1,317	12,134	11,969	12,146	\$53,478,514	\$340.46
Other Support Services	296	1,619	1,555	1,539	\$11,465,910	\$561.42
WASTE MANAGEMENT & REMEDIATION SERVICES	201	2,388	2,368	2,339	\$22,918,164	\$745.43
Waste Collection	94	1,089	1,085	1,097	\$9,760,105	\$688.58
Waste Treatment & Disposal	37	750	737	690	\$9,155,871	\$970.55
Remediation & Other Waste Services	70	549	546	552	\$4,002,188	\$560.77
EDUCATION AND HEALTH SERVICES	10,766	144,864	146,417	147,547	\$1,184,475,801	\$622.89
EDUCATIONAL SERVICES	558	8,405	8,528	9,411	\$59,710,037	\$523.05
Elementary & Secondary Schools	82	2,826	3,007	3,409	\$16,876,493	\$421.40
Junior Colleges	7	230	240	257	\$1,669,510	\$529.95
Colleges & Universities	26	3,030	2,942	3,215	\$24,191,878	\$607.68
Business, Computer & Management Training	46	157	158	159	\$2,873,875	\$1,399.16
Technical & Trade Schools	101	636	656	731	\$7,360,477	\$839.63
Other Schools & Instruction	210	1,257	1,299	1,420	\$4,542,055	\$263.62
Educational Support Services	86	269	226	220	\$2,195,749	\$708.69
HEALTH CARE & SOCIAL ASSISTANCE	10,208	136,459	137,889	138,136	\$1,124,765,764	\$629.26
AMBULATORY HEALTH CARE SERVICES	4,796	42,493	42,764	42,729	\$506,638,762	\$913.51
Offices of Physicians	2,157	20,609	20,669	20,653	\$323,841,527	\$1,206.71
Offices of Dentists	920	6,063	6,115	6,087	\$58,174,830	\$735.01
Offices of Other Health Practitioners	1,131	5,608	5,657	5,649	\$41,260,779	\$562.95
Outpatient Care Centers	211	3,483	3,512	3,565	\$32,712,312	\$714.87
Medical & Diagnostic Laboratories	96	764	788	799	\$9,927,716	\$974.48
Home Health Care Services	136	3,782	3,832	3,787	\$24,778,279	\$501.54
Other Ambulatory Health Care Services	145	2,184	2,191	2,189	\$15,943,319	\$560.52
HOSPITALS	104	41,678	41,779	41,673	\$377,620,007	\$696.42
General Medical & Surgical Hospitals	76	38,331	38,454	38,412	\$350,151,310	\$701.44
Psychiatric & Substance Abuse Hospitals	9	1,515	1,527	1,501	\$11,747,417	\$596.73
Other Hospitals	19	1,832	1,798	1,760	\$15,721,280	\$673.10
NURSING & RESIDENTIAL CARE FACILITIES	509	27,019	27,128	27,138	\$134,572,394	\$382.05
Nursing Care Facilities	246	20,346	20,416	20,367	\$100,729,095	\$380.26

**TABLE 5. STATEWIDE SUMMARY
EMPLOYMENT AND TOTAL EARNINGS, BY INDUSTRY
THIRD QUARTER 2006**

NORTH AMERICAN INDUSTRY CLASSIFICATION SYSTEM INDUSTRY GROUPS	NUMBER OF EMPLOYING UNITS	EMPLOYMENT JULY	EMPLOYMENT AUGUST	EMPLOYMENT SEPTEMBER	TOTAL EARNINGS JULY-SEPTEMBER	AVERAGE WEEKLY EARNINGS
Residential Mental Health Facilities	125	3,025	3,070	3,091	\$16,475,879	\$413.90
Community Care Facilities for the Elderly	90	2,172	2,162	2,195	\$9,603,938	\$339.45
Other Residential Care Facilities	48	1,476	1,480	1,485	\$7,763,482	\$403.42
SOCIAL ASSISTANCE	4,799	25,269	26,218	26,596	\$105,934,601	\$313.08
Individual & Family Services	3,646	13,356	13,518	13,523	\$57,191,742	\$326.71
Emergency & Other Relief Services	120	866	886	884	\$4,396,242	\$384.87
Vocational Rehabilitation Services	130	3,462	3,491	3,532	\$16,695,469	\$367.46
Child Day Care Services	903	7,585	8,323	8,657	\$27,651,148	\$259.76
LEISURE AND HOSPITALITY	6,138	100,484	100,285	98,829	\$289,920,542	\$223.32
ARTS, ENTERTAINMENT & RECREATION	935	10,887	10,569	9,682	\$37,158,289	\$275.39
PERFORMING ARTS & SPECTATOR SPORTS	204	2,025	2,046	2,037	\$8,122,722	\$306.89
Performing Arts Companies	35	604	594	611	\$1,941,054	\$247.62
Spectator Sports	55	806	781	703	\$3,334,844	\$336.06
Performing Arts & Sports Promoters	43	470	533	588	\$1,989,189	\$288.53
Agents & Managers for Public Figures	12	18	17	16	\$132,343	\$598.84
Independent Artists, Writers & Performers	59	127	121	119	\$725,292	\$456.06
MUSEUMS, PARKS & HISTORICAL SITES	47	252	252	243	\$1,079,001	\$333.33
GAMBLING, RECREATION & AMUSEMENT INDUSTRY	684	8,610	8,271	7,402	\$27,956,566	\$265.68
Other Amusement & Recreation Industries	643	7,626	7,439	6,909	\$26,146,674	\$274.59
Other	41	984	832	493	\$1,809,892	\$180.89
ACCOMMODATION & FOOD SERVICES	5,203	89,597	89,716	89,147	\$252,762,253	\$217.28
ACCOMMODATION	815	12,069	11,875	11,545	\$41,203,587	\$267.93
Traveler Accommodation	740	11,370	11,424	11,194	\$39,066,465	\$265.25
RV Parks & Recreational Camps	56	649	379	272	\$1,881,312	\$333.96
Rooming & Boarding Houses	19	50	72	79	\$255,810	\$293.70
FOOD SERVICES & DRINKING PLACES	4,388	77,528	77,841	77,602	\$211,558,666	\$209.56
Full -Service Restaurants	1,938	34,368	34,419	34,196	\$99,285,744	\$222.48
Limited-Service Eating Places	2,138	40,614	40,794	40,426	\$103,538,842	\$196.12
Special Food Services	157	1,704	1,779	2,126	\$6,382,888	\$262.61
Drinking Places, Alcoholic Beverages	155	842	849	854	\$2,351,192	\$213.20
OTHER SERVICES	5,495	26,432	26,299	26,071	\$151,690,588	\$444.22

**TABLE 5. STATEWIDE SUMMARY
EMPLOYMENT AND TOTAL EARNINGS, BY INDUSTRY
THIRD QUARTER 2006**

NORTH AMERICAN INDUSTRY CLASSIFICATION SYSTEM INDUSTRY GROUPS	NUMBER OF EMPLOYING UNITS	EMPLOYMENT JULY	EMPLOYMENT AUGUST	EMPLOYMENT SEPTEMBER	TOTAL EARNINGS JULY-SEPTEMBER	AVERAGE WEEKLY EARNINGS
REPAIR & MAINTENANCE	2,232	9,680	9,737	9,794	\$65,880,190	\$520.46
Automotive Repair & Maintenance	1,548	6,841	6,876	6,890	\$43,737,798	\$489.80
Electronic Equipment Repair & Maintenance	162	670	674	687	\$5,909,825	\$671.49
Commercial Machinery Repair & Maintenance	338	1,580	1,596	1,645	\$12,584,415	\$602.38
Household Goods Repair & Maintenance	184	589	591	572	\$3,648,152	\$480.53
PERSONAL & LAUNDRY SERVICES	1,326	8,354	8,404	8,317	\$39,534,645	\$363.84
Personal Care Services	564	2,663	2,658	2,626	\$10,186,601	\$295.80
Death Care Services	247	1,713	1,721	1,705	\$10,033,227	\$450.55
Drycleaning & Laundry Services	345	3,222	3,246	3,250	\$15,392,049	\$365.51
Other Personal Services	170	756	779	736	\$3,922,768	\$398.61
MEMBERSHIP ASSOCIATIONS & ORGANIZATIONS	1,025	6,961	6,738	6,542	\$40,787,238	\$465.02
Religious Organizations	41	242	226	229	\$1,250,276	\$413.95
Grantmaking & Giving Services	97	450	464	460	\$4,387,351	\$736.87
Social Advocacy Organizations	149	1,932	1,970	1,992	\$12,101,184	\$473.80
Civic & Social Organizations	221	1,928	1,645	1,543	\$5,569,961	\$251.25
Professional & Similar Organizations	517	2,409	2,433	2,318	\$17,478,466	\$563.34
PRIVATE HOUSEHOLDS	912	1,437	1,420	1,418	\$5,488,515	\$296.28
LOCAL GOVERNMENT	2,006	70,538	91,436	115,917	\$634,330,288	\$526.77
STATE GOVERNMENT	1,199	60,556	61,063	64,151	\$573,865,201	\$712.87
NONCLASSIFIABLE ESTABLISHMENTS	0	0	0	0	\$0	

**TABLE 6. COUNTY SUMMARY
EMPLOYMENT AND TOTAL EARNINGS, BY INDUSTRY
THIRD QUARTER 2006**

NORTH AMERICAN INDUSTRY CLASSIFICATION SYSTEM INDUSTRY GROUP	NUMBER OF EMPLOYING UNITS	EMPLOYMENT	EMPLOYMENT	EMPLOYMENT	TOTAL EARNINGS	AVERAGE
		JULY	AUGUST	SEPTEMBER	JULY-SEPTEMBER 2006	WEEKLY EARNINGS
ARKANSAS COUNTY - TOTAL	692	9,767	9,747	9,910	\$69,007,452	\$541.22
Natural Resources & Mining	42	220	245	257	\$1,725,789	\$551.61
Construction	56	288	295	318	\$2,321,470	\$594.59
Manufacturing	32	3,482	3,474	3,481	\$28,257,241	\$624.79
Trade, Transportation & Utilities	202	2,052	2,011	2,046	\$15,023,387	\$567.51
Wholesale Trade	47	446	399	404	\$4,137,492	\$764.46
Retail Trade	102	1,010	1,004	1,015	\$5,086,334	\$387.51
Transportation, Warehousing & Utilities	53	596	608	627	\$5,799,561	\$730.94
Information	11	95	96	98	\$891,732	\$712.06
Financial Activities	41	323	320	319	\$2,401,265	\$576.03
Professional & Business Services	55	420	411	412	\$3,536,334	\$656.54
Education & Health Services	92	1,215	1,244	1,246	\$6,534,167	\$406.99
Leisure & Hospitality	60	526	514	505	\$1,305,634	\$195.02
Other Services	53	145	147	142	\$734,707	\$390.66
Local Government	32	777	776	881	\$4,832,965	\$458.22
State Government	16	224	214	205	\$1,442,761	\$517.80
ASHLEY COUNTY - TOTAL	546	7,809	7,982	8,466	\$68,921,228	\$655.68
Natural Resources & Mining	63	517	492	549	\$3,291,761	\$487.57
Construction	49	630	644	714	\$4,330,771	\$502.72
Manufacturing	30	2,920	2,904	2,913	\$38,597,051	\$1,019.46
Trade, Transportation & Utilities	134	1,239	1,220	1,233	\$7,154,662	\$447.20
Wholesale Trade	24	162	170	198	\$1,657,549	\$721.72
Retail Trade	87	839	807	795	\$3,439,198	\$325.14
Transportation, Warehousing & Utilities	23	238	243	240	\$2,057,915	\$658.67
Information	8	50	51	48	\$310,248	\$480.51
Financial Activities	32	224	225	223	\$1,491,670	\$512.25
Professional & Business Services	49	358	352	356	\$1,963,042	\$424.96
Education & Health Services	65	590	604	612	\$4,614,412	\$589.63
Leisure & Hospitality	29	377	396	392	\$925,483	\$183.32
Other Services	43	193	185	197	\$840,961	\$337.51
Local Government	32	511	692	1,003	\$4,300,967	\$449.92
State Government	12	200	217	226	\$1,100,200	\$394.86

**TABLE 6. COUNTY SUMMARY
EMPLOYMENT AND TOTAL EARNINGS, BY INDUSTRY
THIRD QUARTER 2006**

NORTH AMERICAN INDUSTRY CLASSIFICATION SYSTEM INDUSTRY GROUP	NUMBER OF EMPLOYING UNITS	EMPLOYMENT	EMPLOYMENT	EMPLOYMENT	TOTAL EARNINGS	AVERAGE
		JULY	AUGUST	SEPTEMBER	JULY-SEPTEMBER 2006	WEEKLY EARNINGS
BAXTER COUNTY - TOTAL	1,260	14,277	14,846	14,913	\$96,893,540	\$507.77
Natural Resources & Mining	6	121	122	119	\$883,974	\$563.52
Construction	140	734	723	719	\$4,444,401	\$471.34
Manufacturing	59	2,583	2,569	2,537	\$20,442,853	\$613.55
Trade, Transportation & Utilities	281	2,753	2,773	2,752	\$15,302,594	\$426.60
Wholesale Trade	35	210	219	219	\$1,565,948	\$557.67
Retail Trade	213	2,268	2,276	2,270	\$11,743,979	\$397.73
Transportation, Warehousing & Utilities	33	275	278	263	\$1,992,667	\$563.54
Information	25	274	266	258	\$2,072,937	\$599.46
Financial Activities	116	732	746	749	\$5,463,486	\$566.14
Professional & Business Services	140	766	788	772	\$5,143,434	\$510.30
Education & Health Services	217	3,332	3,336	3,397	\$28,619,036	\$656.17
Leisure & Hospitality	125	1,632	1,677	1,604	\$4,545,772	\$213.52
Other Services	102	440	443	447	\$1,888,981	\$327.76
Local Government	36	647	1,104	1,258	\$6,069,266	\$465.47
State Government	13	263	299	301	\$2,016,806	\$539.30
BENTON COUNTY - TOTAL	5,269	90,414	92,269	93,801	\$820,622,712	\$684.94
Natural Resources & Mining	25	675	668	660	\$6,402,077	\$737.59
Construction	809	5,576	5,553	5,550	\$47,181,167	\$652.79
Manufacturing	246	14,285	14,320	13,765	\$119,848,951	\$652.76
Trade, Transportation & Utilities	1,391	22,784	22,897	23,258	\$209,455,913	\$701.14
Wholesale Trade	625	3,439	3,457	3,515	\$59,273,481	\$1,313.85
Retail Trade	594	7,859	7,963	8,241	\$46,369,444	\$444.69
Transportation, Warehousing & Utilities	172	11,486	11,477	11,502	\$103,812,988	\$695.11
Information	65	950	943	930	\$7,879,438	\$644.11
Financial Activities	588	3,800	3,842	3,832	\$34,812,886	\$700.17
Professional & Business Services	880	22,037	22,099	22,206	\$253,243,704	\$880.90
Education & Health Services	451	6,412	6,528	6,513	\$53,572,592	\$635.53
Leisure & Hospitality	409	7,452	7,543	7,591	\$24,195,020	\$247.21
Other Services	311	1,824	1,802	1,780	\$11,199,599	\$478.08
Local Government	75	4,026	5,419	6,846	\$46,762,541	\$662.41
State Government	19	593	655	870	\$6,068,824	\$661.24

**TABLE 6. COUNTY SUMMARY
EMPLOYMENT AND TOTAL EARNINGS, BY INDUSTRY
THIRD QUARTER 2006**

NORTH AMERICAN INDUSTRY CLASSIFICATION SYSTEM INDUSTRY GROUP	NUMBER OF EMPLOYING UNITS	EMPLOYMENT	EMPLOYMENT	EMPLOYMENT	TOTAL EARNINGS	AVERAGE
		JULY	AUGUST	SEPTEMBER	JULY-SEPTEMBER 2006	WEEKLY EARNINGS
BOONE COUNTY - TOTAL	1,074	13,283	13,641	14,345	\$107,465,960	\$600.93
Construction	92	488	473	481	\$3,313,375	\$530.25
Manufacturing	73	2,149	2,142	2,120	\$16,704,905	\$601.31
Trade, Transportation & Utilities	267	4,557	4,535	4,489	\$44,931,555	\$763.48
Wholesale Trade	60	684	666	652	\$4,842,073	\$558.14
Retail Trade	155	1,973	1,997	1,957	\$10,186,979	\$396.63
Transportation, Warehousing & Utilities	52	1,900	1,872	1,880	\$29,902,503	\$1,220.91
Information	19	392	424	449	\$3,594,807	\$655.79
Financial Activities	98	651	661	647	\$4,849,325	\$571.25
Professional & Business Services	111	578	616	641	\$3,563,454	\$448.14
Education & Health Services	172	1,145	1,157	1,188	\$7,754,896	\$512.78
Leisure & Hospitality	87	1,213	1,243	1,239	\$3,316,802	\$207.15
Local Government	60	1,317	1,554	2,257	\$12,693,814	\$571.24
State Government	21	523	562	560	\$5,072,494	\$711.60
Other	74	270	274	274	\$1,670,533	\$471.28
BRADLEY COUNTY - TOTAL	395	3,777	3,860	4,165	\$24,238,505	\$473.95
Natural Resources & Mining	49	361	361	364	\$2,145,487	\$455.90
Construction	24	169	176	191	\$1,142,605	\$491.94
Manufacturing	9	1,044	1,060	1,079	\$7,995,234	\$579.66
Trade, Transportation & Utilities	89	520	526	529	\$2,557,117	\$374.67
Wholesale Trade	15	124	124	122	\$518,616	\$323.46
Retail Trade	49	323	331	334	\$1,442,945	\$337.03
Transportation, Warehousing & Utilities	25	73	71	73	\$595,556	\$633.35
Information	3	12	12	12	\$78,405	\$502.60
Financial Activities	25	178	176	181	\$1,116,268	\$481.50
Professional & Business Services	28	83	84	84	\$380,570	\$349.90
Education & Health Services	87	561	569	579	\$3,524,652	\$475.94
Leisure & Hospitality	19	181	180	190	\$415,923	\$174.20
Other Services	34	128	123	123	\$659,061	\$406.66
Local & State Government	28	540	593	833	\$4,223,183	\$495.72

**TABLE 6. COUNTY SUMMARY
EMPLOYMENT AND TOTAL EARNINGS, BY INDUSTRY
THIRD QUARTER 2006**

NORTH AMERICAN INDUSTRY CLASSIFICATION SYSTEM INDUSTRY GROUP	NUMBER OF EMPLOYING UNITS	EMPLOYMENT	EMPLOYMENT	EMPLOYMENT	TOTAL EARNINGS	AVERAGE
		JULY	AUGUST	SEPTEMBER	JULY-SEPTEMBER 2006	WEEKLY EARNINGS
CALHOUN COUNTY - TOTAL	112	3,017	3,013	3,058	\$28,218,665	\$716.55
Natural Resources & Mining	19	173	176	186	\$1,337,409	\$576.88
Construction	10	68	77	79	\$480,035	\$494.54
Manufacturing	11	2,108	2,055	2,045	\$21,523,676	\$800.10
Trade, Transportation & Utilities	26	214	219	216	\$1,393,900	\$495.64
Wholesale Trade & Retail Trade	18	70	73	70	\$228,525	\$247.59
Transportation, Warehousing & Utilities	8	144	146	146	\$1,165,375	\$616.82
Professional & Business Services	6	86	84	86	\$513,490	\$462.88
Education & Health Services	4	43	43	44	\$331,199	\$587.93
Local Government	11	136	169	207	\$911,200	\$410.70
State Government	9	80	79	81	\$579,774	\$557.48
Other	16	109	111	114	\$1,147,982	\$793.17
CARROLL COUNTY - TOTAL	849	9,947	10,424	10,421	\$56,326,089	\$422.13
Natural Resources & Mining	17	274	277	275	\$1,844,225	\$515.24
Trade, Transportation & Utilities	207	1,670	1,685	1,685	\$9,530,559	\$436.38
Wholesale Trade	21	128	128	136	\$733,614	\$431.88
Retail Trade	165	1,261	1,278	1,261	\$6,151,482	\$373.57
Transportation, Warehousing & Utilities	21	281	279	288	\$2,645,463	\$719.92
Professional & Business Services	83	266	261	258	\$1,643,871	\$483.25
Education & Health Services	83	769	789	785	\$5,642,595	\$555.76
Leisure & Hospitality	173	2,062	2,092	2,019	\$5,605,497	\$209.55
Local Government	25	605	983	1,100	\$5,581,462	\$479.18
State Government	11	109	109	109	\$743,193	\$524.48
Other	250	4,192	4,228	4,190	\$25,734,687	\$470.96

**TABLE 6. COUNTY SUMMARY
EMPLOYMENT AND TOTAL EARNINGS, BY INDUSTRY
THIRD QUARTER 2006**

NORTH AMERICAN INDUSTRY CLASSIFICATION SYSTEM INDUSTRY GROUP	NUMBER OF EMPLOYING UNITS	EMPLOYMENT	EMPLOYMENT	EMPLOYMENT	TOTAL EARNINGS	AVERAGE
		JULY	AUGUST	SEPTEMBER	JULY-SEPTEMBER 2006	WEEKLY EARNINGS
CHICOT COUNTY - TOTAL	342	3,411	3,615	3,785	\$21,098,743	\$450.37
Natural Resources & Mining	43	268	267	341	\$2,027,715	\$534.17
Construction	19	172	163	145	\$1,230,751	\$591.71
Manufacturing	12	474	478	510	\$2,167,581	\$342.14
Trade, Transportation & Utilities	79	575	595	597	\$3,356,319	\$438.33
Wholesale Trade	15	107	106	105	\$1,046,413	\$759.37
Retail Trade	52	400	412	424	\$1,639,853	\$306.17
Transportation, Warehousing & Utilities	12	68	77	68	\$670,053	\$725.95
Information	6	14	14	14	\$94,803	\$520.90
Financial Activities	30	171	167	171	\$1,244,740	\$564.34
Professional & Business Services	25	85	85	86	\$703,505	\$634.17
Education & Health Services	66	473	489	507	\$2,887,111	\$453.54
Leisure & Hospitality	20	229	235	238	\$470,815	\$154.77
Other Services	15	54	54	54	\$277,745	\$395.65
Local Government	16	562	737	791	\$4,476,320	\$494.26
State Government	11	334	331	331	\$2,161,338	\$500.77
CLARK COUNTY - TOTAL	615	9,299	9,542	9,874	\$61,477,138	\$494.06
Natural Resources & Mining	43	236	235	242	\$1,832,503	\$593.11
Construction	28	156	151	155	\$1,051,353	\$525.15
Manufacturing	34	2,363	2,365	2,397	\$16,888,421	\$546.99
Trade, Transportation & Utilities	144	1,484	1,462	1,443	\$9,169,315	\$482.11
Wholesale Trade	20	82	79	66	\$715,269	\$727.15
Retail Trade	102	1,096	1,095	1,096	\$5,838,963	\$409.93
Transportation, Warehousing & Utilities	22	306	288	281	\$2,615,083	\$689.69
Information	11	31	29	29	\$284,855	\$738.60
Financial Activities	84	398	414	396	\$2,606,833	\$497.99
Professional & Business Services	49	382	368	366	\$3,825,007	\$790.94
Education & Health Services	74	1,373	1,360	1,420	\$9,107,357	\$506.07
Leisure & Hospitality	60	1,042	1,024	1,046	\$2,629,186	\$194.97
Other Services	47	197	214	209	\$1,113,737	\$414.54
Local Government	26	669	857	955	\$4,978,457	\$463.07
State Government	15	968	1,063	1,216	\$7,990,114	\$567.87

**TABLE 6. COUNTY SUMMARY
EMPLOYMENT AND TOTAL EARNINGS, BY INDUSTRY
THIRD QUARTER 2006**

NORTH AMERICAN INDUSTRY CLASSIFICATION SYSTEM INDUSTRY GROUP	NUMBER OF EMPLOYING UNITS	EMPLOYMENT	EMPLOYMENT	EMPLOYMENT	TOTAL EARNINGS	AVERAGE
		JULY	AUGUST	SEPTEMBER	JULY-SEPTEMBER 2006	WEEKLY EARNINGS
CLAY COUNTY - TOTAL	407	4,377	4,498	4,500	\$23,940,559	\$413.07
Natural Resources & Mining	57	253	235	214	\$1,145,622	\$376.60
Construction	35	189	181	185	\$994,619	\$413.56
Manufacturing	19	1,161	1,121	1,113	\$6,372,951	\$433.19
Trade, Transportation & Utilities	98	898	899	931	\$5,279,880	\$446.64
Wholesale Trade	22	302	295	301	\$1,924,317	\$494.51
Retail Trade	55	448	455	457	\$1,878,948	\$318.83
Transportation, Warehousing & Utilities	21	148	149	173	\$1,476,615	\$725.02
Information	7	85	84	80	\$542,118	\$502.43
Financial Activities	36	156	156	156	\$972,813	\$479.69
Professional & Business Services	26	52	48	50	\$261,710	\$402.63
Education & Health Services	50	493	509	507	\$2,594,267	\$396.74
Leisure & Hospitality	21	223	217	214	\$432,258	\$152.53
Other Services	24	55	59	57	\$295,251	\$398.45
Local Government	22	735	911	915	\$4,556,204	\$410.56
State Government	12	77	78	78	\$492,866	\$488.15
CLEBURNE COUNTY - TOTAL	689	6,645	6,773	6,932	\$38,977,639	\$442.01
Natural Resources & Mining	15	74	71	92	\$550,221	\$535.76
Construction	74	359	369	377	\$2,024,195	\$422.73
Manufacturing	44	1,703	1,717	1,713	\$12,431,836	\$558.91
Trade, Transportation & Utilities	183	1,542	1,554	1,532	\$8,500,441	\$423.86
Wholesale Trade	39	197	195	197	\$1,417,655	\$555.43
Retail Trade	112	1,068	1,064	1,048	\$4,829,707	\$350.49
Transportation, Warehousing & Utilities	32	277	295	287	\$2,253,079	\$605.29
Information	8	63	61	59	\$353,281	\$445.50
Financial Activities	73	248	254	251	\$1,628,663	\$499.13
Professional & Business Services	53	191	187	194	\$1,279,012	\$516.01
Education & Health Services	74	754	784	774	\$4,599,894	\$459.13
Leisure & Hospitality	75	953	963	880	\$2,561,270	\$211.40
Other Services	59	167	159	154	\$764,592	\$367.59
Local Government	21	472	536	786	\$3,455,439	\$444.49
State Government	10	119	118	120	\$828,795	\$535.74

**TABLE 6. COUNTY SUMMARY
EMPLOYMENT AND TOTAL EARNINGS, BY INDUSTRY
THIRD QUARTER 2006**

NORTH AMERICAN INDUSTRY CLASSIFICATION SYSTEM INDUSTRY GROUP	NUMBER OF EMPLOYING UNITS	EMPLOYMENT	EMPLOYMENT	EMPLOYMENT	TOTAL EARNINGS	AVERAGE
		JULY	AUGUST	SEPTEMBER	JULY-SEPTEMBER 2006	WEEKLY EARNINGS
CLEVELAND COUNTY - TOTAL	111	916	1,082	1,115	\$6,366,797	\$471.98
Natural Resources & Mining	17	174	174	171	\$1,214,298	\$539.93
Construction	7	40	39	39	\$155,157	\$303.44
Manufacturing	5	107	101	100	\$589,125	\$441.40
Trade, Transportation & Utilities	29	192	190	192	\$876,367	\$352.33
Wholesale Trade	4	16	15	15	\$81,845	\$410.59
Retail Trade	13	89	84	88	\$197,748	\$174.84
Transportation, Warehousing & Utilities	12	87	91	89	\$596,774	\$515.79
Local Government	12	138	314	341	\$1,612,179	\$469.16
State Government	8	66	67	71	\$393,795	\$445.47
Other	33	199	197	201	\$1,525,876	\$589.82
COLUMBIA COUNTY - TOTAL	706	9,031	9,256	9,540	\$70,677,981	\$586.13
Natural Resources & Mining	50	522	514	527	\$6,505,617	\$960.52
Construction	44	296	301	299	\$2,243,563	\$577.84
Manufacturing	42	2,846	2,835	2,842	\$28,915,641	\$782.92
Trade, Transportation & Utilities	177	1,567	1,569	1,574	\$8,621,780	\$422.43
Wholesale Trade	29	276	276	280	\$1,926,311	\$534.29
Retail Trade	108	1,008	1,005	1,010	\$4,228,309	\$322.78
Transportation, Warehousing & Utilities	40	283	288	284	\$2,467,160	\$665.90
Information	9	72	73	73	\$494,345	\$523.30
Financial Activities	73	518	521	521	\$4,764,542	\$704.81
Professional & Business Services	59	300	322	316	\$1,693,083	\$416.54
Education & Health Services	114	812	837	854	\$4,157,154	\$383.28
Leisure & Hospitality	47	672	681	684	\$1,578,298	\$178.80
Other Services	49	206	196	202	\$802,665	\$306.67
Local Government	28	681	888	1,117	\$6,240,307	\$536.14
State Government	14	539	519	531	\$4,660,986	\$676.91

**TABLE 6. COUNTY SUMMARY
EMPLOYMENT AND TOTAL EARNINGS, BY INDUSTRY
THIRD QUARTER 2006**

NORTH AMERICAN INDUSTRY CLASSIFICATION SYSTEM INDUSTRY GROUP	NUMBER OF EMPLOYING UNITS	EMPLOYMENT	EMPLOYMENT	EMPLOYMENT	TOTAL EARNINGS	AVERAGE
		JULY	AUGUST	SEPTEMBER	JULY-SEPTEMBER 2006	WEEKLY EARNINGS
CONWAY COUNTY - TOTAL	542	6,598	6,657	6,793	\$43,690,202	\$502.91
Natural Resources & Mining	20	131	128	136	\$1,131,222	\$660.89
Construction	56	525	516	513	\$4,888,199	\$725.90
Manufacturing	29	1,212	1,192	1,182	\$11,938,158	\$768.25
Trade, Transportation & Utilities	131	1,377	1,392	1,387	\$8,328,413	\$462.45
Wholesale Trade	23	214	217	220	\$1,725,491	\$611.66
Retail Trade	81	893	892	885	\$4,232,344	\$365.80
Transportation, Warehousing & Utilities	27	270	283	282	\$2,370,578	\$655.16
Information	5	40	12	11	\$158,927	\$582.15
Financial Activities	35	204	197	194	\$1,292,195	\$501.17
Professional & Business Services	46	623	600	619	\$2,425,481	\$303.87
Education & Health Services	118	879	896	884	\$5,686,589	\$493.53
Leisure & Hospitality	37	464	461	483	\$1,045,024	\$171.28
Other Services	26	104	92	89	\$576,192	\$466.55
Local Government	28	736	836	893	\$4,036,226	\$377.86
State Government	11	303	335	402	\$2,183,576	\$484.52
CRAIGHEAD COUNTY - TOTAL	2,650	40,325	41,496	42,039	\$289,579,309	\$539.53
Natural Resources & Mining	67	326	340	413	\$1,800,811	\$385.15
Construction	241	1,806	1,799	1,766	\$13,801,267	\$592.98
Manufacturing	135	6,794	6,796	6,807	\$57,084,243	\$645.84
Trade, Transportation & Utilities	739	8,409	8,426	8,415	\$50,399,820	\$460.62
Wholesale Trade	180	1,538	1,511	1,516	\$12,699,877	\$642.00
Retail Trade	444	5,728	5,773	5,732	\$27,481,805	\$368.01
Transportation, Warehousing & Utilities	115	1,143	1,142	1,167	\$10,218,138	\$683.09
Information	30	605	604	594	\$5,037,926	\$644.81
Financial Activities	261	1,546	1,543	1,551	\$13,524,129	\$672.62
Professional & Business Services	352	3,532	3,592	3,507	\$21,173,922	\$459.63
Education & Health Services	387	7,332	7,532	7,521	\$69,215,508	\$713.55
Leisure & Hospitality	195	4,139	4,190	4,173	\$11,141,214	\$205.65
Other Services	180	1,044	1,058	1,064	\$5,126,706	\$373.68
Local Government	38	2,444	3,157	3,683	\$20,390,783	\$506.85
State Government	25	2,348	2,459	2,545	\$20,882,980	\$655.49

**TABLE 6. COUNTY SUMMARY
EMPLOYMENT AND TOTAL EARNINGS, BY INDUSTRY
THIRD QUARTER 2006**

NORTH AMERICAN INDUSTRY CLASSIFICATION SYSTEM INDUSTRY GROUP	NUMBER OF EMPLOYING UNITS	EMPLOYMENT	EMPLOYMENT	EMPLOYMENT	TOTAL EARNINGS	AVERAGE
		JULY	AUGUST	SEPTEMBER	JULY-SEPTEMBER 2006	WEEKLY EARNINGS
CRAWFORD COUNTY - TOTAL	1,209	17,958	18,916	19,295	\$127,779,970	\$524.98
Natural Resources & Mining	26	387	355	372	\$3,213,959	\$665.78
Construction	177	1,533	1,515	1,485	\$11,921,479	\$606.91
Manufacturing	74	3,793	3,790	3,813	\$26,465,751	\$535.93
Trade, Transportation & Utilities	312	6,599	6,524	6,613	\$46,685,153	\$545.88
Wholesale Trade	80	670	672	681	\$6,151,861	\$701.76
Retail Trade	161	2,017	1,999	2,000	\$9,465,613	\$363.09
Transportation, Warehousing & Utilities	71	3,912	3,853	3,932	\$31,067,679	\$612.93
Financial Activities	128	497	504	506	\$3,465,682	\$530.71
Professional & Business Services	150	768	777	801	\$5,843,636	\$574.82
Education & Health Services	118	1,352	1,368	1,364	\$9,609,840	\$543.01
Leisure & Hospitality	82	1,431	1,476	1,482	\$3,834,689	\$201.62
Local Government	41	881	1,898	2,150	\$11,726,417	\$549.02
State Government	11	161	160	157	\$1,395,808	\$673.87
Other	90	556	549	552	\$3,617,556	\$503.81
CRITTENDEN COUNTY - TOTAL	1,208	15,425	15,658	16,454	\$110,181,217	\$534.88
Natural Resources & Mining	46	279	276	391	\$1,643,468	\$400.91
Construction	79	583	621	602	\$4,333,427	\$553.72
Manufacturing	47	1,635	1,641	1,716	\$17,063,517	\$788.81
Trade, Transportation & Utilities	331	5,158	4,943	4,929	\$37,194,308	\$571.08
Wholesale Trade	75	799	802	782	\$7,899,516	\$764.99
Retail Trade	170	2,356	2,106	2,086	\$9,954,423	\$350.82
Transportation, Warehousing & Utilities	86	2,003	2,035	2,061	\$19,340,369	\$731.79
Information	8	94	86	83	\$766,084	\$672.20
Financial Activities	110	587	591	569	\$4,246,317	\$560.92
Professional & Business Services	119	770	792	744	\$4,747,842	\$475.13
Education & Health Services	196	1,989	2,023	2,001	\$14,749,569	\$566.06
Leisure & Hospitality	104	1,856	1,872	1,860	\$5,394,051	\$222.76
Other Services	106	632	627	620	\$3,551,972	\$436.24
Local Government	47	1,437	1,744	2,454	\$13,503,353	\$553.00
State Government	15	405	442	485	\$2,987,309	\$517.55

**TABLE 6. COUNTY SUMMARY
EMPLOYMENT AND TOTAL EARNINGS, BY INDUSTRY
THIRD QUARTER 2006**

NORTH AMERICAN INDUSTRY CLASSIFICATION SYSTEM INDUSTRY GROUP	NUMBER OF EMPLOYING UNITS	EMPLOYMENT	EMPLOYMENT	EMPLOYMENT	TOTAL EARNINGS	AVERAGE
		JULY	AUGUST	SEPTEMBER	JULY-SEPTEMBER 2006	WEEKLY EARNINGS
CROSS COUNTY - TOTAL	533	4,553	4,931	5,072	\$30,259,718	\$479.73
Natural Resources & Mining	44	214	229	240	\$1,129,748	\$381.71
Construction	39	193	202	201	\$1,328,002	\$514.20
Manufacturing	18	702	702	700	\$5,191,869	\$569.45
Trade, Transportation & Utilities	132	1,209	1,202	1,231	\$8,035,343	\$509.15
Wholesale Trade	32	279	262	264	\$2,153,458	\$617.33
Retail Trade	69	666	666	661	\$3,348,669	\$387.74
Transportation, Warehousing & Utilities	31	264	274	306	\$2,533,216	\$692.64
Information	6	60	60	62	\$414,171	\$525.15
Financial Activities	48	346	344	340	\$2,223,284	\$498.12
Professional & Business Services	43	168	166	167	\$1,167,975	\$537.99
Education & Health Services	101	658	677	677	\$4,083,937	\$468.41
Leisure & Hospitality	33	396	410	394	\$840,878	\$161.71
Other Services	41	75	78	76	\$323,778	\$326.28
Local Government	17	313	645	768	\$3,867,738	\$517.12
State Government	11	219	216	216	\$1,652,995	\$585.96
DALLAS COUNTY - TOTAL	280	3,199	3,210	3,375	\$20,043,310	\$472.75
Natural Resources & Mining	40	215	219	215	\$1,549,123	\$550.83
Construction	13	76	81	74	\$501,913	\$501.41
Manufacturing	15	929	925	913	\$7,920,675	\$660.59
Trade, Transportation & Utilities	72	469	473	468	\$2,363,899	\$386.89
Wholesale Trade	9	43	41	42	\$277,498	\$508.24
Retail Trade	45	367	372	366	\$1,662,511	\$347.20
Transportation, Warehousing & Utilities	18	59	60	60	\$423,890	\$546.48
Information	3	26	26	26	\$144,764	\$428.30
Financial Activities	20	104	103	104	\$690,316	\$512.23
Professional & Business Services	19	45	44	47	\$425,962	\$722.79
Education & Health Services	39	811	806	816	\$3,846,592	\$364.85
Leisure & Hospitality	19	150	132	125	\$298,091	\$169.02
Other Services	15	67	64	62	\$258,592	\$309.20
Local Government	16	241	269	459	\$1,561,422	\$371.86
State Government	9	66	68	66	\$481,961	\$556.11

**TABLE 6. COUNTY SUMMARY
EMPLOYMENT AND TOTAL EARNINGS, BY INDUSTRY
THIRD QUARTER 2006**

NORTH AMERICAN INDUSTRY CLASSIFICATION SYSTEM INDUSTRY GROUP	NUMBER OF EMPLOYING UNITS	EMPLOYMENT	EMPLOYMENT	EMPLOYMENT	TOTAL EARNINGS	AVERAGE
		JULY	AUGUST	SEPTEMBER	JULY-SEPTEMBER 2006	WEEKLY EARNINGS
DESHA COUNTY - TOTAL	468	4,544	4,868	5,057	\$32,997,929	\$526.29
Natural Resources & Mining	50	265	268	382	\$1,875,437	\$473.00
Construction	26	127	123	121	\$882,617	\$549.00
Manufacturing	15	1,294	1,299	1,244	\$12,373,842	\$744.20
Trade, Transportation & Utilities	133	909	929	1,002	\$5,474,507	\$444.84
Wholesale Trade	22	192	189	186	\$1,724,106	\$701.71
Retail Trade	79	556	566	553	\$2,371,116	\$326.67
Transportation, Warehousing & Utilities	32	161	174	263	\$1,379,285	\$532.27
Information	5	22	22	22	\$190,524	\$666.17
Financial Activities	43	231	222	227	\$1,326,515	\$450.17
Professional & Business Services	35	116	110	112	\$620,700	\$423.78
Education & Health Services	69	527	546	561	\$3,225,550	\$455.54
Leisure & Hospitality	35	331	305	294	\$675,602	\$167.64
Other Services	27	59	59	67	\$227,562	\$283.86
Local Government	19	508	815	854	\$4,965,774	\$526.39
State Government	11	155	170	171	\$1,159,299	\$539.38
DREW COUNTY - TOTAL	515	5,913	6,141	6,645	\$37,283,261	\$460.12
Natural Resources & Mining	37	285	274	305	\$2,205,709	\$589.13
Construction	27	147	141	104	\$926,998	\$545.72
Manufacturing	19	776	771	777	\$4,828,069	\$479.42
Trade, Transportation & Utilities	136	1,200	1,204	1,210	\$6,962,203	\$444.57
Wholesale Trade	24	239	243	244	\$1,930,341	\$613.59
Retail Trade	89	853	854	859	\$4,008,957	\$360.54
Transportation, Warehousing & Utilities	23	108	107	107	\$1,022,905	\$733.09
Information	9	78	79	78	\$563,085	\$552.95
Financial Activities	43	266	263	261	\$2,115,527	\$617.97
Professional & Business Services	45	326	320	324	\$2,915,646	\$693.65
Education & Health Services	86	826	841	826	\$4,230,068	\$391.56
Leisure & Hospitality	45	623	621	630	\$1,289,168	\$158.75
Other Services	28	101	100	103	\$388,339	\$294.79
Local Government	23	700	770	1,211	\$5,460,163	\$469.99
State Government	17	585	757	816	\$5,398,286	\$577.27

**TABLE 6. COUNTY SUMMARY
EMPLOYMENT AND TOTAL EARNINGS, BY INDUSTRY
THIRD QUARTER 2006**

NORTH AMERICAN INDUSTRY CLASSIFICATION SYSTEM INDUSTRY GROUP	NUMBER OF EMPLOYING UNITS	EMPLOYMENT	EMPLOYMENT	EMPLOYMENT	TOTAL EARNINGS	AVERAGE
		JULY	AUGUST	SEPTEMBER	JULY-SEPTEMBER 2006	WEEKLY EARNINGS
FAULKNER COUNTY - TOTAL	2,459	36,197	37,362	38,512	\$287,620,832	\$592.25
Natural Resources & Mining	18	186	212	262	\$2,992,755	\$1,046.42
Construction	351	2,997	3,048	3,033	\$23,141,078	\$588.26
Manufacturing	121	5,258	5,292	5,218	\$51,116,367	\$748.10
Trade, Transportation & Utilities	607	6,507	6,599	6,647	\$39,479,279	\$461.23
Wholesale Trade	151	837	844	885	\$7,424,883	\$667.75
Retail Trade	379	4,989	5,061	5,033	\$25,024,998	\$382.88
Transportation, Warehousing & Utilities	77	681	694	729	\$7,029,398	\$770.99
Information	39	342	349	349	\$3,042,656	\$675.15
Financial Activities	299	1,413	1,410	1,395	\$10,883,108	\$595.42
Professional & Business Services	326	5,333	5,306	5,304	\$63,258,958	\$915.65
Education & Health Services	313	5,198	5,197	5,316	\$38,250,194	\$561.83
Leisure & Hospitality	192	3,792	3,851	3,895	\$9,890,472	\$197.82
Other Services	133	575	596	573	\$3,015,018	\$398.95
Local Government	41	1,613	2,218	3,187	\$17,293,714	\$568.66
State Government	19	2,983	3,284	3,333	\$25,257,233	\$607.15
FRANKLIN COUNTY - TOTAL	328	3,800	4,202	4,321	\$27,868,636	\$521.89
Natural Resources & Mining	10	88	89	97	\$1,014,377	\$854.33
Construction	29	228	230	236	\$2,009,070	\$668.06
Manufacturing	23	947	967	978	\$7,717,796	\$615.85
Trade, Transportation & Utilities	86	881	874	869	\$5,551,542	\$488.23
Wholesale Trade	13	49	48	53	\$222,307	\$342.01
Retail Trade	51	494	488	469	\$2,010,184	\$319.70
Transportation, Warehousing & Utilities	22	338	338	347	\$3,319,051	\$748.71
Information	7	50	50	51	\$273,612	\$418.15
Financial Activities	28	222	229	225	\$1,403,463	\$479.11
Professional & Business Services	23	60	54	62	\$299,954	\$393.30
Education & Health Services	46	470	483	492	\$2,743,745	\$438.18
Leisure & Hospitality	27	343	336	355	\$765,698	\$170.89
Other Services	20	59	60	59	\$281,808	\$365.35
Local Government	19	346	709	766	\$4,855,336	\$615.30
State Government	10	106	121	131	\$952,235	\$613.82

**TABLE 6. COUNTY SUMMARY
EMPLOYMENT AND TOTAL EARNINGS, BY INDUSTRY
THIRD QUARTER 2006**

NORTH AMERICAN INDUSTRY CLASSIFICATION SYSTEM INDUSTRY GROUP	NUMBER OF EMPLOYING UNITS	EMPLOYMENT	EMPLOYMENT	EMPLOYMENT	TOTAL EARNINGS	AVERAGE
		JULY	AUGUST	SEPTEMBER	JULY-SEPTEMBER 2006	WEEKLY EARNINGS
FULTON COUNTY - TOTAL	228	1,739	1,777	1,889	\$8,938,528	\$381.64
Construction	15	28	27	27	\$161,516	\$454.55
Manufacturing	14	135	135	128	\$581,967	\$337.44
Trade, Transportation & Utilities	65	400	409	400	\$2,432,188	\$464.25
Retail Trade	42	204	210	215	\$701,371	\$257.32
Other Trade, Transportation & Utilities	23	196	199	185	\$1,730,817	\$688.65
Financial Activities	17	130	124	115	\$719,135	\$449.74
Professional & Business Services	17	38	40	43	\$289,079	\$551.33
Education & Health Services	47	344	365	355	\$1,494,844	\$324.21
Leisure & Hospitality	15	165	162	153	\$424,182	\$203.93
Local Government	13	341	356	498	\$1,940,212	\$374.68
State Government	11	98	98	103	\$628,235	\$484.87
Other	14	60	61	67	\$267,170	\$327.95
GARLAND COUNTY - TOTAL	3,244	35,705	36,211	36,785	\$244,193,003	\$518.42
Natural Resources & Mining	48	356	350	354	\$4,407,470	\$959.54
Construction	437	2,391	2,388	2,437	\$15,779,995	\$504.65
Manufacturing	128	3,409	3,456	3,483	\$28,256,371	\$630.14
Trade, Transportation & Utilities	720	7,380	7,388	7,444	\$44,518,693	\$462.52
Wholesale Trade	155	1,137	1,124	1,180	\$10,339,971	\$693.45
Retail Trade	493	5,576	5,586	5,566	\$28,431,118	\$392.22
Transportation, Warehousing & Utilities	72	667	678	698	\$5,747,604	\$649.23
Information	40	449	435	439	\$3,482,248	\$607.40
Financial Activities	372	1,587	1,582	1,549	\$12,710,741	\$621.71
Professional & Business Services	418	2,661	2,677	2,763	\$18,460,440	\$525.87
Education & Health Services	428	7,013	7,090	7,028	\$64,660,239	\$706.15
Leisure & Hospitality	368	6,754	6,607	6,260	\$21,819,958	\$256.63
Other Services	224	999	1,002	998	\$5,065,092	\$389.75
Local Government	34	1,867	2,262	3,014	\$17,114,827	\$552.93
State Government	27	839	974	1,016	\$7,916,929	\$645.81

**TABLE 6. COUNTY SUMMARY
EMPLOYMENT AND TOTAL EARNINGS, BY INDUSTRY
THIRD QUARTER 2006**

NORTH AMERICAN INDUSTRY CLASSIFICATION SYSTEM INDUSTRY GROUP	NUMBER OF EMPLOYING UNITS	EMPLOYMENT	EMPLOYMENT	EMPLOYMENT	TOTAL EARNINGS	AVERAGE
		JULY	AUGUST	SEPTEMBER	JULY-SEPTEMBER 2006	WEEKLY EARNINGS
GRANT COUNTY - TOTAL	302	3,346	3,319	3,525	\$23,140,302	\$524.05
Natural Resources & Mining	23	201	186	181	\$2,298,400	\$933.80
Construction	35	236	232	225	\$1,795,000	\$597.74
Manufacturing	19	863	850	851	\$6,777,477	\$610.00
Trade, Transportation & Utilities	85	590	580	583	\$2,942,058	\$387.30
Wholesale Trade	16	108	111	109	\$820,866	\$577.53
Retail Trade	39	420	409	415	\$1,676,218	\$310.95
Transportation, Warehousing & Utilities	30	62	60	59	\$444,974	\$567.33
Information	3	16	17	16	\$115,291	\$542.97
Financial Activities	21	100	102	99	\$776,910	\$595.64
Professional & Business Services	23	86	88	92	\$769,143	\$667.27
Education & Health Services	34	237	241	233	\$1,428,287	\$463.58
Leisure & Hospitality	23	298	296	284	\$758,373	\$199.33
Other Services	17	54	57	57	\$233,373	\$320.57
Local Government	10	603	610	842	\$4,873,691	\$547.30
State Government	9	62	60	62	\$372,299	\$466.93
GREENE COUNTY - TOTAL	900	14,301	14,794	15,344	\$100,045,322	\$519.53
Natural Resources & Mining	38	215	201	207	\$1,256,236	\$465.33
Construction	81	407	413	389	\$2,608,768	\$497.95
Manufacturing	55	5,531	5,568	5,507	\$46,790,396	\$650.23
Trade, Transportation & Utilities	241	2,097	2,104	2,122	\$12,314,924	\$449.46
Wholesale Trade	52	404	396	411	\$3,528,805	\$672.45
Retail Trade	158	1,484	1,497	1,497	\$6,981,626	\$359.79
Transportation, Warehousing & Utilities	31	209	211	214	\$1,804,493	\$656.82
Information	13	134	129	129	\$590,057	\$347.36
Financial Activities	87	489	491	490	\$2,891,380	\$453.91
Professional & Business Services	91	1,246	1,328	1,618	\$7,557,175	\$416.02
Education & Health Services	136	1,732	1,732	1,747	\$11,329,118	\$501.71
Leisure & Hospitality	66	1,170	1,174	1,123	\$2,535,818	\$168.79
Other Services	50	179	176	180	\$907,632	\$391.50
Local Government	31	841	1,220	1,582	\$9,242,836	\$585.50
State Government	11	260	258	250	\$2,020,982	\$607.27

**TABLE 6. COUNTY SUMMARY
EMPLOYMENT AND TOTAL EARNINGS, BY INDUSTRY
THIRD QUARTER 2006**

NORTH AMERICAN INDUSTRY CLASSIFICATION SYSTEM INDUSTRY GROUP	NUMBER OF EMPLOYING UNITS	EMPLOYMENT	EMPLOYMENT	EMPLOYMENT	TOTAL EARNINGS	AVERAGE
		JULY	AUGUST	SEPTEMBER	JULY-SEPTEMBER 2006	WEEKLY EARNINGS
HEMPSTEAD COUNTY - TOTAL	500	7,697	7,951	8,306	\$52,569,423	\$506.45
Natural Resources & Mining	18	207	210	215	\$1,563,404	\$570.86
Construction	34	163	168	172	\$1,008,885	\$462.86
Manufacturing	29	2,691	2,670	2,632	\$20,917,717	\$603.92
Trade, Transportation & Utilities	136	1,243	1,241	1,245	\$7,123,992	\$440.87
Wholesale Trade	26	188	190	189	\$1,132,200	\$460.81
Retail Trade	86	870	879	877	\$4,021,156	\$353.37
Transportation, Warehousing & Utilities	24	185	172	179	\$1,970,636	\$848.44
Information	10	74	76	75	\$524,355	\$537.80
Financial Activities	43	258	260	251	\$1,946,289	\$584.06
Professional & Business Services	34	190	241	265	\$962,916	\$319.27
Education & Health Services	68	997	997	988	\$6,171,346	\$477.58
Leisure & Hospitality	43	656	673	654	\$1,676,963	\$195.15
Other Services	39	233	236	231	\$1,360,261	\$448.44
Local Government	29	511	667	1,043	\$5,256,538	\$546.17
State Government	17	474	512	535	\$4,056,757	\$615.50
HOT SPRING COUNTY - TOTAL	618	7,983	7,880	8,094	\$56,553,687	\$544.76
Natural Resources & Mining	37	193	196	201	\$1,472,875	\$576.09
Construction	68	628	627	633	\$6,315,943	\$771.99
Manufacturing	41	1,695	1,582	1,591	\$16,967,879	\$804.37
Trade, Transportation & Utilities	165	1,465	1,454	1,464	\$9,668,080	\$509.03
Wholesale Trade	22	98	97	96	\$978,136	\$775.68
Retail Trade	98	966	962	975	\$4,573,651	\$363.57
Transportation, Warehousing & Utilities	45	401	395	393	\$4,116,293	\$798.92
Information	9	70	70	71	\$621,821	\$680.08
Financial Activities	62	335	331	336	\$2,405,578	\$554.03
Professional & Business Services	54	244	251	257	\$1,390,508	\$426.71
Education & Health Services	62	1,020	1,035	1,033	\$6,021,864	\$450.02
Leisure & Hospitality	42	623	605	567	\$1,510,245	\$194.16
Other Services	38	261	298	284	\$1,238,284	\$338.98
Local Government	26	871	884	1,063	\$5,016,972	\$410.85
State Government	14	578	547	594	\$3,923,638	\$526.73

**TABLE 6. COUNTY SUMMARY
EMPLOYMENT AND TOTAL EARNINGS, BY INDUSTRY
THIRD QUARTER 2006**

NORTH AMERICAN INDUSTRY CLASSIFICATION SYSTEM INDUSTRY GROUP	NUMBER OF EMPLOYING UNITS	EMPLOYMENT	EMPLOYMENT	EMPLOYMENT	TOTAL EARNINGS	AVERAGE
		JULY	AUGUST	SEPTEMBER	JULY-SEPTEMBER 2006	WEEKLY EARNINGS
HOWARD COUNTY - TOTAL	365	7,357	7,477	7,662	\$47,851,365	\$490.87
Natural Resources & Mining	21	232	241	240	\$1,868,186	\$604.66
Construction	27	113	110	98	\$673,848	\$484.43
Manufacturing	26	4,304	4,275	4,230	\$29,542,476	\$532.24
Trade, Transportation & Utilities	108	938	962	948	\$5,395,825	\$437.22
Wholesale Trade	21	108	114	115	\$874,836	\$599.07
Retail Trade	65	635	649	641	\$2,819,053	\$337.95
Transportation, Warehousing & Utilities	22	195	199	192	\$1,701,936	\$670.23
Information	6	37	38	36	\$228,580	\$475.22
Financial Activities	37	135	133	129	\$973,021	\$565.60
Professional & Business Services	27	122	127	131	\$732,382	\$444.77
Education & Health Services	44	611	608	598	\$3,325,068	\$422.30
Leisure & Hospitality	19	319	312	311	\$715,714	\$175.33
Other Services	20	111	114	113	\$534,229	\$364.74
Local Government	18	300	425	693	\$2,932,069	\$477.17
State Government	12	135	132	135	\$929,967	\$533.85
INDEPENDENCE COUNTY - TOTAL	935	15,205	15,709	16,220	\$105,603,230	\$517.04
Natural Resources & Mining	13	144	149	148	\$1,072,924	\$561.45
Construction	67	463	472	466	\$3,123,309	\$514.46
Manufacturing	59	4,647	4,762	4,690	\$36,727,313	\$601.14
Trade, Transportation & Utilities	276	2,986	2,991	2,973	\$19,865,880	\$512.23
Wholesale Trade	52	565	567	559	\$4,535,523	\$618.96
Retail Trade	168	1,702	1,697	1,693	\$7,824,067	\$354.59
Transportation, Warehousing & Utilities	56	719	727	721	\$7,506,290	\$799.36
Information	13	171	169	166	\$1,223,157	\$557.84
Financial Activities	85	460	459	457	\$3,468,917	\$581.77
Professional & Business Services	87	910	979	981	\$4,882,537	\$392.59
Education & Health Services	138	2,876	2,901	2,826	\$21,392,064	\$573.83
Leisure & Hospitality	65	1,100	1,153	1,124	\$2,616,048	\$178.77
Other Services	67	377	381	379	\$1,618,673	\$328.53
Local Government	48	661	885	1,528	\$6,215,935	\$466.64
State Government	17	410	408	482	\$3,396,473	\$602.92

**TABLE 6. COUNTY SUMMARY
EMPLOYMENT AND TOTAL EARNINGS, BY INDUSTRY
THIRD QUARTER 2006**

NORTH AMERICAN INDUSTRY CLASSIFICATION SYSTEM INDUSTRY GROUP	NUMBER OF EMPLOYING UNITS	EMPLOYMENT	EMPLOYMENT	EMPLOYMENT	TOTAL EARNINGS	AVERAGE
		JULY	AUGUST	SEPTEMBER	JULY-SEPTEMBER 2006	WEEKLY EARNINGS
IZARD COUNTY - TOTAL	274	2,660	2,926	3,060	\$16,349,120	\$436.37
Natural Resources & Mining	4	92	89	91	\$766,468	\$650.28
Construction	23	47	49	49	\$265,827	\$423.07
Manufacturing	11	360	373	360	\$2,736,688	\$577.81
Trade, Transportation & Utilities	67	538	544	536	\$2,490,601	\$355.23
Retail Trade	50	422	428	423	\$1,755,991	\$318.33
Other Trade, Transportation & Utilities	17	116	116	113	\$734,610	\$491.38
Information	3	6	7	8	\$30,953	\$340.14
Financial Activities	29	152	155	162	\$1,002,359	\$493.21
Professional & Business Services	20	81	82	83	\$392,755	\$368.44
Education & Health Services	51	534	533	543	\$2,707,412	\$388.07
Leisure & Hospitality	23	187	197	209	\$446,098	\$173.60
Other Services	14	36	35	35	\$158,715	\$345.53
Local Government	18	239	448	531	\$2,343,233	\$443.96
State Government	11	388	414	453	\$3,008,011	\$553.11
JACKSON COUNTY - TOTAL	523	5,454	5,707	5,791	\$37,523,396	\$510.81
Natural Resources & Mining	44	207	218	241	\$1,314,827	\$455.59
Construction	29	197	169	163	\$1,346,363	\$587.33
Manufacturing	25	1,099	1,112	1,143	\$9,183,661	\$631.87
Trade, Transportation & Utilities	121	1,102	1,113	1,126	\$6,992,097	\$482.96
Wholesale Trade	31	208	211	205	\$1,903,933	\$704.12
Retail Trade	71	663	666	662	\$3,177,243	\$368.26
Transportation, Warehousing & Utilities	19	231	236	259	\$1,910,921	\$607.41
Information	6	40	41	41	\$296,221	\$560.32
Financial Activities	45	186	187	184	\$1,344,557	\$557.06
Professional & Business Services	38	247	243	245	\$1,550,555	\$486.83
Education & Health Services	92	798	819	834	\$5,901,983	\$555.69
Leisure & Hospitality	39	352	349	338	\$953,898	\$211.87
Other Services	35	99	100	102	\$442,317	\$339.11
Local Government	35	466	695	692	\$3,254,101	\$405.26
State Government	14	661	661	682	\$4,942,816	\$569.19

**TABLE 6. COUNTY SUMMARY
EMPLOYMENT AND TOTAL EARNINGS, BY INDUSTRY
THIRD QUARTER 2006**

NORTH AMERICAN INDUSTRY CLASSIFICATION SYSTEM INDUSTRY GROUP	NUMBER OF EMPLOYING UNITS	EMPLOYMENT	EMPLOYMENT	EMPLOYMENT	TOTAL EARNINGS	AVERAGE
		JULY	AUGUST	SEPTEMBER	JULY-SEPTEMBER 2006	WEEKLY EARNINGS
JEFFERSON COUNTY - TOTAL	1,939	30,319	31,161	32,133	\$233,925,501	\$576.66
Natural Resources & Mining	42	468	472	507	\$3,960,275	\$631.59
Construction	136	1,421	1,479	1,479	\$17,130,934	\$902.78
Manufacturing	72	6,204	6,183	6,100	\$59,909,920	\$747.84
Trade, Transportation & Utilities	499	5,811	5,866	5,912	\$37,404,640	\$490.75
Wholesale Trade	86	1,036	1,050	1,050	\$8,005,035	\$589.07
Retail Trade	346	3,890	3,917	3,947	\$19,033,841	\$373.70
Transportation, Warehousing & Utilities	67	885	899	915	\$10,365,764	\$886.29
Information	20	211	211	209	\$1,476,377	\$539.94
Financial Activities	155	1,238	1,222	1,223	\$10,309,420	\$645.97
Professional & Business Services	175	1,675	1,712	1,709	\$13,188,237	\$597.22
Education & Health Services	451	5,370	5,362	5,457	\$37,652,934	\$536.73
Leisure & Hospitality	151	2,241	2,228	2,200	\$5,643,961	\$195.30
Other Services	157	799	781	779	\$4,480,336	\$438.29
Local Government	41	1,811	2,587	3,355	\$17,134,485	\$510.01
State Government	40	3,070	3,058	3,203	\$25,633,982	\$633.97
JOHNSON COUNTY - TOTAL	478	8,000	8,071	8,544	\$49,478,969	\$463.87
Natural Resources & Mining	15	209	208	193	\$1,638,237	\$619.76
Construction	29	132	129	124	\$794,974	\$476.51
Manufacturing	44	3,110	3,076	3,061	\$19,552,107	\$487.94
Trade, Transportation & Utilities	123	1,816	1,822	1,852	\$10,229,326	\$429.98
Information	6	33	33	32	\$217,351	\$511.82
Financial Activities	45	246	250	243	\$1,636,587	\$511.06
Professional & Business Services	50	169	170	166	\$1,113,145	\$508.67
Education & Health Services	74	1,118	1,153	1,153	\$7,267,639	\$489.82
Leisure & Hospitality	39	515	531	543	\$1,316,458	\$191.19
Other Services	29	90	90	90	\$415,871	\$355.45
Local Government	14	404	456	935	\$4,019,317	\$516.73
State Government	10	158	153	152	\$1,277,957	\$636.96

**TABLE 6. COUNTY SUMMARY
EMPLOYMENT AND TOTAL EARNINGS, BY INDUSTRY
THIRD QUARTER 2006**

NORTH AMERICAN INDUSTRY CLASSIFICATION SYSTEM INDUSTRY GROUP	NUMBER OF EMPLOYING UNITS	EMPLOYMENT	EMPLOYMENT	EMPLOYMENT	TOTAL EARNINGS	AVERAGE
		JULY	AUGUST	SEPTEMBER	JULY-SEPTEMBER 2006	WEEKLY EARNINGS
LAFAYETTE COUNTY - TOTAL	172	1,261	1,313	1,435	\$8,413,223	\$484.29
Natural Resources & Mining	33	180	178	186	\$1,335,641	\$566.59
Trade, Transportation & Utilities	38	229	227	225	\$1,364,634	\$462.43
Retail Trade	22	156	154	154	\$703,149	\$349.71
Other Trade, Transportation & Utilities	16	73	73	71	\$661,485	\$703.46
Financial Activities	17	87	94	92	\$599,110	\$506.43
Professional & Business Services	8	53	53	53	\$450,136	\$653.32
Education & Health Services	23	226	227	233	\$1,017,670	\$342.34
Leisure & Hospitality	6	40	43	42	\$164,860	\$304.36
Other Services	8	80	76	78	\$304,578	\$300.37
Local Government	13	185	233	338	\$1,461,529	\$446.13
State Government	8	47	48	48	\$356,807	\$575.80
Other	18	134	134	140	\$1,358,258	\$768.25
LAWRENCE COUNTY - TOTAL	424	3,764	3,994	4,234	\$22,975,118	\$442.12
Natural Resources & Mining	35	182	179	178	\$1,424,330	\$609.82
Construction	25	62	69	70	\$410,929	\$471.79
Manufacturing	22	578	571	566	\$3,563,631	\$479.52
Trade, Transportation & Utilities	128	944	950	943	\$5,202,981	\$423.22
Wholesale Trade	24	204	205	205	\$1,508,493	\$566.96
Retail Trade	71	603	609	602	\$2,555,810	\$325.14
Transportation, Warehousing & Utilities	33	137	136	136	\$1,138,678	\$642.47
Information	6	21	19	19	\$156,079	\$610.48
Financial Activities	30	137	133	131	\$890,817	\$512.65
Professional & Business Services	23	134	123	132	\$997,497	\$591.75
Education & Health Services	68	468	502	644	\$3,539,262	\$506.04
Leisure & Hospitality	25	322	323	336	\$648,992	\$152.67
Other Services	25	82	88	91	\$283,288	\$250.48
Local Government	26	722	926	1,014	\$5,049,022	\$437.70
State Government	11	112	111	110	\$808,290	\$560.15

**TABLE 6. COUNTY SUMMARY
EMPLOYMENT AND TOTAL EARNINGS, BY INDUSTRY
THIRD QUARTER 2006**

NORTH AMERICAN INDUSTRY CLASSIFICATION SYSTEM INDUSTRY GROUP	NUMBER OF EMPLOYING UNITS	EMPLOYMENT	EMPLOYMENT	EMPLOYMENT	TOTAL EARNINGS	AVERAGE
		JULY	AUGUST	SEPTEMBER	JULY-SEPTEMBER 2006	WEEKLY EARNINGS
LEE COUNTY - TOTAL	254	1,873	2,074	2,191	\$12,624,039	\$474.62
Natural Resources & Mining	28	196	188	283	\$1,283,206	\$443.96
Construction	9	16	13	16	\$77,589	\$397.89
Trade, Transportation & Utilities	54	341	337	362	\$1,838,778	\$408.01
Wholesale Trade	9	74	68	69	\$482,883	\$528.13
Retail Trade	27	188	189	196	\$699,284	\$281.63
Transportation, Warehousing & Utilities	18	79	80	97	\$656,611	\$591.90
Financial Activities	15	81	82	85	\$555,980	\$517.35
Professional & Business Services	18	67	66	68	\$575,459	\$660.69
Education & Health Services	68	298	298	300	\$1,862,600	\$479.72
Leisure & Hospitality	10	90	107	102	\$184,596	\$142.47
Local Government	16	180	386	381	\$1,856,616	\$452.43
State Government	8	472	462	463	\$3,593,580	\$593.62
Other	28	132	135	131	\$795,635	\$461.33
LINCOLN COUNTY - TOTAL	225	2,769	2,787	3,013	\$18,163,603	\$489.16
Natural Resources & Mining	32	166	167	231	\$1,253,880	\$513.04
Construction	13	70	70	73	\$443,971	\$481.01
Manufacturing	9	448	442	438	\$2,729,335	\$474.28
Trade, Transportation & Utilities	46	379	378	364	\$2,454,513	\$505.29
Wholesale Trade	6	29	28	27	\$257,918	\$708.57
Retail Trade	25	208	207	200	\$665,967	\$249.89
Transportation, Warehousing & Utilities	15	142	143	137	\$1,530,628	\$837.02
Financial Activities	22	72	77	73	\$539,618	\$560.93
Professional & Business Services	13	21	21	21	\$138,941	\$508.94
Education & Health Services	36	300	308	309	\$1,595,368	\$401.49
Leisure & Hospitality	15	141	138	143	\$315,247	\$172.39
Local & State Government	22	1,126	1,141	1,315	\$8,482,317	\$546.47
Other	17	46	45	46	\$210,413	\$354.43

**TABLE 6. COUNTY SUMMARY
EMPLOYMENT AND TOTAL EARNINGS, BY INDUSTRY
THIRD QUARTER 2006**

NORTH AMERICAN INDUSTRY CLASSIFICATION SYSTEM INDUSTRY GROUP	NUMBER OF EMPLOYING UNITS	EMPLOYMENT	EMPLOYMENT	EMPLOYMENT	TOTAL EARNINGS	AVERAGE
		JULY	AUGUST	SEPTEMBER	JULY-SEPTEMBER 2006	WEEKLY EARNINGS
LITTLE RIVER COUNTY - TOTAL	261	4,288	4,269	4,531	\$40,294,824	\$710.48
Natural Resources & Mining	12	69	69	71	\$604,343	\$667.29
Trade, Transportation & Utilities	69	1,176	1,178	1,173	\$10,923,725	\$714.73
Wholesale Trade	11	45	48	50	\$396,122	\$639.25
Retail Trade	41	313	315	318	\$1,449,176	\$353.52
Transportation, Warehousing & Utilities	17	818	815	805	\$9,078,427	\$859.32
Information	3	9	9	9	\$83,102	\$710.27
Financial Activities	24	103	102	103	\$598,541	\$448.46
Professional & Business Services	22	129	124	127	\$727,950	\$442.07
Education & Health Services	25	159	167	163	\$839,508	\$396.18
Leisure & Hospitality	20	222	221	218	\$539,129	\$188.22
Other Services	15	108	100	99	\$339,142	\$254.93
Local Government	20	583	562	772	\$3,992,746	\$480.65
State Government	12	78	76	78	\$572,017	\$568.98
Other	39	1,652	1,661	1,718	\$21,074,621	\$966.68
LOGAN COUNTY - TOTAL	486	5,602	5,727	5,906	\$34,636,397	\$463.77
Natural Resources & Mining	19	91	87	93	\$740,989	\$630.99
Construction	51	157	158	155	\$1,037,696	\$509.51
Manufacturing	27	1,795	1,789	1,786	\$12,581,913	\$540.69
Trade, Transportation & Utilities	118	862	863	874	\$4,230,630	\$375.64
Wholesale Trade	19	64	64	68	\$479,385	\$564.43
Retail Trade	73	724	727	730	\$3,088,651	\$326.81
Transportation, Warehousing & Utilities	26	74	72	76	\$662,594	\$688.77
Information	6	45	45	47	\$362,600	\$610.78
Financial Activities	45	247	244	241	\$1,950,181	\$614.81
Professional & Business Services	43	218	194	186	\$915,800	\$353.41
Education & Health Services	80	735	733	745	\$4,182,432	\$436.14
Leisure & Hospitality	31	346	335	336	\$767,713	\$174.20
Other Services	28	72	71	84	\$419,122	\$426.08
Local & State Government	38	1,034	1,208	1,359	\$7,447,321	\$477.26

**TABLE 6. COUNTY SUMMARY
EMPLOYMENT AND TOTAL EARNINGS, BY INDUSTRY
THIRD QUARTER 2006**

NORTH AMERICAN INDUSTRY CLASSIFICATION SYSTEM INDUSTRY GROUP	NUMBER OF EMPLOYING UNITS	EMPLOYMENT	EMPLOYMENT	EMPLOYMENT	TOTAL EARNINGS	AVERAGE
		JULY	AUGUST	SEPTEMBER	JULY-SEPTEMBER 2006	WEEKLY EARNINGS
LONOKE COUNTY - TOTAL	1,228	11,749	12,193	12,471	\$75,558,609	\$478.86
Natural Resources & Mining	71	479	470	518	\$3,832,957	\$602.95
Construction	170	941	949	944	\$7,124,014	\$580.10
Manufacturing	38	1,387	1,402	1,390	\$12,467,772	\$688.48
Trade, Transportation & Utilities	335	2,757	2,761	2,808	\$15,815,668	\$438.36
Wholesale Trade	80	463	438	444	\$4,133,480	\$709.20
Retail Trade	179	2,001	2,020	2,032	\$9,256,651	\$352.91
Transportation, Warehousing & Utilities	76	293	303	332	\$2,425,537	\$603.17
Information	16	123	120	118	\$941,906	\$602.11
Financial Activities	125	584	584	602	\$5,299,531	\$690.94
Professional & Business Services	140	542	570	556	\$3,834,338	\$530.48
Education & Health Services	135	1,352	1,367	1,377	\$7,763,689	\$437.41
Leisure & Hospitality	87	1,322	1,340	1,357	\$3,354,257	\$192.60
Other Services	67	199	196	191	\$1,065,898	\$419.76
Local Government	28	1,925	2,288	2,467	\$13,054,139	\$450.97
State Government	16	138	146	143	\$1,004,440	\$542.84
MADISON COUNTY - TOTAL	257	3,108	3,183	3,182	\$18,378,423	\$447.71
Natural Resources & Mining	12	56	56	53	\$388,835	\$543.83
Construction	45	171	158	149	\$986,121	\$476.08
Manufacturing	20	1,104	1,105	1,103	\$6,996,426	\$487.49
Trade, Transportation & Utilities	64	583	581	585	\$3,448,257	\$454.98
Wholesale Trade	16	40	40	41	\$590,588	\$1,126.36
Retail Trade	34	430	430	425	\$1,934,357	\$347.39
Transportation, Warehousing & Utilities	14	113	111	119	\$923,312	\$621.20
Information	4	36	34	35	\$339,723	\$746.64
Financial Activities	14	91	92	89	\$621,696	\$527.46
Professional & Business Services	21	87	85	87	\$438,223	\$390.46
Education & Health Services	38	256	267	259	\$1,206,621	\$356.08
Leisure & Hospitality	12	131	138	133	\$217,602	\$124.92
Other Services	11	23	25	26	\$157,339	\$490.66
Local Government	8	523	595	615	\$3,195,102	\$425.47
State Government	8	47	47	48	\$382,478	\$621.58

**TABLE 6. COUNTY SUMMARY
EMPLOYMENT AND TOTAL EARNINGS, BY INDUSTRY
THIRD QUARTER 2006**

NORTH AMERICAN INDUSTRY CLASSIFICATION SYSTEM INDUSTRY GROUP	NUMBER OF EMPLOYING UNITS	EMPLOYMENT	EMPLOYMENT	EMPLOYMENT	TOTAL EARNINGS	AVERAGE
		JULY	AUGUST	SEPTEMBER	JULY-SEPTEMBER 2006	WEEKLY EARNINGS
MARION COUNTY - TOTAL	308	4,058	4,121	4,204	\$23,881,804	\$445.06
Natural Resources & Mining	5	62	63	63	\$226,070	\$277.50
Construction	25	71	80	77	\$380,789	\$385.41
Manufacturing	26	1,788	1,794	1,800	\$12,228,999	\$524.35
Trade, Transportation & Utilities	54	655	659	644	\$3,063,175	\$361.02
Retail Trade	36	502	505	494	\$2,078,636	\$319.58
Other Trade, Transportation & Utilities	18	153	154	150	\$984,539	\$497.16
Financial Activities	34	196	187	188	\$1,160,832	\$469.15
Professional & Business Services	27	49	50	54	\$379,992	\$573.14
Education & Health Services	49	372	374	378	\$1,896,657	\$389.40
Leisure & Hospitality	40	298	293	266	\$711,050	\$191.47
Local Government	20	370	429	541	\$2,422,644	\$417.22
State Government	8	111	107	102	\$672,396	\$484.90
Other	20	86	85	91	\$739,200	\$651.09
MILLER COUNTY - TOTAL	839	11,839	11,907	12,677	\$87,920,117	\$557.05
Natural Resources & Mining	28	140	141	144	\$1,076,714	\$584.64
Construction	92	815	848	858	\$6,395,159	\$585.40
Manufacturing	34	2,745	2,725	2,681	\$28,478,453	\$806.28
Trade, Transportation & Utilities	231	2,657	2,650	2,646	\$17,748,827	\$515.01
Wholesale Trade	65	638	645	660	\$5,841,866	\$693.84
Retail Trade	126	1,452	1,444	1,422	\$6,571,451	\$351.20
Transportation, Warehousing & Utilities	40	567	561	564	\$5,335,510	\$727.70
Information	8	105	104	102	\$2,295,861	\$1,703.58
Financial Activities	87	392	378	380	\$2,769,398	\$555.73
Professional & Business Services	84	1,053	1,008	967	\$5,282,176	\$402.56
Education & Health Services	87	1,099	1,096	1,099	\$6,532,421	\$457.64
Leisure & Hospitality	82	1,246	1,273	1,250	\$3,653,749	\$223.71
Other Services	63	407	337	335	\$1,280,345	\$273.83
Local Government	26	707	877	1,747	\$8,345,452	\$578.17
State Government	17	473	470	468	\$4,061,562	\$664.27

**TABLE 6. COUNTY SUMMARY
EMPLOYMENT AND TOTAL EARNINGS, BY INDUSTRY
THIRD QUARTER 2006**

NORTH AMERICAN INDUSTRY CLASSIFICATION SYSTEM INDUSTRY GROUP	NUMBER OF EMPLOYING UNITS	EMPLOYMENT	EMPLOYMENT	EMPLOYMENT	TOTAL EARNINGS	AVERAGE
		JULY	AUGUST	SEPTEMBER	JULY-SEPTEMBER 2006	WEEKLY EARNINGS
MISSISSIPPI COUNTY - TOTAL	1,177	18,511	18,681	19,740	\$148,043,763	\$600.08
Natural Resources & Mining	101	714	697	912	\$4,170,764	\$414.33
Construction	67	571	662	691	\$5,721,326	\$686.23
Manufacturing	55	5,393	5,400	5,453	\$66,775,228	\$948.52
Trade, Transportation & Utilities	301	3,157	3,141	3,149	\$20,538,166	\$501.70
Wholesale Trade	64	594	586	577	\$5,213,449	\$684.75
Retail Trade	185	1,954	1,943	1,950	\$8,987,373	\$354.71
Transportation, Warehousing & Utilities	52	609	612	622	\$6,337,344	\$793.52
Financial Activities	106	591	582	579	\$3,730,408	\$491.36
Professional & Business Services	98	1,229	1,218	1,412	\$7,741,461	\$462.94
Education & Health Services	211	1,657	1,652	1,732	\$11,211,263	\$513.23
Leisure & Hospitality	79	1,156	1,137	1,129	\$2,774,168	\$187.08
Local Government	46	2,043	2,072	2,389	\$11,182,142	\$396.75
State Government	24	613	578	660	\$4,146,832	\$517.00
Other	89	1,387	1,542	1,634	\$10,052,005	\$508.37
MONROE COUNTY - TOTAL	310	2,135	2,324	2,374	\$12,131,091	\$409.70
Natural Resources & Mining	35	141	133	155	\$928,518	\$499.47
Construction	14	39	37	35	\$190,106	\$395.23
Manufacturing	8	101	107	103	\$674,933	\$500.82
Trade, Transportation & Utilities	94	689	695	709	\$3,765,983	\$415.23
Wholesale Trade	23	200	198	194	\$1,322,654	\$515.59
Retail Trade	43	344	345	351	\$1,408,416	\$312.52
Transportation, Warehousing & Utilities	28	145	152	164	\$1,034,913	\$518.06
Financial Activities	16	100	97	93	\$704,381	\$560.52
Professional & Business Services	17	41	37	40	\$241,498	\$472.29
Education & Health Services	43	309	300	317	\$1,438,680	\$358.53
Leisure & Hospitality	26	268	260	250	\$610,837	\$181.19
Local Government	22	223	440	449	\$2,210,570	\$458.75
State Government	9	117	116	115	\$866,604	\$574.67
Other	26	107	102	108	\$498,981	\$363.25

**TABLE 6. COUNTY SUMMARY
EMPLOYMENT AND TOTAL EARNINGS, BY INDUSTRY
THIRD QUARTER 2006**

NORTH AMERICAN INDUSTRY CLASSIFICATION SYSTEM INDUSTRY GROUP	NUMBER OF EMPLOYING UNITS	EMPLOYMENT	EMPLOYMENT	EMPLOYMENT	TOTAL EARNINGS	AVERAGE
		JULY	AUGUST	SEPTEMBER	JULY-SEPTEMBER 2006	WEEKLY EARNINGS
MONTGOMERY COUNTY - TOTAL	187	1,699	1,591	1,706	\$8,292,933	\$383.06
Natural Resources & Mining	15	51	53	59	\$477,390	\$675.87
Construction	23	127	158	176	\$971,843	\$486.49
Trade, Transportation & Utilities	46	205	198	210	\$1,015,366	\$382.24
Wholesale Trade	9	65	62	63	\$365,370	\$443.77
Retail Trade	26	130	127	128	\$591,977	\$354.83
Transportation, Warehousing & Utilities	11	10	9	19	\$58,019	\$352.34
Financial Activities	10	82	81	78	\$489,117	\$468.35
Education & Health Services	16	49	51	52	\$252,441	\$383.26
Leisure & Hospitality	22	502	294	247	\$1,239,489	\$274.24
Other Services	12	64	72	68	\$313,521	\$354.66
Local Government	9	289	348	478	\$1,925,833	\$398.59
State Government	8	57	57	56	\$415,563	\$564.11
Other	26	273	279	282	\$1,192,370	\$329.93
NEVADA COUNTY - TOTAL	192	2,434	2,452	2,647	\$16,129,705	\$494.12
Natural Resources & Mining	16	60	61	61	\$446,553	\$566.21
Construction	12	15	15	15	\$88,240	\$452.51
Manufacturing	9	831	826	830	\$6,767,008	\$627.91
Trade, Transportation & Utilities	46	534	549	531	\$3,368,375	\$481.61
Retail Trade	30	302	299	294	\$1,309,876	\$337.74
Other Trade, Transportation & Utilities	16	232	250	237	\$2,058,499	\$660.69
Financial Activities	14	65	63	65	\$504,956	\$603.77
Education & Health Services	16	390	387	389	\$1,900,799	\$376.20
Leisure & Hospitality	14	125	119	107	\$280,869	\$184.66
Other Services	15	73	69	71	\$233,298	\$252.76
Local Government	27	225	246	462	\$1,606,864	\$397.44
State Government	11	78	78	78	\$597,183	\$588.94
Other	12	38	39	38	\$335,560	\$673.36

**TABLE 6. COUNTY SUMMARY
EMPLOYMENT AND TOTAL EARNINGS, BY INDUSTRY
THIRD QUARTER 2006**

NORTH AMERICAN INDUSTRY CLASSIFICATION SYSTEM INDUSTRY GROUP	NUMBER OF EMPLOYING UNITS	EMPLOYMENT	EMPLOYMENT	EMPLOYMENT	TOTAL EARNINGS	AVERAGE
		JULY	AUGUST	SEPTEMBER	JULY-SEPTEMBER 2006	WEEKLY EARNINGS
NEWTON COUNTY - TOTAL	132	882	1,061	1,094	\$4,857,736	\$369.12
Natural Resources & Mining	5	7	6	8	\$20,491	\$225.18
Construction	8	15	14	14	\$73,932	\$396.77
Manufacturing	16	99	97	86	\$507,457	\$415.27
Trade, Transportation & Utilities	31	165	164	162	\$689,950	\$324.28
Retail Trade	15	110	109	109	\$351,966	\$247.63
Other Trade, Transportation & Utilities	16	55	55	53	\$337,984	\$478.50
Education & Health Services	20	223	225	228	\$859,193	\$293.31
Leisure & Hospitality	16	84	82	77	\$206,460	\$196.07
Other Services	4	10	10	8	\$29,774	\$245.39
Local Government	13	146	326	380	\$1,694,566	\$458.98
State Government	7	87	88	81	\$448,623	\$404.41
Other	12	46	49	50	\$327,290	\$520.89
OUACHITA COUNTY - TOTAL	651	7,803	7,780	7,911	\$47,769,836	\$469.22
Natural Resources & Mining	47	278	283	290	\$2,474,989	\$671.15
Construction	50	296	315	320	\$1,905,549	\$472.33
Manufacturing	31	976	950	942	\$8,079,884	\$650.14
Trade, Transportation & Utilities	178	1,779	1,804	1,810	\$11,043,698	\$472.57
Wholesale Trade	31	248	251	257	\$2,471,757	\$754.50
Retail Trade	120	1,105	1,127	1,125	\$4,549,776	\$312.76
Transportation, Warehousing & Utilities	27	426	426	428	\$4,022,165	\$725.15
Information	9	88	95	89	\$649,147	\$550.75
Financial Activities	65	362	365	369	\$2,560,402	\$539.11
Professional & Business Services	52	361	341	347	\$1,930,457	\$424.68
Education & Health Services	94	1,249	1,242	1,257	\$7,773,053	\$478.60
Leisure & Hospitality	39	557	566	539	\$1,260,011	\$174.95
Other Services	42	173	174	170	\$705,004	\$314.69
Local Government	30	1,153	1,148	1,269	\$5,374,491	\$347.41
State Government	14	531	497	509	\$4,013,151	\$602.55

**TABLE 6. COUNTY SUMMARY
EMPLOYMENT AND TOTAL EARNINGS, BY INDUSTRY
THIRD QUARTER 2006**

NORTH AMERICAN INDUSTRY CLASSIFICATION SYSTEM INDUSTRY GROUP	NUMBER OF EMPLOYING UNITS	EMPLOYMENT	EMPLOYMENT	EMPLOYMENT	TOTAL EARNINGS	AVERAGE
		JULY	AUGUST	SEPTEMBER	JULY-SEPTEMBER 2006	WEEKLY EARNINGS
PERRY COUNTY - TOTAL	162	1,165	1,179	1,222	\$6,359,762	\$411.56
Natural Resources & Mining	9	34	38	39	\$286,655	\$595.96
Construction	26	77	73	70	\$467,241	\$490.11
Manufacturing	7	88	88	82	\$496,679	\$444.26
Trade, Transportation & Utilities	29	182	196	194	\$892,008	\$359.87
Retail Trade	20	152	166	165	\$569,769	\$272.23
Other Trade, Transportation & Utilities	9	30	30	29	\$322,239	\$835.54
Financial Activities	14	53	55	52	\$463,101	\$667.93
Professional & Business Services	13	38	41	38	\$283,156	\$558.49
Education & Health Services	25	170	174	188	\$920,761	\$399.40
Local Government	12	355	362	399	\$1,733,471	\$358.45
State Government	9	54	54	54	\$354,990	\$505.68
Other	18	114	98	106	\$461,700	\$335.05
PHILLIPS COUNTY - TOTAL	770	6,142	6,379	6,674	\$37,056,923	\$445.51
Natural Resources & Mining	71	492	514	622	\$2,743,681	\$388.92
Construction	31	122	113	111	\$686,240	\$457.70
Manufacturing	11	416	378	372	\$2,944,112	\$582.68
Trade, Transportation & Utilities	176	1,564	1,539	1,556	\$8,880,625	\$439.87
Wholesale Trade	36	388	398	386	\$3,019,177	\$594.48
Retail Trade	106	902	870	892	\$3,902,161	\$338.03
Transportation, Warehousing & Utilities	34	274	271	278	\$1,959,287	\$549.38
Information	10	49	49	49	\$379,189	\$595.27
Financial Activities	55	265	269	278	\$1,784,926	\$507.27
Professional & Business Services	61	231	220	204	\$1,398,361	\$492.67
Education & Health Services	226	1,206	1,268	1,302	\$7,382,387	\$451.17
Leisure & Hospitality	41	479	472	455	\$1,027,683	\$168.68
Other Services	41	85	90	81	\$394,627	\$355.73
Local Government	30	681	929	1,134	\$5,779,724	\$486.07
State Government	17	552	538	510	\$3,655,368	\$527.22

**TABLE 6. COUNTY SUMMARY
EMPLOYMENT AND TOTAL EARNINGS, BY INDUSTRY
THIRD QUARTER 2006**

NORTH AMERICAN INDUSTRY CLASSIFICATION SYSTEM INDUSTRY GROUP	NUMBER OF EMPLOYING UNITS	EMPLOYMENT	EMPLOYMENT	EMPLOYMENT	TOTAL EARNINGS	AVERAGE
		JULY	AUGUST	SEPTEMBER	JULY-SEPTEMBER 2006	WEEKLY EARNINGS
PIKE COUNTY - TOTAL	268	2,741	2,922	2,896	\$16,074,508	\$433.40
Natural Resources & Mining	32	147	150	153	\$1,144,390	\$586.87
Construction	13	125	119	113	\$924,919	\$597.88
Manufacturing	14	539	536	513	\$3,190,468	\$463.64
Trade, Transportation & Utilities	91	609	601	590	\$3,614,695	\$463.42
Wholesale Trade	18	129	126	121	\$923,266	\$566.65
Retail Trade	44	349	342	340	\$1,731,701	\$387.61
Transportation, Warehousing & Utilities	29	131	133	129	\$959,728	\$563.55
Information	5	29	29	29	\$304,310	\$807.19
Financial Activities	25	175	177	175	\$1,190,769	\$521.43
Professional & Business Services	11	33	32	30	\$123,395	\$299.74
Education & Health Services	19	245	241	246	\$1,072,143	\$338.00
Leisure & Hospitality	20	214	222	211	\$565,288	\$201.62
Other Services	14	117	127	125	\$603,985	\$377.73
Local Government	13	377	558	581	\$2,636,999	\$401.41
State Government	11	131	130	130	\$703,147	\$415.00
POINSETT COUNTY - TOTAL	503	5,678	5,844	6,033	\$35,170,018	\$462.33
Natural Resources & Mining	49	369	368	374	\$2,452,716	\$509.46
Construction	29	64	64	59	\$489,916	\$604.59
Manufacturing	26	1,247	1,246	1,235	\$8,717,394	\$539.62
Trade, Transportation & Utilities	136	1,365	1,344	1,365	\$8,856,426	\$501.67
Wholesale Trade	34	494	467	490	\$5,054,759	\$803.92
Retail Trade	75	736	735	719	\$2,859,728	\$301.34
Transportation, Warehousing & Utilities	27	135	142	156	\$941,939	\$502.01
Information	6	57	57	59	\$653,864	\$872.21
Financial Activities	45	333	347	349	\$2,478,202	\$555.78
Professional & Business Services	31	142	141	141	\$937,824	\$510.43
Education & Health Services	65	569	586	578	\$3,015,373	\$401.53
Leisure & Hospitality	44	405	409	409	\$806,225	\$152.13
Other Services	29	62	61	63	\$330,751	\$410.36
Local Government	31	867	1,011	1,185	\$5,166,552	\$389.25
State Government	12	198	210	216	\$1,264,775	\$467.74

**TABLE 6. COUNTY SUMMARY
EMPLOYMENT AND TOTAL EARNINGS, BY INDUSTRY
THIRD QUARTER 2006**

NORTH AMERICAN INDUSTRY CLASSIFICATION SYSTEM INDUSTRY GROUP	NUMBER OF EMPLOYING UNITS	EMPLOYMENT	EMPLOYMENT	EMPLOYMENT	TOTAL EARNINGS	AVERAGE
		JULY	AUGUST	SEPTEMBER	JULY-SEPTEMBER 2006	WEEKLY EARNINGS
POLK COUNTY - TOTAL	543	5,883	6,162	6,375	\$34,036,183	\$426.41
Natural Resources & Mining	26	256	255	253	\$1,967,700	\$594.35
Construction	37	213	214	222	\$1,035,429	\$368.17
Manufacturing	45	1,402	1,400	1,387	\$8,325,540	\$458.65
Trade, Transportation & Utilities	154	1,353	1,368	1,372	\$6,691,450	\$377.27
Wholesale Trade	26	119	119	122	\$561,082	\$359.67
Retail Trade	83	841	844	829	\$3,392,687	\$311.43
Transportation, Warehousing & Utilities	45	393	405	421	\$2,737,681	\$518.27
Information	9	59	59	60	\$396,581	\$514.15
Financial Activities	40	226	229	224	\$1,450,075	\$492.83
Professional & Business Services	50	166	173	172	\$1,112,467	\$502.39
Education & Health Services	76	935	951	943	\$5,767,888	\$470.50
Leisure & Hospitality	41	454	474	477	\$985,134	\$161.81
Other Services	30	157	153	149	\$603,059	\$303.20
Local Government	21	392	620	786	\$3,927,726	\$504.11
State Government	14	270	266	330	\$1,773,134	\$472.50
POPE COUNTY - TOTAL	1,727	25,523	26,126	27,251	\$182,961,124	\$535.13
Natural Resources & Mining	22	673	629	459	\$3,394,038	\$444.77
Construction	179	1,171	1,255	1,539	\$11,267,049	\$655.76
Manufacturing	90	5,081	5,132	5,150	\$42,220,508	\$634.20
Trade, Transportation & Utilities	469	6,580	6,633	6,684	\$53,647,130	\$622.21
Wholesale Trade	100	709	721	718	\$5,732,568	\$615.88
Retail Trade	280	3,351	3,385	3,434	\$17,164,321	\$389.48
Transportation, Warehousing & Utilities	89	2,520	2,527	2,532	\$30,750,241	\$936.30
Information	25	262	262	265	\$2,595,373	\$759.10
Financial Activities	178	846	853	859	\$6,260,204	\$564.76
Professional & Business Services	227	2,799	2,741	2,659	\$13,739,624	\$386.72
Education & Health Services	241	2,876	2,937	2,964	\$20,628,026	\$542.36
Leisure & Hospitality	133	2,396	2,452	2,470	\$6,389,347	\$201.48
Other Services	107	452	463	467	\$2,303,761	\$384.69
Local Government	40	1,212	1,470	2,214	\$11,100,829	\$523.23
State Government	16	1,175	1,299	1,521	\$9,415,235	\$543.87

**TABLE 6. COUNTY SUMMARY
EMPLOYMENT AND TOTAL EARNINGS, BY INDUSTRY
THIRD QUARTER 2006**

NORTH AMERICAN INDUSTRY CLASSIFICATION SYSTEM INDUSTRY GROUP	NUMBER OF EMPLOYING UNITS	EMPLOYMENT	EMPLOYMENT	EMPLOYMENT	TOTAL EARNINGS	AVERAGE
		JULY	AUGUST	SEPTEMBER	JULY-SEPTEMBER 2006	WEEKLY EARNINGS
PRAIRIE COUNTY - TOTAL	239	1,369	1,434	1,513	\$8,614,483	\$460.60
Natural Resources & Mining	31	158	150	145	\$1,124,496	\$572.85
Trade, Transportation & Utilities	68	360	346	374	\$2,009,169	\$429.31
Wholesale Trade	10	71	59	54	\$493,259	\$618.64
Retail Trade	39	214	209	209	\$684,491	\$249.94
Transportation, Warehousing & Utilities	19	75	78	111	\$831,419	\$726.76
Information	4	9	9	9	\$100,014	\$854.82
Financial Activities	16	59	59	60	\$411,816	\$533.90
Professional & Business Services	16	58	57	59	\$328,906	\$436.21
Education & Health Services	30	159	158	155	\$967,015	\$472.79
Leisure & Hospitality	20	109	113	108	\$240,858	\$168.43
Other Services	12	36	37	36	\$169,226	\$358.28
Local Government	14	168	260	329	\$1,611,078	\$491.13
State Government	10	48	49	45	\$325,636	\$529.20
Other	18	205	196	193	\$1,326,269	\$515.26
PULASKI COUNTY - TOTAL	14,162	234,048	237,147	241,287	\$2,157,185,569	\$698.70
Natural Resources & Mining	46	752	766	768	\$8,815,012	\$889.87
Construction	1,151	10,688	10,794	10,919	\$102,288,898	\$728.53
Manufacturing	447	15,760	15,743	15,865	\$161,251,799	\$785.59
Trade, Transportation & Utilities	3,269	51,456	51,768	51,798	\$443,910,077	\$660.81
Wholesale Trade	1,097	13,411	13,449	13,410	\$161,186,578	\$923.69
Retail Trade	1,762	24,559	24,788	24,606	\$142,671,356	\$445.20
Transportation, Warehousing & Utilities	410	13,486	13,531	13,782	\$140,052,143	\$792.17
Information	238	8,873	8,871	8,856	\$117,511,874	\$1,019.48
Financial Activities	1,734	16,228	16,287	16,263	\$190,890,064	\$903.10
Professional & Business Services	2,713	34,006	33,848	34,436	\$296,086,242	\$667.98
Education & Health Services	1,980	33,188	33,428	33,779	\$336,727,663	\$774.01
Leisure & Hospitality	1,044	20,431	20,341	19,710	\$69,183,445	\$263.97
Other Services	1,233	7,128	7,041	6,925	\$48,486,914	\$530.45
Local Government	104	11,395	13,756	16,834	\$110,401,061	\$606.82
State Government	203	24,143	24,504	25,134	\$271,632,520	\$849.60

**TABLE 6. COUNTY SUMMARY
EMPLOYMENT AND TOTAL EARNINGS, BY INDUSTRY
THIRD QUARTER 2006**

NORTH AMERICAN INDUSTRY CLASSIFICATION SYSTEM INDUSTRY GROUP	NUMBER OF EMPLOYING UNITS	EMPLOYMENT	EMPLOYMENT	EMPLOYMENT	TOTAL EARNINGS	AVERAGE
		JULY	AUGUST	SEPTEMBER	JULY-SEPTEMBER 2006	WEEKLY EARNINGS
RANDOLPH COUNTY - TOTAL	417	5,025	5,047	5,158	\$26,960,143	\$408.51
Natural Resources & Mining	22	77	73	76	\$382,959	\$391.04
Construction	26	110	119	131	\$496,431	\$318.23
Manufacturing	42	1,075	1,075	1,067	\$6,460,250	\$463.42
Trade, Transportation & Utilities	102	958	948	988	\$4,956,810	\$395.26
Wholesale Trade	22	193	200	220	\$956,296	\$360.01
Retail Trade	62	605	585	603	\$2,513,009	\$323.44
Transportation, Warehousing & Utilities	18	160	163	165	\$1,487,505	\$703.42
Information	5	45	45	44	\$417,038	\$718.21
Financial Activities	27	148	147	153	\$834,969	\$430.10
Professional & Business Services	37	233	237	235	\$1,032,140	\$337.85
Education & Health Services	68	844	872	888	\$5,471,104	\$484.86
Leisure & Hospitality	29	477	468	417	\$832,567	\$141.07
Other Services	24	69	69	70	\$316,366	\$351.00
Local Government	23	762	764	823	\$3,868,830	\$380.08
State Government	12	227	230	266	\$1,890,679	\$603.47
SAINT FRANCIS COUNTY - TOTAL	677	7,692	8,221	8,355	\$48,679,329	\$462.90
Natural Resources & Mining	21	187	178	221	\$1,179,841	\$464.63
Construction	45	240	232	249	\$1,698,324	\$543.58
Manufacturing	21	1,344	1,367	1,419	\$9,309,800	\$520.20
Trade, Transportation & Utilities	190	2,090	2,078	2,083	\$12,552,995	\$463.42
Wholesale Trade	30	508	500	506	\$3,753,666	\$572.15
Retail Trade	127	1,261	1,259	1,238	\$5,872,499	\$360.62
Transportation, Warehousing & Utilities	33	321	319	339	\$2,926,830	\$689.91
Information	9	98	100	101	\$681,619	\$526.08
Financial Activities	49	294	286	284	\$1,757,563	\$469.43
Professional & Business Services	50	167	165	163	\$1,199,243	\$559.09
Education & Health Services	156	1,309	1,319	1,332	\$7,193,742	\$419.22
Leisure & Hospitality	49	758	789	744	\$1,885,593	\$189.93
Other Services	40	122	122	122	\$471,601	\$297.35
Local Government	30	577	1,075	1,118	\$6,710,096	\$559.02
State Government	17	506	510	519	\$4,038,912	\$607.20

**TABLE 6. COUNTY SUMMARY
EMPLOYMENT AND TOTAL EARNINGS, BY INDUSTRY
THIRD QUARTER 2006**

NORTH AMERICAN INDUSTRY CLASSIFICATION SYSTEM INDUSTRY GROUP	NUMBER OF EMPLOYING UNITS	EMPLOYMENT	EMPLOYMENT	EMPLOYMENT	TOTAL EARNINGS	AVERAGE
		JULY	AUGUST	SEPTEMBER	JULY-SEPTEMBER 2006	WEEKLY EARNINGS
SALINE COUNTY - TOTAL	1,726	19,226	19,894	20,462	\$135,505,114	\$524.83
Natural Resources & Mining	10	33	33	32	\$298,932	\$703.92
Construction	302	1,942	2,022	2,011	\$16,461,378	\$635.78
Manufacturing	87	1,844	1,855	1,834	\$18,048,253	\$752.75
Trade, Transportation & Utilities	429	4,410	4,455	4,689	\$29,632,001	\$504.51
Wholesale Trade	124	566	563	559	\$5,988,915	\$818.75
Retail Trade	251	3,591	3,640	3,863	\$21,408,651	\$445.33
Transportation, Warehousing & Utilities	54	253	252	267	\$2,234,435	\$667.93
Information	16	138	140	142	\$963,608	\$529.45
Financial Activities	166	762	758	773	\$5,818,130	\$585.54
Professional & Business Services	216	1,217	1,203	1,213	\$7,733,424	\$491.23
Education & Health Services	186	2,674	2,705	2,678	\$17,797,587	\$509.76
Leisure & Hospitality	136	2,371	2,335	2,296	\$7,293,614	\$240.38
Other Services	128	587	573	579	\$3,405,413	\$451.91
Local & State Government	50	3,248	3,815	4,215	\$28,052,774	\$574.01
SCOTT COUNTY - TOTAL	186	2,827	2,841	2,893	\$15,463,391	\$416.83
Natural Resources & Mining	17	175	181	182	\$1,411,948	\$605.64
Trade, Transportation & Utilities	40	459	461	450	\$2,337,923	\$393.81
Wholesale Trade	7	67	66	62	\$443,739	\$525.13
Retail Trade	26	330	333	329	\$1,290,311	\$300.17
Transportation, Warehousing & Utilities	7	62	62	59	\$603,873	\$761.50
Information	2	7	7	7	\$73,170	\$804.07
Financial Activities	17	71	70	69	\$422,162	\$463.91
Professional & Business Services	9	10	10	11	\$43,872	\$326.59
Education & Health Services	30	309	306	308	\$1,687,706	\$421.96
Leisure & Hospitality	19	183	200	193	\$381,867	\$152.99
Other Services	11	62	63	62	\$600,213	\$740.70
Local Government	5	237	246	345	\$1,332,686	\$371.43
State Government	8	72	73	73	\$443,829	\$469.83
Other	28	1,242	1,224	1,193	\$6,728,015	\$424.33

**TABLE 6. COUNTY SUMMARY
EMPLOYMENT AND TOTAL EARNINGS, BY INDUSTRY
THIRD QUARTER 2006**

NORTH AMERICAN INDUSTRY CLASSIFICATION SYSTEM INDUSTRY GROUP	NUMBER OF EMPLOYING UNITS	EMPLOYMENT	EMPLOYMENT	EMPLOYMENT	TOTAL EARNINGS	AVERAGE
		JULY	AUGUST	SEPTEMBER	JULY-SEPTEMBER 2006	WEEKLY EARNINGS
SEARCY COUNTY - TOTAL	177	1,530	1,749	1,736	\$8,055,057	\$370.66
Construction	6	12	16	16	\$75,417	\$395.54
Manufacturing	16	280	271	272	\$1,218,074	\$341.55
Trade, Transportation & Utilities	38	271	276	273	\$1,156,255	\$325.40
Retail Trade	27	203	205	198	\$804,175	\$306.24
Other Trade, Transportation & Utilities	11	68	71	75	\$352,080	\$379.67
Financial Activities	14	107	104	98	\$597,283	\$446.07
Professional & Business Services	16	35	35	35	\$159,357	\$350.24
Education & Health Services	44	323	312	319	\$1,378,815	\$333.53
Leisure & Hospitality	11	126	127	105	\$263,806	\$170.05
Local Government	10	165	378	384	\$1,741,621	\$433.56
State Government	8	141	139	134	\$889,275	\$495.69
Other	14	70	91	100	\$575,154	\$508.54
SEBASTIAN COUNTY - TOTAL	3,645	72,204	73,577	73,570	\$575,576,378	\$605.54
Natural Resources & Mining	65	1,369	1,372	1,457	\$22,121,233	\$1,216.03
Construction	309	2,996	2,958	2,942	\$24,462,876	\$634.59
Manufacturing	232	21,172	21,228	20,584	\$184,978,083	\$677.75
Trade, Transportation & Utilities	934	12,783	12,882	12,832	\$89,278,057	\$535.17
Wholesale Trade	241	2,592	2,616	2,615	\$26,354,605	\$777.43
Retail Trade	567	7,965	8,052	8,016	\$41,164,189	\$395.27
Transportation, Warehousing & Utilities	126	2,226	2,214	2,201	\$21,759,263	\$756.12
Information	57	1,168	1,159	1,154	\$12,046,400	\$798.60
Financial Activities	406	2,511	2,504	2,507	\$22,384,346	\$686.73
Professional & Business Services	517	9,283	9,699	9,451	\$63,822,504	\$518.00
Education & Health Services	463	9,622	9,692	9,644	\$93,552,266	\$745.53
Leisure & Hospitality	318	5,651	5,617	5,615	\$16,087,827	\$219.90
Other Services	279	1,525	1,528	1,491	\$8,877,725	\$450.86
Local Government	43	2,840	3,608	4,449	\$27,438,638	\$581.08
State Government	22	1,284	1,330	1,444	\$10,526,423	\$598.61

**TABLE 6. COUNTY SUMMARY
EMPLOYMENT AND TOTAL EARNINGS, BY INDUSTRY
THIRD QUARTER 2006**

NORTH AMERICAN INDUSTRY CLASSIFICATION SYSTEM INDUSTRY GROUP	NUMBER OF EMPLOYING UNITS	EMPLOYMENT	EMPLOYMENT	EMPLOYMENT	TOTAL EARNINGS	AVERAGE
		JULY	AUGUST	SEPTEMBER	JULY-SEPTEMBER 2006	WEEKLY EARNINGS
SEVIER COUNTY - TOTAL	338	5,616	5,783	5,877	\$35,545,351	\$474.81
Natural Resources & Mining	18	212	224	227	\$1,676,904	\$583.68
Trade, Transportation & Utilities	94	856	865	868	\$5,254,039	\$468.32
Wholesale Trade	16	151	149	151	\$1,692,248	\$865.90
Retail Trade	59	592	602	604	\$2,481,566	\$318.50
Transportation, Warehousing & Utilities	19	113	114	113	\$1,080,225	\$733.18
Information	6	41	41	41	\$307,371	\$576.68
Financial Activities	29	220	221	214	\$1,319,288	\$464.81
Professional & Business Services	31	92	94	99	\$1,638,913	\$1,327.06
Education & Health Services	55	532	573	565	\$3,008,038	\$415.67
Leisure & Hospitality	19	262	266	255	\$545,291	\$160.71
Other Services	33	147	142	154	\$626,806	\$326.52
Local Government	11	650	753	854	\$4,952,356	\$506.36
State Government	9	169	156	180	\$1,102,936	\$504.01
Other	33	2,435	2,448	2,420	\$15,113,409	\$477.57
SHARP COUNTY - TOTAL	434	3,725	3,662	3,925	\$20,301,927	\$414.17
Construction	36	223	214	242	\$1,552,301	\$527.57
Manufacturing	21	174	172	177	\$843,585	\$372.22
Trade, Transportation & Utilities	100	1,051	1,053	1,008	\$6,349,977	\$470.88
Retail Trade	69	648	651	635	\$2,618,583	\$312.46
Other Trade, Transportation & Utilities	31	403	402	373	\$3,731,394	\$730.98
Information	7	55	56	57	\$710,355	\$975.76
Financial Activities	38	271	271	280	\$1,724,150	\$484.04
Professional & Business Services	39	161	161	171	\$1,025,830	\$480.18
Education & Health Services	85	563	565	581	\$2,809,734	\$379.40
Leisure & Hospitality	38	493	481	469	\$1,039,662	\$166.27
Local Government	29	511	518	768	\$3,226,582	\$414.35
State Government	9	99	94	97	\$672,141	\$534.86
Other	32	124	77	75	\$347,610	\$290.64

**TABLE 6. COUNTY SUMMARY
EMPLOYMENT AND TOTAL EARNINGS, BY INDUSTRY
THIRD QUARTER 2006**

NORTH AMERICAN INDUSTRY CLASSIFICATION SYSTEM INDUSTRY GROUP	NUMBER OF EMPLOYING UNITS	EMPLOYMENT	EMPLOYMENT	EMPLOYMENT	TOTAL EARNINGS	AVERAGE
		JULY	AUGUST	SEPTEMBER	JULY-SEPTEMBER 2006	WEEKLY EARNINGS
STONE COUNTY - TOTAL	270	2,859	3,050	3,007	\$14,642,437	\$378.98
Construction	23	110	116	112	\$621,124	\$424.07
Manufacturing	25	489	500	516	\$2,601,358	\$398.88
Trade, Transportation & Utilities	73	714	730	719	\$3,668,240	\$391.36
Wholesale Trade	8	51	48	49	\$226,237	\$352.76
Retail Trade	51	602	622	608	\$3,043,013	\$383.32
Transportation, Warehousing & Utilities	14	61	60	62	\$398,990	\$503.14
Financial Activities	23	98	100	99	\$687,906	\$534.50
Professional & Business Services	10	18	17	18	\$112,029	\$487.79
Education & Health Services	43	456	467	466	\$2,760,837	\$458.69
Leisure & Hospitality	34	473	472	438	\$990,799	\$165.33
Other Services	13	28	27	27	\$154,207	\$433.98
Local Government	10	226	405	401	\$1,927,328	\$430.98
State Government	9	172	168	170	\$863,385	\$390.67
Other	7	75	48	41	\$255,224	\$359.13
UNION COUNTY - TOTAL	1,391	19,010	19,227	19,850	\$156,379,520	\$621.27
Natural Resources & Mining	108	513	515	525	\$4,289,776	\$637.44
Construction	93	1,344	1,299	1,292	\$13,179,602	\$772.92
Manufacturing	65	5,174	5,094	5,086	\$49,120,887	\$738.28
Trade, Transportation & Utilities	358	3,656	3,663	3,628	\$27,918,501	\$588.54
Wholesale Trade	79	568	574	580	\$8,466,753	\$1,134.65
Retail Trade	220	2,285	2,291	2,248	\$10,553,086	\$356.88
Transportation, Warehousing & Utilities	59	803	798	800	\$8,898,662	\$855.28
Information	21	198	197	195	\$1,387,987	\$542.89
Financial Activities	125	721	715	717	\$5,664,059	\$607.10
Professional & Business Services	135	1,728	1,711	1,732	\$18,606,734	\$830.37
Education & Health Services	199	2,343	2,361	2,386	\$17,466,223	\$568.50
Leisure & Hospitality	86	1,079	1,088	1,028	\$2,903,012	\$209.68
Other Services	146	665	660	666	\$3,305,643	\$383.14
Local Government	37	1,056	1,415	2,049	\$8,525,340	\$435.26
State Government	18	533	509	546	\$4,011,756	\$582.99

**TABLE 6. COUNTY SUMMARY
EMPLOYMENT AND TOTAL EARNINGS, BY INDUSTRY
THIRD QUARTER 2006**

NORTH AMERICAN INDUSTRY CLASSIFICATION SYSTEM INDUSTRY GROUP	NUMBER OF EMPLOYING UNITS	EMPLOYMENT	EMPLOYMENT	EMPLOYMENT	TOTAL EARNINGS	AVERAGE
		JULY	AUGUST	SEPTEMBER	JULY-SEPTEMBER 2006	WEEKLY EARNINGS
VAN BUREN COUNTY - TOTAL	356	3,414	3,665	3,794	\$19,176,668	\$407.01
Natural Resources & Mining	9	20	18	16	\$77,292	\$330.31
Construction	44	193	195	200	\$1,276,519	\$500.99
Manufacturing	14	535	544	537	\$3,443,639	\$491.76
Trade, Transportation & Utilities	97	800	811	799	\$3,963,073	\$379.48
Wholesale Trade	16	50	49	52	\$395,508	\$604.44
Retail Trade	59	616	629	612	\$2,598,795	\$322.95
Transportation, Warehousing & Utilities	22	134	133	135	\$968,770	\$556.13
Information	10	54	54	55	\$440,445	\$623.57
Financial Activities	27	147	155	159	\$982,466	\$491.81
Professional & Business Services	29	100	100	100	\$535,118	\$411.63
Education & Health Services	47	581	607	604	\$3,215,598	\$414.10
Leisure & Hospitality	32	531	525	503	\$1,483,775	\$219.63
Other Services	26	78	81	77	\$413,771	\$404.60
Local Government	13	285	491	660	\$2,717,484	\$436.71
State Government	8	90	84	84	\$627,488	\$561.26
WASHINGTON COUNTY - TOTAL	5,620	88,116	88,908	91,985	\$732,660,202	\$628.51
Natural Resources & Mining	41	469	473	480	\$3,423,212	\$555.54
Construction	692	5,939	5,925	5,930	\$52,238,447	\$677.48
Manufacturing	236	15,593	15,579	15,312	\$124,911,277	\$620.12
Trade, Transportation & Utilities	1,365	20,608	20,711	20,684	\$168,042,702	\$625.44
Wholesale Trade	379	3,719	3,723	3,657	\$46,959,309	\$976.37
Retail Trade	780	11,534	11,568	11,572	\$68,957,736	\$458.94
Transportation, Warehousing & Utilities	206	5,355	5,420	5,455	\$52,125,657	\$741.16
Information	97	1,480	1,465	1,467	\$14,510,370	\$758.96
Financial Activities	692	4,074	4,069	4,051	\$36,572,377	\$692.13
Professional & Business Services	926	9,246	9,394	9,388	\$98,393,862	\$810.13
Education & Health Services	617	10,558	10,627	10,763	\$95,459,742	\$689.53
Leisure & Hospitality	500	9,406	9,294	9,500	\$29,567,950	\$241.96
Other Services	371	1,953	2,005	1,996	\$12,011,395	\$465.55
Local & State Government	83	8,790	9,366	12,414	\$97,528,868	\$736.23

**TABLE 6. COUNTY SUMMARY
EMPLOYMENT AND TOTAL EARNINGS, BY INDUSTRY
THIRD QUARTER 2006**

NORTH AMERICAN INDUSTRY CLASSIFICATION SYSTEM INDUSTRY GROUP	NUMBER OF EMPLOYING UNITS	EMPLOYMENT	EMPLOYMENT	EMPLOYMENT	TOTAL EARNINGS	AVERAGE
		JULY	AUGUST	SEPTEMBER	JULY-SEPTEMBER 2006	WEEKLY EARNINGS
WHITE COUNTY - TOTAL	1,643	22,892	23,613	24,298	\$160,744,640	\$523.92
Natural Resources & Mining	36	251	239	255	\$1,925,806	\$596.53
Construction	182	1,316	1,307	1,239	\$9,670,055	\$577.82
Manufacturing	85	3,662	3,642	3,584	\$32,958,255	\$698.54
Trade, Transportation & Utilities	479	5,927	5,998	5,949	\$38,610,305	\$498.49
Wholesale Trade	98	595	616	604	\$4,531,542	\$576.17
Retail Trade	298	3,114	3,194	3,199	\$15,135,323	\$367.39
Transportation, Warehousing & Utilities	83	2,218	2,188	2,146	\$18,943,440	\$667.21
Information	22	225	237	236	\$1,624,709	\$537.15
Financial Activities	177	918	925	929	\$6,329,631	\$526.94
Professional & Business Services	159	1,424	1,359	1,467	\$8,488,753	\$460.93
Education & Health Services	214	4,196	4,250	4,340	\$33,255,354	\$600.21
Leisure & Hospitality	119	2,261	2,212	2,280	\$5,225,063	\$178.56
Other Services	105	637	640	625	\$4,009,783	\$486.51
Local Government	46	1,457	2,244	2,608	\$13,890,992	\$508.10
State Government	19	618	560	786	\$4,755,934	\$558.82
WOODRUFF COUNTY - TOTAL	191	1,787	1,989	2,050	\$12,061,314	\$477.75
Natural Resources & Mining	20	106	108	117	\$672,488	\$468.85
Construction	6	71	78	86	\$440,744	\$432.81
Manufacturing	9	330	363	362	\$2,638,389	\$577.12
Trade, Transportation & Utilities	56	530	534	546	\$3,508,642	\$502.91
Wholesale Trade	13	215	222	231	\$1,827,226	\$631.24
Retail Trade	26	212	208	211	\$714,617	\$261.35
Transportation, Warehousing & Utilities	17	103	104	104	\$966,799	\$717.39
Financial Activities	15	61	58	58	\$397,816	\$518.66
Professional & Business Services	4	7	7	7	\$71,155	\$781.92
Education & Health Services	47	227	231	232	\$1,399,455	\$468.05
Leisure & Hospitality	7	69	64	55	\$117,251	\$143.93
Local Government	10	296	459	500	\$2,293,790	\$421.78
State Government	7	61	58	58	\$372,948	\$486.24
Other	10	29	29	29	\$148,636	\$394.26

**TABLE 6. COUNTY SUMMARY
EMPLOYMENT AND TOTAL EARNINGS, BY INDUSTRY
THIRD QUARTER 2006**

NORTH AMERICAN INDUSTRY CLASSIFICATION SYSTEM INDUSTRY GROUP	NUMBER OF EMPLOYING UNITS	EMPLOYMENT	EMPLOYMENT	EMPLOYMENT	TOTAL EARNINGS	AVERAGE
		JULY	AUGUST	SEPTEMBER	JULY-SEPTEMBER 2006	WEEKLY EARNINGS
YELL COUNTY - TOTAL	407	6,489	6,579	6,882	\$38,362,430	\$443.75
Natural Resources & Mining	24	265	277	252	\$1,603,521	\$466.05
Construction	45	391	324	315	\$2,409,295	\$539.80
Manufacturing	21	2,924	2,931	2,877	\$17,073,081	\$451.21
Trade, Transportation & Utilities	87	665	662	700	\$3,024,135	\$344.29
Wholesale Trade	11	21	21	20	\$143,221	\$533.08
Retail Trade	55	549	541	582	\$2,075,590	\$286.47
Transportation, Warehousing & Utilities	21	95	100	98	\$805,324	\$634.28
Information	4	51	76	76	\$624,418	\$709.83
Financial Activities	37	203	202	198	\$1,273,352	\$487.31
Professional & Business Services	34	235	227	228	\$2,171,767	\$726.34
Education & Health Services	66	476	490	493	\$2,466,800	\$390.17
Leisure & Hospitality	29	373	343	334	\$903,607	\$198.59
Other Services	19	73	71	70	\$291,354	\$314.18
Local Government	28	718	861	1,226	\$5,820,708	\$478.87
State Government	13	115	115	113	\$700,392	\$471.22
REST-OF-STATE-TOTAL	4,365	16,098	16,333	16,764	\$217,217,271	\$1,018.95
Natural Resources & Mining	63	449	442	488	\$5,060,089	\$846.78
Construction	583	2,672	2,905	3,108	\$26,597,010	\$706.71
Manufacturing	48	180	178	180	\$1,783,992	\$765.22
Trade, Transportation & Utilities	1,752	6,822	6,845	6,911	\$117,110,873	\$1,313.32
Wholesale Trade	1,483	5,652	5,654	5,693	\$105,434,421	\$1,431.32
Retail Trade	102	457	454	441	\$4,775,475	\$815.11
Transportation, Warehousing & Utilities	167	713	737	777	\$6,900,977	\$715.10
Information	104	227	251	254	\$3,209,485	\$1,011.82
Financial Activities	267	851	829	847	\$11,282,138	\$1,030.30
Professional & Business Services	1,248	3,572	3,603	3,730	\$39,875,918	\$843.85
Education & Health Services	114	609	559	545	\$5,846,286	\$787.59
Leisure & Hospitality	42	68	64	69	\$491,837	\$564.68
Other	144	648	657	632	\$5,959,643	\$710.02

TABLE 7. FEDERAL GOVERNMENT EMPLOYMENT AND EARNINGS IN ARKANSAS

NORTH AMERICAN INDUSTRY CLASSIFICATION SYSTEM INDUSTRY GROUP	NUMBER OF EMPLOYING UNITS	EMPLOYMENT JULY	EMPLOYMENT AUGUST	EMPLOYMENT SEPTEMBER	TOTAL EARNINGS JUL. – SEP 2006
Manufacturing	2	5	13	25	\$236,060
Trade, Transportation & Utilities	449	6,869	6,819	6,932	\$77,698,633
Information	1	23	26	29	\$353,140
Financial Activities	24	194	193	191	\$2,603,618
Professional & Business Services	32	804	797	800	\$11,267,071
Education & Health Services	6	4,071	4,077	4,080	\$67,263,898
Leisure & Hospitality	16	206	193	200	\$1,795,569
Other Services	2	293	299	310	\$1,119,675
Public Administration	453	8,362	8,400	8,377	\$105,563,322
TOTAL	985	20,827	20,817	20,944	\$267,900,986

**TABLE 8. WORKFORCE INFORMATION AREA, SUMMARY
EMPLOYMENT AND TOTAL EARNINGS, BY INDUSTRY
THIRD QUARTER 2006**

NORTH AMERICAN INDUSTRY CLASSIFICATION SYSTEM INDUSTRY GROUP	NUMBER OF EMPLOYING UNITS	EMPLOYMENT JULY	EMPLOYMENT AUGUST	EMPLOYMENT SEPTEMBER	TOTAL EARNINGS JUL. - SEP. 2006	AVERAGE WEEKLY EARNINGS
CENTRAL WORKFORCE INFORMATION*	5,962	70,676	73,207	75,332	\$519,430,129	\$545.57
Natural Resources & Mining	165	997	998	1,112	\$9,177,658	\$535.11
Trade, Transportation & Utilities	1,533	14,723	14,856	15,227	\$90,702,100	\$446.24
Wholesale Trade	388	2,137	2,102	2,136	\$19,363,191	\$651.37
Retail Trade	891	11,139	11,275	11,488	\$57,783,207	\$385.26
Transportation, Warehousing & Utilities	254	1,447	1,479	1,603	\$13,555,702	\$629.97
Financial Activities	622	2,918	2,908	2,923	\$23,116,966	\$561.33
Professional & Business Services	715	7,191	7,173	7,172	\$75,397,124	\$778.00
Education & Health Services	707	9,692	9,727	9,843	\$66,217,165	\$501.93
Leisure & Hospitality	461	7,862	7,899	7,906	\$21,390,038	\$196.08
Local & State Government	209	10,463	12,616	14,283	\$89,676,188	\$651.01
Other	1,550	16,830	17,030	16,866	\$143,752,890	\$624.35
*Note: Pulaski County is not included in the Central Workforce Information. Please refer to Page 55 for information on Pulaski County.						
Central Workforce Includes these counties: Faulkner, Lonoke, Monroe, Prairie, and Saline.						
EASTERN WORKFORCE INFORMATION	3,442	35,685	37,263	38,746	\$238,801,226	\$505.44
Natural Resources & Mining	210	1,368	1,385	1,757	\$7,979,944	\$397.18
Construction	203	1,154	1,181	1,179	\$8,123,582	\$534.05
Trade, Transportation & Utilities	883	10,362	10,099	10,161	\$68,502,049	\$499.92
Wholesale Trade	182	2,048	2,030	2,007	\$17,308,700	\$614.93
Retail Trade	499	5,373	5,090	5,073	\$23,777,036	\$344.10
Transportation, Warehousing & Utilities	202	2,941	2,979	3,081	\$27,416,313	\$691.30
Financial Activities	277	1,573	1,572	1,556	\$10,568,070	\$531.70
Professional & Business Services	291	1,403	1,409	1,346	\$9,088,880	\$510.73
Education & Health Services	747	5,460	5,585	5,612	\$35,272,235	\$474.97
Leisure & Hospitality	237	3,579	3,650	3,555	\$9,332,801	\$195.99
Local Government	140	3,188	4,779	5,855	\$31,717,527	\$661.01
State Government	68	2,154	2,168	2,193	\$15,928,164	\$539.22
Other	386	5,444	5,435	5,532	\$42,287,974	\$574.57
Eastern Workforce Includes these counties: Crittenden, Cross, Lee, Phillips, and Saint Francis.						

**TABLE 8. WORKFORCE INFORMATION AREA, SUMMARY
EMPLOYMENT AND TOTAL EARNINGS, BY INDUSTRY
THIRD QUARTER 2006**

NORTH AMERICAN INDUSTRY CLASSIFICATION SYSTEM INDUSTRY GROUP	NUMBER OF EMPLOYING UNITS	EMPLOYMENT JULY	EMPLOYMENT AUGUST	EMPLOYMENT SEPTEMBER	TOTAL EARNINGS JUL. - SEP. 2006	AVERAGE WEEKLY EARNINGS
NORTH CENTRAL WORKFORCE INFORMATION	5,543	66,380	68,871	70,966	\$434,318,899	\$491.40
Construction	499	3,007	2,996	2,961	\$20,481,953	\$507.98
Manufacturing	307	13,134	13,320	13,210	\$104,146,691	\$607.59
Trade, Transportation & Utilities	1,517	15,590	15,737	15,588	\$96,381,444	\$468.08
Retail Trade	946	9,251	9,369	9,306	\$42,398,710	\$338.92
Other Trade, Transportation & Utilities	571	6,339	6,368	6,282	\$53,982,734	\$656.61
Financial Activities	529	2,671	2,688	2,694	\$18,285,600	\$494.10
Professional & Business Services	456	3,177	3,175	3,309	\$18,626,823	\$421.20
Education & Health Services	838	11,329	11,522	11,555	\$79,537,175	\$537.74
Leisure & Hospitality	447	6,584	6,578	6,449	\$15,858,046	\$181.33
Local Government	243	4,954	7,037	8,972	\$41,265,096	\$540.89
State Government	115	2,716	2,663	3,035	\$20,096,226	\$505.96
Other	592	3,218	3,155	3,193	\$19,639,845	\$440.52
North Central Workforce Includes these counties: Cleburne, Fulton, Independence, Izard, Jackson, Sharp, Stone, Van Buren, White, and Woodruff						
NORTHEAST WORKFORCE INFORMATION	6,478	91,981	94,354	97,048	\$646,714,232	\$527.74
Natural Resources & Mining	369	2,136	2,093	2,374	\$12,633,438	\$454.85
Construction	504	3,209	3,307	3,291	\$24,523,256	\$530.31
Manufacturing	354	21,779	21,777	21,748	\$195,764,093	\$655.01
Trade, Transportation & Utilities	1,745	17,828	17,812	17,913	\$107,549,007	\$456.00
Wholesale Trade	398	3,729	3,660	3,720	\$30,885,996	\$625.83
Retail Trade	1,050	11,558	11,597	11,560	\$53,258,299	\$358.49
Transportation, Warehousing & Utilities	297	2,541	2,555	2,633	\$23,404,712	\$643.34
Financial Activities	592	3,400	3,399	3,409	\$25,322,718	\$602.55
Professional & Business Services	658	6,568	6,687	7,095	\$39,701,729	\$428.94
Education & Health Services	985	13,095	13,385	13,617	\$106,375,895	\$571.77
Leisure & Hospitality	459	7,892	7,918	7,801	\$19,171,242	\$185.54
Local Government	217	8,414	10,061	11,591	\$59,456,369	\$604.85
State Government	107	3,835	3,924	4,125	\$31,507,404	\$607.05
Other	488	3,825	3,991	4,084	\$24,709,081	\$459.89
Northeast Workforce Includes these counties: Clay, Craighead, Greene, Lawrence, Mississippi, Poinsett, and Randolph.						

**TABLE 8. WORKFORCE INFORMATION AREA, SUMMARY
EMPLOYMENT AND TOTAL EARNINGS, BY INDUSTRY
THIRD QUARTER 2006**

NORTH AMERICAN INDUSTRY CLASSIFICATION SYSTEM INDUSTRY GROUP	NUMBER OF EMPLOYING UNITS	EMPLOYMENT JULY	EMPLOYMENT AUGUST	EMPLOYMENT SEPTEMBER	TOTAL EARNINGS JUL. - SEP. 2006	AVERAGE WEEKLY EARNINGS
NORTHWEST WORKFORCE INFORMATION	14,946	225,615	230,202	235,681	\$1,869,141,523	\$615.92
Trade, Transportation & Utilities	3,698	54,046	54,281	54,532	\$455,620,960	\$591.49
Retail Trade	2,019	26,140	26,331	26,527	\$148,578,754	\$405.53
Other Trade, Transportation & Utilities	1,679	27,906	27,950	28,005	\$307,042,206	\$762.65
Education & Health Services	1,691	23,390	23,615	23,830	\$196,390,147	\$610.56
Leisure & Hospitality	1,373	22,404	22,489	22,534	\$68,629,959	\$220.04
Local & State Government	425	18,463	22,160	28,000	\$193,983,973	\$698.08
Other	7,759	107,312	107,657	106,785	\$954,516,484	\$688.39
Northwest Workforce Includes these counties: Baxter, Benton, Boone, Carroll, Madison, Marion, Newton, Searcy, and Washington.						
SOUTHEAST WORKFORCE INFORMATION	5,535	72,571	74,562	77,814	\$535,143,321	\$546.39
Natural Resources & Mining	398	2,925	2,906	3,288	\$21,998,751	\$511.24
Construction	392	3,300	3,362	3,409	\$30,360,274	\$654.09
Manufacturing	222	17,612	17,562	17,493	\$164,224,875	\$704.13
Trade, Transportation & Utilities	1,432	13,467	13,499	13,668	\$84,205,773	\$457.78
Wholesale Trade	259	2,459	2,435	2,460	\$20,180,181	\$623.81
Retail Trade	881	8,588	8,591	8,630	\$39,562,177	\$338.67
Transportation, Warehousing & Utilities	292	2,420	2,473	2,578	\$24,463,415	\$735.22
Local & State Government	359	11,972	13,909	16,511	\$98,024,004	\$590.20
Other	2,732	23,295	23,324	23,445	\$136,329,644	\$415.77
Southeast Workforce Includes these counties: Arkansas, Ashley, Bradley, Chicot, Cleveland, Desha, Drew, Grant, Jefferson, and Lincoln						
SOUTHWEST WORKFORCE INFORMATION	5,807	82,552	83,638	86,869	\$611,813,320	\$560.83
Natural Resources & Mining	410	2,801	2,831	2,887	\$24,728,659	\$598.57
Trade, Transportation & Utilities	1,533	15,318	15,400	15,332	\$102,521,195	\$462.94
Education & Health Services	768	9,272	9,344	9,392	\$56,369,071	\$452.03
Local Government	266	6,428	7,652	11,010	\$51,160,314	\$592.25
State Government	150	3,203	3,144	3,255	\$25,424,857	\$582.84
Other	2,680	45,530	45,267	44,993	\$351,609,224	\$602.73
Southwest Workforce Includes these counties: Calhoun, Columbia, Dallas, Hempstead, Howard, Lafayette, Little River, Miller, Nevada, Ouachita, Sevier, and Union						

**TABLE 8. WORKFORCE INFORMATION AREA, SUMMARY
EMPLOYMENT AND TOTAL EARNINGS, BY INDUSTRY
THIRD QUARTER 2006**

NORTH AMERICAN INDUSTRY CLASSIFICATION SYSTEM INDUSTRY GROUP	NUMBER OF EMPLOYING UNITS	EMPLOYMENT JULY	EMPLOYMENT AUGUST	EMPLOYMENT SEPTEMBER	TOTAL EARNINGS JUL. - SEP. 2006	AVERAGE WEEKLY EARNINGS
WEST CENTRAL WORKFORCE INFORMATION	8,248	105,202	106,758	110,047	\$707,443,756	\$505.24
Natural Resources & Mining	265	2,295	2,264	2,088	\$17,388,301	\$586.39
Construction	904	5,723	5,740	6,075	\$44,870,811	\$545.63
Trade, Transportation & Utilities	2,005	21,763	21,808	21,968	\$144,107,161	\$492.05
Financial Activities	862	4,129	4,142	4,080	\$30,328,477	\$551.22
Education & Health Services	1,123	15,219	15,427	15,461	\$118,083,859	\$556.12
Local Government	230	7,498	8,894	11,758	\$58,383,639	\$643.77
State Government	134	4,378	4,727	5,254	\$34,881,541	\$574.27
Other	2,725	44,197	43,756	43,363	\$259,399,967	\$434.92
West Central Workforce Includes these counties: Clark, Conway, Garland, Hot Spring, Johnson, Montgomery, Perry, Pike, Pope, and Yell						
WESTERN WORKFORCE INFORMATION	6,397	108,274	111,425	112,360	\$815,360,955	\$555.86
Natural Resources & Mining	163	2,366	2,339	2,454	\$30,470,206	\$736.78
Trade, Transportation & Utilities	1,644	22,937	22,972	23,010	\$154,774,755	\$499.68
Wholesale Trade	386	3,561	3,585	3,601	\$34,212,979	\$662.57
Retail Trade	961	12,371	12,443	12,373	\$60,411,635	\$383.80
Transportation, Warehousing & Utilities	297	7,005	6,944	7,036	\$60,150,141	\$628.75
Financial Activities	664	3,774	3,780	3,772	\$31,075,909	\$623.05
Professional & Business Services	792	10,505	10,907	10,683	\$72,038,233	\$476.62
Education & Health Services	813	13,423	13,533	13,496	\$117,543,877	\$630.20
Leisure & Hospitality	518	8,408	8,438	8,458	\$22,822,928	\$203.44
Local & State Government	232	7,623	10,239	11,990	\$71,819,553	\$666.17
Other	1,571	39,238	39,217	38,497	\$314,815,494	\$606.70
Western Workforce Includes these counties: Crawford, Franklin, Logan, Polk, Scott, and Sebastian						