

# Arkansas Covered Employment & Earnings

Jobs for People. People for Jobs.

**DWS**  
Department of  
WORKFORCE**Services**

First Quarter  
2006

**COVERED EMPLOYMENT AND EARNINGS  
STATE OF ARKANSAS  
FIRST QUARTER 2006**

**MIKE BEEBE, GOVERNOR  
STATE OF ARKANSAS**

**ARTEE WILLIAMS, DIRECTOR  
DEPARTMENT OF WORKFORCE SERVICES**

**PUBLISHED BY  
LABOR MARKET INFORMATION & ANALYSIS  
BUREAU OF LABOR STATISTICS PROGRAMS  
POST OFFICE BOX 2981  
LITTLE ROCK, ARKANSAS 72203-2981  
BERNADETTE COLEMAN, BLS PROGRAMS MANAGER  
TELEPHONE: (501) 682-3159**

**STATE OF ARKANSAS HOME PAGE: <http://www.arkansas.gov>**

**DEPARTMENT OF WORKFORCE SERVICES HOME PAGE: <http://www.arkansas.gov/esd/>**

**INTERNET SITE FOR LABOR MARKET INFORMATION:  
<http://www.discoverarkansas.net>**

**Equal Opportunity Employer/Program  
Auxiliary aids and services are available upon request to individuals with disabilities.  
TTD/TTY Voice: 1-800-285-1121 TDD: 1-800-285-1131**

**RELEASED: AUGUST 2007**

## TABLE OF CONTENTS

<b>DESCRIPTION OF DATA</b>	<b>Page</b>
Industry Classification	1
Definition of Covered Employment and Earnings	2
Federal Government Employment	2
County Classification	2
Significant Developments During First Quarter 2006	3

Graph 1	Total Covered Employment for Selected Years, Arkansas	7
Graph 2	Total Covered Earnings, by Calendar Quarter for Selected Years, Arkansas	8
Table 1	Quarterly Comparison of Covered Employment and Wages, by Industry	5
Table 2	Total Covered Employment in Arkansas, 1999-2006	6
Table 3	Total Covered Earnings, 1999-2006	9
Table 4	Total Taxable Earnings, 1999-2006	10
Table 5	State Summary - Employment and Total Earnings, by Industry, First Quarter 2006	11
Table 6	County Summary - Employment and Total Earnings, by Industry, First Quarter 2006	24
Table 7	Federal Government Employment and Total Earnings in Arkansas, First Quarter 2006	62
Table 8	Workforce Information Area – Employment and Total Earnings, by Industry, First Quarter 2006	63

EMPLOYMENT AND EARNINGS  
UNDER THE ARKANSAS EMPLOYMENT SECURITY LAW  
FIRST QUARTER 2006

## DESCRIPTION OF DATA

This publication contains covered employment and payroll data by industry and county for the First Quarter 2006. These data are compiled from quarterly contribution and wage reports submitted by employers subject to the Arkansas Employment Security Law. An employing unit is a single physical location where business is conducted, production takes place, or services are provided. Employment data have been tabulated for each month of the quarter by industry under the **North American Industry Classification System** (NAICS) (see "Industry Classification" below) on a statewide, county and workforce area basis. Payroll data represent the total wages paid during the quarter, and are also shown by

industry for the State and by publishable industry groups for each county and workforce area. The tabulation of this data is a joint effort in conjunction with the U.S. Bureau of Labor Statistics. In addition, there are tables included which set out total covered employment by months, quarterly payrolls, and average weekly earnings for the years 1999 through 2006. Data contained in this publication are subject to revision. These revisions will be reflected in the 2006 Annual Covered Employment and Earnings publication. Because of industry code changes between years, substantial employment and wage shifts among industries are anticipated.

## INDUSTRY CLASSIFICATION

Previously published industry data **will not** be comparable in all instances with currently published data since industry codes have been revised according to the following Manuals: (a) between January 1, 1958 and December 31, 1967, industry codes were assigned under the 1957 Standard Industrial Classification (SIC) Manual; (b) between January 1, 1968 and December 31, 1974, industry codes were assigned under the 1967 Standard Industrial Classification (SIC) Manual; (c) between January 1, 1975 and December 31, 1987, industry codes were assigned under the 1972 Standard Industrial Classification (SIC) Manual; (d) between January 1, 1988 and December 31, 2000, industry codes were assigned under the 1987 Standard Industrial Classification (SIC) Manual; and (e) since January 1, 2001, industry codes have been assigned under the 2002 North American Industry Classification System (NAICS) Manual. **The NAICS Manual represents a significant change in coding methodology as compared to the**

**SIC Manual.** One of the most significant changes involves how NAICS treats auxiliary units. Auxiliary units are establishments primarily engaged in performing management or support services for other establishments of the same enterprise. The SIC code for these units was based on the activity of the enterprise served. The NAICS code is based on the actual activities that the establishment performs. Comparisons of many industries **should not be made** between this publication and previous Covered Employment and Earnings publications that were based on SIC. Even though some titles are the same or similar, in nature, NAICS and SIC could differ in the classification of employers. The implementation of NAICS represents a profound change for statistical programs, and will create significant benefits along with transition obstacles for both data collectors and data users. A summary is available on the NAICS home page at <http://www.census.gov/naics>.

## DEFINITION OF COVERED EMPLOYMENT AND EARNINGS

Covered Employment is the number of workers employed by employers subject to the Arkansas Employment Security Law who worked or received pay for the payroll period including the 12th of the month. An employer is subject to the law when they employ one or more employees in each of ten days during the current or preceding calendar year.

Currently excluded from coverage is employment covered by the Railroad Unemployment Insurance Act, some domestic service workers, employees of small agricultural establishments, self-employed and unpaid family workers, insurance and real estate

agents who are on commission only, and employees of churches and religious organizations except separately incorporated schools. The payroll information in this publication includes all wages and salaries paid to any covered employees by their employers including bonuses, commissions, and cash values of remuneration received in any medium other than cash. These wages include both taxable and nontaxable wages. Only the first \$10,000 paid to each worker by an employer in the calendar year is taxable under the Arkansas Employment Security Law.

## FEDERAL GOVERNMENT EMPLOYMENT

Table 7 on page 60 lists the total number of civilians employed by the Federal Government in Arkansas during the First Quarter 2006. Employment and wage data are set out by industry divisions. These data are obtained from required reports submitted by various

government agencies having employment in the State. Civilian Federal workers are covered by the Unemployment Compensation for Federal Employees (UCFE) program.

## COUNTY CLASSIFICATION

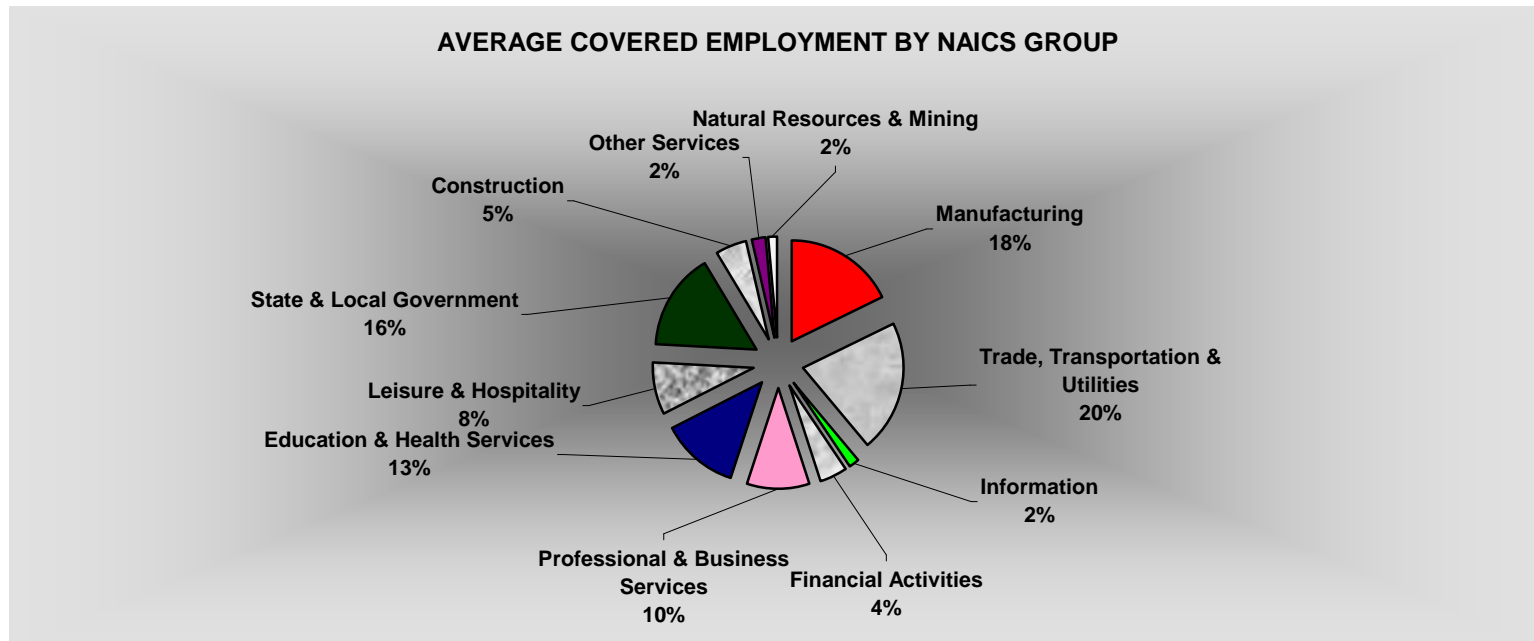
Employment and payroll data by county are classified according to the county where the workers are employed. Employers with operations in more than one county are requested to furnish this agency with a breakdown of employment and wages for at least one quarter of each year by the counties in which they operate. Many such employers submit county data with each regular contribution report. **Note:** This information is invaluable in the preparation of monthly employment and payroll data by county.

Employment and payroll data for multi - area employers, who do not furnish county data each quarter of the year, are prorated by county on the basis of one quarter's information. The "rest-of-state" table that appears on page 59 of this publication includes data on firms that **did not** provide a county breakdown of employment and payrolls. It also includes sales, and all other type of personnel with no permanent place of work, as well as employment of employers with no established place of business in Arkansas.

## SIGNIFICANT DEVELOPMENTS DURING FIRST QUARTER 2006

**AVERAGE EMPLOYMENT CHANGES**

Covered employment averaged 1,140,049 during the First Quarter 2006 (see table 1), a decrease of 5,254 (-0.5%) from the previous quarter and 26,251 (2.4%) above the average recorded one-year ago. This *over-the-year* increase is more significant when used as an economic indicator. This *over-the-year* comparison allows for the disregarding of many seasonal factors that are evident when making an *over-the-quarter* comparison.

**EMPLOYMENT CHANGES FROM FOURTH QUARTER 2005**

*Over the quarter* losses were recorded in six of the eleven industry groups (see table 1). Trade, Transportation and Utilities experienced the biggest drop of 4,323 employees. The focus of the decrease was in the trade industries with 79% of the decline. This is mainly due to the end of the holiday season as retailers release temporary workers. The Natural Resources and Mining (-1,655) sector had a seasonal contraction with the beginning of winter. Construction continued its downward path with a loss of 923 jobs. Other sectors

with a decline included Professional & Business Services (-264), Information (-249), and Education & Health Services (-196).

Gains were recorded in five industries. State and Local Government recorded the largest increase of 1,260 employees. This increase was mainly attributed to the return of educational facilities as employment returned to normal levels after the holiday break.

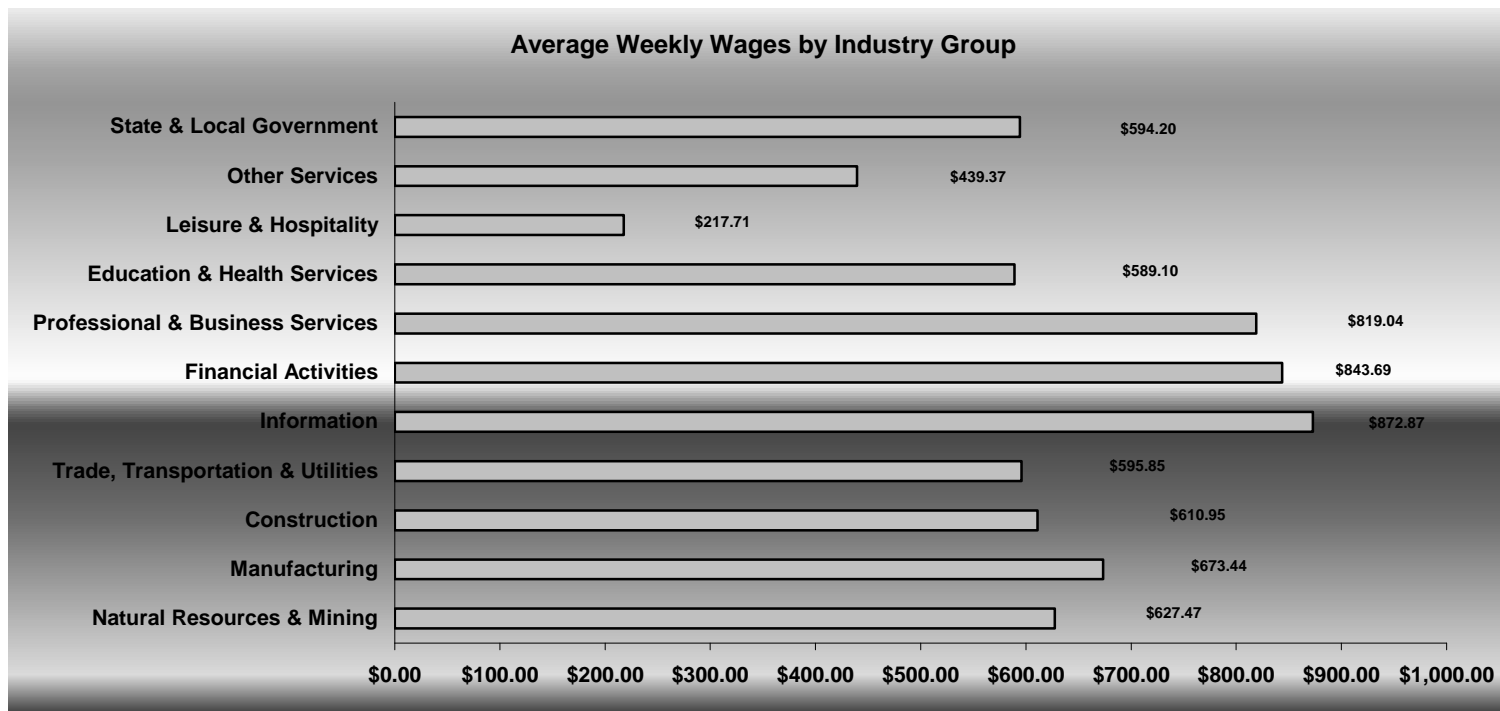
## EMPLOYMENT CHANGES FROM FIRST QUARTER 2005

*Over-the-year* gains were recorded in nine industry groups while two recorded losses (see table 1). Significant gains were posted in State & Local Government (+5,214), Professional & Business Services (+4,646), and Educational & Health Services (+4,489). The only losses occurred in Information (-558) and Manufacturing (-99).

## COVERED WAGES

Wages paid to covered workers totaled \$9,086,373,822 for the First Quarter 2006 (see table 1), for an average weekly wage of \$613.09 (see table 5). Employees in Little River County recorded the highest average weekly wage (\$813.60), and workers in Newton County the lowest (\$343.14) (see table 6).

The Information sector recorded the highest average weekly wage for the State of Arkansas at \$872.87, while the Leisure & Hospitality sector recorded the lowest at \$217.71 for the State of Arkansas (see table 5).



Note: Because of industry code changes between years, substantial employment and wage shifts among industries are anticipated.

TABLE 1. QUARTERLY COMPARISON OF COVERED EMPLOYMENT AND WAGES, BY INDUSTRY

North American Industry Classification System Industry	Number of Employing Units	Average Monthly Employment	% of Employment Total	Net Change From Oct. - Dec. 2005	Net Change From Jan. - Mar. 2005	Total Wages Paid Jan. - Mar. 2006	% of Total Wages Paid
<b>Total</b>	<b>79,468</b>	<b>1,140,049</b>	<b>100.0%</b>	<b>-5,254</b>	<b>26,251</b>	<b>\$9,086,373,822</b>	<b>100.0%</b>
<b>Natural Resources &amp; Mining</b>	<b>2,346</b>	<b>17,167</b>	<b>1.5%</b>	<b>-1,655</b>	<b>264</b>	<b>\$140,031,023</b>	<b>1.5%</b>
Agriculture, Forestry, Fishing & Hunting	1,998	12,668	1.1%	-1,853	-420	\$80,834,614	0.9%
Mining	348	4,499	0.4%	198	684	\$59,196,409	0.7%
<b>Construction</b>	<b>7,842</b>	<b>54,896</b>	<b>4.8%</b>	<b>-923</b>	<b>3,222</b>	<b>\$436,002,960</b>	<b>4.8%</b>
<b>Manufacturing</b>	<b>3,601</b>	<b>201,132</b>	<b>17.6%</b>	<b>63</b>	<b>-99</b>	<b>\$1,760,850,776</b>	<b>19.4%</b>
<b>Trade, Transportation &amp; Utilities</b>	<b>20,907</b>	<b>241,774</b>	<b>21.2%</b>	<b>-4,323</b>	<b>4,016</b>	<b>\$1,872,779,294</b>	<b>20.6%</b>
Wholesale Trade	6,300	47,257	4.1%	-518	707	\$582,499,380	6.4%
Retail Trade	11,290	131,971	11.6%	-2,916	1,966	\$672,362,609	7.4%
Transportation & Warehousing	2,953	55,827	4.9%	-936	1,100	\$506,919,838	5.6%
Utilities	364	6,719	0.6%	46	243	\$110,997,467	1.2%
<b>Information</b>	<b>1,202</b>	<b>19,746</b>	<b>1.7%</b>	<b>-249</b>	<b>-558</b>	<b>\$224,068,142</b>	<b>2.5%</b>
<b>Financial Activities</b>	<b>8,015</b>	<b>50,575</b>	<b>4.4%</b>	<b>244</b>	<b>1,673</b>	<b>\$554,707,334</b>	<b>6.1%</b>
Finance & Insurance	4,709	36,741	3.2%	203	1,052	\$461,417,690	5.1%
Real Estate & Rental & Leasing	3,306	13,834	1.2%	41	620	\$93,289,644	1.0%
<b>Professional &amp; Business Services</b>	<b>10,719</b>	<b>113,243</b>	<b>9.9%</b>	<b>-264</b>	<b>4,646</b>	<b>\$1,205,760,645</b>	<b>13.3%</b>
Professional & Technical Services	6,770	37,536	3.3%	1,944	1,520	\$417,654,902	4.6%
Management of Companies & Enterprises	496	23,874	2.1%	225	442	\$533,503,984	5.9%
Administrative & Waste Services	3,453	51,834	4.5%	-2,432	2,685	\$254,601,759	2.8%
<b>Education &amp; Health Services</b>	<b>10,081</b>	<b>143,143</b>	<b>12.6%</b>	<b>-196</b>	<b>4,489</b>	<b>\$1,096,228,117</b>	<b>12.1%</b>
Educational Services	549	9,023	0.8%	-330	519	\$56,792,202	0.6%
Health Care & Social Assistance	9,532	134,120	11.8%	135	3,971	\$1,039,435,915	11.4%
<b>Leisure &amp; Hospitality</b>	<b>6,054</b>	<b>93,618</b>	<b>8.2%</b>	<b>531</b>	<b>3,218</b>	<b>\$264,955,118</b>	<b>2.9%</b>
Arts, Entertainment & Recreation	926	8,450	0.7%	68	306	\$32,584,282	0.4%
Accommodation & Food Services	5,128	85,167	7.5%	462	2,911	\$232,370,836	2.6%
<b>Other Services</b>	<b>5,504</b>	<b>25,164</b>	<b>2.2%</b>	<b>258</b>	<b>165</b>	<b>\$143,730,814</b>	<b>1.6%</b>
<b>State &amp; Local Government</b>	<b>3,197</b>	<b>179,591</b>	<b>15.8%</b>	<b>1,260</b>	<b>5,214</b>	<b>\$1,387,259,599</b>	<b>15.3%</b>
Local Government	2,004	117,430	10.3%	-284	2,710	\$821,376,924	9.0%
State Government	1,193	62,161	5.5%	1,544	2,504	\$565,882,675	6.2%
Nonclassifiable Establishments	0	0	0.0%	0	0	\$0	0.0%

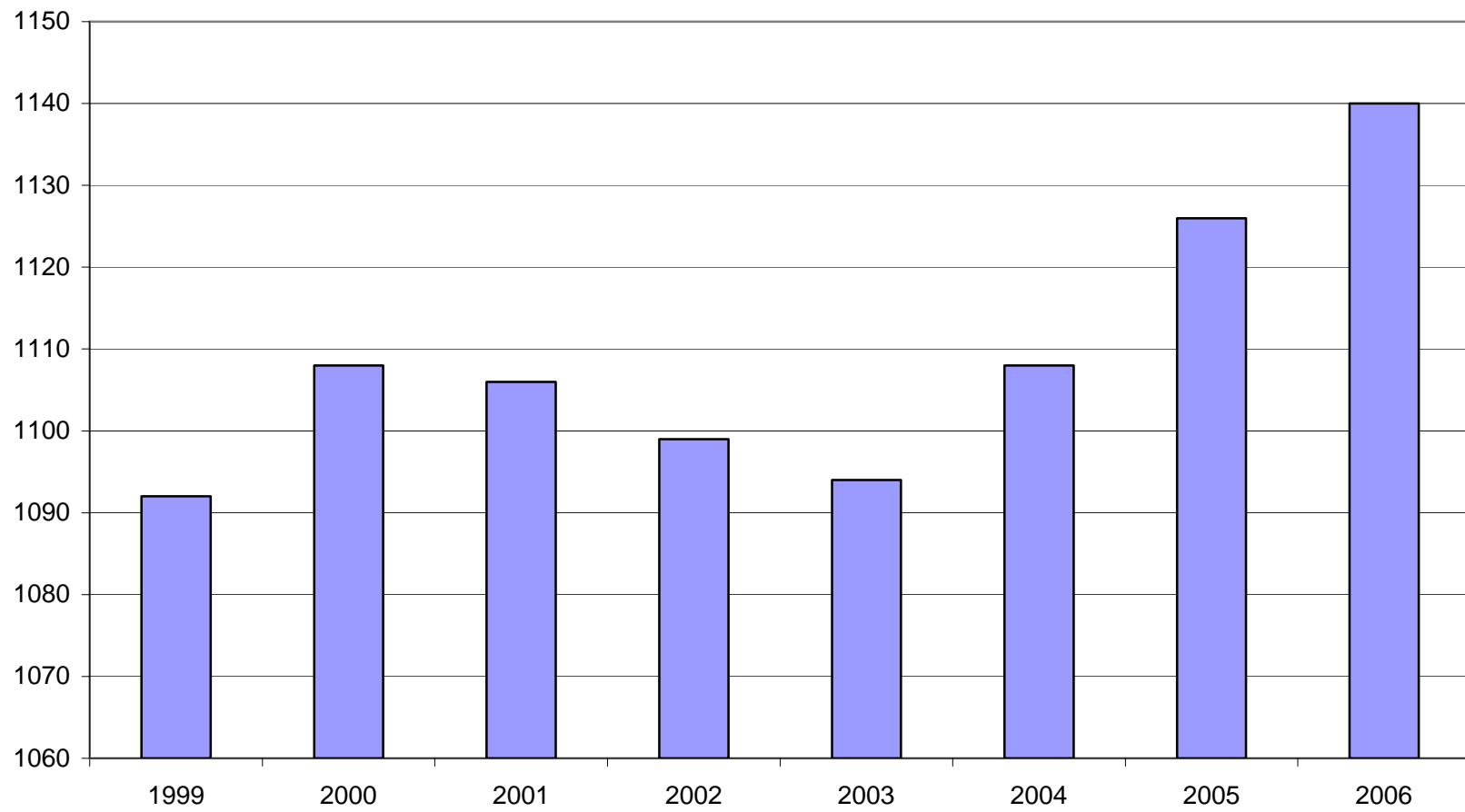
Note: Items do not necessarily add to totals because of rounding. Because of industry code changes between years, substantial employment and wage shifts among industries are anticipated.



TABLE 2. TOTAL COVERED EMPLOYMENT IN ARKANSAS

Period	1999	2000	2001	2002	2003	2004	2005	2006
Average	1,092,351	1,108,479	1,106,066	1,098,558	1,094,087	1,108,264	1,126,778	1,140,049
January	1,065,920	1,089,943	1,096,009	1,081,635	1,082,740	1,089,510	1,102,768	1,131,326
February	1,074,315	1,096,113	1,101,616	1,086,793	1,084,880	1,094,626	1,110,577	1,137,832
March	1,084,653	1,109,144	1,112,143	1,098,500	1,092,172	1,105,266	1,122,619	1,150,990
April	1,093,574	1,111,525	1,115,526	1,103,399	1,095,341	1,111,020	1,129,785	N/A
May	1,098,539	1,116,760	1,119,815	1,111,998	1,103,099	1,117,144	1,135,567	N/A
June	1,101,748	1,121,225	1,119,734	1,112,028	1,099,688	1,117,010	1,136,118	N/A
July	1,062,563	1,075,066	1,071,921	1,065,697	1,053,220	1,071,463	1,090,071	N/A
August	1,081,260	1,096,848	1,094,160	1,086,011	1,077,775	1,094,871	1,114,098	N/A
September	1,108,212	1,123,725	1,115,976	1,113,148	1,105,980	1,122,704	1,144,815	N/A
October	1,110,604	1,122,884	1,110,994	1,108,447	1,112,550	1,123,246	1,142,300	N/A
November	1,112,003	1,120,620	1,109,012	1,107,611	1,109,712	1,125,061	1,145,667	N/A
December	1,114,823	1,117,892	1,105,887	1,107,425	1,111,892	1,127,250	1,146,954	N/A

AVERAGE TOTAL COVERED EMPLOYMENT GRAPH 1  
In Thousands



TOTAL COVERED EARNINGS BY CALENDAR QUARTER, GRAPH 2  
In Thousands

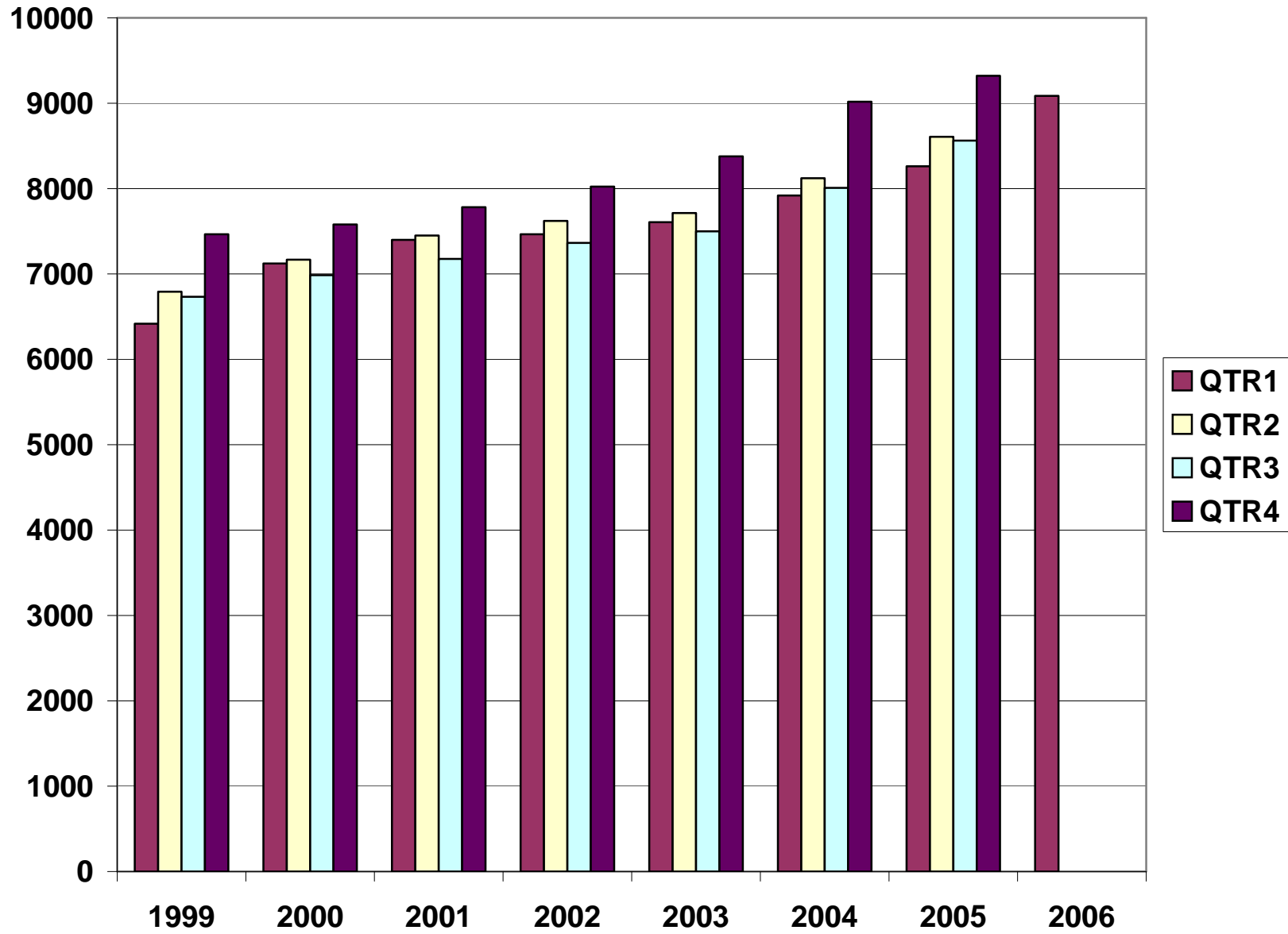


TABLE 3. TOTAL COVERED EARNINGS, 1999- 2006

<b>PERIOD</b>	<b>1999</b>	<b>2000</b>	<b>2001</b>	<b>2002</b>
Total	\$27,407,925,462	\$28,853,716,151	\$29,807,669,666	\$30,472,854,103
January - March	\$6,418,456,638	\$7,122,636,896	\$7,398,887,532	\$7,465,250,305
April - June	\$6,791,960,679	\$7,166,049,182	\$7,448,023,298	\$7,621,878,775
July - September	\$6,733,480,079	\$6,986,085,106	\$7,177,293,061	\$7,361,666,511
October - December	\$7,464,028,066	\$7,578,944,967	\$7,783,465,775	\$8,024,058,512
Average Weekly Earnings	\$482.51	\$500.58	\$518.26	\$533.44

<b>PERIOD</b>	<b>2003</b>	<b>2004</b>	<b>2005</b>	<b>2006</b>
Total	\$31,202,576,767	\$33,068,189,304	\$34,753,437,458	\$9,086,373,822
January - March	\$7,608,130,008	\$7,918,843,610	\$8,261,153,981	\$9,086,373,822
April - June	\$7,714,813,038	\$8,122,370,361	\$8,607,722,353	N/A
July - September	\$7,500,204,764	\$8,010,300,454	\$8,562,885,196	N/A
October - December	\$8,379,428,957	\$9,016,674,879	\$9,321,675,928	N/A
Average Weekly Earnings	\$548.45	\$573.80	\$593.14	\$664.18

TABLE 4. TOTAL TAXABLE EARNINGS, 1999 - 2006

<b>Period</b>	<b>1999</b>	<b>2000</b>	<b>2001</b>	<b>2002</b>
Total	\$8,807,445,422	\$9,047,924,530	\$9,003,189,480	\$8,887,270,978
January - March	\$4,203,067,856	\$4,560,783,991	\$4,670,296,360	\$4,668,534,587
April - June	\$2,325,649,764	\$2,260,680,255	\$2,219,485,263	\$2,162,971,435
July - September	\$1,267,562,743	\$1,250,832,297	\$1,190,098,737	\$1,158,197,858
October - December	\$1,011,165,059	\$975,627,987	\$923,309,120	\$897,567,098

<b>Period</b>	<b>2003</b>	<b>2004</b>	<b>2005</b>	<b>2006</b>
Total	\$9,154,938,743	\$9,731,247,501	\$9,991,605,239	\$5,422,414,259
January - March	\$4,737,918,796	\$4,931,559,230	\$5,062,670,306	\$5,422,414,259
April - June	\$2,270,519,362	\$2,451,454,749	\$2,506,505,721	N/A
July - September	\$1,188,681,170	\$1,318,017,835	\$1,353,660,445	N/A
October - December	\$957,819,415	\$1,030,215,687	\$1,068,768,767	N/A

**TABLE 5. STATEWIDE SUMMARY  
EMPLOYMENT AND TOTAL EARNINGS, BY INDUSTRY  
FIRST QUARTER 2006**

NORTH AMERICAN INDUSTRY CLASSIFICATION SYSTEM INDUSTRY GROUPS	NUMBER OF EMPLOYING UNITS	EMPLOYMENT JANUARY	EMPLOYMENT FEBRUARY	EMPLOYMENT MARCH	TOTAL EARNINGS JANUARY - MARCH	AVERAGE WEEKLY EARNINGS
TOTAL, ALL INDUSTRIES	79,468	1,131,326	1,137,832	1,150,990	\$9,086,373,822	\$613.09
NATURAL RESOURCES AND MINING	2,346	16,699	17,172	17,629	\$140,031,023	\$627.47
AGRICULTURE, FORESTRY, FISHING AND HUNTING	1,998	12,337	12,645	13,021	\$80,834,614	\$490.86
CROP PRODUCTION	719	2,967	3,007	3,403	\$15,178,820	\$373.55
Oilseed and Grain Farming	425	1,522	1,521	1,685	\$7,437,047	\$363.00
Vegetable and Melon Farming	11	138	138	145	\$439,393	\$240.85
Fruit and Tree Nut Farming	9	61	65	66	\$262,594	\$315.62
Greenhouse and Nursery Production	49	317	353	445	\$2,034,564	\$421.09
Other Crop Farming	225	929	930	1,062	\$5,005,222	\$395.43
ANIMAL PRODUCTION	254	3,603	3,615	3,644	\$26,658,690	\$566.38
Cattle Ranching and Farming	75	309	309	313	\$1,930,938	\$478.63
Hog and Pig Farming	7	145	144	141	\$1,300,244	\$697.81
Poultry and Egg Production	87	2,579	2,578	2,570	\$19,808,970	\$591.60
Animal Aquaculture	58	493	501	533	\$3,191,323	\$482.29
Other Animal Production	27	77	83	87	\$427,215	\$399.14
FORESTRY AND LOGGING	566	3,089	3,059	3,059	\$21,490,533	\$538.65
Timber Tract Operations	45	252	254	253	\$2,669,550	\$811.66
Forest Nurseries & Gathering of Forest Products	6	33	34	33	\$269,739	\$622.47
Logging	515	2,804	2,771	2,773	\$18,551,244	\$512.82
OTHER	459	2,678	2,964	2,915	\$17,506,571	\$472.13
MINING	348	4,362	4,527	4,608	\$59,196,409	\$1,012.13
OIL AND GAS EXTRACTION	80	389	389	398	\$5,582,453	\$1,095.46
MINING (EXCEPT OIL AND GAS)	102	1,970	1,997	2,012	\$23,086,411	\$891.06
SUPPORT ACTIVITIES FOR MINING	166	2,003	2,141	2,198	\$30,527,545	\$1,110.82
CONSTRUCTION	7,842	54,415	54,578	55,694	\$436,002,960	\$610.95
CONSTRUCTION OF BUILDINGS	2,203	12,888	12,742	12,973	\$109,436,645	\$654.21
Residential Building Construction	1,596	4,617	4,530	4,719	\$33,447,991	\$556.67
Nonresidential Building Construction	607	8,271	8,212	8,254	\$75,988,654	\$708.89
HEAVY AND CIVIL ENGINEERING CONSTRUCTION	882	9,887	10,032	10,114	\$85,428,235	\$656.42
Utility System Construction	419	4,704	4,378	4,542	\$35,618,961	\$603.33
Land Subdivision	128	428	429	468	\$4,113,611	\$716.45
Highway, Street and Bridge Construction	219	3,346	3,353	3,442	\$27,505,574	\$625.92

**TABLE 5. STATEWIDE SUMMARY  
EMPLOYMENT AND TOTAL EARNINGS, BY INDUSTRY  
FIRST QUARTER 2006**

NORTH AMERICAN INDUSTRY CLASSIFICATION SYSTEM INDUSTRY GROUPS	NUMBER OF EMPLOYING UNITS	EMPLOYMENT JANUARY	EMPLOYMENT FEBRUARY	EMPLOYMENT MARCH	TOTAL EARNINGS JANUARY - MARCH	AVERAGE WEEKLY EARNINGS
Other Heavy Construction	116	1,409	1,872	1,662	\$18,190,089	\$849.22
<b>SPECIALTY TRADE CONTRACTORS</b>	<b>4,757</b>	<b>31,640</b>	<b>31,804</b>	<b>32,607</b>	<b>\$241,138,080</b>	<b>\$579.35</b>
Building Foundation and Exterior Contractors	941	6,173	6,227	6,485	\$46,122,518	\$563.60
Building Equipment Contractors	2,088	15,448	15,468	15,715	\$126,946,703	\$628.24
Building Finishing Contractors	885	5,040	5,115	5,223	\$33,326,224	\$500.11
Other Specialty Trade Contractors	843	4,979	4,994	5,184	\$34,742,635	\$528.97
<b>MANUFACTURING</b>	<b>3,601</b>	<b>201,075</b>	<b>201,124</b>	<b>201,197</b>	<b>\$1,760,850,776</b>	<b>\$673.44</b>
<b>FOOD MANUFACTURING</b>	<b>313</b>	<b>51,391</b>	<b>51,074</b>	<b>51,041</b>	<b>\$349,536,601</b>	<b>\$525.47</b>
Animal Food Manufacturing	56	1,362	1,360	1,381	\$12,604,013	\$708.90
Grain and Oilseed Milling	29	2,458	2,456	2,442	\$20,756,217	\$651.16
Fruit, Vegetable and Specialty Food	35	6,979	6,906	6,948	\$56,530,797	\$626.20
Dairy Product Manufacturing	13	715	717	732	\$6,746,022	\$719.40
Animal Slaughtering and Processing	91	34,411	34,267	34,154	\$209,427,571	\$469.98
Bakeries and Tortilla Manufacturing	52	3,500	3,441	3,454	\$26,265,503	\$583.09
Other Food Manufacturing	24	1,735	1,695	1,694	\$16,221,526	\$730.57
Other	13	231	232	236	\$984,952	\$325.17
<b>BEVERAGE AND TOBACCO PRODUCT MFG.</b>	<b>36</b>	<b>1,231</b>	<b>1,224</b>	<b>1,227</b>	<b>\$11,649,847</b>	<b>\$730.15</b>
<b>TEXTILE MILLS</b>	<b>19</b>	<b>403</b>	<b>412</b>	<b>418</b>	<b>\$4,540,519</b>	<b>\$849.81</b>
Fabric Mills	6	333	339	337	\$4,059,766	\$928.51
Textile and Fabric Finishing Mills	13	70	73	81	\$480,753	\$495.28
<b>TEXTILE PRODUCT MILLS</b>	<b>59</b>	<b>1,324</b>	<b>1,319</b>	<b>1,333</b>	<b>\$12,411,293</b>	<b>\$720.36</b>
Textile Furnishing Mills	17	30	31	33	\$133,770	\$328.40
Other Textile Product Mills	42	1,294	1,288	1,300	\$12,277,523	\$729.85
<b>APPAREL MANUFACTURING</b>	<b>44</b>	<b>1,895</b>	<b>1,902</b>	<b>1,916</b>	<b>\$9,087,414</b>	<b>\$367.07</b>
Cut and Sew Apparel Manufacturing	36	854	884	883	\$4,206,974	\$370.41
Other	8	1,041	1,018	1,033	\$4,880,440	\$364.25
<b>LEATHER AND ALLIED PRODUCT MANUFACTURING</b>	<b>21</b>	<b>2,318</b>	<b>2,325</b>	<b>2,286</b>	<b>\$12,020,905</b>	<b>\$400.35</b>
Footwear Manufacturing	10	2,117	2,115	2,063	\$10,658,389	\$390.73
Other Leather Product Manufacturing	11	201	210	223	\$1,362,516	\$495.94
<b>WOOD PRODUCT MANUFACTURING</b>	<b>394</b>	<b>13,712</b>	<b>13,762</b>	<b>13,928</b>	<b>\$110,557,532</b>	<b>\$616.23</b>
Sawmills and Wood Preservation	182	6,187	6,213	6,252	\$52,902,314	\$654.53
Veneer and Engineered Wood Products	49	3,317	3,298	3,334	\$30,964,865	\$718.24
Other Wood Product Manufacturing	163	4,208	4,251	4,342	\$26,690,353	\$481.16

**TABLE 5. STATEWIDE SUMMARY  
EMPLOYMENT AND TOTAL EARNINGS, BY INDUSTRY  
FIRST QUARTER 2006**

NORTH AMERICAN INDUSTRY CLASSIFICATION SYSTEM INDUSTRY GROUPS	NUMBER OF EMPLOYING UNITS	EMPLOYMENT JANUARY	EMPLOYMENT FEBRUARY	EMPLOYMENT MARCH	TOTAL EARNINGS JANUARY - MARCH	AVERAGE WEEKLY EARNINGS
PAPER MANUFACTURING	88	12,078	11,997	11,816	\$162,365,902	\$1,043.97
Pulp, Paper and Paperboard Mills	13	4,743	4,699	4,624	\$85,805,511	\$1,407.74
Converted Paper Product Manufacturing	75	7,335	7,298	7,192	\$76,560,391	\$809.52
PRINTING AND RELATED SUPPORT ACTIVITIES	300	4,600	4,613	4,667	\$39,535,399	\$657.32
PETROLEUM AND COAL PRODUCTS MANUFACTURING	21	858	853	884	\$10,737,041	\$954.83
CHEMICAL MANUFACTURING	107	4,687	4,728	4,743	\$58,243,519	\$949.34
Basic Chemical Manufacturing	26	1,970	1,962	1,958	\$28,497,180	\$1,116.51
Resin, Rubber and Artificial Fibers	5	298	299	302	\$4,323,604	\$1,109.85
Agricultural Chemical Manufacturing	17	347	348	350	\$4,038,670	\$891.87
Paint, Coating and Adhesive Manufacturing	7	181	178	177	\$2,380,573	\$1,024.93
Cleaning Compound and Toiletry Manufacturing	24	938	992	1,018	\$9,740,060	\$762.45
Other Chemical Preparation Manufacturing	28	953	949	938	\$9,263,432	\$752.72
PLASTICS AND RUBBER PRODUCTS MANUFACTURING	174	13,129	13,144	13,190	\$124,539,324	\$728.27
Plastics Product Manufacturing	129	7,788	7,831	7,847	\$65,196,927	\$641.16
Rubber Product Manufacturing	45	5,341	5,313	5,343	\$59,342,397	\$856.06
NONMETALLIC MINERAL PRODUCT MANUFACTURING	248	4,673	4,674	4,629	\$42,302,319	\$698.49
Clay Product and Refractory Manufacturing	15	463	463	456	\$4,257,296	\$710.89
Glass and Glass Product Manufacturing	14	422	422	422	\$3,473,286	\$633.12
Cement and Concrete Product Manufacturing	181	2,833	2,830	2,802	\$24,011,718	\$654.60
Lime and Gypsum Product Manufacturing	3	418	427	420	\$5,029,645	\$917.54
Other Nonmetallic Mineral Products	35	537	532	529	\$5,530,374	\$798.65
PRIMARY METAL MANUFACTURING	69	8,349	8,482	8,456	\$109,511,682	\$999.40
Iron and Steel Mills and Ferroalloys	8	2,093	2,089	2,042	\$45,568,915	\$1,689.57
Purchased Steel Product Manufacturing	14	2,336	2,370	2,419	\$23,226,981	\$752.29
Alumina and Aluminum Production	19	1,803	1,882	1,853	\$20,783,834	\$866.07
Other Nonferrous Metal Production	11	593	598	594	\$5,476,100	\$707.96
Foundries	17	1,524	1,543	1,548	\$14,455,852	\$722.85
FABRICATED METAL PRODUCT MANUFACTURING	583	17,683	17,753	17,778	\$162,003,495	\$702.55
Forging and Stamping	14	916	928	921	\$7,498,244	\$625.81
Cutlery and Hand Tool Manufacturing	17	1,372	1,356	1,341	\$10,814,247	\$613.32
Architectural and Structural Metals	204	4,992	5,051	5,107	\$46,876,655	\$714.04
Boilers, Tanks and Shipping Containers	20	1,111	1,113	1,113	\$9,974,109	\$689.76
Hardware Manufacturing	10	312	298	291	\$2,346,885	\$601.10



**TABLE 5. STATEWIDE SUMMARY  
EMPLOYMENT AND TOTAL EARNINGS, BY INDUSTRY  
FIRST QUARTER 2006**

NORTH AMERICAN INDUSTRY CLASSIFICATION SYSTEM INDUSTRY GROUPS	NUMBER OF EMPLOYING UNITS	EMPLOYMENT JANUARY	EMPLOYMENT FEBRUARY	EMPLOYMENT MARCH	TOTAL EARNINGS JANUARY - MARCH	AVERAGE WEEKLY EARNINGS
Spring and Wire Product Manufacturing	16	756	749	787	\$5,479,557	\$551.71
Machine Shops and Threaded Products	198	1,725	1,748	1,772	\$14,306,866	\$629.47
Coating, Engraving and Heat Treating Metals	37	952	938	888	\$6,848,555	\$568.91
Other Fabricated Metal Product Manufacturing	67	5,547	5,572	5,558	\$57,858,377	\$800.62
<b>MACHINERY MANUFACTURING</b>	<b>256</b>	<b>14,696</b>	<b>14,778</b>	<b>14,792</b>	<b>\$132,023,470</b>	<b>\$688.27</b>
Agricultural, Construction and Mining Machinery	38	3,165	3,322	3,312	\$20,470,326	\$482.08
Commercial and Service Industry Machinery	27	1,001	1,000	1,002	\$10,656,002	\$818.87
HVAC and Commercial Refrigeration Equipment	24	4,991	4,966	4,987	\$50,921,500	\$786.34
Metalworking Machinery Manufacturing	76	1,379	1,372	1,372	\$12,703,799	\$711.05
Other General Purpose Machinery Manufacturing	56	3,218	3,175	3,154	\$27,724,326	\$670.15
Other	35	942	943	965	\$9,547,517	\$773.08
<b>COMPUTER AND ELECTRONIC PRODUCT MANUFACTURING</b>	<b>80</b>	<b>5,488</b>	<b>5,563</b>	<b>5,505</b>	<b>\$46,995,874</b>	<b>\$655.06</b>
Audio and Video Equipment Manufacturing	10	1,231	1,295	1,296	\$10,757,242	\$649.51
Semiconductors and Electronic Components	24	2,039	2,048	2,038	\$17,299,183	\$651.77
Electronic Instrument Manufacturing	29	1,195	1,200	1,210	\$9,158,063	\$586.24
Other	17	1,023	1,020	961	\$9,781,386	\$751.41
<b>ELECTRICAL EQUIPMENT AND APPLIANCES</b>	<b>71</b>	<b>13,104</b>	<b>12,960</b>	<b>12,918</b>	<b>\$123,789,586</b>	<b>\$732.82</b>
Electrical Equipment Manufacturing	24	4,966	4,963	4,958	\$47,182,121	\$731.39
Other	47	8,138	7,997	7,960	\$76,607,465	\$733.71
<b>TRANSPORTATION EQUIPMENT MANUFACTURING</b>	<b>175</b>	<b>17,020</b>	<b>17,091</b>	<b>17,165</b>	<b>\$148,344,620</b>	<b>\$667.63</b>
Motor Vehicle Body and Trailer Manufacturing	45	3,649	3,697	3,772	\$31,067,590	\$644.85
Motor Vehicle Parts Manufacturing	57	6,864	6,810	6,723	\$51,533,046	\$583.04
Aerospace Product and Parts Manufacturing	30	3,377	3,408	3,432	\$41,113,817	\$928.63
Ship and Boat Building	24	1,683	1,702	1,681	\$11,855,906	\$540.07
Other	19	1,447	1,474	1,557	\$12,774,261	\$658.31
<b>FURNITURE &amp; RELATED PRODUCT MFG.</b>	<b>273</b>	<b>6,659</b>	<b>6,623</b>	<b>6,648</b>	<b>\$48,757,043</b>	<b>\$564.56</b>
Household & Institutional Furniture	225	4,487	4,489	4,479	\$30,713,364	\$526.77
Office Furniture & Fixtures Manufacturing	40	2,029	1,990	2,022	\$17,032,935	\$650.67
Other Furniture Related Product Manufacturing	8	143	144	147	\$1,010,744	\$537.44
<b>MISCELLANEOUS MANUFACTURING</b>	<b>270</b>	<b>5,777</b>	<b>5,847</b>	<b>5,857</b>	<b>\$41,897,391</b>	<b>\$553.09</b>
Medical Equipment & Supplies Manufacturing	99	2,629	2,671	2,653	\$20,361,613	\$590.83
Other Miscellaneous Manufacturing	171	3,148	3,176	3,204	\$21,535,778	\$521.60
<b>TRADE, TRANSPORTATION AND UTILITIES</b>	<b>20,907</b>	<b>240,928</b>	<b>240,541</b>	<b>243,852</b>	<b>\$1,872,779,294</b>	<b>\$595.85</b>

**TABLE 5. STATEWIDE SUMMARY  
EMPLOYMENT AND TOTAL EARNINGS, BY INDUSTRY  
FIRST QUARTER 2006**

NORTH AMERICAN INDUSTRY CLASSIFICATION SYSTEM INDUSTRY GROUPS	NUMBER OF EMPLOYING UNITS	EMPLOYMENT JANUARY	EMPLOYMENT FEBRUARY	EMPLOYMENT MARCH	TOTAL EARNINGS JANUARY - MARCH	AVERAGE WEEKLY EARNINGS
WHOLESALE TRADE	6,300	47,006	47,196	47,568	\$582,499,380	\$948.18
MERCHANT WHOLESALERS, DURABLE GOODS	2,108	21,735	21,834	21,918	\$236,041,621	\$831.79
Motor Vehicle & Part Merchant Wholesalers	233	2,716	2,734	2,752	\$25,440,398	\$715.78
Furniture & Furnishing Merchant Wholesalers	60	424	425	427	\$5,311,111	\$960.53
Lumber & Supply Merchant Wholesalers	171	1,815	1,827	1,827	\$18,624,895	\$785.89
Commercial Goods Merchant Wholesalers	247	2,391	2,434	2,447	\$37,045,068	\$1,175.59
Metal & Mineral Merchant Wholesalers	50	772	784	786	\$8,688,673	\$856.14
Electric Goods Merchant Wholesalers	179	2,187	2,179	2,130	\$25,785,900	\$916.04
Hardware & Plumbing Merchant Wholesalers	226	2,416	2,420	2,450	\$28,032,765	\$887.88
Machinery & Supply Merchant Wholesalers	703	7,216	7,227	7,266	\$69,789,641	\$741.87
Misc. Durable Goods Merchant Wholesalers	239	1,798	1,804	1,833	\$17,323,170	\$735.54
MERCHANT WHOLESALERS, NONDURABLE GOODS	1,307	16,346	16,428	16,659	\$164,902,742	\$769.82
Paper & Paper Product Merchant Wholesalers	73	1,188	1,197	1,180	\$12,059,610	\$780.64
Druggists' Goods Merchant Wholesalers	56	1,212	1,206	1,221	\$13,413,894	\$850.65
Apparel & Piece Goods Merchant Wholesalers	40	458	451	463	\$3,720,894	\$625.85
Grocery Product Merchant Wholesalers	359	5,198	5,181	5,207	\$61,020,225	\$903.48
Farm Product Merchant Wholesalers	80	857	837	835	\$4,794,911	\$437.53
Chemical Merchant Wholesalers	80	440	444	444	\$5,316,149	\$923.80
Petroleum Merchant Wholesalers	156	1,444	1,449	1,478	\$17,847,970	\$942.29
Alcoholic Beverage Merchant Wholesalers	37	1,133	1,121	1,130	\$12,598,815	\$859.17
Misc. Nondurable Goods Merchant Wholesalers	426	4,416	4,542	4,701	\$34,130,274	\$576.63
ELECTRONIC MARKETS & AGENTS & BROKERS	2,885	8,925	8,934	8,991	\$181,555,017	\$1,560.42
RETAIL TRADE	11,290	131,700	130,825	133,388	\$672,362,609	\$391.91
MOTOR VEHICLE & PARTS DEALERS	1,742	17,577	17,576	17,674	\$140,385,132	\$613.26
Automobile Dealers	747	10,469	10,473	10,492	\$96,495,714	\$708.41
Other Motor Vehicle Dealers	196	1,448	1,481	1,523	\$10,557,460	\$547.25
Automotive Parts, Accessories & Tire Stores	799	5,660	5,622	5,659	\$33,331,958	\$454.05
FURNITURE & HOME FURNISHINGS STORES	608	4,101	4,087	4,163	\$25,897,644	\$483.88
Furniture Stores	320	2,553	2,569	2,568	\$16,451,318	\$493.69
Home Furnishings Stores	288	1,548	1,518	1,595	\$9,446,326	\$467.69
ELECTRONICS & APPLIANCE STORES	464	2,945	2,894	2,913	\$17,575,230	\$463.42
BUILDING MATERIAL & GARDEN SUPPLY STORES	821	10,866	11,211	11,557	\$74,085,732	\$508.32
Building Material & Supplies Dealers	650	10,126	10,444	10,676	\$69,969,952	\$516.77

**TABLE 5. STATEWIDE SUMMARY  
EMPLOYMENT AND TOTAL EARNINGS, BY INDUSTRY  
FIRST QUARTER 2006**

NORTH AMERICAN INDUSTRY CLASSIFICATION SYSTEM INDUSTRY GROUPS	NUMBER OF EMPLOYING UNITS	EMPLOYMENT JANUARY	EMPLOYMENT FEBRUARY	EMPLOYMENT MARCH	TOTAL EARNINGS JANUARY - MARCH	AVERAGE WEEKLY EARNINGS
Lawn & Garden Equipment & Supplies Stores	171	740	767	881	\$4,115,780	\$397.74
<b>FOOD &amp; BEVERAGE STORES</b>	1,110	18,415	18,385	18,591	\$71,991,384	\$299.93
Grocery Stores	638	16,065	16,085	16,245	\$61,675,463	\$294.10
Specialty Food Stores	160	855	838	859	\$4,471,368	\$404.33
Beer, Wine & Liquor Stores	312	1,495	1,462	1,487	\$5,844,553	\$303.50
<b>HEALTH &amp; PERSONAL CARE STORES</b>	804	6,734	6,771	6,764	\$44,438,119	\$505.94
<b>GASOLINE STATIONS</b>	1,652	12,542	12,499	12,699	\$42,704,368	\$261.12
Gasoline Stations with Convenience Stores	1,480	11,317	11,252	11,481	\$37,263,319	\$252.55
Other Gasoline Stations	172	1,225	1,247	1,218	\$5,441,049	\$340.28
<b>CLOTHING &amp; CLOTHING ACCESSORIES STORES</b>	1,050	8,479	8,125	8,293	\$29,058,168	\$269.34
Clothing Stores	699	6,284	5,980	6,149	\$19,161,938	\$240.16
Shoe Stores	176	1,182	1,177	1,187	\$4,107,792	\$267.33
Jewelry, Luggage & Leather Goods Stores	175	1,013	968	957	\$5,788,438	\$454.66
<b>SPORTING GOODS, HOBBY, BOOK &amp; MUSIC STORES</b>	565	4,519	4,289	4,360	\$15,452,296	\$270.80
Sporting Goods & Musical Instrument Stores	400	2,949	2,845	2,878	\$11,018,207	\$293.20
Book, Periodical & Music Stores	165	1,570	1,444	1,482	\$4,434,089	\$227.59
<b>GENERAL MERCHANDISE STORES</b>	698	36,727	36,257	37,738	\$167,835,239	\$349.81
<b>MISCELLANEOUS STORE RETAILERS</b>	1,450	6,751	6,747	6,711	\$29,751,713	\$339.74
Florists	272	1,030	1,115	1,026	\$3,891,947	\$283.24
Office Supplies, Stationery & Gift Stores	403	2,490	2,453	2,470	\$11,511,239	\$358.35
Used Merchandise Stores	219	836	790	792	\$3,472,365	\$331.40
Other Miscellaneous Store Retailers	556	2,395	2,389	2,423	\$10,876,162	\$348.26
<b>NONSTORE RETAILERS</b>	326	2,044	1,984	1,925	\$13,187,584	\$511.22
Electronic Shopping & Mail -Order Houses	63	393	367	338	\$2,835,706	\$595.99
Vending Machine Operators	82	693	685	680	\$4,120,623	\$462.06
Direct Selling Establishments	181	958	932	907	\$6,231,255	\$514.12
<b>TRANSPORTATION &amp; WAREHOUSING</b>	2,953	55,504	55,812	56,165	\$506,919,838	\$698.48
<b>AIR TRANSPORTATION</b>	48	994	985	999	\$14,756,976	\$1,143.54
<b>TRUCK TRANSPORTATION</b>	1,977	34,952	35,261	35,483	\$328,618,449	\$717.48
General Freight Trucking	1,242	30,052	30,328	30,490	\$290,609,493	\$738.02
Specialized Freight Trucking	735	4,900	4,933	4,993	\$38,008,956	\$591.62
<b>TRANSIT &amp; GROUND PASSENGER TRANSPORTATION</b>	56	972	977	1,002	\$3,782,956	\$295.83
Taxi & Limousine Service	18	230	238	243	\$671,960	\$218.10

**TABLE 5. STATEWIDE SUMMARY  
EMPLOYMENT AND TOTAL EARNINGS, BY INDUSTRY  
FIRST QUARTER 2006**

NORTH AMERICAN INDUSTRY CLASSIFICATION SYSTEM INDUSTRY GROUPS	NUMBER OF EMPLOYING UNITS	EMPLOYMENT JANUARY	EMPLOYMENT FEBRUARY	EMPLOYMENT MARCH	TOTAL EARNINGS JANUARY - MARCH	AVERAGE WEEKLY EARNINGS
School & Employee Bus Transportation	8	402	402	411	\$1,925,826	\$365.78
Charter Bus Industry	8	85	89	98	\$402,521	\$341.51
Other Ground Passenger Transportation	14	162	163	165	\$504,070	\$237.40
Other	8	93	85	85	\$278,579	\$244.44
PIPELINE TRANSPORTATION	65	942	935	926	\$13,576,704	\$1,117.76
SUPPORT ACTIVITIES FOR TRANSPORTATION	433	4,800	4,788	4,856	\$48,468,312	\$774.37
Support Activities for Air Transportation	106	1,659	1,665	1,685	\$14,163,123	\$652.51
Support Activities for Rail Transportation	33	392	394	407	\$3,136,514	\$606.71
Support Activities for Water Transportation	29	657	631	621	\$6,545,554	\$791.26
Support Activities for Road Transportation	102	452	465	495	\$2,757,735	\$450.71
Freight Transportation Arrangement	140	1,544	1,538	1,549	\$21,323,311	\$1,062.57
Other Support Activities for Transportation	23	96	95	99	\$542,075	\$431.36
COURIERS & MESSENGERS	138	3,147	3,154	3,167	\$27,605,388	\$672.84
Couriers	86	2,899	2,924	2,937	\$26,205,634	\$690.35
Local Messengers & Local Delivery	52	248	230	230	\$1,399,754	\$456.24
WAREHOUSING & STORAGE	212	9,497	9,503	9,514	\$68,494,409	\$554.34
OTHER	24	200	209	218	\$1,616,644	\$595.01
UTILITIES	364	6,718	6,708	6,731	\$110,997,467	\$1,270.76
Power Generation & Supply	166	5,029	5,014	5,017	\$91,312,526	\$1,399.21
Natural Gas Distribution	34	882	896	907	\$13,953,861	\$1,199.30
Water, Sewage and Other Systems	164	807	798	807	\$5,731,080	\$548.32
INFORMATION	1,202	19,705	19,756	19,778	\$224,068,142	\$872.87
PUBLISHING INDUSTRIES, EXCEPT INTERNET	250	6,323	6,357	6,390	\$49,695,567	\$601.37
Newspaper, Book & Directory Publishers	219	6,057	6,090	6,120	\$45,966,773	\$580.70
Software Publishers	31	266	267	270	\$3,728,794	\$1,071.60
MOTION PICTURE & SOUND RECORDING INDUSTRY	138	1,145	1,159	1,168	\$4,533,049	\$301.29
Motion Picture & Video Industries	122	1,113	1,121	1,131	\$4,267,820	\$292.68
Sound Recording Industries	16	32	38	37	\$265,229	\$572.03
BROADCASTING, EXCEPT INTERNET	138	2,075	2,064	2,055	\$17,364,239	\$646.94
Radio & Television Broadcasting	131	2,031	2,024	2,017	\$17,150,504	\$651.81
Cable & Other Subscription Programming	7	44	40	38	\$213,735	\$404.29
TELECOMMUNICATIONS	484	8,698	8,714	8,704	\$134,211,748	\$1,185.94
Wired Telecommunications Carriers	211	3,137	3,148	3,148	\$61,469,189	\$1,503.78

**TABLE 5. STATEWIDE SUMMARY  
EMPLOYMENT AND TOTAL EARNINGS, BY INDUSTRY  
FIRST QUARTER 2006**

NORTH AMERICAN INDUSTRY CLASSIFICATION SYSTEM INDUSTRY GROUPS	NUMBER OF EMPLOYING UNITS	EMPLOYMENT JANUARY	EMPLOYMENT FEBRUARY	EMPLOYMENT MARCH	TOTAL EARNINGS JANUARY - MARCH	AVERAGE WEEKLY EARNINGS
Wireless Telecommunications Carriers	124	3,824	3,829	3,833	\$55,196,756	\$1,108.98
Cable & Other Program Distribution	80	1,219	1,234	1,228	\$12,044,279	\$755.08
Other	69	518	503	495	\$5,501,524	\$837.46
ISPS, SEARCH PORTALS, & DATA PROCESSING	153	1,164	1,158	1,158	\$15,953,013	\$1,057.89
ISPs, & Web Search Portals	68	180	180	190	\$1,725,121	\$723.83
Data Processing & Related Services	85	984	978	968	\$14,227,892	\$1,120.60
OTHER	39	300	304	303	\$2,310,526	\$587.87
FINANCIAL ACTIVITIES	8,015	50,482	50,492	50,752	\$554,707,334	\$843.69
FINANCE & INSURANCE	4,709	36,743	36,681	36,800	\$461,417,690	\$966.04
CREDIT INTERMEDIATION & RELATED ACTIVITIES	2,027	21,664	21,605	21,684	\$213,300,460	\$757.83
Depository Credit Intermediation	1,314	18,115	18,065	18,141	\$173,862,126	\$738.61
Nondepository Credit Intermediation	404	2,640	2,628	2,621	\$31,861,241	\$932.01
Activities Related to Credit Intermediation	309	909	912	922	\$7,577,093	\$637.46
FINANCIAL INVESTMENT & RELATED ACTIVITIES	575	3,044	3,050	3,070	\$98,919,149	\$2,491.00
Security & Commodity Investment Activities	323	2,340	2,339	2,339	\$89,234,673	\$2,934.26
Other Financial Investment Activities	252	704	711	731	\$9,684,476	\$1,041.42
INSURANCE CARRIERS & RELATED ACTIVITIES	2,065	11,540	11,524	11,539	\$143,490,678	\$956.95
Insurance Carriers	399	4,733	4,725	4,725	\$67,087,139	\$1,091.56
Insurance Agencies, Brokerages & Support	1,666	6,807	6,799	6,814	\$76,403,539	\$863.45
OTHER	42	495	502	507	\$5,707,403	\$875.73
REAL ESTATE & RENTAL & LEASING	3,306	13,739	13,811	13,952	\$93,289,644	\$518.73
REAL ESTATE	2,474	8,560	8,544	8,635	\$59,314,721	\$531.80
Lessors of Real Estate	1,070	4,262	4,241	4,302	\$25,994,449	\$468.47
Offices of Real Estate Agents & Brokers	809	2,035	2,048	2,062	\$16,324,596	\$613.05
Activities Related to Real Estate	595	2,263	2,255	2,271	\$16,995,676	\$577.71
RENTAL & LEASING SERVICES	806	5,093	5,184	5,237	\$32,474,873	\$483.06
Automotive Equipment Rental & Leasing	131	1,072	1,103	1,103	\$7,582,441	\$533.80
Consumer Goods Rental	493	3,060	3,116	3,165	\$15,275,821	\$377.39
General Rental Centers	35	211	200	207	\$1,540,561	\$575.27
Machinery & Equipment Rental & Leasing	147	750	765	762	\$8,076,050	\$818.49
LESSORS OF NONFINANCIAL INTANGIBLE ASSETS	26	86	83	80	\$1,500,050	\$1,390.22
PROFESSIONAL AND BUSINESS SERVICES	10,719	111,668	112,925	115,137	\$1,205,760,645	\$819.04
PROFESSIONAL & TECHNICAL SERVICES	6,770	37,189	37,753	37,666	\$417,654,902	\$855.91

**TABLE 5. STATEWIDE SUMMARY  
EMPLOYMENT AND TOTAL EARNINGS, BY INDUSTRY  
FIRST QUARTER 2006**

NORTH AMERICAN INDUSTRY CLASSIFICATION SYSTEM INDUSTRY GROUPS	NUMBER OF EMPLOYING UNITS	EMPLOYMENT JANUARY	EMPLOYMENT FEBRUARY	EMPLOYMENT MARCH	TOTAL EARNINGS JANUARY - MARCH	AVERAGE WEEKLY EARNINGS
Legal Services	1,654	6,607	6,609	6,618	\$65,955,359	\$767.39
Accounting & Bookkeeping Services	1,202	6,461	6,686	6,312	\$46,945,637	\$556.74
Architectural & Engineering Services	897	6,489	6,476	6,505	\$71,818,531	\$851.23
Specialized Design Services	154	454	453	483	\$3,350,269	\$556.22
Computer Systems Design & Related Services	782	7,417	7,461	7,594	\$142,749,517	\$1,465.92
Management & Technical Consulting Services	1,064	2,787	2,991	3,098	\$35,221,684	\$915.74
Scientific Research & Development Services	115	1,101	1,104	1,112	\$12,499,244	\$869.59
Advertising & Related Services	321	2,002	2,051	2,029	\$20,119,896	\$763.41
Other Professional & Technical Services	581	3,871	3,922	3,915	\$18,994,765	\$374.39
MANAGEMENT OF COMPANIES & ENTERPRISES	496	23,727	23,765	24,129	\$533,503,984	\$1,719.00
ADMINISTRATIVE & WASTE SERVICES	3,453	50,752	51,407	53,342	\$254,601,759	\$377.84
ADMINISTRATIVE & SUPPORT SERVICES	3,245	48,516	49,128	51,077	\$232,580,184	\$360.89
Office Administrative Services	339	1,236	1,213	1,207	\$15,581,530	\$983.52
Facilities Support Services	15	118	110	111	\$888,459	\$604.81
Employment Services	632	24,887	25,423	26,814	\$105,976,639	\$317.10
Business Support Services	358	4,909	5,134	5,193	\$24,141,792	\$365.66
Travel Arrangement & Reservation Services	101	437	429	444	\$3,053,354	\$537.88
Investigation & Security Services	233	4,351	4,318	4,356	\$24,995,948	\$442.86
Services to Buildings & Dwellings	1,294	11,037	10,987	11,420	\$46,527,103	\$321.04
Other Support Services	273	1,541	1,514	1,532	\$11,415,359	\$574.30
WASTE MANAGEMENT & REMEDIATION SERVICES	208	2,236	2,279	2,265	\$22,021,575	\$749.54
Waste Collection	96	1,043	1,061	1,070	\$10,551,525	\$767.16
Waste Treatment & Disposal	38	723	728	722	\$8,134,003	\$863.82
Remediation & Other Waste Services	74	470	490	473	\$3,336,047	\$537.23
EDUCATION AND HEALTH SERVICES	10,081	142,278	143,072	144,080	\$1,096,228,117	\$589.10
EDUCATIONAL SERVICES	549	8,716	9,178	9,176	\$56,792,202	\$484.15
Elementary & Secondary Schools	83	3,199	3,215	3,227	\$15,911,322	\$380.86
Junior Colleges	7	253	255	261	\$1,897,044	\$569.28
Colleges & Universities	26	2,951	3,321	3,206	\$23,142,173	\$563.46
Business, Computer & Management Training	43	121	123	124	\$2,527,348	\$1,584.88
Technical & Trade Schools	98	693	694	695	\$7,032,684	\$779.50
Other Schools & Instruction	214	1,322	1,376	1,456	\$4,467,861	\$248.21
Educational Support Services	78	177	194	207	\$1,813,770	\$724.16

**TABLE 5. STATEWIDE SUMMARY  
EMPLOYMENT AND TOTAL EARNINGS, BY INDUSTRY  
FIRST QUARTER 2006**

NORTH AMERICAN INDUSTRY CLASSIFICATION SYSTEM INDUSTRY GROUPS	NUMBER OF EMPLOYING UNITS	EMPLOYMENT JANUARY	EMPLOYMENT FEBRUARY	EMPLOYMENT MARCH	TOTAL EARNINGS JANUARY - MARCH	AVERAGE WEEKLY EARNINGS
HEALTH CARE & SOCIAL ASSISTANCE	9,532	133,562	133,894	134,904	\$1,039,435,915	\$596.16
AMBULATORY HEALTH CARE SERVICES	4,765	41,933	41,911	42,259	\$448,857,928	\$821.41
Offices of Physicians	2,126	20,481	20,458	20,565	\$280,121,556	\$1,051.04
Offices of Dentists	919	5,883	5,844	5,923	\$51,505,375	\$673.42
Offices of Other Health Practitioners	1,127	5,401	5,452	5,536	\$39,135,990	\$551.06
Outpatient Care Centers	205	3,434	3,420	3,445	\$30,005,957	\$672.34
Medical & Diagnostic Laboratories	100	777	779	760	\$9,087,748	\$905.51
Home Health Care Services	137	3,840	3,841	3,875	\$24,076,136	\$480.79
Other Ambulatory Health Care Services	151	2,117	2,117	2,155	\$14,925,166	\$539.09
HOSPITALS	105	41,164	41,244	41,285	\$364,766,145	\$680.53
General Medical & Surgical Hospitals	76	37,949	38,010	38,056	\$338,113,452	\$684.35
Psychiatric & Substance Abuse Hospitals	9	1,474	1,463	1,469	\$11,833,948	\$619.82
Other Hospitals	20	1,741	1,771	1,760	\$14,818,745	\$648.66
NURSING & RESIDENTIAL CARE FACILITIES	510	26,717	26,729	27,077	\$127,229,222	\$364.62
Nursing Care Facilities	249	20,144	20,146	20,434	\$95,100,070	\$361.41
Residential Mental Health Facilities	127	2,983	3,003	3,024	\$15,545,781	\$398.17
Community Care Facilities for the Elderly	87	2,198	2,185	2,213	\$9,336,089	\$326.63
Other Residential Care Facilities	47	1,392	1,395	1,406	\$7,247,282	\$398.87
SOCIAL ASSISTANCE	4,152	23,748	24,010	24,283	\$98,582,620	\$315.79
Individual & Family Services	3,016	11,315	11,389	11,484	\$50,207,206	\$338.90
Emergency & Other Relief Services	118	843	848	851	\$4,127,696	\$374.72
Vocational Rehabilitation Services	127	3,349	3,341	3,398	\$15,587,512	\$356.57
Child Day Care Services	891	8,241	8,432	8,550	\$28,660,206	\$262.22
LEISURE AND HOSPITALITY	6,054	91,932	92,819	96,102	\$264,955,118	\$217.71
ARTS, ENTERTAINMENT & RECREATION	926	8,229	8,168	8,954	\$32,584,282	\$296.61
PERFORMING ARTS & SPECTATOR SPORTS	194	2,309	2,144	2,551	\$9,876,923	\$325.43
Performing Arts Companies	35	297	321	332	\$1,488,279	\$361.53
Spectator Sports	53	1,321	1,191	1,330	\$4,671,170	\$280.57
Performing Arts & Sports Promoters	39	577	506	751	\$2,957,583	\$372.15
Agents & Managers for Public Figures	12	16	16	21	\$135,822	\$591.39
Independent Artists, Writers & Performers	55	98	110	117	\$624,069	\$443.13
MUSEUMS, PARKS & HISTORICAL SITES	47	183	189	210	\$887,860	\$352.05
GAMBLING, RECREATION & AMUSEMENT INDUSTRY	685	5,737	5,835	6,193	\$21,819,499	\$283.44

**TABLE 5. STATEWIDE SUMMARY  
EMPLOYMENT AND TOTAL EARNINGS, BY INDUSTRY  
FIRST QUARTER 2006**

NORTH AMERICAN INDUSTRY CLASSIFICATION SYSTEM INDUSTRY GROUPS	NUMBER OF EMPLOYING UNITS	EMPLOYMENT JANUARY	EMPLOYMENT FEBRUARY	EMPLOYMENT MARCH	TOTAL EARNINGS JANUARY - MARCH	AVERAGE WEEKLY EARNINGS
Other Amusement & Recreation Industries	645	5,544	5,648	5,932	\$21,092,593	\$284.25
Other	40	193	187	261	\$726,906	\$261.70
<b>ACCOMMODATION &amp; FOOD SERVICES</b>	<b>5,128</b>	<b>83,703</b>	<b>84,651</b>	<b>87,148</b>	<b>\$232,370,836</b>	<b>\$209.88</b>
<b>ACCOMMODATION</b>	<b>818</b>	<b>9,906</b>	<b>10,178</b>	<b>10,685</b>	<b>\$35,465,865</b>	<b>\$266.00</b>
Traveler Accommodation	746	9,656	9,938	10,406	\$34,292,785	\$263.79
RV Parks & Recreational Camps	52	175	164	199	\$854,425	\$366.50
Rooming & Boarding Houses	20	75	76	80	\$318,655	\$318.34
<b>FOOD SERVICES &amp; DRINKING PLACES</b>	<b>4,310</b>	<b>73,797</b>	<b>74,473</b>	<b>76,463</b>	<b>\$196,904,971</b>	<b>\$202.19</b>
Full -Service Restaurants	1,899	32,481	32,704	33,727	\$92,670,848	\$216.21
Limited-Service Eating Places	2,102	38,210	38,609	39,476	\$94,847,407	\$188.21
Special Food Services	157	2,161	2,230	2,338	\$6,996,691	\$239.95
Drinking Places, Alcoholic Beverages	152	945	930	922	\$2,390,025	\$197.19
<b>OTHER SERVICES</b>	<b>5,504</b>	<b>24,988</b>	<b>25,037</b>	<b>25,467</b>	<b>\$143,730,814</b>	<b>\$439.37</b>
<b>REPAIR &amp; MAINTENANCE</b>	<b>2,241</b>	<b>9,200</b>	<b>9,196</b>	<b>9,390</b>	<b>\$61,309,037</b>	<b>\$509.19</b>
Automotive Repair & Maintenance	1,548	6,603	6,583	6,691	\$41,452,567	\$481.26
Electronic Equipment Repair & Maintenance	170	656	650	666	\$5,285,928	\$618.57
Commercial Machinery Repair & Maintenance	335	1,410	1,436	1,497	\$11,627,192	\$617.82
Household Goods Repair & Maintenance	188	531	527	536	\$2,943,350	\$426.12
<b>PERSONAL &amp; LAUNDRY SERVICES</b>	<b>1,315</b>	<b>8,162</b>	<b>8,221</b>	<b>8,349</b>	<b>\$39,215,210</b>	<b>\$365.91</b>
Personal Care Services	563	2,554	2,630	2,693	\$9,690,911	\$283.91
Death Care Services	246	1,640	1,622	1,665	\$9,760,983	\$457.18
Drycleaning & Laundry Services	342	3,256	3,256	3,273	\$15,425,026	\$363.78
Other Personal Services	164	712	713	718	\$4,338,290	\$467.17
<b>MEMBERSHIP ASSOCIATIONS &amp; ORGANIZATIONS</b>	<b>1,022</b>	<b>6,188</b>	<b>6,194</b>	<b>6,292</b>	<b>\$37,612,886</b>	<b>\$464.81</b>
Religious Organizations	39	201	199	209	\$1,153,735	\$437.19
Grantmaking & Giving Services	97	443	444	453	\$4,102,608	\$706.53
Social Advocacy Organizations	143	1,927	1,961	1,964	\$11,405,141	\$449.75
Civic & Social Organizations	224	1,504	1,486	1,479	\$4,997,710	\$258.07
Professional & Similar Organizations	519	2,113	2,104	2,187	\$15,953,692	\$574.89
<b>PRIVATE HOUSEHOLDS</b>	<b>926</b>	<b>1,438</b>	<b>1,426</b>	<b>1,436</b>	<b>\$5,593,681</b>	<b>\$300.20</b>
<b>LOCAL GOVERNMENT</b>	<b>2,004</b>	<b>116,671</b>	<b>117,551</b>	<b>118,068</b>	<b>\$821,376,924</b>	<b>\$538.05</b>
<b>STATE GOVERNMENT</b>	<b>1,193</b>	<b>60,485</b>	<b>62,765</b>	<b>63,234</b>	<b>\$565,882,675</b>	<b>\$700.27</b>
<b>NONCLASSIFIABLE ESTABLISHMENTS</b>	<b>0</b>	<b>0</b>	<b>0</b>	<b>0</b>	<b>\$0</b>	



**TABLE 6. COUNTY SUMMARY  
EMPLOYMENT AND TOTAL EARNINGS, BY INDUSTRY  
FIRST QUARTER 2006**

<b>NORTH AMERICAN INDUSTRY CLASSIFICATION SYSTEM INDUSTRY GROUP</b>	<b>NUMBER OF EMPLOYING UNITS</b>	<b>EMPLOYMENT JANUARY</b>	<b>EMPLOYMENT FEBRUARY</b>	<b>EMPLOYMENT MARCH</b>	<b>TOTAL EARNINGS JANUARY - MARCH</b>	<b>AVERAGE WEEKLY EARNINGS</b>
ARKANSAS COUNTY - TOTAL	677	9,969	10,050	10,092	\$70,486,239	\$540.20
Natural Resources & Mining	43	190	195	216	\$1,501,581	\$576.57
Construction	56	232	238	243	\$1,753,185	\$567.43
Manufacturing	32	3,755	3,807	3,776	\$30,701,005	\$624.88
Trade, Transportation & Utilities	203	1,974	1,992	2,021	\$14,662,251	\$565.16
Wholesale Trade	46	412	442	468	\$4,507,238	\$786.79
Retail Trade	104	1,052	1,033	1,037	\$5,132,227	\$379.36
Transportation, Warehousing & Utilities	53	510	517	516	\$5,022,786	\$751.20
Information	8	81	79	80	\$731,922	\$703.77
Financial Activities	43	340	341	337	\$2,406,912	\$545.62
Professional & Business Services	50	400	402	395	\$3,520,402	\$678.70
Education & Health Services	79	1,231	1,222	1,237	\$6,422,150	\$401.64
Leisure & Hospitality	59	533	528	537	\$1,250,829	\$180.63
Other Services	56	157	157	161	\$799,795	\$388.56
Local Government	32	867	876	877	\$5,325,467	\$469.07
State Government	16	209	213	212	\$1,410,740	\$513.49
ASHLEY COUNTY - TOTAL	541	8,246	8,220	8,286	\$75,469,671	\$703.62
Natural Resources & Mining	62	445	447	462	\$3,092,480	\$527.07
Construction	49	534	526	544	\$3,569,778	\$513.59
Manufacturing	30	3,018	2,959	2,944	\$42,840,094	\$1,108.19
Trade, Transportation & Utilities	135	1,226	1,226	1,234	\$7,065,091	\$442.32
Wholesale Trade	26	147	159	159	\$1,280,556	\$635.51
Retail Trade	87	867	862	869	\$3,793,183	\$336.93
Transportation, Warehousing & Utilities	22	212	205	206	\$1,991,352	\$737.63
Information	9	49	50	49	\$324,842	\$506.51
Financial Activities	34	226	221	219	\$1,690,858	\$585.88
Professional & Business Services	48	340	339	361	\$3,139,323	\$696.60
Education & Health Services	60	583	584	593	\$4,529,501	\$593.90
Leisure & Hospitality	28	366	383	395	\$860,392	\$173.56
Other Services	42	184	193	200	\$877,820	\$351.08
Local Government	32	1,058	1,071	1,061	\$6,272,914	\$453.79
State Government	12	217	221	224	\$1,206,578	\$420.61

**TABLE 6. COUNTY SUMMARY  
EMPLOYMENT AND TOTAL EARNINGS, BY INDUSTRY  
FIRST QUARTER 2006**

<b>NORTH AMERICAN INDUSTRY CLASSIFICATION SYSTEM INDUSTRY GROUP</b>	<b>NUMBER OF EMPLOYING UNITS</b>	<b>EMPLOYMENT JANUARY</b>	<b>EMPLOYMENT FEBRUARY</b>	<b>EMPLOYMENT MARCH</b>	<b>TOTAL EARNINGS JANUARY - MARCH</b>	<b>AVERAGE WEEKLY EARNINGS</b>
BAXTER COUNTY - TOTAL	1,218	14,216	14,327	14,535	\$94,920,900	\$508.49
Natural Resources & Mining	6	136	124	118	\$778,516	\$475.28
Construction	133	679	650	689	\$4,050,321	\$463.18
Manufacturing	61	2,555	2,579	2,556	\$20,762,982	\$623.08
Trade, Transportation & Utilities	273	2,611	2,637	2,702	\$15,510,605	\$450.24
Wholesale Trade	33	200	184	187	\$1,616,936	\$653.48
Retail Trade	211	2,159	2,182	2,249	\$12,055,592	\$422.16
Transportation, Warehousing & Utilities	29	252	271	266	\$1,838,077	\$537.61
Information	24	287	288	282	\$2,282,210	\$614.54
Financial Activities	116	679	689	693	\$5,625,448	\$629.88
Professional & Business Services	135	715	732	745	\$4,722,192	\$497.14
Education & Health Services	199	3,223	3,219	3,240	\$25,932,365	\$618.09
Leisure & Hospitality	123	1,386	1,449	1,525	\$3,717,441	\$196.76
Other Services	99	405	408	435	\$1,627,051	\$300.86
Local Government	36	1,233	1,247	1,242	\$7,800,923	\$483.67
State Government	13	307	305	308	\$2,110,846	\$529.48
BENTON COUNTY - TOTAL	5,061	90,737	91,438	92,426	\$942,273,298	\$791.87
Natural Resources & Mining	27	656	661	662	\$6,489,165	\$756.70
Construction	766	5,058	5,147	5,245	\$41,530,353	\$620.32
Manufacturing	240	14,515	14,445	14,462	\$120,919,957	\$642.64
Trade, Transportation & Utilities	1,343	22,261	22,561	22,660	\$220,426,036	\$753.79
Wholesale Trade	608	3,310	3,326	3,375	\$59,913,873	\$1,381.11
Retail Trade	567	7,445	7,482	7,631	\$43,160,826	\$441.54
Transportation, Warehousing & Utilities	168	11,506	11,753	11,654	\$117,351,337	\$775.67
Information	65	928	928	932	\$8,322,722	\$688.89
Financial Activities	565	3,612	3,624	3,657	\$42,418,420	\$898.64
Professional & Business Services	828	21,460	21,358	21,830	\$355,281,037	\$1,268.22
Education & Health Services	431	6,435	6,509	6,478	\$52,869,973	\$628.19
Leisure & Hospitality	399	6,564	6,644	6,839	\$21,030,365	\$242.09
Other Services	303	1,678	1,715	1,698	\$10,816,532	\$490.30
Local Government	75	6,938	7,008	7,109	\$56,135,501	\$615.26
State Government	19	632	838	854	\$6,033,237	\$599.09

**TABLE 6. COUNTY SUMMARY  
EMPLOYMENT AND TOTAL EARNINGS, BY INDUSTRY  
FIRST QUARTER 2006**

<b>NORTH AMERICAN INDUSTRY CLASSIFICATION SYSTEM INDUSTRY GROUP</b>	<b>NUMBER OF EMPLOYING UNITS</b>	<b>EMPLOYMENT JANUARY</b>	<b>EMPLOYMENT FEBRUARY</b>	<b>EMPLOYMENT MARCH</b>	<b>TOTAL EARNINGS JANUARY - MARCH</b>	<b>AVERAGE WEEKLY EARNINGS</b>
BOONE COUNTY - TOTAL	1,051	13,697	13,926	14,058	\$102,258,554	\$566.16
Construction	90	440	441	445	\$3,804,616	\$662.13
Manufacturing	71	2,131	2,136	2,158	\$18,238,281	\$655.07
Trade, Transportation & Utilities	270	4,354	4,352	4,382	\$35,279,385	\$622.05
Wholesale Trade	58	638	643	646	\$4,610,353	\$552.12
Retail Trade	156	1,941	1,935	1,947	\$9,979,385	\$395.49
Transportation, Warehousing & Utilities	56	1,775	1,774	1,789	\$20,689,647	\$894.44
Information	21	408	407	406	\$3,600,661	\$680.53
Financial Activities	95	621	619	619	\$5,350,185	\$664.15
Professional & Business Services	107	588	650	670	\$3,416,117	\$413.17
Education & Health Services	156	1,084	1,104	1,124	\$7,622,415	\$531.10
Leisure & Hospitality	83	1,067	1,108	1,128	\$2,957,710	\$206.65
Local Government	60	2,224	2,237	2,246	\$15,452,713	\$531.68
State Government	21	530	625	628	\$5,058,678	\$654.73
Other	77	250	247	252	\$1,477,793	\$455.31
BRADLEY COUNTY - TOTAL	384	4,152	4,264	4,090	\$25,249,313	\$465.92
Natural Resources & Mining	51	511	603	459	\$2,316,904	\$339.90
Construction	21	134	140	139	\$805,419	\$450.04
Manufacturing	10	1,099	1,092	1,084	\$8,567,147	\$603.67
Trade, Transportation & Utilities	89	491	477	480	\$2,617,989	\$417.23
Wholesale Trade	14	114	114	113	\$639,730	\$432.93
Retail Trade	50	316	300	305	\$1,449,696	\$363.24
Transportation, Warehousing & Utilities	25	61	63	62	\$528,563	\$655.79
Information	3	12	12	12	\$102,143	\$654.76
Financial Activities	23	183	179	174	\$1,066,658	\$459.24
Professional & Business Services	26	83	84	79	\$357,730	\$335.58
Education & Health Services	83	542	543	534	\$3,275,033	\$466.82
Leisure & Hospitality	17	167	167	171	\$387,651	\$177.14
Other Services	33	96	103	105	\$429,443	\$325.99
Local & State Government	28	834	864	853	\$5,323,196	\$481.55

**TABLE 6. COUNTY SUMMARY  
EMPLOYMENT AND TOTAL EARNINGS, BY INDUSTRY  
FIRST QUARTER 2006**

<b>NORTH AMERICAN INDUSTRY CLASSIFICATION SYSTEM INDUSTRY GROUP</b>	<b>NUMBER OF EMPLOYING UNITS</b>	<b>EMPLOYMENT JANUARY</b>	<b>EMPLOYMENT FEBRUARY</b>	<b>EMPLOYMENT MARCH</b>	<b>TOTAL EARNINGS JANUARY - MARCH</b>	<b>AVERAGE WEEKLY EARNINGS</b>
CALHOUN COUNTY - TOTAL	111	2,861	2,843	2,831	\$23,292,036	\$629.77
Natural Resources & Mining	19	159	156	156	\$1,011,387	\$495.54
Construction	10	70	71	77	\$450,954	\$477.37
Manufacturing	10	1,918	1,899	1,890	\$17,049,027	\$689.40
Trade, Transportation & Utilities	25	188	182	176	\$1,136,846	\$480.49
Wholesale Trade & Retail Trade	18	74	65	67	\$228,098	\$255.52
Transportation, Warehousing & Utilities	7	114	117	109	\$908,748	\$616.80
Financial Activities	7	85	85	81	\$634,147	\$583.03
Education & Health Services	4	44	45	46	\$348,136	\$595.10
Local Government	11	204	210	210	\$1,121,269	\$414.67
State Government	9	81	82	80	\$636,992	\$604.93
Other	16	112	113	115	\$903,278	\$613.08
CARROLL COUNTY - TOTAL	834	9,081	9,158	9,439	\$52,298,295	\$436.04
Natural Resources & Mining	17	263	256	251	\$1,476,224	\$442.42
Trade, Transportation & Utilities	208	1,504	1,520	1,604	\$8,797,097	\$438.66
Wholesale Trade	24	119	121	120	\$646,890	\$414.67
Retail Trade	164	1,148	1,155	1,230	\$5,748,029	\$375.45
Transportation, Warehousing & Utilities	20	237	244	254	\$2,402,178	\$754.22
Professional & Business Services	77	247	260	259	\$1,563,046	\$470.89
Education & Health Services	77	768	767	759	\$5,201,661	\$523.27
Leisure & Hospitality	172	1,097	1,140	1,351	\$3,147,585	\$202.44
Local Government	25	1,080	1,074	1,085	\$6,445,208	\$459.20
State Government	11	104	104	104	\$776,455	\$574.30
Other	247	4,018	4,037	4,026	\$24,891,019	\$475.46

**TABLE 6. COUNTY SUMMARY  
EMPLOYMENT AND TOTAL EARNINGS, BY INDUSTRY  
FIRST QUARTER 2006**

<b>NORTH AMERICAN INDUSTRY CLASSIFICATION SYSTEM INDUSTRY GROUP</b>	<b>NUMBER OF EMPLOYING UNITS</b>	<b>EMPLOYMENT JANUARY</b>	<b>EMPLOYMENT FEBRUARY</b>	<b>EMPLOYMENT MARCH</b>	<b>TOTAL EARNINGS JANUARY - MARCH</b>	<b>AVERAGE WEEKLY EARNINGS</b>
CHICOT COUNTY - TOTAL	346	3,593	3,598	3,633	\$19,763,677	\$421.36
Natural Resources & Mining	47	199	206	215	\$1,145,275	\$426.28
Construction	19	238	220	213	\$1,586,480	\$545.62
Manufacturing	12	481	494	507	\$2,023,039	\$315.02
Trade, Transportation & Utilities	83	542	553	560	\$2,748,011	\$383.18
Wholesale Trade	16	98	101	101	\$687,407	\$528.77
Retail Trade	55	382	390	398	\$1,450,647	\$286.12
Transportation, Warehousing & Utilities	12	62	62	61	\$609,957	\$760.86
Information	6	12	12	12	\$87,397	\$560.24
Financial Activities	28	165	165	169	\$1,357,862	\$627.96
Professional & Business Services	25	99	98	94	\$758,554	\$601.55
Education & Health Services	63	496	491	483	\$2,798,853	\$439.38
Leisure & Hospitality	20	223	219	224	\$452,918	\$156.94
Other Services	16	38	36	47	\$190,792	\$363.88
Local Government	16	796	797	801	\$4,494,159	\$433.21
State Government	11	304	307	308	\$2,120,337	\$532.44
CLARK COUNTY - TOTAL	600	9,437	9,571	9,680	\$60,915,556	\$490.01
Natural Resources & Mining	43	245	246	234	\$1,744,710	\$555.35
Construction	31	123	122	117	\$685,420	\$436.94
Manufacturing	35	2,261	2,229	2,248	\$17,040,690	\$583.63
Trade, Transportation & Utilities	135	1,491	1,444	1,477	\$8,998,485	\$470.66
Wholesale Trade	20	101	97	98	\$758,337	\$591.22
Retail Trade	92	1,104	1,073	1,096	\$5,702,647	\$402.08
Transportation, Warehousing & Utilities	23	286	274	283	\$2,537,501	\$694.63
Information	9	34	34	34	\$262,741	\$594.44
Financial Activities	88	371	368	377	\$2,893,651	\$598.36
Professional & Business Services	44	360	380	385	\$3,536,593	\$725.45
Education & Health Services	70	1,380	1,426	1,443	\$8,546,020	\$464.15
Leisure & Hospitality	57	974	1,008	1,022	\$2,413,959	\$185.44
Other Services	47	220	220	223	\$1,146,875	\$399.19
Local Government	26	909	921	941	\$5,431,209	\$452.31
State Government	15	1,069	1,173	1,179	\$8,215,203	\$554.17

**TABLE 6. COUNTY SUMMARY  
EMPLOYMENT AND TOTAL EARNINGS, BY INDUSTRY  
FIRST QUARTER 2006**

<b>NORTH AMERICAN INDUSTRY CLASSIFICATION SYSTEM INDUSTRY GROUP</b>	<b>NUMBER OF EMPLOYING UNITS</b>	<b>EMPLOYMENT JANUARY</b>	<b>EMPLOYMENT FEBRUARY</b>	<b>EMPLOYMENT MARCH</b>	<b>TOTAL EARNINGS JANUARY - MARCH</b>	<b>AVERAGE WEEKLY EARNINGS</b>
CLAY COUNTY - TOTAL	411	4,479	4,399	4,467	\$23,593,451	\$407.99
Natural Resources & Mining	56	134	142	175	\$544,558	\$278.64
Construction	37	135	123	150	\$552,891	\$312.72
Manufacturing	19	1,193	1,125	1,105	\$6,584,260	\$443.89
Trade, Transportation & Utilities	97	959	958	949	\$5,202,187	\$418.88
Wholesale Trade	23	358	359	337	\$1,985,241	\$434.66
Retail Trade	52	452	448	460	\$1,903,934	\$323.07
Transportation, Warehousing & Utilities	22	149	151	152	\$1,313,012	\$670.36
Information	8	86	84	83	\$616,179	\$562.04
Financial Activities	36	156	155	153	\$993,656	\$494.19
Professional & Business Services	25	59	57	61	\$350,882	\$457.47
Education & Health Services	50	504	496	499	\$2,505,502	\$385.72
Leisure & Hospitality	23	212	216	227	\$387,764	\$136.62
Other Services	26	53	52	56	\$280,560	\$402.14
Local Government	22	913	914	928	\$5,062,413	\$424.05
State Government	12	75	77	81	\$512,599	\$507.69
CLEBURNE COUNTY - TOTAL	668	6,604	6,738	6,783	\$38,890,100	\$445.94
Natural Resources & Mining	15	82	120	113	\$698,086	\$511.42
Construction	71	279	283	297	\$1,413,751	\$379.80
Manufacturing	43	1,725	1,743	1,734	\$12,358,583	\$548.25
Trade, Transportation & Utilities	181	1,514	1,524	1,562	\$8,748,672	\$438.90
Wholesale Trade	38	197	196	195	\$1,283,826	\$503.86
Retail Trade	112	1,012	1,027	1,062	\$4,743,071	\$352.97
Transportation, Warehousing & Utilities	31	305	301	305	\$2,721,775	\$689.46
Information	9	60	59	58	\$350,026	\$456.36
Financial Activities	70	244	240	244	\$1,681,605	\$533.05
Professional & Business Services	56	207	210	211	\$1,213,465	\$445.91
Education & Health Services	71	773	773	776	\$4,374,168	\$434.72
Leisure & Hospitality	66	623	677	686	\$1,749,233	\$203.26
Other Services	56	163	161	156	\$641,662	\$308.49
Local Government	20	825	839	829	\$4,878,096	\$451.55
State Government	10	109	109	117	\$782,753	\$539.21

**TABLE 6. COUNTY SUMMARY  
EMPLOYMENT AND TOTAL EARNINGS, BY INDUSTRY  
FIRST QUARTER 2006**

<b>NORTH AMERICAN INDUSTRY CLASSIFICATION SYSTEM INDUSTRY GROUP</b>	<b>NUMBER OF EMPLOYING UNITS</b>	<b>EMPLOYMENT JANUARY</b>	<b>EMPLOYMENT FEBRUARY</b>	<b>EMPLOYMENT MARCH</b>	<b>TOTAL EARNINGS JANUARY - MARCH</b>	<b>AVERAGE WEEKLY EARNINGS</b>
CLEVELAND COUNTY - TOTAL	113	1,081	1,072	1,097	\$6,213,588	\$441.20
Natural Resources & Mining	19	180	170	167	\$1,130,528	\$504.62
Construction	7	41	41	41	\$132,916	\$249.37
Manufacturing	5	94	94	95	\$522,246	\$425.86
Trade, Transportation & Utilities	29	179	183	186	\$764,072	\$321.76
Wholesale Trade	3	14	14	14	\$58,782	\$322.98
Retail Trade	14	79	77	81	\$152,893	\$148.87
Transportation, Warehousing & Utilities	12	86	92	91	\$552,397	\$473.89
Local Government	12	341	339	355	\$1,975,728	\$440.52
State Government	8	68	66	64	\$386,550	\$450.52
Other	33	178	179	189	\$1,301,548	\$550.10
COLUMBIA COUNTY - TOTAL	693	9,320	9,507	9,631	\$70,810,449	\$574.21
Natural Resources & Mining	49	485	488	495	\$6,121,005	\$962.22
Construction	46	305	309	308	\$2,213,383	\$553.99
Manufacturing	41	2,765	2,846	2,838	\$28,415,719	\$776.12
Trade, Transportation & Utilities	175	1,558	1,583	1,634	\$8,441,522	\$407.97
Wholesale Trade	28	288	295	310	\$1,846,133	\$477.08
Retail Trade	108	1,008	1,017	1,041	\$4,382,004	\$329.82
Transportation, Warehousing & Utilities	39	262	271	283	\$2,213,385	\$625.96
Information	10	76	78	77	\$531,715	\$531.18
Financial Activities	76	508	510	513	\$5,137,973	\$774.45
Professional & Business Services	60	324	326	351	\$1,595,679	\$367.87
Education & Health Services	98	829	842	850	\$4,097,324	\$375.06
Leisure & Hospitality	46	649	662	685	\$1,462,794	\$169.12
Other Services	49	207	208	209	\$839,190	\$310.35
Local Government	29	1,132	1,119	1,135	\$7,517,160	\$512.32
State Government	14	482	536	536	\$4,436,985	\$658.89

**TABLE 6. COUNTY SUMMARY  
EMPLOYMENT AND TOTAL EARNINGS, BY INDUSTRY  
FIRST QUARTER 2006**

<b>NORTH AMERICAN INDUSTRY CLASSIFICATION SYSTEM INDUSTRY GROUP</b>	<b>NUMBER OF EMPLOYING UNITS</b>	<b>EMPLOYMENT JANUARY</b>	<b>EMPLOYMENT FEBRUARY</b>	<b>EMPLOYMENT MARCH</b>	<b>TOTAL EARNINGS JANUARY - MARCH</b>	<b>AVERAGE WEEKLY EARNINGS</b>
CONWAY COUNTY - TOTAL	513	6,565	6,619	6,690	\$43,352,905	\$503.40
Natural Resources & Mining	16	126	134	134	\$1,048,057	\$613.86
Construction	52	514	506	495	\$4,176,350	\$636.15
Manufacturing	28	1,063	1,083	1,127	\$11,036,892	\$778.18
Trade, Transportation & Utilities	131	1,354	1,357	1,390	\$8,098,469	\$455.71
Wholesale Trade	27	211	213	216	\$1,695,163	\$611.24
Retail Trade	78	853	859	889	\$4,304,447	\$381.90
Transportation, Warehousing & Utilities	26	290	285	285	\$2,098,859	\$563.20
Information	6	39	38	39	\$180,259	\$358.61
Financial Activities	32	187	186	188	\$1,313,427	\$540.28
Professional & Business Services	46	712	718	696	\$2,871,229	\$311.66
Education & Health Services	101	803	801	824	\$5,407,062	\$513.91
Leisure & Hospitality	37	428	432	448	\$936,135	\$165.16
Other Services	26	86	85	85	\$524,824	\$473.10
Local Government	27	894	898	885	\$5,575,603	\$480.64
State Government	11	359	381	379	\$2,184,598	\$450.53
CRAIGHEAD COUNTY - TOTAL	2,621	40,462	40,477	41,123	\$294,010,179	\$555.85
Natural Resources & Mining	66	231	223	250	\$1,318,588	\$432.23
Construction	231	1,664	1,673	1,702	\$11,718,381	\$536.66
Manufacturing	140	6,908	6,884	6,907	\$61,142,515	\$681.67
Trade, Transportation & Utilities	742	8,113	8,056	8,324	\$50,737,496	\$478.04
Wholesale Trade	182	1,413	1,440	1,478	\$12,853,071	\$684.85
Retail Trade	441	5,588	5,501	5,730	\$27,889,320	\$382.66
Transportation, Warehousing & Utilities	119	1,112	1,115	1,116	\$9,995,105	\$689.97
Information	32	626	623	620	\$5,655,666	\$698.32
Financial Activities	260	1,570	1,571	1,580	\$15,024,849	\$734.44
Professional & Business Services	339	3,613	3,652	3,655	\$21,096,336	\$445.82
Education & Health Services	377	7,405	7,364	7,498	\$66,083,959	\$684.88
Leisure & Hospitality	189	3,578	3,627	3,719	\$9,938,245	\$209.95
Other Services	183	1,022	1,030	1,058	\$4,828,239	\$358.27
Local Government	38	3,489	3,543	3,552	\$23,941,439	\$522.01
State Government	24	2,243	2,231	2,258	\$22,524,466	\$772.13



**TABLE 6. COUNTY SUMMARY  
EMPLOYMENT AND TOTAL EARNINGS, BY INDUSTRY  
FIRST QUARTER 2006**

<b>NORTH AMERICAN INDUSTRY CLASSIFICATION SYSTEM INDUSTRY GROUP</b>	<b>NUMBER OF EMPLOYING UNITS</b>	<b>EMPLOYMENT JANUARY</b>	<b>EMPLOYMENT FEBRUARY</b>	<b>EMPLOYMENT MARCH</b>	<b>TOTAL EARNINGS JANUARY - MARCH</b>	<b>AVERAGE WEEKLY EARNINGS</b>
<b>CRAWFORD COUNTY - TOTAL</b>	1,199	18,303	18,533	18,928	\$128,170,422	\$530.41
Natural Resources & Mining	27	387	462	536	\$3,246,005	\$540.85
Construction	181	1,391	1,421	1,458	\$11,500,532	\$621.54
Manufacturing	76	3,460	3,540	3,575	\$24,347,450	\$531.31
Trade, Transportation & Utilities	307	6,364	6,404	6,620	\$47,395,428	\$564.13
Wholesale Trade	81	669	693	688	\$5,863,740	\$660.08
Retail Trade	158	1,830	1,842	1,924	\$9,325,323	\$384.56
Transportation, Warehousing & Utilities	68	3,865	3,869	4,008	\$32,206,365	\$632.96
Financial Activities	127	494	500	496	\$3,704,457	\$573.74
Professional & Business Services	143	740	750	761	\$5,409,507	\$554.57
Education & Health Services	114	1,311	1,330	1,320	\$9,186,646	\$535.22
Leisure & Hospitality	80	1,358	1,352	1,394	\$3,540,761	\$199.10
Local Government	41	2,119	2,115	2,103	\$14,930,654	\$543.72
State Government	11	156	155	157	\$1,292,246	\$637.20
Other	92	523	504	508	\$3,616,736	\$543.73
<b>CRITTENDEN COUNTY - TOTAL</b>	1,172	16,013	16,003	16,238	\$111,748,337	\$534.42
Natural Resources & Mining	45	220	227	264	\$1,241,193	\$402.85
Construction	79	617	564	546	\$4,673,162	\$624.45
Manufacturing	49	1,539	1,555	1,599	\$16,319,545	\$802.48
Trade, Transportation & Utilities	325	4,916	4,829	4,923	\$35,553,272	\$559.35
Wholesale Trade	71	809	794	798	\$7,504,279	\$721.26
Retail Trade	170	2,104	2,044	2,105	\$9,661,405	\$356.56
Transportation, Warehousing & Utilities	84	2,003	1,991	2,020	\$18,387,588	\$705.57
Information	8	95	95	94	\$820,845	\$666.99
Financial Activities	109	562	567	569	\$5,057,791	\$687.39
Professional & Business Services	116	751	792	761	\$4,609,724	\$461.71
Education & Health Services	174	1,868	1,851	1,876	\$13,452,125	\$554.84
Leisure & Hospitality	101	1,844	1,877	1,952	\$5,377,409	\$218.75
Other Services	104	603	611	614	\$3,403,055	\$429.61
Local Government	47	2,545	2,569	2,573	\$18,383,009	\$551.87
State Government	15	453	466	467	\$2,857,207	\$475.73

**TABLE 6. COUNTY SUMMARY  
EMPLOYMENT AND TOTAL EARNINGS, BY INDUSTRY  
FIRST QUARTER 2006**

<b>NORTH AMERICAN INDUSTRY CLASSIFICATION SYSTEM INDUSTRY GROUP</b>	<b>NUMBER OF EMPLOYING UNITS</b>	<b>EMPLOYMENT JANUARY</b>	<b>EMPLOYMENT FEBRUARY</b>	<b>EMPLOYMENT MARCH</b>	<b>TOTAL EARNINGS JANUARY - MARCH</b>	<b>AVERAGE WEEKLY EARNINGS</b>
CROSS COUNTY - TOTAL	525	4,891	4,973	5,114	\$31,245,084	\$481.40
Natural Resources & Mining	45	148	153	166	\$711,727	\$351.70
Construction	37	135	141	181	\$930,184	\$469.71
Manufacturing	19	724	742	749	\$5,809,916	\$605.30
Trade, Transportation & Utilities	134	1,158	1,162	1,188	\$7,342,654	\$483.03
Wholesale Trade	32	262	259	267	\$1,953,529	\$572.10
Retail Trade	67	663	660	676	\$3,146,680	\$363.26
Transportation, Warehousing & Utilities	35	233	243	245	\$2,242,445	\$717.74
Information	6	61	59	59	\$381,798	\$492.22
Financial Activities	47	400	397	398	\$3,126,403	\$603.75
Professional & Business Services	42	176	174	174	\$1,226,191	\$540.01
Education & Health Services	96	657	646	662	\$3,794,280	\$445.60
Leisure & Hospitality	31	354	365	389	\$729,077	\$151.85
Other Services	40	72	72	74	\$321,395	\$340.22
Local Government	17	799	855	864	\$5,227,824	\$479.12
State Government	11	207	207	210	\$1,643,635	\$607.85
DALLAS COUNTY - TOTAL	275	3,395	3,353	3,409	\$20,859,275	\$473.93
Natural Resources & Mining	40	217	209	215	\$1,506,491	\$542.36
Construction	13	78	73	81	\$498,786	\$496.14
Manufacturing	15	941	926	932	\$7,611,824	\$627.57
Trade, Transportation & Utilities	74	478	465	469	\$2,327,288	\$380.36
Wholesale Trade	9	43	43	45	\$283,382	\$499.20
Retail Trade	46	373	362	365	\$1,668,276	\$349.99
Transportation, Warehousing & Utilities	19	62	60	59	\$375,630	\$478.92
Information	3	26	27	27	\$152,447	\$439.75
Financial Activities	21	103	106	104	\$711,650	\$524.69
Professional & Business Services	17	65	62	66	\$937,791	\$1,121.31
Education & Health Services	32	753	754	770	\$3,687,310	\$373.70
Leisure & Hospitality	19	137	133	137	\$283,948	\$161.00
Other Services	16	62	61	63	\$257,570	\$319.57
Local Government	16	480	481	489	\$2,443,353	\$388.86
State Government	9	55	56	56	\$440,817	\$609.14

**TABLE 6. COUNTY SUMMARY  
EMPLOYMENT AND TOTAL EARNINGS, BY INDUSTRY  
FIRST QUARTER 2006**

<b>NORTH AMERICAN INDUSTRY CLASSIFICATION SYSTEM INDUSTRY GROUP</b>	<b>NUMBER OF EMPLOYING UNITS</b>	<b>EMPLOYMENT JANUARY</b>	<b>EMPLOYMENT FEBRUARY</b>	<b>EMPLOYMENT MARCH</b>	<b>TOTAL EARNINGS JANUARY - MARCH</b>	<b>AVERAGE WEEKLY EARNINGS</b>
DESHA COUNTY - TOTAL	460	4,921	4,894	4,958	\$32,176,205	\$502.62
Natural Resources & Mining	51	208	213	229	\$1,401,334	\$497.52
Construction	26	129	130	134	\$907,529	\$532.90
Manufacturing	15	1,326	1,327	1,301	\$12,209,060	\$712.56
Trade, Transportation & Utilities	131	955	934	948	\$5,391,658	\$438.57
Wholesale Trade	21	181	185	189	\$1,607,575	\$668.43
Retail Trade	80	598	580	592	\$2,582,099	\$336.65
Transportation, Warehousing & Utilities	30	176	169	167	\$1,201,984	\$541.76
Information	5	23	23	24	\$197,143	\$649.92
Financial Activities	42	227	227	227	\$1,317,505	\$446.46
Professional & Business Services	36	222	205	201	\$913,553	\$335.70
Education & Health Services	60	492	497	518	\$2,816,650	\$431.32
Leisure & Hospitality	36	326	321	313	\$646,520	\$155.41
Other Services	28	62	61	84	\$238,446	\$265.83
Local Government	19	788	789	815	\$4,983,882	\$480.82
State Government	11	163	167	164	\$1,152,925	\$538.58
DREW COUNTY - TOTAL	500	6,650	6,673	6,779	\$38,244,023	\$439.04
Natural Resources & Mining	39	318	323	324	\$1,850,592	\$442.55
Construction	25	138	107	113	\$843,220	\$543.55
Manufacturing	20	766	753	753	\$4,633,056	\$470.58
Trade, Transportation & Utilities	136	1,259	1,231	1,270	\$7,323,601	\$449.48
Wholesale Trade	25	247	241	250	\$2,334,900	\$730.11
Retail Trade	88	910	889	918	\$4,095,357	\$347.84
Transportation, Warehousing & Utilities	23	102	101	102	\$893,344	\$675.92
Information	9	79	78	80	\$603,016	\$587.16
Financial Activities	43	278	277	275	\$2,355,530	\$654.92
Professional & Business Services	43	317	336	341	\$1,983,025	\$460.38
Education & Health Services	75	811	815	836	\$4,034,354	\$378.15
Leisure & Hospitality	43	588	604	623	\$1,208,975	\$153.72
Other Services	27	83	81	86	\$349,765	\$322.86
Local Government	23	1,222	1,252	1,242	\$7,073,035	\$439.25
State Government	17	791	816	836	\$5,985,854	\$565.43

**TABLE 6. COUNTY SUMMARY  
EMPLOYMENT AND TOTAL EARNINGS, BY INDUSTRY  
FIRST QUARTER 2006**

<b>NORTH AMERICAN INDUSTRY CLASSIFICATION SYSTEM INDUSTRY GROUP</b>	<b>NUMBER OF EMPLOYING UNITS</b>	<b>EMPLOYMENT JANUARY</b>	<b>EMPLOYMENT FEBRUARY</b>	<b>EMPLOYMENT MARCH</b>	<b>TOTAL EARNINGS JANUARY - MARCH</b>	<b>AVERAGE WEEKLY EARNINGS</b>
<b>FAULKNER COUNTY - TOTAL</b>	2,379	36,485	36,825	37,242	\$287,733,441	\$600.62
Natural Resources & Mining	14	79	99	102	\$1,140,631	\$940.08
Construction	336	2,829	2,838	2,943	\$20,732,052	\$555.67
Manufacturing	121	5,203	5,186	5,203	\$50,693,216	\$750.28
Trade, Transportation & Utilities	589	6,299	6,359	6,408	\$38,321,190	\$463.83
Wholesale Trade	146	743	749	758	\$7,597,192	\$779.20
Retail Trade	371	4,917	4,961	4,979	\$24,312,891	\$377.64
Transportation, Warehousing & Utilities	72	639	649	671	\$6,411,107	\$755.23
Information	39	335	337	349	\$2,831,498	\$639.98
Financial Activities	284	1,337	1,334	1,339	\$11,202,990	\$644.71
Professional & Business Services	319	5,084	5,149	5,216	\$66,659,389	\$995.72
Education & Health Services	294	4,902	5,019	5,055	\$34,889,643	\$537.62
Leisure & Hospitality	185	3,650	3,665	3,791	\$9,322,627	\$193.71
Other Services	137	528	534	543	\$2,794,313	\$401.77
Local Government	42	3,149	3,134	3,161	\$23,866,970	\$583.20
State Government	19	3,090	3,171	3,132	\$25,278,922	\$621.06
<b>FRANKLIN COUNTY - TOTAL</b>	333	4,173	4,211	4,255	\$26,391,433	\$481.87
Natural Resources & Mining	10	89	89	85	\$878,690	\$771.01
Construction	29	195	205	211	\$1,592,633	\$601.52
Manufacturing	22	991	989	1,004	\$6,972,401	\$539.21
Trade, Transportation & Utilities	95	838	840	844	\$5,216,816	\$477.35
Wholesale Trade	15	54	48	50	\$231,925	\$352.11
Retail Trade	58	478	487	486	\$2,035,378	\$323.71
Transportation, Warehousing & Utilities	22	306	305	308	\$2,949,513	\$740.65
Information	7	52	55	53	\$275,952	\$398.01
Financial Activities	28	209	210	213	\$1,357,414	\$495.65
Professional & Business Services	20	55	55	55	\$321,127	\$449.13
Education & Health Services	44	471	472	470	\$2,565,797	\$419.04
Leisure & Hospitality	29	323	326	326	\$677,308	\$160.31
Other Services	20	54	53	64	\$302,680	\$408.48
Local Government	19	788	796	807	\$5,315,449	\$513.02
State Government	10	108	121	123	\$915,166	\$599.98

**TABLE 6. COUNTY SUMMARY  
EMPLOYMENT AND TOTAL EARNINGS, BY INDUSTRY  
FIRST QUARTER 2006**

<b>NORTH AMERICAN INDUSTRY CLASSIFICATION SYSTEM INDUSTRY GROUP</b>	<b>NUMBER OF EMPLOYING UNITS</b>	<b>EMPLOYMENT JANUARY</b>	<b>EMPLOYMENT FEBRUARY</b>	<b>EMPLOYMENT MARCH</b>	<b>TOTAL EARNINGS JANUARY - MARCH</b>	<b>AVERAGE WEEKLY EARNINGS</b>
FULTON COUNTY - TOTAL	220	1,824	1,861	1,863	\$9,397,533	\$390.89
Construction	15	25	26	25	\$154,287	\$468.48
Manufacturing	13	151	155	150	\$653,866	\$330.90
Trade, Transportation & Utilities	62	359	372	365	\$2,301,847	\$484.67
Retail Trade	41	192	202	197	\$733,118	\$286.26
Other Trade, Transportation & Utilities	21	167	170	168	\$1,568,729	\$716.86
Financial Activities	19	95	96	104	\$644,537	\$504.20
Professional & Business Services	17	49	49	49	\$302,089	\$474.24
Education & Health Services	41	347	344	346	\$1,419,244	\$315.83
Leisure & Hospitality	15	129	130	135	\$279,444	\$163.67
Local Government	13	515	522	520	\$2,707,359	\$401.27
State Government	11	94	98	99	\$665,318	\$527.61
Other	14	60	69	70	\$269,542	\$312.57
GARLAND COUNTY - TOTAL	3,173	36,357	36,236	37,023	\$241,755,588	\$508.96
Natural Resources & Mining	48	323	346	337	\$4,261,960	\$977.66
Construction	418	2,273	2,227	2,277	\$14,978,294	\$510.04
Manufacturing	128	3,412	3,427	3,435	\$26,263,205	\$589.91
Trade, Transportation & Utilities	699	7,268	7,233	7,384	\$44,114,643	\$465.17
Wholesale Trade	142	1,070	1,096	1,104	\$9,982,126	\$704.45
Retail Trade	488	5,563	5,498	5,628	\$28,512,969	\$394.27
Transportation, Warehousing & Utilities	69	635	639	652	\$5,619,548	\$673.32
Information	41	436	431	436	\$3,477,737	\$615.93
Financial Activities	367	1,587	1,569	1,574	\$13,058,278	\$637.09
Professional & Business Services	407	2,610	2,622	2,669	\$18,315,167	\$534.94
Education & Health Services	409	6,897	6,906	6,954	\$59,590,455	\$662.51
Leisure & Hospitality	370	6,499	6,344	6,748	\$20,759,855	\$244.54
Other Services	225	916	918	942	\$4,656,299	\$387.08
Local Government	34	3,125	3,153	3,181	\$23,612,583	\$576.07
State Government	27	1,011	1,060	1,086	\$8,667,112	\$633.55

**TABLE 6. COUNTY SUMMARY  
EMPLOYMENT AND TOTAL EARNINGS, BY INDUSTRY  
FIRST QUARTER 2006**

<b>NORTH AMERICAN INDUSTRY CLASSIFICATION SYSTEM INDUSTRY GROUP</b>	<b>NUMBER OF EMPLOYING UNITS</b>	<b>EMPLOYMENT JANUARY</b>	<b>EMPLOYMENT FEBRUARY</b>	<b>EMPLOYMENT MARCH</b>	<b>TOTAL EARNINGS JANUARY - MARCH</b>	<b>AVERAGE WEEKLY EARNINGS</b>
GRANT COUNTY - TOTAL	297	3,643	3,726	3,773	\$23,795,815	\$492.85
Natural Resources & Mining	24	191	187	196	\$1,842,601	\$740.79
Construction	33	251	249	253	\$1,585,241	\$485.82
Manufacturing	21	836	849	849	\$6,396,699	\$582.54
Trade, Transportation & Utilities	86	589	676	698	\$3,615,597	\$425.05
Wholesale Trade	17	163	162	166	\$1,369,014	\$643.43
Retail Trade	37	367	454	470	\$1,817,074	\$324.81
Transportation, Warehousing & Utilities	32	59	60	62	\$429,509	\$547.61
Information	3	39	38	38	\$302,118	\$606.26
Financial Activities	21	93	92	105	\$755,639	\$601.30
Professional & Business Services	21	94	93	92	\$801,172	\$662.67
Education & Health Services	32	239	231	236	\$1,383,682	\$452.28
Leisure & Hospitality	21	288	285	281	\$689,139	\$186.22
Other Services	16	54	55	55	\$212,077	\$298.42
Local Government	10	909	913	910	\$5,789,121	\$489.00
State Government	9	60	58	60	\$422,729	\$548.05
GREENE COUNTY - TOTAL	881	14,840	14,980	15,108	\$100,415,024	\$515.77
Natural Resources & Mining	36	170	169	185	\$1,008,266	\$444.04
Construction	78	352	378	390	\$2,522,629	\$519.77
Manufacturing	58	5,521	5,525	5,602	\$47,846,187	\$663.23
Trade, Transportation & Utilities	236	2,102	2,093	2,136	\$11,649,710	\$424.64
Wholesale Trade	52	363	363	363	\$2,881,688	\$610.66
Retail Trade	157	1,551	1,536	1,574	\$7,190,849	\$356.02
Transportation, Warehousing & Utilities	27	188	194	199	\$1,577,173	\$626.44
Information	14	126	120	119	\$607,329	\$383.98
Financial Activities	84	472	475	483	\$3,362,980	\$542.71
Professional & Business Services	92	1,333	1,417	1,318	\$6,922,027	\$392.67
Education & Health Services	126	1,720	1,717	1,733	\$10,740,448	\$479.41
Leisure & Hospitality	65	1,058	1,059	1,100	\$2,366,530	\$169.76
Other Services	50	168	170	172	\$874,408	\$395.66
Local Government	31	1,570	1,607	1,621	\$10,534,985	\$506.70
State Government	11	248	250	249	\$1,979,525	\$611.53

**TABLE 6. COUNTY SUMMARY  
EMPLOYMENT AND TOTAL EARNINGS, BY INDUSTRY  
FIRST QUARTER 2006**

<b>NORTH AMERICAN INDUSTRY CLASSIFICATION SYSTEM INDUSTRY GROUP</b>	<b>NUMBER OF EMPLOYING UNITS</b>	<b>EMPLOYMENT JANUARY</b>	<b>EMPLOYMENT FEBRUARY</b>	<b>EMPLOYMENT MARCH</b>	<b>TOTAL EARNINGS JANUARY - MARCH</b>	<b>AVERAGE WEEKLY EARNINGS</b>
HEMPSTEAD COUNTY - TOTAL	510	8,324	8,383	8,467	\$53,792,276	\$493.11
Natural Resources & Mining	19	209	210	213	\$1,470,269	\$536.86
Construction	35	157	149	148	\$995,327	\$505.93
Manufacturing	29	2,755	2,738	2,789	\$20,344,201	\$566.87
Trade, Transportation & Utilities	139	1,262	1,277	1,297	\$7,054,464	\$424.39
Wholesale Trade	25	167	176	177	\$1,004,718	\$445.88
Retail Trade	87	901	909	924	\$4,052,846	\$342.09
Transportation, Warehousing & Utilities	27	194	192	196	\$1,996,900	\$791.79
Information	10	78	75	77	\$569,958	\$571.86
Financial Activities	45	254	249	249	\$2,143,025	\$657.64
Professional & Business Services	36	211	246	239	\$951,732	\$315.56
Education & Health Services	71	994	1,021	1,000	\$6,243,580	\$477.89
Leisure & Hospitality	43	604	596	619	\$1,521,884	\$193.08
Other Services	37	206	212	215	\$1,294,443	\$471.91
Local Government	29	1,066	1,080	1,092	\$7,110,756	\$506.78
State Government	17	528	530	529	\$4,092,637	\$595.12
HOT SPRING COUNTY - TOTAL	625	7,732	7,790	7,954	\$54,132,022	\$532.12
Natural Resources & Mining	39	205	210	211	\$1,542,608	\$568.67
Construction	70	340	379	440	\$2,685,591	\$534.73
Manufacturing	42	1,631	1,639	1,644	\$17,282,724	\$811.62
Trade, Transportation & Utilities	167	1,499	1,498	1,520	\$9,738,512	\$497.53
Wholesale Trade	20	102	102	106	\$840,347	\$625.57
Retail Trade	101	966	962	981	\$4,658,172	\$369.53
Transportation, Warehousing & Utilities	46	431	434	433	\$4,239,993	\$753.82
Information	9	71	71	68	\$593,296	\$651.97
Financial Activities	61	327	324	329	\$2,358,220	\$555.31
Professional & Business Services	55	218	222	283	\$1,170,340	\$373.55
Education & Health Services	61	1,011	1,015	1,015	\$5,866,306	\$445.17
Leisure & Hospitality	43	589	592	602	\$1,307,146	\$169.18
Other Services	39	312	305	306	\$1,207,595	\$301.92
Local & State Government	39	1,529	1,535	1,536	\$10,379,684	\$520.72

**TABLE 6. COUNTY SUMMARY  
EMPLOYMENT AND TOTAL EARNINGS, BY INDUSTRY  
FIRST QUARTER 2006**

<b>NORTH AMERICAN INDUSTRY CLASSIFICATION SYSTEM INDUSTRY GROUP</b>	<b>NUMBER OF EMPLOYING UNITS</b>	<b>EMPLOYMENT JANUARY</b>	<b>EMPLOYMENT FEBRUARY</b>	<b>EMPLOYMENT MARCH</b>	<b>TOTAL EARNINGS JANUARY - MARCH</b>	<b>AVERAGE WEEKLY EARNINGS</b>
HOWARD COUNTY - TOTAL	367	7,753	7,850	7,964	\$50,559,498	\$495.08
Natural Resources & Mining	21	232	237	236	\$1,728,947	\$565.94
Construction	25	109	103	110	\$664,801	\$476.45
Manufacturing	27	4,387	4,450	4,508	\$31,658,483	\$547.46
Trade, Transportation & Utilities	112	957	954	960	\$5,360,320	\$430.86
Wholesale Trade	21	97	98	103	\$821,781	\$636.38
Retail Trade	66	656	654	656	\$2,831,556	\$332.37
Transportation, Warehousing & Utilities	25	204	202	201	\$1,706,983	\$648.96
Information	8	38	38	38	\$227,466	\$460.46
Financial Activities	35	132	130	134	\$916,668	\$534.19
Professional & Business Services	28	126	126	124	\$768,374	\$471.59
Education & Health Services	41	579	576	594	\$3,066,463	\$404.60
Leisure & Hospitality	21	278	296	314	\$606,607	\$157.64
Other Services	19	112	113	115	\$525,724	\$356.83
Local Government	18	681	699	702	\$4,141,916	\$459.09
State Government	12	122	128	129	\$893,729	\$544.18
INDEPENDENCE COUNTY - TOTAL	938	16,392	16,457	16,499	\$108,611,976	\$507.91
Natural Resources & Mining	14	142	142	143	\$1,101,870	\$595.50
Construction	69	415	415	454	\$2,618,972	\$470.70
Manufacturing	57	4,964	4,959	4,942	\$39,086,961	\$606.80
Trade, Transportation & Utilities	283	2,986	2,986	3,027	\$20,170,419	\$517.25
Wholesale Trade	53	546	542	543	\$4,597,164	\$650.45
Retail Trade	173	1,697	1,680	1,714	\$7,826,563	\$354.77
Transportation, Warehousing & Utilities	57	743	764	770	\$7,746,692	\$785.11
Information	12	152	151	151	\$1,141,806	\$580.38
Financial Activities	84	464	460	469	\$3,737,436	\$619.16
Professional & Business Services	93	1,102	1,048	964	\$4,266,233	\$316.16
Education & Health Services	129	2,734	2,731	2,765	\$20,067,934	\$562.70
Leisure & Hospitality	68	1,126	1,133	1,152	\$2,517,860	\$170.34
Other Services	69	335	353	365	\$1,588,983	\$348.23
Local Government	43	1,563	1,607	1,587	\$8,921,071	\$432.77
State Government	17	409	472	480	\$3,392,431	\$575.22



**TABLE 6. COUNTY SUMMARY  
EMPLOYMENT AND TOTAL EARNINGS, BY INDUSTRY  
FIRST QUARTER 2006**

<b>NORTH AMERICAN INDUSTRY CLASSIFICATION SYSTEM INDUSTRY GROUP</b>	<b>NUMBER OF EMPLOYING UNITS</b>	<b>EMPLOYMENT JANUARY</b>	<b>EMPLOYMENT FEBRUARY</b>	<b>EMPLOYMENT MARCH</b>	<b>TOTAL EARNINGS JANUARY - MARCH</b>	<b>AVERAGE WEEKLY EARNINGS</b>
IZARD COUNTY - TOTAL	262	2,914	3,018	3,120	\$17,444,490	\$444.73
Natural Resources & Mining	4	85	84	81	\$775,463	\$715.81
Construction	19	41	45	45	\$208,824	\$367.86
Manufacturing	13	397	446	500	\$3,376,446	\$580.18
Trade, Transportation & Utilities	66	488	497	511	\$2,453,257	\$378.43
Retail Trade	50	384	390	405	\$1,713,555	\$335.40
Other Trade, Transportation & Utilities	16	104	107	106	\$739,702	\$538.49
Information	3	8	8	8	\$39,779	\$382.49
Financial Activities	27	147	149	151	\$928,304	\$479.25
Professional & Business Services	21	74	71	75	\$353,591	\$370.90
Education & Health Services	43	534	539	538	\$2,605,625	\$373.25
Leisure & Hospitality	24	150	157	195	\$341,574	\$157.02
Other Services	13	38	42	43	\$182,555	\$342.50
Local Government	18	545	563	563	\$3,015,739	\$416.48
State Government	11	407	417	410	\$3,163,333	\$591.57
JACKSON COUNTY - TOTAL	531	5,600	5,631	5,716	\$37,993,372	\$517.36
Natural Resources & Mining	45	167	164	173	\$900,363	\$412.25
Construction	28	168	174	176	\$1,194,121	\$531.98
Manufacturing	25	1,003	1,011	1,010	\$9,372,682	\$715.25
Trade, Transportation & Utilities	130	1,137	1,132	1,155	\$6,576,501	\$443.24
Wholesale Trade	37	223	224	227	\$1,857,942	\$636.14
Retail Trade	74	679	683	702	\$3,037,866	\$339.65
Transportation, Warehousing & Utilities	19	235	225	226	\$1,680,693	\$565.38
Information	6	32	32	37	\$306,681	\$700.72
Financial Activities	45	195	184	185	\$1,477,425	\$604.51
Professional & Business Services	38	249	255	273	\$1,728,708	\$513.43
Education & Health Services	89	846	851	853	\$6,176,485	\$558.96
Leisure & Hospitality	38	311	321	333	\$801,542	\$191.68
Other Services	38	101	100	101	\$446,132	\$340.91
Local Government	35	731	746	755	\$4,133,519	\$427.37
State Government	14	660	661	665	\$4,879,213	\$566.95

**TABLE 6. COUNTY SUMMARY  
EMPLOYMENT AND TOTAL EARNINGS, BY INDUSTRY  
FIRST QUARTER 2006**

<b>NORTH AMERICAN INDUSTRY CLASSIFICATION SYSTEM INDUSTRY GROUP</b>	<b>NUMBER OF EMPLOYING UNITS</b>	<b>EMPLOYMENT JANUARY</b>	<b>EMPLOYMENT FEBRUARY</b>	<b>EMPLOYMENT MARCH</b>	<b>TOTAL EARNINGS JANUARY - MARCH</b>	<b>AVERAGE WEEKLY EARNINGS</b>
JEFFERSON COUNTY - TOTAL	1,873	32,130	32,275	32,571	\$248,066,689	\$590.31
Natural Resources & Mining	41	446	442	453	\$4,518,826	\$777.63
Construction	133	1,420	1,450	1,555	\$16,350,640	\$852.71
Manufacturing	72	6,299	6,266	6,227	\$63,881,190	\$784.47
Trade, Transportation & Utilities	494	5,893	5,854	5,971	\$39,234,144	\$511.01
Wholesale Trade	85	1,032	1,017	1,045	\$8,003,761	\$596.97
Retail Trade	341	3,974	3,958	4,026	\$19,263,149	\$371.75
Transportation, Warehousing & Utilities	68	887	879	900	\$11,967,234	\$1,035.88
Information	20	208	208	211	\$1,567,370	\$576.88
Financial Activities	156	1,226	1,206	1,216	\$12,057,117	\$762.72
Professional & Business Services	177	1,889	1,817	1,742	\$14,168,032	\$600.14
Education & Health Services	396	5,354	5,363	5,432	\$36,300,507	\$518.73
Leisure & Hospitality	146	2,090	2,190	2,247	\$5,286,858	\$186.92
Other Services	158	761	774	791	\$4,553,570	\$451.77
Local Government	41	3,362	3,375	3,356	\$23,743,634	\$542.88
State Government	39	3,182	3,330	3,370	\$26,404,801	\$616.62
JOHNSON COUNTY - TOTAL	475	8,458	8,559	8,676	\$51,266,444	\$460.46
Natural Resources & Mining	15	199	200	200	\$1,483,835	\$571.66
Construction	32	139	142	143	\$876,437	\$477.02
Manufacturing	43	3,155	3,142	3,152	\$19,795,800	\$483.47
Trade, Transportation & Utilities	126	1,715	1,768	1,826	\$10,285,744	\$447.10
Information	6	36	34	33	\$232,391	\$520.67
Financial Activities	42	221	229	229	\$1,651,341	\$561.24
Professional & Business Services	51	200	205	206	\$1,124,578	\$424.74
Education & Health Services	69	1,109	1,114	1,143	\$6,992,522	\$479.40
Leisure & Hospitality	38	508	532	550	\$1,233,176	\$178.98
Other Services	29	78	77	83	\$376,219	\$364.79
Local Government	14	951	966	960	\$6,011,477	\$482.19
State Government	10	147	150	151	\$1,202,924	\$619.64

**TABLE 6. COUNTY SUMMARY  
EMPLOYMENT AND TOTAL EARNINGS, BY INDUSTRY  
FIRST QUARTER 2006**

<b>NORTH AMERICAN INDUSTRY CLASSIFICATION SYSTEM INDUSTRY GROUP</b>	<b>NUMBER OF EMPLOYING UNITS</b>	<b>EMPLOYMENT JANUARY</b>	<b>EMPLOYMENT FEBRUARY</b>	<b>EMPLOYMENT MARCH</b>	<b>TOTAL EARNINGS JANUARY - MARCH</b>	<b>AVERAGE WEEKLY EARNINGS</b>
LAFAYETTE COUNTY - TOTAL	171	1,455	1,455	1,459	\$8,360,927	\$441.62
Natural Resources & Mining	33	179	174	179	\$1,182,693	\$513.02
Construction	11	93	93	98	\$742,153	\$603.05
Trade, Transportation & Utilities	38	231	230	228	\$1,210,264	\$405.36
Retail Trade	22	161	156	160	\$567,043	\$274.33
Other Trade, Transportation & Utilities	16	70	74	68	\$643,221	\$700.17
Financial Activities	17	82	85	84	\$481,462	\$442.66
Professional & Business Services	11	60	61	60	\$468,073	\$596.78
Education & Health Services	21	214	213	207	\$986,221	\$358.97
Leisure & Hospitality	4	38	37	41	\$94,107	\$187.22
Other Services	8	79	75	72	\$321,710	\$328.50
Local Government	13	360	367	373	\$1,930,560	\$405.01
State Government	8	55	53	53	\$390,037	\$559.06
Other	7	64	67	64	\$553,647	\$655.20
LAWRENCE COUNTY - TOTAL	424	4,098	4,095	4,171	\$23,463,564	\$437.94
Natural Resources & Mining	34	168	164	173	\$1,235,321	\$564.50
Construction	26	60	61	64	\$329,618	\$411.17
Manufacturing	23	577	572	563	\$3,555,577	\$479.27
Trade, Transportation & Utilities	130	894	891	906	\$5,183,065	\$444.48
Wholesale Trade	24	198	204	208	\$1,582,960	\$598.85
Retail Trade	71	584	573	576	\$2,502,179	\$333.19
Transportation, Warehousing & Utilities	35	112	114	122	\$1,097,926	\$728.07
Information	6	23	21	20	\$184,495	\$665.25
Financial Activities	30	136	137	137	\$876,574	\$493.38
Professional & Business Services	25	130	124	129	\$948,872	\$571.72
Education & Health Services	61	441	435	432	\$2,708,446	\$477.85
Leisure & Hospitality	25	301	312	334	\$580,489	\$141.46
Other Services	25	79	72	83	\$273,174	\$269.40
Local Government	28	1,175	1,190	1,212	\$6,819,100	\$439.93
State Government	11	114	116	118	\$768,833	\$509.84

**TABLE 6. COUNTY SUMMARY  
EMPLOYMENT AND TOTAL EARNINGS, BY INDUSTRY  
FIRST QUARTER 2006**

<b>NORTH AMERICAN INDUSTRY CLASSIFICATION SYSTEM INDUSTRY GROUP</b>	<b>NUMBER OF EMPLOYING UNITS</b>	<b>EMPLOYMENT JANUARY</b>	<b>EMPLOYMENT FEBRUARY</b>	<b>EMPLOYMENT MARCH</b>	<b>TOTAL EARNINGS JANUARY - MARCH</b>	<b>AVERAGE WEEKLY EARNINGS</b>
LEE COUNTY - TOTAL	240	1,982	1,981	2,028	\$12,296,770	\$473.66
Natural Resources & Mining	32	140	146	166	\$807,585	\$412.31
Construction	6	12	9	8	\$41,510	\$330.32
Trade, Transportation & Utilities	53	336	333	346	\$1,845,339	\$419.55
Wholesale Trade	8	70	65	69	\$465,412	\$526.48
Retail Trade	28	180	183	189	\$691,557	\$289.11
Transportation, Warehousing & Utilities	17	86	85	88	\$688,370	\$613.34
Financial Activities	14	87	86	87	\$544,580	\$483.36
Professional & Business Services	18	63	64	69	\$551,215	\$649.00
Education & Health Services	56	301	291	295	\$1,789,257	\$465.51
Leisure & Hospitality	9	73	72	75	\$155,525	\$163.14
Local Government	16	393	392	394	\$2,516,699	\$492.60
State Government	8	444	444	445	\$3,229,293	\$559.06
Other	28	133	144	143	\$815,767	\$448.22
LINCOLN COUNTY - TOTAL	221	2,956	2,948	2,988	\$19,674,694	\$510.61
Natural Resources & Mining	32	161	159	162	\$1,013,449	\$485.21
Construction	12	61	61	62	\$393,423	\$493.42
Manufacturing	9	426	422	431	\$3,475,751	\$627.13
Trade, Transportation & Utilities	47	373	366	383	\$2,398,560	\$493.33
Wholesale Trade	6	35	35	35	\$328,967	\$723.00
Retail Trade	25	200	200	213	\$663,313	\$249.71
Transportation, Warehousing & Utilities	16	138	131	135	\$1,406,280	\$803.28
Financial Activities	23	81	77	78	\$579,413	\$566.57
Professional & Business Services	13	21	23	23	\$176,615	\$608.32
Education & Health Services	33	315	320	316	\$1,518,926	\$368.58
Leisure & Hospitality	14	126	126	132	\$277,765	\$166.93
Local & State Government	22	1,348	1,349	1,358	\$9,634,409	\$548.29
Other	16	44	45	43	\$206,383	\$360.81

**TABLE 6. COUNTY SUMMARY  
EMPLOYMENT AND TOTAL EARNINGS, BY INDUSTRY  
FIRST QUARTER 2006**

<b>NORTH AMERICAN INDUSTRY CLASSIFICATION SYSTEM INDUSTRY GROUP</b>	<b>NUMBER OF EMPLOYING UNITS</b>	<b>EMPLOYMENT JANUARY</b>	<b>EMPLOYMENT FEBRUARY</b>	<b>EMPLOYMENT MARCH</b>	<b>TOTAL EARNINGS JANUARY - MARCH</b>	<b>AVERAGE WEEKLY EARNINGS</b>
LITTLE RIVER COUNTY - TOTAL	258	4,452	4,460	4,458	\$47,137,381	\$813.60
Natural Resources & Mining	12	69	68	68	\$572,300	\$644.24
Trade, Transportation & Utilities	68	1,105	1,117	1,119	\$9,680,168	\$668.63
Wholesale Trade	9	40	41	41	\$336,840	\$637.15
Retail Trade	41	323	335	328	\$1,406,605	\$329.21
Transportation, Warehousing & Utilities	18	742	741	750	\$7,936,723	\$820.22
Information	3	11	12	12	\$98,961	\$652.49
Financial Activities	26	98	96	98	\$602,950	\$476.51
Professional & Business Services	21	153	149	148	\$795,997	\$408.20
Education & Health Services	23	144	158	161	\$830,595	\$413.99
Leisure & Hospitality	19	215	220	229	\$486,530	\$169.09
Other Services	14	103	94	97	\$341,577	\$268.11
Local Government	20	770	776	773	\$4,646,190	\$462.35
State Government	12	78	81	78	\$542,342	\$528.08
Other	40	1,706	1,689	1,675	\$28,539,771	\$1,299.03
LOGAN COUNTY - TOTAL	480	5,718	5,699	5,775	\$33,517,943	\$449.91
Natural Resources & Mining	18	86	87	95	\$660,546	\$568.78
Construction	54	168	164	173	\$970,086	\$443.30
Manufacturing	27	1,785	1,768	1,766	\$11,900,887	\$516.33
Trade, Transportation & Utilities	117	831	813	830	\$3,896,055	\$363.42
Wholesale Trade	17	38	41	42	\$203,714	\$388.52
Retail Trade	73	725	714	725	\$3,124,192	\$333.16
Transportation, Warehousing & Utilities	27	68	58	63	\$568,149	\$693.71
Information	7	45	45	45	\$378,035	\$646.21
Financial Activities	43	239	239	241	\$2,001,516	\$642.40
Professional & Business Services	44	129	135	154	\$659,580	\$364.14
Education & Health Services	71	767	763	758	\$4,082,952	\$411.81
Leisure & Hospitality	31	310	311	326	\$711,254	\$173.32
Other Services	30	78	74	74	\$400,256	\$408.70
Local & State Government	38	1,280	1,300	1,313	\$7,856,776	\$465.73

**TABLE 6. COUNTY SUMMARY  
EMPLOYMENT AND TOTAL EARNINGS, BY INDUSTRY  
FIRST QUARTER 2006**

<b>NORTH AMERICAN INDUSTRY CLASSIFICATION SYSTEM INDUSTRY GROUP</b>	<b>NUMBER OF EMPLOYING UNITS</b>	<b>EMPLOYMENT JANUARY</b>	<b>EMPLOYMENT FEBRUARY</b>	<b>EMPLOYMENT MARCH</b>	<b>TOTAL EARNINGS JANUARY - MARCH</b>	<b>AVERAGE WEEKLY EARNINGS</b>
LONOKE COUNTY - TOTAL	1,198	11,715	11,792	12,037	\$73,849,818	\$479.47
Natural Resources & Mining	69	381	395	422	\$2,856,984	\$550.34
Construction	165	882	900	905	\$6,592,828	\$566.22
Manufacturing	38	1,414	1,411	1,416	\$12,245,748	\$666.34
Trade, Transportation & Utilities	326	2,491	2,498	2,611	\$14,394,269	\$437.07
Wholesale Trade	75	414	414	426	\$3,816,339	\$702.31
Retail Trade	177	1,810	1,820	1,911	\$8,512,966	\$354.54
Transportation, Warehousing & Utilities	74	267	264	274	\$2,064,964	\$591.96
Information	17	118	119	120	\$914,853	\$591.37
Financial Activities	120	573	579	577	\$4,975,551	\$664.09
Professional & Business Services	147	509	525	551	\$3,714,160	\$540.77
Education & Health Services	124	1,246	1,257	1,293	\$7,332,310	\$445.75
Leisure & Hospitality	82	1,263	1,251	1,241	\$2,942,549	\$180.84
Other Services	65	197	196	197	\$1,070,417	\$418.68
Local Government	29	2,501	2,520	2,562	\$15,815,854	\$481.32
State Government	16	140	141	142	\$994,295	\$542.44
MADISON COUNTY - TOTAL	251	3,139	3,143	3,149	\$18,623,672	\$455.71
Natural Resources & Mining	12	63	59	58	\$407,351	\$522.24
Construction	44	147	157	158	\$991,574	\$495.29
Manufacturing	19	1,084	1,088	1,071	\$6,571,583	\$467.63
Trade, Transportation & Utilities	62	570	567	583	\$3,354,756	\$450.10
Wholesale Trade	13	40	40	39	\$626,953	\$1,215.81
Retail Trade	34	415	410	434	\$1,911,548	\$350.38
Transportation, Warehousing & Utilities	15	115	117	110	\$816,255	\$550.78
Information	4	34	34	34	\$340,460	\$770.27
Financial Activities	16	96	93	92	\$737,046	\$605.29
Professional & Business Services	19	84	80	77	\$430,408	\$412.14
Education & Health Services	32	243	247	242	\$1,115,003	\$351.51
Leisure & Hospitality	13	110	110	119	\$203,952	\$138.84
Other Services	14	26	26	26	\$170,281	\$503.79
Local Government	8	635	635	641	\$3,934,578	\$475.13
State Government	8	47	47	48	\$366,680	\$595.90

**TABLE 6. COUNTY SUMMARY  
EMPLOYMENT AND TOTAL EARNINGS, BY INDUSTRY  
FIRST QUARTER 2006**

<b>NORTH AMERICAN INDUSTRY CLASSIFICATION SYSTEM INDUSTRY GROUP</b>	<b>NUMBER OF EMPLOYING UNITS</b>	<b>EMPLOYMENT JANUARY</b>	<b>EMPLOYMENT FEBRUARY</b>	<b>EMPLOYMENT MARCH</b>	<b>TOTAL EARNINGS JANUARY - MARCH</b>	<b>AVERAGE WEEKLY EARNINGS</b>
MARION COUNTY - TOTAL	306	3,969	4,008	4,066	\$22,662,953	\$434.27
Natural Resources & Mining	5	51	56	61	\$225,448	\$309.68
Construction	20	58	56	53	\$232,421	\$321.17
Manufacturing	26	1,671	1,698	1,700	\$11,080,237	\$504.43
Trade, Transportation & Utilities	61	662	665	691	\$2,894,013	\$330.95
Retail Trade	39	505	506	523	\$1,922,424	\$289.20
Other Trade, Transportation & Utilities	22	157	159	168	\$971,589	\$463.25
Financial Activities	34	166	167	176	\$1,123,647	\$509.44
Professional & Business Services	26	40	40	44	\$317,751	\$591.35
Education & Health Services	43	376	357	355	\$1,798,925	\$381.56
Leisure & Hospitality	43	214	226	237	\$523,086	\$178.30
Local Government	20	530	539	542	\$3,063,856	\$438.88
State Government	8	111	111	115	\$681,293	\$466.53
Other	20	90	93	92	\$722,276	\$606.11
MILLER COUNTY - TOTAL	829	12,493	12,548	12,706	\$92,427,346	\$565.06
Natural Resources & Mining	28	133	128	139	\$965,459	\$557.00
Construction	86	710	718	728	\$5,148,701	\$551.10
Manufacturing	35	2,784	2,777	2,781	\$32,056,104	\$886.79
Trade, Transportation & Utilities	230	2,705	2,682	2,750	\$18,487,061	\$524.30
Wholesale Trade	65	615	613	607	\$6,342,236	\$797.60
Retail Trade	127	1,477	1,471	1,540	\$6,859,280	\$352.70
Transportation, Warehousing & Utilities	38	613	598	603	\$5,285,545	\$672.40
Information	8	98	98	99	\$1,522,415	\$1,190.94
Financial Activities	87	374	379	382	\$3,159,539	\$642.40
Professional & Business Services	83	872	944	937	\$4,605,682	\$386.07
Education & Health Services	87	1,024	1,017	1,021	\$6,130,778	\$462.05
Leisure & Hospitality	85	1,296	1,314	1,348	\$3,581,082	\$208.79
Other Services	61	336	330	327	\$1,230,291	\$285.91
Local Government	22	1,714	1,712	1,744	\$11,693,970	\$521.97
State Government	17	447	449	450	\$3,846,264	\$659.43

**TABLE 6. COUNTY SUMMARY  
EMPLOYMENT AND TOTAL EARNINGS, BY INDUSTRY  
FIRST QUARTER 2006**

<b>NORTH AMERICAN INDUSTRY CLASSIFICATION SYSTEM INDUSTRY GROUP</b>	<b>NUMBER OF EMPLOYING UNITS</b>	<b>EMPLOYMENT JANUARY</b>	<b>EMPLOYMENT FEBRUARY</b>	<b>EMPLOYMENT MARCH</b>	<b>TOTAL EARNINGS JANUARY - MARCH</b>	<b>AVERAGE WEEKLY EARNINGS</b>
MISSISSIPPI COUNTY - TOTAL	1,161	18,044	18,194	18,506	\$154,959,133	\$653.22
Natural Resources & Mining	102	550	516	537	\$3,179,343	\$457.70
Construction	59	433	439	467	\$3,842,560	\$662.24
Manufacturing	56	5,262	5,273	5,324	\$71,988,535	\$1,047.53
Trade, Transportation & Utilities	306	3,014	3,039	3,071	\$19,417,999	\$491.13
Wholesale Trade	66	570	572	583	\$5,494,187	\$735.01
Retail Trade	187	1,880	1,890	1,913	\$8,524,784	\$346.17
Transportation, Warehousing & Utilities	53	564	577	575	\$5,399,028	\$726.07
Financial Activities	103	590	578	580	\$4,237,068	\$559.37
Professional & Business Services	98	977	999	1,103	\$9,752,976	\$730.98
Education & Health Services	194	1,625	1,628	1,642	\$10,361,977	\$488.50
Leisure & Hospitality	83	1,091	1,100	1,104	\$2,589,793	\$181.38
Local Government	46	2,392	2,424	2,460	\$15,183,176	\$481.56
State Government	24	587	640	649	\$4,249,071	\$522.68
Other	90	1,523	1,558	1,569	\$10,156,635	\$504.05
MONROE COUNTY - TOTAL	301	2,342	2,373	2,406	\$12,160,875	\$394.10
Natural Resources & Mining	33	111	115	132	\$564,458	\$363.85
Construction	15	33	34	37	\$165,802	\$367.90
Manufacturing	7	95	98	103	\$666,026	\$519.25
Trade, Transportation & Utilities	91	672	667	682	\$3,689,990	\$421.34
Wholesale Trade	23	187	188	197	\$1,327,874	\$535.72
Retail Trade	40	331	332	338	\$1,351,933	\$311.67
Transportation, Warehousing & Utilities	28	154	147	147	\$1,010,183	\$520.36
Financial Activities	16	101	100	96	\$721,522	\$560.62
Professional & Business Services	17	54	43	49	\$256,118	\$404.82
Education & Health Services	37	302	310	295	\$1,413,282	\$359.58
Leisure & Hospitality	28	266	281	280	\$627,508	\$175.10
Local Government	22	467	480	482	\$2,722,042	\$439.58
State Government	9	114	114	118	\$803,007	\$535.58
Other	26	127	131	132	\$531,120	\$314.27



**TABLE 6. COUNTY SUMMARY  
EMPLOYMENT AND TOTAL EARNINGS, BY INDUSTRY  
FIRST QUARTER 2006**

<b>NORTH AMERICAN INDUSTRY CLASSIFICATION SYSTEM INDUSTRY GROUP</b>	<b>NUMBER OF EMPLOYING UNITS</b>	<b>EMPLOYMENT JANUARY</b>	<b>EMPLOYMENT FEBRUARY</b>	<b>EMPLOYMENT MARCH</b>	<b>TOTAL EARNINGS JANUARY - MARCH</b>	<b>AVERAGE WEEKLY EARNINGS</b>
MONTGOMERY COUNTY - TOTAL	187	1,554	1,596	1,636	\$8,008,792	\$386.16
Natural Resources & Mining	15	60	59	57	\$453,992	\$595.27
Construction	25	112	125	145	\$832,845	\$503.13
Trade, Transportation & Utilities	44	183	176	182	\$853,669	\$364.14
Wholesale Trade	8	52	55	54	\$312,419	\$447.81
Retail Trade	25	118	109	114	\$475,698	\$321.93
Transportation, Warehousing & Utilities	11	13	12	14	\$65,552	\$387.88
Financial Activities	10	61	66	70	\$548,400	\$642.41
Education & Health Services	16	57	57	58	\$261,174	\$350.41
Leisure & Hospitality	22	176	203	223	\$719,010	\$275.62
Other Services	13	75	70	72	\$286,159	\$304.32
Local Government	9	479	492	481	\$2,490,809	\$395.87
State Government	8	59	58	59	\$396,869	\$520.37
Other	25	292	290	289	\$1,165,865	\$308.89
NEVADA COUNTY - TOTAL	190	2,644	2,660	2,661	\$19,644,321	\$569.15
Natural Resources & Mining	16	60	59	59	\$421,657	\$546.66
Construction	11	14	15	14	\$77,718	\$417.09
Manufacturing	9	870	863	855	\$10,032,082	\$894.55
Trade, Transportation & Utilities	48	511	507	516	\$2,914,887	\$438.50
Retail Trade	31	295	292	296	\$897,266	\$234.50
Other Trade, Transportation & Utilities	17	216	215	220	\$2,017,621	\$715.21
Financial Activities	13	63	64	65	\$498,909	\$599.65
Education & Health Services	14	351	359	370	\$1,773,437	\$378.94
Leisure & Hospitality	15	93	100	102	\$221,174	\$173.02
Other Services	15	70	67	64	\$207,206	\$237.89
Local Government	27	485	499	497	\$2,614,357	\$407.37
State Government	11	76	78	78	\$576,746	\$573.69
Other	11	51	49	41	\$306,148	\$501.06

**TABLE 6. COUNTY SUMMARY  
EMPLOYMENT AND TOTAL EARNINGS, BY INDUSTRY  
FIRST QUARTER 2006**

<b>NORTH AMERICAN INDUSTRY CLASSIFICATION SYSTEM INDUSTRY GROUP</b>	<b>NUMBER OF EMPLOYING UNITS</b>	<b>EMPLOYMENT JANUARY</b>	<b>EMPLOYMENT FEBRUARY</b>	<b>EMPLOYMENT MARCH</b>	<b>TOTAL EARNINGS JANUARY - MARCH</b>	<b>AVERAGE WEEKLY EARNINGS</b>
NEWTON COUNTY - TOTAL	138	1,114	1,096	1,112	\$4,939,598	\$343.14
Natural Resources & Mining	5	12	13	13	\$24,220	\$147.09
Construction	8	19	11	8	\$49,610	\$301.28
Manufacturing	16	104	101	106	\$512,530	\$380.31
Trade, Transportation & Utilities	31	167	159	154	\$642,289	\$308.79
Retail Trade	17	110	105	101	\$332,135	\$242.55
Other Trade, Transportation & Utilities	14	57	54	53	\$310,154	\$436.43
Education & Health Services	19	216	218	218	\$805,537	\$285.11
Leisure & Hospitality	20	60	58	75	\$168,731	\$201.75
Other Services	5	11	11	11	\$50,521	\$353.29
Local Government	13	385	385	388	\$1,931,857	\$384.99
State Government	7	92	92	91	\$436,417	\$366.22
Other	14	48	48	48	\$317,886	\$509.43
OUACHITA COUNTY - TOTAL	650	8,295	8,396	8,458	\$55,392,582	\$508.29
Natural Resources & Mining	43	256	261	274	\$1,861,247	\$543.01
Construction	53	315	295	305	\$1,855,625	\$468.00
Manufacturing	34	1,382	1,432	1,407	\$14,773,495	\$807.69
Trade, Transportation & Utilities	185	1,803	1,818	1,836	\$10,888,101	\$460.44
Wholesale Trade	32	252	251	248	\$2,498,889	\$767.87
Retail Trade	123	1,133	1,153	1,179	\$4,679,561	\$311.66
Transportation, Warehousing & Utilities	30	418	414	409	\$3,709,651	\$689.83
Information	8	93	94	92	\$642,693	\$531.59
Financial Activities	64	362	358	361	\$2,574,009	\$549.49
Professional & Business Services	50	379	372	360	\$1,906,502	\$396.01
Education & Health Services	85	1,219	1,230	1,229	\$7,499,199	\$470.52
Leisure & Hospitality	37	486	494	517	\$1,155,565	\$178.14
Other Services	47	165	169	168	\$705,882	\$324.49
Local Government	30	1,322	1,324	1,331	\$7,596,969	\$440.82
State Government	14	513	549	578	\$3,933,295	\$553.47

**TABLE 6. COUNTY SUMMARY  
EMPLOYMENT AND TOTAL EARNINGS, BY INDUSTRY  
FIRST QUARTER 2006**

<b>NORTH AMERICAN INDUSTRY CLASSIFICATION SYSTEM INDUSTRY GROUP</b>	<b>NUMBER OF EMPLOYING UNITS</b>	<b>EMPLOYMENT JANUARY</b>	<b>EMPLOYMENT FEBRUARY</b>	<b>EMPLOYMENT MARCH</b>	<b>TOTAL EARNINGS JANUARY - MARCH</b>	<b>AVERAGE WEEKLY EARNINGS</b>
PERRY COUNTY - TOTAL	155	1,155	1,180	1,212	\$6,458,168	\$420.17
Natural Resources & Mining	8	29	29	30	\$261,297	\$685.22
Construction	24	84	80	75	\$443,586	\$428.31
Manufacturing	7	81	82	79	\$463,601	\$442.09
Trade, Transportation & Utilities	28	184	185	192	\$824,171	\$339.03
Retail Trade	17	154	155	163	\$528,626	\$258.45
Other Trade, Transportation & Utilities	11	30	30	29	\$295,545	\$766.32
Financial Activities	13	50	50	50	\$386,497	\$594.61
Professional & Business Services	13	34	32	34	\$199,248	\$459.80
Education & Health Services	22	165	171	173	\$850,610	\$385.65
Local Government	12	388	400	408	\$2,243,641	\$432.91
State Government	9	54	53	52	\$372,790	\$541.06
Other	19	86	98	119	\$412,727	\$314.34
PHILLIPS COUNTY - TOTAL	738	6,312	6,347	6,504	\$38,971,302	\$469.31
Natural Resources & Mining	72	300	309	406	\$1,628,995	\$370.37
Construction	30	109	105	112	\$652,174	\$461.66
Manufacturing	13	406	414	423	\$3,021,360	\$560.93
Trade, Transportation & Utilities	182	1,536	1,535	1,563	\$10,604,288	\$528.08
Wholesale Trade	36	396	395	410	\$3,384,396	\$650.30
Retail Trade	108	869	877	883	\$3,836,731	\$336.78
Transportation, Warehousing & Utilities	38	271	263	270	\$3,383,161	\$971.06
Information	11	62	60	56	\$441,620	\$572.54
Financial Activities	55	279	278	273	\$2,247,222	\$624.81
Professional & Business Services	58	220	247	233	\$1,376,980	\$453.95
Education & Health Services	191	1,233	1,229	1,249	\$6,529,246	\$406.02
Leisure & Hospitality	40	402	395	403	\$912,009	\$175.39
Other Services	40	85	83	88	\$397,674	\$358.48
Local Government	30	1,180	1,185	1,186	\$7,737,452	\$502.83
State Government	16	500	507	512	\$3,422,282	\$519.92

**TABLE 6. COUNTY SUMMARY  
EMPLOYMENT AND TOTAL EARNINGS, BY INDUSTRY  
FIRST QUARTER 2006**

<b>NORTH AMERICAN INDUSTRY CLASSIFICATION SYSTEM INDUSTRY GROUP</b>	<b>NUMBER OF EMPLOYING UNITS</b>	<b>EMPLOYMENT JANUARY</b>	<b>EMPLOYMENT FEBRUARY</b>	<b>EMPLOYMENT MARCH</b>	<b>TOTAL EARNINGS JANUARY - MARCH</b>	<b>AVERAGE WEEKLY EARNINGS</b>
PIKE COUNTY - TOTAL	262	2,855	2,862	2,919	\$16,557,723	\$442.45
Natural Resources & Mining	32	146	145	146	\$1,201,845	\$634.67
Construction	13	98	101	104	\$802,146	\$610.93
Manufacturing	14	540	531	546	\$3,520,212	\$502.39
Trade, Transportation & Utilities	90	557	544	558	\$3,300,083	\$459.05
Wholesale Trade	18	118	109	114	\$1,043,150	\$705.94
Retail Trade	44	314	315	321	\$1,333,255	\$323.87
Transportation, Warehousing & Utilities	28	125	120	123	\$923,678	\$579.23
Information	5	30	30	30	\$301,620	\$773.38
Financial Activities	24	174	173	176	\$1,222,892	\$539.59
Professional & Business Services	7	26	25	29	\$110,860	\$319.79
Education & Health Services	18	242	244	248	\$967,598	\$304.21
Leisure & Hospitality	20	199	202	209	\$452,039	\$171.01
Other Services	15	132	137	141	\$656,805	\$369.68
Local Government	13	583	603	603	\$3,393,862	\$437.79
State Government	11	128	127	129	\$627,761	\$377.26
POINSETT COUNTY - TOTAL	502	5,910	5,895	5,992	\$36,379,141	\$471.72
Natural Resources & Mining	49	284	275	272	\$1,715,780	\$476.47
Construction	29	83	85	88	\$399,296	\$359.94
Manufacturing	28	1,284	1,253	1,241	\$9,233,482	\$564.00
Trade, Transportation & Utilities	136	1,355	1,364	1,429	\$9,027,897	\$502.26
Wholesale Trade	34	499	509	533	\$5,210,342	\$780.26
Retail Trade	76	718	717	756	\$2,790,227	\$293.88
Transportation, Warehousing & Utilities	26	138	138	140	\$1,027,328	\$569.89
Information	6	53	53	53	\$558,041	\$809.93
Financial Activities	45	322	324	332	\$2,279,217	\$537.80
Professional & Business Services	30	145	148	151	\$1,032,410	\$536.60
Education & Health Services	58	535	537	553	\$2,762,061	\$392.25
Leisure & Hospitality	47	396	400	420	\$798,219	\$151.48
Other Services	31	61	59	59	\$306,992	\$395.78
Local Government	31	1,194	1,205	1,198	\$6,988,085	\$448.33
State Government	12	198	192	196	\$1,277,661	\$503.15

**TABLE 6. COUNTY SUMMARY  
EMPLOYMENT AND TOTAL EARNINGS, BY INDUSTRY  
FIRST QUARTER 2006**

<b>NORTH AMERICAN INDUSTRY CLASSIFICATION SYSTEM INDUSTRY GROUP</b>	<b>NUMBER OF EMPLOYING UNITS</b>	<b>EMPLOYMENT JANUARY</b>	<b>EMPLOYMENT FEBRUARY</b>	<b>EMPLOYMENT MARCH</b>	<b>TOTAL EARNINGS JANUARY - MARCH</b>	<b>AVERAGE WEEKLY EARNINGS</b>
POLK COUNTY - TOTAL	536	6,216	6,247	6,308	\$35,061,645	\$431.05
Natural Resources & Mining	26	254	252	251	\$1,945,220	\$592.99
Construction	36	187	187	192	\$951,490	\$387.94
Manufacturing	45	1,314	1,320	1,327	\$8,514,615	\$496.06
Trade, Transportation & Utilities	154	1,354	1,374	1,397	\$6,940,378	\$388.27
Wholesale Trade	27	116	120	119	\$523,285	\$340.16
Retail Trade	85	839	845	869	\$3,741,803	\$338.23
Transportation, Warehousing & Utilities	42	399	409	409	\$2,675,290	\$507.29
Information	10	51	51	51	\$379,412	\$572.27
Financial Activities	41	221	224	221	\$1,473,922	\$510.71
Professional & Business Services	48	140	145	143	\$948,961	\$511.66
Education & Health Services	74	959	942	958	\$5,671,650	\$457.80
Leisure & Hospitality	39	437	443	452	\$892,523	\$154.63
Other Services	28	125	127	130	\$570,618	\$344.71
Local Government	21	839	839	837	\$5,046,751	\$463.08
State Government	14	335	343	349	\$1,726,105	\$387.86
POPE COUNTY - TOTAL	1,717	26,751	27,183	26,869	\$188,300,130	\$537.78
Natural Resources & Mining	22	663	780	747	\$4,277,225	\$450.71
Construction	172	1,452	1,554	1,100	\$8,811,077	\$495.21
Manufacturing	92	5,133	5,124	5,113	\$40,369,274	\$606.11
Trade, Transportation & Utilities	477	6,521	6,506	6,529	\$58,920,712	\$695.29
Wholesale Trade	103	723	720	711	\$5,726,107	\$613.47
Retail Trade	283	3,343	3,334	3,387	\$16,908,346	\$387.71
Transportation, Warehousing & Utilities	91	2,455	2,452	2,431	\$36,286,259	\$1,141.15
Information	23	276	275	268	\$2,578,988	\$726.68
Financial Activities	180	847	850	858	\$6,854,524	\$619.10
Professional & Business Services	223	2,631	2,576	2,603	\$13,119,630	\$387.66
Education & Health Services	226	2,857	2,928	2,919	\$20,277,210	\$537.61
Leisure & Hospitality	129	2,277	2,314	2,349	\$5,743,219	\$190.97
Other Services	116	461	461	478	\$2,398,698	\$395.39
Local Government	41	2,267	2,288	2,295	\$14,961,774	\$504.05
State Government	16	1,366	1,527	1,610	\$9,987,799	\$511.85

**TABLE 6. COUNTY SUMMARY  
EMPLOYMENT AND TOTAL EARNINGS, BY INDUSTRY  
FIRST QUARTER 2006**

<b>NORTH AMERICAN INDUSTRY CLASSIFICATION SYSTEM INDUSTRY GROUP</b>	<b>NUMBER OF EMPLOYING UNITS</b>	<b>EMPLOYMENT JANUARY</b>	<b>EMPLOYMENT FEBRUARY</b>	<b>EMPLOYMENT MARCH</b>	<b>TOTAL EARNINGS JANUARY - MARCH</b>	<b>AVERAGE WEEKLY EARNINGS</b>
PRAIRIE COUNTY - TOTAL	237	1,565	1,570	1,608	\$9,271,158	\$451.09
Natural Resources & Mining	28	102	102	115	\$671,712	\$485.93
Trade, Transportation & Utilities	72	374	372	383	\$2,257,140	\$461.36
Wholesale Trade	11	57	62	64	\$392,397	\$494.83
Retail Trade	41	236	231	241	\$1,206,141	\$393.14
Transportation, Warehousing & Utilities	20	81	79	78	\$658,602	\$638.59
Information	4	8	9	9	\$99,211	\$880.57
Financial Activities	16	63	64	62	\$471,137	\$575.26
Professional & Business Services	16	53	53	53	\$319,896	\$464.29
Education & Health Services	26	244	239	248	\$1,321,241	\$417.10
Leisure & Hospitality	19	100	102	104	\$287,679	\$216.95
Other Services	12	36	36	38	\$160,182	\$336.05
Local Government	15	357	364	356	\$2,054,328	\$440.18
State Government	10	49	48	49	\$345,868	\$546.68
Other	19	179	181	191	\$1,282,764	\$537.25
PULASKI COUNTY - TOTAL	13,903	234,710	236,123	238,837	\$2,193,320,887	\$713.22
Natural Resources & Mining	44	619	649	689	\$8,326,106	\$981.81
Construction	1,133	10,245	10,252	10,382	\$94,006,900	\$702.55
Manufacturing	446	15,826	15,886	15,825	\$164,872,231	\$800.38
Trade, Transportation & Utilities	3,234	51,461	50,930	51,300	\$442,686,708	\$664.70
Wholesale Trade	1,085	13,154	13,094	13,096	\$161,551,307	\$947.57
Retail Trade	1,757	25,019	24,530	24,867	\$141,532,310	\$438.90
Transportation, Warehousing & Utilities	392	13,288	13,306	13,337	\$139,603,091	\$806.79
Information	239	8,616	8,575	8,599	\$125,471,283	\$1,122.72
Financial Activities	1,701	16,029	16,085	16,071	\$247,662,201	\$1,186.11
Professional & Business Services	2,645	33,086	33,761	34,728	\$289,438,161	\$657.58
Education & Health Services	1,908	32,404	32,746	32,964	\$299,612,269	\$704.70
Leisure & Hospitality	1,022	19,082	19,055	19,874	\$66,335,930	\$263.89
Other Services	1,226	6,546	6,563	6,664	\$44,465,719	\$518.96
Local Government	104	16,756	16,792	16,818	\$148,804,604	\$681.80
State Government	201	24,040	24,829	24,923	\$261,638,775	\$818.22

**TABLE 6. COUNTY SUMMARY  
EMPLOYMENT AND TOTAL EARNINGS, BY INDUSTRY  
FIRST QUARTER 2006**

<b>NORTH AMERICAN INDUSTRY CLASSIFICATION SYSTEM INDUSTRY GROUP</b>	<b>NUMBER OF EMPLOYING UNITS</b>	<b>EMPLOYMENT JANUARY</b>	<b>EMPLOYMENT FEBRUARY</b>	<b>EMPLOYMENT MARCH</b>	<b>TOTAL EARNINGS JANUARY - MARCH</b>	<b>AVERAGE WEEKLY EARNINGS</b>
<b>RANDOLPH COUNTY - TOTAL</b>	409	4,971	5,081	5,108	\$28,126,836	\$428.15
Natural Resources & Mining	22	61	59	68	\$299,683	\$367.86
Construction	24	83	93	99	\$446,262	\$374.49
Manufacturing	40	1,106	1,099	1,093	\$6,984,128	\$488.70
Trade, Transportation & Utilities	101	934	938	952	\$5,058,938	\$413.40
Wholesale Trade	22	189	193	204	\$975,309	\$384.08
Retail Trade	62	602	600	608	\$2,645,994	\$337.36
Transportation, Warehousing & Utilities	17	143	145	140	\$1,437,635	\$775.14
Information	5	44	45	46	\$437,419	\$747.72
Financial Activities	29	144	150	150	\$825,888	\$429.26
Professional & Business Services	38	215	221	220	\$936,422	\$329.42
Education & Health Services	62	816	829	856	\$5,028,284	\$463.96
Leisure & Hospitality	29	411	416	414	\$796,715	\$148.15
Other Services	24	56	60	71	\$293,985	\$362.80
Local Government	23	872	882	872	\$5,030,490	\$442.07
State Government	12	229	289	267	\$1,988,622	\$584.60
<b>SAINT FRANCIS COUNTY - TOTAL</b>	656	8,075	8,104	8,155	\$48,413,147	\$459.12
Natural Resources & Mining	20	124	120	141	\$527,008	\$315.89
Construction	41	223	201	227	\$1,309,366	\$464.15
Manufacturing	20	1,181	1,226	1,210	\$8,786,799	\$560.61
Trade, Transportation & Utilities	193	2,100	2,104	2,128	\$12,529,549	\$456.64
Wholesale Trade	33	492	510	523	\$3,749,337	\$567.36
Retail Trade	128	1,279	1,269	1,281	\$5,907,071	\$356.01
Transportation, Warehousing & Utilities	32	329	325	324	\$2,873,141	\$677.95
Information	9	98	98	97	\$674,141	\$530.96
Financial Activities	48	290	291	295	\$1,814,584	\$478.03
Professional & Business Services	48	195	197	194	\$1,265,272	\$498.27
Education & Health Services	140	1,319	1,328	1,266	\$6,984,021	\$411.88
Leisure & Hospitality	50	733	722	775	\$1,757,875	\$181.91
Other Services	40	127	124	126	\$457,992	\$280.35
Local Government	30	1,188	1,195	1,195	\$8,231,389	\$530.90
State Government	17	497	498	501	\$4,075,151	\$628.62

**TABLE 6. COUNTY SUMMARY  
EMPLOYMENT AND TOTAL EARNINGS, BY INDUSTRY  
FIRST QUARTER 2006**

<b>NORTH AMERICAN INDUSTRY CLASSIFICATION SYSTEM INDUSTRY GROUP</b>	<b>NUMBER OF EMPLOYING UNITS</b>	<b>EMPLOYMENT JANUARY</b>	<b>EMPLOYMENT FEBRUARY</b>	<b>EMPLOYMENT MARCH</b>	<b>TOTAL EARNINGS JANUARY - MARCH</b>	<b>AVERAGE WEEKLY EARNINGS</b>
SALINE COUNTY - TOTAL	1,674	19,642	19,566	19,722	\$131,472,283	\$514.84
Natural Resources & Mining	12	34	31	32	\$542,315	\$1,290.20
Construction	299	1,881	1,855	1,887	\$13,819,542	\$567.16
Manufacturing	83	1,907	1,858	1,862	\$18,553,615	\$760.90
Trade, Transportation & Utilities	423	4,211	4,224	4,267	\$27,766,774	\$504.47
Wholesale Trade	125	532	532	541	\$5,302,074	\$762.34
Retail Trade	248	3,427	3,445	3,474	\$20,492,198	\$457.08
Transportation, Warehousing & Utilities	50	252	247	252	\$1,972,502	\$606.12
Information	17	138	131	136	\$919,050	\$523.68
Financial Activities	157	716	712	737	\$5,752,856	\$613.20
Professional & Business Services	208	1,182	1,184	1,185	\$7,082,610	\$460.28
Education & Health Services	171	2,564	2,571	2,608	\$16,629,400	\$495.62
Leisure & Hospitality	123	2,270	2,218	2,219	\$6,340,388	\$218.16
Other Services	130	570	596	590	\$3,399,384	\$446.74
Local & State Government	51	4,169	4,186	4,199	\$30,666,349	\$563.71
SCOTT COUNTY - TOTAL	188	2,898	2,892	2,914	\$15,697,406	\$416.19
Natural Resources & Mining	18	179	185	183	\$1,440,287	\$607.63
Trade, Transportation & Utilities	41	462	456	472	\$2,216,907	\$368.05
Wholesale Trade	7	65	66	70	\$412,848	\$473.99
Retail Trade	27	321	314	326	\$1,221,851	\$293.41
Transportation, Warehousing & Utilities	7	76	76	76	\$582,208	\$589.28
Information	3	9	9	9	\$75,114	\$642.00
Financial Activities	17	68	68	70	\$418,629	\$468.96
Professional & Business Services	9	17	17	15	\$55,420	\$261.00
Education & Health Services	29	336	311	313	\$1,679,895	\$403.82
Leisure & Hospitality	19	178	182	193	\$347,630	\$145.07
Other Services	10	56	57	58	\$485,286	\$654.91
Local Government	5	352	367	361	\$2,063,511	\$440.92
State Government	8	65	66	67	\$400,183	\$466.41
Other	29	1,176	1,174	1,173	\$6,514,544	\$426.73



**TABLE 6. COUNTY SUMMARY  
EMPLOYMENT AND TOTAL EARNINGS, BY INDUSTRY  
FIRST QUARTER 2006**

<b>NORTH AMERICAN INDUSTRY CLASSIFICATION SYSTEM INDUSTRY GROUP</b>	<b>NUMBER OF EMPLOYING UNITS</b>	<b>EMPLOYMENT JANUARY</b>	<b>EMPLOYMENT FEBRUARY</b>	<b>EMPLOYMENT MARCH</b>	<b>TOTAL EARNINGS JANUARY - MARCH</b>	<b>AVERAGE WEEKLY EARNINGS</b>
SEARCY COUNTY - TOTAL	165	1,622	1,656	1,650	\$8,008,465	\$375.02
Construction	5	13	13	13	\$64,368	\$380.88
Manufacturing	16	258	267	254	\$1,216,220	\$360.29
Trade, Transportation & Utilities	38	297	303	292	\$1,123,387	\$290.63
Retail Trade	27	211	213	202	\$766,009	\$282.38
Other Trade, Transportation & Utilities	11	86	90	90	\$357,378	\$310.04
Financial Activities	14	77	77	84	\$517,475	\$501.75
Professional & Business Services	17	37	34	32	\$179,881	\$403.02
Education & Health Services	34	288	285	286	\$1,233,627	\$331.41
Leisure & Hospitality	10	86	107	111	\$230,087	\$174.66
Local Government	10	357	355	355	\$2,101,719	\$454.56
State Government	8	168	164	165	\$1,009,403	\$468.69
Other	13	41	51	58	\$332,298	\$511.23
SEBASTIAN COUNTY - TOTAL	3,616	73,029	73,157	74,033	\$680,150,672	\$712.74
Natural Resources & Mining	62	1,198	1,237	1,261	\$20,937,277	\$1,307.27
Construction	300	2,782	2,764	2,815	\$21,994,110	\$607.05
Manufacturing	228	21,556	21,496	21,540	\$196,576,825	\$702.31
Trade, Transportation & Utilities	929	12,750	12,679	12,860	\$89,858,627	\$541.58
Wholesale Trade	238	2,443	2,466	2,482	\$27,261,775	\$851.19
Retail Trade	563	8,160	8,030	8,166	\$41,771,463	\$395.78
Transportation, Warehousing & Utilities	128	2,147	2,183	2,212	\$20,825,389	\$734.62
Information	59	1,165	1,174	1,174	\$13,726,154	\$901.67
Financial Activities	414	2,556	2,548	2,561	\$24,091,025	\$725.31
Professional & Business Services	517	9,133	9,248	9,537	\$155,869,419	\$1,288.41
Education & Health Services	451	9,500	9,518	9,593	\$86,113,012	\$694.57
Leisure & Hospitality	313	5,149	5,209	5,328	\$14,877,404	\$218.87
Other Services	278	1,482	1,465	1,506	\$8,822,210	\$457.20
Local Government	43	4,379	4,406	4,417	\$36,146,536	\$631.84
State Government	22	1,379	1,413	1,441	\$11,138,073	\$607.21

**TABLE 6. COUNTY SUMMARY  
EMPLOYMENT AND TOTAL EARNINGS, BY INDUSTRY  
FIRST QUARTER 2006**

<b>NORTH AMERICAN INDUSTRY CLASSIFICATION SYSTEM INDUSTRY GROUP</b>	<b>NUMBER OF EMPLOYING UNITS</b>	<b>EMPLOYMENT JANUARY</b>	<b>EMPLOYMENT FEBRUARY</b>	<b>EMPLOYMENT MARCH</b>	<b>TOTAL EARNINGS JANUARY - MARCH</b>	<b>AVERAGE WEEKLY EARNINGS</b>
SEVIER COUNTY - TOTAL	331	5,878	5,930	5,912	\$36,732,858	\$478.38
Natural Resources & Mining	19	202	189	189	\$1,391,076	\$553.48
Trade, Transportation & Utilities	89	819	824	838	\$4,972,748	\$462.54
Wholesale Trade	15	138	137	133	\$1,504,672	\$851.06
Retail Trade	57	579	581	597	\$2,457,346	\$322.75
Transportation, Warehousing & Utilities	17	102	106	108	\$1,010,730	\$738.12
Information	6	38	39	39	\$295,499	\$587.86
Financial Activities	27	219	219	219	\$1,728,904	\$607.27
Professional & Business Services	29	103	96	97	\$2,277,089	\$1,775.28
Education & Health Services	53	546	538	545	\$2,790,214	\$395.27
Leisure & Hospitality	21	218	228	242	\$529,358	\$177.56
Other Services	33	143	148	143	\$611,999	\$325.42
Local Government	12	816	827	850	\$4,908,480	\$454.36
State Government	9	171	187	190	\$1,168,503	\$492.07
Other	33	2,603	2,635	2,560	\$16,058,988	\$475.24
SHARP COUNTY - TOTAL	426	3,973	3,942	3,946	\$20,770,537	\$404.11
Construction	34	201	201	220	\$1,344,771	\$498.93
Manufacturing	22	186	186	194	\$866,995	\$353.49
Trade, Transportation & Utilities	99	1,066	1,034	1,037	\$6,115,636	\$449.89
Retail Trade	70	678	665	679	\$2,713,379	\$309.68
Other Trade, Transportation & Utilities	29	388	369	358	\$3,402,257	\$704.16
Information	8	62	54	56	\$942,550	\$1,264.60
Financial Activities	38	267	256	259	\$1,967,156	\$580.51
Professional & Business Services	38	179	183	176	\$945,514	\$405.57
Education & Health Services	77	596	591	550	\$2,837,941	\$377.03
Leisure & Hospitality	43	463	470	481	\$835,355	\$136.33
Local Government	29	778	798	798	\$4,000,500	\$388.88
State Government	9	95	94	96	\$619,233	\$501.40
Other	29	80	75	79	\$294,886	\$290.81

**TABLE 6. COUNTY SUMMARY  
EMPLOYMENT AND TOTAL EARNINGS, BY INDUSTRY  
FIRST QUARTER 2006**

<b>NORTH AMERICAN INDUSTRY CLASSIFICATION SYSTEM INDUSTRY GROUP</b>	<b>NUMBER OF EMPLOYING UNITS</b>	<b>EMPLOYMENT JANUARY</b>	<b>EMPLOYMENT FEBRUARY</b>	<b>EMPLOYMENT MARCH</b>	<b>TOTAL EARNINGS JANUARY - MARCH</b>	<b>AVERAGE WEEKLY EARNINGS</b>
STONE COUNTY - TOTAL	268	2,782	2,803	2,871	\$14,004,123	\$382.18
Construction	23	98	92	95	\$526,243	\$426.11
Manufacturing	26	450	461	468	\$2,484,022	\$415.69
Trade, Transportation & Utilities	75	687	682	694	\$3,254,733	\$364.08
Wholesale Trade	9	41	49	50	\$229,115	\$377.66
Retail Trade	53	606	593	604	\$2,675,635	\$342.46
Transportation, Warehousing & Utilities	13	40	40	40	\$349,983	\$673.04
Financial Activities	22	90	91	91	\$673,018	\$571.00
Professional & Business Services	10	36	34	32	\$221,107	\$500.24
Education & Health Services	39	458	470	473	\$2,685,165	\$442.29
Leisure & Hospitality	34	324	335	368	\$650,238	\$146.11
Other Services	14	25	26	27	\$119,495	\$353.54
Local Government	10	402	396	402	\$2,409,888	\$463.44
State Government	9	171	171	172	\$741,276	\$332.81
Other	6	41	45	49	\$238,938	\$408.44
UNION COUNTY - TOTAL	1,359	20,035	19,993	20,057	\$171,019,599	\$656.84
Natural Resources & Mining	105	511	515	508	\$4,170,373	\$627.38
Construction	91	1,373	1,340	1,367	\$13,189,405	\$746.01
Manufacturing	66	5,250	5,186	5,184	\$53,099,505	\$784.49
Trade, Transportation & Utilities	358	3,651	3,657	3,688	\$29,413,812	\$617.30
Wholesale Trade	81	572	566	575	\$9,711,939	\$1,308.36
Retail Trade	219	2,300	2,312	2,339	\$11,134,791	\$369.67
Transportation, Warehousing & Utilities	58	779	779	774	\$8,567,082	\$847.78
Information	18	205	204	212	\$1,404,821	\$522.04
Financial Activities	124	751	739	735	\$5,899,450	\$611.87
Professional & Business Services	135	1,755	1,782	1,789	\$25,937,115	\$1,123.82
Education & Health Services	176	2,317	2,317	2,305	\$16,007,701	\$532.37
Leisure & Hospitality	87	1,043	1,060	1,076	\$2,781,611	\$201.92
Other Services	144	619	602	609	\$3,016,443	\$380.38
Local Government	37	2,062	2,061	2,052	\$12,257,264	\$458.07
State Government	18	498	530	532	\$3,842,099	\$568.36

**TABLE 6. COUNTY SUMMARY  
EMPLOYMENT AND TOTAL EARNINGS, BY INDUSTRY  
FIRST QUARTER 2006**

<b>NORTH AMERICAN INDUSTRY CLASSIFICATION SYSTEM INDUSTRY GROUP</b>	<b>NUMBER OF EMPLOYING UNITS</b>	<b>EMPLOYMENT JANUARY</b>	<b>EMPLOYMENT FEBRUARY</b>	<b>EMPLOYMENT MARCH</b>	<b>TOTAL EARNINGS JANUARY - MARCH</b>	<b>AVERAGE WEEKLY EARNINGS</b>
VAN BUREN COUNTY - TOTAL	363	3,751	3,742	3,787	\$19,468,909	\$398.30
Natural Resources & Mining	9	23	22	23	\$99,119	\$336.38
Construction	49	159	170	167	\$961,404	\$447.30
Manufacturing	14	609	587	574	\$3,459,533	\$451.05
Trade, Transportation & Utilities	100	785	780	788	\$4,007,482	\$393.03
Wholesale Trade	17	50	54	55	\$415,929	\$603.67
Retail Trade	63	600	592	598	\$2,685,194	\$346.18
Transportation, Warehousing & Utilities	20	135	134	135	\$906,359	\$517.72
Information	10	50	51	51	\$371,893	\$564.61
Financial Activities	26	135	134	137	\$916,904	\$521.17
Professional & Business Services	29	101	98	101	\$473,149	\$363.96
Education & Health Services	45	612	596	590	\$3,198,375	\$410.50
Leisure & Hospitality	32	429	442	490	\$1,223,502	\$207.46
Other Services	28	74	73	77	\$379,831	\$391.31
Local Government	13	688	703	704	\$3,790,381	\$417.52
State Government	8	86	86	85	\$587,336	\$527.39
WASHINGTON COUNTY - TOTAL	5,525	89,661	89,885	90,876	\$722,548,716	\$616.60
Natural Resources & Mining	40	453	452	453	\$3,220,489	\$547.27
Construction	681	5,768	5,791	5,918	\$49,934,914	\$659.35
Manufacturing	231	15,660	15,675	15,635	\$122,616,838	\$602.43
Trade, Transportation & Utilities	1,342	20,405	20,249	20,429	\$160,268,118	\$605.49
Wholesale Trade	365	3,660	3,664	3,654	\$46,875,631	\$985.38
Retail Trade	772	11,534	11,380	11,512	\$64,150,862	\$430.03
Transportation, Warehousing & Utilities	205	5,211	5,205	5,263	\$49,241,625	\$724.76
Information	94	1,418	1,448	1,452	\$15,076,243	\$805.73
Financial Activities	677	3,875	3,887	3,932	\$39,879,223	\$786.98
Professional & Business Services	905	8,846	9,011	9,253	\$94,473,792	\$804.19
Education & Health Services	608	10,218	10,339	10,434	\$85,145,645	\$634.02
Leisure & Hospitality	501	8,895	9,057	9,255	\$27,473,612	\$233.03
Other Services	363	1,943	1,911	1,924	\$11,455,621	\$457.53
Local & State Government	83	12,180	12,065	12,191	\$113,004,221	\$715.72

**TABLE 6. COUNTY SUMMARY  
EMPLOYMENT AND TOTAL EARNINGS, BY INDUSTRY  
FIRST QUARTER 2006**

<b>NORTH AMERICAN INDUSTRY CLASSIFICATION SYSTEM INDUSTRY GROUP</b>	<b>NUMBER OF EMPLOYING UNITS</b>	<b>EMPLOYMENT JANUARY</b>	<b>EMPLOYMENT FEBRUARY</b>	<b>EMPLOYMENT MARCH</b>	<b>TOTAL EARNINGS JANUARY - MARCH</b>	<b>AVERAGE WEEKLY EARNINGS</b>
WHITE COUNTY - TOTAL	1,618	23,419	23,708	23,942	\$158,656,260	\$515.18
Natural Resources & Mining	34	210	216	217	\$1,467,050	\$526.52
Construction	172	1,163	1,143	1,168	\$7,620,147	\$506.19
Manufacturing	84	3,789	3,785	3,717	\$33,179,040	\$678.12
Trade, Transportation & Utilities	478	5,880	5,863	5,982	\$38,310,790	\$498.78
Wholesale Trade	97	595	601	608	\$4,497,442	\$575.32
Retail Trade	298	3,080	3,087	3,174	\$14,808,050	\$365.83
Transportation, Warehousing & Utilities	83	2,205	2,175	2,200	\$19,005,298	\$666.54
Information	21	228	226	215	\$1,613,200	\$556.47
Financial Activities	175	880	857	867	\$6,326,060	\$560.62
Professional & Business Services	153	1,302	1,348	1,394	\$8,078,758	\$461.01
Education & Health Services	209	4,101	4,113	4,162	\$32,223,239	\$600.85
Leisure & Hospitality	120	2,107	2,142	2,200	\$4,728,944	\$169.22
Other Services	107	648	630	638	\$3,779,959	\$455.27
Local Government	46	2,555	2,600	2,593	\$16,292,431	\$485.26
State Government	19	556	785	789	\$5,036,642	\$545.68
WOODRUFF COUNTY - TOTAL	179	1,917	1,931	1,989	\$11,861,440	\$468.95
Natural Resources & Mining	20	72	69	90	\$459,865	\$459.41
Construction	6	46	43	63	\$268,695	\$407.94
Manufacturing	9	381	381	388	\$2,778,679	\$557.59
Trade, Transportation & Utilities	55	499	512	514	\$3,241,094	\$490.46
Wholesale Trade	13	208	223	228	\$1,726,129	\$604.46
Retail Trade	27	181	185	187	\$656,549	\$273.98
Transportation, Warehousing & Utilities	15	110	104	99	\$858,416	\$632.89
Financial Activities	14	57	62	57	\$378,836	\$496.73
Professional & Business Services	3	6	5	7	\$42,120	\$540.00
Education & Health Services	40	212	215	218	\$1,341,801	\$480.07
Leisure & Hospitality	7	53	54	52	\$112,509	\$163.29
Local Government	10	507	504	515	\$2,744,514	\$415.04
State Government	7	57	58	58	\$351,647	\$469.07
Other	8	27	28	27	\$141,680	\$398.72

**TABLE 6. COUNTY SUMMARY  
EMPLOYMENT AND TOTAL EARNINGS, BY INDUSTRY  
FIRST QUARTER 2006**

<b>NORTH AMERICAN INDUSTRY CLASSIFICATION SYSTEM INDUSTRY GROUP</b>	<b>NUMBER OF EMPLOYING UNITS</b>	<b>EMPLOYMENT JANUARY</b>	<b>EMPLOYMENT FEBRUARY</b>	<b>EMPLOYMENT MARCH</b>	<b>TOTAL EARNINGS JANUARY - MARCH</b>	<b>AVERAGE WEEKLY EARNINGS</b>
YELL COUNTY - TOTAL	415	7,037	6,999	7,095	\$41,188,518	\$449.82
Natural Resources & Mining	24	273	261	260	\$1,593,531	\$463.15
Construction	46	362	329	395	\$2,241,397	\$476.28
Manufacturing	23	2,928	2,898	2,899	\$17,390,836	\$459.97
Trade, Transportation & Utilities	90	714	730	739	\$3,257,068	\$344.31
Wholesale Trade	12	26	29	29	\$127,505	\$350.29
Retail Trade	58	591	606	615	\$2,339,536	\$297.95
Transportation, Warehousing & Utilities	20	97	95	95	\$790,027	\$635.24
Information	4	50	50	50	\$557,052	\$857.00
Financial Activities	38	192	193	190	\$1,296,445	\$520.31
Professional & Business Services	35	233	241	245	\$2,756,305	\$884.66
Education & Health Services	66	471	465	463	\$2,383,780	\$393.21
Leisure & Hospitality	28	338	356	367	\$855,421	\$186.06
Other Services	20	72	75	73	\$292,701	\$307.03
Local Government	28	1,291	1,289	1,301	\$7,868,770	\$467.89
State Government	13	113	112	113	\$695,212	\$474.66
REST-OF-STATE-TOTAL	4,384	15,894	16,154	16,550	\$229,216,372	\$1,088.44
Natural Resources & Mining	59	370	428	435	\$4,084,182	\$764.40
Construction	584	2,435	2,520	2,758	\$23,520,211	\$703.71
Manufacturing	44	176	175	181	\$1,747,641	\$758.09
Trade, Transportation & Utilities	1,776	6,937	6,999	7,072	\$134,410,490	\$1,476.48
Wholesale Trade	1,526	5,676	5,719	5,752	\$123,200,316	\$1,658.07
Retail Trade	97	602	602	611	\$4,909,841	\$624.26
Transportation, Warehousing & Utilities	153	659	678	709	\$6,300,333	\$710.62
Information	97	217	272	260	\$3,194,152	\$984.13
Financial Activities	267	839	857	873	\$12,599,835	\$1,131.82
Professional & Business Services	1,256	3,594	3,568	3,634	\$36,656,120	\$783.54
Education & Health Services	114	640	638	639	\$6,303,333	\$758.80
Leisure & Hospitality	40	74	72	74	\$597,157	\$626.39
Other	147	612	625	624	\$6,103,251	\$756.82

TABLE 7. FEDERAL GOVERNMENT EMPLOYMENT AND EARNINGS IN ARKANSAS

NORTH AMERICAN INDUSTRY CLASSIFICATION SYSTEM INDUSTRY GROUP	NUMBER OF EMPLOYING UNITS	EMPLOYMENT JANUARY	EMPLOYMENT FEBRUARY	EMPLOYMENT MARCH	TOTAL EARNINGS JANUARY - MARCH
Manufacturing	2	4	4	3	\$86,545
Trade, Transportation & Utilities	444	6,664	6,639	6,631	\$68,822,823
Information	1	34	34	32	\$360,823
Financial Activities	23	182	181	181	\$2,658,586
Professional & Business Services	32	764	757	758	\$13,638,086
Education & Health Services	6	3,934	3,950	3,961	\$66,828,443
Leisure & Hospitality	17	195	195	208	\$2,453,577
Other Services	2	275	271	275	\$1,001,942
Public Administration	486	8,615	8,598	8,636	\$126,127,584
<b>TOTAL</b>	<b>1,013</b>	<b>20,667</b>	<b>20,629</b>	<b>20,685</b>	<b>\$281,978,409</b>

**TABLE 8. WORKFORCE INFORMATION AREA, SUMMARY  
EMPLOYMENT AND TOTAL EARNINGS, BY INDUSTRY  
FIRST QUARTER 2006**

NORTH AMERICAN INDUSTRY CLASSIFICATION SYSTEM INDUSTRY GROUP	NUMBER OF EMPLOYING UNITS	EMPLOYMENT JANUARY	EMPLOYMENT FEBRUARY	EMPLOYMENT MARCH	TOTAL EARNINGS JANUARY - MARCH	AVERAGE WEEKLY EARNINGS
<b>CENTRAL WORKFORCE INFORMATION*</b>	5,789	71,749	72,126	73,015	\$514,487,575	\$547.41
Natural Resources & Mining	156	707	742	803	\$5,776,100	\$591.89
Trade, Transportation & Utilities	1,501	14,047	14,120	14,351	\$86,429,363	\$469.10
Wholesale Trade	380	1,933	1,945	1,986	\$18,435,876	\$725.52
Retail Trade	877	10,721	10,789	10,943	\$55,876,129	\$397.33
Transportation, Warehousing & Utilities	244	1,393	1,386	1,422	\$12,117,358	\$665.63
Financial Activities	593	2,790	2,789	2,811	\$23,124,056	\$636.03
Professional & Business Services	707	6,882	6,954	7,054	\$78,032,173	\$862.01
Education & Health Services	652	9,258	9,396	9,499	\$61,585,876	\$504.82
Leisure & Hospitality	437	7,549	7,517	7,635	\$19,520,751	\$198.44
Local & State Government	213	14,036	14,158	14,201	\$102,547,635	\$558.20
Other	1,530	16,480	16,450	16,661	\$137,471,621	\$639.72
*Note: Pulaski County is not included in the Central Workforce Information. Please refer to Page 51 for information on Pulaski County.						
Central Workforce Includes these counties: Faulkner, Lonoke, Monroe, Prairie, and Saline.						
<b>EASTERN WORKFORCE INFORMATION</b>	3,331	37,273	37,408	38,039	\$242,674,640	\$496.82
Natural Resources & Mining	214	932	955	1,143	\$4,916,508	\$374.45
Construction	193	1,096	1,020	1,074	\$7,606,396	\$550.26
Trade, Transportation & Utilities	887	10,046	9,963	10,148	\$67,875,102	\$519.40
Wholesale Trade	180	2,029	2,023	2,067	\$17,056,953	\$643.28
Retail Trade	501	5,095	5,033	5,134	\$23,243,444	\$351.45
Transportation, Warehousing & Utilities	206	2,922	2,907	2,947	\$27,574,705	\$725.09
Financial Activities	273	1,618	1,619	1,622	\$12,790,580	\$607.46
Professional & Business Services	282	1,405	1,474	1,431	\$9,029,382	\$483.46
Education & Health Services	657	5,378	5,345	5,348	\$32,548,929	\$467.38
Leisure & Hospitality	231	3,406	3,431	3,594	\$8,931,895	\$197.60
Local Government	140	6,105	6,196	6,212	\$42,096,373	\$524.74
State Government	67	2,101	2,122	2,135	\$15,227,568	\$552.70
Other	387	5,186	5,283	5,332	\$41,651,907	\$608.31
Eastern Workforce Includes these counties: Crittenden, Cross, Lee, Phillips, and Saint Francis.						



**TABLE 8. WORKFORCE INFORMATION AREA, SUMMARY  
EMPLOYMENT AND TOTAL EARNINGS, BY INDUSTRY  
FIRST QUARTER 2006**

NORTH AMERICAN INDUSTRY CLASSIFICATION SYSTEM INDUSTRY GROUP	NUMBER OF EMPLOYING UNITS	EMPLOYMENT JANUARY	EMPLOYMENT FEBRUARY	EMPLOYMENT MARCH	TOTAL EARNINGS JANUARY - MARCH	AVERAGE WEEKLY EARNINGS
<b>NORTH CENTRAL WORKFORCE INFORMATION</b>	5,473	69,176	69,831	70,516	\$437,098,740	\$481.42
Construction	486	2,595	2,592	2,710	\$16,311,215	\$476.65
Manufacturing	306	13,655	13,714	13,677	\$107,616,807	\$605.04
Trade, Transportation & Utilities	1,529	15,401	15,382	15,635	\$95,180,431	\$473.19
Retail Trade	961	9,109	9,104	9,322	\$41,592,980	\$348.59
Other Trade, Transportation & Utilities	568	6,292	6,278	6,313	\$53,587,451	\$654.89
Financial Activities	520	2,574	2,529	2,564	\$18,731,281	\$563.79
Professional & Business Services	458	3,305	3,301	3,282	\$17,624,734	\$411.33
Education & Health Services	783	11,213	11,223	11,271	\$76,929,977	\$526.69
Leisure & Hospitality	447	5,715	5,861	6,092	\$13,240,201	\$172.94
Local Government	237	9,109	9,278	9,266	\$52,893,498	\$441.41
State Government	115	2,644	2,951	2,971	\$20,219,182	\$544.71
Other	592	2,965	3,000	3,048	\$18,351,414	\$469.87
North Central Workforce Includes these counties: Cleburne, Fulton, Independence, Izard, Jackson, Sharp, Stone, Van Buren, White, and Woodruff						
<b>NORTHEAST WORKFORCE INFORMATION</b>	6,409	92,804	93,121	94,475	\$660,947,328	\$543.96
Natural Resources & Mining	365	1,598	1,548	1,660	\$9,301,539	\$446.63
Construction	484	2,810	2,852	2,960	\$19,811,637	\$530.26
Manufacturing	364	21,851	21,731	21,835	\$207,334,684	\$731.41
Trade, Transportation & Utilities	1,748	17,371	17,339	17,767	\$106,277,292	\$467.36
Wholesale Trade	403	3,590	3,640	3,706	\$30,982,798	\$653.79
Retail Trade	1,046	11,375	11,265	11,617	\$53,447,287	\$360.04
Transportation, Warehousing & Utilities	299	2,406	2,434	2,444	\$21,847,207	\$692.16
Financial Activities	587	3,390	3,390	3,415	\$27,600,232	\$624.75
Professional & Business Services	647	6,472	6,618	6,637	\$41,039,925	\$480.09
Education & Health Services	928	13,046	13,006	13,213	\$100,190,677	\$588.84
Leisure & Hospitality	461	7,047	7,130	7,318	\$17,457,755	\$187.43
Local Government	219	11,605	11,765	11,843	\$73,559,688	\$482.08
State Government	106	3,694	3,795	3,818	\$33,300,777	\$679.65
Other	500	3,920	3,947	4,009	\$25,073,122	\$487.21
Northeast Workforce Includes these counties: Clay, Craighead, Greene, Lawrence, Mississippi, Poinsett, and Randolph.						

**TABLE 8. WORKFORCE INFORMATION AREA, SUMMARY  
EMPLOYMENT AND TOTAL EARNINGS, BY INDUSTRY  
FIRST QUARTER 2006**

NORTH AMERICAN INDUSTRY CLASSIFICATION SYSTEM INDUSTRY GROUP	NUMBER OF EMPLOYING UNITS	EMPLOYMENT JANUARY	EMPLOYMENT FEBRUARY	EMPLOYMENT MARCH	TOTAL EARNINGS JANUARY - MARCH	AVERAGE WEEKLY EARNINGS
<b>NORTHWEST WORKFORCE INFORMATION</b>	14,549	227,236	228,637	231,311	\$1,968,534,451	\$661.07
Trade, Transportation & Utilities	3,628	52,831	53,013	53,497	\$448,295,686	\$649.25
Retail Trade	1,987	25,468	25,368	25,829	\$140,026,810	\$421.49
Other Trade, Transportation & Utilities	1,641	27,363	27,645	27,668	\$308,268,876	\$860.45
Education & Health Services	1,599	22,851	23,045	23,136	\$181,725,151	\$607.49
Leisure & Hospitality	1,364	19,479	19,899	20,640	\$59,452,569	\$228.60
Local & State Government	425	27,553	27,831	28,112	\$226,343,585	\$625.58
Other	7,533	104,522	104,849	105,926	\$1,052,717,460	\$770.50
Northwest Workforce Includes these counties: Baxter, Benton, Boone, Carroll, Madison, Marion, Newton, Searcy, and Washington.						
<b>SOUTHEAST WORKFORCE INFORMATION</b>	5,412	77,341	77,720	78,267	\$559,139,914	\$553.01
Natural Resources & Mining	409	2,849	2,945	2,883	\$19,813,570	\$526.95
Construction	381	3,178	3,162	3,297	\$27,927,831	\$668.76
Manufacturing	226	18,100	18,063	17,967	\$175,249,287	\$747.13
Trade, Transportation & Utilities	1,433	13,481	13,492	13,751	\$85,820,974	\$486.32
Wholesale Trade	259	2,443	2,470	2,540	\$20,817,930	\$644.59
Retail Trade	881	8,745	8,743	8,909	\$40,399,638	\$353.18
Transportation, Warehousing & Utilities	293	2,293	2,279	2,302	\$24,603,406	\$825.97
Local & State Government	358	16,519	16,803	16,866	\$113,706,059	\$522.83
Other	2,605	23,214	23,255	23,503	\$136,622,193	\$450.58
Southeast Workforce Includes these counties: Arkansas, Ashley, Bradley, Chicot, Cleveland, Desha, Drew, Grant, Jefferson, and Lincoln						
<b>SOUTHWEST WORKFORCE INFORMATION</b>	5,744	86,905	87,378	88,013	\$650,028,548	\$571.90
Natural Resources & Mining	404	2,712	2,694	2,731	\$22,402,904	\$635.36
Trade, Transportation & Utilities	1,541	15,268	15,296	15,511	\$101,887,481	\$510.31
Education & Health Services	705	9,014	9,070	9,098	\$53,460,958	\$453.87
Leisure & Hospitality	402	5,081	5,164	5,334	\$12,770,601	\$189.17
Local Government	264	11,092	11,155	11,248	\$67,982,244	\$468.37
State Government	150	3,106	3,259	3,289	\$24,800,446	\$592.83
Other	2,278	40,632	40,740	40,802	\$366,723,914	\$692.69
Southwest Workforce Includes these counties: Calhoun, Columbia, Dallas, Hempstead, Howard, Lafayette, Little River, Miller, Nevada, Ouachita, Sevier, and Union						

**TABLE 8. WORKFORCE INFORMATION AREA, SUMMARY  
EMPLOYMENT AND TOTAL EARNINGS, BY INDUSTRY  
FIRST QUARTER 2006**

NORTH AMERICAN INDUSTRY CLASSIFICATION SYSTEM INDUSTRY GROUP	NUMBER OF EMPLOYING UNITS	EMPLOYMENT JANUARY	EMPLOYMENT FEBRUARY	EMPLOYMENT MARCH	TOTAL EARNINGS JANUARY - MARCH	AVERAGE WEEKLY EARNINGS
WEST CENTRAL WORKFORCE INFORMATION	8,122	107,901	108,595	109,754	\$711,935,846	\$503.58
Natural Resources & Mining	262	2,269	2,410	2,356	\$17,869,060	\$586.16
Construction	883	5,497	5,565	5,291	\$36,533,143	\$515.55
Trade, Transportation & Utilities	1,987	21,486	21,441	21,797	\$148,391,556	\$529.08
Financial Activities	855	4,017	4,008	4,041	\$31,583,675	\$604.06
Education & Health Services	1,058	14,992	15,127	15,240	\$111,142,737	\$565.45
Local & State Government	363	16,722	17,186	17,349	\$114,319,680	\$514.69
Other	2,714	42,918	42,858	43,680	\$252,095,995	\$449.39
West Central Workforce Includes these counties: Clark, Conway, Garland, Hot Spring, Johnson, Montgomery, Perry, Pike, Pope, and Yell						
WESTERN WORKFORCE INFORMATION	6,352	110,337	110,739	112,213	\$918,989,521	\$636.31
Natural Resources & Mining	161	2,193	2,312	2,411	\$29,108,025	\$971.26
Trade, Transportation & Utilities	1,643	22,599	22,566	23,023	\$155,524,211	\$526.34
Retail Trade	964	12,353	12,232	12,496	\$61,220,010	\$381.00
Other Trade, Transportation & Utilities	679	10,246	10,334	10,527	\$94,304,201	\$699.60
Information	100	1,524	1,531	1,525	\$16,354,864	\$824.06
Financial Activities	670	3,787	3,789	3,802	\$33,046,963	\$670.26
Professional & Business Services	781	10,214	10,350	10,665	\$163,264,014	\$1,206.45
Education & Health Services	783	13,344	13,336	13,412	\$109,299,952	\$629.13
Leisure & Hospitality	511	7,755	7,823	8,019	\$21,046,880	\$205.83
Other Services	444	2,116	2,083	2,147	\$12,677,589	\$461.01
Local & State Government	232	11,800	11,921	11,975	\$86,831,450	\$461.01
Other	1,027	35,005	35,028	35,234	\$291,835,573	\$561.35
Western Workforce Includes these counties: Crawford, Franklin, Logan, Polk, Scott, and Sebastian						