

Arkansas Covered Employment & Earnings

Jobs for People. People for Jobs.

DWS
Department of
WORKFORCE**Services**

Third Quarter
2005

**COVERED EMPLOYMENT AND EARNINGS
STATE OF ARKANSAS
THIRD QUARTER 2005**

**MIKE HUCKABEE, GOVERNOR
STATE OF ARKANSAS**

**ARTEE WILLIAMS, DIRECTOR
DEPARTMENT OF WORKFORCE SERVICES**

**PUBLISHED BY
LABOR MARKET INFORMATION & ANALYSIS
BUREAU OF LABOR STATISTICS PROGRAMS
POST OFFICE BOX 2981
LITTLE ROCK, ARKANSAS 72203-2981
BERNADETTE COLEMAN, BLS PROGRAMS MANAGER
TELEPHONE: (501) 682-3159**

STATE OF ARKANSAS HOME PAGE: <http://www.arkansas.gov>

DEPARTMENT OF WORKFORCE SERVICES HOME PAGE: <http://www.arkansas.gov/esd/>

**INTERNET SITE FOR LABOR MARKET INFORMATION:
<http://www.discoverarkansas.net>**

RELEASED: March 2006

TABLE OF CONTENTS

DESCRIPTION OF DATA	Page
Industry Classification	1
Definition of Covered Employment and Earnings	2
Federal Government Employment	2
County Classification	2
Significant Developments During Third Quarter 2005	3

LIST OF GRAPHS AND TABLES

Graph 1	Total Covered Employment for Selected Years, Arkansas	7
Graph 2	Total Covered Earnings, by Calendar Quarter for Selected Years, Arkansas	8
Table 1	Quarterly Comparison of Covered Employment and Wages, by Industry	5
Table 2	Total Covered Employment in Arkansas, 1998-2005	6
Table 3	Total Covered Earnings, 1998-2005	9
Table 4	Total Taxable Earnings, 1998-2005	10
Table 5	State Summary - Employment and Total Earnings, by Industry, Third Quarter 2005	11
Table 6	County Summary - Employment and Total Earnings, by Industry, Third Quarter 2005	25
Table 7	Federal Government Employment and Total Earnings in Arkansas, Third Quarter 2005	63
Table 8	Workforce Information Area – Employment and Total Earnings, by Industry, Third Quarter 2005	64

EMPLOYMENT AND EARNINGS
UNDER THE ARKANSAS EMPLOYMENT SECURITY LAW
THIRD QUARTER 2005

DESCRIPTION OF DATA

This publication contains covered employment and payroll data by industry and county for the Third Quarter 2005. These data are compiled from quarterly contribution and wage reports submitted by employers subject to the Arkansas Employment Security Law. An employing unit is a single physical location where business is conducted, production takes place, or services are provided. Employment data have been tabulated for each month of the quarter by industry under the **North American Industry Classification System** (NAICS) (see "Industry Classification" below) on a statewide, county and workforce area basis. Payroll data represent the total wages paid during the quarter, and are also shown by

industry for the State and by publishable industry groups for each county and workforce area. The tabulation of this data is a joint effort in conjunction with the U.S. Bureau of Labor Statistics. In addition, there are tables included which set out total covered employment by months, quarterly payrolls, and average weekly earnings for the years 1998 through 2005. Data contained in this publication are subject to revision. These revisions will be reflected in the 2005 Annual Covered Employment and Earnings publication. Because of industry code changes between years, substantial employment and wage shifts among industries are anticipated.

INDUSTRY CLASSIFICATION

Previously published industry data **will not** be comparable in all instances with currently published data since industry codes have been revised according to the following Manuals: (a) between January 1, 1958 and December 31, 1967, industry codes were assigned under the 1957 Standard Industrial Classification (SIC) Manual; (b) between January 1, 1968 and December 31, 1974, industry codes were assigned under the 1967 Standard Industrial Classification (SIC) Manual; (c) between January 1, 1975 and December 31, 1987, industry codes were assigned under the 1972 Standard Industrial Classification (SIC) Manual; (d) between January 1, 1988 and December 31, 2000, industry codes were assigned under the 1987 Standard Industrial Classification (SIC) Manual; and (e) since January 1, 2001, industry codes have been assigned under the 2002 North American Industry Classification System (NAICS) Manual. **The NAICS Manual represents a significant change in coding methodology as compared to the**

SIC Manual. One of the most significant changes involves how NAICS treats auxiliary units. Auxiliary units are establishments primarily engaged in performing management or support services for other establishments of the same enterprise. The SIC code for these units was based on the activity of the enterprise served. The NAICS code is based on the actual activities that the establishment performs. Comparisons of many industries **should not be made** between this publication and previous Covered Employment and Earnings publications that were based on SIC. Even though some titles are the same or similar, in nature, NAICS and SIC could differ in the classification of employers. The implementation of NAICS represents a profound change for statistical programs, and will create significant benefits along with transition obstacles for both data collectors and data users. A summary is available on the NAICS home page at <http://www.census.gov/naics>.

DEFINITION OF COVERED EMPLOYMENT AND EARNINGS

Covered Employment is the number of workers employed by employers subject to the Arkansas Employment Security Law who worked or received pay for the payroll period including the 12th of the month. An employer is subject to the law when they employ one or more employees in each of ten days during the current or preceding calendar year.

Currently excluded from coverage is employment covered by the Railroad Unemployment Insurance Act, some domestic service workers, employees of small agricultural establishments, self-employed and unpaid family workers, insurance and real estate

agents who are on commission only, and employees of churches and religious organizations except separately incorporated schools. The payroll information in this publication includes all wages and salaries paid to any covered employees by their employers including bonuses, commissions, and cash values of remuneration received in any medium other than cash. These wages include both taxable and nontaxable wages. Only the first \$10,000 paid to each worker by an employer in the calendar year is taxable under the Arkansas Employment Security Law.

FEDERAL GOVERNMENT EMPLOYMENT

Table 7 on page 63 lists the total number of civilians employed by the Federal Government in Arkansas during the Third Quarter 2005. Employment and wage data are set out by industry divisions. These data are obtained from required reports submitted by various

government agencies having employment in the State. Civilian Federal workers are covered by the Unemployment Compensation for Federal Employees (UCFE) program.

COUNTY CLASSIFICATION

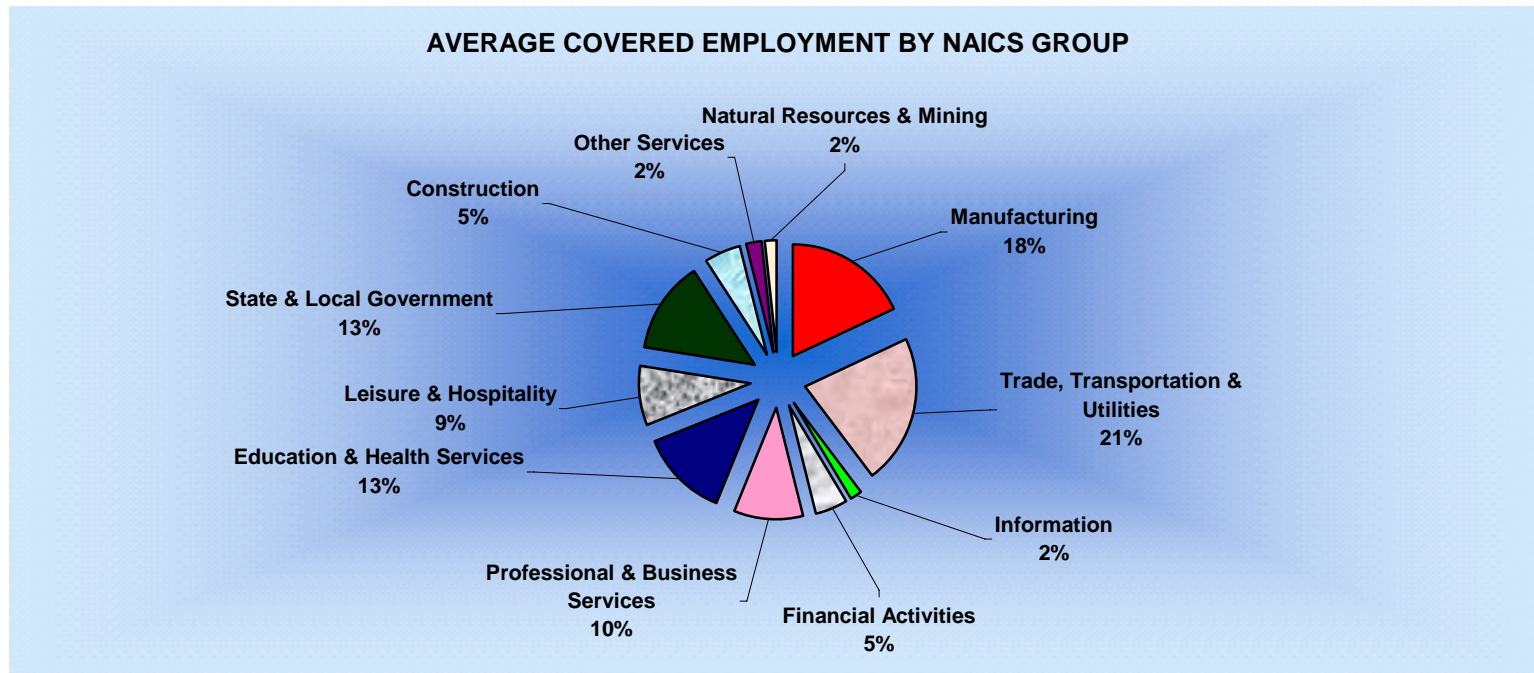
Employment and payroll data by county are classified according to the county where the workers are employed. Employers with operations in more than one county are requested to furnish this agency with a breakdown of employment and wages for at least one quarter of each year by the counties in which they operate. Many such employers submit county data with each regular contribution report. **Note:** This information is invaluable in the preparation of monthly employment and payroll data by county.

Employment and payroll data for multi - area employers, who do not furnish county data each quarter of the year, are prorated by county on the basis of one quarter's information. The "rest-of-state" table that appears on page 62 of this publication includes data on firms that **did not** provide a county breakdown of employment and payrolls. It also includes sales, and all other type of personnel with no permanent place of work, as well as employment of employers with no established place of business in Arkansas.

SIGNIFICANT DEVELOPMENTS DURING THIRD QUARTER 2005

AVERAGE EMPLOYMENT CHANGES

Covered employment averaged 1,116,389 during the Third Quarter 2005 (see table 1), a decrease of 18,209 (1.6%) from the previous quarter and 18,277 (1.7%) above the average recorded one-year ago. This *over-the-year* increase is more significant when used as an economic indicator. This *over-the-year* comparison allows for the disregarding of many seasonal factors that are evident when making an *over-the-quarter* comparison.



EMPLOYMENT CHANGES FROM SECOND QUARTER 2005

Over the quarter gains were recorded in seven of the eleven industry groups (see table 1). Professional and Business Services recorded the largest quarterly gain of 1,797 employees added. The driving factor for the increase was in Employment Services which includes temporary agencies. The Construction industry (+1,555) continued jobs through the summer season. Trade, Transportation and Utilities added 1,412 additional jobs. Trucking increased employment as companies started recruiting for new drivers. Education and Health

Services boosted employment to 141,432 employees; mainly focused within Health Care. Other industry increases occurred in Financial Activities (+648), Natural Resources and Mining (+600) and lastly, Leisure and Hospitality (+5).

Losses were recorded in four industry groups. The largest drop was attributed to seasonal occurrences in State and Local Government (-24,482) due to the release of students for the summer break.

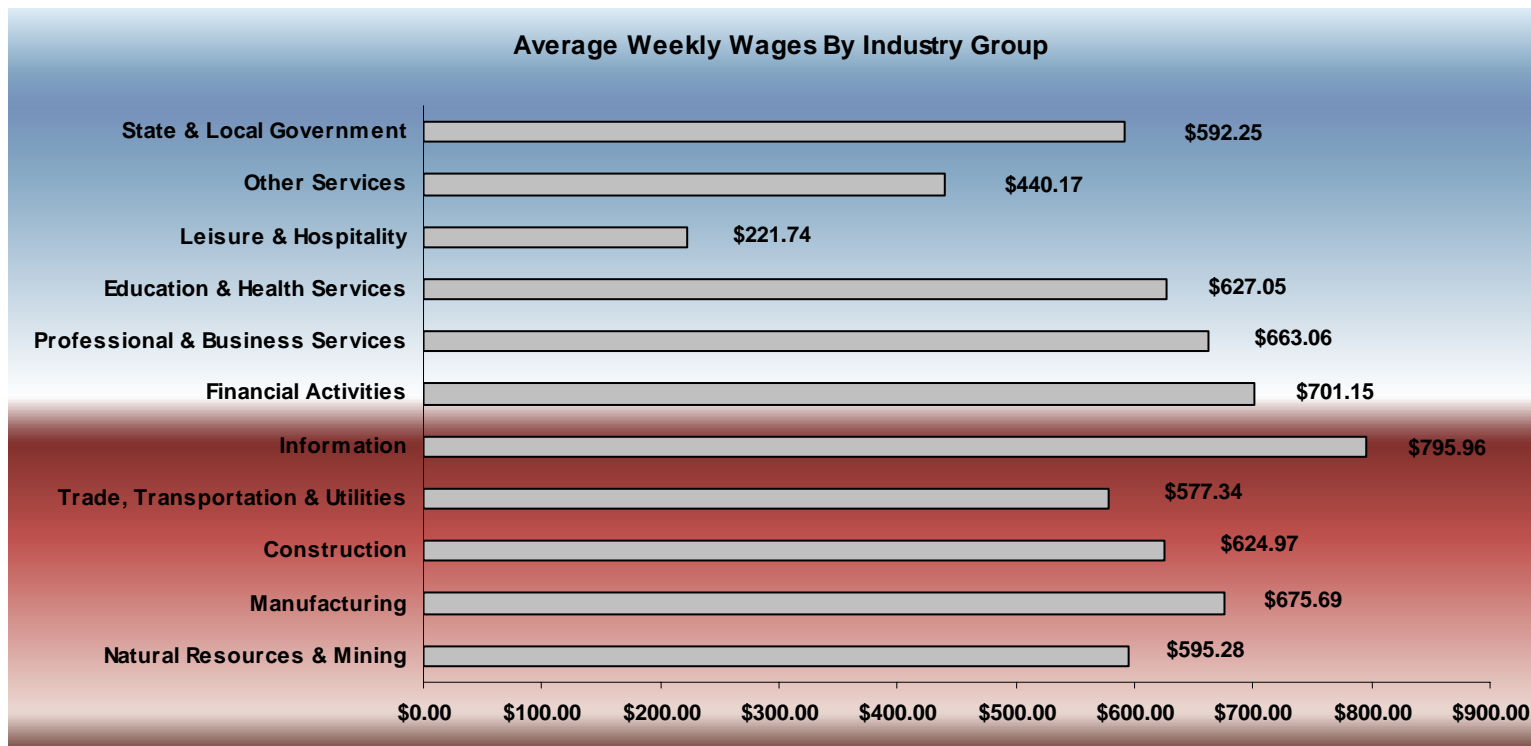
EMPLOYMENT CHANGES FROM FIRST QUARTER 2005

Over-the-year gains were recorded in seven industry groups while four recorded losses (see table 1). Significant gains were posted in State & Local Government (+4,769), Educational & Health Services (+4,540) and Trade, Transportation and Utilities (+4027). Losses occurred in Manufacturing (-4,093), other services (-533) and Natural Resources & Mining (-269).

COVERED WAGES

Wages paid to covered workers totaled \$8,565,665,389 for the Third Quarter 2005 (see table 1), for an average weekly wage of \$590.20 (see table 5). Employees in Little River County recorded the highest average weekly wage (\$764.50), and workers in Newton County the lowest (\$344.74) (see table 6).

The Information sector recorded the highest average weekly wage for the State of Arkansas at \$795.96, while the Leisure & Hospitality sector recorded the lowest at \$221.74 for the State of Arkansas (see table 5).



Note: Because of industry code changes between years, substantial employment and wage shifts among industries are anticipated.

TABLE 1. QUARTERLY COMPARISON OF COVERED EMPLOYMENT AND WAGES, BY INDUSTRY

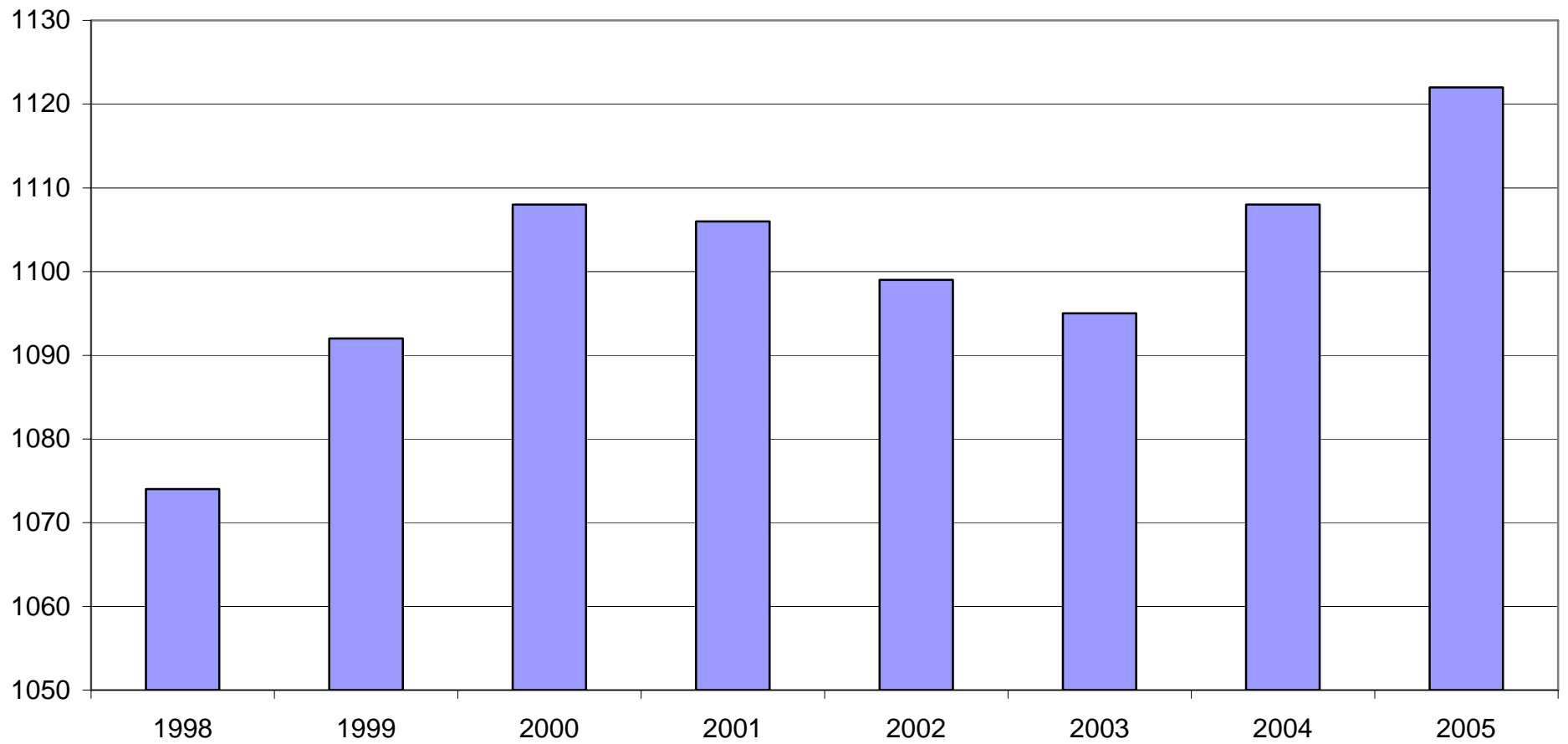
North American Industry Classification System Industry Group	Number of Employing Units	Average Covered Employment		Net Change From:		Total Wages Paid	
		Jul. – Sep. 2005	% of Total	Apr. – Jun. 2005	Jul. – Sep. 2004	Jul. – Sep. 2005	% of Total
Total	76,872	1,116,389	100.0	-18,209	18,277	\$8,565,665,389	100.0
Natural Resources and Mining	2,338	18,917	1.7	600	-269	146,391,693	1.7
Agriculture, Forestry, Fishing and Hunting	2,014	14,712	1.3	506	-439	97,761,505	1.1
Mining	324	4,205	0.4	94	170	48,630,188	0.6
Construction	7,623	56,545	5.1	1,555	2,969	459,412,386	5.4
Manufacturing	3,574	200,482	18.0	-809	-4,093	1,761,022,073	20.6
Trade, Transportation, and Utilities	20,903	242,781	21.7	1,412	4,027	1,822,177,874	21.3
Wholesale Trade	6,269	47,986	4.3	134	1,544	543,052,988	6.3
Retail Trade	11,324	131,834	11.8	54	1,071	665,987,332	7.8
Transportation and Warehousing	2,957	56,327	5.0	1,221	1,335	508,354,874	5.9
Utilities	353	6,634	0.6	3	77	104,782,680	1.2
Information	1,211	20,027	1.8	-14	-158	207,226,373	2.4
Financial Activities	7,782	50,264	4.5	648	700	458,149,826	5.3
Finance and Insurance	4,582	36,300	3.3	458	244	368,058,104	4.3
Real Estate and Rental and Leasing	3,200	13,964	1.3	190	456	90,091,722	1.1
Professional and Business Services	10,463	112,875	10.1	1,797	3,673	972,958,620	11.4
Professional and Technical Services	6,582	35,237	3.2	-243	1,817	377,613,936	4.4
Management of Companies and Enterprises	485	23,676	2.1	249	828	328,463,847	3.8
Administrative and Waste Services	3,396	53,961	4.8	1,790	1,027	266,880,837	3.1
Education and Health Services	8,323	141,432	12.7	1,118	4,540	1,152,910,204	13.5
Educational Services	543	8,267	0.7	-272	502	53,559,866	0.6
Health Care and Social Assistance	7,780	133,164	11.9	1,390	4,037	1,099,350,338	12.8
Leisure and Hospitality	5,923	96,839	8.7	5	2,650	279,151,265	3.3
Arts, Entertainment and Recreation	912	10,388	0.9	208	102	36,454,501	0.4
Accommodation and Food Services	5,011	86,451	7.7	-203	2,548	242,696,764	2.8
Other Services	5,543	25,567	2.3	-40	-533	146,299,250	1.7
State and Local Government	3,189	150,660	13.5	-24,482	4,769	1,159,965,825	13.5
Local Government	1,996	90,849	8.1	-23,242	2,809	616,734,221	7.2
State Government	1,193	59,811	5.4	-1,240	1,961	543,231,604	6.3
Nonclassifiable Establishments	0	0	0.0	0	0	0	0.0

Note: Items do not necessarily add to totals because of rounding. Because of industry code changes between years, substantial employment and wage shifts among industries are anticipated.

TABLE 2. TOTAL COVERED EMPLOYMENT IN ARKANSAS

Period	1998	1999	2000	2001	2002	2003	2004	2005
Average	1,073,732	1,092,351	1,108,490	1,106,053	1,098,558	1,094,087	1,108,275	1,121,595
January	1,050,970	1,065,920	1,089,956	1,096,009	1,081,635	1,082,740	1,089,510	1,104,692
February	1,057,593	1,074,315	1,096,126	1,101,616	1,086,793	1,084,880	1,094,626	1,112,453
March	1,066,099	1,084,653	1,109,157	1,112,143	1,098,500	1,092,172	1,105,266	1,124,250
April	1,074,416	1,093,574	1,111,543	1,115,526	1,103,399	1,095,341	1,111,023	1,130,599
May	1,083,133	1,098,539	1,116,779	1,119,815	1,111,998	1,103,099	1,117,154	1,136,212
June	1,086,125	1,101,748	1,121,245	1,119,734	1,112,028	1,099,688	1,117,021	1,136,984
July	1,046,396	1,062,563	1,075,096	1,071,830	1,065,697	1,053,220	1,071,474	1,090,058
August	1,063,680	1,081,260	1,096,841	1,094,068	1,086,011	1,077,775	1,094,887	1,114,403
September	1,088,772	1,108,212	1,123,735	1,115,996	1,113,148	1,105,980	1,122,725	1,144,705
October	1,089,836	1,110,604	1,122,884	1,110,994	1,108,447	1,112,550	1,123,261	NA
November	1,087,855	1,112,003	1,120,620	1,109,012	1,107,611	1,109,712	1,125,082	NA
December	1,089,913	1,114,823	1,117,892	1,105,887	1,107,425	1,111,892	1,127,274	NA

AVERAGE TOTAL COVERED EMPLOYMENT GRAPH 1
In Thousands



TOTAL COVERED EARNINGS BY CALENDAR QUARTER, GRAPH 2

In Thousands

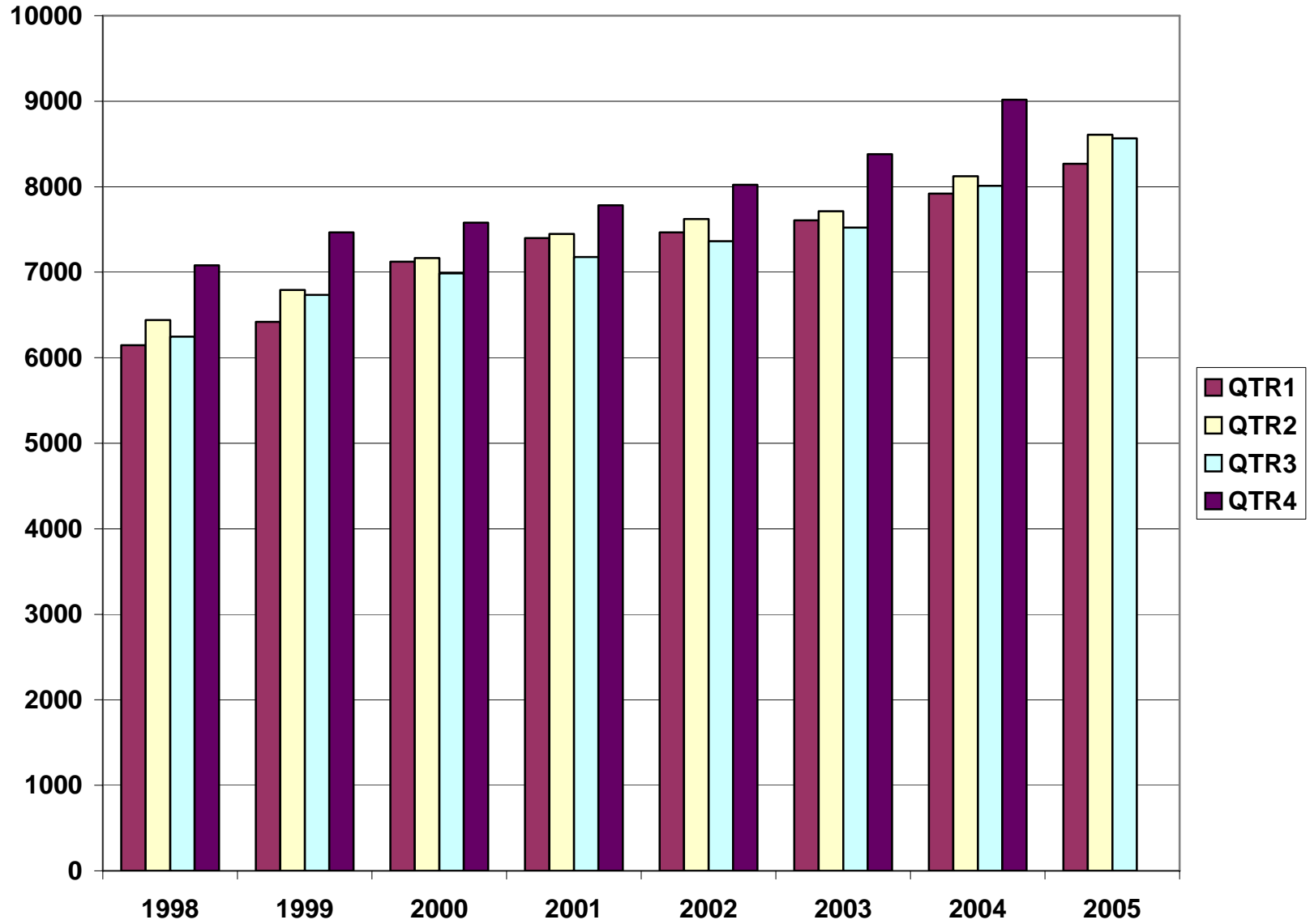


TABLE 3. TOTAL COVERED EARNINGS, 1998- 2005

Period	1998	1999	2000	2001
Total	\$25,914,345,060	\$27,407,925,462	\$28,853,825,155	\$29,807,669,666
January - March	6,145,178,755	6,418,456,638	7,122,666,917	7,398,887,532
April - June	6,441,129,069	6,791,960,679	7,166,110,114	7,448,023,298
July - September	6,246,775,598	6,733,480,079	6,986,103,157	7,177,293,061
October - December	7,081,261,638	7,464,028,066	7,578,944,967	7,783,465,775
Average Weekly Earnings	464.13	482.51	500.57	518.26

Period	2002	2003	2004	2005
Total	\$30,472,854,103	\$31,202,576,767	\$33,068,346,519	\$25,441,915,231
January - March	7,465,250,305	7,608,130,008	7,918,843,610	8,269,065,129
April - June	7,621,878,775	7,714,813,038	8,122,399,978	8,607,184,713
July - September	7,361,666,511	7,500,204,764	8,010,367,744	8,565,665,389
October - December	8,024,058,512	8,379,428,957	9,016,735,187	NA
Average Weekly Earnings	533.44	548.45	573.80	581.63

TABLE 4. TOTAL TAXABLE EARNINGS, 1998 - 2005

Period	1998	1999	2000	2001
Total	\$8,554,973,370	\$8,807,445,422	\$9,048,033,534	\$9,003,189,480
January - March	4,063,795,529	4,203,067,856	4,560,814,012	4,670,296,360
April - June	2,271,303,325	2,325,649,764	2,260,741,187	2,219,485,263
July - September	1,236,054,184	1,267,562,743	1,250,850,348	1,190,098,737
October - December	983,820,332	1,011,165,059	975,627,987	923,309,120
Period	2002	2003	2004	2005
Total	\$8,887,270,978	\$9,154,938,743	\$9,731,879,624	\$8,928,177,335
January - March	4,668,534,587	4,737,918,796	4,931,559,230	5,068,103,112
April - June	2,162,971,435	2,270,519,362	2,451,476,366	2,504,400,617
July - September	1,158,197,858	1,188,681,170	1,318,044,471	1,355,673,606
October - December	897,567,098	957,819,415	1,030,799,557	NA

**TABLE 5. STATEWIDE SUMMARY
EMPLOYMENT AND TOTAL EARNINGS, BY INDUSTRY
THIRD QUARTER 2005**

NORTH AMERICAN INDUSTRY CLASSIFICATION SYSTEM INDUSTRY GROUPS	NUMBER OF EMPLOYING UNITS	EMPLOYMENT			TOTAL EARNINGS	AVERAGE
		JULY	AUGUST	SEPTEMBER	JUL. - SEP. 2005	WEEKLY EARNINGS
TOTAL, ALL INDUSTRIES	76,872	1,090,058	1,114,403	1,144,705	\$8,565,665,389	\$590.20
NATURAL RESOURCES & MINING	2,338	18,454	18,603	19,694	\$146,391,693	\$595.28
11 AGRICULTURE, FORESTRY, FISHING & HUNTING	2,014	14,423	14,314	15,399	\$97,761,505	\$511.16
111 CROP PRODUCTION	718	4,105	4,077	4,389	\$20,679,275	\$379.62
1111 Oilseed and Grain Farming	435	2,112	2,133	2,245	10,785,014	383.49
1112 Vegetable and Melon Farming	10	309	239	246	753,328	218.95
1113 Fruit and Tree Nut Farming	10	102	102	89	415,795	327.48
1114 Greenhouse & Nursery Production	48	321	308	317	2,060,403	502.62
1119 Other Crop Farming	215	1,261	1,295	1,492	6,664,735	379.94
112 ANIMAL PRODUCTION	252	3,806	3,775	3,789	\$28,400,950	\$576.43
1121 Cattle Ranching and Farming	73	361	359	348	2,002,192	432.63
1123 Poultry and Egg Production	88	2,592	2,580	2,608	20,553,206	609.65
1125 Animal Aquaculture	60	637	626	613	4,238,146	521.34
Other	31	216	210	220	1,607,406	574.21
113 FORESTRY AND LOGGING	577	3,301	3,317	3,328	\$24,731,896	\$573.83
1131 Timber Tract Operations	45	262	261	260	2,142,157	631.35
1132 Forest Nurseries & Gathering of Forest Products	6	30	30	30	238,341	611.13
1133 Logging	526	3,009	3,026	3,038	22,351,398	568.50
OTHER	467	3,211	3,145	3,893	\$23,949,384	\$539.25
21 MINING	324	4,031	4,289	4,295	\$48,630,188	\$889.60
211 OIL AND GAS EXTRACTION	72	401	396	391	\$4,985,949	\$968.52
212 MINING (EXCEPT OIL AND GAS)	99	1,986	2,074	2,069	\$21,697,856	\$816.97
213 SUPPORT ACTIVITIES FOR MINING	153	1,644	1,819	1,835	\$21,946,383	\$955.94

**TABLE 5. STATEWIDE SUMMARY
EMPLOYMENT AND TOTAL EARNINGS, BY INDUSTRY
THIRD QUARTER 2005**

NORTH AMERICAN INDUSTRY CLASSIFICATION SYSTEM INDUSTRY GROUPS		NUMBER OF EMPLOYING UNITS	EMPLOYMENT			TOTAL EARNINGS	AVERAGE
			JULY	AUGUST	SEPTEMBER	JUL. - SEP. 2005	WEEKLY EARNINGS
CONSTRUCTION		7,623	56,107	56,564	56,965	\$459,412,386	\$624.97
236	CONSTRUCTION OF BUILDINGS	2,099	12,970	13,011	13,028	\$110,845,637	\$655.74
2361	Residential Building Construction	1,508	4,739	4,763	4,722	34,294,234	556.39
2362	Nonresidential Building Construction	591	8,231	8,248	8,306	76,551,403	712.76
237	HEAVY & CIVIL ENGINEERING CONSTRUCTION	879	10,675	10,966	11,107	\$97,852,572	\$689.55
2371	Utility System Construction	412	4,900	5,031	4,979	41,149,434	636.89
2372	Land Subdivision	112	382	382	399	3,296,699	654.15
2373	Highway, Street & Bridge Construction	236	4,008	4,018	4,041	35,695,050	682.63
2379	Other Heavy Construction	119	1,385	1,535	1,688	17,711,389	886.99
238	SPECIALTY TRADE CONTRACTORS	4,645	32,462	32,587	32,830	\$250,714,177	\$591.11
2381	Building Foundation & Exterior Contractors	908	6,185	6,341	6,377	44,854,567	547.59
2382	Building Equipment Contractors	2,027	15,674	15,579	15,758	131,194,004	644.01
2383	Building Finishing Contractors	862	4,931	4,962	5,061	33,616,562	518.77
2389	Other Specialty Trade Contractors	848	5,672	5,705	5,634	41,049,044	556.87
MANUFACTURING		3,574	199,904	200,414	201,129	\$1,761,022,073	\$675.69
311	FOOD MANUFACTURING	299	50,684	50,812	51,179	\$359,612,508	\$543.56
3111	Animal Food Manufacturing	51	1,337	1,328	1,347	13,577,792	780.99
3112	Grain and Oilseed Milling	30	2,394	2,405	2,462	22,582,527	717.72
3114	Fruit, Vegetable & Specialty Food	37	6,963	7,073	7,249	58,108,840	630.01
3115	Dairy Product Manufacturing	10	729	725	720	6,728,532	714.23
3116	Animal Slaughtering & Processing	85	34,182	34,195	34,201	214,565,064	482.71
3118	Bakeries and Tortilla Manufacturing	52	3,399	3,417	3,528	29,691,225	662.40
3119	Other Food Manufacturing	23	1,567	1,557	1,553	13,687,941	675.38
	Other	11	113	112	119	670,587	449.86
312	BEVERAGE & TOBACCO PRODUCT MFG.	36	1,274	1,268	1,252	\$12,668,294	\$770.55
313	TEXTILE MILLS	19	398	405	426	\$4,144,780	\$778.27
3132	Fabric Mills	5	310	315	327	3,673,865	890.56
3133	Textile & Fabric Finishing Mills	14	88	90	99	470,915	392.32
314	TEXTILE PRODUCT MILLS	59	1,330	1,348	1,354	12,243,584	\$700.75

**TABLE 5. STATEWIDE SUMMARY
EMPLOYMENT AND TOTAL EARNINGS, BY INDUSTRY
THIRD QUARTER 2005**

NORTH AMERICAN INDUSTRY CLASSIFICATION SYSTEM INDUSTRY GROUPS		NUMBER OF EMPLOYING UNITS	EMPLOYMENT			TOTAL EARNINGS	AVERAGE
			JULY	AUGUST	SEPTEMBER	JUL. - SEP. 2005	WEEKLY EARNINGS
315	APPAREL MANUFACTURING	40	1,967	1,977	2,016	\$10,691,942	\$413.99
3152	Cut & Sew Apparel Manufacturing	33	867	884	922	4,634,211	400.09
	Other	7	1,100	1,093	1,094	6,057,731	425.29
316	LEATHER & ALLIED PRODUCT MANUFACTURING	23	2,278	2,344	2,407	\$13,242,732	\$434.77
3162	Footwear Manufacturing	12	2,074	2,128	2,199	11,856,558	427.45
3169	Other Leather Product Manufacturing	11	204	216	208	1,386,174	509.37
321	WOOD PRODUCT MANUFACTURING	392	13,825	13,848	13,928	\$112,793,042	\$625.69
3211	Sawmills and Wood Preservation	183	6,327	6,301	6,284	53,787,881	656.33
3212	Veneer & Engineered Wood Products	49	3,376	3,368	3,397	32,195,423	732.64
3219	Other Wood Product Manufacturing	160	4,122	4,179	4,247	26,809,738	493.06
322	PAPER MANUFACTURING	85	11,988	11,906	11,921	\$151,936,810	\$978.98
3221	Pulp, Paper & Paperboard Mills	12	4,799	4,727	4,729	79,874,495	1293.06
3222	Converted Paper Product Manufacturing	73	7,189	7,179	7,192	72,062,315	771.32
323	PRINTING & RELATED SUPPORT ACTIVITIES	306	4,750	4,709	4,705	\$38,759,482	\$631.50
324	PETROLEUM AND COAL PRODUCTS MFG.	20	903	899	895	\$11,073,508	\$947.51
325	CHEMICAL MANUFACTURING	115	5,139	5,118	5,104	\$64,499,930	\$968.99
3251	Basic Chemical Manufacturing	24	1,571	1,561	1,557	22,607,025	1112.61
3252	Resin, Rubber & Artificial Fibers	7	315	313	314	4,124,947	1010.52
3253	Agricultural Chemical Manufacturing	20	419	404	387	4,687,919	894.07
3254	Pharmaceutical & Medicine Manufacturing	14	151	153	146	1,653,847	848.13
3255	Paint, Coating & Adhesive Manufacturing	7	189	187	182	2,478,401	1024.98
3256	Cleaning Compound & Toiletry Manufacturing	17	1,085	1,088	1,077	11,490,456	815.89
3259	Other Chemical Preparation Manufacturing	26	1,409	1,412	1,441	17,457,335	945.24
326	PLASTICS & RUBBER PRODUCTS MFG.	170	12,744	12,876	12,897	\$121,134,315	\$725.76
3261	Plastics Product Manufacturing	126	7,495	7,452	7,466	62,187,985	640.30
3262	Rubber Product Manufacturing	44	5,249	5,424	5,431	58,946,330	844.70

**TABLE 5. STATEWIDE SUMMARY
EMPLOYMENT AND TOTAL EARNINGS, BY INDUSTRY
THIRD QUARTER 2005**

NORTH AMERICAN INDUSTRY CLASSIFICATION SYSTEM INDUSTRY GROUPS		NUMBER OF EMPLOYING UNITS	EMPLOYMENT			TOTAL EARNINGS	AVERAGE
			JULY	AUGUST	SEPTEMBER	JUL. - SEP. 2005	WEEKLY EARNINGS
327	NONMETALLIC MINERAL PRODUCT MFG.	251	4,595	4,582	4,611	\$43,058,120	\$720.66
3271	Clay Product & Refractory Manufacturing	14	487	466	459	4,312,845	704.87
3272	Glass & Glass Product Manufacturing	15	348	342	396	3,578,423	760.40
3273	Cement & Concrete Product Manufacturing	185	2,833	2,840	2,825	25,715,085	698.31
3274	Lime & Gypsum Product Manufacturing	3	394	400	398	4,509,187	872.97
3279	Other Nonmetallic Mineral Products	34	533	534	533	4,942,580	712.87
331	PRIMARY METAL MANUFACTURING	65	7,979	8,000	7,949	\$95,437,945	\$920.43
3311	Iron & Steel Mills and Ferroalloys	7	2,128	2,138	2,072	38,870,631	1415.30
3312	Purchased Steel Product Manufacturing	13	2,137	2,138	2,177	20,382,389	729.02
3313	Alumina & Aluminum Production	19	1,731	1,759	1,761	18,231,709	801.24
3314	Other Nonferrous Metal Production	10	606	616	610	5,686,709	716.33
3315	Foundries	16	1,377	1,349	1,329	12,266,507	698.08
332	FABRICATED METAL PRODUCT MANUFACTURING	580	18,209	18,190	18,246	\$168,559,291	\$711.84
3321	Forging & Stamping	14	898	896	902	7,738,402	662.38
3322	Cutlery & Hand Tool Manufacturing	20	1,353	1,364	1,374	11,619,712	655.46
3323	Architectural & Structural Metals	193	5,113	5,138	5,165	48,572,273	727.10
3324	Boilers, Tanks & Shipping Containers	18	1,093	1,074	1,087	9,782,483	693.76
3325	Hardware Manufacturing	12	345	306	301	2,386,800	578.57
3326	Spring & Wire Product Manufacturing	18	823	787	794	5,896,465	566.02
3327	Machine Shops & Threaded Products	199	1,714	1,724	1,730	14,088,697	629.11
3328	Coating, Engraving & Heat Treating Metals	38	966	988	995	7,972,658	623.89
3329	Other Fabricated Metal Product Manufacturing	68	5,904	5,913	5,898	60,501,801	788.14
333	MACHINERY MANUFACTURING	251	14,080	13,980	14,039	121,135,142	\$664.01
3331	Agri., Construction & Mining Machinery	38	2,897	2,820	2,736	16,738,968	456.98
3333	Commercial & Service Industry Machinery	25	1,026	1,010	987	10,416,516	795.17
3334	HVAC & Commercial Refrigeration Equipment	25	4,738	4,768	4,815	44,524,664	717.47
3335	Metalworking Machinery Manufacturing	75	1,402	1,401	1,415	13,767,711	753.24
3339	Other General Purpose Machinery Manufacturing	55	3,178	3,133	3,172	27,191,030	661.69
	Other	33	839	848	914	8,496,253	753.82

**TABLE 5. STATEWIDE SUMMARY
EMPLOYMENT AND TOTAL EARNINGS, BY INDUSTRY
THIRD QUARTER 2005**

NORTH AMERICAN INDUSTRY CLASSIFICATION SYSTEM INDUSTRY GROUPS		NUMBER OF EMPLOYING UNITS	EMPLOYMENT			TOTAL EARNINGS	AVERAGE
			JULY	AUGUST	SEPTEMBER	JUL. - SEP. 2005	WEEKLY EARNINGS
334	COMPUTER & ELECTRONIC PRODUCT MFG.	76	5,684	5,677	5,726	52,273,441	\$705.98
3343	Audio & Video Equipment Manufacturing	10	1,336	1,367	1,384	11,071,921	625.17
3344	Semiconductors & Electronic Components	24	2,044	2,036	2,062	19,179,651	720.62
3345	Electronic Instrument Manufacturing	26	1,241	1,229	1,234	10,620,195	661.67
	Other	16	1,063	1,045	1,046	11,401,674	834.23
335	ELECTRICAL EQUIPMENT & APPLIANCES	71	12,998	13,047	13,032	\$123,273,130	\$727.99
3353	Electrical Equipment Manufacturing	27	4,949	4,970	4,954	47,386,897	735.25
	Other	44	8,049	8,077	8,078	75,886,233	723.53
336	TRANSPORTATION EQUIPMENT MANUFACTURING	177	16,464	16,732	16,832	\$149,790,581	\$690.95
3362	Motor Vehicle Body & Trailer Manufacturing	43	3,645	3,632	3,701	30,763,274	646.68
3363	Motor Vehicle Parts Manufacturing	62	6,666	6,792	6,839	54,811,793	623.19
3364	Aerospace Product & Parts Manufacturing	31	3,254	3,282	3,313	40,216,204	942.29
3366	Ship & Boat Building	23	1,625	1,650	1,668	12,680,137	591.99
	Other	18	1,274	1,376	1,311	11,319,173	659.46
337	FURNITURE & RELATED PRODUCT MFG.	270	6,831	6,991	6,821	\$50,583,100	\$565.47
3371	Household & Institutional Furniture	221	4,714	4,680	4,566	32,087,600	530.43
3372	Office Furniture & Fixtures Manufacturing	40	1,973	2,158	2,105	17,658,580	653.47
3379	Other Furniture Related Product Manufacturing	9	144	153	150	836,920	432.07
339	MISCELLANEOUS MANUFACTURING	269	5,784	5,705	5,789	\$44,110,396	\$589.15
3391	Medical Equipment & Supplies Manufacturing	98	2,570	2,577	2,560	19,924,838	596.61
3399	Other Miscellaneous Manufacturing	171	3,214	3,128	3,229	24,185,558	583.15

**TABLE 5. STATEWIDE SUMMARY
EMPLOYMENT AND TOTAL EARNINGS, BY INDUSTRY
THIRD QUARTER 2005**

NORTH AMERICAN INDUSTRY CLASSIFICATION SYSTEM INDUSTRY GROUPS		NUMBER OF EMPLOYING UNITS	EMPLOYMENT			TOTAL EARNINGS	AVERAGE
			JULY	AUGUST	SEPTEMBER	JUL. - SEP. 2005	WEEKLY EARNINGS
TRADE, TRANSPORTATION & UTILITIES		20,903	242,329	242,103	243,911	\$1,822,177,874	\$577.34
42	WHOLESALE TRADE	6,269	48,040	47,907	48,010	\$543,052,988	\$870.54
423	MERCHANT WHOLESALERS, DURABLE GOODS	2,097	21,795	21,810	21,889	\$229,134,776	\$807.36
4231	Motor Vehicle & Part Merchant Wholesalers	235	2,716	2,728	2,771	24,305,829	682.78
4232	Furniture & Furnishing Merchant Wholesalers	60	415	415	425	4,585,265	843.14
4233	Lumber & Supply Merchant Wholesalers	166	1,770	1,784	1,790	17,705,387	764.57
4234	Commercial Goods Merchant Wholesalers	239	2,357	2,378	2,399	33,123,514	1071.47
4235	Metal & Mineral Merchant Wholesalers	50	730	736	736	7,861,436	823.88
4236	Electric Goods Merchant Wholesalers	174	2,205	2,192	2,182	27,987,035	981.69
4237	Hardware & Plumbing Merchant Wholesalers	241	2,465	2,484	2,510	25,508,858	789.20
4238	Machinery & Supply Merchant Wholesalers	703	7,368	7,321	7,308	73,477,406	770.85
4239	Misc. Durable Goods Merchant Wholesalers	229	1,769	1,772	1,768	14,580,046	633.76
424	MERCHANT WHOLESALERS, NONDURABLE GOODS	1,313	17,478	17,317	17,293	\$159,005,047	\$704.45
4241	Paper & Paper Product Merchant Wholesalers	72	1,209	1,242	1,247	11,638,927	726.31
4242	Druggists' Goods Merchant Wholesalers	53	1,048	1,012	1,005	9,789,101	737.04
4243	Apparel & Piece Goods Merchant Wholesalers	41	443	435	440	2,950,303	516.57
4244	Grocery Product Merchant Wholesalers	363	6,106	6,070	6,019	63,208,820	801.68
4245	Farm Product Merchant Wholesalers	81	918	908	989	5,446,404	446.49
4246	Chemical Merchant Wholesalers	83	442	445	442	5,110,642	887.42
4247	Petroleum Merchant Wholesalers	156	1,429	1,432	1,453	14,304,385	765.19
4248	Alcoholic Beverage Merchant Wholesalers	37	1,122	1,140	1,155	11,621,628	784.87
4249	Misc. Nondurable Goods Merchant Wholesalers	427	4,761	4,633	4,543	34,934,837	578.45
425	ELECTRONIC MARKETS & AGENTS & BROKERS	2,859	8,767	8,780	8,828	\$154,913,165	\$1,355.42
44-45	RETAIL TRADE	11,324	131,789	131,609	132,103	\$665,987,332	\$388.59
441	MOTOR VEHICLE & PARTS DEALERS	1,734	18,173	18,203	18,248	\$153,155,166	\$647.03
4411	Automobile Dealers	748	10,982	11,004	11,027	105,658,473	738.58
4412	Other Motor Vehicle Dealers	195	1,533	1,528	1,504	12,842,088	649.19
4413	Automotive Parts, Accessories & Tire Stores	791	5,658	5,671	5,717	34,654,605	469.16

**TABLE 5. STATEWIDE SUMMARY
EMPLOYMENT AND TOTAL EARNINGS, BY INDUSTRY
THIRD QUARTER 2005**

NORTH AMERICAN INDUSTRY CLASSIFICATION SYSTEM INDUSTRY GROUPS		NUMBER OF EMPLOYING UNITS	EMPLOYMENT			TOTAL EARNINGS	AVERAGE
			JULY	AUGUST	SEPTEMBER	JUL. - SEP. 2005	WEEKLY EARNINGS
442	FURNITURE & HOME FURNISHINGS STORES	615	4,172	4,162	4,145	\$27,240,037	\$503.74
4421	Furniture Stores	317	2,549	2,542	2,528	16,125,923	488.43
4422	Home Furnishings Stores	298	1,623	1,620	1,617	11,114,114	527.74
443	ELECTRONICS & APPLIANCE STORES	477	2,870	2,892	2,931	\$17,664,268	\$468.93
444	BUILDING MATERIAL & GARDEN SUPPLY STORES	821	10,996	10,977	10,922	\$70,821,153	\$496.83
4441	Building Material & Supplies Dealers	645	10,083	10,098	10,060	65,613,036	500.69
4442	Lawn & Garden Equipment & Supplies Stores	176	913	879	862	5,208,117	452.85
445	FOOD & BEVERAGE STORES	1,144	18,818	18,595	18,960	\$74,328,144	\$304.27
4451	Grocery Stores	677	16,484	16,252	16,645	64,163,253	299.85
4452	Specialty Food Stores	157	853	842	815	4,450,060	409.14
4453	Beer, Wine & Liquor Stores	310	1,481	1,501	1,500	5,714,831	294.25
446	HEALTH & PERSONAL CARE STORES	790	6,521	6,575	6,652	\$44,828,948	\$523.86
447	GASOLINE STATIONS	1,666	13,101	13,037	12,994	\$44,845,950	\$264.47
44711	Gasoline Stations with Convenience Stores	1,486	11,778	11,744	11,725	39,196,334	256.63
44719	Other Gasoline Stations	180	1,323	1,293	1,269	5,649,616	335.59
448	CLOTHING & CLOTHING ACCESSORIES STORES	1,054	8,091	8,213	8,120	\$28,728,862	\$271.44
4481	Clothing Stores	694	5,968	6,095	6,020	19,162,053	244.54
4482	Shoe Stores	183	1,204	1,225	1,199	4,209,924	267.78
4483	Jewelry, Luggage & Leather Goods Stores	177	919	893	901	5,356,885	455.66
451	SPORTING GOODS, HOBBY, BOOK & MUSIC STORES	552	4,095	4,186	4,156	\$15,592,605	\$289.32
4511	Sporting Goods & Musical Instrument Stores	391	2,714	2,741	2,751	11,227,846	315.75
4512	Book, Periodical & Music Stores	161	1,381	1,445	1,405	4,364,759	238.06
452	GENERAL MERCHANDISE STORES	701	35,927	35,988	36,213	\$145,082,148	\$309.64
453	MISCELLANEOUS STORE RETAILERS	1,452	7,099	6,845	6,794	\$30,725,775	\$341.91
4531	Florists	273	1,022	1,010	1,019	3,540,140	267.77
4532	Office Supplies, Stationery & Gift Stores	413	2,543	2,546	2,542	11,876,869	359.17
4533	Used Merchandise Stores	219	805	830	793	3,320,605	315.61
4539	Other Miscellaneous Store Retailers	547	2,729	2,459	2,440	11,988,161	362.68

**TABLE 5. STATEWIDE SUMMARY
EMPLOYMENT AND TOTAL EARNINGS, BY INDUSTRY
THIRD QUARTER 2005**

NORTH AMERICAN INDUSTRY CLASSIFICATION SYSTEM INDUSTRY GROUPS		NUMBER OF EMPLOYING UNITS	EMPLOYMENT			TOTAL EARNINGS	AVERAGE
			JULY	AUGUST	SEPTEMBER	JUL. - SEP. 2005	WEEKLY EARNINGS
454	NONSTORE RETAILERS	318	1,926	1,936	1,968	\$12,974,276	\$513.56
4541	Electronic Shopping & Mail -Order Houses	68	338	340	374	2,795,532	613.23
4542	Vending Machine Operators	82	690	697	706	4,137,931	456.24
4543	Direct Selling Establishments	168	898	899	888	6,040,813	519.19
48-49	TRANSPORTATION & WAREHOUSING	2,957	55,860	55,945	57,177	\$508,354,874	\$694.23
481	AIR TRANSPORTATION	45	1,041	1,031	1,019	\$13,432,661	\$1,002.86
484	TRUCK TRANSPORTATION	1,990	35,204	35,123	35,662	\$332,367,958	\$723.66
4841	General Freight Trucking	1,239	29,691	29,653	30,095	290,114,179	748.55
4842	Specialized Freight Trucking	751	5,513	5,470	5,567	42,253,779	589.18
485	TRANSIT & GROUND PASSENGER TRANS.	56	834	885	1,056	\$3,672,080	\$305.37
4853	Taxi & Limousine Service	20	233	234	229	628,525	208.40
4854	School & Employee Bus Transportation	8	221	270	423	1,608,418	406.10
4855	Charter Bus Industry Service	8	97	91	95	497,759	405.89
4859	Other Ground Passenger Transportation	11	203	209	213	555,173	204.99
	Other	9	80	81	96	382,205	343.20
486	PIPELINE TRANSPORTATION	66	959	955	954	\$13,422,326	\$1,080.01
488	SUPPORT ACTIVITIES FOR TRANSPORTATION	434	4,784	4,823	4,808	\$44,440,114	\$711.44
4881	Support Activities for Air Transportation	103	1,586	1,620	1,635	13,942,360	664.63
4882	Support Activities for Rail Transportation	33	402	415	417	3,253,333	608.40
4883	Support Activities for Water Transportation	31	676	658	627	6,317,457	743.43
4884	Support Activities for Road Transportation	102	468	475	479	2,897,077	470.15
4885	Freight Transportation Arrangement	145	1,508	1,505	1,493	16,993,460	870.30
4889	Other Support Activities for Transportation	20	144	150	157	1,036,427	530.32
492	COURIERS & MESSENGERS	135	3,212	3,227	3,241	\$30,052,399	\$716.44
4921	Couriers	88	2,950	2,967	2,987	28,531,978	739.48
4922	Local Messengers & Local Delivery	47	262	260	254	1,520,421	452.15
493	WAREHOUSING & STORAGE	213	9,622	9,696	10,245	\$69,422,545	\$541.91
	OTHER	18	204	205	192	\$1,544,791	\$593.16

**TABLE 5. STATEWIDE SUMMARY
EMPLOYMENT AND TOTAL EARNINGS, BY INDUSTRY
THIRD QUARTER 2005**

NORTH AMERICAN INDUSTRY CLASSIFICATION SYSTEM INDUSTRY GROUPS		NUMBER OF EMPLOYING UNITS	EMPLOYMENT			TOTAL EARNINGS	AVERAGE
			JULY	AUGUST	SEPTEMBER	JUL. - SEP. 2005	WEEKLY EARNINGS
22	UTILITIES	353	6,640	6,642	6,621	\$104,782,680	\$1,214.92
2211	Power Generation & Supply	159	4,985	5,002	4,976	85,490,066	1318.48
2212	Natural Gas Distribution	31	838	827	836	13,508,968	1246.48
2213	Water, Sewage and Other Systems	163	817	813	809	5,783,646	547.23
INFORMATION		1,211	20,029	20,097	19,954	\$207,226,373	\$795.96
511	PUBLISHING INDUSTRIES, EXCEPT INTERNET	245	6,269	6,437	6,459	\$48,539,505	\$584.47
5111	Newspaper, Book & Directory Publishers	214	6,022	6,190	6,214	45,065,949	564.41
5112	Software Publishers	31	247	247	245	3,473,556	1084.70
512	MOTION PICTURE & SOUND RECORDING INDUSTRY	138	1,286	1,219	1,130	\$4,756,170	\$301.95
5121	Motion Picture & Video Industries	125	1,258	1,190	1,103	4,515,973	293.48
5122	Sound Recording Industries	13	28	29	27	240,197	659.88
515	BROADCASTING, EXCEPT INTERNET	138	2,073	2,078	2,081	\$17,054,335	\$631.52
5151	Radio & Television Broadcasting	131	2,041	2,046	2,052	16,836,634	632.90
5152	Cable & Other Subscription Programming	7	32	32	29	217,701	540.20
517	TELECOMMUNICATIONS	499	8,867	8,837	8,767	\$119,547,949	\$1,042.20
5171	Wired Telecommunications Carriers	211	5,083	5,075	5,060	81,931,553	1242.43
5172	Wireless Telecommunications Carriers	125	1,985	1,983	1,952	19,117,324	745.22
5175	Cable & Other Program Distribution	84	1,253	1,237	1,216	11,583,252	721.28
	Other	79	546	542	539	6,915,820	980.92
518	ISPS, SEARCH PORTALS, & DATA PROCESSING	156	1,200	1,187	1,197	\$14,914,170	\$960.30
5181	ISPs, & Web Search Portals	65	203	191	195	1,828,451	716.38
5182	Data Processing & Related Services	91	997	996	1,002	13,085,719	1008.27
	OTHER	35	334	339	320	\$2,414,244	\$561.06
FINANCIAL ACTIVITIES		7,782	50,225	50,275	50,291	\$458,149,826	\$701.15
52	FINANCE & INSURANCE	4,582	36,180	36,296	36,424	\$368,058,104	\$779.95

**TABLE 5. STATEWIDE SUMMARY
EMPLOYMENT AND TOTAL EARNINGS, BY INDUSTRY
THIRD QUARTER 2005**

NORTH AMERICAN INDUSTRY CLASSIFICATION SYSTEM INDUSTRY GROUPS		NUMBER OF EMPLOYING UNITS	EMPLOYMENT			TOTAL EARNINGS	AVERAGE
			JULY	AUGUST	SEPTEMBER	JUL. - SEP. 2005	WEEKLY EARNINGS
522	CREDIT INTERMEDIATION & RELATED ACTIVITIES	1,967	21,433	21,452	21,543	\$186,318,176	\$667.36
5221	Depository Credit Intermediation	1,270	17,871	17,866	17,947	147,325,589	633.30
5222	Nondepository Credit Intermediation	401	2,696	2,700	2,691	31,297,338	893.10
5223	Activities Related to Credit Intermediation	296	866	886	905	7,695,249	668.36
523	FINANCIAL INVESTMENT & RELATED ACTIVITIES	572	3,112	3,111	3,072	\$57,179,590	\$1,419.61
5231	Security & Commodity Investment Activities	327	2,440	2,430	2,402	48,805,404	1548.79
5239	Other Financial Investment Activities	245	672	681	670	8,374,186	955.27
524	INSURANCE CARRIERS & RELATED ACTIVITIES	2,005	11,211	11,305	11,385	\$120,839,143	\$822.57
5241	Insurance Carriers	382	4,660	4,691	4,702	55,796,209	916.25
5242	Insurance Agencies, Brokerages & Support	1,623	6,551	6,614	6,683	65,042,934	756.24
	OTHER	38	424	428	424	\$3,721,195	\$672.99
53	REAL ESTATE & RENTAL & LEASING	3,200	14,045	13,979	13,867	\$90,091,722	\$496.30
531	REAL ESTATE	2,379	8,733	8,689	8,640	\$56,503,684	\$500.32
5311	Lessors of Real Estate	1,030	4,342	4,275	4,244	24,405,328	437.91
5312	Offices of Real Estate Agents & Brokers	777	2,016	2,013	1,999	15,033,734	575.53
5313	Activities Related to Real Estate	572	2,375	2,401	2,397	17,064,622	549.00
532	RENTAL & LEASING SERVICES	798	5,225	5,200	5,142	\$32,339,348	\$479.41
5321	Automotive Equipment Rental & Leasing	126	937	954	973	6,755,728	544.35
5322	Consumer Goods Rental	498	3,375	3,338	3,261	16,775,394	388.13
5323	General Rental Centers	36	198	197	194	1,576,591	617.71
5324	Machinery & Equipment Rental & Leasing	138	715	711	714	7,231,635	779.83
533	LESSORS OF NONFINANCIAL INTANGIBLE ASSETS	23	87	90	85	\$1,248,690	\$1,099.84

**TABLE 5. STATEWIDE SUMMARY
EMPLOYMENT AND TOTAL EARNINGS, BY INDUSTRY
THIRD QUARTER 2005**

NORTH AMERICAN INDUSTRY CLASSIFICATION SYSTEM INDUSTRY GROUPS		NUMBER OF EMPLOYING UNITS	EMPLOYMENT			TOTAL EARNINGS	AVERAGE
			JULY	AUGUST	SEPTEMBER	JUL. - SEP. 2005	WEEKLY EARNINGS
PROFESSIONAL & BUSINESS SERVICES		10,463	112,042	113,126	113,456	\$972,958,620	\$663.06
54	PROFESSIONAL & TECHNICAL SERVICES	6,582	35,129	35,278	35,304	\$377,613,936	\$824.34
5411	Legal Services	1,615	6,733	6,732	6,729	63,216,992	722.42
5412	Accounting & Bookkeeping Services	1,174	4,523	4,562	4,589	39,152,833	660.76
5413	Architectural & Engineering Services	886	6,381	6,435	6,413	71,108,366	853.38
5414	Specialized Design Services	154	448	448	456	3,217,496	549.19
5415	Computer Systems Design & Related Services	756	7,577	7,563	7,518	119,665,645	1218.78
5416	Management & Technical Consulting Services	1,003	2,605	2,686	2,711	31,474,847	907.70
5417	Scientific Research & Development Services	108	1,148	1,119	1,123	12,141,461	826.51
5418	Advertising & Related Services	318	1,922	1,908	1,957	19,069,610	760.44
5419	Other Professional & Technical Services	568	3,792	3,825	3,808	18,566,686	375.02
55	MANAGEMENT OF COMPANIES & ENTERPRISES	485	23,754	23,627	23,648	\$328,463,847	\$1,067.16
56	ADMINISTRATIVE & WASTE SERVICES	3,396	53,159	54,221	54,504	\$266,880,837	\$380.44
561	ADMINISTRATIVE & SUPPORT SERVICES	3,201	50,759	51,813	52,081	\$244,724,397	\$365.17
5611	Office Administrative Services	321	1,311	1,299	1,337	14,055,355	821.77
5612	Facilities Support Services	14	135	123	130	1,124,394	668.75
5613	Employment Services	613	26,497	27,424	27,805	115,055,085	324.88
5614	Business Support Services	354	4,566	4,679	4,621	22,529,398	374.95
5615	Travel Arrangement & Reservation Services	103	472	463	461	3,533,519	584.12
5616	Investigation & Security Services	226	4,319	4,362	4,383	24,488,183	432.57
5617	Services to Buildings & Dwellings	1,280	11,911	11,915	11,815	53,153,036	344.16
5619	Other Support Services	290	1,548	1,548	1,529	10,785,427	538.15
562	WASTE MANAGEMENT & REMEDIATION SERVICES	195	2,400	2,408	2,423	\$22,156,440	\$707.10
5621	Waste Collection Services	90	1,113	1,116	1,140	10,188,885	697.92
5622	Waste Treatment & Disposal Services	38	770	776	787	8,413,204	832.19
5629	Remediation & Other Waste Services	67	517	516	496	3,554,351	536.45

**TABLE 5. STATEWIDE SUMMARY
EMPLOYMENT AND TOTAL EARNINGS, BY INDUSTRY
THIRD QUARTER 2005**

NORTH AMERICAN INDUSTRY CLASSIFICATION SYSTEM INDUSTRY GROUPS		NUMBER OF EMPLOYING UNITS	EMPLOYMENT			TOTAL EARNINGS	AVERAGE
			JULY	AUGUST	SEPTEMBER	JUL. - SEP. 2005	WEEKLY EARNINGS
EDUCATION & HEALTH SERVICES		8,323	140,303	141,328	142,664	\$1,152,910,204	\$627.05
61	EDUCATIONAL SERVICES	543	8,009	8,013	8,780	\$53,559,866	\$498.35
6111	Elementary & Secondary Schools	82	2,796	2,867	3,136	14,680,205	385.01
6112	Junior Colleges	8	230	249	270	1,724,267	531.25
6113	Colleges & Universities	25	2,919	2,806	3,091	22,593,495	591.41
6114	Business, Computer, & Management Training	47	138	133	133	1,824,814	1042.35
6115	Technical & Trade Schools	93	628	637	655	6,730,597	808.97
6116	Other Schools & Instruction	218	1,071	1,089	1,274	4,021,450	270.25
6117	Educational Support Services	70	227	232	221	1,985,038	673.66
62	HEALTH CARE & SOCIAL ASSISTANCE	7,780	132,294	133,315	133,884	\$1,099,350,338	\$635.05
621	AMBULATORY HEALTH CARE SERVICES	4,683	41,551	41,875	41,888	\$494,044,140	\$909.80
6211	Offices of Physicians	2,084	20,149	20,215	20,189	318,511,535	1213.86
6212	Offices of Dentists	911	5,998	6,049	6,048	55,127,536	703.05
6213	Offices of Other Health Practitioners	1,119	5,307	5,340	5,339	39,405,340	568.84
6214	Outpatient Care Centers	207	3,484	3,540	3,558	32,746,383	714.12
6215	Medical & Diagnostic Laboratories	88	709	719	716	9,191,078	989.28
6216	Home Health Care Services	127	3,836	3,900	3,909	24,696,929	489.42
6219	Other Ambulatory Health Care Services	147	2,068	2,112	2,129	14,365,339	525.45
622	HOSPITALS	108	42,210	42,048	42,105	\$383,261,058	\$699.93
6221	General Medical & Surgical Hospitals	76	38,864	38,732	38,775	353,493,649	700.99
6222	Psychiatric & Substance Abuse Hospitals	10	1,431	1,466	1,492	12,123,258	637.43
6223	Other Hospitals	22	1,915	1,850	1,838	17,644,151	726.70
623	NURSING & RESIDENTIAL CARE FACILITIES	496	26,565	26,734	26,851	\$127,654,061	\$367.54
6231	Nursing Care Facilities	234	20,081	20,197	20,275	95,285,026	363.13
6232	Residential Mental Health Facilities	128	2,852	2,896	2,936	15,041,649	399.72
6233	Community Care Facilities for the Elderly	90	2,274	2,269	2,260	9,941,210	337.22
6239	Other Residential Care Facilities	44	1,358	1,372	1,380	7,386,176	414.72

**TABLE 5. STATEWIDE SUMMARY
EMPLOYMENT AND TOTAL EARNINGS, BY INDUSTRY
THIRD QUARTER 2005**

NORTH AMERICAN INDUSTRY CLASSIFICATION SYSTEM INDUSTRY GROUPS		NUMBER OF EMPLOYING UNITS	EMPLOYMENT			TOTAL EARNINGS	AVERAGE
			JULY	AUGUST	SEPTEMBER	JUL. - SEP. 2005	WEEKLY EARNINGS
624	SOCIAL ASSISTANCE	2,493	21,968	22,658	23,040	\$94,391,079	\$321.91
6241	Individual & Family Services	1,362	10,243	10,430	10,378	46,901,211	348.57
6242	Emergency & Other Relief Services	114	858	894	899	4,436,759	386.22
6243	Vocational Rehabilitation Services	129	3,318	3,329	3,322	16,190,574	374.79
6244	Child Day Care Services	888	7,549	8,005	8,441	26,862,535	258.35
LEISURE & HOSPITALITY		5,923	97,242	96,992	96,284	\$279,151,265	\$221.74
71	ARTS, ENTERTAINMENT & RECREATION	912	10,860	10,600	9,705	\$36,454,501	\$269.94
711	PERFORMING ARTS & SPECTATOR SPORTS	201	2,111	2,164	2,237	\$8,035,042	\$284.74
7111	Performing Arts Companies	41	669	660	659	1,994,260	231.50
7112	Spectator Sports	57	814	782	741	3,240,358	319.97
7113	Performing Arts & Sports Promoters	38	512	609	705	2,030,671	256.64
7114	Agents & Managers for Public Figures	11	14	14	15	126,322	677.94
7115	Independent Artists, Writers & Performers	54	102	99	117	643,431	466.93
712	MUSEUMS, PARKS & HISTORICAL SITES	46	242	240	245	\$936,578	\$297.29
713	GAMBLING, RECREATION & AMUSEMENT INDUSTRY	665	8,507	8,196	7,223	\$27,482,881	\$265.08
7139	Other Amusement & Recreation Industries	627	7,576	7,353	6,744	25,756,283	274.25
	Other	38	931	843	479	1,726,598	176.85
72	ACCOMMODATION & FOOD SERVICES	5,011	86,382	86,392	86,579	\$242,696,764	\$215.95
721	ACCOMMODATION	785	12,105	11,769	11,460	\$41,092,565	\$268.38
7211	Traveler Accommodation	715	11,475	11,379	11,132	39,318,424	266.98
7212	RV Parks & Recreational Camps	50	585	315	244	1,519,215	306.46
7213	Rooming & Boarding Houses	20	45	75	84	254,926	288.38
722	FOOD SERVICES & DRINKING PLACES	4,226	74,277	74,623	75,119	\$201,604,199	\$207.68
7221	Full -Service Restaurants	1,826	32,347	32,633	32,535	93,718,800	221.79
7222	Limited-Service Eating Places	2,087	39,326	39,274	39,500	99,198,222	193.83
7223	Special Food Services	157	1,681	1,748	2,109	6,202,089	258.44
7224	Drinking Places, Alcoholic Beverages	156	923	968	975	2,485,088	200.10

**TABLE 5. STATEWIDE SUMMARY
EMPLOYMENT AND TOTAL EARNINGS, BY INDUSTRY
THIRD QUARTER 2005**

NORTH AMERICAN INDUSTRY CLASSIFICATION SYSTEM INDUSTRY GROUPS		NUMBER OF EMPLOYING UNITS	EMPLOYMENT			TOTAL EARNINGS	AVERAGE
			JULY	AUGUST	SEPTEMBER	JUL. - SEP. 2005	WEEKLY EARNINGS
OTHER SERVICES		5,543	25,729	25,496	25,475	\$146,299,250	\$440.17
811	REPAIR & MAINTENANCE	2,251	9,342	9,296	9,316	\$62,345,268	\$514.68
8111	Automotive Repair & Maintenance	1,560	6,708	6,682	6,674	41,968,264	482.70
8112	Electronic Equipment Repair & Maintenance	161	563	585	592	4,837,665	641.60
8113	Commercial Machinery Repair & Maintenance	334	1,490	1,470	1,471	11,765,562	612.76
8114	Household Goods Repair & Maintenance	196	581	559	579	3,773,777	506.62
812	PERSONAL & LAUNDRY SERVICES	1,323	8,163	8,199	8,159	\$39,881,124	\$375.32
8121	Personal Care Services	569	2,476	2,534	2,464	9,174,994	283.29
8122	Death Care Services	249	1,622	1,618	1,642	10,326,537	488.13
8123	Drycleaning & Laundry Services	346	3,317	3,289	3,314	16,198,941	376.84
8129	Other Personal Services	159	748	758	739	4,180,652	429.74
813	MEMBERSHIP ASSOCIATIONS & ORGANIZATIONS	1,012	6,769	6,556	6,534	\$38,359,001	\$445.75
8131	Religious Organizations	39	216	203	205	1,081,872	400.10
8132	Grantmaking & Giving Services	95	407	412	421	3,945,367	734.25
8133	Social Advocacy Organizations	137	1,873	1,914	1,927	11,394,438	460.18
8134	Civic & Social Organizations	228	1,987	1,742	1,649	5,729,975	245.87
8139	Professional & Similar Organizations	513	2,286	2,285	2,332	16,207,349	541.82
814	PRIVATE HOUSEHOLDS	957	1,455	1,445	1,466	\$5,713,857	\$302.01
	LOCAL GOVERNMENT	1,996	69,720	89,379	113,448	\$616,734,221	\$522.20
	STATE GOVERNMENT	1,193	57,974	60,026	61,434	\$543,231,604	\$698.65
	NONCLASSIFIABLE ESTABLISHMENTS	0	0	0	0	\$0	

**TABLE 6. COUNTY SUMMARY
EMPLOYMENT AND TOTAL EARNINGS, BY INDUSTRY
THIRD QUARTER 2005**

NORTH AMERICAN INDUSTRY CLASSIFICATION SYSTEM INDUSTRY GROUP	NUMBER OF EMPLOYING UNITS	EMPLOYMENT			TOTAL EARNINGS	AVERAGE WEEKLY EARNINGS
		JULY	AUGUST	SEPTEMBER	JUL. - SEP. 2005	
ARKANSAS COUNTY - TOTAL	644	9,717	9,799	10,025	\$70,217,591	\$548.53
Natural Resources & Mining	46	326	321	313	2,097,684	504.25
Construction	53	282	276	262	2,101,177	591.33
Manufacturing	32	3,547	3,593	3,678	29,842,953	636.61
Trade, Transportation & Utilities	198	2,117	2,099	2,152	14,955,035	541.95
Wholesale Trade	42	457	435	421	4,386,588	770.97
Retail Trade	102	1,079	1,073	1,113	5,145,907	363.71
Transportation, Warehousing & Utilities	54	581	591	618	5,422,540	699.08
Information	8	78	82	79	741,727	716.18
Financial Activities	42	333	331	334	2,446,749	565.77
Professional & Business Services	49	382	385	391	3,926,340	782.45
Education & Health Services	65	1,133	1,168	1,167	6,220,177	413.91
Leisure & Hospitality	52	489	489	482	1,188,378	187.84
Other Services	52	154	151	152	809,031	408.53
Local Government	31	699	696	805	4,515,948	473.70
State Government	16	177	208	210	1,372,392	532.28
ASHLEY COUNTY - TOTAL	526	7,815	7,949	8,448	\$70,549,202	\$672.42
Natural Resources & Mining	61	522	495	585	3,716,840	535.41
Construction	49	640	623	642	4,544,843	550.56
Manufacturing	28	2,990	2,997	2,997	39,801,287	1022.36
Trade, Transportation & Utilities	134	1,224	1,223	1,258	7,187,335	447.67
Wholesale Trade	25	148	149	179	1,508,342	731.26
Retail Trade	88	849	848	846	3,629,850	329.40
Transportation, Warehousing & Utilities	21	227	226	233	2,049,143	689.33
Information	10	53	54	49	387,333	572.98
Financial Activities	35	231	233	230	1,552,531	516.25
Professional & Business Services	46	340	345	345	2,063,543	462.33
Education & Health Services	49	572	591	596	4,385,156	575.30
Leisure & Hospitality	30	353	366	370	914,855	193.87
Other Services	40	172	167	182	795,313	352.27
Local Government	32	514	638	977	4,004,787	434.09
State Government	12	204	217	217	1,195,379	432.38

**TABLE 6. COUNTY SUMMARY
EMPLOYMENT AND TOTAL EARNINGS, BY INDUSTRY
THIRD QUARTER 2005**

NORTH AMERICAN INDUSTRY CLASSIFICATION SYSTEM INDUSTRY GROUP	NUMBER OF EMPLOYING UNITS	EMPLOYMENT			TOTAL EARNINGS	AVERAGE WEEKLY EARNINGS
		JULY	AUGUST	SEPTEMBER	JUL. - SEP. 2005	
BAXTER COUNTY - TOTAL	1,190	13,932	14,165	14,566	\$93,179,837	\$504.02
Natural Resources & Mining	7	122	127	139	919,139	546.67
Construction	130	665	672	656	3,789,541	438.79
Manufacturing	67	2,589	2,579	2,618	20,401,645	604.68
Trade, Transportation & Utilities	270	2,606	2,598	2,587	14,057,954	416.40
Wholesale Trade	32	178	178	182	1,419,179	608.74
Retail Trade	210	2,160	2,157	2,141	10,791,747	385.63
Transportation, Warehousing & Utilities	28	268	263	264	1,847,028	536.15
Information	24	293	288	283	2,191,163	585.25
Financial Activities	108	680	675	669	5,159,525	588.27
Professional & Business Services	128	773	798	798	5,107,648	497.55
Education & Health Services	176	3,182	3,207	3,222	27,714,768	665.46
Leisure & Hospitality	123	1,763	1,713	1,650	4,435,162	199.67
Other Services	108	421	413	430	1,619,655	295.70
Local Government	36	572	791	1,211	5,853,206	524.76
State Government	13	266	304	303	1,930,431	510.29
BENTON COUNTY - TOTAL	4,840	86,890	87,962	90,364	\$773,051,549	\$672.65
Natural Resources & Mining	26	674	676	674	6,248,381	712.42
Construction	733	5,117	5,090	5,157	41,675,290	625.97
Manufacturing	239	13,712	13,709	13,714	117,486,776	659.11
Trade, Transportation & Utilities	1,302	22,519	22,253	22,567	194,628,004	666.99
Wholesale Trade	573	3,813	3,754	3,755	51,309,461	1045.81
Retail Trade	564	7,254	7,232	7,191	40,889,433	435.30
Transportation, Warehousing & Utilities	165	11,452	11,267	11,621	102,429,110	688.34
Information	70	901	889	885	8,363,540	721.51
Financial Activities	541	3,299	3,345	3,340	28,246,656	652.89
Professional & Business Services	776	21,791	21,765	21,835	242,304,973	855.11
Education & Health Services	392	6,268	6,375	6,508	52,807,728	636.33
Leisure & Hospitality	364	6,427	6,457	6,449	21,620,431	258.07
Other Services	303	1,718	1,742	1,693	10,552,876	472.59
Local Government	75	3,919	5,066	6,696	43,627,280	642.04
State Government	19	545	595	846	5,489,614	637.88

**TABLE 6. COUNTY SUMMARY
EMPLOYMENT AND TOTAL EARNINGS, BY INDUSTRY
THIRD QUARTER 2005**

NORTH AMERICAN INDUSTRY CLASSIFICATION SYSTEM INDUSTRY GROUP	NUMBER OF EMPLOYING UNITS	EMPLOYMENT			TOTAL EARNINGS	AVERAGE WEEKLY EARNINGS
		JULY	AUGUST	SEPTEMBER	JUL. - SEP. 2005	
BOONE COUNTY - TOTAL	1,022	12,962	13,179	13,933	\$103,120,937	\$593.83
Natural Resources & Mining	6	4	4	4	65,315	1256.06
Construction	93	461	449	471	3,786,266	632.70
Manufacturing	68	2,118	2,102	2,112	16,860,218	614.47
Trade, Transportation & Utilities	271	4,377	4,389	4,420	42,205,320	738.64
Wholesale Trade	58	666	669	661	5,126,676	592.72
Retail Trade	158	1,952	1,970	1,981	10,011,912	391.40
Transportation, Warehousing & Utilities	55	1,759	1,750	1,778	27,066,732	1181.42
Information	18	415	407	398	3,591,776	679.40
Financial Activities	95	620	621	615	4,610,289	573.23
Professional & Business Services	105	536	531	566	3,010,804	425.48
Education & Health Services	128	1,088	1,138	1,147	7,697,831	526.66
Leisure & Hospitality	85	1,185	1,200	1,180	3,280,437	212.35
Other Services	72	269	266	263	1,590,134	459.84
Local Government	60	1,397	1,538	2,219	11,869,544	531.46
State Government	21	492	534	538	4,553,003	671.80
BRADLEY COUNTY - TOTAL	342	3,725	3,774	3,948	\$24,420,572	\$492.31
Natural Resources & Mining	50	398	395	388	1,908,512	372.93
Construction	23	155	165	156	1,131,249	548.44
Manufacturing	11	1,048	1,023	1,019	9,095,717	679.29
Trade, Transportation & Utilities	92	512	499	508	2,556,725	388.42
Wholesale Trade	13	104	104	109	484,076	352.40
Retail Trade	52	332	321	325	1,419,259	334.89
Transportation, Warehousing & Utilities	27	76	74	74	653,390	673.14
Information	3	13	13	13	80,904	478.72
Financial Activities	24	188	186	187	1,216,596	500.45
Professional & Business Services	25	86	87	83	349,624	315.17
Education & Health Services	36	529	534	525	3,200,851	465.15
Leisure & Hospitality	19	173	187	173	375,257	162.47
Other Services	31	92	95	91	427,594	354.95
Local & State Government	28	531	590	805	4,077,543	488.56

**TABLE 6. COUNTY SUMMARY
EMPLOYMENT AND TOTAL EARNINGS, BY INDUSTRY
THIRD QUARTER 2005**

NORTH AMERICAN INDUSTRY CLASSIFICATION SYSTEM INDUSTRY GROUP	NUMBER OF EMPLOYING UNITS	EMPLOYMENT			TOTAL EARNINGS	AVERAGE WEEKLY EARNINGS
		JULY	AUGUST	SEPTEMBER	JUL. - SEP. 2005	
CALHOUN COUNTY - TOTAL	121	3,798	3,870	3,874	\$33,933,097	\$678.45
Natural Resources & Mining	20	130	138	135	832,204	476.54
Construction	11	93	95	100	581,712	466.12
Manufacturing	14	2,648	2,672	2,636	25,770,511	747.49
Trade, Transportation & Utilities	27	198	205	202	1,353,086	516.12
Wholesale Trade & Retail Trade	19	79	83	80	256,821	244.90
Transportation, Warehousing & Utilities	8	119	122	122	1,096,265	696.93
Financial Activities	8	127	125	127	928,943	565.62
Education & Health Services	4	43	44	47	329,641	567.69
Local Government	11	129	156	199	849,185	404.89
State Government	10	304	307	297	2,115,832	537.74
Other	16	126	128	131	1,171,983	702.49
CARROLL COUNTY - TOTAL	797	9,680	10,080	10,093	\$54,852,857	\$424.02
Natural Resources & Mining	17	268	273	274	1,855,768	525.47
Trade, Transportation & Utilities	207	1,682	1,673	1,661	9,188,143	422.72
Wholesale Trade	23	117	114	118	575,318	380.42
Retail Trade	166	1,310	1,304	1,294	6,160,840	363.80
Transportation, Warehousing & Utilities	18	255	255	249	2,451,985	745.51
Professional & Business Services	69	227	211	218	1,439,817	506.50
Education & Health Services	58	713	736	737	5,579,062	588.96
Leisure & Hospitality	175	1,984	1,983	1,920	5,507,150	215.88
Local Government	25	586	998	1,070	5,341,413	464.44
State Government	11	106	108	104	756,005	548.62
Other	235	4,114	4,098	4,109	25,185,499	471.72

**TABLE 6. COUNTY SUMMARY
EMPLOYMENT AND TOTAL EARNINGS, BY INDUSTRY
THIRD QUARTER 2005**

NORTH AMERICAN INDUSTRY CLASSIFICATION SYSTEM INDUSTRY GROUP	NUMBER OF EMPLOYING UNITS	EMPLOYMENT			TOTAL EARNINGS	AVERAGE WEEKLY EARNINGS
		JULY	AUGUST	SEPTEMBER	JUL. - SEP. 2005	
CHICOT COUNTY - TOTAL	333	3,483	3,652	3,787	\$21,615,952	\$456.72
Natural Resources & Mining	46	267	268	313	1,984,840	540.14
Construction	19	322	319	326	2,441,312	582.61
Manufacturing	12	360	361	362	1,895,631	403.93
Trade, Transportation & Utilities	85	609	630	621	3,300,362	409.47
Wholesale Trade	16	111	108	106	900,279	639.25
Retail Trade	57	418	438	430	1,622,059	291.07
Transportation, Warehousing & Utilities	12	80	84	85	778,024	721.06
Information	6	14	14	14	98,523	541.34
Financial Activities	28	163	160	160	1,165,637	556.92
Professional & Business Services	26	92	92	89	982,848	830.81
Education & Health Services	45	484	491	497	2,613,051	409.65
Leisure & Hospitality	22	255	241	245	547,139	170.40
Other Services	17	56	60	57	328,839	438.65
Local Government	16	554	706	800	4,243,587	475.38
State Government	11	307	310	303	2,014,183	505.23
CLARK COUNTY - TOTAL	611	9,385	9,539	9,859	\$61,052,997	\$489.50
Natural Resources & Mining	42	266	268	271	1,937,729	555.49
Construction	35	128	137	135	925,184	533.76
Manufacturing	35	2,351	2,323	2,293	17,752,272	588.01
Trade, Transportation & Utilities	141	1,436	1,444	1,450	8,958,936	477.47
Wholesale Trade	20	69	74	74	574,783	611.25
Retail Trade	94	1,080	1,075	1,091	5,561,729	395.40
Transportation, Warehousing & Utilities	27	287	295	285	2,822,424	751.24
Information	10	47	45	47	300,953	499.65
Financial Activities	92	406	400	405	2,755,571	525.10
Professional & Business Services	45	422	448	457	3,529,760	613.84
Education & Health Services	66	1,389	1,397	1,430	8,699,265	476.17
Leisure & Hospitality	56	1,070	1,045	1,101	2,823,019	202.57
Other Services	48	205	218	218	1,189,386	428.20
Local Government	26	739	790	905	4,449,777	421.89
State Government	15	926	1,024	1,147	7,731,145	576.08

**TABLE 6. COUNTY SUMMARY
EMPLOYMENT AND TOTAL EARNINGS, BY INDUSTRY
THIRD QUARTER 2005**

NORTH AMERICAN INDUSTRY CLASSIFICATION SYSTEM INDUSTRY GROUP	NUMBER OF EMPLOYING UNITS	EMPLOYMENT			TOTAL EARNINGS	AVERAGE WEEKLY EARNINGS
		JULY	AUGUST	SEPTEMBER	JUL. - SEP. 2005	
CLAY COUNTY - TOTAL	405	4,301	4,535	4,635	\$26,681,740	\$457.08
Natural Resources & Mining	57	237	246	239	1,284,281	410.49
Construction	39	182	194	200	1,096,280	439.21
Manufacturing	19	1,161	1,139	1,109	7,222,665	488.93
Trade, Transportation & Utilities	96	945	935	966	5,488,366	445.03
Wholesale Trade	23	321	310	316	1,988,822	484.65
Retail Trade	52	458	455	454	1,895,791	320.04
Transportation, Warehousing & Utilities	21	166	170	196	1,603,753	695.67
Information	9	136	129	121	852,946	509.93
Financial Activities	36	155	155	156	957,274	474.05
Professional & Business Services	26	55	54	57	291,039	404.60
Education & Health Services	40	493	501	522	2,626,145	399.76
Leisure & Hospitality	24	236	238	239	449,990	145.64
Other Services	25	52	49	52	271,975	410.22
Local Government	22	564	813	893	5,621,150	571.45
State Government	12	85	82	81	519,629	483.53
CLEBURNE COUNTY - TOTAL	661	6,500	6,693	6,966	\$38,816,009	\$444.34
Natural Resources & Mining	15	37	38	37	286,977	591.30
Construction	65	323	323	327	1,679,241	398.27
Manufacturing	46	1,817	1,825	1,857	13,513,511	567.10
Trade, Transportation & Utilities	189	1,574	1,576	1,594	8,664,214	421.47
Wholesale Trade	41	170	165	165	1,049,730	484.49
Retail Trade	109	1,086	1,089	1,112	4,706,444	330.42
Transportation, Warehousing & Utilities	39	318	322	317	2,908,040	701.24
Information	8	64	61	57	362,262	459.33
Financial Activities	68	256	254	256	1,774,338	534.55
Professional & Business Services	57	195	191	188	1,145,782	460.65
Education & Health Services	58	738	776	775	4,372,874	440.86
Leisure & Hospitality	67	895	896	825	2,288,867	201.91
Other Services	58	158	155	162	682,889	331.77
Local Government	20	328	483	770	3,312,861	483.56
State Government	10	115	115	118	732,193	485.54

**TABLE 6. COUNTY SUMMARY
EMPLOYMENT AND TOTAL EARNINGS, BY INDUSTRY
THIRD QUARTER 2005**

NORTH AMERICAN INDUSTRY CLASSIFICATION SYSTEM INDUSTRY GROUP	NUMBER OF EMPLOYING UNITS	EMPLOYMENT			TOTAL EARNINGS	AVERAGE
		JULY	AUGUST	SEPTEMBER	JUL. - SEP. 2005	WEEKLY EARNINGS
CLEVELAND COUNTY - TOTAL	112	902	1,086	1,113	\$6,140,071	\$456.93
Natural Resources & Mining	194	197	195	1,326,613	522.43	522.43
Construction	40	40	39	165,060	320.09	320.09
Manufacturing	94	98	100	557,675	440.73	440.73
Trade, Transportation & Utilities	213	206	212	999,533	365.55	365.55
Wholesale Trade	30	28	27	136,207	369.79	369.79
Retail Trade	81	80	81	223,005	212.66	212.66
Transportation, Warehousing & Utilities	102	98	104	640,321	486.07	486.07
Local Government	123	303	338	1,500,215	453.15	453.15
State Government	64	67	66	375,638	440.03	440.03
Other	174	175	163	1,215,337	547.78	427.18
COLUMBIA COUNTY - TOTAL	682	8,967	9,114	9,365	\$66,033,226	\$555.22
Natural Resources & Mining	49	473	462	481	5,483,103	893.60
Construction	45	325	326	305	2,367,815	571.57
Manufacturing	38	2,703	2,710	2,752	27,488,429	776.91
Trade, Transportation & Utilities	184	1,571	1,573	1,570	8,437,270	413.04
Wholesale Trade	28	264	261	253	1,795,279	532.51
Retail Trade	115	1,054	1,063	1,067	4,441,299	321.90
Transportation, Warehousing & Utilities	41	253	249	250	2,200,692	675.34
Information	11	82	83	79	536,471	507.38
Financial Activities	75	414	414	407	2,971,967	555.33
Professional & Business Services	63	356	339	330	1,754,177	394.94
Education & Health Services	78	833	854	873	4,089,682	368.66
Leisure & Hospitality	44	680	663	657	1,538,575	177.53
Other Services	51	210	209	210	857,025	314.43
Local Government	30	700	901	1,137	5,979,004	503.93
State Government	14	620	580	564	4,529,708	592.58

**TABLE 6. COUNTY SUMMARY
EMPLOYMENT AND TOTAL EARNINGS, BY INDUSTRY
THIRD QUARTER 2005**

NORTH AMERICAN INDUSTRY CLASSIFICATION SYSTEM INDUSTRY GROUP	NUMBER OF EMPLOYING UNITS	EMPLOYMENT			TOTAL EARNINGS	AVERAGE WEEKLY EARNINGS
		JULY	AUGUST	SEPTEMBER	JUL. - SEP. 2005	
CONWAY COUNTY - TOTAL	480	6,418	6,478	6,618	\$41,585,208	\$491.78
Natural Resources & Mining	18	125	123	122	1,032,046	643.69
Construction	50	550	545	559	4,624,720	645.25
Manufacturing	30	1,103	1,088	1,081	10,790,377	761.03
Trade, Transportation & Utilities	137	1,438	1,437	1,455	7,993,242	426.00
Wholesale Trade	30	273	261	252	1,904,368	559.12
Retail Trade	80	886	897	920	4,000,170	341.52
Transportation, Warehousing & Utilities	27	279	279	283	2,088,704	573.14
Information	6	37	37	37	173,447	360.60
Financial Activities	35	188	186	187	1,317,881	542.11
Professional & Business Services	45	608	618	606	2,945,818	371.07
Education & Health Services	54	764	765	779	5,213,376	521.27
Leisure & Hospitality	39	480	479	470	1,046,804	169.05
Other Services	28	86	90	78	553,109	502.52
Local Government	27	730	775	875	3,867,220	374.97
State Government	11	309	335	369	2,027,168	461.80
CRAIGHEAD COUNTY - TOTAL	2,528	38,162	39,745	40,682	\$287,962,823	\$560.36
Natural Resources & Mining	58	276	285	362	1,741,423	435.39
Construction	224	1,710	1,761	1,740	12,984,693	575.03
Manufacturing	139	6,765	6,752	6,884	66,035,585	746.97
Trade, Transportation & Utilities	732	7,973	8,007	8,118	49,080,165	470.01
Wholesale Trade	188	1,533	1,521	1,522	13,191,252	665.24
Retail Trade	429	5,365	5,404	5,462	26,342,542	374.53
Transportation, Warehousing & Utilities	115	1,075	1,082	1,134	9,546,371	669.40
Information	34	685	660	647	5,348,083	619.56
Financial Activities	259	1,583	1,582	1,574	13,660,488	665.21
Professional & Business Services	322	3,513	3,832	3,782	21,027,684	436.11
Education & Health Services	342	6,843	6,904	6,913	65,358,661	730.05
Leisure & Hospitality	174	3,572	3,614	3,694	9,813,727	208.15
Other Services	182	1,010	1,008	1,035	5,071,342	383.33
Local Government	38	2,200	3,053	3,544	18,087,426	474.48
State Government	24	2,032	2,287	2,389	19,753,546	679.56

**TABLE 6. COUNTY SUMMARY
EMPLOYMENT AND TOTAL EARNINGS, BY INDUSTRY
THIRD QUARTER 2005**

NORTH AMERICAN INDUSTRY CLASSIFICATION SYSTEM INDUSTRY GROUP	NUMBER OF EMPLOYING UNITS	EMPLOYMENT			TOTAL EARNINGS JUL. - SEP. 2005	AVERAGE WEEKLY EARNINGS
		JULY	AUGUST	SEPTEMBER		
CRAWFORD COUNTY - TOTAL	1,153	17,650	18,526	18,916	\$122,863,408	\$514.65
Natural Resources & Mining	24	411	444	430	3,533,930	634.65
Construction	178	1,418	1,406	1,443	11,035,577	596.83
Manufacturing	74	3,472	3,499	3,583	24,050,091	525.87
Trade, Transportation & Utilities	307	6,519	6,589	6,634	46,201,540	540.06
Wholesale Trade	80	684	670	686	5,903,515	667.82
Retail Trade	160	1,869	1,886	1,893	8,777,575	358.64
Transportation, Warehousing & Utilities	67	3,966	4,033	4,055	31,520,450	603.45
Financial Activities	117	514	513	503	3,426,529	516.82
Professional & Business Services	133	699	703	692	4,672,753	514.96
Education & Health Services	97	1,444	1,479	1,512	10,523,862	547.59
Leisure & Hospitality	81	1,353	1,360	1,379	3,525,882	198.84
Local Government	41	1,082	1,806	2,017	10,786,396	507.48
State Government	11	172	171	169	1,296,741	584.47
Other	90	566	556	554	3,810,107	524.62
CRITTENDEN COUNTY - TOTAL	1,114	14,879	15,765	16,097	\$106,097,636	\$523.82
Natural Resources & Mining	48	316	303	393	1,936,286	441.54
Construction	73	604	641	659	5,103,074	618.50
Manufacturing	52	1,477	1,490	1,539	15,833,892	810.91
Trade, Transportation & Utilities	308	5,076	4,867	4,817	36,134,268	564.95
Wholesale Trade	61	788	786	799	7,497,859	729.15
Retail Trade	167	2,280	2,064	2,013	9,631,288	349.63
Transportation, Warehousing & Utilities	80	2,008	2,017	2,005	19,005,121	727.33
Information	10	96	94	96	853,492	688.67
Financial Activities	113	525	528	558	4,199,646	601.58
Professional & Business Services	110	648	702	687	4,208,391	476.76
Education & Health Services	141	1,833	1,859	1,873	13,274,207	550.45
Leisure & Hospitality	99	1,918	1,955	1,919	5,502,508	219.24
Other Services	101	609	631	607	3,509,731	438.52
Local Government	44	1,330	2,294	2,489	12,794,432	483.00
State Government	15	447	401	460	2,747,709	484.78

**TABLE 6. COUNTY SUMMARY
EMPLOYMENT AND TOTAL EARNINGS, BY INDUSTRY
THIRD QUARTER 2005**

NORTH AMERICAN INDUSTRY CLASSIFICATION SYSTEM INDUSTRY GROUP	NUMBER OF EMPLOYING UNITS	EMPLOYMENT			TOTAL EARNINGS	AVERAGE WEEKLY EARNINGS
		JULY	AUGUST	SEPTEMBER	JUL. - SEP. 2005	
CROSS COUNTY - TOTAL	490	4,692	4,998	5,209	\$31,909,369	\$494.24
Natural Resources & Mining	46	250	244	255	1,361,803	419.58
Construction	34	187	197	204	1,006,100	394.86
Manufacturing	21	735	736	734	5,994,965	627.42
Trade, Transportation & Utilities	132	1,228	1,220	1,229	8,352,992	524.24
Wholesale Trade	32	302	303	290	2,606,905	672.17
Retail Trade	66	656	650	649	3,191,530	376.73
Transportation, Warehousing & Utilities	34	270	267	290	2,554,557	712.83
Information	8	64	63	60	386,624	477.12
Financial Activities	47	379	380	372	2,733,401	557.72
Professional & Business Services	42	153	155	156	1,084,490	539.37
Education & Health Services	58	619	630	631	3,935,536	483.09
Leisure & Hospitality	32	404	404	393	859,799	165.21
Other Services	41	68	68	79	320,513	344.02
Local Government	18	378	674	884	4,202,123	500.89
State Government	11	227	227	212	1,671,023	579.01
DALLAS COUNTY - TOTAL	271	3,128	3,127	3,316	\$20,308,751	\$489.67
Natural Resources & Mining	40	233	236	234	1,704,862	559.64
Construction	13	73	74	78	535,349	549.08
Manufacturing	15	872	856	874	7,473,529	662.82
Trade, Transportation & Utilities	74	488	484	484	2,451,516	388.55
Wholesale Trade	8	38	37	40	265,382	532.54
Retail Trade	47	386	382	383	1,730,967	347.05
Transportation, Warehousing & Utilities	19	64	65	61	455,167	552.83
Information	3	24	24	24	161,271	516.89
Financial Activities	21	103	104	105	675,443	499.59
Professional & Business Services	17	53	47	48	545,438	850.48
Education & Health Services	28	739	738	758	4,165,164	430.06
Leisure & Hospitality	19	143	144	145	307,888	164.47
Other Services	16	67	64	64	263,703	312.07
Local Government	16	272	295	442	1,583,657	362.20
State Government	9	61	61	60	440,931	559.08

**TABLE 6. COUNTY SUMMARY
EMPLOYMENT AND TOTAL EARNINGS, BY INDUSTRY
THIRD QUARTER 2005**

NORTH AMERICAN INDUSTRY CLASSIFICATION SYSTEM INDUSTRY GROUP	NUMBER OF EMPLOYING UNITS	EMPLOYMENT			TOTAL EARNINGS	AVERAGE WEEKLY EARNINGS
		JULY	AUGUST	SEPTEMBER	JUL. - SEP. 2005	
DESHA COUNTY - TOTAL	456	4,749	5,031	5,216	\$33,732,829	\$519.11
Natural Resources & Mining	51	324	325	394	1,854,292	410.27
Construction	27	156	154	162	1,224,633	598.74
Manufacturing	15	1,331	1,323	1,316	13,033,112	757.59
Trade, Transportation & Utilities	135	1,057	1,053	1,127	6,220,363	443.46
Wholesale Trade	20	195	186	182	1,776,477	728.16
Retail Trade	84	683	683	672	2,866,776	324.61
Transportation, Warehousing & Utilities	31	179	184	273	1,577,110	572.25
Information	6	23	23	23	194,263	649.71
Financial Activities	41	235	231	221	1,328,119	446.13
Professional & Business Services	35	94	98	92	509,051	413.64
Education & Health Services	50	530	525	546	2,965,873	427.50
Leisure & Hospitality	37	321	332	299	642,570	155.76
Other Services	29	74	74	69	233,988	248.84
Local Government	19	455	732	802	4,390,068	509.35
State Government	11	149	161	165	1,136,497	552.14
DREW COUNTY - TOTAL	484	6,109	6,287	6,858	\$37,939,567	\$454.73
Natural Resources & Mining	40	307	304	344	2,179,344	526.62
Construction	26	201	145	206	1,000,813	418.40
Manufacturing	21	913	905	875	6,378,118	546.56
Trade, Transportation & Utilities	137	1,271	1,263	1,272	7,371,088	446.93
Wholesale Trade	27	275	269	268	2,278,559	647.56
Retail Trade	89	895	894	900	4,017,878	344.81
Transportation, Warehousing & Utilities	21	101	100	104	1,074,651	813.10
Information	9	87	88	84	600,944	535.44
Financial Activities	41	278	277	276	2,255,977	626.49
Professional & Business Services	43	380	396	392	2,237,208	442.02
Education & Health Services	58	777	770	773	3,747,388	372.75
Leisure & Hospitality	43	568	582	588	1,184,246	157.24
Other Services	26	86	89	89	322,602	281.99
Local Government	23	635	740	1,167	5,445,862	494.39
State Government	17	606	728	792	5,215,977	566.17

**TABLE 6. COUNTY SUMMARY
EMPLOYMENT AND TOTAL EARNINGS, BY INDUSTRY
THIRD QUARTER 2005**

NORTH AMERICAN INDUSTRY CLASSIFICATION SYSTEM INDUSTRY GROUP	NUMBER OF EMPLOYING UNITS	EMPLOYMENT			TOTAL EARNINGS	AVERAGE WEEKLY EARNINGS
		JULY	AUGUST	SEPTEMBER	JUL. - SEP. 2005	
FAULKNER COUNTY - TOTAL	2,286	34,012	35,278	36,157	\$272,084,379	\$595.45
Natural Resources & Mining	10	51	49	47	467,293	733.58
Construction	316	2,746	2,768	2,734	21,084,197	589.91
Manufacturing	116	5,297	5,314	5,314	50,836,390	736.67
Trade, Transportation & Utilities	565	6,141	6,202	6,288	36,526,189	452.42
Wholesale Trade	132	756	762	765	6,516,835	658.73
Retail Trade	362	4,757	4,795	4,876	23,646,581	378.22
Transportation, Warehousing & Utilities	71	628	645	647	6,362,773	764.76
Information	39	354	360	353	2,899,394	627.08
Financial Activities	275	1,314	1,331	1,328	10,155,523	589.88
Professional & Business Services	313	5,323	5,345	5,098	62,083,208	908.72
Education & Health Services	271	4,609	4,647	4,714	35,641,935	588.77
Leisure & Hospitality	180	3,704	3,702	3,810	9,449,393	194.42
Other Services	143	560	567	582	2,900,545	391.67
Local Government	39	1,594	2,011	2,856	16,642,116	594.41
State Government	19	2,319	2,982	3,033	23,398,196	647.90
FRANKLIN COUNTY - TOTAL	314	3,836	4,168	4,267	\$26,299,912	\$494.60
Natural Resources & Mining	7	147	143	146	1,406,315	744.34
Construction	27	154	150	162	1,139,531	564.31
Manufacturing	22	1,051	1,032	1,028	7,301,544	541.62
Trade, Transportation & Utilities	94	842	834	836	5,168,765	474.84
Wholesale Trade	15	60	60	57	242,414	316.05
Retail Trade	57	464	471	479	1,890,438	308.53
Transportation, Warehousing & Utilities	22	318	303	300	3,035,913	760.69
Information	7	53	50	52	269,876	401.80
Financial Activities	25	187	190	190	1,146,319	466.55
Professional & Business Services	19	59	59	59	308,232	401.87
Education & Health Services	39	520	535	538	3,228,793	467.74
Leisure & Hospitality	27	354	355	343	765,525	167.93
Other Services	18	52	52	50	287,285	430.50
Local Government	19	325	656	742	4,494,744	602.00
State Government	10	92	112	121	782,983	555.96

**TABLE 6. COUNTY SUMMARY
EMPLOYMENT AND TOTAL EARNINGS, BY INDUSTRY
THIRD QUARTER 2005**

NORTH AMERICAN INDUSTRY CLASSIFICATION SYSTEM INDUSTRY GROUP	NUMBER OF EMPLOYING UNITS	EMPLOYMENT			TOTAL EARNINGS	AVERAGE WEEKLY EARNINGS
		JULY	AUGUST	SEPTEMBER	JUL. - SEP. 2005	
FULTON COUNTY - TOTAL	206	1,815	1,842	1,962	\$9,024,427	\$370.63
Construction	15	32	30	27	173,543	449.98
Manufacturing	12	151	157	151	661,658	332.66
Trade, Transportation & Utilities	61	394	395	401	2,251,800	436.68
Retail Trade	41	210	210	215	707,027	256.95
Other Trade, Transportation & Utilities	20	184	185	186	1,544,773	642.32
Financial Activities	18	122	117	111	750,593	494.90
Professional & Business Services	16	51	50	47	296,344	462.07
Education & Health Services	28	376	391	394	1,678,286	333.59
Leisure & Hospitality	16	178	175	169	428,693	189.52
Local Government	13	338	357	493	1,854,715	360.28
State Government	11	107	101	101	654,812	489.03
Other	16	66	69	68	273,983	311.46
GARLAND COUNTY - TOTAL	3,029	34,986	35,470	35,967	\$238,939,343	\$518.12
Natural Resources & Mining	49	350	351	348	2,995,902	659.07
Construction	411	2,380	2,380	2,366	16,246,101	526.12
Manufacturing	125	3,425	3,420	3,388	28,504,375	642.82
Trade, Transportation & Utilities	700	7,308	7,296	7,304	44,641,996	470.24
Wholesale Trade	142	1,086	1,089	1,093	9,396,750	663.55
Retail Trade	483	5,492	5,460	5,456	28,076,253	394.88
Transportation, Warehousing & Utilities	75	730	747	755	7,168,993	741.21
Information	36	436	441	437	3,389,549	595.28
Financial Activities	350	1,558	1,572	1,557	12,246,161	602.95
Professional & Business Services	390	2,566	2,595	2,647	17,881,073	528.48
Education & Health Services	327	6,920	6,919	6,873	62,573,601	697.18
Leisure & Hospitality	351	6,426	6,285	6,008	21,310,065	262.71
Other Services	229	971	974	977	4,861,279	383.93
Local Government	36	1,843	2,436	3,150	17,525,073	544.39
State Government	25	803	801	912	6,764,168	620.41

**TABLE 6. COUNTY SUMMARY
EMPLOYMENT AND TOTAL EARNINGS, BY INDUSTRY
THIRD QUARTER 2005**

NORTH AMERICAN INDUSTRY CLASSIFICATION SYSTEM INDUSTRY GROUP	NUMBER OF EMPLOYING UNITS	EMPLOYMENT			TOTAL EARNINGS	AVERAGE WEEKLY EARNINGS
		JULY	AUGUST	SEPTEMBER	JUL. - SEP. 2005	
GRANT COUNTY - TOTAL	287	3,282	3,329	3,535	\$23,803,809	\$541.41
Natural Resources & Mining	25	232	228	222	2,700,969	913.93
Construction	34	264	273	263	2,097,241	604.97
Manufacturing	20	817	816	815	6,691,932	630.84
Trade, Transportation & Utilities	88	561	560	572	3,176,211	432.94
Wholesale Trade	16	159	155	162	1,224,944	593.86
Retail Trade	41	347	344	346	1,510,510	336.14
Transportation, Warehousing & Utilities	31	55	61	64	440,757	565.07
Information	3	40	41	40	324,104	618.13
Financial Activities	19	101	103	102	737,731	556.36
Professional & Business Services	22	86	86	86	719,533	643.59
Education & Health Services	23	224	219	215	1,232,723	432.33
Leisure & Hospitality	21	281	279	267	695,797	194.16
Other Services	13	37	38	38	166,736	340.51
Local Government	10	579	626	857	4,862,317	544.17
State Government	9	60	60	58	398,515	516.66
GREENE COUNTY - TOTAL	864	14,230	14,668	15,120	\$99,154,195	\$519.83
Natural Resources & Mining	37	232	220	228	1,334,090	452.75
Construction	74	418	403	397	2,550,221	483.18
Manufacturing	57	5,513	5,554	5,409	47,269,826	662.08
Trade, Transportation & Utilities	243	2,181	2,135	2,189	12,127,274	430.22
Wholesale Trade	53	413	400	423	3,516,288	656.51
Retail Trade	161	1,584	1,546	1,566	6,920,199	340.07
Transportation, Warehousing & Utilities	29	184	189	200	1,690,787	680.95
Information	14	108	117	120	593,126	396.74
Financial Activities	85	470	468	460	3,293,644	543.69
Professional & Business Services	86	1,214	1,260	1,403	7,129,830	424.39
Education & Health Services	101	1,650	1,682	1,714	10,631,943	486.23
Leisure & Hospitality	68	1,199	1,200	1,221	2,640,608	168.33
Other Services	57	167	171	175	895,126	402.67
Local Government	31	814	1,193	1,549	8,731,010	566.61
State Government	11	264	265	255	1,957,497	576.19

**TABLE 6. COUNTY SUMMARY
EMPLOYMENT AND TOTAL EARNINGS, BY INDUSTRY
THIRD QUARTER 2005**

NORTH AMERICAN INDUSTRY CLASSIFICATION SYSTEM INDUSTRY GROUP	NUMBER OF EMPLOYING UNITS	EMPLOYMENT			TOTAL EARNINGS	AVERAGE WEEKLY EARNINGS
		JULY	AUGUST	SEPTEMBER	JUL. - SEP. 2005	
HEMPSTEAD COUNTY - TOTAL	498	7,817	7,972	8,457	\$54,006,564	\$514.03
Natural Resources & Mining	18	225	217	216	2,021,051	708.81
Construction	34	146	156	142	893,392	464.34
Manufacturing	32	2,823	2,805	2,902	22,214,361	600.98
Trade, Transportation & Utilities	138	1,244	1,253	1,262	6,947,677	426.53
Wholesale Trade	26	200	190	186	1,156,410	463.31
Retail Trade	87	866	877	881	3,668,484	322.63
Transportation, Warehousing & Utilities	25	178	186	195	2,122,783	876.34
Information	11	92	87	90	579,945	497.52
Financial Activities	44	272	276	276	2,065,299	578.41
Professional & Business Services	36	222	215	214	887,115	314.47
Education & Health Services	61	986	994	995	6,422,850	498.22
Leisure & Hospitality	42	631	625	603	1,583,771	196.60
Other Services	36	214	212	211	1,354,522	490.71
Local Government	29	468	599	1,010	5,081,466	564.59
State Government	17	494	533	536	3,955,115	583.95
HOT SPRING COUNTY - TOTAL	610	7,301	7,358	7,842	\$51,130,551	\$524.39
Natural Resources & Mining	40	173	171	174	1,387,332	618.06
Construction	67	378	382	359	2,646,451	545.77
Manufacturing	45	1,632	1,620	1,631	16,778,446	792.94
Trade, Transportation & Utilities	169	1,531	1,496	1,479	9,285,654	475.55
Wholesale Trade	22	105	104	107	1,146,269	837.10
Retail Trade	100	1,040	1,016	993	4,645,590	351.61
Transportation, Warehousing & Utilities	47	386	376	379	3,493,795	706.63
Information	9	67	67	69	581,040	660.52
Financial Activities	54	301	304	306	2,035,024	515.50
Professional & Business Services	53	218	241	266	1,424,596	453.45
Education & Health Services	47	981	984	985	5,889,079	460.68
Leisure & Hospitality	44	597	589	573	1,443,250	189.34
Other Services	41	247	298	301	1,173,872	320.21
Local Government	26	656	667	1,092	4,863,521	464.74
State Government	15	520	539	607	3,622,286	501.75

**TABLE 6. COUNTY SUMMARY
EMPLOYMENT AND TOTAL EARNINGS, BY INDUSTRY
THIRD QUARTER 2005**

NORTH AMERICAN INDUSTRY CLASSIFICATION SYSTEM INDUSTRY GROUP	NUMBER OF EMPLOYING UNITS	EMPLOYMENT			TOTAL EARNINGS	AVERAGE WEEKLY EARNINGS
		JULY	AUGUST	SEPTEMBER	JUL. - SEP. 2005	
HOWARD COUNTY - TOTAL	359	7,180	7,305	7,442	\$47,477,379	\$499.67
Natural Resources & Mining	22	234	240	246	1,896,863	607.97
Construction	24	92	97	103	661,703	522.95
Manufacturing	26	4,139	4,093	4,019	29,597,798	557.53
Trade, Transportation & Utilities	106	945	962	947	5,367,391	434.00
Wholesale Trade	20	111	108	108	882,829	623.03
Retail Trade	63	646	662	648	2,838,419	334.88
Transportation, Warehousing & Utilities	23	188	192	191	1,646,143	665.29
Information	8	37	35	37	254,070	537.90
Financial Activities	33	144	139	136	883,219	486.44
Professional & Business Services	27	115	116	115	684,627	456.62
Education & Health Services	41	646	632	627	3,172,725	384.34
Leisure & Hospitality	21	290	291	283	668,816	178.64
Other Services	21	109	106	107	523,967	375.51
Local Government	18	304	467	691	2,853,170	450.36
State Government	12	125	127	131	913,030	550.13
INDEPENDENCE COUNTY - TOTAL	918	15,225	15,728	16,490	\$106,192,658	\$516.54
Natural Resources & Mining	11	135	134	134	1,038,906	594.91
Construction	70	386	399	397	2,667,169	520.73
Manufacturing	55	4,771	5,000	5,073	40,023,756	622.22
Trade, Transportation & Utilities	289	3,061	3,058	3,098	20,426,664	511.43
Wholesale Trade	53	511	511	514	4,257,257	639.61
Retail Trade	180	1,796	1,762	1,776	8,001,459	346.17
Transportation, Warehousing & Utilities	56	754	785	808	8,167,948	803.12
Information	12	168	166	163	1,190,795	552.92
Financial Activities	87	461	477	481	3,361,969	546.75
Professional & Business Services	88	901	955	954	4,442,764	364.86
Education & Health Services	106	2,721	2,715	2,684	19,529,945	555.04
Leisure & Hospitality	70	1,157	1,173	1,187	2,678,446	175.75
Other Services	70	346	347	334	1,622,121	364.49
Local Government	43	695	895	1,499	5,981,647	446.87
State Government	17	423	409	486	3,228,476	565.28

**TABLE 6. COUNTY SUMMARY
EMPLOYMENT AND TOTAL EARNINGS, BY INDUSTRY
THIRD QUARTER 2005**

NORTH AMERICAN INDUSTRY CLASSIFICATION SYSTEM INDUSTRY GROUP	NUMBER OF EMPLOYING UNITS	EMPLOYMENT			TOTAL EARNINGS	AVERAGE WEEKLY EARNINGS
		JULY	AUGUST	SEPTEMBER	JUL. - SEP. 2005	
IZARD COUNTY - TOTAL	247	2,605	2,784	2,880	15,956,980	\$445.32
Natural Resources & Mining	4	87	85	84	694,904	626.42
Construction	24	90	88	91	408,128	350.12
Manufacturing	12	372	357	347	3,209,206	688.28
Trade, Transportation & Utilities	67	515	508	528	2,537,312	377.52
Retail Trade	51	407	403	418	1,735,773	326.19
Other Trade, Transportation & Utilities	16	108	105	110	801,539	572.66
Information	3	6	7	8	39,511	434.19
Financial Activities	26	145	153	148	947,618	490.32
Professional & Business Services	22	85	83	81	387,870	359.47
Education & Health Services	22	413	430	437	2,098,444	378.33
Leisure & Hospitality	25	180	181	184	383,446	162.36
Other Services	13	41	39	38	185,561	362.90
Local Government	18	279	446	531	2,241,990	411.93
State Government	11	392	407	403	2,822,990	541.98
JACKSON COUNTY - TOTAL	517	5,675	5,729	5,786	\$37,934,855	\$509.26
Natural Resources & Mining	46	242	241	257	1,526,189	475.94
Construction	28	217	209	196	1,287,479	477.67
Manufacturing	26	1,013	997	983	8,457,681	652.11
Trade, Transportation & Utilities	133	1,180	1,182	1,192	7,280,091	472.71
Wholesale Trade	37	230	223	214	1,974,578	683.17
Retail Trade	77	708	710	702	3,220,633	350.58
Transportation, Warehousing & Utilities	19	242	249	276	2,084,880	627.28
Information	4	37	38	37	316,709	652.56
Financial Activities	45	199	203	206	1,402,874	532.47
Professional & Business Services	38	125	119	123	829,471	521.57
Education & Health Services	69	999	1,009	1,004	7,790,599	596.89
Leisure & Hospitality	39	357	335	326	862,966	195.62
Other Services	40	99	96	105	447,551	344.27
Local Government	35	592	693	721	3,313,036	381.13
State Government	14	615	607	636	4,420,209	549.00

**TABLE 6. COUNTY SUMMARY
EMPLOYMENT AND TOTAL EARNINGS, BY INDUSTRY
THIRD QUARTER 2005**

NORTH AMERICAN INDUSTRY CLASSIFICATION SYSTEM INDUSTRY GROUP	NUMBER OF EMPLOYING UNITS	EMPLOYMENT			TOTAL EARNINGS	AVERAGE WEEKLY EARNINGS
		JULY	AUGUST	SEPTEMBER	JUL. - SEP. 2005	
JEFFERSON COUNTY - TOTAL	1,778	30,844	31,224	32,839	\$241,452,074	\$587.10
Natural Resources & Mining	39	493	497	546	4,147,763	623.16
Construction	128	1,407	1,510	1,457	16,215,148	855.50
Manufacturing	74	6,341	6,359	6,326	64,569,315	783.17
Trade, Transportation & Utilities	499	6,002	6,027	6,007	38,592,683	493.79
Wholesale Trade	88	1,084	1,069	1,037	8,473,926	613.02
Retail Trade	344	4,033	4,061	4,044	19,209,296	365.21
Transportation, Warehousing & Utilities	67	885	897	926	10,909,461	929.68
Information	18	230	225	204	1,526,938	534.70
Financial Activities	154	1,270	1,261	1,258	10,511,064	640.18
Professional & Business Services	177	1,903	1,876	2,022	15,349,544	610.62
Education & Health Services	303	5,324	5,326	5,462	39,905,181	571.55
Leisure & Hospitality	143	2,352	2,343	2,358	5,921,266	193.74
Other Services	162	806	784	788	4,410,513	428.01
Local Government	42	1,786	2,101	3,272	15,824,319	510.09
State Government	39	2,930	2,915	3,139	24,478,340	628.77
JOHNSON COUNTY - TOTAL	448	7,883	7,974	8,507	\$48,110,756	\$455.69
Natural Resources & Mining	15	212	213	207	1,532,536	559.59
Construction	31	124	138	131	804,703	472.52
Manufacturing	42	3,177	3,164	3,205	20,292,338	490.56
Trade, Transportation & Utilities	125	1,704	1,689	1,718	9,069,502	409.50
Information	6	32	30	31	202,843	503.33
Financial Activities	38	224	218	219	1,523,915	532.03
Professional & Business Services	46	166	168	166	1,085,925	501.20
Education & Health Services	53	1,078	1,105	1,116	6,856,044	479.59
Leisure & Hospitality	39	530	549	541	1,305,247	185.93
Other Services	29	83	85	91	429,404	382.60
Local Government	14	399	458	924	3,848,879	498.71
State Government	10	154	157	158	1,159,420	570.49

**TABLE 6. COUNTY SUMMARY
EMPLOYMENT AND TOTAL EARNINGS, BY INDUSTRY
THIRD QUARTER 2005**

NORTH AMERICAN INDUSTRY CLASSIFICATION SYSTEM INDUSTRY GROUP	NUMBER OF EMPLOYING UNITS	EMPLOYMENT			TOTAL EARNINGS	AVERAGE WEEKLY EARNINGS
		JULY	AUGUST	SEPTEMBER	JUL. - SEP. 2005	
LAFAYETTE COUNTY - TOTAL	162	1,375	1,410	1,478	\$8,226,056	\$445.30
Natural Resources & Mining	31	186	192	218	1,255,160	485.99
Trade, Transportation & Utilities	40	233	233	243	1,150,768	374.56
Retail Trade	23	158	161	164	552,440	263.95
Other Trade, Transportation & Utilities	17	75	72	79	598,328	610.95
Financial Activities	17	89	88	84	497,464	439.84
Professional & Business Services	11	55	54	54	442,817	626.92
Education & Health Services	13	222	222	222	1,073,566	371.99
Leisure & Hospitality	5	42	41	41	99,608	185.37
Other Services	7	80	72	70	315,787	328.26
Local Government	13	202	252	338	1,417,798	413.11
State Government	8	60	59	59	388,474	503.64
Other	17	206	197	149	1,584,614	662.46
LAWRENCE COUNTY - TOTAL	411	3,899	4,091	4,293	\$23,832,059	\$447.75
Natural Resources & Mining	33	167	168	160	1,360,464	634.25
Construction	27	112	110	103	747,622	530.86
Manufacturing	23	640	633	645	4,121,696	495.91
Trade, Transportation & Utilities	133	1,018	996	1,003	5,643,699	431.68
Wholesale Trade	26	222	216	208	1,599,992	571.56
Retail Trade	73	665	645	656	2,792,488	327.78
Transportation, Warehousing & Utilities	34	131	135	139	1,251,219	712.95
Information	7	23	22	22	181,795	626.16
Financial Activities	30	146	140	141	865,194	467.59
Professional & Business Services	23	128	122	125	982,637	604.70
Education & Health Services	45	411	416	419	2,805,033	519.51
Leisure & Hospitality	26	296	308	305	555,526	141.03
Other Services	25	63	67	67	294,784	345.32
Local Government	28	765	978	1,180	5,472,219	432.03
State Government	11	130	131	123	801,390	481.60

**TABLE 6. COUNTY SUMMARY
EMPLOYMENT AND TOTAL EARNINGS, BY INDUSTRY
THIRD QUARTER 2005**

NORTH AMERICAN INDUSTRY CLASSIFICATION SYSTEM INDUSTRY GROUP	NUMBER OF EMPLOYING UNITS	EMPLOYMENT			TOTAL EARNINGS	AVERAGE WEEKLY EARNINGS
		JULY	AUGUST	SEPTEMBER	JUL. - SEP. 2005	
LEE COUNTY - TOTAL	219	1,770	2,031	2,156	\$12,329,466	\$477.63
Natural Resources & Mining	32	213	210	283	1,349,689	441.17
Construction	7	12	12	12	57,006	365.42
Trade, Transportation & Utilities	55	349	354	370	2,075,878	446.46
Wholesale Trade	9	68	66	66	554,555	639.87
Retail Trade	30	192	201	204	771,536	298.24
Transportation, Warehousing & Utilities	16	89	87	100	749,787	626.91
Financial Activities	13	79	78	78	439,291	431.38
Professional & Business Services	18	63	65	63	500,856	605.14
Education & Health Services	32	292	304	298	1,812,779	467.93
Leisure & Hospitality	8	91	89	86	174,209	151.14
Local Government	16	99	347	407	1,993,173	539.23
State Government	8	429	428	418	3,041,262	550.45
Other	30	143	144	141	885,323	477.35
LINCOLN COUNTY - TOTAL	213	2,724	2,750	2,955	\$18,023,411	\$493.45
Natural Resources & Mining	33	212	207	248	1,443,449	499.41
Construction	14	61	60	61	390,950	495.71
Manufacturing	9	461	426	437	3,064,876	534.20
Trade, Transportation & Utilities	48	355	340	330	2,473,277	556.84
Wholesale Trade	7	35	32	32	253,138	590.07
Retail Trade	24	173	161	159	630,372	295.07
Transportation, Warehousing & Utilities	17	147	147	139	1,589,767	847.27
Financial Activities	23	73	79	76	494,069	500.07
Professional & Business Services	12	23	24	22	164,002	548.50
Education & Health Services	22	290	301	309	1,518,345	389.32
Leisure & Hospitality	16	161	167	159	309,931	146.86
Local & State Government	22	1,045	1,106	1,272	7,964,141	536.92
Other	14	43	40	41	200,371	372.90

**TABLE 6. COUNTY SUMMARY
EMPLOYMENT AND TOTAL EARNINGS, BY INDUSTRY
THIRD QUARTER 2005**

NORTH AMERICAN INDUSTRY CLASSIFICATION SYSTEM INDUSTRY GROUP	NUMBER OF EMPLOYING UNITS	EMPLOYMENT			TOTAL EARNINGS	AVERAGE WEEKLY EARNINGS
		JULY	AUGUST	SEPTEMBER	JUL. - SEP. 2005	
LITTLE RIVER COUNTY - TOTAL	252	4,299	4,281	4,434	\$43,113,400	\$764.50
Natural Resources & Mining	12	55	75	74	631,566	714.44
Trade, Transportation & Utilities	72	1,079	1,102	1,077	9,881,900	699.95
Wholesale Trade	10	32	32	32	238,030	572.19
Retail Trade	42	324	323	325	1,425,824	338.51
Transportation, Warehousing & Utilities	20	723	747	720	8,218,046	865.97
Information	3	10	10	9	87,153	693.53
Financial Activities	24	105	106	107	601,590	436.57
Professional & Business Services	20	157	158	150	781,313	387.75
Education & Health Services	17	160	158	163	835,512	400.85
Leisure & Hospitality	20	214	220	223	542,787	190.65
Other Services	15	103	88	89	318,668	262.64
Local Government	20	603	583	746	3,770,298	450.35
State Government	12	89	88	84	576,189	509.45
Other	37	1,724	1,693	1,712	25,086,424	1128.71
LOGAN COUNTY - TOTAL	460	5,377	5,562	5,637	\$34,023,904	\$473.68
Natural Resources & Mining	14	77	80	77	618,805	610.26
Construction	49	168	173	175	938,359	419.66
Manufacturing	28	1,739	1,742	1,735	13,646,280	603.75
Trade, Transportation & Utilities	118	858	850	845	3,858,100	348.74
Wholesale Trade	18	43	43	42	219,899	396.45
Retail Trade	74	745	735	735	3,053,618	318.14
Transportation, Warehousing & Utilities	26	70	72	68	584,583	642.40
Information	8	43	43	43	347,440	621.54
Financial Activities	42	242	240	233	1,881,561	607.28
Professional & Business Services	44	122	128	126	698,048	428.43
Education & Health Services	57	737	731	755	4,080,803	423.63
Leisure & Hospitality	31	319	326	324	776,578	184.94
Other Services	31	89	86	89	429,641	375.56
Local & State Government	38	983	1,163	1,235	6,748,289	460.60

**TABLE 6. COUNTY SUMMARY
EMPLOYMENT AND TOTAL EARNINGS, BY INDUSTRY
THIRD QUARTER 2005**

NORTH AMERICAN INDUSTRY CLASSIFICATION SYSTEM INDUSTRY GROUP	NUMBER OF EMPLOYING UNITS	EMPLOYMENT			TOTAL EARNINGS	AVERAGE WEEKLY EARNINGS
		JULY	AUGUST	SEPTEMBER	JUL. - SEP. 2005	
LONOKE COUNTY - TOTAL	1,171	11,122	11,556	11,813	\$72,844,707	\$487.38
Natural Resources & Mining	73	488	483	504	4,207,625	658.30
Construction	164	959	958	939	7,512,002	606.98
Manufacturing	38	1,379	1,416	1,440	12,712,353	692.71
Trade, Transportation & Utilities	327	2,531	2,561	2,562	14,509,064	437.45
Wholesale Trade	75	427	427	420	3,865,646	700.21
Retail Trade	184	1,866	1,886	1,882	8,628,856	353.44
Transportation, Warehousing & Utilities	68	238	248	260	2,014,562	623.19
Information	16	109	115	110	1,075,023	742.76
Financial Activities	115	585	599	610	5,038,243	648.09
Professional & Business Services	143	454	457	461	2,994,883	503.74
Education & Health Services	105	1,225	1,257	1,274	7,290,272	447.92
Leisure & Hospitality	80	1,220	1,190	1,184	2,944,183	189.04
Other Services	66	187	183	195	1,096,887	448.01
Local Government	28	1,837	2,185	2,389	12,481,978	449.30
State Government	16	148	152	145	982,194	509.35
MADISON COUNTY - TOTAL	246	3,075	3,170	3,155	\$19,467,433	\$477.92
Natural Resources & Mining	13	65	62	62	434,313	530.30
Construction	46	143	142	145	809,321	434.34
Manufacturing	20	1,076	1,062	1,061	7,845,748	565.98
Trade, Transportation & Utilities	63	611	613	609	3,594,145	452.49
Wholesale Trade	13	41	42	42	502,772	928.19
Retail Trade	36	437	439	431	2,111,205	372.76
Transportation, Warehousing & Utilities	14	133	132	136	980,168	564.07
Information	4	38	39	36	412,018	841.43
Financial Activities	15	92	92	94	614,365	509.99
Professional & Business Services	18	94	103	87	598,793	486.56
Education & Health Services	22	221	235	237	1,119,441	372.77
Leisure & Hospitality	13	130	122	121	236,369	146.24
Other Services	16	26	25	26	159,123	476.89
Local Government	8	516	610	623	3,260,970	430.26
State Government	8	63	65	54	382,827	485.41

**TABLE 6. COUNTY SUMMARY
EMPLOYMENT AND TOTAL EARNINGS, BY INDUSTRY
THIRD QUARTER 2005**

NORTH AMERICAN INDUSTRY CLASSIFICATION SYSTEM INDUSTRY GROUP	NUMBER OF EMPLOYING UNITS	EMPLOYMENT			TOTAL EARNINGS	AVERAGE WEEKLY EARNINGS
		JULY	AUGUST	SEPTEMBER	JUL. - SEP. 2005	
MARION COUNTY - TOTAL	280	3,884	3,916	4,051	\$22,513,724	\$438.40
Natural Resources & Mining	5	44	43	47	188,759	325.07
Construction	16	44	43	45	188,181	328.99
Manufacturing	25	1,672	1,672	1,694	11,795,784	540.31
Trade, Transportation & Utilities	59	707	695	697	3,073,868	337.95
Retail Trade	38	554	538	546	2,097,963	295.57
Other Trade, Transportation & Utilities	21	153	157	151	975,905	488.52
Financial Activities	34	210	203	192	1,149,012	438.28
Professional & Business Services	25	38	36	38	275,218	567.07
Education & Health Services	24	319	324	341	1,664,731	390.42
Leisure & Hospitality	44	307	300	285	735,352	190.24
Local Government	20	344	396	507	2,026,831	375.08
State Government	8	112	117	115	668,713	448.60
Other	20	87	87	90	747,275	653.21
MILLER COUNTY - TOTAL	828	12,040	12,203	12,971	\$93,394,524	\$579.15
Natural Resources & Mining	29	157	153	146	1,152,293	583.14
Construction	84	814	788	802	6,084,157	584.04
Manufacturing	36	2,875	2,862	2,843	35,959,140	967.16
Trade, Transportation & Utilities	244	2,711	2,727	2,760	17,857,087	502.67
Wholesale Trade	66	626	624	628	5,645,819	693.76
Retail Trade	136	1,519	1,516	1,539	6,723,001	339.19
Transportation, Warehousing & Utilities	42	566	587	593	5,488,267	725.39
Information	8	92	92	89	1,160,211	980.74
Financial Activities	85	428	426	416	3,358,201	610.21
Professional & Business Services	83	935	961	918	4,877,830	400.02
Education & Health Services	77	1,070	1,067	1,074	6,124,424	440.15
Leisure & Hospitality	79	1,361	1,377	1,415	3,878,710	215.53
Other Services	64	409	335	342	1,281,938	272.41
Local Government	22	735	961	1,720	7,863,424	531.22
State Government	17	453	454	446	3,797,109	647.64

**TABLE 6. COUNTY SUMMARY
EMPLOYMENT AND TOTAL EARNINGS, BY INDUSTRY
THIRD QUARTER 2005**

NORTH AMERICAN INDUSTRY CLASSIFICATION SYSTEM INDUSTRY GROUP	NUMBER OF EMPLOYING UNITS	EMPLOYMENT			TOTAL EARNINGS	AVERAGE WEEKLY EARNINGS
		JULY	AUGUST	SEPTEMBER	JUL. - SEP. 2005	
MISSISSIPPI COUNTY - TOTAL	1,123	17,831	18,110	18,795	\$139,004,186	\$586.05
Natural Resources & Mining	106	800	773	983	4,647,659	419.62
Construction	54	402	403	490	3,979,900	709.22
Manufacturing	59	5,114	5,087	5,172	62,335,909	935.75
Trade, Transportation & Utilities	308	3,172	3,132	3,094	19,476,039	478.24
Wholesale Trade	65	600	590	619	5,021,219	640.54
Retail Trade	193	2,008	1,979	1,910	8,799,926	344.37
Transportation, Warehousing & Utilities	50	564	563	565	5,654,894	771.26
Financial Activities	103	608	608	606	3,902,587	494.29
Professional & Business Services	97	1,093	1,168	1,109	7,276,628	498.29
Education & Health Services	158	1,588	1,575	1,605	10,621,402	514.07
Leisure & Hospitality	77	1,181	1,191	1,137	2,770,594	182.21
Local Government	46	1,912	2,061	2,391	10,345,218	375.13
State Government	25	586	585	646	4,032,750	512.18
Other	90	1,375	1,527	1,562	9,615,500	497.08
MONROE COUNTY - TOTAL	299	2,403	2,575	2,627	\$13,198,466	\$400.50
Natural Resources & Mining	32	168	162	176	1,046,057	477.07
Construction	16	45	44	43	238,735	417.37
Manufacturing	9	162	162	162	947,370	449.84
Trade, Transportation & Utilities	93	681	678	706	3,914,691	437.48
Wholesale Trade	23	196	195	195	1,377,995	542.66
Retail Trade	42	338	326	333	1,359,758	314.73
Transportation, Warehousing & Utilities	28	147	157	178	1,176,938	563.49
Financial Activities	16	102	99	97	707,659	548.01
Professional & Business Services	15	38	39	39	216,322	430.35
Education & Health Services	34	374	370	402	1,810,986	364.68
Leisure & Hospitality	28	331	321	302	711,454	172.10
Local Government	22	237	440	441	2,214,816	457.17
State Government	9	135	132	129	842,897	491.20
Other	25	130	128	130	547,479	325.62

**TABLE 6. COUNTY SUMMARY
EMPLOYMENT AND TOTAL EARNINGS, BY INDUSTRY
THIRD QUARTER 2005**

NORTH AMERICAN INDUSTRY CLASSIFICATION SYSTEM INDUSTRY GROUP	NUMBER OF EMPLOYING UNITS	EMPLOYMENT			TOTAL EARNINGS	AVERAGE
		JULY	AUGUST	SEPTEMBER	JUL. - SEP. 2005	WEEKLY EARNINGS
MONTGOMERY COUNTY - TOTAL	176	1,749	1,601	1,690	\$8,186,209	\$374.83
Natural Resources & Mining	14	68	66	61	480,508	568.65
Construction	24	139	131	136	836,713	475.59
Trade, Transportation & Utilities	47	229	227	215	1,093,458	376.06
Wholesale Trade	12	78	78	74	423,660	425.08
Retail Trade	27	127	127	119	534,902	330.94
Transportation, Warehousing & Utilities	8	24	22	22	134,896	457.79
Financial Activities	10	77	76	76	459,329	462.88
Education & Health Services	12	61	61	61	245,885	310.07
Leisure & Hospitality	20	489	277	247	1,303,166	296.87
Other Services	11	65	74	76	310,788	333.58
Local Government	9	283	346	472	1,838,195	385.29
State Government	8	58	57	58	398,206	531.18
Other	21	280	286	288	1,219,961	329.66
NEVADA COUNTY - TOTAL	194	2,501	2,550	2,719	\$17,281,775	\$513.27
Natural Resources & Mining	14	56	56	55	384,596	531.45
Construction	14	56	54	51	397,212	569.34
Manufacturing	8	876	871	860	8,594,529	760.78
Trade, Transportation & Utilities	48	483	487	499	2,515,960	395.24
Retail Trade	31	298	300	304	919,837	235.33
Other Trade, Transportation & Utilities	17	185	187	195	1,596,123	649.62
Financial Activities	12	64	63	62	481,655	588.10
Education & Health Services	13	385	403	404	1,921,845	372.07
Leisure & Hospitality	17	115	120	110	223,343	149.39
Other Services	17	75	73	67	257,393	276.27
Local Government	27	264	300	484	1,593,665	350.92
State Government	11	84	80	81	588,369	554.19
Other	13	43	43	46	323,208	565.05

**TABLE 6. COUNTY SUMMARY
EMPLOYMENT AND TOTAL EARNINGS, BY INDUSTRY
THIRD QUARTER 2005**

NORTH AMERICAN INDUSTRY CLASSIFICATION SYSTEM INDUSTRY GROUP	NUMBER OF EMPLOYING UNITS	EMPLOYMENT			TOTAL EARNINGS	AVERAGE WEEKLY EARNINGS
		JULY	AUGUST	SEPTEMBER	JUL. - SEP. 2005	
NEWTON COUNTY - TOTAL	135	853	1,028	1,074	\$4,414,397	\$344.74
Natural Resources & Mining	6	9	5	5	19,885	241.52
Construction	8	14	17	15	46,978	235.68
Manufacturing	16	67	72	71	378,261	415.67
Trade, Transportation & Utilities	31	164	162	165	670,318	315.05
Wholesale Trade	3	6	3	4	19,359	343.65
Retail Trade	17	104	105	107	342,346	250.01
Transportation, Warehousing & Utilities	11	54	54	54	308,613	439.62
Education & Health Services	14	211	211	212	793,755	288.92
Leisure & Hospitality	21	84	88	87	222,901	198.60
Other Services	5	10	10	11	31,930	237.69
Local Government	13	148	318	362	1,496,383	417.05
State Government	7	96	95	96	433,509	348.57
Other	14	50	50	50	320,477	493.04
OUACHITA COUNTY - TOTAL	625	7,098	7,158	7,424	\$44,466,390	\$473.32
Natural Resources & Mining	45	285	306	309	2,637,251	676.22
Construction	48	254	271	295	1,934,100	544.31
Manufacturing	31	763	766	808	6,841,646	675.58
Trade, Transportation & Utilities	181	1,755	1,736	1,764	11,559,948	507.65
Wholesale Trade	31	261	262	263	2,640,529	775.26
Retail Trade	122	1,075	1,066	1,094	4,550,963	324.64
Transportation, Warehousing & Utilities	28	419	408	407	4,368,456	816.94
Information	8	94	94	97	645,961	523.05
Financial Activities	63	334	331	340	2,099,804	482.16
Professional & Business Services	49	364	391	378	1,961,052	399.43
Education & Health Services	71	1,227	1,230	1,216	7,450,258	468.09
Leisure & Hospitality	35	538	529	516	1,173,260	171.04
Other Services	51	174	176	159	750,376	340.20
Local Government	30	1,002	1,023	1,237	5,023,286	355.37
State Government	13	308	305	305	2,389,448	600.67

**TABLE 6. COUNTY SUMMARY
EMPLOYMENT AND TOTAL EARNINGS, BY INDUSTRY
THIRD QUARTER 2005**

NORTH AMERICAN INDUSTRY CLASSIFICATION SYSTEM INDUSTRY GROUP	NUMBER OF EMPLOYING UNITS	EMPLOYMENT			TOTAL EARNINGS	AVERAGE WEEKLY EARNINGS
		JULY	AUGUST	SEPTEMBER	JUL. - SEP. 2005	
PERRY COUNTY - TOTAL	149	1,058	1,159	1,175	\$6,195,983	\$421.53
Natural Resources & Mining	7	30	25	26	253,557	722.38
Construction	23	90	87	81	481,989	431.12
Manufacturing	6	78	77	79	465,912	459.48
Trade, Transportation & Utilities	29	182	181	188	842,431	352.83
Wholesale Trade	3	7	7	7	68,187	749.31
Retail Trade	18	155	154	162	553,614	271.25
Transportation, Warehousing & Utilities	8	20	20	19	220,630	862.96
Financial Activities	14	50	52	53	578,039	860.60
Professional & Business Services	15	56	53	44	268,277	
Education & Health Services	15	161	161	167	787,080	371.44
Local Government	12	255	369	386	1,720,763	393.17
State Government	9	58	53	55	361,134	502.04
Other	19	98	101	96	436,801	341.70
PHILLIPS COUNTY - TOTAL	682	6,029	6,293	6,707	\$37,837,572	\$458.87
Natural Resources & Mining	71	457	494	721	2,674,543	369.14
Construction	34	122	120	117	713,231	458.47
Manufacturing	12	451	381	400	3,002,648	562.43
Trade, Transportation & Utilities	180	1,525	1,508	1,532	10,710,330	541.43
Wholesale Trade	34	400	391	398	3,119,352	605.43
Retail Trade	108	887	865	877	3,860,343	338.85
Transportation, Warehousing & Utilities	38	238	252	257	3,730,635	1152.50
Information	11	59	60	61	458,390	587.68
Financial Activities	54	304	291	288	1,993,580	521.02
Professional & Business Services	55	243	247	236	1,578,626	501.79
Education & Health Services	135	1,154	1,171	1,189	7,096,500	466.04
Leisure & Hospitality	36	453	438	408	959,711	170.49
Other Services	45	89	92	88	467,792	401.31
Local Government	33	745	976	1,162	4,855,720	388.68
State Government	16	427	515	505	3,326,501	530.51

**TABLE 6. COUNTY SUMMARY
EMPLOYMENT AND TOTAL EARNINGS, BY INDUSTRY
THIRD QUARTER 2005**

NORTH AMERICAN INDUSTRY CLASSIFICATION SYSTEM INDUSTRY GROUP	NUMBER OF EMPLOYING UNITS	EMPLOYMENT			TOTAL EARNINGS	AVERAGE WEEKLY EARNINGS
		JULY	AUGUST	SEPTEMBER	JUL. - SEP. 2005	
PIKE COUNTY - TOTAL	262	2,703	2,898	2,922	\$15,756,753	\$426.63
Natural Resources & Mining	32	169	194	187	1,315,631	552.01
Construction	10	96	115	115	896,096	634.33
Manufacturing	16	529	533	538	3,414,893	492.53
Trade, Transportation & Utilities	90	563	569	562	3,083,535	420.06
Wholesale Trade	15	96	93	91	719,012	592.59
Retail Trade	49	347	353	349	1,469,928	323.37
Transportation, Warehousing & Utilities	26	120	123	122	894,595	565.60
Information	5	31	31	31	334,728	830.59
Financial Activities	23	175	174	171	1,223,105	542.80
Professional & Business Services	9	43	45	45	182,099	315.96
Education & Health Services	16	218	216	226	923,615	322.94
Leisure & Hospitality	21	238	222	216	499,731	170.60
Other Services	16	120	131	130	716,060	433.71
Local Government	13	387	533	574	2,473,887	382.13
State Government	11	134	135	127	693,373	404.06
POINSETT COUNTY - TOTAL	501	5,983	6,241	6,414	\$38,701,895	\$479.19
Natural Resources & Mining	49	387	390	431	2,345,244	448.02
Construction	32	117	111	116	772,297	518.09
Manufacturing	29	1,426	1,419	1,456	12,105,908	649.54
Trade, Transportation & Utilities	137	1,449	1,443	1,466	8,813,188	466.68
Wholesale Trade	33	496	491	493	4,623,863	720.98
Retail Trade	75	802	808	812	3,053,620	290.95
Transportation, Warehousing & Utilities	29	151	144	161	1,135,705	574.75
Information	7	68	68	57	594,464	710.80
Financial Activities	45	342	340	338	2,676,046	605.44
Professional & Business Services	26	103	102	99	788,785	598.77
Education & Health Services	51	584	601	625	3,358,981	428.26
Leisure & Hospitality	50	411	412	432	818,895	150.58
Other Services	32	78	77	74	447,662	451.12
Local Government	30	789	1,026	1,066	4,520,006	362.05
State Government	13	229	252	254	1,460,419	458.53

**TABLE 6. COUNTY SUMMARY
EMPLOYMENT AND TOTAL EARNINGS, BY INDUSTRY
THIRD QUARTER 2005**

NORTH AMERICAN INDUSTRY CLASSIFICATION SYSTEM INDUSTRY GROUP	NUMBER OF EMPLOYING UNITS	EMPLOYMENT			TOTAL EARNINGS	AVERAGE WEEKLY EARNINGS
		JULY	AUGUST	SEPTEMBER	JUL. - SEP. 2005	
POLK COUNTY - TOTAL	532	5,929	6,237	6,396	\$34,385,626	\$427.49
Natural Resources & Mining	27	260	263	262	2,120,330	623.32
Construction	36	198	217	220	1,020,190	370.75
Manufacturing	45	1,414	1,408	1,399	8,813,214	481.83
Trade, Transportation & Utilities	151	1,403	1,440	1,422	7,206,021	389.90
Wholesale Trade	24	150	149	151	798,868	409.68
Retail Trade	84	886	897	883	3,601,470	311.74
Transportation, Warehousing & Utilities	43	367	394	388	2,805,683	563.50
Information	10	54	56	58	394,794	542.30
Financial Activities	40	214	215	212	1,328,021	478.11
Professional & Business Services	50	145	144	148	851,206	449.50
Education & Health Services	66	932	963	975	5,510,144	443.06
Leisure & Hospitality	42	437	449	461	957,788	164.09
Other Services	30	144	138	136	658,219	363.39
Local Government	21	428	611	780	3,765,653	477.73
State Government	14	300	333	323	1,760,046	424.86
POPE COUNTY - TOTAL	1,648	24,912	25,460	27,044	\$180,193,451	\$537.14
Natural Resources & Mining	21	644	602	558	3,553,273	454.54
Construction	172	1,452	1,507	1,718	12,262,275	605.04
Manufacturing	88	4,951	4,955	5,072	38,699,160	596.25
Trade, Transportation & Utilities	481	6,509	6,548	6,644	55,402,073	648.96
Wholesale Trade	105	769	762	729	6,122,541	625.17
Retail Trade	282	3,236	3,254	3,408	16,068,856	374.64
Transportation, Warehousing & Utilities	94	2,504	2,532	2,507	33,210,676	1016.04
Information	21	292	285	292	2,512,694	667.26
Financial Activities	166	774	774	784	5,608,376	554.99
Professional & Business Services	214	2,456	2,495	2,551	13,801,686	424.55
Education & Health Services	186	2,746	2,785	2,852	20,226,086	556.79
Leisure & Hospitality	131	2,317	2,346	2,426	5,888,718	191.70
Other Services	112	458	466	484	2,382,704	390.52
Local Government	40	1,142	1,426	2,203	10,733,392	519.17
State Government	16	1,171	1,271	1,460	9,123,014	539.55

**TABLE 6. COUNTY SUMMARY
EMPLOYMENT AND TOTAL EARNINGS, BY INDUSTRY
THIRD QUARTER 2005**

NORTH AMERICAN INDUSTRY CLASSIFICATION SYSTEM INDUSTRY GROUP	NUMBER OF EMPLOYING UNITS	EMPLOYMENT			TOTAL EARNINGS	AVERAGE WEEKLY EARNINGS
		JULY	AUGUST	SEPTEMBER	JUL. - SEP. 2005	
PRAIRIE COUNTY - TOTAL	224	1,458	1,548	1,661	\$9,002,099	\$445.13
Natural Resources & Mining	27	172	163	158	1,188,215	556.19
Trade, Transportation & Utilities	66	381	380	412	2,014,153	396.25
Wholesale Trade	10	64	61	57	455,776	577.91
Retail Trade	37	225	226	225	750,990	256.37
Transportation, Warehousing & Utilities	19	92	93	130	807,387	591.49
Information	4	10	10	9	104,414	830.88
Financial Activities	16	61	63	63	414,432	511.43
Professional & Business Services	16	53	51	52	322,536	477.12
Education & Health Services	19	204	198	199	1,083,093	415.88
Leisure & Hospitality	18	104	104	102	237,864	177.07
Other Services	14	54	52	52	207,105	302.49
Local Government	15	161	267	360	1,634,889	478.78
State Government	10	52	53	50	348,114	518.28
Other	19	206	207	204	1,447,284	541.31
PULASKI COUNTY - TOTAL	13,443	231,642	234,066	237,046	\$2,107,369,686	\$692.01
Natural Resources & Mining	41	654	673	679	7,952,310	914.83
Construction	1,104	10,665	10,750	10,734	99,707,222	715.71
Manufacturing	434	15,988	15,963	15,920	166,292,936	801.64
Trade, Transportation & Utilities	3,200	51,151	51,273	51,596	442,177,081	662.52
Wholesale Trade	1,073	12,996	12,985	13,017	155,224,954	918.54
Retail Trade	1,734	24,824	24,883	24,883	144,679,485	447.61
Transportation, Warehousing & Utilities	393	13,331	13,405	13,696	142,272,642	812.03
Information	238	8,637	8,632	8,590	110,544,386	986.51
Financial Activities	1,663	16,212	16,244	16,193	189,303,808	897.97
Professional & Business Services	2,571	32,799	32,988	33,315	272,456,893	634.44
Education & Health Services	1,662	32,862	32,929	33,075	329,732,997	769.65
Leisure & Hospitality	999	20,432	20,394	19,925	67,616,048	256.85
Other Services	1,228	6,873	6,800	6,712	46,008,112	520.84
Local Government	103	12,190	13,981	16,439	117,815,622	638.07
State Government	200	23,179	23,439	23,868	257,762,271	843.91

**TABLE 6. COUNTY SUMMARY
EMPLOYMENT AND TOTAL EARNINGS, BY INDUSTRY
THIRD QUARTER 2005**

NORTH AMERICAN INDUSTRY CLASSIFICATION SYSTEM INDUSTRY GROUP	NUMBER OF EMPLOYING UNITS	EMPLOYMENT			TOTAL EARNINGS	AVERAGE WEEKLY EARNINGS
		JULY	AUGUST	SEPTEMBER	JUL. - SEP. 2005	
RANDOLPH COUNTY - TOTAL	404	4,802	4,910	5,110	\$27,386,894	\$426.40
Natural Resources & Mining	21	76	75	82	488,095	483.42
Construction	24	133	132	126	594,649	350.96
Manufacturing	38	1,033	1,036	1,047	6,716,599	497.43
Trade, Transportation & Utilities	104	966	999	1,006	5,021,993	390.08
Wholesale Trade	22	219	231	236	1,079,681	363.20
Retail Trade	62	604	608	613	2,468,310	312.12
Transportation, Warehousing & Utilities	20	143	160	157	1,474,002	739.47
Information	5	53	52	54	447,792	649.92
Financial Activities	28	142	145	149	802,406	424.70
Professional & Business Services	38	240	242	248	1,306,257	412.94
Education & Health Services	54	763	805	805	5,162,445	502.04
Leisure & Hospitality	31	405	415	458	826,735	149.28
Other Services	26	63	67	69	280,933	325.78
Local Government	23	686	711	809	4,029,933	421.57
State Government	12	242	231	257	1,709,057	540.27
SAINT FRANCIS COUNTY - TOTAL	618	7,746	8,266	8,405	\$50,773,428	\$479.87
Natural Resources & Mining	22	164	164	173	1,152,495	530.86
Construction	41	251	249	253	1,743,594	534.35
Manufacturing	22	1,215	1,288	1,371	9,978,006	594.38
Trade, Transportation & Utilities	190	2,169	2,158	2,154	13,711,481	488.23
Wholesale Trade	33	549	535	532	4,194,524	598.99
Retail Trade	124	1,281	1,276	1,243	6,149,456	373.45
Transportation, Warehousing & Utilities	33	339	347	379	3,367,501	729.69
Information	10	128	111	111	991,315	653.61
Financial Activities	50	306	307	300	1,754,148	443.38
Professional & Business Services	44	137	153	160	1,031,104	528.77
Education & Health Services	101	1,301	1,316	1,293	7,254,360	428.15
Leisure & Hospitality	51	785	784	744	2,000,187	199.56
Other Services	40	126	127	128	459,518	278.33
Local Government	30	573	1,042	1,153	6,816,819	568.32
State Government	17	591	567	565	3,880,401	519.72

**TABLE 6. COUNTY SUMMARY
EMPLOYMENT AND TOTAL EARNINGS, BY INDUSTRY
THIRD QUARTER 2005**

NORTH AMERICAN INDUSTRY CLASSIFICATION SYSTEM INDUSTRY GROUP	NUMBER OF EMPLOYING UNITS	EMPLOYMENT			TOTAL EARNINGS	AVERAGE WEEKLY EARNINGS
		JULY	AUGUST	SEPTEMBER	JUL. - SEP. 2005	
SALINE COUNTY - TOTAL	1,585	18,417	18,840	19,313	\$127,008,006	\$518.11
Natural Resources & Mining	12	40	41	39	386,735	743.72
Construction	285	1,852	1,907	1,866	14,672,902	601.97
Manufacturing	83	1,851	1,875	1,857	17,365,437	717.79
Trade, Transportation & Utilities	408	4,337	4,299	4,334	29,024,807	516.43
Wholesale Trade	115	556	553	549	5,663,986	788.34
Retail Trade	249	3,525	3,495	3,529	21,121,439	462.05
Transportation, Warehousing & Utilities	44	256	251	256	2,239,382	677.30
Information	14	108	111	107	667,852	472.76
Financial Activities	148	687	687	697	5,129,166	571.54
Professional & Business Services	198	1,260	1,100	1,118	7,114,111	472.03
Education & Health Services	145	2,515	2,543	2,570	16,981,825	513.75
Leisure & Hospitality	115	2,054	2,048	2,066	5,927,233	221.76
Other Services	126	554	568	571	3,313,906	451.71
Local & State Government	51	3,159	3,661	4,088	26,424,032	559.03
SCOTT COUNTY - TOTAL	180	2,774	2,788	2,924	15,482,733	\$421.04
Natural Resources & Mining	17	174	179	176	1,410,579	615.35
Trade, Transportation & Utilities	44	472	472	476	2,258,676	367.07
Wholesale Trade	8	63	66	64	439,705	525.75
Retail Trade	28	334	332	339	1,207,688	277.31
Transportation, Warehousing & Utilities	8	75	74	73	611,283	635.43
Information	3	10	10	11	78,511	584.45
Financial Activities	15	72	71	69	406,735	442.74
Professional & Business Services	9	12	12	12	51,408	329.54
Education & Health Services	20	321	319	329	1,859,922	442.94
Leisure & Hospitality	17	161	164	165	360,452	169.76
Other Services	11	59	60	60	486,118	626.71
Local Government	5	232	227	337	1,280,236	371.15
State Government	8	68	70	72	395,884	435.04
Other	31	1,193	1,204	1,217	6,894,212	440.22

**TABLE 6. COUNTY SUMMARY
EMPLOYMENT AND TOTAL EARNINGS, BY INDUSTRY
THIRD QUARTER 2005**

NORTH AMERICAN INDUSTRY CLASSIFICATION SYSTEM INDUSTRY GROUP	NUMBER OF EMPLOYING UNITS	EMPLOYMENT			TOTAL EARNINGS	AVERAGE WEEKLY EARNINGS
		JULY	AUGUST	SEPTEMBER	JUL. - SEP. 2005	
SEARCY COUNTY - TOTAL	149	1,486	1,700	1,744	\$7,785,070	\$364.41
Construction	5	14	16	18	59,651	286.78
Manufacturing	18	301	305	301	1,322,980	336.61
Trade, Transportation & Utilities	40	290	295	295	1,137,451	298.28
Retail Trade	29	217	219	219	793,537	279.58
Other Trade, Transportation & Utilities	11	73	76	76	343,914	352.73
Financial Activities	15	69	64	58	325,515	393.29
Professional & Business Services	16	32	33	33	161,686	380.74
Education & Health Services	13	257	255	264	1,140,417	339.14
Leisure & Hospitality	12	133	131	123	288,150	171.82
Local Government	9	142	334	368	1,623,306	443.85
State Government	9	174	183	188	1,134,095	480.21
Other	12	74	84	96	591,819	537.69
SEBASTIAN COUNTY - TOTAL	3,535	70,961	71,845	73,120	\$554,169,957	\$592.26
Natural Resources & Mining	63	1,003	1,153	1,121	14,684,913	1034.12
Construction	290	2,995	2,914	2,859	24,129,935	635.09
Manufacturing	217	21,185	21,449	21,600	186,785,900	671.05
Trade, Transportation & Utilities	915	12,365	12,232	12,276	85,085,391	532.51
Wholesale Trade	228	2,366	2,383	2,402	24,121,961	778.44
Retail Trade	568	7,939	7,846	7,854	40,865,133	398.93
Transportation, Warehousing & Utilities	119	2,060	2,003	2,020	20,098,297	762.46
Information	56	1,187	1,172	1,166	12,229,454	800.62
Financial Activities	402	2,508	2,423	2,448	21,789,097	681.43
Professional & Business Services	511	9,885	9,923	9,874	62,763,907	487.97
Education & Health Services	423	9,072	9,089	9,209	86,564,424	729.87
Leisure & Hospitality	308	5,357	5,372	5,344	15,378,095	220.79
Other Services	285	1,576	1,521	1,559	8,954,176	443.80
Local Government	43	2,549	3,336	4,295	25,958,224	588.44
State Government	22	1,279	1,261	1,369	9,846,441	581.29

**TABLE 6. COUNTY SUMMARY
EMPLOYMENT AND TOTAL EARNINGS, BY INDUSTRY
THIRD QUARTER 2005**

NORTH AMERICAN INDUSTRY CLASSIFICATION SYSTEM INDUSTRY GROUP	NUMBER OF EMPLOYING UNITS	EMPLOYMENT			TOTAL EARNINGS	AVERAGE WEEKLY EARNINGS
		JULY	AUGUST	SEPTEMBER	JUL. - SEP. 2005	
SEVIER COUNTY - TOTAL	320	5,735	5,813	5,961	36,229,160	\$477.50
Natural Resources & Mining	20	210	209	214	1,488,900	542.80
Trade, Transportation & Utilities	90	865	887	877	4,993,811	438.35
Wholesale Trade	15	142	141	140	1,510,637	824.13
Retail Trade	57	615	636	630	2,482,352	304.55
Transportation, Warehousing & Utilities	18	108	110	107	1,000,822	710.64
Information	7	44	44	47	346,139	591.69
Financial Activities	27	223	220	214	1,385,553	486.67
Professional & Business Services	31	122	128	132	2,042,910	1234.14
Education & Health Services	36	508	506	511	3,232,092	489.09
Leisure & Hospitality	21	290	273	267	682,490	189.76
Other Services	33	157	144	155	645,889	326.87
Local Government	12	572	685	838	4,369,916	481.36
State Government	9	165	157	182	1,123,020	514.20
Other	34	2,579	2,560	2,524	15,918,440	479.38
SHARP COUNTY - TOTAL	391	3,806	3,756	3,945	\$19,848,855	\$398.06
Construction	35	216	225	223	1,404,228	488.03
Manufacturing	23	217	212	207	1,031,225	374.17
Trade, Transportation & Utilities	101	1,078	1,046	1,006	5,744,761	423.55
Retail Trade	69	691	673	659	2,616,176	298.43
Other Trade, Transportation & Utilities	32	387	373	347	3,128,585	652.20
Information	8	62	60	60	822,175	1042.49
Financial Activities	35	271	270	279	1,766,941	497.26
Professional & Business Services	36	157	157	156	998,154	490.09
Education & Health Services	49	557	566	565	3,018,399	412.65
Leisure & Hospitality	42	509	522	509	1,023,412	153.36
Local Government	25	503	509	760	3,106,027	404.50
State Government	9	106	109	101	621,527	453.89
Other	28	130	80	79	312,006	249.14

**TABLE 6. COUNTY SUMMARY
EMPLOYMENT AND TOTAL EARNINGS, BY INDUSTRY
THIRD QUARTER 2005**

NORTH AMERICAN INDUSTRY CLASSIFICATION SYSTEM INDUSTRY GROUP	NUMBER OF EMPLOYING UNITS	EMPLOYMENT			TOTAL EARNINGS	AVERAGE WEEKLY EARNINGS
		JULY	AUGUST	SEPTEMBER	JUL. - SEP. 2005	
STONE COUNTY - TOTAL	242	2,622	2,813	2,859	\$13,806,568	\$384.15
Construction	21	86	94	93	488,424	412.87
Manufacturing	21	464	473	464	2,427,966	399.93
Trade, Transportation & Utilities	76	616	620	703	3,439,074	409.30
Wholesale Trade	10	52	55	55	246,552	351.21
Retail Trade	51	518	523	606	2,797,730	392.00
Transportation, Warehousing & Utilities	15	46	42	42	394,792	700.81
Financial Activities	20	86	88	88	593,021	522.33
Professional & Business Services	11	26	29	25	176,795	509.99
Education & Health Services	25	415	407	417	2,493,197	464.37
Leisure & Hospitality	32	463	439	427	974,530	169.22
Other Services	11	28	26	28	137,131	385.92
Local Government	10	207	405	403	1,906,283	433.41
State Government	9	177	179	162	865,395	385.53
Other	6	54	53	49	304,752	450.82
UNION COUNTY - TOTAL	1,311	19,035	19,670	19,948	\$165,082,242	\$649.51
Natural Resources & Mining	104	517	511	517	4,296,003	641.67
Construction	92	1,380	1,408	1,369	13,813,504	766.83
Manufacturing	67	5,283	5,251	5,282	54,117,631	789.62
Trade, Transportation & Utilities	364	3,596	3,600	3,644	25,651,544	546.09
Wholesale Trade	79	529	537	541	6,724,265	965.62
Retail Trade	228	2,324	2,325	2,336	10,686,346	353.05
Transportation, Warehousing & Utilities	57	743	738	767	8,240,933	845.98
Information	20	209	206	205	1,392,784	518.41
Financial Activities	122	741	739	751	5,645,435	583.95
Professional & Business Services	129	1,693	1,731	1,735	24,716,881	1105.62
Education & Health Services	133	2,221	2,230	2,251	16,141,517	555.80
Leisure & Hospitality	88	1,106	1,118	1,116	3,190,706	220.45
Other Services	137	669	643	607	3,190,491	383.67
Local Government	37	1,084	1,722	1,924	9,026,879	440.41
State Government	18	536	511	547	3,898,867	564.45

**TABLE 6. COUNTY SUMMARY
EMPLOYMENT AND TOTAL EARNINGS, BY INDUSTRY
THIRD QUARTER 2005**

NORTH AMERICAN INDUSTRY CLASSIFICATION SYSTEM INDUSTRY GROUP	NUMBER OF EMPLOYING UNITS	EMPLOYMENT			TOTAL EARNINGS	AVERAGE WEEKLY EARNINGS
		JULY	AUGUST	SEPTEMBER	JUL. - SEP. 2005	
VAN BUREN COUNTY - TOTAL	358	3,441	3,494	3,819	\$18,668,976	\$400.62
Natural Resources & Mining	11	50	48	44	248,148	403.27
Construction	46	119	119	122	815,538	522.78
Manufacturing	14	596	606	600	3,945,642	505.29
Trade, Transportation & Utilities	103	830	815	807	3,882,827	365.43
Wholesale Trade	15	55	53	53	391,097	560.58
Retail Trade	66	637	635	623	2,588,875	315.27
Transportation, Warehousing & Utilities	22	138	127	131	902,855	526.14
Information	9	51	50	51	371,127	563.45
Financial Activities	29	125	125	126	719,455	441.56
Professional & Business Services	29	89	92	92	631,171	533.53
Education & Health Services	37	633	637	619	3,242,697	396.14
Leisure & Hospitality	30	492	519	515	1,493,261	225.82
Other Services	29	78	75	79	357,226	355.33
Local Government	13	286	313	677	2,359,639	426.75
State Government	8	92	95	87	602,245	507.22
WASHINGTON COUNTY - TOTAL	5,298	85,791	87,874	89,846	\$710,566,236	\$622.28
Natural Resources & Mining	40	448	453	451	3,346,877	571.27
Construction	627	5,516	5,511	5,628	49,468,711	685.43
Manufacturing	227	15,668	15,791	15,804	128,722,885	628.51
Trade, Transportation & Utilities	1,339	20,313	20,506	20,542	160,517,511	603.68
Wholesale Trade	358	3,736	3,801	3,764	47,216,391	964.17
Retail Trade	781	11,294	11,421	11,467	63,963,639	431.83
Transportation, Warehousing & Utilities	200	5,283	5,284	5,311	49,337,481	717.07
Information	100	1,564	1,550	1,538	14,832,877	735.81
Financial Activities	623	3,946	3,982	4,042	37,494,686	722.86
Professional & Business Services	874	8,785	8,887	8,879	91,693,288	796.96
Education & Health Services	545	9,890	9,962	10,097	93,060,885	717.07
Leisure & Hospitality	486	9,046	9,090	9,277	28,690,081	241.52
Other Services	354	1,906	1,932	1,927	11,541,407	462.00
Local & State Government	83	8,709	10,210	11,661	91,197,028	688.21

**TABLE 6. COUNTY SUMMARY
EMPLOYMENT AND TOTAL EARNINGS, BY INDUSTRY
THIRD QUARTER 2005**

NORTH AMERICAN INDUSTRY CLASSIFICATION SYSTEM INDUSTRY GROUP	NUMBER OF EMPLOYING UNITS	EMPLOYMENT			TOTAL EARNINGS	AVERAGE WEEKLY EARNINGS
		JULY	AUGUST	SEPTEMBER	JUL. - SEP. 2005	
WHITE COUNTY - TOTAL	1,527	22,626	23,359	24,023	\$160,399,950	\$528.73
Natural Resources & Mining	33	282	276	288	2,106,546	574.62
Construction	168	1,225	1,240	1,258	9,472,114	587.13
Manufacturing	79	3,767	3,779	3,774	33,759,842	688.23
Trade, Transportation & Utilities	469	5,946	5,912	5,934	37,046,792	480.51
Wholesale Trade	97	593	584	600	4,370,628	567.59
Retail Trade	288	3,113	3,108	3,081	14,476,780	359.15
Transportation, Warehousing & Utilities	84	2,240	2,220	2,253	18,199,384	625.63
Information	22	239	231	231	1,452,716	478.23
Financial Activities	166	873	871	888	6,017,887	527.64
Professional & Business Services	144	1,323	1,429	1,397	8,601,012	478.39
Education & Health Services	169	4,228	4,216	4,334	35,518,393	641.46
Leisure & Hospitality	110	1,980	1,990	2,053	4,823,368	184.81
Other Services	102	625	600	600	3,658,271	462.58
Local Government	46	1,579	2,252	2,509	13,573,542	494.06
State Government	19	559	563	757	4,369,467	536.64
WOODRUFF COUNTY - TOTAL	170	1,897	2,093	2,121	\$12,850,081	\$485.26
Natural Resources & Mining	20	101	97	95	554,345	436.61
Construction	7	76	71	70	387,404	411.99
Manufacturing	10	483	513	505	3,722,984	572.39
Trade, Transportation & Utilities	56	528	529	545	3,605,844	519.42
Wholesale Trade	12	226	217	229	2,006,947	689.20
Retail Trade	29	218	219	217	736,825	259.99
Transportation, Warehousing & Utilities	15	84	93	99	862,072	720.80
Financial Activities	14	57	55	55	366,923	507.03
Professional & Business Services	3	7	7	6	38,376	442.80
Education & Health Services	27	187	185	187	1,202,852	496.57
Leisure & Hospitality	7	67	68	62	145,499	170.44
Local Government	10	305	480	511	2,339,118	416.51
State Government	7	58	60	55	336,836	449.31
Other	9	28	28	30	149,900	402.24

**TABLE 6. COUNTY SUMMARY
EMPLOYMENT AND TOTAL EARNINGS, BY INDUSTRY
THIRD QUARTER 2005**

NORTH AMERICAN INDUSTRY CLASSIFICATION SYSTEM INDUSTRY GROUP	NUMBER OF EMPLOYING UNITS	EMPLOYMENT			TOTAL EARNINGS	AVERAGE WEEKLY EARNINGS
		JULY	AUGUST	SEPTEMBER	JUL. - SEP. 2005	
YELL COUNTY - TOTAL	399	6,577	6,744	7,308	\$39,107,853	\$437.49
Natural Resources & Mining	25	309	304	317	1,825,149	452.89
Construction	50	423	448	440	2,871,001	505.37
Manufacturing	23	2,908	2,944	2,964	17,576,390	460.08
Trade, Transportation & Utilities	92	653	657	745	3,059,929	343.62
Wholesale Trade	13	29	28	27	155,356	426.80
Retail Trade	58	520	528	621	2,089,711	288.94
Transportation, Warehousing & Utilities	21	104	101	97	814,862	622.67
Information	4	50	52	51	562,620	848.60
Financial Activities	40	204	200	197	1,201,920	461.51
Professional & Business Services	34	249	246	259	2,113,130	646.74
Education & Health Services	45	478	469	483	2,336,824	377.11
Leisure & Hospitality	28	429	422	425	999,431	180.75
Other Services	17	67	65	69	267,233	306.81
Local Government	28	689	815	1,244	5,584,743	468.99
State Government	13	118	122	114	709,483	462.51
REST-OF-STATE-TOTAL	4,527	16,093	16,361	16,483	205,103,098	\$967.19
Natural Resources & Mining	62	214	208	222	2,233,889	800.49
Construction	583	2,482	2,626	2,649	20,881,498	621.22
Manufacturing	48	138	139	141	1,192,417	658.31
Trade, Transportation & Utilities	1,843	6,964	7,021	7,081	115,214,304	1262.12
Wholesale Trade	1,584	5,709	5,760	5,817	104,006,290	1388.49
Retail Trade	98	499	505	503	4,067,082	622.80
Transportation, Warehousing & Utilities	161	756	756	761	7,140,932	724.99
Information	101	237	254	252	3,363,347	1044.63
Financial Activities	269	633	658	693	9,091,200	1057.44
Professional & Business Services	1,310	3,991	4,024	4,034	39,804,040	762.35
Education & Health Services	115	772	791	771	7,270,103	718.82
Leisure & Hospitality	41	99	87	87	530,009	448.02
Other	155	563	553	553	5,522,291	763.56

TABLE 7. FEDERAL GOVERNMENT EMPLOYMENT AND EARNINGS IN ARKANSAS

NORTH AMERICAN INDUSTRY CLASSIFICATION SYSTEM INDUSTRY GROUP	NUMBER OF EMPLOYING UNITS	EMPLOYMENT			TOTAL EARNINGS
		JULY	AUGUST	SEPTEMBER	JUL. - SEP. 2005
Manufacturing	2	4	4	3	\$124,190
Trade, Transportation & Utilities	451	6,775	6,803	6,801	68,397,598
Information	1	34	34	33	398,894
Financial Activities	23	182	183	185	2,695,396
Professional & Business Services	32	883	868	835	13,497,842
Education & Health Services	6	3,994	3,980	4,016	75,669,416
Leisure & Hospitality	16	287	237	232	2,581,131
Other Services	2	285	285	288	1,051,857
Public Administration	481	8,568	8,533	8,616	121,795,602
TOTAL	1,014	21,012	20,927	21,009	\$286,211,926

**TABLE 8. WORKFORCE INFORMATION AREA, SUMMARY
EMPLOYMENT AND TOTAL EARNINGS, BY INDUSTRY
THIRD QUARTER 2005**

NORTH AMERICAN INDUSTRY CLASSIFICATION SYSTEM INDUSTRY GROUP	NUMBER OF EMPLOYING UNITS	EMPLOYMENT			TOTAL EARNINGS JUL. - SEP. 2005	AVERAGE WEEKLY EARNINGS
		JULY	AUGUST	SEPTEMBER		
CENTRAL WORKFORCE INFORMATION*	5,565	67,412	69,797	71,571	\$494,137,657	\$546.18
Natural Resources & Mining	154	919	898	924	7,295,925	614.26
Trade, Transportation & Utilities	1,459	14,071	14,120	14,302	85,988,904	466.98
Wholesale Trade	355	1,999	1,998	1,986	17,880,238	689.66
Retail Trade	874	10,711	10,728	10,845	55,507,624	396.77
Transportation, Warehousing & Utilities	230	1,361	1,394	1,471	12,601,042	688.11
Financial Activities	570	2,749	2,779	2,795	21,445,023	594.60
Professional & Business Services	685	7,128	6,992	6,768	72,731,060	803.53
Education & Health Services	574	8,927	9,015	9,159	62,808,111	534.82
Leisure & Hospitality	421	7,413	7,365	7,464	19,270,127	199.93
Local & State Government	209	9,642	11,883	13,491	84,969,232	559.98
Other	1,493	16,563	16,745	16,668	139,629,275	644.75

*Note: Pulaski County is not included in the Central Workforce Information. Please refer to Page 55 for information on Pulaski County.

Central Workforce Includes these counties: Faulkner, Lonoke, Monroe, Prairie, and Saline.

EASTERN WORKFORCE INFORMATION	3,123	35,116	37,353	38,574	\$238,947,471	\$496.58
Natural Resources & Mining	219	1,400	1,415	1,825	8,474,816	421.49
Construction	189	1,176	1,219	1,245	8,623,005	546.68
Trade, Transportation & Utilities	865	10,347	10,107	10,102	70,984,949	536.10
Wholesale Trade	169	2,107	2,081	2,085	17,973,195	661.19
Retail Trade	495	5,296	5,056	4,986	23,604,153	355.14
Transportation, Warehousing & Utilities	201	2,944	2,970	3,031	29,407,601	758.68
Financial Activities	277	1,593	1,584	1,596	11,120,066	537.64
Professional & Business Services	269	1,244	1,322	1,302	8,403,467	501.36
Education & Health Services	467	5,199	5,280	5,284	33,373,382	488.58
Leisure & Hospitality	226	3,651	3,670	3,550	9,496,414	201.59
Local Government	141	3,125	5,333	6,095	30,662,267	486.22
State Government	67	2,121	2,138	2,160	14,666,896	527.29
Other	403	5,260	5,285	5,415	43,142,209	623.80

Eastern Workforce Includes these counties: Crittenden, Cross, Lee, Phillips, and Saint Francis.

**TABLE 8. WORKFORCE INFORMATION AREA, SUMMARY
EMPLOYMENT AND TOTAL EARNINGS, BY INDUSTRY
THIRD QUARTER 2005**

NORTH AMERICAN INDUSTRY CLASSIFICATION SYSTEM INDUSTRY GROUP	NUMBER OF EMPLOYING UNITS	EMPLOYMENT			TOTAL EARNINGS	AVERAGE
		JULY	AUGUST	SEPTEMBER	JUL. - SEP. 2005	WEEKLY EARNINGS
NORTH CENTRAL WORKFORCE INFORMATION	5,237	66,212	68,291	70,851	\$433,499,359	\$487.15
Construction	479	2,770	2,798	2,804	18,783,268	517.75
Manufacturing	298	13,651	13,919	13,961	110,753,471	615.41
Trade, Transportation & Utilities	1,544	15,722	15,641	15,808	94,879,379	464.17
Retail Trade	961	9,384	9,332	9,409	41,587,722	341.23
Other Trade, Transportation & Utilities	583	6,338	6,309	6,399	53,291,657	645.70
Financial Activities	508	2,595	2,613	2,638	17,701,619	520.65
Professional & Business Services	444	2,959	3,112	3,069	17,547,739	443.05
Education & Health Services	590	11,267	11,332	11,416	80,945,686	549.16
Leisure & Hospitality	438	6,278	6,298	6,257	15,102,488	185.06
Local Government	233	5,112	6,833	8,874	39,988,858	443.26
State Government	115	2,644	2,645	2,906	18,654,150	525.30
Other	588	3,214	3,100	3,118	19,142,701	468.36

North Central Workforce Includes these counties: Cleburne, Fulton, Independence, Izard, Jackson, Sharp, Stone, Van Buren, White, and Woodruff

NORTHEAST WORKFORCE INFORMATION	6,236	89,208	92,300	95,049	\$642,723,792	\$536.31
Natural Resources & Mining	361	2,175	2,157	2,485	13,201,256	446.89
Construction	474	3,074	3,114	3,172	22,725,662	560.30
Manufacturing	364	21,652	21,620	21,722	205,808,188	730.75
Trade, Transportation & Utilities	1,753	17,704	17,647	17,842	105,650,724	458.35
Wholesale Trade	410	3,804	3,759	3,817	31,021,117	629.06
Retail Trade	1,045	11,486	11,445	11,473	52,272,876	350.63
Transportation, Warehousing & Utilities	298	2,414	2,443	2,552	22,356,731	696.35
Financial Activities	586	3,446	3,438	3,424	26,157,639	585.60
Professional & Business Services	618	6,346	6,780	6,823	38,802,860	448.87
Education & Health Services	791	12,332	12,484	12,603	100,564,610	620.20
Leisure & Hospitality	450	7,300	7,378	7,486	17,876,075	186.12
Local Government	218	7,730	9,835	11,432	56,806,962	452.09
State Government	108	3,568	3,833	4,005	30,234,288	611.71
Other	513	3,881	4,014	4,055	24,895,528	480.76

Northeast Workforce Includes these counties: Clay, Craighead, Greene, Lawrence, Mississippi, Poinsett, and Randolph.

**TABLE 8. WORKFORCE INFORMATION AREA, SUMMARY
EMPLOYMENT AND TOTAL EARNINGS, BY INDUSTRY
THIRD QUARTER 2005**

NORTH AMERICAN INDUSTRY CLASSIFICATION SYSTEM INDUSTRY GROUP	NUMBER OF EMPLOYING UNITS	EMPLOYMENT			TOTAL EARNINGS JUL. - SEP. 2005	AVERAGE WEEKLY EARNINGS
		JULY	AUGUST	SEPTEMBER		
NORTHWEST WORKFORCE INFORMATION	13,957	218,553	223,074	228,826	\$1,788,952,040	\$615.76
Trade, Transportation & Utilities	3,582	53,269	53,184	53,543	429,072,714	618.87
Retail Trade	1,999	25,282	25,385	25,377	137,162,622	416.24
Other Trade, Transportation & Utilities	1,583	27,987	27,799	28,166	291,910,092	802.41
Education & Health Services	1,372	22,149	22,443	22,765	191,578,618	656.36
Leisure & Hospitality	1,323	21,059	21,084	21,092	65,016,033	237.27
Local & State Government	425	18,187	22,262	26,961	181,644,158	621.83
Other	7,255	103,889	104,101	104,465	921,640,517	680.69
SOUTHEAST WORKFORCE INFORMATION	5,175	73,350	74,881	78,724	\$547,895,078	\$557.10
Natural Resources & Mining	411	3,275	3,237	3,548	23,360,306	535.87
Construction	379	3,528	3,565	3,574	31,312,426	677.41
Manufacturing	228	17,902	17,901	17,925	174,930,616	751.35
Trade, Transportation & Utilities	1,449	13,921	13,900	14,059	86,832,612	478.47
Wholesale Trade	259	2,598	2,535	2,523	21,422,536	645.72
Retail Trade	897	8,890	8,903	8,916	40,274,912	347.98
Transportation, Warehousing & Utilities	293	2,433	2,462	2,620	25,135,164	771.85
Financial Activities	411	2,934	2,923	2,898	22,305,535	587.94
Local & State Government	358	11,418	12,904	16,045	93,015,708	531.75
Other	1,939	20,372	20,451	20,675	116,137,875	435.80
SOUTHWEST WORKFORCE INFORMATION	5,623	82,973	84,473	87,389	\$629,552,564	\$570.10
Natural Resources & Mining	404	2,761	2,795	2,845	23,783,852	653.32
Trade, Transportation & Utilities	1,568	15,168	15,249	15,329	98,167,958	495.22
Education & Health Services	572	9,040	9,078	9,141	54,959,276	465.27
Local Government	265	6,335	7,944	10,766	49,411,748	455.29
State Government	150	3,299	3,262	3,292	24,716,092	578.88
Other	2,664	46,370	46,145	46,016	378,513,638	630.54

Northwest Workforce Includes these counties: Baxter, Benton, Boone, Carroll, Madison, Marion, Newton, Searcy, and Washington.

Southeast Workforce Includes these counties: Arkansas, Ashley, Bradley, Chicot, Cleveland, Desha, Drew, Grant, Jefferson, and Lincoln

Southwest Workforce Includes these counties: Calhoun, Columbia, Dallas, Hempstead, Howard, Lafayette, Little River, Miller, Nevada, Ouachita, Sevier, and Union

**TABLE 8. WORKFORCE INFORMATION AREA, SUMMARY
EMPLOYMENT AND TOTAL EARNINGS, BY INDUSTRY
THIRD QUARTER 2005**

NORTH AMERICAN INDUSTRY CLASSIFICATION SYSTEM INDUSTRY GROUP	NUMBER OF EMPLOYING UNITS	EMPLOYMENT			TOTAL EARNINGS JUL. - SEP. 2005	AVERAGE WEEKLY EARNINGS
		JULY	AUGUST	SEPTEMBER		
WEST CENTRAL WORKFORCE INFORMATION	7,812	102,972	104,681	108,932	\$690,259,104	\$503.15
Natural Resources & Mining	263	2,346	2,317	2,271	16,313,663	542.93
Construction	873	5,760	5,870	6,040	42,595,233	556.29
Trade, Transportation & Utilities	2,011	21,553	21,544	21,760	143,430,756	510.34
Financial Activities	822	3,957	3,956	3,955	28,949,321	562.91
Education & Health Services	821	14,796	14,862	14,972	113,750,855	588.17
Local Government	231	7,123	8,615	11,825	56,905,450	476.44
State Government	133	4,251	4,494	5,007	32,589,397	546.88
Other	2,658	43,186	43,023	43,102	255,724,429	456.37

West Central Workforce Includes these counties: Clark, Conway, Garland, Hot Spring, Johnson, Montgomery, Perry, Pike, Pope, and Yell

WESTERN WORKFORCE INFORMATION	6,174	106,527	109,126	111,260	\$787,225,540	\$555.71
Natural Resources & Mining	152	2,072	2,262	2,212	23,774,872	838.15
Trade, Transportation & Utilities	1,629	22,459	22,417	22,489	149,778,493	513.09
Wholesale Trade	373	3,366	3,371	3,402	31,726,362	722.11
Retail Trade	971	12,237	12,167	12,183	59,395,922	374.63
Transportation, Warehousing & Utilities	285	6,856	6,879	6,904	58,656,209	655.85
Financial Activities	641	3,737	3,652	3,655	29,978,262	626.41
Professional & Business Services	766	10,922	10,969	10,911	69,345,554	487.86
Education & Health Services	702	13,026	13,116	13,318	111,767,948	653.64
Leisure & Hospitality	506	7,981	8,026	8,016	21,764,320	209.07
Local & State Government	232	7,510	9,746	11,460	67,115,637	539.36
Other	1,546	38,820	38,938	39,199	313,700,454	618.97

Western Workforce Includes these counties: Crawford, Franklin, Logan, Polk, Scott, and Sebastian