

# Arkansas Covered Employment & Earnings



Third Quarter  
2004

**COVERED EMPLOYMENT AND EARNINGS  
STATE OF ARKANSAS  
THIRD QUARTER 2004**

**MIKE HUCKABEE, GOVERNOR  
STATE OF ARKANSAS**

**ARTEE WILLIAMS, DIRECTOR  
ARKANSAS EMPLOYMENT SECURITY DEPARTMENT**

**PUBLISHED BY  
BUREAU OF LABOR STATISTICS PROGRAMS  
ARKANSAS EMPLOYMENT SECURITY DEPARTMENT  
POST OFFICE BOX 2981  
LITTLE ROCK, ARKANSAS 72203-2981  
BERNADETTE COLEMAN, BLS PROGRAMS MANAGER  
TELEPHONE: (501) 682-3159**

**STATE OF ARKANSAS HOME PAGE: <http://www.arkansas.gov>**

**ARKANSAS EMPLOYMENT SECURITY DEPARTMENT HOME PAGE: <http://www.arkansas.gov/esd/>**

**INTERNET SITE FOR LABOR MARKET INFORMATION:  
<http://www.discoverarkansas.net>**

**RELEASED: MARCH 2005**

## TABLE OF CONTENTS

DESCRIPTION OF DATA	Page
Industry Classification	1
Definition of Covered Employment and Earnings	2
Federal Government Employment	2
County Classification	2
Significant Developments During Third Quarter 2004	3

### LIST OF GRAPHS AND TABLES

Graph 1	Total Covered Employment for Selected Years, Arkansas	7
Graph 2	Total Covered Earnings, by Calendar Quarter for Selected Years, Arkansas	8
Table 1	Quarterly Comparison of Covered Employment and Wages, by Industry	5
Table 2	Total Covered Employment in Arkansas, 1997-2004	6
Table 3	Total Covered Earnings, 1997-2004	9
Table 4	Total Taxable Earnings, 1997-2004	10
Table 5	State Summary - Employment and Total Earnings, by Industry, Third Quarter 2004	11
Table 6	County Summary - Employment and Total Earnings, by Industry, Third Quarter 2004	25
Table 7	Federal Government Employment and Total Earnings in Arkansas, Third Quarter 2004	63
Table 8	Workforce Information Area – Employment and Total Earnings, by Industry, Third Quarter 2004	64

EMPLOYMENT AND EARNINGS  
UNDER THE ARKANSAS EMPLOYMENT SECURITY LAW  
THIRD QUARTER 2004

## DESCRIPTION OF DATA

This publication contains covered employment and payroll data by industry and county for the Third Quarter 2004. These data are compiled from quarterly contribution and wage reports submitted by employers subject to the Arkansas Employment Security Law. An employing unit is a single physical location where business is conducted, production takes place, or services are provided. Employment data have been tabulated for each month of the quarter by industry under the **North American Industry Classification System** (NAICS) (see "Industry Classification" below) on a statewide and county basis. Payroll data represent the total wages paid during the quarter, and are also shown by industry for the State and by

publishable industry groups for each county. The tabulation of this data is a joint effort in conjunction with the U.S. Bureau of Labor Statistics. In addition, there are tables included which set out total covered employment by months, quarterly payrolls, and average weekly earnings for the years 1997 through 2004. Data contained in this publication are subject to revision. These revisions will be reflected in the 2004 Annual Covered Employment and Earnings publication. Because of industry code changes between years, substantial employment and wage shifts among industries are anticipated.

## INDUSTRY CLASSIFICATION

Previously published industry data **will not** be comparable in all instances with currently published data since industry codes have been revised according to the following Manuals: (a) between January 1, 1958 and December 31, 1967, industry codes were assigned under the 1957 Standard Industrial Classification (SIC) Manual; (b) between January 1, 1968 and December 31, 1974, industry codes were assigned under the 1967 Standard Industrial Classification (SIC) Manual; (c) between January 1, 1975 and December 31, 1987, industry codes were assigned under the 1972 Standard Industrial Classification (SIC) Manual; (d) between January 1, 1988 and December 31, 2000, industry codes were assigned under the 1987 Standard Industrial Classification (SIC) Manual; and (e) since January 1, 2001, industry codes have been assigned under the 2002 North American Industry Classification System (NAICS) Manual. **The NAICS Manual represents a significant change in coding methodology as compared to the**

**SIC Manual.** One of the most significant changes involves how NAICS treats auxiliary units. Auxiliary units are establishments primarily engaged in performing management or support services for other establishments of the same enterprise. The SIC code for these units was based on the activity of the enterprise served. The NAICS code is based on the actual activities that the establishment performs. Comparisons of many industries **should not be made** between this publication and previous Covered Employment and Earnings publications that were based on SIC. Even though some titles are the same or similar in nature, NAICS and SIC could differ in the classification of employers. The implementation of NAICS represents a profound change for statistical programs, and will create significant benefits along with transition obstacles for both data collectors and data users. A summary is available on the NAICS home page at <http://www.census.gov/naics>.

## DEFINITION OF COVERED EMPLOYMENT AND EARNINGS

Covered Employment is the number of workers employed by employers subject to the Arkansas Employment Security Law who worked or received pay for the payroll period including the 12th of the month. An employer is subject to the law when they employ one or more employees in each of ten days during the current or preceding calendar year.

Currently excluded from coverage is employment covered by the Railroad Unemployment Insurance Act, some domestic service workers, employees of small agricultural establishments, self-employed and unpaid family workers, insurance and real estate

agents who are on commission only, and employees of churches and religious organizations except separately incorporated schools. The payroll information in this publication includes all wages and salaries paid to any covered employees by their employers including bonuses, commissions, and cash values of remuneration received in any medium other than cash. These wages include both taxable and nontaxable wages. Only the first \$10,000 paid to each worker by an employer in the calendar year is taxable under the Arkansas Employment Security Law.

## FEDERAL GOVERNMENT EMPLOYMENT

Table 7 on page 63 lists the total number of civilians employed by the Federal Government in Arkansas during the Third Quarter 2004. Employment and wage data are set out by industry divisions. These data are obtained from required reports submitted by various

government agencies having employment in the State. Civilian Federal workers are covered by the Unemployment Compensation for Federal Employees (UCFE) program.

## COUNTY CLASSIFICATION

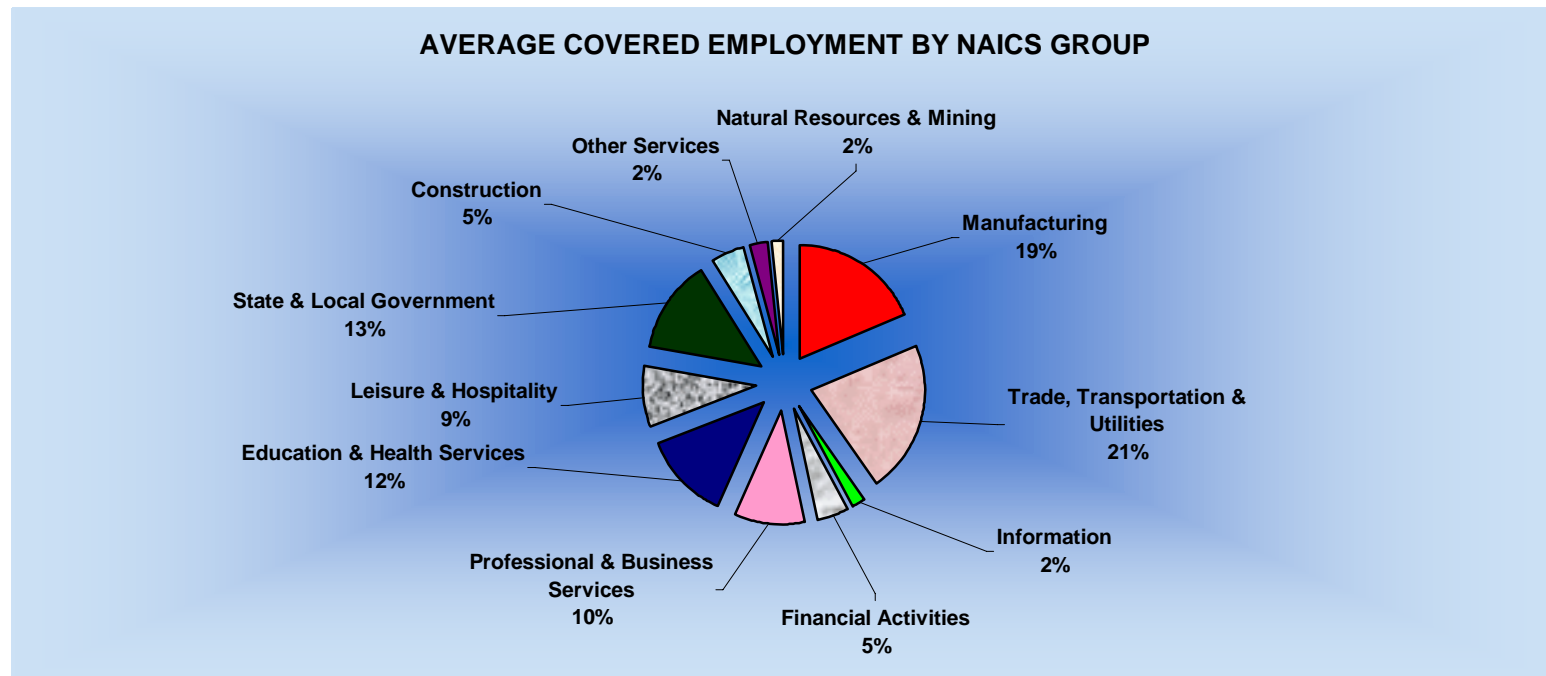
Employment and payroll data by county are classified according to the county where the workers are employed. Employers with operations in more than one county are requested to furnish this agency with a breakdown of employment and wages for at least one quarter of each year by the counties in which they operate. Many such employers submit county data with each regular contribution report. **Note:** This information is invaluable in the preparation of monthly employment and payroll data by county.

Employment and payroll data for multi - area employers who do not furnish county data each quarter of the year, are prorated by county on the basis of one quarter's information. The "rest-of-state" table that appears on page 62 of this publication includes data on firms that **did not** provide a county breakdown of employment and payrolls. It also includes sales, and all other type of personnel with no permanent place of work, as well as employment of employers with no established place of business in Arkansas.

## SIGNIFICANT DEVELOPMENTS DURING THIRD QUARTER 2004

## AVERAGE EMPLOYMENT CHANGES

Covered employment averaged 1,098,112 during the Third Quarter 2004 (see table 1), a decrease of 17,032 (-1.5%) from the previous quarter and, 16,262 (1.5%) above the average recorded one year ago. This *over-the-year* increase is more significant when used as an economic indicator. This *over-the-year* comparison allows for the disregarding of many seasonal factors that are evident when making an *over-the-quarter* comparison.



## EMPLOYMENT CHANGES FROM SECOND QUARTER 2004

*Over-the-quarter* gains were recorded in eight industry groups (see table 1). Professional and Business Services recorded the largest quarterly gain of 1,995 employees. The driving factor for the increase was focused in Administrative & Support Services as companies added temporary employees. Leisure and Hospitality added 1,421 employees due to the increase in demand in the food service industry. Trade, Transportation, and Utilities increased 1,404 with over half of the increase noted in the trucking industry.

Construction (+1,286), Education and Health Services (+635), Natural Resources and Mining (+469), Financial Activities (+343) and Manufacturing (+238) all recorded gains for the quarter.

Losses occurred in three industry groups. State and Local Government experienced the largest drop of 24,627 employees. This was mainly due to summer break as schools were still out. Other Services and Information decreased respectively 133 and 61.

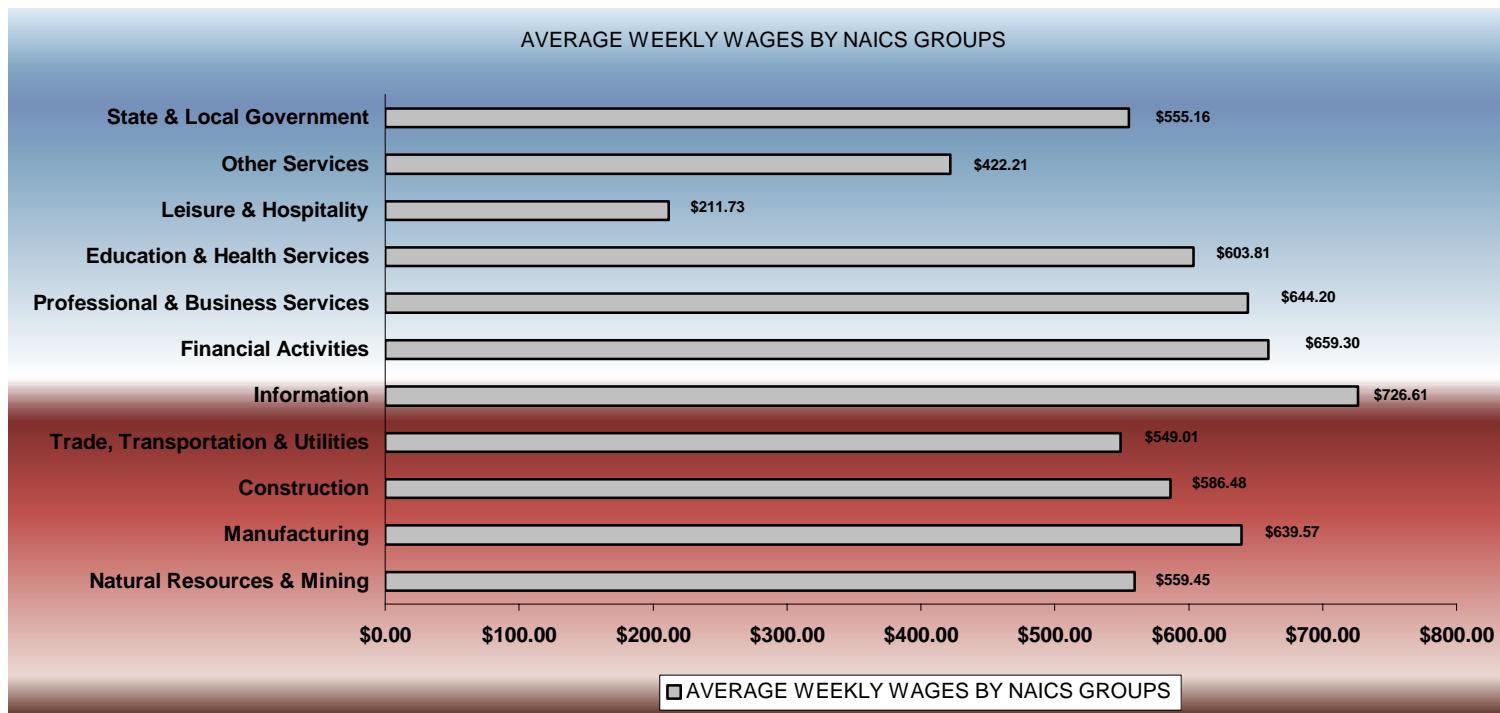
## EMPLOYMENT CHANGES FROM THIRD QUARTER 2003

*Over-the-year* gains were recorded in nine industry groups while two recorded losses (see table 1). Significant gains were posted in Professional & Business Services (4,637), Educational & Health Services (3,120) and Trade, Transportation & Utilities (2,774). The only losses occurred in Manufacturing (-485), and Information (-214).

## COVERED WAGES

Wages paid to covered workers totaled \$8,012,954,303 for the Third Quarter 2004 (see table 1), for an average weekly wage of \$561.31 (see table 5). Employees in Little River County had the highest average weekly wage (\$703.95), and workers in Newton County the lowest (\$333.76) (see table 6).

The Information sector recorded the highest average weekly wage for the State of Arkansas at \$726.61, while the Leisure & Hospitality sector recorded the lowest at \$211.76 for the State of Arkansas (see table 5).



Note: Because of industry code changes between years, substantial employment and wage shifts among industries are anticipated.

TABLE 1. QUARTERLY COMPARISON OF COVERED EMPLOYMENT AND WAGES, BY INDUSTRY

North American Industry Classification System Industry Group	Number of Employing Units	Average Covered Employment		Net Change From:		Total Wages Paid		% of Total
		Jul. – Sep. 2004	Monthly Average	Apr. – Jun. 2004	Jul. – Sep. 2003	Jul – Sep. 2004	% of Total	
<b>Total</b>	<b>75,400</b>	<b>1,098,112</b>	<b>100.0</b>	<b>-17,032</b>	<b>16,262</b>	<b>\$8,012,954,303</b>	<b>100.0</b>	
<b>Natural Resources and Mining</b>	2,360	19,186	1.7	469	643	139,534,841	1.7	
Agriculture, Forestry, Fishing and Hunting	2,038	15,151	1.4	358	360	97,746,362	1.2	
Mining	322	4,035	0.4	111	283	41,788,479	0.5	
<b>Construction</b>	7,394	53,576	4.9	1,286	1,261	408,478,182	5.1	
<b>Manufacturing</b>	3,613	204,575	18.6	238	-485	1,700,906,962	21.2	
<b>Trade, Transportation, and Utilities</b>	20,862	238,754	21.7	1,404	2,774	1,704,030,194	21.3	
Wholesale Trade	6,115	46,442	4.2	146	1,555	489,762,582	6.1	
Retail Trade	11,486	130,763	11.9	401	1,719	642,427,845	8.0	
Transportation and Warehousing	2,937	54,992	5.0	855	-298	477,224,928	6.0	
Utilities	324	6,557	0.6	3	-202	94,614,839	1.2	
<b>Information</b>	1,213	20,185	1.8	-61	-214	190,666,465	2.4	
<b>Financial Activities</b>	7,443	49,564	4.5	343	566	424,808,249	5.3	
Finance and Insurance	4,402	36,056	3.3	232	48	345,268,448	4.3	
Real Estate and Rental and Leasing	3,041	13,508	1.2	111	518	79,539,801	1.0	
<b>Professional and Business Services</b>	10,095	109,202	9.9	1,995	4,637	914,517,080	11.4	
Professional and Technical Services	6,277	33,420	3.0	-103	3,022	339,280,055	4.2	
Management of Companies and Enterprises	475	22,848	2.1	257	-901	326,059,071	4.1	
Administrative and Waste Services	3,343	52,934	4.8	1,841	2,516	249,177,954	3.1	
<b>Education and Health Services</b>	7,863	136,892	12.5	635	3,120	1,074,547,199	13.4	
Educational Services	513	7,765	0.7	-177	308	49,345,805	0.6	
Health Care and Social Assistance	7,350	129,127	11.8	812	2,812	1,025,201,394	12.8	
<b>Leisure and Hospitality</b>	5,853	94,189	8.6	1,421	2,758	259,297,112	3.2	
Arts, Entertainment and Recreation	882	10,286	0.9	284	-72	34,073,868	0.4	
Accommodation and Food Services	4,971	83,903	7.6	1,137	2,830	225,223,244	2.8	
<b>Other Services</b>	5,514	26,100	2.4	-133	83	143,254,882	1.8	
<b>State and Local Government</b>	3,190	145,891	13.3	-24,627	1,121	1,052,913,137	13.1	
Local Government	1,988	88,040	8.0	-23,301	529	572,923,723	7.1	
State Government	1,202	57,850	5.3	-1,327	591	479,989,414	6.0	
Nonclassifiable Establishments	0	0	0.0	0	0	0	0.0	

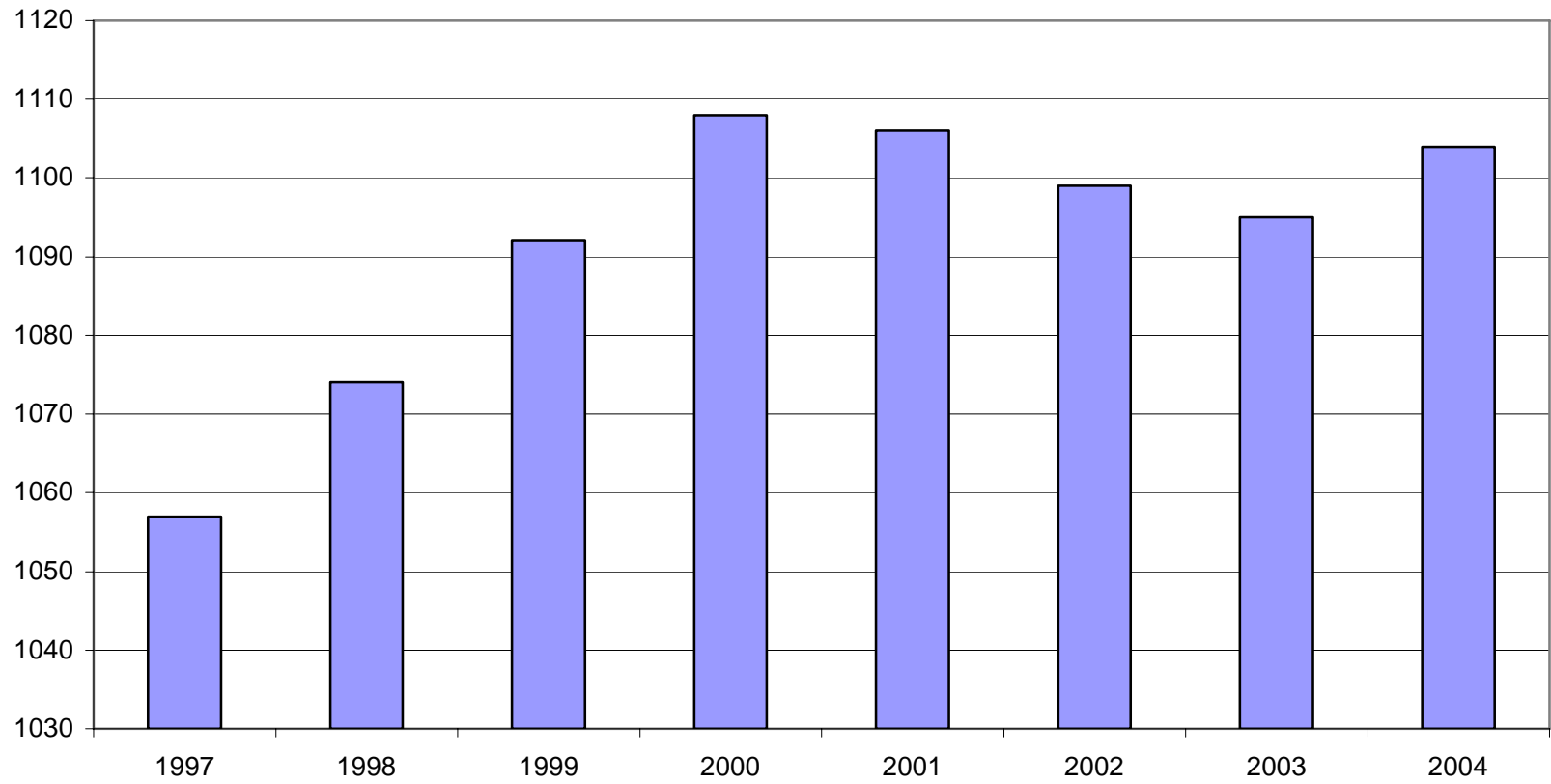
Note: Items do not necessarily add to totals because of rounding. Because of industry code changes between years, substantial employment and wage shifts among industries are anticipated.



TABLE 2. TOTAL COVERED EMPLOYMENT IN ARKANSAS

<b>Period</b>	<b>1997</b>	<b>1998</b>	<b>1999</b>	<b>2000</b>	<b>2001</b>	<b>2002</b>	<b>2003</b>	<b>2004</b>
<b>Average</b>	<b>1,057,350</b>	<b>1,073,732</b>	<b>1,092,351</b>	<b>1,108,490</b>	<b>1,106,053</b>	<b>1,098,558</b>	<b>1,094,904</b>	<b>1,104,087</b>
January	1,025,949	1,050,970	1,065,920	1,089,956	1,096,009	1,081,635	1,082,740	1,091,643
February	1,034,361	1,057,593	1,074,315	1,096,126	1,101,616	1,086,793	1,084,880	1,097,370
March	1,046,551	1,066,099	1,084,653	1,109,157	1,112,143	1,098,500	1,092,172	1,108,001
April	1,057,633	1,074,416	1,093,574	1,111,543	1,115,526	1,103,399	1,095,341	1,110,784
May	1,067,078	1,083,133	1,098,539	1,116,779	1,119,815	1,111,998	1,103,099	1,116,986
June	1,066,728	1,086,125	1,101,748	1,121,245	1,119,734	1,112,028	1,099,688	1,117,663
July	1,028,510	1,046,396	1,062,563	1,075,096	1,071,830	1,065,697	1,056,155	1,073,136
August	1,050,656	1,063,680	1,081,260	1,096,841	1,094,068	1,086,011	1,080,681	1,096,390
September	1,075,759	1,088,772	1,108,212	1,123,735	1,115,996	1,113,148	1,108,905	1,124,811
October	1,079,093	1,089,836	1,110,604	1,122,884	1,110,994	1,108,447	1,112,900	N/A
November	1,076,715	1,087,855	1,112,003	1,120,620	1,109,012	1,107,611	1,110,041	N/A
December	1,079,166	1,089,913	1,114,823	1,117,892	1,105,887	1,107,425	1,112,243	N/A

GRAPH 1  
AVERAGE TOTAL COVERED EMPLOYMENT  
In Thousands



GRAPH 2  
TOTAL COVERED EARNINGS BY CALENDAR QUARTER  
In Thousands

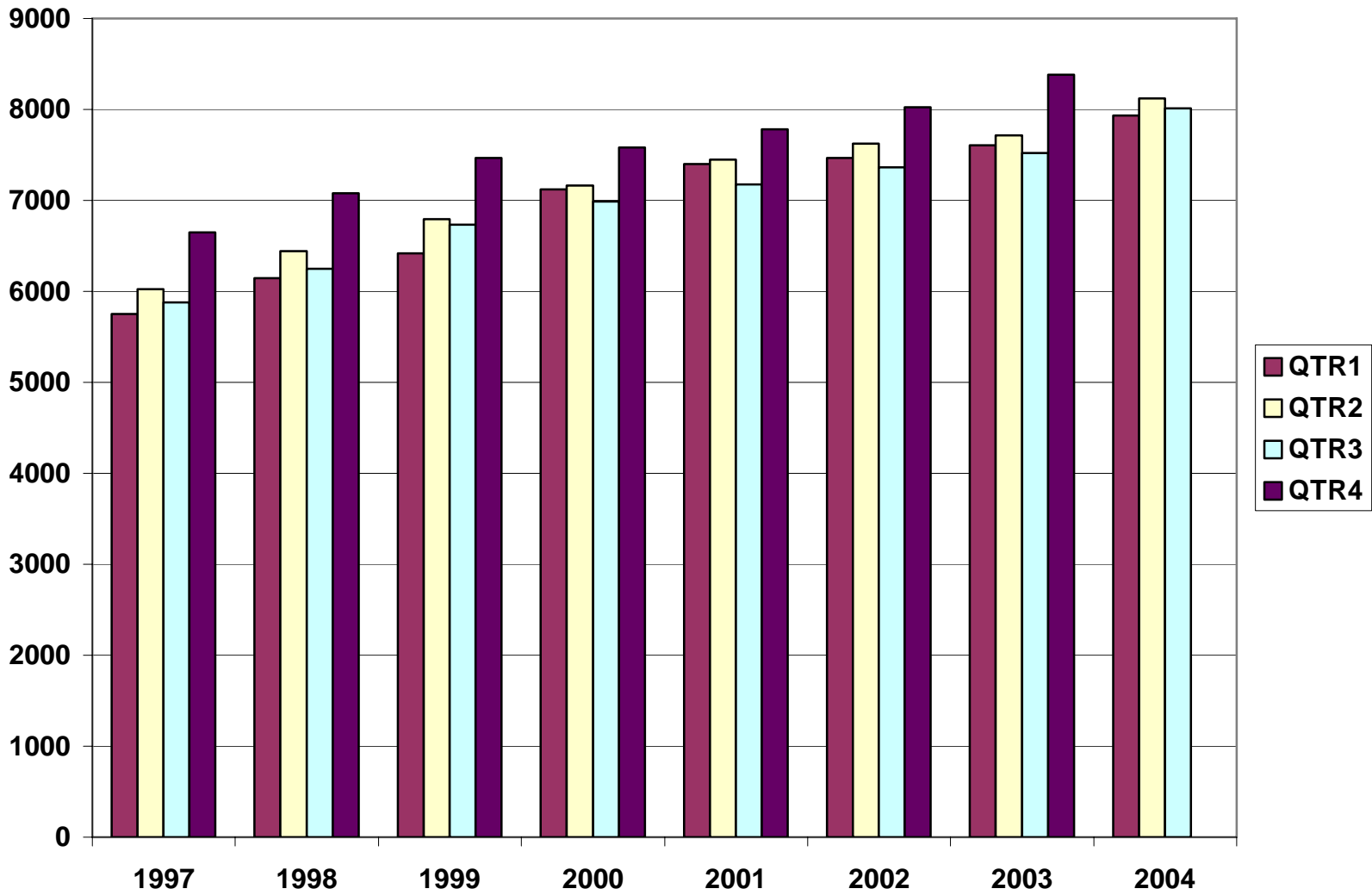


TABLE 3. TOTAL COVERED EARNINGS, 1997 - 2004

<b>Period</b>	<b>1997</b>	<b>1998</b>	<b>1999</b>	<b>2000</b>
<b>Total</b>	<b>\$24,296,555,335</b>	<b>\$25,914,345,060</b>	<b>\$27,407,925,462</b>	<b>\$28,853,825,155</b>
January - March	5,751,056,136	6,145,178,755	6,418,456,638	7,122,666,917
April - June	6,021,537,518	6,441,129,069	6,791,960,679	7,166,110,114
July - September	5,877,681,886	6,246,775,598	6,733,480,079	6,986,103,157
October - December	6,646,279,795	7,081,261,638	7,464,028,066	7,578,944,967
Average Weekly Earnings	441.90	464.13	482.51	500.57

<b>Period</b>	<b>2001</b>	<b>2002</b>	<b>2003</b>	<b>2004</b>
<b>Total</b>	<b>\$29,807,669,666</b>	<b>\$30,472,854,103</b>	<b>\$31,226,612,657</b>	<b>\$24,071,636,680</b>
January - March	7,398,887,532	7,465,250,305	7,608,130,008	7,935,999,703
April - June	7,448,023,298	7,621,878,775	7,714,813,038	8,122,682,674
July - September	7,177,293,061	7,361,666,511	7,522,456,991	8,012,954,303
October - December	7,783,465,775	8,024,058,512	8,381,212,620	N/A
Average Weekly Earnings	518.26	533.44	548.46	559.03

TABLE 4. TOTAL TAXABLE EARNINGS, 1997 - 2004

<b>Period</b>	<b>1997</b>	<b>1998</b>	<b>1999</b>	<b>2000</b>
<b>Total</b>	<b>\$8,262,066,213</b>	<b>\$8,554,973,370</b>	<b>\$8,807,445,422</b>	<b>\$9,048,033,534</b>
Jan.-March	3,871,667,342	4,063,795,529	4,203,067,856	4,560,814,012
Apr.-June	2,223,918,770	2,271,303,325	2,325,649,764	2,260,741,187
July-Sept.	1,208,701,615	1,236,054,184	1,267,562,743	1,250,850,348
Oct.-Dec.	957,778,486	983,820,332	1,011,165,059	975,627,987
<b>Period</b>	<b>2001</b>	<b>2002</b>	<b>2003</b>	<b>2004</b>
<b>Total</b>	<b>\$9,003,189,480</b>	<b>\$8,887,270,978</b>	<b>\$9,155,945,780</b>	<b>\$8,722,767,680</b>
Jan.-March	4,670,296,360	4,668,534,587	4,737,918,796	4,942,118,249
Apr.-June	2,219,485,263	2,162,971,435	2,270,519,362	2,459,193,434
July-Sept.	1,190,098,737	1,158,197,858	1,188,784,400	1,321,455,997
Oct.-Dec.	923,309,120	897,567,098	958,723,222	N/A

**TABLE 5. STATE SUMMARY  
EMPLOYMENT AND TOTAL EARNINGS, BY INDUSTRY  
THIRD QUARTER 2004**

NORTH AMERICAN INDUSTRY CLASSIFICATION SYSTEM INDUSTRY GROUPS		NUMBER OF EMPLOYING UNITS	EMPLOYMENT			TOTAL EARNINGS	AVERAGE
			JULY	AUGUST	SEPTEMBER	JUL. - SEP. 2004	WEEKLY EARNINGS
<b>TOTAL, ALL INDUSTRIES</b>		<b>75,400</b>	<b>1,073,136</b>	<b>1,096,390</b>	<b>1,124,811</b>	<b>\$8,012,954,303</b>	<b>\$561.31</b>
<b>NATURAL RESOURCES &amp; MINING</b>		<b>2,360</b>	<b>18,951</b>	<b>18,939</b>	<b>19,667</b>	<b>\$139,534,841</b>	<b>\$559.45</b>
<b>11</b>	<b>AGRICULTURE, FORESTRY, FISHING &amp; HUNTING</b>	<b>2,038</b>	<b>14,991</b>	<b>14,866</b>	<b>15,596</b>	<b>\$97,746,362</b>	<b>\$496.27</b>
<b>111</b>	<b>CROP PRODUCTION</b>	<b>716</b>	<b>4,181</b>	<b>4,019</b>	<b>4,216</b>	<b>\$19,937,380</b>	<b>\$370.56</b>
1111	Oilseed and Grain Farming	426	2,127	2,132	2,205	10,667,075	380.82
1112	Vegetable and Melon Farming	8	234	148	154	280,850	120.92
1113	Fruit and Tree Nut Farming	9	116	91	71	356,210	295.69
1114	Greenhouse & Nursery Production	50	302	283	291	1,799,179	473.97
1119	Other Crop Farming	223	1,402	1,365	1,495	6,834,066	370.04
<b>112</b>	<b>ANIMAL PRODUCTION</b>	<b>266</b>	<b>3,961</b>	<b>3,934</b>	<b>3,904</b>	<b>\$29,837,600</b>	<b>\$583.57</b>
1121	Cattle Ranching and Farming	76	416	408	399	2,260,908	426.61
1123	Poultry and Egg Production	93	2,660	2,649	2,642	21,534,666	625.02
1125	Animal Aquaculture	66	650	643	620	4,397,232	530.45
	Other	31	235	234	243	1,644,794	533.10
<b>113</b>	<b>FORESTRY AND LOGGING</b>	<b>593</b>	<b>3,468</b>	<b>3,539</b>	<b>3,619</b>	<b>\$25,058,538</b>	<b>\$544.21</b>
1131	Timber Tract Operations	45	271	272	268	2,198,408	625.55
1132	Forest Nurseries & Gathering of Forest Products	6	30	31	31	227,005	569.41
1133	Logging	542	3,167	3,236	3,320	22,633,125	537.18
	<b>OTHER</b>	<b>463</b>	<b>3,381</b>	<b>3,374</b>	<b>3,857</b>	<b>\$22,912,844</b>	<b>\$498.26</b>
<b>21</b>	<b>MINING</b>	<b>322</b>	<b>3,960</b>	<b>4,073</b>	<b>4,071</b>	<b>\$41,788,479</b>	<b>\$796.72</b>
<b>211</b>	<b>OIL AND GAS EXTRACTION</b>	<b>72</b>	<b>373</b>	<b>373</b>	<b>365</b>	<b>\$4,186,232</b>	<b>\$869.54</b>
<b>212</b>	<b>MINING (EXCEPT OIL AND GAS)</b>	<b>111</b>	<b>2,079</b>	<b>2,115</b>	<b>2,097</b>	<b>\$21,068,747</b>	<b>\$772.85</b>
<b>213</b>	<b>SUPPORT ACTIVITIES FOR MINING</b>	<b>139</b>	<b>1,508</b>	<b>1,585</b>	<b>1,609</b>	<b>\$16,533,500</b>	<b>\$811.45</b>

**TABLE 5. STATE SUMMARY  
EMPLOYMENT AND TOTAL EARNINGS, BY INDUSTRY  
THIRD QUARTER 2004**

NORTH AMERICAN INDUSTRY CLASSIFICATION SYSTEM INDUSTRY GROUPS		NUMBER OF EMPLOYING UNITS	EMPLOYMENT			TOTAL EARNINGS	AVERAGE
			JULY	AUGUST	SEPTEMBER	JUL. - SEP. 2004	WEEKLY EARNINGS
<b>CONSTRUCTION</b>		<b>7,394</b>	<b>53,529</b>	<b>53,697</b>	<b>53,503</b>	<b>\$408,478,182</b>	<b>\$586.48</b>
<b>236</b>	<b>CONSTRUCTION OF BUILDINGS</b>	<b>1,952</b>	<b>12,120</b>	<b>12,290</b>	<b>12,240</b>	<b>\$97,616,992</b>	<b>\$614.65</b>
2361	Residential Building Construction	1,353	4,125	4,207	4,247	27,669,051	507.61
2362	Nonresidential Building Construction	599	7,995	8,083	7,993	69,947,941	670.59
<b>237</b>	<b>HEAVY &amp; CIVIL ENGINEERING CONSTRUCTION</b>	<b>906</b>	<b>10,147</b>	<b>10,109</b>	<b>10,085</b>	<b>\$83,844,562</b>	<b>\$637.71</b>
2371	Utility System Construction	427	4,827	4,769	4,779	38,794,605	622.79
2372	Land Subdivision	121	390	409	392	3,386,863	656.24
2373	Highway, Street & Bridge Construction	249	4,056	4,106	4,108	34,675,945	652.17
2379	Other Heavy Construction	109	874	825	806	6,987,149	643.68
<b>238</b>	<b>SPECIALTY TRADE CONTRACTORS</b>	<b>4,536</b>	<b>31,262</b>	<b>31,298</b>	<b>31,178</b>	<b>\$227,016,628</b>	<b>\$558.88</b>
2381	Building Foundation & Exterior Contractors	916	6,074	6,058	5,972	40,148,666	511.77
2382	Building Equipment Contractors	1,955	14,764	14,693	14,660	118,503,945	619.88
2383	Building Finishing Contractors	855	5,088	5,090	5,084	32,219,056	487.17
2389	Other Specialty Trade Contractors	810	5,336	5,457	5,462	36,144,961	513.14
<b>MANUFACTURING</b>		<b>3,613</b>	<b>204,628</b>	<b>204,502</b>	<b>204,594</b>	<b>\$1,700,906,962</b>	<b>\$639.57</b>
<b>311</b>	<b>FOOD MANUFACTURING</b>	<b>297</b>	<b>51,395</b>	<b>51,781</b>	<b>52,009</b>	<b>\$356,676,919</b>	<b>\$530.40</b>
3111	Animal Food Manufacturing	50	1,395	1,400	1,399	12,371,220	680.71
3112	Grain and Oilseed Milling	31	2,424	2,443	2,511	20,583,560	643.81
3114	Fruit, Vegetable & Specialty Food	39	6,513	6,569	6,670	50,997,491	595.82
3115	Dairy Product Manufacturing	10	739	729	724	6,397,897	673.56
3116	Animal Slaughtering & Processing	88	35,073	35,374	35,405	221,308,891	482.48
3118	Bakeries and Tortilla Manufacturing	51	3,377	3,383	3,427	30,123,473	682.40
3119	Other Food Manufacturing	19	1,763	1,769	1,754	14,372,751	627.47
	Other	9	111	114	119	521,636	349.93
<b>312</b>	<b>BEVERAGE &amp; TOBACCO PRODUCT MFG.</b>	<b>38</b>	<b>1,258</b>	<b>1,266</b>	<b>1,263</b>	<b>\$10,937,093</b>	<b>\$666.48</b>
<b>313</b>	<b>TEXTILE MILLS</b>	<b>14</b>	<b>360</b>	<b>361</b>	<b>372</b>	<b>\$3,813,399</b>	<b>\$805.14</b>
3132	Fabric Mills	4	300	298	305	3,464,529	885.39
3133	Textile & Fabric Finishing Mills	10	60	63	67	348,870	423.73

**TABLE 5. STATE SUMMARY  
EMPLOYMENT AND TOTAL EARNINGS, BY INDUSTRY  
THIRD QUARTER 2004**

NORTH AMERICAN INDUSTRY CLASSIFICATION SYSTEM INDUSTRY GROUPS		NUMBER OF EMPLOYING UNITS	EMPLOYMENT			TOTAL EARNINGS	AVERAGE
			JULY	AUGUST	SEPTEMBER	JUL. - SEP. 2004	WEEKLY EARNINGS
<b>314</b>	<b>TEXTILE PRODUCT MILLS</b>	<b>59</b>	<b>1,632</b>	<b>1,616</b>	<b>1,615</b>	<b>13,901,671</b>	<b>\$659.69</b>
<b>315</b>	<b>APPAREL MANUFACTURING</b>	<b>37</b>	<b>2,108</b>	<b>2,109</b>	<b>2,138</b>	<b>\$11,154,093</b>	<b>\$405.04</b>
3152	Cut & Sew Apparel Manufacturing	30	866	836	884	4,165,898	371.76
	Other	7	1,242	1,273	1,254	6,988,195	427.87
<b>316</b>	<b>LEATHER &amp; ALLIED PRODUCT MANUFACTURING</b>	<b>21</b>	<b>2,544</b>	<b>2,571</b>	<b>2,634</b>	<b>\$12,862,811</b>	<b>\$383.06</b>
3162	Footwear Manufacturing	10	2,348	2,369	2,430	11,494,754	371.15
3169	Other Leather Product Manufacturing	11	196	202	204	1,368,057	524.43
<b>321</b>	<b>WOOD PRODUCT MANUFACTURING</b>	<b>405</b>	<b>14,137</b>	<b>14,074</b>	<b>14,044</b>	<b>\$104,108,849</b>	<b>\$568.57</b>
3211	Sawmills and Wood Preservation	190	6,327	6,333	6,298	48,796,256	593.98
3212	Veneer & Engineered Wood Products	49	3,400	3,351	3,369	28,609,101	652.38
3219	Other Wood Product Manufacturing	166	4,410	4,390	4,377	26,703,492	467.66
<b>322</b>	<b>PAPER MANUFACTURING</b>	<b>86</b>	<b>12,242</b>	<b>12,181</b>	<b>12,210</b>	<b>\$146,574,542</b>	<b>\$923.34</b>
3221	Pulp, Paper & Paperboard Mills	12	4,824	4,750	4,709	73,698,931	1190.75
3222	Converted Paper Product Manufacturing	74	7,418	7,431	7,501	72,875,611	752.46
<b>323</b>	<b>PRINTING &amp; RELATED SUPPORT ACTIVITIES</b>	<b>307</b>	<b>4,786</b>	<b>4,805</b>	<b>4,798</b>	<b>\$39,261,647</b>	<b>\$629.67</b>
<b>324</b>	<b>PETROLEUM AND COAL PRODUCTS MFG.</b>	<b>21</b>	<b>978</b>	<b>972</b>	<b>926</b>	<b>\$11,091,172</b>	<b>\$889.95</b>
<b>325</b>	<b>CHEMICAL MANUFACTURING</b>	<b>121</b>	<b>5,119</b>	<b>5,126</b>	<b>5,122</b>	<b>\$60,797,656</b>	<b>\$913.01</b>
3251	Basic Chemical Manufacturing	25	1,593	1,591	1,598	20,994,862	1013.17
3252	Resin, Rubber & Artificial Fibers	8	293	296	294	3,601,694	941.29
3253	Agricultural Chemical Manufacturing	24	456	450	451	5,369,619	913.15
3254	Pharmaceutical & Medicine Manufacturing	13	124	120	131	1,022,703	629.36
3255	Paint, Coating & Adhesive Manufacturing	8	205	202	209	2,288,300	857.26
3256	Cleaning Compound & Toiletry Manufacturing	18	1,088	1,086	1,068	10,945,863	779.14
3259	Other Chemical Preparation Manufacturing	25	1,360	1,381	1,371	16,574,615	930.18



**TABLE 5. STATE SUMMARY  
EMPLOYMENT AND TOTAL EARNINGS, BY INDUSTRY  
THIRD QUARTER 2004**

NORTH AMERICAN INDUSTRY CLASSIFICATION SYSTEM INDUSTRY GROUPS		NUMBER OF EMPLOYING UNITS	EMPLOYMENT			TOTAL EARNINGS	AVERAGE WEEKLY EARNINGS
			JULY	AUGUST	SEPTEMBER	JUL. - SEP. 2004	
<b>326</b>	<b>PLASTICS &amp; RUBBER PRODUCTS MFG.</b>	<b>183</b>	<b>13,170</b>	<b>13,127</b>	<b>13,080</b>	<b>\$115,679,728</b>	<b>\$677.94</b>
3261	Plastics Product Manufacturing	140	7,686	7,627	7,610	60,145,061	605.49
3262	Rubber Product Manufacturing	43	5,484	5,500	5,470	55,534,667	778.88
<b>327</b>	<b>NONMETALLIC MINERAL PRODUCT MFG.</b>	<b>256</b>	<b>4,520</b>	<b>4,515</b>	<b>4,495</b>	<b>\$39,274,318</b>	<b>\$669.87</b>
3271	Clay Product & Refractory Manufacturing	20	535	532	537	4,336,668	623.92
3272	Glass & Glass Product Manufacturing	14	366	362	362	3,293,753	697.34
3273	Cement & Concrete Product Manufacturing	188	2,706	2,717	2,688	22,750,557	647.28
3274	Lime & Gypsum Product Manufacturing	3	397	395	394	4,356,326	847.64
3279	Other Nonmetallic Mineral Products	31	516	509	514	4,537,014	680.31
<b>331</b>	<b>PRIMARY METAL MANUFACTURING</b>	<b>66</b>	<b>8,190</b>	<b>8,163</b>	<b>8,104</b>	<b>\$96,565,134</b>	<b>\$911.16</b>
3311	Iron & Steel Mills and Ferroalloys	7	2,094	2,083	2,082	40,579,847	1496.18
3312	Purchased Steel Product Manufacturing	13	2,222	2,215	2,208	20,618,335	716.04
3313	Alumina & Aluminum Production	20	1,759	1,798	1,755	18,529,661	804.98
3314	Other Nonferrous Metal Production	10	709	705	699	5,833,076	637.05
3315	Foundries	16	1,406	1,362	1,360	11,004,215	615.17
<b>332</b>	<b>FABRICATED METAL PRODUCT MANUFACTURING</b>	<b>574</b>	<b>17,948</b>	<b>17,841</b>	<b>17,899</b>	<b>\$153,847,043</b>	<b>\$661.29</b>
3321	Forging & Stamping	16	815	814	829	6,703,520	629.36
3322	Cutlery & Hand Tool Manufacturing	18	1,323	1,321	1,321	9,921,122	577.42
3323	Architectural & Structural Metals	179	5,021	5,009	4,998	44,615,337	685.11
3324	Boilers, Tanks & Shipping Containers	20	1,101	1,098	1,102	10,772,861	753.12
3325	Hardware Manufacturing	12	507	437	445	3,407,718	566.16
3326	Spring & Wire Product Manufacturing	17	894	880	917	6,404,040	549.18
3327	Machine Shops & Threaded Products	205	1,648	1,653	1,685	12,732,922	589.32
3328	Coating, Engraving & Heat Treating Metals	36	992	996	1,001	7,298,619	563.50
3329	Other Fabricated Metal Product Manufacturing	71	5,647	5,633	5,601	51,990,904	710.73
<b>333</b>	<b>MACHINERY MANUFACTURING</b>	<b>257</b>	<b>14,193</b>	<b>13,910</b>	<b>13,855</b>	<b>118,044,436</b>	<b>\$649.25</b>
3331	Agri., Construction & Mining Machinery	38	2,962	2,822	2,763	15,964,972	431.05
3333	Commercial & Service Industry Machinery	26	1,042	1,038	1,043	9,769,780	721.92
3334	HVAC & Commercial Refrigeration Equipment	26	4,596	4,470	4,449	42,621,635	727.77
3335	Metalworking Machinery Manufacturing	83	1,536	1,522	1,517	14,586,201	735.75
3339	Other General Purpose Machinery Manufacturing	53	3,174	3,176	3,202	26,737,190	645.95
	Other	31	883	882	881	8,364,658	729.52

**TABLE 5. STATE SUMMARY  
EMPLOYMENT AND TOTAL EARNINGS, BY INDUSTRY  
THIRD QUARTER 2004**

NORTH AMERICAN INDUSTRY CLASSIFICATION SYSTEM INDUSTRY GROUPS		NUMBER OF EMPLOYING UNITS	EMPLOYMENT			TOTAL EARNINGS	AVERAGE
			JULY	AUGUST	SEPTEMBER	JUL. - SEP. 2004	WEEKLY EARNINGS
<b>334</b>	<b>COMPUTER &amp; ELECTRONIC PRODUCT MFG.</b>	<b>72</b>	<b>6,217</b>	<b>6,234</b>	<b>6,202</b>	<b>\$51,139,674</b>	<b>\$632.68</b>
3343	Audio & Video Equipment Manufacturing	10	1,647	1,629	1,655	10,936,859	511.84
3344	Semiconductors & Electronic Components	24	1,986	1,980	2,011	17,593,192	679.27
3345	Electronic Instrument Manufacturing	25	1,305	1,314	1,286	10,642,171	628.91
	Other	13	1,279	1,311	1,250	11,967,452	719.20
<b>335</b>	<b>ELECTRICAL EQUIPMENT &amp; APPLIANCES</b>	<b>69</b>	<b>12,876</b>	<b>12,950</b>	<b>12,903</b>	<b>\$116,165,381</b>	<b>\$692.18</b>
3351	Electric Lighting Equipment Manufacturing	14	680	687	665	5,690,317	646.24
3353	Electrical Equipment Manufacturing	29	5,188	5,167	5,162	47,807,688	711.00
	Other	26	7,008	7,096	7,076	62,667,376	682.80
<b>336</b>	<b>TRANSPORTATION EQUIPMENT MANUFACTURING</b>	<b>185</b>	<b>16,288</b>	<b>16,354</b>	<b>16,425</b>	<b>\$137,885,081</b>	<b>\$648.49</b>
3362	Motor Vehicle Body & Trailer Manufacturing	45	3,408	3,443	3,443	27,068,767	606.82
3363	Motor Vehicle Parts Manufacturing	68	7,231	7,200	7,142	54,971,342	588.04
3364	Aerospace Product & Parts Manufacturing	32	3,070	3,083	3,111	36,318,366	904.70
3366	Ship & Boat Building	23	1,673	1,641	1,665	11,459,607	531.14
	Other	17	906	987	1,064	8,066,999	629.56
<b>337</b>	<b>FURNITURE &amp; RELATED PRODUCT MFG.</b>	<b>271</b>	<b>8,109</b>	<b>8,033</b>	<b>7,933</b>	<b>\$54,895,953</b>	<b>\$526.20</b>
3371	Household & Institutional Furniture	221	5,333	5,308	5,271	33,786,578	490.00
3372	Office Furniture & Fixtures Manufacturing	40	2,618	2,575	2,510	20,386,380	610.74
3379	Other Furniture Related Product Manufacturing	10	158	150	152	722,995	362.71
<b>339</b>	<b>MISCELLANEOUS MANUFACTURING</b>	<b>274</b>	<b>6,558</b>	<b>6,513</b>	<b>6,567</b>	<b>\$46,230,362</b>	<b>\$543.26</b>
3391	Medical Equipment & Supplies Manufacturing	94	2,583	2,591	2,577	20,277,622	603.72
3399	Other Miscellaneous Manufacturing	180	3,975	3,922	3,990	25,952,740	503.84

**TABLE 5. STATE SUMMARY  
EMPLOYMENT AND TOTAL EARNINGS, BY INDUSTRY  
THIRD QUARTER 2004**

NORTH AMERICAN INDUSTRY CLASSIFICATION SYSTEM INDUSTRY GROUPS		NUMBER OF EMPLOYING UNITS	EMPLOYMENT			TOTAL EARNINGS	AVERAGE WEEKLY EARNINGS
			JULY	AUGUST	SEPTEMBER	JUL. - SEP. 2004	
<b>TRADE, TRANSPORTATION &amp; UTILITIES</b>		<b>20,862</b>	<b>238,313</b>	<b>238,698</b>	<b>239,250</b>	<b>\$1,704,030,194</b>	<b>\$549.01</b>
<b>42</b>	<b>WHOLESALE TRADE</b>	<b>6,115</b>	<b>46,667</b>	<b>46,314</b>	<b>46,345</b>	<b>\$489,762,582</b>	<b>\$811.21</b>
<b>423</b>	<b>MERCHANT WHOLESALERS, DURABLE GOODS</b>	<b>2,074</b>	<b>21,404</b>	<b>21,429</b>	<b>21,428</b>	<b>\$206,290,771</b>	<b>\$740.82</b>
4231	Motor Vehicle & Part Merchant Wholesalers	237	2,717	2,721	2,688	22,168,933	629.57
4232	Furniture & Furnishing Merchant Wholesalers	55	378	377	380	3,862,843	785.40
4233	Lumber & Supply Merchant Wholesalers	157	1,818	1,817	1,807	16,995,662	720.70
4234	Commercial Goods Merchant Wholesalers	244	2,310	2,307	2,321	31,502,320	1047.82
4235	Metal & Mineral Merchant Wholesalers	53	751	743	754	7,662,784	786.63
4236	Electric Goods Merchant Wholesalers	171	2,188	2,192	2,203	21,827,616	765.17
4237	Hardware & Plumbing Merchant Wholesalers	228	2,220	2,255	2,272	21,973,884	751.58
4238	Machinery & Supply Merchant Wholesalers	716	7,278	7,265	7,265	67,412,787	713.35
4239	Misc. Durable Goods Merchant Wholesalers	213	1,744	1,752	1,738	12,883,942	568.06
<b>424</b>	<b>MERCHANT WHOLESALERS, NONDURABLE GOODS</b>	<b>1,306</b>	<b>16,768</b>	<b>16,433</b>	<b>16,392</b>	<b>\$142,359,141</b>	<b>\$662.43</b>
4241	Paper & Paper Product Merchant Wholesalers	80	1,392	1,318	1,308	11,159,010	640.90
4242	Druggists' Goods Merchant Wholesalers	51	921	915	943	8,649,843	718.29
4243	Apparel & Piece Goods Merchant Wholesalers	41	451	446	447	3,104,567	533.06
4244	Grocery Product Merchant Wholesalers	362	5,323	5,300	5,298	53,118,179	769.93
4245	Farm Product Merchant Wholesalers	83	942	925	994	5,623,408	453.59
4246	Chemical Merchant Wholesalers	82	445	431	419	4,802,695	855.84
4247	Petroleum Merchant Wholesalers	157	1,420	1,427	1,427	11,978,870	646.78
4248	Alcoholic Beverage Merchant Wholesalers	39	1,146	1,148	1,154	10,716,237	717.22
4249	Misc. Nondurable Goods Merchant Wholesalers	411	4,728	4,523	4,402	33,206,332	561.27
<b>425</b>	<b>ELECTRONIC MARKETS &amp; AGENTS &amp; BROKERS</b>	<b>2,735</b>	<b>8,495</b>	<b>8,452</b>	<b>8,525</b>	<b>\$141,112,670</b>	<b>\$1,278.44</b>
<b>44-45</b>	<b>RETAIL TRADE</b>	<b>11,486</b>	<b>130,519</b>	<b>130,887</b>	<b>130,882</b>	<b>\$642,427,845</b>	<b>\$377.92</b>
<b>441</b>	<b>MOTOR VEHICLE &amp; PARTS DEALERS</b>	<b>1,757</b>	<b>18,039</b>	<b>18,076</b>	<b>18,089</b>	<b>\$142,298,575</b>	<b>\$605.82</b>
4411	Automobile Dealers	747	10,957	11,037	11,057	99,172,290	692.44
4412	Other Motor Vehicle Dealers	196	1,416	1,391	1,403	10,431,849	571.82
4413	Automotive Parts, Accessories & Tire Stores	814	5,666	5,648	5,629	32,694,436	445.31

**TABLE 5. STATE SUMMARY  
EMPLOYMENT AND TOTAL EARNINGS, BY INDUSTRY  
THIRD QUARTER 2004**

NORTH AMERICAN INDUSTRY CLASSIFICATION SYSTEM INDUSTRY GROUPS		NUMBER OF EMPLOYING UNITS	EMPLOYMENT			TOTAL EARNINGS	AVERAGE
			JULY	AUGUST	SEPTEMBER	JUL. - SEP. 2004	WEEKLY EARNINGS
<b>442</b>	<b>FURNITURE &amp; HOME FURNISHINGS STORES</b>	<b>629</b>	<b>4,138</b>	<b>4,191</b>	<b>4,170</b>	<b>\$25,878,412</b>	<b>\$477.79</b>
4421	Furniture Stores	321	2,519	2,548	2,534	15,638,051	474.78
4422	Home Furnishings Stores	308	1,619	1,643	1,636	10,240,361	482.47
<b>443</b>	<b>ELECTRONICS &amp; APPLIANCE STORES</b>	<b>507</b>	<b>3,017</b>	<b>3,048</b>	<b>3,036</b>	<b>\$17,165,385</b>	<b>\$435.25</b>
<b>444</b>	<b>BUILDING MATERIAL &amp; GARDEN SUPPLY STORES</b>	<b>811</b>	<b>10,044</b>	<b>10,075</b>	<b>10,096</b>	<b>\$59,647,425</b>	<b>\$455.56</b>
4441	Building Material & Supplies Dealers	628	9,081	9,160	9,193	54,922,160	461.99
4442	Lawn & Garden Equipment & Supplies Stores	183	963	915	903	4,725,265	392.11
<b>445</b>	<b>FOOD &amp; BEVERAGE STORES</b>	<b>1,171</b>	<b>19,625</b>	<b>19,690</b>	<b>19,720</b>	<b>\$74,819,624</b>	<b>\$292.47</b>
4451	Grocery Stores	696	17,239	17,284	17,275	64,443,329	287.11
4452	Specialty Food Stores	164	922	933	959	4,886,127	400.70
4453	Beer, Wine & Liquor Stores	311	1,464	1,473	1,486	5,490,168	286.45
<b>446</b>	<b>HEALTH &amp; PERSONAL CARE STORES</b>	<b>773</b>	<b>5,996</b>	<b>6,028</b>	<b>6,099</b>	<b>\$39,317,065</b>	<b>\$500.64</b>
<b>447</b>	<b>GASOLINE STATIONS</b>	<b>1,683</b>	<b>13,274</b>	<b>13,255</b>	<b>13,210</b>	<b>\$43,575,727</b>	<b>\$253.05</b>
44711	Gasoline Stations with Convenience Stores	1,499	11,858	11,840	11,834	37,790,566	245.44
44719	Other Gasoline Stations	184	1,416	1,415	1,376	5,785,161	317.34
<b>448</b>	<b>CLOTHING &amp; CLOTHING ACCESSORIES STORES</b>	<b>1,069</b>	<b>7,748</b>	<b>8,027</b>	<b>7,914</b>	<b>\$27,517,973</b>	<b>\$268.07</b>
4481	Clothing Stores	683	5,619	5,850	5,723	18,081,693	242.71
4482	Shoe Stores	193	1,182	1,243	1,235	4,017,455	253.31
4483	Jewelry, Luggage & Leather Goods Stores	193	947	934	956	5,418,825	440.78
<b>451</b>	<b>SPORTING GOODS, HOBBY, BOOK &amp; MUSIC STORES</b>	<b>561</b>	<b>4,099</b>	<b>4,189</b>	<b>4,183</b>	<b>\$14,595,827</b>	<b>\$270.09</b>
4511	Sporting Goods & Musical Instrument Stores	399	2,679	2,716	2,718	10,413,813	296.21
4512	Book, Periodical & Music Stores	162	1,420	1,473	1,465	4,182,014	221.45
<b>452</b>	<b>GENERAL MERCHANDISE STORES</b>	<b>693</b>	<b>34,992</b>	<b>35,016</b>	<b>35,108</b>	<b>\$153,428,545</b>	<b>\$336.83</b>

**TABLE 5. STATE SUMMARY  
EMPLOYMENT AND TOTAL EARNINGS, BY INDUSTRY  
THIRD QUARTER 2004**

NORTH AMERICAN INDUSTRY CLASSIFICATION SYSTEM INDUSTRY GROUPS		NUMBER OF EMPLOYING UNITS	EMPLOYMENT			TOTAL EARNINGS	AVERAGE
			JULY	AUGUST	SEPTEMBER	JUL. - SEP. 2004	WEEKLY EARNINGS
<b>453</b>	<b>MISCELLANEOUS STORE RETAILERS</b>	<b>1,512</b>	<b>7,443</b>	<b>7,165</b>	<b>7,053</b>	<b>\$30,446,974</b>	<b>\$324.37</b>
4531	Florists	290	1,067	1,073	1,073	3,488,295	250.54
4532	Office Supplies, Stationery & Gift Stores	438	2,573	2,608	2,597	11,894,829	352.91
4533	Used Merchandise Stores	225	716	784	730	2,666,122	275.90
4539	Other Miscellaneous Store Retailers	559	3,087	2,700	2,653	12,397,728	338.98
<b>454</b>	<b>NONSTORE RETAILERS</b>	<b>320</b>	<b>2,104</b>	<b>2,127</b>	<b>2,204</b>	<b>\$13,736,313</b>	<b>\$492.61</b>
4541	Electronic Shopping & Mail -Order Houses	64	425	447	474	3,368,298	577.49
4542	Vending Machine Operators	89	749	746	758	4,127,163	422.74
4543	Direct Selling Establishments	167	930	934	972	6,240,852	507.83
<b>48-49</b>	<b>TRANSPORTATION &amp; WAREHOUSING</b>	<b>2,937</b>	<b>54,555</b>	<b>54,933</b>	<b>55,489</b>	<b>\$477,224,928</b>	<b>\$667.54</b>
<b>481</b>	<b>AIR TRANSPORTATION</b>	<b>44</b>	<b>967</b>	<b>954</b>	<b>963</b>	<b>\$11,168,203</b>	<b>\$893.65</b>
<b>484</b>	<b>TRUCK TRANSPORTATION</b>	<b>1,972</b>	<b>33,864</b>	<b>34,107</b>	<b>34,035</b>	<b>\$307,118,446</b>	<b>\$694.80</b>
4841	General Freight Trucking	1,199	28,724	28,930	28,899	270,429,644	721.02
4842	Specialized Freight Trucking	773	5,140	5,177	5,136	36,688,802	547.90
<b>485</b>	<b>TRANSIT &amp; GROUND PASSENGER TRANS.</b>	<b>61</b>	<b>789</b>	<b>841</b>	<b>989</b>	<b>\$3,418,395</b>	<b>\$301.21</b>
4853	Taxi & Limousine Service	20	201	201	200	548,411	210.23
4854	School & Employee Bus Transportation	8	205	266	409	1,248,341	327.36
4855	Charter Bus Industry Service	12	108	98	101	506,502	380.73
4859	Other Ground Passenger Transportation	12	153	148	150	611,315	312.80
	Other	9	122	128	129	503,826	306.77
<b>486</b>	<b>PIPELINE TRANSPORTATION</b>	<b>69</b>	<b>973</b>	<b>962</b>	<b>949</b>	<b>\$11,339,415</b>	<b>\$907.35</b>
<b>488</b>	<b>SUPPORT ACTIVITIES FOR TRANSPORTATION</b>	<b>431</b>	<b>4,855</b>	<b>4,873</b>	<b>4,893</b>	<b>\$43,417,675</b>	<b>\$685.28</b>
4881	Support Activities for Air Transportation	106	1,533	1,550	1,526	12,615,167	631.63
4882	Support Activities for Rail Transportation	30	557	545	562	4,275,553	592.95
4883	Support Activities for Water Transportation	28	694	706	727	6,158,332	668.15
4884	Support Activities for Road Transportation	104	456	460	464	2,625,237	439.00
4885	Freight Transportation Arrangement	144	1,451	1,451	1,452	16,715,608	885.95
4889	Other Support Activities for Transportation	19	164	161	162	1,027,778	487.02

**TABLE 5. STATE SUMMARY  
EMPLOYMENT AND TOTAL EARNINGS, BY INDUSTRY  
THIRD QUARTER 2004**

NORTH AMERICAN INDUSTRY CLASSIFICATION SYSTEM INDUSTRY GROUPS		NUMBER OF EMPLOYING UNITS	EMPLOYMENT			TOTAL EARNINGS	AVERAGE
			JULY	AUGUST	SEPTEMBER	JUL. - SEP. 2004	WEEKLY EARNINGS
<b>492</b>	<b>COURIERS &amp; MESSENGERS</b>	<b>129</b>	<b>3,057</b>	<b>3,070</b>	<b>3,075</b>	<b>\$26,927,295</b>	<b>\$675.29</b>
4921	Couriers	86	2,842	2,858	2,869	25,712,451	692.45
4922	Local Messengers & Local Delivery	43	215	212	206	1,214,844	442.89
<b>493</b>	<b>WAREHOUSING &amp; STORAGE</b>	<b>214</b>	<b>9,858</b>	<b>9,923</b>	<b>10,384</b>	<b>\$72,394,843</b>	<b>\$553.84</b>
	<b>OTHER</b>	<b>17</b>	<b>192</b>	<b>203</b>	<b>201</b>	<b>\$1,440,656</b>	<b>\$557.82</b>
<b>22</b>	<b>UTILITIES</b>	<b>324</b>	<b>6,572</b>	<b>6,564</b>	<b>6,534</b>	<b>\$94,614,839</b>	<b>\$1,110.03</b>
2211	Power Generation & Supply	127	4,955	4,951	4,925	79,591,446	1238.44
2212	Natural Gas Distribution	33	815	811	813	9,851,004	932.07
2213	Water, Sewage and Other Systems	164	802	802	796	5,172,389	497.35
<b>INFORMATION</b>		<b>1,213</b>	<b>20,157</b>	<b>20,210</b>	<b>20,188</b>	<b>\$190,666,465</b>	<b>\$726.61</b>
<b>511</b>	<b>PUBLISHING INDUSTRIES, EXCEPT INTERNET</b>	<b>257</b>	<b>6,334</b>	<b>6,494</b>	<b>6,533</b>	<b>\$44,942,168</b>	<b>\$535.68</b>
5111	Newspaper, Book & Directory Publishers	222	6,088	6,247	6,286	41,867,166	518.86
5112	Software Publishers	35	246	247	247	3,075,002	958.94
<b>512</b>	<b>MOTION PICTURE &amp; SOUND RECORDING INDUSTRY</b>	<b>132</b>	<b>1,325</b>	<b>1,315</b>	<b>1,232</b>	<b>\$4,544,199</b>	<b>\$270.83</b>
5121	Motion Picture & Video Industries	117	1,297	1,287	1,204	4,339,908	264.39
5122	Sound Recording Industries	15	28	28	28	204,291	561.24
<b>515</b>	<b>BROADCASTING, EXCEPT INTERNET</b>	<b>145</b>	<b>2,165</b>	<b>2,147</b>	<b>2,160</b>	<b>\$17,004,522</b>	<b>\$606.32</b>
5151	Radio & Television Broadcasting	130	2,084	2,070	2,083	16,321,736	603.90
5152	Cable & Other Subscription Programming	15	81	77	77	682,786	670.49
<b>517</b>	<b>TELECOMMUNICATIONS</b>	<b>501</b>	<b>8,677</b>	<b>8,624</b>	<b>8,641</b>	<b>\$105,280,903</b>	<b>\$936.54</b>
5171	Wired Telecommunications Carriers	216	4,963	4,937	4,955	71,406,982	1109.29
5172	Wireless Telecommunications Carriers	127	1,970	1,941	1,960	17,633,235	693.10
5175	Cable & Other Program Distribution	67	1,147	1,150	1,129	9,237,802	622.24
	Other	91	597	596	597	7,002,884	902.82

**TABLE 5. STATE SUMMARY  
EMPLOYMENT AND TOTAL EARNINGS, BY INDUSTRY  
THIRD QUARTER 2004**

NORTH AMERICAN INDUSTRY CLASSIFICATION SYSTEM INDUSTRY GROUPS		NUMBER OF EMPLOYING UNITS	EMPLOYMENT			TOTAL EARNINGS	AVERAGE
			JULY	AUGUST	SEPTEMBER	JUL. - SEP. 2004	WEEKLY EARNINGS
<b>518</b>	<b>ISPS, SEARCH PORTALS, &amp; DATA PROCESSING</b>	<b>146</b>	<b>1,326</b>	<b>1,306</b>	<b>1,307</b>	<b>\$16,411,667</b>	<b>\$961.49</b>
5181	ISPs, & Web Search Portals	58	244	240	239	1,985,007	633.58
5182	Data Processing & Related Services	88	1,082	1,066	1,068	14,426,660	1035.21
	<b>OTHER</b>	<b>32</b>	<b>330</b>	<b>324</b>	<b>315</b>	<b>\$2,483,006</b>	<b>\$591.33</b>
<b>FINANCIAL ACTIVITIES</b>		<b>7,443</b>	<b>49,586</b>	<b>49,597</b>	<b>49,508</b>	<b>\$424,808,249</b>	<b>\$659.30</b>
<b>52</b>	<b>FINANCE &amp; INSURANCE</b>	<b>4,402</b>	<b>36,054</b>	<b>36,028</b>	<b>36,085</b>	<b>\$345,268,448</b>	<b>\$736.61</b>
<b>522</b>	<b>CREDIT INTERMEDIATION &amp; RELATED ACTIVITIES</b>	<b>1,875</b>	<b>20,990</b>	<b>20,992</b>	<b>20,909</b>	<b>\$170,555,083</b>	<b>\$625.83</b>
5221	Depository Credit Intermediation	1,220	17,544	17,555	17,474	136,540,251	599.34
5222	Nondepository Credit Intermediation	389	2,673	2,657	2,657	28,319,873	818.25
5223	Activities Related to Credit Intermediation	266	773	780	778	5,694,959	563.80
<b>523</b>	<b>FINANCIAL INVESTMENT &amp; RELATED ACTIVITIES</b>	<b>579</b>	<b>3,108</b>	<b>3,112</b>	<b>3,149</b>	<b>\$56,337,044</b>	<b>\$1,387.65</b>
5231	Security & Commodity Investment Activities	331	2,461	2,461	2,475	48,627,138	1517.05
5239	Other Financial Investment Activities	248	647	651	674	7,709,906	902.24
<b>524</b>	<b>INSURANCE CARRIERS &amp; RELATED ACTIVITIES</b>	<b>1,918</b>	<b>11,471</b>	<b>11,473</b>	<b>11,580</b>	<b>\$113,013,981</b>	<b>\$755.42</b>
5241	Insurance Carriers	353	5,019	5,024	5,044	53,571,290	819.42
5242	Insurance Agencies, Brokerages & Support	1,565	6,452	6,449	6,536	59,442,691	705.74
	<b>OTHER</b>	<b>30</b>	<b>485</b>	<b>451</b>	<b>447</b>	<b>\$5,362,340</b>	<b>\$894.77</b>
<b>53</b>	<b>REAL ESTATE &amp; RENTAL &amp; LEASING</b>	<b>3,041</b>	<b>13,532</b>	<b>13,569</b>	<b>13,423</b>	<b>\$79,539,801</b>	<b>\$452.95</b>
<b>531</b>	<b>REAL ESTATE</b>	<b>2,219</b>	<b>8,210</b>	<b>8,261</b>	<b>8,204</b>	<b>\$49,463,485</b>	<b>\$462.60</b>
5311	Lessors of Real Estate	994	4,193	4,217	4,166	22,408,672	411.20
5312	Offices of Real Estate Agents & Brokers	681	1,856	1,853	1,866	12,564,336	520.08
5313	Activities Related to Real Estate	544	2,161	2,191	2,172	14,490,477	512.56

**TABLE 5. STATE SUMMARY  
EMPLOYMENT AND TOTAL EARNINGS, BY INDUSTRY  
THIRD QUARTER 2004**

NORTH AMERICAN INDUSTRY CLASSIFICATION SYSTEM INDUSTRY GROUPS		NUMBER OF EMPLOYING UNITS	EMPLOYMENT			TOTAL EARNINGS	AVERAGE
			JULY	AUGUST	SEPTEMBER	JUL. - SEP. 2004	WEEKLY EARNINGS
<b>532</b>	<b>RENTAL &amp; LEASING SERVICES</b>	<b>796</b>	<b>5,228</b>	<b>5,215</b>	<b>5,124</b>	<b>\$28,823,594</b>	<b>\$427.29</b>
5321	Automotive Equipment Rental & Leasing	125	1,005	1,012	1,006	6,537,668	499.07
5322	Consumer Goods Rental	505	3,395	3,369	3,281	15,436,412	354.63
5323	General Rental Centers	38	220	218	212	1,527,017	542.14
5324	Machinery & Equipment Rental & Leasing	128	608	616	625	5,322,497	664.29
<b>533</b>	<b>LESSORS OF NONFINANCIAL INTANGIBLE ASSETS</b>	<b>26</b>	<b>94</b>	<b>93</b>	<b>95</b>	<b>\$1,252,722</b>	<b>\$1,025.14</b>
<b>PROFESSIONAL &amp; BUSINESS SERVICES</b>		<b>10,095</b>	<b>108,862</b>	<b>109,542</b>	<b>109,201</b>	<b>\$914,517,080</b>	<b>\$644.20</b>
<b>54</b>	<b>PROFESSIONAL &amp; TECHNICAL SERVICES</b>	<b>6,277</b>	<b>33,341</b>	<b>33,436</b>	<b>33,482</b>	<b>\$339,280,055</b>	<b>\$780.93</b>
5411	Legal Services	1,569	6,572	6,612	6,548	58,481,901	683.96
5412	Accounting & Bookkeeping Services	1,140	4,432	4,442	4,536	36,517,740	628.42
5413	Architectural & Engineering Services	851	5,941	5,966	5,954	61,034,010	788.58
5414	Specialized Design Services	149	453	452	450	2,900,604	494.00
5415	Computer Systems Design & Related Services	708	7,137	7,171	7,209	110,874,805	1189.13
5416	Management & Technical Consulting Services	903	2,224	2,256	2,286	24,644,835	840.57
5417	Scientific Research & Development Services	107	1,088	1,077	1,066	10,714,912	765.30
5418	Advertising & Related Services	305	1,960	1,946	1,925	17,949,600	710.38
5419	Other Professional & Technical Services	545	3,534	3,514	3,508	16,161,648	353.32
<b>55</b>	<b>MANAGEMENT OF COMPANIES &amp; ENTERPRISES</b>	<b>475</b>	<b>22,856</b>	<b>22,785</b>	<b>22,902</b>	<b>\$326,059,071</b>	<b>\$1,097.77</b>
<b>56</b>	<b>ADMINISTRATIVE &amp; WASTE SERVICES</b>	<b>3,343</b>	<b>52,665</b>	<b>53,321</b>	<b>52,817</b>	<b>\$249,177,954</b>	<b>\$362.10</b>
<b>561</b>	<b>ADMINISTRATIVE &amp; SUPPORT SERVICES</b>	<b>3,149</b>	<b>49,894</b>	<b>50,548</b>	<b>50,029</b>	<b>\$222,375,747</b>	<b>\$341.05</b>
5611	Office Administrative Services	294	1,075	1,076	1,137	11,998,023	842.08
5612	Facilities Support Services	14	94	109	109	868,954	642.72
5613	Employment Services	598	26,137	26,482	26,255	103,524,901	302.89
5614	Business Support Services	355	4,787	4,855	4,696	22,268,149	358.40
5615	Travel Arrangement & Reservation Services	107	458	464	454	3,267,493	547.99
5616	Investigation & Security Services	211	4,231	4,295	4,305	21,314,167	383.34
5617	Services to Buildings & Dwellings	1,254	11,526	11,680	11,441	48,222,797	321.19
5619	Other Support Services	316	1,586	1,587	1,632	10,911,263	524.03



**TABLE 5. STATE SUMMARY  
EMPLOYMENT AND TOTAL EARNINGS, BY INDUSTRY  
THIRD QUARTER 2004**

NORTH AMERICAN INDUSTRY CLASSIFICATION SYSTEM INDUSTRY GROUPS		NUMBER OF EMPLOYING UNITS	EMPLOYMENT			TOTAL EARNINGS	AVERAGE
			JULY	AUGUST	SEPTEMBER	JUL. - SEP. 2004	WEEKLY EARNINGS
<b>562</b>	<b>WASTE MANAGEMENT &amp; REMEDIATION SERVICES</b>	<b>194</b>	<b>2,771</b>	<b>2,773</b>	<b>2,788</b>	<b>\$26,802,207</b>	<b>\$742.33</b>
5621	Waste Collection Services	85	1,018	1,030	1,061	8,764,793	650.58
5622	Waste Treatment & Disposal Services	39	1,285	1,259	1,261	14,728,800	893.29
5629	Remediation & Other Waste Services	70	468	484	466	3,308,614	538.45
<b>EDUCATION &amp; HEALTH SERVICES</b>		<b>7,863</b>	<b>135,861</b>	<b>136,902</b>	<b>137,914</b>	<b>\$1,074,547,199</b>	<b>\$603.81</b>
<b>61</b>	<b>EDUCATIONAL SERVICES</b>	<b>513</b>	<b>7,453</b>	<b>7,520</b>	<b>8,323</b>	<b>\$49,345,805</b>	<b>\$488.82</b>
6111	Elementary & Secondary Schools	80	2,430	2,582	2,879	13,604,256	397.85
6112	Junior Colleges	8	202	213	229	1,573,083	563.69
6113	Colleges & Universities	26	2,858	2,675	3,072	21,283,776	570.79
6114	Business, Computer, & Management Training	47	212	210	206	2,718,957	999.13
6115	Technical & Trade Schools	105	610	630	640	5,468,826	671.30
6116	Other Schools & Instruction	202	986	1,060	1,148	3,771,188	272.47
6117	Educational Support Services	45	155	150	149	925,719	470.55
<b>62</b>	<b>HEALTH CARE &amp; SOCIAL ASSISTANCE</b>	<b>7,350</b>	<b>128,408</b>	<b>129,382</b>	<b>129,591</b>	<b>\$1,025,201,394</b>	<b>\$610.73</b>
<b>621</b>	<b>AMBULATORY HEALTH CARE SERVICES</b>	<b>4,571</b>	<b>39,655</b>	<b>39,870</b>	<b>39,983</b>	<b>\$456,509,390</b>	<b>\$881.52</b>
6211	Offices of Physicians	2,050	19,739	19,753	19,808	299,330,907	1164.86
6212	Offices of Dentists	895	5,879	5,911	5,902	52,030,987	678.68
6213	Offices of Other Health Practitioners	1,081	5,031	5,061	5,030	36,101,403	550.93
6214	Outpatient Care Centers	198	3,042	3,139	3,172	28,370,259	699.99
6215	Medical & Diagnostic Laboratories	82	676	678	674	7,476,615	850.78
6216	Home Health Care Services	127	3,300	3,317	3,365	20,764,162	480.04
6219	Other Ambulatory Health Care Services	138	1,988	2,011	2,032	12,435,057	475.81
<b>622</b>	<b>HOSPITALS</b>	<b>107</b>	<b>42,053</b>	<b>41,871</b>	<b>41,795</b>	<b>\$366,085,251</b>	<b>\$671.98</b>
6221	General Medical & Surgical Hospitals	77	38,749	38,594	38,532	338,182,696	673.50
6222	Psychiatric & Substance Abuse Hospitals	10	1,364	1,357	1,357	10,489,378	593.58
6223	Other Hospitals	20	1,940	1,920	1,906	17,413,177	696.92

**TABLE 5. STATE SUMMARY  
EMPLOYMENT AND TOTAL EARNINGS, BY INDUSTRY  
THIRD QUARTER 2004**

NORTH AMERICAN INDUSTRY CLASSIFICATION SYSTEM INDUSTRY GROUPS		NUMBER OF EMPLOYING UNITS	EMPLOYMENT			TOTAL EARNINGS	AVERAGE
			JULY	AUGUST	SEPTEMBER	JUL. - SEP. 2004	WEEKLY EARNINGS
<b>623</b>	<b>NURSING &amp; RESIDENTIAL CARE FACILITIES</b>	<b>508</b>	<b>25,722</b>	<b>25,900</b>	<b>25,860</b>	<b>\$117,978,461</b>	<b>\$351.38</b>
6231	Nursing Care Facilities	243	19,429	19,476	19,498	88,469,474	349.57
6232	Residential Mental Health Facilities	132	2,878	2,936	2,897	14,192,166	375.97
6233	Community Care Facilities for the Elderly	89	2,067	2,148	2,121	8,524,595	310.48
6239	Other Residential Care Facilities	44	1,348	1,340	1,344	6,792,226	388.75
<b>624</b>	<b>SOCIAL ASSISTANCE</b>	<b>2,164</b>	<b>20,978</b>	<b>21,741</b>	<b>21,953</b>	<b>\$84,628,292</b>	<b>\$301.98</b>
6241	Individual & Family Services	1,041	9,523	9,737	9,751	41,558,335	330.58
6242	Emergency & Other Relief Services	108	784	809	821	3,935,485	376.22
6243	Vocational Rehabilitation Services	131	3,234	3,197	3,222	14,652,824	350.30
6244	Child Day Care Services	884	7,437	7,998	8,159	24,481,648	239.45
<b>LEISURE &amp; HOSPITALITY</b>		<b>5,853</b>	<b>94,454</b>	<b>94,667</b>	<b>93,446</b>	<b>\$259,297,112</b>	<b>\$211.76</b>
<b>71</b>	<b>ARTS, ENTERTAINMENT &amp; RECREATION</b>	<b>882</b>	<b>10,727</b>	<b>10,610</b>	<b>9,520</b>	<b>\$34,073,868</b>	<b>\$254.83</b>
<b>711</b>	<b>PERFORMING ARTS &amp; SPECTATOR SPORTS</b>	<b>187</b>	<b>2,020</b>	<b>2,149</b>	<b>1,875</b>	<b>\$7,483,702</b>	<b>\$285.74</b>
7111	Performing Arts Companies	43	729	698	682	2,073,019	226.83
7112	Spectator Sports	58	792	773	649	2,968,298	309.39
7113	Performing Arts & Sports Promoters	34	398	570	436	1,704,392	280.14
7114	Agents & Managers for Public Figures	10	18	18	17	133,066	579.39
7115	Independent Artists, Writers & Performers	42	83	90	91	604,927	528.78
<b>712</b>	<b>MUSEUMS, PARKS &amp; HISTORICAL SITES</b>	<b>46</b>	<b>219</b>	<b>230</b>	<b>237</b>	<b>\$856,716</b>	<b>\$288.20</b>
<b>713</b>	<b>GAMBLING, RECREATION &amp; AMUSEMENT INDUSTRY</b>	<b>649</b>	<b>8,488</b>	<b>8,231</b>	<b>7,408</b>	<b>\$25,733,450</b>	<b>\$246.13</b>
7139	Other Amusement & Recreation Industries	618	7,582	7,392	6,944	23,960,003	252.27
	Other	31	906	839	464	1,773,447	185.27
<b>72</b>	<b>ACCOMMODATION &amp; FOOD SERVICES</b>	<b>4,971</b>	<b>83,727</b>	<b>84,057</b>	<b>83,926</b>	<b>\$225,223,244</b>	<b>\$206.49</b>
<b>721</b>	<b>ACCOMMODATION</b>	<b>790</b>	<b>11,935</b>	<b>11,645</b>	<b>11,448</b>	<b>\$38,414,579</b>	<b>\$253.08</b>
7211	Traveler Accommodation	721	11,288	11,233	11,128	36,997,103	253.73
7212	RV Parks & Recreational Camps	49	614	348	250	1,211,315	230.64
7213	Rooming & Boarding Houses	20	33	64	70	206,161	284.88

**TABLE 5. STATE SUMMARY  
EMPLOYMENT AND TOTAL EARNINGS, BY INDUSTRY  
THIRD QUARTER 2004**

NORTH AMERICAN INDUSTRY CLASSIFICATION SYSTEM INDUSTRY GROUPS		NUMBER OF EMPLOYING UNITS	EMPLOYMENT			TOTAL EARNINGS	AVERAGE
			JULY	AUGUST	SEPTEMBER	JUL. - SEP. 2004	WEEKLY EARNINGS
<b>722</b>	<b>FOOD SERVICES &amp; DRINKING PLACES</b>	<b>4,181</b>	<b>71,792</b>	<b>72,412</b>	<b>72,478</b>	<b>\$186,808,665</b>	<b>\$198.95</b>
7221	Full -Service Restaurants	1,758	30,846	31,019	30,968	85,976,102	213.72
7222	Limited-Service Eating Places	2,105	38,481	38,797	38,703	93,605,897	186.25
7223	Special Food Services	149	1,542	1,655	1,854	4,990,257	227.99
7224	Drinking Places, Alcoholic Beverages	169	923	941	953	2,236,409	183.21
<b>OTHER SERVICES</b>		<b>5,514</b>	<b>26,327</b>	<b>26,040</b>	<b>25,932</b>	<b>\$143,254,882</b>	<b>\$422.21</b>
<b>811</b>	<b>REPAIR &amp; MAINTENANCE</b>	<b>2,265</b>	<b>9,657</b>	<b>9,722</b>	<b>9,742</b>	<b>\$63,313,238</b>	<b>\$501.73</b>
8111	Automotive Repair & Maintenance	1,592	7,191	7,207	7,192	45,055,168	481.58
8112	Electronic Equipment Repair & Maintenance	152	519	527	524	4,231,406	621.96
8113	Commercial Machinery Repair & Maintenance	328	1,360	1,401	1,453	10,464,000	573.03
8114	Household Goods Repair & Maintenance	193	587	587	573	3,562,664	470.61
<b>812</b>	<b>PERSONAL &amp; LAUNDRY SERVICES</b>	<b>1,330</b>	<b>8,488</b>	<b>8,405</b>	<b>8,405</b>	<b>\$40,308,732</b>	<b>\$367.70</b>
8121	Personal Care Services	565	2,440	2,430	2,426	8,524,500	269.63
8122	Death Care Services	243	1,753	1,727	1,744	10,226,828	451.77
8123	Drycleaning & Laundry Services	370	3,517	3,476	3,460	15,842,942	349.76
8129	Other Personal Services	152	778	772	775	5,714,462	567.19
<b>813</b>	<b>MEMBERSHIP ASSOCIATIONS &amp; ORGANIZATIONS</b>	<b>978</b>	<b>6,768</b>	<b>6,483</b>	<b>6,350</b>	<b>\$34,450,712</b>	<b>\$405.60</b>
8131	Religious Organizations	38	232	228	222	1,086,466	367.63
8132	Grantmaking & Giving Services	91	375	387	421	3,541,112	690.77
8133	Social Advocacy Organizations	132	1,846	1,902	1,904	9,925,317	405.25
8134	Civic & Social Organizations	210	2,039	1,692	1,522	5,409,760	237.66
8139	Professional & Similar Organizations	507	2,276	2,274	2,281	14,488,057	489.44
<b>814</b>	<b>PRIVATE HOUSEHOLDS</b>	<b>941</b>	<b>1,414</b>	<b>1,430</b>	<b>1,435</b>	<b>\$5,182,200</b>	<b>\$279.48</b>
<b>LOCAL GOVERNMENT</b>		<b>1,988</b>	<b>66,238</b>	<b>86,024</b>	<b>111,859</b>	<b>\$572,923,723</b>	<b>\$500.58</b>
<b>STATE GOVERNMENT</b>		<b>1,202</b>	<b>56,230</b>	<b>57,572</b>	<b>59,749</b>	<b>\$479,989,414</b>	<b>\$638.24</b>
<b>NONCLASSIFIABLE ESTABLISHMENTS</b>		<b>0</b>	<b>0</b>	<b>0</b>	<b>0</b>	<b>\$0</b>	

**TABLE 6. COUNTY SUMMARY  
EMPLOYMENT AND TOTAL EARNINGS, BY INDUSTRY  
THIRD QUARTER 2004**

NORTH AMERICAN INDUSTRY CLASSIFICATION SYSTEM INDUSTRY GROUP	NUMBER OF EMPLOYING UNITS	EMPLOYMENT			TOTAL EARNINGS	AVERAGE WEEKLY EARNINGS
		JULY	AUGUST	SEPTEMBER	JUL. - SEP. 2004	
<b>ARKANSAS COUNTY - TOTAL</b>	<b>661</b>	<b>9,786</b>	<b>9,862</b>	<b>10,034</b>	<b>\$65,512,914</b>	<b>\$509.34</b>
Natural Resources & Mining	45	352	369	346	2,230,298	482.37
Construction	55	292	297	312	2,052,847	525.79
Manufacturing	30	3,458	3,438	3,484	26,071,945	579.63
Trade, Transportation & Utilities	209	2,165	2,151	2,177	14,816,492	526.60
Wholesale Trade	46	497	481	458	4,911,561	789.30
Retail Trade	110	1,102	1,094	1,114	5,111,856	356.39
Transportation, Warehousing & Utilities	53	566	576	605	4,793,075	633.14
Information	9	85	84	84	756,453	689.98
Financial Activities	47	359	361	365	2,526,015	537.26
Professional & Business Services	54	387	394	403	3,431,460	668.81
Education & Health Services	60	1,087	1,123	1,151	6,011,105	412.73
Leisure & Hospitality	58	546	557	556	1,199,281	166.82
Other Services	47	140	141	138	652,103	359.15
Local Government	31	725	741	800	4,524,796	460.80
State Government	16	190	206	218	1,240,119	466.09
<b>ASHLEY COUNTY - TOTAL</b>	<b>540</b>	<b>8,182</b>	<b>8,155</b>	<b>8,494</b>	<b>\$66,829,546</b>	<b>\$621.09</b>
Natural Resources & Mining	62	545	487	519	3,364,826	500.64
Construction	50	718	740	705	4,752,810	507.07
Manufacturing	28	3,076	2,975	2,955	36,199,176	927.57
Trade, Transportation & Utilities	141	1,224	1,204	1,232	7,041,553	443.98
Wholesale Trade	26	164	164	172	1,756,295	810.60
Retail Trade	93	820	803	817	3,453,522	326.63
Transportation, Warehousing & Utilities	22	240	237	243	1,831,736	587.09
Information	11	66	64	64	460,520	547.80
Financial Activities	38	347	348	334	2,513,471	563.68
Professional & Business Services	46	359	350	355	2,140,861	464.33
Education & Health Services	46	518	544	548	3,780,361	541.86
Leisure & Hospitality	33	411	398	396	950,043	181.94
Other Services	41	178	191	192	772,572	317.80
Local Government	32	535	648	980	3,818,170	407.36
State Government	12	205	206	214	1,035,183	382.22

**TABLE 6. COUNTY SUMMARY  
EMPLOYMENT AND TOTAL EARNINGS, BY INDUSTRY  
THIRD QUARTER 2004**

NORTH AMERICAN INDUSTRY CLASSIFICATION SYSTEM INDUSTRY GROUP	NUMBER OF EMPLOYING UNITS	EMPLOYMENT			TOTAL EARNINGS	AVERAGE WEEKLY EARNINGS
		JULY	AUGUST	SEPTEMBER	JUL. - SEP. 2004	
<b>BAXTER COUNTY - TOTAL</b>	<b>1,185</b>	<b>13,375</b>	<b>13,964</b>	<b>14,117</b>	<b>\$86,402,337</b>	<b>\$480.97</b>
Natural Resources & Mining	6	105	109	111	679,575	482.54
Construction	126	624	622	621	3,446,648	426.02
Manufacturing	65	2,495	2,549	2,528	19,050,546	580.60
Trade, Transportation & Utilities	274	2,538	2,545	2,559	12,982,336	392.03
Wholesale Trade	31	181	185	184	1,279,280	536.76
Retail Trade	216	2,111	2,115	2,129	10,113,598	367.26
Transportation, Warehousing & Utilities	27	246	245	246	1,589,458	497.69
Information	24	295	297	294	2,130,812	555.00
Financial Activities	106	623	629	634	4,492,438	549.69
Professional & Business Services	134	807	815	793	5,030,604	480.71
Education & Health Services	171	3,023	3,048	3,053	25,404,971	642.56
Leisure & Hospitality	122	1,588	1,563	1,543	3,989,636	196.14
Other Services	109	431	439	444	1,678,270	294.74
Local Government	36	621	1,077	1,261	5,984,405	466.72
State Government	12	225	271	276	1,532,096	457.98
<b>BENTON COUNTY - TOTAL</b>	<b>4,443</b>	<b>82,762</b>	<b>84,198</b>	<b>85,691</b>	<b>\$742,252,952</b>	<b>\$677.97</b>
Natural Resources & Mining	29	672	679	671	6,881,112	785.34
Construction	646	4,315	4,367	4,393	32,922,459	581.07
Manufacturing	235	14,132	14,216	14,283	120,187,787	650.60
Trade, Transportation & Utilities	1,211	21,046	21,092	21,029	182,668,046	667.34
Wholesale Trade	496	2,939	2,938	2,935	40,111,534	1050.44
Retail Trade	559	6,992	7,020	6,973	38,868,244	427.43
Transportation, Warehousing & Utilities	156	11,115	11,134	11,121	103,688,268	717.05
Information	68	904	886	886	7,619,075	657.04
Financial Activities	481	3,149	3,164	3,163	27,222,433	662.95
Professional & Business Services	690	20,288	20,316	20,301	244,131,463	925.01
Education & Health Services	372	5,875	6,100	6,107	46,366,281	591.74
Leisure & Hospitality	327	6,205	6,274	6,292	19,414,080	238.68
Other Services	290	1,717	1,693	1,694	11,396,607	515.28
Local Government	75	3,863	4,811	6,193	38,826,285	602.67
State Government	19	596	600	679	4,617,324	568.29

**TABLE 6. COUNTY SUMMARY  
EMPLOYMENT AND TOTAL EARNINGS, BY INDUSTRY  
THIRD QUARTER 2004**

NORTH AMERICAN INDUSTRY CLASSIFICATION SYSTEM INDUSTRY GROUP	NUMBER OF EMPLOYING UNITS	EMPLOYMENT			TOTAL EARNINGS	AVERAGE WEEKLY EARNINGS
		JULY	AUGUST	SEPTEMBER	JUL. - SEP. 2004	
<b>BOONE COUNTY - TOTAL</b>	<b>1,001</b>	<b>12,771</b>	<b>13,079</b>	<b>13,636</b>	<b>\$93,586,763</b>	<b>\$546.95</b>
Construction	96	476	509	484	2,984,015	468.77
Manufacturing	70	2,188	2,149	2,144	16,450,018	585.74
Trade, Transportation & Utilities	270	4,132	4,237	4,247	36,529,585	668.19
Wholesale Trade	53	698	700	697	4,863,861	535.77
Retail Trade	167	1,914	2,013	2,017	10,253,154	398.07
Transportation, Warehousing & Utilities	50	1,520	1,524	1,533	21,412,570	1079.61
Information	17	427	418	415	3,532,397	646.96
Financial Activities	95	602	604	596	4,559,433	583.89
Professional & Business Services	107	524	539	523	2,574,365	374.58
Education & Health Services	118	1,099	1,096	1,097	7,177,246	503.13
Leisure & Hospitality	83	1,227	1,255	1,222	3,071,378	191.36
Local Government	51	1,356	1,479	2,113	11,334,899	528.65
State Government	20	480	534	530	3,838,163	573.66
Other	74	260	259	265	1,535,264	451.90
<b>BRADLEY COUNTY - TOTAL</b>	<b>344</b>	<b>3,949</b>	<b>4,028</b>	<b>4,215</b>	<b>\$25,141,552</b>	<b>\$475.88</b>
Natural Resources & Mining	57	378	398	394	1,625,919	320.69
Construction	21	189	189	189	1,415,057	575.93
Manufacturing	10	1,075	1,089	1,066	8,301,434	593.10
Trade, Transportation & Utilities	92	614	614	613	3,282,337	411.44
Wholesale Trade	13	193	197	195	1,136,054	448.15
Retail Trade	49	318	310	313	1,357,369	332.88
Transportation, Warehousing & Utilities	30	103	107	105	788,914	577.96
Information	3	12	13	14	79,618	471.11
Financial Activities	22	191	187	187	1,264,185	516.35
Professional & Business Services	25	143	143	143	1,485,383	799.02
Education & Health Services	36	519	527	527	3,248,272	476.54
Leisure & Hospitality	18	213	211	206	344,263	126.10
Other Services	32	106	105	105	441,614	322.50
Local Government	16	269	313	531	2,186,450	453.34
State Government	12	240	239	240	1,467,020	470.85

**TABLE 6. COUNTY SUMMARY  
EMPLOYMENT AND TOTAL EARNINGS, BY INDUSTRY  
THIRD QUARTER 2004**

NORTH AMERICAN INDUSTRY CLASSIFICATION SYSTEM INDUSTRY GROUP	NUMBER OF EMPLOYING UNITS	EMPLOYMENT			TOTAL EARNINGS	AVERAGE WEEKLY EARNINGS
		JULY	AUGUST	SEPTEMBER	JUL. - SEP. 2004	
<b>CALHOUN COUNTY - TOTAL</b>	<b>125</b>	<b>3,576</b>	<b>3,655</b>	<b>3,713</b>	<b>\$28,273,314</b>	<b>\$596.18</b>
Natural Resources & Mining	23	143	147	140	949,735	509.70
Construction	9	87	88	84	482,643	430.04
Manufacturing	16	2,473	2,503	2,519	21,387,856	658.53
Trade, Transportation & Utilities	27	205	206	199	1,231,375	465.84
Wholesale Trade & Retail Trade	17	73	70	70	251,905	272.92
Transportation, Warehousing & Utilities	10	132	136	129	979,470	569.35
Professional & Business Services	8	98	98	94	531,330	422.81
Education & Health Services	4	44	43	43	281,211	499.19
Local Government	11	130	164	199	785,445	367.66
State Government	10	289	297	328	1,918,189	484.31
Other	17	107	109	107	705,530	504.07
<b>CARROLL COUNTY - TOTAL</b>	<b>799</b>	<b>9,831</b>	<b>10,225</b>	<b>10,173</b>	<b>\$56,449,384</b>	<b>\$430.94</b>
Natural Resources & Mining	15	282	278	283	2,029,384	555.54
Trade, Transportation & Utilities	217	1,700	1,683	1,667	9,406,064	429.83
Wholesale Trade	26	116	116	110	535,903	361.61
Retail Trade	172	1,308	1,297	1,289	6,434,454	381.32
Transportation, Warehousing & Utilities	19	276	270	268	2,435,707	690.52
Professional & Business Services	67	222	214	209	1,238,566	443.14
Education & Health Services	58	709	728	728	5,405,160	576.14
Leisure & Hospitality	172	2,030	2,003	1,962	5,311,990	204.48
Local Government	24	553	975	1,010	5,098,220	463.56
State Government	11	107	102	100	629,380	470.04
Other	235	4,228	4,242	4,214	27,330,620	497.25

**TABLE 6. COUNTY SUMMARY  
EMPLOYMENT AND TOTAL EARNINGS, BY INDUSTRY  
THIRD QUARTER 2004**

NORTH AMERICAN INDUSTRY CLASSIFICATION SYSTEM INDUSTRY GROUP	NUMBER OF EMPLOYING UNITS	EMPLOYMENT			TOTAL EARNINGS	AVERAGE WEEKLY EARNINGS
		JULY	AUGUST	SEPTEMBER	JUL. - SEP. 2004	
<b>CHICOT COUNTY - TOTAL</b>	<b>342</b>	<b>3,507</b>	<b>3,698</b>	<b>3,800</b>	<b>\$20,641,092</b>	<b>\$432.83</b>
Natural Resources & Mining	54	284	279	304	2,063,681	549.29
Construction	23	270	290	306	2,384,055	635.30
Manufacturing	14	321	307	326	1,570,938	380.00
Trade, Transportation & Utilities	87	616	624	629	3,240,195	400.07
Wholesale Trade	14	111	110	106	825,106	582.29
Retail Trade	58	425	426	435	1,612,874	289.43
Transportation, Warehousing & Utilities	15	80	88	88	802,215	723.15
Information	5	22	23	24	111,185	371.86
Financial Activities	28	154	153	154	1,061,086	531.16
Professional & Business Services	26	156	143	140	917,011	482.05
Education & Health Services	37	428	434	448	2,372,670	417.97
Leisure & Hospitality	23	273	283	286	537,691	147.37
Other Services	18	59	58	57	273,083	362.18
Local Government	16	629	808	831	4,362,596	443.89
State Government	11	295	296	295	1,746,901	455.00
<b>CLARK COUNTY - TOTAL</b>	<b>611</b>	<b>9,238</b>	<b>9,480</b>	<b>9,923</b>	<b>\$58,410,388</b>	<b>\$470.63</b>
Natural Resources & Mining	45	281	290	293	2,016,080	538.48
Construction	39	98	100	113	611,672	453.87
Manufacturing	36	2,470	2,446	2,471	17,382,553	543.03
Trade, Transportation & Utilities	140	1,483	1,474	1,481	8,633,706	448.94
Wholesale Trade	24	75	73	77	527,221	540.74
Retail Trade	93	1,123	1,112	1,118	5,628,200	387.36
Transportation, Warehousing & Utilities	23	285	289	286	2,478,285	665.01
Information	10	51	52	52	387,615	577.09
Financial Activities	86	389	390	392	2,537,745	500.11
Professional & Business Services	47	332	325	328	3,184,734	746.13
Education & Health Services	62	1,357	1,388	1,470	8,731,335	478.04
Leisure & Hospitality	55	1,053	1,044	1,057	2,567,390	187.85
Other Services	50	202	221	223	1,176,186	420.17
Local Government	27	611	759	919	4,352,888	438.84
State Government	14	911	991	1,124	6,828,484	520.75



**TABLE 6. COUNTY SUMMARY  
EMPLOYMENT AND TOTAL EARNINGS, BY INDUSTRY  
THIRD QUARTER 2004**

NORTH AMERICAN INDUSTRY CLASSIFICATION SYSTEM INDUSTRY GROUP	NUMBER OF EMPLOYING UNITS	EMPLOYMENT			TOTAL EARNINGS	AVERAGE WEEKLY EARNINGS
		JULY	AUGUST	SEPTEMBER	JUL. - SEP. 2004	
<b>CLAY COUNTY - TOTAL</b>	<b>414</b>	<b>4,890</b>	<b>5,215</b>	<b>5,210</b>	<b>\$26,330,900</b>	<b>\$396.76</b>
Natural Resources & Mining	56	238	221	221	1,216,127	412.71
Construction	44	199	197	192	1,148,635	450.80
Manufacturing	24	1,849	1,876	1,843	9,102,468	377.26
Trade, Transportation & Utilities	100	897	864	884	4,910,559	428.43
Wholesale Trade	25	241	215	220	1,357,090	463.28
Retail Trade	55	470	463	454	1,937,335	322.33
Transportation, Warehousing & Utilities	20	186	186	210	1,616,134	640.81
Information	8	138	143	137	811,975	448.27
Financial Activities	37	155	151	156	950,243	474.65
Professional & Business Services	23	64	62	63	287,369	350.88
Education & Health Services	39	455	494	478	2,370,298	383.32
Leisure & Hospitality	24	209	213	204	414,804	152.91
Other Services	25	52	46	53	256,087	391.37
Local Government	22	554	868	900	4,420,159	439.29
State Government	12	80	80	79	442,176	426.95
<b>CLEBURNE COUNTY - TOTAL</b>	<b>662</b>	<b>6,337</b>	<b>6,530</b>	<b>6,730</b>	<b>\$37,401,598</b>	<b>\$440.43</b>
Natural Resources & Mining	14	34	34	32	249,073	574.78
Construction	65	253	242	256	1,704,472	523.75
Manufacturing	48	1,779	1,815	1,843	13,003,422	551.92
Trade, Transportation & Utilities	194	1,499	1,492	1,489	8,233,984	424.14
Wholesale Trade	38	162	161	168	949,132	446.09
Retail Trade	115	990	982	987	4,612,408	359.72
Transportation, Warehousing & Utilities	41	347	349	334	2,672,444	598.76
Information	8	61	62	58	357,087	455.27
Financial Activities	66	251	250	253	1,593,275	487.64
Professional & Business Services	60	200	200	198	1,145,423	442.02
Education & Health Services	62	719	756	768	4,496,776	462.65
Leisure & Hospitality	61	885	856	795	2,229,723	202.90
Other Services	54	161	162	154	653,672	316.24
Local Government	20	388	555	774	3,114,247	418.56
State Government	10	107	106	110	620,444	443.28

**TABLE 6. COUNTY SUMMARY  
EMPLOYMENT AND TOTAL EARNINGS, BY INDUSTRY  
THIRD QUARTER 2004**

NORTH AMERICAN INDUSTRY CLASSIFICATION SYSTEM INDUSTRY GROUP	NUMBER OF EMPLOYING UNITS	EMPLOYMENT			TOTAL EARNINGS	AVERAGE
		JULY	AUGUST	SEPTEMBER	JUL. - SEP. 2004	WEEKLY EARNINGS
<b>CLEVELAND COUNTY - TOTAL</b>	<b>110</b>	<b>849</b>	<b>1,036</b>	<b>1,081</b>	<b>\$5,286,742</b>	<b>\$411.33</b>
Natural Resources & Mining	18	169	173	179	1,166,404	516.64
Construction	8	50	50	50	144,307	222.01
Manufacturing	6	89	93	97	527,852	436.60
Trade, Transportation & Utilities	33	218	231	235	1,030,340	347.62
Wholesale Trade	6	52	57	53	245,838	350.20
Retail Trade	15	76	73	84	192,755	190.91
Transportation, Warehousing & Utilities	12	90	101	98	591,747	472.52
Financial Activities	4	28	30	30	175,169	459.36
Local Government	12	131	284	320	1,408,894	442.35
State Government	8	52	55	55	313,028	445.91
Other	21	112	120	115	520,748	346.32
<b>COLUMBIA COUNTY - TOTAL</b>	<b>685</b>	<b>8,788</b>	<b>9,024</b>	<b>9,240</b>	<b>\$63,965,832</b>	<b>\$545.67</b>
Natural Resources & Mining	46	400	409	399	4,160,664	794.83
Construction	49	322	312	306	2,275,377	558.60
Manufacturing	39	2,783	2,819	2,771	27,881,847	768.45
Trade, Transportation & Utilities	188	1,581	1,598	1,608	8,152,304	393.00
Wholesale Trade	29	281	277	284	1,633,371	447.66
Retail Trade	115	1,066	1,082	1,087	4,532,276	323.31
Transportation, Warehousing & Utilities	44	234	239	237	1,986,657	645.72
Information	9	79	80	79	523,720	507.81
Financial Activities	74	394	391	399	2,637,790	514.12
Professional & Business Services	62	349	346	332	1,771,933	398.16
Education & Health Services	73	802	819	846	4,097,454	383.29
Leisure & Hospitality	46	605	604	612	1,454,882	184.37
Other Services	54	227	231	235	932,948	310.67
Local Government	30	710	899	1,124	5,910,221	499.05
State Government	15	536	516	529	4,166,692	608.19

**TABLE 6. COUNTY SUMMARY  
EMPLOYMENT AND TOTAL EARNINGS, BY INDUSTRY  
THIRD QUARTER 2004**

NORTH AMERICAN INDUSTRY CLASSIFICATION SYSTEM INDUSTRY GROUP	NUMBER OF EMPLOYING UNITS	EMPLOYMENT			TOTAL EARNINGS	AVERAGE WEEKLY EARNINGS
		JULY	AUGUST	SEPTEMBER	JUL. - SEP. 2004	
<b>CONWAY COUNTY - TOTAL</b>	<b>468</b>	<b>6,363</b>	<b>6,522</b>	<b>6,609</b>	<b>\$39,538,181</b>	<b>\$468.05</b>
Natural Resources & Mining	17	134	129	131	993,885	582.13
Construction	48	581	578	563	4,777,777	640.28
Manufacturing	29	1,092	1,077	1,076	10,249,617	728.90
Trade, Transportation & Utilities	131	1,403	1,422	1,393	7,662,866	419.24
Wholesale Trade	28	248	249	249	1,727,702	534.45
Retail Trade	79	933	927	898	4,121,896	344.89
Transportation, Warehousing & Utilities	24	222	246	246	1,813,268	586.06
Information	6	40	43	42	210,527	388.67
Financial Activities	39	189	189	186	1,179,018	482.41
Professional & Business Services	47	689	699	704	3,096,422	341.57
Education & Health Services	51	715	734	736	4,433,547	468.25
Leisure & Hospitality	39	461	459	478	1,062,949	175.46
Other Services	23	92	93	89	522,270	439.87
Local Government	27	659	760	840	3,508,248	358.39
State Government	11	308	339	371	1,841,055	417.35
<b>CRAIGHEAD COUNTY - TOTAL</b>	<b>2,484</b>	<b>38,729</b>	<b>39,578</b>	<b>39,975</b>	<b>\$268,048,630</b>	<b>\$522.97</b>
Natural Resources & Mining	58	261	249	278	1,479,035	433.14
Construction	219	1,996	1,980	1,924	13,265,374	518.85
Manufacturing	149	7,549	7,536	7,508	59,057,548	603.23
Trade, Transportation & Utilities	710	7,832	7,887	7,865	45,966,230	449.78
Wholesale Trade	174	1,491	1,461	1,466	11,971,637	625.32
Retail Trade	427	5,276	5,375	5,297	25,373,050	367.15
Transportation, Warehousing & Utilities	109	1,065	1,051	1,102	8,621,543	618.27
Information	32	646	641	626	5,241,718	632.32
Financial Activities	248	1,590	1,590	1,572	13,457,818	653.55
Professional & Business Services	297	3,442	3,332	3,213	18,217,936	420.96
Education & Health Services	340	6,546	6,586	6,639	61,351,382	716.10
Leisure & Hospitality	180	3,640	3,615	3,621	9,451,043	200.53
Other Services	187	1,107	1,135	1,099	5,187,025	358.28
Local Government	39	2,153	2,750	3,332	16,969,173	475.53
State Government	25	1,967	2,277	2,298	18,404,348	649.21

**TABLE 6. COUNTY SUMMARY  
EMPLOYMENT AND TOTAL EARNINGS, BY INDUSTRY  
THIRD QUARTER 2004**

NORTH AMERICAN INDUSTRY CLASSIFICATION SYSTEM INDUSTRY GROUP	NUMBER OF EMPLOYING UNITS	EMPLOYMENT			TOTAL EARNINGS	AVERAGE WEEKLY EARNINGS
		JULY	AUGUST	SEPTEMBER	JUL. - SEP. 2004	
<b>CRAWFORD COUNTY - TOTAL</b>	<b>1,122</b>	<b>16,864</b>	<b>17,844</b>	<b>18,041</b>	<b>\$112,341,721</b>	<b>\$491.48</b>
Natural Resources & Mining	24	450	433	461	3,259,580	559.68
Construction	181	1,367	1,355	1,349	9,656,725	547.40
Manufacturing	79	3,547	3,546	3,495	24,684,439	538.01
Trade, Transportation & Utilities	302	5,968	6,040	6,066	39,673,152	506.55
Wholesale Trade	71	623	623	624	4,943,282	610.03
Retail Trade	167	1,772	1,758	1,775	8,315,888	361.74
Transportation, Warehousing & Utilities	64	3,573	3,659	3,667	26,413,982	559.27
Financial Activities	106	496	501	496	3,209,548	496.09
Professional & Business Services	128	652	657	652	3,842,647	452.20
Education & Health Services	84	1,424	1,426	1,432	8,898,909	479.59
Leisure & Hospitality	73	1,323	1,309	1,307	3,322,283	194.64
Local Government	42	890	1,826	2,038	10,740,977	521.39
State Government	11	170	168	167	1,113,013	508.61
Other	92	577	583	578	3,940,448	523.21
<b>CRITTENDEN COUNTY - TOTAL</b>	<b>1,107</b>	<b>15,198</b>	<b>15,217</b>	<b>15,985</b>	<b>\$100,954,837</b>	<b>\$502.10</b>
Natural Resources & Mining	51	336	314	380	1,706,811	382.41
Construction	77	712	713	716	4,869,145	524.82
Manufacturing	54	1,548	1,549	1,561	14,487,035	717.72
Trade, Transportation & Utilities	316	5,251	4,939	4,874	36,300,384	556.09
Wholesale Trade	61	597	600	582	5,245,441	680.43
Retail Trade	169	2,382	2,088	2,028	9,911,460	351.99
Transportation, Warehousing & Utilities	86	2,272	2,251	2,264	21,143,483	718.91
Information	10	91	85	88	748,707	654.46
Financial Activities	104	492	490	476	3,580,141	566.66
Professional & Business Services	113	754	747	804	4,155,179	416.00
Education & Health Services	127	1,681	1,710	1,712	12,083,922	546.46
Leisure & Hospitality	102	2,036	2,015	1,939	5,514,988	212.47
Other Services	96	614	617	593	3,181,687	402.54
Local Government	40	1,259	1,661	2,380	11,780,961	512.96
State Government	17	424	377	462	2,545,877	465.17

**TABLE 6. COUNTY SUMMARY  
EMPLOYMENT AND TOTAL EARNINGS, BY INDUSTRY  
THIRD QUARTER 2004**

NORTH AMERICAN INDUSTRY CLASSIFICATION SYSTEM INDUSTRY GROUP	NUMBER OF EMPLOYING UNITS	EMPLOYMENT			TOTAL EARNINGS	AVERAGE WEEKLY EARNINGS
		JULY	AUGUST	SEPTEMBER	JUL. - SEP. 2004	
<b>CROSS COUNTY - TOTAL</b>	<b>469</b>	<b>5,038</b>	<b>5,268</b>	<b>5,402</b>	<b>\$30,948,867</b>	<b>\$454.68</b>
Natural Resources & Mining	40	247	244	272	1,391,112	420.74
Construction	32	159	156	156	810,521	397.12
Manufacturing	18	1,014	995	976	6,746,981	521.61
Trade, Transportation & Utilities	130	1,250	1,257	1,285	7,959,994	484.42
Wholesale Trade	33	336	327	323	2,506,232	586.57
Retail Trade	66	649	656	651	3,284,662	387.53
Transportation, Warehousing & Utilities	31	265	274	311	2,169,100	588.90
Information	9	60	59	59	378,229	490.36
Financial Activities	43	381	377	370	2,557,284	523.18
Professional & Business Services	40	175	172	169	1,091,702	488.24
Education & Health Services	53	601	604	608	3,474,174	442.21
Leisure & Hospitality	31	388	370	367	824,560	169.14
Other Services	44	88	87	85	376,766	334.41
Local Government	17	448	723	832	3,825,701	440.77
State Government	12	227	224	223	1,511,843	517.64
<b>DALLAS COUNTY - TOTAL</b>	<b>275</b>	<b>3,069</b>	<b>3,088</b>	<b>3,324</b>	<b>\$17,949,195</b>	<b>\$436.89</b>
Natural Resources & Mining	40	208	210	215	1,536,566	560.18
Construction	15	92	87	81	489,960	434.88
Manufacturing	16	900	907	899	6,114,894	521.48
Trade, Transportation & Utilities	80	508	498	506	2,448,729	373.74
Wholesale Trade	10	50	50	48	287,688	448.58
Retail Trade	49	380	373	384	1,690,557	343.12
Transportation, Warehousing & Utilities	21	78	75	74	470,484	478.30
Information	3	24	24	25	151,026	477.43
Financial Activities	20	109	106	107	611,012	437.90
Professional & Business Services	16	50	49	49	429,064	669.02
Education & Health Services	26	677	680	712	3,687,703	411.31
Leisure & Hospitality	17	139	132	137	283,095	160.12
Other Services	17	69	66	66	249,379	286.31
Local Government	16	227	262	463	1,565,465	379.48
State Government	9	66	67	64	382,302	447.84

**TABLE 6. COUNTY SUMMARY  
EMPLOYMENT AND TOTAL EARNINGS, BY INDUSTRY  
THIRD QUARTER 2004**

NORTH AMERICAN INDUSTRY CLASSIFICATION SYSTEM INDUSTRY GROUP	NUMBER OF EMPLOYING UNITS	EMPLOYMENT			TOTAL EARNINGS	AVERAGE WEEKLY EARNINGS
		JULY	AUGUST	SEPTEMBER	JUL. - SEP. 2004	
<b>DESHA COUNTY - TOTAL</b>	<b>448</b>	<b>4,649</b>	<b>4,920</b>	<b>5,228</b>	<b>\$31,981,456</b>	<b>\$498.77</b>
Natural Resources & Mining	55	304	284	379	1,850,099	441.52
Construction	25	135	137	135	1,029,687	583.83
Manufacturing	16	1,062	1,088	1,089	9,661,242	688.34
Trade, Transportation & Utilities	139	1,150	1,133	1,227	6,234,387	409.89
Wholesale Trade	20	206	198	201	1,789,439	682.56
Retail Trade	88	740	726	726	3,008,327	316.71
Transportation, Warehousing & Utilities	31	204	209	300	1,436,621	464.98
Information	6	25	25	25	226,607	697.25
Financial Activities	37	231	233	224	1,219,570	409.07
Professional & Business Services	35	213	208	215	2,509,953	910.72
Education & Health Services	38	504	516	514	2,737,408	411.81
Leisure & Hospitality	35	324	329	324	608,830	143.81
Other Services	29	72	73	69	223,272	240.77
Local Government	22	475	741	867	4,655,279	515.74
State Government	11	154	153	160	1,025,122	506.57
<b>DREW COUNTY - TOTAL</b>	<b>502</b>	<b>6,402</b>	<b>6,576</b>	<b>7,023</b>	<b>\$38,421,588</b>	<b>\$443.30</b>
Natural Resources & Mining	45	320	336	354	2,297,550	524.95
Construction	25	143	145	155	982,352	511.73
Manufacturing	27	1,380	1,375	1,377	8,982,369	501.66
Trade, Transportation & Utilities	143	1,271	1,294	1,310	7,167,371	426.84
Wholesale Trade	26	265	273	271	1,987,774	567.02
Retail Trade	95	910	922	939	4,221,228	351.54
Transportation, Warehousing & Utilities	22	96	99	100	958,369	749.70
Information	9	91	92	89	590,150	500.69
Financial Activities	48	274	277	275	1,954,232	545.98
Professional & Business Services	42	276	284	278	1,447,899	398.72
Education & Health Services	53	752	755	750	3,485,792	356.41
Leisure & Hospitality	40	568	555	607	1,092,076	145.67
Other Services	30	92	96	98	352,872	284.73
Local Government	23	723	796	1,172	5,120,338	439.10
State Government	17	512	571	558	4,948,587	695.91

**TABLE 6. COUNTY SUMMARY  
EMPLOYMENT AND TOTAL EARNINGS, BY INDUSTRY  
THIRD QUARTER 2004**

NORTH AMERICAN INDUSTRY CLASSIFICATION SYSTEM INDUSTRY GROUP	NUMBER OF EMPLOYING UNITS	EMPLOYMENT			TOTAL EARNINGS	AVERAGE WEEKLY EARNINGS
		JULY	AUGUST	SEPTEMBER	JUL. - SEP. 2004	
<b>FAULKNER COUNTY - TOTAL</b>	<b>2,173</b>	<b>33,466</b>	<b>34,125</b>	<b>34,832</b>	<b>\$246,818,939</b>	<b>\$556.11</b>
Natural Resources & Mining	8	48	47	46	435,255	712.36
Construction	311	2,722	2,723	2,672	20,124,742	572.15
Manufacturing	113	5,203	5,224	5,171	48,061,426	711.06
Trade, Transportation & Utilities	547	5,963	6,136	6,144	32,986,479	417.27
Wholesale Trade	118	658	688	703	5,673,742	639.01
Retail Trade	366	4,683	4,824	4,809	21,834,289	351.96
Transportation, Warehousing & Utilities	63	622	624	632	5,478,448	673.19
Information	38	392	386	390	2,890,664	571.13
Financial Activities	246	1,309	1,311	1,320	9,173,284	537.29
Professional & Business Services	290	5,019	5,118	4,877	54,388,738	835.97
Education & Health Services	257	4,278	4,272	4,343	32,424,806	580.37
Leisure & Hospitality	176	3,649	3,616	3,691	8,816,989	185.71
Other Services	132	592	618	621	2,889,103	364.13
Local Government	36	1,725	1,999	2,858	14,231,025	498.95
State Government	19	2,566	2,675	2,699	20,396,428	592.80
<b>FRANKLIN COUNTY - TOTAL</b>	<b>316</b>	<b>3,908</b>	<b>4,290</b>	<b>4,354</b>	<b>\$25,632,792</b>	<b>\$471.26</b>
Natural Resources & Mining	8	159	156	147	1,311,609	655.15
Construction	28	159	159	167	1,070,682	509.44
Manufacturing	20	1,073	1,079	1,063	7,089,486	508.88
Trade, Transportation & Utilities	101	855	852	857	5,235,066	471.17
Wholesale Trade	13	43	48	53	200,734	321.69
Retail Trade	61	508	501	503	2,016,599	307.78
Transportation, Warehousing & Utilities	27	304	303	301	3,017,733	766.96
Information	7	61	58	60	267,503	344.87
Financial Activities	25	178	176	180	953,260	411.95
Professional & Business Services	18	56	53	53	294,368	419.33
Education & Health Services	37	540	545	543	3,256,666	461.63
Leisure & Hospitality	26	320	327	313	724,648	174.19
Other Services	16	52	53	45	251,131	386.36
Local Government	20	341	705	793	4,336,026	544.11
State Government	10	114	127	133	842,347	519.75

**TABLE 6. COUNTY SUMMARY  
EMPLOYMENT AND TOTAL EARNINGS, BY INDUSTRY  
THIRD QUARTER 2004**

NORTH AMERICAN INDUSTRY CLASSIFICATION SYSTEM INDUSTRY GROUP	NUMBER OF EMPLOYING UNITS	EMPLOYMENT			TOTAL EARNINGS	AVERAGE
		JULY	AUGUST	SEPTEMBER	JUL. - SEP. 2004	WEEKLY EARNINGS
<b>FULTON COUNTY - TOTAL</b>	<b>207</b>	<b>1,790</b>	<b>1,811</b>	<b>1,901</b>	<b>\$8,171,069</b>	<b>\$342.72</b>
Construction	16	33	32	33	179,292	422.19
Manufacturing	11	165	160	145	572,092	280.90
Trade, Transportation & Utilities	58	376	381	384	2,008,194	406.16
Retail Trade	43	212	213	215	676,170	243.81
Other Trade, Transportation & Utilities	15	164	168	169	1,332,024	613.55
Financial Activities	21	133	122	119	722,114	445.57
Professional & Business Services	16	44	45	44	277,557	481.59
Education & Health Services	26	353	366	365	1,413,155	300.84
Leisure & Hospitality	19	187	189	174	429,884	180.37
Local Government	13	332	346	469	1,744,649	351.01
State Government	11	100	102	100	552,128	421.90
Other	16	67	68	68	272,004	309.21
<b>GARLAND COUNTY - TOTAL</b>	<b>2,966</b>	<b>34,348</b>	<b>34,869</b>	<b>35,912</b>	<b>\$222,625,319</b>	<b>\$488.69</b>
Natural Resources & Mining	47	344	345	346	2,763,651	616.20
Construction	401	2,213	2,255	2,239	14,124,291	485.98
Manufacturing	127	3,544	3,503	3,532	26,198,975	571.50
Trade, Transportation & Utilities	699	7,085	7,101	7,259	41,584,066	447.49
Wholesale Trade	146	1,116	1,105	1,125	8,849,231	610.32
Retail Trade	486	5,271	5,295	5,425	26,245,856	378.76
Transportation, Warehousing & Utilities	67	698	701	709	6,488,979	710.37
Information	38	486	493	483	3,562,158	562.27
Financial Activities	325	1,545	1,538	1,523	11,261,575	564.23
Professional & Business Services	373	2,559	2,617	2,642	16,204,558	478.32
Education & Health Services	316	6,854	6,836	6,861	59,311,908	666.02
Leisure & Hospitality	346	6,316	6,312	6,076	20,177,085	248.94
Other Services	232	999	999	986	4,778,474	369.55
Local Government	36	1,614	2,067	3,064	16,652,719	569.75
State Government	26	789	803	901	6,005,859	555.94



**TABLE 6. COUNTY SUMMARY  
EMPLOYMENT AND TOTAL EARNINGS, BY INDUSTRY  
THIRD QUARTER 2004**

NORTH AMERICAN INDUSTRY CLASSIFICATION SYSTEM INDUSTRY GROUP	NUMBER OF EMPLOYING UNITS	EMPLOYMENT			TOTAL EARNINGS	AVERAGE WEEKLY EARNINGS
		JULY	AUGUST	SEPTEMBER	JUL. - SEP. 2004	
<b>GRANT COUNTY - TOTAL</b>	<b>295</b>	<b>3,329</b>	<b>3,343</b>	<b>3,612</b>	<b>\$22,816,394</b>	<b>\$511.99</b>
Natural Resources & Mining	27	256	254	252	2,666,030	807.40
Construction	30	227	229	232	1,743,623	584.85
Manufacturing	22	866	877	905	6,654,308	579.91
Trade, Transportation & Utilities	89	562	558	562	3,168,248	434.68
Wholesale Trade	17	141	140	142	1,138,038	620.86
Retail Trade	42	361	359	362	1,582,885	337.60
Transportation, Warehousing & Utilities	30	60	59	58	447,325	583.21
Information	3	38	38	37	285,191	582.42
Financial Activities	21	96	97	93	589,953	476.02
Professional & Business Services	22	72	70	71	535,677	580.37
Education & Health Services	23	233	229	226	1,263,360	423.76
Leisure & Hospitality	22	268	278	278	657,928	184.26
Other Services	16	39	40	41	173,589	333.83
Local Government	10	608	609	853	4,714,089	525.54
State Government	10	64	64	62	364,398	442.59
<b>GREENE COUNTY - TOTAL</b>	<b>852</b>	<b>13,655</b>	<b>14,011</b>	<b>14,577</b>	<b>\$90,812,108</b>	<b>\$496.10</b>
Natural Resources & Mining	36	195	188	193	1,150,688	461.01
Construction	76	411	403	395	2,628,468	501.71
Manufacturing	54	5,191	5,235	5,262	43,083,951	633.76
Trade, Transportation & Utilities	253	2,240	2,217	2,267	12,199,072	418.67
Wholesale Trade	53	460	448	446	3,651,892	622.41
Retail Trade	166	1,595	1,587	1,635	7,063,525	338.39
Transportation, Warehousing & Utilities	34	185	182	186	1,483,655	619.14
Information	13	97	97	96	590,134	469.60
Financial Activities	83	455	459	463	2,603,904	436.38
Professional & Business Services	76	1,275	1,238	1,350	7,351,997	439.20
Education & Health Services	100	1,574	1,599	1,618	8,996,777	433.35
Leisure & Hospitality	62	1,045	1,056	1,036	2,344,545	172.47
Other Services	56	178	172	173	767,830	338.80
Local Government	32	742	1,097	1,475	7,310,672	509.08
State Government	11	252	250	249	1,784,070	548.21

**TABLE 6. COUNTY SUMMARY  
EMPLOYMENT AND TOTAL EARNINGS, BY INDUSTRY  
THIRD QUARTER 2004**

NORTH AMERICAN INDUSTRY CLASSIFICATION SYSTEM INDUSTRY GROUP	NUMBER OF EMPLOYING UNITS	EMPLOYMENT			TOTAL EARNINGS	AVERAGE WEEKLY EARNINGS
		JULY	AUGUST	SEPTEMBER	JUL. - SEP. 2004	
<b>HEMPSTEAD COUNTY - TOTAL</b>	<b>496</b>	<b>8,166</b>	<b>8,332</b>	<b>8,814</b>	<b>\$51,826,458</b>	<b>\$472.50</b>
Natural Resources & Mining	18	226	227	229	1,850,058	626.01
Construction	34	115	107	126	753,723	499.82
Manufacturing	34	2,910	2,959	2,977	21,364,403	557.34
Trade, Transportation & Utilities	135	1,314	1,312	1,296	7,121,442	419.02
Wholesale Trade	24	198	198	189	1,065,558	420.34
Retail Trade	86	911	902	912	3,759,440	318.37
Transportation, Warehousing & Utilities	25	205	212	195	2,296,444	865.93
Information	11	68	67	69	470,264	531.97
Financial Activities	44	281	277	276	2,097,132	580.28
Professional & Business Services	34	520	477	504	1,719,560	264.37
Education & Health Services	62	941	953	955	5,440,371	440.67
Leisure & Hospitality	44	629	604	592	1,486,872	188.01
Other Services	35	218	208	209	1,324,355	481.29
Local Government	29	463	624	1,036	4,668,196	507.43
State Government	16	481	517	545	3,530,082	527.95
<b>HOT SPRING COUNTY - TOTAL</b>	<b>612</b>	<b>7,108</b>	<b>7,220</b>	<b>7,753</b>	<b>\$49,734,074</b>	<b>\$519.77</b>
Natural Resources & Mining	40	195	212	221	1,897,904	697.42
Construction	70	366	390	386	2,986,485	603.49
Manufacturing	55	1,926	1,905	1,909	17,466,871	702.23
Trade, Transportation & Utilities	164	1,342	1,336	1,349	8,414,971	482.22
Wholesale Trade	18	87	86	87	884,823	785.35
Retail Trade	102	899	885	899	4,098,814	352.55
Transportation, Warehousing & Utilities	44	356	365	363	3,431,334	730.49
Information	9	67	65	67	625,406	725.25
Financial Activities	52	307	304	305	1,928,294	485.80
Professional & Business Services	58	257	269	287	1,605,481	455.71
Education & Health Services	44	898	915	910	5,462,729	462.96
Leisure & Hospitality	41	557	537	551	1,224,247	171.74
Other Services	38	226	262	266	1,093,886	334.79
Local Government	27	641	677	1,091	4,840,303	463.67
State Government	14	326	348	411	2,187,497	465.26

**TABLE 6. COUNTY SUMMARY  
EMPLOYMENT AND TOTAL EARNINGS, BY INDUSTRY  
THIRD QUARTER 2004**

NORTH AMERICAN INDUSTRY CLASSIFICATION SYSTEM INDUSTRY GROUP	NUMBER OF EMPLOYING UNITS	EMPLOYMENT			TOTAL EARNINGS	AVERAGE WEEKLY EARNINGS
		JULY	AUGUST	SEPTEMBER	JUL. - SEP. 2004	
<b>HOWARD COUNTY - TOTAL</b>	<b>361</b>	<b>7,575</b>	<b>7,573</b>	<b>7,719</b>	<b>\$46,347,156</b>	<b>\$467.73</b>
Natural Resources & Mining	23	267	273	278	1,911,602	539.29
Construction	25	109	112	122	739,715	497.68
Manufacturing	26	4,531	4,415	4,268	29,325,567	512.14
Trade, Transportation & Utilities	108	925	924	931	5,075,289	421.30
Wholesale Trade	17	101	100	99	731,832	562.95
Retail Trade	69	652	645	650	2,790,377	330.73
Transportation, Warehousing & Utilities	22	172	179	182	1,553,080	672.43
Information	7	34	36	34	229,121	508.40
Financial Activities	37	173	171	169	973,120	437.75
Professional & Business Services	27	102	104	102	591,542	443.21
Education & Health Services	36	585	592	596	2,837,918	369.38
Leisure & Hospitality	23	304	289	289	638,335	167.02
Other Services	19	107	104	110	469,946	337.85
Local Government	18	319	437	700	2,777,891	440.28
State Government	12	119	116	120	777,110	505.16
<b>INDEPENDENCE COUNTY - TOTAL</b>	<b>920</b>	<b>15,539</b>	<b>15,795</b>	<b>16,435</b>	<b>\$102,037,508</b>	<b>\$492.94</b>
Natural Resources & Mining	14	139	139	136	1,038,173	578.69
Construction	69	462	464	473	3,155,487	520.51
Manufacturing	55	5,086	5,123	5,148	39,520,739	593.88
Trade, Transportation & Utilities	293	3,088	3,052	3,017	18,533,229	467.06
Wholesale Trade	52	445	443	441	3,068,181	532.76
Retail Trade	184	1,812	1,781	1,742	7,822,184	338.35
Transportation, Warehousing & Utilities	57	831	828	834	7,642,864	707.48
Information	11	175	171	171	1,219,718	544.44
Financial Activities	83	427	423	417	2,817,755	513.22
Professional & Business Services	91	1,030	1,111	1,091	5,391,436	384.96
Education & Health Services	104	2,555	2,528	2,515	17,681,479	537.03
Leisure & Hospitality	76	1,134	1,166	1,161	2,502,970	166.89
Other Services	68	345	335	340	1,516,853	343.18
Local Government	37	699	898	1,492	5,930,962	443.08
State Government	19	399	385	474	2,728,707	500.56

**TABLE 6. COUNTY SUMMARY  
EMPLOYMENT AND TOTAL EARNINGS, BY INDUSTRY  
THIRD QUARTER 2004**

NORTH AMERICAN INDUSTRY CLASSIFICATION SYSTEM INDUSTRY GROUP	NUMBER OF EMPLOYING UNITS	EMPLOYMENT			TOTAL EARNINGS	AVERAGE WEEKLY EARNINGS
		JULY	AUGUST	SEPTEMBER	JUL. - SEP. 2004	
<b>IZARD COUNTY - TOTAL</b>	<b>252</b>	<b>2,737</b>	<b>2,837</b>	<b>2,912</b>	<b>\$15,217,078</b>	<b>\$413.81</b>
Natural Resources & Mining	5	83	83	81	647,891	605.32
Construction	27	72	72	75	337,788	355.94
Manufacturing	13	513	436	437	3,336,131	555.47
Trade, Transportation & Utilities	70	530	523	514	2,437,206	358.92
Retail Trade	51	404	399	395	1,651,860	318.20
Other Trade, Transportation & Utilities	19	126	124	119	785,346	491.15
Information	3	10	10	9	43,437	345.65
Financial Activities	25	149	146	143	963,595	507.69
Professional & Business Services	23	85	89	86	360,187	319.69
Education & Health Services	22	411	430	420	1,959,645	358.62
Leisure & Hospitality	24	175	165	162	373,949	171.90
Other Services	14	41	37	39	158,606	312.83
Local Government	18	295	438	533	2,129,548	388.18
State Government	11	383	418	422	2,512,532	474.09
<b>JACKSON COUNTY - TOTAL</b>	<b>526</b>	<b>5,573</b>	<b>5,808</b>	<b>5,934</b>	<b>\$36,742,819</b>	<b>\$489.70</b>
Natural Resources & Mining	46	263	253	249	1,564,018	471.80
Construction	31	197	195	192	1,262,990	499.07
Manufacturing	30	1,094	1,078	1,051	8,606,916	616.26
Trade, Transportation & Utilities	142	1,249	1,228	1,252	7,252,839	448.84
Wholesale Trade	37	261	244	230	1,864,267	585.33
Retail Trade	85	732	727	735	3,398,192	357.43
Transportation, Warehousing & Utilities	20	256	257	287	1,990,380	574.15
Information	5	39	40	41	303,805	584.24
Financial Activities	42	187	193	191	1,145,031	462.76
Professional & Business Services	39	134	130	133	809,731	470.68
Education & Health Services	66	1,013	1,034	1,023	7,601,937	571.43
Leisure & Hospitality	37	349	352	339	872,195	193.53
Other Services	40	117	120	112	494,362	326.89
Local Government	34	430	682	753	3,253,329	402.56
State Government	14	501	503	598	3,575,666	515.08

**TABLE 6. COUNTY SUMMARY  
EMPLOYMENT AND TOTAL EARNINGS, BY INDUSTRY  
THIRD QUARTER 2004**

NORTH AMERICAN INDUSTRY CLASSIFICATION SYSTEM INDUSTRY GROUP	NUMBER OF EMPLOYING UNITS	EMPLOYMENT			TOTAL EARNINGS	AVERAGE WEEKLY EARNINGS
		JULY	AUGUST	SEPTEMBER	JUL. - SEP. 2004	
<b>JEFFERSON COUNTY - TOTAL</b>	<b>1,763</b>	<b>31,045</b>	<b>31,375</b>	<b>32,977</b>	<b>\$231,561,679</b>	<b>\$560.16</b>
Natural Resources & Mining	41	495	498	518	4,218,146	644.22
Construction	122	1,073	1,033	987	8,142,810	607.54
Manufacturing	83	6,656	6,716	6,710	65,130,763	748.44
Trade, Transportation & Utilities	500	5,995	5,969	6,075	35,741,154	457.23
Wholesale Trade	91	1,051	1,048	1,068	8,094,480	589.82
Retail Trade	345	4,136	4,125	4,174	19,099,891	354.46
Transportation, Warehousing & Utilities	64	808	796	833	8,546,783	809.33
Information	19	227	220	217	1,649,020	573.11
Financial Activities	148	1,209	1,189	1,176	9,586,505	618.99
Professional & Business Services	185	2,389	2,406	2,420	21,092,437	674.63
Education & Health Services	275	5,388	5,507	5,559	38,277,959	536.85
Leisure & Hospitality	144	2,295	2,326	2,326	5,941,366	197.36
Other Services	164	813	797	819	4,374,716	415.62
Local Government	42	1,697	1,933	3,243	15,896,592	533.75
State Government	40	2,808	2,781	2,927	21,510,211	582.89
<b>JOHNSON COUNTY - TOTAL</b>	<b>438</b>	<b>7,913</b>	<b>8,021</b>	<b>8,551</b>	<b>\$49,268,937</b>	<b>\$464.36</b>
Natural Resources & Mining	13	208	204	201	1,537,874	578.95
Construction	28	188	196	191	1,151,312	462.07
Manufacturing	42	3,209	3,232	3,253	21,480,047	511.34
Trade, Transportation & Utilities	120	1,670	1,683	1,751	9,284,330	419.78
Information	6	30	28	30	207,907	545.21
Financial Activities	39	217	215	212	1,363,040	488.43
Professional & Business Services	44	146	153	152	839,196	429.40
Education & Health Services	52	1,054	1,060	1,068	6,942,277	503.48
Leisure & Hospitality	40	557	559	551	1,277,142	176.80
Other Services	30	82	81	83	393,498	369.14
Local Government	14	404	462	910	3,812,758	495.42
State Government	10	148	148	149	979,556	507.98

**TABLE 6. COUNTY SUMMARY  
EMPLOYMENT AND TOTAL EARNINGS, BY INDUSTRY  
THIRD QUARTER 2004**

NORTH AMERICAN INDUSTRY CLASSIFICATION SYSTEM INDUSTRY GROUP	NUMBER OF EMPLOYING UNITS	EMPLOYMENT			TOTAL EARNINGS	AVERAGE WEEKLY EARNINGS
		JULY	AUGUST	SEPTEMBER	JUL. - SEP. 2004	
<b>LAFAYETTE COUNTY - TOTAL</b>	<b>160</b>	<b>1,517</b>	<b>1,580</b>	<b>1,720</b>	<b>\$9,067,582</b>	<b>\$434.04</b>
Natural Resources & Mining	29	157	164	181	947,269	435.46
Trade, Transportation & Utilities	38	234	235	243	1,432,351	464.25
Retail Trade	24	148	148	156	572,840	292.46
Other Trade, Transportation & Utilities	14	86	87	87	859,511	762.88
Financial Activities	16	91	96	86	463,014	391.39
Professional & Business Services	10	51	51	52	402,620	603.33
Education & Health Services	10	210	212	211	910,059	331.78
Leisure & Hospitality	8	59	58	57	128,084	169.87
Other Services	7	90	88	89	330,017	285.24
Local Government	14	202	255	349	1,403,856	401.94
State Government	8	64	63	63	358,155	435.01
Other	20	359	358	389	2,692,157	561.72
<b>LAWRENCE COUNTY - TOTAL</b>	<b>424</b>	<b>4,015</b>	<b>4,232</b>	<b>4,404</b>	<b>\$24,178,020</b>	<b>\$441.04</b>
Natural Resources & Mining	32	190	184	173	1,249,262	527.04
Construction	27	121	117	120	804,698	518.71
Manufacturing	24	743	735	727	5,125,113	536.38
Trade, Transportation & Utilities	142	1,033	1,024	1,033	5,447,834	406.86
Wholesale Trade	24	228	218	218	1,599,919	556.04
Retail Trade	82	669	669	678	2,833,729	324.37
Transportation, Warehousing & Utilities	36	136	137	137	1,014,186	570.84
Information	6	25	25	26	183,387	556.84
Financial Activities	30	153	146	144	852,479	444.08
Professional & Business Services	24	120	116	115	962,486	632.80
Education & Health Services	46	398	407	429	2,592,314	484.79
Leisure & Hospitality	29	294	288	304	570,075	148.48
Other Services	24	77	71	70	273,708	289.74
Local Government	28	732	991	1,139	5,435,537	438.28
State Government	12	129	128	124	681,127	412.55

**TABLE 6. COUNTY SUMMARY  
EMPLOYMENT AND TOTAL EARNINGS, BY INDUSTRY  
THIRD QUARTER 2004**

NORTH AMERICAN INDUSTRY CLASSIFICATION SYSTEM INDUSTRY GROUP	NUMBER OF EMPLOYING UNITS	EMPLOYMENT			TOTAL EARNINGS	AVERAGE WEEKLY EARNINGS
		JULY	AUGUST	SEPTEMBER	JUL. - SEP. 2004	
<b>LEE COUNTY - TOTAL</b>	<b>225</b>	<b>1,896</b>	<b>2,105</b>	<b>2,272</b>	<b>\$12,197,951</b>	<b>\$448.73</b>
Natural Resources & Mining	30	192	207	302	1,359,109	447.42
Construction	8	17	17	18	88,652	393.43
Trade, Transportation & Utilities	66	395	388	388	2,145,660	422.85
Wholesale Trade	9	77	75	71	476,696	493.30
Retail Trade	38	217	215	216	829,307	295.34
Transportation, Warehousing & Utilities	19	101	98	101	839,657	645.89
Financial Activities	11	81	80	81	412,761	393.61
Professional & Business Services	18	78	78	76	418,704	416.48
Education & Health Services	28	294	300	300	1,592,417	411.05
Leisure & Hospitality	9	68	64	65	151,063	176.96
Local Government	17	144	336	400	2,146,744	562.96
State Government	8	444	448	456	2,755,365	471.70
Other	30	183	187	186	1,127,476	467.96
<b>LINCOLN COUNTY - TOTAL</b>	<b>220</b>	<b>2,884</b>	<b>2,954</b>	<b>3,189</b>	<b>\$17,149,033</b>	<b>\$438.40</b>
Natural Resources & Mining	31	206	198	248	1,432,476	507.01
Construction	17	100	91	90	550,075	451.75
Manufacturing	10	479	491	487	2,893,426	458.28
Trade, Transportation & Utilities	56	397	400	397	2,487,361	480.74
Wholesale Trade	8	33	33	32	245,642	578.43
Retail Trade	29	205	209	218	752,338	274.71
Transportation, Warehousing & Utilities	19	159	158	147	1,489,381	740.74
Financial Activities	22	93	94	98	558,678	452.37
Professional & Business Services	11	25	25	26	168,315	511.08
Education & Health Services	20	301	320	323	1,520,371	371.67
Leisure & Hospitality	16	122	129	123	272,765	168.30
Local & State Government	23	1,105	1,152	1,343	7,036,307	451.05
Other	14	56	54	54	229,259	322.60

**TABLE 6. COUNTY SUMMARY  
EMPLOYMENT AND TOTAL EARNINGS, BY INDUSTRY  
THIRD QUARTER 2004**

NORTH AMERICAN INDUSTRY CLASSIFICATION SYSTEM INDUSTRY GROUP	NUMBER OF EMPLOYING UNITS	EMPLOYMENT			TOTAL EARNINGS	AVERAGE WEEKLY EARNINGS
		JULY	AUGUST	SEPTEMBER	JUL. - SEP. 2004	
<b>LITTLE RIVER COUNTY - TOTAL</b>	<b>252</b>	<b>4,330</b>	<b>4,348</b>	<b>4,509</b>	<b>\$40,226,425</b>	<b>\$703.95</b>
Natural Resources & Mining	12	81	81	81	603,941	573.54
Trade, Transportation & Utilities	76	1,058	1,063	1,088	8,196,253	589.42
Wholesale Trade	9	32	32	32	216,894	521.38
Retail Trade	44	349	349	353	1,478,842	324.71
Transportation, Warehousing & Utilities	23	677	682	703	6,500,517	727.51
Information	4	11	11	10	76,489	551.60
Financial Activities	27	132	130	129	732,391	432.26
Professional & Business Services	21	168	167	165	925,362	427.09
Education & Health Services	14	169	156	152	927,182	448.56
Leisure & Hospitality	19	212	210	211	489,916	178.61
Other Services	16	102	94	92	284,655	228.09
Local Government	20	539	570	738	3,523,113	440.19
State Government	12	93	90	92	493,066	413.76
Other	31	1,765	1,776	1,751	23,974,057	1045.44
<b>LOGAN COUNTY - TOTAL</b>	<b>445</b>	<b>5,584</b>	<b>5,699</b>	<b>5,811</b>	<b>\$32,694,218</b>	<b>\$441.37</b>
Natural Resources & Mining	15	86	80	87	656,690	598.99
Construction	45	130	135	148	717,865	401.12
Manufacturing	26	1,979	1,955	1,929	13,888,421	546.65
Trade, Transportation & Utilities	122	875	868	873	3,791,204	334.44
Wholesale Trade	20	56	55	55	253,110	351.87
Retail Trade	75	754	748	750	3,062,426	313.82
Transportation, Warehousing & Utilities	27	65	65	68	475,668	554.39
Information	9	41	41	42	345,035	642.12
Financial Activities	42	232	229	233	1,692,662	562.84
Professional & Business Services	37	101	106	106	578,799	426.74
Education & Health Services	48	700	694	711	3,636,570	398.67
Leisure & Hospitality	30	344	361	349	780,121	170.80
Other Services	32	94	91	101	447,637	361.19
Local Government	23	566	707	797	3,841,316	428.24
State Government	16	436	432	435	2,317,898	410.51



**TABLE 6. COUNTY SUMMARY  
EMPLOYMENT AND TOTAL EARNINGS, BY INDUSTRY  
THIRD QUARTER 2004**

NORTH AMERICAN INDUSTRY CLASSIFICATION SYSTEM INDUSTRY GROUP	NUMBER OF EMPLOYING UNITS	EMPLOYMENT			TOTAL EARNINGS	AVERAGE WEEKLY EARNINGS
		JULY	AUGUST	SEPTEMBER	JUL. - SEP. 2004	
<b>LONOKE COUNTY - TOTAL</b>	<b>1,129</b>	<b>10,915</b>	<b>11,395</b>	<b>11,707</b>	<b>\$69,187,048</b>	<b>\$469.36</b>
Natural Resources & Mining	74	474	473	497	4,177,622	667.64
Construction	152	1,009	1,041	1,074	7,323,443	540.98
Manufacturing	34	1,371	1,359	1,342	12,354,272	700.14
Trade, Transportation & Utilities	314	2,503	2,465	2,488	13,474,716	417.05
Wholesale Trade	72	428	410	404	3,605,061	669.84
Retail Trade	175	1,765	1,753	1,761	7,621,679	333.18
Transportation, Warehousing & Utilities	67	310	302	323	2,247,976	554.83
Information	16	119	122	117	1,015,650	654.69
Financial Activities	124	597	587	579	4,349,416	569.32
Professional & Business Services	130	472	477	461	3,045,609	498.46
Education & Health Services	99	1,317	1,317	1,326	7,037,219	410.09
Leisure & Hospitality	80	1,161	1,145	1,141	2,811,010	188.19
Other Services	62	180	181	175	887,279	382.01
Local Government	28	1,566	2,076	2,360	11,874,054	456.54
State Government	16	146	152	147	836,758	433.93
<b>MADISON COUNTY - TOTAL</b>	<b>234</b>	<b>2,950</b>	<b>2,962</b>	<b>3,082</b>	<b>\$17,510,202</b>	<b>\$449.28</b>
Natural Resources & Mining	15	68	65	63	427,432	503.26
Construction	36	85	85	84	468,170	425.35
Manufacturing	21	1,154	1,149	1,150	7,179,752	479.83
Trade, Transportation & Utilities	60	599	595	581	2,862,715	372.18
Wholesale Trade	12	44	48	45	254,863	429.30
Retail Trade	35	430	423	411	1,727,250	315.35
Transportation, Warehousing & Utilities	13	125	124	125	880,602	543.36
Information	4	39	40	40	391,093	758.42
Financial Activities	19	88	87	90	583,532	508.16
Professional & Business Services	19	123	118	118	702,987	451.89
Education & Health Services	20	233	236	235	1,080,606	354.22
Leisure & Hospitality	11	124	131	131	213,639	127.72
Other Services	13	30	29	28	161,374	428.05
Local Government	8	352	372	509	3,107,767	581.65
State Government	8	55	55	53	331,135	468.81

**TABLE 6. COUNTY SUMMARY  
EMPLOYMENT AND TOTAL EARNINGS, BY INDUSTRY  
THIRD QUARTER 2004**

NORTH AMERICAN INDUSTRY CLASSIFICATION SYSTEM INDUSTRY GROUP	NUMBER OF EMPLOYING UNITS	EMPLOYMENT			TOTAL EARNINGS	AVERAGE WEEKLY EARNINGS
		JULY	AUGUST	SEPTEMBER	JUL. - SEP. 2004	
<b>MARION COUNTY - TOTAL</b>	<b>273</b>	<b>3,840</b>	<b>3,847</b>	<b>3,933</b>	<b>\$20,840,333</b>	<b>\$413.88</b>
Natural Resources & Mining	6	41	40	41	206,106	389.86
Construction	14	57	54	49	220,578	318.14
Manufacturing	27	1,678	1,686	1,681	10,830,377	495.40
Trade, Transportation & Utilities	58	563	533	538	2,414,312	340.97
Financial Activities	33	219	213	209	1,169,364	420.99
Professional & Business Services	23	40	42	40	211,128	399.36
Education & Health Services	24	334	329	336	1,621,957	374.67
Leisure & Hospitality	40	305	299	285	750,566	194.83
Local Government	20	400	448	555	2,105,386	346.30
State Government	8	112	112	109	600,413	416.09
Other	20	91	91	90	710,146	602.50
<b>MILLER COUNTY - TOTAL</b>	<b>825</b>	<b>12,019</b>	<b>12,135</b>	<b>12,802</b>	<b>\$88,119,377</b>	<b>\$550.26</b>
Natural Resources & Mining	33	153	163	153	1,314,764	646.92
Construction	88	848	904	893	6,538,678	570.48
Manufacturing	37	2,809	2,802	2,771	31,865,971	877.32
Trade, Transportation & Utilities	243	2,825	2,828	2,842	18,023,940	489.63
Wholesale Trade	65	626	628	626	5,137,682	630.65
Retail Trade	135	1,440	1,433	1,443	6,508,289	347.99
Transportation, Warehousing & Utilities	43	759	767	773	6,377,969	640.21
Information	9	97	89	89	947,764	795.33
Financial Activities	80	430	431	433	3,486,477	621.77
Professional & Business Services	77	898	857	759	4,322,162	396.75
Education & Health Services	72	952	956	952	5,662,320	456.88
Leisure & Hospitality	80	1,396	1,358	1,360	3,747,052	210.19
Other Services	65	471	355	360	1,485,306	289.01
Local Government	23	715	963	1,764	7,465,057	500.50
State Government	18	425	429	426	3,259,886	587.72

**TABLE 6. COUNTY SUMMARY  
EMPLOYMENT AND TOTAL EARNINGS, BY INDUSTRY  
THIRD QUARTER 2004**

NORTH AMERICAN INDUSTRY CLASSIFICATION SYSTEM INDUSTRY GROUP	NUMBER OF EMPLOYING UNITS	EMPLOYMENT			TOTAL EARNINGS	AVERAGE WEEKLY EARNINGS
		JULY	AUGUST	SEPTEMBER	JUL. - SEP. 2004	
<b>MISSISSIPPI COUNTY - TOTAL</b>	<b>1,126</b>	<b>17,258</b>	<b>17,420</b>	<b>18,166</b>	<b>\$132,667,996</b>	<b>\$579.36</b>
Natural Resources & Mining	102	864	867	1,005	4,110,443	346.70
Construction	58	404	410	451	3,085,486	562.87
Manufacturing	57	4,712	4,687	4,699	62,594,875	1024.61
Trade, Transportation & Utilities	311	3,013	2,964	2,980	18,618,419	479.69
Wholesale Trade	64	589	563	572	5,035,448	674.03
Retail Trade	197	1,874	1,866	1,851	8,122,797	335.27
Transportation, Warehousing & Utilities	50	550	535	557	5,460,174	767.38
Financial Activities	108	618	618	626	3,933,996	487.56
Professional & Business Services	93	1,005	1,018	1,050	5,867,464	440.62
Education & Health Services	148	1,532	1,531	1,627	9,419,546	463.48
Leisure & Hospitality	79	1,097	1,105	1,081	2,561,411	180.05
Local Government	46	2,045	2,068	2,375	9,779,239	347.83
State Government	25	593	601	692	3,786,575	463.32
Other	99	1,375	1,551	1,580	8,910,542	456.34
<b>MONROE COUNTY - TOTAL</b>	<b>291</b>	<b>2,425</b>	<b>2,660</b>	<b>2,743</b>	<b>\$12,682,101</b>	<b>\$373.87</b>
Natural Resources & Mining	32	215	217	231	1,133,604	394.57
Construction	15	61	57	62	315,579	404.59
Manufacturing	8	197	191	196	1,194,050	471.83
Trade, Transportation & Utilities	90	686	689	713	3,692,635	408.12
Wholesale Trade	23	205	200	195	1,254,348	482.44
Retail Trade	41	335	343	352	1,389,896	311.40
Transportation, Warehousing & Utilities	26	146	146	166	1,048,391	528.25
Information	7	34	36	37	176,371	380.38
Financial Activities	16	103	102	99	655,160	497.34
Professional & Business Services	15	35	36	50	217,805	415.39
Education & Health Services	27	335	342	338	1,434,055	326.05
Leisure & Hospitality	31	337	348	348	718,759	160.57
Other Services	18	68	66	73	300,261	334.74
Local Government	22	220	439	457	2,083,439	430.82
State Government	10	134	137	139	760,383	427.98

**TABLE 6. COUNTY SUMMARY  
EMPLOYMENT AND TOTAL EARNINGS, BY INDUSTRY  
THIRD QUARTER 2004**

NORTH AMERICAN INDUSTRY CLASSIFICATION SYSTEM INDUSTRY GROUP	NUMBER OF EMPLOYING UNITS	EMPLOYMENT			TOTAL EARNINGS	AVERAGE
		JULY	AUGUST	SEPTEMBER	JUL. - SEP. 2004	WEEKLY EARNINGS
<b>MONTGOMERY COUNTY - TOTAL</b>	<b>170</b>	<b>1,676</b>	<b>1,539</b>	<b>1,652</b>	<b>\$7,687,108</b>	<b>\$364.48</b>
Natural Resources & Mining	14	62	64	61	377,706	466.11
Construction	23	138	155	152	945,060	490.09
Trade, Transportation & Utilities	45	232	227	230	1,119,232	374.87
Wholesale Trade	11	76	73	73	371,233	385.90
Retail Trade	25	127	126	129	561,908	339.45
Transportation, Warehousing & Utilities	9	29	28	28	186,091	505.22
Financial Activities	9	76	75	73	452,298	465.97
Education & Health Services	12	59	60	60	237,714	306.46
Leisure & Hospitality	20	453	237	213	966,062	246.89
Other Services	10	56	65	63	286,060	358.77
Local Government	9	270	325	458	1,787,022	391.63
State Government	8	58	58	57	344,754	459.88
Other	20	272	273	285	1,171,200	325.63
<b>NEVADA COUNTY - TOTAL</b>	<b>195</b>	<b>2,358</b>	<b>2,401</b>	<b>2,610</b>	<b>\$16,256,503</b>	<b>\$509.09</b>
Natural Resources & Mining	18	61	61	65	381,478	470.77
Construction	13	30	34	35	176,916	412.39
Manufacturing	7	727	737	732	7,478,501	785.89
Trade, Transportation & Utilities	45	455	464	460	2,448,265	409.71
Retail Trade	30	282	282	284	1,177,985	320.57
Other Trade, Transportation & Utilities	15	173	182	176	1,270,280	552.06
Financial Activities	12	69	68	66	459,777	522.67
Education & Health Services	12	384	380	385	1,855,730	372.71
Leisure & Hospitality	18	147	152	154	312,595	159.24
Other Services	17	84	81	74	236,825	228.67
Local Government	27	249	271	485	1,683,148	386.49
State Government	11	86	85	87	498,246	445.66
Other	15	66	68	67	725,022	832.40

**TABLE 6. COUNTY SUMMARY  
EMPLOYMENT AND TOTAL EARNINGS, BY INDUSTRY  
THIRD QUARTER 2004**

NORTH AMERICAN INDUSTRY CLASSIFICATION SYSTEM INDUSTRY GROUP	NUMBER OF EMPLOYING UNITS	EMPLOYMENT			TOTAL EARNINGS	AVERAGE WEEKLY EARNINGS
		JULY	AUGUST	SEPTEMBER	JUL. - SEP. 2004	
<b>NEWTON COUNTY - TOTAL</b>	<b>132</b>	<b>870</b>	<b>963</b>	<b>1,072</b>	<b>\$4,201,524</b>	<b>\$333.76</b>
Natural Resources & Mining	8	18	14	14	46,984	235.71
Construction	8	12	7	10	19,513	155.28
Manufacturing	14	61	63	64	311,766	382.69
Trade, Transportation & Utilities	31	166	169	171	682,386	311.21
Wholesale Trade	4	9	9	9	71,539	611.44
Retail Trade	17	110	112	115	340,079	232.88
Transportation, Warehousing & Utilities	10	47	48	47	270,768	440.03
Education & Health Services	13	135	134	140	426,249	240.50
Leisure & Hospitality	20	79	75	72	189,807	193.81
Other Services	5	14	13	14	44,000	247.65
Local Government	12	238	343	435	1,770,054	402.04
State Government	7	90	91	95	374,760	313.34
Other	14	57	54	57	336,005	461.55
<b>OUACHITA COUNTY - TOTAL</b>	<b>634</b>	<b>7,330</b>	<b>7,363</b>	<b>7,690</b>	<b>\$43,389,569</b>	<b>\$447.35</b>
Natural Resources & Mining	48	460	468	476	3,840,512	631.25
Construction	46	190	189	197	1,141,539	457.35
Manufacturing	28	833	837	845	6,235,213	572.13
Trade, Transportation & Utilities	194	1,740	1,720	1,724	10,016,500	445.89
Wholesale Trade	33	293	287	292	2,447,267	647.65
Retail Trade	131	1,152	1,144	1,156	4,849,060	324.16
Transportation, Warehousing & Utilities	30	295	289	276	2,720,173	729.92
Information	8	96	95	97	644,882	516.73
Financial Activities	63	368	364	354	2,403,171	510.66
Professional & Business Services	46	412	415	463	2,001,438	358.04
Education & Health Services	66	1,240	1,250	1,260	7,932,276	488.14
Leisure & Hospitality	38	563	545	539	1,168,998	163.79
Other Services	54	182	196	185	800,566	328.15
Local Government	30	943	985	1,246	5,017,638	364.81
State Government	13	303	299	304	2,186,836	557.01

**TABLE 6. COUNTY SUMMARY  
EMPLOYMENT AND TOTAL EARNINGS, BY INDUSTRY  
THIRD QUARTER 2004**

NORTH AMERICAN INDUSTRY CLASSIFICATION SYSTEM INDUSTRY GROUP	NUMBER OF EMPLOYING UNITS	EMPLOYMENT			TOTAL EARNINGS	AVERAGE WEEKLY EARNINGS
		JULY	AUGUST	SEPTEMBER	JUL. - SEP. 2004	
<b>PERRY COUNTY - TOTAL</b>	<b>151</b>	<b>1,006</b>	<b>1,175</b>	<b>1,193</b>	<b>\$5,707,610</b>	<b>\$390.38</b>
Natural Resources & Mining	6	27	27	28	237,992	669.77
Construction	25	87	80	83	489,672	452.00
Manufacturing	7	80	79	77	481,845	471.17
Trade, Transportation & Utilities	31	184	188	198	872,842	353.38
Wholesale Trade	5	7	7	8	64,383	675.35
Retail Trade	19	156	159	167	543,094	260.02
Transportation, Warehousing & Utilities	7	21	22	23	265,365	927.85
Financial Activities	14	53	56	53	344,863	491.26
Education & Health Services	14	159	169	163	760,165	357.28
Local Government	12	210	363	377	1,594,964	387.44
State Government	8	55	55	56	322,173	447.88
Other	34	151	158	158	603,094	298.02
<b>PHILLIPS COUNTY - TOTAL</b>	<b>657</b>	<b>6,308</b>	<b>6,611</b>	<b>7,129</b>	<b>\$36,014,930</b>	<b>\$414.56</b>
Natural Resources & Mining	76	514	537	633	2,719,554	372.68
Construction	32	148	149	146	851,668	443.65
Manufacturing	16	469	386	454	3,381,049	596.06
Trade, Transportation & Utilities	177	1,622	1,647	1,745	9,802,445	451.16
Wholesale Trade	36	411	419	424	3,141,279	578.08
Retail Trade	107	912	928	1,008	4,174,360	338.24
Transportation, Warehousing & Utilities	34	299	300	313	2,486,806	629.25
Information	12	61	59	58	432,162	560.28
Financial Activities	54	284	304	296	1,856,195	484.56
Professional & Business Services	57	348	333	300	1,742,967	410.01
Education & Health Services	104	1,091	1,112	1,146	6,141,449	423.19
Leisure & Hospitality	36	432	429	404	816,911	149.03
Other Services	43	106	109	105	480,217	346.31
Local Government	34	762	1,021	1,277	4,724,591	356.30
State Government	16	471	525	565	3,065,722	453.22

**TABLE 6. COUNTY SUMMARY  
EMPLOYMENT AND TOTAL EARNINGS, BY INDUSTRY  
THIRD QUARTER 2004**

NORTH AMERICAN INDUSTRY CLASSIFICATION SYSTEM INDUSTRY GROUP	NUMBER OF EMPLOYING UNITS	EMPLOYMENT			TOTAL EARNINGS	AVERAGE WEEKLY EARNINGS
		JULY	AUGUST	SEPTEMBER	JUL. - SEP. 2004	
<b>PIKE COUNTY - TOTAL</b>	<b>265</b>	<b>2,663</b>	<b>2,821</b>	<b>2,836</b>	<b>\$14,459,999</b>	<b>\$401.07</b>
Natural Resources & Mining	35	200	204	200	1,376,244	525.82
Construction	13	70	70	73	387,863	420.22
Manufacturing	11	461	461	462	2,839,631	473.48
Trade, Transportation & Utilities	89	628	629	625	3,097,386	379.80
Wholesale Trade	18	146	138	140	915,655	498.36
Retail Trade	52	392	397	388	1,512,201	296.49
Transportation, Warehousing & Utilities	19	90	94	97	669,530	549.85
Information	6	41	43	42	346,955	635.45
Financial Activities	25	195	198	192	1,260,486	497.23
Professional & Business Services	11	47	52	50	245,731	380.58
Education & Health Services	11	175	177	174	781,615	342.91
Leisure & Hospitality	22	235	221	222	527,179	179.43
Other Services	18	111	115	118	559,728	375.49
Local Government	13	379	531	558	2,426,091	381.38
State Government	11	121	120	120	611,090	390.64
<b>POINSETT COUNTY - TOTAL</b>	<b>500</b>	<b>5,981</b>	<b>6,314</b>	<b>6,411</b>	<b>\$35,322,045</b>	<b>\$435.76</b>
Natural Resources & Mining	49	397	411	407	2,379,180	451.89
Construction	29	109	111	103	805,838	575.74
Manufacturing	27	1,509	1,495	1,518	10,669,889	544.51
Trade, Transportation & Utilities	143	1,280	1,370	1,400	7,945,518	452.74
Wholesale Trade	33	448	429	439	3,726,485	653.46
Retail Trade	80	680	781	786	3,092,990	317.65
Transportation, Warehousing & Utilities	30	152	160	175	1,126,043	533.59
Information	7	61	63	62	643,126	797.92
Financial Activities	46	332	330	331	1,939,807	450.80
Professional & Business Services	24	85	82	79	632,712	593.54
Education & Health Services	51	535	532	521	2,672,728	388.40
Leisure & Hospitality	47	509	516	518	1,062,521	158.91
Other Services	33	71	72	74	371,532	395.11
Local Government	31	873	1,097	1,159	4,924,003	363.15
State Government	13	220	235	239	1,275,191	424.03

**TABLE 6. COUNTY SUMMARY  
EMPLOYMENT AND TOTAL EARNINGS, BY INDUSTRY  
THIRD QUARTER 2004**

NORTH AMERICAN INDUSTRY CLASSIFICATION SYSTEM INDUSTRY GROUP	NUMBER OF EMPLOYING UNITS	EMPLOYMENT			TOTAL EARNINGS	AVERAGE WEEKLY EARNINGS
		JULY	AUGUST	SEPTEMBER	JUL. - SEP. 2004	
<b>POLK COUNTY - TOTAL</b>	<b>524</b>	<b>5,779</b>	<b>5,986</b>	<b>6,149</b>	<b>\$31,942,044</b>	<b>\$411.48</b>
Natural Resources & Mining	27	255	260	268	1,974,325	581.88
Construction	37	164	171	169	786,778	360.25
Manufacturing	47	1,462	1,439	1,427	8,657,402	461.61
Trade, Transportation & Utilities	153	1,341	1,318	1,304	6,320,237	368.03
Wholesale Trade	26	150	142	145	750,659	396.41
Retail Trade	83	854	836	815	3,390,764	312.37
Transportation, Warehousing & Utilities	44	337	340	344	2,178,814	492.46
Information	9	51	53	52	369,415	546.47
Financial Activities	37	223	220	213	1,279,948	450.26
Professional & Business Services	46	186	182	186	1,062,035	442.39
Education & Health Services	60	856	895	927	4,865,243	419.25
Leisure & Hospitality	38	406	409	407	836,055	157.89
Other Services	34	131	133	132	581,995	339.16
Local Government	21	425	586	741	3,662,639	482.43
State Government	15	279	320	323	1,545,972	386.94
<b>POPE COUNTY - TOTAL</b>	<b>1,616</b>	<b>23,269</b>	<b>24,127</b>	<b>24,851</b>	<b>\$162,717,244</b>	<b>\$519.75</b>
Natural Resources & Mining	21	576	563	546	3,400,382	465.70
Construction	161	1,144	1,078	1,019	8,380,479	596.72
Manufacturing	88	4,353	4,536	4,723	36,465,662	618.22
Trade, Transportation & Utilities	475	6,385	6,409	6,374	52,746,449	635.03
Wholesale Trade	104	776	776	774	5,837,781	579.18
Retail Trade	278	3,112	3,135	3,096	14,544,406	359.24
Transportation, Warehousing & Utilities	93	2,497	2,498	2,504	32,364,262	995.96
Information	22	297	293	293	2,420,200	632.51
Financial Activities	156	744	745	763	5,211,867	534.08
Professional & Business Services	206	2,280	2,343	2,279	11,645,831	389.38
Education & Health Services	180	2,635	2,712	2,746	16,391,704	467.40
Leisure & Hospitality	132	2,273	2,337	2,346	5,518,157	183.07
Other Services	119	495	474	487	2,333,298	369.82
Local Government	39	1,164	1,609	2,184	9,936,107	462.57
State Government	17	923	1,028	1,091	8,267,108	627.15



**TABLE 6. COUNTY SUMMARY  
EMPLOYMENT AND TOTAL EARNINGS, BY INDUSTRY  
THIRD QUARTER 2004**

NORTH AMERICAN INDUSTRY CLASSIFICATION SYSTEM INDUSTRY GROUP	NUMBER OF EMPLOYING UNITS	EMPLOYMENT			TOTAL EARNINGS	AVERAGE WEEKLY EARNINGS
		JULY	AUGUST	SEPTEMBER	JUL. - SEP. 2004	
<b>PRAIRIE COUNTY - TOTAL</b>	<b>226</b>	<b>1,555</b>	<b>1,645</b>	<b>1,743</b>	<b>\$9,610,092</b>	<b>\$448.66</b>
Natural Resources & Mining	24	157	143	135	1,156,285	613.41
Trade, Transportation & Utilities	69	413	396	431	2,064,615	384.23
Wholesale Trade	10	68	59	57	415,671	521.33
Retail Trade	37	251	239	240	710,187	224.51
Transportation, Warehousing & Utilities	22	94	98	134	938,757	664.53
Information	4	10	10	9	102,337	814.35
Financial Activities	17	65	65	66	406,395	478.49
Professional & Business Services	17	56	57	63	310,645	407.31
Education & Health Services	16	194	193	197	967,133	382.17
Leisure & Hospitality	18	109	107	106	225,341	161.50
Other Services	15	48	53	46	200,517	314.78
Local Government	15	174	287	368	1,531,119	426.22
State Government	10	50	51	50	303,272	463.48
Other	21	279	283	272	2,342,433	648.16
<b>PULASKI COUNTY - TOTAL</b>	<b>13,224</b>	<b>227,148</b>	<b>230,981</b>	<b>233,899</b>	<b>\$1,954,023,556</b>	<b>\$651.60</b>
Natural Resources & Mining	42	714	726	727	7,610,520	810.46
Construction	1,108	10,711	10,683	10,641	94,517,435	680.87
Manufacturing	425	16,156	16,183	16,148	156,016,104	742.54
Trade, Transportation & Utilities	3,201	50,600	51,032	50,958	412,264,389	623.49
Wholesale Trade	1,068	12,940	12,972	12,975	144,685,404	858.61
Retail Trade	1,748	24,710	24,991	24,895	138,252,675	427.70
Transportation, Warehousing & Utilities	385	12,950	13,069	13,088	129,326,310	763.15
Information	227	8,669	8,609	8,604	97,627,136	870.46
Financial Activities	1,603	16,314	16,272	16,251	176,591,760	834.45
Professional & Business Services	2,502	32,485	32,729	32,649	257,883,135	608.11
Education & Health Services	1,609	31,655	31,645	31,898	313,160,639	759.13
Leisure & Hospitality	980	19,573	19,813	19,032	61,380,049	242.47
Other Services	1,227	7,271	7,229	7,135	47,222,177	503.69
Local Government	104	10,210	13,026	16,327	104,030,734	606.81
State Government	196	22,790	23,034	23,529	225,719,478	751.07

**TABLE 6. COUNTY SUMMARY  
EMPLOYMENT AND TOTAL EARNINGS, BY INDUSTRY  
THIRD QUARTER 2004**

NORTH AMERICAN INDUSTRY CLASSIFICATION SYSTEM INDUSTRY GROUP	NUMBER OF EMPLOYING UNITS	EMPLOYMENT			TOTAL EARNINGS	AVERAGE WEEKLY EARNINGS
		JULY	AUGUST	SEPTEMBER	JUL. - SEP. 2004	
<b>RANDOLPH COUNTY - TOTAL</b>	<b>399</b>	<b>4,795</b>	<b>5,001</b>	<b>5,125</b>	<b>\$26,943,582</b>	<b>\$416.71</b>
Natural Resources & Mining	21	82	83	84	375,265	347.79
Construction	21	108	115	112	555,183	382.45
Manufacturing	36	1,308	1,348	1,365	9,199,698	527.98
Trade, Transportation & Utilities	109	968	981	982	4,804,925	378.31
Wholesale Trade	21	165	162	162	835,756	394.41
Retail Trade	65	632	647	648	2,653,893	317.82
Transportation, Warehousing & Utilities	23	171	172	172	1,315,276	589.37
Information	7	50	51	50	418,512	639.60
Financial Activities	25	156	157	154	897,828	443.66
Professional & Business Services	41	220	235	216	792,771	272.65
Education & Health Services	50	691	708	714	4,241,162	463.19
Leisure & Hospitality	27	372	373	394	812,312	164.58
Other Services	27	59	55	60	255,217	338.48
Local Government	23	595	675	747	3,047,332	348.65
State Government	12	186	220	247	1,543,377	545.43
<b>SAINT FRANCIS COUNTY - TOTAL</b>	<b>603</b>	<b>7,942</b>	<b>8,427</b>	<b>8,744</b>	<b>\$49,099,328</b>	<b>\$451.19</b>
Natural Resources & Mining	24	191	192	191	1,215,102	488.52
Construction	46	295	282	273	1,834,802	498.14
Manufacturing	22	1,452	1,435	1,495	9,454,166	497.88
Trade, Transportation & Utilities	187	2,082	2,072	2,101	12,605,098	465.05
Wholesale Trade	33	529	524	518	3,764,800	553.02
Retail Trade	120	1,224	1,205	1,203	5,769,348	366.57
Transportation, Warehousing & Utilities	34	329	343	380	3,070,950	673.65
Information	12	107	106	100	789,717	582.24
Financial Activities	48	283	273	272	1,529,789	426.36
Professional & Business Services	42	141	134	135	1,083,923	610.09
Education & Health Services	83	1,367	1,402	1,419	8,164,370	449.88
Leisure & Hospitality	49	793	791	778	2,001,036	195.50
Other Services	43	142	142	146	480,490	257.87
Local Government	30	611	1,103	1,254	6,474,555	503.41
State Government	17	478	495	580	3,466,280	515.07

**TABLE 6. COUNTY SUMMARY  
EMPLOYMENT AND TOTAL EARNINGS, BY INDUSTRY  
THIRD QUARTER 2004**

NORTH AMERICAN INDUSTRY CLASSIFICATION SYSTEM INDUSTRY GROUP	NUMBER OF EMPLOYING UNITS	EMPLOYMENT			TOTAL EARNINGS	AVERAGE
		JULY	AUGUST	SEPTEMBER	JUL. - SEP. 2004	WEEKLY EARNINGS
<b>SALINE COUNTY - TOTAL</b>	<b>1,547</b>	<b>18,156</b>	<b>18,565</b>	<b>18,996</b>	<b>\$119,464,427</b>	<b>\$494.80</b>
Natural Resources & Mining	13	50	50	52	456,929	693.72
Construction	278	1,753	1,731	1,725	12,276,138	543.86
Manufacturing	80	1,787	1,780	1,787	15,998,415	689.57
Trade, Transportation & Utilities	403	4,422	4,440	4,409	28,259,001	491.40
Wholesale Trade	105	532	527	518	4,827,748	706.47
Retail Trade	253	3,626	3,653	3,622	21,044,135	445.49
Transportation, Warehousing & Utilities	45	264	260	269	2,387,118	694.67
Information	16	135	136	141	925,178	518.21
Financial Activities	147	675	671	675	4,609,733	526.37
Professional & Business Services	185	1,229	1,302	1,305	7,165,633	431.08
Education & Health Services	135	2,413	2,423	2,427	15,491,822	492.23
Leisure & Hospitality	116	2,066	2,069	2,067	5,743,200	213.70
Other Services	123	548	552	543	3,001,178	421.53
Local & State Government	51	3,078	3,411	3,865	25,537,200	569.17
<b>SCOTT COUNTY - TOTAL</b>	<b>181</b>	<b>2,720</b>	<b>2,743</b>	<b>2,813</b>	<b>\$15,363,730</b>	<b>\$428.40</b>
Natural Resources & Mining	16	174	174	168	1,286,400	575.31
Construction	10	37	39	40	205,002	407.83
Manufacturing	19	1,117	1,118	1,119	7,011,456	482.42
Trade, Transportation & Utilities	49	501	501	475	2,307,308	360.50
Wholesale Trade	8	62	63	62	398,395	491.64
Retail Trade	31	359	359	333	1,320,274	289.89
Transportation, Warehousing & Utilities	10	80	79	80	588,639	568.37
Information	4	12	12	13	94,659	590.39
Financial Activities	16	75	80	74	382,840	385.80
Professional & Business Services	8	12	13	13	51,622	313.49
Education & Health Services	19	291	299	287	1,659,492	436.67
Leisure & Hospitality	16	156	156	152	293,922	146.18
Other Services	11	58	59	57	466,083	618.15
Local Government	5	224	232	352	1,262,634	360.62
State Government	8	63	60	63	342,312	424.70

**TABLE 6. COUNTY SUMMARY  
EMPLOYMENT AND TOTAL EARNINGS, BY INDUSTRY  
THIRD QUARTER 2004**

NORTH AMERICAN INDUSTRY CLASSIFICATION SYSTEM INDUSTRY GROUP	NUMBER OF EMPLOYING UNITS	EMPLOYMENT			TOTAL EARNINGS	AVERAGE
		JULY	AUGUST	SEPTEMBER	JUL. - SEP. 2004	WEEKLY EARNINGS
<b>SEARCY COUNTY - TOTAL</b>	<b>148</b>	<b>1,467</b>	<b>1,588</b>	<b>1,633</b>	<b>\$6,958,948</b>	<b>\$342.56</b>
Construction	5	13	11	11	49,014	323.17
Manufacturing	17	302	299	306	1,158,129	294.66
Trade, Transportation & Utilities	40	296	295	293	1,065,129	278.05
Retail Trade	30	215	218	215	725,420	258.34
Other Trade, Transportation & Utilities	10	81	77	78	339,709	332.18
Financial Activities	14	70	67	65	309,151	353.18
Professional & Business Services	17	39	39	40	193,967	379.34
Education & Health Services	14	278	284	277	1,205,550	331.59
Leisure & Hospitality	13	115	119	112	242,669	161.85
Local Government	9	157	261	314	1,498,699	472.48
State Government	9	157	173	174	998,556	457.21
Other	10	40	40	41	238,084	454.07
<b>SEBASTIAN COUNTY - TOTAL</b>	<b>3,506</b>	<b>69,841</b>	<b>70,639</b>	<b>71,707</b>	<b>\$524,411,865</b>	<b>\$570.34</b>
Natural Resources & Mining	62	965	1,027	1,029	10,908,049	833.25
Construction	279	2,788	2,764	2,746	21,038,450	585.08
Manufacturing	220	21,232	21,042	21,189	184,958,918	672.56
Trade, Transportation & Utilities	911	12,166	12,153	12,095	79,039,813	500.91
Wholesale Trade	224	2,320	2,316	2,332	21,657,599	717.27
Retail Trade	566	7,787	7,785	7,705	38,571,437	382.40
Transportation, Warehousing & Utilities	121	2,059	2,052	2,058	18,810,777	703.67
Information	55	1,231	1,207	1,211	12,043,472	761.65
Financial Activities	382	2,479	2,474	2,483	20,527,966	637.07
Professional & Business Services	513	9,615	9,722	9,575	58,157,551	464.20
Education & Health Services	414	9,121	9,111	9,078	82,417,824	696.43
Leisure & Hospitality	310	5,104	5,280	5,216	14,695,414	217.39
Other Services	294	1,556	1,473	1,481	8,183,378	418.73
Local Government	43	2,439	3,380	4,263	23,366,699	534.85
State Government	23	1,145	1,006	1,341	9,074,331	599.68

**TABLE 6. COUNTY SUMMARY  
EMPLOYMENT AND TOTAL EARNINGS, BY INDUSTRY  
THIRD QUARTER 2004**

NORTH AMERICAN INDUSTRY CLASSIFICATION SYSTEM INDUSTRY GROUP	NUMBER OF EMPLOYING UNITS	EMPLOYMENT			TOTAL EARNINGS	AVERAGE WEEKLY EARNINGS
		JULY	AUGUST	SEPTEMBER	JUL. - SEP. 2004	
<b>SEVIER COUNTY - TOTAL</b>	<b>326</b>	<b>5,583</b>	<b>5,640</b>	<b>5,773</b>	<b>\$32,479,783</b>	<b>\$441.01</b>
Natural Resources & Mining	23	193	193	195	1,205,439	478.79
Construction	26	136	143	141	958,805	526.82
Manufacturing	13	2,334	2,316	2,291	12,885,878	428.42
Trade, Transportation & Utilities	93	886	889	886	4,898,399	424.80
Wholesale Trade	16	136	135	137	1,421,483	804.01
Retail Trade	58	647	649	646	2,588,320	307.57
Transportation, Warehousing & Utilities	19	103	105	103	888,596	659.36
Information	7	46	44	44	338,743	583.37
Financial Activities	25	172	170	164	1,032,261	470.78
Professional & Business Services	30	134	134	138	1,915,258	1088.63
Education & Health Services	38	526	535	515	3,089,119	452.33
Leisure & Hospitality	19	291	284	272	684,838	186.59
Other Services	31	186	166	154	649,758	296.33
Local Government	12	528	633	814	3,824,333	446.85
State Government	9	151	133	159	996,952	519.34
<b>SHARP COUNTY - TOTAL</b>	<b>387</b>	<b>3,757</b>	<b>3,714</b>	<b>3,982</b>	<b>\$19,252,761</b>	<b>\$387.93</b>
Construction	32	189	199	196	1,126,331	445.07
Manufacturing	22	170	169	164	842,408	386.48
Trade, Transportation & Utilities	106	1,058	1,060	1,067	5,828,732	422.32
Retail Trade	76	666	656	656	2,628,587	306.67
Other Trade, Transportation & Utilities	30	392	404	411	3,200,145	611.84
Information	11	63	62	64	802,714	980.11
Financial Activities	29	267	267	266	1,625,951	469.02
Professional & Business Services	39	133	131	140	837,574	478.43
Education & Health Services	45	614	623	630	3,104,102	383.68
Leisure & Hospitality	38	504	480	471	1,043,702	165.54
Local Government	26	527	540	806	3,190,019	393.04
State Government	9	91	94	94	504,338	417.15
Other	30	141	89	84	346,890	254.94

**TABLE 6. COUNTY SUMMARY  
EMPLOYMENT AND TOTAL EARNINGS, BY INDUSTRY  
THIRD QUARTER 2004**

NORTH AMERICAN INDUSTRY CLASSIFICATION SYSTEM INDUSTRY GROUP	NUMBER OF EMPLOYING UNITS	EMPLOYMENT			TOTAL EARNINGS	AVERAGE WEEKLY EARNINGS
		JULY	AUGUST	SEPTEMBER	JUL. - SEP. 2004	
<b>STONE COUNTY - TOTAL</b>	<b>246</b>	<b>2,617</b>	<b>2,773</b>	<b>2,742</b>	<b>\$12,772,153</b>	<b>\$362.45</b>
Construction	22	84	84	87	433,338	392.16
Manufacturing	25	477	482	477	2,328,314	374.17
Trade, Transportation & Utilities	78	594	592	573	2,959,025	388.20
Wholesale Trade	10	59	53	53	252,851	353.64
Retail Trade	54	492	494	473	2,350,361	371.76
Transportation, Warehousing & Utilities	14	43	45	47	355,813	608.23
Financial Activities	20	88	90	91	573,951	492.38
Professional & Business Services	9	21	23	21	100,537	356.94
Education & Health Services	23	418	424	414	2,234,345	410.52
Leisure & Hospitality	31	440	429	410	941,616	169.90
Other Services	12	24	24	25	101,082	319.54
Local Government	10	211	386	413	1,820,660	415.99
State Government	10	186	183	177	904,127	382.13
Other	6	74	56	54	375,158	470.52
<b>UNION COUNTY - TOTAL</b>	<b>1,346</b>	<b>19,364</b>	<b>19,701</b>	<b>20,297</b>	<b>\$147,021,954</b>	<b>\$571.55</b>
Natural Resources & Mining	103	539	543	542	4,144,367	588.91
Construction	100	1,513	1,534	1,592	14,893,512	740.88
Manufacturing	67	5,275	5,301	5,294	47,995,009	697.91
Trade, Transportation & Utilities	372	3,633	3,630	3,606	23,346,191	495.68
Wholesale Trade	82	525	519	523	5,205,507	766.61
Retail Trade	234	2,376	2,386	2,367	10,765,234	348.48
Transportation, Warehousing & Utilities	56	732	725	716	7,375,450	783.26
Information	20	228	222	220	1,343,673	462.80
Financial Activities	125	775	774	781	5,529,683	547.67
Professional & Business Services	137	1,745	1,730	1,721	15,357,962	682.09
Education & Health Services	131	2,225	2,217	2,189	15,428,584	536.94
Leisure & Hospitality	97	1,207	1,207	1,195	3,221,805	206.01
Other Services	137	641	636	625	2,908,545	352.89
Local Government	39	1,064	1,393	1,989	9,345,227	485.06
State Government	18	519	514	543	3,507,396	513.58

**TABLE 6. COUNTY SUMMARY  
EMPLOYMENT AND TOTAL EARNINGS, BY INDUSTRY  
THIRD QUARTER 2004**

NORTH AMERICAN INDUSTRY CLASSIFICATION SYSTEM INDUSTRY GROUP	NUMBER OF EMPLOYING UNITS	EMPLOYMENT			TOTAL EARNINGS	AVERAGE WEEKLY EARNINGS
		JULY	AUGUST	SEPTEMBER	JUL. - SEP. 2004	
<b>VAN BUREN COUNTY - TOTAL</b>	<b>349</b>	<b>3,508</b>	<b>3,507</b>	<b>3,845</b>	<b>\$17,626,045</b>	<b>\$374.54</b>
Natural Resources & Mining	9	52	49	52	251,990	380.08
Construction	44	174	169	155	860,496	398.75
Manufacturing	14	615	612	593	3,390,667	429.92
Trade, Transportation & Utilities	104	838	824	845	3,989,242	367.21
Wholesale Trade	16	62	65	66	474,104	566.88
Retail Trade	67	626	609	634	2,625,105	324.13
Transportation, Warehousing & Utilities	21	150	150	145	890,033	461.56
Information	8	45	45	48	335,466	560.98
Financial Activities	31	148	145	141	672,448	357.56
Professional & Business Services	27	94	92	89	581,691	488.13
Education & Health Services	35	579	578	597	3,014,166	396.57
Leisure & Hospitality	28	491	476	469	1,417,898	227.86
Other Services	28	86	83	84	346,626	316.17
Local Government	13	295	344	683	2,236,952	390.48
State Government	8	91	90	89	528,403	451.63
<b>WASHINGTON COUNTY - TOTAL</b>	<b>5,044</b>	<b>81,637</b>	<b>83,253</b>	<b>85,554</b>	<b>\$639,316,316</b>	<b>\$589.09</b>
Natural Resources & Mining	39	507	505	497	3,550,829	543.02
Construction	566	4,796	4,795	4,807	40,353,903	646.79
Manufacturing	234	15,565	15,523	15,540	121,171,739	599.70
Trade, Transportation & Utilities	1,311	20,075	20,077	20,030	146,821,263	562.99
Wholesale Trade	333	3,672	3,567	3,508	40,949,437	879.30
Retail Trade	771	11,274	11,361	11,350	60,387,678	410.05
Transportation, Warehousing & Utilities	207	5,129	5,149	5,172	45,484,148	679.37
Information	94	1,493	1,479	1,466	13,316,412	692.43
Financial Activities	579	3,608	3,648	3,652	31,980,145	676.57
Professional & Business Services	811	7,721	7,717	7,835	79,481,445	788.12
Education & Health Services	500	9,721	9,704	9,772	85,437,637	675.29
Leisure & Hospitality	479	8,167	8,284	8,417	24,698,675	229.20
Other Services	347	1,813	1,811	1,883	10,423,466	436.79
Local & State Government	84	8,171	9,710	11,655	82,080,802	641.31

**TABLE 6. COUNTY SUMMARY  
EMPLOYMENT AND TOTAL EARNINGS, BY INDUSTRY  
THIRD QUARTER 2004**

NORTH AMERICAN INDUSTRY CLASSIFICATION SYSTEM INDUSTRY GROUP	NUMBER OF EMPLOYING UNITS	EMPLOYMENT			TOTAL EARNINGS	AVERAGE WEEKLY EARNINGS
		JULY	AUGUST	SEPTEMBER	JUL. - SEP. 2004	
<b>WHITE COUNTY - TOTAL</b>	<b>1,521</b>	<b>22,812</b>	<b>23,376</b>	<b>23,835</b>	<b>\$155,862,684</b>	<b>\$513.66</b>
Natural Resources & Mining	32	301	267	265	2,087,335	578.26
Construction	166	1,135	1,137	1,113	8,159,680	556.28
Manufacturing	82	4,345	4,296	4,136	36,479,363	658.86
Trade, Transportation & Utilities	477	5,923	5,908	5,923	37,501,959	487.46
Wholesale Trade	101	571	577	580	3,992,077	533.13
Retail Trade	295	3,124	3,088	3,103	14,044,305	347.93
Transportation, Warehousing & Utilities	81	2,228	2,243	2,240	19,465,577	669.36
Information	22	230	225	226	1,603,407	543.34
Financial Activities	157	915	916	915	5,739,142	482.31
Professional & Business Services	133	1,245	1,241	1,243	6,813,457	421.65
Education & Health Services	164	4,076	4,101	4,223	32,765,081	609.77
Leisure & Hospitality	120	1,925	1,928	1,968	4,333,409	171.79
Other Services	103	636	619	607	3,630,745	449.98
Local Government	46	1,540	2,214	2,498	12,727,497	469.79
State Government	19	541	524	718	4,021,609	520.51
<b>WOODRUFF COUNTY - TOTAL</b>	<b>172</b>	<b>1,932</b>	<b>2,067</b>	<b>2,123</b>	<b>\$12,254,814</b>	<b>\$461.95</b>
Natural Resources & Mining	20	116	108	111	582,672	401.38
Construction	7	82	90	92	497,687	435.04
Manufacturing	8	452	461	460	3,171,100	532.99
Trade, Transportation & Utilities	62	532	530	553	3,661,908	523.25
Wholesale Trade	12	221	215	236	2,037,963	699.85
Retail Trade	34	218	212	214	769,602	275.78
Transportation, Warehousing & Utilities	16	93	103	103	854,343	659.38
Financial Activities	14	62	62	59	351,715	443.52
Professional & Business Services	4	9	10	8	46,357	396.21
Education & Health Services	23	181	187	190	1,063,138	439.68
Leisure & Hospitality	9	52	51	49	111,704	169.59
Local Government	10	355	483	514	2,341,952	399.74
State Government	7	58	57	58	294,741	393.16
Other	8	33	28	29	131,840	338.05



**TABLE 6. COUNTY SUMMARY  
EMPLOYMENT AND TOTAL EARNINGS, BY INDUSTRY  
THIRD QUARTER 2004**

NORTH AMERICAN INDUSTRY CLASSIFICATION SYSTEM INDUSTRY GROUP	NUMBER OF EMPLOYING UNITS	EMPLOYMENT			TOTAL EARNINGS	AVERAGE WEEKLY EARNINGS
		JULY	AUGUST	SEPTEMBER	JUL. - SEP. 2004	
<b>YELL COUNTY - TOTAL</b>	<b>387</b>	<b>6,487</b>	<b>6,634</b>	<b>7,075</b>	<b>\$38,680,377</b>	<b>\$441.98</b>
Natural Resources & Mining	27	355	350	370	2,139,089	459.20
Construction	51	375	404	428	2,291,578	438.13
Manufacturing	23	2,950	2,965	2,998	18,631,980	482.41
Trade, Transportation & Utilities	88	591	597	597	2,775,910	358.88
Wholesale Trade	10	23	23	26	132,641	425.13
Retail Trade	61	475	482	486	1,929,266	308.53
Transportation, Warehousing & Utilities	17	93	92	85	714,003	610.26
Information	6	51	51	51	563,633	850.13
Financial Activities	34	190	195	191	1,203,581	482.20
Professional & Business Services	34	249	240	228	2,089,545	672.53
Education & Health Services	38	447	455	461	2,155,369	364.93
Leisure & Hospitality	27	392	397	384	934,675	183.88
Other Services	18	71	70	65	279,246	312.82
Local Government	28	692	785	1,177	4,985,874	433.53
State Government	13	124	125	125	629,897	388.67
<b>REST-OF-STATE-TOTAL</b>	<b>4,363</b>	<b>14,627</b>	<b>14,917</b>	<b>15,058</b>	<b>181,267,470</b>	<b>\$937.87</b>
Natural Resources & Mining	52	175	187	187	1,810,782	761.15
Construction	543	2,253	2,303	2,280	18,735,037	632.46
Manufacturing	42	141	138	141	1,632,482	896.97
Trade, Transportation & Utilities	1,830	6,776	6,771	6,798	105,585,053	1197.63
Wholesale Trade	1,585	5,716	5,656	5,687	95,878,248	1297.01
Retail Trade	100	442	460	461	3,991,128	675.74
Transportation, Warehousing & Utilities	145	618	655	650	5,715,677	685.91
Information	113	294	309	318	3,178,656	796.46
Financial Activities	237	500	559	604	8,014,536	1112.15
Professional & Business Services	1,274	3,277	3,426	3,525	31,442,010	709.41
Education & Health Services	109	735	743	726	6,370,647	667.04
Leisure & Hospitality	40	78	79	75	608,406	605.18
Other	123	398	402	404	3,889,861	745.56

TABLE 7. FEDERAL GOVERNMENT EMPLOYMENT AND EARNINGS IN ARKANSAS

North American Industry Classification System Industry Group	Number of Employing Units	Employment			Total Earnings
		July	August	September	Jul. – Sep. 2004
Manufacturing	2	26	26	26	445,331
Trade, Transportation, and Utilities	450	7,009	6,821	6,806	73,712,945
Information	1	23	22	21	329,138
Financial Activities	24	195	195	193	3,213,231
Professional and Business Services	32	954	953	941	13,094,011
Education and Health Services	6	4,043	4,080	4,052	70,006,507
Leisure and Hospitality	16	277	250	238	2,405,216
Other Services	2	297	296	302	919,103
Public Administration	453	8,297	8,288	8,306	114,669,054
<b>TOTAL</b>	<b>986</b>	<b>21,121</b>	<b>20,931</b>	<b>20,885</b>	<b>\$278,794,536</b>

**TABLE 8. WORKFORCE INFORMATION AREA, SUMMARY  
EMPLOYMENT AND TOTAL EARNINGS, BY INDUSTRY  
THIRD QUARTER 2004**

NORTH AMERICAN INDUSTRY CLASSIFICATION SYSTEM INDUSTRY GROUP	NUMBER OF EMPLOYING UNITS	EMPLOYMENT			TOTAL EARNINGS	AVERAGE WEEKLY EARNINGS
		JULY	AUGUST	SEPTEMBER	JUL. - SEP. 2004	
<b>CENTRAL*</b>	<b>5,366</b>	<b>66,517</b>	<b>68,390</b>	<b>70,021</b>	<b>\$457,762,607</b>	<b>\$515.49</b>
Natural Resources & Mining	151	944	930	961	7,359,695	599.08
Construction	773	5,637	5,641	5,621	40,979,638	559.61
Manufacturing	239	8,745	8,748	8,680	79,010,860	696.64
Trade, Transportation & Utilities	1,423	13,987	14,126	14,185	80,477,446	439.07
Information	81	690	690	694	5,110,200	568.60
Financial Activities	550	2,749	2,736	2,739	19,193,988	538.59
Professional & Business Services	637	6,811	6,990	6,756	65,128,430	731.12
Education & Health Services	534	8,537	8,547	8,631	57,355,035	514.71
Leisure & Hospitality	421	7,322	7,285	7,353	18,315,299	192.47
Other Services	350	1,436	1,470	1,458	7,278,338	384.88
Local Government	135	5,811	7,265	8,961	49,420,721	517.53
State Government	72	3,848	3,962	3,982	28,132,957	550.56

\*Note: Pulaski County is not included in the Central Workforce Information Area. Please refer to Page 54 for information on Pulaski County.  
Central Workforce Information Area includes these counties: Faulkner, Lonoke Monroe, Prairie, and Saline.

<b>EASTERN</b>	<b>3,061</b>	<b>31,843</b>	<b>31,446</b>	<b>31,835</b>	<b>\$191,044,497</b>	<b>\$463.47</b>
Natural Resources & Mining	221	1,480	1,494	1,778	8,391,688	407.52
Construction	195	1,331	1,317	1,309	8,454,788	493.08
Manufacturing	114	4,605	4,492	4,613	34,959,125	588.44
Trade, Transportation & Utilities	876	10,600	10,303	10,393	68,813,581	507.41
Information	45	328	317	311	2,383,974	575.47
Financial Activities	260	1,521	1,524	1,495	9,936,170	505.06
Professional & Business Services	270	1,496	1,464	1,484	8,492,475	441.00
Education & Health Services	395	5,034	5,128	5,185	31,456,332	473.00
Leisure & Hospitality	227	3,717	3,669	3,553	9,308,558	196.37
Other Services	250	1,002	1,007	982	4,721,583	364.29
Local Government	138	105	109	111	679,575	482.54
State Government	70	624	622	621	3,446,648	426.02

Eastern Workforce Information Area includes these counties: Crittenden, Cross, Lee, Phillips, and Saint Francis.

**TABLE 8. WORKFORCE INFORMATION AREA, SUMMARY  
EMPLOYMENT AND TOTAL EARNINGS, BY INDUSTRY  
THIRD QUARTER 2004**

NORTH AMERICAN INDUSTRY CLASSIFICATION SYSTEM INDUSTRY GROUP	NUMBER OF EMPLOYING UNITS	EMPLOYMENT			TOTAL EARNINGS	AVERAGE WEEKLY EARNINGS
		JULY	AUGUST	SEPTEMBER	JUL. - SEP. 2004	
<b>NORTH CENTRAL</b>	<b>5,245</b>	<b>66,612</b>	<b>68,228</b>	<b>70,448</b>	<b>\$417,381,966</b>	<b>\$469.19</b>
Natural Resources & Mining	147	1,033	959	952	6,530,834	511.93
Construction	479	2,681	2,684	2,672	17,717,561	508.73
Manufacturing	308	14,696	14,632	14,454	111,251,152	586.39
Trade, Transportation & Utilities	1,584	15,687	15,590	15,617	92,406,318	454.74
Information	77	716	710	711	5,208,977	562.50
Financial Activities	488	2,627	2,614	2,595	16,204,977	477.23
Professional & Business Services	441	2,995	3,072	3,053	16,363,950	414.07
Education & Health Services	570	10,919	11,027	11,145	75,333,824	525.36
Leisure & Hospitality	443	6,142	6,092	5,998	14,257,050	180.46
Other Services	363	1,587	1,500	1,476	7,374,813	372.97
Local Government	227	5,072	6,886	8,935	38,489,815	425.13
State Government	118	2,457	2,462	2,840	16,242,695	483.09

North Central Workforce Information Area includes these counties: Cleburne, Fulton, Independence, IZard, Jackson, Sharp, Stone, Van Buren, White, and Woodruff

<b>NORTHEAST</b>	<b>6,199</b>	<b>89,323</b>	<b>91,771</b>	<b>93,868</b>	<b>\$604,303,281</b>	<b>\$507.18</b>
Natural Resources & Mining	354	2,227	2,203	2,361	11,960,000	406.42
Construction	474	3,348	3,333	3,297	22,293,682	515.60
Manufacturing	371	22,861	22,912	22,922	198,833,542	667.95
Trade, Transportation & Utilities	1,768	17,263	17,307	17,411	99,892,557	443.47
Information	86	2,084	2,283	2,290	15,663,606	542.99
Financial Activities	577	3,459	3,451	3,446	24,636,075	548.98
Professional & Business Services	578	6,211	6,083	6,086	34,112,735	428.30
Education & Health Services	774	11,731	11,857	12,026	91,644,207	593.83
Leisure & Hospitality	448	7,166	7,166	7,158	17,216,711	184.88
Other Services	438	1,852	1,839	1,816	8,247,187	345.60
Local Government	221	7,694	9,546	11,127	51,886,115	422.10
State Government	110	3,427	3,791	3,928	27,916,864	578.00

Northeast Workforce Information Area includes these counties: Clay, Craighead, Greene, Lawrence, Mississippi, Poinsett, and Randolph.

**TABLE 8. WORKFORCE INFORMATION AREA, SUMMARY  
EMPLOYMENT AND TOTAL EARNINGS, BY INDUSTRY  
THIRD QUARTER 2004**

NORTH AMERICAN INDUSTRY CLASSIFICATION SYSTEM INDUSTRY GROUP	NUMBER OF EMPLOYING UNITS	EMPLOYMENT			TOTAL EARNINGS	AVERAGE WEEKLY EARNINGS
		JULY	AUGUST	SEPTEMBER	JUL. - SEP. 2004	
<b>NORTHWEST</b>	<b>13,259</b>	<b>209,503</b>	<b>214,079</b>	<b>218,891</b>	<b>\$1,667,518,759</b>	<b>\$598.95</b>
Natural Resources & Mining	125	1,710	1,707	1,697	13,972,038	630.49
Construction	1,572	10,683	10,746	10,743	82,145,919	589.23
Manufacturing	726	40,881	40,956	41,005	317,998,898	597.39
Trade, Transportation & Utilities	3,472	51,115	51,226	51,115	395,431,836	594.66
Information	229	3,343	3,305	3,287	28,409,735	659.90
Financial Activities	1,395	8,754	8,811	8,815	73,035,730	638.91
Professional & Business Services	1,876	29,798	29,832	29,892	333,787,458	860.44
Education & Health Services	1,290	21,407	21,659	21,745	174,125,657	620.00
Leisure & Hospitality	1,267	19,840	20,003	20,036	57,882,440	223.07
Other Services	894	4,439	4,420	4,495	26,000,704	449.32
Local Government	294	10,631	14,122	18,900	102,950,973	544.24
State Government	119	6,902	7,292	7,161	61,777,371	667.59

Northwest Workforce Information Area includes these counties: Baxter, Benton, Boone, Carroll, Madison, Marion, Newton, Searcy, and Washington.

<b>SOUTHEAST</b>	<b>5,225</b>	<b>74,582</b>	<b>75,947</b>	<b>79,653</b>	<b>\$525,341,996</b>	<b>\$526.68</b>
Natural Resources & Mining	435	3,309	3,276	3,493	22,915,429	524.72
Construction	376	3,197	3,201	3,161	23,197,623	560.03
Manufacturing	246	18,462	18,449	18,496	165,993,453	691.36
Trade, Transportation & Utilities	1,489	14,212	14,178	14,457	84,209,438	453.54
Information	69	580	573	568	4,285,943	574.70
Financial Activities	415	2,982	2,969	2,936	21,448,864	556.96
Professional & Business Services	447	4,021	4,024	4,052	33,732,596	643.50
Education & Health Services	596	9,803	10,027	10,115	63,007,864	485.57
Leisure & Hospitality	392	5,038	5,089	5,122	11,639,903	176.15
Other Services	396	1,561	1,565	1,584	7,536,803	369.27
Local Government	214	5,978	7,105	9,997	48,115,958	481.10
State Government	150	5,439	5,491	5,672	39,258,122	545.69

Southeast Workforce Information Area includes these counties: Arkansas, Ashley, Bradley, Chicot, Cleveland, Desha, Drew, Grant, Jefferson, and Lincoln.

**TABLE 8. WORKFORCE INFORMATION AREA, SUMMARY  
EMPLOYMENT AND TOTAL EARNINGS, BY INDUSTRY  
THIRD QUARTER 2004**

NORTH AMERICAN INDUSTRY CLASSIFICATION SYSTEM INDUSTRY GROUP	NUMBER OF EMPLOYING UNITS	EMPLOYMENT			TOTAL EARNINGS	AVERAGE WEEKLY EARNINGS
		JULY	AUGUST	SEPTEMBER	JUL. - SEP. 2004	
<b>SOUTHWEST</b>	<b>5,680</b>	<b>83,675</b>	<b>84,840</b>	<b>88,211</b>	<b>\$584,923,148</b>	<b>\$525.78</b>
Natural Resources & Mining	416	2,888	2,939	2,954	22,846,395	600.42
Construction	435	3,783	3,860	3,913	30,814,808	615.36
Manufacturing	302	27,334	27,356	27,148	236,685,203	667.41
Trade, Transportation & Utilities	1,599	15,364	15,367	15,389	92,391,038	462.29
Information	85	742	727	725	5,317,113	559.26
Financial Activities	531	3,092	3,076	3,058	20,957,158	524.20
Professional & Business Services	476	4,528	4,432	4,386	30,340,369	524.62
Education & Health Services	544	8,755	8,793	8,816	52,149,927	456.48
Leisure & Hospitality	414	5,569	5,460	5,434	13,649,254	191.33
Other Services	458	2,399	2,248	2,221	9,727,381	326.85
Local Government	269	6,089	7,456	10,907	47,969,590	452.72
State Government	151	3,132	3,126	3,260	22,074,912	535.22

Southwest Workforce Information Area includes these counties: Calhoun, Columbia, Dallas, Hempstead, Howard, Lafayette, Little River, Miller, Nevada, Ouachita, Sevier, and Union.

<b>WEST CENTRAL</b>	<b>7,684</b>	<b>100,071</b>	<b>102,408</b>	<b>106,355</b>	<b>\$648,829,237</b>	<b>\$484.82</b>
Natural Resources & Mining	265	2,382	2,388	2,397	16,740,807	539.03
Construction	859	5,260	5,306	5,247	36,146,189	527.50
Manufacturing	429	20,337	20,457	20,765	152,236,021	570.69
Trade, Transportation & Utilities	1,982	21,003	21,066	21,257	136,191,758	496.30
Information	106	1,072	1,076	1,068	8,381,923	601.46
Financial Activities	779	3,905	3,905	3,890	26,742,767	527.47
Professional & Business Services	844	6,618	6,757	6,733	39,246,900	450.42
Education & Health Services	780	14,353	14,506	14,649	105,208,363	558.03
Leisure & Hospitality	728	12,356	12,169	11,941	34,386,999	217.61
Other Services	548	2,378	2,425	2,425	11,633,063	371.41
Local Government	232	6,644	8,338	11,578	53,896,974	468.29
State Government	132	3,763	4,015	4,405	28,017,473	530.70

West Central Workforce Information Area includes these counties: Clark, Conway, Garland, Hot Spring, Johnson, Montgomery, Perry, Pike, Pope, and Yell

**TABLE 8. WORKFORCE INFORMATION AREA, SUMMARY  
EMPLOYMENT AND TOTAL EARNINGS, BY INDUSTRY  
THIRD QUARTER 2004**

NORTH AMERICAN INDUSTRY CLASSIFICATION SYSTEM INDUSTRY GROUP	NUMBER OF EMPLOYING UNITS	EMPLOYMENT			TOTAL EARNINGS	AVERAGE WEEKLY EARNINGS
		JULY	AUGUST	SEPTEMBER	JUL. - SEP. 2004	
<b>WESTERN</b>	<b>6,094</b>	<b>104,696</b>	<b>107,201</b>	<b>108,875</b>	<b>\$742,386,370</b>	<b>\$534.09</b>
Natural Resources & Mining	152	2,089	2,130	2,160	19,396,653	701.70
Construction	580	4,645	4,623	4,619	33,475,502	556.28
Manufacturing	411	30,410	30,179	30,222	246,290,122	625.87
Trade, Transportation & Utilities	1,638	21,706	21,732	21,670	136,366,780	483.34
Information	95	1,639	1,611	1,612	15,099,202	716.67
Financial Activities	608	3,683	3,680	3,679	28,046,224	586.14
Professional & Business Services	750	10,622	10,733	10,585	63,987,022	462.31
Education & Health Services	662	12,932	12,970	12,978	104,734,704	621.64
Leisure & Hospitality	493	7,653	7,842	7,744	20,652,443	205.08
Other Services	468	2,225	2,152	2,160	11,891,554	419.80
Local Government	154	4,885	7,436	8,984	47,210,291	511.37
State Government	83	2,207	2,113	2,462	15,235,873	518.43

Western Workforce Information Area includes these counties: Crawford, Franklin, Logan, Polk, Scott, and Sebastian.