

Arkansas Covered Employment & Earnings

Jobs for People. People for Jobs.

DWS
Department of
WORKFORCE**Services**

ANNUAL
2004

**COVERED EMPLOYMENT AND EARNINGS
STATE OF ARKANSAS
CALENDAR YEAR 2004**

**MIKE HUCKABEE, GOVERNOR
STATE OF ARKANSAS**

**ARTEE WILLIAMS, DIRECTOR
DEPARTMENT OF WORKFORCE SERVICES**

**PUBLISHED BY
BUREAU OF LABOR STATISTICS PROGRAMS
DEPARTMENT OF WORKFORCE SERVICES
POST OFFICE BOX 2981
LITTLE ROCK, ARKANSAS 72203-2981
BERNADETTE COLEMAN, BLS PROGRAMS MANAGER
TELEPHONE: (501) 682-3159**

STATE OF ARKANSAS HOME PAGE: <http://www.arkansas.gov>

DEPARTMENT OF WORKFORCE SERVICES HOME PAGE: <http://www.arkansas.gov/esd/>

**INTERNET SITE FOR LABOR MARKET INFORMATION:
<http://www.discoverarkansas.net>**

RELEASED: JUNE 2005

TABLE OF CONTENTS

DESCRIPTION OF DATA	Page
Industry Classification	1
Definition of Covered Employment and Earnings	2
Federal Government Employment	2
County Classification	2
Significant Developments During Calendar Year 2004	3

LIST OF GRAPHS AND TABLES

Graph 1	Total Covered Employment for Selected Years, Arkansas	7
Graph 2	Total Covered Earnings, by Calendar Quarter for Selected Years, Arkansas	8
Table 1	Quarterly Comparison of Covered Employment and Wages, by Industry	5
Table 2	Total Covered Employment in Arkansas, 1997-2004	6
Table 3	Total Covered Earnings, 1997-2004	9
Table 4	Total Taxable Earnings, 1997-2004	10
Table 5	State Summary - Employment and Total Earnings, by Industry, Calendar Year 2004	11
Table 6	County Summary - Employment and Total Earnings, by Industry, Calendar Year 2004	25
Table 7	Federal Government Employment and Total Earnings in Arkansas, Calendar Year 2004	63
Table 8	Workforce Information Area – Employment and Total Earnings, by Industry, Calendar Year 2004	64

EMPLOYMENT AND EARNINGS UNDER THE ARKANSAS EMPLOYMENT SECURITY LAW CALENDAR YEAR 2004

DESCRIPTION OF DATA

This publication contains covered employment and payroll data by industry and county for the Calendar Year 2004. These data are compiled from quarterly contribution and wage reports submitted by employers subject to the Arkansas Employment Security Law. An employing unit is a single physical location where business is conducted, production takes place, or services are provided. Employment data have been tabulated for each month of the quarter by industry under the **North American Industry Classification System** (NAICS) (see "Industry Classification" below) on a statewide, county and workforce area basis. Payroll data represent the total wages paid during the quarter, and are also shown by

industry for the State and by publishable industry groups for each county and workforce area. The tabulation of this data is a joint effort in conjunction with the U.S. Bureau of Labor Statistics. In addition, there are tables included which set out total covered employment by months, quarterly payrolls, and average weekly earnings for the years 1997 through 2004. Data contained in this publication are subject to revision. These revisions will be reflected in the 2005 First Quarter Covered Employment and Earnings publication. Because of industry code changes between years, substantial employment and wage shifts among industries are anticipated.

INDUSTRY CLASSIFICATION

Previously published industry data **will not** be comparable in all instances with currently published data since industry codes have been revised according to the following Manuals: (a) between January 1, 1958 and December 31, 1967, industry codes were assigned under the 1957 Standard Industrial Classification (SIC) Manual; (b) between January 1, 1968 and December 31, 1974, industry codes were assigned under the 1967 Standard Industrial Classification (SIC) Manual; (c) between January 1, 1975 and December 31, 1987, industry codes were assigned under the 1972 Standard Industrial Classification (SIC) Manual; (d) between January 1, 1988 and December 31, 2000, industry codes were assigned under the 1987 Standard Industrial Classification (SIC) Manual; and (e) since January 1, 2001, industry codes have been assigned under the 2002 North American Industry Classification System (NAICS) Manual. **The NAICS Manual represents a significant change in coding methodology as compared to the**

SIC Manual. One of the most significant changes involves how NAICS treats auxiliary units. Auxiliary units are establishments primarily engaged in performing management or support services for other establishments of the same enterprise. The SIC code for these units was based on the activity of the enterprise served. The NAICS code is based on the actual activities that the establishment performs. Comparisons of many industries **should not be made** between this publication and previous Covered Employment and Earnings publications that were based on SIC. Even though some titles are the same or similar, in nature, NAICS and SIC could differ in the classification of employers. The implementation of NAICS represents a profound change for statistical programs, and will create significant benefits along with transition obstacles for both data collectors and data users. A summary is available on the NAICS home page at <http://www.census.gov/naics>.

DEFINITION OF COVERED EMPLOYMENT AND EARNINGS

Covered Employment is the number of workers employed by employers subject to the Arkansas Employment Security Law who worked or received pay for the payroll period including the 12th of the month. An employer is subject to the law when they employ one or more employees in each of ten days during the current or preceding calendar year.

Currently excluded from coverage is employment covered by the Railroad Unemployment Insurance Act, some domestic service workers, employees of small agricultural establishments, self-employed and unpaid family workers, insurance and real estate

agents who are on commission only, and employees of churches and religious organizations except separately incorporated schools. The payroll information in this publication includes all wages and salaries paid to any covered employees by their employers including bonuses, commissions, and cash values of remuneration received in any medium other than cash. These wages include both taxable and nontaxable wages. Only the first \$10,000 paid to each worker by an employer in the calendar year is taxable under the Arkansas Employment Security Law.

FEDERAL GOVERNMENT EMPLOYMENT

Table 7 on page 63 lists the total number of civilians employed by the Federal Government in Arkansas during the Calendar Year 2004. Employment and wage data are set out by industry divisions. These data are obtained from required reports submitted by various

government agencies having employment in the State. Civilian Federal workers are covered by the Unemployment Compensation for Federal Employees (UCFE) program.

COUNTY CLASSIFICATION

Employment and payroll data by county are classified according to the county where the workers are employed. Employers with operations in more than one county are requested to furnish this agency with a breakdown of employment and wages for at least one quarter of each year by the counties in which they operate. Many such employers submit county data with each regular contribution report. **Note:** This information is invaluable in the preparation of monthly employment and payroll data by county.

Employment and payroll data for multi - area employers who do not furnish county data each quarter of the year, are prorated by county on the basis of one quarter's information. The "rest-of-state" table that appears on page 62 of this publication includes data on firms that **did not** provide a county breakdown of employment and payrolls. It also includes sales, and all other type of personnel with no permanent place of work, as well as employment of employers with no established place of business in Arkansas.

SIGNIFICANT DEVELOPMENTS DURING CALENDAR YEAR 2004

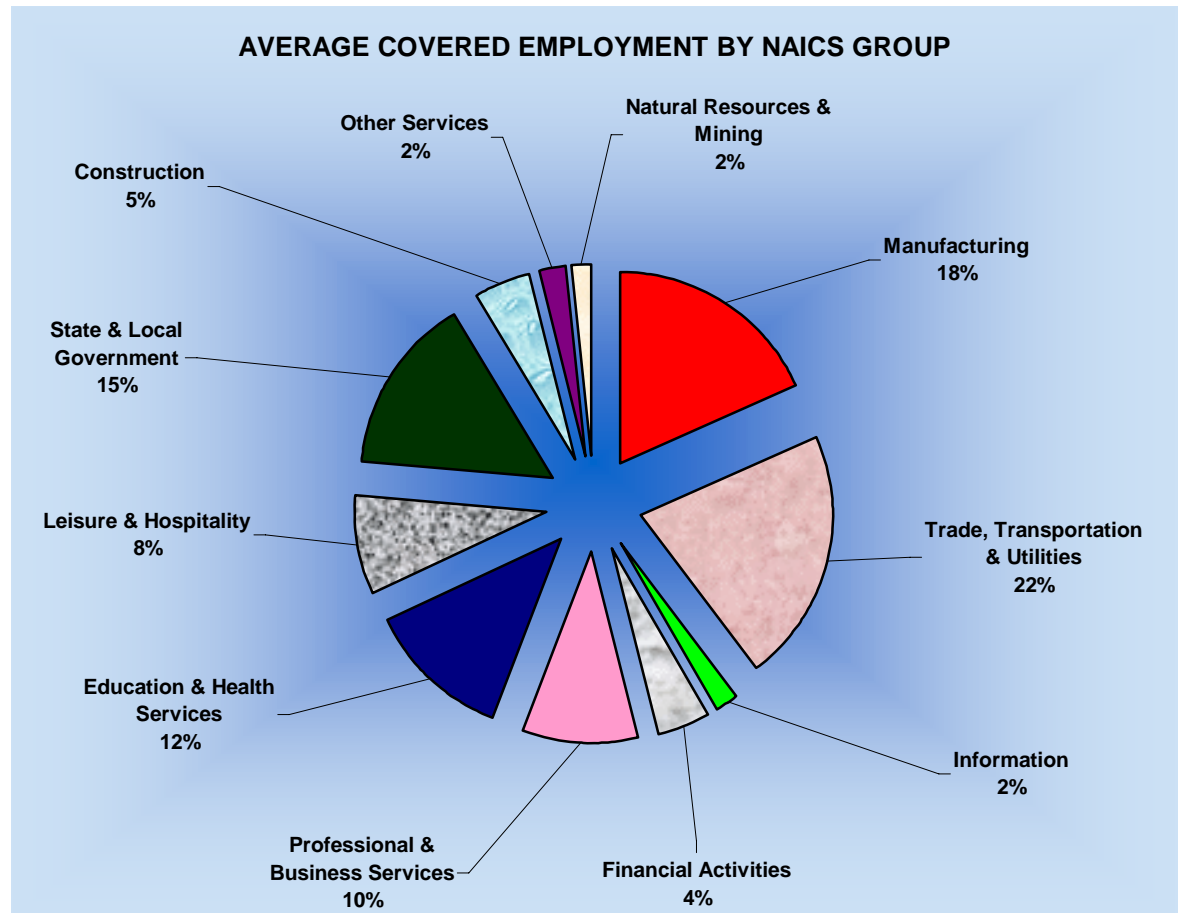
AVERAGE EMPLOYMENT CHANGES

Covered employment averaged 1,108,654 during the Calendar Year 2004 (see table 1), an increase of 13,720 (+1.25%) from the previous year and 2,635 from 2001 above the average recorded previously. 2001 was the first year in Arkansas that average employment recorded a decline since 1982. This is the first year Arkansas has seen a recovery from the loss in employment from this time three years ago. This provides an indication that the economy in Arkansas is starting to recover from the recession in 2001.

Eight of the eleven major industries recorded gains over the year. Professional & Business Services added 4,400 jobs. The majority of the increase occurred within the computer and employment sectors. Education & Health Services had a jump in employment to 136,650 an increase of 3,125 jobs. Doctors offices (+910), individual & family services (+890), and child day care services (+321) all contributed to the gain in employment. Leisure & Hospitality added an additional 2,819 jobs. Accommodation & Food Services accounted for 99.0 percent of the increase. This large jump was driven by the food industries (+2,484).

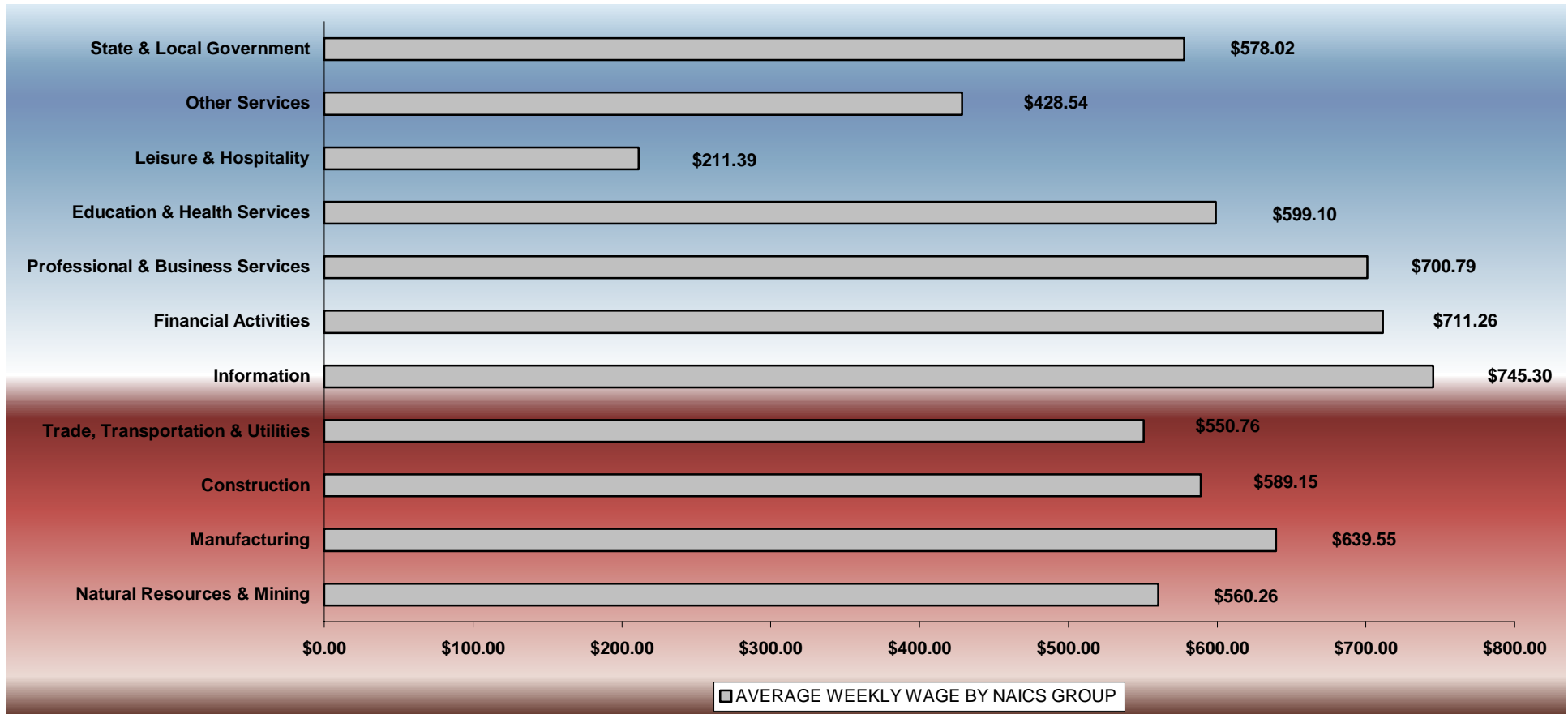
Three major industries experienced losses this year. The most significant loss occurred in the Manufacturing industry (-2,112). Sectors within the manufacturing group have continued to close up, downsize, and layoff workers. Slight losses occurred in Information (-152) and Other Services (-63).

Pulaski ranked first among the counties in covered employment, averaging 232,134 during 2004. Second ranked Benton County averaged 84,172 followed by Washington County with 83,989. Sebastian and Craighead Counties averaged 70,907 and 39,853, respectively, to make the top five among the seventy-five counties in Arkansas



AVERAGE WEEKLY EARNINGS

Wages paid to covered workers totaled \$33,071,052,719 for the Calendar Year 2004 (see table 1), for an average weekly wage of \$573.65 (see table 5). This represented an increase of \$25.27, or 4.4 percent, from the level of \$548.38 recorded in 2003. Employees in Security & Commodity Investment Activities led all published industry groups with average weekly earnings of \$1,799.06. Workers in Iron & Steel Mills and Ferroalloys ranked second averaging \$1,447.00, followed by Electronic Markets and Agents & Brokers (\$1,309.33) and Power Generation & Supply (1,309.02). Limited Service Eating Places (\$183.67) and Drinking Places, Alcoholic Beverages (\$185.88) posted the lowest average.



Note: Because of industry code changes between years, substantial employment and wage shifts among industries are anticipated.

Little River County employees ranked first averaging \$722.12. Benton County employees (\$710.25) ranked second followed by Pulaski County (\$674.14), Calhoun County (\$667.17), and Ashley County (\$637.25). Employees in Newton County ranked last among the counties with an average of \$340.23.

TABLE 1. YEARLY COMPARISON OF COVERED EMPLOYMENT AND WAGES, BY INDUSTRY

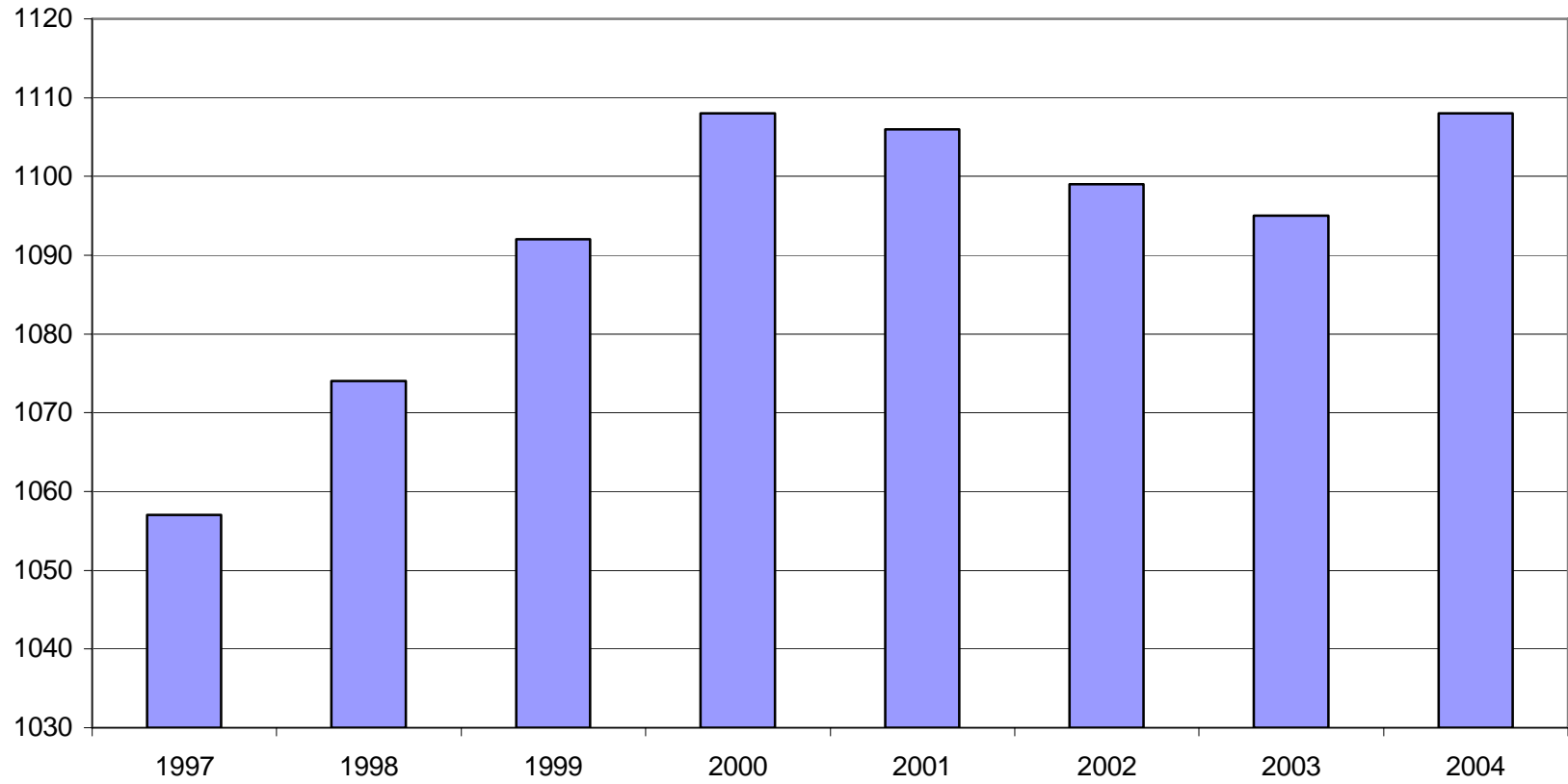
North American Industry Classification System Industry Group	Number of Employing Units	Average Covered Employment	% of Total	Net Change From 2,003	Total Earnings 2004	% of Total	Average Weekly Earnings
Total	74,881	1,108,654	100.0	13,720	33,071,052,719	100.0	\$573.65
Natural Resources & Mining	2,355	18,649	1.7	337	543,315,282	1.6%	\$560.26
Agriculture, Forestry, Fishing & Hunting	2,034	14,716	1.3	69	378,328,636	1.1%	\$494.40
Mining	321	3,933	0.4	268	164,986,646	0.5%	\$806.72
Construction	7,308	51,407	4.6	480	1,574,893,584	4.8%	\$589.15
Manufacturing	3,590	203,702	18.4	-2,112	6,774,424,603	20.5%	\$639.55
Trade, Transportation & Utilities	20,750	237,807	21.5	2,163	6,810,550,716	20.6%	\$550.75
Wholesale Trade	6,052	45,939	4.1	1,349	2,002,497,428	6.1%	\$838.28
Retail Trade	11,448	130,724	11.8	1,716	2,550,447,082	7.7%	\$375.20
Transportation & Warehousing	2,926	54,614	4.9	-720	1,859,452,208	5.6%	\$654.75
Utilities	324	6,530	0.6	-182	398,153,998	1.2%	\$1,172.56
Information	1,208	20,183	1.8	-152	782,203,784	2.4%	\$745.30
Financial Activities	7,420	49,182	4.4	674	1,819,026,060	5.5%	\$711.26
Finance & Insurance	4,400	35,940	3.2	189	1,493,293,683	4.5%	\$799.03
Real Estate & Rental & Leasing	3,020	13,242	1.2	485	325,732,377	1.0%	\$473.05
Professional & Business Services	9,990	108,091	9.7	4,400	3,938,956,435	11.9%	\$700.79
Professional & Technical Services	6,231	33,698	3.0	2,909	1,483,122,423	4.5%	\$846.39
Management of Companies & Enterprises	474	22,799	2.1	-782	1,483,322,376	4.5%	\$1,251.17
Administrative & Waste Services	3,093	48,818	4.4	-503	862,378,379	2.6%	\$339.71
Education & Health Services	7,793	136,650	12.3	3,125	4,257,171,676	12.9%	\$599.11
Educational Services	503	8,000	0.7	164	201,454,462	0.6%	\$484.27
Health Care & Social Assistance	7,290	128,650	11.6	2,961	4,055,717,214	12.3%	\$606.25
Leisure & Hospitality	5,792	90,993	8.2	2,819	1,000,212,053	3.0%	\$211.39
Arts, Entertainment & Recreation	880	9,133	0.8	29	126,461,299	0.4%	\$266.28
Accommodation & Food Services	4,912	81,860	7.4	2,790	873,750,754	2.6%	\$205.26
Other Services	5,493	25,775	2.3	-63	574,377,553	1.7%	\$428.54
State & Local Government	3,182	166,215	15.0	2,048	4,995,920,973	15.1%	\$578.02
Local Government	1,980	107,261	9.7	1,383	2,975,389,154	9.0%	\$533.46
State Government	1,202	58,954	5.3	665	2,020,531,819	6.1%	\$659.10
Nonclassifiable Establishments	0	0	0	0	0	0	\$0.00

Note: Items do not necessarily add to totals because of rounding. Because of industry code changes between years, substantial employment and wage shifts among industries are anticipated.

TABLE 2. TOTAL COVERED EMPLOYMENT IN ARKANSAS

Period	1997	1998	1999	2000	2001	2002	2003	2004
Average	1,057,350	1,073,732	1,092,351	1,108,490	1,106,053	1,098,558	1,094,904	1,108,654
January	1,025,949	1,050,970	1,065,920	1,089,956	1,096,009	1,081,635	1,082,740	1,089,798
February	1,034,361	1,057,593	1,074,315	1,096,126	1,101,616	1,086,793	1,084,880	1,094,946
March	1,046,551	1,066,099	1,084,653	1,109,157	1,112,143	1,098,500	1,092,172	1,105,592
April	1,057,633	1,074,416	1,093,574	1,111,543	1,115,526	1,103,399	1,095,341	1,111,410
May	1,067,078	1,083,133	1,098,539	1,116,779	1,119,815	1,111,998	1,103,099	1,117,470
June	1,066,728	1,086,125	1,101,748	1,121,245	1,119,734	1,112,028	1,099,688	1,117,324
July	1,028,510	1,046,396	1,062,563	1,075,096	1,071,830	1,065,697	1,056,155	1,071,561
August	1,050,656	1,063,680	1,081,260	1,096,841	1,094,068	1,086,011	1,080,681	1,094,977
September	1,075,759	1,088,772	1,108,212	1,123,735	1,115,996	1,113,148	1,108,905	1,122,823
October	1,079,093	1,089,836	1,110,604	1,122,884	1,110,994	1,108,447	1,112,900	1,123,901
November	1,076,715	1,087,855	1,112,003	1,120,620	1,109,012	1,107,611	1,110,041	1,125,910
December	1,079,166	1,089,913	1,114,823	1,117,892	1,105,887	1,107,425	1,112,243	1,128,139

AVERAGE TOTAL COVERED EMPLOYMENT GRAPH 1
In Thousands



TOTAL COVERED EARNINGS BY CALENDAR QUARTER, GRAPH 2
In Thousands

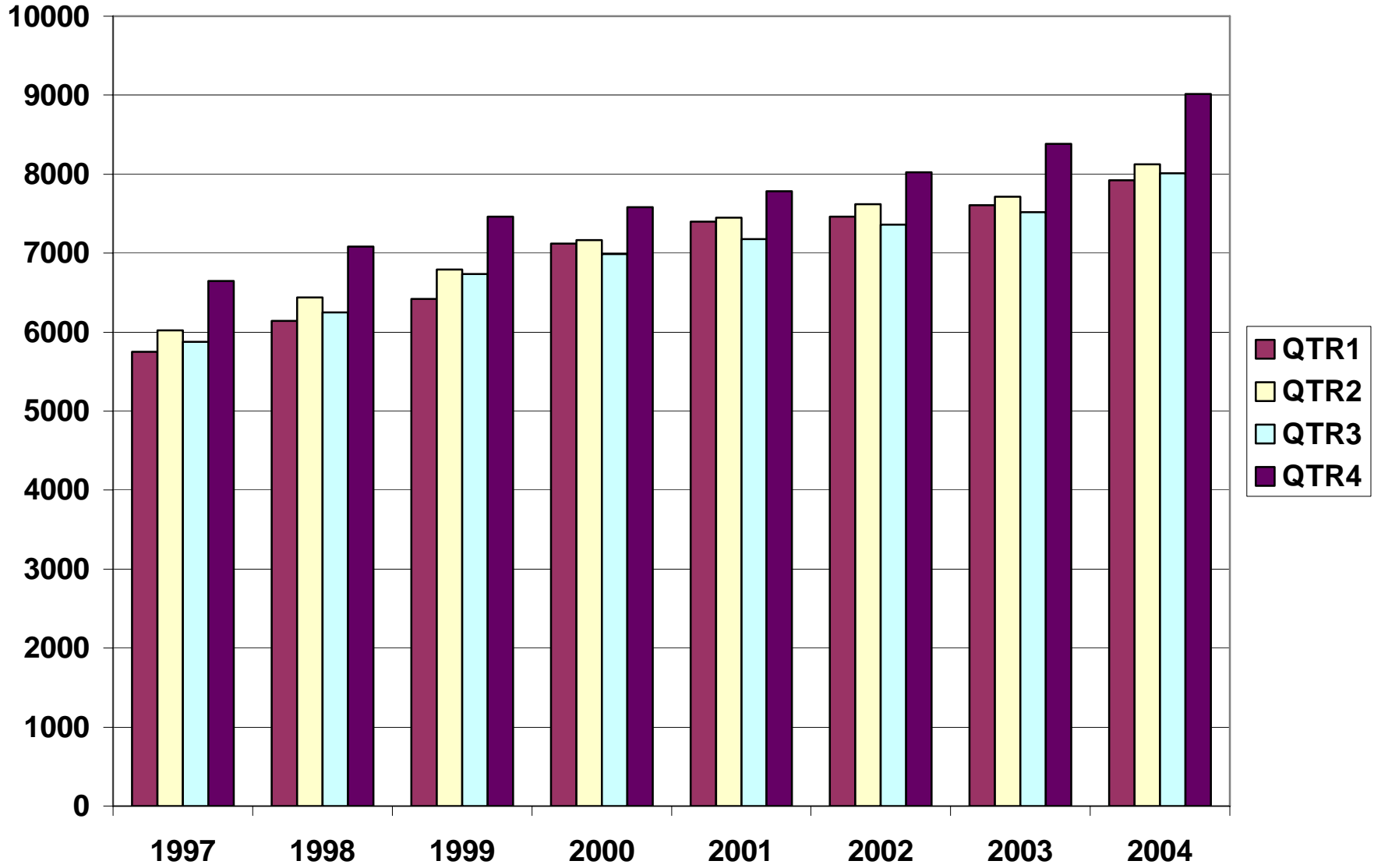


TABLE 3. TOTAL COVERED EARNINGS, 1997 - 2004

Period	1997	1998	1999	2000
Total	\$24,296,555,335	\$25,914,345,060	\$27,407,925,462	\$28,853,825,155
January - March	5,751,056,136	6,145,178,755	6,418,456,638	7,122,666,917
April - June	6,021,537,518	6,441,129,069	6,791,960,679	7,166,110,114
July - September	5,877,681,886	6,246,775,598	6,733,480,079	6,986,103,157
October - December	6,646,279,795	7,081,261,638	7,464,028,066	7,578,944,967
Average Weekly Earnings	441.90	464.13	482.51	500.57

Period	2001	2002	2003	2004
Total	\$29,807,669,666	\$30,472,854,103	\$31,226,612,657	\$33,071,052,719
January - March	7,398,887,532	7,465,250,305	7,608,130,008	7,920,073,954
April - June	7,448,023,298	7,621,878,775	7,714,813,038	8,123,965,587
July - September	7,177,293,061	7,361,666,511	7,522,456,991	8,010,924,124
October - December	7,783,465,775	8,024,058,512	8,381,212,620	9,016,089,054
Average Weekly Earnings	518.26	533.44	548.46	573.65

TABLE 4. TOTAL TAXABLE EARNINGS, 1997 - 2004

Period	1997	1998	1999	2000
Total	\$8,262,066,213	\$8,554,973,370	\$8,807,445,422	\$9,048,033,534
January - March	3,871,667,342	4,063,795,529	4,203,067,856	4,560,814,012
April - June	2,223,918,770	2,271,303,325	2,325,649,764	2,260,741,187
July - September	1,208,701,615	1,236,054,184	1,267,562,743	1,250,850,348
October - December	957,778,486	983,820,332	1,011,165,059	975,627,987
Period	2001	2002	2003	2004
Total	\$9,003,189,480	\$8,887,270,978	\$9,155,945,780	\$9,735,009,666
January - March	4,670,296,360	4,668,534,587	4,737,918,796	4,932,839,735
April - June	2,219,485,263	2,162,971,435	2,270,519,362	2,452,278,332
July - September	1,190,098,737	1,158,197,858	1,188,784,400	1,318,301,555
October - December	923,309,120	897,567,098	958,723,222	1,031,590,044

**TABLE 5. STATEWIDE SUMMARY
EMPLOYMENT AND TOTAL EARNINGS, BY INDUSTRY
CALENDAR YEAR 2004**

NORTH AMERICAN INDUSTRY CLASSIFICATION SYSTEM INDUSTRY GROUPS		AVERAGE EMPLOYING UNITS	AVERAGE COVERED EMPLOYMENT	TOTAL EARNINGS	AVERAGE WEEKLY EARNINGS
TOTAL, ALL INDUSTRIES		74,881	1,108,654	\$33,071,052,719	\$573.65
NATURAL RESOURCES & MINING		2,355	18,649	\$543,315,282	\$560.26
11	AGRICULTURE, FORESTRY, FISHING & HUNTING	2,034	14,716	\$378,328,636	\$494.40
111	CROP PRODUCTION	721	3,928	\$80,357,515	\$393.42
1111	Oilseed and Grain Farming	430	2,027	41,562,750	\$394.32
1112	Vegetable and Melon Farming	8	134	1,610,496	\$231.13
1113	Fruit and Tree Nut Farming	10	84	1,413,667	\$323.64
1114	Greenhouse & Nursery Production	50	340	7,979,774	\$451.34
1119	Other Crop Farming	224	1,342	27,790,828	\$398.24
112	ANIMAL PRODUCTION	266	3,848	\$115,176,581	\$575.61
1121	Cattle Ranching and Farming	76	395	10,056,085	\$489.59
1123	Poultry and Egg Production	94	2,643	82,410,912	\$599.63
1125	Animal Aquaculture	66	572	16,092,486	\$541.03
	Other	30	239	6,617,098	\$532.43
113	FORESTRY AND LOGGING	591	3,446	\$93,430,536	\$521.40
1131	Timber Tract Operations	45	268	8,942,134	\$641.66
1132	Forest Nurseries & Gathering of Forest Products	6	30	970,918	\$622.38
1133	Logging	540	3,148	83,517,484	\$510.20
	OTHER	457	3,495	\$89,364,004	\$491.71
21	MINING	321	3,933	\$164,986,646	\$806.72
211	OIL AND GAS EXTRACTION	73	372	\$18,659,278	\$964.60
212	MINING (EXCEPT OIL AND GAS)	111	2,041	\$80,890,109	\$762.17
213	SUPPORT ACTIVITIES FOR MINING	137	1,520	\$65,437,259	\$827.90

*Note: Totals may not add due to rounding.

**TABLE 5. STATEWIDE SUMMARY
EMPLOYMENT AND TOTAL EARNINGS, BY INDUSTRY
CALENDAR YEAR 2004**

NORTH AMERICAN INDUSTRY CLASSIFICATION SYSTEM INDUSTRY GROUPS		AVERAGE EMPLOYING UNITS	AVERAGE COVERED EMPLOYMENT	TOTAL EARNINGS	AVERAGE WEEKLY EARNINGS
CONSTRUCTION		7,308	51,407	\$1,574,893,584	\$589.15
236	CONSTRUCTION OF BUILDINGS	1,933	11,778	\$393,874,243	\$643.11
2361	Residential Building Construction	1,332	4,034	111,867,541	\$533.29
2362	Nonresidential Building Construction	601	7,744	282,006,702	\$700.31
237	HEAVY & CIVIL ENGINEERING CONSTRUCTION	901	9,684	\$316,152,610	\$627.83
2371	Utility System Construction	427	4,751	151,048,016	\$611.40
2372	Land Subdivision	119	377	13,369,852	\$682.00
2373	Highway, Street & Bridge Construction	245	3,767	124,734,985	\$636.78
2379	Other Heavy Construction	110	789	26,999,757	\$658.08
238	SPECIALTY TRADE CONTRACTORS	4,475	29,946	\$864,866,731	\$555.40
2381	Building Foundation & Exterior Contractors	900	5,826	149,451,326	\$493.32
2382	Building Equipment Contractors	1,934	14,300	459,775,553	\$618.31
2383	Building Finishing Contractors	835	4,910	128,027,541	\$501.44
2389	Other Specialty Trade Contractors	806	4,911	127,612,311	\$499.71
MANUFACTURING		3,590	203,702	\$6,774,424,603	\$639.55
311	FOOD MANUFACTURING	295	51,708	\$1,386,681,198	\$515.72
3111	Animal Food Manufacturing	50	1,375	61,964,441	\$866.64
3112	Grain and Oilseed Milling	30	2,440	80,471,844	\$634.24
3114	Fruit, Vegetable & Specialty Food	39	6,588	210,787,578	\$615.30
3115	Dairy Product Manufacturing	11	721	24,464,391	\$652.52
3116	Animal Slaughtering & Processing	88	35,263	840,346,402	\$458.29
3118	Bakeries and Tortilla Manufacturing	50	3,355	106,358,401	\$609.64
3119	Other Food Manufacturing	19	1,769	58,866,899	\$639.94
	Other	9	197	3,421,242	\$333.98
312	BEVERAGE & TOBACCO PRODUCT MFG.	38	1,252	\$45,032,524	\$691.70
313	TEXTILE MILLS	14	364	\$15,182,442	\$802.12
3132	Fabric Mills	4	302	13,770,218	\$876.86
3133	Textile & Fabric Finishing Mills	10	62	1,412,224	\$438.03

*Note: Totals may not add due to rounding.

**TABLE 5. STATEWIDE SUMMARY
EMPLOYMENT AND TOTAL EARNINGS, BY INDUSTRY
CALENDAR YEAR 2004**

NORTH AMERICAN INDUSTRY CLASSIFICATION SYSTEM INDUSTRY GROUPS		AVERAGE EMPLOYING UNITS	AVERAGE COVERED EMPLOYMENT	TOTAL EARNINGS	AVERAGE WEEKLY EARNINGS
314	TEXTILE PRODUCT MILLS	60	1,594	\$55,075,235	\$664.45
315	APPAREL MANUFACTURING	38	2,118	\$43,668,420	\$396.50
3152	Cut & Sew Apparel Manufacturing	30	856	16,447,280	\$369.50
	Other	9	1,262	27,221,140	\$414.80
316	LEATHER & ALLIED PRODUCT MANUFACTURING	21	2,534	\$54,027,730	\$410.02
3162	Footwear Manufacturing	10	2,331	48,461,197	\$399.81
3169	Other Leather Product Manufacturing	11	204	5,566,533	\$524.75
321	WOOD PRODUCT MANUFACTURING	401	13,888	\$420,626,148	\$582.44
3211	Sawmills and Wood Preservation	187	6,205	196,758,464	\$609.80
3212	Veneer & Engineered Wood Products	48	3,290	114,491,000	\$669.22
3219	Other Wood Product Manufacturing	166	4,392	109,376,684	\$478.92
322	PAPER MANUFACTURING	87	12,226	\$591,224,348	\$929.96
3221	Pulp, Paper & Paperboard Mills	12	4,774	300,374,590	\$1,209.98
3222	Converted Paper Product Manufacturing	75	7,452	290,849,758	\$750.57
323	PRINTING & RELATED SUPPORT ACTIVITIES	307	4,775	\$157,251,978	\$633.31
324	PETROLEUM AND COAL PRODUCTS MFG.	23	949	\$46,146,405	\$935.12
325	CHEMICAL MANUFACTURING	118	5,140	\$247,946,032	\$927.66
3251	Basic Chemical Manufacturing	25	1,608	86,511,403	\$1,034.63
3252	Resin, Rubber & Artificial Fibers	8	293	14,918,736	\$979.18
3253	Agricultural Chemical Manufacturing	23	453	21,787,641	\$924.93
3254	Pharmaceutical & Medicine Manufacturing	13	128	4,259,775	\$639.99
3255	Paint, Coating & Adhesive Manufacturing	8	204	9,430,525	\$889.00
3256	Cleaning Compound & Toiletry Manufacturing	18	1,075	46,689,749	\$835.24
3259	Other Chemical Preparation Manufacturing	25	1,379	64,348,203	\$897.36
326	PLASTICS & RUBBER PRODUCTS MFG.	181	13,125	\$477,408,175	\$699.50
3261	Plastics Product Manufacturing	138	7,644	234,089,350	\$588.92
3262	Rubber Product Manufacturing	43	5,482	243,318,825	\$853.56

*Note: Totals may not add due to rounding.

**TABLE 5. STATEWIDE SUMMARY
EMPLOYMENT AND TOTAL EARNINGS, BY INDUSTRY
CALENDAR YEAR 2004**

NORTH AMERICAN INDUSTRY CLASSIFICATION SYSTEM INDUSTRY GROUPS		AVERAGE EMPLOYING UNITS	AVERAGE COVERED EMPLOYMENT	TOTAL EARNINGS	AVERAGE WEEKLY EARNINGS
327	NONMETALLIC MINERAL PRODUCT MFG.	253	4,448	\$153,119,612	\$662.01
3271	Clay Product & Refractory Manufacturing	20	523	17,695,781	\$650.68
3272	Glass & Glass Product Manufacturing	14	403	13,391,707	\$639.04
3273	Cement & Concrete Product Manufacturing	186	2,626	86,567,544	\$633.95
3274	Lime & Gypsum Product Manufacturing	3	393	17,418,604	\$852.35
3279	Other Nonmetallic Mineral Products	30	503	18,045,976	\$689.94
331	PRIMARY METAL MANUFACTURING	67	8,095	\$378,603,125	\$899.42
3311	Iron & Steel Mills and Ferroalloys	7	2,067	155,529,521	\$1,447.00
3312	Purchased Steel Product Manufacturing	13	2,231	81,101,174	\$699.08
3313	Alumina & Aluminum Production	21	1,724	73,467,631	\$819.51
3314	Other Nonferrous Metal Production	10	709	23,448,688	\$636.02
3315	Foundries	16	1,364	45,056,111	\$635.24
332	FABRICATED METAL PRODUCT MANUFACTURING	566	17,750	\$617,389,210	\$668.89
3321	Forging & Stamping	16	820	26,224,776	\$615.03
3322	Cutlery & Hand Tool Manufacturing	18	1,286	41,170,585	\$615.66
3323	Architectural & Structural Metals	179	4,956	173,193,792	\$672.04
3324	Boilers, Tanks & Shipping Containers	20	1,104	40,647,922	\$708.05
3325	Hardware Manufacturing	11	469	14,144,207	\$579.97
3326	Spring & Wire Product Manufacturing	17	914	25,720,885	\$541.17
3327	Machine Shops & Threaded Products	200	1,636	50,895,369	\$598.26
3328	Coating, Engraving & Heat Treating Metals	36	979	29,214,208	\$573.86
3329	Other Fabricated Metal Product Manufacturing	71	5,587	216,177,466	\$744.10
333	MACHINERY MANUFACTURING	255	13,971	\$469,816,401	\$646.69
3331	Agri., Construction & Mining Machinery	38	2,945	70,416,174	\$459.82
3333	Commercial & Service Industry Machinery	25	1,048	40,905,715	\$750.62
3334	HVAC & Commercial Refrigeration Equipment	26	4,372	161,875,878	\$712.03
3335	Metalworking Machinery Manufacturing	83	1,521	55,658,451	\$703.72
3339	Other General Purpose Machinery Manufacturing	53	3,224	106,871,039	\$637.47
	Other	31	861	34,089,144	\$761.39

*Note: Totals may not add due to rounding.

**TABLE 5. STATEWIDE SUMMARY
EMPLOYMENT AND TOTAL EARNINGS, BY INDUSTRY
CALENDAR YEAR 2004**

NORTH AMERICAN INDUSTRY CLASSIFICATION SYSTEM INDUSTRY GROUPS		AVERAGE EMPLOYING UNITS	AVERAGE COVERED EMPLOYMENT	TOTAL EARNINGS	AVERAGE WEEKLY EARNINGS
334	COMPUTER & ELECTRONIC PRODUCT MFG.	71	6,182	\$205,147,651	\$638.17
3343	Audio & Video Equipment Manufacturing	10	1,604	48,034,113	\$575.89
3344	Semiconductors & Electronic Components	24	1,967	66,461,319	\$649.77
3345	Electronic Instrument Manufacturing	24	1,306	38,902,577	\$572.84
	Other	13	1,306	51,749,642	\$762.01
335	ELECTRICAL EQUIPMENT & APPLIANCES	69	12,964	\$469,139,010	\$695.92
3353	Electrical Equipment Manufacturing	29	5,160	185,458,133	\$691.18
	Other	40	7,804	283,680,877	\$699.05
336	TRANSPORTATION EQUIPMENT MANUFACTURING	184	16,200	\$536,932,410	\$637.38
3362	Motor Vehicle Body & Trailer Manufacturing	46	3,318	102,693,612	\$595.20
3363	Motor Vehicle Parts Manufacturing	68	7,150	216,647,163	\$582.70
3364	Aerospace Product & Parts Manufacturing	31	3,111	141,761,412	\$876.30
3366	Ship & Boat Building	23	1,679	44,418,895	\$508.76
	Other	17	944	31,411,328	\$639.90
337	FURNITURE & RELATED PRODUCT MFG.	270	7,922	\$220,983,364	\$536.44
3371	Household & Institutional Furniture	221	5,238	140,090,908	\$514.33
3372	Office Furniture & Fixtures Manufacturing	39	2,535	77,696,543	\$589.41
3379	Other Furniture Related Product Manufacturing	10	149	3,195,913	\$412.48
339	MISCELLANEOUS MANUFACTURING	274	6,498	\$183,023,185	\$541.66
3391	Medical Equipment & Supplies Manufacturing	93	2,577	82,622,905	\$616.57
3399	Other Miscellaneous Manufacturing	181	3,921	100,400,280	\$492.42

*Note: Totals may not add due to rounding.

**TABLE 5. STATEWIDE SUMMARY
EMPLOYMENT AND TOTAL EARNINGS, BY INDUSTRY
CALENDAR YEAR 2004**

NORTH AMERICAN INDUSTRY CLASSIFICATION SYSTEM INDUSTRY GROUPS		AVERAGE EMPLOYING UNITS	AVERAGE COVERED EMPLOYMENT	TOTAL EARNINGS	AVERAGE WEEKLY EARNINGS
TRADE, TRANSPORTATION & UTILITIES		20,750	237,807	\$6,810,550,716	\$550.75
42	WHOLESALE TRADE	6,052	45,939	\$2,002,497,428	\$838.28
423	MERCHANT WHOLESALERS, DURABLE GOODS	2,069	21,142	\$848,882,882	\$772.14
4231	Motor Vehicle & Part Merchant Wholesalers	234	2,654	89,540,582	\$648.81
4232	Furniture & Furnishing Merchant Wholesalers	56	393	16,022,797	\$784.05
4233	Lumber & Supply Merchant Wholesalers	157	1,775	69,971,597	\$758.09
4234	Commercial Goods Merchant Wholesalers	243	2,293	126,158,340	\$1,058.06
4235	Metal & Mineral Merchant Wholesalers	53	747	29,724,016	\$765.22
4236	Electric Goods Merchant Wholesalers	170	2,168	101,042,872	\$896.28
4237	Hardware & Plumbing Merchant Wholesalers	229	2,212	87,084,127	\$757.10
4238	Machinery & Supply Merchant Wholesalers	714	7,190	273,181,120	\$730.67
4239	Misc. Durable Goods Merchant Wholesalers	213	1,710	56,157,431	\$631.55
424	MERCHANT WHOLESALERS, NONDURABLE GOODS	1,305	16,510	\$589,393,291	\$686.52
4241	Paper & Paper Product Merchant Wholesalers	80	1,348	46,338,013	\$661.07
4242	Druggists' Goods Merchant Wholesalers	52	927	34,638,990	\$718.59
4243	Apparel & Piece Goods Merchant Wholesalers	41	442	13,931,158	\$606.12
4244	Grocery Product Merchant Wholesalers	359	5,297	215,330,515	\$781.76
4245	Farm Product Merchant Wholesalers	82	936	21,641,159	\$444.63
4246	Chemical Merchant Wholesalers	81	436	19,448,384	\$857.82
4247	Petroleum Merchant Wholesalers	159	1,427	50,484,537	\$680.35
4248	Alcoholic Beverage Merchant Wholesalers	39	1,137	46,231,835	\$781.95
4249	Misc. Nondurable Goods Merchant Wholesalers	413	4,559	141,348,700	\$596.24
425	ELECTRONIC MARKETS & AGENTS & BROKERS	2,678	8,287	\$564,221,255	\$1,309.33
44-45	RETAIL TRADE	11,448	130,724	\$2,550,447,082	\$375.20
441	MOTOR VEHICLE & PARTS DEALERS	1,746	17,744	\$564,280,891	\$611.56
4411	Automobile Dealers	740	10,825	394,045,684	\$700.03
4412	Other Motor Vehicle Dealers	195	1,349	40,208,437	\$573.19
4413	Automotive Parts, Accessories & Tire Stores	811	5,571	130,026,770	\$448.84

*Note: Totals may not add due to rounding.

**TABLE 5. STATEWIDE SUMMARY
EMPLOYMENT AND TOTAL EARNINGS, BY INDUSTRY
CALENDAR YEAR 2004**

NORTH AMERICAN INDUSTRY CLASSIFICATION SYSTEM INDUSTRY GROUPS		AVERAGE EMPLOYING UNITS	AVERAGE COVERED EMPLOYMENT	TOTAL EARNINGS	AVERAGE WEEKLY EARNINGS
442	FURNITURE & HOME FURNISHINGS STORES	626	4,125	\$101,081,646	\$471.24
4421	Furniture Stores	322	2,502	62,150,798	\$477.70
4422	Home Furnishings Stores	304	1,623	38,930,848	\$461.29
443	ELECTRONICS & APPLIANCE STORES	505	3,069	\$71,490,777	\$447.97
444	BUILDING MATERIAL & GARDEN SUPPLY STORES	805	9,871	\$240,370,837	\$468.29
4441	Building Material & Supplies Dealers	623	8,961	221,495,220	\$475.34
4442	Lawn & Garden Equipment & Supplies Stores	182	910	18,875,617	\$398.89
445	FOOD & BEVERAGE STORES	1,169	19,508	\$295,622,115	\$291.42
4451	Grocery Stores	695	17,123	254,158,253	\$285.44
4452	Specialty Food Stores	164	928	19,164,970	\$397.15
4453	Beer, Wine & Liquor Stores	310	1,458	22,298,892	\$294.12
446	HEALTH & PERSONAL CARE STORES	768	6,043	\$158,323,936	\$503.84
447	GASOLINE STATIONS	1,678	13,105	\$171,550,916	\$251.74
44711	Gasoline Stations with Convenience Stores	1,494	11,748	148,866,121	\$243.68
44719	Other Gasoline Stations	184	1,357	22,684,795	\$321.48
448	CLOTHING & CLOTHING ACCESSORIES STORES	1,074	8,158	\$114,676,413	\$270.33
4481	Clothing Stores	687	5,912	74,500,215	\$242.34
4482	Shoe Stores	193	1,243	16,228,990	\$251.08
4483	Jewelry, Luggage & Leather Goods Stores	195	1,003	23,947,208	\$459.15
451	SPORTING GOODS, HOBBY, BOOK & MUSIC STORES	564	4,259	\$59,550,733	\$268.89
4511	Sporting Goods & Musical Instrument Stores	401	2,747	42,554,033	\$297.91
4512	Book, Periodical & Music Stores	163	1,512	16,996,700	\$216.18
452	GENERAL MERCHANDISE STORES	694	35,473	\$594,471,969	\$322.28
453	MISCELLANEOUS STORE RETAILERS	1,502	7,192	\$121,640,837	\$325.26
4531	Florists	293	1,114	15,193,470	\$262.28
4532	Office Supplies, Stationery & Gift Stores	433	2,589	47,813,585	\$355.15
4533	Used Merchandise Stores	219	736	11,028,743	\$288.17
4539	Other Miscellaneous Store Retailers	558	2,753	47,605,039	\$332.54

*Note: Totals may not add due to rounding.

**TABLE 5. STATEWIDE SUMMARY
EMPLOYMENT AND TOTAL EARNINGS, BY INDUSTRY
CALENDAR YEAR 2004**

NORTH AMERICAN INDUSTRY CLASSIFICATION SYSTEM INDUSTRY GROUPS		AVERAGE EMPLOYING UNITS	AVERAGE COVERED EMPLOYMENT	TOTAL EARNINGS	AVERAGE WEEKLY EARNINGS
454	NONSTORE RETAILERS	317	2,176	\$57,386,012	\$507.16
4541	Electronic Shopping & Mail -Order Houses	64	458	14,134,522	\$593.49
4542	Vending Machine Operators	86	746	16,678,996	\$429.96
4543	Direct Selling Establishments	168	973	26,572,494	\$525.19
48-49	TRANSPORTATION & WAREHOUSING	2,926	54,614	\$1,859,452,208	\$654.75
481	AIR TRANSPORTATION	45	1,094	\$53,606,044	\$942.31
484	TRUCK TRANSPORTATION	1,961	33,437	\$1,168,634,563	\$672.12
4841	General Freight Trucking	1,198	28,547	1,029,795,842	\$693.72
4842	Specialized Freight Trucking	763	4,890	138,838,721	\$546.01
485	TRANSIT & GROUND PASSENGER TRANS.	60	933	\$14,691,360	\$302.81
4853	Taxi & Limousine Service	21	208	2,395,753	\$221.50
4854	School & Employee Bus Transportation	8	348	5,994,423	\$331.26
4855	Charter Bus Industry Service	12	102	1,934,635	\$364.75
4859	Other Ground Passenger Transportation	12	158	2,475,946	\$301.36
	Other	9	118	1,890,603	\$308.12
486	PIPELINE TRANSPORTATION	69	984	\$50,296,657	\$982.97
488	SUPPORT ACTIVITIES FOR TRANSPORTATION	432	4,834	\$173,322,064	\$689.52
4881	Support Activities for Air Transportation	107	1,516	50,357,383	\$638.79
4882	Support Activities for Rail Transportation	28	555	17,320,623	\$600.16
4883	Support Activities for Water Transportation	28	712	24,404,868	\$659.16
4884	Support Activities for Road Transportation	103	456	10,280,233	\$433.55
4885	Freight Transportation Arrangement	147	1,442	66,889,170	\$892.05
4889	Other Support Activities for Transportation	19	154	4,069,787	\$508.22
492	COURIERS & MESSENGERS	132	3,256	\$113,105,805	\$668.03
4921	Couriers	87	3,043	108,199,056	\$683.78
4922	Local Messengers & Local Delivery	44	213	4,906,749	\$443.01

*Note: Totals may not add due to rounding.

**TABLE 5. STATEWIDE SUMMARY
EMPLOYMENT AND TOTAL EARNINGS, BY INDUSTRY
CALENDAR YEAR 2004**

NORTH AMERICAN INDUSTRY CLASSIFICATION SYSTEM INDUSTRY GROUPS		AVERAGE EMPLOYING UNITS	AVERAGE COVERED EMPLOYMENT	TOTAL EARNINGS	AVERAGE WEEKLY EARNINGS
493	WAREHOUSING & STORAGE	212	9,896	\$280,262,613	\$544.63
	OTHER	17	180	\$5,533,102	\$591.14
22	UTILITIES	324	6,530	\$398,153,998	\$1,172.56
2211	Power Generation & Supply	128	4,932	335,716,324	\$1,309.02
2212	Natural Gas Distribution	33	809	41,368,243	\$983.37
2213	Water, Sewage and Other Systems	164	789	21,069,431	\$513.54
INFORMATION		1,208	20,183	\$782,203,784	\$745.30
511	PUBLISHING INDUSTRIES, EXCEPT INTERNET	255	6,487	\$189,255,582	\$561.05
5111	Newspaper, Book & Directory Publishers	220	6,243	175,135,095	\$539.48
5112	Software Publishers	36	244	14,120,487	\$1,112.90
512	MOTION PICTURE & SOUND RECORDING INDUSTRY	131	1,227	\$18,128,723	\$284.13
5121	Motion Picture & Video Industries	117	1,200	17,314,076	\$277.47
5122	Sound Recording Industries	14	27	814,647	\$580.23
515	BROADCASTING, EXCEPT INTERNET	145	2,152	\$69,435,991	\$620.50
5151	Radio & Television Broadcasting	130	2,071	66,256,249	\$615.24
5152	Cable & Other Subscription Programming	15	81	3,179,742	\$754.92
517	TELECOMMUNICATIONS	501	8,682	\$430,357,274	\$953.25
5171	Wired Telecommunications Carriers	217	4,971	290,643,192	\$1,124.38
5172	Wireless Telecommunications Carriers	127	1,977	73,449,439	\$714.46
5175	Cable & Other Program Distribution	68	1,149	39,339,543	\$658.42
	Other	90	585	26,925,100	\$885.11
518	ISPS, SEARCH PORTALS, & DATA PROCESSING	146	1,314	\$65,138,186	\$953.32
5181	ISPs, & Web Search Portals	58	237	7,690,071	\$623.99
5182	Data Processing & Related Services	87	1,077	57,448,115	\$1,025.79
	OTHER	31	322	\$9,888,028	\$590.54

*Note: Totals may not add due to rounding.

**TABLE 5. STATEWIDE SUMMARY
EMPLOYMENT AND TOTAL EARNINGS, BY INDUSTRY
CALENDAR YEAR 2004**

NORTH AMERICAN INDUSTRY CLASSIFICATION SYSTEM INDUSTRY GROUPS		AVERAGE EMPLOYING UNITS	AVERAGE COVERED EMPLOYMENT	TOTAL EARNINGS	AVERAGE WEEKLY EARNINGS
FINANCIAL ACTIVITIES		7,420	49,182	\$1,819,026,060	\$711.26
52	FINANCE & INSURANCE	4,400	35,940	\$1,493,293,683	\$799.03
522	CREDIT INTERMEDIATION & RELATED ACTIVITIES	1,872	20,905	\$721,351,207	\$663.58
5221	Depository Credit Intermediation	1,215	17,451	578,938,743	\$637.98
5222	Nondepository Credit Intermediation	392	2,680	119,091,169	\$854.56
5223	Activities Related to Credit Intermediation	265	774	23,321,295	\$579.44
523	FINANCIAL INVESTMENT & RELATED ACTIVITIES	581	3,106	\$261,992,678	\$1,622.13
5231	Security & Commodity Investment Activities	332	2,461	230,229,419	\$1,799.06
5239	Other Financial Investment Activities	249	645	31,763,259	\$947.03
524	INSURANCE CARRIERS & RELATED ACTIVITIES	1,917	11,457	\$490,378,140	\$823.11
5241	Insurance Carriers	349	5,026	237,728,070	\$909.61
5242	Insurance Agencies, Brokerages & Support	1,568	6,432	252,650,070	\$755.39
	OTHER	30	472	\$19,571,658	\$797.41
53	REAL ESTATE & RENTAL & LEASING	3,020	13,242	\$325,732,377	\$473.05
531	REAL ESTATE	2,199	8,059	\$205,586,343	\$490.58
5311	Lessors of Real Estate	987	4,160	91,904,643	\$424.86
5312	Offices of Real Estate Agents & Brokers	679	1,811	54,880,937	\$582.77
5313	Activities Related to Real Estate	533	2,089	58,800,763	\$541.30
532	RENTAL & LEASING SERVICES	795	5,091	\$115,109,654	\$434.82
5321	Automotive Equipment Rental & Leasing	125	991	25,550,588	\$495.82
5322	Consumer Goods Rental	502	3,303	61,383,116	\$357.39
5323	General Rental Centers	39	211	6,341,161	\$577.94
5324	Machinery & Equipment Rental & Leasing	129	587	21,834,789	\$715.33
533	LESSORS OF NONFINANCIAL INTANGIBLE ASSETS	27	91	\$5,036,380	\$1,064.32

*Note: Totals may not add due to rounding.

**TABLE 5. STATEWIDE SUMMARY
EMPLOYMENT AND TOTAL EARNINGS, BY INDUSTRY
CALENDAR YEAR 2004**

NORTH AMERICAN INDUSTRY CLASSIFICATION SYSTEM INDUSTRY GROUPS		AVERAGE EMPLOYING UNITS	AVERAGE COVERED EMPLOYMENT	TOTAL EARNINGS	AVERAGE WEEKLY EARNINGS
PROFESSIONAL & BUSINESS SERVICES		9,990	108,091	\$3,938,956,435	\$700.79
54	PROFESSIONAL & TECHNICAL SERVICES	6,231	33,698	\$1,483,122,423	\$846.39
5411	Legal Services	1,563	6,507	287,004,736	\$848.21
5412	Accounting & Bookkeeping Services	1,143	4,971	164,184,006	\$635.16
5413	Architectural & Engineering Services	840	5,819	250,875,709	\$829.10
5414	Specialized Design Services	147	442	11,617,099	\$505.44
5415	Computer Systems Design & Related Services	703	7,130	478,277,351	\$1,289.99
5416	Management & Technical Consulting Services	885	2,245	105,233,308	\$901.43
5417	Scientific Research & Development Services	105	1,080	46,272,219	\$823.94
5418	Advertising & Related Services	302	1,957	72,974,754	\$717.10
5419	Other Professional & Technical Services	543	3,548	66,683,241	\$361.43
55	MANAGEMENT OF COMPANIES & ENTERPRISES	474	22,799	\$1,483,322,376	\$1,251.17
56	ADMINISTRATIVE & WASTE SERVICES	3,285	51,594	\$972,511,636	\$362.49
561	ADMINISTRATIVE & SUPPORT SERVICES	3,093	48,818	\$862,378,379	\$339.71
5611	Office Administrative Services	290	1,100	52,785,157	\$922.82
5612	Facilities Support Services	12	157	5,043,441	\$617.77
5613	Employment Services	583	25,108	383,368,848	\$293.63
5614	Business Support Services	352	5,017	93,096,414	\$356.85
5615	Travel Arrangement & Reservation Services	105	439	13,157,056	\$576.36
5616	Investigation & Security Services	204	4,244	85,571,311	\$387.75
5617	Services to Buildings & Dwellings	1,230	11,176	183,895,942	\$316.43
5619	Other Support Services	318	1,576	45,460,210	\$554.72
562	WASTE MANAGEMENT & REMEDIATION SERVICES	192	2,777	\$110,133,257	\$762.67
5621	Waste Collection Services	85	1,040	35,218,912	\$651.24
5622	Waste Treatment & Disposal Services	40	1,277	62,055,748	\$934.52
5629	Remediation & Other Waste Services	67	459	12,858,597	\$538.74

*Note: Totals may not add due to rounding.

**TABLE 5. STATEWIDE SUMMARY
EMPLOYMENT AND TOTAL EARNINGS, BY INDUSTRY
CALENDAR YEAR 2004**

NORTH AMERICAN INDUSTRY CLASSIFICATION SYSTEM INDUSTRY GROUPS		AVERAGE EMPLOYING UNITS	AVERAGE COVERED EMPLOYMENT	TOTAL EARNINGS	AVERAGE WEEKLY EARNINGS
EDUCATION & HEALTH SERVICES		7,793	136,650	\$4,257,171,676	\$599.11
61	EDUCATIONAL SERVICES	503	8,000	\$201,454,462	\$484.27
6111	Elementary & Secondary Schools	77	2,798	54,931,210	\$377.54
6112	Junior Colleges	8	227	6,478,825	\$548.87
6113	Colleges & Universities	26	2,886	85,541,752	\$570.00
6114	Business, Computer, & Management Training	45	220	11,835,713	\$1,034.59
6115	Technical & Trade Schools	100	605	22,578,609	\$717.69
6116	Other Schools & Instruction	201	1,112	16,008,849	\$276.85
6117	Educational Support Services	45	150	4,079,504	\$523.01
62	HEALTH CARE & SOCIAL ASSISTANCE	7,290	128,650	\$4,055,717,214	\$606.25
621	AMBULATORY HEALTH CARE SERVICES	4,541	39,623	\$1,830,518,262	\$888.43
6211	Offices of Physicians	2,032	19,633	1,204,212,885	\$1,179.54
6212	Offices of Dentists	891	5,827	206,802,814	\$682.51
6213	Offices of Other Health Practitioners	1,077	5,087	148,793,393	\$562.49
6214	Outpatient Care Centers	198	3,081	108,122,922	\$674.87
6215	Medical & Diagnostic Laboratories	81	666	29,159,600	\$841.98
6216	Home Health Care Services	127	3,343	82,806,670	\$476.35
6219	Other Ambulatory Health Care Services	135	1,987	50,619,978	\$489.92
622	HOSPITALS	107	41,784	\$1,421,058,030	\$654.03
6221	General Medical & Surgical Hospitals	77	38,518	1,312,407,268	\$655.24
6222	Psychiatric & Substance Abuse Hospitals	10	1,358	41,522,451	\$588.00
6223	Other Hospitals	20	1,909	67,128,311	\$676.23
623	NURSING & RESIDENTIAL CARE FACILITIES	496	25,663	\$463,481,176	\$347.31
6231	Nursing Care Facilities	233	19,341	345,955,449	\$343.98
6232	Residential Mental Health Facilities	131	2,869	56,070,868	\$375.84
6233	Community Care Facilities for the Elderly	88	2,098	33,998,833	\$311.64
6239	Other Residential Care Facilities	45	1,356	27,456,026	\$389.38

*Note: Totals may not add due to rounding.

**TABLE 5. STATEWIDE SUMMARY
EMPLOYMENT AND TOTAL EARNINGS, BY INDUSTRY
CALENDAR YEAR 2004**

NORTH AMERICAN INDUSTRY CLASSIFICATION SYSTEM INDUSTRY GROUPS		AVERAGE EMPLOYING UNITS	AVERAGE COVERED EMPLOYMENT	TOTAL EARNINGS	AVERAGE WEEKLY EARNINGS
624	SOCIAL ASSISTANCE	2,146	21,579	\$340,659,746	\$303.59
6241	Individual & Family Services	1,039	9,592	164,691,634	\$330.19
6242	Emergency & Other Relief Services	107	807	15,334,602	\$365.42
6243	Vocational Rehabilitation Services	131	3,192	58,890,182	\$354.79
6244	Child Day Care Services	869	7,989	101,743,328	\$244.91
LEISURE & HOSPITALITY		5,792	90,993	\$1,000,212,053	\$211.39
71	ARTS, ENTERTAINMENT & RECREATION	880	9,133	\$126,461,299	\$266.28
711	PERFORMING ARTS & SPECTATOR SPORTS	189	2,067	\$32,364,146	\$301.11
7111	Performing Arts Companies	44	561	7,956,836	\$272.76
7112	Spectator Sports	60	861	14,319,490	\$319.83
7113	Performing Arts & Sports Promoters	34	525	7,114,569	\$260.61
7114	Agents & Managers for Public Figures	9	17	513,634	\$581.03
7115	Independent Artists, Writers & Performers	44	103	2,459,617	\$459.23
712	MUSEUMS, PARKS & HISTORICAL SITES	46	210	\$3,123,546	\$286.04
713	GAMBLING, RECREATION & AMUSEMENT INDUSTRY	645	6,856	\$90,973,607	\$255.18
7139	Other Amusement & Recreation Industries	615	6,405	86,709,334	\$260.34
	Other	30	451	4,264,273	\$181.83
72	ACCOMMODATION & FOOD SERVICES	4,912	81,860	\$873,750,754	\$205.26
721	ACCOMMODATION	780	10,979	\$145,123,577	\$254.20
7211	Traveler Accommodation	712	10,631	140,403,345	\$253.98
7212	RV Parks & Recreational Camps	48	287	3,743,578	\$250.84
7213	Rooming & Boarding Houses	20	61	976,654	\$307.90
722	FOOD SERVICES & DRINKING PLACES	4,132	70,881	\$728,627,177	\$197.68
7221	Full -Service Restaurants	1,734	30,376	337,123,890	\$213.43
7222	Limited-Service Eating Places	2,087	37,718	360,239,073	\$183.67
7223	Special Food Services	144	1,815	21,869,091	\$231.71
7224	Drinking Places, Alcoholic Beverages	167	972	9,395,123	\$185.88

*Note: Totals may not add due to rounding.

**TABLE 5. STATEWIDE SUMMARY
EMPLOYMENT AND TOTAL EARNINGS, BY INDUSTRY
CALENDAR YEAR 2004**

NORTH AMERICAN INDUSTRY CLASSIFICATION SYSTEM INDUSTRY GROUPS		AVERAGE EMPLOYING UNITS	AVERAGE COVERED EMPLOYMENT	TOTAL EARNINGS	AVERAGE WEEKLY EARNINGS
OTHER SERVICES		5,493	25,775	\$574,377,553	\$428.54
811	REPAIR & MAINTENANCE	2,248	9,625	\$251,299,535	\$502.10
8111	Automotive Repair & Maintenance	1,580	7,146	177,674,267	\$478.14
8112	Electronic Equipment Repair & Maintenance	155	518	17,103,695	\$634.98
8113	Commercial Machinery Repair & Maintenance	322	1,383	42,994,003	\$597.84
8114	Household Goods Repair & Maintenance	191	578	13,527,570	\$450.08
812	PERSONAL & LAUNDRY SERVICES	1,312	8,411	\$160,477,482	\$366.91
8121	Personal Care Services	555	2,428	34,456,888	\$272.91
8122	Death Care Services	243	1,726	44,155,846	\$491.98
8123	Drycleaning & Laundry Services	365	3,491	63,676,992	\$350.78
8129	Other Personal Services	149	767	18,187,756	\$456.02
813	MEMBERSHIP ASSOCIATIONS & ORGANIZATIONS	972	6,293	\$136,398,368	\$416.82
8131	Religious Organizations	38	219	4,415,811	\$387.76
8132	Grantmaking & Giving Services	87	398	13,743,220	\$664.05
8133	Social Advocacy Organizations	133	1,876	40,189,254	\$411.98
8134	Civic & Social Organizations	212	1,587	19,658,569	\$238.22
8139	Professional & Similar Organizations	503	2,212	58,391,514	\$507.65
814	PRIVATE HOUSEHOLDS	962	1,446	\$26,202,168	\$348.47
LOCAL GOVERNMENT		1,980	107,261	\$2,975,389,154	\$533.46
STATE GOVERNMENT		1,202	58,954	\$2,020,531,819	\$659.10
NONCLASSIFIABLE ESTABLISHMENTS		0	0	\$0	

*Note: Totals may not add due to rounding.

**TABLE 6. COUNTY SUMMARY
EMPLOYMENT AND TOTAL EARNINGS, BY INDUSTRY
CALENDAR YEAR 2004**

NORTH AMERICAN INDUSTRY CLASSIFICATION SYSTEM INDUSTRY GROUP	AVERAGE EMPLOYING UNITS	AVERAGE COVERED EMPLOYMENT	TOTAL EARNINGS	AVERAGE WEEKLY EARNINGS
ARKANSAS COUNTY - TOTAL	649	9,742	\$269,088,030	\$531.18
Natural Resources & Mining	44	299	8,086,345	520.09
Construction	53	292	8,268,267	544.54
Manufacturing	30	3,425	105,102,959	590.13
Trade, Transportation & Utilities	207	2,114	63,490,136	577.56
Wholesale Trade	47	481	24,714,353	988.10
Retail Trade	109	1,102	20,437,811	356.66
Transportation, Warehousing & Utilities	52	531	18,337,972	664.13
Information	9	83	2,913,650	675.08
Financial Activities	46	350	11,085,603	609.10
Professional & Business Services	53	392	14,076,959	690.59
Education & Health Services	58	1,095	22,940,005	402.88
Leisure & Hospitality	55	521	4,840,400	178.67
Other Services	48	144	2,735,532	365.32
Local Government	31	823	20,200,675	472.02
State Government	16	205	5,347,499	501.64
ASHLEY COUNTY - TOTAL	542	8,407	\$278,581,027	\$637.25
Natural Resources & Mining	62	495	13,225,144	513.80
Construction	49	638	16,027,738	483.11
Manufacturing	28	3,022	151,671,849	965.18
Trade, Transportation & Utilities	145	1,230	27,352,171	427.64
Wholesale Trade	26	161	6,202,118	740.82
Retail Trade	95	835	14,049,860	323.58
Transportation, Warehousing & Utilities	24	234	7,100,193	583.51
Information	11	62	1,681,125	521.44
Financial Activities	39	340	10,402,375	588.37
Professional & Business Services	46	346	8,888,287	494.01
Education & Health Services	44	542	15,529,631	551.01
Leisure & Hospitality	32	401	3,780,682	181.31
Other Services	42	192	3,123,444	312.84
Local Government	32	933	22,578,711	465.39
State Government	12	208	4,319,870	399.40

*Note: Totals may not add due to rounding.

**TABLE 6. COUNTY SUMMARY
EMPLOYMENT AND TOTAL EARNINGS, BY INDUSTRY
CALENDAR YEAR 2004**

NORTH AMERICAN INDUSTRY CLASSIFICATION SYSTEM INDUSTRY GROUP	AVERAGE EMPLOYING UNITS	AVERAGE COVERED EMPLOYMENT	TOTAL EARNINGS	AVERAGE WEEKLY EARNINGS
BAXTER COUNTY - TOTAL	1,169	13,847	\$351,622,005	\$488.33
Natural Resources & Mining	6	99	2,450,438	476.00
Construction	121	604	13,222,481	420.99
Manufacturing	64	2,487	77,363,315	598.21
Trade, Transportation & Utilities	270	2,557	51,687,317	388.73
Wholesale Trade	31	176	5,034,796	550.13
Retail Trade	212	2,135	40,352,603	363.47
Transportation, Warehousing & Utilities	27	247	6,299,918	490.50
Information	24	295	8,494,192	553.73
Financial Activities	107	614	18,919,197	592.56
Professional & Business Services	133	793	21,759,810	527.69
Education & Health Services	163	3,042	98,818,875	624.71
Leisure & Hospitality	120	1,488	14,983,362	193.64
Other Services	113	432	6,995,906	311.43
Local Government	36	1,166	30,222,177	498.45
State Government	12	269	6,704,935	479.33
BENTON COUNTY - TOTAL	4,374	84,172	\$3,108,727,690	\$710.25
Natural Resources & Mining	30	644	28,243,214	843.38
Construction	626	4,130	128,082,950	596.40
Manufacturing	230	14,148	454,650,294	617.99
Trade, Transportation & Utilities	1,196	20,806	717,740,477	663.40
Wholesale Trade	484	2,929	166,122,428	1090.70
Retail Trade	556	6,879	151,227,735	422.77
Transportation, Warehousing & Utilities	156	10,997	400,390,314	700.17
Information	67	898	30,808,085	659.76
Financial Activities	472	3,158	114,149,808	695.12
Professional & Business Services	682	20,180	1,131,650,098	1078.42
Education & Health Services	366	5,891	188,194,103	614.35
Leisure & Hospitality	328	6,069	73,960,690	234.36
Other Services	284	1,659	40,025,943	463.97
Local Government	75	5,880	182,085,078	595.52
State Government	19	709	19,136,950	519.07

*Note: Totals may not add due to rounding.

**TABLE 6. COUNTY SUMMARY
EMPLOYMENT AND TOTAL EARNINGS, BY INDUSTRY
CALENDAR YEAR 2004**

NORTH AMERICAN INDUSTRY CLASSIFICATION SYSTEM INDUSTRY GROUP	AVERAGE EMPLOYING UNITS	AVERAGE COVERED EMPLOYMENT	TOTAL EARNINGS	AVERAGE WEEKLY EARNINGS
BOONE COUNTY - TOTAL	992	13,436	\$370,645,576	\$530.50
Construction	93	459	11,140,763	466.77
Manufacturing	69	2,179	66,760,340	589.19
Trade, Transportation & Utilities	264	4,163	130,289,962	601.87
Wholesale Trade	50	693	19,506,340	541.30
Retail Trade	166	1,947	39,925,890	394.35
Transportation, Warehousing & Utilities	49	1,524	70,857,732	894.13
Information	17	426	13,842,907	624.91
Financial Activities	96	599	19,330,752	620.61
Professional & Business Services	107	516	10,991,049	409.62
Education & Health Services	121	1,081	28,355,034	504.43
Leisure & Hospitality	83	1,168	11,517,427	189.63
Local Government	50	2,018	54,487,651	519.25
State Government	20	573	18,012,310	604.52
Other	73	254	5,917,381	448.01
BRADLEY COUNTY - TOTAL	342	4,207	\$104,011,596	\$475.45
Natural Resources & Mining	58	462	7,298,343	303.79
Construction	21	176	4,499,343	491.62
Manufacturing	11	1,058	33,058,217	600.88
Trade, Transportation & Utilities	92	602	12,754,142	407.43
Wholesale Trade	13	190	4,442,806	449.68
Retail Trade	50	321	5,504,657	329.78
Transportation, Warehousing & Utilities	29	92	2,806,679	586.68
Information	3	13	343,619	508.31
Financial Activities	22	184	4,366,120	456.33
Professional & Business Services	24	145	6,201,007	822.41
Education & Health Services	34	532	13,692,352	494.95
Leisure & Hospitality	19	200	1,452,156	139.63
Other Services	32	104	1,951,333	360.82
Local Government	16	491	11,986,456	469.47
State Government	12	239	6,408,508	515.65

*Note: Totals may not add due to rounding.

**TABLE 6. COUNTY SUMMARY
EMPLOYMENT AND TOTAL EARNINGS, BY INDUSTRY
CALENDAR YEAR 2004**

NORTH AMERICAN INDUSTRY CLASSIFICATION SYSTEM INDUSTRY GROUP	AVERAGE EMPLOYING UNITS	AVERAGE COVERED EMPLOYMENT	TOTAL EARNINGS	AVERAGE WEEKLY EARNINGS
CALHOUN COUNTY - TOTAL	126	3,663	\$127,079,596	\$667.17
Natural Resources & Mining	24	146	3,563,563	469.38
Construction	9	89	1,956,203	422.69
Manufacturing	16	2,468	97,793,873	762.01
Trade, Transportation & Utilities	28	199	4,605,587	445.07
Wholesale Trade & Retail Trade	17	73	987,478	260.14
Transportation, Warehousing & Utilities	10	127	3,618,109	547.87
Education & Health Services	4	42	1,191,946	545.76
Local Government	11	189	4,064,300	413.54
State Government	10	326	7,845,554	462.81
Other	25	204	6,058,570	571.13
CARROLL COUNTY - TOTAL	793	9,770	\$212,582,160	\$418.44
Natural Resources & Mining	15	281	7,569,847	518.06
Trade, Transportation & Utilities	214	1,638	34,578,329	405.96
Wholesale Trade	26	115	2,200,760	368.02
Retail Trade	170	1,258	23,108,752	353.26
Transportation, Warehousing & Utilities	19	265	9,268,817	672.63
Professional & Business Services	65	210	4,932,866	451.73
Education & Health Services	58	728	20,046,240	529.54
Leisure & Hospitality	177	1,675	17,699,771	203.21
Local Government	24	967	23,944,473	476.18
State Government	12	102	2,676,244	504.57
Other	230	4,171	101,134,390	466.29

*Note: Totals may not add due to rounding.

**TABLE 6. COUNTY SUMMARY
EMPLOYMENT AND TOTAL EARNINGS, BY INDUSTRY
CALENDAR YEAR 2004**

NORTH AMERICAN INDUSTRY CLASSIFICATION SYSTEM INDUSTRY GROUP	AVERAGE EMPLOYING UNITS	AVERAGE COVERED EMPLOYMENT	TOTAL EARNINGS	AVERAGE WEEKLY EARNINGS
CHICOT COUNTY - TOTAL	336	3,705	\$82,454,439	\$427.98
Natural Resources & Mining	53	275	6,569,373	459.40
Construction	22	259	7,905,128	586.96
Manufacturing	12	391	7,128,244	350.59
Trade, Transportation & Utilities	85	622	12,861,104	397.63
Wholesale Trade	15	110	3,374,032	589.87
Retail Trade	57	428	6,436,785	289.22
Transportation, Warehousing & Utilities	14	84	3,050,287	698.33
Information	5	21	434,283	397.70
Financial Activities	29	155	4,541,162	563.42
Professional & Business Services	26	139	3,637,052	503.19
Education & Health Services	38	445	9,752,516	421.46
Leisure & Hospitality	22	247	1,912,590	148.91
Other Services	19	61	1,146,294	361.38
Local Government	16	800	19,001,232	456.76
State Government	11	290	7,565,461	501.69
CLARK COUNTY - TOTAL	613	9,825	\$236,466,421	\$462.84
Natural Resources & Mining	44	278	7,389,457	511.17
Construction	39	108	2,465,379	438.99
Manufacturing	36	2,477	68,111,713	528.80
Trade, Transportation & Utilities	141	1,495	33,822,728	435.07
Wholesale Trade	23	79	2,173,393	529.06
Retail Trade	94	1,131	21,989,473	373.89
Transportation, Warehousing & Utilities	23	284	9,659,862	654.11
Information	10	53	1,529,904	555.12
Financial Activities	87	392	10,524,543	516.31
Professional & Business Services	47	331	12,959,627	752.94
Education & Health Services	62	1,440	34,746,411	464.03
Leisure & Hospitality	56	1,074	10,037,552	179.73
Other Services	50	219	4,727,263	415.11
Local Government	27	892	20,547,191	442.98
State Government	14	1,067	29,604,653	533.57

*Note: Totals may not add due to rounding.

**TABLE 6. COUNTY SUMMARY
EMPLOYMENT AND TOTAL EARNINGS, BY INDUSTRY
CALENDAR YEAR 2004**

NORTH AMERICAN INDUSTRY CLASSIFICATION SYSTEM INDUSTRY GROUP	AVERAGE EMPLOYING UNITS	AVERAGE COVERED EMPLOYMENT	TOTAL EARNINGS	AVERAGE WEEKLY EARNINGS
CLAY COUNTY - TOTAL	412	5,143	\$108,465,054	\$405.57
Natural Resources & Mining	57	215	4,432,599	396.48
Construction	44	180	3,932,923	420.18
Manufacturing	23	1,839	37,662,088	393.84
Trade, Transportation & Utilities	99	871	19,908,919	439.57
Wholesale Trade	25	234	6,269,852	515.27
Retail Trade	55	459	7,818,383	327.57
Transportation, Warehousing & Utilities	19	178	5,820,684	628.86
Information	8	140	3,638,608	499.81
Financial Activities	36	158	3,842,413	467.67
Professional & Business Services	23	59	1,180,182	384.67
Education & Health Services	38	475	8,857,987	358.62
Leisure & Hospitality	23	212	1,615,524	146.55
Other Services	26	52	1,060,961	392.37
Local Government	22	863	20,440,683	455.49
State Government	12	78	1,892,167	466.51
CLEBURNE COUNTY - TOTAL	654	6,512	\$149,823,060	\$442.45
Natural Resources & Mining	14	33	951,716	554.61
Construction	63	245	5,655,815	443.94
Manufacturing	49	1,790	50,727,149	544.98
Trade, Transportation & Utilities	191	1,479	32,217,535	418.91
Wholesale Trade	38	163	4,097,296	483.40
Retail Trade	114	973	17,594,786	347.75
Transportation, Warehousing & Utilities	39	343	10,525,453	590.12
Information	8	60	1,480,508	474.52
Financial Activities	65	251	6,368,768	487.95
Professional & Business Services	60	195	4,520,712	445.83
Education & Health Services	59	728	17,684,414	467.15
Leisure & Hospitality	62	729	7,616,542	200.92
Other Services	55	151	2,582,648	328.92
Local Government	20	745	17,415,002	449.54
State Government	10	108	2,602,251	463.36

*Note: Totals may not add due to rounding.

**TABLE 6. COUNTY SUMMARY
EMPLOYMENT AND TOTAL EARNINGS, BY INDUSTRY
CALENDAR YEAR 2004**

NORTH AMERICAN INDUSTRY CLASSIFICATION SYSTEM INDUSTRY GROUP	AVERAGE EMPLOYING UNITS	AVERAGE COVERED EMPLOYMENT	TOTAL EARNINGS	AVERAGE WEEKLY EARNINGS
CLEVELAND COUNTY - TOTAL	112	1,040	\$22,939,530	\$424.18
Natural Resources & Mining	19	160	4,283,866	514.89
Construction	9	44	581,656	254.22
Manufacturing	6	88	1,973,899	431.36
Trade, Transportation & Utilities	33	223	4,091,163	352.81
Wholesale Trade	6	50	926,120	356.20
Retail Trade	15	80	792,377	190.48
Transportation, Warehousing & Utilities	13	94	2,372,666	485.41
Financial Activities	4	28	716,112	491.84
Local Government	13	316	7,413,507	451.16
State Government	8	52	1,321,254	488.63
Other	22	128	2,558,073	384.33
COLUMBIA COUNTY - TOTAL	685	9,244	\$257,613,536	\$535.93
Natural Resources & Mining	46	406	17,064,413	808.28
Construction	48	314	9,325,092	571.11
Manufacturing	39	2,765	105,162,411	731.41
Trade, Transportation & Utilities	189	1,605	32,894,184	394.13
Wholesale Trade	29	272	6,677,645	472.12
Retail Trade	116	1,090	18,158,525	320.37
Transportation, Warehousing & Utilities	44	243	8,058,014	637.70
Information	9	79	2,141,124	521.21
Financial Activities	75	396	11,772,957	571.72
Professional & Business Services	61	338	7,184,554	408.77
Education & Health Services	73	845	16,600,627	377.80
Leisure & Hospitality	46	584	5,690,756	187.39
Other Services	54	232	3,786,887	313.90
Local Government	30	1,147	29,249,014	490.39
State Government	15	533	16,741,517	604.04

*Note: Totals may not add due to rounding.

**TABLE 6. COUNTY SUMMARY
EMPLOYMENT AND TOTAL EARNINGS, BY INDUSTRY
CALENDAR YEAR 2004**

NORTH AMERICAN INDUSTRY CLASSIFICATION SYSTEM INDUSTRY GROUP	AVERAGE EMPLOYING UNITS	AVERAGE COVERED EMPLOYMENT	TOTAL EARNINGS	AVERAGE WEEKLY EARNINGS
CONWAY COUNTY - TOTAL	466	6,472	\$166,234,288	\$493.95
Natural Resources & Mining	17	137	4,258,385	597.75
Construction	48	517	18,754,030	697.59
Manufacturing	29	1,079	42,474,041	757.01
Trade, Transportation & Utilities	133	1,372	30,374,597	425.75
Wholesale Trade	28	242	7,121,178	565.89
Retail Trade	80	890	16,077,937	347.41
Transportation, Warehousing & Utilities	25	240	7,175,482	574.96
Information	6	40	779,037	374.54
Financial Activities	39	184	4,785,099	500.11
Professional & Business Services	46	695	13,122,678	363.11
Education & Health Services	50	718	17,414,387	466.42
Leisure & Hospitality	39	454	4,037,511	171.02
Other Services	23	87	2,093,201	462.69
Local Government	27	843	20,442,476	466.34
State Government	11	347	7,698,846	426.67
CRAIGHEAD COUNTY - TOTAL	2,478	39,853	\$1,105,504,538	\$533.45
Natural Resources & Mining	58	271	6,715,740	476.56
Construction	219	1,870	50,402,396	518.33
Manufacturing	146	7,430	240,355,689	622.10
Trade, Transportation & Utilities	712	7,965	186,898,832	451.25
Wholesale Trade	176	1,465	50,028,965	656.72
Retail Trade	425	5,433	102,122,090	361.47
Transportation, Warehousing & Utilities	112	1,067	34,747,777	626.27
Information	32	634	21,389,825	648.81
Financial Activities	248	1,582	56,696,092	689.20
Professional & Business Services	297	3,319	78,321,830	453.81
Education & Health Services	338	6,604	239,445,174	697.26
Leisure & Hospitality	178	3,600	37,262,383	199.05
Other Services	187	1,103	21,033,569	366.72
Local Government	39	3,177	87,636,934	530.48
State Government	25	2,299	79,346,074	663.72

*Note: Totals may not add due to rounding.

**TABLE 6. COUNTY SUMMARY
EMPLOYMENT AND TOTAL EARNINGS, BY INDUSTRY
CALENDAR YEAR 2004**

NORTH AMERICAN INDUSTRY CLASSIFICATION SYSTEM INDUSTRY GROUP	AVERAGE EMPLOYING UNITS	AVERAGE COVERED EMPLOYMENT	TOTAL EARNINGS	AVERAGE WEEKLY EARNINGS
CRAWFORD COUNTY - TOTAL	1,122	17,819	\$459,298,470	\$495.69
Natural Resources & Mining	24	479	13,594,167	545.78
Construction	180	1,303	37,367,933	551.51
Manufacturing	80	3,533	93,975,749	511.53
Trade, Transportation & Utilities	305	5,992	159,816,869	512.92
Wholesale Trade	72	623	20,124,939	621.22
Retail Trade	167	1,780	33,399,525	360.84
Transportation, Warehousing & Utilities	66	3,589	106,292,405	569.54
Financial Activities	107	491	13,184,263	516.38
Professional & Business Services	129	639	16,109,375	484.81
Education & Health Services	84	1,443	37,926,890	505.45
Leisure & Hospitality	73	1,286	12,787,548	191.22
Local Government	42	1,896	54,059,699	548.32
State Government	11	167	4,800,981	552.85
Other	90	589	15,674,996	511.79
CRITTENDEN COUNTY - TOTAL	1,106	15,689	\$419,564,022	\$514.28
Natural Resources & Mining	52	345	8,094,993	451.23
Construction	78	652	18,236,599	537.89
Manufacturing	55	1,541	57,603,780	718.86
Trade, Transportation & Utilities	314	4,968	143,063,997	553.79
Wholesale Trade	61	604	23,193,448	738.46
Retail Trade	169	2,089	38,482,900	354.26
Transportation, Warehousing & Utilities	84	2,275	81,387,649	687.98
Information	10	89	3,030,488	654.82
Financial Activities	104	477	15,274,813	615.82
Professional & Business Services	111	745	17,635,899	455.24
Education & Health Services	125	1,706	46,533,524	524.55
Leisure & Hospitality	103	1,850	20,933,287	217.60
Other Services	98	596	12,697,247	409.69
Local Government	40	2,282	65,891,191	555.28
State Government	17	439	10,568,204	462.95

*Note: Totals may not add due to rounding.

**TABLE 6. COUNTY SUMMARY
EMPLOYMENT AND TOTAL EARNINGS, BY INDUSTRY
CALENDAR YEAR 2004**

NORTH AMERICAN INDUSTRY CLASSIFICATION SYSTEM INDUSTRY GROUP	AVERAGE EMPLOYING UNITS	AVERAGE COVERED EMPLOYMENT	TOTAL EARNINGS	AVERAGE WEEKLY EARNINGS
CROSS COUNTY - TOTAL	467	5,293	\$127,902,570	\$464.70
Natural Resources & Mining	41	224	4,739,061	406.86
Construction	32	142	3,066,553	415.30
Manufacturing	18	1,017	28,350,319	536.08
Trade, Transportation & Utilities	131	1,235	29,959,537	466.51
Wholesale Trade	33	317	9,895,364	600.30
Retail Trade	66	661	11,898,441	346.17
Transportation, Warehousing & Utilities	32	257	8,165,732	611.02
Information	9	57	1,459,900	492.54
Financial Activities	43	377	10,805,725	551.20
Professional & Business Services	39	177	4,753,854	516.50
Education & Health Services	53	600	13,201,770	423.13
Leisure & Hospitality	31	356	3,135,322	169.37
Other Services	42	82	1,402,905	329.01
Local Government	17	805	20,549,439	490.91
State Government	12	223	6,478,185	558.66
DALLAS COUNTY - TOTAL	274	3,219	\$75,129,932	\$448.84
Natural Resources & Mining	40	215	5,480,030	490.16
Construction	15	88	2,097,329	458.33
Manufacturing	16	883	24,603,347	535.83
Trade, Transportation & Utilities	80	497	9,828,809	380.31
Wholesale Trade	10	49	1,144,807	449.30
Retail Trade	49	376	6,883,889	352.08
Transportation, Warehousing & Utilities	21	72	1,800,113	480.80
Information	3	26	605,722	448.02
Financial Activities	21	103	2,805,186	523.75
Professional & Business Services	16	54	2,088,600	743.80
Education & Health Services	25	680	14,248,085	402.94
Leisure & Hospitality	17	129	1,117,058	166.53
Other Services	17	65	1,024,728	303.17
Local Government	16	413	9,568,367	445.54
State Government	9	65	1,662,671	491.91

*Note: Totals may not add due to rounding.

**TABLE 6. COUNTY SUMMARY
EMPLOYMENT AND TOTAL EARNINGS, BY INDUSTRY
CALENDAR YEAR 2004**

NORTH AMERICAN INDUSTRY CLASSIFICATION SYSTEM INDUSTRY GROUP	AVERAGE EMPLOYING UNITS	AVERAGE COVERED EMPLOYMENT	TOTAL EARNINGS	AVERAGE WEEKLY EARNINGS
DESHA COUNTY - TOTAL	447	4,952	\$127,910,652	\$496.73
Natural Resources & Mining	55	296	7,355,036	477.85
Construction	26	128	3,684,399	553.55
Manufacturing	16	1,051	36,200,787	662.39
Trade, Transportation & Utilities	140	1,149	24,295,455	406.63
Wholesale Trade	20	192	6,999,936	701.12
Retail Trade	87	732	11,597,586	304.69
Transportation, Warehousing & Utilities	33	226	5,697,933	484.85
Information	6	28	940,380	645.87
Financial Activities	38	226	5,357,011	455.84
Professional & Business Services	35	244	10,741,760	846.61
Education & Health Services	37	507	11,003,357	417.36
Leisure & Hospitality	35	290	2,352,107	155.98
Other Services	28	72	941,499	251.47
Local Government	21	801	20,696,361	496.89
State Government	11	160	4,342,500	521.94
DREW COUNTY - TOTAL	497	6,955	\$161,377,636	\$446.21
Natural Resources & Mining	44	327	9,102,329	535.31
Construction	25	125	3,176,249	488.65
Manufacturing	27	1,346	33,725,935	481.85
Trade, Transportation & Utilities	144	1,306	28,643,833	421.78
Wholesale Trade	27	270	8,286,766	590.23
Retail Trade	95	939	16,702,331	342.06
Transportation, Warehousing & Utilities	23	97	3,654,736	724.57
Information	9	90	2,422,754	517.68
Financial Activities	47	278	8,535,011	590.41
Professional & Business Services	40	265	6,530,833	473.94
Education & Health Services	53	754	14,278,445	364.17
Leisure & Hospitality	40	581	4,600,654	152.28
Other Services	30	95	1,471,718	297.92
Local Government	23	1,128	27,800,381	473.96
State Government	17	659	21,089,494	615.43

*Note: Totals may not add due to rounding.

**TABLE 6. COUNTY SUMMARY
EMPLOYMENT AND TOTAL EARNINGS, BY INDUSTRY
CALENDAR YEAR 2004**

NORTH AMERICAN INDUSTRY CLASSIFICATION SYSTEM INDUSTRY GROUP	AVERAGE EMPLOYING UNITS	AVERAGE COVERED EMPLOYMENT	TOTAL EARNINGS	AVERAGE WEEKLY EARNINGS
FAULKNER COUNTY - TOTAL	2,150	34,246	\$1,014,498,334	\$569.69
Natural Resources & Mining	9	48	1,715,643	687.36
Construction	305	2,607	76,036,006	560.89
Manufacturing	113	5,062	184,553,604	701.13
Trade, Transportation & Utilities	541	5,950	128,177,989	414.28
Wholesale Trade	118	667	21,732,408	626.58
Retail Trade	362	4,696	85,868,585	351.64
Transportation, Warehousing & Utilities	61	587	20,576,996	674.13
Information	38	390	11,807,778	582.24
Financial Activities	249	1,296	37,923,218	562.73
Professional & Business Services	285	5,036	230,814,536	881.40
Education & Health Services	257	4,320	128,167,534	570.55
Leisure & Hospitality	172	3,502	33,656,260	184.82
Other Services	129	600	11,584,618	371.30
Local Government	35	2,726	83,373,103	588.16
State Government	19	2,709	86,688,045	615.38
FRANKLIN COUNTY - TOTAL	312	4,296	\$104,678,791	\$468.59
Natural Resources & Mining	8	148	6,006,411	780.46
Construction	26	149	3,804,677	491.05
Manufacturing	21	1,059	27,431,404	498.14
Trade, Transportation & Utilities	98	867	20,995,289	465.69
Wholesale Trade	13	53	842,907	305.84
Retail Trade	60	508	8,004,202	303.01
Transportation, Warehousing & Utilities	26	306	12,148,180	763.46
Information	7	59	1,026,861	334.70
Financial Activities	25	177	4,658,820	506.17
Professional & Business Services	19	55	1,107,087	387.09
Education & Health Services	37	534	12,499,527	450.14
Leisure & Hospitality	26	312	2,721,040	167.72
Other Services	17	54	1,061,025	377.86
Local Government	20	750	19,716,464	505.55
State Government	10	132	3,650,186	531.79

*Note: Totals may not add due to rounding.

**TABLE 6. COUNTY SUMMARY
EMPLOYMENT AND TOTAL EARNINGS, BY INDUSTRY
CALENDAR YEAR 2004**

NORTH AMERICAN INDUSTRY CLASSIFICATION SYSTEM INDUSTRY GROUP	AVERAGE EMPLOYING UNITS	AVERAGE COVERED EMPLOYMENT	TOTAL EARNINGS	AVERAGE WEEKLY EARNINGS
FULTON COUNTY - TOTAL	205	1,868	\$35,213,770	\$362.52
Construction	16	35	684,648	376.18
Manufacturing	11	144	2,190,623	292.55
Trade, Transportation & Utilities	58	367	7,598,331	398.15
Retail Trade	43	207	2,645,666	245.79
Other Trade, Transportation & Utilities	15	161	4,952,665	591.57
Financial Activities	20	117	2,858,536	469.84
Professional & Business Services	16	44	1,088,696	475.83
Education & Health Services	26	359	5,742,105	307.59
Leisure & Hospitality	18	164	1,479,829	173.53
Local Government	13	473	10,166,162	413.33
State Government	11	97	2,306,078	457.19
Other	16	69	1,098,762	306.23
GARLAND COUNTY - TOTAL	2,947	35,395	\$912,724,996	\$495.90
Natural Resources & Mining	46	332	10,590,119	613.42
Construction	401	2,143	53,923,743	483.90
Manufacturing	127	3,498	106,007,128	582.79
Trade, Transportation & Utilities	694	7,174	167,369,253	448.65
Wholesale Trade	143	1,120	35,372,876	607.36
Retail Trade	485	5,360	105,965,891	380.19
Transportation, Warehousing & Utilities	67	695	26,030,486	720.27
Information	38	476	14,335,633	579.17
Financial Activities	327	1,505	47,855,289	611.49
Professional & Business Services	368	2,622	69,659,196	510.91
Education & Health Services	314	6,878	231,691,541	647.81
Leisure & Hospitality	341	6,018	77,527,643	247.74
Other Services	230	982	18,667,347	365.57
Local Government	36	2,833	87,162,704	591.67
State Government	26	936	27,935,400	573.95

*Note: Totals may not add due to rounding.

**TABLE 6. COUNTY SUMMARY
EMPLOYMENT AND TOTAL EARNINGS, BY INDUSTRY
CALENDAR YEAR 2004**

NORTH AMERICAN INDUSTRY CLASSIFICATION SYSTEM INDUSTRY GROUP	AVERAGE EMPLOYING UNITS	AVERAGE COVERED EMPLOYMENT	TOTAL EARNINGS	AVERAGE WEEKLY EARNINGS
GRANT COUNTY - TOTAL	290	3,497	\$89,843,049	\$494.07
Natural Resources & Mining	27	246	9,066,649	708.77
Construction	30	219	5,970,904	524.32
Manufacturing	21	839	26,160,674	599.63
Trade, Transportation & Utilities	87	555	12,198,638	422.68
Wholesale Trade	16	140	4,428,700	608.34
Retail Trade	40	356	6,045,580	326.58
Transportation, Warehousing & Utilities	30	59	1,724,358	562.05
Information	3	38	1,137,798	575.81
Financial Activities	21	96	2,565,446	513.91
Professional & Business Services	22	73	2,211,479	582.58
Education & Health Services	23	226	4,736,725	403.06
Leisure & Hospitality	21	270	2,540,285	180.93
Other Services	16	40	703,376	338.16
Local Government	10	834	21,026,587	484.84
State Government	10	63	1,524,488	465.35
GREENE COUNTY - TOTAL	849	14,334	\$372,112,623	\$499.23
Natural Resources & Mining	36	188	4,695,682	480.33
Construction	73	379	9,077,789	460.61
Manufacturing	55	5,159	169,373,818	631.36
Trade, Transportation & Utilities	253	2,235	48,007,699	413.08
Wholesale Trade	54	449	13,203,843	565.52
Retail Trade	167	1,602	28,890,596	346.81
Transportation, Warehousing & Utilities	32	184	5,913,260	618.02
Information	13	103	2,332,532	435.50
Financial Activities	83	453	11,102,579	471.33
Professional & Business Services	75	1,322	30,938,314	450.05
Education & Health Services	100	1,630	38,213,834	450.85
Leisure & Hospitality	63	1,047	9,232,593	169.58
Other Services	55	172	3,114,663	348.24
Local Government	32	1,398	38,437,572	528.74
State Government	11	249	7,585,548	585.85

*Note: Totals may not add due to rounding.

**TABLE 6. COUNTY SUMMARY
EMPLOYMENT AND TOTAL EARNINGS, BY INDUSTRY
CALENDAR YEAR 2004**

NORTH AMERICAN INDUSTRY CLASSIFICATION SYSTEM INDUSTRY GROUP	AVERAGE EMPLOYING UNITS	AVERAGE COVERED EMPLOYMENT	TOTAL EARNINGS	AVERAGE WEEKLY EARNINGS
HEMPSTEAD COUNTY - TOTAL	498	8,544	\$210,117,810	\$472.93
Natural Resources & Mining	18	231	6,890,875	573.67
Construction	33	111	2,816,837	488.02
Manufacturing	34	2,915	82,655,125	545.29
Trade, Transportation & Utilities	138	1,291	27,713,105	412.82
Wholesale Trade	24	193	4,261,278	424.60
Retail Trade	89	906	14,917,867	316.65
Transportation, Warehousing & Utilities	26	193	8,533,960	850.33
Information	11	74	2,087,473	542.48
Financial Activities	44	278	8,231,857	569.44
Professional & Business Services	35	407	5,207,540	246.06
Education & Health Services	62	943	22,548,334	459.83
Leisure & Hospitality	44	599	5,712,523	183.40
Other Services	35	214	5,300,319	476.30
Local Government	29	952	25,475,680	514.62
State Government	16	529	15,478,142	562.68
HOT SPRING COUNTY - TOTAL	606	7,521	\$207,813,336	\$531.37
Natural Resources & Mining	39	207	7,430,833	690.34
Construction	69	358	11,240,056	603.78
Manufacturing	53	1,884	69,146,969	705.81
Trade, Transportation & Utilities	166	1,335	33,675,537	485.10
Wholesale Trade	19	85	4,354,213	985.12
Retail Trade	102	893	16,382,065	352.79
Transportation, Warehousing & Utilities	45	357	12,939,259	697.01
Information	9	63	2,405,375	734.24
Financial Activities	51	302	7,946,014	505.99
Professional & Business Services	56	268	6,575,626	471.84
Education & Health Services	41	888	22,679,365	491.15
Leisure & Hospitality	42	527	5,134,703	187.37
Other Services	39	262	4,355,376	319.68
Local Government	27	1,048	27,433,808	503.41
State Government	14	379	9,789,674	496.74

*Note: Totals may not add due to rounding.

**TABLE 6. COUNTY SUMMARY
EMPLOYMENT AND TOTAL EARNINGS, BY INDUSTRY
CALENDAR YEAR 2004**

NORTH AMERICAN INDUSTRY CLASSIFICATION SYSTEM INDUSTRY GROUP	AVERAGE EMPLOYING UNITS	AVERAGE COVERED EMPLOYMENT	TOTAL EARNINGS	AVERAGE WEEKLY EARNINGS
HOWARD COUNTY - TOTAL	362	7,994	\$192,137,312	\$462.22
Natural Resources & Mining	23	264	7,227,031	526.44
Construction	25	111	2,573,646	445.88
Manufacturing	26	4,622	120,124,857	499.80
Trade, Transportation & Utilities	110	929	19,872,283	411.37
Wholesale Trade	17	94	2,975,294	608.69
Retail Trade	71	653	10,923,080	321.68
Transportation, Warehousing & Utilities	23	182	5,973,909	631.22
Information	7	36	918,696	490.76
Financial Activities	36	168	4,039,366	462.38
Professional & Business Services	26	105	2,486,589	455.42
Education & Health Services	35	611	11,396,294	358.69
Leisure & Hospitality	23	285	2,462,900	166.19
Other Services	20	105	1,833,792	335.86
Local Government	18	637	15,853,257	478.60
State Government	12	123	3,348,601	523.55
INDEPENDENCE COUNTY - TOTAL	918	16,106	\$416,435,878	\$497.23
Natural Resources & Mining	13	133	3,840,240	555.27
Construction	68	433	11,375,516	505.22
Manufacturing	54	5,069	155,376,070	589.47
Trade, Transportation & Utilities	295	3,014	75,744,489	483.29
Wholesale Trade	53	456	13,103,411	552.61
Retail Trade	186	1,738	30,852,773	341.38
Transportation, Warehousing & Utilities	57	819	31,788,305	746.41
Information	11	168	4,805,469	550.08
Financial Activities	83	416	11,461,121	529.82
Professional & Business Services	92	1,025	19,129,763	358.91
Education & Health Services	103	2,516	73,488,038	561.70
Leisure & Hospitality	75	1,115	9,778,931	168.66
Other Services	69	347	5,986,772	331.79
Local Government	37	1,416	33,048,046	448.83
State Government	19	455	12,401,423	524.15

*Note: Totals may not add due to rounding.

**TABLE 6. COUNTY SUMMARY
EMPLOYMENT AND TOTAL EARNINGS, BY INDUSTRY
CALENDAR YEAR 2004**

NORTH AMERICAN INDUSTRY CLASSIFICATION SYSTEM INDUSTRY GROUP	AVERAGE EMPLOYING UNITS	AVERAGE COVERED EMPLOYMENT	TOTAL EARNINGS	AVERAGE WEEKLY EARNINGS
IZARD COUNTY - TOTAL	254	2,919	\$65,997,855	\$434.80
Natural Resources & Mining	5	79	2,488,041	605.66
Construction	27	72	1,315,146	351.27
Manufacturing	13	489	14,675,759	577.15
Trade, Transportation & Utilities	71	515	10,032,656	374.63
Retail Trade	52	396	6,641,631	322.53
Other Trade, Transportation & Utilities	20	120	3,391,025	543.43
Information	3	8	148,383	356.69
Financial Activities	25	141	3,905,262	532.63
Professional & Business Services	23	79	1,409,002	342.99
Education & Health Services	22	416	8,048,140	372.05
Leisure & Hospitality	24	159	1,362,978	164.85
Other Services	14	38	607,423	307.40
Local Government	18	509	11,189,970	422.77
State Government	11	413	10,815,095	503.59
JACKSON COUNTY - TOTAL	524	5,832	\$148,181,480	\$488.62
Natural Resources & Mining	46	239	5,301,172	426.55
Construction	31	195	5,216,236	514.42
Manufacturing	30	1,067	34,425,359	620.46
Trade, Transportation & Utilities	141	1,239	28,549,570	443.12
Wholesale Trade	35	241	7,939,652	633.55
Retail Trade	86	742	12,873,207	333.64
Transportation, Warehousing & Utilities	20	257	7,736,711	578.92
Information	5	41	1,306,111	612.62
Financial Activities	43	188	4,796,503	490.64
Professional & Business Services	39	131	3,404,107	499.72
Education & Health Services	67	1,024	29,140,196	547.25
Leisure & Hospitality	36	315	3,272,492	199.79
Other Services	40	120	2,092,923	335.40
Local Government	34	723	15,359,164	408.53
State Government	14	552	15,317,647	533.64

*Note: Totals may not add due to rounding.

**TABLE 6. COUNTY SUMMARY
EMPLOYMENT AND TOTAL EARNINGS, BY INDUSTRY
CALENDAR YEAR 2004**

NORTH AMERICAN INDUSTRY CLASSIFICATION SYSTEM INDUSTRY GROUP	AVERAGE EMPLOYING UNITS	AVERAGE COVERED EMPLOYMENT	TOTAL EARNINGS	AVERAGE WEEKLY EARNINGS
JEFFERSON COUNTY - TOTAL	1,745	32,755	\$956,602,709	\$561.63
Natural Resources & Mining	41	488	16,889,551	665.57
Construction	120	968	28,779,163	571.74
Manufacturing	82	6,738	255,036,735	727.89
Trade, Transportation & Utilities	496	6,094	147,740,296	466.22
Wholesale Trade	91	1,043	33,322,253	614.39
Retail Trade	341	4,235	77,999,035	354.19
Transportation, Warehousing & Utilities	64	815	36,419,008	859.34
Information	18	220	6,479,499	566.39
Financial Activities	147	1,199	40,038,773	642.18
Professional & Business Services	179	2,449	87,071,620	683.73
Education & Health Services	275	5,431	152,326,482	539.38
Leisure & Hospitality	141	2,230	22,424,162	193.38
Other Services	165	803	17,072,543	408.86
Local Government	42	3,151	88,658,686	541.09
State Government	40	2,985	94,085,199	606.14
JOHNSON COUNTY - TOTAL	439	8,432	\$197,367,487	\$450.13
Natural Resources & Mining	13	208	5,909,196	546.34
Construction	28	191	4,333,416	436.31
Manufacturing	42	3,217	80,454,128	480.94
Trade, Transportation & Utilities	121	1,695	35,987,557	408.30
Information	6	29	839,464	556.67
Financial Activities	39	215	5,869,893	525.04
Professional & Business Services	44	153	3,628,458	456.07
Education & Health Services	51	1,084	26,930,780	477.77
Leisure & Hospitality	40	555	5,084,780	176.19
Other Services	31	82	1,570,170	368.24
Local Government	14	855	22,595,054	508.21
State Government	10	147	4,164,591	544.82

*Note: Totals may not add due to rounding.

**TABLE 6. COUNTY SUMMARY
EMPLOYMENT AND TOTAL EARNINGS, BY INDUSTRY
CALENDAR YEAR 2004**

NORTH AMERICAN INDUSTRY CLASSIFICATION SYSTEM INDUSTRY GROUP	AVERAGE EMPLOYING UNITS	AVERAGE COVERED EMPLOYMENT	TOTAL EARNINGS	AVERAGE WEEKLY EARNINGS
LAFAYETTE COUNTY - TOTAL	158	1,720	\$39,748,722	\$444.42
Natural Resources & Mining	28	163	3,695,934	436.05
Trade, Transportation & Utilities	38	247	5,906,564	459.87
Retail Trade	24	156	2,392,739	294.96
Other Trade, Transportation & Utilities	14	92	3,513,825	734.50
Financial Activities	16	89	1,816,908	392.59
Professional & Business Services	10	52	1,691,698	625.63
Education & Health Services	10	209	3,753,116	345.34
Leisure & Hospitality	7	55	561,459	196.31
Other Services	8	89	1,346,285	290.90
Local Government	14	345	7,555,225	421.14
State Government	8	64	1,546,845	464.80
Other	19	408	11,874,688	559.70
LAWRENCE COUNTY - TOTAL	428	4,358	\$99,790,083	\$440.35
Natural Resources & Mining	33	175	4,874,208	535.63
Construction	27	102	2,811,051	529.99
Manufacturing	24	744	19,970,466	516.19
Trade, Transportation & Utilities	143	1,017	21,641,388	409.22
Wholesale Trade	24	220	6,577,203	574.93
Retail Trade	84	668	11,249,673	323.86
Transportation, Warehousing & Utilities	34	129	3,814,512	568.65
Information	6	25	711,640	547.42
Financial Activities	31	145	3,451,166	457.71
Professional & Business Services	24	117	3,839,732	631.12
Education & Health Services	47	423	10,105,280	459.41
Leisure & Hospitality	29	308	2,348,796	146.65
Other Services	25	67	1,131,337	324.72
Local Government	28	1,108	26,036,662	451.90
State Government	12	127	2,868,357	434.34

*Note: Totals may not add due to rounding.

**TABLE 6. COUNTY SUMMARY
EMPLOYMENT AND TOTAL EARNINGS, BY INDUSTRY
CALENDAR YEAR 2004**

NORTH AMERICAN INDUSTRY CLASSIFICATION SYSTEM INDUSTRY GROUP	AVERAGE EMPLOYING UNITS	AVERAGE COVERED EMPLOYMENT	TOTAL EARNINGS	AVERAGE WEEKLY EARNINGS
LEE COUNTY - TOTAL	221	2,141	\$50,662,903	\$455.06
Natural Resources & Mining	30	228	5,215,624	439.91
Construction	8	13	231,351	342.24
Trade, Transportation & Utilities	65	381	8,438,143	425.91
Wholesale Trade	9	68	1,994,527	564.06
Retail Trade	38	217	3,340,242	296.02
Transportation, Warehousing & Utilities	18	97	3,103,374	615.26
Financial Activities	12	79	1,805,067	439.40
Professional & Business Services	18	75	1,642,632	421.19
Education & Health Services	28	295	6,642,920	433.05
Leisure & Hospitality	8	75	642,966	164.86
Local Government	17	369	9,173,465	478.08
State Government	8	445	12,149,551	525.05
Other	29	181	4,721,184	501.61
LINCOLN COUNTY - TOTAL	216	3,108	\$75,444,201	\$466.81
Natural Resources & Mining	31	210	5,588,301	511.75
Construction	17	92	1,943,063	406.16
Manufacturing	10	486	12,901,371	510.50
Trade, Transportation & Utilities	55	396	9,840,493	477.88
Wholesale Trade	8	33	1,068,023	622.39
Retail Trade	28	214	3,108,445	279.34
Transportation, Warehousing & Utilities	18	149	5,664,025	731.03
Financial Activities	22	94	2,224,844	455.16
Professional & Business Services	11	25	629,651	484.35
Education & Health Services	20	319	6,122,460	369.09
Leisure & Hospitality	15	120	1,093,694	175.27
Local & State Government	22	1,317	34,233,937	499.88
Other	14	48	866,387	347.11

*Note: Totals may not add due to rounding.

**TABLE 6. COUNTY SUMMARY
EMPLOYMENT AND TOTAL EARNINGS, BY INDUSTRY
CALENDAR YEAR 2004**

NORTH AMERICAN INDUSTRY CLASSIFICATION SYSTEM INDUSTRY GROUP	AVERAGE EMPLOYING UNITS	AVERAGE COVERED EMPLOYMENT	TOTAL EARNINGS	AVERAGE WEEKLY EARNINGS
LITTLE RIVER COUNTY - TOTAL	253	4,511	\$169,390,087	\$722.12
Natural Resources & Mining	12	80	2,319,020	557.46
Trade, Transportation & Utilities	76	1,062	32,284,053	584.60
Wholesale Trade	9	32	860,914	517.38
Retail Trade	45	349	5,826,856	321.07
Transportation, Warehousing & Utilities	22	682	25,596,283	721.75
Information	4	11	331,042	578.74
Financial Activities	27	126	2,980,476	454.90
Professional & Business Services	21	167	4,149,095	477.79
Education & Health Services	14	158	3,319,743	404.06
Leisure & Hospitality	19	226	1,998,451	170.05
Other Services	16	100	1,201,376	231.03
Local Government	20	726	17,270,603	457.48
State Government	12	91	2,138,739	451.97
Other	32	1,763	101,397,489	1106.04
LOGAN COUNTY - TOTAL	440	5,768	\$135,244,698	\$450.91
Natural Resources & Mining	14	81	2,657,328	630.89
Construction	44	136	2,758,802	390.10
Manufacturing	25	1,956	55,820,446	548.81
Trade, Transportation & Utilities	121	875	14,996,849	329.60
Wholesale Trade	20	55	941,056	329.04
Retail Trade	76	757	12,209,391	310.17
Transportation, Warehousing & Utilities	26	63	1,846,402	563.61
Information	9	40	1,332,220	640.49
Financial Activities	43	230	7,105,227	594.08
Professional & Business Services	37	105	2,378,091	435.55
Education & Health Services	47	709	15,041,180	407.97
Leisure & Hospitality	30	340	3,046,167	172.29
Other Services	32	90	1,757,415	375.52
Local Government	23	772	18,294,285	455.72
State Government	16	433	10,056,688	446.65

*Note: Totals may not add due to rounding.

**TABLE 6. COUNTY SUMMARY
EMPLOYMENT AND TOTAL EARNINGS, BY INDUSTRY
CALENDAR YEAR 2004**

NORTH AMERICAN INDUSTRY CLASSIFICATION SYSTEM INDUSTRY GROUP	AVERAGE EMPLOYING UNITS	AVERAGE COVERED EMPLOYMENT	TOTAL EARNINGS	AVERAGE WEEKLY EARNINGS
LONOKE COUNTY - TOTAL	1,115	11,330	\$279,689,446	\$474.73
Natural Resources & Mining	73	460	14,322,425	598.76
Construction	152	953	27,475,651	554.44
Manufacturing	35	1,364	46,911,837	661.40
Trade, Transportation & Utilities	310	2,423	54,846,152	435.30
Wholesale Trade	71	412	15,073,215	703.57
Retail Trade	171	1,727	31,480,738	350.55
Transportation, Warehousing & Utilities	68	283	8,292,199	563.48
Information	16	122	4,566,701	719.85
Financial Activities	122	570	16,787,414	566.38
Professional & Business Services	128	469	12,033,433	493.42
Education & Health Services	97	1,320	28,270,082	411.86
Leisure & Hospitality	76	1,093	10,929,743	192.30
Other Services	62	177	3,512,058	381.58
Local Government	28	2,232	56,446,243	486.34
State Government	16	147	3,587,707	469.35
MADISON COUNTY - TOTAL	233	3,110	\$72,088,330	\$445.76
Natural Resources & Mining	15	65	1,551,029	458.88
Construction	37	93	2,115,814	437.51
Manufacturing	21	1,151	28,183,410	470.89
Trade, Transportation & Utilities	60	580	12,415,037	411.64
Wholesale Trade	12	43	2,151,640	962.27
Retail Trade	35	411	6,888,990	322.34
Transportation, Warehousing & Utilities	13	126	3,374,407	515.02
Information	4	37	1,556,111	808.79
Financial Activities	18	91	2,503,556	529.07
Professional & Business Services	19	118	2,696,550	439.46
Education & Health Services	20	235	4,251,725	347.93
Leisure & Hospitality	11	123	815,802	127.55
Other Services	13	28	618,164	424.56
Local Government	8	536	13,939,505	500.13
State Government	8	53	1,441,627	523.09

*Note: Totals may not add due to rounding.

**TABLE 6. COUNTY SUMMARY
EMPLOYMENT AND TOTAL EARNINGS, BY INDUSTRY
CALENDAR YEAR 2004**

NORTH AMERICAN INDUSTRY CLASSIFICATION SYSTEM INDUSTRY GROUP	AVERAGE EMPLOYING UNITS	AVERAGE COVERED EMPLOYMENT	TOTAL EARNINGS	AVERAGE WEEKLY EARNINGS
MARION COUNTY - TOTAL	276	3,903	\$86,312,058	\$425.27
Natural Resources & Mining	6	41	845,668	396.65
Construction	15	46	771,095	322.36
Manufacturing	27	1,683	41,987,458	479.77
Trade, Transportation & Utilities	59	553	9,484,161	329.82
Financial Activities	33	193	4,610,761	459.42
Professional & Business Services	24	42	1,000,741	458.21
Education & Health Services	24	338	6,345,637	361.04
Leisure & Hospitality	41	270	2,859,319	203.66
Local Government	20	534	12,691,948	457.07
State Government	8	110	2,564,803	448.39
Other	19	93	3,150,467	651.46
MILLER COUNTY - TOTAL	825	12,592	\$377,680,190	\$576.80
Natural Resources & Mining	33	159	4,691,712	567.45
Construction	86	872	24,344,991	536.90
Manufacturing	37	2,779	144,001,130	996.49
Trade, Transportation & Utilities	243	2,880	74,649,662	498.46
Wholesale Trade	65	614	21,705,143	679.82
Retail Trade	135	1,467	25,987,546	340.67
Transportation, Warehousing & Utilities	44	799	26,956,973	648.82
Information	9	94	4,424,721	905.22
Financial Activities	80	430	13,235,756	591.94
Professional & Business Services	79	808	16,177,990	385.04
Education & Health Services	74	949	21,928,395	444.36
Leisure & Hospitality	78	1,350	14,529,770	206.98
Other Services	67	389	5,803,061	286.88
Local Government	23	1,453	39,908,002	528.19
State Government	18	430	13,985,000	625.45

*Note: Totals may not add due to rounding.

**TABLE 6. COUNTY SUMMARY
EMPLOYMENT AND TOTAL EARNINGS, BY INDUSTRY
CALENDAR YEAR 2004**

NORTH AMERICAN INDUSTRY CLASSIFICATION SYSTEM INDUSTRY GROUP	AVERAGE EMPLOYING UNITS	AVERAGE COVERED EMPLOYMENT	TOTAL EARNINGS	AVERAGE WEEKLY EARNINGS
MISSISSIPPI COUNTY - TOTAL	1,121	17,748	\$546,120,823	\$591.75
Natural Resources & Mining	103	858	19,421,370	435.30
Construction	57	366	11,184,515	587.67
Manufacturing	55	4,718	240,812,659	981.56
Trade, Transportation & Utilities	310	3,028	73,272,354	465.35
Wholesale Trade	63	566	19,994,145	679.33
Retail Trade	198	1,904	32,213,501	325.36
Transportation, Warehousing & Utilities	50	558	21,064,708	725.97
Financial Activities	106	620	16,106,643	499.59
Professional & Business Services	93	954	24,199,651	487.82
Education & Health Services	149	1,605	39,242,835	470.20
Leisure & Hospitality	78	1,058	10,221,233	185.79
Local Government	46	2,352	56,958,082	465.71
State Government	26	666	17,045,700	492.20
Other	99	1,524	37,655,781	475.16
MONROE COUNTY - TOTAL	292	2,590	\$52,300,431	\$388.33
Natural Resources & Mining	32	183	3,807,900	400.16
Construction	15	50	1,024,359	393.98
Manufacturing	9	188	4,369,303	446.94
Trade, Transportation & Utilities	90	687	15,367,221	430.17
Wholesale Trade	23	199	5,542,477	535.61
Retail Trade	41	340	5,784,941	327.20
Transportation, Warehousing & Utilities	26	148	4,039,803	524.92
Information	7	41	753,417	353.39
Financial Activities	16	101	2,818,216	536.60
Professional & Business Services	15	39	881,267	434.55
Education & Health Services	28	350	5,704,666	313.44
Leisure & Hospitality	30	323	2,701,299	160.83
Other Services	18	69	1,206,127	336.16
Local Government	22	424	10,486,338	475.61
State Government	10	135	3,180,318	453.04

*Note: Totals may not add due to rounding.

**TABLE 6. COUNTY SUMMARY
EMPLOYMENT AND TOTAL EARNINGS, BY INDUSTRY
CALENDAR YEAR 2004**

NORTH AMERICAN INDUSTRY CLASSIFICATION SYSTEM INDUSTRY GROUP	AVERAGE EMPLOYING UNITS	AVERAGE COVERED EMPLOYMENT	TOTAL EARNINGS	AVERAGE WEEKLY EARNINGS
MONTGOMERY COUNTY - TOTAL	167	1,636	\$31,914,914	\$375.15
Natural Resources & Mining	14	59	1,305,130	425.40
Construction	22	170	4,274,002	483.48
Trade, Transportation & Utilities	44	218	4,020,705	354.68
Wholesale Trade	11	67	1,328,387	381.28
Retail Trade	25	126	2,117,054	323.12
Transportation, Warehousing & Utilities	8	26	575,264	425.49
Financial Activities	9	70	1,823,033	500.83
Education & Health Services	12	58	941,480	312.16
Leisure & Hospitality	20	225	2,995,628	256.04
Other Services	10	62	1,052,769	326.54
Local Government	9	444	9,162,944	396.87
State Government	8	57	1,429,622	482.33
Other	21	274	4,909,601	344.58
NEVADA COUNTY - TOTAL	196	2,540	\$68,852,825	\$521.30
Natural Resources & Mining	17	58	1,452,098	481.46
Construction	13	37	735,238	382.14
Manufacturing	7	716	30,543,034	820.34
Trade, Transportation & Utilities	48	450	9,538,616	407.63
Retail Trade	32	288	4,528,625	302.39
Other Trade, Transportation & Utilities	16	163	5,009,991	591.08
Financial Activities	12	66	1,861,712	542.46
Education & Health Services	12	381	7,249,260	365.90
Leisure & Hospitality	17	133	1,134,948	164.10
Other Services	17	84	965,396	221.02
Local Government	27	457	10,034,524	422.26
State Government	11	89	2,156,975	466.07
Other	15	70	3,181,024	873.91

*Note: Totals may not add due to rounding.

**TABLE 6. COUNTY SUMMARY
EMPLOYMENT AND TOTAL EARNINGS, BY INDUSTRY
CALENDAR YEAR 2004**

NORTH AMERICAN INDUSTRY CLASSIFICATION SYSTEM INDUSTRY GROUP	AVERAGE EMPLOYING UNITS	AVERAGE COVERED EMPLOYMENT	TOTAL EARNINGS	AVERAGE WEEKLY EARNINGS
NEWTON COUNTY - TOTAL	130	1,046	\$18,505,832	\$340.23
Natural Resources & Mining	8	17	194,076	219.54
Construction	8	7	67,952	186.68
Manufacturing	14	62	1,220,531	378.58
Trade, Transportation & Utilities	31	169	2,631,102	299.40
Wholesale Trade	4	10	262,719	505.23
Retail Trade	17	113	1,350,982	229.92
Transportation, Warehousing & Utilities	10	47	1,017,401	416.29
Education & Health Services	13	181	2,342,882	248.92
Leisure & Hospitality	19	72	774,184	206.78
Other Services	5	13	176,193	260.64
Local Government	12	372	7,929,858	409.94
State Government	7	92	1,593,391	333.07
Other	14	62	1,575,663	488.73
OUACHITA COUNTY - TOTAL	631	7,481	\$180,642,418	\$464.36
Natural Resources & Mining	48	438	13,778,089	604.94
Construction	46	196	4,448,692	436.49
Manufacturing	29	832	25,978,101	600.46
Trade, Transportation & Utilities	192	1,702	39,726,814	448.87
Wholesale Trade	33	290	10,128,485	671.65
Retail Trade	130	1,134	19,096,213	323.84
Transportation, Warehousing & Utilities	29	278	10,502,116	726.49
Information	9	94	2,636,147	539.31
Financial Activities	63	363	10,043,430	532.07
Professional & Business Services	44	392	7,703,965	377.94
Education & Health Services	66	1,243	30,428,642	470.77
Leisure & Hospitality	38	524	4,459,533	163.66
Other Services	54	175	3,373,635	370.73
Local Government	30	1,222	28,705,819	451.75
State Government	13	301	9,359,551	597.98

*Note: Totals may not add due to rounding.

**TABLE 6. COUNTY SUMMARY
EMPLOYMENT AND TOTAL EARNINGS, BY INDUSTRY
CALENDAR YEAR 2004**

NORTH AMERICAN INDUSTRY CLASSIFICATION SYSTEM INDUSTRY GROUP	AVERAGE EMPLOYING UNITS	AVERAGE COVERED EMPLOYMENT	TOTAL EARNINGS	AVERAGE WEEKLY EARNINGS
PERRY COUNTY - TOTAL	150	1,157	\$25,274,442	\$420.09
Natural Resources & Mining	6	29	933,478	619.02
Construction	25	77	2,150,205	537.01
Manufacturing	7	77	1,809,679	451.97
Trade, Transportation & Utilities	29	183	3,371,464	354.29
Wholesale Trade	4	7	291,579	801.04
Retail Trade	19	154	2,113,997	263.99
Transportation, Warehousing & Utilities	6	21	965,888	884.51
Financial Activities	14	56	1,977,783	679.18
Education & Health Services	15	166	3,021,134	349.99
Local Government	12	364	8,189,697	432.68
State Government	8	57	1,373,289	463.32
Other	34	150	2,447,713	313.81
PHILLIPS COUNTY - TOTAL	655	6,884	\$160,073,311	\$447.17
Natural Resources & Mining	76	498	10,482,953	404.81
Construction	32	135	3,091,088	440.33
Manufacturing	15	476	14,744,626	595.69
Trade, Transportation & Utilities	178	1,641	38,996,148	456.99
Wholesale Trade	37	418	13,021,325	599.07
Retail Trade	108	921	15,822,794	330.38
Transportation, Warehousing & Utilities	34	302	10,152,029	646.46
Information	12	62	1,759,294	545.69
Financial Activities	54	296	7,934,720	515.51
Professional & Business Services	57	318	7,432,573	449.48
Education & Health Services	104	1,125	25,311,185	432.67
Leisure & Hospitality	36	386	3,302,809	164.55
Other Services	43	107	1,888,273	339.37
Local Government	34	1,293	31,182,745	463.78
State Government	16	547	13,946,897	490.33

*Note: Totals may not add due to rounding.

**TABLE 6. COUNTY SUMMARY
EMPLOYMENT AND TOTAL EARNINGS, BY INDUSTRY
CALENDAR YEAR 2004**

NORTH AMERICAN INDUSTRY CLASSIFICATION SYSTEM INDUSTRY GROUP	AVERAGE EMPLOYING UNITS	AVERAGE COVERED EMPLOYMENT	TOTAL EARNINGS	AVERAGE WEEKLY EARNINGS
PIKE COUNTY - TOTAL	264	2,702	\$59,567,918	\$423.96
Natural Resources & Mining	36	197	5,111,296	498.96
Construction	12	57	1,522,350	513.61
Manufacturing	11	446	10,785,130	465.04
Trade, Transportation & Utilities	89	617	12,270,657	382.45
Wholesale Trade	18	140	3,499,767	480.74
Retail Trade	52	381	6,017,302	303.72
Transportation, Warehousing & Utilities	20	96	2,753,588	551.60
Information	6	41	1,353,661	634.93
Financial Activities	25	192	5,382,329	539.10
Professional & Business Services	11	48	848,765	340.05
Education & Health Services	11	174	3,136,641	346.67
Leisure & Hospitality	22	205	1,793,605	168.26
Other Services	17	118	2,312,198	376.82
Local Government	13	547	12,566,124	441.78
State Government	11	116	2,485,162	412.00
POINSETT COUNTY - TOTAL	498	6,198	\$150,475,236	\$466.89
Natural Resources & Mining	49	373	9,842,823	507.47
Construction	30	101	2,539,386	483.51
Manufacturing	27	1,483	41,989,196	544.49
Trade, Transportation & Utilities	141	1,321	31,542,322	459.18
Wholesale Trade	32	437	15,740,239	692.67
Retail Trade	79	727	11,402,389	301.62
Transportation, Warehousing & Utilities	30	157	4,399,694	538.91
Information	7	60	2,570,206	823.78
Financial Activities	46	328	8,191,760	480.29
Professional & Business Services	24	84	2,679,126	613.35
Education & Health Services	50	537	11,284,410	404.11
Leisure & Hospitality	46	466	3,800,331	156.83
Other Services	33	72	3,791,484	1012.68
Local Government	31	1,136	26,781,375	453.37
State Government	13	237	5,462,817	443.27

*Note: Totals may not add due to rounding.

**TABLE 6. COUNTY SUMMARY
EMPLOYMENT AND TOTAL EARNINGS, BY INDUSTRY
CALENDAR YEAR 2004**

NORTH AMERICAN INDUSTRY CLASSIFICATION SYSTEM INDUSTRY GROUP	AVERAGE EMPLOYING UNITS	AVERAGE COVERED EMPLOYMENT	TOTAL EARNINGS	AVERAGE WEEKLY EARNINGS
POLK COUNTY - TOTAL	525	6,127	\$131,655,197	\$413.23
Natural Resources & Mining	26	260	7,270,567	537.76
Construction	37	166	3,167,675	366.97
Manufacturing	48	1,418	35,017,419	474.90
Trade, Transportation & Utilities	154	1,318	25,159,559	367.10
Wholesale Trade	25	141	3,022,544	412.24
Retail Trade	84	845	13,782,723	313.67
Transportation, Warehousing & Utilities	45	331	8,354,292	485.38
Information	9	53	1,472,282	534.21
Financial Activities	38	216	5,549,731	494.10
Professional & Business Services	46	185	4,790,192	497.94
Education & Health Services	60	898	19,102,452	409.08
Leisure & Hospitality	39	409	3,338,542	156.97
Other Services	34	135	2,290,222	326.24
Local Government	21	754	18,134,943	462.53
State Government	15	314	6,361,613	389.61
POPE COUNTY - TOTAL	1,608	24,330	\$678,111,072	\$535.99
Natural Resources & Mining	20	541	12,780,114	454.29
Construction	164	1,118	36,436,861	626.75
Manufacturing	88	4,403	142,497,179	622.38
Trade, Transportation & Utilities	472	6,363	217,511,389	657.38
Wholesale Trade	104	757	22,267,465	565.68
Retail Trade	277	3,127	57,270,513	352.21
Transportation, Warehousing & Utilities	92	2,479	137,973,411	1070.32
Information	22	301	9,465,577	604.75
Financial Activities	155	740	22,346,768	580.74
Professional & Business Services	205	2,216	46,413,271	402.78
Education & Health Services	179	2,713	67,875,513	481.13
Leisure & Hospitality	129	2,262	21,634,757	183.93
Other Services	117	479	9,796,874	393.32
Local Government	39	2,114	54,858,442	499.04
State Government	17	1,080	36,494,327	649.83

*Note: Totals may not add due to rounding.

**TABLE 6. COUNTY SUMMARY
EMPLOYMENT AND TOTAL EARNINGS, BY INDUSTRY
CALENDAR YEAR 2004**

NORTH AMERICAN INDUSTRY CLASSIFICATION SYSTEM INDUSTRY GROUP	AVERAGE EMPLOYING UNITS	AVERAGE COVERED EMPLOYMENT	TOTAL EARNINGS	AVERAGE WEEKLY EARNINGS
PRAIRIE COUNTY - TOTAL	226	1,681	\$38,283,631	\$437.97
Natural Resources & Mining	24	135	3,763,363	536.09
Trade, Transportation & Utilities	69	398	8,076,550	390.25
Wholesale Trade	10	67	1,812,914	520.35
Retail Trade	37	238	3,078,527	248.75
Transportation, Warehousing & Utilities	22	93	3,185,109	658.62
Information	4	11	402,471	703.62
Financial Activities	17	65	1,795,712	531.28
Professional & Business Services	16	60	1,240,710	397.66
Education & Health Services	17	194	3,790,188	375.71
Leisure & Hospitality	19	113	999,375	170.08
Other Services	15	49	822,209	322.69
Local Government	15	339	7,634,423	433.09
State Government	10	50	1,272,263	489.33
Other	21	267	8,486,367	611.23
PULASKI COUNTY - TOTAL	13,168	232,134	\$8,137,560,126	\$674.14
Natural Resources & Mining	42	689	30,346,572	847.01
Construction	1,099	10,326	374,206,893	696.91
Manufacturing	428	16,126	641,576,961	765.10
Trade, Transportation & Utilities	3,188	51,043	1,682,347,450	633.83
Wholesale Trade	1,068	12,874	599,737,410	895.87
Retail Trade	1,738	24,980	556,942,196	428.76
Transportation, Warehousing & Utilities	382	13,189	525,667,844	766.47
Information	225	8,627	405,311,557	903.50
Financial Activities	1,604	16,210	781,248,591	926.84
Professional & Business Services	2,496	32,466	1,092,753,332	647.28
Education & Health Services	1,596	31,444	1,224,778,309	749.06
Leisure & Hospitality	971	18,841	240,406,050	245.38
Other Services	1,221	7,049	193,146,118	526.93
Local Government	103	15,937	535,623,425	646.32
State Government	196	23,377	935,814,868	769.84

*Note: Totals may not add due to rounding.

**TABLE 6. COUNTY SUMMARY
EMPLOYMENT AND TOTAL EARNINGS, BY INDUSTRY
CALENDAR YEAR 2004**

NORTH AMERICAN INDUSTRY CLASSIFICATION SYSTEM INDUSTRY GROUP	AVERAGE EMPLOYING UNITS	AVERAGE COVERED EMPLOYMENT	TOTAL EARNINGS	AVERAGE WEEKLY EARNINGS
RANDOLPH COUNTY - TOTAL	396	4,999	\$110,050,311	\$423.36
Natural Resources & Mining	21	74	1,398,886	363.54
Construction	22	104	2,017,814	373.12
Manufacturing	35	1,305	33,789,050	497.92
Trade, Transportation & Utilities	109	953	18,538,958	374.10
Wholesale Trade	21	160	3,267,073	392.68
Retail Trade	66	638	10,497,840	316.43
Transportation, Warehousing & Utilities	22	156	4,774,045	588.52
Information	7	50	1,730,866	665.72
Financial Activities	25	155	4,112,904	510.29
Professional & Business Services	40	202	3,118,828	296.92
Education & Health Services	50	712	17,162,465	463.55
Leisure & Hospitality	28	362	2,983,518	158.50
Other Services	25	59	1,061,640	346.04
Local Government	23	784	17,407,235	426.98
State Government	12	239	6,728,147	541.37
SAINT FRANCIS COUNTY - TOTAL	602	8,567	\$205,743,644	\$461.84
Natural Resources & Mining	23	180	4,158,702	444.31
Construction	46	269	7,175,975	513.01
Manufacturing	22	1,479	41,645,329	541.50
Trade, Transportation & Utilities	188	2,073	49,301,602	457.36
Wholesale Trade	33	529	15,443,365	561.41
Retail Trade	121	1,206	21,935,882	349.79
Transportation, Warehousing & Utilities	34	339	11,922,355	676.33
Information	12	104	3,049,978	563.98
Financial Activities	49	277	6,484,361	450.18
Professional & Business Services	43	145	4,007,080	531.44
Education & Health Services	83	1,392	33,743,556	466.17
Leisure & Hospitality	49	772	7,614,038	189.67
Other Services	41	143	1,954,847	262.89
Local Government	30	1,190	31,694,366	512.19
State Government	17	544	14,913,810	527.21

*Note: Totals may not add due to rounding.

**TABLE 6. COUNTY SUMMARY
EMPLOYMENT AND TOTAL EARNINGS, BY INDUSTRY
CALENDAR YEAR 2004**

NORTH AMERICAN INDUSTRY CLASSIFICATION SYSTEM INDUSTRY GROUP	AVERAGE EMPLOYING UNITS	AVERAGE COVERED EMPLOYMENT	TOTAL EARNINGS	AVERAGE WEEKLY EARNINGS
SALINE COUNTY - TOTAL	1,523	18,853	\$495,921,744	\$505.86
Natural Resources & Mining	13	50	1,842,566	708.68
Construction	274	1,675	48,192,634	553.30
Manufacturing	80	1,774	68,263,485	740.00
Trade, Transportation & Utilities	398	4,398	111,653,767	488.22
Wholesale Trade	103	525	18,975,344	695.07
Retail Trade	252	3,618	84,042,827	446.71
Transportation, Warehousing & Utilities	44	255	8,635,596	651.25
Information	16	137	3,749,845	526.37
Financial Activities	144	676	18,594,870	528.98
Professional & Business Services	181	1,321	31,470,570	458.14
Education & Health Services	132	2,418	61,551,035	489.53
Leisure & Hospitality	113	2,017	21,964,651	209.42
Other Services	122	550	12,020,833	420.31
Local & State Government	51	3,839	116,617,488	584.17
SCOTT COUNTY - TOTAL	182	2,818	\$61,430,026	\$419.21
Natural Resources & Mining	17	175	4,951,120	544.08
Construction	11	38	742,289	375.65
Manufacturing	19	1,106	25,964,194	451.46
Trade, Transportation & Utilities	49	482	8,862,073	353.58
Wholesale Trade	8	58	1,468,767	486.99
Retail Trade	32	342	5,047,701	283.83
Transportation, Warehousing & Utilities	10	82	2,345,605	550.09
Information	4	13	377,332	558.18
Financial Activities	16	75	1,540,817	395.08
Professional & Business Services	8	15	235,538	301.97
Education & Health Services	19	300	6,614,728	424.02
Leisure & Hospitality	17	149	1,179,092	152.18
Other Services	11	57	1,789,770	603.84
Local Government	5	343	7,743,407	434.14
State Government	8	64	1,429,666	429.59

*Note: Totals may not add due to rounding.

**TABLE 6. COUNTY SUMMARY
EMPLOYMENT AND TOTAL EARNINGS, BY INDUSTRY
CALENDAR YEAR 2004**

NORTH AMERICAN INDUSTRY CLASSIFICATION SYSTEM INDUSTRY GROUP	AVERAGE EMPLOYING UNITS	AVERAGE COVERED EMPLOYMENT	TOTAL EARNINGS	AVERAGE WEEKLY EARNINGS
SEARCY COUNTY - TOTAL	150	1,580	\$29,220,951	\$355.66
Construction	5	14	260,015	357.16
Manufacturing	17	299	4,875,174	313.56
Trade, Transportation & Utilities	40	286	4,214,939	283.41
Retail Trade	30	208	2,872,260	265.56
Other Trade, Transportation & Utilities	10	78	1,342,679	331.04
Financial Activities	14	58	1,257,503	416.94
Professional & Business Services	17	38	777,806	393.63
Education & Health Services	14	275	4,763,166	333.09
Leisure & Hospitality	14	105	850,460	155.76
Local Government	9	293	6,973,566	457.70
State Government	9	172	4,293,376	480.03
Other	10	41	954,946	447.91
SEBASTIAN COUNTY - TOTAL	3,494	70,907	\$2,148,099,986	\$582.59
Natural Resources & Mining	60	993	43,444,059	841.35
Construction	280	2,729	84,451,584	595.12
Manufacturing	220	21,096	732,339,483	667.59
Trade, Transportation & Utilities	915	12,199	318,953,721	502.81
Wholesale Trade	226	2,315	87,506,214	726.92
Retail Trade	567	7,816	154,569,725	380.31
Transportation, Warehousing & Utilities	123	2,069	76,877,782	714.56
Information	56	1,222	49,243,866	774.96
Financial Activities	384	2,439	85,514,029	674.25
Professional & Business Services	509	9,141	243,137,588	511.51
Education & Health Services	409	9,120	332,473,299	701.07
Leisure & Hospitality	303	5,135	57,805,961	216.49
Other Services	294	1,474	32,500,933	424.03
Local Government	43	4,104	129,690,622	607.71
State Government	23	1,255	38,544,841	590.64

*Note: Totals may not add due to rounding.

**TABLE 6. COUNTY SUMMARY
EMPLOYMENT AND TOTAL EARNINGS, BY INDUSTRY
CALENDAR YEAR 2004**

NORTH AMERICAN INDUSTRY CLASSIFICATION SYSTEM INDUSTRY GROUP	AVERAGE EMPLOYING UNITS	AVERAGE COVERED EMPLOYMENT	TOTAL EARNINGS	AVERAGE WEEKLY EARNINGS
SEVIER COUNTY - TOTAL	318	5,641	\$132,087,013	\$450.30
Natural Resources & Mining	23	189	4,719,486	480.21
Construction	26	139	3,544,601	490.40
Manufacturing	13	2,220	51,881,376	449.42
Trade, Transportation & Utilities	92	870	19,138,540	423.04
Wholesale Trade	16	135	5,679,100	808.99
Retail Trade	57	631	9,952,014	303.30
Transportation, Warehousing & Utilities	19	103	3,507,426	654.86
Information	7	44	1,352,772	591.25
Financial Activities	25	169	4,301,945	489.52
Professional & Business Services	29	132	8,289,477	1207.67
Education & Health Services	37	524	11,496,113	421.91
Leisure & Hospitality	20	280	2,626,044	180.36
Other Services	31	166	2,670,837	309.41
Local Government	12	738	17,399,053	453.38
State Government	9	171	4,666,769	524.83
SHARP COUNTY - TOTAL	383	3,869	\$78,428,214	\$389.83
Construction	34	183	4,410,295	463.46
Manufacturing	22	165	3,131,904	365.02
Trade, Transportation & Utilities	104	1,068	23,417,746	421.67
Retail Trade	74	658	10,423,165	304.63
Other Trade, Transportation & Utilities	31	411	12,994,581	608.02
Information	10	59	3,013,112	982.11
Financial Activities	30	259	6,773,746	502.95
Professional & Business Services	37	127	3,299,223	499.58
Education & Health Services	46	621	12,105,100	374.86
Leisure & Hospitality	38	470	3,746,964	153.31
Local Government	26	730	15,022,576	395.75
State Government	9	92	2,135,831	446.45
Other	29	95	1,371,717	277.68

*Note: Totals may not add due to rounding.

**TABLE 6. COUNTY SUMMARY
EMPLOYMENT AND TOTAL EARNINGS, BY INDUSTRY
CALENDAR YEAR 2004**

NORTH AMERICAN INDUSTRY CLASSIFICATION SYSTEM INDUSTRY GROUP	AVERAGE EMPLOYING UNITS	AVERAGE COVERED EMPLOYMENT	TOTAL EARNINGS	AVERAGE WEEKLY EARNINGS
STONE COUNTY - TOTAL	245	2,723	\$54,147,463	\$382.41
Construction	21	91	1,726,058	364.76
Manufacturing	25	466	9,948,279	410.54
Trade, Transportation & Utilities	78	574	12,430,471	416.46
Wholesale Trade	10	54	1,034,783	368.51
Retail Trade	54	476	9,973,576	402.94
Transportation, Warehousing & Utilities	14	44	1,422,112	621.55
Financial Activities	21	89	2,398,273	518.21
Professional & Business Services	9	24	554,348	444.19
Education & Health Services	22	420	9,315,560	426.54
Leisure & Hospitality	32	385	3,182,256	158.95
Other Services	12	25	428,762	329.82
Local Government	10	415	8,998,513	416.98
State Government	10	171	3,662,212	411.85
Other	6	62	1,502,731	466.11
UNION COUNTY - TOTAL	1,341	20,021	\$603,329,623	\$579.52
Natural Resources & Mining	102	549	16,325,901	571.88
Construction	101	1,468	56,027,130	733.95
Manufacturing	66	5,321	197,855,614	715.08
Trade, Transportation & Utilities	374	3,582	93,658,105	502.82
Wholesale Trade	82	527	22,650,196	826.53
Retail Trade	236	2,341	42,227,138	346.89
Transportation, Warehousing & Utilities	57	714	28,780,771	775.18
Information	21	219	5,529,978	485.60
Financial Activities	126	778	23,924,845	591.38
Professional & Business Services	136	1,711	61,727,453	693.79
Education & Health Services	128	2,198	61,773,403	540.47
Leisure & Hospitality	93	1,163	12,504,442	206.77
Other Services	139	641	11,780,199	353.42
Local Government	38	1,852	47,608,292	494.35
State Government	18	540	14,614,261	520.45

*Note: Totals may not add due to rounding.

**TABLE 6. COUNTY SUMMARY
EMPLOYMENT AND TOTAL EARNINGS, BY INDUSTRY
CALENDAR YEAR 2004**

NORTH AMERICAN INDUSTRY CLASSIFICATION SYSTEM INDUSTRY GROUP	AVERAGE EMPLOYING UNITS	AVERAGE COVERED EMPLOYMENT	TOTAL EARNINGS	AVERAGE WEEKLY EARNINGS
VAN BUREN COUNTY - TOTAL	346	3,738	\$74,142,995	\$381.44
Natural Resources & Mining	9	48	999,101	400.28
Construction	42	150	3,120,934	400.12
Manufacturing	14	613	13,720,593	430.44
Trade, Transportation & Utilities	103	833	15,811,665	365.03
Wholesale Trade	16	63	1,830,440	558.74
Retail Trade	65	624	10,312,278	317.81
Transportation, Warehousing & Utilities	22	146	3,668,947	483.26
Information	8	46	1,417,610	592.65
Financial Activities	31	134	2,768,477	397.31
Professional & Business Services	27	87	1,956,416	432.45
Education & Health Services	36	571	11,841,238	398.80
Leisure & Hospitality	28	438	5,098,921	223.87
Other Services	28	81	1,330,487	315.88
Local Government	13	649	13,844,800	410.24
State Government	8	90	2,232,753	477.08
WASHINGTON COUNTY - TOTAL	5,007	83,989	\$2,602,037,502	\$595.78
Natural Resources & Mining	40	499	13,863,015	534.26
Construction	552	4,613	153,844,284	641.35
Manufacturing	234	15,574	481,705,757	594.81
Trade, Transportation & Utilities	1,302	19,962	572,602,501	551.63
Wholesale Trade	329	3,523	159,070,021	868.31
Retail Trade	768	11,304	236,559,757	402.44
Transportation, Warehousing & Utilities	205	5,135	176,972,723	662.77
Information	94	1,453	52,450,916	694.20
Financial Activities	570	3,595	133,798,041	715.73
Professional & Business Services	808	7,616	332,651,491	839.96
Education & Health Services	499	9,691	336,589,838	667.93
Leisure & Hospitality	474	8,224	96,437,009	225.51
Other Services	350	1,850	41,735,293	433.84
Local & State Government	84	10,912	386,359,357	680.90

*Note: Totals may not add due to rounding.

**TABLE 6. COUNTY SUMMARY
EMPLOYMENT AND TOTAL EARNINGS, BY INDUSTRY
CALENDAR YEAR 2004**

NORTH AMERICAN INDUSTRY CLASSIFICATION SYSTEM INDUSTRY GROUP	AVERAGE EMPLOYING UNITS	AVERAGE COVERED EMPLOYMENT	TOTAL EARNINGS	AVERAGE WEEKLY EARNINGS
WHITE COUNTY - TOTAL	1,491	23,700	\$626,803,929	\$508.60
Natural Resources & Mining	33	269	7,694,638	550.09
Construction	166	1,065	30,163,729	544.67
Manufacturing	81	4,233	142,559,415	647.66
Trade, Transportation & Utilities	477	5,903	149,050,114	485.57
Wholesale Trade	101	562	16,216,999	554.92
Retail Trade	295	3,123	55,817,359	343.71
Transportation, Warehousing & Utilities	81	2,218	77,015,756	667.75
Information	21	232	6,302,475	522.42
Financial Activities	156	887	23,055,171	499.85
Professional & Business Services	134	1,344	28,397,802	406.33
Education & Health Services	162	4,170	129,753,779	598.38
Leisure & Hospitality	114	1,916	17,267,161	173.31
Other Services	103	609	14,297,123	451.47
Local Government	46	2,415	60,776,893	483.97
State Government	19	657	17,485,629	511.81
WOODRUFF COUNTY - TOTAL	173	2,053	\$49,798,208	\$466.47
Natural Resources & Mining	19	97	2,137,383	423.75
Construction	7	73	1,648,506	434.27
Manufacturing	8	463	12,899,053	535.76
Trade, Transportation & Utilities	64	539	14,523,923	518.19
Wholesale Trade	13	217	7,939,241	703.58
Retail Trade	34	219	2,948,916	258.95
Transportation, Warehousing & Utilities	17	102	3,635,766	685.48
Financial Activities	15	62	1,702,793	528.16
Professional & Business Services	4	7	167,301	459.62
Education & Health Services	23	186	4,369,357	451.75
Leisure & Hospitality	8	48	383,106	153.49
Local Government	10	494	10,233,078	398.36
State Government	7	56	1,229,965	422.38
Other	9	30	503,743	322.91

*Note: Totals may not add due to rounding.

**TABLE 6. COUNTY SUMMARY
EMPLOYMENT AND TOTAL EARNINGS, BY INDUSTRY
CALENDAR YEAR 2004**

NORTH AMERICAN INDUSTRY CLASSIFICATION SYSTEM INDUSTRY GROUP	AVERAGE EMPLOYING UNITS	AVERAGE COVERED EMPLOYMENT	TOTAL EARNINGS	AVERAGE WEEKLY EARNINGS
YELL COUNTY - TOTAL	390	6,896	\$156,525,980	\$436.50
Natural Resources & Mining	27	353	8,151,576	444.08
Construction	52	373	8,736,929	450.45
Manufacturing	23	2,924	69,454,813	456.80
Trade, Transportation & Utilities	89	608	11,019,394	348.54
Wholesale Trade	10	24	530,364	424.97
Retail Trade	60	492	7,641,262	298.67
Transportation, Warehousing & Utilities	18	92	2,847,768	595.27
Information	6	52	2,217,803	820.19
Financial Activities	35	198	4,910,290	476.91
Professional & Business Services	33	235	8,028,091	656.96
Education & Health Services	39	465	8,750,461	361.89
Leisure & Hospitality	27	366	3,495,757	183.68
Other Services	19	63	1,067,514	325.86
Local Government	28	1,140	28,074,243	473.59
State Government	13	120	2,619,109	419.73
REST-OF-STATE-TOTAL	4,273	14,748	731,148,978	\$953.39
Natural Resources & Mining	53	228	7,832,173	660.61
Construction	536	2,274	75,089,088	635.01
Manufacturing	41	139	6,689,069	925.44
Trade, Transportation & Utilities	1,789	6,577	424,199,969	1240.34
Wholesale Trade	1,549	5,498	386,798,660	1352.93
Retail Trade	99	473	15,708,206	638.65
Transportation, Warehousing & Utilities	143	605	21,693,103	689.55
Information	114	294	12,628,715	826.05
Financial Activities	236	562	33,313,518	1139.94
Professional & Business Services	1,237	3,460	127,654,579	709.51
Education & Health Services	105	724	25,113,581	667.06
Leisure & Hospitality	41	84	2,259,630	517.31
Other	122	406	16,368,656	775.32

*Note: Totals may not add due to rounding.

**TABLE 7. FEDERAL GOVERNMENT EMPLOYMENT AND EARNINGS IN ARKANSAS
CALENDAR YEAR 2004**

NORTH AMERICAN INDUSTRY CLASSIFICATION SYSTEM INDUSTRY GROUP	AVERAGE EMPLOYING UNITS	AVERAGE COVERED EMPLOYMENT	TOTAL EARNINGS	AVERAGE WEEKLY EARNINGS
Manufacturing	2	212	\$7,837,066	\$710.91
Trade, Transportation & Utilities	449	6,862	\$296,312,548	\$830.42
Information	1	23	\$1,249,352	\$1,044.61
Financial Activities	24	193	\$11,456,197	\$1,141.51
Professional & Business Services	33	881	\$49,691,535	\$1,084.68
Education & Health Services	6	4,057	\$269,330,659	\$1,276.67
Leisure & Hospitality	16	225	\$8,368,867	\$715.29
Other Services	2	290	\$3,977,507	\$263.76
Public Administration	451	8,036	\$429,746,560	\$1,028.42
TOTAL	984	20,779	\$1,077,970,291	\$997.65

*Note: Totals may not add due to rounding.

**TABLE 8. WORKFORCE INFORMATION AREA, SUMMARY
EMPLOYMENT AND TOTAL EARNINGS, BY INDUSTRY
CALENDAR YEAR 2004**

NORTH AMERICAN INDUSTRY CLASSIFICATION SYSTEM INDUSTRY GROUP	AVERAGE EMPLOYING UNITS	AVERAGE COVERED EMPLOYMENT	TOTAL EARNINGS	AVERAGE WEEKLY EARNINGS
CENTRAL WORKFORCE INFORMATION*	5,307	68,700	\$1,880,693,586	\$526.45
Natural Resources & Mining	151	876	25,451,897	558.74
Construction	762	5,371	155,837,170	557.97
Manufacturing	240	8,569	309,476,076	694.53
Trade, Transportation & Utilities	1,407	13,856	318,121,679	441.52
Information	81	702	21,280,212	582.96
Financial Activities	548	2,707	77,919,430	553.55
Professional & Business Services	625	6,924	276,440,516	767.79
Education & Health Services	531	8,602	227,483,505	508.57
Leisure & Hospitality	410	7,049	70,251,328	191.66
Other Services	346	1,444	29,145,845	388.16
Local Government	134	8,609	249,547,250	557.44
State Government	72	3,991	119,738,678	576.96

*Note: Pulaski County is not included in the Central Workforce Information. Please refer to Page 55 for information on Pulaski County.
Central Workforce includes these counties: Faulkner, Lonoke Monroe, Prairie, and Saline.

EASTERN WORKFORCE INFORMATION	3,052	38,574	\$963,946,450	\$480.57
Natural Resources & Mining	223	1,475	32,691,333	426.22
Construction	195	1,211	31,801,566	505.01
Manufacturing	115	4,635	146,127,966	606.29
Trade, Transportation & Utilities	876	10,298	269,759,427	503.76
Information	44	319	9,442,485	569.24
Financial Activities	260	1,506	42,304,686	540.21
Professional & Business Services	267	1,460	35,472,038	467.23
Education & Health Services	392	5,118	125,432,955	471.31
Leisure & Hospitality	226	3,439	35,628,422	199.23
Other Services	246	978	18,737,719	368.45
Local Government	138	5,938	158,491,206	513.29
State Government	70	2,197	58,056,647	508.18

Eastern Workforce includes these counties: Crittenden, Cross, Lee, Phillips, and Saint Francis.

**TABLE 8. WORKFORCE INFORMATION AREA, SUMMARY
EMPLOYMENT AND TOTAL EARNINGS, BY INDUSTRY
CALENDAR YEAR 2004**

NORTH AMERICAN INDUSTRY CLASSIFICATION SYSTEM INDUSTRY GROUP	AVERAGE EMPLOYING UNITS	AVERAGE COVERED EMPLOYMENT	TOTAL EARNINGS	AVERAGE WEEKLY EARNINGS
NORTH CENTRAL WORKFORCE INFORMATION	5,214	69,321	\$1,698,972,852	\$471.32
Natural Resources & Mining	146	932	23,874,996	492.63
Construction	474	2,541	65,316,883	494.33
Manufacturing	305	14,499	439,654,204	583.14
Trade, Transportation & Utilities	1,581	15,531	369,376,500	457.37
Information	74	704	20,614,417	563.11
Financial Activities	487	2,545	66,088,650	499.39
Professional & Business Services	439	3,062	63,927,370	401.49
Education & Health Services	565	11,010	301,487,927	526.60
Leisure & Hospitality	434	5,737	53,189,180	178.29
Other Services	364	1,501	29,199,637	374.10
Local Government	227	8,569	196,054,204	439.99
State Government	118	2,690	70,188,884	501.78

North Central Workforce Includes these counties: Cleburne, Fulton, Independence, IZard, Jackson, Sharp, Stone, Van Buren, White, and Woodruff

NORTHEAST WORKFORCE INFORMATION	6,183	92,635	\$2,492,518,668	\$517.44
Natural Resources & Mining	357	2,155	51,381,308	458.52
Construction	472	3,103	81,965,874	507.98
Manufacturing	365	22,678	783,952,966	664.79
Trade, Transportation & Utilities	1,767	17,390	399,810,472	442.13
Information	87	2,245	65,472,119	560.84
Financial Activities	574	3,441	103,503,557	578.45
Professional & Business Services	577	6,056	144,277,663	458.15
Education & Health Services	772	11,986	364,311,985	584.52
Leisure & Hospitality	445	7,053	67,464,378	183.95
Other Services	436	1,816	35,750,993	378.59
Local Government	221	10,818	273,698,543	486.54
State Government	110	3,894	120,928,810	597.21

Northeast Workforce includes these counties: Clay, Craighead, Greene, Lawrence, Mississippi, Poinsett, and Randolph.

**TABLE 8. WORKFORCE INFORMATION AREA, SUMMARY
EMPLOYMENT AND TOTAL EARNINGS, BY INDUSTRY
CALENDAR YEAR 2004**

NORTH AMERICAN INDUSTRY CLASSIFICATION SYSTEM INDUSTRY GROUP	AVERAGE EMPLOYING UNITS	AVERAGE COVERED EMPLOYMENT	TOTAL EARNINGS	AVERAGE WEEKLY EARNINGS
NORTHWEST WORKFORCE INFORMATION	13,124	214,852	\$6,851,742,104	\$613.28
Natural Resources & Mining	127	1,661	55,280,678	640.03
Construction	1,530	10,257	316,318,193	593.06
Manufacturing	717	40,852	1,234,724,691	581.24
Trade, Transportation & Utilities	3,436	50,714	1,535,643,825	582.32
Information	228	3,294	113,038,650	659.93
Financial Activities	1,377	8,708	306,212,069	676.24
Professional & Business Services	1,862	29,551	1,507,468,619	981.01
Education & Health Services	1,277	21,461	689,707,500	618.03
Leisure & Hospitality	1,267	19,194	219,898,024	220.32
Other Services	891	4,401	98,392,606	429.94
Local Government	292	17,898	521,733,363	560.58
State Government	120	6,861	253,323,886	710.04

Northwest Workforce includes these counties: Baxter, Benton, Boone, Carroll, Madison, Marion, Newton, Searcy, and Washington.

SOUTHEAST WORKFORCE INFORMATION	5,176	78,368	\$2,168,252,869	\$532.07
Natural Resources & Mining	433	3,258	87,464,937	516.27
Construction	370	2,941	80,835,910	528.57
Manufacturing	242	18,443	662,960,670	691.28
Trade, Transportation & Utilities	1,483	14,290	343,267,431	461.95
Information	68	569	16,851,842	569.55
Financial Activities	413	2,950	89,832,457	585.61
Professional & Business Services	435	4,079	140,003,048	660.06
Education & Health Services	589	9,936	252,076,167	487.88
Leisure & Hospitality	384	4,879	45,129,189	177.88
Other Services	396	1,568	30,230,412	370.76
Local Government	213	9,663	248,876,924	495.30
State Government	150	5,792	170,723,882	566.84

Southeast Workforce includes these counties: Arkansas, Ashley, Bradley, Chicot, Cleveland, Desha, Drew, Grant, Jefferson, and Lincoln.

**TABLE 8. WORKFORCE INFORMATION AREA, SUMMARY
EMPLOYMENT AND TOTAL EARNINGS, BY INDUSTRY
CALENDAR YEAR 2004**

NORTH AMERICAN INDUSTRY CLASSIFICATION SYSTEM INDUSTRY GROUP	AVERAGE EMPLOYING UNITS	AVERAGE COVERED EMPLOYMENT	TOTAL EARNINGS	AVERAGE WEEKLY EARNINGS
SOUTHWEST WORKFORCE INFORMATION	5,674	87,171	\$2,433,809,064	\$536.92
Natural Resources & Mining	413	2,899	87,208,152	578.50
Construction	433	3,754	117,392,076	601.37
Manufacturing	302	27,337	983,660,461	691.98
Trade, Transportation & Utilities	1,607	15,314	369,816,322	464.40
Information	87	735	23,191,773	606.80
Financial Activities	531	3,072	87,629,174	548.56
Professional & Business Services	472	4,266	120,573,746	543.54
Education & Health Services	539	8,783	205,933,958	450.90
Leisure & Hospitality	406	5,342	52,913,882	190.49
Other Services	465	2,278	39,252,759	331.37
Local Government	268	10,130	252,692,136	479.71
State Government	151	3,261	93,544,625	551.65

Southwest Workforce includes these counties: Calhoun, Columbia, Dallas, Hempstead, Howard, Lafayette, Little River, Miller, Nevada, Ouachita, Sevier, and Union.

WEST CENTRAL WORKFORCE INFORMATION	7,650	104,421	\$2,672,000,854	\$492.09
Natural Resources & Mining	262	2,341	63,859,584	524.59
Construction	860	5,110	143,836,971	541.31
Manufacturing	427	20,256	595,052,844	564.94
Trade, Transportation & Utilities	1,977	21,060	549,423,281	501.70
Information	107	1,064	33,151,308	599.18
Financial Activities	780	3,853	113,421,041	566.10
Professional & Business Services	833	6,628	162,627,653	471.85
Education & Health Services	773	14,584	417,187,713	550.11
Leisure & Hospitality	721	11,743	132,193,620	216.49
Other Services	546	2,399	46,619,483	373.71
Local Government	232	11,079	291,032,683	505.17
State Government	132	4,304	123,594,673	552.24

West Central Workforce Includes these counties: Clark, Conway, Garland, Hot Spring, Johnson, Montgomery, Perry, Pike, Pope, and Yell

**TABLE 8. WORKFORCE INFORMATION AREA, SUMMARY
EMPLOYMENT AND TOTAL EARNINGS, BY INDUSTRY
CALENDAR YEAR 2004**

NORTH AMERICAN INDUSTRY CLASSIFICATION SYSTEM INDUSTRY GROUP	AVERAGE EMPLOYING UNITS	AVERAGE COVERED EMPLOYMENT	TOTAL EARNINGS	AVERAGE WEEKLY EARNINGS
WESTERN WORKFORCE INFORMATION	6,077	107,734	\$3,040,407,168	\$542.72
Natural Resources & Mining	149	2,136	77,923,652	701.56
Construction	577	4,521	132,292,960	562.73
Manufacturing	411	30,168	970,548,695	618.68
Trade, Transportation & Utilities	1,642	21,734	548,784,360	485.58
Information	95	1,629	61,220,706	722.73
Financial Activities	611	3,628	117,552,887	623.11
Professional & Business Services	747	10,141	267,757,871	507.76
Education & Health Services	656	13,003	423,658,076	626.57
Leisure & Hospitality	487	7,632	80,878,350	203.79
Other Services	465	2,157	47,306,216	421.76
Local Government	154	8,619	247,639,420	552.53
State Government	83	2,366	64,843,975	527.05

Western Workforce includes these counties: Crawford, Franklin, Logan, Polk, Scott, and Sebastian.