

Arkansas Covered Employment & Earnings

Jobs for People. People for Jobs.

DWS
Department of
WORKFORCE**Services**

ANNUAL
2004

**COVERED EMPLOYMENT AND EARNINGS
STATE OF ARKANSAS
CALENDAR YEAR 2004**

**MIKE HUCKABEE, GOVERNOR
STATE OF ARKANSAS**

**ARTEE WILLIAMS, DIRECTOR
DEPARTMENT OF WORKFORCE SERVICES**

**PUBLISHED BY
BUREAU OF LABOR STATISTICS PROGRAMS
DEPARTMENT OF WORKFORCE SERVICES
POST OFFICE BOX 2981
LITTLE ROCK, ARKANSAS 72203-2981
BERNADETTE COLEMAN, BLS PROGRAMS MANAGER
TELEPHONE: (501) 682-3159**

STATE OF ARKANSAS HOME PAGE: <http://www.arkansas.gov>

DEPARTMENT OF WORKFORCE SERVICES HOME PAGE: <http://www.arkansas.gov/esd/>

**INTERNET SITE FOR LABOR MARKET INFORMATION:
<http://www.discoverarkansas.net>**

RELEASED: JUNE 2005

TABLE OF CONTENTS

DESCRIPTION OF DATA	Page
Industry Classification	Page 1
Definition of Covered Employment and Earnings	Page 2
Federal Government Employment	Page 2
County Classification	Page 2
Significant Developments During Calendar Year 2004	Page 3

List of Graphs and Tables

Graph 1	Total Covered Employment for Selected Years, Arkansas	Page 7
Graph 2	Total Covered Earnings, by Calendar Quarter for Selected Years, Arkansas	Page 8
Table 1	Quarterly Comparison of Covered Employment and Wages, by Industry	Page 5
Table 2	Total Covered Employment in Arkansas, 1997-2004	Page 6
Table 3	Total Covered Earnings, 1997-2004	Page 9
Table 4	Total Taxable Earnings, 1997-2004	Page 10
Table 5	State Summary - Employment and Total Earnings, by Industry, Calendar Year 2004	Page 11
Table 6	County Summary - Employment and Total Earnings, by Industry, Calendar Year 2004	Page 21
Table 7	Federal Government Employment and Total Earnings in Arkansas, Calendar Year 2004	Page 59
Table 8	Workforce Information Area – Employment and Total Earnings, by Industry, Calendar Year 2004	Page 60

EMPLOYMENT AND EARNINGS
UNDER THE ARKANSAS EMPLOYMENT SECURITY LAW
CALENDAR YEAR 2004

DESCRIPTION OF DATA

This publication contains covered employment and payroll data by industry and county for the Calendar Year 2004. These data are compiled from quarterly contribution and wage reports submitted by employers subject to the Arkansas Employment Security Law. An employing unit is a single physical location where business is conducted, production takes place, or services are provided. Employment data have been tabulated for each month of the quarter by industry under the **North American Industry Classification System** (NAICS) (see "Industry Classification" below) on a statewide, county and workforce area basis. Payroll data represent the total wages paid during the quarter, and are also shown by

industry for the State and by publishable industry groups for each county and workforce area. The tabulation of this data is a joint effort in conjunction with the U.S. Bureau of Labor Statistics. In addition, there are tables included which set out total covered employment by months, quarterly payrolls, and average weekly earnings for the years 1997 through 2004. Data contained in this publication are subject to revision. These revisions will be reflected in the 2005 First Quarter Covered Employment and Earnings publication. Because of industry code changes between years, substantial employment and wage shifts among industries are anticipated.

INDUSTRY CLASSIFICATION

Previously published industry data **will not** be comparable in all instances with currently published data since industry codes have been revised according to the following Manuals: (a) between January 1, 1958 and December 31, 1967, industry codes were assigned under the 1957 Standard Industrial Classification (SIC) Manual; (b) between January 1, 1968 and December 31, 1974, industry codes were assigned under the 1967 Standard Industrial Classification (SIC) Manual; (c) between January 1, 1975 and December 31, 1987, industry codes were assigned under the 1972 Standard Industrial Classification (SIC) Manual; (d) between January 1, 1988 and December 31, 2000, industry codes were assigned under the 1987 Standard Industrial Classification (SIC) Manual; and (e) since January 1, 2001, industry codes have been assigned under the 2002 North American Industry Classification System (NAICS) Manual. **The NAICS Manual represents a significant change in coding methodology as compared to the**

SIC Manual. One of the most significant changes involves how NAICS treats auxiliary units. Auxiliary units are establishments primarily engaged in performing management or support services for other establishments of the same enterprise. The SIC code for these units was based on the activity of the enterprise served. The NAICS code is based on the actual activities that the establishment performs. Comparisons of many industries **should not be made** between this publication and previous Covered Employment and Earnings publications that were based on SIC. Even though some titles are the same or similar, in nature, NAICS and SIC could differ in the classification of employers. The implementation of NAICS represents a profound change for statistical programs, and will create significant benefits along with transition obstacles for both data collectors and data users. A summary is available on the NAICS home page at <http://www.census.gov/naics>.

DEFINITION OF COVERED EMPLOYMENT AND EARNINGS

Covered Employment is the number of workers employed by employers subject to the Arkansas Employment Security Law who worked or received pay for the payroll period including the 12th of the month. An employer is subject to the law when they employ one or more employees in each of ten days during the current or preceding calendar year.

Currently excluded from coverage is employment covered by the Railroad Unemployment Insurance Act, some domestic service workers, employees of small agricultural establishments, self-employed and unpaid family workers, insurance and real estate

agents who are on commission only, and employees of churches and religious organizations except separately incorporated schools. The payroll information in this publication includes all wages and salaries paid to any covered employees by their employers including bonuses, commissions, and cash values of remuneration received in any medium other than cash. These wages include both taxable and nontaxable wages. Only the first \$10,000 paid to each worker by an employer in the calendar year is taxable under the Arkansas Employment Security Law.

FEDERAL GOVERNMENT EMPLOYMENT

Table 7 on page 59 lists the total number of civilians employed by the Federal Government in Arkansas during the Calendar Year 2004. Employment and wage data are set out by industry divisions. These data are obtained from required reports submitted by various

government agencies having employment in the State. Civilian Federal workers are covered by the Unemployment Compensation for Federal Employees (UCFE) program.

COUNTY CLASSIFICATION

Employment and payroll data by county are classified according to the county where the workers are employed. Employers with operations in more than one county are requested to furnish this agency with a breakdown of employment and wages for at least one quarter of each year by the counties in which they operate. Many such employers submit county data with each regular contribution report. **Note:** This information is invaluable in the preparation of monthly employment and payroll data by county.

Employment and payroll data for multi - area employers who do not furnish county data each quarter of the year, are prorated by county on the basis of one quarter's information. The "rest-of-state" table that appears on page 58 of this publication includes data on firms that **did not** provide a county breakdown of employment and payrolls. It also includes sales, and all other type of personnel with no permanent place of work, as well as employment of employers with no established place of business in Arkansas.

SIGNIFICANT DEVELOPMENTS DURING CALENDAR YEAR 2004

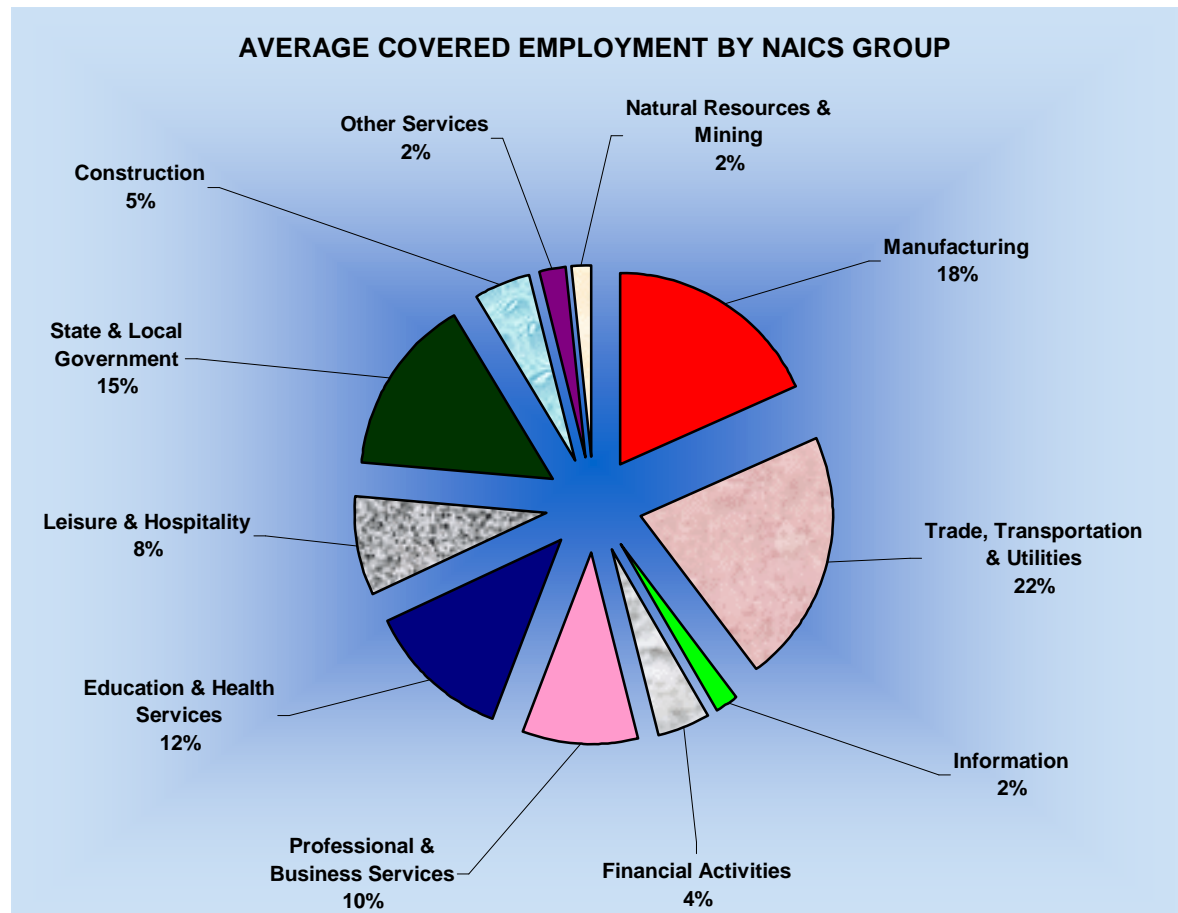
AVERAGE EMPLOYMENT CHANGES

Covered employment averaged 1,108,654 during the Calendar Year 2004 (see table 1), an increase of 13,720 (+1.25%) from the previous year and 2,635 from 2001 above the average recorded previously. 2001 was the first year in Arkansas that average employment recorded a decline since 1982. This is the first year Arkansas has seen a recovery from the loss in employment from this time three years ago. This provides an indication that the economy in Arkansas is starting to recover from the recession in 2001.

Eight of the eleven major industries recorded gains over the year. Professional & Business Services added 4,400 jobs. The majority of the increase occurred within the computer and employment sectors. Education & Health Services had a jump in employment to 136,650 an increase of 3,125 jobs. Doctors offices (+910), individual & family services (+890), and child day care services (+321) all contributed to the gain in employment. Leisure & Hospitality added an additional 2,819 jobs. Accommodation & Food Services accounted for 99.0 percent of the increase. This large jump was driven by the food industries (+2,484).

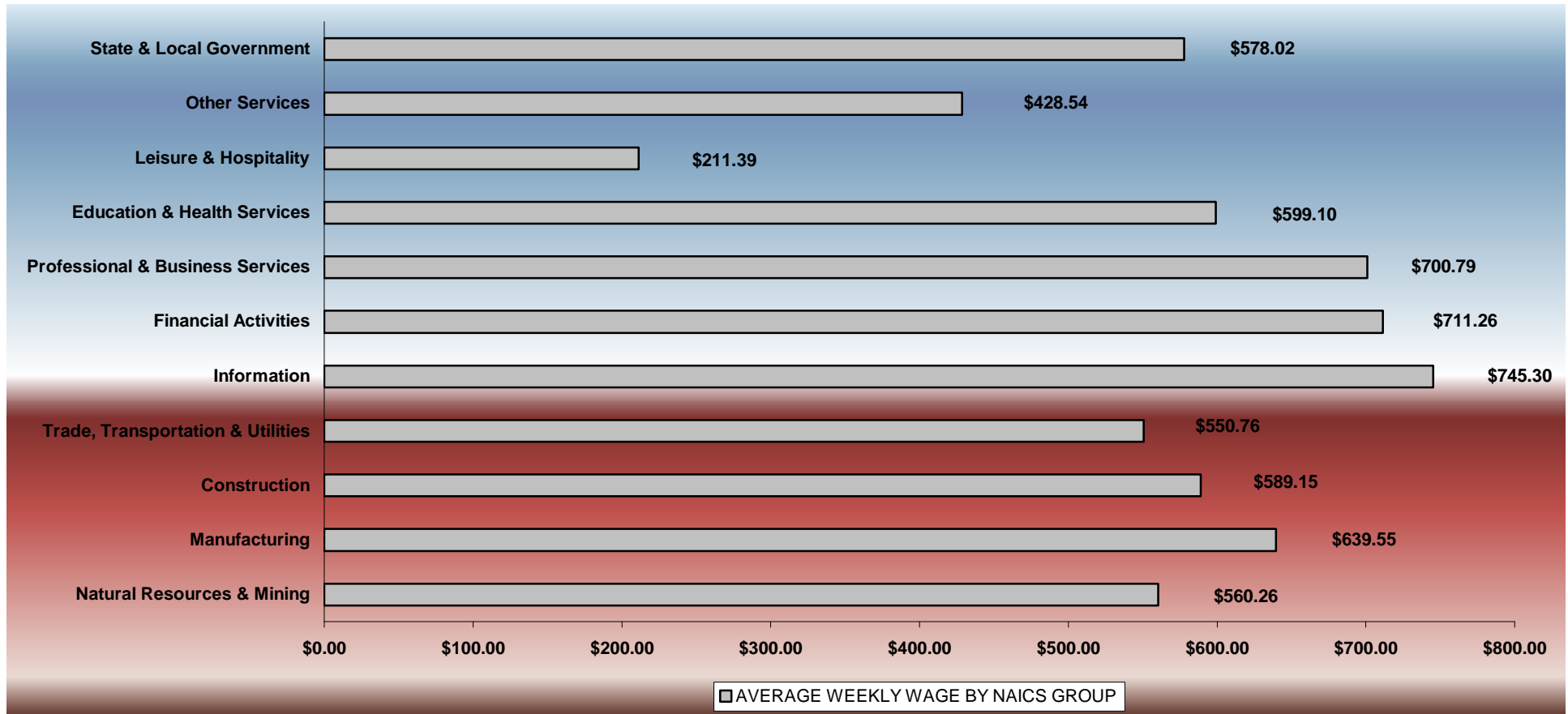
Three major industries experienced losses this year. The most significant loss occurred in the Manufacturing industry (-2,112). Sectors within the manufacturing group have continued to close up, downsize, and layoff workers. Slight losses occurred in Information (-152) and Other Services (-63).

Pulaski ranked first among the counties in covered employment, averaging 232,134 during 2004. Second ranked Benton County averaged 84,172 followed by Washington County with 83,989. Sebastian and Craighead Counties averaged 70,907 and 39,853, respectively, to make the top five among the seventy-five counties in Arkansas



AVERAGE WEEKLY EARNINGS

Wages paid to covered workers totaled \$33,071,052,719 for the Calendar Year 2004 (see table 1), for an average weekly wage of \$573.65 (see table 5). This represented an increase of \$25.27, or 4.4 percent, from the level of \$548.38 recorded in 2003. Employees in Security & Commodity Investment Activities led all published industry groups with average weekly earnings of \$1,799.06. Workers in Iron & Steel Mills and Ferroalloys ranked second averaging \$1,447.00, followed by Electronic Markets and Agents & Brokers (\$1,309.33) and Power Generation & Supply (1,309.02). Limited Service Eating Places (\$183.67) and Drinking Places, Alcoholic Beverages (\$185.88) posted the lowest average.



Note: Because of industry code changes between years, substantial employment and wage shifts among industries are anticipated.

Little River County employees ranked first averaging \$722.12. Benton County employees (\$710.25) ranked second followed by Pulaski County (\$674.14), Calhoun County (\$667.17), and Ashley County (\$637.25). Employees in Newton County ranked last among the counties with an average of \$340.23.

TABLE 1. YEARLY COMPARISON OF COVERED EMPLOYMENT AND WAGES, BY INDUSTRY

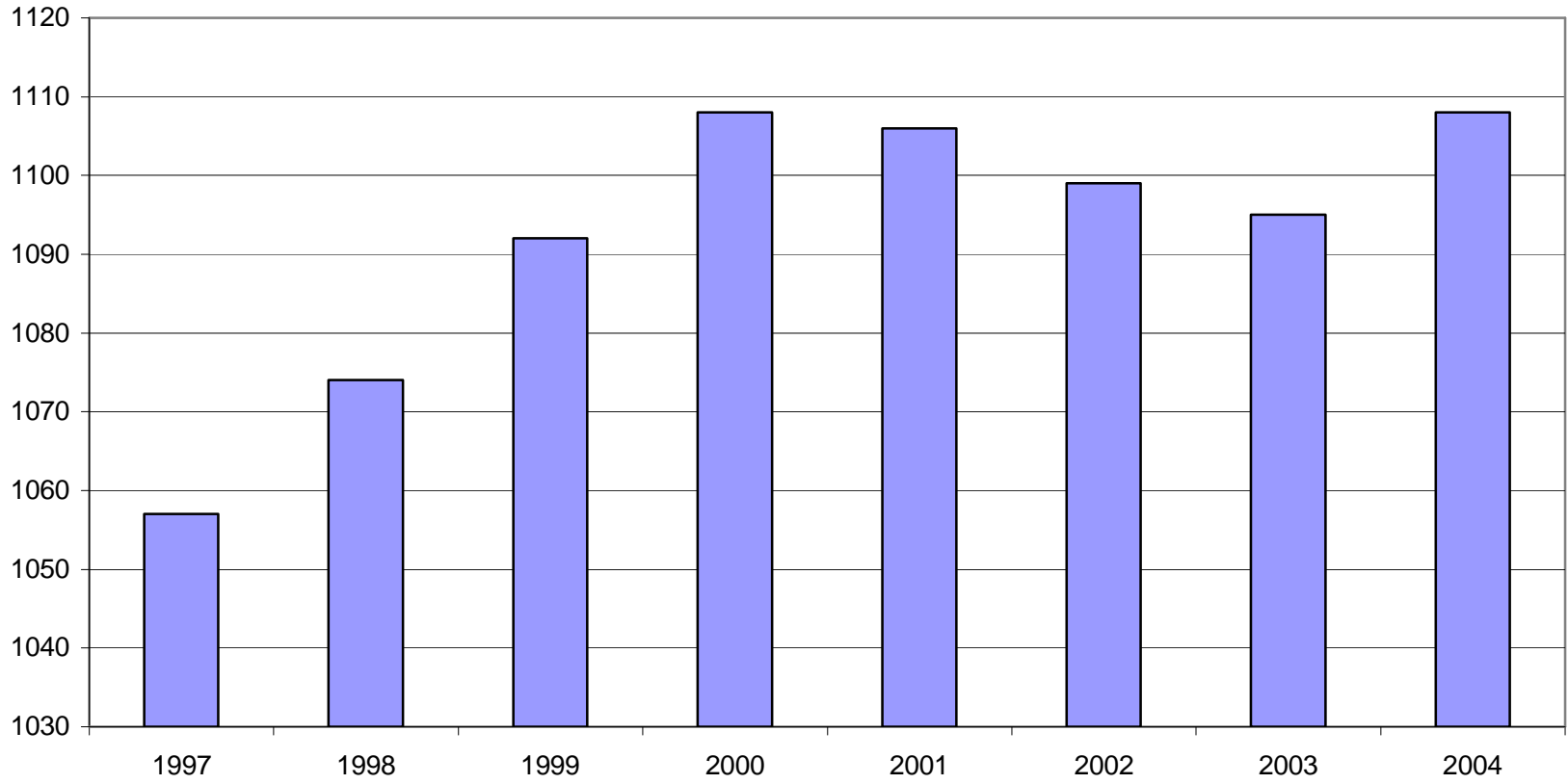
North American Industry Classification System Industry Group	Number of Employing Units	Average Covered Employment	% of Total Employment	Net Change From 2,003	Total Earnings Calendar Year 2,004	% of Total Wages	Average Weekly Earnings
Total	74,881	1,108,654	100.0%	13,720	\$33,071,052,719	100.0%	\$573.65
Natural Resources & Mining	2,355	18,649	1.7%	337	\$543,315,282	1.6%	\$560.26
Agriculture, Forestry, Fishing & Hunting	2,034	14,716	1.3%	69	\$378,328,636	1.1%	\$494.40
Mining	321	3,933	0.4%	268	\$164,986,646	0.5%	\$806.72
Construction	7,308	51,407	4.6%	480	\$1,574,893,584	4.8%	\$589.15
Manufacturing	3,590	203,702	18.4%	-2,112	\$6,774,424,603	20.5%	\$639.55
Trade, Transportation & Utilities	20,750	237,807	21.5%	2,163	\$6,810,550,716	20.6%	\$550.75
Wholesale Trade	6,052	45,939	4.1%	1,349	\$2,002,497,428	6.1%	\$838.28
Retail Trade	11,448	130,724	11.8%	1,716	\$2,550,447,082	7.7%	\$375.20
Transportation & Warehousing	2,926	54,614	4.9%	-720	\$1,859,452,208	5.6%	\$654.75
Utilities	324	6,530	0.6%	-182	\$398,153,998	1.2%	\$1,172.56
Information	1,208	20,183	1.8%	-152	\$782,203,784	2.4%	\$745.30
Financial Activities	7,420	49,182	4.4%	674	\$1,819,026,060	5.5%	\$711.26
Finance & Insurance	4,400	35,940	3.2%	189	\$1,493,293,683	4.5%	\$799.03
Real Estate & Rental & Leasing	3,020	13,242	1.2%	485	\$325,732,377	1.0%	\$473.05
Professional & Business Services	9,990	108,091	9.7%	4,400	\$3,938,956,435	11.9%	\$700.79
Professional & Technical Services	6,231	33,698	3.0%	2,909	\$1,483,122,423	4.5%	\$846.39
Management of Companies & Enterprises	474	22,799	2.1%	-782	\$1,483,322,376	4.5%	\$1,251.17
Administrative & Waste Services	3,093	48,818	4.4%	-503	\$862,378,379	2.6%	\$339.71
Education & Health Services	7,793	136,650	12.3%	3,125	\$4,257,171,676	12.9%	\$599.11
Educational Services	503	8,000	0.7%	164	\$201,454,462	0.6%	\$484.27
Health Care & Social Assistance	7,290	128,650	11.6%	2,961	\$4,055,717,214	12.3%	\$606.25
Leisure & Hospitality	5,792	90,993	8.2%	2,819	\$1,000,212,053	3.0%	\$211.39
Arts, Entertainment & Recreation	880	9,133	0.8%	29	\$126,461,299	0.4%	\$266.28
Accommodation & Food Services	4,912	81,860	7.4%	2,790	\$873,750,754	2.6%	\$205.26
Other Services	5,493	25,775	2.3%	-63	\$574,377,553	1.7%	\$428.54
State & Local Government	3,182	166,215	15.0%	2,048	\$4,995,920,973	15.1%	\$578.02
Local Government	1,980	107,261	9.7%	1,383	\$2,975,389,154	9.0%	\$533.46
State Government	1,202	58,954	5.3%	665	\$2,020,531,819	6.1%	\$659.10
Nonclassifiable Establishments	0	0	0.0%	0	\$0	0.0%	\$0.00

Note: Items do not necessarily add to totals because of rounding. Because of industry code changes between years, substantial employment and wage shifts among industries are anticipated.

TABLE 2. TOTAL COVERED EMPLOYMENT IN ARKANSAS

Period	1997	1998	1999	2000	2001	2002	2003	2004
Average	1,057,350	1,073,732	1,092,351	1,108,490	1,106,053	1,098,558	1,094,904	1,108,654
January	1,025,949	1,050,970	1,065,920	1,089,956	1,096,009	1,081,635	1,082,740	1,089,798
February	1,034,361	1,057,593	1,074,315	1,096,126	1,101,616	1,086,793	1,084,880	1,094,946
March	1,046,551	1,066,099	1,084,653	1,109,157	1,112,143	1,098,500	1,092,172	1,105,592
April	1,057,633	1,074,416	1,093,574	1,111,543	1,115,526	1,103,399	1,095,341	1,111,410
May	1,067,078	1,083,133	1,098,539	1,116,779	1,119,815	1,111,998	1,103,099	1,117,470
June	1,066,728	1,086,125	1,101,748	1,121,245	1,119,734	1,112,028	1,099,688	1,117,324
July	1,028,510	1,046,396	1,062,563	1,075,096	1,071,830	1,065,697	1,056,155	1,071,561
August	1,050,656	1,063,680	1,081,260	1,096,841	1,094,068	1,086,011	1,080,681	1,094,977
September	1,075,759	1,088,772	1,108,212	1,123,735	1,115,996	1,113,148	1,108,905	1,122,823
October	1,079,093	1,089,836	1,110,604	1,122,884	1,110,994	1,108,447	1,112,900	1,123,901
November	1,076,715	1,087,855	1,112,003	1,120,620	1,109,012	1,107,611	1,110,041	1,125,910
December	1,079,166	1,089,913	1,114,823	1,117,892	1,105,887	1,107,425	1,112,243	1,128,139

AVERAGE TOTAL COVERED EMPLOYMENT GRAPH 1
In Thousands



TOTAL COVERED EARNINGS BY CALENDAR QUARTER, GRAPH 2
In Thousands

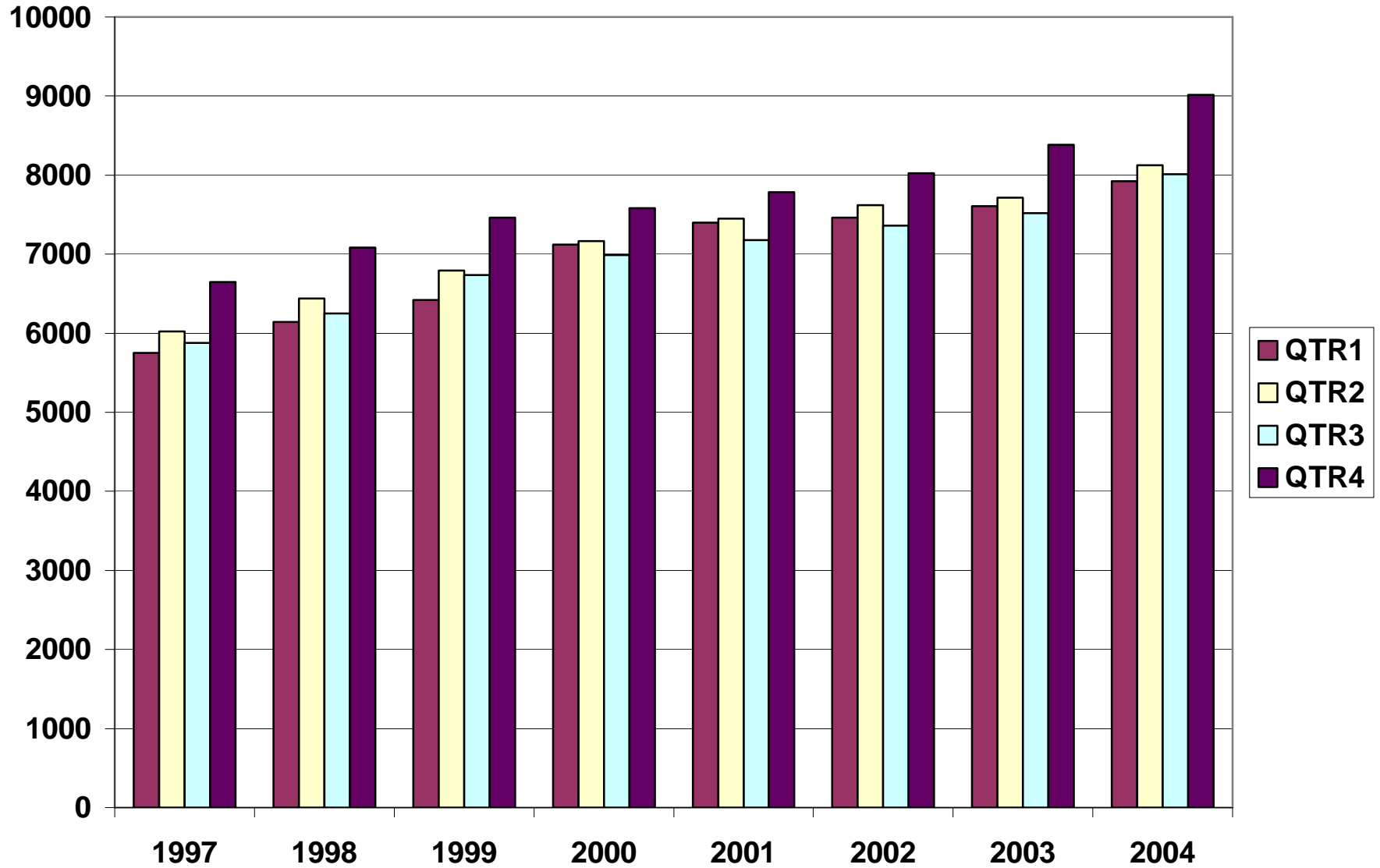


TABLE 3. TOTAL COVERED EARNINGS, 1997 - 2004

Period	1997	1998	1999	2000
Total	\$24,296,555,335	\$25,914,345,060	\$27,407,925,462	\$28,853,825,155
January - March	\$5,751,056,136	\$6,145,178,755	\$6,418,456,638	\$7,122,666,917
April - June	\$6,021,537,518	\$6,441,129,069	\$6,791,960,679	\$7,166,110,114
July - September	\$5,877,681,886	\$6,246,775,598	\$6,733,480,079	\$6,986,103,157
October - December	\$6,646,279,795	\$7,081,261,638	\$7,464,028,066	\$7,578,944,967
Average Weekly Earnings	\$441.90	\$464.13	\$482.51	\$500.57

Period	2001	2002	2003	2004
Total	\$29,807,669,666	\$30,472,854,103	\$31,226,612,657	\$33,071,052,719
January - March	\$7,398,887,532	\$7,465,250,305	\$7,608,130,008	\$7,920,073,954
April - June	\$7,448,023,298	\$7,621,878,775	\$7,714,813,038	\$8,123,965,587
July - September	\$7,177,293,061	\$7,361,666,511	\$7,522,456,991	\$8,010,924,124
October - December	\$7,783,465,775	\$8,024,058,512	\$8,381,212,620	\$9,016,089,054
Average Weekly Earnings	\$518.26	\$533.44	\$548.46	\$573.65

TABLE 4. TOTAL TAXABLE EARNINGS, 1997 - 2004

Period	1997	1998	1999	2000
Total	\$8,262,066,213	\$8,554,973,370	\$8,807,445,422	\$9,048,033,534
January - March	\$3,871,667,342	\$4,063,795,529	\$4,203,067,856	\$4,560,814,012
April - June	\$2,223,918,770	\$2,271,303,325	\$2,325,649,764	\$2,260,741,187
July - September	\$1,208,701,615	\$1,236,054,184	\$1,267,562,743	\$1,250,850,348
October - December	\$957,778,486	\$983,820,332	\$1,011,165,059	\$975,627,987

Period	2001	2002	2003	2004
Total	\$9,003,189,480	\$8,887,270,978	\$9,155,945,780	\$9,735,009,666
January - March	\$4,670,296,360	\$4,668,534,587	\$4,737,918,796	\$4,932,839,735
April - June	\$2,219,485,263	\$2,162,971,435	\$2,270,519,362	\$2,452,278,332
July - September	\$1,190,098,737	\$1,158,197,858	\$1,188,784,400	\$1,318,301,555
October - December	\$923,309,120	\$897,567,098	\$958,723,222	\$1,031,590,044

**TABLE 5. STATEWIDE SUMMARY
EMPLOYMENT AND TOTAL EARNINGS, BY INDUSTRY
CALENDAR YEAR 2004**

NORTH AMERICAN INDUSTRY CLASSIFICATION SYSTEM INDUSTRY GROUPS	AVERAGE EMPLOYING UNITS	AVERAGE COVERED EMPLOYMENT	TOTAL EARNINGS	AVERAGE WEEKLY EARNINGS
TOTAL, ALL INDUSTRIES	74,881	1,108,654	\$33,071,052,719	\$573.65
NATURAL RESOURCES & MINING	2,355	18,649	\$543,315,282	\$560.26
AGRICULTURE, FORESTRY, FISHING & HUNTING	2,034	14,716	\$378,328,636	\$494.40
CROP PRODUCTION	721	3,928	\$80,357,515	\$393.42
Oilseed and Grain Farming	430	2,027	\$41,562,750	\$394.32
Vegetable and Melon Farming	8	134	\$1,610,496	\$231.13
Fruit and Tree Nut Farming	10	84	\$1,413,667	\$323.64
Greenhouse & Nursery Production	50	340	\$7,979,774	\$451.34
Other Crop Farming	224	1,342	\$27,790,828	\$398.24
ANIMAL PRODUCTION	266	3,848	\$115,176,581	\$575.61
Cattle Ranching and Farming	76	395	\$10,056,085	\$489.59
Poultry and Egg Production	94	2,643	\$82,410,912	\$599.63
Animal Aquaculture	66	572	\$16,092,486	\$541.03
Other	30	239	\$6,617,098	\$532.43
FORESTRY AND LOGGING	591	3,446	\$93,430,536	\$521.40
Timber Tract Operations	45	268	\$8,942,134	\$641.66
Forest Nurseries & Gathering of Forest Products	6	30	\$970,918	\$622.38
Logging	540	3,148	\$83,517,484	\$510.20
OTHER	457	3,495	\$89,364,004	\$491.71
MINING	321	3,933	\$164,986,646	\$806.72
OIL AND GAS EXTRACTION	73	372	\$18,659,278	\$964.60
MINING (EXCEPT OIL AND GAS)	111	2,041	\$80,890,109	\$762.17
SUPPORT ACTIVITIES FOR MINING	137	1,520	\$65,437,259	\$827.90
CONSTRUCTION	7,308	51,407	\$1,574,893,584	\$589.15
CONSTRUCTION OF BUILDINGS	1,933	11,778	\$393,874,243	\$643.11
Residential Building Construction	1,332	4,034	\$111,867,541	\$533.29
Nonresidential Building Construction	601	7,744	\$282,006,702	\$700.31
HEAVY & CIVIL ENGINEERING CONSTRUCTION	901	9,684	\$316,152,610	\$627.83
Utility System Construction	427	4,751	\$151,048,016	\$611.40
Land Subdivision	119	377	\$13,369,852	\$682.00
Highway, Street & Bridge Construction	245	3,767	\$124,734,985	\$636.78
Other Heavy Construction	110	789	\$26,999,757	\$658.08

*Note: Totals may not add due to rounding.

NORTH AMERICAN INDUSTRY CLASSIFICATION SYSTEM INDUSTRY GROUPS	AVERAGE EMPLOYING UNITS	AVERAGE COVERED EMPLOYMENT	TOTAL EARNINGS	AVERAGE WEEKLY EARNINGS
SPECIALTY TRADE CONTRACTORS	4,475	29,946	\$864,866,731	\$555.40
Building Foundation & Exterior Contractors	900	5,826	\$149,451,326	\$493.32
Building Equipment Contractors	1,934	14,300	\$459,775,553	\$618.31
Building Finishing Contractors	835	4,910	\$128,027,541	\$501.44
Other Specialty Trade Contractors	806	4,911	\$127,612,311	\$499.71
MANUFACTURING	3,590	203,702	\$6,774,424,603	\$639.55
FOOD MANUFACTURING	295	51,708	\$1,386,681,198	\$515.72
Animal Food Manufacturing	50	1,375	\$61,964,441	\$866.64
Grain and Oilseed Milling	30	2,440	\$80,471,844	\$634.24
Fruit, Vegetable & Specialty Food	39	6,588	\$210,787,578	\$615.30
Dairy Product Manufacturing	11	721	\$24,464,391	\$652.52
Animal Slaughtering & Processing	88	35,263	\$840,346,402	\$458.29
Bakeries and Tortilla Manufacturing	50	3,355	\$106,358,401	\$609.64
Other Food Manufacturing	19	1,769	\$58,866,899	\$639.94
Other	9	197	\$3,421,242	\$333.98
BEVERAGE & TOBACCO PRODUCT MFG.	38	1,252	\$45,032,524	\$691.70
TEXTILE MILLS	14	364	\$15,182,442	\$802.12
Fabric Mills	4	302	\$13,770,218	\$876.86
Textile & Fabric Finishing Mills	10	62	\$1,412,224	\$438.03
TEXTILE PRODUCT MILLS	60	1,594	\$55,075,235	\$664.45
APPAREL MANUFACTURING	38	2,118	\$43,668,420	\$396.50
Cut & Sew Apparel Manufacturing	30	856	\$16,447,280	\$369.50
Other	9	1,262	\$27,221,140	\$414.80
LEATHER & ALLIED PRODUCT MANUFACTURING	21	2,534	\$54,027,730	\$410.02
Footwear Manufacturing	10	2,331	\$48,461,197	\$399.81
Other Leather Product Manufacturing	11	204	\$5,566,533	\$524.75
WOOD PRODUCT MANUFACTURING	401	13,888	\$420,626,148	\$582.44
Sawmills and Wood Preservation	187	6,205	\$196,758,464	\$609.80
Veneer & Engineered Wood Products	48	3,290	\$114,491,000	\$669.22
Other Wood Product Manufacturing	166	4,392	\$109,376,684	\$478.92
PAPER MANUFACTURING	87	12,226	\$591,224,348	\$929.96
Pulp, Paper & Paperboard Mills	12	4,774	\$300,374,590	\$1,209.98
Converted Paper Product Manufacturing	75	7,452	\$290,849,758	\$750.57
PRINTING & RELATED SUPPORT ACTIVITIES	307	4,775	\$157,251,978	\$633.31
PETROLEUM AND COAL PRODUCTS MFG.	23	949	\$46,146,405	\$935.12
CHEMICAL MANUFACTURING	118	5,140	\$247,946,032	\$927.66
Basic Chemical Manufacturing	25	1,608	\$86,511,403	\$1,034.63
Resin, Rubber & Artificial Fibers	8	293	\$14,918,736	\$979.18
Agricultural Chemical Manufacturing	23	453	\$21,787,641	\$924.93

*Note: Totals may not add due to rounding.

NORTH AMERICAN INDUSTRY CLASSIFICATION SYSTEM INDUSTRY GROUPS	AVERAGE EMPLOYING UNITS	AVERAGE COVERED EMPLOYMENT	TOTAL EARNINGS	AVERAGE WEEKLY EARNINGS
Pharmaceutical & Medicine Manufacturing	13	128	\$4,259,775	\$639.99
Paint, Coating & Adhesive Manufacturing	8	204	\$9,430,525	\$889.00
Cleaning Compound & Toiletry Manufacturing	18	1,075	\$46,689,749	\$835.24
Other Chemical Preparation Manufacturing	25	1,379	\$64,348,203	\$897.36
PLASTICS & RUBBER PRODUCTS MFG.	181	13,125	\$477,408,175	\$699.50
Plastics Product Manufacturing	138	7,644	\$234,089,350	\$588.92
Rubber Product Manufacturing	43	5,482	\$243,318,825	\$853.56
NONMETALLIC MINERAL PRODUCT MFG.	253	4,448	\$153,119,612	\$662.01
Clay Product & Refractory Manufacturing	20	523	\$17,695,781	\$650.68
Glass & Glass Product Manufacturing	14	403	\$13,391,707	\$639.04
Cement & Concrete Product Manufacturing	186	2,626	\$86,567,544	\$633.95
Lime & Gypsum Product Manufacturing	3	393	\$17,418,604	\$852.35
Other Nonmetallic Mineral Products	30	503	\$18,045,976	\$689.94
PRIMARY METAL MANUFACTURING	67	8,095	\$378,603,125	\$899.42
Iron & Steel Mills and Ferroalloys	7	2,067	\$155,529,521	\$1,447.00
Purchased Steel Product Manufacturing	13	2,231	\$81,101,174	\$699.08
Alumina & Aluminum Production	21	1,724	\$73,467,631	\$819.51
Other Nonferrous Metal Production	10	709	\$23,448,688	\$636.02
Foundries	16	1,364	\$45,056,111	\$635.24
FABRICATED METAL PRODUCT MANUFACTURING	566	17,750	\$617,389,210	\$668.89
Forging & Stamping	16	820	\$26,224,776	\$615.03
Cutlery & Hand Tool Manufacturing	18	1,286	\$41,170,585	\$615.66
Architectural & Structural Metals	179	4,956	\$173,193,792	\$672.04
Boilers, Tanks & Shipping Containers	20	1,104	\$40,647,922	\$708.05
Hardware Manufacturing	11	469	\$14,144,207	\$579.97
Spring & Wire Product Manufacturing	17	914	\$25,720,885	\$541.17
Machine Shops & Threaded Products	200	1,636	\$50,895,369	\$598.26
Coating, Engraving & Heat Treating Metals	36	979	\$29,214,208	\$573.86
Other Fabricated Metal Product Manufacturing	71	5,587	\$216,177,466	\$744.10
MACHINERY MANUFACTURING	255	13,971	\$469,816,401	\$646.69
Agri., Construction & Mining Machinery	38	2,945	\$70,416,174	\$459.82
Commercial & Service Industry Machinery	25	1,048	\$40,905,715	\$750.62
HVAC & Commercial Refrigeration Equipment	26	4,372	\$161,875,878	\$712.03
Metalworking Machinery Manufacturing	83	1,521	\$55,658,451	\$703.72
Other General Purpose Machinery Manufacturing	53	3,224	\$106,871,039	\$637.47
Other	31	861	\$34,089,144	\$761.39
COMPUTER & ELECTRONIC PRODUCT MFG.	71	6,182	\$205,147,651	\$638.17
Audio & Video Equipment Manufacturing	10	1,604	\$48,034,113	\$575.89
Semiconductors & Electronic Components	24	1,967	\$66,461,319	\$649.77

*Note: Totals may not add due to rounding.

NORTH AMERICAN INDUSTRY CLASSIFICATION SYSTEM INDUSTRY GROUPS	AVERAGE EMPLOYING UNITS	AVERAGE COVERED EMPLOYMENT	TOTAL EARNINGS	AVERAGE WEEKLY EARNINGS
Electronic Instrument Manufacturing	24	1,306	\$38,902,577	\$572.84
Other	13	1,306	\$51,749,642	\$762.01
ELECTRICAL EQUIPMENT & APPLIANCES	69	12,964	\$469,139,010	\$695.92
Electrical Equipment Manufacturing	29	5,160	\$185,458,133	\$691.18
Other	40	7,804	\$283,680,877	\$699.05
TRANSPORTATION EQUIPMENT MANUFACTURING	184	16,200	\$536,932,410	\$637.38
Motor Vehicle Body & Trailer Manufacturing	46	3,318	\$102,693,612	\$595.20
Motor Vehicle Parts Manufacturing	68	7,150	\$216,647,163	\$582.70
Aerospace Product & Parts Manufacturing	31	3,111	\$141,761,412	\$876.30
Ship & Boat Building	23	1,679	\$44,418,895	\$508.76
Other	17	944	\$31,411,328	\$639.90
FURNITURE & RELATED PRODUCT MFG.	270	7,922	\$220,983,364	\$536.44
Household & Institutional Furniture	221	5,238	\$140,090,908	\$514.33
Office Furniture & Fixtures Manufacturing	39	2,535	\$77,696,543	\$589.41
Other Furniture Related Product Manufacturing	10	149	\$3,195,913	\$412.48
MISCELLANEOUS MANUFACTURING	274	6,498	\$183,023,185	\$541.66
Medical Equipment & Supplies Manufacturing	93	2,577	\$82,622,905	\$616.57
Other Miscellaneous Manufacturing	181	3,921	\$100,400,280	\$492.42
TRADE, TRANSPORTATION & UTILITIES	20,750	237,807	\$6,810,550,716	\$550.75
WHOLESALE TRADE	6,052	45,939	\$2,002,497,428	\$838.28
MERCHANT WHOLESALERS, DURABLE GOODS	2,069	21,142	\$848,882,882	\$772.14
Motor Vehicle & Part Merchant Wholesalers	234	2,654	\$89,540,582	\$648.81
Furniture & Furnishing Merchant Wholesalers	56	393	\$16,022,797	\$784.05
Lumber & Supply Merchant Wholesalers	157	1,775	\$69,971,597	\$758.09
Commercial Goods Merchant Wholesalers	243	2,293	\$126,158,340	\$1,058.06
Metal & Mineral Merchant Wholesalers	53	747	\$29,724,016	\$765.22
Electric Goods Merchant Wholesalers	170	2,168	\$101,042,872	\$896.28
Hardware & Plumbing Merchant Wholesalers	229	2,212	\$87,084,127	\$757.10
Machinery & Supply Merchant Wholesalers	714	7,190	\$273,181,120	\$730.67
Misc. Durable Goods Merchant Wholesalers	213	1,710	\$56,157,431	\$631.55
MERCHANT WHOLESALERS, NONDURABLE GOODS	1,305	16,510	\$589,393,291	\$686.52
Paper & Paper Product Merchant Wholesalers	80	1,348	\$46,338,013	\$661.07
Druggists' Goods Merchant Wholesalers	52	927	\$34,638,990	\$718.59
Apparel & Piece Goods Merchant Wholesalers	41	442	\$13,931,158	\$606.12
Grocery Product Merchant Wholesalers	359	5,297	\$215,330,515	\$781.76
Farm Product Merchant Wholesalers	82	936	\$21,641,159	\$444.63
Chemical Merchant Wholesalers	81	436	\$19,448,384	\$857.82
Petroleum Merchant Wholesalers	159	1,427	\$50,484,537	\$680.35
Alcoholic Beverage Merchant Wholesalers	39	1,137	\$46,231,835	\$781.95

*Note: Totals may not add due to rounding.

NORTH AMERICAN INDUSTRY CLASSIFICATION SYSTEM INDUSTRY GROUPS	AVERAGE EMPLOYING UNITS	AVERAGE COVERED EMPLOYMENT	TOTAL EARNINGS	AVERAGE WEEKLY EARNINGS
Misc. Nondurable Goods Merchant Wholesalers	413	4,559	\$141,348,700	\$596.24
ELECTRONIC MARKETS & AGENTS & BROKERS	2,678	8,287	\$564,221,255	\$1,309.33
RETAIL TRADE	11,448	130,724	\$2,550,447,082	\$375.20
MOTOR VEHICLE & PARTS DEALERS	1,746	17,744	\$564,280,891	\$611.56
Automobile Dealers	740	10,825	\$394,045,684	\$700.03
Other Motor Vehicle Dealers	195	1,349	\$40,208,437	\$573.19
Automotive Parts, Accessories & Tire Stores	811	5,571	\$130,026,770	\$448.84
FURNITURE & HOME FURNISHINGS STORES	626	4,125	\$101,081,646	\$471.24
Furniture Stores	322	2,502	\$62,150,798	\$477.70
Home Furnishings Stores	304	1,623	\$38,930,848	\$461.29
ELECTRONICS & APPLIANCE STORES	505	3,069	\$71,490,777	\$447.97
BUILDING MATERIAL & GARDEN SUPPLY STORES	805	9,871	\$240,370,837	\$468.29
Building Material & Supplies Dealers	623	8,961	\$221,495,220	\$475.34
Lawn & Garden Equipment & Supplies Stores	182	910	\$18,875,617	\$398.89
FOOD & BEVERAGE STORES	1,169	19,508	\$295,622,115	\$291.42
Grocery Stores	695	17,123	\$254,158,253	\$285.44
Specialty Food Stores	164	928	\$19,164,970	\$397.15
Beer, Wine & Liquor Stores	310	1,458	\$22,298,892	\$294.12
HEALTH & PERSONAL CARE STORES	768	6,043	\$158,323,936	\$503.84
GASOLINE STATIONS	1,678	13,105	\$171,550,916	\$251.74
Gasoline Stations with Convenience Stores	1,494	11,748	\$148,866,121	\$243.68
Other Gasoline Stations	184	1,357	\$22,684,795	\$321.48
CLOTHING & CLOTHING ACCESSORIES STORES	1,074	8,158	\$114,676,413	\$270.33
Clothing Stores	687	5,912	\$74,500,215	\$242.34
Shoe Stores	193	1,243	\$16,228,990	\$251.08
Jewelry, Luggage & Leather Goods Stores	195	1,003	\$23,947,208	\$459.15
SPORTING GOODS, HOBBY, BOOK & MUSIC STORES	564	4,259	\$59,550,733	\$268.89
Sporting Goods & Musical Instrument Stores	401	2,747	\$42,554,033	\$297.91
Book, Periodical & Music Stores	163	1,512	\$16,996,700	\$216.18
GENERAL MERCHANDISE STORES	694	35,473	\$594,471,969	\$322.28
MISCELLANEOUS STORE RETAILERS	1,502	7,192	\$121,640,837	\$325.26
Florists	293	1,114	\$15,193,470	\$262.28
Office Supplies, Stationery & Gift Stores	433	2,589	\$47,813,585	\$355.15
Used Merchandise Stores	219	736	\$11,028,743	\$288.17
Other Miscellaneous Store Retailers	558	2,753	\$47,605,039	\$332.54
NONSTORE RETAILERS	317	2,176	\$57,386,012	\$507.16
Electronic Shopping & Mail -Order Houses	64	458	\$14,134,522	\$593.49
Vending Machine Operators	86	746	\$16,678,996	\$429.96
Direct Selling Establishments	168	973	\$26,572,494	\$525.19

*Note: Totals may not add due to rounding.

NORTH AMERICAN INDUSTRY CLASSIFICATION SYSTEM INDUSTRY GROUPS	AVERAGE EMPLOYING UNITS	AVERAGE COVERED EMPLOYMENT	TOTAL EARNINGS	AVERAGE WEEKLY EARNINGS
TRANSPORTATION & WAREHOUSING	2,926	54,614	\$1,859,452,208	\$654.75
AIR TRANSPORTATION	45	1,094	\$53,606,044	\$942.31
TRUCK TRANSPORTATION	1,961	33,437	\$1,168,634,563	\$672.12
General Freight Trucking	1,198	28,547	\$1,029,795,842	\$693.72
Specialized Freight Trucking	763	4,890	\$138,838,721	\$546.01
TRANSIT & GROUND PASSENGER TRANS.	60	933	\$14,691,360	\$302.81
Taxi & Limousine Service	21	208	\$2,395,753	\$221.50
School & Employee Bus Transportation	8	348	\$5,994,423	\$331.26
Charter Bus Industry Service	12	102	\$1,934,635	\$364.75
Other Ground Passenger Transportation	12	158	\$2,475,946	\$301.36
Other	9	118	\$1,890,603	\$308.12
PIPELINE TRANSPORTATION	69	984	\$50,296,657	\$982.97
SUPPORT ACTIVITIES FOR TRANSPORTATION	432	4,834	\$173,322,064	\$689.52
Support Activities for Air Transportation	107	1,516	\$50,357,383	\$638.79
Support Activities for Rail Transportation	28	555	\$17,320,623	\$600.16
Support Activities for Water Transportation	28	712	\$24,404,868	\$659.16
Support Activities for Road Transportation	103	456	\$10,280,233	\$433.55
Freight Transportation Arrangement	147	1,442	\$66,889,170	\$892.05
Other Support Activities for Transportation	19	154	\$4,069,787	\$508.22
COURIERS & MESSENGERS	132	3,256	\$113,105,805	\$668.03
Couriers	87	3,043	\$108,199,056	\$683.78
Local Messengers & Local Delivery	44	213	\$4,906,749	\$443.01
WAREHOUSING & STORAGE	212	9,896	\$280,262,613	\$544.63
OTHER	17	180	\$5,533,102	\$591.14
UTILITIES	324	6,530	\$398,153,998	\$1,172.56
Power Generation & Supply	128	4,932	\$335,716,324	\$1,309.02
Natural Gas Distribution	33	809	\$41,368,243	\$983.37
Water, Sewage and Other Systems	164	789	\$21,069,431	\$513.54
INFORMATION	1,208	20,183	\$782,203,784	\$745.30
PUBLISHING INDUSTRIES, EXCEPT INTERNET	255	6,487	\$189,255,582	\$561.05
Newspaper, Book & Directory Publishers	220	6,243	\$175,135,095	\$539.48
Software Publishers	36	244	\$14,120,487	\$1,112.90
MOTION PICTURE & SOUND RECORDING INDUSTRY	131	1,227	\$18,128,723	\$284.13
Motion Picture & Video Industries	117	1,200	\$17,314,076	\$277.47
Sound Recording Industries	14	27	\$814,647	\$580.23
BROADCASTING, EXCEPT INTERNET	145	2,152	\$69,435,991	\$620.50
Radio & Television Broadcasting	130	2,071	\$66,256,249	\$615.24
Cable & Other Subscription Programming	15	81	\$3,179,742	\$754.92
TELECOMMUNICATIONS	501	8,682	\$430,357,274	\$953.25

*Note: Totals may not add due to rounding.

NORTH AMERICAN INDUSTRY CLASSIFICATION SYSTEM INDUSTRY GROUPS	AVERAGE EMPLOYING UNITS	AVERAGE COVERED EMPLOYMENT	TOTAL EARNINGS	AVERAGE WEEKLY EARNINGS
Wired Telecommunications Carriers	217	4,971	\$290,643,192	\$1,124.38
Wireless Telecommunications Carriers	127	1,977	\$73,449,439	\$714.46
Cable & Other Program Distribution	68	1,149	\$39,339,543	\$658.42
Other	90	585	\$26,925,100	\$885.11
ISPS, SEARCH PORTALS, & DATA PROCESSING	146	1,314	\$65,138,186	\$953.32
ISPs, & Web Search Portals	58	237	\$7,690,071	\$623.99
Data Processing & Related Services	87	1,077	\$57,448,115	\$1,025.79
OTHER	31	322	\$9,888,028	\$590.54
FINANCIAL ACTIVITIES	7,420	49,182	\$1,819,026,060	\$711.26
FINANCE & INSURANCE	4,400	35,940	\$1,493,293,683	\$799.03
CREDIT INTERMEDIATION & RELATED ACTIVITIES	1,872	20,905	\$721,351,207	\$663.58
Depository Credit Intermediation	1,215	17,451	\$578,938,743	\$637.98
Nondepository Credit Intermediation	392	2,680	\$119,091,169	\$854.56
Activities Related to Credit Intermediation	265	774	\$23,321,295	\$579.44
FINANCIAL INVESTMENT & RELATED ACTIVITIES	581	3,106	\$261,992,678	\$1,622.13
Security & Commodity Investment Activities	332	2,461	\$230,229,419	\$1,799.06
Other Financial Investment Activities	249	645	\$31,763,259	\$947.03
INSURANCE CARRIERS & RELATED ACTIVITIES	1,917	11,457	\$490,378,140	\$823.11
Insurance Carriers	349	5,026	\$237,728,070	\$909.61
Insurance Agencies, Brokerages & Support	1,568	6,432	\$252,650,070	\$755.39
OTHER	30	472	\$19,571,658	\$797.41
REAL ESTATE & RENTAL & LEASING	3,020	13,242	\$325,732,377	\$473.05
REAL ESTATE	2,199	8,059	\$205,586,343	\$490.58
Lessors of Real Estate	987	4,160	\$91,904,643	\$424.86
Offices of Real Estate Agents & Brokers	679	1,811	\$54,880,937	\$582.77
Activities Related to Real Estate	533	2,089	\$58,800,763	\$541.30
RENTAL & LEASING SERVICES	795	5,091	\$115,109,654	\$434.82
Automotive Equipment Rental & Leasing	125	991	\$25,550,588	\$495.82
Consumer Goods Rental	502	3,303	\$61,383,116	\$357.39
General Rental Centers	39	211	\$6,341,161	\$577.94
Machinery & Equipment Rental & Leasing	129	587	\$21,834,789	\$715.33
LESSORS OF NONFINANCIAL INTANGIBLE ASSETS	27	91	\$5,036,380	\$1,064.32
PROFESSIONAL & BUSINESS SERVICES	9,990	108,091	\$3,938,956,435	\$700.79
PROFESSIONAL & TECHNICAL SERVICES	6,231	33,698	\$1,483,122,423	\$846.39
Legal Services	1,563	6,507	\$287,004,736	\$848.21
Accounting & Bookkeeping Services	1,143	4,971	\$164,184,006	\$635.16
Architectural & Engineering Services	840	5,819	\$250,875,709	\$829.10
Specialized Design Services	147	442	\$11,617,099	\$505.44
Computer Systems Design & Related Services	703	7,130	\$478,277,351	\$1,289.99

*Note: Totals may not add due to rounding.

NORTH AMERICAN INDUSTRY CLASSIFICATION SYSTEM INDUSTRY GROUPS	AVERAGE EMPLOYING UNITS	AVERAGE COVERED EMPLOYMENT	TOTAL EARNINGS	AVERAGE WEEKLY EARNINGS
Management & Technical Consulting Services	885	2,245	\$105,233,308	\$901.43
Scientific Research & Development Services	105	1,080	\$46,272,219	\$823.94
Advertising & Related Services	302	1,957	\$72,974,754	\$717.10
Other Professional & Technical Services	543	3,548	\$66,683,241	\$361.43
MANAGEMENT OF COMPANIES & ENTERPRISES	474	22,799	\$1,483,322,376	\$1,251.17
ADMINISTRATIVE & WASTE SERVICES	3,285	51,594	\$972,511,636	\$362.49
ADMINISTRATIVE & SUPPORT SERVICES	3,093	48,818	\$862,378,379	\$339.71
Office Administrative Services	290	1,100	\$52,785,157	\$922.82
Facilities Support Services	12	157	\$5,043,441	\$617.77
Employment Services	583	25,108	\$383,368,848	\$293.63
Business Support Services	352	5,017	\$93,096,414	\$356.85
Travel Arrangement & Reservation Services	105	439	\$13,157,056	\$576.36
Investigation & Security Services	204	4,244	\$85,571,311	\$387.75
Services to Buildings & Dwellings	1,230	11,176	\$183,895,942	\$316.43
Other Support Services	318	1,576	\$45,460,210	\$554.72
WASTE MANAGEMENT & REMEDIATION SERVICES	192	2,777	\$110,133,257	\$762.67
Waste Collection Services	85	1,040	\$35,218,912	\$651.24
Waste Treatment & Disposal Services	40	1,277	\$62,055,748	\$934.52
Remediation & Other Waste Services	67	459	\$12,858,597	\$538.74
EDUCATION & HEALTH SERVICES	7,793	136,650	\$4,257,171,676	\$599.11
EDUCATIONAL SERVICES	503	8,000	\$201,454,462	\$484.27
Elementary & Secondary Schools	77	2,798	\$54,931,210	\$377.54
Junior Colleges	8	227	\$6,478,825	\$548.87
Colleges & Universities	26	2,886	\$85,541,752	\$570.00
Business, Computer, & Management Training	45	220	\$11,835,713	\$1,034.59
Technical & Trade Schools	100	605	\$22,578,609	\$717.69
Other Schools & Instruction	201	1,112	\$16,008,849	\$276.85
Educational Support Services	45	150	\$4,079,504	\$523.01
HEALTH CARE & SOCIAL ASSISTANCE	7,290	128,650	\$4,055,717,214	\$606.25
AMBULATORY HEALTH CARE SERVICES	4,541	39,623	\$1,830,518,262	\$888.43
Offices of Physicians	2,032	19,633	\$1,204,212,885	\$1,179.54
Offices of Dentists	891	5,827	\$206,802,814	\$682.51
Offices of Other Health Practitioners	1,077	5,087	\$148,793,393	\$562.49
Outpatient Care Centers	198	3,081	\$108,122,922	\$674.87
Medical & Diagnostic Laboratories	81	666	\$29,159,600	\$841.98
Home Health Care Services	127	3,343	\$82,806,670	\$476.35
Other Ambulatory Health Care Services	135	1,987	\$50,619,978	\$489.92
HOSPITALS	107	41,784	\$1,421,058,030	\$654.03
General Medical & Surgical Hospitals	77	38,518	\$1,312,407,268	\$655.24

*Note: Totals may not add due to rounding.

NORTH AMERICAN INDUSTRY CLASSIFICATION SYSTEM INDUSTRY GROUPS	AVERAGE EMPLOYING UNITS	AVERAGE COVERED EMPLOYMENT	TOTAL EARNINGS	AVERAGE WEEKLY EARNINGS
Psychiatric & Substance Abuse Hospitals	10	1,358	\$41,522,451	\$588.00
Other Hospitals	20	1,909	\$67,128,311	\$676.23
NURSING & RESIDENTIAL CARE FACILITIES	496	25,663	\$463,481,176	\$347.31
Nursing Care Facilities	233	19,341	\$345,955,449	\$343.98
Residential Mental Health Facilities	131	2,869	\$56,070,868	\$375.84
Community Care Facilities for the Elderly	88	2,098	\$33,998,833	\$311.64
Other Residential Care Facilities	45	1,356	\$27,456,026	\$389.38
SOCIAL ASSISTANCE	2,146	21,579	\$340,659,746	\$303.59
Individual & Family Services	1,039	9,592	\$164,691,634	\$330.19
Emergency & Other Relief Services	107	807	\$15,334,602	\$365.42
Vocational Rehabilitation Services	131	3,192	\$58,890,182	\$354.79
Child Day Care Services	869	7,989	\$101,743,328	\$244.91
LEISURE & HOSPITALITY	5,792	90,993	\$1,000,212,053	\$211.39
ARTS, ENTERTAINMENT & RECREATION	880	9,133	\$126,461,299	\$266.28
PERFORMING ARTS & SPECTATOR SPORTS	189	2,067	\$32,364,146	\$301.11
Performing Arts Companies	44	561	\$7,956,836	\$272.76
Spectator Sports	60	861	\$14,319,490	\$319.83
Performing Arts & Sports Promoters	34	525	\$7,114,569	\$260.61
Agents & Managers for Public Figures	9	17	\$513,634	\$581.03
Independent Artists, Writers & Performers	44	103	\$2,459,617	\$459.23
MUSEUMS, PARKS & HISTORICAL SITES	46	210	\$3,123,546	\$286.04
GAMBLING, RECREATION & AMUSEMENT INDUSTRY	645	6,856	\$90,973,607	\$255.18
Other Amusement & Recreation Industries	615	6,405	\$86,709,334	\$260.34
Other	30	451	\$4,264,273	\$181.83
ACCOMMODATION & FOOD SERVICES	4,912	81,860	\$873,750,754	\$205.26
ACCOMMODATION	780	10,979	\$145,123,577	\$254.20
Traveler Accommodation	712	10,631	\$140,403,345	\$253.98
RV Parks & Recreational Camps	48	287	\$3,743,578	\$250.84
Rooming & Boarding Houses	20	61	\$976,654	\$307.90
FOOD SERVICES & DRINKING PLACES	4,132	70,881	\$728,627,177	\$197.68
Full -Service Restaurants	1,734	30,376	\$337,123,890	\$213.43
Limited-Service Eating Places	2,087	37,718	\$360,239,073	\$183.67
Special Food Services	144	1,815	\$21,869,091	\$231.71
Drinking Places, Alcoholic Beverages	167	972	\$9,395,123	\$185.88
OTHER SERVICES	5,493	25,775	\$574,377,553	\$428.54
REPAIR & MAINTENANCE	2,248	9,625	\$251,299,535	\$502.10
Automotive Repair & Maintenance	1,580	7,146	\$177,674,267	\$478.14
Electronic Equipment Repair & Maintenance	155	518	\$17,103,695	\$634.98
Commercial Machinery Repair & Maintenance	322	1,383	\$42,994,003	\$597.84

*Note: Totals may not add due to rounding.

NORTH AMERICAN INDUSTRY CLASSIFICATION SYSTEM INDUSTRY GROUPS	AVERAGE EMPLOYING UNITS	AVERAGE COVERED EMPLOYMENT	TOTAL EARNINGS	AVERAGE WEEKLY EARNINGS
Household Goods Repair & Maintenance	191	578	\$13,527,570	\$450.08
PERSONAL & LAUNDRY SERVICES	1,312	8,411	\$160,477,482	\$366.91
Personal Care Services	555	2,428	\$34,456,888	\$272.91
Death Care Services	243	1,726	\$44,155,846	\$491.98
Drycleaning & Laundry Services	365	3,491	\$63,676,992	\$350.78
Other Personal Services	149	767	\$18,187,756	\$456.02
MEMBERSHIP ASSOCIATIONS & ORGANIZATIONS	972	6,293	\$136,398,368	\$416.82
Religious Organizations	38	219	\$4,415,811	\$387.76
Grantmaking & Giving Services	87	398	\$13,743,220	\$664.05
Social Advocacy Organizations	133	1,876	\$40,189,254	\$411.98
Civic & Social Organizations	212	1,587	\$19,658,569	\$238.22
Professional & Similar Organizations	503	2,212	\$58,391,514	\$507.65
PRIVATE HOUSEHOLDS	962	1,446	\$26,202,168	\$348.47
LOCAL GOVERNMENT	1,980	107,261	\$2,975,389,154	\$533.46
STATE GOVERNMENT	1,202	58,954	\$2,020,531,819	\$659.10
NONCLASSIFIABLE ESTABLISHMENTS	0	0	\$0	

*Note: Totals may not add due to rounding.

**TABLE 6. COUNTY SUMMARY
EMPLOYMENT AND TOTAL EARNINGS, BY INDUSTRY
CALENDAR YEAR 2004**

NORTH AMERICAN INDUSTRY CLASSIFICATION SYSTEM INDUSTRY GROUP	AVERAGE EMPLOYING UNITS	AVERAGE COVERED EMPLOYMENT	TOTAL EARNINGS	AVERAGE WEEKLY EARNINGS
ARKANSAS COUNTY - TOTAL	649	9,742	\$269,088,030	\$531.18
Natural Resources & Mining	44	299	\$8,086,345	\$520.09
Construction	53	292	\$8,268,267	\$544.54
Manufacturing	30	3,425	\$105,102,959	\$590.13
Trade, Transportation & Utilities	207	2,114	\$63,490,136	\$577.56
Wholesale Trade	47	481	\$24,714,353	\$988.10
Retail Trade	109	1,102	\$20,437,811	\$356.66
Transportation, Warehousing & Utilities	52	531	\$18,337,972	\$664.13
Information	9	83	\$2,913,650	\$675.08
Financial Activities	46	350	\$11,085,603	\$609.10
Professional & Business Services	53	392	\$14,076,959	\$690.59
Education & Health Services	58	1,095	\$22,940,005	\$402.88
Leisure & Hospitality	55	521	\$4,840,400	\$178.67
Other Services	48	144	\$2,735,532	\$365.32
Local Government	31	823	\$20,200,675	\$472.02
State Government	16	205	\$5,347,499	\$501.64
ASHLEY COUNTY - TOTAL	542	8,407	\$278,581,027	\$637.25
Natural Resources & Mining	62	495	\$13,225,144	\$513.80
Construction	49	638	\$16,027,738	\$483.11
Manufacturing	28	3,022	\$151,671,849	\$965.18
Trade, Transportation & Utilities	145	1,230	\$27,352,171	\$427.64
Wholesale Trade	26	161	\$6,202,118	\$740.82
Retail Trade	95	835	\$14,049,860	\$323.58
Transportation, Warehousing & Utilities	24	234	\$7,100,193	\$583.51
Information	11	62	\$1,681,125	\$521.44
Financial Activities	39	340	\$10,402,375	\$588.37
Professional & Business Services	46	346	\$8,888,287	\$494.01
Education & Health Services	44	542	\$15,529,631	\$551.01
Leisure & Hospitality	32	401	\$3,780,682	\$181.31
Other Services	42	192	\$3,123,444	\$312.84
Local Government	32	933	\$22,578,711	\$465.39
State Government	12	208	\$4,319,870	\$399.40

*Note: Totals may not add due to rounding.

NORTH AMERICAN INDUSTRY CLASSIFICATION SYSTEM INDUSTRY GROUP	AVERAGE EMPLOYING UNITS	AVERAGE COVERED EMPLOYMENT	TOTAL EARNINGS	AVERAGE WEEKLY EARNINGS
BAXTER COUNTY - TOTAL	1,169	13,847	\$351,622,005	\$488.33
Natural Resources & Mining	6	99	\$2,450,438	\$476.00
Construction	121	604	\$13,222,481	\$420.99
Manufacturing	64	2,487	\$77,363,315	\$598.21
Trade, Transportation & Utilities	270	2,557	\$51,687,317	\$388.73
Wholesale Trade	31	176	\$5,034,796	\$550.13
Retail Trade	212	2,135	\$40,352,603	\$363.47
Transportation, Warehousing & Utilities	27	247	\$6,299,918	\$490.50
Information	24	295	\$8,494,192	\$553.73
Financial Activities	107	614	\$18,919,197	\$592.56
Professional & Business Services	133	793	\$21,759,810	\$527.69
Education & Health Services	163	3,042	\$98,818,875	\$624.71
Leisure & Hospitality	120	1,488	\$14,983,362	\$193.64
Other Services	113	432	\$6,995,906	\$311.43
Local Government	36	1,166	\$30,222,177	\$498.45
State Government	12	269	\$6,704,935	\$479.33
BENTON COUNTY - TOTAL	4,374	84,172	\$3,108,727,690	\$710.25
Natural Resources & Mining	30	644	\$28,243,214	\$843.38
Construction	626	4,130	\$128,082,950	\$596.40
Manufacturing	230	14,148	\$454,650,294	\$617.99
Trade, Transportation & Utilities	1,196	20,806	\$717,740,477	\$663.40
Wholesale Trade	484	2,929	\$166,122,428	\$1,090.70
Retail Trade	556	6,879	\$151,227,735	\$422.77
Transportation, Warehousing & Utilities	156	10,997	\$400,390,314	\$700.17
Information	67	898	\$30,808,085	\$659.76
Financial Activities	472	3,158	\$114,149,808	\$695.12
Professional & Business Services	682	20,180	\$1,131,650,098	\$1,078.42
Education & Health Services	366	5,891	\$188,194,103	\$614.35
Leisure & Hospitality	328	6,069	\$73,960,690	\$234.36
Other Services	284	1,659	\$40,025,943	\$463.97
Local Government	75	5,880	\$182,085,078	\$595.52
State Government	19	709	\$19,136,950	\$519.07

*Note: Totals may not add due to rounding.

NORTH AMERICAN INDUSTRY CLASSIFICATION SYSTEM INDUSTRY GROUP	AVERAGE EMPLOYING UNITS	AVERAGE COVERED EMPLOYMENT	TOTAL EARNINGS	AVERAGE WEEKLY EARNINGS
BOONE COUNTY - TOTAL	992	13,436	\$370,645,576	\$530.50
Construction	93	459	\$11,140,763	\$466.77
Manufacturing	69	2,179	\$66,760,340	\$589.19
Trade, Transportation & Utilities	264	4,163	\$130,289,962	\$601.87
Wholesale Trade	50	693	\$19,506,340	\$541.30
Retail Trade	166	1,947	\$39,925,890	\$394.35
Transportation, Warehousing & Utilities	49	1,524	\$70,857,732	\$894.13
Information	17	426	\$13,842,907	\$624.91
Financial Activities	96	599	\$19,330,752	\$620.61
Professional & Business Services	107	516	\$10,991,049	\$409.62
Education & Health Services	121	1,081	\$28,355,034	\$504.43
Leisure & Hospitality	83	1,168	\$11,517,427	\$189.63
Local Government	50	2,018	\$54,487,651	\$519.25
State Government	20	573	\$18,012,310	\$604.52
Other	73	254	\$5,917,381	\$448.01
BRADLEY COUNTY - TOTAL	342	4,207	\$104,011,596	\$475.45
Natural Resources & Mining	58	462	\$7,298,343	\$303.79
Construction	21	176	\$4,499,343	\$491.62
Manufacturing	11	1,058	\$33,058,217	\$600.88
Trade, Transportation & Utilities	92	602	\$12,754,142	\$407.43
Wholesale Trade	13	190	\$4,442,806	\$449.68
Retail Trade	50	321	\$5,504,657	\$329.78
Transportation, Warehousing & Utilities	29	92	\$2,806,679	\$586.68
Information	3	13	\$343,619	\$508.31
Financial Activities	22	184	\$4,366,120	\$456.33
Professional & Business Services	24	145	\$6,201,007	\$822.41
Education & Health Services	34	532	\$13,692,352	\$494.95
Leisure & Hospitality	19	200	\$1,452,156	\$139.63
Other Services	32	104	\$1,951,333	\$360.82
Local Government	16	491	\$11,986,456	\$469.47
State Government	12	239	\$6,408,508	\$515.65

*Note: Totals may not add due to rounding.

NORTH AMERICAN INDUSTRY CLASSIFICATION SYSTEM INDUSTRY GROUP	AVERAGE EMPLOYING UNITS	AVERAGE COVERED EMPLOYMENT	TOTAL EARNINGS	AVERAGE WEEKLY EARNINGS
CALHOUN COUNTY - TOTAL	126	3,663	\$127,079,596	\$667.17
Natural Resources & Mining	24	146	\$3,563,563	\$469.38
Construction	9	89	\$1,956,203	\$422.69
Manufacturing	16	2,468	\$97,793,873	\$762.01
Trade, Transportation & Utilities	28	199	\$4,605,587	\$445.07
Wholesale Trade & Retail Trade	17	73	\$987,478	\$260.14
Transportation, Warehousing & Utilities	10	127	\$3,618,109	\$547.87
Education & Health Services	4	42	\$1,191,946	\$545.76
Local Government	11	189	\$4,064,300	\$413.54
State Government	10	326	\$7,845,554	\$462.81
Other	25	204	\$6,058,570	\$571.13
CARROLL COUNTY - TOTAL	793	9,770	\$212,582,160	\$418.44
Natural Resources & Mining	15	281	\$7,569,847	\$518.06
Trade, Transportation & Utilities	214	1,638	\$34,578,329	\$405.96
Wholesale Trade	26	115	\$2,200,760	\$368.02
Retail Trade	170	1,258	\$23,108,752	\$353.26
Transportation, Warehousing & Utilities	19	265	\$9,268,817	\$672.63
Professional & Business Services	65	210	\$4,932,866	\$451.73
Education & Health Services	58	728	\$20,046,240	\$529.54
Leisure & Hospitality	177	1,675	\$17,699,771	\$203.21
Local Government	24	967	\$23,944,473	\$476.18
State Government	12	102	\$2,676,244	\$504.57
Other	230	4,171	\$101,134,390	\$466.29

*Note: Totals may not add due to rounding.

NORTH AMERICAN INDUSTRY CLASSIFICATION SYSTEM INDUSTRY GROUP	AVERAGE EMPLOYING UNITS	AVERAGE COVERED EMPLOYMENT	TOTAL EARNINGS	AVERAGE WEEKLY EARNINGS
CHICOT COUNTY - TOTAL	336	3,705	\$82,454,439	\$427.98
Natural Resources & Mining	53	275	\$6,569,373	\$459.40
Construction	22	259	\$7,905,128	\$586.96
Manufacturing	12	391	\$7,128,244	\$350.59
Trade, Transportation & Utilities	85	622	\$12,861,104	\$397.63
Wholesale Trade	15	110	\$3,374,032	\$589.87
Retail Trade	57	428	\$6,436,785	\$289.22
Transportation, Warehousing & Utilities	14	84	\$3,050,287	\$698.33
Information	5	21	\$434,283	\$397.70
Financial Activities	29	155	\$4,541,162	\$563.42
Professional & Business Services	26	139	\$3,637,052	\$503.19
Education & Health Services	38	445	\$9,752,516	\$421.46
Leisure & Hospitality	22	247	\$1,912,590	\$148.91
Other Services	19	61	\$1,146,294	\$361.38
Local Government	16	800	\$19,001,232	\$456.76
State Government	11	290	\$7,565,461	\$501.69
CLARK COUNTY - TOTAL	613	9,825	\$236,466,421	\$462.84
Natural Resources & Mining	44	278	\$7,389,457	\$511.17
Construction	39	108	\$2,465,379	\$438.99
Manufacturing	36	2,477	\$68,111,713	\$528.80
Trade, Transportation & Utilities	141	1,495	\$33,822,728	\$435.07
Wholesale Trade	23	79	\$2,173,393	\$529.06
Retail Trade	94	1,131	\$21,989,473	\$373.89
Transportation, Warehousing & Utilities	23	284	\$9,659,862	\$654.11
Information	10	53	\$1,529,904	\$555.12
Financial Activities	87	392	\$10,524,543	\$516.31
Professional & Business Services	47	331	\$12,959,627	\$752.94
Education & Health Services	62	1,440	\$34,746,411	\$464.03
Leisure & Hospitality	56	1,074	\$10,037,552	\$179.73
Other Services	50	219	\$4,727,263	\$415.11
Local Government	27	892	\$20,547,191	\$442.98
State Government	14	1,067	\$29,604,653	\$533.57

*Note: Totals may not add due to rounding.

NORTH AMERICAN INDUSTRY CLASSIFICATION SYSTEM INDUSTRY GROUP	AVERAGE EMPLOYING UNITS	AVERAGE COVERED EMPLOYMENT	TOTAL EARNINGS	AVERAGE WEEKLY EARNINGS
CLAY COUNTY - TOTAL	412	5,143	\$108,465,054	\$405.57
Natural Resources & Mining	57	215	\$4,432,599	\$396.48
Construction	44	180	\$3,932,923	\$420.18
Manufacturing	23	1,839	\$37,662,088	\$393.84
Trade, Transportation & Utilities	99	871	\$19,908,919	\$439.57
Wholesale Trade	25	234	\$6,269,852	\$515.27
Retail Trade	55	459	\$7,818,383	\$327.57
Transportation, Warehousing & Utilities	19	178	\$5,820,684	\$628.86
Information	8	140	\$3,638,608	\$499.81
Financial Activities	36	158	\$3,842,413	\$467.67
Professional & Business Services	23	59	\$1,180,182	\$384.67
Education & Health Services	38	475	\$8,857,987	\$358.62
Leisure & Hospitality	23	212	\$1,615,524	\$146.55
Other Services	26	52	\$1,060,961	\$392.37
Local Government	22	863	\$20,440,683	\$455.49
State Government	12	78	\$1,892,167	\$466.51
CLEBURNE COUNTY - TOTAL	654	6,512	\$149,823,060	\$442.45
Natural Resources & Mining	14	33	\$951,716	\$554.61
Construction	63	245	\$5,655,815	\$443.94
Manufacturing	49	1,790	\$50,727,149	\$544.98
Trade, Transportation & Utilities	191	1,479	\$32,217,535	\$418.91
Wholesale Trade	38	163	\$4,097,296	\$483.40
Retail Trade	114	973	\$17,594,786	\$347.75
Transportation, Warehousing & Utilities	39	343	\$10,525,453	\$590.12
Information	8	60	\$1,480,508	\$474.52
Financial Activities	65	251	\$6,368,768	\$487.95
Professional & Business Services	60	195	\$4,520,712	\$445.83
Education & Health Services	59	728	\$17,684,414	\$467.15
Leisure & Hospitality	62	729	\$7,616,542	\$200.92
Other Services	55	151	\$2,582,648	\$328.92
Local Government	20	745	\$17,415,002	\$449.54
State Government	10	108	\$2,602,251	\$463.36

*Note: Totals may not add due to rounding.

NORTH AMERICAN INDUSTRY CLASSIFICATION SYSTEM INDUSTRY GROUP	AVERAGE EMPLOYING UNITS	AVERAGE COVERED EMPLOYMENT	TOTAL EARNINGS	AVERAGE WEEKLY EARNINGS
CLEVELAND COUNTY - TOTAL	112	1,040	\$22,939,530	\$424.18
Natural Resources & Mining	19	160	\$4,283,866	\$514.89
Construction	9	44	\$581,656	\$254.22
Manufacturing	6	88	\$1,973,899	\$431.36
Trade, Transportation & Utilities	33	223	\$4,091,163	\$352.81
Wholesale Trade	6	50	\$926,120	\$356.20
Retail Trade	15	80	\$792,377	\$190.48
Transportation, Warehousing & Utilities	13	94	\$2,372,666	\$485.41
Financial Activities	4	28	\$716,112	\$491.84
Local Government	13	316	\$7,413,507	\$451.16
State Government	8	52	\$1,321,254	\$488.63
Other	22	128	\$2,558,073	\$384.33
COLUMBIA COUNTY - TOTAL	685	9,244	\$257,613,536	\$535.93
Natural Resources & Mining	46	406	\$17,064,413	\$808.28
Construction	48	314	\$9,325,092	\$571.11
Manufacturing	39	2,765	\$105,162,411	\$731.41
Trade, Transportation & Utilities	189	1,605	\$32,894,184	\$394.13
Wholesale Trade	29	272	\$6,677,645	\$472.12
Retail Trade	116	1,090	\$18,158,525	\$320.37
Transportation, Warehousing & Utilities	44	243	\$8,058,014	\$637.70
Information	9	79	\$2,141,124	\$521.21
Financial Activities	75	396	\$11,772,957	\$571.72
Professional & Business Services	61	338	\$7,184,554	\$408.77
Education & Health Services	73	845	\$16,600,627	\$377.80
Leisure & Hospitality	46	584	\$5,690,756	\$187.39
Other Services	54	232	\$3,786,887	\$313.90
Local Government	30	1,147	\$29,249,014	\$490.39
State Government	15	533	\$16,741,517	\$604.04

*Note: Totals may not add due to rounding.

NORTH AMERICAN INDUSTRY CLASSIFICATION SYSTEM INDUSTRY GROUP	AVERAGE EMPLOYING UNITS	AVERAGE COVERED EMPLOYMENT	TOTAL EARNINGS	AVERAGE WEEKLY EARNINGS
CONWAY COUNTY - TOTAL	466	6,472	\$166,234,288	\$493.95
Natural Resources & Mining	17	137	\$4,258,385	\$597.75
Construction	48	517	\$18,754,030	\$697.59
Manufacturing	29	1,079	\$42,474,041	\$757.01
Trade, Transportation & Utilities	133	1,372	\$30,374,597	\$425.75
Wholesale Trade	28	242	\$7,121,178	\$565.89
Retail Trade	80	890	\$16,077,937	\$347.41
Transportation, Warehousing & Utilities	25	240	\$7,175,482	\$574.96
Information	6	40	\$779,037	\$374.54
Financial Activities	39	184	\$4,785,099	\$500.11
Professional & Business Services	46	695	\$13,122,678	\$363.11
Education & Health Services	50	718	\$17,414,387	\$466.42
Leisure & Hospitality	39	454	\$4,037,511	\$171.02
Other Services	23	87	\$2,093,201	\$462.69
Local Government	27	843	\$20,442,476	\$466.34
State Government	11	347	\$7,698,846	\$426.67
CRAIGHEAD COUNTY - TOTAL	2,478	39,853	\$1,105,504,538	\$533.45
Natural Resources & Mining	58	271	\$6,715,740	\$476.56
Construction	219	1,870	\$50,402,396	\$518.33
Manufacturing	146	7,430	\$240,355,689	\$622.10
Trade, Transportation & Utilities	712	7,965	\$186,898,832	\$451.25
Wholesale Trade	176	1,465	\$50,028,965	\$656.72
Retail Trade	425	5,433	\$102,122,090	\$361.47
Transportation, Warehousing & Utilities	112	1,067	\$34,747,777	\$626.27
Information	32	634	\$21,389,825	\$648.81
Financial Activities	248	1,582	\$56,696,092	\$689.20
Professional & Business Services	297	3,319	\$78,321,830	\$453.81
Education & Health Services	338	6,604	\$239,445,174	\$697.26
Leisure & Hospitality	178	3,600	\$37,262,383	\$199.05
Other Services	187	1,103	\$21,033,569	\$366.72
Local Government	39	3,177	\$87,636,934	\$530.48
State Government	25	2,299	\$79,346,074	\$663.72

*Note: Totals may not add due to rounding.

NORTH AMERICAN INDUSTRY CLASSIFICATION SYSTEM INDUSTRY GROUP	AVERAGE EMPLOYING UNITS	AVERAGE COVERED EMPLOYMENT	TOTAL EARNINGS	AVERAGE WEEKLY EARNINGS
CRAWFORD COUNTY - TOTAL	1,122	17,819	\$459,298,470	\$495.69
Natural Resources & Mining	24	479	\$13,594,167	\$545.78
Construction	180	1,303	\$37,367,933	\$551.51
Manufacturing	80	3,533	\$93,975,749	\$511.53
Trade, Transportation & Utilities	305	5,992	\$159,816,869	\$512.92
Wholesale Trade	72	623	\$20,124,939	\$621.22
Retail Trade	167	1,780	\$33,399,525	\$360.84
Transportation, Warehousing & Utilities	66	3,589	\$106,292,405	\$569.54
Financial Activities	107	491	\$13,184,263	\$516.38
Professional & Business Services	129	639	\$16,109,375	\$484.81
Education & Health Services	84	1,443	\$37,926,890	\$505.45
Leisure & Hospitality	73	1,286	\$12,787,548	\$191.22
Local Government	42	1,896	\$54,059,699	\$548.32
State Government	11	167	\$4,800,981	\$552.85
Other	90	589	\$15,674,996	\$511.79
CRITTENDEN COUNTY - TOTAL	1,106	15,689	\$419,564,022	\$514.28
Natural Resources & Mining	52	345	\$8,094,993	\$451.23
Construction	78	652	\$18,236,599	\$537.89
Manufacturing	55	1,541	\$57,603,780	\$718.86
Trade, Transportation & Utilities	314	4,968	\$143,063,997	\$553.79
Wholesale Trade	61	604	\$23,193,448	\$738.46
Retail Trade	169	2,089	\$38,482,900	\$354.26
Transportation, Warehousing & Utilities	84	2,275	\$81,387,649	\$687.98
Information	10	89	\$3,030,488	\$654.82
Financial Activities	104	477	\$15,274,813	\$615.82
Professional & Business Services	111	745	\$17,635,899	\$455.24
Education & Health Services	125	1,706	\$46,533,524	\$524.55
Leisure & Hospitality	103	1,850	\$20,933,287	\$217.60
Other Services	98	596	\$12,697,247	\$409.69
Local Government	40	2,282	\$65,891,191	\$555.28
State Government	17	439	\$10,568,204	\$462.95

*Note: Totals may not add due to rounding.

NORTH AMERICAN INDUSTRY CLASSIFICATION SYSTEM INDUSTRY GROUP	AVERAGE EMPLOYING UNITS	AVERAGE COVERED EMPLOYMENT	TOTAL EARNINGS	AVERAGE WEEKLY EARNINGS
CROSS COUNTY - TOTAL	467	5,293	\$127,902,570	\$464.70
Natural Resources & Mining	41	224	\$4,739,061	\$406.86
Construction	32	142	\$3,066,553	\$415.30
Manufacturing	18	1,017	\$28,350,319	\$536.08
Trade, Transportation & Utilities	131	1,235	\$29,959,537	\$466.51
Wholesale Trade	33	317	\$9,895,364	\$600.30
Retail Trade	66	661	\$11,898,441	\$346.17
Transportation, Warehousing & Utilities	32	257	\$8,165,732	\$611.02
Information	9	57	\$1,459,900	\$492.54
Financial Activities	43	377	\$10,805,725	\$551.20
Professional & Business Services	39	177	\$4,753,854	\$516.50
Education & Health Services	53	600	\$13,201,770	\$423.13
Leisure & Hospitality	31	356	\$3,135,322	\$169.37
Other Services	42	82	\$1,402,905	\$329.01
Local Government	17	805	\$20,549,439	\$490.91
State Government	12	223	\$6,478,185	\$558.66
DALLAS COUNTY - TOTAL	274	3,219	\$75,129,932	\$448.84
Natural Resources & Mining	40	215	\$5,480,030	\$490.16
Construction	15	88	\$2,097,329	\$458.33
Manufacturing	16	883	\$24,603,347	\$535.83
Trade, Transportation & Utilities	80	497	\$9,828,809	\$380.31
Wholesale Trade	10	49	\$1,144,807	\$449.30
Retail Trade	49	376	\$6,883,889	\$352.08
Transportation, Warehousing & Utilities	21	72	\$1,800,113	\$480.80
Information	3	26	\$605,722	\$448.02
Financial Activities	21	103	\$2,805,186	\$523.75
Professional & Business Services	16	54	\$2,088,600	\$743.80
Education & Health Services	25	680	\$14,248,085	\$402.94
Leisure & Hospitality	17	129	\$1,117,058	\$166.53
Other Services	17	65	\$1,024,728	\$303.17
Local Government	16	413	\$9,568,367	\$445.54
State Government	9	65	\$1,662,671	\$491.91

*Note: Totals may not add due to rounding.

NORTH AMERICAN INDUSTRY CLASSIFICATION SYSTEM INDUSTRY GROUP	AVERAGE EMPLOYING UNITS	AVERAGE COVERED EMPLOYMENT	TOTAL EARNINGS	AVERAGE WEEKLY EARNINGS
DESHA COUNTY - TOTAL	447	4,952	\$127,910,652	\$496.73
Natural Resources & Mining	55	296	\$7,355,036	\$477.85
Construction	26	128	\$3,684,399	\$553.55
Manufacturing	16	1,051	\$36,200,787	\$662.39
Trade, Transportation & Utilities	140	1,149	\$24,295,455	\$406.63
Wholesale Trade	20	192	\$6,999,936	\$701.12
Retail Trade	87	732	\$11,597,586	\$304.69
Transportation, Warehousing & Utilities	33	226	\$5,697,933	\$484.85
Information	6	28	\$940,380	\$645.87
Financial Activities	38	226	\$5,357,011	\$455.84
Professional & Business Services	35	244	\$10,741,760	\$846.61
Education & Health Services	37	507	\$11,003,357	\$417.36
Leisure & Hospitality	35	290	\$2,352,107	\$155.98
Other Services	28	72	\$941,499	\$251.47
Local Government	21	801	\$20,696,361	\$496.89
State Government	11	160	\$4,342,500	\$521.94
DREW COUNTY - TOTAL	497	6,955	\$161,377,636	\$446.21
Natural Resources & Mining	44	327	\$9,102,329	\$535.31
Construction	25	125	\$3,176,249	\$488.65
Manufacturing	27	1,346	\$33,725,935	\$481.85
Trade, Transportation & Utilities	144	1,306	\$28,643,833	\$421.78
Wholesale Trade	27	270	\$8,286,766	\$590.23
Retail Trade	95	939	\$16,702,331	\$342.06
Transportation, Warehousing & Utilities	23	97	\$3,654,736	\$724.57
Information	9	90	\$2,422,754	\$517.68
Financial Activities	47	278	\$8,535,011	\$590.41
Professional & Business Services	40	265	\$6,530,833	\$473.94
Education & Health Services	53	754	\$14,278,445	\$364.17
Leisure & Hospitality	40	581	\$4,600,654	\$152.28
Other Services	30	95	\$1,471,718	\$297.92
Local Government	23	1,128	\$27,800,381	\$473.96
State Government	17	659	\$21,089,494	\$615.43

*Note: Totals may not add due to rounding.

NORTH AMERICAN INDUSTRY CLASSIFICATION SYSTEM INDUSTRY GROUP	AVERAGE EMPLOYING UNITS	AVERAGE COVERED EMPLOYMENT	TOTAL EARNINGS	AVERAGE WEEKLY EARNINGS
FAULKNER COUNTY - TOTAL	2,150	34,246	\$1,014,498,334	\$569.69
Natural Resources & Mining	9	48	\$1,715,643	\$687.36
Construction	305	2,607	\$76,036,006	\$560.89
Manufacturing	113	5,062	\$184,553,604	\$701.13
Trade, Transportation & Utilities	541	5,950	\$128,177,989	\$414.28
Wholesale Trade	118	667	\$21,732,408	\$626.58
Retail Trade	362	4,696	\$85,868,585	\$351.64
Transportation, Warehousing & Utilities	61	587	\$20,576,996	\$674.13
Information	38	390	\$11,807,778	\$582.24
Financial Activities	249	1,296	\$37,923,218	\$562.73
Professional & Business Services	285	5,036	\$230,814,536	\$881.40
Education & Health Services	257	4,320	\$128,167,534	\$570.55
Leisure & Hospitality	172	3,502	\$33,656,260	\$184.82
Other Services	129	600	\$11,584,618	\$371.30
Local Government	35	2,726	\$83,373,103	\$588.16
State Government	19	2,709	\$86,688,045	\$615.38
FRANKLIN COUNTY - TOTAL	312	4,296	\$104,678,791	\$468.59
Natural Resources & Mining	8	148	\$6,006,411	\$780.46
Construction	26	149	\$3,804,677	\$491.05
Manufacturing	21	1,059	\$27,431,404	\$498.14
Trade, Transportation & Utilities	98	867	\$20,995,289	\$465.69
Wholesale Trade	13	53	\$842,907	\$305.84
Retail Trade	60	508	\$8,004,202	\$303.01
Transportation, Warehousing & Utilities	26	306	\$12,148,180	\$763.46
Information	7	59	\$1,026,861	\$334.70
Financial Activities	25	177	\$4,658,820	\$506.17
Professional & Business Services	19	55	\$1,107,087	\$387.09
Education & Health Services	37	534	\$12,499,527	\$450.14
Leisure & Hospitality	26	312	\$2,721,040	\$167.72
Other Services	17	54	\$1,061,025	\$377.86
Local Government	20	750	\$19,716,464	\$505.55
State Government	10	132	\$3,650,186	\$531.79

*Note: Totals may not add due to rounding.

NORTH AMERICAN INDUSTRY CLASSIFICATION SYSTEM INDUSTRY GROUP	AVERAGE EMPLOYING UNITS	AVERAGE COVERED EMPLOYMENT	TOTAL EARNINGS	AVERAGE WEEKLY EARNINGS
FULTON COUNTY - TOTAL	205	1,868	\$35,213,770	\$362.52
Construction	16	35	\$684,648	\$376.18
Manufacturing	11	144	\$2,190,623	\$292.55
Trade, Transportation & Utilities	58	367	\$7,598,331	\$398.15
Retail Trade	43	207	\$2,645,666	\$245.79
Other Trade, Transportation & Utilities	15	161	\$4,952,665	\$591.57
Financial Activities	20	117	\$2,858,536	\$469.84
Professional & Business Services	16	44	\$1,088,696	\$475.83
Education & Health Services	26	359	\$5,742,105	\$307.59
Leisure & Hospitality	18	164	\$1,479,829	\$173.53
Local Government	13	473	\$10,166,162	\$413.33
State Government	11	97	\$2,306,078	\$457.19
Other	16	69	\$1,098,762	\$306.23
GARLAND COUNTY - TOTAL	2,947	35,395	\$912,724,996	\$495.90
Natural Resources & Mining	46	332	\$10,590,119	\$613.42
Construction	401	2,143	\$53,923,743	\$483.90
Manufacturing	127	3,498	\$106,007,128	\$582.79
Trade, Transportation & Utilities	694	7,174	\$167,369,253	\$448.65
Wholesale Trade	143	1,120	\$35,372,876	\$607.36
Retail Trade	485	5,360	\$105,965,891	\$380.19
Transportation, Warehousing & Utilities	67	695	\$26,030,486	\$720.27
Information	38	476	\$14,335,633	\$579.17
Financial Activities	327	1,505	\$47,855,289	\$611.49
Professional & Business Services	368	2,622	\$69,659,196	\$510.91
Education & Health Services	314	6,878	\$231,691,541	\$647.81
Leisure & Hospitality	341	6,018	\$77,527,643	\$247.74
Other Services	230	982	\$18,667,347	\$365.57
Local Government	36	2,833	\$87,162,704	\$591.67
State Government	26	936	\$27,935,400	\$573.95

*Note: Totals may not add due to rounding.

NORTH AMERICAN INDUSTRY CLASSIFICATION SYSTEM INDUSTRY GROUP	AVERAGE EMPLOYING UNITS	AVERAGE COVERED EMPLOYMENT	TOTAL EARNINGS	AVERAGE WEEKLY EARNINGS
GRANT COUNTY - TOTAL	290	3,497	\$89,843,049	\$494.07
Natural Resources & Mining	27	246	\$9,066,649	\$708.77
Construction	30	219	\$5,970,904	\$524.32
Manufacturing	21	839	\$26,160,674	\$599.63
Trade, Transportation & Utilities	87	555	\$12,198,638	\$422.68
Wholesale Trade	16	140	\$4,428,700	\$608.34
Retail Trade	40	356	\$6,045,580	\$326.58
Transportation, Warehousing & Utilities	30	59	\$1,724,358	\$562.05
Information	3	38	\$1,137,798	\$575.81
Financial Activities	21	96	\$2,565,446	\$513.91
Professional & Business Services	22	73	\$2,211,479	\$582.58
Education & Health Services	23	226	\$4,736,725	\$403.06
Leisure & Hospitality	21	270	\$2,540,285	\$180.93
Other Services	16	40	\$703,376	\$338.16
Local Government	10	834	\$21,026,587	\$484.84
State Government	10	63	\$1,524,488	\$465.35
GREENE COUNTY - TOTAL	849	14,334	\$372,112,623	\$499.23
Natural Resources & Mining	36	188	\$4,695,682	\$480.33
Construction	73	379	\$9,077,789	\$460.61
Manufacturing	55	5,159	\$169,373,818	\$631.36
Trade, Transportation & Utilities	253	2,235	\$48,007,699	\$413.08
Wholesale Trade	54	449	\$13,203,843	\$565.52
Retail Trade	167	1,602	\$28,890,596	\$346.81
Transportation, Warehousing & Utilities	32	184	\$5,913,260	\$618.02
Information	13	103	\$2,332,532	\$435.50
Financial Activities	83	453	\$11,102,579	\$471.33
Professional & Business Services	75	1,322	\$30,938,314	\$450.05
Education & Health Services	100	1,630	\$38,213,834	\$450.85
Leisure & Hospitality	63	1,047	\$9,232,593	\$169.58
Other Services	55	172	\$3,114,663	\$348.24
Local Government	32	1,398	\$38,437,572	\$528.74
State Government	11	249	\$7,585,548	\$585.85

*Note: Totals may not add due to rounding.

NORTH AMERICAN INDUSTRY CLASSIFICATION SYSTEM INDUSTRY GROUP	AVERAGE EMPLOYING UNITS	AVERAGE COVERED EMPLOYMENT	TOTAL EARNINGS	AVERAGE WEEKLY EARNINGS
HEMPSTEAD COUNTY - TOTAL	498	8,544	\$210,117,810	\$472.93
Natural Resources & Mining	18	231	\$6,890,875	\$573.67
Construction	33	111	\$2,816,837	\$488.02
Manufacturing	34	2,915	\$82,655,125	\$545.29
Trade, Transportation & Utilities	138	1,291	\$27,713,105	\$412.82
Wholesale Trade	24	193	\$4,261,278	\$424.60
Retail Trade	89	906	\$14,917,867	\$316.65
Transportation, Warehousing & Utilities	26	193	\$8,533,960	\$850.33
Information	11	74	\$2,087,473	\$542.48
Financial Activities	44	278	\$8,231,857	\$569.44
Professional & Business Services	35	407	\$5,207,540	\$246.06
Education & Health Services	62	943	\$22,548,334	\$459.83
Leisure & Hospitality	44	599	\$5,712,523	\$183.40
Other Services	35	214	\$5,300,319	\$476.30
Local Government	29	952	\$25,475,680	\$514.62
State Government	16	529	\$15,478,142	\$562.68
HOT SPRING COUNTY - TOTAL	606	7,521	\$207,813,336	\$531.37
Natural Resources & Mining	39	207	\$7,430,833	\$690.34
Construction	69	358	\$11,240,056	\$603.78
Manufacturing	53	1,884	\$69,146,969	\$705.81
Trade, Transportation & Utilities	166	1,335	\$33,675,537	\$485.10
Wholesale Trade	19	85	\$4,354,213	\$985.12
Retail Trade	102	893	\$16,382,065	\$352.79
Transportation, Warehousing & Utilities	45	357	\$12,939,259	\$697.01
Information	9	63	\$2,405,375	\$734.24
Financial Activities	51	302	\$7,946,014	\$505.99
Professional & Business Services	56	268	\$6,575,626	\$471.84
Education & Health Services	41	888	\$22,679,365	\$491.15
Leisure & Hospitality	42	527	\$5,134,703	\$187.37
Other Services	39	262	\$4,355,376	\$319.68
Local Government	27	1,048	\$27,433,808	\$503.41
State Government	14	379	\$9,789,674	\$496.74

*Note: Totals may not add due to rounding.

NORTH AMERICAN INDUSTRY CLASSIFICATION SYSTEM INDUSTRY GROUP	AVERAGE EMPLOYING UNITS	AVERAGE COVERED EMPLOYMENT	TOTAL EARNINGS	AVERAGE WEEKLY EARNINGS
HOWARD COUNTY - TOTAL	362	7,994	\$192,137,312	\$462.22
Natural Resources & Mining	23	264	\$7,227,031	\$526.44
Construction	25	111	\$2,573,646	\$445.88
Manufacturing	26	4,622	\$120,124,857	\$499.80
Trade, Transportation & Utilities	110	929	\$19,872,283	\$411.37
Wholesale Trade	17	94	\$2,975,294	\$608.69
Retail Trade	71	653	\$10,923,080	\$321.68
Transportation, Warehousing & Utilities	23	182	\$5,973,909	\$631.22
Information	7	36	\$918,696	\$490.76
Financial Activities	36	168	\$4,039,366	\$462.38
Professional & Business Services	26	105	\$2,486,589	\$455.42
Education & Health Services	35	611	\$11,396,294	\$358.69
Leisure & Hospitality	23	285	\$2,462,900	\$166.19
Other Services	20	105	\$1,833,792	\$335.86
Local Government	18	637	\$15,853,257	\$478.60
State Government	12	123	\$3,348,601	\$523.55
INDEPENDENCE COUNTY - TOTAL	918	16,106	\$416,435,878	\$497.23
Natural Resources & Mining	13	133	\$3,840,240	\$555.27
Construction	68	433	\$11,375,516	\$505.22
Manufacturing	54	5,069	\$155,376,070	\$589.47
Trade, Transportation & Utilities	295	3,014	\$75,744,489	\$483.29
Wholesale Trade	53	456	\$13,103,411	\$552.61
Retail Trade	186	1,738	\$30,852,773	\$341.38
Transportation, Warehousing & Utilities	57	819	\$31,788,305	\$746.41
Information	11	168	\$4,805,469	\$550.08
Financial Activities	83	416	\$11,461,121	\$529.82
Professional & Business Services	92	1,025	\$19,129,763	\$358.91
Education & Health Services	103	2,516	\$73,488,038	\$561.70
Leisure & Hospitality	75	1,115	\$9,778,931	\$168.66
Other Services	69	347	\$5,986,772	\$331.79
Local Government	37	1,416	\$33,048,046	\$448.83
State Government	19	455	\$12,401,423	\$524.15

*Note: Totals may not add due to rounding.

NORTH AMERICAN INDUSTRY CLASSIFICATION SYSTEM INDUSTRY GROUP	AVERAGE EMPLOYING UNITS	AVERAGE COVERED EMPLOYMENT	TOTAL EARNINGS	AVERAGE WEEKLY EARNINGS
IZARD COUNTY - TOTAL	254	2,919	\$65,997,855	\$434.80
Natural Resources & Mining	5	79	\$2,488,041	\$605.66
Construction	27	72	\$1,315,146	\$351.27
Manufacturing	13	489	\$14,675,759	\$577.15
Trade, Transportation & Utilities	71	515	\$10,032,656	\$374.63
Retail Trade	52	396	\$6,641,631	\$322.53
Other Trade, Transportation & Utilities	20	120	\$3,391,025	\$543.43
Information	3	8	\$148,383	\$356.69
Financial Activities	25	141	\$3,905,262	\$532.63
Professional & Business Services	23	79	\$1,409,002	\$342.99
Education & Health Services	22	416	\$8,048,140	\$372.05
Leisure & Hospitality	24	159	\$1,362,978	\$164.85
Other Services	14	38	\$607,423	\$307.40
Local Government	18	509	\$11,189,970	\$422.77
State Government	11	413	\$10,815,095	\$503.59
JACKSON COUNTY - TOTAL	524	5,832	\$148,181,480	\$488.62
Natural Resources & Mining	46	239	\$5,301,172	\$426.55
Construction	31	195	\$5,216,236	\$514.42
Manufacturing	30	1,067	\$34,425,359	\$620.46
Trade, Transportation & Utilities	141	1,239	\$28,549,570	\$443.12
Wholesale Trade	35	241	\$7,939,652	\$633.55
Retail Trade	86	742	\$12,873,207	\$333.64
Transportation, Warehousing & Utilities	20	257	\$7,736,711	\$578.92
Information	5	41	\$1,306,111	\$612.62
Financial Activities	43	188	\$4,796,503	\$490.64
Professional & Business Services	39	131	\$3,404,107	\$499.72
Education & Health Services	67	1,024	\$29,140,196	\$547.25
Leisure & Hospitality	36	315	\$3,272,492	\$199.79
Other Services	40	120	\$2,092,923	\$335.40
Local Government	34	723	\$15,359,164	\$408.53
State Government	14	552	\$15,317,647	\$533.64

*Note: Totals may not add due to rounding.

NORTH AMERICAN INDUSTRY CLASSIFICATION SYSTEM INDUSTRY GROUP	AVERAGE EMPLOYING UNITS	AVERAGE COVERED EMPLOYMENT	TOTAL EARNINGS	AVERAGE WEEKLY EARNINGS
JEFFERSON COUNTY - TOTAL	1,745	32,755	\$956,602,709	\$561.63
Natural Resources & Mining	41	488	\$16,889,551	\$665.57
Construction	120	968	\$28,779,163	\$571.74
Manufacturing	82	6,738	\$255,036,735	\$727.89
Trade, Transportation & Utilities	496	6,094	\$147,740,296	\$466.22
Wholesale Trade	91	1,043	\$33,322,253	\$614.39
Retail Trade	341	4,235	\$77,999,035	\$354.19
Transportation, Warehousing & Utilities	64	815	\$36,419,008	\$859.34
Information	18	220	\$6,479,499	\$566.39
Financial Activities	147	1,199	\$40,038,773	\$642.18
Professional & Business Services	179	2,449	\$87,071,620	\$683.73
Education & Health Services	275	5,431	\$152,326,482	\$539.38
Leisure & Hospitality	141	2,230	\$22,424,162	\$193.38
Other Services	165	803	\$17,072,543	\$408.86
Local Government	42	3,151	\$88,658,686	\$541.09
State Government	40	2,985	\$94,085,199	\$606.14
JOHNSON COUNTY - TOTAL	439	8,432	\$197,367,487	\$450.13
Natural Resources & Mining	13	208	\$5,909,196	\$546.34
Construction	28	191	\$4,333,416	\$436.31
Manufacturing	42	3,217	\$80,454,128	\$480.94
Trade, Transportation & Utilities	121	1,695	\$35,987,557	\$408.30
Information	6	29	\$839,464	\$556.67
Financial Activities	39	215	\$5,869,893	\$525.04
Professional & Business Services	44	153	\$3,628,458	\$456.07
Education & Health Services	51	1,084	\$26,930,780	\$477.77
Leisure & Hospitality	40	555	\$5,084,780	\$176.19
Other Services	31	82	\$1,570,170	\$368.24
Local Government	14	855	\$22,595,054	\$508.21
State Government	10	147	\$4,164,591	\$544.82

*Note: Totals may not add due to rounding.

NORTH AMERICAN INDUSTRY CLASSIFICATION SYSTEM INDUSTRY GROUP	AVERAGE EMPLOYING UNITS	AVERAGE COVERED EMPLOYMENT	TOTAL EARNINGS	AVERAGE WEEKLY EARNINGS
LAFAYETTE COUNTY - TOTAL	158	1,720	\$39,748,722	\$444.42
Natural Resources & Mining	28	163	\$3,695,934	\$436.05
Trade, Transportation & Utilities	38	247	\$5,906,564	\$459.87
Retail Trade	24	156	\$2,392,739	\$294.96
Other Trade, Transportation & Utilities	14	92	\$3,513,825	\$734.50
Financial Activities	16	89	\$1,816,908	\$392.59
Professional & Business Services	10	52	\$1,691,698	\$625.63
Education & Health Services	10	209	\$3,753,116	\$345.34
Leisure & Hospitality	7	55	\$561,459	\$196.31
Other Services	8	89	\$1,346,285	\$290.90
Local Government	14	345	\$7,555,225	\$421.14
State Government	8	64	\$1,546,845	\$464.80
Other	19	408	\$11,874,688	\$559.70
LAWRENCE COUNTY - TOTAL	428	4,358	\$99,790,083	\$440.35
Natural Resources & Mining	33	175	\$4,874,208	\$535.63
Construction	27	102	\$2,811,051	\$529.99
Manufacturing	24	744	\$19,970,466	\$516.19
Trade, Transportation & Utilities	143	1,017	\$21,641,388	\$409.22
Wholesale Trade	24	220	\$6,577,203	\$574.93
Retail Trade	84	668	\$11,249,673	\$323.86
Transportation, Warehousing & Utilities	34	129	\$3,814,512	\$568.65
Information	6	25	\$711,640	\$547.42
Financial Activities	31	145	\$3,451,166	\$457.71
Professional & Business Services	24	117	\$3,839,732	\$631.12
Education & Health Services	47	423	\$10,105,280	\$459.41
Leisure & Hospitality	29	308	\$2,348,796	\$146.65
Other Services	25	67	\$1,131,337	\$324.72
Local Government	28	1,108	\$26,036,662	\$451.90
State Government	12	127	\$2,868,357	\$434.34

*Note: Totals may not add due to rounding.

NORTH AMERICAN INDUSTRY CLASSIFICATION SYSTEM INDUSTRY GROUP	AVERAGE EMPLOYING UNITS	AVERAGE COVERED EMPLOYMENT	TOTAL EARNINGS	AVERAGE WEEKLY EARNINGS
LEE COUNTY - TOTAL	221	2,141	\$50,662,903	\$455.06
Natural Resources & Mining	30	228	\$5,215,624	\$439.91
Construction	8	13	\$231,351	\$342.24
Trade, Transportation & Utilities	65	381	\$8,438,143	\$425.91
Wholesale Trade	9	68	\$1,994,527	\$564.06
Retail Trade	38	217	\$3,340,242	\$296.02
Transportation, Warehousing & Utilities	18	97	\$3,103,374	\$615.26
Financial Activities	12	79	\$1,805,067	\$439.40
Professional & Business Services	18	75	\$1,642,632	\$421.19
Education & Health Services	28	295	\$6,642,920	\$433.05
Leisure & Hospitality	8	75	\$642,966	\$164.86
Local Government	17	369	\$9,173,465	\$478.08
State Government	8	445	\$12,149,551	\$525.05
Other	29	181	\$4,721,184	\$501.61
LINCOLN COUNTY - TOTAL	216	3,108	\$75,444,201	\$466.81
Natural Resources & Mining	31	210	\$5,588,301	\$511.75
Construction	17	92	\$1,943,063	\$406.16
Manufacturing	10	486	\$12,901,371	\$510.50
Trade, Transportation & Utilities	55	396	\$9,840,493	\$477.88
Wholesale Trade	8	33	\$1,068,023	\$622.39
Retail Trade	28	214	\$3,108,445	\$279.34
Transportation, Warehousing & Utilities	18	149	\$5,664,025	\$731.03
Financial Activities	22	94	\$2,224,844	\$455.16
Professional & Business Services	11	25	\$629,651	\$484.35
Education & Health Services	20	319	\$6,122,460	\$369.09
Leisure & Hospitality	15	120	\$1,093,694	\$175.27
Local & State Government	22	1,317	\$34,233,937	\$499.88
Other	14	48	\$866,387	\$347.11

*Note: Totals may not add due to rounding.

NORTH AMERICAN INDUSTRY CLASSIFICATION SYSTEM INDUSTRY GROUP	AVERAGE EMPLOYING UNITS	AVERAGE COVERED EMPLOYMENT	TOTAL EARNINGS	AVERAGE WEEKLY EARNINGS
LITTLE RIVER COUNTY - TOTAL	253	4,511	\$169,390,087	\$722.12
Natural Resources & Mining	12	80	\$2,319,020	\$557.46
Trade, Transportation & Utilities	76	1,062	\$32,284,053	\$584.60
Wholesale Trade	9	32	\$860,914	\$517.38
Retail Trade	45	349	\$5,826,856	\$321.07
Transportation, Warehousing & Utilities	22	682	\$25,596,283	\$721.75
Information	4	11	\$331,042	\$578.74
Financial Activities	27	126	\$2,980,476	\$454.90
Professional & Business Services	21	167	\$4,149,095	\$477.79
Education & Health Services	14	158	\$3,319,743	\$404.06
Leisure & Hospitality	19	226	\$1,998,451	\$170.05
Other Services	16	100	\$1,201,376	\$231.03
Local Government	20	726	\$17,270,603	\$457.48
State Government	12	91	\$2,138,739	\$451.97
Other	32	1,763	\$101,397,489	\$1,106.04
LOGAN COUNTY - TOTAL	440	5,768	\$135,244,698	\$450.91
Natural Resources & Mining	14	81	\$2,657,328	\$630.89
Construction	44	136	\$2,758,802	\$390.10
Manufacturing	25	1,956	\$55,820,446	\$548.81
Trade, Transportation & Utilities	121	875	\$14,996,849	\$329.60
Wholesale Trade	20	55	\$941,056	\$329.04
Retail Trade	76	757	\$12,209,391	\$310.17
Transportation, Warehousing & Utilities	26	63	\$1,846,402	\$563.61
Information	9	40	\$1,332,220	\$640.49
Financial Activities	43	230	\$7,105,227	\$594.08
Professional & Business Services	37	105	\$2,378,091	\$435.55
Education & Health Services	47	709	\$15,041,180	\$407.97
Leisure & Hospitality	30	340	\$3,046,167	\$172.29
Other Services	32	90	\$1,757,415	\$375.52
Local Government	23	772	\$18,294,285	\$455.72
State Government	16	433	\$10,056,688	\$446.65

*Note: Totals may not add due to rounding.

NORTH AMERICAN INDUSTRY CLASSIFICATION SYSTEM INDUSTRY GROUP	AVERAGE EMPLOYING UNITS	AVERAGE COVERED EMPLOYMENT	TOTAL EARNINGS	AVERAGE WEEKLY EARNINGS
LONOKE COUNTY - TOTAL	1,115	11,330	\$279,689,446	\$474.73
Natural Resources & Mining	73	460	\$14,322,425	\$598.76
Construction	152	953	\$27,475,651	\$554.44
Manufacturing	35	1,364	\$46,911,837	\$661.40
Trade, Transportation & Utilities	310	2,423	\$54,846,152	\$435.30
Wholesale Trade	71	412	\$15,073,215	\$703.57
Retail Trade	171	1,727	\$31,480,738	\$350.55
Transportation, Warehousing & Utilities	68	283	\$8,292,199	\$563.48
Information	16	122	\$4,566,701	\$719.85
Financial Activities	122	570	\$16,787,414	\$566.38
Professional & Business Services	128	469	\$12,033,433	\$493.42
Education & Health Services	97	1,320	\$28,270,082	\$411.86
Leisure & Hospitality	76	1,093	\$10,929,743	\$192.30
Other Services	62	177	\$3,512,058	\$381.58
Local Government	28	2,232	\$56,446,243	\$486.34
State Government	16	147	\$3,587,707	\$469.35
MADISON COUNTY - TOTAL	233	3,110	\$72,088,330	\$445.76
Natural Resources & Mining	15	65	\$1,551,029	\$458.88
Construction	37	93	\$2,115,814	\$437.51
Manufacturing	21	1,151	\$28,183,410	\$470.89
Trade, Transportation & Utilities	60	580	\$12,415,037	\$411.64
Wholesale Trade	12	43	\$2,151,640	\$962.27
Retail Trade	35	411	\$6,888,990	\$322.34
Transportation, Warehousing & Utilities	13	126	\$3,374,407	\$515.02
Information	4	37	\$1,556,111	\$808.79
Financial Activities	18	91	\$2,503,556	\$529.07
Professional & Business Services	19	118	\$2,696,550	\$439.46
Education & Health Services	20	235	\$4,251,725	\$347.93
Leisure & Hospitality	11	123	\$815,802	\$127.55
Other Services	13	28	\$618,164	\$424.56
Local Government	8	536	\$13,939,505	\$500.13
State Government	8	53	\$1,441,627	\$523.09

*Note: Totals may not add due to rounding.

NORTH AMERICAN INDUSTRY CLASSIFICATION SYSTEM INDUSTRY GROUP	AVERAGE EMPLOYING UNITS	AVERAGE COVERED EMPLOYMENT	TOTAL EARNINGS	AVERAGE WEEKLY EARNINGS
MARION COUNTY - TOTAL	276	3,903	\$86,312,058	\$425.27
Natural Resources & Mining	6	41	\$845,668	\$396.65
Construction	15	46	\$771,095	\$322.36
Manufacturing	27	1,683	\$41,987,458	\$479.77
Trade, Transportation & Utilities	59	553	\$9,484,161	\$329.82
Financial Activities	33	193	\$4,610,761	\$459.42
Professional & Business Services	24	42	\$1,000,741	\$458.21
Education & Health Services	24	338	\$6,345,637	\$361.04
Leisure & Hospitality	41	270	\$2,859,319	\$203.66
Local Government	20	534	\$12,691,948	\$457.07
State Government	8	110	\$2,564,803	\$448.39
Other	19	93	\$3,150,467	\$651.46
MILLER COUNTY - TOTAL	825	12,592	\$377,680,190	\$576.80
Natural Resources & Mining	33	159	\$4,691,712	\$567.45
Construction	86	872	\$24,344,991	\$536.90
Manufacturing	37	2,779	\$144,001,130	\$996.49
Trade, Transportation & Utilities	243	2,880	\$74,649,662	\$498.46
Wholesale Trade	65	614	\$21,705,143	\$679.82
Retail Trade	135	1,467	\$25,987,546	\$340.67
Transportation, Warehousing & Utilities	44	799	\$26,956,973	\$648.82
Information	9	94	\$4,424,721	\$905.22
Financial Activities	80	430	\$13,235,756	\$591.94
Professional & Business Services	79	808	\$16,177,990	\$385.04
Education & Health Services	74	949	\$21,928,395	\$444.36
Leisure & Hospitality	78	1,350	\$14,529,770	\$206.98
Other Services	67	389	\$5,803,061	\$286.88
Local Government	23	1,453	\$39,908,002	\$528.19
State Government	18	430	\$13,985,000	\$625.45

*Note: Totals may not add due to rounding.

NORTH AMERICAN INDUSTRY CLASSIFICATION SYSTEM INDUSTRY GROUP	AVERAGE EMPLOYING UNITS	AVERAGE COVERED EMPLOYMENT	TOTAL EARNINGS	AVERAGE WEEKLY EARNINGS
MISSISSIPPI COUNTY - TOTAL	1,121	17,748	\$546,120,823	\$591.75
Natural Resources & Mining	103	858	\$19,421,370	\$435.30
Construction	57	366	\$11,184,515	\$587.67
Manufacturing	55	4,718	\$240,812,659	\$981.56
Trade, Transportation & Utilities	310	3,028	\$73,272,354	\$465.35
Wholesale Trade	63	566	\$19,994,145	\$679.33
Retail Trade	198	1,904	\$32,213,501	\$325.36
Transportation, Warehousing & Utilities	50	558	\$21,064,708	\$725.97
Financial Activities	106	620	\$16,106,643	\$499.59
Professional & Business Services	93	954	\$24,199,651	\$487.82
Education & Health Services	149	1,605	\$39,242,835	\$470.20
Leisure & Hospitality	78	1,058	\$10,221,233	\$185.79
Local Government	46	2,352	\$56,958,082	\$465.71
State Government	26	666	\$17,045,700	\$492.20
Other	99	1,524	\$37,655,781	\$475.16
MONROE COUNTY - TOTAL	292	2,590	\$52,300,431	\$388.33
Natural Resources & Mining	32	183	\$3,807,900	\$400.16
Construction	15	50	\$1,024,359	\$393.98
Manufacturing	9	188	\$4,369,303	\$446.94
Trade, Transportation & Utilities	90	687	\$15,367,221	\$430.17
Wholesale Trade	23	199	\$5,542,477	\$535.61
Retail Trade	41	340	\$5,784,941	\$327.20
Transportation, Warehousing & Utilities	26	148	\$4,039,803	\$524.92
Information	7	41	\$753,417	\$353.39
Financial Activities	16	101	\$2,818,216	\$536.60
Professional & Business Services	15	39	\$881,267	\$434.55
Education & Health Services	28	350	\$5,704,666	\$313.44
Leisure & Hospitality	30	323	\$2,701,299	\$160.83
Other Services	18	69	\$1,206,127	\$336.16
Local Government	22	424	\$10,486,338	\$475.61
State Government	10	135	\$3,180,318	\$453.04

*Note: Totals may not add due to rounding.

NORTH AMERICAN INDUSTRY CLASSIFICATION SYSTEM INDUSTRY GROUP	AVERAGE EMPLOYING UNITS	AVERAGE COVERED EMPLOYMENT	TOTAL EARNINGS	AVERAGE WEEKLY EARNINGS
MONTGOMERY COUNTY - TOTAL	167	1,636	\$31,914,914	\$375.15
Natural Resources & Mining	14	59	\$1,305,130	\$425.40
Construction	22	170	\$4,274,002	\$483.48
Trade, Transportation & Utilities	44	218	\$4,020,705	\$354.68
Wholesale Trade	11	67	\$1,328,387	\$381.28
Retail Trade	25	126	\$2,117,054	\$323.12
Transportation, Warehousing & Utilities	8	26	\$575,264	\$425.49
Financial Activities	9	70	\$1,823,033	\$500.83
Education & Health Services	12	58	\$941,480	\$312.16
Leisure & Hospitality	20	225	\$2,995,628	\$256.04
Other Services	10	62	\$1,052,769	\$326.54
Local Government	9	444	\$9,162,944	\$396.87
State Government	8	57	\$1,429,622	\$482.33
Other	21	274	\$4,909,601	\$344.58
NEVADA COUNTY - TOTAL	196	2,540	\$68,852,825	\$521.30
Natural Resources & Mining	17	58	\$1,452,098	\$481.46
Construction	13	37	\$735,238	\$382.14
Manufacturing	7	716	\$30,543,034	\$820.34
Trade, Transportation & Utilities	48	450	\$9,538,616	\$407.63
Retail Trade	32	288	\$4,528,625	\$302.39
Other Trade, Transportation & Utilities	16	163	\$5,009,991	\$591.08
Financial Activities	12	66	\$1,861,712	\$542.46
Education & Health Services	12	381	\$7,249,260	\$365.90
Leisure & Hospitality	17	133	\$1,134,948	\$164.10
Other Services	17	84	\$965,396	\$221.02
Local Government	27	457	\$10,034,524	\$422.26
State Government	11	89	\$2,156,975	\$466.07
Other	15	70	\$3,181,024	\$873.91

*Note: Totals may not add due to rounding.

NORTH AMERICAN INDUSTRY CLASSIFICATION SYSTEM INDUSTRY GROUP	AVERAGE EMPLOYING UNITS	AVERAGE COVERED EMPLOYMENT	TOTAL EARNINGS	AVERAGE WEEKLY EARNINGS
NEWTON COUNTY - TOTAL	130	1,046	\$18,505,832	\$340.23
Natural Resources & Mining	8	17	\$194,076	\$219.54
Construction	8	7	\$67,952	\$186.68
Manufacturing	14	62	\$1,220,531	\$378.58
Trade, Transportation & Utilities	31	169	\$2,631,102	\$299.40
Wholesale Trade	4	10	\$262,719	\$505.23
Retail Trade	17	113	\$1,350,982	\$229.92
Transportation, Warehousing & Utilities	10	47	\$1,017,401	\$416.29
Education & Health Services	13	181	\$2,342,882	\$248.92
Leisure & Hospitality	19	72	\$774,184	\$206.78
Other Services	5	13	\$176,193	\$260.64
Local Government	12	372	\$7,929,858	\$409.94
State Government	7	92	\$1,593,391	\$333.07
Other	14	62	\$1,575,663	\$488.73
OUACHITA COUNTY - TOTAL	631	7,481	\$180,642,418	\$464.36
Natural Resources & Mining	48	438	\$13,778,089	\$604.94
Construction	46	196	\$4,448,692	\$436.49
Manufacturing	29	832	\$25,978,101	\$600.46
Trade, Transportation & Utilities	192	1,702	\$39,726,814	\$448.87
Wholesale Trade	33	290	\$10,128,485	\$671.65
Retail Trade	130	1,134	\$19,096,213	\$323.84
Transportation, Warehousing & Utilities	29	278	\$10,502,116	\$726.49
Information	9	94	\$2,636,147	\$539.31
Financial Activities	63	363	\$10,043,430	\$532.07
Professional & Business Services	44	392	\$7,703,965	\$377.94
Education & Health Services	66	1,243	\$30,428,642	\$470.77
Leisure & Hospitality	38	524	\$4,459,533	\$163.66
Other Services	54	175	\$3,373,635	\$370.73
Local Government	30	1,222	\$28,705,819	\$451.75
State Government	13	301	\$9,359,551	\$597.98

*Note: Totals may not add due to rounding.

NORTH AMERICAN INDUSTRY CLASSIFICATION SYSTEM INDUSTRY GROUP	AVERAGE EMPLOYING UNITS	AVERAGE COVERED EMPLOYMENT	TOTAL EARNINGS	AVERAGE WEEKLY EARNINGS
PERRY COUNTY - TOTAL	150	1,157	\$25,274,442	\$420.09
Natural Resources & Mining	6	29	\$933,478	\$619.02
Construction	25	77	\$2,150,205	\$537.01
Manufacturing	7	77	\$1,809,679	\$451.97
Trade, Transportation & Utilities	29	183	\$3,371,464	\$354.29
Wholesale Trade	4	7	\$291,579	\$801.04
Retail Trade	19	154	\$2,113,997	\$263.99
Transportation, Warehousing & Utilities	6	21	\$965,888	\$884.51
Financial Activities	14	56	\$1,977,783	\$679.18
Education & Health Services	15	166	\$3,021,134	\$349.99
Local Government	12	364	\$8,189,697	\$432.68
State Government	8	57	\$1,373,289	\$463.32
Other	34	150	\$2,447,713	\$313.81
PHILLIPS COUNTY - TOTAL	655	6,884	\$160,073,311	\$447.17
Natural Resources & Mining	76	498	\$10,482,953	\$404.81
Construction	32	135	\$3,091,088	\$440.33
Manufacturing	15	476	\$14,744,626	\$595.69
Trade, Transportation & Utilities	178	1,641	\$38,996,148	\$456.99
Wholesale Trade	37	418	\$13,021,325	\$599.07
Retail Trade	108	921	\$15,822,794	\$330.38
Transportation, Warehousing & Utilities	34	302	\$10,152,029	\$646.46
Information	12	62	\$1,759,294	\$545.69
Financial Activities	54	296	\$7,934,720	\$515.51
Professional & Business Services	57	318	\$7,432,573	\$449.48
Education & Health Services	104	1,125	\$25,311,185	\$432.67
Leisure & Hospitality	36	386	\$3,302,809	\$164.55
Other Services	43	107	\$1,888,273	\$339.37
Local Government	34	1,293	\$31,182,745	\$463.78
State Government	16	547	\$13,946,897	\$490.33

*Note: Totals may not add due to rounding.

NORTH AMERICAN INDUSTRY CLASSIFICATION SYSTEM INDUSTRY GROUP	AVERAGE EMPLOYING UNITS	AVERAGE COVERED EMPLOYMENT	TOTAL EARNINGS	AVERAGE WEEKLY EARNINGS
PIKE COUNTY - TOTAL	264	2,702	\$59,567,918	\$423.96
Natural Resources & Mining	36	197	\$5,111,296	\$498.96
Construction	12	57	\$1,522,350	\$513.61
Manufacturing	11	446	\$10,785,130	\$465.04
Trade, Transportation & Utilities	89	617	\$12,270,657	\$382.45
Wholesale Trade	18	140	\$3,499,767	\$480.74
Retail Trade	52	381	\$6,017,302	\$303.72
Transportation, Warehousing & Utilities	20	96	\$2,753,588	\$551.60
Information	6	41	\$1,353,661	\$634.93
Financial Activities	25	192	\$5,382,329	\$539.10
Professional & Business Services	11	48	\$848,765	\$340.05
Education & Health Services	11	174	\$3,136,641	\$346.67
Leisure & Hospitality	22	205	\$1,793,605	\$168.26
Other Services	17	118	\$2,312,198	\$376.82
Local Government	13	547	\$12,566,124	\$441.78
State Government	11	116	\$2,485,162	\$412.00
POINSETT COUNTY - TOTAL	498	6,198	\$150,475,236	\$466.89
Natural Resources & Mining	49	373	\$9,842,823	\$507.47
Construction	30	101	\$2,539,386	\$483.51
Manufacturing	27	1,483	\$41,989,196	\$544.49
Trade, Transportation & Utilities	141	1,321	\$31,542,322	\$459.18
Wholesale Trade	32	437	\$15,740,239	\$692.67
Retail Trade	79	727	\$11,402,389	\$301.62
Transportation, Warehousing & Utilities	30	157	\$4,399,694	\$538.91
Information	7	60	\$2,570,206	\$823.78
Financial Activities	46	328	\$8,191,760	\$480.29
Professional & Business Services	24	84	\$2,679,126	\$613.35
Education & Health Services	50	537	\$11,284,410	\$404.11
Leisure & Hospitality	46	466	\$3,800,331	\$156.83
Other Services	33	72	\$3,791,484	\$1,012.68
Local Government	31	1,136	\$26,781,375	\$453.37
State Government	13	237	\$5,462,817	\$443.27

*Note: Totals may not add due to rounding.

NORTH AMERICAN INDUSTRY CLASSIFICATION SYSTEM INDUSTRY GROUP	AVERAGE EMPLOYING UNITS	AVERAGE COVERED EMPLOYMENT	TOTAL EARNINGS	AVERAGE WEEKLY EARNINGS
POLK COUNTY - TOTAL	525	6,127	\$131,655,197	\$413.23
Natural Resources & Mining	26	260	\$7,270,567	\$537.76
Construction	37	166	\$3,167,675	\$366.97
Manufacturing	48	1,418	\$35,017,419	\$474.90
Trade, Transportation & Utilities	154	1,318	\$25,159,559	\$367.10
Wholesale Trade	25	141	\$3,022,544	\$412.24
Retail Trade	84	845	\$13,782,723	\$313.67
Transportation, Warehousing & Utilities	45	331	\$8,354,292	\$485.38
Information	9	53	\$1,472,282	\$534.21
Financial Activities	38	216	\$5,549,731	\$494.10
Professional & Business Services	46	185	\$4,790,192	\$497.94
Education & Health Services	60	898	\$19,102,452	\$409.08
Leisure & Hospitality	39	409	\$3,338,542	\$156.97
Other Services	34	135	\$2,290,222	\$326.24
Local Government	21	754	\$18,134,943	\$462.53
State Government	15	314	\$6,361,613	\$389.61
POPE COUNTY - TOTAL	1,608	24,330	\$678,111,072	\$535.99
Natural Resources & Mining	20	541	\$12,780,114	\$454.29
Construction	164	1,118	\$36,436,861	\$626.75
Manufacturing	88	4,403	\$142,497,179	\$622.38
Trade, Transportation & Utilities	472	6,363	\$217,511,389	\$657.38
Wholesale Trade	104	757	\$22,267,465	\$565.68
Retail Trade	277	3,127	\$57,270,513	\$352.21
Transportation, Warehousing & Utilities	92	2,479	\$137,973,411	\$1,070.32
Information	22	301	\$9,465,577	\$604.75
Financial Activities	155	740	\$22,346,768	\$580.74
Professional & Business Services	205	2,216	\$46,413,271	\$402.78
Education & Health Services	179	2,713	\$67,875,513	\$481.13
Leisure & Hospitality	129	2,262	\$21,634,757	\$183.93
Other Services	117	479	\$9,796,874	\$393.32
Local Government	39	2,114	\$54,858,442	\$499.04
State Government	17	1,080	\$36,494,327	\$649.83

*Note: Totals may not add due to rounding.

NORTH AMERICAN INDUSTRY CLASSIFICATION SYSTEM INDUSTRY GROUP	AVERAGE EMPLOYING UNITS	AVERAGE COVERED EMPLOYMENT	TOTAL EARNINGS	AVERAGE WEEKLY EARNINGS
PRAIRIE COUNTY - TOTAL	226	1,681	\$38,283,631	\$437.97
Natural Resources & Mining	24	135	\$3,763,363	\$536.09
Trade, Transportation & Utilities	69	398	\$8,076,550	\$390.25
Wholesale Trade	10	67	\$1,812,914	\$520.35
Retail Trade	37	238	\$3,078,527	\$248.75
Transportation, Warehousing & Utilities	22	93	\$3,185,109	\$658.62
Information	4	11	\$402,471	\$703.62
Financial Activities	17	65	\$1,795,712	\$531.28
Professional & Business Services	16	60	\$1,240,710	\$397.66
Education & Health Services	17	194	\$3,790,188	\$375.71
Leisure & Hospitality	19	113	\$999,375	\$170.08
Other Services	15	49	\$822,209	\$322.69
Local Government	15	339	\$7,634,423	\$433.09
State Government	10	50	\$1,272,263	\$489.33
Other	21	267	\$8,486,367	\$611.23
PULASKI COUNTY - TOTAL	13,168	232,134	\$8,137,560,126	\$674.14
Natural Resources & Mining	42	689	\$30,346,572	\$847.01
Construction	1,099	10,326	\$374,206,893	\$696.91
Manufacturing	428	16,126	\$641,576,961	\$765.10
Trade, Transportation & Utilities	3,188	51,043	\$1,682,347,450	\$633.83
Wholesale Trade	1,068	12,874	\$599,737,410	\$895.87
Retail Trade	1,738	24,980	\$556,942,196	\$428.76
Transportation, Warehousing & Utilities	382	13,189	\$525,667,844	\$766.47
Information	225	8,627	\$405,311,557	\$903.50
Financial Activities	1,604	16,210	\$781,248,591	\$926.84
Professional & Business Services	2,496	32,466	\$1,092,753,332	\$647.28
Education & Health Services	1,596	31,444	\$1,224,778,309	\$749.06
Leisure & Hospitality	971	18,841	\$240,406,050	\$245.38
Other Services	1,221	7,049	\$193,146,118	\$526.93
Local Government	103	15,937	\$535,623,425	\$646.32
State Government	196	23,377	\$935,814,868	\$769.84

*Note: Totals may not add due to rounding.

NORTH AMERICAN INDUSTRY CLASSIFICATION SYSTEM INDUSTRY GROUP	AVERAGE EMPLOYING UNITS	AVERAGE COVERED EMPLOYMENT	TOTAL EARNINGS	AVERAGE WEEKLY EARNINGS
RANDOLPH COUNTY - TOTAL	396	4,999	\$110,050,311	\$423.36
Natural Resources & Mining	21	74	\$1,398,886	\$363.54
Construction	22	104	\$2,017,814	\$373.12
Manufacturing	35	1,305	\$33,789,050	\$497.92
Trade, Transportation & Utilities	109	953	\$18,538,958	\$374.10
Wholesale Trade	21	160	\$3,267,073	\$392.68
Retail Trade	66	638	\$10,497,840	\$316.43
Transportation, Warehousing & Utilities	22	156	\$4,774,045	\$588.52
Information	7	50	\$1,730,866	\$665.72
Financial Activities	25	155	\$4,112,904	\$510.29
Professional & Business Services	40	202	\$3,118,828	\$296.92
Education & Health Services	50	712	\$17,162,465	\$463.55
Leisure & Hospitality	28	362	\$2,983,518	\$158.50
Other Services	25	59	\$1,061,640	\$346.04
Local Government	23	784	\$17,407,235	\$426.98
State Government	12	239	\$6,728,147	\$541.37
SAINT FRANCIS COUNTY - TOTAL	602	8,567	\$205,743,644	\$461.84
Natural Resources & Mining	23	180	\$4,158,702	\$444.31
Construction	46	269	\$7,175,975	\$513.01
Manufacturing	22	1,479	\$41,645,329	\$541.50
Trade, Transportation & Utilities	188	2,073	\$49,301,602	\$457.36
Wholesale Trade	33	529	\$15,443,365	\$561.41
Retail Trade	121	1,206	\$21,935,882	\$349.79
Transportation, Warehousing & Utilities	34	339	\$11,922,355	\$676.33
Information	12	104	\$3,049,978	\$563.98
Financial Activities	49	277	\$6,484,361	\$450.18
Professional & Business Services	43	145	\$4,007,080	\$531.44
Education & Health Services	83	1,392	\$33,743,556	\$466.17
Leisure & Hospitality	49	772	\$7,614,038	\$189.67
Other Services	41	143	\$1,954,847	\$262.89
Local Government	30	1,190	\$31,694,366	\$512.19
State Government	17	544	\$14,913,810	\$527.21

*Note: Totals may not add due to rounding.

NORTH AMERICAN INDUSTRY CLASSIFICATION SYSTEM INDUSTRY GROUP	AVERAGE EMPLOYING UNITS	AVERAGE COVERED EMPLOYMENT	TOTAL EARNINGS	AVERAGE WEEKLY EARNINGS
SALINE COUNTY - TOTAL	1,523	18,853	\$495,921,744	\$505.86
Natural Resources & Mining	13	50	\$1,842,566	\$708.68
Construction	274	1,675	\$48,192,634	\$553.30
Manufacturing	80	1,774	\$68,263,485	\$740.00
Trade, Transportation & Utilities	398	4,398	\$111,653,767	\$488.22
Wholesale Trade	103	525	\$18,975,344	\$695.07
Retail Trade	252	3,618	\$84,042,827	\$446.71
Transportation, Warehousing & Utilities	44	255	\$8,635,596	\$651.25
Information	16	137	\$3,749,845	\$526.37
Financial Activities	144	676	\$18,594,870	\$528.98
Professional & Business Services	181	1,321	\$31,470,570	\$458.14
Education & Health Services	132	2,418	\$61,551,035	\$489.53
Leisure & Hospitality	113	2,017	\$21,964,651	\$209.42
Other Services	122	550	\$12,020,833	\$420.31
Local & State Government	51	3,839	\$116,617,488	\$584.17
SCOTT COUNTY - TOTAL	182	2,818	\$61,430,026	\$419.21
Natural Resources & Mining	17	175	\$4,951,120	\$544.08
Construction	11	38	\$742,289	\$375.65
Manufacturing	19	1,106	\$25,964,194	\$451.46
Trade, Transportation & Utilities	49	482	\$8,862,073	\$353.58
Wholesale Trade	8	58	\$1,468,767	\$486.99
Retail Trade	32	342	\$5,047,701	\$283.83
Transportation, Warehousing & Utilities	10	82	\$2,345,605	\$550.09
Information	4	13	\$377,332	\$558.18
Financial Activities	16	75	\$1,540,817	\$395.08
Professional & Business Services	8	15	\$235,538	\$301.97
Education & Health Services	19	300	\$6,614,728	\$424.02
Leisure & Hospitality	17	149	\$1,179,092	\$152.18
Other Services	11	57	\$1,789,770	\$603.84
Local Government	5	343	\$7,743,407	\$434.14
State Government	8	64	\$1,429,666	\$429.59

*Note: Totals may not add due to rounding.

NORTH AMERICAN INDUSTRY CLASSIFICATION SYSTEM INDUSTRY GROUP	AVERAGE EMPLOYING UNITS	AVERAGE COVERED EMPLOYMENT	TOTAL EARNINGS	AVERAGE WEEKLY EARNINGS
SEARCY COUNTY - TOTAL	150	1,580	\$29,220,951	\$355.66
Construction	5	14	\$260,015	\$357.16
Manufacturing	17	299	\$4,875,174	\$313.56
Trade, Transportation & Utilities	40	286	\$4,214,939	\$283.41
Retail Trade	30	208	\$2,872,260	\$265.56
Other Trade, Transportation & Utilities	10	78	\$1,342,679	\$331.04
Financial Activities	14	58	\$1,257,503	\$416.94
Professional & Business Services	17	38	\$777,806	\$393.63
Education & Health Services	14	275	\$4,763,166	\$333.09
Leisure & Hospitality	14	105	\$850,460	\$155.76
Local Government	9	293	\$6,973,566	\$457.70
State Government	9	172	\$4,293,376	\$480.03
Other	10	41	\$954,946	\$447.91
SEBASTIAN COUNTY - TOTAL	3,494	70,907	\$2,148,099,986	\$582.59
Natural Resources & Mining	60	993	\$43,444,059	\$841.35
Construction	280	2,729	\$84,451,584	\$595.12
Manufacturing	220	21,096	\$732,339,483	\$667.59
Trade, Transportation & Utilities	915	12,199	\$318,953,721	\$502.81
Wholesale Trade	226	2,315	\$87,506,214	\$726.92
Retail Trade	567	7,816	\$154,569,725	\$380.31
Transportation, Warehousing & Utilities	123	2,069	\$76,877,782	\$714.56
Information	56	1,222	\$49,243,866	\$774.96
Financial Activities	384	2,439	\$85,514,029	\$674.25
Professional & Business Services	509	9,141	\$243,137,588	\$511.51
Education & Health Services	409	9,120	\$332,473,299	\$701.07
Leisure & Hospitality	303	5,135	\$57,805,961	\$216.49
Other Services	294	1,474	\$32,500,933	\$424.03
Local Government	43	4,104	\$129,690,622	\$607.71
State Government	23	1,255	\$38,544,841	\$590.64

*Note: Totals may not add due to rounding.

NORTH AMERICAN INDUSTRY CLASSIFICATION SYSTEM INDUSTRY GROUP	AVERAGE EMPLOYING UNITS	AVERAGE COVERED EMPLOYMENT	TOTAL EARNINGS	AVERAGE WEEKLY EARNINGS
SEVIER COUNTY - TOTAL	318	5,641	\$132,087,013	\$450.30
Natural Resources & Mining	23	189	\$4,719,486	\$480.21
Construction	26	139	\$3,544,601	\$490.40
Manufacturing	13	2,220	\$51,881,376	\$449.42
Trade, Transportation & Utilities	92	870	\$19,138,540	\$423.04
Wholesale Trade	16	135	\$5,679,100	\$808.99
Retail Trade	57	631	\$9,952,014	\$303.30
Transportation, Warehousing & Utilities	19	103	\$3,507,426	\$654.86
Information	7	44	\$1,352,772	\$591.25
Financial Activities	25	169	\$4,301,945	\$489.52
Professional & Business Services	29	132	\$8,289,477	\$1,207.67
Education & Health Services	37	524	\$11,496,113	\$421.91
Leisure & Hospitality	20	280	\$2,626,044	\$180.36
Other Services	31	166	\$2,670,837	\$309.41
Local Government	12	738	\$17,399,053	\$453.38
State Government	9	171	\$4,666,769	\$524.83
SHARP COUNTY - TOTAL	383	3,869	\$78,428,214	\$389.83
Construction	34	183	\$4,410,295	\$463.46
Manufacturing	22	165	\$3,131,904	\$365.02
Trade, Transportation & Utilities	104	1,068	\$23,417,746	\$421.67
Retail Trade	74	658	\$10,423,165	\$304.63
Other Trade, Transportation & Utilities	31	411	\$12,994,581	\$608.02
Information	10	59	\$3,013,112	\$982.11
Financial Activities	30	259	\$6,773,746	\$502.95
Professional & Business Services	37	127	\$3,299,223	\$499.58
Education & Health Services	46	621	\$12,105,100	\$374.86
Leisure & Hospitality	38	470	\$3,746,964	\$153.31
Local Government	26	730	\$15,022,576	\$395.75
State Government	9	92	\$2,135,831	\$446.45
Other	29	95	\$1,371,717	\$277.68

*Note: Totals may not add due to rounding.

NORTH AMERICAN INDUSTRY CLASSIFICATION SYSTEM INDUSTRY GROUP	AVERAGE EMPLOYING UNITS	AVERAGE COVERED EMPLOYMENT	TOTAL EARNINGS	AVERAGE WEEKLY EARNINGS
STONE COUNTY - TOTAL	245	2,723	\$54,147,463	\$382.41
Construction	21	91	\$1,726,058	\$364.76
Manufacturing	25	466	\$9,948,279	\$410.54
Trade, Transportation & Utilities	78	574	\$12,430,471	\$416.46
Wholesale Trade	10	54	\$1,034,783	\$368.51
Retail Trade	54	476	\$9,973,576	\$402.94
Transportation, Warehousing & Utilities	14	44	\$1,422,112	\$621.55
Financial Activities	21	89	\$2,398,273	\$518.21
Professional & Business Services	9	24	\$554,348	\$444.19
Education & Health Services	22	420	\$9,315,560	\$426.54
Leisure & Hospitality	32	385	\$3,182,256	\$158.95
Other Services	12	25	\$428,762	\$329.82
Local Government	10	415	\$8,998,513	\$416.98
State Government	10	171	\$3,662,212	\$411.85
Other	6	62	\$1,502,731	\$466.11
UNION COUNTY - TOTAL	1,341	20,021	\$603,329,623	\$579.52
Natural Resources & Mining	102	549	\$16,325,901	\$571.88
Construction	101	1,468	\$56,027,130	\$733.95
Manufacturing	66	5,321	\$197,855,614	\$715.08
Trade, Transportation & Utilities	374	3,582	\$93,658,105	\$502.82
Wholesale Trade	82	527	\$22,650,196	\$826.53
Retail Trade	236	2,341	\$42,227,138	\$346.89
Transportation, Warehousing & Utilities	57	714	\$28,780,771	\$775.18
Information	21	219	\$5,529,978	\$485.60
Financial Activities	126	778	\$23,924,845	\$591.38
Professional & Business Services	136	1,711	\$61,727,453	\$693.79
Education & Health Services	128	2,198	\$61,773,403	\$540.47
Leisure & Hospitality	93	1,163	\$12,504,442	\$206.77
Other Services	139	641	\$11,780,199	\$353.42
Local Government	38	1,852	\$47,608,292	\$494.35
State Government	18	540	\$14,614,261	\$520.45

*Note: Totals may not add due to rounding.

NORTH AMERICAN INDUSTRY CLASSIFICATION SYSTEM INDUSTRY GROUP	AVERAGE EMPLOYING UNITS	AVERAGE COVERED EMPLOYMENT	TOTAL EARNINGS	AVERAGE WEEKLY EARNINGS
VAN BUREN COUNTY - TOTAL	346	3,738	\$74,142,995	\$381.44
Natural Resources & Mining	9	48	\$999,101	\$400.28
Construction	42	150	\$3,120,934	\$400.12
Manufacturing	14	613	\$13,720,593	\$430.44
Trade, Transportation & Utilities	103	833	\$15,811,665	\$365.03
Wholesale Trade	16	63	\$1,830,440	\$558.74
Retail Trade	65	624	\$10,312,278	\$317.81
Transportation, Warehousing & Utilities	22	146	\$3,668,947	\$483.26
Information	8	46	\$1,417,610	\$592.65
Financial Activities	31	134	\$2,768,477	\$397.31
Professional & Business Services	27	87	\$1,956,416	\$432.45
Education & Health Services	36	571	\$11,841,238	\$398.80
Leisure & Hospitality	28	438	\$5,098,921	\$223.87
Other Services	28	81	\$1,330,487	\$315.88
Local Government	13	649	\$13,844,800	\$410.24
State Government	8	90	\$2,232,753	\$477.08
WASHINGTON COUNTY - TOTAL	5,007	83,989	\$2,602,037,502	\$595.78
Natural Resources & Mining	40	499	\$13,863,015	\$534.26
Construction	552	4,613	\$153,844,284	\$641.35
Manufacturing	234	15,574	\$481,705,757	\$594.81
Trade, Transportation & Utilities	1,302	19,962	\$572,602,501	\$551.63
Wholesale Trade	329	3,523	\$159,070,021	\$868.31
Retail Trade	768	11,304	\$236,559,757	\$402.44
Transportation, Warehousing & Utilities	205	5,135	\$176,972,723	\$662.77
Information	94	1,453	\$52,450,916	\$694.20
Financial Activities	570	3,595	\$133,798,041	\$715.73
Professional & Business Services	808	7,616	\$332,651,491	\$839.96
Education & Health Services	499	9,691	\$336,589,838	\$667.93
Leisure & Hospitality	474	8,224	\$96,437,009	\$225.51
Other Services	350	1,850	\$41,735,293	\$433.84
Local & State Government	84	10,912	\$386,359,357	\$680.90

*Note: Totals may not add due to rounding.

NORTH AMERICAN INDUSTRY CLASSIFICATION SYSTEM INDUSTRY GROUP	AVERAGE EMPLOYING UNITS	AVERAGE COVERED EMPLOYMENT	TOTAL EARNINGS	AVERAGE WEEKLY EARNINGS
WHITE COUNTY - TOTAL	1,491	23,700	\$626,803,929	\$508.60
Natural Resources & Mining	33	269	\$7,694,638	\$550.09
Construction	166	1,065	\$30,163,729	\$544.67
Manufacturing	81	4,233	\$142,559,415	\$647.66
Trade, Transportation & Utilities	477	5,903	\$149,050,114	\$485.57
Wholesale Trade	101	562	\$16,216,999	\$554.92
Retail Trade	295	3,123	\$55,817,359	\$343.71
Transportation, Warehousing & Utilities	81	2,218	\$77,015,756	\$667.75
Information	21	232	\$6,302,475	\$522.42
Financial Activities	156	887	\$23,055,171	\$499.85
Professional & Business Services	134	1,344	\$28,397,802	\$406.33
Education & Health Services	162	4,170	\$129,753,779	\$598.38
Leisure & Hospitality	114	1,916	\$17,267,161	\$173.31
Other Services	103	609	\$14,297,123	\$451.47
Local Government	46	2,415	\$60,776,893	\$483.97
State Government	19	657	\$17,485,629	\$511.81
WOODRUFF COUNTY - TOTAL	173	2,053	\$49,798,208	\$466.47
Natural Resources & Mining	19	97	\$2,137,383	\$423.75
Construction	7	73	\$1,648,506	\$434.27
Manufacturing	8	463	\$12,899,053	\$535.76
Trade, Transportation & Utilities	64	539	\$14,523,923	\$518.19
Wholesale Trade	13	217	\$7,939,241	\$703.58
Retail Trade	34	219	\$2,948,916	\$258.95
Transportation, Warehousing & Utilities	17	102	\$3,635,766	\$685.48
Financial Activities	15	62	\$1,702,793	\$528.16
Professional & Business Services	4	7	\$167,301	\$459.62
Education & Health Services	23	186	\$4,369,357	\$451.75
Leisure & Hospitality	8	48	\$383,106	\$153.49
Local Government	10	494	\$10,233,078	\$398.36
State Government	7	56	\$1,229,965	\$422.38
Other	9	30	\$503,743	\$322.91

*Note: Totals may not add due to rounding.

NORTH AMERICAN INDUSTRY CLASSIFICATION SYSTEM INDUSTRY GROUP	AVERAGE EMPLOYING UNITS	AVERAGE COVERED EMPLOYMENT	TOTAL EARNINGS	AVERAGE WEEKLY EARNINGS
YELL COUNTY - TOTAL	390	6,896	\$156,525,980	\$436.50
Natural Resources & Mining	27	353	\$8,151,576	\$444.08
Construction	52	373	\$8,736,929	\$450.45
Manufacturing	23	2,924	\$69,454,813	\$456.80
Trade, Transportation & Utilities	89	608	\$11,019,394	\$348.54
Wholesale Trade	10	24	\$530,364	\$424.97
Retail Trade	60	492	\$7,641,262	\$298.67
Transportation, Warehousing & Utilities	18	92	\$2,847,768	\$595.27
Information	6	52	\$2,217,803	\$820.19
Financial Activities	35	198	\$4,910,290	\$476.91
Professional & Business Services	33	235	\$8,028,091	\$656.96
Education & Health Services	39	465	\$8,750,461	\$361.89
Leisure & Hospitality	27	366	\$3,495,757	\$183.68
Other Services	19	63	\$1,067,514	\$325.86
Local Government	28	1,140	\$28,074,243	\$473.59
State Government	13	120	\$2,619,109	\$419.73
REST-OF-STATE-TOTAL	4,273	14,748	\$731,148,978	\$953.39
Natural Resources & Mining	53	228	\$7,832,173	\$660.61
Construction	536	2,274	\$75,089,088	\$635.01
Manufacturing	41	139	\$6,689,069	\$925.44
Trade, Transportation & Utilities	1,789	6,577	\$424,199,969	\$1,240.34
Wholesale Trade	1,549	5,498	\$386,798,660	\$1,352.93
Retail Trade	99	473	\$15,708,206	\$638.65
Transportation, Warehousing & Utilities	143	605	\$21,693,103	\$689.55
Information	114	294	\$12,628,715	\$826.05
Financial Activities	236	562	\$33,313,518	\$1,139.94
Professional & Business Services	1,237	3,460	\$127,654,579	\$709.51
Education & Health Services	105	724	\$25,113,581	\$667.06
Leisure & Hospitality	41	84	\$2,259,630	\$517.31
Other	122	406	\$16,368,656	\$775.32

*Note: Totals may not add due to rounding.

**TABLE 7. FEDERAL GOVERNMENT EMPLOYMENT AND EARNINGS IN ARKANSAS
CALENDAR YEAR 2004**

NORTH AMERICAN INDUSTRY CLASSIFICATION SYSTEM INDUSTRY GROUP	AVERAGE EMPLOYING UNITS	AVERAGE COVERED EMPLOYMENT	TOTAL EARNINGS	AVERAGE WEEKLY EARNINGS
Manufacturing	2	212	\$7,837,066	\$710.91
Trade, Transportation & Utilities	449	6,862	\$296,312,548	\$830.42
Information	1	23	\$1,249,352	\$1,044.61
Financial Activities	24	193	\$11,456,197	\$1,141.51
Professional & Business Services	33	881	\$49,691,535	\$1,084.68
Education & Health Services	6	4,057	\$269,330,659	\$1,276.67
Leisure & Hospitality	16	225	\$8,368,867	\$715.29
Other Services	2	290	\$3,977,507	\$263.76
Public Administration	451	8,036	\$429,746,560	\$1,028.42
TOTAL	984	20,779	\$1,077,970,291	\$997.65

*Note: Totals may not add due to rounding.

**TABLE 8. WORKFORCE INFORMATION AREA, SUMMARY
EMPLOYMENT AND TOTAL EARNINGS, BY INDUSTRY
CALENDAR YEAR 2004**

NORTH AMERICAN INDUSTRY CLASSIFICATION SYSTEM INDUSTRY GROUP	AVERAGE EMPLOYING UNITS	AVERAGE COVERED EMPLOYMENT	TOTAL EARNINGS	AVERAGE WEEKLY EARNINGS
CENTRAL WORKFORCE INFORMATION*	5,307	68,700	\$1,880,693,586	\$526.45
Natural Resources & Mining	151	876	\$25,451,897	\$558.74
Construction	762	5,371	\$155,837,170	\$557.97
Manufacturing	240	8,569	\$309,476,076	\$694.53
Trade, Transportation & Utilities	1,407	13,856	\$318,121,679	\$441.52
Information	81	702	\$21,280,212	\$582.96
Financial Activities	548	2,707	\$77,919,430	\$553.55
Professional & Business Services	625	6,924	\$276,440,516	\$767.79
Education & Health Services	531	8,602	\$227,483,505	\$508.57
Leisure & Hospitality	410	7,049	\$70,251,328	\$191.66
Other Services	346	1,444	\$29,145,845	\$388.16
Local Government	134	8,609	\$249,547,250	\$557.44
State Government	72	3,991	\$119,738,678	\$576.96
*Note: Pulaski County is not included in the Central Workforce Information. Please refer to Page 50 for information on Pulaski County.				
Central Workforce Includes these counties: Faulkner, Lonoke Monroe, Prairie, and Saline.				
EASTERN WORKFORCE INFORMATION	3,052	38,574	\$963,946,450	\$480.57
Natural Resources & Mining	223	1,475	\$32,691,333	\$426.22
Construction	195	1,211	\$31,801,566	\$505.01
Manufacturing	115	4,635	\$146,127,966	\$606.29
Trade, Transportation & Utilities	876	10,298	\$269,759,427	\$503.76
Information	44	319	\$9,442,485	\$569.24
Financial Activities	260	1,506	\$42,304,686	\$540.21
Professional & Business Services	267	1,460	\$35,472,038	\$467.23
Education & Health Services	392	5,118	\$125,432,955	\$471.31
Leisure & Hospitality	226	3,439	\$35,628,422	\$199.23
Other Services	246	978	\$18,737,719	\$368.45
Local Government	138	5,938	\$158,491,206	\$513.29
State Government	70	2,197	\$58,056,647	\$508.18
Eastern Workforce Includes these counties: Crittenden, Cross, Lee, Phillips, and Saint Francis.				

NORTH AMERICAN INDUSTRY CLASSIFICATION SYSTEM INDUSTRY GROUP	AVERAGE EMPLOYING UNITS	AVERAGE COVERED EMPLOYMENT	TOTAL EARNINGS	AVERAGE WEEKLY EARNINGS
NORTH CENTRAL WORKFORCE INFORMATION	5,214	69,321	\$1,698,972,852	\$471.32
Natural Resources & Mining	146	932	\$23,874,996	\$492.63
Construction	474	2,541	\$65,316,883	\$494.33
Manufacturing	305	14,499	\$439,654,204	\$583.14
Trade, Transportation & Utilities	1,581	15,531	\$369,376,500	\$457.37
Information	74	704	\$20,614,417	\$563.11
Financial Activities	487	2,545	\$66,088,650	\$499.39
Professional & Business Services	439	3,062	\$63,927,370	\$401.49
Education & Health Services	565	11,010	\$301,487,927	\$526.60
Leisure & Hospitality	434	5,737	\$53,189,180	\$178.29
Other Services	364	1,501	\$29,199,637	\$374.10
Local Government	227	8,569	\$196,054,204	\$439.99
State Government	118	2,690	\$70,188,884	\$501.78
North Central Workforce Includes these counties: Cleburne, Fulton, Independence, Izard, Jackson, Sharp, Stone, Van Buren, White, and Woodruff				
NORTHEAST WORKFORCE INFORMATION	6,183	92,635	\$2,492,518,668	\$517.44
Natural Resources & Mining	357	2,155	\$51,381,308	\$458.52
Construction	472	3,103	\$81,965,874	\$507.98
Manufacturing	365	22,678	\$783,952,966	\$664.79
Trade, Transportation & Utilities	1,767	17,390	\$399,810,472	\$442.13
Information	87	2,245	\$65,472,119	\$560.84
Financial Activities	574	3,441	\$103,503,557	\$578.45
Professional & Business Services	577	6,056	\$144,277,663	\$458.15
Education & Health Services	772	11,986	\$364,311,985	\$584.52
Leisure & Hospitality	445	7,053	\$67,464,378	\$183.95
Other Services	436	1,816	\$35,750,993	\$378.59
Local Government	221	10,818	\$273,698,543	\$486.54
State Government	110	3,894	\$120,928,810	\$597.21
Northeast Workforce Includes these counties: Clay, Craighead, Greene, Lawrence, Mississippi, Poinsett, and Randolph.				

NORTH AMERICAN INDUSTRY CLASSIFICATION SYSTEM INDUSTRY GROUP	AVERAGE EMPLOYING UNITS	AVERAGE COVERED EMPLOYMENT	TOTAL EARNINGS	AVERAGE WEEKLY EARNINGS
NORTHWEST WORKFORCE INFORMATION	13,124	214,852	\$6,851,742,104	\$613.28
Natural Resources & Mining	127	1,661	\$55,280,678	\$640.03
Construction	1,530	10,257	\$316,318,193	\$593.06
Manufacturing	717	40,852	\$1,234,724,691	\$581.24
Trade, Transportation & Utilities	3,436	50,714	\$1,535,643,825	\$582.32
Information	228	3,294	\$113,038,650	\$659.93
Financial Activities	1,377	8,708	\$306,212,069	\$676.24
Professional & Business Services	1,862	29,551	\$1,507,468,619	\$981.01
Education & Health Services	1,277	21,461	\$689,707,500	\$618.03
Leisure & Hospitality	1,267	19,194	\$219,898,024	\$220.32
Other Services	891	4,401	\$98,392,606	\$429.94
Local Government	292	17,898	\$521,733,363	\$560.58
State Government	120	6,861	\$253,323,886	\$710.04
Northwest Workforce Includes these counties: Baxter, Benton, Boone, Carroll, Madison, Marion, Newton, Searcy, and Washington.				
SOUTHEAST WORKFORCE INFORMATION		78,368	\$2,168,252,869	\$532.07
Natural Resources & Mining	433	3,258	\$87,464,937	\$516.27
Construction	370	2,941	\$80,835,910	\$528.57
Manufacturing	242	18,443	\$662,960,670	\$691.28
Trade, Transportation & Utilities	1,483	14,290	\$343,267,431	\$461.95
Information	68	569	\$16,851,842	\$569.55
Financial Activities	413	2,950	\$89,832,457	\$585.61
Professional & Business Services	435	4,079	\$140,003,048	\$660.06
Education & Health Services	589	9,936	\$252,076,167	\$487.88
Leisure & Hospitality	384	4,879	\$45,129,189	\$177.88
Other Services	396	1,568	\$30,230,412	\$370.76
Local Government	213	9,663	\$248,876,924	\$495.30
State Government	150	5,792	\$170,723,882	\$566.84
Southeast Workforce Includes these counties: Arkansas, Ashley, Bradley, Chicot, Cleveland, Desha, Drew, Grant, Jefferson, and Lincoln				

NORTH AMERICAN INDUSTRY CLASSIFICATION SYSTEM INDUSTRY GROUP	AVERAGE EMPLOYING UNITS	AVERAGE COVERED EMPLOYMENT	TOTAL EARNINGS	AVERAGE WEEKLY EARNINGS
SOUTHWEST WORKFORCE INFORMATION		87,171	\$2,433,809,064	\$536.92
Natural Resources & Mining	413	2,899	\$87,208,152	\$578.50
Construction	433	3,754	\$117,392,076	\$601.37
Manufacturing	302	27,337	\$983,660,461	\$691.98
Trade, Transportation & Utilities	1,607	15,314	\$369,816,322	\$464.40
Information	87	735	\$23,191,773	\$606.80
Financial Activities	531	3,072	\$87,629,174	\$548.56
Professional & Business Services	472	4,266	\$120,573,746	\$543.54
Education & Health Services	539	8,783	\$205,933,958	\$450.90
Leisure & Hospitality	406	5,342	\$52,913,882	\$190.49
Other Services	5,674	2,278	\$39,252,759	\$331.37
Local Government	268	10,130	\$252,692,136	\$479.71
State Government	151	3,261	\$93,544,625	\$551.65
Southwest Workforce Includes these counties: Calhoun, Columbia, Dallas, Hempstead, Howard, Lafayette, Little River, Miller, Nevada, Ouachita, Sevier, and Union				
WEST CENTRAL WORKFORCE INFORMATION	7,650	104,421	\$2,672,000,854	\$492.09
Natural Resources & Mining	262	2,341	\$63,859,584	\$524.59
Construction	860	5,110	\$143,836,971	\$541.31
Manufacturing	427	20,256	\$595,052,844	\$564.94
Trade, Transportation & Utilities	1,977	21,060	\$549,423,281	\$501.70
Information	107	1,064	\$33,151,308	\$599.18
Financial Activities	780	3,853	\$113,421,041	\$566.10
Professional & Business Services	833	6,628	\$162,627,653	\$471.85
Education & Health Services	773	14,584	\$417,187,713	\$550.11
Leisure & Hospitality	721	11,743	\$132,193,620	\$216.49
Other Services	546	2,399	\$46,619,483	\$373.71
Local Government	232	11,079	\$291,032,683	\$505.17
State Government	132	4,304	\$123,594,673	\$552.24
West Central Workforce Includes these counties: Clark, Conway, Garland, Hot Spring, Johnson, Montgomery, Perry, Pike, Pope, and Yell				

NORTH AMERICAN INDUSTRY CLASSIFICATION SYSTEM INDUSTRY GROUP	AVERAGE EMPLOYING UNITS	AVERAGE COVERED EMPLOYMENT	TOTAL EARNINGS	AVERAGE WEEKLY EARNINGS
WESTERN WORKFORCE INFORMATION	6,077	107,734	\$3,040,407,168	\$542.72
Natural Resources & Mining	149	2,136	\$77,923,652	\$701.56
Construction	577	4,521	\$132,292,960	\$562.73
Manufacturing	411	30,168	\$970,548,695	\$618.68
Trade, Transportation & Utilities	1,642	21,734	\$548,784,360	\$485.58
Information	95	1,629	\$61,220,706	\$722.73
Financial Activities	611	3,628	\$117,552,887	\$623.11
Professional & Business Services	747	10,141	\$267,757,871	\$507.76
Education & Health Services	656	13,003	\$423,658,076	\$626.57
Leisure & Hospitality	487	7,632	\$80,878,350	\$203.79
Other Services	465	2,157	\$47,306,216	\$421.76
Local Government	154	8,619	\$247,639,420	\$552.53
State Government	83	2,366	\$64,843,975	\$527.05
Western Workforce Includes these counties: Crawford, Franklin, Logan, Polk, Scott, and Sebastian				