

Arkansas Covered Employment & Earnings



Fourth Quarter
2004

**COVERED EMPLOYMENT AND EARNINGS
STATE OF ARKANSAS
FOURTH QUARTER 2004**

**MIKE HUCKABEE, GOVERNOR
STATE OF ARKANSAS**

**ARTEE WILLIAMS, DIRECTOR
ARKANSAS EMPLOYMENT SECURITY DEPARTMENT**

**PUBLISHED BY
BUREAU OF LABOR STATISTICS PROGRAMS
ARKANSAS EMPLOYMENT SECURITY DEPARTMENT
POST OFFICE BOX 2981
LITTLE ROCK, ARKANSAS 72203-2981
BERNADETTE COLEMAN, BLS PROGRAMS MANAGER
TELEPHONE: (501) 682-3159**

STATE OF ARKANSAS HOME PAGE: <http://www.arkansas.gov>

ARKANSAS EMPLOYMENT SECURITY DEPARTMENT HOME PAGE: <http://www.arkansas.gov/esd/>

**INTERNET SITE FOR LABOR MARKET INFORMATION:
<http://www.discoverarkansas.net>**

RELEASED: JUNE 2005

TABLE OF CONTENTS

Description of Data	Page 1
Industry Classification	Page 1
Definition of Covered Employment and Earnings	Page 2
Federal Government Employment	Page 2
County Classification	Page 2
Significant Developments During Fourth Quarter 2004	Page 3

LIST OF GRAPHS AND TABLES

Graph 1	Total Covered Employment for Selected Years, Arkansas	Page 7
Graph 2	Total Covered Earnings, by Calendar Quarter for Selected Years, Arkansas	Page 8
Table 1	Quarterly Comparison of Covered Employment and Wages, by Industry	Page 5
Table 2	Total Covered Employment in Arkansas, 1997-2004	Page 6
Table 3	Total Covered Earnings, 1997-2004	Page 9
Table 4	Total Taxable Earnings, 1997-2004	Page 10
Table 5	State Summary - Employment and Total Earnings, by Industry, Fourth Quarter 2004	Page 11
Table 6	County Summary - Employment and Total Earnings, by Industry, Fourth Quarter 2004	Page 22
Table 7	Federal Government Employment and Total Earnings in Arkansas, Fourth Quarter 2004	Page 60
Table 8	Workforce Information Area – Employment and Total Earnings, by Industry, Fourth Quarter 2004	Page 61

EMPLOYMENT AND EARNINGS
UNDER THE ARKANSAS EMPLOYMENT SECURITY LAW
FOURTH QUARTER 2004

DESCRIPTION OF DATA

This publication contains covered employment and payroll data by industry and county for the Fourth Quarter 2004. These data are compiled from quarterly contribution and wage reports submitted by employers subject to the Arkansas Employment Security Law. An employing unit is a single physical location where business is conducted, production takes place, or services are provided. Employment data have been tabulated for each month of the quarter by industry under the **North American Industry Classification System** (NAICS) (see "Industry Classification" below) on a statewide, county and workforce area basis. Payroll data represent the total wages paid during the quarter, and are also shown by

industry for the State and by publishable industry groups for each county and workforce area. The tabulation of this data is a joint effort in conjunction with the U.S. Bureau of Labor Statistics. In addition, there are tables included which set out total covered employment by months, quarterly payrolls, and average weekly earnings for the years 1997 through 2004. Data contained in this publication are subject to revision. These revisions will be reflected in the 2004 Annual Covered Employment and Earnings publication. Because of industry code changes between years, substantial employment and wage shifts among industries are anticipated.

INDUSTRY CLASSIFICATION

Previously published industry data **will not** be comparable in all instances with currently published data since industry codes have been revised according to the following Manuals: (a) between January 1, 1958 and December 31, 1967, industry codes were assigned under the 1957 Standard Industrial Classification (SIC) Manual; (b) between January 1, 1968 and December 31, 1974, industry codes were assigned under the 1967 Standard Industrial Classification (SIC) Manual; (c) between January 1, 1975 and December 31, 1987, industry codes were assigned under the 1972 Standard Industrial Classification (SIC) Manual; (d) between January 1, 1988 and December 31, 2000, industry codes were assigned under the 1987 Standard Industrial Classification (SIC) Manual; and (e) since January 1, 2001, industry codes have been assigned under the 2002 North American Industry Classification System (NAICS) Manual. **The NAICS Manual represents a significant change in coding methodology as compared to the**

SIC Manual. One of the most significant changes involves how NAICS treats auxiliary units. Auxiliary units are establishments primarily engaged in performing management or support services for other establishments of the same enterprise. The SIC code for these units was based on the activity of the enterprise served. The NAICS code is based on the actual activities that the establishment performs. Comparisons of many industries **should not be made** between this publication and previous Covered Employment and Earnings publications that were based on SIC. Even though some titles are the same or similar, in nature, NAICS and SIC could differ in the classification of employers. The implementation of NAICS represents a profound change for statistical programs, and will create significant benefits along with transition obstacles for both data collectors and data users. A summary is available on the NAICS home page at <http://www.census.gov/naics>.

DEFINITION OF COVERED EMPLOYMENT AND EARNINGS

Covered Employment is the number of workers employed by employers subject to the Arkansas Employment Security Law who worked or received pay for the payroll period including the 12th of the month. An employer is subject to the law when they employ one or more employees in each of ten days during the current or preceding calendar year.

Currently excluded from coverage is employment covered by the Railroad Unemployment Insurance Act, some domestic service workers, employees of small agricultural establishments, self-employed and unpaid family workers, insurance and real estate

agents who are on commission only, and employees of churches and religious organizations except separately incorporated schools. The payroll information in this publication includes all wages and salaries paid to any covered employees by their employers including bonuses, commissions, and cash values of remuneration received in any medium other than cash. These wages include both taxable and nontaxable wages. Only the first \$10,000 paid to each worker by an employer in the calendar year is taxable under the Arkansas Employment Security Law.

FEDERAL GOVERNMENT EMPLOYMENT

Table 7 on page 60 lists the total number of civilians employed by the Federal Government in Arkansas during the Fourth Quarter 2004. Employment and wage data are set out by industry divisions. These data are obtained from required reports submitted by various

government agencies having employment in the State. Civilian Federal workers are covered by the Unemployment Compensation for Federal Employees (UCFE) program.

COUNTY CLASSIFICATION

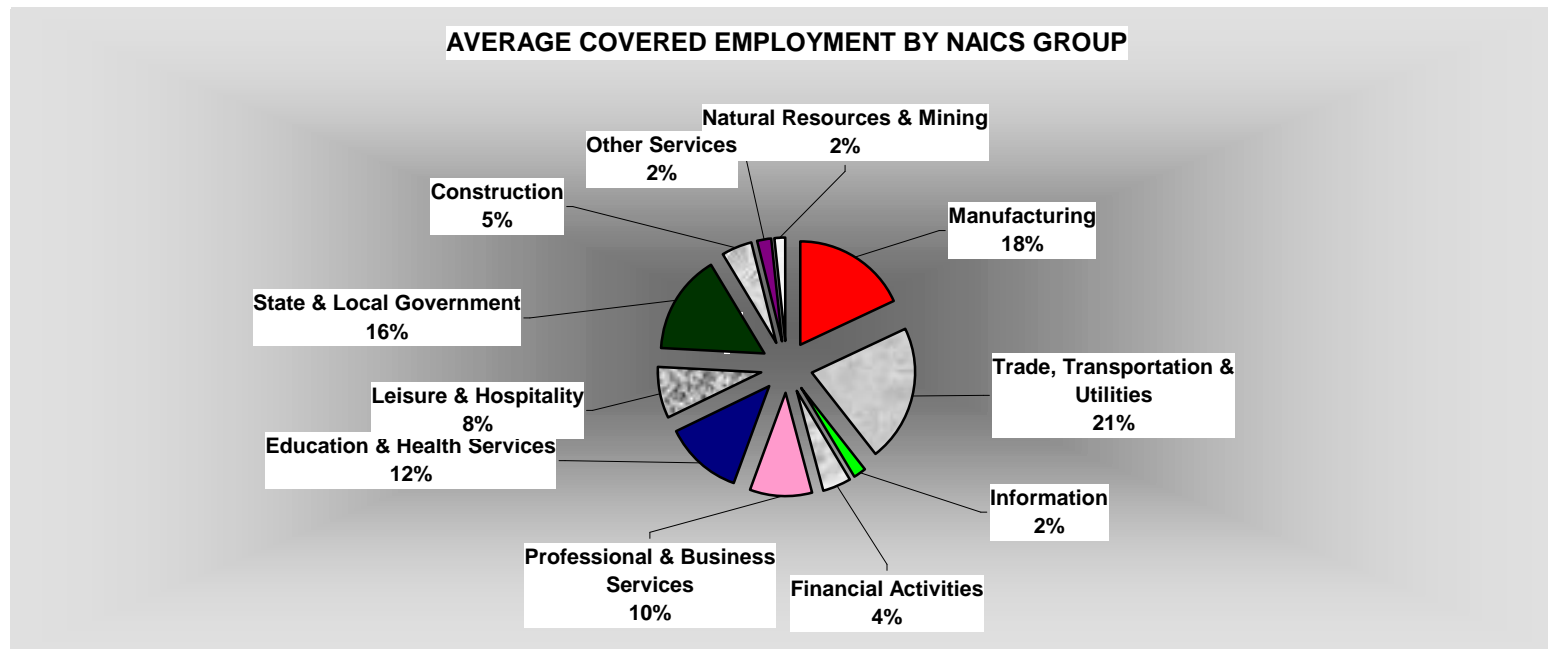
Employment and payroll data by county are classified according to the county where the workers are employed. Employers with operations in more than one county are requested to furnish this agency with a breakdown of employment and wages for at least one quarter of each year by the counties in which they operate. Many such employers submit county data with each regular contribution report. **Note:** This information is invaluable in the preparation of monthly employment and payroll data by county.

Employment and payroll data for multi - area employers who do not furnish county data each quarter of the year, are prorated by county on the basis of one quarter's information. The "rest-of-state" table that appears on page 59 of this publication includes data on firms that **did not** provide a county breakdown of employment and payrolls. It also includes sales, and all other type of personnel with no permanent place of work, as well as employment of employers with no established place of business in Arkansas.

SIGNIFICANT DEVELOPMENTS DURING FOURTH QUARTER 2004

AVERAGE EMPLOYMENT CHANGES

Covered employment averaged 1,125,983 during the Fourth Quarter 2004 (see table 1), an increase of 27,871 (+2.5%) from the previous quarter and, 14,132 (1.3%) above the average recorded one-year ago. This *over-the-year* increase is more significant when used as an economic indicator. This *over-the-year* comparison allows for the disregarding of many seasonal factors that are evident when making an *over-the-quarter* comparison.



EMPLOYMENT CHANGES FROM THIRD QUARTER 2004

Over the quarter gains were recorded in five industry groups (see table 1). State & Local Government recorded the largest quarterly gain of 29,574 employees. The increase is due to the educational facilities starting fall semester in local areas. Trade, Transportation, & Utilities increased 2,774 jobs. Retail merchants hiring temporary personnel for the upcoming holiday season was the major factor for the change in employment. Education & Health Services rose 1,734 as private schools increased employment for the on-going fall semester. Other factors for the increase included health care and

social assistance industries. Professional & Business Services (+862) and Financial Activities (+45) both recorded gains.

Losses occurred in six industry groups. Leisure & Hospitality experienced the largest drop of 3,600 employees. This was mainly due to the tourism season ending. Construction dropped 1,863 jobs as many companies have completed contracts over the summer months. Manufacturing (-1,143) continues to decline as companies downsize.

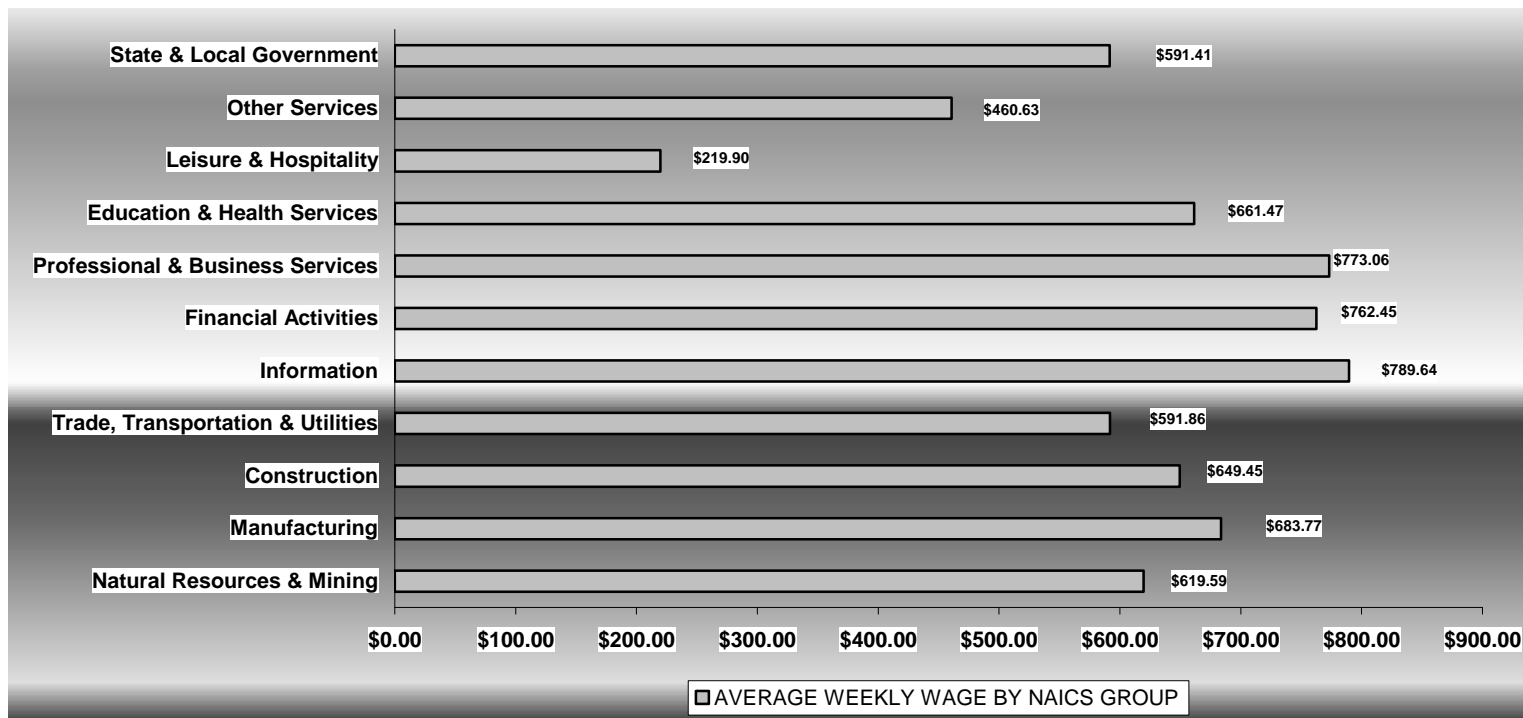
EMPLOYMENT CHANGES FROM FOURTH QUARTER 2003

Over-the-year gains were recorded in eight industry groups while three recorded losses (see table 1). Significant gains were posted in Professional & Business Services (4,040), Leisure & Hospitality (3,731) and Education & Health Services (3,241). Losses occurred in Manufacturing (-1,028), Information (-291) and Other Services (-4).

COVERED WAGES

Wages paid to covered workers totaled \$9,016,089,054 for the Fourth Quarter 2004 (see table 1), for an average weekly wage of \$615.95 (see table 5). Employees in Little River County recorded the highest average weekly wage (\$755.07), and workers in Newton County the lowest (\$337.22) (see table 6).

The Information sector recorded the highest average weekly wage for the State of Arkansas at \$789.64, while the Leisure & Hospitality sector recorded the lowest at \$219.90 (see table 5).



Note: Because of industry code changes between years, substantial employment and wage shifts among industries are anticipated.

TABLE 1. QUARTERLY COMPARISON OF COVERED EMPLOYMENT AND WAGES, BY INDUSTRY

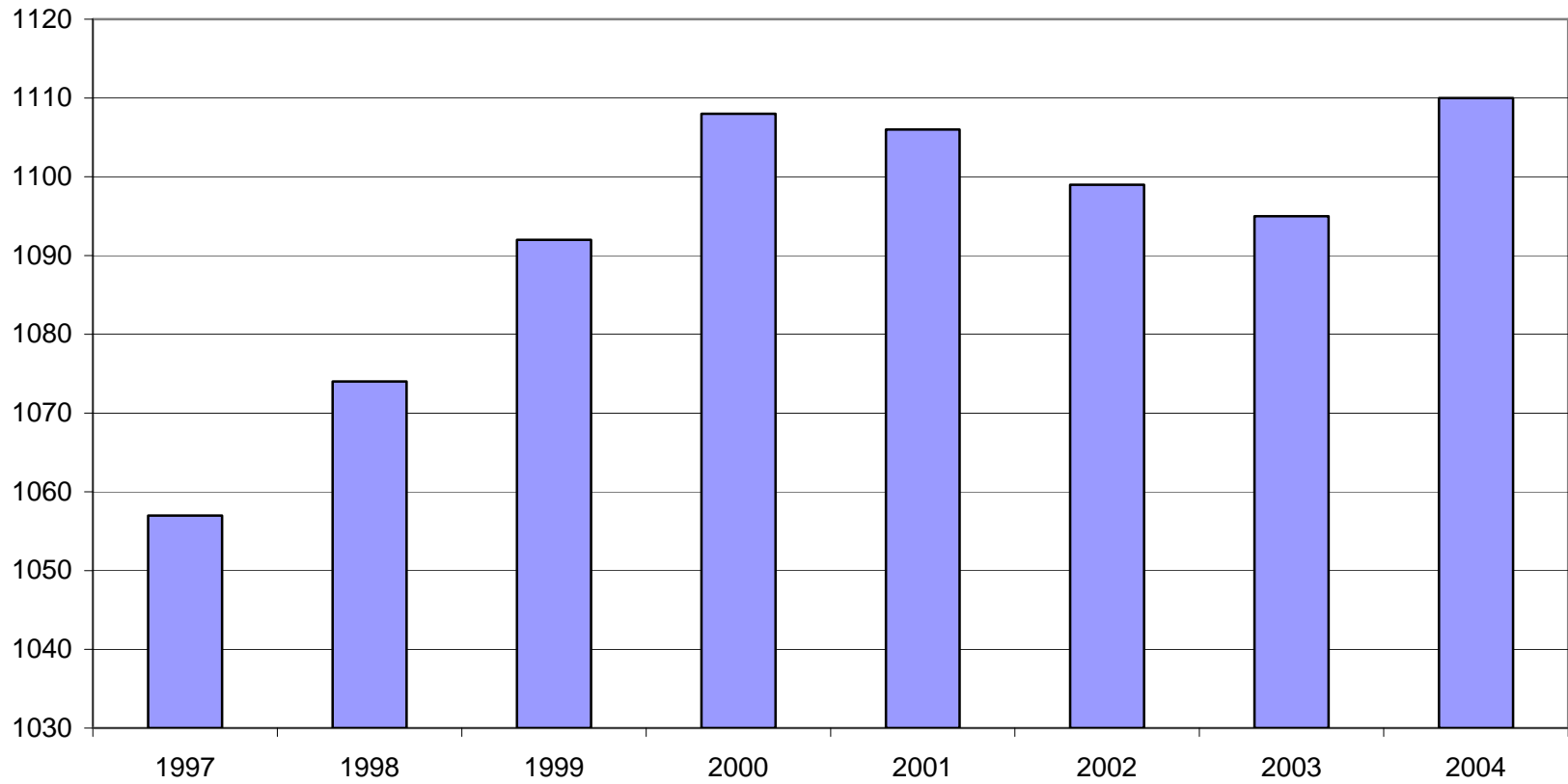
North American Industry Classification System Industry Group	Number of Employing Units	Average Covered Employment Oct. – Dec. 2004	Average Covered Employment Oct. – Dec. 2004 % of Total	Net Change From: Jul. – Sep. 2004	Net Change From: Oct. – Dec. 2003	Total Wages Paid Oct. – Dec. 2004	Total Wages Paid % of Total
Total	76,036	1,125,983	100.0%	27,871	14,132	\$9,016,089,054	100.0%
Natural Resources & Mining	2,386	19,177	1.7%	-9	35	\$154,464,745	1.7%
Agriculture, Forestry, Fishing & Hunting	2,063	15,226	1.4%	75	-154	\$111,016,473	1.2%
Mining	323	3,951	0.4%	-84	189	\$43,448,272	0.5%
Construction	7,484	51,713	4.6%	-1,863	570	\$436,606,622	4.8%
Manufacturing	3,599	203,432	18.1%	-1,143	-1,028	\$1,808,305,282	20.1%
Trade, Transportation & Utilities	20,960	241,528	21.5%	2,774	1,044	\$1,858,343,761	20.6%
Wholesale Trade	6,149	46,309	4.1%	-133	1,608	\$565,622,099	6.3%
Retail Trade	11,527	133,664	11.9%	2,901	812	\$691,722,648	7.7%
Transportation & Warehousing	2,959	55,058	4.9%	66	-1,234	\$502,719,865	5.6%
Utilities	325	6,497	0.6%	-60	-143	\$98,279,149	1.1%
Information	1,214	20,183	1.8%	-2	-291	\$207,184,148	2.3%
Financial Activities	7,564	49,609	4.4%	45	599	\$491,717,947	5.5%
Finance & Insurance	4,480	36,339	3.2%	283	275	\$396,592,320	4.4%
Real Estate & Rental & Leasing	3,084	13,270	1.2%	-238	324	\$95,125,627	1.1%
Professional & Business Services	10,229	110,064	9.8%	862	4,040	\$1,106,122,671	12.3%
Professional & Technical Services	6,393	34,398	3.1%	978	3,609	\$454,877,321	5.0%
Management of Companies & Enterprises	476	22,920	2.0%	72	-1,002	\$387,136,292	4.3%
Administrative & Waste Services	3,360	52,746	4.7%	-188	1,433	\$264,109,058	2.9%
Education & Health Services	8,021	138,626	12.3%	1,734	3,241	\$1,192,054,271	13.2%
Educational Services	517	8,373	0.7%	608	68	\$53,892,918	0.6%
Health Care & Social Assistance	7,504	130,254	11.6%	1,127	3,174	\$1,138,161,353	12.6%
Leisure & Hospitality	5,875	90,589	8.0%	-3,600	3,731	\$258,972,294	2.9%
Arts, Entertainment & Recreation	897	8,311	0.7%	-1,975	202	\$31,901,684	0.4%
Accommodation & Food Services	4,978	82,278	7.3%	-1,625	3,529	\$227,070,610	2.5%
Other Services	5,526	25,597	2.3%	-503	-4	\$153,280,376	1.7%
State & Local Government	3,178	175,465	15.6%	29,574	2,193	\$1,349,036,937	15.0%
Local Government	1,977	115,320	10.2%	27,280	1,495	\$804,795,658	8.9%
State Government	1,201	60,145	5.3%	2,295	698	\$544,241,279	6.0%
Nonclassifiable Establishments	0	0	0.0%	0	0	\$0	0.0%

Note: Items do not necessarily add to totals because of rounding. Because of industry code changes between years, substantial employment and wage shifts among industries are anticipated.

TABLE 2. TOTAL COVERED EMPLOYMENT IN ARKANSAS

Period	1997	1998	1999	2000	2001	2002	2003	2004
Average	1,057,350	1,073,732	1,092,351	1,108,490	1,106,053	1,098,558	1,094,904	1,109,561
January	1,025,949	1,050,970	1,065,920	1,089,956	1,096,009	1,081,635	1,082,740	1,091,643
February	1,034,361	1,057,593	1,074,315	1,096,126	1,101,616	1,086,793	1,084,880	1,097,370
March	1,046,551	1,066,099	1,084,653	1,109,157	1,112,143	1,098,500	1,092,172	1,108,001
April	1,057,633	1,074,416	1,093,574	1,111,543	1,115,526	1,103,399	1,095,341	1,110,784
May	1,067,078	1,083,133	1,098,539	1,116,779	1,119,815	1,111,998	1,103,099	1,116,986
June	1,066,728	1,086,125	1,101,748	1,121,245	1,119,734	1,112,028	1,099,688	1,117,663
July	1,028,510	1,046,396	1,062,563	1,075,096	1,071,830	1,065,697	1,056,155	1,073,136
August	1,050,656	1,063,680	1,081,260	1,096,841	1,094,068	1,086,011	1,080,681	1,096,390
September	1,075,759	1,088,772	1,108,212	1,123,735	1,115,996	1,113,148	1,108,905	1,124,811
October	1,079,093	1,089,836	1,110,604	1,122,884	1,110,994	1,108,447	1,112,900	1,123,901
November	1,076,715	1,087,855	1,112,003	1,120,620	1,109,012	1,107,611	1,110,041	1,125,910
December	1,079,166	1,089,913	1,114,823	1,117,892	1,105,887	1,107,425	1,112,243	1,128,139

AVERAGE TOTAL COVERED EMPLOYMENT GRAPH 1
In Thousands



TOTAL COVERED EARNINGS BY CALENDAR QUARTER, GRAPH 2
In Thousands

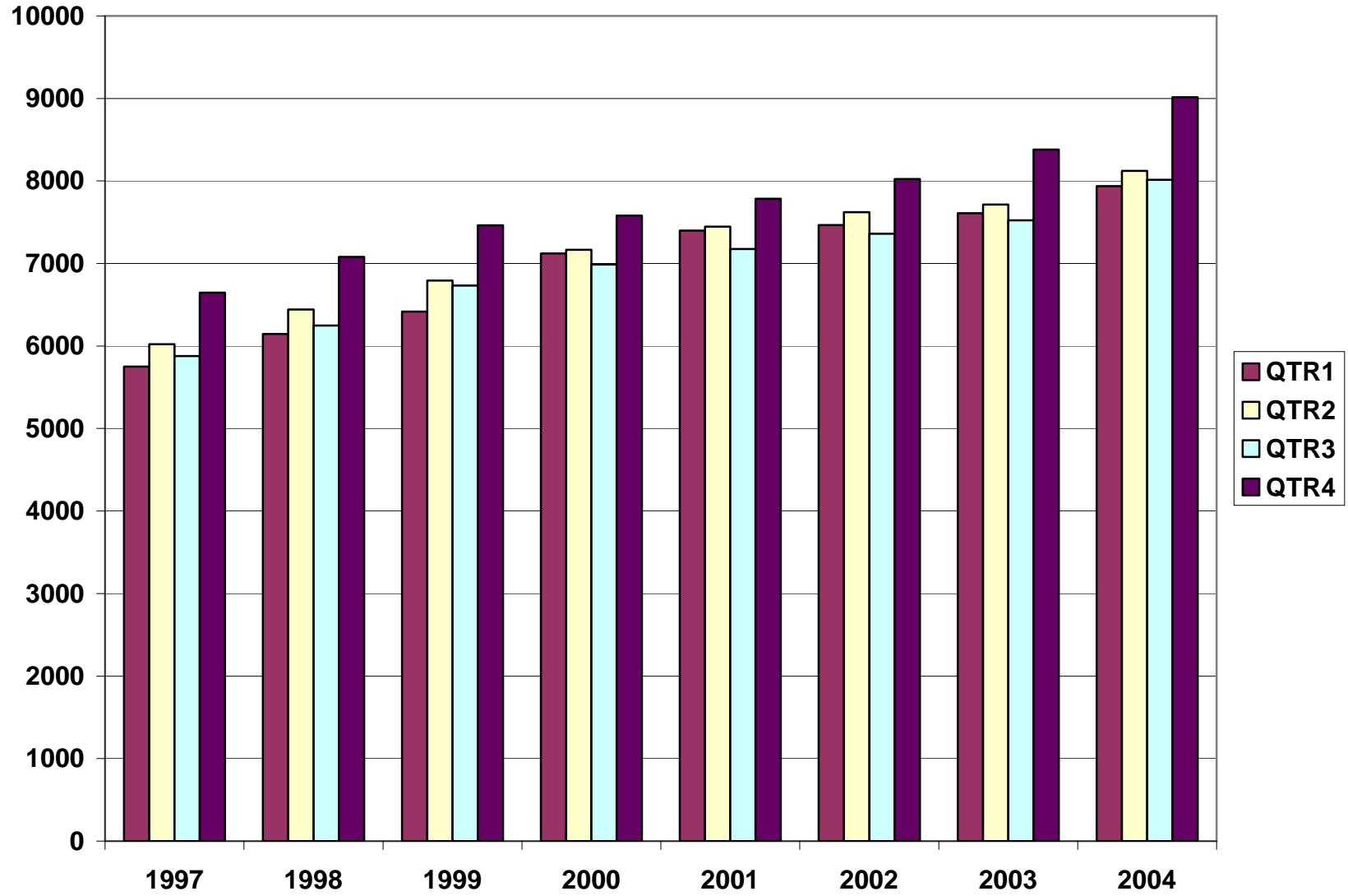


TABLE 3. TOTAL COVERED EARNINGS, 1997 - 2004

Period	1997	1998	1999	2000
Total	\$24,296,555,335	\$25,914,345,060	\$27,407,925,462	\$28,853,825,155
January - March	\$5,751,056,136	\$6,145,178,755	\$6,418,456,638	\$7,122,666,917
April - June	\$6,021,537,518	\$6,441,129,069	\$6,791,960,679	\$7,166,110,114
July - September	\$5,877,681,886	\$6,246,775,598	\$6,733,480,079	\$6,986,103,157
October - December	\$6,646,279,795	\$7,081,261,638	\$7,464,028,066	\$7,578,944,967
Average Weekly Earnings	\$441.90	\$464.13	\$482.51	\$500.57

Period	2001	2002	2003	2004
Total	\$29,807,669,666	\$30,472,854,103	\$31,226,612,657	\$33,087,725,734
January - March	\$7,398,887,532	\$7,465,250,305	\$7,608,130,008	\$7,935,999,703
April - June	\$7,448,023,298	\$7,621,878,775	\$7,714,813,038	\$8,122,682,674
July - September	\$7,177,293,061	\$7,361,666,511	\$7,522,456,991	\$8,012,954,303
October - December	\$7,783,465,775	\$8,024,058,512	\$8,381,212,620	\$9,016,089,054
Average Weekly Earnings	\$518.26	\$533.44	\$548.46	\$573.47

TABLE 4. TOTAL TAXABLE EARNINGS, 1997 - 2004

Period	1997	1998	1999	2000
Total	\$8,262,066,213	\$8,554,973,370	\$8,807,445,422	\$9,048,033,534
January – March	\$3,871,667,342	\$4,063,795,529	\$4,203,067,856	\$4,560,814,012
April – June	\$2,223,918,770	\$2,271,303,325	\$2,325,649,764	\$2,260,741,187
July – September	\$1,208,701,615	\$1,236,054,184	\$1,267,562,743	\$1,250,850,348
October - December	\$957,778,486	\$983,820,332	\$1,011,165,059	\$975,627,987

Period	2001	2002	2003	2004
Total	\$9,003,189,480	\$8,887,270,978	\$9,155,945,780	\$9,754,357,724
January – March	\$4,670,296,360	\$4,668,534,587	\$4,737,918,796	\$4,942,118,249
April – June	\$2,219,485,263	\$2,162,971,435	\$2,270,519,362	\$2,459,193,434
July – September	\$1,190,098,737	\$1,158,197,858	\$1,188,784,400	\$1,321,455,997
October - December	\$923,309,120	\$897,567,098	\$958,723,222	\$1,031,590,044

**TABLE 5. STATEWIDE SUMMARY
EMPLOYMENT AND TOTAL EARNINGS, BY INDUSTRY
FOURTH QUARTER 2004**

NORTH AMERICAN INDUSTRY CLASSIFICATION SYSTEM INDUSTRY GROUPS	NUMBER OF EMPLOYING UNITS	EMPLOYMENT	EMPLOYMENT	EMPLOYMENT	TOTAL EARNINGS OCT. - DEC. 2004	AVERAGE WEEKLY EARNINGS
		OCTOBER	NOVEMBER	DECEMBER		
TOTAL, ALL INDUSTRIES	76,036	1,123,901	1,125,910	1,128,139	\$9,016,089,054	\$615.95
NATURAL RESOURCES AND MINING	2,386	19,810	19,098	18,623	\$154,464,745	\$619.59
AGRICULTURE, FORESTRY, FISHING AND HUNTING	2,063	15,839	15,165	14,674	\$111,016,473	\$560.86
CROP PRODUCTION	737	4,447	4,080	3,779	\$25,521,080	\$478.59
Oilseed and Grain Farming	450	2,311	2,152	2,042	\$13,400,422	\$475.39
Vegetable and Melon Farming	8	91	82	53	\$311,303	\$317.87
Fruit and Tree Nut Farming	9	65	67	74	\$334,607	\$374.84
Greenhouse and Nursery Production	48	303	273	286	\$2,122,531	\$568.23
Other Crop Farming	222	1,677	1,506	1,324	\$9,352,217	\$478.86
ANIMAL PRODUCTION	269	3,826	3,802	3,769	\$32,483,324	\$657.73
Cattle Ranching and Farming	76	398	396	394	\$3,452,548	\$670.66
Poultry and Egg Production	94	2,638	2,639	2,634	\$22,686,309	\$661.78
Animal Aquaculture	68	541	517	483	\$4,319,087	\$646.80
Other	31	249	250	258	\$2,025,380	\$617.43
FORESTRY AND LOGGING	593	3,521	3,437	3,369	\$24,540,534	\$548.39
Timber Tract Operations	45	268	269	271	\$2,283,356	\$652.14
Forest Nurseries & Gathering of Forest Products	6	31	31	31	\$268,123	\$665.32
Logging	542	3,222	3,137	3,067	\$21,989,055	\$538.34
OTHER	464	4,045	3,846	3,757	\$28,471,535	\$564.08
MINING	323	3,971	3,933	3,949	\$43,448,272	\$845.91
OIL AND GAS EXTRACTION	74	367	367	376	\$5,231,877	\$1,087.71
MINING (EXCEPT OIL AND GAS)	109	1,989	1,977	1,980	\$20,092,484	\$779.81
SUPPORT ACTIVITIES FOR MINING	140	1,615	1,589	1,593	\$18,123,911	\$871.89
CONSTRUCTION	7,484	52,191	51,688	51,261	\$436,606,622	\$649.45
CONSTRUCTION OF BUILDINGS	2,019	11,960	11,936	12,040	\$120,869,430	\$776.18
Residential Building Construction	1,411	4,221	4,172	4,304	\$34,593,789	\$628.75
Nonresidential Building Construction	608	7,739	7,764	7,736	\$86,275,641	\$856.74
HEAVY AND CIVIL ENGINEERING CONSTRUCTION	895	9,953	9,557	9,178	\$81,779,086	\$657.84

NORTH AMERICAN INDUSTRY CLASSIFICATION SYSTEM INDUSTRY GROUPS	NUMBER OF EMPLOYING UNITS	EMPLOYMENT	EMPLOYMENT	EMPLOYMENT	TOTAL EARNINGS OCT. - DEC. 2004	AVERAGE WEEKLY EARNINGS
		OCTOBER	NOVEMBER	DECEMBER		
Utility System Construction	426	4,645	4,567	4,474	\$38,961,714	\$656.96
Land Subdivision	120	391	400	420	\$4,250,297	\$809.94
Highway, Street and Bridge Construction	244	3,997	3,836	3,657	\$32,236,491	\$647.45
Other Heavy Construction	105	920	754	627	\$6,330,584	\$634.90
SPECIALTY TRADE CONTRACTORS	4,570	30,278	30,195	30,043	\$233,958,106	\$596.47
Building Foundation and Exterior Contractors	916	5,945	5,792	5,674	\$39,121,620	\$518.53
Building Equipment Contractors	1,991	14,341	14,450	14,594	\$127,717,545	\$679.34
Building Finishing Contractors	846	4,932	5,016	4,965	\$33,694,422	\$521.40
Other Specialty Trade Contractors	817	5,060	4,937	4,810	\$33,424,519	\$520.93
MANUFACTURING	3,599	203,728	203,404	203,164	\$1,808,305,282	\$683.77
FOOD MANUFACTURING	294	52,130	52,103	51,948	\$377,122,870	\$557.23
Animal Food Manufacturing	49	1,394	1,401	1,407	\$25,167,701	\$1,382.18
Grain and Oilseed Milling	31	2,545	2,439	2,432	\$22,131,205	\$688.67
Fruit, Vegetable and Specialty Food	39	6,565	6,579	6,697	\$59,255,804	\$689.20
Dairy Product Manufacturing	10	722	715	711	\$6,285,065	\$675.23
Animal Slaughtering and Processing	86	35,609	35,632	35,372	\$221,047,249	\$478.47
Bakeries and Tortilla Manufacturing	52	3,402	3,388	3,372	\$26,967,238	\$612.40
Other Food Manufacturing	19	1,768	1,815	1,821	\$15,633,465	\$667.60
Other	8	125	134	136	\$635,143	\$371.07
BEVERAGE AND TOBACCO PRODUCT MFG.	37	1,245	1,240	1,235	\$12,428,372	\$770.99
TEXTILE MILLS	14	367	369	367	\$3,926,159	\$821.43
Fabric Mills	4	296	299	301	\$3,514,473	\$905.17
Textile and Fabric Finishing Mills	10	71	70	66	\$411,686	\$458.96
TEXTILE PRODUCT MILLS	59	1,549	1,552	1,555	\$14,575,103	\$722.40
APPAREL MANUFACTURING	37	2,108	2,124	2,135	\$12,058,363	\$437.05
Cut and Sew Apparel Manufacturing	30	893	887	875	\$4,747,721	\$412.67
Other	7	1,215	1,237	1,260	\$7,310,642	\$454.49
LEATHER AND ALLIED PRODUCT MANUFACTURING	21	2,559	2,561	2,589	\$14,920,991	\$446.66
Footwear Manufacturing	10	2,358	2,364	2,395	\$13,300,603	\$431.27
Other Leather Product Manufacturing	11	201	197	194	\$1,620,388	\$631.65
WOOD PRODUCT MANUFACTURING	399	13,834	13,708	13,670	\$112,451,049	\$629.68
Sawmills and Wood Preservation	185	6,172	6,070	6,081	\$52,142,010	\$656.70
Veneer and Engineered Wood Products	48	3,337	3,285	3,284	\$30,700,484	\$715.20

NORTH AMERICAN INDUSTRY CLASSIFICATION SYSTEM INDUSTRY GROUPS	NUMBER OF EMPLOYING UNITS	EMPLOYMENT	EMPLOYMENT	EMPLOYMENT	TOTAL EARNINGS	AVERAGE WEEKLY EARNINGS
		OCTOBER	NOVEMBER	DECEMBER	OCT. - DEC. 2004	
Other Wood Product Manufacturing	166	4,325	4,353	4,305	\$29,608,555	\$526.28
PAPER MANUFACTURING	89	12,212	12,172	12,156	\$153,961,503	\$972.35
Pulp, Paper and Paperboard Mills	12	4,756	4,714	4,693	\$77,612,692	\$1,264.61
Converted Paper Product Manufacturing	77	7,456	7,458	7,463	\$76,348,811	\$787.37
PRINTING AND RELATED SUPPORT ACTIVITIES	309	4,822	4,823	4,816	\$44,729,150	\$713.79
PETROLEUM AND COAL PRODUCTS MANUFACTURING	21	928	935	936	\$12,864,679	\$1,060.65
CHEMICAL MANUFACTURING	121	5,137	5,140	5,177	\$68,366,476	\$1,020.89
Basic Chemical Manufacturing	25	1,631	1,643	1,651	\$23,449,871	\$1,098.78
Resin, Rubber and Artificial Fibers	8	292	289	298	\$3,847,713	\$1,010.16
Agricultural Chemical Manufacturing	24	411	414	426	\$5,507,912	\$1,016.03
Pharmaceutical and Medicine Manufacturing	13	136	134	136	\$1,126,723	\$640.43
Paint, Coating and Adhesive Manufacturing	7	211	209	207	\$2,628,543	\$967.44
Cleaning Compound and Toiletry Manufacturing	19	1,073	1,069	1,066	\$14,493,502	\$1,042.60
Other Chemical Preparation Manufacturing	25	1,383	1,382	1,393	\$17,312,212	\$960.83
PLASTICS AND RUBBER PRODUCTS MANUFACTURING	182	13,055	13,069	13,129	\$128,656,422	\$756.37
Plastics Product Manufacturing	138	7,614	7,611	7,564	\$61,026,804	\$617.98
Rubber Product Manufacturing	44	5,441	5,458	5,565	\$67,629,618	\$947.94
NONMETALLIC MINERAL PRODUCT MANUFACTURING	257	4,437	4,406	4,452	\$40,270,826	\$699.00
Clay Product and Refractory Manufacturing	19	544	529	523	\$4,932,213	\$713.16
Glass and Glass Product Manufacturing	14	432	420	412	\$3,751,674	\$684.95
Cement and Concrete Product Manufacturing	189	2,561	2,561	2,611	\$22,327,451	\$666.30
Lime and Gypsum Product Manufacturing	3	397	389	394	\$4,686,257	\$916.48
Other Nonmetallic Mineral Products	32	503	507	512	\$4,573,231	\$693.40
PRIMARY METAL MANUFACTURING	66	7,945	7,947	7,975	\$99,424,619	\$961.33
Iron and Steel Mills and Ferroalloys	7	2,058	2,065	2,073	\$42,537,112	\$1,584.29
Purchased Steel Product Manufacturing	13	2,167	2,137	2,110	\$20,487,180	\$737.11
Alumina and Aluminum Production	20	1,686	1,698	1,740	\$18,161,947	\$817.96
Other Nonferrous Metal Production	10	696	701	701	\$5,735,507	\$630.88
Foundries	16	1,338	1,346	1,351	\$12,502,873	\$715.06
FABRICATED METAL PRODUCT MANUFACTURING	572	17,838	17,878	17,857	\$167,009,182	\$719.40
Forging and Stamping	16	837	841	839	\$6,996,111	\$641.43
Cutlery and Hand Tool Manufacturing	17	1,303	1,299	1,294	\$12,920,557	\$765.31
Architectural and Structural Metals	184	4,974	4,947	4,953	\$47,315,269	\$734.09

NORTH AMERICAN INDUSTRY CLASSIFICATION SYSTEM INDUSTRY GROUPS	NUMBER OF EMPLOYING UNITS	EMPLOYMENT	EMPLOYMENT	EMPLOYMENT	TOTAL EARNINGS	AVERAGE WEEKLY EARNINGS
		OCTOBER	NOVEMBER	DECEMBER	OCT. - DEC. 2004	
Boilers, Tanks and Shipping Containers	19	1,104	1,103	1,103	\$10,320,680	\$719.55
Hardware Manufacturing	11	437	438	439	\$3,201,895	\$562.33
Spring and Wire Product Manufacturing	17	908	915	909	\$6,715,494	\$567.25
Machine Shops and Threaded Products	201	1,634	1,645	1,652	\$14,664,045	\$686.27
Coating, Engraving and Heat Treating Metals	36	988	980	987	\$8,046,461	\$628.38
Other Fabricated Metal Product Manufacturing	71	5,653	5,710	5,681	\$56,828,670	\$769.44
MACHINERY MANUFACTURING	253	13,728	13,712	13,769	\$120,063,248	\$672.35
Agricultural, Construction and Mining Machinery	37	2,754	2,790	2,840	\$18,860,870	\$519.14
Commercial and Service Industry Machinery	25	1,050	1,052	1,046	\$10,917,642	\$800.34
HVAC and Commercial Refrigeration Equipment	26	4,370	4,324	4,337	\$38,021,454	\$673.33
Metalworking Machinery Manufacturing	80	1,489	1,497	1,503	\$14,634,022	\$752.30
Other General Purpose Machinery Manufacturing	54	3,195	3,195	3,198	\$28,554,344	\$687.26
Other	31	870	854	845	\$9,074,916	\$815.19
COMPUTER AND ELECTRONIC PRODUCT MANUFACTURING	70	6,298	6,212	6,142	\$56,403,870	\$697.85
Audio and Video Equipment Manufacturing	10	1,574	1,530	1,526	\$14,112,268	\$703.39
Semiconductors and Electronic Components	24	1,997	2,000	1,997	\$17,774,069	\$684.30
Electronic Instrument Manufacturing	22	1,257	1,257	1,267	\$9,954,643	\$607.57
Other	14	1,470	1,425	1,352	\$14,562,890	\$791.30
ELECTRICAL EQUIPMENT AND APPLIANCES	68	13,157	13,148	12,976	\$120,892,353	\$710.22
Electric Lighting Equipment Manufacturing	14	640	648	646	\$6,117,151	\$729.91
Electrical Equipment Manufacturing	28	5,097	5,087	5,048	\$47,930,361	\$726.16
Other	26	7,420	7,413	7,282	\$66,844,841	\$697.52
TRANSPORTATION EQUIPMENT MANUFACTURING	186	16,382	16,467	16,579	\$143,544,425	\$670.18
Motor Vehicle Body and Trailer Manufacturing	46	3,363	3,405	3,389	\$27,629,270	\$627.74
Motor Vehicle Parts Manufacturing	68	7,121	7,132	7,137	\$55,027,119	\$593.67
Aerospace Product and Parts Manufacturing	32	3,148	3,181	3,190	\$39,359,418	\$954.19
Ship and Boat Building	22	1,656	1,671	1,667	\$11,749,108	\$542.92
Other	18	1,094	1,078	1,196	\$9,779,510	\$670.07
FURNITURE & RELATED PRODUCT MFG.	269	7,717	7,641	7,577	\$57,103,854	\$574.57
Household & Institutional Furniture	221	5,101	5,104	5,111	\$38,142,259	\$574.70
Office Furniture & Fixtures Manufacturing	38	2,465	2,387	2,313	\$18,081,052	\$582.35
Other Furniture Related Product Manufacturing	10	151	150	153	\$880,543	\$447.58
MISCELLANEOUS MANUFACTURING	275	6,280	6,197	6,124	\$47,531,768	\$589.69

NORTH AMERICAN INDUSTRY CLASSIFICATION SYSTEM INDUSTRY GROUPS	NUMBER OF EMPLOYING UNITS	EMPLOYMENT OCTOBER	EMPLOYMENT NOVEMBER	EMPLOYMENT DECEMBER	TOTAL EARNINGS OCT. - DEC. 2004	AVERAGE WEEKLY EARNINGS
Medical Equipment & Supplies Manufacturing	95	2,365	2,362	2,350	\$20,578,043	\$671.02
Other Miscellaneous Manufacturing	180	3,915	3,835	3,774	\$26,953,725	\$539.75
TRADE, TRANSPORTATION AND UTILITIES	20,960	238,889	241,458	244,236	\$1,858,343,761	\$591.86
WHOLESALE TRADE	6,149	46,155	46,167	46,604	\$565,622,099	\$939.55
MERCHANT WHOLESALERS, DURABLE GOODS	2,078	21,317	21,291	21,504	\$245,667,679	\$884.27
Motor Vehicle & Part Merchant Wholesalers	236	2,645	2,653	2,688	\$24,779,884	\$716.06
Furniture & Furnishing Merchant Wholesalers	57	388	383	390	\$4,124,203	\$819.76
Lumber & Supply Merchant Wholesalers	162	1,838	1,809	1,826	\$19,774,498	\$833.79
Commercial Goods Merchant Wholesalers	245	2,302	2,329	2,381	\$33,642,444	\$1,107.19
Metal & Mineral Merchant Wholesalers	53	764	752	753	\$8,179,403	\$831.89
Electric Goods Merchant Wholesalers	169	2,198	2,167	2,183	\$35,332,320	\$1,245.21
Hardware & Plumbing Merchant Wholesalers	231	2,261	2,293	2,286	\$23,771,029	\$801.99
Machinery & Supply Merchant Wholesalers	709	7,197	7,204	7,283	\$77,893,015	\$828.97
Misc. Durable Goods Merchant Wholesalers	216	1,724	1,701	1,714	\$18,170,883	\$815.97
MERCHANT WHOLESALERS, NONDURABLE GOODS	1,288	16,342	16,286	16,400	\$161,406,555	\$759.72
Paper & Paper Product Merchant Wholesalers	79	1,308	1,287	1,297	\$12,965,857	\$768.79
Druggists' Goods Merchant Wholesalers	53	962	981	990	\$9,307,562	\$732.32
Apparel & Piece Goods Merchant Wholesalers	39	440	445	443	\$4,577,222	\$795.39
Grocery Product Merchant Wholesalers	352	5,259	5,248	5,338	\$57,600,051	\$838.90
Farm Product Merchant Wholesalers	81	999	951	940	\$6,304,628	\$503.43
Chemical Merchant Wholesalers	80	429	431	421	\$5,022,269	\$904.75
Petroleum Merchant Wholesalers	157	1,410	1,406	1,410	\$13,252,864	\$723.70
Alcoholic Beverage Merchant Wholesalers	39	1,136	1,140	1,145	\$13,229,982	\$892.45
Misc. Nondurable Goods Merchant Wholesalers	408	4,399	4,397	4,416	\$39,146,120	\$683.75
ELECTRONIC MARKETS & AGENTS & BROKERS	2,783	8,496	8,590	8,700	\$158,547,865	\$1,418.91
RETAIL TRADE	11,527	131,206	134,056	135,731	\$691,722,648	\$398.08
MOTOR VEHICLE & PARTS DEALERS	1,744	17,709	17,578	17,512	\$151,834,764	\$663.63
Automobile Dealers	742	10,783	10,712	10,698	\$106,539,057	\$763.70
Other Motor Vehicle Dealers	196	1,357	1,310	1,306	\$10,867,760	\$631.25
Automotive Parts, Accessories & Tire Stores	806	5,569	5,556	5,508	\$34,427,947	\$477.66
FURNITURE & HOME FURNISHINGS STORES	631	4,114	4,249	4,269	\$27,307,994	\$498.88
Furniture Stores	322	2,478	2,526	2,523	\$16,637,960	\$510.10
Home Furnishings Stores	309	1,636	1,723	1,746	\$10,670,034	\$482.33

NORTH AMERICAN INDUSTRY CLASSIFICATION SYSTEM INDUSTRY GROUPS	NUMBER OF EMPLOYING UNITS	EMPLOYMENT	EMPLOYMENT	EMPLOYMENT	TOTAL EARNINGS	AVERAGE WEEKLY EARNINGS
		OCTOBER	NOVEMBER	DECEMBER	OCT. - DEC. 2004	
ELECTRONICS & APPLIANCE STORES	511	3,118	3,258	3,332	\$19,918,120	\$473.47
BUILDING MATERIAL & GARDEN SUPPLY STORES	804	10,062	9,963	9,962	\$65,318,604	\$502.67
Building Material & Supplies Dealers	625	9,204	9,140	9,153	\$60,220,463	\$505.40
Lawn & Garden Equipment & Supplies Stores	179	858	823	809	\$5,098,141	\$472.49
FOOD & BEVERAGE STORES	1,180	19,563	19,621	19,696	\$77,958,597	\$305.54
Grocery Stores	704	17,157	17,210	17,213	\$66,504,134	\$297.54
Specialty Food Stores	167	921	937	982	\$5,196,496	\$422.25
Beer, Wine & Liquor Stores	309	1,485	1,474	1,501	\$6,257,967	\$323.80
HEALTH & PERSONAL CARE STORES	777	6,217	6,231	6,279	\$44,060,691	\$542.95
GASOLINE STATIONS	1,694	13,022	13,047	13,077	\$44,885,180	\$264.60
Gasoline Stations with Convenience Stores	1,504	11,663	11,687	11,684	\$38,647,824	\$254.57
Other Gasoline Stations	190	1,359	1,360	1,393	\$6,237,356	\$350.05
CLOTHING & CLOTHING ACCESSORIES STORES	1,088	8,237	8,911	9,356	\$31,427,136	\$273.63
Clothing Stores	706	6,000	6,581	6,928	\$20,379,454	\$241.07
Shoe Stores	188	1,239	1,260	1,285	\$4,311,441	\$262.94
Jewelry, Luggage & Leather Goods Stores	194	998	1,070	1,143	\$6,736,241	\$484.12
SPORTING GOODS, HOBBY, BOOK & MUSIC STORES	567	4,201	4,476	4,651	\$16,233,195	\$281.07
Sporting Goods & Musical Instrument Stores	404	2,704	2,892	3,005	\$11,788,334	\$316.29
Book, Periodical & Music Stores	163	1,497	1,584	1,646	\$4,444,861	\$217.00
GENERAL MERCHANDISE STORES	698	35,629	37,315	37,902	\$163,303,456	\$339.98
MISCELLANEOUS STORE RETAILERS	1,510	7,096	7,174	7,444	\$33,388,054	\$354.84
Florists	286	1,056	1,063	1,084	\$3,873,815	\$279.10
Office Supplies, Stationery & Gift Stores	435	2,601	2,680	2,794	\$13,060,831	\$373.26
Used Merchandise Stores	221	747	754	770	\$3,043,344	\$309.25
Other Miscellaneous Store Retailers	568	2,692	2,677	2,796	\$13,410,064	\$379.01
NONSTORE RETAILERS	323	2,238	2,233	2,251	\$16,086,857	\$552.27
Electronic Shopping & Mail -Order Houses	68	494	488	491	\$4,274,337	\$669.64
Vending Machine Operators	87	740	745	757	\$4,354,806	\$448.24
Direct Selling Establishments	168	1,004	1,000	1,003	\$7,457,714	\$572.33
TRANSPORTATION & WAREHOUSING	2,959	55,029	54,751	55,394	\$502,719,865	\$702.36
AIR TRANSPORTATION	45	971	981	967	\$12,925,298	\$1,021.84
TRUCK TRANSPORTATION	1,999	33,714	33,651	33,969	\$313,147,167	\$713.13
General Freight Trucking	1,228	28,735	28,681	29,053	\$273,322,203	\$729.44

NORTH AMERICAN INDUSTRY CLASSIFICATION SYSTEM INDUSTRY GROUPS	NUMBER OF EMPLOYING UNITS	EMPLOYMENT OCTOBER	EMPLOYMENT NOVEMBER	EMPLOYMENT DECEMBER	TOTAL EARNINGS OCT. - DEC. 2004	AVERAGE WEEKLY EARNINGS
Specialized Freight Trucking	771	4,979	4,970	4,916	\$39,824,964	\$618.26
TRANSIT & GROUND PASSENGER TRANSPORTATION	58	989	985	978	\$4,065,134	\$317.79
Taxi & Limousine Service	17	203	203	209	\$603,880	\$226.60
School & Employee Bus Transportation	8	385	385	384	\$1,756,366	\$351.23
Charter Bus Industry	12	107	102	94	\$501,641	\$382.06
Other Ground Passenger Transportation	12	166	169	169	\$684,080	\$313.22
Other	9	128	126	122	\$519,167	\$318.64
PIPELINE TRANSPORTATION	67	943	943	944	\$12,783,411	\$1,042.41
SUPPORT ACTIVITIES FOR TRANSPORTATION	427	4,841	4,841	4,858	\$47,060,495	\$746.91
Support Activities for Air Transportation	107	1,529	1,538	1,565	\$13,512,191	\$673.19
Support Activities for Rail Transportation	27	505	503	505	\$4,930,210	\$751.98
Support Activities for Water Transportation	28	725	735	734	\$6,559,683	\$689.96
Support Activities for Road Transportation	106	470	473	480	\$2,815,629	\$456.61
Freight Transportation Arrangement	141	1,454	1,437	1,421	\$18,074,261	\$967.30
Other Support Activities for Transportation	18	158	155	153	\$1,168,521	\$578.67
COURIERS & MESSENGERS	135	3,125	3,167	3,607	\$34,253,996	\$798.54
Couriers	88	2,911	2,947	3,394	\$32,928,160	\$821.31
Local Messengers & Local Delivery	47	214	220	213	\$1,325,836	\$472.89
WAREHOUSING & STORAGE	211	10,244	10,003	9,905	\$76,968,407	\$589.08
OTHER	17	202	180	166	\$1,515,957	\$638.39
UTILITIES	325	6,499	6,484	6,507	\$98,279,149	\$1,163.66
Power Generation & Supply	128	4,879	4,879	4,895	\$81,313,683	\$1,280.60
Natural Gas Distribution	32	817	808	813	\$11,239,558	\$1,063.88
Water, Sewage and Other Systems	165	803	797	799	\$5,725,908	\$550.80
INFORMATION	1,214	20,041	20,203	20,305	\$207,184,148	\$789.64
PUBLISHING INDUSTRIES, EXCEPT INTERNET	254	6,539	6,579	6,575	\$52,288,396	\$612.73
Newspaper, Book & Directory Publishers	220	6,299	6,333	6,324	\$48,748,777	\$593.46
Software Publishers	34	240	246	251	\$3,539,619	\$1,108.32
MOTION PICTURE & SOUND RECORDING INDUSTRY	130	1,108	1,171	1,220	\$4,609,064	\$303.98
Motion Picture & Video Industries	116	1,082	1,144	1,193	\$4,383,810	\$295.89
Sound Recording Industries	14	26	27	27	\$225,254	\$649.77
BROADCASTING, EXCEPT INTERNET	145	2,151	2,145	2,152	\$18,304,481	\$655.10
Radio & Television Broadcasting	131	2,077	2,075	2,084	\$17,431,092	\$645.05

NORTH AMERICAN INDUSTRY CLASSIFICATION SYSTEM INDUSTRY GROUPS	NUMBER OF EMPLOYING UNITS	EMPLOYMENT OCTOBER	EMPLOYMENT NOVEMBER	EMPLOYMENT DECEMBER	TOTAL EARNINGS OCT. - DEC. 2004	AVERAGE WEEKLY EARNINGS
Cable & Other Subscription Programming	14	74	70	68	\$873,389	\$950.71
TELECOMMUNICATIONS	503	8,631	8,702	8,735	\$112,070,629	\$992.11
Wired Telecommunications Carriers	218	4,903	4,953	4,959	\$75,308,564	\$1,173.06
Wireless Telecommunications Carriers	127	1,978	2,021	2,026	\$19,400,884	\$743.09
Cable & Other Program Distribution	68	1,151	1,144	1,151	\$10,612,109	\$710.66
Other	90	599	584	599	\$6,749,072	\$874.01
ISPS, SEARCH PORTALS, & DATA PROCESSING	150	1,286	1,281	1,300	\$17,327,322	\$1,034.03
ISPs, & Web Search Portals	58	217	208	220	\$1,899,514	\$679.61
Data Processing & Related Services	92	1,069	1,073	1,080	\$15,427,808	\$1,104.99
OTHER	32	326	325	323	\$2,584,256	\$612.29
FINANCIAL ACTIVITIES	7,564	49,334	49,521	49,972	\$491,717,947	\$762.45
FINANCE & INSURANCE	4,480	36,156	36,346	36,516	\$396,592,320	\$839.51
CREDIT INTERMEDIATION & RELATED ACTIVITIES	1,898	21,032	21,220	21,265	\$195,183,403	\$709.14
Depository Credit Intermediation	1,223	17,543	17,684	17,702	\$156,424,868	\$682.01
Nondepository Credit Intermediation	406	2,741	2,786	2,801	\$32,724,711	\$906.80
Activities Related to Credit Intermediation	269	748	750	762	\$6,033,824	\$616.12
FINANCIAL INVESTMENT & RELATED ACTIVITIES	577	3,136	3,111	3,147	\$58,630,558	\$1,440.29
Security & Commodity Investment Activities	324	2,467	2,450	2,473	\$49,156,605	\$1,535.02
Other Financial Investment Activities	253	669	661	674	\$9,473,953	\$1,090.97
INSURANCE CARRIERS & RELATED ACTIVITIES	1,970	11,551	11,607	11,700	\$137,991,150	\$913.54
Insurance Carriers	372	5,016	5,084	5,083	\$66,621,269	\$1,012.59
Insurance Agencies, Brokerages & Support	1,598	6,535	6,523	6,617	\$71,369,881	\$837.10
OTHER	35	437	408	404	\$4,787,209	\$884.50
REAL ESTATE & RENTAL & LEASING	3,084	13,178	13,175	13,456	\$95,125,627	\$551.43
REAL ESTATE	2,259	8,089	8,077	8,354	\$62,208,776	\$585.48
Lessors of Real Estate	1,000	4,139	4,131	4,263	\$25,724,317	\$473.66
Offices of Real Estate Agents & Brokers	707	1,830	1,848	1,943	\$18,326,300	\$752.38
Activities Related to Real Estate	552	2,120	2,098	2,148	\$18,158,159	\$658.24
RENTAL & LEASING SERVICES	798	4,993	5,002	5,005	\$31,560,288	\$485.54
Automotive Equipment Rental & Leasing	125	989	971	958	\$6,658,178	\$526.56
Consumer Goods Rental	498	3,165	3,179	3,184	\$16,311,210	\$395.06
General Rental Centers	39	211	216	207	\$1,775,418	\$646.23
Machinery & Equipment Rental & Leasing	136	628	636	656	\$6,815,482	\$819.17

NORTH AMERICAN INDUSTRY CLASSIFICATION SYSTEM INDUSTRY GROUPS	NUMBER OF EMPLOYING UNITS	EMPLOYMENT OCTOBER	EMPLOYMENT NOVEMBER	EMPLOYMENT DECEMBER	TOTAL EARNINGS OCT. - DEC. 2004	AVERAGE WEEKLY EARNINGS
LESSORS OF NONFINANCIAL INTANGIBLE ASSETS	27	96	96	97	\$1,356,563	\$1,083.23
PROFESSIONAL AND BUSINESS SERVICES	10,229	110,021	110,129	110,041	\$1,106,122,671	\$773.06
PROFESSIONAL & TECHNICAL SERVICES	6,393	33,918	34,305	34,970	\$454,877,321	\$1,017.24
Legal Services	1,575	6,554	6,582	6,638	\$114,563,431	\$1,336.99
Accounting & Bookkeeping Services	1,163	4,371	4,584	4,764	\$47,276,610	\$795.25
Architectural & Engineering Services	859	5,943	5,963	6,063	\$77,365,365	\$993.57
Specialized Design Services	153	460	470	463	\$3,317,443	\$549.58
Computer Systems Design & Related Services	732	7,493	7,505	7,558	\$125,513,378	\$1,284.12
Management & Technical Consulting Services	943	2,395	2,435	2,534	\$32,977,647	\$1,033.44
Scientific Research & Development Services	106	1,082	1,131	1,164	\$13,541,789	\$925.39
Advertising & Related Services	303	1,948	1,942	1,980	\$21,047,961	\$827.47
Other Professional & Technical Services	559	3,672	3,693	3,806	\$19,273,697	\$398.15
MANAGEMENT OF COMPANIES & ENTERPRISES	476	22,855	22,862	23,043	\$387,136,292	\$1,299.29
ADMINISTRATIVE & WASTE SERVICES	3,360	53,248	52,962	52,028	\$264,109,058	\$385.17
ADMINISTRATIVE & SUPPORT SERVICES	3,167	50,456	50,137	49,237	\$233,762,409	\$360.04
Office Administrative Services	315	1,238	1,237	1,271	\$17,198,578	\$1,059.50
Facilities Support Services	14	125	127	134	\$1,040,150	\$621.85
Employment Services	599	26,610	26,479	25,367	\$103,908,320	\$305.63
Business Support Services	359	5,040	4,851	4,911	\$24,651,022	\$384.32
Travel Arrangement & Reservation Services	105	434	425	417	\$3,387,512	\$612.64
Investigation & Security Services	209	4,260	4,323	4,474	\$22,977,458	\$406.10
Services to Buildings & Dwellings	1,254	11,181	11,139	11,080	\$48,375,370	\$334.24
Other Support Services	312	1,568	1,556	1,583	\$12,223,999	\$599.30
WASTE MANAGEMENT & REMEDIATION SERVICES	193	2,792	2,825	2,791	\$30,346,649	\$832.91
Waste Collection	85	1,069	1,079	1,048	\$9,624,506	\$694.94
Waste Treatment & Disposal	40	1,258	1,273	1,282	\$17,049,798	\$1,031.88
Remediation & Other Waste Services	68	465	473	461	\$3,672,345	\$605.76
EDUCATION AND HEALTH SERVICES	8,021	138,170	138,660	139,049	\$1,192,054,271	\$661.47
EDUCATIONAL SERVICES	517	8,319	8,371	8,428	\$53,892,918	\$495.14
Elementary & Secondary Schools	79	2,927	2,944	2,938	\$14,672,364	\$384.37
Junior Colleges	8	244	226	240	\$1,627,886	\$529.11
Colleges & Universities	26	3,014	3,058	3,054	\$21,990,557	\$556.08
Business, Computer & Management Training	46	214	219	212	\$3,007,491	\$1,076.03

NORTH AMERICAN INDUSTRY CLASSIFICATION SYSTEM INDUSTRY GROUPS	NUMBER OF EMPLOYING UNITS	EMPLOYMENT OCTOBER	EMPLOYMENT NOVEMBER	EMPLOYMENT DECEMBER	TOTAL EARNINGS OCT. - DEC. 2004	AVERAGE WEEKLY EARNINGS
Technical & Trade Schools	99	623	616	631	\$6,507,318	\$803.04
Other Schools & Instruction	210	1,139	1,147	1,188	\$4,685,111	\$311.22
Educational Support Services	49	158	161	165	\$1,402,191	\$668.56
HEALTH CARE & SOCIAL ASSISTANCE	7,504	129,851	130,289	130,621	\$1,138,161,353	\$672.16
AMBULATORY HEALTH CARE SERVICES	4,612	40,107	40,320	40,751	\$549,476,974	\$1,046.41
Offices of Physicians	2,056	19,866	19,895	20,042	\$371,219,879	\$1,432.47
Offices of Dentists	899	5,870	5,920	5,996	\$61,359,729	\$796.13
Offices of Other Health Practitioners	1,106	5,088	5,137	5,226	\$42,189,797	\$630.13
Outpatient Care Centers	203	3,161	3,221	3,258	\$29,251,688	\$700.25
Medical & Diagnostic Laboratories	83	689	678	683	\$8,667,266	\$975.68
Home Health Care Services	127	3,405	3,424	3,466	\$22,814,113	\$511.39
Other Ambulatory Health Care Services	138	2,028	2,045	2,080	\$13,974,502	\$524.12
HOSPITALS	111	41,815	41,906	41,651	\$374,861,462	\$690.00
General Medical & Surgical Hospitals	79	38,508	38,567	38,354	\$345,521,773	\$690.78
Psychiatric & Substance Abuse Hospitals	11	1,391	1,433	1,412	\$11,463,120	\$624.49
Other Hospitals	21	1,916	1,906	1,885	\$17,876,569	\$722.86
NURSING & RESIDENTIAL CARE FACILITIES	491	25,779	25,760	25,911	\$120,583,240	\$359.29
Nursing Care Facilities	231	19,483	19,401	19,486	\$89,498,593	\$353.84
Residential Mental Health Facilities	129	2,839	2,883	2,918	\$14,789,994	\$395.03
Community Care Facilities for the Elderly	86	2,121	2,128	2,116	\$9,050,629	\$328.14
Other Residential Care Facilities	45	1,336	1,348	1,391	\$7,244,024	\$410.23
SOCIAL ASSISTANCE	2,290	22,150	22,303	22,308	\$93,239,677	\$322.30
Individual & Family Services	1,175	9,898	9,955	9,967	\$45,114,044	\$349.13
Emergency & Other Relief Services	107	802	809	808	\$3,998,387	\$381.44
Vocational Rehabilitation Services	130	3,173	3,182	3,192	\$15,880,488	\$383.86
Child Day Care Services	878	8,277	8,357	8,341	\$28,246,758	\$261.00
LEISURE AND HOSPITALITY	5,875	91,350	90,296	90,122	\$258,972,294	\$219.90
ARTS, ENTERTAINMENT & RECREATION	897	8,711	8,142	8,080	\$31,901,684	\$295.27
PERFORMING ARTS & SPECTATOR SPORTS	195	1,983	1,889	1,916	\$8,239,121	\$328.50
Performing Arts Companies	44	682	652	445	\$2,312,103	\$299.92
Spectator Sports	60	616	612	781	\$3,048,036	\$350.12
Performing Arts & Sports Promoters	35	551	481	542	\$2,029,904	\$297.61
Agents & Managers for Public Figures	10	18	19	18	\$140,718	\$590.43

NORTH AMERICAN INDUSTRY CLASSIFICATION SYSTEM INDUSTRY GROUPS	NUMBER OF EMPLOYING UNITS	EMPLOYMENT	EMPLOYMENT	EMPLOYMENT	TOTAL EARNINGS OCT. - DEC. 2004	AVERAGE WEEKLY EARNINGS
		OCTOBER	NOVEMBER	DECEMBER		
Independent Artists, Writers & Performers	46	116	125	130	\$708,360	\$440.61
MUSEUMS, PARKS & HISTORICAL SITES	46	221	204	198	\$790,745	\$292.90
GAMBLING, RECREATION & AMUSEMENT INDUSTRY	656	6,507	6,049	5,966	\$22,871,818	\$284.96
Other Amusement & Recreation Industries	624	6,180	5,877	5,788	\$22,060,303	\$285.28
Other	32	327	172	178	\$811,515	\$276.62
ACCOMMODATION & FOOD SERVICES	4,978	82,639	82,154	82,042	\$227,070,610	\$212.29
ACCOMMODATION	783	11,082	10,787	10,412	\$38,219,550	\$273.22
Traveler Accommodation	715	10,805	10,532	10,160	\$37,153,529	\$272.21
RV Parks & Recreational Camps	48	209	182	176	\$753,887	\$306.83
Rooming & Boarding Houses	20	68	73	76	\$312,134	\$331.94
FOOD SERVICES & DRINKING PLACES	4,195	71,557	71,367	71,630	\$188,851,060	\$203.12
Full -Service Restaurants	1,769	30,231	30,536	30,912	\$87,666,731	\$220.67
Limited-Service Eating Places	2,113	38,376	37,915	37,831	\$92,237,668	\$186.52
Special Food Services	145	1,950	1,906	1,879	\$6,418,822	\$258.29
Drinking Places, Alcoholic Beverages	168	1,000	1,010	1,008	\$2,527,839	\$193.29
OTHER SERVICES	5,526	25,591	25,548	25,653	\$153,280,376	\$460.63
REPAIR & MAINTENANCE	2,256	9,617	9,590	9,623	\$67,230,885	\$538.15
Automotive Repair & Maintenance	1,573	7,082	7,045	7,055	\$46,275,954	\$504.16
Electronic Equipment Repair & Maintenance	157	514	507	513	\$4,762,587	\$716.47
Commercial Machinery Repair & Maintenance	336	1,456	1,475	1,483	\$12,674,780	\$662.65
Household Goods Repair & Maintenance	190	565	563	572	\$3,517,564	\$477.50
PERSONAL & LAUNDRY SERVICES	1,321	8,370	8,285	8,346	\$43,371,589	\$400.34
Personal Care Services	562	2,416	2,401	2,430	\$8,747,522	\$278.55
Death Care Services	245	1,718	1,679	1,722	\$13,711,364	\$618.12
Drycleaning & Laundry Services	361	3,479	3,453	3,447	\$16,836,816	\$374.35
Other Personal Services	153	757	752	747	\$4,075,887	\$416.93
MEMBERSHIP ASSOCIATIONS & ORGANIZATIONS	986	6,157	6,221	6,232	\$35,961,158	\$445.93
Religious Organizations	39	222	217	219	\$1,164,656	\$408.46
Grantmaking & Giving Services	92	401	407	413	\$3,741,081	\$707.07
Social Advocacy Organizations	136	1,897	1,931	1,985	\$11,040,846	\$438.31
Civic & Social Organizations	215	1,490	1,503	1,464	\$4,842,711	\$250.74
Professional & Similar Organizations	504	2,147	2,163	2,151	\$15,171,864	\$541.90
PRIVATE HOUSEHOLDS	963	1,447	1,452	1,452	\$6,716,744	\$356.24

NORTH AMERICAN INDUSTRY CLASSIFICATION SYSTEM INDUSTRY GROUPS	NUMBER OF EMPLOYING UNITS	EMPLOYMENT OCTOBER	EMPLOYMENT NOVEMBER	EMPLOYMENT DECEMBER	TOTAL EARNINGS OCT. - DEC. 2004	AVERAGE WEEKLY EARNINGS
LOCAL GOVERNMENT	1,977	114,696	115,643	115,620	\$804,795,658	\$536.83
STATE GOVERNMENT	1,201	60,080	60,262	60,093	\$544,241,279	\$696.06
NONCLASSIFIABLE ESTABLISHMENTS	0	0	0	0	\$0	

**TABLE 6. COUNTY SUMMARY
EMPLOYMENT AND TOTAL EARNINGS, BY INDUSTRY
FOURTH QUARTER 2004**

NORTH AMERICAN INDUSTRY CLASSIFICATION SYSTEM INDUSTRY GROUP	NUMBER OF EMPLOYING UNITS	EMPLOYMENT OCTOBER	EMPLOYMENT NOVEMBER	EMPLOYMENT DECEMBER	TOTAL EARNINGS OCT. - DEC. 2004	AVERAGE WEEKLY EARNINGS
ARKANSAS COUNTY - TOTAL	641	9,841	9,713	9,792	\$74,616,257	\$586.76
Natural Resources & Mining	43	290	260	262	\$2,111,450	\$600.07
Construction	55	291	279	271	\$2,169,886	\$595.41
Manufacturing	30	3,491	3,391	3,423	\$26,847,401	\$601.22
Trade, Transportation & Utilities	202	2,156	2,157	2,186	\$20,158,959	\$715.81
Wholesale Trade	46	489	479	481	\$9,490,958	\$1,511.54
Retail Trade	106	1,079	1,103	1,115	\$5,642,042	\$394.91
Transportation, Warehousing & Utilities	50	588	575	590	\$5,025,959	\$661.63
Information	9	81	84	85	\$698,035	\$644.34
Financial Activities	46	323	320	324	\$3,326,835	\$793.93
Professional & Business Services	52	399	396	401	\$3,953,123	\$762.76
Education & Health Services	57	1,133	1,131	1,123	\$6,466,859	\$440.61
Leisure & Hospitality	54	524	530	534	\$1,226,271	\$178.20
Other Services	46	145	145	141	\$716,250	\$383.50
Local Government	31	804	818	840	\$5,454,352	\$511.25
State Government	16	204	202	202	\$1,486,836	\$564.34
ASHLEY COUNTY - TOTAL	537	8,545	8,514	8,507	\$75,635,176	\$682.71
Natural Resources & Mining	62	553	533	500	\$3,737,000	\$543.75
Construction	50	603	604	622	\$3,975,893	\$501.65
Manufacturing	28	3,044	3,001	2,943	\$41,472,211	\$1,064.81
Trade, Transportation & Utilities	141	1,240	1,263	1,306	\$7,541,419	\$456.90
Wholesale Trade	26	172	171	152	\$1,691,873	\$788.75
Retail Trade	92	818	840	905	\$3,863,691	\$347.88
Transportation, Warehousing & Utilities	23	250	252	249	\$1,985,855	\$610.22
Information	11	61	54	56	\$439,153	\$592.65
Financial Activities	39	326	327	330	\$2,750,073	\$645.61
Professional & Business Services	46	326	332	346	\$2,370,874	\$544.94
Education & Health Services	45	545	549	565	\$4,279,425	\$595.27
Leisure & Hospitality	31	391	393	384	\$949,563	\$187.61
Other Services	40	195	193	192	\$821,076	\$326.69
Local Government	32	1,050	1,053	1,048	\$6,168,710	\$451.78
State Government	12	211	212	215	\$1,129,779	\$408.65

NORTH AMERICAN INDUSTRY CLASSIFICATION SYSTEM INDUSTRY GROUP	NUMBER OF EMPLOYING UNITS	EMPLOYMENT OCTOBER	EMPLOYMENT NOVEMBER	EMPLOYMENT DECEMBER	TOTAL EARNINGS OCT. - DEC. 2004	AVERAGE WEEKLY EARNINGS
BAXTER COUNTY - TOTAL	1,178	14,036	14,042	14,083	\$97,158,242	\$531.80
Natural Resources & Mining	6	107	105	105	\$677,527	\$493.23
Construction	121	636	624	636	\$3,992,567	\$485.95
Manufacturing	65	2,492	2,506	2,517	\$21,143,514	\$649.27
Trade, Transportation & Utilities	271	2,647	2,639	2,650	\$14,104,737	\$410.15
Wholesale Trade	31	179	176	178	\$1,404,752	\$608.21
Retail Trade	213	2,238	2,232	2,240	\$11,118,102	\$382.37
Transportation, Warehousing & Utilities	27	230	231	232	\$1,581,883	\$526.77
Information	24	288	285	292	\$2,312,196	\$616.86
Financial Activities	107	631	639	633	\$5,116,690	\$620.48
Professional & Business Services	133	801	820	817	\$7,160,063	\$677.74
Education & Health Services	171	2,984	3,018	3,098	\$26,941,145	\$683.21
Leisure & Hospitality	121	1,466	1,434	1,424	\$3,973,367	\$212.06
Other Services	111	417	425	420	\$1,843,477	\$337.10
Local Government	36	1,284	1,269	1,209	\$8,007,320	\$491.19
State Government	12	283	278	282	\$1,885,639	\$516.19
BENTON COUNTY - TOTAL	4,529	85,692	85,904	86,726	\$812,270,053	\$725.63
Natural Resources & Mining	29	612	607	620	\$8,829,852	\$1,108.03
Construction	662	4,356	4,307	4,324	\$36,636,893	\$651.01
Manufacturing	234	14,340	14,402	14,413	\$120,088,757	\$642.17
Trade, Transportation & Utilities	1,234	20,907	20,985	21,236	\$191,889,569	\$701.47
Wholesale Trade	500	3,007	3,062	3,110	\$47,340,015	\$1,190.18
Retail Trade	573	6,948	7,107	7,105	\$41,369,429	\$451.17
Transportation, Warehousing & Utilities	161	10,952	10,816	11,021	\$103,180,125	\$726.18
Information	69	903	929	931	\$8,064,657	\$673.57
Financial Activities	490	3,157	3,183	3,231	\$31,108,669	\$750.07
Professional & Business Services	712	20,393	20,520	20,771	\$280,649,566	\$1,049.95
Education & Health Services	373	6,065	6,123	6,211	\$52,507,347	\$658.57
Leisure & Hospitality	341	6,169	6,019	6,060	\$19,315,739	\$244.27
Other Services	291	1,656	1,640	1,685	\$9,967,908	\$461.81
Local Government	75	6,355	6,401	6,455	\$47,955,564	\$576.06
State Government	19	779	788	789	\$5,255,532	\$514.78

NORTH AMERICAN INDUSTRY CLASSIFICATION SYSTEM INDUSTRY GROUP	NUMBER OF EMPLOYING UNITS	EMPLOYMENT OCTOBER	EMPLOYMENT NOVEMBER	EMPLOYMENT DECEMBER	TOTAL EARNINGS OCT. - DEC. 2004	AVERAGE WEEKLY EARNINGS
BOONE COUNTY - TOTAL	992	13,517	13,553	13,768	\$97,586,714	\$551.45
Construction	86	431	427	434	\$2,885,041	\$515.31
Manufacturing	68	2,134	2,112	2,123	\$17,527,767	\$635.09
Trade, Transportation & Utilities	265	4,198	4,273	4,311	\$33,959,068	\$613.10
Wholesale Trade	50	669	700	704	\$5,127,012	\$570.75
Retail Trade	166	1,986	2,013	2,012	\$10,881,838	\$417.77
Transportation, Warehousing & Utilities	49	1,543	1,560	1,595	\$17,950,218	\$881.73
Information	17	415	413	423	\$3,579,772	\$660.35
Financial Activities	96	603	601	615	\$5,321,688	\$675.14
Professional & Business Services	105	515	517	524	\$2,928,586	\$434.34
Education & Health Services	124	1,095	1,086	1,102	\$7,980,224	\$560.95
Leisure & Hospitality	86	1,193	1,184	1,173	\$2,929,009	\$190.40
Local Government	51	2,151	2,152	2,164	\$13,805,356	\$492.63
State Government	20	529	535	647	\$5,123,484	\$691.02
Other	74	253	253	252	\$1,546,719	\$470.89
BRADLEY COUNTY - TOTAL	339	4,088	4,103	4,116	\$27,274,417	\$511.42
Natural Resources & Mining	56	274	294	331	\$1,575,531	\$404.43
Construction	21	181	190	173	\$1,133,061	\$480.65
Manufacturing	10	1,044	1,035	1,044	\$8,693,379	\$642.38
Trade, Transportation & Utilities	92	613	620	607	\$3,371,521	\$422.85
Wholesale Trade	13	204	201	198	\$1,235,572	\$472.86
Retail Trade	50	320	326	319	\$1,416,324	\$338.70
Transportation, Warehousing & Utilities	29	89	93	90	\$719,625	\$610.54
Information	3	13	13	14	\$88,268	\$509.24
Financial Activities	22	181	183	181	\$1,164,533	\$493.10
Professional & Business Services	24	149	147	147	\$1,585,341	\$825.84
Education & Health Services	34	539	541	545	\$3,763,720	\$534.49
Leisure & Hospitality	18	196	182	176	\$366,660	\$152.73
Other Services	31	107	107	110	\$679,430	\$483.92
Local Government	16	552	549	546	\$3,147,999	\$441.08
State Government	12	239	242	242	\$1,704,974	\$544.20

NORTH AMERICAN INDUSTRY CLASSIFICATION SYSTEM INDUSTRY GROUP	NUMBER OF EMPLOYING UNITS	EMPLOYMENT OCTOBER	EMPLOYMENT NOVEMBER	EMPLOYMENT DECEMBER	TOTAL EARNINGS OCT. - DEC. 2004	AVERAGE WEEKLY EARNINGS
CALHOUN COUNTY - TOTAL	126	3,790	3,824	3,825	\$35,397,401	\$714.10
Natural Resources & Mining	24	137	143	136	\$830,015	\$460.44
Construction	10	84	84	82	\$512,896	\$473.44
Manufacturing	15	2,551	2,558	2,576	\$27,332,462	\$820.75
Trade, Transportation & Utilities	27	199	201	199	\$1,225,043	\$471.96
Wholesale Trade & Retail Trade	17	72	75	75	\$244,605	\$254.27
Transportation, Warehousing & Utilities	10	127	126	124	\$980,438	\$600.15
Professional & Business Services	8	130	129	128	\$884,945	\$527.70
Education & Health Services	4	43	43	42	\$299,089	\$539.22
Local Government	11	197	201	204	\$1,114,098	\$427.08
State Government	10	344	361	353	\$2,019,697	\$440.53
Other	17	105	104	105	\$1,179,156	\$866.60
CARROLL COUNTY - TOTAL	804	10,137	9,901	9,493	\$55,474,378	\$433.50
Natural Resources & Mining	15	273	276	275	\$2,011,907	\$563.45
Trade, Transportation & Utilities	217	1,676	1,662	1,643	\$8,983,581	\$416.21
Wholesale Trade	25	113	114	113	\$577,744	\$392.13
Retail Trade	172	1,285	1,288	1,269	\$6,021,099	\$361.66
Transportation, Warehousing & Utilities	20	278	260	261	\$2,384,738	\$688.77
Professional & Business Services	68	214	213	219	\$1,427,962	\$510.11
Education & Health Services	60	732	751	753	\$5,389,292	\$556.21
Leisure & Hospitality	177	1,916	1,773	1,360	\$4,496,738	\$205.53
Local Government	24	1,041	1,035	1,030	\$6,504,148	\$483.24
State Government	11	99	98	97	\$720,461	\$565.51
Other	232	4,186	4,093	4,116	\$25,940,289	\$482.95

NORTH AMERICAN INDUSTRY CLASSIFICATION SYSTEM INDUSTRY GROUP	NUMBER OF EMPLOYING UNITS	EMPLOYMENT OCTOBER	EMPLOYMENT NOVEMBER	EMPLOYMENT DECEMBER	TOTAL EARNINGS OCT. - DEC. 2004	AVERAGE WEEKLY EARNINGS
CHICOT COUNTY - TOTAL	333	3,735	3,710	3,662	\$22,443,316	\$466.30
Natural Resources & Mining	52	323	312	262	\$1,815,399	\$467.04
Construction	23	301	282	281	\$2,077,771	\$554.96
Manufacturing	11	319	322	322	\$1,702,914	\$408.08
Trade, Transportation & Utilities	82	611	611	623	\$3,390,485	\$424.08
Wholesale Trade	14	100	100	98	\$875,062	\$677.64
Retail Trade	53	419	422	430	\$1,674,114	\$303.96
Transportation, Warehousing & Utilities	15	92	89	95	\$841,309	\$703.44
Information	5	18	16	12	\$120,709	\$605.56
Financial Activities	28	151	151	152	\$1,167,055	\$593.22
Professional & Business Services	25	135	140	147	\$890,310	\$486.86
Education & Health Services	42	447	451	451	\$2,730,167	\$467.04
Leisure & Hospitality	22	246	234	218	\$464,995	\$153.73
Other Services	17	58	53	59	\$312,326	\$423.97
Local Government	16	829	845	838	\$5,708,375	\$524.41
State Government	10	297	293	297	\$2,062,810	\$536.68
CLARK COUNTY - TOTAL	609	9,930	9,876	9,802	\$62,616,867	\$488.05
Natural Resources & Mining	45	277	274	267	\$1,816,984	\$512.60
Construction	40	101	110	118	\$649,766	\$455.76
Manufacturing	36	2,481	2,451	2,395	\$17,299,358	\$544.86
Trade, Transportation & Utilities	140	1,503	1,495	1,504	\$9,171,872	\$470.14
Wholesale Trade	23	80	80	77	\$595,780	\$580.12
Retail Trade	94	1,131	1,128	1,134	\$6,006,901	\$408.55
Transportation, Warehousing & Utilities	23	292	287	293	\$2,569,191	\$679.92
Information	11	44	44	44	\$383,399	\$670.28
Financial Activities	85	392	380	394	\$2,726,003	\$539.52
Professional & Business Services	45	308	314	309	\$3,820,698	\$947.05
Education & Health Services	64	1,482	1,463	1,453	\$9,463,799	\$496.58
Leisure & Hospitality	53	1,067	1,044	1,043	\$2,528,738	\$185.02
Other Services	49	218	221	222	\$1,307,209	\$456.37
Local Government	27	942	964	936	\$5,422,273	\$440.29
State Government	14	1,115	1,116	1,117	\$8,026,768	\$553.26

NORTH AMERICAN INDUSTRY CLASSIFICATION SYSTEM INDUSTRY GROUP	NUMBER OF EMPLOYING UNITS	EMPLOYMENT OCTOBER	EMPLOYMENT NOVEMBER	EMPLOYMENT DECEMBER	TOTAL EARNINGS OCT. - DEC. 2004	AVERAGE WEEKLY EARNINGS
CLAY COUNTY - TOTAL	414	5,126	5,021	4,960	\$28,588,360	\$436.71
Natural Resources & Mining	57	253	242	228	\$1,349,770	\$430.82
Construction	44	188	164	154	\$890,629	\$406.19
Manufacturing	22	1,718	1,665	1,598	\$9,796,331	\$453.86
Trade, Transportation & Utilities	99	863	861	892	\$5,287,479	\$466.43
Wholesale Trade	25	214	241	260	\$1,606,063	\$518.36
Retail Trade	55	459	446	464	\$2,063,969	\$347.92
Transportation, Warehousing & Utilities	19	190	174	168	\$1,617,447	\$701.61
Information	8	142	139	137	\$1,067,546	\$589.37
Financial Activities	35	165	159	162	\$1,121,462	\$532.51
Professional & Business Services	23	56	57	44	\$305,951	\$449.71
Education & Health Services	40	499	498	492	\$2,157,557	\$334.38
Leisure & Hospitality	26	217	208	204	\$422,018	\$154.83
Other Services	26	51	47	47	\$282,461	\$449.54
Local Government	22	896	904	921	\$5,404,239	\$458.34
State Government	12	78	77	81	\$502,917	\$491.77
CLEBURNE COUNTY - TOTAL	662	6,546	6,564	6,613	\$40,081,419	\$468.97
Natural Resources & Mining	14	35	34	34	\$235,579	\$527.81
Construction	66	267	268	251	\$1,322,045	\$388.15
Manufacturing	48	1,769	1,810	1,854	\$13,519,575	\$574.25
Trade, Transportation & Utilities	193	1,465	1,474	1,492	\$8,733,940	\$454.87
Wholesale Trade	40	161	156	168	\$1,257,531	\$598.35
Retail Trade	112	979	983	989	\$4,568,286	\$357.24
Transportation, Warehousing & Utilities	41	325	335	335	\$2,908,123	\$674.48
Information	8	58	60	63	\$381,389	\$486.26
Financial Activities	65	252	254	255	\$1,803,213	\$546.81
Professional & Business Services	61	189	187	198	\$1,203,393	\$483.81
Education & Health Services	61	748	737	736	\$4,983,347	\$517.79
Leisure & Hospitality	61	689	658	640	\$1,774,905	\$206.14
Other Services	55	151	153	152	\$680,589	\$344.43
Local Government	20	811	817	827	\$4,736,315	\$445.21
State Government	10	112	112	111	\$707,129	\$487.12

NORTH AMERICAN INDUSTRY CLASSIFICATION SYSTEM INDUSTRY GROUP	NUMBER OF EMPLOYING UNITS	EMPLOYMENT OCTOBER	EMPLOYMENT NOVEMBER	EMPLOYMENT DECEMBER	TOTAL EARNINGS OCT. - DEC. 2004	AVERAGE WEEKLY EARNINGS
CLEVELAND COUNTY - TOTAL	112	1,069	1,064	1,072	\$6,193,929	\$445.98
Natural Resources & Mining	19	163	159	153	\$1,128,902	\$548.45
Construction	8	39	39	39	\$143,865	\$283.76
Manufacturing	6	87	86	88	\$475,346	\$420.29
Trade, Transportation & Utilities	33	229	217	223	\$1,155,001	\$398.41
Wholesale Trade	5	52	42	49	\$268,136	\$432.71
Retail Trade	15	81	84	83	\$206,735	\$192.37
Transportation, Warehousing & Utilities	13	96	91	91	\$680,130	\$564.58
Financial Activities	4	29	29	30	\$205,318	\$538.42
Local Government	13	352	360	362	\$2,131,174	\$457.92
State Government	8	54	53	52	\$364,006	\$528.31
Other	21	116	121	125	\$590,317	\$376.32
COLUMBIA COUNTY - TOTAL	698	9,242	9,240	9,354	\$69,171,075	\$573.45
Natural Resources & Mining	46	415	412	428	\$4,870,229	\$895.54
Construction	50	298	304	328	\$2,920,909	\$724.79
Manufacturing	38	2,775	2,764	2,827	\$27,712,219	\$764.42
Trade, Transportation & Utilities	192	1,559	1,556	1,571	\$8,938,515	\$440.19
Wholesale Trade	29	249	245	235	\$1,810,239	\$573.04
Retail Trade	118	1,081	1,086	1,109	\$5,040,795	\$355.09
Transportation, Warehousing & Utilities	45	229	225	227	\$2,087,481	\$707.38
Information	9	76	79	79	\$583,333	\$575.28
Financial Activities	79	389	386	397	\$3,419,392	\$673.29
Professional & Business Services	62	348	349	343	\$2,096,129	\$465.12
Education & Health Services	76	836	853	847	\$4,482,988	\$407.94
Leisure & Hospitality	46	576	571	561	\$1,422,146	\$192.15
Other Services	55	228	223	229	\$948,030	\$321.73
Local Government	30	1,203	1,202	1,205	\$7,493,603	\$479.03
State Government	15	539	541	539	\$4,283,582	\$610.57

NORTH AMERICAN INDUSTRY CLASSIFICATION SYSTEM INDUSTRY GROUP	NUMBER OF EMPLOYING UNITS	EMPLOYMENT OCTOBER	EMPLOYMENT NOVEMBER	EMPLOYMENT DECEMBER	TOTAL EARNINGS OCT. - DEC. 2004	AVERAGE WEEKLY EARNINGS
CONWAY COUNTY - TOTAL	468	6,583	6,569	6,574	\$43,577,002	\$509.80
Natural Resources & Mining	17	135	136	146	\$1,314,398	\$727.39
Construction	48	558	533	488	\$4,376,477	\$639.62
Manufacturing	29	1,080	1,078	1,081	\$11,214,242	\$798.98
Trade, Transportation & Utilities	133	1,382	1,401	1,396	\$8,293,608	\$457.98
Wholesale Trade	28	234	233	233	\$2,021,844	\$666.54
Retail Trade	80	894	918	917	\$4,342,401	\$367.20
Transportation, Warehousing & Utilities	25	254	250	246	\$1,929,363	\$593.65
Information	6	41	40	40	\$229,237	\$437.20
Financial Activities	38	182	181	188	\$1,270,370	\$532.06
Professional & Business Services	45	692	697	703	\$3,602,037	\$397.34
Education & Health Services	53	737	730	723	\$4,418,782	\$465.63
Leisure & Hospitality	38	477	469	483	\$972,694	\$157.08
Other Services	23	81	79	95	\$550,442	\$498.14
Local Government	27	865	868	872	\$5,350,281	\$473.97
State Government	11	353	357	359	\$1,984,434	\$428.39
CRAIGHEAD COUNTY - TOTAL	2,519	40,325	40,883	40,424	\$304,728,461	\$578.15
Natural Resources & Mining	59	398	387	323	\$2,625,989	\$546.93
Construction	222	1,847	1,839	1,776	\$13,415,138	\$566.79
Manufacturing	146	7,536	7,447	7,254	\$63,869,014	\$662.81
Trade, Transportation & Utilities	726	8,035	8,234	8,323	\$51,718,498	\$485.32
Wholesale Trade	180	1,478	1,491	1,493	\$14,657,741	\$758.08
Retail Trade	432	5,436	5,658	5,726	\$27,445,921	\$376.56
Transportation, Warehousing & Utilities	114	1,121	1,085	1,104	\$9,614,836	\$670.33
Information	34	605	621	627	\$5,370,529	\$668.84
Financial Activities	250	1,586	1,595	1,609	\$15,296,643	\$736.95
Professional & Business Services	305	3,312	3,737	3,536	\$25,984,298	\$566.50
Education & Health Services	349	6,635	6,734	6,817	\$66,428,415	\$759.42
Leisure & Hospitality	179	3,553	3,494	3,432	\$9,422,639	\$207.51
Other Services	185	1,101	1,065	1,034	\$5,618,006	\$405.14
Local Government	39	3,422	3,440	3,407	\$23,276,498	\$523.08
State Government	25	2,295	2,290	2,286	\$21,702,794	\$728.91

NORTH AMERICAN INDUSTRY CLASSIFICATION SYSTEM INDUSTRY GROUP	NUMBER OF EMPLOYING UNITS	EMPLOYMENT OCTOBER	EMPLOYMENT NOVEMBER	EMPLOYMENT DECEMBER	TOTAL EARNINGS OCT. - DEC. 2004	AVERAGE WEEKLY EARNINGS
CRAWFORD COUNTY - TOTAL	1,140	17,836	17,892	17,947	\$122,725,769	\$527.64
Natural Resources & Mining	24	481	489	484	\$3,865,797	\$613.55
Construction	182	1,242	1,206	1,206	\$9,145,559	\$577.59
Manufacturing	80	3,377	3,392	3,371	\$23,552,187	\$536.01
Trade, Transportation & Utilities	312	6,021	6,066	6,168	\$43,743,928	\$552.99
Wholesale Trade	73	625	624	634	\$5,620,612	\$688.83
Retail Trade	173	1,797	1,813	1,833	\$9,123,857	\$386.83
Transportation, Warehousing & Utilities	66	3,599	3,629	3,701	\$28,999,459	\$612.33
Financial Activities	111	498	504	505	\$3,723,466	\$570.18
Professional & Business Services	131	642	682	695	\$5,043,930	\$576.52
Education & Health Services	84	1,486	1,471	1,464	\$10,628,675	\$554.80
Leisure & Hospitality	75	1,279	1,263	1,246	\$3,247,495	\$197.84
Local Government	42	2,059	2,067	2,056	\$14,406,181	\$537.77
State Government	11	168	169	169	\$1,297,915	\$591.93
Other	88	583	583	583	\$4,070,636	\$537.09
CRITTENDEN COUNTY - TOTAL	1,119	16,013	15,976	15,950	\$113,536,566	\$546.54
Natural Resources & Mining	51	490	400	365	\$3,313,865	\$609.35
Construction	80	674	674	670	\$5,297,605	\$605.81
Manufacturing	56	1,529	1,521	1,536	\$14,853,492	\$747.43
Trade, Transportation & Utilities	313	4,891	4,941	5,003	\$38,203,013	\$594.28
Wholesale Trade	61	588	602	606	\$5,939,320	\$763.15
Retail Trade	167	2,013	2,068	2,092	\$10,239,174	\$382.78
Transportation, Warehousing & Utilities	85	2,290	2,271	2,305	\$22,024,519	\$740.25
Information	10	88	90	89	\$826,624	\$714.45
Financial Activities	105	469	468	481	\$3,971,175	\$646.28
Professional & Business Services	113	752	745	752	\$5,247,292	\$538.42
Education & Health Services	128	1,727	1,738	1,714	\$12,617,229	\$562.21
Leisure & Hospitality	104	1,834	1,811	1,811	\$5,289,817	\$223.74
Other Services	102	599	588	590	\$3,380,707	\$439.03
Local Government	40	2,478	2,512	2,543	\$17,775,289	\$544.54
State Government	17	482	488	396	\$2,760,458	\$466.35

NORTH AMERICAN INDUSTRY CLASSIFICATION SYSTEM INDUSTRY GROUP	NUMBER OF EMPLOYING UNITS	EMPLOYMENT OCTOBER	EMPLOYMENT NOVEMBER	EMPLOYMENT DECEMBER	TOTAL EARNINGS OCT. - DEC. 2004	AVERAGE WEEKLY EARNINGS
CROSS COUNTY - TOTAL	478	5,331	5,325	5,306	\$34,447,441	\$498.02
Natural Resources & Mining	47	243	221	196	\$1,494,462	\$522.54
Construction	33	151	145	142	\$947,805	\$499.37
Manufacturing	19	925	932	944	\$6,662,411	\$548.90
Trade, Transportation & Utilities	130	1,248	1,229	1,234	\$8,456,666	\$525.88
Wholesale Trade	33	314	307	312	\$2,900,276	\$717.36
Retail Trade	65	642	652	663	\$3,229,797	\$380.86
Transportation, Warehousing & Utilities	32	292	270	259	\$2,326,593	\$653.97
Information	8	57	59	59	\$388,509	\$512.32
Financial Activities	43	373	380	376	\$2,967,297	\$606.52
Professional & Business Services	40	170	185	182	\$1,330,387	\$571.72
Education & Health Services	57	616	619	612	\$3,448,390	\$430.85
Leisure & Hospitality	31	368	368	383	\$798,791	\$164.73
Other Services	42	80	82	73	\$341,560	\$335.41
Local Government	17	880	887	884	\$5,857,526	\$509.90
State Government	11	220	218	221	\$1,753,637	\$614.09
DALLAS COUNTY - TOTAL	277	3,287	3,280	3,309	\$20,659,935	\$482.75
Natural Resources & Mining	40	221	215	202	\$1,329,340	\$480.83
Construction	15	77	75	76	\$516,665	\$522.94
Manufacturing	15	905	889	914	\$7,029,005	\$598.99
Trade, Transportation & Utilities	78	499	497	494	\$2,722,871	\$421.71
Wholesale Trade	10	49	51	48	\$324,951	\$506.68
Retail Trade	48	371	371	372	\$1,927,507	\$399.29
Transportation, Warehousing & Utilities	20	79	75	74	\$470,413	\$476.13
Information	3	26	26	27	\$163,244	\$476.86
Financial Activities	21	100	102	104	\$845,140	\$637.36
Professional & Business Services	16	53	53	51	\$439,611	\$646.17
Education & Health Services	28	685	682	690	\$3,784,722	\$424.60
Leisure & Hospitality	19	134	134	130	\$288,297	\$167.16
Other Services	17	63	62	65	\$286,429	\$347.89
Local Government	16	459	481	490	\$2,812,348	\$453.85
State Government	9	65	64	66	\$442,263	\$523.39

NORTH AMERICAN INDUSTRY CLASSIFICATION SYSTEM INDUSTRY GROUP	NUMBER OF EMPLOYING UNITS	EMPLOYMENT OCTOBER	EMPLOYMENT NOVEMBER	EMPLOYMENT DECEMBER	TOTAL EARNINGS OCT. - DEC. 2004	AVERAGE WEEKLY EARNINGS
DESHA COUNTY - TOTAL	452	5,188	5,130	5,129	\$36,035,353	\$538.35
Natural Resources & Mining	55	412	399	366	\$2,959,971	\$580.35
Construction	25	135	128	129	\$1,088,349	\$640.71
Manufacturing	16	1,055	1,041	1,034	\$9,456,473	\$697.21
Trade, Transportation & Utilities	140	1,211	1,185	1,165	\$6,893,266	\$446.72
Wholesale Trade	20	187	197	191	\$1,974,914	\$792.61
Retail Trade	87	696	698	695	\$2,954,946	\$326.43
Transportation, Warehousing & Utilities	33	328	290	279	\$1,963,406	\$505.12
Information	6	24	23	23	\$210,171	\$692.87
Financial Activities	38	223	229	229	\$1,599,888	\$542.15
Professional & Business Services	37	311	307	291	\$3,080,992	\$782.18
Education & Health Services	40	504	501	502	\$3,018,275	\$462.19
Leisure & Hospitality	36	285	273	282	\$605,518	\$166.35
Other Services	29	70	69	77	\$238,043	\$254.32
Local Government	19	808	817	868	\$5,732,460	\$530.64
State Government	11	150	158	163	\$1,151,947	\$564.40
DREW COUNTY - TOTAL	492	6,963	7,022	7,035	\$43,617,570	\$478.86
Natural Resources & Mining	45	340	338	303	\$2,711,521	\$637.85
Construction	25	132	125	125	\$790,281	\$477.42
Manufacturing	25	1,302	1,288	1,319	\$8,551,829	\$504.86
Trade, Transportation & Utilities	141	1,311	1,329	1,324	\$7,641,928	\$444.88
Wholesale Trade	26	278	278	280	\$2,233,190	\$616.45
Retail Trade	93	939	956	948	\$4,520,681	\$366.95
Transportation, Warehousing & Utilities	22	94	95	96	\$888,057	\$719.07
Information	9	83	86	85	\$660,366	\$599.97
Financial Activities	44	274	278	282	\$2,141,535	\$592.57
Professional & Business Services	39	258	259	255	\$1,557,510	\$465.58
Education & Health Services	55	768	760	785	\$3,827,549	\$381.88
Leisure & Hospitality	41	618	603	598	\$1,323,467	\$167.90
Other Services	28	89	88	89	\$346,024	\$300.19
Local Government	23	1,198	1,214	1,206	\$8,439,056	\$538.27
State Government	17	590	654	664	\$5,626,504	\$680.52

NORTH AMERICAN INDUSTRY CLASSIFICATION SYSTEM INDUSTRY GROUP	NUMBER OF EMPLOYING UNITS	EMPLOYMENT OCTOBER	EMPLOYMENT NOVEMBER	EMPLOYMENT DECEMBER	TOTAL EARNINGS OCT. - DEC. 2004	AVERAGE WEEKLY EARNINGS
FAULKNER COUNTY - TOTAL	2,198	34,769	34,781	34,895	\$274,414,704	\$606.31
Natural Resources & Mining	9	44	42	44	\$407,766	\$723.84
Construction	311	2,574	2,535	2,495	\$19,971,338	\$606.10
Manufacturing	112	5,018	5,037	5,001	\$47,633,456	\$730.10
Trade, Transportation & Utilities	549	6,101	6,164	6,303	\$34,769,246	\$432.12
Wholesale Trade	120	688	677	698	\$6,022,457	\$673.68
Retail Trade	369	4,804	4,874	4,973	\$23,099,321	\$363.84
Transportation, Warehousing & Utilities	60	609	613	632	\$5,647,468	\$702.95
Information	39	399	397	411	\$3,200,670	\$611.94
Financial Activities	258	1,315	1,322	1,332	\$10,648,339	\$619.13
Professional & Business Services	296	5,262	5,173	5,235	\$63,450,063	\$934.42
Education & Health Services	264	4,379	4,356	4,370	\$36,234,296	\$638.06
Leisure & Hospitality	173	3,495	3,486	3,446	\$8,626,142	\$190.91
Other Services	133	601	595	608	\$3,020,397	\$386.37
Local Government	35	2,897	2,971	2,956	\$22,856,191	\$597.75
State Government	19	2,684	2,703	2,694	\$23,596,800	\$673.85
FRANKLIN COUNTY - TOTAL	315	4,382	4,396	4,418	\$28,163,299	\$492.51
Natural Resources & Mining	8	132	137	142	\$1,510,173	\$847.94
Construction	27	151	158	158	\$1,012,562	\$500.36
Manufacturing	20	1,056	1,066	1,068	\$7,421,839	\$536.91
Trade, Transportation & Utilities	99	900	891	892	\$5,590,880	\$480.88
Wholesale Trade	13	59	58	56	\$247,339	\$329.93
Retail Trade	60	524	518	520	\$2,179,957	\$322.07
Transportation, Warehousing & Utilities	26	317	315	316	\$3,163,584	\$770.10
Information	7	57	55	57	\$249,443	\$340.61
Financial Activities	25	174	177	179	\$1,273,550	\$554.52
Professional & Business Services	18	58	58	59	\$311,053	\$410.18
Education & Health Services	38	543	539	545	\$3,367,936	\$477.70
Leisure & Hospitality	27	329	323	315	\$707,547	\$168.85
Other Services	17	49	53	52	\$287,818	\$431.30
Local Government	19	800	806	818	\$5,452,892	\$519.13
State Government	10	133	133	133	\$977,606	\$565.42

NORTH AMERICAN INDUSTRY CLASSIFICATION SYSTEM INDUSTRY GROUP	NUMBER OF EMPLOYING UNITS	EMPLOYMENT OCTOBER	EMPLOYMENT NOVEMBER	EMPLOYMENT DECEMBER	TOTAL EARNINGS OCT. - DEC. 2004	AVERAGE WEEKLY EARNINGS
FULTON COUNTY - TOTAL	208	1,871	1,858	1,872	\$9,061,954	\$373.37
Construction	16	33	33	34	\$204,204	\$471.24
Manufacturing	11	131	123	119	\$568,466	\$351.70
Trade, Transportation & Utilities	60	361	365	364	\$1,838,826	\$389.31
Retail Trade	44	202	206	202	\$661,837	\$250.38
Other Trade, Transportation & Utilities	16	159	159	162	\$1,176,989	\$565.86
Financial Activities	19	109	104	103	\$694,431	\$507.13
Professional & Business Services	16	47	49	47	\$302,866	\$488.76
Education & Health Services	28	356	364	374	\$1,546,042	\$326.12
Leisure & Hospitality	19	163	151	156	\$356,659	\$175.12
Local Government	13	508	505	508	\$2,656,961	\$403.12
State Government	11	100	100	103	\$629,819	\$479.68
Other	15	63	64	64	\$263,680	\$318.58
GARLAND COUNTY - TOTAL	2,981	35,530	35,578	35,609	\$242,835,875	\$525.12
Natural Resources & Mining	47	336	333	327	\$2,895,065	\$670.78
Construction	411	2,115	2,130	2,138	\$14,211,553	\$513.80
Manufacturing	125	3,441	3,443	3,443	\$28,132,004	\$628.64
Trade, Transportation & Utilities	694	7,387	7,531	7,568	\$45,747,276	\$469.49
Wholesale Trade	142	1,108	1,101	1,107	\$9,315,089	\$648.26
Retail Trade	484	5,573	5,726	5,732	\$29,491,955	\$399.61
Transportation, Warehousing & Utilities	68	706	704	729	\$6,940,232	\$748.76
Information	38	433	431	424	\$3,603,619	\$645.66
Financial Activities	333	1,510	1,510	1,501	\$13,325,998	\$680.21
Professional & Business Services	376	2,679	2,712	2,691	\$18,910,034	\$539.95
Education & Health Services	317	6,897	6,854	6,897	\$62,278,462	\$696.05
Leisure & Hospitality	347	5,695	5,527	5,574	\$18,618,257	\$255.81
Other Services	231	994	996	986	\$4,948,380	\$383.71
Local Government	36	3,105	3,140	3,089	\$22,887,155	\$565.85
State Government	26	938	971	971	\$7,278,072	\$583.18

NORTH AMERICAN INDUSTRY CLASSIFICATION SYSTEM INDUSTRY GROUP	NUMBER OF EMPLOYING UNITS	EMPLOYMENT OCTOBER	EMPLOYMENT NOVEMBER	EMPLOYMENT DECEMBER	TOTAL EARNINGS OCT. - DEC. 2004	AVERAGE WEEKLY EARNINGS
GRANT COUNTY - TOTAL	288	3,583	3,626	3,608	\$24,281,316	\$518.02
Natural Resources & Mining	27	239	231	229	\$2,396,227	\$791.10
Construction	30	231	234	236	\$1,624,074	\$534.65
Manufacturing	21	885	886	892	\$7,307,070	\$633.21
Trade, Transportation & Utilities	86	560	556	576	\$3,439,926	\$469.17
Wholesale Trade	17	151	146	152	\$1,425,694	\$732.75
Retail Trade	39	346	349	363	\$1,561,096	\$340.50
Transportation, Warehousing & Utilities	30	63	61	61	\$453,136	\$565.24
Information	3	39	38	40	\$288,273	\$568.59
Financial Activities	20	94	98	93	\$681,414	\$551.75
Professional & Business Services	23	68	75	73	\$544,795	\$582.05
Education & Health Services	23	211	219	211	\$1,167,681	\$420.38
Leisure & Hospitality	21	272	269	252	\$656,833	\$191.14
Other Services	14	41	41	38	\$173,650	\$333.94
Local Government	10	881	918	907	\$5,587,440	\$476.50
State Government	10	62	61	61	\$413,933	\$519.15
GREENE COUNTY - TOTAL	857	14,775	14,877	15,058	\$101,556,809	\$524.18
Natural Resources & Mining	37	216	210	201	\$1,560,302	\$574.27
Construction	76	390	362	360	\$2,187,460	\$453.96
Manufacturing	55	5,265	5,249	5,386	\$45,015,658	\$653.35
Trade, Transportation & Utilities	252	2,233	2,267	2,297	\$13,034,583	\$442.55
Wholesale Trade	55	449	445	443	\$3,531,876	\$609.61
Retail Trade	164	1,594	1,641	1,662	\$7,891,652	\$371.89
Transportation, Warehousing & Utilities	33	190	181	192	\$1,611,055	\$660.36
Information	13	99	98	98	\$589,716	\$461.32
Financial Activities	86	461	455	453	\$3,115,229	\$525.13
Professional & Business Services	77	1,428	1,546	1,560	\$9,242,317	\$470.41
Education & Health Services	98	1,657	1,670	1,665	\$10,909,348	\$504.32
Leisure & Hospitality	64	1,075	1,049	1,065	\$2,388,764	\$172.86
Other Services	56	169	166	158	\$841,004	\$393.67
Local Government	32	1,533	1,552	1,562	\$10,583,404	\$525.57
State Government	11	249	253	253	\$2,089,024	\$638.52

NORTH AMERICAN INDUSTRY CLASSIFICATION SYSTEM INDUSTRY GROUP	NUMBER OF EMPLOYING UNITS	EMPLOYMENT OCTOBER	EMPLOYMENT NOVEMBER	EMPLOYMENT DECEMBER	TOTAL EARNINGS OCT. - DEC. 2004	AVERAGE WEEKLY EARNINGS
HEMPSTEAD COUNTY - TOTAL	499	8,432	8,390	8,419	\$55,764,153	\$509.83
Natural Resources & Mining	18	228	234	242	\$1,745,949	\$572.32
Construction	34	114	117	112	\$754,551	\$507.66
Manufacturing	34	2,855	2,802	2,804	\$22,292,526	\$608.02
Trade, Transportation & Utilities	137	1,302	1,308	1,315	\$7,819,496	\$459.74
Wholesale Trade	24	195	195	192	\$1,264,670	\$501.46
Retail Trade	88	909	918	930	\$3,899,768	\$326.42
Transportation, Warehousing & Utilities	25	198	195	193	\$2,655,058	\$1,045.57
Information	11	79	82	86	\$626,197	\$585.05
Financial Activities	46	263	274	277	\$2,094,826	\$593.88
Professional & Business Services	35	264	256	220	\$1,054,256	\$328.77
Education & Health Services	62	951	959	974	\$6,229,288	\$498.45
Leisure & Hospitality	43	599	575	579	\$1,387,478	\$182.65
Other Services	34	212	207	215	\$1,390,558	\$506.15
Local Government	29	1,023	1,036	1,051	\$6,205,346	\$460.45
State Government	16	542	540	544	\$4,163,682	\$590.93
HOT SPRING COUNTY - TOTAL	617	7,672	7,744	7,720	\$56,886,205	\$567.41
Natural Resources & Mining	39	216	211	217	\$1,934,336	\$693.14
Construction	71	382	372	350	\$2,978,009	\$622.49
Manufacturing	51	1,907	1,896	1,880	\$18,507,705	\$751.54
Trade, Transportation & Utilities	169	1,320	1,333	1,342	\$9,637,988	\$556.73
Wholesale Trade	19	85	85	87	\$1,905,374	\$1,710.90
Retail Trade	106	890	901	909	\$4,392,405	\$375.42
Transportation, Warehousing & Utilities	44	345	347	346	\$3,340,209	\$742.60
Information	9	68	67	67	\$724,300	\$827.46
Financial Activities	55	302	302	300	\$2,205,314	\$562.96
Professional & Business Services	58	266	280	279	\$1,813,526	\$507.28
Education & Health Services	44	922	911	937	\$6,388,579	\$532.23
Leisure & Hospitality	42	519	578	557	\$1,533,391	\$213.94
Other Services	38	259	266	274	\$1,080,602	\$312.10
Local Government	27	1,102	1,115	1,142	\$7,345,843	\$504.67
State Government	14	409	413	375	\$2,736,612	\$527.59

NORTH AMERICAN INDUSTRY CLASSIFICATION SYSTEM INDUSTRY GROUP	NUMBER OF EMPLOYING UNITS	EMPLOYMENT OCTOBER	EMPLOYMENT NOVEMBER	EMPLOYMENT DECEMBER	TOTAL EARNINGS OCT. - DEC. 2004	AVERAGE WEEKLY EARNINGS
HOWARD COUNTY - TOTAL	361	8,376	8,467	8,454	\$53,086,395	\$484.28
Natural Resources & Mining	23	264	254	267	\$1,976,525	\$581.05
Construction	25	116	114	119	\$725,231	\$479.54
Manufacturing	26	4,984	5,080	5,006	\$33,831,554	\$518.07
Trade, Transportation & Utilities	110	930	941	967	\$5,332,034	\$433.57
Wholesale Trade	17	96	96	102	\$841,344	\$660.40
Retail Trade	70	653	660	670	\$2,947,811	\$343.05
Transportation, Warehousing & Utilities	23	181	185	195	\$1,542,879	\$634.67
Information	7	35	35	37	\$228,157	\$492.07
Financial Activities	35	164	164	165	\$1,079,038	\$505.09
Professional & Business Services	26	100	103	108	\$676,126	\$501.70
Education & Health Services	37	600	605	604	\$2,972,765	\$379.23
Leisure & Hospitality	22	267	272	268	\$626,716	\$179.22
Other Services	20	101	100	108	\$473,356	\$353.51
Local Government	18	691	674	681	\$4,249,750	\$479.33
State Government	12	124	125	124	\$915,143	\$566.18
INDEPENDENCE COUNTY - TOTAL	922	16,173	16,269	16,234	\$112,676,015	\$534.19
Natural Resources & Mining	13	131	137	127	\$940,887	\$549.69
Construction	66	489	479	480	\$3,544,030	\$564.82
Manufacturing	53	4,866	4,916	4,896	\$40,831,330	\$641.95
Trade, Transportation & Utilities	298	2,976	3,043	3,086	\$20,823,304	\$527.77
Wholesale Trade	56	474	473	487	\$3,871,104	\$622.96
Retail Trade	186	1,683	1,749	1,772	\$8,159,113	\$361.81
Transportation, Warehousing & Utilities	56	819	821	827	\$8,793,087	\$822.53
Information	11	165	164	166	\$1,259,726	\$587.28
Financial Activities	85	425	425	428	\$3,016,021	\$544.60
Professional & Business Services	90	1,046	1,003	957	\$4,851,031	\$372.41
Education & Health Services	102	2,516	2,524	2,540	\$20,612,267	\$627.53
Leisure & Hospitality	80	1,143	1,148	1,142	\$2,572,840	\$172.95
Other Services	68	341	337	335	\$1,559,305	\$355.22
Local Government	37	1,590	1,610	1,597	\$9,064,188	\$436.05
State Government	19	485	483	480	\$3,601,086	\$573.91

NORTH AMERICAN INDUSTRY CLASSIFICATION SYSTEM INDUSTRY GROUP	NUMBER OF EMPLOYING UNITS	EMPLOYMENT OCTOBER	EMPLOYMENT NOVEMBER	EMPLOYMENT DECEMBER	TOTAL EARNINGS OCT. - DEC. 2004	AVERAGE WEEKLY EARNINGS
IZARD COUNTY - TOTAL	254	2,873	2,899	2,926	\$17,906,077	\$475.07
Natural Resources & Mining	5	79	79	76	\$647,870	\$638.93
Construction	27	61	63	65	\$277,002	\$338.22
Manufacturing	12	425	419	423	\$3,614,849	\$658.40
Trade, Transportation & Utilities	71	511	518	520	\$3,026,329	\$450.86
Retail Trade	53	394	402	402	\$1,840,428	\$354.52
Other Trade, Transportation & Utilities	18	117	116	118	\$1,185,901	\$779.69
Information	3	8	7	7	\$43,681	\$458.19
Financial Activities	25	143	146	146	\$1,229,931	\$652.48
Professional & Business Services	22	78	77	77	\$360,664	\$358.75
Education & Health Services	23	413	418	413	\$2,211,631	\$410.27
Leisure & Hospitality	23	150	163	157	\$343,116	\$168.47
Other Services	14	38	38	43	\$167,448	\$324.72
Local Government	18	555	556	539	\$3,062,652	\$428.34
State Government	11	412	415	460	\$2,920,904	\$523.74
JACKSON COUNTY - TOTAL	524	5,942	5,857	5,867	\$39,783,804	\$519.69
Natural Resources & Mining	47	263	242	224	\$1,402,237	\$443.89
Construction	30	184	180	175	\$1,255,373	\$537.48
Manufacturing	29	1,038	1,043	1,058	\$8,892,202	\$653.73
Trade, Transportation & Utilities	139	1,227	1,208	1,217	\$7,669,383	\$484.63
Wholesale Trade	37	228	222	227	\$2,130,739	\$726.31
Retail Trade	83	731	727	727	\$3,356,478	\$354.50
Transportation, Warehousing & Utilities	19	268	259	263	\$2,182,166	\$637.44
Information	4	38	38	37	\$342,414	\$699.28
Financial Activities	44	186	187	190	\$1,243,481	\$509.69
Professional & Business Services	38	128	131	133	\$1,003,719	\$590.89
Education & Health Services	66	1,043	1,027	1,017	\$7,999,429	\$598.00
Leisure & Hospitality	36	312	298	307	\$812,024	\$204.35
Other Services	43	133	116	120	\$573,223	\$358.49
Local Government	34	803	804	800	\$4,276,589	\$410.01
State Government	14	587	583	589	\$4,313,730	\$565.93

NORTH AMERICAN INDUSTRY CLASSIFICATION SYSTEM INDUSTRY GROUP	NUMBER OF EMPLOYING UNITS	EMPLOYMENT OCTOBER	EMPLOYMENT NOVEMBER	EMPLOYMENT DECEMBER	TOTAL EARNINGS OCT. - DEC. 2004	AVERAGE WEEKLY EARNINGS
JEFFERSON COUNTY - TOTAL	1,755	33,430	33,393	33,363	\$257,076,894	\$592.15
Natural Resources & Mining	42	534	527	511	\$4,521,904	\$663.81
Construction	120	1,129	954	931	\$7,557,542	\$578.65
Manufacturing	82	6,744	6,701	6,689	\$66,775,853	\$765.36
Trade, Transportation & Utilities	499	6,056	6,172	6,208	\$39,802,581	\$498.22
Wholesale Trade	89	1,073	1,093	1,101	\$9,944,786	\$702.46
Retail Trade	346	4,150	4,253	4,277	\$20,505,808	\$373.19
Transportation, Warehousing & Utilities	64	833	826	830	\$9,351,987	\$867.08
Information	18	214	221	226	\$1,725,436	\$602.39
Financial Activities	147	1,221	1,220	1,229	\$10,789,029	\$678.41
Professional & Business Services	179	2,437	2,478	2,431	\$23,285,070	\$731.48
Education & Health Services	280	5,537	5,535	5,515	\$42,872,523	\$596.47
Leisure & Hospitality	143	2,221	2,185	2,170	\$5,623,634	\$197.35
Other Services	163	787	776	788	\$4,463,130	\$438.09
Local Government	42	3,428	3,478	3,517	\$23,707,546	\$524.89
State Government	40	3,122	3,146	3,148	\$25,952,646	\$636.05
JOHNSON COUNTY - TOTAL	442	8,526	8,546	8,603	\$53,109,078	\$477.35
Natural Resources & Mining	13	202	209	210	\$1,585,311	\$589.12
Construction	29	189	191	184	\$1,029,051	\$421.05
Manufacturing	41	3,227	3,201	3,243	\$21,336,766	\$509.14
Trade, Transportation & Utilities	124	1,743	1,777	1,772	\$9,970,306	\$434.78
Information	6	29	28	28	\$244,455	\$663.68
Financial Activities	38	206	208	215	\$1,487,795	\$545.85
Professional & Business Services	44	152	155	154	\$1,036,950	\$519.08
Education & Health Services	53	1,066	1,073	1,084	\$7,132,802	\$510.71
Leisure & Hospitality	40	548	540	534	\$1,312,066	\$186.67
Other Services	30	78	76	77	\$402,874	\$402.47
Local Government	14	934	943	955	\$6,436,308	\$524.47
State Government	10	152	145	147	\$1,134,394	\$589.60

NORTH AMERICAN INDUSTRY CLASSIFICATION SYSTEM INDUSTRY GROUP	NUMBER OF EMPLOYING UNITS	EMPLOYMENT OCTOBER	EMPLOYMENT NOVEMBER	EMPLOYMENT DECEMBER	TOTAL EARNINGS OCT. - DEC. 2004	AVERAGE WEEKLY EARNINGS
LAFAYETTE COUNTY - TOTAL	161	1,755	1,770	1,779	\$10,753,365	\$467.86
Natural Resources & Mining	30	175	182	174	\$1,046,511	\$454.81
Trade, Transportation & Utilities	38	248	240	242	\$1,471,071	\$465.04
Retail Trade	23	158	154	153	\$554,258	\$275.07
Other Trade, Transportation & Utilities	15	90	86	89	\$916,813	\$798.39
Financial Activities	16	87	86	94	\$487,542	\$421.38
Professional & Business Services	10	50	51	54	\$495,919	\$738.34
Education & Health Services	11	212	213	209	\$996,836	\$362.84
Leisure & Hospitality	6	55	61	64	\$188,907	\$242.19
Other Services	8	89	87	88	\$350,206	\$306.12
Local Government	14	366	374	384	\$2,014,041	\$413.50
State Government	8	64	64	63	\$410,635	\$496.14
Other	20	409	412	407	\$3,291,697	\$618.59
LAWRENCE COUNTY - TOTAL	436	4,438	4,433	4,464	\$26,507,856	\$458.73
Natural Resources & Mining	33	168	169	169	\$1,331,878	\$607.42
Construction	29	103	98	105	\$769,323	\$580.18
Manufacturing	24	720	711	704	\$5,202,958	\$562.38
Trade, Transportation & Utilities	146	1,025	1,022	1,024	\$5,714,206	\$429.39
Wholesale Trade	25	219	214	212	\$1,713,178	\$612.94
Retail Trade	84	670	680	688	\$2,977,304	\$337.13
Transportation, Warehousing & Utilities	37	136	128	124	\$1,023,724	\$608.88
Information	6	26	23	25	\$195,603	\$609.99
Financial Activities	31	135	138	140	\$856,372	\$478.51
Professional & Business Services	24	116	113	113	\$973,394	\$656.81
Education & Health Services	49	451	450	440	\$2,610,280	\$449.20
Leisure & Hospitality	29	323	340	343	\$651,113	\$149.36
Other Services	25	66	67	72	\$346,512	\$390.07
Local Government	28	1,180	1,178	1,205	\$7,081,741	\$458.67
State Government	12	125	124	124	\$774,476	\$479.16

NORTH AMERICAN INDUSTRY CLASSIFICATION SYSTEM INDUSTRY GROUP	NUMBER OF EMPLOYING UNITS	EMPLOYMENT OCTOBER	EMPLOYMENT NOVEMBER	EMPLOYMENT DECEMBER	TOTAL EARNINGS OCT. - DEC. 2004	AVERAGE WEEKLY EARNINGS
LEE COUNTY - TOTAL	226	2,342	2,278	2,264	\$14,486,529	\$485.63
Natural Resources & Mining	32	332	313	287	\$2,027,651	\$502.06
Construction	7	13	11	9	\$39,358	\$275.23
Trade, Transportation & Utilities	62	379	365	378	\$2,345,785	\$482.47
Wholesale Trade	9	68	63	64	\$599,299	\$709.23
Retail Trade	36	214	210	223	\$923,259	\$329.30
Transportation, Warehousing & Utilities	17	97	92	91	\$823,227	\$678.48
Financial Activities	12	78	79	82	\$477,646	\$461.20
Professional & Business Services	18	74	74	73	\$498,974	\$521.03
Education & Health Services	32	306	304	303	\$2,047,898	\$517.63
Leisure & Hospitality	8	103	96	95	\$197,011	\$154.64
Local Government	17	408	404	406	\$2,417,403	\$458.01
State Government	8	460	463	469	\$3,348,785	\$555.17
Other	30	189	169	162	\$1,086,018	\$481.96
LINCOLN COUNTY - TOTAL	216	3,203	3,259	3,177	\$20,647,772	\$494.33
Natural Resources & Mining	31	255	247	192	\$1,723,746	\$573.18
Construction	16	91	95	90	\$498,159	\$416.52
Manufacturing	10	477	489	495	\$3,323,550	\$524.96
Trade, Transportation & Utilities	53	400	387	387	\$2,563,854	\$503.97
Wholesale Trade	8	34	33	33	\$327,607	\$756.02
Retail Trade	27	222	210	208	\$813,478	\$293.32
Transportation, Warehousing & Utilities	18	144	144	146	\$1,422,769	\$756.52
Financial Activities	22	95	95	95	\$561,785	\$454.89
Professional & Business Services	11	26	26	26	\$192,387	\$569.19
Education & Health Services	22	318	319	311	\$1,574,906	\$383.38
Leisure & Hospitality	16	117	167	134	\$313,541	\$173.10
Local & State Government	22	1,380	1,391	1,402	\$9,662,094	\$534.32
Other	13	44	43	45	\$233,750	\$408.65

NORTH AMERICAN INDUSTRY CLASSIFICATION SYSTEM INDUSTRY GROUP	NUMBER OF EMPLOYING UNITS	EMPLOYMENT OCTOBER	EMPLOYMENT NOVEMBER	EMPLOYMENT DECEMBER	TOTAL EARNINGS OCT. - DEC. 2004	AVERAGE WEEKLY EARNINGS
LITTLE RIVER COUNTY - TOTAL	252	4,466	4,520	4,524	\$44,204,402	\$755.07
Natural Resources & Mining	12	73	73	70	\$561,032	\$599.39
Trade, Transportation & Utilities	74	1,056	1,077	1,076	\$8,829,096	\$634.93
Wholesale Trade	9	32	32	32	\$245,862	\$591.01
Retail Trade	43	363	357	356	\$1,585,083	\$339.95
Transportation, Warehousing & Utilities	22	661	688	688	\$6,998,151	\$792.81
Information	4	9	10	10	\$79,571	\$633.19
Financial Activities	27	126	117	120	\$823,872	\$523.76
Professional & Business Services	21	159	162	152	\$990,191	\$483.10
Education & Health Services	14	161	155	158	\$875,623	\$426.30
Leisure & Hospitality	19	201	207	210	\$495,223	\$184.92
Other Services	16	98	96	98	\$293,733	\$232.14
Local Government	20	759	765	761	\$4,524,408	\$456.93
State Government	12	93	94	94	\$567,228	\$465.83
Other	33	1,731	1,764	1,775	\$26,164,425	\$1,145.72
LOGAN COUNTY - TOTAL	452	5,777	5,796	5,865	\$36,294,571	\$480.31
Natural Resources & Mining	16	91	86	87	\$715,278	\$625.24
Construction	47	140	146	158	\$799,244	\$415.41
Manufacturing	26	1,912	1,921	1,948	\$14,728,546	\$587.94
Trade, Transportation & Utilities	122	879	894	899	\$4,040,736	\$348.98
Wholesale Trade	21	56	55	55	\$269,543	\$374.71
Retail Trade	76	761	778	783	\$3,264,780	\$324.47
Transportation, Warehousing & Utilities	25	62	61	61	\$506,413	\$635.13
Information	9	30	43	43	\$336,505	\$669.44
Financial Activities	43	230	235	234	\$2,119,861	\$699.86
Professional & Business Services	38	103	103	105	\$690,715	\$512.53
Education & Health Services	51	723	705	717	\$4,051,696	\$435.90
Leisure & Hospitality	29	345	335	333	\$786,286	\$179.12
Other Services	32	96	91	92	\$486,593	\$402.48
Local Government	23	794	804	811	\$4,853,083	\$464.90
State Government	16	434	433	438	\$2,686,028	\$474.98

NORTH AMERICAN INDUSTRY CLASSIFICATION SYSTEM INDUSTRY GROUP	NUMBER OF EMPLOYING UNITS	EMPLOYMENT OCTOBER	EMPLOYMENT NOVEMBER	EMPLOYMENT DECEMBER	TOTAL EARNINGS OCT. - DEC. 2004	AVERAGE WEEKLY EARNINGS
LONOKE COUNTY - TOTAL	1,151	11,565	11,585	11,459	\$77,209,924	\$514.83
Natural Resources & Mining	75	505	486	439	\$4,488,207	\$724.29
Construction	162	965	929	901	\$7,577,785	\$625.66
Manufacturing	37	1,373	1,390	1,371	\$12,330,175	\$688.30
Trade, Transportation & Utilities	314	2,402	2,464	2,483	\$15,421,322	\$484.25
Wholesale Trade	71	389	390	399	\$4,026,361	\$788.76
Retail Trade	175	1,712	1,788	1,806	\$9,170,790	\$398.86
Transportation, Warehousing & Utilities	68	301	286	278	\$2,224,171	\$593.38
Information	17	115	109	107	\$1,481,853	\$1,033.13
Financial Activities	125	578	591	589	\$4,930,330	\$647.19
Professional & Business Services	135	447	445	456	\$3,288,618	\$562.99
Education & Health Services	101	1,320	1,322	1,291	\$7,559,273	\$443.54
Leisure & Hospitality	76	1,105	1,079	1,112	\$2,800,375	\$196.07
Other Services	65	177	175	180	\$1,006,333	\$436.52
Local Government	28	2,434	2,453	2,384	\$15,364,559	\$487.65
State Government	16	144	142	146	\$961,094	\$513.40
MADISON COUNTY - TOTAL	236	3,174	3,186	3,181	\$20,318,286	\$491.44
Natural Resources & Mining	14	64	64	61	\$359,455	\$438.89
Construction	38	103	104	104	\$639,280	\$474.36
Manufacturing	22	1,144	1,148	1,155	\$8,148,409	\$545.52
Trade, Transportation & Utilities	59	579	574	577	\$3,520,631	\$469.63
Wholesale Trade	13	40	38	41	\$786,388	\$1,524.99
Retail Trade	34	412	402	413	\$1,859,091	\$349.65
Transportation, Warehousing & Utilities	12	127	134	123	\$875,152	\$525.93
Information	4	37	36	38	\$508,872	\$1,057.95
Financial Activities	17	96	99	93	\$669,780	\$536.68
Professional & Business Services	20	112	113	114	\$741,028	\$504.44
Education & Health Services	21	235	238	240	\$1,157,870	\$374.76
Leisure & Hospitality	12	117	125	118	\$207,254	\$132.86
Other Services	13	29	28	27	\$143,295	\$393.67
Local Government	8	605	604	601	\$3,830,283	\$488.35
State Government	8	53	53	53	\$392,129	\$569.13

NORTH AMERICAN INDUSTRY CLASSIFICATION SYSTEM INDUSTRY GROUP	NUMBER OF EMPLOYING UNITS	EMPLOYMENT OCTOBER	EMPLOYMENT NOVEMBER	EMPLOYMENT DECEMBER	TOTAL EARNINGS OCT. - DEC. 2004	AVERAGE WEEKLY EARNINGS
MARION COUNTY - TOTAL	276	3,933	3,920	3,941	\$23,145,976	\$452.89
Natural Resources & Mining	6	44	40	44	\$232,965	\$420.01
Construction	14	46	42	47	\$209,897	\$358.80
Manufacturing	27	1,691	1,703	1,701	\$11,550,310	\$523.15
Trade, Transportation & Utilities	58	547	565	577	\$2,474,848	\$338.14
Financial Activities	34	188	172	172	\$1,120,100	\$485.87
Professional & Business Services	24	43	44	43	\$359,906	\$638.89
Education & Health Services	24	336	329	331	\$1,705,657	\$395.19
Leisure & Hospitality	42	264	251	249	\$706,311	\$213.34
Local Government	20	573	571	569	\$3,203,944	\$431.62
State Government	8	107	112	116	\$679,342	\$467.97
Other	19	94	91	92	\$902,696	\$752.04
MILLER COUNTY - TOTAL	839	12,897	12,829	12,955	\$106,239,573	\$633.82
Natural Resources & Mining	33	161	167	171	\$1,196,588	\$553.38
Construction	88	867	907	944	\$6,781,169	\$575.75
Manufacturing	37	2,782	2,783	2,810	\$42,264,460	\$1,164.58
Trade, Transportation & Utilities	247	2,863	2,864	2,876	\$21,069,076	\$565.16
Wholesale Trade	67	626	619	629	\$6,410,158	\$789.36
Retail Trade	135	1,477	1,478	1,469	\$6,814,827	\$355.48
Transportation, Warehousing & Utilities	45	760	767	778	\$7,844,091	\$785.33
Information	9	86	89	94	\$1,391,764	\$1,193.96
Financial Activities	80	435	441	443	\$3,857,637	\$674.92
Professional & Business Services	80	909	795	775	\$4,428,304	\$412.23
Education & Health Services	79	966	999	1,009	\$6,058,353	\$470.10
Leisure & Hospitality	78	1,379	1,342	1,377	\$3,736,767	\$210.43
Other Services	68	369	358	365	\$1,428,983	\$301.98
Local Government	22	1,650	1,653	1,662	\$10,273,245	\$477.49
State Government	18	430	431	429	\$3,753,227	\$671.42

NORTH AMERICAN INDUSTRY CLASSIFICATION SYSTEM INDUSTRY GROUP	NUMBER OF EMPLOYING UNITS	EMPLOYMENT OCTOBER	EMPLOYMENT NOVEMBER	EMPLOYMENT DECEMBER	TOTAL EARNINGS OCT. - DEC. 2004	AVERAGE WEEKLY EARNINGS
MISSISSIPPI COUNTY - TOTAL	1,128	18,366	18,325	17,937	\$149,788,085	\$632.76
Natural Resources & Mining	106	1,281	1,243	957	\$8,021,027	\$531.75
Construction	56	356	365	367	\$3,159,059	\$670.05
Manufacturing	56	4,687	4,704	4,708	\$63,412,703	\$1,037.92
Trade, Transportation & Utilities	310	3,015	3,004	3,057	\$19,211,654	\$488.48
Wholesale Trade	63	554	540	556	\$5,051,095	\$706.45
Retail Trade	198	1,902	1,905	1,926	\$8,600,528	\$346.20
Transportation, Warehousing & Utilities	49	559	559	575	\$5,560,031	\$757.88
Financial Activities	104	607	603	602	\$4,294,979	\$546.99
Professional & Business Services	95	1,009	953	879	\$6,928,706	\$562.81
Education & Health Services	153	1,638	1,621	1,585	\$11,058,573	\$526.83
Leisure & Hospitality	79	1,084	1,087	1,048	\$2,763,699	\$198.13
Local Government	46	2,402	2,429	2,419	\$15,379,808	\$489.54
State Government	25	699	705	698	\$4,516,486	\$495.84
Other	98	1,588	1,611	1,617	\$11,041,391	\$529.07
MONROE COUNTY - TOTAL	298	2,618	2,571	2,572	\$14,606,967	\$434.33
Natural Resources & Mining	35	179	164	164	\$950,555	\$432.66
Construction	15	59	49	45	\$271,646	\$409.72
Manufacturing	8	202	188	181	\$1,186,292	\$479.44
Trade, Transportation & Utilities	92	673	666	654	\$4,502,595	\$521.35
Wholesale Trade	24	189	190	180	\$1,607,751	\$663.72
Retail Trade	42	329	337	330	\$1,707,827	\$395.70
Transportation, Warehousing & Utilities	26	155	139	144	\$1,187,017	\$625.40
Information	7	19	26	25	\$157,231	\$518.34
Financial Activities	16	102	99	104	\$806,976	\$610.57
Professional & Business Services	15	35	33	32	\$225,889	\$521.28
Education & Health Services	29	357	365	373	\$1,500,113	\$316.15
Leisure & Hospitality	31	319	312	316	\$655,947	\$159.84
Other Services	18	73	70	71	\$315,264	\$339.97
Local Government	22	463	462	470	\$3,155,759	\$522.04
State Government	10	137	137	137	\$878,700	\$493.37

NORTH AMERICAN INDUSTRY CLASSIFICATION SYSTEM INDUSTRY GROUP	NUMBER OF EMPLOYING UNITS	EMPLOYMENT OCTOBER	EMPLOYMENT NOVEMBER	EMPLOYMENT DECEMBER	TOTAL EARNINGS OCT. - DEC. 2004	AVERAGE WEEKLY EARNINGS
MONTGOMERY COUNTY - TOTAL	171	1,570	1,560	1,514	\$7,966,214	\$395.86
Natural Resources & Mining	13	56	55	60	\$340,455	\$459.45
Construction	23	125	129	114	\$676,859	\$424.45
Trade, Transportation & Utilities	45	223	218	219	\$1,019,514	\$356.47
Wholesale Trade	11	70	75	78	\$364,077	\$376.76
Retail Trade	26	124	117	114	\$538,181	\$349.85
Transportation, Warehousing & Utilities	8	29	26	27	\$117,256	\$329.99
Financial Activities	9	70	64	61	\$522,956	\$618.88
Education & Health Services	12	57	55	58	\$238,864	\$324.25
Leisure & Hospitality	20	168	161	115	\$577,489	\$300.15
Other Services	10	61	62	62	\$250,634	\$312.64
Local Government	9	488	488	488	\$2,587,096	\$407.80
State Government	8	57	56	57	\$392,850	\$533.28
Other	22	265	272	280	\$1,359,497	\$384.00
NEVADA COUNTY - TOTAL	200	2,614	2,622	2,668	\$18,286,680	\$533.91
Natural Resources & Mining	17	58	56	55	\$433,079	\$591.37
Construction	14	45	49	51	\$248,808	\$395.98
Manufacturing	7	721	732	757	\$7,833,542	\$817.98
Trade, Transportation & Utilities	49	465	459	463	\$2,531,610	\$421.21
Retail Trade	33	295	292	301	\$1,174,476	\$305.22
Other Trade, Transportation & Utilities	16	170	167	162	\$1,357,134	\$627.62
Financial Activities	12	63	63	66	\$543,240	\$652.93
Education & Health Services	13	391	401	412	\$1,944,969	\$372.79
Leisure & Hospitality	17	119	107	106	\$249,379	\$173.34
Other Services	18	91	88	88	\$264,631	\$228.72
Local Government	27	513	516	518	\$2,708,724	\$404.07
State Government	11	84	85	85	\$578,808	\$525.87
Other	15	64	66	67	\$949,890	\$1,112.72

NORTH AMERICAN INDUSTRY CLASSIFICATION SYSTEM INDUSTRY GROUP	NUMBER OF EMPLOYING UNITS	EMPLOYMENT OCTOBER	EMPLOYMENT NOVEMBER	EMPLOYMENT DECEMBER	TOTAL EARNINGS OCT. - DEC. 2004	AVERAGE WEEKLY EARNINGS
NEWTON COUNTY - TOTAL	128	1,073	1,074	1,070	\$4,700,918	\$337.22
Natural Resources & Mining	8	15	14	15	\$43,808	\$229.76
Construction	8	5	7	6	\$17,501	\$224.37
Manufacturing	14	64	60	61	\$314,501	\$392.31
Trade, Transportation & Utilities	29	172	173	167	\$662,948	\$298.80
Wholesale Trade	3	10	8	7	\$58,556	\$540.52
Retail Trade	16	110	112	108	\$342,223	\$239.32
Transportation, Warehousing & Utilities	10	52	53	52	\$262,169	\$385.35
Education & Health Services	13	216	220	227	\$784,490	\$273.06
Leisure & Hospitality	19	68	66	61	\$170,886	\$202.23
Other Services	6	14	15	14	\$49,517	\$265.74
Local Government	11	367	367	368	\$1,789,319	\$374.70
State Government	7	97	98	95	\$428,329	\$340.85
Other	13	55	54	56	\$439,619	\$614.85
OUACHITA COUNTY - TOTAL	640	7,543	7,531	7,529	\$49,050,818	\$500.79
Natural Resources & Mining	48	435	434	437	\$3,666,799	\$647.92
Construction	46	209	205	195	\$1,197,162	\$453.64
Manufacturing	28	828	828	830	\$7,297,978	\$677.45
Trade, Transportation & Utilities	192	1,686	1,683	1,705	\$10,794,128	\$490.92
Wholesale Trade	33	281	282	281	\$2,841,151	\$776.84
Retail Trade	129	1,127	1,125	1,144	\$5,104,898	\$346.89
Transportation, Warehousing & Utilities	30	278	276	280	\$2,848,079	\$788.07
Information	9	93	90	91	\$735,698	\$619.62
Financial Activities	65	353	359	354	\$2,886,454	\$624.86
Professional & Business Services	46	383	373	357	\$1,986,936	\$411.97
Education & Health Services	68	1,262	1,251	1,246	\$8,121,216	\$498.57
Leisure & Hospitality	40	522	504	512	\$1,204,146	\$180.68
Other Services	55	170	167	172	\$817,196	\$370.50
Local Government	30	1,300	1,333	1,324	\$7,770,903	\$453.19
State Government	13	302	304	306	\$2,572,202	\$650.86

NORTH AMERICAN INDUSTRY CLASSIFICATION SYSTEM INDUSTRY GROUP	NUMBER OF EMPLOYING UNITS	EMPLOYMENT OCTOBER	EMPLOYMENT NOVEMBER	EMPLOYMENT DECEMBER	TOTAL EARNINGS OCT. - DEC. 2004	AVERAGE WEEKLY EARNINGS
PERRY COUNTY - TOTAL	152	1,192	1,181	1,180	\$6,907,650	\$448.66
Natural Resources & Mining	6	26	27	27	\$204,323	\$589.39
Construction	25	69	73	73	\$433,060	\$464.82
Manufacturing	6	76	72	71	\$462,841	\$487.71
Trade, Transportation & Utilities	31	191	187	183	\$945,423	\$388.90
Wholesale Trade	4	8	8	7	\$109,717	\$1,100.84
Retail Trade	20	161	158	155	\$568,001	\$276.53
Transportation, Warehousing & Utilities	7	22	21	21	\$267,705	\$965.28
Financial Activities	15	50	53	59	\$890,559	\$1,268.60
Education & Health Services	15	157	155	157	\$745,671	\$366.90
Local Government	12	410	415	415	\$2,158,975	\$401.79
State Government	8	55	54	56	\$374,128	\$523.26
Other	34	158	145	139	\$692,670	\$361.64
PHILLIPS COUNTY - TOTAL	674	7,106	7,007	6,867	\$44,094,290	\$485.01
Natural Resources & Mining	77	741	627	497	\$3,892,578	\$481.66
Construction	33	129	119	117	\$715,835	\$452.58
Manufacturing	14	463	475	460	\$3,562,803	\$588.12
Trade, Transportation & Utilities	178	1,644	1,677	1,652	\$10,600,105	\$491.89
Wholesale Trade	36	421	423	421	\$3,546,014	\$646.89
Retail Trade	107	891	915	903	\$4,324,742	\$368.41
Transportation, Warehousing & Utilities	35	332	339	328	\$2,729,349	\$630.48
Information	12	62	61	63	\$459,267	\$569.81
Financial Activities	55	302	303	301	\$2,042,568	\$520.27
Professional & Business Services	58	304	273	293	\$2,150,693	\$570.48
Education & Health Services	119	1,146	1,157	1,150	\$7,079,233	\$473.12
Leisure & Hospitality	36	366	354	368	\$866,481	\$183.78
Other Services	42	105	105	104	\$532,183	\$391.12
Local Government	34	1,327	1,333	1,332	\$8,582,722	\$496.15
State Government	16	517	523	530	\$3,609,822	\$530.60

NORTH AMERICAN INDUSTRY CLASSIFICATION SYSTEM INDUSTRY GROUP	NUMBER OF EMPLOYING UNITS	EMPLOYMENT OCTOBER	EMPLOYMENT NOVEMBER	EMPLOYMENT DECEMBER	TOTAL EARNINGS OCT. - DEC. 2004	AVERAGE WEEKLY EARNINGS
PIKE COUNTY - TOTAL	270	2,783	2,759	2,784	\$16,051,646	\$444.90
Natural Resources & Mining	36	179	172	188	\$1,294,666	\$554.30
Construction	12	65	58	69	\$470,328	\$565.30
Manufacturing	11	463	448	443	\$2,645,193	\$450.83
Trade, Transportation & Utilities	95	600	611	625	\$3,201,547	\$402.41
Wholesale Trade	18	129	135	135	\$866,342	\$501.07
Retail Trade	55	376	376	395	\$1,656,783	\$333.33
Transportation, Warehousing & Utilities	22	95	100	95	\$678,422	\$539.86
Information	6	41	40	40	\$347,716	\$663.16
Financial Activities	25	193	192	193	\$1,704,396	\$680.49
Professional & Business Services	11	46	45	45	\$195,127	\$331.10
Education & Health Services	12	176	180	182	\$873,750	\$374.79
Leisure & Hospitality	22	215	199	189	\$427,039	\$163.43
Other Services	16	123	124	124	\$624,490	\$388.44
Local Government	13	566	576	573	\$3,584,988	\$482.39
State Government	11	116	114	113	\$682,406	\$459.12
POINSETT COUNTY - TOTAL	500	6,419	6,372	6,277	\$43,401,826	\$525.27
Natural Resources & Mining	49	426	411	388	\$2,869,329	\$540.53
Construction	31	100	102	94	\$668,802	\$521.42
Manufacturing	27	1,496	1,504	1,511	\$11,812,594	\$604.30
Trade, Transportation & Utilities	141	1,424	1,408	1,398	\$9,008,378	\$491.46
Wholesale Trade	32	480	474	448	\$4,608,822	\$758.61
Retail Trade	78	768	780	791	\$3,149,652	\$310.75
Transportation, Warehousing & Utilities	31	176	154	159	\$1,249,904	\$589.86
Information	7	60	59	58	\$748,405	\$975.76
Financial Activities	45	331	330	329	\$2,369,909	\$552.43
Professional & Business Services	25	84	83	81	\$685,230	\$637.62
Education & Health Services	50	527	525	518	\$3,004,373	\$441.60
Leisure & Hospitality	48	470	437	403	\$865,729	\$152.51
Other Services	33	71	71	72	\$2,684,418	\$2,894.77
Local Government	31	1,194	1,208	1,190	\$7,189,299	\$461.88
State Government	13	236	234	235	\$1,495,360	\$489.48

NORTH AMERICAN INDUSTRY CLASSIFICATION SYSTEM INDUSTRY GROUP	NUMBER OF EMPLOYING UNITS	EMPLOYMENT OCTOBER	EMPLOYMENT NOVEMBER	EMPLOYMENT DECEMBER	TOTAL EARNINGS OCT. - DEC. 2004	AVERAGE WEEKLY EARNINGS
POLK COUNTY - TOTAL	529	6,212	6,250	6,265	\$34,859,060	\$429.56
Natural Resources & Mining	26	253	251	248	\$1,893,536	\$581.08
Construction	35	167	153	160	\$791,065	\$380.32
Manufacturing	49	1,390	1,392	1,406	\$9,096,261	\$501.23
Trade, Transportation & Utilities	154	1,328	1,334	1,336	\$6,807,836	\$392.96
Wholesale Trade	24	143	146	144	\$764,943	\$407.68
Retail Trade	86	859	864	866	\$4,001,149	\$356.64
Transportation, Warehousing & Utilities	44	326	324	326	\$2,041,744	\$482.76
Information	9	55	55	55	\$418,295	\$585.03
Financial Activities	38	213	215	213	\$1,587,094	\$571.38
Professional & Business Services	45	178	183	180	\$1,223,531	\$521.91
Education & Health Services	65	918	945	943	\$5,086,865	\$418.35
Leisure & Hospitality	39	429	433	443	\$834,332	\$147.54
Other Services	33	138	137	137	\$595,495	\$333.55
Local Government	21	824	829	822	\$4,855,567	\$452.73
State Government	15	319	323	322	\$1,669,183	\$399.58
POPE COUNTY - TOTAL	1,624	24,577	24,516	24,915	\$178,705,362	\$557.23
Natural Resources & Mining	22	318	241	628	\$2,155,134	\$418.99
Construction	167	1,073	1,049	1,033	\$9,219,199	\$674.33
Manufacturing	89	4,624	4,623	4,686	\$40,137,406	\$664.79
Trade, Transportation & Utilities	475	6,374	6,411	6,429	\$54,331,354	\$652.55
Wholesale Trade	104	766	751	751	\$6,083,485	\$619.00
Retail Trade	277	3,143	3,200	3,203	\$15,181,305	\$367.00
Transportation, Warehousing & Utilities	94	2,465	2,460	2,475	\$33,066,564	\$1,031.18
Information	22	295	302	313	\$2,319,338	\$588.17
Financial Activities	158	741	750	763	\$6,083,566	\$622.85
Professional & Business Services	206	2,299	2,249	2,239	\$13,273,566	\$451.32
Education & Health Services	181	2,729	2,754	2,742	\$18,558,265	\$520.69
Leisure & Hospitality	131	2,254	2,275	2,242	\$5,619,349	\$191.52
Other Services	117	486	469	456	\$2,693,214	\$440.48
Local Government	39	2,294	2,298	2,291	\$14,685,481	\$492.37
State Government	17	1,090	1,095	1,093	\$9,629,490	\$677.91

NORTH AMERICAN INDUSTRY CLASSIFICATION SYSTEM INDUSTRY GROUP	NUMBER OF EMPLOYING UNITS	EMPLOYMENT OCTOBER	EMPLOYMENT NOVEMBER	EMPLOYMENT DECEMBER	TOTAL EARNINGS OCT. - DEC. 2004	AVERAGE WEEKLY EARNINGS
PRAIRIE COUNTY - TOTAL	227	1,672	1,654	1,646	\$10,023,170	\$465.21
Natural Resources & Mining	24	128	121	114	\$791,350	\$503.08
Trade, Transportation & Utilities	69	408	386	383	\$2,134,537	\$418.51
Wholesale Trade	10	56	52	49	\$382,205	\$561.79
Retail Trade	37	238	243	244	\$740,915	\$235.84
Transportation, Warehousing & Utilities	22	114	91	90	\$1,011,417	\$791.20
Information	4	10	10	10	\$97,164	\$747.42
Financial Activities	17	67	67	71	\$582,296	\$655.49
Professional & Business Services	16	57	56	55	\$312,285	\$428.96
Education & Health Services	18	202	201	206	\$1,032,384	\$391.20
Leisure & Hospitality	18	96	96	101	\$228,017	\$179.59
Other Services	15	51	52	53	\$216,879	\$320.83
Local Government	15	359	362	363	\$2,092,517	\$445.47
State Government	10	51	52	52	\$345,827	\$514.88
Other	21	243	251	238	\$2,189,914	\$690.39
PULASKI COUNTY - TOTAL	13,361	234,374	235,256	236,855	\$2,282,997,565	\$745.73
Natural Resources & Mining	42	701	662	653	\$7,823,497	\$895.55
Construction	1,120	10,453	10,338	10,384	\$110,741,813	\$819.75
Manufacturing	433	16,404	16,441	16,438	\$187,424,902	\$877.62
Trade, Transportation & Utilities	3,218	51,261	51,995	52,813	\$472,080,747	\$698.04
Wholesale Trade	1,072	12,967	12,880	13,032	\$175,540,693	\$1,041.93
Retail Trade	1,761	25,158	25,934	26,467	\$154,716,727	\$460.34
Transportation, Warehousing & Utilities	385	13,136	13,181	13,314	\$141,823,327	\$825.83
Information	223	8,611	8,664	8,664	\$104,951,308	\$933.71
Financial Activities	1,641	16,174	16,220	16,333	\$203,928,045	\$965.80
Professional & Business Services	2,539	33,098	33,040	33,291	\$331,755,445	\$769.99
Education & Health Services	1,632	31,860	31,902	31,951	\$352,154,167	\$849.06
Leisure & Hospitality	983	18,717	18,713	19,012	\$63,855,009	\$261.08
Other Services	1,230	6,955	7,019	7,013	\$51,175,796	\$562.72
Local Government	103	16,532	16,561	16,505	\$145,657,166	\$677.71
State Government	197	23,608	23,701	23,798	\$251,449,670	\$816.05

NORTH AMERICAN INDUSTRY CLASSIFICATION SYSTEM INDUSTRY GROUP	NUMBER OF EMPLOYING UNITS	EMPLOYMENT OCTOBER	EMPLOYMENT NOVEMBER	EMPLOYMENT DECEMBER	TOTAL EARNINGS OCT. - DEC. 2004	AVERAGE WEEKLY EARNINGS
RANDOLPH COUNTY - TOTAL	398	5,134	5,124	5,095	\$29,402,493	\$441.95
Natural Resources & Mining	20	79	73	69	\$350,235	\$365.72
Construction	21	105	108	102	\$517,935	\$379.44
Manufacturing	36	1,282	1,254	1,202	\$8,471,572	\$523.00
Trade, Transportation & Utilities	107	964	952	942	\$4,827,866	\$389.83
Wholesale Trade	21	164	161	161	\$853,422	\$405.23
Retail Trade	65	629	627	626	\$2,711,609	\$332.50
Transportation, Warehousing & Utilities	21	171	164	155	\$1,262,835	\$594.74
Information	7	48	47	47	\$444,635	\$722.59
Financial Activities	27	156	152	161	\$1,367,509	\$672.88
Professional & Business Services	40	209	224	227	\$950,573	\$332.37
Education & Health Services	53	751	777	789	\$5,101,591	\$508.11
Leisure & Hospitality	29	378	358	353	\$710,749	\$150.61
Other Services	23	56	58	60	\$279,670	\$370.92
Local Government	23	842	856	884	\$4,610,000	\$412.02
State Government	12	264	265	259	\$1,770,158	\$518.40
SAINT FRANCIS COUNTY - TOTAL	605	8,684	8,647	8,567	\$56,798,308	\$506.11
Natural Resources & Mining	24	211	204	190	\$1,294,442	\$493.75
Construction	46	268	264	252	\$2,041,690	\$600.97
Manufacturing	22	1,494	1,461	1,459	\$11,232,415	\$587.24
Trade, Transportation & Utilities	185	2,075	2,079	2,104	\$13,568,418	\$500.35
Wholesale Trade	33	530	521	509	\$4,266,550	\$631.15
Retail Trade	122	1,188	1,205	1,236	\$5,858,290	\$372.53
Transportation, Warehousing & Utilities	30	357	353	359	\$3,443,578	\$743.38
Information	12	101	101	102	\$786,675	\$597.17
Financial Activities	48	272	274	282	\$1,756,828	\$489.64
Professional & Business Services	42	136	140	139	\$964,164	\$536.14
Education & Health Services	89	1,424	1,427	1,411	\$9,500,540	\$514.41
Leisure & Hospitality	48	758	736	731	\$1,964,316	\$203.73
Other Services	42	143	149	140	\$542,983	\$290.06
Local Government	30	1,225	1,245	1,197	\$9,058,372	\$570.06
State Government	17	577	567	560	\$4,087,465	\$553.56

NORTH AMERICAN INDUSTRY CLASSIFICATION SYSTEM INDUSTRY GROUP	NUMBER OF EMPLOYING UNITS	EMPLOYMENT OCTOBER	EMPLOYMENT NOVEMBER	EMPLOYMENT DECEMBER	TOTAL EARNINGS OCT. - DEC. 2004	AVERAGE WEEKLY EARNINGS
SALINE COUNTY - TOTAL	1,538	18,968	19,034	19,171	\$133,315,555	\$538.11
Natural Resources & Mining	13	51	47	48	\$497,855	\$786.92
Construction	274	1,706	1,700	1,673	\$13,829,226	\$628.34
Manufacturing	81	1,786	1,808	1,800	\$18,456,421	\$789.61
Trade, Transportation & Utilities	402	4,401	4,357	4,467	\$29,574,841	\$516.07
Wholesale Trade	103	525	510	521	\$5,148,889	\$763.63
Retail Trade	254	3,607	3,602	3,693	\$22,127,827	\$468.39
Transportation, Warehousing & Utilities	45	269	245	253	\$2,298,125	\$691.44
Information	15	132	131	139	\$1,020,107	\$585.60
Financial Activities	146	668	688	690	\$4,923,476	\$555.32
Professional & Business Services	184	1,194	1,192	1,175	\$8,280,624	\$536.62
Education & Health Services	136	2,432	2,467	2,482	\$16,875,431	\$527.62
Leisure & Hospitality	113	2,031	2,024	2,035	\$5,474,647	\$207.45
Other Services	123	539	548	537	\$3,099,600	\$440.45
Local & State Government	51	4,028	4,072	4,125	\$31,283,327	\$590.53
SCOTT COUNTY - TOTAL	180	2,809	2,821	2,820	\$16,042,491	\$438.12
Natural Resources & Mining	17	172	168	166	\$1,323,823	\$603.75
Trade, Transportation & Utilities	48	479	483	482	\$2,386,305	\$381.36
Wholesale Trade	8	59	59	61	\$398,495	\$513.75
Retail Trade	30	341	343	344	\$1,385,670	\$311.06
Transportation, Warehousing & Utilities	10	79	81	77	\$602,140	\$586.31
Information	4	13	14	15	\$100,248	\$550.81
Financial Activities	15	74	77	74	\$408,733	\$419.21
Professional & Business Services	8	10	10	11	\$44,783	\$333.37
Education & Health Services	19	297	301	309	\$1,771,796	\$450.80
Leisure & Hospitality	17	146	138	138	\$296,210	\$161.98
Other Services	11	59	59	56	\$513,503	\$681.04
Local Government	5	359	358	364	\$2,091,325	\$446.45
State Government	8	63	64	65	\$390,185	\$468.97
Other	28	1,137	1,149	1,140	\$6,715,580	\$452.35

NORTH AMERICAN INDUSTRY CLASSIFICATION SYSTEM INDUSTRY GROUP	NUMBER OF EMPLOYING UNITS	EMPLOYMENT OCTOBER	EMPLOYMENT NOVEMBER	EMPLOYMENT DECEMBER	TOTAL EARNINGS OCT. - DEC. 2004	AVERAGE WEEKLY EARNINGS
SEARCY COUNTY - TOTAL	149	1,611	1,618	1,636	\$8,130,689	\$385.68
Construction	5	15	16	17	\$67,869	\$326.29
Manufacturing	18	307	311	311	\$1,511,732	\$375.52
Trade, Transportation & Utilities	40	280	281	295	\$1,151,651	\$310.47
Retail Trade	30	208	206	215	\$803,375	\$294.74
Other Trade, Transportation & Utilities	10	72	75	80	\$348,276	\$354.06
Financial Activities	14	57	52	51	\$313,006	\$451.45
Professional & Business Services	17	39	39	37	\$207,320	\$416.03
Education & Health Services	14	279	280	280	\$1,330,883	\$366.06
Leisure & Hospitality	13	101	100	100	\$221,842	\$170.08
Local Government	9	313	315	317	\$1,881,956	\$459.57
State Government	9	179	184	186	\$1,187,683	\$499.24
Other	10	41	40	42	\$256,747	\$481.70
SEBASTIAN COUNTY - TOTAL	3,531	72,414	72,169	72,039	\$571,012,175	\$608.30
Natural Resources & Mining	61	1,020	961	960	\$11,297,620	\$886.48
Construction	288	2,722	2,742	2,763	\$23,075,456	\$647.27
Manufacturing	220	21,396	21,308	21,248	\$189,592,730	\$684.14
Trade, Transportation & Utilities	916	12,216	12,552	12,773	\$87,271,296	\$536.47
Wholesale Trade	225	2,363	2,374	2,403	\$24,383,411	\$788.09
Retail Trade	570	7,766	8,091	8,252	\$41,802,831	\$400.13
Transportation, Warehousing & Utilities	121	2,087	2,087	2,118	\$21,085,054	\$773.33
Information	55	1,199	1,204	1,200	\$12,894,854	\$825.90
Financial Activities	391	2,530	2,524	2,539	\$23,307,047	\$708.36
Professional & Business Services	518	9,721	9,325	8,942	\$62,764,499	\$517.51
Education & Health Services	416	9,142	9,124	9,132	\$92,339,872	\$777.76
Leisure & Hospitality	306	5,281	5,218	5,330	\$15,090,521	\$220.00
Other Services	294	1,475	1,452	1,439	\$8,665,459	\$458.02
Local Government	43	4,370	4,417	4,412	\$34,316,353	\$599.98
State Government	23	1,342	1,342	1,301	\$10,396,468	\$602.05

NORTH AMERICAN INDUSTRY CLASSIFICATION SYSTEM INDUSTRY GROUP	NUMBER OF EMPLOYING UNITS	EMPLOYMENT OCTOBER	EMPLOYMENT NOVEMBER	EMPLOYMENT DECEMBER	TOTAL EARNINGS OCT. - DEC. 2004	AVERAGE WEEKLY EARNINGS
SEVIER COUNTY - TOTAL	326	5,179	5,221	5,202	\$33,498,770	\$495.48
Natural Resources & Mining	23	199	196	194	\$1,296,282	\$507.88
Trade, Transportation & Utilities	95	872	889	889	\$5,109,699	\$444.97
Wholesale Trade	16	132	137	137	\$1,506,592	\$856.34
Retail Trade	60	643	650	648	\$2,682,467	\$318.92
Transportation, Warehousing & Utilities	19	97	102	104	\$920,640	\$701.17
Information	7	43	43	44	\$365,334	\$648.52
Financial Activities	26	165	165	171	\$1,233,651	\$568.24
Professional & Business Services	29	127	129	135	\$2,330,659	\$1,375.56
Education & Health Services	36	510	505	506	\$2,913,998	\$442.12
Leisure & Hospitality	19	271	283	268	\$638,071	\$179.13
Other Services	32	161	155	149	\$679,720	\$337.33
Local Government	12	785	796	788	\$4,925,672	\$479.82
State Government	9	178	183	191	\$1,217,405	\$508.95
Other	38	1,868	1,877	1,867	\$12,788,279	\$525.86
SHARP COUNTY - TOTAL	383	3,898	3,924	3,876	\$20,519,408	\$404.79
Construction	32	198	193	193	\$1,203,381	\$475.52
Manufacturing	22	157	158	161	\$820,564	\$397.82
Trade, Transportation & Utilities	105	1,063	1,068	1,078	\$6,350,947	\$456.72
Retail Trade	76	661	654	655	\$2,760,416	\$323.36
Other Trade, Transportation & Utilities	29	402	414	423	\$3,590,531	\$668.75
Information	10	62	66	67	\$728,480	\$862.11
Financial Activities	30	258	256	262	\$1,708,801	\$508.17
Professional & Business Services	38	132	130	130	\$898,353	\$528.86
Education & Health Services	46	622	645	600	\$3,133,949	\$387.37
Leisure & Hospitality	38	464	449	445	\$898,868	\$152.75
Local Government	25	764	776	759	\$3,859,366	\$387.40
State Government	9	94	97	97	\$587,220	\$470.53
Other	28	84	86	84	\$329,479	\$299.34

NORTH AMERICAN INDUSTRY CLASSIFICATION SYSTEM INDUSTRY GROUP	NUMBER OF EMPLOYING UNITS	EMPLOYMENT OCTOBER	EMPLOYMENT NOVEMBER	EMPLOYMENT DECEMBER	TOTAL EARNINGS OCT. - DEC. 2004	AVERAGE WEEKLY EARNINGS
STONE COUNTY - TOTAL	245	2,789	2,726	2,700	\$14,842,959	\$416.96
Construction	21	73	71	67	\$335,523	\$366.96
Manufacturing	24	521	489	496	\$2,826,438	\$433.10
Trade, Transportation & Utilities	76	568	563	572	\$3,624,952	\$491.21
Wholesale Trade	10	52	51	48	\$245,264	\$374.83
Retail Trade	52	472	470	482	\$3,023,810	\$490.03
Transportation, Warehousing & Utilities	14	44	42	42	\$355,878	\$641.61
Financial Activities	21	92	90	90	\$685,492	\$581.58
Professional & Business Services	9	23	23	27	\$160,482	\$507.32
Education & Health Services	22	423	418	423	\$2,537,928	\$463.35
Leisure & Hospitality	34	399	385	336	\$791,905	\$163.17
Other Services	12	23	23	23	\$123,681	\$413.65
Local Government	10	443	443	442	\$2,375,899	\$412.86
State Government	10	170	168	168	\$1,000,967	\$456.51
Other	6	54	53	56	\$379,692	\$537.55
UNION COUNTY - TOTAL	1,347	20,165	20,298	20,392	\$161,394,871	\$612.03
Natural Resources & Mining	105	552	547	539	\$4,640,281	\$653.74
Construction	102	1,542	1,588	1,559	\$15,453,664	\$760.55
Manufacturing	67	5,295	5,286	5,288	\$52,010,339	\$756.34
Trade, Transportation & Utilities	372	3,517	3,574	3,616	\$23,991,168	\$517.08
Wholesale Trade	82	513	512	528	\$5,847,920	\$868.98
Retail Trade	233	2,333	2,357	2,385	\$11,030,203	\$359.78
Transportation, Warehousing & Utilities	57	671	705	703	\$7,113,045	\$789.55
Information	21	220	224	223	\$1,521,455	\$526.39
Financial Activities	125	751	755	754	\$6,888,429	\$703.38
Professional & Business Services	137	1,795	1,764	1,780	\$16,550,381	\$715.36
Education & Health Services	128	2,178	2,209	2,208	\$17,114,299	\$598.86
Leisure & Hospitality	97	1,141	1,133	1,166	\$3,210,972	\$215.41
Other Services	138	614	654	677	\$3,177,938	\$377.05
Local Government	37	2,007	2,009	2,011	\$12,945,454	\$495.67
State Government	18	553	555	571	\$3,890,491	\$534.73

NORTH AMERICAN INDUSTRY CLASSIFICATION SYSTEM INDUSTRY GROUP	NUMBER OF EMPLOYING UNITS	EMPLOYMENT OCTOBER	EMPLOYMENT NOVEMBER	EMPLOYMENT DECEMBER	TOTAL EARNINGS OCT. - DEC. 2004	AVERAGE WEEKLY EARNINGS
VAN BUREN COUNTY - TOTAL	345	3,805	3,772	3,743	\$19,741,713	\$402.45
Natural Resources & Mining	9	49	52	49	\$265,620	\$408.65
Construction	44	143	137	134	\$774,299	\$431.60
Manufacturing	14	617	613	608	\$3,693,498	\$463.74
Trade, Transportation & Utilities	103	831	822	836	\$4,281,704	\$396.98
Wholesale Trade	16	62	63	60	\$502,337	\$626.62
Retail Trade	65	630	620	638	\$2,784,082	\$340.30
Transportation, Warehousing & Utilities	22	139	139	138	\$995,285	\$552.12
Information	8	48	46	46	\$432,234	\$712.47
Financial Activities	31	103	106	107	\$618,330	\$451.56
Professional & Business Services	26	77	77	84	\$495,498	\$480.44
Education & Health Services	34	593	593	594	\$3,250,588	\$421.42
Leisure & Hospitality	28	435	425	396	\$1,246,022	\$228.94
Other Services	27	71	71	70	\$307,512	\$334.74
Local Government	13	747	738	725	\$3,759,254	\$392.54
State Government	8	91	92	94	\$617,154	\$514.15
WASHINGTON COUNTY - TOTAL	5,120	85,700	86,260	86,529	\$736,954,588	\$657.93
Natural Resources & Mining	39	501	505	498	\$3,841,918	\$589.49
Construction	579	4,845	4,813	4,870	\$45,825,763	\$727.92
Manufacturing	233	15,483	15,515	15,521	\$130,302,109	\$646.40
Trade, Transportation & Utilities	1,317	19,940	20,247	20,543	\$152,564,087	\$579.73
Wholesale Trade	337	3,464	3,466	3,547	\$41,632,976	\$917.02
Retail Trade	778	11,367	11,705	11,888	\$63,442,833	\$418.78
Transportation, Warehousing & Utilities	202	5,109	5,076	5,108	\$47,488,278	\$716.59
Information	97	1,471	1,489	1,511	\$15,266,140	\$787.96
Financial Activities	583	3,644	3,703	3,759	\$36,844,950	\$765.59
Professional & Business Services	833	7,875	7,908	7,845	\$112,629,535	\$1,100.03
Education & Health Services	514	9,748	9,853	9,875	\$97,546,275	\$763.70
Leisure & Hospitality	488	8,529	8,551	8,711	\$26,331,104	\$235.60
Other Services	353	1,885	1,883	1,910	\$11,009,401	\$447.45
Local & State Government	84	11,779	11,793	11,486	\$104,793,306	\$689.80

NORTH AMERICAN INDUSTRY CLASSIFICATION SYSTEM INDUSTRY GROUP	NUMBER OF EMPLOYING UNITS	EMPLOYMENT OCTOBER	EMPLOYMENT NOVEMBER	EMPLOYMENT DECEMBER	TOTAL EARNINGS OCT. - DEC. 2004	AVERAGE WEEKLY EARNINGS
WHITE COUNTY - TOTAL	1,526	23,733	23,750	23,840	\$166,969,103	\$540.24
Natural Resources & Mining	34	270	265	259	\$1,986,743	\$577.43
Construction	164	1,044	1,037	1,020	\$8,299,353	\$617.62
Manufacturing	83	4,036	4,066	4,048	\$34,339,641	\$652.22
Trade, Transportation & Utilities	480	5,864	5,909	5,952	\$40,364,638	\$525.52
Wholesale Trade	101	571	559	578	\$4,494,127	\$607.21
Retail Trade	297	3,084	3,159	3,203	\$14,686,149	\$358.79
Transportation, Warehousing & Utilities	82	2,209	2,191	2,171	\$21,184,362	\$743.98
Information	22	234	239	242	\$1,622,096	\$523.54
Financial Activities	159	884	860	888	\$6,379,076	\$559.31
Professional & Business Services	136	1,281	1,288	1,340	\$8,010,759	\$472.92
Education & Health Services	165	4,229	4,238	4,273	\$35,445,308	\$642.05
Leisure & Hospitality	116	2,010	1,972	1,929	\$4,618,295	\$180.30
Other Services	102	593	597	594	\$3,803,378	\$491.99
Local Government	46	2,598	2,592	2,603	\$17,293,454	\$512.10
State Government	19	690	687	692	\$4,806,362	\$536.09
WOODRUFF COUNTY - TOTAL	173	2,104	2,055	2,046	\$13,981,440	\$519.98
Natural Resources & Mining	20	96	89	80	\$674,861	\$587.69
Construction	7	96	75	70	\$498,221	\$477.07
Manufacturing	8	458	461	465	\$3,343,608	\$557.52
Trade, Transportation & Utilities	64	543	531	526	\$4,378,187	\$631.47
Wholesale Trade	12	220	210	201	\$2,575,145	\$941.78
Retail Trade	35	214	209	216	\$750,900	\$271.18
Transportation, Warehousing & Utilities	17	109	112	109	\$1,052,142	\$735.76
Financial Activities	14	62	64	63	\$621,505	\$758.86
Professional & Business Services	3	6	6	7	\$42,969	\$521.89
Education & Health Services	24	191	192	197	\$1,119,919	\$445.59
Leisure & Hospitality	8	53	47	45	\$105,355	\$167.67
Local Government	10	507	507	509	\$2,755,586	\$417.53
State Government	7	57	58	57	\$332,380	\$445.95
Other	8	35	25	27	\$108,849	\$288.72

NORTH AMERICAN INDUSTRY CLASSIFICATION SYSTEM INDUSTRY GROUP	NUMBER OF EMPLOYING UNITS	EMPLOYMENT OCTOBER	EMPLOYMENT NOVEMBER	EMPLOYMENT DECEMBER	TOTAL EARNINGS OCT. - DEC. 2004	AVERAGE WEEKLY EARNINGS
YELL COUNTY - TOTAL	395	7,168	7,122	6,924	\$41,946,827	\$456.30
Natural Resources & Mining	27	364	357	355	\$2,193,873	\$470.52
Construction	53	454	401	370	\$2,575,891	\$485.25
Manufacturing	23	2,979	2,957	2,794	\$17,849,568	\$471.84
Trade, Transportation & Utilities	90	628	618	613	\$2,920,357	\$362.52
Wholesale Trade	10	25	25	25	\$156,418	\$481.29
Retail Trade	60	512	505	497	\$2,007,117	\$305.93
Transportation, Warehousing & Utilities	20	91	88	91	\$756,822	\$646.86
Information	6	53	53	51	\$599,010	\$880.47
Financial Activities	35	203	205	207	\$1,283,246	\$481.52
Professional & Business Services	34	227	229	230	\$2,082,442	\$700.53
Education & Health Services	40	467	487	490	\$2,527,125	\$403.87
Leisure & Hospitality	27	360	361	360	\$894,078	\$190.87
Other Services	19	69	67	68	\$301,282	\$340.82
Local Government	28	1,244	1,264	1,264	\$8,013,692	\$490.27
State Government	13	120	123	122	\$706,263	\$446.53
REST-OF-STATE-TOTAL	4,488	14,917	15,328	15,378	\$199,850,880	\$1,010.88
Natural Resources & Mining	54	224	204	241	\$2,357,978	\$813.38
Construction	566	2,183	2,315	2,072	\$17,487,823	\$614.25
Manufacturing	43	165	163	169	\$2,171,976	\$1,008.50
Trade, Transportation & Utilities	1,861	6,735	6,899	6,968	\$116,607,519	\$1,306.16
Wholesale Trade	1,603	5,560	5,646	5,662	\$105,912,213	\$1,448.97
Retail Trade	100	506	566	577	\$4,206,095	\$588.62
Transportation, Warehousing & Utilities	158	669	687	729	\$6,489,211	\$718.23
Information	112	264	270	273	\$3,167,345	\$905.73
Financial Activities	253	686	707	731	\$11,206,561	\$1,217.58
Professional & Business Services	1,309	3,406	3,482	3,613	\$34,918,979	\$767.38
Education & Health Services	113	750	768	771	\$6,807,835	\$686.34
Leisure & Hospitality	43	77	82	89	\$534,667	\$497.52
Other	134	427	438	451	\$4,590,197	\$804.92

TABLE 7. FEDERAL GOVERNMENT EMPLOYMENT AND EARNINGS IN ARKANSAS

NORTH AMERICAN INDUSTRY CLASSIFICATION SYSTEM INDUSTRY GROUP	NUMBER OF EMPLOYING UNITS	EMPLOYMENT OCTOBER	EMPLOYMENT NOVEMBER	EMPLOYMENT DECEMBER	TOTAL Earnings OCT. - DEC. 2004
Manufacturing	2	5	13	25	\$236,060
Trade, Transportation & Utilities	449	6,869	6,819	6,932	\$77,698,633
Information	1	23	26	29	\$353,140
Financial Activities	24	194	193	191	\$2,603,618
Professional & Business Services	32	804	797	800	\$11,267,071
Education & Health Services	6	4,071	4,077	4,080	\$67,263,898
Leisure & Hospitality	16	206	193	200	\$1,795,569
Other Services	2	293	299	310	\$1,119,675
Public Administration	453	8,362	8,400	8,377	\$105,563,322
TOTAL	985	20,827	20,817	20,944	\$267,900,986

**TABLE 8. WORKFORCE INFORMATION AREA, SUMMARY
EMPLOYMENT AND TOTAL EARNINGS, BY INDUSTRY
FOURTH QUARTER 2004**

NORTH AMERICAN INDUSTRY CLASSIFICATION SYSTEM INDUSTRY GROUP	NUMBER OF EMPLOYING UNITS	EMPLOYMENT OCTOBER	EMPLOYMENT NOVEMBER	EMPLOYMENT DECEMBER	TOTAL EARNINGS OCT. - DEC. 2004	AVERAGE WEEKLY EARNINGS
CENTRAL WORKFORCE INFORMATION*	5,412	69,592	69,625	69,743	\$509,570,320	\$562.75
Natural Resources & Mining	156	907	860	809	\$7,135,733	\$639.25
Construction	779	5,380	5,292	5,184	\$42,553,258	\$619.32
Manufacturing	242	8,546	8,595	8,521	\$80,892,995	\$727.44
Trade, Transportation & Utilities	1,426	13,985	14,037	14,290	\$86,402,541	\$471.24
Information	82	675	673	692	\$5,957,025	\$673.87
Financial Activities	562	2,730	2,767	2,786	\$21,891,417	\$609.91
Professional & Business Services	646	6,995	6,899	6,953	\$75,557,479	\$836.40
Education & Health Services	548	8,690	8,711	8,722	\$63,201,497	\$558.32
Leisure & Hospitality	411	7,046	6,997	7,010	\$17,785,128	\$194.95
Other Services	354	1,441	1,440	1,449	\$7,658,473	\$408.16
Local Government	134	9,231	9,359	9,331	\$67,909,854	\$561.28
State Government	72	3,966	3,995	3,996	\$32,624,920	\$629.66
*Note: Pulaski County is not included in the Central Workforce Information. Please refer to Page 55 for information on Pulaski County.						
**Note: Central Workforce Includes these counties: Faulkner, Lonoke, Monroe, Prairie, and Saline.						
EASTERN WORKFORCE INFORMATION	3,102	39,476	39,233	38,954	\$263,363,134	\$511.88
Natural Resources & Mining	231	2,017	1,765	1,535	\$12,022,998	\$521.82
Construction	199	1,235	1,213	1,190	\$9,042,293	\$573.58
Manufacturing	115	4,538	4,497	4,500	\$37,146,574	\$633.34
Trade, Transportation & Utilities	868	10,237	10,291	10,371	\$73,173,987	\$546.50
Information	44	316	318	320	\$2,497,241	\$604.07
Financial Activities	263	1,494	1,504	1,522	\$11,215,514	\$572.61
Professional & Business Services	271	1,436	1,417	1,439	\$10,191,510	\$547.97
Education & Health Services	425	5,219	5,245	5,190	\$34,693,290	\$511.44
Leisure & Hospitality	227	3,429	3,365	3,388	\$9,116,416	\$206.62
Other Services	252	981	978	961	\$5,011,832	\$396.09
Local Government	138	107	105	105	\$677,527	\$493.23
State Government	69	636	624	636	\$3,992,567	\$485.95

NORTH AMERICAN INDUSTRY CLASSIFICATION SYSTEM INDUSTRY GROUP	NUMBER OF EMPLOYING UNITS	EMPLOYMENT OCTOBER	EMPLOYMENT NOVEMBER	EMPLOYMENT DECEMBER	TOTAL EARNINGS OCT. - DEC. 2004	AVERAGE WEEKLY EARNINGS
*Note: Eastern Workforce Includes these counties: Crittenden, Cross, Lee, Phillips, and Saint Francis.						
NORTH CENTRAL WORKFORCE INFORMATION	5,242	69,734	69,674	69,717	\$455,563,892	\$502.71
Natural Resources & Mining	149	949	926	879	\$6,249,872	\$523.70
Construction	473	2,588	2,536	2,489	\$17,713,431	\$536.94
Manufacturing	304	14,018	14,098	14,128	\$112,450,171	\$614.29
Trade, Transportation & Utilities	1,589	15,409	15,501	15,643	\$101,092,210	\$501.13
Information	75	705	710	718	\$5,368,083	\$580.77
Financial Activities	493	2,514	2,492	2,532	\$18,000,281	\$551.06
Professional & Business Services	439	3,007	2,971	3,000	\$17,329,734	\$445.44
Education & Health Services	571	11,134	11,156	11,167	\$82,840,408	\$571.39
Leisure & Hospitality	443	5,818	5,696	5,553	\$13,519,989	\$182.81
Other Services	362	1,468	1,445	1,448	\$7,642,698	\$404.43
Local Government	226	9,326	9,348	9,309	\$53,840,264	\$444.01
State Government	118	2,798	2,795	2,851	\$19,516,751	\$533.38
*Note: North Central Workforce Includes these counties: Cleburne, Fulton, Independence, IZard, Jackson, Sharp, Stone, Van Buren, White, and Woodruff						
NORTHEAST WORKFORCE INFORMATION	6,252	94,583	95,035	94,215	\$683,973,890	\$556.10
Natural Resources & Mining	361	2,821	2,735	2,335	\$18,108,530	\$529.58
Construction	479	3,089	3,038	2,958	\$21,608,346	\$548.88
Manufacturing	366	22,704	22,534	22,363	\$207,580,830	\$708.62
Trade, Transportation & Utilities	1,781	17,559	17,748	17,933	\$108,802,664	\$471.61
Information	88	2,290	2,320	2,328	\$18,275,696	\$607.88
Financial Activities	578	3,441	3,432	3,456	\$28,422,103	\$635.00
Professional & Business Services	589	6,214	6,713	6,440	\$45,070,469	\$537.04
Education & Health Services	792	12,158	12,275	12,306	\$101,270,137	\$636.11
Leisure & Hospitality	454	7,100	6,973	6,848	\$17,224,711	\$190.00
Other Services	433	1,792	1,752	1,724	\$11,234,200	\$492.12
Local Government	221	11,469	11,567	11,588	\$73,524,989	\$490.04
State Government	110	3,946	3,948	3,936	\$32,851,215	\$640.83

NORTH AMERICAN INDUSTRY CLASSIFICATION SYSTEM INDUSTRY GROUP	NUMBER OF EMPLOYING UNITS	EMPLOYMENT OCTOBER	EMPLOYMENT NOVEMBER	EMPLOYMENT DECEMBER	TOTAL EARNINGS OCT. - DEC. 2004	AVERAGE WEEKLY EARNINGS
*Note: Northeast Workforce Includes these counties: Clay, Craighead, Greene, Lawrence, Mississippi, Poinsett, and Randolph.						
NORTHWEST WORKFORCE INFORMATION	13,411	218,873	219,458	220,426	\$1,855,648,177	\$650.05
Natural Resources & Mining	125	1,632	1,626	1,635	\$16,151,084	\$761.74
Construction	1,586	10,715	10,614	10,719	\$92,008,934	\$662.53
Manufacturing	722	40,946	40,956	41,006	\$330,362,240	\$620.28
Trade, Transportation & Utilities	3,490	50,946	51,399	51,999	\$409,311,120	\$611.99
Information	234	3,301	3,338	3,383	\$31,338,121	\$721.60
Financial Activities	1,410	8,784	8,851	8,969	\$83,702,441	\$726.05
Professional & Business Services	1,919	30,024	30,205	30,402	\$406,384,094	\$1,034.76
Education & Health Services	1,313	21,690	21,898	22,116	\$195,251,516	\$685.77
Leisure & Hospitality	1,299	19,823	19,503	19,256	\$58,352,250	\$229.86
Other Services	901	4,418	4,415	4,477	\$25,342,582	\$439.39
Local Government	293	19,387	19,558	19,576	\$139,896,538	\$551.66
State Government	119	7,207	7,095	6,888	\$67,547,257	\$735.62
*Note: Northwest Workforce Includes these counties: Baxter, Benton, Boone, Carroll, Madison, Marion, Newton, Searcy, and Washington.						
SOUTHEAST WORKFORCE INFORMATION	5,165	79,645	79,534	79,461	\$587,822,000	\$568.43
Natural Resources & Mining	432	3,383	3,300	3,109	\$24,681,651	\$581.68
Construction	373	3,133	2,930	2,897	\$21,058,881	\$542.38
Manufacturing	239	18,448	18,240	18,249	\$174,606,026	\$733.45
Trade, Transportation & Utilities	1,469	14,387	14,497	14,605	\$95,958,940	\$509.19
Information	68	547	549	555	\$4,352,620	\$608.39
Financial Activities	410	2,917	2,930	2,945	\$24,387,465	\$640.11
Professional & Business Services	437	4,110	4,161	4,118	\$37,464,002	\$697.84
Education & Health Services	606	10,075	10,083	10,087	\$70,076,669	\$534.68
Leisure & Hospitality	385	4,889	4,855	4,769	\$11,566,349	\$183.91
Other Services	386	1,545	1,525	1,549	\$8,036,756	\$401.52
Local Government	211	10,324	10,477	10,562	\$68,790,450	\$506.16
State Government	149	5,887	5,987	6,016	\$46,842,191	\$604.23

NORTH AMERICAN INDUSTRY CLASSIFICATION SYSTEM INDUSTRY GROUP	NUMBER OF EMPLOYING UNITS	EMPLOYMENT OCTOBER	EMPLOYMENT NOVEMBER	EMPLOYMENT DECEMBER	TOTAL EARNINGS OCT. - DEC. 2004	AVERAGE WEEKLY EARNINGS
*Note: Southeast Workforce Includes these counties: Arkansas, Ashley, Bradley, Chicot, Cleveland, Desha, Drew, Grant, Jefferson, and Lincoln						
SOUTHWEST WORKFORCE INFORMATION	5,726	87,746	87,992	88,410	\$657,507,438	\$574.42
Natural Resources & Mining	419	2,918	2,913	2,915	\$23,592,630	\$622.51
Construction	441	3,820	3,923	3,950	\$32,757,562	\$646.49
Manufacturing	299	27,212	27,271	27,352	\$266,004,558	\$750.12
Trade, Transportation & Utilities	1,611	15,196	15,289	15,413	\$99,833,807	\$501.95
Information	87	726	737	750	\$6,779,089	\$706.92
Financial Activities	540	3,026	3,041	3,073	\$25,044,166	\$632.32
Professional & Business Services	478	4,285	4,134	4,077	\$32,201,183	\$594.67
Education & Health Services	556	8,795	8,875	8,905	\$55,794,146	\$484.50
Leisure & Hospitality	411	5,277	5,201	5,253	\$13,475,753	\$197.69
Other Services	467	2,220	2,221	2,278	\$10,172,589	\$349.39
Local Government	266	10,953	11,040	11,079	\$67,037,592	\$467.77
State Government	151	3,318	3,347	3,365	\$24,814,363	\$570.93
*Note: Southwest Workforce Includes these counties: Calhoun, Columbia, Dallas, Hempstead, Howard, Lafayette, Little River, Miller, Nevada, Ouachita, Sevier, and Union						
WEST CENTRAL WORKFORCE INFORMATION	7,729	105,531	105,451	105,625	\$710,602,726	\$517.95
Natural Resources & Mining	265	2,109	2,015	2,425	\$15,734,545	\$554.44
Construction	879	5,131	5,046	4,937	\$36,620,193	\$559.14
Manufacturing	423	20,521	20,419	20,293	\$158,748,069	\$598.27
Trade, Transportation & Utilities	1,996	21,351	21,582	21,651	\$145,239,245	\$518.96
Information	107	1,013	1,014	1,015	\$8,512,539	\$645.77
Financial Activities	791	3,849	3,845	3,881	\$31,500,203	\$628.02
Professional & Business Services	844	6,734	6,746	6,716	\$45,171,265	\$516.15
Education & Health Services	791	14,690	14,662	14,723	\$112,626,099	\$589.69
Leisure & Hospitality	726	11,365	11,201	11,139	\$32,579,631	\$223.06
Other Services	543	2,413	2,406	2,410	\$12,453,428	\$397.55
Local Government	232	11,950	12,071	12,025	\$78,472,092	\$502.38
State Government	132	4,405	4,444	4,410	\$32,945,417	\$573.41

NORTH AMERICAN INDUSTRY CLASSIFICATION SYSTEM INDUSTRY GROUP	NUMBER OF EMPLOYING UNITS	EMPLOYMENT OCTOBER	EMPLOYMENT NOVEMBER	EMPLOYMENT DECEMBER	TOTAL EARNINGS OCT. - DEC. 2004	AVERAGE WEEKLY EARNINGS
*Note: West Central Workforce Includes these counties: Clark, Conway, Garland, Hot Spring, Johnson, Montgomery, Perry, Pike, Pope, and Yell						
WESTERN WORKFORCE INFORMATION	6,147	109,430	109,324	109,354	\$809,097,365	\$569.06
Natural Resources & Mining	152	2,149	2,092	2,087	\$20,606,227	\$751.47
Construction	589	4,464	4,443	4,481	\$35,014,088	\$603.54
Manufacturing	413	30,226	30,190	30,145	\$250,916,941	\$639.39
Trade, Transportation & Utilities	1,651	21,823	22,220	22,550	\$149,840,981	\$519.25
Information	94	1,593	1,610	1,607	\$15,985,081	\$766.92
Financial Activities	623	3,719	3,732	3,744	\$32,419,751	\$668.29
Professional & Business Services	758	10,712	10,361	9,992	\$70,078,511	\$520.58
Education & Health Services	673	13,109	13,085	13,110	\$117,246,840	\$688.40
Leisure & Hospitality	493	7,809	7,710	7,805	\$20,962,391	\$207.40
Other Services	465	2,161	2,136	2,122	\$12,633,768	\$454.20
Local Government	153	9,206	9,281	9,283	\$65,975,401	\$548.26
State Government	83	2,459	2,464	2,428	\$17,417,385	\$546.78
*Note: Western Workforce Includes these counties: Crawford, Franklin, Logan, Polk, Scott, and Sebastian						