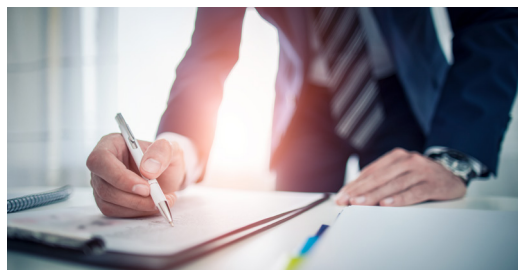




Arkansas

Labor Market Report

July

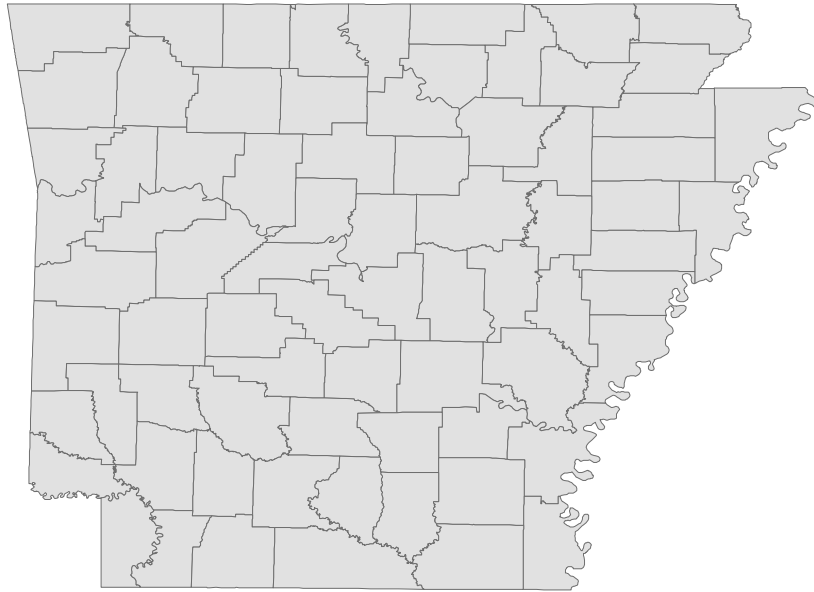


2019

adws
Arkansas Division of
Workforce Services

www.discover.arkansas.gov

Table of Contents



Monthly Spotlight.....	2
Arkansas Labor Force Summary.....	3
Arkansas Nonfarm Payroll Jobs.....	4
Arkansas Production Workers.....	6
Metropolitan Statistical Areas.....	7
Micropolitan Statistical Areas/Cities.....	14
County Labor Force Statistics.....	15
Local Workforce Development Areas.....	18

Technical Notes

The *Arkansas Labor Market* is prepared monthly in conjunction with the U.S. Department of Labor, Bureau of Labor Statistics (BLS). The current month's estimates are preliminary, while previous month's data is subject to revision.

Estimates of nonfarm payroll jobs show the number of jobs by industry and reflect employment by place of work. Hours and earnings estimates are based on payroll and worker-hour data collected for production workers in manufacturing industries.

Industries are classified according to the North American Industry Classification System (NAICS). All estimates are based on a first quarter 2018 benchmark.

Explanation of Terms and Concepts

Monthly Business Survey of Employers

A monthly sample survey designed to provide industry information on nonfarm payroll jobs. Data are compiled each month from mail surveys and telephone interviews conducted by the Bureau of Labor Statistics in cooperation with Department of Workforce Services. The data are based on establishment records and include all workers, full- or part-time, who received pay during the payroll period which includes the 12th of

the month. Approximately 5,000 Arkansas business establishments are surveyed.

Metropolitan Statistical Area (MSA)

A term applied by the U.S. Office of Management and Budget to counties that have one or more central cities and that meet specified criteria of population density, commuting patterns and social and economic integration.

Current Population Survey (CPS)

A monthly sample survey of the population 16 years of age and over, designed to provide data on the labor force, the employed and the unemployed. The survey is conducted each month by the Bureau of the Census for BLS. The information is collected by trained interviewers from a sample of about 60,000 households. The data collected are based on the activity reported for the calendar week including the 12th of the month. Approximately 800 Arkansas households are represented in the sample survey.

Civilian Labor Force

The sum of all employed and unemployed persons 16 years of age or older. Members of the Armed Forces are excluded.

Employment

An estimate of the number of persons who worked any time for pay or profit or worked 15 hours or more as unpaid workers in a family business during the calendar week which includes the 12th of the month. Also included are those who, although not working, had some job attachment and were not looking for work, and persons involved in labor management disputes.

Unemployment

An estimate of the number of persons who did not have a job, but were available for work and actively seeking work during the calendar week which includes the 12th of the month.

Unemployment Rate

The number of unemployed as a percentage of the civilian labor force. Unemployment rates are calculated from unrounded data.

Seasonal Adjustment

A statistical technique applied to monthly data to eliminate changes that normally occur during the year due to seasonal events such as weather, major holidays, schedule shifts, harvest times, and the opening/closing of schools.

July Spotlight

Seasonal Employment Trends (Part 1 of 2)

Employment in several major industry sectors is directly affected by seasonal patterns. These patterns can be seen by comparing monthly employment across multiple years. Seasonal trends can be attributed to set schedules of operation, holidays, or weather patterns. Examples of all three types are provided.

Education is one of the most obvious examples of seasonal employment. Most of Arkansas' public schools and universities are scheduled to operate from August to May. Chart 1 shows how state and local government employment is affected by the operation schedule of public schools. Note that the number of jobs begin to decline between May and June, reaches a low in July, and then increases between August and September. Jobs remain fairly stable during the rest of the year, with the exception of the holiday-related drop in December/January.

While employment at public universities and secondary schools falls under state and local government, employment at *private* universities and *private* secondary schools falls under educational services. This is a subsector under **educational and health services**. With the exception of the few schools that utilize a three-quarter system, the majority of private schools operate on the same August to May schedule as public schools. Chart 2 below shows the seasonal employment trends of private educational services, which closely mirrors the trend seen in state and local government.

Leisure and hospitality is another sector affected by seasonal patterns. People tend to travel more during the summer months. Hotels, restaurants, and recreational facilities have increased business during this time and require more employees. Similarly, many recreational facilities in Arkansas are only open during the summer months—amusement parks and camps are prime examples. Chart 3 shows the seasonal employment pattern that occurs in the **leisure and hospitality** sector. Note that employment begins to steadily rise throughout the spring, peaks in July or August, and then typically declines slowly throughout the second half of the year.

Chart 1. Jobs in State and Local Government
January 2017 - July 2019

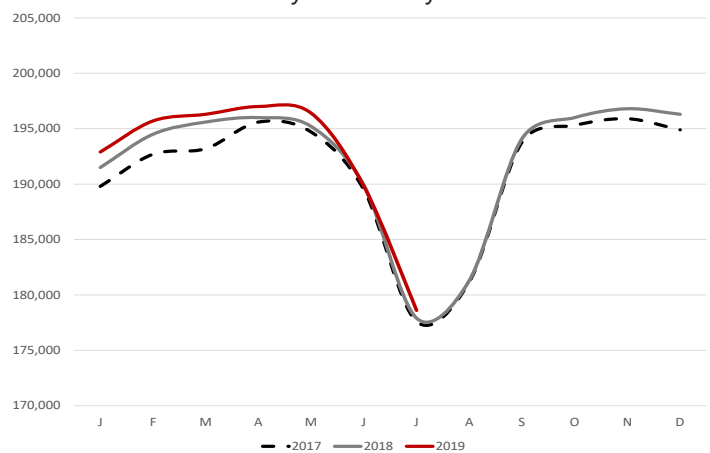


Chart 2. Jobs in Educational Services
January 2017 - July 2019

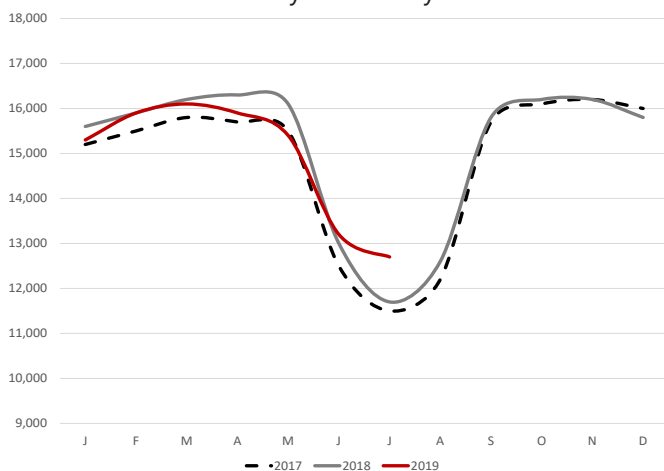
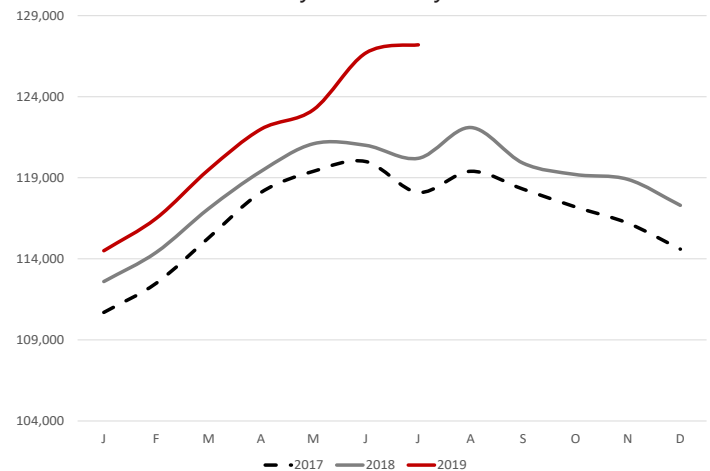


Chart 3. Jobs in Leisure and Hospitality
January 2017 - July 2019



State of Arkansas Civilian Labor Force Summary

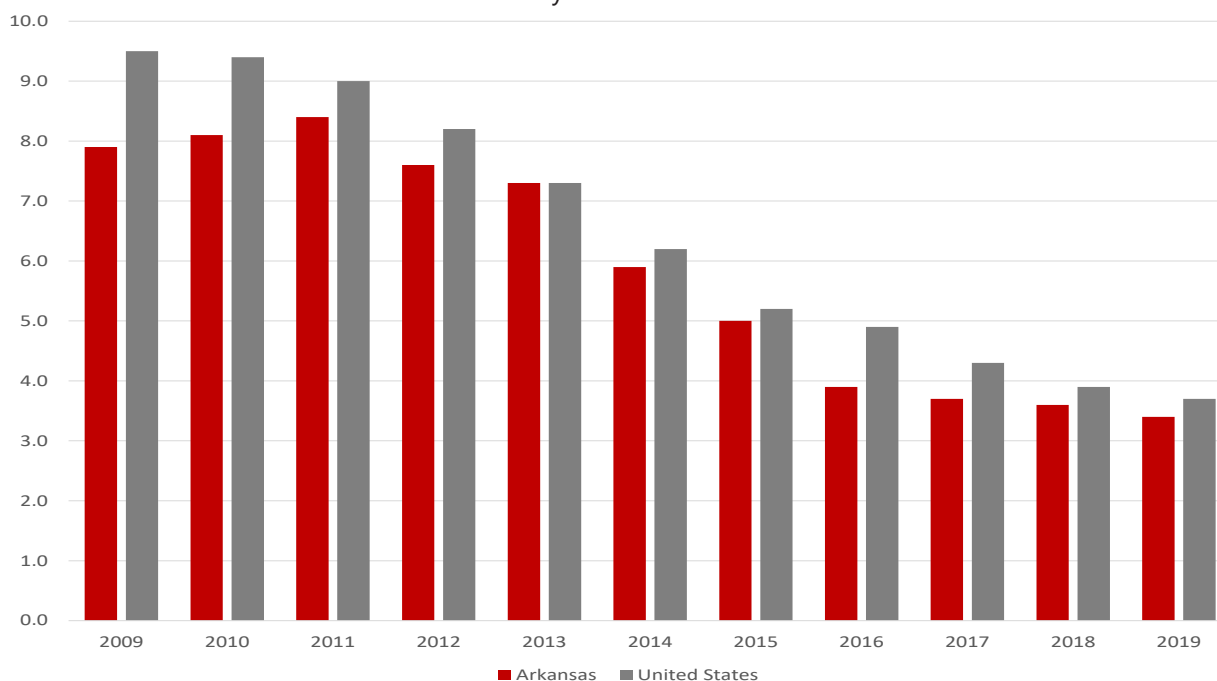
Labor force data, produced by the U.S. Department of Labor, Bureau of Labor Statistics and released by the Arkansas Division of Workforce Services, show Arkansas' seasonally adjusted unemployment rate declined one-tenth of a percentage point, from 3.5 percent in June to 3.4 percent in July. Arkansas' civilian labor force rose 410, a result of 802 more employed and 392 fewer unemployed Arkansans. The United States' jobless rate remained stable at 3.7 percent between June and July.

BLS Program Operations Manager Susan Price said, "Dropping another one-tenth of percentage point in July, Arkansas' jobless rate decreased for the third consecutive month. The unemployment rate of 3.4 percent is a new record low, breaking the record low of 3.5 percent set last month."

Civilian Labor Force Estimates

	Seasonally Adjusted			Not Seasonally Adjusted			
	Jul 19	Jun 19	Jul 18	Jul 19	Jun 19	Jul 18	
Civilian Labor Force	1,363,167	1,362,757	1,349,795	Civilian Labor Force	1,380,474	1,382,212	1,368,932
Employment	1,316,265	1,315,463	1,300,640	Employment	1,325,919	1,332,568	1,313,583
Unemployment	46,902	47,294	49,155	Unemployment	54,555	49,644	55,349
Unemployment Rate	3.4	3.5	3.6	Unemployment Rate	4.0	3.6	4.0
U.S. Unemployment	3.7	3.7	3.9	U.S. Unemployment	4.0	3.8	4.1

Unemployment Rates - Arkansas vs United States (Seasonally Adjusted)
July: 2009 - 2019



State of Arkansas Nonfarm Payroll Jobs

Not Seasonally Adjusted

(In Thousands)

(NAICS)	<u>Jul 19</u>	<u>Jun 19</u>	<u>Jul 18</u>	<u>OTM</u>	<u>QTY</u>
Total Nonfarm	1265.1	1279.0	1245.9	-13.9	19.2
Goods Producing	223.1	224.5	218.3	-1.4	4.8
Mining, Logging, and Construction	60.4	60.3	57.6	0.1	2.8
Mining & Logging	5.9	5.8	5.9	0.1	0.0
Construction	54.5	54.5	51.7	0.0	2.8
Specialty Trade Contractors	33.7	33.9	32.8	-0.2	0.9
Manufacturing	162.7	164.2	160.7	-1.5	2.0
Durable Goods	77.3	78.8	76.5	-1.5	0.8
Nondurable Goods	85.4	85.4	84.2	0.0	1.2
Service Providing	1042.0	1054.5	1027.6	-12.5	14.4
Trade, Transportation & Utilities	253.3	253.8	250.9	-0.5	2.4
Wholesale Trade	48.9	48.3	47.5	0.6	1.4
Retail Trade	139.6	140.8	138.4	-1.2	1.2
Transport, Warehousing & Utilities	64.8	64.7	65.0	0.1	-0.2
Information	11.0	11.1	11.1	-0.1	-0.1
Financial Activities	63.1	62.1	61.0	1.0	2.1
Finance & Insurance	48.7	48.0	47.1	0.7	1.6
Real Estate & Rental & Leasing	14.4	14.1	13.9	0.3	0.5
Professional & Business Services	145.7	146.4	145.0	-0.7	0.7
Professional, Scientific & Technical	44.6	43.8	43.8	0.8	0.8
Management of Companies	35.7	35.5	34.9	0.2	0.8
Administrative & Support Services	65.4	67.1	66.3	-1.7	-0.9
Educational & Health Services	188.8	190.2	187.5	-1.4	1.3
Educational Services	12.7	13.2	11.7	-0.5	1.0
Health Care & Social Assistance	176.1	177.0	175.8	-0.9	0.3
Ambulatory Health Care	58.8	58.8	58.4	0.0	0.4
Social Assistance	39.2	40.1	39.3	-0.9	-0.1
Leisure & Hospitality	127.2	126.7	120.2	0.5	7.0
Arts, Entertainment & Recreation	13.1	13.2	13.2	-0.1	-0.1
Accommodation & Food Services	114.1	113.5	107.0	0.6	7.1
Accommodation Services	12.2	12.3	12.0	-0.1	0.2
Food Services	101.9	101.2	95.0	0.7	6.9
Other Services	54.0	54.1	53.9	-0.1	0.1
Government	198.9	210.1	198.0	-11.2	0.9
Federal Government	20.3	20.3	20.1	0.0	0.2
State Government	72.9	74.6	72.8	-1.7	0.1
Local Government	105.7	115.2	105.1	-9.5	0.6

State of Arkansas Nonfarm Payroll Job Summary

June 2019 - July 2019

Arkansas' nonfarm payroll jobs dropped 13,900 to total 1,265,100. Employment declined in seven major industry sectors. The greatest loss was in **government** (-11,200), attributed to summer break at public schools and universities. Jobs in **manufacturing** decreased 1,500. All reductions were in durable goods manufacturing (-1,500), related to several recent layoffs and closures. **Educational and health services** declined 1,400, due to seasonal hiring trends in both subsectors. **Financial activities** posted the largest increase, adding 1,000 jobs. Gains were reported in both finance and insurance (+700) and in real estate-rental-leasing (+300).

July 2018 - July 2019

Compared to July 2018, nonfarm payroll jobs in Arkansas are up 19,200. Nine major industry sectors posted gains, with five adding 2,000 or more jobs, each. Employment in **leisure and hospitality** rose 7,000. Most of the expansion was in food services (+6,900). **Construction** increased 2,800, related to ongoing large projects. **Trade-transportation-utilities** added 2,400 jobs, with hiring in both wholesale (+1,400) and retail (+1,200) trade. Jobs in **financial activities** rose 2,100. The sector includes businesses such as banks, insurance carriers, and real estate agencies. Employment in **manufacturing** increased 2,000. Most of the gains occurred in nondurable goods manufacturing (+1,200).

Jobs in Construction (Not Seasonally Adjusted)

July 2016 - July 2019



State of Arkansas Production Workers- Hours and Earnings

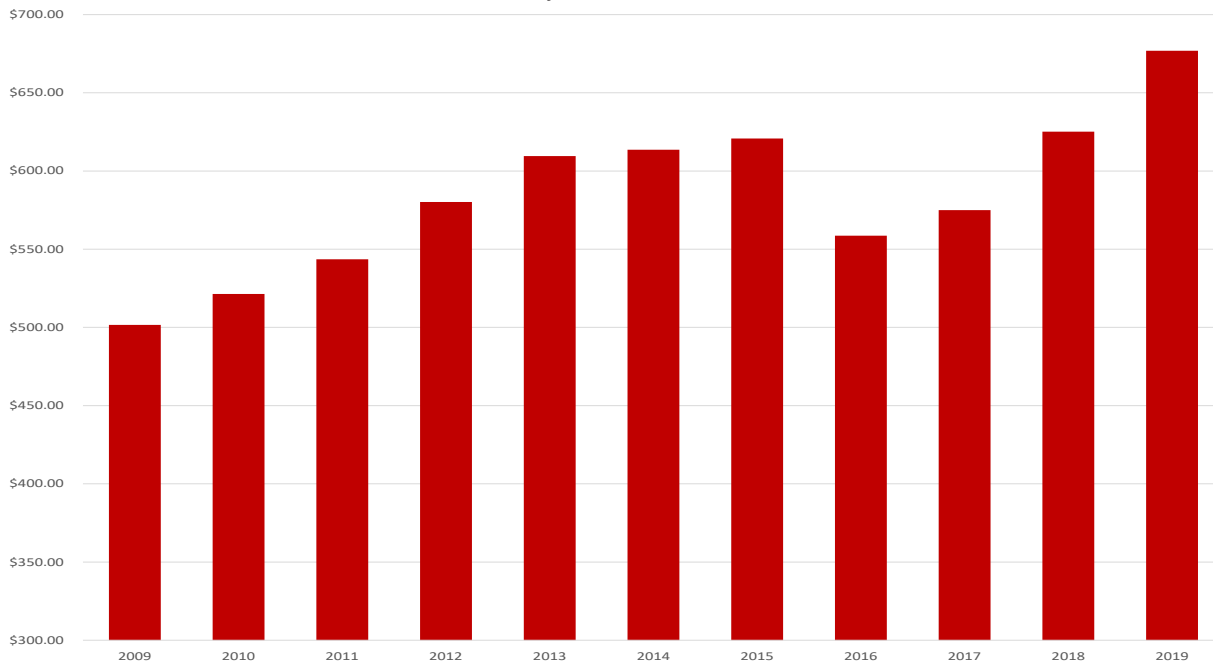
Manufacturing

	<u>Jul 19</u>	<u>Jun 19</u>	<u>Jul 18</u>
Average Weekly Hours	40.6	41.6	41.4
Average Hourly Earnings	18.71	18.68	17.58
Average Weekly Earnings	759.63	777.09	727.81

Durable Goods and Nondurable Goods Manufacturing

Durable Goods Manufacturing				Nondurable Goods Manufacturing			
	<u>Jul 19</u>	<u>Jun 19</u>	<u>Jul 18</u>		<u>Jul 19</u>	<u>Jun 19</u>	<u>Jul 18</u>
Average Weekly Hours	40.5	42.2	42.1	Average Weekly Hours	40.7	41.0	40.7
Average Hourly Earnings	21.10	20.50	20.14	Average Hourly Earnings	16.63	17.02	15.36
Average Weekly Earnings	854.55	865.10	847.89	Average Weekly Earnings	676.84	697.82	625.15

Average Weekly Earnings - Nondurable Goods Manufacturing
July: 2009 - 2019



Metropolitan Statistical Areas Little Rock-North Little Rock-Conway MSA

The Little Rock-North Little Rock-Conway MSA = Faulkner, Grant, Lonoke, Perry, Pulaski, & Saline counties.

Civilian Labor Force Estimates (Not Seasonally Adjusted)

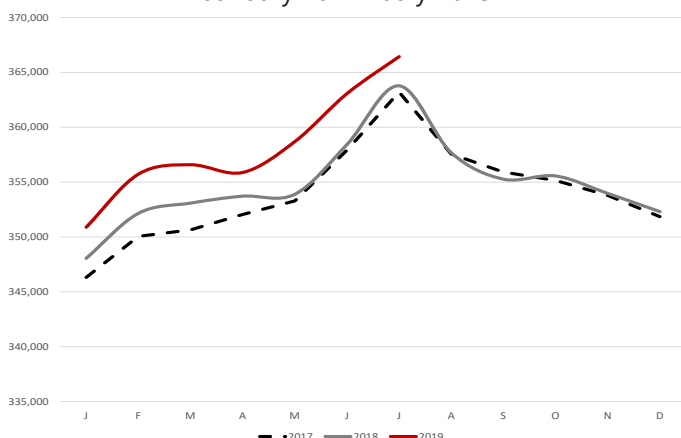
	Jul 19	Jun 19	Jul 18	OTM	QTY
Civilian Labor Force	366,439	363,068	363,778	3,371	2,661
Employment	353,256	351,543	350,872	1,713	2,384
Unemployment	13,183	11,525	12,906	1,658	277
Unemployment Rate	3.6	3.2	3.5	0.4	0.1

Nonfarm Payroll Jobs (Not Seasonally Adjusted)

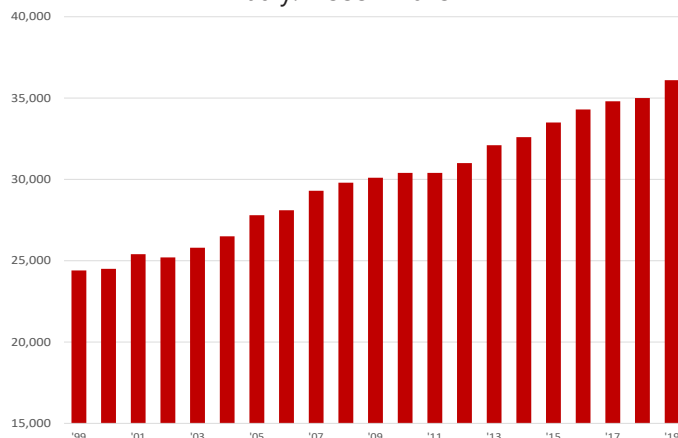
(In Thousands)

NAICS	Jul 19	Jun 19	Jul 18	OTM	QTY
Total Nonfarm	363.2	366.7	359.0	-3.5	4.2
Goods Producing	38.3	38.3	38.5	0.0	-0.2
Mining, Logging & Construction	17.2	17.2	17.5	0.0	-0.3
Manufacturing	21.1	21.1	21.0	0.0	0.1
Service Providing	324.9	328.4	320.5	-3.5	4.4
Trade, Transportation & Utilities	71.1	71.0	70.3	0.1	0.8
Wholesale Trade	16.5	16.2	16.0	0.3	0.5
Retail Trade	38.6	38.8	38.7	-0.2	-0.1
Trans., Warehousing & Utilities	16.0	16.0	15.6	0.0	0.4
Information	4.2	4.3	4.2	-0.1	0.0
Financial Activities	21.7	21.6	21.3	0.1	0.4
Professional & Business Services	48.7	49.2	49.2	-0.5	-0.5
Educational & Health Services	58.2	58.8	56.4	-0.6	1.8
Leisure & Hospitality	36.1	36.5	35.0	-0.4	1.1
Other Services	16.3	16.3	16.0	0.0	0.3
Government	68.6	70.7	68.1	-2.1	0.5
Federal Government	9.7	9.7	9.6	0.0	0.1
State Government	34.3	34.6	34.0	-0.3	0.3
Local Government	24.6	26.4	24.5	-1.8	0.1

Civilian Labor Force
January 2017 - July 2019



Jobs in Leisure and Hospitality
July: 1999 - 2019



Metropolitan Statistical Areas Fayetteville-Springdale-Rogers MSA

The Fayetteville-Springdale-Rogers MSA = Benton, Madison, & Washington counties in Arkansas and McDonald county in Missouri.

Civilian Labor Force Estimates (Not Seasonally Adjusted)

	Jul 19	Jun 19	Jul 18	OTM	QTY
Civilian Labor Force	286,583	283,378	279,072	3,205	7,511
Employment	278,491	276,154	270,534	2,337	7,957
Unemployment	8,092	7,224	8,538	868	-446
Unemployment Rate	2.8	2.5	3.1	0.3	-0.3

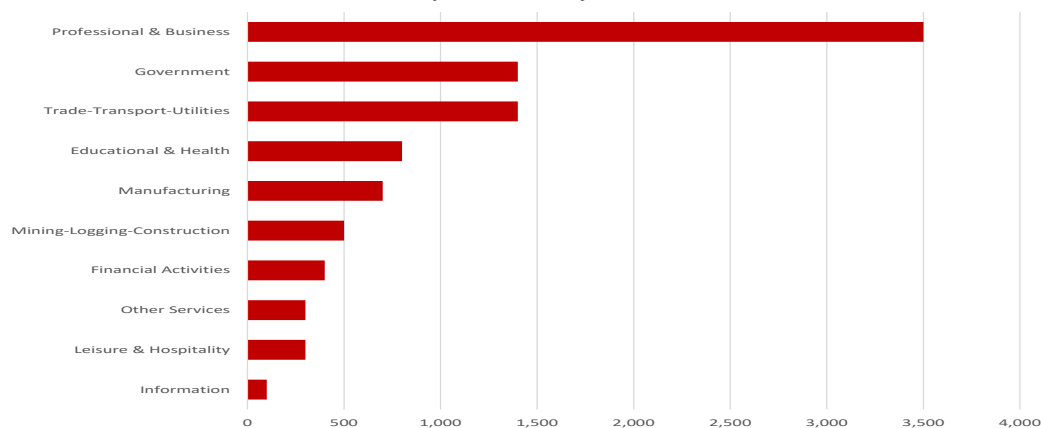
Nonfarm Payroll Jobs (Not Seasonally Adjusted)

(In Thousands)

NAICS	Jul 19	Jun 19	Jul 18	OTM	QTY
Total Nonfarm	262.6	264.7	253.2	-2.1	9.4
Goods Producing	42.7	42.7	41.5	0.0	1.2
Mining, Logging & Construction	12.4	12.3	11.9	0.1	0.5
Manufacturing	30.3	30.4	29.6	-0.1	0.7
Service Providing	219.9	222.0	211.7	-2.1	8.2
Trade, Transportation & Utilities	57.1	57.0	55.7	0.1	1.4
Wholesale Trade	12.6	12.5	12.2	0.1	0.4
Retail Trade	26.7	26.7	26.1	0.0	0.6
Trans., Warehousing & Utilities	17.8	17.8	17.4	0.0	0.4
Information	2.2	2.2	2.1	0.0	0.1
Financial Activities	8.6	8.4	8.2	0.2	0.4
Professional & Business Services	53.0	52.6	49.5	0.4	3.5
Educational & Health Services	29.2	29.4	28.4	-0.2	0.8
Leisure & Hospitality	26.6	26.9	26.3	-0.3	0.3
Other Services	9.5	9.5	9.2	0.0	0.3
Government	33.7	36.0	32.3	-2.3	1.4
Federal Government	2.7	2.7	2.6	0.0	0.1
State Government	13.5	13.9	12.5	-0.4	1.0
Local Government	17.5	19.4	17.2	-1.9	0.3

Over-the-Year Employment Change by Industry Sector

July 2018 vs July 2019



Metropolitan Statistical Areas

Fort Smith MSA

The Fort Smith MSA = Crawford & Sebastian counties in Arkansas & LeFlore & Sequoyah counties in Oklahoma.

Civilian Labor Force Estimates (Not Seasonally Adjusted)

	Jul 19	Jun 19	Jul 18	OTM	QTY
Civilian Labor Force	120,301	120,528	120,665	-227	-364
Employment	115,621	116,022	115,917	-401	-296
Unemployment	4,680	4,506	4,748	174	-68
Unemployment Rate	3.9	3.7	3.9	0.2	0.0

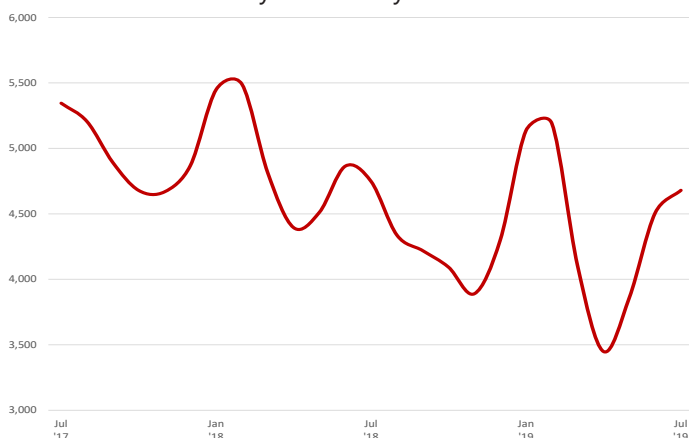
Nonfarm Payroll Jobs (Not Seasonally Adjusted)

(In Thousands)

NAICS	Jul 19	Jun 19	Jul 18	OTM	QTY
Total Nonfarm	111.5	113.8	111.4	-2.3	0.1
Goods Producing	22.9	22.9	23.2	0.0	-0.3
Mining, Logging & Construction	5.2	5.2	5.5	0.0	-0.3
Manufacturing	17.7	17.7	17.7	0.0	0.0
Service Providing	88.6	90.9	88.2	-2.3	0.4
Trade, Transportation & Utilities	23.0	23.0	23.1	0.0	-0.1
Wholesale Trade	4.2	4.2	4.1	0.0	0.1
Retail Trade	12.3	12.3	12.5	0.0	-0.2
Trans., Warehousing & Utilities	6.5	6.5	6.5	0.0	0.0
Information	1.2	1.2	1.2	0.0	0.0
Financial Activities	4.0	4.0	3.9	0.0	0.1
Professional & Business Services	13.1	13.0	13.0	0.1	0.1
Educational & Health Services	17.2	17.4	16.9	-0.2	0.3
Leisure & Hospitality	9.8	9.9	9.6	-0.1	0.2
Other Services	4.5	4.5	4.5	0.0	0.0
Government	15.8	17.9	16.0	-2.1	-0.2
Federal Government	1.3	1.3	1.3	0.0	0.0
State Government	2.9	2.9	2.9	0.0	0.0
Local Government	11.6	13.7	11.8	-2.1	-0.2

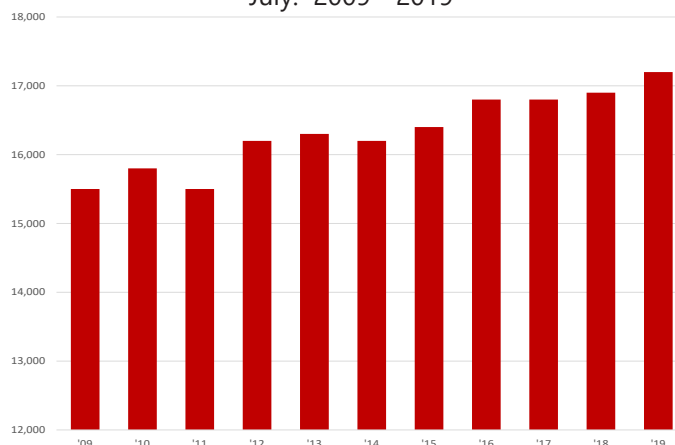
Number of Unemployed

July 2017 - July 2019



Jobs in Educational and Health Services

July: 2009 - 2019



Metropolitan Statistical Areas

Hot Springs MSA

The Hot Springs MSA = Garland County.

Civilian Labor Force Estimates (Not Seasonally Adjusted)

	Jul 19	Jun 19	Jul 18	OTM	QTY
Civilian Labor Force	42,906	42,364	42,159	542	747
Employment	41,149	40,765	40,370	384	779
Unemployment	1,757	1,599	1,789	158	-32
Unemployment Rate	4.1	3.8	4.2	0.3	-0.1

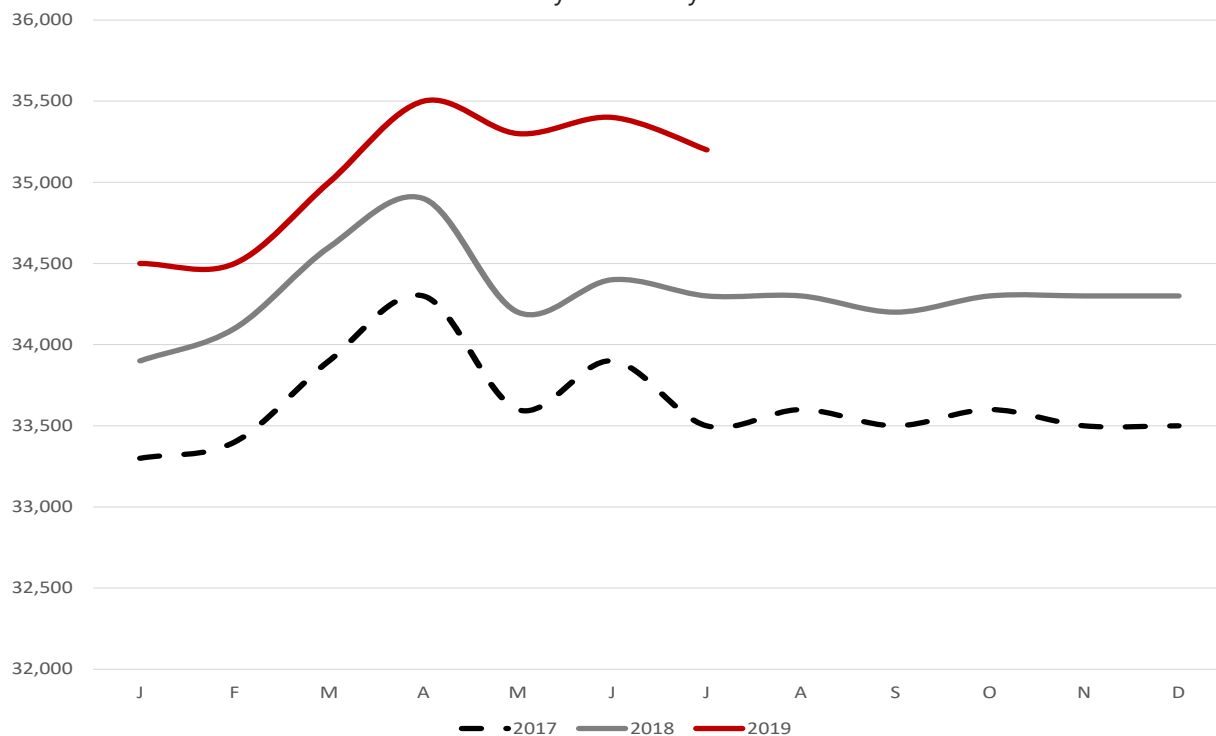
Nonfarm Payroll Jobs (Not Seasonally Adjusted)

(In Thousands)

NAICS	Jul 19	Jun 19	Jul 18	OTM	QTY
Total Nonfarm	39.7	39.9	38.8	-0.2	0.9
Goods Producing	4.5	4.5	4.5	0.0	0.0
Service Providing	35.2	35.4	34.3	-0.2	0.9
Government	4.0	4.3	4.1	-0.3	-0.1

Jobs in Service Providing Industries

January 2017 - July 2019



Metropolitan Statistical Areas

Jonesboro MSA

The Jonesboro MSA = Craighead & Poinsett counties.

Civilian Labor Force Estimates (Not Seasonally Adjusted)

	<u>Jul 19</u>	<u>Jun 19</u>	<u>Jul 18</u>	<u>OTM</u>	<u>QTY</u>
Civilian Labor Force	66,593	65,744	65,603	849	990
Employment	64,373	63,723	63,258	650	1,115
Unemployment	2,220	2,021	2,345	199	-125
Unemployment Rate	3.3	3.1	3.6	0.2	-0.3

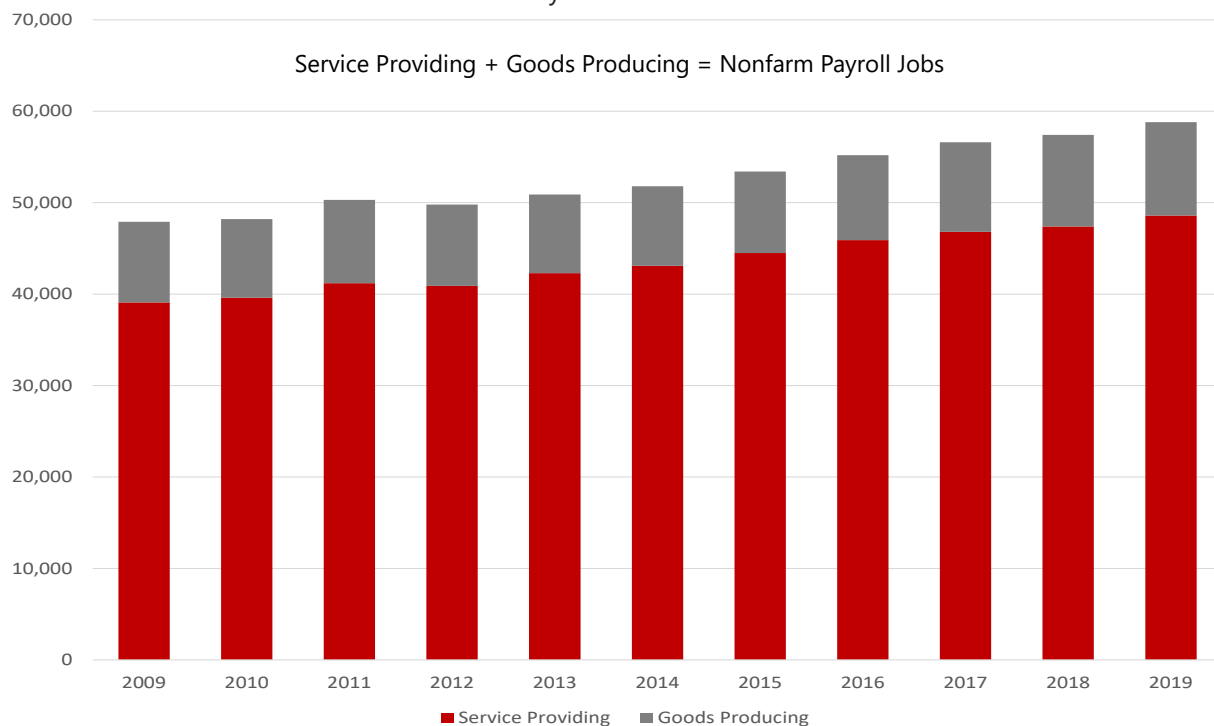
Nonfarm Payroll Jobs (Not Seasonally Adjusted)

(In Thousands)

<u>NAICS</u>	<u>Jul 19</u>	<u>Jun 19</u>	<u>Jul 18</u>	<u>OTM</u>	<u>QTY</u>
Total Nonfarm	58.8	59.2	57.4	-0.4	1.4
Goods Producing	10.2	10.2	10.0	0.0	0.2
Service Providing	48.6	49.0	47.4	-0.4	1.2
Government	8.5	8.9	8.5	-0.4	0.0

Jobs by Industry Type

July: 2009 - 2019



Metropolitan Statistical Areas

Pine Bluff MSA

The Pine Bluff MSA = Cleveland, Jefferson, & Lincoln counties.

Civilian Labor Force Estimates (Not Seasonally Adjusted)

	<u>Jul 19</u>	<u>Jun 19</u>	<u>Jul 18</u>	<u>OTM</u>	<u>QTY</u>
Civilian Labor Force	35,822	35,706	36,275	116	-453
Employment	33,751	33,781	34,237	-30	-486
Unemployment	2,071	1,925	2,038	146	33
Unemployment Rate	5.8	5.4	5.6	0.4	0.2

Nonfarm Payroll Jobs (Not Seasonally Adjusted)

(In Thousands)

<u>NAICS</u>	<u>Jul 19</u>	<u>Jun 19</u>	<u>Jul 18</u>	<u>OTM</u>	<u>QTY</u>
Total Nonfarm	32.5	33.1	32.9	-0.6	-0.4
Goods Producing	6.0	6.0	6.1	0.0	-0.1
Service Providing	26.5	27.1	26.8	-0.6	-0.3
Government	8.6	9.1	8.7	-0.5	-0.1

Civilian Labor Force

July 2016 - July 2019



Metropolitan Statistical Areas Out-of-State MSA

Civilian Labor Force Estimates (Not Seasonally Adjusted)

Memphis, TN-MS-AR MSA

The Memphis, TN-MS-AR MSA = Fayette, Shelby, & Tipton counties in Tennessee; Benton, Desoto, Marshall, Tate, & Tunica counties in Mississippi; & Crittenden County in Arkansas.

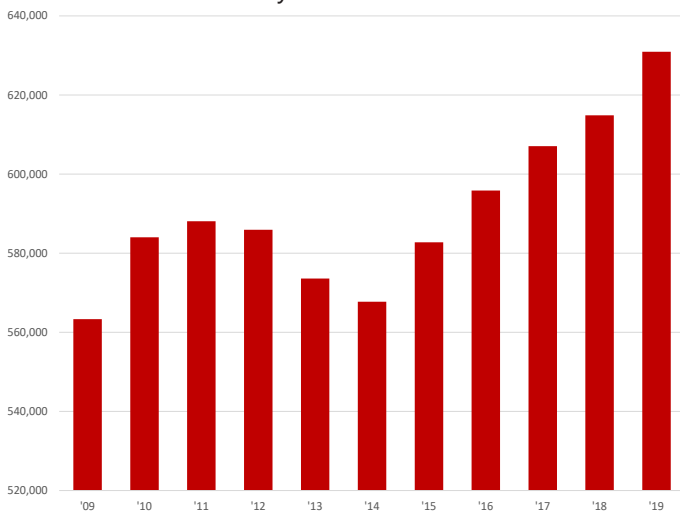
	<u>Jul 19</u>	<u>Jun 19</u>	<u>Jul 18</u>	<u>OTM</u>	<u>OTY</u>
Civilian Labor Force	664,291	661,709	644,745	2,582	19,546
Employment	630,915	629,882	614,846	1,033	16,069
Unemployment	33,376	31,827	29,899	1,549	3,477
Unemployment Rate	5.0	4.8	4.6	0.2	0.4

Texarkana MSA

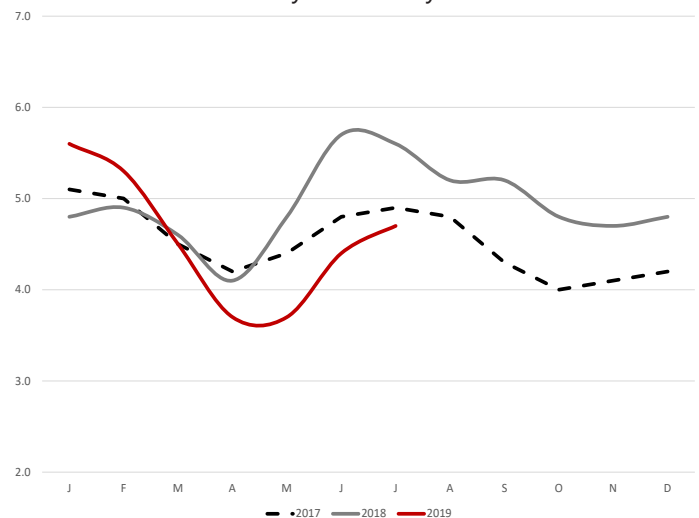
The Texarkana MSA= Bowie County in Texas & Little River & Miller counties in Arkansas.

	<u>Jul 19</u>	<u>Jun 19</u>	<u>Jul 18</u>	<u>OTM</u>	<u>OTY</u>
Civilian Labor Force	64,720	65,364	64,701	-644	19
Employment	61,674	62,467	61,100	-793	574
Unemployment	3,046	2,897	3,601	149	-555
Unemployment Rate	4.7	4.4	5.6	0.3	-0.9

Memphis MSA - Number of Employed
July: 2009 - 2019



Texarkana MSA - Unemployment Rates
January 2017 - July 2019



Micropolitan Statistical Areas and Cities Civilian Labor Force Estimates

Micropolitan Labor Force Estimates

Not Seasonally Adjusted

Micro Area	July 2019				June 2019				July 2018			
	CLF	Emp	Unemp	Rate	CLF	Emp	Unemp	Rate	CLF	Emp	Unemp	Rate
Arkadelphia Micro	9,600	9,113	487	5.1	9,603	9,216	387	4.0	9,297	8,853	444	4.8
Batesville Micro	16,288	15,550	738	4.5	16,818	16,126	692	4.1	16,114	15,344	770	4.8
Blytheville Micro	17,772	16,548	1,224	6.9	17,684	16,418	1,266	7.2	17,842	16,630	1,212	6.8
Camden Micro	12,208	11,581	627	5.1	12,453	11,852	601	4.8	12,118	11,534	584	4.8
El Dorado Micro	15,766	14,833	933	5.9	16,201	15,337	864	5.3	15,917	14,914	1,003	6.3
Forrest City Micro	8,248	7,777	471	5.7	8,401	7,952	449	5.3	8,364	7,914	450	5.4
Harrison Micro	19,140	18,468	672	3.5	19,866	19,253	613	3.1	19,004	18,315	689	3.6
Helena-West Helena Micro	6,436	6,008	428	6.7	6,618	6,242	376	5.7	6,513	6,060	453	7.0
Hope Micro	13,478	12,868	610	4.5	13,973	13,414	559	4.0	13,409	12,846	563	4.2
Magnolia Micro	8,829	8,334	495	5.6	9,206	8,761	445	4.8	8,708	8,205	503	5.8
Malvern Micro	14,078	13,477	601	4.3	14,180	13,641	539	3.8	14,137	13,521	616	4.4
Mountain Home Micro	16,211	15,573	638	3.9	16,468	15,813	655	4.0	16,556	15,837	719	4.3
Paragould Micro	20,381	19,572	809	4.0	20,348	19,601	747	3.7	20,174	19,383	791	3.9
Russellville Micro	36,869	34,950	1,919	5.2	37,852	36,117	1,735	4.6	37,259	35,164	2,095	5.6
Searcy Micro	33,267	31,640	1,627	4.9	34,003	32,534	1,469	4.3	33,276	31,776	1,500	4.5

Arkadelphia Micro = Clark County

Batesville Micro = Independence County

Blytheville Micro = Mississippi County

Camden Micro = Calhoun & Ouachita counties

El Dorado Micro = Union County

Forrest City Micro = St. Francis County

Harrison Micro = Boone & Newton counties

Helena-West Helena Micro = Phillips County

Hope Micro = Hempstead & Nevada counties

Magnolia Micro = Columbia County

Malvern Micro = Hot Spring County

Mountain Home Micro = Baxter County

Paragould Micro = Greene County

Russellville Micro = Pope & Yell counties

Searcy Micro = White County

City Labor Force Statistics

Not Seasonally Adjusted

City	July 2019				June 2019				July 2018			
	CLF	Emp	Unemp	Rate	CLF	Emp	Unemp	Rate	CLF	Emp	Unemp	Rate
Bella Vista	12,659	12,249	410	3.2	12,564	12,157	407	3.2	12,387	11,899	488	3.9
Benton	17,695	17,143	552	3.1	17,552	17,070	482	2.7	17,605	17,025	580	3.3
Bentonville	27,180	26,487	693	2.5	26,923	26,287	636	2.4	26,462	25,729	733	2.8
Blytheville	6,162	5,597	565	9.2	6,096	5,553	543	8.9	6,097	5,624	473	7.8
Cabot	12,379	11,935	444	3.6	12,205	11,837	368	3.0	12,270	11,859	411	3.3
Conway	34,564	33,451	1,113	3.2	34,283	33,271	1,012	3.0	34,418	33,224	1,194	3.5
El Dorado	6,917	6,408	509	7.4	7,063	6,625	438	6.2	7,014	6,443	571	8.1
Fayetteville	49,430	47,998	1,432	2.9	48,877	47,626	1,251	2.6	48,161	46,624	1,537	3.2
Fort Smith	39,962	38,501	1,461	3.7	40,062	38,703	1,359	3.4	40,126	38,618	1,508	3.8
Hot Springs	15,339	14,601	738	4.8	15,124	14,464	660	4.4	15,099	14,324	775	5.1
Jacksonville	12,201	11,559	642	5.3	12,000	11,512	488	4.1	12,032	11,480	552	4.6
Jonesboro	39,370	38,077	1,293	3.3	38,913	37,738	1,175	3.0	38,777	37,407	1,370	3.5
Little Rock	100,531	96,855	3,676	3.7	99,882	96,465	3,417	3.4	99,880	96,196	3,684	3.7
North Little Rock	30,724	29,509	1,215	4.0	30,459	29,390	1,069	3.5	30,504	29,308	1,196	3.9
Paragould	12,819	12,258	561	4.4	12,802	12,276	526	4.1	12,661	12,140	521	4.1
Pine Bluff	17,025	15,775	1,250	7.3	16,970	15,829	1,141	6.7	17,226	16,006	1,220	7.1
Rogers	36,707	35,724	983	2.7	36,288	35,455	833	2.3	35,701	34,702	999	2.8
Russellville	13,223	12,567	656	5.0	13,602	13,024	578	4.2	13,348	12,644	704	5.3
Searcy	10,166	9,671	495	4.9	10,400	9,944	456	4.4	10,175	9,713	462	4.5
Sherwood	16,469	15,901	568	3.4	16,322	15,837	485	3.0	16,299	15,793	506	3.1
Springdale	40,619	39,520	1,099	2.7	40,168	39,214	954	2.4	39,504	38,388	1,116	2.8
Texarkana, AR	13,883	13,201	682	4.9	13,910	13,269	641	4.6	13,936	13,053	883	6.3
Van Buren	10,525	10,150	375	3.6	10,531	10,185	346	3.3	10,583	10,182	401	3.8
West Memphis	11,056	10,436	620	5.6	10,860	10,314	546	5.0	10,889	10,300	589	5.4

County Labor Force Statistics Civilian Labor Force Estimates

Not Seasonally Adjusted

County	July 2019				June 2019				July 2018			
	CLF	Emp	Unemp	Rate	CLF	Emp	Unemp	Rate	CLF	Emp	Unemp	Rate
Arkansas	9,682	9,390	292	3.0	9,589	9,309	280	2.9	9,283	8,977	306	3.3
Ashley	7,708	7,227	481	6.2	7,910	7,475	435	5.5	7,697	7,252	445	5.8
Baxter	16,211	15,573	638	3.9	16,468	15,813	655	4.0	16,556	15,837	719	4.3
Benton	139,923	136,008	3,915	2.8	138,519	134,983	3,536	2.6	136,360	132,117	4,243	3.1
Boone	15,807	15,257	550	3.5	16,435	15,936	499	3.0	15,705	15,130	575	3.7
Bradley	4,476	4,285	191	4.3	4,626	4,436	190	4.1	4,302	4,099	203	4.7
Calhoun	2,419	2,312	107	4.4	2,456	2,346	110	4.5	2,410	2,305	105	4.4
Carroll	12,954	12,575	379	2.9	13,129	12,771	358	2.7	12,914	12,536	378	2.9
Chicot	3,370	3,111	259	7.7	3,304	3,077	227	6.9	3,373	3,155	218	6.5
Clark	9,600	9,113	487	5.1	9,603	9,216	387	4.0	9,297	8,853	444	4.8
Clay	5,768	5,480	288	5.0	5,811	5,531	280	4.8	5,865	5,595	270	4.6
Cleburne	9,319	8,901	418	4.5	9,520	9,126	394	4.1	9,177	8,758	419	4.6
Cleveland	3,337	3,200	137	4.1	3,300	3,177	123	3.7	3,378	3,244	134	4.0
Columbia	8,829	8,334	495	5.6	9,206	8,761	445	4.8	8,708	8,205	503	5.8
Conway	8,293	7,886	407	4.9	8,388	8,005	383	4.6	8,276	7,875	401	4.8
Craighead	55,980	54,161	1,819	3.2	55,327	53,679	1,648	3.0	55,107	53,209	1,898	3.4
Crawford	27,146	26,140	1,006	3.7	27,148	26,229	919	3.4	27,272	26,222	1,050	3.9
Crittenden	22,377	21,274	1,103	4.9	22,043	21,026	1,017	4.6	22,111	20,997	1,114	5.0
Cross	7,195	6,855	340	4.7	7,493	7,185	308	4.1	7,307	6,987	320	4.4
Dallas	2,865	2,720	145	5.1	2,925	2,779	146	5.0	2,760	2,632	128	4.6
Desh	5,477	5,205	272	5.0	5,588	5,329	259	4.6	5,441	5,174	267	4.9
Drew	7,737	7,281	456	5.9	7,907	7,494	413	5.2	7,576	7,158	418	5.5
Faulkner	63,345	61,283	2,062	3.3	62,808	60,954	1,854	3.0	63,060	60,867	2,193	3.5
Franklin	7,349	7,061	288	3.9	7,517	7,242	275	3.7	7,348	7,043	305	4.2
Fulton	4,924	4,703	221	4.5	5,151	4,953	198	3.8	4,780	4,574	206	4.3
Garland	42,906	41,149	1,757	4.1	42,364	40,765	1,599	3.8	42,159	40,370	1,789	4.2
Grant	8,603	8,302	301	3.5	8,519	8,240	279	3.3	8,541	8,250	291	3.4
Greene	20,381	19,572	809	4.0	20,348	19,601	747	3.7	20,174	19,383	791	3.9
Hempstead	9,860	9,434	426	4.3	10,210	9,819	391	3.8	9,831	9,419	412	4.2
Hot Spring	14,078	13,477	601	4.3	14,180	13,641	539	3.8	14,137	13,521	616	4.4
Howard	5,681	5,466	215	3.8	5,809	5,611	198	3.4	5,892	5,645	247	4.2
Independence	16,288	15,550	738	4.5	16,818	16,126	692	4.1	16,114	15,344	770	4.8
Izard	4,806	4,527	279	5.8	4,954	4,672	282	5.7	4,798	4,511	287	6.0
Jackson	5,910	5,490	420	7.1	5,994	5,596	398	6.6	5,731	5,351	380	6.6
Jefferson	28,386	26,644	1,742	6.1	28,353	26,735	1,618	5.7	28,743	27,034	1,709	5.9
Johnson	10,174	9,626	548	5.4	10,640	10,070	570	5.4	10,225	9,656	569	5.6
Lafayette	2,434	2,311	123	5.1	2,524	2,406	118	4.7	2,442	2,294	148	6.1
Lawrence	6,558	6,236	322	4.9	6,726	6,431	295	4.4	6,626	6,317	309	4.7
Lee	2,875	2,746	129	4.5	2,872	2,747	125	4.4	2,985	2,823	162	5.4
Lincoln	4,099	3,907	192	4.7	4,053	3,869	184	4.5	4,154	3,959	195	4.7
Little River	5,559	5,302	257	4.6	5,571	5,339	232	4.2	5,585	5,244	341	6.1
Logan	8,667	8,228	439	5.1	8,752	8,380	372	4.3	8,833	8,417	416	4.7
Lonoke	35,219	33,779	1,440	4.1	34,535	33,502	1,033	3.0	34,740	33,566	1,174	3.4
Madison	7,743	7,537	206	2.7	7,571	7,389	182	2.4	7,571	7,348	223	2.9
Marion	6,653	6,382	271	4.1	6,791	6,529	262	3.9	6,559	6,283	276	4.2
Miller	20,091	19,200	891	4.4	20,148	19,298	850	4.2	20,095	18,984	1,111	5.5

(continued on Page 16)

County Labor Force Statistics Civilian Labor Force Estimates

(continued from Page 15)

Not Seasonally Adjusted

County	July 2019				June 2019				July 2018			
	CLF	Emp	Unemp	Rate	CLF	Emp	Unemp	Rate	CLF	Emp	Unemp	Rate
Mississippi	17,772	16,548	1,224	6.9	17,684	16,418	1,266	7.2	17,842	16,630	1,212	6.8
Monroe	2,809	2,664	145	5.2	2,845	2,713	132	4.6	2,800	2,660	140	5.0
Montgomery	3,057	2,912	145	4.7	3,122	2,996	126	4.0	3,092	2,933	159	5.1
Nevada	3,618	3,434	184	5.1	3,763	3,595	168	4.5	3,578	3,427	151	4.2
Newton	3,333	3,211	122	3.7	3,431	3,317	114	3.3	3,299	3,185	114	3.5
Ouachita	9,789	9,269	520	5.3	9,997	9,506	491	4.9	9,708	9,229	479	4.9
Perry	4,401	4,207	194	4.4	4,344	4,164	180	4.1	4,355	4,178	177	4.1
Phillips	6,436	6,008	428	6.7	6,618	6,242	376	5.7	6,513	6,060	453	7.0
Pike	4,278	4,091	187	4.4	4,397	4,233	164	3.7	4,258	4,063	195	4.6
Poinsett	10,613	10,212	401	3.8	10,417	10,044	373	3.6	10,496	10,049	447	4.3
Polk	8,012	7,659	353	4.4	8,277	7,944	333	4.0	7,936	7,563	373	4.7
Pope	28,497	26,966	1,531	5.4	29,334	27,946	1,388	4.7	28,798	27,131	1,667	5.8
Prairie	3,606	3,410	196	5.4	3,635	3,484	151	4.2	3,542	3,405	137	3.9
Pulaski	195,436	188,076	7,360	3.8	193,872	187,318	6,554	3.4	193,906	186,797	7,109	3.7
Randolph	7,315	6,994	321	4.4	7,421	7,112	309	4.2	7,172	6,847	325	4.5
St. Francis	8,248	7,777	471	5.7	8,401	7,952	449	5.3	8,364	7,914	450	5.4
Saline	59,435	57,609	1,826	3.1	58,990	57,365	1,625	2.8	59,176	57,214	1,962	3.3
Scott	4,365	4,199	166	3.8	4,407	4,266	141	3.2	4,314	4,136	178	4.1
Searcy	2,805	2,666	139	5.0	3,002	2,876	126	4.2	2,961	2,831	130	4.4
Sebastian	57,585	55,515	2,070	3.6	57,728	55,807	1,921	3.3	57,854	55,684	2,170	3.8
Sevier	5,515	5,221	294	5.3	5,535	5,277	258	4.7	5,570	5,299	271	4.9
Sharp	5,809	5,502	307	5.3	6,061	5,759	302	5.0	5,726	5,417	309	5.4
Stone	4,940	4,721	219	4.4	5,057	4,834	223	4.4	4,862	4,653	209	4.3
Union	15,766	14,833	933	5.9	16,201	15,337	864	5.3	15,917	14,914	1,003	6.3
Van Buren	5,665	5,364	301	5.3	5,884	5,616	268	4.6	5,851	5,523	328	5.6
Washington	127,928	124,434	3,494	2.7	126,542	123,469	3,073	2.4	124,539	120,872	3,667	2.9
White	33,267	31,640	1,627	4.9	34,003	32,534	1,469	4.3	33,276	31,776	1,500	4.5
Woodruff	2,740	2,591	149	5.4	2,820	2,674	146	5.2	2,778	2,644	134	4.8
Yell	8,372	7,984	388	4.6	8,518	8,171	347	4.1	8,461	8,033	428	5.1

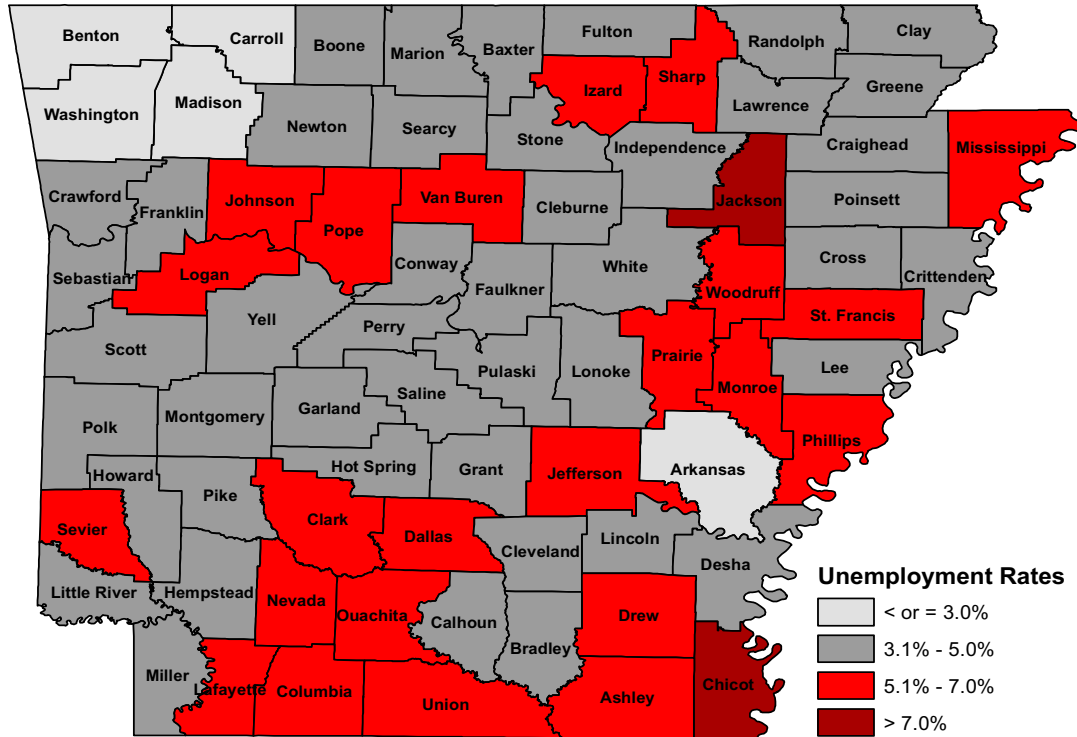
County Labor Force Summary

Between June and July, unemployment rates increased in 70 of Arkansas' 75 counties. Three counties posted rate declines, while two were unchanged over-the-month. Jobless rates ranged from a low of 2.7 percent in Madison and Washington counties to a high of 7.7 percent in Chicot County.

In July, twenty counties reported unemployment rates at or below four percent. That is down from 31 counties at or below four percent in June. Two counties posted jobless rates at or above seven percent, up from one county above seven percent last month.

Compared to July 2018, unemployment rates have declined in 39 Arkansas counties. Rates in 33 counties increased over-the-year, while three counties were unchanged.

County Unemployment Rates



Ranked by Unemployment Rates

July 2019 (Not Seasonally Adjusted)

Rank	County	Rate	Rank	County	Rate	Rank	County	Rate
1	Madison	2.7	25	Hempstead	4.3	51	Clark	5.1
1	Washington	2.7	25	Hot Spring	4.3	51	Dallas	5.1
3	Benton	2.8	28	Calhoun	4.4	51	Lafayette	5.1
4	Carroll	2.9	28	Miller	4.4	51	Logan	5.1
5	Arkansas	3.0	28	Perry	4.4	51	Nevada	5.1
6	Saline	3.1	28	Pike	4.4	56	Monroe	5.2
7	Craighead	3.2	28	Polk	4.4	57	Ouachita	5.3
8	Faulkner	3.3	28	Randolph	4.4	57	Sevier	5.3
9	Boone	3.5	28	Stone	4.4	57	Sharp	5.3
9	Grant	3.5	35	Cleburne	4.5	57	Van Buren	5.3
11	Sebastian	3.6	35	Fulton	4.5	61	Johnson	5.4
12	Crawford	3.7	35	Independence	4.5	61	Pope	5.4
12	Newton	3.7	35	Lee	4.5	61	Prairie	5.4
14	Howard	3.8	39	Little River	4.6	61	Woodruff	5.4
14	Poinsett	3.8	39	Yell	4.6	65	Columbia	5.6
14	Pulaski	3.8	41	Cross	4.7	66	St. Francis	5.7
14	Scott	3.8	41	Lincoln	4.7	67	Izard	5.8
18	Baxter	3.9	41	Montgomery	4.7	68	Drew	5.9
18	Franklin	3.9	44	Conway	4.9	68	Union	5.9
20	Greene	4.0	44	Crittenden	4.9	70	Jefferson	6.1
21	Cleveland	4.1	44	Lawrence	4.9	71	Ashley	6.2
21	Garland	4.1	44	White	4.9	72	Phillips	6.7
21	Lonoke	4.1	48	Clay	5.0	73	Mississippi	6.9
21	Marion	4.1	48	Desha	5.0	74	Jackson	7.1
25	Bradley	4.3	48	Searcy	5.0	75	Chicot	7.7

Local Workforce Development Areas Civilian Labor Force Estimates

Not Seasonally Adjusted

LWDA	July 2019				June 2019				July 2018			
	CLF	Emp	Unemp	Rate	CLF	Emp	Unemp	Rate	CLF	Emp	Unemp	Rate
Central (minus LR)	259,319	249,966	9,353	3.6	256,803	248,871	7,932	3.1	257,344	248,313	9,031	3.5
City of Little Rock	100,531	96,855	3,676	3.7	99,882	96,465	3,417	3.4	99,880	96,196	3,684	3.7
Eastern	47,131	44,660	2,471	5.2	47,427	45,152	2,275	4.8	47,280	44,781	2,499	5.3
North Central	93,668	88,989	4,679	5.0	96,262	91,890	4,372	4.5	93,093	88,551	4,542	4.9
Northeast	124,387	119,203	5,184	4.2	123,734	118,816	4,918	4.0	123,282	118,030	5,252	4.3
Northwest	333,357	323,643	9,714	2.9	331,888	323,083	8,805	2.7	326,464	316,139	10,325	3.2
Southeast	82,875	78,552	4,323	5.2	83,149	79,141	4,008	4.8	82,488	78,302	4,186	5.1
Southwest	92,426	87,836	4,590	5.0	94,345	90,074	4,271	4.5	92,496	87,597	4,899	5.3
West Central	133,656	127,411	6,245	4.7	134,890	129,207	5,683	4.2	133,058	126,613	6,445	4.8
Western	113,124	108,802	4,322	3.8	113,829	109,868	3,961	3.5	113,557	109,065	4,492	4.0

