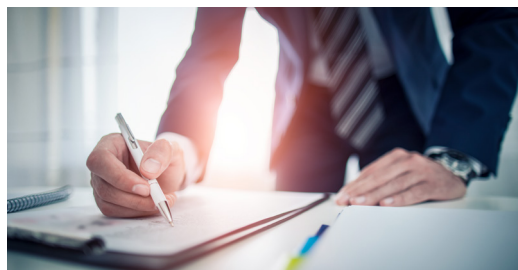




# Arkansas

## Labor Market Report

August

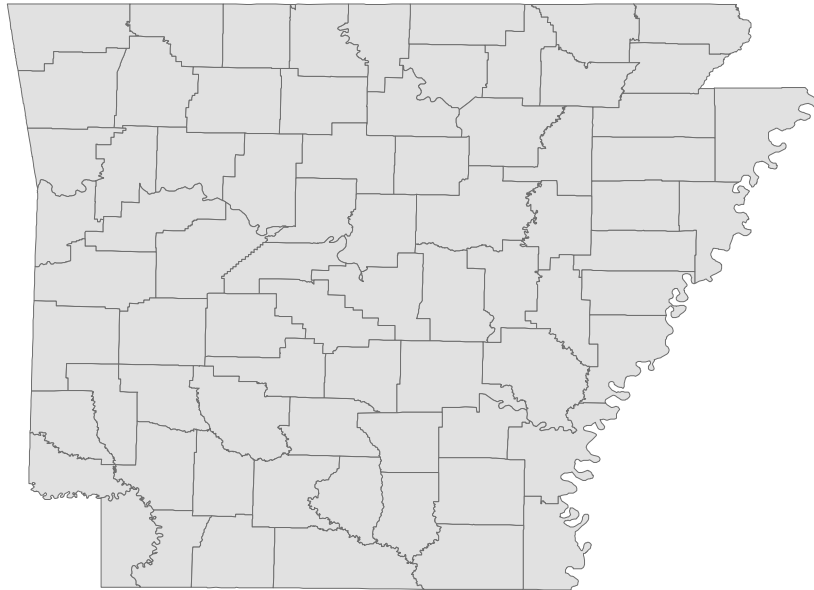


2019

**adws**  
Arkansas Department  
of Workforce Services

[www.discover.arkansas.gov](http://www.discover.arkansas.gov)

### Table of Contents



Monthly Spotlight.....	2
Arkansas Labor Force Summary.....	3
Arkansas Nonfarm Payroll Jobs.....	4
Arkansas Production Workers.....	6
Metropolitan Statistical Areas.....	7
Micropolitan Statistical Areas/Cities.....	14
County Labor Force Statistics.....	15
Local Workforce Development Areas.....	18

### Technical Notes

The *Arkansas Labor Market* is prepared monthly in conjunction with the U.S. Department of Labor, Bureau of Labor Statistics (BLS). The current month's estimates are preliminary, while previous month's data is subject to revision.

Estimates of nonfarm payroll jobs show the number of jobs by industry and reflect employment by place of work. Hours and earnings estimates are based on payroll and worker-hour data collected for production workers in manufacturing industries.

Industries are classified according to the North American Industry Classification System (NAICS). All estimates are based on a first quarter 2018 benchmark.

#### **Explanation of Terms and Concepts**

##### **Monthly Business Survey of Employers**

A monthly sample survey designed to provide industry information on nonfarm payroll jobs. Data are compiled each month from mail surveys and telephone interviews conducted by the Bureau of Labor Statistics in cooperation with Department of Workforce Services. The data are based on establishment records and include all workers, full- or part-time, who received pay during the payroll period which includes the 12th of

the month. Approximately 5,000 Arkansas business establishments are surveyed.

##### **Metropolitan Statistical Area (MSA)**

A term applied by the U.S. Office of Management and Budget to counties that have one or more central cities and that meet specified criteria of population density, commuting patterns and social and economic integration.

##### **Current Population Survey (CPS)**

A monthly sample survey of the population 16 years of age and over, designed to provide data on the labor force, the employed and the unemployed. The survey is conducted each month by the Bureau of the Census for BLS. The information is collected by trained interviewers from a sample of about 60,000 households. The data collected are based on the activity reported for the calendar week including the 12th of the month. Approximately 800 Arkansas households are represented in the sample survey.

##### **Civilian Labor Force**

The sum of all employed and unemployed persons 16 years of age or older. Members of the Armed Forces are excluded.

##### **Employment**

An estimate of the number of persons who worked any time for pay or profit or worked 15 hours or more as unpaid workers in a family business during the calendar week which includes the 12th of the month. Also included are those who, although not working, had some job attachment and were not looking for work, and persons involved in labor management disputes.

##### **Unemployment**

An estimate of the number of persons who did not have a job, but were available for work and actively seeking work during the calendar week which includes the 12th of the month.

##### **Unemployment Rate**

The number of unemployed as a percentage of the civilian labor force. Unemployment rates are calculated from unrounded data.

##### **Seasonal Adjustment**

A statistical technique applied to monthly data to eliminate changes that normally occur during the year due to seasonal events such as weather, major holidays, schedule shifts, harvest times, and the opening/closing of schools.



### August Spotlight

## Seasonal Employment Trends (Part 2 of 2)

As discussed in the July Labor Market Report, employment in some major industry sectors is directly influenced by seasonal trends. When employment from multiple years is compared, these patterns become apparent. Seasonal trends are related to set schedules of operation, holidays, and weather patterns. Last month's Spotlight discussed the seasonal trends seen in state and local government, educational services, and **leisure and hospitality**. In this issue, the seasonality of **construction** and professional-scientific-technical services are highlighted, along with some of the industries that are *indirectly* affected by seasonal movements.

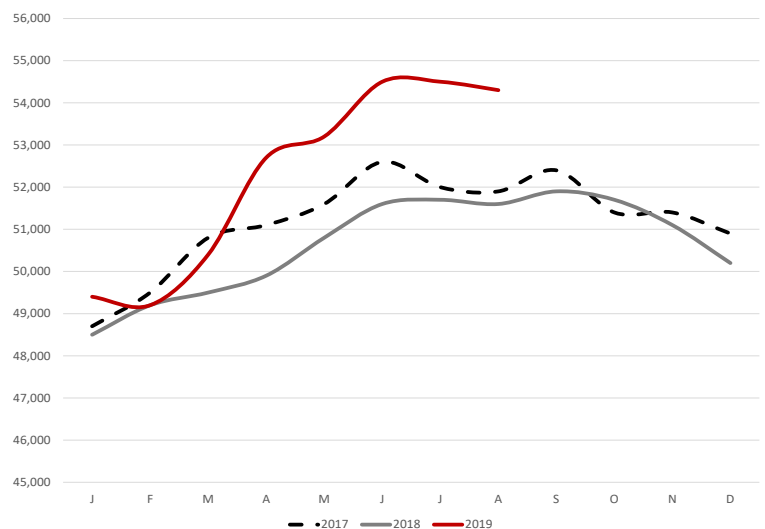
Employment in the **construction** sector is significantly affected by weather patterns. While construction operations run year round, more projects are commissioned during the spring and summer than in the winter. In general, employment in **construction** begins to increase in March, often peaking in September or October. Employment then tends to decline after October (see Chart 4). These weather patterns are a generalization, as non-typical weather events will also influence jobs in **construction**. On the other hand, large scale projects can cause employment spikes that are unrelated to the weather.

Found under the **professional and business services** sector, the professional-scientific-technical services subsector includes a particular type of business that is highly seasonal-- accounting and tax preparation services. Seasonal hiring related to tax preparation usually begins in November or December, with employment in the subsector peaking from February to April. Employment tends to remain fairly constant throughout the summer and fall months. While this seasonal trend is significant, employment in accounting and tax preparation is not large enough to affect the trend of the **professional and business services** sector as a whole.

There are also other seasonal businesses, many of which may not be visible when tracking the movement of a major industry sector. For example, landscaping services is influenced by weather and the seasons. Employment in landscaping services increases during the spring and summer months, but the number of workers is not large enough to impact the movement of the administrative and support services subsector as a whole. Similarly, employment in other services to buildings and dwellings (also under the administrative and support services subsector) tends to increase in the spring and summer. This includes activities such as cleaning swimming pools, driveways, and gutters and power-washing building exteriors.

It is important to keep in mind that some other industries are *indirectly* affected by these seasonal employment fluctuations. The timber industry, for example, relies heavily on the **construction** sector and may experience declines and increases in employment related to construction patterns. Similarly, movement within the retail trade sector will affect both wholesale trade and the transportation of goods. Some industries are indirectly affected by school closures in the summer. Employment in day care services (found under the social assistance subsector) increases in the summer when schools are closed, as does employment at businesses such as day camps and summer sports programs. There are also many non-profit organizations (under **Other Services**) with activities designed for children during the summer months.

**Chart 4. Jobs in Construction**  
January 2017 - August 2019



### State of Arkansas Civilian Labor Force Summary

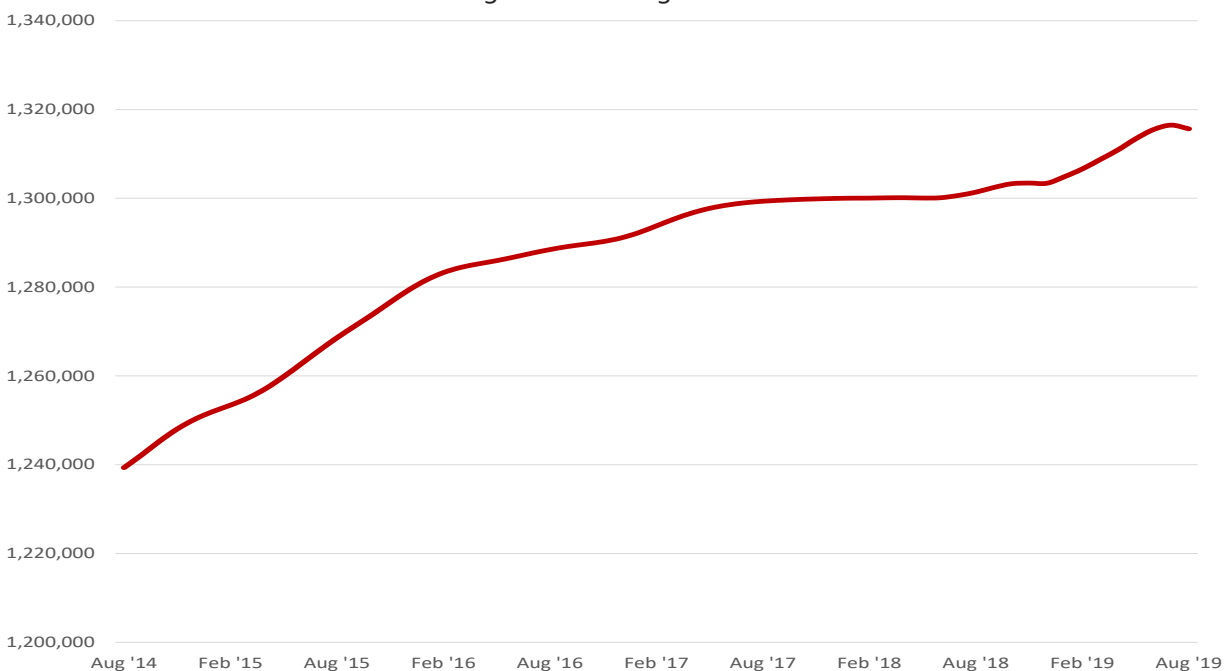
Labor force data, produced by the U.S. Department of Labor, Bureau of Labor Statistics and released by the Arkansas Division of Workforce Services, show Arkansas' seasonally adjusted unemployment rate was unchanged at 3.4 percent between July and August. Arkansas' civilian labor force declined 873, a result of 832 fewer employed and 41 fewer unemployed Arkansans. The United States' jobless rate was also stable between July and August, remaining at 3.7 percent.

BLS Program Operations Manager Susan Price said, "Mirroring the trend seen at the national level, Arkansas' unemployment rate remained stable in August. At 3.4 percent, the State maintains its lowest unemployment rate on record."

#### Civilian Labor Force Estimates

	Seasonally Adjusted			Not Seasonally Adjusted			
	Aug 19	Jul 19	Aug 18	Aug 19	Jul 19	Aug 18	
Civilian Labor Force	1,362,514	1,363,387	1,350,487	Civilian Labor Force	1,359,602	1,381,647	1,352,630
Employment	1,315,649	1,316,481	1,301,386	Employment	1,310,876	1,327,070	1,303,679
Unemployment	46,865	46,906	49,101	Unemployment	48,726	54,577	48,951
Unemployment Rate	3.4	3.4	3.6	Unemployment Rate	3.6	4.0	3.6
U.S. Unemployment	3.7	3.7	3.8	U.S. Unemployment	3.8	4.0	3.9

**Number of Employed (Seasonally Adjusted)**  
August 2014 - August 2019



### State of Arkansas Nonfarm Payroll Jobs

#### Not Seasonally Adjusted

(In Thousands)

(NAICS)	<u>Aug 19</u>	<u>Jul 19</u>	<u>Aug 18</u>	<u>OTM</u>	<u>OTY</u>
Total Nonfarm	1269.7	1266.7	1254.9	3.0	14.8
Goods Producing	224.2	223.2	218.4	1.0	5.8
Mining, Logging, and Construction	60.1	60.4	57.6	-0.3	2.5
<b>Mining &amp; Logging</b>	<b>5.8</b>	<b>5.9</b>	<b>6.0</b>	<b>-0.1</b>	<b>-0.2</b>
<b>Construction</b>	<b>54.3</b>	<b>54.5</b>	<b>51.6</b>	<b>-0.2</b>	<b>2.7</b>
Specialty Trade Contractors	33.4	33.7	32.8	-0.3	0.6
<b>Manufacturing</b>	<b>164.1</b>	<b>162.8</b>	<b>160.8</b>	<b>1.3</b>	<b>3.3</b>
Durable Goods	78.4	77.6	76.5	0.8	1.9
Nondurable Goods	85.7	85.2	84.3	0.5	1.4
Service Providing	1045.5	1043.5	1036.5	2.0	9.0
<b>Trade, Transportation &amp; Utilities</b>	<b>253.0</b>	<b>254.8</b>	<b>251.6</b>	<b>-1.8</b>	<b>1.4</b>
Wholesale Trade	49.1	49.4	47.4	-0.3	1.7
Retail Trade	138.7	140.3	138.8	-1.6	-0.1
Transport, Warehousing & Utilities	65.2	65.1	65.4	0.1	-0.2
<b>Information</b>	<b>11.0</b>	<b>11.0</b>	<b>11.1</b>	<b>0.0</b>	<b>-0.1</b>
<b>Financial Activities</b>	<b>63.4</b>	<b>62.9</b>	<b>61.2</b>	<b>0.5</b>	<b>2.2</b>
Finance & Insurance	49.0	48.6	47.3	0.4	1.7
Real Estate & Rental & Leasing	14.4	14.3	13.9	0.1	0.5
<b>Professional &amp; Business Services</b>	<b>144.5</b>	<b>145.6</b>	<b>145.7</b>	<b>-1.1</b>	<b>-1.2</b>
Professional, Scientific & Technical	43.2	44.5	44.0	-1.3	-0.8
Management of Companies	36.3	35.9	34.7	0.4	1.6
Administrative & Support Services	65.0	65.2	67.0	-0.2	-2.0
<b>Educational &amp; Health Services</b>	<b>191.5</b>	<b>189.0</b>	<b>189.6</b>	<b>2.5</b>	<b>1.9</b>
Educational Services	12.8	12.6	12.6	0.2	0.2
Health Care & Social Assistance	178.7	176.4	177.0	2.3	1.7
Ambulatory Health Care	59.3	59.1	58.6	0.2	0.7
Social Assistance	40.6	39.2	39.9	1.4	0.7
<b>Leisure &amp; Hospitality</b>	<b>125.5</b>	<b>127.4</b>	<b>122.1</b>	<b>-1.9</b>	<b>3.4</b>
Arts, Entertainment & Recreation	12.6	13.1	12.7	-0.5	-0.1
Accommodation & Food Services	112.9	114.3	109.4	-1.4	3.5
Accommodation Services	11.8	12.2	11.9	-0.4	-0.1
Food Services	101.1	102.1	97.5	-1.0	3.6
<b>Other Services</b>	<b>53.7</b>	<b>53.9</b>	<b>53.8</b>	<b>-0.2</b>	<b>-0.1</b>
<b>Government</b>	<b>202.9</b>	<b>198.9</b>	<b>201.4</b>	<b>4.0</b>	<b>1.5</b>
Federal Government	20.5	20.3	20.1	0.2	0.4
State Government	74.7	72.9	74.3	1.8	0.4
Local Government	107.7	105.7	107.0	2.0	0.7

### State of Arkansas Nonfarm Payroll Job Summary

#### July 2019 - August 2019

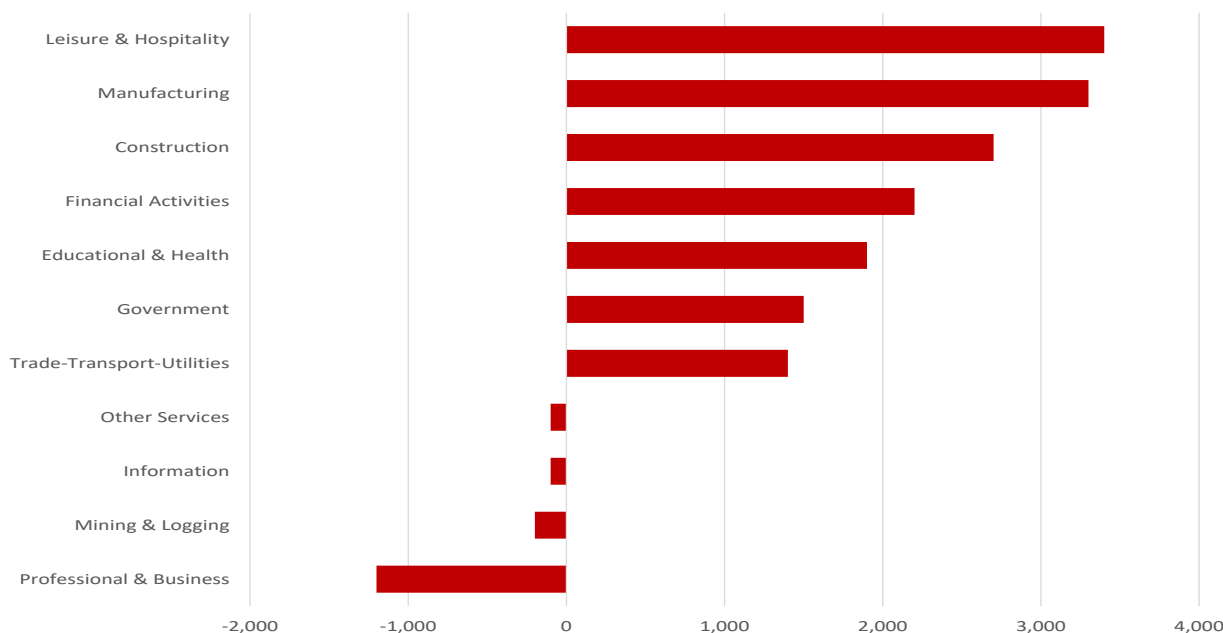
Nonfarm payroll jobs in Arkansas rose 3,000 in August to total 1,269,700. Gains were reported in four major industry sectors, more than offsetting declines in six sectors. The largest increase occurred in **government** (+4,000), as public schools and universities began the 2019-2020 school year. **Educational and health services** added 2,500 jobs. Much of the expansion was in social assistance (+1,400), which includes education-related activities such as child and youth services, vocational rehabilitation, and day care centers. Jobs in **manufacturing** rose 1,300, with the largest gains in durable goods manufacturing (+800). The greatest decrease occurred in **leisure and hospitality** (-1,900). The biggest loss was in food services (-1,000), due to reported contractions at limited service restaurants and snack bars. Notable declines were also posted in **trade-transportation-utilities** (-1,800) and in **professional and business services** (-1,100).

#### August 2018 - August 2019

Compared to August 2018, Arkansas' nonfarm payroll jobs are up 14,800. Seven major industry sectors added jobs, all increasing by 1,400 or more jobs, each. Employment in **leisure and hospitality** rose 3,400. All growth was in food services (+3,600). Jobs in **manufacturing** expanded 3,300, with reported hiring in both durable (+1,900) and nondurable (+1,400) goods manufacturing. Employment in construction is up 2,700, as large projects continue. **Financial activities** rose 2,200. A majority of the gains were reported in finance and insurance (+1,700). **Educational and health services** added 1,900 jobs, mostly in health care and social assistance (+1,700). Sizable growth also occurred in **government** (+1,500) and **trade-transportation-utilities** (+1,400). **Professional and business services** posted the largest decline (-1,200). Most of the loss was reported in administrative and support services (-2,000), a subsector which includes employment agencies.

#### Over-the-Year Employment Change by Industry Sector (Not Seasonally Adjusted)

August 2018 vs August 2019



### State of Arkansas Production Workers- Hours and Earnings

#### Manufacturing

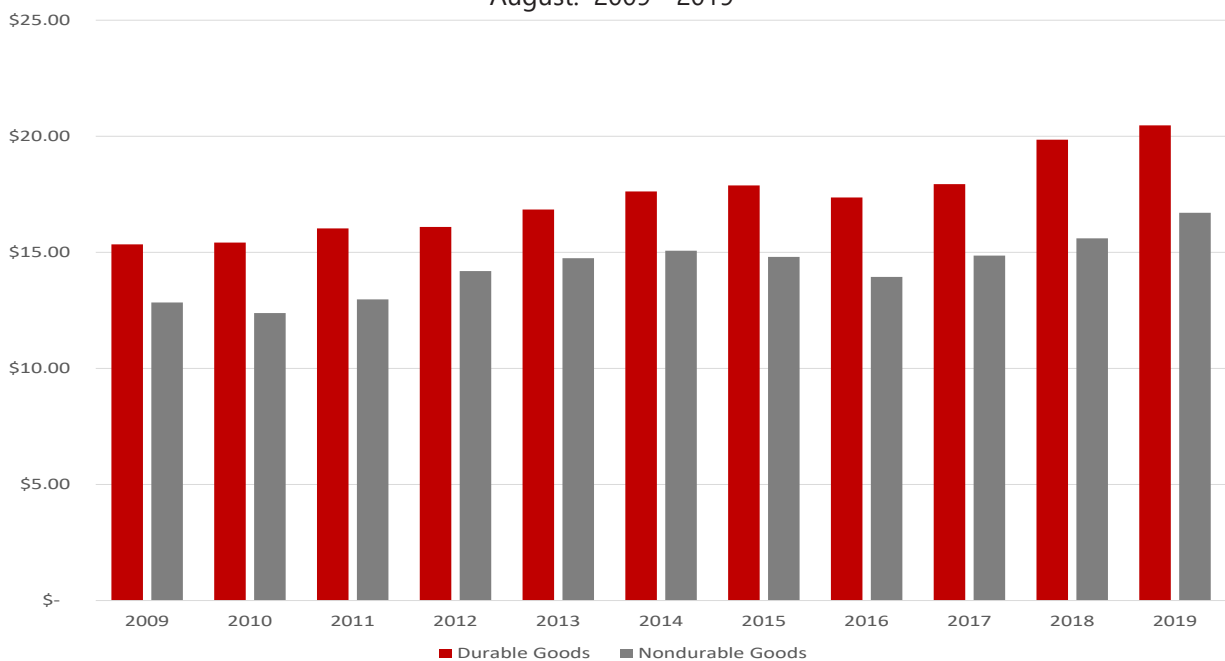
	<b>Aug 19</b>	<b>Jul 19</b>	<b>Aug 18</b>
Average Weekly Hours	41.2	40.8	42.8
Average Hourly Earnings	18.50	18.64	17.59
Average Weekly Earnings	762.20	760.51	752.85

#### Durable Goods and Nondurable Goods Manufacturing

Durable Goods Manufacturing				Nondurable Goods Manufacturing			
	<b>Aug 19</b>	<b>Jul 19</b>	<b>Aug 18</b>		<b>Aug 19</b>	<b>Jul 19</b>	<b>Aug 18</b>
Average Weekly Hours	42.0	41.0	43.6	Average Weekly Hours	40.5	40.7	42.0
Average Hourly Earnings	20.47	20.90	19.85	Average Hourly Earnings	16.70	16.63	15.60
Average Weekly Earnings	859.74	856.90	865.46	Average Weekly Earnings	676.35	676.84	655.20

#### Average Hourly Earnings- Durable Goods vs Nondurable Goods Manufacturing

August: 2009 - 2019



### Metropolitan Statistical Areas Little Rock-North Little Rock-Conway MSA

The Little Rock-North Little Rock-Conway MSA = Faulkner, Grant, Lonoke, Perry, Pulaski, & Saline counties.

#### Civilian Labor Force Estimates (Not Seasonally Adjusted)

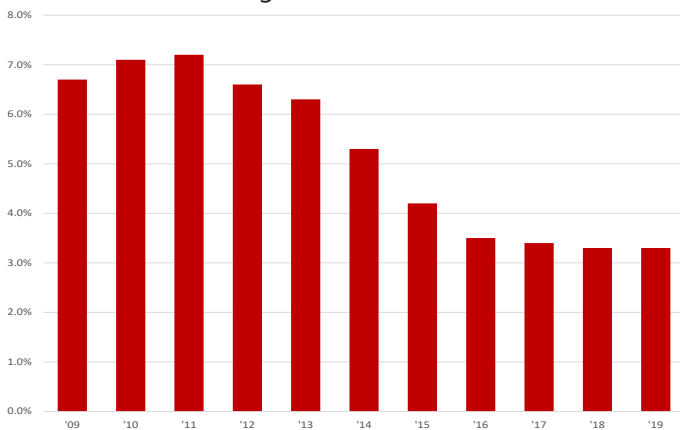
	<b>Aug 19</b>	<b>Jul 19</b>	<b>Aug 18</b>	<b>OTM</b>	<b>QTY</b>
Civilian Labor Force	357,838	366,962	357,677	-9,124	161
Employment	346,100	353,767	345,914	-7,667	186
Unemployment	11,738	13,195	11,763	-1,457	-25
Unemployment Rate	3.3	3.6	3.3	-0.3	0.0

#### Nonfarm Payroll Jobs (Not Seasonally Adjusted)

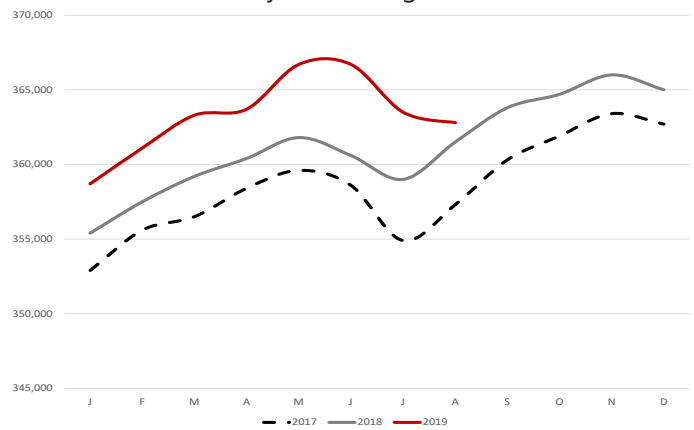
(In Thousands)

<b>NAICS</b>	<b>Aug 19</b>	<b>Jul 19</b>	<b>Aug 18</b>	<b>OTM</b>	<b>QTY</b>
Total Nonfarm	362.8	363.5	361.5	-0.7	1.3
Goods Producing	38.4	38.3	38.4	0.1	0.0
Mining, Logging & Construction	17.3	17.2	17.4	0.1	-0.1
Manufacturing	21.1	21.1	21.0	0.0	0.1
Service Providing	324.4	325.2	323.1	-0.8	1.3
Trade, Transportation & Utilities	70.5	71.0	70.4	-0.5	0.1
Wholesale Trade	16.4	16.4	15.9	0.0	0.5
Retail Trade	38.0	38.6	38.8	-0.6	-0.8
Trans., Warehousing & Utilities	16.1	16.0	15.7	0.1	0.4
Information	4.1	4.2	4.2	-0.1	-0.1
Financial Activities	21.7	21.7	21.4	0.0	0.3
Professional & Business Services	48.0	48.9	49.4	-0.9	-1.4
Educational & Health Services	58.1	58.2	57.0	-0.1	1.1
Leisure & Hospitality	36.2	36.3	35.6	-0.1	0.6
Other Services	16.2	16.3	15.9	-0.1	0.3
Government	69.6	68.6	69.2	1.0	0.4
Federal Government	9.8	9.7	9.6	0.1	0.2
State Government	34.9	34.3	34.6	0.6	0.3
Local Government	24.9	24.6	25.0	0.3	-0.1

**Unemployment Rates**  
August: 2009 - 2019



**Nonfarm Payroll Jobs**  
January 2017 - August 2019





### Metropolitan Statistical Areas Fayetteville-Springdale-Rogers MSA

The Fayetteville-Springdale-Rogers MSA = Benton, Madison, & Washington counties in Arkansas and McDonald county in Missouri.

#### Civilian Labor Force Estimates (Not Seasonally Adjusted)

	<b>Aug 19</b>	<b>Jul 19</b>	<b>Aug 18</b>	<b>OTM</b>	<b>QTY</b>
Civilian Labor Force	282,163	286,734	274,988	-4,571	7,175
Employment	274,805	278,628	267,367	-3,823	7,438
Unemployment	7,358	8,106	7,621	-748	-263
Unemployment Rate	2.6	2.8	2.8	-0.2	-0.2

#### Nonfarm Payroll Jobs (Not Seasonally Adjusted)

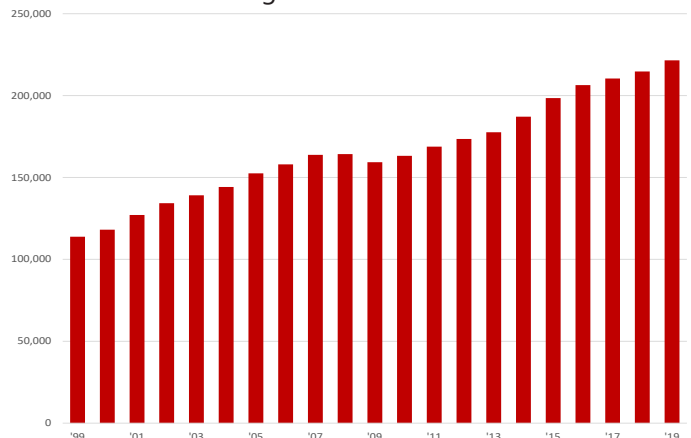
(In Thousands)

<b>NAICS</b>	<b>Aug 19</b>	<b>Jul 19</b>	<b>Aug 18</b>	<b>OTM</b>	<b>QTY</b>
Total Nonfarm	264.5	262.6	256.2	1.9	8.3
Goods Producing	43.0	42.9	41.5	0.1	1.5
Mining, Logging & Construction	12.3	12.5	11.8	-0.2	0.5
Manufacturing	30.7	30.4	29.7	0.3	1.0
Service Providing	221.5	219.7	214.7	1.8	6.8
Trade, Transportation & Utilities	57.1	57.2	56.1	-0.1	1.0
Wholesale Trade	12.6	12.5	12.2	0.1	0.4
Retail Trade	26.7	26.9	26.3	-0.2	0.4
Trans., Warehousing & Utilities	17.8	17.8	17.6	0.0	0.2
Information	2.2	2.2	2.1	0.0	0.1
Financial Activities	8.6	8.6	8.3	0.0	0.3
Professional & Business Services	53.4	52.7	49.7	0.7	3.7
Educational & Health Services	29.7	29.2	28.6	0.5	1.1
Leisure & Hospitality	26.3	26.6	27.2	-0.3	-0.9
Other Services	9.5	9.5	9.2	0.0	0.3
Government	34.7	33.7	33.5	1.0	1.2
Federal Government	2.7	2.7	2.7	0.0	0.0
State Government	14.4	13.5	13.4	0.9	1.0
Local Government	17.6	17.5	17.4	0.1	0.2

**Number of Employed**  
August 2016 - August 2019



**Jobs in Service-Providing Industries**  
August: 1999 - 2019



### Metropolitan Statistical Areas

### Fort Smith MSA

The Fort Smith MSA = Crawford & Sebastian counties in Arkansas & LeFlore & Sequoyah counties in Oklahoma.

### Civilian Labor Force Estimates (Not Seasonally Adjusted)

	<u>Aug 19</u>	<u>Jul 19</u>	<u>Aug 18</u>	<u>OTM</u>	<u>QTY</u>
Civilian Labor Force	118,652	120,369	118,922	-1,717	-270
Employment	114,220	115,679	114,584	-1,459	-364
Unemployment	4,432	4,690	4,338	-258	94
Unemployment Rate	3.7	3.9	3.6	-0.2	0.1

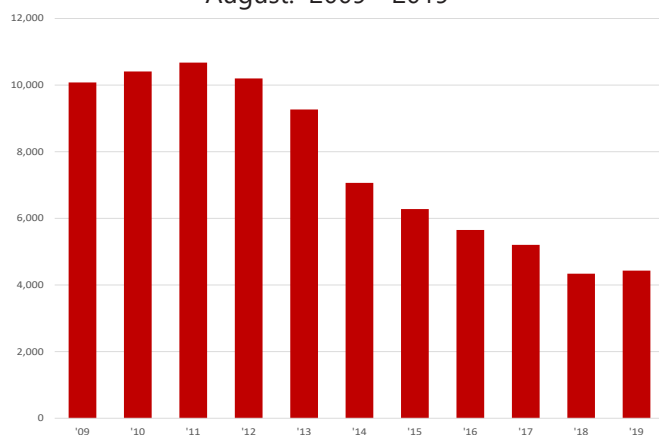
### Nonfarm Payroll Jobs (Not Seasonally Adjusted)

(In Thousands)

<u>NAICS</u>	<u>Aug 19</u>	<u>Jul 19</u>	<u>Aug 18</u>	<u>OTM</u>	<u>QTY</u>
Total Nonfarm	112.0	111.5	112.5	0.5	-0.5
Goods Producing	22.9	22.9	23.0	0.0	-0.1
Mining, Logging & Construction	5.2	5.2	5.4	0.0	-0.2
Manufacturing	17.7	17.7	17.6	0.0	0.1
Service Providing	89.1	88.6	89.5	0.5	-0.4
Trade, Transportation & Utilities	22.8	23.0	23.1	-0.2	-0.3
Wholesale Trade	4.2	4.2	4.2	0.0	0.0
Retail Trade	12.2	12.3	12.4	-0.1	-0.2
Trans., Warehousing & Utilities	6.4	6.5	6.5	-0.1	-0.1
Information	1.1	1.2	1.2	-0.1	-0.1
Financial Activities	4.0	4.0	3.9	0.0	0.1
Professional & Business Services	12.7	13.1	13.1	-0.4	-0.4
Educational & Health Services	17.3	17.2	17.0	0.1	0.3
Leisure & Hospitality	9.7	9.8	9.6	-0.1	0.1
Other Services	4.5	4.5	4.5	0.0	0.0
Government	17.0	15.8	17.1	1.2	-0.1
Federal Government	1.3	1.3	1.3	0.0	0.0
State Government	2.9	2.9	2.9	0.0	0.0
Local Government	12.8	11.6	12.9	1.2	-0.1

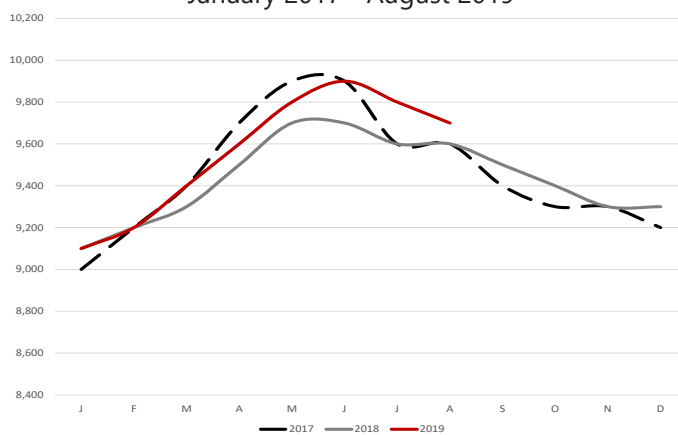
### Number of Unemployed

August: 2009 - 2019



### Jobs in Leisure and Hospitality

January 2017 - August 2019



### Metropolitan Statistical Areas

## Hot Springs MSA

The Hot Springs MSA = Garland County.

### Civilian Labor Force Estimates (Not Seasonally Adjusted)

	<u>Aug 19</u>	<u>Jul 19</u>	<u>Aug 18</u>	<u>OTM</u>	<u>QTY</u>
Civilian Labor Force	41,590	42,849	41,095	-1,259	495
Employment	40,024	41,091	39,486	-1,067	538
Unemployment	1,566	1,758	1,609	-192	-43
Unemployment Rate	3.8	4.1	3.9	-0.3	-0.1

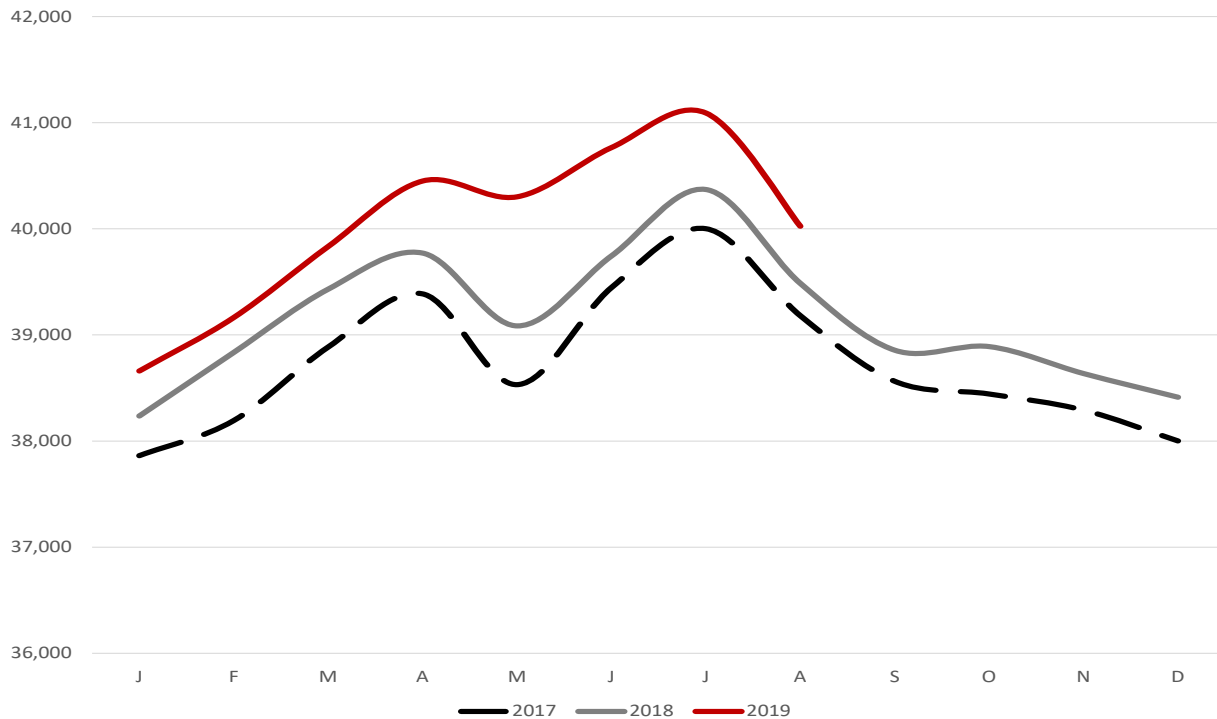
### Nonfarm Payroll Jobs (Not Seasonally Adjusted)

(In Thousands)

<u>NAICS</u>	<u>Aug 19</u>	<u>Jul 19</u>	<u>Aug 18</u>	<u>OTM</u>	<u>QTY</u>
Total Nonfarm	39.5	39.6	38.8	-0.1	0.7
Goods Producing	4.5	4.5	4.5	0.0	0.0
Service Providing	35.0	35.1	34.3	-0.1	0.7
Government	4.3	4.0	4.3	0.3	0.0

### Number of Employed

January 2017 - August 2019



### Metropolitan Statistical Areas Jonesboro MSA

The Jonesboro MSA = Craighead & Poinsett counties.

#### Civilian Labor Force Estimates (Not Seasonally Adjusted)

	<u>Aug 19</u>	<u>Jul 19</u>	<u>Aug 18</u>	<u>OTM</u>	<u>QTY</u>
Civilian Labor Force	65,353	66,655	64,535	-1,302	818
Employment	63,428	64,439	62,525	-1,011	903
Unemployment	1,925	2,216	2,010	-291	-85
Unemployment Rate	2.9	3.3	3.1	-0.4	-0.2

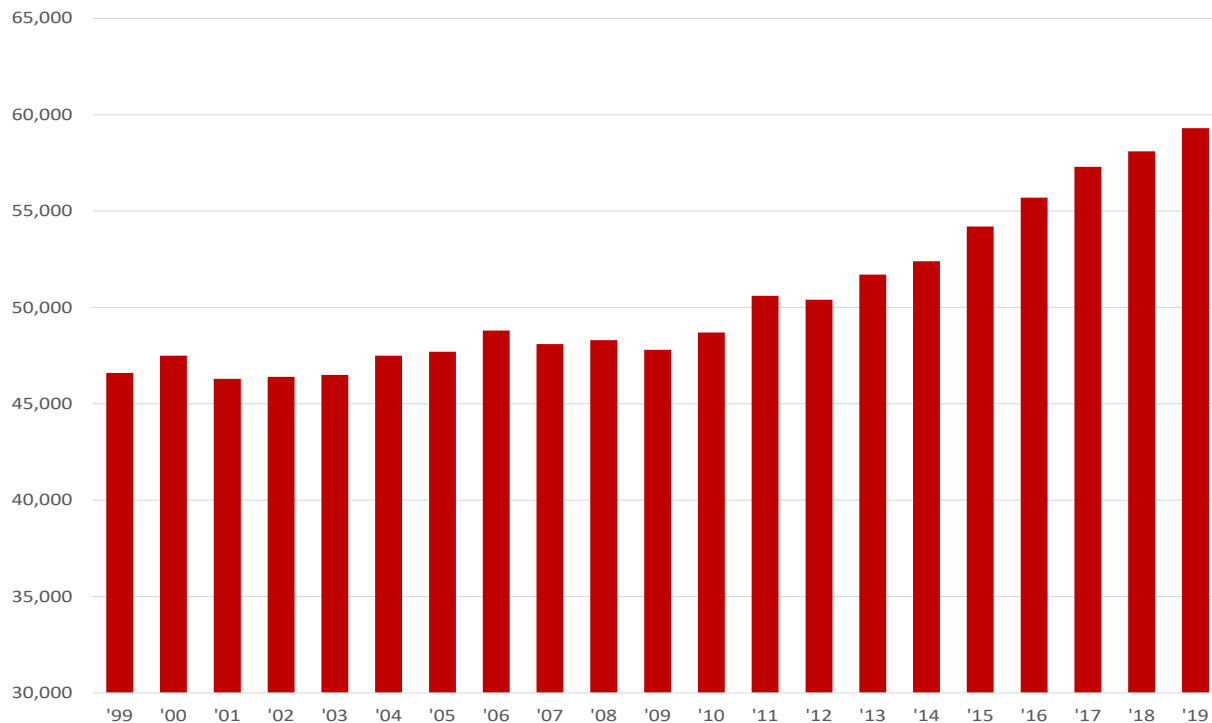
#### Nonfarm Payroll Jobs (Not Seasonally Adjusted)

(In Thousands)

<u>NAICS</u>	<u>Aug 19</u>	<u>Jul 19</u>	<u>Aug 18</u>	<u>OTM</u>	<u>QTY</u>
Total Nonfarm	59.3	58.8	58.1	0.5	1.2
Goods Producing	10.2	10.2	10.1	0.0	0.1
Service Providing	49.1	48.6	48.0	0.5	1.1
Government	8.7	8.5	8.6	0.2	0.1

#### Nonfarm Payroll Jobs

August: 1999 - 2019





### Metropolitan Statistical Areas Pine Bluff MSA

The Pine Bluff MSA = Cleveland, Jefferson, & Lincoln counties.

#### Civilian Labor Force Estimates (Not Seasonally Adjusted)

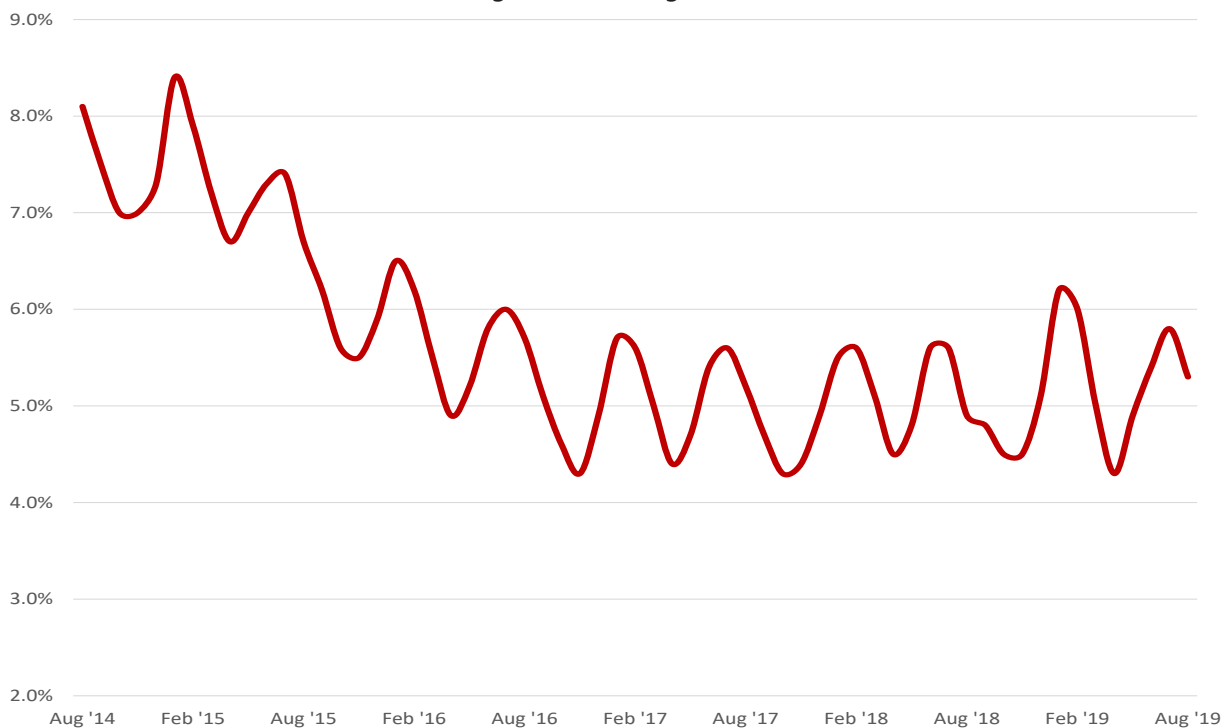
	<u>Aug 19</u>	<u>Jul 19</u>	<u>Aug 18</u>	<u>OTM</u>	<u>QTY</u>
Civilian Labor Force	35,024	35,899	35,430	-875	-406
Employment	33,180	33,826	33,679	-646	-499
Unemployment	1,844	2,073	1,751	-229	93
Unemployment Rate	5.3	5.8	4.9	-0.5	0.4

#### Nonfarm Payroll Jobs (Not Seasonally Adjusted)

(In Thousands)

<u>NAICS</u>	<u>Aug 19</u>	<u>Jul 19</u>	<u>Aug 18</u>	<u>OTM</u>	<u>QTY</u>
Total Nonfarm	32.7	32.6	33.1	0.1	-0.4
Goods Producing	6.0	6.0	6.1	0.0	-0.1
Service Providing	26.7	26.6	27.0	0.1	-0.3
Government	8.8	8.6	8.9	0.2	-0.1

#### Unemployment Rates August 2014 - August 2019



### Metropolitan Statistical Areas Out-of-State MSA

#### Civilian Labor Force Estimates (Not Seasonally Adjusted)

##### Memphis, TN-MS-AR MSA

The Memphis, TN-MS-AR MSA = Fayette, Shelby, & Tipton counties in Tennessee; Benton, Desoto, Marshall, Tate, & Tunica counties in Mississippi; & Crittenden County in Arkansas.

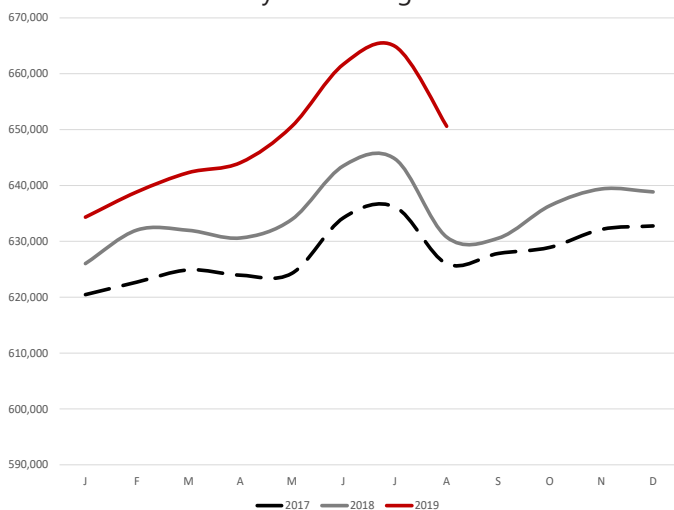
	<u>Aug 19</u>	<u>Jul 19</u>	<u>Aug 18</u>	<u>OTM</u>	<u>QTY</u>
Civilian Labor Force	650,601	664,902	630,762	-14,301	19,839
Employment	623,122	631,669	603,636	-8,547	19,486
Unemployment	27,479	33,233	27,126	-5,754	353
Unemployment Rate	4.2	5.0	4.3	-0.8	-0.1

##### Texarkana MSA

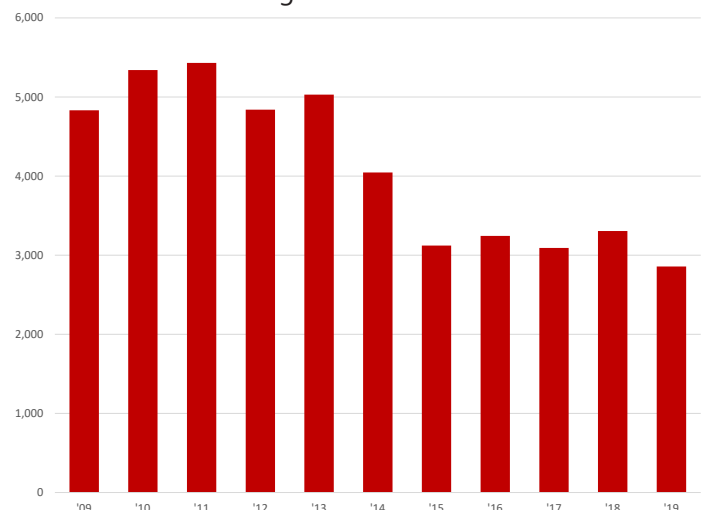
The Texarkana MSA= Bowie County in Texas & Little River & Miller counties in Arkansas.

	<u>Aug 19</u>	<u>Jul 19</u>	<u>Aug 18</u>	<u>OTM</u>	<u>QTY</u>
Civilian Labor Force	64,226	64,768	63,938	-542	288
Employment	61,369	61,723	60,632	-354	737
Unemployment	2,857	3,045	3,306	-188	-449
Unemployment Rate	4.4	4.7	5.2	-0.3	-0.8

**Memphis MSA - Civilian Labor Force**  
January 2017 - August 2019



**Texarkana MSA - Number of Unemployed**  
August: 2009 - 2019



### Micropolitan Statistical Areas and Cities Civilian Labor Force Estimates

#### Micropolitan Labor Force Estimates

Not Seasonally Adjusted

Micro Area	August 2019				July 2019				August 2018			
	CLF	Emp	Unemp	Rate	CLF	Emp	Unemp	Rate	CLF	Emp	Unemp	Rate
Arkadelphia Micro	9,643	9,238	405	4.2	9,610	9,120	490	5.1	9,381	9,022	359	3.8
Batesville Micro	16,081	15,399	682	4.2	16,299	15,561	738	4.5	15,968	15,319	649	4.1
Blytheville Micro	17,371	16,448	923	5.3	17,785	16,560	1,225	6.9	17,439	16,498	941	5.4
Camden Micro	12,080	11,501	579	4.8	12,215	11,589	626	5.1	12,082	11,549	533	4.4
El Dorado Micro	15,807	14,968	839	5.3	15,777	14,843	934	5.9	15,953	15,109	844	5.3
Forrest City Micro	8,281	7,867	414	5.0	8,255	7,784	471	5.7	8,409	8,007	402	4.8
Harrison Micro	19,068	18,432	636	3.3	19,151	18,480	671	3.5	18,955	18,320	635	3.4
Helena-West Helena Micro	6,444	6,056	388	6.0	6,439	6,012	427	6.6	6,484	6,124	360	5.6
Hope Micro	13,319	12,786	533	4.0	13,487	12,877	610	4.5	13,267	12,764	503	3.8
Magnolia Micro	8,912	8,483	429	4.8	8,833	8,339	494	5.6	8,920	8,497	423	4.7
Malvern Micro	13,836	13,300	536	3.9	14,082	13,482	600	4.3	13,935	13,426	509	3.7
Mountain Home Micro	16,164	15,521	643	4.0	16,225	15,584	641	4.0	16,402	15,749	653	4.0
Paragould Micro	19,948	19,250	698	3.5	20,394	19,587	807	4.0	19,757	19,119	638	3.2
Russellville Micro	36,616	34,978	1,638	4.5	36,891	34,974	1,917	5.2	36,752	35,059	1,693	4.6
Searcy Micro	33,497	32,125	1,372	4.1	33,289	31,666	1,623	4.9	33,637	32,281	1,356	4.0

Arkadelphia Micro = Clark County

Batesville Micro = Independence County

Blytheville Micro = Mississippi County

Camden Micro = Calhoun & Ouachita counties

El Dorado Micro = Union County

Forrest City Micro = St. Francis County

Harrison Micro = Boone & Newton counties

Helena-West Helena Micro = Phillips County

Hope Micro = Hempstead & Nevada counties

Magnolia Micro = Columbia County

Malvern Micro = Hot Spring County

Mountain Home Micro = Baxter County

Paragould Micro = Greene County

Russellville Micro = Pope & Yell counties

Searcy Micro = White County

#### City Labor Force Statistics

Not Seasonally Adjusted

City	August 2019				July 2019				August 2018			
	CLF	Emp	Unemp	Rate	CLF	Emp	Unemp	Rate	CLF	Emp	Unemp	Rate
Bella Vista	12,476	12,088	388	3.1	12,671	12,255	416	3.3	12,211	11,764	447	3.7
Benton	17,336	16,801	535	3.1	17,721	17,167	554	3.1	17,308	16,788	520	3.0
Bentonville	26,790	26,139	651	2.4	27,195	26,500	695	2.6	26,099	25,437	662	2.5
Blytheville	6,002	5,563	439	7.3	6,168	5,601	567	9.2	5,955	5,580	375	6.3
Cabot	12,065	11,671	394	3.3	12,397	11,952	445	3.6	12,061	11,679	382	3.2
Conway	33,761	32,756	1,005	3.0	34,613	33,500	1,113	3.2	33,822	32,742	1,080	3.2
El Dorado	6,896	6,466	430	6.2	6,924	6,412	512	7.4	6,990	6,527	463	6.6
Fayetteville	48,643	47,347	1,296	2.7	49,456	48,022	1,434	2.9	47,379	46,079	1,300	2.7
Fort Smith	39,262	37,923	1,339	3.4	39,993	38,530	1,463	3.7	39,525	38,169	1,356	3.4
Hot Springs	14,858	14,202	656	4.4	15,319	14,580	739	4.8	14,668	14,011	657	4.5
Jacksonville	11,868	11,331	537	4.5	12,221	11,576	645	5.3	11,817	11,322	495	4.2
Jonesboro	38,649	37,548	1,101	2.8	39,407	38,116	1,291	3.3	38,151	36,992	1,159	3.0
Little Rock	98,275	94,946	3,329	3.4	100,680	96,997	3,683	3.7	98,274	94,869	3,405	3.5
North Little Rock	30,000	28,927	1,073	3.6	30,769	29,552	1,217	4.0	29,971	28,904	1,067	3.6
Paragould	12,536	12,056	480	3.8	12,828	12,268	560	4.4	12,389	11,974	415	3.3
Pine Bluff	16,653	15,537	1,116	6.7	17,062	15,811	1,251	7.3	16,783	15,763	1,020	6.1
Rogers	36,155	35,255	900	2.5	36,725	35,742	983	2.7	35,257	34,309	948	2.7
Russellville	13,099	12,598	501	3.8	13,230	12,575	655	5.0	13,188	12,618	570	4.3
Searcy	10,219	9,819	400	3.9	10,173	9,679	494	4.9	10,280	9,867	413	4.0
Sherwood	16,100	15,588	512	3.2	16,492	15,925	567	3.4	16,040	15,575	465	2.9
Springdale	39,970	38,985	985	2.5	40,639	39,539	1,100	2.7	38,964	37,941	1,023	2.6
Texarkana, AR	13,563	12,972	591	4.4	13,897	13,214	683	4.9	13,576	12,845	731	5.4
Van Buren	10,328	9,988	340	3.3	10,533	10,158	375	3.6	10,421	10,059	362	3.5
West Memphis	10,801	10,261	540	5.0	11,070	10,452	618	5.6	10,642	10,169	473	4.4

### County Labor Force Statistics Civilian Labor Force Estimates

Not Seasonally Adjusted

County	August 2019				July 2019				August 2018			
	CLF	Emp	Unemp	Rate	CLF	Emp	Unemp	Rate	CLF	Emp	Unemp	Rate
Arkansas	9,584	9,325	259	2.7	9,689	9,396	293	3.0	9,244	8,957	287	3.1
Ashley	7,626	7,224	402	5.3	7,712	7,232	480	6.2	7,682	7,291	391	5.1
Baxter	16,164	15,521	643	4.0	16,225	15,584	641	4.0	16,402	15,749	653	4.0
Benton	137,860	134,221	3,639	2.6	139,995	136,075	3,920	2.8	134,467	130,618	3,849	2.9
Boone	15,775	15,247	528	3.3	15,816	15,267	549	3.5	15,678	15,148	530	3.4
Bradley	4,419	4,244	175	4.0	4,479	4,288	191	4.3	4,219	4,036	183	4.3
Calhoun	2,384	2,285	99	4.2	2,421	2,314	107	4.4	2,385	2,300	85	3.6
Carroll	13,002	12,639	363	2.8	12,963	12,584	379	2.9	12,955	12,580	375	2.9
Chicot	3,335	3,119	216	6.5	3,371	3,113	258	7.7	3,372	3,174	198	5.9
Clark	9,643	9,238	405	4.2	9,610	9,120	490	5.1	9,381	9,022	359	3.8
Clay	5,733	5,480	253	4.4	5,775	5,484	291	5.0	5,845	5,607	238	4.1
Cleburne	9,218	8,816	402	4.4	9,328	8,909	419	4.5	9,155	8,749	406	4.4
Cleveland	3,254	3,128	126	3.9	3,343	3,206	137	4.1	3,301	3,180	121	3.7
Columbia	8,912	8,483	429	4.8	8,833	8,339	494	5.6	8,920	8,497	423	4.7
Conway	8,183	7,827	356	4.4	8,300	7,893	407	4.9	8,166	7,834	332	4.1
Craighead	54,976	53,409	1,567	2.9	56,033	54,217	1,816	3.2	54,237	52,618	1,619	3.0
Crawford	26,663	25,723	940	3.5	27,166	26,160	1,006	3.7	26,846	25,905	941	3.5
Crittenden	21,852	20,918	934	4.3	22,409	21,308	1,101	4.9	21,648	20,731	917	4.2
Cross	7,366	7,058	308	4.2	7,200	6,859	341	4.7	7,477	7,183	294	3.9
Dallas	2,834	2,696	138	4.9	2,867	2,722	145	5.1	2,761	2,641	120	4.3
Desha	5,546	5,310	236	4.3	5,482	5,209	273	5.0	5,490	5,259	231	4.2
Drew	7,615	7,231	384	5.0	7,744	7,286	458	5.9	7,493	7,133	360	4.8
Faulkner	61,918	60,010	1,908	3.1	63,433	61,372	2,061	3.2	61,945	59,984	1,961	3.2
Franklin	7,385	7,108	277	3.8	7,353	7,065	288	3.9	7,392	7,118	274	3.7
Fulton	4,794	4,599	195	4.1	4,926	4,706	220	4.5	4,720	4,534	186	3.9
Garland	41,590	40,024	1,566	3.8	42,849	41,091	1,758	4.1	41,095	39,486	1,609	3.9
Grant	8,403	8,128	275	3.3	8,616	8,313	303	3.5	8,396	8,133	263	3.1
Greene	19,948	19,250	698	3.5	20,394	19,587	807	4.0	19,757	19,119	638	3.2
Hempstead	9,757	9,367	390	4.0	9,867	9,441	426	4.3	9,725	9,355	370	3.8
Hot Spring	13,836	13,300	536	3.9	14,082	13,482	600	4.3	13,935	13,426	509	3.7
Howard	5,603	5,421	182	3.2	5,685	5,470	215	3.8	5,872	5,663	209	3.6
Independence	16,081	15,399	682	4.2	16,299	15,561	738	4.5	15,968	15,319	649	4.1
Izard	4,934	4,675	259	5.2	4,809	4,530	279	5.8	4,972	4,695	277	5.6
Jackson	5,891	5,529	362	6.1	5,912	5,493	419	7.1	5,830	5,470	360	6.2
Jefferson	27,784	26,241	1,543	5.6	28,448	26,704	1,744	6.1	28,079	26,623	1,456	5.2
Johnson	10,011	9,531	480	4.8	10,181	9,633	548	5.4	10,169	9,592	577	5.7
Lafayette	2,446	2,322	124	5.1	2,437	2,313	124	5.1	2,454	2,334	120	4.9
Lawrence	6,653	6,354	299	4.5	6,564	6,242	322	4.9	6,687	6,436	251	3.8
Lee	2,859	2,727	132	4.6	2,875	2,748	127	4.4	2,937	2,801	136	4.6
Lincoln	3,986	3,811	175	4.4	4,108	3,916	192	4.7	4,050	3,876	174	4.3
Little River	5,461	5,222	239	4.4	5,565	5,307	258	4.6	5,456	5,169	287	5.3
Logan	8,615	8,218	397	4.6	8,671	8,234	437	5.0	8,812	8,468	344	3.9
Lonoke	34,115	33,032	1,083	3.2	35,271	33,828	1,443	4.1	34,113	33,055	1,058	3.1
Madison	7,570	7,370	200	2.6	7,746	7,540	206	2.7	7,431	7,224	207	2.8
Marion	6,591	6,334	257	3.9	6,658	6,386	272	4.1	6,476	6,222	254	3.9
Miller	19,667	18,866	801	4.1	20,109	19,218	891	4.4	19,625	18,682	943	4.8

(continued on Page 16)



### County Labor Force Statistics Civilian Labor Force Estimates

(continued from Page 15)

Not Seasonally Adjusted

County	August 2019				July 2019				August 2018			
	CLF	Emp	Unemp	Rate	CLF	Emp	Unemp	Rate	CLF	Emp	Unemp	Rate
Mississippi	17,371	16,448	923	5.3	17,785	16,560	1,225	6.9	17,439	16,498	941	5.4
Monroe	2,795	2,683	112	4.0	2,811	2,666	145	5.2	2,786	2,674	112	4.0
Montgomery	3,007	2,869	138	4.6	3,058	2,913	145	4.7	3,045	2,909	136	4.5
Nevada	3,562	3,419	143	4.0	3,620	3,436	184	5.1	3,542	3,409	133	3.8
Newton	3,293	3,185	108	3.3	3,335	3,213	122	3.7	3,277	3,172	105	3.2
Ouachita	9,696	9,216	480	5.0	9,794	9,275	519	5.3	9,697	9,249	448	4.6
Perry	4,278	4,102	176	4.1	4,405	4,212	193	4.4	4,272	4,106	166	3.9
Phillips	6,444	6,056	388	6.0	6,439	6,012	427	6.6	6,484	6,124	360	5.6
Pike	4,339	4,170	169	3.9	4,281	4,094	187	4.4	4,329	4,157	172	4.0
Poinsett	10,377	10,019	358	3.4	10,622	10,222	400	3.8	10,298	9,907	391	3.8
Polk	8,100	7,749	351	4.3	8,018	7,665	353	4.4	8,072	7,741	331	4.1
Pope	28,328	27,032	1,296	4.6	28,513	26,984	1,529	5.4	28,419	27,076	1,343	4.7
Prairie	3,564	3,427	137	3.8	3,608	3,412	196	5.4	3,599	3,471	128	3.6
Pulaski	190,969	184,369	6,600	3.5	195,719	188,351	7,368	3.8	190,752	184,220	6,532	3.4
Randolph	7,312	7,043	269	3.7	7,319	6,999	320	4.4	7,169	6,899	270	3.8
St. Francis	8,281	7,867	414	5.0	8,255	7,784	471	5.7	8,409	8,007	402	4.8
Saline	58,155	56,459	1,696	2.9	59,518	57,691	1,827	3.1	58,199	56,416	1,783	3.1
Scott	4,288	4,141	147	3.4	4,368	4,202	166	3.8	4,323	4,159	164	3.8
Searcy	2,955	2,806	149	5.0	2,807	2,668	139	5.0	3,043	2,925	118	3.9
Sebastian	56,607	54,682	1,925	3.4	57,627	55,557	2,070	3.6	56,979	55,037	1,942	3.4
Sevier	5,453	5,167	286	5.2	5,517	5,224	293	5.3	5,588	5,322	266	4.8
Sharp	5,692	5,412	280	4.9	5,813	5,506	307	5.3	5,660	5,386	274	4.8
Stone	4,937	4,750	187	3.8	4,943	4,724	219	4.4	4,912	4,710	202	4.1
Union	15,807	14,968	839	5.3	15,777	14,843	934	5.9	15,953	15,109	844	5.3
Van Buren	5,646	5,368	278	4.9	5,668	5,368	300	5.3	5,854	5,554	300	5.1
Washington	125,902	122,746	3,156	2.5	127,998	124,496	3,502	2.7	122,690	119,458	3,232	2.6
White	33,497	32,125	1,372	4.1	33,289	31,666	1,623	4.9	33,637	32,281	1,356	4.0
Woodruff	2,814	2,666	148	5.3	2,741	2,592	149	5.4	2,847	2,722	125	4.4
Yell	8,288	7,946	342	4.1	8,378	7,990	388	4.6	8,333	7,983	350	4.2

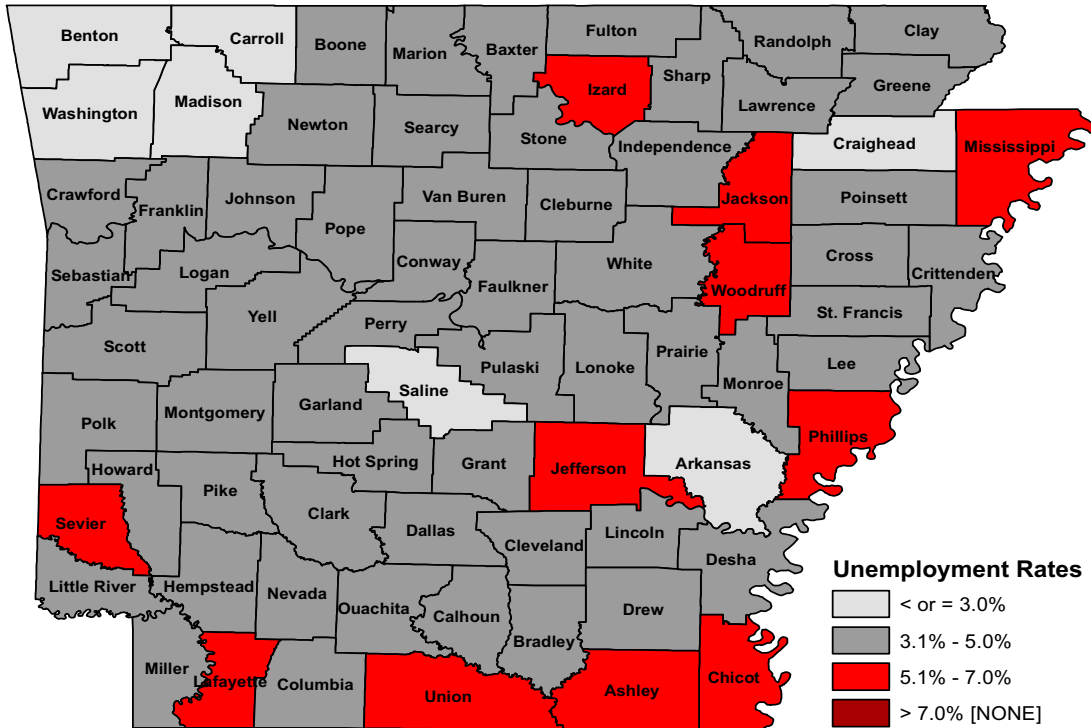
### County Labor Force Summary

Between July and August, unemployment rates declined in 71 of Arkansas' 75 counties. Three counties were unchanged, while one-- Lee County-- rose slightly over-the-month. Jobless rates ranged from a low of 2.5 percent in Washington County to a high of 6.5 percent in Chicot County.

In August, thirty-three counties posted unemployment rates at or below four percent. That is up from 20 counties last month. No county had a unemployment rate above seven percent, down from two counties at or above seven percent in July.

Compared to August 2018, jobless rates are up in 41 Arkansas counties. Twenty-six counties posted over-the-year rate declines, while 8 counties were the same as last year.

### County Unemployment Rates



### Ranked by Unemployment Rates

August 2019 (Not Seasonally Adjusted)

Rank	County	Rate	Rank	County	Rate	Rank	County	Rate
1	Washington	2.5	25	Hot Spring	3.9	51	Lawrence	4.5
2	Benton	2.6	25	Marion	3.9	52	Lee	4.6
2	Madison	2.6	25	Pike	3.9	52	Logan	4.6
4	Arkansas	2.7	29	Baxter	4.0	52	Montgomery	4.6
5	Carroll	2.8	29	Bradley	4.0	52	Pope	4.6
6	Craighead	2.9	29	Hempstead	4.0	56	Columbia	4.8
6	Saline	2.9	29	Monroe	4.0	56	Johnson	4.8
8	Faulkner	3.1	29	Nevada	4.0	58	Dallas	4.9
9	Howard	3.2	34	Fulton	4.1	58	Sharp	4.9
9	Lonoke	3.2	34	Miller	4.1	58	Van Buren	4.9
11	Boone	3.3	34	Perry	4.1	61	Drew	5.0
11	Grant	3.3	34	White	4.1	61	Ouachita	5.0
11	Newton	3.3	34	Yell	4.1	61	St. Francis	5.0
14	Poinsett	3.4	39	Calhoun	4.2	61	Searcy	5.0
14	Scott	3.4	39	Clark	4.2	65	Lafayette	5.1
14	Sebastian	3.4	39	Cross	4.2	66	Izard	5.2
17	Crawford	3.5	39	Independence	4.2	66	Sevier	5.2
17	Greene	3.5	43	Crittenden	4.3	68	Ashley	5.3
17	Pulaski	3.5	43	Desha	4.3	68	Mississippi	5.3
20	Randolph	3.7	43	Polk	4.3	68	Union	5.3
21	Franklin	3.8	46	Clay	4.4	68	Woodruff	5.3
21	Garland	3.8	46	Cleburne	4.4	72	Jefferson	5.6
21	Prairie	3.8	46	Conway	4.4	73	Phillips	6.0
21	Stone	3.8	46	Lincoln	4.4	74	Jackson	6.1
25	Cleveland	3.9	46	Little River	4.4	75	Chicot	6.5

### Local Workforce Development Areas Civilian Labor Force Estimates

Not Seasonally Adjusted

LWDA	August 2019				July 2019				August 2018			
	CLF	Emp	Unemp	Rate	CLF	Emp	Unemp	Rate	CLF	Emp	Unemp	Rate
Central (minus LR)	253,241	245,034	8,207	3.2	259,680	250,323	9,357	3.6	253,120	244,951	8,169	3.2
City of Little Rock	98,275	94,946	3,329	3.4	100,680	96,997	3,683	3.7	98,274	94,869	3,405	3.5
Eastern	46,802	44,626	2,176	4.6	47,178	44,711	2,467	5.2	46,955	44,846	2,109	4.5
North Central	93,504	89,339	4,165	4.5	93,728	89,055	4,673	5.0	93,555	89,420	4,135	4.4
Northeast	122,370	118,003	4,367	3.6	124,492	119,311	5,181	4.2	121,432	117,084	4,348	3.6
Northwest	329,112	320,069	9,043	2.7	333,543	323,813	9,730	2.9	322,419	313,096	9,323	2.9
Southeast	81,552	77,761	3,791	4.6	82,992	78,663	4,329	5.2	81,326	77,662	3,664	4.5
Southwest	91,582	87,432	4,150	4.5	92,492	87,902	4,590	5.0	91,978	87,730	4,248	4.6
West Central	131,503	126,039	5,464	4.2	133,657	127,412	6,245	4.7	131,144	125,591	5,553	4.2
Western	111,658	107,621	4,037	3.6	113,203	108,883	4,320	3.8	112,424	108,428	3,996	3.6

