

Arkansas Labor Market

November 2014

Employment Headlines

Arkansas' Unemployment Rate Falls to 5.8 Percent

Nonfarm Payroll Jobs Increase 5,400 in November

Employment Quick Facts

Unemployment Rates

Seasonally Adjusted

	<u>Nov 14</u>	<u>Oct 14</u>	<u>Nov 13</u>
AR Unemployment Rate	5.8	6.1	7.5
US Unemployment Rate	5.8	5.8	7.0

Nonfarm Payroll Summary

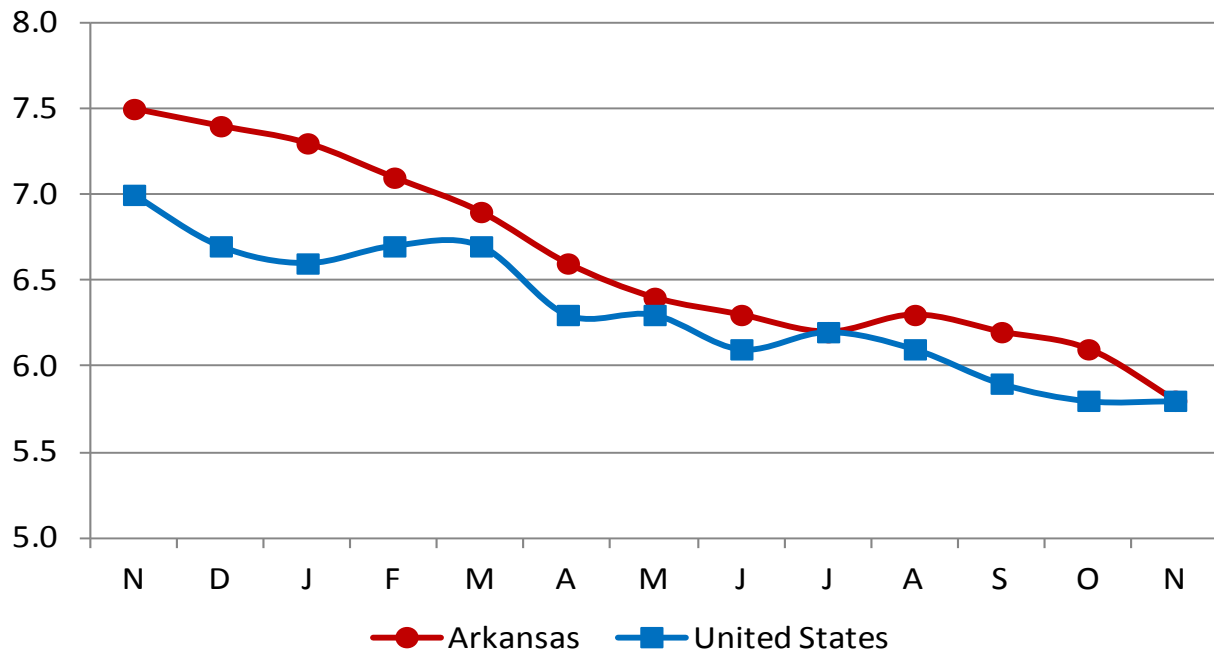
State of Arkansas

	<u>Nov 14</u>	<u>Oct 14</u>	<u>Nov 13</u>
Total Nonfarm	1,210,100	1,204,700	1,191,700
Goods Producing	217,400	216,300	207,600
Service Providing	992,700	988,400	984,100

Unemployment Rates (Seasonally Adjusted)

State of Arkansas vs. United States

November 2013 - November 2014



Nonfarm Payroll Employment

State of Arkansas

October 2014 - November 2014

Arkansas' nonfarm payroll jobs increased 5,400 in November to total 1,210,100. Seven major industry sectors posted gains, while two sectors declined. **Trade, transportation, and utilities** added 5,400 jobs. A majority of the increase occurred in retail trade (+3,700), representing the start of holiday hiring. Jobs in **government** rose 1,300. Most of the additions were in local government (+1,100), due in part to hiring for the 2014 elections. Employment in **professional and business services** dropped 2,400. All losses were in administrative and support services (-2,500). **Leisure and hospitality** decreased 1,200. Most of the declines occurred in arts-entertainment-recreation (-1,100), a typical seasonal loss.

November 2013 - November 2014

Since November 2013, nonfarm payroll jobs in Arkansas increased 18,400. Eight major industry sectors posted growth, while three sectors experienced minor decreases. Employment in **manufacturing** increased 5,400, mostly in durable goods manufacturing (+4,600). **Construction** added 4,000 jobs. A majority of the gains were in specialty trade contractors (+2,800). Jobs in **educational and health services** rose 3,600. Growth was posted in all subsectors. **Leisure and hospitality** gained 3,500 jobs. Increases in food services (+3,900) more than offset minor losses in other subsectors. Employment in **trade, transportation, and utilities** rose 1,700.

Nonfarm Payroll Jobs

(NAICS)	Nov 14	Oct 14	Nov 13
Total Nonfarm	1,210,100	1,204,700	1,191,700
Goods Producing	217,400	216,300	207,600
Mining & Logging	10,000	10,000	9,600
Construction	50,100	49,500	46,100
Specialty Trade Contractors	31,500	30,700	28,700
Manufacturing	157,300	156,800	151,900
Durable Goods	79,800	79,300	75,200
Nondurable Goods	77,500	77,500	76,700
Service Providing	992,700	988,400	984,100
Trade, Transportation & Utilities	247,600	242,200	245,900
Wholesale Trade	47,300	47,100	47,000
Retail Trade	136,700	133,000	137,000
Transport, Warehousing & Utilities	63,600	62,100	61,900
Information	13,500	13,500	14,100
Financial Activities	50,100	49,600	49,700
Finance & Insurance	36,900	36,500	36,500
Real Estate & Rental & Leasing	13,200	13,100	13,200
Professional & Business Services	130,000	132,400	130,100
Professional, Scientific & Technical	38,400	38,400	39,900
Management of Companies	32,200	32,100	31,500
Administrative & Support Services	59,400	61,900	58,700
Educational & Health Services	178,600	178,200	175,000
Educational Services	15,800	15,700	15,300
Health Care & Social Assistance	162,800	162,500	159,700
Ambulatory Health Care	49,800	49,800	48,700
Social Assistance	39,900	39,400	38,300
Leisure & Hospitality	109,100	110,300	105,600
Arts, Entertainment & Recreation	8,700	9,800	8,800
Accommodation & Food Services	100,400	100,500	96,800
Accommodation Services	10,600	11,200	10,900
Food Services	89,800	89,300	85,900
Other Services	43,300	43,000	42,900
Government	220,500	219,200	220,800
Federal Government	20,000	20,000	20,200
State Government	80,000	79,800	79,500
Local Government	120,500	119,400	121,100

Hours and Earnings of Arkansas Production Workers

(Manufacturing Industries)

	Average Weekly Earnings			Average Weekly Hours			Average Hourly Earnings		
	Nov 14	Oct 14	Nov 13	Nov 14	Oct 14	Nov 13	Nov 14	Oct 14	Nov 13
Manufacturing	\$667.44	\$670.27	\$630.47	41.2	41.4	41.1	\$16.20	\$16.19	\$15.34
Durable Goods	717.46	719.35	693.00	41.4	41.2	42.0	17.33	17.46	16.50
Nondurable Goods	619.38	621.92	575.08	41.1	41.6	40.3	15.07	14.95	14.27

Spotlight

Alternative Measures of Labor Underutilization

In addition to the unemployment rate, the Bureau of Labor Statistics (BLS) calculates five additional estimates based on various definitions of 'unemployment'. These are known as Alternative Measures of Labor Underutilization and are referred to as U1-U6, with U-3 being the definition used to calculate the official unemployment rate. These measures are calculated using data from the Current Population Survey (CPS), a monthly survey of households (roughly 800 Arkansas households are surveyed each month).

Alternative Measures of Labor Underutilization

State of Arkansas

4 Quarter Average: 4th Q 2013 - 3rd Q 2014

U-1	U-2	U-3	U-4	U-5	U-6
2.3%	3.2%	6.6%	6.9%	7.6%	11.2%

Alternative Measures of Labor Underutilization are available at the statewide level, but they are not produced on a monthly basis. Estimates are calculated using a four quarter moving average. The most recent data represents an average of 4th Quarter 2013 through 3rd Quarter 2014.

The following are the definitions used to calculate each measure of labor underutilization:

U-1 Measure: Persons unemployed for 15 weeks or longer, as a percent of the civilian labor force.

U-2 Measure: Job losers and persons who completed temporary jobs, as a percent of the civilian labor force.

U-3 Measure: Total number of unemployed persons, as a percent of the civilian labor force (this is the definition used for the official unemployment rate).

U-4 Measure: Total number of unemployed and discouraged workers, as a percent of the civilian labor force plus discouraged workers.

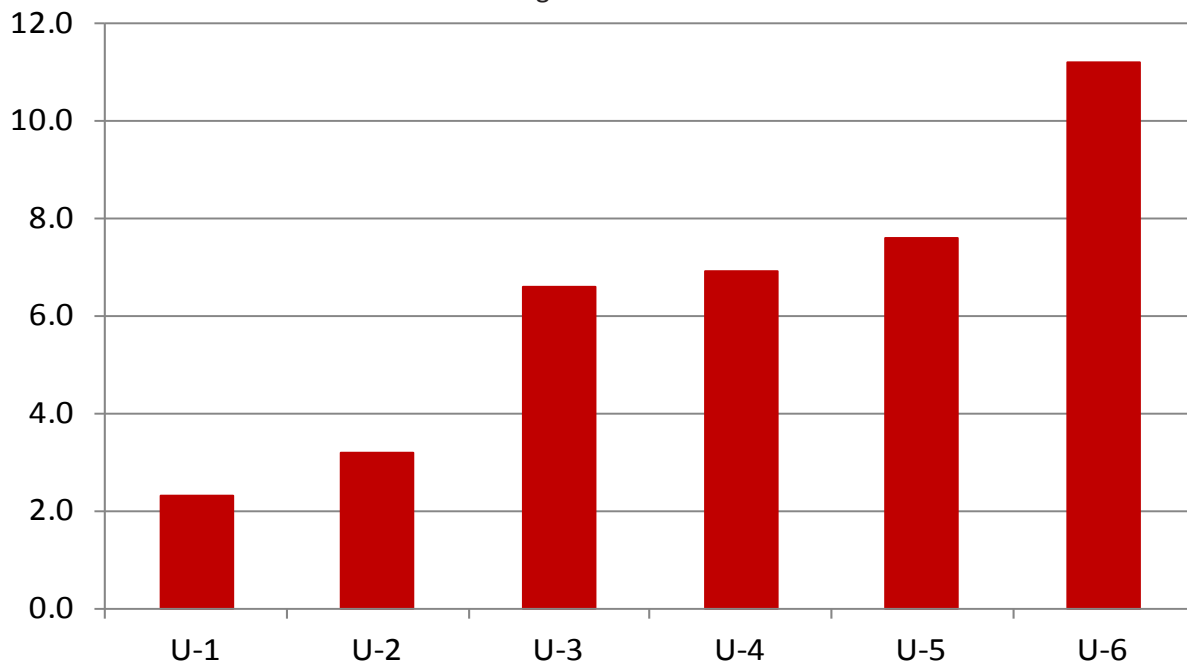
U-5 Measure: Total number of unemployed, discouraged workers, and all other marginally attached workers, as a percent of the civilian labor force plus marginally attached workers.

U-6 Measure: Total number of unemployed, discouraged workers, marginally attached workers, and those employed part-time for economic reasons (not by choice), as a percent of the civilian labor force plus marginally attached workers.

Alternative Measures of Labor Underutilization

State of Arkansas

4 Quarter Average: 4th Q 2013 - 3rd Q 2014



Metropolitan Statistical Areas

Little Rock-North Little Rock-Conway MSA

Nonfarm Payroll Jobs

NAICS	Nov 14	Oct 14	Nov 13
Total Nonfarm	350,300	349,700	348,200
Goods Producing	38,600	38,400	35,600
Mining, Logging & Construction	18,500	18,400	16,000
Manufacturing	20,100	20,000	19,600
Service Providing	311,700	312,300	312,600
Trade, Transportation & Utilities	67,800	66,400	67,900
Wholesale Trade	15,400	15,500	15,600
Retail Trade	37,700	36,500	38,000
Trans., Warehousing & Utilities	14,700	14,400	14,300
Information	6,900	6,900	7,200
Financial Activities	20,400	20,200	20,100
Professional & Business Services	43,900	44,800	45,900
Educational & Health Services	52,400	52,500	51,700
Leisure & Hospitality	32,100	32,600	32,100
Other Services	15,900	15,800	15,700
Government	72,300	72,100	72,000
Federal Government	9,600	9,500	9,500
State Government	34,700	34,600	34,400
Local Government	28,000	28,000	28,100

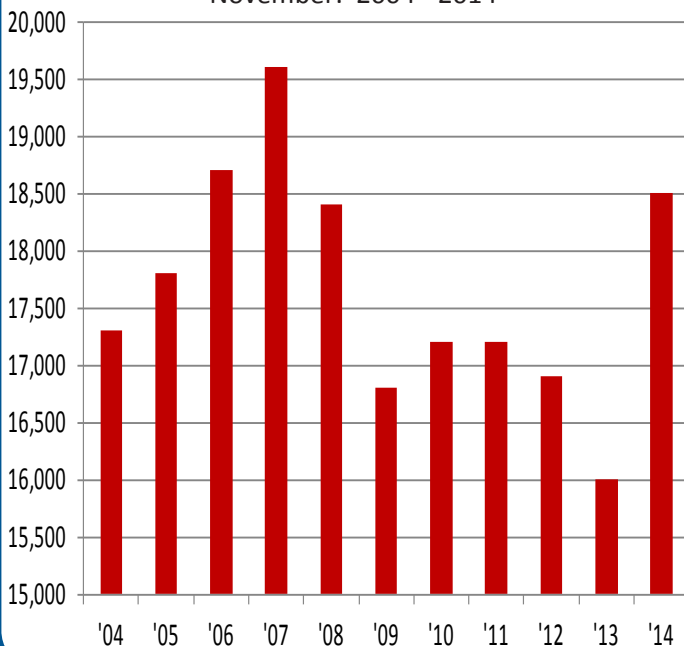
The LR-NLR-Conway MSA consists of the following counties:
Faulkner, Grant, Lonoke, Perry, Pulaski, and Saline

Civilian Labor Force Estimates

	Nov 14	Oct 14	Nov 13
Civilian Labor Force	335,950	334,375	341,575
Employment	319,725	318,250	320,450
Unemployment	16,225	16,125	21,125
Unemployment Rate	4.8	4.8	6.2

Jobs in Mining, Logging, and Construction

November: 2004 - 2014



Fayetteville-Springdale-Rogers MSA

Nonfarm Payroll Jobs

NAICS	Nov 14	Oct 14	Nov 13
Total Nonfarm	220,900	219,700	218,600
Goods Producing	34,900	35,000	34,600
Mining, Logging & Construction	8,700	8,800	8,200
Manufacturing	26,200	26,200	26,400
Service Providing	186,000	184,700	184,000
Trade, Transportation & Utilities	47,500	46,200	49,300
Wholesale Trade	10,100	10,000	10,300
Retail Trade	23,200	22,200	24,000
Trans., Warehousing & Utilities	14,200	14,000	15,000
Information	1,800	1,800	1,800
Financial Activities	7,000	6,900	6,700
Professional & Business Services	41,700	41,900	40,900
Educational & Health Services	25,500	25,400	24,800
Leisure & Hospitality	22,400	22,600	21,400
Other Services	6,300	6,300	6,200
Government	33,800	33,600	32,900
Federal Government	2,500	2,500	2,500
State Government	12,900	12,900	12,200
Local Government	18,400	18,200	18,200

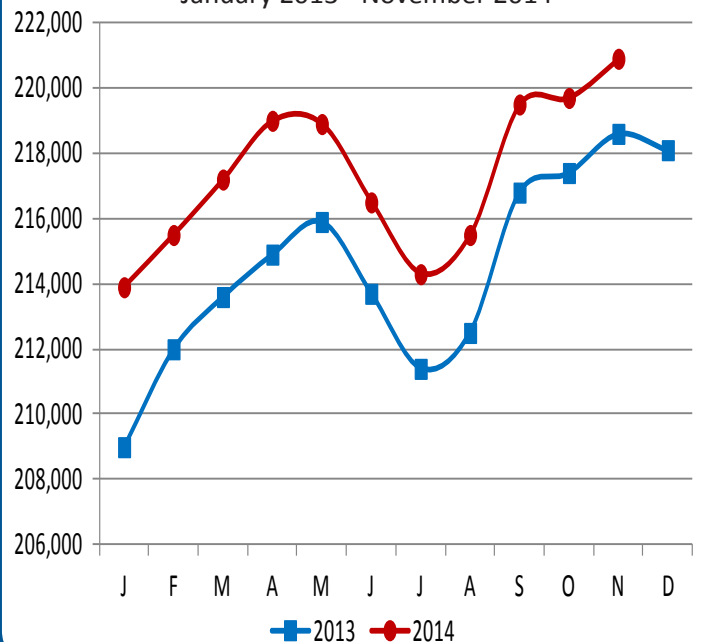
The FSR MSA consists of the following counties:
Benton, Madison, Washington, and McDonald (in Missouri)

Civilian Labor Force Estimates

	Nov 14	Oct 14	Nov 13
Civilian Labor Force	234,750	233,550	235,850
Employment	225,525	224,425	224,000
Unemployment	9,225	9,125	11,850
Unemployment Rate	3.9	3.9	5.0

Nonfarm Payroll Jobs

January 2013 - November 2014



Metropolitan Statistical Areas

Fort Smith MSA

Nonfarm Payroll Jobs

<u>NAICS</u>	<u>Nov 14</u>	<u>Oct 14</u>	<u>Nov 13</u>
Total Nonfarm	117,300	116,400	117,100
Goods Producing	24,300	24,400	25,300
Mining, Logging & Construction	6,500	6,600	6,900
Manufacturing	17,800	17,800	18,400
Service Providing	93,000	92,000	91,800
Trade, Transportation & Utilities	25,100	24,300	24,600
Wholesale Trade	4,100	4,100	4,100
Retail Trade	13,700	13,000	13,500
Trans., Warehousing & Utilities	7,300	7,200	7,000
Information	1,300	1,300	1,300
Financial Activities	4,200	4,100	4,200
Professional & Business Services	12,300	12,500	11,900
Educational & Health Services	16,500	16,400	16,700
Leisure & Hospitality	9,800	9,800	9,400
Other Services	4,200	4,100	4,100
Government	19,600	19,500	19,600
Federal Government	1,400	1,400	1,500
State Government	3,200	3,200	3,300
Local Government	15,000	14,900	14,800

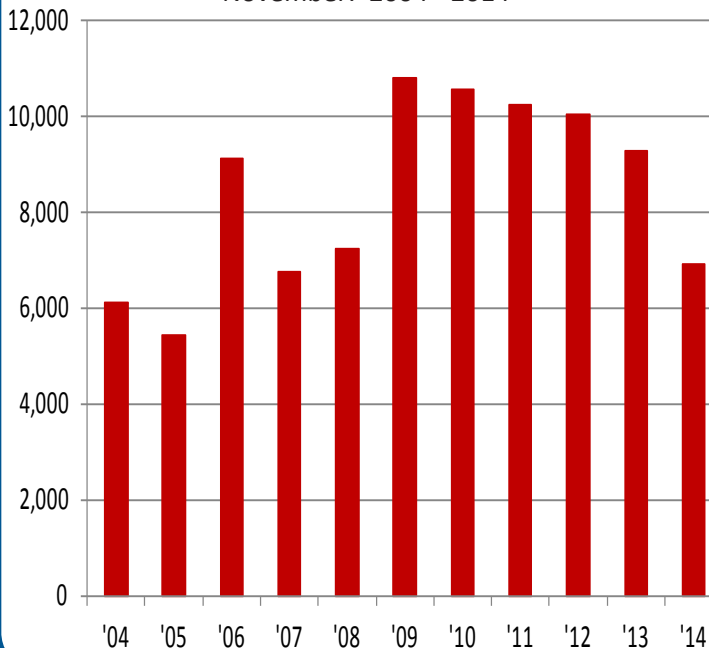
The FS MSA consists of the following counties: Crawford, Franklin, Sebastian, and LeFlore and Sequoyah (in Oklahoma)

Civilian Labor Force Estimates

	<u>Nov 14</u>	<u>Oct 14</u>	<u>Nov 13</u>
Civilian Labor Force	126,800	125,925	129,825
Employment	119,875	119,175	120,550
Unemployment	6,925	6,750	9,275
Unemployment Rate	5.5	5.4	7.1

Number of Unemployed

November: 2004 - 2014



Hot Springs MSA

Nonfarm Payroll Jobs

<u>NAICS</u>	<u>Nov 14</u>	<u>Oct 14</u>	<u>Nov 13</u>
Total Nonfarm	37,500	37,600	37,100
Goods Producing	4,700	4,700	4,500
Service Providing	32,800	32,900	32,600
Government	4,800	4,800	4,900

The HS MSA consists of the following county: Garland

Civilian Labor Force Estimates

	<u>Nov 14</u>	<u>Oct 14</u>	<u>Nov 13</u>
Civilian Labor Force	40,225	39,975	40,575
Employment	37,900	37,750	37,575
Unemployment	2,325	2,225	3,000
Unemployment Rate	5.8	5.6	7.4

Jonesboro MSA

Nonfarm Payroll Jobs

<u>NAICS</u>	<u>Nov 14</u>	<u>Oct 14</u>	<u>Nov 13</u>
Total Nonfarm	54,800	54,200	53,200
Goods Producing	9,300	9,300	8,700
Service Providing	45,500	44,900	44,500
Government	9,200	9,100	9,000

The Jonesboro MSA consists of the following counties:

Craighead and Poinsett

Civilian Labor Force Estimates

	<u>Nov 14</u>	<u>Oct 14</u>	<u>Nov 13</u>
Civilian Labor Force	60,450	59,975	59,975
Employment	57,550	57,150	56,150
Unemployment	2,900	2,825	3,825
Unemployment Rate	4.8	4.7	6.4

Pine Bluff MSA

Nonfarm Payroll Jobs

<u>NAICS</u>	<u>Nov 14</u>	<u>Oct 14</u>	<u>Nov 13</u>
Total Nonfarm	35,300	35,300	35,700
Goods Producing	7,100	7,200	7,100
Service Providing	28,200	28,100	28,600
Government	9,900	9,900	10,100

The PB MSA consists of the following counties: Cleveland, Jefferson, and Lincoln

Civilian Labor Force Estimates

	<u>Nov 14</u>	<u>Oct 14</u>	<u>Nov 13</u>
Civilian Labor Force	39,700	39,600	41,225
Employment	37,000	36,925	37,300
Unemployment	2,700	2,675	3,925
Unemployment Rate	6.8	6.8	9.5

Civilian Labor Force Statistics

State of Arkansas

(Seasonally Adjusted)

(Not Seasonally Adjusted)

	<u>Nov 14</u>	<u>Oct 14</u>	<u>Nov 13</u>	<u>OTM</u>	<u>OTY</u>	<u>Nov 14</u>	<u>Oct 14</u>	<u>Nov 13</u>	<u>OTM</u>	<u>OTY</u>
Civilian Labor Force	1,315,600	1,307,500	1,326,300	8,100	-10,700	1,320,100	1,314,100	1,324,800	6,000	-4,700
Employment	1,238,700	1,228,400	1,226,800	10,300	11,900	1,250,700	1,246,500	1,233,500	4,200	17,200
Unemployment	76,900	79,100	99,500	-2,200	-22,600	69,400	67,600	91,300	1,800	-21,900
Unemployment Rate	5.8	6.1	7.5	-0.3	-1.7	5.3	5.1	6.9	0.2	-1.6
U.S. Unemployment Rate	5.8	5.8	7.0	0.0	-1.2	5.5	5.5	6.6	0.0	-1.1

Out-of-State MSAs

Memphis, Tennessee

	<u>Nov 14</u>	<u>Oct 14</u>	<u>Nov 13</u>
Civilian Labor Force	584,350	586,275	598,675
Employment	540,200	542,350	546,575
Unemployment	44,150	43,925	52,100
Unemployment Rate	7.6	7.5	8.7

Texarkana, Texas

	<u>Nov 14</u>	<u>Oct 14</u>	<u>Nov 13</u>
Civilian Labor Force	62,275	61,850	62,675
Employment	58,975	58,450	58,325
Unemployment	3,300	3,400	4,350
Unemployment Rate	5.3	5.5	6.9

Between October and November, unemployment rates increased in 51 of Arkansas' 75 counties. Rates declined in fourteen counties, while remaining stable in ten.

In November, 42 counties posted jobless rates at or below six percent. For the fourth month in a row, no county had a rate above ten percent.

Compared to November 2013, unemployment rates are down in 74 counties. Only one county posted an over-the-year rate increase.

Unemployment Rates by County

<u>Rank</u>	<u>County</u>	<u>Nov 14</u>	<u>Oct 14</u>	<u>Nov 13</u>	<u>Rank</u>	<u>County</u>	<u>Nov 14</u>	<u>Oct 14</u>	<u>Nov 13</u>
6	Arkansas	4.2	3.8	5.8	72	Lee	8.1	7.8	10.4
73	Ashley	8.2	7.7	10.9	61	Lincoln	7.3	6.6	9.5
29	Baxter	5.4	5.6	7.4	45	Little River	6.2	5.8	7.4
3	Benton	4.0	4.0	5.1	18	Logan	4.9	4.8	7.1
20	Boone	5.0	4.9	6.6	10	Lonoke	4.6	4.5	5.7
45	Bradley	6.2	6.2	8.7	1	Madison	3.8	3.8	5.3
29	Calhoun	5.4	4.9	8.4	25	Marion	5.3	5.4	7.5
3	Carroll	4.0	3.6	5.1	29	Miller	5.4	5.7	7.0
74	Chicot	8.4	8.3	10.6	56	Mississippi	6.8	6.5	9.7
23	Clark	5.2	5.2	7.4	38	Monroe	5.9	5.7	8.5
70	Clay	8.0	7.2	10.6	55	Montgomery	6.7	6.4	9.5
36	Cleburne	5.8	5.7	7.0	9	Nevada	4.5	4.7	6.7
33	Cleveland	5.5	5.6	7.9	33	Newton	5.5	5.3	7.7
41	Columbia	6.0	6.1	8.0	45	Ouachita	6.2	6.2	8.7
20	Conway	5.0	5.1	7.4	54	Perry	6.6	6.0	8.4
14	Craighead	4.7	4.6	6.1	66	Phillips	7.6	7.1	10.5
25	Crawford	5.3	5.0	7.1	58	Pike	7.0	6.0	8.1
75	Crittenden	9.0	8.6	9.8	29	Poinsett	5.4	5.4	7.7
49	Cross	6.3	5.8	7.8	35	Polk	5.7	5.8	7.3
61	Dallas	7.3	7.0	9.8	25	Pope	5.3	5.1	7.3
69	Desha	7.9	6.9	9.8	22	Prairie	5.1	5.0	6.6
63	Drew	7.4	7.1	9.6	18	Pulaski	4.9	5.0	6.2
17	Faulkner	4.8	4.7	6.8	45	Randolph	6.2	6.1	8.3
6	Franklin	4.2	4.4	6.0	66	St. Francis	7.6	7.4	10.2
14	Fulton	4.7	4.8	6.7	8	Saline	4.4	4.5	5.7
36	Garland	5.8	5.6	7.4	5	Scott	4.1	4.1	5.8
10	Grant	4.6	4.2	6.2	23	Searcy	5.2	5.3	7.0
38	Greene	5.9	5.6	8.2	14	Sebastian	4.7	4.8	6.6
43	Hempstead	6.1	4.8	7.0	38	Sevier	5.9	5.0	6.7
10	Hot Spring	4.6	4.6	6.5	60	Sharp	7.2	6.9	9.9
70	Howard	8.0	4.8	6.3	68	Stone	7.7	7.3	10.6
53	Independence	6.4	6.4	9.3	49	Union	6.3	6.2	8.2
49	Izard	6.3	5.8	8.3	41	Van Buren	6.0	5.9	8.5
65	Jackson	7.5	6.9	10.0	1	Washington	3.8	3.7	4.9
57	Jefferson	6.9	6.9	9.6	49	White	6.3	6.2	8.0
25	Johnson	5.3	5.2	6.8	63	Woodruff	7.4	6.9	10.0
58	Lafayette	7.0	6.7	9.8	10	Yell	4.6	4.4	5.7
43	Lawrence	6.1	5.8	8.0					

Lowest Rates

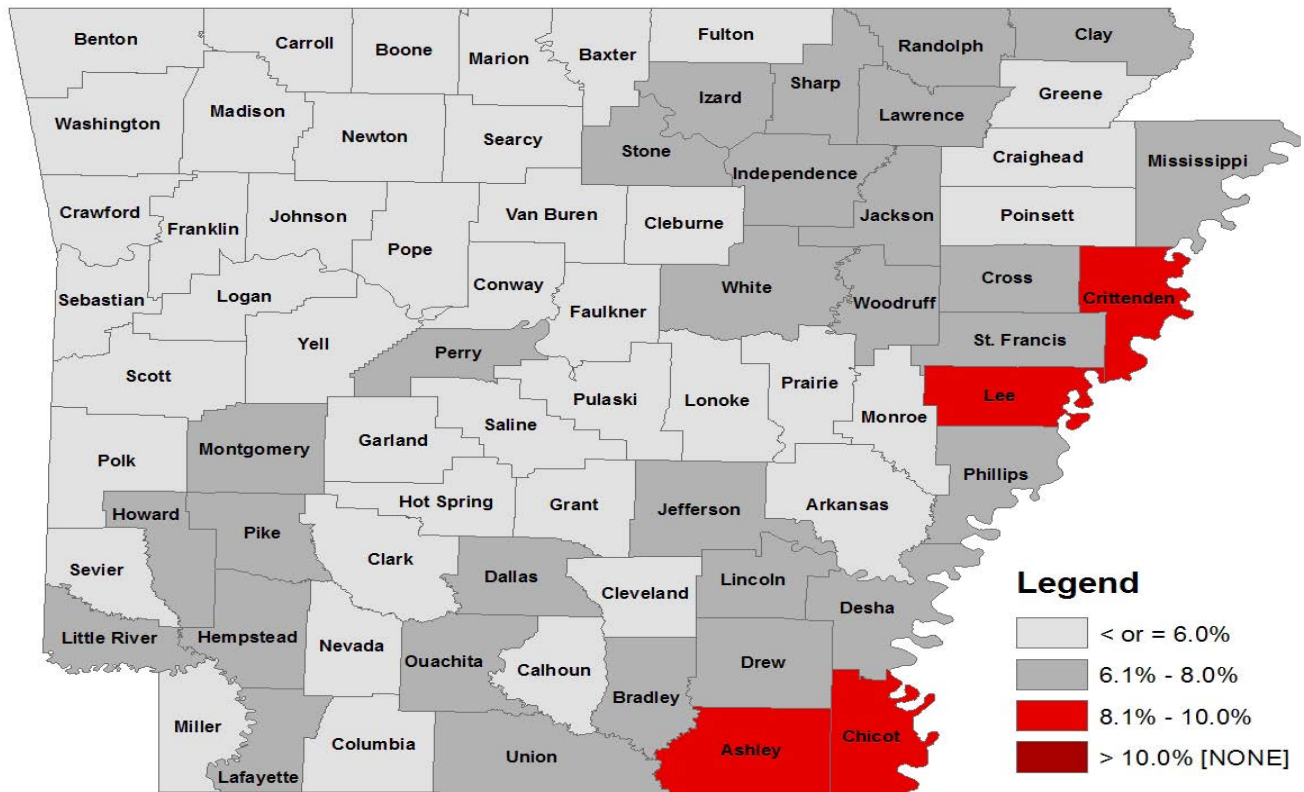
<u>Rank</u>	<u>County</u>	<u>Rate</u>
1	Madison	3.8
1	Washington	3.8
3	Benton	4.0
3	Carroll	4.0
5	Scott	4.1

Highest Rates

<u>Rank</u>	<u>County</u>	<u>Rate</u>
72	Lee	8.1
73	Ashley	8.2
74	Chicot	8.4
75	Crittenden	9.0

Civilian Labor Force Statistics

For complete County Labor Force Statistics, please visit our website at www.discover.arkansas.gov



Technical Notes

The *Arkansas Labor Market* is prepared monthly in conjunction with the U.S. Department of Labor, Bureau of Labor Statistics (BLS). The current month's estimates are preliminary, while previous data are subject to revision.

Estimates of nonfarm payroll jobs show the number of jobs by industry and reflect employment by place of work. Hours and earnings estimates are based on payroll and worker-hour data collected for production workers in manufacturing industries.

Industries are classified according to the North American Industry Classification System (NAICS). All estimates are based on a first quarter 2013 benchmark.

Explanation of Terms and Concepts

Monthly Business Survey of Employers

A monthly sample survey designed to provide industry information on nonfarm payroll jobs. Data are compiled each month from mail surveys and telephone interviews conducted by the Bureau of Labor Statistics in cooperation with Department of Workforce Services. The data are based on establishment records and include all workers, full- or part-time, who received pay during the payroll period which includes the 12th

of the month. Approximately 5,000 Arkansas business establishments are surveyed.

Metropolitan Statistical Area (MSA)

A term applied by the U.S. Office of Management and Budget to counties that have one or more central cities and that meet specified criteria of population density, commuting patterns and social and economic integration.

Current Population Survey (CPS)

A monthly sample survey of the population 16 years of age and over, designed to provide data on the labor force, the employed and the unemployed. The survey is conducted each month by the Bureau of the Census for BLS. The information is collected by trained interviewers from a sample of about 60,000 households. The data collected are based on the activity reported for the calendar week including the 12th of the month. Approximately 800 Arkansas households are represented in the sample survey.

Civilian Labor Force

The sum of all employed and unemployed persons 16 years of age or older. Members of the Armed Forces are excluded.

Employment

An estimate of the number of persons who worked any time for pay or profit or worked 15 hours or more as unpaid workers in a family business during the calendar week which includes the 12th of the month. Also included are those who, although not working, had some job attachment and were not looking for work, and persons involved in labor management disputes.

Unemployment

An estimate of the number of persons who did not have a job, but were available for work and actively seeking work during the calendar week which includes the 12th of the month.

Unemployment Rate

The number of unemployed as a percentage of the civilian labor force. Unemployment rates are calculated from unrounded data.

Seasonal Adjustment

A statistical technique applied to monthly data to eliminate changes that normally occur during the year due to seasonal events such as weather, major holidays, schedule shifts, harvest times, and the opening/closing of schools.

Arkansas Labor Market

November 2014

The *Arkansas Labor Market* is produced by the Department of Workforce Services, Bureau of Labor Statistics. All Statistics are published in cooperation with the United States Department of Labor, Bureau of Labor Statistics.

Auxiliary aids and services are available upon request to individuals with disabilities.

Voice: 1-800-285-1121

TDD: 1-800-285-1131



Department of Workforce Services
Bureau of Labor Statistics
P.O. Box 2981
Little Rock, AR 72203-2981