

Arkansas Labor Market

July 2013

Employment Headlines

Arkansas' Unemployment Rate Increases to 7.4 Percent

Nonfarm Payroll Jobs Decrease 13,900 in July

Employment Quick Facts

Unemployment Rates

Seasonally Adjusted

| | <u>Jul 13</u> | <u>Jun 13</u> | <u>Jul 12</u> |
|----------------------|---------------|---------------|---------------|
| AR Unemployment Rate | 7.4 | 7.3 | 7.4 |
| US Unemployment Rate | 7.4 | 7.6 | 8.2 |

Nonfarm Payroll Summary

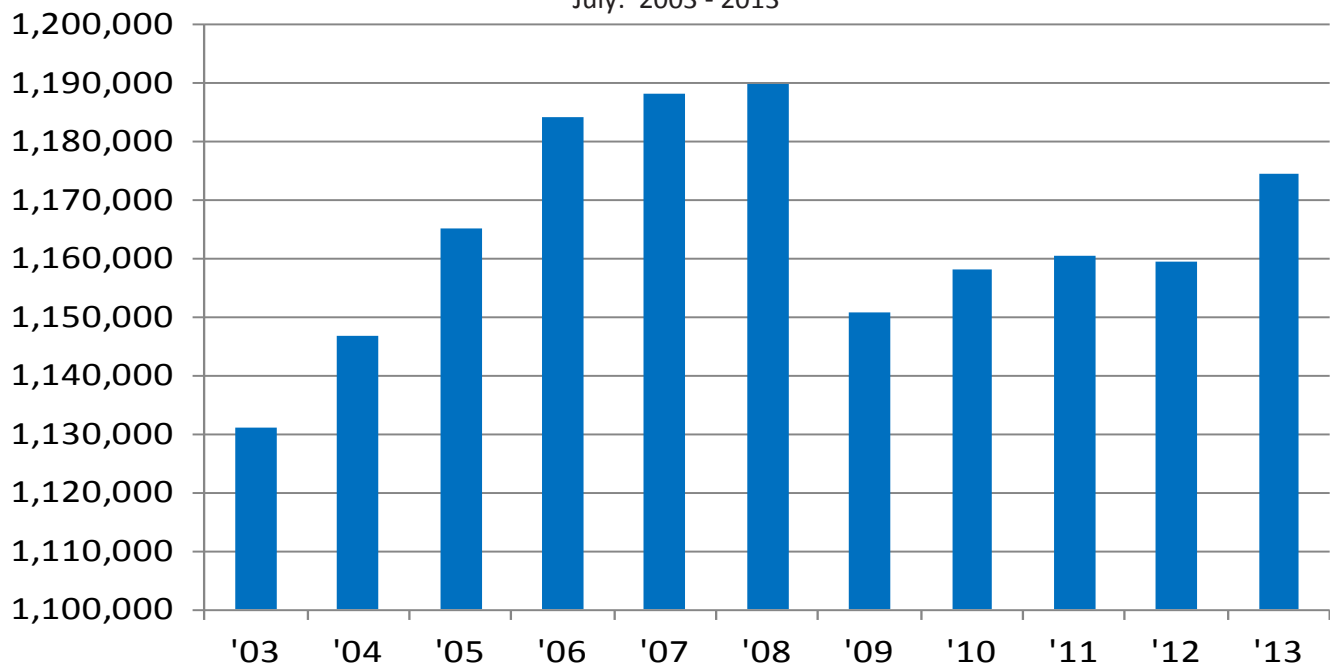
State of Arkansas

| | <u>Jul 13</u> | <u>Jun 13</u> | <u>Jul 12</u> |
|-------------------|---------------|---------------|---------------|
| Total Nonfarm | 1,174,500 | 1,188,400 | 1,159,600 |
| Goods Producing | 212,300 | 213,300 | 215,100 |
| Service Providing | 962,200 | 975,100 | 944,500 |

Nonfarm Payroll Jobs

State of Arkansas

July: 2003 - 2013



Nonfarm Payroll Employment

State of Arkansas

June 2013 - July 2013

Arkansas' nonfarm payroll jobs decreased 13,900 in July to total 1,174,500. Six major industry sectors posted declines, more than offsetting gains in four sectors. **Government** employment fell 13,900. Losses occurred in state (-1,600) and local (-12,300) government, representing the seasonal closure of public schools and universities. Jobs in **other services** decreased 1,400. Employment declines were reported mostly in membership associations and organizations. Jobs in **professional and business services** rose 2,000. A majority of the gain was reported in professional, scientific, and technical services (+1,200). **Educational and health services** added 1,300 jobs. Increases in health care and social assistance (+2,500) more than offset the seasonal losses in educational services (-1,200).

July 2012 - July 2013

Since July 2012, nonfarm payroll jobs in Arkansas rose 14,900. Five major industry sectors added jobs, while six sectors posted declines. **Trade, transportation, and utilities** enjoyed the largest increase (+10,700). A majority of the growth occurred in retail trade (+7,300). Jobs in **educational and health services** rose 7,000. Gains were reported in health care and social assistance (+4,400) and in educational services (+2,600). **Professional and business services** added 2,100 jobs. Professional, scientific, and technical services reported a majority of the increase (+1,700). Employment in **other services** decreased 1,800.

Nonfarm Payroll Jobs

| (NAICS) | Jul 13 | Jun 13 | Jul 12 |
|--|----------------|----------------|----------------|
| Total Nonfarm | 1,174,500 | 1,188,400 | 1,159,600 |
| Goods Producing | 212,300 | 213,300 | 215,100 |
| Mining & Logging | 10,400 | 10,300 | 10,700 |
| Construction | 47,000 | 47,600 | 47,900 |
| Specialty Trade Contractors | 29,900 | 30,700 | 29,700 |
| Manufacturing | 154,900 | 155,400 | 156,500 |
| Durable Goods | 78,600 | 79,000 | 77,800 |
| Nondurable Goods | 76,300 | 76,400 | 78,700 |
| Service Providing | 962,200 | 975,100 | 944,500 |
| Trade, Transportation & Utilities | 252,200 | 252,700 | 241,500 |
| Wholesale Trade | 46,700 | 47,200 | 47,600 |
| Retail Trade | 140,000 | 140,400 | 132,700 |
| Transport, Warehousing & Utilities | 65,500 | 65,100 | 61,200 |
| Information | 14,600 | 14,600 | 14,400 |
| Financial Activities | 49,300 | 49,000 | 49,100 |
| Finance & Insurance | 35,900 | 35,700 | 35,800 |
| Real Estate & Rental & Leasing | 13,400 | 13,300 | 13,300 |
| Professional & Business Services | 125,800 | 123,800 | 123,700 |
| Professional, Scientific & Technical | 39,700 | 38,500 | 38,000 |
| Management of Companies | 32,000 | 31,900 | 31,100 |
| Administrative & Support Services | 54,100 | 53,400 | 54,600 |
| Educational & Health Services | 174,300 | 173,000 | 167,300 |
| Educational Services | 13,300 | 14,500 | 10,700 |
| Health Care & Social Assistance | 161,000 | 158,500 | 156,600 |
| Ambulatory Health Care | 50,100 | 49,000 | 47,700 |
| Social Assistance | 36,800 | 36,400 | 34,900 |
| Leisure & Hospitality | 105,000 | 105,700 | 105,300 |
| Arts, Entertainment & Recreation | 10,800 | 11,000 | 11,300 |
| Accommodation & Food Services | 94,200 | 94,700 | 94,000 |
| Accommodation Services | 11,500 | 11,700 | 12,000 |
| Food Services | 82,700 | 83,000 | 82,000 |
| Other Services | 41,800 | 43,200 | 43,600 |
| Government | 199,200 | 213,100 | 199,600 |
| Federal Government | 20,000 | 20,000 | 20,600 |
| State Government | 71,500 | 73,100 | 70,700 |
| Local Government | 107,700 | 120,000 | 108,300 |

Hours and Earnings of Arkansas Production Workers

(Manufacturing Industries)

| | Average Weekly Earnings | | | Average Weekly Hours | | | Average Hourly Earnings | | |
|----------------------|-------------------------|----------|----------|----------------------|--------|--------|-------------------------|---------|---------|
| | Jul 13 | Jun 13 | Jul 12 | Jul 13 | Jun 13 | Jul 12 | Jul 13 | Jun 13 | Jul 12 |
| Manufacturing | \$641.72 | \$637.14 | \$629.12 | 40.9 | 41.0 | 41.2 | \$15.69 | \$15.54 | \$15.27 |
| Durable Goods | 680.14 | 695.41 | 680.09 | 40.8 | 42.9 | 41.8 | 16.67 | 16.21 | 16.27 |
| Nondurable Goods | 605.98 | 582.12 | 580.17 | 41.0 | 39.2 | 40.6 | 14.78 | 14.85 | 14.29 |

Spotlight

A Comparative Look at Unemployment Rates

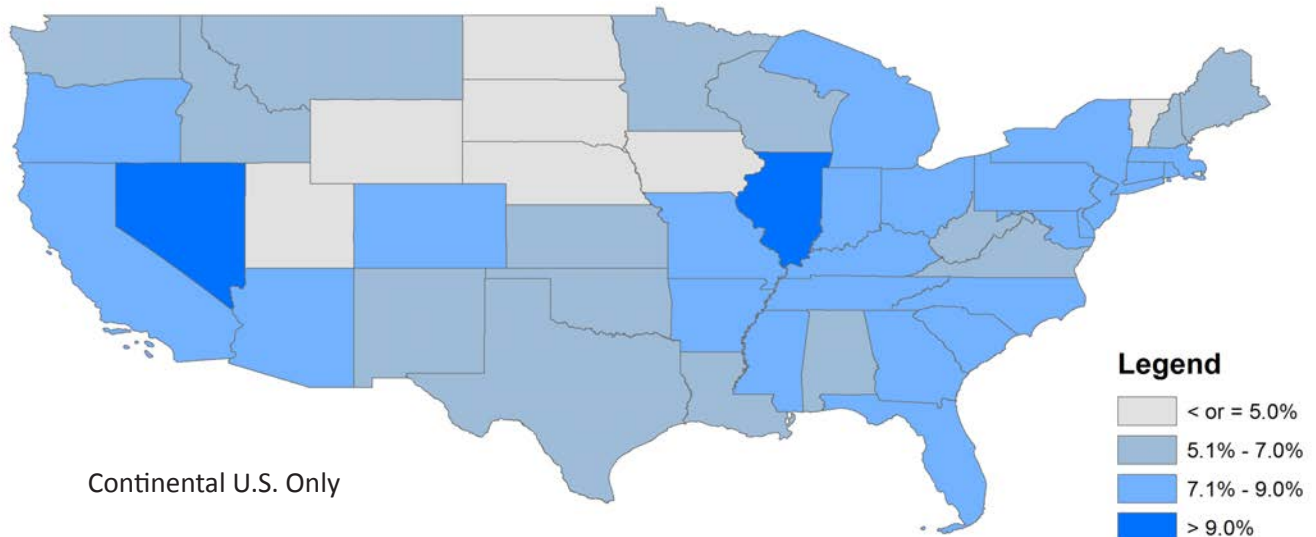
Due to differing economies and labor force conditions in various parts of the country, unemployment rates vary greatly from state to state. In July 2013, state jobless rates ranged from a low of 3.0 percent in North Dakota to a high of 9.5 percent in Nevada. The unemployment rate in Arkansas generally falls somewhere towards the middle, ranking 31st in July with a rate of 7.4 percent. By looking at the map below, it becomes apparent that trends exist among states that are located within the same region. While there are some exceptions, western states tend to have higher jobless rates than states located in the midwest. Similarly, states located in the northeast generally experience lower unemployment rates than states located in the southeast. These regional trends occur because states often experience economic similarities based on shared industries, work forces, and climates.

Unemployment Rates, Ranked by State (Seasonally Adjusted)
July 2013

| Rank | State | Rate | Rank | State | Rate | Rank | State | Rate |
|------|---------------|------|-----------|-----------------|------------|------|----------------------|------|
| 1 | North Dakota | 3.0 | 21 | Maine | 6.9 | 40 | Mississippi | 8.5 |
| 2 | South Dakota | 3.9 | 21 | New Mexico | 6.9 | 40 | Tennessee | 8.5 |
| 3 | Nebraska | 4.2 | 21 | Washington | 6.9 | 43 | District of Columbia | 8.6 |
| 4 | Hawaii | 4.5 | 24 | Louisiana | 7.0 | 43 | New Jersey | 8.6 |
| 5 | Utah | 4.6 | 25 | Colorado | 7.1 | 45 | California | 8.7 |
| 5 | Vermont | 4.6 | 25 | Florida | 7.1 | 46 | Georgia | 8.8 |
| 5 | Wyoming | 4.6 | 25 | Maryland | 7.1 | 46 | Michigan | 8.8 |
| 8 | Iowa | 4.8 | 25 | Missouri | 7.1 | 48 | North Carolina | 8.9 |
| 9 | New Hampshire | 5.1 | 29 | Massachusetts | 7.2 | 48 | Rhode Island | 8.9 |
| 10 | Minnesota | 5.2 | 29 | Ohio | 7.2 | 50 | Illinois | 9.2 |
| 11 | Montana | 5.3 | 31 | Arkansas | 7.4 | 51 | Nevada | 9.5 |
| 11 | Oklahoma | 5.3 | 31 | Delaware | 7.4 | | | |
| 13 | Virginia | 5.7 | 33 | New York | 7.5 | | | |
| 14 | Kansas | 5.9 | 33 | Pennsylvania | 7.5 | | | |
| 15 | West Virginia | 6.2 | 35 | Arizona | 8.0 | | | |
| 16 | Alabama | 6.3 | 35 | Oregon | 8.0 | | | |
| 16 | Alaska | 6.3 | 37 | Connecticut | 8.1 | | | |
| 18 | Texas | 6.5 | 37 | South Carolina | 8.1 | | | |
| 19 | Idaho | 6.6 | 39 | Indiana | 8.4 | | | |
| 20 | Wisconsin | 6.8 | 40 | Kentucky | 8.5 | | | |

U.S. Unemployment Rate = 7.4 Percent

Unemployment Rates by State (Seasonally Adjusted)
July 2013



Continental U.S. Only

Metropolitan Statistical Areas

Little Rock-North Little Rock-Conway MSA

Nonfarm Payroll Jobs

| NAICS | Jul 13 | Jun 13 | Jul 12 |
|-----------------------------------|---------|---------|---------|
| Total Nonfarm | 347,100 | 349,900 | 339,000 |
| Goods Producing | 36,900 | 36,900 | 37,300 |
| Mining, Logging & Construction | 17,000 | 16,900 | 17,100 |
| Manufacturing | 19,900 | 20,000 | 20,200 |
| Service Providing | 310,200 | 313,000 | 301,700 |
| Trade, Transportation & Utilities | 70,600 | 71,000 | 66,200 |
| Wholesale Trade | 15,800 | 15,800 | 15,900 |
| Retail Trade | 40,400 | 40,700 | 36,800 |
| Trans., Warehousing & Utilities | 14,400 | 14,500 | 13,500 |
| Information | 7,100 | 7,200 | 7,200 |
| Financial Activities | 19,900 | 19,800 | 20,000 |
| Professional & Business Services | 45,100 | 44,400 | 43,600 |
| Educational & Health Services | 53,600 | 54,100 | 50,800 |
| Leisure & Hospitality | 31,200 | 31,300 | 30,900 |
| Other Services | 15,800 | 15,900 | 15,700 |
| Government | 66,900 | 69,300 | 67,300 |
| Federal Government | 9,300 | 9,300 | 9,500 |
| State Government | 31,500 | 31,700 | 31,500 |
| Local Government | 26,100 | 28,300 | 26,300 |

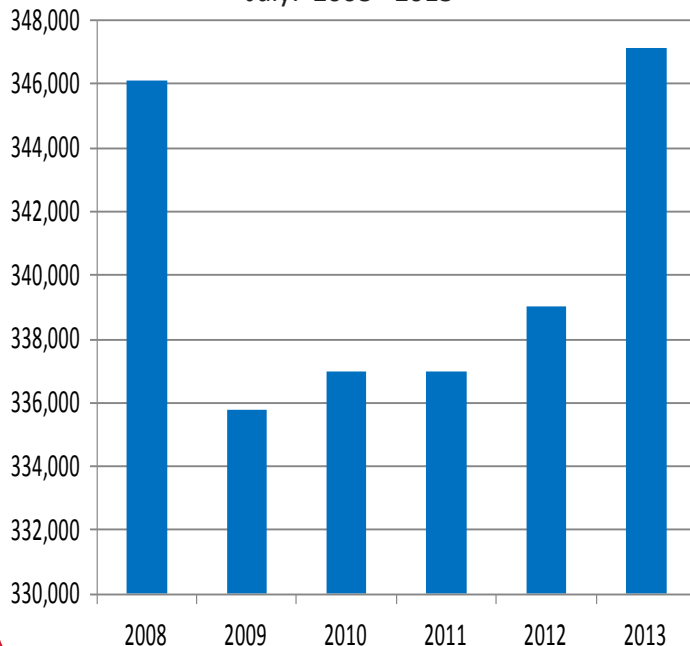
The LR-NLR-Conway MSA consists of the following counties:
Faulkner, Grant, Lonoke, Perry, Pulaski, and Saline

Civilian Labor Force Estimates

| | Jul 13 | Jun 13 | Jul 12 |
|----------------------|---------|---------|---------|
| Civilian Labor Force | 347,200 | 348,825 | 351,675 |
| Employment | 323,650 | 325,500 | 326,875 |
| Unemployment | 23,550 | 23,325 | 24,800 |
| Unemployment Rate | 6.8 | 6.7 | 7.0 |

Nonfarm Payroll Jobs

July: 2008 - 2013



Fayetteville-Springdale-Rogers MSA

Nonfarm Payroll Jobs

| NAICS | Jul 13 | Jun 13 | Jul 12 |
|-----------------------------------|---------|---------|---------|
| Total Nonfarm | 217,300 | 218,600 | 206,500 |
| Goods Producing | 35,500 | 35,700 | 35,200 |
| Mining, Logging & Construction | 8,800 | 8,800 | 8,300 |
| Manufacturing | 26,700 | 26,900 | 26,900 |
| Service Providing | 181,800 | 182,900 | 171,300 |
| Trade, Transportation & Utilities | 50,700 | 50,200 | 47,700 |
| Wholesale Trade | 11,100 | 11,100 | 10,400 |
| Retail Trade | 23,800 | 23,500 | 22,200 |
| Trans., Warehousing & Utilities | 15,800 | 15,600 | 15,100 |
| Information | 2,000 | 2,000 | 1,900 |
| Financial Activities | 6,500 | 6,500 | 6,300 |
| Professional & Business Services | 42,000 | 41,500 | 39,000 |
| Educational & Health Services | 24,900 | 24,800 | 22,900 |
| Leisure & Hospitality | 22,000 | 22,000 | 20,600 |
| Other Services | 7,100 | 7,000 | 6,700 |
| Government | 26,600 | 28,900 | 26,200 |
| Federal Government | 2,300 | 2,300 | 2,400 |
| State Government | 8,700 | 9,000 | 8,400 |
| Local Government | 15,600 | 17,600 | 15,400 |

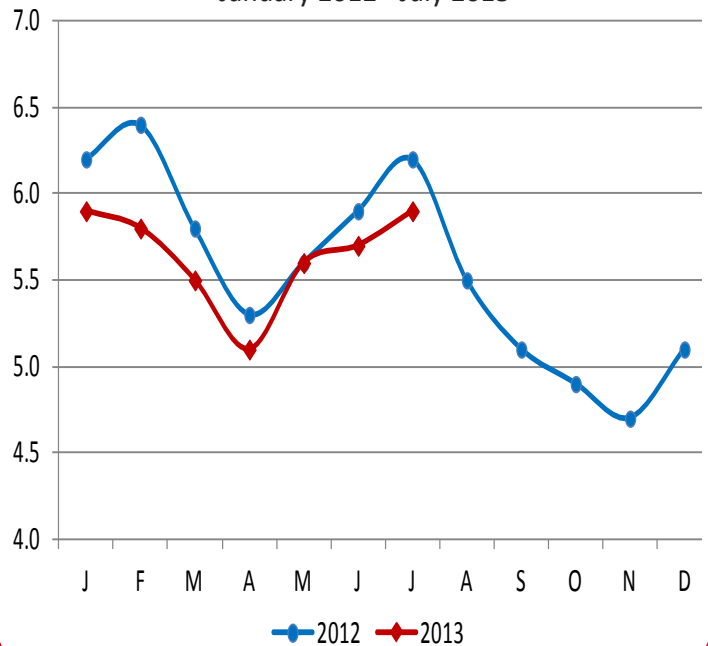
The FSR MSA consists of the following counties:
Benton, Madison, Washington, and McDonald (in Missouri)

Civilian Labor Force Estimates

| | Jul 13 | Jun 13 | Jul 12 |
|----------------------|---------|---------|---------|
| Civilian Labor Force | 241,050 | 241,100 | 237,050 |
| Employment | 226,900 | 227,300 | 222,275 |
| Unemployment | 14,150 | 13,800 | 14,775 |
| Unemployment Rate | 5.9 | 5.7 | 6.2 |

Unemployment Rates

January 2012 - July 2013



Metropolitan Statistical Areas

Fort Smith MSA

Nonfarm Payroll Jobs

| <u>NAICS</u> | <u>Jul 13</u> | <u>Jun 13</u> | <u>Jul 12</u> |
|--|---------------|---------------|---------------|
| Total Nonfarm | 117,400 | 120,000 | 114,500 |
| Goods Producing | 25,700 | 25,500 | 26,300 |
| Mining, Logging & Construction | 7,100 | 7,000 | 6,900 |
| Manufacturing | 18,600 | 18,500 | 19,400 |
| Service Providing | 91,700 | 94,500 | 88,200 |
| Trade, Transportation & Utilities | 25,600 | 25,800 | 24,100 |
| Wholesale Trade | 4,200 | 4,300 | 4,100 |
| Retail Trade | 13,500 | 13,600 | 13,100 |
| Trans., Warehousing & Utilities | 7,900 | 7,900 | 6,900 |
| Information | 1,400 | 1,400 | 1,400 |
| Financial Activities | 4,400 | 4,400 | 4,300 |
| Professional & Business Services | 11,700 | 11,600 | 11,300 |
| Educational & Health Services | 17,800 | 17,900 | 16,900 |
| Leisure & Hospitality | 9,500 | 9,600 | 9,100 |
| Other Services | 4,600 | 4,900 | 4,500 |
| Government | 16,700 | 18,900 | 16,600 |
| Federal Government | 1,600 | 1,500 | 1,600 |
| State Government | 2,900 | 2,900 | 3,000 |
| Local Government | 12,200 | 14,500 | 12,000 |

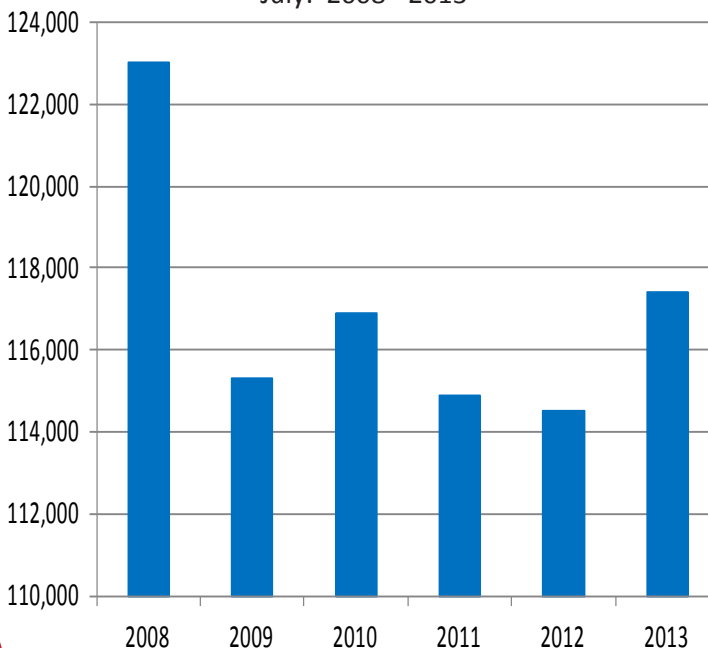
The FS MSA consists of the following counties: Crawford, Franklin, Sebastian, and LeFlore and Sequoyah (in Oklahoma)

Civilian Labor Force Estimates

| | <u>Jul 13</u> | <u>Jun 13</u> | <u>Jul 12</u> |
|----------------------|---------------|---------------|---------------|
| Civilian Labor Force | 133,250 | 135,850 | 134,025 |
| Employment | 123,150 | 125,325 | 122,825 |
| Unemployment | 10,100 | 10,525 | 11,200 |
| Unemployment Rate | 7.6 | 7.7 | 8.4 |

Nonfarm Payroll Jobs

July: 2008 - 2013



Hot Springs MSA

Nonfarm Payroll Jobs

| <u>NAICS</u> | <u>Jul 13</u> | <u>Jun 13</u> | <u>Jul 12</u> |
|-------------------|---------------|---------------|---------------|
| Total Nonfarm | 37,700 | 38,000 | 37,500 |
| Goods Producing | 4,200 | 4,200 | 4,200 |
| Service Providing | 33,500 | 33,800 | 33,300 |
| Government | 4,600 | 5,000 | 4,500 |

The HS MSA consists of the following county: Garland

Civilian Labor Force Estimates

| | <u>Jul 13</u> | <u>Jun 13</u> | <u>Jul 12</u> |
|----------------------|---------------|---------------|---------------|
| Civilian Labor Force | 42,200 | 42,025 | 43,325 |
| Employment | 38,900 | 38,800 | 39,850 |
| Unemployment | 3,300 | 3,225 | 3,475 |
| Unemployment Rate | 7.8 | 7.7 | 8.0 |

Jonesboro MSA

Nonfarm Payroll Jobs

| <u>NAICS</u> | <u>Jul 13</u> | <u>Jun 13</u> | <u>Jul 12</u> |
|-------------------|---------------|---------------|---------------|
| Total Nonfarm | 52,200 | 52,500 | 49,900 |
| Goods Producing | 9,500 | 9,400 | 8,900 |
| Service Providing | 42,700 | 43,100 | 41,000 |
| Government | 8,400 | 8,900 | 8,100 |

The Jonesboro MSA consists of the following counties:

Craighead and Poinsett

Civilian Labor Force Estimates

| | <u>Jul 13</u> | <u>Jun 13</u> | <u>Jul 12</u> |
|----------------------|---------------|---------------|---------------|
| Civilian Labor Force | 60,650 | 60,600 | 60,275 |
| Employment | 56,250 | 56,275 | 55,725 |
| Unemployment | 4,400 | 4,325 | 4,550 |
| Unemployment Rate | 7.3 | 7.1 | 7.6 |

Pine Bluff MSA

Nonfarm Payroll Jobs

| <u>NAICS</u> | <u>Jul 13</u> | <u>Jun 13</u> | <u>Jul 12</u> |
|-------------------|---------------|---------------|---------------|
| Total Nonfarm | 35,000 | 35,800 | 35,400 |
| Goods Producing | 7,000 | 7,100 | 7,200 |
| Service Providing | 28,000 | 28,700 | 28,200 |
| Government | 9,700 | 10,400 | 9,800 |

The PB MSA consists of the following counties: Cleveland, Jefferson, and Lincoln

Civilian Labor Force Estimates

| | <u>Jul 13</u> | <u>Jun 13</u> | <u>Jul 12</u> |
|----------------------|---------------|---------------|---------------|
| Civilian Labor Force | 41,850 | 42,150 | 43,075 |
| Employment | 37,525 | 37,900 | 38,775 |
| Unemployment | 4,325 | 4,250 | 4,300 |
| Unemployment Rate | 10.3 | 10.1 | 10.0 |

Civilian Labor Force Statistics

State of Arkansas

(Seasonally Adjusted)

(Not Seasonally Adjusted)

| | <u>Jul 13</u> | <u>Jun 13</u> | <u>Jul 12</u> | <u>OTM</u> | <u>OTY</u> | <u>Jul 13</u> | <u>Jun 13</u> | <u>Jul 12</u> | <u>OTM</u> | <u>OTY</u> |
|------------------------|---------------|---------------|---------------|------------|------------|---------------|---------------|---------------|------------|------------|
| Civilian Labor Force | 1,327,700 | 1,332,500 | 1,352,100 | -4,800 | -24,400 | 1,343,300 | 1,351,600 | 1,372,300 | -8,300 | -29,000 |
| Employment | 1,229,900 | 1,234,700 | 1,252,600 | -4,800 | -22,700 | 1,240,800 | 1,248,900 | 1,264,100 | -8,100 | -23,300 |
| Unemployment | 97,800 | 97,800 | 99,500 | 0 | -1,700 | 102,500 | 102,700 | 108,200 | -200 | -5,700 |
| Unemployment Rate | 7.4 | 7.3 | 7.4 | 0.1 | 0.0 | 7.6 | 7.6 | 7.9 | 0.0 | -0.3 |
| U.S. Unemployment Rate | 7.4 | 7.6 | 8.2 | -0.2 | -0.8 | 7.7 | 7.8 | 8.6 | -0.1 | -0.9 |

Out-of-State MSAs

Memphis, Tennessee

| | <u>Jul 13</u> | <u>Jun 13</u> | <u>Jul 12</u> |
|----------------------|---------------|---------------|---------------|
| Civilian Labor Force | 620,225 | 618,375 | 625,425 |
| Employment | 561,525 | 556,575 | 565,775 |
| Unemployment | 58,700 | 61,800 | 59,650 |
| Unemployment Rate | 9.5 | 10.0 | 9.5 |

Texarkana, Texas

| | <u>Jul 13</u> | <u>Jun 13</u> | <u>Jul 12</u> |
|----------------------|---------------|---------------|---------------|
| Civilian Labor Force | 64,875 | 64,825 | 65,050 |
| Employment | 60,250 | 60,050 | 60,275 |
| Unemployment | 4,625 | 4,775 | 4,775 |
| Unemployment Rate | 7.1 | 7.4 | 7.3 |

Unemployment Rates by County

Between June and July, unemployment rates increased in 50 of Arkansas' 75 counties. Twenty counties posted rate declines, while five remained stable.

In July, four counties enjoyed jobless rates below six percent. Twenty counties posted rates at or above ten percent, up from eighteen counties in June.

Since July 2012, unemployment rates are down in 48 counties. Twenty-one counties posted rate increases, while six remained the same.

| <u>Rank</u> | <u>County</u> | <u>Jul 13</u> | <u>Jun 13</u> | <u>Jul 12</u> | <u>Rank</u> | <u>County</u> | <u>Jul 13</u> | <u>Jun 13</u> | <u>Jul 12</u> |
|-------------|---------------|---------------|---------------|---------------|-------------|---------------|---------------|---------------|---------------|
| 7 | Arkansas | 6.6 | 6.8 | 7.6 | 75 | Lee | 12.3 | 11.5 | 12.2 |
| 73 | Ashley | 11.9 | 11.7 | 13.2 | 44 | Lincoln | 8.6 | 8.3 | 10.1 |
| 35 | Baxter | 8.1 | 8.1 | 8.2 | 37 | Little River | 8.2 | 8.0 | 7.8 |
| 4 | Benton | 5.8 | 5.7 | 6.3 | 31 | Logan | 8.0 | 8.1 | 8.5 |
| 23 | Boone | 7.6 | 7.2 | 7.6 | 6 | Lonoke | 6.3 | 6.2 | 6.6 |
| 51 | Bradley | 9.5 | 9.2 | 10.6 | 2 | Madison | 5.7 | 5.6 | 5.7 |
| 56 | Calhoun | 10.2 | 10.3 | 9.6 | 45 | Marion | 8.7 | 8.6 | 8.5 |
| 1 | Carroll | 5.5 | 5.3 | 5.4 | 7 | Miller | 6.6 | 7.0 | 7.0 |
| 64 | Chicot | 11.0 | 11.4 | 10.7 | 70 | Mississippi | 11.5 | 12.9 | 10.7 |
| 54 | Clark | 9.6 | 9.8 | 10.2 | 43 | Monroe | 8.5 | 8.6 | 8.8 |
| 72 | Clay | 11.8 | 11.5 | 12.5 | 11 | Montgomery | 6.9 | 7.0 | 8.2 |
| 21 | Cleburne | 7.5 | 7.3 | 7.6 | 31 | Nevada | 8.0 | 7.9 | 7.1 |
| 26 | Cleveland | 7.7 | 7.7 | 7.3 | 21 | Newton | 7.5 | 7.2 | 7.9 |
| 51 | Columbia | 9.5 | 9.6 | 9.5 | 49 | Ouachita | 9.3 | 9.2 | 9.9 |
| 41 | Conway | 8.3 | 8.2 | 8.3 | 23 | Perry | 7.6 | 7.9 | 8.3 |
| 16 | Craighead | 7.1 | 6.8 | 7.4 | 74 | Phillips | 12.0 | 11.5 | 11.8 |
| 23 | Crawford | 7.6 | 7.7 | 7.9 | 49 | Pike | 9.3 | 9.0 | 9.2 |
| 68 | Crittenden | 11.1 | 11.4 | 11.3 | 35 | Poinsett | 8.1 | 8.5 | 8.2 |
| 37 | Cross | 8.2 | 8.1 | 8.6 | 31 | Polk | 8.0 | 8.0 | 8.2 |
| 56 | Dallas | 10.2 | 9.9 | 11.2 | 37 | Pope | 8.2 | 8.3 | 8.2 |
| 64 | Desha | 11.0 | 10.9 | 10.8 | 17 | Prairie | 7.2 | 6.9 | 7.9 |
| 69 | Drew | 11.3 | 10.8 | 12.0 | 14 | Pulaski | 7.0 | 6.9 | 7.2 |
| 9 | Faulkner | 6.7 | 6.6 | 7.0 | 56 | Randolph | 10.2 | 9.8 | 10.5 |
| 9 | Franklin | 6.7 | 7.4 | 7.2 | 70 | St. Francis | 11.5 | 11.2 | 11.7 |
| 17 | Fulton | 7.2 | 7.0 | 7.7 | 5 | Saline | 6.1 | 6.0 | 6.6 |
| 29 | Garland | 7.8 | 7.7 | 8.0 | 11 | Scott | 6.9 | 6.7 | 7.6 |
| 14 | Grant | 7.0 | 6.8 | 6.8 | 37 | Searcy | 8.2 | 8.0 | 7.9 |
| 46 | Greene | 8.8 | 8.7 | 9.5 | 20 | Sebastian | 7.4 | 7.6 | 7.7 |
| 26 | Hempstead | 7.7 | 7.6 | 7.8 | 31 | Sevier | 8.0 | 8.0 | 8.5 |
| 17 | Hot Spring | 7.2 | 7.2 | 7.1 | 59 | Sharp | 10.3 | 10.1 | 10.6 |
| 26 | Howard | 7.7 | 7.8 | 7.7 | 62 | Stone | 10.9 | 10.4 | 10.2 |
| 55 | Independence | 9.7 | 9.5 | 9.3 | 47 | Union | 9.0 | 8.6 | 9.2 |
| 51 | Izard | 9.5 | 9.0 | 9.3 | 47 | Van Buren | 9.0 | 8.6 | 9.5 |
| 60 | Jackson | 10.4 | 10.1 | 10.1 | 2 | Washington | 5.7 | 5.6 | 6.0 |
| 62 | Jefferson | 10.9 | 10.7 | 10.3 | 42 | White | 8.4 | 8.6 | 8.5 |
| 29 | Johnson | 7.8 | 10.1 | 8.0 | 64 | Woodruff | 11.0 | 10.5 | 11.1 |
| 64 | Lafayette | 11.0 | 10.8 | 11.2 | 11 | Yell | 6.9 | 6.8 | 7.0 |
| 61 | Lawrence | 10.5 | 9.9 | 10.1 | | | | | |

Lowest Rates

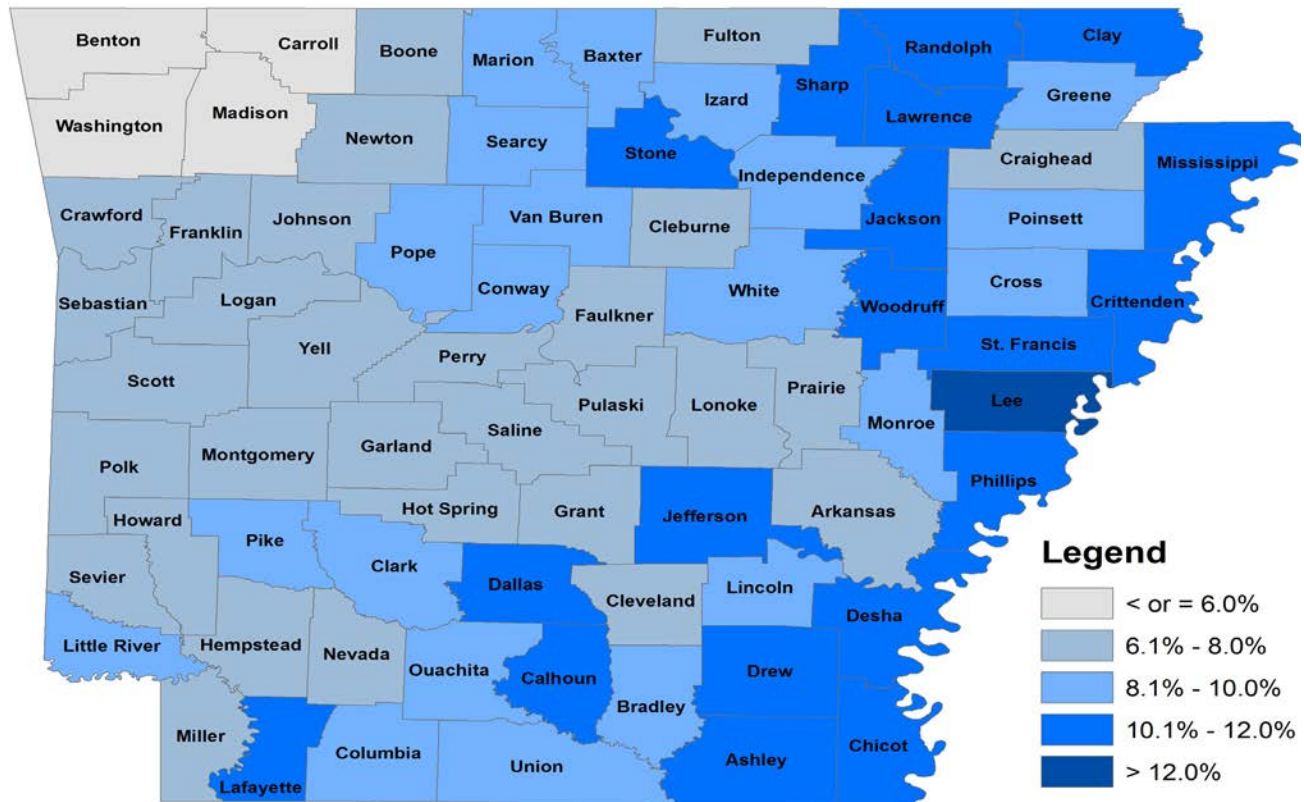
| <u>Rank</u> | <u>County</u> | <u>Rate</u> |
|-------------|---------------|-------------|
| 1 | Carroll | 5.5 |
| 2 | Madison | 5.7 |
| 2 | Washington | 5.7 |
| 4 | Benton | 5.8 |
| 5 | Saline | 6.1 |

Highest Rates

| <u>Rank</u> | <u>County</u> | <u>Rate</u> |
|-------------|---------------|-------------|
| 72 | Clay | 11.8 |
| 73 | Ashley | 11.9 |
| 74 | Phillips | 12.0 |
| 75 | Lee | 12.3 |

Civilian Labor Force Statistics

For complete County Labor Force Statistics, please visit our website at www.discover.arkansas.gov



Technical Notes

The *Arkansas Labor Market* is prepared monthly in conjunction with the U.S. Department of Labor, Bureau of Labor Statistics (BLS). The current month's estimates are preliminary, while previous data are subject to revision.

Estimates of nonfarm payroll jobs show the number of jobs by industry and reflect employment by place of work. Hours and earnings estimates are based on payroll and worker-hour data collected for production workers in manufacturing industries.

Industries are classified according to the North American Industry Classification System (NAICS). All estimates are based on a first quarter 2012 benchmark.

Explanation of Terms and Concepts

Monthly Business Survey of Employers

A monthly sample survey designed to provide industry information on nonfarm payroll jobs. Data are compiled each month from mail surveys and telephone interviews conducted by the Bureau of Labor Statistics in cooperation with Department of Workforce Services. The data are based on establishment records and include all workers, full- or part-time, who received pay during the payroll period which includes the 12th

of the month. Approximately 5,500 Arkansas business establishments are surveyed.

Metropolitan Statistical Area (MSA)

A term applied by the U.S. Office of Management and Budget to counties that have one or more central cities and that meet specified criteria of population density, commuting patterns and social and economic integration.

Current Population Survey (CPS)

A monthly sample survey of the population 16 years of age and over, designed to provide data on the labor force, the employed and the unemployed. The survey is conducted each month by the Bureau of the Census for BLS. The information is collected by trained interviewers from a sample of about 60,000 households. The data collected are based on the activity reported for the calendar week including the 12th of the month. Approximately 800 Arkansas households are represented in the sample survey.

Civilian Labor Force

The sum of all employed and unemployed persons 16 years of age or older. Members of the Armed Forces are excluded.

Employment

An estimate of the number of persons who worked any time for pay or profit or worked 15 hours or more as unpaid workers in a family business during the calendar week which includes the 12th of the month. Also included are those who, although not working, had some job attachment and were not looking for work, and persons involved in labor management disputes.

Unemployment

An estimate of the number of persons who did not have a job, but were available for work and actively seeking work during the calendar week which includes the 12th of the month.

Unemployment Rate

The number of unemployed as a percentage of the civilian labor force. Unemployment rates are calculated from unrounded data.

Seasonal Adjustment

A statistical technique applied to monthly data to eliminate changes that normally occur during the year due to seasonal events such as weather, major holidays, schedule shifts, harvest times, and the opening/closing of schools.

Arkansas Labor Market

July 2013

The *Arkansas Labor Market* is produced by the Department of Workforce Services, Bureau of Labor Statistics. All Statistics are published in cooperation with the United States Department of Labor, Bureau of Labor Statistics.

Auxiliary aids and services are available upon request to individuals with disabilities.

Voice: 1-800-285-1121

TDD: 1-800-285-1131

Mike Beebe- Governor

Artee Williams- DWS Director



Department of Workforce Services
Bureau of Labor Statistics
P.O. Box 2981
Little Rock, AR 72203-2981