

# Arkansas Labor Market

## November 2012

### Employment Headlines

Arkansas' Unemployment Rate Falls to 7.0 Percent

Nonfarm Payroll Jobs Decline 1,100 in November

### Employment Quick Facts

#### Unemployment Rates

Seasonally Adjusted

	<u>Nov 12</u>	<u>Oct 12</u>	<u>Nov 11</u>
AR Unemployment Rate	7.0	7.2	7.9
US Unemployment Rate	7.7	7.9	8.7

#### Nonfarm Payroll Summary

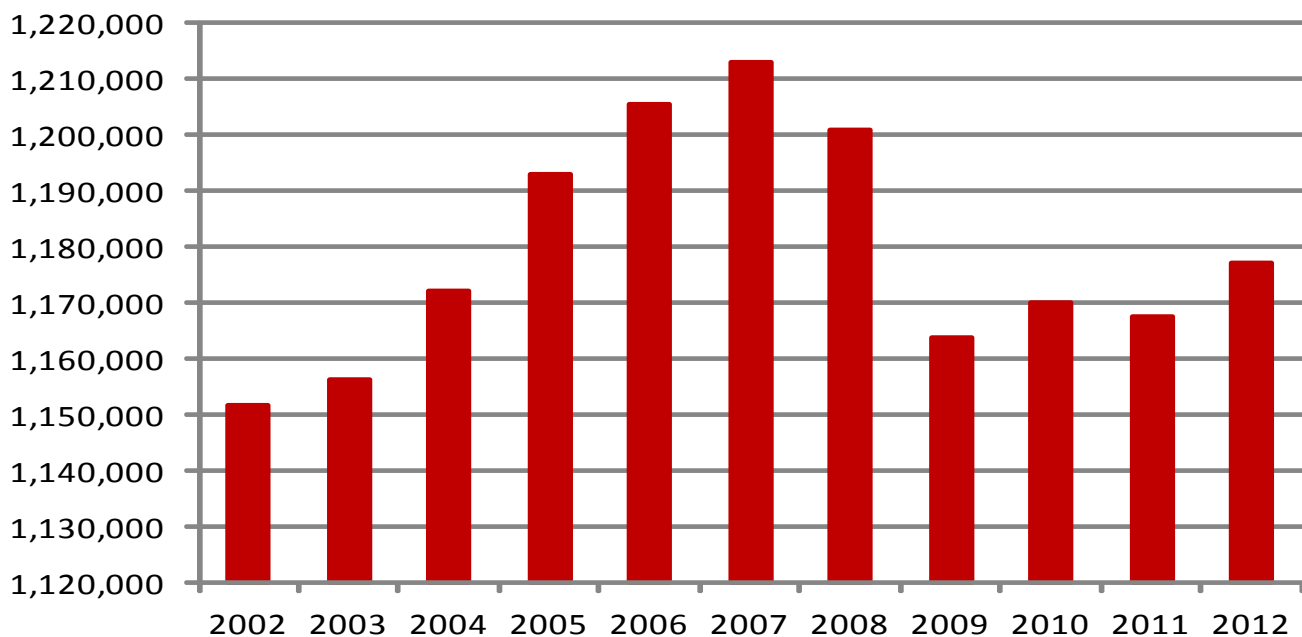
State of Arkansas

	<u>Nov 12</u>	<u>Oct 12</u>	<u>Nov 11</u>
Total Nonfarm	1,177,200	1,178,300	1,167,700
Goods Producing	210,300	211,700	214,000
Service Providing	966,900	966,600	953,700

#### Nonfarm Payroll Jobs

State of Arkansas

November: 2002 - 2012



# Nonfarm Payroll Employment

## State of Arkansas

### October 2012 - November 2012

Arkansas' nonfarm payroll jobs declined 1,100 in November to total 1,177,200. Employment decreased in six major industry sectors, more than offsetting the gains in four sectors. **Leisure and hospitality** lost 2,300 jobs, an expected seasonal decline. Employment in **professional and business services** dropped 2,300. Losses occurred in administrative and support services (-2,300), which includes seasonal activities such as landscaping services. Jobs in **construction** decreased 1,500, a typical weather-related drop. **Trade, transportation, and utilities** posted the largest increase (+4,900). Most of the gain occurred in retail trade (+4,000), related to the start of the holiday shopping season.

### November 2011 - November 2012

Since November 2011, nonfarm payroll jobs in Arkansas rose 9,500. Six major industry sectors enjoyed growth, more than offsetting declines in five sectors. **Trade, transportation, and utilities** added 6,900 jobs. The transportation-warehousing-utilities subsector posted the largest increase (+3,400), attributed in part to reported growth in truck transportation. Employment in **leisure and hospitality** rose 3,800, mostly in food services (+3,100). **Educational and health services** gained 2,600 jobs. Most of the additions occurred in health care and social assistance (+2,500). Jobs in **government** increased 1,600. A majority was posted in local government (+1,500), related to growth in public education. **Construction** declined 3,700, mostly in building equipment contracting.

### Nonfarm Payroll Jobs

(NAICS)	Nov 12	Oct 12	Nov 11
Total Nonfarm	1,177,200	1,178,300	1,167,700
Goods Producing	210,300	211,700	214,000
<b>Mining &amp; Logging</b>	<b>11,100</b>	<b>11,200</b>	<b>10,900</b>
<b>Construction</b>	<b>43,100</b>	<b>44,600</b>	<b>46,800</b>
Specialty Trade Contractors	26,600	26,800	28,200
<b>Manufacturing</b>	<b>156,100</b>	<b>155,900</b>	<b>156,300</b>
Durable Goods	81,300	80,900	78,900
Nondurable Goods	74,800	75,000	77,400
Service Providing	966,900	966,600	953,700
<b>Trade, Transportation &amp; Utilities</b>	<b>242,300</b>	<b>237,400</b>	<b>235,400</b>
Wholesale Trade	46,600	47,000	45,700
Retail Trade	133,600	129,600	131,000
Transport, Warehousing & Utilities	62,100	60,800	58,700
<b>Information</b>	<b>14,100</b>	<b>14,000</b>	<b>14,400</b>
<b>Financial Activities</b>	<b>47,200</b>	<b>47,200</b>	<b>48,100</b>
Finance & Insurance	34,900	34,800	35,300
Real Estate & Rental & Leasing	12,300	12,400	12,800
<b>Professional &amp; Business Services</b>	<b>115,800</b>	<b>118,100</b>	<b>116,500</b>
Professional, Scientific & Technical	37,100	37,300	36,100
Management of Companies	27,300	27,100	26,300
Administrative & Support Services	51,400	53,700	54,100
<b>Educational &amp; Health Services</b>	<b>173,400</b>	<b>173,600</b>	<b>170,800</b>
Health Care & Social Assistance	157,300	157,600	154,800
Ambulatory Health Care	46,800	47,600	47,400
Social Assistance	35,500	35,600	34,500
<b>Leisure &amp; Hospitality</b>	<b>102,100</b>	<b>104,400</b>	<b>98,300</b>
Arts, Entertainment & Recreation	8,500	9,700	8,000
Accommodation & Food Services	93,600	94,700	90,300
Accommodation Services	11,100	11,600	10,900
Food Services	82,500	83,100	79,400
<b>Other Services</b>	<b>44,100</b>	<b>44,400</b>	<b>43,900</b>
<b>Government</b>	<b>227,900</b>	<b>227,500</b>	<b>226,300</b>
Federal Government	20,100	20,300	20,500
State Government	79,400	79,100	78,900
Local Government	128,400	128,100	126,900

## Hours & Earnings of Arkansas Production Workers

(Manufacturing Industries)

	Average Weekly Earnings			Average Weekly Hours			Average Hourly Earnings		
	Nov 12	Oct 12	Nov 11	Nov 12	Oct 12	Nov 11	Nov 12	Oct 12	Nov 11
<b>Manufacturing</b>	\$637.56	\$647.22	\$601.95	42.0	42.0	40.7	\$15.18	\$15.41	\$14.79
<b>Durable Goods</b>	688.84	673.99	678.08	41.9	41.4	41.6	16.44	16.28	16.30
<b>Nondurable Goods</b>	585.19	621.71	529.07	42.1	42.7	39.9	13.90	14.56	13.26

# Spotlight

## Alternative Measures of Labor Underutilization

### Alternative Measures of Labor Underutilization

State of Arkansas

4th Quarter 2011 - 3rd Quarter 2012 (Average)

U-1	U-2	U-3	U-4	U-5	U-6
3.7%	3.8%	7.5%	8.0%	8.8%	13.1%

In addition to the unemployment rate, the Bureau of Labor Statistics (BLS) also calculates five additional estimates based on various definitions of 'unemployment'. These are known as Alternative Measures of Labor Underutilization and are referred to as U1-U6, with U-3 being the definition used to calculate the official unemployment rate. These measures are calculated using data from the

Current Population Survey (CPS), a monthly survey of households (roughly 800 Arkansas households are surveyed each month). Alternative Measures of Labor Underutilization are available at the statewide level, but they are not produced on a monthly basis. Estimates are calculated using a four quarter moving average. The most recent data represents an average of 4th Quarter 2011 through 3rd Quarter 2012 (i.e. October 2011-September 2012).

The following are the definitions used to calculate each measure of labor underutilization:

**U-1 Measure:** Persons unemployed for 15 weeks or longer, as a percent of the civilian labor force.

**U-2 Measure:** Job losers and persons who completed temporary jobs, as a percent of the civilian labor force.

**U-3 Measure:** Total number of unemployed persons, as a percent of the civilian labor force (this is the definition used for the official unemployment rate).

**U-4 Measure:** Total number of unemployed and discouraged workers, as a percent of the civilian labor force plus discouraged workers.

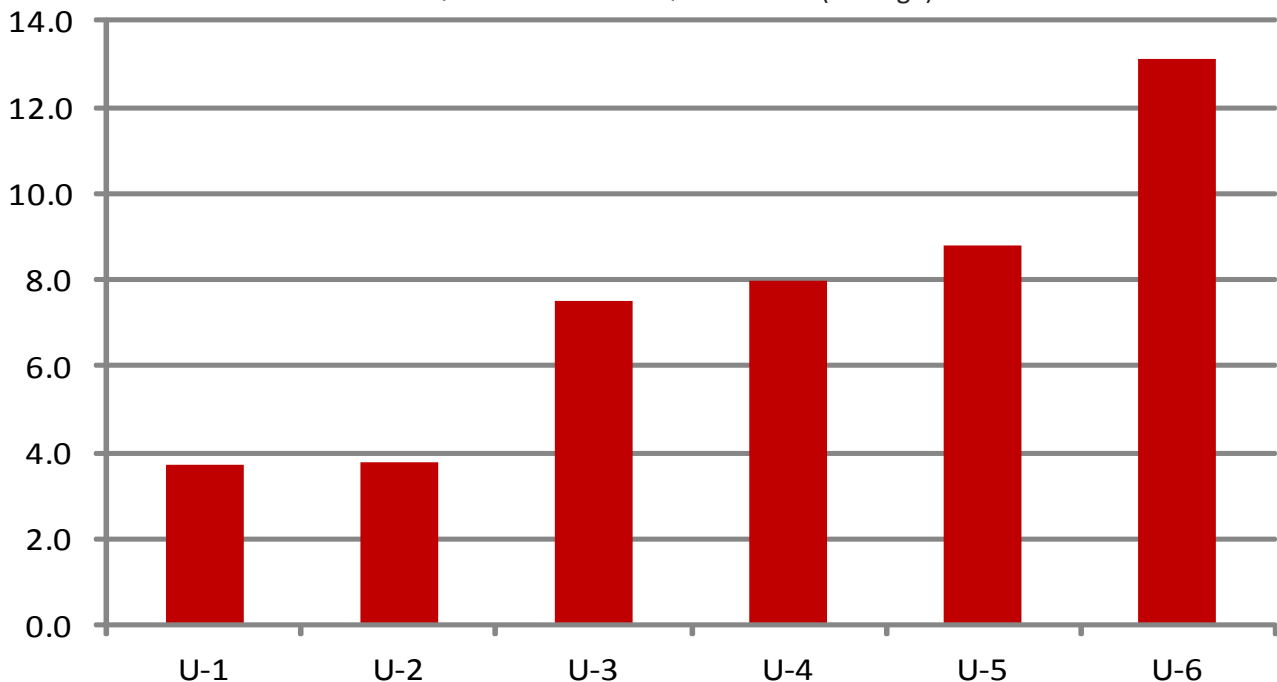
**U-5 Measure:** Total number of unemployed, discouraged workers, and all other marginally attached workers, as a percent of the civilian labor force plus marginally attached workers.

**U-6 Measure:** Total number of unemployed, discouraged workers, marginally attached workers, and those employed part-time for economic reasons (not by choice), as a percent of the civilian labor force plus marginally attached workers.

### Alternative Measures of Labor Underutilization

State of Arkansas

4th Quarter 2011 - 3rd Quarter 2012 (Average)



# Metropolitan Statistical Areas

## Little Rock-North Little Rock-Conway MSA

### Nonfarm Payroll Jobs

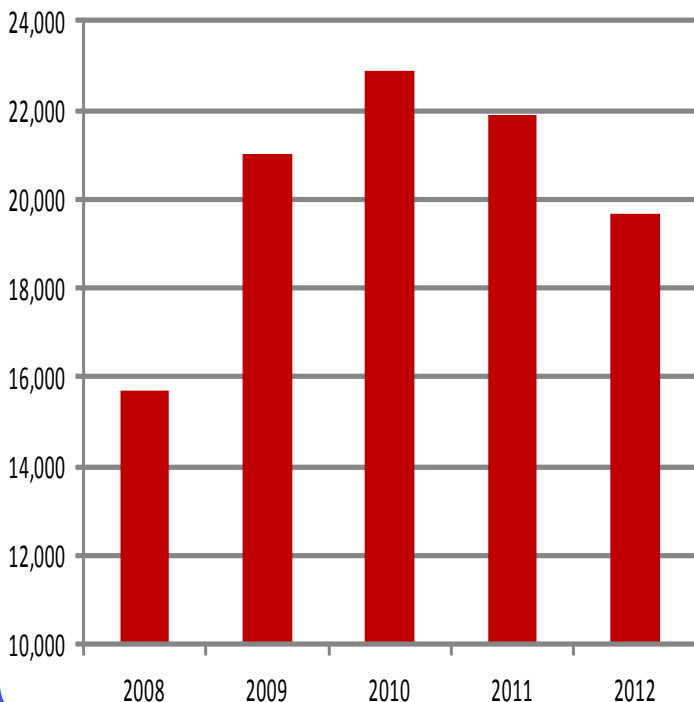
(NAICS)	Nov 12	Oct 12	Nov 11
Total Nonfarm	340,600	341,500	339,200
Goods Producing	34,700	35,000	35,700
Mining, Logging & Construction	15,700	16,100	16,400
Manufacturing	19,000	18,900	19,300
Service Providing	305,900	306,500	303,500
Trade, Transportation & Utilities	69,400	67,300	65,400
Wholesale Trade	16,700	16,800	15,900
Retail Trade	39,000	37,100	36,700
Trans., Warehousing & Utilities	13,700	13,400	12,800
Information	7,200	7,200	7,500
Financial Activities	18,700	18,700	18,900
Professional & Business Services	42,600	44,200	43,200
Educational & Health Services	50,700	51,400	50,700
Leisure & Hospitality	30,700	31,200	30,600
Other Services	15,100	15,100	15,000
Government	71,500	71,400	72,200
Federal Government	9,400	9,500	9,400
State Government	34,200	34,100	34,300
Local Government	27,900	27,800	28,500

(The following counties make up the LR-NLR-Conway MSA: Faulkner, Grant, Lonoke, Perry, Pulaski, and Saline.)

### Civilian Labor Force Statistics

	Nov 12	Oct 12	Nov 11
Civilian Labor Force	341,250	346,975	346,200
Employment	321,575	326,250	324,300
Unemployment	19,675	20,725	21,900
Unemployment Rate	5.8	6.0	6.3

Number of Unemployed  
November: 2008 - 2012



## Fayetteville-Springdale-Rogers MSA

### Nonfarm Payroll Jobs

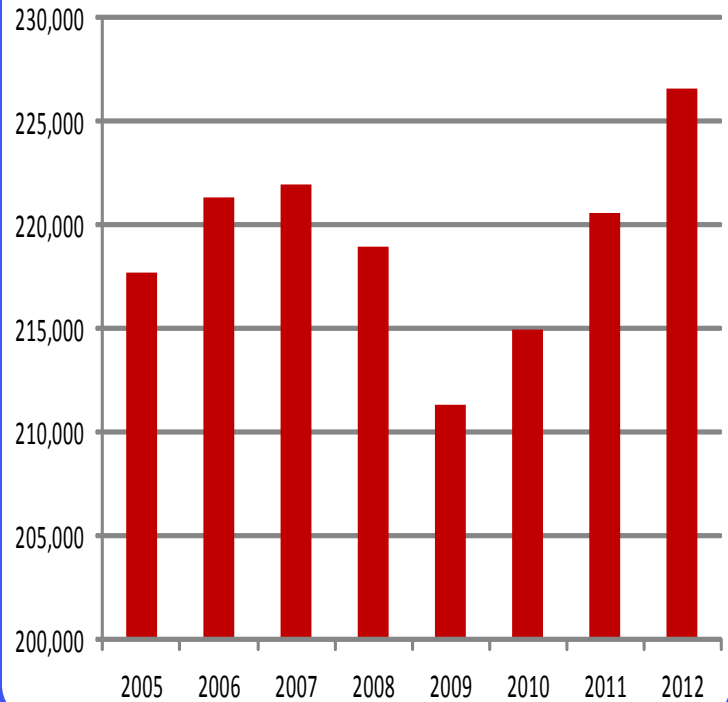
(NAICS)	Nov 12	Oct 12	Nov 11
Total Nonfarm	214,500	212,300	205,300
Goods Producing	35,700	35,700	35,100
Mining, Logging & Construction	7,800	7,800	7,600
Manufacturing	27,900	27,900	27,500
Service Providing	178,800	176,600	170,200
Trade, Transportation & Utilities	48,400	47,300	46,000
Wholesale Trade	10,300	10,200	9,700
Retail Trade	23,000	22,200	21,500
Trans., Warehousing & Utilities	15,100	14,900	14,800
Information	1,900	1,900	1,900
Financial Activities	7,100	7,000	7,000
Professional & Business Services	37,800	37,000	35,700
Educational & Health Services	24,600	24,500	23,100
Leisure & Hospitality	20,200	20,400	18,800
Other Services	7,300	7,300	7,000
Government	31,500	31,200	30,700
Federal Government	2,300	2,300	2,300
State Government	11,000	10,900	10,500
Local Government	18,200	18,000	17,900

(The following counties make up the FSR MSA: Benton, Madison, and Washington in Arkansas and McDonald in Missouri.)

### Civilian Labor Force Statistics

	Nov 12	Oct 12	Nov 11
Civilian Labor Force	237,600	238,350	233,175
Employment	226,600	226,450	220,600
Unemployment	11,000	11,900	12,575
Unemployment Rate	4.6	5.0	5.4

Number of Employed  
November: 2005 - 2012



# Metropolitan Statistical Areas

## Fort Smith MSA

### Nonfarm Payroll Jobs

(NAICS)	Nov 12	Oct 12	Nov 11
Total Nonfarm	110,700	111,000	111,800
Goods Producing	25,800	26,000	25,600
<b>Mining, Logging &amp; Construction</b>	<b>6,700</b>	<b>6,800</b>	<b>6,800</b>
<b>Manufacturing</b>	<b>19,100</b>	<b>19,200</b>	<b>18,800</b>
Service Providing	84,900	85,000	86,200
<b>Trade, Transportation &amp; Utilities</b>	<b>24,000</b>	<b>23,700</b>	<b>23,800</b>
Wholesale Trade	4,000	4,000	3,900
Retail Trade	12,900	12,600	13,000
Trans., Warehousing & Utilities	7,100	7,100	6,900
<b>Information</b>	<b>1,100</b>	<b>1,100</b>	<b>1,100</b>
<b>Financial Activities</b>	<b>3,600</b>	<b>3,600</b>	<b>3,900</b>
<b>Professional &amp; Business Services</b>	<b>9,300</b>	<b>9,600</b>	<b>9,700</b>
<b>Educational &amp; Health Services</b>	<b>15,100</b>	<b>15,200</b>	<b>15,900</b>
<b>Leisure &amp; Hospitality</b>	<b>8,300</b>	<b>8,500</b>	<b>8,300</b>
<b>Other Services</b>	<b>4,300</b>	<b>4,300</b>	<b>4,300</b>
<b>Government</b>	<b>19,200</b>	<b>19,000</b>	<b>19,200</b>
Federal Government	1,600	1,600	1,600
State Government	3,600	3,500	3,500
Local Government	14,000	13,900	14,100

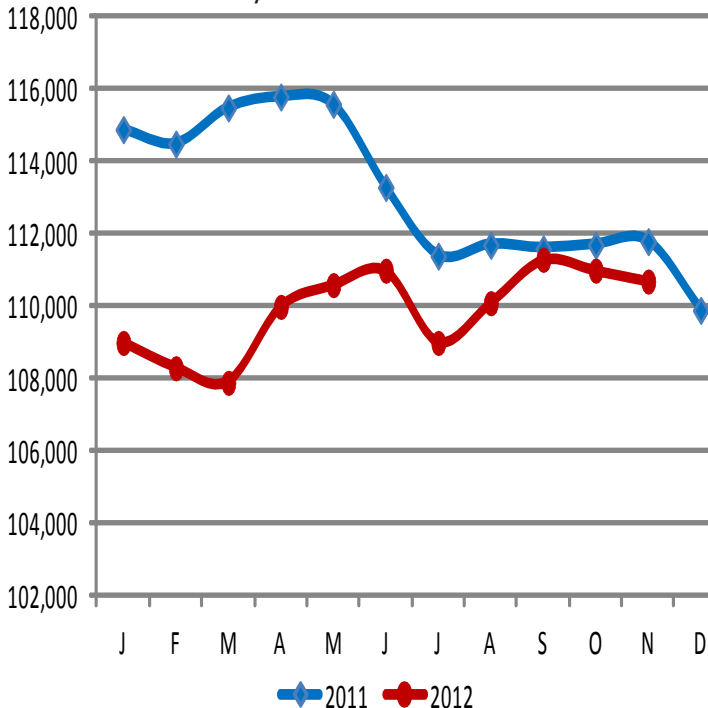
(The following counties make up the Fort Smith MSA: Crawford, Franklin, and Sebastian in Arkansas and LeFlore and Sequoyah in Oklahoma.)

### Civilian Labor Force Statistics

	Nov 12	Oct 12	Nov 11
Civilian Labor Force	127,400	128,475	130,150
Employment	117,725	118,275	119,550
Unemployment	9,675	10,200	10,600
Unemployment Rate	7.6	8.0	8.1

### Nonfarm Payroll Jobs

January 2011 - November 2012



## Hot Springs MSA

### Nonfarm Payroll Jobs

(NAICS)	Nov 12	Oct 12	Nov 11
Total Nonfarm	36,700	36,500	37,100
Goods Producing	3,900	3,900	4,000
Service Providing	32,800	32,600	33,100
Government	5,600	5,600	5,700

(The following county makes up the Hot Springs MSA: Garland.)

### Civilian Labor Force Statistics

	Nov 12	Oct 12	Nov 11
Civilian Labor Force	41,000	41,425	42,525
Employment	38,200	38,500	39,325
Unemployment	2,800	2,925	3,200
Unemployment Rate	6.8	7.1	7.5

## Jonesboro MSA

### Nonfarm Payroll Jobs

(NAICS)	Nov 12	Oct 12	Nov 11
Total Nonfarm	51,200	50,200	49,700
Goods Producing	8,400	8,500	8,500
Service Providing	42,800	41,700	41,200
Government	8,700	8,700	8,700

(The following counties make up the Jonesboro MSA: Craighead and Poinsett.)

### Civilian Labor Force Statistics

	Nov 12	Oct 12	Nov 11
Civilian Labor Force	59,875	59,375	59,350
Employment	56,150	55,500	55,475
Unemployment	3,725	3,875	3,875
Unemployment Rate	6.2	6.5	6.5

## Pine Bluff MSA

### Nonfarm Payroll Jobs

(NAICS)	Nov 12	Oct 12	Nov 11
Total Nonfarm	37,200	36,800	36,600
Goods Producing	7,200	7,200	7,400
Service Providing	30,000	29,600	29,200
Government	10,100	10,000	10,800

(The following counties make up the Pine Bluff MSA: Cleveland, Jefferson, and Lincoln.)

### Civilian Labor Force Statistics

	Nov 12	Oct 12	Nov 11
Civilian Labor Force	43,375	43,600	44,150
Employment	39,800	39,925	40,025
Unemployment	3,575	3,675	4,125
Unemployment Rate	8.3	8.4	9.3

# Civilian Labor Force Statistics

## State of Arkansas

(Seasonally Adjusted)

(Not Seasonally Adjusted)

	<u>Nov 12</u>	<u>Oct 12</u>	<u>Nov 11</u>	<u>OTM</u>	<u>QTY</u>	<u>Nov 12</u>	<u>Oct 12</u>	<u>Nov 11</u>	<u>OTM</u>	<u>QTY</u>
Civilian Labor Force	1,363,400	1,372,100	1,375,800	-8,700	-12,400	1,351,300	1,364,800	1,373,600	-13,500	-22,300
Employment	1,267,500	1,273,800	1,267,600	-6,300	-100	1,263,900	1,274,100	1,274,700	-10,200	-10,800
Unemployment	95,900	98,300	108,200	-2,400	-12,300	87,400	90,700	98,900	-3,300	-11,500
Unemployment Rate	7.0	7.2	7.9	-0.2	-0.9	6.5	6.6	7.2	-0.1	-0.7
U.S. Unemployment Rate	7.7	7.9	8.7	-0.2	-1.0	7.4	7.5	8.2	-0.1	-0.8

## Out-of-State MSAs

### Memphis, Tennessee

	<u>Nov 12</u>	<u>Oct 12</u>	<u>Nov 11</u>
Civilian Labor Force	621,625	625,650	633,175
Employment	574,025	571,700	575,700
Unemployment	47,600	53,950	57,475
Unemployment Rate	7.7	8.6	9.1

### Texarkana, Texas

	<u>Nov 12</u>	<u>Oct 12</u>	<u>Nov 11</u>
Civilian Labor Force	68,275	68,475	67,050
Employment	64,450	64,375	62,500
Unemployment	3,825	4,100	4,550
Unemployment Rate	5.6	6.0	6.8

## Unemployment Rates by County

Between October and November, unemployment rates declined in 53 of Arkansas' 75 counties. Thirteen counties posted rate increases, while nine remained the same. Jobless rates ranged from a low of 4.3 percent in Carroll County to a high of 11.0 percent in Clay County.

In November, eighteen counties enjoyed unemployment rates at or below six percent. Three counties posted rates at or above ten percent, down from four counties in October.

Since November 2011, jobless rates are down in 71 Arkansas counties. Four counties posted rate increases.

<u>Rank</u>	<u>County</u>	<u>Nov 12</u>	<u>Oct 12</u>	<u>Nov 11</u>	<u>Rank</u>	<u>County</u>	<u>Nov 12</u>	<u>Oct 12</u>	<u>Nov 11</u>
34	Arkansas	6.9	6.8	9.1	71	Lee	9.8	10.4	9.5
74	Ashley	10.8	10.7	12.8	53	Lincoln	8.0	8.1	8.6
27	Baxter	6.6	6.8	7.7	14	Little River	6.0	6.2	6.8
4	Benton	4.8	5.1	5.7	30	Logan	6.7	7.2	7.2
14	Boone	6.0	6.1	6.7	7	Lonoke	5.4	5.5	6.1
57	Bradley	8.3	8.5	9.5	2	Madison	4.4	4.5	5.3
39	Calhoun	7.1	7.0	7.4	40	Marion	7.2	7.3	8.2
1	Carroll	4.3	4.3	5.0	24	Miller	6.5	6.1	6.9
64	Chicot	9.1	9.1	10.0	61	Mississippi	8.7	8.7	9.3
49	Clark	7.8	8.0	9.6	49	Monroe	7.8	7.8	7.9
75	Clay	11.0	11.1	12.7	34	Montgomery	6.9	7.0	7.4
24	Cleburne	6.5	6.6	6.7	23	Nevada	6.4	7.0	7.8
30	Cleveland	6.7	6.3	7.3	30	Newton	6.7	7.5	7.4
40	Columbia	7.2	7.6	8.0	60	Ouachita	8.6	8.6	9.6
34	Conway	6.9	7.1	7.2	56	Perry	8.2	7.2	7.7
14	Craighead	6.0	6.4	6.3	69	Phillips	9.7	9.7	10.4
40	Crawford	7.2	7.4	8.2	43	Pike	7.3	7.5	8.1
73	Crittenden	10.2	9.0	11.5	43	Poinsett	7.3	7.1	7.7
46	Cross	7.5	7.7	7.6	20	Polk	6.2	6.9	7.4
64	Dallas	9.1	9.0	10.1	14	Pope	6.0	6.2	6.6
67	Desha	9.5	9.2	9.9	24	Prairie	6.5	6.6	7.5
66	Drew	9.2	9.2	10.8	12	Pulaski	5.9	6.1	6.4
14	Faulkner	6.0	6.2	6.5	58	Randolph	8.5	8.6	10.0
19	Franklin	6.1	6.6	7.3	68	St. Francis	9.6	10.1	9.8
12	Fulton	5.9	6.2	6.3	6	Saline	5.1	5.4	5.7
33	Garland	6.8	7.1	7.5	7	Scott	5.4	5.9	5.9
9	Grant	5.7	5.8	6.1	27	Searcy	6.6	7.0	7.3
49	Greene	7.8	7.9	9.0	47	Sebastian	7.6	7.6	8.2
21	Hempstead	6.3	6.5	7.5	27	Sevier	6.6	7.2	7.1
11	Hot Spring	5.8	6.1	6.6	62	Sharp	8.8	8.9	9.3
21	Howard	6.3	6.8	7.1	53	Stone	8.0	8.4	8.3
52	Independence	7.9	8.1	7.8	47	Union	7.6	7.8	8.9
34	Izard	6.9	7.1	8.1	53	Van Buren	8.0	7.9	8.5
63	Jackson	8.9	8.9	9.2	3	Washington	4.5	4.8	5.0
58	Jefferson	8.5	8.8	9.7	38	White	7.0	7.2	7.6
9	Johnson	5.7	5.9	5.8	71	Woodruff	9.8	9.6	9.9
69	Lafayette	9.7	9.4	8.3	5	Yell	4.9	5.1	5.2
45	Lawrence	7.4	7.7	8.4					

### Lowest Rates

<u>Rank</u>	<u>County</u>	<u>Rate</u>
1	Carroll	4.3
2	Madison	4.4
3	Washington	4.5
4	Benton	4.8
5	Yell	4.9

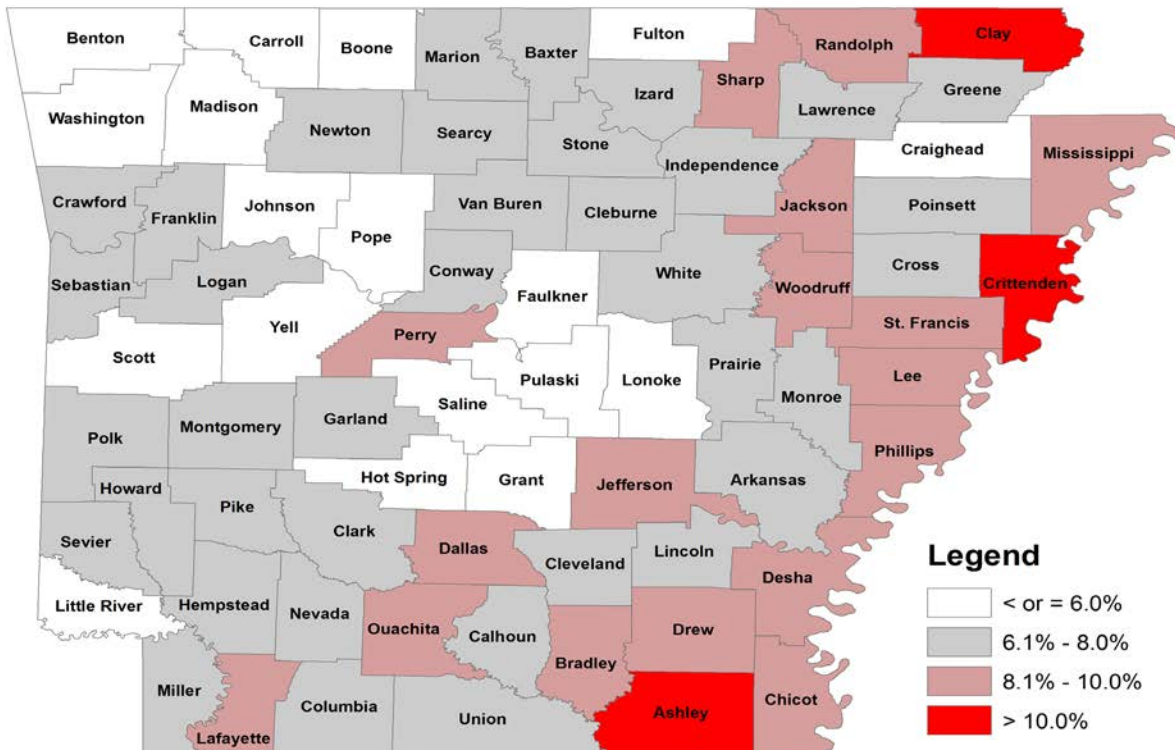
### Highest Rates

<u>Rank</u>	<u>County</u>	<u>Rate</u>
71	Lee	9.8
71	Woodruff	9.8
73	Crittenden	10.2
74	Ashley	10.8
75	Clay	11.0



# Civilian Labor Force Statistics

For complete County Labor Force Statistics, please visit our website at [www.discover.arkansas.gov](http://www.discover.arkansas.gov)



## Technical Notes

The *Arkansas Labor Market* is prepared monthly in conjunction with the U.S. Department of Labor, Bureau of Labor Statistics (BLS). The current month's estimates are preliminary, while previous data are subject to revision.

Estimates of nonfarm payroll jobs show the number of jobs by industry and reflect employment by place of work. Hours and earnings estimates are based on payroll and worker-hour data collected for production workers in manufacturing industries.

Industries are classified according to the North American Industry Classification System (NAICS). All estimates are based on a first quarter 2011 benchmark.

### Explanation of Terms and Concepts

#### Monthly Business Survey of Employers

A monthly sample survey designed to provide industry information on nonfarm payroll jobs. Data are compiled each month from mail surveys and telephone interviews conducted by the Bureau of Labor Statistics in cooperation with Department of Workforce Services. The data are based on establishment records and include all workers, full-or part-time, who received pay during the payroll period which includes the 12th of the

month. Approximately 3,000 Arkansas business establishments are surveyed.

#### Metropolitan Statistical Area (MSA)

A term applied by the U.S. Office of Management and Budget to counties that have one or more central cities and that meet specified criteria of population density, commuting patterns and social and economic integration.

#### Current Population Survey (CPS)

A monthly sample survey of the population 16 years of age and over, designed to provide data on the labor force, the employed and the unemployed. The survey is conducted each month by the Bureau of the Census for BLS. The information is collected by trained interviewers from a sample of about 60,000 households. The data collected are based on the activity reported for the calendar week including the 12th of the month. Approximately 800 Arkansas households are represented in the sample survey.

#### Civilian Labor Force

The sum of all employed and unemployed persons 16 years of age or older. Members of the Armed Forces are excluded.

#### Employment

An estimate of the number of persons who worked any time for pay or profit or worked 15 hours or more as unpaid workers in a family business during the calendar week which includes the 12th of the month. Also included are those who, although not working, had some job attachment and were not looking for work, and persons involved in labor management disputes.

#### Unemployment

An estimate of the number of persons who did not have a job, but were available for work and actively seeking work during the calendar week which includes the 12th of the month.

#### Unemployment Rate

The number of unemployed as a percentage of the civilian labor force. Unemployment rates in this publication are calculated from unrounded data.

#### Seasonal Adjustment

A statistical technique applied to monthly data to eliminate changes that normally occur during the year due to seasonal events such as weather, major holidays, shifts in schedules, harvest times, and the opening/closing of schools.

# Arkansas Labor Market

## November 2012

The *Arkansas Labor Market* is produced by the Department of Workforce Services, Bureau of Labor Statistics. All Statistics are published in cooperation with the United States Department of Labor, Bureau of Labor Statistics.

Equal Opportunity Employer/Program

Auxiliary aids and services are available upon request to individuals with disabilities.



Voice: 1-800-285-1121

TDD: 1-800-285-1131

Mike Beebe- Governor  
Artee Williams- DWS Director

Jobs for People. People for Jobs.  
**DWS**  
Department of  
WORKFORCEservices

Department of Workforce Services  
Bureau of Labor Statistics  
P.O. Box 2981  
Little Rock, AR 72203-2981